

NEW YORK-NEW JERSEY INFORMATION OFFICE
New York, N.Y.

For release: Monday, June 20, 2011

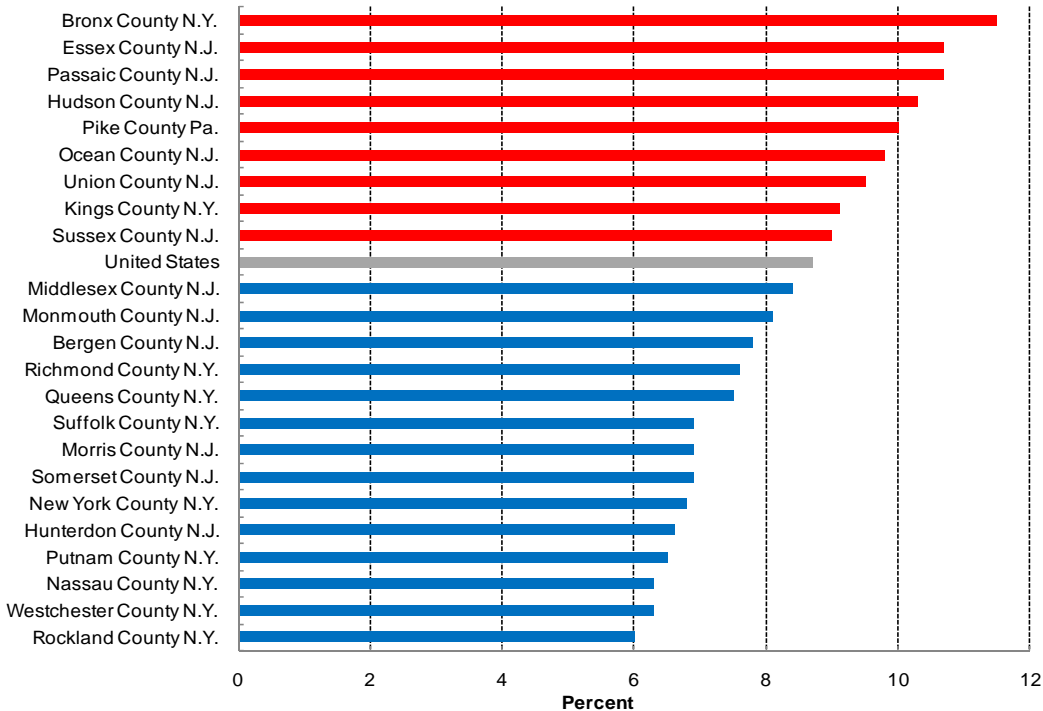
NYLS – 7492

Technical information: Martin Kohli (646) 264-3620 • BLSInfoNY@bls.gov • www.bls.gov/ro2
Media contact: Michael L. Dolfman (212) 337-2500

UNEMPLOYMENT IN THE NEW YORK AREA BY COUNTY – APRIL 2011
Unemployment Rates Vary Widely throughout the Area

In April, Rockland County, N.Y., reported the lowest unemployment rate in the New York-Northern New Jersey-Long Island, N.Y.-N.J.-Pa. Metropolitan Statistical Area (MSA), at 6.0 percent, followed by Nassau and Westchester Counties, N.Y., at 6.3 percent each, the U.S. Bureau of Labor Statistics reported today. In all, 14 of the 23 counties that make up the metropolitan area registered jobless rates below the U.S. rate of 8.7 percent (See chart 1.) Regional Commissioner Michael L. Dolfman pointed out that of the nine counties with rates exceeding the national average, three had rates that were at least 2.0 percentage points higher than that for the nation: Bronx County, N.Y. (11.5 percent), and Essex and Passaic Counties, N.J. (each at 10.7 percent). (See chart 2. The Technical Note at the end of this release contains metropolitan area definitions. All data in this release are not seasonally adjusted; accordingly, over-the-year analysis is used throughout.)

Chart 1. Unemployment rates for the United States and counties in the New York-Northern New Jersey-Long Island, N.Y.-N.J.-Pa. Metropolitan Statistical Area, April 2011, not seasonally adjusted



Round-the-clock recorded messages for the **Consumer Price Index** and a variety of other **Bureau of Labor Statistics** data are available by dialing the **New York-New Jersey Information Office's** main telephone number: **(646) 264-3600**. For recorded messages, press '2'.

All of the 23 counties in the New York area had lower unemployment rates in April 2011 than one year earlier. The largest rate declines occurred among the five counties which make up New York City, where percentages dropped from 0.9 to 1.2 points. At the other end of the spectrum, the unemployment rates in three counties in the Newark-Union Metropolitan Division—Essex, Union, and Pike—were little changed over the year.

While it is clear that New York area jobless rates were on the decline in April 2011, only four counties had rates that had fallen below those levels existing in April 2009—Nassau, New York, Rockland, and Westchester, all in New York State. In addition, two other counties, Queens and Suffolk, had rates that had returned to the 2009 levels. Among the 17 counties with rates still above the April 2009 levels, the largest difference occurred in Pike County, Pa. (2.0 percentage points), followed by Essex County, N.J. (1.3 points), and Bronx County, N.Y. (1.1 points). By comparison, the April 2011 unemployment rate in the United States was little changed over the two-year period.

Technical Notes

This release presents unemployment rate data for states and counties from the Local Area Unemployment Statistics (LAUS) program, a federal-state cooperative endeavor.

Definitions. The labor force and unemployment data are based on the same concepts and definitions as those used for the official national estimates obtained from the Current Population Survey (CPS), a sample survey of households that is conducted for the Bureau of Labor Statistics (BLS) by the U.S. Census Bureau. The LAUS program measures employment and unemployment on a place-of-residence basis. The universe for each is the civilian noninstitutional population 16 years of age and over. Employed persons are those who did any work at all for pay or profit in the reference week (the week including the 12th of the month) or worked 15 hours or more without pay in a family business or farm, plus those not working who had a job from which they were temporarily absent, whether or not paid, for such reasons as labor-management dispute, illness, or vacation. Unemployed persons are those who were not employed during the reference week (based on the definition above), had actively looked for a job sometime in the 4-week period ending with the reference week, and were currently available for work; persons on layoff expecting recall need not be looking for work to be counted as unemployed. The labor force is the sum of employed and unemployed persons. The unemployment rate is the number of unemployed as a percent of the labor force.

Method of estimation. Estimates for the substate areas in this release are prepared through indirect estimation procedures using a building-block approach. Employment estimates, which are based largely on "place of work" estimates from the Current Employment Statistics (CES) program, are adjusted to refer to place of residence as used in the CPS. Unemployment estimates are aggregates of persons previously employed in industries covered by state unemployment insurance (UI) laws and entrants to the labor force data from the CPS. The substate estimates of employment and unemployment, which geographically exhaust the entire state, are adjusted proportionally to ensure that they add to the independently estimated state or balance-of-state totals. A detailed description of the estimation procedures is available from BLS upon request.

Annual revisions. Labor force and unemployment data for prior years reflect adjustments made at the end of each year. The adjusted estimates reflect updated population data from the U.S. Census Bureau, any revisions in the other data sources, and model reestimation. In most years, historical data for the

most recent five years (both seasonally adjusted and not seasonally adjusted) are revised near the beginning of each calendar year, prior to or coincident with the release of January estimates.

Information in this release will be made available to sensory impaired individuals upon request. Voice phone: (202) 691-5200; TDD message referral phone: 1-800-877-8339.

For personal assistance or further information on the Local Area Unemployment Statistics data, as well as other Bureau data, contact the New York-New Jersey Information Office at 646-264-3600 from 9:00 a.m. to 12:30 p.m. and 1:30 p.m. to 4:30 p.m. ET. Information on the Local Area Unemployment Statistics program and other surveys and programs is available on our Web site at www.bls.gov/ro2/.

Area definitions. The substate area data published in this release reflect the standards and definitions established by the U.S. Office of Management and Budget, dated November 20, 2008. A detailed list of the geographic definitions is available at www.bls.gov/lau/lausmsa.htm.

The New York-Northern New Jersey-Long Island Metropolitan Statistical Area (MSA) consists of New York City, Nassau, Putnam, Rockland, Suffolk, and Westchester Counties in New York; Bergen, Essex, Hudson, Hunterdon, Middlesex, Monmouth, Morris, Ocean, Passaic, Somerset, Sussex, and Union Counties in New Jersey; and Pike County, Pennsylvania.

The Edison-New Brunswick Metropolitan Division consists of Middlesex, Monmouth, Ocean, and Somerset Counties in New Jersey.

The Nassau-Suffolk Metropolitan Division consists of Nassau and Suffolk Counties in New York.

The New York-White Plains-Wayne Metropolitan Division consists of New York City and Westchester, Rockland, and Putnam Counties in New York; and Bergen, Hudson, and Passaic Counties in New Jersey.

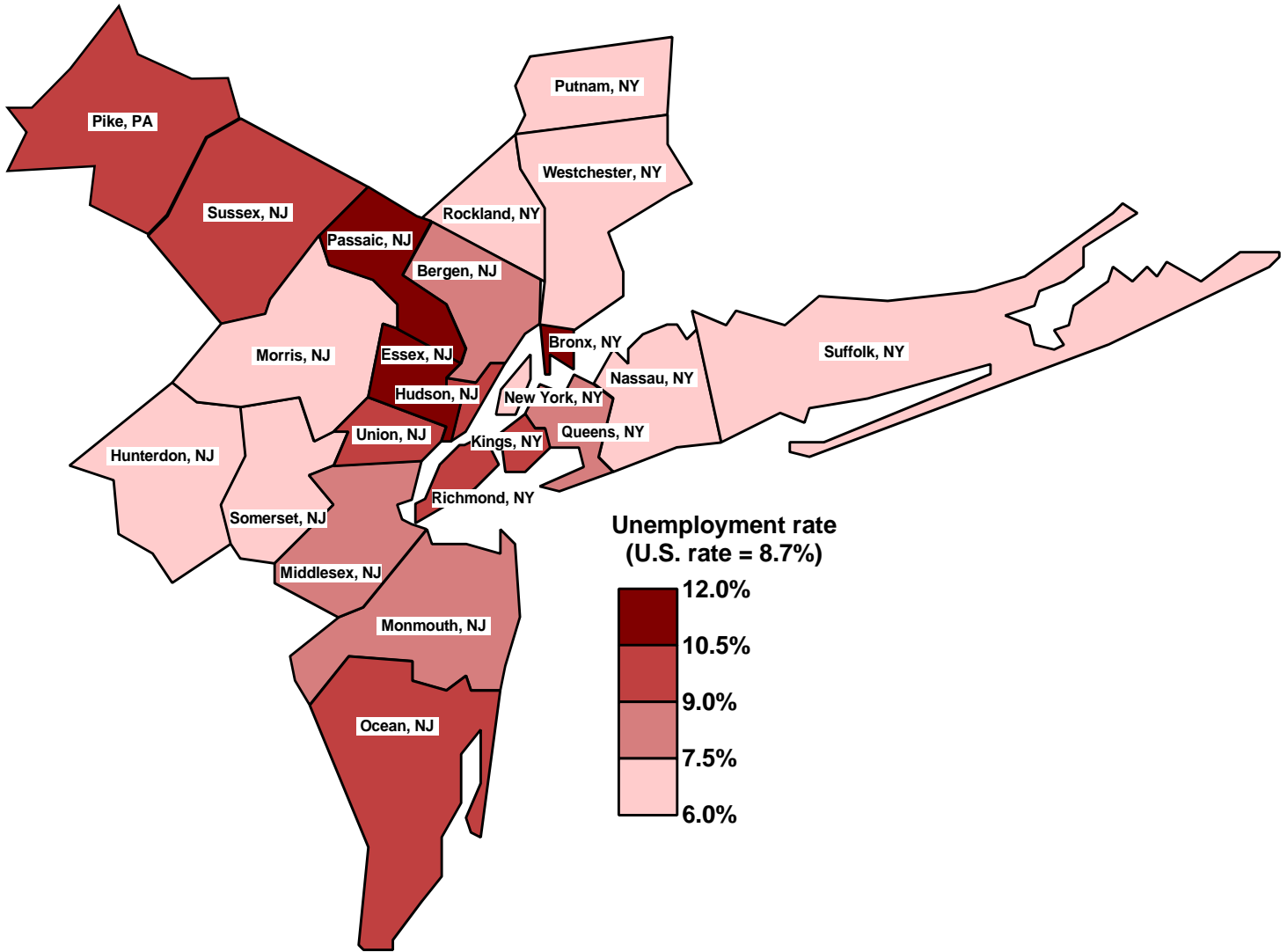
The Newark-Union Metropolitan Division consists of Essex, Hunterdon, Morris, Sussex, and Union Counties in New Jersey; and Pike County in Pennsylvania.

Table 1. Unemployment rates for the United States, the New York-Northern New Jersey- Long Island, N.Y.-N.J.-Pa. Metropolitan Statistical Area, and its components, not seasonally adjusted

<u>Area</u>	<u>Unemployment rates</u>			<u>Net change from</u>	
	April 2009	April 2010	April 2011 ^P	April 2009 to April 2010	April 2010 to April 2011 ^P
United States	8.6	9.5	8.7	0.9	-0.8
New York-Northern New Jersey- Long Island, N.Y.-N.J.-Pa. Metropolitan Statistical Area	7.9	8.8	8.1	0.9	-0.7
New York-White Plains-Wayne, N.Y.-N.J.					
Metropolitan Division	8.2	9.2	8.2	1.0	-1.0
New York City, N.Y.	8.3	9.5	8.3	1.2	-1.2
Bronx County, N.Y.	10.4	12.6	11.5	2.2	-1.1
Kings County, N.Y.	8.8	10.2	9.1	1.4	-1.1
New York County, N.Y.	7.5	8.0	6.8	0.5	-1.2
Queens County, N.Y.	7.5	8.7	7.5	1.2	-1.2
Richmond County, N.Y.	7.4	8.5	7.6	1.1	-0.9
Putnam County, N.Y.	6.4	6.8	6.5	0.4	-0.3
Rockland County, N.Y.	6.7	6.8	6.0	0.1	-0.8
Westchester County, N.Y.	6.7	6.9	6.3	0.2	-0.6
Bergen County, N.J.	7.2	8.0	7.8	0.8	-0.2
Hudson County, N.J.	9.9	10.7	10.3	0.8	-0.4
Passaic County, N.J.	10.5	11.4	10.7	0.9	-0.7
Edison-New Brunswick, N.J.					
Metropolitan Division	8.0	8.7	8.4	0.7	-0.3
Middlesex County, N.J.	8.0	8.7	8.4	0.7	-0.3
Monmouth County, N.J.	7.8	8.5	8.1	0.7	-0.4
Ocean County, N.J.	9.2	10.0	9.8	0.8	-0.2
Somerset County, N.J.	6.6	7.5	6.9	0.9	-0.6
Newark-Union, N.J.-Pa.					
Metropolitan Division	8.2	9.3	9.0	1.1	-0.3
Essex County, N.J.	9.4	10.8	10.7	1.4	-0.1
Hunterdon County, N.J.	6.2	7.1	6.6	0.9	-0.5
Morris County, N.J.	6.5	7.4	6.9	0.9	-0.5
Sussex County, N.J.	8.4	9.4	9.0	1.0	-0.4
Union County, N.J.	8.8	9.6	9.5	0.8	-0.1
Pike County Pa.	8.0	10.1	10.0	2.1	-0.1
Nassau-Suffolk, N.Y.					
Metropolitan Division	6.8	7.1	6.6	0.3	-0.5
Nassau County, N.Y.	6.8	6.8	6.3	0.0	-0.5
Suffolk County, N.Y.	6.9	7.4	6.9	0.5	-0.5

^P Data for the New York-Northern New Jersey-Long Island, N.Y.-N.J.-Pa. Metropolitan Statistical Area and its components are preliminary for the most recent month.

Chart 2. Unemployment rates for counties in the New York- Northern New Jersey- Long Island, NY-NJ-PA Metropolitan Statistical Area, not seasonally adjusted, April 2011



Source: Bureau of Labor Statistics, June 2011