

MID-ATLANTIC INFORMATION OFFICE
Philadelphia, Pa.

For release: Tuesday, April 10, 2012

12-681-PHI

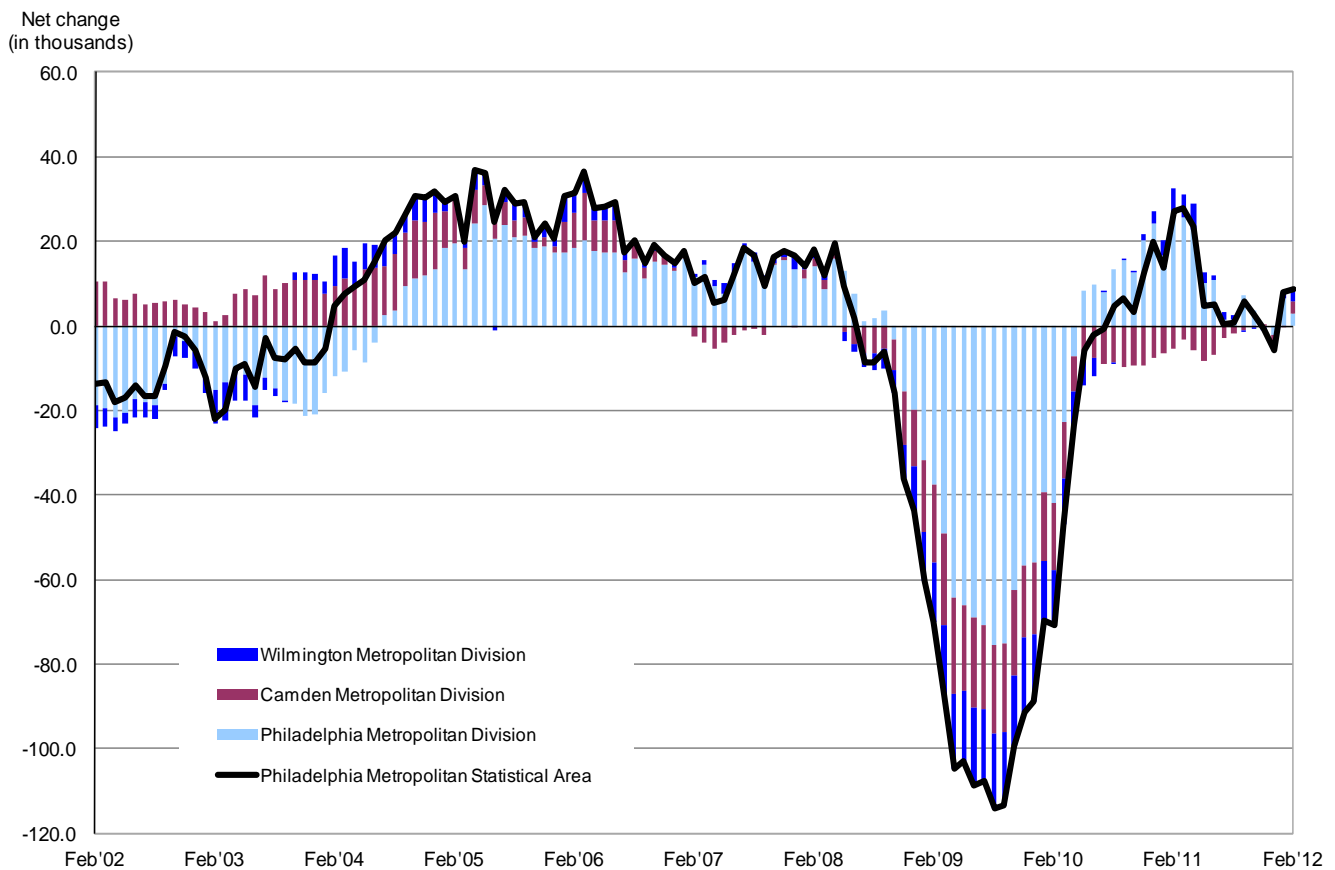
Technical Information: (215) 597-3282 • BLSInfoPhiladelphia@bls.gov • www.bls.gov/ro3
Media Contact: (215) 861-5600 • BLSMediaPhiladelphia@bls.gov

PHILADELPHIA AREA EMPLOYMENT – FEBRUARY 2012

Local Employment Little Changed Over the Year

Total nonfarm employment for the Philadelphia-Camden-Wilmington, Pa.-N.J.-Del.-Md. Metropolitan Statistical Area stood at 2,683,400 in February 2012, up 8,800, or 0.3 percent, over the year, the U.S. Bureau of Labor Statistics reported today. During the same period, the national job count increased 1.6 percent. Sheila Watkins, the Bureau’s regional commissioner, noted that the Philadelphia area’s February increase was the 10th consecutive month of little or no change over the year. (See chart 1 and table 1; Technical Note at end of release contains metropolitan area definitions. All data in this release are not seasonally adjusted; accordingly, over-the-year analysis is used throughout.)

Chart 1. Total nonfarm employment, over-the-year net change in the Philadelphia metropolitan area and its divisions, February 2002-February 2012



Source: U.S. Bureau of Labor Statistics

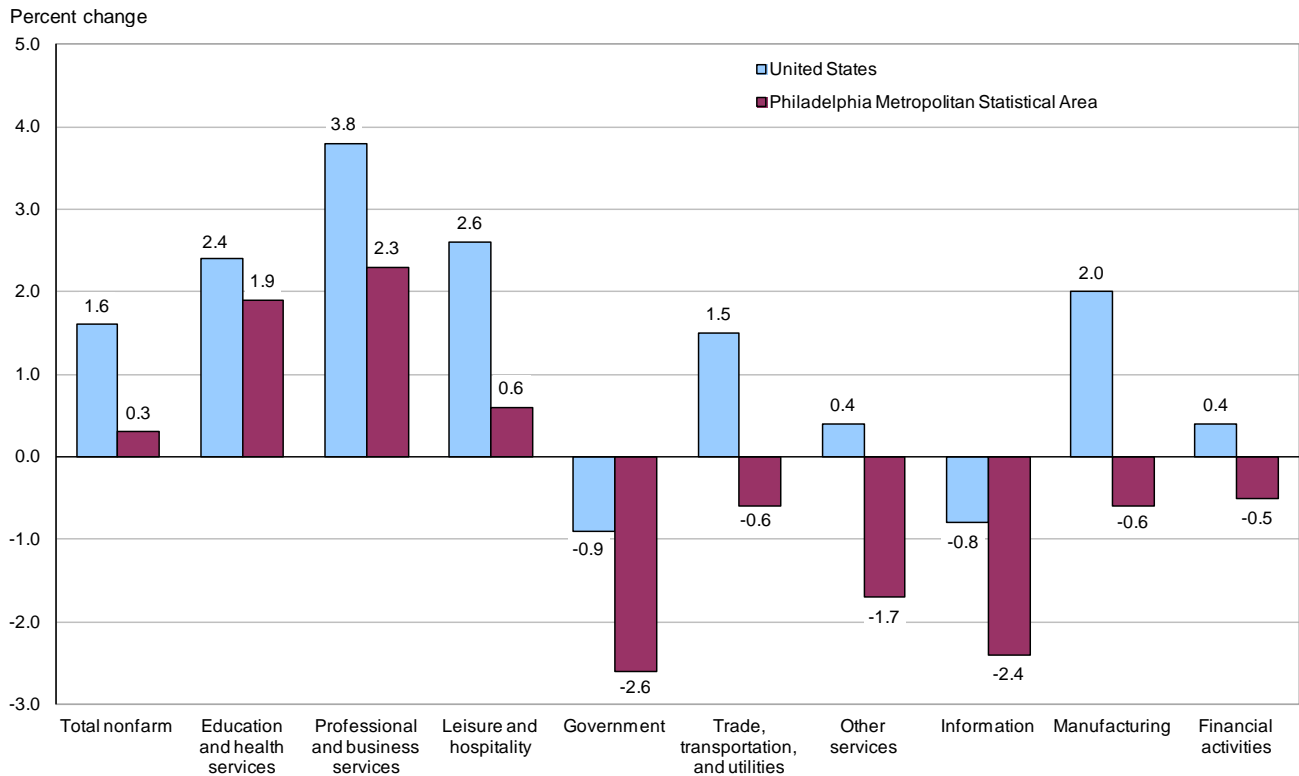
The Philadelphia-Camden-Wilmington, Pa.-N.J.-Del.-Md. Metropolitan Statistical Area is made up of three metropolitan divisions—separately identifiable employment centers within the greater metropolitan area. All three of these areas gained jobs over the year. The Camden and Wilmington Metropolitan Divisions (with 18 and 12 percent of the area’s employment, respectively), each added 3,000 jobs from the previous February. The Philadelphia Metropolitan Division, which made up the largest part of local area employment at 69 percent, added 2,800 jobs over the year.

Industry employment

In the greater Philadelphia metropolitan area, education and health services recorded the largest increase from February 2011 to February 2012, adding 11,000 jobs. More than one-half of the employment gain took place in the Camden division, which added 5,700 jobs. Still, the Philadelphia area’s 1.9-percent increase in education and health services jobs was below the nationwide gain of 2.4 percent. (See chart 2.)

Local employment in professional and business services grew by 9,200 over the year, with most of the increase coming from the Philadelphia division, which added 8,100 jobs. Since last February, professional and business services employment in the Philadelphia area increased 2.3 percent, less than the 3.8-percent rise nationally.

Chart 2. Over-the-year percent change in employment by selected industry supersector, United States and the Philadelphia metropolitan area, February 2012



Source: U.S. Bureau of Labor Statistics

Two other supersectors in the Philadelphia area gained jobs from February 2011 to February 2012. Employment in mining, logging, and construction was up 4,700 from February a year ago. In leisure and hospitality, 1,200 jobs were added over the year, an advance of 0.6 percent, much less than the national increase of 2.6 percent.

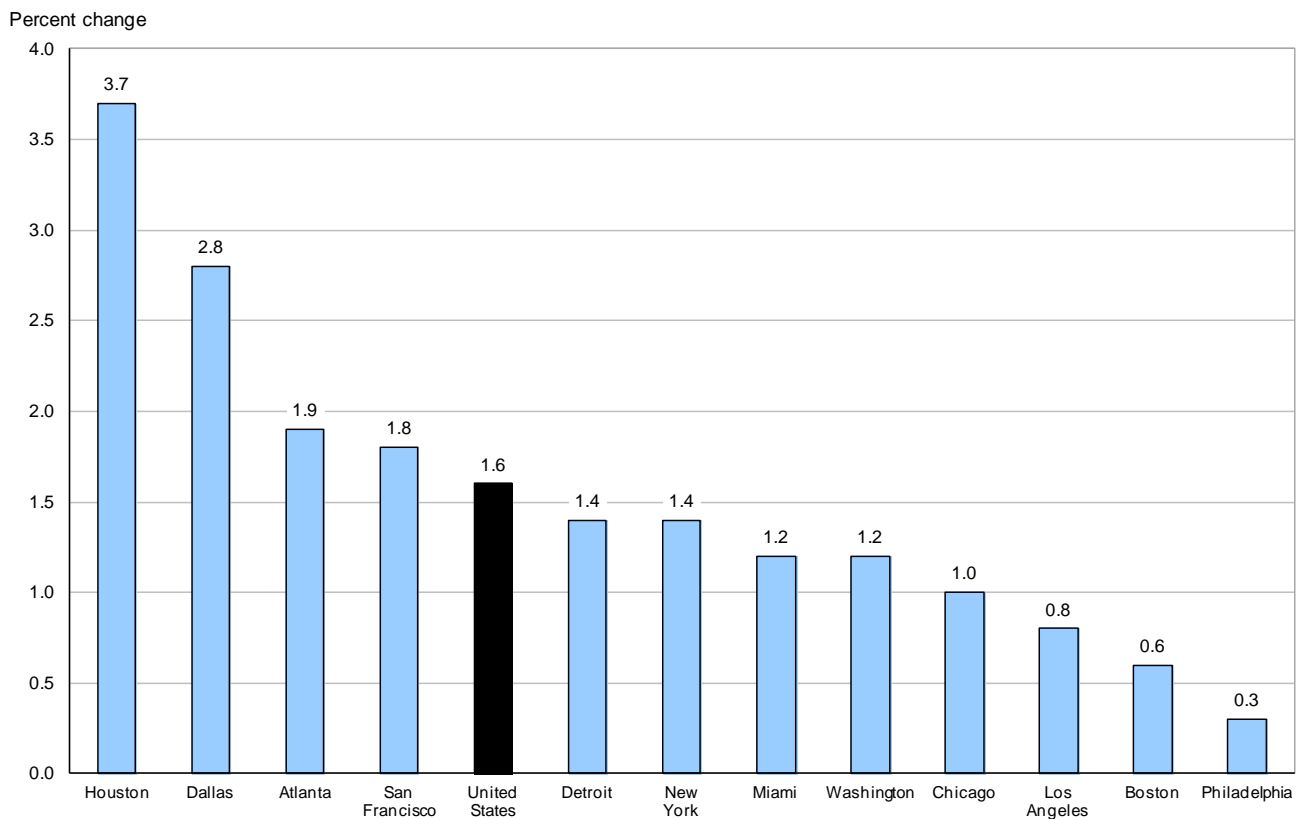
Government employment recorded the largest over-the-year decline in the Philadelphia area, down 9,000 from the previous February. Nearly all of the loss was centered in the Philadelphia division, which shed 8,400 public-sector jobs. The metropolitan area’s 2.6-percent decrease in government jobs was nearly three times the national rate of decline of 0.9 percent.

Five other supersectors lost 3,000 jobs or less in the local area over the last 12 months: trade, transportation, and utilities; other services; information; manufacturing; and financial activities. Nationally, four of these supersectors gained jobs over the year; information was the exception. Still, this industry declined at a faster pace in the Philadelphia area (-2.4 percent) than it did nationwide (-0.8 percent).

Twelve largest metropolitan areas

Philadelphia was 1 of the nation’s 12 largest metropolitan statistical areas in February 2012. All of these areas experienced over-the-year job gains during the period, though the rates of growth were varied. Four of these areas expanded at a pace above the 1.6-percent national average and three others grew by less than 1.0 percent. Employment growth was strongest in Houston, up 3.7 percent—more than twice the U.S. average, and slowest in Philadelphia, up 0.3 percent. (See chart 3 and table 2.)

Chart 3. Over-the-year percent change in employment, United States and 12 largest metropolitan areas, February 2012



Source: U.S. Bureau of Labor Statistics

Among the 12 areas, New York added the most jobs since February 2011, up 117,700. Houston and Dallas followed with the addition of 93,400 and 79,400 jobs, respectively. Five other areas added between 44,000 and 34,000 jobs. Only Philadelphia added fewer than 10,000 jobs over the 12-month period.

Two industry supersectors accounted for most of the job growth from February a year ago among the 12 metropolitan areas. Professional and business services registered the largest employment gains in six areas (Atlanta, Chicago, Detroit, Los Angeles, New York, and San Francisco) and education and health services led in five other areas (Boston, Houston, Miami, Philadelphia, and Washington).

Widespread losses were recorded in the public sector over the year. Government experienced the largest loss of jobs in eight areas and had the second largest drop in three additional areas. The decline in government employment was largest in New York, down 13,400, followed by Los Angeles (-9,300), and Philadelphia (-9,000). Only Washington added public sector jobs from the prior February, up 5,800.

Changes to Current Employment Statistics Data

Effective with the release of January 2012 data, nonfarm payroll estimates for all states, metropolitan areas, and metropolitan divisions were revised to reflect 2011 benchmark levels. For more information on benchmark procedures, see www.bls.gov/sae/benchmark2012.pdf.

Technical Note

This release presents nonfarm payroll employment estimates from the Current Employment Statistics (CES) program. The CES survey is a Federal-State cooperative endeavor with the Bureau of Labor Statistics.

Definitions. Employment data refer to persons on establishment payrolls who receive pay for any part of the pay period which includes the 12th of the month. Persons are counted at their place of work rather than at their place of residence; those appearing on more than one payroll are counted on each payroll. Industries are classified on the basis of their principal activity in accordance with the 2007 version of the North American Industry Classification System.

Method of estimation. The employment data are estimated using a "link relative" technique in which a ratio (link relative) of current-month employment to that of the previous month is computed from a sample of establishments reporting for both months. The estimates of employment for the current month are obtained by multiplying the estimates for the previous month by these ratios. Small-domain models are used as the official estimators for approximately 39 percent of CES published series which have insufficient sample for direct sample-based estimates.

Annual revisions. Employment estimates are adjusted annually to a complete count of jobs, called benchmarks, derived principally from tax reports which are submitted by employers who are covered under state unemployment insurance (UI) laws. The benchmark information is used to adjust the monthly estimates between the new benchmark and the preceding one and also to establish the level of employment for the new benchmark month. Thus, the benchmarking process establishes the level of employment, and the sample is used to measure the month-to-month changes in the level for the subsequent months.

Reliability of the estimates. The estimates presented in this release are based on sample survey and administrative data and thus are subject to sampling and other types of errors. Sampling error is a measure of sampling variability—that is, variation that occurs by chance because a sample rather than the entire population is surveyed. Survey data are also subject to nonsampling errors, such as those which can be introduced into the data collection and processing operations. Estimates not directly derived from sample surveys are subject to additional errors resulting from the special estimation

processes used. The sums of individual items may not always equal the totals shown in the same tables because of rounding.

Employment estimates. Measures of sampling error for state CES data at the supersector level are available on the BLS Web site at www.bls.gov/sae/790stderr.htm. Information on recent benchmark revisions for states is available at www.bls.gov/sae/.

Additional information

More complete information on the technical procedures used to develop these estimates and additional data appear in *Employment and Earnings*, which is available online at www.bls.gov/opub/ee/home.htm. Industry employment data for states and metropolitan areas from the Current Employment Statistics program are also available in the above mentioned news releases and from the Internet at www.bls.gov/sae/.

For personal assistance or further information on the Current Employment Statistics program, as well as other Bureau programs, contact the Mid-Atlantic Information Office at 215-597-3282 from 8:30 a.m. to 12:00 p.m. and 1:00 p.m. to 3:30 p.m. ET.

Area definitions. The substate area data published in this release reflect the standards and definitions established by the U.S. Office of Management and Budget, dated December 1, 2009. A detailed list of the geographic definitions is available at www.bls.gov/lau/lausmsa.htm.

The Philadelphia-Camden-Wilmington, Pa.-N.J.-Del.-Md. Metropolitan Statistical Area (MSA) includes Bucks, Chester, Delaware, Montgomery, and Philadelphia Counties in Pennsylvania; Burlington, Camden, Gloucester, and Salem Counties in New Jersey; New Castle County in Delaware; and Cecil County in Maryland.

The Camden, N.J. Metropolitan Division (MD) includes Burlington, Camden, and Gloucester Counties in New Jersey.

The Philadelphia, Pa. Metropolitan Division (MD) includes Bucks, Chester, Delaware, Montgomery, and Philadelphia Counties in Pennsylvania.

The Wilmington, Del.-Md.-N.J. Metropolitan Division (MD) includes New Castle County in Delaware; Cecil County in Maryland; and Salem County in New Jersey.

Table 1. Employees on nonfarm payrolls by industry supersector, Philadelphia metropolitan area and its components, not seasonally adjusted (numbers in thousands)

Area	Feb 2011	Dec 2011	Jan 2012	Feb 2012(p)	Feb 2011 to Feb 2012(p)	
					Net change	Percent change
Philadelphia-Camden-Wilmington, Pa.-N.J.-Del.-Md. Metropolitan Statistical Area						
Total nonfarm	2,674.6	2,733.0	2,670.6	2,683.4	8.8	0.3
Mining, logging, and construction	90.0	101.8	97.3	94.7	4.7	5.2
Manufacturing	185.0	187.0	185.9	183.9	-1.1	-0.6
Trade, transportation, and utilities	493.8	513.8	495.1	490.8	-3.0	-0.6
Information	50.0	49.5	49.0	48.8	-1.2	-2.4
Financial activities	198.5	198.4	197.5	197.5	-1.0	-0.5
Professional and business services	406.6	419.3	409.5	415.8	9.2	2.3
Education and health services	568.9	576.3	569.1	579.9	11.0	1.9
Leisure and hospitality	213.1	222.9	214.9	214.3	1.2	0.6
Other services	119.1	121.0	118.7	117.1	-2.0	-1.7
Government	349.6	343.0	333.6	340.6	-9.0	-2.6
Philadelphia, Pa. Metropolitan Division						
Total nonfarm	1,855.0	1,891.8	1,849.3	1,857.8	2.8	0.2
Mining, logging, and construction	58.4	65.5	63.5	61.9	3.5	6.0
Manufacturing	130.4	131.9	131.2	129.4	-1.0	-0.8
Trade, transportation, and utilities	324.4	339.6	326.4	323.8	-0.6	-0.2
Information	37.9	37.4	37.0	36.9	-1.0	-2.6
Financial activities	131.3	129.9	130.0	129.6	-1.7	-1.3
Professional and business services	288.1	298.7	291.7	296.2	8.1	2.8
Education and health services	434.5	435.7	428.0	438.0	3.5	0.8
Leisure and hospitality	146.4	154.7	150.6	148.8	2.4	1.6
Other services	82.8	84.4	82.5	80.8	-2.0	-2.4
Government	220.8	214.0	208.4	212.4	-8.4	-3.8
Philadelphia City, Pa.						
Total nonfarm	660.9	659.9	648.0	655.5	-5.4	-0.8
Mining, logging, and construction	9.1	9.3	9.0	8.9	-0.2	-2.2
Manufacturing	23.9	23.0	23.1	23.0	-0.9	-3.8
Trade, transportation, and utilities	85.8	89.1	86.2	86.0	0.2	0.2
Information	12.0	11.9	11.6	11.6	-0.4	-3.3
Financial activities	41.8	41.2	41.0	40.9	-0.9	-2.2
Professional and business services	82.6	82.8	79.5	80.6	-2.0	-2.4
Education and health services	216.3	212.8	211.0	217.0	0.7	0.3
Leisure and hospitality	57.0	58.9	57.9	58.6	1.6	2.8
Other services	26.1	26.2	24.9	24.8	-1.3	-5.0
Government	106.3	104.7	103.8	104.1	-2.2	-2.1
Camden, N.J. Metropolitan Division						
Total nonfarm	493.2	506.5	494.4	496.2	3.0	0.6
Mining, logging, and construction	17.2	20.8	19.1	18.5	1.3	7.6
Manufacturing	36.6	36.3	35.9	35.7	-0.9	-2.5
Trade, transportation, and utilities	111.2	113.4	109.9	108.8	-2.4	-2.2
Information	7.0	7.1	7.0	6.9	-0.1	-1.4
Financial activities	28.2	28.8	28.5	28.6	0.4	1.4
Professional and business services	69.8	70.1	68.3	68.9	-0.9	-1.3
Education and health services	81.0	85.6	86.5	86.7	5.7	7.0
Leisure and hospitality	38.5	39.3	36.9	37.6	-0.9	-2.3
Other services	21.5	21.9	21.6	21.6	0.1	0.5
Government	82.2	83.2	80.7	82.9	0.7	0.9
Wilmington, Del.-Md.-N.J. Metropolitan Division						
Total nonfarm	326.4	334.7	326.9	329.4	3.0	0.9
Mining, logging, and construction	14.4	15.5	14.7	14.3	-0.1	-0.7
Manufacturing	18.0	18.8	18.8	18.8	0.8	4.4
Trade, transportation, and utilities	58.2	60.8	58.8	58.2	0.0	0.0
Information	5.1	5.0	5.0	5.0	-0.1	-2.0
Financial activities	39.0	39.7	39.0	39.3	0.3	0.8
Professional and business services	48.7	50.5	49.5	50.7	2.0	4.1
Education and health services	53.4	55.0	54.6	55.2	1.8	3.4
Leisure and hospitality	28.2	28.9	27.4	27.9	-0.3	-1.1
Other services	14.8	14.7	14.6	14.7	-0.1	-0.7
Government	46.6	45.8	44.5	45.3	-1.3	-2.8

(p) = preliminary

Table 2. Employees on nonfarm payrolls by industry supersector, United States and 12 large metropolitan areas, not seasonally adjusted (numbers in thousands)

Area	Feb 2011	Dec 2011	Jan 2012	Feb 2012(p)	Feb 2011 to Feb 2012(p)	
					Net change	Percent change
United States						
Total nonfarm	129,148	132,965	130,297	131,199	2,051	1.6
Mining and logging	723	818	813	817	94	13.0
Construction	5,049	5,441	5,158	5,129	80	1.6
Manufacturing	11,542	11,817	11,755	11,774	232	2.0
Trade, transportation, and utilities	24,473	25,803	25,047	24,837	364	1.5
Information	2,663	2,660	2,599	2,643	-20	-0.8
Financial activities	7,624	7,707	7,645	7,652	28	0.4
Professional and business services	16,842	17,698	17,335	17,488	646	3.8
Education and health services	19,829	20,236	19,977	20,298	469	2.4
Leisure and hospitality	12,614	13,116	12,817	12,943	329	2.6
Other services	5,284	5,336	5,293	5,307	23	0.4
Government	22,505	22,333	21,858	22,311	-194	-0.9
Atlanta-Sandy Springs-Marietta, Ga.						
Total nonfarm	2,272.5	2,334.1	2,303.4	2,316.4	43.9	1.9
Mining and logging	1.3	1.3	1.3	1.3	0.0	0.0
Construction	88.2	91.5	88.4	88.5	0.3	0.3
Manufacturing	144.8	148.1	148.5	149.6	4.8	3.3
Trade, transportation, and utilities	514.0	541.6	531.1	531.7	17.7	3.4
Information	79.2	79.0	78.7	79.3	0.1	0.1
Financial activities	141.0	138.8	136.5	135.1	-5.9	-4.2
Professional and business services	390.8	411.7	407.9	412.6	21.8	5.6
Education and health services	285.5	294.1	290.4	294.4	8.9	3.1
Leisure and hospitality	215.5	219.6	213.0	215.1	-0.4	-0.2
Other services	92.9	91.3	92.6	92.4	-0.5	-0.5
Government	319.3	317.1	315.0	316.4	-2.9	-0.9
Boston-Cambridge-Quincy, Mass.-N.H. (NECTA)						
Total nonfarm	2,404.6	2,464.3	2,417.4	2,418.7	14.1	0.6
Mining and logging	0.4	0.5	0.4	0.4	0.0	0.0
Construction	69.9	78.8	72.5	70.1	0.2	0.3
Manufacturing	193.0	197.6	196.2	195.5	2.5	1.3
Trade, transportation, and utilities	394.2	418.7	407.0	397.9	3.7	0.9
Information	71.6	72.9	71.7	72.5	0.9	1.3
Financial activities	171.6	171.1	168.8	168.1	-3.5	-2.0
Professional and business services	391.1	401.9	393.7	395.2	4.1	1.0
Education and health services	505.4	505.4	500.7	509.7	4.3	0.9
Leisure and hospitality	208.8	215.0	209.9	210.5	1.7	0.8
Other services	90.4	95.1	94.6	94.7	4.3	4.8
Government	308.2	307.3	301.9	304.1	-4.1	-1.3
Chicago-Joliet-Naperville, Ill.-Ind.-Wis.						
Total nonfarm	4,188.9	4,329.3	4,224.1	4,231.0	42.1	1.0
Mining and logging	1.2	1.5	1.4	1.4	0.2	16.7
Construction	124.1	139.3	121.9	119.8	-4.3	-3.5
Manufacturing	406.4	413.6	411.5	412.7	6.3	1.6
Trade, transportation, and utilities	849.3	894.3	859.6	847.3	-2.0	-0.2
Information	79.2	79.3	78.6	78.0	-1.2	-1.5
Financial activities	282.8	283.4	283.2	282.8	0.0	0.0
Professional and business services	678.6	714.9	695.4	700.9	22.3	3.3
Education and health services	648.4	662.7	653.2	659.9	11.5	1.8
Leisure and hospitality	374.7	394.8	384.5	384.1	9.4	2.5
Other services	186.7	191.7	190.1	190.6	3.9	2.1
Government	557.5	553.8	544.7	553.5	-4.0	-0.7
Dallas-Fort Worth-Arlington, Texas						
Total nonfarm	2,870.2	2,961.3	2,928.0	2,949.6	79.4	2.8
Mining, logging, and construction	153.0	152.6	152.4	155.5	2.5	1.6
Manufacturing	250.8	256.5	255.7	256.3	5.5	2.2
Trade, transportation, and utilities	587.3	625.0	610.9	611.0	23.7	4.0
Information	78.6	78.9	78.0	78.2	-0.4	-0.5
Financial activities	232.3	240.0	238.3	240.4	8.1	3.5
Professional and business services	435.4	450.6	446.4	448.8	13.4	3.1
Education and health services	358.3	362.7	361.7	366.9	8.6	2.4
Leisure and hospitality	276.4	297.8	295.5	295.0	18.6	6.7
Other services	100.8	102.8	101.9	102.7	1.9	1.9
Government	397.3	394.4	387.2	394.8	-2.5	-0.6

(p) = preliminary

Table 2. Employees on nonfarm payrolls by industry supersector, United States and 12 large metropolitan areas, not seasonally adjusted (numbers in thousands)—continued

Area	Feb 2011	Dec 2011	Jan 2012	Feb 2012(p)	Feb 2011 to Feb 2012(p)	
					Net change	Percent change
Detroit-Warren-Livonia, Mich.						
Total nonfarm	1,738.4	1,799.9	1,755.0	1,762.1	23.7	1.4
Mining, logging, and construction	45.3	52.5	46.9	45.8	0.5	1.1
Manufacturing	197.9	209.7	207.4	208.7	10.8	5.5
Trade, transportation, and utilities	325.0	342.4	330.7	326.9	1.9	0.6
Information	26.1	25.9	25.7	25.7	-0.4	-1.5
Financial activities	96.7	98.7	99.0	98.3	1.6	1.7
Professional and business services	314.9	330.7	323.8	328.9	14.0	4.4
Education and health services	287.8	292.4	287.9	290.6	2.8	1.0
Leisure and hospitality	161.9	168.8	162.9	161.7	-0.2	-0.1
Other services	79.3	80.4	79.3	79.0	-0.3	-0.4
Government	203.5	198.4	191.4	196.5	-7.0	-3.4
Houston-Sugar Land-Baytown, Texas						
Total nonfarm	2,543.7	2,646.5	2,622.4	2,637.1	93.4	3.7
Mining and logging	84.5	92.8	93.3	93.6	9.1	10.8
Construction	168.1	168.9	168.1	170.4	2.3	1.4
Manufacturing	221.9	230.8	228.3	230.8	8.9	4.0
Trade, transportation, and utilities	518.0	543.5	535.7	535.2	17.2	3.3
Information	31.8	31.5	31.1	31.1	-0.7	-2.2
Financial activities	136.0	140.3	138.7	138.2	2.2	1.6
Professional and business services	368.2	390.2	386.0	385.9	17.7	4.8
Education and health services	311.0	331.0	330.6	335.5	24.5	7.9
Leisure and hospitality	232.3	245.9	245.3	246.1	13.8	5.9
Other services	90.2	95.7	96.1	96.0	5.8	6.4
Government	381.7	375.9	369.2	374.3	-7.4	-1.9
Los Angeles-Long Beach-Santa Ana, Calif.						
Total nonfarm	5,136.8	5,245.6	5,137.8	5,175.8	39.0	0.8
Mining and logging	4.5	4.5	4.5	4.5	0.0	0.0
Construction	167.8	172.2	169.6	171.2	3.4	2.0
Manufacturing	518.3	516.5	512.3	517.5	-0.8	-0.2
Trade, transportation, and utilities	983.9	1,029.3	1,003.2	994.1	10.2	1.0
Information	218.4	229.7	204.2	215.6	-2.8	-1.3
Financial activities	312.9	315.9	311.6	313.4	0.5	0.2
Professional and business services	779.1	805.3	791.2	797.1	18.0	2.3
Education and health services	694.9	705.1	694.8	705.4	10.5	1.5
Leisure and hospitality	551.2	568.4	558.8	563.3	12.1	2.2
Other services	178.0	177.8	175.7	175.2	-2.8	-1.6
Government	727.8	720.9	711.9	718.5	-9.3	-1.3
Miami-Fort Lauderdale-Pompano Beach, Fla.						
Total nonfarm	2,214.0	2,260.4	2,227.9	2,241.2	27.2	1.2
Mining and logging	0.7	0.7	0.7	0.7	0.0	0.0
Construction	84.1	81.4	77.9	79.1	-5.0	-5.9
Manufacturing	75.6	78.0	77.0	77.2	1.6	2.1
Trade, transportation, and utilities	510.3	538.2	525.7	522.9	12.6	2.5
Information	43.9	43.7	43.3	43.8	-0.1	-0.2
Financial activities	151.7	151.9	150.6	150.4	-1.3	-0.9
Professional and business services	339.4	346.3	341.4	344.7	5.3	1.6
Education and health services	340.6	355.4	351.1	355.0	14.4	4.2
Leisure and hospitality	260.9	258.8	258.7	263.0	2.1	0.8
Other services	93.2	94.6	93.3	94.4	1.2	1.3
Government	313.6	311.4	308.2	310.0	-3.6	-1.1

(p) = preliminary

Table 2. Employees on nonfarm payrolls by industry supersector, United States and 12 large metropolitan areas, not seasonally adjusted (numbers in thousands)—continued

Area	Feb 2011	Dec 2011	Jan 2012	Feb 2012(p)	Feb 2011 to Feb 2012(p)	
					Net change	Percent change
New York-Northern New Jersey-Long Island, N.Y.-N.J.-Pa.						
Total nonfarm	8,238.8	8,535.3	8,319.6	8,356.5	117.7	1.4
Mining, logging, and construction	267.0	296.6	267.1	264.4	-2.6	-1.0
Manufacturing	360.4	361.9	358.3	357.9	-2.5	-0.7
Trade, transportation, and utilities	1,522.1	1,621.6	1,562.2	1,543.4	21.3	1.4
Information	266.6	270.2	262.4	266.1	-0.5	-0.2
Financial activities	728.2	743.2	741.6	742.4	14.2	2.0
Professional and business services	1,256.8	1,327.8	1,295.4	1,314.0	57.2	4.6
Education and health services	1,553.9	1,574.6	1,555.1	1,567.7	13.8	0.9
Leisure and hospitality	657.4	706.1	672.9	679.3	21.9	3.3
Other services	356.6	364.9	362.5	364.9	8.3	2.3
Government	1,269.8	1,268.4	1,242.1	1,256.4	-13.4	-1.1
Philadelphia-Camden-Wilmington, Pa.-N.J.-Del.-Md.						
Total nonfarm	2,674.6	2,733.0	2,670.6	2,683.4	8.8	0.3
Mining, logging, and construction	90.0	101.8	97.3	94.7	4.7	5.2
Manufacturing	185.0	187.0	185.9	183.9	-1.1	-0.6
Trade, transportation, and utilities	493.8	513.8	495.1	490.8	-3.0	-0.6
Information	50.0	49.5	49.0	48.8	-1.2	-2.4
Financial activities	198.5	198.4	197.5	197.5	-1.0	-0.5
Professional and business services	406.6	419.3	409.5	415.8	9.2	2.3
Education and health services	568.9	576.3	569.1	579.9	11.0	1.9
Leisure and hospitality	213.1	222.9	214.9	214.3	1.2	0.6
Other services	119.1	121.0	118.7	117.1	-2.0	-1.7
Government	349.6	343.0	333.6	340.6	-9.0	-2.6
San Francisco-Oakland-Fremont, Calif.						
Total nonfarm	1,877.4	1,923.6	1,891.9	1,911.6	34.2	1.8
Mining and logging	1.4	1.4	1.4	1.4	0.0	0.0
Construction	76.2	79.0	77.0	77.0	0.8	1.0
Manufacturing	116.0	115.4	114.1	115.6	-0.4	-0.3
Trade, transportation, and utilities	316.9	332.9	324.2	321.7	4.8	1.5
Information	62.5	65.2	65.1	65.8	3.3	5.3
Financial activities	123.8	124.4	122.3	122.5	-1.3	-1.1
Professional and business services	350.5	363.4	360.0	367.1	16.6	4.7
Education and health services	247.5	252.0	245.8	254.2	6.7	2.7
Leisure and hospitality	206.3	215.0	209.9	210.3	4.0	1.9
Other services	72.5	76.9	75.8	76.9	4.4	6.1
Government	303.8	298.0	296.3	299.1	-4.7	-1.5
Washington-Arlington-Alexandria, D.C.-Va.-Md.-W.Va.						
Total nonfarm	2,952.9	3,030.3	2,977.9	2,989.8	36.9	1.2
Mining, logging, and construction	134.2	141.6	140.2	139.8	5.6	4.2
Manufacturing	50.7	49.4	49.7	49.5	-1.2	-2.4
Trade, transportation, and utilities	373.1	392.2	376.2	369.2	-3.9	-1.0
Information	80.2	80.5	78.5	79.6	-0.6	-0.7
Financial activities	144.0	148.2	147.2	147.9	3.9	2.7
Professional and business services	682.4	690.1	679.4	682.4	0.0	0.0
Education and health services	365.1	376.5	374.3	379.9	14.8	4.1
Leisure and hospitality	251.3	269.2	263.1	264.4	13.1	5.2
Other services	181.5	183.0	182.0	180.9	-0.6	-0.3
Government	690.4	699.6	687.3	696.2	5.8	0.8

(p) = preliminary