

Transmission of material in this release is embargoed until
8:30 a.m. (EDT) Friday, September 4, 2015

USDL-15-1697

Technical information:

Household data: (202) 691-6378 • cpsinfo@bls.gov • www.bls.gov/cps
Establishment data: (202) 691-6555 • cesinfo@bls.gov • www.bls.gov/ces

Media contact: (202) 691-5902 • PressOffice@bls.gov

THE EMPLOYMENT SITUATION — AUGUST 2015

Total **nonfarm payroll employment** increased by 173,000 in August, and the **unemployment rate** edged down to 5.1 percent, the U.S. Bureau of Labor Statistics reported today. Job gains occurred in health care and social assistance and in financial activities. Manufacturing and mining lost jobs.

Chart 1. Unemployment rate, seasonally adjusted, August 2013 – August 2015

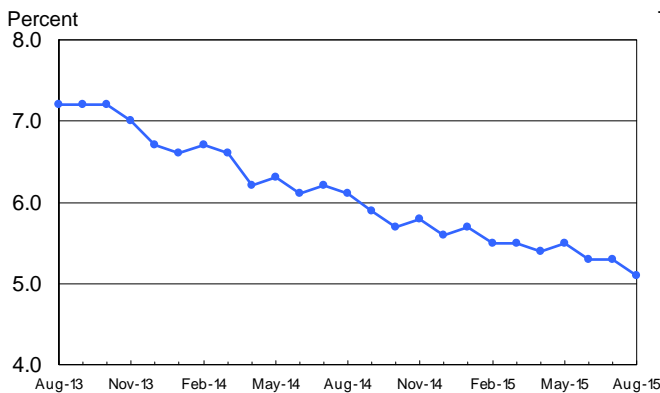
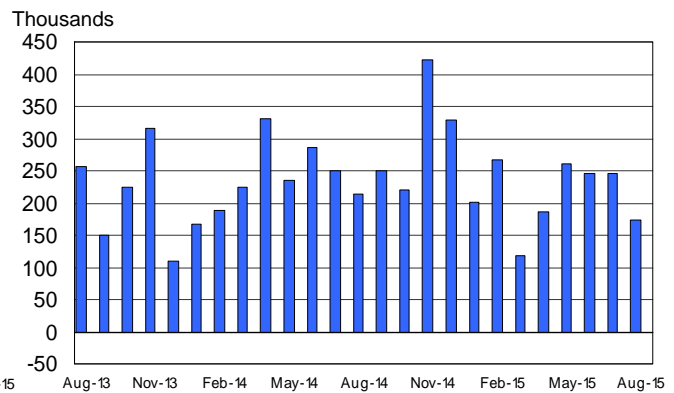


Chart 2. Nonfarm payroll employment over-the-month change, seasonally adjusted, August 2013 – August 2015



Household Survey Data

In August, the **unemployment rate** edged down to 5.1 percent, and the number of **unemployed persons** edged down to 8.0 million. Over the year, the unemployment rate and the number of unemployed persons were down by 1.0 percentage point and 1.5 million, respectively. (See table A-1.)

Among the **major worker groups**, the unemployment rate for whites declined to 4.4 percent in August. The rates for adult men (4.7 percent), adult women (4.7 percent), teenagers (16.9 percent), blacks (9.5 percent), Asians (3.5 percent), and Hispanics (6.6 percent) showed little change in August. (See tables A-1, A-2, and A-3.)

The number of persons **unemployed for less than 5 weeks** decreased by 393,000 to 2.1 million in August. The number of **long-term unemployed** (those jobless for 27 weeks or more) held at 2.2 million

in August and accounted for 27.7 percent of the unemployed. Over the past 12 months, the number of long-term unemployed is down by 779,000. (See table A-12.)

In August, the **civilian labor force participation rate** was 62.6 percent for the third consecutive month. The **employment-population ratio**, at 59.4 percent, was about unchanged in August and has shown little movement thus far this year. (See table A-1.)

The number of persons employed **part time for economic reasons** (sometimes referred to as involuntary part-time workers) was little changed in August at 6.5 million. These individuals, who would have preferred full-time employment, were working part time because their hours had been cut back or because they were unable to find a full-time job. (See table A-8.)

In August, 1.8 million persons were **marginally attached to the labor force**, down by 329,000 from a year earlier. (The data are not seasonally adjusted.) These individuals were not in the labor force, wanted and were available for work, and had looked for a job sometime in the prior 12 months. They were not counted as unemployed because they had not searched for work in the 4 weeks preceding the survey. (See table A-16.)

Among the marginally attached, there were 624,000 **discouraged workers** in August, down by 151,000 from a year earlier. (The data are not seasonally adjusted.) Discouraged workers are persons not currently looking for work because they believe no jobs are available for them. The remaining 1.2 million persons marginally attached to the labor force in August had not searched for work for reasons such as school attendance or family responsibilities. (See table A-16.)

Establishment Survey Data

Total **nonfarm payroll employment** rose by 173,000 in August. Over the prior 12 months, employment growth had averaged 247,000 per month. In August, job gains occurred in health care and social assistance and in financial activities. Employment in manufacturing and mining declined. (See table B-1.)

Health care and social assistance added 56,000 jobs in August. Health care employment increased by 41,000 over the month, with job growth occurring in ambulatory health care services (+21,000) and hospitals (+16,000). Employment rose by 16,000 in social assistance, which includes child day care services and services for the elderly and disabled. Over the year, employment has risen by 457,000 in health care and by 107,000 in social assistance.

In August, **financial activities** employment increased by 19,000, with job gains in real estate (+8,000) and in securities, commodity contracts, and investments (+5,000). Over the year, employment in financial activities has grown by 170,000.

Employment in **professional and business services** continued to trend up in August (+33,000) and has increased by 641,000 over the year.

Employment in **food services and drinking places** continued on an upward trend in August (+26,000), in line with its average monthly gain of 31,000 over the prior 12 months.

Manufacturing employment decreased by 17,000 in August, after changing little in July (+12,000). Job losses occurred in a number of component industries, including fabricated metal products and food

manufacturing (-7,000 each). These losses more than offset gains in motor vehicles and parts (+6,000) and in miscellaneous durable goods manufacturing (+4,000). Thus far this year, overall employment in manufacturing has shown little net change.

Employment in **mining** fell in August (-9,000), with losses concentrated in support activities for mining (-7,000). Since reaching a peak in December 2014, mining employment has declined by 90,000.

Employment in other major industries, including **construction, wholesale trade, retail trade, transportation and warehousing, and government**, showed little change over the month.

The **average workweek for all employees** on private nonfarm payrolls edged up by 0.1 hour to 34.6 hours in August. The manufacturing workweek was unchanged at 40.8 hours, and factory overtime edged down by 0.1 hour to 3.3 hours. The average workweek for **production and nonsupervisory employees** on private nonfarm payrolls was unchanged at 33.7 hours. (See tables B-2 and B-7.)

In August, **average hourly earnings for all employees** on private nonfarm payrolls rose by 8 cents to \$25.09, following a 6-cent gain in July. Hourly earnings have risen by 2.2 percent over the year. Average hourly earnings of private-sector **production and nonsupervisory employees** increased by 5 cents to \$21.07 in August. (See tables B-3 and B-8.)

The change in total nonfarm payroll employment for June was revised from +231,000 to +245,000, and the change for July was revised from +215,000 to +245,000. With these revisions, employment gains in June and July combined were 44,000 more than previously reported. Over the past 3 months, job gains have averaged 221,000 per month.

The Employment Situation for September is scheduled to be released on Friday, October 2, 2015, at 8:30 a.m. (EDT).

**2015 CES Preliminary Benchmark Revision to be released
on September 17, 2015**

Each year, the Current Employment Statistics (CES) survey estimates are benchmarked to comprehensive counts of employment from the Quarterly Census of Employment and Wages (QCEW) for the month of March. These counts are derived from state unemployment insurance (UI) tax records that nearly all employers are required to file. On September 17, 2015, at 10:00 a.m. (EDT), the Bureau of Labor Statistics (BLS) will release the preliminary estimate of the upcoming annual benchmark revision to the establishment survey employment series. This is the same day the First Quarter 2015 data from the QCEW will be issued. Preliminary benchmark revisions for all major industry sectors, as well as total nonfarm and total private levels, will be available on the BLS website at www.bls.gov/web/empsit/cesprelbnk.htm.

The final benchmark revision will be issued with the publication of the January 2016 Employment Situation news release in February.

HOUSEHOLD DATA

Summary table A. Household data, seasonally adjusted

[Numbers in thousands]

Category	Aug. 2014	June 2015	July 2015	Aug. 2015	Change from: July 2015- Aug. 2015
Employment status					
Civilian noninstitutional population.....	248,229	250,663	250,876	251,096	220
Civilian labor force.....	156,018	157,037	157,106	157,065	-41
Participation rate.....	62.9	62.6	62.6	62.6	0.0
Employed.....	146,451	148,739	148,840	149,036	196
Employment-population ratio.....	59.0	59.3	59.3	59.4	0.1
Unemployed.....	9,568	8,299	8,266	8,029	-237
Unemployment rate.....	6.1	5.3	5.3	5.1	-0.2
Not in labor force.....	92,210	93,626	93,770	94,031	261
Unemployment rates					
Total, 16 years and over.....	6.1	5.3	5.3	5.1	-0.2
Adult men (20 years and over).....	5.7	4.8	4.8	4.7	-0.1
Adult women (20 years and over).....	5.6	4.8	4.9	4.7	-0.2
Teenagers (16 to 19 years).....	19.4	18.1	16.2	16.9	0.7
White.....	5.3	4.6	4.6	4.4	-0.2
Black or African American.....	11.6	9.5	9.1	9.5	0.4
Asian.....	4.6	3.8	4.0	3.5	-0.5
Hispanic or Latino ethnicity.....	7.4	6.6	6.8	6.6	-0.2
Total, 25 years and over.....	5.1	4.2	4.3	4.2	-0.1
Less than a high school diploma.....	9.1	8.2	8.3	7.7	-0.6
High school graduates, no college.....	6.2	5.4	5.5	5.5	0.0
Some college or associate degree.....	5.4	4.2	4.4	4.4	0.0
Bachelor's degree and higher.....	3.2	2.5	2.6	2.5	-0.1
Reason for unemployment					
Job losers and persons who completed temporary jobs.....	4,813	4,088	4,143	4,070	-73
Job leavers.....	851	773	843	790	-53
Reentrants.....	2,845	2,516	2,447	2,349	-98
New entrants.....	1,064	933	826	850	24
Duration of unemployment					
Less than 5 weeks.....	2,609	2,355	2,488	2,095	-393
5 to 14 weeks.....	2,444	2,364	2,257	2,374	117
15 to 26 weeks.....	1,500	1,393	1,188	1,250	62
27 weeks and over.....	2,966	2,121	2,180	2,187	7
Employed persons at work part time					
Part time for economic reasons.....	7,223	6,505	6,325	6,483	158
Slack work or business conditions.....	4,217	3,915	3,828	3,841	13
Could only find part-time work.....	2,546	2,216	2,213	2,242	29
Part time for noneconomic reasons.....	19,538	20,480	19,891	19,760	-131
Persons not in the labor force (not seasonally adjusted)					
Marginally attached to the labor force.....	2,141	1,914	1,927	1,812	-
Discouraged workers.....	775	653	668	624	-

- Over-the-month changes are not displayed for not seasonally adjusted data.

NOTE: Persons whose ethnicity is identified as Hispanic or Latino may be of any race. Detail for the seasonally adjusted data shown in this table will not necessarily add to totals because of the independent seasonal adjustment of the various series. Updated population controls are introduced annually with the release of January data.

ESTABLISHMENT DATA
Summary table B. Establishment data, seasonally adjusted

Category	Aug. 2014	June 2015	July 2015 ^p	Aug. 2015 ^p
EMPLOYMENT BY SELECTED INDUSTRY (Over-the-month change, in thousands)				
Total nonfarm.....	213	245	245	173
Total private.....	209	218	224	140
Goods-producing.....	34	-3	13	-24
Mining and logging.....	3	-5	-6	-10
Construction.....	17	1	7	3
Manufacturing.....	14	1	12	-17
Durable goods ¹	16	1	-7	-5
Motor vehicles and parts.....	4.3	0.0	1.6	5.7
Nondurable goods.....	-2	0	19	-12
Private service-providing.....	175	221	211	164
Wholesale trade.....	4.7	3.1	6.4	7.8
Retail trade.....	-3.4	36.2	32.4	11.2
Transportation and warehousing.....	10.0	12.7	13.6	7.3
Utilities.....	2.2	0.0	2.6	1.5
Information.....	13	3	2	-7
Financial activities.....	13	21	21	19
Professional and business services ¹	56	68	39	33
Temporary help services.....	19.2	19.9	-9.2	10.7
Education and health services ¹	42	61	53	62
Health care and social assistance.....	35.9	56.9	45.4	56.4
Leisure and hospitality.....	25	19	30	33
Other services.....	12	-3	11	-4
Government.....	4	27	21	33
(3-month average change, in thousands)				
Total nonfarm.....	249	231	250	221
Total private.....	241	220	231	194
WOMEN AND PRODUCTION AND NONSUPERVISORY EMPLOYEES AS A PERCENT OF ALL EMPLOYEES ²				
Total nonfarm women employees.....	49.4	49.4	49.4	49.4
Total private women employees.....	47.9	48.0	48.0	48.0
Total private production and nonsupervisory employees.....	82.7	82.5	82.4	82.4
HOURS AND EARNINGS ALL EMPLOYEES				
Total private				
Average weekly hours.....	34.5	34.5	34.5	34.6
Average hourly earnings.....	\$24.55	\$24.95	\$25.01	\$25.09
Average weekly earnings.....	\$846.98	\$860.78	\$862.85	\$868.11
Index of aggregate weekly hours (2007=100) ³	101.3	103.4	103.6	104.0
Over-the-month percent change.....	0.1	0.2	0.2	0.4
Index of aggregate weekly payrolls (2007=100) ⁴	118.7	123.2	123.7	124.6
Over-the-month percent change.....	0.5	0.2	0.4	0.7
DIFFUSION INDEX (Over 1-month span) ⁵				
Total private (263 industries).....	65.8	57.2	60.5	56.3
Manufacturing (80 industries).....	55.6	51.3	50.6	41.3

¹ Includes other industries, not shown separately.

² Data relate to production employees in mining and logging and manufacturing, construction employees in construction, and nonsupervisory employees in the service-providing industries.

³ The indexes of aggregate weekly hours are calculated by dividing the current month's estimates of aggregate hours by the corresponding annual average aggregate hours.

⁴ The indexes of aggregate weekly payrolls are calculated by dividing the current month's estimates of aggregate weekly payrolls by the corresponding annual average aggregate weekly payrolls.

⁵ Figures are the percent of industries with employment increasing plus one-half of the industries with unchanged employment, where 50 percent indicates an equal balance between industries with increasing and decreasing employment.

p Preliminary

NOTE: Data have been revised to reflect March 2014 benchmark levels and updated seasonal adjustment factors.

Frequently Asked Questions about Employment and Unemployment Estimates

1. Why are there two monthly measures of employment?

The household survey and establishment survey both produce sample-based estimates of employment, and both have strengths and limitations. The establishment survey employment series has a smaller margin of error on the measurement of month-to-month change than the household survey because of its much larger sample size. An over-the-month employment change of about 100,000 is statistically significant in the establishment survey, while the threshold for a statistically significant change in the household survey is about 500,000. However, the household survey has a more expansive scope than the establishment survey because it includes self-employed workers whose businesses are unincorporated, unpaid family workers, agricultural workers, and private household workers, who are excluded by the establishment survey. The household survey also provides estimates of employment for demographic groups. For more information on the differences between the two surveys, please visit www.bls.gov/web/empsit/ces_cps_trends.pdf.

2. Are undocumented immigrants counted in the surveys?

It is likely that both surveys include at least some undocumented immigrants. However, neither the establishment nor the household survey is designed to identify the legal status of workers. Therefore, it is not possible to determine how many are counted in either survey. The establishment survey does not collect data on the legal status of workers. The household survey does include questions which identify the foreign and native born, but it does not include questions about the legal status of the foreign born. Data on the foreign and native born are published each month in table A-7 of The Employment Situation news release.

3. Why does the establishment survey have revisions?

The establishment survey revises published estimates to improve its data series by incorporating additional information that was not available at the time of the initial publication of the estimates. The establishment survey revises its initial monthly estimates twice, in the immediately succeeding 2 months, to incorporate additional sample receipts from respondents in the survey and recalculated seasonal adjustment factors. For more information on the monthly revisions, please visit www.bls.gov/ces/cesrevinfo.htm.

On an annual basis, the establishment survey incorporates a benchmark revision that re-anchors estimates to nearly complete employment counts available from unemployment insurance tax records. The benchmark helps to control for sampling and modeling errors in the estimates. For more information on the annual benchmark revision, please visit www.bls.gov/web/empsit/cesbmart.htm.

4. Does the establishment survey sample include small firms?

Yes; about 40 percent of the establishment survey sample is comprised of business establishments with fewer than 20 employees. The establishment survey sample is designed to maximize the reliability of the statewide total nonfarm employment estimate; firms from all states, size classes, and industries are appropriately sampled to achieve that goal.

5. Does the establishment survey account for employment from new businesses?

Yes; monthly establishment survey estimates include an adjustment to account for the net employment change generated by business births and deaths. The adjustment comes from an econometric model that forecasts the monthly net jobs impact of business births and deaths based on the actual past values of the net impact that can be observed with a lag from the Quarterly Census of Employment and Wages. The establishment survey uses modeling rather than sampling for this purpose because the survey is not immediately able to bring new businesses into the sample. There is an unavoidable lag between the birth of a new firm and its appearance on the sampling frame and availability for selection. BLS adds new businesses to the survey twice a year.

6. Is the count of unemployed persons limited to just those people receiving unemployment insurance benefits?

No; the estimate of unemployment is based on a monthly sample survey of households. All persons who are without jobs and are actively seeking and available to work are included among the unemployed. (People on temporary layoff are included even if they do not actively seek work.) There is no requirement or question relating to unemployment insurance benefits in the monthly survey.

7. Does the official unemployment rate exclude people who want a job but are not currently looking for work?

Yes; however, there are separate estimates of persons outside the labor force who want a job, including those who are not currently looking because they believe no jobs are available (discouraged workers). In addition, alternative measures of labor underutilization (some of which include discouraged workers and other groups not officially counted as unemployed) are published each month in table A-15 of The Employment Situation news release. For more information about these alternative measures, please visit www.bls.gov/cps/lfcharacteristics.htm#altmeasures.

8. How can unusually severe weather affect employment and hours estimates?

In the establishment survey, the reference period is the pay period that includes the 12th of the month. Unusually severe weather is more likely to have an impact on average weekly hours than on employment. Average weekly hours are estimated for paid time during the pay period, including pay for holidays, sick leave, or other time off. The impact of severe weather on hours estimates typically, but not always, results in a reduction in average weekly hours. For example, some employees may be off work for part of the pay period and not receive pay for the time missed, while some workers, such as those dealing with cleanup or repair, may work extra hours.

Typically, it is not possible to precisely quantify the effect of extreme weather on payroll employment estimates. In order for severe weather conditions to reduce employment estimates, employees have to be off work without pay for the entire pay period. Employees who receive pay for any part of the pay period, even 1 hour, are counted in the payroll employment figures. For more information on how often employees are paid, please visit www.bls.gov/opub/btn/volume-3/how-frequently-do-private-businesses-pay-workers.htm.

In the household survey, the reference period is generally the calendar week that includes the 12th of the month. Persons who miss the entire week's work for weather-related events are counted as employed whether or not they are paid for the time off. The household survey collects data on the number of persons who had a job but were not at work due to bad weather. It also provides a measure of the number of persons who usually work full time but had reduced hours due to bad weather. Current and historical data are available on the household survey's most requested statistics page, please visit <http://data.bls.gov/cgi-bin/surveymost?ln>.

Technical Note

This news release presents statistics from two major surveys, the Current Population Survey (CPS; household survey) and the Current Employment Statistics survey (CES; establishment survey). The household survey provides information on the labor force, employment, and unemployment that appears in the "A" tables, marked HOUSEHOLD DATA. It is a sample survey of about 60,000 eligible households conducted by the U.S. Census Bureau for the U.S. Bureau of Labor Statistics (BLS).

The establishment survey provides information on employment, hours, and earnings of employees on nonfarm payrolls; the data appear in the "B" tables, marked ESTABLISHMENT DATA. BLS collects these data each month from the payroll records of a sample of nonagricultural business establishments. Each month the CES program surveys about 143,000 businesses and government agencies, representing approximately 588,000 individual worksites, in order to provide detailed industry data on employment, hours, and earnings of workers on nonfarm payrolls. The active sample includes approximately one-third of all nonfarm payroll employees.

For both surveys, the data for a given month relate to a particular week or pay period. In the household survey, the reference period is generally the calendar week that contains the 12th day of the month. In the establishment survey, the reference period is the pay period including the 12th, which may or may not correspond directly to the calendar week.

Coverage, definitions, and differences between surveys

Household survey. The sample is selected to reflect the entire civilian noninstitutional population. Based on responses to a series of questions on work and job search activities, each person 16 years and over in a sample household is classified as employed, unemployed, or not in the labor force.

People are classified as *employed* if they did any work at all as paid employees during the reference week; worked in their own business, profession, or on their own farm; or worked without pay at least 15 hours in a family business or farm. People are also counted as employed if they were temporarily absent from their jobs because of illness, bad weather, vacation, labor-management disputes, or personal reasons.

People are classified as *unemployed* if they meet all of the following criteria: they had no employment during the reference week; they were available for work at that time; and they made specific efforts to find employment sometime during the 4-week period ending with the reference week. Persons laid off from a job and expecting recall need not be looking for work to be counted as unemployed. The unemployment data derived from the household survey in no way depend upon the eligibility for or receipt of unemployment insurance benefits.

The *civilian labor force* is the sum of employed and unemployed persons. Those persons not classified as employed or unemployed are *not in the labor force*. The

unemployment rate is the number unemployed as a percent of the labor force. The *labor force participation rate* is the labor force as a percent of the population, and the *employment-population ratio* is the employed as a percent of the population. Additional information about the household survey can be found at www.bls.gov/cps/documentation.htm.

Establishment survey. The sample establishments are drawn from private nonfarm businesses such as factories, offices, and stores, as well as from federal, state, and local government entities. *Employees on nonfarm payrolls* are those who received pay for any part of the reference pay period, including persons on paid leave. Persons are counted in each job they hold. *Hours and earnings* data are produced for the private sector for all employees and for production and nonsupervisory employees. *Production and nonsupervisory* employees are defined as production and related employees in manufacturing and mining and logging, construction workers in construction, and non-supervisory employees in private service-providing industries.

Industries are classified on the basis of an establishment's principal activity in accordance with the 2012 version of the North American Industry Classification System. Additional information about the establishment survey can be found at www.bls.gov/ces/.

Differences in employment estimates. The numerous conceptual and methodological differences between the household and establishment surveys result in important distinctions in the employment estimates derived from the surveys. Among these are:

- The household survey includes agricultural workers, self-employed workers whose businesses are unincorporated, unpaid family workers, and private household workers among the employed. These groups are excluded from the establishment survey.
- The household survey includes people on unpaid leave among the employed. The establishment survey does not.
- The household survey is limited to workers 16 years of age and older. The establishment survey is not limited by age.
- The household survey has no duplication of individuals, because individuals are counted only once, even if they hold more than one job. In the establishment survey, employees working at more than one job and thus appearing on more than one payroll are counted separately for each appearance.

Seasonal adjustment

Over the course of a year, the size of the nation's labor force and the levels of employment and unemployment undergo regularly occurring fluctuations. These events may result from seasonal changes in weather, major holidays, and the opening and closing of schools. The effect of such seasonal variation can be very large.

Because these seasonal events follow a more or less regular pattern each year, their influence on the level of a series can be tempered by adjusting for regular seasonal variation. These adjustments make nonseasonal developments, such as declines in employment or increases in the participation of women in the labor force, easier to spot. For example, in the household survey, the large number of youth entering the labor force each June is likely to obscure any other changes that have taken place relative to May, making it difficult to determine if the level of economic activity has risen or declined. Similarly, in the establishment survey, payroll employment in education declines by about 20 percent at the end of the spring term and later rises with the start of the fall term, obscuring the underlying employment trends in the industry. Because seasonal employment changes at the end and beginning of the school year can be estimated, the statistics can be adjusted to make underlying employment patterns more discernable. The seasonally adjusted figures provide a more useful tool with which to analyze changes in month-to-month economic activity.

Many seasonally adjusted series are independently adjusted in both the household and establishment surveys. However, the adjusted series for many major estimates, such as total payroll employment, employment in most major sectors, total employment, and unemployment are computed by aggregating independently adjusted component series. For example, total unemployment is derived by summing the adjusted series for four major age-sex components; this differs from the unemployment estimate that would be obtained by directly adjusting the total or by combining the duration, reasons, or more detailed age categories.

For both the household and establishment surveys, a concurrent seasonal adjustment methodology is used in which new seasonal factors are calculated each month using all relevant data, up to and including the data for the current month. In the household survey, new seasonal factors are used to adjust only the current month's data. In the establishment survey, however, new seasonal factors are used each month to adjust the three most recent monthly estimates. The prior 2 months are routinely revised to incorporate additional sample reports and recalculated seasonal adjustment factors. In both surveys, 5-year revisions to historical data are made once a year.

Reliability of the estimates

Statistics based on the household and establishment surveys are subject to both sampling and nonsampling error. When a sample, rather than the entire population, is

surveyed, there is a chance that the sample estimates may differ from the true population values they represent. The component of this difference that occurs because samples differ by chance is known as *sampling error*, and its variability is measured by the standard error of the estimate. There is about a 90-percent chance, or level of confidence, that an estimate based on a sample will differ by no more than 1.6 standard errors from the true population value because of sampling error. BLS analyses are generally conducted at the 90-percent level of confidence.

For example, the confidence interval for the monthly change in total nonfarm employment from the establishment survey is on the order of plus or minus 105,000. Suppose the estimate of nonfarm employment increases by 50,000 from one month to the next. The 90-percent confidence interval on the monthly change would range from -55,000 to +155,000 (50,000 +/- 105,000). These figures do not mean that the sample results are off by these magnitudes, but rather that there is about a 90-percent chance that the true over-the-month change lies within this interval. Since this range includes values of less than zero, we could not say with confidence that nonfarm employment had, in fact, increased that month. If, however, the reported nonfarm employment rise was 250,000, then all of the values within the 90-percent confidence interval would be greater than zero. In this case, it is likely (at least a 90-percent chance) that nonfarm employment had, in fact, risen that month. At an unemployment rate of around 6.0 percent, the 90-percent confidence interval for the monthly change in unemployment as measured by the household survey is about +/- 300,000, and for the monthly change in the unemployment rate it is about +/- 0.2 percentage point.

In general, estimates involving many individuals or establishments have lower standard errors (relative to the size of the estimate) than estimates which are based on a small number of observations. The precision of estimates also is improved when the data are cumulated over time, such as for quarterly and annual averages.

The household and establishment surveys are also affected by *nonsampling error*, which can occur for many reasons, including the failure to sample a segment of the population, inability to obtain information for all respondents in the sample, inability or unwillingness of respondents to provide correct information on a timely basis, mistakes made by respondents, and errors made in the collection or processing of the data.

For example, in the establishment survey, estimates for the most recent 2 months are based on incomplete returns; for this reason, these estimates are labeled preliminary in the tables. It is only after two successive revisions to a monthly estimate, when nearly all sample reports have been received, that the estimate is considered final.

Another major source of nonsampling error in the establishment survey is the inability to capture, on a timely basis, employment generated by new firms. To correct for this systematic underestimation of employment growth, an estimation procedure with two components is used to account for business births. The first component excludes employment losses from business deaths from sample-based

estimation in order to offset the missing employment gains from business births. This is incorporated into the sample-based estimation procedure by simply not reflecting sample units going out of business, but imputing to them the same employment trend as the other firms in the sample. This procedure accounts for most of the net birth/death employment.

The second component is an ARIMA time series model designed to estimate the residual net birth/death employment not accounted for by the imputation. The historical time series used to create and test the ARIMA model was derived from the unemployment insurance universe micro-level database, and reflects the actual residual net of births and deaths over the past 5 years.

The sample-based estimates from the establishment survey are adjusted once a year (on a lagged basis) to

universe counts of payroll employment obtained from administrative records of the unemployment insurance program. The difference between the March sample-based employment estimates and the March universe counts is known as a benchmark revision, and serves as a rough proxy for total survey error. The new benchmarks also incorporate changes in the classification of industries. Over the past decade, absolute benchmark revisions for total nonfarm employment have averaged 0.3 percent, with a range from -0.7 percent to 0.6 percent.

Other information

Information in this release will be made available to sensory impaired individuals upon request. Voice phone: (202) 691-5200; Federal Relay Service: (800) 877-8339.

HOUSEHOLD DATA

Table A-1. Employment status of the civilian population by sex and age

[Numbers in thousands]

Employment status, sex, and age	Not seasonally adjusted			Seasonally adjusted ¹					
	Aug. 2014	July 2015	Aug. 2015	Aug. 2014	Apr. 2015	May 2015	June 2015	July 2015	Aug. 2015
TOTAL									
Civilian noninstitutional population.....	248,229	250,876	251,096	248,229	250,266	250,455	250,663	250,876	251,096
Civilian labor force.....	156,434	158,527	157,390	156,018	157,072	157,469	157,037	157,106	157,065
Participation rate.....	63.0	63.2	62.7	62.9	62.8	62.9	62.6	62.6	62.6
Employed.....	146,647	149,722	149,228	146,451	148,523	148,795	148,739	148,840	149,036
Employment-population ratio.....	59.1	59.7	59.4	59.0	59.3	59.4	59.3	59.3	59.4
Unemployed.....	9,787	8,805	8,162	9,568	8,549	8,674	8,299	8,266	8,029
Unemployment rate.....	6.3	5.6	5.2	6.1	5.4	5.5	5.3	5.3	5.1
Not in labor force.....	91,794	92,349	93,706	92,210	93,194	92,986	93,626	93,770	94,031
Persons who currently want a job.....	6,382	6,446	5,920	6,334	6,258	6,058	6,076	6,135	5,932
Men, 16 years and over									
Civilian noninstitutional population.....	119,893	121,139	121,250	119,893	120,831	120,927	121,032	121,139	121,250
Civilian labor force.....	83,567	84,831	83,996	83,010	83,805	83,892	83,490	83,578	83,472
Participation rate.....	69.7	70.0	69.3	69.2	69.4	69.4	69.0	69.0	68.8
Employed.....	78,576	80,436	79,898	77,873	79,203	79,201	79,020	79,202	79,211
Employment-population ratio.....	65.5	66.4	65.9	65.0	65.5	65.5	65.3	65.4	65.3
Unemployed.....	4,991	4,394	4,098	5,136	4,602	4,691	4,471	4,376	4,261
Unemployment rate.....	6.0	5.2	4.9	6.2	5.5	5.6	5.4	5.2	5.1
Not in labor force.....	36,326	36,309	37,253	36,883	37,026	37,035	37,541	37,562	37,778
Men, 20 years and over									
Civilian noninstitutional population.....	111,451	112,714	112,825	111,451	112,400	112,498	112,605	112,714	112,825
Civilian labor force.....	80,486	81,320	80,892	80,210	80,884	80,915	80,680	80,790	80,640
Participation rate.....	72.2	72.1	71.7	72.0	72.0	71.9	71.6	71.7	71.5
Employed.....	76,120	77,541	77,311	75,668	76,805	76,833	76,783	76,903	76,880
Employment-population ratio.....	68.3	68.8	68.5	67.9	68.3	68.3	68.2	68.2	68.1
Unemployed.....	4,366	3,779	3,581	4,543	4,079	4,082	3,897	3,887	3,760
Unemployment rate.....	5.4	4.6	4.4	5.7	5.0	5.0	4.8	4.8	4.7
Not in labor force.....	30,965	31,395	31,933	31,241	31,516	31,583	31,925	31,924	32,185
Women, 16 years and over									
Civilian noninstitutional population.....	128,336	129,737	129,846	128,336	129,434	129,528	129,631	129,737	129,846
Civilian labor force.....	72,867	73,696	73,393	73,008	73,267	73,577	73,547	73,528	73,593
Participation rate.....	56.8	56.8	56.5	56.9	56.6	56.8	56.7	56.7	56.7
Employed.....	68,071	69,286	69,329	68,577	69,320	69,594	69,719	69,638	69,825
Employment-population ratio.....	53.0	53.4	53.4	53.4	53.6	53.7	53.8	53.7	53.8
Unemployed.....	4,796	4,410	4,064	4,431	3,947	3,983	3,828	3,891	3,768
Unemployment rate.....	6.6	6.0	5.5	6.1	5.4	5.4	5.2	5.3	5.1
Not in labor force.....	55,469	56,041	56,453	55,327	56,167	55,951	56,085	56,209	56,253
Women, 20 years and over									
Civilian noninstitutional population.....	120,156	121,551	121,660	120,156	121,246	121,342	121,445	121,551	121,660
Civilian labor force.....	69,898	70,339	70,460	70,230	70,419	70,731	70,665	70,745	70,826
Participation rate.....	58.2	57.9	57.9	58.4	58.1	58.3	58.2	58.2	58.2
Employed.....	65,631	66,485	66,874	66,289	66,935	67,178	67,294	67,271	67,502
Employment-population ratio.....	54.6	54.7	55.0	55.2	55.2	55.4	55.4	55.3	55.5
Unemployed.....	4,266	3,854	3,585	3,942	3,483	3,553	3,372	3,474	3,324
Unemployment rate.....	6.1	5.5	5.1	5.6	4.9	5.0	4.8	4.9	4.7
Not in labor force.....	50,258	51,212	51,200	49,925	50,828	50,611	50,780	50,806	50,833
Both sexes, 16 to 19 years									
Civilian noninstitutional population.....	16,622	16,611	16,611	16,622	16,619	16,615	16,613	16,611	16,611
Civilian labor force.....	6,050	6,868	6,038	5,578	5,769	5,823	5,691	5,570	5,599
Participation rate.....	36.4	41.3	36.4	33.6	34.7	35.0	34.3	33.5	33.7
Employed.....	4,896	5,696	5,042	4,495	4,784	4,784	4,662	4,666	4,654
Employment-population ratio.....	29.5	34.3	30.4	27.0	28.8	28.8	28.1	28.1	28.0
Unemployed.....	1,155	1,172	996	1,083	986	1,039	1,029	904	945
Unemployment rate.....	19.1	17.1	16.5	19.4	17.1	17.9	18.1	16.2	16.9
Not in labor force.....	10,571	9,743	10,573	11,044	10,849	10,792	10,922	11,040	11,012

¹ The population figures are not adjusted for seasonal variation; therefore, identical numbers appear in the unadjusted and seasonally adjusted columns.

NOTE: Updated population controls are introduced annually with the release of January data.

HOUSEHOLD DATA

Table A-2. Employment status of the civilian population by race, sex, and age

[Numbers in thousands]

Employment status, race, sex, and age	Not seasonally adjusted			Seasonally adjusted ¹					
	Aug. 2014	July 2015	Aug. 2015	Aug. 2014	Apr. 2015	May 2015	June 2015	July 2015	Aug. 2015
WHITE									
Civilian noninstitutional population.....	195,652	196,904	197,024	195,652	196,574	196,673	196,786	196,904	197,024
Civilian labor force.....	123,667	124,667	123,676	123,266	123,510	123,875	123,649	123,607	123,390
Participation rate.....	63.2	63.3	62.8	63.0	62.8	63.0	62.8	62.8	62.6
Employed.....	117,095	118,603	118,168	116,760	117,719	118,048	117,942	117,880	117,903
Employment-population ratio.....	59.8	60.2	60.0	59.7	59.9	60.0	59.9	59.9	59.8
Unemployed.....	6,573	6,064	5,508	6,506	5,791	5,827	5,707	5,727	5,487
Unemployment rate.....	5.3	4.9	4.5	5.3	4.7	4.7	4.6	4.6	4.4
Not in labor force.....	71,985	72,237	73,349	72,386	73,064	72,798	73,137	73,297	73,634
Men, 20 years and over									
Civilian labor force.....	64,753	65,207	64,815	64,519	64,764	64,790	64,727	64,819	64,617
Participation rate.....	72.5	72.5	72.1	72.3	72.2	72.2	72.1	72.1	71.8
Employed.....	61,763	62,550	62,328	61,360	61,919	62,037	62,031	62,057	61,964
Employment-population ratio.....	69.2	69.6	69.3	68.7	69.0	69.1	69.1	69.0	68.9
Unemployed.....	2,990	2,657	2,488	3,159	2,845	2,753	2,696	2,762	2,652
Unemployment rate.....	4.6	4.1	3.8	4.9	4.4	4.2	4.2	4.3	4.1
Women, 20 years and over									
Civilian labor force.....	54,112	54,032	54,120	54,315	54,198	54,481	54,400	54,369	54,372
Participation rate.....	57.6	57.1	57.1	57.8	57.3	57.6	57.5	57.4	57.4
Employed.....	51,345	51,403	51,755	51,739	51,912	52,121	52,097	52,027	52,167
Employment-population ratio.....	54.6	54.3	54.6	55.0	54.9	55.1	55.0	54.9	55.1
Unemployed.....	2,767	2,628	2,365	2,576	2,286	2,359	2,303	2,342	2,205
Unemployment rate.....	5.1	4.9	4.4	4.7	4.2	4.3	4.2	4.3	4.1
Both sexes, 16 to 19 years									
Civilian labor force.....	4,802	5,428	4,740	4,432	4,548	4,604	4,522	4,418	4,401
Participation rate.....	38.8	44.1	38.5	35.8	36.9	37.4	36.7	35.9	35.7
Employed.....	3,987	4,649	4,085	3,661	3,888	3,890	3,814	3,796	3,772
Employment-population ratio.....	32.2	37.8	33.2	29.6	31.5	31.6	31.0	30.8	30.6
Unemployed.....	815	779	655	772	660	714	708	622	629
Unemployment rate.....	17.0	14.4	13.8	17.4	14.5	15.5	15.7	14.1	14.3
BLACK OR AFRICAN AMERICAN									
Civilian noninstitutional population.....	30,893	31,399	31,438	30,893	31,293	31,326	31,362	31,399	31,438
Civilian labor force.....	18,931	19,537	19,449	18,867	19,397	19,428	19,346	19,298	19,388
Participation rate.....	61.3	62.2	61.9	61.1	62.0	62.0	61.7	61.5	61.7
Employed.....	16,653	17,649	17,529	16,685	17,529	17,441	17,501	17,534	17,556
Employment-population ratio.....	53.9	56.2	55.8	54.0	56.0	55.7	55.8	55.8	55.8
Unemployed.....	2,278	1,887	1,919	2,182	1,868	1,988	1,845	1,764	1,832
Unemployment rate.....	12.0	9.7	9.9	11.6	9.6	10.2	9.5	9.1	9.5
Not in labor force.....	11,963	11,862	11,989	12,026	11,896	11,898	12,016	12,101	12,050
Men, 20 years and over									
Civilian labor force.....	8,623	8,791	8,773	8,614	8,926	8,905	8,808	8,738	8,763
Participation rate.....	67.5	67.4	67.2	67.4	68.7	68.5	67.6	67.0	67.1
Employed.....	7,700	8,023	7,979	7,678	8,109	7,995	7,970	7,966	7,956
Employment-population ratio.....	60.3	61.5	61.1	60.1	62.5	61.5	61.2	61.1	60.9
Unemployed.....	923	769	794	936	817	911	838	773	807
Unemployment rate.....	10.7	8.7	9.1	10.9	9.2	10.2	9.5	8.8	9.2
Women, 20 years and over									
Civilian labor force.....	9,588	9,866	9,932	9,591	9,792	9,808	9,827	9,861	9,934
Participation rate.....	61.4	62.2	62.5	61.4	61.9	61.9	62.0	62.1	62.5
Employed.....	8,470	9,020	9,048	8,559	8,928	8,946	9,046	9,070	9,125
Employment-population ratio.....	54.3	56.8	56.9	54.8	56.4	56.5	57.1	57.2	57.4
Unemployed.....	1,118	846	884	1,032	864	862	781	791	809
Unemployment rate.....	11.7	8.6	8.9	10.8	8.8	8.8	7.9	8.0	8.1
Both sexes, 16 to 19 years									
Civilian labor force.....	720	879	744	662	678	715	712	698	691
Participation rate.....	28.8	35.3	29.9	26.4	27.2	28.7	28.6	28.1	27.8
Employed.....	483	607	503	447	491	500	486	498	474
Employment-population ratio.....	19.3	24.4	20.2	17.9	19.7	20.1	19.5	20.0	19.1
Unemployed.....	237	273	241	215	187	215	226	200	216
Unemployment rate.....	32.9	31.0	32.4	32.4	27.5	30.1	31.8	28.7	31.3
ASIAN									
Civilian noninstitutional population.....	13,704	14,540	14,558	13,704	14,290	14,403	14,430	14,540	14,558

See footnotes at end of table.

HOUSEHOLD DATA

Table A-2. Employment status of the civilian population by race, sex, and age — Continued

[Numbers in thousands]

Employment status, race, sex, and age	Not seasonally adjusted			Seasonally adjusted ¹					
	Aug. 2014	July 2015	Aug. 2015	Aug. 2014	Apr. 2015	May 2015	June 2015	July 2015	Aug. 2015
Civilian labor force.....	8,751	9,181	9,107	8,752	9,038	9,169	9,076	9,113	9,110
Participation rate.....	63.9	63.1	62.6	63.9	63.3	63.7	62.9	62.7	62.6
Employed.....	8,354	8,795	8,794	8,348	8,644	8,794	8,730	8,751	8,790
Employment-population ratio.....	61.0	60.5	60.4	60.9	60.5	61.1	60.5	60.2	60.4
Unemployed.....	398	387	313	404	394	375	346	362	321
Unemployment rate.....	4.5	4.2	3.4	4.6	4.4	4.1	3.8	4.0	3.5
Not in labor force.....	4,952	5,359	5,451	4,952	5,251	5,234	5,354	5,427	5,448

¹ The population figures are not adjusted for seasonal variation; therefore, identical numbers appear in the unadjusted and seasonally adjusted columns.

NOTE: Estimates for the above race groups will not sum to totals shown in table A-1 because data are not presented for all races. Updated population controls are introduced annually with the release of January data.

HOUSEHOLD DATA

Table A-3. Employment status of the Hispanic or Latino population by sex and age

[Numbers in thousands]

Employment status, sex, and age	Not seasonally adjusted			Seasonally adjusted ¹					
	Aug. 2014	July 2015	Aug. 2015	Aug. 2014	Apr. 2015	May 2015	June 2015	July 2015	Aug. 2015
HISPANIC OR LATINO ETHNICITY									
Civilian noninstitutional population.....	38,512	39,648	39,737	38,512	39,405	39,483	39,566	39,648	39,737
Civilian labor force.....	25,465	26,334	26,078	25,410	26,167	26,149	26,132	26,158	26,077
Participation rate.....	66.1	66.4	65.6	66.0	66.4	66.2	66.0	66.0	65.6
Employed.....	23,567	24,478	24,344	23,536	24,354	24,385	24,401	24,374	24,343
Employment-population ratio.....	61.2	61.7	61.3	61.1	61.8	61.8	61.7	61.5	61.3
Unemployed.....	1,898	1,856	1,734	1,873	1,813	1,764	1,730	1,784	1,734
Unemployment rate.....	7.5	7.0	6.6	7.4	6.9	6.7	6.6	6.8	6.6
Not in labor force.....	13,047	13,314	13,659	13,102	13,237	13,334	13,434	13,491	13,660
Men, 20 years and over									
Civilian labor force.....	14,137	14,511	14,361	14,104	14,484	14,479	14,402	14,468	14,352
Participation rate.....	81.1	81.2	80.2	80.9	81.6	81.4	80.7	80.9	80.1
Employed.....	13,309	13,694	13,662	13,238	13,614	13,615	13,549	13,596	13,595
Employment-population ratio.....	76.4	76.6	76.3	76.0	76.7	76.5	76.0	76.1	75.9
Unemployed.....	828	817	699	866	870	863	853	872	757
Unemployment rate.....	5.9	5.6	4.9	6.1	6.0	6.0	5.9	6.0	5.3
Women, 20 years and over									
Civilian labor force.....	10,178	10,518	10,537	10,223	10,526	10,537	10,552	10,574	10,606
Participation rate.....	58.4	58.2	58.2	58.7	58.6	58.6	58.5	58.5	58.6
Employed.....	9,356	9,751	9,760	9,433	9,802	9,854	9,919	9,850	9,859
Employment-population ratio.....	53.7	54.0	53.9	54.2	54.6	54.8	55.0	54.5	54.4
Unemployed.....	822	766	777	790	725	684	633	724	747
Unemployment rate.....	8.1	7.3	7.4	7.7	6.9	6.5	6.0	6.8	7.0
Both sexes, 16 to 19 years									
Civilian labor force.....	1,149	1,305	1,180	1,082	1,157	1,133	1,178	1,116	1,118
Participation rate.....	31.3	35.2	31.8	29.5	31.3	30.6	31.8	30.1	30.1
Employed.....	901	1,033	922	865	938	916	933	928	889
Employment-population ratio.....	24.6	27.9	24.9	23.6	25.4	24.8	25.2	25.0	24.0
Unemployed.....	248	272	258	217	218	217	245	188	230
Unemployment rate.....	21.6	20.9	21.8	20.1	18.9	19.2	20.8	16.9	20.6

¹ The population figures are not adjusted for seasonal variation; therefore, identical numbers appear in the unadjusted and seasonally adjusted columns.

NOTE: Persons whose ethnicity is identified as Hispanic or Latino may be of any race. Updated population controls are introduced annually with the release of January data.

HOUSEHOLD DATA

Table A-4. Employment status of the civilian population 25 years and over by educational attainment

[Numbers in thousands]

Educational attainment	Not seasonally adjusted			Seasonally adjusted					
	Aug. 2014	July 2015	Aug. 2015	Aug. 2014	Apr. 2015	May 2015	June 2015	July 2015	Aug. 2015
Less than a high school diploma									
Civilian labor force.....	10,627	10,622	10,546	10,709	11,338	11,153	11,065	10,843	10,692
Participation rate.....	44.8	45.3	44.7	45.2	45.7	44.6	44.6	46.2	45.4
Employed.....	9,712	9,750	9,776	9,738	10,367	10,192	10,161	9,942	9,865
Employment-population ratio.....	41.0	41.6	41.5	41.1	41.8	40.7	41.0	42.4	41.9
Unemployed.....	914	872	770	971	971	961	904	901	827
Unemployment rate.....	8.6	8.2	7.3	9.1	8.6	8.6	8.2	8.3	7.7
High school graduates, no college¹									
Civilian labor force.....	36,291	35,088	35,617	36,286	35,577	35,341	34,996	35,130	35,534
Participation rate.....	58.1	57.0	57.3	58.1	57.2	57.2	57.1	57.1	57.1
Employed.....	34,100	33,149	33,689	34,046	33,639	33,304	33,110	33,194	33,584
Employment-population ratio.....	54.6	53.9	54.2	54.5	54.1	53.9	54.0	53.9	54.0
Unemployed.....	2,191	1,939	1,928	2,240	1,938	2,037	1,886	1,936	1,950
Unemployment rate.....	6.0	5.5	5.4	6.2	5.4	5.8	5.4	5.5	5.5
Some college or associate degree									
Civilian labor force.....	37,865	37,731	37,194	37,503	37,755	37,594	37,674	37,547	37,053
Participation rate.....	67.4	66.2	66.2	66.8	67.4	67.4	66.8	65.9	65.9
Employed.....	35,802	36,044	35,535	35,490	35,996	35,934	36,084	35,900	35,427
Employment-population ratio.....	63.7	63.2	63.2	63.2	64.2	64.4	64.0	63.0	63.0
Unemployed.....	2,063	1,688	1,659	2,013	1,759	1,660	1,590	1,646	1,626
Unemployment rate.....	5.4	4.5	4.5	5.4	4.7	4.4	4.2	4.4	4.4
Bachelor's degree and higher²									
Civilian labor force.....	49,836	51,924	52,065	50,162	51,156	51,938	51,855	52,361	52,454
Participation rate.....	74.2	73.9	73.8	74.7	74.6	75.0	74.6	74.5	74.3
Employed.....	48,062	50,446	50,650	48,561	49,758	50,518	50,548	51,021	51,167
Employment-population ratio.....	71.6	71.8	71.8	72.3	72.5	73.0	72.7	72.6	72.5
Unemployed.....	1,774	1,477	1,415	1,600	1,399	1,419	1,307	1,339	1,286
Unemployment rate.....	3.6	2.8	2.7	3.2	2.7	2.7	2.5	2.6	2.5

¹ Includes persons with a high school diploma or equivalent.

² Includes persons with bachelor's, master's, professional, and doctoral degrees.

NOTE: Updated population controls are introduced annually with the release of January data.

HOUSEHOLD DATA

Table A-5. Employment status of the civilian population 18 years and over by veteran status, period of service, and sex, not seasonally adjusted

[Numbers in thousands]

Employment status, veteran status, and period of service	Total		Men		Women	
	Aug. 2014	Aug. 2015	Aug. 2014	Aug. 2015	Aug. 2014	Aug. 2015
VETERANS, 18 years and over						
Civilian noninstitutional population.....	21,124	21,171	18,870	19,172	2,254	1,999
Civilian labor force.....	10,667	10,686	9,300	9,452	1,368	1,234
Participation rate.....	50.5	50.5	49.3	49.3	60.7	61.7
Employed.....	10,070	10,236	8,784	9,067	1,286	1,170
Employment-population ratio.....	47.7	48.3	46.5	47.3	57.1	58.5
Unemployed.....	598	449	516	385	82	64
Unemployment rate.....	5.6	4.2	5.5	4.1	6.0	5.2
Not in labor force.....	10,457	10,486	9,570	9,720	886	765
Gulf War-era II veterans						
Civilian noninstitutional population.....	3,154	3,581	2,464	2,956	690	625
Civilian labor force.....	2,484	2,878	2,009	2,434	475	444
Participation rate.....	78.8	80.4	81.5	82.3	68.8	71.1
Employed.....	2,282	2,744	1,843	2,322	439	422
Employment-population ratio.....	72.4	76.6	74.8	78.6	63.6	67.6
Unemployed.....	201	134	165	112	36	22
Unemployment rate.....	8.1	4.7	8.2	4.6	7.6	5.0
Not in labor force.....	670	702	455	522	215	180
Gulf War-era I veterans						
Civilian noninstitutional population.....	3,353	3,479	2,737	2,936	616	543
Civilian labor force.....	2,789	2,832	2,352	2,410	437	422
Participation rate.....	83.2	81.4	85.9	82.1	70.9	77.6
Employed.....	2,663	2,724	2,247	2,331	417	393
Employment-population ratio.....	79.4	78.3	82.1	79.4	67.6	72.4
Unemployed.....	125	107	105	79	20	28
Unemployment rate.....	4.5	3.8	4.5	3.3	4.6	6.7
Not in labor force.....	565	648	385	526	180	122
World War II, Korean War, and Vietnam-era veterans						
Civilian noninstitutional population.....	9,321	8,852	8,971	8,537	350	315
Civilian labor force.....	2,651	2,293	2,555	2,221	96	72
Participation rate.....	28.4	25.9	28.5	26.0	27.4	22.9
Employed.....	2,507	2,198	2,411	2,125	96	72
Employment-population ratio.....	26.9	24.8	26.9	24.9	27.4	22.9
Unemployed.....	144	95	144	95	0	0
Unemployment rate.....	5.4	4.2	5.6	4.3	0.0	-
Not in labor force.....	6,670	6,559	6,416	6,316	254	243
Veterans of other service periods						
Civilian noninstitutional population.....	5,296	5,259	4,698	4,743	598	516
Civilian labor force.....	2,744	2,683	2,384	2,387	361	296
Participation rate.....	51.8	51.0	50.7	50.3	60.3	57.4
Employed.....	2,617	2,570	2,282	2,288	335	282
Employment-population ratio.....	49.4	48.9	48.6	48.2	56.0	54.6
Unemployed.....	127	113	101	99	26	14
Unemployment rate.....	4.6	4.2	4.3	4.1	7.1	4.8
Not in labor force.....	2,552	2,576	2,314	2,356	237	220
NONVETERANS, 18 years and over						
Civilian noninstitutional population.....	218,405	221,138	96,629	97,597	121,775	123,542
Civilian labor force.....	143,636	144,530	73,225	73,454	70,411	71,076
Participation rate.....	65.8	65.4	75.8	75.3	57.8	57.5
Employed.....	134,922	137,213	68,994	69,932	65,928	67,281
Employment-population ratio.....	61.8	62.0	71.4	71.7	54.1	54.5
Unemployed.....	8,713	7,318	4,231	3,523	4,482	3,795
Unemployment rate.....	6.1	5.1	5.8	4.8	6.4	5.3
Not in labor force.....	74,769	76,608	23,404	24,142	51,365	52,466

NOTE: Veterans served on active duty in the U.S. Armed Forces and were not on active duty at the time of the survey. Nonveterans never served on active duty in the U.S. Armed Forces. Veterans could have served anywhere in the world during these periods of service: Gulf War era II (September 2001-present), Gulf War era I (August 1990-August 2001), Vietnam era (August 1964-April 1975), Korean War (July 1950-January 1955), World War II (December 1941-December 1946), and other service periods (all other time periods). Veterans who served in more than one wartime period are classified only in the most recent one. Veterans who served during one of the selected wartime periods and another period are classified only in the wartime period.

HOUSEHOLD DATA

Table A-6. Employment status of the civilian population by sex, age, and disability status, not seasonally adjusted

[Numbers in thousands]

Employment status, sex, and age	Persons with a disability		Persons with no disability	
	Aug. 2014	Aug. 2015	Aug. 2014	Aug. 2015
TOTAL, 16 years and over				
Civilian noninstitutional population.....	29,443	29,858	218,786	221,238
Civilian labor force.....	5,819	5,833	150,615	151,557
Participation rate.....	19.8	19.5	68.8	68.5
Employed.....	5,075	5,237	141,572	143,991
Employment-population ratio.....	17.2	17.5	64.7	65.1
Unemployed.....	744	596	9,043	7,566
Unemployment rate.....	12.8	10.2	6.0	5.0
Not in labor force.....	23,624	24,025	68,171	69,681
Men, 16 to 64 years				
Civilian labor force.....	2,660	2,518	76,348	76,612
Participation rate.....	33.8	32.7	83.0	82.6
Employed.....	2,270	2,240	71,955	72,974
Employment-population ratio.....	28.8	29.1	78.2	78.7
Unemployed.....	390	277	4,392	3,637
Unemployment rate.....	14.7	11.0	5.8	4.7
Not in labor force.....	5,220	5,179	15,615	16,146
Women, 16 to 64 years				
Civilian labor force.....	2,199	2,291	66,986	67,218
Participation rate.....	27.7	28.1	70.3	70.1
Employed.....	1,895	2,027	62,751	63,576
Employment-population ratio.....	23.8	24.9	65.8	66.3
Unemployed.....	304	264	4,235	3,642
Unemployment rate.....	13.8	11.5	6.3	5.4
Not in labor force.....	5,748	5,854	28,337	28,636
Both sexes, 65 years and over				
Civilian labor force.....	960	1,024	7,281	7,727
Participation rate.....	7.1	7.3	23.1	23.7
Employed.....	910	969	6,865	7,440
Employment-population ratio.....	6.7	6.9	21.8	22.8
Unemployed.....	50	55	416	287
Unemployment rate.....	5.2	5.4	5.7	3.7
Not in labor force.....	12,656	12,992	24,219	24,899

NOTE: A person with a disability has at least one of the following conditions: is deaf or has serious difficulty hearing; is blind or has serious difficulty seeing even when wearing glasses; has serious difficulty concentrating, remembering, or making decisions because of a physical, mental, or emotional condition; has serious difficulty walking or climbing stairs; has difficulty dressing or bathing; or has difficulty doing errands alone such as visiting a doctor's office or shopping because of a physical, mental, or emotional condition. Updated population controls are introduced annually with the release of January data.

HOUSEHOLD DATA

Table A-7. Employment status of the civilian population by nativity and sex, not seasonally adjusted

[Numbers in thousands]

Employment status and nativity	Total		Men		Women	
	Aug. 2014	Aug. 2015	Aug. 2014	Aug. 2015	Aug. 2014	Aug. 2015
Foreign born, 16 years and over						
Civilian noninstitutional population.....	39,289	40,290	19,302	19,535	19,986	20,754
Civilian labor force.....	26,046	26,056	15,216	15,267	10,830	10,788
Participation rate.....	66.3	64.7	78.8	78.2	54.2	52.0
Employed.....	24,639	24,914	14,538	14,745	10,101	10,169
Employment-population ratio.....	62.7	61.8	75.3	75.5	50.5	49.0
Unemployed.....	1,407	1,142	678	522	728	620
Unemployment rate.....	5.4	4.4	4.5	3.4	6.7	5.7
Not in labor force.....	13,243	14,234	4,086	4,268	9,157	9,966
Native born, 16 years and over						
Civilian noninstitutional population.....	208,940	210,806	100,590	101,715	108,349	109,092
Civilian labor force.....	130,388	131,334	68,351	68,729	62,038	62,605
Participation rate.....	62.4	62.3	67.9	67.6	57.3	57.4
Employed.....	122,008	124,314	64,038	65,153	57,970	59,161
Employment-population ratio.....	58.4	59.0	63.7	64.1	53.5	54.2
Unemployed.....	8,381	7,021	4,313	3,576	4,068	3,444
Unemployment rate.....	6.4	5.3	6.3	5.2	6.6	5.5
Not in labor force.....	78,552	79,472	32,240	32,985	46,312	46,487

NOTE: The foreign born are those residing in the United States who were not U.S. citizens at birth. That is, they were born outside the United States or one of its outlying areas such as Puerto Rico or Guam, to parents neither of whom was a U.S. citizen. The native born are persons who were born in the United States or one of its outlying areas such as Puerto Rico or Guam or who were born abroad of at least one parent who was a U.S. citizen. Updated population controls are introduced annually with the release of January data.

HOUSEHOLD DATA

Table A-8. Employed persons by class of worker and part-time status

[In thousands]

Category	Not seasonally adjusted			Seasonally adjusted					
	Aug. 2014	July 2015	Aug. 2015	Aug. 2014	Apr. 2015	May 2015	June 2015	July 2015	Aug. 2015
CLASS OF WORKER									
Agriculture and related industries.....	2,472	2,601	2,539	2,265	2,435	2,405	2,544	2,375	2,345
Wage and salary workers ¹	1,699	1,654	1,590	1,518	1,610	1,536	1,590	1,490	1,437
Self-employed workers, unincorporated.....	756	912	922	732	794	828	905	853	886
Unpaid family workers.....	18	34	26	-	-	-	-	-	-
Nonagricultural industries.....	144,175	147,121	146,689	144,111	146,111	146,417	146,192	146,439	146,679
Wage and salary workers ¹	135,541	138,143	137,890	135,641	137,148	137,175	137,458	137,628	137,988
Government.....	19,410	19,720	19,994	20,027	20,455	20,613	20,744	20,547	20,620
Private industries.....	116,131	118,423	117,896	115,553	116,707	116,572	116,678	117,059	117,331
Private households.....	789	792	825	-	-	-	-	-	-
Other industries.....	115,342	117,632	117,072	114,787	115,899	115,821	115,857	116,257	116,509
Self-employed workers, unincorporated.....	8,576	8,879	8,747	8,483	8,826	9,142	8,645	8,741	8,682
Unpaid family workers.....	58	99	52	-	-	-	-	-	-
PERSONS AT WORK PART TIME²									
 All industries									
Part time for economic reasons ³	7,083	6,511	6,361	7,223	6,580	6,652	6,505	6,325	6,483
Slack work or business conditions.....	4,055	3,883	3,674	4,217	3,885	3,891	3,915	3,828	3,841
Could only find part-time work.....	2,548	2,263	2,227	2,546	2,374	2,390	2,216	2,213	2,242
Part time for noneconomic reasons ⁴	17,872	18,273	17,933	19,538	20,056	19,961	20,480	19,891	19,760
 Nonagricultural industries									
Part time for economic reasons ³	7,021	6,414	6,265	7,152	6,501	6,541	6,384	6,223	6,380
Slack work or business conditions.....	4,020	3,813	3,621	4,178	3,835	3,830	3,828	3,752	3,779
Could only find part-time work.....	2,538	2,249	2,216	2,557	2,352	2,419	2,195	2,199	2,239
Part time for noneconomic reasons ⁴	17,523	17,895	17,597	19,171	19,705	19,603	19,996	19,504	19,445

¹ Includes self-employed workers whose businesses are incorporated.

² Refers to those who worked 1 to 34 hours during the survey reference week and excludes employed persons who were absent from their jobs for the entire week.

³ Refers to those who worked 1 to 34 hours during the reference week for an economic reason such as slack work or unfavorable business conditions, inability to find full-time work, or seasonal declines in demand.

⁴ Refers to persons who usually work part time for noneconomic reasons such as childcare problems, family or personal obligations, school or training, retirement or Social Security limits on earnings, and other reasons. This excludes persons who usually work full time but worked only 1 to 34 hours during the reference week for reasons such as vacations, holidays, illness, and bad weather.

- Data not available.

NOTE: Detail for the seasonally adjusted data shown in this table will not necessarily add to totals because of the independent seasonal adjustment of the various series. Updated population controls are introduced annually with the release of January data.

HOUSEHOLD DATA

Table A-9. Selected employment indicators

[Numbers in thousands]

Characteristic	Not seasonally adjusted			Seasonally adjusted					
	Aug. 2014	July 2015	Aug. 2015	Aug. 2014	Apr. 2015	May 2015	June 2015	July 2015	Aug. 2015
AGE AND SEX									
Total, 16 years and over.....	146,647	149,722	149,228	146,451	148,523	148,795	148,739	148,840	149,036
16 to 19 years.....	4,896	5,696	5,042	4,495	4,784	4,784	4,662	4,666	4,654
16 to 17 years.....	1,655	2,073	1,779	1,500	1,630	1,678	1,654	1,637	1,623
18 to 19 years.....	3,241	3,624	3,263	2,998	3,147	3,128	3,014	3,034	3,030
20 years and over.....	141,751	144,026	144,185	141,956	143,740	144,011	144,077	144,174	144,382
20 to 24 years.....	14,076	14,637	14,535	13,884	13,851	14,060	14,055	14,043	14,315
25 years and over.....	127,675	129,389	129,651	128,022	129,861	129,890	130,043	130,123	130,051
25 to 54 years.....	95,548	96,107	96,506	95,627	96,482	96,507	96,618	96,487	96,628
25 to 34 years.....	31,951	32,518	32,682	32,013	32,734	32,786	32,756	32,652	32,765
35 to 44 years.....	30,908	31,089	31,315	30,953	31,072	31,095	31,277	31,261	31,343
45 to 54 years.....	32,689	32,499	32,509	32,661	32,676	32,625	32,584	32,574	32,520
55 years and over.....	32,128	33,282	33,145	32,395	33,379	33,383	33,425	33,636	33,423
Men, 16 years and over.....	78,576	80,436	79,898	77,873	79,203	79,201	79,020	79,202	79,211
16 to 19 years.....	2,456	2,896	2,587	2,206	2,399	2,368	2,237	2,299	2,331
16 to 17 years.....	798	1,063	900	717	830	845	824	799	808
18 to 19 years.....	1,658	1,832	1,687	1,498	1,557	1,528	1,415	1,498	1,526
20 years and over.....	76,120	77,541	77,311	75,668	76,805	76,833	76,783	76,903	76,880
20 to 24 years.....	7,422	7,592	7,472	7,225	7,158	7,259	7,181	7,177	7,256
25 years and over.....	68,698	69,949	69,839	68,462	69,633	69,531	69,633	69,730	69,615
25 to 54 years.....	51,506	52,020	52,127	51,252	51,863	51,716	51,828	51,740	51,891
25 to 34 years.....	17,422	17,778	17,775	17,330	17,798	17,755	17,799	17,689	17,705
35 to 44 years.....	16,795	16,904	17,002	16,734	16,818	16,766	16,903	16,838	16,931
45 to 54 years.....	17,288	17,338	17,350	17,188	17,247	17,195	17,125	17,213	17,255
55 years and over.....	17,192	17,929	17,712	17,210	17,770	17,816	17,806	17,990	17,724
Women, 16 years and over.....	68,071	69,286	69,329	68,577	69,320	69,594	69,719	69,638	69,825
16 to 19 years.....	2,440	2,801	2,455	2,289	2,385	2,416	2,425	2,367	2,322
16 to 17 years.....	857	1,009	879	783	800	833	830	838	814
18 to 19 years.....	1,583	1,792	1,576	1,500	1,590	1,600	1,599	1,536	1,504
20 years and over.....	65,631	66,485	66,874	66,289	66,935	67,178	67,294	67,271	67,502
20 to 24 years.....	6,654	7,045	7,063	6,659	6,693	6,801	6,874	6,865	7,059
25 years and over.....	58,978	59,440	59,812	59,560	60,228	60,358	60,409	60,392	60,437
25 to 54 years.....	44,042	44,087	44,379	44,375	44,619	44,791	44,790	44,746	44,738
25 to 34 years.....	14,529	14,741	14,907	14,684	14,936	15,032	14,957	14,962	15,060
35 to 44 years.....	14,113	14,185	14,313	14,219	14,255	14,329	14,374	14,423	14,413
45 to 54 years.....	15,401	15,162	15,158	15,473	15,429	15,431	15,459	15,361	15,265
55 years and over.....	14,936	15,353	15,433	15,185	15,609	15,567	15,619	15,646	15,699
MARITAL STATUS									
Married men, spouse present.....	44,374	44,762	45,048	44,293	45,023	44,792	44,878	44,855	44,994
Married women, spouse present.....	34,282	34,098	34,516	34,722	34,974	34,879	34,940	34,815	34,963
Women who maintain families.....	9,337	9,799	9,696	-	-	-	-	-	-
FULL- OR PART-TIME STATUS									
Full-time workers ¹	120,110	123,142	123,420	118,758	120,772	121,402	121,053	121,589	122,024
Part-time workers ²	26,537	26,580	25,808	27,681	27,738	27,506	27,667	27,265	26,916
MULTIPLE JOBHOLDERS									
Total multiple jobholders.....	6,819	6,997	6,901	7,114	6,986	6,946	7,119	7,124	7,187
Percent of total employed.....	4.7	4.7	4.6	4.9	4.7	4.7	4.8	4.8	4.8
SELF-EMPLOYMENT									
Self-employed workers, incorporated.....	5,294	5,453	5,176	-	-	-	-	-	-
Self-employed workers, unincorporated.....	9,332	9,791	9,669	9,214	9,620	9,970	9,550	9,593	9,569

¹ Employed full-time workers are persons who usually work 35 hours or more per week.

² Employed part-time workers are persons who usually work less than 35 hours per week.

- Data not available.

NOTE: Detail for the seasonally adjusted data shown in this table will not necessarily add to totals because of the independent seasonal adjustment of the various series. Updated population controls are introduced annually with the release of January data.

HOUSEHOLD DATA

Table A-10. Selected unemployment indicators, seasonally adjusted

Characteristic	Number of unemployed persons (in thousands)			Unemployment rates					
	Aug. 2014	July 2015	Aug. 2015	Aug. 2014	Apr. 2015	May 2015	June 2015	July 2015	Aug. 2015
AGE AND SEX									
Total, 16 years and over.....	9,568	8,266	8,029	6.1	5.4	5.5	5.3	5.3	5.1
16 to 19 years.....	1,083	904	945	19.4	17.1	17.9	18.1	16.2	16.9
16 to 17 years.....	449	346	369	23.1	20.0	19.3	18.3	17.4	18.5
18 to 19 years.....	643	576	577	17.6	15.1	16.7	18.2	15.9	16.0
20 years and over.....	8,484	7,362	7,084	5.6	5.0	5.0	4.8	4.9	4.7
20 to 24 years.....	1,655	1,577	1,395	10.7	9.6	10.1	9.9	10.1	8.9
25 years and over.....	6,891	5,809	5,739	5.1	4.5	4.5	4.2	4.3	4.2
25 to 54 years.....	5,373	4,526	4,417	5.3	4.6	4.7	4.4	4.5	4.4
25 to 34 years.....	2,350	1,895	1,825	6.8	5.8	5.8	5.6	5.5	5.3
35 to 44 years.....	1,552	1,340	1,265	4.8	4.3	4.4	3.9	4.1	3.9
45 to 54 years.....	1,472	1,291	1,327	4.3	3.8	3.9	3.5	3.8	3.9
55 years and over.....	1,544	1,282	1,329	4.5	4.0	3.7	3.7	3.7	3.8
Men, 16 years and over.....	5,136	4,376	4,261	6.2	5.5	5.6	5.4	5.2	5.1
16 to 19 years.....	594	488	501	21.2	17.9	20.5	20.4	17.5	17.7
16 to 17 years.....	235	184	186	24.7	21.0	22.0	19.5	18.7	18.7
18 to 19 years.....	370	315	319	19.8	15.2	19.1	21.4	17.4	17.3
20 years and over.....	4,543	3,887	3,760	5.7	5.0	5.0	4.8	4.8	4.7
20 to 24 years.....	942	883	792	11.5	10.5	11.0	10.9	11.0	9.8
25 years and over.....	3,648	3,009	3,006	5.1	4.4	4.4	4.1	4.1	4.1
25 to 54 years.....	2,857	2,340	2,284	5.3	4.5	4.6	4.3	4.3	4.2
25 to 34 years.....	1,222	1,017	977	6.6	5.4	5.6	5.3	5.4	5.2
35 to 44 years.....	860	668	622	4.9	4.0	4.3	4.0	3.8	3.5
45 to 54 years.....	774	656	685	4.3	4.0	3.7	3.4	3.7	3.8
55 years and over.....	792	668	723	4.4	4.2	3.9	3.8	3.6	3.9
Women, 16 years and over.....	4,431	3,891	3,768	6.1	5.4	5.4	5.2	5.3	5.1
16 to 19 years.....	490	416	444	17.6	16.3	15.1	15.8	15.0	16.1
16 to 17 years.....	214	161	183	21.5	18.9	16.4	17.2	16.1	18.3
18 to 19 years.....	273	260	257	15.4	15.0	14.4	15.2	14.5	14.6
20 years and over.....	3,942	3,474	3,324	5.6	4.9	5.0	4.8	4.9	4.7
20 to 24 years.....	713	694	603	9.7	8.5	9.1	8.8	9.2	7.9
25 years and over.....	3,243	2,801	2,733	5.2	4.5	4.5	4.3	4.4	4.3
25 to 54 years.....	2,517	2,186	2,133	5.4	4.8	4.9	4.5	4.7	4.6
25 to 34 years.....	1,127	879	848	7.1	6.2	6.0	6.0	5.5	5.3
35 to 44 years.....	692	672	643	4.6	4.6	4.5	3.8	4.4	4.3
45 to 54 years.....	698	635	642	4.3	3.7	4.1	3.6	4.0	4.0
55 years and over.....	752	591	602	4.7	3.7	3.6	3.6	3.6	3.7
MARITAL STATUS									
Married men, spouse present.....	1,487	1,294	1,275	3.2	3.0	2.9	2.8	2.8	2.8
Married women, spouse present.....	1,333	1,179	1,130	3.7	3.4	3.3	3.2	3.3	3.1
Women who maintain families ¹	960	855	855	9.3	7.0	6.8	7.8	8.0	8.1
FULL- OR PART-TIME STATUS									
Full-time workers ²	7,912	6,838	6,618	6.2	5.5	5.6	5.3	5.3	5.1
Part-time workers ³	1,623	1,457	1,386	5.5	4.9	4.9	5.2	5.1	4.9

¹ Not seasonally adjusted.

² Full-time workers are unemployed persons who have expressed a desire to work full time (35 hours or more per week) or are on layoff from full-time jobs.

³ Part-time workers are unemployed persons who have expressed a desire to work part time (less than 35 hours per week) or are on layoff from part-time jobs.

NOTE: Detail for the seasonally adjusted data shown in this table will not necessarily add to totals because of the independent seasonal adjustment of the various series. Updated population controls are introduced annually with the release of January data.

HOUSEHOLD DATA

Table A-11. Unemployed persons by reason for unemployment

[Numbers in thousands]

Reason	Not seasonally adjusted			Seasonally adjusted					
	Aug. 2014	July 2015	Aug. 2015	Aug. 2014	Apr. 2015	May 2015	June 2015	July 2015	Aug. 2015
NUMBER OF UNEMPLOYED									
Job losers and persons who completed temporary jobs.....	4,750	4,204	3,987	4,813	4,136	4,267	4,088	4,143	4,070
On temporary layoff.....	1,070	1,140	954	1,106	950	1,041	1,052	999	1,001
Not on temporary layoff.....	3,681	3,063	3,032	3,708	3,185	3,226	3,035	3,145	3,069
Permanent job losers.....	2,605	2,182	2,116	2,622	2,238	2,217	2,126	2,224	2,147
Persons who completed temporary jobs....	1,076	881	916	1,086	948	1,009	909	921	922
Job leavers.....	922	875	849	851	828	829	773	843	790
Reentrants.....	2,943	2,604	2,389	2,845	2,685	2,615	2,516	2,447	2,349
New entrants.....	1,171	1,122	938	1,064	868	971	933	826	850
PERCENT DISTRIBUTION									
Job losers and persons who completed temporary jobs.....	48.5	47.7	48.8	50.3	48.6	49.1	49.2	50.2	50.5
On temporary layoff.....	10.9	13.0	11.7	11.5	11.2	12.0	12.7	12.1	12.4
Not on temporary layoff.....	37.6	34.8	37.2	38.7	37.4	37.2	36.5	38.1	38.1
Job leavers.....	9.4	9.9	10.4	8.9	9.7	9.5	9.3	10.2	9.8
Reentrants.....	30.1	29.6	29.3	29.7	31.5	30.1	30.3	29.6	29.1
New entrants.....	12.0	12.7	11.5	11.1	10.2	11.2	11.2	10.0	10.6
UNEMPLOYED AS A PERCENT OF THE CIVILIAN LABOR FORCE									
Job losers and persons who completed temporary jobs.....	3.0	2.7	2.5	3.1	2.6	2.7	2.6	2.6	2.6
Job leavers.....	0.6	0.6	0.5	0.5	0.5	0.5	0.5	0.5	0.5
Reentrants.....	1.9	1.6	1.5	1.8	1.7	1.7	1.6	1.6	1.5
New entrants.....	0.7	0.7	0.6	0.7	0.6	0.6	0.6	0.5	0.5

NOTE: Updated population controls are introduced annually with the release of January data.

HOUSEHOLD DATA

Table A-12. Unemployed persons by duration of unemployment

[Numbers in thousands]

Duration	Not seasonally adjusted			Seasonally adjusted					
	Aug. 2014	July 2015	Aug. 2015	Aug. 2014	Apr. 2015	May 2015	June 2015	July 2015	Aug. 2015
NUMBER OF UNEMPLOYED									
Less than 5 weeks.....	2,664	2,870	2,100	2,609	2,729	2,418	2,355	2,488	2,095
5 to 14 weeks.....	2,802	2,690	2,744	2,444	2,307	2,532	2,364	2,257	2,374
15 weeks and over.....	4,321	3,245	3,318	4,465	3,663	3,795	3,514	3,368	3,437
15 to 26 weeks.....	1,354	1,049	1,136	1,500	1,139	1,293	1,393	1,188	1,250
27 weeks and over.....	2,967	2,196	2,183	2,966	2,525	2,502	2,121	2,180	2,187
Average (mean) duration, in weeks.....	31.2	26.5	27.6	31.9	30.8	30.7	28.1	28.3	28.4
Median duration, in weeks.....	12.0	9.4	11.0	13.3	11.7	11.6	11.3	11.3	12.1
PERCENT DISTRIBUTION									
Less than 5 weeks.....	27.2	32.6	25.7	27.4	31.4	27.6	28.6	30.7	26.5
5 to 14 weeks.....	28.6	30.5	33.6	25.7	26.5	29.0	28.7	27.8	30.0
15 weeks and over.....	44.1	36.9	40.7	46.9	42.1	43.4	42.7	41.5	43.5
15 to 26 weeks.....	13.8	11.9	13.9	15.8	13.1	14.8	16.9	14.6	15.8
27 weeks and over.....	30.3	24.9	26.7	31.2	29.0	28.6	25.8	26.9	27.7

NOTE: Updated population controls are introduced annually with the release of January data.

HOUSEHOLD DATA

Table A-13. Employed and unemployed persons by occupation, not seasonally adjusted

[Numbers in thousands]

Occupation	Employed		Unemployed		Unemployment rates	
	Aug. 2014	Aug. 2015	Aug. 2014	Aug. 2015	Aug. 2014	Aug. 2015
Total, 16 years and over ¹	146,647	149,228	9,787	8,162	6.3	5.2
Management, professional, and related occupations.....	55,646	57,288	1,930	1,686	3.4	2.9
Management, business, and financial operations occupations.....	23,854	24,331	643	555	2.6	2.2
Professional and related occupations.....	31,792	32,957	1,287	1,132	3.9	3.3
Service occupations.....	26,183	26,886	2,139	1,847	7.6	6.4
Sales and office occupations.....	33,045	33,158	2,037	1,738	5.8	5.0
Sales and related occupations.....	15,102	15,596	900	890	5.6	5.4
Office and administrative support occupations.....	17,943	17,561	1,138	848	6.0	4.6
Natural resources, construction, and maintenance occupations.....	14,046	14,025	1,116	817	7.4	5.5
Farming, fishing, and forestry occupations.....	1,183	1,145	111	62	8.6	5.1
Construction and extraction occupations.....	7,888	7,774	752	585	8.7	7.0
Installation, maintenance, and repair occupations.....	4,975	5,106	253	170	4.8	3.2
Production, transportation, and material moving occupations.....	17,727	17,871	1,372	1,109	7.2	5.8
Production occupations.....	8,586	8,619	623	482	6.8	5.3
Transportation and material moving occupations.....	9,141	9,252	749	627	7.6	6.3

¹ Persons with no previous work experience and persons whose last job was in the U.S. Armed Forces are included in the unemployed total.

NOTE: Updated population controls are introduced annually with the release of January data.

HOUSEHOLD DATA

Table A-14. Unemployed persons by industry and class of worker, not seasonally adjusted

Industry and class of worker	Number of unemployed persons (in thousands)		Unemployment rates	
	Aug. 2014	Aug. 2015	Aug. 2014	Aug. 2015
Total, 16 years and over ¹	9,787	8,162	6.3	5.2
Nonagricultural private wage and salary workers.....	7,200	6,039	5.8	4.9
Mining, quarrying, and oil and gas extraction.....	74	77	6.3	8.0
Construction.....	678	525	7.7	6.1
Manufacturing.....	787	639	5.0	4.0
Durable goods.....	506	426	5.1	4.2
Nondurable goods.....	281	213	4.8	3.6
Wholesale and retail trade.....	1,160	1,034	5.8	5.1
Transportation and utilities.....	412	251	6.3	4.0
Information.....	131	151	4.5	5.2
Financial activities.....	322	236	3.5	2.5
Professional and business services.....	1,039	852	6.5	5.4
Education and health services.....	1,068	934	4.8	4.1
Leisure and hospitality.....	1,149	1,012	8.1	7.2
Other services.....	382	328	5.8	4.8
Agriculture and related private wage and salary workers.....	145	87	8.1	5.3
Government workers.....	798	779	3.9	3.7
Self-employed workers, unincorporated, and unpaid family workers.....	473	319	4.8	3.2

¹ Persons with no previous work experience and persons whose last job was in the U.S. Armed Forces are included in the unemployed total.

NOTE: Updated population controls are introduced annually with the release of January data.

HOUSEHOLD DATA

Table A-15. Alternative measures of labor underutilization

[Percent]

Measure	Not seasonally adjusted			Seasonally adjusted					
	Aug. 2014	July 2015	Aug. 2015	Aug. 2014	Apr. 2015	May 2015	June 2015	July 2015	Aug. 2015
U-1 Persons unemployed 15 weeks or longer, as a percent of the civilian labor force.....	2.8	2.0	2.1	2.9	2.3	2.4	2.2	2.1	2.2
U-2 Job losers and persons who completed temporary jobs, as a percent of the civilian labor force.....	3.0	2.7	2.5	3.1	2.6	2.7	2.6	2.6	2.6
U-3 Total unemployed, as a percent of the civilian labor force (official unemployment rate).....	6.3	5.6	5.2	6.1	5.4	5.5	5.3	5.3	5.1
U-4 Total unemployed plus discouraged workers, as a percent of the civilian labor force plus discouraged workers.....	6.7	6.0	5.6	6.6	5.9	5.8	5.7	5.7	5.5
U-5 Total unemployed, plus discouraged workers, plus all other persons marginally attached to the labor force, as a percent of the civilian labor force plus all persons marginally attached to the labor force.....	7.5	6.7	6.3	7.4	6.7	6.6	6.4	6.4	6.2
U-6 Total unemployed, plus all persons marginally attached to the labor force, plus total employed part time for economic reasons, as a percent of the civilian labor force plus all persons marginally attached to the labor force.....	12.0	10.7	10.3	12.0	10.8	10.8	10.5	10.4	10.3

NOTE: Persons marginally attached to the labor force are those who currently are neither working nor looking for work but indicate that they want and are available for a job and have looked for work sometime in the past 12 months. Discouraged workers, a subset of the marginally attached, have given a job-market related reason for not currently looking for work. Persons employed part time for economic reasons are those who want and are available for full-time work but have had to settle for a part-time schedule. Updated population controls are introduced annually with the release of January data.

HOUSEHOLD DATA

Table A-16. Persons not in the labor force and multiple jobholders by sex, not seasonally adjusted

[Numbers in thousands]

Category	Total		Men		Women	
	Aug. 2014	Aug. 2015	Aug. 2014	Aug. 2015	Aug. 2014	Aug. 2015
NOT IN THE LABOR FORCE						
Total not in the labor force.....	91,794	93,706	36,326	37,253	55,469	56,453
Persons who currently want a job.....	6,382	5,920	2,657	2,589	3,725	3,331
Marginally attached to the labor force ¹	2,141	1,812	984	967	1,157	846
Discouraged workers ²	775	624	424	391	351	234
Other persons marginally attached to the labor force ³ ..	1,366	1,188	560	576	806	612
MULTIPLE JOBHOLDERS						
Total multiple jobholders ⁴	6,819	6,901	3,419	3,475	3,401	3,427
Percent of total employed.....	4.7	4.6	4.4	4.3	5.0	4.9
Primary job full time, secondary job part time.....	3,658	3,832	1,996	2,150	1,662	1,682
Primary and secondary jobs both part time.....	1,748	1,708	609	561	1,139	1,146
Primary and secondary jobs both full time.....	269	286	186	183	83	103
Hours vary on primary or secondary job.....	1,085	1,038	602	555	483	482

¹ Data refer to persons who want a job, have searched for work during the prior 12 months, and were available to take a job during the reference week, but had not looked for work in the past 4 weeks.

² Includes those who did not actively look for work in the prior 4 weeks for reasons such as thinks no work available, could not find work, lacks schooling or training, employer thinks too young or old, and other types of discrimination.

³ Includes those who did not actively look for work in the prior 4 weeks for such reasons as school or family responsibilities, ill health, and transportation problems, as well as a number for whom reason for nonparticipation was not determined.

⁴ Includes a small number of persons who work part time on their primary job and full time on their secondary job(s), not shown separately.

NOTE: Updated population controls are introduced annually with the release of January data.

ESTABLISHMENT DATA

Table B-1. Employees on nonfarm payrolls by industry sector and selected industry detail

[In thousands]

Industry	Not seasonally adjusted				Seasonally adjusted				Change from: July 2015 - Aug. 2015 ^P
	Aug. 2014	June 2015	July 2015 ^P	Aug. 2015 ^P	Aug. 2014	June 2015	July 2015 ^P	Aug. 2015 ^P	
Total nonfarm.....	139,232	142,836	141,868	142,126	139,369	141,870	142,115	142,288	173
Total private.....	118,464	120,971	121,170	121,241	117,504	119,929	120,153	120,293	140
Goods-producing.....	19,681	19,831	19,912	19,927	19,277	19,551	19,564	19,540	-24
Mining and logging.....	921	843	844	830	903	839	833	823	-10
Logging.....	55.1	53.9	55.2	56.3	52.5	53.9	54.0	54.1	0.1
Mining.....	865.7	788.6	788.7	774.1	850.6	784.8	778.5	769.2	-9.3
Oil and gas extraction.....	200.6	194.1	195.0	193.4	198.4	193.2	193.7	192.6	-1.1
Mining, except oil and gas ¹	213.6	204.5	204.9	203.0	207.0	199.2	198.7	197.7	-1.0
Coal mining.....	74.4	69.1	68.3	67.6	74.1	68.5	68.1	67.3	-0.8
Support activities for mining.....	451.5	390.0	388.8	377.7	445.2	392.4	386.1	378.9	-7.2
Construction.....	6,460	6,573	6,653	6,681	6,169	6,378	6,385	6,388	3
Construction of buildings.....	1,413.4	1,436.4	1,456.8	1,459.8	1,368.2	1,407.5	1,412.1	1,410.7	-1.4
Residential building.....	693.0	706.9	716.5	718.0	667.4	688.2	694.2	694.4	0.2
Nonresidential building.....	720.4	729.5	740.3	741.8	700.8	719.3	717.9	716.3	-1.6
Heavy and civil engineering construction.....	983.5	992.2	1,002.8	1,014.0	916.0	944.6	947.3	948.8	1.5
Specialty trade contractors.....	4,062.8	4,144.3	4,192.9	4,207.1	3,884.6	4,026.1	4,025.5	4,028.6	3.1
Residential specialty trade contractors.....	1,761.3	1,819.3	1,840.8	1,841.7	1,677.1	1,755.3	1,758.9	1,761.1	2.2
Nonresidential specialty trade contractors.....	2,301.5	2,325.0	2,352.1	2,365.4	2,207.5	2,270.8	2,266.6	2,267.5	0.9
Manufacturing.....	12,300	12,415	12,415	12,416	12,205	12,334	12,346	12,329	-17
Durable goods.....	7,748	7,853	7,825	7,824	7,709	7,801	7,794	7,789	-5
Wood products.....	379.6	379.9	381.2	384.1	375.2	376.6	376.7	377.7	1.0
Nonmetallic mineral products.....	398.0	409.5	410.6	412.0	388.3	401.2	401.7	403.0	1.3
Primary metals.....	401.6	402.4	399.9	397.8	401.1	401.3	399.2	397.1	-2.1
Fabricated metal products.....	1,462.2	1,475.3	1,469.8	1,460.8	1,455.4	1,466.0	1,463.9	1,457.0	-6.9
Machinery.....	1,137.5	1,135.6	1,130.0	1,125.5	1,135.2	1,130.9	1,128.4	1,124.1	-4.3
Computer and electronic products ¹	1,054.2	1,060.3	1,060.2	1,056.5	1,048.8	1,055.7	1,053.5	1,051.7	-1.8
Computer and peripheral equipment.....	167.3	170.7	170.6	171.4	165.0	169.8	169.1	169.6	0.5
Communications equipment.....	92.8	89.9	89.3	88.2	92.6	89.4	89.0	88.2	-0.8
Semiconductors and electronic components.....	367.9	370.6	369.4	368.6	366.5	369.4	368.5	366.7	-1.8
Electronic instruments.....	388.0	392.9	395.2	392.3	386.9	391.1	391.6	391.2	-0.4
Electrical equipment and appliances.....	375.7	375.8	376.5	375.5	374.7	375.0	373.9	373.7	-0.2
Transportation equipment ¹	1,576.0	1,619.7	1,603.1	1,616.5	1,574.0	1,607.7	1,610.7	1,615.8	5.1
Motor vehicles and parts ²	886.3	931.1	915.2	931.8	885.4	924.2	925.8	931.5	5.7
Furniture and related products.....	380.4	393.0	394.7	393.1	374.8	388.1	388.1	387.9	-0.2
Miscellaneous durable goods manufacturing.....	582.7	601.5	598.7	602.2	581.5	598.5	597.6	601.3	3.7
Nondurable goods.....	4,552	4,562	4,590	4,592	4,496	4,533	4,552	4,540	-12
Food manufacturing.....	1,511.8	1,503.9	1,522.9	1,529.5	1,475.0	1,496.4	1,501.3	1,494.8	-6.5
Textile mills.....	117.7	119.6	118.2	118.0	117.3	118.5	118.4	117.7	-0.7
Textile product mills.....	117.1	115.1	116.5	115.4	115.6	114.6	115.2	114.7	-0.5
Apparel.....	138.2	137.2	135.4	137.4	139.4	137.2	137.4	137.2	-0.2
Paper and paper products.....	371.1	367.2	370.0	369.4	370.0	364.6	367.1	367.8	0.7
Printing and related support activities.....	452.9	445.1	444.6	444.3	451.9	443.8	444.9	444.2	-0.7
Petroleum and coal products.....	114.0	113.2	115.4	114.8	111.3	110.6	112.3	112.2	-0.1
Chemicals.....	809.0	816.4	818.0	814.6	806.1	812.4	813.1	812.3	-0.8
Plastics and rubber products.....	677.5	692.2	694.2	691.3	672.9	687.6	691.6	688.8	-2.8
Miscellaneous nondurable goods manufacturing.....	243.1	251.9	255.0	257.4	236.4	247.7	250.2	250.6	0.4
Private service-providing.....	98,783	101,140	101,258	101,314	98,227	100,378	100,589	100,753	164
Trade, transportation, and utilities.....	26,413	26,956	26,966	26,974	26,427	26,916	26,971	26,999	28
Wholesale trade.....	5,860.9	5,951.6	5,956.3	5,953.0	5,839.1	5,912.4	5,918.8	5,926.6	7.8
Durable goods.....	2,929.9	2,962.5	2,966.4	2,969.1	2,917.1	2,946.8	2,949.6	2,955.1	5.5
Nondurable goods.....	2,028.6	2,073.2	2,073.7	2,065.9	2,022.5	2,054.2	2,055.3	2,056.9	1.6
Electronic markets and agents and brokers.....	902.4	915.9	916.2	918.0	899.5	911.4	913.9	914.6	0.7
Retail trade.....	15,383.1	15,667.1	15,701.9	15,709.2	15,378.5	15,667.4	15,699.8	15,711.0	11.2
Motor vehicle and parts dealers ¹	1,887.9	1,941.5	1,953.1	1,957.3	1,869.0	1,925.6	1,936.6	1,938.6	2.0
Automobile dealers.....	1,198.9	1,232.3	1,238.1	1,242.9	1,190.1	1,226.1	1,232.7	1,234.3	1.6

See footnotes at end of table.

ESTABLISHMENT DATA

Table B-1. Employees on nonfarm payrolls by industry sector and selected industry detail

— Continued

[In thousands]

Industry	Not seasonally adjusted				Seasonally adjusted				Change from: July 2015 - Aug. 2015 ^P
	Aug. 2014	June 2015	July 2015 ^P	Aug. 2015 ^P	Aug. 2014	June 2015	July 2015 ^P	Aug. 2015 ^P	
Retail trade - Continued									
Furniture and home furnishings stores.	453.5	462.3	462.8	463.9	458.8	469.4	470.2	471.2	1.0
Electronics and appliance stores.	480.3	491.1	493.0	491.4	491.7	504.5	505.1	503.3	-1.8
Building material and garden supply stores.	1,246.3	1,316.5	1,293.2	1,267.4	1,235.9	1,256.0	1,260.1	1,264.6	4.5
Food and beverage stores.	3,000.6	3,063.7	3,065.6	3,069.8	2,984.7	3,042.3	3,047.2	3,051.8	4.6
Health and personal care stores.	1,018.4	1,029.9	1,028.9	1,027.3	1,021.6	1,030.5	1,029.6	1,028.9	-0.7
Gasoline stations.	896.7	917.0	918.6	923.3	883.2	904.4	903.7	906.2	2.5
Clothing and clothing accessories stores.	1,383.6	1,360.6	1,383.4	1,400.7	1,372.2	1,392.9	1,397.0	1,402.3	5.3
Sporting goods, hobby, book, and music stores.	600.0	585.6	588.9	590.6	603.7	603.5	605.2	599.6	-5.6
General merchandise stores ¹	3,089.5	3,138.8	3,146.9	3,148.2	3,126.9	3,175.3	3,179.5	3,178.9	-0.6
Department stores.	1,327.8	1,296.6	1,300.7	1,299.5	1,354.7	1,330.0	1,328.5	1,321.7	-6.8
Miscellaneous store retailers.	826.1	831.1	837.5	835.9	822.8	825.1	825.6	823.6	-2.0
Nonstore retailers.	500.2	529.0	530.0	533.4	508.0	537.9	540.0	542.0	2.0
Transportation and warehousing.	4,611.3	4,771.3	4,738.7	4,741.8	4,654.1	4,774.1	4,787.7	4,795.0	7.3
Air transportation.	443.8	451.0	453.9	454.7	442.0	447.5	449.7	451.3	1.6
Rail transportation.	237.4	243.4	241.6	242.2	236.1	242.7	240.5	242.7	2.2
Water transportation.	70.3	66.8	66.6	65.3	67.7	65.2	64.5	63.5	-1.0
Truck transportation.	1,445.4	1,472.6	1,478.9	1,478.5	1,419.5	1,455.4	1,458.1	1,458.8	0.7
Transit and ground passenger transportation.	408.9	464.4	412.0	410.5	473.5	472.3	473.5	474.5	1.0
Pipeline transportation.	47.2	49.6	49.6	49.9	47.1	49.4	49.5	49.7	0.2
Scenic and sightseeing transportation.	39.4	39.3	41.3	42.4	31.4	32.2	32.5	33.5	1.0
Support activities for transportation.	625.4	647.9	651.6	651.5	625.7	646.6	649.2	650.2	1.0
Couriers and messengers.	550.8	571.1	566.8	571.2	569.8	594.3	596.5	598.1	1.6
Warehousing and storage.	742.7	765.2	776.4	775.6	741.3	768.5	773.7	772.7	-1.0
Utilities.	557.5	565.6	568.8	569.5	555.1	562.0	564.6	566.1	1.5
Information.	2,774	2,796	2,807	2,802	2,753	2,790	2,792	2,785	-7
Publishing industries, except Internet.	728.4	719.5	721.0	719.8	724.5	719.9	718.3	717.3	-1.0
Motion picture and sound recording industries.	388.7	393.2	395.2	394.6	376.1	387.3	384.5	381.4	-3.1
Broadcasting, except Internet.	290.7	288.6	288.6	286.6	290.3	287.9	288.3	287.0	-1.3
Telecommunications.	860.6	860.0	864.6	861.7	859.5	860.9	864.9	861.4	-3.5
Data processing, hosting and related services.	281.9	297.1	297.4	298.6	281.3	297.1	297.9	299.5	1.6
Other information services.	223.2	237.7	240.5	240.5	220.8	237.1	237.8	238.7	0.9
Financial activities.	8,057	8,178	8,217	8,224	7,997	8,127	8,148	8,167	19
Finance and insurance.	5,960.1	6,055.5	6,079.3	6,084.2	5,944.3	6,044.6	6,057.7	6,069.7	12.0
Monetary authorities - central bank.	18.6	18.5	18.7	18.2	18.4	18.3	18.3	18.0	-0.3
Credit intermediation and related activities ¹	2,572.6	2,582.3	2,591.0	2,593.5	2,563.7	2,579.4	2,580.5	2,586.0	5.5
Depository credit intermediation ¹	1,712.2	1,702.7	1,705.6	1,705.8	1,705.3	1,699.3	1,698.8	1,699.9	1.1
Commercial banking.	1,294.9	1,277.1	1,279.2	1,279.2	1,290.6	1,276.5	1,275.0	1,275.7	0.7
Securities, commodity contracts, investments, and funds and trusts.	889.6	904.2	910.3	913.7	885.5	901.6	904.3	908.8	4.5
Insurance carriers and related activities.	2,479.3	2,550.5	2,559.3	2,558.8	2,476.7	2,545.3	2,554.6	2,556.9	2.3
Real estate and rental and leasing.	2,096.5	2,122.5	2,137.3	2,139.3	2,052.4	2,082.1	2,089.8	2,097.6	7.8
Real estate.	1,516.0	1,534.3	1,545.0	1,550.7	1,488.5	1,512.5	1,519.6	1,527.6	8.0
Rental and leasing services.	556.7	564.3	568.2	564.8	540.4	545.9	546.4	546.5	0.1
Lessors of nonfinancial intangible assets.	23.8	23.9	24.1	23.8	23.5	23.7	23.8	23.5	-0.3
Professional and business services.	19,315	19,885	19,917	19,967	19,180	19,749	19,788	19,821	33
Professional and technical services ¹	8,357.3	8,620.7	8,675.5	8,664.3	8,383.7	8,642.8	8,672.2	8,686.7	14.5
Legal services.	1,124.7	1,131.3	1,131.2	1,121.8	1,122.4	1,120.6	1,119.6	1,117.6	-2.0
Accounting and bookkeeping services.	902.4	938.9	941.0	943.4	968.5	1,000.1	1,004.1	1,007.2	3.1
Architectural and engineering services.	1,404.4	1,441.9	1,454.4	1,447.0	1,386.0	1,425.6	1,432.4	1,428.0	-4.4
Computer systems design and related services.	1,790.5	1,864.9	1,889.6	1,890.1	1,784.8	1,865.2	1,876.3	1,883.3	7.0
Management and technical consulting services.	1,256.9	1,315.0	1,324.8	1,326.7	1,252.3	1,312.2	1,316.1	1,322.2	6.1
Management of companies and enterprises.	2,186.7	2,230.4	2,241.6	2,242.7	2,178.2	2,215.9	2,229.2	2,231.9	2.7

See footnotes at end of table.

ESTABLISHMENT DATA

Table B-1. Employees on nonfarm payrolls by industry sector and selected industry detail

— Continued

[In thousands]

Industry	Not seasonally adjusted				Seasonally adjusted				Change from: July 2015 - Aug. 2015 ^P
	Aug. 2014	June 2015	July 2015 ^P	Aug. 2015 ^P	Aug. 2014	June 2015	July 2015 ^P	Aug. 2015 ^P	
Professional and business services - Continued									
Administrative and waste services.....	8,771.1	9,034.2	8,999.8	9,059.5	8,617.7	8,890.6	8,886.7	8,902.5	15.8
Administrative and support services ¹	8,375.4	8,629.4	8,592.1	8,656.3	8,230.4	8,494.0	8,491.2	8,506.6	15.4
Employment services ¹	3,486.7	3,610.7	3,575.6	3,634.7	3,444.5	3,590.1	3,579.5	3,586.9	7.4
Temporary help services.....	2,819.9	2,921.8	2,883.3	2,945.0	2,787.8	2,906.2	2,897.0	2,907.7	10.7
Business support services.....	873.5	897.8	896.3	896.1	884.7	909.8	908.1	907.3	-0.8
Services to buildings and dwellings.....	2,055.8	2,103.8	2,115.5	2,109.1	1,952.8	1,987.9	1,998.0	2,003.7	5.7
Waste management and remediation services.....	395.7	404.8	407.7	403.2	387.3	396.6	395.5	395.9	0.4
Education and health services.....	21,216	21,839	21,752	21,812	21,539	22,035	22,088	22,150	62
Educational services.....	3,119.9	3,262.9	3,174.3	3,155.2	3,424.3	3,457.6	3,465.1	3,470.5	5.4
Health care and social assistance.....	18,095.8	18,575.8	18,577.3	18,657.1	18,115.1	18,577.4	18,622.8	18,679.2	56.4
Health care ³	14,745.5	15,113.9	15,162.2	15,204.7	14,720.9	15,099.9	15,137.4	15,177.9	40.5
Ambulatory health care services ¹	6,677.2	6,921.0	6,933.0	6,956.5	6,670.5	6,914.3	6,926.0	6,947.1	21.1
Offices of physicians.....	2,481.3	2,550.3	2,559.7	2,569.9	2,480.0	2,552.7	2,558.8	2,565.7	6.9
Outpatient care centers.....	715.7	746.1	747.9	749.6	715.3	745.2	747.5	749.1	1.6
Home health care services.....	1,263.8	1,322.0	1,323.1	1,328.7	1,265.1	1,319.9	1,324.5	1,330.3	5.8
Hospitals.....	4,790.8	4,884.7	4,912.6	4,927.6	4,786.7	4,885.3	4,905.2	4,921.1	15.9
Nursing and residential care facilities ¹	3,277.5	3,308.2	3,316.6	3,320.6	3,263.7	3,300.3	3,306.2	3,309.7	3.5
Nursing care facilities.....	1,659.5	1,657.8	1,660.9	1,663.7	1,652.4	1,653.9	1,656.7	1,658.7	2.0
Social assistance ¹	3,350.3	3,461.9	3,415.1	3,452.4	3,394.2	3,477.5	3,485.4	3,501.3	15.9
Child day care services.....	812.3	854.3	812.0	830.6	856.2	873.7	877.4	875.8	-1.6
Leisure and hospitality.....	15,383	15,780	15,876	15,848	14,746	15,122	15,152	15,185	33
Arts, entertainment, and recreation.....	2,367.4	2,435.8	2,490.3	2,439.0	2,102.6	2,155.0	2,151.9	2,159.5	7.6
Performing arts and spectator sports.....	474.1	496.5	498.8	505.4	449.1	471.3	469.2	474.3	5.1
Museums, historical sites, and similar institutions.....	155.1	158.8	161.7	158.3	145.3	146.8	147.3	147.3	0.0
Amusements, gambling, and recreation.....	1,738.2	1,780.5	1,829.8	1,775.3	1,508.2	1,536.9	1,535.4	1,537.9	2.5
Accommodation and food services.....	13,015.5	13,343.9	13,385.2	13,409.4	12,643.3	12,967.2	13,000.1	13,025.6	25.5
Accommodation.....	2,030.9	1,995.7	2,049.8	2,043.1	1,890.5	1,897.2	1,901.3	1,900.7	-0.6
Food services and drinking places.....	10,984.6	11,348.2	11,335.4	11,366.3	10,752.8	11,070.0	11,098.8	11,124.9	26.1
Other services.....	5,625	5,706	5,723	5,687	5,585	5,639	5,650	5,646	-4
Repair and maintenance.....	1,250.7	1,280.3	1,279.8	1,278.1	1,246.0	1,270.9	1,271.8	1,271.6	-0.2
Personal and laundry services.....	1,380.6	1,408.6	1,405.2	1,397.4	1,373.3	1,391.8	1,393.1	1,391.0	-2.1
Membership associations and organizations.....	2,993.8	3,017.4	3,037.8	3,011.2	2,965.5	2,975.9	2,985.1	2,983.5	-1.6
Government.....	20,768	21,865	20,698	20,885	21,865	21,941	21,962	21,995	33
Federal.....	2,739.0	2,748.0	2,754.0	2,748.0	2,727.0	2,736.0	2,736.0	2,738.0	2.0
Federal, except U.S. Postal Service.....	2,147.7	2,155.3	2,160.9	2,155.7	2,135.0	2,140.1	2,140.8	2,141.5	0.7
U.S. Postal Service.....	591.7	592.5	593.4	592.5	591.6	595.8	595.3	596.5	1.2
State government.....	4,757.0	4,839.0	4,756.0	4,794.0	5,042.0	5,085.0	5,083.0	5,092.0	9.0
State government education.....	2,092.5	2,174.7	2,094.8	2,137.2	2,391.8	2,440.8	2,437.6	2,446.3	8.7
State government, excluding education.....	2,664.4	2,664.7	2,660.9	2,656.7	2,649.8	2,643.9	2,645.4	2,645.2	-0.2
Local government.....	13,272.0	14,278.0	13,188.0	13,343.0	14,096.0	14,120.0	14,143.0	14,165.0	22.0
Local government education.....	6,800.9	7,785.6	6,634.3	6,837.1	7,804.5	7,810.6	7,829.6	7,852.5	22.9
Local government, excluding education.....	6,471.1	6,492.8	6,553.4	6,505.5	6,291.9	6,309.4	6,313.7	6,312.2	-1.5

¹ Includes other industries, not shown separately.

² Includes motor vehicles, motor vehicle bodies and trailers, and motor vehicle parts.

³ Includes ambulatory health care services, hospitals, and nursing and residential care facilities.

^p Preliminary

NOTE: Data have been revised to reflect March 2014 benchmark levels and updated seasonal adjustment factors.

ESTABLISHMENT DATA

Table B-2. Average weekly hours and overtime of all employees on private nonfarm payrolls by industry sector, seasonally adjusted

Industry	Aug. 2014	June 2015	July 2015 ^p	Aug. 2015 ^p
AVERAGE WEEKLY HOURS				
Total private.....	34.5	34.5	34.5	34.6
Goods-producing.....	40.6	40.3	40.3	40.4
Mining and logging.....	44.9	43.3	44.0	44.0
Construction.....	39.2	39.2	38.9	39.0
Manufacturing.....	40.9	40.7	40.8	40.8
Durable goods.....	41.5	41.0	41.1	41.1
Nondurable goods.....	40.1	40.0	40.3	40.3
Private service-providing.....	33.3	33.4	33.4	33.4
Trade, transportation, and utilities.....	34.5	34.6	34.6	34.7
Wholesale trade.....	38.9	38.8	38.9	38.8
Retail trade.....	31.3	31.4	31.4	31.5
Transportation and warehousing.....	38.5	38.8	38.9	38.9
Utilities.....	42.4	42.2	42.6	42.7
Information.....	36.6	36.3	36.4	36.4
Financial activities.....	37.2	37.7	37.8	37.7
Professional and business services.....	36.2	36.1	36.1	36.2
Education and health services.....	32.8	32.8	32.9	32.9
Leisure and hospitality.....	26.2	26.3	26.3	26.2
Other services.....	31.8	31.8	31.8	31.9
AVERAGE OVERTIME HOURS				
Manufacturing.....	3.4	3.4	3.4	3.3
Durable goods.....	3.5	3.4	3.3	3.2
Nondurable goods.....	3.3	3.4	3.5	3.4

p Preliminary

NOTE: Data have been revised to reflect March 2014 benchmark levels and updated seasonal adjustment factors.

ESTABLISHMENT DATA

Table B-3. Average hourly and weekly earnings of all employees on private nonfarm payrolls by industry sector, seasonally adjusted

Industry	Average hourly earnings				Average weekly earnings			
	Aug. 2014	June 2015	July 2015 ^P	Aug. 2015 ^P	Aug. 2014	June 2015	July 2015 ^P	Aug. 2015 ^P
Total private.....	\$24.55	\$24.95	\$25.01	\$25.09	\$846.98	\$860.78	\$862.85	\$868.11
Goods-producing.....	25.77	26.09	26.21	26.29	1,046.26	1,051.43	1,056.26	1,062.12
Mining and logging.....	30.90	30.84	31.21	31.43	1,387.41	1,335.37	1,373.24	1,382.92
Construction.....	26.73	27.38	27.42	27.49	1,047.82	1,073.30	1,066.64	1,072.11
Manufacturing.....	24.90	25.11	25.24	25.33	1,018.41	1,021.98	1,029.79	1,033.46
Durable goods.....	26.25	26.48	26.57	26.64	1,089.38	1,085.68	1,092.03	1,094.90
Nondurable goods.....	22.49	22.69	22.92	23.03	901.85	907.60	923.68	928.11
Private service-providing.....	24.26	24.68	24.73	24.81	807.86	824.31	825.98	828.65
Trade, transportation, and utilities.....	21.47	21.74	21.82	21.87	740.72	752.20	754.97	758.89
Wholesale trade.....	28.21	28.68	28.70	28.86	1,097.37	1,112.78	1,116.43	1,119.77
Retail trade.....	17.08	17.41	17.48	17.51	534.60	546.67	548.87	551.57
Transportation and warehousing.....	22.88	22.73	22.80	22.80	880.88	881.92	886.92	886.92
Utilities.....	35.52	36.85	37.25	37.54	1,506.05	1,555.07	1,586.85	1,602.96
Information.....	34.16	34.75	34.70	35.12	1,250.26	1,261.43	1,263.08	1,278.37
Financial activities.....	30.85	31.49	31.51	31.64	1,147.62	1,187.17	1,191.08	1,192.83
Professional and business services.....	29.39	30.00	30.08	30.17	1,063.92	1,083.00	1,085.89	1,092.15
Education and health services.....	24.78	25.18	25.22	25.26	812.78	825.90	829.74	831.05
Leisure and hospitality.....	13.99	14.29	14.34	14.40	366.54	375.83	377.14	377.28
Other services.....	22.05	22.38	22.34	22.44	701.19	711.68	710.41	715.84

p Preliminary

NOTE: Data have been revised to reflect March 2014 benchmark levels and updated seasonal adjustment factors.

ESTABLISHMENT DATA

Table B-4. Indexes of aggregate weekly hours and payrolls for all employees on private nonfarm payrolls by industry sector, seasonally adjusted

[2007=100]

Industry	Index of aggregate weekly hours ¹					Index of aggregate weekly payrolls ²				
	Aug. 2014	June 2015	July 2015 ^p	Aug. 2015 ^p	Percent change from: July 2015 - Aug. 2015 ^p	Aug. 2014	June 2015	July 2015 ^p	Aug. 2015 ^p	Percent change from: July 2015 - Aug. 2015 ^p
Total private.....	101.3	103.4	103.6	104.0	0.4	118.7	123.2	123.7	124.6	0.7
Goods-producing.....	89.2	89.8	89.8	89.9	0.1	103.9	105.9	106.4	106.9	0.5
Mining and logging.....	127.4	114.2	115.2	113.8	-1.2	158.1	141.3	144.3	143.6	-0.5
Construction.....	83.4	86.2	85.6	85.9	0.4	96.8	102.5	102.0	102.6	0.6
Manufacturing.....	89.8	90.3	90.6	90.5	-0.1	104.0	105.5	106.4	106.6	0.2
Durable goods.....	90.1	90.0	90.2	90.1	-0.1	105.0	105.9	106.4	106.6	0.2
Nondurable goods.....	90.0	90.5	91.5	91.3	-0.2	102.7	104.2	106.5	106.7	0.2
Private service-providing.....	104.7	107.3	107.5	107.7	0.2	123.1	128.4	128.9	129.5	0.5
Trade, transportation, and utilities.....	99.2	101.3	101.5	101.9	0.4	114.6	118.5	119.2	119.9	0.6
Wholesale trade.....	99.1	100.1	100.5	100.3	-0.2	116.7	119.8	120.3	120.8	0.4
Retail trade.....	97.8	99.9	100.1	100.5	0.4	110.4	115.0	115.7	116.4	0.6
Transportation and warehousing.....	102.6	106.0	106.6	106.8	0.2	119.1	122.3	123.3	123.5	0.2
Utilities.....	101.8	102.6	104.1	104.6	0.5	119.5	124.9	128.1	129.7	1.2
Information.....	92.0	92.5	92.8	92.6	-0.2	111.9	114.4	114.7	115.8	1.0
Financial activities.....	97.4	100.3	100.9	100.8	-0.1	117.2	123.3	124.0	124.4	0.3
Professional and business services.....	109.2	112.1	112.4	112.9	0.4	130.0	136.3	136.9	137.9	0.7
Education and health services.....	113.4	116.0	116.6	117.0	0.3	132.4	137.6	138.6	139.2	0.4
Leisure and hospitality.....	110.2	113.5	113.7	113.5	-0.2	124.4	130.8	131.5	131.9	0.3
Other services.....	98.4	99.4	99.5	99.8	0.3	123.1	126.2	126.2	127.1	0.7

¹ The indexes of aggregate weekly hours are calculated by dividing the current month's estimates of aggregate hours by the corresponding 2007 annual average aggregate hours. Aggregate hours estimates are the product of estimates of average weekly hours and employment.

² The indexes of aggregate weekly payrolls are calculated by dividing the current month's estimates of aggregate weekly payrolls by the corresponding 2007 annual average aggregate weekly payrolls. Aggregate payrolls estimates are the product of estimates of average hourly earnings, average weekly hours, and employment.

p Preliminary

NOTE: Data have been revised to reflect March 2014 benchmark levels and updated seasonal adjustment factors.

ESTABLISHMENT DATA

Table B-5. Employment of women on nonfarm payrolls by industry sector, seasonally adjusted

Industry	Women employees (in thousands)				Percent of all employees			
	Aug. 2014	June 2015	July 2015 ^p	Aug. 2015 ^p	Aug. 2014	June 2015	July 2015 ^p	Aug. 2015 ^p
Total nonfarm.....	68,788	70,095	70,220	70,327	49.4	49.4	49.4	49.4
Total private.....	56,304	57,540	57,633	57,715	47.9	48.0	48.0	48.0
Goods-producing.....	4,221	4,287	4,295	4,284	21.9	21.9	22.0	21.9
Mining and logging.....	120	115	115	113	13.3	13.7	13.8	13.7
Construction.....	783	807	812	810	12.7	12.7	12.7	12.7
Manufacturing.....	3,318	3,365	3,368	3,361	27.2	27.3	27.3	27.3
Durable goods.....	1,775	1,819	1,815	1,816	23.0	23.3	23.3	23.3
Nondurable goods.....	1,543	1,546	1,553	1,545	34.3	34.1	34.1	34.0
Private service-providing.....	52,083	53,253	53,338	53,431	53.0	53.1	53.0	53.0
Trade, transportation, and utilities.....	10,707	10,913	10,927	10,936	40.5	40.5	40.5	40.5
Wholesale trade.....	1,722.9	1,740.9	1,740.9	1,741.5	29.5	29.4	29.4	29.4
Retail trade.....	7,746.8	7,914.7	7,923.9	7,927.6	50.4	50.5	50.5	50.5
Transportation and warehousing.....	1,102.6	1,122.5	1,126.8	1,130.7	23.7	23.5	23.5	23.6
Utilities.....	134.3	134.9	135.2	136.2	24.2	24.0	23.9	24.1
Information.....	1,108	1,117	1,119	1,119	40.2	40.0	40.1	40.2
Financial activities.....	4,579	4,643	4,648	4,653	57.3	57.1	57.0	57.0
Professional and business services.....	8,557	8,813	8,812	8,832	44.6	44.6	44.5	44.6
Education and health services.....	16,548	16,964	17,005	17,058	76.8	77.0	77.0	77.0
Leisure and hospitality.....	7,666	7,852	7,873	7,880	52.0	51.9	52.0	51.9
Other services.....	2,918	2,951	2,954	2,953	52.2	52.3	52.3	52.3
Government.....	12,484	12,555	12,587	12,612	57.1	57.2	57.3	57.3

p Preliminary

NOTE: Data have been revised to reflect March 2014 benchmark levels and updated seasonal adjustment factors.

ESTABLISHMENT DATA

Table B-6. Employment of production and nonsupervisory employees on private nonfarm payrolls by industry sector, seasonally adjusted¹

[In thousands]

Industry	Aug. 2014	June 2015	July 2015 ^p	Aug. 2015 ^p
Total private.....	97,118	98,919	99,057	99,154
Goods-producing.....	13,904	14,103	14,099	14,069
Mining and logging.....	661	615	608	602
Construction.....	4,655	4,804	4,806	4,812
Manufacturing.....	8,588	8,684	8,685	8,655
Durable goods.....	5,316	5,378	5,365	5,348
Nondurable goods.....	3,272	3,306	3,320	3,307
Private service-providing.....	83,214	84,816	84,958	85,085
Trade, transportation, and utilities.....	22,332	22,652	22,688	22,717
Wholesale trade.....	4,723.3	4,743.3	4,746.5	4,744.7
Retail trade.....	13,128.6	13,324.8	13,344.2	13,363.1
Transportation and warehousing.....	4,031.7	4,132.7	4,143.4	4,153.1
Utilities.....	448.8	451.0	453.7	456.3
Information.....	2,239	2,260	2,262	2,260
Financial activities.....	6,177	6,283	6,291	6,302
Professional and business services.....	15,870	16,226	16,243	16,254
Education and health services.....	18,925	19,352	19,398	19,445
Leisure and hospitality.....	13,021	13,349	13,381	13,412
Other services.....	4,650	4,694	4,695	4,695

¹ Data relate to production employees in mining and logging and manufacturing, construction employees in construction, and nonsupervisory employees in the service-providing industries. These groups account for approximately four-fifths of the total employment on private nonfarm payrolls.

^p Preliminary

NOTE: Data have been revised to reflect March 2014 benchmark levels and updated seasonal adjustment factors.

ESTABLISHMENT DATA

Table B-7. Average weekly hours and overtime of production and nonsupervisory employees on private nonfarm payrolls by industry sector, seasonally adjusted¹

Industry	Aug. 2014	June 2015	July 2015 ^p	Aug. 2015 ^p
AVERAGE WEEKLY HOURS				
Total private.....	33.7	33.7	33.7	33.7
Goods-producing.....	41.5	41.3	41.2	41.2
Mining and logging.....	47.7	45.2	46.1	45.4
Construction.....	39.8	39.8	39.4	39.5
Manufacturing.....	42.0	41.8	41.8	41.8
Durable goods.....	42.4	42.1	42.1	42.1
Nondurable goods.....	41.2	41.2	41.3	41.3
Private service-providing.....	32.4	32.4	32.4	32.4
Trade, transportation, and utilities.....	33.6	33.6	33.6	33.6
Wholesale trade.....	38.6	38.6	38.6	38.5
Retail trade.....	30.0	30.0	30.0	30.0
Transportation and warehousing.....	38.4	38.5	38.7	38.8
Utilities.....	42.1	41.9	42.3	42.4
Information.....	35.9	35.7	35.8	35.8
Financial activities.....	36.7	37.0	37.1	37.1
Professional and business services.....	35.6	35.4	35.4	35.5
Education and health services.....	32.0	32.1	32.1	32.1
Leisure and hospitality.....	25.2	25.1	25.1	25.0
Other services.....	30.7	30.6	30.7	30.7
AVERAGE OVERTIME HOURS				
Manufacturing.....	4.4	4.4	4.3	4.3
Durable goods.....	4.6	4.4	4.3	4.3
Nondurable goods.....	4.2	4.4	4.4	4.3

¹ Data relate to production employees in mining and logging and manufacturing, construction employees in construction, and nonsupervisory employees in the service-providing industries. These groups account for approximately four-fifths of the total employment on private nonfarm payrolls.

^p Preliminary

NOTE: Data have been revised to reflect March 2014 benchmark levels and updated seasonal adjustment factors.

ESTABLISHMENT DATA

Table B-8. Average hourly and weekly earnings of production and nonsupervisory employees on private nonfarm payrolls by industry sector, seasonally adjusted¹

Industry	Average hourly earnings				Average weekly earnings			
	Aug. 2014	June 2015	July 2015 ^p	Aug. 2015 ^p	Aug. 2014	June 2015	July 2015 ^p	Aug. 2015 ^p
Total private.....	\$20.68	\$20.98	\$21.02	\$21.07	\$696.92	\$707.03	\$708.37	\$710.06
Goods-producing.....	21.66	21.96	21.96	22.00	898.89	906.95	904.75	906.40
Mining and logging.....	27.02	26.37	26.39	26.56	1,288.85	1,191.92	1,216.58	1,205.82
Construction.....	24.68	25.27	25.19	25.27	982.26	1,005.75	992.49	998.17
Manufacturing.....	19.63	19.88	19.93	19.93	824.46	830.98	833.07	833.07
Durable goods.....	20.73	20.96	20.99	20.98	878.95	882.42	883.68	883.26
Nondurable goods.....	17.80	18.09	18.19	18.20	733.36	745.31	751.25	751.66
Private service-providing.....	20.47	20.78	20.82	20.88	663.23	673.27	674.57	676.51
Trade, transportation, and utilities.....	18.36	18.59	18.65	18.70	616.90	624.62	626.64	628.32
Wholesale trade.....	23.35	23.55	23.59	23.74	901.31	909.03	910.57	913.99
Retail trade.....	14.48	14.77	14.82	14.85	434.40	443.10	444.60	445.50
Transportation and warehousing.....	20.59	20.67	20.73	20.70	790.66	795.80	802.25	803.16
Utilities.....	32.83	33.92	34.15	34.20	1,382.14	1,421.25	1,444.55	1,450.08
Information.....	28.74	28.86	28.92	29.07	1,031.77	1,030.30	1,035.34	1,040.71
Financial activities.....	24.86	25.30	25.38	25.45	912.36	936.10	941.60	944.20
Professional and business services.....	24.35	24.70	24.76	24.81	866.86	874.38	876.50	880.76
Education and health services.....	21.67	22.06	22.07	22.11	693.44	708.13	708.45	709.73
Leisure and hospitality.....	12.14	12.34	12.39	12.44	305.93	309.73	310.99	311.00
Other services.....	18.58	18.90	18.89	18.98	570.41	578.34	579.92	582.69

¹ Data relate to production employees in mining and logging and manufacturing, construction employees in construction, and nonsupervisory employees in the service-providing industries. These groups account for approximately four-fifths of the total employment on private nonfarm payrolls.

p Preliminary

NOTE: Data have been revised to reflect March 2014 benchmark levels and updated seasonal adjustment factors.

ESTABLISHMENT DATA

Table B-9. Indexes of aggregate weekly hours and payrolls for production and nonsupervisory employees on private nonfarm payrolls by industry sector, seasonally adjusted¹

[2002=100]

Industry	Index of aggregate weekly hours ²					Index of aggregate weekly payrolls ³				
	Aug. 2014	June 2015	July 2015 ^p	Aug. 2015 ^p	Percent change from: July 2015 - Aug. 2015 ^p	Aug. 2014	June 2015	July 2015 ^p	Aug. 2015 ^p	Percent change from: July 2015 - Aug. 2015 ^p
Total private.....	109.1	111.1	111.2	111.4	0.2	150.7	155.7	156.3	156.8	0.3
Goods-producing.....	88.2	89.0	88.8	88.6	-0.2	117.0	119.7	119.4	119.3	-0.1
Mining and logging.....	167.6	147.7	148.9	145.2	-2.5	263.3	226.6	228.6	224.3	-1.9
Construction.....	92.8	95.7	94.8	95.2	0.4	123.6	130.6	129.0	129.9	0.7
Manufacturing.....	82.8	83.3	83.3	83.0	-0.4	106.3	108.3	108.6	108.2	-0.4
Durable goods.....	84.7	85.1	84.9	84.6	-0.4	109.6	111.3	111.2	110.8	-0.4
Nondurable goods.....	79.4	80.3	80.8	80.5	-0.4	99.9	102.6	103.8	103.5	-0.3
Private service-providing.....	114.9	117.1	117.3	117.4	0.1	161.2	166.8	167.4	168.1	0.4
Trade, transportation, and utilities.....	104.6	106.1	106.3	106.4	0.1	137.0	140.7	141.4	141.9	0.4
Wholesale trade.....	107.4	107.8	107.9	107.6	-0.3	147.7	149.6	149.9	150.4	0.3
Retail trade.....	99.7	101.2	101.3	101.5	0.2	123.7	128.1	128.7	129.2	0.4
Transportation and warehousing.....	116.5	119.8	120.7	121.3	0.5	152.2	157.0	158.7	159.3	0.4
Utilities.....	96.6	96.6	98.1	98.9	0.8	132.4	136.8	139.9	141.2	0.9
Information.....	91.7	92.1	92.4	92.3	-0.1	130.5	131.6	132.3	132.9	0.5
Financial activities.....	106.7	109.4	109.9	110.1	0.2	163.2	170.3	171.6	172.3	0.4
Professional and business services.....	126.6	128.7	128.9	129.3	0.3	183.5	189.2	189.9	190.9	0.5
Education and health services.....	129.3	132.6	132.9	133.2	0.2	184.8	193.0	193.5	194.3	0.4
Leisure and hospitality.....	120.2	122.7	123.0	122.8	-0.2	165.7	172.0	173.1	173.5	0.2
Other services.....	100.1	100.7	101.1	101.1	0.0	135.5	138.7	139.1	139.8	0.5

¹ Data relate to production employees in mining and logging and manufacturing, construction employees in construction, and nonsupervisory employees in the service-providing industries. These groups account for approximately four-fifths of the total employment on private nonfarm payrolls.

² The indexes of aggregate weekly hours are calculated by dividing the current month's estimates of aggregate hours by the corresponding 2002 annual average aggregate hours. Aggregate hours estimates are the product of estimates of average weekly hours and employment.

³ The indexes of aggregate weekly payrolls are calculated by dividing the current month's estimates of aggregate weekly payrolls by the corresponding 2002 annual average aggregate weekly payrolls. Aggregate payrolls estimates are the product of estimates of average hourly earnings, average weekly hours, and employment.

p Preliminary

NOTE: Data have been revised to reflect March 2014 benchmark levels and updated seasonal adjustment factors.