



Transmission of material in this news release is embargoed until 8:30 a.m. (ET) Friday, October 6, 2023

USDL-23-2128

Technical information:

Household data: (202) 691-6378 • cpsinfo@bls.gov • www.bls.gov/cps
 Establishment data: (202) 691-6555 • cesinfo@bls.gov • www.bls.gov/ces

Media contact: (202) 691-5902 • PressOffice@bls.gov

THE EMPLOYMENT SITUATION — SEPTEMBER 2023

Total **nonfarm payroll employment** rose by 336,000 in September, and the **unemployment rate** was unchanged at 3.8 percent, the U.S. Bureau of Labor Statistics reported today. Job gains occurred in leisure and hospitality; government; health care; professional, scientific, and technical services; and social assistance.

Chart 1. Unemployment rate, seasonally adjusted, September 2021 – September 2023

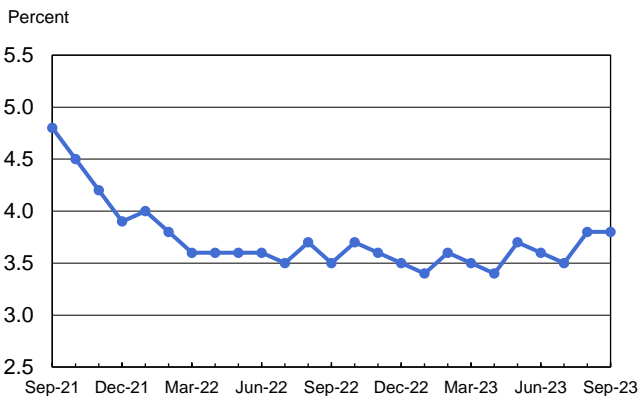
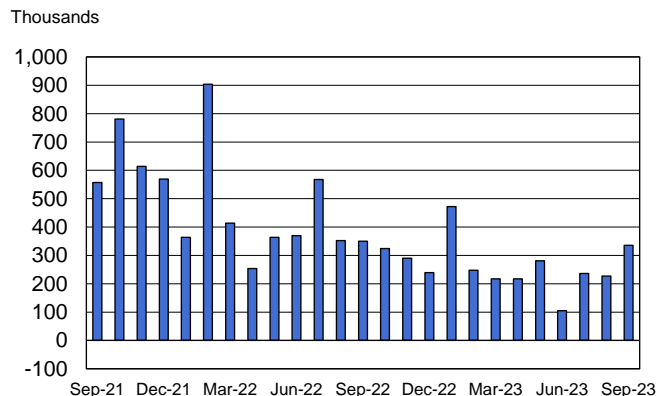


Chart 2. Nonfarm payroll employment over-the-month change, seasonally adjusted, September 2021 – September 2023



This news release presents statistics from two monthly surveys. The household survey measures labor force status, including unemployment, by demographic characteristics. The establishment survey measures nonfarm employment, hours, and earnings by industry. For more information about the concepts and statistical methodology used in these two surveys, see the Technical Note.

Household Survey Data

The major labor market indicators from the survey of households showed little or no change over the month. The **unemployment rate** held at 3.8 percent in September, and the number of **unemployed persons** was essentially unchanged at 6.4 million. (See table A-1.)

Among the **major worker groups**, the unemployment rates for adult men (3.8 percent), adult women (3.1 percent), teenagers (11.6 percent), Whites (3.4 percent), Blacks (5.7 percent), Asians (2.8 percent), and Hispanics (4.6 percent) showed little or no change in September. (See tables A-1, A-2, and A-3.)

The number of **long-term unemployed** (those jobless for 27 weeks or more) was little changed at 1.2 million in September. The long-term unemployed accounted for 19.1 percent of all unemployed persons. (See table A-12.)

Both the **labor force participation rate**, at 62.8 percent, and the **employment-population ratio**, at 60.4 percent, were unchanged over the month. (See table A-1.)

The number of persons employed **part time for economic reasons**, at 4.1 million, changed little in September. These individuals, who would have preferred full-time employment, were working part time because their hours had been reduced or they were unable to find full-time jobs. (See table A-8.)

In September, the number of persons **not in the labor force who currently want a job** was 5.5 million, little different from the prior month. These individuals were not counted as unemployed because they were not actively looking for work during the 4 weeks preceding the survey or were unavailable to take a job. (See table A-1.)

Among those not in the labor force who wanted a job, the number of persons **marginally attached to the labor force** changed little at 1.5 million in September. These individuals wanted and were available for work and had looked for a job sometime in the prior 12 months but had not looked for work in the 4 weeks preceding the survey. The number of **discouraged workers**, a subset of the marginally attached who believed that no jobs were available for them, also changed little over the month at 367,000. (See Summary table A.)

Establishment Survey Data

Total **nonfarm payroll employment** rose by 336,000 in September, above the average monthly gain of 267,000 over the prior 12 months. In September, job gains occurred in leisure and hospitality; government; health care; professional, scientific, and technical services; and social assistance. (See table B-1.)

Leisure and hospitality added 96,000 jobs in September, above the average monthly gain of 61,000 over the prior 12 months. Employment in food services and drinking places rose by 61,000 over the month and has returned to its pre-pandemic February 2020 level. Accommodation employment continued to trend up over the month (+16,000) but remains below its February 2020 level by 217,000, or 10.3 percent.

In September, **government** employment increased by 73,000, above the average monthly gain of 47,000 over the prior 12 months. Over the month, job gains occurred in state government education (+29,000) and in local government, excluding education (+27,000). Employment in government is slightly below (-9,000) its February 2020 level.

Health care added 41,000 jobs in September, compared with the average monthly gain of 53,000 over the prior 12 months. Over the month, employment continued to trend up in ambulatory health care services (+24,000), hospitals (+8,000), and nursing and residential care facilities (+8,000).

Employment in **professional, scientific, and technical services** increased by 29,000 in September, in line with the average monthly gain of 27,000 over the prior 12 months.

Social assistance added 25,000 jobs in September, about the same as the average monthly gain of 23,000 over the prior 12 months. Over the month, job growth occurred in individual and family services (+19,000).

In September, employment in **transportation and warehousing** changed little (+9,000). Truck transportation added 9,000 jobs, following a decline of 25,000 in August that largely reflected a business closure. Air transportation added 5,000 jobs in September. Employment in transportation and warehousing has shown little net change over the year.

Employment in **information** changed little in September (-5,000). Within the industry, employment in motion picture and sound recording industries continued to trend down (-7,000) and has declined by 45,000 since May, reflecting the impact of labor disputes.

Employment showed little change over the month in other major industries, including **mining, quarrying, and oil and gas extraction; construction; manufacturing; wholesale trade; retail trade; financial activities; and other services**.

In September, **average hourly earnings for all employees** on private nonfarm payrolls rose by 7 cents, or 0.2 percent, to \$33.88. Over the past 12 months, average hourly earnings have increased by 4.2 percent. In September, average hourly earnings of private-sector **production and nonsupervisory employees** rose by 6 cents, or 0.2 percent, to \$29.06. (See tables B-3 and B-8.)

The **average workweek for all employees** on private nonfarm payrolls was unchanged at 34.4 hours in September. In manufacturing, the average workweek was little changed at 40.1 hours, and overtime was unchanged at 3.1 hours. The average workweek for **production and nonsupervisory employees** on private nonfarm payrolls remained at 33.8 hours. (See tables B-2 and B-7.)

The change in total nonfarm payroll employment for July was revised up by 79,000, from +157,000 to +236,000, and the change for August was revised up by 40,000, from +187,000 to +227,000. With these revisions, employment in July and August combined is 119,000 higher than previously reported. (Monthly revisions result from additional reports received from businesses and government agencies since the last published estimates and from the recalculation of seasonal factors.)

The Employment Situation for October is scheduled to be released on Friday, November 3, 2023, at 8:30 a.m. (ET).

HOUSEHOLD DATA

Summary table A. Household data, seasonally adjusted

[Numbers in thousands]

Category	Sept. 2022	July 2023	Aug. 2023	Sept. 2023	Change from: Aug. 2023- Sept. 2023
Employment status					
Civilian noninstitutional population.....	264,356	267,002	267,213	267,428	215
Civilian labor force.....	164,619	167,103	167,839	167,929	90
Participation rate.....	62.3	62.6	62.8	62.8	0.0
Employed.....	158,850	161,262	161,484	161,570	86
Employment-population ratio.....	60.1	60.4	60.4	60.4	0.0
Unemployed.....	5,770	5,841	6,355	6,360	5
Unemployment rate.....	3.5	3.5	3.8	3.8	0.0
Not in labor force.....	99,736	99,899	99,374	99,498	124
Unemployment rates					
Total, 16 years and over.....	3.5	3.5	3.8	3.8	0.0
Adult men (20 years and over).....	3.3	3.3	3.7	3.8	0.1
Adult women (20 years and over).....	3.1	3.1	3.2	3.1	-0.1
Teenagers (16 to 19 years).....	11.3	11.3	12.2	11.6	-0.6
White.....	3.1	3.1	3.4	3.4	0.0
Black or African American.....	5.9	5.8	5.3	5.7	0.4
Asian.....	2.5	2.3	3.1	2.8	-0.3
Hispanic or Latino ethnicity.....	3.9	4.4	4.9	4.6	-0.3
Total, 25 years and over.....	2.8	2.8	3.0	3.1	0.1
Less than a high school diploma.....	5.5	5.2	5.4	5.5	0.1
High school graduates, no college.....	3.7	3.4	3.8	4.1	0.3
Some college or associate degree.....	2.9	3.1	3.0	3.0	0.0
Bachelor's degree and higher.....	1.8	2.0	2.2	2.1	-0.1
Reason for unemployment					
Job losers and persons who completed temporary jobs.....	2,530	2,620	2,914	2,858	-56
Job leavers.....	904	852	801	797	-4
Reentrants.....	1,834	1,853	1,930	2,043	113
New entrants.....	460	503	597	568	-29
Duration of unemployment					
Less than 5 weeks.....	2,158	2,004	2,221	2,051	-170
5 to 14 weeks.....	1,643	1,698	1,877	2,044	167
15 to 26 weeks.....	901	997	1,002	1,072	70
27 weeks and over.....	1,089	1,164	1,296	1,216	-80
Employed persons at work part time					
Part time for economic reasons.....	3,843	4,000	4,221	4,065	-156
Slack work or business conditions.....	2,576	2,717	2,799	2,793	-6
Could only find part-time work.....	942	1,014	1,021	938	-83
Part time for noneconomic reasons.....	21,260	21,971	21,975	22,152	177
Persons not in the labor force					
Marginally attached to the labor force.....	1,590	1,398	1,505	1,457	-48
Discouraged workers.....	484	335	386	367	-19

NOTE: Persons whose ethnicity is identified as Hispanic or Latino may be of any race. Detail for the seasonally adjusted data shown in this table will not necessarily add to totals because of the independent seasonal adjustment of the various series. Updated population controls are introduced annually with the release of January data.

ESTABLISHMENT DATA
Summary table B. Establishment data, seasonally adjusted

Category	Sept. 2022	July 2023	Aug. 2023 ^p	Sept. 2023 ^p
EMPLOYMENT BY SELECTED INDUSTRY (Over-the-month change, in thousands)				
Total nonfarm.....	350	236	227	336
Total private.....	344	145	177	263
Goods-producing.....	44	12	47	29
Mining and logging.....	2	2	0	1
Construction.....	16	12	36	11
Manufacturing.....	26	-2	11	17
Durable goods ¹	14	12	13	13
Motor vehicles and parts.....	4.3	2.6	-2.6	8.9
Nondurable goods.....	12	-14	-2	4
Private service-providing.....	300	133	130	234
Wholesale trade.....	8.3	15.4	0.0	11.7
Retail trade.....	-11.1	12.6	0.4	19.7
Transportation and warehousing.....	9.7	-6.8	-18.9	8.6
Utilities.....	0.1	-1.5	2.4	4.8
Information.....	3	-19	-21	-5
Financial activities.....	2	15	2	3
Professional and business services ¹	48	-29	11	21
Temporary help services.....	11.2	-17.4	-13.3	-4.2
Private education and health services ¹	80	104	97	70
Health care and social assistance.....	71.7	102.5	94.1	65.9
Leisure and hospitality.....	139	38	44	96
Other services.....	21	4	14	4
Government.....	6	91	50	73
(3-month average change, in thousands)				
Total nonfarm.....	423	207	189	266
Total private.....	381	162	136	195
WOMEN AND PRODUCTION AND NONSUPERVISORY EMPLOYEES AS A PERCENT OF ALL EMPLOYEES ²				
Total nonfarm women employees.....	49.8	49.8	49.8	49.8
Total private women employees.....	48.4	48.4	48.4	48.4
Total private production and nonsupervisory employees.....	81.5	81.4	81.4	81.4
HOURS AND EARNINGS ALL EMPLOYEES				
Total private				
Average weekly hours.....	34.6	34.3	34.4	34.4
Average hourly earnings.....	\$32.53	\$33.73	\$33.81	\$33.88
Average weekly earnings.....	\$1,125.54	\$1,156.94	\$1,163.06	\$1,165.47
Index of aggregate weekly hours (2007=100) ³	114.2	115.0	115.5	115.7
Over-the-month percent change.....	0.6	-0.2	0.4	0.2
Index of aggregate weekly payrolls (2007=100) ⁴	177.6	185.5	186.7	187.5
Over-the-month percent change.....	0.9	0.2	0.6	0.4
DIFFUSION INDEX (Over 1-month span) ⁵				
Total private (250 industries).....	63.4	53.4	62.2	64.2
Manufacturing (72 industries).....	54.9	44.4	52.8	52.8

¹ Includes other industries, not shown separately.

² Data relate to production employees in mining and logging and manufacturing, construction employees in construction, and nonsupervisory employees in the service-providing industries.

³ The indexes of aggregate weekly hours are calculated by dividing the current month's estimates of aggregate hours by the corresponding annual average aggregate hours.

⁴ The indexes of aggregate weekly payrolls are calculated by dividing the current month's estimates of aggregate weekly payrolls by the corresponding annual average aggregate weekly payrolls.

⁵ Figures are the percent of industries with employment increasing plus one-half of the industries with unchanged employment, where 50 percent indicates an equal balance between industries with increasing and decreasing employment.

p Preliminary

NOTE: Data have been revised to reflect March 2022 benchmark levels and updated seasonal adjustment factors.

Frequently Asked Questions about Employment and Unemployment Estimates

1. Why are there two monthly measures of employment?

The household survey and establishment survey both produce sample-based estimates of employment, and both have strengths and limitations. The establishment survey employment series has a smaller margin of error on the measurement of month-to-month change than the household survey because of its much larger sample size. An over-the-month employment change of about 130,000 is statistically significant in the establishment survey, while the threshold for a statistically significant change in the household survey is about 600,000. However, the household survey has a more expansive scope than the establishment survey because it includes self-employed workers whose businesses are unincorporated, unpaid family workers, agricultural workers, and private household workers, who are excluded by the establishment survey. The household survey also provides estimates of employment for demographic groups. For more information on the differences between the two surveys, please visit www.bls.gov/web/empsit/ces_cps_trends.htm.

2. Are undocumented immigrants counted in the surveys?

It is likely that both surveys include at least some undocumented immigrants. However, neither the establishment nor the household survey is designed to identify the legal status of workers. Therefore, it is not possible to determine how many are counted in either survey. The establishment survey does not collect data on the legal status of workers. The household survey does include questions which identify the foreign and native born, but it does not include questions about the legal status of the foreign born. Data on the foreign and native born are published each month in table A-7 of The Employment Situation news release.

3. Why does the establishment survey have revisions?

The establishment survey revises published estimates to improve its data series by incorporating additional information that was not available at the time of the initial publication of the estimates. The establishment survey revises its initial monthly estimates twice, in the immediately succeeding 2 months, to incorporate additional sample receipts from respondents in the survey and recalculated seasonal adjustment factors. For more information on the monthly revisions, please visit www.bls.gov/web/empsit/cestn.htm#section7.

On an annual basis, the establishment survey incorporates a benchmark revision that re-anchors estimates to nearly complete employment counts available from unemployment insurance tax records. The benchmark helps to control for sampling and modeling errors in the estimates. For more information on the annual benchmark revision, please visit www.bls.gov/web/empsit/cesbmart.htm.

4. Does the establishment survey sample include small firms?

Yes; about 40 percent of the establishment survey sample is comprised of business establishments with fewer than 20 employees. The establishment survey sample is designed to maximize the reliability of the statewide total nonfarm employment estimate; firms from all states, size classes, and industries are appropriately sampled to achieve that goal.

5. Does the establishment survey account for employment from new businesses?

Yes; monthly establishment survey estimates include an adjustment to account for the net employment change generated by business births and deaths. The adjustment comes from an econometric model that forecasts the monthly net jobs impact of business births and deaths based on the actual past values of the net impact that can be observed with a lag from the Quarterly Census of Employment and Wages. The establishment survey uses modeling rather than sampling for this purpose because the survey is not immediately able to bring new businesses into the sample. There is an unavoidable lag between the birth of a new firm and its appearance on the sampling frame and availability for selection. BLS adds new businesses to the survey twice a year.

6. Is the count of unemployed persons limited to just those people receiving unemployment insurance benefits?

No; the estimate of unemployment is based on a monthly sample survey of households. All persons who are without jobs and are actively seeking and available to work are included among the unemployed. (People on temporary layoff are included even if they do not actively seek work.) There is no requirement or question relating to unemployment insurance benefits in the monthly survey.

7. Does the official unemployment rate exclude people who want a job but are not currently looking for work?

Yes; however, there are separate estimates of persons outside the labor force who want a job, including those who are not currently looking because they believe no jobs are available (discouraged workers). In addition, alternative measures of labor underutilization (some of which include discouraged workers and other groups not officially counted as unemployed) are published each month in table A-15 of The Employment Situation news release. For more information about these alternative measures, please visit www.bls.gov/cps/lfcharacteristics.htm#altmeasures.

8. How can unusually severe weather affect employment and hours estimates?

In the establishment survey, the reference period is the pay period that includes the 12th of the month. Unusually severe weather is more likely to have an impact on average weekly hours than on employment. Average weekly hours are estimated for paid time during the pay period, including pay for holidays, sick leave, or other time off. The impact of severe weather on hours estimates typically, but not always, results in a reduction in average weekly hours. For example, some employees may be off work for part of the pay period and not receive pay for the time missed, while some workers, such as those dealing with cleanup or repair, may work extra hours.

Typically, it is not possible to precisely quantify the effect of extreme weather on payroll employment estimates. In order for severe weather conditions to reduce employment estimates, employees have to be off work without pay for the entire pay period. Employees who receive pay for any part of the pay period, even 1 hour, are counted in the payroll employment figures. For more information on how often employees are paid, please visit www.bls.gov/ces/publications/length-pay-period.htm.

In the household survey, the reference period is generally the calendar week that includes the 12th of the month. Persons who miss the entire week's work for weather-related events are counted as employed whether or not they are paid for the time off. The household survey collects data on the number of persons who had a job but were not at work due to bad weather. It also provides a measure of the number of persons who usually work full time but had reduced hours due to bad weather. Current and historical data are available on the household survey's most requested statistics page, please visit data.bls.gov/cgi-bin/surveymost?ln.

Technical Note

This news release presents statistics from two major surveys, the Current Population Survey (CPS; household survey) and the Current Employment Statistics survey (CES; establishment survey). The household survey provides information on the labor force, employment, and unemployment that appears in the "A" tables, marked HOUSEHOLD DATA. It is a sample survey of about 60,000 eligible households conducted by the U.S. Census Bureau for the U.S. Bureau of Labor Statistics (BLS).

The establishment survey provides information on employment, hours, and earnings of employees on nonfarm payrolls; the data appear in the "B" tables, marked ESTABLISHMENT DATA. BLS collects these data each month from the payroll records of a sample of nonagricultural business establishments. Each month the CES program surveys about 122,000 businesses and government agencies, representing approximately 666,000 individual worksites, in order to provide detailed industry data on employment, hours, and earnings of workers on nonfarm payrolls. The active sample includes approximately one-third of all nonfarm payroll jobs.

For both surveys, the data for a given month relate to a particular week or pay period. In the household survey, the reference period is generally the calendar week that contains the 12th day of the month. In the establishment survey, the reference period is the pay period including the 12th, which may or may not correspond directly to the calendar week.

Coverage, definitions, and differences between surveys

Household survey. The sample is selected to reflect the entire civilian noninstitutional population. Based on responses to a series of questions on work and job search activities, each person 16 years and over in a sample household is classified as employed, unemployed, or not in the labor force.

People are classified as *employed* if they did any work at all as paid employees during the reference week; worked in their own business, profession, or on their own farm; or worked without pay at least 15 hours in a family business or farm. People are also counted as employed if they were temporarily absent from their jobs because of illness, bad weather, vacation, labor-management disputes, or personal reasons.

People are classified as *unemployed* if they meet all of the following criteria: they had no employment during the reference week; they were available for work at that time; and they made specific active efforts to find employment sometime during the 4-week period ending with the reference week. Persons laid off from a job and expecting recall need not be looking for work to be counted as unemployed. The unemployment data derived from the household survey in no way depend upon the eligibility for or receipt of unemployment insurance benefits.

The *civilian labor force* is the sum of employed and unemployed persons. Those persons not classified as employed or unemployed are *not in the labor force*. The

unemployment rate is the number unemployed as a percent of the labor force. The *labor force participation rate* is the labor force as a percent of the population, and the *employment-population ratio* is the employed as a percent of the population. Additional information about the household survey can be found at www.bls.gov/cps/documentation.htm.

Establishment survey. The sample establishments are drawn from private nonfarm businesses such as factories, offices, and stores, as well as from federal, state, and local government entities. *Employees on nonfarm payrolls* are those who worked or received pay for any part of the reference pay period, including persons on paid leave. Persons are counted in each job they hold. *Hours and earnings* data are produced for the private sector for all employees and for production and nonsupervisory employees. *Production and nonsupervisory* employees are defined as production and related employees in manufacturing and mining and logging, construction workers in construction, and non-supervisory employees in private service-providing industries.

Industries are classified on the basis of an establishment's principal activity in accordance with the 2022 version of the North American Industry Classification System. Additional information about the establishment survey can be found at www.bls.gov/ces/.

Differences in employment estimates. The numerous conceptual and methodological differences between the household and establishment surveys result in important distinctions in the employment estimates derived from the surveys. Among these are:

- The household survey includes agricultural workers, self-employed workers whose businesses are unincorporated, unpaid family workers, and private household workers among the employed. These groups are excluded from the establishment survey.
- The household survey includes people on unpaid leave among the employed. The establishment survey does not.
- The household survey is limited to workers 16 years of age and older. The establishment survey is not limited by age.
- The household survey has no duplication of individuals, because individuals are counted only once, even if they hold more than one job. In the establishment survey, employees working at more than one job and thus appearing on more than one payroll are counted separately for each appearance.

Seasonal adjustment

Over the course of a year, the size of the nation's labor force and the levels of employment and unemployment undergo regularly occurring fluctuations. These events may result from seasonal changes in weather, major holidays, and the opening and closing of schools. The effect of such seasonal variation can be very large.

Because these seasonal events follow a more or less regular pattern each year, their influence on the level of a series can be tempered by adjusting for regular seasonal variation. These adjustments make nonseasonal developments, such as declines in employment or increases in the participation of women in the labor force, easier to spot. For example, in the household survey, the large number of youth entering the labor force each June is likely to obscure any other changes that have taken place relative to May, making it difficult to determine if the level of economic activity has risen or declined. Similarly, in the establishment survey, payroll employment in education declines by about 20 percent at the end of the spring term and later rises with the start of the fall term, obscuring the underlying employment trends in the industry. Because seasonal employment changes at the end and beginning of the school year can be estimated, the statistics can be adjusted to make underlying employment patterns more discernable. The seasonally adjusted figures provide a more useful tool with which to analyze changes in month-to-month economic activity.

Many seasonally adjusted series are independently adjusted in both the household and establishment surveys. However, the adjusted series for many major estimates, such as total payroll employment, employment in most major sectors, total employment, and unemployment are computed by aggregating independently adjusted component series. For example, total unemployment is derived by summing the adjusted series for four major age-sex components; this differs from the unemployment estimate that would be obtained by directly adjusting the total or by combining the duration, reasons, or more detailed age categories. Percentage distributions of unemployment by reason and duration are derived from the sum of the independently seasonally adjusted component series and will not necessarily match calculations made using the seasonally adjusted total unemployment level. Additional information about seasonal adjustment in the household survey can be found at www.bls.gov/cps/documentation.htm#sa.

For both the household and establishment surveys, a concurrent seasonal adjustment methodology is used in which new seasonal factors are calculated each month using all relevant data, up to and including the data for the current month. In the household survey, new seasonal factors are used to adjust only the current month's data. In the establishment survey, however, new seasonal factors are used each month to adjust the three most recent monthly estimates. The prior 2 months are routinely revised to incorporate additional sample reports and recalculated seasonal adjustment factors. In both surveys, 5-year revisions to historical data are made once a year.

Reliability of the estimates

Statistics based on the household and establishment surveys are subject to both sampling and nonsampling error. When a sample, rather than the entire population, is surveyed, there is a chance that the sample estimates may differ from the true population values they represent. The component of this difference that occurs because samples differ by chance is known as *sampling error*, and its variability is measured by the standard error of the estimate. There is about a 90-percent chance, or level of confidence, that an estimate based on a sample will differ by no more than 1.6 standard errors from the true population value because of sampling error. BLS analyses are generally conducted at the 90-percent level of confidence.

For example, the confidence interval for the monthly change in total nonfarm employment from the establishment survey is on the order of plus or minus 130,000. Suppose the estimate of nonfarm employment increases by 50,000 from one month to the next. The 90-percent confidence interval on the monthly change would range from -80,000 to +180,000 (50,000 +/- 130,000). These figures do not mean that the sample results are off by these magnitudes, but rather that there is about a 90-percent chance that the true over-the-month change lies within this interval. Since this range includes values of less than zero, we could not say with confidence that nonfarm employment had, in fact, increased that month. If, however, the reported nonfarm employment rise was 250,000, then all of the values within the 90-percent confidence interval would be greater than zero. In this case, it is likely (at least a 90-percent chance) that nonfarm employment had, in fact, risen that month. At an unemployment rate of around 6.0 percent, the 90-percent confidence interval for the monthly change in unemployment as measured by the household survey is about +/- 300,000, and for the monthly change in the unemployment rate it is about +/- 0.2 percentage point.

In general, estimates involving many individuals or establishments have lower standard errors (relative to the size of the estimate) than estimates which are based on a small number of observations. The precision of estimates also is improved when the data are cumulated over time, such as for quarterly and annual averages.

The household and establishment surveys are also affected by *nonsampling error*, which can occur for many reasons, including the failure to sample a segment of the population, inability to obtain information for all respondents in the sample, inability or unwillingness of respondents to provide correct information on a timely basis, mistakes made by respondents, and errors made in the collection or processing of the data.

For example, in the establishment survey, estimates for the most recent 2 months are based on incomplete returns; for this reason, these estimates are labeled preliminary in the tables. It is only after two successive revisions to a monthly estimate, when nearly all sample reports have been received, that the estimate is considered final.

Another major source of nonsampling error in the establishment survey is the inability to capture, on a timely

basis, employment generated by new firms. To correct for this systematic underestimation of employment growth, an estimation procedure with two components is used to account for business births. The first component excludes employment losses from business deaths from sample-based estimation in order to offset the missing employment gains from business births. This is incorporated into the sample-based estimation procedure by simply not reflecting sample units going out of business, but imputing to them the same employment trend as the other firms in the sample. This procedure accounts for most of the net birth/death employment.

The second component is an ARIMA time series model designed to estimate the residual net birth/death employment not accounted for by the imputation. The historical time series used to create and test the ARIMA model was derived from the unemployment insurance universe micro-level database, and reflects the actual residual net of births and deaths over the past 5 years.

The sample-based estimates from the establishment survey are adjusted once a year (on a lagged basis) to universe counts of payroll employment obtained from administrative records of the unemployment insurance program. The difference between the March sample-based employment estimates and the March universe counts is known as a benchmark revision, and serves as a rough proxy for total survey error. The new benchmarks also incorporate changes in the classification of industries. Over the past decade, absolute benchmark revisions for total nonfarm employment have averaged 0.1 percent, with a range from -0.3 percent to 0.3 percent.

Other information

If you are deaf, hard of hearing, or have a speech disability, please dial 7-1-1 to access telecommunications relay services.

HOUSEHOLD DATA

Table A-1. Employment status of the civilian population by sex and age

[Numbers in thousands]

Employment status, sex, and age	Not seasonally adjusted			Seasonally adjusted ¹					
	Sept. 2022	Aug. 2023	Sept. 2023	Sept. 2022	May 2023	June 2023	July 2023	Aug. 2023	Sept. 2023
TOTAL									
Civilian noninstitutional population.....	264,356	267,213	267,428	264,356	266,618	266,801	267,002	267,213	267,428
Civilian labor force.....	164,463	168,049	167,718	164,619	166,818	166,951	167,103	167,839	167,929
Participation rate.....	62.2	62.9	62.7	62.3	62.6	62.6	62.6	62.8	62.8
Employed.....	159,003	161,427	161,669	158,850	160,721	160,994	161,262	161,484	161,570
Employment-population ratio.....	60.1	60.4	60.5	60.1	60.3	60.3	60.4	60.4	60.4
Unemployed.....	5,460	6,623	6,049	5,770	6,097	5,957	5,841	6,355	6,360
Unemployment rate.....	3.3	3.9	3.6	3.5	3.7	3.6	3.5	3.8	3.8
Not in labor force.....	99,893	99,164	99,710	99,736	99,800	99,850	99,899	99,374	99,498
Persons who currently want a job.....	5,650	5,482	5,299	5,813	5,477	5,389	5,247	5,370	5,450
Men, 16 years and over									
Civilian noninstitutional population.....	128,807	130,608	130,713	128,807	130,319	130,408	130,507	130,608	130,713
Civilian labor force.....	87,529	89,299	89,159	87,659	88,704	88,836	88,695	89,082	89,331
Participation rate.....	68.0	68.4	68.2	68.1	68.1	68.1	68.0	68.2	68.3
Employed.....	84,687	85,838	85,745	84,532	85,410	85,547	85,492	85,493	85,633
Employment-population ratio.....	65.7	65.7	65.6	65.6	65.5	65.6	65.5	65.5	65.5
Unemployed.....	2,842	3,461	3,414	3,127	3,294	3,289	3,203	3,589	3,697
Unemployment rate.....	3.2	3.9	3.8	3.6	3.7	3.7	3.6	4.0	4.1
Not in labor force.....	41,278	41,310	41,553	41,148	41,616	41,572	41,811	41,527	41,382
Men, 20 years and over									
Civilian noninstitutional population.....	120,140	121,832	121,931	120,140	121,565	121,646	121,735	121,832	121,931
Civilian labor force.....	84,594	85,868	86,086	84,602	85,487	85,774	85,739	85,934	86,130
Participation rate.....	70.4	70.5	70.6	70.4	70.3	70.5	70.4	70.5	70.6
Employed.....	82,075	82,865	83,057	81,816	82,526	82,868	82,922	82,777	82,837
Employment-population ratio.....	68.3	68.0	68.1	68.1	67.9	68.1	68.1	67.9	67.9
Unemployed.....	2,519	3,003	3,029	2,786	2,961	2,906	2,817	3,157	3,293
Unemployment rate.....	3.0	3.5	3.5	3.3	3.5	3.4	3.3	3.7	3.8
Not in labor force.....	35,545	35,964	35,845	35,537	36,078	35,871	35,997	35,898	35,801
Women, 16 years and over									
Civilian noninstitutional population.....	135,548	136,605	136,715	135,548	136,299	136,393	136,496	136,605	136,715
Civilian labor force.....	76,934	78,750	78,559	76,960	78,114	78,115	78,408	78,757	78,599
Participation rate.....	56.8	57.6	57.5	56.8	57.3	57.3	57.4	57.7	57.5
Employed.....	74,316	75,589	75,924	74,318	75,311	75,448	75,769	75,991	75,936
Employment-population ratio.....	54.8	55.3	55.5	54.8	55.3	55.3	55.5	55.6	55.5
Unemployed.....	2,618	3,162	2,634	2,642	2,803	2,668	2,638	2,766	2,662
Unemployment rate.....	3.4	4.0	3.4	3.4	3.6	3.4	3.4	3.5	3.4
Not in labor force.....	58,615	57,854	58,156	58,588	58,185	58,277	58,088	57,847	58,116
Women, 20 years and over									
Civilian noninstitutional population.....	127,117	128,132	128,237	127,117	127,845	127,932	128,028	128,132	128,237
Civilian labor force.....	73,842	75,305	75,602	73,729	75,005	74,927	75,205	75,541	75,497
Participation rate.....	58.1	58.8	59.0	58.0	58.7	58.6	58.7	59.0	58.9
Employed.....	71,590	72,515	73,292	71,457	72,518	72,567	72,877	73,121	73,163
Employment-population ratio.....	56.3	56.6	57.2	56.2	56.7	56.7	56.9	57.1	57.1
Unemployed.....	2,251	2,790	2,310	2,272	2,486	2,360	2,328	2,419	2,334
Unemployment rate.....	3.0	3.7	3.1	3.1	3.3	3.1	3.1	3.2	3.1
Not in labor force.....	53,276	52,826	52,635	53,388	52,840	53,005	52,822	52,591	52,740
Both sexes, 16 to 19 years									
Civilian noninstitutional population.....	17,099	17,249	17,260	17,099	17,208	17,223	17,239	17,249	17,260
Civilian labor force.....	6,027	6,876	6,030	6,288	6,326	6,250	6,159	6,365	6,303
Participation rate.....	35.2	39.9	34.9	36.8	36.8	36.3	35.7	36.9	36.5
Employed.....	5,337	6,046	5,321	5,576	5,676	5,559	5,462	5,586	5,570
Employment-population ratio.....	31.2	35.1	30.8	32.6	33.0	32.3	31.7	32.4	32.3
Unemployed.....	689	830	710	712	650	691	696	779	733
Unemployment rate.....	11.4	12.1	11.8	11.3	10.3	11.0	11.3	12.2	11.6
Not in labor force.....	11,072	10,373	11,230	10,811	10,882	10,973	11,080	10,885	10,957

¹ The population figures are not adjusted for seasonal variation; therefore, identical numbers appear in the unadjusted and seasonally adjusted columns.

NOTE: Updated population controls are introduced annually with the release of January data.

HOUSEHOLD DATA

Table A-2. Employment status of the civilian population by race, sex, and age

[Numbers in thousands]

Employment status, race, sex, and age	Not seasonally adjusted			Seasonally adjusted ¹					
	Sept. 2022	Aug. 2023	Sept. 2023	Sept. 2022	May 2023	June 2023	July 2023	Aug. 2023	Sept. 2023
WHITE									
Civilian noninstitutional population.....	203,420	204,645	204,756	203,420	204,345	204,433	204,536	204,645	204,756
Civilian labor force.....	126,036	128,092	127,706	126,117	127,273	127,306	127,329	127,976	127,829
Participation rate.....	62.0	62.6	62.4	62.0	62.3	62.3	62.3	62.5	62.4
Employed.....	122,403	123,531	123,547	122,261	123,112	123,389	123,393	123,571	123,456
Employment-population ratio.....	60.2	60.4	60.3	60.1	60.2	60.4	60.3	60.4	60.3
Unemployed.....	3,633	4,561	4,160	3,856	4,161	3,917	3,936	4,405	4,373
Unemployment rate.....	2.9	3.6	3.3	3.1	3.3	3.1	3.1	3.4	3.4
Not in labor force.....	77,383	76,553	77,049	77,303	77,072	77,127	77,207	76,669	76,926
Men, 20 years and over									
Civilian labor force.....	65,872	66,480	66,622	65,884	66,433	66,543	66,414	66,565	66,643
Participation rate.....	70.2	70.2	70.3	70.2	70.2	70.3	70.2	70.3	70.3
Employed.....	64,221	64,374	64,514	64,012	64,343	64,545	64,423	64,324	64,321
Employment-population ratio.....	68.4	68.0	68.1	68.2	68.0	68.2	68.0	67.9	67.9
Unemployed.....	1,651	2,106	2,108	1,871	2,089	1,998	1,991	2,241	2,322
Unemployment rate.....	2.5	3.2	3.2	2.8	3.1	3.0	3.0	3.4	3.5
Women, 20 years and over									
Civilian labor force.....	55,435	56,243	56,503	55,348	55,950	55,994	56,188	56,451	56,401
Participation rate.....	57.1	57.7	58.0	57.0	57.5	57.6	57.7	58.0	57.9
Employed.....	53,979	54,361	54,912	53,885	54,323	54,536	54,690	54,826	54,810
Employment-population ratio.....	55.6	55.8	56.3	55.5	55.9	56.1	56.2	56.3	56.2
Unemployed.....	1,456	1,882	1,592	1,463	1,627	1,458	1,498	1,625	1,591
Unemployment rate.....	2.6	3.3	2.8	2.6	2.9	2.6	2.7	2.9	2.8
Both sexes, 16 to 19 years									
Civilian labor force.....	4,730	5,369	4,581	4,885	4,890	4,769	4,727	4,960	4,785
Participation rate.....	37.8	42.9	36.6	39.1	39.1	38.1	37.8	39.6	38.2
Employed.....	4,203	4,796	4,121	4,364	4,445	4,308	4,281	4,421	4,324
Employment-population ratio.....	33.6	38.3	32.9	34.9	35.5	34.4	34.2	35.3	34.5
Unemployed.....	527	573	460	521	445	461	447	539	460
Unemployment rate.....	11.1	10.7	10.0	10.7	9.1	9.7	9.5	10.9	9.6
BLACK OR AFRICAN AMERICAN									
Civilian noninstitutional population.....	34,204	34,714	34,751	34,204	34,613	34,644	34,678	34,714	34,751
Civilian labor force.....	21,218	21,837	21,808	21,260	21,874	21,695	21,751	21,746	21,868
Participation rate.....	62.0	62.9	62.8	62.2	63.2	62.6	62.7	62.6	62.9
Employed.....	20,041	20,613	20,622	20,016	20,641	20,402	20,496	20,596	20,616
Employment-population ratio.....	58.6	59.4	59.3	58.5	59.6	58.9	59.1	59.3	59.3
Unemployed.....	1,177	1,224	1,186	1,244	1,234	1,292	1,255	1,150	1,253
Unemployment rate.....	5.5	5.6	5.4	5.9	5.6	6.0	5.8	5.3	5.7
Not in labor force.....	12,986	12,878	12,943	12,944	12,738	12,949	12,927	12,969	12,883
Men, 20 years and over									
Civilian labor force.....	9,907	10,182	10,197	9,892	10,084	10,053	10,114	10,131	10,185
Participation rate.....	68.1	68.7	68.7	68.0	68.2	68.0	68.3	68.4	68.6
Employed.....	9,368	9,678	9,650	9,322	9,519	9,465	9,576	9,620	9,611
Employment-population ratio.....	64.4	65.3	65.0	64.1	64.4	64.0	64.7	64.9	64.8
Unemployed.....	540	504	547	570	565	588	538	511	574
Unemployment rate.....	5.4	5.0	5.4	5.8	5.6	5.9	5.3	5.0	5.6
Women, 20 years and over									
Civilian labor force.....	10,638	10,859	10,861	10,637	11,051	10,886	10,922	10,872	10,873
Participation rate.....	61.9	62.6	62.5	61.9	63.9	62.9	63.0	62.7	62.6
Employed.....	10,072	10,277	10,394	10,057	10,469	10,300	10,353	10,359	10,389
Employment-population ratio.....	58.6	59.2	59.8	58.6	60.5	59.5	59.7	59.7	59.8
Unemployed.....	565	582	467	579	582	586	569	514	485
Unemployment rate.....	5.3	5.4	4.3	5.4	5.3	5.4	5.2	4.7	4.5
Both sexes, 16 to 19 years									
Civilian labor force.....	673	796	750	731	740	756	715	742	810
Participation rate.....	27.1	31.3	29.5	29.4	29.2	29.8	28.2	29.2	31.8
Employed.....	601	658	579	636	653	638	568	617	616
Employment-population ratio.....	24.2	25.9	22.7	25.6	25.8	25.1	22.3	24.3	24.2
Unemployed.....	72	138	172	95	87	118	148	125	194
Unemployment rate.....	10.7	17.3	22.9	12.9	11.7	15.6	20.7	16.9	24.0

See footnotes at end of table.

HOUSEHOLD DATA

Table A-2. Employment status of the civilian population by race, sex, and age — Continued

[Numbers in thousands]

Employment status, race, sex, and age	Not seasonally adjusted			Seasonally adjusted ¹					
	Sept. 2022	Aug. 2023	Sept. 2023	Sept. 2022	May 2023	June 2023	July 2023	Aug. 2023	Sept. 2023
ASIAN									
Civilian noninstitutional population.....	17,132	17,515	17,633	17,132	17,511	17,491	17,600	17,515	17,633
Civilian labor force.....	11,151	11,552	11,611	11,106	11,408	11,435	11,556	11,486	11,580
Participation rate.....	65.1	66.0	65.8	64.8	65.1	65.4	65.7	65.6	65.7
Employed.....	10,882	11,176	11,288	10,832	11,073	11,073	11,288	11,131	11,250
Employment-population ratio.....	63.5	63.8	64.0	63.2	63.2	63.3	64.1	63.6	63.8
Unemployed.....	269	376	323	274	335	363	267	355	330
Unemployment rate.....	2.4	3.3	2.8	2.5	2.9	3.2	2.3	3.1	2.8
Not in labor force.....	5,981	5,963	6,023	6,025	6,104	6,056	6,044	6,029	6,053

¹ The population figures are not adjusted for seasonal variation; therefore, identical numbers appear in the unadjusted and seasonally adjusted columns.

NOTE: Estimates for the above race groups will not sum to totals shown in table A-1 because data are not presented for all races. Updated population controls are introduced annually with the release of January data.

HOUSEHOLD DATA

Table A-3. Employment status of the Hispanic or Latino population by sex and age

[Numbers in thousands]

Employment status, sex, and age	Not seasonally adjusted			Seasonally adjusted ¹					
	Sept. 2022	Aug. 2023	Sept. 2023	Sept. 2022	May 2023	June 2023	July 2023	Aug. 2023	Sept. 2023
HISPANIC OR LATINO ETHNICITY									
Civilian noninstitutional population.....	46,373	47,671	47,774	46,373	47,380	47,473	47,569	47,671	47,774
Civilian labor force.....	30,641	31,960	32,099	30,673	31,690	31,943	32,052	31,977	32,144
Participation rate.....	66.1	67.0	67.2	66.1	66.9	67.3	67.4	67.1	67.3
Employed.....	29,515	30,382	30,706	29,462	30,407	30,571	30,637	30,420	30,660
Employment-population ratio.....	63.6	63.7	64.3	63.5	64.2	64.4	64.4	63.8	64.2
Unemployed.....	1,126	1,578	1,393	1,211	1,283	1,372	1,416	1,557	1,484
Unemployment rate.....	3.7	4.9	4.3	3.9	4.0	4.3	4.4	4.9	4.6
Not in labor force.....	15,732	15,711	15,675	15,700	15,690	15,530	15,517	15,694	15,630
Men, 20 years and over									
Civilian labor force.....	16,523	17,170	17,246	16,536	17,123	17,224	17,290	17,164	17,262
Participation rate.....	78.7	79.3	79.5	78.7	79.5	79.8	80.0	79.2	79.5
Employed.....	16,031	16,465	16,586	15,967	16,434	16,576	16,599	16,433	16,523
Employment-population ratio.....	76.3	76.0	76.4	76.0	76.3	76.8	76.8	75.9	76.1
Unemployed.....	493	706	660	569	690	649	691	731	739
Unemployment rate.....	3.0	4.1	3.8	3.4	4.0	3.8	4.0	4.3	4.3
Women, 20 years and over									
Civilian labor force.....	12,792	13,279	13,395	12,771	13,150	13,182	13,271	13,343	13,379
Participation rate.....	60.7	61.5	61.9	60.6	61.2	61.3	61.6	61.8	61.8
Employed.....	12,339	12,663	12,826	12,314	12,700	12,638	12,745	12,752	12,805
Employment-population ratio.....	58.6	58.6	59.2	58.4	59.1	58.7	59.1	59.0	59.1
Unemployed.....	452	616	569	457	450	544	525	591	573
Unemployment rate.....	3.5	4.6	4.2	3.6	3.4	4.1	4.0	4.4	4.3
Both sexes, 16 to 19 years									
Civilian labor force.....	1,326	1,510	1,457	1,366	1,417	1,537	1,492	1,470	1,503
Participation rate.....	30.9	34.3	33.0	31.8	32.4	35.0	33.9	33.4	34.0
Employed.....	1,145	1,254	1,293	1,181	1,273	1,357	1,292	1,236	1,331
Employment-population ratio.....	26.7	28.5	29.3	27.5	29.1	31.0	29.4	28.0	30.1
Unemployed.....	181	257	164	185	144	180	200	235	172
Unemployment rate.....	13.6	17.0	11.3	13.6	10.1	11.7	13.4	16.0	11.4

¹ The population figures are not adjusted for seasonal variation; therefore, identical numbers appear in the unadjusted and seasonally adjusted columns.

NOTE: Persons whose ethnicity is identified as Hispanic or Latino may be of any race. Updated population controls are introduced annually with the release of January data.

HOUSEHOLD DATA

Table A-4. Employment status of the civilian population 25 years and over by educational attainment

[Numbers in thousands]

Educational attainment	Not seasonally adjusted			Seasonally adjusted					
	Sept. 2022	Aug. 2023	Sept. 2023	Sept. 2022	May 2023	June 2023	July 2023	Aug. 2023	Sept. 2023
Less than a high school diploma									
Civilian labor force.....	9,094	9,210	9,287	8,990	9,140	9,184	8,926	9,239	9,185
Participation rate.....	46.2	47.4	47.5	45.7	45.7	46.6	47.7	47.6	46.9
Employed.....	8,674	8,774	8,865	8,491	8,621	8,632	8,459	8,743	8,683
Employment-population ratio.....	44.1	45.2	45.3	43.1	43.1	43.8	45.2	45.0	44.4
Unemployed.....	420	436	422	499	519	552	467	496	501
Unemployment rate.....	4.6	4.7	4.5	5.5	5.7	6.0	5.2	5.4	5.5
High school graduates, no college¹									
Civilian labor force.....	35,488	36,349	36,416	35,282	36,022	36,038	35,980	36,243	36,205
Participation rate.....	56.5	56.7	57.2	56.2	56.8	57.0	56.5	56.5	56.8
Employed.....	34,244	34,957	34,993	33,975	34,611	34,638	34,763	34,851	34,722
Employment-population ratio.....	54.5	54.5	54.9	54.1	54.6	54.7	54.6	54.4	54.5
Unemployed.....	1,244	1,392	1,423	1,307	1,411	1,400	1,217	1,391	1,484
Unemployment rate.....	3.5	3.8	3.9	3.7	3.9	3.9	3.4	3.8	4.1
Some college or associate degree									
Civilian labor force.....	35,597	35,560	36,016	35,575	35,407	35,564	35,730	35,867	35,960
Participation rate.....	62.8	62.7	62.9	62.7	63.1	62.5	62.7	63.3	62.8
Employed.....	34,609	34,393	34,976	34,558	34,273	34,472	34,612	34,780	34,886
Employment-population ratio.....	61.0	60.7	61.1	60.9	61.1	60.5	60.7	61.4	60.9
Unemployed.....	989	1,167	1,041	1,017	1,134	1,092	1,118	1,087	1,074
Unemployment rate.....	2.8	3.3	2.9	2.9	3.2	3.1	3.1	3.0	3.0
Bachelor's degree and higher²									
Civilian labor force.....	63,574	64,112	64,285	63,519	64,201	64,274	64,817	64,398	64,277
Participation rate.....	73.0	73.2	73.5	72.9	73.1	73.4	73.4	73.5	73.5
Employed.....	62,473	62,469	62,946	62,381	62,879	63,010	63,522	62,986	62,907
Employment-population ratio.....	71.7	71.3	71.9	71.6	71.6	72.0	71.9	71.9	71.9
Unemployed.....	1,100	1,643	1,340	1,138	1,322	1,264	1,295	1,412	1,370
Unemployment rate.....	1.7	2.6	2.1	1.8	2.1	2.0	2.0	2.2	2.1

¹ Includes persons with a high school diploma or equivalent.

² Includes persons with bachelor's, master's, professional, and doctoral degrees.

NOTE: Detail for the seasonally adjusted data shown in this table will not necessarily add to totals for those 25 years and over because of the independent seasonal adjustment of the various series. Updated population controls are introduced annually with the release of January data.

HOUSEHOLD DATA

Table A-5. Employment status of the civilian population 18 years and over by veteran status, period of service, and sex, not seasonally adjusted

[Numbers in thousands]

Employment status, veteran status, and period of service	Total		Men		Women	
	Sept. 2022	Sept. 2023	Sept. 2022	Sept. 2023	Sept. 2022	Sept. 2023
VETERANS, 18 years and over						
Civilian noninstitutional population.....	18,313	17,856	16,283	15,812	2,030	2,044
Civilian labor force.....	8,807	8,488	7,621	7,293	1,187	1,195
Participation rate.....	48.1	47.5	46.8	46.1	58.5	58.5
Employed.....	8,579	8,189	7,436	7,047	1,143	1,141
Employment-population ratio.....	46.8	45.9	45.7	44.6	56.3	55.8
Unemployed.....	229	299	185	245	44	54
Unemployment rate.....	2.6	3.5	2.4	3.4	3.7	4.5
Not in labor force.....	9,506	9,368	8,662	8,519	843	849
Gulf War-era II veterans						
Civilian noninstitutional population.....	4,922	5,068	4,041	4,120	881	948
Civilian labor force.....	3,973	3,952	3,289	3,238	684	714
Participation rate.....	80.7	78.0	81.4	78.6	77.6	75.3
Employed.....	3,880	3,752	3,210	3,071	671	681
Employment-population ratio.....	78.8	74.0	79.4	74.5	76.1	71.8
Unemployed.....	92	200	79	167	13	33
Unemployment rate.....	2.3	5.1	2.4	5.2	1.9	4.6
Not in labor force.....	949	1,116	752	882	197	234
Gulf War-era I veterans						
Civilian noninstitutional population.....	3,248	2,961	2,753	2,534	495	427
Civilian labor force.....	2,280	2,082	1,986	1,812	294	270
Participation rate.....	70.2	70.3	72.1	71.5	59.4	63.1
Employed.....	2,207	2,031	1,931	1,763	276	268
Employment-population ratio.....	67.9	68.6	70.1	69.6	55.8	62.7
Unemployed.....	73	51	55	49	18	2
Unemployment rate.....	3.2	2.4	2.8	2.7	6.1	0.7
Not in labor force.....	968	879	768	722	201	157
World War II, Korean War, and Vietnam-era veterans						
Civilian noninstitutional population.....	6,178	5,918	5,932	5,667	246	251
Civilian labor force.....	904	802	877	768	27	35
Participation rate.....	14.6	13.6	14.8	13.5	11.1	13.8
Employed.....	878	786	850	759	27	27
Employment-population ratio.....	14.2	13.3	14.3	13.4	11.1	10.9
Unemployed.....	27	16	27	9	0	7
Unemployment rate.....	2.9	2.0	3.0	1.2	-	-
Not in labor force.....	5,274	5,116	5,055	4,899	219	216
Veterans of other service periods						
Civilian noninstitutional population.....	3,965	3,909	3,557	3,491	408	418
Civilian labor force.....	1,650	1,651	1,469	1,474	182	177
Participation rate.....	41.6	42.2	41.3	42.2	44.5	42.3
Employed.....	1,613	1,620	1,444	1,454	169	165
Employment-population ratio.....	40.7	41.4	40.6	41.7	41.4	39.6
Unemployed.....	37	32	25	20	12	12
Unemployment rate.....	2.2	1.9	1.7	1.4	6.8	6.5
Not in labor force.....	2,315	2,258	2,088	2,017	226	241
NONVETERANS, 18 years and over						
Civilian noninstitutional population.....	236,598	240,361	107,682	110,172	128,916	130,189
Civilian labor force.....	153,284	156,823	78,826	80,635	74,458	76,188
Participation rate.....	64.8	65.2	73.2	73.2	57.8	58.5
Employed.....	148,309	151,346	76,293	77,634	72,016	73,712
Employment-population ratio.....	62.7	63.0	70.9	70.5	55.9	56.6
Unemployed.....	4,975	5,477	2,533	3,001	2,443	2,476
Unemployment rate.....	3.2	3.5	3.2	3.7	3.3	3.2
Not in labor force.....	83,314	83,538	28,857	29,537	54,458	54,002

NOTE: Veterans served on active duty in the U.S. Armed Forces and were not on active duty at the time of the survey. Nonveterans never served on active duty in the U.S. Armed Forces. Veterans could have served anywhere in the world during these periods of service: Gulf War era II (September 2001-present), Gulf War era I (August 1990-August 2001), Vietnam era (August 1964-April 1975), Korean War (July 1950-January 1955), World War II (December 1941-December 1946), and other service periods (all other time periods). Veterans who served in more than one wartime period are classified only in the most recent one. Veterans who served during one of the selected wartime periods and another period are classified only in the wartime period. Dash indicates no data or data that do not meet publication criteria (values not shown where base is less than 75,000).

HOUSEHOLD DATA

Table A-6. Employment status of the civilian population by sex, age, and disability status, not seasonally adjusted

[Numbers in thousands]

Employment status, sex, and age	Persons with a disability		Persons with no disability	
	Sept. 2022	Sept. 2023	Sept. 2022	Sept. 2023
TOTAL, 16 years and over				
Civilian noninstitutional population.....	33,223	34,146	231,132	233,282
Civilian labor force.....	7,710	8,275	156,753	159,443
Participation rate.....	23.2	24.2	67.8	68.3
Employed.....	7,145	7,674	151,858	153,995
Employment-population ratio.....	21.5	22.5	65.7	66.0
Unemployed.....	565	601	4,894	5,447
Unemployment rate.....	7.3	7.3	3.1	3.4
Not in labor force.....	25,513	25,871	74,380	73,839
Men, 16 to 64 years				
Civilian labor force.....	3,126	3,543	78,109	79,399
Participation rate.....	37.9	41.9	82.7	83.0
Employed.....	2,868	3,278	75,652	76,409
Employment-population ratio.....	34.8	38.7	80.1	79.9
Unemployed.....	259	265	2,457	2,991
Unemployment rate.....	8.3	7.5	3.1	3.8
Not in labor force.....	5,124	4,916	16,395	16,260
Women, 16 to 64 years				
Civilian labor force.....	3,243	3,313	68,733	70,044
Participation rate.....	38.2	38.8	71.6	72.9
Employed.....	2,974	3,045	66,506	67,809
Employment-population ratio.....	35.0	35.6	69.3	70.5
Unemployed.....	269	268	2,227	2,234
Unemployment rate.....	8.3	8.1	3.2	3.2
Not in labor force.....	5,249	5,234	27,228	26,089
Both sexes, 65 years and over				
Civilian labor force.....	1,341	1,419	9,910	10,000
Participation rate.....	8.1	8.3	24.4	24.1
Employed.....	1,303	1,351	9,700	9,777
Employment-population ratio.....	7.9	7.9	23.9	23.6
Unemployed.....	37	68	210	222
Unemployment rate.....	2.8	4.8	2.1	2.2
Not in labor force.....	15,140	15,721	30,757	31,490

NOTE: A person with a disability has at least one of the following conditions: is deaf or has serious difficulty hearing; is blind or has serious difficulty seeing even when wearing glasses; has serious difficulty concentrating, remembering, or making decisions because of a physical, mental, or emotional condition; has serious difficulty walking or climbing stairs; has difficulty dressing or bathing; or has difficulty doing errands alone such as visiting a doctor's office or shopping because of a physical, mental, or emotional condition. Updated population controls are introduced annually with the release of January data.

HOUSEHOLD DATA

Table A-7. Employment status of the civilian population by nativity and sex, not seasonally adjusted

[Numbers in thousands]

Employment status and nativity	Total		Men		Women	
	Sept. 2022	Sept. 2023	Sept. 2022	Sept. 2023	Sept. 2022	Sept. 2023
Foreign born, 16 years and over						
Civilian noninstitutional population.....	45,351	46,707	22,003	22,753	23,348	23,953
Civilian labor force.....	30,213	31,336	17,219	17,769	12,994	13,567
Participation rate.....	66.6	67.1	78.3	78.1	55.7	56.6
Employed.....	29,349	30,213	16,750	17,154	12,599	13,059
Employment-population ratio.....	64.7	64.7	76.1	75.4	54.0	54.5
Unemployed.....	864	1,123	469	615	395	508
Unemployment rate.....	2.9	3.6	2.7	3.5	3.0	3.7
Not in labor force.....	15,138	15,371	4,784	4,985	10,354	10,386
Native born, 16 years and over						
Civilian noninstitutional population.....	219,005	220,721	106,805	107,959	112,200	112,762
Civilian labor force.....	134,250	136,382	70,310	71,391	63,939	64,992
Participation rate.....	61.3	61.8	65.8	66.1	57.0	57.6
Employed.....	129,654	131,457	67,938	68,591	61,717	62,865
Employment-population ratio.....	59.2	59.6	63.6	63.5	55.0	55.8
Unemployed.....	4,596	4,926	2,373	2,799	2,223	2,126
Unemployment rate.....	3.4	3.6	3.4	3.9	3.5	3.3
Not in labor force.....	84,755	84,339	36,494	36,569	48,261	47,770

NOTE: The foreign born are those residing in the United States who were not U.S. citizens at birth. That is, they were born outside the United States or one of its outlying areas such as Puerto Rico or Guam, to parents neither of whom was a U.S. citizen. The native born are persons who were born in the United States or one of its outlying areas such as Puerto Rico or Guam or who were born abroad of at least one parent who was a U.S. citizen. Updated population controls are introduced annually with the release of January data.

HOUSEHOLD DATA

Table A-8. Employed persons by class of worker and part-time status

[In thousands]

Category	Not seasonally adjusted			Seasonally adjusted					
	Sept. 2022	Aug. 2023	Sept. 2023	Sept. 2022	May 2023	June 2023	July 2023	Aug. 2023	Sept. 2023
CLASS OF WORKER									
Agriculture and related industries.....	2,165	2,326	2,288	2,178	2,301	2,311	2,261	2,296	2,303
Wage and salary workers ¹	1,448	1,582	1,551	1,473	1,569	1,591	1,519	1,559	1,571
Self-employed workers, unincorporated.....	700	717	699	696	672	674	688	695	693
Unpaid family workers.....	18	27	39	-	-	-	-	-	-
Nonagricultural industries.....	156,838	159,101	159,381	156,762	158,416	158,853	159,099	159,321	159,388
Wage and salary workers ¹	147,538	150,171	150,233	147,291	149,512	149,632	149,974	150,217	150,090
Government.....	21,166	20,684	21,480	21,331	21,434	21,552	21,161	21,199	21,601
Private industries.....	126,372	129,487	128,753	126,371	128,050	128,110	128,778	128,891	128,821
Private households.....	705	681	665	-	-	-	-	-	-
Other industries.....	125,667	128,807	128,089	125,712	127,337	127,470	128,166	128,282	128,209
Self-employed workers, unincorporated.....	9,235	8,886	9,114	9,155	8,731	8,917	8,814	8,809	9,033
Unpaid family workers.....	65	44	33	-	-	-	-	-	-
PERSONS AT WORK PART TIME²									
 All industries									
Part time for economic reasons ³	3,523	4,143	3,742	3,843	3,739	4,191	4,000	4,221	4,065
Slack work or business conditions.....	2,393	2,712	2,608	2,576	2,582	2,890	2,717	2,799	2,793
Could only find part-time work.....	945	1,003	940	942	824	948	1,014	1,021	938
Part time for noneconomic reasons ⁴	21,389	20,506	22,309	21,260	21,864	21,267	21,971	21,975	22,152
 Nonagricultural industries									
Part time for economic reasons ³	3,479	4,084	3,698	3,762	3,725	4,095	3,913	4,110	3,991
Slack work or business conditions.....	2,353	2,670	2,579	2,526	2,566	2,835	2,657	2,757	2,752
Could only find part-time work.....	945	999	930	940	821	943	1,012	1,021	929
Part time for noneconomic reasons ⁴	21,047	20,084	21,883	20,912	21,496	20,913	21,539	21,522	21,723

¹ Includes self-employed workers whose businesses are incorporated.

² Refers to those who worked 1 to 34 hours during the survey reference week and excludes employed persons who were absent from their jobs for the entire week.

³ Refers to those who worked 1 to 34 hours during the reference week for an economic reason such as slack work or unfavorable business conditions, inability to find full-time work, or seasonal declines in demand.

⁴ Refers to persons who usually work part time for noneconomic reasons such as childcare problems, family or personal obligations, school or training, retirement or Social Security limits on earnings, and other reasons. This excludes persons who usually work full time but worked only 1 to 34 hours during the reference week for reasons such as vacations, holidays, illness, and bad weather.

- Data not available.

NOTE: Detail for the seasonally adjusted data shown in this table will not necessarily add to totals because of the independent seasonal adjustment of the various series. Updated population controls are introduced annually with the release of January data.

HOUSEHOLD DATA

Table A-9. Selected employment indicators

[Numbers in thousands]

Characteristic	Not seasonally adjusted			Seasonally adjusted					
	Sept. 2022	Aug. 2023	Sept. 2023	Sept. 2022	May 2023	June 2023	July 2023	Aug. 2023	Sept. 2023
AGE AND SEX									
Total, 16 years and over.....	159,003	161,427	161,669	158,850	160,721	160,994	161,262	161,484	161,570
16 to 19 years.....	5,337	6,046	5,321	5,576	5,676	5,559	5,462	5,586	5,570
16 to 17 years.....	2,115	2,362	2,134	2,100	2,240	2,177	2,083	2,098	2,119
18 to 19 years.....	3,222	3,684	3,186	3,462	3,450	3,372	3,353	3,461	3,427
20 years and over.....	153,666	155,381	156,349	153,274	155,045	155,435	155,799	155,898	156,000
20 to 24 years.....	13,666	14,787	14,569	13,752	14,816	14,741	14,559	14,606	14,676
25 years and over.....	140,000	140,593	141,780	139,503	140,314	140,612	141,160	141,194	141,293
25 to 54 years.....	102,291	103,133	103,831	101,954	103,209	103,384	103,539	103,531	103,537
25 to 34 years.....	35,451	35,810	36,008	35,349	35,814	35,755	36,168	35,974	35,940
35 to 44 years.....	34,735	35,375	35,625	34,619	35,257	35,391	35,379	35,478	35,518
45 to 54 years.....	32,105	31,948	32,199	31,986	32,138	32,238	31,992	32,080	32,079
55 years and over.....	37,709	37,461	37,949	37,550	37,105	37,228	37,620	37,663	37,756
Men, 16 years and over.....	84,687	85,838	85,745	84,532	85,410	85,547	85,492	85,493	85,633
16 to 19 years.....	2,612	2,973	2,688	2,716	2,884	2,679	2,570	2,716	2,797
16 to 17 years.....	958	1,158	1,064	962	1,043	972	943	1,009	1,060
18 to 19 years.....	1,653	1,815	1,624	1,750	1,844	1,695	1,606	1,668	1,720
20 years and over.....	82,075	82,865	83,057	81,816	82,526	82,868	82,922	82,777	82,837
20 to 24 years.....	7,003	7,530	7,248	7,040	7,509	7,541	7,435	7,369	7,310
25 years and over.....	75,072	75,335	75,809	74,703	75,088	75,233	75,462	75,297	75,466
25 to 54 years.....	54,560	55,335	55,489	54,325	55,174	55,263	55,358	55,300	55,291
25 to 34 years.....	18,926	19,198	19,175	18,829	19,145	19,130	19,338	19,215	19,114
35 to 44 years.....	18,656	19,097	19,188	18,579	18,998	19,143	19,103	19,053	19,120
45 to 54 years.....	16,979	17,040	17,126	16,917	17,031	16,990	16,917	17,032	17,057
55 years and over.....	20,512	20,000	20,319	20,378	19,914	19,971	20,104	19,997	20,175
Women, 16 years and over.....	74,316	75,589	75,924	74,318	75,311	75,448	75,769	75,991	75,936
16 to 19 years.....	2,726	3,073	2,633	2,861	2,793	2,880	2,892	2,870	2,773
16 to 17 years.....	1,157	1,204	1,071	1,138	1,196	1,205	1,140	1,089	1,059
18 to 19 years.....	1,568	1,869	1,562	1,712	1,606	1,677	1,746	1,793	1,708
20 years and over.....	71,590	72,515	73,292	71,457	72,518	72,567	72,877	73,121	73,163
20 to 24 years.....	6,663	7,257	7,321	6,712	7,307	7,201	7,125	7,237	7,366
25 years and over.....	64,928	65,258	65,971	64,801	65,226	65,378	65,697	65,897	65,827
25 to 54 years.....	47,731	47,797	48,342	47,628	48,035	48,121	48,181	48,232	48,245
25 to 34 years.....	16,525	16,611	16,832	16,519	16,669	16,625	16,830	16,759	16,826
35 to 44 years.....	16,079	16,279	16,437	16,040	16,259	16,248	16,276	16,425	16,398
45 to 54 years.....	15,127	14,908	15,073	15,069	15,107	15,248	15,075	15,048	15,022
55 years and over.....	17,197	17,461	17,629	17,172	17,191	17,258	17,516	17,665	17,582
MARITAL STATUS									
Married men, spouse present ¹	46,100	45,754	46,588	45,920	45,647	45,844	45,886	45,911	46,357
Married women, spouse present ¹	36,616	36,930	37,300	36,582	36,964	36,847	37,413	37,430	37,279
Women who maintain families ²	9,813	9,719	9,882	-	-	-	-	-	-
FULL- OR PART-TIME STATUS									
Full-time workers ³	133,027	135,445	134,560	132,575	134,477	134,859	134,274	134,189	134,167
Part-time workers ⁴	25,976	25,982	27,109	26,249	26,443	26,181	27,153	27,185	27,336
MULTIPLE JOBHOLDERS									
Total multiple jobholders.....	7,739	7,778	8,146	7,755	7,762	7,995	8,113	8,028	8,151
Percent of total employed.....	4.9	4.8	5.0	4.9	4.8	5.0	5.0	5.0	5.0
SELF-EMPLOYMENT									
Self-employed workers, incorporated.....	6,710	6,989	6,684	-	-	-	-	-	-
Self-employed workers, unincorporated.....	9,935	9,603	9,813	9,851	9,403	9,591	9,502	9,504	9,726

¹ Beginning with data for January 2020, refers to persons in both opposite-sex and same-sex married couples. Prior to January 2020, referred to persons in opposite-sex married couples only.

² Beginning with data for January 2020, refers to female householders residing with one or more family members, but not a spouse of either sex. Prior to January 2020, referred to female householders residing with one or more family members, but not an opposite-sex spouse.

³ Employed full-time workers are persons who usually work 35 hours or more per week.

⁴ Employed part-time workers are persons who usually work less than 35 hours per week.

- Data not available.

NOTE: Detail for the seasonally adjusted data shown in this table will not necessarily add to totals because of the independent seasonal adjustment of the various series. Updated population controls are introduced annually with the release of January data.

HOUSEHOLD DATA

Table A-10. Selected unemployment indicators, seasonally adjusted

Characteristic	Number of unemployed persons (in thousands)			Unemployment rates					
	Sept. 2022	Aug. 2023	Sept. 2023	Sept. 2022	May 2023	June 2023	July 2023	Aug. 2023	Sept. 2023
AGE AND SEX									
Total, 16 years and over.....	5,770	6,355	6,360	3.5	3.7	3.6	3.5	3.8	3.8
16 to 19 years.....	712	779	733	11.3	10.3	11.0	11.3	12.2	11.6
16 to 17 years.....	291	280	307	12.2	9.5	11.2	11.2	11.8	12.7
18 to 19 years.....	426	506	429	11.0	10.6	10.5	11.4	12.7	11.1
20 years and over.....	5,058	5,576	5,627	3.2	3.4	3.3	3.2	3.5	3.5
20 to 24 years.....	1,030	1,125	1,115	7.0	6.3	6.1	6.7	7.2	7.1
25 years and over.....	3,984	4,395	4,453	2.8	3.0	3.0	2.8	3.0	3.1
25 to 54 years.....	3,075	3,353	3,438	2.9	3.1	3.1	3.0	3.1	3.2
25 to 34 years.....	1,320	1,446	1,505	3.6	3.9	3.9	3.6	3.9	4.0
35 to 44 years.....	1,063	1,085	1,012	3.0	2.9	2.9	3.0	3.0	2.8
45 to 54 years.....	692	822	921	2.1	2.6	2.4	2.3	2.5	2.8
55 years and over.....	938	1,036	1,029	2.4	2.8	2.6	2.3	2.7	2.7
Men, 16 years and over.....	3,127	3,589	3,697	3.6	3.7	3.7	3.6	4.0	4.1
16 to 19 years.....	342	432	404	11.2	10.4	12.5	13.0	13.7	12.6
16 to 17 years.....	145	138	190	13.1	8.0	14.1	13.2	12.0	15.2
18 to 19 years.....	200	302	222	10.3	11.5	10.5	12.9	15.3	11.4
20 years and over.....	2,786	3,157	3,293	3.3	3.5	3.4	3.3	3.7	3.8
20 to 24 years.....	604	677	673	7.9	7.1	6.7	7.2	8.4	8.4
25 years and over.....	2,162	2,422	2,583	2.8	3.0	3.0	2.9	3.1	3.3
25 to 54 years.....	1,669	1,842	2,064	3.0	3.1	3.0	3.1	3.2	3.6
25 to 34 years.....	709	776	925	3.6	3.7	4.0	3.8	3.9	4.6
35 to 44 years.....	556	587	587	2.9	2.7	2.5	2.8	3.0	3.0
45 to 54 years.....	403	479	552	2.3	2.7	2.5	2.6	2.7	3.1
55 years and over.....	493	580	518	2.4	2.9	3.0	2.2	2.8	2.5
Women, 16 years and over.....	2,642	2,766	2,662	3.4	3.6	3.4	3.4	3.5	3.4
16 to 19 years.....	370	347	329	11.5	10.2	9.7	9.7	10.8	10.6
16 to 17 years.....	145	143	117	11.3	10.7	8.7	9.4	11.6	9.9
18 to 19 years.....	225	204	207	11.6	9.5	10.4	10.0	10.2	10.8
20 years and over.....	2,272	2,419	2,334	3.1	3.3	3.1	3.1	3.2	3.1
20 to 24 years.....	425	448	441	6.0	5.4	5.3	6.2	5.8	5.7
25 years and over.....	1,822	1,973	1,870	2.7	3.1	3.0	2.7	2.9	2.8
25 to 54 years.....	1,407	1,511	1,374	2.9	3.2	3.2	2.8	3.0	2.8
25 to 34 years.....	611	670	579	3.6	4.0	3.9	3.3	3.8	3.3
35 to 44 years.....	507	498	426	3.1	3.1	3.5	3.2	2.9	2.5
45 to 54 years.....	289	343	369	1.9	2.6	2.3	1.9	2.2	2.4
55 years and over.....	421	449	492	2.4	2.6	2.1	2.3	2.5	2.7
MARITAL STATUS									
Married men, spouse present ¹	846	942	989	1.8	2.0	1.8	1.7	2.0	2.1
Married women, spouse present ¹	712	794	821	1.9	2.3	2.2	2.0	2.1	2.2
Women who maintain families ²	488	499	415	4.7	4.6	4.8	4.5	4.9	4.0
FULL- OR PART-TIME STATUS									
Full-time workers ³	4,754	5,129	5,099	3.5	3.6	3.5	3.4	3.7	3.7
Part-time workers ⁴	1,010	1,258	1,239	3.7	4.0	4.0	4.1	4.4	4.3

¹ Beginning with data for January 2020, refers to persons in both opposite-sex and same-sex married couples. Prior to January 2020, referred to persons in opposite-sex married couples only.

² Data are not seasonally adjusted. Beginning with data for January 2020, refers to female householders residing with one or more family members, but not a spouse of either sex. Prior to January 2020, referred to female householders residing with one or more family members, but not an opposite-sex spouse.

³ Full-time workers are unemployed persons who have expressed a desire to work full time (35 hours or more per week) or are on layoff from full-time jobs.

⁴ Part-time workers are unemployed persons who have expressed a desire to work part time (less than 35 hours per week) or are on layoff from part-time jobs.

NOTE: Detail for the seasonally adjusted data shown in this table will not necessarily add to totals because of the independent seasonal adjustment of the various series. Updated population controls are introduced annually with the release of January data.

HOUSEHOLD DATA

Table A-11. Unemployed persons by reason for unemployment

[Numbers in thousands]

Reason	Not seasonally adjusted			Seasonally adjusted					
	Sept. 2022	Aug. 2023	Sept. 2023	Sept. 2022	May 2023	June 2023	July 2023	Aug. 2023	Sept. 2023
NUMBER OF UNEMPLOYED									
Job losers and persons who completed temporary jobs.....	2,176	3,053	2,522	2,530	2,960	2,900	2,620	2,914	2,858
On temporary layoff.....	463	870	478	772	767	842	667	789	781
Not on temporary layoff.....	1,713	2,183	2,044	1,758	2,193	2,058	1,953	2,125	2,077
Permanent job losers.....	1,161	1,600	1,409	1,202	1,588	1,493	1,372	1,538	1,441
Persons who completed temporary jobs....	552	583	634	555	605	565	581	587	636
Job leavers.....	976	876	859	904	765	794	852	801	797
Reentrants.....	1,867	2,014	2,114	1,834	1,821	1,745	1,853	1,930	2,043
New entrants.....	441	680	553	460	508	558	503	597	568
PERCENT DISTRIBUTION									
Job losers and persons who completed temporary jobs.....	39.9	46.1	41.7	44.2	48.9	48.4	44.9	46.7	45.6
On temporary layoff.....	8.5	13.1	7.9	13.5	12.7	14.0	11.4	12.6	12.5
Not on temporary layoff.....	31.4	33.0	33.8	30.7	36.2	34.3	33.5	34.0	33.2
Job leavers.....	17.9	13.2	14.2	15.8	12.6	13.2	14.6	12.8	12.7
Reentrants.....	34.2	30.4	34.9	32.0	30.1	29.1	31.8	30.9	32.6
New entrants.....	8.1	10.3	9.1	8.0	8.4	9.3	8.6	9.6	9.1
UNEMPLOYED AS A PERCENT OF THE CIVILIAN LABOR FORCE									
Job losers and persons who completed temporary jobs.....	1.3	1.8	1.5	1.5	1.8	1.7	1.6	1.7	1.7
Job leavers.....	0.6	0.5	0.5	0.5	0.5	0.5	0.5	0.5	0.5
Reentrants.....	1.1	1.2	1.3	1.1	1.1	1.0	1.1	1.2	1.2
New entrants.....	0.3	0.4	0.3	0.3	0.3	0.3	0.3	0.4	0.3

NOTE: Detail for the seasonally adjusted data shown in this table will not necessarily add to total unemployed in table A-1 because of the independent seasonal adjustment of the various series. Updated population controls are introduced annually with the release of January data.

HOUSEHOLD DATA

Table A-12. Unemployed persons by duration of unemployment

[Numbers in thousands]

Duration	Not seasonally adjusted			Seasonally adjusted					
	Sept. 2022	Aug. 2023	Sept. 2023	Sept. 2022	May 2023	June 2023	July 2023	Aug. 2023	Sept. 2023
NUMBER OF UNEMPLOYED									
Less than 5 weeks.....	2,127	2,173	2,023	2,158	2,083	2,068	2,004	2,221	2,051
5 to 14 weeks.....	1,474	2,280	1,865	1,643	1,865	1,889	1,698	1,877	2,044
15 weeks and over.....	1,859	2,171	2,161	1,990	2,046	2,021	2,161	2,298	2,288
15 to 26 weeks.....	751	796	928	901	858	917	997	1,002	1,072
27 weeks and over.....	1,109	1,374	1,233	1,089	1,188	1,105	1,164	1,296	1,216
Average (mean) duration, in weeks.....	20.7	20.2	21.9	20.3	21.2	20.7	20.6	20.4	21.5
Median duration, in weeks.....	8.8	8.8	9.7	8.5	8.6	8.7	8.7	8.7	9.2
PERCENT DISTRIBUTION									
Less than 5 weeks.....	39.0	32.8	33.4	37.3	34.8	34.6	34.2	34.7	32.1
5 to 14 weeks.....	27.0	34.4	30.8	28.4	31.1	31.6	29.0	29.3	32.0
15 weeks and over.....	34.1	32.8	35.7	34.4	34.1	33.8	36.9	35.9	35.8
15 to 26 weeks.....	13.7	12.0	15.3	15.6	14.3	15.3	17.0	15.7	16.8
27 weeks and over.....	20.3	20.7	20.4	18.8	19.8	18.5	19.9	20.3	19.1

NOTE: Detail for the seasonally adjusted data shown in this table will not necessarily add to total unemployed in table A-1 because of the independent seasonal adjustment of the various series. Updated population controls are introduced annually with the release of January data.

HOUSEHOLD DATA

Table A-13. Employed and unemployed persons by occupation, not seasonally adjusted

[Numbers in thousands]

Occupation	Employed		Unemployed		Unemployment rates	
	Sept. 2022	Sept. 2023	Sept. 2022	Sept. 2023	Sept. 2022	Sept. 2023
Total, 16 years and over ¹	159,003	161,669	5,460	6,049	3.3	3.6
Management, professional, and related occupations.....	69,056	70,417	1,291	1,466	1.8	2.0
Management, business, and financial operations occupations.....	29,780	30,768	537	655	1.8	2.1
Professional and related occupations.....	39,276	39,649	754	811	1.9	2.0
Service occupations.....	25,738	26,659	1,178	1,134	4.4	4.1
Sales and office occupations.....	29,602	30,393	1,154	1,270	3.8	4.0
Sales and related occupations.....	13,878	14,353	553	612	3.8	4.1
Office and administrative support occupations.....	15,725	16,040	601	658	3.7	3.9
Natural resources, construction, and maintenance occupations.....	14,518	14,276	477	566	3.2	3.8
Farming, fishing, and forestry occupations.....	934	1,058	42	70	4.3	6.2
Construction and extraction occupations.....	8,628	8,248	343	416	3.8	4.8
Installation, maintenance, and repair occupations.....	4,956	4,970	92	80	1.8	1.6
Production, transportation, and material moving occupations.....	20,088	19,924	904	1,038	4.3	5.0
Production occupations.....	8,222	8,163	304	277	3.6	3.3
Transportation and material moving occupations.....	11,866	11,761	600	761	4.8	6.1

¹ Persons with no previous work experience and persons whose last job was in the U.S. Armed Forces are included in the unemployed total.

NOTE: Updated population controls are introduced annually with the release of January data. Effective with January 2020 data, occupations reflect the introduction of the 2018 Census occupational classification system into the Current Population Survey, or household survey. This classification system is derived from the 2018 Standard Occupational Classification (SOC). No historical data have been revised. Data for 2020 are not strictly comparable with earlier years.

HOUSEHOLD DATA

Table A-14. Unemployed persons by industry and class of worker, not seasonally adjusted

Industry and class of worker	Number of unemployed persons (in thousands)		Unemployment rates	
	Sept. 2022	Sept. 2023	Sept. 2022	Sept. 2023
Total, 16 years and over ¹	5,460	6,049	3.3	3.6
Nonagricultural private wage and salary workers.....	4,297	4,762	3.3	3.6
Mining, quarrying, and oil and gas extraction.....	16	16	2.5	2.6
Construction.....	346	392	3.4	3.8
Manufacturing.....	416	495	2.8	3.2
Durable goods.....	236	278	2.5	2.8
Nondurable goods.....	181	217	3.3	3.9
Wholesale and retail trade.....	768	889	4.0	4.5
Transportation and utilities.....	337	379	4.0	4.7
Information.....	85	117	3.2	4.3
Financial activities.....	136	190	1.3	1.9
Professional and business services.....	544	699	2.9	3.6
Education and health services.....	659	638	2.6	2.4
Leisure and hospitality.....	802	734	5.9	5.4
Other services.....	189	211	2.8	3.1
Agriculture and related private wage and salary workers.....	46	62	3.2	3.9
Government workers.....	388	393	1.8	1.8
Self-employed workers, unincorporated, and unpaid family workers.....	288	278	2.8	2.7

¹ Persons with no previous work experience and persons whose last job was in the U.S. Armed Forces are included in the unemployed total.

NOTE: Updated population controls are introduced annually with the release of January data. Effective with January 2020 data, industries reflect the introduction of the 2017 Census industry classification system into the Current Population Survey. This industry classification system is derived from the 2017 North American Industry Classification System (NAICS). No historical data have been revised.

HOUSEHOLD DATA

Table A-15. Alternative measures of labor underutilization

[Percent]

Measure	Not seasonally adjusted			Seasonally adjusted					
	Sept. 2022	Aug. 2023	Sept. 2023	Sept. 2022	May 2023	June 2023	July 2023	Aug. 2023	Sept. 2023
U-1 Persons unemployed 15 weeks or longer, as a percent of the civilian labor force.....	1.1	1.3	1.3	1.2	1.2	1.2	1.3	1.4	1.4
U-2 Job losers and persons who completed temporary jobs, as a percent of the civilian labor force.....	1.3	1.8	1.5	1.5	1.8	1.7	1.6	1.7	1.7
U-3 Total unemployed, as a percent of the civilian labor force (official unemployment rate).....	3.3	3.9	3.6	3.5	3.7	3.6	3.5	3.8	3.8
U-4 Total unemployed plus discouraged workers, as a percent of the civilian labor force plus discouraged workers.....	3.6	4.1	3.8	3.8	3.9	3.7	3.7	4.0	4.0
U-5 Total unemployed, plus discouraged workers, plus all other persons marginally attached to the labor force, as a percent of the civilian labor force plus all persons marginally attached to the labor force.....	4.3	4.8	4.5	4.4	4.5	4.4	4.3	4.6	4.6
U-6 Total unemployed, plus all persons marginally attached to the labor force, plus total employed part time for economic reasons, as a percent of the civilian labor force plus all persons marginally attached to the labor force.....	6.4	7.2	6.7	6.7	6.7	6.9	6.7	7.1	7.0

NOTE: Persons marginally attached to the labor force are those who currently are neither working nor looking for work but indicate that they want and are available for a job and have looked for work sometime in the past 12 months. Discouraged workers, a subset of the marginally attached, have given a job-market related reason for not currently looking for work. Persons employed part time for economic reasons are those who want and are available for full-time work but have had to settle for a part-time schedule. Updated population controls are introduced annually with the release of January data.

HOUSEHOLD DATA

Table A-16. Persons not in the labor force and multiple jobholders by sex, not seasonally adjusted

[Numbers in thousands]

Category	Total		Men		Women	
	Sept. 2022	Sept. 2023	Sept. 2022	Sept. 2023	Sept. 2022	Sept. 2023
NOT IN THE LABOR FORCE						
Total not in the labor force.....	99,893	99,710	41,278	41,553	58,615	58,156
Persons who currently want a job.....	5,650	5,299	2,627	2,364	3,024	2,935
Marginally attached to the labor force ¹	1,619	1,492	817	756	802	736
Discouraged workers ²	462	351	286	189	176	162
Other persons marginally attached to the labor force ³ ..	1,157	1,141	531	567	626	575
MULTIPLE JOBHOLDERS						
Total multiple jobholders ⁴	7,739	8,146	3,753	3,959	3,986	4,186
Percent of total employed.....	4.9	5.0	4.4	4.6	5.4	5.5
Primary job full time, secondary job part time.....	4,307	4,730	2,300	2,469	2,007	2,262
Primary and secondary jobs both part time.....	1,925	1,888	664	659	1,261	1,229
Primary and secondary jobs both full time.....	420	447	251	272	169	175
Hours vary on primary or secondary job.....	1,042	1,008	518	520	525	489

¹ Data refer to persons who want a job, have searched for work during the prior 12 months, and were available to take a job during the reference week, but had not looked for work in the past 4 weeks.

² Includes those who did not actively look for work in the prior 4 weeks for reasons such as thinks no work available, could not find work, lacks schooling or training, employer thinks too young or old, and other types of discrimination.

³ Includes those who did not actively look for work in the prior 4 weeks for such reasons as school or family responsibilities, ill health, and transportation problems, as well as a number for whom reason for nonparticipation was not determined.

⁴ Includes a small number of persons who work part time on their primary job and full time on their secondary job(s), not shown separately.

NOTE: Updated population controls are introduced annually with the release of January data.

ESTABLISHMENT DATA

Table B-1. Employees on nonfarm payrolls by industry sector and selected industry detail

[In thousands]

Industry	Not seasonally adjusted				Seasonally adjusted				Change from: Aug.2023 - Sept.2023 ^P
	Sept. 2022	July 2023	Aug. 2023 ^P	Sept. 2023 ^P	Sept. 2022	July 2023	Aug. 2023 ^P	Sept. 2023 ^P	
Total nonfarm.....	153,809	156,022	156,416	157,001	153,682	156,311	156,538	156,874	336
Total private.....	131,486	134,461	134,447	134,048	131,445	133,572	133,749	134,012	263
Goods-producing.....	21,493	21,875	21,923	21,836	21,327	21,594	21,641	21,670	29
Mining and logging.....	619	652	652	649	613	644	644	645	1
Logging.....	46.4	48.5	48.0	48.2	45.9	47.3	46.5	47.5	1.0
Mining, quarrying, and oil and gas extraction..	572.1	603.7	603.8	601.1	567.3	596.8	597.3	597.4	0.1
Oil and gas extraction.....	116.1	119.2	120.0	119.4	115.8	118.3	118.8	119.0	0.2
Mining (except oil and gas).....	186.3	191.4	190.6	189.0	183.7	187.6	187.1	186.7	-0.4
Coal mining.....	40.8	41.9	41.7	41.4	40.8	41.8	41.7	41.5	-0.2
Metal ore mining.....	43.1	44.3	44.2	43.7	43.2	43.7	43.9	43.8	-0.1
Nonmetallic mineral mining and quarrying.....	102.4	105.2	104.7	103.9	99.7	102.0	101.5	101.4	-0.1
Support activities for mining.....	269.7	293.1	293.2	292.7	267.8	290.9	291.4	291.7	0.3
Construction.....	7,956	8,185	8,215	8,173	7,797	7,967	8,003	8,014	11
Construction of buildings.....	1,773.8	1,834.7	1,838.1	1,828.0	1,754.3	1,796.2	1,804.3	1,810.8	6.5
Residential building construction.....	930.8	942.1	942.1	939.2	924.6	922.6	926.4	933.1	6.7
Nonresidential building construction.....	843.0	892.6	896.0	888.8	829.7	873.6	877.9	877.7	-0.2
Heavy and civil engineering construction.....	1,125.7	1,172.1	1,178.5	1,180.4	1,073.7	1,120.2	1,125.0	1,127.2	2.2
Specialty trade contractors.....	5,056.3	5,178.3	5,198.4	5,164.1	4,968.9	5,050.8	5,073.2	5,075.8	2.6
Residential specialty trade contractors.....	2,348.3	2,415.3	2,408.6	2,396.4	2,316.7	2,354.5	2,357.6	2,363.5	5.9
Nonresidential specialty trade contractors...	2,708.0	2,763.0	2,789.8	2,767.7	2,652.2	2,696.3	2,715.6	2,712.3	-3.3
Manufacturing.....	12,918	13,038	13,056	13,014	12,917	12,983	12,994	13,011	17
Durable goods.....	8,022	8,155	8,182	8,156	8,032	8,137	8,150	8,163	13
Wood product manufacturing.....	429.6	422.2	425.6	424.7	430.9	420.6	424.1	425.5	1.4
Nonmetallic mineral product manufacturing.....	427.1	437.8	437.9	435.8	422.8	432.1	432.0	432.8	0.8
Primary metal manufacturing.....	364.7	372.0	372.0	369.8	366.8	371.7	371.9	371.4	-0.5
Fabricated metal product manufacturing...	1,437.4	1,457.5	1,457.3	1,453.7	1,440.5	1,450.7	1,455.3	1,456.3	1.0
Machinery manufacturing.....	1,106.9	1,139.6	1,138.4	1,131.1	1,110.2	1,131.1	1,134.3	1,135.1	0.8
Computer and electronic product manufacturing.....	1,092.0	1,113.7	1,109.2	1,098.3	1,094.2	1,105.9	1,103.3	1,100.9	-2.4
Computer and peripheral equipment manufacturing.....	164.6	169.3	168.8	167.3	164.8	168.3	168.1	167.6	-0.5
Communications equipment manufacturing.....	83.5	86.6	85.9	86.2	84.1	85.8	85.9	86.4	0.5
Semiconductor and other electronic component manufacturing.....	389.6	390.6	388.3	382.8	390.8	386.8	385.9	384.3	-1.6
Navigational, measuring, electromedical, and control instruments manufacturing.....	422.1	433.2	432.6	428.8	422.5	431.4	430.3	429.4	-0.9
Manufacturing and reproducing magnetic and optical media and audio and video equipment manufacturing.....	32.2	34.0	33.6	33.2	32.0	33.5	33.1	33.2	0.1
Electrical equipment, appliance, and component manufacturing.....	405.4	406.7	407.3	407.8	406.4	404.4	406.8	407.8	1.0
Transportation equipment manufacturing ¹ ...	1,751.4	1,808.2	1,842.2	1,848.9	1,747.7	1,827.8	1,833.1	1,843.4	10.3
Motor vehicles and parts ²	1,032.9	1,051.2	1,075.3	1,083.9	1,029.5	1,073.2	1,070.6	1,079.5	8.9
Furniture and related product manufacturing.....	377.0	362.0	360.7	356.7	381.0	361.0	360.3	359.2	-1.1
Miscellaneous manufacturing.....	630.9	635.3	631.7	628.8	631.8	631.2	629.2	630.3	1.1
Nondurable goods.....	4,896	4,883	4,874	4,858	4,885	4,846	4,844	4,848	4
Food manufacturing.....	1,719.4	1,728.7	1,733.2	1,726.7	1,707.6	1,713.9	1,717.2	1,719.1	1.9
Textile mills.....	98.9	94.3	93.6	93.2	98.6	93.8	93.2	93.0	-0.2
Textile product mills.....	102.7	99.1	99.0	98.6	102.8	99.0	99.5	99.0	-0.5
Apparel manufacturing.....	92.5	91.3	91.5	90.9	92.7	91.3	91.6	91.3	-0.3
Paper manufacturing.....	361.1	349.3	345.9	348.5	362.2	349.7	347.3	348.9	1.6
Printing and related support activities.....	379.4	377.0	375.9	371.0	379.5	375.8	374.9	372.2	-2.7
Petroleum and coal products manufacturing.....	106.2	108.5	108.2	106.5	104.8	105.5	105.8	105.3	-0.5
Chemical manufacturing.....	910.3	919.3	916.1	913.3	914.3	914.5	914.9	917.5	2.6
Plastics and rubber products manufacturing.....	760.4	745.3	740.8	742.9	765.7	743.6	740.0	744.5	4.5

See footnotes at end of table.

ESTABLISHMENT DATA

Table B-1. Employees on nonfarm payrolls by industry sector and selected industry detail

— Continued

[In thousands]

Industry	Not seasonally adjusted				Seasonally adjusted				Change from: Aug.2023 - Sept.2023 ^P
	Sept. 2022	July 2023	Aug. 2023 ^P	Sept. 2023 ^P	Sept. 2022	July 2023	Aug. 2023 ^P	Sept. 2023 ^P	
Nondurable goods - Continued									
Beverage, tobacco, and leather and allied product manufacturing.....	365.3	370.4	369.9	365.9	356.9	358.7	359.4	357.4	-2.0
Private service-providing.....	109,993	112,586	112,524	112,212	110,118	111,978	112,108	112,342	234
Trade, transportation, and utilities.....	28,584	28,778	28,714	28,720	28,784	28,870	28,853	28,898	45
Wholesale trade.....	5,998.3	6,098.8	6,080.4	6,071.0	6,003.8	6,062.8	6,062.8	6,074.5	11.7
Merchant wholesalers, durable goods.....	3,304.5	3,366.4	3,358.7	3,354.2	3,310.1	3,348.9	3,351.5	3,358.7	7.2
Merchant wholesalers, nondurable goods....	2,170.0	2,203.8	2,190.4	2,190.5	2,169.7	2,187.6	2,182.1	2,189.6	7.5
Wholesale trade agents and brokers.....	523.8	528.6	531.3	526.3	524.0	526.3	529.2	526.2	-3.0
Retail trade.....	15,358.8	15,546.6	15,505.8	15,422.7	15,502.3	15,538.0	15,538.4	15,558.1	19.7
Motor vehicle and parts dealers.....	2,017.4	2,050.9	2,055.9	2,059.7	2,013.5	2,040.2	2,044.8	2,054.2	9.4
Automobile dealers.....	1,253.5	1,260.6	1,265.8	1,269.3	1,253.0	1,259.4	1,261.8	1,267.1	5.3
Other motor vehicle dealers.....	178.7	185.6	183.5	176.8	177.1	176.9	176.5	175.5	-1.0
Automotive parts, accessories, and tire retailers.....	585.2	604.7	606.6	613.6	583.4	604.0	606.4	611.6	5.2
Building material and garden equipment and supplies dealers.....	1,396.7	1,405.0	1,379.9	1,356.6	1,419.4	1,372.1	1,374.5	1,375.0	0.5
Food and beverage retailers.....	3,196.3	3,266.4	3,256.8	3,228.3	3,211.7	3,247.5	3,248.4	3,249.1	0.7
Furniture, home furnishings, electronics, and appliance retailers.....	891.1	837.9	834.7	836.8	902.4	849.9	846.0	843.3	-2.7
Furniture and home furnishings retailers...	447.6	429.0	427.8	429.6	454.4	435.2	434.8	435.5	0.7
Electronics and appliance retailers.....	443.5	408.9	406.9	407.2	453.2	416.0	412.9	411.4	-1.5
General merchandise retailers.....	3,063.8	3,137.6	3,125.3	3,128.3	3,123.7	3,181.2	3,176.9	3,181.3	4.4
Department stores.....	923.6	931.6	929.0	930.6	954.0	958.7	955.4	958.0	2.6
Warehouse clubs, supercenters, and other general merchandise retailers....	2,140.2	2,206.0	2,196.3	2,197.7	2,169.7	2,222.5	2,221.5	2,223.3	1.8
Health and personal care retailers.....	1,095.4	1,090.3	1,085.8	1,088.7	1,106.2	1,104.0	1,098.7	1,099.7	1.0
Gasoline stations and fuel dealers.....	1,048.0	1,086.4	1,087.7	1,083.2	1,044.2	1,073.7	1,073.8	1,079.2	5.4
Clothing, clothing accessories, shoe, and jewelry retailers.....	1,126.9	1,131.3	1,140.5	1,116.2	1,145.1	1,135.3	1,139.5	1,137.6	-1.9
Sporting goods, hobby, musical instrument, book, and miscellaneous retailers.....	1,523.2	1,540.8	1,539.2	1,524.9	1,536.1	1,534.1	1,535.8	1,538.7	2.9
Transportation and warehousing.....	6,673.1	6,572.0	6,567.8	6,664.4	6,721.8	6,712.7	6,693.8	6,702.4	8.6
Air transportation.....	514.1	548.3	550.2	553.6	513.4	544.0	547.3	552.2	4.9
Rail transportation.....	147.3	150.5	150.5	150.5	147.1	150.3	150.3	150.4	0.1
Water transportation.....	67.2	71.2	71.5	70.4	65.9	67.5	68.8	68.7	-0.1
Truck transportation.....	1,607.3	1,619.9	1,589.0	1,587.7	1,598.3	1,600.9	1,575.7	1,584.5	8.8
Transit and ground passenger transportation.....	434.3	378.7	381.4	448.5	416.3	434.7	438.9	433.8	-5.1
Pipeline transportation.....	47.9	47.8	48.2	48.4	48.2	47.4	48.1	48.5	0.4
Scenic and sightseeing transportation.....	37.5	44.5	44.3	42.3	33.3	36.6	37.2	37.6	0.4
Support activities for transportation.....	801.4	812.7	817.3	816.8	801.9	816.1	816.8	818.6	1.8
Couriers and messengers.....	1,083.8	1,042.3	1,060.5	1,079.9	1,148.2	1,121.8	1,122.8	1,124.0	1.2
Warehousing and storage.....	1,932.3	1,856.1	1,854.9	1,866.3	1,949.2	1,893.4	1,887.9	1,884.1	-3.8
Utilities.....	553.7	560.2	559.8	562.2	555.6	556.0	558.4	563.2	4.8
Information.....	3,108	3,084	3,055	3,034	3,113	3,062	3,041	3,036	-5
Motion picture and sound recording industries.....	457.2	468.1	447.0	422.3	458.0	452.6	433.8	427.2	-6.6
Publishing industries.....	953.2	930.2	931.8	939.4	955.3	927.1	929.9	936.2	6.3
Broadcasting and content providers.....	357.0	351.3	346.1	345.3	356.9	352.4	346.6	346.4	-0.2
Telecommunications.....	665.3	644.2	639.9	640.7	666.1	642.4	640.5	640.3	-0.2
Computing infrastructure providers, data processing, web hosting, and related services.....	479.2	498.6	499.5	496.1	479.8	497.0	500.0	496.0	-4.0
Web search portals, libraries, archives, and other information services.....	196.5	191.8	191.1	189.8	197.3	190.3	189.7	190.0	0.3
Financial activities.....	9,066	9,222	9,210	9,152	9,068	9,152	9,154	9,157	3
Finance and insurance.....	6,663.0	6,751.7	6,741.5	6,700.7	6,681.4	6,722.0	6,720.9	6,717.8	-3.1
Monetary authorities-central bank.....	21.5	22.4	22.1	22.0	21.5	22.1	22.0	22.0	0.0
Credit intermediation and related activities.....	2,680.3	2,675.7	2,667.2	2,643.1	2,688.2	2,665.2	2,658.4	2,650.9	-7.5

See footnotes at end of table.

ESTABLISHMENT DATA

Table B-1. Employees on nonfarm payrolls by industry sector and selected industry detail

— Continued

[In thousands]

Industry	Not seasonally adjusted				Seasonally adjusted				Change from: Aug.2023 - Sept.2023 ^P
	Sept. 2022	July 2023	Aug. 2023 ^P	Sept. 2023 ^P	Sept. 2022	July 2023	Aug. 2023 ^P	Sept. 2023 ^P	
Credit intermediation and related - Continued									
Depository credit intermediation ¹	1,763.7	1,793.5	1,787.6	1,772.5	1,770.7	1,784.9	1,782.5	1,780.4	-2.1
Commercial banking.....	1,363.8	1,379.1	1,374.9	1,361.9	1,369.9	1,372.2	1,370.6	1,368.7	-1.9
Nondepository credit intermediation.....	589.3	570.6	566.4	561.6	589.2	568.5	564.2	561.3	-2.9
Activities related to credit intermediation...	327.3	311.6	313.2	309.0	328.3	311.9	311.7	309.2	-2.5
Securities, commodity contracts, funds, trusts, and other financial vehicles, investments, and related activities.....	1,054.8	1,099.0	1,098.9	1,084.9	1,058.6	1,085.6	1,088.3	1,088.8	0.5
Insurance carriers and related activities.....	2,906.4	2,954.6	2,953.3	2,950.7	2,913.1	2,949.1	2,952.2	2,956.1	3.9
Real estate and rental and leasing.....	2,402.6	2,470.5	2,468.4	2,451.7	2,387.0	2,430.2	2,433.4	2,439.1	5.7
Real estate.....	1,835.6	1,869.0	1,868.9	1,857.6	1,830.3	1,850.6	1,852.8	1,855.3	2.5
Rental and leasing services.....	544.5	578.8	576.7	571.5	534.1	557.2	558.1	561.1	3.0
Lessors of nonfinancial intangible assets (except copyrighted works).....	22.5	22.7	22.8	22.6	22.6	22.4	22.5	22.7	0.2
Professional and business services.....	22,806	23,052	23,087	23,073	22,755	22,987	22,998	23,019	21
Professional, scientific, and technical services.....	10,538.3	10,952.5	10,925.4	10,867.8	10,622.1	10,910.9	10,924.8	10,953.8	29.0
Legal services.....	1,169.0	1,192.8	1,175.9	1,176.2	1,175.5	1,181.5	1,177.6	1,182.7	5.1
Accounting, tax preparation, bookkeeping, and payroll services.....	1,073.1	1,129.7	1,118.0	1,115.8	1,128.8	1,163.3	1,165.8	1,168.9	3.1
Architectural, engineering, and related services.....	1,633.2	1,708.9	1,707.8	1,691.1	1,627.6	1,683.3	1,686.2	1,687.4	1.2
Specialized design services.....	153.9	160.3	161.3	159.4	154.3	159.9	160.7	160.3	-0.4
Computer systems design and related services.....	2,460.0	2,524.3	2,528.8	2,500.7	2,476.4	2,513.0	2,517.2	2,516.5	-0.7
Management, scientific, and technical consulting services.....	1,801.7	1,887.3	1,884.7	1,881.6	1,807.7	1,883.7	1,884.4	1,891.8	7.4
Scientific research and development services.....	902.8	953.8	953.3	943.7	906.7	938.1	942.9	947.0	4.1
Advertising, public relations, and related services.....	492.5	500.2	500.7	501.6	494.0	497.7	499.1	502.1	3.0
Other professional, scientific, and technical services.....	852.1	895.2	894.9	897.7	851.1	890.4	890.8	897.1	6.3
Management of companies and enterprises. . .	2,497.4	2,535.8	2,537.3	2,527.1	2,500.6	2,519.2	2,526.8	2,530.1	3.3
Administrative and support and waste management and remediation services. . . .	9,769.8	9,563.7	9,624.0	9,678.0	9,632.2	9,557.1	9,546.2	9,534.8	-11.4
Administrative and support services.....	9,283.6	9,061.8	9,120.7	9,177.3	9,149.3	9,060.9	9,049.1	9,037.6	-11.5
Office administrative services.....	605.9	626.8	627.4	632.3	603.7	621.9	622.8	630.0	7.2
Facilities support services.....	158.5	165.5	167.1	162.1	158.1	163.8	164.3	162.1	-2.2
Employment services ¹	3,964.2	3,617.1	3,681.0	3,776.3	3,910.5	3,736.1	3,723.1	3,708.4	-14.7
Temporary help services.....	3,172.0	2,856.3	2,906.2	2,996.4	3,131.2	2,960.9	2,947.6	2,943.4	-4.2
Business support services.....	779.1	745.5	741.3	741.3	785.5	757.0	751.0	747.2	-3.8
Travel arrangement and reservation services.....	174.6	185.9	186.6	187.0	173.1	183.2	184.1	185.6	1.5
Investigation and security services.....	969.1	978.7	983.0	978.1	966.3	979.8	980.5	976.9	-3.6
Services to buildings and dwellings.....	2,288.2	2,398.5	2,390.8	2,353.2	2,215.0	2,278.0	2,283.9	2,286.4	2.5
Other support services.....	344.0	343.8	343.5	347.0	337.0	341.0	339.5	341.0	1.5
Waste management and remediation services.....	486.2	501.9	503.3	500.7	482.9	496.2	497.1	497.2	0.1
Private education and health services.....	24,539	25,120	25,242	25,545	24,576	25,420	25,517	25,587	70
Private educational services.....	3,839.6	3,647.3	3,667.8	3,932.9	3,835.4	3,933.6	3,936.0	3,940.3	4.3
Health care and social assistance.....	20,699.5	21,472.5	21,574.5	21,612.2	20,740.5	21,486.4	21,580.5	21,646.4	65.9
Health care ³	16,420.2	16,954.7	17,025.1	17,052.4	16,429.3	16,947.2	17,014.2	17,055.1	40.9
Ambulatory health care services.....	8,160.7	8,431.5	8,467.4	8,483.9	8,180.0	8,439.6	8,476.2	8,500.5	24.3
Offices of physicians.....	2,821.6	2,906.5	2,918.0	2,925.1	2,827.2	2,906.7	2,921.2	2,928.6	7.4
Offices of dentists.....	1,012.5	1,042.6	1,042.1	1,039.9	1,017.0	1,042.2	1,040.9	1,043.5	2.6
Offices of other health practitioners.....	1,094.0	1,136.9	1,144.2	1,142.8	1,099.5	1,137.8	1,143.4	1,147.1	3.7
Outpatient care centers.....	1,040.8	1,060.2	1,063.5	1,066.3	1,042.1	1,061.5	1,065.2	1,068.1	2.9
Medical and diagnostic laboratories. . .	319.4	323.8	325.9	324.1	320.5	324.2	325.6	325.7	0.1
Home health care services.....	1,545.7	1,624.5	1,632.7	1,641.1	1,547.7	1,627.7	1,637.3	1,643.7	6.4
Other ambulatory health care services.....	326.7	337.0	341.0	344.6	326.1	339.5	342.6	343.7	1.1
Hospitals.....	5,215.5	5,338.5	5,358.7	5,367.9	5,208.7	5,335.8	5,349.9	5,358.3	8.4

See footnotes at end of table.

ESTABLISHMENT DATA

Table B-1. Employees on nonfarm payrolls by industry sector and selected industry detail

— Continued

[In thousands]

Industry	Not seasonally adjusted				Seasonally adjusted				Change from: Aug.2023 - Sept.2023 ^P
	Sept. 2022	July 2023	Aug. 2023 ^P	Sept. 2023 ^P	Sept. 2022	July 2023	Aug. 2023 ^P	Sept. 2023 ^P	
Health care - Continued									
Nursing and residential care facilities.....	3,044.0	3,184.7	3,199.0	3,200.6	3,040.6	3,171.8	3,188.1	3,196.3	8.2
Skilled nursing care facilities.....	1,365.3	1,425.4	1,434.7	1,437.0	1,362.1	1,419.6	1,430.2	1,432.6	2.4
Residential intellectual and developmental disability, mental health, and substance abuse facilities.....	616.6	639.5	641.4	644.1	616.6	637.2	639.7	643.3	3.6
Continuing care retirement communities and assisted living facilities for the elderly.....	909.5	962.6	965.6	962.3	909.2	958.6	961.3	963.0	1.7
Other residential care facilities.....	152.6	157.2	157.3	157.2	152.7	156.4	156.9	157.3	0.4
Social assistance.....	4,279.3	4,517.8	4,549.4	4,559.8	4,311.2	4,539.2	4,566.3	4,591.3	25.0
Individual and family services.....	2,847.2	3,044.6	3,057.5	3,056.5	2,868.6	3,035.7	3,057.6	3,076.8	19.2
Community food and housing, and emergency and other relief services....	201.1	217.6	217.6	217.6	203.4	218.5	219.1	220.0	0.9
Vocational rehabilitation services.....	269.1	283.1	282.7	283.2	269.5	280.0	280.3	284.1	3.8
Child care services.....	961.9	972.5	991.6	1,002.5	969.7	1,005.0	1,009.3	1,010.4	1.1
Leisure and hospitality.....	16,157	17,388	17,288	16,822	16,074	16,621	16,665	16,761	96
Arts, entertainment, and recreation.....	2,397.0	2,795.4	2,737.4	2,541.9	2,348.5	2,460.2	2,477.8	2,497.1	19.3
Performing arts, spectator sports, and related industries.....	546.7	564.7	571.5	583.1	522.6	534.6	542.8	551.5	8.7
Museums, historical sites, and similar institutions.....	164.1	187.6	183.9	177.6	162.0	172.3	173.8	175.7	1.9
Amusement, gambling, and recreation industries.....	1,686.2	2,043.1	1,982.0	1,781.2	1,663.9	1,753.3	1,761.2	1,769.9	8.7
Accommodation and food services.....	13,759.6	14,592.7	14,550.1	14,280.1	13,725.5	14,161.2	14,187.6	14,263.9	76.3
Accommodation.....	1,819.3	2,016.7	1,992.6	1,909.4	1,800.4	1,867.9	1,879.9	1,895.5	15.6
Food services and drinking places.....	11,940.3	12,576.0	12,557.5	12,370.7	11,925.1	12,293.3	12,307.7	12,368.4	60.7
Other services.....	5,733	5,942	5,928	5,866	5,748	5,866	5,880	5,884	4
Repair and maintenance.....	1,403.7	1,463.9	1,460.3	1,456.2	1,405.5	1,452.3	1,453.3	1,457.4	4.1
Personal and laundry services.....	1,495.6	1,544.7	1,549.5	1,545.7	1,503.1	1,536.7	1,545.3	1,553.0	7.7
Religious, grantmaking, civic, professional, and similar organizations.....	2,833.8	2,932.9	2,918.2	2,863.6	2,838.9	2,877.3	2,881.5	2,873.1	-8.4
Government.....	22,323	21,561	21,969	22,953	22,237	22,739	22,789	22,862	73
Federal.....	2,875	2,946	2,954	2,963	2,867	2,935	2,946	2,952	6
Federal, except U.S. Postal Service.....	2,279.9	2,341.1	2,351.1	2,360.2	2,267.3	2,329.4	2,338.0	2,344.7	6.7
U.S. Postal Service.....	594.8	605.3	602.4	602.5	599.5	605.5	608.4	606.8	-1.6
State government.....	5,198	4,924	5,013	5,396	5,115	5,243	5,267	5,296	29
State government education.....	2,534.8	2,197.6	2,273.9	2,666.1	2,458.0	2,532.8	2,545.7	2,574.8	29.1
State government, excluding education.....	2,662.9	2,726.0	2,738.8	2,729.5	2,657.4	2,710.0	2,721.3	2,721.5	0.2
Local government.....	14,250	13,691	14,002	14,594	14,255	14,561	14,576	14,614	38
Local government education.....	7,806.8	6,841.4	7,200.8	7,954.3	7,811.4	7,944.9	7,956.1	7,966.9	10.8
Local government, excluding education.....	6,443.3	6,849.5	6,801.5	6,640.1	6,443.8	6,616.2	6,620.2	6,646.8	26.6

¹ Includes other industries, not shown separately.

² Includes motor vehicle manufacturing, motor vehicle body and trailer manufacturing, and motor vehicle parts manufacturing.

³ Includes ambulatory health care services, hospitals, and nursing and residential care facilities.

p Preliminary

NOTE: Data have been revised to reflect March 2022 benchmark levels and updated seasonal adjustment factors.

ESTABLISHMENT DATA

Table B-2. Average weekly hours and overtime of all employees on private nonfarm payrolls by industry sector, seasonally adjusted

Industry	Sept. 2022	July 2023	Aug. 2023 ^p	Sept. 2023 ^p
AVERAGE WEEKLY HOURS				
Total private.....	34.6	34.3	34.4	34.4
Goods-producing.....	39.9	39.8	39.8	39.8
Mining and logging.....	46.4	44.6	45.2	45.1
Construction.....	38.7	38.9	39.1	39.0
Manufacturing.....	40.3	40.1	40.0	40.1
Durable goods.....	40.7	40.6	40.6	40.6
Nondurable goods.....	39.7	39.1	39.0	39.2
Private service-providing.....	33.5	33.3	33.3	33.3
Trade, transportation, and utilities.....	34.1	33.9	34.0	33.9
Wholesale trade.....	38.9	38.7	38.8	38.8
Retail trade.....	30.1	29.9	29.9	29.8
Transportation and warehousing.....	38.5	38.2	38.4	38.3
Utilities.....	42.2	42.2	41.9	41.8
Information.....	36.6	36.3	36.3	36.3
Financial activities.....	37.4	37.4	37.4	37.4
Professional and business services.....	36.8	36.5	36.5	36.5
Private education and health services.....	33.5	33.3	33.4	33.3
Leisure and hospitality.....	25.6	25.3	25.3	25.6
Other services.....	32.3	32.2	32.3	32.4
AVERAGE OVERTIME HOURS				
Manufacturing.....	3.2	3.0	3.1	3.1
Durable goods.....	3.3	3.2	3.2	3.2
Nondurable goods.....	3.0	2.7	2.8	2.8

p Preliminary

NOTE: Data have been revised to reflect March 2022 benchmark levels and updated seasonal adjustment factors.

ESTABLISHMENT DATA

Table B-3. Average hourly and weekly earnings of all employees on private nonfarm payrolls by industry sector, seasonally adjusted

Industry	Average hourly earnings				Average weekly earnings			
	Sept. 2022	July 2023	Aug. 2023 ^p	Sept. 2023 ^p	Sept. 2022	July 2023	Aug. 2023 ^p	Sept. 2023 ^p
Total private.....	\$32.53	\$33.73	\$33.81	\$33.88	\$1,125.54	\$1,156.94	\$1,163.06	\$1,165.47
Goods-producing.....	32.71	34.27	34.34	34.45	1,305.13	1,363.95	1,366.73	1,371.11
Mining and logging.....	36.31	38.17	38.27	38.35	1,684.78	1,702.38	1,729.80	1,729.59
Construction.....	35.05	36.66	36.73	36.85	1,356.44	1,426.07	1,436.14	1,437.15
Manufacturing.....	31.16	32.63	32.68	32.79	1,255.75	1,308.46	1,307.20	1,314.88
Durable goods.....	32.76	34.15	34.20	34.31	1,333.33	1,386.49	1,388.52	1,392.99
Nondurable goods.....	28.46	29.96	30.03	30.15	1,129.86	1,171.44	1,171.17	1,181.88
Private service-providing.....	32.49	33.61	33.69	33.75	1,088.42	1,119.21	1,121.88	1,123.88
Trade, transportation, and utilities.....	27.91	29.05	29.15	29.27	951.73	984.80	991.10	992.25
Wholesale trade.....	35.27	36.92	37.13	37.27	1,372.00	1,428.80	1,440.64	1,446.08
Retail trade.....	23.11	23.93	24.01	24.09	695.61	715.51	717.90	717.88
Transportation and warehousing.....	28.12	29.19	29.24	29.36	1,082.62	1,115.06	1,122.82	1,124.49
Utilities.....	47.97	50.19	50.09	50.19	2,024.33	2,118.02	2,098.77	2,097.94
Information.....	47.73	48.08	48.21	48.14	1,746.92	1,745.30	1,750.02	1,747.48
Financial activities.....	42.09	43.61	43.97	44.16	1,574.17	1,631.01	1,644.48	1,651.58
Professional and business services.....	39.00	40.59	40.56	40.67	1,435.20	1,481.54	1,480.44	1,484.46
Private education and health services.....	32.11	33.02	33.10	33.15	1,075.69	1,099.57	1,105.54	1,103.90
Leisure and hospitality.....	20.32	21.23	21.27	21.27	520.19	537.12	538.13	544.51
Other services.....	29.12	29.83	30.02	30.08	940.58	960.53	969.65	974.59

p Preliminary

NOTE: Data have been revised to reflect March 2022 benchmark levels and updated seasonal adjustment factors.

ESTABLISHMENT DATA

Table B-4. Indexes of aggregate weekly hours and payrolls for all employees on private nonfarm payrolls by industry sector, seasonally adjusted

[2007=100]

Industry	Index of aggregate weekly hours ¹					Index of aggregate weekly payrolls ²				
	Sept. 2022	July 2023	Aug. 2023 ^p	Sept. 2023 ^p	Percent change from: Aug. 2023 - Sept. 2023 ^p	Sept. 2022	July 2023	Aug. 2023 ^p	Sept. 2023 ^p	Percent change from: Aug. 2023 - Sept. 2023 ^p
Total private.....	114.2	115.0	115.5	115.7	0.2	177.6	185.5	186.7	187.5	0.4
Goods-producing.....	96.9	97.9	98.1	98.3	0.2	143.3	151.7	152.3	153.0	0.5
Mining and logging.....	89.4	90.3	91.5	91.4	-0.1	130.3	138.3	140.5	140.7	0.1
Construction.....	104.0	106.8	107.9	107.7	-0.2	158.4	170.2	172.1	172.5	0.2
Manufacturing.....	93.6	93.7	93.5	93.9	0.4	135.7	142.1	142.1	143.1	0.7
Durable goods.....	92.0	93.0	93.2	93.3	0.1	133.9	141.1	141.5	142.2	0.5
Nondurable goods.....	96.8	94.6	94.3	94.9	0.6	139.8	143.8	143.7	145.1	1.0
Private service-providing.....	118.8	120.0	120.2	120.4	0.2	187.6	196.1	196.8	197.6	0.4
Trade, transportation, and utilities.....	107.2	106.9	107.2	107.0	-0.2	161.4	167.5	168.5	169.0	0.3
Wholesale trade.....	103.0	103.5	103.8	104.0	0.2	152.0	159.8	161.2	162.1	0.6
Retail trade.....	95.0	94.6	94.6	94.4	-0.2	145.1	149.6	150.1	150.3	0.1
Transportation and warehousing.....	148.7	147.3	147.7	147.5	-0.1	212.7	218.8	219.7	220.3	0.3
Utilities.....	101.4	101.5	101.2	101.9	0.7	160.8	168.3	167.5	168.9	0.8
Information.....	104.1	101.5	100.8	100.7	-0.1	176.9	173.8	173.1	172.5	-0.3
Financial activities.....	111.1	112.1	112.2	112.2	0.0	182.4	190.7	192.3	193.2	0.5
Professional and business services.....	131.0	131.3	131.3	131.4	0.1	207.0	215.8	215.8	216.5	0.3
Private education and health services..	134.4	138.2	139.2	139.1	-0.1	207.7	219.6	221.6	221.9	0.1
Leisure and hospitality.....	117.4	120.0	120.3	122.4	1.7	192.5	205.5	206.4	210.1	1.8
Other services.....	107.0	108.9	109.5	109.9	0.4	170.9	178.1	180.2	181.2	0.6

¹ The indexes of aggregate weekly hours are calculated by dividing the current month's estimates of aggregate hours by the corresponding 2007 annual average aggregate hours. Aggregate hours estimates are the product of estimates of average weekly hours and employment.

² The indexes of aggregate weekly payrolls are calculated by dividing the current month's estimates of aggregate weekly payrolls by the corresponding 2007 annual average aggregate weekly payrolls. Aggregate payrolls estimates are the product of estimates of average hourly earnings, average weekly hours, and employment.

p Preliminary

NOTE: Data have been revised to reflect March 2022 benchmark levels and updated seasonal adjustment factors.

ESTABLISHMENT DATA

Table B-5. Employment of women on nonfarm payrolls by industry sector, seasonally adjusted

Industry	Women employees (in thousands)				Percent of all employees			
	Sept. 2022	July 2023	Aug. 2023 ^p	Sept. 2023 ^p	Sept. 2022	July 2023	Aug. 2023 ^p	Sept. 2023 ^p
Total nonfarm.....	76,500	77,883	78,011	78,196	49.8	49.8	49.8	49.8
Total private.....	63,558	64,619	64,719	64,877	48.4	48.4	48.4	48.4
Goods-producing.....	4,921	5,001	4,996	5,009	23.1	23.2	23.1	23.1
Mining and logging.....	79	83	83	83	12.9	12.9	12.9	12.9
Construction.....	1,099	1,137	1,138	1,143	14.1	14.3	14.2	14.3
Manufacturing.....	3,743	3,781	3,775	3,783	29.0	29.1	29.1	29.1
Durable goods.....	1,995	2,028	2,029	2,032	24.8	24.9	24.9	24.9
Nondurable goods.....	1,748	1,753	1,746	1,751	35.8	36.2	36.0	36.1
Private service-providing.....	58,637	59,618	59,723	59,868	53.2	53.2	53.3	53.3
Trade, transportation, and utilities.....	11,346	11,314	11,301	11,300	39.4	39.2	39.2	39.1
Wholesale trade.....	1,837.8	1,861.2	1,862.5	1,857.1	30.6	30.7	30.7	30.6
Retail trade.....	7,547.4	7,502.2	7,497.4	7,503.1	48.7	48.3	48.3	48.2
Transportation and warehousing.....	1,819.3	1,804.6	1,793.2	1,791.3	27.1	26.9	26.8	26.7
Utilities.....	141.9	145.7	147.4	148.1	25.5	26.2	26.4	26.3
Information.....	1,258	1,245	1,244	1,243	40.4	40.7	40.9	40.9
Financial activities.....	5,052	5,089	5,090	5,095	55.7	55.6	55.6	55.6
Professional and business services.....	10,486	10,570	10,577	10,589	46.1	46.0	46.0	46.0
Private education and health services.....	18,945	19,525	19,597	19,648	77.1	76.8	76.8	76.8
Leisure and hospitality.....	8,490	8,734	8,771	8,845	52.8	52.5	52.6	52.8
Other services.....	3,060	3,141	3,143	3,148	53.2	53.5	53.5	53.5
Government.....	12,942	13,264	13,292	13,319	58.2	58.3	58.3	58.3

p Preliminary

NOTE: Data have been revised to reflect March 2022 benchmark levels and updated seasonal adjustment factors.

ESTABLISHMENT DATA

Table B-6. Employment of production and nonsupervisory employees on private nonfarm payrolls by industry sector, seasonally adjusted¹

[In thousands]

Industry	Sept. 2022	July 2023	Aug. 2023 ^p	Sept. 2023 ^p
Total private.....	107,078	108,766	108,846	109,072
Goods-producing.....	15,313	15,467	15,475	15,489
Mining and logging.....	460	495	496	498
Construction.....	5,768	5,850	5,873	5,872
Manufacturing.....	9,085	9,122	9,106	9,119
Durable goods.....	5,581	5,630	5,619	5,629
Nondurable goods.....	3,504	3,492	3,487	3,490
Private service-providing.....	91,765	93,299	93,371	93,583
Trade, transportation, and utilities.....	24,259	24,329	24,323	24,374
Wholesale trade.....	4,768.3	4,795.5	4,784.6	4,789.1
Retail trade.....	13,196.0	13,236.3	13,242.4	13,281.5
Transportation and warehousing.....	5,852.9	5,855.8	5,852.0	5,855.3
Utilities.....	441.4	441.0	444.0	448.1
Information.....	2,465	2,452	2,425	2,421
Financial activities.....	6,830	6,863	6,861	6,870
Professional and business services.....	18,240	18,214	18,202	18,209
Private education and health services.....	21,368	22,111	22,195	22,286
Leisure and hospitality.....	13,938	14,548	14,562	14,623
Other services.....	4,665	4,782	4,803	4,800

¹ Data relate to production employees in mining and logging and manufacturing, construction employees in construction, and nonsupervisory employees in the service-providing industries. These groups account for approximately four-fifths of the total employment on private nonfarm payrolls.

^p Preliminary

NOTE: Data have been revised to reflect March 2022 benchmark levels and updated seasonal adjustment factors.

ESTABLISHMENT DATA

Table B-7. Average weekly hours and overtime of production and nonsupervisory employees on private nonfarm payrolls by industry sector, seasonally adjusted¹

Industry	Sept. 2022	July 2023	Aug. 2023 ^p	Sept. 2023 ^p
AVERAGE WEEKLY HOURS				
Total private.....	34.0	33.8	33.8	33.8
Goods-producing.....	40.7	40.5	40.6	40.5
Mining and logging.....	48.1	47.1	47.7	47.8
Construction.....	39.6	39.5	39.7	39.6
Manufacturing.....	41.1	40.7	40.7	40.7
Durable goods.....	41.4	41.0	41.0	40.9
Nondurable goods.....	40.4	40.2	40.3	40.5
Private service-providing.....	32.9	32.7	32.7	32.7
Trade, transportation, and utilities.....	34.1	34.0	34.0	34.1
Wholesale trade.....	38.9	38.8	38.8	38.8
Retail trade.....	30.4	30.3	30.4	30.5
Transportation and warehousing.....	37.8	37.7	37.6	37.6
Utilities.....	42.1	43.0	42.4	42.3
Information.....	36.1	35.9	35.9	35.9
Financial activities.....	37.3	37.0	37.0	36.9
Professional and business services.....	36.5	36.2	36.4	36.2
Private education and health services.....	32.6	32.5	32.5	32.4
Leisure and hospitality.....	24.6	24.1	24.1	24.3
Other services.....	31.2	31.2	31.3	31.4
AVERAGE OVERTIME HOURS				
Manufacturing.....	3.9	3.7	3.6	3.6
Durable goods.....	4.1	3.8	3.7	3.7
Nondurable goods.....	3.7	3.5	3.5	3.4

¹ Data relate to production employees in mining and logging and manufacturing, construction employees in construction, and nonsupervisory employees in the service-providing industries. These groups account for approximately four-fifths of the total employment on private nonfarm payrolls.

^p Preliminary

NOTE: Data have been revised to reflect March 2022 benchmark levels and updated seasonal adjustment factors.

ESTABLISHMENT DATA

Table B-8. Average hourly and weekly earnings of production and nonsupervisory employees on private nonfarm payrolls by industry sector, seasonally adjusted¹

Industry	Average hourly earnings				Average weekly earnings			
	Sept. 2022	July 2023	Aug. 2023 ^p	Sept. 2023 ^p	Sept. 2022	July 2023	Aug. 2023 ^p	Sept. 2023 ^p
Total private.....	\$27.85	\$28.94	\$29.00	\$29.06	\$946.90	\$978.17	\$980.20	\$982.23
Goods-producing.....	28.27	29.63	29.74	29.86	1,150.59	1,200.02	1,207.44	1,209.33
Mining and logging.....	32.92	34.37	34.03	34.48	1,583.45	1,618.83	1,623.23	1,648.14
Construction.....	32.74	34.22	34.41	34.54	1,296.50	1,351.69	1,366.08	1,367.78
Manufacturing.....	25.26	26.49	26.54	26.63	1,038.19	1,078.14	1,080.18	1,083.84
Durable goods.....	26.40	27.62	27.62	27.75	1,092.96	1,132.42	1,132.42	1,134.98
Nondurable goods.....	23.40	24.62	24.75	24.80	945.36	989.72	997.43	1,004.40
Private service-providing.....	27.76	28.79	28.85	28.90	913.30	941.43	943.40	945.03
Trade, transportation, and utilities.....	24.28	25.28	25.38	25.39	827.95	859.52	862.92	865.80
Wholesale trade.....	29.55	30.46	30.65	30.63	1,149.50	1,181.85	1,189.22	1,188.44
Retail trade.....	19.85	20.53	20.62	20.69	603.44	622.06	626.85	631.05
Transportation and warehousing.....	26.38	27.89	27.96	27.94	997.16	1,051.45	1,051.30	1,050.54
Utilities.....	42.40	44.74	44.85	44.86	1,785.04	1,923.82	1,901.64	1,897.58
Information.....	38.62	39.49	39.62	39.63	1,394.18	1,417.69	1,422.36	1,422.72
Financial activities.....	32.56	33.90	34.01	34.19	1,214.49	1,254.30	1,258.37	1,261.61
Professional and business services.....	32.75	34.25	34.35	34.44	1,195.38	1,239.85	1,250.34	1,246.73
Private education and health services.....	29.30	30.18	30.14	30.26	955.18	980.85	979.55	980.42
Leisure and hospitality.....	18.05	18.84	18.87	18.89	444.03	454.04	454.77	459.03
Other services.....	25.11	25.80	25.93	25.97	783.43	804.96	811.61	815.46

¹ Data relate to production employees in mining and logging and manufacturing, construction employees in construction, and nonsupervisory employees in the service-providing industries. These groups account for approximately four-fifths of the total employment on private nonfarm payrolls.

p Preliminary

NOTE: Data have been revised to reflect March 2022 benchmark levels and updated seasonal adjustment factors.

ESTABLISHMENT DATA

Table B-9. Indexes of aggregate weekly hours and payrolls for production and nonsupervisory employees on private nonfarm payrolls by industry sector, seasonally adjusted¹

[2002=100]

Industry	Index of aggregate weekly hours ²					Index of aggregate weekly payrolls ³				
	Sept. 2022	July 2023	Aug. 2023 ^p	Sept. 2023 ^p	Percent change from: Aug. 2023 - Sept. 2023 ^p	Sept. 2022	July 2023	Aug. 2023 ^p	Sept. 2023 ^p	Percent change from: Aug. 2023 - Sept. 2023 ^p
Total private.....	121.3	122.5	122.6	122.8	0.2	225.8	237.0	237.6	238.6	0.4
Goods-producing.....	95.2	95.7	96.0	95.9	-0.1	164.9	173.7	174.8	175.3	0.3
Mining and logging.....	117.6	123.9	125.7	126.5	0.6	225.1	247.7	248.8	253.7	2.0
Construction.....	114.4	115.7	116.7	116.4	-0.3	202.2	213.8	216.9	217.1	0.1
Manufacturing.....	85.7	85.2	85.1	85.2	0.1	141.6	147.6	147.7	148.4	0.5
Durable goods.....	86.8	86.7	86.5	86.5	0.0	143.1	149.5	149.2	149.8	0.4
Nondurable goods.....	83.4	82.7	82.8	83.3	0.6	137.9	143.9	144.8	145.9	0.8
Private service-providing.....	128.6	130.0	130.1	130.4	0.2	244.9	256.7	257.4	258.5	0.4
Trade, transportation, and utilities.....	115.8	115.8	115.8	116.3	0.4	200.9	209.2	210.0	211.1	0.5
Wholesale trade.....	110.1	110.4	110.2	110.3	0.1	192.0	198.5	199.3	199.4	0.1
Retail trade.....	101.7	101.7	102.1	102.7	0.6	173.1	179.0	180.5	182.2	0.9
Transportation and warehousing.....	167.4	167.1	166.5	166.6	0.1	281.1	296.6	296.4	296.3	0.0
Utilities.....	95.0	97.0	96.3	96.9	0.6	168.2	181.1	180.2	181.5	0.7
Information.....	101.6	100.5	99.4	99.2	-0.2	194.2	196.4	194.9	194.6	-0.2
Financial activities.....	119.9	119.5	119.5	119.3	-0.2	240.2	249.3	250.0	251.0	0.4
Professional and business services.....	148.6	147.2	147.9	147.1	-0.5	289.5	299.8	302.2	301.4	-0.3
Private education and health services..	148.5	153.2	153.8	154.0	0.1	287.2	305.2	306.0	307.5	0.5
Leisure and hospitality.....	125.6	128.4	128.5	130.2	1.3	257.4	274.8	275.5	279.2	1.3
Other services.....	102.1	104.6	105.4	105.7	0.3	186.8	196.7	199.2	200.0	0.4

¹ Data relate to production employees in mining and logging and manufacturing, construction employees in construction, and nonsupervisory employees in the service-providing industries. These groups account for approximately four-fifths of the total employment on private nonfarm payrolls.

² The indexes of aggregate weekly hours are calculated by dividing the current month's estimates of aggregate hours by the corresponding 2002 annual average aggregate hours. Aggregate hours estimates are the product of estimates of average weekly hours and employment.

³ The indexes of aggregate weekly payrolls are calculated by dividing the current month's estimates of aggregate weekly payrolls by the corresponding 2002 annual average aggregate weekly payrolls. Aggregate payrolls estimates are the product of estimates of average hourly earnings, average weekly hours, and employment.

p Preliminary

NOTE: Data have been revised to reflect March 2022 benchmark levels and updated seasonal adjustment factors.