

**Transmission of material in this release is embargoed until 8:30 a.m. (EDT) Thursday, March 18, 2010**

USDL-10-0317

Technical information: (202) 691-7000 • [Reed.Steve@bls.gov](mailto:Reed.Steve@bls.gov) • [www.bls.gov/cpi](http://www.bls.gov/cpi)  
Media Contact: (202) 691-5902 • [PressOffice@bls.gov](mailto:PressOffice@bls.gov)

(NOTE: This release was reissued on Friday, July 16, 2010, to correct errors in the January-February 2010 data. Corrections have been made to Table 7. There were no changes made to the text of the release.)

### CONSUMER PRICE INDEX – FEBRUARY 2010

On a seasonally adjusted basis, the Consumer Price Index for All Urban Consumers (CPI-U) was unchanged in February, the U.S. Bureau of Labor Statistics reported today. Over the last 12 months, the index increased 2.1 percent before seasonal adjustment.

The unchanged all items index was the result of a decline in the energy index being offset by slight increases in the indexes for food and for all items less food and energy. Within the latter group, declines in the indexes for apparel and household furnishings and operations were more than offset by continuing increases in the indexes for medical care and used cars and trucks. The 12-month increase in the index for all items less food and energy now stands at 1.3 percent, the lowest since February 2004.

The food index also edged up in February. The food at home index rose slightly, the net result of the major grocery store food group indexes posting a mix of modest increases and decreases. In contrast, the energy index declined in February. Decreases in the indexes for gasoline, electricity, and fuel oil more than offset an increase in the index for natural gas.

**Chart 1. One-month percent change in CPI for All Urban Consumers (CPI-U), seasonally adjusted, Feb. 2009 - Feb. 2010**  
Percent change

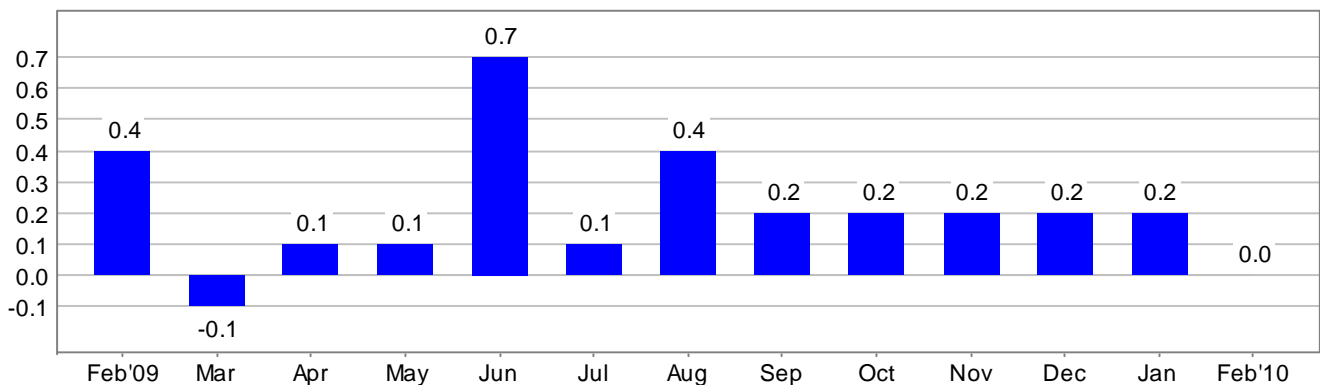


Chart 2. 12-month percent change in CPI for All Urban Consumers (CPI-U), not seasonally adjusted, Feb. 2009 - Feb. 2010

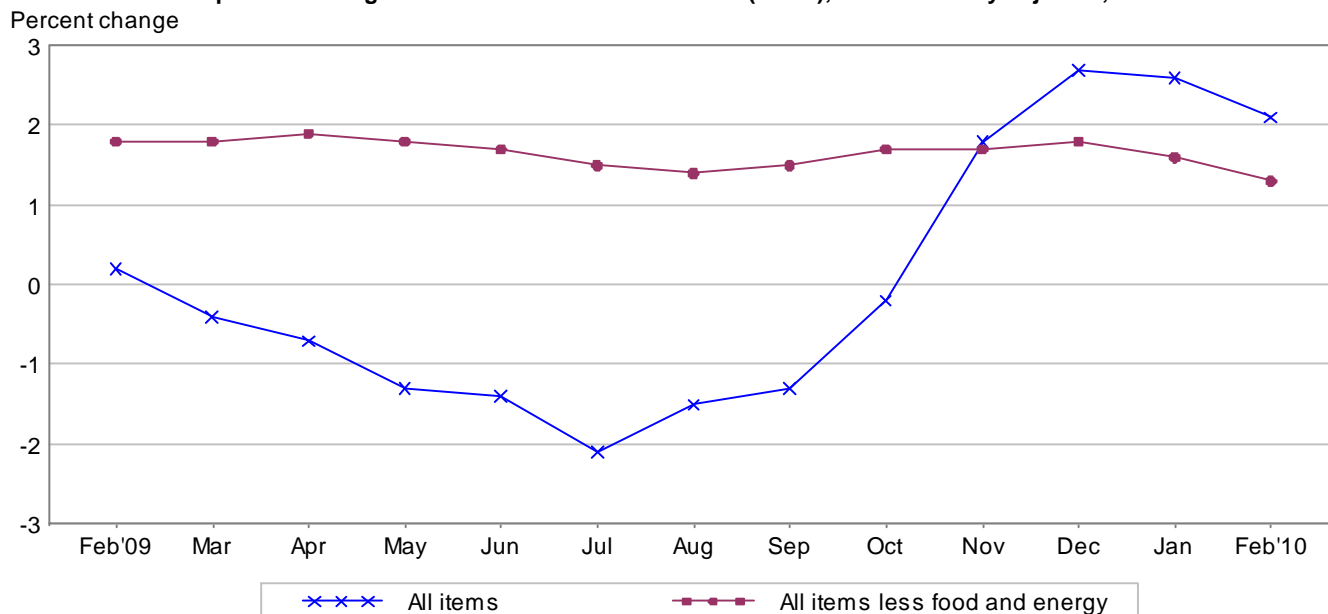


Table A. Percent changes in CPI for All Urban Consumers (CPI-U): U.S. city average

	Seasonally adjusted changes from preceding month							Un-adjusted 12-mos. ended Feb. 2010
	Aug. 2009	Sep. 2009	Oct. 2009	Nov. 2009	Dec. 2009	Jan. 2010	Feb. 2010	
All items .....	.4	.2	.2	.2	.2	.2	.0	2.1
Food .....	.0	-.1	.0	.1	.1	.2	.1	-.2
Food at home .....	-.1	-.3	.0	.0	.2	.4	.1	-1.5
Food away from home <sup>1</sup> .....	.1	.1	.1	.2	.1	.1	.1	1.4
Energy .....	3.7	.6	.6	2.2	.8	2.8	-.5	14.4
Energy commodities .....	6.7	1.1	.4	3.0	1.6	4.9	-1.3	34.4
Gasoline (all types) .....	6.9	.9	.3	2.7	2.3	4.4	-1.4	36.8
Fuel oil <sup>1</sup> .....	5.0	-.3	2.2	7.4	.0	6.1	-2.4	19.3
Energy services .....	.1	-.1	.8	1.1	-.3	.0	.5	-4.2
Electricity .....	-.1	-.3	.8	1.2	-.2	-1.1	-.5	-2.7
Utility (piped) gas service .....	.5	-1.5	.7	.9	-.7	3.5	3.9	-8.4
All items less food and energy .....	.1	.2	.2	.0	.1	-.1	.1	1.3
Commodities less food and energy commodities .....	-.2	.3	.4	.2	.1	.1	-.1	2.5
New vehicles .....	-1.0	.3	1.4	.5	-.2	-.5	.1	3.5
Used cars and trucks .....	2.0	1.7	3.1	1.9	2.2	1.5	.7	14.1
Apparel .....	.0	.2	-.3	-.3	.4	-.1	-.7	.0
Medical care commodities <sup>1</sup> .....	.5	.6	.2	.1	-.1	.7	.8	3.5
Services less energy services .....	.2	.1	.1	.0	.1	-.2	.1	.9
Shelter .....	.1	.0	.0	-.2	.0	-.5	.0	-.4
Transportation services .....	.5	.7	.5	.5	.3	-.3	.4	3.3
Medical care services .....	.2	.3	.2	.3	.2	.5	.4	3.7

<sup>1</sup> Not seasonally adjusted.

## **Consumer Price Index Data for February 2010**

### **Food**

The food index rose 0.1 percent in February after increasing 0.2 percent in January. The indexes for food away from home and food at home both rose 0.1 percent. Within the latter group, the index for meats, poultry, fish, and eggs posted the largest increase among major grocery store food groups, rising 0.4 percent as the indexes for pork and for eggs both rose 2.6 percent. The index for other food at home rose 0.2 percent, and the index for cereals and bakery products was unchanged. The indexes for fruits and vegetables and for dairy and related products both decreased 0.1 percent in February after rising in January, and the nonalcoholic beverages index fell 0.4 percent. Over the last 12 months, the food index declined 0.2 percent, with the index for food away from home rising 1.4 percent but the food at home index falling 1.5 percent.

### **Energy**

After rising 2.8 percent in January, the energy index declined 0.5 percent in February, the first decrease since April 2009. The decline was the result of a decrease in the gasoline index, which fell 1.4 percent. (Before seasonal adjustment, gasoline prices fell 2.8 percent in February.) The index for household energy rose 0.4 percent in February due to an increase in the index for natural gas, which rose 3.9 percent in February after increasing 3.5 percent in January. This more than offset declines in the fuel oil index, which fell 2.4 percent, and the electricity index, which fell 0.5 percent, its third consecutive decrease. Over the last 12 months the energy index has risen 14.4 percent with the gasoline index up 36.8 percent but the index for household energy down 3.0 percent.

### **All items less food and energy**

The index for all items less food and energy, which declined 0.1 percent in January, increased 0.1 percent in February. The medical care index rose in February, increasing 0.5 percent for the second straight month. The index for medical care services increased 0.4 percent and the medical care commodities index rose 0.8 percent with the prescription drug index up 0.6 percent. The index for used cars and trucks continued to rise, increasing 0.7 percent in February, while the index for new vehicles rose 0.1 percent. The shelter index, which declined in January, was unchanged in February, as both rent and owners' equivalent rent were unchanged. The apparel index decreased 0.7 percent, as did the index for airline fares. The index for household furnishings and operations declined 0.4 percent, and the index for recreation fell 0.1 percent.

### **Not seasonally adjusted CPI measures**

The Consumer Price Index for All Urban Consumers (CPI-U) increased 2.1 percent over the last 12 months to an index level of 216.741 (1982-84=100). For the month, the index was unchanged prior to seasonal adjustment.

The Consumer Price Index for Urban Wage Earners and Clerical Workers (CPI-W) increased 2.8 percent over the last 12 months to an index level of 212.544 (1982-84=100). For the month, the index was unchanged prior to seasonal adjustment.

The Chained Consumer Price Index for All Urban Consumers (C-CPI-U) increased 2.2 percent over the last 12 months. For the month, the index was unchanged on a not seasonally adjusted basis. Please note that the indexes for the post-2008 period are subject to revision.

---

**The Consumer Price Index for March 2010 is scheduled to be released on Wednesday, April 14, 2010, at 8:30 a.m. (EDT).**

## **Facilities for Sensory Impaired**

Information from this release will be made available to sensory impaired individuals upon request. Voice phone: 202-691-5200, Federal Relay Services: 1-800-877-8339.

## **Brief Explanation of the CPI**

The Consumer Price Index (CPI) is a measure of the average change in prices over time of goods and services purchased by households. The Bureau of Labor Statistics publishes CPIs for two population groups: (1) the CPI for Urban Wage Earners and Clerical Workers (CPI-W), which covers households of wage earners and clerical workers that comprise approximately 32 percent of the total population and (2) the CPI for All Urban Consumers (CPI-U) and the Chained CPI for All Urban Consumers (C-CPI-U), which cover approximately 87 percent of the total population and include in addition to wage earners and clerical worker households, groups such as professional, managerial, and technical workers, the self-employed, short-term workers, the unemployed, and retirees and others not in the labor force.

The CPIs are based on prices of food, clothing, shelter, and fuels, transportation fares, charges for doctors' and dentists' services, drugs, and other goods and services that people buy for day-to-day living. Prices are collected each month in 87 urban areas across the country from about 4,000 housing units and approximately 25,000 retail establishments-department stores, supermarkets, hospitals, filling stations, and other types of stores and service establishments. All taxes directly associated with the purchase and use of items are included in the index. Prices of fuels and a few other items are obtained every month in all 87 locations. Prices of most other commodities and services are collected every month in the three largest geographic areas and every other month in other areas. Prices of most goods and services are obtained by personal visits or telephone calls of the Bureau's trained representatives.

In calculating the index, price changes for the various items in each location are averaged together with weights, which represent their importance in the spending of the appropriate population group. Local data are then combined to obtain a U.S. city average. For the CPI-U and CPI-W separate indexes are also published by size of city, by region of the country, for cross-classifications of regions and population-size classes, and for 27 local areas. Area indexes do not measure differences in the level of prices among cities; they only measure the average change in prices for each area since the base period. For the C-CPI-U data are issued only at the national level. It is important to note that the CPI-U and CPI-W are considered final when released, but the C-CPI-U is issued in preliminary form and subject to two annual revisions.

The index measures price change from a designed reference date. For the CPI-U and the CPI-W the reference base is 1982-84 equals 100.0. The reference base for the C-CPI-U is December 1999 equals 100. An increase of 16.5 percent from the reference base, for example, is shown as 116.5. This change can also be expressed in dollars as follows: the price of a base period market basket of goods and services in the CPI has risen from \$10 in 1982-84 to \$11.65.

For further details visit the CPI home page on the Internet at <http://www.bls.gov/cpi/> or contact our CPI Information and Analysis Section on (202) 691-7000.

## Note on Sampling Error in the Consumer Price Index

The CPI is a statistical estimate that is subject to sampling error because it is based upon a sample of retail prices and not the complete universe of all prices. BLS calculates and publishes estimates of the 1-month, 2-month, 6-month and 12-month percent change standard errors annually, for the CPI-U. These standard error estimates can be used to construct confidence intervals for hypothesis testing. For example, the estimated standard error of the 1 month percent change is 0.04 percent for the U.S. All Items Consumer Price Index. This means that if we repeatedly sample from the universe of all retail prices using the same methodology, and estimate a percentage change for each sample, then 95% of these estimates would be within 0.08 percent of the 1 month percentage change based on all retail prices. For example, for a 1-month change of 0.2 percent in the All Items CPI for All Urban Consumers, we are 95 percent confident that the actual percent change based on all retail prices would fall between 0.12 and 0.28 percent. For the latest data, including information on how to use the estimates of standard error, see “Variance Estimates for Price Changes in the Consumer Price Index, January-December 2008”. These data are available on the CPI home page (<http://www.bls.gov/cpi>), or by using the following link <http://www.bls.gov/cpi/cpivar2008.pdf>

## Calculating Index Changes

Movements of the indexes from one month to another are usually expressed as percent changes rather than changes in index points, because index point changes are affected by the level of the index in relation to its base period while percent changes are not. The example below illustrates the computation of index point and percent changes.

Percent changes for 3-month and 6-month periods are expressed as annual rates and are computed according to the standard formula for compound growth rates. These data indicate what the percent change would be if the current rate were maintained for a 12-month period.

### Index Point Change

CPI	202.416
Less previous index	201.800
Equals index point change	.616

### Percent Change

Index point difference	.616
Divided by the previous index	201.800
Equals	0.003
Results multiplied by one hundred	0.003x100
Equals percent change	0.3

## Regions Defined

The states in the four regions shown in Tables 3 and 6 are listed below.

The Northeast--Connecticut, Maine, Massachusetts, New Hampshire, New York, New Jersey, Pennsylvania, Rhode Island, and Vermont.

The Midwest--Illinois, Indiana, Iowa, Kansas, Michigan, Minnesota, Missouri, Nebraska, North Dakota, Ohio, South Dakota, and Wisconsin.

The South--Alabama, Arkansas, Delaware, Florida, Georgia, Kentucky, Louisiana, Maryland, Mississippi, North Carolina, Oklahoma, South Carolina, Tennessee, Texas, Virginia, West Virginia, and the District of Columbia.

The West--Alaska, Arizona, California, Colorado, Hawaii, Idaho, Montana, Nevada, New Mexico, Oregon, Utah, Washington, and Wyoming.

## A Note on Seasonally Adjusted and Unadjusted Data

Because price data are used for different purposes by different groups, the Bureau of Labor Statistics publishes seasonally adjusted as well as unadjusted changes each month.

For analyzing general price trends in the economy, seasonally adjusted changes are usually preferred since they eliminate the effect of changes that normally occur at the same time and in about the same magnitude every year--such as price movements resulting from changing climatic conditions, production cycles, model changeovers, holidays, and sales.

The unadjusted data are of primary interest to consumers concerned about the prices they actually pay. Unadjusted data also are used extensively for escalation purposes. Many collective bargaining contract agreements and pension plans, for example, tie compensation changes to the Consumer Price Index before adjustment for seasonal variation.

Seasonal factors used in computing the seasonally adjusted indexes are derived by the X-12-ARIMA Seasonal Adjustment Method. Seasonally adjusted indexes and seasonal factors are computed annually. Each year, the last 5 years of seasonally adjusted data are revised. Data from January 2005 through December 2009 were replaced in January 2010. Exceptions to the usual revision schedule were: the updated seasonal data at the end of 1977 replaced data from 1967 through 1977; and, in January 2002, dependently seasonally adjusted series were revised for January 1987-December 2001 as a result of a change in the aggregation weights for dependently adjusted series. For further information, please see "Aggregation of Dependently Adjusted Seasonally Adjusted Series," in the October 2001 issue of the CPI Detailed Report.

The seasonal movement of all items and 54 other aggregations is derived by combining the seasonal movement of 73 selected components. Each year the seasonal status of every series is reevaluated based upon certain statistical criteria. If any of the 73 components change their seasonal adjustment status from seasonally adjusted to not seasonally adjusted, not seasonally adjusted data will be used in the aggregation of the dependent series for the last 5 years, but the seasonally adjusted indexes will be used before that period. Note: 46 of the 73 components are seasonally adjusted for 2010.

Seasonally adjusted data, including the all items index levels, are subject to revision for up to five years after their original release. For this reason, BLS advises against the use of these data in escalation agreements.

Effective with the calculation of the seasonal factors for 1990, the Bureau of Labor Statistics has used an enhanced seasonal adjustment procedure called Intervention Analysis Seasonal Adjustment for some CPI series. Intervention Analysis Seasonal Adjustment allows for better estimates of seasonally adjusted data. Extreme values and/or sharp movements which might distort the seasonal pattern are estimated and removed from the data prior to calculation of seasonal factors. Beginning with the calculation of seasonal factors for 1996, X-12-ARIMA software was used for Intervention Analysis Seasonal Adjustment.

For the seasonal factors introduced in January 2010, BLS adjusted 30 series using Intervention Analysis Seasonal Adjustment, including selected food and beverage items, motor fuels, electricity and vehicles. For example, this procedure was used for the Motor fuel series to offset the effects of events such as damage to oil refineries from Hurricane Katrina.

For a complete list of Intervention Analysis Seasonal Adjustment series and explanations, please refer to the article "Intervention Analysis Seasonal Adjustment", located on our website at <http://www.bls.gov/cpi/cpisapage.htm>.

For additional information on seasonal adjustment in the CPI, please write to the Bureau of Labor Statistics, Division of Consumer Prices and Price Indexes, Washington, DC 20212 or contact David Levin at (202) 691-6968, or by e-mail at [Levin.David@bls.gov](mailto:Levin.David@bls.gov). If you have general questions about the CPI, please call our information staff at (202) 691-7000.



**Table 1. Consumer Price Index for All Urban Consumers (CPI-U): U.S. city average, by expenditure category and commodity and service group**

(1982-84=100, unless otherwise noted)

CPI-U Expenditure category	Relative importance, December 2009	Unadjusted indexes		Unadjusted percent change to Feb. 2010 from—		Seasonally adjusted percent change from—		
		Jan. 2010	Feb. 2010	Feb. 2009	Jan. 2010	Nov. to Dec.	Dec. to Jan.	Jan. to Feb.
All items .....	100.000	216.687	216.741	2.1	0.0	0.2	0.2	0.0
All items (1967=100) .....	-	649.098	649.259	-	-	-	-	-
Food and beverages .....	14.795	219.223	219.140	-1	.0	.1	.2	.0
Food .....	13.738	218.874	218.778	-2	.0	.1	.2	.1
Food at home .....	7.801	215.404	215.118	-1.5	-1	.2	.4	.1
Cereals and bakery products .....	1.108	250.725	251.361	-1.1	.3	.4	-.5	.0
Meats, poultry, fish, and eggs .....	1.745	201.870	202.343	-2.7	.2	-.1	.4	.4
Dairy and related products <sup>1</sup> .....	.820	198.949	198.800	-2.8	-1	.5	2.1	-1
Fruits and vegetables .....	1.153	279.119	274.963	-1.3	-1.5	.4	1.3	-1
Nonalcoholic beverages and beverage materials .....	.952	163.684	162.775	-.9	-.6	.0	.2	-.4
Other food at home .....	2.023	190.994	191.572	-.4	.3	.2	-.3	.2
Sugar and sweets .....	.295	199.777	201.942	2.7	1.1	.3	-.3	1.4
Fats and oils .....	.232	200.220	200.919	-2.2	.3	.6	.2	-.1
Other foods .....	1.496	204.719	205.008	-.8	.1	.2	-.3	.0
Other miscellaneous foods <sup>1 2</sup> .....	.439	121.564	121.172	-1.1	-.3	1.0	-.7	-.3
Food away from home <sup>1</sup> .....	5.937	224.916	225.081	1.4	.1	.1	.1	.1
Other food away from home <sup>1 2</sup> .....	.326	157.517	158.569	2.5	.7	.0	.3	.7
Alcoholic beverages .....	1.056	222.401	222.496	1.3	.0	.0	-.1	-.2
Housing .....	41.960	215.925	215.841	-.6	.0	.0	-.3	.0
Shelter .....	32.289	247.950	248.001	-.4	.0	.0	-.5	.0
Rent of primary residence <sup>3</sup> .....	5.966	249.144	249.017	.3	-.1	.0	.0	.0
Lodging away from home <sup>2</sup> .....	.769	125.778	128.991	-5.0	2.6	.1	-2.1	.1
Owners' equivalent rent of residences <sup>3 4</sup> .....	25.206	256.591	256.483	.3	.0	.0	-.1	.0
Owners' equivalent rent of primary residence <sup>3 4</sup> .....	23.593	256.589	256.479	.3	.0	.0	-.1	.0
Tenants' and household insurance <sup>1 2</sup> .....	.347	124.360	124.439	3.1	.1	1.3	.4	.1
Fuels and utilities .....	5.081	211.381	210.819	-1.3	-.3	-.1	.5	.5
Household energy .....	4.028	187.330	186.345	-3.0	-.5	-.2	.5	.4
Fuel oil and other fuels <sup>1</sup> .....	.276	280.850	277.284	14.5	-1.3	.9	6.9	-1.3
Gas (piped) and electricity <sup>3</sup> .....	3.752	190.439	189.549	-4.2	-.5	-.3	.0	.5
Water and sewer and trash collection services <sup>2</sup> .....	1.052	166.857	168.078	6.6	.7	.4	.8	.7
Household furnishings and operations .....	4.590	127.209	126.945	-1.7	-.2	.0	-.1	-.4
Household operations <sup>1 2</sup> .....	.781	149.510	149.707	-.3	.1	.0	-.4	.1
Apparel .....	3.695	116.678	118.869	.0	1.9	.4	-.1	-.7
Men's and boys' apparel .....	.903	109.762	111.351	-3.3	1.4	-.2	.2	-.5
Women's and girls' apparel .....	1.580	103.353	106.818	1.0	3.4	.9	.1	-.9
Infants' and toddlers' apparel .....	.196	113.248	114.318	.7	.9	-.2	1.0	-1.1
Footwear .....	.721	127.205	127.737	2.8	.4	.2	.3	-.5
Transportation .....	16.685	190.512	189.577	11.8	-.5	.7	1.3	-.1
Private transportation .....	15.497	186.308	185.274	12.4	-.6	.7	1.6	-.1
New and used motor vehicles <sup>2</sup> .....	6.386	96.660	97.020	5.2	.4	.3	.2	.4
New vehicles .....	3.573	138.743	138.851	3.5	.1	-.2	-.5	.1
Used cars and trucks .....	2.012	139.174	140.218	14.1	.8	2.2	1.5	.7
Motor fuel .....	4.525	234.106	227.674	36.0	-2.7	1.7	4.8	-1.3
Gasoline (all types) .....	4.337	233.727	227.198	36.8	-2.8	2.3	4.4	-1.4
Motor vehicle parts and equipment <sup>1</sup> .....	.401	135.277	135.649	1.1	.3	.4	.4	.3
Motor vehicle maintenance and repair <sup>1</sup> .....	1.167	245.567	245.969	1.8	.2	.0	.1	.2
Public transportation .....	1.187	241.058	241.967	4.5	.4	1.2	-1.8	-.1
Medical care .....	6.513	382.688	385.907	3.6	.8	.1	.5	.5
Medical care commodities <sup>1</sup> .....	1.611	310.494	312.864	3.5	.8	-.1	.7	.8
Medical care services .....	4.902	404.937	408.447	3.7	.9	.2	.5	.4
Professional services .....	2.796	324.397	325.969	2.8	.5	.2	.5	.2

See footnotes at end of table.

**Table 1. Consumer Price Index for All Urban Consumers (CPI-U): U.S. city average, by expenditure category and commodity and service group-Continued**

(1982-84=100, unless otherwise noted)

CPI-U Expenditure category	Relative importance, December 2009	Unadjusted indexes		Unadjusted percent change to Feb. 2010 from—		Seasonally adjusted percent change from—		
		Jan. 2010	Feb. 2010	Feb. 2009	Jan. 2010	Nov. to Dec.	Dec. to Jan.	Jan. to Feb.
Hospital and related services <sup>3</sup> .....	1.619	588.631	598.549	7.2	1.7	0.6	0.4	1.1
Recreation <sup>2</sup> .....	6.437	113.310	113.345	-1.0	.0	-3	-1	-1
Video and audio <sup>2</sup> .....	1.894	99.940	99.532	-2.1	-4	-1	-2	-7
Education and communication <sup>2</sup> .....	6.434	129.072	129.105	2.3	.0	.2	.3	.2
Education <sup>2</sup> .....	3.035	195.850	196.137	4.7	.1	.4	.3	.5
Educational books and supplies .....	.200	500.551	502.812	7.0	.5	.4	.4	.7
Tuition, other school fees, and childcare .....	2.835	562.841	563.544	4.6	.1	.4	.3	.5
Communication <sup>2</sup> .....	3.399	84.974	84.905	.0	-1	.1	.2	-1
Information and information processing <sup>1 2</sup> .....	3.225	81.817	81.743	-4	-1	.0	.1	-1
Telephone services <sup>1 2</sup> .....	2.392	102.729	102.288	.4	-4	.2	.0	-4
Information technology, hardware and services <sup>1 5</sup> .....	.833	9.457	9.540	-3.9	.9	-5	.4	.9
Personal computers and peripheral equipment <sup>6</sup> .....	.246	78.323	77.961	-11.1	-5	-5	-6	-5
Other goods and services .....	3.483	377.652	377.992	7.6	.1	.2	.1	.1
Tobacco and smoking products <sup>1</sup> .....	.871	786.857	785.714	28.5	-1	.3	.4	-1
Personal care .....	2.612	205.789	206.137	1.4	.2	.1	-1	.1
Personal care products <sup>1</sup> .....	.688	161.627	162.029	-3	.2	.3	-4	.2
Personal care services <sup>1</sup> .....	.642	228.629	228.107	1.0	-2	.0	.1	-2
Miscellaneous personal services .....	1.048	349.605	350.780	2.8	.3	.2	.1	.3
<b>Commodity and service group</b>								
Commodities .....	39.816	173.646	173.419	4.5	-1	.3	.8	-2
Food and beverages .....	14.795	219.223	219.140	-1	.0	.1	.2	.0
Commodities less food and beverages .....	25.021	149.439	149.162	7.5	-2	.4	1.1	-3
Nondurables less food and beverages .....	15.044	187.484	186.882	11.5	-3	.7	1.6	-3
Apparel .....	3.695	116.678	118.869	.0	1.9	.4	-1	-7
Nondurables less food, beverages, and apparel .....	11.349	235.821	233.447	15.8	-1.0	.8	2.3	-3
Durables .....	9.978	111.731	111.753	2.3	.0	.3	.0	.0
Services .....	60.184	259.459	259.792	.6	.1	.1	-2	.1
Rent of shelter <sup>4</sup> .....	31.942	258.382	258.435	-4	.0	.0	-3	-3
Tenants' and household insurance <sup>1 2</sup> .....	.347	124.360	124.439	3.1	.1	1.3	.4	.1
Gas (piped) and electricity <sup>3</sup> .....	3.752	190.439	189.549	-4.2	-5	-3	.0	.5
Water and sewer and trash collection services <sup>2</sup> .....	1.052	166.857	168.078	6.6	.7	.4	.8	.7
Household operations <sup>1 2</sup> .....	.781	149.510	149.707	-3	.1	.0	-4	.1
Transportation services .....	6.060	255.216	256.365	3.3	.5	.3	-3	.4
Medical care services .....	4.902	404.937	408.447	3.7	.9	.2	.5	.4
Other services .....	11.347	306.916	307.171	1.9	.1	.1	.2	.1
<b>Special indexes</b>								
All items less food .....	86.262	216.362	216.440	2.5	.0	.2	.2	.0
All items less shelter .....	67.711	206.892	206.948	3.4	.0	.2	.5	.0
All items less medical care .....	93.487	208.499	208.432	2.0	.0	.2	.1	.0
Commodities less food .....	26.078	152.035	151.767	7.3	-2	.4	1.1	-3
Nondurables less food .....	16.100	189.578	189.015	10.8	-3	.6	1.6	-3
Nondurables less food and apparel .....	12.405	233.498	231.353	14.3	-9	.7	2.1	-3
Nondurables .....	29.838	203.588	203.219	5.3	-2	.3	.9	-2
Services less rent of shelter <sup>4</sup> .....	28.243	280.730	281.432	1.7	.3	.2	.1	.3
Services less medical care services .....	55.282	248.023	248.178	.3	.1	.1	-2	-1
Energy .....	8.553	208.026	204.455	14.4	-1.7	.8	2.8	-5
All items less energy .....	91.447	219.287	219.708	1.1	.2	.1	-1	.1
All items less food and energy .....	77.708	220.086	220.602	1.3	.2	.1	-1	.1
Commodities less food and energy commodities .....	21.276	143.125	143.711	2.5	.4	.1	.1	-1
Energy commodities .....	4.801	238.069	231.735	34.4	-2.7	1.6	4.9	-1.3
Services less energy services .....	56.432	266.519	266.967	.9	.2	.1	-2	.1
Purchasing power of the consumer dollar (1982-84=\$1.00) .....	-	\$ .461	\$ .461	-	-	-	-	-
Purchasing power of the consumer dollar (1967=\$1.00) .....	-	\$ .154	\$ .154	-	-	-	-	-

<sup>1</sup> Not seasonally adjusted.

<sup>2</sup> Indexes on a December 1997=100 base.

<sup>3</sup> This index series was calculated using a Laspeyres estimator. All other item stratum index series were calculated using a geometric means estimator.

<sup>4</sup> Indexes on a December 1982=100 base.

<sup>5</sup> Indexes on a December 1988=100 base.

<sup>6</sup> Indexes on a December 2007=100 base.

- Data not available.

NOTE: Index applies to a month as a whole, not to any specific date.

**Table 2. Consumer Price Index for All Urban Consumers (CPI-U): Seasonally adjusted U.S. city average, by expenditure category and commodity and service group**

(1982-84=100, unless otherwise noted)

CPI-U	Seasonally adjusted indexes				Seasonally adjusted annual rate percent change for					
					3 months ended—			6 months ended—		
	Nov. 2009	Dec. 2009	Jan. 2010	Feb. 2010	May 2009	Aug. 2009	Nov. 2009	Feb. 2010	Aug. 2009	Feb. 2010
<b>Expenditure category</b>										
All items .....	216.859	217.224	217.587	217.591	0.3	4.8	2.4	1.4	2.5	1.9
Food and beverages .....	217.952	218.253	218.731	218.838	-1.6	-7	.3	1.6	-1.1	1.0
Food .....	217.482	217.801	218.339	218.494	-1.9	-9	.1	1.9	-1.4	1.0
Food at home .....	213.206	213.655	214.479	214.628	-4.8	-2.6	-1.2	2.7	-3.7	.7
Cereals and bakery products .....	251.806	252.805	251.452	251.354	-3.3	-1.1	.7	-7	-2.2	.0
Meats, poultry, fish, and eggs .....	200.929	200.779	201.682	202.506	-6.3	-4.0	-3.4	3.2	-5.1	-2
Dairy and related products <sup>1</sup> .....	193.914	194.792	198.949	198.800	-15.6	-7.3	3.2	10.5	-11.5	6.8
Fruits and vegetables .....	268.326	269.428	272.854	272.571	-3.1	-3.5	-4.9	6.5	-3.3	.6
Nonalcoholic beverages and beverage materials .....	162.164	162.202	162.499	161.872	-7	-6	-1.5	-7	-6	-1.1
Other food at home .....	190.868	191.326	190.812	191.211	-2.2	-5	.3	.7	-1.4	.5
Sugar and sweets .....	198.960	199.524	198.862	201.656	-2	-1.3	6.8	5.5	-7	6.2
Fats and oils .....	197.875	199.004	199.460	199.352	-5.2	-2.3	-4.0	3.0	-3.8	-5
Other foods .....	205.086	205.455	204.762	204.793	-2.2	.0	-3	-6	-1.1	-5
Other miscellaneous foods <sup>1 2</sup> .....	121.263	122.422	121.564	121.172	.8	-3.0	-2.0	-3	-1.1	-1.2
Food away from home <sup>1</sup> .....	224.633	224.789	224.916	225.081	1.9	1.2	1.7	.8	1.5	1.3
Other food away from home <sup>1 2</sup> .....	157.027	156.990	157.517	158.569	1.0	4.2	.8	4.0	2.6	2.4
Alcoholic beverages .....	222.717	222.792	222.488	221.954	1.4	2.4	2.8	-1.4	1.9	.7
Housing .....	216.881	216.880	216.185	216.181	-1.0	-5	.1	-1.3	-7	-6
Shelter .....	249.173	249.216	248.029	247.976	1.1	.0	-8	-1.9	.6	-1.3
Rent of primary residence <sup>3</sup> .....	248.786	248.788	248.885	248.813	1.7	.1	-7	.0	.9	-3
Lodging away from home <sup>2</sup> .....	132.339	132.480	129.698	129.776	-6.3	-5.6	-9	-7.5	-6.0	-4.3
Owners' equivalent rent of residences <sup>3 4</sup> .....	256.721	256.708	256.509	256.449	1.8	.5	-8	-4	1.2	-6
Owners' equivalent rent of primary residence <sup>3 4</sup> .....	256.721	256.708	256.507	256.445	1.8	.5	-8	-4	1.2	-6
Tenants' and household insurance <sup>1 2</sup> .....	122.243	123.812	124.360	124.439	.1	3.7	1.4	7.4	1.9	4.3
Fuels and utilities .....	211.881	211.685	212.757	213.770	-14.2	-1.9	8.8	3.6	-8.3	6.2
Household energy .....	188.492	188.120	188.982	189.753	-18.4	-3.8	9.7	2.7	-11.4	6.1
Fuel oil and other fuels <sup>1</sup> .....	260.250	262.649	280.850	277.284	-25.4	23.8	44.1	28.9	-3.9	36.3
Gas (piped) and electricity <sup>3</sup> .....	192.829	192.284	192.250	193.283	-17.9	-5.5	7.5	.9	-11.9	4.2
Water and sewer and trash collection services <sup>2</sup> .....	164.557	165.138	166.463	167.696	7.0	6.6	5.1	7.9	6.8	6.5
Household furnishings and operations .....	127.605	127.577	127.392	126.879	.7	-2.5	-2.7	-2.3	-9	-2.5
Household operations <sup>1 2</sup> .....	150.135	150.172	149.510	149.707	-1.8	2.8	-1.0	-1.1	.5	-1.0
Apparel .....	120.247	120.684	120.613	119.814	-1.0	3.9	-1.2	-1.4	1.4	-1.3
Men's and boys' apparel .....	112.382	112.109	112.296	111.748	-5.2	-1.2	-4.6	-2.2	-3.3	-3.4
Women's and girls' apparel .....	108.114	109.085	109.196	108.261	-2	7.5	-3.5	.5	3.6	-1.5
Infants' and toddlers' apparel .....	113.941	113.668	114.757	113.551	2.7	9.4	-7.2	-1.4	6.0	-4.4
Footwear .....	128.697	128.979	129.343	128.641	3.1	4.5	3.8	-2	3.8	1.8
Transportation .....	189.647	191.018	193.593	193.332	.2	30.3	12.8	8.0	14.2	10.4
Private transportation .....	185.085	186.356	189.316	189.062	.8	31.9	12.2	8.9	15.3	10.5
New and used motor vehicles <sup>2</sup> .....	95.996	96.255	96.422	96.794	4.1	2.3	11.8	3.4	3.2	7.5
New vehicles .....	138.532	138.214	137.470	137.648	6.9	.6	9.4	-2.5	3.7	3.3
Used cars and trucks .....	135.010	137.922	139.990	140.963	-2.3	12.5	29.9	18.8	4.9	24.3
Motor fuel .....	232.878	236.762	248.088	244.826	-7.7	156.6	18.2	22.2	53.9	20.2
Gasoline (all types) .....	232.144	237.449	247.897	244.409	-4.5	154.5	17.2	22.9	55.9	20.0
Motor vehicle parts and equipment <sup>1</sup> .....	134.234	134.781	135.277	135.649	.7	-2.4	2.1	4.3	-9	3.2
Motor vehicle maintenance and repair <sup>1</sup> .....	245.511	245.417	245.567	245.969	1.3	1.7	3.4	.7	1.5	2.0
Public transportation .....	246.516	249.551	245.058	244.713	-7.7	9.4	21.6	-2.9	.5	8.7
Medical care .....	380.212	380.732	382.737	384.703	3.5	2.7	3.6	4.8	3.1	4.2
Medical care commodities <sup>1</sup> .....	308.546	308.221	310.494	312.864	3.4	1.5	3.6	5.7	2.4	4.7
Medical care services .....	402.295	403.177	405.006	406.755	3.5	3.1	3.5	4.5	3.3	4.0
Professional services .....	322.528	323.045	324.784	325.373	2.6	2.4	2.8	3.6	2.5	3.2

See footnotes at end of table.

**Table 2. Consumer Price Index for All Urban Consumers (CPI-U): Seasonally adjusted U.S. city average, by expenditure category and commodity and service group-Continued**

(1982-84=100, unless otherwise noted)

CPI-U	Seasonally adjusted indexes				Seasonally adjusted annual rate percent change for					
					3 months ended—			6 months ended—		
	Nov. 2009	Dec. 2009	Jan. 2010	Feb. 2010	May 2009	Aug. 2009	Nov. 2009	Feb. 2010	Aug. 2009	Feb. 2010
<b>Expenditure category</b>										
Hospital and related services <sup>3</sup> .....	581.662	585.044	587.561	593.869	6.9	6.6	6.6	8.7	6.8	7.6
Recreation <sup>2</sup> .....	113.968	113.598	113.524	113.415	-1.4	1.7	-2.2	-1.9	.2	-2.1
Video and audio <sup>2</sup> .....	100.563	100.440	100.255	99.571	-6	-8	-3.1	-3.9	-7	-3.5
Education and communication <sup>2</sup> .....	128.255	128.528	128.872	129.141	2.9	2.4	1.1	2.8	2.7	2.0
Education <sup>2</sup> .....	193.869	194.587	195.209	196.252	5.5	5.6	3.0	5.0	5.5	4.0
Educational books and supplies .....	494.815	496.737	498.880	502.169	5.6	9.8	6.5	6.1	7.7	6.3
Tuition, other school fees, and childcare .....	557.176	559.232	561.001	563.950	5.5	5.2	2.7	5.0	5.3	3.8
Communication <sup>2</sup> .....	84.770	84.815	84.974	84.905	.5	-7	-6	.6	-1	.0
Information and information processing <sup>1 2</sup> .....	81.688	81.728	81.817	81.743	-1	-1.0	-7	.3	-5	-2
Telephone services <sup>1 2</sup> .....	102.528	102.707	102.729	102.288	1.5	1.6	-6	-9	1.5	-8
Information technology, hardware and services <sup>1 5</sup> .....	9.467	9.423	9.457	9.540	-5.9	-10.8	-1.3	3.1	-8.4	.9
Personal computers and peripheral equipment <sup>6</sup> .....	78.784	78.356	77.925	77.518	-14.6	-20.8	-1.5	-6.3	-17.8	-3.9
Other goods and services .....	376.960	377.651	377.853	378.091	22.0	4.7	3.8	1.2	13.0	2.5
Tobacco and smoking products <sup>1</sup> .....	781.538	783.794	786.857	785.714	114.7	13.2	9.7	2.2	55.9	5.9
Personal care .....	205.770	206.065	205.935	206.209	1.2	1.7	1.6	.9	1.4	1.3
Personal care products <sup>1</sup> .....	161.753	162.275	161.627	162.029	1.3	-1.4	-1.8	.7	.0	-5
Personal care services <sup>1</sup> .....	228.358	228.343	228.629	228.107	3.1	.0	1.4	-4	1.5	.5
Miscellaneous personal services .....	349.284	349.935	350.113	351.082	.9	3.6	4.8	2.1	2.2	3.4
<b>Commodity and service group</b>										
Commodities .....	173.284	173.830	175.196	174.878	.9	10.5	4.2	3.7	5.6	4.0
Food and beverages .....	217.952	218.253	218.731	218.838	-1.6	-7	.3	1.6	-1.1	1.0
Commodities less food and beverages .....	149.463	150.092	151.759	151.280	2.5	18.1	6.6	5.0	10.0	5.8
Nondurables less food and beverages .....	188.385	189.796	192.765	192.192	-2.8	36.8	7.3	8.3	15.4	7.8
Apparel .....	120.247	120.684	120.613	119.814	-1.0	3.9	-1.2	-1.4	1.4	-1.3
Nondurables less food, beverages, and apparel .....	234.760	236.606	241.982	241.214	-1.7	50.9	8.8	11.5	21.8	10.1
Durables .....	111.269	111.607	111.565	111.514	1.9	-3	6.9	.9	.8	3.8
Services .....	260.129	260.290	259.716	260.045	.0	1.0	1.2	-1	.5	.6
Rent of shelter <sup>4</sup> .....	259.852	259.963	259.168	258.517	1.0	-1	-4	-2.0	.5	-1.2
Tenants' and household insurance <sup>1 2</sup> .....	122.243	123.812	124.360	124.439	.1	3.7	1.4	7.4	1.9	4.3
Gas (piped) and electricity <sup>3</sup> .....	192.829	192.284	192.250	193.283	-17.9	-5.5	7.5	.9	-11.9	4.2
Water and sewer and trash collection services <sup>2</sup> .....	164.557	165.138	166.463	167.696	7.0	6.6	5.1	7.9	6.8	6.5
Household operations <sup>1 2</sup> .....	150.135	150.172	149.510	149.707	-1.8	2.8	-1.0	-1.1	.5	-1.0
Transportation services .....	255.733	256.494	255.735	256.676	1.0	3.4	7.3	1.5	2.2	4.3
Medical care services .....	402.295	403.177	405.006	406.755	3.5	3.1	3.5	4.5	3.3	4.0
Other services .....	306.204	306.521	306.985	307.265	1.5	3.7	.9	1.4	2.6	1.2
<b>Special indexes</b>										
All items less food .....	216.787	217.160	217.489	217.469	.7	5.8	2.8	1.3	3.2	2.0
All items less shelter .....	206.649	207.147	208.128	208.155	-1	7.2	4.0	2.9	3.5	3.5
All items less medical care .....	208.770	209.126	209.424	209.353	.1	5.0	2.3	1.1	2.5	1.7
Commodities less food .....	152.066	152.681	154.302	153.820	2.4	17.4	6.4	4.7	9.7	5.6
Nondurables less food .....	190.304	191.439	194.517	193.959	-2.2	34.3	6.2	7.9	14.6	7.1
Nondurables less food and apparel .....	232.549	234.233	239.081	238.287	-1.5	45.8	8.0	10.2	19.8	9.1
Nondurables .....	203.673	204.280	206.144	205.792	-2.2	15.9	4.2	4.2	6.5	4.2
Services less rent of shelter <sup>4</sup> .....	280.508	281.171	281.417	282.121	-1.2	2.0	3.7	2.3	.4	3.0
Services less medical care services .....	248.944	249.198	248.690	248.541	-1	.6	1.4	-6	.2	.4
Energy .....	208.041	209.699	215.536	214.379	-13.6	56.8	14.2	12.8	16.4	13.5
All items less energy .....	219.462	219.695	219.524	219.646	1.6	1.0	1.3	.3	1.3	.8
All items less food and energy .....	220.546	220.764	220.463	220.579	2.3	1.4	1.6	.1	1.9	.8
Commodities less food and energy commodities .....	143.513	143.702	143.863	143.761	4.6	1.2	3.6	.7	2.9	2.1
Energy commodities .....	235.831	239.662	251.449	248.149	-9.0	145.5	19.6	22.6	49.5	21.1
Services less energy services .....	267.018	267.248	266.630	266.894	1.4	1.5	.8	-2	1.5	.3

<sup>1</sup> Not seasonally adjusted.

<sup>2</sup> Indexes on a December 1997=100 base.

<sup>3</sup> This index series was calculated using a Laspeyres estimator. All other item stratum index series were calculated using a geometric means estimator.

<sup>4</sup> Indexes on a December 1982=100 base.

<sup>5</sup> Indexes on a December 1988=100 base.

<sup>6</sup> Indexes on a December 2007=100 base.

NOTE: Index applies to a month as a whole, not to any specific date.

**Table 3. Consumer Price Index for All Urban Consumers (CPI-U): Selected areas, all items index**

(1982-84=100, unless otherwise noted)

CPI-U	Pricing schedule 1	All items									
		Indexes				Percent change to Feb.2010 from—			Percent change to Jan.2010 from—		
		Nov. 2009	Dec. 2009	Jan. 2010	Feb. 2010	Feb. 2009	Dec. 2009	Jan. 2010	Jan. 2009	Nov. 2009	Dec. 2009
U.S. city average .....	M	216.330	215.949	216.687	216.741	2.1	0.4	0.0	2.6	0.2	0.3
<b>Region and area size<sup>2</sup></b>											
Northeast urban .....	M	231.708	231.462	232.294	232.382	2.5	.4	.0	3.0	.3	.4
Size A - More than 1,500,000 .....	M	233.785	233.475	234.109	234.183	2.1	.3	.0	2.7	.1	.3
Size B/C - 50,000 to 1,500,000 <sup>3</sup> .....	M	137.646	137.597	138.416	138.491	3.4	.6	.1	3.8	.6	.6
Midwest urban .....	M	206.247	205.613	206.564	206.563	2.5	.5	.0	2.9	.2	.5
Size A - More than 1,500,000 .....	M	207.277	206.399	207.325	207.329	2.3	.5	.0	2.6	.0	.4
Size B/C - 50,000 to 1,500,000 <sup>3</sup> .....	M	131.952	131.742	132.417	132.451	2.6	.5	.0	2.9	.4	.5
Size D - Nonmetropolitan (less than 50,000) .....	M	203.047	202.738	203.490	203.274	3.5	.3	-.1	3.9	.2	.4
South urban .....	M	209.738	209.476	210.056	210.020	2.3	.3	.0	2.8	.2	.3
Size A - More than 1,500,000 .....	M	211.424	210.971	211.762	211.503	1.7	.3	-.1	2.3	.2	.4
Size B/C - 50,000 to 1,500,000 <sup>3</sup> .....	M	133.342	133.252	133.517	133.575	2.5	.2	.0	3.0	.1	.2
Size D - Nonmetropolitan (less than 50,000) .....	M	213.372	213.159	213.873	214.007	3.5	.4	.1	3.9	.2	.3
West urban .....	M	219.728	219.307	219.989	220.179	1.4	.4	.1	1.9	.1	.3
Size A - More than 1,500,000 .....	M	223.489	223.058	223.852	223.989	1.4	.4	.1	1.8	.2	.4
Size B/C - 50,000 to 1,500,000 <sup>3</sup> .....	M	133.335	133.132	133.366	133.513	1.4	.3	.1	2.1	.0	.2
<b>Size classes</b>											
A <sup>4</sup> .....	M	197.697	197.246	197.948	197.949	1.8	.4	.0	2.3	.1	.4
B/C <sup>3</sup> .....	M	133.663	133.535	133.954	134.028	2.4	.4	.1	2.9	.2	.3
D .....	M	209.567	209.192	209.984	210.098	3.0	.4	.1	3.2	.2	.4
<b>Selected local areas<sup>5</sup></b>											
Chicago-Gary-Kenosha, IL-IN-WI .....	M	212.206	211.185	212.104	212.456	2.5	.6	.2	2.2	.0	.4
Los Angeles-Riverside-Orange County, CA ...	M	224.317	223.643	224.610	224.620	1.4	.4	.0	1.8	.1	.4
New York-Northern N.J.-Long Island, NY-NJ-CT-PA .....	M	238.777	238.427	238.970	238.862	1.8	.2	.0	2.4	.1	.2
Boston-Brockton-Nashua, MA-NH-ME-CT .....	1	236.589	-	237.266	-	-	-	-	2.8	.3	-
Cleveland-Akron, OH .....	1	201.471	-	203.037	-	-	-	-	2.4	.8	-
Dallas-Fort Worth, TX .....	1	201.958	-	202.106	-	-	-	-	1.8	.1	-
Washington-Baltimore, DC-MD-VA-WV <sup>6</sup> .....	1	140.718	-	141.124	-	-	-	-	2.6	.3	-
Atlanta, GA .....	2	-	200.456	-	202.646	1.7	1.1	-	-	-	-
Detroit-Ann Arbor-Flint, MI .....	2	-	203.880	-	203.380	.7	-.2	-	-	-	-
Houston-Galveston-Brazoria, TX .....	2	-	190.932	-	192.412	2.4	.8	-	-	-	-
Miami-Fort Lauderdale, FL .....	2	-	222.943	-	222.505	.9	-.2	-	-	-	-
Philadelphia-Wilmington-Atlantic City, PA-NJ-DE-MD .....	2	-	224.800	-	226.529	2.8	.8	-	-	-	-
San Francisco-Oakland-San Jose, CA .....	2	-	224.239	-	226.145	1.8	.8	-	-	-	-
Seattle-Tacoma-Bremerton, WA .....	2	-	225.596	-	226.085	.6	.2	-	-	-	-

<sup>1</sup> Foods, fuels, and several other items priced every month in all areas; most other goods and services priced as indicated:

M - Every month.

1 - January, March, May, July, September, and November.

2 - February, April, June, August, October, and December.

<sup>2</sup> Regions defined as the four Census regions. See technical notes.

<sup>3</sup> Indexes on a December 1996=100 base.

<sup>4</sup> Indexes on a December 1986=100 base.

<sup>5</sup> In addition, the following metropolitan areas are published semiannually and appear in Tables 34 and 39 of the January and July issues of the CPI Detailed Report: Anchorage, AK; Cincinnati-Hamilton, OH-KY-IN; Denver-Boulder-Greeley, CO; Honolulu, HI; Kansas City, MO-KS; Milwaukee-Racine, WI; Minneapolis-St. Paul, MN-WI; Phoenix-Mesa, AZ; Pittsburgh, PA; Portland-Salem, OR-WA; St. Louis, MO-IL; San Diego, CA;

Tampa-St. Petersburg-Clearwater, FL.

<sup>6</sup> Indexes on a November 1996=100 base.

- Data not available.

NOTE: Local area indexes are byproducts of the national CPI program. Each local index has a smaller sample size than the national index and is, therefore, subject to substantially more sampling and other measurement error. As a result, local area indexes show greater volatility than the national index, although their long-term trends are similar. Therefore, the Bureau of Labor Statistics strongly urges users to consider adopting the national average CPI for use in their escalator clauses.

NOTE: Index applies to a month as a whole, not to any specific date.

**Table 4. Consumer Price Index for Urban Wage Earners and Clerical Workers (CPI-W): U.S. city average, by expenditure category and commodity and service group**

(1982-84=100, unless otherwise noted)

CPI-W  Expenditure category	Relative importance, December 2009	Unadjusted indexes		Unadjusted percent change to Feb. 2010 from—		Seasonally adjusted percent change from—		
		Jan. 2010	Feb. 2010	Feb. 2009	Jan. 2010	Nov. to Dec.	Dec. to Jan.	Jan. to Feb.
All items .....	100.000	212.568	212.544	2.8	0.0	0.2	0.3	0.0
All items (1967=100) .....	-	633.176	633.105	-	-	-	-	-
Food and beverages .....	16.425	218.354	218.299	-2	.0	.1	.2	.1
Food .....	15.333	217.900	217.837	-3	.0	.2	.2	.1
Food at home .....	8.900	214.049	213.839	-1.5	-1	.2	.4	.1
Cereals and bakery products .....	1.257	251.195	251.757	-1.2	.2	.3	-.6	-.1
Meats, poultry, fish, and eggs .....	2.144	201.411	202.139	-2.7	.4	.0	.4	.6
Dairy and related products <sup>1</sup> .....	.898	197.663	197.583	-2.7	.0	.4	2.1	.0
Fruits and vegetables .....	1.223	276.025	271.974	-1.4	-1.5	.5	1.2	-.1
Nonalcoholic beverages and beverage materials .....	1.123	163.439	162.524	-.8	-.6	.1	-.2	-.3
Other food at home .....	2.254	190.354	190.831	-.4	.3	.3	-.2	.1
Sugar and sweets .....	.321	198.694	200.880	2.8	1.1	.1	-.2	1.4
Fats and oils .....	.259	200.741	201.356	-2.3	.3	.6	.2	.0
Other foods .....	1.674	204.957	205.117	-.7	.1	.2	-.3	-.1
Other miscellaneous foods <sup>1 2</sup> .....	.472	122.051	121.482	-1.2	-5	.9	-.6	-5
Food away from home <sup>1</sup> .....	6.433	225.015	225.168	1.4	.1	.1	.0	.1
Other food away from home <sup>1 2</sup> .....	.321	157.670	158.826	2.8	.7	.0	.5	.7
Alcoholic beverages .....	1.092	223.565	223.621	1.6	.0	.0	-.1	-.3
Housing .....	39.753	212.529	212.401	-.4	-1	.0	-.1	.0
Shelter .....	30.171	242.019	242.002	.0	.0	.0	-.3	.0
Rent of primary residence <sup>3</sup> .....	8.476	247.574	247.448	.2	-1	.0	.0	.0
Lodging away from home <sup>2</sup> .....	.432	127.150	130.571	-4.2	2.7	-1	-2.0	.5
Owners' equivalent rent of residences <sup>3 4</sup> .....	20.959	232.463	232.354	.3	.0	.0	-.1	.0
Owners' equivalent rent of primary residence <sup>3 4</sup> .....	20.218	232.463	232.353	.3	.0	.0	-.1	.0
Tenants' and household insurance <sup>1 2</sup> .....	.303	125.299	125.367	3.6	.1	1.3	.7	.1
Fuels and utilities .....	5.632	209.691	209.171	-1.5	-2	-1	.6	.2
Household energy .....	4.517	184.843	183.918	-3.3	-5	-3	.6	.1
Fuel oil and other fuels <sup>1</sup> .....	.271	284.061	281.157	13.9	-1.0	1.1	7.1	-1.0
Gas (piped) and electricity <sup>3</sup> .....	4.246	188.607	187.730	-4.2	-5	-3	.2	.2
Water and sewer and trash collection services <sup>2</sup> .....	1.114	167.473	168.774	6.8	.8	.4	.8	.8
Household furnishings and operations .....	3.950	123.339	123.097	-1.4	-2	.0	-.1	-.4
Household operations <sup>1 2</sup> .....	.369	151.499	151.535	-.4	.0	-2	-.6	.0
Apparel .....	3.788	116.310	118.607	-.1	2.0	.2	.0	-.5
Men's and boys' apparel .....	.945	109.893	111.575	-4.1	1.5	-5	.0	-.4
Women's and girls' apparel .....	1.568	102.860	106.496	.9	3.5	.9	.1	-.5
Infants' and toddlers' apparel .....	.285	117.028	117.789	1.5	.7	-1	1.6	-1.2
Footwear .....	.781	127.267	127.843	2.7	.5	.2	.1	-.4
Transportation .....	18.647	189.544	188.406	13.5	-6	1.1	1.7	-.1
Private transportation .....	17.881	186.457	185.268	13.9	-6	1.0	1.8	-.1
New and used motor vehicles <sup>2</sup> .....	6.952	95.464	95.819	6.8	.4	.6	.3	.4
New vehicles .....	3.385	139.857	139.905	3.4	.0	-2	-.5	.1
Used cars and trucks .....	2.944	140.023	141.079	14.3	.8	2.2	1.5	.7
Motor fuel .....	5.774	235.083	228.569	36.0	-2.8	2.2	4.9	-1.2
Gasoline (all types) .....	5.530	234.825	228.207	36.8	-2.8	2.4	4.4	-1.5
Motor vehicle parts and equipment <sup>1</sup> .....	.472	135.383	135.694	1.1	.2	.4	.4	.2
Motor vehicle maintenance and repair <sup>1</sup> .....	1.180	247.975	248.479	1.7	.2	-1	.1	.2
Public transportation .....	.766	239.739	240.418	4.8	.3	1.3	-1.8	-.2
Medical care .....	5.261	383.443	386.919	3.8	.9	.2	.5	.6
Medical care commodities <sup>1</sup> .....	1.301	301.890	304.320	3.5	.8	-1	.7	.8
Medical care services .....	3.961	407.286	411.114	3.9	.9	.3	.5	.5
Professional services .....	2.195	327.439	329.020	2.9	.5	.2	.6	.1

See footnotes at end of table.

**Table 4. Consumer Price Index for Urban Wage Earners and Clerical Workers (CPI-W): U.S. city average, by expenditure category and commodity and service group-Continued**

(1982-84=100, unless otherwise noted)

CPI-W Expenditure category	Relative importance, December 2009	Unadjusted indexes		Unadjusted percent change to Feb. 2010 from—		Seasonally adjusted percent change from—		
		Jan. 2010	Feb. 2010	Feb. 2009	Jan. 2010	Nov. to Dec.	Dec. to Jan.	Jan. to Feb.
Hospital and related services <sup>3</sup> .....	1.339	587.101	598.149	7.9	1.9	0.6	0.4	1.3
Recreation <sup>2</sup> .....	6.031	109.964	110.076	-1.1	.1	-3	.0	.0
Video and audio <sup>2</sup> .....	2.046	100.473	100.084	-1.7	-4	-1	-1	-6
Education and communication <sup>2</sup> .....	6.175	124.293	124.334	1.8	.0	.2	.2	.2
Education <sup>2</sup> .....	2.327	193.049	193.641	4.8	.3	.3	.3	.6
Educational books and supplies .....	.196	503.416	505.356	6.8	.4	.4	.4	.6
Tuition, other school fees, and childcare .....	2.131	542.531	544.155	4.6	.3	.3	.3	.6
Communication <sup>2</sup> .....	3.848	87.617	87.501	-2	-1	.1	.1	-1
Information and information processing <sup>1 2</sup> .....	3.715	85.433	85.314	-4	-1	.1	.0	-1
Telephone services <sup>1 2</sup> .....	2.906	102.504	102.038	.1	-5	.2	-1	-5
Information technology, hardware and services <sup>1 5</sup> .....	.809	9.978	10.077	-3.5	1.0	-3	.4	1.0
Personal computers and peripheral equipment <sup>6</sup> .....	.225	78.278	77.939	-11.1	-4	-6	-3	-7
Other goods and services .....	3.919	404.632	404.722	10.7	.0	.2	.1	.0
Tobacco and smoking products <sup>1</sup> .....	1.397	791.959	790.710	28.6	-2	.3	.4	-2
Personal care .....	2.522	203.575	203.824	1.2	.1	.2	.0	.1
Personal care products <sup>1</sup> .....	.733	161.689	162.073	-3	.2	.3	-3	.2
Personal care services <sup>1</sup> .....	.577	228.793	228.169	.9	-3	.0	.1	-3
Miscellaneous personal services .....	1.019	351.329	352.366	2.6	.3	.2	.3	.2
<b>Commodity and service group</b>								
Commodities .....	43.589	176.413	176.118	5.7	-2	.5	.9	-1
Food and beverages .....	16.425	218.354	218.299	-2	.0	.1	.2	.1
Commodities less food and beverages .....	27.164	153.834	153.444	9.4	-3	.7	1.3	-3
Nondurables less food and beverages .....	16.703	195.981	195.059	13.6	-5	.8	1.9	-4
Apparel .....	3.788	116.310	118.607	-1	2.0	.2	.0	-5
Nondurables less food, beverages, and apparel .....	12.915	249.801	246.914	18.6	-1.2	.9	2.5	-5
Durables .....	10.461	112.511	112.618	3.7	.1	.5	.1	.1
Services .....	56.411	254.918	255.199	.7	.1	.0	-1	.1
Rent of shelter <sup>4</sup> .....	29.868	233.252	233.234	-1	.0	.0	-2	-2
Tenants' and household insurance <sup>1 2</sup> .....	.303	125.299	125.367	3.6	.1	1.3	.7	.1
Gas (piped) and electricity <sup>3</sup> .....	4.246	188.607	187.730	-4.2	-5	-3	.2	.2
Water and sewer and trash collection services <sup>2</sup> .....	1.114	167.473	168.774	6.8	.8	.4	.8	.8
Household operations <sup>1 2</sup> .....	.369	151.499	151.535	-4	.0	-2	-6	.0
Transportation services .....	5.918	255.577	256.809	3.5	.5	.3	-2	.4
Medical care services .....	3.961	407.286	411.114	3.9	.9	.3	.5	.5
Other services .....	10.631	293.972	294.230	1.7	.1	.1	.2	.1
<b>Special indexes</b>								
All items less food .....	84.667	211.440	211.423	3.4	.0	.3	.4	.0
All items less shelter .....	69.829	204.128	204.101	4.1	.0	.3	.6	.0
All items less medical care .....	94.739	205.589	205.461	2.8	-1	.2	.3	.0
Commodities less food .....	28.256	156.200	155.820	9.1	-2	.6	1.3	-3
Nondurables less food .....	17.795	197.701	196.831	12.8	-4	.8	1.8	-4
Nondurables less food and apparel .....	14.007	246.455	243.829	17.1	-1.1	.8	2.3	-5
Nondurables .....	33.128	207.611	207.092	6.3	-2	.4	1.1	-2
Services less rent of shelter <sup>4</sup> .....	26.543	247.985	248.586	1.6	.2	.2	.1	.3
Services less medical care services .....	52.450	244.090	244.205	.4	.0	.1	-1	.0
Energy .....	10.291	208.222	204.494	15.5	-1.8	1.1	3.1	-6
All items less energy .....	89.709	214.048	214.472	1.5	.2	.1	.0	.1
All items less food and energy .....	74.376	213.647	214.172	1.9	.2	.1	.0	.1
Commodities less food and energy commodities .....	22.211	145.065	145.722	3.7	.5	.3	.2	.0
Energy commodities .....	6.045	238.217	231.808	34.8	-2.7	2.1	5.0	-1.2
Services less energy services .....	52.165	262.146	262.559	1.1	.2	.1	-1	.1
Purchasing power of the consumer dollar (1982-84=\$1.00) .....	-	\$ .470	\$ .470	-	-	-	-	-
Purchasing power of the consumer dollar (1967=\$1.00) .....	-	\$ .158	\$ .158	-	-	-	-	-

<sup>1</sup> Not seasonally adjusted.

<sup>2</sup> Indexes on a December 1997=100 base.

<sup>3</sup> This index series was calculated using a Laspeyres estimator. All other item stratum index series were calculated using a geometric means estimator.

<sup>4</sup> Indexes on a December 1984=100 base

<sup>5</sup> Indexes on a December 1988=100 base.

<sup>6</sup> Indexes on a December 2007=100 base.

- Data not available.

NOTE: Index applies to a month as a whole, not to any specific date.

**Table 5. Consumer Price Index for Urban Wage Earners and Clerical Workers (CPI-W): Seasonally adjusted U.S. city average, by expenditure category and commodity and service group**

(1982-84=100, unless otherwise noted)

CPI-W	Seasonally adjusted indexes				Seasonally adjusted annual rate percent change for					
					3 months ended—			6 months ended—		
	Nov. 2009	Dec. 2009	Jan. 2010	Feb. 2010	May 2009	Aug. 2009	Nov. 2009	Feb. 2010	Aug. 2009	Feb. 2010
<b>Expenditure category</b>										
All items .....	212.417	212.920	213.638	213.644	0.4	6.2	2.8	2.3	3.3	2.6
Food and beverages .....	217.109	217.426	217.876	218.037	-1.8	-7	.2	1.7	-1.3	1.0
Food .....	216.553	216.887	217.376	217.593	-2.0	-1.0	.0	1.9	-1.5	1.0
Food at home .....	211.914	212.400	213.166	213.428	-4.7	-2.7	-1.4	2.9	-3.7	.7
Cereals and bakery products .....	252.586	253.427	251.835	251.687	-3.0	-1.2	.9	-1.4	-2.1	-3
Meats, poultry, fish, and eggs .....	200.374	200.365	201.172	202.401	-6.5	-4.2	-3.6	4.1	-5.4	.2
Dairy and related products <sup>1</sup> .....	192.695	193.546	197.663	197.583	-15.4	-7.3	3.5	10.5	-11.4	7.0
Fruits and vegetables .....	265.811	267.011	270.176	270.020	-3.2	-3.6	-5.0	6.5	-3.4	.6
Nonalcoholic beverages and beverage materials .....	161.582	161.738	162.068	161.550	-3	-1.0	-1.8	-.1	-.6	-1.0
Other food at home .....	190.110	190.619	190.215	190.493	-2.2	-.2	.0	.8	-1.2	.4
Sugar and sweets .....	197.888	198.163	197.745	200.465	-.1	-5	6.7	5.3	-.3	6.0
Fats and oils .....	198.650	199.828	200.194	200.243	-6.3	-2.3	-3.8	3.2	-4.3	-3
Other foods .....	205.097	205.590	205.030	204.886	-1.9	.1	-.6	-.4	-.9	-5
Other miscellaneous foods <sup>1 2</sup> .....	121.647	122.796	122.051	121.482	.4	-2.9	-1.9	-.5	-1.3	-1.2
Food away from home <sup>1</sup> .....	224.815	224.940	225.015	225.168	1.8	1.3	1.8	.6	1.5	1.2
Other food away from home <sup>1 2</sup> .....	156.853	156.830	157.670	158.826	-.3	6.3	.2	5.1	2.9	2.6
Alcoholic beverages .....	223.819	223.876	223.748	223.101	1.7	2.9	3.2	-1.3	2.3	1.0
Housing .....	213.130	213.065	212.818	212.780	-1.0	-.3	.4	-.7	-.6	-.1
Shelter .....	242.620	242.592	241.969	241.916	1.5	.2	-.7	-1.2	.8	-.9
Rent of primary residence <sup>3</sup> .....	247.276	247.237	247.305	247.213	1.7	.0	-.9	-.1	.9	-.5
Lodging away from home <sup>2</sup> .....	133.804	133.606	130.907	131.519	-6.2	-4.1	.0	-6.7	-5.1	-3.4
Owners' equivalent rent of residences <sup>3 4</sup> .....	232.633	232.585	232.351	232.286	1.9	.5	-.7	-.6	1.2	-.7
Owners' equivalent rent of primary residence <sup>3 4</sup> .....	232.633	232.585	232.351	232.286	1.9	.5	-.7	-.6	1.2	-.7
Tenants' and household insurance <sup>1 2</sup> .....	122.830	124.415	125.299	125.367	.7	3.7	1.9	8.5	2.2	5.2
Fuels and utilities .....	210.569	210.281	211.617	212.146	-14.2	-1.4	7.9	3.0	-8.0	5.4
Household energy .....	186.409	185.937	187.075	187.283	-18.1	-3.1	8.5	1.9	-10.9	5.2
Fuel oil and other fuels <sup>1</sup> .....	262.340	265.130	284.061	281.157	-25.8	19.5	44.1	31.9	-5.9	37.9
Gas (piped) and electricity <sup>3</sup> .....	191.296	190.655	191.039	191.397	-17.7	-4.3	6.7	.2	-11.2	3.4
Water and sewer and trash collection services <sup>2</sup> .....	165.035	165.662	167.045	168.416	6.9	6.6	5.1	8.4	6.8	6.8
Household furnishings and operations .....	123.776	123.744	123.590	123.126	1.2	-3.0	-1.7	-2.1	-.9	-1.9
Household operations <sup>1 2</sup> .....	152.747	152.486	151.499	151.535	-.4	4.5	-2.4	-3.1	2.0	-2.8
Apparel .....	119.871	120.151	120.099	119.483	-1.2	4.0	-1.9	-1.3	1.4	-1.6
Men's and boys' apparel .....	112.900	112.285	112.252	111.820	-6.0	-.6	-5.9	-3.8	-3.3	-4.8
Women's and girls' apparel .....	107.522	108.442	108.554	107.988	-2.0	7.6	-3.4	1.7	2.7	-.9
Infants' and toddlers' apparel .....	116.678	116.548	118.441	117.058	4.7	7.7	-7.0	1.3	6.2	-2.9
Footwear .....	128.856	129.173	129.256	128.706	3.6	5.2	2.6	-.5	4.4	1.0
Transportation .....	187.971	189.949	193.144	192.920	-1.5	36.2	13.5	11.0	15.9	12.2
Private transportation .....	184.689	186.609	190.031	189.821	-1.3	37.5	13.2	11.6	16.5	12.4
New and used motor vehicles <sup>2</sup> .....	94.438	95.030	95.343	95.710	2.6	4.3	15.5	5.5	3.5	10.4
New vehicles .....	139.664	139.358	138.596	138.749	6.3	.8	9.7	-2.6	3.5	3.4
Used cars and trucks .....	135.844	138.813	140.866	141.875	-2.2	12.6	30.2	19.0	5.0	24.4
Motor fuel .....	232.924	237.946	249.602	246.705	-11.2	163.6	16.2	25.9	53.0	20.9
Gasoline (all types) .....	233.205	238.841	249.318	245.597	-4.7	153.8	17.7	23.0	55.5	20.3
Motor vehicle parts and equipment <sup>1</sup> .....	134.346	134.892	135.383	135.694	.5	-2.5	2.3	4.1	-1.0	3.2
Motor vehicle maintenance and repair <sup>1</sup> .....	247.972	247.812	247.975	248.479	1.3	1.4	3.5	.8	1.4	2.1
Public transportation .....	244.557	247.857	243.274	242.675	-5.9	9.8	20.5	-3.0	1.6	8.1
Medical care .....	380.838	381.504	383.504	385.728	3.7	2.7	3.7	5.2	3.2	4.5
Medical care commodities <sup>1</sup> .....	299.972	299.777	301.890	304.320	3.5	1.3	3.5	5.9	2.4	4.7
Medical care services .....	404.460	405.483	407.372	409.435	3.8	3.2	3.8	5.0	3.5	4.4
Professional services .....	325.379	325.933	327.911	328.390	2.7	2.4	2.9	3.8	2.5	3.3

See footnotes at end of table.



**Table 5. Consumer Price Index for Urban Wage Earners and Clerical Workers (CPI-W): Seasonally adjusted U.S. city average, by expenditure category and commodity and service group-Continued**

(1982-84=100, unless otherwise noted)

CPI-W	Seasonally adjusted indexes				Seasonally adjusted annual rate percent change for					
					3 months ended—			6 months ended—		
	Nov. 2009	Dec. 2009	Jan. 2010	Feb. 2010	May 2009	Aug. 2009	Nov. 2009	Feb. 2010	Aug. 2009	Feb. 2010
<b>Expenditure category</b>										
Hospital and related services <sup>3</sup> .....	579.659	583.389	585.929	593.708	7.5	7.1	7.0	10.1	7.3	8.5
Recreation <sup>2</sup> .....	110.559	110.221	110.176	110.176	-1.1	1.0	-2.7	-1.4	-1	-2.0
Video and audio <sup>2</sup> .....	101.026	100.934	100.793	100.171	-2	-6	-2.8	-3.3	-4	-3.1
Education and communication <sup>2</sup> .....	123.678	123.911	124.142	124.338	2.3	2.1	.9	2.2	2.2	1.5
Education <sup>2</sup> .....	191.203	191.835	192.430	193.654	5.2	5.4	3.4	5.2	5.3	4.3
Educational books and supplies .....	497.706	499.745	501.581	504.554	5.5	10.2	6.1	5.6	7.8	5.9
Tuition, other school fees, and childcare .....	537.418	539.155	540.811	544.275	5.2	5.0	3.1	5.2	5.1	4.2
Communication <sup>2</sup> .....	87.469	87.545	87.616	87.501	.3	-2	-9	.1	.1	-4
Information and information processing <sup>1 2</sup> .....	85.331	85.404	85.433	85.314	.0	-4	-9	-1	-2	-5
Telephone services <sup>1 2</sup> .....	102.413	102.585	102.504	102.038	1.3	1.5	-8	-1.5	1.4	-1.1
Information technology, hardware and services <sup>1 5</sup> .....	9.969	9.935	9.978	10.077	-6.4	-9.7	-1.7	4.4	-8.1	1.3
Personal computers and peripheral equipment <sup>6</sup> .....	78.673	78.163	77.929	77.391	-15.3	-19.8	-1.6	-6.4	-17.6	-4.0
Other goods and services .....	403.360	404.292	404.888	404.813	34.1	5.6	4.6	1.4	19.0	3.0
Tobacco and smoking products <sup>1</sup> .....	786.541	789.173	791.959	790.710	116.5	12.6	9.7	2.1	56.1	5.9
Personal care .....	203.399	203.727	203.775	203.895	1.2	1.3	1.3	1.0	1.3	1.1
Personal care products <sup>1</sup> .....	161.784	162.231	161.689	162.073	1.4	-1.7	-1.5	.7	-2	-4
Personal care services <sup>1</sup> .....	228.614	228.614	228.793	228.169	3.1	-1	1.5	-8	1.5	.4
Miscellaneous personal services .....	350.374	351.092	352.090	352.853	1.0	2.9	3.7	2.9	1.9	3.3
<b>Commodity and service group</b>										
Commodities .....	175.805	176.635	178.233	177.989	.9	13.2	4.9	5.1	6.9	5.0
Food and beverages .....	217.109	217.426	217.876	218.037	-1.8	-7	.2	1.7	-1.3	1.0
Commodities less food and beverages .....	153.502	154.519	156.580	156.171	2.6	22.7	7.8	7.1	12.2	7.5
Nondurables less food and beverages .....	196.863	198.438	202.280	201.470	-1.3	41.7	8.6	9.7	18.3	9.1
Apparel .....	119.871	120.151	120.099	119.483	-1.2	4.0	-1.9	-1.3	1.4	-1.6
Nondurables less food, beverages, and apparel .....	248.738	251.007	257.262	255.925	.9	58.4	10.3	12.1	26.4	11.2
Durables .....	111.728	112.317	112.382	112.465	1.4	1.0	10.0	2.7	1.2	6.3
Services .....	255.245	255.350	255.157	255.440	.1	1.1	1.2	.3	.6	.8
Rent of shelter <sup>4</sup> .....	234.029	234.082	233.607	233.241	1.3	.1	-3	-1.3	.7	-8
Tenants' and household insurance <sup>1 2</sup> .....	122.830	124.415	125.299	125.367	.7	3.7	1.9	8.5	2.2	5.2
Gas (piped) and electricity <sup>3</sup> .....	191.296	190.655	191.039	191.397	-17.7	-4.3	6.7	.2	-11.2	3.4
Water and sewer and trash collection services <sup>2</sup> .....	165.035	165.662	167.045	168.416	6.9	6.6	5.1	8.4	6.8	6.8
Household operations <sup>1 2</sup> .....	152.747	152.486	151.499	151.535	-4	4.5	-2.4	-3.1	2.0	-2.8
Transportation services .....	255.455	256.122	255.588	256.694	2.0	3.4	6.6	2.0	2.7	4.2
Medical care services .....	404.460	405.483	407.372	409.435	3.8	3.2	3.8	5.0	3.5	4.4
Other services .....	293.299	293.681	294.133	294.301	1.4	3.4	.5	1.4	2.4	.9
<b>Special indexes</b>										
All items less food .....	211.499	212.031	212.790	212.759	.8	7.6	3.3	2.4	4.2	2.9
All items less shelter .....	203.704	204.406	205.615	205.643	-1	9.0	4.4	3.9	4.4	4.1
All items less medical care .....	205.514	206.007	206.680	206.620	.2	6.4	2.8	2.2	3.3	2.5
Commodities less food .....	155.883	156.879	158.886	158.469	2.5	21.9	7.7	6.8	11.8	7.2
Nondurables less food .....	198.543	200.048	203.681	202.891	-1.2	38.9	8.2	9.1	17.1	8.6
Nondurables less food and apparel .....	245.496	247.582	253.287	252.038	.7	53.0	9.7	11.1	24.1	10.4
Nondurables .....	207.442	208.232	210.553	210.177	-2.5	19.4	4.3	5.4	7.9	4.8
Services less rent of shelter <sup>4</sup> .....	247.833	248.380	248.589	249.271	-1.5	1.9	3.6	2.3	.2	3.0
Services less medical care services .....	244.619	244.797	244.523	244.557	-2	.7	1.3	-1	.3	.6
Energy .....	207.897	210.195	216.617	215.259	-14.8	64.5	12.8	14.9	18.4	13.9
All items less energy .....	213.906	214.189	214.235	214.406	2.1	1.3	1.7	.9	1.7	1.3
All items less food and energy .....	213.749	214.023	213.979	214.141	3.0	1.7	2.1	.7	2.4	1.4
Commodities less food and energy commodities .....	145.242	145.608	145.835	145.848	5.9	2.1	5.2	1.7	4.0	3.4
Energy commodities .....	235.286	240.247	252.253	249.339	-12.0	154.3	17.3	26.1	49.6	21.6
Services less energy services .....	262.192	262.385	262.136	262.409	1.8	1.6	.7	.3	1.7	.5

<sup>1</sup> Not seasonally adjusted.

<sup>2</sup> Indexes on a December 1997=100 base.

<sup>3</sup> This index series was calculated using a Laspeyres estimator. All other item stratum index series were calculated using a geometric means estimator.

<sup>4</sup> Indexes on a December 1984=100 base

<sup>5</sup> Indexes on a December 1988=100 base.

<sup>6</sup> Indexes on a December 2007=100 base.

NOTE: Index applies to a month as a whole, not to any specific date.

**Table 6. Consumer Price Index for Urban Wage Earners and Clerical Workers (CPI-W): Selected areas, all items index**

(1982-84=100, unless otherwise noted)

CPI-W	Pricing schedule 1	All items									
		Indexes				Percent change to Feb.2010 from—			Percent change to Jan.2010 from—		
		Nov. 2009	Dec. 2009	Jan. 2010	Feb. 2010	Feb. 2009	Dec. 2009	Jan. 2010	Jan. 2009	Nov. 2009	Dec. 2009
U.S. city average .....	M	212.003	211.703	212.568	212.544	2.8	0.4	0.0	3.3	0.3	0.4
<b>Region and area size<sup>2</sup></b>											
Northeast urban .....	M	229.048	228.794	229.744	229.874	3.1	.5	.1	3.6	.3	.4
Size A - More than 1,500,000 .....	M	229.541	229.180	229.919	230.099	2.7	.4	.1	3.2	.2	.3
Size B/C - 50,000 to 1,500,000 <sup>3</sup> .....	M	138.527	138.522	139.364	139.379	4.1	.6	.0	4.5	.6	.6
Midwest urban .....	M	201.553	200.999	202.180	202.044	3.2	.5	-.1	3.6	.3	.6
Size A - More than 1,500,000 .....	M	201.626	200.820	201.957	201.758	2.9	.5	-.1	3.2	.2	.6
Size B/C - 50,000 to 1,500,000 <sup>3</sup> .....	M	131.823	131.639	132.502	132.507	3.4	.7	.0	3.7	.5	.7
Size D - Nonmetropolitan (less than 50,000) .....	M	200.748	200.471	201.414	201.118	3.9	.3	-.1	4.4	.3	.5
South urban .....	M	206.859	206.716	207.405	207.325	3.1	.3	.0	3.7	.3	.3
Size A - More than 1,500,000 .....	M	209.161	208.788	209.619	209.288	2.3	.2	-.2	3.0	.2	.4
Size B/C - 50,000 to 1,500,000 <sup>3</sup> .....	M	132.129	132.136	132.508	132.528	3.3	.3	.0	3.9	.3	.3
Size D - Nonmetropolitan (less than 50,000) .....	M	213.396	213.184	213.984	214.172	4.3	.5	.1	4.7	.3	.4
West urban .....	M	214.228	213.919	214.664	214.710	2.0	.4	.0	2.5	.2	.3
Size A - More than 1,500,000 .....	M	216.286	215.988	216.905	216.850	1.9	.4	.0	2.4	.3	.4
Size B/C - 50,000 to 1,500,000 <sup>3</sup> .....	M	133.149	132.983	133.238	133.325	2.0	.3	.1	2.8	.1	.2
<b>Size classes</b>											
A <sup>4</sup> .....	M	196.187	195.779	196.606	196.516	2.4	.4	.0	2.9	.2	.4
B/C <sup>3</sup> .....	M	133.139	133.072	133.589	133.619	3.2	.4	.0	3.7	.3	.4
D .....	M	207.739	207.417	208.297	208.368	3.8	.5	.0	4.1	.3	.4
<b>Selected local areas<sup>5</sup></b>											
Chicago-Gary-Kenosha, IL-IN-WI .....	M	205.136	204.196	205.529	205.627	2.8	.7	.0	2.7	.2	.7
Los Angeles-Riverside-Orange County, CA ...	M	216.618	216.233	217.290	217.090	1.8	.4	-.1	2.3	.3	.5
New York-Northern N.J.-Long Island, NY-NJ-CT-PA .....	M	233.893	233.448	234.067	234.153	2.4	.3	.0	2.9	.1	.3
Boston-Brockton-Nashua, MA-NH-ME-CT .....	1	236.859	-	237.999	-	-	-	-	3.4	.5	-
Cleveland-Akron, OH .....	1	192.871	-	194.529	-	-	-	-	3.0	.9	-
Dallas-Fort Worth, TX .....	1	205.297	-	205.456	-	-	-	-	3.0	.1	-
Washington-Baltimore, DC-MD-VA-WV <sup>6</sup> .....	1	140.608	-	141.155	-	-	-	-	3.5	.4	-
Atlanta, GA .....	2	-	199.331	-	201.407	2.0	1.0	-	-	-	-
Detroit-Ann Arbor-Flint, MI .....	2	-	199.614	-	198.913	1.4	-.4	-	-	-	-
Houston-Galveston-Brazoria, TX .....	2	-	188.842	-	190.351	2.9	.8	-	-	-	-
Miami-Fort Lauderdale, FL .....	2	-	221.067	-	221.074	1.6	.0	-	-	-	-
Philadelphia-Wilmington-Atlantic City, PA-NJ-DE-MD .....	2	-	224.732	-	226.539	3.3	.8	-	-	-	-
San Francisco-Oakland-San Jose, CA .....	2	-	220.121	-	222.049	2.4	.9	-	-	-	-
Seattle-Tacoma-Bremerton, WA .....	2	-	220.905	-	221.215	1.1	.1	-	-	-	-

<sup>1</sup> Foods, fuels, and several other items priced every month in all areas; most other goods and services priced as indicated:

M - Every month.

1 - January, March, May, July, September, and November.

2 - February, April, June, August, October, and December.

<sup>2</sup> Regions defined as the four Census regions. See technical notes.

<sup>3</sup> Indexes on a December 1996=100 base.

<sup>4</sup> Indexes on a December 1986=100 base.

<sup>5</sup> In addition, the following metropolitan areas are published semiannually and appear in Tables 34 and 39 of the January and July issues of the CPI Detailed Report: Anchorage, AK; Cincinnati-Hamilton, OH-KY-IN; Denver-Boulder-Greeley, CO; Honolulu, HI; Kansas City, MO-KS; Milwaukee-Racine, WI; Minneapolis-St. Paul, MN-WI; Phoenix-Mesa, AZ; Pittsburgh, PA; Portland-Salem, OR-WA; St. Louis, MO-IL; San Diego, CA;

Tampa-St. Petersburg-Clearwater, FL.

<sup>6</sup> Indexes on a November 1996=100 base.

- Data not available.

NOTE: Local area indexes are byproducts of the national CPI program. Each local index has a smaller sample size than the national index and is, therefore, subject to substantially more sampling and other measurement error. As a result, local area indexes show greater volatility than the national index, although their long-term trends are similar. Therefore, the Bureau of Labor Statistics strongly urges users to consider adopting the national average CPI for use in their escalator clauses.

NOTE: Index applies to a month as a whole, not to any specific date.

**Table 7. Chained Consumer Price Index for All Urban Consumers (C-CPI-U): U.S. city average, by expenditure category and commodity and service group**

(December 1999=100, unless otherwise noted)

C-CPI-U	Relative importance, 2007-2008	Unadjusted indexes		Unadjusted percent change to Feb. 2010 from—	
		Jan. 2010	Feb. 2010	Feb. 2009	Jan. 2010
		Expenditure category			
All items .....	100.000	R125.628	R125.604	2.2	0.0
Food and beverages .....	14.519	127.981	127.923	-3	.0
Food .....	13.493	127.962	127.895	-4	-.1
Food at home .....	7.780	123.115	122.940	-1.7	-.1
Food away from home .....	5.712	134.554	134.648	1.3	.1
Alcoholic beverages .....	1.027	128.680	128.745	1.1	.1
Housing .....	42.074	R128.296	R128.240	-7	.0
Shelter .....	32.119	130.799	130.840	-4	.0
Fuels and utilities .....	5.231	R157.973	R157.467	-1.3	-.3
Household furnishings and operations .....	4.724	94.503	94.268	-2.0	-.2
Apparel .....	3.772	86.984	88.474	.0	1.7
Transportation .....	17.199	130.159	129.375	13.8	-.6
Private transportation .....	16.013	131.066	130.185	14.6	-.7
Public transportation .....	1.186	118.303	118.725	4.4	.4
Medical care .....	6.294	148.326	149.521	3.3	.8
Medical care commodities .....	1.570	130.850	131.864	3.2	.8
Medical care services .....	4.723	154.738	156.001	3.3	.8
Recreation .....	6.625	103.359	103.267	-2.7	-.1
Education and communication .....	6.288	111.806	111.783	1.4	.0
Education .....	2.804	180.738	181.011	4.5	.2
Communication .....	3.484	73.401	73.285	-1.0	-.2
Other goods and services .....	3.229	136.994	137.103	6.1	.1
<b>Commodity and service group</b>					
Services .....	59.383	R134.619	R134.773	.4	.1
Commodities .....	40.617	114.592	114.347	4.9	-.2
Durables .....	10.376	81.555	81.503	1.2	-.1
Nondurables .....	30.241	131.785	131.435	6.2	-.3
All items less food and energy .....	76.901	119.269	119.518	1.0	.2
Energy .....	9.606	R185.213	R181.912	17.1	-1.8

R Revised.

Indexes for 2010 are initial estimates. Indexes for 2009 are interim adjustments.

NOTE: Index applies to a month as a whole, not to any specific date.