



NEWS RELEASE



Transmission of material in this release is embargoed until
8:30 a.m. (EDT) Thursday, August 18, 2011

USDL-11-1229

Technical information: (202) 691-7000 • Reed.Steve@bls.gov • www.bls.gov/cpi
Media Contact: (202) 691-5902 • PressOffice@bls.gov

CONSUMER PRICE INDEX – JULY 2011

The Consumer Price Index for All Urban Consumers (CPI-U) increased 0.5 percent in July on a seasonally adjusted basis, the U.S. Bureau of Labor Statistics reported today. Over the last 12 months, the all items index increased 3.6 percent before seasonal adjustment.

The gasoline index rebounded from previous declines and rose sharply in July, accounting for about half of the seasonally adjusted increase in the all items index. The food at home index accelerated in July and also contributed to the increase, as dairy and fruit indexes posted notable increases and five of the six major grocery store food groups rose.

The index for all items less food and energy increased as well, though the 0.2 percent increase was slightly smaller than the two previous months. The shelter index accelerated in July, and the apparel index again increased sharply. In contrast, the index for new vehicles was unchanged after a long string of increases. The index for household furnishings and operations was flat in July as well, and the recreation index declined slightly.

The 12 month change in the all items index remained at 3.6 percent for the third month in a row. The change in the index for all items less food and energy continued its upward trend, rising to 1.8 percent in July, with the shelter and apparel indexes contributing notably to the acceleration. The energy index has risen 19.0 percent over the past year.

Chart 1. One-month percent change in CPI for All Urban Consumers (CPI-U), seasonally adjusted, July 2010 - July 2011
Percent change

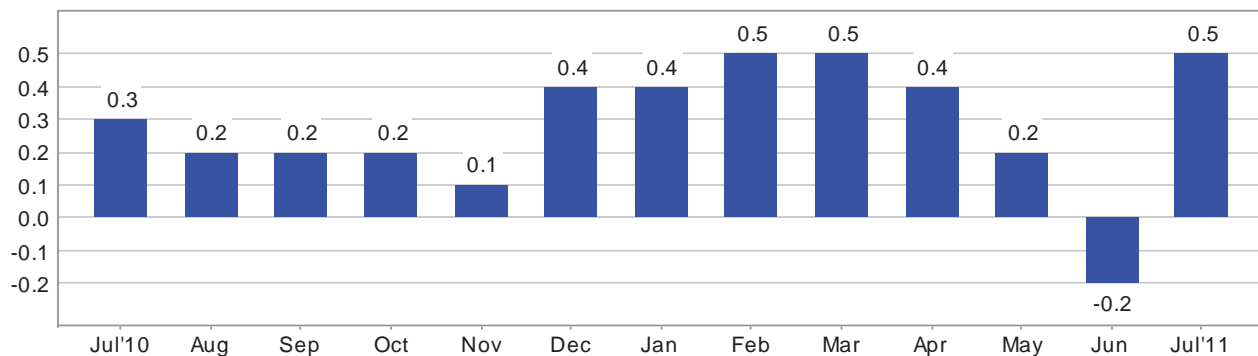


Chart 2. 12-month percent change in CPI for All Urban Consumers (CPI-U), not seasonally adjusted, July 2010 - July 2011
Percent change

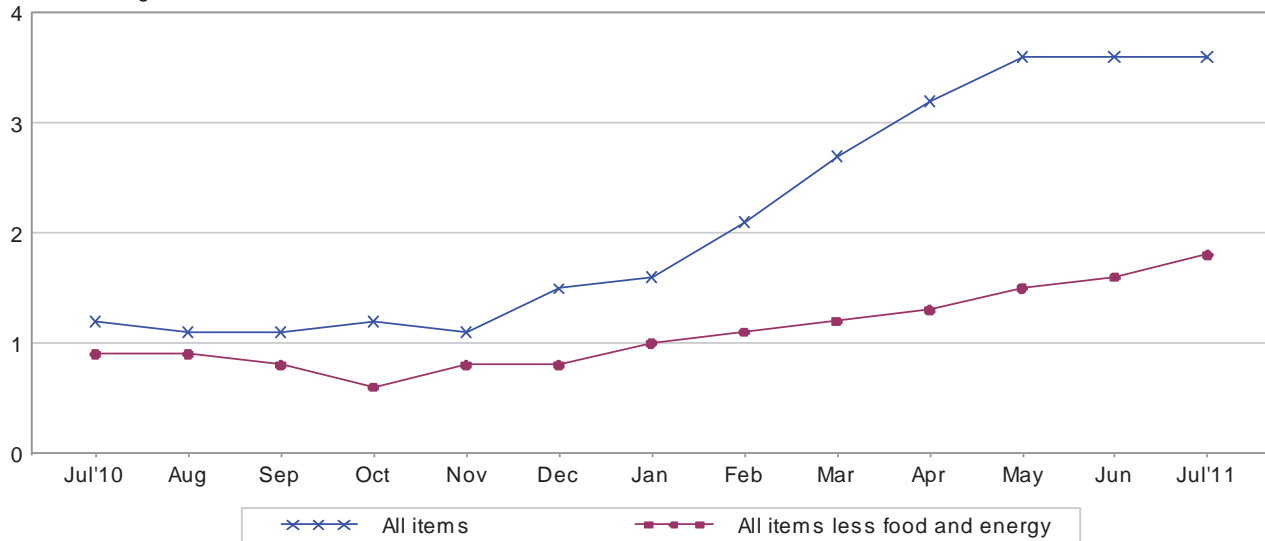


Table A. Percent changes in CPI for All Urban Consumers (CPI-U): U.S. city average

	Seasonally adjusted changes from preceding month							Un-adjusted 12-mos. ended July 2011
	Jan. 2011	Feb. 2011	Mar. 2011	Apr. 2011	May 2011	June 2011	July 2011	
All items4	.5	.5	.4	.2	-.2	.5	3.6
Food5	.6	.8	.4	.4	.2	.4	4.2
Food at home7	.8	1.1	.5	.5	.2	.6	5.4
Food away from home ¹2	.2	.3	.3	.2	.3	.2	2.6
Energy	2.1	3.4	3.5	2.2	-1.0	-4.4	2.8	19.0
Energy commodities	4.0	4.8	5.5	3.1	-1.9	-6.3	4.3	33.3
Gasoline (all types)	3.5	4.7	5.6	3.3	-2.0	-6.8	4.7	33.6
Fuel oil ¹	6.8	5.8	6.2	3.2	-.8	-2.2	-1.7	37.2
Energy services	-.6	1.1	.2	.6	.6	-1.1	.4	.9
Electricity	-.5	.4	.7	.2	.8	-1.6	.8	2.0
Utility (piped) gas service	-1.2	3.4	-1.4	1.9	-.3	.4	-1.2	-2.8
All items less food and energy2	.2	.1	.2	.3	.3	.2	1.8
Commodities less food and energy commodities2	.2	.1	.4	.5	.5	.3	1.8
New vehicles	-.1	1.0	.7	.7	1.1	.6	.0	4.0
Used cars and trucks	-.3	.1	.8	1.2	1.1	1.6	.7	5.3
Apparel	1.0	-.9	-.5	.2	1.2	1.4	1.2	3.1
Medical care commodities ¹5	.7	.5	.5	.0	-.1	.0	3.2
Services less energy services1	.2	.2	.1	.2	.1	.2	1.7
Shelter1	.1	.1	.1	.2	.2	.3	1.4
Transportation services6	.5	.5	.2	.1	-.3	-.1	2.9
Medical care services	-.1	.4	.1	.3	.3	.3	.3	3.2

¹ Not seasonally adjusted.

Consumer Price Index Data for July 2011

Food

The food index rose 0.4 percent in July after rising 0.2 percent in June. The cereals and bakery products index fell 0.1 percent in July; the other five major grocery store food groups all increased. The dairy and related products index, which rose 0.5 percent in June, increased 1.2 percent in July. The fruits and vegetables index also rose 1.2 percent as the index for fresh fruits rose 3.7 percent. The index for nonalcoholic beverages increased 0.9 percent in July as the coffee index continued to rise sharply, while the index for meats, poultry, fish, and eggs increased 0.5 percent and the index for other food at home advanced 0.3 percent. The index for food away from home rose 0.2 percent in July after rising 0.3 percent in June. Over the past 12 months, the food index has risen 4.2 percent with the food at home index up 5.4 percent. All major grocery store food group indexes have risen over the past year; the increases ranged from 3.5 percent (other food at home) to 7.9 percent (dairy and related products).

Energy

The energy index, which declined in May and June, increased 2.8 percent in July. The gasoline index, down 6.8 percent in June, rose 4.7 percent in July. (Before seasonal adjustment, gasoline prices fell 1.5 percent in July.) Over the past 12 months, the gasoline index has increased 33.6 percent. The household energy index also turned up in July, rising 0.2 percent after a 1.2 percent decline in June. The electricity index, which declined in June, rose 0.8 percent and more than offset a 1.7 percent decline in the index for fuel oil and a 1.2 percent decrease in the natural gas index. The household energy index has risen 2.7 percent over the last 12 months, with the fuel oil index up 37.2 percent and the electricity index up 2.0 percent but the index for natural gas down 2.8 percent.

All items less food and energy

The index for all items less food and energy rose 0.2 percent in July after increasing 0.3 percent in both May and June. The shelter index rose 0.3 percent in July, its largest increase since June 2008. The indexes for rent and owners' equivalent rent both rose 0.3 percent, while the lodging away from home index increased 0.9 percent. The index for medical care rose 0.2 percent, with the medical care services index rising 0.3 percent while the index for medical care commodities was unchanged. The apparel index continued to rise sharply, increasing 1.2 percent in July; it has increased 3.9 percent over the past three months. The index for used cars and trucks also continued to rise, increasing 0.7 percent in July, and the airline fare index turned up, rising 0.1 percent after falling in May and June. The tobacco index rose as well; its 0.5 percent July increase was its largest of the year. However, the index for new vehicles was unchanged in July after rising at least 0.6 percent in each of the last five months. The indexes for personal care and household furnishings and operations were also unchanged in July, while the index for recreation fell 0.1 percent.

The 12 month change in the index for all items less food and energy reached 1.8 percent in July, continuing its steady rise from the October 2010 low point of 0.6 percent. Most of its major component indexes have risen more quickly in 2011 than they did in late 2010. The 12 month change in the shelter index, which was negative as recently as October 2010, reached 1.4 percent in July. The apparel index has now increased 3.1 percent over the last 12 months, its largest 12 month increase since July 1992.

Not seasonally adjusted CPI measures

The Consumer Price Index for All Urban Consumers (CPI-U) increased 3.6 percent over the last 12 months to an index level of 225.922 (1982-84=100). For the month, the index increased 0.1 percent prior to seasonal adjustment.

The Consumer Price Index for Urban Wage Earners and Clerical Workers (CPI-W) increased 4.1 percent over the last 12 months to an index level of 222.686 (1982-84=100). For the month, the index increased 0.1 percent prior to seasonal adjustment.

The Chained Consumer Price Index for All Urban Consumers (C-CPI-U) increased 3.5 percent over the last 12 months. For the month, the index increased 0.1 percent on a not seasonally adjusted basis. Please note that the indexes for the post-2009 period are subject to revision.

The Consumer Price Index for August 2011 is scheduled to be released on Thursday, September 15, 2011, at 8:30 a.m. (EDT).

Facilities for Sensory Impaired

Information from this release will be made available to sensory impaired individuals upon request. Voice phone: 202-691-5200, Federal Relay Services: 1-800-877-8339.

Brief Explanation of the CPI

The Consumer Price Index (CPI) is a measure of the average change in prices over time of goods and services purchased by households. The Bureau of Labor Statistics publishes CPIs for two population groups: (1) the CPI for Urban Wage Earners and Clerical Workers (CPI-W), which covers households of wage earners and clerical workers that comprise approximately 32 percent of the total population and (2) the CPI for All Urban Consumers (CPI-U) and the Chained CPI for All Urban Consumers (C-CPI-U), which cover approximately 87 percent of the total population and include in addition to wage earners and clerical worker households, groups such as professional, managerial, and technical workers, the self-employed, short-term workers, the unemployed, and retirees and others not in the labor force.

The CPIs are based on prices of food, clothing, shelter, and fuels, transportation fares, charges for doctors' and dentists' services, drugs, and other goods and services that people buy for day-to-day living. Prices are collected each month in 87 urban areas across the country from about 4,000 housing units and approximately 26,000 retail establishments-department stores, supermarkets, hospitals, filling stations, and other types of stores and service establishments. All taxes directly associated with the purchase and use of items are included in the index. Prices of fuels and a few other items are obtained every month in all 87 locations. Prices of most other commodities and services are collected every month in the three largest geographic areas and every other month in other areas. Prices of most goods and services are obtained by personal visits or telephone calls of the Bureau's trained representatives.

In calculating the index, price changes for the various items in each location are averaged together with weights, which represent their importance in the spending of the appropriate population group. Local data are then combined to obtain a U.S. city average. For the CPI-U and CPI-W separate indexes are also published by size of city, by region of the country, for cross-classifications of regions and population-size classes, and for 27 local areas. Area indexes do not measure differences in the level of prices among cities; they only measure the average change in prices for each area since the base period. For the C-CPI-U data are issued only at the national level. It is important to note that the CPI-U and CPI-W are considered final when released, but the C-CPI-U is issued in preliminary form and subject to two annual revisions.

The index measures price change from a designed reference date. For the CPI-U and the CPI-W the reference base is 1982-84 equals 100. The reference base for the C-CPI-U is December 1999 equals 100. An increase of 16.5 percent from the reference base, for example, is shown as 116.500. This change can also be expressed in dollars as follows: the price of a base period market basket of goods and services in the CPI has risen from \$10 in 1982-84 to \$11.65.

For further details visit the CPI home page on the Internet at <http://www.bls.gov/cpi/> or contact our CPI Information and Analysis Section on (202) 691-7000.

Note on Sampling Error in the Consumer Price Index

The CPI is a statistical estimate that is subject to sampling error because it is based upon a sample of retail prices and not the complete universe of all prices. BLS calculates and publishes estimates of the 1-month, 2-month, 6-month and 12-month percent change standard errors annually, for the CPI-U. These standard error estimates can be used to construct confidence intervals for hypothesis testing. For example, the estimated standard error of the 1 month percent change is 0.03 percent for the U.S. All Items Consumer Price Index. This means that if we repeatedly sample from the universe of all retail prices using the same methodology, and estimate a percentage change for each sample, then 95% of these estimates would be within 0.06 percent of the 1 month percentage change based on all retail prices. For example, for a 1-month change of 0.2 percent in the All Items CPI for All Urban Consumers, we are 95 percent confident that the actual percent change based on all retail prices would fall between 0.14 and 0.26 percent. For the latest data, including information on how to use the estimates of standard error, see “Variance Estimates for Price Changes in the Consumer Price Index, January-December 2010”. These data are available on the CPI home page (<http://www.bls.gov/cpi>), or by using the following link <http://www.bls.gov/cpi/cpivar2010.pdf>

Calculating Index Changes

Movements of the indexes from one month to another are usually expressed as percent changes rather than changes in index points, because index point changes are affected by the level of the index in relation to its base period while percent changes are not. The example below illustrates the computation of index point and percent changes.

Percent changes for 3-month and 6-month periods are expressed as annual rates and are computed according to the standard formula for compound growth rates. These data indicate what the percent change would be if the current rate were maintained for a 12-month period.

Index Point Change

CPI	202.416
Less previous index	201.800
Equals index point change	.616

Percent Change

Index point difference	.616
Divided by the previous index	201.800
Equals	0.003
Results multiplied by one hundred	0.003x100
Equals percent change	0.3

Regions Defined

The states in the four regions shown in Tables 3 and 6 are listed below.

The Northeast--Connecticut, Maine, Massachusetts, New Hampshire, New York, New Jersey, Pennsylvania, Rhode Island, and Vermont.

The Midwest--Illinois, Indiana, Iowa, Kansas, Michigan, Minnesota, Missouri, Nebraska, North Dakota, Ohio, South Dakota, and Wisconsin.

The South--Alabama, Arkansas, Delaware, Florida, Georgia, Kentucky, Louisiana, Maryland, Mississippi, North Carolina, Oklahoma, South Carolina, Tennessee, Texas, Virginia, West Virginia, and the District of Columbia.

The West--Alaska, Arizona, California, Colorado, Hawaii, Idaho, Montana, Nevada, New Mexico, Oregon, Utah, Washington, and Wyoming.

A Note on Seasonally Adjusted and Unadjusted Data

Because price data are used for different purposes by different groups, the Bureau of Labor Statistics publishes seasonally adjusted as well as unadjusted changes each month.

For analyzing general price trends in the economy, seasonally adjusted changes are usually preferred since they eliminate the effect of changes that normally occur at the same time and in about the same magnitude every year--such as price movements resulting from changing climatic conditions, production cycles, model changeovers, holidays, and sales.

The unadjusted data are of primary interest to consumers concerned about the prices they actually pay. Unadjusted data also are used extensively for escalation purposes. Many collective bargaining contract agreements and pension plans, for example, tie compensation changes to the Consumer Price Index before adjustment for seasonal variation.

Seasonal factors used in computing the seasonally adjusted indexes are derived by the X-12-ARIMA Seasonal Adjustment Method. Seasonally adjusted indexes and seasonal factors are computed annually. Each year, the last 5 years of seasonally adjusted data are revised. Data from January 2006 through December 2010 were replaced in January 2011. Exceptions to the usual revision schedule were: the updated seasonal data at the end of 1977 replaced data from 1967 through 1977; and, in January 2002, dependently seasonally adjusted series were revised for January 1987-December 2001 as a result of a change in the aggregation weights for dependently adjusted series. For further information, please see "Aggregation of Dependently Adjusted Seasonally Adjusted Series," in the October 2001 issue of the CPI Detailed Report.

Effective with the publication of data from January 2006 through December 2010 in January 2011, the Video and audio series and the Information technology, hardware and services series were changed from independently adjusted to dependently adjusted. This resulted in an increase in the number of seasonal components used in deriving seasonal movement of the All items and 54 other lower level aggregations, from 73 for the publication of January 1998 through December 2005 data to 82 for the publication of seasonally adjusted data for January 2006 and later. Each year the seasonal status of every series is reevaluated based upon certain statistical criteria. If any of the 82 components change their seasonal adjustment status from seasonally adjusted to not seasonally adjusted, not seasonally adjusted data will be used in the aggregation of the dependent series for the last 5 years, but the seasonally adjusted

indexes before that period will not be changed. Note: 37 of the 82 components are not seasonally adjusted for 2011.

Seasonally adjusted data, including the all items index levels, are subject to revision for up to five years after their original release. For this reason, BLS advises against the use of these data in escalation agreements.

Effective with the calculation of the seasonal factors for 1990, the Bureau of Labor Statistics has used an enhanced seasonal adjustment procedure called Intervention Analysis Seasonal Adjustment for some CPI series. Intervention Analysis Seasonal Adjustment allows for better estimates of seasonally adjusted data. Extreme values and/or sharp movements which might distort the seasonal pattern are estimated and removed from the data prior to calculation of seasonal factors. Beginning with the calculation of seasonal factors for 1996, X-12-ARIMA software was used for Intervention Analysis Seasonal Adjustment.

For the seasonal factors introduced in January 2011, BLS adjusted 29 series using Intervention Analysis Seasonal Adjustment, including selected food and beverage items, motor fuels, electricity and vehicles. For example, this procedure was used for the Motor fuel series to offset the effects of events such as damage to oil refineries from Hurricane Katrina.

For a complete list of Intervention Analysis Seasonal Adjustment series and explanations, please refer to the article “Intervention Analysis Seasonal Adjustment”, located on our website at <http://www.bls.gov/cpi/cpisapage.htm>.

For additional information on seasonal adjustment in the CPI, please write to the Bureau of Labor Statistics, Division of Consumer Prices and Price Indexes, Washington, DC 20212 or contact David Levin at (202) 691-6968, or by e-mail at Levin.David@bls.gov. If you have general questions about the CPI, please call our information staff at (202) 691-7000.

Table 1. Consumer Price Index for All Urban Consumers (CPI-U): U.S. city average, by expenditure category and commodity and service group

(1982-84=100, unless otherwise noted)

CPI-U Expenditure category	Relative importance, December 2010	Unadjusted indexes		Unadjusted percent change to July 2011 from—		Seasonally adjusted percent change from—		
		June 2011	July 2011	July 2010	June 2011	Apr. to May	May to June	June to July
All items	100.000	225.722	225.922	3.6	0.1	0.2	-0.2	0.5
All items (1967=100)	-	676.162	676.762	-	-	-	-	-
Food and beverages	14.792	227.451	228.323	4.0	.4	.4	.2	.4
Food	13.742	227.360	228.316	4.2	.4	.4	.2	.4
Food at home	7.816	225.588	226.891	5.4	.6	.5	.2	.6
Cereals and bakery products	1.090	260.563	260.921	4.3	.1	1.0	.6	-.1
Meats, poultry, fish, and eggs	1.813	223.105	224.394	7.4	.6	1.5	-.4	.5
Dairy and related products ¹839	212.286	214.781	7.9	1.2	.8	.5	1.2
Fruits and vegetables	1.152	280.721	282.018	6.0	.5	-1.3	-.3	1.2
Nonalcoholic beverages and beverage materials926	166.197	167.802	4.1	1.0	.0	.3	.9
Other food at home	1.996	197.270	198.152	3.5	.4	.4	.5	.3
Sugar and sweets ¹297	207.672	207.321	3.1	-.2	.7	1.2	-.2
Fats and oils232	218.771	221.325	10.4	1.2	.4	1.0	.5
Other foods	1.466	209.259	210.202	2.5	.5	.4	.3	.4
Other miscellaneous foods ^{1 2}432	123.692	124.418	1.9	.6	-.3	.3	.6
Food away from home ¹	5.926	231.097	231.580	2.6	.2	.2	.3	.2
Other food away from home ^{1 2}329	162.494	162.971	2.3	.3	.2	.0	.3
Alcoholic beverages	1.051	227.154	226.908	1.5	-.1	.4	.1	-.2
Housing	41.460	219.553	220.230	1.5	.3	.2	.1	.2
Shelter	31.955	251.422	252.155	1.4	.3	.2	.2	.3
Rent of primary residence ³	5.925	252.592	253.085	1.6	.2	.1	.1	.3
Lodging away from home ²776	145.608	150.095	4.7	3.1	2.9	3.0	.9
Owners' equivalent rent of residences ^{3 4}	24.905	259.010	259.573	1.2	.2	.1	.2	.3
Owners' equivalent rent of primary residence ^{3 4}	23.310	258.996	259.555	1.2	.2	.1	.2	.3
Tenants' and household insurance ^{1 2}349	127.155	127.278	1.1	.1	.2	.3	.1
Fuels and utilities	5.096	225.022	226.643	3.2	.7	.4	-.8	.2
Household energy	4.000	199.122	200.587	2.7	.7	.5	-1.2	.2
Fuel oil and other fuels ¹309	340.775	336.894	29.0	-1.1	-.5	-1.8	-1.1
Energy services ³	3.691	200.191	202.002	.9	.9	.6	-1.1	.4
Water and sewer and trash collection services ²	1.095	178.640	179.820	5.1	.7	.3	.4	.2
Household furnishings and operations	4.409	125.048	124.959	-.2	-.1	.2	.0	.0
Household operations ^{1 2}772	151.730	151.908	.8	.1	.3	.0	.1
Apparel	3.601	120.578	118.770	3.1	-1.5	1.2	1.4	1.2
Men's and boys' apparel882	114.279	113.914	3.9	-.3	1.5	2.6	1.7
Women's and girls' apparel	1.520	106.746	103.349	2.7	-3.2	1.3	1.4	1.4
Infants' and toddlers' apparel192	110.011	111.541	-1.2	1.4	.6	.6	3.6
Footwear700	128.054	126.092	.7	-1.5	1.5	.4	.0
Transportation	17.308	216.880	216.164	12.0	-.3	-.3	-1.9	1.5
Private transportation	16.082	212.216	211.432	12.4	-.4	-.2	-1.9	1.6
New and used motor vehicles ²	6.333	101.004	101.442	3.9	.4	1.0	1.0	.1
New vehicles	3.513	143.054	142.763	4.0	-.2	1.1	.6	.0
Used cars and trucks	2.055	151.776	154.184	5.3	1.6	1.1	1.6	.7
Motor fuel	5.079	318.242	313.488	33.6	-1.5	-2.0	-6.6	4.6
Gasoline (all types)	4.865	317.543	312.760	33.6	-1.5	-2.0	-6.8	4.7
Motor vehicle parts and equipment ¹408	144.618	144.960	5.6	.2	1.2	.9	.2
Motor vehicle maintenance and repair ¹	1.172	252.529	252.769	2.1	.1	.4	.1	.1
Public transportation	1.227	272.297	272.868	6.0	.2	-.5	-2.2	-.2
Medical care	6.627	399.552	400.305	3.2	.2	.2	.2	.2
Medical care commodities ¹	1.633	324.102	324.159	3.2	.0	.0	-.1	.0
Medical care services	4.994	422.813	423.847	3.2	.2	.3	.3	.3
Professional services	2.830	335.494	336.150	2.2	.2	.0	.2	.2

See footnotes at end of table.

Table 1. Consumer Price Index for All Urban Consumers (CPI-U): U.S. city average, by expenditure category and commodity and service group-Continued

(1982-84=100, unless otherwise noted)

CPI-U	Relative importance, December 2010	Unadjusted indexes		Unadjusted percent change to July 2011 from—		Seasonally adjusted percent change from—		
		June 2011	July 2011	July 2010	June 2011	Apr. to May	May to June	June to July
Expenditure category								
Hospital and related services	1.703	639.728	641.712	6.2	0.3	0.7	0.5	0.4
Recreation ²	6.293	113.654	113.492	-2	-1	.3	-1	-1
Video and audio ²	1.816	98.373	98.672	-6	.3	.0	-5	.5
Education and communication ²	6.421	130.568	130.859	1.0	.2	.1	.1	.2
Education ²	3.107	204.821	206.158	4.0	.7	.4	.3	.7
Educational books and supplies204	524.307	525.981	4.2	.3	.5	.2	.2
Tuition, other school fees, and childcare	2.903	588.556	592.539	4.0	.7	.4	.3	.7
Communication ²	3.313	83.367	83.211	-1.8	-2	-2	-1	-2
Information and information processing ²	3.138	79.980	79.822	-2.1	-2	-2	-1	-2
Telephone services ^{1 2}	2.334	101.204	100.961	-1.5	-2	.0	.0	-2
Information technology, hardware and services ⁵804	9.038	9.032	-3.9	-1	-6	-4	-1
Personal computers and peripheral equipment ⁶228	69.125	68.788	-9.4	-5	-6	-1.6	-5
Other goods and services	3.497	386.171	386.494	.8	.1	-2	.3	.1
Tobacco and smoking products ¹906	828.860	833.067	1.7	.5	-2	.4	.5
Personal care	2.591	208.307	208.174	.6	-1	-2	.3	.0
Personal care products ¹671	160.163	159.763	-1.0	-2	-1.2	.4	-2
Personal care services ¹638	230.614	230.454	.0	-1	.1	.0	-1
Miscellaneous personal services	1.055	362.435	362.905	2.4	.1	.1	.2	.4
Commodity and service group								
Commodities	40.012	185.266	184.931	6.6	-2	.1	-6	.9
Food and beverages	14.792	227.451	228.323	4.0	.4	.4	.2	.4
Commodities less food and beverages	25.219	162.032	161.222	8.1	-5	-1	-1.1	1.2
Nondurables less food and beverages	15.474	211.621	209.739	12.2	-9	.1	-1.9	1.5
Apparel	3.601	120.578	118.770	3.1	-1.5	1.2	1.4	1.2
Nondurables less food, beverages, and apparel	11.873	273.195	271.228	15.0	-7	-5	-2.9	1.5
Durables	9.745	113.598	113.778	2.0	.2	.6	.6	.1
Services	59.988	265.928	266.660	1.7	.3	.2	.1	.2
Rent of shelter ⁴	31.607	261.977	262.747	1.4	.3	.2	.1	.2
Tenants' and household insurance ^{1 2}349	127.155	127.278	1.1	.1	.2	.3	.1
Energy services ³	3.691	200.191	202.002	.9	.9	.6	-1.1	.4
Water and sewer and trash collection services ²	1.095	178.640	179.820	5.1	.7	.3	.4	.2
Household operations ^{1 2}772	151.730	151.908	.8	.1	.3	.0	.1
Transportation services	6.140	268.488	268.642	2.9	.1	.1	-.3	-.1
Medical care services	4.994	422.813	423.847	3.2	.2	.3	.3	.3
Other services	11.340	313.332	313.703	1.2	.1	.3	.1	.2
Special indexes								
All items less food	86.258	225.485	225.566	3.5	.0	.1	-.3	.5
All items less shelter	68.045	218.239	218.230	4.7	.0	.2	-.4	.6
All items less medical care	93.373	217.158	217.336	3.7	.1	.2	-.3	.5
Commodities less food	26.270	164.461	163.664	7.8	-5	-1	-1.1	1.2
Nondurables less food	16.525	212.660	210.867	11.5	-8	.1	-1.9	1.4
Nondurables less food and apparel	12.923	267.823	266.018	13.8	-7	-4	-2.7	1.4
Nondurables	30.266	220.611	219.979	8.1	-3	.2	-1.1	.9
Services less rent of shelter ⁴	28.382	291.219	291.961	2.0	.3	.3	-.1	.1
Services less medical care services	54.994	253.781	254.487	1.5	.3	.2	.0	.1
Energy	9.079	254.170	252.661	19.0	-6	-1.0	-4.4	2.8
All items less energy	90.921	224.635	225.010	2.1	.2	.3	.2	.3
All items less food and energy	77.179	224.891	225.164	1.8	.1	.3	.3	.2
Commodities less food and energy commodities	20.882	145.741	145.486	1.8	-2	.5	.5	.3
Energy commodities	5.388	321.578	316.835	33.3	-1.5	-1.9	-6.3	4.3
Services less energy services	56.297	272.695	273.327	1.7	.2	.2	.1	.2
Purchasing power of the consumer dollar (1982-84=\$1.00)	-	\$.443	\$.443	-	-	-	-	-
Purchasing power of the consumer dollar (1967=\$1.00)	-	\$.148	\$.148	-	-	-	-	-

¹ Not seasonally adjusted.

² Indexes on a December 1997=100 base.

³ This index series was calculated using a Laspeyres estimator. All other item stratum index series were calculated using a geometric means estimator.

⁴ Indexes on a December 1982=100 base.

⁵ Indexes on a December 1988=100 base.

⁶ Indexes on a December 2007=100 base.

- Data not available.

NOTE: Index applies to a month as a whole, not to any specific date.

Table 2. Consumer Price Index for All Urban Consumers (CPI-U): Seasonally adjusted U.S. city average, by expenditure category and commodity and service group

(1982-84=100, unless otherwise noted)

CPI-U Expenditure category	Seasonally adjusted indexes				Seasonally adjusted annual rate percent change for					
					3 months ended—				6 months ended—	
	Apr. 2011	May 2011	June 2011	July 2011	Oct. 2010	Jan. 2011	Apr. 2011	July 2011	Jan. 2011	July 2011
All items	224.433	224.804	224.304	225.425	2.5	3.9	6.2	1.8	3.2	4.0
Food and beverages	226.330	227.137	227.585	228.453	2.3	3.1	6.9	3.8	2.7	5.3
Food	226.231	227.024	227.493	228.455	2.4	3.2	7.2	4.0	2.8	5.6
Food at home	224.373	225.440	225.818	227.131	2.1	4.5	10.2	5.0	3.3	7.6
Cereals and bakery products	255.751	258.365	259.833	259.615	2.1	6.1	2.9	6.2	4.1	4.5
Meats, poultry, fish, and eggs	221.181	224.390	223.561	224.610	4.9	4.4	14.2	6.3	4.6	10.2
Dairy and related products ¹	209.707	211.327	212.286	214.781	4.7	2.1	15.4	10.0	3.4	12.7
Fruits and vegetables	286.716	283.011	282.217	285.577	2.1	12.1	12.3	-1.6	7.0	5.1
Nonalcoholic beverages and beverage materials	166.375	166.304	166.866	168.300	-1.3	4.0	9.5	4.7	1.3	7.1
Other food at home	195.207	196.037	197.027	197.654	.2	.9	7.8	5.1	.6	6.4
Sugar and sweets ¹	203.783	205.285	207.672	207.321	3.6	-6	2.3	7.1	1.5	4.7
Fats and oils	216.297	217.141	219.368	220.368	4.7	10.2	19.5	7.7	7.4	13.5
Other foods	207.448	208.214	208.810	209.632	-1.2	-2	7.1	4.3	-7	5.7
Other miscellaneous foods ^{1 2}	123.769	123.343	123.692	124.418	-1.2	-2.5	9.7	2.1	-1.8	5.9
Food away from home ¹	230.082	230.501	231.097	231.580	2.8	1.6	3.4	2.6	2.2	3.0
Other food away from home ^{1 2}	162.218	162.483	162.494	162.971	1.8	1.5	4.0	1.9	1.6	2.9
Alcoholic beverages	226.141	227.134	227.306	226.915	1.3	1.1	2.1	1.4	1.2	1.8
Housing	218.192	218.637	218.770	219.299	.4	1.1	2.2	2.0	.8	2.1
Shelter	250.278	250.707	251.267	251.947	.4	1.2	1.2	2.7	.8	2.0
Rent of primary residence ³	252.102	252.403	252.683	253.315	.7	2.3	1.4	1.9	1.5	1.7
Lodging away from home ²	133.885	137.705	141.840	143.172	-6.9	-4.2	3.0	30.8	-5.6	16.1
Owners' equivalent rent of residences ^{3 4}	258.377	258.623	259.023	259.682	.6	1.2	1.1	2.0	.9	1.6
Owners' equivalent rent of primary residence ^{3 4}	258.364	258.610	259.009	259.664	.6	1.2	1.1	2.0	.9	1.6
Tenants' and household insurance ^{1 2}	126.574	126.780	127.155	127.278	4.0	-2.9	1.2	2.2	.5	1.7
Fuels and utilities	220.834	221.800	219.939	220.447	2.2	1.8	10.1	-.7	2.0	4.5
Household energy	194.539	195.475	193.171	193.621	1.5	.9	10.9	-1.9	1.2	4.3
Fuel oil and other fuels ¹	348.657	347.002	340.775	336.894	25.6	66.5	51.8	-12.8	44.6	15.0
Energy services ³	194.751	195.864	193.669	194.368	.0	-3.2	7.8	-.8	-1.6	3.4
Water and sewer and trash collection services ²	178.316	178.806	179.574	179.974	4.5	5.2	6.8	3.8	4.8	5.3
Household furnishings and operations	124.661	124.859	124.813	124.870	-1.5	-9	.9	.7	-1.2	.8
Household operations ^{1 2}	151.338	151.730	151.730	151.908	-1.6	2.8	.4	1.5	.6	1.0
Apparel	118.951	120.342	122.037	123.562	-3.0	4.9	-4.9	16.4	.9	5.2
Men's and boys' apparel	110.613	112.243	115.111	117.114	-2.7	1.6	-6.3	25.7	-6	8.5
Women's and girls' apparel	105.993	107.363	108.838	110.363	-5.6	7.7	-7.1	17.5	.9	4.5
Infants' and toddlers' apparel	110.154	110.858	111.560	115.598	-15.9	-2.1	-4.5	21.3	-9.3	7.6
Footwear	126.702	128.540	129.051	129.026	1.5	-1.3	-4.5	7.5	.1	1.3
Transportation	215.016	214.457	210.317	213.484	12.1	15.4	24.3	-2.8	13.7	9.9
Private transportation	210.173	209.664	205.663	209.018	12.9	14.9	25.1	-2.2	13.9	10.6
New and used motor vehicles ²	99.051	99.997	100.992	101.140	-.1	-1.3	8.7	8.7	-.7	8.7
New vehicles	141.092	142.637	143.501	143.549	.7	-1.6	10.1	7.1	-5	8.6
Used cars and trucks	146.704	148.264	150.707	151.827	-.4	-9	8.7	14.7	-.7	11.7
Motor fuel	317.215	310.990	290.494	303.903	44.6	53.5	70.3	-15.8	49.0	19.8
Gasoline (all types)	316.333	310.161	289.077	302.520	46.1	53.6	69.8	-16.4	49.8	19.2
Motor vehicle parts and equipment ¹	141.590	143.328	144.618	144.960	3.1	6.5	3.2	9.9	4.8	6.5
Motor vehicle maintenance and repair ¹	251.458	252.376	252.529	252.769	3.7	1.5	1.2	2.1	2.6	1.6
Public transportation	273.781	272.417	266.349	265.862	1.9	21.7	14.6	-11.1	11.4	.9
Medical care	397.793	398.739	399.500	400.468	4.0	2.0	4.1	2.7	3.0	3.4
Medical care commodities ¹	324.241	324.399	324.102	324.159	2.5	3.7	6.8	-.1	3.1	3.3
Medical care services	420.282	421.544	422.741	424.076	4.5	1.4	3.2	3.7	3.0	3.4
Professional services	334.196	334.323	335.125	335.831	2.6	1.5	2.7	2.0	2.1	2.3

See footnotes at end of table.

Table 2. Consumer Price Index for All Urban Consumers (CPI-U): Seasonally adjusted U.S. city average, by expenditure category and commodity and service group-Continued

(1982-84=100, unless otherwise noted)

CPI-U	Seasonally adjusted indexes				Seasonally adjusted annual rate percent change for					
					3 months ended—			6 months ended—		
	Apr. 2011	May 2011	June 2011	July 2011	Oct. 2010	Jan. 2011	Apr. 2011	July 2011	Jan. 2011	July 2011
Expenditure category										
Hospital and related services	633.287	637.925	641.042	643.675	10.0	2.7	5.5	6.7	6.3	6.1
Recreation ²	113.183	113.512	113.448	113.332	-1.8	-.3	.9	.5	-1.0	.7
Video and audio ²	98.437	98.424	97.922	98.435	-1.3	-3.1	2.2	.0	-2.2	1.1
Education and communication ²	131.012	131.168	131.300	131.598	-.1	.9	1.4	1.8	.4	1.6
Education ²	205.707	206.559	207.115	208.477	.6	6.1	3.9	5.5	3.3	4.7
Educational books and supplies	523.912	526.573	527.674	528.975	.2	10.0	2.9	3.9	5.0	3.4
Tuition, other school fees, and childcare	591.314	593.725	595.349	599.439	.6	5.9	4.0	5.6	3.2	4.8
Communication ²	83.576	83.441	83.391	83.235	-.8	-3.7	-.9	-1.6	-2.3	-1.2
Information and information processing ²	80.201	80.056	80.004	79.846	-.8	-4.8	-1.0	-1.8	-2.8	-1.4
Telephone services ^{1 2}	101.191	101.159	101.204	100.961	-.1	-4.0	-.9	-.9	-2.1	-.9
Information technology, hardware and services ⁵	9.140	9.084	9.049	9.043	-3.0	-7.0	-1.3	-4.2	-5.0	-2.8
Personal computers and peripheral equipment ⁶	71.002	70.586	69.430	69.089	-2.3	-15.6	-8.8	-10.3	-9.2	-9.6
Other goods and services	385.600	384.959	386.068	386.568	-.6	2.4	.6	1.0	.9	.8
Tobacco and smoking products ¹	827.287	825.690	828.860	833.067	1.1	3.2	-.4	2.8	2.2	1.2
Personal care	208.030	207.704	208.232	208.228	-1.2	2.2	.9	.4	.5	.7
Personal care products ¹	161.418	159.478	160.163	159.763	-3.5	2.4	1.2	-4.0	-6	-1.4
Personal care services ¹	230.380	230.505	230.614	230.454	-2.0	1.0	.8	.1	-.5	.5
Miscellaneous personal services	360.622	361.046	361.765	363.086	1.7	2.2	2.8	2.8	2.0	2.8
Commodity and service group										
Commodities	184.090	184.226	183.042	184.701	5.0	7.6	12.3	1.3	6.3	6.7
Food and beverages	226.330	227.137	227.585	228.453	2.3	3.1	6.9	3.8	2.7	5.3
Commodities less food and beverages	160.874	160.735	158.934	160.855	6.6	10.3	15.5	.0	8.4	7.5
Nondurables less food and beverages	210.177	210.446	206.462	209.517	10.7	20.7	19.9	-1.3	15.6	8.8
Apparel	118.951	120.342	122.037	123.562	-3.0	4.9	-4.9	16.4	.9	5.2
Nondurables less food, beverages, and apparel	272.442	271.195	263.361	267.418	16.5	24.8	29.4	-7.2	20.6	9.6
Durables	112.128	112.843	113.560	113.697	-1.2	-2.1	5.8	5.7	-1.6	5.8
Services	264.561	265.147	265.318	265.897	.9	1.5	2.3	2.0	1.2	2.2
Rent of shelter ⁴	260.645	261.102	261.396	261.882	1.5	1.9	.3	1.9	1.7	1.1
Tenants' and household insurance ^{1 2}	126.574	126.780	127.155	127.278	4.0	-2.9	1.2	2.2	.5	1.7
Energy services ³	194.751	195.864	193.669	194.368	.0	-3.2	7.8	-.8	-1.6	3.4
Water and sewer and trash collection services ²	178.316	178.806	179.574	179.974	4.5	5.2	6.8	3.8	4.8	5.3
Household operations ^{1 2}	151.338	151.730	151.730	151.908	-1.6	2.8	.4	1.5	.6	1.0
Transportation services	268.096	268.408	267.700	267.367	2.7	5.0	5.0	-1.1	3.9	1.9
Medical care services	420.282	421.544	422.741	424.076	4.5	1.4	3.2	3.7	3.0	3.4
Other services	312.898	313.707	313.917	314.461	-.4	1.5	1.7	2.0	.6	1.8
Special indexes										
All items less food	224.171	224.475	223.822	224.968	2.5	4.0	6.1	1.4	3.2	3.7
All items less shelter	216.878	217.230	216.303	217.613	3.5	5.1	8.6	1.4	4.3	4.9
All items less medical care	215.899	216.244	215.700	216.818	2.4	4.0	6.4	1.7	3.2	4.0
Commodities less food	163.303	163.195	161.441	163.305	6.4	9.9	15.0	.0	8.1	7.2
Nondurables less food	211.335	211.633	207.713	210.536	10.2	19.5	18.9	-1.5	14.8	8.2
Nondurables less food and apparel	267.120	266.147	259.034	262.591	14.9	22.9	27.3	-6.6	18.8	9.0
Nondurables	219.744	220.165	217.801	219.814	6.4	11.8	14.7	.1	9.1	7.2
Services less rent of shelter ⁴	289.660	290.391	290.050	290.297	1.5	1.9	3.7	.9	1.7	2.3
Services less medical care services	252.413	253.004	252.972	253.218	1.2	2.0	1.7	1.3	1.6	1.5
Energy	251.319	248.837	237.889	244.507	22.8	27.7	42.8	-10.4	25.3	13.1
All items less energy	223.494	224.157	224.711	225.284	.7	1.7	2.9	3.2	1.2	3.1
All items less food and energy	223.745	224.387	224.958	225.463	.4	1.4	2.1	3.1	.9	2.6
Commodities less food and energy commodities	144.423	145.183	145.979	146.370	-.9	.4	2.4	5.5	-.2	3.9
Energy commodities	320.989	314.950	295.025	307.662	43.5	54.2	69.3	-15.6	48.8	19.5
Services less energy services	271.707	272.244	272.638	273.207	.9	1.8	2.0	2.2	1.4	2.1

¹ Not seasonally adjusted.

² Indexes on a December 1997=100 base.

³ This index series was calculated using a Laspeyres estimator. All other item stratum index series were calculated using a geometric means estimator.

⁴ Indexes on a December 1982=100 base.

⁵ Indexes on a December 1988=100 base.

⁶ Indexes on a December 2007=100 base.

NOTE: Index applies to a month as a whole, not to any specific date.

Table 3. Consumer Price Index for All Urban Consumers (CPI-U): Selected areas, all items index

(1982-84=100, unless otherwise noted)

CPI-U	Pricing schedule 1	All items									
		Indexes				Percent change to July 2011 from—			Percent change to June 2011 from—		
		Apr. 2011	May 2011	June 2011	July 2011	July 2010	May 2011	June 2011	June 2010	Apr. 2011	May 2011
U.S. city average	M	224.906	225.964	225.722	225.922	3.6	0.0	0.1	3.6	0.4	-0.1
Region and area size²											
Northeast urban	M	240.267	241.566	241.690	242.282	3.6	.3	.2	3.4	.6	.1
Size A - More than 1,500,000	M	241.626	242.976	243.257	243.806	3.4	.3	.2	3.2	.7	.1
Size B/C - 50,000 to 1,500,000 ³	M	143.987	144.697	144.525	144.952	4.1	.2	.3	3.9	.4	-.1
Midwest urban	M	214.535	215.899	215.954	216.099	3.8	.1	.1	3.9	.7	.0
Size A - More than 1,500,000	M	214.878	216.376	216.290	216.350	3.7	.0	.0	3.8	.7	.0
Size B/C - 50,000 to 1,500,000 ³	M	138.005	138.827	139.115	139.222	3.8	.3	.1	3.9	.8	.2
Size D - Nonmetropolitan (less than 50,000)	M	211.314	212.210	211.717	212.261	4.1	.0	.3	3.9	.2	-.2
South urban	M	218.820	219.820	219.318	219.682	4.1	-.1	.2	3.8	.2	-.2
Size A - More than 1,500,000	M	219.944	220.982	220.481	220.897	3.9	.0	.2	3.5	.2	-.2
Size B/C - 50,000 to 1,500,000 ³	M	139.177	139.833	139.639	139.783	4.2	.0	.1	4.1	.3	-.1
Size D - Nonmetropolitan (less than 50,000)	M	224.716	225.416	223.675	224.681	4.7	-.3	.4	3.9	-.5	-.8
West urban	M	227.837	228.516	228.075	227.805	2.9	-.3	-.1	3.1	.1	-.2
Size A - More than 1,500,000	M	231.808	232.393	232.010	231.666	2.7	-.3	-.1	3.0	.1	-.2
Size B/C - 50,000 to 1,500,000 ³	M	138.174	138.598	138.269	138.128	3.3	-.3	-.1	3.5	.1	-.2
Size classes											
A ⁴	M	204.963	205.944	205.792	205.928	3.4	.0	.1	3.3	.4	-.1
B/C ³	M	139.413	140.062	139.935	140.057	3.9	.0	.1	3.9	.4	-.1
D	M	218.920	219.873	218.862	219.465	4.1	-.2	.3	3.7	.0	-.5
Selected local areas⁵											
Chicago-Gary-Kenosha, IL-IN-WI	M	218.762	220.094	220.182	219.277	3.2	-.4	-.4	3.8	.6	.0
Los Angeles-Riverside-Orange County, CA ...	M	233.319	233.367	232.328	231.303	2.4	-.9	-.4	2.9	-.4	-.4
New York-Northern N.J.-Long Island, NY-NJ-CT-PA	M	246.489	248.073	248.505	249.164	3.3	.4	.3	3.2	.8	.2
Boston-Brockton-Nashua, MA-NH-ME-CT	1	-	244.574	-	244.256	3.4	-.1	-	-	-	-
Cleveland-Akron, OH	1	-	212.175	-	211.686	3.8	-.2	-	-	-	-
Dallas-Fort Worth, TX	1	-	208.794	-	208.602	4.2	-.1	-	-	-	-
Washington-Baltimore, DC-MD-VA-WV ⁶	1	-	147.554	-	147.747	4.1	.1	-	-	-	-
Atlanta, GA	2	209.215	-	211.074	-	-	-	-	3.1	.9	-
Detroit-Ann Arbor-Flint, MI	2	211.673	-	213.506	-	-	-	-	4.2	.9	-
Houston-Galveston-Brazoria, TX	2	201.624	-	201.309	-	-	-	-	3.4	-.2	-
Miami-Fort Lauderdale, FL	2	231.503	-	231.197	-	-	-	-	4.0	-.1	-
Philadelphia-Wilmington-Atlantic City, PA-NJ-DE-MD	2	233.143	-	234.463	-	-	-	-	2.8	.6	-
San Francisco-Oakland-San Jose, CA	2	234.121	-	233.646	-	-	-	-	2.4	-.2	-
Seattle-Tacoma-Bremerton, WA	2	231.314	-	233.250	-	-	-	-	3.2	.8	-

¹ Foods, fuels, and several other items priced every month in all areas; most other goods and services priced as indicated:

M - Every month.

1 - January, March, May, July, September, and November.

2 - February, April, June, August, October, and December.

² Regions defined as the four Census regions. See technical notes.

³ Indexes on a December 1996=100 base.

⁴ Indexes on a December 1986=100 base.

⁵ In addition, the following metropolitan areas are published semiannually and appear in Tables 34 and 39 of the January and July issues of the CPI Detailed Report: Anchorage, AK; Cincinnati-Hamilton, OH-KY-IN; Denver-Boulder-Greeley, CO; Honolulu, HI; Kansas City, MO-KS; Milwaukee-Racine, WI; Minneapolis-St. Paul, MN-WI; Phoenix-Mesa, AZ; Pittsburgh, PA; Portland-Salem, OR-WA; St. Louis, MO-IL; San Diego, CA;

Tampa-St. Petersburg-Clearwater, FL.

⁶ Indexes on a November 1996=100 base.

- Data not available.

NOTE: Index applies to a month as a whole, not to any specific date.

NOTE: Local area indexes are byproducts of the national CPI program. Each local index has a smaller sample size than the national index and is, therefore, subject to substantially more sampling and other measurement error. As a result, local area indexes show greater volatility than the national index, although their long-term trends are similar. Therefore, the Bureau of Labor Statistics strongly urges users to consider adopting the national average CPI for use in their escalator clauses.

Table 4. Consumer Price Index for Urban Wage Earners and Clerical Workers (CPI-W): U.S. city average, by expenditure category and commodity and service group

(1982-84=100, unless otherwise noted)

CPI-W Expenditure category	Relative importance, December 2010	Unadjusted indexes		Unadjusted percent change to July 2011 from—		Seasonally adjusted percent change from—		
		June 2011	July 2011	July 2010	June 2011	Apr. to May	May to June	June to July
All items	100.000	222.522	222.686	4.1	0.1	0.1	-0.3	0.6
All items (1967=100)	-	662.826	663.314	-	-	-	-	-
Food and beverages	16.401	226.813	227.701	4.1	.4	.4	.2	.4
Food	15.315	226.610	227.585	4.3	.4	.4	.2	.4
Food at home	8.906	224.580	225.889	5.5	.6	.5	.1	.6
Cereals and bakery products	1.236	261.297	261.564	4.3	.1	.9	.6	-.1
Meats, poultry, fish, and eggs	2.227	223.250	224.421	7.5	.5	1.5	-.4	.4
Dairy and related products ¹917	211.374	213.957	8.2	1.2	.7	.4	1.2
Fruits and vegetables	1.219	277.853	279.494	6.0	.6	-1.4	-.5	1.2
Nonalcoholic beverages and beverage materials	1.091	165.380	166.890	3.7	.9	-.1	.3	.8
Other food at home	2.217	196.454	197.389	3.5	.5	.6	.5	.4
Sugar and sweets ¹324	206.402	206.103	3.1	-.1	.8	1.1	-.1
Fats and oils258	219.304	221.982	10.6	1.2	.3	1.3	.7
Other foods	1.635	209.328	210.318	2.5	.5	.6	.2	.4
Other miscellaneous foods ^{1 2}463	123.911	124.607	2.0	.6	-.1	.2	.6
Food away from home ¹	6.409	231.112	231.603	2.6	.2	.2	.3	.2
Other food away from home ^{1 2}326	163.524	164.167	2.8	.4	.1	.0	.4
Alcoholic beverages	1.086	228.331	227.956	1.4	-.2	.4	.1	-.2
Housing	39.228	216.263	216.917	1.5	.3	.2	.0	.3
Shelter	29.811	245.112	245.705	1.4	.2	.1	.2	.2
Rent of primary residence ³	8.396	250.843	251.271	1.5	.2	.1	.1	.2
Lodging away from home ²436	147.508	151.939	4.2	3.0	2.7	2.6	.8
Owners' equivalent rent of residences ^{3 4}	20.672	234.634	235.116	1.2	.2	.1	.1	.2
Owners' equivalent rent of primary residence ^{3 4}	19.942	234.630	235.110	1.2	.2	.1	.1	.2
Tenants' and household insurance ^{1 2}306	128.242	128.377	1.1	.1	.2	.3	.1
Fuels and utilities	5.633	223.834	225.589	3.1	.8	.5	-.8	.3
Household energy	4.476	197.253	198.857	2.7	.8	.5	-.1	.3
Fuel oil and other fuels ¹301	339.095	335.796	27.5	-1.0	-4	-1.9	-1.0
Energy services ³	4.175	199.650	201.547	1.2	1.0	.6	-1.0	.5
Water and sewer and trash collection services ²	1.157	178.981	180.170	4.9	.7	.3	.4	.2
Household furnishings and operations	3.784	121.152	121.185	-.1	.0	.3	-.1	.2
Household operations ^{1 2}364	154.581	154.670	.7	.1	.3	.1	.1
Apparel	3.668	119.720	117.830	2.9	-1.6	1.2	1.4	1.2
Men's and boys' apparel921	114.172	113.565	3.9	-.5	1.6	2.3	1.6
Women's and girls' apparel	1.502	106.263	102.841	3.3	-3.2	1.1	1.4	1.4
Infants' and toddlers' apparel280	113.203	114.220	-1.8	.9	.8	.6	3.2
Footwear750	128.533	126.679	1.1	-1.4	1.6	.5	-.1
Transportation	19.418	218.155	217.466	13.2	-.3	-.3	-2.2	1.8
Private transportation	18.631	214.837	214.119	13.5	-.3	-.3	-2.2	1.9
New and used motor vehicles ²	6.914	100.485	101.093	4.2	.6	1.0	1.1	.3
New vehicles	3.320	143.995	143.687	3.8	-.2	1.1	.5	.1
Used cars and trucks	3.003	152.759	155.201	5.4	1.6	1.1	1.7	.8
Motor fuel	6.470	319.323	314.806	33.7	-1.4	-2.0	-6.7	4.7
Gasoline (all types)	6.193	318.779	314.232	33.7	-1.4	-2.0	-6.9	4.9
Motor vehicle parts and equipment ¹479	144.458	144.840	5.6	.3	1.2	.8	.3
Motor vehicle maintenance and repair ¹	1.184	255.133	255.509	2.1	.1	.4	.0	.1
Public transportation787	268.615	269.003	6.1	.1	-.3	-2.1	-.1
Medical care	5.355	401.398	402.160	3.3	.2	.3	.2	.3
Medical care commodities ¹	1.318	315.710	315.957	3.3	.1	.1	-.1	.1
Medical care services	4.038	426.498	427.464	3.3	.2	.3	.3	.3
Professional services	2.220	339.198	339.756	2.3	.2	.0	.2	.2

See footnotes at end of table.

Table 4. Consumer Price Index for Urban Wage Earners and Clerical Workers (CPI-W): U.S. city average, by expenditure category and commodity and service group-Continued

(1982-84=100, unless otherwise noted)

CPI-W Expenditure category	Relative importance, December 2010	Unadjusted indexes		Unadjusted percent change to July 2011 from—		Seasonally adjusted percent change from—			
		June 2011	July 2011	July 2010	June 2011	Apr. to May	May to June	June to July	
Hospital and related services	1.414	642.513	644.693	6.4	0.3	0.8	0.5	0.5	
Recreation ²	5.862	110.216	110.134	.1	-.1	.3	-.1	.0	
Video and audio ²	1.959	99.005	99.417	-.2	.4	.0	-.5	.6	
Education and communication ²	6.118	124.906	124.994	.2	.1	.1	.1	.1	
Education ²	2.380	202.119	203.181	3.9	.5	.5	.2	.5	
Educational books and supplies199	529.103	529.929	4.6	.2	.5	.2	.1	
Tuition, other school fees, and childcare	2.181	567.816	570.995	3.8	.6	.5	.2	.5	
Communication ²	3.738	85.819	85.628	-2.0	-.2	-.2	.0	-.2	
Information and information processing ²	3.605	83.474	83.282	-2.2	-.2	-.2	.0	-.2	
Telephone services ^{1 2}	2.823	100.657	100.366	-1.8	-.3	.0	.0	-.3	
Information technology, hardware and services ⁵782	9.575	9.573	-3.9	.0	-.6	-.3	.0	
Personal computers and peripheral equipment ⁶208	68.426	68.230	-10.1	-.3	-.6	-1.5	-.3	
Other goods and services	3.950	415.514	416.166	1.1	.2	-.2	.3	.2	
Tobacco and smoking products ¹	1.450	833.452	837.692	1.6	.5	-.2	.4	.5	
Personal care	2.500	206.165	206.069	.7	.0	-.2	.3	.0	
Personal care products ¹717	160.780	160.567	-.5	-.1	-1.2	.4	-.1	
Personal care services ¹572	230.814	230.579	-.1	-.1	.0	.0	-.1	
Miscellaneous personal services	1.027	364.113	364.597	2.5	.1	.2	.1	.3	
Commodity and service group									
Commodities	43.898	189.779	189.508	7.3	-.1	.0	-.8	1.1	
Food and beverages	16.401	226.813	227.701	4.1	.4	.4	.2	.4	
Commodities less food and beverages	27.497	168.922	168.166	9.3	-.4	-.2	-1.4	1.5	
Nondurables less food and beverages	17.244	223.944	221.945	13.5	-.9	.0	-2.1	1.4	
Apparel	3.668	119.720	117.830	2.9	-1.6	1.2	1.4	1.2	
Nondurables less food, beverages, and apparel	13.576	293.390	291.265	16.5	-.7	-.5	-3.2	1.8	
Durables	10.253	115.461	115.866	2.5	.4	.8	.7	.2	
Services	56.102	261.122	261.777	1.6	.3	.2	.0	.2	
Rent of shelter ⁴	29.504	236.207	236.781	1.4	.2	.1	.1	.2	
Tenants' and household insurance ^{1 2}306	128.242	128.377	1.1	.1	.2	.3	.1	
Energy services ³	4.175	199.650	201.547	1.2	1.0	.6	-1.0	.5	
Water and sewer and trash collection services ²	1.157	178.981	180.170	4.9	.7	.3	.4	.2	
Household operations ^{1 2}364	154.581	154.670	.7	.1	.3	.1	.1	
Transportation services	5.994	268.122	268.170	2.9	.0	.2	-.1	-.1	
Medical care services	4.038	426.498	427.464	3.3	.2	.3	.3	.3	
Other services	10.563	298.819	299.077	.9	.1	.2	.0	.1	
Special indexes									
All items less food	84.685	221.604	221.625	4.1	.0	.1	-.4	.6	
All items less shelter	70.189	216.673	216.683	5.3	.0	.1	-.6	.7	
All items less medical care	94.645	215.216	215.361	4.2	.1	.1	-.4	.6	
Commodities less food	28.583	171.059	170.311	9.0	-.4	-.1	-1.3	1.4	
Nondurables less food	18.329	224.451	222.537	12.8	-.9	.0	-2.0	1.3	
Nondurables less food and apparel	14.662	286.570	284.603	15.3	-.7	-.4	-3.0	1.6	
Nondurables	33.644	226.570	225.916	8.9	-.3	.2	-1.3	1.0	
Services less rent of shelter ⁴	26.598	257.266	257.932	1.9	.3	.3	-.1	.1	
Services less medical care services	52.065	249.607	250.237	1.5	.3	.2	.0	.1	
Energy	10.946	256.663	255.169	20.0	-.6	-1.1	-4.6	3.0	
All items less energy	89.054	219.383	219.748	2.2	.2	.3	.2	.3	
All items less food and energy	73.739	218.306	218.548	1.8	.1	.3	.3	.2	
Commodities less food and energy commodities	21.812	148.321	148.206	2.1	-.1	.6	.6	.3	
Energy commodities	6.771	321.775	317.281	33.5	-1.4	-1.9	-6.5	4.5	
Services less energy services	51.927	267.791	268.303	1.7	.2	.2	.1	.2	
Purchasing power of the consumer dollar (1982-84=\$1.00)	-	\$.449	\$.449	-	-	-	-	-	
Purchasing power of the consumer dollar (1967=\$1.00)	-	\$.151	\$.151	-	-	-	-	-	

¹ Not seasonally adjusted.

² Indexes on a December 1997=100 base.

³ This index series was calculated using a Laspeyres estimator. All other item stratum index series were calculated using a geometric means estimator.

⁴ Indexes on a December 1984=100 base

⁵ Indexes on a December 1988=100 base.

⁶ Indexes on a December 2007=100 base.

- Data not available.

NOTE: Index applies to a month as a whole, not to any specific date.

Table 5. Consumer Price Index for Urban Wage Earners and Clerical Workers (CPI-W): Seasonally adjusted U.S. city average, by expenditure category and commodity and service group

(1982-84=100, unless otherwise noted)

CPI-W	Seasonally adjusted indexes				Seasonally adjusted annual rate percent change for					
					3 months ended—			6 months ended—		
	Apr. 2011	May 2011	June 2011	July 2011	Oct. 2010	Jan. 2011	Apr. 2011	July 2011	Jan. 2011	July 2011
Expenditure category										
All items	221.212	221.529	220.768	222.077	3.0	4.4	7.3	1.6	3.7	4.4
Food and beverages	225.708	226.540	226.929	227.802	2.3	3.2	7.1	3.8	2.7	5.4
Food	225.485	226.319	226.723	227.692	2.4	3.4	7.4	4.0	2.9	5.7
Food at home	223.322	224.492	224.769	226.069	1.9	4.7	10.4	5.0	3.3	7.7
Cereals and bakery products	256.620	259.020	260.567	260.242	2.3	6.1	3.3	5.8	4.2	4.5
Meats, poultry, fish, and eggs	221.143	224.521	223.720	224.657	4.9	4.3	14.6	6.5	4.6	10.5
Dairy and related products ¹	208.951	210.488	211.374	213.957	4.3	2.6	16.4	9.9	3.5	13.1
Fruits and vegetables	284.305	280.367	278.965	282.395	2.2	12.6	12.8	-2.7	7.2	4.8
Nonalcoholic beverages and beverage materials	165.778	165.582	166.036	167.414	-2.1	4.2	9.3	4.0	1.0	6.6
Other food at home	194.133	195.230	196.198	196.955	-2	1.3	7.2	5.9	.6	6.6
Sugar and sweets ¹	202.613	204.161	206.402	206.103	3.3	.7	1.6	7.1	2.0	4.3
Fats and oils	216.271	216.992	219.872	221.486	3.9	10.4	18.8	10.0	7.1	14.3
Other foods	207.193	208.363	208.866	209.767	-1.4	.1	6.5	5.1	-7	5.8
Other miscellaneous foods ^{1 2}	123.797	123.673	123.911	124.607	-1.3	-2.1	9.0	2.6	-1.7	5.8
Food away from home ¹	230.174	230.521	231.112	231.603	3.1	1.5	3.4	2.5	2.3	2.9
Other food away from home ^{1 2}	163.275	163.498	163.524	164.167	3.2	1.6	4.1	2.2	2.4	3.2
Alcoholic beverages	227.525	228.327	228.503	227.990	1.2	.6	3.1	.8	.9	2.0
Housing	214.943	215.372	215.369	215.909	.5	1.3	2.3	1.8	.9	2.1
Shelter	244.287	244.622	245.029	245.635	.5	1.5	1.3	2.2	1.0	1.7
Rent of primary residence ³	250.444	250.687	250.938	251.517	.5	2.5	1.4	1.7	1.5	1.6
Lodging away from home ²	136.073	139.738	143.333	144.542	-8.0	-4.8	5.8	27.3	-6.4	16.1
Owners' equivalent rent of residences ^{3 4}	234.102	234.326	234.643	235.213	.6	1.2	1.1	1.9	.9	1.5
Owners' equivalent rent of primary residence ^{3 4}	234.097	234.320	234.639	235.206	.6	1.2	1.1	1.9	.9	1.5
Tenants' and household insurance ^{1 2}	127.654	127.859	128.242	128.377	3.8	-1.4	-1	2.3	1.2	1.1
Fuels and utilities	219.052	220.111	218.367	219.074	1.8	1.9	9.1	.0	1.8	4.5
Household energy	192.083	193.096	190.982	191.649	1.2	1.1	9.7	-9	1.2	4.3
Fuel oil and other fuels ¹	347.371	345.830	339.095	335.796	25.3	64.3	47.2	-12.7	43.5	13.4
Energy services ³	193.645	194.818	192.818	193.693	-2	-2.3	7.3	.1	-1.2	3.6
Water and sewer and trash collection services ²	178.669	179.223	179.953	180.357	4.3	5.0	6.7	3.8	4.6	5.2
Household furnishings and operations	120.697	121.006	120.881	121.083	-1.6	-7	.7	1.3	-1.1	1.0
Household operations ^{1 2}	153.923	154.378	154.581	154.670	-2.3	2.3	.9	2.0	-1	1.4
Apparel	118.059	119.528	121.203	122.700	-3.5	3.8	-4.0	16.7	.1	5.8
Men's and boys' apparel	110.770	112.512	115.078	116.888	-3.2	4.0	-6.7	24.0	.4	7.5
Women's and girls' apparel	105.750	106.951	108.462	109.948	-3.6	6.0	-4.8	16.8	1.1	5.5
Infants' and toddlers' apparel	112.979	113.863	114.525	118.190	-16.9	-1.4	-5.1	19.8	-9.5	6.6
Footwear	126.695	128.720	129.412	129.250	-5	-9	-2.2	8.3	-7	2.9
Transportation	216.214	215.500	210.835	214.617	13.7	16.6	26.9	-2.9	15.1	11.0
Private transportation	212.808	212.103	207.502	211.387	14.2	16.5	27.5	-2.6	15.3	11.4
New and used motor vehicles ²	98.310	99.292	100.337	100.613	-1	-1.2	9.0	9.7	-7	9.3
New vehicles	142.121	143.630	144.411	144.489	.4	-1.7	10.3	6.8	-7	8.5
Used cars and trucks	147.635	149.198	151.670	152.817	-2	-9	8.7	14.8	-5	11.7
Motor fuel	318.736	312.340	291.497	305.332	44.6	53.7	70.8	-15.8	49.1	19.9
Gasoline (all types)	318.025	311.697	290.345	304.500	45.2	53.9	70.3	-16.0	49.5	19.6
Motor vehicle parts and equipment ¹	141.505	143.257	144.458	144.840	2.8	6.3	3.5	9.8	4.5	6.6
Motor vehicle maintenance and repair ¹	253.990	255.042	255.133	255.509	3.9	1.2	1.1	2.4	2.5	1.7
Public transportation	269.886	269.065	263.506	263.228	2.1	19.4	14.7	-9.5	10.4	1.9
Medical care	399.544	400.682	401.374	402.449	4.0	2.2	4.1	2.9	3.1	3.5
Medical care commodities ¹	315.798	316.099	315.710	315.957	2.3	3.9	7.0	.2	3.1	3.6
Medical care services	423.843	425.316	426.464	427.870	4.5	1.7	3.1	3.9	3.1	3.5
Professional services	337.866	337.966	338.809	339.447	2.6	2.1	2.5	1.9	2.3	2.2

See footnotes at end of table.

Table 5. Consumer Price Index for Urban Wage Earners and Clerical Workers (CPI-W): Seasonally adjusted U.S. city average, by expenditure category and commodity and service group-Continued

(1982-84=100, unless otherwise noted)

CPI-W	Seasonally adjusted indexes				Seasonally adjusted annual rate percent change for					
	Apr. 2011	May 2011	June 2011	July 2011	3 months ended—				6 months ended—	
					Oct. 2010	Jan. 2011	Apr. 2011	July 2011	Jan. 2011	July 2011
Expenditure category										
Hospital and related services	635.892	641.005	644.001	647.029	9.9	3.3	5.6	7.2	6.5	6.4
Recreation ²	109.747	110.076	110.001	109.989	-1.5	-6	1.5	.9	-1.1	1.2
Video and audio ²	99.080	99.080	98.575	99.198	-9	-2.8	2.3	.5	-1.8	1.4
Education and communication ²	125.225	125.340	125.440	125.517	-1	-6	.9	.9	-4	.9
Education ²	202.814	203.768	204.259	205.277	1.1	5.9	3.7	4.9	3.5	4.3
Educational books and supplies	528.629	531.355	532.591	532.994	.7	11.3	3.3	3.3	5.8	3.3
Tuition, other school fees, and childcare	569.997	572.656	574.039	577.124	1.2	5.4	3.7	5.1	3.3	4.4
Communication ²	85.989	85.857	85.836	85.644	-9	-4.5	-9	-1.6	-2.7	-1.3
Information and information processing ²	83.651	83.513	83.492	83.298	-9	-5.3	-1.0	-1.7	-3.1	-1.3
Telephone services ^{1 2}	100.643	100.610	100.657	100.366	-2	-4.8	-9	-1.1	-2.5	-1.0
Information technology, hardware and services ⁵	9.674	9.612	9.584	9.582	-3.4	-6.9	-1.2	-3.8	-5.2	-2.5
Personal computers and peripheral equipment ⁶	70.196	69.761	68.685	68.476	-3.9	-16.2	-10.5	-9.4	-10.3	-10.0
Other goods and services	414.900	414.012	415.446	416.213	-2	2.9	.4	1.3	1.3	.8
Tobacco and smoking products ¹	832.003	830.137	833.452	837.692	1.1	3.2	-.4	2.8	2.1	1.2
Personal care	205.891	205.463	206.112	206.107	-1.0	2.7	.8	.4	.8	.6
Personal care products ¹	162.088	160.083	160.780	160.567	-3.0	3.3	1.6	-3.7	.1	-1.1
Personal care services ¹	230.597	230.709	230.814	230.579	-2.0	.9	.8	.0	-.5	.4
Miscellaneous personal services	362.235	363.012	363.440	364.641	2.1	3.1	2.2	2.7	2.6	2.4
Commodity and service group										
Commodities	188.512	188.580	187.064	189.046	5.8	8.5	13.9	1.1	7.1	7.3
Food and beverages	225.708	226.540	226.929	227.802	2.3	3.2	7.1	3.8	2.7	5.4
Commodities less food and beverages	167.620	167.363	165.079	167.478	7.9	11.7	17.9	-.3	9.8	8.4
Nondurables less food and beverages	222.388	222.447	217.845	220.896	13.5	22.7	22.7	-2.7	18.0	9.3
Apparel	118.059	119.528	121.203	122.700	-3.5	3.8	-4.0	16.7	.1	5.8
Nondurables less food, beverages, and apparel	292.312	290.849	281.604	286.641	19.7	26.5	31.3	-7.5	23.1	10.2
Durables	113.705	114.560	115.400	115.677	-1.4	-2.1	6.8	7.1	-1.7	7.0
Services	259.786	260.366	260.433	260.993	.9	1.3	2.4	1.9	1.1	2.1
Rent of shelter ⁴	235.375	235.649	235.908	236.372	1.1	1.9	.7	1.7	1.5	1.2
Tenants' and household insurance ^{1 2}	127.654	127.859	128.242	128.377	3.8	-1.4	-.1	2.3	1.2	1.1
Energy services ³	193.645	194.818	192.818	193.693	-2	-2.3	7.3	.1	-1.2	3.6
Water and sewer and trash collection services ²	178.669	179.223	179.953	180.357	4.3	5.0	6.7	3.8	4.6	5.2
Household operations ^{1 2}	153.923	154.378	154.581	154.670	-2.3	2.3	.9	2.0	-.1	1.4
Transportation services	267.612	268.275	267.896	267.720	3.1	3.5	4.8	.2	3.3	2.5
Medical care services	423.843	425.316	426.464	427.870	4.5	1.7	3.1	3.9	3.1	3.5
Other services	298.388	299.096	299.140	299.585	-2	.6	1.5	1.6	.2	1.6
Special indexes										
All items less food	220.262	220.488	219.523	220.891	3.1	4.6	7.3	1.1	3.9	4.2
All items less shelter	215.173	215.486	214.295	215.872	4.1	5.7	9.9	1.3	4.9	5.5
All items less medical care	213.934	214.223	213.426	214.730	3.0	4.5	7.5	1.5	3.7	4.5
Commodities less food	169.766	169.536	167.311	169.640	7.7	11.3	17.4	-.3	9.5	8.2
Nondurables less food	223.009	223.118	218.640	221.553	12.4	21.5	21.6	-2.6	16.9	8.8
Nondurables less food and apparel	285.598	284.399	275.970	280.419	17.8	24.9	29.3	-7.1	21.3	9.6
Nondurables	225.644	226.125	223.294	225.476	7.3	13.0	16.2	-.3	10.1	7.6
Services less rent of shelter ⁴	255.550	256.332	255.986	256.220	1.5	1.4	3.6	1.1	1.5	2.3
Services less medical care services	248.319	248.874	248.840	249.178	1.0	1.6	2.0	1.4	1.3	1.7
Energy	253.853	251.126	239.606	246.895	24.0	29.7	44.3	-10.5	26.8	13.6
All items less energy	218.248	218.935	219.475	220.065	.8	1.6	3.1	3.4	1.2	3.2
All items less food and energy	217.167	217.826	218.395	218.908	.4	1.3	2.2	3.2	.8	2.7
Commodities less food and energy commodities	146.774	147.607	148.509	148.996	-9	.4	2.7	6.2	-.3	4.5
Energy commodities	321.527	315.284	294.876	308.122	43.7	54.2	69.7	-15.7	48.9	19.6
Services less energy services	266.988	267.500	267.802	268.327	1.0	1.6	2.0	2.0	1.3	2.0

¹ Not seasonally adjusted.

² Indexes on a December 1997=100 base.

³ This index series was calculated using a Laspeyres estimator. All other item stratum index series were calculated using a geometric means estimator.

⁴ Indexes on a December 1984=100 base

⁵ Indexes on a December 1988=100 base.

⁶ Indexes on a December 2007=100 base.

NOTE: Index applies to a month as a whole, not to any specific date.

Table 6. Consumer Price Index for Urban Wage Earners and Clerical Workers (CPI-W): Selected areas, all items index

(1982-84=100, unless otherwise noted)

CPI-W	Pricing schedule 1	All items									
		Indexes				Percent change to July 2011 from—			Percent change to June 2011 from—		
		Apr. 2011	May 2011	June 2011	July 2011	July 2010	May 2011	June 2011	June 2010	Apr. 2011	May 2011
U.S. city average	M	221.743	222.954	222.522	222.686	4.1	-0.1	0.1	4.1	0.4	-0.2
Region and area size²											
Northeast urban	M	238.756	240.209	240.158	240.707	4.0	.2	.2	3.8	.6	.0
Size A - More than 1,500,000	M	238.390	239.852	239.972	240.475	3.8	.3	.2	3.6	.7	.1
Size B/C - 50,000 to 1,500,000 ³	M	145.520	146.390	146.144	146.536	4.5	.1	.3	4.2	.4	-2
Midwest urban	M	210.991	212.572	212.556	212.718	4.3	.1	.1	4.4	.7	.0
Size A - More than 1,500,000	M	210.508	212.272	212.147	212.211	4.4	.0	.0	4.5	.8	-1
Size B/C - 50,000 to 1,500,000 ³	M	138.552	139.532	139.738	139.835	4.2	.2	.1	4.4	.9	.1
Size D - Nonmetropolitan (less than 50,000)	M	209.987	211.052	210.516	211.120	4.5	.0	.3	4.4	.3	-3
South urban	M	217.234	218.437	217.722	218.087	4.6	-2	.2	4.4	.2	-3
Size A - More than 1,500,000	M	218.615	219.971	219.263	219.543	4.3	-2	.1	3.9	.3	-3
Size B/C - 50,000 to 1,500,000 ³	M	138.962	139.744	139.407	139.584	4.8	-1	.1	4.6	.3	-2
Size D - Nonmetropolitan (less than 50,000)	M	225.869	226.539	224.807	225.923	5.2	-3	.5	4.4	-5	-8
West urban	M	223.268	223.944	223.237	222.815	3.2	-5	-2	3.5	.0	-3
Size A - More than 1,500,000	M	225.833	226.399	225.670	225.152	3.0	-6	-2	3.4	-1	-3
Size B/C - 50,000 to 1,500,000 ³	M	138.362	138.816	138.392	138.151	3.5	-5	-2	3.7	.0	-3
Size classes											
A ⁴	M	204.607	205.758	205.415	205.474	3.8	-1	.0	3.8	.4	-2
B/C ³	M	139.645	140.412	140.179	140.288	4.4	-1	.1	4.3	.4	-2
D	M	218.220	219.159	218.067	218.791	4.6	-2	.3	4.2	-1	-5
Selected local areas⁵											
Chicago-Gary-Kenosha, IL-IN-WI	M	213.633	215.358	215.325	214.437	3.9	-4	-4	4.6	.8	.0
Los Angeles-Riverside-Orange County, CA ...	M	227.051	226.842	225.461	224.277	2.7	-1.1	-5	3.3	-7	-6
New York-Northern N.J.-Long Island, NY-NJ-CT-PA	M	242.697	244.316	244.601	245.265	3.8	.4	.3	3.7	.8	.1
Boston-Brockton-Nashua, MA-NH-ME-CT	1	-	246.825	-	245.949	3.9	-4	-	-	-	-
Cleveland-Akron, OH	1	-	204.105	-	203.660	4.2	-2	-	-	-	-
Dallas-Fort Worth, TX	1	-	214.038	-	213.480	4.9	-3	-	-	-	-
Washington-Baltimore, DC-MD-VA-WV ⁶	1	-	148.638	-	148.294	4.5	-2	-	-	-	-
Atlanta, GA	2	208.356	-	210.598	-	-	-	-	3.2	1.1	-
Detroit-Ann Arbor-Flint, MI	2	208.217	-	210.354	-	-	-	-	4.8	1.0	-
Houston-Galveston-Brazoria, TX	2	200.997	-	200.444	-	-	-	-	4.0	-3	-
Miami-Fort Lauderdale, FL	2	229.675	-	229.353	-	-	-	-	4.1	-1	-
Philadelphia-Wilmington-Atlantic City, PA-NJ-DE-MD	2	233.441	-	234.965	-	-	-	-	3.0	.7	-
San Francisco-Oakland-San Jose, CA	2	231.600	-	230.605	-	-	-	-	2.9	-4	-
Seattle-Tacoma-Bremerton, WA	2	228.313	-	230.072	-	-	-	-	3.7	.8	-

¹ Foods, fuels, and several other items priced every month in all areas; most other goods and services priced as indicated:

M - Every month.

1 - January, March, May, July, September, and November.

2 - February, April, June, August, October, and December.

² Regions defined as the four Census regions. See technical notes.

³ Indexes on a December 1996=100 base.

⁴ Indexes on a December 1986=100 base.

⁵ In addition, the following metropolitan areas are published semiannually and appear in Tables 34 and 39 of the January and July issues of the CPI Detailed Report: Anchorage, AK; Cincinnati-Hamilton, OH-KY-IN; Denver-Boulder-Greeley, CO; Honolulu, HI; Kansas City, MO-KS; Milwaukee-Racine, WI; Minneapolis-St. Paul, MN-WI; Phoenix-Mesa, AZ; Pittsburgh, PA; Portland-Salem, OR-WA; St. Louis, MO-IL; San Diego, CA;

Tampa-St. Petersburg-Clearwater, FL.

⁶ Indexes on a November 1996=100 base.

- Data not available.

NOTE: Index applies to a month as a whole, not to any specific date.

NOTE: Local area indexes are byproducts of the national CPI program. Each local index has a smaller sample size than the national index and is, therefore, subject to substantially more sampling and other measurement error. As a result, local area indexes show greater volatility than the national index, although their long-term trends are similar. Therefore, the Bureau of Labor Statistics strongly urges users to consider adopting the national average CPI for use in their escalator clauses.

Table 7. Chained Consumer Price Index for All Urban Consumers (C-CPI-U): U.S. city average, by expenditure category and commodity and service group

(December 1999=100, unless otherwise noted)

C-CPI-U	Relative importance, 2007-2008	Unadjusted indexes		Unadjusted percent change to July 2011 from—	
		June 2011	July 2011	July 2010	June 2011
Expenditure category					
All items ¹	100.000	R129.841	129.930	3.5	0.1
Food and beverages	14.519	132.333	132.832	4.1	.4
Food	13.493	132.514	133.064	4.3	.4
Food at home	7.780	128.341	129.069	5.3	.6
Food away from home	5.712	138.213	138.500	2.9	.2
Alcoholic beverages	1.027	130.679	130.514	1.3	-.1
Housing ²	42.074	R129.990	130.366	1.3	.3
Shelter	32.119	132.740	133.109	1.4	.3
Fuels and utilities ³	5.231	R164.596	165.819	2.8	.7
Household furnishings and operations	4.724	92.656	92.533	-6	-.1
Apparel	3.772	90.190	88.719	2.6	-1.6
Transportation	17.199	145.972	145.528	12.2	-.3
Private transportation	16.013	146.973	146.471	12.6	-.3
Public transportation	1.186	133.254	133.536	6.0	.2
Medical care	6.294	154.508	154.776	3.0	.2
Medical care commodities	1.570	136.490	136.465	3.0	.0
Medical care services	4.723	161.116	161.498	3.0	.2
Recreation	6.625	102.654	102.413	-1.0	-.2
Education and communication	6.288	112.491	112.666	.5	.2
Education	2.804	188.948	190.158	3.9	.6
Communication	3.484	71.347	71.181	-2.2	-.2
Other goods and services	3.229	142.216	142.265	1.9	.0
Commodity and service group					
Services ⁴	59.383	R137.848	138.211	1.6	.3
Commodities	40.617	120.282	120.021	6.3	-.2
Durables	10.376	81.957	81.997	1.1	.0
Nondurables	30.241	140.337	139.905	8.1	-.3
All items less food and energy	76.901	121.726	121.821	1.6	.1
Energy ⁵	9.606	R215.138	214.070	18.7	-.5

¹ Revised indexes: May 2011=129.943, Apr. 2011=129.408.

² Revised indexes: May 2011=129.406, Apr. 2011=129.071.

³ Revised indexes: May 2011=161.135, Apr. 2011=159.248.

⁴ Revised indexes: May 2011=137.336, Apr. 2011=137.017.

⁵ Revised indexes: May 2011=219.671, Apr. 2011=214.257.

R Revised.

Indexes for 2011 are initial estimates. Indexes for 2010 are interim adjustments.

NOTE: Index applies to a month as a whole, not to any specific date.