

Transmission of material in this release is embargoed until
8:30 a.m. (EDT) Friday, October 7, 2011

USDL-11-1441

Technical information:

Household data: (202) 691-6378 • cpsinfo@bls.gov • www.bls.gov/cps
Establishment data: (202) 691-6555 • cesinfo@bls.gov • www.bls.gov/ces

Media contact: (202) 691-5902 • PressOffice@bls.gov

THE EMPLOYMENT SITUATION – SEPTEMBER 2011

Nonfarm payroll employment edged up by 103,000 in September, and the **unemployment rate** held at 9.1 percent, the U.S. Bureau of Labor Statistics reported today. The increase in employment partially reflected the return to payrolls of about 45,000 telecommunications workers who had been on strike in August. In September, job gains occurred in professional and business services, health care, and construction. Government employment continued to trend down.

Chart 1. Unemployment rate, seasonally adjusted, September 2009 – September 2011

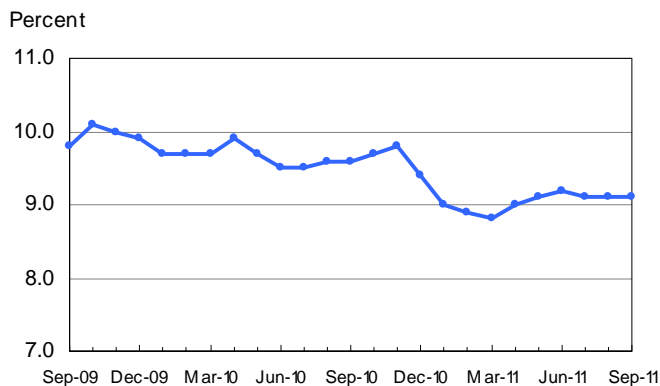
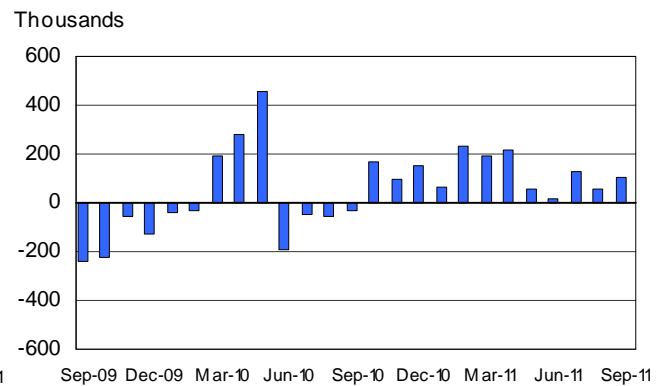


Chart 2. Nonfarm payroll employment over-the-month change, seasonally adjusted, September 2009 – September 2011



Household Survey Data

The number of **unemployed persons**, at 14.0 million, was essentially unchanged in September, and the **unemployment rate** was 9.1 percent. Since April, the rate has held in a narrow range from 9.0 to 9.2 percent. (See table A-1.)

Among the **major worker groups**, the unemployment rates for adult men (8.8 percent), adult women (8.1 percent), teenagers (24.6 percent), whites (8.0 percent), blacks (16.0 percent), and Hispanics (11.3 percent) showed little or no change in September. The jobless rate for Asians was 7.8 percent, not seasonally adjusted. (See tables A-1, A-2, and A-3.)

The number of **long-term unemployed** (those jobless for 27 weeks and over) was 6.2 million in September. These individuals accounted for 44.6 percent of the unemployed. (See table A-12.)

Both the labor force and employment increased in September. However, the **civilian labor force participation rate**, at 64.2 percent, and the **employment-population ratio**, at 58.3 percent, were little changed. (See table A-1.)

The number of persons employed **part time for economic reasons** (sometimes referred to as involuntary part-time workers) rose to 9.3 million in September. These individuals were working part time because their hours had been cut back or because they were unable to find a full-time job. (See table A-8.)

In September, about 2.5 million persons were **marginally attached to the labor force**, about the same as a year earlier. (The data are not seasonally adjusted.) These individuals were not in the labor force, wanted and were available for work, and had looked for a job sometime in the prior 12 months. They were not counted as unemployed because they had not searched for work in the 4 weeks preceding the survey. (See table A-16.)

Among the marginally attached, there were 1.0 million **discouraged workers** in September, down by 172,000 from a year earlier. (The data are not seasonally adjusted.) Discouraged workers are persons not currently looking for work because they believe no jobs are available for them. The remaining 1.5 million persons marginally attached to the labor force in September had not searched for work in the 4 weeks preceding the survey for reasons such as school attendance or family responsibilities. (See table A-16.)

Establishment Survey Data

Total **nonfarm payroll employment** edged up by 103,000 in September. Since April, payroll employment has increased by an average of 72,000 per month, compared with an average of 161,000 for the prior 7 months. In September, job gains occurred in professional and business services, health care, and construction. Government employment continued to trend down. (See table B-1.)

Employment in **professional and business services** increased by 48,000 over the month and has grown by 897,000 since a recent low in September 2009. Employment in temporary help services edged up in September; this industry has added 53,000 jobs over the past 3 months. In September, employment growth continued in computer systems design and in management and technical consulting services.

Health care employment continued to expand in September, with an increase of 44,000. Within the industry, job gains occurred in ambulatory health care services (+26,000) and in hospitals (+13,000).

Construction employment increased by 26,000 over the month, after showing little movement since February. The over-the-month gain was due to employment increases in the nonresidential construction industries, which includes heavy and civil construction. **Mining** employment continued to trend up in September.

Employment in **information** was up by 34,000 over the month due to the return of about 45,000 telecommunications workers to payrolls after an August strike.

Manufacturing employment changed little in September (-13,000) and has been essentially flat for the past 2 months.

Within **retail trade**, employment declined in electronic and appliance stores (-9,000) in September. Employment in **wholesale trade, transportation and warehousing, financial activities, and leisure and hospitality** changed little.

Government employment continued to trend down over the month (-34,000). The U.S. Postal Service continued to lose jobs (-5,000). Local government employment declined by 35,000 and has fallen by 535,000 since September 2008.

The **average workweek for all employees** on private nonfarm payrolls edged up by 0.1 hour over the month to 34.3 hours following a decrease of 0.1 hour in August. The manufacturing workweek edged down by 0.1 hour in September to 40.2 hours. Factory overtime increased by 0.1 hour to 3.2 hours. The average workweek for **production and nonsupervisory employees** on private nonfarm payrolls edged up by 0.1 hour to 33.6 hours in September. (See tables B-2 and B-7.)

In September, **average hourly earnings for all employees** on private nonfarm payrolls increased by 4 cents, or 0.2 percent, to \$23.12. This increase followed a decline of 4 cents in August. Over the past 12 months, average hourly earnings have increased by 1.9 percent. In September, average hourly earnings of private-sector **production and nonsupervisory employees** increased by 3 cents, or 0.2 percent, to \$19.52. (See tables B-3 and B-8.)

The change in total nonfarm payroll employment for July was revised from +85,000 to +127,000, and the change for August was revised from 0 to +57,000.

The Employment Situation for October is scheduled to be released on Friday, November 4, 2011, at 8:30 a.m. (EDT).

HOUSEHOLD DATA

Summary table A. Household data, seasonally adjusted

[Numbers in thousands]

Category	Sept. 2010	July 2011	Aug. 2011	Sept. 2011	Change from: Aug. 2011- Sept. 2011
Employment status					
Civilian noninstitutional population.....	238,322	239,671	239,871	240,071	200
Civilian labor force.....	154,124	153,228	153,594	154,017	423
Participation rate.....	64.7	63.9	64.0	64.2	0.2
Employed.....	139,378	139,296	139,627	140,025	398
Employment-population ratio.....	58.5	58.1	58.2	58.3	0.1
Unemployed.....	14,746	13,931	13,967	13,992	25
Unemployment rate.....	9.6	9.1	9.1	9.1	0.0
Not in labor force.....	84,198	86,443	86,278	86,054	-224
Unemployment rates					
Total, 16 years and over.....	9.6	9.1	9.1	9.1	0.0
Adult men (20 years and over).....	9.7	9.0	8.9	8.8	-0.1
Adult women (20 years and over).....	8.0	7.9	8.0	8.1	0.1
Teenagers (16 to 19 years).....	26.0	25.0	25.4	24.6	-0.8
White.....	8.7	8.1	8.0	8.0	0.0
Black or African American.....	16.1	15.9	16.7	16.0	-0.7
Asian (not seasonally adjusted).....	6.4	7.7	7.1	7.8	-
Hispanic or Latino ethnicity.....	12.5	11.3	11.3	11.3	0.0
Total, 25 years and over.....	8.3	7.8	7.8	7.8	0.0
Less than a high school diploma.....	15.4	15.0	14.3	14.0	-0.3
High school graduates, no college.....	10.0	9.3	9.6	9.7	0.1
Some college or associate degree.....	9.1	8.3	8.2	8.4	0.2
Bachelor's degree and higher.....	4.5	4.3	4.3	4.2	-0.1
Reason for unemployment					
Job losers and persons who completed temporary jobs.....	9,286	8,215	8,203	8,121	-82
Job leavers.....	809	928	963	967	4
Reentrants.....	3,441	3,410	3,532	3,504	-28
New entrants.....	1,193	1,270	1,241	1,327	86
Duration of unemployment					
Less than 5 weeks.....	2,872	2,689	2,755	2,772	17
5 to 14 weeks.....	3,329	3,088	3,050	2,904	-146
15 to 26 weeks.....	2,364	1,965	2,239	2,086	-153
27 weeks and over.....	6,153	6,185	6,034	6,242	208
Employed persons at work part time					
Part time for economic reasons.....	9,506	8,396	8,826	9,270	444
Slack work or business conditions.....	6,732	5,687	5,833	5,963	130
Could only find part-time work.....	2,478	2,517	2,736	2,852	116
Part time for noneconomic reasons.....	18,256	18,258	18,208	18,308	100
Persons not in the labor force (not seasonally adjusted)					
Marginally attached to the labor force.....	2,548	2,785	2,575	2,511	-
Discouraged workers.....	1,209	1,119	977	1,037	-

- Over-the-month changes are not displayed for not seasonally adjusted data.

NOTE: Persons whose ethnicity is identified as Hispanic or Latino may be of any race. Detail for the seasonally adjusted data shown in this table will not necessarily add to totals because of the independent seasonal adjustment of the various series. Updated population controls are introduced annually with the release of January data.

ESTABLISHMENT DATA
Summary table B. Establishment data, seasonally adjusted

Category	Sept. 2010	July 2011	Aug. 2011 ^p	Sept. 2011 ^p
EMPLOYMENT BY SELECTED INDUSTRY (Over-the-month change, in thousands)				
Total nonfarm.....	-29	127	57	103
Total private.....	109	173	42	137
Goods-producing.....	-6	53	-9	18
Mining and logging.....	6	9	2	5
Construction.....	-6	10	-7	26
Manufacturing.....	-6	34	-4	-13
Durable goods ¹	3	25	-8	-8
Motor vehicles and parts.....	-0.2	8.3	-6.4	0.3
Nondurable goods.....	-9	9	4	-5
Private service-providing ¹	115	120	51	119
Wholesale trade.....	1.5	0.3	2.8	-5.9
Retail trade.....	17.7	28.5	-0.8	13.6
Transportation and warehousing.....	8.3	-5.8	0.2	-1.9
Information.....	-10	-5	-51	34
Financial activities.....	0	-3	5	-8
Professional and business services ¹	8	39	38	48
Temporary help services.....	19.9	13.5	20.3	19.4
Education and health services ¹	19	54	38	45
Health care and social assistance.....	34.3	37.4	34.1	40.8
Leisure and hospitality.....	52	15	10	-4
Other services.....	20	-3	8	-3
Government.....	-138	-46	15	-34
WOMEN AND PRODUCTION AND NONSUPERVISORY EMPLOYEES AS A PERCENT OF ALL EMPLOYEES ²				
Total nonfarm women employees.....	49.7	49.4	49.4	49.4
Total private women employees.....	48.2	47.9	47.9	47.9
Total private production and nonsupervisory employees.....	82.4	82.4	82.4	82.5
HOURS AND EARNINGS ALL EMPLOYEES				
Total private				
Average weekly hours.....	34.2	34.3	34.2	34.3
Average hourly earnings.....	\$ 22.70	\$ 23.12	\$ 23.08	\$ 23.12
Average weekly earnings.....	\$ 776.34	\$793.02	\$789.34	\$793.02
Index of aggregate weekly hours (2007=100) ³	92.2	93.8	93.6	94.0
Over-the-month percent change.....	0.1	0.1	-0.2	0.4
Index of aggregate weekly payrolls (2007=100) ⁴	99.8	103.5	103.0	103.6
Over-the-month percent change.....	0.2	0.7	-0.5	0.6
HOURS AND EARNINGS PRODUCTION AND NONSUPERVISORY EMPLOYEES				
Total private				
Average weekly hours.....	33.5	33.6	33.5	33.6
Average hourly earnings.....	\$ 19.14	\$ 19.49	\$ 19.49	\$ 19.52
Average weekly earnings.....	\$ 641.19	\$654.86	\$652.92	\$655.87
Index of aggregate weekly hours (2002=100) ³	99.2	101.0	100.8	101.2
Over-the-month percent change.....	0.1	0.2	-0.2	0.4
Index of aggregate weekly payrolls (2002=100) ⁴	126.9	131.5	131.2	132.0
Over-the-month percent change.....	0.2	0.5	-0.2	0.6
DIFFUSION INDEX (Over 1-month span) ⁵				
Total private.....	51.9	61.4	55.6	55.4
Manufacturing.....	49.4	60.5	48.8	46.3

1 Includes other industries, not shown separately.

2 Data relate to production employees in mining and logging and manufacturing, construction employees in construction, and nonsupervisory employees in the service-providing industries.

3 The indexes of aggregate weekly hours are calculated by dividing the current month's estimates of aggregate hours by the corresponding annual average aggregate hours.

4 The indexes of aggregate weekly payrolls are calculated by dividing the current month's estimates of aggregate weekly payrolls by the corresponding annual average aggregate weekly payrolls.

5 Figures are the percent of industries with employment increasing plus one-half of the industries with unchanged employment, where 50 percent indicates an equal balance between industries with increasing and decreasing employment.

p Preliminary

Frequently Asked Questions about Employment and Unemployment Estimates

Why are there two monthly measures of employment?

The household survey and establishment survey both produce sample-based estimates of employment and both have strengths and limitations. The establishment survey employment series has a smaller margin of error on the measurement of month-to-month change than the household survey because of its much larger sample size. An over-the-month employment change of about 100,000 is statistically significant in the establishment survey, while the threshold for a statistically significant change in the household survey is about 400,000. However, the household survey has a more expansive scope than the establishment survey because it includes the self-employed, unpaid family workers, agricultural workers, and private household workers, who are excluded by the establishment survey. The household survey also provides estimates of employment for demographic groups.

Are undocumented immigrants counted in the surveys?

It is likely that both surveys include at least some undocumented immigrants. However, neither the establishment nor the household survey is designed to identify the legal status of workers. Therefore, it is not possible to determine how many are counted in either survey. The establishment survey does not collect data on the legal status of workers. The household survey does include questions which identify the foreign and native born, but it does not include questions about the legal status of the foreign born.

Why does the establishment survey have revisions?

The establishment survey revises published estimates to improve its data series by incorporating additional information that was not available at the time of the initial publication of the estimates. The establishment survey revises its initial monthly estimates twice, in the immediately succeeding 2 months, to incorporate additional sample receipts from respondents in the survey and recalculated seasonal adjustment factors. For more information on the monthly revisions, please visit www.bls.gov/ces/cesrevinfo.htm.

On an annual basis, the establishment survey incorporates a benchmark revision that re-anchors estimates to nearly complete employment counts available from unemployment insurance tax records. The benchmark helps to control for sampling and modeling errors in the estimates. For more information on the annual benchmark revision, please visit www.bls.gov/web/cesbmart.htm.

Does the establishment survey sample include small firms?

Yes; about 40 percent of the establishment survey sample is comprised of business establishments with fewer than 20 employees. The establishment survey sample is designed to maximize the reliability of the total nonfarm employment estimate; firms from all size classes and industries are appropriately sampled to achieve that goal.

Does the establishment survey account for employment from new businesses?

Yes; monthly establishment survey estimates include an adjustment to account for the net employment change generated by business births and deaths. The adjustment comes from an econometric model that forecasts the monthly net jobs impact of business births and deaths based on the actual past values of the net impact that can be observed with a lag from the Quarterly Census of Employment and Wages. The

establishment survey uses modeling rather than sampling for this purpose because the survey is not immediately able to bring new businesses into the sample. There is an unavoidable lag between the birth of a new firm and its appearance on the sampling frame and availability for selection. BLS adds new businesses to the survey twice a year.

Is the count of unemployed persons limited to just those people receiving unemployment insurance benefits?

No; the estimate of unemployment is based on a monthly sample survey of households. All persons who are without jobs and are actively seeking and available to work are included among the unemployed. (People on temporary layoff are included even if they do not actively seek work.) There is no requirement or question relating to unemployment insurance benefits in the monthly survey.

Does the official unemployment rate exclude people who have stopped looking for work?

Yes; however, there are separate estimates of persons outside the labor force who want a job, including those who have stopped looking because they believe no jobs are available (discouraged workers). In addition, alternative measures of labor underutilization (some of which include discouraged workers and other groups not officially counted as unemployed) are published each month in The Employment Situation news release.

How can unusually severe weather affect employment and hours estimates?

In the establishment survey, the reference period is the pay period that includes the 12th of the month. Unusually severe weather is more likely to have an impact on average weekly hours than on employment. Average weekly hours are estimated for paid time during the pay period, including pay for holidays, sick leave, or other time off. The impact of severe weather on hours estimates typically, but not always, results in a reduction in average weekly hours. For example, some employees may be off work for part of the pay period and not receive pay for the time missed, while some workers, such as those dealing with cleanup or repair, may work extra hours.

In order for severe weather conditions to reduce the estimate of payroll employment, employees have to be off work without pay for the entire pay period. About half of all employees in the payroll survey have a 2-week, semi-monthly, or monthly pay period. Employees who receive pay for any part of the pay period, even 1 hour, are counted in the payroll employment figures. It is not possible to quantify the effect of extreme weather on estimates of employment from the establishment survey.

In the household survey, the reference period is generally the calendar week that includes the 12th of the month. Persons who miss the entire week's work for weather-related events are counted as employed whether or not they are paid for the time off. The household survey collects data on the number of persons who usually work full time but had reduced hours, or had a job but were not at work the entire week, due to bad weather. Current and historical data are available on the household survey's most requested statistics page at <http://data.bls.gov/cgi-bin/surveymost?ln>.

Technical Note

This news release presents statistics from two major surveys, the Current Population Survey (household survey) and the Current Employment Statistics survey (establishment survey). The household survey provides information on the labor force, employment, and unemployment that appears in the "A" tables, marked HOUSEHOLD DATA. It is a sample survey of about 60,000 households conducted by the U.S. Census Bureau for the U.S. Bureau of Labor Statistics (BLS).

The establishment survey provides information on employment, hours, and earnings of employees on nonfarm payrolls; the data appear in the "B" tables, marked ESTABLISHMENT DATA. BLS collects these data each month from the payroll records of a sample of nonagricultural business establishments. The sample includes about 140,000 businesses and government agencies representing approximately 440,000 worksites and is drawn from a sampling frame of roughly 9 million unemployment insurance tax accounts. The active sample includes approximately one-third of all nonfarm payroll employees.

For both surveys, the data for a given month relate to a particular week or pay period. In the household survey, the reference period is generally the calendar week that contains the 12th day of the month. In the establishment survey, the reference period is the pay period including the 12th, which may or may not correspond directly to the calendar week.

Coverage, definitions, and differences between surveys

Household survey. The sample is selected to reflect the entire civilian noninstitutional population. Based on responses to a series of questions on work and job search activities, each person 16 years and over in a sample household is classified as employed, unemployed, or not in the labor force.

People are classified as *employed* if they did any work at all as paid employees during the reference week; worked in their own business, profession, or on their own farm; or worked without pay at least 15 hours in a family business or farm. People are also counted as employed if they were temporarily absent from their jobs because of illness, bad weather, vacation, labor-management disputes, or personal reasons.

People are classified as *unemployed* if they meet all of the following criteria: they had no employment during the reference week; they were available for work at that time; and they made specific efforts to find employment sometime during the 4-week period ending with the reference week. Persons laid off from a job and expecting recall need not be looking for work to be counted as unemployed. The unemployment data derived from the household survey in no way depend upon the eligibility for or receipt of unemployment insurance benefits.

The *civilian labor force* is the sum of employed and

unemployed persons. Those not classified as employed or unemployed are *not in the labor force*. The *unemployment rate* is the number unemployed as a percent of the labor force. The *labor force participation rate* is the labor force as a percent of the population, and the *employment-population ratio* is the employed as a percent of the population. Additional information about the household survey can be found at www.bls.gov/cps/documentation.htm.

Establishment survey. The sample establishments are drawn from private nonfarm businesses such as factories, offices, and stores, as well as from federal, state, and local government entities. *Employees on nonfarm payrolls* are those who received pay for any part of the reference pay period, including persons on paid leave. Persons are counted in each job they hold. *Hours and earnings* data are produced for the private sector for all employees and for production and nonsupervisory employees. *Production and nonsupervisory employees* are defined as production and related employees in manufacturing and mining and logging, construction workers in construction, and non-supervisory employees in private service-providing industries.

Industries are classified on the basis of an establishment's principal activity in accordance with the 2007 version of the North American Industry Classification System. Additional information about the establishment survey can be found at www.bls.gov/ces/#technical.

Differences in employment estimates. The numerous conceptual and methodological differences between the household and establishment surveys result in important distinctions in the employment estimates derived from the surveys. Among these are:

- The household survey includes agricultural workers, the self-employed, unpaid family workers, and private household workers among the employed. These groups are excluded from the establishment survey.
- The household survey includes people on unpaid leave among the employed. The establishment survey does not.
- The household survey is limited to workers 16 years of age and older. The establishment survey is not limited by age.
- The household survey has no duplication of individuals, because individuals are counted only once, even if they hold more than one job. In the establishment survey, employees working at more than one job and thus appearing on more than one payroll are counted separately for each appearance.

Seasonal adjustment

Over the course of a year, the size of the nation's labor force and the levels of employment and unemployment undergo regularly occurring fluctuations. These events may result from seasonal changes in weather, major holidays, and the opening and closing of schools. The effect of such seasonal variation can be very large.

Because these seasonal events follow a more or less regular pattern each year, their influence on the level of a series can be tempered by adjusting for regular seasonal variation. These adjustments make nonseasonal developments, such as declines in employment or increases in the participation of women in the labor force, easier to spot. For example, in the household survey, the large number of youth entering the labor force each June is likely to obscure any other changes that have taken place relative to May, making it difficult to determine if the level of economic activity has risen or declined. Similarly, in the establishment survey, payroll employment in education declines by about 20 percent at the end of the spring term and later rises with the start of the fall term, obscuring the underlying employment trends in the industry. Because seasonal employment changes at the end and beginning of the school year can be estimated, the statistics can be adjusted to make underlying employment patterns more discernable. The seasonally adjusted figures provide a more useful tool with which to analyze changes in month-to-month economic activity.

Many seasonally adjusted series are independently adjusted in both the household and establishment surveys. However, the adjusted series for many major estimates, such as total payroll employment, employment in most major sectors, total employment, and unemployment are computed by aggregating independently adjusted component series. For example, total unemployment is derived by summing the adjusted series for four major age-sex components; this differs from the unemployment estimate that would be obtained by directly adjusting the total or by combining the duration, reasons, or more detailed age categories.

For both the household and establishment surveys, a concurrent seasonal adjustment methodology is used in which new seasonal factors are calculated each month using all relevant data, up to and including the data for the current month. In the household survey, new seasonal factors are used to adjust only the current month's data. In the establishment survey, however, new seasonal factors are used each month to adjust the three most recent monthly estimates. The prior 2 months are routinely revised to incorporate additional sample reports and recalculated seasonal adjustment factors. In both surveys, 5-year revisions to historical data are made once a year.

Reliability of the estimates

Statistics based on the household and establishment surveys are subject to both sampling and nonsampling error. When a sample rather than the entire population is

surveyed, there is a chance that the sample estimates may differ from the "true" population values they represent. The exact difference, or *sampling error*, varies depending on the particular sample selected, and this variability is measured by the standard error of the estimate. There is about a 90-percent chance, or level of confidence, that an estimate based on a sample will differ by no more than 1.6 standard errors from the "true" population value because of sampling error. BLS analyses are generally conducted at the 90-percent level of confidence.

For example, the confidence interval for the monthly change in total nonfarm employment from the establishment survey is on the order of plus or minus 100,000. Suppose the estimate of nonfarm employment increases by 50,000 from one month to the next. The 90-percent confidence interval on the monthly change would range from -50,000 to +150,000 (50,000 +/- 100,000). These figures do not mean that the sample results are off by these magnitudes, but rather that there is about a 90-percent chance that the "true" over-the-month change lies within this interval. Since this range includes values of less than zero, we could not say with confidence that nonfarm employment had, in fact, increased that month. If, however, the reported nonfarm employment rise was 250,000, then all of the values within the 90-percent confidence interval would be greater than zero. In this case, it is likely (at least a 90-percent chance) that nonfarm employment had, in fact, risen that month. At an unemployment rate of around 5.5 percent, the 90-percent confidence interval for the monthly change in unemployment as measured by the household survey is about +/- 280,000, and for the monthly change in the unemployment rate it is about +/- 0.19 percentage point.

In general, estimates involving many individuals or establishments have lower standard errors (relative to the size of the estimate) than estimates which are based on a small number of observations. The precision of estimates also is improved when the data are cumulated over time, such as for quarterly and annual averages.

The household and establishment surveys are also affected by *nonsampling error*, which can occur for many reasons, including the failure to sample a segment of the population, inability to obtain information for all respondents in the sample, inability or unwillingness of respondents to provide correct information on a timely basis, mistakes made by respondents, and errors made in the collection or processing of the data.

For example, in the establishment survey, estimates for the most recent 2 months are based on incomplete returns; for this reason, these estimates are labeled preliminary in the tables. It is only after two successive revisions to a monthly estimate, when nearly all sample reports have been received, that the estimate is considered final.

Another major source of nonsampling error in the establishment survey is the inability to capture, on a timely basis, employment generated by new firms. To correct for this systematic underestimation of employment growth, an estimation procedure with two components is used to account for business births. The first component excludes

employment losses from business deaths from sample-based estimation in order to offset the missing employment gains from business births. This is incorporated into the sample-based estimation procedure by simply not reflecting sample units going out of business, but imputing to them the same employment trend as the other firms in the sample. This procedure accounts for most of the net birth/death employment.

The second component is an ARIMA time series model designed to estimate the residual net birth/death employment not accounted for by the imputation. The historical time series used to create and test the ARIMA model was derived from the unemployment insurance universe micro-level database, and reflects the actual residual net of births and deaths over the past 5 years.

The sample-based estimates from the establishment survey are adjusted once a year (on a lagged basis) to

universe counts of payroll employment obtained from administrative records of the unemployment insurance program. The difference between the March sample-based employment estimates and the March universe counts is known as a benchmark revision, and serves as a rough proxy for total survey error. The new benchmarks also incorporate changes in the classification of industries. Over the past decade, absolute benchmark revisions for total nonfarm employment have averaged 0.3 percent, with a range from -0.7 to 0.6 percent.

Other information

Information in this release will be made available to sensory impaired individuals upon request. Voice phone: (202) 691-5200; Federal Relay Service: (800) 877-8339.

HOUSEHOLD DATA

Table A-1. Employment status of the civilian population by sex and age

[Numbers in thousands]

Employment status, sex, and age	Not seasonally adjusted			Seasonally adjusted ¹					
	Sept. 2010	Aug. 2011	Sept. 2011	Sept. 2010	May 2011	June 2011	July 2011	Aug. 2011	Sept. 2011
TOTAL									
Civilian noninstitutional population.....	238,322	239,871	240,071	238,322	239,313	239,489	239,671	239,871	240,071
Civilian labor force.....	153,854	154,344	154,022	154,124	153,693	153,421	153,228	153,594	154,017
Participation rate.....	64.6	64.3	64.2	64.7	64.2	64.1	63.9	64.0	64.2
Employed.....	139,715	140,335	140,502	139,378	139,779	139,334	139,296	139,627	140,025
Employment-population ratio.....	58.6	58.5	58.5	58.5	58.4	58.2	58.1	58.2	58.3
Unemployed.....	14,140	14,008	13,520	14,746	13,914	14,087	13,931	13,967	13,992
Unemployment rate.....	9.2	9.1	8.8	9.6	9.1	9.2	9.1	9.1	9.1
Not in labor force.....	84,468	85,528	86,049	84,198	85,620	86,069	86,443	86,278	86,054
Persons who currently want a job.....	5,949	6,493	5,929	6,236	6,227	6,537	6,575	6,493	6,241
Men, 16 years and over									
Civilian noninstitutional population.....	115,433	116,453	116,559	115,433	116,156	116,250	116,347	116,453	116,559
Civilian labor force.....	81,845	82,612	82,011	82,165	81,989	81,966	81,751	81,975	82,123
Participation rate.....	70.9	70.9	70.4	71.2	70.6	70.5	70.3	70.4	70.5
Employed.....	73,959	75,190	74,821	73,594	74,177	74,014	73,908	74,122	74,364
Employment-population ratio.....	64.1	64.6	64.2	63.8	63.9	63.7	63.5	63.6	63.8
Unemployed.....	7,886	7,422	7,189	8,571	7,811	7,952	7,844	7,853	7,758
Unemployment rate.....	9.6	9.0	8.8	10.4	9.5	9.7	9.6	9.6	9.4
Not in labor force.....	33,588	33,842	34,549	33,268	34,168	34,284	34,596	34,478	34,436
Men, 20 years and over									
Civilian noninstitutional population.....	106,887	107,884	107,994	106,887	107,566	107,668	107,773	107,884	107,994
Civilian labor force.....	79,081	79,362	79,224	79,289	79,193	79,104	78,906	79,043	79,227
Participation rate.....	74.0	73.6	73.4	74.2	73.6	73.5	73.2	73.3	73.4
Employed.....	71,978	72,795	72,796	71,559	72,137	71,937	71,836	72,015	72,276
Employment-population ratio.....	67.3	67.5	67.4	66.9	67.1	66.8	66.7	66.8	66.9
Unemployed.....	7,103	6,567	6,427	7,729	7,056	7,167	7,070	7,028	6,952
Unemployment rate.....	9.0	8.3	8.1	9.7	8.9	9.1	9.0	8.9	8.8
Not in labor force.....	27,806	28,522	28,771	27,599	28,373	28,564	28,867	28,841	28,767
Women, 16 years and over									
Civilian noninstitutional population.....	122,889	123,418	123,512	122,889	123,157	123,239	123,324	123,418	123,512
Civilian labor force.....	72,009	71,732	72,011	71,959	71,704	71,455	71,476	71,619	71,894
Participation rate.....	58.6	58.1	58.3	58.6	58.2	58.0	58.0	58.0	58.2
Employed.....	65,755	65,145	65,680	65,784	65,602	65,320	65,388	65,505	65,661
Employment-population ratio.....	53.5	52.8	53.2	53.5	53.3	53.0	53.0	53.1	53.2
Unemployed.....	6,254	6,587	6,331	6,175	6,102	6,134	6,088	6,114	6,233
Unemployment rate.....	8.7	9.2	8.8	8.6	8.5	8.6	8.5	8.5	8.7
Not in labor force.....	50,880	51,686	51,501	50,930	51,453	51,784	51,847	51,800	51,618
Women, 20 years and over									
Civilian noninstitutional population.....	114,596	115,238	115,338	114,596	114,954	115,045	115,138	115,238	115,338
Civilian labor force.....	69,269	68,617	69,266	69,082	68,908	68,618	68,666	68,771	69,019
Participation rate.....	60.4	59.5	60.1	60.3	59.9	59.6	59.6	59.7	59.8
Employed.....	63,653	62,746	63,529	63,562	63,402	63,098	63,216	63,300	63,398
Employment-population ratio.....	55.5	54.4	55.1	55.5	55.2	54.8	54.9	54.9	55.0
Unemployed.....	5,616	5,870	5,737	5,520	5,505	5,520	5,450	5,472	5,622
Unemployment rate.....	8.1	8.6	8.3	8.0	8.0	8.0	7.9	8.0	8.1
Not in labor force.....	45,327	46,622	46,072	45,514	46,047	46,427	46,472	46,467	46,318
Both sexes, 16 to 19 years									
Civilian noninstitutional population.....	16,839	16,749	16,739	16,839	16,792	16,776	16,760	16,749	16,739
Civilian labor force.....	5,504	6,365	5,532	5,754	5,592	5,698	5,656	5,779	5,770
Participation rate.....	32.7	38.0	33.1	34.2	33.3	34.0	33.7	34.5	34.5
Employed.....	4,084	4,794	4,177	4,256	4,240	4,299	4,244	4,312	4,352
Employment-population ratio.....	24.3	28.6	25.0	25.3	25.2	25.6	25.3	25.7	26.0
Unemployed.....	1,421	1,571	1,356	1,497	1,352	1,399	1,412	1,467	1,418
Unemployment rate.....	25.8	24.7	24.5	26.0	24.2	24.5	25.0	25.4	24.6
Not in labor force.....	11,334	10,384	11,206	11,085	11,201	11,078	11,104	10,970	10,969

¹ The population figures are not adjusted for seasonal variation; therefore, identical numbers appear in the unadjusted and seasonally adjusted columns.

NOTE: Updated population controls are introduced annually with the release of January data.

HOUSEHOLD DATA

Table A-2. Employment status of the civilian population by race, sex, and age

[Numbers in thousands]

Employment status, race, sex, and age	Not seasonally adjusted			Seasonally adjusted ¹					
	Sept. 2010	Aug. 2011	Sept. 2011	Sept. 2010	May 2011	June 2011	July 2011	Aug. 2011	Sept. 2011
WHITE									
Civilian noninstitutional population.....	192,391	193,236	193,365	192,391	192,877	192,989	193,106	193,236	193,365
Civilian labor force.....	125,273	125,146	124,812	125,333	124,811	124,493	124,503	124,563	124,702
Participation rate.....	65.1	64.8	64.5	65.1	64.7	64.5	64.5	64.5	64.5
Employed.....	114,900	115,268	115,266	114,433	114,785	114,358	114,420	114,631	114,751
Employment-population ratio.....	59.7	59.7	59.6	59.5	59.5	59.3	59.3	59.3	59.3
Unemployed.....	10,373	9,878	9,545	10,899	10,026	10,135	10,083	9,932	9,951
Unemployment rate.....	8.3	7.9	7.6	8.7	8.0	8.1	8.1	8.0	8.0
Not in labor force.....	67,118	68,090	68,553	67,058	68,066	68,496	68,603	68,673	68,662
Men, 20 years and over									
Civilian labor force.....	65,424	65,335	65,290	65,579	65,335	65,203	65,099	65,105	65,269
Participation rate.....	74.6	74.0	73.9	74.8	74.2	74.0	73.8	73.7	73.9
Employed.....	60,102	60,714	60,648	59,759	60,168	59,943	59,929	60,108	60,235
Employment-population ratio.....	68.5	68.8	68.6	68.1	68.3	68.0	67.9	68.1	68.2
Unemployed.....	5,321	4,622	4,642	5,820	5,167	5,261	5,170	4,997	5,034
Unemployment rate.....	8.1	7.1	7.1	8.9	7.9	8.1	7.9	7.7	7.7
Women, 20 years and over									
Civilian labor force.....	55,212	54,525	54,949	54,961	54,912	54,633	54,696	54,655	54,706
Participation rate.....	60.1	59.2	59.6	59.8	59.7	59.4	59.4	59.3	59.3
Employed.....	51,231	50,405	51,002	51,000	50,999	50,775	50,866	50,826	50,795
Employment-population ratio.....	55.8	54.7	55.3	55.5	55.5	55.2	55.2	55.2	55.1
Unemployed.....	3,981	4,119	3,947	3,961	3,914	3,858	3,830	3,828	3,911
Unemployment rate.....	7.2	7.6	7.2	7.2	7.1	7.1	7.0	7.0	7.1
Both sexes, 16 to 19 years									
Civilian labor force.....	4,637	5,286	4,573	4,793	4,563	4,657	4,708	4,803	4,728
Participation rate.....	36.1	41.3	35.8	37.3	35.6	36.3	36.8	37.5	37.0
Employed.....	3,566	4,149	3,616	3,674	3,619	3,640	3,625	3,697	3,722
Employment-population ratio.....	27.8	32.4	28.3	28.6	28.2	28.4	28.3	28.9	29.1
Unemployed.....	1,071	1,137	956	1,119	945	1,017	1,083	1,106	1,006
Unemployment rate.....	23.1	21.5	20.9	23.3	20.7	21.8	23.0	23.0	21.3
BLACK OR AFRICAN AMERICAN									
Civilian noninstitutional population.....	28,794	29,158	29,193	28,794	29,063	29,093	29,123	29,158	29,193
Civilian labor force.....	17,716	18,083	18,051	17,777	17,750	17,733	17,582	17,930	18,103
Participation rate.....	61.5	62.0	61.8	61.7	61.1	61.0	60.4	61.5	62.0
Employed.....	14,891	15,011	15,186	14,920	14,870	14,855	14,786	14,941	15,209
Employment-population ratio.....	51.7	51.5	52.0	51.8	51.2	51.1	50.8	51.2	52.1
Unemployed.....	2,826	3,072	2,865	2,857	2,880	2,877	2,796	2,989	2,893
Unemployment rate.....	15.9	17.0	15.9	16.1	16.2	16.2	15.9	16.7	16.0
Not in labor force.....	11,078	11,075	11,142	11,017	11,313	11,360	11,541	11,229	11,091
Men, 20 years and over									
Civilian labor force.....	8,017	8,207	8,108	8,066	8,056	8,111	8,044	8,151	8,146
Participation rate.....	68.7	68.9	68.0	69.1	68.0	68.3	67.7	68.4	68.3
Employed.....	6,699	6,790	6,830	6,661	6,645	6,736	6,680	6,682	6,774
Employment-population ratio.....	57.4	57.0	57.3	57.1	56.1	56.7	56.2	56.1	56.8
Unemployed.....	1,318	1,417	1,279	1,405	1,411	1,375	1,364	1,469	1,372
Unemployment rate.....	16.4	17.3	15.8	17.4	17.5	17.0	17.0	18.0	16.8
Women, 20 years and over									
Civilian labor force.....	9,154	9,189	9,348	9,101	9,056	8,953	8,945	9,153	9,291
Participation rate.....	63.2	62.7	63.7	62.9	62.0	61.2	61.1	62.4	63.3
Employed.....	7,914	7,858	8,027	7,948	7,847	7,718	7,745	7,923	8,064
Employment-population ratio.....	54.7	53.6	54.7	54.9	53.7	52.8	52.9	54.0	54.9
Unemployed.....	1,239	1,331	1,320	1,152	1,210	1,235	1,200	1,230	1,227
Unemployment rate.....	13.5	14.5	14.1	12.7	13.4	13.8	13.4	13.4	13.2
Both sexes, 16 to 19 years									
Civilian labor force.....	545	687	595	611	638	669	594	626	665
Participation rate.....	20.6	26.6	23.1	23.1	24.5	25.8	22.9	24.2	25.8
Employed.....	277	363	329	310	378	402	361	335	371
Employment-population ratio.....	10.5	14.0	12.7	11.7	14.5	15.5	13.9	13.0	14.4
Unemployed.....	268	324	266	300	260	267	233	291	294
Unemployment rate.....	49.1	47.2	44.8	49.2	40.7	39.9	39.2	46.5	44.2
ASIAN									
Civilian noninstitutional population.....	11,283	11,454	11,523	-	-	-	-	-	-

See footnotes at end of table.

HOUSEHOLD DATA

Table A-2. Employment status of the civilian population by race, sex, and age — Continued

[Numbers in thousands]

Employment status, race, sex, and age	Not seasonally adjusted			Seasonally adjusted ¹					
	Sept. 2010	Aug. 2011	Sept. 2011	Sept. 2010	May 2011	June 2011	July 2011	Aug. 2011	Sept. 2011
Civilian labor force.....	7,197	7,305	7,360	-	-	-	-	-	-
Participation rate.....	63.8	63.8	63.9	-	-	-	-	-	-
Employed.....	6,734	6,788	6,784	-	-	-	-	-	-
Employment-population ratio.....	59.7	59.3	58.9	-	-	-	-	-	-
Unemployed.....	463	517	577	-	-	-	-	-	-
Unemployment rate.....	6.4	7.1	7.8	-	-	-	-	-	-
Not in labor force.....	4,087	4,149	4,162	-	-	-	-	-	-

¹ The population figures are not adjusted for seasonal variation; therefore, identical numbers appear in the unadjusted and seasonally adjusted columns.

- Data not available.

NOTE: Estimates for the above race groups will not sum to totals shown in table A-1 because data are not presented for all races. Updated population controls are introduced annually with the release of January data.

HOUSEHOLD DATA

Table A-3. Employment status of the Hispanic or Latino population by sex and age

[Numbers in thousands]

Employment status, sex, and age	Not seasonally adjusted			Seasonally adjusted ¹					
	Sept. 2010	Aug. 2011	Sept. 2011	Sept. 2010	May 2011	June 2011	July 2011	Aug. 2011	Sept. 2011
HISPANIC OR LATINO ETHNICITY									
Civilian noninstitutional population.....	33,927	34,555	34,640	33,927	34,311	34,391	34,470	34,555	34,640
Civilian labor force.....	22,918	23,045	23,058	22,896	22,739	22,816	22,741	22,917	22,993
Participation rate.....	67.6	66.7	66.6	67.5	66.3	66.3	66.0	66.3	66.4
Employed.....	20,191	20,484	20,569	20,042	20,025	20,164	20,171	20,332	20,389
Employment-population ratio.....	59.5	59.3	59.4	59.1	58.4	58.6	58.5	58.8	58.9
Unemployed.....	2,728	2,562	2,488	2,854	2,715	2,653	2,570	2,585	2,604
Unemployment rate.....	11.9	11.1	10.8	12.5	11.9	11.6	11.3	11.3	11.3
Not in labor force.....	11,009	11,510	11,582	11,031	11,571	11,574	11,728	11,638	11,647
Men, 20 years and over									
Civilian labor force.....	13,121	13,118	13,112	-	-	-	-	-	-
Participation rate.....	83.0	82.0	81.7	-	-	-	-	-	-
Employed.....	11,664	11,949	11,887	-	-	-	-	-	-
Employment-population ratio.....	73.8	74.7	74.1	-	-	-	-	-	-
Unemployed.....	1,457	1,169	1,225	-	-	-	-	-	-
Unemployment rate.....	11.1	8.9	9.3	-	-	-	-	-	-
Women, 20 years and over									
Civilian labor force.....	8,865	8,919	9,000	-	-	-	-	-	-
Participation rate.....	59.6	58.9	59.3	-	-	-	-	-	-
Employed.....	7,883	7,903	7,993	-	-	-	-	-	-
Employment-population ratio.....	53.0	52.2	52.7	-	-	-	-	-	-
Unemployed.....	982	1,015	1,007	-	-	-	-	-	-
Unemployment rate.....	11.1	11.4	11.2	-	-	-	-	-	-
Both sexes, 16 to 19 years									
Civilian labor force.....	933	1,009	946	-	-	-	-	-	-
Participation rate.....	28.7	29.6	27.7	-	-	-	-	-	-
Employed.....	643	631	689	-	-	-	-	-	-
Employment-population ratio.....	19.8	18.5	20.2	-	-	-	-	-	-
Unemployed.....	289	378	257	-	-	-	-	-	-
Unemployment rate.....	31.0	37.4	27.1	-	-	-	-	-	-

¹ The population figures are not adjusted for seasonal variation; therefore, identical numbers appear in the unadjusted and seasonally adjusted columns.

- Data not available.

NOTE: Persons whose ethnicity is identified as Hispanic or Latino may be of any race. Updated population controls are introduced annually with the release of January data.

HOUSEHOLD DATA

Table A-4. Employment status of the civilian population 25 years and over by educational attainment

[Numbers in thousands]

Educational attainment	Not seasonally adjusted			Seasonally adjusted					
	Sept. 2010	Aug. 2011	Sept. 2011	Sept. 2010	May 2011	June 2011	July 2011	Aug. 2011	Sept. 2011
Less than a high school diploma									
Civilian labor force.....	11,834	11,662	11,840	11,828	11,442	11,392	11,704	11,664	11,738
Participation rate.....	46.7	46.7	46.9	46.7	45.1	45.0	46.9	46.7	46.5
Employed.....	10,143	10,115	10,303	10,003	9,757	9,768	9,952	10,002	10,092
Employment-population ratio.....	40.0	40.5	40.8	39.5	38.5	38.6	39.9	40.0	40.0
Unemployed.....	1,691	1,547	1,536	1,824	1,685	1,624	1,752	1,663	1,646
Unemployment rate.....	14.3	13.3	13.0	15.4	14.7	14.3	15.0	14.3	14.0
High school graduates, no college¹									
Civilian labor force.....	37,982	36,862	37,210	38,151	37,653	37,612	37,505	36,956	37,319
Participation rate.....	61.6	59.9	60.4	61.9	60.4	60.6	60.6	60.0	60.5
Employed.....	34,460	33,536	33,841	34,331	34,072	33,836	34,006	33,425	33,686
Employment-population ratio.....	55.9	54.5	54.9	55.7	54.6	54.5	54.9	54.3	54.7
Unemployed.....	3,521	3,327	3,369	3,820	3,581	3,775	3,499	3,531	3,632
Unemployment rate.....	9.3	9.0	9.1	10.0	9.5	10.0	9.3	9.6	9.7
Some college or associate degree									
Civilian labor force.....	36,988	37,132	37,172	37,115	36,780	36,786	36,686	37,013	37,164
Participation rate.....	70.3	69.4	69.5	70.5	69.7	69.8	68.9	69.2	69.5
Employed.....	33,750	33,969	34,072	33,746	33,852	33,708	33,657	33,975	34,031
Employment-population ratio.....	64.1	63.5	63.7	64.1	64.1	63.9	63.2	63.5	63.7
Unemployed.....	3,239	3,163	3,101	3,369	2,928	3,079	3,028	3,038	3,133
Unemployment rate.....	8.8	8.5	8.3	9.1	8.0	8.4	8.3	8.2	8.4
Bachelor's degree and higher²									
Civilian labor force.....	46,573	46,800	47,021	46,488	46,925	46,963	46,680	46,813	46,915
Participation rate.....	76.6	76.0	76.4	76.5	77.5	76.8	76.1	76.0	76.2
Employed.....	44,488	44,648	45,048	44,405	44,807	44,894	44,677	44,808	44,931
Employment-population ratio.....	73.2	72.5	73.2	73.0	74.0	73.4	72.9	72.7	73.0
Unemployed.....	2,084	2,152	1,973	2,083	2,118	2,069	2,003	2,005	1,985
Unemployment rate.....	4.5	4.6	4.2	4.5	4.5	4.4	4.3	4.3	4.2

1 Includes persons with a high school diploma or equivalent.

2 Includes persons with bachelor's, master's, professional, and doctoral degrees.

NOTE: Updated population controls are introduced annually with the release of January data.

HOUSEHOLD DATA

Table A-5. Employment status of the civilian population 18 years and over by veteran status, period of service, and sex, not seasonally adjusted

[Numbers in thousands]

Employment status, veteran status, and period of service	Total		Men		Women	
	Sept. 2010	Sept. 2011	Sept. 2010	Sept. 2011	Sept. 2010	Sept. 2011
VETERANS, 18 years and over						
Civilian noninstitutional population.....	21,933	21,528	20,142	19,724	1,791	1,804
Civilian labor force.....	11,683	11,310	10,590	10,200	1,093	1,109
Participation rate.....	53.3	52.5	52.6	51.7	61.0	61.5
Employed.....	10,746	10,394	9,743	9,393	1,003	1,002
Employment-population ratio.....	49.0	48.3	48.4	47.6	56.0	55.5
Unemployed.....	937	916	847	808	90	108
Unemployment rate.....	8.0	8.1	8.0	7.9	8.2	9.7
Not in labor force.....	10,250	10,218	9,552	9,524	698	695
 Gulf War-era II veterans						
Civilian noninstitutional population.....	2,228	2,451	1,828	2,042	399	409
Civilian labor force.....	1,857	2,017	1,575	1,712	282	305
Participation rate.....	83.3	82.3	86.1	83.8	70.6	74.7
Employed.....	1,666	1,781	1,411	1,521	256	260
Employment-population ratio.....	74.8	72.7	77.1	74.5	64.1	63.7
Unemployed.....	190	235	164	191	26	45
Unemployment rate.....	10.2	11.7	10.4	11.1	9.2	14.7
Not in labor force.....	371	434	254	330	117	104
 Gulf War-era I veterans						
Civilian noninstitutional population.....	2,966	2,980	2,525	2,520	441	460
Civilian labor force.....	2,515	2,474	2,199	2,147	316	327
Participation rate.....	84.8	83.0	87.1	85.2	71.7	71.1
Employed.....	2,347	2,295	2,057	1,987	289	308
Employment-population ratio.....	79.1	77.0	81.5	78.9	65.6	67.0
Unemployed.....	169	179	142	160	27	19
Unemployment rate.....	6.7	7.2	6.4	7.4	8.6	5.7
Not in labor force.....	451	506	326	373	125	133
 World War II, Korean War, and Vietnam-era veterans						
Civilian noninstitutional population.....	10,911	10,346	10,547	10,016	364	331
Civilian labor force.....	3,984	3,491	3,870	3,405	115	86
Participation rate.....	36.5	33.7	36.7	34.0	31.5	26.0
Employed.....	3,649	3,256	3,545	3,177	104	79
Employment-population ratio.....	33.4	31.5	33.6	31.7	28.6	23.9
Unemployed.....	336	235	325	229	10	7
Unemployment rate.....	8.4	6.7	8.4	6.7	9.1	8.0
Not in labor force.....	6,927	6,855	6,677	6,610	250	245
 Veterans of other service periods						
Civilian noninstitutional population.....	5,828	5,751	5,241	5,146	587	605
Civilian labor force.....	3,326	3,328	2,946	2,936	380	392
Participation rate.....	57.1	57.9	56.2	57.1	64.8	64.7
Employed.....	3,084	3,062	2,730	2,707	354	354
Employment-population ratio.....	52.9	53.2	52.1	52.6	60.4	58.6
Unemployed.....	242	266	216	229	26	37
Unemployment rate.....	7.3	8.0	7.3	7.8	6.9	9.5
Not in labor force.....	2,502	2,423	2,295	2,210	207	213
NONVETERANS, 18 years and over						
Civilian noninstitutional population.....	207,224	209,678	90,661	92,251	116,563	117,427
Civilian labor force.....	140,190	140,784	70,272	70,876	69,918	69,908
Participation rate.....	67.7	67.1	77.5	76.8	60.0	59.5
Employed.....	127,552	128,657	63,543	64,737	64,009	63,920
Employment-population ratio.....	61.6	61.4	70.1	70.2	54.9	54.4
Unemployed.....	12,638	12,127	6,728	6,139	5,909	5,988
Unemployment rate.....	9.0	8.6	9.6	8.7	8.5	8.6
Not in labor force.....	67,034	68,894	20,390	21,375	46,645	47,519

NOTE: Veterans served on active duty in the U.S. Armed Forces and were not on active duty at the time of the survey. Nonveterans never served on active duty in the U.S. Armed Forces. Veterans could have served anywhere in the world during these periods of service: Gulf War era II (September 2001-present), Gulf War era I (August 1990-August 2001), Vietnam era (August 1964-April 1975), Korean War (July 1950-January 1955), World War II (December 1941-December 1946), and other service periods (all other time periods). Veterans who served in more than one wartime period are classified only in the most recent one. Veterans who served during one of the selected wartime periods and another period are classified only in the wartime period. Updated population controls are introduced annually with the release of January data.

HOUSEHOLD DATA

Table A-6. Employment status of the civilian population by sex, age, and disability status, not seasonally adjusted

[Numbers in thousands]

Employment status, sex, and age	Persons with a disability		Persons with no disability	
	Sept. 2010	Sept. 2011	Sept. 2010	Sept. 2011
TOTAL, 16 years and over				
Civilian noninstitutional population.....	26,380	27,355	211,942	212,716
Civilian labor force.....	5,698	5,770	148,156	148,252
Participation rate.....	21.6	21.1	69.9	69.7
Employed.....	4,854	4,843	134,860	135,659
Employment-population ratio.....	18.4	17.7	63.6	63.8
Unemployed.....	844	927	13,296	12,593
Unemployment rate.....	14.8	16.1	9.0	8.5
Not in labor force.....	20,682	21,585	63,786	64,464
Men, 16 to 64 years				
Civilian labor force.....	2,591	2,614	75,484	75,322
Participation rate.....	35.7	34.7	82.7	82.4
Employed.....	2,198	2,135	68,236	68,879
Employment-population ratio.....	30.3	28.3	74.7	75.3
Unemployed.....	393	479	7,247	6,443
Unemployment rate.....	15.2	18.3	9.6	8.6
Not in labor force.....	4,671	4,926	15,840	16,097
Women, 16 to 64 years				
Civilian labor force.....	2,341	2,251	66,551	66,608
Participation rate.....	32.2	30.6	71.1	71.0
Employed.....	1,949	1,897	60,882	60,855
Employment-population ratio.....	26.8	25.8	65.0	64.9
Unemployed.....	393	353	5,669	5,753
Unemployment rate.....	16.8	15.7	8.5	8.6
Not in labor force.....	4,923	5,113	27,044	27,202
Both sexes, 65 years and over				
Civilian labor force.....	766	905	6,121	6,321
Participation rate.....	6.5	7.3	22.7	23.0
Employed.....	707	810	5,741	5,924
Employment-population ratio.....	6.0	6.5	21.2	21.6
Unemployed.....	58	95	380	397
Unemployment rate.....	7.6	10.5	6.2	6.3
Not in labor force.....	11,088	11,547	20,902	21,164

NOTE: A person with a disability has at least one of the following conditions: is deaf or has serious difficulty hearing; is blind or has serious difficulty seeing even when wearing glasses; has serious difficulty concentrating, remembering, or making decisions because of a physical, mental, or emotional condition; has serious difficulty walking or climbing stairs; has difficulty dressing or bathing; or has difficulty doing errands alone such as visiting a doctor's office or shopping because of a physical, mental, or emotional condition. Updated population controls are introduced annually with the release of January data.

HOUSEHOLD DATA

Table A-7. Employment status of the civilian population by nativity and sex, not seasonally adjusted

[Numbers in thousands]

Employment status and nativity	Total		Men		Women	
	Sept. 2010	Sept. 2011	Sept. 2010	Sept. 2011	Sept. 2010	Sept. 2011
Foreign born, 16 years and over						
Civilian noninstitutional population.....	36,097	36,657	18,054	18,125	18,043	18,531
Civilian labor force.....	24,488	24,447	14,437	14,330	10,051	10,117
Participation rate.....	67.8	66.7	80.0	79.1	55.7	54.6
Employed.....	22,226	22,224	13,116	13,135	9,110	9,090
Employment-population ratio.....	61.6	60.6	72.6	72.5	50.5	49.1
Unemployed.....	2,262	2,222	1,322	1,195	940	1,027
Unemployment rate.....	9.2	9.1	9.2	8.3	9.4	10.2
Not in labor force.....	11,609	12,210	3,617	3,795	7,992	8,415
Native born, 16 years and over						
Civilian noninstitutional population.....	202,225	203,415	97,379	98,434	104,846	104,981
Civilian labor force.....	129,366	129,575	67,408	67,681	61,958	61,895
Participation rate.....	64.0	63.7	69.2	68.8	59.1	59.0
Employed.....	117,488	118,277	60,843	61,687	56,645	56,591
Employment-population ratio.....	58.1	58.1	62.5	62.7	54.0	53.9
Unemployed.....	11,878	11,298	6,564	5,994	5,313	5,304
Unemployment rate.....	9.2	8.7	9.7	8.9	8.6	8.6
Not in labor force.....	72,859	73,839	29,971	30,753	42,887	43,086

NOTE: The foreign born are those residing in the United States who were not U.S. citizens at birth. That is, they were born outside the United States or one of its outlying areas such as Puerto Rico or Guam, to parents neither of whom was a U.S. citizen. The native born are persons who were born in the United States or one of its outlying areas such as Puerto Rico or Guam or who were born abroad of at least one parent who was a U.S. citizen. Updated population controls are introduced annually with the release of January data.

HOUSEHOLD DATA

Table A-8. Employed persons by class of worker and part-time status

[In thousands]

Category	Not seasonally adjusted			Seasonally adjusted					
	Sept. 2010	Aug. 2011	Sept. 2011	Sept. 2010	May 2011	June 2011	July 2011	Aug. 2011	Sept. 2011
CLASS OF WORKER									
Agriculture and related industries.....	2,203	2,531	2,281	2,172	2,243	2,217	2,245	2,355	2,267
Wage and salary workers ¹	1,370	1,606	1,409	1,310	1,391	1,383	1,419	1,475	1,380
Self-employed workers, unincorporated.....	802	879	839	798	822	829	810	843	839
Unpaid family workers.....	31	46	33	-	-	-	-	-	-
Nonagricultural industries.....	137,512	137,804	138,221	137,266	137,551	137,035	136,837	137,146	137,840
Wage and salary workers ¹	128,565	129,042	129,756	128,438	128,803	128,437	128,393	128,552	129,606
Government.....	20,828	19,709	20,569	20,855	20,309	20,318	20,302	20,286	20,568
Private industries.....	107,737	109,333	109,187	107,451	108,505	108,209	108,070	108,275	108,742
Private households.....	597	769	756	-	-	-	-	-	-
Other industries.....	107,139	108,564	108,431	106,859	107,727	107,511	107,319	107,556	107,992
Self-employed workers, unincorporated.....	8,878	8,695	8,411	8,752	8,655	8,543	8,525	8,551	8,334
Unpaid family workers.....	69	66	55	-	-	-	-	-	-
PERSONS AT WORK PART TIME²									
All industries									
Part time for economic reasons ³	8,628	8,604	8,541	9,506	8,548	8,552	8,396	8,826	9,270
Slack work or business conditions.....	6,072	5,593	5,497	6,732	5,834	5,806	5,687	5,833	5,963
Could only find part-time work.....	2,306	2,579	2,766	2,478	2,473	2,401	2,517	2,736	2,852
Part time for noneconomic reasons ⁴	18,579	16,535	18,647	18,256	18,468	18,470	18,258	18,208	18,308
Nonagricultural industries									
Part time for economic reasons ³	8,540	8,463	8,423	9,380	8,400	8,400	8,218	8,670	9,112
Slack work or business conditions.....	6,020	5,492	5,410	6,649	5,731	5,704	5,569	5,732	5,864
Could only find part-time work.....	2,286	2,554	2,749	2,454	2,444	2,341	2,466	2,720	2,868
Part time for noneconomic reasons ⁴	18,259	16,153	18,249	17,911	18,126	18,151	17,880	17,813	17,877

1 Includes self-employed workers whose businesses are incorporated.

2 Refers to those who worked 1 to 34 hours during the survey reference week and excludes employed persons who were absent from their jobs for the entire week.

3 Refers to those who worked 1 to 34 hours during the reference week for an economic reason such as slack work or unfavorable business conditions, inability to find full-time work, or seasonal declines in demand.

4 Refers to persons who usually work part time for noneconomic reasons such as childcare problems, family or personal obligations, school or training, retirement or Social Security limits on earnings, and other reasons. This excludes persons who usually work full time but worked only 1 to 34 hours during the reference week for reasons such as vacations, holidays, illness, and bad weather.

- Data not available.

NOTE: Detail for the seasonally adjusted data shown in this table will not necessarily add to totals because of the independent seasonal adjustment of the various series. Updated population controls are introduced annually with the release of January data.

HOUSEHOLD DATA

Table A-9. Selected employment indicators

[Numbers in thousands]

Characteristic	Not seasonally adjusted			Seasonally adjusted					
	Sept. 2010	Aug. 2011	Sept. 2011	Sept. 2010	May 2011	June 2011	July 2011	Aug. 2011	Sept. 2011
AGE AND SEX									
Total, 16 years and over.....	139,715	140,335	140,502	139,378	139,779	139,334	139,296	139,627	140,025
16 to 19 years.....	4,084	4,794	4,177	4,256	4,240	4,299	4,244	4,312	4,352
16 to 17 years.....	1,417	1,573	1,450	1,405	1,249	1,358	1,343	1,341	1,414
18 to 19 years.....	2,667	3,222	2,727	2,857	2,982	2,945	2,890	2,981	2,944
20 years and over.....	135,631	135,541	136,325	135,121	135,539	135,035	135,052	135,315	135,673
20 to 24 years.....	12,790	13,273	13,061	12,825	12,970	12,911	12,860	12,895	13,072
25 years and over.....	122,841	122,268	123,264	122,254	122,641	122,175	122,228	122,447	122,610
25 to 54 years.....	94,535	93,608	93,920	94,076	93,919	93,505	93,550	93,568	93,460
25 to 34 years.....	30,474	30,789	30,750	30,321	30,627	30,416	30,322	30,635	30,587
35 to 44 years.....	30,713	30,021	30,228	30,538	30,302	30,197	30,249	30,017	30,053
45 to 54 years.....	33,348	32,798	32,941	33,217	32,989	32,892	32,979	32,916	32,819
55 years and over.....	28,305	28,660	29,345	28,178	28,722	28,670	28,677	28,880	29,150
Men, 16 years and over.....	73,959	75,190	74,821	73,594	74,177	74,014	73,908	74,122	74,364
16 to 19 years.....	1,981	2,395	2,025	2,035	2,040	2,077	2,072	2,107	2,089
16 to 17 years.....	673	760	692	662	594	646	652	629	674
18 to 19 years.....	1,308	1,635	1,334	1,371	1,446	1,451	1,429	1,492	1,418
20 years and over.....	71,978	72,795	72,796	71,559	72,137	71,937	71,836	72,015	72,276
20 to 24 years.....	6,536	7,053	6,874	6,533	6,756	6,754	6,711	6,747	6,858
25 years and over.....	65,442	65,742	65,923	65,005	65,448	65,193	65,163	65,289	65,429
25 to 54 years.....	50,641	50,480	50,373	50,306	50,358	50,096	50,018	50,019	50,022
25 to 34 years.....	16,590	16,917	16,852	16,436	16,747	16,607	16,481	16,674	16,686
35 to 44 years.....	16,659	16,342	16,395	16,547	16,421	16,365	16,371	16,226	16,277
45 to 54 years.....	17,392	17,221	17,127	17,324	17,189	17,124	17,167	17,118	17,059
55 years and over.....	14,802	15,261	15,549	14,699	15,090	15,097	15,146	15,271	15,407
Women, 16 years and over.....	65,755	65,145	65,680	65,784	65,602	65,320	65,388	65,505	65,661
16 to 19 years.....	2,103	2,399	2,152	2,221	2,200	2,222	2,172	2,205	2,263
16 to 17 years.....	743	812	759	743	654	713	691	712	740
18 to 19 years.....	1,359	1,587	1,393	1,486	1,537	1,494	1,461	1,489	1,525
20 years and over.....	63,653	62,746	63,529	63,562	63,402	63,098	63,216	63,300	63,398
20 to 24 years.....	6,255	6,220	6,187	6,292	6,214	6,157	6,149	6,148	6,214
25 years and over.....	57,398	56,526	57,341	57,249	57,193	56,982	57,064	57,158	57,181
25 to 54 years.....	43,895	43,127	43,546	43,770	43,561	43,409	43,533	43,549	43,438
25 to 34 years.....	13,884	13,871	13,899	13,885	13,880	13,809	13,841	13,960	13,901
35 to 44 years.....	14,054	13,679	13,833	13,992	13,881	13,833	13,879	13,790	13,776
45 to 54 years.....	15,957	15,577	15,815	15,894	15,800	15,768	15,813	15,798	15,760
55 years and over.....	13,503	13,399	13,795	13,479	13,631	13,573	13,532	13,609	13,744
MARITAL STATUS									
Married men, spouse present.....	43,895	43,362	43,938	43,701	42,998	43,004	43,145	43,184	43,637
Married women, spouse present.....	34,499	33,321	34,095	34,469	33,826	33,676	33,734	33,845	34,052
Women who maintain families.....	8,906	9,278	9,173	-	-	-	-	-	-
FULL- OR PART-TIME STATUS									
Full-time workers ¹	112,385	114,286	112,980	111,710	112,342	111,907	111,859	112,330	112,357
Part-time workers ²	27,330	26,050	27,522	27,649	27,418	27,631	27,606	27,407	27,704
MULTIPLE JOBHOLDERS									
Total multiple jobholders.....	6,681	6,649	6,946	6,687	6,939	6,880	6,741	6,927	6,964
Percent of total employed.....	4.8	4.7	4.9	4.8	5.0	4.9	4.8	5.0	5.0
SELF-EMPLOYMENT									
Self-employed workers, incorporated.....	5,036	5,101	4,950	-	-	-	-	-	-
Self-employed workers, unincorporated.....	9,680	9,575	9,249	9,550	9,477	9,372	9,335	9,394	9,173

1 Employed full-time workers are persons who usually work 35 hours or more per week.

2 Employed part-time workers are persons who usually work less than 35 hours per week.

- Data not available.

NOTE: Detail for the seasonally adjusted data shown in this table will not necessarily add to totals because of the independent seasonal adjustment of the various series. Updated population controls are introduced annually with the release of January data.

HOUSEHOLD DATA

Table A-10. Selected unemployment indicators, seasonally adjusted

Characteristic	Number of unemployed persons (in thousands)			Unemployment rates					
	Sept. 2010	Aug. 2011	Sept. 2011	Sept. 2010	May 2011	June 2011	July 2011	Aug. 2011	Sept. 2011
AGE AND SEX									
Total, 16 years and over.....	14,746	13,967	13,992	9.6	9.1	9.2	9.1	9.1	9.1
16 to 19 years.....	1,497	1,467	1,418	26.0	24.2	24.5	25.0	25.4	24.6
16 to 17 years.....	604	564	511	30.0	29.4	28.2	28.7	29.6	26.5
18 to 19 years.....	869	966	893	23.3	21.9	22.8	23.1	24.5	23.3
20 years and over.....	13,249	12,500	12,573	8.9	8.5	8.6	8.5	8.5	8.5
20 to 24 years.....	2,237	2,231	2,249	14.9	14.7	14.5	14.6	14.8	14.7
25 years and over.....	11,028	10,297	10,339	8.3	7.8	8.0	7.8	7.8	7.8
25 to 54 years.....	8,920	8,226	8,284	8.7	8.1	8.2	8.0	8.1	8.1
25 to 34 years.....	3,379	3,210	3,287	10.0	9.3	9.6	9.7	9.5	9.7
35 to 44 years.....	2,779	2,498	2,443	8.3	7.7	7.8	7.1	7.7	7.5
45 to 54 years.....	2,762	2,519	2,554	7.7	7.3	7.3	7.3	7.1	7.2
55 years and over.....	2,176	2,053	2,106	7.2	6.8	7.0	6.9	6.6	6.7
Men, 16 years and over.....	8,571	7,853	7,758	10.4	9.5	9.7	9.6	9.6	9.4
16 to 19 years.....	841	825	807	29.3	27.0	27.4	27.2	28.1	27.9
16 to 17 years.....	331	252	257	33.3	31.3	30.7	29.9	28.6	27.6
18 to 19 years.....	487	607	533	26.2	25.2	25.7	25.6	28.9	27.3
20 years and over.....	7,729	7,028	6,952	9.7	8.9	9.1	9.0	8.9	8.8
20 to 24 years.....	1,344	1,329	1,286	17.1	15.7	15.5	15.7	16.5	15.8
25 years and over.....	6,438	5,761	5,712	9.0	8.1	8.4	8.2	8.1	8.0
25 to 54 years.....	5,174	4,618	4,572	9.3	8.4	8.6	8.4	8.5	8.4
25 to 34 years.....	2,000	1,816	1,817	10.8	9.7	10.0	10.2	9.8	9.8
35 to 44 years.....	1,548	1,428	1,354	8.6	7.5	8.1	7.5	8.1	7.7
45 to 54 years.....	1,626	1,374	1,401	8.6	8.0	7.7	7.7	7.4	7.6
55 years and over.....	1,264	1,144	1,139	7.9	7.0	7.9	7.4	7.0	6.9
Women, 16 years and over.....	6,175	6,114	6,233	8.6	8.5	8.6	8.5	8.5	8.7
16 to 19 years.....	656	642	612	22.8	21.3	21.6	22.7	22.6	21.3
16 to 17 years.....	273	312	254	26.8	27.5	25.9	27.5	30.5	25.5
18 to 19 years.....	382	359	360	20.4	18.6	19.7	20.6	19.4	19.1
20 years and over.....	5,520	5,472	5,622	8.0	8.0	8.0	7.9	8.0	8.1
20 to 24 years.....	893	902	963	12.4	13.6	13.4	13.2	12.8	13.4
25 years and over.....	4,590	4,536	4,628	7.4	7.4	7.4	7.3	7.4	7.5
25 to 54 years.....	3,747	3,608	3,712	7.9	7.6	7.8	7.5	7.7	7.9
25 to 34 years.....	1,380	1,394	1,470	9.0	8.8	9.1	9.1	9.1	9.6
35 to 44 years.....	1,231	1,070	1,088	8.1	7.8	7.4	6.7	7.2	7.3
45 to 54 years.....	1,136	1,144	1,153	6.7	6.5	6.9	6.8	6.8	6.8
55 years and over ¹	922	1,018	978	6.4	6.0	6.3	7.3	7.1	6.6
MARITAL STATUS									
Married men, spouse present.....	3,177	2,710	2,738	6.8	5.9	6.2	6.1	5.9	5.9
Married women, spouse present.....	2,068	2,072	2,127	5.7	5.8	5.6	5.6	5.8	5.9
Women who maintain families ¹	1,321	1,257	1,294	12.9	12.7	12.8	12.1	11.9	12.4
FULL- OR PART-TIME STATUS									
Full-time workers ²	13,002	12,077	12,240	10.4	9.7	9.8	9.8	9.7	9.8
Part-time workers ³	1,782	1,904	1,774	6.1	6.3	6.7	6.1	6.5	6.0

1 Not seasonally adjusted.

2 Full-time workers are unemployed persons who have expressed a desire to work full time (35 hours or more per week) or are on layoff from full-time jobs.

3 Part-time workers are unemployed persons who have expressed a desire to work part time (less than 35 hours per week) or are on layoff from part-time jobs.

NOTE: Detail for the seasonally adjusted data shown in this table will not necessarily add to totals because of the independent seasonal adjustment of the various series. Updated population controls are introduced annually with the release of January data.

HOUSEHOLD DATA

Table A-11. Unemployed persons by reason for unemployment

[Numbers in thousands]

Reason	Not seasonally adjusted			Seasonally adjusted					
	Sept. 2010	Aug. 2011	Sept. 2011	Sept. 2010	May 2011	June 2011	July 2011	Aug. 2011	Sept. 2011
NUMBER OF UNEMPLOYED									
Job losers and persons who completed temporary jobs.....	8,651	7,897	7,636	9,286	8,274	8,261	8,215	8,203	8,121
On temporary layoff.....	910	1,136	813	1,340	1,214	1,251	1,268	1,247	1,196
Not on temporary layoff.....	7,741	6,762	6,823	7,947	7,060	7,010	6,947	6,956	6,925
Permanent job losers.....	6,271	5,399	5,383	6,467	5,653	5,606	5,567	5,545	5,500
Persons who completed temporary jobs.....	1,471	1,362	1,440	1,479	1,407	1,405	1,380	1,411	1,426
Job leavers.....	880	1,056	1,064	809	908	965	928	963	967
Reentrants.....	3,428	3,644	3,500	3,441	3,433	3,430	3,410	3,532	3,504
New entrants.....	1,180	1,411	1,320	1,193	1,231	1,222	1,270	1,241	1,327
PERCENT DISTRIBUTION									
Job losers and persons who completed temporary jobs.....	61.2	56.4	56.5	63.0	59.8	59.5	59.4	58.8	58.3
On temporary layoff.....	6.4	8.1	6.0	9.1	8.8	9.0	9.2	8.9	8.6
Not on temporary layoff.....	54.7	48.3	50.5	54.0	51.0	50.5	50.3	49.9	49.8
Job leavers.....	6.2	7.5	7.9	5.5	6.6	7.0	6.7	6.9	6.9
Reentrants.....	24.2	26.0	25.9	23.4	24.8	24.7	24.7	25.3	25.2
New entrants.....	8.3	10.1	9.8	8.1	8.9	8.8	9.2	8.9	9.5
UNEMPLOYED AS A PERCENT OF THE CIVILIAN LABOR FORCE									
Job losers and persons who completed temporary jobs.....	5.6	5.1	5.0	6.0	5.4	5.4	5.4	5.3	5.3
Job leavers.....	0.6	0.7	0.7	0.5	0.6	0.6	0.6	0.6	0.6
Reentrants.....	2.2	2.4	2.3	2.2	2.2	2.2	2.2	2.3	2.3
New entrants.....	0.8	0.9	0.9	0.8	0.8	0.8	0.8	0.8	0.9

NOTE: Updated population controls are introduced annually with the release of January data.

HOUSEHOLD DATA

Table A-12. Unemployed persons by duration of unemployment

[Numbers in thousands]

Duration	Not seasonally adjusted			Seasonally adjusted					
	Sept. 2010	Aug. 2011	Sept. 2011	Sept. 2010	May 2011	June 2011	July 2011	Aug. 2011	Sept. 2011
NUMBER OF UNEMPLOYED									
Less than 5 weeks.....	2,830	2,635	2,760	2,872	2,664	3,076	2,689	2,755	2,772
5 to 14 weeks.....	3,127	3,377	2,726	3,329	2,892	2,972	3,088	3,050	2,904
15 weeks and over.....	8,183	7,997	8,034	8,517	8,184	8,125	8,150	8,273	8,328
15 to 26 weeks.....	2,075	1,958	1,816	2,364	1,984	1,836	1,965	2,239	2,086
27 weeks and over.....	6,108	6,038	6,217	6,153	6,200	6,289	6,185	6,034	6,242
Average (mean) duration, in weeks ¹	34.1	39.7	41.0	33.4	39.7	39.9	40.4	40.3	40.5
Median duration, in weeks.....	20.5	20.6	22.2	20.5	22.0	22.5	21.2	21.8	22.2
PERCENT DISTRIBUTION									
Less than 5 weeks.....	20.0	18.8	20.4	19.5	19.4	21.7	19.3	19.6	19.8
5 to 14 weeks.....	22.1	24.1	20.2	22.6	21.0	21.0	22.2	21.7	20.7
15 weeks and over.....	57.9	57.1	59.4	57.9	59.6	57.3	58.5	58.8	59.5
15 to 26 weeks.....	14.7	14.0	13.4	16.1	14.4	13.0	14.1	15.9	14.9
27 weeks and over.....	43.2	43.1	46.0	41.8	45.1	44.4	44.4	42.9	44.6

¹ Beginning in January 2011, this series reflects a change to the collection of data on unemployment duration. For more information, see www.bls.gov/cps/duration.htm.

NOTE: Updated population controls are introduced annually with the release of January data.

HOUSEHOLD DATA

Table A-13. Employed and unemployed persons by occupation, not seasonally adjusted

[Numbers in thousands]

Occupation	Employed		Unemployed		Unemployment rates	
	Sept. 2010	Sept. 2011	Sept. 2010	Sept. 2011	Sept. 2010	Sept. 2011
Total, 16 years and over ¹	139,715	140,502	14,140	13,520	9.2	8.8
Management, professional, and related occupations.....	51,757	52,665	2,381	2,450	4.4	4.4
Management, business, and financial operations occupations.....	21,038	21,587	956	1,035	4.3	4.6
Professional and related occupations.....	30,719	31,078	1,425	1,415	4.4	4.4
Service occupations.....	24,660	25,347	2,867	2,828	10.4	10.0
Sales and office occupations.....	33,331	32,735	3,386	3,246	9.2	9.0
Sales and related occupations.....	15,319	15,064	1,584	1,554	9.4	9.4
Office and administrative support occupations.....	18,012	17,672	1,803	1,692	9.1	8.7
Natural resources, construction, and maintenance occupations.....	13,273	13,387	2,195	1,675	14.2	11.1
Farming, fishing, and forestry occupations.....	1,051	1,038	142	131	11.9	11.2
Construction and extraction occupations.....	7,186	7,316	1,536	1,137	17.6	13.4
Installation, maintenance, and repair occupations.....	5,036	5,033	517	407	9.3	7.5
Production, transportation, and material moving occupations.....	16,693	16,368	2,085	1,951	11.1	10.7
Production occupations.....	8,187	8,128	1,123	944	12.1	10.4
Transportation and material moving occupations.....	8,506	8,239	962	1,008	10.2	10.9

¹ Persons with no previous work experience and persons whose last job was in the U.S. Armed Forces are included in the unemployed total.

NOTE: Updated population controls are introduced annually with the release of January data. Effective with January 2011 data, occupations reflect the introduction of the 2010 Census occupational classification system into the Current Population Survey, or household survey. This classification system is derived from the 2010 Standard Occupational Classification (SOC). No historical data have been revised. Data for 2011 are not strictly comparable with earlier years.

HOUSEHOLD DATA

Table A-14. Unemployed persons by industry and class of worker, not seasonally adjusted

Industry and class of worker	Number of unemployed persons (in thousands)		Unemployment rates	
	Sept. 2010	Sept. 2011	Sept. 2010	Sept. 2011
Total, 16 years and over ¹	14,140	13,520	9.2	8.8
Nonagricultural private wage and salary workers.....	11,127	10,375	9.4	8.7
Mining, quarrying, and oil and gas extraction.....	66	55	8.2	6.2
Construction.....	1,464	1,110	17.2	13.3
Manufacturing.....	1,471	1,306	9.6	8.4
Durable goods.....	937	821	9.7	8.4
Nondurable goods.....	534	484	9.3	8.4
Wholesale and retail trade.....	1,962	1,882	9.6	9.2
Transportation and utilities.....	418	458	7.1	7.8
Information.....	330	209	10.8	7.4
Financial activities.....	568	501	6.3	5.5
Professional and business services.....	1,426	1,509	9.9	10.1
Education and health services.....	1,352	1,241	6.3	5.7
Leisure and hospitality.....	1,536	1,492	11.4	11.3
Other services.....	534	613	8.5	9.4
Agriculture and related private wage and salary workers.....	164	169	11.1	11.1
Government workers.....	1,089	1,013	5.0	4.7
Self-employed workers, unincorporated, and unpaid family workers.....	580	643	5.6	6.4

¹ Persons with no previous work experience and persons whose last job was in the U.S. Armed Forces are included in the unemployed total.

NOTE: Updated population controls are introduced annually with the release of January data.

HOUSEHOLD DATA

Table A-15. Alternative measures of labor underutilization

[Percent]

Measure	Not seasonally adjusted			Seasonally adjusted					
	Sept. 2010	Aug. 2011	Sept. 2011	Sept. 2010	May 2011	June 2011	July 2011	Aug. 2011	Sept. 2011
U-1 Persons unemployed 15 weeks or longer, as a percent of the civilian labor force.....	5.3	5.2	5.2	5.5	5.3	5.3	5.3	5.4	5.4
U-2 Job losers and persons who completed temporary jobs, as a percent of the civilian labor force.....	5.6	5.1	5.0	6.0	5.4	5.4	5.4	5.3	5.3
U-3 Total unemployed, as a percent of the civilian labor force (official unemployment rate).....	9.2	9.1	8.8	9.6	9.1	9.2	9.1	9.1	9.1
U-4 Total unemployed plus discouraged workers, as a percent of the civilian labor force plus discouraged workers.....	9.9	9.6	9.4	10.3	9.5	9.8	9.8	9.7	9.7
U-5 Total unemployed, plus discouraged workers, plus all other persons marginally attached to the labor force, as a percent of the civilian labor force plus all persons marginally attached to the labor force.....	10.7	10.6	10.2	11.0	10.3	10.7	10.7	10.6	10.5
U-6 Total unemployed, plus all persons marginally attached to the labor force, plus total employed part time for economic reasons, as a percent of the civilian labor force plus all persons marginally attached to the labor force.....	16.2	16.1	15.7	17.1	15.8	16.2	16.1	16.2	16.5

NOTE: Persons marginally attached to the labor force are those who currently are neither working nor looking for work but indicate that they want and are available for a job and have looked for work sometime in the past 12 months. Discouraged workers, a subset of the marginally attached, have given a job-market related reason for not currently looking for work. Persons employed part time for economic reasons are those who want and are available for full-time work but have had to settle for a part-time schedule. Updated population controls are introduced annually with the release of January data.

HOUSEHOLD DATA

Table A-16. Persons not in the labor force and multiple jobholders by sex, not seasonally adjusted

[Numbers in thousands]

Category	Total		Men		Women	
	Sept. 2010	Sept. 2011	Sept. 2010	Sept. 2011	Sept. 2010	Sept. 2011
NOT IN THE LABOR FORCE						
Total not in the labor force.....	84,468	86,049	33,588	34,549	50,880	51,501
Persons who currently want a job.....	5,949	5,929	2,772	2,792	3,177	3,137
Marginally attached to the labor force ¹	2,548	2,511	1,354	1,319	1,194	1,192
Discouraged workers ²	1,209	1,037	730	585	478	452
Other persons marginally attached to the labor force ³	1,340	1,474	624	734	716	740
MULTIPLE JOBHOLDERS						
Total multiple jobholders ⁴	6,681	6,946	3,140	3,427	3,540	3,519
Percent of total employed.....	4.8	4.9	4.2	4.6	5.4	5.4
Primary job full time, secondary job part time.....	3,515	3,778	1,852	2,039	1,663	1,739
Primary and secondary jobs both part time.....	1,717	1,730	563	597	1,154	1,132
Primary and secondary jobs both full time.....	265	193	164	118	101	74
Hours vary on primary or secondary job.....	1,144	1,214	541	655	603	559

1 Data refer to persons who want a job, have searched for work during the prior 12 months, and were available to take a job during the reference week, but had not looked for work in the past 4 weeks.

2 Includes those who did not actively look for work in the prior 4 weeks for reasons such as thinks no work available, could not find work, lacks schooling or training, employer thinks too young or old, and other types of discrimination.

3 Includes those who did not actively look for work in the prior 4 weeks for such reasons as school or family responsibilities, ill health, and transportation problems, as well as a number for whom reason for nonparticipation was not determined.

4 Includes a small number of persons who work part time on their primary job and full time on their secondary job(s), not shown separately.

NOTE: Updated population controls are introduced annually with the release of January data.

ESTABLISHMENT DATA

Table B-1. Employees on nonfarm payrolls by industry sector and selected industry detail

[In thousands]

Industry	Not seasonally adjusted				Seasonally adjusted				Change from: Aug.2011 - Sept.2011 ^P
	Sept. 2010	July 2011	Aug. 2011 ^P	Sept. 2011 ^P	Sept. 2010	July 2011	Aug. 2011 ^P	Sept. 2011 ^P	
Total nonfarm.....	130,090	130,821	131,033	131,552	129,844	131,174	131,231	131,334	103
Total private.....	108,004	110,061	110,179	109,793	107,570	109,170	109,212	109,349	137
Goods-producing.....	18,105	18,425	18,508	18,435	17,784	18,088	18,079	18,097	18
Mining and logging.....	733	812	814	818	725	798	800	805	5
Logging.....	51.5	49.3	49.4	49.4	49.5	47.7	47.1	47.2	0.1
Mining.....	681.3	763.1	764.5	768.3	675.0	749.9	752.8	758.2	5.4
Oil and gas extraction.....	159.9	177.9	178.6	179.4	160.9	175.5	177.2	179.9	2.7
Mining, except oil and gas ¹	210.2	220.0	222.0	218.8	205.2	212.7	213.9	213.1	-0.8
Coal mining.....	81.8	85.9	87.0	86.3	81.8	85.6	86.5	86.3	-0.2
Support activities for mining.....	311.2	365.2	363.9	370.1	308.9	361.7	361.7	365.2	3.5
Construction.....	5,744	5,805	5,834	5,794	5,514	5,532	5,525	5,551	26
Construction of buildings.....	1,262.4	1,263.8	1,274.2	1,277.0	1,223.0	1,222.0	1,221.8	1,236.8	15.0
Residential building.....	584.0	581.9	581.0	575.0	564.2	557.8	555.0	556.8	1.8
Nonresidential building.....	678.4	681.9	693.2	702.0	658.8	664.2	666.8	680.0	13.2
Heavy and civil engineering construction.....	904.8	904.1	910.9	917.3	841.4	844.9	844.9	851.1	6.2
Specialty trade contractors.....	3,576.6	3,636.7	3,649.0	3,599.8	3,449.4	3,464.7	3,458.1	3,463.2	5.1
Residential specialty trade contractors.....	1,514.8	1,538.0	1,534.0	1,510.4	1,447.4	1,451.5	1,448.1	1,442.5	-5.6
Nonresidential specialty trade contractors.....	2,061.8	2,098.7	2,115.0	2,089.4	2,002.0	2,013.2	2,010.0	2,020.7	10.7
Manufacturing.....	11,628	11,808	11,860	11,823	11,545	11,758	11,754	11,741	-13
Durable goods.....	7,134	7,324	7,355	7,334	7,095	7,313	7,305	7,297	-8
Wood products.....	344.0	336.0	339.3	334.4	337.7	328.4	330.3	329.4	-0.9
Nonmetallic mineral products.....	382.5	382.8	381.5	377.6	372.5	371.2	369.8	368.2	-1.6
Primary metals.....	366.8	386.3	387.9	390.5	365.2	387.3	387.5	388.9	1.4
Fabricated metal products.....	1,310.0	1,369.4	1,371.8	1,367.5	1,299.9	1,366.1	1,360.0	1,357.1	-2.9
Machinery.....	997.7	1,053.7	1,057.0	1,056.0	998.4	1,049.1	1,053.6	1,056.4	2.8
Computer and electronic products ¹	1,102.7	1,131.7	1,133.2	1,129.4	1,103.0	1,128.7	1,129.6	1,130.2	0.6
Computer and peripheral equipment.....	162.7	172.9	173.4	172.9	162.2	172.6	173.0	172.7	-0.3
Communication equipment.....	118.9	117.3	117.0	116.4	119.3	117.4	116.8	116.5	-0.3
Semiconductors and electronic components.....	372.5	387.9	390.0	388.9	372.0	386.8	388.1	388.8	0.7
Electronic instruments.....	405.4	404.8	403.8	402.0	405.8	403.4	402.8	402.6	-0.2
Electrical equipment and appliances.....	364.6	373.8	374.9	372.0	363.9	371.8	372.1	370.7	-1.4
Transportation equipment ¹	1,340.9	1,355.9	1,373.1	1,381.2	1,332.5	1,378.4	1,373.1	1,374.1	1.0
Motor vehicles and parts ²	683.2	685.0	699.7	707.1	675.5	707.0	700.6	700.9	0.3
Furniture and related products.....	357.9	357.5	357.0	350.2	355.7	354.1	351.0	347.4	-3.6
Miscellaneous manufacturing.....	567.2	577.3	579.4	574.9	566.3	578.3	577.8	574.8	-3.0
Nondurable goods.....	4,494	4,484	4,505	4,489	4,450	4,445	4,449	4,444	-5
Food manufacturing.....	1,477.5	1,470.7	1,478.5	1,471.5	1,445.2	1,448.1	1,442.6	1,441.7	-0.9
Beverages and tobacco products.....	187.3	191.4	194.9	193.8	183.2	186.2	189.6	187.8	-1.8
Textile mills.....	118.9	122.9	122.5	121.3	118.8	123.0	121.9	121.2	-0.7
Textile product mills.....	118.7	116.6	116.0	113.6	118.5	115.7	115.9	113.7	-2.2
Apparel.....	157.1	153.2	155.7	156.8	155.0	153.3	154.4	154.7	0.3
Leather and allied products.....	28.4	29.4	29.2	30.0	28.0	30.0	29.0	29.6	0.6
Paper and paper products.....	397.2	399.9	401.0	401.1	396.8	398.1	399.2	399.7	0.5
Printing and related support activities.....	484.2	467.7	470.3	466.1	483.0	467.5	468.9	464.7	-4.2
Petroleum and coal products.....	116.1	115.7	114.2	114.4	114.0	111.7	111.1	111.9	0.8
Chemicals.....	780.1	784.1	785.8	784.5	781.8	780.3	783.5	784.9	1.4
Plastics and rubber products.....	628.2	632.3	637.0	636.0	625.4	631.3	632.6	634.0	1.4
Private service-providing.....	89,899	91,636	91,671	91,358	89,786	91,082	91,133	91,252	119
Trade, transportation, and utilities.....	24,565	24,959	24,953	24,886	24,627	24,942	24,945	24,952	7
Wholesale trade.....	5,465.0	5,574.7	5,573.6	5,547.9	5,456.0	5,543.0	5,545.8	5,539.9	-5.9
Durable goods.....	2,725.0	2,790.3	2,791.2	2,774.4	2,722.4	2,774.4	2,776.1	2,772.2	-3.9
Nondurable goods.....	1,932.2	1,962.7	1,961.6	1,955.5	1,928.7	1,950.3	1,952.2	1,952.1	-0.1
Electronic markets and agents and brokers.....	807.8	821.7	820.8	818.0	804.9	818.3	817.5	815.6	-1.9
Retail trade.....	14,311.7	14,599.4	14,589.5	14,481.3	14,430.3	14,579.1	14,578.3	14,591.9	13.6
Motor vehicle and parts dealers ¹	1,641.7	1,695.9	1,696.7	1,692.6	1,627.3	1,676.2	1,677.2	1,678.6	1.4
Automobile dealers.....	1,014.4	1,049.0	1,051.3	1,050.8	1,007.0	1,041.6	1,042.9	1,043.8	0.9
Furniture and home furnishings stores.....	429.5	431.4	430.1	430.9	436.0	436.5	435.7	436.2	0.5

See footnotes at end of table.

ESTABLISHMENT DATA

Table B-1. Employees on nonfarm payrolls by industry sector and selected industry detail

— Continued

[In thousands]

Industry	Not seasonally adjusted				Seasonally adjusted				Change from: Aug.2011 - Sept.2011 ^P
	Sept. 2010	July 2011	Aug. 2011 ^P	Sept. 2011 ^P	Sept. 2010	July 2011	Aug. 2011 ^P	Sept. 2011 ^P	
Retail trade - Continued									
Electronics and appliance stores.....	492.5	493.8	486.0	475.7	500.8	501.3	492.8	483.9	-8.9
Building material and garden supply stores...	1,106.8	1,148.3	1,128.1	1,107.3	1,115.1	1,119.0	1,119.5	1,118.9	-0.6
Food and beverage stores.....	2,803.5	2,858.5	2,854.6	2,841.0	2,812.4	2,837.1	2,840.6	2,847.6	7.0
Health and personal care stores.....	969.2	975.2	977.1	975.7	976.3	976.9	977.5	981.7	4.2
Gasoline stations.....	822.1	833.0	835.9	823.4	816.0	820.6	821.1	817.5	-3.6
Clothing and clothing accessories stores.....	1,350.8	1,422.4	1,435.7	1,409.9	1,388.0	1,431.1	1,440.4	1,449.4	9.0
Sporting goods, hobby, book, and music stores.....	595.3	583.5	595.7	599.3	597.8	600.4	599.2	601.3	2.1
General merchandise stores ¹	2,927.2	2,971.5	2,966.8	2,941.3	2,986.1	2,989.4	2,988.4	2,993.6	5.2
Department stores.....	1,453.7	1,479.6	1,478.4	1,460.1	1,495.8	1,499.8	1,498.2	1,499.6	1.4
Miscellaneous store retailers.....	755.3	780.7	770.8	767.2	756.6	774.0	766.8	767.8	1.0
Nonstore retailers.....	417.8	405.2	412.0	417.0	417.9	416.6	419.1	415.4	-3.7
Transportation and warehousing.....	4,240.8	4,228.9	4,235.0	4,303.2	4,192.4	4,267.8	4,268.0	4,266.1	-1.9
Air transportation.....	464.9	481.2	480.0	475.2	463.4	478.8	475.9	474.8	-1.1
Rail transportation.....	218.4	225.2	226.9	226.8	217.6	224.7	226.4	225.4	-1.0
Water transportation.....	63.9	65.0	65.8	64.7	62.8	63.1	63.5	63.8	0.3
Truck transportation.....	1,271.1	1,300.0	1,305.0	1,306.4	1,248.5	1,283.0	1,281.7	1,284.3	2.6
Transit and ground passenger transportation.....	453.2	379.7	376.8	448.5	438.6	440.3	442.8	439.2	-3.6
Pipeline transportation.....	41.9	43.6	43.0	43.3	41.9	43.3	43.0	43.3	0.3
Scenic and sightseeing transportation.....	33.0	37.8	36.9	34.0	27.6	28.5	28.6	28.3	-0.3
Support activities for transportation.....	542.9	556.5	558.0	556.7	542.3	555.0	555.3	555.7	0.4
Couriers and messengers.....	520.2	510.1	513.5	516.7	521.0	521.1	521.7	522.5	0.8
Warehousing and storage.....	631.3	629.8	629.1	630.9	628.7	630.0	629.1	628.8	-0.3
Utilities.....	547.4	555.6	554.6	553.2	548.6	552.1	552.6	553.8	1.2
Information.....	2,693	2,679	2,637	2,651	2,701	2,677	2,626	2,660	34
Publishing industries, except Internet.....	758.6	758.4	756.2	753.4	759.4	756.0	754.8	754.0	-0.8
Motion picture and sound recording industries.....	370.4	368.2	376.9	357.9	373.3	366.1	367.3	361.9	-5.4
Broadcasting, except Internet.....	295.7	294.3	293.6	296.1	296.1	295.0	294.5	296.2	1.7
Telecommunications.....	885.8	857.2	808.3	842.0	887.7	859.1	807.5	845.1	37.6
Data processing, hosting and related services.....	239.4	238.6	238.3	238.3	240.5	239.7	240.0	239.4	-0.6
Other information services.....	143.3	162.7	163.2	163.4	143.5	160.6	161.9	163.4	1.5
Financial activities.....	7,618	7,672	7,659	7,607	7,616	7,606	7,611	7,603	-8
Finance and insurance.....	5,674.9	5,688.9	5,680.2	5,650.6	5,686.7	5,667.0	5,669.5	5,660.7	-8.8
Monetary authorities - central bank.....	20.8	21.7	22.0	21.8	20.7	21.5	21.8	21.8	0.0
Credit intermediation and related activities ¹	2,538.8	2,552.5	2,545.9	2,532.7	2,547.2	2,542.8	2,541.7	2,539.0	-2.7
Depository credit intermediation ¹	1,730.5	1,766.3	1,764.1	1,751.3	1,735.8	1,756.5	1,757.3	1,756.3	-1.0
Commercial banking.....	1,307.2	1,331.8	1,330.0	1,320.7	1,310.8	1,324.9	1,325.5	1,323.7	-1.8
Securities, commodity contracts, investments.....	803.7	813.7	814.6	807.4	805.5	811.0	812.5	809.1	-3.4
Insurance carriers and related activities.....	2,225.1	2,213.1	2,211.0	2,202.3	2,226.6	2,204.3	2,206.9	2,204.1	-2.8
Funds, trusts, and other financial vehicles.....	86.5	87.9	86.7	86.4	86.7	87.4	86.6	86.7	0.1
Real estate and rental and leasing.....	1,943.0	1,983.2	1,978.7	1,956.1	1,928.9	1,938.8	1,941.5	1,942.7	1.2
Real estate.....	1,397.7	1,426.9	1,423.3	1,402.6	1,389.8	1,401.9	1,401.3	1,395.8	-5.5
Rental and leasing services.....	520.5	530.5	529.5	527.7	514.3	511.4	514.5	521.1	6.6
Lessors of nonfinancial intangible assets.....	24.8	25.8	25.9	25.8	24.8	25.5	25.7	25.8	0.1
Professional and business services.....	16,801	17,257	17,362	17,350	16,719	17,194	17,232	17,280	48
Professional and technical services ¹	7,327.2	7,618.1	7,622.5	7,594.6	7,414.1	7,642.4	7,659.4	7,683.5	24.1
Legal services.....	1,112.7	1,125.0	1,118.3	1,109.5	1,115.7	1,113.8	1,113.5	1,112.2	-1.3
Accounting and bookkeeping services.....	799.0	851.6	850.2	847.5	875.6	924.2	923.3	926.6	3.3
Architectural and engineering services.....	1,276.7	1,317.1	1,319.7	1,308.1	1,273.7	1,297.5	1,301.8	1,304.5	2.7
Computer systems design and related services.....	1,443.0	1,514.6	1,524.5	1,520.8	1,447.1	1,511.4	1,519.1	1,525.1	6.0
Management and technical consulting services.....	986.8	1,050.0	1,054.2	1,053.4	991.5	1,045.4	1,052.4	1,057.9	5.5
Management of companies and enterprises.....	1,871.5	1,894.7	1,895.4	1,889.9	1,870.6	1,885.4	1,885.2	1,887.0	1.8
Administrative and waste services.....	7,602.3	7,744.5	7,844.3	7,865.7	7,434.6	7,666.2	7,687.1	7,709.6	22.5

See footnotes at end of table.

ESTABLISHMENT DATA

Table B-1. Employees on nonfarm payrolls by industry sector and selected industry detail

— Continued

[In thousands]

Industry	Not seasonally adjusted				Seasonally adjusted				Change from: Aug.2011 - Sept.2011 ^P
	Sept. 2010	July 2011	Aug. 2011 ^P	Sept. 2011 ^P	Sept. 2010	July 2011	Aug. 2011 ^P	Sept. 2011 ^P	
Administrative and waste services - Continued									
Administrative and support services ¹	7,238.2	7,370.1	7,469.4	7,494.3	7,074.1	7,301.4	7,321.3	7,343.0	21.7
Employment services ¹	2,833.9	2,875.4	2,981.8	3,040.1	2,745.7	2,917.4	2,938.4	2,962.2	23.8
Temporary help services.....	2,180.5	2,207.2	2,294.6	2,351.1	2,110.1	2,247.7	2,268.0	2,287.4	19.4
Business support services.....	797.3	790.2	791.6	794.2	807.6	803.3	802.3	803.2	0.9
Services to buildings and dwellings.....	1,815.2	1,878.5	1,868.1	1,836.3	1,747.2	1,763.8	1,766.1	1,768.8	2.7
Waste management and remediation services.....	364.1	374.4	374.9	371.4	360.5	364.8	365.8	366.6	0.8
Education and health services.....	19,545	19,666	19,697	19,994	19,631	19,998	20,036	20,081	45
Educational services.....	3,094.4	2,922.0	2,908.5	3,173.6	3,145.1	3,219.3	3,223.9	3,227.8	3.9
Health care and social assistance.....	16,450.1	16,744.1	16,788.4	16,820.7	16,485.5	16,778.2	16,812.3	16,853.1	40.8
Health care ³	13,822.0	14,130.9	14,163.8	14,164.1	13,844.9	14,104.1	14,136.6	14,180.4	43.8
Ambulatory health care services ¹	5,995.2	6,160.2	6,189.1	6,194.9	6,013.5	6,157.8	6,180.5	6,206.5	26.0
Offices of physicians.....	2,314.0	2,366.7	2,373.0	2,378.0	2,322.2	2,365.2	2,371.0	2,383.2	12.2
Outpatient care centers.....	602.7	619.1	623.0	624.5	604.5	619.6	622.2	626.0	3.8
Home health care services.....	1,089.6	1,126.5	1,134.1	1,138.6	1,091.7	1,127.7	1,134.4	1,139.4	5.0
Hospitals.....	4,687.7	4,768.9	4,770.3	4,773.1	4,690.5	4,754.0	4,761.5	4,774.8	13.3
Nursing and residential care facilities ¹	3,139.1	3,201.8	3,204.4	3,196.1	3,140.9	3,192.3	3,194.6	3,199.1	4.5
Nursing care facilities.....	1,665.4	1,688.1	1,686.7	1,681.3	1,664.6	1,684.5	1,682.5	1,682.5	0.0
Social assistance ¹	2,628.1	2,613.2	2,624.6	2,656.6	2,640.6	2,674.1	2,675.7	2,672.7	-3.0
Child day care services.....	853.1	790.0	802.2	840.2	855.4	852.0	850.7	845.8	-4.9
Leisure and hospitality.....	13,304	13,887	13,862	13,430	13,103	13,217	13,227	13,223	-4
Arts, entertainment, and recreation.....	2,013.1	2,204.2	2,160.3	1,966.0	1,933.3	1,897.3	1,895.0	1,885.4	-9.6
Performing arts and spectator sports.....	452.4	431.4	431.3	417.7	429.7	401.0	400.2	396.3	-3.9
Museums, historical sites, zoos, and parks....	129.6	146.6	144.1	132.7	126.8	130.8	131.5	130.5	-1.0
Amusements, gambling, and recreation.....	1,431.1	1,626.2	1,584.9	1,415.6	1,376.8	1,365.5	1,363.3	1,358.6	-4.7
Accommodation and food services.....	11,290.4	11,682.4	11,702.1	11,464.2	11,169.7	11,320.1	11,331.7	11,337.5	5.8
Accommodation.....	1,809.6	1,961.7	1,953.5	1,843.5	1,772.7	1,811.0	1,810.4	1,804.2	-6.2
Food services and drinking places.....	9,480.8	9,720.7	9,748.6	9,620.7	9,397.0	9,509.1	9,521.3	9,533.3	12.0
Other services.....	5,373	5,516	5,501	5,440	5,389	5,448	5,456	5,453	-3
Repair and maintenance.....	1,142.8	1,159.7	1,158.3	1,153.4	1,141.2	1,152.0	1,151.4	1,151.7	0.3
Personal and laundry services.....	1,259.6	1,293.5	1,294.4	1,287.8	1,263.3	1,286.4	1,288.1	1,290.2	2.1
Membership associations and organizations....	2,971.0	3,063.2	3,048.0	2,998.7	2,984.0	3,010.0	3,016.3	3,011.3	-5.0
Government.....	22,086	20,760	20,854	21,759	22,274	22,004	22,019	21,985	-34
Federal.....	2,863.0	2,854.0	2,837.0	2,827.0	2,850.0	2,824.0	2,821.0	2,820.0	-1.0
Federal, except U.S. Postal Service.....	2,215.8	2,223.3	2,219.8	2,215.8	2,200.6	2,199.3	2,201.1	2,205.1	4.0
U.S. Postal Service.....	647.2	630.6	617.1	610.7	648.9	624.5	620.0	614.7	-5.3
State government.....	5,146.0	4,772.0	4,809.0	5,098.0	5,138.0	5,076.0	5,087.0	5,089.0	2.0
State government education.....	2,394.6	2,079.4	2,108.4	2,407.9	2,383.7	2,394.3	2,399.0	2,397.6	-1.4
State government, excluding education.....	2,750.9	2,692.7	2,701.0	2,689.9	2,753.9	2,681.7	2,688.2	2,691.5	3.3
Local government.....	14,077.0	13,134.0	13,208.0	13,834.0	14,286.0	14,104.0	14,111.0	14,076.0	-35.0
Local government education.....	7,736.5	6,652.4	6,768.3	7,586.4	7,948.6	7,846.4	7,858.2	7,833.8	-24.4
Local government, excluding education.....	6,340.1	6,481.7	6,439.5	6,247.8	6,337.3	6,257.8	6,252.3	6,241.7	-10.6

1 Includes other industries, not shown separately.

2 Includes motor vehicles, motor vehicle bodies and trailers, and motor vehicle parts.

3 Includes ambulatory health care services, hospitals, and nursing and residential care facilities.

p Preliminary

ESTABLISHMENT DATA

Table B-2. Average weekly hours and overtime of all employees on private nonfarm payrolls by industry sector, seasonally adjusted

Industry	Sept. 2010	July 2011	Aug. 2011 ^p	Sept. 2011 ^p
AVERAGE WEEKLY HOURS				
Total private.....	34.2	34.3	34.2	34.3
Goods-producing.....	39.7	39.8	39.8	39.9
Mining and logging.....	43.7	44.1	44.1	44.0
Construction.....	38.0	38.2	38.2	38.5
Manufacturing.....	40.3	40.3	40.3	40.2
Durable goods.....	40.5	40.6	40.6	40.6
Nondurable goods.....	39.9	39.7	39.8	39.6
Private service-providing.....	33.1	33.3	33.1	33.2
Trade, transportation, and utilities.....	34.3	34.4	34.3	34.5
Wholesale trade.....	38.4	38.6	38.5	38.8
Retail trade.....	31.3	31.4	31.3	31.4
Transportation and warehousing.....	38.3	38.5	38.4	38.4
Utilities.....	41.3	41.6	41.5	42.3
Information.....	36.7	36.5	36.4	36.5
Financial activities.....	37.1	37.4	37.1	37.4
Professional and business services.....	35.6	35.8	35.7	35.8
Education and health services.....	32.8	32.9	32.7	32.7
Leisure and hospitality.....	25.8	25.9	25.8	25.9
Other services.....	31.8	31.7	31.5	31.6
AVERAGE OVERTIME HOURS				
Manufacturing.....	3.1	3.1	3.1	3.2
Durable goods.....	2.9	3.1	3.1	3.2
Nondurable goods.....	3.3	3.2	3.2	3.1

p Preliminary

ESTABLISHMENT DATA

Table B-3. Average hourly and weekly earnings of all employees on private nonfarm payrolls by industry sector, seasonally adjusted

Industry	Average hourly earnings				Average weekly earnings			
	Sept. 2010	July 2011	Aug. 2011 ^p	Sept. 2011 ^p	Sept. 2010	July 2011	Aug. 2011 ^p	Sept. 2011 ^p
Total private.....	\$22.70	\$23.12	\$23.08	\$23.12	\$ 776.34	\$ 793.02	\$ 789.34	\$ 793.02
Goods-producing.....	24.15	24.45	24.43	24.46	958.76	973.11	972.31	975.95
Mining and logging.....	27.89	27.96	28.06	28.35	1,218.79	1,233.04	1,237.45	1,247.40
Construction.....	25.19	25.40	25.48	25.48	957.22	970.28	973.34	980.98
Manufacturing.....	23.43	23.77	23.69	23.71	944.23	957.93	954.71	953.14
Durable goods.....	24.91	25.31	25.24	25.24	1,008.86	1,027.59	1,024.74	1,024.74
Nondurable goods.....	21.04	21.17	21.10	21.13	839.50	840.45	839.78	836.75
Private service-providing.....	22.36	22.80	22.76	22.80	740.12	759.24	753.36	756.96
Trade, transportation, and utilities.....	19.76	20.09	20.03	20.06	677.77	691.10	687.03	692.07
Wholesale trade.....	26.23	26.33	26.27	26.25	1,007.23	1,016.34	1,011.40	1,018.50
Retail trade.....	15.61	15.90	15.76	15.80	488.59	499.26	493.29	496.12
Transportation and warehousing.....	21.14	21.73	21.90	21.86	809.66	836.61	840.96	839.42
Utilities.....	32.75	33.63	33.70	34.00	1,352.58	1,399.01	1,398.55	1,438.20
Information.....	30.84	31.41	31.54	31.57	1,131.83	1,146.47	1,148.06	1,152.31
Financial activities.....	27.29	27.74	27.79	27.85	1,012.46	1,037.48	1,031.01	1,041.59
Professional and business services.....	27.41	27.98	27.85	27.90	975.80	1,001.68	994.25	998.82
Education and health services.....	23.06	23.67	23.64	23.66	756.37	778.74	773.03	773.68
Leisure and hospitality.....	13.10	13.24	13.25	13.28	337.98	342.92	341.85	343.95
Other services.....	20.22	20.50	20.52	20.54	643.00	649.85	646.38	649.06

p Preliminary

ESTABLISHMENT DATA

Table B-4. Indexes of aggregate weekly hours and payrolls for all employees on private nonfarm payrolls by industry sector, seasonally adjusted

[2007=100]

Industry	Index of aggregate weekly hours ¹					Index of aggregate weekly payrolls ²				
	Sept. 2010	July 2011	Aug. 2011 ^p	Sept. 2011 ^p	Percent change from: Aug. 2011 - Sept. 2011 ^p	Sept. 2010	July 2011	Aug. 2011 ^p	Sept. 2011 ^p	Percent change from: Aug. 2011 - Sept. 2011 ^p
Total private.....	92.2	93.8	93.6	94.0	0.4	99.8	103.5	103.0	103.6	0.6
Goods-producing.....	80.4	82.0	82.0	82.3	0.4	87.8	90.6	90.5	90.9	0.4
Mining and logging.....	99.6	110.6	110.9	111.3	0.4	111.5	124.1	124.9	126.7	1.4
Construction.....	72.2	72.8	72.7	73.7	1.4	79.0	80.4	80.5	81.5	1.2
Manufacturing.....	83.7	85.2	85.2	84.9	-0.4	91.2	94.2	93.9	93.6	-0.3
Durable goods.....	80.9	83.6	83.5	83.4	-0.1	89.5	94.0	93.6	93.5	-0.1
Nondurable goods.....	88.6	88.1	88.4	87.8	-0.7	94.6	94.6	94.6	94.2	-0.4
Private service-providing.....	95.4	97.4	96.9	97.3	0.4	103.4	107.6	106.8	107.5	0.7
Trade, transportation, and utilities.....	91.8	93.2	93.0	93.6	0.6	97.6	100.8	100.2	101.0	0.8
Wholesale trade.....	91.4	93.4	93.2	93.8	0.6	100.1	102.6	102.1	102.7	0.6
Retail trade.....	91.7	93.0	92.7	93.0	0.3	94.7	97.7	96.6	97.2	0.6
Transportation and warehousing.....	91.9	94.0	93.8	93.8	0.0	98.6	103.7	104.2	104.0	-0.2
Utilities.....	98.0	99.3	99.2	101.3	2.1	106.0	110.4	110.5	113.8	3.0
Information.....	90.5	89.2	87.3	88.7	1.6	99.4	99.8	98.0	99.7	1.7
Financial activities.....	93.1	93.7	93.0	93.7	0.8	99.2	101.5	100.9	101.9	1.0
Professional and business services.....	93.6	96.8	96.8	97.3	0.5	104.0	109.7	109.2	110.0	0.7
Education and health services.....	104.8	107.1	106.6	106.9	0.3	113.2	118.7	118.1	118.5	0.3
Leisure and hospitality.....	96.5	97.7	97.4	97.7	0.3	101.9	104.3	104.1	104.7	0.6
Other services.....	94.9	95.7	95.2	95.5	0.3	109.0	111.3	110.9	111.3	0.4

1 The indexes of aggregate weekly hours are calculated by dividing the current month's estimates of aggregate hours by the corresponding 2007 annual average aggregate hours. Aggregate hours estimates are the product of estimates of average weekly hours and employment.

2 The indexes of aggregate weekly payrolls are calculated by dividing the current month's estimates of aggregate weekly payrolls by the corresponding 2007 annual average aggregate weekly payrolls. Aggregate payrolls estimates are the product of estimates of average hourly earnings, average weekly hours, and employment.

p Preliminary

ESTABLISHMENT DATA

Table B-5. Employment of women on nonfarm payrolls by industry sector, seasonally adjusted

Industry	Women employees (in thousands)				Percent of all employees			
	Sept. 2010	July 2011	Aug. 2011 ^p	Sept. 2011 ^p	Sept. 2010	July 2011	Aug. 2011 ^p	Sept. 2011 ^p
Total nonfarm.....	64,553	64,816	64,867	64,871	49.7	49.4	49.4	49.4
Total private.....	51,892	52,314	52,350	52,382	48.2	47.9	47.9	47.9
Goods-producing.....	4,071	4,061	4,055	4,056	22.9	22.5	22.4	22.4
Mining and logging.....	99	105	106	107	13.7	13.2	13.3	13.3
Construction.....	713	710	711	715	12.9	12.8	12.9	12.9
Manufacturing.....	3,259	3,246	3,238	3,234	28.2	27.6	27.5	27.5
Durable goods.....	1,722	1,722	1,716	1,713	24.3	23.5	23.5	23.5
Nondurable goods.....	1,537	1,524	1,522	1,521	34.5	34.3	34.2	34.2
Private service-providing.....	47,821	48,253	48,295	48,326	53.3	53.0	53.0	53.0
Trade, transportation, and utilities.....	9,991	9,995	9,995	9,973	40.6	40.1	40.1	40.0
Wholesale trade.....	1,637.5	1,669.8	1,671.5	1,672.7	30.0	30.1	30.1	30.2
Retail trade.....	7,212.4	7,188.4	7,186.3	7,175.9	50.0	49.3	49.3	49.2
Transportation and warehousing.....	1,003.9	1,001.8	1,003.2	989.8	23.9	23.5	23.5	23.2
Utilities.....	136.7	134.6	134.4	134.8	24.9	24.4	24.3	24.3
Information.....	1,097	1,088	1,075	1,079	40.6	40.6	40.9	40.6
Financial activities.....	4,474	4,441	4,441	4,426	58.7	58.4	58.3	58.2
Professional and business services.....	7,437	7,625	7,647	7,663	44.5	44.3	44.4	44.3
Education and health services.....	15,134	15,346	15,371	15,404	77.1	76.7	76.7	76.7
Leisure and hospitality.....	6,837	6,883	6,883	6,901	52.2	52.1	52.0	52.2
Other services.....	2,851	2,875	2,883	2,880	52.9	52.8	52.8	52.8
Government.....	12,661	12,502	12,517	12,489	56.8	56.8	56.8	56.8

p Preliminary

ESTABLISHMENT DATA

Table B-6. Employment of production and nonsupervisory employees on private nonfarm payrolls by industry sector, seasonally adjusted¹

[In thousands]

Industry	Sept. 2010	July 2011	Aug. 2011 ^p	Sept. 2011 ^p
Total private.....	88,673	89,972	90,017	90,183
Goods-producing.....	12,794	13,034	13,024	13,056
Mining and logging.....	541	599	601	605
Construction.....	4,170	4,186	4,175	4,202
Manufacturing.....	8,083	8,249	8,248	8,249
Durable goods.....	4,852	5,012	5,009	5,010
Nondurable goods.....	3,231	3,237	3,239	3,239
Private service-providing.....	75,879	76,938	76,993	77,127
Trade, transportation, and utilities.....	20,849	21,101	21,119	21,143
Wholesale trade.....	4,369.5	4,441.3	4,444.1	4,439.5
Retail trade.....	12,418.6	12,544.8	12,552.7	12,577.5
Transportation and warehousing.....	3,621.5	3,673.6	3,680.9	3,684.6
Utilities.....	439.8	440.8	441.4	441.3
Information.....	2,170	2,148	2,099	2,134
Financial activities.....	5,866	5,821	5,822	5,815
Professional and business services.....	13,691	14,145	14,182	14,220
Education and health services.....	17,221	17,520	17,544	17,581
Leisure and hospitality.....	11,573	11,648	11,664	11,672
Other services.....	4,509	4,555	4,563	4,562

¹ Data relate to production employees in mining and logging and manufacturing, construction employees in construction, and nonsupervisory employees in the service-providing industries. These groups account for approximately four-fifths of the total employment on private nonfarm payrolls.

^p Preliminary

ESTABLISHMENT DATA

Table B-7. Average weekly hours and overtime of production and nonsupervisory employees on private nonfarm payrolls by industry sector, seasonally adjusted¹

Industry	Sept. 2010	July 2011	Aug. 2011 ^p	Sept. 2011 ^p
AVERAGE WEEKLY HOURS				
Total private.....	33.5	33.6	33.5	33.6
Goods-producing.....	40.7	40.9	40.8	40.8
Mining and logging.....	44.6	46.3	46.3	46.3
Construction.....	39.0	39.1	39.0	39.1
Manufacturing.....	41.3	41.4	41.3	41.3
Durable goods.....	41.4	41.8	41.7	41.7
Nondurable goods.....	41.0	40.8	40.6	40.6
Private service-providing.....	32.3	32.4	32.3	32.3
Trade, transportation, and utilities.....	33.3	33.7	33.5	33.6
Wholesale trade.....	38.2	38.5	38.3	38.6
Retail trade.....	30.1	30.5	30.3	30.3
Transportation and warehousing.....	37.2	37.7	37.7	37.6
Utilities.....	42.1	41.9	41.8	42.1
Information.....	36.1	36.2	35.9	36.0
Financial activities.....	36.3	36.4	36.3	36.4
Professional and business services.....	35.2	35.1	35.1	35.2
Education and health services.....	32.2	32.4	32.3	32.3
Leisure and hospitality.....	24.8	24.8	24.7	24.7
Other services.....	30.8	30.7	30.7	30.7
AVERAGE OVERTIME HOURS				
Manufacturing.....	3.9	4.1	4.1	4.0
Durable goods.....	3.9	4.2	4.2	4.1
Nondurable goods.....	3.9	4.0	4.0	3.9

¹ Data relate to production employees in mining and logging and manufacturing, construction employees in construction, and nonsupervisory employees in the service-providing industries. These groups account for approximately four-fifths of the total employment on private nonfarm payrolls.

^p Preliminary

ESTABLISHMENT DATA

Table B-8. Average hourly and weekly earnings of production and nonsupervisory employees on private nonfarm payrolls by industry sector, seasonally adjusted¹

Industry	Average hourly earnings				Average weekly earnings			
	Sept. 2010	July 2011	Aug. 2011 ^p	Sept. 2011 ^p	Sept. 2010	July 2011	Aug. 2011 ^p	Sept. 2011 ^p
Total private.....	\$19.14	\$19.49	\$19.49	\$19.52	\$ 641.19	\$ 654.86	\$ 652.92	\$ 655.87
Goods-producing.....	20.33	20.69	20.71	20.71	827.43	846.22	844.97	844.97
Mining and logging.....	24.10	24.60	24.57	24.61	1,074.86	1,138.98	1,137.59	1,139.44
Construction.....	23.21	23.65	23.81	23.76	905.19	924.72	928.59	929.02
Manufacturing.....	18.65	18.96	18.92	18.92	770.25	784.94	781.40	781.40
Durable goods.....	19.81	20.14	20.07	20.08	820.13	841.85	836.92	837.34
Nondurable goods.....	16.89	17.08	17.09	17.07	692.49	696.86	693.85	693.04
Private service-providing.....	18.88	19.24	19.22	19.26	609.82	623.38	620.81	622.10
Trade, transportation, and utilities.....	16.90	17.20	17.17	17.23	562.77	579.64	575.20	578.93
Wholesale trade.....	21.64	22.13	22.03	22.08	826.65	852.01	843.75	852.29
Retail trade.....	13.29	13.48	13.46	13.49	400.03	411.14	407.84	408.75
Transportation and warehousing.....	19.18	19.53	19.55	19.66	713.50	736.28	737.04	739.22
Utilities.....	30.28	30.96	30.92	31.21	1,274.79	1,297.22	1,292.46	1,313.94
Information.....	26.01	26.48	26.52	26.66	938.96	958.58	952.07	959.76
Financial activities.....	21.45	21.78	21.75	21.82	778.64	792.79	789.53	794.25
Professional and business services.....	22.94	23.24	23.16	23.15	807.49	815.72	812.92	814.88
Education and health services.....	20.24	20.79	20.84	20.86	651.73	673.60	673.13	673.78
Leisure and hospitality.....	11.27	11.49	11.49	11.47	279.50	284.95	283.80	283.31
Other services.....	17.13	17.25	17.24	17.26	527.60	529.58	529.27	529.88

¹ Data relate to production employees in mining and logging and manufacturing, construction employees in construction, and nonsupervisory employees in the service-providing industries. These groups account for approximately four-fifths of the total employment on private nonfarm payrolls.

^p Preliminary

ESTABLISHMENT DATA

Table B-9. Indexes of aggregate weekly hours and payrolls for production and nonsupervisory employees on private nonfarm payrolls by industry sector, seasonally adjusted¹

[2002=100]

Industry	Index of aggregate weekly hours ²					Index of aggregate weekly payrolls ³				
	Sept. 2010	July 2011	Aug. 2011 ^p	Sept. 2011 ^p	Percent change from: Aug. 2011 - Sept. 2011 ^p	Sept. 2010	July 2011	Aug. 2011 ^p	Sept. 2011 ^p	Percent change from: Aug. 2011 - Sept. 2011 ^p
Total private.....	99.2	101.0	100.8	101.2	0.4	126.9	131.5	131.2	132.0	0.6
Goods-producing.....	79.6	81.5	81.2	81.4	0.2	99.1	103.2	103.0	103.2	0.2
Mining and logging.....	128.2	147.4	147.9	148.9	0.7	179.7	210.9	211.3	213.1	0.9
Construction.....	81.4	82.0	81.5	82.3	1.0	102.1	104.7	104.8	105.5	0.7
Manufacturing.....	76.6	78.4	78.2	78.2	0.0	93.4	97.2	96.7	96.7	0.0
Durable goods.....	75.5	78.7	78.5	78.5	0.0	93.3	99.0	98.3	98.4	0.1
Nondurable goods.....	78.1	77.8	77.5	77.5	0.0	93.2	93.9	93.6	93.5	-0.1
Private service-providing.....	104.8	106.6	106.3	106.5	0.2	135.7	140.6	140.1	140.7	0.4
Trade, transportation, and utilities.....	96.8	99.1	98.6	99.0	0.4	116.7	121.6	120.8	121.7	0.7
Wholesale trade.....	98.3	100.7	100.2	100.9	0.7	125.3	131.3	130.1	131.3	0.9
Retail trade.....	94.6	96.9	96.3	96.5	0.2	107.8	111.9	111.1	111.5	0.4
Transportation and warehousing.....	101.4	104.3	104.5	104.3	-0.2	123.4	129.2	129.6	130.1	0.4
Utilities.....	94.7	94.5	94.4	95.0	0.6	119.7	122.1	121.8	123.8	1.6
Information.....	89.4	88.8	86.0	87.7	2.0	115.2	116.4	112.9	115.8	2.6
Financial activities.....	101.9	101.4	101.1	101.3	0.2	135.1	136.5	136.0	136.7	0.5
Professional and business services.....	108.0	111.3	111.6	112.2	0.5	147.4	153.9	153.7	154.5	0.5
Education and health services.....	119.6	122.5	122.2	122.5	0.2	159.2	167.4	167.5	168.0	0.3
Leisure and hospitality.....	105.2	105.9	105.6	105.7	0.1	134.6	138.2	137.8	137.6	-0.1
Other services.....	97.4	98.1	98.3	98.2	-0.1	121.6	123.3	123.4	123.6	0.2

1 Data relate to production employees in mining and logging and manufacturing, construction employees in construction, and nonsupervisory employees in the service-providing industries. These groups account for approximately four-fifths of the total employment on private nonfarm payrolls.

2 The indexes of aggregate weekly hours are calculated by dividing the current month's estimates of aggregate hours by the corresponding 2002 annual average aggregate hours. Aggregate hours estimates are the product of estimates of average weekly hours and employment.

3 The indexes of aggregate weekly payrolls are calculated by dividing the current month's estimates of aggregate weekly payrolls by the corresponding 2002 annual average aggregate weekly payrolls. Aggregate payrolls estimates are the product of estimates of average hourly earnings, average weekly hours, and employment.

p Preliminary