

For release 10:00 a.m. (EDT) Tuesday, June 11, 2013

USDL-13-1139

Technical information: (202) 691-5870 • JoltsInfo@bls.gov • www.bls.gov/jlt

Media contact: (202) 691-5902 • PressOffice@bls.gov

JOB OPENINGS AND LABOR TURNOVER – APRIL 2013

There were 3.8 million job openings on the last business day of April, little changed from 3.9 million in March, the U.S. Bureau of Labor Statistics reported today. The hires rate (3.3 percent) and separations rate (3.2 percent) also were little changed in April. This release includes estimates of the number and rate of job openings, hires, and separations for the nonfarm sector by industry and by geographic region.

Chart 1. Job openings rate, seasonally adjusted, May 2010 - April 2013

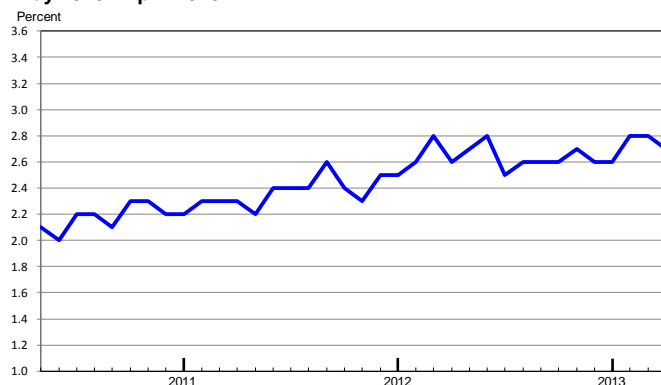
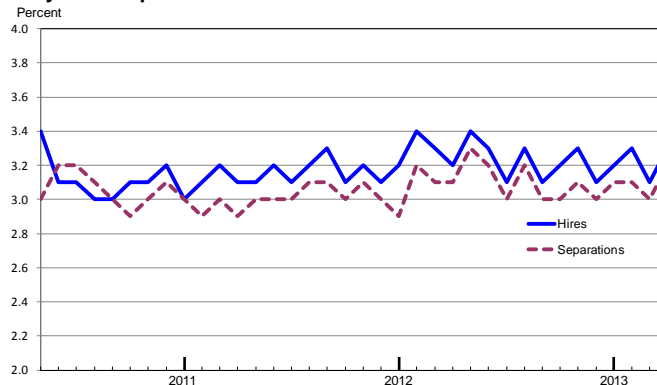


Chart 2. Hires and separations rates, seasonally adjusted, May 2010 - April 2013



Job Openings

The number of job openings in April was 3.8 million, little changed from March. (See table 1.) In April, the number of job openings was little changed in all industries and regions.

The number of job openings in April (not seasonally adjusted) increased over the year for total nonfarm and government and was little changed for total private. Job openings increased over the year for several industries and state and local government. Job openings decreased over the year for information; arts, entertainment, and recreation; and federal government. Job openings were up over the year for the West and little changed in the other regions. (See table 7.)

Hires

In April, the hires rate was little changed at 3.3 percent. The hires rate was little changed in all industries and regions over the month. (See table 2.)

Over the 12 months ending in April, the hires rate (not seasonally adjusted) was little changed for total nonfarm, total private, and government. The hires rate also was little changed for all industries and all four regions over the year. (See table 8.)

Separations

Total separations includes quits, layoffs and discharges, and other separations. Total separations also is referred to as turnover. Quits are generally voluntary separations initiated by the employee. Therefore, the quits rate can serve as a measure of workers' willingness or ability to leave jobs. Layoffs and discharges are involuntary separations initiated by the employer. Other separations include separations due to retirement, death, and disability, as well as transfers to other locations of the same firm.

In April, the quits rate was little changed at 1.7 percent. The quits rate was up for total private and little changed for government. The quits rate increased for professional and business services. The quits rate was little changed in all four regions. (See table 4.)

The number of quits (not seasonally adjusted) was up over the 12 months ending in April for total nonfarm and total private but was little changed for government. The quits level increased for professional and business services and for the Midwest and South. (See table 10.)

The layoffs and discharges component of total separations is seasonally adjusted at the total nonfarm, total private, and government levels and for the four regions. The layoffs and discharges rate was unchanged in April at 1.2 percent. The rate also was unchanged for total private and government and little changed in all four regions. (See table 5.)

The layoffs and discharges level (not seasonally adjusted) was little changed for total nonfarm, total private, and government over the 12 months ending in April. Over the year, the number of layoffs and discharges fell in other services and rose in federal government. The number of layoffs and discharges was little changed in all four regions. (See table 11.)

In April, there were 375,000 other separations for total nonfarm, little changed from the previous month. The number of other separations for total private and government was little changed. (See table 6.) Over the 12 months ending in April, the number of other separations rose for total nonfarm and total private and was little changed for government. (See table 12.)

Net Change in Employment

Large numbers of hires and separations occur every month throughout the business cycle. Net employment change results from the relationship between hires and separations. When the number of hires exceeds the number of separations, employment rises, even if the hires level is steady or declining. Conversely, when the number of hires is less than the number of separations, employment declines, even if the hires level is steady or rising. Over the 12 months ending in April 2013, hires totaled 52.0 million and separations totaled 50.2 million, yielding a net employment gain of 1.8 million. These figures include workers who may have been hired and separated more than once during the year.

The Job Openings and Labor Turnover Survey results for May 2013 are scheduled to be released on Tuesday, July 9, 2013 at 10:00 a.m. (EDT).

Changes to Job Openings and Labor Turnover News Release Tables

Effective with this release, the format of the tables in the JOLTS release have changed slightly and Table A has been moved to the end of the text. The content of the tables remains the same.

Table A. Job openings, hires, and total separations by industry, seasonally adjusted

| Category | Job openings | | | Hires | | | Total separations | | |
|---|--------------|-----------|------------------------|-----------|-----------|------------------------|-------------------|-----------|------------------------|
| | Apr. 2012 | Mar. 2013 | Apr. 2013 ^p | Apr. 2012 | Mar. 2013 | Apr. 2013 ^p | Apr. 2012 | Mar. 2013 | Apr. 2013 ^p |
| LEVELS BY INDUSTRY (in thousands) | | | | | | | | | |
| Total..... | 3,523 | 3,875 | 3,757 | 4,252 | 4,227 | 4,425 | 4,122 | 4,123 | 4,279 |
| Total private ¹ | 3,163 | 3,473 | 3,355 | 3,962 | 3,931 | 4,133 | 3,813 | 3,819 | 3,973 |
| Construction..... | 67 | 108 | 108 | 262 | 320 | 285 | 277 | 316 | 300 |
| Manufacturing..... | 254 | 271 | 245 | 252 | 201 | 224 | 238 | 203 | 218 |
| Trade, transportation, and utilities ² | 552 | 669 | 711 | 862 | 821 | 898 | 827 | 820 | 867 |
| Retail trade..... | 321 | 424 | 449 | 575 | 562 | 628 | 557 | 557 | 615 |
| Professional and business services..... | 668 | 692 | 692 | 859 | 831 | 937 | 806 | 780 | 869 |
| Education and health services ³ | 674 | 687 | 652 | 485 | 520 | 541 | 459 | 482 | 531 |
| Health care and social assistance..... | 620 | 621 | 590 | 416 | 443 | 463 | 394 | 416 | 456 |
| Leisure and hospitality..... | 452 | 500 | 465 | 766 | 776 | 797 | 730 | 738 | 738 |
| Arts, entertainment, and recreation..... | 77 | 64 | 56 | 143 | 123 | 120 | 152 | 108 | 115 |
| Accommodation and food services..... | 375 | 436 | 408 | 623 | 653 | 678 | 578 | 631 | 624 |
| Government ⁴ | 360 | 402 | 402 | 290 | 295 | 292 | 309 | 304 | 305 |
| State and local..... | 283 | 344 | 341 | 256 | 264 | 257 | 276 | 260 | 261 |
| RATES BY INDUSTRY (percent) | | | | | | | | | |
| Total..... | 2.6 | 2.8 | 2.7 | 3.2 | 3.1 | 3.3 | 3.1 | 3.0 | 3.2 |
| Total private ¹ | 2.8 | 3.0 | 2.9 | 3.6 | 3.5 | 3.6 | 3.4 | 3.4 | 3.5 |
| Construction..... | 1.2 | 1.8 | 1.8 | 4.7 | 5.5 | 4.9 | 4.9 | 5.4 | 5.2 |
| Manufacturing..... | 2.1 | 2.2 | 2.0 | 2.1 | 1.7 | 1.9 | 2.0 | 1.7 | 1.8 |
| Trade, transportation, and utilities ² | 2.1 | 2.5 | 2.7 | 3.4 | 3.2 | 3.5 | 3.3 | 3.2 | 3.4 |
| Retail trade..... | 2.1 | 2.7 | 2.9 | 3.9 | 3.7 | 4.2 | 3.8 | 3.7 | 4.1 |
| Professional and business services..... | 3.6 | 3.6 | 3.6 | 4.8 | 4.5 | 5.1 | 4.5 | 4.2 | 4.7 |
| Education and health services ³ | 3.2 | 3.2 | 3.1 | 2.4 | 2.5 | 2.6 | 2.3 | 2.3 | 2.6 |
| Health care and social assistance..... | 3.5 | 3.5 | 3.3 | 2.5 | 2.6 | 2.7 | 2.3 | 2.4 | 2.6 |
| Leisure and hospitality..... | 3.2 | 3.4 | 3.2 | 5.6 | 5.5 | 5.7 | 5.3 | 5.3 | 5.2 |
| Arts, entertainment, and recreation..... | 3.8 | 3.1 | 2.7 | 7.3 | 6.1 | 6.0 | 7.7 | 5.4 | 5.7 |
| Accommodation and food services..... | 3.1 | 3.5 | 3.3 | 5.3 | 5.4 | 5.6 | 4.9 | 5.2 | 5.2 |
| Government ⁴ | 1.6 | 1.8 | 1.8 | 1.3 | 1.4 | 1.3 | 1.4 | 1.4 | 1.4 |
| State and local..... | 1.5 | 1.8 | 1.8 | 1.3 | 1.4 | 1.3 | 1.4 | 1.4 | 1.4 |

1 Includes mining and logging, information, financial activities, and other services, not shown separately.

2 Includes wholesale trade and transportation, warehousing, and utilities, not shown separately.

3 Includes educational services, not shown separately.

4 Includes federal government, not shown separately.

p Preliminary

Technical Note

This news release presents statistics from the Job Openings and Labor Turnover Survey (JOLTS). The Bureau of Labor Statistics (BLS) collects and compiles JOLTS data monthly from a sample of nonfarm establishments. A more detailed discussion of JOLTS concepts and methodology is available online at www.bls.gov/opub/hom/pdf/homch18.pdf.

Coverage and collection

The JOLTS program covers all private nonfarm establishments, as well as federal, state, and local government entities in the 50 states and the District of Columbia. Data are collected for total employment, job openings, hires, quits, layoffs and discharges, other separations, and total separations.

Concepts

Industry classification. The industry classifications in this release are in accordance with the 2012 version of the North American Industry Classification System (NAICS).

Employment. Employment includes persons on the payroll who worked or received pay for the pay period that includes the 12th day of the reference month. Full-time, part-time, permanent, short-term, seasonal, salaried, and hourly employees are included, as are employees on paid vacations or other paid leave. Proprietors or partners of unincorporated businesses, unpaid family workers, or persons on leave without pay or on strike for the entire pay period, are not counted as employed. Employees of temporary help agencies, employee leasing companies, outside contractors, and consultants are counted by their employer of record, not by the establishment where they are working.

Job openings. Job openings information is collected for the last business day of the reference month. A job opening requires that: 1) a specific position exists and there is work available for that position, 2) work could start within 30 days whether or not the employer found a suitable candidate, and 3) the employer is actively recruiting from outside the establishment to fill the position. Included are full-time, part-time, permanent, short-term, and seasonal openings. Active recruiting means that the establishment is taking steps to fill a position by advertising in newspapers or on the Internet, posting help-wanted signs, accepting applications, or using other similar methods.

Jobs to be filled only by internal transfers, promotions, demotions, or recall from layoffs are excluded. Also excluded are jobs with start dates more than 30 days in the future, jobs for which employees have been hired but have not yet reported for work, and jobs to be filled by employees of temporary help agencies, employee leasing

companies, outside contractors, or consultants. The job openings rate is computed by dividing the number of job openings by the sum of employment and job openings and multiplying that quotient by 100.

Hires. The hires level is the total number of additions to the payroll occurring at any time during the reference month, including both new and rehired employees, full-time and part-time, permanent, short-term and seasonal employees, employees recalled to the location after a layoff lasting more than 7 days, on-call or intermittent employees who returned to work after having been formally separated, and transfers from other locations. The hires count does not include transfers or promotions within the reporting site, employees returning from strike, employees of temporary help agencies or employee leasing companies, outside contractors, or consultants. The hires rate is computed by dividing the number of hires by employment and multiplying that quotient by 100.

Separations. The separations level is the total number of employment terminations occurring at any time during the reference month, and is reported by type of separation—quits, layoffs and discharges, and other separations. (Some respondents are only able to report total separations.) The quits count includes voluntary separations by employees (except for retirements, which are reported as other separations). The layoffs and discharges count is comprised of involuntary separations initiated by the employer and includes layoffs with no intent to rehire; formal layoffs lasting or expected to last more than 7 days; discharges resulting from mergers, downsizing, or closings; firings or other discharges for cause; terminations of permanent or short-term employees; and terminations of seasonal employees. The other separations count includes retirements, transfers to other locations, deaths, and separations due to disability. The separations count does not include transfers within the same location or employees on strike. The separations rate is computed by dividing the number of separations by employment and multiplying that quotient by 100. The quits, layoffs and discharges, and other separations rates are computed similarly.

Annual estimates. Annual levels for hires, quits, layoffs and discharges, other separations, and total separations are the sum of the 12 published monthly levels. Annual rates are computed by dividing the annual level by the Current Employment Statistics (CES) annual average employment level, and multiplying that quotient by 100. This figure will be approximately equal to the sum of the 12 monthly rates. Consistent with BLS practice, annual estimates are published only for not seasonally adjusted data and are released with the January news release each year. Annual estimates are not calculated for job openings because job openings are a stock, or point-in-time, measurement for the last business day of each month.

Sample and estimation methodology

The JOLTS survey design is a stratified random sample of 16,400 nonfarm business and government establishments. The sample is stratified by ownership, region, industry sector, and establishment size class. The establishments are drawn from a universe of over 9.1 million establishments compiled by the Quarterly Census of Employment and Wages (QCEW) program which includes all employers subject to state unemployment insurance laws and federal agencies subject to the Unemployment Compensation for Federal Employees program.

JOLTS total employment estimates are benchmarked, or ratio adjusted, monthly to the strike-adjusted employment estimates of the CES survey. A ratio of CES to JOLTS employment is used to adjust the levels for all other JOLTS data elements.

JOLTS business birth/death model

As with any sample survey, the JOLTS sample can only be as current as its sampling frame. The time lag from the birth of an establishment until its appearance on the sampling frame is approximately one year. In addition, many of these new units may fail within the first year. Since these universe units cannot be reflected on the sampling frame immediately, the JOLTS sample cannot capture job openings, hires, and separations from these units during their early existence. To compensate for the inability to capture data from these establishments, BLS has developed a birth/death model that uses birth and death activity from previous years. The estimates of job openings, hires, and separations produced by the birth/death model are added to the sample-based estimates produced from the survey to arrive at the estimates for openings, hires, and separations.

Seasonal adjustment

BLS uses X-12 ARIMA to seasonally adjust several JOLTS series utilizing moving averages as seasonal filters. A concurrent seasonal adjustment methodology is used in which new seasonal adjustment factors are calculated each month, using all relevant data, up to and including current month data. JOLTS seasonal adjustment includes both additive and multiplicative models and REGARIMA (regression with auto-correlated errors) modeling to improve the seasonal adjustment factors at the beginning and end of the series and to detect and adjust for outliers in the series.

Alignment procedure

The JOLTS measures for hires minus separations can be used to derive a measure of net employment change. This change should be comparable to the net employment change from the much larger CES survey. However, definitional differences as well as sampling and non-

sampling errors between the two surveys historically caused JOLTS to diverge from CES over time. To limit the divergence, and improve the quality of the JOLTS hires and separations series, BLS implemented the Monthly Alignment Method.

This method applies the CES employment trends to the seasonally adjusted JOLTS implied employment trend (hires minus separations) forcing them to be approximately the same, while preserving the seasonality of the JOLTS data. First, the two series are seasonally adjusted and the difference between the JOLTS implied employment change and the CES net employment change is calculated. Next, the JOLTS implied employment change is adjusted to equal the CES net employment change through a proportional adjustment. This procedure adjusts the two components (hires, separations) proportionally to their contribution to the total churn (hires plus separations). The adjusted hires and separations are converted back to not seasonally adjusted data by reversing the application of the original seasonal factors. After the Monthly Alignment Method has been used to adjust the level estimates, rate estimates are computed from the adjusted levels.

Reliability of the estimates

JOLTS estimates are subject to both sampling and nonsampling error. When a sample is surveyed rather than the entire population, there is a chance that the sample estimates may differ from the "true" population values they represent. The exact difference, or sampling error, varies depending on the particular sample selected, and this variability is measured by the standard error of the estimate. BLS analysis is generally conducted at the 90-percent level of confidence. That means that there is a 90-percent chance, or level of confidence, that an estimate based on a sample will differ by no more than 1.6 standard errors from the "true" population value because of sampling error. Estimates of sampling errors are available upon request.

The JOLTS estimates also are affected by nonsampling error. Nonsampling error can occur for many reasons, including the failure to include a segment of the population, the inability to obtain data from all units in the sample, the inability or unwillingness of respondents to provide data on a timely basis, mistakes made by respondents, errors made in the collection or processing of the data, and errors from the employment benchmark data used in estimation.

Other information

Information in this release will be made available to sensory impaired individuals upon request. Voice phone: (202) 691-5200; Federal Relay Service: (800) 877-8339.

Table 1. Job openings levels and rates by industry and region, seasonally adjusted¹

| Industry and region | Levels (in thousands) ² | | | | | | Rates ³ | | | | | |
|---|------------------------------------|-----------|-----------|-----------|-----------|------------------------|--------------------|-----------|-----------|-----------|-----------|------------------------|
| | Apr. 2012 | Dec. 2012 | Jan. 2013 | Feb. 2013 | Mar. 2013 | Apr. 2013 ^p | Apr. 2012 | Dec. 2012 | Jan. 2013 | Feb. 2013 | Mar. 2013 | Apr. 2013 ^p |
| Total | 3,523 | 3,612 | 3,611 | 3,899 | 3,875 | 3,757 | 2.6 | 2.6 | 2.6 | 2.8 | 2.8 | 2.7 |
| INDUSTRY | | | | | | | | | | | | |
| Total private ⁴ | 3,163 | 3,235 | 3,194 | 3,478 | 3,473 | 3,355 | 2.8 | 2.8 | 2.7 | 3.0 | 3.0 | 2.9 |
| Construction..... | 67 | 95 | 104 | 116 | 108 | 108 | 1.2 | 1.6 | 1.8 | 2.0 | 1.8 | 1.8 |
| Manufacturing..... | 254 | 242 | 253 | 274 | 271 | 245 | 2.1 | 2.0 | 2.1 | 2.2 | 2.2 | 2.0 |
| Trade, transportation, and utilities ⁵ . . . | 552 | 704 | 645 | 644 | 669 | 711 | 2.1 | 2.7 | 2.4 | 2.4 | 2.5 | 2.7 |
| Retail trade..... | 321 | 436 | 390 | 396 | 424 | 449 | 2.1 | 2.8 | 2.5 | 2.6 | 2.7 | 2.9 |
| Professional and business services. . . | 668 | 575 | 690 | 709 | 692 | 692 | 3.6 | 3.1 | 3.7 | 3.7 | 3.6 | 3.6 |
| Education and health services ⁶ | 674 | 670 | 579 | 672 | 687 | 652 | 3.2 | 3.2 | 2.7 | 3.2 | 3.2 | 3.1 |
| Health care and social assistance. . . | 620 | 602 | 524 | 612 | 621 | 590 | 3.5 | 3.4 | 3.0 | 3.4 | 3.5 | 3.3 |
| Leisure and hospitality..... | 452 | 453 | 453 | 488 | 500 | 465 | 3.2 | 3.2 | 3.2 | 3.4 | 3.4 | 3.2 |
| Arts, entertainment, and recreation... | 77 | 59 | 52 | 52 | 64 | 56 | 3.8 | 2.9 | 2.6 | 2.5 | 3.1 | 2.7 |
| Accommodation and food services... | 375 | 394 | 401 | 437 | 436 | 408 | 3.1 | 3.2 | 3.2 | 3.5 | 3.5 | 3.3 |
| Government ⁷ | 360 | 377 | 417 | 421 | 402 | 402 | 1.6 | 1.7 | 1.9 | 1.9 | 1.8 | 1.8 |
| State and local..... | 283 | 313 | 340 | 357 | 344 | 341 | 1.5 | 1.6 | 1.8 | 1.8 | 1.8 | 1.8 |
| REGION⁸ | | | | | | | | | | | | |
| Northeast..... | 681 | 661 | 668 | 700 | 699 | 643 | 2.6 | 2.5 | 2.5 | 2.7 | 2.6 | 2.4 |
| South..... | 1,405 | 1,364 | 1,441 | 1,547 | 1,501 | 1,466 | 2.8 | 2.7 | 2.9 | 3.1 | 3.0 | 2.9 |
| Midwest..... | 704 | 838 | 723 | 831 | 825 | 781 | 2.3 | 2.7 | 2.3 | 2.6 | 2.6 | 2.5 |
| West..... | 733 | 749 | 778 | 821 | 850 | 867 | 2.4 | 2.5 | 2.6 | 2.7 | 2.8 | 2.8 |

1 Job openings are the number of job openings on the last business day of the month.

2 Detail will not necessarily add to totals because of the independent seasonal adjustment of the various series and because not all series are shown.

3 The job openings rate is the number of job openings on the last business day of the month as a percent of total employment plus job openings.

4 Includes mining and logging, information, financial activities, and other services, not shown separately.

5 Includes wholesale trade and transportation, warehousing, and utilities, not shown separately.

6 Includes educational services, not shown separately.

7 Includes federal government, not shown separately.

8 The states (including the District of Columbia) that comprise the regions are: Northeast: Connecticut, Maine, Massachusetts, New Hampshire, New Jersey, New York, Pennsylvania, Rhode Island, and Vermont; South: Alabama, Arkansas, Delaware, District of Columbia, Florida, Georgia, Kentucky, Louisiana, Maryland, Mississippi, North Carolina, Oklahoma, South Carolina, Tennessee, Texas, Virginia, and West Virginia; Midwest: Illinois, Indiana, Iowa, Kansas, Michigan, Minnesota, Missouri, Nebraska, North Dakota, Ohio, South Dakota, and Wisconsin; West: Alaska, Arizona, California, Colorado, Hawaii, Idaho, Montana, Nevada, New Mexico, Oregon, Utah, Washington, and Wyoming.

p Preliminary

Table 2. Hires levels and rates by industry and region, seasonally adjusted¹

| Industry and region | Levels (in thousands) ² | | | | | | Rates ³ | | | | | |
|---|------------------------------------|-----------|-----------|-----------|-----------|------------------------|--------------------|-----------|-----------|-----------|-----------|------------------------|
| | Apr. 2012 | Dec. 2012 | Jan. 2013 | Feb. 2013 | Mar. 2013 | Apr. 2013 ^p | Apr. 2012 | Dec. 2012 | Jan. 2013 | Feb. 2013 | Mar. 2013 | Apr. 2013 ^p |
| Total..... | 4,252 | 4,195 | 4,298 | 4,451 | 4,227 | 4,425 | 3.2 | 3.1 | 3.2 | 3.3 | 3.1 | 3.3 |
| INDUSTRY | | | | | | | | | | | | |
| Total private ⁴ | 3,962 | 3,915 | 4,015 | 4,138 | 3,931 | 4,133 | 3.6 | 3.5 | 3.6 | 3.7 | 3.5 | 3.6 |
| Construction..... | 262 | 280 | 326 | 353 | 320 | 285 | 4.7 | 4.9 | 5.7 | 6.1 | 5.5 | 4.9 |
| Manufacturing..... | 252 | 236 | 219 | 231 | 201 | 224 | 2.1 | 2.0 | 1.8 | 1.9 | 1.7 | 1.9 |
| Trade, transportation, and utilities ⁵ | 862 | 890 | 868 | 936 | 821 | 898 | 3.4 | 3.5 | 3.4 | 3.6 | 3.2 | 3.5 |
| Retail trade..... | 575 | 600 | 586 | 651 | 562 | 628 | 3.9 | 4.0 | 3.9 | 4.3 | 3.7 | 4.2 |
| Professional and business services. . . . | 859 | 798 | 878 | 845 | 831 | 937 | 4.8 | 4.4 | 4.8 | 4.6 | 4.5 | 5.1 |
| Education and health services ⁶ | 485 | 506 | 507 | 499 | 520 | 541 | 2.4 | 2.5 | 2.5 | 2.4 | 2.5 | 2.6 |
| Health care and social assistance. . . . | 416 | 431 | 443 | 437 | 443 | 463 | 2.5 | 2.5 | 2.6 | 2.5 | 2.6 | 2.7 |
| Leisure and hospitality..... | 766 | 759 | 747 | 762 | 776 | 797 | 5.6 | 5.5 | 5.4 | 5.5 | 5.5 | 5.7 |
| Arts, entertainment, and recreation... . | 143 | 130 | 104 | 116 | 123 | 120 | 7.3 | 6.5 | 5.2 | 5.8 | 6.1 | 6.0 |
| Accommodation and food services... . | 623 | 629 | 643 | 646 | 653 | 678 | 5.3 | 5.3 | 5.4 | 5.4 | 5.4 | 5.6 |
| Government ⁷ | 290 | 280 | 283 | 313 | 295 | 292 | 1.3 | 1.3 | 1.3 | 1.4 | 1.4 | 1.3 |
| State and local..... | 256 | 246 | 249 | 266 | 264 | 257 | 1.3 | 1.3 | 1.3 | 1.4 | 1.4 | 1.3 |
| REGION⁸ | | | | | | | | | | | | |
| Northeast..... | 676 | 687 | 675 | 716 | 722 | 751 | 2.7 | 2.7 | 2.6 | 2.8 | 2.8 | 2.9 |
| South..... | 1,677 | 1,660 | 1,787 | 1,843 | 1,640 | 1,782 | 3.5 | 3.4 | 3.6 | 3.8 | 3.3 | 3.6 |
| Midwest..... | 940 | 924 | 906 | 848 | 907 | 931 | 3.1 | 3.0 | 3.0 | 2.8 | 2.9 | 3.0 |
| West..... | 958 | 924 | 930 | 1,044 | 959 | 962 | 3.3 | 3.1 | 3.1 | 3.5 | 3.2 | 3.2 |

1 Hires are the number of hires during the entire month.

2 Detail will not necessarily add to totals because of the independent seasonal adjustment of the various series and because not all series are shown.

3 The hires rate is the number of hires during the entire month as a percent of total employment.

4 Includes mining and logging, information, financial activities, and other services, not shown separately.

5 Includes wholesale trade and transportation, warehousing, and utilities, not shown separately.

6 Includes educational services, not shown separately.

7 Includes federal government, not shown separately.

8 The states (including the District of Columbia) that comprise the regions are: Northeast: Connecticut, Maine, Massachusetts, New Hampshire, New Jersey, New York, Pennsylvania, Rhode Island, and Vermont; South: Alabama, Arkansas, Delaware, District of Columbia, Florida, Georgia, Kentucky, Louisiana, Maryland, Mississippi, North Carolina, Oklahoma, South Carolina, Tennessee, Texas, Virginia, and West Virginia; Midwest: Illinois, Indiana, Iowa, Kansas, Michigan, Minnesota, Missouri, Nebraska, North Dakota, Ohio, South Dakota, and Wisconsin; West: Alaska, Arizona, California, Colorado, Hawaii, Idaho, Montana, Nevada, New Mexico, Oregon, Utah, Washington, and Wyoming.

p Preliminary

Table 3. Total separations levels and rates by industry and region, seasonally adjusted¹

| Industry and region | Levels (in thousands) ² | | | | | | Rates ³ | | | | | |
|---|------------------------------------|-----------|-----------|-----------|-----------|------------------------|--------------------|-----------|-----------|-----------|-----------|------------------------|
| | Apr. 2012 | Dec. 2012 | Jan. 2013 | Feb. 2013 | Mar. 2013 | Apr. 2013 ^p | Apr. 2012 | Dec. 2012 | Jan. 2013 | Feb. 2013 | Mar. 2013 | Apr. 2013 ^p |
| Total..... | 4,122 | 4,062 | 4,173 | 4,180 | 4,123 | 4,279 | 3.1 | 3.0 | 3.1 | 3.1 | 3.0 | 3.2 |
| INDUSTRY | | | | | | | | | | | | |
| Total private ⁴ | 3,813 | 3,772 | 3,872 | 3,884 | 3,819 | 3,973 | 3.4 | 3.3 | 3.4 | 3.4 | 3.4 | 3.5 |
| Construction..... | 277 | 263 | 315 | 322 | 316 | 300 | 4.9 | 4.6 | 5.5 | 5.6 | 5.4 | 5.2 |
| Manufacturing..... | 238 | 231 | 215 | 225 | 203 | 218 | 2.0 | 1.9 | 1.8 | 1.9 | 1.7 | 1.8 |
| Trade, transportation, and utilities ⁵ . . . | 827 | 840 | 854 | 863 | 820 | 867 | 3.3 | 3.3 | 3.3 | 3.3 | 3.2 | 3.4 |
| Retail trade..... | 557 | 595 | 580 | 583 | 557 | 615 | 3.8 | 4.0 | 3.9 | 3.9 | 3.7 | 4.1 |
| Professional and business services. . . | 806 | 813 | 845 | 770 | 780 | 869 | 4.5 | 4.5 | 4.7 | 4.2 | 4.2 | 4.7 |
| Education and health services ⁶ | 459 | 468 | 486 | 482 | 482 | 531 | 2.3 | 2.3 | 2.4 | 2.3 | 2.3 | 2.6 |
| Health care and social assistance. . . | 394 | 402 | 417 | 413 | 416 | 456 | 2.3 | 2.3 | 2.4 | 2.4 | 2.4 | 2.6 |
| Leisure and hospitality..... | 730 | 729 | 715 | 730 | 738 | 738 | 5.3 | 5.2 | 5.1 | 5.2 | 5.3 | 5.2 |
| Arts, entertainment, and recreation... | 152 | 125 | 101 | 103 | 108 | 115 | 7.7 | 6.3 | 5.1 | 5.2 | 5.4 | 5.7 |
| Accommodation and food services... | 578 | 604 | 614 | 627 | 631 | 624 | 4.9 | 5.1 | 5.1 | 5.2 | 5.2 | 5.2 |
| Government ⁷ | 309 | 290 | 302 | 296 | 304 | 305 | 1.4 | 1.3 | 1.4 | 1.4 | 1.4 | 1.4 |
| State and local..... | 276 | 251 | 259 | 251 | 260 | 261 | 1.4 | 1.3 | 1.4 | 1.3 | 1.4 | 1.4 |
| REGION⁸ | | | | | | | | | | | | |
| Northeast..... | 686 | 663 | 724 | 682 | 711 | 694 | 2.7 | 2.6 | 2.8 | 2.7 | 2.8 | 2.7 |
| South..... | 1,581 | 1,609 | 1,587 | 1,712 | 1,599 | 1,670 | 3.3 | 3.3 | 3.2 | 3.5 | 3.3 | 3.4 |
| Midwest..... | 961 | 894 | 849 | 874 | 880 | 932 | 3.2 | 2.9 | 2.8 | 2.8 | 2.9 | 3.0 |
| West..... | 894 | 895 | 1,013 | 911 | 933 | 983 | 3.1 | 3.0 | 3.4 | 3.1 | 3.1 | 3.3 |

1 Total separations are the number of total separations during the entire month.

2 Detail will not necessarily add to totals because of the independent seasonal adjustment of the various series and because not all series are shown.

3 The total separations rate is the number of total separations during the entire month as a percent of total employment.

4 Includes mining and logging, information, financial activities, and other services, not shown separately.

5 Includes wholesale trade and transportation, warehousing, and utilities, not shown separately.

6 Includes educational services, not shown separately.

7 Includes federal government, not shown separately.

8 The states (including the District of Columbia) that comprise the regions are: Northeast: Connecticut, Maine, Massachusetts, New Hampshire, New Jersey, New York, Pennsylvania, Rhode Island, and Vermont; South: Alabama, Arkansas, Delaware, District of Columbia, Florida, Georgia, Kentucky, Louisiana, Maryland, Mississippi, North Carolina, Oklahoma, South Carolina, Tennessee, Texas, Virginia, and West Virginia; Midwest: Illinois, Indiana, Iowa, Kansas, Michigan, Minnesota, Missouri, Nebraska, North Dakota, Ohio, South Dakota, and Wisconsin; West: Alaska, Arizona, California, Colorado, Hawaii, Idaho, Montana, Nevada, New Mexico, Oregon, Utah, Washington, and Wyoming.

p Preliminary

Table 4. Quits levels and rates by industry and region, seasonally adjusted¹

| Industry and region | Levels (in thousands) ² | | | | | | Rates ³ | | | | | |
|---|------------------------------------|-----------|-----------|-----------|-----------|------------------------|--------------------|-----------|-----------|-----------|-----------|------------------------|
| | Apr. 2012 | Dec. 2012 | Jan. 2013 | Feb. 2013 | Mar. 2013 | Apr. 2013 ^p | Apr. 2012 | Dec. 2012 | Jan. 2013 | Feb. 2013 | Mar. 2013 | Apr. 2013 ^p |
| Total..... | 2,080 | 2,126 | 2,260 | 2,286 | 2,099 | 2,251 | 1.6 | 1.6 | 1.7 | 1.7 | 1.6 | 1.7 |
| INDUSTRY | | | | | | | | | | | | |
| Total private ⁴ | 1,940 | 1,999 | 2,128 | 2,159 | 1,967 | 2,104 | 1.7 | 1.8 | 1.9 | 1.9 | 1.7 | 1.9 |
| Construction..... | 75 | 68 | 134 | 106 | 91 | 95 | 1.3 | 1.2 | 2.3 | 1.8 | 1.6 | 1.6 |
| Manufacturing..... | 114 | 116 | 98 | 102 | 94 | 106 | 1.0 | 1.0 | 0.8 | 0.9 | 0.8 | 0.9 |
| Trade, transportation, and utilities ⁵ | 455 | 452 | 491 | 501 | 446 | 483 | 1.8 | 1.8 | 1.9 | 1.9 | 1.7 | 1.9 |
| Retail trade..... | 332 | 328 | 362 | 354 | 318 | 350 | 2.2 | 2.2 | 2.4 | 2.4 | 2.1 | 2.3 |
| Professional and business services. . . . | 383 | 413 | 375 | 385 | 372 | 465 | 2.1 | 2.3 | 2.1 | 2.1 | 2.0 | 2.5 |
| Education and health services ⁶ | 258 | 273 | 299 | 289 | 281 | 286 | 1.3 | 1.3 | 1.5 | 1.4 | 1.4 | 1.4 |
| Health care and social assistance. . . . | 229 | 248 | 264 | 255 | 255 | 251 | 1.4 | 1.4 | 1.5 | 1.5 | 1.5 | 1.5 |
| Leisure and hospitality..... | 433 | 451 | 472 | 491 | 445 | 443 | 3.2 | 3.2 | 3.4 | 3.5 | 3.2 | 3.1 |
| Arts, entertainment, and recreation... . | 43 | 38 | 47 | 54 | 47 | 42 | 2.2 | 1.9 | 2.4 | 2.7 | 2.3 | 2.1 |
| Accommodation and food services... . | 390 | 413 | 426 | 437 | 397 | 401 | 3.3 | 3.5 | 3.6 | 3.7 | 3.3 | 3.3 |
| Government ⁷ | 141 | 127 | 132 | 127 | 131 | 146 | 0.6 | 0.6 | 0.6 | 0.6 | 0.6 | 0.7 |
| State and local..... | 129 | 115 | 121 | 116 | 120 | 134 | 0.7 | 0.6 | 0.6 | 0.6 | 0.6 | 0.7 |
| REGION⁸ | | | | | | | | | | | | |
| Northeast..... | 299 | 315 | 352 | 311 | 288 | 309 | 1.2 | 1.2 | 1.4 | 1.2 | 1.1 | 1.2 |
| South..... | 865 | 892 | 908 | 1,034 | 894 | 947 | 1.8 | 1.8 | 1.9 | 2.1 | 1.8 | 1.9 |
| Midwest..... | 474 | 454 | 479 | 469 | 473 | 534 | 1.6 | 1.5 | 1.6 | 1.5 | 1.5 | 1.7 |
| West..... | 442 | 465 | 522 | 472 | 444 | 461 | 1.5 | 1.6 | 1.8 | 1.6 | 1.5 | 1.6 |

1 Quits are the number of quits during the entire month.

2 Detail will not necessarily add to totals because of the independent seasonal adjustment of the various series and because not all series are shown.

3 The quits rate is the number of quits during the entire month as a percent of total employment.

4 Includes mining and logging, information, financial activities, and other services, not shown separately.

5 Includes wholesale trade and transportation, warehousing, and utilities, not shown separately.

6 Includes educational services, not shown separately.

7 Includes federal government, not shown separately.

8 The states (including the District of Columbia) that comprise the regions are: Northeast: Connecticut, Maine, Massachusetts, New Hampshire, New Jersey, New York, Pennsylvania, Rhode Island, and Vermont; South: Alabama, Arkansas, Delaware, District of Columbia, Florida, Georgia, Kentucky, Louisiana, Maryland, Mississippi, North Carolina, Oklahoma, South Carolina, Tennessee, Texas, Virginia, and West Virginia; Midwest: Illinois, Indiana, Iowa, Kansas, Michigan, Minnesota, Missouri, Nebraska, North Dakota, Ohio, South Dakota, and Wisconsin; West: Alaska, Arizona, California, Colorado, Hawaii, Idaho, Montana, Nevada, New Mexico, Oregon, Utah, Washington, and Wyoming.

p Preliminary

Table 5. Layoffs and discharges levels and rates by industry and region, seasonally adjusted¹

| Industry and region | Levels (in thousands) ² | | | | | | Rates ³ | | | | | |
|---|------------------------------------|-----------|-----------|-----------|-----------|------------------------|--------------------|-----------|-----------|-----------|-----------|------------------------|
| | Apr. 2012 | Dec. 2012 | Jan. 2013 | Feb. 2013 | Mar. 2013 | Apr. 2013 ^p | Apr. 2012 | Dec. 2012 | Jan. 2013 | Feb. 2013 | Mar. 2013 | Apr. 2013 ^p |
| Total..... | 1,752 | 1,569 | 1,520 | 1,572 | 1,686 | 1,653 | 1.3 | 1.2 | 1.1 | 1.2 | 1.2 | 1.2 |
| INDUSTRY | | | | | | | | | | | | |
| Total private ⁴ | 1,644 | 1,479 | 1,430 | 1,467 | 1,572 | 1,554 | 1.5 | 1.3 | 1.3 | 1.3 | 1.4 | 1.4 |
| Construction..... | - | - | - | - | - | - | - | - | - | - | - | - |
| Manufacturing..... | - | - | - | - | - | - | - | - | - | - | - | - |
| Trade, transportation, and utilities ⁵ | - | - | - | - | - | - | - | - | - | - | - | - |
| Retail trade..... | - | - | - | - | - | - | - | - | - | - | - | - |
| Professional and business services. | - | - | - | - | - | - | - | - | - | - | - | - |
| Education and health services ⁶ | - | - | - | - | - | - | - | - | - | - | - | - |
| Health care and social assistance. ... | - | - | - | - | - | - | - | - | - | - | - | - |
| Leisure and hospitality..... | - | - | - | - | - | - | - | - | - | - | - | - |
| Arts, entertainment, and recreation... | - | - | - | - | - | - | - | - | - | - | - | - |
| Accommodation and food services... | - | - | - | - | - | - | - | - | - | - | - | - |
| Government ⁷ | 108 | 89 | 90 | 104 | 114 | 99 | 0.5 | 0.4 | 0.4 | 0.5 | 0.5 | 0.5 |
| State and local..... | - | - | - | - | - | - | - | - | - | - | - | - |
| REGION⁸ | | | | | | | | | | | | |
| Northeast..... | 335 | 284 | 284 | 300 | 358 | 319 | 1.3 | 1.1 | 1.1 | 1.2 | 1.4 | 1.2 |
| South..... | 630 | 557 | 532 | 561 | 584 | 594 | 1.3 | 1.1 | 1.1 | 1.1 | 1.2 | 1.2 |
| Midwest..... | 409 | 357 | 298 | 334 | 329 | 311 | 1.3 | 1.2 | 1.0 | 1.1 | 1.1 | 1.0 |
| West..... | 378 | 370 | 406 | 376 | 415 | 429 | 1.3 | 1.3 | 1.4 | 1.3 | 1.4 | 1.4 |

1 Layoffs and discharges are the number of layoffs and discharges during the entire month.

2 Detail will not necessarily add to totals because of the independent seasonal adjustment of the various series and because not all series are shown.

3 The layoffs and discharges rate is the number of layoffs and discharges during the entire month as a percent of total employment.

4 Includes mining and logging, information, financial activities, and other services, not shown separately.

5 Includes wholesale trade and transportation, warehousing, and utilities, not shown separately.

6 Includes educational services, not shown separately.

7 Includes federal government, not shown separately.

8 The states (including the District of Columbia) that comprise the regions are: Northeast: Connecticut, Maine, Massachusetts, New Hampshire, New Jersey, New York, Pennsylvania, Rhode Island, and Vermont; South: Alabama, Arkansas, Delaware, District of Columbia, Florida, Georgia, Kentucky, Louisiana, Maryland, Mississippi, North Carolina, Oklahoma, South Carolina, Tennessee, Texas, Virginia, and West Virginia; Midwest: Illinois, Indiana, Iowa, Kansas, Michigan, Minnesota, Missouri, Nebraska, North Dakota, Ohio, South Dakota, and Wisconsin; West: Alaska, Arizona, California, Colorado, Hawaii, Idaho, Montana, Nevada, New Mexico, Oregon, Utah, Washington, and Wyoming.

p Preliminary

- Data not available.

Table 6. Other separations levels and rates by industry and region, seasonally adjusted¹

| Industry and region | Levels (in thousands) ² | | | | | | Rates ³ | | | | | |
|---|------------------------------------|-----------|-----------|-----------|-----------|------------------------|--------------------|-----------|-----------|-----------|-----------|------------------------|
| | Apr. 2012 | Dec. 2012 | Jan. 2013 | Feb. 2013 | Mar. 2013 | Apr. 2013 ^p | Apr. 2012 | Dec. 2012 | Jan. 2013 | Feb. 2013 | Mar. 2013 | Apr. 2013 ^p |
| Total..... | 289 | 367 | 393 | 323 | 338 | 375 | 0.2 | 0.3 | 0.3 | 0.2 | 0.3 | 0.3 |
| INDUSTRY | | | | | | | | | | | | |
| Total private ⁴ | 229 | 293 | 314 | 258 | 280 | 315 | 0.2 | 0.3 | 0.3 | 0.2 | 0.2 | 0.3 |
| Construction..... | - | - | - | - | - | - | - | - | - | - | - | - |
| Manufacturing..... | - | - | - | - | - | - | - | - | - | - | - | - |
| Trade, transportation, and utilities ⁵ | - | - | - | - | - | - | - | - | - | - | - | - |
| Retail trade..... | - | - | - | - | - | - | - | - | - | - | - | - |
| Professional and business services. | - | - | - | - | - | - | - | - | - | - | - | - |
| Education and health services ⁶ | - | - | - | - | - | - | - | - | - | - | - | - |
| Health care and social assistance. ... | - | - | - | - | - | - | - | - | - | - | - | - |
| Leisure and hospitality..... | - | - | - | - | - | - | - | - | - | - | - | - |
| Arts, entertainment, and recreation... | - | - | - | - | - | - | - | - | - | - | - | - |
| Accommodation and food services... | - | - | - | - | - | - | - | - | - | - | - | - |
| Government ⁷ | 60 | 74 | 79 | 66 | 58 | 60 | 0.3 | 0.3 | 0.4 | 0.3 | 0.3 | 0.3 |
| State and local..... | - | - | - | - | - | - | - | - | - | - | - | - |
| REGION⁸ | | | | | | | | | | | | |
| Northeast..... | - | - | - | - | - | - | - | - | - | - | - | - |
| South..... | - | - | - | - | - | - | - | - | - | - | - | - |
| Midwest..... | - | - | - | - | - | - | - | - | - | - | - | - |
| West..... | - | - | - | - | - | - | - | - | - | - | - | - |

1 Other separations are the number of other separations during the entire month.

2 Detail will not necessarily add to totals because of the independent seasonal adjustment of the various series and because not all series are shown.

3 The other separations rate is the number of other separations during the entire month as a percent of total employment.

4 Includes mining and logging, information, financial activities, and other services, not shown separately.

5 Includes wholesale trade and transportation, warehousing, and utilities, not shown separately.

6 Includes educational services, not shown separately.

7 Includes federal government, not shown separately.

8 The states (including the District of Columbia) that comprise the regions are: Northeast: Connecticut, Maine, Massachusetts, New Hampshire, New Jersey, New York, Pennsylvania, Rhode Island, and Vermont; South: Alabama, Arkansas, Delaware, District of Columbia, Florida, Georgia, Kentucky, Louisiana, Maryland, Mississippi, North Carolina, Oklahoma, South Carolina, Tennessee, Texas, Virginia, and West Virginia; Midwest: Illinois, Indiana, Iowa, Kansas, Michigan, Minnesota, Missouri, Nebraska, North Dakota, Ohio, South Dakota, and Wisconsin; West: Alaska, Arizona, California, Colorado, Hawaii, Idaho, Montana, Nevada, New Mexico, Oregon, Utah, Washington, and Wyoming.

p Preliminary

- Data not available.

Table 7. Job openings levels and rates by industry and region, not seasonally adjusted¹

| Industry and region | Levels (in thousands) | | | Rates ² | | |
|---|-----------------------|-----------|------------------------|--------------------|-----------|------------------------|
| | Apr. 2012 | Mar. 2013 | Apr. 2013 ^p | Apr. 2012 | Mar. 2013 | Apr. 2013 ^p |
| Total..... | 3,831 | 3,912 | 4,076 | 2.8 | 2.8 | 2.9 |
| INDUSTRY | | | | | | |
| Total private..... | 3,462 | 3,513 | 3,663 | 3.0 | 3.0 | 3.1 |
| Mining and logging..... | 16 | 14 | 24 | 1.9 | 1.6 | 2.7 |
| Construction..... | 86 | 109 | 139 | 1.6 | 2.0 | 2.4 |
| Manufacturing..... | 268 | 281 | 255 | 2.2 | 2.3 | 2.1 |
| Durable goods..... | 165 | 198 | 168 | 2.2 | 2.6 | 2.2 |
| Nondurable goods..... | 103 | 83 | 86 | 2.3 | 1.9 | 1.9 |
| Trade, transportation, and utilities..... | 576 | 644 | 752 | 2.2 | 2.5 | 2.8 |
| Wholesale trade..... | 136 | 134 | 134 | 2.3 | 2.3 | 2.3 |
| Retail trade..... | 334 | 396 | 476 | 2.2 | 2.6 | 3.1 |
| Transportation, warehousing, and utilities..... | 107 | 115 | 141 | 2.1 | 2.3 | 2.8 |
| Information..... | 111 | 88 | 75 | 4.0 | 3.2 | 2.7 |
| Financial activities..... | 242 | 273 | 300 | 3.0 | 3.4 | 3.7 |
| Finance and insurance..... | 195 | 228 | 241 | 3.2 | 3.7 | 3.9 |
| Real estate and rental and leasing..... | 47 | 45 | 59 | 2.4 | 2.2 | 2.9 |
| Professional and business services..... | 692 | 689 | 721 | 3.7 | 3.7 | 3.8 |
| Education and health services..... | 712 | 695 | 689 | 3.4 | 3.2 | 3.2 |
| Educational services..... | 62 | 64 | 69 | 1.7 | 1.8 | 1.9 |
| Health care and social assistance..... | 650 | 631 | 620 | 3.7 | 3.5 | 3.5 |
| Leisure and hospitality..... | 554 | 553 | 565 | 3.9 | 3.9 | 3.9 |
| Arts, entertainment, and recreation..... | 97 | 67 | 73 | 4.8 | 3.5 | 3.6 |
| Accommodation and food services..... | 457 | 486 | 492 | 3.8 | 4.0 | 3.9 |
| Other services..... | 204 | 166 | 146 | 3.6 | 3.0 | 2.6 |
| Government..... | 369 | 398 | 412 | 1.6 | 1.8 | 1.8 |
| Federal..... | 82 | 65 | 64 | 2.8 | 2.3 | 2.3 |
| State and local..... | 286 | 334 | 348 | 1.4 | 1.7 | 1.8 |
| REGION³ | | | | | | |
| Northeast..... | 746 | 697 | 698 | 2.9 | 2.7 | 2.6 |
| South..... | 1,509 | 1,531 | 1,574 | 3.0 | 3.0 | 3.1 |
| Midwest..... | 790 | 851 | 866 | 2.5 | 2.7 | 2.7 |
| West..... | 785 | 833 | 938 | 2.6 | 2.7 | 3.1 |

1 Job openings are the number of job openings on the last business day of the month.

2 The job openings rate is the number of job openings on the last business day of the month as a percent of total employment plus job openings.

3 The states (including the District of Columbia) that comprise the regions are: Northeast: Connecticut, Maine, Massachusetts, New Hampshire, New Jersey, New York, Pennsylvania, Rhode Island, and Vermont; South: Alabama, Arkansas, Delaware, District of Columbia, Florida, Georgia, Kentucky, Louisiana, Maryland, Mississippi, North Carolina, Oklahoma, South Carolina, Tennessee, Texas, Virginia, and West Virginia; Midwest: Illinois, Indiana, Iowa, Kansas, Michigan, Minnesota, Missouri, Nebraska, North Dakota, Ohio, South Dakota, and Wisconsin; West: Alaska, Arizona, California, Colorado, Hawaii, Idaho, Montana, Nevada, New Mexico, Oregon, Utah, Washington, and Wyoming.

p Preliminary

Table 8. Hires levels and rates by industry and region, not seasonally adjusted¹

| Industry and region | Levels (in thousands) | | | Rates ² | | |
|---|-----------------------|-----------|------------------------|--------------------|-----------|------------------------|
| | Apr. 2012 | Mar. 2013 | Apr. 2013 ^p | Apr. 2012 | Mar. 2013 | Apr. 2013 ^p |
| Total..... | 4,554 | 3,991 | 4,773 | 3.4 | 3.0 | 3.5 |
| INDUSTRY | | | | | | |
| Total private..... | 4,347 | 3,780 | 4,556 | 3.9 | 3.4 | 4.0 |
| Mining and logging..... | 35 | 32 | 33 | 4.1 | 3.7 | 3.8 |
| Construction..... | 351 | 343 | 366 | 6.4 | 6.2 | 6.5 |
| Manufacturing..... | 268 | 201 | 240 | 2.3 | 1.7 | 2.0 |
| Durable goods..... | 168 | 125 | 160 | 2.3 | 1.7 | 2.1 |
| Nondurable goods..... | 99 | 76 | 80 | 2.3 | 1.7 | 1.8 |
| Trade, transportation, and utilities..... | 906 | 779 | 947 | 3.6 | 3.1 | 3.7 |
| Wholesale trade..... | 153 | 115 | 138 | 2.7 | 2.0 | 2.4 |
| Retail trade..... | 599 | 540 | 666 | 4.1 | 3.6 | 4.5 |
| Transportation, warehousing, and utilities..... | 154 | 124 | 143 | 3.2 | 2.5 | 2.9 |
| Information..... | 60 | 40 | 69 | 2.3 | 1.5 | 2.6 |
| Financial activities..... | 186 | 156 | 200 | 2.4 | 2.0 | 2.5 |
| Finance and insurance..... | 119 | 102 | 141 | 2.0 | 1.7 | 2.4 |
| Real estate and rental and leasing..... | 67 | 54 | 59 | 3.5 | 2.8 | 3.0 |
| Professional and business services..... | 953 | 786 | 1,049 | 5.4 | 4.3 | 5.7 |
| Education and health services..... | 456 | 453 | 523 | 2.2 | 2.2 | 2.5 |
| Educational services..... | 44 | 50 | 52 | 1.3 | 1.4 | 1.5 |
| Health care and social assistance..... | 412 | 403 | 470 | 2.4 | 2.3 | 2.7 |
| Leisure and hospitality..... | 901 | 809 | 950 | 6.6 | 5.9 | 6.8 |
| Arts, entertainment, and recreation..... | 189 | 128 | 161 | 9.9 | 6.9 | 8.2 |
| Accommodation and food services..... | 712 | 680 | 789 | 6.1 | 5.8 | 6.6 |
| Other services..... | 230 | 182 | 179 | 4.3 | 3.4 | 3.3 |
| Government..... | 208 | 211 | 217 | 0.9 | 0.9 | 1.0 |
| Federal..... | 29 | 28 | 31 | 1.0 | 1.0 | 1.1 |
| State and local..... | 179 | 183 | 186 | 0.9 | 0.9 | 1.0 |
| REGION³ | | | | | | |
| Northeast..... | 716 | 665 | 807 | 2.8 | 2.6 | 3.1 |
| South..... | 1,805 | 1,580 | 1,924 | 3.7 | 3.2 | 3.9 |
| Midwest..... | 1,047 | 870 | 1,054 | 3.5 | 2.8 | 3.4 |
| West..... | 987 | 877 | 989 | 3.4 | 3.0 | 3.3 |

1 Hires are the number of hires during the entire month.

2 The hires rate is the number of hires during the entire month as a percent of total employment.

3 The states (including the District of Columbia) that comprise the regions are: Northeast: Connecticut, Maine, Massachusetts, New Hampshire, New Jersey, New York, Pennsylvania, Rhode Island, and Vermont; South: Alabama, Arkansas, Delaware, District of Columbia, Florida, Georgia, Kentucky, Louisiana, Maryland, Mississippi, North Carolina, Oklahoma, South Carolina, Tennessee, Texas, Virginia, and West Virginia; Midwest: Illinois, Indiana, Iowa, Kansas, Michigan, Minnesota, Missouri, Nebraska, North Dakota, Ohio, South Dakota, and Wisconsin; West: Alaska, Arizona, California, Colorado, Hawaii, Idaho, Montana, Nevada, New Mexico, Oregon, Utah, Washington, and Wyoming.

p Preliminary

Table 9. Total separations levels and rates by industry and region, not seasonally adjusted¹

| Industry and region | Levels (in thousands) | | | Rates ² | | |
|---|-----------------------|-----------|------------------------|--------------------|-----------|------------------------|
| | Apr. 2012 | Mar. 2013 | Apr. 2013 ^p | Apr. 2012 | Mar. 2013 | Apr. 2013 ^p |
| Total..... | 3,994 | 3,506 | 4,161 | 3.0 | 2.6 | 3.1 |
| INDUSTRY | | | | | | |
| Total private..... | 3,782 | 3,306 | 3,943 | 3.4 | 2.9 | 3.5 |
| Mining and logging..... | 31 | 30 | 31 | 3.6 | 3.5 | 3.6 |
| Construction..... | 264 | 276 | 285 | 4.8 | 5.0 | 5.1 |
| Manufacturing..... | 242 | 185 | 224 | 2.0 | 1.6 | 1.9 |
| Durable goods..... | 143 | 114 | 144 | 1.9 | 1.5 | 1.9 |
| Nondurable goods..... | 99 | 72 | 81 | 2.2 | 1.6 | 1.8 |
| Trade, transportation, and utilities..... | 769 | 710 | 809 | 3.0 | 2.8 | 3.2 |
| Wholesale trade..... | 104 | 106 | 101 | 1.9 | 1.9 | 1.8 |
| Retail trade..... | 514 | 475 | 577 | 3.5 | 3.2 | 3.9 |
| Transportation, warehousing, and utilities..... | 151 | 129 | 131 | 3.1 | 2.6 | 2.6 |
| Information..... | 57 | 44 | 71 | 2.1 | 1.6 | 2.7 |
| Financial activities..... | 182 | 158 | 194 | 2.4 | 2.0 | 2.5 |
| Finance and insurance..... | 126 | 112 | 143 | 2.2 | 1.9 | 2.4 |
| Real estate and rental and leasing..... | 56 | 46 | 51 | 2.9 | 2.4 | 2.6 |
| Professional and business services..... | 875 | 724 | 938 | 4.9 | 4.0 | 5.1 |
| Education and health services..... | 433 | 424 | 503 | 2.1 | 2.0 | 2.4 |
| Educational services..... | 51 | 39 | 59 | 1.4 | 1.1 | 1.7 |
| Health care and social assistance..... | 382 | 384 | 444 | 2.3 | 2.2 | 2.6 |
| Leisure and hospitality..... | 705 | 599 | 716 | 5.2 | 4.4 | 5.1 |
| Arts, entertainment, and recreation..... | 147 | 76 | 113 | 7.7 | 4.1 | 5.8 |
| Accommodation and food services..... | 557 | 523 | 603 | 4.8 | 4.4 | 5.0 |
| Other services..... | 225 | 156 | 170 | 4.2 | 2.9 | 3.1 |
| Government..... | 212 | 199 | 218 | 0.9 | 0.9 | 1.0 |
| Federal..... | 29 | 33 | 37 | 1.0 | 1.2 | 1.3 |
| State and local..... | 183 | 166 | 181 | 0.9 | 0.9 | 0.9 |
| REGION³ | | | | | | |
| Northeast..... | 644 | 572 | 656 | 2.5 | 2.2 | 2.6 |
| South..... | 1,618 | 1,425 | 1,700 | 3.3 | 2.9 | 3.5 |
| Midwest..... | 865 | 723 | 848 | 2.9 | 2.4 | 2.8 |
| West..... | 868 | 786 | 956 | 3.0 | 2.7 | 3.2 |

1 Total separations are the number of total separations during the entire month.

2 The total separations rate is the number of total separations during the entire month as a percent of total employment.

3 The states (including the District of Columbia) that comprise the regions are: Northeast: Connecticut, Maine, Massachusetts, New Hampshire, New Jersey, New York, Pennsylvania, Rhode Island, and Vermont; South: Alabama, Arkansas, Delaware, District of Columbia, Florida, Georgia, Kentucky, Louisiana, Maryland, Mississippi, North Carolina, Oklahoma, South Carolina, Tennessee, Texas, Virginia, and West Virginia; Midwest: Illinois, Indiana, Iowa, Kansas, Michigan, Minnesota, Missouri, Nebraska, North Dakota, Ohio, South Dakota, and Wisconsin; West: Alaska, Arizona, California, Colorado, Hawaii, Idaho, Montana, Nevada, New Mexico, Oregon, Utah, Washington, and Wyoming.

p Preliminary

Table 10. Quits levels and rates by industry and region, not seasonally adjusted¹

| Industry and region | Levels (in thousands) | | | Rates ² | | |
|---|-----------------------|-----------|------------------------|--------------------|-----------|------------------------|
| | Apr. 2012 | Mar. 2013 | Apr. 2013 ^p | Apr. 2012 | Mar. 2013 | Apr. 2013 ^p |
| Total..... | 2,098 | 1,898 | 2,291 | 1.6 | 1.4 | 1.7 |
| INDUSTRY | | | | | | |
| Total private..... | 1,995 | 1,801 | 2,175 | 1.8 | 1.6 | 1.9 |
| Mining and logging..... | 18 | 19 | 16 | 2.2 | 2.2 | 1.9 |
| Construction..... | 73 | 84 | 93 | 1.3 | 1.5 | 1.6 |
| Manufacturing..... | 118 | 88 | 114 | 1.0 | 0.7 | 1.0 |
| Durable goods..... | 68 | 47 | 70 | 0.9 | 0.6 | 0.9 |
| Nondurable goods..... | 50 | 40 | 44 | 1.1 | 0.9 | 1.0 |
| Trade, transportation, and utilities..... | 457 | 408 | 490 | 1.8 | 1.6 | 1.9 |
| Wholesale trade..... | 48 | 59 | 65 | 0.9 | 1.0 | 1.1 |
| Retail trade..... | 327 | 279 | 352 | 2.2 | 1.9 | 2.4 |
| Transportation, warehousing, and utilities..... | 81 | 70 | 73 | 1.7 | 1.4 | 1.5 |
| Information..... | 33 | 24 | 39 | 1.2 | 0.9 | 1.4 |
| Financial activities..... | 106 | 91 | 107 | 1.4 | 1.2 | 1.4 |
| Finance and insurance..... | 69 | 66 | 82 | 1.2 | 1.1 | 1.4 |
| Real estate and rental and leasing..... | 37 | 25 | 25 | 1.9 | 1.3 | 1.2 |
| Professional and business services..... | 394 | 356 | 488 | 2.2 | 2.0 | 2.7 |
| Education and health services..... | 257 | 268 | 285 | 1.3 | 1.3 | 1.4 |
| Educational services..... | 26 | 19 | 31 | 0.7 | 0.5 | 0.9 |
| Health care and social assistance..... | 231 | 250 | 254 | 1.4 | 1.5 | 1.5 |
| Leisure and hospitality..... | 445 | 380 | 453 | 3.3 | 2.8 | 3.2 |
| Arts, entertainment, and recreation..... | 40 | 34 | 38 | 2.1 | 1.8 | 1.9 |
| Accommodation and food services..... | 405 | 346 | 415 | 3.5 | 2.9 | 3.5 |
| Other services..... | 93 | 83 | 90 | 1.7 | 1.5 | 1.7 |
| Government..... | 103 | 97 | 116 | 0.5 | 0.4 | 0.5 |
| Federal..... | 11 | 10 | 11 | 0.4 | 0.4 | 0.4 |
| State and local..... | 93 | 87 | 105 | 0.5 | 0.4 | 0.5 |
| REGION³ | | | | | | |
| Northeast..... | 301 | 252 | 314 | 1.2 | 1.0 | 1.2 |
| South..... | 907 | 823 | 1,001 | 1.9 | 1.7 | 2.0 |
| Midwest..... | 449 | 424 | 514 | 1.5 | 1.4 | 1.7 |
| West..... | 441 | 398 | 462 | 1.5 | 1.3 | 1.6 |

1 Quits are the number of quits during the entire month.

2 The quits rate is the number of quits during the entire month as a percent of total employment.

3 The states (including the District of Columbia) that comprise the regions are: Northeast: Connecticut, Maine, Massachusetts, New Hampshire, New Jersey, New York, Pennsylvania, Rhode Island, and Vermont; South: Alabama, Arkansas, Delaware, District of Columbia, Florida, Georgia, Kentucky, Louisiana, Maryland, Mississippi, North Carolina, Oklahoma, South Carolina, Tennessee, Texas, Virginia, and West Virginia; Midwest: Illinois, Indiana, Iowa, Kansas, Michigan, Minnesota, Missouri, Nebraska, North Dakota, Ohio, South Dakota, and Wisconsin; West: Alaska, Arizona, California, Colorado, Hawaii, Idaho, Montana, Nevada, New Mexico, Oregon, Utah, Washington, and Wyoming.

p Preliminary

Table 11. Layoffs and discharges levels and rates by industry and region, not seasonally adjusted¹

| Industry and region | Levels (in thousands) | | | Rates ² | | |
|---|-----------------------|-----------|------------------------|--------------------|-----------|------------------------|
| | Apr. 2012 | Mar. 2013 | Apr. 2013 ^p | Apr. 2012 | Mar. 2013 | Apr. 2013 ^p |
| Total..... | 1,616 | 1,329 | 1,514 | 1.2 | 1.0 | 1.1 |
| INDUSTRY | | | | | | |
| Total private..... | 1,554 | 1,267 | 1,455 | 1.4 | 1.1 | 1.3 |
| Mining and logging..... | 11 | 9 | 12 | 1.3 | 1.0 | 1.5 |
| Construction..... | 178 | 189 | 179 | 3.3 | 3.4 | 3.2 |
| Manufacturing..... | 99 | 83 | 86 | 0.8 | 0.7 | 0.7 |
| Durable goods..... | 59 | 58 | 60 | 0.8 | 0.8 | 0.8 |
| Nondurable goods..... | 40 | 25 | 26 | 0.9 | 0.6 | 0.6 |
| Trade, transportation, and utilities..... | 235 | 233 | 254 | 0.9 | 0.9 | 1.0 |
| Wholesale trade..... | 48 | 30 | 31 | 0.9 | 0.5 | 0.5 |
| Retail trade..... | 143 | 162 | 178 | 1.0 | 1.1 | 1.2 |
| Transportation, warehousing, and utilities..... | 44 | 41 | 46 | 0.9 | 0.8 | 0.9 |
| Information..... | 21 | 11 | 29 | 0.8 | 0.4 | 1.1 |
| Financial activities..... | 50 | 44 | 46 | 0.7 | 0.6 | 0.6 |
| Finance and insurance..... | 34 | 26 | 30 | 0.6 | 0.5 | 0.5 |
| Real estate and rental and leasing..... | 17 | 18 | 17 | 0.9 | 0.9 | 0.8 |
| Professional and business services..... | 452 | 328 | 411 | 2.5 | 1.8 | 2.2 |
| Education and health services..... | 150 | 115 | 144 | 0.7 | 0.6 | 0.7 |
| Educational services..... | 21 | 16 | 20 | 0.6 | 0.5 | 0.6 |
| Health care and social assistance..... | 129 | 99 | 124 | 0.8 | 0.6 | 0.7 |
| Leisure and hospitality..... | 229 | 192 | 223 | 1.7 | 1.4 | 1.6 |
| Arts, entertainment, and recreation..... | 104 | 40 | 72 | 5.5 | 2.2 | 3.7 |
| Accommodation and food services..... | 124 | 152 | 151 | 1.1 | 1.3 | 1.3 |
| Other services..... | 129 | 63 | 71 | 2.4 | 1.2 | 1.3 |
| Government..... | 62 | 62 | 59 | 0.3 | 0.3 | 0.3 |
| Federal..... | 7 | 14 | 16 | 0.2 | 0.5 | 0.6 |
| State and local..... | 55 | 48 | 43 | 0.3 | 0.2 | 0.2 |
| REGION³ | | | | | | |
| Northeast..... | 293 | 264 | 281 | 1.2 | 1.0 | 1.1 |
| South..... | 624 | 504 | 574 | 1.3 | 1.0 | 1.2 |
| Midwest..... | 345 | 242 | 254 | 1.1 | 0.8 | 0.8 |
| West..... | 354 | 319 | 404 | 1.2 | 1.1 | 1.4 |

1 Layoffs and discharges are the number of layoffs and discharges during the entire month.

2 The layoffs and discharges rate is the number of layoffs and discharges during the entire month as a percent of total employment.

3 The states (including the District of Columbia) that comprise the regions are: Northeast: Connecticut, Maine, Massachusetts, New Hampshire, New Jersey, New York, Pennsylvania, Rhode Island, and Vermont; South: Alabama, Arkansas, Delaware, District of Columbia, Florida, Georgia, Kentucky, Louisiana, Maryland, Mississippi, North Carolina, Oklahoma, South Carolina, Tennessee, Texas, Virginia, and West Virginia; Midwest: Illinois, Indiana, Iowa, Kansas, Michigan, Minnesota, Missouri, Nebraska, North Dakota, Ohio, South Dakota, and Wisconsin; West: Alaska, Arizona, California, Colorado, Hawaii, Idaho, Montana, Nevada, New Mexico, Oregon, Utah, Washington, and Wyoming.

p Preliminary

Table 12. Other separations levels and rates by industry and region, not seasonally adjusted¹

| Industry and region | Levels (in thousands) | | | Rates ² | | |
|---|-----------------------|-----------|------------------------|--------------------|-----------|------------------------|
| | Apr. 2012 | Mar. 2013 | Apr. 2013 ^p | Apr. 2012 | Mar. 2013 | Apr. 2013 ^p |
| Total..... | 280 | 279 | 357 | 0.2 | 0.2 | 0.3 |
| INDUSTRY | | | | | | |
| Total private..... | 233 | 239 | 314 | 0.2 | 0.2 | 0.3 |
| Mining and logging..... | 2 | 3 | 2 | 0.2 | 0.3 | 0.3 |
| Construction..... | 13 | 3 | 14 | 0.2 | 0.1 | 0.2 |
| Manufacturing..... | 25 | 15 | 24 | 0.2 | 0.1 | 0.2 |
| Durable goods..... | 16 | 9 | 14 | 0.2 | 0.1 | 0.2 |
| Nondurable goods..... | 9 | 6 | 10 | 0.2 | 0.1 | 0.2 |
| Trade, transportation, and utilities..... | 77 | 69 | 66 | 0.3 | 0.3 | 0.3 |
| Wholesale trade..... | 7 | 17 | 6 | 0.1 | 0.3 | 0.1 |
| Retail trade..... | 43 | 34 | 47 | 0.3 | 0.2 | 0.3 |
| Transportation, warehousing, and utilities..... | 26 | 18 | 12 | 0.5 | 0.4 | 0.3 |
| Information..... | 3 | 8 | 4 | 0.1 | 0.3 | 0.2 |
| Financial activities..... | 26 | 23 | 42 | 0.3 | 0.3 | 0.5 |
| Finance and insurance..... | 23 | 20 | 32 | 0.4 | 0.3 | 0.5 |
| Real estate and rental and leasing..... | 3 | 3 | 10 | 0.1 | 0.2 | 0.5 |
| Professional and business services..... | 28 | 40 | 40 | 0.2 | 0.2 | 0.2 |
| Education and health services..... | 26 | 41 | 74 | 0.1 | 0.2 | 0.4 |
| Educational services..... | 4 | 5 | 8 | 0.1 | 0.1 | 0.2 |
| Health care and social assistance..... | 22 | 36 | 66 | 0.1 | 0.2 | 0.4 |
| Leisure and hospitality..... | 31 | 27 | 40 | 0.2 | 0.2 | 0.3 |
| Arts, entertainment, and recreation..... | 2 | 2 | 3 | 0.1 | 0.1 | 0.2 |
| Accommodation and food services..... | 28 | 25 | 37 | 0.2 | 0.2 | 0.3 |
| Other services..... | 4 | 10 | 9 | 0.1 | 0.2 | 0.2 |
| Government..... | 47 | 40 | 43 | 0.2 | 0.2 | 0.2 |
| Federal..... | 11 | 8 | 10 | 0.4 | 0.3 | 0.3 |
| State and local..... | 36 | 32 | 33 | 0.2 | 0.2 | 0.2 |
| REGION³ | | | | | | |
| Northeast..... | 50 | 55 | 61 | 0.2 | 0.2 | 0.2 |
| South..... | 87 | 98 | 125 | 0.2 | 0.2 | 0.3 |
| Midwest..... | 71 | 58 | 80 | 0.2 | 0.2 | 0.3 |
| West..... | 73 | 69 | 91 | 0.2 | 0.2 | 0.3 |

1 Other separations are the number of other separations during the entire month.

2 The other separations rate is the number of other separations during the entire month as a percent of total employment.

3 The states (including the District of Columbia) that comprise the regions are: Northeast: Connecticut, Maine, Massachusetts, New Hampshire, New Jersey, New York, Pennsylvania, Rhode Island, and Vermont; South: Alabama, Arkansas, Delaware, District of Columbia, Florida, Georgia, Kentucky, Louisiana, Maryland, Mississippi, North Carolina, Oklahoma, South Carolina, Tennessee, Texas, Virginia, and West Virginia; Midwest: Illinois, Indiana, Iowa, Kansas, Michigan, Minnesota, Missouri, Nebraska, North Dakota, Ohio, South Dakota, and Wisconsin; West: Alaska, Arizona, California, Colorado, Hawaii, Idaho, Montana, Nevada, New Mexico, Oregon, Utah, Washington, and Wyoming.

p Preliminary

NOTE: Levels are rounded to the nearest thousand and rates are rounded to the nearest tenth. Levels and rates may round down to zero.