

Transmission of material in this release is embargoed until 8:30 a.m. (EST) Wednesday, November 18, 2009

USDL-09-1401

Technical information: (202) 691-7000 • Reed.Steve@bls.gov • www.bls.gov/cpi
Media Contact: (202) 691-5902 • PressOffice@bls.gov

CONSUMER PRICE INDEX – OCTOBER 2009

On a seasonally adjusted basis, the Consumer Price Index for All Urban Consumers (CPI-U) rose 0.3 percent in October, the U.S. Bureau of Labor Statistics reported today. The index has decreased 0.2 percent over the last 12 months on a not seasonally adjusted basis.

The seasonally adjusted all items increase largely reflected advances in the indexes for energy and for new and used motor vehicles. The energy index rose for the fifth time in the last six months, advancing 1.5 percent as the indexes for gasoline, fuel oil, natural gas, and electricity all increased. The index for all items less food and energy rose 0.2 percent in October, the same increase as in September. The indexes for used cars and trucks and for new vehicles both rose sharply and together they accounted for over 90 percent of the increase in the index for all items less food and energy. The indexes for airline fares and medical care also increased, while the shelter index was unchanged and the indexes for apparel and recreation declined.

The food index also increased in October, rising 0.1 percent after declining in two of the previous three months. The index for food away from home increased slightly, while the food at home index was unchanged. Within the food at home group, the index for dairy and related products rose significantly, while the fruits and vegetables index declined for the fourth straight month.

Chart 1. One-month percent change in CPI for All Urban Consumers (CPI-U), seasonally adjusted, Oct. 2008 - Oct. 2009
Percent change

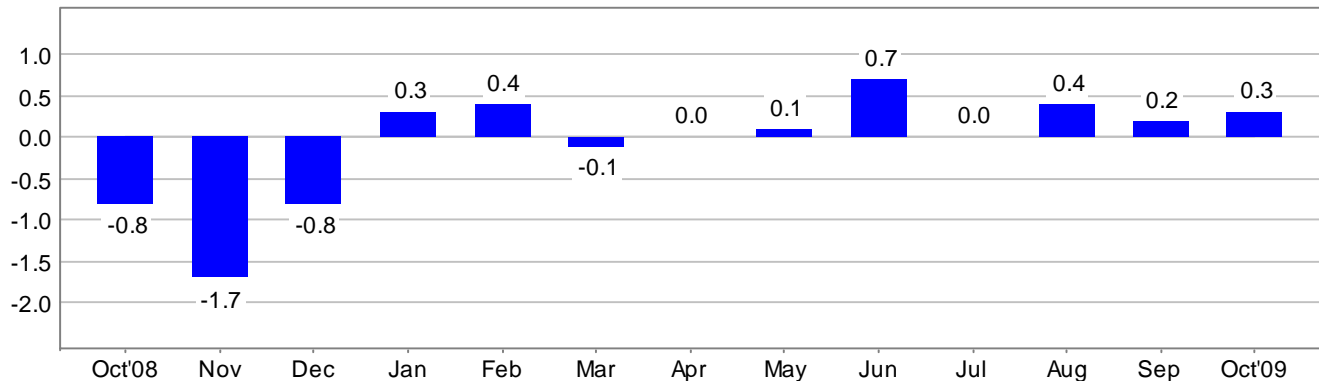


Chart 2. 12-month percent change in CPI for All Urban Consumers (CPI-U), not seasonally adjusted, Oct. 2008 - Oct. 2009

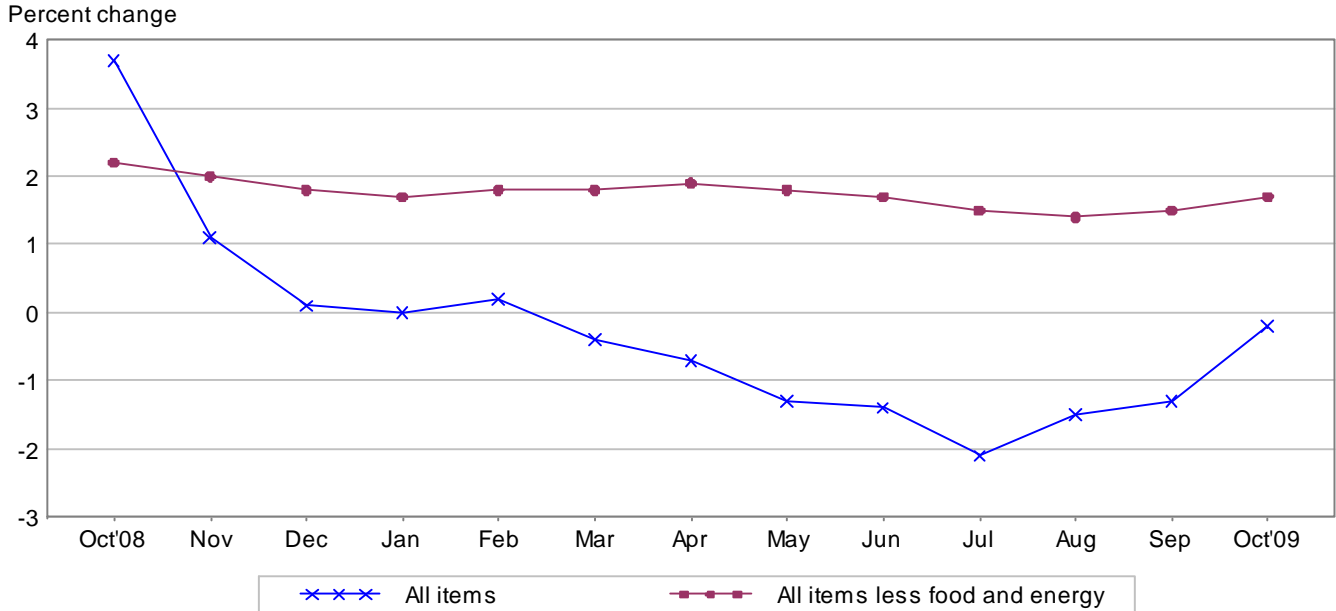


Table A. Percent changes in CPI for All Urban Consumers (CPI-U): U.S. city average

	Seasonally adjusted changes from preceding month							Un-adjusted 12-mos. ended Oct. 2009
	Apr. 2009	May 2009	June 2009	July 2009	Aug. 2009	Sep. 2009	Oct. 2009	
All items0	.1	.7	.0	.4	.2	.3	-.2
Food	-2	-2	.0	-3	.1	-1	.1	-.6
Food at home	-6	-5	.0	-5	.0	-3	.0	-2.8
Food away from home ¹3	.1	.1	.1	.1	.1	.1	2.2
Energy	-2.4	.2	7.4	-4	4.6	.6	1.5	-14.0
Energy commodities	-2.6	2.3	16.2	-4	8.5	1.1	1.9	-18.7
Gasoline (all types)	-2.8	3.1	17.3	-8	9.1	1.0	1.6	-17.9
Fuel oil	-3	-3.3	4.8	-1.5	6.2	1.5	6.3	-26.3
Energy services	-2.2	-1.7	-1.2	-3	.0	.1	.9	-7.1
Electricity	-6	-4	-1.9	-6	-1	.6	.6	-.6
Utility (piped) gas service	-7.0	-5.7	1.3	.9	.4	-1.7	1.9	-24.0
All items less food and energy3	.1	.2	.1	.1	.2	.2	1.7
Commodities less food and energy								
commodities5	.2	.3	.2	-.3	.3	.4	2.3
New vehicles4	.5	.7	.5	-1.3	.4	1.6	3.8
Used cars and trucks	-.1	1.0	.9	.0	1.9	1.6	3.4	2.3
Apparel	-.2	-.2	.7	.6	-.1	.1	-.4	1.4
Medical care commodities3	.4	.1	-.1	.5	.6	.2	4.3
Services less energy services2	.1	.1	.0	.2	.1	.1	1.5
Shelter2	.1	.1	-2	.1	.0	.0	.7
Transportation services3	-.1	-.1	.5	.6	.7	.4	2.7
Medical care services4	.3	.2	.3	.2	.4	.2	3.2

¹ Not seasonally adjusted.

Consumer Price Index Data for October 2009

Food

The food index rose 0.1 percent in October after declining 0.1 percent in September. The index for food away from home increased 0.1 percent while the food at home index was unchanged. Within the food at home group, the index for dairy and related products rose 1.0 percent in October after a 0.5 percent increase in September, and the index for other food at home advanced 0.3 percent. These increases were offset by a 0.7 percent decline in the fruits and vegetables index and 0.2 percent decreases in the indexes for meats, poultry, fish, and eggs and for nonalcoholic beverages. The index for cereals and bakery products was unchanged in October. Over the past 12 months, the food index has declined 0.6 percent with the food at home index down 2.8 percent.

Energy

The energy index rose 1.5 percent in October after increasing 0.6 percent in September. The index for energy commodities rose 1.9 percent, with the gasoline index increasing 1.6 percent. (Before seasonal adjustment, gasoline prices fell 0.8 percent in October.) The index for fuel oil rose 6.3 percent. The index for energy services, which increased 0.1 percent in September, rose 0.9 percent in October. The electricity index increased 0.6 percent while the index for natural gas rose 1.9 percent in October after declining 1.7 percent in September. Over the past 12 months, the energy index has fallen 14.0 percent with the gasoline index declining 17.9 percent.

All items less food and energy

The index for all items less food and energy rose 0.2 percent in October, the same increase as in September. Most of the advance was due to increases in transportation indexes. The new vehicles index rose 1.6 percent and the index for used cars and trucks rose 3.4 percent, its third consecutive substantial increase. The index for airline fares rose for the fourth straight month, increasing 1.7 percent in October. Outside of the transportation group, the changes within all items less food and energy were largely modest. The medical care index rose 0.2 percent in October after increasing 0.4 percent in September. The shelter index was unchanged in October, as it was in September. The rent index decreased 0.1 percent, the index for owners' equivalent rent was unchanged, and the index for lodging away from home rose 0.4 percent. Posting declines in October were the indexes for recreation and apparel, which both fell 0.4 percent. For the past 12 months, the index for all items less food and energy has risen 1.7 percent.

Not seasonally adjusted CPI measures

The Consumer Price Index for All Urban Consumers (CPI-U) decreased 0.2 percent over the last 12 months to an index level of 216.177 (1982-84=100). For the month, the index increased 0.1 percent prior to seasonal adjustment.

The Consumer Price Index for Urban Wage Earners and Clerical Workers (CPI-W) decreased 0.3 percent over the last 12 months to an index level of 211.549 (1982-84=100). For the month, the index increased 0.1 percent prior to seasonal adjustment.

The Chained Consumer Price Index for All Urban Consumers (C-CPI-U) decreased 0.5 percent over the last 12 months. For the month, the index increased 0.1 percent on a not seasonally adjusted basis. Please note that the indexes for the post-2007 period are subject to revision.

The Consumer Price Index for November 2009 is scheduled to be released on Wednesday, December 16, 2009, at 8:30 a.m. (EST).

Facilities for Sensory Impaired

Information from this release will be made available to sensory impaired individuals upon request.
Voice phone: 202-691-5200, Federal Relay Services: 1-800-877-8339.

Brief Explanation of the CPI

The Consumer Price Index (CPI) is a measure of the average change in prices over time of goods and services purchased by households. The Bureau of Labor Statistics publishes CPIs for two population groups: (1) the CPI for Urban Wage Earners and Clerical Workers (CPI-W), which covers households of wage earners and clerical workers that comprise approximately 32 percent of the total population and (2) the CPI for All Urban Consumers (CPI-U) and the Chained CPI for All Urban Consumers (C-CPI-U), which cover approximately 87 percent of the total population and include in addition to wage earners and clerical worker households, groups such as professional, managerial, and technical workers, the self-employed, short-term workers, the unemployed, and retirees and others not in the labor force.

The CPIs are based on prices of food, clothing, shelter, and fuels, transportation fares, charges for doctors' and dentists' services, drugs, and other goods and services that people buy for day-to-day living. Prices are collected in 87 urban areas across the country from about 50,000 housing units and approximately 23,000 retail establishments-department stores, supermarkets, hospitals, filling stations, and other types of stores and service establishments. All taxes directly associated with the purchase and use of items are included in the index. Prices of fuels and a few other items are obtained every month in all 87 locations. Prices of most other commodities and services are collected every month in the three largest geographic areas and every other month in other areas. Prices of most goods and services are obtained by personal visits or telephone calls of the Bureau's trained representatives.

In calculating the index, price changes for the various items in each location are averaged together with weights, which represent their importance in the spending of the appropriate population group. Local data are then combined to obtain a U.S. city average. For the CPI-U and CPI-W separate indexes are also published by size of city, by region of the country, for cross-classifications of regions and population-size classes, and for 27 local areas. Area indexes do not measure differences in the level of prices among cities; they only measure the average change in prices for each area since the base period. For the C-CPI-U data are issued only at the national level. It is important to note that the CPI-U and CPI-W are considered final when released, but the C-CPI-U is issued in preliminary form and subject to two annual revisions.

The index measures price change from a designed reference date. For the CPI-U and the CPI-W the reference base is 1982-84 equals 100.0. The reference base for the C-CPI-U is December 1999 equals 100. An increase of 16.5 percent from the reference base, for example, is shown as 116.5. This change can also be expressed in dollars as follows: the price of a base period market basket of goods and services in the CPI has risen from \$10 in 1982-84 to \$11.65.

For further details visit the CPI home page on the Internet at <http://www.bls.gov/cpi/> or contact our CPI Information and Analysis Section on (202) 691-7000.

Note on Sampling Error in the Consumer Price Index

The CPI is a statistical estimate that is subject to sampling error because it is based upon a sample of retail prices and not the complete universe of all prices. BLS calculates and publishes estimates of the 1-month, 2-month, 6-month and 12-month percent change standard errors annually, for the CPI-U. These standard error estimates can be used to construct confidence intervals for hypothesis testing. For example, the estimated standard error of the 1 month percent change is 0.04 percent for the U.S. All Items Consumer Price Index. This means that if we repeatedly sample from the universe of all retail prices using the same methodology, and estimate a percentage change for each sample, then 95% of these estimates would be within 0.08 percent of the 1 month percentage change based on all retail prices. For example, for a 1-month change of 0.2 percent in the All Items CPI for All Urban Consumers, we are 95 percent confident that the actual percent change based on all retail prices would fall between 0.12 and 0.28 percent. For the latest data, including information on how to use the estimates of standard error, see “Variance Estimates for Price Changes in the Consumer Price Index, January-December 2008”. These data are available on the CPI home page (<http://www.bls.gov/cpi>), or by using the following link <http://www.bls.gov/cpi/cpivar2008.pdf>

Calculating Index Changes

Movements of the indexes from one month to another are usually expressed as percent changes rather than changes in index points, because index point changes are affected by the level of the index in relation to its base period while percent changes are not. The example below illustrates the computation of index point and percent changes.

Percent changes for 3-month and 6-month periods are expressed as annual rates and are computed according to the standard formula for compound growth rates. These data indicate what the percent change would be if the current rate were maintained for a 12-month period.

Index Point Change

CPI	202.416
Less previous index	201.800
Equals index point change	.616

Percent Change

Index point difference	.616
Divided by the previous index	201.800
Equals	0.003
Results multiplied by one hundred	0.003x100
Equals percent change	0.3

Regions Defined

The states in the four regions shown in Tables 3 and 6 are listed below.

The Northeast--Connecticut, Maine, Massachusetts, New Hampshire, New York, New Jersey, Pennsylvania, Rhode Island, and Vermont.

The Midwest--Illinois, Indiana, Iowa, Kansas, Michigan, Minnesota, Missouri, Nebraska, North Dakota, Ohio, South Dakota, and Wisconsin.

The South--Alabama, Arkansas, Delaware, Florida, Georgia, Kentucky, Louisiana, Maryland, Mississippi, North Carolina, Oklahoma, South Carolina, Tennessee, Texas, Virginia, West Virginia, and the District of Columbia.

The West--Alaska, Arizona, California, Colorado, Hawaii, Idaho, Montana, Nevada, New Mexico, Oregon, Utah, Washington, and Wyoming.

A Note on Seasonally Adjusted and Unadjusted Data

Because price data are used for different purposes by different groups, the Bureau of Labor Statistics publishes seasonally adjusted as well as unadjusted changes each month.

For analyzing general price trends in the economy, seasonally adjusted changes are usually preferred since they eliminate the effect of changes that normally occur at the same time and in about the same magnitude every year--such as price movements resulting from changing climatic conditions, production cycles, model changeovers, holidays, and sales.

The unadjusted data are of primary interest to consumers concerned about the prices they actually pay. Unadjusted data also are used extensively for escalation purposes. Many collective bargaining contract agreements and pension plans, for example, tie compensation changes to the Consumer Price Index before adjustment for seasonal variation.

Seasonal factors used in computing the seasonally adjusted indexes are derived by the X-12-ARIMA Seasonal Adjustment Method. Seasonally adjusted indexes and seasonal factors are computed annually. Each year, the last 5 years of seasonally adjusted data are revised. Data from January 2004 through December 2008 were replaced in January 2009. Exceptions to the usual revision schedule were: the updated seasonal data at the end of 1977 replaced data from 1967 through 1977; and, in January 2002, dependently seasonally adjusted series were revised for January 1987-December 2001 as a result of a change in the aggregation weights for dependently adjusted series. For further information, please see "Aggregation of Dependently Adjusted Seasonally Adjusted Series," in the October 2001 issue of the CPI Detailed Report.

The seasonal movement of all items and 54 other aggregations is derived by combining the seasonal movement of 73 selected components. Each year the seasonal status of every series is reevaluated based upon certain statistical criteria. If any of the 73 components change their seasonal adjustment status from seasonally adjusted to not seasonally adjusted, not seasonally adjusted data will be used in the aggregation of the dependent series for the last 5 years, but the seasonally adjusted indexes will be used before that period. Note: 47 of the 73 components are seasonally adjusted for 2009.

Seasonally adjusted data, including the all items index levels, are subject to revision for up to five years after their original release. For this reason, BLS advises against the use of these data in escalation agreements.

Effective with the calculation of the seasonal factors for 1990, the Bureau of Labor Statistics has used an enhanced seasonal adjustment procedure called Intervention Analysis Seasonal Adjustment for some CPI series. Intervention Analysis Seasonal Adjustment allows for better estimates of seasonally adjusted data. Extreme values and/or sharp movements which might distort the seasonal pattern are estimated and removed from the data prior to calculation of seasonal factors. Beginning with the calculation of seasonal factors for 1996, X-12-ARIMA software was used for Intervention Analysis Seasonal Adjustment.

For the seasonal factors introduced in January 2009, BLS adjusted 29 series using Intervention Analysis Seasonal Adjustment, including selected food and beverage items, motor fuels, electricity and vehicles. For example, this procedure was used for the Motor fuel series to offset the effects of events such as damage to oil refineries from Hurricane Katrina.

For a complete list of Intervention Analysis Seasonal Adjustment series and explanations, please refer to the article “Intervention Analysis Seasonal Adjustment”, located on our website at <http://www.bls.gov/cpi/cpisapage.htm>.

For additional information on seasonal adjustment in the CPI, please write to the Bureau of Labor Statistics, Division of Consumer Prices and Price Indexes, Washington, DC 20212 or contact Jeff Wilson at (202) 691-6968, or by e-mail at Wilson.Jeff@bls.gov. If you have general questions about the CPI, please call our information staff at (202) 691-7000.

Table 1. Consumer Price Index for All Urban Consumers (CPI-U): U.S. city average, by expenditure category and commodity and service group

(1982-84=100, unless otherwise noted)

CPI-U Expenditure category	Relative importance, December 2008	Unadjusted indexes		Unadjusted percent change to Oct. 2009 from—		Seasonally adjusted percent change from—		
		Sep. 2009	Oct. 2009	Oct. 2008	Sep. 2009	July to Aug.	Aug. to Sep.	Sep. to Oct.
All items	100.000	215.969	216.177	-0.2	0.1	0.4	0.2	0.3
All items (1967=100)	-	646.948	647.570	-	-	-	-	-
Food and beverages	15.757	217.617	217.957	-.3	.2	.1	-.1	.1
Food	14.629	217.218	217.526	-.6	.1	.1	-.1	.1
Food at home	8.156	213.227	213.605	-2.8	.2	.0	-.3	.0
Cereals and bakery products	1.150	251.231	251.421	-.6	.1	-.1	.3	.0
Meats, poultry, fish, and eggs	1.898	201.755	200.597	-4.8	-.6	.4	-1.0	-.2
Dairy and related products ¹910	193.353	195.360	-8.2	1.0	-.4	.5	1.0
Fruits and vegetables	1.194	267.609	269.467	-5.6	.7	-.7	-1.2	-.7
Nonalcoholic beverages and beverage materials982	162.911	162.885	-.5	.0	.4	.0	-.2
Other food at home	2.022	190.571	191.266	1.0	.4	.2	.1	.3
Sugar and sweets300	196.998	196.747	3.3	-.1	.4	1.0	.3
Fats and oils241	200.009	199.916	-4.0	.0	.1	-.3	-.4
Other foods	1.481	204.728	205.814	1.4	.5	.2	-.1	.4
Other miscellaneous foods ^{1 2}433	122.099	122.112	-.5	.0	-.1	.2	.0
Food away from home ¹	6.474	224.003	224.224	2.2	.1	.1	.1	.1
Other food away from home ^{1 2}314	157.302	157.056	2.3	-.2	.1	.4	-.2
Alcoholic beverages	1.127	221.474	222.232	2.4	.3	.1	.3	.3
Housing	43.421	217.178	216.612	-.4	-.3	.1	.0	.1
Shelter	33.200	249.501	249.474	.7	.0	.1	.0	.0
Rent of primary residence ³	5.957	248.965	248.888	1.2	.0	.0	-.1	-.1
Lodging away from home ²	2.478	133.706	133.485	-5.4	-.2	.5	1.5	.4
Owners' equivalent rent of primary residence ^{3 4}	24.433	256.865	256.890	1.2	.0	.1	-.1	.0
Tenants' and household insurance ^{1 2}333	122.170	122.184	1.9	.0	.4	.3	.0
Fuels and utilities	5.431	211.618	207.937	-6.0	-1.7	.4	.2	1.2
Household energy	4.460	188.509	184.146	-8.5	-2.3	.2	.1	1.3
Fuel oil and other fuels301	236.616	243.936	-23.5	3.1	3.9	1.1	6.0
Gas (piped) and electricity ³	4.159	194.176	188.963	-7.1	-2.7	.0	.1	.9
Water and sewer and trash collection services ²971	163.429	164.591	5.8	.7	.8	.4	.8
Household furnishings and operations	4.790	128.201	127.740	-.8	-.4	-.6	.0	-.5
Household operations ^{1 2}781	150.437	150.184	.1	-.2	.3	.0	-.2
Apparel	3.691	122.476	123.998	1.4	1.2	-.1	.1	-.4
Men's and boys' apparel923	112.933	114.818	-.2	1.7	.6	-.8	-.6
Women's and girls' apparel	1.541	112.535	113.838	1.8	1.2	-.3	.3	-.6
Infants' and toddlers' apparel183	116.309	117.300	1.0	.9	1.2	.1	-1.5
Footwear688	128.670	130.333	3.1	1.3	-.2	.1	.2
Transportation	15.314	183.932	185.362	-3.8	.8	2.3	.8	1.4
Private transportation	14.189	179.466	180.896	-3.8	.8	2.4	.7	1.4
New and used motor vehicles ²	6.931	93.440	95.131	3.3	1.8	-.4	.5	1.7
New vehicles	4.480	134.576	137.268	3.8	2.0	-1.3	.4	1.6
Used cars and trucks	1.628	129.369	132.689	2.3	2.6	1.9	1.6	3.4
Motor fuel	3.164	220.690	219.015	-18.4	-.8	8.8	1.1	1.6
Gasoline (all types)	2.964	220.542	218.683	-17.9	-.8	9.1	1.0	1.6
Motor vehicle parts and equipment ¹382	133.406	133.650	1.3	.2	-.1	-.1	.2
Motor vehicle maintenance and repair ¹	1.188	244.493	245.393	3.0	.4	-.2	.4	.4
Public transportation	1.125	239.855	241.060	-4.5	.5	1.3	2.1	.9
Medical care	6.390	377.727	378.552	3.5	.2	.3	.4	.2
Medical care commodities	1.625	307.671	308.379	4.3	.2	.5	.6	.2
Medical care services	4.765	399.160	400.015	3.2	.2	.2	.4	.2
Professional services	2.702	320.756	321.381	2.7	.2	.1	.4	.2
Hospital and related services ³	1.545	572.991	575.540	6.4	.4	.5	.6	.2

See footnotes at end of table.

Table 1. Consumer Price Index for All Urban Consumers (CPI-U): U.S. city average, by expenditure category and commodity and service group-Continued

(1982-84=100, unless otherwise noted)

CPI-U Expenditure category	Relative importance, December 2008	Unadjusted indexes		Unadjusted percent change to Oct. 2009 from—		Seasonally adjusted percent change from—		
		Sep. 2009	Oct. 2009	Oct. 2008	Sep. 2009	July to Aug.	Aug. to Sep.	Sep. to Oct.
Expenditure category								
Recreation ²	5.741	114.629	114.157	0.0	-0.4	0.1	-0.1	-0.4
Video and audio ²	1.822	100.801	100.178	-2.0	-6	-2	-7	-6
Education and communication ²	6.301	129.035	129.128	2.7	.1	.2	.1	.2
Education ²	3.107	195.595	195.849	4.9	.1	.5	.0	.3
Educational books and supplies221	493.636	494.435	6.6	.2	.6	.3	.2
Tuition, other school fees, and childcare	2.886	562.635	563.352	4.8	.1	.5	.0	.3
Communication ²	3.194	85.044	85.055	.6	.0	-2	.2	.0
Information and information processing ^{1 2}	3.022	81.969	81.978	.4	.0	-2	.2	.0
Telephone services ^{1 2}	2.408	102.968	102.891	1.5	-1	.0	.3	-1
Information technology, hardware and services ^{1 5}614	9.467	9.501	-3.8	.4	-1.1	-3	.4
Personal computers and peripheral equipment ^{1 6}214	77.997	78.213	-13.0	.3	-2.8	-7	.3
Other goods and services	3.386	374.219	375.444	7.5	.3	.1	.3	.3
Tobacco and smoking products ¹776	771.089	773.758	29.0	.3	.1	1.0	.3
Personal care	2.610	204.751	205.406	1.1	.3	.1	.0	.2
Personal care products ¹651	162.372	162.257	1.5	-1	-3	-1	-1
Personal care services ¹647	228.286	228.465	1.3	.1	.1	.3	.1
Miscellaneous personal services	1.074	345.515	347.834	1.4	.7	.2	-2	.9
Commodity and service group								
Commodities	39.556	171.559	172.252	-1.7	.4	.8	.3	.5
Food and beverages	15.757	217.617	217.957	-.3	.2	.1	-.1	.1
Commodities less food and beverages	23.799	147.222	148.037	-2.5	.6	1.2	.4	.8
Nondurables less food and beverages	13.289	185.544	185.759	-4.8	.1	3.1	.4	-.8
Apparel	3.691	122.476	123.998	1.4	1.2	-1	.1	-.4
Nondurables less food, beverages, and apparel	9.598	228.954	228.344	-6.8	-.3	4.2	.4	-.9
Durables	10.510	109.387	110.684	.9	1.2	-6	.4	1.1
Services	60.444	260.136	259.844	.9	-1	.2	.1	.1
Rent of shelter ⁴	32.867	260.064	260.035	.6	.0	.1	.1	.0
Tenants' and household insurance ^{1 2}333	122.170	122.184	1.9	.0	.4	.3	.0
Gas (piped) and electricity ³	4.159	194.176	188.963	-7.1	-2.7	.0	.1	.9
Water and sewer and trash collection services ²971	163.429	164.591	5.8	.7	.8	.4	.8
Household operations ^{1 2}781	150.437	150.184	.1	-2	.3	.0	-2
Transportation services	5.567	253.001	254.449	2.7	.6	.6	.7	.4
Medical care services	4.765	399.160	400.015	3.2	.2	.2	.4	.2
Other services	11.002	307.161	307.011	2.4	.0	.3	.0	.1
Special indexes								
All items less food	85.371	215.795	215.986	-.1	.1	.5	.2	.3
All items less shelter	66.800	205.263	205.567	-.6	.1	.6	.3	.4
All items less medical care	93.610	207.949	208.131	-.4	.1	.5	.2	.3
Commodities less food	24.926	149.846	150.663	-2.3	.5	1.2	.4	.7
Nondurables less food	14.416	187.691	187.939	-4.3	.1	2.9	.4	-.7
Nondurables less food and apparel	10.726	227.195	226.717	-6.0	-2	3.8	.4	-.8
Nondurables	29.046	201.783	202.058	-2.6	.1	1.6	.1	-.3
Services less rent of shelter ⁴	27.577	280.194	279.545	1.2	-2	.4	.3	.3
Services less medical care services	55.679	249.043	248.692	.7	-1	.2	.1	.2
Energy	7.624	202.243	199.198	-14.0	-1.5	4.6	.6	1.5
All items less energy	92.376	219.076	219.624	1.4	.3	.1	.1	.2
All items less food and energy	77.746	220.137	220.731	1.7	.3	.1	.2	.2
Commodities less food and energy commodities	21.461	142.729	143.857	2.3	.8	-.3	.3	.4
Energy commodities	3.465	222.961	221.749	-18.7	-5	8.5	1.1	1.9
Services less energy services	56.285	266.894	267.081	1.5	.1	.2	.1	.1
Purchasing power of the consumer dollar (1982-84=\$1.00)	-	\$.463	\$.463	-	-	-	-	-
Purchasing power of the consumer dollar (1967=\$1.00)	-	\$.155	\$.154	-	-	-	-	-

¹ Not seasonally adjusted.

² Indexes on a December 1997=100 base.

³ This index series was calculated using a Laspeyres estimator. All other item stratum index series were calculated using a geometric means estimator.

⁴ Indexes on a December 1982=100 base.

⁵ Indexes on a December 1988=100 base.

⁶ Indexes on a December 2007=100 base.

- Data not available.

NOTE: Index applies to a month as a whole, not to any specific date.

Table 2. Consumer Price Index for All Urban Consumers (CPI-U): Seasonally adjusted U.S. city average, by expenditure category and commodity and service group

(1982-84=100, unless otherwise noted)

CPI-U Expenditure category	Seasonally adjusted indexes				Seasonally adjusted annual rate percent change for					
	July 2009	Aug. 2009	Sep. 2009	Oct. 2009	3 months ended—				6 months ended—	
					Jan. 2009	Apr. 2009	July 2009	Oct. 2009	Apr. 2009	Oct. 2009
All items	214.469	215.428	215.791	216.385	-8.4	0.9	3.4	3.6	-3.9	3.5
Food and beverages	217.638	217.829	217.670	217.830	1.4	-1.6	-1.4	.4	-2	-5
Food	217.291	217.478	217.257	217.377	1.1	-1.7	-1.8	.2	-3	-8
Food at home	213.876	213.951	213.298	213.338	-9	-5.2	-3.8	-1.0	-3.1	-2.4
Cereals and bakery products	251.380	251.049	251.711	251.814	4.0	-5.6	-1.1	.7	-9	-2
Meats, poultry, fish, and eggs	201.738	202.601	200.583	200.128	-3.2	-3.9	-8.9	-3.2	-3.6	-6.1
Dairy and related products ¹	193.118	192.381	193.353	195.360	-5.7	-21.8	-7.9	4.7	-14.1	-1.8
Fruits and vegetables	275.379	273.410	270.064	268.276	-13.3	2.3	-.6	-9.9	-5.8	-5.4
Nonalcoholic beverages and beverage materials	162.431	163.008	162.981	162.638	.8	-1.7	-1.6	.5	-.5	-.5
Other food at home	190.071	190.494	190.598	191.178	8.0	-4.3	-1.6	2.4	1.7	.4
Sugar and sweets	194.193	194.991	197.000	197.535	12.7	-1.4	-4.4	7.1	5.4	1.2
Fats and oils	200.428	200.546	199.971	199.118	-3.0	-8.8	-1.6	-2.6	-5.9	-2.1
Other foods	204.528	204.958	204.773	205.645	8.9	-4.1	-1.0	2.2	2.2	.6
Other miscellaneous foods ^{1 2}	121.990	121.892	122.099	122.112	4.3	-3.6	-2.9	.4	.3	-1.3
Food away from home ¹	223.345	223.675	224.003	224.224	3.8	2.9	.8	1.6	3.3	1.2
Other food away from home ^{1 2}	156.570	156.697	157.302	157.056	-4	4.5	3.8	1.2	2.0	2.5
Alcoholic beverages	220.815	221.072	221.709	222.394	4.4	-9	3.4	2.9	1.7	3.1
Housing	216.612	216.726	216.770	216.964	-3	-9	-1.0	.7	-.6	-.2
Shelter	249.410	249.658	249.655	249.678	1.4	.6	.1	.4	1.0	.3
Rent of primary residence ³	249.293	249.266	249.132	248.868	3.1	1.9	.6	-.7	2.5	.0
Lodging away from home ²	131.742	132.411	134.342	134.890	-9.5	-13.9	-6.6	9.9	-11.8	1.3
Owners' equivalent rent of primary residence ^{3 4}	257.073	257.278	256.911	256.900	2.3	2.0	.7	-.3	2.2	.2
Tenants' and household insurance ^{1 2}	121.298	121.830	122.170	122.184	1.6	.9	2.1	3.0	1.3	2.5
Fuels and utilities	206.046	206.783	207.172	209.580	-9.8	-12.0	-8.6	7.0	-10.9	-1.1
Household energy	182.927	183.374	183.627	185.931	-12.4	-15.3	-11.8	6.7	-13.8	-3.0
Fuel oil and other fuels	222.296	231.023	233.497	247.530	-60.6	-38.0	-8.6	53.7	-50.6	18.5
Gas (piped) and electricity ³	188.839	188.839	188.979	190.725	-6.6	-13.4	-12.0	4.1	-10.1	-4.3
Water and sewer and trash collection services ²	161.408	162.756	163.402	164.675	3.6	4.6	6.7	8.3	4.1	7.5
Household furnishings and operations	129.254	128.471	128.455	127.790	-2	2.1	-.6	-4.5	.9	-2.5
Household operations ^{1 2}	149.983	150.494	150.437	150.184	1.0	1.0	-2.2	.5	1.0	-.8
Apparel	120.865	120.756	120.931	120.505	-9	3.5	4.5	-1.2	1.2	1.6
Men's and boys' apparel	113.251	113.938	112.991	112.329	2.3	3.0	-2.8	-3.2	2.7	-3.0
Women's and girls' apparel	109.695	109.390	109.688	109.020	-2.3	1.1	11.4	-2.4	-.6	4.3
Infants' and toddlers' apparel	114.831	116.235	116.350	114.644	1.7	3.6	-.7	-.6	2.7	-.7
Footwear	127.790	127.504	127.603	127.894	.8	5.6	5.7	.3	3.2	3.0
Transportation	179.180	183.312	184.750	187.276	-43.0	1.8	22.7	19.3	-23.8	21.0
Private transportation	174.949	179.110	180.352	182.877	-44.4	3.1	24.3	19.4	-24.3	21.8
New and used motor vehicles ²	93.501	93.155	93.605	95.229	-2.7	3.8	4.9	7.6	.5	6.2
New vehicles	136.826	135.030	135.574	137.777	-1.9	7.6	6.8	2.8	2.8	4.8
Used cars and trucks	123.848	126.157	128.153	132.456	-10.7	-12.9	7.5	30.8	-11.8	18.6
Motor fuel	202.924	220.836	223.273	226.932	-86.3	.5	106.0	56.4	-62.9	79.5
Gasoline (all types)	202.498	220.967	223.146	226.688	-86.7	4.5	107.6	57.0	-62.7	80.6
Motor vehicle parts and equipment ¹	133.729	133.531	133.406	133.650	4.6	3.7	-2.7	-.2	4.2	-1.5
Motor vehicle maintenance and repair ¹	243.031	243.494	244.493	245.393	4.9	2.6	.6	3.9	3.7	2.3
Public transportation	231.418	234.384	239.281	241.437	-19.9	-13.6	1.7	18.5	-16.8	9.7
Medical care	375.851	376.919	378.555	379.229	3.9	3.7	2.8	3.6	3.8	3.2
Medical care commodities	304.406	306.029	308.016	308.780	5.1	4.7	1.4	5.9	4.9	3.6
Medical care services	397.947	398.742	400.180	400.797	3.5	3.3	3.3	2.9	3.4	3.1
Professional services	319.810	320.262	321.405	322.067	3.3	.7	4.0	2.9	2.0	3.4
Hospital and related services ³	569.494	572.422	575.812	577.133	5.8	9.6	4.8	5.5	7.7	5.1

See footnotes at end of table.

Table 2. Consumer Price Index for All Urban Consumers (CPI-U): Seasonally adjusted U.S. city average, by expenditure category and commodity and service group-Continued

(1982-84=100, unless otherwise noted)

CPI-U Expenditure category	Seasonally adjusted indexes				Seasonally adjusted annual rate percent change for					
	July 2009	Aug. 2009	Sep. 2009	Oct. 2009	3 months ended—				6 months ended—	
					Jan. 2009	Apr. 2009	July 2009	Oct. 2009	Apr. 2009	Oct. 2009
Recreation ²	114.612	114.731	114.585	114.155	-0.5	0.0	2.1	-1.6	-0.2	0.2
Video and audio ²	101.741	101.530	100.824	100.191	-2.1	.3	.0	-6.0	-9	-3.0
Education and communication ²	127.751	127.967	128.074	128.285	3.3	2.8	3.1	1.7	3.1	2.4
Education ²	191.709	192.686	192.711	193.313	4.8	5.5	6.0	3.4	5.2	4.7
Educational books and supplies	486.256	489.280	490.667	491.662	4.9	5.2	12.0	4.5	5.0	8.2
Tuition, other school fees, and childcare	551.241	554.000	553.955	555.733	4.8	5.5	5.5	3.3	5.2	4.4
Communication ²	85.053	84.909	85.040	85.054	1.9	.3	.3	.0	1.1	.2
Information and information processing ^{1 2}	81.991	81.835	81.969	81.978	1.9	.3	-.5	-.1	1.1	-.3
Telephone services ^{1 2}	102.643	102.674	102.968	102.891	1.9	.8	2.3	1.0	1.3	1.6
Information technology, hardware and services ^{1 5}	9.604	9.499	9.467	9.501	1.8	-1.5	-10.8	-4.2	.1	-7.5
Personal computers and peripheral equipment ^{1 6}	80.838	78.576	77.997	78.213	-6.2	-12.1	-20.9	-12.4	-9.2	-16.7
Other goods and services	373.084	373.425	374.442	375.427	1.5	24.2	3.3	2.5	12.2	2.9
Tobacco and smoking products ¹	762.907	763.634	771.089	773.758	5.2	123.2	11.5	5.8	53.2	8.6
Personal care	204.714	204.899	204.919	205.394	.4	2.3	.5	1.3	1.4	.9
Personal care products ¹	162.887	162.476	162.372	162.257	7.1	3.0	-2.2	-1.5	5.0	-1.8
Personal care services ¹	227.325	227.580	228.286	228.465	.3	3.9	-1.0	2.0	2.1	.5
Miscellaneous personal services	344.739	345.448	344.770	347.750	-2.2	1.0	3.2	3.5	-6	3.4
Commodity and service group										
Commodities	169.875	171.236	171.666	172.529	-20.8	2.0	8.1	6.4	-10.1	7.2
Food and beverages	217.638	217.829	217.670	217.830	1.4	-1.6	-1.4	.4	-.2	-.5
Commodities less food and beverages	144.891	146.689	147.347	148.472	-31.9	4.5	14.5	10.3	-15.7	12.4
Nondurables less food and beverages	179.986	185.567	186.349	184.873	-43.8	3.6	26.8	11.3	-23.7	18.8
Apparel	120.865	120.756	120.931	120.505	-.9	3.5	4.5	-1.2	1.2	1.6
Nondurables less food, beverages, and apparel	220.790	230.120	231.087	228.965	-53.6	4.2	35.1	15.7	-30.5	25.0
Durables	109.926	109.238	109.714	110.882	-3.6	1.3	2.7	3.5	-1.2	3.1
Services	258.833	259.344	259.617	259.979	1.0	.3	.4	1.8	.7	1.1
Rent of shelter ⁴	259.779	260.033	260.233	260.293	1.8	.1	-.1	.8	1.0	.3
Tenants' and household insurance ^{1 2}	121.298	121.830	122.170	122.184	1.6	.9	2.1	3.0	1.3	2.5
Gas (piped) and electricity ³	188.839	188.839	188.979	190.725	-6.6	-13.4	-12.0	4.1	-10.1	-4.3
Water and sewer and trash collection services ²	161.408	162.756	163.402	164.675	3.6	4.6	6.7	8.3	4.1	7.5
Household operations ^{1 2}	149.983	150.494	150.437	150.184	1.0	1.0	-2.2	.5	1.0	-.8
Transportation services	249.855	251.455	253.146	254.265	.1	2.5	1.1	7.2	1.3	4.1
Medical care services	397.947	398.742	400.180	400.797	3.5	3.3	3.3	2.9	3.4	3.1
Other services	304.916	305.733	305.795	305.965	2.2	2.0	3.9	1.4	2.1	2.6
Special indexes										
All items less food	214.037	215.123	215.582	216.253	-9.9	1.4	4.3	4.2	-4.4	4.3
All items less shelter	203.183	204.437	204.951	205.779	-12.8	1.1	5.1	5.2	-6.1	5.2
All items less medical care	206.476	207.422	207.735	208.320	-9.2	.8	3.5	3.6	-4.3	3.5
Commodities less food	147.555	149.315	149.975	151.091	-30.7	4.2	14.0	9.9	-15.0	11.9
Nondurables less food	182.401	187.699	188.493	187.110	-41.3	3.1	24.9	10.7	-22.2	17.6
Nondurables less food and apparel	219.772	228.214	229.166	227.347	-50.0	3.5	31.6	14.5	-28.0	22.8
Nondurables	198.640	201.800	202.076	201.442	-23.4	.9	10.1	5.8	-12.1	7.9
Services less rent of shelter ⁴	276.955	277.946	278.770	279.601	1.0	-.3	.2	3.9	.3	2.0
Services less medical care services	247.503	248.063	248.397	248.834	1.1	-.2	-.3	2.2	.4	.9
Energy	190.905	199.667	200.959	203.889	-65.4	-8.5	32.5	30.1	-43.8	31.3
All items less energy	218.588	218.743	219.012	219.367	1.0	1.8	1.2	1.4	1.4	1.3
All items less food and energy	219.543	219.692	220.053	220.453	.9	2.5	1.7	1.7	1.7	1.7
Commodities less food and energy commodities	142.612	142.179	142.624	143.240	-.9	5.4	2.9	1.8	2.2	2.4
Energy commodities	205.261	222.805	225.260	229.490	-85.3	-3.0	95.8	56.3	-62.2	74.9
Services less energy services	265.982	266.543	266.830	267.058	1.6	1.4	1.3	1.6	1.5	1.5

¹ Not seasonally adjusted.

² Indexes on a December 1997=100 base.

³ This index series was calculated using a Laspeyres estimator. All other item stratum index series were calculated using a geometric means estimator.

⁴ Indexes on a December 1982=100 base.

⁵ Indexes on a December 1988=100 base.

⁶ Indexes on a December 2007=100 base.

NOTE: Index applies to a month as a whole, not to any specific date.

Table 3. Consumer Price Index for All Urban Consumers (CPI-U): Selected areas, all items index

(1982-84=100, unless otherwise noted)

CPI-U	Pricing schedule 1	All items									
		Indexes				Percent change to Oct.2009 from—			Percent change to Sep.2009 from—		
		July 2009	Aug. 2009	Sep. 2009	Oct. 2009	Oct. 2008	Aug. 2009	Sep. 2009	Sep. 2008	July 2009	Aug. 2009
U.S. city average	M	215.351	215.834	215.969	216.177	-0.2	0.2	0.1	-1.3	0.3	0.1
Region and area size²											
Northeast urban	M	230.154	230.883	231.200	231.304	.2	.2	.0	-.7	.5	.1
Size A - More than 1,500,000	M	232.416	233.314	233.695	233.415	.1	.0	-.1	-.7	.6	.2
Size B/C - 50,000 to 1,500,000 ³	M	136.417	136.598	136.691	137.348	.5	.5	.5	-.7	.2	.1
Midwest urban	M	204.814	205.632	205.601	205.706	-2	.0	.1	-1.7	.4	.0
Size A - More than 1,500,000	M	205.656	206.591	206.459	206.625	-2	.0	.1	-1.8	.4	-.1
Size B/C - 50,000 to 1,500,000 ³	M	131.366	131.748	131.812	131.724	-2	.0	-.1	-1.6	.3	.0
Size D - Nonmetropolitan (less than 50,000)	M	200.908	201.823	201.918	202.499	.2	.3	.3	-1.8	.5	.0
South urban	M	208.819	209.000	208.912	209.292	-4	.1	.2	-1.8	.0	.0
Size A - More than 1,500,000	M	211.034	211.436	211.212	211.152	-7	-.1	.0	-1.7	.1	-.1
Size B/C - 50,000 to 1,500,000 ³	M	132.736	132.729	132.722	133.035	-2	.2	.2	-1.8	.0	.0
Size D - Nonmetropolitan (less than 50,000)	M	210.491	210.899	210.911	212.423	-3	.7	.7	-2.0	.2	.0
West urban	M	219.484	219.884	220.294	220.447	-3	.3	.1	-.8	.4	.2
Size A - More than 1,500,000	M	223.498	224.072	224.412	224.372	-3	.1	.0	-.7	.4	.2
Size B/C - 50,000 to 1,500,000 ³	M	132.774	132.756	133.128	133.618	-1	.6	.4	-1.3	.3	.3
Size classes											
A ⁴	M	196.987	197.614	197.724	197.670	-2	.0	.0	-1.1	.4	.1
B/C ³	M	132.975	133.069	133.165	133.489	-1	.3	.2	-1.5	.1	.1
D	M	207.784	208.369	208.503	209.139	-3	.4	.3	-1.5	.3	.1
Selected local areas⁵											
Chicago-Gary-Kenosha, IL-IN-WI	M	210.906	211.441	211.345	211.708	-8	.1	.2	-1.9	.2	.0
Los Angeles-Riverside-Orange County, CA ...	M	224.010	224.507	225.226	225.264	-4	.3	.0	-1.0	.5	.3
New York-Northern N.J.-Long Island, NY-NJ-CT-PA	M	237.600	238.282	238.568	238.380	.0	.0	-.1	-.6	.4	.1
Boston-Brockton-Nashua, MA-NH-ME-CT	1	233.018	-	236.596	-	-	-	-	-.8	1.5	-
Cleveland-Akron, OH	1	200.558	-	201.836	-	-	-	-	-2.1	.6	-
Dallas-Fort Worth, TX	1	200.663	-	201.802	-	-	-	-	-2.0	.6	-
Washington-Baltimore, DC-MD-VA-WV ⁶	1	140.810	-	140.945	-	-	-	-	-.8	.1	-
Atlanta, GA	2	-	203.351	-	201.068	-2.6	-1.1	-	-	-	-
Detroit-Ann Arbor-Flint, MI	2	-	204.673	-	205.079	-1	.2	-	-	-	-
Houston-Galveston-Brazoria, TX	2	-	191.687	-	191.608	.2	.0	-	-	-	-
Miami-Fort Lauderdale, FL	2	-	221.306	-	222.416	-6	.5	-	-	-	-
Philadelphia-Wilmington-Atlantic City, PA-NJ-DE-MD	2	-	226.039	-	224.787	-1	-6	-	-	-	-
San Francisco-Oakland-San Jose, CA	2	-	225.801	-	226.051	.1	.1	-	-	-	-
Seattle-Tacoma-Bremerton, WA	2	-	227.138	-	226.277	.2	-4	-	-	-	-

¹ Foods, fuels, and several other items priced every month in all areas; most other goods and services priced as indicated:

M - Every month.

1 - January, March, May, July, September, and November.

2 - February, April, June, August, October, and December.

² Regions defined as the four Census regions. See technical notes.

³ Indexes on a December 1996=100 base.

⁴ Indexes on a December 1986=100 base.

⁵ In addition, the following metropolitan areas are published semiannually and appear in Tables 34 and 39 of the January and July issues of the CPI Detailed Report: Anchorage, AK; Cincinnati-Hamilton, OH-KY-IN; Denver-Boulder-Greeley, CO; Honolulu, HI; Kansas City, MO-KS; Milwaukee-Racine, WI; Minneapolis-St. Paul, MN-WI; Phoenix-Mesa, AZ; Pittsburgh, PA; Portland-Salem, OR-WA; St. Louis, MO-IL; San Diego, CA;

Tampa-St. Petersburg-Clearwater, FL.

⁶ Indexes on a November 1996=100 base.

- Data not available.

NOTE: Local area indexes are byproducts of the national CPI program. Each local index has a smaller sample size than the national index and is, therefore, subject to substantially more sampling and other measurement error. As a result, local area indexes show greater volatility than the national index, although their long-term trends are similar. Therefore, the Bureau of Labor Statistics strongly urges users to consider adopting the national average CPI for use in their escalator clauses.

NOTE: Index applies to a month as a whole, not to any specific date.

Table 4. Consumer Price Index for Urban Wage Earners and Clerical Workers (CPI-W): U.S. city average, by expenditure category and commodity and service group

(1982-84=100, unless otherwise noted)

CPI-W Expenditure category	Relative importance, December 2008	Unadjusted indexes		Unadjusted percent change to Oct. 2009 from—		Seasonally adjusted percent change from—		
		Sep. 2009	Oct. 2009	Oct. 2008	Sep. 2009	July to Aug.	Aug. to Sep.	Sep. to Oct.
All items	100.000	211.322	211.549	-0.3	0.1	0.6	0.2	0.3
All items (1967=100)	-	629.462	630.140	-	-	-	-	-
Food and beverages	16.942	216.734	217.123	-.5	.2	.1	-.1	.1
Food	15.865	216.313	216.654	-.7	.2	.1	-.1	.1
Food at home	9.201	212.010	212.396	-2.8	.2	.0	-.3	.1
Cereals and bakery products	1.249	251.754	252.049	-.6	.1	-.1	.2	.1
Meats, poultry, fish, and eggs	2.315	201.087	200.210	-4.8	-.4	-.4	-1.1	-.1
Dairy and related products ¹992	192.048	194.120	-8.4	1.1	-.4	.5	1.1
Fruits and vegetables	1.266	265.810	267.084	-5.8	.5	-.9	-1.1	-.7
Nonalcoholic beverages and beverage materials	1.167	162.396	162.456	-.5	.0	.3	.0	-.1
Other food at home	2.212	189.892	190.630	1.0	.4	.3	.0	.3
Sugar and sweets304	196.027	195.752	3.3	-.1	.5	1.0	.2
Fats and oils274	200.621	200.759	-3.9	.1	.1	-.3	-.2
Other foods	1.634	204.823	205.929	1.4	.5	.3	-.1	.4
Other miscellaneous foods ^{1 2}472	122.496	122.676	-.3	.1	.1	.2	.1
Food away from home ¹	6.664	224.102	224.382	2.4	.1	.2	.1	.1
Other food away from home ^{1 2}233	157.132	156.909	2.6	-.1	-.1	.2	-.1
Alcoholic beverages	1.077	221.454	222.555	2.6	.5	.2	.0	.3
Housing	41.313	213.391	212.734	-.2	-.3	.0	.0	.1
Shelter	31.224	242.816	242.804	1.0	.0	.1	.0	.0
Rent of primary residence ³	8.279	247.500	247.422	1.1	.0	.0	-.1	-.1
Lodging away from home ²	1.209	134.803	134.586	-4.4	-.2	.2	1.5	.5
Owners' equivalent rent of primary residence ^{3 4}	21.430	232.731	232.761	1.2	.0	.1	-.1	.0
Tenants' and household insurance ^{1 2}306	122.644	122.761	2.1	.1	.4	.3	.1
Fuels and utilities	6.030	210.796	206.732	-5.7	-1.9	.3	.3	1.0
Household energy	4.996	186.967	182.227	-8.1	-2.5	.1	.2	1.1
Fuel oil and other fuels283	238.006	246.153	-22.4	3.4	3.7	.8	6.2
Gas (piped) and electricity ³	4.713	193.013	187.473	-7.0	-2.9	-.1	.2	.8
Water and sewer and trash collection services ²	1.035	163.808	165.123	5.8	.8	.9	.4	.8
Household furnishings and operations	4.059	124.351	123.995	-.6	-.3	-.6	.2	-.5
Household operations ^{1 2}360	153.648	153.368	.5	-.2	.7	.0	-.2
Apparel	3.979	122.176	123.642	1.4	1.2	.0	.2	-.6
Men's and boys' apparel	1.024	113.682	115.381	-.1	1.5	.7	-.7	-1.0
Women's and girls' apparel	1.568	112.086	113.290	1.3	1.1	-.2	.7	-1.1
Infants' and toddlers' apparel249	119.075	119.949	1.2	.7	.8	.3	-1.7
Footwear840	128.988	130.596	3.4	1.2	-.2	-.1	.3
Transportation	17.067	182.024	183.506	-4.5	.8	2.7	.8	1.6
Private transportation	16.284	178.801	180.271	-4.6	.8	2.8	.7	1.6
New and used motor vehicles ²	7.627	91.599	93.414	3.2	2.0	.1	.7	2.1
New vehicles	4.057	135.672	138.422	3.8	2.0	-1.3	.4	1.6
Used cars and trucks	2.863	130.122	133.458	2.3	2.6	1.9	1.5	3.4
Motor fuel	4.029	221.241	219.733	-18.5	-.7	8.8	1.0	1.8
Gasoline (all types)	3.770	221.197	219.509	-18.0	-.8	9.1	.8	1.7
Motor vehicle parts and equipment ¹482	133.504	133.764	1.3	.2	-.1	-.1	.2
Motor vehicle maintenance and repair ¹	1.242	246.850	247.811	3.0	.4	.2	.4	.4
Public transportation784	238.225	239.729	-3.8	.6	1.2	1.9	.9
Medical care	5.355	378.263	379.072	3.6	.2	.3	.5	.1
Medical care commodities	1.320	299.098	299.742	4.2	.2	.5	.6	.2
Medical care services	4.035	401.217	402.075	3.4	.2	.2	.4	.1
Professional services	2.234	323.577	324.284	2.8	.2	.1	.4	.2
Hospital and related services ³	1.338	570.697	573.069	6.6	.4	.6	.7	.1

See footnotes at end of table.

Table 4. Consumer Price Index for Urban Wage Earners and Clerical Workers (CPI-W): U.S. city average, by expenditure category and commodity and service group-Continued

(1982-84=100, unless otherwise noted)

CPI-W Expenditure category	Relative importance, December 2008	Unadjusted indexes		Unadjusted percent change to Oct. 2009 from—		Seasonally adjusted percent change from—		
		Sep. 2009	Oct. 2009	Oct. 2008	Sep. 2009	July to Aug.	Aug. to Sep.	Sep. to Oct.
Expenditure category								
Recreation ²	5.454	111.205	110.724	-0.2	-0.4	0.0	-0.2	-0.4
Video and audio ²	1.982	101.228	100.639	-1.6	-6	-2	-7	-6
Education and communication ²	6.221	124.322	124.362	2.3	.0	.1	.1	.1
Education ²	2.527	192.552	192.774	4.7	.1	.4	.0	.3
Educational books and supplies219	496.691	497.534	6.6	.2	.4	.4	.1
Tuition, other school fees, and childcare	2.308	541.688	542.284	4.5	.1	.5	.0	.4
Communication ²	3.694	87.810	87.786	.6	.0	-1	.2	.0
Information and information processing ^{1 2}	3.568	85.676	85.651	.5	.0	-1	.2	.0
Telephone services ^{1 2}	2.965	102.896	102.818	1.4	-1	.0	.3	-1
Information technology, hardware and services ^{1 5}604	9.975	9.995	-3.7	.2	-1.0	-4	.2
Personal computers and peripheral equipment ^{1 6}202	77.835	77.939	-13.1	.1	-2.8	-8	.1
Other goods and services	3.668	400.245	401.390	10.8	.3	.1	.4	.2
Tobacco and smoking products ¹	1.267	776.198	778.650	29.2	.3	.1	1.0	.3
Personal care	2.401	202.576	203.115	1.1	.3	.1	.0	.2
Personal care products ¹662	162.312	162.242	1.5	.0	-2	-1	.0
Personal care services ¹580	228.480	228.683	1.3	.1	.1	.3	.1
Miscellaneous personal services947	347.658	349.283	1.4	.5	.3	-1	.6
Commodity and service group								
Commodities	42.689	173.777	174.550	-1.9	.4	1.0	.3	.6
Food and beverages	16.942	216.734	217.123	-.5	.2	.1	-.1	.1
Commodities less food and beverages	25.747	150.851	151.760	-2.7	.6	1.6	.6	.9
Nondurables less food and beverages	14.587	193.225	193.394	-5.1	.1	3.5	.4	-.9
Apparel	3.979	122.176	123.642	1.4	1.2	.0	.2	-.6
Nondurables less food, beverages, and apparel	10.609	241.657	241.005	-7.0	-.3	4.7	.4	-1.1
Durables	11.160	109.470	110.988	1.1	1.4	-.3	.6	1.4
Services	57.311	255.244	254.847	1.0	-.2	.2	.1	.1
Rent of shelter ⁴	30.918	234.079	234.064	.9	.0	.1	.0	.0
Tenants' and household insurance ^{1 2}306	122.644	122.761	2.1	.1	.4	.3	.1
Gas (piped) and electricity ³	4.713	193.013	187.473	-7.0	-2.9	-1	.2	.8
Water and sewer and trash collection services ²	1.035	163.808	165.123	5.8	.8	.9	.4	.8
Household operations ^{1 2}360	153.648	153.368	.5	-.2	.7	.0	-.2
Transportation services	5.512	252.805	254.408	3.4	.6	.6	.6	.5
Medical care services	4.035	401.217	402.075	3.4	.2	.2	.4	.1
Other services	10.432	294.190	293.938	2.1	-1	.2	.0	.0
Special indexes								
All items less food	84.135	210.255	210.462	-.2	.1	.6	.2	.4
All items less shelter	68.776	202.123	202.441	-.8	.2	.8	.3	.5
All items less medical care	94.645	204.472	204.680	-.5	.1	.6	.2	.3
Commodities less food	26.824	153.229	154.147	-2.5	.6	1.6	.5	.9
Nondurables less food	15.664	194.978	195.196	-4.7	.1	3.3	.3	-.9
Nondurables less food and apparel	11.686	238.857	238.355	-6.3	-.2	4.3	.4	-1.0
Nondurables	31.530	205.374	205.647	-2.9	.1	1.8	.1	-.3
Services less rent of shelter ⁴	26.392	247.664	246.851	1.0	-.3	.4	.3	.3
Services less medical care services	53.275	244.707	244.258	.8	-.2	.2	.1	.2
Energy	9.024	202.287	199.223	-14.2	-1.5	4.8	.6	1.5
All items less energy	90.976	213.363	213.998	1.6	.3	.1	.1	.2
All items less food and energy	75.111	213.144	213.840	2.1	.3	.1	.2	.2
Commodities less food and energy commodities	22.513	144.148	145.439	2.9	.9	-.1	.4	.5
Energy commodities	4.311	223.048	221.910	-18.7	-.5	8.6	1.0	2.0
Services less energy services	52.598	261.990	262.196	1.7	.1	.2	.1	.1
Purchasing power of the consumer dollar (1982-84=\$1.00)	-	\$.473	\$.473	-	-	-	-	-
Purchasing power of the consumer dollar (1967=\$1.00)	-	\$.159	\$.159	-	-	-	-	-

¹ Not seasonally adjusted.
² Indexes on a December 1997=100 base.
³ This index series was calculated using a Laspeyres estimator. All other item stratum index series were calculated using a geometric means estimator.
⁴ Indexes on a December 1984=100 base

⁵ Indexes on a December 1988=100 base.
⁶ Indexes on a December 2007=100 base.
 - Data not available.
 NOTE: Index applies to a month as a whole, not to any specific date.

Table 5. Consumer Price Index for Urban Wage Earners and Clerical Workers (CPI-W): Seasonally adjusted U.S. city average, by expenditure category and commodity and service group

(1982-84=100, unless otherwise noted)

Expenditure category	Seasonally adjusted indexes				Seasonally adjusted annual rate percent change for					
					3 months ended—			6 months ended—		
	July 2009	Aug. 2009	Sep. 2009	Oct. 2009	Jan. 2009	Apr. 2009	July 2009	Oct. 2009	Apr. 2009	Oct. 2009
All items	209.598	210.758	211.136	211.842	-10.5	1.1	4.4	4.4	-4.9	4.4
Food and beverages	216.821	217.045	216.778	217.027	1.2	-1.9	-1.6	.4	-3	-6
Food	216.395	216.610	216.317	216.531	1.0	-2.0	-1.9	.3	-5	-9
Food at home	212.646	212.744	212.018	212.185	-1.3	-5.2	-4.0	-.9	-3.3	-2.4
Cereals and bakery products	251.916	251.677	252.195	252.524	3.8	-5.5	-1.5	1.0	-.9	-3
Meats, poultry, fish, and eggs	201.245	202.128	199.912	199.773	-3.4	-3.6	-9.3	-2.9	-3.5	-6.1
Dairy and related products ¹	191.783	191.048	192.048	194.120	-6.0	-22.4	-7.8	5.0	-14.6	-1.6
Fruits and vegetables	273.468	270.988	268.099	266.270	-14.2	1.9	.1	-10.1	-6.5	-5.1
Nonalcoholic beverages and beverage materials	161.977	162.465	162.444	162.244	.4	-1.1	-1.9	.7	-.4	-6
Other food at home	189.366	189.945	189.934	190.529	7.7	-4.5	-1.4	2.5	1.4	.5
Sugar and sweets	193.001	194.039	195.992	196.328	11.9	-1.0	-4.2	7.1	5.3	1.3
Fats and oils	201.077	201.203	200.499	200.113	-3.3	-8.2	-2.2	-1.9	-5.8	-2.0
Other foods	204.578	205.196	204.911	205.775	8.9	-4.5	-.8	2.4	2.0	.8
Other miscellaneous foods ^{1 2}	122.119	122.217	122.496	122.676	4.8	-4.3	-3.2	1.8	.1	-7
Food away from home ¹	223.408	223.789	224.102	224.382	4.2	2.7	.8	1.8	3.4	1.3
Other food away from home ^{1 2}	156.904	156.769	157.132	156.909	1.3	2.7	6.6	.0	2.0	3.3
Alcoholic beverages	221.612	221.978	222.073	222.843	4.9	-1.0	4.4	2.2	1.9	3.3
Housing	212.765	212.823	212.863	213.063	.1	-.7	-.8	.6	-.3	-.1
Shelter	242.884	243.044	242.930	242.918	2.1	1.2	.5	.1	1.6	.3
Rent of primary residence ³	247.880	247.869	247.669	247.420	3.0	1.8	.6	-.7	2.4	-.1
Lodging away from home ²	133.136	133.451	135.480	136.095	-8.0	-13.5	-3.9	9.2	-10.8	2.4
Owners' equivalent rent of primary residence ^{3 4}	232.879	233.061	232.761	232.770	2.4	1.9	.7	-.2	2.1	.2
Tenants' and household insurance ^{1 2}	121.765	122.254	122.644	122.761	1.5	1.2	2.3	3.3	1.4	2.8
Fuels and utilities	205.268	205.839	206.356	208.463	-9.2	-12.0	-7.5	6.4	-10.6	-.8
Household energy	181.483	181.747	182.153	184.089	-11.6	-15.1	-10.4	5.9	-13.4	-2.6
Fuel oil and other fuels	225.175	233.552	235.480	250.133	-56.9	-38.2	-10.3	52.3	-48.4	16.9
Gas (piped) and electricity ³	187.619	187.525	187.880	189.323	-7.3	-13.6	-10.4	3.7	-10.5	-3.6
Water and sewer and trash collection services ²	161.801	163.201	163.808	165.178	3.6	4.6	6.7	8.6	4.1	7.6
Household furnishings and operations	125.131	124.347	124.592	124.011	-.6	2.5	-.5	-3.5	.9	-2.1
Household operations ^{1 2}	152.577	153.667	153.648	153.368	-.9	1.9	-1.0	2.1	.5	.5
Apparel	120.666	120.672	120.949	120.228	.3	1.3	5.5	-1.4	.8	2.0
Men's and boys' apparel	114.086	114.936	114.131	113.038	3.4	1.7	-1.7	-3.6	2.5	-2.7
Women's and girls' apparel	109.019	108.852	109.649	108.460	-1.7	-2.4	11.9	-2.0	-2.1	4.7
Infants' and toddlers' apparel	117.941	118.857	119.258	117.261	1.6	5.1	.6	-2.3	3.3	-.8
Footwear	128.313	128.063	127.912	128.352	1.2	6.0	6.2	.1	3.6	3.1
Transportation	176.456	181.285	182.716	185.612	-46.8	.6	25.8	22.4	-26.8	24.1
Private transportation	173.340	178.196	179.519	182.415	-47.7	1.3	26.9	22.6	-27.2	24.7
New and used motor vehicles ²	90.888	90.936	91.560	93.467	-3.9	-.1	5.6	11.8	-2.0	8.7
New vehicles	137.855	136.112	136.675	138.886	-1.2	6.9	6.8	3.0	2.7	4.9
Used cars and trucks	124.569	126.950	128.878	133.216	-10.8	-12.9	7.8	30.8	-11.8	18.7
Motor fuel	203.579	221.467	223.652	227.788	-86.4	.6	105.0	56.7	-63.0	79.3
Gasoline (all types)	203.341	221.758	223.578	227.480	-86.6	4.6	106.8	56.6	-62.6	80.0
Motor vehicle parts and equipment ¹	133.787	133.587	133.504	133.764	4.8	2.9	-2.4	-.1	3.9	-1.3
Motor vehicle maintenance and repair ¹	245.421	245.871	246.850	247.811	4.9	2.6	.4	4.0	3.8	2.2
Public transportation	230.677	233.494	237.928	240.111	-19.1	-13.1	3.8	17.4	-16.1	10.4
Medical care	376.321	377.444	379.213	379.750	3.8	3.8	3.0	3.7	3.8	3.4
Medical care commodities	296.084	297.712	299.487	300.144	4.8	5.0	1.4	5.6	4.9	3.5
Medical care services	399.808	400.673	402.384	402.852	3.5	3.4	3.5	3.1	3.4	3.3
Professional services	322.537	322.955	324.248	324.921	3.3	1.0	3.9	3.0	2.1	3.5
Hospital and related services ³	566.848	570.031	573.743	574.505	5.8	9.8	5.5	5.5	7.8	5.5

See footnotes at end of table.

Table 5. Consumer Price Index for Urban Wage Earners and Clerical Workers (CPI-W): Seasonally adjusted U.S. city average, by expenditure category and commodity and service group-Continued

(1982-84=100, unless otherwise noted)

CPI-W	Seasonally adjusted indexes				Seasonally adjusted annual rate percent change for					
					3 months ended—			6 months ended—		
	July 2009	Aug. 2009	Sep. 2009	Oct. 2009	Jan. 2009	Apr. 2009	July 2009	Oct. 2009	Apr. 2009	Oct. 2009
Expenditure category										
Recreation ²	111.418	111.415	111.147	110.717	-0.5	0.6	1.6	-2.5	0.1	-0.5
Video and audio ²	102.121	101.924	101.243	100.681	-2.0	.9	.4	-5.5	-6	-2.6
Education and communication ²	123.348	123.479	123.601	123.757	2.8	2.3	2.8	1.3	2.5	2.1
Education ²	189.018	189.859	189.872	190.521	4.3	5.2	6.2	3.2	4.7	4.7
Educational books and supplies	490.109	491.859	493.984	494.705	4.2	5.4	13.1	3.8	4.8	8.4
Tuition, other school fees, and childcare	531.480	533.890	533.704	535.632	4.3	5.2	5.5	3.2	4.7	4.3
Communication ²	87.778	87.664	87.807	87.785	1.7	.3	.5	.0	1.0	.3
Information and information processing ^{1 2}	85.653	85.532	85.676	85.651	1.7	.3	.0	.0	1.0	.0
Telephone services ^{1 2}	102.587	102.613	102.896	102.818	1.7	.7	2.1	.9	1.2	1.5
Information technology, hardware and services ^{1 5}	10.113	10.012	9.975	9.995	1.7	-1.3	-10.1	-4.6	.2	-7.4
Personal computers and peripheral equipment ^{1 6}	80.736	78.480	77.835	77.939	-6.6	-12.0	-20.1	-13.2	-9.3	-16.7
Other goods and services	398.522	398.801	400.504	401.414	2.5	36.8	4.3	2.9	18.4	3.6
Tobacco and smoking products ¹	768.005	768.483	776.198	778.650	5.4	125.2	11.2	5.7	54.1	8.4
Personal care	202.553	202.705	202.795	203.135	1.0	2.2	.0	1.2	1.6	.6
Personal care products ¹	162.767	162.415	162.312	162.242	7.1	3.1	-2.8	-1.3	5.1	-2.0
Personal care services ¹	227.512	227.751	228.480	228.683	.3	3.9	-1.1	2.1	2.1	.5
Miscellaneous personal services	346.809	347.691	347.345	349.308	-1.4	1.1	2.9	2.9	-2	2.9
Commodity and service group										
Commodities	171.568	173.366	173.885	174.960	-23.7	2.1	9.6	8.1	-11.8	8.9
Food and beverages	216.821	217.045	216.778	217.027	1.2	-1.9	-1.6	.4	-.3	-.6
Commodities less food and beverages	147.760	150.154	150.983	152.366	-35.8	4.7	17.1	13.1	-18.0	15.1
Nondurables less food and beverages	187.184	193.645	194.337	192.499	-47.8	5.1	32.1	11.9	-25.9	21.6
Apparel	120.666	120.672	120.949	120.228	.3	1.3	5.5	-1.4	.8	2.0
Nondurables less food, beverages, and apparel	232.430	243.283	244.219	241.553	-57.7	7.8	40.4	16.6	-32.4	28.0
Durables	109.321	108.994	109.657	111.148	-4.7	-6	3.2	6.9	-2.7	5.0
Services	254.063	254.480	254.679	255.014	1.3	.4	.6	1.5	.9	1.0
Rent of shelter ⁴	234.008	234.179	234.254	234.207	2.2	.8	.4	.3	1.5	.3
Tenants' and household insurance ^{1 2}	121.765	122.254	122.644	122.761	1.5	1.2	2.3	3.3	1.4	2.8
Gas (piped) and electricity ³	187.619	187.525	187.880	189.323	-7.3	-13.6	-10.4	3.7	-10.5	-3.6
Water and sewer and trash collection services ²	161.801	163.201	163.808	165.178	3.6	4.6	6.7	8.6	4.1	7.6
Household operations ^{1 2}	152.577	153.667	153.648	153.368	-.9	1.9	-1.0	2.1	.5	.5
Transportation services	250.263	251.654	253.079	254.314	1.9	3.3	1.8	6.6	2.6	4.2
Medical care services	399.808	400.673	402.384	402.852	3.5	3.4	3.5	3.1	3.4	3.3
Other services	292.500	293.179	293.119	293.183	2.0	1.8	3.6	.9	1.9	2.3
Special indexes										
All items less food	208.216	209.541	210.036	210.827	-12.5	1.7	5.6	5.1	-5.7	5.4
All items less shelter	199.725	201.265	201.826	202.802	-15.6	1.1	6.2	6.3	-7.6	6.3
All items less medical care	202.769	203.921	204.253	204.958	-11.2	1.0	4.5	4.4	-5.3	4.4
Commodities less food	150.211	152.561	153.374	154.747	-34.6	4.5	16.6	12.6	-17.3	14.6
Nondurables less food	189.232	195.417	196.084	194.368	-45.4	4.6	30.0	11.3	-24.4	20.3
Nondurables less food and apparel	230.427	240.380	241.279	238.966	-54.5	6.9	36.9	15.7	-30.3	25.8
Nondurables	201.960	205.614	205.775	205.065	-26.6	1.9	12.0	6.3	-13.5	9.1
Services less rent of shelter ⁴	244.854	245.730	246.381	247.071	.9	-6	.3	3.7	.1	2.0
Services less medical care services	243.332	243.823	244.068	244.456	1.4	-1	.0	1.9	.7	.9
Energy	190.731	199.863	201.160	204.183	-67.3	-7.9	36.8	31.3	-45.2	34.0
All items less energy	212.846	213.027	213.292	213.715	1.2	2.1	1.4	1.6	1.6	1.5
All items less food and energy	212.505	212.680	213.059	213.524	1.2	3.0	2.1	1.9	2.1	2.0
Commodities less food and energy commodities	143.589	143.376	143.992	144.772	-1.0	5.8	3.5	3.3	2.4	3.4
Energy commodities	205.483	223.093	225.279	229.848	-85.5	-2.1	97.1	56.6	-62.4	75.7
Services less energy services	261.304	261.781	261.962	262.166	2.2	1.8	1.6	1.3	2.0	1.5

¹ Not seasonally adjusted.

² Indexes on a December 1997=100 base.

³ This index series was calculated using a Laspeyres estimator. All other item stratum index series were calculated using a geometric means estimator.

⁴ Indexes on a December 1984=100 base

⁵ Indexes on a December 1988=100 base.

⁶ Indexes on a December 2007=100 base.

NOTE: Index applies to a month as a whole, not to any specific date.

Table 6. Consumer Price Index for Urban Wage Earners and Clerical Workers (CPI-W): Selected areas, all items index

(1982-84=100, unless otherwise noted)

CPI-W	Pricing schedule 1	All items									
		Indexes				Percent change to Oct.2009 from—			Percent change to Sep.2009 from—		
		July 2009	Aug. 2009	Sep. 2009	Oct. 2009	Oct. 2008	Aug. 2009	Sep. 2009	Sep. 2008	July 2009	Aug. 2009
U.S. city average	M	210.526	211.156	211.322	211.549	-0.3	0.2	0.1	-1.7	0.4	0.1
Region and area size²											
Northeast urban	M	226.714	227.598	228.158	228.193	.2	.3	.0	-.8	.6	.2
Size A - More than 1,500,000	M	227.550	228.472	229.067	228.720	.1	.1	-.2	-.7	.7	.3
Size B/C - 50,000 to 1,500,000 ³	M	136.626	137.109	137.400	137.959	.3	.6	.4	-1.1	.6	.2
Midwest urban	M	199.824	200.723	200.658	200.781	-.2	.0	.1	-2.1	.4	.0
Size A - More than 1,500,000	M	199.611	200.710	200.566	200.730	-.3	.0	.1	-2.2	.5	-.1
Size B/C - 50,000 to 1,500,000 ³	M	131.096	131.481	131.497	131.420	-.2	.0	-.1	-2.0	.3	.0
Size D - Nonmetropolitan (less than 50,000)	M	198.455	199.404	199.416	200.053	.0	.3	.3	-2.3	.5	.0
South urban	M	205.415	205.867	205.726	206.121	-.6	.1	.2	-2.3	.2	-.1
Size A - More than 1,500,000	M	208.492	208.995	208.677	208.577	-1.0	-.2	.0	-2.3	.1	-.2
Size B/C - 50,000 to 1,500,000 ³	M	131.063	131.302	131.284	131.621	-.3	.2	.3	-2.2	.2	.0
Size D - Nonmetropolitan (less than 50,000)	M	210.341	211.088	210.922	212.368	-.6	.6	.7	-2.7	.3	-.1
West urban	M	213.541	213.988	214.490	214.718	-.4	.3	.1	-1.2	.4	.2
Size A - More than 1,500,000	M	215.955	216.539	217.000	217.002	-.3	.2	.0	-1.0	.5	.2
Size B/C - 50,000 to 1,500,000 ³	M	132.314	132.407	132.773	133.244	-.3	.6	.4	-1.6	.3	.3
Size classes											
A ⁴	M	195.096	195.796	195.957	195.895	-.4	.1	.0	-1.5	.4	.1
B/C ³	M	132.069	132.341	132.450	132.764	-.2	.3	.2	-1.9	.3	.1
D	M	205.504	206.271	206.341	207.120	-.4	.4	.4	-2.1	.4	.0
Selected local areas⁵											
Chicago-Gary-Kenosha, IL-IN-WI	M	203.554	204.246	204.278	204.511	-1.1	.1	.1	-2.3	.4	.0
Los Angeles-Riverside-Orange County, CA ...	M	216.128	216.628	217.302	217.474	-.6	.4	.1	-1.4	.5	.3
New York-Northern N.J.-Long Island, NY-NJ-CT-PA	M	232.177	232.841	233.502	233.084	.1	.1	-.2	-.5	.6	.3
Boston-Brockton-Nashua, MA-NH-ME-CT	1	232.535	-	235.744	-	-	-	-	-1.0	1.4	-
Cleveland-Akron, OH	1	191.494	-	192.800	-	-	-	-	-2.3	.7	-
Dallas-Fort Worth, TX	1	203.075	-	204.298	-	-	-	-	-2.6	.6	-
Washington-Baltimore, DC-MD-VA-WV ⁶	1	140.434	-	140.701	-	-	-	-	-.7	.2	-
Atlanta, GA	2	-	202.276	-	199.736	-2.7	-1.3	-	-	-	-
Detroit-Ann Arbor-Flint, MI	2	-	200.169	-	200.324	-.1	.1	-	-	-	-
Houston-Galveston-Brazoria, TX	2	-	189.503	-	189.304	-.7	-1	-	-	-	-
Miami-Fort Lauderdale, FL	2	-	219.000	-	220.358	-.8	.6	-	-	-	-
Philadelphia-Wilmington-Atlantic City, PA-NJ-DE-MD	2	-	225.481	-	224.573	-.2	-.4	-	-	-	-
San Francisco-Oakland-San Jose, CA	2	-	221.279	-	221.708	.2	.2	-	-	-	-
Seattle-Tacoma-Bremerton, WA	2	-	221.873	-	221.339	.3	-.2	-	-	-	-

¹ Foods, fuels, and several other items priced every month in all areas; most other goods and services priced as indicated:

M - Every month.

1 - January, March, May, July, September, and November.

2 - February, April, June, August, October, and December.

² Regions defined as the four Census regions. See technical notes.

³ Indexes on a December 1996=100 base.

⁴ Indexes on a December 1986=100 base.

⁵ In addition, the following metropolitan areas are published semiannually and appear in Tables 34 and 39 of the January and July issues of the CPI Detailed Report: Anchorage, AK; Cincinnati-Hamilton, OH-KY-IN; Denver-Boulder-Greeley, CO; Honolulu, HI; Kansas City, MO-KS; Milwaukee-Racine, WI; Minneapolis-St. Paul, MN-WI; Phoenix-Mesa, AZ; Pittsburgh, PA; Portland-Salem, OR-WA; St. Louis, MO-IL; San Diego, CA;

Tampa-St. Petersburg-Clearwater, FL.

⁶ Indexes on a November 1996=100 base.

- Data not available.

NOTE: Local area indexes are byproducts of the national CPI program. Each local index has a smaller sample size than the national index and is, therefore, subject to substantially more sampling and other measurement error. As a result, local area indexes show greater volatility than the national index, although their long-term trends are similar. Therefore, the Bureau of Labor Statistics strongly urges users to consider adopting the national average CPI for use in their escalator clauses.

NOTE: Index applies to a month as a whole, not to any specific date.

Table 7. Chained Consumer Price Index for All Urban Consumers (C-CPI-U): U.S. city average, by expenditure category and commodity and service group

(December 1999=100, unless otherwise noted)

C-CPI-U	Relative importance, 2005-2006	Unadjusted indexes		Unadjusted percent change to Oct. 2009 from—	
		Sep. 2009	Oct. 2009	Oct. 2008	Sep. 2009
Expenditure category					
All items	100.000	124.021	124.179	-0.5	0.1
Food and beverages	14.726	127.542	127.775	-.4	.2
Food	13.648	127.505	127.722	-.6	.2
Food at home	7.557	122.477	122.743	-2.9	.2
Food away from home	6.091	134.038	134.188	2.2	.1
Alcoholic beverages	1.077	128.371	128.803	2.4	.3
Housing	42.421	128.505	128.235	-.5	-.2
Shelter	32.409	131.413	131.398	.6	.0
Fuels and utilities	5.004	154.183	152.195	-7.0	-1.3
Household furnishings and operations	5.008	95.039	94.643	-1.2	-.4
Apparel	3.988	90.302	91.496	1.1	1.3
Transportation	17.393	123.573	124.609	-3.3	.8
Private transportation	16.285	124.115	125.186	-3.2	.9
Public transportation	1.108	117.307	117.852	-4.6	.5
Medical care	6.085	146.587	146.888	3.3	.2
Medical care commodities	1.615	129.938	130.234	4.1	.2
Medical care services	4.470	152.700	153.001	3.0	.2
Recreation	5.935	104.955	104.321	-1.5	-.6
Education and communication	6.196	111.486	111.581	2.1	.1
Education	2.771	180.639	180.851	4.8	.1
Communication	3.425	73.860	73.904	-.1	.1
Other goods and services	3.257	134.310	134.750	4.0	.3
Commodity and service group					
Services	58.427	134.306	134.196	.5	-.1
Commodities	41.573	111.473	111.944	-1.9	.4
Durables	11.817	80.658	81.540	.2	1.1
Nondurables	29.756	127.490	127.691	-2.7	.2
All items less food and energy	77.561	119.059	119.380	1.3	.3
Energy	8.790	171.660	169.637	-14.4	-1.2

Indexes for 2009 are initial estimates. Indexes for 2008 are interim adjustments.
NOTE: Index applies to a month as a whole, not to any specific date.