

**Transmission of material in this release is embargoed until 8:30 a.m. (EST) Friday, January 7, 2011**

USDL-11-0002

Technical information:

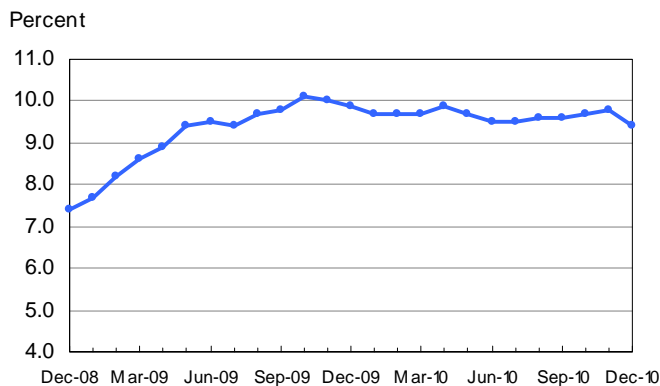
Household data: (202) 691-6378 • cpsinfo@bls.gov • www.bls.gov/cps  
Establishment data: (202) 691-6555 • cesinfo@bls.gov • www.bls.gov/ces

Media contact: (202) 691-5902 • PressOffice@bls.gov

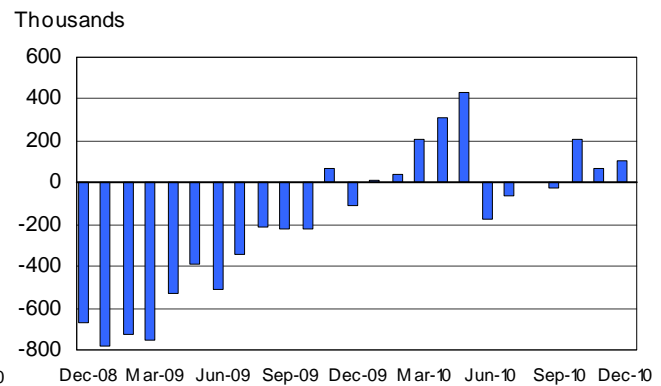
**THE EMPLOYMENT SITUATION – DECEMBER 2010**

The **unemployment rate** fell by 0.4 percentage point to 9.4 percent in December, and **nonfarm payroll employment** increased by 103,000, the U.S. Bureau of Labor Statistics reported today. Employment rose in leisure and hospitality and in health care but was little changed in other major industries.

**Chart 1. Unemployment rate, seasonally adjusted, December 2008 – December 2010**



**Chart 2. Nonfarm payroll employment over-the-month change, seasonally adjusted, December 2008 – December 2010**



**Revision of Seasonally Adjusted Household Survey Data**

Seasonally adjusted household survey data have been revised using updated seasonal adjustment factors, a procedure done at the end of each calendar year. Seasonally adjusted estimates back to January 2006 were subject to revision. The unemployment rates for January 2010 through November 2010 (as originally published and as revised) appear in table A on page 6, along with additional information about the revisions.

## Household Survey Data

The number of **unemployed persons** decreased by 556,000 to 14.5 million in December, and the **unemployment rate** dropped to 9.4 percent. Over the year, these measures were down from 15.2 million and 9.9 percent, respectively. (See table A-1.)

Among the **major worker groups**, the unemployment rates for adult men (9.4 percent) and whites (8.5 percent) declined in December. The unemployment rates for adult women (8.1 percent), teenagers (25.4 percent), blacks (15.8 percent), and Hispanics (13.0 percent) showed little change. The jobless rate for Asians was 7.2 percent, not seasonally adjusted. (See tables A-1, A-2, and A-3.)

In December, the number of **job losers and persons who completed temporary jobs** dropped by 548,000 to 8.9 million. The number of **long-term unemployed** (those jobless for 27 weeks or more) was little changed at 6.4 million and accounted for 44.3 percent of the unemployed. (See tables A-11 and A-12.)

The **civilian labor force participation rate** edged down in December to 64.3 percent, and the **employment-population ratio** was essentially unchanged at 58.3 percent. (See table A-1.)

The number of persons employed **part time for economic reasons** (sometimes referred to as involuntary part-time workers) was essentially unchanged in December at 8.9 million. These individuals were working part time because their hours had been cut back or because they were unable to find a full-time job. (See table A-8.)

About 2.6 million persons were **marginally attached to the labor force** in December, little different than a year earlier. (The data are not seasonally adjusted.) These individuals were not in the labor force, wanted and were available for work, and had looked for a job sometime in the prior 12 months. They were not counted as unemployed because they had not searched for work in the 4 weeks preceding the survey. (See table A-16.)

Among the marginally attached, there were 1.3 million **discouraged workers** in December, an increase of 389,000 from December 2009. (The data are not seasonally adjusted.) Discouraged workers are persons not currently looking for work because they believe no jobs are available for them. The remaining 1.3 million persons marginally attached to the labor force had not searched for work in the 4 weeks preceding the survey for reasons such as school attendance or family responsibilities. (See table A-16.)

## Establishment Survey Data

Total **nonfarm payroll employment** increased by 103,000 in December. Employment rose in leisure and hospitality and in health care but changed little in other major industries. Since December 2009, total payroll employment has increased by 1.1 million, or an average of 94,000 per month. (See table B-1.)

Employment in **leisure and hospitality** increased by 47,000 in December. Within the industry, job gains continued in food services and drinking places (+25,000). Since a recent low in December 2009, the food services industry has added 188,000 jobs.

In December, **health care** employment continued to expand, with a gain of 36,000. Over the month, job gains continued in ambulatory services (+21,000), hospitals (+8,000), and nursing and residential care facilities (+7,000).

Within professional and business services, employment in **temporary help services** continued to trend up in December (+16,000) and has risen by 495,000 since a recent low in September 2009.

Employment in **retail trade** changed little in December (+12,000). A job gain in motor vehicle and parts dealers (+8,000) offset a loss in health and personal care stores (-8,000). Employment in most other service-providing industries changed little over the month.

In the goods-producing sector, **mining** employment continued to trend up in December, reflecting a job gain in support activities for mining (+5,000).

**Manufacturing** employment changed little over the month (+10,000). Following job growth earlier in 2010, employment has been relatively flat, on net, since May. **Construction** employment also was little changed overall in December (-16,000). Within construction, there were job losses in heavy and civil engineering (-13,000) and in residential building (-6,000).

The **average workweek for all employees** on private nonfarm payrolls held at 34.3 hours in December. The manufacturing workweek for all employees declined by 0.1 hour to 40.2 hours, while factory overtime remained at 3.1 hours. The average workweek for **production and nonsupervisory employees** on private nonfarm payrolls increased by 0.1 hour to 33.6 hours. (See tables B-2 and B-7.)

In December, **average hourly earnings for all employees** on private nonfarm payrolls increased by 3 cents, or 0.1 percent, to \$22.78. Over the past 12 months, average hourly earnings have increased by 1.8 percent. In December, average hourly earnings of private-sector **production and nonsupervisory employees** rose by 2 cents, or 0.1 percent, to \$19.21. (See tables B-3 and B-8.)

The change in total nonfarm payroll employment for October was revised from +172,000 to +210,000, and the change for November was revised from +39,000 to +71,000.

---

**The Employment Situation for January is scheduled to be released on Friday, February 4, 2011, at 8:30 a.m. (EST).**

### **Upcoming Changes to Establishment Survey Data**

Effective with the release of January 2011 data on February 4, 2011, the establishment survey will begin estimating net business birth/death adjustment factors on a quarterly basis, replacing the current practice of estimating the factors annually. This will allow the establishment survey to incorporate information from the Quarterly Census of Employment and Wages into the birth/death adjustment factors as soon as it becomes available and thereby improve the factors. Additional information on this change is available at [www.bls.gov/ces/ces\\_quarterly\\_birthdeath.pdf](http://www.bls.gov/ces/ces_quarterly_birthdeath.pdf).

### **Upcoming Changes to Household Survey Data**

Effective with the release of January 2011 data on February 4, 2011, two additional data series—"Self-employed workers, unincorporated" and "Self-employed workers, incorporated"—will be added to table A-9. As a result, the format of table A-9 will change; sample versions in HTML and PDF formats are available at [www.bls.gov/cps/empsit\\_changes\\_table\\_a9\\_2011.htm](http://www.bls.gov/cps/empsit_changes_table_a9_2011.htm). Data on the incorporated self-employed have not previously been published on a regular basis.

Also, in table A-8, the data series currently labeled "Self-employed workers" (one for Agriculture and related industries and one for Nonagricultural industries) will be renamed "Self-employed workers, unincorporated." This is strictly a change in title and not in definition; the data shown will not be affected. This change is being made to clarify that these data only include persons operating unincorporated businesses. A similar title change will be made to one data series in table A-14.

In addition, a change affecting data collected on unemployment duration will be introduced in the household survey in January 2011. Presently, the Current Population Survey can record unemployment durations of up to 2 years. Starting with data collected for January 2011, respondents will be able to report unemployment durations of up to 5 years. This change will likely affect one data series in this news release: the average (mean) duration of unemployment, which is found in table A-12. The change does not affect the estimate of total unemployment or other data series on duration of unemployment. Additional information is available at [www.bls.gov/cps/duration.htm](http://www.bls.gov/cps/duration.htm).

Beginning with data for January 2011, occupation estimates in table A-13 will reflect the introduction of the 2010 Census occupation classification system into the household survey. This occupation classification system is derived from the 2010 Standard Occupational Classification system. Historical data will not be revised.

### **Revisions in the Establishment Survey Data**

With the release of January 2011 data on February 4, 2011, the Current Employment Statistics survey will introduce revisions to nonfarm payroll employment, hours, and earnings data to reflect the annual benchmark adjustments for March 2010 and updated seasonal adjustment factors. Not seasonally adjusted data beginning with April 2009 and seasonally adjusted data beginning with January 2006 are subject to revision.

### **Revisions in the Household Survey Data**

Effective with the release of data for January 2011 on February 4, 2011, revisions will be introduced into the population controls for the household survey. These changes reflect the routine annual updating of intercensal population estimates by the U.S. Census Bureau.

## Revision of Seasonally Adjusted Household Survey Data

At the end of each calendar year, BLS routinely updates the seasonal adjustment factors for the labor force series derived from the Current Population Survey (CPS), or household survey. As a result of this process, seasonally adjusted data for January 2006 through November 2010 were subject to revision.

Table A shows the unemployment rates for January 2010 through November 2010, as first published and as revised. The rates were unchanged in 8 of the 11 months and changed by one-tenth of a percentage point in the remaining 3 months. Revised seasonally adjusted data for other major labor force series beginning in December 2009 appear in table B.

An article describing the seasonal adjustment methodology for the household survey data and revised data for January 2010 through November 2010 is available at [www.bls.gov/cps/cpsrs2011.pdf](http://www.bls.gov/cps/cpsrs2011.pdf).

Historical data for the seasonally adjusted household series contained in the A-tables of this release can be accessed at [www.bls.gov/cps/cpsatabs.htm](http://www.bls.gov/cps/cpsatabs.htm). Revised historical seasonally adjusted monthly and quarterly data for additional series are available on the Internet at [ftp.bls.gov/pub/special.requests/lf/](http://ftp.bls.gov/pub/special.requests/lf/).

**Table A. Seasonally adjusted unemployment rates and changes due to revision, January - November 2010**

Year and month	As first published	As revised	Change
<b>2010</b>			
January .....	9.7	9.7	0.0
February .....	9.7	9.7	.0
March .....	9.7	9.7	.0
April .....	9.9	9.8	-.1
May .....	9.7	9.6	-.1
June .....	9.5	9.5	.0
July .....	9.5	9.5	.0
August .....	9.6	9.6	.0
September .....	9.6	9.6	.0
October .....	9.6	9.7	.1
November .....	9.8	9.8	.0

**HOUSEHOLD DATA**

**Table B. Employment status of the civilian population by sex and age, seasonally adjusted**

[Numbers in thousands]

Employment status, sex, and age	2009	2010											
	Dec.	Jan.	Feb.	Mar.	Apr.	May	June	July	Aug.	Sept.	Oct.	Nov.	Dec.
<b>TOTAL</b>													
Civilian noninstitutional population <sup>1</sup> .....	236,924	236,832	236,998	237,159	237,329	237,499	237,690	237,890	238,099	238,322	238,530	238,715	238,889
Civilian labor force.....	153,172	153,353	153,558	153,895	154,520	154,237	153,684	153,628	154,117	154,124	153,960	153,950	153,690
Participation rate.....	64.7	64.8	64.8	64.9	65.1	64.9	64.7	64.6	64.7	64.7	64.5	64.5	64.3
Employed.....	137,960	138,511	138,698	138,952	139,382	139,353	139,092	138,991	139,267	139,378	139,084	138,909	139,206
Employment-population ratio.....	58.2	58.5	58.5	58.6	58.7	58.7	58.5	58.4	58.5	58.5	58.3	58.2	58.3
Unemployed.....	15,212	14,842	14,860	14,943	15,138	14,884	14,593	14,637	14,849	14,746	14,876	15,041	14,485
Unemployment rate.....	9.9	9.7	9.7	9.7	9.8	9.6	9.5	9.5	9.6	9.6	9.7	9.8	9.4
<b>Men, 20 years and over</b>													
Civilian noninstitutional population <sup>1</sup> .....	106,125	105,998	106,100	106,198	106,301	106,407	106,522	106,641	106,761	106,887	107,007	107,114	107,216
Civilian labor force.....	78,463	78,386	78,568	78,841	79,279	79,178	79,094	78,993	79,295	79,289	79,016	78,980	78,906
Participation rate.....	73.9	74.0	74.1	74.2	74.6	74.4	74.3	74.1	74.3	74.2	73.8	73.7	73.6
Employed.....	70,479	70,525	70,707	70,977	71,348	71,451	71,329	71,340	71,505	71,559	71,365	71,130	71,480
Employment-population ratio.....	66.4	66.5	66.6	66.8	67.1	67.1	67.0	66.9	67.0	66.9	66.7	66.4	66.7
Unemployed.....	7,983	7,861	7,861	7,864	7,931	7,728	7,765	7,653	7,789	7,729	7,651	7,849	7,426
Unemployment rate.....	10.2	10.0	10.0	10.0	10.0	9.8	9.8	9.7	9.8	9.7	9.7	9.9	9.4
<b>Women, 20 years and over</b>													
Civilian noninstitutional population <sup>1</sup> .....	113,832	113,796	113,886	113,974	114,066	114,160	114,264	114,372	114,481	114,596	114,704	114,801	114,894
Civilian labor force.....	68,635	68,958	69,026	68,976	69,167	69,057	68,826	68,797	68,883	69,082	69,018	69,151	69,027
Participation rate.....	60.3	60.6	60.6	60.5	60.6	60.5	60.2	60.2	60.2	60.3	60.2	60.2	60.1
Employed.....	63,037	63,549	63,516	63,479	63,501	63,487	63,483	63,340	63,379	63,562	63,400	63,385	63,428
Employment-population ratio.....	55.4	55.8	55.8	55.7	55.7	55.6	55.6	55.4	55.4	55.5	55.3	55.2	55.2
Unemployed.....	5,598	5,409	5,509	5,497	5,665	5,570	5,343	5,458	5,504	5,520	5,618	5,766	5,599
Unemployment rate.....	8.2	7.8	8.0	8.0	8.2	8.1	7.8	7.9	8.0	8.0	8.1	8.3	8.1
<b>Both sexes, 16 to 19 years</b>													
Civilian noninstitutional population <sup>1</sup> .....	16,967	17,038	17,012	16,987	16,962	16,932	16,904	16,877	16,857	16,839	16,819	16,800	16,780
Civilian labor force.....	6,075	6,009	5,964	6,078	6,074	6,002	5,764	5,838	5,939	5,754	5,927	5,820	5,757
Participation rate.....	35.8	35.3	35.1	35.8	35.8	35.4	34.1	34.6	35.2	34.2	35.2	34.6	34.3
Employed.....	4,444	4,438	4,475	4,497	4,533	4,416	4,279	4,312	4,383	4,256	4,319	4,393	4,298
Employment-population ratio.....	26.2	26.0	26.3	26.5	26.7	26.1	25.3	25.5	26.0	25.3	25.7	26.2	25.6
Unemployed.....	1,631	1,572	1,490	1,581	1,542	1,586	1,485	1,526	1,556	1,497	1,607	1,426	1,460
Unemployment rate.....	26.8	26.2	25.0	26.0	25.4	26.4	25.8	26.1	26.2	26.0	27.1	24.5	25.4

<sup>1</sup> The population figures are not adjusted for seasonal variation.

NOTE: Seasonally adjusted data have been revised to reflect updated seasonal adjustment factors.

# HOUSEHOLD DATA

## Summary table A. Household data, seasonally adjusted

[Numbers in thousands]

Category	Dec. 2009	Oct. 2010	Nov. 2010	Dec. 2010	Change from: Nov. 2010- Dec. 2010
<b>Employment status</b>					
Civilian noninstitutional population.....	236,924	238,530	238,715	238,889	174
Civilian labor force.....	153,172	153,960	153,950	153,690	-260
Participation rate.....	64.7	64.5	64.5	64.3	-0.2
Employed.....	137,960	139,084	138,909	139,206	297
Employment-population ratio.....	58.2	58.3	58.2	58.3	0.1
Unemployed.....	15,212	14,876	15,041	14,485	-556
Unemployment rate.....	9.9	9.7	9.8	9.4	-0.4
Not in labor force.....	83,752	84,570	84,765	85,199	434
<b>Unemployment rates</b>					
Total, 16 years and over.....	9.9	9.7	9.8	9.4	-0.4
Adult men (20 years and over).....	10.2	9.7	9.9	9.4	-0.5
Adult women (20 years and over).....	8.2	8.1	8.3	8.1	-0.2
Teenagers (16 to 19 years).....	26.8	27.1	24.5	25.4	0.9
White.....	9.0	8.8	8.9	8.5	-0.4
Black or African American.....	16.2	15.7	16.0	15.8	-0.2
Asian (not seasonally adjusted).....	8.4	7.1	7.6	7.2	-
Hispanic or Latino ethnicity.....	12.8	12.6	13.2	13.0	-0.2
Total, 25 years and over.....	8.5	8.2	8.4	8.1	-0.3
Less than a high school diploma.....	15.3	15.3	15.7	15.3	-0.4
High school graduates, no college.....	10.6	10.1	10.0	9.8	-0.2
Some college or associate degree.....	8.8	8.5	8.7	8.1	-0.6
Bachelor's degree and higher.....	4.9	4.7	5.1	4.8	-0.3
<b>Reason for unemployment</b>					
Job losers and persons who completed temporary jobs.....	9,688	9,070	9,471	8,923	-548
Job leavers.....	916	854	864	914	50
Reentrants.....	3,385	3,498	3,427	3,408	-19
New entrants.....	1,244	1,278	1,269	1,311	42
<b>Duration of unemployment</b>					
Less than 5 weeks.....	2,908	2,659	2,824	2,725	-99
5 to 14 weeks.....	3,483	3,427	3,336	3,184	-152
15 to 26 weeks.....	2,781	2,500	2,515	2,205	-310
27 weeks and over.....	6,133	6,234	6,328	6,441	113
<b>Employed persons at work part time</b>					
Part time for economic reasons.....	9,093	9,100	8,960	8,931	-29
Slack work or business conditions.....	6,397	6,174	6,025	6,011	-14
Could only find part-time work.....	2,362	2,564	2,557	2,568	11
Part time for noneconomic reasons.....	18,359	18,230	18,326	18,184	-142
<b>Persons not in the labor force (not seasonally adjusted)</b>					
Marginally attached to the labor force.....	2,486	2,602	2,531	2,609	-
Discouraged workers.....	929	1,219	1,282	1,318	-

- Over-the-month changes are not displayed for not seasonally adjusted data.

NOTE: Persons whose ethnicity is identified as Hispanic or Latino may be of any race. Detail for the seasonally adjusted data shown in this table will not necessarily add to totals because of the independent seasonal adjustment of the various series. Updated population controls are introduced annually with the release of January data.



**ESTABLISHMENT DATA**  
**Summary table B. Establishment data, seasonally adjusted**

Category	Dec. 2009	Oct. 2010	Nov. 2010 <sup>p</sup>	Dec. 2010 <sup>p</sup>
<b>EMPLOYMENT BY SELECTED INDUSTRY</b> (Over-the-month change, in thousands)				
Total nonfarm.....	-109	210	71	103
Total private.....	-83	193	79	113
Goods-producing.....	-54	10	-5	-2
Mining and logging.....	0	10	5	4
Construction.....	-36	4	-2	-16
Manufacturing.....	-18	-4	-8	10
Durable goods <sup>1</sup> .....	-11	1	-2	10
Motor vehicles and parts.....	-1.1	3.2	0.1	3.3
Nondurable goods.....	-7	-5	-6	0
Private service-providing <sup>1</sup> .....	-29	183	84	115
Wholesale trade.....	-4.3	11.1	5.2	8.8
Retail trade.....	-14.5	38.2	-19.4	12.0
Transportation and warehousing.....	-4.0	3.9	15.3	8.8
Information.....	-14	-4	2	-4
Financial activities.....	-9	3	-4	4
Professional and business services <sup>1</sup> .....	22	40	49	7
Temporary help services.....	49.7	28.6	31.1	15.9
Education and health services <sup>1</sup> .....	37	66	37	44
Health care and social assistance.....	21.8	42.1	26.6	37.1
Leisure and hospitality.....	-33	-1	12	47
Other services.....	-7	25	-12	-14
Government.....	-26	17	-8	-10
<b>WOMEN AND PRODUCTION AND NONSUPERVISORY EMPLOYEES</b> AS A PERCENT OF ALL EMPLOYEES <sup>2</sup>				
Total nonfarm women employees.....	49.9	49.6	49.6	49.6
Total private women employees.....	48.4	48.1	48.1	48.1
Total private production and nonsupervisory employees.....	82.4	82.4	82.4	82.4
<b>HOURS AND EARNINGS</b> ALL EMPLOYEES				
<b>Total private</b>				
Average weekly hours.....	33.8	34.3	34.3	34.3
Average hourly earnings.....	\$ 22.38	\$ 22.74	\$ 22.75	\$ 22.78
Average weekly earnings.....	\$ 756.44	\$ 779.98	\$ 780.33	\$ 781.35
Index of aggregate weekly hours (2007=100) <sup>3</sup> .....	90.7	93.1	93.1	93.2
Over-the-month percent change.....	-0.4	0.5	0.0	0.1
Index of aggregate weekly payrolls (2007=100) <sup>4</sup> .....	96.8	100.9	101.0	101.3
Over-the-month percent change.....	-0.4	0.7	0.1	0.3
<b>HOURS AND EARNINGS</b> PRODUCTION AND NONSUPERVISORY EMPLOYEES				
<b>Total private</b>				
Average weekly hours.....	33.2	33.6	33.5	33.6
Average hourly earnings.....	\$ 18.85	\$ 19.18	\$ 19.19	\$ 19.21
Average weekly earnings.....	\$ 625.82	\$ 644.45	\$ 642.87	\$ 645.46
Index of aggregate weekly hours (2002=100) <sup>3</sup> .....	97.9	100.1	99.9	100.3
Over-the-month percent change.....	0.0	0.4	-0.2	0.4
Index of aggregate weekly payrolls (2002=100) <sup>4</sup> .....	123.3	128.3	128.1	128.8
Over-the-month percent change.....	0.2	0.8	-0.2	0.5
<b>DIFFUSION INDEX</b> (Over 1-month span) <sup>5</sup>				
Total private.....	39.6	60.4	52.0	60.0
Manufacturing.....	41.5	49.4	45.7	53.7

1 Includes other industries, not shown separately.

2 Data relate to production employees in mining and logging and manufacturing, construction employees in construction, and nonsupervisory employees in the service-providing industries.

3 The indexes of aggregate weekly hours are calculated by dividing the current month's estimates of aggregate hours by the corresponding annual average aggregate hours.

4 The indexes of aggregate weekly payrolls are calculated by dividing the current month's estimates of aggregate weekly payrolls by the corresponding annual average aggregate weekly payrolls.

5 Figures are the percent of industries with employment increasing plus one-half of the industries with unchanged employment, where 50 percent indicates an equal balance between industries with increasing and decreasing employment.

p Preliminary

## **Frequently Asked Questions about Employment and Unemployment Estimates**

### **Why are there two monthly measures of employment?**

The household survey and establishment survey both produce sample-based estimates of employment and both have strengths and limitations. The establishment survey employment series has a smaller margin of error on the measurement of month-to-month change than the household survey because of its much larger sample size. An over-the-month employment change of about 100,000 is statistically significant in the establishment survey, while the threshold for a statistically significant change in the household survey is about 400,000. However, the household survey has a more expansive scope than the establishment survey because it includes the self-employed, unpaid family workers, agricultural workers, and private household workers, who are excluded by the establishment survey. The household survey also provides estimates of employment for demographic groups.

### **Are undocumented immigrants counted in the surveys?**

It is likely that both surveys include at least some undocumented immigrants. However, neither the establishment nor the household survey is designed to identify the legal status of workers. Therefore, it is not possible to determine how many are counted in either survey. The establishment survey does not collect data on the legal status of workers. The household survey does include questions which identify the foreign and native born, but it does not include questions about the legal status of the foreign born.

### **Why does the establishment survey have revisions?**

The establishment survey revises published estimates to improve its data series by incorporating additional information that was not available at the time of the initial publication of the estimates. The establishment survey revises its initial monthly estimates twice, in the immediately succeeding 2 months, to incorporate additional sample receipts from respondents in the survey and recalculated seasonal adjustment factors. For more information on the monthly revisions, please visit [www.bls.gov/ces/cesrevinfo.htm](http://www.bls.gov/ces/cesrevinfo.htm).

On an annual basis, the establishment survey incorporates a benchmark revision that re-anchors estimates to nearly complete employment counts available from unemployment insurance tax records. The benchmark helps to control for sampling and modeling errors in the estimates. For more information on the annual benchmark revision, please visit [www.bls.gov/web/cesbmart.htm](http://www.bls.gov/web/cesbmart.htm).

### **Does the establishment survey sample include small firms?**

Yes; about 40 percent of the establishment survey sample is comprised of business establishments with fewer than 20 employees. The establishment survey sample is designed to maximize the reliability of the total nonfarm employment estimate; firms from all size classes and industries are appropriately sampled to achieve that goal.

### **Does the establishment survey account for employment from new businesses?**

Yes; monthly establishment survey estimates include an adjustment to account for the net employment change generated by business births and deaths. The adjustment comes from an econometric model that forecasts the monthly net jobs impact of business births and deaths based on the actual past values of the net impact that can be observed with a lag from the Quarterly Census of Employment and Wages. The establishment survey uses modeling rather than sampling for this purpose because the survey is not

immediately able to bring new businesses into the sample. There is an unavoidable lag between the birth of a new firm and its appearance on the sampling frame and availability for selection. BLS adds new businesses to the survey twice a year.

**Is the count of unemployed persons limited to just those people receiving unemployment insurance benefits?**

No; the estimate of unemployment is based on a monthly sample survey of households. All persons who are without jobs and are actively seeking and available to work are included among the unemployed. (People on temporary layoff are included even if they do not actively seek work.) There is no requirement or question relating to unemployment insurance benefits in the monthly survey.

**Does the official unemployment rate exclude people who have stopped looking for work?**

Yes; however, there are separate estimates of persons outside the labor force who want a job, including those who have stopped looking because they believe no jobs are available (discouraged workers). In addition, alternative measures of labor underutilization (some of which include discouraged workers and other groups not officially counted as unemployed) are published each month in The Employment Situation news release.

# Technical Note

This news release presents statistics from two major surveys, the Current Population Survey (household survey) and the Current Employment Statistics survey (establishment survey). The household survey provides information on the labor force, employment, and unemployment that appears in the "A" tables, marked HOUSEHOLD DATA. It is a sample survey of about 60,000 households conducted by the U.S. Census Bureau for the U.S. Bureau of Labor Statistics (BLS).

The establishment survey provides information on employment, hours, and earnings of employees on nonfarm payrolls; the data appear in the "B" tables, marked ESTABLISHMENT DATA. BLS collects these data each month from the payroll records of a sample of nonagricultural business establishments. The sample includes about 140,000 businesses and government agencies representing approximately 410,000 worksites and is drawn from a sampling frame of roughly 8.9 million unemployment insurance tax accounts. The active sample includes approximately one-third of all nonfarm payroll employees.

For both surveys, the data for a given month relate to a particular week or pay period. In the household survey, the reference period is generally the calendar week that contains the 12th day of the month. In the establishment survey, the reference period is the pay period including the 12th, which may or may not correspond directly to the calendar week.

## Coverage, definitions, and differences between surveys

**Household survey.** The sample is selected to reflect the entire civilian noninstitutional population. Based on responses to a series of questions on work and job search activities, each person 16 years and over in a sample household is classified as employed, unemployed, or not in the labor force.

People are classified as *employed* if they did any work at all as paid employees during the reference week; worked in their own business, profession, or on their own farm; or worked without pay at least 15 hours in a family business or farm. People are also counted as employed if they were temporarily absent from their jobs because of illness, bad weather, vacation, labor-management disputes, or personal reasons.

People are classified as *unemployed* if they meet all of the following criteria: they had no employment during the reference week; they were available for work at that time; and they made specific efforts to find employment sometime during the 4-week period ending with the reference week. Persons laid off from a job and expecting recall need not be looking for work to be counted as unemployed. The unemployment data derived from the household survey in no way depend upon the eligibility for or receipt of unemployment insurance benefits.

The *civilian labor force* is the sum of employed and unemployed persons. Those not classified as employed or unemployed are *not in the labor force*. The *unemployment rate* is the number unemployed as a percent of the labor force. The *labor force participation rate* is the labor force as a percent of the population, and the *employment-population ratio* is the employed as a percent of the population. Additional information about the household survey can be found at [www.bls.gov/cps/documentation.htm](http://www.bls.gov/cps/documentation.htm).

**Establishment survey.** The sample establishments are drawn from private nonfarm businesses such as factories, offices, and stores, as well as from federal, state, and local government entities. *Employees on nonfarm payrolls* are those who received pay for any part of the reference pay period, including persons on paid leave. Persons are counted in each job they hold. *Hours and earnings* data are produced for the private sector for all employees and for production and nonsupervisory employees. *Production and nonsupervisory employees* are defined as production and related employees in manufacturing and mining and logging, construction workers in construction, and nonsupervisory employees in private service-providing industries.

Industries are classified on the basis of an establishment's principal activity in accordance with the 2007 version of the North American Industry Classification System. Additional information about the establishment survey can be found at [www.bls.gov/ces/#technical](http://www.bls.gov/ces/#technical).

**Differences in employment estimates.** The numerous conceptual and methodological differences between the household and establishment surveys result in important distinctions in the employment estimates derived from the surveys. Among these are:

- The household survey includes agricultural workers, the self-employed, unpaid family workers, and private household workers among the employed. These groups are excluded from the establishment survey.
- The household survey includes people on unpaid leave among the employed. The establishment survey does not.
- The household survey is limited to workers 16 years of age and older. The establishment survey is not limited by age.
- The household survey has no duplication of individuals, because individuals are counted only once, even if they hold more than one job. In the establishment survey, employees working at more than one job and thus appearing on more than one payroll are counted separately for each appearance.

## Seasonal adjustment

Over the course of a year, the size of the nation's labor force and the levels of employment and unemployment undergo regularly occurring fluctuations. These events may result from seasonal changes in weather, major holidays, and the opening and closing of schools. The effect of such seasonal variation can be very large.

Because these seasonal events follow a more or less regular pattern each year, their influence on the level of a series can be tempered by adjusting for regular seasonal variation. These adjustments make nonseasonal developments, such as declines in employment or increases in the participation of women in the labor force, easier to spot. For example, in the household survey, the large number of youth entering the labor force each June is likely to obscure any other changes that have taken place relative to May, making it difficult to determine if the level of economic activity has risen or declined. Similarly, in the establishment survey, payroll employment in education declines by about 20 percent at the end of the spring term and later rises with the start of the fall term, obscuring the underlying employment trends in the industry. Because seasonal employment changes at the end and beginning of the school year can be estimated, the statistics can be adjusted to make underlying employment patterns more discernable. The seasonally adjusted figures provide a more useful tool with which to analyze changes in month-to-month economic activity.

Many seasonally adjusted series are independently adjusted in both the household and establishment surveys. However, the adjusted series for many major estimates, such as total payroll employment, employment in most major sectors, total employment, and unemployment are computed by aggregating independently adjusted component series. For example, total unemployment is derived by summing the adjusted series for four major age-sex components; this differs from the unemployment estimate that would be obtained by directly adjusting the total or by combining the duration, reasons, or more detailed age categories.

For both the household and establishment surveys, a concurrent seasonal adjustment methodology is used in which new seasonal factors are calculated each month using all relevant data, up to and including the data for the current month. In the household survey, new seasonal factors are used to adjust only the current month's data. In the establishment survey, however, new seasonal factors are used each month to adjust the three most recent monthly estimates. The prior 2 months are routinely revised to incorporate additional sample reports and recalculated seasonal adjustment factors. In both surveys, 5-year revisions to historical data are made once a year.

## Reliability of the estimates

Statistics based on the household and establishment surveys are subject to both sampling and nonsampling

error. When a sample rather than the entire population is surveyed, there is a chance that the sample estimates may differ from the "true" population values they represent. The exact difference, or *sampling error*, varies depending on the particular sample selected, and this variability is measured by the standard error of the estimate. There is about a 90-percent chance, or level of confidence, that an estimate based on a sample will differ by no more than 1.6 standard errors from the "true" population value because of sampling error. BLS analyses are generally conducted at the 90-percent level of confidence.

For example, the confidence interval for the monthly change in total nonfarm employment from the establishment survey is on the order of plus or minus 100,000. Suppose the estimate of nonfarm employment increases by 50,000 from one month to the next. The 90-percent confidence interval on the monthly change would range from -50,000 to +150,000 (50,000 +/- 100,000). These figures do not mean that the sample results are off by these magnitudes, but rather that there is about a 90-percent chance that the "true" over-the-month change lies within this interval. Since this range includes values of less than zero, we could not say with confidence that nonfarm employment had, in fact, increased that month. If, however, the reported nonfarm employment rise was 250,000, then all of the values within the 90-percent confidence interval would be greater than zero. In this case, it is likely (at least a 90-percent chance) that nonfarm employment had, in fact, risen that month. At an unemployment rate of around 5.5 percent, the 90-percent confidence interval for the monthly change in unemployment as measured by the household survey is about +/- 280,000, and for the monthly change in the unemployment rate it is about +/- 0.19 percentage point.

In general, estimates involving many individuals or establishments have lower standard errors (relative to the size of the estimate) than estimates which are based on a small number of observations. The precision of estimates also is improved when the data are cumulated over time, such as for quarterly and annual averages.

The household and establishment surveys are also affected by *nonsampling error*, which can occur for many reasons, including the failure to sample a segment of the population, inability to obtain information for all respondents in the sample, inability or unwillingness of respondents to provide correct information on a timely basis, mistakes made by respondents, and errors made in the collection or processing of the data.

For example, in the establishment survey, estimates for the most recent 2 months are based on incomplete returns; for this reason, these estimates are labeled preliminary in the tables. It is only after two successive revisions to a monthly estimate, when nearly all sample reports have been received, that the estimate is considered final.

Another major source of nonsampling error in the establishment survey is the inability to capture, on a timely basis, employment generated by new firms. To correct for this systematic underestimation of employment growth, an estimation procedure with two components is used to

account for business births. The first component excludes employment losses from business deaths from sample-based estimation in order to offset the missing employment gains from business births. This is incorporated into the sample-based estimation procedure by simply not reflecting sample units going out of business, but imputing to them the same employment trend as the other firms in the sample. This procedure accounts for most of the net birth/death employment.

The second component is an ARIMA time series model designed to estimate the residual net birth/death employment not accounted for by the imputation. The historical time series used to create and test the ARIMA model was derived from the unemployment insurance universe micro-level database, and reflects the actual residual net of births and deaths over the past 5 years.

The sample-based estimates from the establishment survey are adjusted once a year (on a lagged basis) to

universe counts of payroll employment obtained from administrative records of the unemployment insurance program. The difference between the March sample-based employment estimates and the March universe counts is known as a benchmark revision, and serves as a rough proxy for total survey error. The new benchmarks also incorporate changes in the classification of industries. Over the past decade, absolute benchmark revisions for total nonfarm employment have averaged 0.3 percent, with a range from -0.7 to 0.6 percent.

#### **Other information**

Information in this release will be made available to sensory impaired individuals upon request. Voice phone: (202) 691-5200; Federal Relay Service: (800) 877-8339.

# HOUSEHOLD DATA

## Table A-1. Employment status of the civilian population by sex and age

[Numbers in thousands]

Employment status, sex, and age	Not seasonally adjusted			Seasonally adjusted <sup>1</sup>					
	Dec. 2009	Nov. 2010	Dec. 2010	Dec. 2009	Aug. 2010	Sept. 2010	Oct. 2010	Nov. 2010	Dec. 2010
<b>TOTAL</b>									
Civilian noninstitutional population.....	236,924	238,715	238,889	236,924	238,099	238,322	238,530	238,715	238,889
Civilian labor force.....	152,693	153,698	153,156	153,172	154,117	154,124	153,960	153,950	153,690
Participation rate.....	64.4	64.4	64.1	64.7	64.7	64.7	64.5	64.5	64.3
Employed.....	137,953	139,415	139,159	137,960	139,267	139,378	139,084	138,909	139,206
Employment-population ratio.....	58.2	58.4	58.3	58.2	58.5	58.5	58.3	58.2	58.3
Unemployed.....	14,740	14,282	13,997	15,212	14,849	14,746	14,876	15,041	14,485
Unemployment rate.....	9.7	9.3	9.1	9.9	9.6	9.6	9.7	9.8	9.4
Not in labor force.....	84,231	85,017	85,733	83,752	83,983	84,198	84,570	84,765	85,199
Persons who currently want a job.....	5,939	5,832	6,212	6,218	6,039	6,236	6,279	6,248	6,471
<b>Men, 16 years and over</b>									
Civilian noninstitutional population.....	114,728	115,640	115,731	114,728	115,317	115,433	115,542	115,640	115,731
Civilian labor force.....	81,243	81,651	81,504	81,533	82,266	82,165	82,000	81,986	81,845
Participation rate.....	70.8	70.6	70.4	71.1	71.3	71.2	71.0	70.9	70.7
Employed.....	72,258	73,540	73,226	72,609	73,600	73,594	73,470	73,337	73,600
Employment-population ratio.....	63.0	63.6	63.3	63.3	63.8	63.8	63.6	63.4	63.6
Unemployed.....	8,985	8,111	8,278	8,925	8,666	8,571	8,530	8,649	8,245
Unemployment rate.....	11.1	9.9	10.2	10.9	10.5	10.4	10.4	10.5	10.1
Not in labor force.....	33,485	33,988	34,228	33,194	33,051	33,268	33,542	33,653	33,886
<b>Men, 20 years and over</b>									
Civilian noninstitutional population.....	106,125	107,114	107,216	106,125	106,761	106,887	107,007	107,114	107,216
Civilian labor force.....	78,392	78,822	78,780	78,463	79,295	79,289	79,016	78,980	78,906
Participation rate.....	73.9	73.6	73.5	73.9	74.3	74.2	73.8	73.7	73.6
Employed.....	70,251	71,471	71,235	70,479	71,505	71,559	71,365	71,130	71,480
Employment-population ratio.....	66.2	66.7	66.4	66.4	67.0	66.9	66.7	66.4	66.7
Unemployed.....	8,141	7,352	7,545	7,983	7,789	7,729	7,651	7,849	7,426
Unemployment rate.....	10.4	9.3	9.6	10.2	9.8	9.7	9.7	9.9	9.4
Not in labor force.....	27,733	28,291	28,436	27,662	27,467	27,599	27,991	28,134	28,310
<b>Women, 16 years and over</b>									
Civilian noninstitutional population.....	122,197	123,075	123,158	122,197	122,783	122,889	122,988	123,075	123,158
Civilian labor force.....	71,450	72,046	71,653	71,639	71,851	71,959	71,960	71,964	71,845
Participation rate.....	58.5	58.5	58.2	58.6	58.5	58.6	58.5	58.5	58.3
Employed.....	65,694	65,875	65,933	65,351	65,667	65,784	65,613	65,572	65,605
Employment-population ratio.....	53.8	53.5	53.5	53.5	53.5	53.5	53.3	53.3	53.3
Unemployed.....	5,756	6,171	5,719	6,287	6,183	6,175	6,346	6,392	6,240
Unemployment rate.....	8.1	8.6	8.0	8.8	8.6	8.6	8.8	8.9	8.7
Not in labor force.....	50,747	51,029	51,505	50,558	50,932	50,930	51,028	51,112	51,313
<b>Women, 20 years and over</b>									
Civilian noninstitutional population.....	113,832	114,801	114,894	113,832	114,481	114,596	114,704	114,801	114,894
Civilian labor force.....	68,617	69,374	68,999	68,635	68,883	69,082	69,018	69,151	69,027
Participation rate.....	60.3	60.4	60.1	60.3	60.2	60.3	60.2	60.2	60.1
Employed.....	63,430	63,779	63,809	63,037	63,379	63,562	63,400	63,385	63,428
Employment-population ratio.....	55.7	55.6	55.5	55.4	55.4	55.5	55.3	55.2	55.2
Unemployed.....	5,187	5,595	5,190	5,598	5,504	5,520	5,618	5,766	5,599
Unemployment rate.....	7.6	8.1	7.5	8.2	8.0	8.0	8.1	8.3	8.1
Not in labor force.....	45,215	45,427	45,895	45,198	45,598	45,514	45,687	45,651	45,867
<b>Both sexes, 16 to 19 years</b>									
Civilian noninstitutional population.....	16,967	16,800	16,780	16,967	16,857	16,839	16,819	16,800	16,780
Civilian labor force.....	5,684	5,501	5,378	6,075	5,939	5,754	5,927	5,820	5,757
Participation rate.....	33.5	32.7	32.0	35.8	35.2	34.2	35.2	34.6	34.3
Employed.....	4,272	4,165	4,116	4,444	4,383	4,256	4,319	4,393	4,298
Employment-population ratio.....	25.2	24.8	24.5	26.2	26.0	25.3	25.7	26.2	25.6
Unemployed.....	1,412	1,335	1,262	1,631	1,556	1,497	1,607	1,426	1,460
Unemployment rate.....	24.8	24.3	23.5	26.8	26.2	26.0	27.1	24.5	25.4
Not in labor force.....	11,283	11,299	11,402	10,892	10,918	11,085	10,893	10,980	11,022

<sup>1</sup> The population figures are not adjusted for seasonal variation; therefore, identical numbers appear in the unadjusted and seasonally adjusted columns.

NOTE: Updated population controls are introduced annually with the release of January data.

**HOUSEHOLD DATA**

**Table A-2. Employment status of the civilian population by race, sex, and age**

[Numbers in thousands]

Employment status, race, sex, and age	Not seasonally adjusted			Seasonally adjusted <sup>1</sup>					
	Dec. 2009	Nov. 2010	Dec. 2010	Dec. 2009	Aug. 2010	Sept. 2010	Oct. 2010	Nov. 2010	Dec. 2010
<b>WHITE</b>									
Civilian noninstitutional population.....	191,628	192,641	192,749	191,628	192,245	192,391	192,527	192,641	192,749
Civilian labor force.....	124,344	124,735	124,309	124,703	125,358	125,333	124,914	124,824	124,700
Participation rate.....	64.9	64.7	64.5	65.1	65.2	65.1	64.9	64.8	64.7
Employed.....	113,416	114,254	114,035	113,439	114,457	114,433	113,975	113,728	114,079
Employment-population ratio.....	59.2	59.3	59.2	59.2	59.5	59.5	59.2	59.0	59.2
Unemployed.....	10,928	10,481	10,274	11,264	10,901	10,899	10,940	11,096	10,620
Unemployment rate.....	8.8	8.4	8.3	9.0	8.7	8.7	8.8	8.9	8.5
Not in labor force.....	67,284	67,907	68,439	66,925	66,887	67,058	67,612	67,817	68,049
<b>Men, 20 years and over</b>									
Civilian labor force.....	64,870	65,074	64,978	64,884	65,571	65,579	65,215	65,088	65,041
Participation rate.....	74.4	74.1	73.9	74.4	74.8	74.8	74.3	74.1	74.0
Employed.....	58,653	59,492	59,280	58,846	59,720	59,759	59,425	59,137	59,484
Employment-population ratio.....	67.2	67.7	67.4	67.5	68.2	68.1	67.7	67.3	67.7
Unemployed.....	6,217	5,583	5,698	6,038	5,850	5,820	5,790	5,951	5,557
Unemployment rate.....	9.6	8.6	8.8	9.3	8.9	8.9	8.9	9.1	8.5
<b>Women, 20 years and over</b>									
Civilian labor force.....	54,823	55,155	54,927	54,817	54,878	54,961	54,846	54,953	54,914
Participation rate.....	60.0	60.0	59.7	59.9	59.8	59.8	59.7	59.7	59.7
Employed.....	51,116	51,195	51,261	50,771	50,989	51,000	50,835	50,817	50,920
Employment-population ratio.....	55.9	55.7	55.7	55.5	55.6	55.5	55.3	55.2	55.3
Unemployed.....	3,707	3,960	3,667	4,046	3,889	3,961	4,012	4,136	3,994
Unemployment rate.....	6.8	7.2	6.7	7.4	7.1	7.2	7.3	7.5	7.3
<b>Both sexes, 16 to 19 years</b>									
Civilian labor force.....	4,651	4,506	4,404	5,002	4,910	4,793	4,853	4,783	4,746
Participation rate.....	35.9	35.2	34.4	38.6	38.2	37.3	37.8	37.3	37.1
Employed.....	3,647	3,568	3,494	3,822	3,747	3,674	3,715	3,775	3,676
Employment-population ratio.....	28.1	27.9	27.3	29.5	29.2	28.6	29.0	29.5	28.7
Unemployed.....	1,004	938	910	1,180	1,162	1,119	1,138	1,008	1,070
Unemployment rate.....	21.6	20.8	20.7	23.6	23.7	23.3	23.4	21.1	22.5
<b>BLACK OR AFRICAN AMERICAN</b>									
Civilian noninstitutional population.....	28,437	28,865	28,896	28,437	28,755	28,794	28,831	28,865	28,896
Civilian labor force.....	17,484	17,979	17,835	17,616	17,876	17,777	17,946	18,020	17,958
Participation rate.....	61.5	62.3	61.7	61.9	62.2	61.7	62.2	62.4	62.1
Employed.....	14,759	15,206	15,120	14,760	14,972	14,920	15,127	15,142	15,119
Employment-population ratio.....	51.9	52.7	52.3	51.9	52.1	51.8	52.5	52.5	52.3
Unemployed.....	2,725	2,772	2,715	2,856	2,904	2,857	2,818	2,878	2,839
Unemployment rate.....	15.6	15.4	15.2	16.2	16.2	16.1	15.7	16.0	15.8
Not in labor force.....	10,953	10,886	11,061	10,822	10,879	11,017	10,885	10,845	10,939
<b>Men, 20 years and over</b>									
Civilian labor force.....	7,896	8,084	8,079	7,919	8,080	8,066	8,072	8,099	8,106
Participation rate.....	68.7	69.0	68.8	68.9	69.3	69.1	69.0	69.1	69.1
Employed.....	6,579	6,815	6,758	6,588	6,691	6,661	6,763	6,753	6,764
Employment-population ratio.....	57.3	58.2	57.6	57.4	57.4	57.1	57.8	57.6	57.6
Unemployed.....	1,317	1,269	1,321	1,331	1,389	1,405	1,309	1,346	1,341
Unemployment rate.....	16.7	15.7	16.4	16.8	17.2	17.4	16.2	16.6	16.5
<b>Women, 20 years and over</b>									
Civilian labor force.....	8,891	9,238	9,141	8,953	9,114	9,101	9,173	9,228	9,204
Participation rate.....	62.2	63.6	62.9	62.7	63.1	62.9	63.3	63.6	63.3
Employed.....	7,786	8,035	7,998	7,783	7,911	7,948	7,998	8,017	7,993
Employment-population ratio.....	54.5	55.4	55.0	54.5	54.7	54.9	55.2	55.2	55.0
Unemployed.....	1,105	1,203	1,143	1,170	1,203	1,152	1,176	1,211	1,211
Unemployment rate.....	12.4	13.0	12.5	13.1	13.2	12.7	12.8	13.1	13.2
<b>Both sexes, 16 to 19 years</b>									
Civilian labor force.....	698	657	615	744	682	611	700	693	648
Participation rate.....	26.2	24.9	23.4	27.9	25.7	23.1	26.5	26.3	24.6
Employed.....	394	356	365	389	370	310	366	372	361
Employment-population ratio.....	14.8	13.5	13.9	14.6	14.0	11.7	13.9	14.1	13.7
Unemployed.....	303	301	250	355	312	300	334	321	287
Unemployment rate.....	43.5	45.8	40.7	47.7	45.7	49.2	47.7	46.3	44.2
<b>ASIAN</b>									
Civilian noninstitutional population.....	10,904	11,376	11,387	-	-	-	-	-	-

See footnotes at end of table.



**HOUSEHOLD DATA**

**Table A-2. Employment status of the civilian population by race, sex, and age — Continued**

[Numbers in thousands]

Employment status, race, sex, and age	Not seasonally adjusted			Seasonally adjusted <sup>1</sup>					
	Dec. 2009	Nov. 2010	Dec. 2010	Dec. 2009	Aug. 2010	Sept. 2010	Oct. 2010	Nov. 2010	Dec. 2010
Civilian labor force.....	7,163	7,335	7,355	-	-	-	-	-	-
Participation rate.....	65.7	64.5	64.6	-	-	-	-	-	-
Employed.....	6,560	6,780	6,829	-	-	-	-	-	-
Employment-population ratio.....	60.2	59.6	60.0	-	-	-	-	-	-
Unemployed.....	602	555	526	-	-	-	-	-	-
Unemployment rate.....	8.4	7.6	7.2	-	-	-	-	-	-
Not in labor force.....	3,741	4,041	4,032	-	-	-	-	-	-

<sup>1</sup> The population figures are not adjusted for seasonal variation; therefore, identical numbers appear in the unadjusted and seasonally adjusted columns.

- Data not available.

NOTE: Estimates for the above race groups will not sum to totals shown in table A-1 because data are not presented for all races. Updated population controls are introduced annually with the release of January data.

**HOUSEHOLD DATA**

**Table A-3. Employment status of the Hispanic or Latino population by sex and age**

[Numbers in thousands]

Employment status, sex, and age	Not seasonally adjusted			Seasonally adjusted <sup>1</sup>					
	Dec. 2009	Nov. 2010	Dec. 2010	Dec. 2009	Aug. 2010	Sept. 2010	Oct. 2010	Nov. 2010	Dec. 2010
<b>HISPANIC OR LATINO ETHNICITY</b>									
Civilian noninstitutional population.....	33,379	34,102	34,188	33,379	33,836	33,927	34,014	34,102	34,188
Civilian labor force.....	22,481	22,958	22,929	22,408	22,733	22,896	22,814	22,915	22,868
Participation rate.....	67.3	67.3	67.1	67.1	67.2	67.5	67.1	67.2	66.9
Employed.....	19,591	20,042	19,957	19,532	19,991	20,042	19,936	19,899	19,906
Employment-population ratio.....	58.7	58.8	58.4	58.5	59.1	59.1	58.6	58.4	58.2
Unemployed.....	2,890	2,916	2,972	2,876	2,742	2,854	2,878	3,016	2,962
Unemployment rate.....	12.9	12.7	13.0	12.8	12.1	12.5	12.6	13.2	13.0
Not in labor force.....	10,899	11,145	11,259	10,971	11,102	11,031	11,201	11,188	11,320
<b>Men, 20 years and over</b>									
Civilian labor force.....	12,804	13,000	13,115	-	-	-	-	-	-
Participation rate.....	82.4	81.8	82.3	-	-	-	-	-	-
Employed.....	11,168	11,454	11,431	-	-	-	-	-	-
Employment-population ratio.....	71.9	72.1	71.7	-	-	-	-	-	-
Unemployed.....	1,636	1,546	1,684	-	-	-	-	-	-
Unemployment rate.....	12.8	11.9	12.8	-	-	-	-	-	-
<b>Women, 20 years and over</b>									
Civilian labor force.....	8,720	8,999	8,880	-	-	-	-	-	-
Participation rate.....	59.4	60.2	59.2	-	-	-	-	-	-
Employed.....	7,806	7,916	7,892	-	-	-	-	-	-
Employment-population ratio.....	53.2	52.9	52.7	-	-	-	-	-	-
Unemployed.....	915	1,083	988	-	-	-	-	-	-
Unemployment rate.....	10.5	12.0	11.1	-	-	-	-	-	-
<b>Both sexes, 16 to 19 years</b>									
Civilian labor force.....	956	959	934	-	-	-	-	-	-
Participation rate.....	30.3	29.4	28.6	-	-	-	-	-	-
Employed.....	617	672	633	-	-	-	-	-	-
Employment-population ratio.....	19.5	20.6	19.4	-	-	-	-	-	-
Unemployed.....	340	288	300	-	-	-	-	-	-
Unemployment rate.....	35.5	30.0	32.2	-	-	-	-	-	-

<sup>1</sup> The population figures are not adjusted for seasonal variation; therefore, identical numbers appear in the unadjusted and seasonally adjusted columns.

- Data not available.

NOTE: Persons whose ethnicity is identified as Hispanic or Latino may be of any race. Updated population controls are introduced annually with the release of January data.

**HOUSEHOLD DATA**

**Table A-4. Employment status of the civilian population 25 years and over by educational attainment**

[Numbers in thousands]

Educational attainment	Not seasonally adjusted			Seasonally adjusted					
	Dec. 2009	Nov. 2010	Dec. 2010	Dec. 2009	Aug. 2010	Sept. 2010	Oct. 2010	Nov. 2010	Dec. 2010
<b>Less than a high school diploma</b>									
Civilian labor force.....	12,015	11,730	11,773	11,988	11,815	11,828	11,800	11,803	11,758
Participation rate.....	45.7	46.3	46.1	45.6	46.4	46.7	47.0	46.6	46.0
Employed.....	10,123	9,943	9,924	10,160	10,143	10,003	9,995	9,955	9,963
Employment-population ratio.....	38.5	39.3	38.9	38.7	39.8	39.5	39.8	39.3	39.0
Unemployed.....	1,892	1,788	1,850	1,829	1,673	1,824	1,805	1,848	1,795
Unemployment rate.....	15.7	15.2	15.7	15.3	14.2	15.4	15.3	15.7	15.3
<b>High school graduates, no college<sup>1</sup></b>									
Civilian labor force.....	37,808	37,794	38,231	37,732	38,266	38,151	38,051	37,824	38,203
Participation rate.....	61.7	61.0	60.9	61.6	61.9	61.9	61.6	61.1	60.9
Employed.....	33,803	34,178	34,470	33,746	34,352	34,331	34,225	34,035	34,465
Employment-population ratio.....	55.2	55.2	54.9	55.1	55.5	55.7	55.4	55.0	54.9
Unemployed.....	4,005	3,616	3,761	3,986	3,915	3,820	3,826	3,789	3,738
Unemployment rate.....	10.6	9.6	9.8	10.6	10.2	10.0	10.1	10.0	9.8
<b>Some college or associate degree</b>									
Civilian labor force.....	36,796	37,337	36,763	36,878	37,065	37,115	37,120	37,037	36,809
Participation rate.....	70.4	70.4	70.1	70.5	70.5	70.5	70.0	69.8	70.2
Employed.....	33,660	34,247	33,869	33,641	33,850	33,746	33,972	33,832	33,821
Employment-population ratio.....	64.4	64.6	64.6	64.3	64.4	64.1	64.0	63.8	64.5
Unemployed.....	3,135	3,090	2,894	3,237	3,215	3,369	3,148	3,205	2,988
Unemployment rate.....	8.5	8.3	7.9	8.8	8.7	9.1	8.5	8.7	8.1
<b>Bachelor's degree and higher<sup>2</sup></b>									
Civilian labor force.....	45,927	46,330	46,310	45,912	45,677	46,488	46,132	46,322	46,312
Participation rate.....	77.2	76.6	76.9	77.1	75.8	76.5	76.1	76.6	76.9
Employed.....	43,752	44,101	44,170	43,654	43,574	44,405	43,971	43,952	44,095
Employment-population ratio.....	73.5	72.9	73.4	73.3	72.3	73.0	72.6	72.7	73.2
Unemployed.....	2,175	2,228	2,140	2,258	2,103	2,083	2,161	2,370	2,217
Unemployment rate.....	4.7	4.8	4.6	4.9	4.6	4.5	4.7	5.1	4.8

1 Includes persons with a high school diploma or equivalent.

2 Includes persons with bachelor's, master's, professional, and doctoral degrees.

NOTE: Updated population controls are introduced annually with the release of January data.

**HOUSEHOLD DATA**

**Table A-5. Employment status of the civilian population 18 years and over by veteran status, period of service, and sex, not seasonally adjusted**

[Numbers in thousands]

Employment status, veteran status, and period of service	Total		Men		Women	
	Dec. 2009	Dec. 2010	Dec. 2009	Dec. 2010	Dec. 2009	Dec. 2010
<b>VETERANS, 18 years and over</b>						
Civilian noninstitutional population.....	22,000	21,833	20,234	20,039	1,766	1,794
Civilian labor force.....	11,834	11,534	10,736	10,390	1,098	1,144
Participation rate.....	53.8	52.8	53.1	51.8	62.2	63.8
Employed.....	10,866	10,576	9,846	9,509	1,020	1,067
Employment-population ratio.....	49.4	48.4	48.7	47.5	57.8	59.5
Unemployed.....	968	957	891	881	78	77
Unemployment rate.....	8.2	8.3	8.3	8.5	7.1	6.7
Not in labor force.....	10,166	10,299	9,498	9,649	668	650
<b>  Gulf War-era II veterans</b>						
Civilian noninstitutional population.....	2,120	2,242	1,755	1,897	365	345
Civilian labor force.....	1,768	1,794	1,496	1,558	273	236
Participation rate.....	83.4	80.0	85.2	82.1	74.7	68.3
Employed.....	1,628	1,584	1,377	1,374	252	210
Employment-population ratio.....	76.8	70.7	78.4	72.4	69.0	60.8
Unemployed.....	140	210	119	184	21	26
Unemployment rate.....	7.9	11.7	8.0	11.8	7.6	10.9
Not in labor force.....	352	448	259	339	92	109
<b>  Gulf War-era I veterans</b>						
Civilian noninstitutional population.....	2,825	2,924	2,374	2,470	451	454
Civilian labor force.....	2,464	2,530	2,124	2,163	340	367
Participation rate.....	87.2	86.5	89.5	87.6	75.3	80.9
Employed.....	2,307	2,395	1,987	2,039	320	356
Employment-population ratio.....	81.7	81.9	83.7	82.5	70.9	78.5
Unemployed.....	157	136	137	125	20	11
Unemployment rate.....	6.4	5.4	6.5	5.8	5.9	3.0
Not in labor force.....	361	394	250	307	111	87
<b>  World War II, Korean War, and Vietnam-era veterans</b>						
Civilian noninstitutional population.....	11,130	10,796	10,764	10,448	367	348
Civilian labor force.....	4,108	3,847	3,974	3,718	135	129
Participation rate.....	36.9	35.6	36.9	35.6	36.8	37.2
Employed.....	3,741	3,516	3,615	3,395	126	122
Employment-population ratio.....	33.6	32.6	33.6	32.5	34.4	34.9
Unemployed.....	368	331	359	323	9	8
Unemployment rate.....	8.9	8.6	9.0	8.7	6.5	6.1
Not in labor force.....	7,022	6,949	6,790	6,730	232	219
<b>  Veterans of other service periods</b>						
Civilian noninstitutional population.....	5,925	5,871	5,341	5,224	584	647
Civilian labor force.....	3,494	3,362	3,143	2,951	351	412
Participation rate.....	59.0	57.3	58.8	56.5	60.1	63.6
Employed.....	3,190	3,081	2,867	2,701	323	380
Employment-population ratio.....	53.8	52.5	53.7	51.7	55.3	58.7
Unemployed.....	304	281	276	249	28	32
Unemployment rate.....	8.7	8.4	8.8	8.5	8.0	7.8
Not in labor force.....	2,431	2,508	2,198	2,273	233	235
<b>NONVETERANS, 18 years and over</b>						
Civilian noninstitutional population.....	205,980	208,058	89,935	91,143	116,045	116,915
Civilian labor force.....	138,955	139,806	69,594	70,228	69,361	69,578
Participation rate.....	67.5	67.2	77.4	77.1	59.8	59.5
Employed.....	125,705	127,220	61,794	63,082	63,911	64,138
Employment-population ratio.....	61.0	61.1	68.7	69.2	55.1	54.9
Unemployed.....	13,250	12,586	7,800	7,146	5,450	5,440
Unemployment rate.....	9.5	9.0	11.2	10.2	7.9	7.8
Not in labor force.....	67,025	68,252	20,341	20,915	46,684	47,338

NOTE: Veterans served on active duty in the U.S. Armed Forces and were not on active duty at the time of the survey. Nonveterans never served on active duty in the U.S. Armed Forces. Veterans could have served anywhere in the world during these periods of service: Gulf War era II (September 2001-present), Gulf War era I (August 1990-August 2001), Vietnam era (August 1964-April 1975), Korean War (July 1950-January 1955), World War II (December 1941-December 1946), and other service periods (all other time periods). Veterans who served in more than one wartime period are classified only in the most recent one. Veterans who served during one of the selected wartime periods and another period are classified only in the wartime period. Updated population controls are introduced annually with the release of January data.

**HOUSEHOLD DATA**

**Table A-6. Employment status of the civilian population by sex, age, and disability status, not seasonally adjusted**

[Numbers in thousands]

Employment status, sex, and age	Persons with a disability		Persons with no disability	
	Dec. 2009	Dec. 2010	Dec. 2009	Dec. 2010
<b>TOTAL, 16 years and over</b>				
Civilian noninstitutional population.....	27,075	26,984	209,849	211,905
Civilian labor force.....	5,847	5,679	146,845	147,477
Participation rate.....	21.6	21.0	70.0	69.6
Employed.....	5,042	4,869	132,910	134,290
Employment-population ratio.....	18.6	18.0	63.3	63.4
Unemployed.....	805	810	13,935	13,187
Unemployment rate.....	13.8	14.3	9.5	8.9
Not in labor force.....	21,228	21,305	63,004	64,428
<b>Men, 16 to 64 years</b>				
Civilian labor force.....	2,629	2,591	74,975	75,101
Participation rate.....	36.4	34.6	82.5	82.2
Employed.....	2,238	2,190	66,675	67,517
Employment-population ratio.....	31.0	29.3	73.4	73.9
Unemployed.....	391	401	8,300	7,584
Unemployment rate.....	14.9	15.5	11.1	10.1
Not in labor force.....	4,602	4,895	15,915	16,208
<b>Women, 16 to 64 years</b>				
Civilian labor force.....	2,353	2,310	66,063	66,303
Participation rate.....	30.6	31.2	71.2	70.8
Employed.....	2,028	1,966	60,818	61,110
Employment-population ratio.....	26.4	26.5	65.6	65.3
Unemployed.....	324	344	5,245	5,193
Unemployment rate.....	13.8	14.9	7.9	7.8
Not in labor force.....	5,339	5,097	26,686	27,339
<b>Both sexes, 65 years and over</b>				
Civilian labor force.....	865	778	5,807	6,073
Participation rate.....	7.1	6.4	22.2	22.5
Employed.....	775	713	5,417	5,662
Employment-population ratio.....	6.4	5.9	20.7	21.0
Unemployed.....	89	65	390	410
Unemployment rate.....	10.3	8.4	6.7	6.8
Not in labor force.....	11,287	11,312	20,403	20,881

NOTE: A person with a disability has at least one of the following conditions: is deaf or has serious difficulty hearing; is blind or has serious difficulty seeing even when wearing glasses; has serious difficulty concentrating, remembering, or making decisions because of a physical, mental, or emotional condition; has serious difficulty walking or climbing stairs; has difficulty dressing or bathing; or has difficulty doing errands alone such as visiting a doctor's office or shopping because of a physical, mental, or emotional condition. Updated population controls are introduced annually with the release of January data.

**HOUSEHOLD DATA**

**Table A-7. Employment status of the civilian population by nativity and sex, not seasonally adjusted**

[Numbers in thousands]

Employment status and nativity	Total		Men		Women	
	Dec. 2009	Dec. 2010	Dec. 2009	Dec. 2010	Dec. 2009	Dec. 2010
<b>Foreign born, 16 years and over</b>						
Civilian noninstitutional population.....	35,575	36,545	17,932	18,042	17,643	18,503
Civilian labor force.....	23,920	24,783	14,179	14,441	9,741	10,342
Participation rate.....	67.2	67.8	79.1	80.0	55.2	55.9
Employed.....	21,290	22,153	12,517	12,856	8,773	9,297
Employment-population ratio.....	59.8	60.6	69.8	71.3	49.7	50.2
Unemployed.....	2,630	2,630	1,662	1,584	968	1,045
Unemployment rate.....	11.0	10.6	11.7	11.0	9.9	10.1
Not in labor force.....	11,655	11,762	3,753	3,602	7,902	8,160
<b>Native born, 16 years and over</b>						
Civilian noninstitutional population.....	201,349	202,344	96,795	97,689	104,554	104,655
Civilian labor force.....	128,773	128,373	67,064	67,063	61,709	61,310
Participation rate.....	64.0	63.4	69.3	68.6	59.0	58.6
Employed.....	116,663	117,006	59,741	60,370	56,922	56,636
Employment-population ratio.....	57.9	57.8	61.7	61.8	54.4	54.1
Unemployed.....	12,110	11,367	7,323	6,693	4,787	4,674
Unemployment rate.....	9.4	8.9	10.9	10.0	7.8	7.6
Not in labor force.....	72,576	73,971	29,732	30,626	42,845	43,345

NOTE: The foreign born are those residing in the United States who were not U.S. citizens at birth. That is, they were born outside the United States or one of its outlying areas such as Puerto Rico or Guam, to parents neither of whom was a U.S. citizen. The native born are persons who were born in the United States or one of its outlying areas such as Puerto Rico or Guam or who were born abroad of at least one parent who was a U.S. citizen. Updated population controls are introduced annually with the release of January data.

**HOUSEHOLD DATA**

**Table A-8. Employed persons by class of worker and part-time status**

[In thousands]

Category	Not seasonally adjusted			Seasonally adjusted					
	Dec. 2009	Nov. 2010	Dec. 2010	Dec. 2009	Aug. 2010	Sept. 2010	Oct. 2010	Nov. 2010	Dec. 2010
<b>CLASS OF WORKER</b>									
Agriculture and related industries.....	1,952	2,127	2,037	2,079	2,187	2,172	2,348	2,185	2,176
Wage and salary workers.....	1,228	1,347	1,295	1,313	1,306	1,310	1,446	1,385	1,384
Self-employed workers.....	707	749	720	760	852	798	823	771	775
Unpaid family workers.....	17	30	22	-	-	-	-	-	-
Nonagricultural industries.....	136,001	137,289	137,123	135,854	136,957	137,266	136,797	136,752	137,001
Wage and salary workers.....	127,003	128,468	128,436	126,605	128,215	128,438	127,852	127,728	128,043
Government.....	21,128	20,745	20,745	21,146	20,564	20,855	20,717	20,600	20,759
Private industries.....	105,875	107,723	107,691	105,481	107,709	107,451	107,100	107,146	107,303
Private households.....	736	650	635	-	-	-	-	-	-
Other industries.....	105,139	107,073	107,056	104,738	107,057	106,859	106,470	106,516	106,665
Self-employed workers.....	8,915	8,727	8,589	9,119	8,715	8,752	8,862	8,832	8,783
Unpaid family workers.....	83	93	97	-	-	-	-	-	-
<b>PERSONS AT WORK PART TIME<sup>1</sup></b>									
<b>All industries</b>									
Part time for economic reasons <sup>2</sup> .....	9,354	8,670	9,205	9,093	8,883	9,506	9,100	8,960	8,931
Slack work or business conditions.....	6,758	5,897	6,347	6,397	6,357	6,732	6,174	6,025	6,011
Could only find part-time work.....	2,286	2,487	2,499	2,362	2,379	2,478	2,564	2,557	2,568
Part time for noneconomic reasons <sup>3</sup> .....	19,082	19,290	18,872	18,359	18,566	18,256	18,230	18,326	18,184
<b>Nonagricultural industries</b>									
Part time for economic reasons <sup>2</sup> .....	9,222	8,526	9,029	8,993	8,752	9,380	8,991	8,822	8,789
Slack work or business conditions.....	6,672	5,805	6,230	6,327	6,276	6,649	6,108	5,941	5,911
Could only find part-time work.....	2,267	2,468	2,470	2,340	2,347	2,454	2,534	2,555	2,542
Part time for noneconomic reasons <sup>3</sup> .....	18,740	18,928	18,525	18,020	18,175	17,911	17,848	17,929	17,829

1 Refers to those who worked 1 to 34 hours during the survey reference week and excludes employed persons who were absent from their jobs for the entire week.

2 Refers to those who worked 1 to 34 hours during the reference week for an economic reason such as slack work or unfavorable business conditions, inability to find full-time work, or seasonal declines in demand.

3 Refers to persons who usually work part time for noneconomic reasons such as childcare problems, family or personal obligations, school or training, retirement or Social Security limits on earnings, and other reasons. This excludes persons who usually work full time but worked only 1 to 34 hours during the reference week for reasons such as vacations, holidays, illness, and bad weather.

- Data not available.

NOTE: Detail for the seasonally adjusted data shown in this table will not necessarily add to totals because of the independent seasonal adjustment of the various series. Updated population controls are introduced annually with the release of January data.

# HOUSEHOLD DATA

## Table A-9. Selected employment indicators

[Numbers in thousands]

Characteristic	Not seasonally adjusted			Seasonally adjusted					
	Dec. 2009	Nov. 2010	Dec. 2010	Dec. 2009	Aug. 2010	Sept. 2010	Oct. 2010	Nov. 2010	Dec. 2010
<b>AGE AND SEX</b>									
Total, 16 years and over.....	137,953	139,415	139,159	137,960	139,267	139,378	139,084	138,909	139,206
16 to 19 years.....	4,272	4,165	4,116	4,444	4,383	4,256	4,319	4,393	4,298
16 to 17 years.....	1,381	1,369	1,363	1,446	1,413	1,405	1,434	1,440	1,434
18 to 19 years.....	2,891	2,796	2,753	3,005	2,979	2,857	2,894	2,961	2,869
20 years and over.....	133,680	135,250	135,044	133,516	134,885	135,121	134,764	134,515	134,908
20 to 24 years.....	12,343	12,781	12,611	12,426	12,838	12,825	12,774	12,774	12,713
25 years and over.....	121,337	122,469	122,433	121,095	122,110	122,254	121,910	121,744	122,196
25 to 54 years.....	94,030	94,347	94,156	93,838	94,060	94,076	94,011	93,723	93,962
25 to 34 years.....	29,875	30,458	30,384	29,829	30,341	30,321	30,323	30,214	30,345
35 to 44 years.....	30,831	30,715	30,528	30,748	30,598	30,538	30,650	30,527	30,447
45 to 54 years.....	33,325	33,175	33,244	33,260	33,120	33,217	33,037	32,982	33,170
55 years and over.....	27,307	28,122	28,276	27,257	28,051	28,178	27,899	28,021	28,234
Men, 16 years and over.....	72,258	73,540	73,226	72,609	73,600	73,594	73,470	73,337	73,600
16 to 19 years.....	2,008	2,069	1,991	2,129	2,095	2,035	2,106	2,206	2,121
16 to 17 years.....	618	627	635	673	671	662	660	688	695
18 to 19 years.....	1,389	1,443	1,356	1,449	1,437	1,371	1,443	1,524	1,420
20 years and over.....	70,251	71,471	71,235	70,479	71,505	71,559	71,365	71,130	71,480
20 to 24 years.....	6,127	6,473	6,438	6,245	6,573	6,533	6,542	6,502	6,568
25 years and over.....	64,124	64,998	64,798	64,224	64,976	65,005	64,803	64,617	64,904
25 to 54 years.....	49,905	50,304	50,049	49,970	50,345	50,306	50,209	49,970	50,117
25 to 34 years.....	16,146	16,491	16,443	16,127	16,495	16,436	16,434	16,331	16,428
35 to 44 years.....	16,615	16,652	16,511	16,631	16,603	16,547	16,573	16,543	16,522
45 to 54 years.....	17,144	17,162	17,095	17,212	17,247	17,324	17,202	17,096	17,168
55 years and over.....	14,219	14,693	14,749	14,253	14,630	14,699	14,594	14,648	14,787
Women, 16 years and over.....	65,694	65,875	65,933	65,351	65,667	65,784	65,613	65,572	65,605
16 to 19 years.....	2,265	2,096	2,125	2,315	2,288	2,221	2,214	2,187	2,177
16 to 17 years.....	763	742	728	772	742	743	774	752	739
18 to 19 years.....	1,502	1,354	1,397	1,556	1,542	1,486	1,452	1,437	1,449
20 years and over.....	63,430	63,779	63,809	63,037	63,379	63,562	63,400	63,385	63,428
20 to 24 years.....	6,216	6,308	6,174	6,182	6,265	6,292	6,232	6,272	6,145
25 years and over.....	57,213	57,471	57,635	56,871	57,135	57,249	57,106	57,127	57,292
25 to 54 years.....	44,125	44,042	44,108	43,867	43,714	43,770	43,801	43,753	43,845
25 to 34 years.....	13,728	13,967	13,941	13,702	13,846	13,885	13,889	13,883	13,917
35 to 44 years.....	14,215	14,063	14,017	14,118	13,995	13,992	14,077	13,983	13,925
45 to 54 years.....	16,181	16,013	16,150	16,048	15,873	15,894	15,836	15,887	16,003
55 years and over.....	13,089	13,429	13,527	13,004	13,420	13,479	13,305	13,374	13,447
<b>MARITAL STATUS</b>									
Married men, spouse present.....	43,364	43,296	43,119	43,323	43,418	43,701	43,301	43,130	43,081
Married women, spouse present.....	35,198	34,725	34,850	34,962	34,271	34,469	34,553	34,543	34,612
Women who maintain families.....	8,403	8,817	8,878	-	-	-	-	-	-
<b>FULL- OR PART-TIME STATUS</b>									
Full-time workers <sup>1</sup> .....	109,875	111,348	111,207	110,403	111,805	111,710	111,585	111,187	111,744
Part-time workers <sup>2</sup> .....	28,078	28,068	27,953	27,492	27,711	27,649	27,433	27,594	27,394
<b>MULTIPLE JOBHOLDERS</b>									
Total multiple jobholders.....	6,886	6,816	6,884	6,936	6,805	6,687	6,679	6,734	6,950
Percent of total employed.....	5.0	4.9	4.9	5.0	4.9	4.8	4.8	4.8	5.0

1 Employed full-time workers are persons who usually work 35 hours or more per week.

2 Employed part-time workers are persons who usually work less than 35 hours per week.

- Data not available.

NOTE: Detail for the seasonally adjusted data shown in this table will not necessarily add to totals because of the independent seasonal adjustment of the various series. Updated population controls are introduced annually with the release of January data.



# HOUSEHOLD DATA

## Table A-10. Selected unemployment indicators, seasonally adjusted

Characteristic	Number of unemployed persons (in thousands)			Unemployment rates					
	Dec. 2009	Nov. 2010	Dec. 2010	Dec. 2009	Aug. 2010	Sept. 2010	Oct. 2010	Nov. 2010	Dec. 2010
<b>AGE AND SEX</b>									
Total, 16 years and over.....	15,212	15,041	14,485	9.9	9.6	9.6	9.7	9.8	9.4
16 to 19 years.....	1,631	1,426	1,460	26.8	26.2	26.0	27.1	24.5	25.4
16 to 17 years.....	613	476	533	29.8	31.2	30.0	30.3	24.9	27.1
18 to 19 years.....	1,027	947	933	25.5	23.8	23.3	24.7	24.2	24.5
20 years and over.....	13,581	13,615	13,025	9.2	9.0	8.9	9.0	9.2	8.8
20 to 24 years.....	2,310	2,418	2,296	15.7	14.9	14.9	15.3	15.9	15.3
25 years and over.....	11,245	11,188	10,716	8.5	8.3	8.3	8.2	8.4	8.1
25 to 54 years.....	9,184	8,983	8,674	8.9	8.6	8.7	8.5	8.7	8.5
25 to 34 years.....	3,388	3,513	3,418	10.2	9.8	10.0	9.9	10.4	10.1
35 to 44 years.....	2,956	2,558	2,566	8.8	7.8	8.3	7.9	7.7	7.8
45 to 54 years.....	2,840	2,912	2,690	7.9	8.2	7.7	7.8	8.1	7.5
55 years and over.....	2,119	2,184	2,088	7.2	7.3	7.2	7.2	7.2	6.9
Men, 16 years and over.....	8,925	8,649	8,245	10.9	10.5	10.4	10.4	10.5	10.1
16 to 19 years.....	941	800	818	30.7	29.5	29.3	29.4	26.6	27.8
16 to 17 years.....	333	274	284	33.1	32.8	33.3	33.8	28.5	29.0
18 to 19 years.....	613	523	536	29.7	27.8	26.2	26.8	25.5	27.4
20 years and over.....	7,983	7,849	7,426	10.2	9.8	9.7	9.7	9.9	9.4
20 to 24 years.....	1,424	1,440	1,340	18.6	17.3	17.1	16.5	18.1	16.9
25 years and over.....	6,547	6,417	6,079	9.3	9.1	9.0	8.9	9.0	8.6
25 to 54 years.....	5,337	5,145	4,926	9.7	9.2	9.3	9.1	9.3	8.9
25 to 34 years.....	2,011	2,002	1,950	11.1	10.5	10.8	10.4	10.9	10.6
35 to 44 years.....	1,641	1,417	1,418	9.0	8.2	8.6	8.2	7.9	7.9
45 to 54 years.....	1,685	1,726	1,558	8.9	9.0	8.6	8.6	9.2	8.3
55 years and over.....	1,210	1,272	1,152	7.8	8.5	7.9	8.3	8.0	7.2
Women, 16 years and over.....	6,287	6,392	6,240	8.8	8.6	8.6	8.8	8.9	8.7
16 to 19 years.....	689	626	641	22.9	22.9	22.8	24.8	22.3	22.8
16 to 17 years.....	280	202	248	26.6	29.6	26.8	27.0	21.2	25.2
18 to 19 years.....	414	425	397	21.0	19.7	20.4	22.6	22.8	21.5
20 years and over.....	5,598	5,766	5,599	8.2	8.0	8.0	8.1	8.3	8.1
20 to 24 years.....	886	978	956	12.5	12.3	12.4	13.9	13.5	13.5
25 years and over.....	4,698	4,771	4,638	7.6	7.4	7.4	7.5	7.7	7.5
25 to 54 years.....	3,846	3,838	3,747	8.1	7.8	7.9	7.9	8.1	7.9
25 to 34 years.....	1,376	1,511	1,468	9.1	9.1	9.0	9.4	9.8	9.5
35 to 44 years.....	1,315	1,141	1,147	8.5	7.2	8.1	7.5	7.5	7.6
45 to 54 years.....	1,156	1,186	1,132	6.7	7.2	6.7	6.9	6.9	6.6
55 years and over <sup>1</sup> .....	800	887	830	5.8	6.9	6.4	5.9	6.2	5.8
<b>MARITAL STATUS</b>									
Married men, spouse present.....	3,357	3,214	3,047	7.2	6.8	6.8	6.9	6.9	6.6
Married women, spouse present.....	2,184	2,118	2,046	5.9	5.9	5.7	5.7	5.8	5.6
Women who maintain families <sup>1</sup> .....	1,258	1,317	1,207	13.0	13.4	12.9	12.4	13.0	12.0
<b>FULL- OR PART-TIME STATUS</b>									
Full-time workers <sup>2</sup> .....	13,370	13,298	12,650	10.8	10.3	10.4	10.5	10.7	10.2
Part-time workers <sup>3</sup> .....	1,788	1,690	1,764	6.1	6.7	6.1	6.3	5.8	6.0

1 Not seasonally adjusted.

2 Full-time workers are unemployed persons who have expressed a desire to work full time (35 hours or more per week) or are on layoff from full-time jobs.

3 Part-time workers are unemployed persons who have expressed a desire to work part time (less than 35 hours per week) or are on layoff from part-time jobs.

NOTE: Detail for the seasonally adjusted data shown in this table will not necessarily add to totals because of the independent seasonal adjustment of the various series. Updated population controls are introduced annually with the release of January data.

**HOUSEHOLD DATA**

**Table A-11. Unemployed persons by reason for unemployment**

[Numbers in thousands]

Reason	Not seasonally adjusted			Seasonally adjusted					
	Dec. 2009	Nov. 2010	Dec. 2010	Dec. 2009	Aug. 2010	Sept. 2010	Oct. 2010	Nov. 2010	Dec. 2010
<b>NUMBER OF UNEMPLOYED</b>									
Job losers and persons who completed temporary jobs.....	9,822	8,926	8,995	9,688	9,285	9,286	9,070	9,471	8,923
On temporary layoff.....	1,683	1,172	1,547	1,530	1,505	1,340	1,293	1,430	1,402
Not on temporary layoff.....	8,140	7,754	7,448	8,158	7,780	7,947	7,777	8,042	7,521
Permanent job losers.....	6,718	6,183	5,917	6,736	6,411	6,467	6,254	6,425	5,995
Persons who completed temporary jobs.....	1,422	1,571	1,530	1,422	1,368	1,479	1,523	1,617	1,526
Job leavers.....	860	852	861	916	868	809	854	864	914
Reentrants.....	3,012	3,348	3,031	3,385	3,418	3,441	3,498	3,427	3,408
New entrants.....	1,046	1,156	1,110	1,244	1,260	1,193	1,278	1,269	1,311
<b>PERCENT DISTRIBUTION</b>									
Job losers and persons who completed temporary jobs.....	66.6	62.5	64.3	63.6	62.6	63.0	61.7	63.0	61.3
On temporary layoff.....	11.4	8.2	11.1	10.0	10.1	9.1	8.8	9.5	9.6
Not on temporary layoff.....	55.2	54.3	53.2	53.6	52.5	54.0	52.9	53.5	51.7
Job leavers.....	5.8	6.0	6.2	6.0	5.9	5.5	5.8	5.8	6.3
Reentrants.....	20.4	23.4	21.7	22.2	23.0	23.4	23.8	22.8	23.4
New entrants.....	7.1	8.1	7.9	8.2	8.5	8.1	8.7	8.4	9.0
<b>UNEMPLOYED AS A PERCENT OF THE CIVILIAN LABOR FORCE</b>									
Job losers and persons who completed temporary jobs.....	6.4	5.8	5.9	6.3	6.0	6.0	5.9	6.2	5.8
Job leavers.....	0.6	0.6	0.6	0.6	0.6	0.5	0.6	0.6	0.6
Reentrants.....	2.0	2.2	2.0	2.2	2.2	2.2	2.3	2.2	2.2
New entrants.....	0.7	0.8	0.7	0.8	0.8	0.8	0.8	0.8	0.9

NOTE: Updated population controls are introduced annually with the release of January data.

**HOUSEHOLD DATA**

**Table A-12. Unemployed persons by duration of unemployment**

[Numbers in thousands]

Duration	Not seasonally adjusted			Seasonally adjusted					
	Dec. 2009	Nov. 2010	Dec. 2010	Dec. 2009	Aug. 2010	Sept. 2010	Oct. 2010	Nov. 2010	Dec. 2010
<b>NUMBER OF UNEMPLOYED</b>									
Less than 5 weeks.....	2,871	2,639	2,681	2,908	2,756	2,872	2,659	2,824	2,725
5 to 14 weeks.....	3,335	3,152	3,043	3,483	3,604	3,329	3,427	3,336	3,184
15 weeks and over.....	8,534	8,491	8,273	8,913	8,471	8,517	8,734	8,843	8,647
15 to 26 weeks.....	2,638	2,233	2,073	2,781	2,210	2,364	2,500	2,515	2,205
27 weeks and over.....	5,896	6,258	6,200	6,133	6,261	6,153	6,234	6,328	6,441
Average (mean) duration, in weeks.....	29.0	34.5	34.0	29.3	33.5	33.4	33.9	33.9	34.2
Median duration, in weeks.....	20.2	21.7	22.3	20.4	20.6	20.5	21.3	21.7	22.4
<b>PERCENT DISTRIBUTION</b>									
Less than 5 weeks.....	19.5	18.5	19.2	19.0	18.6	19.5	17.9	18.8	18.7
5 to 14 weeks.....	22.6	22.1	21.7	22.8	24.3	22.6	23.1	22.2	21.9
15 weeks and over.....	57.9	59.5	59.1	58.2	57.1	57.9	58.9	58.9	59.4
15 to 26 weeks.....	17.9	15.6	14.8	18.2	14.9	16.1	16.9	16.8	15.2
27 weeks and over.....	40.0	43.8	44.3	40.1	42.2	41.8	42.1	42.2	44.3

NOTE: Updated population controls are introduced annually with the release of January data.

**HOUSEHOLD DATA**

**Table A-13. Employed and unemployed persons by occupation, not seasonally adjusted**

[Numbers in thousands]

Occupation	Employed		Unemployed		Unemployment rates	
	Dec. 2009	Dec. 2010	Dec. 2009	Dec. 2010	Dec. 2009	Dec. 2010
Total, 16 years and over <sup>1</sup> .....	137,953	139,159	14,740	13,997	9.7	9.1
Management, professional, and related occupations.....	52,131	51,704	2,509	2,468	4.6	4.6
Management, business, and financial operations occupations.....	20,944	20,393	1,157	1,243	5.2	5.7
Professional and related occupations.....	31,188	31,310	1,352	1,225	4.2	3.8
Service occupations.....	24,216	24,717	2,747	2,696	10.2	9.8
Sales and office occupations.....	33,296	33,407	3,184	3,023	8.7	8.3
Sales and related occupations.....	15,478	15,521	1,520	1,407	8.9	8.3
Office and administrative support occupations.....	17,819	17,885	1,664	1,616	8.5	8.3
Natural resources, construction, and maintenance occupations.....	12,617	12,666	2,802	2,407	18.2	16.0
Farming, fishing, and forestry occupations.....	869	925	242	268	21.8	22.5
Construction and extraction occupations.....	7,106	6,849	2,067	1,785	22.5	20.7
Installation, maintenance, and repair occupations.....	4,642	4,892	494	354	9.6	6.7
Production, transportation, and material moving occupations.....	15,692	16,666	2,425	2,245	13.4	11.9
Production occupations.....	7,420	8,339	1,281	1,109	14.7	11.7
Transportation and material moving occupations.....	8,272	8,327	1,144	1,137	12.2	12.0

<sup>1</sup> Persons with no previous work experience and persons whose last job was in the U.S. Armed Forces are included in the unemployed total.

NOTE: Updated population controls are introduced annually with the release of January data.

**HOUSEHOLD DATA**

**Table A-14. Unemployed persons by industry and class of worker, not seasonally adjusted**

Industry and class of worker	Number of unemployed persons (in thousands)		Unemployment rates	
	Dec. 2009	Dec. 2010	Dec. 2009	Dec. 2010
Total, 16 years and over <sup>1</sup> .....	14,740	13,997	9.7	9.1
Nonagricultural private wage and salary workers.....	11,997	11,008	10.2	9.3
Mining, quarrying, and oil and gas extraction.....	89	83	11.8	10.8
Construction.....	2,044	1,749	22.7	20.7
Manufacturing.....	1,747	1,551	11.9	10.0
Durable goods.....	1,245	999	13.3	10.4
Nondurable goods.....	502	551	9.5	9.4
Wholesale and retail trade.....	1,851	1,698	9.1	8.2
Transportation and utilities.....	539	428	9.0	7.4
Information.....	256	244	8.5	8.1
Financial activities.....	665	568	7.2	6.4
Professional and business services.....	1,486	1,477	10.3	10.2
Education and health services.....	1,183	1,139	5.6	5.2
Leisure and hospitality.....	1,624	1,580	12.6	12.0
Other services.....	513	491	8.2	7.9
Agriculture and related private wage and salary workers.....	292	278	19.7	18.1
Government workers.....	797	950	3.6	4.4
Self-employed and unpaid family workers.....	609	650	5.9	6.5

<sup>1</sup> Persons with no previous work experience and persons whose last job was in the U.S. Armed Forces are included in the unemployed total.

NOTE: Updated population controls are introduced annually with the release of January data.

**HOUSEHOLD DATA**

**Table A-15. Alternative measures of labor underutilization**

[Percent]

Measure	Not seasonally adjusted			Seasonally adjusted					
	Dec. 2009	Nov. 2010	Dec. 2010	Dec. 2009	Aug. 2010	Sept. 2010	Oct. 2010	Nov. 2010	Dec. 2010
U-1 Persons unemployed 15 weeks or longer, as a percent of the civilian labor force.....	5.6	5.5	5.4	5.8	5.5	5.5	5.7	5.7	5.6
U-2 Job losers and persons who completed temporary jobs, as a percent of the civilian labor force.....	6.4	5.8	5.9	6.3	6.0	6.0	5.9	6.2	5.8
U-3 Total unemployed, as a percent of the civilian labor force (official unemployment rate).....	9.7	9.3	9.1	9.9	9.6	9.6	9.7	9.8	9.4
U-4 Total unemployed plus discouraged workers, as a percent of the civilian labor force plus discouraged workers.....	10.2	10.0	9.9	10.5	10.3	10.3	10.4	10.5	10.2
U-5 Total unemployed, plus discouraged workers, plus all other persons marginally attached to the labor force, as a percent of the civilian labor force plus all persons marginally attached to the labor force.....	11.1	10.8	10.7	11.4	11.0	11.0	11.2	11.2	10.9
U-6 Total unemployed, plus all persons marginally attached to the labor force, plus total employed part time for economic reasons, as a percent of the civilian labor force plus all persons marginally attached to the labor force.....	17.1	16.3	16.6	17.2	16.7	17.1	17.0	17.0	16.7

NOTE: Persons marginally attached to the labor force are those who currently are neither working nor looking for work but indicate that they want and are available for a job and have looked for work sometime in the past 12 months. Discouraged workers, a subset of the marginally attached, have given a job-market related reason for not currently looking for work. Persons employed part time for economic reasons are those who want and are available for full-time work but have had to settle for a part-time schedule. Updated population controls are introduced annually with the release of January data.

**HOUSEHOLD DATA**

**Table A-16. Persons not in the labor force and multiple jobholders by sex, not seasonally adjusted**

[Numbers in thousands]

Category	Total		Men		Women	
	Dec. 2009	Dec. 2010	Dec. 2009	Dec. 2010	Dec. 2009	Dec. 2010
<b>NOT IN THE LABOR FORCE</b>						
Total not in the labor force.....	84,231	85,733	33,485	34,228	50,747	51,505
Persons who currently want a job.....	5,939	6,212	2,896	2,936	3,043	3,276
Marginally attached to the labor force <sup>1</sup> .....	2,486	2,609	1,384	1,326	1,102	1,283
Discouraged workers <sup>2</sup> .....	929	1,318	594	829	334	489
Other persons marginally attached to the labor force <sup>3</sup> .....	1,558	1,291	790	497	768	794
<b>MULTIPLE JOBHOLDERS</b>						
Total multiple jobholders <sup>4</sup> .....	6,886	6,884	3,369	3,259	3,517	3,625
Percent of total employed.....	5.0	4.9	4.7	4.5	5.4	5.5
Primary job full time, secondary job part time.....	3,641	3,514	2,010	1,889	1,632	1,624
Primary and secondary jobs both part time.....	1,818	1,916	549	596	1,268	1,320
Primary and secondary jobs both full time.....	202	251	123	156	79	95
Hours vary on primary or secondary job.....	1,198	1,164	670	597	528	567

1 Data refer to persons who want a job, have searched for work during the prior 12 months, and were available to take a job during the reference week, but had not looked for work in the past 4 weeks.

2 Includes those who did not actively look for work in the prior 4 weeks for reasons such as thinks no work available, could not find work, lacks schooling or training, employer thinks too young or old, and other types of discrimination.

3 Includes those who did not actively look for work in the prior 4 weeks for such reasons as school or family responsibilities, ill health, and transportation problems, as well as a number for whom reason for nonparticipation was not determined.

4 Includes a small number of persons who work part time on their primary job and full time on their secondary job(s), not shown separately.

NOTE: Updated population controls are introduced annually with the release of January data.

**ESTABLISHMENT DATA**

**Table B-1. Employees on nonfarm payrolls by industry sector and selected industry detail**

[In thousands]

Industry	Not seasonally adjusted				Seasonally adjusted				Change from: Nov. 2010- Dec. 2010 <sup>P</sup>
	Dec. 2009	Oct. 2010	Nov. 2010 <sup>P</sup>	Dec. 2010 <sup>P</sup>	Dec. 2009	Oct. 2010	Nov. 2010 <sup>P</sup>	Dec. 2010 <sup>P</sup>	
Total nonfarm.....	130,448	131,600	131,871	131,514	129,588	130,538	130,609	130,712	103
Total private.....	107,623	108,970	109,124	108,919	107,107	108,261	108,340	108,453	113
Goods-producing.....	17,871	18,359	18,257	17,989	17,906	18,048	18,043	18,041	-2
Mining and logging.....	676	769	771	770	676	759	764	768	4
Logging.....	47.5	49.1	47.9	48.6	46.9	47.1	46.8	47.7	0.9
Mining.....	628.1	720.2	723.2	721.2	629.4	711.8	716.8	720.0	3.2
Oil and gas extraction.....	159.7	169.4	169.2	167.8	159.8	169.8	168.7	167.7	-1.0
Mining, except oil and gas <sup>1</sup> .....	204.0	222.9	222.9	215.6	207.7	218.3	219.6	219.1	-0.5
Coal mining.....	79.6	84.9	85.2	85.8	79.2	84.8	84.9	85.3	0.4
Support activities for mining.....	264.4	327.9	331.1	337.8	261.9	323.7	328.5	333.2	4.7
Construction.....	5,615	5,850	5,762	5,501	5,696	5,621	5,619	5,603	-16
Construction of buildings.....	1,282.5	1,292.9	1,282.9	1,245.7	1,282.5	1,256.2	1,257.5	1,251.2	-6.3
Residential building.....	600.5	589.8	582.9	561.3	599.9	569.5	568.8	562.9	-5.9
Nonresidential building.....	682.0	703.1	700.0	684.4	682.6	686.7	688.7	688.3	-0.4
Heavy and civil engineering construction.....	763.3	894.0	862.9	776.1	797.9	829.2	828.7	816.0	-12.7
Specialty trade contractors.....	3,568.9	3,662.7	3,615.8	3,478.8	3,615.1	3,535.2	3,532.8	3,536.1	3.3
Residential specialty trade contractors.....	1,538.6	1,576.3	1,551.2	1,498.6	1,567.2	1,519.1	1,519.9	1,524.0	4.1
Nonresidential specialty trade contractors.....	2,030.5	2,086.4	2,064.6	1,980.2	2,047.9	2,016.1	2,012.9	2,012.1	-0.8
Manufacturing.....	11,580	11,740	11,724	11,718	11,534	11,668	11,660	11,670	10
Durable goods.....	7,079	7,225	7,230	7,236	7,036	7,186	7,184	7,194	10
Wood products.....	347.9	345.8	345.8	343.7	348.9	343.8	344.1	344.3	0.2
Nonmetallic mineral products.....	379.4	391.5	388.3	376.2	383.9	383.3	382.0	379.6	-2.4
Primary metals.....	353.4	376.3	375.5	376.8	351.8	374.6	374.2	375.1	0.9
Fabricated metal products.....	1,277.4	1,335.2	1,334.4	1,336.3	1,266.8	1,322.4	1,324.8	1,328.9	4.1
Machinery.....	982.0	1,008.1	1,010.3	1,010.9	973.2	1,001.2	1,001.6	998.8	-2.8
Computer and electronic products <sup>1</sup> .....	1,098.5	1,102.1	1,105.9	1,111.8	1,093.3	1,103.2	1,104.0	1,107.6	3.6
Computer and peripheral equipment.....	159.3	162.3	163.6	165.5	158.3	162.3	162.6	163.3	0.7
Communication equipment.....	119.3	123.3	123.1	123.6	119.0	123.3	123.1	123.6	0.5
Semiconductors and electronic components.....	361.9	368.6	369.1	371.8	359.7	368.8	368.9	370.7	1.8
Electronic instruments.....	409.6	403.1	404.7	405.7	408.9	403.9	404.6	405.4	0.8
Electrical equipment and appliances.....	362.7	375.4	374.2	375.5	361.8	374.7	373.1	375.8	2.7
Transportation equipment <sup>1</sup> .....	1,334.1	1,353.3	1,360.0	1,372.2	1,316.6	1,351.0	1,351.6	1,357.1	5.5
Motor vehicles and parts <sup>2</sup> .....	667.1	688.5	694.6	702.4	652.2	686.2	686.3	689.6	3.3
Furniture and related products.....	364.8	357.1	354.5	353.0	363.9	356.1	354.1	352.6	-1.5
Miscellaneous manufacturing.....	579.1	580.1	581.0	579.8	575.6	575.8	574.7	573.9	-0.8
Nondurable goods.....	4,501	4,515	4,494	4,482	4,498	4,482	4,476	4,476	0
Food manufacturing.....	1,459.9	1,472.4	1,459.6	1,459.5	1,455.6	1,449.9	1,448.4	1,450.8	2.4
Beverages and tobacco products.....	180.8	189.2	185.9	181.1	183.6	184.9	185.4	183.5	-1.9
Textile mills.....	123.8	123.8	124.2	125.0	124.2	123.6	123.8	124.8	1.0
Textile product mills.....	123.3	121.4	118.9	117.7	122.1	119.9	117.7	117.7	0.0
Apparel.....	164.5	164.2	162.3	163.6	166.0	164.4	163.7	165.0	1.3
Leather and allied products.....	28.4	30.1	29.9	30.6	28.4	29.8	30.0	30.3	0.3
Paper and paper products.....	398.3	398.5	397.3	397.4	397.6	398.3	396.6	396.8	0.2
Printing and related support activities.....	504.3	490.6	492.9	488.1	501.0	488.5	488.8	484.8	-4.0
Petroleum and coal products.....	108.9	117.2	113.5	105.3	112.3	113.9	112.4	110.6	-1.8
Chemicals.....	792.0	772.8	773.8	775.0	791.2	775.1	773.6	772.7	-0.9
Plastics and rubber products.....	616.7	635.2	635.5	638.5	616.4	634.1	635.4	639.0	3.6
Private service-providing.....	89,752	90,611	90,867	90,930	89,201	90,213	90,297	90,412	115
Trade, transportation, and utilities.....	25,251	24,931	25,275	25,462	24,653	24,849	24,849	24,880	31
Wholesale trade.....	5,581.9	5,625.9	5,634.2	5,639.9	5,564.0	5,605.0	5,610.2	5,619.0	8.8
Durable goods.....	2,772.4	2,795.1	2,801.5	2,811.5	2,766.7	2,787.5	2,793.3	2,800.5	7.2
Nondurable goods.....	1,982.1	1,985.6	1,987.6	1,988.8	1,974.3	1,976.0	1,974.0	1,974.3	0.3
Electronic markets and agents and brokers.....	827.4	845.2	845.1	847.6	823.0	841.5	842.9	844.2	1.3
Retail trade.....	14,871.1	14,498.0	14,815.6	14,997.5	14,360.0	14,483.1	14,463.7	14,475.7	12.0
Motor vehicle and parts dealers <sup>1</sup> .....	1,611.2	1,655.2	1,653.1	1,654.0	1,624.0	1,649.5	1,656.9	1,664.4	7.5
Automobile dealers.....	1,007.0	1,030.7	1,031.3	1,034.9	1,014.0	1,027.9	1,033.2	1,038.1	4.9
Furniture and home furnishings stores.....	464.9	449.6	460.1	470.7	439.0	444.9	443.8	447.6	3.8

See footnotes at end of table.



**ESTABLISHMENT DATA**

**Table B-1. Employees on nonfarm payrolls by industry sector and selected industry detail**

— Continued

[In thousands]

Industry	Not seasonally adjusted				Seasonally adjusted				Change from: Nov. 2010-Dec. 2010 <sup>P</sup>
	Dec. 2009	Oct. 2010	Nov. 2010 <sup>P</sup>	Dec. 2010 <sup>P</sup>	Dec. 2009	Oct. 2010	Nov. 2010 <sup>P</sup>	Dec. 2010 <sup>P</sup>	
Retail trade - Continued									
Electronics and appliance stores.....	499.1	494.3	512.3	514.2	477.2	491.7	491.4	490.2	-1.2
Building material and garden supply stores...	1,121.5	1,123.2	1,113.2	1,106.0	1,150.0	1,137.1	1,133.8	1,134.5	0.7
Food and beverage stores.....	2,827.0	2,811.4	2,831.1	2,833.3	2,799.8	2,807.7	2,806.8	2,807.3	0.5
Health and personal care stores.....	996.2	969.3	978.0	978.6	978.7	971.0	968.4	960.8	-7.6
Gasoline stations.....	820.8	820.7	817.8	814.5	822.5	818.6	818.9	819.1	0.2
Clothing and clothing accessories stores.....	1,495.2	1,416.1	1,496.3	1,557.8	1,360.9	1,415.6	1,412.9	1,419.0	6.1
Sporting goods, hobby, book, and music stores.....	659.5	607.6	630.0	655.8	606.9	602.4	600.2	600.8	0.6
General merchandise stores <sup>1</sup> .....	3,125.1	2,942.8	3,091.8	3,164.3	2,911.8	2,955.0	2,943.9	2,945.3	1.4
Department stores.....	1,623.1	1,479.7	1,593.2	1,656.9	1,458.7	1,490.8	1,483.8	1,484.5	0.7
Miscellaneous store retailers.....	793.6	776.3	784.6	787.7	769.4	768.3	767.0	764.9	-2.1
Nonstore retailers.....	457.0	431.5	447.3	460.6	419.8	421.3	419.7	421.8	2.1
Transportation and warehousing.....	4,240.1	4,254.9	4,274.4	4,274.0	4,171.8	4,208.2	4,223.5	4,232.3	8.8
Air transportation.....	451.6	454.9	453.5	455.6	453.8	454.7	454.9	455.6	0.7
Rail transportation.....	213.7	222.7	223.8	223.7	213.7	222.4	223.0	223.6	0.6
Water transportation.....	62.9	65.4	64.5	64.8	63.3	64.9	65.1	65.2	0.1
Truck transportation.....	1,234.5	1,264.8	1,260.6	1,251.1	1,231.3	1,243.9	1,247.5	1,250.1	2.6
Transit and ground passenger transportation.....	429.0	453.6	453.1	455.3	414.6	437.1	436.6	439.1	2.5
Pipeline transportation.....	40.8	39.1	39.1	39.1	40.7	38.9	38.9	39.1	0.2
Scenic and sightseeing transportation.....	24.4	29.6	24.6	22.4	28.1	28.2	27.7	26.5	-1.2
Support activities for transportation.....	542.6	549.8	548.4	549.0	538.5	546.2	545.7	545.4	-0.3
Couriers and messengers.....	596.7	521.0	543.5	555.2	553.6	524.2	533.1	536.4	3.3
Warehousing and storage.....	643.9	654.0	663.3	657.8	634.2	647.7	651.0	651.3	0.3
Utilities.....	557.6	552.4	551.0	550.5	557.2	552.8	551.8	552.9	1.1
Information.....	2,763	2,708	2,728	2,721	2,748	2,713	2,715	2,711	-4
Publishing industries, except Internet.....	774.5	759.9	763.7	763.0	769.3	759.9	759.8	759.4	-0.4
Motion picture and sound recording industries.....	344.7	347.0	357.3	353.9	341.7	351.4	353.5	354.9	1.4
Broadcasting, except Internet.....	296.4	299.1	299.6	298.8	294.3	297.8	297.3	296.7	-0.6
Telecommunications.....	960.0	916.2	918.9	916.5	956.9	916.3	916.0	911.5	-4.5
Data processing, hosting and related services.....	250.6	244.3	245.7	246.0	250.2	245.2	245.2	245.4	0.2
Other information services.....	136.3	141.5	142.9	142.8	135.3	141.9	142.7	142.7	0.0
Financial activities.....	7,667	7,586	7,577	7,590	7,657	7,585	7,581	7,585	4
Finance and insurance.....	5,704.2	5,648.0	5,653.2	5,657.9	5,693.7	5,650.8	5,650.2	5,650.8	0.6
Monetary authorities - central bank.....	21.0	21.3	21.8	21.8	21.1	21.5	21.8	21.9	0.1
Credit intermediation and related activities <sup>1</sup> .....	2,572.7	2,573.2	2,573.9	2,575.8	2,570.9	2,575.4	2,575.0	2,575.1	0.1
Depository credit intermediation <sup>1</sup> .....	1,752.6	1,764.7	1,765.2	1,768.0	1,750.3	1,766.5	1,766.8	1,768.3	1.5
Commercial banking.....	1,312.3	1,323.1	1,322.7	1,326.0	1,310.8	1,324.4	1,324.8	1,326.9	2.1
Securities, commodity contracts, investments.....	799.6	796.9	799.0	805.3	795.9	797.3	798.6	803.0	4.4
Insurance carriers and related activities.....	2,224.0	2,171.2	2,172.9	2,169.6	2,219.6	2,171.6	2,169.3	2,165.6	-3.7
Funds, trusts, and other financial vehicles.....	86.9	85.4	85.6	85.4	86.2	85.0	85.5	85.2	-0.3
Real estate and rental and leasing.....	1,962.7	1,938.2	1,923.4	1,932.1	1,963.3	1,934.2	1,930.9	1,934.5	3.6
Real estate.....	1,408.6	1,383.1	1,377.6	1,387.5	1,403.5	1,379.8	1,378.8	1,384.7	5.9
Rental and leasing services.....	528.3	530.8	521.7	520.2	534.2	530.0	527.9	525.6	-2.3
Lessors of nonfinancial intangible assets.....	25.8	24.3	24.1	24.4	25.6	24.4	24.2	24.2	0.0
Professional and business services.....	16,569	16,995	17,020	16,951	16,488	16,798	16,847	16,854	7
Professional and technical services <sup>1</sup> .....	7,471.5	7,404.9	7,436.4	7,475.6	7,431.5	7,428.0	7,436.0	7,437.4	1.4
Legal services.....	1,107.5	1,107.9	1,107.2	1,111.6	1,104.5	1,107.6	1,106.7	1,105.7	-1.0
Accounting and bookkeeping services.....	925.4	813.0	824.7	859.3	915.8	875.3	873.2	862.5	-10.7
Architectural and engineering services.....	1,291.9	1,285.0	1,284.4	1,277.3	1,291.7	1,275.4	1,276.1	1,274.8	-1.3
Computer systems design and related services.....	1,435.4	1,481.8	1,486.8	1,488.9	1,428.3	1,473.6	1,475.7	1,481.0	5.3
Management and technical consulting services.....	1,005.1	1,005.8	1,013.8	1,018.4	993.3	996.2	1,000.8	1,003.7	2.9
Management of companies and enterprises.....	1,828.4	1,835.3	1,835.1	1,841.2	1,819.8	1,834.9	1,835.1	1,836.4	1.3
Administrative and waste services.....	7,269.4	7,754.9	7,748.1	7,634.3	7,236.4	7,535.5	7,575.5	7,580.1	4.6

See footnotes at end of table.

**ESTABLISHMENT DATA**

**Table B-1. Employees on nonfarm payrolls by industry sector and selected industry detail**

— Continued

[In thousands]

Industry	Not seasonally adjusted				Seasonally adjusted				Change from: Nov. 2010-Dec. 2010 <sup>p</sup>
	Dec. 2009	Oct. 2010	Nov. 2010 <sup>p</sup>	Dec. 2010 <sup>p</sup>	Dec. 2009	Oct. 2010	Nov. 2010 <sup>p</sup>	Dec. 2010 <sup>p</sup>	
Administrative and waste services - Continued									
Administrative and support services <sup>1</sup> .....	6,922.8	7,395.9	7,390.8	7,280.8	6,888.7	7,179.8	7,220.2	7,224.9	4.7
Employment services <sup>1</sup> .....	2,659.7	2,985.1	3,013.6	3,002.9	2,575.0	2,844.9	2,880.4	2,888.7	8.3
Temporary help services.....	1,981.8	2,293.1	2,313.4	2,304.7	1,911.0	2,172.4	2,203.5	2,219.4	15.9
Business support services.....	826.7	807.9	820.2	826.4	805.3	800.8	803.1	805.3	2.2
Services to buildings and dwellings.....	1,654.2	1,783.2	1,739.7	1,645.8	1,725.9	1,730.7	1,725.6	1,723.7	-1.9
Waste management and remediation services.....	346.6	359.0	357.3	353.5	347.7	355.7	355.3	355.2	-0.1
Education and health services.....	19,520	19,853	19,956	19,941	19,350	19,691	19,728	19,772	44
Educational services.....	3,226.3	3,315.7	3,360.3	3,310.0	3,107.3	3,170.4	3,180.9	3,187.4	6.5
Health care and social assistance.....	16,294.1	16,537.1	16,595.8	16,631.4	16,242.5	16,520.6	16,547.2	16,584.3	37.1
Health care <sup>3</sup> .....	13,675.3	13,859.3	13,898.0	13,937.5	13,640.6	13,852.9	13,870.7	13,906.4	35.7
Ambulatory health care services <sup>1</sup> .....	5,866.4	5,986.3	6,001.9	6,027.3	5,847.2	5,980.5	5,986.8	6,007.4	20.6
Offices of physicians.....	2,318.5	2,333.3	2,338.9	2,348.4	2,306.5	2,330.7	2,331.9	2,335.2	3.3
Outpatient care centers.....	547.4	559.6	561.0	568.8	546.2	559.6	559.8	566.3	6.5
Home health care services.....	1,053.2	1,085.1	1,092.4	1,095.3	1,051.0	1,083.6	1,087.5	1,091.8	4.3
Hospitals.....	4,701.2	4,729.0	4,742.4	4,750.1	4,694.4	4,728.8	4,736.5	4,744.5	8.0
Nursing and residential care facilities <sup>1</sup> .....	3,107.7	3,144.0	3,153.7	3,160.1	3,099.0	3,143.6	3,147.4	3,154.5	7.1
Nursing care facilities.....	1,653.2	1,664.0	1,670.9	1,672.0	1,648.2	1,663.6	1,665.6	1,667.5	1.9
Social assistance <sup>1</sup> .....	2,618.8	2,677.8	2,697.8	2,693.9	2,601.9	2,667.7	2,676.5	2,677.9	1.4
Child day care services.....	872.5	881.1	888.0	882.8	858.9	870.1	871.2	869.4	-1.8
Leisure and hospitality.....	12,691	13,128	12,930	12,911	12,991	13,172	13,184	13,231	47
Arts, entertainment, and recreation.....	1,739.0	1,855.8	1,750.9	1,762.6	1,886.5	1,898.6	1,898.3	1,916.5	18.2
Performing arts and spectator sports.....	376.2	410.8	400.7	401.0	391.8	407.9	415.8	417.7	1.9
Museums, historical sites, zoos, and parks....	121.9	127.8	123.4	120.6	129.0	127.6	127.9	128.1	0.2
Amusements, gambling, and recreation.....	1,240.9	1,317.2	1,226.8	1,241.0	1,365.7	1,363.1	1,354.6	1,370.7	16.1
Accommodation and food services.....	10,951.5	11,272.0	11,179.0	11,148.1	11,104.5	11,272.9	11,285.5	11,314.6	29.1
Accommodation.....	1,683.4	1,744.1	1,702.3	1,695.7	1,733.1	1,754.1	1,750.2	1,754.8	4.6
Food services and drinking places.....	9,268.1	9,527.9	9,476.7	9,452.4	9,371.4	9,518.8	9,535.3	9,559.8	24.5
Other services.....	5,291	5,410	5,381	5,354	5,314	5,405	5,393	5,379	-14
Repair and maintenance.....	1,131.8	1,158.8	1,150.1	1,144.4	1,139.8	1,157.4	1,153.7	1,150.9	-2.8
Personal and laundry services.....	1,268.1	1,278.8	1,272.4	1,276.7	1,269.6	1,281.9	1,276.6	1,280.8	4.2
Membership associations and organizations....	2,890.9	2,972.5	2,958.6	2,932.6	2,904.4	2,965.4	2,962.8	2,947.7	-15.1
Government.....	22,825	22,630	22,747	22,595	22,481	22,277	22,269	22,259	-10
Federal.....	2,816.0	2,840.0	2,834.0	2,840.0	2,824.0	2,838.0	2,842.0	2,852.0	10.0
Federal, except U.S. Postal Service.....	2,148.8	2,189.7	2,190.7	2,194.5	2,160.1	2,190.8	2,198.4	2,208.7	10.3
U.S. Postal Service.....	667.5	650.4	642.8	645.5	663.7	646.9	643.6	643.6	0.0
State government.....	5,281.0	5,331.0	5,360.0	5,295.0	5,178.0	5,182.0	5,184.0	5,184.0	0.0
State government education.....	2,502.3	2,585.3	2,616.5	2,553.9	2,383.7	2,427.1	2,429.3	2,430.9	1.6
State government, excluding education.....	2,778.9	2,746.1	2,743.5	2,740.6	2,794.5	2,754.4	2,754.8	2,753.4	-1.4
Local government.....	14,728.0	14,459.0	14,553.0	14,460.0	14,479.0	14,257.0	14,243.0	14,223.0	-20.0
Local government education.....	8,363.1	8,154.0	8,257.4	8,218.7	8,040.0	7,914.5	7,906.9	7,899.7	-7.2
Local government, excluding education.....	6,364.7	6,304.9	6,295.1	6,241.1	6,438.9	6,342.2	6,335.9	6,323.6	-12.3

1 Includes other industries, not shown separately.

2 Includes motor vehicles, motor vehicle bodies and trailers, and motor vehicle parts.

3 Includes ambulatory health care services, hospitals, and nursing and residential care facilities.

p Preliminary

**ESTABLISHMENT DATA**

**Table B-2. Average weekly hours and overtime of all employees on private nonfarm payrolls by industry sector, seasonally adjusted**

Industry	Dec. 2009	Oct. 2010	Nov. 2010 <sup>p</sup>	Dec. 2010 <sup>p</sup>
<b>AVERAGE WEEKLY HOURS</b>				
Total private.....	33.8	34.3	34.3	34.3
Goods-producing.....	38.8	39.7	39.7	39.7
Mining and logging.....	42.1	43.3	43.1	43.5
Construction.....	36.9	38.0	38.0	38.2
Manufacturing.....	39.6	40.3	40.3	40.2
Durable goods.....	39.7	40.5	40.6	40.5
Nondurable goods.....	39.3	40.0	39.8	39.8
Private service-providing.....	32.8	33.2	33.2	33.2
Trade, transportation, and utilities.....	34.0	34.4	34.3	34.6
Wholesale trade.....	37.6	38.5	38.4	38.4
Retail trade.....	31.2	31.3	31.2	31.6
Transportation and warehousing.....	37.9	38.7	38.7	38.8
Utilities.....	40.5	42.0	41.7	41.4
Information.....	36.5	36.9	36.8	36.7
Financial activities.....	36.7	37.1	37.2	37.1
Professional and business services.....	35.1	35.7	35.7	35.8
Education and health services.....	32.7	33.0	33.0	32.9
Leisure and hospitality.....	25.6	25.8	25.8	25.7
Other services.....	31.3	31.9	31.8	31.8
<b>AVERAGE OVERTIME HOURS</b>				
Manufacturing.....	2.7	3.1	3.1	3.1
Durable goods.....	2.5	2.9	3.1	3.0
Nondurable goods.....	2.9	3.3	3.2	3.2

p Preliminary

**ESTABLISHMENT DATA**

**Table B-3. Average hourly and weekly earnings of all employees on private nonfarm payrolls by industry sector, seasonally adjusted**

Industry	Average hourly earnings				Average weekly earnings			
	Dec. 2009	Oct. 2010	Nov. 2010 <sup>p</sup>	Dec. 2010 <sup>p</sup>	Dec. 2009	Oct. 2010	Nov. 2010 <sup>p</sup>	Dec. 2010 <sup>p</sup>
Total private.....	\$22.38	\$22.74	\$22.75	\$22.78	\$ 756.44	\$ 779.98	\$ 780.33	\$ 781.35
Goods-producing.....	23.84	24.16	24.15	24.18	924.99	959.15	958.76	959.95
Mining and logging.....	26.97	27.73	27.65	27.62	1,135.44	1,200.71	1,191.72	1,201.47
Construction.....	25.03	25.30	25.36	25.40	923.61	961.40	963.68	970.28
Manufacturing.....	23.10	23.40	23.36	23.37	914.76	943.02	941.41	939.47
Durable goods.....	24.65	24.86	24.84	24.85	978.61	1,006.83	1,008.50	1,006.43
Nondurable goods.....	20.65	21.03	20.93	20.96	811.55	841.20	833.01	834.21
Private service-providing.....	22.03	22.39	22.42	22.45	722.58	743.35	744.34	745.34
Trade, transportation, and utilities.....	19.53	19.87	19.89	19.86	664.02	683.53	682.23	687.16
Wholesale trade.....	25.91	26.33	26.34	26.31	974.22	1,013.71	1,011.46	1,010.30
Retail trade.....	15.47	15.64	15.66	15.63	482.66	489.53	488.59	493.91
Transportation and warehousing.....	20.69	21.20	21.22	21.30	784.15	820.44	821.21	826.44
Utilities.....	32.93	33.24	33.00	33.23	1,333.67	1,396.08	1,376.10	1,375.72
Information.....	30.03	31.14	31.22	31.26	1,096.10	1,149.07	1,148.90	1,147.24
Financial activities.....	26.83	27.30	27.33	27.42	984.66	1,012.83	1,016.68	1,017.28
Professional and business services.....	27.09	27.43	27.46	27.47	950.86	979.25	980.32	983.43
Education and health services.....	22.55	23.07	23.07	23.17	737.39	761.31	761.31	762.29
Leisure and hospitality.....	13.10	13.11	13.10	13.14	335.36	338.24	337.98	337.70
Other services.....	20.04	20.05	20.16	20.18	627.25	639.60	641.09	641.72

p Preliminary

**ESTABLISHMENT DATA**

**Table B-4. Indexes of aggregate weekly hours and payrolls for all employees on private nonfarm payrolls by industry sector, seasonally adjusted**

[2007=100]

Industry	Index of aggregate weekly hours <sup>1</sup>					Index of aggregate weekly payrolls <sup>2</sup>				
	Dec. 2009	Oct. 2010	Nov. 2010 <sup>p</sup>	Dec. 2010 <sup>p</sup>	Percent change from: Nov. 2010 - Dec. 2010 <sup>p</sup>	Dec. 2009	Oct. 2010	Nov. 2010 <sup>p</sup>	Dec. 2010 <sup>p</sup>	Percent change from: Nov. 2010 - Dec. 2010 <sup>p</sup>
Total private.....	90.7	93.1	93.1	93.2	0.1	96.8	100.9	101.0	101.3	0.3
Goods-producing.....	79.2	81.6	81.6	81.6	0.0	85.3	89.1	89.1	89.2	0.1
Mining and logging.....	89.4	103.3	103.5	105.0	1.4	96.8	115.0	114.9	116.4	1.3
Construction.....	72.4	73.6	73.6	73.8	0.3	78.8	80.9	81.1	81.4	0.4
Manufacturing.....	82.2	84.6	84.5	84.4	-0.1	88.3	92.1	91.8	91.7	-0.1
Durable goods.....	78.6	81.9	82.1	82.0	-0.1	86.1	90.5	90.6	90.5	-0.1
Nondurable goods.....	88.2	89.5	88.9	88.9	0.0	92.4	95.5	94.4	94.6	0.2
Private service-providing.....	94.0	96.2	96.3	96.4	0.1	100.3	104.3	104.6	104.9	0.3
Trade, transportation, and utilities.....	91.1	92.9	92.6	93.6	1.1	95.8	99.4	99.2	100.0	0.8
Wholesale trade.....	91.3	94.2	94.0	94.1	0.1	98.7	103.5	103.3	103.4	0.1
Retail trade.....	91.0	92.1	91.6	92.9	1.4	93.1	95.2	94.9	96.0	1.2
Transportation and warehousing.....	90.5	93.2	93.5	94.0	0.5	95.0	100.3	100.7	101.6	0.9
Utilities.....	97.6	100.4	99.5	99.0	-0.5	106.2	110.3	108.5	108.7	0.2
Information.....	91.6	91.4	91.2	90.9	-0.3	97.9	101.4	101.4	101.1	-0.3
Financial activities.....	92.6	92.7	92.9	92.7	-0.2	97.0	98.8	99.1	99.2	0.1
Professional and business services.....	91.0	94.3	94.6	94.9	0.3	99.9	104.8	105.2	105.6	0.4
Education and health services.....	103.0	105.8	106.0	105.9	-0.1	108.8	114.3	114.5	114.9	0.3
Leisure and hospitality.....	94.9	97.0	97.1	97.0	-0.1	100.3	102.6	102.6	102.9	0.3
Other services.....	92.2	95.5	95.0	94.8	-0.2	104.8	108.7	108.7	108.5	-0.2

1 The indexes of aggregate weekly hours are calculated by dividing the current month's estimates of aggregate hours by the corresponding 2007 annual average aggregate hours. Aggregate hours estimates are the product of estimates of average weekly hours and employment.

2 The indexes of aggregate weekly payrolls are calculated by dividing the current month's estimates of aggregate weekly payrolls by the corresponding 2007 annual average aggregate weekly payrolls. Aggregate payrolls estimates are the product of estimates of average hourly earnings, average weekly hours, and employment.

p Preliminary

**ESTABLISHMENT DATA**

**Table B-5. Employment of women on nonfarm payrolls by industry sector, seasonally adjusted**

Industry	Women employees (in thousands)				Percent of all employees			
	Dec. 2009	Oct. 2010	Nov. 2010 <sup>p</sup>	Dec. 2010 <sup>p</sup>	Dec. 2009	Oct. 2010	Nov. 2010 <sup>p</sup>	Dec. 2010 <sup>p</sup>
Total nonfarm.....	64,666	64,751	64,746	64,810	49.9	49.6	49.6	49.6
Total private.....	51,842	52,091	52,105	52,182	48.4	48.1	48.1	48.1
Goods-producing.....	4,150	4,114	4,111	4,116	23.2	22.8	22.8	22.8
Mining and logging.....	98	103	104	106	14.5	13.6	13.6	13.8
Construction.....	759	726	725	729	13.3	12.9	12.9	13.0
Manufacturing.....	3,293	3,285	3,282	3,281	28.6	28.2	28.1	28.1
Durable goods.....	1,739	1,735	1,735	1,737	24.7	24.1	24.2	24.1
Nondurable goods.....	1,554	1,550	1,547	1,544	34.5	34.6	34.6	34.5
Private service-providing.....	47,692	47,977	47,994	48,066	53.5	53.2	53.2	53.2
Trade, transportation, and utilities.....	10,062	10,041	10,015	10,014	40.8	40.4	40.3	40.2
Wholesale trade.....	1,684.8	1,686.5	1,687.4	1,688.0	30.3	30.1	30.1	30.0
Retail trade.....	7,232.6	7,222.5	7,198.8	7,197.3	50.4	49.9	49.8	49.7
Transportation and warehousing.....	1,006.1	1,000.5	997.1	997.7	24.1	23.8	23.6	23.6
Utilities.....	138.3	131.8	131.2	130.8	24.8	23.8	23.8	23.7
Information.....	1,133	1,102	1,108	1,101	41.2	40.6	40.8	40.6
Financial activities.....	4,533	4,452	4,445	4,446	59.2	58.7	58.6	58.6
Professional and business services.....	7,389	7,471	7,493	7,515	44.8	44.5	44.5	44.6
Education and health services.....	14,956	15,184	15,209	15,240	77.3	77.1	77.1	77.1
Leisure and hospitality.....	6,823	6,884	6,885	6,914	52.5	52.3	52.2	52.3
Other services.....	2,796	2,843	2,839	2,836	52.6	52.6	52.6	52.7
Government.....	12,824	12,660	12,641	12,628	57.0	56.8	56.8	56.7

p Preliminary

**ESTABLISHMENT DATA**

**Table B-6. Employment of production and nonsupervisory employees on private nonfarm payrolls by industry sector, seasonally adjusted<sup>1</sup>**

[In thousands]

Industry	Dec. 2009	Oct. 2010	Nov. 2010 <sup>p</sup>	Dec. 2010 <sup>p</sup>
Total private.....	88,239	89,210	89,281	89,387
Goods-producing.....	12,886	12,995	12,989	12,982
Mining and logging.....	490	568	571	577
Construction.....	4,307	4,257	4,261	4,240
Manufacturing.....	8,089	8,170	8,157	8,165
Durable goods.....	4,801	4,914	4,913	4,917
Nondurable goods.....	3,288	3,256	3,244	3,248
Private service-providing.....	75,353	76,215	76,292	76,405
Trade, transportation, and utilities.....	20,876	21,014	21,010	21,053
Wholesale trade.....	4,470.8	4,483.6	4,485.7	4,490.8
Retail trade.....	12,329.1	12,463.1	12,448.6	12,472.9
Transportation and warehousing.....	3,630.7	3,629.1	3,639.5	3,651.2
Utilities.....	445.0	438.2	436.5	437.8
Information.....	2,192	2,180	2,181	2,181
Financial activities.....	5,937	5,829	5,821	5,824
Professional and business services.....	13,463	13,777	13,834	13,831
Education and health services.....	16,971	17,270	17,308	17,350
Leisure and hospitality.....	11,464	11,621	11,623	11,660
Other services.....	4,450	4,524	4,515	4,506

<sup>1</sup> Data relate to production employees in mining and logging and manufacturing, construction employees in construction, and nonsupervisory employees in the service-providing industries. These groups account for approximately four-fifths of the total employment on private nonfarm payrolls.

<sup>p</sup> Preliminary

**ESTABLISHMENT DATA**

**Table B-7. Average weekly hours and overtime of production and nonsupervisory employees on private nonfarm payrolls by industry sector, seasonally adjusted<sup>1</sup>**

Industry	Dec. 2009	Oct. 2010	Nov. 2010 <sup>p</sup>	Dec. 2010 <sup>p</sup>
<b>AVERAGE WEEKLY HOURS</b>				
Total private.....	33.2	33.6	33.5	33.6
Goods-producing.....	39.6	40.6	40.5	40.5
Mining and logging.....	43.4	44.5	44.6	44.6
Construction.....	37.5	38.8	38.6	38.7
Manufacturing.....	40.5	41.2	41.2	41.2
Durable goods.....	40.6	41.4	41.5	41.4
Nondurable goods.....	40.4	40.9	40.8	40.9
Private service-providing.....	32.1	32.4	32.3	32.4
Trade, transportation, and utilities.....	32.9	33.5	33.5	33.7
Wholesale trade.....	37.6	38.2	38.2	38.3
Retail trade.....	30.0	30.3	30.2	30.5
Transportation and warehousing.....	36.2	37.6	37.8	37.7
Utilities.....	41.4	42.9	42.7	42.2
Information.....	36.5	36.4	36.4	36.3
Financial activities.....	35.9	36.3	36.1	36.2
Professional and business services.....	34.8	35.3	35.2	35.5
Education and health services.....	32.3	32.3	32.2	32.2
Leisure and hospitality.....	24.8	24.9	24.9	24.7
Other services.....	30.5	30.9	30.8	30.8
<b>AVERAGE OVERTIME HOURS</b>				
Manufacturing.....	3.4	3.9	4.0	4.0
Durable goods.....	3.3	3.9	4.0	4.1
Nondurable goods.....	3.6	4.0	3.9	3.8

<sup>1</sup> Data relate to production employees in mining and logging and manufacturing, construction employees in construction, and nonsupervisory employees in the service-providing industries. These groups account for approximately four-fifths of the total employment on private nonfarm payrolls.

p Preliminary



**ESTABLISHMENT DATA**

**Table B-8. Average hourly and weekly earnings of production and nonsupervisory employees on private nonfarm payrolls by industry sector, seasonally adjusted<sup>1</sup>**

Industry	Average hourly earnings				Average weekly earnings			
	Dec. 2009	Oct. 2010	Nov. 2010 <sup>p</sup>	Dec. 2010 <sup>p</sup>	Dec. 2009	Oct. 2010	Nov. 2010 <sup>p</sup>	Dec. 2010 <sup>p</sup>
Total private.....	\$18.85	\$19.18	\$19.19	\$19.21	\$ 625.82	\$ 644.45	\$ 642.87	\$ 645.46
Goods-producing.....	20.04	20.40	20.43	20.44	793.58	828.24	827.42	827.82
Mining and logging.....	23.47	23.85	23.96	23.96	1,018.60	1,061.33	1,068.62	1,068.62
Construction.....	22.95	23.42	23.50	23.55	860.63	908.70	907.10	911.39
Manufacturing.....	18.38	18.66	18.66	18.66	744.39	768.79	768.79	768.79
Durable goods.....	19.57	19.83	19.86	19.87	794.54	820.96	824.19	822.62
Nondurable goods.....	16.64	16.86	16.81	16.80	672.26	689.57	685.85	687.12
Private service-providing.....	18.60	18.93	18.92	18.95	597.06	613.33	611.12	613.98
Trade, transportation, and utilities.....	16.73	17.03	17.01	17.00	550.42	570.51	569.84	572.90
Wholesale trade.....	21.35	21.84	21.72	21.75	802.76	834.29	829.70	833.03
Retail trade.....	13.16	13.37	13.39	13.38	394.80	405.11	404.38	408.09
Transportation and warehousing.....	19.00	19.23	19.16	19.25	687.80	723.05	724.25	725.73
Utilities.....	29.91	30.76	30.78	30.68	1,238.27	1,319.60	1,314.31	1,294.70
Information.....	25.64	26.20	26.18	26.22	935.86	953.68	952.95	951.79
Financial activities.....	21.11	21.61	21.66	21.67	757.85	784.44	781.93	784.45
Professional and business services.....	22.58	22.98	22.98	22.99	785.78	811.19	808.90	816.15
Education and health services.....	19.76	20.19	20.17	20.24	638.25	652.14	649.47	651.73
Leisure and hospitality.....	11.27	11.30	11.31	11.34	279.50	281.37	281.62	280.10
Other services.....	16.85	16.91	16.95	16.98	513.93	522.52	522.06	522.98

<sup>1</sup> Data relate to production employees in mining and logging and manufacturing, construction employees in construction, and nonsupervisory employees in the service-providing industries. These groups account for approximately four-fifths of the total employment on private nonfarm payrolls.

p Preliminary

**ESTABLISHMENT DATA**

**Table B-9. Indexes of aggregate weekly hours and payrolls for production and nonsupervisory employees on private nonfarm payrolls by industry sector, seasonally adjusted<sup>1</sup>**

[2002=100]

Industry	Index of aggregate weekly hours <sup>2</sup>					Index of aggregate weekly payrolls <sup>3</sup>				
	Dec. 2009	Oct. 2010	Nov. 2010 <sup>p</sup>	Dec. 2010 <sup>p</sup>	Percent change from: Nov. 2010 - Dec. 2010 <sup>p</sup>	Dec. 2009	Oct. 2010	Nov. 2010 <sup>p</sup>	Dec. 2010 <sup>p</sup>	Percent change from: Nov. 2010 - Dec. 2010 <sup>p</sup>
Total private.....	97.9	100.1	99.9	100.3	0.4	123.3	128.3	128.1	128.8	0.5
Goods-producing.....	78.0	80.6	80.4	80.3	-0.1	95.7	100.7	100.6	100.6	0.0
Mining and logging.....	113.0	134.3	135.3	136.8	1.1	154.3	186.3	188.6	190.6	1.1
Construction.....	80.9	82.7	82.4	82.2	-0.2	100.2	104.6	104.5	104.5	0.0
Manufacturing.....	75.2	77.3	77.1	77.2	0.1	90.4	94.3	94.1	94.2	0.1
Durable goods.....	73.2	76.4	76.6	76.5	-0.1	89.5	94.6	95.0	94.9	-0.1
Nondurable goods.....	78.3	78.5	78.0	78.3	0.4	92.0	93.5	92.6	92.9	0.3
Private service-providing.....	103.4	105.6	105.4	105.9	0.5	131.9	137.0	136.7	137.5	0.6
Trade, transportation, and utilities.....	95.7	98.1	98.1	98.9	0.8	114.3	119.2	119.1	119.9	0.7
Wholesale trade.....	99.0	100.9	100.9	101.3	0.4	124.5	129.8	129.1	129.8	0.5
Retail trade.....	93.6	95.6	95.2	96.3	1.2	105.6	109.5	109.2	110.4	1.1
Transportation and warehousing.....	98.9	102.7	103.6	103.6	0.0	119.2	125.3	125.9	126.5	0.5
Utilities.....	94.2	96.2	95.3	94.5	-0.8	117.6	123.5	122.5	121.0	-1.2
Information.....	91.3	90.6	90.6	90.4	-0.2	115.9	117.5	117.5	117.3	-0.2
Financial activities.....	102.0	101.3	100.6	100.9	0.3	133.1	135.3	134.7	135.2	0.4
Professional and business services.....	105.0	109.0	109.1	110.0	0.8	141.1	149.0	149.2	150.5	0.9
Education and health services.....	118.2	120.3	120.2	120.5	0.2	153.6	159.7	159.4	160.4	0.6
Leisure and hospitality.....	104.2	106.1	106.1	105.6	-0.5	133.4	136.1	136.2	135.9	-0.2
Other services.....	95.2	98.1	97.6	97.4	-0.2	116.9	120.8	120.5	120.5	0.0

1 Data relate to production employees in mining and logging and manufacturing, construction employees in construction, and nonsupervisory employees in the service-providing industries. These groups account for approximately four-fifths of the total employment on private nonfarm payrolls.

2 The indexes of aggregate weekly hours are calculated by dividing the current month's estimates of aggregate hours by the corresponding 2002 annual average aggregate hours. Aggregate hours estimates are the product of estimates of average weekly hours and employment.

3 The indexes of aggregate weekly payrolls are calculated by dividing the current month's estimates of aggregate weekly payrolls by the corresponding 2002 annual average aggregate weekly payrolls. Aggregate payrolls estimates are the product of estimates of average hourly earnings, average weekly hours, and employment.

p Preliminary