



**Transmission of material in this release is embargoed until
8:30 a.m. (EDT) Thursday, May 12, 2016**

USDL-16-0945

Technical information: (202) 691-7101 • MXPinfo@bls.gov • www.bls.gov/mxp

Media contact: (202) 691-5902 • PressOffice@bls.gov

U.S. IMPORT AND EXPORT PRICE INDEXES – APRIL 2016

The price index for U.S. imports rose 0.3 percent in April following a 0.3-percent increase in March, the U.S. Bureau of Labor Statistics reported today. The increases in both April and March were led by higher fuel prices. U.S. export prices increased 0.5 percent in April, after recording no change the previous month. Both agricultural and nonagricultural export prices contributed to the April advance.

Chart 1. One-month percent change in the Import Price Index: April 2015 – April 2016

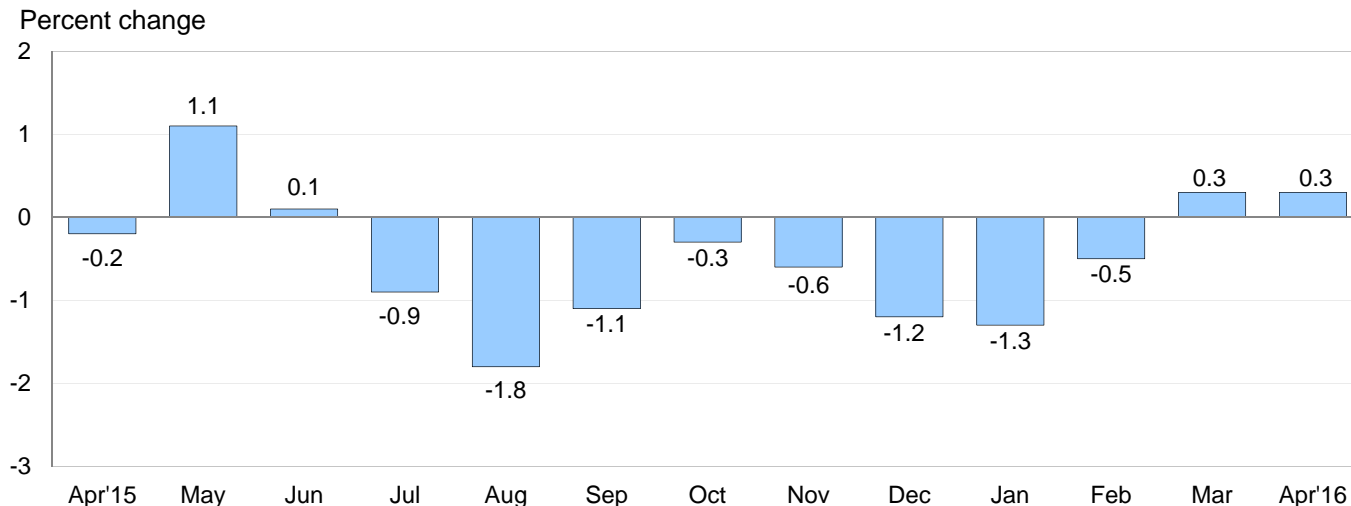
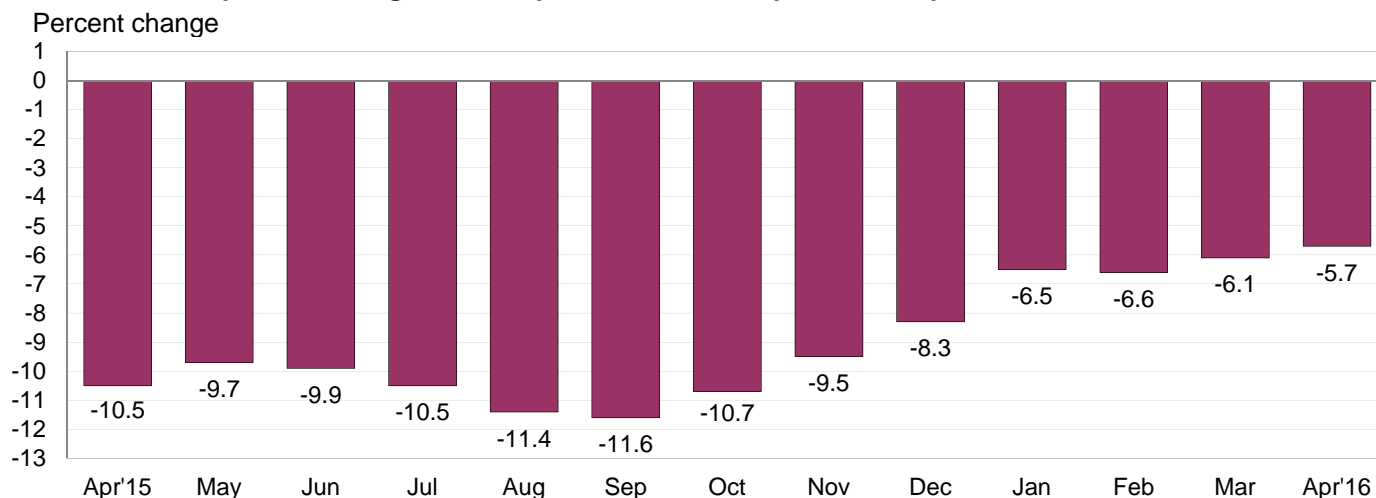


Chart 2. 12-month percent change in the Import Price Index: April 2015 – April 2016



All Imports: The consecutive 0.3-percent increases in April and March were the first monthly advances since the index ticked up 0.1 percent in June 2015 and the largest increases since a 1.1-percent rise in May 2015. Higher fuel prices drove the April advance although nonfuel prices also contributed to the overall increase in import prices. Import prices declined 5.7 percent over the past year, the smallest over-the-year drop since the index fell 5.6 percent in December 2014.

Fuel Imports: Prices for fuel imports advanced 3.3 percent in April following a 7.6-percent rise in March. The increases were the first monthly advances since the index rose 1.5 percent in June 2015 and the largest 1-month increases since a 10.8-percent advance in May 2015. The April rise was driven by a 4.1-percent advance in petroleum prices which more than offset a 10.5-percent drop in natural gas prices. Despite the recent increases, the price index for import fuel declined 36.4 percent over the past 12 months. A 37.4-percent decrease in petroleum prices and a 38.9-percent drop in natural gas prices both contributed to the overall fall in import fuel prices for the year ended in April.

All Imports Excluding Fuel: Nonfuel import prices rose 0.1 percent, the first monthly advance since the index ticked up 0.1 percent in July 2014. The last time nonfuel import prices advanced by more than 0.1 percent was a 0.3-percent increase in March 2014. In April, higher prices for nonfuel industrial supplies and materials; foods, feeds, and beverages; and automotive vehicles more than offset falling consumer goods and capital goods prices. Despite the April increase, nonfuel import prices fell 2.0 percent between April 2015 and April 2016.

Table A. Percent change in Import and Export Price Indexes, selected categories

Month	IMPORTS			EXPORTS		
	All imports	Fuel imports	Nonfuel imports	All exports	Agricultural exports	Non-agricultural exports
2015						
April.....	-0.2	1.8	-0.3	-0.6	-0.9	-0.7
May.....	1.1	10.8	0.0	0.5	-1.3	0.6
June.....	0.1	1.5	-0.2	-0.3	-1.6	-0.1
July.....	-0.9	-6.1	-0.3	-0.4	1.0	-0.6
August.....	-1.8	-12.7	-0.3	-1.4	-2.5	-1.3
September.....	-1.1	-8.4	-0.3	-0.6	-1.4	-0.5
October.....	-0.3	-0.4	-0.3	-0.2	0.1	-0.3
November.....	-0.6	-4.0	-0.3	-0.7	-0.9	-0.7
December.....	-1.2	-10.0	-0.3	-1.1	-0.9	-1.1
2016						
January.....	-1.3	-15.6 ^r	-0.1	-0.9 ^r	-1.3	-0.9
February.....	-0.5 ^r	-7.0 ^r	-0.1	-0.4 ^r	0.6	-0.6 ^r
March.....	0.3 ^r	7.6 ^r	-0.1	0.0	-2.3 ^r	0.3
April.....	0.3	3.3	0.1	0.5	0.5	0.5
Apr. 2014 to 2015.....	-10.5	-45.3	-2.2	-6.3	-15.7	-5.3
Apr. 2015 to 2016.....	-5.7	-36.4	-2.0	-5.0	-9.7	-4.6

r Revised

Chart 3. One-month percent change in the Export Price Index: April 2015 – April 2016

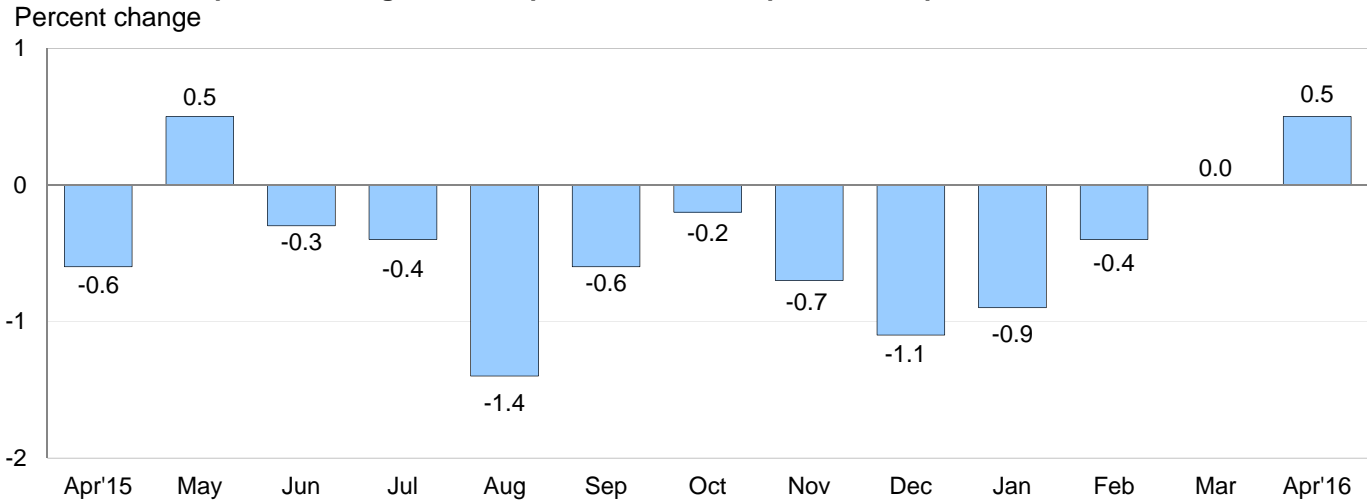
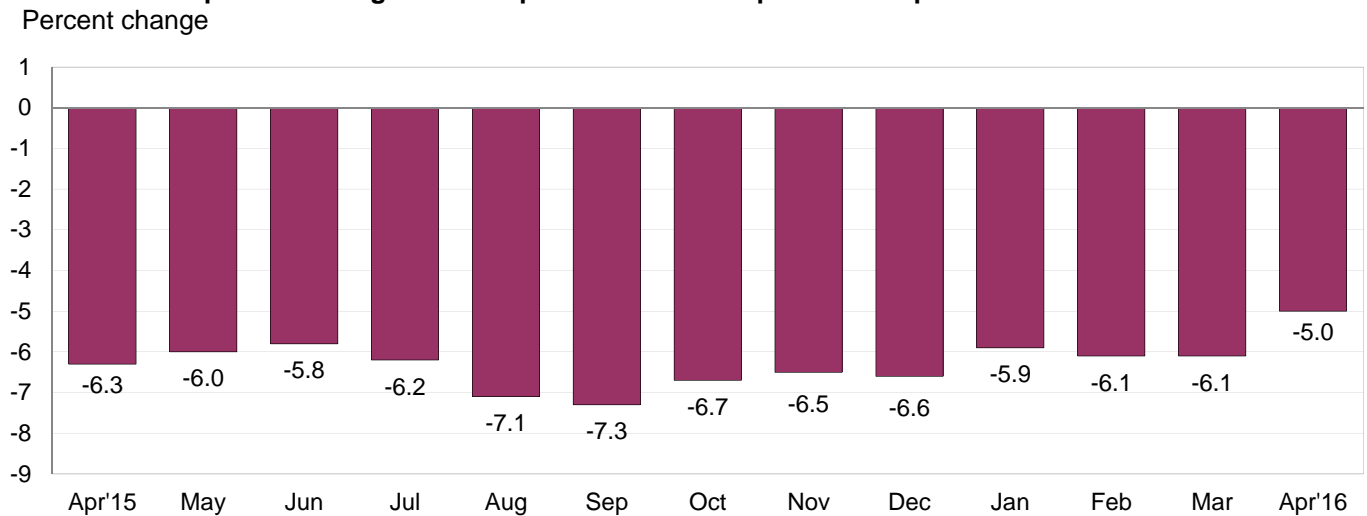


Chart 4. 12-month percent change in the Export Price Index: April 2015 – April 2016



All Exports: Prices for U.S. exports rose 0.5 percent in April, the first monthly advance for the index since a 0.5-percent increase in May 2015. Those advances are the largest 1-month rises since the index increased 0.9 percent in March 2014. The price index for U.S. exports fell 5.0 percent for the year ended in April, the smallest 12-month decline since the index decreased 5.0 percent from January 2014 to January 2015.

Agricultural Exports: Agricultural export prices increased 0.5 percent in April, after decreasing 2.3 percent the previous month. The April advance was led by a 4.4-percent rise in soybean prices which more than offset lower prices for fruit and meat. Despite the April upturn, agricultural prices decreased 9.7 percent over the past 12 months.

All Exports Excluding Agriculture: The price index for nonagricultural prices also advanced 0.5 percent in April following a 0.3-percent rise in March. Both monthly increases were driven by higher prices for nonagricultural industrial supplies and materials and capital goods. Nonagricultural prices decreased 4.6 percent for the year ended in April. Falling prices for nonagricultural industrial supplies and materials as well as each of the major finished goods categories all contributed to the overall decline.

SELECTED APRIL HIGHLIGHTS

Import Prices

Imports by Locality of Origin: Import prices from China edged down 0.1 percent in April, after consecutive 0.2-percent decreases in March and February. Prices for imports from China have not recorded a monthly increase since the index ticked up 0.1 percent in December 2014. The index fell 1.9 percent over the past year, the largest 12-month decrease since the index fell 2.4 percent for the year ended in November 2009. In contrast, led by higher prices for fuel and metals, the price indexes for imports from Canada, the European Union, and Mexico all rose in April. Prices for imports from Canada increased 1.4 percent, from the European Union 0.3 percent, and from Mexico 0.2 percent. Prices for imports from Japan recorded no change for the second consecutive month in April.

Nonfuel Industrial Supplies and Materials: Prices for nonfuel industrial supplies and materials rose 0.6 percent in April, after a 0.6-percent increase in March. In April, higher prices for metals and building materials led the increase in overall nonfuel industrial supplies and materials prices.

Finished Goods: Finished goods prices were mostly down in April. Consumer goods prices fell 0.3 percent, driven by lower prices for household goods. Prices for automotive vehicles ticked up 0.1 percent, led by rising auto parts prices. In contrast, capital goods prices edged down 0.1 percent in April. Falling prices for computers, peripherals, and semiconductors were the largest contributor.

Foods, Feeds, and Beverages: The price index for import foods, feeds, and beverages increased 1.3 percent in April following a 0.4-percent decline in March. The April advance was led by a 3.4-percent rise in fish prices and a 4.4-percent increase in meat prices.

Transportation Services: Import air passenger fares advanced 3.5 percent in April following a 5.4-percent decrease the previous month. In April, the rise was led by a 5.1-percent increase in European fares and a 3.8-percent advance in Asian fares. Despite the April rise, import air passenger fares declined 0.2 percent over the past 12 months. Import air freight prices rose 2.0 percent in April, the largest monthly advance since the index increased 5.0 percent in October 2015. The price index for import air freight fell 10.6 percent for the year ended in April.

Export Prices

Nonagricultural Industrial Supplies and Materials: Prices for nonagricultural industrial supplies and materials increased 1.4 percent in April following a 0.7-percent rise in March. Higher prices for fuel, metals, and chemicals all factored into the April advance.

Finished Goods: Finished goods prices were mixed in April. Capital goods prices advanced 0.4 percent, the largest monthly increase since the index rose 0.7 percent in January 2013. In contrast, consumer goods prices edged down 0.1 percent. The price index for automotive vehicles recorded no change in April.

Transportation Services: Export air passenger fares decreased 6.0 percent in April, after rising 7.7 percent in March. The April drop was driven by an 11.4-percent decline in European fares. The index for export air passenger fares fell 7.1 percent over the past year. Export air freight prices recorded no change in April and declined 3.1 percent over the past 12 months.

Import and Export Price Index data for May 2016 are scheduled for release on Tuesday, June 14, 2016 at 8:30 a.m. (EDT).

Table 1. U.S. import price indexes and percent changes for selected categories of goods: April 2015 to April 2016

[2000=100, unless otherwise noted]

Description	End Use	Relative importance Mar. 2016 ¹	Index		Percent change				
			Mar. 2016	Apr. 2016	Annual Apr. 2015 to Apr. 2016	Monthly			
						Dec. 2015 to Jan. 2016	Jan. 2016 to Feb. 2016	Feb. 2016 to Mar. 2016	Mar. 2016 to Apr. 2016
All commodities		100.000	117.6	118.0	-5.7	-1.3	-0.5	0.3	0.3
All imports excluding food and fuels (Dec. 2010=100)		87.435	98.1	98.1	-2.0	-0.2	0.0	0.0	0.0
All imports excluding petroleum		94.154	110.4	110.5	-2.2	-0.1	-0.2	-0.1	0.1
All imports excluding fuels (Dec. 2001=100)		93.600	114.6	114.7	-2.0	-0.1	-0.1	-0.1	0.1
Foods, feeds, & beverages	0	6.165	170.3	172.5	-2.2	0.8	-1.6	-0.4	1.3
Agricultural foods, feeds & beverages, excluding distilled beverages.....	00	4.758	186.0	187.6	-3.5	0.7	-2.0	-0.8	0.9
Nonagricultural foods (fish, distilled beverages).....	01	1.407	135.0	138.5	2.3	1.4	-0.3	1.0	2.6
Industrial supplies & materials	1	19.888	139.4	141.5	-19.8	-6.2	-2.4	2.7	1.5
Industrial supplies & materials excluding petroleum.....		14.042	136.8	137.3	-7.9	-0.9	-0.3	0.0	0.4
Industrial supplies & materials excluding fuels (Dec. 2001=100).....		13.488	156.4	157.3	-7.0	-1.0	-0.1	0.6	0.6
Industrial supplies & materials, durable....		8.120	144.3	145.7	-7.0	-1.1	0.4	1.3	1.0
Industrial supplies & materials nondurable excluding petroleum.....		5.368	127.4	126.7	-9.1	-0.5	-1.1	-1.7	-0.5
Fuels & lubricants.....	10	6.400	114.6	118.4	-36.4	-15.6	-7.0	7.6	3.3
Petroleum & petroleum products.....	100	5.846	121.8	126.8	-37.4	-17.2	-7.3	9.6	4.1
Crude.....	10000	4.177	122.0	127.5	-37.1	-17.0	-7.3	13.4	4.5
Fuels, n.e.s.-coals & gas.....	101	0.364	70.5	65.0	-32.6	-2.3	-5.4	-14.6	-7.8
Gas-natural.....	10110	0.271	54.2	48.5	-38.9	0.0	-6.8	-18.7	-10.5
Paper & paper base stocks.....	11	0.592	107.5	107.0	-3.7	-0.6	-0.2	-0.1	-0.5
Materials associated with nondurable supplies & materials.....	12	4.844	148.5	148.5	-7.4	-0.7	-0.9	-0.6	0.0
Selected building materials.....	13	1.306	134.3	136.1	-0.8	-0.1	-0.6	0.7	1.3
Unfinished metals related to durable goods.....	14	3.262	180.1	183.9	-12.8	-1.9	0.5	3.2	2.1
Finished metals related to durable goods.....	15	1.726	145.0	144.7	-5.9	-0.6	0.0	0.3	-0.2
Nonmetals related to durable goods.....	16	1.758	108.4	108.1	-1.5	-0.7	0.9	-0.2	-0.3
Capital goods	2	29.345	89.4	89.3	-2.0	-0.2	-0.1	-0.1	-0.1
Electric generating equipment.....	20	3.566	116.6	116.1	-1.9	0.3	-0.3	0.0	-0.4
Nonelectrical machinery.....	21	22.991	81.8	81.8	-2.3	-0.4	0.0	-0.2	0.0
Transportation equipment excluding motor vehicles (Dec. 2001=100).....	22	2.788	137.4	137.5	0.5	0.2	0.0	0.1	0.1
Automotive vehicles, parts & engines	3	16.479	110.2	110.3	-0.8	-0.3	-0.1	0.1	0.1
Consumer goods, excluding automobiles	4	28.123	107.3	107.0	-0.4	0.1	0.3	-0.3	-0.3
Nondurables, manufactured.....	40	13.419	120.0	119.9	0.7	0.3	0.8	-0.4	-0.1
Durables, manufactured.....	41	13.175	94.7	94.3	-1.5	0.0	-0.2	-0.1	-0.4
Nonmanufactured consumer goods.....	42	1.529	118.8	118.5	0.4	-0.4	0.3	-1.1	-0.3

¹ Relative importance figures are based on 2014 trade values.

NOTES: Data may be revised in each of the 3 months after original publication.

Dash = Not available

Table 2. U.S. export price indexes and percent changes for selected categories of goods: April 2015 to April 2016

[2000=100, unless otherwise noted]

Description	End Use	Relative importance Mar. 2016 ¹	Index		Percent change				
			Mar. 2016	Apr. 2016	Annual Apr. 2015 to Apr. 2016	Monthly			
						Dec. 2015 to Jan. 2016	Jan. 2016 to Feb. 2016	Feb. 2016 to Mar. 2016	Mar. 2016 to Apr. 2016
All commodities.....		100.000	118.2	118.8	-5.0	-0.9	-0.4	0.0	0.5
Agricultural commodities.....		8.966	170.5	171.3	-9.7	-1.3	0.6	-2.3	0.5
All exports excluding food and fuels (Dec. 2010=100).....		85.973	98.0	98.3	-2.3	-0.3	-0.1	0.2	0.3
Nonagricultural commodities.....		91.034	114.2	114.8	-4.6	-0.9	-0.6	0.3	0.5
Foods, feeds, & beverages.....	0	8.398	172.2	173.5	-9.4	-1.4	0.9	-2.3	0.8
Agricultural foods, feeds & beverages, excluding distilled beverages.....	00	7.716	172.0	173.2	-9.2	-1.5	0.7	-2.4	0.7
Nonagricultural foods (fish, distilled beverages).....	01	0.682	182.9	184.3	-10.4	-1.2	2.2	-0.7	0.8
Industrial supplies & materials.....	1	27.706	132.5	134.1	-12.5	-2.2	-2.0	0.6	1.2
Industrial supplies & materials, durable....		10.632	150.2	151.1	-5.6	-0.3	0.1	2.0	0.6
Industrial supplies & materials, nondurable.....		17.074	124.0	125.9	-16.4	-3.2	-3.3	-0.2	1.5
Agricultural industrial supplies & materials.....	10	1.250	167.1	164.6	-12.4	-0.2	-0.1	-1.4	-1.5
Nonagricultural industrial supplies & materials.....		26.456	131.3	133.1	-12.5	-2.3	-2.1	0.7	1.4
Fuels & lubricants.....	11	5.629	117.4	121.7	-29.7	-7.7	-7.3	0.3	3.7
Nonagricultural supplies & materials excluding fuels & building materials....	12	19.790	146.4	147.4	-6.6	-0.7	-0.5	0.9	0.7
Selected building materials.....	13	1.037	113.3	114.7	-3.3	0.2	-0.9	-0.4	1.2
Capital goods.....	2	39.790	107.1	107.5	-0.1	-0.1	0.1	0.2	0.4
Electrical generating equipment.....	20	4.070	113.0	113.9	-0.6	-0.2	-0.1	0.9	0.8
Nonelectrical machinery.....	21	26.865	94.3	94.6	-0.6	-0.2	0.0	0.0	0.3
Transportation equipment excluding motor vehicles (Dec. 2001=100).....	22	8.855	163.6	163.9	1.9	0.1	0.8	0.1	0.2
Automotive vehicles, parts & engines.....	3	10.929	113.1	113.1	-0.7	0.0	-0.2	-0.2	0.0
Consumer goods, excluding automotives.....	4	13.177	110.6	110.5	-1.8	-0.8	-0.1	0.1	-0.1
Nondurables, manufactured.....	40	5.931	105.5	105.6	-2.6	-1.4	-0.4	0.2	0.1
Durables, manufactured.....	41	5.575	109.3	108.9	-1.4	-0.5	0.3	0.0	-0.4

¹ Relative importance figures are based on 2014 trade values.

NOTES: Data may be revised in each of the 3 months after original publication.

Dash = Not available

Table 3. U.S. import price indexes and percent changes for selected categories of goods: April 2015 to April 2016

[December 2005=100, unless otherwise noted]

Description	NAICS	Relative importance Mar. 2016 ¹	Index		Percent change				
			Mar. 2016	Apr. 2016	Annual	Monthly			
					Apr. 2015 to Apr. 2016	Dec. 2015 to Jan. 2016	Jan. 2016 to Feb. 2016	Feb. 2016 to Mar. 2016	Mar. 2016 to Apr. 2016
Nonmanufactured articles.....		6.725	67.8	69.6	-29.5	-10.6	-6.3	6.4	2.7
Agriculture, forestry, fishing and hunting.....	11	1.978	167.0	167.5	-4.3	1.5	-5.1	-2.0	0.3
Crop production.....	111	1.581	177.2	176.6	-3.9	1.5	-6.3	-2.8	-0.3
Animal production (Dec. 2014=100).....	112	0.227	85.1	86.5	-7.9	5.4	1.6	3.0	1.6
Mining.....	21	4.747	55.4	57.4	-35.9	-15.3	-6.9	10.4	3.6
Mining (except oil and gas) (Dec. 2006=100).....	212	0.240	93.1	98.7	-3.3	-4.4	0.1	-0.1	6.0
Manufactured articles.....		92.978	108.1	108.3	-3.1	-0.6	-0.1	-0.1	0.2
Manufactured goods, part 1.....	31	12.399	122.8	123.4	-1.1	0.0	0.0	0.0	0.5
Food manufacturing.....	311	3.468	148.0	150.7	-2.3	0.1	0.3	0.1	1.8
Beverage and tobacco product manufacturing.....	312	1.124	118.7	118.7	1.0	0.2	0.1	0.5	0.0
Textile mills (Dec. 2011=100).....	313	0.416	98.7	98.6	-2.7	0.0	-0.3	-0.4	-0.1
Textile product mills.....	314	0.924	109.5	109.4	-2.8	-0.6	-0.4	-0.2	-0.1
Apparel manufacturing.....	315	4.488	111.5	111.5	-0.6	0.2	0.0	-0.1	0.0
Leather and allied product manufacturing.....	316	1.978	123.7	123.8	-0.2	-0.3	-0.2	0.0	0.1
Manufactured goods, part 2.....	32	16.704	112.3	112.5	-8.2	-2.4	-0.3	-0.5	0.2
Wood product manufacturing.....	321	0.782	111.6	113.8	-1.0	0.1	-0.4	1.0	2.0
Paper manufacturing.....	322	1.106	105.7	105.3	-3.4	-0.5	0.0	0.3	-0.4
Petroleum and coal products manufacturing.....	324	1.548	56.7	58.7	-39.1	-18.6	-7.3	1.1	3.5
Chemical manufacturing.....	325	9.680	130.6	130.4	-2.8	-0.1	0.7	-1.0	-0.2
Plastics and rubber products manufacturing.....	326	2.320	116.6	116.0	-3.2	-0.9	0.1	-0.6	-0.5
Nonmetallic mineral product manufacturing.....	327	1.063	130.0	129.6	-0.5	-0.2	-0.1	-0.1	-0.3
Manufactured goods, part 3.....	33	63.875	103.3	103.3	-2.2	-0.3	0.0	0.1	0.0
Primary metal manufacturing.....	331	4.032	121.4	123.3	-12.7	-2.2	0.2	2.8	1.6
Fabricated metal product manufacturing.....	332	3.195	122.6	122.5	-2.9	-0.5	-0.3	-0.2	-0.1
Machinery manufacturing.....	333	7.910	116.6	116.7	-1.8	-0.4	-0.2	-0.3	0.1
Computer and electronic product manufacturing.....	334	18.602	76.9	76.8	-2.0	-0.3	0.0	-0.3	-0.1
Electrical equipment, appliance, and component manufacturing.....	335	5.013	115.9	114.9	-2.4	0.3	-0.4	-0.1	-0.9
Transportation equipment manufacturing..	336	17.730	109.5	109.7	-0.5	-0.1	-0.1	0.1	0.2
Furniture and related product manufacturing.....	337	1.707	115.1	115.1	-0.8	0.2	-0.1	-0.1	0.0
Miscellaneous manufacturing.....	339	5.685	120.0	119.8	-0.2	0.2	0.5	0.3	-0.2

¹ Relative importance figures are based on 2014 trade values.

NOTES: Data may be revised in each of the 3 months after original publication.

Dash = Not available

Table 4. U.S. export price indexes and percent changes for selected categories of goods: April 2015 to April 2016

[December 2005=100, unless otherwise noted]

Description	NAICS	Relative importance Mar. 2016 ¹	Index		Percent change				
			Mar. 2016	Apr. 2016	Annual Apr. 2015 to Apr. 2016	Monthly			
						Dec. 2015 to Jan. 2016	Jan. 2016 to Feb. 2016	Feb. 2016 to Mar. 2016	Mar. 2016 to Apr. 2016
Nonmanufactured articles.....		6.491	112.2	115.3	-14.6	0.7	-1.7	-5.5	2.8
Agriculture, forestry, fishing and hunting.....	11	4.529	147.3	149.1	-11.6	-1.2	1.4	-4.6	1.2
Crop production.....	111	4.244	152.9	154.8	-11.0	-1.3	1.2	-4.2	1.2
Mining.....	21	1.962	54.8	58.2	-20.8	4.9	-7.8	-7.6	6.2
Mining (except oil and gas).....	212	1.121	75.6	75.9	-15.0	-2.1	-2.2	2.3	0.4
Manufactured articles.....		92.256	109.6	110.0	-4.1	-0.8	-0.4	0.2	0.4
Manufactured goods, part 1.....	31	6.762	132.2	131.8	-7.6	-1.0	0.1	-0.2	-0.3
Food manufacturing.....	311	4.504	147.3	147.5	-8.4	-1.1	-0.2	-0.1	0.1
Beverage and tobacco product manufacturing.....	312	0.619	105.8	102.5	-13.3	-2.1	0.8	0.0	-3.1
Manufactured goods, part 2.....	32	22.416	100.1	101.0	-11.3	-2.8	-1.8	0.2	0.9
Paper manufacturing.....	322	1.781	121.9	121.7	-1.6	-0.4	0.1	0.1	-0.2
Printing and related support activities (Dec. 2015=100).....	323	0.274	100.0	100.0	-	0.0	0.0	0.0	0.0
Petroleum and coal products manufacturing.....	324	3.543	66.2	68.5	-33.0	-10.3	-7.1	2.5	3.5
Chemical manufacturing.....	325	12.981	112.0	112.6	-6.9	-1.4	-0.9	-0.3	0.5
Plastics and rubber products manufacturing.....	326	2.433	115.2	114.8	-3.3	-0.9	-0.1	-0.1	-0.3
Nonmetallic mineral product manufacturing.....	327	0.878	111.9	112.3	-0.1	-0.7	0.0	0.0	0.4
Manufactured goods, part 3.....	33	63.078	111.2	111.4	-0.9	-0.1	0.1	0.3	0.2
Primary metal manufacturing.....	331	4.263	131.8	131.7	-6.7	-0.5	-0.3	4.4	-0.1
Fabricated metal product manufacturing... ..	332	3.354	129.9	129.8	0.4	0.2	0.0	-0.2	-0.1
Machinery manufacturing.....	333	11.830	125.8	126.7	1.3	0.2	0.1	0.2	0.7
Computer and electronic product manufacturing.....	334	14.800	83.9	83.8	-2.7	-0.5	-0.2	-0.2	-0.1
Electrical equipment, appliance, and component manufacturing.....	335	3.933	112.9	113.8	-1.0	-0.4	-0.1	0.9	0.8
Transportation equipment manufacturing..	336	18.664	121.8	122.0	0.6	0.1	0.2	-0.1	0.2
Furniture and related product manufacturing (Dec. 2011=100).....	337	0.409	113.0	113.3	4.3	0.4	2.3	-0.1	0.3
Miscellaneous manufacturing.....	339	5.826	122.2	121.9	-1.0	-0.2	0.1	0.2	-0.2

¹ Relative importance figures are based on 2014 trade values.

NOTES: Data may be revised in each of the 3 months after original publication.

Dash = Not available

Table 5. U.S. import price indexes and percent changes for selected categories of goods: April 2015 to April 2016

[2000=100, unless otherwise noted]

Description	Harmonized system	Relative importance Mar. 2016 ¹	Index		Percent change				
			Mar. 2016	Apr. 2016	Annual Apr. 2015 to Apr. 2016	Monthly			
						Dec. 2015 to Jan. 2016	Jan. 2016 to Feb. 2016	Feb. 2016 to Mar. 2016	Mar. 2016 to Apr. 2016
Live animals; animal products.....	I	1.464	182.9	189.4	-0.4	1.8	1.2	0.2	3.6
Meat and edible meat offal.....	02	0.365	218.7	228.7	-4.7	-1.3	4.5	-3.1	4.6
Fish and crustaceans, molluscs and other aquatic invertebrates.....	03	0.764	134.6	140.9	5.5	2.8	-0.5	2.0	4.7
Vegetable products.....	II	1.988	192.3	192.5	-2.1	1.5	-6.2	-3.4	0.1
Edible vegetables, roots, and tubers.....	07	0.480	424.6	429.0	5.1	13.3	-24.0	-5.2	1.0
Edible fruit and nuts; peel of citrus fruit or melons.....	08	0.587	94.1	92.3	-7.2	-4.5	3.9	-2.8	-1.9
Coffee, tea, mate and spices.....	09	0.365	224.8	226.5	-7.3	-2.6	0.3	-0.5	0.8
Oilseeds & misc grains, seeds, plants, straw & fodder (Dec. 2015=100).....	12	0.169	101.5	103.4	-	3.0	-0.8	-0.7	1.9
Animal or vegetable fats and oils (Dec. 2009=100).....	III	0.276	102.6	106.7	2.9	0.7	1.9	2.9	4.0
Prepared foodstuffs, beverages, and tobacco.....	IV	2.826	159.1	159.6	-1.2	-0.5	-0.2	0.7	0.3
Sugars and sugar confectionary (Dec. 2012=100).....	17	0.196	86.1	86.2	-5.4	-0.1	0.2	1.3	0.1
Cocoa and cocoa preparations (Dec. 2009=100).....	18	0.244	110.7	111.6	3.1	-5.5	-2.7	4.2	0.8
Preparations of cereals, flour, starch or milk; bakers' wares (Dec. 2007=100).....	19	0.292	132.4	133.1	0.7	0.2	-0.2	0.2	0.5
Preparations of vegetables, fruit, nuts, or other parts of plants.....	20	0.332	155.3	155.8	-3.5	-0.1	-0.4	0.9	0.3
Beverages, spirits, and vinegar.....	22	1.059	128.5	128.6	0.9	0.0	0.2	0.2	0.1
Mineral products.....	V	6.454	114.7	118.4	-36.7	-15.9	-6.8	7.6	3.2
Mineral fuels, oils and residuals, bituminous substances and mineral waxes.....	27	6.193	111.6	115.2	-37.4	-16.4	-7.0	8.0	3.2
Products of the chemical or allied industries.....	VI	9.097	146.9	146.9	-1.1	0.6	0.8	-1.0	0.0
Inorganic chemicals.....	28	0.585	265.6	263.6	-13.3	-2.2	-1.2	-1.0	-0.8
Organic chemicals.....	29	2.429	119.9	120.2	-2.9	1.2	-0.6	-2.2	0.3
Pharmaceutical products.....	30	3.961	142.4	142.4	4.2	-0.1	2.5	0.2	0.0
Fertilizers (Dec. 2009=100).....	31	0.291	77.0	76.6	-31.4	-10.1	0.2	-7.7	-0.5
Tanning extracts; dye, pigments, varnish, paints & putty (Dec. 2011=100).....	32	0.192	97.2	97.3	-1.0	-2.2	0.6	1.0	0.1
Miscellaneous chemical products.....	38	0.692	102.6	101.3	11.9	14.7	0.2	0.0	-1.3
Plastics and articles thereof; rubber and articles thereof.....	VII	3.554	135.3	135.6	-4.8	-1.0	-0.2	-0.5	0.2
Plastics and articles thereof.....	39	2.290	139.4	139.4	-5.0	-1.1	-0.6	-0.1	0.0
Rubber and articles thereof.....	40	1.264	129.6	130.4	-4.2	-0.9	0.3	-1.1	0.6
Raw hides, skins, leather, furskins, travel goods, etc.....	VIII	0.731	124.8	125.1	-2.4	-0.5	-0.8	-0.4	0.2
Articles of leather; travel goods, bags, etc. of various materials.....	42	0.696	129.4	129.8	-0.7	0.0	-0.2	-0.2	0.3
Wood, wood charcoal, cork, straw, basketware and wickerwork.....	IX	0.819	136.0	138.6	-0.8	0.1	-0.4	0.9	1.9
Wood and articles of wood; wood charcoal (Dec. 2014=100).....	44	0.793	93.3	95.2	-0.7	0.1	-0.5	1.0	2.0
Woodpulp, recovered paper, and paper products.....	X	1.186	110.2	109.7	-2.1	-0.5	-0.1	0.4	-0.5
Paper and paperboard; articles of paper pulp, paper or paperboard.....	48	0.802	104.5	104.4	-1.7	-0.9	0.2	0.4	-0.1

See footnotes at end of table.

Table 5. U.S. import price indexes and percent changes for selected categories of goods: April 2015 to April 2016 — Continued
 [2000=100, unless otherwise noted]

Description	Harmonized system	Relative importance Mar. 2016 ¹	Index		Percent change				
			Mar. 2016	Apr. 2016	Annual Apr. 2015 to Apr. 2016	Monthly			
						Dec. 2015 to Jan. 2016	Jan. 2016 to Feb. 2016	Feb. 2016 to Mar. 2016	Mar. 2016 to Apr. 2016
Printed matter (Dec. 2015=100).....	49	0.216	100.4	100.4	-	0.1	-0.1	0.4	0.0
Textile and textile articles.....	XI	5.635	113.4	113.4	-1.1	0.0	-0.1	-0.2	0.0
Articles of apparel and clothing accessories, knitted or crocheted.....	61	2.333	103.7	103.7	-0.5	-0.1	0.0	-0.2	0.0
Articles of apparel and clothing accessories, not knitted or crocheted.....	62	1.954	119.9	119.9	-0.3	0.4	0.0	0.0	0.0
Made-up or worn textile articles.....	63	0.652	103.2	103.1	-3.4	-0.7	-0.4	-0.5	-0.1
Headgear, umbrellas, artificial flowers, etc....	XII	1.575	123.1	123.1	0.2	-0.2	0.0	0.0	0.0
Footwear and parts of such articles.....	64	1.368	122.2	122.2	0.1	-0.3	0.1	0.0	0.0
Stone, plaster, cement, asbestos, ceramics, glass etc.....	XIII	0.987	131.6	131.9	-0.3	-0.3	-0.1	0.1	0.2
Articles of stone, plaster, cement, asbestos, or mica (Dec. 2015=100).....	68	0.342	99.4	99.8	-	-0.6	-0.4	0.4	0.4
Ceramic products.....	69	0.290	137.5	137.5	-0.8	0.3	-0.1	-0.7	0.0
Glass and glassware.....	70	0.355	129.4	129.7	0.3	-0.4	0.1	0.3	0.2
Pearls, stones, precious metals, imitation jewelry, and coins.....	XIV	3.109	168.0	167.7	-2.4	0.6	1.4	3.3	-0.2
Base metals and articles of base metals. ...	XV	5.446	151.6	153.4	-9.7	-1.8	-0.5	0.3	1.2
Iron and steel.....	72	1.208	149.9	156.6	-16.1	-4.4	-0.7	0.1	4.5
Articles of iron or steel.....	73	1.772	138.9	139.1	-7.0	-1.2	-0.7	-0.3	0.1
Copper and articles thereof.....	74	0.380	248.8	254.2	-12.5	-2.6	-2.1	2.9	2.2
Aluminum and articles thereof.....	76	0.741	120.6	120.7	-11.3	-0.7	-0.4	0.4	0.1
Tools, implements, cutlery, spoons and forks, of base metal; parts thereof.....	82	0.468	125.5	125.6	-2.5	-0.2	-0.1	-0.1	0.1
Miscellaneous articles of base metal.....	83	0.541	136.7	136.8	-1.0	-0.5	-0.1	-0.1	0.1
Machinery, electrical equipment, TV image and sound recorders, parts, etc.....	XVI	31.564	81.2	81.0	-2.2	-0.2	-0.2	-0.1	-0.2
Machinery and mechanical appliances; parts thereof.....	84	16.029	86.2	86.0	-2.3	-0.3	-0.1	-0.1	-0.2
Electrical machinery and equip, sound and TV recorders & reproducers, parts.....	85	15.535	76.4	76.2	-2.1	0.0	-0.4	-0.1	-0.3
Vehicles, aircraft, vessels and associated transport equipment.....	XVII	14.749	114.0	114.2	-0.3	-0.1	-0.1	0.1	0.2
Motor vehicles and their parts.....	87	13.203	112.5	112.7	-0.4	-0.2	-0.1	0.1	0.2
Aircraft, spacecraft, and parts thereof (Dec. 2002=100).....	88	1.473	120.3	120.3	0.4	0.4	0.0	0.0	0.0
Optical, photo, measuring, medical & musical instruments; & timepieces.....	XVIII	4.138	103.6	103.5	-0.2	-0.1	0.9	-0.1	-0.1
Optical, photographic, measuring and medical instruments.....	90	3.799	100.4	100.3	-0.2	-0.2	1.0	-0.2	-0.1
Clocks and watches and parts thereof.....	91	0.274	141.5	141.8	-0.1	0.2	0.6	0.2	0.2
Miscellaneous manufactured articles.....	XX	4.312	112.1	112.2	-0.9	0.1	-0.1	-0.1	0.1
Furniture & stuffed furnishings; lamps & lighting fittings, nesoi; prefab bldgs.....	94	2.637	116.6	116.7	-0.9	0.1	0.0	-0.2	0.1
Toys, games and sports equipment; parts and accessories thereof.....	95	1.388	103.6	103.6	-1.2	-0.1	-0.1	-0.1	0.0
Miscellaneous manufactured articles.....	96	0.288	135.4	135.4	0.7	1.1	0.0	0.0	0.0

¹ Relative importance figures are based on 2014 trade values.

NOTES: Data may be revised in each of the 3 months after original publication.

Dash = Not available

Table 6. U.S. export price indexes and percent changes for selected categories of goods: April 2015 to April 2016

[2000=100, unless otherwise noted]

Description	Harmonized system	Relative importance Mar. 2016 ¹	Index		Percent change				
			Mar. 2016	Apr. 2016	Annual	Monthly			
					Apr. 2015 to Apr. 2016	Dec. 2015 to Jan. 2016	Jan. 2016 to Feb. 2016	Feb. 2016 to Mar. 2016	Mar. 2016 to Apr. 2016
Live animals; animal products.....	I	1.727	182.3	182.4	-10.8	-1.5	1.4	0.2	0.1
Meat & edible meat offal (Dec. 2006=100)...	02	1.029	145.0	144.1	-8.3	-2.4	4.5	2.3	-0.6
Vegetable products.....	II	4.264	188.3	189.8	-10.7	-1.0	1.4	-4.6	0.8
Edible fruit and nuts; peel of citrus fruit or melons.....	08	0.953	157.2	150.5	-12.9	1.4	-0.1	-8.7	-4.3
Cereals.....	10	1.252	176.6	177.7	-16.1	-3.5	3.2	-4.3	0.6
Oilseeds and misc. grains, seeds, fruits, plants, straw and fodder.....	12	1.477	181.4	187.4	-11.8	-1.7	1.2	-3.5	3.3
Prepared foodstuffs, beverages, and tobacco.....	IV	2.937	144.6	145.1	-7.6	-1.1	-1.0	-0.5	0.3
Preparations of vegetables, fruit, nuts or other parts of plants (Dec. 2009=100)....	20	0.386	118.9	119.0	0.7	0.3	-0.3	0.0	0.1
Beverages, spirits, and vinegar (Dec. 2008=100).....	22	0.531	105.5	108.0	-2.3	-1.5	-0.2	1.2	2.4
Residues and waste from the food industries; prepared animal feed.....	23	0.636	188.9	183.6	-21.2	-2.0	-1.0	-2.2	-2.8
Mineral products.....	V	5.651	136.3	141.5	-28.6	-5.6	-6.2	-0.4	3.8
Ores, slag and ash (Dec. 2012=100).....	26	0.465	71.9	74.1	-14.5	-2.3	1.0	3.6	3.1
Mineral fuels, oils and residuals, bituminous substances and mineral waxes.....	27	4.986	127.7	132.7	-30.3	-6.0	-7.0	-0.8	3.9
Products of the chemical or allied industries.....	VI	10.819	134.3	134.7	-6.4	-1.4	-1.5	-0.1	0.3
Inorganic chemicals.....	28	0.922	172.4	171.8	-7.1	0.2	-6.2	-0.3	-0.3
Organic chemicals.....	29	2.448	129.6	132.1	-9.6	-2.5	-0.9	-0.4	1.9
Pharmaceutical products.....	30	2.945	106.0	106.0	-4.3	-2.3	-0.9	0.3	0.0
Tanning or dyeing extracts, dyes, paints varnish, putty, & inks (Dec. 2015=100)....	32	0.557	98.9	99.2	-	-0.4	-0.7	0.0	0.3
Essential oils and resinoids; perfumery cosmetic or toilet preparations.....	33	0.848	134.4	134.6	-1.7	-0.9	-0.1	0.2	0.1
Soap; lubricants; waxes, polishing or scouring products; candles, pastes.....	34	0.526	116.2	116.2	1.6	3.3	0.2	0.0	0.0
Miscellaneous chemical products.....	38	1.845	143.5	142.8	-7.3	-0.7	-2.3	-0.5	-0.5
Plastics and articles thereof; rubber and articles thereof.....	VII	5.168	135.7	136.4	-5.1	-0.7	0.2	-0.1	0.5
Plastics and articles thereof.....	39	4.168	131.0	132.0	-5.2	-1.1	0.5	-0.2	0.8
Rubber and articles thereof.....	40	1.000	155.8	155.1	-4.5	0.3	-0.3	0.5	-0.4
Raw hides, skins, leather, furskins, travel goods, etc.....	VIII	0.330	117.7	118.5	-17.9	-0.5	0.8	-2.6	0.7
Raw hides and skins other than furskins and leather (Dec.2014=100).....	41	0.182	68.3	69.2	-25.0	-1.3	-0.1	0.6	1.3
Wood, wood charcoal, cork, straw, baskets and wickerwork (Dec. 2014=100).....	IX	0.652	93.7	96.1	-1.7	-0.2	-1.4	-1.2	2.6
Woodpulp, recovered paper, and paper products.....	X	2.158	121.0	121.3	-1.3	-1.0	-0.4	0.7	0.2
Woodpulp and recovered paper.....	47	0.608	120.2	122.6	0.5	-1.5	-1.4	2.0	2.0
Paper and paperboard; articles of paper pulp, paper or paperboard.....	48	1.162	120.4	119.8	-3.1	-1.1	-0.1	0.2	-0.5
Printed material (Dec. 2014=100).....	49	0.388	100.4	100.4	1.3	0.0	0.0	0.0	0.0
Textile and textile articles.....	XI	1.732	118.8	119.6	-2.5	-0.3	-0.4	-0.8	0.7
Cotton, including yarns and woven fabrics thereof.....	52	0.376	109.9	112.6	-6.0	-1.6	-1.1	-3.1	2.5

See footnotes at end of table.

Table 6. U.S. export price indexes and percent changes for selected categories of goods: April 2015 to April 2016 — Continued

[2000=100, unless otherwise noted]

Description	Harmonized system	Relative importance Mar. 2016 ¹	Index		Percent change				
			Mar. 2016	Apr. 2016	Annual	Monthly			
					Apr. 2015 to Apr. 2016	Dec. 2015 to Jan. 2016	Jan. 2016 to Feb. 2016	Feb. 2016 to Mar. 2016	Mar. 2016 to Apr. 2016
Stone, plaster, cement, asbestos, ceramics, glass etc.....	XIII	0.887	122.9	122.8	0.3	0.2	0.0	0.0	-0.1
Articles of stone, plaster, cement, asbestos, or mica (Dec. 2015=100).....	68	0.299	100.5	100.5	—	0.5	0.0	0.0	0.0
Glass and glassware.....	70	0.447	99.4	99.4	0.1	0.1	0.0	0.0	0.0
Pearls, stones, precious metals, imitation jewelry, and coins.....	XIV	4.474	231.1	231.0	-2.2	0.7	1.7	3.4	0.0
Base metals and articles of base metals. . .	XV	4.991	141.1	142.0	-6.6	-0.4	-0.9	0.8	0.6
Iron and steel.....	72	0.970	134.5	139.6	-12.1	-1.0	-1.1	-0.2	3.8
Copper and articles thereof.....	74	0.432	152.3	152.1	-19.3	-4.4	0.0	5.4	-0.1
Aluminum and articles thereof.....	76	0.775	102.5	102.8	-12.9	0.6	-4.4	2.9	0.3
Tools, implements, cutlery, spoons and forks, of base metal (Dec. 2015=100). . . .	82	0.399	99.8	99.7	—	0.2	-0.4	0.0	-0.1
Miscellaneous articles of base metal.....	83	0.363	148.2	148.2	0.3	-0.1	0.0	0.0	0.0
Machinery, electrical equipment, TV image and sound recorders, parts, etc.....	XVI	30.469	96.1	96.2	-1.1	-0.3	0.2	0.0	0.1
Machinery and mechanical appliances; parts thereof.....	84	18.213	113.0	113.1	-0.6	-0.2	0.4	-0.1	0.1
Electrical machinery and equipment and parts and accessories thereof.....	85	12.256	77.8	77.9	-1.9	-0.3	-0.3	0.1	0.1
Vehicles, aircraft, vessels and associated transport equipment.....	XVII	15.415	131.0	131.5	0.7	0.1	0.0	0.0	0.4
Motor vehicles and their parts.....	87	9.391	114.6	115.1	0.3	0.0	-0.2	0.0	0.4
Optical, photo, measuring, medical & musical instruments; & timepieces.....	XVIII	6.398	107.4	107.6	0.7	0.3	0.0	0.1	0.2
Miscellaneous manufactured articles.....	XX	1.578	111.5	111.5	0.0	0.0	0.4	0.0	0.0
Furniture; stuffed furnishings; lamps and lighting fittings nesoi;.....	94	0.933	125.0	125.2	1.1	0.2	0.5	0.0	0.2
Toys, games and sports equipment; parts and accessories thereof.....	95	0.484	89.8	89.5	-0.2	0.0	-0.2	-0.1	-0.3

¹ Relative importance figures are based on 2014 trade values.

NOTES: Data may be revised in each of the 3 months after original publication.

Dash = Not available

Table 7. U.S. import price indexes and percent changes by locality of origin: April 2015 to April 2016
 [2000=100, unless otherwise noted]

Description	Relative importance Mar. 2016 ¹	Index		Percent change				
		Mar. 2016	Apr. 2016	Annual	Monthly			
				Apr. 2015 to Apr. 2016	Dec. 2015 to Jan. 2016	Jan. 2016 to Feb. 2016	Feb. 2016 to Mar. 2016	Mar. 2016 to Apr. 2016
Industrialized Countries²	100.000	114.3	114.6	-5.1	-1.5	-0.3	0.7	0.3
Nonmanufactured articles.....	6.339	100.3	102.8	-26.2	-11.1	-5.9	12.1	2.5
Manufactured articles.....	93.270	115.0	115.1	-3.1	-0.8	0.1	0.0	0.1
Other Countries³	100.000	114.9	115.3	-6.4	-1.4	-0.8	0.0	0.3
Nonmanufactured articles.....	6.849	133.3	137.1	-32.7	-9.7	-7.4	1.9	2.9
Manufactured articles.....	92.915	102.2	102.3	-3.3	-0.7	-0.3	-0.1	0.1
Canada	100.000	110.7	112.3	-10.8	-3.7	-1.4	1.9	1.4
Nonmanufactured articles.....	18.828	94.6	97.2	-27.2	-11.7	-6.3	12.6	2.7
Manufactured articles.....	80.471	119.1	120.4	-6.0	-1.7	-0.3	-0.3	1.1
European Union⁴	100.000	131.0	131.4	-1.6	-0.2	-0.5	-0.1	0.3
Manufactured articles.....	99.540	127.7	128.1	-1.5	-0.2	-0.5	-0.1	0.3
France (Dec. 2003=100)	100.000	122.5	122.6	0.5	0.9	0.1	0.2	0.1
Germany (Dec. 2003=100)	100.000	113.4	113.4	-2.7	-2.7	0.3	-0.1	0.0
United Kingdom (Dec. 2003=100)	100.000	118.3	118.4	-2.5	1.9	-0.3	-2.6	0.1
Latin America⁵	100.000	134.2	135.0	-9.2	-1.9	-1.4	0.7	0.6
Nonmanufactured articles.....	13.818	158.1	161.3	-29.4	-7.7	-6.4	4.5	2.0
Manufactured articles.....	85.724	118.7	119.1	-4.6	-0.8	-0.5	0.0	0.3
Mexico (Dec. 2003=100)	100.000	123.9	124.1	-5.4	-0.6	-1.0	0.1	0.2
Nonmanufactured articles (Dec. 2008=100).....	6.878	85.5	87.1	-31.0	-2.9	-11.0	2.3	1.9
Manufactured articles (Dec. 2008=100)...	92.690	88.8	88.7	-2.6	-0.4	-0.1	-0.1	-0.1
Pacific Rim (Dec. 2003=100)⁶	100.000	98.7	98.6	-2.2	-0.3	-0.1	-0.2	-0.1
China (Dec. 2003=100)	100.000	101.4	101.3	-1.9	-0.1	-0.2	-0.2	-0.1
Japan	100.000	95.2	95.2	-1.3	-0.1	0.2	0.0	0.0
Asian NICs⁷	100.000	84.6	84.5	-2.5	-0.6	0.6	-0.6	-0.1
ASEAN (Dec. 2003=100)⁸	100.000	96.3	96.8	-2.2	-0.7	-0.7	0.0	0.5
Asia Near East (Dec. 2003=100)⁹	100.000	115.7	120.0	-28.3	-9.1	-5.2	-1.5	3.7

¹ Relative importance figures are based on 2014 trade values.

² Western Europe, Canada, Japan, Australia, New Zealand and South Africa.

³ Eastern Europe, Latin America, OPEC countries, and other countries in Asia, Africa and the Western Hemisphere.

⁴ European Union countries.

⁵ Mexico, Central America, South America and the Caribbean.

⁶ China, Japan, Australia, Brunei, Indonesia, Macao, Malaysia, New Zealand, Papua New Guinea, Philippines and the Asian Newly Industrialized Countries.

⁷ Asian Newly Industrialized Countries - Hong Kong, Singapore, South Korea and Taiwan.

⁸ Association of Southeast Asian Nations - Brunei, Cambodia, Indonesia, Laos, Malaysia, Myanmar, Philippines, Singapore, Thailand and Vietnam.

⁹ Bahrain, Iran, Iraq, Israel, Jordan, Kuwait, Lebanon, Oman, Qatar, Saudi Arabia, Syria, United Arab Emirates and Yemen.

NOTES: Data may be revised in each of the 3 months after original publication.

Regions are not mutually exclusive.

Dash = Not available

Table 8. U.S. international price indexes and percent changes for selected transportation services: April 2015 to April 2016

[2000=100, unless otherwise noted]

Description	Relative importance Mar. 2016 ¹	Index		Percent change				
		Mar. 2016	Apr. 2016	Annual	Monthly			
				Apr. 2015 to Apr. 2016	Dec. 2015 to Jan. 2016	Jan. 2016 to Feb. 2016	Feb. 2016 to Mar. 2016	Mar. 2016 to Apr. 2016
Air Freight								
Import Air Freight	100.000	151.1	154.1	-10.6	-4.6	-2.1	-0.1	2.0
Europe (Dec. 2003=100).....	24.384	140.5	141.9	-1.5	0.4	-1.5	1.2	1.0
Asia.....	61.525	132.2	136.6	-14.5	-7.4	-3.3	-0.5	3.3
Export Air Freight	100.000	153.2	153.2	-3.1	1.4	-0.1	-3.4	0.0
Europe (Dec. 2006=100).....	38.106	146.3	144.1	-4.7	1.3	0.1	-3.6	-1.5
Inbound Air Freight	100.000	144.4	148.1	-7.1	-2.5	-1.3	-1.6	2.6
Europe (Dec. 2003=100).....	28.535	134.6	140.1	2.0	0.3	-1.3	0.7	4.1
Asia.....	56.739	126.6	130.3	-12.4	-4.3	-2.0	-2.7	2.9
Outbound Air Freight	100.000	140.3	139.7	-4.1	0.1	1.0	-3.9	-0.4
Europe (Dec. 2003=100).....	34.252	151.6	149.4	-5.6	0.1	0.2	-4.2	-1.5
Asia.....	42.514	130.2	130.2	-7.7	0.0	2.5	-5.3	0.0
Air Passenger Fares								
Import Air Passenger Fares	100.000	179.2	185.5	-0.2	-1.0	-1.5	-5.4	3.5
Europe.....	44.806	209.9	220.5	0.3	11.0	3.6	-11.3	5.1
Asia.....	22.966	130.5	135.4	-1.2	-10.1	-6.7	-2.8	3.8
Latin America/Caribbean.....	9.203	148.3	145.1	-12.4	-16.4	2.9	1.2	-2.2
Export Air Passenger Fares	100.000	156.9	147.5	-7.1	4.7	-13.5	7.7	-6.0
Europe.....	33.285	223.3	197.8	-1.7	-0.7	-1.7	14.7	-11.4
Asia.....	26.616	128.5	123.8	-4.8	9.0	-16.4	1.2	-3.7
Latin America/Caribbean.....	22.282	156.4	149.8	-12.2	8.3	-15.1	4.3	-4.2

¹ Relative importance figures are based on 2014 trade values.

NOTES: Data may be revised in each of the 3 months after original publication.

Dash = Not available

TECHNICAL NOTE

Import and Export Merchandise and Services Price Indexes - All indexes use a modified Laspeyres formula and are not seasonally adjusted. Price indexes are reweighted annually, with a 2-year lag in the weights. Published series use a base year of 2000=100 where possible. More detailed index series and additional information may be obtained at www.bls.gov/mxp or by calling (202) 691-7101.

Merchandise Goods Classification Systems - The merchandise price indexes are published using three classification systems. Items are classified by end use according to the Bureau of Economic Analysis Classification System, by industry according to the North American Industry Classification System (NAICS), and by product category according to the Harmonized System (HS). While classification by end use and product category are self-explanatory, some notes are in order for classifying items by industry. In the NAICS imports and exports tables, items are classified by output industry, not input industry. As an example, NAICS import index 326 (plastics and rubber products manufacturing) include outputs such as manufactured plastic rather than inputs such as petroleum. The NAICS classification structure also matches the classification system used by the Producer Price Index (PPI) to produce the NAICS primary products indexes.

Import Price Indexes - Products have been classified by the Harmonized Tariff Schedule of the United States Annotated (TSUSA). Import prices are based on U.S. dollar prices paid by the U.S. importer. The prices are generally either "free on board" (f.o.b.) foreign port or "cost, insurance, and freight" (c.i.f.) U.S. port transaction prices, depending on the practices of the individual industry. The index for crude petroleum is calculated from data collected by the U.S. Department of Energy.

Export Price Indexes - Products have been classified by the Harmonized Schedule B classification system of the U.S. Bureau of the Census. The prices used are generally either "free alongside ship" (f.a.s.) factory or "free on board" (f.o.b.) transaction prices, depending on the practices of the individual industry. Prices used in the grain index, excluding rice, are obtained from the U.S. Department of Agriculture.

Services Price Indexes - Starting in September 2008, the import air passenger fares indexes represent changes in the average revenue per passenger received by foreign carriers from U.S. residents and are calculated from data obtained from an airline consulting service. These data include tickets sold by travel agencies and travel websites. Tickets sold directly by the airlines are excluded, as are frequent flyer tickets generally. Starting in January 2008, the export air passenger fares indexes represent changes in the average revenue per passenger received by U.S. carriers from foreign residents and are calculated from data collected directly from airlines. These data include frequent flyer tickets and those sold by consolidators. Taxes and fees are included in the import air passenger fares indexes and excluded from the export air passenger fares indexes. The air freight indexes are calculated from data collected directly from airlines. These data exclude mail and passenger baggage. The scope of the service being priced is the movement of freight from airport to airport only, and does not include any ground transportation or port service. The air freight indexes are presented using two definitions: balance of payments (which represent transactions between U.S. and foreign residents) and international (which represent transactions inbound to and outbound from the U.S.). Fact sheets specifying detailed information for each services industry are available at www.bls.gov/mxp under "MXP Publications."

Import Indexes by Locality of Origin - Prices used in these indexes are a subset of the data collected for the import price indexes. Beginning with January 2002, the indexes are defined by locality of origin using a nomenclature based upon the North American Industry Classification System (NAICS). Nonmanufactured goods are defined as NAICS 11 and 21, and manufactured goods are defined as NAICS 31-33.

Revision Policy - To reflect the availability of late reports and corrections by respondents, monthly data may be revised in each of the 3 months after original publication. After 3 months, no further data revisions take place. For example, data first published in the January release will be subject to revision in the releases for February, March, and April.

Uses of the Data - The primary use of the indexes is to deflate trade statistics, notably the foreign trade sector of the National Income and Product Accounts (NIPA) constructed by the Department of Commerce. Other published indexes are useful for general market analysis. For trade in international services, balance of payments indexes are used for deflating NIPA, while international indexes are more appropriate for market analysis. Merchandise and services indexes also can be used to study U.S. competitiveness and to compute price elasticities, and the merchandise import indexes by country or region of origin are useful in terms of trade analysis.

Email Subscription - The U.S. import and export price indexes news release is available through an email subscription service at www.bls.gov/bls/list.htm.

Additional Information - More detailed data are available on the Import/Export Price Indexes home page at www.bls.gov/mxp. For import and export price indexes data requests, send an email to mxpinfo@bls.gov.

Information from this release will be made available to sensory impaired individuals upon request.
Voice phone: (202)-691-5200; Federal Relay Service: 1-(800)-877-8339.