

Transmission of material in this release is embargoed until
8:30 a.m. (EDT) Thursday, May 13, 2010

USDL-10-0645

Technical information: (202) 691-7101 • MXPinfo@bls.gov • www.bls.gov/mxp
Media contact: (202) 691-5902 • PressOffice@bls.gov

U.S. IMPORT AND EXPORT PRICE INDEXES – APRIL 2010

U.S. import prices advanced 0.9 percent in April, the U.S. Bureau of Labor Statistics reported today, following a 0.5 percent increase the previous month. Higher prices for fuel and nonfuel imports contributed to the overall advance. Prices for U.S. exports also increased in April, rising 1.2 percent after a 0.7 percent advance in March.

Chart 1. One-month percent change in the Import Price Index: April 2009 – April 2010

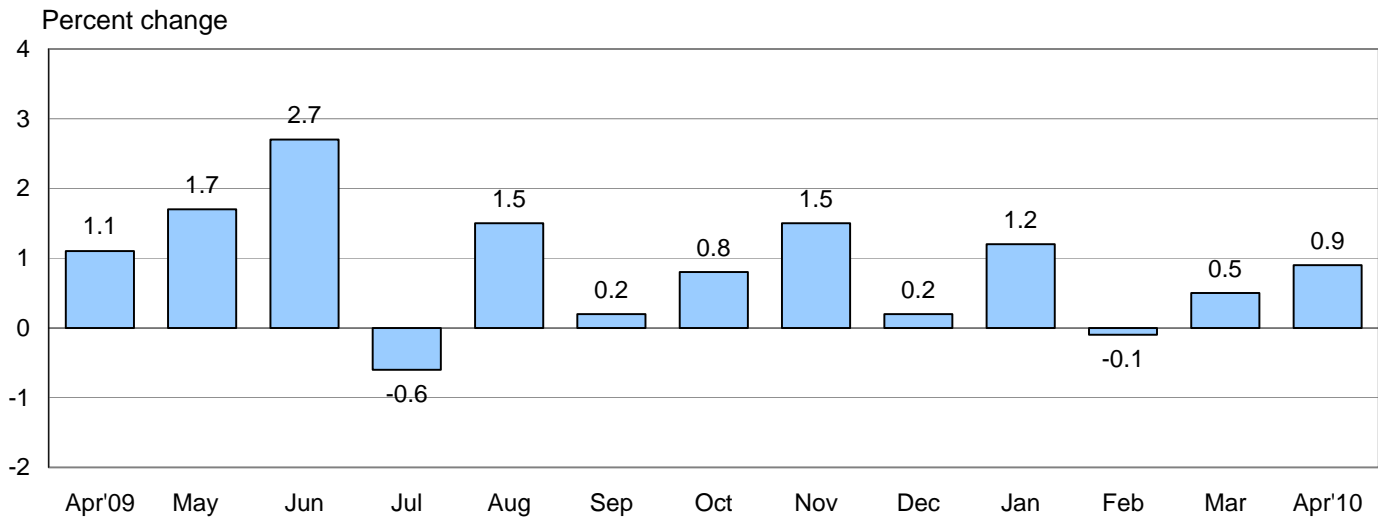
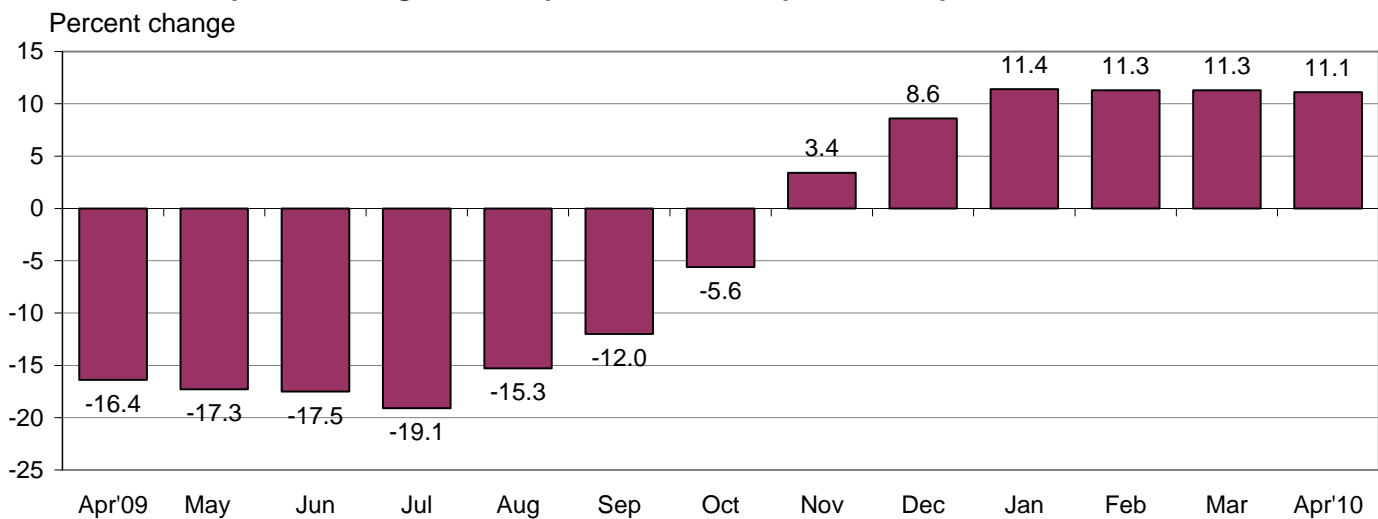


Chart 2. 12-month percent change in the Import Price Index: April 2009 – April 2010



All Imports: The price index for U.S. imports increased 0.9 percent in April, continuing the upward trend of the past year. The April advance followed a 0.5 percent rise in March and approximately 55 percent of the increase was attributable to higher fuel prices. Import prices rose 11.1 percent over the past 12 months, similar to the 11.3 to 11.4 percent year-over-year increases recorded in each of the three previous months.

Fuel Imports: Fuel prices also continued to trend up in April, rising 2.3 percent after increasing 1.7 percent in March. The price index for import fuel jumped 54.3 percent for the year ended in April, partially reversing the 50.8 percent drop recorded for the April 2008-09 period. Both the April increase and the rise over the past 12 months were driven by higher petroleum prices which rose 3.3 percent in April and 58.7 percent over the past year. A 15.1 percent decline in natural gas prices, which followed a 14.2 percent decrease in March, partially offset the higher petroleum prices in April. Despite the downward movement of the past two months, natural gas prices advanced 15.0 percent over the past 12 months.

All Imports Excluding Fuel: Nonfuel import prices also contributed to the overall increase in import prices in April, rising 0.5 percent. The increase was driven by a 2.6 percent advance in nonfuel industrial supplies and materials prices, although higher prices for food and finished goods also contributed to the overall advance. The price index for nonfuel prices has not recorded a monthly decline since July 2009 and rose 3.2 percent for the year ended in April after falling 3.8 percent for the April 2008-09 period.

Table A. Percent changes

Month	IMPORTS			EXPORTS		
	All imports	Fuel imports	Nonfuel imports	All exports	Agricultural exports	Non-agricultural exports
2009						
April.....	1.1	7.5	0.1	0.5	3.7	0.2
May.....	1.7	9.8	0.2	0.4	3.6	0.3
June.....	2.7	16.0	0.2	1.0	4.2	0.6
July.....	-0.6	-2.6	-0.2	-0.3	-4.9	0.1
August.....	1.5	7.0	0.4	0.6	0.2	0.7
September.....	0.2	-1.3	0.4	-0.2	-2.9	0.1
October.....	0.8	3.0	0.4	0.0	-0.7	0.1
November.....	1.5	6.3	0.3	0.8	3.9	0.5
December.....	0.2	-0.2	0.4	0.7	1.8	0.6
2010						
January.....	1.2	4.4	0.4	0.8 ^r	1.3	0.7 ^r
February.....	-0.1 ^r	-0.7 ^r	0.1	-0.3 ^r	-3.9 ^r	0.1 ^r
March.....	0.5 ^r	1.7 ^r	0.2	0.7	1.9 ^r	0.7 ^r
April.....	0.9	2.3	0.5	1.2	-0.7	1.4
Apr. 2008 to 2009.....	-16.4	-50.8	-3.8	-6.7	-17.5	-5.4
Apr. 2009 to 2010.....	11.1	54.3	3.2	5.7	3.2	6.0

r Revised

Chart 3. One-month percent change in the Export Price Index: April 2009 – April 2010

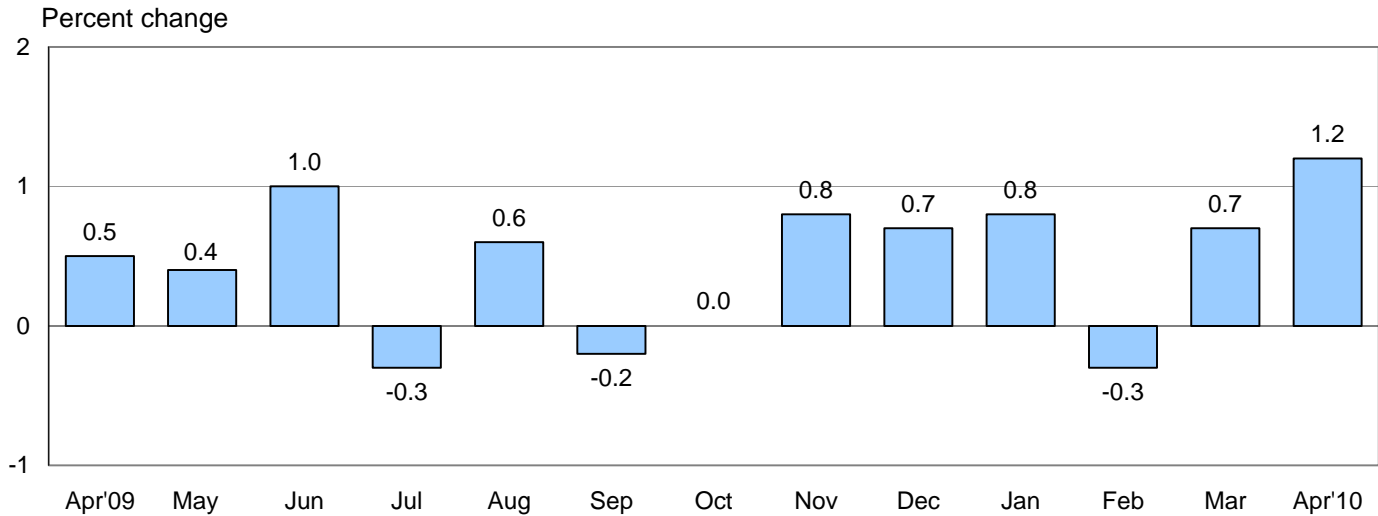
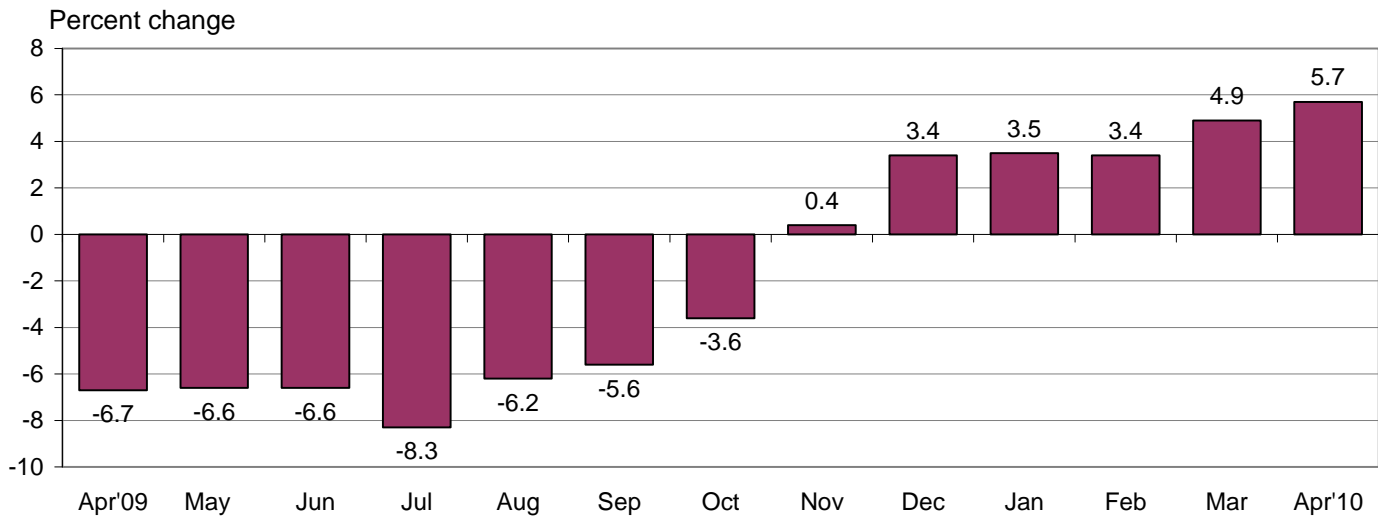


Chart 4. 12-month percent change in the Export Price Index: April 2009 – April 2010



All Exports: Export prices increased 1.2 percent in April after rising 0.7 percent the previous month. The April advance was led by higher nonagricultural prices and was the largest monthly increase since a 1.5 percent rise in July 2008. The price index for U.S. exports rose 5.7 percent for the April 2009-10 period, the largest 12-month increase since a 7.0 percent advance between September 2007 and September 2008.

Agricultural Exports: Agricultural prices fell 0.7 percent in April following a 1.9 percent increase in March and a 3.9 percent decrease in February. In April, lower corn and wheat prices more than offset higher prices for fruits and nuts. Despite declining in two of the past three months, agricultural prices advanced 3.2 percent over the past year, driven by rising prices for cotton, nuts, fruit and meat.

All Exports Excluding Agriculture: Prices for nonagricultural exports rose 1.4 percent in April, the largest one-month jump for the index since monthly publication began in December 1988. Higher prices for industrial supplies and materials as well as an overall rise in finished goods prices each contributed to the advance. Nonagricultural export prices increased 6.0 percent for the year ended in April, following a 5.4 percent decline for the April 2008-09 period.

SELECTED APRIL HIGHLIGHTS

Import Prices

Nonfuel Industrial Supplies and Materials: Nonfuel industrial supplies and materials rose 2.6 percent in April, the largest one-month increase since a 3.2 percent advance in April 2008. The increase was driven by a 6.0 percent jump in unfinished metals prices. Higher prices for iron and steel mill products, steelmaking materials, copper, and precious metals all contributed to the increase in metals prices.

Finished Goods: Finished goods prices were up overall in April, led by a 0.1 percent uptick in the price index for capital goods and a 0.2 percent rise in prices for automotive vehicles. The increases were the first monthly advances for capital goods prices and automotive vehicle prices since April 2009 and November 2009, respectively. Consumer goods prices were unchanged in April.

Foods, Feeds, and Beverages: Foods, feeds, and beverages prices increased 1.2 percent in April after a 1.5 percent advance the previous month. Higher prices for meat, fish, coffee, and fruit, up 4.8 percent, 2.3 percent, 7.6 percent, and 2.6 percent, respectively, more than offset a 2.7 percent decline in vegetable prices.

Imports by Locality of Origin: Import prices from China rose 0.2 percent in April, the first monthly advance for the index since December. The price indexes for imports from Mexico, the European Union, and Canada also advanced in April, rising 1.2 percent, 0.2 percent, and 0.1 percent, respectively.

Transportation Services: Import air passenger fares increased 4.2 percent in April after advancing 5.3 percent in March. Higher European, Asian, and Latin American/Caribbean fares all contributed to the overall increase. The price index for import air freight ticked up 0.1 percent in April.

Export Prices

Nonagricultural Industrial Supplies and Materials: The price index for nonagricultural industrial supplies and materials increased 3.4 percent in April. The widespread increase was led by a 5.1 percent advance in fuel prices, a 3.1 percent rise in chemicals prices, a 12.7 percent increase in steelmaking material prices, and a 2.7 percent advance in nonferrous metal prices.

Finished Goods: Finished goods prices increased overall in April, led by a second consecutive 0.4 percent increase in capital goods prices and a 0.9 percent advance in consumer goods prices. The increase in capital goods prices was the largest since April 2009 and was primarily led by a 5.3 percent increase in the price index for computer peripherals, accessories, and parts. The rise in consumer goods prices was the largest monthly advance for the index since January 1992. In contrast, automotive vehicles prices edged down 0.1 percent for the month.

Transportation Services: Export air passenger fares rose 2.4 percent in April following a 1.7 percent advance the previous month. Higher Latin American/Caribbean fares and European fares more than offset lower Asian fares. Export air freight prices declined 0.2 percent in April after rising 0.5 percent in each of the previous two months.

Import and Export Price Index data for May 2010 are scheduled for release on Tuesday, June 15, 2010 at 8:30 a.m. (EDT).

Table 1. U.S. import price indexes and percent changes for selected categories of goods: April 2009 to April 2010

[2000=100, unless otherwise noted]

Description	End Use	Relative importance Mar. 2010 ¹	Index		Percent change				
			Mar. 2010	Apr. 2010	Annual Apr. 2009 to Apr. 2010	Monthly			
						Dec. 2009 to Jan. 2010	Jan. 2010 to Feb. 2010	Feb. 2010 to Mar. 2010	Mar. 2010 to Apr. 2010
All commodities		100.000	126.4	127.5	11.1	1.2	-0.1	0.5	0.9
All imports excluding petroleum		80.226	110.3	110.6	3.3	0.5	0.1	-0.1	0.3
All imports excluding fuels (Dec. 2001=100) ..		78.594	113.7	114.3	3.2	0.4	0.1	0.2	0.5
Foods, feeds, & beverages	0	4.732	147.4	149.1	7.3	1.3	-0.3	1.5	1.2
Agricultural foods, feeds & beverages, excluding distilled beverages.....	00	3.693	165.8	167.6	8.6	1.9	-0.5	1.7	1.1
Nonagricultural foods (fish, distilled beverages).....	01	1.039	105.6	107.2	3.0	-0.7	0.5	0.9	1.5
Industrial supplies & materials	1	35.424	205.2	210.1	36.2	3.3	0.0	1.2	2.4
Industrial supplies & materials excluding petroleum.....		15.649	149.5	151.2	16.0	2.6	1.1	-0.7	1.1
Industrial supplies & materials excluding fuels (Dec. 2001=100).....		14.017	163.9	168.1	16.4	1.6	1.1	0.6	2.6
Industrial supplies & materials, durable.....		8.827	158.3	164.0	22.6	1.8	1.5	0.4	3.6
Industrial supplies & materials nondurable excluding petroleum.....		5.190	139.0	136.3	7.9	3.8	0.4	-2.2	-1.9
Fuels & lubricants.....	10	21.407	263.1	269.1	54.3	4.4	-0.7	1.7	2.3
Petroleum & petroleum products.....	100	19.775	285.0	294.4	58.7	3.8	-0.8	2.7	3.3
Crude.....	10000	14.634	291.8	301.4	59.6	3.0	-0.8	3.9	3.3
Fuels, n.e.s.-coals & gas.....	101	1.388	144.4	127.6	13.4	12.6	0.4	-11.3	-11.6
Gas-natural.....	10110	1.067	132.4	112.4	15.0	17.7	0.5	-14.2	-15.1
Paper & paper base stocks.....	11	0.685	107.5	109.2	4.4	1.2	2.0	1.0	1.6
Materials associated with nondurable supplies & materials.....	12	4.581	143.9	144.8	7.0	1.4	0.2	0.7	0.6
Selected building materials.....	13	1.360	127.3	129.9	12.8	1.3	1.7	2.2	2.0
Unfinished metals related to durable goods.....	14	4.055	233.4	247.3	44.5	2.8	2.6	-0.1	6.0
Finished metals related to durable goods. ...	15	1.787	142.2	145.7	10.0	0.9	-0.2	0.6	2.5
Nonmetals related to durable goods.....	16	1.549	107.1	107.3	2.9	0.6	0.7	0.4	0.2
Capital goods	2	23.157	91.4	91.5	-0.4	0.0	-0.2	-0.3	0.1
Electric generating equipment.....	20	2.929	111.1	111.5	2.2	0.4	0.1	-0.6	0.4
Nonelectrical machinery.....	21	18.230	85.9	85.9	-1.0	-0.2	-0.1	-0.2	0.0
Transportation equipment excluding motor vehicles (Dec. 2001=100).....	22	1.998	121.5	121.5	0.2	0.2	-0.2	-0.9	0.0
Automotive vehicles, parts & engines	3	12.027	108.2	108.4	0.6	-0.4	0.0	-0.2	0.2
Consumer goods, excluding automotives ..	4	24.661	104.5	104.5	0.4	0.1	-0.1	0.2	0.0
Nondurables, manufactured.....	40	11.483	109.0	109.0	0.6	0.6	-0.1	0.6	0.0
Durables, manufactured.....	41	11.964	100.2	100.2	0.2	-0.3	-0.2	-0.1	0.0
Nonmanufactured consumer goods.....	42	1.213	102.5	102.0	-0.7	0.0	0.3	0.1	-0.5

¹ Relative importance figures are based on 2008 trade values.

NOTES: Data may be revised in each of the three months after original publication.

Dash = Not available

Table 2. U.S. export price indexes and percent changes for selected categories of goods: April 2009 to April 2010

[2000=100, unless otherwise noted]

Description	End Use	Relative importance Mar. 2010 ¹	Index		Percent change				
			Mar. 2010	Apr. 2010	Annual Apr. 2009 to Apr. 2010	Monthly			
						Dec. 2009 to Jan. 2010	Jan. 2010 to Feb. 2010	Feb. 2010 to Mar. 2010	Mar. 2010 to Apr. 2010
All commodities.....		100.000	121.2	122.7	5.7	0.8	-0.3	0.7	1.2
Agricultural commodities.....		8.812	163.4	162.3	3.2	1.3	-3.9	1.9	-0.7
Nonagricultural commodities.....		91.187	118.2	119.9	6.0	0.7	0.1	0.7	1.4
Foods, feeds, & beverages.....	0	7.987	163.5	162.2	-0.4	1.5	-3.9	1.6	-0.8
Agricultural foods, feeds & beverages, excluding distilled beverages.....	00	7.406	165.8	164.1	-0.5	1.6	-4.4	1.7	-1.0
Nonagricultural foods (fish, distilled beverages).....	01	0.581	145.8	147.8	1.7	0.0	2.8	0.7	1.4
Industrial supplies & materials.....	1	30.911	155.1	160.2	17.0	1.8	-0.3	1.8	3.3
Industrial supplies & materials, durable.....		12.102	160.4	165.5	16.4	1.3	0.1	0.4	3.2
Industrial supplies & materials, nondurable.....		18.809	152.7	157.8	17.4	2.2	-0.5	2.7	3.3
Agricultural industrial supplies & materials.....	10	1.406	155.9	157.4	27.3	-0.3	-1.1	3.7	1.0
Nonagricultural industrial supplies & materials.....		29.505	155.3	160.6	16.5	1.9	-0.2	1.6	3.4
Fuels & lubricants.....	11	5.628	196.3	206.3	31.5	5.5	-4.8	3.1	5.1
Nonagricultural supplies & materials excluding fuels & building materials.....	12	22.860	152.3	157.0	14.5	1.1	0.9	1.3	3.1
Selected building materials.....	13	1.017	116.0	117.8	3.8	1.1	1.0	0.1	1.6
Capital goods.....	2	38.860	104.0	104.4	1.6	0.3	0.0	0.4	0.4
Electrical generating equipment.....	20	3.627	109.8	109.9	2.9	0.5	0.1	-0.2	0.1
Nonelectrical machinery.....	21	28.410	94.9	95.4	1.2	0.0	0.1	0.3	0.5
Transportation equipment excluding motor vehicles (Dec. 2001=100).....	22	6.824	139.1	139.8	2.5	1.5	0.1	0.3	0.5
Automotive vehicles, parts & engines.....	3	9.262	108.6	108.5	0.4	0.3	0.2	-0.1	-0.1
Consumer goods, excluding automotives..	4	12.979	110.1	111.1	3.3	0.1	0.5	0.1	0.9
Nondurables, manufactured.....	40	5.971	111.9	112.5	4.9	0.8	0.9	0.0	0.5
Durables, manufactured.....	41	5.682	107.4	108.4	0.7	-1.3	-0.3	-0.1	0.9

¹ Relative importance figures are based on 2008 trade values.

NOTES: Data may be revised in each of the three months after original publication.

Dash = Not available

Table 3. U.S. import price indexes and percent changes for selected categories of goods: April 2009 to April 2010

[December 2005=100, unless otherwise noted]

Description	NAICS	Relative importance Mar. 2010 ¹	Index		Percent change				
			Mar. 2010	Apr. 2010	Annual Apr. 2009 to Apr. 2010	Monthly			
						Dec. 2009 to Jan. 2010	Jan. 2010 to Feb. 2010	Feb. 2010 to Mar. 2010	Mar. 2010 to Apr. 2010
Nonmanufactured articles.....		18.611	131.3	133.7	48.2	4.3	-0.6	2.3	1.8
Agriculture, forestry, fishing and hunting...	11	1.794	147.3	149.9	9.2	4.4	-0.6	3.2	1.8
Crop production.....	111	1.278	153.6	154.8	4.8	4.5	-1.4	2.5	0.8
Mining.....	21	16.817	129.5	131.8	54.3	4.3	-0.6	2.2	1.8
Mining (except oil and gas) (Dec. 2006=100).....	212	0.519	131.9	133.8	3.6	-0.4	1.2	1.5	1.4
Manufactured articles.....		80.876	109.6	110.4	4.9	0.6	0.0	0.1	0.7
Manufactured goods, part 1.....	31	10.063	108.2	108.5	2.1	0.3	0.0	0.3	0.3
Food manufacturing.....	311	2.517	122.9	124.5	9.4	0.6	-0.2	1.0	1.3
Beverage and tobacco product manufacturing.....	312	0.919	109.3	109.2	2.1	0.0	0.5	0.0	-0.1
Textile product mills.....	314	0.769	100.5	100.7	1.9	0.7	0.0	-0.5	0.2
Apparel manufacturing.....	315	3.952	101.5	101.5	-1.0	0.3	0.0	0.3	0.0
Leather and allied product manufacturing. . .	316	1.505	106.4	106.3	-1.2	-0.2	-0.3	-0.1	-0.1
Manufactured goods, part 2.....	32	17.961	121.6	123.3	14.0	2.1	0.1	0.6	1.4
Wood product manufacturing.....	321	0.828	105.3	108.3	21.5	2.4	2.8	4.1	2.8
Paper manufacturing.....	322	1.195	103.7	104.9	1.2	0.6	1.5	0.6	1.2
Petroleum and coal products manufacturing.....	324	4.125	128.1	133.8	54.0	5.1	-0.7	-0.5	4.4
Chemical manufacturing.....	325	8.930	125.0	125.4	5.7	1.3	0.0	1.1	0.3
Plastics and rubber products manufacturing.....	326	1.788	114.1	113.7	0.7	0.8	-0.2	0.1	-0.4
Nonmetallic mineral product manufacturing.....	327	0.990	120.5	120.8	1.4	0.8	0.2	-0.1	0.2
Manufactured goods, part 3.....	33	52.852	106.1	106.7	2.6	0.0	0.0	-0.2	0.6
Primary metal manufacturing.....	331	4.724	153.8	162.0	35.5	2.7	2.3	0.3	5.3
Fabricated metal product manufacturing. . .	332	2.678	116.6	117.3	0.9	-0.1	0.0	0.3	0.6
Machinery manufacturing.....	333	6.773	113.3	113.2	1.9	0.1	-0.2	0.2	-0.1
Computer and electronic product manufacturing.....	334	15.123	87.8	87.7	-1.5	-0.5	-0.1	-0.3	-0.1
Electrical equipment, appliance, and component manufacturing.....	335	3.808	112.3	112.7	0.4	0.2	-0.2	-0.5	0.4
Transportation equipment manufacturing....	336	13.290	105.5	105.7	0.8	-0.2	-0.1	-0.3	0.2
Furniture and related product manufacturing.....	337	1.321	105.7	105.8	-4.0	-0.8	-0.7	-0.6	0.1
Miscellaneous manufacturing.....	339	5.135	112.2	112.2	1.5	-0.4	0.0	0.1	0.0

¹ Relative importance figures are based on 2008 trade values.

NOTES: Data may be revised in each of the three months after original publication.

Dash = Not available

Table 4. U.S. export price indexes and percent changes for selected categories of goods: April 2009 to April 2010

[December 2005=100, unless otherwise noted]

Description	NAICS	Relative importance Mar. 2010 ¹	Index		Percent change				
			Mar. 2010	Apr. 2010	Annual	Monthly			
					Apr. 2009 to Apr. 2010	Dec. 2009 to Jan. 2010	Jan. 2010 to Feb. 2010	Feb. 2010 to Mar. 2010	Mar. 2010 to Apr. 2010
Nonmanufactured articles.....		6.500	125.8	126.6	6.6	3.2	-5.7	2.0	0.6
Agriculture, forestry, fishing and hunting...	11	4.641	141.9	140.7	1.7	3.0	-7.4	3.6	-0.8
Crop production.....	111	4.283	145.6	144.0	1.1	2.8	-8.0	3.9	-1.1
Mining.....	21	1.859	89.5	93.6	24.1	3.5	-1.6	-1.6	4.6
Mining (except oil and gas).....	212	1.401	98.8	104.9	18.5	3.3	-2.4	4.8	6.2
Manufactured articles.....		90.700	111.4	112.7	5.0	0.5	0.1	0.6	1.2
Manufactured goods, part 1.....	31	6.634	124.0	124.7	6.9	0.7	0.2	0.4	0.6
Food manufacturing.....	311	4.493	138.9	139.3	7.4	0.5	0.4	0.4	0.3
Beverage and tobacco product manufacturing.....	312	0.525	105.8	104.8	-0.6	0.1	-1.0	-0.8	-0.9
Apparel manufacturing.....	315	0.377	102.9	102.9	0.6	0.0	0.0	0.5	0.0
Manufactured goods, part 2.....	32	23.740	117.3	120.4	12.1	1.8	-0.2	2.0	2.6
Wood product manufacturing.....	321	0.448	111.8	115.0	8.5	0.8	1.8	-0.1	2.9
Paper manufacturing.....	322	1.922	113.4	115.4	3.5	0.6	-0.2	0.4	1.8
Petroleum and coal products manufacturing.....	324	3.623	120.1	127.7	41.3	7.3	-7.6	6.9	6.3
Chemical manufacturing.....	325	14.824	119.8	122.7	11.7	1.0	1.6	1.5	2.4
Plastics and rubber products manufacturing.....	326	2.068	106.4	106.0	-2.4	-0.7	0.0	-0.3	-0.4
Nonmetallic mineral product manufacturing.....	327	0.855	114.3	114.6	1.3	2.5	-0.2	-0.2	0.3
Manufactured goods, part 3.....	33	60.326	107.9	108.6	2.4	0.1	0.1	0.2	0.6
Primary metal manufacturing.....	331	4.811	139.3	143.1	19.6	1.2	0.3	-0.5	2.7
Fabricated metal product manufacturing.	332	2.775	120.6	121.6	0.3	-0.7	0.2	-0.5	0.8
Machinery manufacturing.....	333	12.764	114.7	115.1	3.0	0.7	0.4	0.5	0.3
Computer and electronic product manufacturing.....	334	15.766	92.5	93.2	-0.4	-0.4	-0.3	0.2	0.8
Electrical equipment, appliance, and component manufacturing.....	335	3.498	109.6	109.9	3.0	0.6	0.2	-0.2	0.3
Transportation equipment manufacturing....	336	15.327	110.9	111.1	1.1	0.5	0.2	0.1	0.2
Miscellaneous manufacturing.....	339	5.022	109.1	110.4	1.3	-1.4	0.0	0.0	1.2

¹ Relative importance figures are based on 2008 trade values.

NOTES: Data may be revised in each of the three months after original publication.

Dash = Not available

Table 5. U.S. import price indexes and percent changes for selected categories of goods: April 2009 to April 2010

[2000=100, unless otherwise noted]

Description	Harmonized system	Relative importance Mar. 2010 ¹	Index		Percent change				
			Mar. 2010	Apr. 2010	Annual Apr. 2009 to Apr. 2010	Monthly			
						Dec. 2009 to Jan. 2010	Jan. 2010 to Feb. 2010	Feb. 2010 to Mar. 2010	Mar. 2010 to Apr. 2010
Live animals; animal products.....	I	1.065	136.2	140.5	11.3	-0.4	0.3	3.2	3.2
Meat and edible meat offal.....	02	0.247	174.2	179.3	24.3	1.4	3.3	4.2	2.9
Fish and crustaceans, molluscs and other aquatic invertebrates.....	03	0.547	101.5	104.3	5.0	-0.8	0.2	1.8	2.8
Vegetable products.....	II	1.494	170.3	172.5	3.7	3.6	-0.9	2.5	1.3
Edible vegetables, roots, and tubers.....	07	0.441	341.4	328.9	-2.2	6.3	-2.7	14.9	-3.7
Edible fruit and nuts; peel of citrus fruit or melons.....	08	0.403	106.3	112.2	11.0	7.4	0.2	-0.7	5.6
Coffee, tea, mate and spices.....	09	0.273	160.9	172.7	17.6	-1.2	-1.3	-1.3	7.3
Animal or vegetable fats and oils (Dec. 2009=100).....	III	0.212	103.8	104.4	-	2.4	-2.8	4.3	0.6
Prepared foodstuffs, beverages, and tobacco.....	IV	2.273	140.1	140.3	5.0	1.0	0.0	-0.4	0.1
Cocoa and cocoa preparations (Dec. 2009=100).....	18	0.208	100.0	100.2	-	3.2	-1.0	-2.2	0.2
Preparations of cereals, flour, starch or milk; bakers' wares (Dec. 2007=100).....	19	0.237	112.4	114.5	8.3	2.0	-1.3	-0.7	1.9
Preparations of vegetables, fruit, nuts, or other parts of plants.....	20	0.288	130.5	129.7	4.4	3.0	0.2	-0.2	-0.6
Beverages, spirits, and vinegar.....	22	0.906	118.8	118.7	2.6	-0.3	0.4	-0.1	-0.1
Mineral products.....	V	21.373	264.9	270.8	52.3	4.4	-0.7	1.7	2.2
Salt; sulfur; earths and stone; plaster materials, lime & cement (Dec. 2009=100).....	25	0.186	100.5	102.2	-	1.0	-0.7	0.2	1.7
Mineral fuels, oils and residuals, bituminous substances and mineral waxes.....	27	20.970	261.8	267.7	53.6	4.4	-0.7	1.6	2.3
Products of the chemical or allied industries.....	VI	8.277	139.3	139.4	7.7	1.4	0.4	1.2	0.1
Inorganic chemicals.....	28	0.957	275.6	268.9	36.9	-1.1	5.0	6.2	-2.4
Organic chemicals.....	29	2.749	133.3	134.0	9.5	1.5	0.0	1.3	0.5
Pharmaceutical products.....	30	2.825	117.8	117.7	4.2	1.5	0.0	-0.3	-0.1
Fertilizers (Dec. 2009=100).....	31	0.323	105.0	106.0	-	7.5	-4.8	2.6	1.0
Tanning & dyeing extracts; dye & pigments; varnish & paints; putty.....	32	0.173	113.3	113.3	8.9	2.5	2.0	-0.5	0.0
Essential oils and resinoids (Dec. 2001=100).....	33	0.406	118.9	120.4	2.6	0.5	-0.7	-0.9	1.3
Miscellaneous chemical products.....	38	0.496	93.3	94.2	3.5	1.1	1.5	0.4	1.0
Plastics and articles thereof; rubber and articles thereof.....	VII	2.938	133.7	134.5	5.3	1.2	0.7	0.8	0.6
Plastics and articles thereof.....	39	1.830	128.0	128.8	2.2	0.6	0.5	0.1	0.6
Rubber and articles thereof.....	40	1.108	144.7	145.6	11.2	2.0	1.1	2.1	0.6
Raw hides, skins, leather, furskins, travel goods, etc.....	VIII	0.588	113.9	113.6	0.0	0.1	0.0	0.2	-0.3
Articles of leather; travel goods, bags, etc. of various materials.....	42	0.552	114.8	114.5	0.0	0.1	0.0	0.1	-0.3
Wood, wood charcoal, cork, straw, basketware and wickerwork.....	IX	0.850	127.3	131.4	20.3	2.2	2.9	3.8	3.2
Woodpulp, recovered paper, and paper products.....	X	1.339	107.9	108.7	-0.6	0.1	1.0	0.4	0.7
Pulp wood, waste paper, and paperboard (Dec. 2009=100).....	47	0.197	111.2	115.0	-	3.2	5.0	2.6	3.4
Paper and paperboard; articles of paper pulp, paper or paperboard.....	48	0.876	102.0	102.4	-6.7	-0.5	0.5	0.1	0.4
Printed matter.....	49	0.266	120.2	120.0	0.3	-0.1	0.1	-0.3	-0.2

See footnotes at end of table.

Table 5. U.S. import price indexes and percent changes for selected categories of goods: April 2009 to April 2010 — Continued

[2000=100, unless otherwise noted]

Description	Harmonized system	Relative importance Mar. 2010 ¹	Index		Percent change				
			Mar. 2010	Apr. 2010	Annual Apr. 2009 to Apr. 2010	Monthly			
						Dec. 2009 to Jan. 2010	Jan. 2010 to Feb. 2010	Feb. 2010 to Mar. 2010	Mar. 2010 to Apr. 2010
Textile and textile articles.....	XI	4.954	102.9	103.1	0.3	0.5	0.0	0.0	0.2
Articles of apparel and clothing accessories, knitted or crocheted.....	61	1.900	98.2	98.4	-1.4	0.6	0.1	-0.1	0.2
Articles of apparel and clothing accessories, not knitted or crocheted.....	62	1.873	103.4	103.4	-0.4	0.1	0.0	0.6	0.0
Made-up or worn textile articles.....	63	0.524	92.3	92.3	2.1	0.8	-0.1	-0.2	0.0
Headgear, umbrellas, artificial flowers, etc. . .	XII	1.208	106.6	106.5	-1.4	-0.3	-0.3	-0.2	-0.1
Footwear and parts of such articles.....	64	1.025	105.5	105.4	-1.9	-0.2	-0.4	-0.2	-0.1
Stone, plaster, cement, asbestos, ceramics, glass etc.....	XIII	0.884	124.3	124.3	0.2	0.0	-0.1	-0.1	0.0
Articles of stone, plaster, cement, asbestos, or mica (Dec. 2001=100).....	68	0.315	118.0	118.0	0.0	0.3	-0.1	0.2	0.0
Ceramic products.....	69	0.278	139.9	139.9	3.1	0.0	0.1	-0.1	0.0
Glass and glassware.....	70	0.292	115.0	115.0	-2.5	-0.3	-0.2	-0.3	0.0
Pearls, stones, precious metals, imitation jewelry, and coins.....	XIV	2.696	154.9	158.0	16.5	-0.2	0.3	-0.6	2.0
Base metals and articles of base metals.....	XV	5.914	174.8	182.1	21.3	2.2	1.9	0.6	4.2
Iron and steel.....	72	1.344	220.7	234.8	28.0	2.4	4.2	5.1	6.4
Articles of iron or steel.....	73	1.775	143.1	145.0	0.0	0.5	0.3	1.5	1.3
Copper and articles thereof.....	74	0.671	324.2	348.3	75.4	3.8	1.2	-2.5	7.4
Nickel and articles thereof (Dec. 2009=100)...	75	0.170	111.2	130.4	-	-0.8	8.5	3.3	17.3
Aluminum and articles thereof.....	76	0.812	133.1	139.6	38.6	6.0	2.2	-2.3	4.9
Tools, implements, cutlery, spoons and forks, of base metal; parts thereof.....	82	0.363	117.8	118.0	0.1	0.4	-0.1	-0.2	0.2
Miscellaneous articles of base metal.....	83	0.411	127.2	127.2	-2.3	0.0	0.5	-0.7	0.0
Machinery, electrical equipment, TV image and sound recorders, parts, etc.....	XVI	25.498	86.8	86.9	0.3	-0.1	-0.1	-0.2	0.1
Machinery and mechanical appliances; parts thereof.....	84	12.815	88.1	88.2	0.7	-0.1	-0.2	0.0	0.1
Electrical machinery and equip, sound and TV recorders & reproducers, parts.....	85	12.683	85.5	85.5	-0.1	0.0	-0.1	-0.5	0.0
Vehicles, aircraft, vessels and associated transport equipment.....	XVII	11.253	109.5	109.7	0.4	-0.4	-0.1	-0.3	0.2
Motor vehicles and their parts.....	87	10.159	108.5	108.8	0.5	-0.4	-0.1	-0.2	0.3
Aircraft, spacecraft, and parts thereof (Dec. 2002=100).....	88	1.001	113.8	113.9	-1.5	0.2	0.0	-1.6	0.1
Optical, photo, measuring, medical & musical instruments; & timepieces.....	XVIII	3.267	101.3	101.3	-0.2	-1.0	0.2	-0.3	0.0
Optical, photographic, measuring and medical instruments.....	90	2.960	99.0	99.0	-0.4	-1.0	0.1	-0.2	0.0
Clocks and watches and parts thereof.....	91	0.228	122.3	122.4	-0.2	-0.2	0.0	-1.9	0.1
Miscellaneous manufactured articles.....	XX	3.853	106.4	106.3	-1.5	-0.2	-0.2	-0.2	-0.1
Furniture & stuffed furnishings; lamps & lighting fittings, nesoi; prefab bldgs.....	94	1.959	109.3	109.3	-3.2	-0.6	-0.4	-0.5	0.0
Toys, games and sports equipment; parts and accessories thereof.....	95	1.694	101.2	100.7	0.1	0.2	-0.1	0.2	-0.5
Miscellaneous manufactured articles.....	96	0.200	118.7	118.7	2.7	1.6	-0.2	0.1	0.0

¹ Relative importance figures are based on 2008 trade values.

NOTES: Data may be revised in each of the three months after original publication.

Dash = Not available

Table 6. U.S. export price indexes and percent changes for selected categories of goods: April 2009 to April 2010

[2000=100, unless otherwise noted]

Description	Harmoni- zied system	Relative importance Mar. 2010 ¹	Index		Percent change				
			Mar. 2010	Apr. 2010	Annual Apr. 2009 to Apr. 2010	Monthly			
						Dec. 2009 to Jan. 2010	Jan. 2010 to Feb. 2010	Feb. 2010 to Mar. 2010	Mar. 2010 to Apr. 2010
Live animals; animal products.....	I	1.692	163.5	164.1	5.1	1.6	3.0	1.7	0.4
Meat & edible meat offal (Dec. 2006=100). . .	02	0.953	133.1	133.4	8.4	0.8	4.3	2.8	0.2
Fish and crustaceans, molluscs and other aquatic invertebrates.....	03	0.319	150.1	152.9	3.4	2.5	4.7	1.6	1.9
Vegetable products.....	II	4.268	181.2	177.3	-5.0	2.8	-8.4	3.0	-2.2
Edible fruit and nuts; peel of citrus fruit or melons.....	08	0.763	124.9	133.3	31.7	11.8	-1.0	0.4	6.7
Cereals.....	10	1.686	183.3	170.9	-15.7	1.9	-9.7	3.0	-6.8
Oilseeds and misc. grains, seeds, fruits, plants, straw and fodder.....	12	1.306	195.3	192.6	-4.0	0.0	-9.7	3.2	-1.4
Animal or vegetable fats and oils (Dec. 2009=100).....	III	0.297	102.8	108.5	-	2.7	-2.7	2.9	5.5
Prepared foodstuffs, beverages, and tobacco.....	IV	2.469	138.8	138.1	1.5	0.1	-1.1	-1.1	-0.5
Preparations of vegetables, fruit, nuts or other parts of plants (Dec. 2009=100).....	20	0.342	102.5	103.4	-	0.9	1.3	0.3	0.9
Miscellaneous edible preparations.....	21	0.416	119.0	119.1	0.4	0.3	0.0	-0.2	0.1
Beverages, spirits, and vinegar (Dec. 2008=100).....	22	0.340	104.8	104.9	5.1	0.5	0.0	0.5	0.1
Residues and waste from the food industries; prepared animal feed.....	23	0.554	177.2	172.2	-8.6	-0.8	-5.0	-5.3	-2.8
Mineral products.....	V	5.542	232.2	245.1	35.1	5.8	-5.0	2.9	5.6
Mineral fuels, oils and residuals, bituminous substances and mineral waxes.....	27	4.919	226.2	238.7	37.3	6.0	-5.4	3.2	5.5
Products of the chemical or allied industries.....	VI	12.073	143.2	146.3	8.8	0.9	1.7	1.3	2.2
Inorganic chemicals.....	28	1.001	170.3	174.1	-9.9	-1.1	0.8	0.6	2.2
Organic chemicals.....	29	3.062	150.6	157.8	17.6	0.9	1.2	1.8	4.8
Pharmaceutical products.....	30	2.994	122.7	123.9	8.2	2.7	1.5	0.2	1.0
Tanning or dyeing extracts, dyes, paints, varnish, putty, & inks.....	32	0.537	113.9	116.2	3.8	-1.8	1.1	0.0	2.0
Essential oils and resinoids; perfumery cosmetic or toilet preparations.....	33	0.721	123.3	124.0	1.8	-2.2	0.6	-1.3	0.6
Soap; lubricants; waxes, polishing or scouring products; candles, pastes.....	34	0.429	115.3	116.5	2.6	-1.4	0.3	-0.8	1.0
Miscellaneous chemical products.....	38	2.068	139.4	140.8	8.4	1.8	0.7	1.5	1.0
Plastics and articles thereof; rubber and articles thereof.....	VII	5.055	135.4	138.7	7.5	-0.7	0.8	0.8	2.4
Plastics and articles thereof.....	39	4.091	128.8	132.8	7.4	-1.6	1.3	0.9	3.1
Rubber and articles thereof.....	40	0.964	165.1	164.9	8.6	2.9	-0.8	0.5	-0.1
Raw hides, skins, leather, furskins, travel goods, etc.....	VIII	0.370	117.0	120.7	55.7	2.3	3.9	3.4	3.2
Wood, wood charcoal, cork, straw, basketware and wickerwork.....	IX	0.557	108.2	110.1	6.3	2.2	1.6	-0.6	1.8
Woodpulp, recovered paper, and paper products.....	X	2.461	114.0	115.5	8.7	1.6	0.3	1.2	1.3
Woodpulp and recovered paper.....	47	0.674	124.2	126.5	41.2	6.0	2.0	3.8	1.9
Paper and paperboard; articles of paper pulp, paper or paperboard.....	48	1.281	110.2	111.8	-0.6	0.4	-0.5	0.5	1.5
Printed material.....	49	0.506	116.1	116.6	1.9	-0.2	0.1	-0.1	0.4
Textile and textile articles.....	XI	1.990	112.4	114.2	13.0	0.4	-0.3	2.8	1.6
Cotton, including yarns and woven fabrics thereof.....	52	0.645	123.8	127.9	43.5	0.4	-0.7	8.6	3.3

See footnotes at end of table.

Table 6. U.S. export price indexes and percent changes for selected categories of goods: April 2009 to April 2010 — Continued

[2000=100, unless otherwise noted]

Description	Harmonized system	Relative importance Mar. 2010 ¹	Index		Percent change				
			Mar. 2010	Apr. 2010	Annual Apr. 2009 to Apr. 2010	Monthly			
						Dec. 2009 to Jan. 2010	Jan. 2010 to Feb. 2010	Feb. 2010 to Mar. 2010	Mar. 2010 to Apr. 2010
Stone, plaster, cement, asbestos, ceramics, glass etc. (Dec. 2008=100).....	XIII	0.808	117.1	117.4	1.5	2.6	-0.3	-0.1	0.3
Glass and glassware.....	70	0.432	99.7	99.7	-0.4	2.5	-0.1	-0.2	0.0
Pearls, stones, precious metals, imitation jewelry, and coins.....	XIV	4.754	197.7	203.4	20.8	0.4	0.1	-0.2	2.9
Base metals and articles of base metals.....	XV	5.913	160.8	167.2	18.2	2.5	0.6	1.3	4.0
Iron and steel.....	72	1.744	190.2	206.4	32.2	4.6	2.8	2.4	8.5
Articles of iron or steel.....	73	1.515	156.7	158.2	-3.5	-0.3	0.3	-0.4	1.0
Copper and articles thereof.....	74	0.596	230.1	241.0	71.7	4.9	-3.7	6.6	4.7
Aluminum and articles thereof.....	76	0.899	123.2	128.8	36.9	6.3	0.0	-0.2	4.5
Tools, implements, cutlery, spoons and forks, of base metal; parts thereof.....	82	0.416	124.2	124.2	1.9	0.1	0.2	0.0	0.0
Miscellaneous articles of base metal.....	83	0.318	124.4	124.5	2.0	0.1	0.9	0.7	0.1
Machinery, electrical equipment, TV image and sound recorders, parts, etc.....	XVI	30.702	96.2	96.5	1.3	0.4	0.0	0.3	0.3
Machinery and mechanical appliances; parts thereof.....	84	18.005	107.3	108.2	2.9	0.4	0.2	0.7	0.8
Electrical machinery and equipment and parts and accessories thereof.....	85	12.697	84.1	83.9	-1.1	0.4	-0.2	-0.1	-0.2
Vehicles, aircraft, vessels and associated transport equipment.....	XVII	13.377	121.0	121.4	1.3	0.4	0.2	0.2	0.3
Motor vehicles and their parts.....	87	8.613	108.2	108.4	0.8	0.2	0.2	0.0	0.2
Ships, boats and floating structures (Dec. 2009=100).....	89	0.295	100.1	100.1	-	0.1	0.0	0.0	0.0
Optical, photo, measuring, medical & musical instruments; & timepieces.....	XVIII	5.988	106.1	105.9	-0.7	-1.9	-0.1	-0.2	-0.2
Miscellaneous manufactured articles.....	XX	1.534	107.9	108.1	1.2	0.8	-0.1	-0.6	0.2
Furniture; stuffed furnishings; lamps and lighting fittings nesoi;.....	94	0.762	118.1	118.6	1.9	-0.2	0.0	0.6	0.4
Toys, games and sports equipment; parts and accessories thereof.....	95	0.657	93.2	93.2	0.3	2.0	0.0	-2.1	0.0

1 Relative importance figures are based on 2008 trade values.

NOTES: Data may be revised in each of the three months after original publication.

Dash = Not available

Table 7. U.S. import price indexes and percent changes by locality of origin: April 2009 to April 2010
 [2000=100, unless otherwise noted]

Description	Percent of U.S. imports ¹	Index		Percent change				
		Mar. 2010	Apr. 2010	Annual	Monthly			
				Apr. 2009 to Apr. 2010	Dec. 2009 to Jan. 2010	Jan. 2010 to Feb. 2010	Feb. 2010 to Mar. 2010	Mar. 2010 to Apr. 2010
Industrialized Countries²	41.082	125.7	126.1	7.9	1.3	0.3	-0.2	0.3
Nonmanufactured articles.....	5.687	210.2	206.7	40.9	5.5	2.1	-1.8	-1.7
Manufactured articles.....	34.943	118.9	119.6	4.8	0.8	0.0	0.1	0.6
Other Countries³	58.918	124.3	125.7	11.9	1.3	-0.4	0.9	1.1
Nonmanufactured articles.....	15.714	260.6	268.7	47.7	3.6	-1.6	3.2	3.1
Manufactured articles.....	43.010	105.2	105.7	3.7	0.5	0.0	0.2	0.5
Canada	15.923	143.3	143.4	16.1	3.6	0.8	-0.4	0.1
Nonmanufactured articles.....	5.257	205.2	201.3	43.4	6.1	2.2	-1.7	-1.9
Manufactured articles.....	10.335	131.0	132.0	8.7	2.6	0.3	0.0	0.8
European Union⁴	16.799	128.1	128.4	3.7	0.2	0.0	0.3	0.2
Nonmanufactured articles.....	0.211	248.9	254.0	26.9	-1.2	0.7	0.0	2.0
Manufactured articles.....	16.491	125.6	125.9	3.5	0.2	0.0	0.3	0.2
France (Dec. 2003=100)	1.948	121.1	121.2	1.2	0.0	-2.0	-0.4	0.1
Germany (Dec. 2003=100)	4.572	112.8	112.8	4.2	0.8	-0.5	-0.6	0.0
United Kingdom (Dec. 2003=100)	2.566	125.5	125.5	5.8	0.2	-0.2	0.6	0.0
Latin America⁵	17.999	158.0	160.7	17.7	2.2	-0.8	1.2	1.7
Nonmanufactured articles.....	6.186	287.6	295.9	41.0	4.3	-2.2	2.9	2.9
Manufactured articles.....	11.730	130.8	132.3	8.2	1.0	-0.2	0.3	1.1
Mexico (Dec. 2003=100)	10.275	138.0	139.6	9.2	1.7	-1.1	1.2	1.2
Nonmanufactured articles (Dec. 2008=100).....	2.141	154.4	159.8	41.4	5.9	-4.2	5.1	3.5
Manufactured articles (Dec. 2008=100)....	8.085	96.5	96.9	1.3	0.4	-0.3	0.3	0.4
Pacific Rim (Dec. 2003=100)⁶	31.500	100.2	100.5	1.4	0.1	-0.1	-0.1	0.3
China (Dec. 2003=100)	16.449	100.1	100.3	-0.1	-0.3	-0.1	-0.1	0.2
Japan	6.678	98.1	97.8	1.7	0.1	-0.1	0.3	-0.3
Asian NICs⁷	5.003	87.0	87.2	2.7	0.9	-0.2	-0.1	0.2
ASEAN (Dec. 2003=100)⁸	5.274	95.7	96.2	0.7	-0.5	-0.1	-1.0	0.5
Asia Near East (Dec. 2003=100)⁹	5.380	206.6	211.6	31.1	2.3	1.4	0.0	2.4

1 Percentage of trade figures are based on 2008 trade values.

2 Includes Western Europe, Canada, Japan, Australia, New Zealand and South Africa.

3 Includes Eastern Europe, Latin America, OPEC countries, and other countries in Asia, Africa and the Western Hemisphere.

4 Includes European Union countries.

5 Includes Mexico, Central America, South America and the Caribbean.

6 Includes China, Japan, Australia, Brunei, Indonesia, Macao, Malaysia, New Zealand, Papua New Guinea, Philippines and Asian Newly Industrialized Countries.

7 Asian Newly Industrialized Countries. Includes Hong Kong, Singapore, South Korea and Taiwan.

8 Association of Southeast Asian Nations. Includes Brunei, Cambodia, Indonesia, Laos, Malaysia, Myanmar, Philippines, Singapore, Thailand and Vietnam.

9 Includes Bahrain, Iran, Iraq, Israel, Jordan, Kuwait, Lebanon, Oman, Qatar, Saudi Arabia, Syria, United Arab Emirates and Yemen.

NOTES: Data may be revised in each of the three months after original publication.

Regions are not mutually exclusive.

Dash = Not available

Table 8. U.S. international price indexes and percent changes for selected transportation services: April 2009 to April 2010

[2000=100, unless otherwise noted]

Description	Relative importance Mar. 2010 ¹	Index		Percent change				
		Mar. 2010	Apr. 2010	Annual	Monthly			
				Apr. 2009 to Apr. 2010	Dec. 2009 to Jan. 2010	Jan. 2010 to Feb. 2010	Feb. 2010 to Mar. 2010	Mar. 2010 to Apr. 2010
Air Freight								
Import Air Freight	100.000	156.6	156.8	19.6	-4.4	-0.3	0.3	0.1
Europe (Dec. 2003=100).....	21.540	132.0	132.0	8.5	-1.6	-1.0	-3.6	0.0
Asia.....	71.441	144.0	144.3	23.7	-5.6	-0.6	1.8	0.2
Export Air Freight	100.000	124.3	124.0	1.2	0.2	0.5	0.5	-0.2
Europe (Dec. 2006=100).....	38.591	114.7	114.5	1.1	0.0	0.2	1.1	-0.2
Inbound Air Freight	100.000	143.6	143.4	14.3	-2.2	-0.6	0.3	-0.1
Europe (Dec. 2003=100).....	22.797	123.6	123.1	4.3	-0.5	-1.1	-3.0	-0.4
Asia.....	66.771	132.2	132.2	19.5	-3.1	-0.6	0.9	0.0
Outbound Air Freight	100.000	117.8	118.1	2.3	0.8	0.9	1.1	0.3
Europe (Dec. 2003=100).....	40.956	135.5	137.2	2.3	1.7	0.6	0.5	1.3
Asia.....	42.564	108.6	107.8	4.0	0.7	1.3	1.3	-0.7
Air Passenger Fares								
Import Air Passenger Fares	100.000	149.8	156.1	17.3	-3.2	-3.5	5.3	4.2
Europe.....	42.354	162.6	171.0	28.7	-1.6	-3.6	9.9	5.2
Asia.....	27.272	126.4	130.9	6.6	-5.3	-7.6	2.9	3.6
Latin America/Caribbean.....	13.024	135.9	145.8	20.9	-10.8	1.1	2.7	7.3
Export Air Passenger Fares	100.000	160.1	164.0	20.4	1.0	-0.2	1.7	2.4
Europe.....	33.479	199.8	204.5	32.7	-0.6	5.8	1.4	2.4
Asia.....	30.990	147.7	146.6	24.7	6.0	3.6	5.7	-0.7
Latin America/Caribbean.....	21.378	161.8	168.4	10.7	2.7	-9.6	1.4	4.1

¹ Relative importance figures are based on 2008 trade values.

NOTES: Data may be revised in each of the three months after original publication.

Dash = Not available

TECHNICAL NOTE

Import and Export Merchandise and Services Price Indexes -- All indexes use a modified Laspeyres formula and are not seasonally adjusted. Price indexes are reweighted annually, with a two-year lag in the weights. Published series use a base year of 2000=100 where possible. More detailed index series and additional information may be obtained at <http://www.bls.gov/mxp>, or by calling (202) 691-7101.

Merchandise Goods Classification Systems -- The merchandise price indexes are published using three classification systems. Items are classified by end use according to the Bureau of Economic Analysis Classification System, by industry according to the North American Industry Classification System (NAICS), and by product category according to the Harmonized System (HS). While classification by end use and product category are self-explanatory, some notes are in order for classifying items by industry. In the NAICS imports and exports tables, items are classified by output industry, not input industry. As an example, NAICS import index 326 (plastics and rubber products manufacturing) include outputs such as manufactured plastic rather than inputs such as petroleum. The NAICS classification structure also matches the classification system used by the PPI (Producer Price Index) to produce the NAICS primary products indexes.

Import Price Indexes -- Products have been classified by the Harmonized Tariff Schedule of the United States Annotated (TSUSA). Import prices are based on U.S. dollar prices paid by the U.S. importer. The prices are generally either "free on board" (f.o.b.) foreign port or "cost, insurance, and freight" (c.i.f.) U.S. port transaction prices, depending on the practices of the individual industry. The index for crude petroleum is calculated from data collected by the U.S. Department of Energy.

Export Price Indexes -- Products have been classified by the Harmonized Schedule B classification system of the U.S. Bureau of the Census. The prices used are generally either "free alongside ship" (f.a.s.) factory or "free on board" (f.o.b.) transaction prices, depending on the practices of the individual industry. Prices used in the grain index, excluding rice, are obtained from the U.S. Department of Agriculture.

Services Price Indexes -- Starting in September 2008 the Import Air Passenger Fares Indexes represent changes in the average revenue per passenger received by foreign carriers from U.S. residents and are calculated from data obtained from an airline consulting service. These data include tickets sold by travel agencies and travel websites. Tickets sold directly by the airlines are excluded, as are frequent flyer tickets generally. Starting in January 2008 the Export Air Passenger Fares Indexes represent changes in the average revenue per passenger received by U.S. carriers from foreign residents and are calculated from data collected directly from airlines. These data include frequent flyer tickets and those sold by consolidators. Taxes and fees are included in the Import Air Passenger Fares Index and excluded from the Export Air Passenger Fares Index. The Air Freight Indexes are calculated from data collected directly from airlines. These data exclude mail and passenger baggage. The scope of the service being priced is the movement of freight from airport to airport only, and does not include any ground transportation or port service. The Air Freight Indexes are presented using two definitions: Balance of Payments (which represent transactions between U.S. and foreign residents) and International (which represent transactions inbound to and outbound from the U.S.). Fact sheets specifying detailed information for each services industry are available at <http://www.bls.gov/mxp> under "MXP Publications."

Import Indexes by Locality of Origin -- Prices used in these indexes are a subset of the data collected for the Import Price Indexes. Beginning with January 2002, the indexes are defined by locality of origin using a nomenclature based upon the North American Industry Classification System (NAICS). Nonmanufactured goods are defined as NAICS 11 and 21 and manufactured goods are defined as NAICS 31-33.

Revision Policy -- To reflect the availability of late reports and corrections by respondents, monthly data may be revised in each of the three months after original publication. After three months, no further data revisions take place. So, for example, data released in the January release will be subject to revision in the releases for February, March, and April.

Uses of the Data -- The primary use of the indexes is to deflate trade statistics, notably the foreign trade sector of the National Income and Product Accounts constructed by the Department of Commerce. Other published indexes are useful for general market analysis. For trade in international services, Balance of Payments indexes are used for deflating National Income and Product Accounts, while International indexes are more appropriate for market analysis. Merchandise and services indexes also can be used to study U.S. competitiveness and to compute price elasticities, and the merchandise import indexes by country or region of origin are useful in terms of trade analysis.

E-Mail Subscription -- The U.S. Import and Export Price Indexes news release is available through an e-mail subscription service at (<http://www.bls.gov/bls/list.htm>).

Additional Information -- More detailed data are available on the Import/Export Price Indexes home page at (<http://www.bls.gov/mxp>). Flat Files and the FTP server are available for users requiring access to either a large volume of time series data or other related documentation. The FTP site can be accessed at <ftp://ftp.bls.gov>. For technical assistance in using the BLS Internet site, send e-mail to (labstat.helpdesk@bls.gov). For Import/Export Price Index data requests, send e-mail to (mxpinfo@bls.gov).

Information from this release will be made available to sensory impaired individuals upon request. Voice phone: 202-691-5200; Federal Relay Service: 1-800-877-8339.