

Transmission of material in this release is embargoed until  
8:30 a.m. (EST) Friday, November 13, 2009

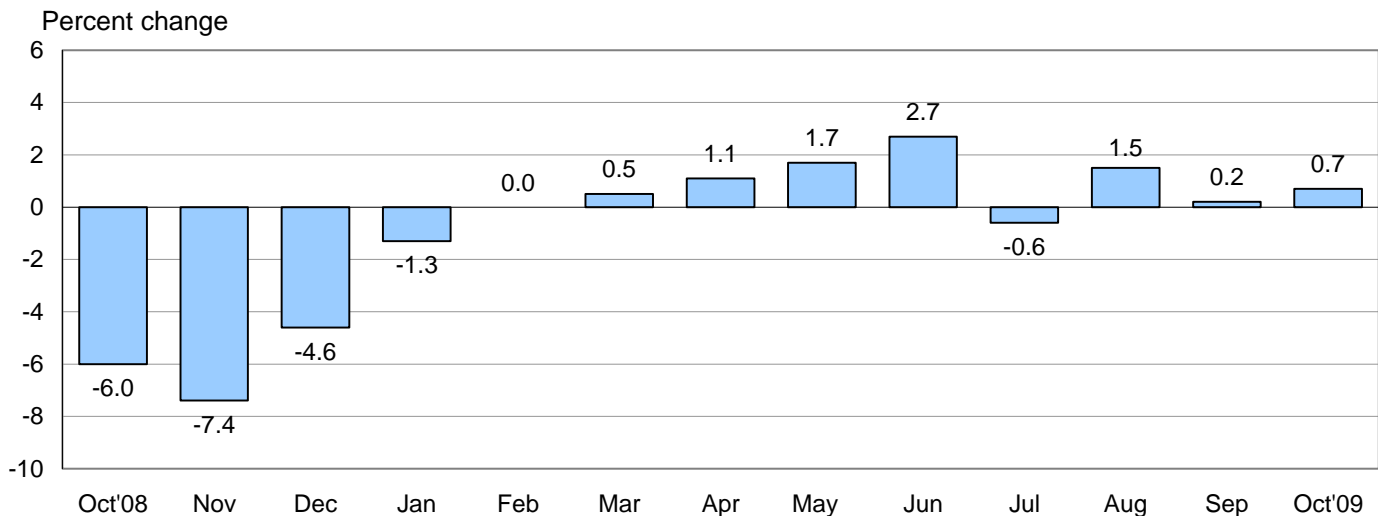
USDL-09-1360

Technical information: (202) 691-7101 • MXPinfo@bls.gov • www.bls.gov/mxp  
Media contact: (202) 691-5902 • PressOffice@bls.gov

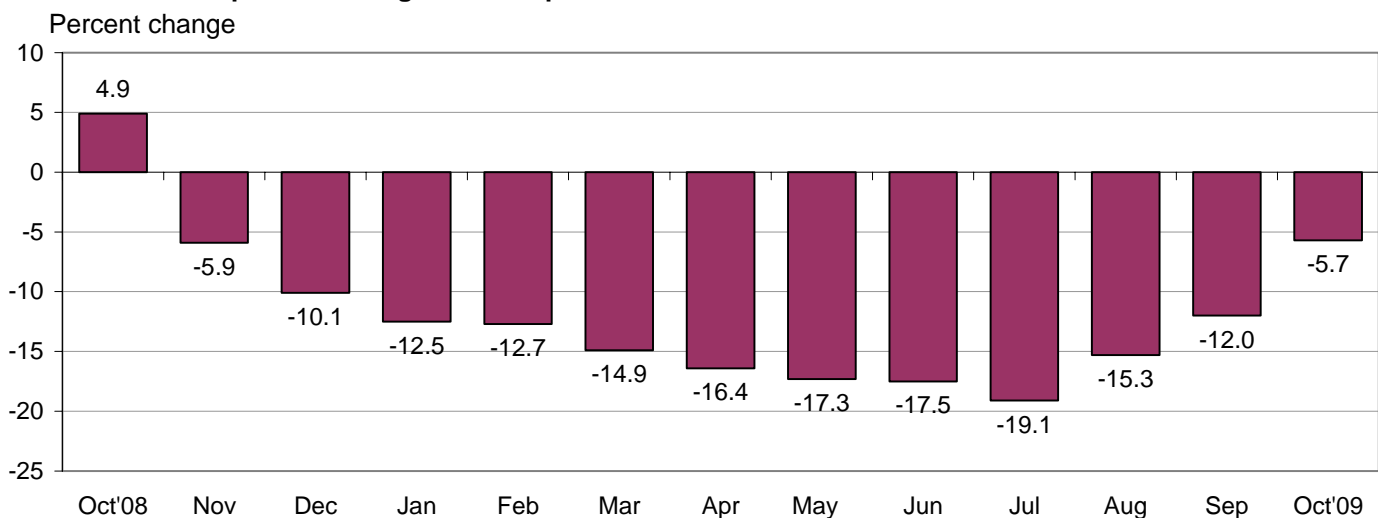
### U.S. IMPORT AND EXPORT PRICE INDEXES – OCTOBER 2009

The U.S. Import Price Index rose 0.7 percent in October, the U.S. Bureau of Labor Statistics reported today, led by a 1.8 percent increase in fuel prices. The rise followed a 0.2 percent increase in September. U.S. export prices advanced 0.3 percent in October after decreasing 0.2 percent the previous month.

**Chart 1. One-month percent change in the Import Price Index: October 2008 – October 2009**



**Chart 2. 12-month percent change in the Import Price Index: October 2008 – October 2009**



**All Imports:** The increase in U.S. imports in October continued the recent upward trend for the index. Import prices have risen in seven of the past eight months and were up 8.1 percent over that period. Despite the recent increases, import prices declined 5.7 percent for the year ended in October driven by a 12.8 percent drop in prices between October 2008 and January 2009.

**Fuel Imports:** Prices for import fuel advanced 1.8 percent in October after a 1.5 percent decline the previous month. A 24.1 percent increase in natural gas prices led the overall advance in October, while petroleum prices were also a contributing factor, advancing 0.9 percent. However, the price indexes for natural gas and petroleum both declined over the past year, falling 46.4 percent and 12.2 percent, respectively.

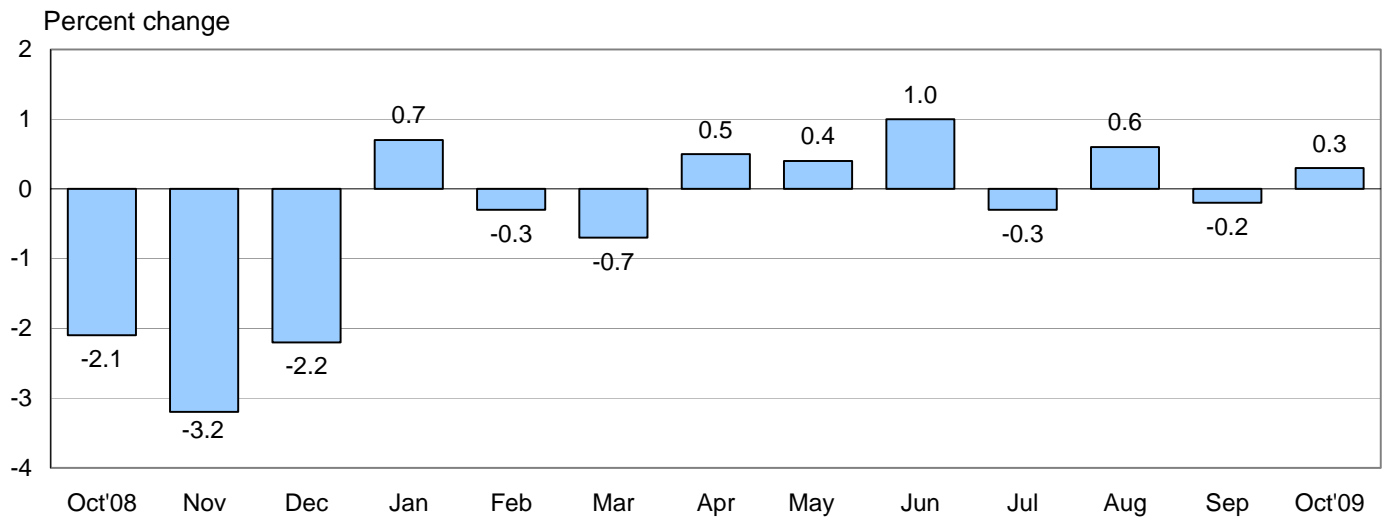
**All Imports Excluding Fuel:** Nonfuel import prices rose 0.4 percent in October as higher prices for industrial supplies and materials, finished goods, and foods, feeds, and beverages all contributed to the advance. Prices for nonfuel imports rose between 0.4 percent and 0.5 percent in each of the past three months, the largest monthly advances since a 0.6 percent increase in July 2008. The index declined 2.9 percent over the past 12 months as sharp decreases at the end of 2008 more than offset the recent rises.

**Table A. Percent changes**

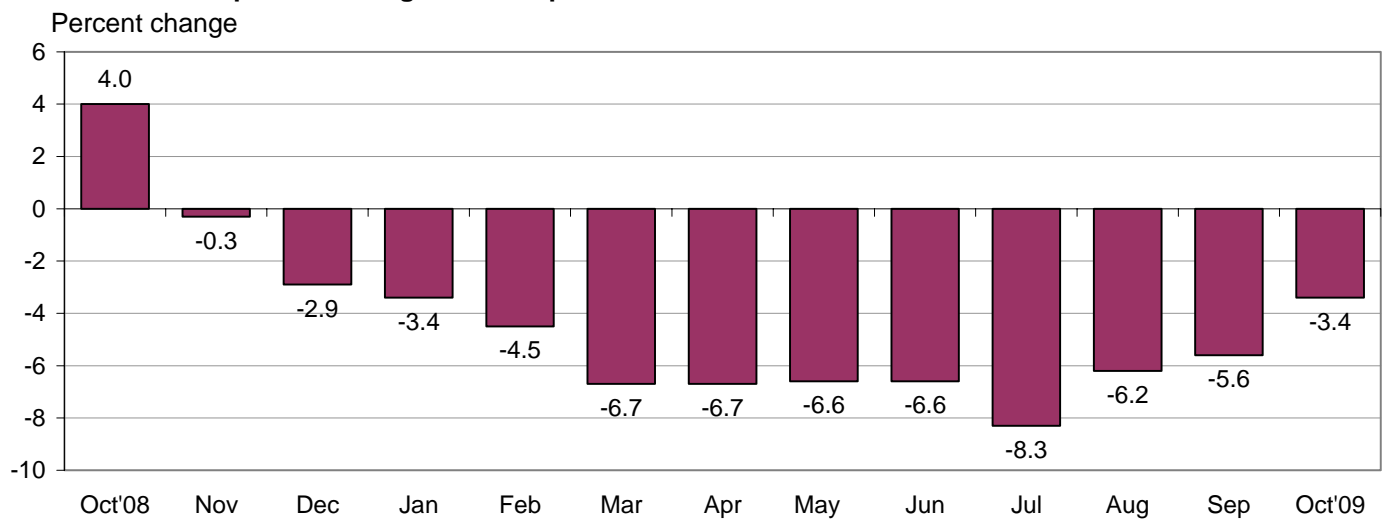
Month	IMPORTS			EXPORTS		
	All imports	Fuel imports	Nonfuel imports	All exports	Agricultural exports	Non-agricultural exports
<b>2008</b>						
October.....	-6.0	-20.8	-0.8	-2.1	-8.4	-1.4
November.....	-7.4	-27.8	-1.7	-3.2	-6.9	-2.8
December.....	-4.6	-22.2	-1.1	-2.2	-6.1	-1.9
<b>2009</b>						
January.....	-1.3	-4.7	-0.7	0.7	5.9	0.3
February.....	0.0	2.7	-0.4	-0.3	-1.7	-0.2
March.....	0.5	7.8	-0.6	-0.7	-3.4	-0.4
April.....	1.1	7.5	0.1	0.5	3.7	0.2
May.....	1.7	9.8	0.2	0.4	3.6	0.3
June.....	2.7	16.0	0.2	1.0	4.2	0.6
July.....	-0.6 <sup>r</sup>	-2.6 <sup>r</sup>	-0.2	-0.3	-4.9	0.1 <sup>r</sup>
August.....	1.5 <sup>r</sup>	6.9 <sup>r</sup>	0.4 <sup>r</sup>	0.6 <sup>r</sup>	0.2	0.7
September.....	0.2 <sup>r</sup>	-1.5 <sup>r</sup>	0.5 <sup>r</sup>	-0.2 <sup>r</sup>	-3.0 <sup>r</sup>	0.1 <sup>r</sup>
October.....	0.7	1.8	0.4	0.3	-1.0	0.3
Oct. 2007 to 2008.....	4.9	4.5	4.8	4.0	6.0	3.8
Oct. 2008 to 2009.....	-5.7	-15.4	-2.9	-3.4	-10.0	-2.7

r Revised

**Chart 3. One-month percent change in the Export Price Index: October 2008 – October 2009**



**Chart 4. 12-month percent change in the Export Price Index: October 2008 – October 2009**



**All Exports:** Export prices rose 0.3 percent after falling 0.2 percent in September. Rising nonagricultural prices more than offset a drop in the price index for agricultural exports. Prices of overall exports decreased 3.4 percent for the October 2008-2009 period.

**Agricultural Exports:** Agricultural prices fell for the third time in the past four months in October, declining 1.0 percent after recording a 3.0 percent decrease in September. Falling prices for soybeans and wheat, down 7.5 percent and 6.1 percent, respectively, continued to drive agricultural prices lower. In contrast, a 9.2 percent rise in corn prices partially offset those declines. The price index for overall agricultural prices decreased 10.0 percent for the year ended in October.

**All Exports Excluding Agriculture:** Prices for nonagricultural exports increased 0.3 percent in October and have risen 2.3 percent since March. Higher prices for nonagricultural industrial supplies and materials and most of the major finished goods areas contributed to the advance. Despite the recent increases, a 4.6 percent drop in prices for the final two months of 2008 drove the index down 2.7 percent over the past year.

## SELECTED OCTOBER HIGHLIGHTS

### Import Prices

**Nonfuel Industrial Supplies and Materials:** The price index for nonfuel industrial supplies and materials increased 1.6 percent in October after rising 2.8 percent the previous month. Rising prices for metals and chemicals were a major factor for the increases in both October and September.

**Finished Goods:** Prices for each of the major finished goods areas rose in October. Prices for automotive vehicles advanced 0.6 percent, the largest increase since a 0.6 percent rise in December 2007. The October increase was partially attributable to year-end model changeovers. The price index for consumer goods advanced 0.3 percent, the largest gain for the index since a 0.6 percent increase in April 2008. Capital goods prices advanced 0.2 percent, the largest increase since a similar 0.2 percent rise in July 2008. The increase was led by higher prices for electrical generating equipment.

**Foods, Feeds, and Beverages:** Prices for foods, feeds, and beverages ticked up 0.1 percent in October. The modest advance followed increases of 0.5 percent and 1.3 percent, respectively, in September and August. For October, higher prices for fruit and coffee more than offset falling meat and fish prices.

**Imports by Locality of Origin:** Higher fuel prices drove import prices from Canada in October, up 1.2 percent. The October increase followed advances of 0.9 percent and 1.2 percent, respectively, in the previous two months. The price indexes of imports from the European Union, Mexico, China, and Japan also rose in October—up 0.6 percent, 0.7 percent, 0.1 percent, and 0.2 percent, respectively.

**Transportation Services:** Import air passenger fares advanced 6.4 percent in October, the first increase since a 13.0 percent jump in June. The October advance was led by an 8.6 percent rise in European fares. Import air freight prices also increased in October, rising 1.5 percent after advancing 0.7 percent the previous month.

### Export Prices

**Nonagricultural Industrial Supplies and Materials:** The price index for nonagricultural industrial supplies and materials increased 1.0 percent in October after ticking up a modest 0.1 percent in September. The October advance was driven by higher prices for metals, chemicals, iron and steel mill products, and fuel.

**Finished Goods:** Finished goods prices were mixed in October. Prices for capital goods and for automotive vehicles rose 0.2 percent and 0.1 percent, respectively. In contrast, consumer goods prices edged down 0.1 percent.

**Transportation Services:** Export air passenger fares rose 4.9 percent in October following a decline of 9.1 percent in September and an increase of 9.1 percent in August. Rising prices for European fares and Latin American/Caribbean fares contributed to the October advance. In contrast, export air freight prices fell 0.2 percent in October, the first monthly decline for the index since a 1.2 percent drop in June.

---

**Import and Export Price Index data for November 2009 are scheduled for release on Friday, December 11, 2009 at 8:30 a.m. (EST).**

**Table 1. U.S. import price indexes and percent changes for selected categories of goods: October 2008 to October 2009**

[2000=100, unless otherwise noted]

Description	End Use	Relative importance Sept. 2009 <sup>1</sup>	Index		Percent change				
			Sept. 2009	Oct. 2009	Annual Oct. 2008 to Oct. 2009	Monthly			Sept. 2009 to Oct. 2009
						June 2009 to July 2009	July 2009 to Aug. 2009	Aug. 2009 to Sept. 2009	
<b>All commodities</b> .....		100.000	121.3	122.2	-5.7	-0.6	1.5	0.2	0.7
<b>All imports excluding petroleum</b> .....		82.326	107.9	108.7	-3.8	-0.2	0.3	0.4	0.7
<b>All imports excluding fuels (Dec. 2001=100)</b> ..		81.147	112.0	112.5	-2.9	-0.2	0.4	0.5	0.4
<b>Foods, feeds, &amp; beverages</b> .....	0	4.689	140.7	140.9	-3.5	-1.1	1.3	0.5	0.1
Agricultural foods, feeds & beverages, excluding distilled beverages.....	00	3.639	156.9	157.4	-3.3	-1.5	1.6	0.8	0.3
Nonagricultural foods (fish, distilled beverages).....	01	1.050	104.1	103.6	-4.1	-0.2	0.3	-0.4	-0.5
<b>Industrial supplies &amp; materials</b> .....	1	32.905	182.8	186.0	-12.9	-1.6	4.6	0.2	1.8
Industrial supplies & materials excluding petroleum.....		15.231	134.7	138.3	-14.5	-0.8	1.2	1.5	2.7
Industrial supplies & materials excluding fuels (Dec. 2001=100).....		14.052	152.1	154.5	-10.9	-0.3	1.3	2.8	1.6
Industrial supplies & materials, durable.....		8.984	146.0	147.9	-8.8	1.8	1.8	3.5	1.3
Industrial supplies & materials nondurable excluding petroleum.....		5.068	121.2	126.8	-20.9	-4.1	0.4	-1.2	4.6
Fuels & lubricants.....	10	18.852	227.8	231.9	-15.4	-2.6	6.9	-1.5	1.8
Petroleum & petroleum products.....	100	17.674	251.4	253.7	-12.2	-2.4	7.5	-0.9	0.9
Crude.....	10000	12.804	257.2	261.6	-10.6	-2.2	7.1	-0.7	1.7
Fuels, n.e.s.-coals & gas.....	101	0.991	91.7	109.4	-40.9	-7.2	0.1	-12.3	19.3
Gas-natural.....	10110	0.790	76.2	94.6	-46.4	-8.5	0.0	-14.7	24.1
Paper & paper base stocks.....	11	0.669	99.2	100.5	-13.7	-2.7	-0.5	0.6	1.3
Materials associated with nondurable supplies & materials.....	12	4.475	135.2	138.0	-13.9	-3.8	0.8	1.4	2.1
Selected building materials.....	13	1.658	119.0	118.8	-1.3	1.7	1.1	-0.3	-0.2
Unfinished metals related to durable goods.....	14	3.845	205.3	210.8	-10.9	3.6	3.1	7.7	2.7
Finished metals related to durable goods. ...	15	1.866	137.0	137.8	-11.6	0.3	0.9	1.6	0.6
Nonmetals related to durable goods.....	16	1.539	104.2	104.7	-5.6	-0.2	0.6	0.8	0.5
<b>Capital goods</b> .....	2	23.412	91.9	92.1	-1.3	0.0	0.0	0.0	0.2
Electric generating equipment.....	20	3.016	110.2	110.9	-1.2	0.2	0.1	-0.1	0.6
Nonelectrical machinery.....	21	18.294	86.5	86.6	-1.7	0.0	-0.1	0.1	0.1
Transportation equipment excluding motor vehicles (Dec. 2001=100).....	22	2.102	123.3	123.3	2.8	0.6	0.2	0.0	0.0
<b>Automotive vehicles, parts &amp; engines</b> .....	3	13.925	108.7	109.4	1.0	0.2	0.3	0.2	0.6
<b>Consumer goods, excluding automotives</b> ..	4	25.069	104.0	104.3	-0.8	-0.2	-0.1	0.0	0.3
Nondurables, manufactured.....	40	11.555	107.8	107.8	-0.3	-0.3	0.0	0.0	0.0
Durables, manufactured.....	41	12.314	100.5	100.9	-0.9	0.0	-0.2	0.1	0.4
Nonmanufactured consumer goods.....	42	1.201	101.2	101.6	-4.1	-0.1	-0.5	0.4	0.4

<sup>1</sup> Relative importance figures are based on 2007 trade values.

NOTES: Data may be revised in each of the three months after original publication.

Dash = Not available

**Table 2. U.S. export price indexes and percent changes for selected categories of goods: October 2008 to October 2009**

[2000=100, unless otherwise noted]

Description	End Use	Relative importance Sept. 2009 <sup>1</sup>	Index		Percent change				
			Sept. 2009	Oct. 2009	Annual Oct. 2008 to Oct. 2009	Monthly			Sept. 2009 to Oct. 2009
						June 2009 to July 2009	July 2009 to Aug. 2009	Aug. 2009 to Sept. 2009	
<b>All commodities.....</b>		100.000	117.9	118.2	-3.4	-0.3	0.6	-0.2	0.3
<b>Agricultural commodities.....</b>		8.545	156.8	155.3	-10.0	-4.9	0.2	-3.0	-1.0
<b>Nonagricultural commodities.....</b>		91.456	115.1	115.5	-2.7	0.1	0.7	0.1	0.3
<b>Foods, feeds, &amp; beverages.....</b>	0	7.830	158.1	156.1	-10.8	-5.7	-0.2	-3.9	-1.3
Agricultural foods, feeds & beverages, excluding distilled beverages.....	00	7.199	160.6	158.7	-11.0	-6.2	-0.2	-4.0	-1.2
Nonagricultural foods (fish, distilled beverages).....	01	0.631	137.3	134.3	-9.1	0.5	-1.0	-2.5	-2.2
<b>Industrial supplies &amp; materials.....</b>	1	27.659	143.9	145.3	-10.2	0.1	2.1	0.2	1.0
Industrial supplies & materials, durable.....		10.955	150.7	152.4	-4.7	0.8	2.0	1.8	1.1
Industrial supplies & materials, nondurable.....		16.704	140.6	141.7	-13.4	-0.4	2.3	-0.8	0.8
Agricultural industrial supplies & materials.....	10	1.346	142.0	142.7	-3.9	3.0	2.2	3.0	0.5
<b>Nonagricultural industrial supplies &amp; materials.....</b>		26.313	144.3	145.7	-10.4	-0.1	2.2	0.1	1.0
Fuels & lubricants.....	11	3.778	170.9	172.6	-27.8	-5.3	9.4	-5.9	1.0
Nonagricultural supplies & materials excluding fuels & building materials.....	12	21.506	142.8	144.2	-7.3	0.9	1.0	1.1	1.0
Selected building materials.....	13	1.029	114.0	114.6	-1.7	-0.2	0.8	0.3	0.5
<b>Capital goods.....</b>	2	41.294	103.5	103.7	2.0	0.1	0.2	0.1	0.2
Electrical generating equipment.....	20	3.731	107.5	108.0	-1.5	-0.2	0.3	0.2	0.5
Nonelectrical machinery.....	21	28.624	94.9	95.1	1.6	0.1	0.2	0.2	0.2
Transportation equipment excluding motor vehicles (Dec. 2001=100).....	22	8.939	137.1	137.1	4.6	0.1	0.1	-0.3	0.0
<b>Automotive vehicles, parts &amp; engines.....</b>	3	10.321	108.0	108.1	-0.1	-0.1	0.1	0.0	0.1
<b>Consumer goods, excluding automotives..</b>	4	12.897	109.2	109.1	-0.7	0.5	0.2	0.1	-0.1
Nondurables, manufactured.....	40	5.746	109.3	109.1	0.2	0.2	0.3	0.3	-0.2
Durables, manufactured.....	41	6.054	109.5	109.6	-0.3	1.3	0.1	-0.1	0.1

<sup>1</sup> Relative importance figures are based on 2007 trade values.

NOTES: Data may be revised in each of the three months after original publication.

Dash = Not available

**Table 3. U.S. import price indexes and percent changes for selected categories of goods: October 2008 to October 2009**

[December 2005=100, unless otherwise noted]

Description	NAICS	Relative importance Sept. 2009 <sup>1</sup>	Index		Percent change				
			Sept. 2009	Oct. 2009	Annual	Monthly			
					Oct. 2008 to Oct. 2009	June 2009 to July 2009	July 2009 to Aug. 2009	Aug. 2009 to Sept. 2009	Sept. 2009 to Oct. 2009
<b>Nonmanufactured articles.....</b>		16.073	112.5	115.6	-14.2	-2.8	5.5	-1.0	2.8
<b>Agriculture, forestry, fishing and hunting...</b>	11	1.712	132.8	132.6	-1.3	-3.5	2.0	1.2	-0.2
Crop production.....	111	1.228	139.9	139.7	2.9	-5.0	1.9	1.4	-0.1
<b>Mining.....</b>	21	14.361	110.3	113.7	-15.6	-2.7	6.0	-1.3	3.1
Mining (except oil and gas) (Dec. 2006=100).....	212	0.446	129.7	131.8	1.2	-1.6	0.9	0.8	1.6
<b>Manufactured articles.....</b>		83.382	107.8	108.2	-3.5	-0.1	0.7	0.4	0.4
<b>Manufactured goods, part 1.....</b>	31	10.356	107.0	107.2	-1.8	-0.1	0.3	0.1	0.2
Food manufacturing.....	311	2.441	117.9	118.4	-7.5	-0.1	1.0	0.5	0.4
Beverage and tobacco product manufacturing.....	312	0.935	107.4	107.7	1.5	0.3	0.0	0.1	0.3
Textile mills.....	313	0.446	112.5	112.8	-0.4	0.6	0.3	-0.2	0.3
Textile product mills.....	314	0.798	99.4	100.5	-1.5	0.6	0.0	0.0	1.1
Apparel manufacturing.....	315	4.176	101.9	101.8	-0.1	-0.2	0.0	-0.1	-0.1
Leather and allied product manufacturing. . .	316	1.560	107.2	107.2	0.9	-0.4	0.1	0.0	0.0
<b>Manufactured goods, part 2.....</b>	32	17.937	115.4	115.4	-7.8	-1.5	2.6	-0.3	0.0
Wood product manufacturing.....	321	1.006	94.5	94.3	-1.3	3.7	1.7	-0.4	-0.2
Paper manufacturing.....	322	1.202	99.0	99.4	-11.6	-3.2	-0.6	0.6	0.4
Petroleum and coal products manufacturing.....	324	4.110	116.7	114.4	-16.7	-2.9	10.8	-2.8	-2.0
Chemical manufacturing.....	325	8.515	119.8	121.0	-6.4	-1.6	0.3	0.9	1.0
Plastics and rubber products manufacturing.....	326	1.840	112.0	112.0	-1.4	-0.4	0.2	-0.1	0.0
Nonmetallic mineral product manufacturing.....	327	1.156	119.6	119.3	1.0	-0.4	-0.2	0.0	-0.3
<b>Manufactured goods, part 3.....</b>	33	55.090	105.6	106.1	-2.3	0.3	0.3	0.6	0.5
Primary metal manufacturing.....	331	4.363	136.1	138.3	-15.4	2.4	2.6	6.3	1.6
Fabricated metal product manufacturing. . .	332	2.785	115.8	116.7	-4.2	-0.3	-0.1	0.0	0.8
Machinery manufacturing.....	333	6.912	112.4	112.9	1.7	0.4	0.2	0.2	0.4
Computer and electronic product manufacturing.....	334	15.085	88.9	89.0	-3.1	0.0	-0.1	0.0	0.1
Electrical equipment, appliance, and component manufacturing.....	335	4.012	112.6	113.0	-1.4	0.1	0.0	0.1	0.4
Transportation equipment manufacturing. . .	336	15.123	106.1	106.8	1.4	0.2	0.3	0.2	0.7
Furniture and related product manufacturing.....	337	1.571	109.3	109.0	-2.0	-0.1	-0.2	0.5	-0.3
Miscellaneous manufacturing.....	339	5.238	111.8	112.2	1.1	0.2	-0.1	0.0	0.4

1 Relative importance figures are based on 2007 trade values.

NOTES: Data may be revised in each of the three months after original publication.

Dash = Not available

**Table 4. U.S. export price indexes and percent changes for selected categories of goods: October 2008 to October 2009**

[December 2005=100, unless otherwise noted]

Description	NAICS	Relative importance Sept. 2009 <sup>1</sup>	Index		Percent change				
			Sept. 2009	Oct. 2009	Annual Oct. 2008 to Oct. 2009	Monthly			Sept. 2009 to Oct. 2009
						June 2009 to July 2009	July 2009 to Aug. 2009	Aug. 2009 to Sept. 2009	
<b>Nonmanufactured articles.....</b>		5.787	114.4	117.6	-10.4	-6.7	1.2	-5.5	2.8
<b>Agriculture, forestry, fishing and hunting...</b>	11	4.529	131.3	131.9	-10.7	-7.7	0.4	-6.5	0.5
Crop production.....	111	4.185	134.7	135.5	-11.1	-8.1	0.1	-6.9	0.6
<b>Mining.....</b>	21	1.258	76.8	85.5	-9.5	-2.3	4.4	-1.9	11.3
Mining (except oil and gas).....	212	0.985	90.3	91.0	-5.2	-1.8	2.3	1.9	0.8
<b>Manufactured articles.....</b>		92.235	109.0	109.2	-2.4	0.1	0.5	0.1	0.2
<b>Manufactured goods, part 1.....</b>	31	6.639	121.4	120.3	-3.5	0.0	-0.1	0.8	-0.9
Food manufacturing.....	311	4.472	136.5	134.5	-4.3	-0.2	-0.2	1.0	-1.5
Beverage and tobacco product manufacturing.....	312	0.517	107.0	107.2	3.1	-0.1	0.1	0.0	0.2
Apparel manufacturing.....	315	0.390	102.7	102.8	1.3	0.3	0.0	0.1	0.1
<b>Manufactured goods, part 2.....</b>	32	21.965	111.2	111.1	-10.1	-0.1	1.5	-0.5	-0.1
Wood product manufacturing.....	321	0.459	106.9	107.6	-4.4	1.1	1.2	0.6	0.7
Paper manufacturing.....	322	1.873	109.7	111.0	-4.7	-1.0	-0.1	0.4	1.2
Petroleum and coal products manufacturing.....	324	2.258	102.1	102.8	-34.1	-9.2	13.5	-7.0	0.7
Chemical manufacturing.....	325	14.361	114.1	113.7	-7.3	1.6	0.4	0.2	-0.4
Plastics and rubber products manufacturing.....	326	2.163	107.8	107.2	-4.4	-0.1	-0.1	0.0	-0.6
Nonmetallic mineral product manufacturing.....	327	0.851	111.8	111.7	0.4	-1.7	0.1	0.4	-0.1
<b>Manufactured goods, part 3.....</b>	33	63.631	106.9	107.3	0.7	0.2	0.1	0.3	0.4
Primary metal manufacturing.....	331	4.356	125.7	129.5	-5.8	0.5	1.2	3.2	3.0
Fabricated metal product manufacturing. ....	332	2.839	121.7	121.3	2.0	0.0	0.3	0.2	-0.3
Machinery manufacturing.....	333	12.754	112.6	112.9	1.3	0.6	0.0	0.1	0.3
Computer and electronic product manufacturing.....	334	16.526	93.9	94.1	0.7	-0.2	0.1	0.3	0.2
Electrical equipment, appliance, and component manufacturing.....	335	3.609	107.3	107.1	-0.5	0.3	0.2	-0.1	-0.2
Transportation equipment manufacturing....	336	18.241	110.2	110.3	2.4	0.0	0.0	-0.1	0.1
Miscellaneous manufacturing.....	339	4.951	110.6	110.4	-1.4	0.8	0.0	0.0	-0.2

<sup>1</sup> Relative importance figures are based on 2007 trade values.

NOTES: Data may be revised in each of the three months after original publication.

Dash = Not available



**Table 5. U.S. import price indexes and percent changes for selected categories of goods: October 2008 to October 2009**

[2000=100, unless otherwise noted]

Description	Harmonized system	Relative importance Sept. 2009 <sup>1</sup>	Index		Percent change				
			Sept. 2009	Oct. 2009	Annual Oct. 2008 to Oct. 2009	Monthly			
						June 2009 to July 2009	July 2009 to Aug. 2009	Aug. 2009 to Sept. 2009	Sept. 2009 to Oct. 2009
<b>Live animals; animal products.....</b>	I	1.145	131.7	133.5	-3.7	0.4	0.7	1.0	1.4
Meat and edible meat offal.....	02	0.262	157.5	155.6	-8.3	1.8	1.7	0.9	-1.2
Fish and crustaceans, molluscs and other aquatic invertebrates.....	03	0.553	99.2	99.6	-5.2	-0.6	0.5	-0.5	0.4
<b>Vegetable products.....</b>	II	1.430	158.6	158.3	0.5	-4.7	1.9	1.3	-0.2
Edible vegetables, roots, and tubers.....	07	0.426	293.4	294.5	22.6	-3.6	-1.1	5.0	0.4
Edible fruit and nuts; peel of citrus fruit or melons.....	08	0.412	98.9	102.0	-6.4	-7.3	2.5	0.3	3.1
Coffee, tea, mate and spices.....	09	0.258	155.4	157.7	2.6	-8.6	10.3	-4.3	1.5
<b>Prepared foodstuffs, beverages, and tobacco.....</b>	IV	2.298	136.4	136.5	-0.5	0.4	0.7	0.4	0.1
Preparations of cereals, flour, starch or milk; bakers' wares (Dec. 2007=100).....	19	0.250	112.8	110.8	-1.5	1.3	0.4	0.8	-1.8
Preparations of vegetables, fruit, nuts, or other parts of plants.....	20	0.279	125.8	125.6	-10.1	0.1	0.4	0.2	-0.2
Beverages, spirits, and vinegar.....	22	0.939	116.7	116.9	1.6	0.3	0.1	0.2	0.2
<b>Mineral products.....</b>	V	18.995	229.7	234.2	-14.3	-2.7	6.8	-1.5	2.0
Mineral fuels, oils and residuals, bituminous substances and mineral waxes.....	27	18.612	226.5	231.0	-15.1	-2.7	6.9	-1.6	2.0
<b>Products of the chemical or allied industries.....</b>	VI	7.713	131.0	132.9	-8.0	-1.1	0.5	0.5	1.5
Inorganic chemicals.....	28	0.770	216.3	244.6	-16.6	-9.3	-3.9	10.6	13.1
Organic chemicals.....	29	2.458	126.1	126.4	-5.2	0.6	1.8	-1.2	0.2
Pharmaceutical products.....	30	2.724	114.2	114.1	0.6	0.7	0.0	0.1	-0.1
Tanning & dyeing extracts; dye & pigments; varnish & paints; putty.....	32	0.175	107.3	106.2	0.5	0.6	0.0	2.7	-1.0
Essential oils and resinoids (Dec. 2001=100).....	33	0.426	121.0	121.5	-2.8	1.3	0.2	0.4	0.4
Miscellaneous chemical products.....	38	0.423	90.1	90.0	-9.7	-0.8	0.1	0.4	-0.1
<b>Plastics and articles thereof; rubber and articles thereof.....</b>	VII	2.900	127.1	127.6	-6.3	-2.9	0.3	0.6	0.4
Plastics and articles thereof.....	39	1.877	123.9	124.3	-5.8	-4.4	0.2	0.1	0.3
Rubber and articles thereof.....	40	1.023	133.3	134.1	-7.3	-0.1	0.7	1.3	0.6
<b>Raw hides, skins, leather, furskins, travel goods, etc.....</b>	VIII	0.622	113.6	113.6	-0.1	-0.4	0.1	0.3	0.0
Articles of leather; travel goods, bags, etc. of various materials.....	42	0.560	114.5	114.6	0.4	-0.4	0.2	0.1	0.1
<b>Wood, wood charcoal, cork, straw, basketware and wickerwork.....</b>	IX	1.032	115.1	114.2	-2.1	3.1	1.7	-0.3	-0.8
<b>Woodpulp, recovered paper, and paper products.....</b>	X	1.381	104.5	104.8	-9.5	-3.0	-0.6	0.2	0.3
Paper and paperboard; articles of paper pulp, paper or paperboard.....	48	0.941	101.5	101.1	-11.8	-4.5	-1.3	-0.2	-0.4
Printed matter.....	49	0.282	119.4	119.4	0.1	0.2	0.0	-0.6	0.0
<b>Textile and textile articles.....</b>	XI	5.252	102.9	103.0	-0.9	0.2	0.1	0.0	0.1
Articles of apparel and clothing accessories, knitted or crocheted.....	61	1.981	99.6	99.7	-0.7	0.2	0.0	-0.1	0.1
Articles of apparel and clothing accessories, not knitted or crocheted.....	62	2.006	102.8	102.6	0.1	-0.3	-0.1	-0.2	-0.2
Made-up or worn textile articles.....	63	0.539	90.7	91.8	-4.0	0.4	0.0	0.0	1.2
<b>Headgear, umbrellas, artificial flowers, etc. ...</b>	XII	1.271	107.6	107.5	1.0	-0.4	0.1	-0.1	-0.1
Footwear and parts of such articles.....	64	1.071	106.7	106.6	1.0	-0.5	0.1	-0.1	-0.1

See footnotes at end of table.

**Table 5. U.S. import price indexes and percent changes for selected categories of goods: October 2008 to October 2009 — Continued**  
 [2000=100, unless otherwise noted]

Description	Harmonized system	Relative importance Sept. 2009 <sup>1</sup>	Index		Percent change				
			Sept. 2009	Oct. 2009	Annual	Monthly			
					Oct. 2008 to Oct. 2009	June 2009 to July 2009	July 2009 to Aug. 2009	Aug. 2009 to Sept. 2009	Sept. 2009 to Oct. 2009
<b>Stone, plaster, cement, asbestos, ceramics, glass etc.....</b>	XIII	1.030	124.6	124.6	1.4	-0.4	-0.2	0.1	0.0
Articles of stone, plaster, cement, asbestos, or mica (Dec. 2001=100).....	68	0.383	117.7	118.0	-1.0	-0.2	-0.1	0.2	0.3
Ceramic products.....	69	0.326	139.4	139.5	5.5	-0.1	0.0	0.0	0.1
Glass and glassware.....	70	0.321	116.7	116.1	0.3	-0.9	-0.6	0.1	-0.5
<b>Pearls, stones, precious metals, imitation jewelry, and coins.....</b>	XIV	2.651	142.2	146.5	5.1	-0.2	-0.1	1.4	3.0
<b>Base metals and articles of base metals.....</b>	XV	5.815	162.5	164.0	-15.4	1.4	1.8	4.2	0.9
Iron and steel.....	72	1.281	194.0	199.0	-28.7	2.3	3.4	5.0	2.6
Articles of iron or steel.....	73	1.722	136.0	137.6	-16.8	-1.9	-1.0	0.3	1.2
Copper and articles thereof.....	74	0.689	291.9	295.1	5.2	4.5	7.1	11.1	1.1
Aluminum and articles thereof.....	76	0.798	123.3	121.1	-15.7	3.5	5.1	7.2	-1.8
Tools, implements, cutlery, spoons and forks, of base metal; parts thereof.....	82	0.391	117.2	116.7	-0.3	0.0	-0.2	0.0	-0.4
Miscellaneous articles of base metal.....	83	0.468	128.6	128.4	-2.8	-0.2	-1.2	0.0	-0.2
<b>Machinery, electrical equipment, TV image and sound recorders, parts, etc.....</b>	XVI	25.917	87.1	87.4	-1.2	0.1	0.1	0.0	0.3
Machinery and mechanical appliances; parts thereof.....	84	13.078	88.4	88.5	-0.2	0.5	0.1	0.0	0.1
Electrical machinery and equip, sound and TV recorders & reproducers, parts.....	85	12.839	85.9	86.3	-2.3	-0.1	0.2	0.0	0.5
<b>Vehicles, aircraft, vessels and associated transport equipment.....</b>	XVII	12.874	110.3	111.0	1.0	0.1	0.2	0.3	0.6
Motor vehicles and their parts.....	87	11.681	109.2	110.0	1.1	0.2	0.2	0.2	0.7
Aircraft, spacecraft, and parts thereof (Dec. 2002=100).....	88	1.079	115.9	115.9	0.4	0.1	0.3	0.0	0.0
<b>Optical, photo, measuring, medical &amp; musical instruments; &amp; timepieces.....</b>	XVIII	3.211	102.4	102.5	1.1	0.3	0.0	0.1	0.1
Optical, photographic, measuring and medical instruments.....	90	2.882	100.1	100.1	0.8	0.3	0.0	0.1	0.0
Clocks and watches and parts thereof.....	91	0.250	124.0	124.5	1.7	0.3	0.0	0.2	0.4
<b>Miscellaneous manufactured articles.....</b>	XX	4.245	107.9	107.7	0.2	0.2	0.0	0.0	-0.2
Furniture & stuffed furnishings; lamps & lighting fittings, nesoi; prefab bldgs.....	94	2.310	112.3	111.9	-1.1	-0.1	-0.1	0.3	-0.4
Toys, games and sports equipment; parts and accessories thereof.....	95	1.721	101.4	101.2	1.5	0.6	0.2	-0.3	-0.2
Miscellaneous manufactured articles.....	96	0.214	116.0	116.2	3.2	0.1	-0.1	0.0	0.2

<sup>1</sup> Relative importance figures are based on 2007 trade values.

NOTES: Data may be revised in each of the three months after original publication.

Dash = Not available

**Table 6. U.S. export price indexes and percent changes for selected categories of goods: October 2008 to October 2009**

[2000=100, unless otherwise noted]

Description	Harmonized system	Relative importance Sept. 2009 <sup>1</sup>	Index		Percent change				
			Sept. 2009	Oct. 2009	Annual Oct. 2008 to Oct. 2009	Monthly			
						June 2009 to July 2009	July 2009 to Aug. 2009	Aug. 2009 to Sept. 2009	Sept. 2009 to Oct. 2009
<b>Live animals; animal products.....</b>	I	1.477	153.3	149.5	-16.3	-1.6	-0.9	-1.6	-2.5
Meat & edible meat offal (Dec. 2006=100). . .	02	0.772	123.9	119.9	-18.4	-3.1	-0.9	-2.1	-3.2
Fish and crustaceans, molluscs and other aquatic invertebrates.....	03	0.366	134.2	130.5	-15.6	0.1	-1.5	-3.2	-2.8
<b>Vegetable products.....</b>	II	4.363	176.9	175.7	-11.4	-8.7	0.2	-5.8	-0.7
Edible fruit and nuts; peel of citrus fruit or melons.....	08	0.605	107.4	111.2	-0.6	1.5	3.2	1.3	3.5
Cereals.....	10	1.666	168.3	172.1	-24.4	-17.4	0.2	-8.4	2.3
Oilseeds and misc. grains, seeds, fruits, plants, straw and fodder.....	12	1.461	211.4	198.7	-2.1	-3.9	0.0	-7.5	-6.0
<b>Prepared foodstuffs, beverages, and tobacco.....</b>	IV	2.517	140.6	140.4	4.6	-0.7	-0.1	0.6	-0.1
Miscellaneous edible preparations.....	21	0.366	118.1	119.7	-2.0	-0.2	-0.1	0.3	1.4
Beverages, spirits, and vinegar (Dec.2008=100).....	22	0.284	101.9	102.3	-	-0.1	0.2	0.0	0.4
Residues and waste from the food industries; prepared animal feed.....	23	0.554	206.0	191.2	5.3	-3.5	-2.6	0.0	-7.2
<b>Mineral products.....</b>	V	3.707	199.7	206.1	-28.3	-7.1	10.3	-4.4	3.2
Mineral fuels, oils and residuals, bituminous substances and mineral waxes.....	27	3.170	191.8	198.5	-29.9	-7.9	11.4	-5.7	3.5
<b>Products of the chemical or allied industries.....</b>	VI	11.731	136.2	136.0	-5.9	0.7	0.0	-0.3	-0.1
Inorganic chemicals.....	28	1.167	176.6	165.7	-21.2	3.8	-1.0	-6.6	-6.2
Organic chemicals.....	29	3.347	141.3	143.1	-10.7	0.9	0.9	0.3	1.3
Pharmaceutical products.....	30	2.689	116.5	116.4	-0.5	-0.3	0.2	0.3	-0.1
Tanning or dyeing extracts, dyes, paints, varnish, putty, & inks.....	32	0.542	114.4	114.6	-0.4	0.2	0.0	0.2	0.2
Essential oils and resinoids; perfumery cosmetic or toilet preparations.....	33	0.742	126.1	126.2	2.3	-0.2	0.9	0.2	0.1
Soap; lubricants; waxes, polishing or scouring products; candles, pastes.....	34	0.414	116.1	114.4	-6.8	0.5	0.0	0.7	-1.5
Miscellaneous chemical products.....	38	1.820	133.0	133.1	2.0	0.5	-0.1	0.8	0.1
<b>Plastics and articles thereof; rubber and articles thereof.....</b>	VII	5.403	134.9	133.3	-9.9	2.5	0.5	1.0	-1.2
Plastics and articles thereof.....	39	4.377	129.4	127.7	-9.3	2.6	0.2	0.5	-1.3
Rubber and articles thereof.....	40	1.026	158.7	158.1	-12.5	2.2	1.7	2.5	-0.4
<b>Raw hides, skins, leather, furskins, travel goods, etc.....</b>	VIII	0.328	97.9	97.4	-14.0	8.7	8.6	4.8	-0.5
<b>Wood, wood charcoal, cork, straw, basketware and wickerwork.....</b>	IX	0.566	102.7	103.1	-7.9	-1.5	1.5	0.2	0.4
<b>Woodpulp, recovered paper, and paper products.....</b>	X	2.382	107.8	108.0	-7.1	-0.4	0.4	0.5	0.2
Woodpulp and recovered paper.....	47	0.544	99.5	102.8	-15.4	1.4	2.4	2.8	3.3
Paper and paperboard; articles of paper pulp, paper or paperboard.....	48	1.299	109.6	110.1	-4.1	-1.5	-0.3	-0.5	0.5
Printed material.....	49	0.538	117.5	113.0	-3.9	0.8	0.1	0.3	-3.8
<b>Textile and textile articles.....</b>	XI	1.983	103.3	105.2	-1.9	1.3	-0.4	0.5	1.8
Cotton, including yarns and woven fabrics thereof.....	52	0.564	96.1	101.9	-0.8	4.6	-0.6	1.3	6.0
<b>Stone, plaster, cement, asbestos, ceramics, glass etc. (Dec.2008=100).....</b>	XIII	0.829	114.4	114.6	1.0	-1.3	0.0	0.0	0.2
Glass and glassware.....	70	0.434	97.5	97.6	-1.9	-2.6	0.0	0.0	0.1
<b>Pearls, stones, precious metals, imitation jewelry, and coins.....</b>	XIV	3.925	176.8	181.7	3.9	1.6	-0.1	1.7	2.8

See footnotes at end of table.

**Table 6. U.S. export price indexes and percent changes for selected categories of goods: October 2008 to October 2009 — Continued**  
 [2000=100, unless otherwise noted]

Description	Harmonized system	Relative importance Sept. 2009 <sup>1</sup>	Index		Percent change				
			Sept. 2009	Oct. 2009	Annual	Monthly			
					Oct. 2008 to Oct. 2009	June 2009 to July 2009	July 2009 to Aug. 2009	Aug. 2009 to Sept. 2009	Sept. 2009 to Oct. 2009
<b>Base metals and articles of base metals.....</b>	XV	5.309	152.2	152.2	-8.1	0.9	3.5	1.5	0.0
Iron and steel.....	72	1.384	174.5	175.0	-14.8	3.8	8.5	3.3	0.3
Articles of iron or steel.....	73	1.449	157.8	157.1	-1.6	-2.2	0.1	-1.4	-0.4
Copper and articles thereof.....	74	0.532	195.9	196.8	-13.0	0.9	7.6	4.9	0.5
Aluminum and articles thereof.....	76	0.775	112.9	112.5	-10.8	3.5	4.1	4.2	-0.4
Tools, implements, cutlery, spoons and forks, of base metal; parts thereof.....	82	0.405	123.1	123.1	1.2	1.0	0.0	0.0	0.0
Miscellaneous articles of base metal.....	83	0.338	121.7	122.0	-6.5	-0.1	-0.2	0.0	0.2
<b>Machinery, electrical equipment, TV image and sound recorders, parts, etc.....</b>	XVI	31.339	95.7	95.9	1.2	0.1	0.1	0.2	0.2
Machinery and mechanical appliances; parts thereof.....	84	18.087	105.8	106.1	1.6	0.3	0.1	0.3	0.3
Electrical machinery and equipment and parts and accessories thereof.....	85	13.252	84.7	84.8	0.5	-0.1	0.0	0.1	0.1
<b>Vehicles, aircraft, vessels and associated transport equipment.....</b>	XVII	15.798	120.3	120.5	2.4	0.0	0.0	-0.2	0.2
Motor vehicles and their parts.....	87	9.059	107.5	107.8	0.2	-0.1	0.0	-0.1	0.3
<b>Optical, photo, measuring, medical &amp; musical instruments; &amp; timepieces.....</b>	XVIII	6.309	108.6	108.5	1.6	0.1	0.5	0.2	-0.1
<b>Miscellaneous manufactured articles.....</b>	XX	1.583	108.2	108.4	-0.2	0.5	0.2	0.6	0.2
Furniture; stuffed furnishings; lamps and lighting fittings nesoi;.....	94	0.779	118.8	119.2	1.3	0.5	0.5	1.3	0.3
Toys, games and sports equipment; parts and accessories thereof.....	95	0.680	93.3	93.3	-1.4	0.1	-0.1	0.0	0.0

1 Relative importance figures are based on 2007 trade values.

NOTES: Data may be revised in each of the three months after original publication.

Dash = Not available

**Table 7. U.S. import price indexes and percent changes by locality of origin: October 2008 to October 2009**  
 [2000=100, unless otherwise noted]

Description	Percent of U.S. imports <sup>1</sup>	Index		Percent change				
		Sept. 2009	Oct. 2009	Annual	Monthly			
				Oct. 2008 to Oct. 2009	June 2009 to July 2009	July 2009 to Aug. 2009	Aug. 2009 to Sept. 2009	Sept. 2009 to Oct. 2009
<b>Industrialized Countries<sup>2</sup></b> .....	42.434	120.3	121.4	-6.5	-0.2	0.7	0.3	0.9
Nonmanufactured articles.....	4.390	167.6	178.4	-20.7	-1.3	0.8	-1.3	6.4
Manufactured articles.....	37.621	116.1	116.6	-4.7	-0.1	0.7	0.4	0.4
<b>Other Countries<sup>3</sup></b> .....	57.566	120.6	121.5	-5.3	-0.8	2.2	0.2	0.7
Nonmanufactured articles.....	12.442	232.6	236.3	-10.6	-3.4	6.8	0.0	1.6
Manufactured articles.....	44.910	104.8	105.2	-3.3	-0.1	1.0	0.4	0.4
<b>Canada</b> .....	15.963	130.9	132.5	-11.3	-0.6	1.2	0.9	1.2
Nonmanufactured articles.....	3.979	160.2	171.3	-23.3	-1.3	0.8	-1.4	6.9
Manufactured articles.....	11.678	125.9	125.5	-7.7	-0.4	1.2	1.5	-0.3
<b>European Union<sup>4</sup></b> .....	17.447	125.6	126.3	-2.5	0.2	0.2	0.6	0.6
Nonmanufactured articles.....	0.222	235.8	239.1	-4.3	-0.4	4.9	-1.8	1.4
Manufactured articles.....	17.133	123.2	123.9	-2.4	0.2	0.2	0.6	0.6
<b>France (Dec. 2003=100)</b> .....	1.954	122.3	123.0	1.7	0.8	0.3	0.2	0.6
<b>Germany (Dec. 2003=100)</b> .....	4.735	110.1	110.9	0.1	0.6	0.5	0.4	0.7
<b>United Kingdom (Dec. 2003=100)</b> .....	2.660	121.8	122.5	-4.7	0.1	0.6	0.2	0.6
<b>Latin America<sup>5</sup></b> .....	17.808	150.0	152.1	-6.3	-1.5	2.7	1.1	1.4
Nonmanufactured articles.....	5.160	260.0	264.9	-2.5	-4.4	6.6	0.3	1.9
Manufactured articles.....	12.547	127.7	129.1	-7.5	-0.2	1.0	1.3	1.1
<b>Mexico (Dec. 2003=100)</b> .....	10.785	133.9	134.8	-3.3	-1.7	1.7	0.6	0.7
Nonmanufactured articles (Dec. 2008=100).....	1.947	136.3	139.5	-	-6.5	7.1	0.4	2.3
Manufactured articles (Dec. 2008=100)....	8.788	96.4	96.5	-	-0.3	0.1	0.7	0.1
<b>Pacific Rim (Dec. 2003=100)<sup>6</sup></b> .....	33.590	99.9	100.0	-2.3	-0.2	0.4	0.1	0.1
<b>China (Dec. 2003=100)</b> .....	16.852	100.4	100.5	-3.0	-0.1	0.2	-0.1	0.1
<b>Japan</b> .....	7.488	97.2	97.4	2.1	0.1	0.1	0.1	0.2
<b>Asian NICs<sup>7</sup></b> .....	5.647	86.1	86.1	-6.9	-0.2	0.5	0.2	0.0
<b>ASEAN (Dec. 2003=100)<sup>8</sup></b> .....	5.729	97.2	96.6	-3.6	-0.3	0.4	0.0	-0.6
<b>Asia Near East (Dec. 2003=100)<sup>9</sup></b> .....	3.992	192.7	194.7	-10.7	-2.6	5.6	0.0	1.0

1 Percentage of trade figures are based on 2007 trade values.

2 Includes Western Europe, Canada, Japan, Australia, New Zealand and South Africa.

3 Includes Eastern Europe, Latin America, OPEC countries, and other countries in Asia, Africa and the Western Hemisphere.

4 Includes European Union countries.

5 Includes Mexico, Central America, South America and the Caribbean.

6 Includes China, Japan, Australia, Brunei, Indonesia, Macao, Malaysia, New Zealand, Papua New Guinea, Philippines and Asian Newly Industrialized Countries.

7 Asian Newly Industrialized Countries. Includes Hong Kong, Singapore, South Korea and Taiwan.

8 Association of Southeast Asian Nations. Includes Brunei, Cambodia, Indonesia, Laos, Malaysia, Myanmar, Philippines, Singapore, Thailand and Vietnam.

9 Includes Bahrain, Iran, Iraq, Israel, Jordan, Kuwait, Lebanon, Oman, Qatar, Saudi Arabia, Syria, United Arab Emirates and Yemen.

NOTES: Data may be revised in each of the three months after original publication.

Regions are not mutually exclusive.

Dash = Not available

**Table 8. U.S. international price indexes and percent changes for selected transportation services: October 2008 to October 2009**

[2000=100, unless otherwise noted]

Description	Relative importance Sept. 2009 <sup>1</sup>	Index		Percent change				
		Sept. 2009	Oct. 2009	Annual	Monthly			
				Oct. 2008 to Oct. 2009	June 2009 to July 2009	July 2009 to Aug. 2009	Aug. 2009 to Sept. 2009	Sept. 2009 to Oct. 2009
<b>Air Freight</b>								
<b>Import Air Freight</b> .....	100.000	134.4	136.4	-10.2	0.5	0.1	0.7	1.5
Europe (Dec. 2003=100).....	23.348	133.1	136.0	-13.9	3.3	1.1	1.1	2.2
Asia.....	66.936	115.8	117.5	-7.4	-0.8	-0.3	0.7	1.5
<b>Export Air Freight</b> .....	100.000	121.6	121.4	-14.3	1.7	0.5	1.3	-0.2
Europe (Dec. 2006=100).....	36.875	111.0	111.0	-17.5	2.5	0.0	2.5	0.0
<b>Inbound Air Freight</b> .....	100.000	126.4	128.0	-13.3	0.2	0.5	0.4	1.3
Europe (Dec. 2003=100).....	25.278	124.7	126.4	-18.0	2.7	0.6	1.1	1.4
Asia.....	62.770	109.2	110.7	-9.6	-1.1	0.6	0.4	1.4
<b>Outbound Air Freight</b> .....	100.000	112.0	111.7	-21.5	0.3	-1.2	0.9	-0.3
Europe (Dec. 2003=100).....	40.092	129.4	129.4	-19.9	0.0	0.3	1.1	0.0
Asia.....	41.422	102.8	102.8	-19.5	-0.4	-0.1	0.6	0.0
<b>Air Passenger Fares</b>								
<b>Import Air Passenger Fares</b> .....	100.000	137.9	146.7	-11.6	-3.1	-2.2	-1.1	6.4
Europe.....	44.588	147.0	159.6	-9.4	-6.0	-5.3	2.8	8.6
Asia.....	28.099	124.4	129.5	-5.0	-0.4	-4.0	-4.3	4.1
Latin America/Caribbean.....	11.609	117.6	120.3	-7.2	7.8	4.5	-8.3	2.3
<b>Export Air Passenger Fares</b> .....	100.000	141.3	148.2	-8.6	3.0	9.1	-9.1	4.9
Europe.....	31.472	166.9	172.2	-16.0	6.7	-0.3	-10.1	3.2
Asia.....	34.877	122.2	122.7	-6.5	2.9	22.7	-11.4	0.4
Latin America/Caribbean.....	20.729	144.2	151.5	-8.7	4.1	3.9	-7.3	5.1

<sup>1</sup> Relative importance figures are based on 2007 trade values.

NOTES: Data may be revised in each of the three months after original publication.

Dash = Not available

## TECHNICAL NOTE

**Import and Export Merchandise and Services Price Indexes** -- All indexes use a modified Laspeyres formula and are not seasonally adjusted. Price indexes are reweighted annually, with a two-year lag in the weights. Published series use a base year of 2000=100 where possible. More detailed index series and additional information may be obtained at <http://www.bls.gov/mxp>, or by calling (202) 691-7101.

**Merchandise Goods Classification Systems** -- The merchandise price indexes are published using three classification systems. Items are classified by end use according to the Bureau of Economic Analysis Classification System, by industry according to the North American Industry Classification System (NAICS), and by product category according to the Harmonized System (HS). While classification by end use and product category are self-explanatory, some notes are in order for classifying items by industry. In the NAICS imports and exports tables, items are classified by output industry, not input industry. As an example, NAICS import index 326 (plastics and rubber products manufacturing) include outputs such as manufactured plastic rather than inputs such as petroleum. The NAICS classification structure also matches the classification system used by the PPI (Producer Price Index) to produce the NAICS primary products indexes.

**Import Price Indexes** -- Products have been classified by the Harmonized Tariff Schedule of the United States Annotated (TSUSA). Import prices are based on U.S. dollar prices paid by the U.S. importer. The prices are generally either "free on board" (f.o.b.) foreign port or "cost, insurance, and freight" (c.i.f.) U.S. port transaction prices, depending on the practices of the individual industry. The index for crude petroleum is calculated from data collected by the U.S. Department of Energy.

**Export Price Indexes** -- Products have been classified by the Harmonized Schedule B classification system of the U.S. Bureau of the Census. The prices used are generally either "free alongside ship" (f.a.s.) factory or "free on board" (f.o.b.) transaction prices, depending on the practices of the individual industry. Prices used in the grain index, excluding rice, are obtained from the U.S. Department of Agriculture.

**Services Price Indexes** -- Starting in September 2008 the Import Air Passenger Fares Indexes represent changes in the average revenue per passenger received by foreign carriers from U.S. residents and are calculated from data obtained from an airline consulting service. These data include tickets sold by travel agencies and travel websites. Tickets sold directly by the airlines are excluded, as are frequent flyer tickets generally. Starting in January 2008 the Export Air Passenger Fares Indexes represent changes in the average revenue per passenger received by U.S. carriers from foreign residents and are calculated from data collected directly from airlines. These data include frequent flyer tickets and those sold by consolidators. Taxes and fees are included in the Import Air Passenger Fares Index and excluded from the Export Air Passenger Fares Index. The Air Freight Indexes are calculated from data collected directly from airlines. These data exclude mail and passenger baggage. The scope of the service being priced is the movement of freight from airport to airport only, and does not include any ground transportation or port service. The Air Freight Indexes are presented using two definitions: Balance of Payments (which represent transactions between U.S. and foreign residents) and International (which represent transactions inbound to and outbound from the U.S.). Fact sheets specifying detailed information for each services industry are available at <http://www.bls.gov/mxp> under "MXP Publications."

**Import Indexes by Locality of Origin** -- Prices used in these indexes are a subset of the data collected for the Import Price Indexes. Beginning with January 2002, the indexes are defined by locality of origin using a nomenclature based upon the North American Industry Classification System (NAICS). Nonmanufactured goods are defined as NAICS 11 and 21 and manufactured goods are defined as NAICS 31-33.

**Revision Policy** -- To reflect the availability of late reports and corrections by respondents, monthly data may be revised in each of the three months after original publication. After three months, no further data revisions take place. So, for example, data released in the January release will be subject to revision in the releases for February, March, and April.

**Uses of the Data** -- The primary use of the indexes is to deflate trade statistics, notably the foreign trade sector of the National Income and Product Accounts constructed by the Department of Commerce. Other published indexes are useful for general market analysis. For trade in international services, Balance of Payments indexes are used for deflating National Income and Product Accounts, while International indexes are more appropriate for market analysis. Merchandise and services indexes also can be used to study U.S. competitiveness and to compute price elasticities, and the merchandise import indexes by country or region of origin are useful in terms of trade analysis.

**E-Mail Subscription** -- The U.S. Import and Export Price Indexes news release is available through an e-mail subscription service at (<http://www.bls.gov/bls/list.htm>).

**Additional Information** -- More detailed data are available on the Import/Export Price Indexes home page at (<http://www.bls.gov/mxp>). Flat Files and the FTP server are available for users requiring access to either a large volume of time series data or other related documentation. The FTP site can be accessed at <ftp://ftp.bls.gov>. For technical assistance in using the BLS Internet site, send e-mail to ([labstat.helpdesk@bls.gov](mailto:labstat.helpdesk@bls.gov)). For Import/Export Price Index data requests, send e-mail to ([mxpinfo@bls.gov](mailto:mxpinfo@bls.gov)).

Information from this release will be made available to sensory impaired individuals upon request. Voice phone: 202-691-5200; Federal Relay Service: 1-800-877-8339.