

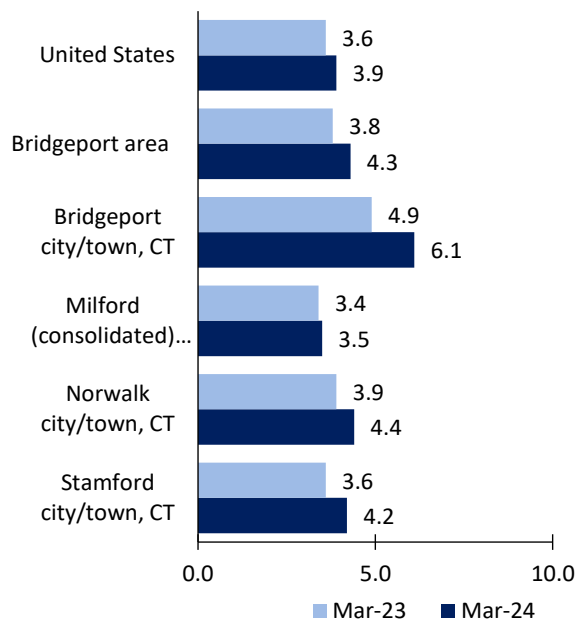
Bridgeport Area Economic Summary

Updated May 07, 2024

This summary presents a sampling of economic information for the area; supplemental data are provided for regions and the nation. Subjects include **unemployment, employment, wages, prices, spending, and benefits**. All data are not seasonally adjusted and some may be subject to revision. Area definitions may differ by subject. For more area summaries and geographic definitions, see www.bls.gov/regions/economic-summaries.htm.

Unemployment rates for the nation and selected areas

Unemployment rates

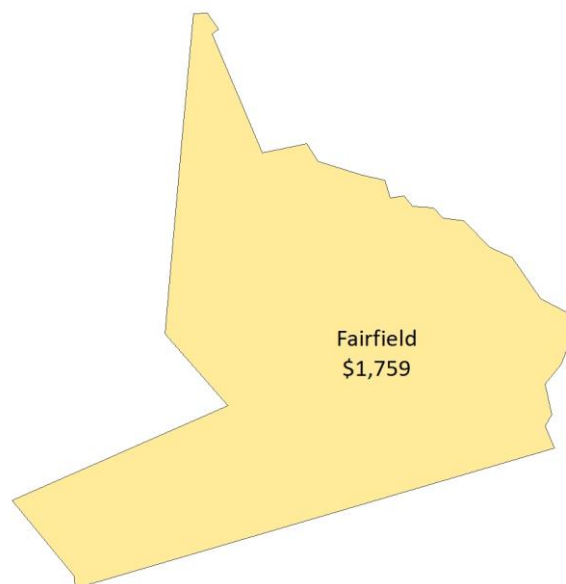


Source: U.S. BLS, Local Area Unemployment Statistics.

Average weekly wages for all industries by county

Bridgeport area, third quarter 2023

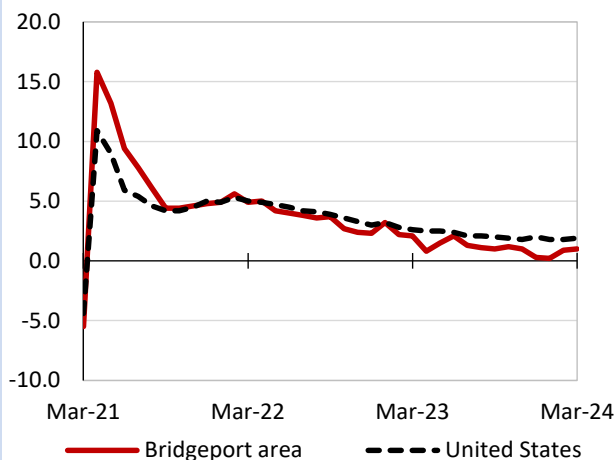
(U.S. = \$1,334; Area = \$1,759)



Source: U.S. BLS, Quarterly Census of Employment and Wages.

Over-the-year changes in employment on nonfarm payrolls and employment by major industry sector

12-month percent changes in employment



Source: U.S. BLS, Current Employment Statistics.

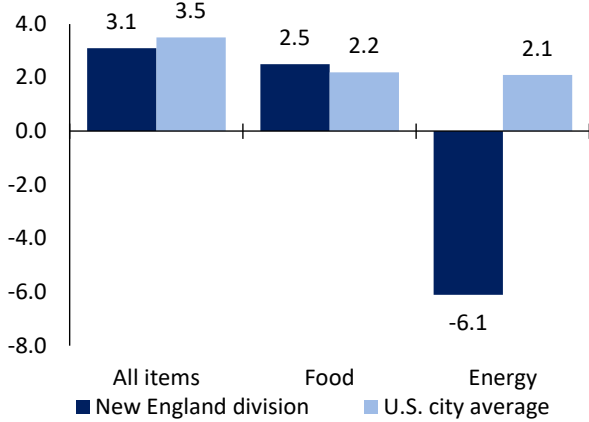
| Bridgeport area employment (number in thousands) | Mar. 2024 | Change from Mar. 2023 to Mar. 2024 | |
|---|-----------|------------------------------------|---------|
| | | Number | Percent |
| Total nonfarm | 404.6 | 4.2 | 1.0 |
| Mining, logging, and construction | 12.8 | 0.0 | 0.0 |
| Manufacturing | 29.2 | -0.1 | -0.3 |
| Trade, transportation, and utilities | 64.2 | -0.9 | -1.4 |
| Information | 12.5 | -0.6 | -4.6 |
| Financial activities | 36.1 | 0.6 | 1.7 |
| Professional and business services | 64.3 | 0.0 | 0.0 |
| Education and health services | 82.6 | 3.1 | 3.9 |
| Leisure and hospitality | 41.8 | 1.2 | 3.0 |
| Other services | 17.8 | 0.6 | 3.5 |
| Government | 43.3 | 0.3 | 0.7 |

Source: U.S. BLS, Current Employment Statistics.



Over-the-year change in the prices paid by urban consumers for selected categories

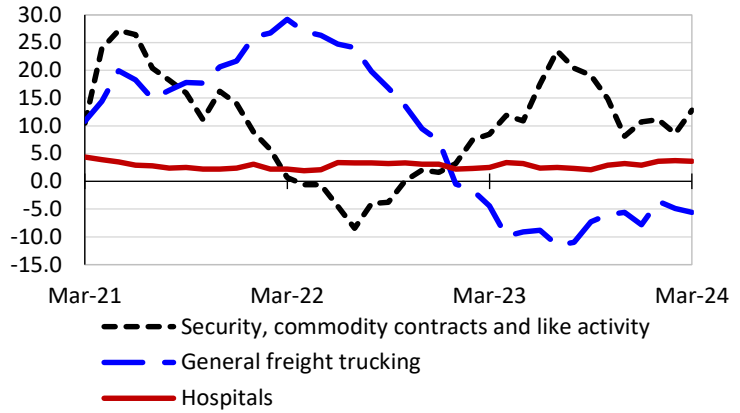
12-month percent change in CPI-U, March 2024



Source: U.S. BLS, Consumer Price Index.

Over-the-year changes in the selling prices received by producers for selected industries nationwide

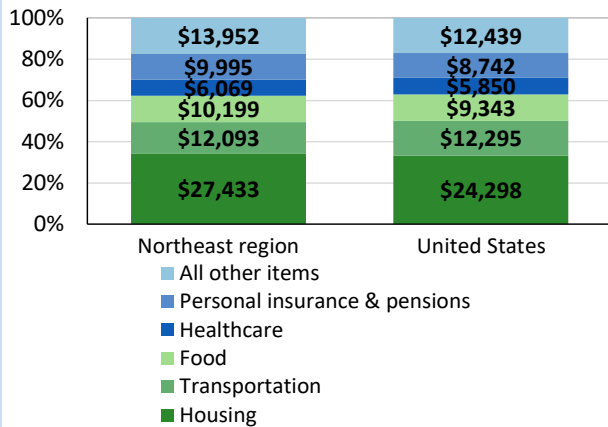
12-month percent changes in PPI



Source: U.S. BLS, Producer Price Index.

Average annual spending and percent distribution for selected categories

Average annual expenditures, United States and Northeast region, 2022



Source: U.S. BLS, Consumer Expenditure Survey.

Average hourly wages for selected occupations

| Occupation | Bridgeport area | United States |
|--------------------------------------|-----------------|---------------|
| All occupations | \$39.51 | \$31.48 |
| Financial managers | 96.69 | 84.05 |
| General and operations managers | 86.93 | 62.18 |
| Customer service representatives | 25.11 | 20.92 |
| Receptionists and information clerks | 19.91 | 17.59 |
| Security guards | 19.19 | 19.44 |
| Food preparation workers | 18.21 | 15.85 |

Source: U.S. BLS, Occupational Employment and Wage Statistics, May 2023.

Employer costs per hour worked for wages and selected employee benefits by geographic division

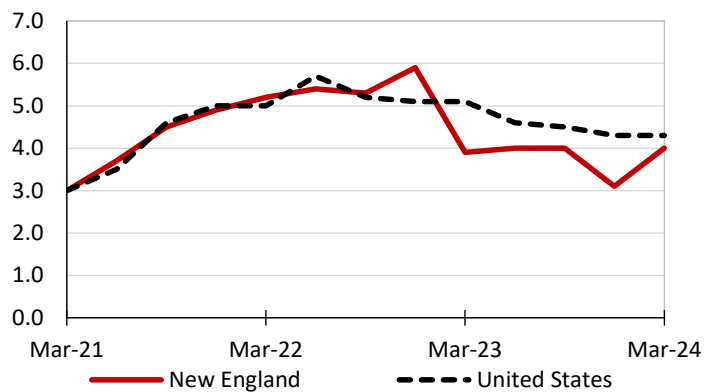
| Private industry, December 2023 | New England (1) | United States |
|---------------------------------|-----------------|---------------|
| Total compensation | \$51.73 | \$43.11 |
| Wages and salaries | 35.15 | 30.33 |
| Total benefits | 16.58 | 12.77 |
| Paid leave | 4.24 | 3.26 |
| Vacation | 2.18 | 1.67 |
| Supplemental pay | 2.71 | 1.71 |
| Insurance | 4.04 | 3.14 |
| Retirement and savings | 1.96 | 1.50 |
| Legally required benefits | 3.64 | 3.17 |

(1) The states that compose the New England census division are: CT, ME, MA, NH, RI, and VT.

Source: U.S. BLS, Employer Costs for Employee Compensation.

Over-the-year changes in wages and salaries

12-month percent changes in ECI



Source: U.S. BLS, Employment Cost Index.

