

Re-engineering the SIPP: Creating the SIPP-EHC

Jason Fields – US Census Bureau

Session 5: Designs that use “event history” methodology to improve recall and reduce measurement error in recall surveys.

June 1-2, 2011

Committee on National Statistics

Household Survey Producers Workshop

Conference Center, 20 F Street, NW, Washington DC

The Save the SIPP Campaign

New York Times Editorials

Discovering What Happens Next

Save our SIPP

The Continuing Saga of SIPP



NY Representative, Carolyn Maloney stated:

“I want to thank all of the policy groups and economists who worked so hard to help reverse the Administration’s original SIPP decision. Because of their dedication and hard work, the Administration came to understand how important SIPP is to creating and implementing good public policy.”

SIPP Re-engineering

Implement Improvements to SIPP

- reduce costs
- reduce R burden
- improve processing system
- modernize instrument
- expand/enhance use of admin records

Key Design Change:

- annual interview, 12-month reference pd.,
Event History Calendar (EHC) methods

EHC Interviewing

Human Memory

- structured/organized
- links and associations

EHC Exploits Memory Structure

- links between the occurrence and timing of events

EHC Encourages Active Assistance to Rs

- flexible approach to help elicit an autobiographical “story”
- Accuracy in placement of events by respondents
- Improvements in ability for respondents to recall details and timing
- Facilitate the interviewer’s ability to recognize inconsistencies and probe

SIPP-EHC: A ‘hybrid’ Event History Calendar.

Evaluations of EHC Methods

Many EHC vs. “Q-List” Comparisons

- various methods
- in general: positive data quality results

BUT, Important Research Gaps

- data quality for need-based programs?
- comparison to 4-month reference period?

Evaluations of EHC Methods

- Event history calendar instruments evaluated on numerous occasions
- Reliability – High levels of agreement with previously collected questionnaire based data.
- Domains
 - Marriage, births, residential moves, school enrollment, labor force (all showed good agreement)
 - Concerns - AFDC/Food Stamps (SNAP)
- Mode - Phone and in-person almost same degree of consistency.
- Validation – Limited record check studies – designed into the first SIPP field test evaluation.
- Reduction of seam bias

Measurement Errors

- Missed data due to:
 - Recall
 - Ineffective conversational interviewing
- Inaccurately reported data due to:
 - Timing accuracy
 - Detail accuracy
 - Proxies
 - Memory decay
- Seam Errors
 - Dependent data
 - Revising based on longitudinal edits or administrative data post-hoc

SIPP calendar aided interview test

1989 to 1991

NOTE: The SIPP survey studies the changes in persons' lives and their financial situation over time. For most people, important changes only occur now and then. Whenever a change does occur, however, it is extremely important that we know exactly in which month it happened. This calendar records the answers given in the past by you or another household member for some of the most important events in the survey, to help you think about the answers for the current interview period.

1. R.O. Code _____ 2. Control number _____

Person number (or name)	1988			1989						1990							
	OCT	NOV	DEC	JAN	FEB	MAR	APR	MAY	JUN	JUL	AUG	SEP	OCT	NOV	DEC	JAN	FEB
Respondent person number																	
Address change?																	
Number of persons in household																	
Marital status																	
Employer 1: Wages/Salary																	
Employer 2: Wages/Salary																	
Self-employed (income)																	
Health insurance coverage: Private																	
Medicaid																	
Medicare																	
Programs: Workers' compensation																	
Unemployment payments																	
Child support																	
Food stamps																	
SSI																	
AFDC/ADC																	
General assistance																	
WIC																	
Pensions/Retirement: Social Security Retirement																	
Private pension																	
State/Local govt. pension																	

FORM **SIPP-9030** U.S. DEPARTMENT OF COMMERCE
#8 12 88) BUREAU OF THE CENSUS

EVENT CALENDAR

INCOME SOURCE LIST

- Social Security
- U.S. Government Railroad Retirement pay
- Federal Supplemental Security Income (SSI)
- State Supplemental Security Income (State administered SSI only)
- State unemployment compensation
- Supplemental Unemployment Benefits
- Other unemployment compensation (Trade Adjustment Act benefits, strike pay, other)
- Veterans compensation or pensions
- Black lung payments
- Workers' compensation
- State temporary sickness or disability benefits
- Employer or union temporary sickness policy
- Payments from a sickness, accident, or disability insurance policy purchased on your own
- Aid to Families with Dependent Children (AFDC, ADC)
- General assistance or General relief
- Indian, Cuban, or Refugee Assistance
- Foster child care payments
- Other welfare
- WIC (Women, Infants, and Children Nutrition Program)
- Food stamps
- Child support payments
- Alimony payments
- Pension from company or union
- Federal Civil Service or other Federal civilian employee pensions
- U.S. Military retirement pay
- National Guard or Reserve Forces retirement
- State government pensions
- Local government pensions
- Income from paid-up-life insurance policies or annuities
- Estates and trusts
- Other payments for retirement, disability, or survivor
- G.I. Bill
- Other VA educational assistance
- Income assistance from a charitable group
- Money from relatives or friends
- Lump sum payments
- Income from roomers or boarders
- National Guard or Reserve pay
- Incidental or casual earnings
- Other cash income not included elsewhere

SIPP Re-engineering Field Test Plans

- Proof of concept test
 - 2008 paper and pencil reinterview test
- EHC CAPI test
 - 2010 Integrated Blaise and C# instrument prototype
- CAPI Revised test
 - 2011 Test improvements to the wave 1 instrument, training, and expand sample to all regional offices.
- 2012 Test wave 2 concepts and instrument, examine movers and attrition issues, and refine training procedures.

Re-engineered SIPP - Contents

2011 Re-engineered SIPP-EHC high-level instrument contents and flow

The roster, demographics are collected by the household respondent for the whole household.

The Type-2 items are answered by the household respondent for the people they live with all year, additionally the income screener is answered for a subset of those people meeting a relationship restriction, else these two sections are person level.

Person level interviewing begins with the Event History Calendar and continues to the wrap-up section. Each available household member 15 and over are interviewed in person and data are collected for each household member (by proxy for those under age 15). Respondents are subject to the universe restrictions of each section and item.

The last interviewed knowledgeable person age 15 and over responds to the final section of the interview.

Address Verification

Sample address characteristics and coverage

Roster creation and demographics

Roster creation for Type 2 (people who the sample members lived with during the year, but who don't live here now)

Income Screener for Programs

E
H
C

C
A
L
E
N
D
A
R

Landmark Events

Residence History

Marriage and Cohabitation

School Enrollment

Labor Force (Jobs, Businesses, Contingent Work, Unemployment, Not In Labor Force, Commuting, Work Schedule)

Programs (SSI,FS,TANF,GA,WIC)

Health Insurance (Private, Medicare, Medicaid, Military, Other, and Uninsured)

Fertility - Child Care
Dependent Care

Social Insurance -
Annual Programs - Other GI -
Lump Sum - Child Support

Assets / Balances

Health (Medical Expenditures -
Utilization, Disability)

Housing - Material Wellbeing, Food
Security, Basic Needs,
Child Well-Being

Wrap-up and Missing
Follow-up visit/call Info

Interview Closeout -
Respondent Debriefing Items -
Interviewer Debriefing Items

Screenshot – 2010 SIPP-EHC Instrument

Event History Calendar ver 2.27

Browse Topics F3-Check Progress F10-Exit EHC

Topic	Category	Jan	Feb	Mar	Apr	May	Jun	Jul	Aug	Sep	Oct	Nov	Dec
Landmarks	Landmark events												
Residences	Residence history												
Marital History	Marital history												
Mom	Mom												
Dad	Dad												
Enrollment	Education												
Job	Job/business												
Job2	Job/business												
Job3	Job/business												
Job4	Job/business												
Job5	Job/business												
Job6	Job/business												
NoJob	Job/business												
SSI	SSI program												
FS	Food Stamp												
TANF	TANF Program												
GenAssis	General Assistance												
WIC	WIC Program												
Private1	Private Insurance												
Private2	Private Insurance												
Medicare	Medicare Insurance												
Medicaid	Medicaid Insurance												
Military	Military Insurance												
OtherCovers...	Other sources?												
NoCoverage	Anytime no coverage?												

- Use arrow keys to highlight a topic.

- Press 'Enter' to select a topic and move to topic introduction message and then to the "Screener" question.

- List of Topics
- Landmarks
 - Residences
 - Marital History
 - Mom
 - Dad
 - Enrollment
 - Job
 - Job2
 - Job3
 - Job4
 - Job5
 - Job6
 - NoJob
 - SSI
 - FS
 - TANF
 - GenAssis
 - WIC

Questions

Landmarks

Proceed?

1) Yes 2) No 3) Refused

1

Set Period

From: To: OK

1-Not sure 1-Not sure

F4-Edit Period

Ctrl-X-Delete Period

Period: 1 , 2 , 0-New

Event History Calendar ver 2.27

Browse Topics F3-Check Progress F10-Exit EHC

Topic	Category	Jan	Feb	Mar	Apr	May	Jun	Jul	Aug	Sep	Oct	Nov	Dec
Landmarks	Landmark events	■		■	■		■		■		■		
Residences	Residence history	■	■	■	■	■	■	■	■	■	■	■	■
Marital History	Marital history	■	■	■	■	■	■	■	■	■	■	■	■
Mom	Mom												
Dad	Dad												
Enrollment	Education												
Job	Job/business	■	■	■	■	■	■	■	■	■	■	■	■
Job2	Job/business												
Job3	Job/business												
Job4	Job/business												
Job5	Job/business												
Job6	Job/business												
NoJob	Job/business								■				
SSI	SSI program												
FS	Food Stamp	■											
TANF	TANF Program	■											
GenAssis	General Assistance												
WIC	WIC Program												
Private1	Private Insurance												
Private2	Private Insurance												
Medicare	Medicare Insurance												
Medicaid	Medicaid Insurance												
Military	Military Insurance												
OtherCovera...	Other sources?												
NoCoverage	Anytime no coverage?												

- Use the text box to make a selection.
- Type '1' for "Yes," '2' for "No," or '3' for "Refused."
- If a selection has been made, press 'Enter' to continue.
- Choosing "Yes" will bring you to the

Topic Introduction

Now I am going to ask you questions about Supplemental Security Income, also known as SSI. This program mainly assists aged, blind, and disabled people who have little or no income. I want to know about SSI received by you or SSI received by you on behalf of a child.

Did you receive SSI between January and December of 2009?

OK

- List of Topics
- Landmarks
 - Residences
 - Marital History
 - Mom
 - Dad
 - Enrollment
 - Job
 - Job2
 - Job3
 - Job4
 - Job5
 - Job6
 - NoJob
 - SSI**
 - FS
 - TANF
 - GenAssis
 - WIC

Questions

SSI

SSI receipt?

1) Yes
 2) No
 3) Refused

Period: 0-New

1-Not sure
 1-Not sure

For 2011...

- Extend the reference period to 'Now'
- Clean up the instrument navigation tasks
- Transition spell level questions to Blaise

Screenshot – 2012 SIPP-EHC Instrument

Re-Engineered SIPP 2012 Ver 4.04--05/05/2012

Ctrl+P - Previous Topic Ctrl+N - Next Topic F3-Check Progress F10-Exit EHC

REFERENCE YEAR 2010 INTERVIEW YEAR 2011

Topic	Jan	Feb	Mar	Apr	May	Jun	Jul	Aug	Sep	Oct	Nov	Dec	Jan	Feb	Mar	Apr	May	Jun
Landmarks																		
Residency																		
Marital History																		
Education																		
Job 1																		
Job 2																		
Job 3																		
Job 4																		
Job 5																		
Job 6																		
Job 7																		
More Jobs (if any)																		
No Job																		
SSI																		
Food Stamps																		
TANF																		
Gen. Assist.																		
WIC																		
Private 1																		
Private 2																		
Medicare																		
Medicaid																		
Military																		
Other Coverage																		
No Coverage																		

(Next are some questions about assistance programs for people in need.) Now I'm going to ask about Supplemental Security Income, also known as SSI.

Are you currently receiving SSI (either for yourself or on behalf of a child)?

1) Yes 1) Yes
 2) No 2) No
 3) DK/RF 3) DK/RF

Set Period

From: To:

SSI

(Only collect SSI spells that cover the person being interviewed. SSI collected on behalf of someone else - such as a child - will be collected in that person's interview. SSI provides assistance to blind and disabled children and adults, and, in some instances, people over age 65 who have low income. It is not the same as income from Social Security.)

Combined Conversational and Conventional Probing...

- Focus on spells
- Sub-monthly data for labor force section collected based on delineated weeks (calendar flash card provided to R's)
- Scripted – repeated probes for „more work’
 - Based on 2010 information that navigating multiple job lines conversationally was not clear, and evidence from administrative data that jobs were under-reported.

Defining the Spells

Re-Engineered SIPP 2012 Ver 4.04--03/05/2012

Ctrl+P - Previous Topic Ctrl+N - Next Topic F3-Check Progress F10-Exit EHC

REFERENCE YEAR 2010

INTERVIEW YEAR 2011

Topic	Jan	Feb	Mar	Apr	May	Jun	Jul	Aug	Sep	Oct	Nov	Dec	Jan	Feb	Mar	Apr	May	Jun
Landmarks																		
Residency																		
Marital History																		
Education																		
Job 1																		
Job 2																		
Job 3																		
Job 4																		
Job 5																		
Job 6																		
Job 7																		
More Jobs (if any)																		
No Job																		
SSI																		
Food Stamps																		
TANF																		
Gen. Assist.																		
WIC																		
Private 1																		
Private 2																		
Medicare																		
Medicaid																		
Military																		
Other Coverage																		
No Coverage																		

Now I'd like to ask you about work situation since January 1st of 2010.

Do you currently have a job or business, or do any kind of work for pay?

- 1) Y Jan 10
- 2) N Feb 10
- 3) D Mar 10
- 4) Y Apr 10
- 5) N May 10
- 6) D Jun 10
- 7) Y Jul 10
- 8) N Aug 10
- 9) D Sep 10
- 10) Y Oct 10
- 11) N Nov 10
- 12) D Dec 10
- 13) Y Jan 11
- 14) N Feb 11
- 15) D Mar 11
- 16) Y Apr 11
- 17) N May 11

Set Period

From: To:

Job 1


•If necessary probe with additional question: Did you have a paid job, or do any work at all, no matter how small, that earned some money?

Sub-monthly Time Definition.

Re-Engineered SIPP 2012 Ver 4.04 -- 05/05/2012

Forms Answer Navigate Options Help Show Watch Window

DEWS | SkipF9 | F10 | Opt Out | EhcScreen

 T

During which week did you begin this job?

32. August 1, 2010 - August 7, 2010 36. August 29, 2010 - August 31, 2010

33. August 8, 2010 - August 14, 2010

34. August 15, 2010 - August 21, 2010

35. August 22, 2010 - August 28, 2010

Work arrangement	<input type="text" value="1"/>	Emp./bus. name	<input type="text"/>	Function of government	
Contingent work		Street number	<input type="text"/>	Industry	<input type="text"/>
Start January		Street name	<input type="text"/>	Type of industry	<input type="text"/>
Start year		Suite/office number	<input type="text"/>	Occupation	<input type="text"/>
Start month		City	<input type="text"/>	Usual activities	<input type="text"/>
Start day		State	<input type="text"/>	Member of union	<input type="text"/>
Start week	<input type="text" value="33"/>	Zip code	<input style="width: 50px;" type="text" value=" - "/>	Union contract	
End week		Class of job	<input type="text"/>	Number of locations	<input type="text"/>
Reason job end		Class of government		Employees at all locations	
Reason business end		Class of government		Total employees	<input type="text"/>

00000005 | startweek | 2:32:25 PM | 5-19-2011 | Current Respondent: John Q Doe | 205/5315

Within Spell Changes in Earnings / Hours

Re-Engineered SIPP 2012 Ver 4.04 -- 05/05/2012

Forms Answer Navigate Options Help Show Watch Window

DEWS | SkipF9 | F10 | Opt Out | EhcScreen

You said you are paid \$54,534.00 annually now. Did your pay rate change between August 2010 and now?

1. Yes
 2. No

Size of business	Part time	Week first change
Incorporated status	Part time reason	Hours worked
Business ownership	First earnings change <input type="checkbox"/>	Part time
Family in business	Month first change	Part time reason
Business salary	Week first change	Second earnings change
Type of pay <input type="text" value="1"/>	Type of pay rate	Month second change
Type of pay rate <input type="text" value="1"/>	Pay rate	Week Second change
Most recent pay rate <input type="text" value="\$54,534.00"/>	Net or gross	Type of pay rate
Net or gross <input type="text" value="1"/>	First hours change <input type="checkbox"/>	Pay rate
Hours worked <input type="text" value="54"/>	Month first change	Net or gross

00000005 | CHEARN1 | 2:35:16 PM | 5-19-2011 | Current Respondent: John Q Doe | 206/5315

You said you were paid \$45,345.00 annually before December 2010. Did your pay rate change between August 2010 and December 2010?

- 1. Yes
- 2. No

Size of business	Part time	Week first change
Incorporated status	Part time reason	Hours worked
Business ownership	First earnings change <input type="text" value="1"/>	Part time
Family in business	Month first change <input type="text" value="12"/>	Part time reason
Business salary	Week first change <input type="text" value="52"/>	Second earnings change <input type="text"/>
Type of pay <input type="text" value="1"/>	Type of pay rate <input type="text" value="1"/>	Month second change
Type of pay rate <input type="text" value="1"/>	Pay rate <input type="text" value="\$45,345.00"/>	Week Second change
Most recent pay rate <input type="text" value="\$54,534.00"/>	Net or gross <input type="text" value="1"/>	Type of pay rate
Net or gross <input type="text" value="1"/>	First hours change <input type="text" value="2"/>	Pay rate
Hours worked <input type="text" value="54"/>	Month first change	Net or gross

Probing – Now Scripted For More Work

Re-Engineered SIPP 2012 Ver 4.04 -- 05/05/2012

Forms Answer Navigate Options Help Show Watch Window

DEW5 | SkipF9 | F10 | Opt Out | EhcScreen

Did you work for ABC Construction at any other times since January 1st of 2010?

1. Yes

2. No

[Any more spells](#)

How many

Any Other Work

No Job Screener

No more spells

00000005 | ANYMORESPELLS | 2:41:09 PM | 5-19-2011 | Current Respondent: John Q Doe | 211/5315

Probing – Now Scripted For More Work

Re-Engineered SIPP 2012 Ver 4.04 -- 05/05/2012

Forms Answer Navigate Options Help Show Watch Window

DEW5 | SkipF9 | F10 | Opt Out | EhcScreen

Did you have any other work for pay for another employer or business since January 1st of 2010?

1. Yes

2. No

Any more spells

How many

[Any Other Work](#)

No Job Screener

No more spells

00000005 ANYOTHERWORK 2:41:55 PM 5-19-2011 Current Respondent: John Q Doe 211/5315

- Gaps calculations embedded into questionnaire flow.
- And one more scripted probe about work

I'm showing you were not working for pay during the following time since January 1st of 2010:

♦ The following time periods are calculated GAPS within reported JOB HISTORY :
January 1 2010 to August 7 2010

Have we talked about all the times, since January 1st of 2010, when you worked for pay?

1. Yes

2. No

Any more spells

How many

Any Other Work

[No Job Screener](#)

No more spells

REFERENCE YEAR 2010

INTERVIEW YEAR 2011

Topic	Jan	Feb	Mar	Apr	May	Jun	Jul	Aug	Sep	Oct	Nov	Dec	Jan	Feb	Mar	Apr	May	Jun
Landmarks																		
Residency																		
Marital History																		
Education																		
ABC Construction																		
Job 2																		
Job 3																		
Job 4																		
Job 5																		
Job 6																		
Job 7																		
More Jobs (if any)																		
No Job																		
SSI																		
Food Stamps																		
TANF																		
Gen. Assist.																		
WIC																		
Private 1																		
Private 2																		
Medicare																		
Medicaid																		
Military																		
Other Coverage																		
No Coverage																		

(Next are some questions about assistance programs for people in need.) Now I'm going to ask about Supplemental Security Income, also known as SSI.

Are you currently receiving SSI (either for yourself or on behalf of a child)?

1) Yes
 2) No
 3) DK/RF

1) Yes
 2) No
 3) DK/RF

Set Period
 From: To:

(Only collect SSI spells that cover the person being interviewed. SSI collected on behalf of someone else - such as a child - will be collected in that person's interview. SSI provides assistance to blind and disabled children and adults, and, in some instances, people over age 65 who have low income. It is not the same as income from Social Security.)

SSI

- Completeness checks for „conversational’ component

REFERENCE YEAR 2010

INTERVIEW YEAR 2011

Topic	Jan	Feb	Mar	Apr	May	Jun	Jul	Aug	Sep	Oct	Nov	Dec	Jan	Feb	Mar	Apr	May	Jun
Landmarks																		
Residency																		
Marital History																		
Education																		
ABC Construction																		
Job 2																		
Job 3																		
Job 4																		
Job 5																		
Job 6																		
Job 7																		
More Jobs (if any)																		
No Job																		
SSI																		
Food Stamps																		
TANF																		
Gen. Assist.																		
WIC																		
Private 1																		
Private 2																		
Medicare																		
Medicaid																		
Military																		
Other Coverage																		
No Coverage																		

Errors Found

- The following sections have not been completed:

- Marital Status
- Education
- SSI
- Food Stamps
- TANF
- General Assistance
- WIC
- Private Insurance 1
- Private Insurance 2
- Medicare Insurance
- Medicaid Insurance
- Military Insurance
- Other Insurance Coverage
- No Insurance

Go Back Suppress

(Next are some questions about assistance programs for people in need.) Now I'm going to ask about Supplemental Security Income, also known as SSI.

Are you currently receiving SSI (either for yourself or on behalf of a child)?

<input type="radio"/> 1) Yes	<input type="radio"/> 1) Yes
<input type="radio"/> 2) No	<input type="radio"/> 2) No
<input type="radio"/> 3) DK/RF	<input type="radio"/> 3) DK/RF
<input checked="" type="radio"/>	<input type="radio"/>

Set Period

From: To:

OK

(Only collect SSI spells that cover the person being interviewed. SSI collected on behalf of someone else - such as a child - will be collected in that person's interview. SSI provides assistance to blind and disabled children and adults, and, in some instances, people over age 65 who have low income. It is not the same as income from Social Security.)

SSI

Dependent Data

- Very useful in standard interviewing to reduce seam bias and respondent burden.
- Very burdensome to the instrument and to processing.
- Design, How to effectively build a calendar based interview with dependent data

2011 SIPP-EHC Completed Calendar

Re-Engineered SIPP 2011 Ver 3.29--12/08/2010

Ctrl+P - Previous Topic Ctrl+N - Next Topic F3-Check Progress F10-Exit EHC

Topic	REFERENCE YEAR 2010												INTERVIEW YEAR 2011					
	Jan	Feb	Mar	Apr	May	Jun	Jul	Aug	Sep	Oct	Nov	Dec	Jan	Feb	Mar	Apr	May	Jun
Landmarks																		
Residency																		
Marital History																		
Education																		
ABC Employer																		
Job 2																		
Job 3																		
Job 4																		
Job 5																		
Job 6																		
Job 7																		
More Jobs (if any)																		
No Job																		
SSI																		
Food Stamps																		
TANF																		
Gen. Assist.																		
WIC																		
Private 1																		
Private 2																		
Medicare																		
Medicaid																		
Military																		
Other Coverage																		
No Coverage																		

EHC Dependent Data

Re-Engineered SIPP 2011

Ctrl+P - Previous Topic Ctrl+N - Next Topic

INTERVIEW YEAR 2

Topic	Nov	Dec	Jan	Feb	Mar	Apr
Landmarks						
Residency						
Marital History						
Education						
ABC Employer						
Job 2						
Job 3						
Job 4						
Job 5						
Job 6						
Job 7						
More Jobs (if any)						
No Job						
SSI						
Food Stamps						
TANF						
Gen. Assist.						
WIC						
Private 1						
Private 2						
Medicare						
Medicaid						
Military						
Other Coverage						
No Coverage						

Re-Engineered SIPP 2011 Ver 3.29--12/08/2010

Ctrl+P - Previous Topic Ctrl+N - Next Topic F3-Check Progress F10-Exit EHC

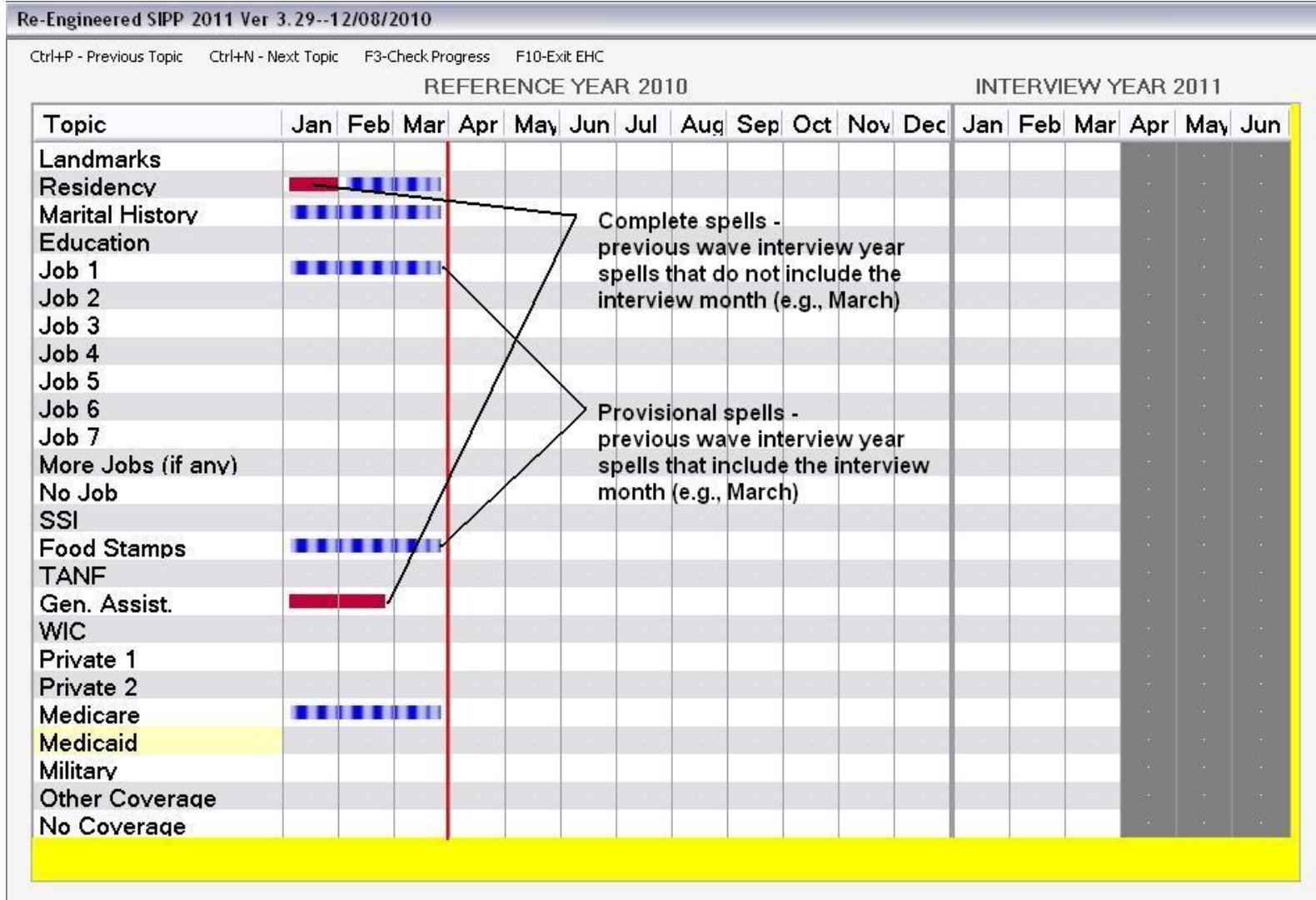
REFERENCE YEAR 2010

Topic	Jan	Feb	Mar	Apr	May	Jun	Jul	Aug	Sep	Oct	Nov	De
Landmarks												
Residency												
Marital History												
Education												
Job 1												
Job 2												
Job 3												
Job 4												
Job 5												
Job 6												
Job 7												
More Jobs (if any)												
No Job												
SSI												
Food Stamps												
TANF												
Gen. Assist.												
WIC												
Private 1												
Private 2												
Medicare												
Medicaid												
Military												
Other Coverage												
No Coverage												

Complete spells - previous wave interview year spells that do not include the interview month (e.g., March)

Provisional spells - previous wave interview year spells that include the interview month (e.g., March)

2012 SIPP-EHC Calendar w/ Dependent Data



- Feedback will both utilize existing question structure and alternative fills to script questions based on the presence or absence of returning data.

REFERENCE YEAR 2010

INTERVIEW YEAR 2011

Topic	Jan	Feb	Mar	Apr	May	Jun	Jul	Aug	Sep	Oct	Nov	Dec	Jan	Feb	Mar	Apr	May	Jun
Landmarks																		
Residency	■	■	■															
Marital History	■	■	■															
Education																		
Job 1	■	■	■															
Job 2																		
Job 3																		
Job 4																		
Job 5																		
Job 6																		
Job 7																		
More Jobs (if any)																		
No Job																		
SSI																		
Food Stamps	■	■	■															
TANF																		
Gen. Assist.	■	■	■															
WIC																		
Private 1																		
Private 2																		
Medicare	■	■	■															
Medicaid																		
Military																		
Other Coverage																		
No Coverage																		

(Next are some questions about assistance programs for people in need.) Now I'm going to ask about Supplemental Security Income, also known as SSI.

Are you currently receiving SSI (either for yourself or on behalf of a child)?

1) Yes 1) Yes
 2) No 2) No
 3) DK/RF 3) DK/RF

Set Period

From: To:

(Only collect SSI spells that cover the person being interviewed. SSI collected on behalf of someone else - such as a child - will be collected in that person's interview. SSI provides assistance to blind and disabled children and adults, and, in some instances, people over age 65 who have low income. It is not the same as income from Social Security.)

SSI

- Evaluation and comparison of 2010 SIPP-EHC data (in progress)

Food Stamp Participation Probability and Monthly Time Trend in Participation

2010 SIPP-EHC and 2008 Panel data matched in MSIPP

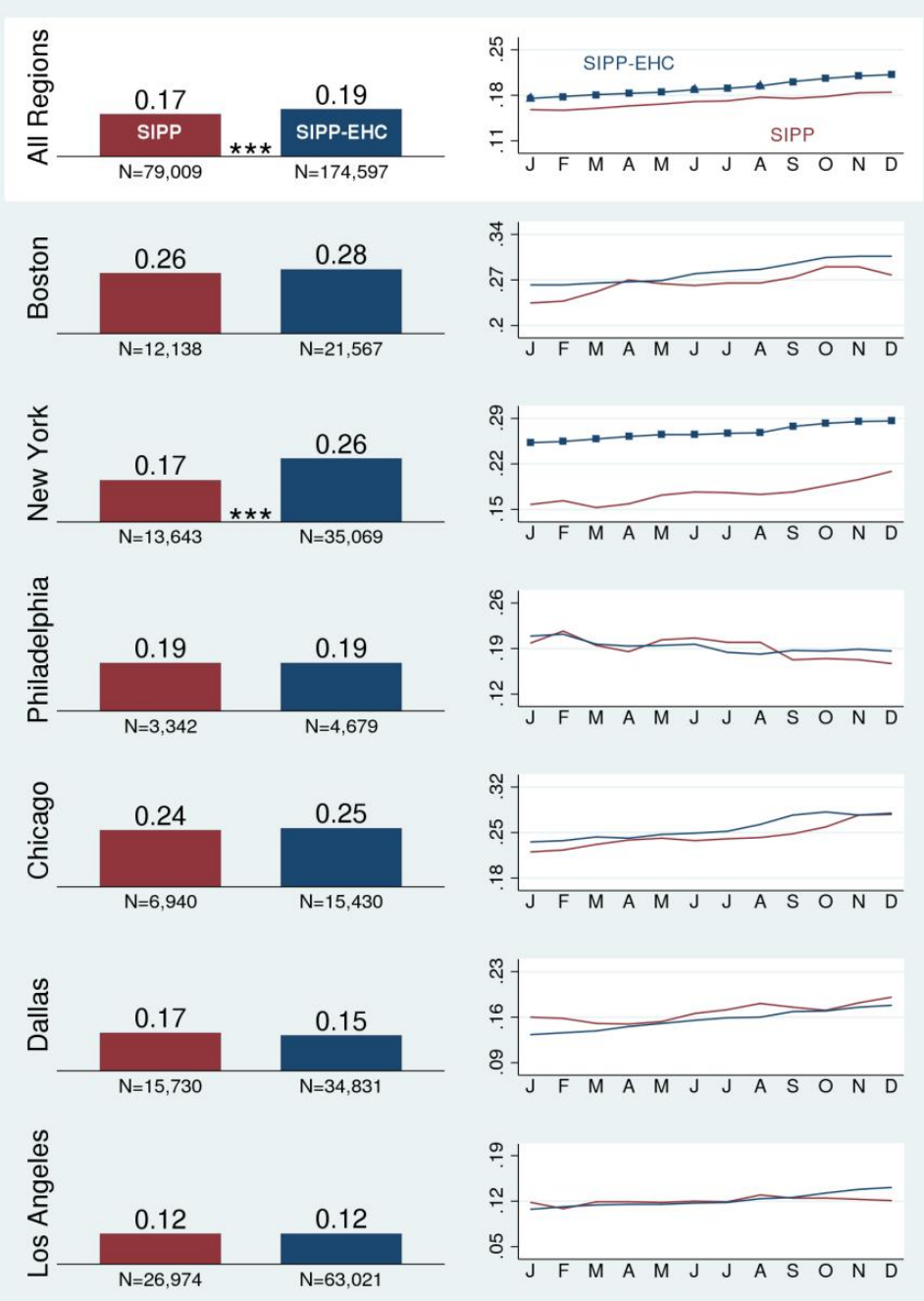


Figure 6. Probability of Employment and Program Participation in a Given Month

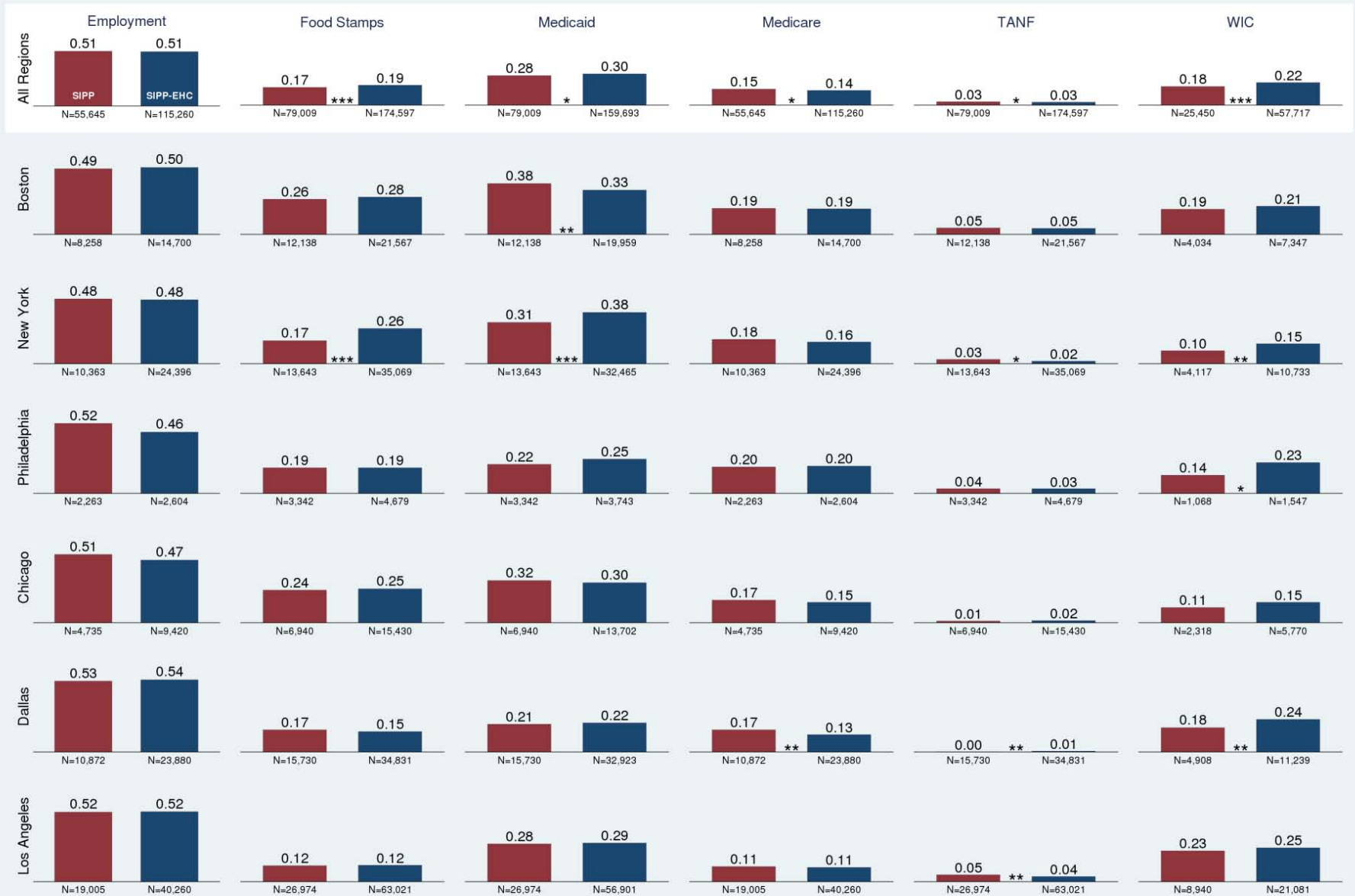
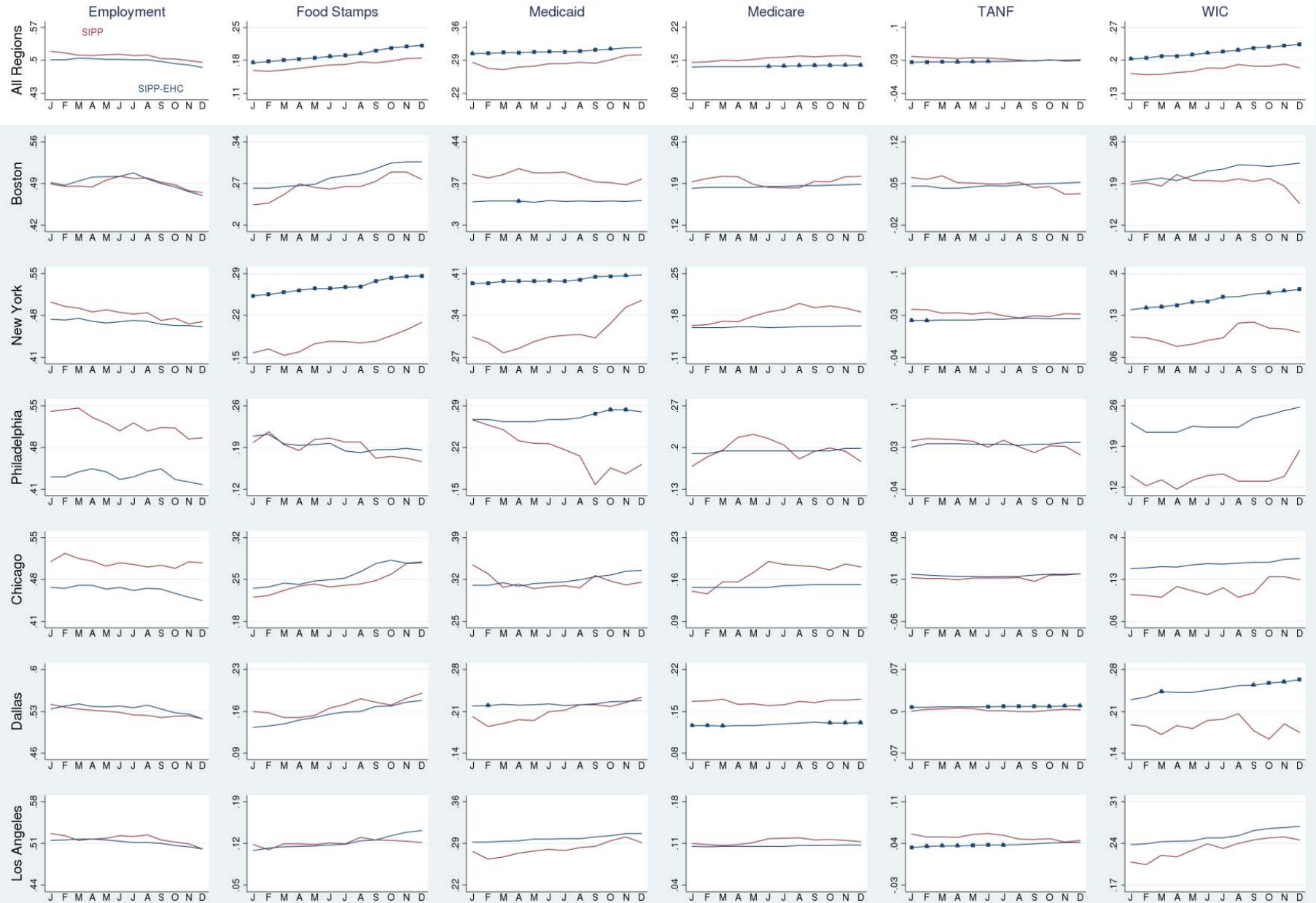


Figure 8: Month-Specific Differences in Reported Participation



Challenges Faced

Developing new technical capacity.

- experimentation
- limitations
- evolution

Crisis planning.

- limited lead time / preparation
- changing goals and required flexibility

New procedures.

- training and acceptance
- development and refinement of procedures

Current Status

- Interviewing for 2011 SIPP-EHC in all 12 regional office areas (20 States) is complete.
- Reviewing and making changes to content and design (Dependent Interviewing for 2012 – Wave 2).
- Reviewing and revising training materials and methods
- Planning for 2013 Research Panel design and implementation
- Planning for 2014 Production Implementation of SIPP-EHC

Assessing Users' Needs

U.S. Census Bureau

Survey of Income and Program Participation

SIPP

[Introduction to SIPP](#)

[SIPP Survey Content](#)

[Technical Information](#)

[Using & Linking Files](#)

[SIPP Publications](#)

[Access SIPP Data](#)

[Access SIPP
Synthetic Data](#)

[SIPP Small Grants
Awards](#)

[2004 Panel
Release Schedule](#)



[User Notes/
ListServe/News](#)

[SIPP
Users' Guide](#)

[SIPP
Tutorial](#)

[Technical
Documentation](#)

[SIPP Help](#)

[re-engineered
SIPP](#)

[Contact
re-engineered
SIPP](#)

(Formerly, DEWS)

URL: <http://www.census.gov/sipp/>

URL: <http://www.census.gov/sipp>