



NEWS RELEASE



Transmission of material in this release is embargoed until 8:30 a.m. (EDT), Friday, July 12, 2013

USDL-13-1313

Technical information: (202) 691-7705 • ppi-info@bls.gov • www.bls.gov/ppi
 Media contact: (202) 691-5902 • PressOffice@bls.gov

PRODUCER PRICE INDEXES – JUNE 2013

The Producer Price Index for finished goods increased 0.8 percent in June, seasonally adjusted, the U.S. Bureau of Labor Statistics reported today. Prices for finished goods rose 0.5 percent in May and fell 0.7 percent in April. At the earlier stages of processing, prices received by manufacturers of intermediate goods advanced 0.5 percent in June, and the crude goods index was unchanged. On an unadjusted basis, prices for finished goods moved up 2.5 percent for the 12 months ended June 2013, the largest 12-month rise since a 2.8-percent increase in March 2012. (See table A.)

Table A. Monthly and 12-month percent changes in selected stage-of-processing price indexes, seasonally adjusted

| Month | Finished goods | | | | | Intermediate goods | Crude goods |
|-------------------------|----------------|-------|--------|-------------------------|--|--------------------|-------------|
| | Total | Foods | Energy | Except foods and energy | Change in finished goods from 12 months ago (unadj.) | | |
| 2012 | | | | | | | |
| June..... | 0.1 | 0.4 | -0.4 | 0.2 | 0.7 | -0.7 | -2.9 |
| July..... | 0.4 | 0.2 | 0.0 | 0.5 | 0.5 | -0.4 | 2.8 |
| Aug..... | 1.0 | 0.7 | 4.1 | 0.0 | 1.9 | 1.0 | 4.7 |
| Sept..... | 1.0 | 0.1 | 4.1 | 0.1 | 2.1 | 1.2 | 1.5 |
| Oct..... | -0.2 | 0.5 | -0.9 | 0.0 | 2.3 | 0.0 | 0.0 |
| Nov..... | -0.5 | 1.1 | -3.1 | 0.1 | 1.5 | -0.8 | 0.3 |
| Dec..... | -0.1 | -0.6 | -0.4 | 0.2 | 1.4 | 0.0 | 1.3 |
| 2013 | | | | | | | |
| Jan..... | 0.2 | 0.7 | -0.6 | 0.2 | 1.5 | 0.2 | 0.0 |
| Feb. ¹ | 0.7 | -0.7 | 3.2 | 0.1 | 1.8 | 1.2 | 0.1 |
| Mar. ¹ | -0.6 | 0.8 | -3.5 | 0.2 | 1.1 | -1.1 | -2.0 |
| Apr..... | -0.7 | -0.8 | -2.5 | 0.1 | 0.6 | -0.6 | -0.4 |
| May..... | 0.5 | 0.6 | 1.3 | 0.1 | 1.7 | -0.1 | 2.2 |
| June..... | 0.8 | 0.2 | 2.9 | 0.2 | 2.5 | 0.5 | 0.0 |

¹ Some of the figures shown above and elsewhere in this release may differ from those previously reported because data for February 2013 have been revised to reflect the availability of late reports and corrections by respondents.

Chart 1. Monthly percent changes in the Producer Price Index for finished goods, seasonally adjusted: June 2012 – June 2013

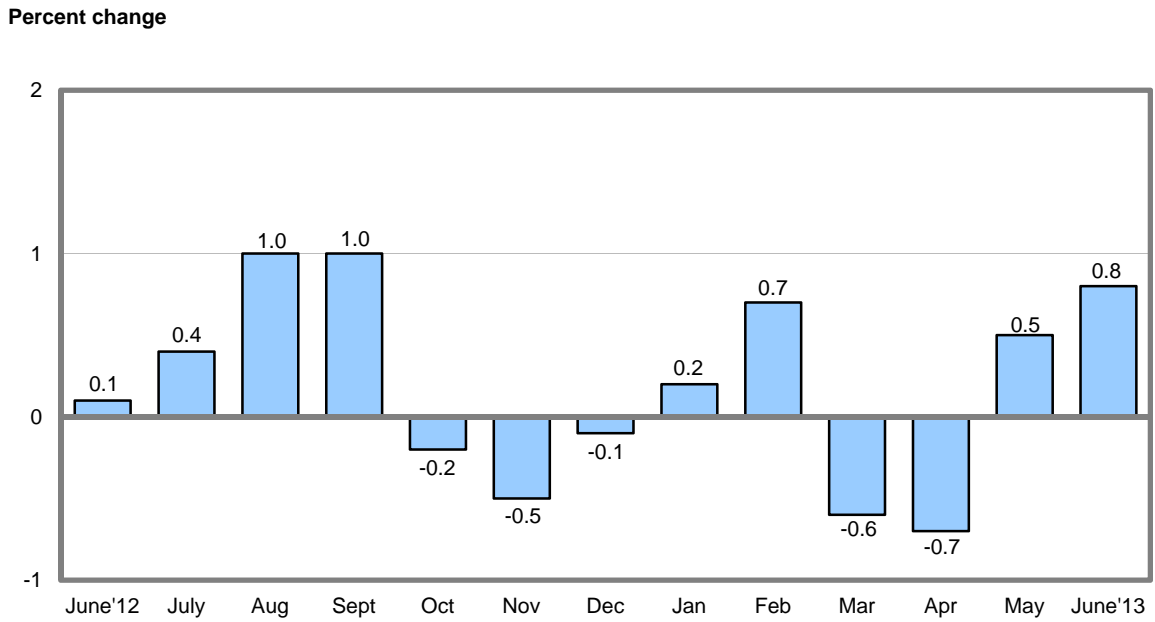
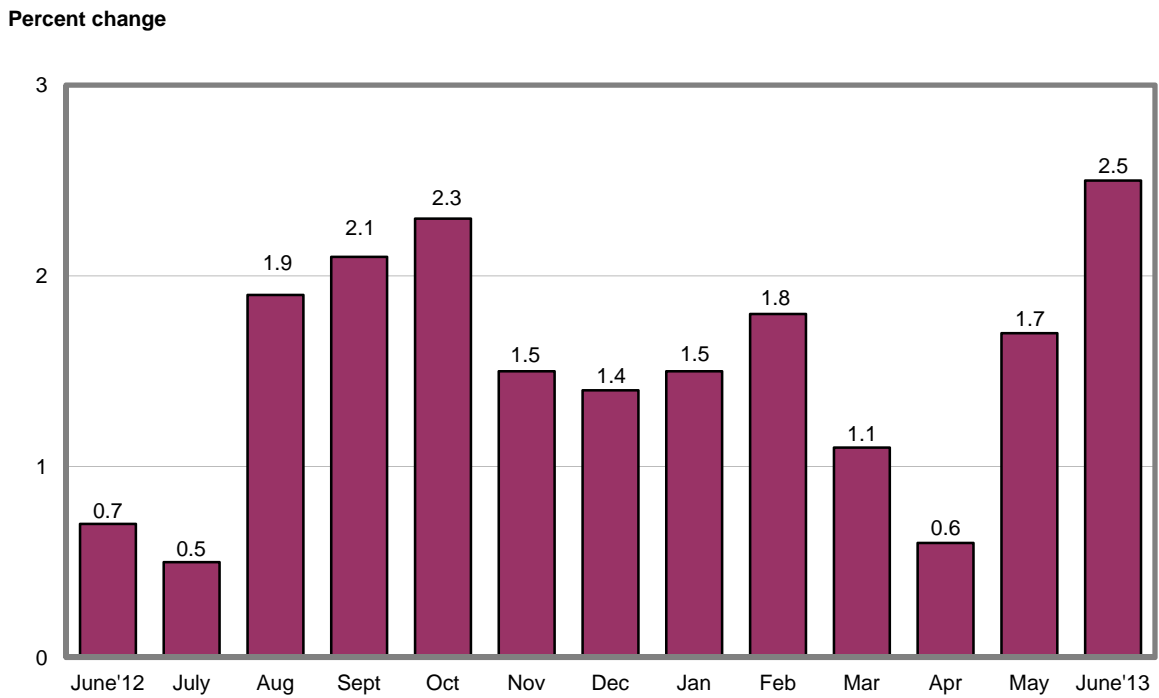


Chart 2. 12-month percent changes in the Producer Price Index for finished goods, not seasonally adjusted: June 2012 – June 2013



Stage-of-Processing Analysis

Finished goods

In June, most of the broad-based rise in finished goods prices can be traced to the index for finished energy goods, which increased 2.9 percent. Also contributing to the advance in finished goods prices, the indexes for finished goods less foods and energy and for finished consumer foods both moved up 0.2 percent.

Finished energy: Prices for finished energy goods climbed 2.9 percent in June, the largest rise since a 3.2-percent increase in February 2013. The June advance is mostly attributable to a 7.2-percent jump in the index for gasoline. Higher prices for home heating oil and diesel fuel also contributed to the rise in the finished energy goods index. (See table 2.)

Finished core: The index for finished goods less foods and energy moved up 0.2 percent in June, the eighth consecutive advance. A major contributor to the June increase were prices for passenger cars, which rose 0.8 percent. An advance in the index for light motor trucks also was a factor in higher finished core prices.

Finished foods: Prices for finished consumer foods advanced 0.2 percent in June following a 0.6-percent increase in May. The June rise was led by the index for meats, which moved up 4.2 percent.

Intermediate goods

The Producer Price Index for intermediate materials, supplies, and components advanced 0.5 percent in June after three consecutive declines. Accounting for over eighty percent of the broad-based increase, prices for intermediate energy goods rose 2.0 percent. The index for intermediate materials less foods and energy inched up 0.1 percent, and prices for intermediate foods and feeds climbed 0.7 percent. For the 12 months ended in June, the intermediate goods index advanced 1.1 percent, the first 12-month increase since a 1.3-percent rise in February 2013. (See table B.)

Intermediate energy: Prices for intermediate energy goods increased 2.0 percent in June following a 0.5-percent rise in May. A major factor in the June advance was the electric power index, which moved up 0.5 percent. Higher prices for gasoline and jet fuel also were factors in the increase in the intermediate energy goods index. (See table 2.)

Intermediate core: The index for intermediate materials less foods and energy inched up 0.1 percent in June after two consecutive declines. Most of the June rise can be attributed to a 1.1-percent increase in the index for basic organic chemicals. Higher prices for converted paper and paperboard products also contributed significantly to the advance in the intermediate core index.

Intermediate foods: Prices for intermediate foods and feeds climbed 0.7 percent in June following a 1.1-percent rise in the prior month. A major factor in the June increase was a 1.5-percent advance in the index for processed poultry. Higher prices for meats also contributed significantly to the rise in the index for intermediate foods and feeds.

Chart 3. Monthly percent changes in the Producer Price Index for intermediate goods, seasonally adjusted: June 2012 – June 2013

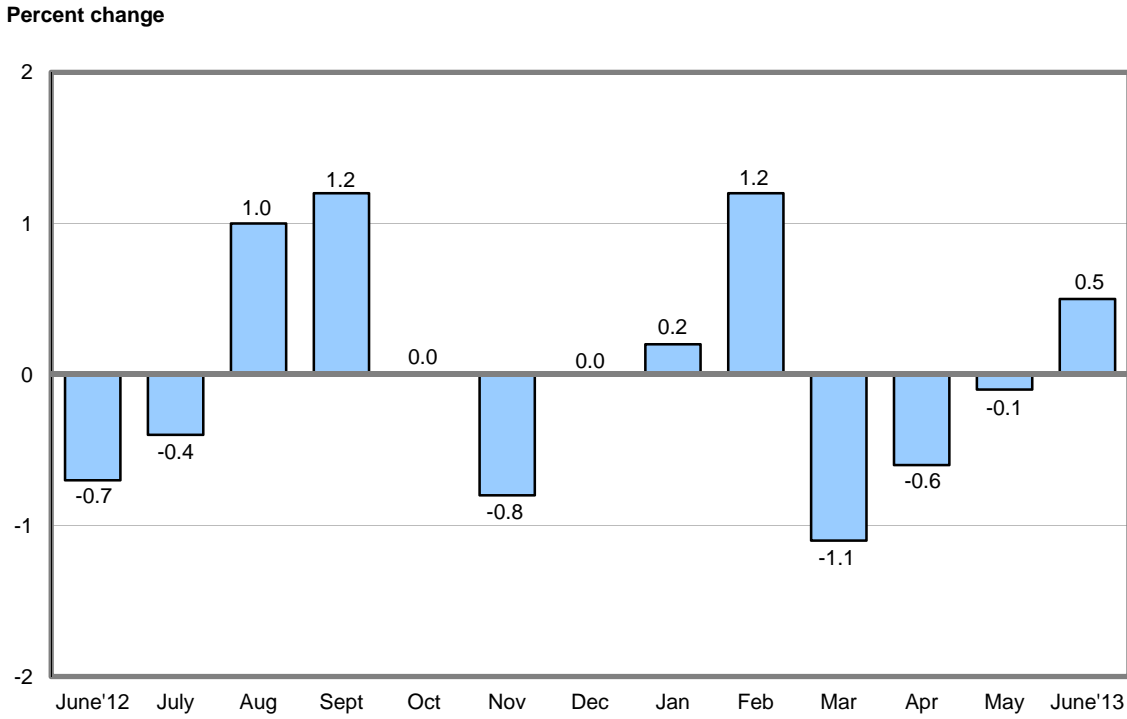
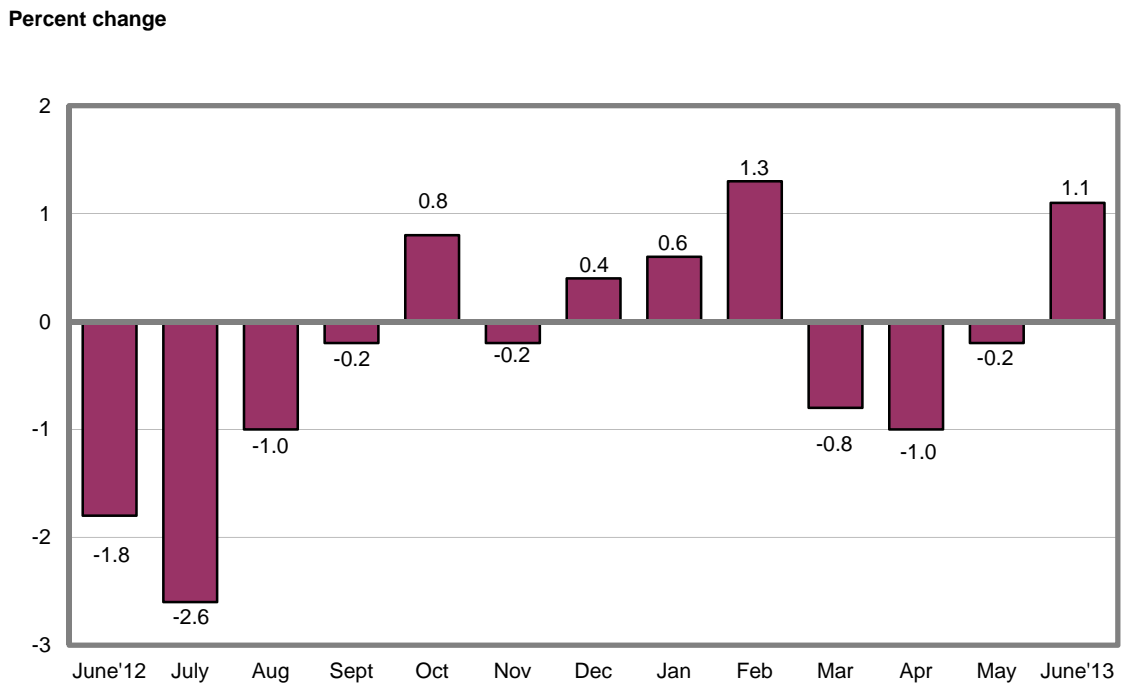


Chart 4. 12-month percent changes in the Producer Price Index for intermediate goods, not seasonally adjusted: June 2012 – June 2013



Crude goods

The Producer Price Index for crude materials for further processing was unchanged in June. For the 3 months ended in June, prices for crude goods moved up 1.7 percent after falling 1.8 percent for the 3 months ended in March. On a monthly basis in June, a 0.3-percent increase in the crude energy materials index and a 0.1-percent advance in prices for crude nonfood materials less energy offset a 0.3-percent decrease in the index for crude foodstuffs and feedstuffs. (See table B.)

Crude energy: Prices for crude energy materials rose 0.3 percent in June. In the second quarter of 2013, the index for crude energy materials jumped 9.2 percent compared with a 4.0-percent decrease in the first quarter. The monthly advance in June can be traced to prices for crude petroleum, which increased 1.7 percent. (See table 2.)

Crude core: The index for crude nonfood materials less energy inched up 0.1 percent in June. From March to June, crude core prices fell 4.9 percent subsequent to a 0.9-percent decline in the prior quarter. In June, the monthly advance was led by a 2.0-percent increase in the index for nonferrous scrap. Higher prices for construction sand, gravel, and crushed stone also contributed to the rise in the crude core index.

Crude foods: Prices for crude foodstuffs and feedstuffs decreased 0.3 percent in June. In the second quarter, the index for crude foods moved down 0.9 percent after falling 0.6 percent for the 3 months ended in March. The monthly decline in June was led by a 3.8-percent drop in prices for slaughter steers and heifers. Lower prices for raw milk and unprocessed finfish also were factors in the decrease in the index for crude foodstuffs and feedstuffs.

Table B. Monthly and 12-month percent changes in selected price indexes for intermediate goods and crude goods, seasonally adjusted

| Month | Intermediate goods | | | | Crude goods | | | |
|-------------------------|--------------------|--------|-------------------------|--|-------------|--------|-------------------------|---|
| | Foods | Energy | Except foods and energy | Change in intermediate goods from 12 months ago (unadj.) | Foods | Energy | Except foods and energy | Change in crude goods from 12 months ago (unadj.) |
| 2012 | | | | | | | | |
| June..... | 0.6 | 0.0 | -1.0 | -1.8 | -0.9 | -3.8 | -4.2 | -11.6 |
| July..... | 1.6 | -0.9 | -0.4 | -2.6 | 4.2 | 3.9 | -0.5 | -9.3 |
| Aug..... | 2.5 | 3.5 | -0.1 | -1.0 | 3.7 | 7.3 | 2.4 | -3.4 |
| Sept..... | 0.9 | 3.5 | 0.4 | -0.2 | 0.7 | 2.6 | 0.9 | -2.5 |
| Oct..... | 0.4 | -0.5 | 0.1 | 0.8 | 2.1 | -0.6 | -1.8 | -0.2 |
| Nov..... | -0.2 | -3.5 | -0.1 | -0.2 | 0.5 | -0.4 | 1.6 | -1.9 |
| Dec..... | -0.6 | 0.1 | 0.2 | 0.4 | 0.4 | 2.3 | 1.3 | 1.4 |
| 2013 | | | | | | | | |
| Jan..... | -1.2 | -0.6 | 0.7 | 0.6 | -0.3 | 0.9 | -1.4 | 0.5 |
| Feb. ¹ | -0.1 | 3.6 | 0.6 | 1.3 | -2.1 | 2.7 | -0.8 | 0.3 |
| Mar. ¹ | 0.0 | -4.9 | 0.1 | -0.8 | 1.9 | -7.3 | 1.4 | -0.3 |
| Apr..... | -0.9 | -2.1 | -0.2 | -1.0 | -2.6 | 3.7 | -2.8 | 3.1 |
| May..... | 1.1 | 0.5 | -0.4 | -0.2 | 2.1 | 5.0 | -2.3 | 7.6 |
| June..... | 0.7 | 2.0 | 0.1 | 1.1 | -0.3 | 0.3 | 0.1 | 11.0 |

¹ Some of the figures shown above and elsewhere in this release may differ from those previously reported because data for February 2013 have been revised to reflect the availability of late reports and corrections by respondents.

Chart 5. Monthly percent changes in the Producer Price Index for crude materials, seasonally adjusted: June 2012 – June 2013

Percent change

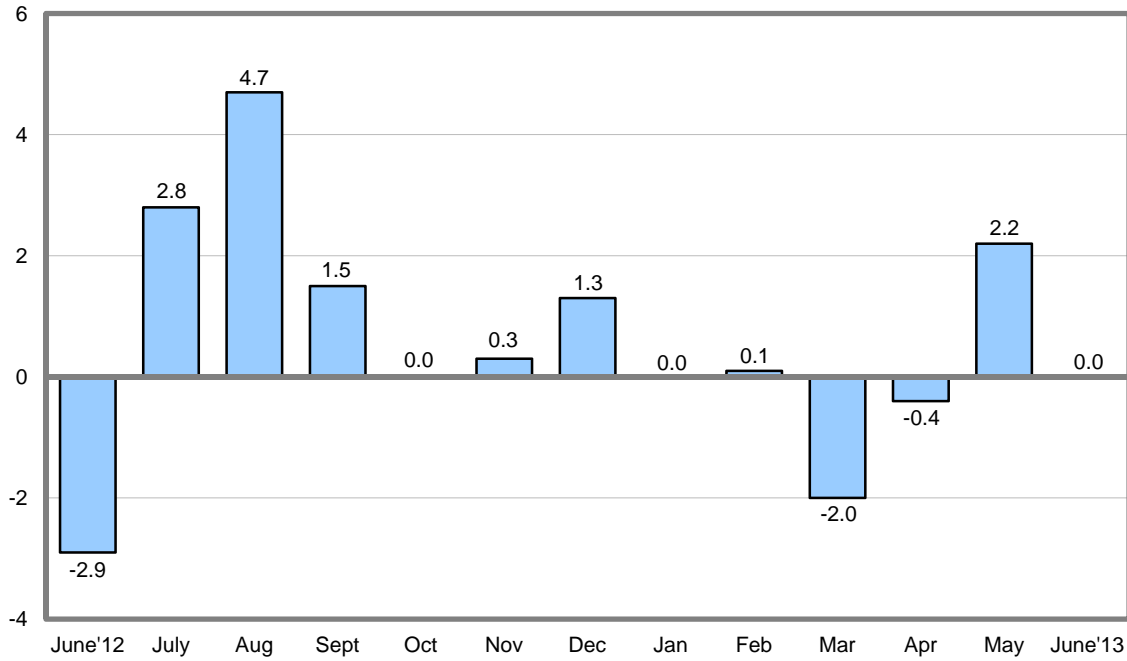
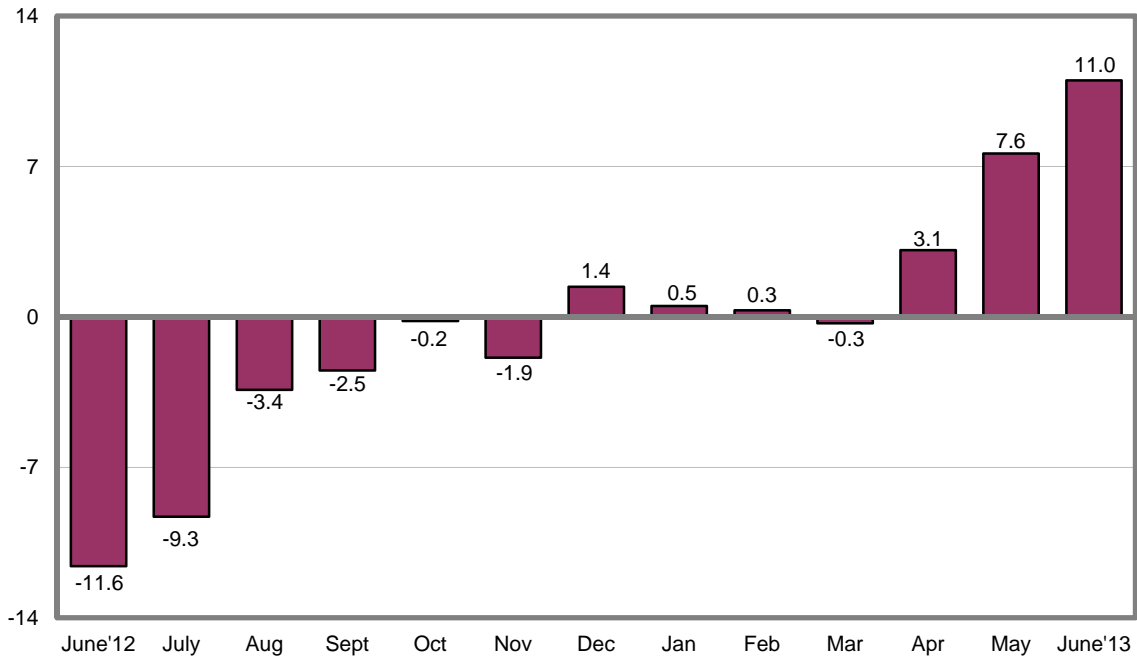


Chart 6. 12-month percent changes in the Producer Price Index for crude materials, not seasonally adjusted: June 2012 – June 2013

Percent change



Services Analysis

Trade industries: The Producer Price Index for the net output of total trade industries moved down 0.5 percent in June following a 0.9-percent decrease a month earlier. (Trade indexes measure changes in margins received by wholesalers and retailers.) Leading the June decline, margins received by discount department stores fell 15.2 percent. Lower margins received by family clothing stores and merchant wholesalers of durable goods also contributed to the decrease in the total trade industries index.

Transportation and warehousing industries: The Producer Price Index for the net output of transportation and warehousing industries rose 0.6 percent in June after a 0.6-percent decrease in May. Most of the increase is attributable to a 3.0-percent jump in prices received by the industry for scheduled passenger air transportation. Higher prices received by the industries for long distance general freight trucking and freight transportation arrangement also were factors in the advance in the transportation and warehousing industries index.

Services less trade, transportation, and warehousing: The Producer Price Index for the net output of services less trade, transportation, and warehousing moved up 0.4 percent in June, the third consecutive increase. Accounting for about forty percent of the June advance, prices received by the industry group for depository credit intermediation rose 1.9 percent. Higher prices received by investment bankers and securities dealers and by the passenger car rental industry also contributed to the advance in the index for services less trade, transportation, and warehousing.

The Producer Price Index for July 2013 is scheduled to be released on Wednesday, August 14, 2013 at 8:30 a.m. (EDT).

Technical Note

Brief Explanation of Producer Price Indexes

The Producer Price Index (PPI) of the Bureau of Labor Statistics (BLS) is a family of indexes that measure the average change over time in the prices received by domestic producers of goods and services. PPIs measure price change from the perspective of the seller. This contrasts with other measures, such as the Consumer Price Index (CPI). CPIs measure price change from the purchaser's perspective. Sellers' and purchasers' prices can differ due to government subsidies, sales and excise taxes, and distribution costs.

More than 9,000 PPIs for individual products and groups of products are released each month. PPIs are available for the products of virtually every industry in the mining and manufacturing sectors of the U.S. economy. New PPIs are gradually being introduced for the products of industries in the construction, trade, finance, and services sectors of the economy.

More than 100,000 price quotations per month are organized into three sets of PPIs: (1) Stage-of-processing indexes, (2) commodity indexes, and (3) indexes for the net output of industries and their products. The stage-of-processing structure organizes products by class of buyer and degree of fabrication. The commodity structure organizes products by similarity of end use or material composition. The entire output of various industries is sampled to derive price indexes for the net output of industries and their products.

Stage-of-Processing Indexes

Within the stage-of-processing system, finished goods are commodities that will not undergo further processing and are ready for sale to the final-demand user, either an individual consumer or business firm. Consumer foods include unprocessed foods such as eggs and fresh vegetables, as well as processed foods such as bakery products and meats. Other finished consumer goods include durable goods such as automobiles, household furniture, and appliances, as well as nondurable goods such as apparel and home heating oil. Capital equipment includes durable goods such as heavy motor trucks, tractors, and machine tools.

The stage-of-processing category for intermediate materials, supplies, and components consists partly of commodities that have been processed but require further processing. Examples of such semifinished goods include flour, cotton yarn, steel mill products, and lumber. The intermediate goods category also encompasses nondurable, physically complete items purchased by business firms as inputs for their operations. Examples include diesel fuel, belts and belting, paper boxes, and fertilizers.

Crude materials for further processing are products entering the market for the first time that have not been manufactured or fabricated and that are not sold directly to consumers. Crude foodstuffs and feedstuffs include items such as grains and livestock. Examples of crude nonfood materials include raw cotton, crude petroleum, coal, hides and skins, and iron and steel scrap.

Commodity Indexes

The commodity classification structure of the PPI organizes goods and services by similarity of material composition or end use, disregarding their industry of origin. Table 6 of the *PPI Detailed Report* includes data for commodity indexes, organized in a hierarchal structure, including major commodity groupings (two-digit commodity codes), subgroups (three-digit codes), product classes (four-digit codes), subproduct classes (five- and six-digit codes), item groupings (seven-digit codes) and individual items (eight-, nine-, and ten-digit codes).

Industry Net-Output Price Indexes

PPIs for the net output of industries and their products are grouped according to the North American Industry Classification System (NAICS). Prior to the release of January 2004, industry-based PPIs were published according to the Standard Industrial Classification (SIC) system. Industry price indexes are compatible with other economic time series organized by industry, such as data on employment, wages, and productivity. Table 5 of the *PPI Detailed Report* includes data for NAICS industries and industry groups (3-, 4-, 5-, and 6-digit codes), Census product classes (7- and 8-digit codes), products (9-digit codes), and more detailed subproducts (11-digit codes), and, for some industries, indexes for other sources of revenue.

Indexes may represent one of three kinds of product categories. Every industry has primary product indexes to show changes in prices received by establishments classified in the industry for products made primarily, but not necessarily exclusively, by that industry. The industry classification of an establishment is determined by which products make up a plurality of its total shipment value. In addition, most industries have secondary product indexes that show changes in prices received by establishments classified in the industry for products chiefly made in some other industry. Finally, some industries have miscellaneous receipts indexes to show price changes in other sources of revenue received by establishments within the industry that are not derived from sales of their products—for example, resales of purchased materials, or revenues from parking lots owned by a manufacturing plant.

Data Collection

PPIs are based on selling prices reported by establishments of all sizes selected by probability sampling, with the probability of selection proportionate to size. Individual items and transaction terms from these firms also are chosen by probability proportionate to size. BLS strongly encourages cooperating companies to supply actual transaction prices at the time of shipment to minimize the use of list prices. Prices submitted by survey respondents are effective on the Tuesday of the week containing the 13th day of the month. This survey is conducted via mail, fax, and the Internet.

Price data are provided on a voluntary and confidential basis; only sworn BLS employees are allowed access to individual company price reports. BLS publishes price indexes instead of actual prices. All PPIs are subject to revision 4 months after original publication to reflect the availability of late reports and corrections by respondents.

BLS periodically updates the PPI sample of survey respondents to better reflect current conditions when the structure, membership, technology, or product mix of an industry shifts significantly and to spread reporting burden among smaller firms. Results of these resampling efforts are incorporated into the PPI with the release of data for January and July.

As part of an ongoing effort to expand coverage to sectors of the economy other than mining and manufacturing, an increasing number of service sector industries have been introduced into the PPI. The following list of industries introduced since the mid-1990s includes the month and year in which an article describing the industry's content appeared in the *PPI Detailed Report*.

Service sector industries introduced into the Producer Price Index, by SIC or NAICS code and the *PPI Detailed Report* that announces their introduction

| <i>Title</i> | <i>Code</i> | <i>PPI Detailed Report Issue</i> |
|---|-------------|----------------------------------|
| | SIC | |
| Wireless telecommunications | 4812 | July 1999 |
| Telephone communications, except radio telephone | 4813 | July 1995 |
| Television broadcasting | 4833 | July 2002 |
| Grocery stores | 5411 | July 2000 |
| Meat and fish (seafood) markets | 5421 | July 2000 |
| Fruit and vegetable markets | 5431 | July 2000 |
| Candy, nut, and confectionery stores ... | 5441 | July 2000 |
| Retail bakeries | 5461 | July 2000 |
| Miscellaneous food stores | 5499 | July 2000 |
| New car dealers | 5511 | July 2000 |
| Gasoline service stations | 5541 | January 2002 |
| Boat dealers | 5551 | January 2002 |
| Recreational vehicle dealers | 5561 | January 2002 |
| Miscellaneous retail | 59 | January 2001 |
| Security brokers, dealers, and investment bankers | 6211 | January 2001 |
| Investment advice | 6282 | January 2003 |
| Life insurance carriers | 6311 | January 1999 |
| Property and casualty insurance | 6331 | July 1998 |
| Insurance agencies and brokerages | 6412 | January 2003 |
| Operators and lessors of nonresidential buildings | 6512 | January 1996 |
| Real estate agents and managers | 6531 | January 1996 |
| Prepackaged software | 7372 | January 1998 |
| Data processing services | 7374 | January 2002 |
| Home health care services | 8082 | January 1997 |
| Legal services | 8111 | January 1997 |
| Engineering design, analysis, and consulting services | 8711 | January 1997 |
| Architectural design, analysis, and consulting services | 8712 | January 1997 |
| Premiums for property and casualty insurance | 9331 | July 1998 |

| <i>Title</i> | <i>Code</i> | <i>PPI Detailed Report Issue</i> |
|---|--------------|----------------------------------|
| | NAICS | |
| New Industrial building construction | 236211 | January 2008 |
| New warehouse building construction .. | 236221 | July 2005 |
| New school construction | 236222 | July 2006 |
| New office construction | 236223 | January 2007 |
| New health care building construction... | 236224 | January 2013 |
| Concrete contractors, nonresidential building work | 23811X | July 2008 |
| Roofing contractors, nonresidential building work | 23816X | July 2008 |
| Electrical contractors, nonresidential building work | 23821X | July 2008 |
| Plumbing / HVAC contractors, nonresidential building work | 23822X | July 2008 |
| Merchant wholesalers, durable goods .. | 423 | July 2005 |
| Merchant wholesalers, nondurable goods | 424 | July 2005 |
| Wholesale trade agents and brokers ... | 425120 | July 2005 |
| Furniture and home furnishings stores . | 442 | January 2004 |
| Electronics and appliance stores | 443 | January 2004 |
| Building material and garden equipment and supplies dealers | 444 | January 2004 |
| Clothing and clothing accessories stores | 448 | January 2004 |
| Sporting goods, hobby, book, and music stores | 451 | January 2004 |
| General merchandise stores | 452 | January 2004 |
| Miscellaneous store retailers | 453 | January 2004 |
| Internet service providers | 518111 | July 2005 |
| Internet publishing and web search portals | 519130 | January 2010 |
| Commercial banking | 522110 | January 2005 |
| Savings institutions | 522120 | January 2005 |
| Direct health and medical insurance carriers | 524114 | July 2004 |
| Construction, mining, and forestry machinery and equipment rental and leasing | 532412 | January 2005 |
| Management consulting services | 541610 | January 2007 |
| Security guards and patrol services | 561612 | July 2005 |
| Computer training | 611420 | July 2007 |
| Offices of dentists | 621210 | January 2011 |
| Blood and organ banks | 621991 | January 2007 |
| Amusement and theme parks | 713110 | July 2006 |
| Golf courses and country clubs | 713910 | July 2006 |
| Fitness and recreational sports centers . | 713940 | July 2005 |
| Commercial machinery repair and maintenance..... | 811310 | July 2007 |

Weights

Weights for most traditional commodity groupings of the PPI, as well as weights for commodity-based aggregate indexes calculated using traditional commodity groupings, such as stage-of-processing indexes, currently reflect 2007 values of shipments as reported in the *Census of Manufactures* and other sources. From January 2007 through December 2011, PPI weights were derived from 2002 shipment values. Industry indexes now are calculated under the 2012 NAICS structure utilizing 2007 value of shipment weights and 2002

net output ratios. The periodic update of the value weights used to calculate the PPI is done to more accurately reflect changes in production and marketing patterns in the economy. Net output values of shipments are used as weights for industry indexes. Net output values refer to the value of shipments from establishments within the industry to buyers outside the industry. However, weights for commodity price indexes are based on gross shipment values, including values of shipments between establishments within the same industry. As a result, broad commodity grouping indexes, such as the PPI for All Commodities (which is comprised of major commodity groupings 01 through 15), are affected by the multiple counting of price change at successive stages of processing, which can lead to exaggerated or misleading signals about inflation. Stage-of-processing indexes partially correct for this defect, but industry indexes consistently correct for this at all levels of aggregation. Therefore, industry and stage-of-processing indexes are more appropriate than broad commodity groupings for economic analysis of general price trends.

Price Index Reference Base

Effective with publication of January 1988 data, many important PPI series (including stage-of-processing groupings and most commodity groups and individual items) were placed on a new reference base, 1982 = 100. From 1971 through 1987, the standard reference base for most PPI series was 1967 = 100. Except for rounding differences, the shift to the new reference base did not alter any previously published percent changes for affected PPI series. (See “Calculating Index Changes,” below.) The 1982 reference base is not used for commodity indexes with a base later than December 1981 or for industry net output indexes and their products.

For further information on the underlying concepts and methodology of the Producer Price Index, see chapter 14, “Producer Prices,” in the *BLS Handbook of Methods* (July 2010). This chapter can be downloaded from the BLS Web site at www.bls.gov/opub/hom/homch14.htm.

Calculating Index Changes

Each PPI measures price changes from a reference period that equals 100.0. An increase of 5.5 percent from the reference period in the Finished Goods Price Index, for example, is shown as 105.5. This change also can be expressed in dollars, as follows: prices received by domestic producers of a sample of finished goods have risen from \$100 in 1982 to \$105.50. Likewise, a current index of 90.0 would indicate that prices received by producers of finished goods are 10 percent lower than they were in 1982.

Movements of price indexes from one month to another are usually expressed as percent changes, rather than as changes in index points. Index point changes are affected by the level of the index in relation to its base period, whereas percent changes are not. The following example shows the computation of index point and percent changes.

Index point change

| | |
|----------------------------|-------|
| Finished Goods Price Index | 107.5 |
| Less previous index | 104.0 |
| Equals index point change | 3.5 |

Index percent change

| | |
|-------------------------------|-------------|
| Index point change | 3.5 |
| Divided by the previous index | 104.0 |
| Equals | 0.034 |
| Result multiplied by 100 | 0.034 x 100 |
| Equals percent change | 3.4 |

Seasonally Adjusted and Unadjusted Data

Because price data are used for different purposes by different groups, BLS publishes seasonally adjusted and unadjusted changes each month. Seasonally adjusted data are preferred for analyzing general price trends in the economy because these data eliminate the effect of changes that normally occur at about the same time, and in about the same magnitude, every year—such as price movements resulting from normal weather patterns, regular production and marketing cycles, model changeovers, seasonal discounts, and holidays. For these reasons, seasonally adjusted data more clearly reveal underlying cyclical trends. Unadjusted data are of primary interest to users who need information that can be related to actual dollar values of transactions. Individuals requiring this information include marketing specialists, purchasing agents, budget and cost analysts, contract specialists, and commodity traders. It is the unadjusted data that are generally cited when escalating long-term contracts such as purchasing agreements or real estate leases. For more information, see *Escalation and Producer Price Indexes: A Guide for Contracting Parties*, BLS Report 807, September 1991, on the Web at www.bls.gov/ppi/ppiescalation.htm.

In 1998, the PPI implemented the X-12-ARIMA Seasonal Adjustment Method; prior to that year, the PPI employed the X-11 method. Each year, the seasonal status of most commodity indexes is reevaluated to reflect more recent price behavior. Industry net output indexes are not seasonally adjusted. For time series that exhibit seasonal pricing patterns, new seasonal factors are estimated and applied to the unadjusted data for the previous 5 years. These updated seasonally adjusted indexes replace the most recent 5 years of seasonal data.

Seasonal factors may be applied to series using either a direct or an aggregative method. Generally, commodity indexes are seasonally adjusted using direct seasonal adjustment, which produces a more complete elimination of seasonal movements than does the aggregative method. However, the direct seasonal adjustment process may not yield figures that possess additive consistency. Thus, a seasonally adjusted index for a broad category that is directly adjusted may not be logically consistent with all seasonally adjusted indexes for its components. Seasonal movements for stage-of-

processing indexes are derived indirectly through an aggregative method that combines movements of a wide variety of subproduct class (six-digit) series.

Seasonally adjusted indexes can become problematic when previously stable and predictable price patterns abruptly change. If the new pattern persists, the seasonal adjustment method will eventually reflect it adequately; if the pattern keeps shifting, however, seasonally adjusted data will become chronically troublesome. This problem occurs relatively infrequently for farm and food-related products, but has more often affected manufactured products such as automobiles and steel.

Since January 1988, the PPI has used Intervention Analysis Seasonal Adjustment methods to enhance the calculation of seasonal factors. With this technique, outlier values that may distort the seasonal pattern are removed from the data prior to applying the standard seasonal factor estimation procedure. For example, a possible economic cause for large price movements for petroleum-based products might have been the Persian Gulf War. In this case, intervention techniques allowed for better estimates of seasonally adjusted data. On the whole, very few series have required intervention. Out of almost 300 seasonally adjusted series, only 27 were subject to intervention in 2009.

For more information relating to seasonal adjustment methods, see (1) “Appendix A: Seasonal Adjustment Methodology at BLS,” in the *BLS Handbook of Methods* (July 2010) and (2) “Summary of Changes to the PPI’s Seasonal Adjustment Methodology” in the January 1995 issue of *Producer Price Indexes*.

Producer Price Index Data on the Internet

In 1995, the BLS began posting PPI series, news releases, and technical information to both a World Wide Web (WWW) site and a file transfer protocol (FTP) site. During the years following the introduction of PPI Internet services, use of these sites eclipsed more traditional methods of data dissemination, such as subscriptions to the *PPI Detailed Report*. There were more than 2.1 million instances of PPI series being downloaded from the Internet during the 12 months ended December 31, 2008.

Retrieving PPI data from the PPI Web site

PPI data can be obtained from the WWW address (www.bls.gov/ppi). Clicking on the “PPI Databases” link reveals the following methods of data retrieval:

- **Top Picks** is a form-based application for both Industry Data and Commodity Data that allows the user to quickly obtain PPI time series data by selecting the most commonly requested time series, including the All Commodities Index and the stage-of-processing indexes (for example, Finished Goods). Within each list, any one—or all—of the time series shown can be selected. A user can modify the

date range and output options after executing the query, using the reformat button above the data output table.

- **One-Screen Data Search and Multi-Screen Data Search** are form-based query applications for both Industry Data and Commodity Data designed for users unfamiliar with the PPI coding structure. These applications guide a user through the PPI classification system by listing index titles and do not require knowledge of commodity or industry codes. Data retrieved are based on a query formulated by selecting data characteristics from lists provided. Two options are available to create customized tables, depending on a user’s browser capability. The one-screen option is a JavaScript application that uses a single screen to guide a user through the available time series data. The second option is a multiple-screen, non-Java-based application. Both methods allow a user to browse the PPI coding structure and select multiple series codes. Users can modify the date range and output options after executing the query using the reformat button above the data output table.
- **Series Report** is a form-based application that uses formatted PPI time series identifiers (commodity or industry codes) as input in extracting data according to a specified set of date ranges and output options. This application provides the most efficient path for users who are familiar with the format of PPI time series identifiers. Up to 300 indexes can be extracted at a time.

There are five alphabetic prefixes used to create unique PPI time series identifiers: WP, WD, PC, PD, and ND. Each provides the user access to a different PPI database. Adding either a “u” (not seasonally adjusted) or an “s” (seasonally adjusted) to the end of these prefixes further specifies the type of data needed.

EXAMPLES

For commodity and stage-of-processing indexes, series identifiers combine a “wpu” prefix (not seasonally adjusted) or a “wps” prefix (seasonally adjusted) with a commodity code.

| <u>Commodity code</u> | <u>Provides data for:</u> |
|-----------------------|---|
| wps141101 | Passenger cars, seasonally adjusted |
| wpu141101 | Passenger cars, not seasonally adjusted |
| wpusop3000 | Finished goods, not seasonally adjusted |

For discontinued commodity indexes, series identifiers combine a “wdu” prefix (not seasonally adjusted) or a “wds” prefix (seasonally adjusted) with a commodity code.

| | |
|-----------------------|---|
| <u>Commodity code</u> | <u>Provides data for:</u> |
| wds019 | Other farm products, seasonally adjusted |
| wdu0635 | Preparations, ethical (prescription), not seasonally adjusted |
| wdusi138011 | Stainless steel mill products, not seasonally adjusted |

Current price indexes grouped by industry according to NAICS have series identifiers that begin with the prefix “pcu.” After the prefix, there are 12 digits (the 6-digit industry code is listed twice) followed by up to 7 alphanumeric characters identifying product detail. Dashes are used as placeholders for higher-level industry group codes.

| | |
|--|---|
| <u>Industry-product code, current NAICS series</u> | <u>Provides data for:</u> |
| pcu325---325--- | Chemical manufacturing, not seasonally adjusted |
| pcu336110336110 | Automobile and light duty motor vehicle manufacturing |
| pcu621111621111411 | Offices of physicians, one- and two-physician practices and single-specialty group practices, general/family practice |
| pcu325412325412A | Pharmaceutical preparation manufacturing, pharmaceuticals acting on the respiratory system |

Discontinued industry-product codes based on SIC combine a “pdu” prefix and “#” between the fourth and fifth characters of the product code. Series identifiers for the discontinued dataset use underscores as placeholders to complete a reference to an SIC industry group code of fewer than four digits. (All PPI industry-based indexes organized by SIC were discontinued with the introduction of NAICS.)

| | |
|---|---|
| <u>Industry-product code, discontinued SIC series</u> | <u>Provides data for:</u> |
| pdu28_# | Chemicals and allied products, not seasonally adjusted |
| pdu331_# | Blast furnaces, steel works, and rolling and finishing mills, not seasonally adjusted |
| pdu3711#111 | Passenger cars |

Price indexes for discontinued series grouped by industry according to NAICS have identifiers that begin with the prefix “ndu.” After the prefix, there are 12 numeric digits (the 6-digit industry code is listed twice), and up to 7 additional alphanumeric characters that identify product detail. Dashes are used as placeholders for higher-level industry group codes.

| | |
|---|------------------------------|
| <u>Industry-product code, discontinued NAICS series</u> | <u>Provides data for</u> |
| ndu212231212231 | Lead ore and zinc ore mining |
| ndu2122312122312 | Lead and zinc concentrates |
| ndu212231212231214 | Lead concentrates |

- **Text Files (FTP)** and the FTP server are best suited for users requiring access to either a large volume of time series data or other PPI-related documentation (such as seasonal factor and relative importance tables). The FTP sites can be accessed at <ftp://ftp.bls.gov> or directly from the links on the “PPI Databases” page or the PPI homepage. Data and documentation available for download include the following:

| | |
|--|---|
| | <u>Directory:</u> |
| Industry Data | /pub/time.series/pc |
| Industry Data - Discontinued (NAICS basis) | /pub/time.series/nd |
| (SIC basis) | /pub/time.series/pd |
| Commodity Data | /pub/time.series/wp |
| Commodity Data - Discontinued Series | /pub/time.series/wd |
| Special requests | /pub/special.requests/ppi |

The FTP site maintains files to help with searches and downloads. These files are centrally located in the [/pub/doc](#) directory. Within this directory, the **overview.txt** file contains an overview relating to all BLS data available through the FTP site. For current commodity-based PPI data, the program help file is **wp.txt**; for discontinued commodity series, **wd.txt**; for current industry-based PPI data based on NAICS, **pc.txt**; for industry-based SIC time series that have been discontinued, **pd.txt**; and for industry-based NAICS series that have been discontinued, **nd.txt**.

Users who prefer downloading PPI datasets as individual ZIP files should go to the directory labeled [/pub/time.series/compressed/tape.format/](#) on the FTP site. This directory includes six PPI-specific ZIP files, one for each of the PPI databases—WP, WD, PC, ND, and PD—and a ZIP file for the annual 5-year revision to historical seasonal PPIs.

Other Sources of PPI Data

PPI data can also be accessed via the BLS homepage (www.bls.gov). Clicking on the “Databases & Tools” tab at the top of the homepage calls up a listing all available BLS programs.

Additional information

The PPI homepage (www.bls.gov/ppi) contains additional information regarding PPI data and methodology. The top section of the homepage provides PPI news releases, both current and archived, as well as general PPI information. The “Tables Created by BLS” section found beneath the

statistics section provides relative importance and seasonal factor tables. The remaining sections offer special notices and publications pertaining to PPI methodology and applications.

For questions or comments regarding PPI data classification, methodology, or data availability on the Internet, call or e-mail the Section of Index Analysis and Public Information at (202) 691-7705 or ppi-info@bls.gov.

Table 1. Producer price indexes and percent changes by stage of processing
[1982=100]

| Grouping | Relative importance Dec. 2012 ¹ | Unadjusted index | | | Unadjusted percent change to June 2013 from: | | Seasonally adjusted percent change from: | | |
|--|---|---------------------------|--------------------------|---------------------------|--|-------------|---|-------------|----------------|
| | | Feb. 2013 ² | May 2013 ² | June 2013 ² | June 2012 | May 2013 | Mar. to Apr. | Apr. to May | May to June |
| Finished goods..... | 100.000 | 196.3 | 197.0 | 197.6 | 2.5 | 0.3 | -0.7 | 0.5 | 0.8 |
| Finished consumer goods..... | 73.334 | 209.9 | 210.8 | 211.7 | 3.0 | 0.4 | -1.0 | 0.6 | 1.1 |
| Finished consumer foods..... | 18.957 | 201.6 | 203.2 | 204.0 | 3.0 | 0.4 | -0.8 | 0.6 | 0.2 |
| Crude..... | 1.345 | 176.7 | 190.5 | 179.0 | 8.1 | -6.0 | -8.9 | 10.2 | -8.3 |
| Processed..... | 17.612 | 204.0 | 204.5 | 206.4 | 2.6 | 0.9 | -0.1 | 0.0 | 0.9 |
| Finished consumer goods, excluding foods..... | 54.377 | 211.6 | 212.3 | 213.3 | 3.1 | 0.5 | -1.0 | 0.6 | 1.3 |
| Nondurable goods less foods..... | 40.640 | 238.2 | 239.4 | 240.8 | 3.7 | 0.6 | -1.3 | 0.8 | 1.7 |
| Durable goods..... | 13.736 | 152.3 | 151.9 | 151.8 | 0.9 | -0.1 | 0.0 | 0.0 | 0.1 |
| Capital equipment..... | 26.666 | 163.9 | 163.9 | 163.9 | 0.9 | 0.0 | 0.1 | 0.1 | 0.1 |
| Manufacturing industries..... | 6.090 | 166.1 | 166.4 | 166.3 | 0.8 | -0.1 | 0.1 | 0.1 | 0.0 |
| Nonmanufacturing industries..... | 20.576 | 163.0 | 162.9 | 162.9 | 0.9 | 0.0 | 0.1 | 0.1 | 0.1 |
| Intermediate materials, supplies, and components..... | 100.000 | 202.5 | 201.0 | 201.8 | 1.1 | 0.4 | -0.6 | -0.1 | 0.5 |
| Materials and components for manufacturing..... | 44.688 | 190.5 | 188.1 | 188.3 | 0.2 | 0.1 | -0.6 | -0.6 | 0.2 |
| Materials for food manufacturing..... | 3.373 | 198.0 | 199.6 | 201.8 | 3.0 | 1.1 | -0.5 | 0.5 | 1.1 |
| Materials for nondurable manufacturing..... | 15.927 | 250.7 | 242.8 | 243.7 | 0.8 | 0.4 | -1.4 | -1.3 | 0.4 |
| Materials for durable manufacturing..... | 9.223 | 197.6 | 194.5 | 193.4 | -2.8 | -0.6 | -0.4 | -1.7 | -0.3 |
| Components for manufacturing..... | 16.165 | 148.5 | 149.3 | 149.2 | 0.9 | -0.1 | 0.1 | 0.3 | -0.1 |
| Materials and components for construction..... | 9.441 | 222.2 | 223.0 | 222.6 | 1.6 | -0.2 | 0.0 | -0.1 | -0.1 |
| Processed fuels and lubricants..... | 20.313 | 213.8 | 209.9 | 212.8 | 1.0 | 1.4 | -1.8 | 0.7 | 2.1 |
| Manufacturing industries..... | 5.349 | 205.8 | 206.2 | 209.6 | -1.6 | 1.6 | -0.8 | 1.2 | 1.8 |
| Nonmanufacturing industries..... | 14.964 | 217.3 | 211.8 | 214.5 | 1.9 | 1.3 | -2.2 | 0.6 | 2.2 |
| Containers..... | 2.551 | 210.7 | 212.2 | 214.9 | 4.0 | 1.3 | 0.2 | 0.5 | 1.3 |
| Supplies..... | 23.007 | 191.4 | 192.4 | 192.7 | 2.3 | 0.2 | -0.2 | 0.3 | 0.2 |
| Manufacturing industries..... | 2.880 | 184.3 | 185.5 | 185.4 | 1.0 | -0.1 | 0.1 | 0.1 | -0.1 |
| Nonmanufacturing industries..... | 20.127 | 190.9 | 191.9 | 192.2 | 2.4 | 0.2 | -0.3 | 0.4 | 0.2 |
| Feeds..... | 1.948 | 237.9 | 240.2 | 240.5 | 8.3 | 0.1 | -2.7 | 3.0 | 0.1 |
| Other supplies..... | 18.179 | 188.8 | 189.6 | 189.9 | 1.8 | 0.2 | 0.1 | 0.1 | 0.2 |
| Crude materials for further processing..... | 100.000 | 246.0 | 252.7 | 252.1 | 11.0 | -0.2 | -0.4 | 2.2 | 0.0 |
| Foodstuffs and feedstuffs..... | 38.569 | 202.1 | 208.2 | 208.5 | 10.4 | 0.1 | -2.6 | 2.1 | -0.3 |
| Nonfood materials..... | 61.431 | 266.5 | 273.3 | 272.1 | 11.4 | -0.4 | 1.0 | 2.2 | 0.3 |
| Nonfood materials except fuel ³ | 46.403 | 329.6 | 325.3 | 325.2 | 5.4 | 0.0 | -1.6 | 1.4 | 0.8 |
| Manufacturing ³ | 44.535 | 311.9 | 307.7 | 307.5 | 5.6 | -0.1 | -1.7 | 1.5 | 0.9 |
| Construction..... | 1.868 | 215.3 | 215.5 | 216.2 | 1.9 | 0.3 | -0.1 | -0.3 | 0.7 |
| Crude fuel ⁴ | 15.028 | 157.4 | 182.4 | 179.3 | 34.0 | -1.7 | 9.7 | 4.5 | -1.4 |
| Manufacturing industries..... | 0.561 | 191.7 | 207.7 | 204.4 | 14.2 | -1.6 | 5.3 | 2.6 | -1.2 |
| Nonmanufacturing industries..... | 14.467 | 159.4 | 185.2 | 182.1 | 34.9 | -1.7 | 9.9 | 4.6 | -1.4 |
| Special groupings | | | | | | | | | |
| Finished goods, excluding foods..... | 81.043 ⁵ | 194.2 | 194.6 | 195.2 | 2.4 | 0.3 | -0.7 | 0.5 | 0.9 |
| Intermediate materials less foods and feeds..... | 91.809 ⁶ | 202.3 | 200.5 | 201.2 | 0.8 | 0.3 | -0.6 | -0.2 | 0.6 |
| Intermediate foods and feeds..... | 8.191 ⁶ | 203.8 | 205.7 | 207.3 | 4.2 | 0.8 | -0.9 | 1.1 | 0.7 |
| Crude materials less agricultural products ^{3, 7} | 58.059 ⁸ | 266.7 | 274.5 | 272.9 | 11.7 | -0.6 | 1.6 | 2.1 | 0.3 |
| Finished energy goods..... | 22.026 ⁵ | 193.3 | 194.7 | 196.6 | 4.1 | 1.0 | -2.5 | 1.3 | 2.9 |
| Finished goods less energy..... | 77.974 ⁵ | 188.5 | 188.9 | 189.1 | 2.0 | 0.1 | -0.1 | 0.2 | 0.2 |
| Finished consumer goods less energy..... | 51.308 ⁵ | 200.5 | 201.1 | 201.5 | 2.6 | 0.2 | -0.2 | 0.3 | 0.2 |
| Finished goods less foods and energy..... | 59.017 ⁵ | 184.7 | 184.7 | 184.8 | 1.7 | 0.1 | 0.1 | 0.1 | 0.2 |
| Finished consumer goods less foods and energy..... | 32.350 ⁵ | 200.2 | 200.3 | 200.4 | 2.3 | 0.0 | 0.1 | 0.1 | 0.2 |
| Consumer nondurable goods less foods and energy..... | 18.614 ⁵ | 244.2 | 244.8 | 245.1 | 3.3 | 0.1 | 0.2 | 0.1 | 0.2 |
| Intermediate energy goods..... | 21.600 ⁶ | 219.0 | 213.6 | 216.4 | 0.4 | 1.3 | -2.1 | 0.5 | 2.0 |
| Intermediate materials less energy..... | 78.400 ⁶ | 195.8 | 195.3 | 195.5 | 1.2 | 0.1 | -0.3 | -0.2 | 0.2 |
| Intermediate materials less foods and energy..... | 70.210 ⁶ | 194.7 | 194.0 | 194.0 | 0.9 | 0.0 | -0.2 | -0.4 | 0.1 |
| Crude energy materials ³ | 37.237 ⁸ | 226.3 | 241.4 | 239.7 | 21.4 | -0.7 | 3.7 | 5.0 | 0.3 |
| Crude materials less energy..... | 62.763 ⁸ | 243.9 | 245.3 | 245.4 | 5.5 | 0.0 | -2.7 | 0.5 | -0.2 |
| Crude nonfood materials less energy ⁴ | 24.194 ⁸ | 363.0 | 350.7 | 350.1 | -2.1 | -0.2 | -2.8 | -2.3 | 0.1 |

1 Comprehensive relative importance figures are initially computed after the publication of December indexes and are recalculated after final December indexes are available. Individual items and subtotals may not add exactly to totals because of rounding differences.

2 The indexes for February 2013 have been recalculated to incorporate late reports and corrections by respondents. All indexes are subject to revision 4 months after original publication.

3 Includes crude petroleum.

4 Excludes crude petroleum.

5 Percent of total finished goods.

6 Percent of total intermediate materials.

7 Formerly titled "Crude materials for further processing, excluding crude foodstuffs and feedstuffs, plant and animal fibers, oilseeds, and leaf tobacco."

8 Percent of total crude materials.

Table 2. Producer price indexes and percent changes for selected commodity groupings by stage of processing

[1982=100, unless otherwise indicated]

| Grouping | Commodity code | Unadjusted index | | | Unadjusted percent change to June 2013 from: | | Seasonally adjusted percent change from: | | |
|---|----------------|------------------------|-----------------------|------------------------|--|----------|--|-------------|-------------|
| | | Feb. 2013 ¹ | May 2013 ¹ | June 2013 ¹ | June 2012 | May 2013 | Mar. to Apr. | Apr. to May | May to June |
| Finished goods..... | | 196.3 | 197.0 | 197.6 | 2.5 | 0.3 | -0.7 | 0.5 | 0.8 |
| Finished consumer goods..... | | 209.9 | 210.8 | 211.7 | 3.0 | 0.4 | -1.0 | 0.6 | 1.1 |
| Finished consumer foods..... | | 201.6 | 203.2 | 204.0 | 3.0 | 0.4 | -0.8 | 0.6 | 0.2 |
| Fresh fruits and melons ² | 01-11 | 120.5 | 122.4 | 115.6 | 0.8 | -5.6 | -7.9 | 4.3 | -5.6 |
| Fresh and dry vegetables ² | 01-13 | 167.1 | 191.6 | 191.2 | 15.6 | -0.2 | -10.6 | 5.7 | -0.2 |
| Eggs for fresh use (Dec 1991=100)..... | 01-71-07 | 138.8 | 150.0 | 118.1 | -6.3 | -21.3 | -13.1 | 41.6 | -26.8 |
| Bakery products..... | 02-11 | 265.6 | 265.9 | 266.1 | 2.1 | 0.1 | 0.3 | -0.1 | 0.3 |
| Milled rice ² | 02-13 | 209.7 | 211.7 | 211.2 | 6.7 | -0.2 | 1.1 | 0.0 | -0.2 |
| Pasta products (June 1985=100)..... | 02-14-02 | 204.1 | 204.6 | 204.5 | -0.3 | 0.0 | 0.6 | 1.0 | 0.0 |
| Beef and veal..... | 02-21-01 | 197.6 | 202.7 | 212.4 | 2.7 | 4.8 | -3.8 | 1.0 | 4.7 |
| Pork..... | 02-21-04 | 150.8 | 151.2 | 158.5 | 6.2 | 4.8 | -1.8 | 1.3 | 6.3 |
| Processed young chickens..... | 02-22-03 | 173.9 | 174.9 | 176.3 | 5.5 | 0.8 | 0.7 | -1.9 | 1.9 |
| Processed turkeys..... | 02-22-06 | 143.9 | 142.8 | 143.4 | -1.3 | 0.4 | 0.2 | -0.2 | 0.2 |
| Finfish and shellfish..... | 02-23 | 296.3 | 312.1 | 295.5 | 3.4 | -5.3 | -1.8 | 4.3 | -1.2 |
| Dairy products..... | 02-3 | 196.2 | 199.2 | 200.1 | 8.7 | 0.5 | 0.1 | 1.7 | -0.8 |
| Processed fruits and vegetables..... | 02-4 | 193.7 | 194.7 | 194.4 | 1.4 | -0.2 | 0.2 | 0.5 | -0.2 |
| Confectionery end products ² | 02-55 | 264.7 | 266.1 | 266.9 | 2.3 | 0.3 | 0.5 | 0.2 | 0.3 |
| Soft drinks ² | 02-62 | 195.8 | 192.7 | 194.3 | 1.3 | 0.8 | -0.2 | -1.9 | 0.8 |
| Roasted coffee ² | 02-63-01 | 206.1 | 197.7 | 199.3 | -7.8 | 0.8 | -2.1 | 0.3 | 0.8 |
| Shortening and cooking oils..... | 02-78 | 283.3 | 275.9 | 275.5 | -6.9 | -0.1 | -0.9 | -2.7 | 0.8 |
| Frozen specialties ² | 02-85 | 185.4 | 185.6 | 185.7 | 1.1 | 0.1 | -0.1 | 0.1 | 0.1 |
| Finished consumer goods excluding foods..... | | 211.6 | 212.3 | 213.3 | 3.1 | 0.5 | -1.0 | 0.6 | 1.3 |
| Alcoholic beverages..... | 02-61 | 190.0 | 189.6 | 189.5 | 2.3 | -0.1 | -0.2 | 0.2 | 0.0 |
| Pet food..... | 02-94-02 | 247.5 | 248.0 | 248.6 | 3.5 | 0.2 | 0.4 | 0.0 | -0.2 |
| Women's, girls', & infants' apparel (Dec 2003=100) ² | 03-81-06 | 105.7 | 105.5 | 105.6 | 1.8 | 0.1 | 0.2 | -0.5 | 0.1 |
| Men's and boys' apparel (Dec 2003=100) ² | 03-81-07 | 115.5 | 115.4 | 115.5 | 2.8 | 0.1 | -0.5 | 0.2 | 0.1 |
| Textile furnishings ² | 03-82 | 143.7 | 144.4 | 144.4 | 1.5 | 0.0 | -0.1 | 0.1 | 0.0 |
| Footwear ² | 04-3 | 180.6 | 184.4 | 185.9 | 5.6 | 0.8 | 0.3 | -0.1 | 0.8 |
| Residential electric power (Dec 1990=100)..... | 05-41 | 161.0 | 162.6 | 166.5 | 3.0 | 2.4 | -0.6 | 0.6 | 0.1 |
| Residential gas (Dec 1990=100)..... | 05-51 | 186.6 | 198.1 | 199.3 | 15.3 | 0.6 | 4.5 | 4.0 | 0.0 |
| Gasoline..... | 05-71 | 301.9 | 305.1 | 305.5 | 2.9 | 0.1 | -6.0 | 1.5 | 7.2 |
| Home heating oil and distillates..... | 05-73-02 | 290.0 | 271.4 | 276.1 | 5.7 | 1.7 | -8.8 | 4.9 | 6.1 |
| Pharmaceutical preparations (June 2001=100)..... | 06-38 | 181.0 | 182.1 | 182.4 | 7.6 | 0.2 | 0.6 | 0.3 | 0.4 |
| Soaps and detergents ² | 06-71 | 177.0 | 177.4 | 177.5 | 1.8 | 0.1 | 0.1 | 0.2 | 0.1 |
| Cleaning and polishing products (June 1983=100) ² | 06-72 | 170.4 | 170.0 | 170.2 | 0.7 | 0.1 | -0.1 | -0.5 | 0.1 |
| Cosmetics and other toilet preparations ² | 06-75 | 155.1 | 155.3 | 155.1 | 1.0 | -0.1 | 0.5 | 0.3 | -0.1 |
| Tires, tubes, tread, etc ² | 07-12 | 157.0 | 155.7 | 156.0 | -2.1 | 0.2 | -0.8 | -0.4 | 0.2 |
| Sanitary paper products ² | 09-15-01 | 185.5 | 185.3 | 185.3 | -0.4 | 0.0 | 0.1 | 0.1 | 0.0 |
| Household furniture ² | 12-1 | 198.6 | 199.2 | 199.7 | 1.5 | 0.3 | 0.2 | -0.1 | 0.3 |
| Floor coverings ² | 12-3 | 177.7 | 179.7 | 181.3 | 0.1 | 0.9 | 0.0 | -0.9 | 0.9 |
| Household appliances..... | 12-4 | 116.7 | 117.2 | 117.1 | -0.3 | -0.1 | 0.2 | 0.3 | -0.1 |
| Home electronic equipment ² | 12-5 | 50.8 | 50.5 | 50.6 | -3.4 | 0.2 | 0.0 | -0.6 | 0.2 |
| Lawn and garden equip, ex tractors ² | 12-66 | 142.4 | 142.4 | 142.4 | 0.1 | 0.0 | 0.0 | -0.1 | 0.0 |
| Silverware and hollowware (Dec 2011=100) ² | 12-6A | 100.1 | 99.3 | 99.3 | -0.5 | 0.0 | 0.0 | -0.8 | 0.0 |
| Passenger cars..... | 14-11-01 | 131.3 | 129.7 | 130.6 | -0.2 | 0.7 | -0.2 | -0.5 | 0.8 |
| Travel trailers and campers (June 1984=100) ² | 14-16 | 179.7 | 184.2 | 184.1 | 3.0 | -0.1 | 1.4 | 1.1 | -0.1 |
| Toys, games, and children's vehicles ² | 15-11 | 150.1 | 150.5 | 150.6 | 0.3 | 0.1 | 1.1 | -1.1 | 0.1 |
| Sporting and athletic goods ² | 15-12 | 132.8 | 134.4 | 134.9 | 0.5 | 0.4 | 0.2 | 0.0 | 0.4 |
| Tobacco products ² | 15-2 | 653.2 | 654.3 | 658.2 | 4.9 | 0.6 | 0.0 | 0.2 | 0.6 |
| Mobile homes..... | 15-5 | 254.1 | 257.5 | 257.5 | 4.9 | 0.0 | 0.3 | 0.0 | -0.2 |
| Jewelry, platinum, & karat gold ² | 15-94-02 | 241.3 | 244.6 | 243.9 | 2.3 | -0.3 | -0.7 | -1.0 | -0.3 |
| Costume jewelry and novelties ² | 15-94-04 | 169.0 | 169.7 | 169.6 | 3.0 | -0.1 | -0.1 | 0.1 | -0.1 |
| Capital equipment..... | | 163.9 | 163.9 | 163.9 | 0.9 | 0.0 | 0.1 | 0.1 | 0.1 |
| Agricultural machinery and equipment ² | 11-1 | 215.1 | 215.3 | 215.3 | 0.7 | 0.0 | 0.0 | 0.2 | 0.0 |
| Construction machinery and equipment..... | 11-2 | 210.0 | 210.7 | 210.6 | 2.5 | 0.0 | 0.4 | 0.2 | 0.0 |
| Metal cutting machine tools ² | 11-37 | 193.0 | 192.8 | 192.8 | 4.3 | 0.0 | 0.0 | -0.2 | 0.0 |
| Metal forming machine tools ² | 11-38 | 213.8 | 214.9 | 215.3 | 3.2 | 0.2 | 0.0 | 0.8 | 0.2 |
| Tools, dies, jigs, fixtures, and ind. molds ² | 11-39 | 150.0 | 150.3 | 150.3 | 1.7 | 0.0 | 0.1 | 0.0 | 0.0 |
| Pumps, compressors, and equipment..... | 11-41 | 234.2 | 235.7 | 235.5 | 2.2 | -0.1 | -0.3 | 0.3 | 0.1 |
| Industrial material handling equipment ² | 11-44 | 197.2 | 197.9 | 197.9 | 2.1 | 0.0 | 0.2 | 0.1 | 0.0 |
| Electronic computers (Dec 2004=100) ² | 11-51 | 23.2 | 22.5 | 22.3 | -10.1 | -0.9 | -0.9 | -1.7 | -0.9 |

See footnotes at end of table.

Table 2. Producer price indexes and percent changes for selected commodity groupings by stage of processing — Continued
 [1982=100, unless otherwise indicated]

| Grouping | Commodity code | Unadjusted index | | | Unadjusted percent change to June 2013 from: | | Seasonally adjusted percent change from: | | |
|--|----------------|------------------------|-----------------------|------------------------|--|------------|--|-------------|-------------|
| | | Feb. 2013 ¹ | May 2013 ¹ | June 2013 ¹ | June 2012 | May 2013 | Mar. to Apr. | Apr. to May | May to June |
| Capital equipment - Continued | | | | | | | | | |
| Textile machinery ² | 11-62 | 171.6 | 172.7 | 172.7 | 2.6 | 0.0 | 0.6 | -0.2 | 0.0 |
| Paper industries machinery (June 1982=100) ² | 11-64 | 207.2 | 208.8 | 208.7 | 2.0 | 0.0 | 0.0 | 0.6 | 0.0 |
| Printing trades machinery ² | 11-65 | 161.1 | 160.9 | 160.9 | 1.9 | 0.0 | -0.1 | 0.0 | 0.0 |
| Transformers and power regulators ² | 11-74 | 225.1 | 225.1 | 223.1 | -1.8 | -0.9 | -0.9 | 0.8 | -0.9 |
| Communication & related equip (Dec 1985=100) | 11-76 | 107.0 | 107.3 | 107.2 | 0.5 | -0.1 | 0.2 | 0.2 | 0.1 |
| X-ray and electromedical equipment | 11-79-05 | 88.4 | 88.4 | 88.2 | 0.0 | -0.2 | -0.3 | -0.2 | -0.1 |
| Oil field and gas field machinery ² | 11-91 | 212.9 | 212.6 | 212.6 | 0.6 | 0.0 | 0.0 | -0.5 | 0.0 |
| Mining machinery and equipment | 11-92 | 252.1 | 252.1 | 252.6 | 3.9 | 0.2 | 0.6 | 0.2 | 0.2 |
| Office and store machines and equipment ² | 11-93 | 117.4 | 117.6 | 117.6 | -4.5 | 0.0 | 0.9 | 0.2 | 0.0 |
| Commercial furniture ² | 12-2 | 203.7 | 205.0 | 205.4 | -0.1 | 0.2 | 0.9 | 0.4 | 0.2 |
| Light motor trucks | 14-11-05 | 163.5 | 161.7 | 161.0 | 1.8 | -0.4 | -0.1 | 0.4 | 0.2 |
| Heavy motor trucks ² | 14-11-06 | 208.1 | 207.9 | 208.7 | 1.4 | 0.4 | -0.4 | 0.3 | 0.4 |
| Truck trailers ² | 14-14 | 194.5 | 195.4 | 195.3 | -1.0 | -0.1 | 0.1 | 0.3 | -0.1 |
| Civilian aircraft (Dec 1985=100) | 14-21-02 | 254.7 | 255.4 | 255.7 | 1.6 | 0.1 | 0.2 | -0.1 | 0.0 |
| Ships (Dec 1985=100) ² | 14-31 | 219.9 | 219.3 | 219.1 | -0.7 | -0.1 | -0.1 | 0.0 | -0.1 |
| Railroad equipment ² | 14-4 | 195.2 | 198.4 | 198.4 | 3.6 | 0.0 | 0.4 | 0.9 | 0.0 |
| Signs and advertising displays (Dec 1985=100) ² | 15-9A-04 | 159.7 | 159.9 | 160.1 | 0.9 | 0.1 | 0.1 | 0.2 | 0.1 |
| Intermediate materials, supplies, and components | | 202.5 | 201.0 | 201.8 | 1.1 | 0.4 | -0.6 | -0.1 | 0.5 |
| Intermediate foods and feeds | | | | | | | | | |
| | | 203.8 | 205.7 | 207.3 | 4.2 | 0.8 | -0.9 | 1.1 | 0.7 |
| Flour ² | 02-12-03 | 228.9 | 234.5 | 235.6 | 7.3 | 0.5 | 0.6 | 3.9 | 0.5 |
| Refined sugar and byproducts ² | 02-53 | 189.7 | 184.3 | 183.5 | -11.5 | -0.4 | -0.7 | -1.5 | -0.4 |
| Confectionery materials | 02-54 | 186.8 | 188.8 | 188.7 | 5.9 | -0.1 | 0.7 | 0.4 | -0.7 |
| Soft drink beverage bases (Dec 1985=100) ² | 02-64-01-11 | 231.7 | 231.8 | 231.8 | -0.7 | 0.0 | 0.0 | 0.0 | 0.0 |
| Processed eggs ² | 02-83 | 161.6 | 178.2 | 185.8 | 32.0 | 4.3 | -6.3 | 4.9 | 4.3 |
| Prepared animal feeds | 02-9 | 231.8 | 234.4 | 234.7 | 7.4 | 0.1 | -2.6 | 2.1 | -0.6 |
| Intermediate materials less foods and feeds | | | | | | | | | |
| | | 202.3 | 200.5 | 201.2 | 0.8 | 0.3 | -0.6 | -0.2 | 0.6 |
| Synthetic fibers ² | 03-1 | 123.0 | 124.9 | 124.9 | 1.5 | 0.0 | 1.6 | 0.0 | 0.0 |
| Processed yarns and threads ² | 03-2 | 142.2 | 142.0 | 142.5 | 0.1 | 0.4 | -1.2 | 0.0 | 0.4 |
| Gray fabrics ² | 03-3 | 140.3 | 141.1 | 141.1 | -1.3 | 0.0 | 1.1 | -0.2 | 0.0 |
| Finished fabrics ² | 03-4 | 150.9 | 150.4 | 150.2 | 0.2 | -0.1 | -0.1 | -0.5 | -0.1 |
| Industrial textile products ² | 03-83-03 | 162.2 | 163.2 | 163.2 | 3.0 | 0.0 | 0.1 | -0.3 | 0.0 |
| Leather ² | 04-2 | 275.5 | 286.1 | 286.7 | 10.8 | 0.2 | -0.9 | 1.7 | 0.2 |
| Liquefied petroleum gas ² | 05-32 | 284.5 | 259.7 | 243.8 | 9.1 | -6.1 | -0.7 | -2.3 | -6.1 |
| Commercial electric power | 05-42 | 183.1 | 187.9 | 194.5 | 3.4 | 3.5 | -0.8 | 0.9 | 0.8 |
| Industrial electric power | 05-43 | 199.4 | 203.9 | 211.7 | 1.9 | 3.8 | 0.5 | 0.5 | 0.8 |
| Commercial natural gas (Dec 1990=100) ² | 05-52 | 185.4 | 190.7 | 190.3 | 12.3 | -0.2 | 1.6 | 1.8 | -0.2 |
| Industrial natural gas (Dec 1990=100) | 05-53 | 177.5 | 181.2 | 180.8 | 14.9 | -0.2 | 6.2 | 2.6 | -0.5 |
| Natural gas to electric utilities (Dec 1990=100) | 05-54 | 163.1 | 167.9 | 175.2 | 18.1 | 4.3 | 4.7 | 5.3 | 2.2 |
| Jet fuels | 05-72-03 | 330.9 | 275.3 | 277.3 | -2.2 | 0.7 | -7.0 | -9.3 | 4.1 |
| No 2 Diesel fuel | 05-73-03 | 342.4 | 308.0 | 306.0 | 3.6 | -0.6 | -3.5 | 0.3 | 1.1 |
| Residual fuels ² | 05-74 | 292.1 | 273.7 | 268.6 | 3.3 | -1.9 | -4.1 | -1.2 | -1.9 |
| Basic inorganic chemicals ² | 06-13 | 284.1 | 284.5 | 282.0 | -5.4 | -0.9 | 1.0 | -0.3 | -0.9 |
| Basic organic chemicals ² | 06-14 | 323.0 | 306.0 | 309.3 | 2.9 | 1.1 | -1.9 | -2.6 | 1.1 |
| Prepared paint ² | 06-21 | 273.9 | 273.4 | 272.8 | 0.7 | -0.2 | -0.4 | 0.1 | -0.2 |
| Paint materials ² | 06-22 | 282.0 | 275.6 | 272.8 | -10.0 | -1.0 | -0.5 | 0.1 | -1.0 |
| Medicinal and botanical chemicals ² | 06-31 | 172.5 | 176.6 | 174.6 | -2.4 | -1.1 | -0.1 | 2.7 | -1.1 |
| Fats and oils, inedible ² | 06-4 | 324.1 | 322.6 | 317.6 | -5.1 | -1.5 | 0.5 | -0.7 | -1.5 |
| Mixed fertilizers ² | 06-51 | 196.9 | 203.3 | 202.8 | -3.2 | -0.2 | -0.5 | 0.1 | -0.2 |
| Nitrogenates ² | 06-52-01 | 378.4 | 414.1 | 392.9 | 2.1 | -5.1 | 5.5 | 4.6 | -5.1 |
| Phosphates ² | 06-52-02 | 257.8 | 257.8 | 254.7 | -0.5 | -1.2 | -0.7 | 0.9 | -1.2 |
| Other agricultural chemicals ² | 06-53 | 183.7 | 183.4 | 183.7 | 0.5 | 0.2 | -1.2 | 0.0 | 0.2 |
| Plastic resins and materials ² | 06-6 | 244.1 | 243.3 | 244.7 | 3.6 | 0.6 | -1.1 | -1.1 | 0.6 |
| Synthetic rubber ² | 07-11-02 | 240.1 | 243.5 | 236.8 | -11.9 | -2.8 | 0.0 | -0.5 | -2.8 |
| Plastic construction products ² | 07-21 | 210.7 | 208.5 | 208.9 | 0.3 | 0.2 | -1.2 | 0.3 | 0.2 |
| Unsupported plastic film, sheet, & other shapes ² | 07-22 | 212.7 | 216.1 | 212.7 | 0.0 | -1.6 | 0.7 | 0.9 | -1.6 |
| Plastic parts and components for manufacturing ² | 07-26 | 141.4 | 148.3 | 148.1 | 5.2 | -0.1 | 0.5 | 4.4 | -0.1 |
| Softwood lumber | 08-11 | 206.0 | 206.0 | 190.4 | 8.0 | -7.6 | 2.5 | -8.2 | -5.6 |
| Hardwood lumber ² | 08-12 | 192.0 | 205.9 | 207.3 | 13.7 | 0.7 | 1.6 | 3.0 | 0.7 |
| Millwork | 08-2 | 223.6 | 226.5 | 226.0 | 4.3 | -0.2 | 0.5 | 0.3 | -0.2 |
| Plywood ² | 08-3 | 200.7 | 202.0 | 205.8 | 8.4 | 1.9 | 1.7 | -1.4 | 1.9 |
| Treated wood (June 1985=100) | 08-71-01 | 201.7 | 197.8 | 194.6 | 5.8 | -1.6 | -0.9 | -6.7 | 1.2 |

See footnotes at end of table.

Table 2. Producer price indexes and percent changes for selected commodity groupings by stage of processing — Continued
 [1982=100, unless otherwise indicated]

| Grouping | Commodity code | Unadjusted index | | | Unadjusted percent change to June 2013 from: | | Seasonally adjusted percent change from: | | |
|---|----------------|------------------------|-----------------------|------------------------|--|-------------|--|-------------|-------------|
| | | Feb. 2013 ¹ | May 2013 ¹ | June 2013 ¹ | June 2012 | May 2013 | Mar. to Apr. | Apr. to May | May to June |
| Intermediate materials less foods and feeds - Continued | | | | | | | | | |
| Woodpulp ² | 09-11 | 178.7 | 179.0 | 181.0 | -2.6 | 1.1 | -0.2 | 0.1 | 1.1 |
| Paper ² | 09-13 | 190.4 | 190.3 | 190.4 | -0.7 | 0.1 | -0.1 | 0.2 | 0.1 |
| Paperboard ² | 09-14 | 235.8 | 240.9 | 242.9 | 7.5 | 0.8 | 0.0 | 1.8 | 0.8 |
| Paper boxes and containers ² | 09-15-03 | 233.5 | 234.8 | 238.7 | 5.7 | 1.7 | 0.2 | 0.6 | 1.7 |
| Building paper and board ² | 09-2 | 229.9 | 222.7 | 214.7 | 18.1 | -3.6 | 3.9 | -5.4 | -3.6 |
| Commercial printing (June 1982=100) ² | 09-47 | 169.8 | 169.6 | 169.9 | 0.2 | 0.2 | -0.1 | -0.1 | 0.2 |
| Foundry and forge shop products ² | 10-15 | 208.5 | 208.7 | 208.2 | -0.2 | -0.2 | 0.2 | -0.2 | -0.2 |
| Steel mill products ² | 10-17 | 196.3 | 194.3 | 192.9 | -8.1 | -0.7 | 0.4 | -1.3 | -0.7 |
| Primary nonferrous metals ² | 10-22 | 220.9 | 197.4 | 196.7 | -4.1 | -0.4 | -3.5 | -4.7 | -0.4 |
| Aluminum mill shapes ² | 10-25-01 | 178.7 | 172.6 | 172.4 | -2.5 | -0.1 | -2.5 | -1.4 | -0.1 |
| Copper and brass mill shapes ² | 10-25-02 | 436.1 | 402.9 | 400.7 | -3.8 | -0.5 | -2.7 | -2.9 | -0.5 |
| Titanium mill shapes ² | 10-25-05 | 174.0 | 173.8 | 174.6 | -5.0 | 0.5 | 0.9 | 0.1 | 0.5 |
| Nonferrous wire and cable ² | 10-26 | 266.8 | 257.5 | 258.6 | -2.1 | 0.4 | -3.5 | -0.8 | 0.4 |
| Metal containers ² | 10-3 | 152.5 | 152.6 | 152.5 | 0.3 | -0.1 | 0.2 | -0.1 | -0.1 |
| Hardware ² | 10-4 | 204.2 | 205.2 | 204.9 | 0.9 | -0.1 | 0.2 | 0.3 | -0.1 |
| Plumbing fixtures and brass fittings | 10-5 | 243.7 | 243.7 | 243.7 | 1.0 | 0.0 | -0.5 | 0.3 | 0.0 |
| Heating equipment ² | 10-6 | 238.9 | 240.7 | 239.9 | 1.9 | -0.3 | 0.2 | 0.5 | -0.3 |
| Fabricated structural metal products | 10-7 | 213.3 | 213.9 | 213.5 | -0.9 | -0.2 | -0.4 | 0.0 | 0.0 |
| Fabricated ferrous wire products (June 1982=100) | 10-88 | 219.7 | 221.4 | 221.8 | -0.1 | 0.2 | -0.1 | 1.0 | -0.5 |
| Other misc metal products ² | 10-89 | 160.4 | 160.3 | 160.5 | 0.2 | 0.1 | -0.1 | 0.0 | 0.1 |
| Mechanical power transmission equipment ² | 11-45 | 253.9 | 255.6 | 256.0 | 3.4 | 0.2 | 0.3 | 0.0 | 0.2 |
| Air conditioning and refrigeration equipment ² | 11-48 | 173.7 | 174.9 | 174.0 | 2.2 | -0.5 | -0.6 | 0.3 | -0.5 |
| Metal valves, ex.fluid power (Dec. 1982=100) | 11-49-02 | 281.7 | 283.0 | 283.0 | 2.6 | 0.0 | 0.4 | 0.5 | -0.3 |
| Ball and roller bearings ² | 11-49-05 | 246.4 | 251.3 | 247.3 | 1.0 | -1.6 | 0.0 | 2.0 | -1.6 |
| Wiring devices ² | 11-71 | 227.9 | 226.2 | 226.9 | 1.2 | 0.3 | -0.6 | -0.1 | 0.3 |
| Motors, generators, motor generator sets ² | 11-73 | 207.9 | 208.2 | 208.1 | 0.7 | 0.0 | 0.0 | 0.0 | 0.0 |
| Switchgear, switchboard, etc, equipment ² | 11-75 | 216.7 | 216.8 | 217.2 | 2.3 | 0.2 | 0.0 | 0.0 | 0.2 |
| Electronic components and accessories ² | 11-78 | 68.6 | 69.8 | 69.8 | 0.4 | 0.0 | 0.9 | 0.3 | 0.0 |
| Internal combustion engines | 11-94 | 165.2 | 165.8 | 165.7 | 0.1 | -0.1 | 0.3 | 0.4 | 0.2 |
| Machine shop products ² | 11-95 | 183.3 | 183.5 | 183.2 | 0.3 | -0.2 | -0.1 | 0.0 | -0.2 |
| Flat glass ² | 13-11 | 116.7 | 118.4 | 118.7 | 4.2 | 0.3 | -0.9 | 2.2 | 0.3 |
| Cement ² | 13-22 | 197.3 | 201.2 | 200.6 | 4.9 | -0.3 | 0.8 | 0.7 | -0.3 |
| Concrete products | 13-3 | 218.6 | 220.9 | 220.7 | 3.1 | -0.1 | 1.1 | -0.2 | 0.0 |
| Asphalt felts and coatings ² | 13-6 | 231.0 | 239.4 | 242.7 | 2.1 | 1.4 | 2.0 | 1.4 | 1.4 |
| Gypsum products ² | 13-7 | 269.1 | 273.9 | 273.4 | 15.6 | -0.2 | 0.3 | 0.5 | -0.2 |
| Glass containers | 13-8 | 187.7 | 190.2 | 190.2 | 1.1 | 0.0 | 0.1 | 0.1 | 0.2 |
| Motor vehicle parts ² | 14-12 | 125.8 | 125.6 | 125.6 | 0.4 | 0.0 | -0.1 | -0.2 | 0.0 |
| Aircraft engines & engine parts (Dec 1985=100) | 14-23 | 215.8 | 215.9 | 216.0 | 2.3 | 0.0 | 0.4 | 0.2 | 0.3 |
| Aircraft parts & aux. equip., nec (June 1985=100) | 14-25 | 175.2 | 176.1 | 177.3 | 3.3 | 0.7 | 0.8 | 0.0 | 0.7 |
| Photographic supplies ² | 15-42 | 146.2 | 146.2 | 146.1 | -0.7 | -0.1 | 0.1 | -0.1 | -0.1 |
| Medical/surgical/personal aid devices | 15-6 | 174.8 | 175.3 | 175.0 | 1.3 | -0.2 | 0.1 | 0.1 | -0.1 |
| Crude materials for further processing | | 246.0 | 252.7 | 252.1 | 11.0 | -0.2 | -0.4 | 2.2 | 0.0 |
| Crude foodstuffs and feedstuffs | | 202.1 | 208.2 | 208.5 | 10.4 | 0.1 | -2.6 | 2.1 | -0.3 |
| Wheat ² | 01-21 | 214.4 | 211.1 | 207.3 | 11.6 | -1.8 | 0.2 | 1.3 | -1.8 |
| Corn | 01-22-02 | 286.2 | 278.3 | 284.9 | 15.1 | 2.4 | -11.5 | 5.6 | -0.4 |
| Slaughter cattle ² | 01-31 | 184.3 | 187.1 | 181.2 | -0.3 | -3.2 | 0.0 | -1.0 | -3.2 |
| Slaughter hogs | 01-32 | 107.2 | 115.2 | 126.9 | 8.2 | 10.2 | 7.0 | 5.7 | 12.2 |
| Slaughter chickens | 01-41-02 | 283.7 | 318.8 | 312.2 | 32.4 | -2.1 | 1.1 | -0.8 | -0.7 |
| Slaughter turkeys | 01-42 | 183.4 | 188.1 | 188.5 | -9.3 | 0.2 | -3.0 | -2.4 | -5.7 |
| Raw milk | 01-6 | 145.8 | 148.0 | 147.3 | 21.6 | -0.5 | 1.8 | 1.9 | -2.4 |
| Soybeans ² | 01-83-01-31 | 244.9 | 254.6 | 265.8 | 8.4 | 4.4 | -4.7 | 5.0 | 4.4 |
| Cane sugar, raw ² | 02-52-01 | 157.6 | 150.4 | 147.8 | -18.7 | -1.7 | 0.5 | -3.5 | -1.7 |
| Crude nonfood materials | | 266.5 | 273.3 | 272.1 | 11.4 | -0.4 | 1.0 | 2.2 | 0.3 |
| Raw cotton ² | 01-51 | 125.5 | 126.1 | 126.0 | -2.2 | -0.1 | 0.2 | 1.2 | -0.1 |
| Hides and skins ² | 04-1 | 302.3 | 314.8 | 316.4 | 13.6 | 0.5 | 0.5 | 2.7 | 0.5 |
| Coal | 05-1 | 209.1 | 213.7 | 210.2 | -1.2 | -1.6 | 1.6 | 1.0 | -1.1 |
| Natural gas ² | 05-31 | 138.2 | 174.0 | 171.0 | 67.5 | -1.7 | 15.5 | 6.9 | -1.7 |
| Crude petroleum | 05-61 | 275.0 | 276.6 | 277.1 | 14.8 | 0.2 | -0.6 | 5.5 | 1.7 |
| Logs, timber, etc ² | 08-5 | 236.2 | 235.2 | 236.3 | 2.9 | 0.5 | -1.0 | 0.0 | 0.5 |
| Wastepaper ² | 09-12 | 356.8 | 350.8 | 354.4 | -10.6 | 1.0 | -4.5 | -4.5 | 1.0 |

See footnotes at end of table.

Table 2. Producer price indexes and percent changes for selected commodity groupings by stage of processing — Continued

[1982=100, unless otherwise indicated]

| Grouping | Commodity code | Unadjusted index | | | Unadjusted percent change to June 2013 from: | | Seasonally adjusted percent change from: | | |
|---|----------------|------------------------|-----------------------|------------------------|--|----------|--|-------------|-------------|
| | | Feb. 2013 ¹ | May 2013 ¹ | June 2013 ¹ | June 2012 | May 2013 | Mar. to Apr. | Apr. to May | May to June |
| Crude nonfood materials - Continued | | | | | | | | | |
| Iron ore ² | 10-11 | 122.0 | 131.9 | 130.0 | -28.0 | -1.4 | -0.7 | 1.9 | -1.4 |
| Iron and steel scrap ² | 10-12 | 514.9 | 504.2 | 495.3 | -7.4 | -1.8 | -2.3 | -6.0 | -1.8 |
| Nonferrous metal ores (Dec 1983=100) ² | 10-21 | 365.4 | 325.5 | 327.9 | -4.7 | 0.7 | -3.7 | -7.2 | 0.7 |
| Copper base scrap..... | 10-23-01 | 622.9 | 584.2 | 571.7 | -4.8 | -2.1 | -4.8 | 0.3 | 1.4 |
| Aluminum base scrap..... | 10-23-02 | 241.1 | 227.2 | 227.0 | -3.4 | -0.1 | -2.4 | -1.5 | 2.9 |
| Construction sand, gravel, and crushed stone..... | 13-21 | 276.5 | 276.9 | 277.9 | 2.0 | 0.4 | -0.1 | -0.3 | 0.7 |
| Industrial sand..... | 13-99-01 | 274.4 | 271.4 | 271.4 | -1.7 | 0.0 | 0.7 | -0.8 | 0.4 |

¹ The indexes for February 2013 have been recalculated to incorporate late reports and corrections by respondents. All indexes are subject to revision 4 months after original publication.
² Not seasonally adjusted.

"-" Data not available.

Table 3. Producer price indexes for selected commodity groupings
 [1982=100, unless otherwise indicated]

| Grouping | Commodity code | Unadjusted index ¹ | | |
|---|----------------|-------------------------------|----------|-----------|
| | | Feb. 2013 | May 2013 | June 2013 |
| All commodities..... | | 204.3 | 204.2 | 204.7 |
| Major commodity groups | | | | |
| Farm products and processed foods and feeds..... | | 203.8 | 206.4 | 207.4 |
| Farm products..... | 01 | 197.5 | 203.2 | 203.3 |
| Processed foods and feeds..... | 02 | 207.6 | 208.8 | 210.2 |
| Industrial commodities..... | | 204.1 | 203.4 | 203.9 |
| Textile products and apparel..... | 03 | 143.0 | 143.5 | 143.5 |
| Hides, skins, leather, and related products..... | 04 | 213.9 | 220.3 | 221.3 |
| Fuels and related products and power..... | 05 | 214.1 | 213.5 | 215.2 |
| Chemicals and allied products..... | 06 | 283.8 | 280.2 | 281.1 |
| Rubber and plastic products..... | 07 | 188.1 | 189.9 | 189.2 |
| Lumber and wood products..... | 08 | 213.1 | 215.7 | 213.8 |
| Pulp, paper, and allied products..... | 09 | 247.0 | 247.6 | 248.5 |
| Metals and metal products..... | 10 | 216.5 | 212.6 | 211.9 |
| Machinery and equipment..... | 11 | 134.8 | 135.3 | 135.2 |
| Furniture and household durables..... | 12 | 160.1 | 160.9 | 161.2 |
| Nonmetallic mineral products..... | 13 | 214.9 | 216.9 | 217.0 |
| Transportation equipment..... | 14 | 171.8 | 171.2 | 171.3 |
| Miscellaneous products..... | 15 | 238.8 | 239.5 | 239.7 |
| Industrial commodities less fuels and related products and power..... | | 196.1 | 195.5 | 195.5 |
| Other commodity groupings | | | | |
| Fruits and melons, fresh and dry vegetables, and tree nuts..... | 01-1 | 161.8 | 173.9 | 170.3 |
| Grains..... | 01-2 | 268.1 | 262.1 | 265.8 |
| Slaughter livestock..... | 01-3 | 167.7 | 172.4 | 172.7 |
| Slaughter poultry..... | 01-4 | 258.0 | 285.6 | 280.6 |
| Plant and animal fibers..... | 01-5 | 126.7 | 127.4 | 127.3 |
| Chicken eggs..... | 01-7 | 164.5 | 180.5 | 146.7 |
| Hay, hayseeds, and oilseeds..... | 01-8 | 287.4 | 297.2 | 307.4 |
| Oilseeds..... | 01-83 | 262.9 | 273.0 | 284.7 |
| Cereal and bakery products..... | 02-1 | 250.8 | 250.2 | 250.5 |
| Meats, poultry, and fish..... | 02-2 | 181.4 | 184.7 | 188.6 |
| Processed poultry..... | 02-22 | 162.1 | 164.2 | 165.8 |
| Sugar and confectionery..... | 02-5 | 218.1 | 217.8 | 217.8 |
| Beverages and beverage materials..... | 02-6 | 195.9 | 193.8 | 194.5 |
| Packaged beverage materials..... | 02-63 | 201.3 | 194.3 | 195.6 |
| Fats and oils..... | 02-7 | 286.1 | 278.8 | 278.0 |
| Apparel..... | 03-81 | 138.5 | 138.4 | 138.6 |
| Other leather and related products..... | 04-4 | 169.4 | 172.0 | 172.6 |
| Gas fuels..... | 05-3 | 174.5 | 202.0 | 196.5 |
| Electric power..... | 05-4 | 189.0 | 192.4 | 198.4 |
| Refined petroleum products..... | 05-7 | 311.3 | 296.4 | 296.6 |
| Drugs and pharmaceuticals..... | 06-3 | 435.5 | 440.0 | 441.7 |
| Agricultural chemicals and products..... | 06-5 | 248.9 | 255.9 | 251.7 |
| Other chemicals and allied products..... | 06-7 | 190.7 | 191.0 | 190.9 |
| Rubber and rubber products..... | 07-1 | 185.1 | 184.9 | 183.9 |
| Rubber, except natural rubber..... | 07-11 | 238.9 | 242.2 | 235.5 |
| Miscellaneous rubber products..... | 07-13 | 196.9 | 196.3 | 196.3 |
| Plastic products..... | 07-2 | 196.1 | 198.6 | 198.1 |
| Lumber..... | 08-1 | 196.1 | 201.5 | 192.7 |
| Pulp, paper, and products, excluding building paper and board..... | 09-1 | 215.1 | 216.3 | 217.7 |
| Converted paper and paperboard products..... | 09-15 | 221.3 | 222.4 | 224.3 |
| Iron and steel..... | 10-1 | 226.0 | 223.8 | 221.8 |
| Nonferrous metals..... | 10-2 | 258.0 | 242.7 | 242.5 |
| Nonferrous mill shapes..... | 10-25 | 207.9 | 198.6 | 198.3 |
| Metalworking machinery and equipment..... | 11-3 | 181.7 | 182.3 | 182.5 |
| General purpose machinery and equipment..... | 11-4 | 217.3 | 218.4 | 218.0 |
| Special industry machinery..... | 11-6 | 193.6 | 194.5 | 194.5 |
| Electrical machinery and equipment..... | 11-7 | 113.4 | 114.0 | 114.0 |
| Miscellaneous machinery and equipment..... | 11-9 | 176.5 | 176.9 | 176.8 |
| Other household durable goods..... | 12-6 | 185.1 | 185.5 | 185.7 |
| Concrete ingredients..... | 13-2 | 242.9 | 244.4 | 244.9 |
| Motor vehicles and equipment..... | 14-1 | 143.7 | 142.8 | 142.8 |
| Toys, sporting goods, small arms, etc..... | 15-1 | 152.5 | 154.2 | 154.3 |
| Photographic equipment and supplies..... | 15-4 | 127.2 | 127.2 | 127.2 |
| Other miscellaneous products..... | 15-9 | 177.1 | 177.2 | 177.1 |

¹ Data for February 2013 have been revised to reflect the availability of late reports and corrections by respondents. All data are subject to revision 4 months after original publication.

Table 4. Producer price indexes for the net output of selected industries and industry groups, not seasonally adjusted

| Industry ¹ | Industry code | Index base | Index | | | Percent change to June 2013 from: | |
|--|---------------|------------|------------------------|-----------------------|------------------------|-----------------------------------|----------|
| | | | Feb. 2013 ² | May 2013 ² | June 2013 ² | June 2012 | May 2013 |
| Total mining, utilities, and manufacturing industries..... | | 12/06 | 122.6 | 122.3 | 122.7 | 1.9 | 0.3 |
| Total mining industries..... | | 12/84 | 230.9 | 237.9 | 236.7 | 13.6 | -0.5 |
| Oil and gas extraction..... | 211 | 12/85 | 250.2 | 264.3 | 261.6 | 25.5 | -1.0 |
| Mining (except oil & gas)..... | 212 | 12/03 | 227.1 | 224.2 | 222.8 | -2.1 | -0.6 |
| Mining support activities..... | 213 | 06/09 | 117.8 | 118.5 | 120.3 | 3.4 | 1.5 |
| Utilities..... | 221 | 12/03 | 132.4 | 135.6 | 138.5 | 5.4 | 2.1 |
| Total manufacturing industries..... | | 12/84 | 195.2 | 194.1 | 194.3 | 1.4 | 0.1 |
| Food mfg..... | 311 | 12/84 | 200.6 | 202.0 | 203.3 | 3.1 | 0.6 |
| Beverage & tobacco mfg..... | 312 | 12/03 | 134.9 | 134.3 | 134.9 | 2.7 | 0.4 |
| Textile mills..... | 313 | 12/84 | 128.5 | 128.2 | 128.2 | 0.1 | 0.0 |
| Textile product mills..... | 314 | 12/03 | 125.5 | 126.8 | 127.4 | 1.4 | 0.5 |
| Apparel manufacturing..... | 315 | 12/03 | 108.9 | 109.1 | 109.2 | 1.8 | 0.1 |
| Leather and allied product manufacturing..... | 316 | 12/84 | 171.9 | 174.3 | 175.2 | 4.6 | 0.5 |
| Wood product manufacturing..... | 321 | 12/03 | 120.4 | 121.7 | 120.7 | 6.7 | -0.8 |
| Paper manufacturing..... | 322 | 12/03 | 133.1 | 133.7 | 134.6 | 2.3 | 0.7 |
| Printing and related support activities..... | 323 | 12/03 | 112.0 | 112.0 | 112.1 | 0.3 | 0.1 |
| Petroleum and coal products manufacturing..... | 324 | 12/84 | 382.2 | 365.4 | 365.3 | -0.4 | 0.0 |
| Chemical mfg..... | 325 | 12/84 | 264.7 | 265.0 | 265.6 | 2.3 | 0.2 |
| Plastics and rubber products mfg..... | 326 | 12/84 | 182.7 | 184.7 | 184.7 | 1.7 | 0.0 |
| Nonmetallic mineral product mfg..... | 327 | 12/84 | 184.1 | 185.8 | 185.7 | 3.2 | -0.1 |
| Primary metal mfg..... | 331 | 12/84 | 202.3 | 197.6 | 196.9 | -4.9 | -0.4 |
| Fabricated metal product mfg..... | 332 | 12/84 | 186.3 | 186.5 | 186.3 | 0.2 | -0.1 |
| Machinery mfg..... | 333 | 12/03 | 127.5 | 127.9 | 127.8 | 1.3 | -0.1 |
| Computer & electronic product mfg..... | 334 | 12/03 | 89.3 | 89.6 | 89.5 | -0.1 | -0.1 |
| Electrical equipment, appliance & component mfg..... | 335 | 12/03 | 138.8 | 138.7 | 138.5 | -0.1 | -0.1 |
| Transportation equipment mfg..... | 336 | 12/03 | 116.0 | 115.6 | 115.6 | 1.0 | 0.0 |
| Furniture & related product mfg..... | 337 | 12/84 | 186.5 | 188.2 | 188.1 | 1.7 | -0.1 |
| Miscellaneous mfg..... | 339 | 12/03 | 118.4 | 118.8 | 118.7 | 1.0 | -0.1 |
| Total trade industries..... | | 12/06 | 120.4 | 121.7 | 121.1 | 1.8 | -0.5 |
| Total wholesale trade industries..... | | 12/06 | 124.2 | 125.4 | 124.9 | 3.1 | -0.4 |
| Merchant wholesalers, durable goods..... | 423 | 06/04 | 121.9 | 125.5 | 124.5 | 1.0 | -0.8 |
| Merchant wholesalers, nondurable goods..... | 424 | 06/05 | 151.1 | 149.3 | 149.2 | 6.0 | -0.1 |
| Wholesale trade agents and brokers..... | 425 | 06/05 | 128.5 | 128.5 | 129.6 | -0.1 | 0.9 |
| Total retail trade industries..... | | 12/06 | 117.9 | 119.1 | 118.5 | 0.7 | -0.5 |
| Motor vehicle and parts dealers..... | 441 | 12/03 | 130.7 | 132.1 | 132.3 | 0.7 | 0.2 |
| Furniture and home furnishings stores..... | 442 | 12/03 | 128.9 | 139.0 | 132.3 | 4.0 | -4.8 |
| Electronics and appliance stores..... | 443 | 12/03 | 78.5 | 83.7 | 86.0 | 10.3 | 2.7 |
| Bldg material and garden equip and supp dealers..... | 444 | 12/03 | 136.7 | 138.3 | 138.3 | 8.3 | 0.0 |
| Food and beverage stores..... | 445 | 12/99 | 168.9 | 164.8 | 165.9 | 1.4 | 0.7 |
| Health and personal care stores..... | 446 | 12/03 | 141.4 | 144.1 | 143.8 | 6.8 | -0.2 |
| Gasoline stations..... | 447 | 06/01 | 82.2 | 78.1 | 86.7 | 0.3 | 11.0 |
| Clothing and clothing accessories stores..... | 448 | 12/03 | 119.0 | 125.9 | 118.4 | -7.6 | -6.0 |
| Sporting goods hobby, book and music stores..... | 451 | 12/03 | 113.6 | 113.2 | 113.3 | -1.2 | 0.1 |
| General merchandise stores..... | 452 | 12/03 | 127.7 | 132.4 | 124.4 | -1.5 | -6.0 |
| Florists..... | 4531 | 12/03 | 107.2 | 107.2 | 106.9 | -0.2 | -0.3 |
| Office supplies, stationery and gift stores..... | 4532 | 12/03 | 136.4 | 129.8 | 135.6 | 0.2 | 4.5 |
| Manufactured (mobile) home dealers..... | 45393 | 12/03 | 110.6 | 111.7 | 107.7 | -6.1 | -3.6 |
| Nonstore retailers..... | 454 | 12/03 | 147.5 | 148.4 | 150.4 | -3.5 | 1.3 |
| Transportation and warehousing industries..... | | 12/06 | 125.4 | 125.1 | 125.8 | 1.0 | 0.6 |
| Transportation industries..... | | 12/06 | 122.4 | 122.1 | 123.0 | 0.5 | 0.7 |
| Air transportation..... | 481 | 12/92 | 223.9 | 221.9 | 227.5 | -2.7 | 2.5 |
| Rail transportation..... | 482 | 12/96 | 182.2 | 183.7 | 182.6 | 1.7 | -0.6 |
| Water transportation..... | 483 | 12/03 | 137.1 | 135.1 | 135.0 | -1.9 | -0.1 |
| Truck transportation..... | 484 | 12/03 | 132.4 | 131.9 | 132.5 | 1.9 | 0.5 |
| Pipeline transportation of crude oil..... | 486110 | 06/86 | 224.9 | 230.1 | 230.1 | 10.6 | 0.0 |
| Refined petroleum product pipeline transport..... | 486910 | 06/86 | 169.8 | 169.9 | 169.8 | 5.2 | -0.1 |
| Transportation support activities..... | 488 | 12/03 | 116.8 | 117.5 | 117.4 | 1.6 | -0.1 |
| Delivery and warehouse industries..... | | 12/06 | 136.1 | 136.0 | 135.7 | 3.5 | -0.2 |
| U.S. Postal Service..... | 491 | 06/89 | 203.0 | 203.0 | 203.0 | 3.6 | 0.0 |
| Couriers and messengers..... | 492 | 12/03 | 189.6 | 189.8 | 189.1 | 4.4 | -0.4 |
| Warehousing and storage..... | 493 | 12/06 | 100.6 | 99.2 | 99.2 | -1.2 | 0.0 |
| Services less trade, transportation, and warehousing³..... | | 12/06 | 110.3 | 110.3 | 110.7 | 1.7 | 0.4 |
| Information..... | | 12/06 | 103.0 | 103.0 | 103.0 | 0.3 | 0.0 |
| Publishing industries, except Internet..... | 511 | 12/03 | 112.1 | 112.4 | 112.9 | 1.5 | 0.4 |
| Broadcasting, except Internet..... | 515 | 12/03 | 119.1 | 119.3 | 120.0 | 1.9 | 0.6 |
| Telecommunications..... | 517 | 12/03 | 102.2 | 101.8 | 101.6 | -0.2 | -0.2 |

See footnotes at end of table.

Table 4. Producer price indexes for the net output of selected industries and industry groups, not seasonally adjusted — Continued

| Industry ¹ | Industry code | Index base | Index | | | Percent change to June 2013 from: | |
|--|---------------|------------|------------------------|-----------------------|------------------------|-----------------------------------|----------|
| | | | Feb. 2013 ² | May 2013 ² | June 2013 ² | June 2012 | May 2013 |
| Data processing and related services..... | 5182 | 12/03 | 102.6 | 102.6 | 102.6 | 0.1 | 0.0 |
| Internet publishing and web search portals..... | 519130 | 12/09 | 93.9 | 94.6 | 93.9 | -3.2 | -0.7 |
| Selected health care industries..... | | 12/06 | 116.7 | 116.0 | 116.2 | 1.2 | 0.2 |
| Offices of physicians..... | 6211 | 12/96 | 133.6 | 133.3 | 133.3 | 0.2 | 0.0 |
| Offices of dentists..... | 6212 | 06/10 | 105.2 | 105.5 | 106.0 | 2.1 | 0.5 |
| Medical and diagnostic laboratories..... | 6215 | 12/03 | 107.7 | 106.3 | 107.0 | -1.2 | 0.7 |
| Home health care services..... | 6216 | 12/96 | 131.1 | 130.1 | 130.1 | -0.1 | 0.0 |
| Blood and organ banks..... | 621991 | 06/06 | 115.4 | 115.4 | 115.3 | 0.4 | -0.1 |
| Hospitals..... | 622 | 12/92 | 185.4 | 183.8 | 184.2 | 1.9 | 0.2 |
| Nursing care facilities..... | 6231 | 12/03 | 131.4 | 131.1 | 131.5 | 1.0 | 0.3 |
| Residential mental retardation facilities..... | 62321 | 12/03 | 144.6 | 145.6 | 145.6 | 4.4 | 0.0 |
| Other selected services less trade, transportation, and warehousing industries..... | | 12/06 | 109.5 | 109.7 | 110.2 | 2.0 | 0.5 |
| Depository credit intermediation..... | 5221 | 12/03 | 106.0 | 103.0 | 105.0 | -0.9 | 1.9 |
| Security, commodity contracts and like activity..... | 523 | 12/03 | 133.9 | 138.1 | 138.9 | 8.7 | 0.6 |
| Insurance carriers and related activities..... | 524 | 12/03 | 123.7 | 123.8 | 123.8 | 1.0 | 0.0 |
| Lessors of nonres bldg (exc miniwarehouse)..... | 53112 | 12/03 | 111.4 | 111.5 | 112.3 | 1.7 | 0.7 |
| Lessors of miniwarehouse and self storage units..... | 53113 | 12/03 | 116.1 | 117.2 | 117.7 | 2.6 | 0.4 |
| Offices of real estate agents and brokers..... | 5312 | 12/03 | 102.9 | 105.1 | 105.7 | 6.9 | 0.6 |
| Real estate property managers..... | 53131 | 12/03 | 108.3 | 109.7 | 109.7 | 1.8 | 0.0 |
| Offices of real estate appraisers..... | 531320 | 12/03 | 99.1 | 97.7 | 98.2 | -0.7 | 0.5 |
| Automotive equipment rental and leasing..... | 5321 | 06/01 | 139.3 | 123.1 | 130.7 | 2.1 | 6.2 |
| Other heavy machinery rental and leasing..... | 532412 | 12/03 | 122.9 | 123.0 | 123.0 | 7.6 | 0.0 |
| Legal services..... | 5411 | 12/96 | 186.5 | 186.9 | 187.4 | 2.5 | 0.3 |
| Offices of certified public accountants..... | 541211 | 12/03 | 113.3 | 113.3 | 114.1 | 2.7 | 0.7 |
| Other accounting services..... | 541219 | 12/03 | 107.5 | 108.0 | 107.7 | 1.6 | -0.3 |
| Architectural, engineering and related services..... | 5413 | 12/96 | 148.7 | 149.4 | 149.1 | 1.3 | -0.2 |
| Management and technical consulting services..... | 5416 | 06/06 | 112.6 | 112.4 | 112.4 | 1.8 | 0.0 |
| Advertising agencies..... | 54181 | 12/03 | 108.5 | 108.6 | 108.7 | 1.1 | 0.1 |
| Employment services..... | 5613 | 12/96 | 127.8 | 128.5 | 128.5 | 1.8 | 0.0 |
| Travel agencies..... | 56151 | 12/03 | 101.5 | 102.3 | 101.7 | 0.2 | -0.6 |
| Security guards and patrol services..... | 561612 | 12/04 | 109.5 | 110.1 | 109.6 | 0.4 | -0.5 |
| Janitorial services..... | 56172 | 12/03 | 114.3 | 114.8 | 114.7 | 0.8 | -0.1 |
| Waste collection..... | 5621 | 12/03 | 123.5 | 123.4 | 123.5 | 1.4 | 0.1 |
| Computer training..... | 61142 | 06/06 | 113.9 | 113.9 | 113.9 | 0.2 | 0.0 |
| Amusement and theme parks..... | 71311 | 06/06 | 136.5 | 137.3 | 140.9 | 4.1 | 2.6 |
| Golf courses and country clubs..... | 71391 | 12/05 | 110.6 | 111.6 | 113.8 | 1.8 | 2.0 |
| Fitness and recreational sports centers..... | 71394 | 12/04 | 100.8 | 101.9 | 101.8 | -0.6 | -0.1 |
| Accommodation..... | 721 | 12/96 | 145.6 | 149.8 | 150.8 | 2.4 | 0.7 |
| Commercial machinery repair and maintenance..... | 8113 | 06/06 | 118.7 | 119.8 | 119.6 | 1.6 | -0.2 |

1 Indexes in this table are derived from the net-output-weighted industry price indexes. Because of differences in coverage and aggregation methodology, they will generally not match the movements of similarly titled indexes which are derived from traditional commodity groupings.

2 The indexes for February 2013 have been recalculated to incorporate late reports and corrections by respondents. All indexes are subject to revision 4 months after original publication.

3 Formerly titled "Total traditional service industries."

"-" Data not available.

NOTE: NAICS replaced the SIC system beginning with the release of PPI data for January 2004. See <http://www.bls.gov/ppi/ppinaics.htm> for details.

Table 5. Producer price indexes by stage of processing, seasonally adjusted
 [1982=100]

| Grouping | Index ¹ | | | | | |
|---|--------------------|-----------|-----------|-----------|----------|-----------|
| | Jan. 2013 | Feb. 2013 | Mar. 2013 | Apr. 2013 | May 2013 | June 2013 |
| Finished goods..... | 196.1 | 197.4 | 196.2 | 194.9 | 195.8 | 197.3 |
| Finished consumer goods..... | 209.4 | 211.2 | 209.5 | 207.5 | 208.7 | 210.9 |
| Finished consumer foods..... | 204.1 | 202.6 | 204.3 | 202.6 | 203.9 | 204.3 |
| Crude..... | 195.2 | 178.4 | 202.6 | 184.6 | 203.4 | 186.6 |
| Processed..... | 204.9 | 204.7 | 204.4 | 204.1 | 204.0 | 205.8 |
| Finished consumer goods, excluding foods..... | 210.2 | 213.1 | 210.1 | 208.0 | 209.3 | 212.0 |
| Nondurable goods less foods..... | 235.7 | 240.0 | 235.3 | 232.3 | 234.1 | 238.0 |
| Durable goods..... | 151.8 | 151.9 | 152.3 | 152.3 | 152.3 | 152.5 |
| Capital equipment..... | 163.6 | 163.8 | 164.0 | 164.2 | 164.3 | 164.4 |
| Manufacturing industries..... | 166.1 | 166.2 | 166.3 | 166.5 | 166.6 | 166.6 |
| Nonmanufacturing industries..... | 162.6 | 162.8 | 163.0 | 163.2 | 163.3 | 163.5 |
| Intermediate materials, supplies, and components..... | 201.1 | 203.5 | 201.3 | 200.0 | 199.9 | 200.9 |
| Materials and components for manufacturing..... | 189.0 | 190.6 | 190.2 | 189.1 | 187.9 | 188.2 |
| Materials for food manufacturing..... | 200.6 | 199.5 | 199.2 | 198.3 | 199.3 | 201.4 |
| Materials for nondurable manufacturing..... | 244.7 | 251.0 | 249.8 | 246.3 | 243.1 | 244.0 |
| Materials for durable manufacturing..... | 198.0 | 197.6 | 197.1 | 196.4 | 193.1 | 192.6 |
| Components for manufacturing..... | 148.3 | 148.4 | 148.5 | 148.7 | 149.2 | 149.1 |
| Materials and components for construction..... | 221.5 | 222.3 | 222.8 | 222.8 | 222.6 | 222.4 |
| Processed fuels and lubricants..... | 209.7 | 216.8 | 206.0 | 202.2 | 203.7 | 207.9 |
| Manufacturing industries..... | 200.6 | 205.2 | 197.1 | 195.6 | 198.0 | 201.5 |
| Nonmanufacturing industries..... | 214.0 | 222.0 | 210.2 | 205.5 | 206.7 | 211.3 |
| Containers..... | 210.3 | 210.7 | 210.7 | 211.2 | 212.3 | 215.0 |
| Supplies..... | 191.0 | 191.5 | 192.1 | 191.7 | 192.3 | 192.6 |
| Manufacturing industries..... | 183.9 | 184.3 | 185.3 | 185.4 | 185.5 | 185.4 |
| Nonmanufacturing industries..... | 190.6 | 191.1 | 191.6 | 191.1 | 191.8 | 192.2 |
| Feeds..... | 237.9 | 240.9 | 241.9 | 235.4 | 242.4 | 242.6 |
| Other supplies..... | 188.5 | 188.8 | 189.2 | 189.3 | 189.5 | 189.8 |
| Crude materials for further processing..... | 250.5 | 250.7 | 245.8 | 244.7 | 250.0 | 250.1 |
| Foodstuffs and feedstuffs..... | 206.7 | 202.4 | 206.2 | 200.8 | 205.0 | 204.4 |
| Nonfood materials..... | 270.1 | 274.0 | 262.2 | 264.9 | 270.6 | 271.3 |
| Nonfood materials except fuel ² | 336.6 | 345.1 | 324.9 | 319.6 | 324.1 | 326.8 |
| Manufacturing ² | 318.3 | 326.5 | 306.6 | 301.3 | 305.8 | 308.4 |
| Construction..... | 213.2 | 214.2 | 214.9 | 214.7 | 214.0 | 215.4 |
| Crude fuel ³ | 159.3 | 155.8 | 158.1 | 173.5 | 181.3 | 178.7 |
| Manufacturing industries..... | 189.8 | 187.3 | 189.3 | 199.4 | 204.5 | 202.1 |
| Nonmanufacturing industries..... | 161.4 | 157.7 | 160.1 | 176.0 | 184.1 | 181.5 |
| Special groupings | | | | | | |
| Finished goods, excluding foods..... | 193.4 | 195.3 | 193.5 | 192.2 | 193.1 | 194.8 |
| Intermediate materials less foods and feeds..... | 200.7 | 203.3 | 201.0 | 199.7 | 199.3 | 200.4 |
| Intermediate foods and feeds..... | 206.0 | 205.8 | 205.9 | 204.1 | 206.3 | 207.7 |
| Crude materials less agricultural products ² | 270.1 | 274.5 | 262.0 | 266.1 | 271.7 | 272.5 |
| Finished energy goods..... | 190.2 | 196.2 | 189.3 | 184.5 | 186.9 | 192.3 |
| Finished goods less energy..... | 188.7 | 188.5 | 189.1 | 188.9 | 189.3 | 189.6 |
| Finished consumer goods less energy..... | 201.0 | 200.7 | 201.5 | 201.0 | 201.6 | 202.0 |
| Finished goods less foods and energy..... | 184.3 | 184.5 | 184.8 | 185.0 | 185.1 | 185.4 |
| Finished consumer goods less foods and energy..... | 199.7 | 200.0 | 200.3 | 200.5 | 200.7 | 201.1 |
| Consumer nondurable goods less foods and energy..... | 243.3 | 243.8 | 244.0 | 244.5 | 244.8 | 245.4 |
| Intermediate energy goods..... | 214.0 | 221.8 | 210.9 | 206.5 | 207.6 | 211.7 |
| Intermediate materials less energy..... | 195.0 | 195.9 | 196.1 | 195.5 | 195.1 | 195.4 |
| Intermediate materials less foods and energy..... | 193.7 | 194.8 | 194.9 | 194.5 | 193.8 | 193.9 |
| Crude energy materials ² | 229.4 | 235.5 | 218.3 | 226.4 | 237.7 | 238.3 |
| Crude materials less energy..... | 248.2 | 244.2 | 248.4 | 241.7 | 242.8 | 242.4 |
| Crude nonfood materials less energy ³ | 365.1 | 362.1 | 367.0 | 356.9 | 348.6 | 348.9 |

1 All seasonally adjusted indexes are subject to change up to 5 years after original publication due to the recalculation of seasonal factors each January. The indexes for February 2013 have been recalculated to incorporate late reports and corrections by respondents.

2 Includes crude petroleum.

3 Excludes crude petroleum.