

Transmission of material in this release is embargoed until
8:30 a.m. (EST) Friday, January 11, 2013

USDL-13-0016

Technical information: (202) 691-7101 • MXPinfo@bls.gov • www.bls.gov/mxp
Media contact: (202) 691-5902 • PressOffice@bls.gov

U.S. IMPORT AND EXPORT PRICE INDEXES – DECEMBER 2012

The price index for U.S. imports edged down 0.1 percent in December, the U.S. Bureau of Labor Statistics reported today, after declining 0.8 percent the previous month. Falling fuel and nonfuel prices each contributed to the December decrease. U.S. export prices also fell 0.1 percent in December following a 0.7 percent drop in November.

Chart 1. One-month percent change in the Import Price Index: December 2011 – December 2012

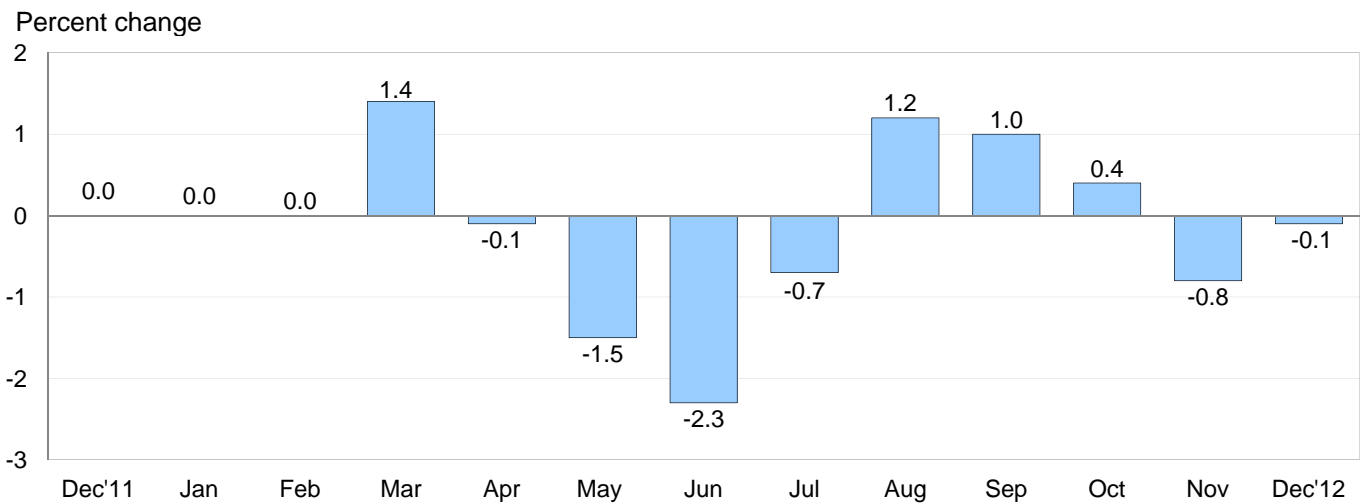
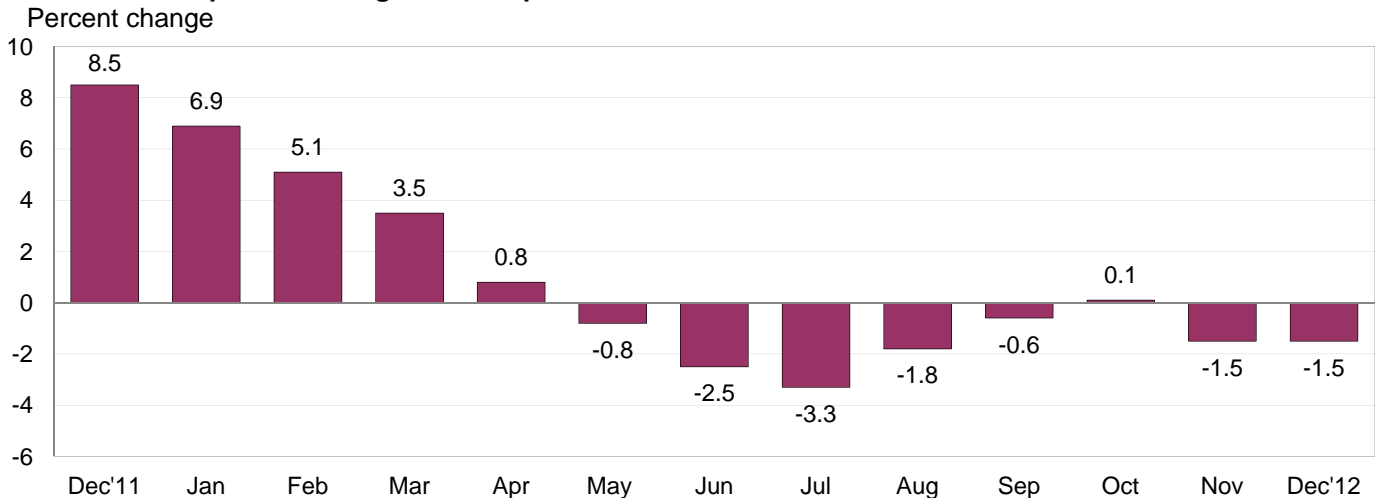


Chart 2. 12-month percent change in the Import Price Index: December 2011 – December 2012



All Imports: Import prices declined for the second consecutive month in December after increasing the three months prior to November. Overall, import prices fell 1.5 percent in 2012, the first calendar year decrease for the index since a 10.1 percent drop in 2008. Import prices had risen 8.5 percent in 2011, 5.3 percent in 2010, and 8.6 percent in 2009.

Fuel Imports: The price index for import fuel edged down 0.1 percent in December after declining 2.8 percent the previous month. The decrease in both months was led by falling petroleum prices, down 0.8 percent in December and 3.4 percent in November. In contrast, natural gas prices rose 18.4 percent in December following an 18.0 percent rise in November. Overall fuel prices fell 6.4 percent in 2012 after increasing 24.9 percent the previous year. The decline over the past 12 months was driven by a 7.1 percent drop in petroleum prices which more than offset a 14.2 percent increase in natural gas prices.

All Imports Excluding Fuel: Prices for nonfuel imports also declined 0.1 percent in December following a 0.2 percent decrease in November. Lower prices for capital goods, consumer goods, and foods, feeds, and beverages all contributed to the December decline. Despite the recent decreases, nonfuel import prices ticked up 0.1 percent in 2012, after advancing 3.4 percent and 3.0 percent the two previous years. The 2012 increase was led by a 1.9 percent rise in automotive vehicles prices, as all other major categories either recorded declines or no change for the year.

Table A. Percent changes

Month	IMPORTS			EXPORTS		
	All imports	Fuel imports	Nonfuel imports	All exports	Agricultural exports	Non-agricultural exports
2011						
December.....	0.0	-0.4	0.1	-0.5	-2.3	-0.2
2012						
January.....	0.0	-0.2	0.2	0.3	1.1	0.2
February.....	0.0	-0.1	0.0	0.5	-0.4	0.6
March.....	1.4	4.4	0.4	0.8	2.4	0.5
April.....	-0.1	-0.9	0.2	0.4	2.0	0.2
May.....	-1.5	-5.6	-0.1	-0.5	0.5	-0.6
June.....	-2.3	-8.5	-0.3	-1.7	-3.5	-1.5
July.....	-0.7	-2.0	-0.4	0.4	6.0	-0.2
August.....	1.2	6.1	-0.2	0.9	4.8	0.4
September.....	1.0	3.9 ^r	0.2	0.8	1.3	0.7
October.....	0.4 ^r	0.1 ^r	0.3 ^r	0.0	-1.9	0.3 ^r
November.....	-0.8 ^r	-2.8 ^r	-0.2	-0.7	0.1	-0.8 ^r
December.....	-0.1	-0.1	-0.1	-0.1	0.1	-0.2
Dec. 2010 to 2011.....	8.5	24.9	3.4	3.6	1.0	4.0
Dec. 2011 to 2012.....	-1.5	-6.4	0.1	1.1	12.8	-0.4

r Revised

Chart 3. One-month percent change in the Export Price Index: December 2011 – December 2012

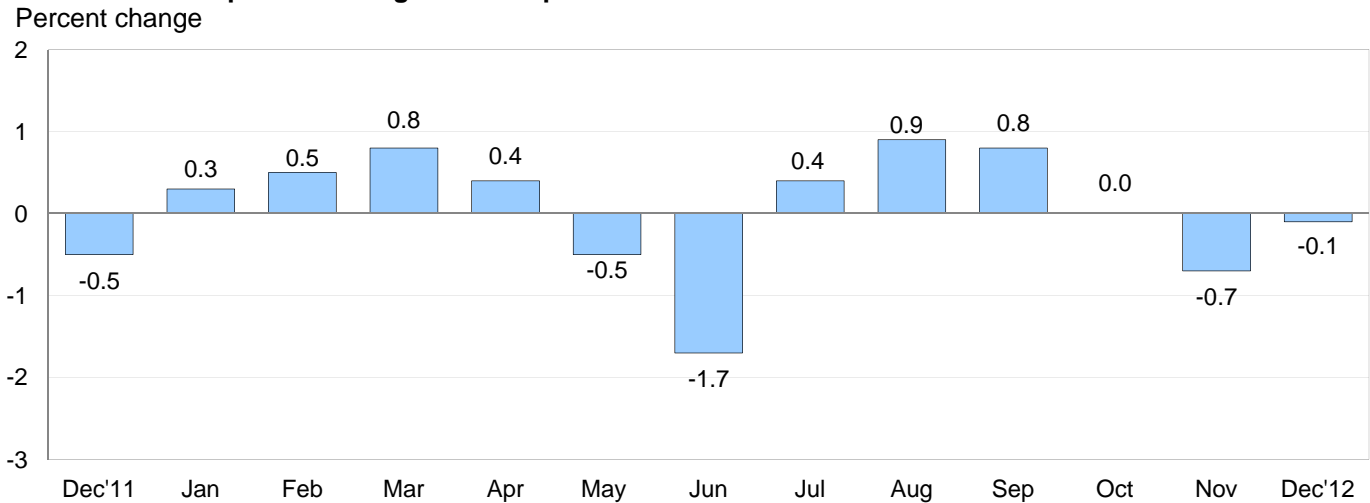
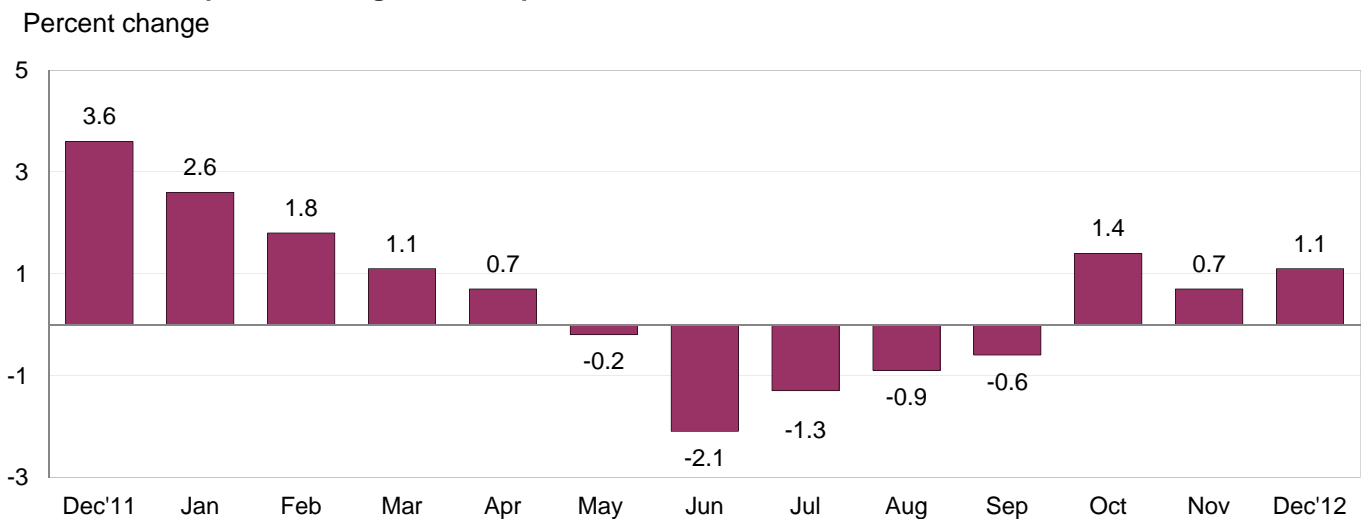


Chart 4. 12-month percent change in the Export Price Index: December 2011 – December 2012



All Exports: Export prices fell 0.1 percent in December after a 0.7 percent decline the previous month. Decreasing nonagricultural prices in December and November more than offset rising prices for agricultural exports. Despite the recent declines, the price index for overall exports rose 1.1 percent in 2012. That increase followed a 3.6 percent advance in 2011, and was the smallest calendar-year rise since the index declined 2.9 percent in 2008.

Agricultural Exports: Prices for agricultural exports ticked up 0.1 percent for the second consecutive month in December. The increases for both December and November were driven by higher fruit prices. Agricultural prices increased 12.8 percent in 2012 after rising 1.0 percent the previous year. The 2012 advance was led by rising prices for soybeans, corn, and wheat, up 31.6 percent, 26.9 percent, and 28.0 percent, respectively.

All Exports Excluding Agriculture: The price index for nonagricultural exports fell 0.2 percent in December, driven by falling prices for nonagricultural industrial supplies and materials, capital goods, and consumer goods. Overall nonagricultural prices declined 0.4 percent in 2012 after rising 4.0 percent in 2011 and 5.1 percent in 2010.

SELECTED DECEMBER HIGHLIGHTS

Import Prices

Imports by Locality of Origin: Import prices from China were unchanged in December and declined 0.7 percent in 2012. The yearly decrease followed increases of 3.6 percent in 2011 and 0.8 percent in 2010. Import prices from the European Union and Mexico fell 0.2 percent in December, while import prices from Japan edged down 0.1 percent. The price index for imports from Canada rose 0.3 percent, led by higher natural gas prices. For the year, import prices from Canada, the European Union, and Mexico all declined, falling 2.5 percent, 1.1 percent, and 3.6 percent, respectively. In contrast, prices for imports from Japan rose 1.0 percent over the past 12 months.

Nonfuel Industrial Supplies and Materials: Prices for nonfuel industrial supplies and materials ticked up 0.1 percent in December, led by a 7.5 percent increase in prices for agricultural materials. For the year, the price index for nonfuel industrial supplies and materials fell 0.8 percent, driven mostly by a 4.9 percent drop in unfinished metal prices.

Finished Goods: Finished goods prices were mostly down in December; capital goods prices fell 0.2 percent and prices for consumer goods edged down 0.1 percent. Prices for automotive vehicles remained unchanged for the second consecutive month. In 2012, automotive vehicles prices rose 1.9 percent, while prices for consumer goods fell 0.1 percent. Capital goods prices were unchanged over the past year.

Foods, Feeds, and Beverages: The price index for foods, feeds, and beverages fell 0.2 percent in December and 1.7 percent over the past 12 months. Lower coffee prices were the largest contributor to the annual decline, decreasing 26.8 percent in 2012.

Transportation Services: Import air passenger fares increased 6.8 percent in December, which helped contribute towards an 8.2 percent advance in 2012. A 16.1 percent rise in Asian fares was the largest contributor to the December increase, but the advance over the past year was led by a 17.5 percent jump in European fares. Import air freight prices decreased 0.7 percent in December as well as over the past 12 months.

Export Prices

Nonagricultural Industrial Supplies and Materials: Prices for nonagricultural materials declined 0.3 percent in December. A 0.7 percent drop in fuel prices and a 0.6 percent decrease in chemicals prices were the primary contributors to the decline. Nonagricultural industrial supplies and materials prices fell 2.2 percent over the past year, led by a 6.1 percent drop in fuel prices.

Finished Goods: Finished goods prices decreased overall in December as capital goods prices and prices for consumer goods each edged down 0.1 percent. Automotive vehicles prices were unchanged. In 2012, capital goods prices rose 1.0 percent, while automotive vehicles prices advanced 0.9 percent and prices for consumer goods were unchanged.

Transportation Services: Export air passenger fares advanced 6.2 percent in December, led by a 10.9 percent increase in Asian fares. The index for export air passenger fares rose 1.7 percent over the past year. Export air freight prices fell 0.7 percent in December. Despite the decline, prices for export air freight increased 1.9 percent in 2012.

Import and Export Price Index data for January 2013 are scheduled for release on Wednesday, February 13, 2013 at 8:30 a.m. (EST).

Table 1. U.S. import price indexes and percent changes for selected categories of goods: December 2011 to December 2012

[2000=100, unless otherwise noted]

Description	End Use	Relative importance Nov. 2012 ¹	Index		Percent change				
			Nov. 2012	Dec. 2012	Annual	Monthly			
					Dec. 2011 to Dec. 2012	Aug. 2012 to Sept. 2012	Sept. 2012 to Oct. 2012	Oct. 2012 to Nov. 2012	Nov. 2012 to Dec. 2012
All commodities.....		100.000	140.1	140.0	-1.5	1.0	0.4	-0.8	-0.1
All imports excluding food and fuels (Dec. 2010=100).....		71.728	103.5	103.5	0.2	0.1	0.4	-0.2	0.0
All imports excluding petroleum.....		77.910	116.4	116.5	0.1	0.2	0.4	-0.1	0.1
All imports excluding fuels (Dec. 2001=100)..		76.801	120.6	120.5	0.1	0.2	0.3	-0.2	-0.1
Foods, feeds, & beverages.....	0	5.073	169.9	169.5	-1.7	1.4	0.3	-1.3	-0.2
Agricultural foods, feeds & beverages, excluding distilled beverages.....	00	3.932	191.3	191.0	-1.5	1.9	0.3	-1.8	-0.2
Nonagricultural foods (fish, distilled beverages).....	01	1.141	121.4	120.9	-2.3	-0.3	0.3	0.7	-0.4
Industrial supplies & materials.....	1	36.433	252.0	251.8	-4.5	2.5	0.5	-1.9	-0.1
Industrial supplies & materials excluding petroleum.....		14.343	165.8	167.5	-0.2	0.1	1.2	0.4	1.0
Industrial supplies & materials excluding fuels (Dec. 2001=100).....		13.234	188.4	188.5	-0.8	0.1	1.1	-0.4	0.1
Industrial supplies & materials, durable.....		7.865	178.0	177.6	-1.3	0.5	2.3	-0.6	-0.2
Industrial supplies & materials nondurable excluding petroleum.....		5.369	151.4	155.3	1.2	-0.6	0.0	1.5	2.6
Fuels & lubricants.....	10	23.200	333.8	333.4	-6.4	3.9	0.1	-2.8	-0.1
Petroleum & petroleum products.....	100	22.091	372.4	369.6	-7.1	4.0	0.0	-3.4	-0.8
Crude.....	10000	16.637	381.5	377.9	-7.5	4.2	-0.3	-3.4	-0.9
Fuels, n.e.s.-coals & gas.....	101	0.826	111.6	129.8	12.8	0.2	6.0	14.8	16.3
Gas-natural.....	10110	0.724	97.9	115.9	14.2	-0.5	7.7	18.0	18.4
Paper & paper base stocks.....	11	0.587	112.2	111.4	-3.0	-0.5	-0.3	-0.1	-0.7
Materials associated with nondurable supplies & materials.....	12	4.872	174.6	175.6	0.3	-0.7	-0.6	-0.2	0.6
Selected building materials.....	13	1.060	141.5	143.5	9.8	1.2	0.2	-0.1	1.4
Unfinished metals related to durable goods.....	14	3.658	265.8	264.1	-4.9	0.8	4.4	-0.9	-0.6
Finished metals related to durable goods. ...	15	1.557	163.1	162.0	-0.1	0.0	1.4	-0.5	-0.7
Nonmetals related to durable goods.....	16	1.500	114.4	114.4	-0.7	-0.1	0.0	0.2	0.0
Capital goods.....	2	22.408	93.3	93.1	0.0	0.2	0.1	-0.2	-0.2
Electric generating equipment.....	20	2.917	119.6	119.6	1.0	0.2	0.1	0.0	0.0
Nonelectrical machinery.....	21	17.826	86.2	86.0	-0.5	0.3	0.0	-0.2	-0.2
Transportation equipment excluding motor vehicles (Dec. 2001=100).....	22	1.665	133.9	134.2	3.2	-0.2	0.0	0.1	0.2
Automotive vehicles, parts & engines.....	3	11.735	115.1	115.1	1.9	0.2	0.3	0.0	0.0
Consumer goods, excluding automotives..	4	24.351	107.7	107.6	-0.1	0.0	0.5	-0.1	-0.1
Nondurables, manufactured.....	40	11.741	115.3	115.3	0.8	-0.1	0.4	0.1	0.0
Durables, manufactured.....	41	11.336	99.8	99.8	-0.5	0.1	0.5	-0.3	0.0
Nonmanufactured consumer goods.....	42	1.273	115.7	115.3	-3.4	0.1	0.1	0.1	-0.3

¹ Relative importance figures are based on 2010 trade values.

NOTES: Data may be revised in each of the three months after original publication.

Dash = Not available

Table 2. U.S. export price indexes and percent changes for selected categories of goods: December 2011 to December 2012

[2000=100, unless otherwise noted]

Description	End Use	Relative importance Nov. 2012 ¹	Index		Percent change				
			Nov. 2012	Dec. 2012	Annual	Monthly			
					Dec. 2011 to Dec. 2012	Aug. 2012 to Sept. 2012	Sept. 2012 to Oct. 2012	Oct. 2012 to Nov. 2012	Nov. 2012 to Dec. 2012
All commodities		100.000	133.6	133.5	1.1	0.8	0.0	-0.7	-0.1
Agricultural commodities		11.847	225.9	226.1	12.8	1.3	-1.9	0.1	0.1
All exports excluding food and fuels (Dec. 2010=100)		80.788	102.7	102.6	0.2	0.4	0.3	-0.2	-0.1
Nonagricultural commodities		88.152	127.0	126.8	-0.4	0.7	0.3	-0.8	-0.2
Foods, feeds, & beverages	0	10.989	228.2	227.4	14.3	1.0	-1.7	0.2	-0.4
Agricultural foods, feeds & beverages, excluding distilled beverages.....	00	10.275	232.6	232.1	15.4	1.2	-1.9	0.5	-0.2
Nonagricultural foods (fish, distilled beverages).....	01	0.714	189.3	184.5	0.4	-0.3	0.7	-2.6	-2.5
Industrial supplies & materials	1	33.660	180.8	180.6	-2.2	1.9	0.5	-2.0	-0.1
Industrial supplies & materials, durable.....		12.169	185.6	186.0	-1.2	1.0	2.0	-0.7	0.2
Industrial supplies & materials, nondurable.....		21.489	179.0	178.4	-2.7	2.3	-0.3	-2.7	-0.3
Agricultural industrial supplies & materials..	10	1.572	193.6	197.4	-1.6	2.0	-1.8	-2.0	2.0
Nonagricultural industrial supplies & materials		32.087	180.6	180.1	-2.2	1.8	0.7	-2.0	-0.3
Fuels & lubricants.....	11	8.222	255.9	254.1	-6.1	4.4	-0.5	-5.8	-0.7
Nonagricultural supplies & materials excluding fuels & building materials.....	12	22.925	172.4	172.2	-0.9	1.0	1.1	-0.6	-0.1
Selected building materials.....	13	0.940	117.8	117.8	1.9	0.1	-0.8	-0.1	0.0
Capital goods	2	34.425	105.7	105.6	1.0	0.1	0.1	0.0	-0.1
Electrical generating equipment.....	20	3.550	114.3	113.9	1.0	0.3	0.4	-0.1	-0.3
Nonelectrical machinery.....	21	24.912	94.8	94.8	0.5	0.1	0.0	0.0	0.0
Transportation equipment excluding motor vehicles (Dec. 2001=100).....	22	5.963	149.2	149.4	2.6	0.0	0.0	0.0	0.1
Automotive vehicles, parts & engines	3	8.200	112.9	112.9	0.9	0.1	0.0	0.0	0.0
Consumer goods, excluding automotives ..	4	12.726	116.7	116.6	0.0	0.3	0.2	-0.2	-0.1
Nondurables, manufactured.....	40	5.950	115.8	115.7	1.6	0.3	0.4	0.0	-0.1
Durables, manufactured.....	41	5.352	114.4	114.2	0.8	0.3	-0.3	-0.2	-0.2

¹ Relative importance figures are based on 2010 trade values.

NOTES: Data may be revised in each of the three months after original publication.

Dash = Not available

Table 3. U.S. import price indexes and percent changes for selected categories of goods: December 2011 to December 2012

[December 2005=100, unless otherwise noted]

Description	NAICS	Relative importance Nov. 2012 ¹	Index		Percent change				
			Nov. 2012	Dec. 2012	Annual	Monthly			
					Dec. 2011 to Dec. 2012	Aug. 2012 to Sept. 2012	Sept. 2012 to Oct. 2012	Oct. 2012 to Nov. 2012	Nov. 2012 to Dec. 2012
Nonmanufactured articles.....		19.967	163.9	163.3	-6.4	4.2	0.2	-2.4	-0.4
Agriculture, forestry, fishing and hunting...	11	1.785	166.1	165.8	-5.3	2.7	1.3	-4.9	-0.2
Crop production.....	111	1.259	171.3	171.3	-5.7	3.5	1.1	-6.5	0.0
Mining.....	21	18.182	163.3	162.6	-6.6	4.3	0.1	-2.2	-0.4
Mining (except oil and gas) (Dec. 2006=100).....	212	0.318	139.0	139.7	-4.7	0.8	-3.0	-0.9	0.5
Manufactured articles.....		79.570	117.7	117.6	-0.3	0.3	0.4	-0.4	-0.1
Manufactured goods, part 1.....	31	10.808	123.5	123.8	-0.1	-0.5	-0.3	0.1	0.2
Food manufacturing.....	311	2.940	153.7	155.2	-1.3	-1.5	-0.8	-0.1	1.0
Beverage and tobacco product manufacturing.....	312	0.854	112.4	112.1	0.1	0.4	0.2	0.4	-0.3
Textile mills (Dec. 2011=100).....	313	0.408	102.4	102.2	2.2	0.5	0.1	-0.1	-0.2
Textile product mills.....	314	0.875	115.9	115.9	-2.2	-0.2	0.1	0.2	0.0
Apparel manufacturing.....	315	4.075	111.0	111.0	-0.4	-0.4	-0.2	0.1	0.0
Leather and allied product manufacturing. .	316	1.657	120.8	120.9	3.4	0.0	0.1	0.0	0.1
Manufactured goods, part 2.....	32	17.968	138.4	138.6	-0.9	0.9	0.2	-1.2	0.1
Wood product manufacturing.....	321	0.648	120.4	123.5	15.0	0.9	0.1	0.4	2.6
Paper manufacturing.....	322	1.090	110.6	110.0	-1.5	-0.2	0.0	0.1	-0.5
Petroleum and coal products manufacturing.....	324	4.576	167.1	168.4	-5.9	2.6	0.3	-4.9	0.8
Chemical manufacturing.....	325	8.821	135.0	134.8	0.4	0.2	0.4	0.1	-0.1
Plastics and rubber products manufacturing.....	326	1.906	127.5	127.6	1.4	0.1	0.1	-0.1	0.1
Nonmetallic mineral product manufacturing.....	327	0.838	129.5	129.3	0.6	0.2	-0.5	-0.2	-0.2
Manufactured goods, part 3.....	33	50.795	110.0	109.8	-0.1	0.3	0.5	-0.3	-0.2
Primary metal manufacturing.....	331	4.239	174.6	172.8	-5.0	0.5	4.1	-1.1	-1.0
Fabricated metal product manufacturing. . .	332	2.581	130.5	130.3	0.9	0.5	0.5	-0.2	-0.2
Machinery manufacturing.....	333	5.716	122.2	122.2	2.3	0.5	0.6	-0.1	0.0
Computer and electronic product manufacturing.....	334	15.460	81.9	81.7	-1.4	0.2	-0.1	-0.5	-0.2
Electrical equipment, appliance, and component manufacturing.....	335	3.897	119.5	119.6	1.8	0.0	0.3	0.4	0.1
Transportation equipment manufacturing. . .	336	12.427	112.4	112.4	2.2	0.1	0.4	0.1	0.0
Furniture and related product manufacturing.....	337	1.322	113.8	113.9	0.9	0.5	-0.3	0.0	0.1
Miscellaneous manufacturing.....	339	5.153	121.3	121.1	-1.7	-0.1	0.3	0.0	-0.2

¹ Relative importance figures are based on 2010 trade values.

NOTES: Data may be revised in each of the three months after original publication.

Dash = Not available

Table 4. U.S. export price indexes and percent changes for selected categories of goods: December 2011 to December 2012

[December 2005=100, unless otherwise noted]

Description	NAICS	Relative importance Nov. 2012 ¹	Index		Percent change				
			Nov. 2012	Dec. 2012	Annual	Monthly			
					Dec. 2011 to Dec. 2012	Aug. 2012 to Sept. 2012	Sept. 2012 to Oct. 2012	Oct. 2012 to Nov. 2012	Nov. 2012 to Dec. 2012
Nonmanufactured articles.....		8.772	175.4	175.4	5.7	0.8	-2.9	-0.1	0.0
Agriculture, forestry, fishing and hunting...	11	6.928	217.6	217.4	16.5	1.5	-3.5	-0.1	-0.1
Crop production.....	111	6.491	226.9	227.1	17.7	2.0	-3.8	0.2	0.1
Mining.....	21	1.844	93.5	93.6	-21.7	-2.0	-1.0	0.2	0.1
Mining (except oil and gas).....	212	1.216	107.5	108.8	-23.0	-1.6	-4.9	-3.7	1.2
Manufactured articles.....		88.291	120.8	120.6	0.6	0.8	0.2	-0.7	-0.2
Manufactured goods, part 1.....	31	7.316	150.6	150.0	4.5	0.9	0.4	-0.1	-0.4
Food manufacturing.....	311	5.114	172.8	171.1	5.1	1.1	0.6	-0.2	-1.0
Beverage and tobacco product manufacturing.....	312	0.593	125.3	127.6	11.0	2.2	-0.5	-1.9	1.8
Apparel manufacturing.....	315	0.427	122.8	122.8	3.5	1.1	0.0	0.0	0.0
Manufactured goods, part 2.....	32	26.142	132.8	132.3	-0.2	2.0	0.1	-2.2	-0.4
Wood product manufacturing.....	321	0.400	113.7	113.2	-0.9	0.0	-0.7	0.3	-0.4
Paper manufacturing.....	322	1.827	119.0	118.9	-0.8	0.0	-0.1	-0.5	-0.1
Petroleum and coal products manufacturing.....	324	6.067	164.0	163.2	-0.3	5.7	-0.1	-7.6	-0.5
Chemical manufacturing.....	325	14.895	130.8	130.2	-0.5	0.9	0.2	-0.6	-0.5
Plastics and rubber products manufacturing.....	326	2.203	118.8	119.2	2.8	1.2	0.0	0.1	0.3
Nonmetallic mineral product manufacturing.....	327	0.750	111.5	111.4	0.6	0.0	-0.3	0.1	-0.1
Manufactured goods, part 3.....	33	54.833	113.3	113.2	0.4	0.3	0.4	-0.1	-0.1
Primary metal manufacturing.....	331	4.832	173.6	173.2	-3.7	1.7	4.0	-1.1	-0.2
Fabricated metal product manufacturing. ...	332	2.665	132.1	132.0	2.3	0.1	0.3	0.0	-0.1
Machinery manufacturing.....	333	11.121	121.2	121.1	2.8	0.1	0.1	0.2	-0.1
Computer and electronic product manufacturing.....	334	14.201	88.9	88.7	-1.0	-0.2	0.1	-0.2	-0.2
Electrical equipment, appliance, and component manufacturing.....	335	3.211	112.7	112.8	1.6	0.4	0.1	0.0	0.1
Transportation equipment manufacturing....	336	13.370	116.8	116.9	1.6	0.1	0.0	0.0	0.1
Furniture and related product manufacturing (Dec. 2011=100).....	337	0.302	104.7	104.8	4.8	0.1	1.4	0.2	0.1
Miscellaneous manufacturing.....	339	5.130	122.1	122.0	-1.3	0.6	-0.2	0.0	-0.1

1 Relative importance figures are based on 2010 trade values.

NOTES: Data may be revised in each of the three months after original publication.

Dash = Not available

Table 5. U.S. import price indexes and percent changes for selected categories of goods: December 2011 to December 2012

[2000=100, unless otherwise noted]

Description	Harmoni- zied system	Relative importance Nov. 2012 ¹	Index		Percent change				
			Nov. 2012	Dec. 2012	Annual	Monthly			
					Dec. 2011 to Dec. 2012	Aug. 2012 to Sept. 2012	Sept. 2012 to Oct. 2012	Oct. 2012 to Nov. 2012	Nov. 2012 to Dec. 2012
Live animals; animal products.....	I	1.157	164.4	164.2	-1.3	0.2	0.2	1.5	-0.1
Meat and edible meat offal.....	02	0.275	218.5	217.2	1.0	0.3	-0.7	0.4	-0.6
Fish and crustaceans, molluscs and other aquatic invertebrates.....	03	0.582	114.6	113.8	-6.3	-1.2	0.3	1.5	-0.7
Vegetable products.....	II	1.618	204.5	207.8	-1.8	0.9	-0.6	-4.0	1.6
Edible vegetables, roots, and tubers.....	07	0.372	369.3	363.9	18.8	25.8	0.5	-1.6	-1.5
Edible fruit and nuts; peel of citrus fruit or melons.....	08	0.436	109.5	108.7	-4.3	-0.6	-2.3	-3.0	-0.7
Coffee, tea, mate and spices.....	09	0.359	233.0	232.3	-21.5	-6.5	4.0	-11.3	-0.3
Animal or vegetable fats and oils (Dec. 2009=100).....	III	0.238	121.2	118.3	-11.8	1.2	-2.5	-2.2	-2.4
Prepared foodstuffs, beverages, and tobacco.....	IV	2.397	157.8	157.4	0.1	0.3	0.1	0.1	-0.3
Cocoa and cocoa preparations (Dec. 2009=100).....	18	0.191	88.3	91.7	8.0	1.1	2.8	1.6	3.9
Preparations of cereals, flour, starch or milk; bakers' wares (Dec. 2007=100).....	19	0.233	129.4	129.4	3.3	0.5	0.4	0.1	0.0
Preparations of vegetables, fruit, nuts, or other parts of plants.....	20	0.343	168.9	166.6	-4.4	-0.1	-1.0	0.6	-1.4
Beverages, spirits, and vinegar.....	22	0.805	122.7	122.5	0.0	0.3	0.3	0.3	-0.2
Mineral products.....	V	22.860	335.4	335.5	-6.3	3.9	0.1	-3.0	0.0
Mineral fuels, oils and residuals, bituminous substances and mineral waxes.....	27	22.564	331.9	332.0	-6.2	4.0	0.1	-3.1	0.0
Products of the chemical or allied industries.....	VI	8.414	151.6	151.3	1.3	0.1	0.5	0.3	-0.2
Inorganic chemicals.....	28	0.985	393.6	387.9	0.6	0.5	-0.9	0.1	-1.4
Organic chemicals.....	29	2.483	140.3	140.3	2.3	-0.3	0.2	1.2	0.0
Pharmaceutical products.....	30	3.107	119.7	119.7	2.8	0.1	2.2	0.1	0.0
Fertilizers (Dec. 2009=100).....	31	0.421	131.8	131.2	-9.4	-0.2	-1.3	-1.9	-0.5
Tanning extracts; dye, pigments, varnish, paints & putty (Dec. 2011=100).....	32	0.163	93.2	93.1	-6.9	0.0	-10.0	0.0	-0.1
Essential oils and resinoids (Dec. 2001=100).....	33	0.420	126.0	125.7	0.9	-0.2	0.4	0.1	-0.2
Miscellaneous chemical products.....	38	0.468	100.9	101.2	-3.3	0.0	-1.1	0.2	0.3
Plastics and articles thereof; rubber and articles thereof.....	VII	3.105	151.8	151.8	-0.1	0.3	0.3	-0.2	0.0
Plastics and articles thereof.....	39	1.905	144.8	145.2	1.6	0.9	0.4	0.3	0.3
Rubber and articles thereof.....	40	1.200	165.6	164.8	-2.7	-0.7	0.1	-0.9	-0.5
Raw hides, skins, leather, furskins, travel goods, etc.....	VIII	0.590	126.2	126.2	2.4	-0.1	0.0	0.0	0.0
Articles of leather; travel goods, bags, etc. of various materials.....	42	0.557	127.0	126.9	2.5	0.0	-0.1	0.1	-0.1
Wood, wood charcoal, cork, straw, basketware and wickerwork.....	IX	0.683	146.0	149.6	15.2	1.0	0.4	0.1	2.5
Woodpulp, recovered paper, and paper products.....	X	1.194	113.4	113.1	-1.0	-0.2	-0.1	0.0	-0.3
Pulp wood, waste paper, and paperboard (Dec. 2011=100).....	47	0.175	97.8	97.5	-2.5	-2.1	-1.2	-0.8	-0.3
Paper and paperboard; articles of paper pulp, paper or paperboard.....	48	0.801	108.6	108.1	-1.5	0.1	0.2	0.2	-0.5
Textile and textile articles.....	XI	5.213	114.6	114.5	-0.9	-0.3	-0.1	0.1	-0.1
Articles of apparel and clothing accessories, knitted or crocheted.....	61	2.005	104.8	104.8	-1.6	-0.7	-0.4	0.2	0.0

See footnotes at end of table.

Table 5. U.S. import price indexes and percent changes for selected categories of goods: December 2011 to December 2012 — Continued
 [2000=100, unless otherwise noted]

Description	Harmonized system	Relative importance Nov. 2012 ¹	Index		Percent change				
			Nov. 2012	Dec. 2012	Annual	Monthly			
					Dec. 2011 to Dec. 2012	Aug. 2012 to Sept. 2012	Sept. 2012 to Oct. 2012	Oct. 2012 to Nov. 2012	Nov. 2012 to Dec. 2012
Articles of apparel and clothing accessories, not knitted or crocheted.....	62	1.922	117.4	117.1	0.3	0.0	-0.1	0.1	-0.3
Made-up or worn textile articles.....	63	0.633	108.7	108.6	-3.7	0.1	0.0	0.2	-0.1
Headgear, umbrellas, artificial flowers, etc.. ...	XII	1.356	120.2	120.2	2.7	-0.1	0.1	0.0	0.0
Footwear and parts of such articles.....	64	1.158	119.7	119.9	3.4	0.0	0.1	0.0	0.2
Stone, plaster, cement, asbestos, ceramics, glass etc.....	XIII	0.760	131.9	131.5	0.5	0.2	-0.2	-0.1	-0.3
Articles of stone, plaster, cement, asbestos, or mica (Dec. 2001=100).....	68	0.244	125.3	124.2	0.0	0.6	-1.0	0.4	-0.9
Ceramic products.....	69	0.226	140.9	141.0	-0.1	0.0	0.1	-1.0	0.1
Glass and glassware.....	70	0.290	127.6	127.3	1.2	0.2	0.2	0.2	-0.2
Pearls, stones, precious metals, imitation jewelry, and coins.....	XIV	3.384	207.0	205.8	-0.6	2.0	4.5	-0.7	-0.6
Base metals and articles of base metals.....	XV	4.771	184.4	183.4	-3.0	-0.6	0.7	-0.5	-0.5
Iron and steel.....	72	1.030	221.0	218.7	-11.2	-1.9	-2.8	0.2	-1.0
Articles of iron or steel.....	73	1.397	158.1	156.9	-2.8	-0.7	-0.4	-0.4	-0.8
Copper and articles thereof.....	74	0.456	354.1	355.0	4.4	2.7	5.0	-3.2	0.3
Nickel and articles thereof (Dec. 2009=100)...	75	0.135	104.1	97.2	-8.8	-2.5	6.9	2.5	-6.6
Aluminum and articles thereof.....	76	0.697	136.8	137.5	-1.9	-0.9	4.1	-1.0	0.5
Tools, implements, cutlery, spoons and forks, of base metal; parts thereof.....	82	0.364	128.1	128.1	3.1	0.2	-0.5	0.2	0.0
Miscellaneous articles of base metal.....	83	0.415	136.3	136.9	3.9	0.7	-0.3	-0.1	0.4
Machinery, electrical equipment, TV image and sound recorders, parts, etc.....	XVI	24.878	85.8	85.7	-0.2	0.2	0.1	-0.2	-0.1
Machinery and mechanical appliances; parts thereof.....	84	12.576	90.0	89.9	1.0	0.6	0.1	-0.3	-0.1
Electrical machinery and equip, sound and TV recorders & reproducers, parts.....	85	12.302	81.7	81.7	-1.4	0.1	0.0	-0.2	0.0
Vehicles, aircraft, vessels and associated transport equipment.....	XVII	10.359	116.7	116.6	2.0	0.1	0.3	0.1	-0.1
Motor vehicles and their parts.....	87	9.544	115.6	115.6	1.9	0.1	0.4	-0.1	0.0
Aircraft, spacecraft, and parts thereof (Dec. 2002=100).....	88	0.709	118.4	118.9	2.7	-0.5	0.0	0.2	0.4
Optical, photo, measuring, medical & musical instruments; & timepieces.....	XVIII	3.247	104.9	104.6	-1.2	0.2	0.7	0.1	-0.3
Optical, photographic, measuring and medical instruments.....	90	2.974	101.8	101.5	-2.0	0.1	0.3	0.0	-0.3
Clocks and watches and parts thereof.....	91	0.212	141.0	140.8	10.3	1.8	6.4	0.1	-0.1
Miscellaneous manufactured articles.....	XX	3.721	112.8	112.8	1.1	-0.2	0.3	0.1	0.0
Furniture & stuffed furnishings; lamps & lighting fittings, nesoi; prefab bldgs.....	94	1.986	116.6	116.7	1.2	0.1	0.1	0.0	0.1
Toys, games and sports equipment; parts and accessories thereof.....	95	1.531	105.2	105.2	0.6	-0.4	0.4	0.2	0.0
Miscellaneous manufactured articles.....	96	0.204	135.9	135.8	2.3	-0.8	0.1	0.0	-0.1

¹ Relative importance figures are based on 2010 trade values.

NOTES: Data may be revised in each of the three months after original publication.

Dash = Not available

Table 6. U.S. export price indexes and percent changes for selected categories of goods: December 2011 to December 2012

[2000=100, unless otherwise noted]

Description	Harmoni- zied system	Relative importance Nov. 2012 ¹	Index		Percent change				
			Nov. 2012	Dec. 2012	Annual	Monthly			
					Dec. 2011 to Dec. 2012	Aug. 2012 to Sept. 2012	Sept. 2012 to Oct. 2012	Oct. 2012 to Nov. 2012	Nov. 2012 to Dec. 2012
Live animals; animal products.....	I	1.984	212.6	212.3	2.2	-1.8	2.7	-0.2	-0.1
Meat & edible meat offal (Dec. 2006=100). . .	02	1.150	168.9	169.0	-0.6	0.8	1.6	-0.2	0.1
Fish and crustaceans, molluscs and other aquatic invertebrates.....	03	0.426	206.8	200.7	0.0	-0.1	0.9	-2.7	-2.9
Vegetable products.....	II	6.539	278.4	279.0	20.2	1.7	-3.7	0.5	0.2
Edible fruit and nuts; peel of citrus fruit or melons.....	08	0.930	149.4	158.0	13.9	3.5	4.2	3.8	5.8
Cereals.....	10	2.572	334.6	336.2	24.1	-1.1	-1.0	0.6	0.5
Oilseeds and misc. grains, seeds, fruits, plants, straw and fodder.....	12	2.439	302.9	295.8	27.9	4.4	-9.2	-0.5	-2.3
Animal or vegetable fats and oils (Dec. 2009=100).....	III	0.426	133.8	131.8	-9.5	1.7	-2.6	-6.7	-1.5
Prepared foodstuffs, beverages, and tobacco.....	IV	2.897	167.9	166.7	12.1	1.6	0.4	0.3	-0.7
Preparations of vegetables, fruit, nuts or other parts of plants (Dec. 2009=100).....	20	0.320	110.9	110.6	1.3	0.3	-1.4	0.0	-0.3
Beverages, spirits, and vinegar (Dec. 2008=100).....	22	0.402	110.7	110.3	4.8	0.1	0.7	0.0	-0.4
Residues and waste from the food industries; prepared animal feed.....	23	0.989	286.9	280.9	36.6	4.9	1.2	0.7	-2.1
Mineral products.....	V	8.144	299.4	298.5	-6.3	3.9	-0.5	-5.9	-0.3
Mineral fuels, oils and residuals, bituminous substances and mineral waxes.....	27	7.573	296.2	294.5	-6.5	4.2	-0.6	-6.1	-0.6
Products of the chemical or allied industries.....	VI	12.200	154.7	154.1	-0.5	0.5	0.1	-0.2	-0.4
Inorganic chemicals.....	28	1.005	185.8	182.3	-7.9	0.6	-0.9	0.9	-1.9
Organic chemicals.....	29	3.401	165.7	165.3	-0.9	1.0	0.4	-0.5	-0.2
Pharmaceutical products.....	30	3.161	125.0	124.7	0.8	0.4	0.4	-0.1	-0.2
Essential oils and resinoids; perfumery cosmetic or toilet preparations.....	33	0.762	136.5	136.5	2.3	-0.2	-0.4	0.1	0.0
Soap; lubricants; waxes, polishing or scouring products; candles, pastes.....	34	0.465	123.0	122.9	-1.4	0.0	0.0	0.0	-0.1
Miscellaneous chemical products.....	38	1.757	152.6	152.8	1.6	0.3	-0.1	-0.7	0.1
Plastics and articles thereof; rubber and articles thereof.....	VII	5.409	147.6	147.1	-0.1	1.6	-0.2	-0.7	-0.3
Plastics and articles thereof.....	39	4.352	138.9	138.5	0.4	2.0	-0.1	-0.9	-0.3
Rubber and articles thereof.....	40	1.057	188.6	187.6	-1.8	-0.3	-0.3	-0.1	-0.5
Raw hides, skins, leather, furskins, travel goods, etc.....	VIII	0.381	135.0	137.0	13.3	-0.2	0.8	1.5	1.5
Wood, wood charcoal, cork, straw, basketware and wickerwork.....	IX	0.542	110.0	109.9	1.8	0.3	-0.3	0.0	-0.1
Woodpulp, recovered paper, and paper products.....	X	2.298	117.1	117.3	0.3	-0.8	1.1	0.8	0.2
Woodpulp and recovered paper.....	47	0.598	117.8	119.0	-2.1	-3.7	2.0	2.9	1.0
Paper and paperboard; articles of paper pulp, paper or paperboard.....	48	1.228	117.4	117.0	-0.3	0.1	0.2	0.0	-0.3
Printed material.....	49	0.471	125.6	125.8	5.4	0.8	2.8	0.1	0.2
Textile and textile articles.....	XI	1.897	125.6	126.1	-5.0	0.6	-0.7	0.2	0.4
Cotton, including yarns and woven fabrics thereof.....	52	0.547	130.8	132.3	-22.1	1.1	-2.8	0.2	1.1
Stone, plaster, cement, asbestos, ceramics, glass etc.....	XIII	0.746	118.4	118.4	1.7	0.0	0.5	0.0	0.0
Glass and glassware.....	70	0.402	98.9	98.8	0.0	0.0	0.4	0.0	-0.1

See footnotes at end of table.

Table 6. U.S. export price indexes and percent changes for selected categories of goods: December 2011 to December 2012 — Continued
 [2000=100, unless otherwise noted]

Description	Harmonized system	Relative importance Nov. 2012 ¹	Index		Percent change				
			Nov. 2012	Dec. 2012	Annual	Monthly			
					Dec. 2011 to Dec. 2012	Aug. 2012 to Sept. 2012	Sept. 2012 to Oct. 2012	Oct. 2012 to Nov. 2012	Nov. 2012 to Dec. 2012
Pearls, stones, precious metals, imitation jewelry, and coins.....	XIV	5.374	286.3	285.9	-3.0	3.1	3.7	-1.5	-0.1
Base metals and articles of base metals.....	XV	5.421	171.3	171.8	-1.2	-0.5	0.5	-0.1	0.3
Iron and steel.....	72	1.576	199.6	199.7	-6.1	-2.5	-1.8	2.1	0.1
Articles of iron or steel.....	73	1.359	172.7	172.3	0.1	0.0	0.0	-0.2	-0.2
Copper and articles thereof.....	74	0.644	247.3	253.8	1.9	2.0	4.5	-4.3	2.6
Aluminum and articles thereof.....	76	0.822	125.7	125.9	0.0	0.6	2.3	-1.1	0.2
Tools, implements, cutlery, spoons and forks, of base metal; parts thereof.....	82	0.388	133.1	133.1	3.5	0.0	1.1	0.0	0.0
Miscellaneous articles of base metal.....	83	0.339	146.0	145.6	6.8	0.0	0.0	0.0	-0.3
Machinery, electrical equipment, TV image and sound recorders, parts, etc.....	XVI	27.507	96.9	96.8	0.5	0.0	0.1	0.0	-0.1
Machinery and mechanical appliances; parts thereof.....	84	16.083	111.0	110.8	2.0	0.0	0.0	0.5	-0.2
Electrical machinery and equipment and parts and accessories thereof.....	85	11.424	81.7	81.6	-1.7	-0.1	0.1	-0.5	-0.1
Vehicles, aircraft, vessels and associated transport equipment.....	XVII	10.942	126.8	126.9	1.8	0.1	0.0	0.0	0.1
Motor vehicles and their parts.....	87	7.229	113.0	113.0	1.6	0.1	0.0	0.0	0.0
Optical, photo, measuring, medical & musical instruments; & timepieces.....	XVIII	5.797	106.2	106.2	0.7	0.1	0.1	0.0	0.0
Miscellaneous manufactured articles.....	XX	1.351	110.9	111.1	2.5	0.0	0.4	0.2	0.2
Furniture; stuffed furnishings; lamps and lighting fittings nesoi;.....	94	0.702	121.2	121.6	2.1	0.1	0.7	0.3	0.3
Toys, games and sports equipment; parts and accessories thereof.....	95	0.517	90.9	90.9	1.0	0.0	0.0	0.0	0.0

¹ Relative importance figures are based on 2010 trade values.

NOTES: Data may be revised in each of the three months after original publication.

Dash = Not available

Table 7. U.S. import price indexes and percent changes by locality of origin: December 2011 to December 2012
 [2000=100, unless otherwise noted]

Description	Relative importance Nov. 2012 ¹	Index		Percent change				
		Nov. 2012	Dec. 2012	Annual	Monthly			
				Dec. 2011 to Dec. 2012	Aug. 2012 to Sept. 2012	Sept. 2012 to Oct. 2012	Oct. 2012 to Nov. 2012	Nov. 2012 to Dec. 2012
Industrialized Countries²	100.000	131.6	131.7	-1.1	1.2	0.5	-0.3	0.1
Nonmanufactured articles.....	12.380	223.7	226.0	-8.3	6.7	2.2	-2.3	1.0
Manufactured articles.....	87.017	124.1	124.0	0.1	0.6	0.2	0.0	-0.1
Other Countries³	100.000	139.3	139.1	-2.0	0.7	-0.1	-0.9	-0.1
Nonmanufactured articles.....	24.950	345.7	343.9	-5.5	3.6	-0.3	-2.6	-0.5
Manufactured articles.....	74.698	110.9	110.9	-0.8	-0.2	-0.2	-0.2	0.0
Canada	100.000	151.1	151.5	-2.5	2.3	0.7	-0.5	0.3
Nonmanufactured articles.....	29.017	212.3	214.7	-9.1	6.9	3.1	-2.1	1.1
Manufactured articles.....	70.018	138.9	138.7	0.7	0.6	-0.1	0.1	-0.1
European Union⁴	100.000	135.1	134.8	-1.1	-0.1	0.6	0.0	-0.2
Nonmanufactured articles.....	2.360	381.6	378.5	4.0	0.1	1.1	0.0	-0.8
Manufactured articles.....	96.831	131.3	131.1	-1.2	-0.2	0.6	0.0	-0.2
France (Dec. 2003=100)	100.000	120.0	119.9	-1.1	0.1	-0.1	0.2	-0.1
Germany (Dec. 2003=100)	100.000	114.9	114.5	-0.5	0.3	0.3	0.2	-0.3
United Kingdom (Dec. 2003=100)	100.000	134.9	134.7	1.7	0.4	0.4	-0.1	-0.1
Latin America⁵	100.000	173.5	173.6	-4.4	1.3	-0.4	-2.4	0.1
Nonmanufactured articles.....	34.215	359.5	358.0	-10.4	3.1	-1.3	-5.0	-0.4
Manufactured articles.....	65.331	132.7	133.1	-0.9	0.4	0.1	-0.9	0.3
Mexico (Dec. 2003=100)	100.000	142.8	142.5	-3.6	0.8	-0.3	-1.7	-0.2
Nonmanufactured articles (Dec. 2008=100).....	20.537	191.5	188.8	-10.4	3.7	-1.7	-5.9	-1.4
Manufactured articles (Dec. 2008=100) ...	79.463	94.1	94.2	-1.8	0.0	0.1	-0.6	0.1
Pacific Rim (Dec. 2003=100)⁶	100.000	104.2	104.1	-0.6	-0.1	0.1	-0.2	-0.1
China (Dec. 2003=100)	100.000	104.4	104.4	-0.7	-0.2	-0.2	-0.1	0.0
Japan	100.000	103.2	103.1	1.0	0.2	0.4	-0.1	-0.1
Asian NICs⁷	100.000	90.8	90.5	-0.1	0.2	0.5	-0.8	-0.3
ASEAN (Dec. 2003=100)⁸	100.000	103.9	103.8	-1.0	0.1	0.0	-0.7	-0.1
Asia Near East (Dec. 2003=100)⁹	100.000	273.5	271.6	-0.5	2.5	1.3	-0.4	-0.7

1 Relative figures are based on 2010 trade values.

2 Western Europe, Canada, Japan, Australia, New Zealand and South Africa.

3 Eastern Europe, Latin America, OPEC countries, and other countries in Asia, Africa and the Western Hemisphere.

4 European Union countries.

5 Mexico, Central America, South America and the Caribbean.

6 China, Japan, Australia, Brunei, Indonesia, Macao, Malaysia, New Zealand, Papua New Guinea, Philippines and the Asian Newly Industrialized Countries.

7 Asian Newly Industrialized Countries - Hong Kong, Singapore, South Korea and Taiwan.

8 Association of Southeast Asian Nations - Brunei, Cambodia, Indonesia, Laos, Malaysia, Myanmar, Philippines, Singapore, Thailand and Vietnam.

9 Bahrain, Iran, Iraq, Israel, Jordan, Kuwait, Lebanon, Oman, Qatar, Saudi Arabia, Syria, United Arab Emirates and Yemen.

NOTES: Data may be revised in each of the three months after original publication.

Regions are not mutually exclusive.

Dash = Not available

Table 8. U.S. international price indexes and percent changes for selected transportation services: December 2011 to December 2012

[2000=100, unless otherwise noted]

Description	Relative importance Nov. 2012 ¹	Index		Percent change				
		Nov. 2012	Dec. 2012	Annual	Monthly			
				Dec. 2011 to Dec. 2012	Aug. 2012 to Sept. 2012	Sept. 2012 to Oct. 2012	Oct. 2012 to Nov. 2012	Nov. 2012 to Dec. 2012
Air Freight								
Import Air Freight	100.000	177.1	175.8	-0.7	0.3	1.3	0.6	-0.7
Europe (Dec. 2003=100).....	24.449	166.7	162.2	-3.6	1.0	3.8	1.8	-2.7
Asia.....	71.089	156.8	156.7	0.3	0.1	0.5	0.2	-0.1
Export Air Freight	100.000	148.1	147.0	1.9	2.4	1.2	-0.3	-0.7
Europe (Dec. 2006=100).....	35.179	130.0	129.6	0.0	1.7	-1.3	-0.4	-0.3
Inbound Air Freight	100.000	168.5	167.5	4.2	1.6	1.2	1.8	-0.6
Europe (Dec. 2003=100).....	24.253	151.8	149.2	-0.2	1.4	3.2	1.3	-1.7
Asia.....	64.875	154.5	154.2	6.6	1.8	0.6	2.3	-0.2
Outbound Air Freight	100.000	149.2	147.9	2.3	1.4	0.3	1.3	-0.9
Europe (Dec. 2003=100).....	29.974	162.7	161.7	-0.8	0.7	-1.3	0.3	-0.6
Asia.....	50.137	143.1	141.6	4.7	1.8	0.9	2.3	-1.0
Air Passenger Fares								
Import Air Passenger Fares	100.000	181.8	194.2	8.2	-1.6	2.0	-0.9	6.8
Europe.....	41.988	202.9	207.2	17.5	0.6	3.7	2.4	2.1
Asia.....	25.485	147.5	171.3	5.4	-5.4	-0.3	-3.0	16.1
Latin America/Caribbean.....	11.626	169.2	185.1	-1.0	-9.1	1.5	6.3	9.4
Export Air Passenger Fares	100.000	182.9	194.3	1.7	-12.4	-0.4	-2.2	6.2
Europe.....	27.657	216.5	222.2	7.4	-9.4	-2.2	0.6	2.6
Asia.....	28.271	165.7	183.7	2.7	-24.1	-0.9	-4.1	10.9
Latin America/Caribbean.....	24.308	215.5	224.6	9.7	-2.9	-0.4	0.4	4.2

¹ Relative importance figures are based on 2010 trade values.

NOTES: Data may be revised in each of the three months after original publication.

Dash = Not available

TECHNICAL NOTE

Import and Export Merchandise and Services Price Indexes -- All indexes use a modified Laspeyres formula and are not seasonally adjusted. Price indexes are reweighted annually, with a two-year lag in the weights. Published series use a base year of 2000=100 where possible. More detailed index series and additional information may be obtained at <http://www.bls.gov/mxp>, or by calling (202) 691-7101.

Merchandise Goods Classification Systems -- The merchandise price indexes are published using three classification systems. Items are classified by end use according to the Bureau of Economic Analysis Classification System, by industry according to the North American Industry Classification System (NAICS), and by product category according to the Harmonized System (HS). While classification by end use and product category are self-explanatory, some notes are in order for classifying items by industry. In the NAICS imports and exports tables, items are classified by output industry, not input industry. As an example, NAICS import index 326 (plastics and rubber products manufacturing) include outputs such as manufactured plastic rather than inputs such as petroleum. The NAICS classification structure also matches the classification system used by the PPI (Producer Price Index) to produce the NAICS primary products indexes.

Import Price Indexes -- Products have been classified by the Harmonized Tariff Schedule of the United States Annotated (TSUSA). Import prices are based on U.S. dollar prices paid by the U.S. importer. The prices are generally either "free on board" (f.o.b.) foreign port or "cost, insurance, and freight" (c.i.f.) U.S. port transaction prices, depending on the practices of the individual industry. The index for crude petroleum is calculated from data collected by the U.S. Department of Energy.

Export Price Indexes -- Products have been classified by the Harmonized Schedule B classification system of the U.S. Bureau of the Census. The prices used are generally either "free alongside ship" (f.a.s.) factory or "free on board" (f.o.b.) transaction prices, depending on the practices of the individual industry. Prices used in the grain index, excluding rice, are obtained from the U.S. Department of Agriculture.

Services Price Indexes -- Starting in September 2008 the Import Air Passenger Fares Indexes represent changes in the average revenue per passenger received by foreign carriers from U.S. residents and are calculated from data obtained from an airline consulting service. These data include tickets sold by travel agencies and travel websites. Tickets sold directly by the airlines are excluded, as are frequent flyer tickets generally. Starting in January 2008 the Export Air Passenger Fares Indexes represent changes in the average revenue per passenger received by U.S. carriers from foreign residents and are calculated from data collected directly from airlines. These data include frequent flyer tickets and those sold by consolidators. Taxes and fees are included in the Import Air Passenger Fares Index and excluded from the Export Air Passenger Fares Index. The Air Freight Indexes are calculated from data collected directly from airlines. These data exclude mail and passenger baggage. The scope of the service being priced is the movement of freight from airport to airport only, and does not include any ground transportation or port service. The Air Freight Indexes are presented using two definitions: Balance of Payments (which represent transactions between U.S. and foreign residents) and International (which represent transactions inbound to and outbound from the U.S.). Fact sheets specifying detailed information for each services industry are available at <http://www.bls.gov/mxp> under "MXP Publications."

Import Indexes by Locality of Origin -- Prices used in these indexes are a subset of the data collected for the Import Price Indexes. Beginning with January 2002, the indexes are defined by locality of origin using a nomenclature based upon the North American Industry Classification System (NAICS). Nonmanufactured goods are defined as NAICS 11 and 21 and manufactured goods are defined as NAICS 31-33.

Revision Policy -- To reflect the availability of late reports and corrections by respondents, monthly data may be revised in each of the three months after original publication. After three months, no further data revisions take place. So, for example, data released in the January release will be subject to revision in the releases for February, March, and April.

Uses of the Data -- The primary use of the indexes is to deflate trade statistics, notably the foreign trade sector of the National Income and Product Accounts constructed by the Department of Commerce. Other published indexes are useful for general market analysis. For trade in international services, Balance of Payments indexes are used for deflating National Income and Product Accounts, while International indexes are more appropriate for market analysis. Merchandise and services indexes also can be used to study U.S. competitiveness and to compute price elasticities, and the merchandise import indexes by country or region of origin are useful in terms of trade analysis.

E-Mail Subscription -- The U.S. Import and Export Price Indexes news release is available through an e-mail subscription service at (<http://www.bls.gov/bls/list.htm>).

Additional Information -- More detailed data are available on the Import/Export Price Indexes home page at (<http://www.bls.gov/mxp>). Flat Files and the FTP server are available for users requiring access to either a large volume of time series data or other related documentation. The FTP site can be accessed at <ftp://ftp.bls.gov>. For technical assistance in using the BLS Internet site, send e-mail to (labstat.helpdesk@bls.gov). For Import/Export Price Index data requests, send e-mail to (mxpinfo@bls.gov).

Information from this release will be made available to sensory impaired individuals upon request. Voice phone: 202-691-5200; Federal Relay Service: 1-800-877-8339.