

Transmission of material in this release is embargoed until
8:30 a.m. (EDT) Tuesday, March 16, 2010

USDL-10-0315

Technical information: (202) 691-7101 • MXPinfo@bls.gov • www.bls.gov/mxp
Media contact: (202) 691-5902 • PressOffice@bls.gov

U.S. IMPORT AND EXPORT PRICE INDEXES – FEBRUARY 2010

The U.S. Import Price Index fell 0.3 percent in February, the U.S. Bureau of Labor Statistics reported today. The decrease was led by a 1.9 percent downturn in fuel prices, which more than offset a 0.2 percent advance in nonfuel prices. Export prices fell 0.5 percent in February after advancing 0.7 percent in each of the previous two months.

Chart 1. One-month percent change in the Import Price Index: February 2009 – February 2010

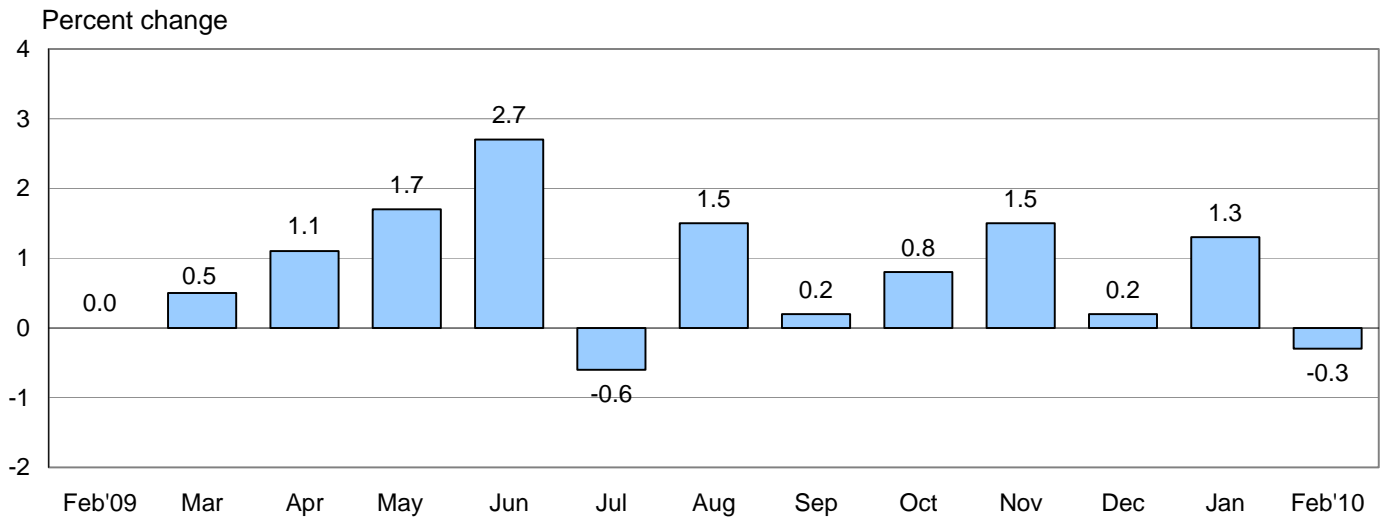
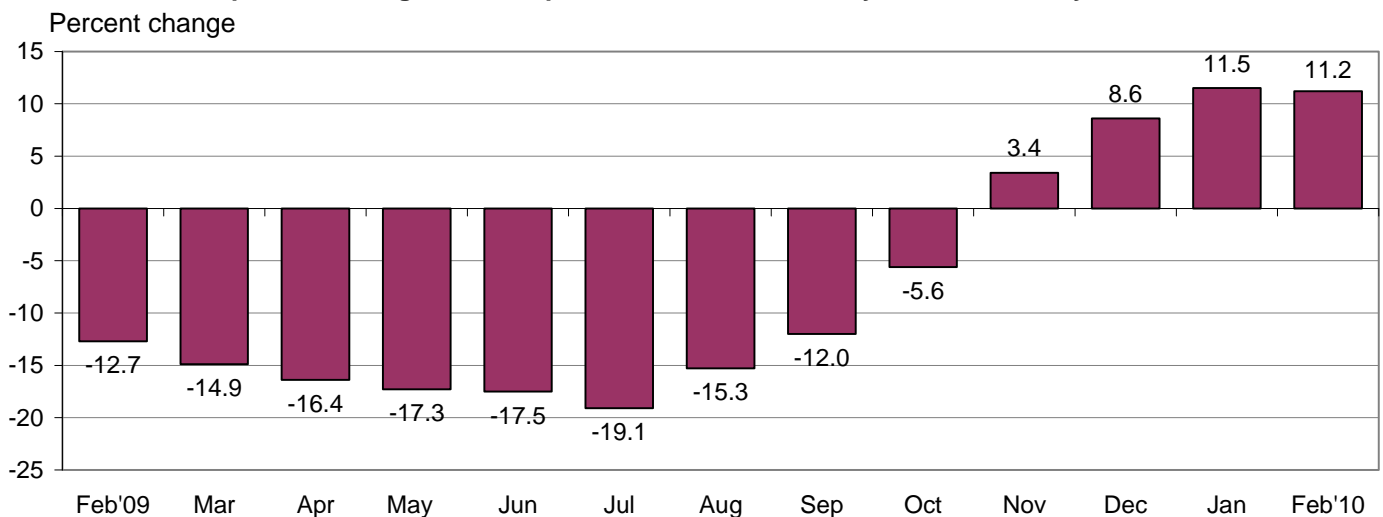


Chart 2. 12-month percent change in the Import Price Index: February 2009 – February 2010



All Imports: In February, import prices decreased for the first time since a 0.6 percent decline in July, falling 0.3 percent. The February downturn followed a 1.3 percent advance in January and was driven by a turnaround in fuel prices. Despite the February decline, import prices advanced 11.2 percent for the year ended in February after decreasing 12.7 percent for the February 2008-09 period.

Fuel Imports: Import fuel prices countered an upward trend in February, falling 1.9 percent following a 4.9 percent rise in January. A 2.2 percent decline in petroleum prices was slightly offset by a 2.6 percent increase in natural gas prices. Over the past year, the price index for petroleum increased 81.3 percent and natural gas prices rose 16.3 percent, driving overall fuel prices up 70.8 percent for the same period. The 12-month increase in fuel prices followed a 49.8 percent drop for the February 2008-09 period.

All Imports Excluding Fuel: Prices for nonfuel imports rose for the seventh consecutive month, advancing 0.2 percent. The increase was led by higher prices for nonfuel industrial supplies and materials. Lower prices for foods, feeds, and beverages, capital goods, and consumer goods mitigated the overall advance. Over the past 12 months, nonfuel import prices increased 2.0 percent.

Table A. Percent changes

Month	IMPORTS			EXPORTS		
	All imports	Fuel imports	Nonfuel imports	All exports	Agricultural exports	Non-agricultural exports
2009						
February.....	0.0	2.7	-0.4	-0.3	-1.7	-0.2
March.....	0.5	7.8	-0.6	-0.7	-3.4	-0.4
April.....	1.1	7.5	0.1	0.5	3.7	0.2
May.....	1.7	9.8	0.2	0.4	3.6	0.3
June.....	2.7	16.0	0.2	1.0	4.2	0.6
July.....	-0.6	-2.6	-0.2	-0.3	-4.9	0.1
August.....	1.5	7.0	0.4	0.6	0.2	0.7
September.....	0.2	-1.3	0.4	-0.2	-2.9	0.1
October.....	0.8	3.0	0.4	0.0	-0.7	0.1
November.....	1.5	6.3	0.3 ^r	0.8	3.9	0.5
December.....	0.2	-0.2 ^r	0.4 ^r	0.7 ^r	1.8 ^r	0.5
2010						
January.....	1.3 ^r	4.9 ^r	0.4	0.7 ^r	1.3 ^r	0.7
February.....	-0.3	-1.9	0.2	-0.5	-3.8	-0.2
Feb. 2008 to 2009.....	-12.7	-49.8	-1.2	-4.5	-15.4	-3.4
Feb. 2009 to 2010.....	11.2	70.8	2.0	3.1	2.3	3.3

r Revised

Chart 3. One-month percent change in the Export Price Index: February 2009 – February 2010

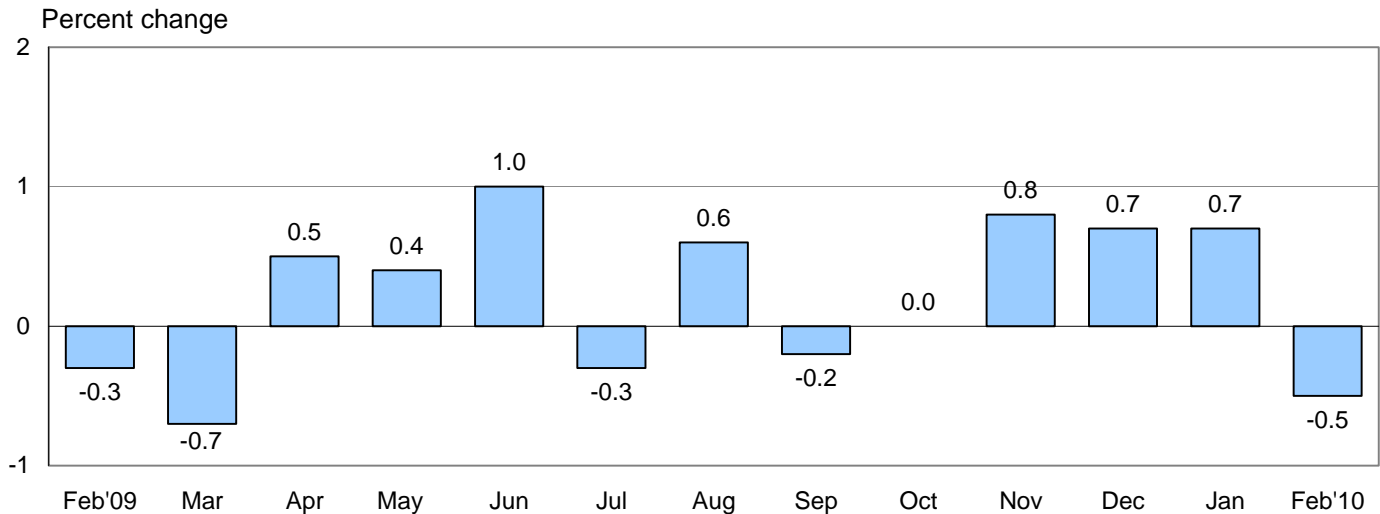
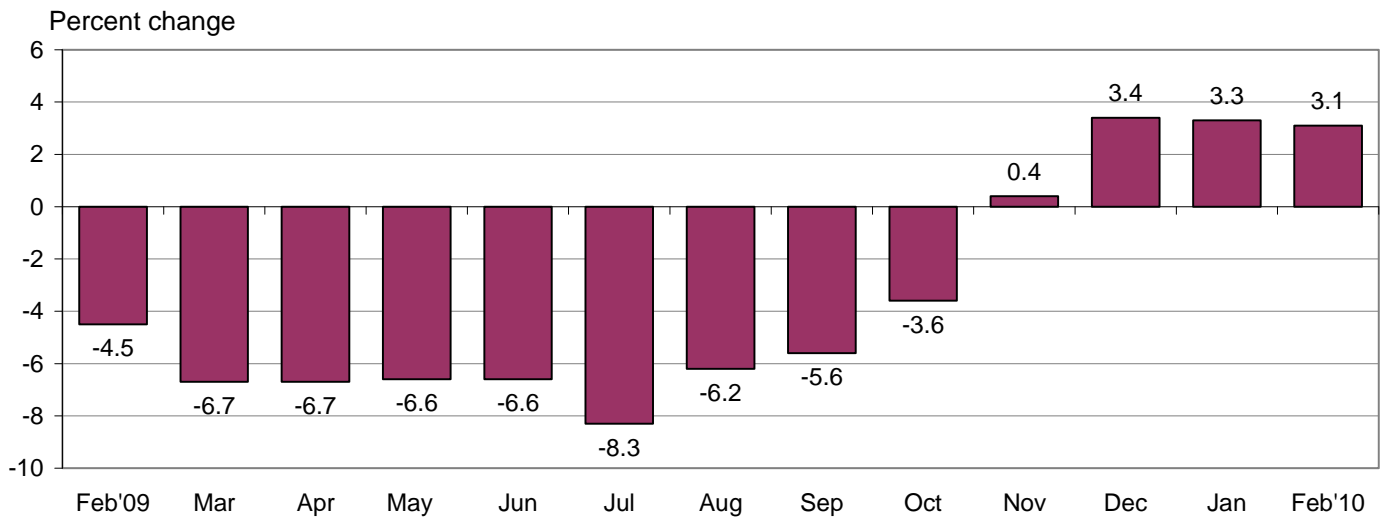


Chart 4. 12-month percent change in the Export Price Index: February 2009 – February 2010



All Exports: Export prices decreased for the first time in five months, falling 0.5 percent in February. The February drop was the largest monthly decline since the index fell 0.7 percent in March 2009. Lower agricultural prices accounted for approximately 65 percent of the overall decline. Despite the February decrease, the price index for overall exports rose 3.1 percent over the past 12 months.

Agricultural Exports: The price index for agricultural exports fell 3.8 percent in February, following a 1.3 percent advance in January. Lower prices for soybeans, corn, and wheat led the downturn in agricultural prices. For the year ended in February, agricultural prices rose 2.3 percent, led by a 33.0 percent rise in nut prices and a 28.9 percent increase in cotton prices.

All Exports Excluding Agriculture: Nonagricultural prices declined 0.2 percent in February, the first decrease in 11 months. Lower prices for nonagricultural industrial supplies and materials and capital goods contributed to the overall decline in February. The price index for nonagricultural export prices increased 3.3 percent for the year ended in February.

SELECTED FEBRUARY HIGHLIGHTS

Import Prices

Nonfuel Industrial Supplies and Materials: Prices for nonfuel industrial supplies and materials increased 1.0 percent in February after rising 1.6 percent in January. Rising prices for metals and lumber led the advances this month.

Finished Goods: Import finished goods prices were virtually unchanged in February, as the price indexes for capital goods and consumer goods each decreased 0.1 percent and the price index for automotive vehicles was unchanged. The decrease in capital goods prices was led by a 1.4 percent drop in prices for measuring, testing, and control instruments.

Foods, Feeds, and Beverages: The price index for foods, feeds, and beverages decreased for the first time since a 1.1 percent decline in July, edging down 0.1 percent. Vegetables and food oils, which fell 2.1 percent and 2.7 percent, respectively, were the primary contributors to the February decline.

Imports by Locality of Origin: Import prices from China and Japan declined in February, each falling 0.1 percent. Lower fuel prices contributed to February decreases in import prices from Mexico and the European Union. The price index for imports from Mexico declined 0.7 percent while import prices from the European Union edged down 0.1 percent. In contrast, import prices from Canada rose 0.1 percent.

Transportation Services: Import air passenger fares fell 3.5 percent in February after decreasing 3.2 percent in January. Lower Asian and European fares contributed to the decline. The price index for import air freight also decreased in February, falling 0.3 percent. The decline was led by a 0.7 percent decrease in Asian air freight prices.

Export Prices

Nonagricultural Industrial Supplies and Materials: Nonagricultural industrial supplies and materials prices fell 0.5 percent in February, the first decrease since a 0.1 percent drop in July. Lower prices for petroleum were partly offset by higher prices for chemicals.

Finished Goods: Prices for the major finished goods categories were mixed in February. The price indexes for consumer goods and automotive vehicles rose 0.3 percent and 0.1 percent, respectively, while prices for capital goods fell 0.3 percent. The drop in capital goods prices was led by a 1.1 percent decline in prices for computers, peripherals, and semiconductors.

Transportation Services: Export air passenger fares decreased 7.7 percent in February following a 3.4 percent increase the previous month. The decline was led by lower Asian and Latin American fares. In contrast, the price index for export air freight rose 0.4 percent in February after advancing 0.3 percent in January.

Import and Export Price Index data for March 2010 are scheduled for release on Tuesday, April 13, 2010 at 8:30 a.m. (EDT).

Table 1. U.S. import price indexes and percent changes for selected categories of goods: February 2009 to February 2010

[2000=100, unless otherwise noted]

Description	End Use	Relative importance Jan. 2010 ¹	Index		Percent change				
			Jan. 2010	Feb. 2010	Annual	Monthly			
					Feb. 2009 to Feb. 2010	Oct. 2009 to Nov. 2009	Nov. 2009 to Dec. 2009	Dec. 2009 to Jan. 2010	Jan. 2010 to Feb. 2010
All commodities.....		100.000	126.0	125.6	11.2	1.5	0.2	1.3	-0.3
All imports excluding petroleum.....		80.444	110.3	110.5	2.1	0.6	0.5	0.5	0.2
All imports excluding fuels (Dec. 2001=100)..		78.634	113.4	113.6	2.0	0.3	0.4	0.4	0.2
Foods, feeds, & beverages.....	0	4.684	145.5	145.3	5.4	1.0	0.8	1.3	-0.1
Agricultural foods, feeds & beverages, excluding distilled beverages.....	00	3.657	163.8	163.1	6.6	1.4	0.8	1.9	-0.4
Nonagricultural foods (fish, distilled beverages).....	01	1.027	104.1	104.9	1.5	-0.4	0.4	-0.8	0.8
Industrial supplies & materials.....	1	35.191	203.4	201.8	39.3	4.2	0.7	3.6	-0.8
Industrial supplies & materials excluding petroleum.....		15.634	149.1	150.7	10.3	2.9	2.8	2.7	1.1
Industrial supplies & materials excluding fuels (Dec. 2001=100).....		13.824	161.3	162.9	10.5	1.3	1.9	1.6	1.0
Industrial supplies & materials, durable.....		8.672	155.1	157.4	14.8	1.3	2.3	1.7	1.5
Industrial supplies & materials nondurable excluding petroleum.....		5.152	141.7	142.6	4.9	5.2	3.3	3.9	0.6
Fuels & lubricants.....	10	21.367	262.0	257.0	70.8	6.3	-0.2	4.9	-1.9
Petroleum & petroleum products.....	100	19.557	281.2	274.9	81.3	5.4	-1.1	4.4	-2.2
Crude.....	10000	14.374	285.9	279.1	85.0	4.8	-2.0	4.0	-2.4
Fuels, n.e.s.-coals & gas.....	101	1.564	162.2	165.6	11.3	22.4	12.1	12.6	2.1
Gas-natural.....	10110	1.242	153.7	157.7	16.3	27.3	14.2	17.6	2.6
Paper & paper base stocks.....	11	0.666	104.3	106.4	-2.2	1.9	0.7	1.2	2.0
Materials associated with nondurable supplies & materials.....	12	4.562	142.9	142.8	4.2	1.2	1.0	1.5	-0.1
Selected building materials.....	13	1.311	122.4	124.7	7.0	-0.1	1.9	1.3	1.9
Unfinished metals related to durable goods.....	14	3.966	227.7	233.2	32.6	2.4	4.0	2.8	2.4
Finished metals related to durable goods. ...	15	1.784	141.5	141.4	3.9	1.1	0.8	0.9	-0.1
Nonmetals related to durable goods.....	16	1.535	105.9	106.5	0.3	0.4	0.2	0.5	0.6
Capital goods.....	2	23.314	91.8	91.7	-0.7	0.0	0.0	-0.1	-0.1
Electric generating equipment.....	20	2.956	111.8	111.7	1.3	0.2	0.3	0.4	-0.1
Nonelectrical machinery.....	21	18.328	86.2	86.1	-1.3	0.0	0.0	-0.2	-0.1
Transportation equipment excluding motor vehicles (Dec. 2001=100).....	22	2.030	123.1	122.8	1.8	-0.2	-0.2	0.4	-0.2
Automotive vehicles, parts & engines.....	3	12.096	108.5	108.5	0.6	0.1	-0.1	-0.3	0.0
Consumer goods, excluding automotives..	4	24.716	104.5	104.4	0.0	0.0	0.0	0.2	-0.1
Nondurables, manufactured.....	40	11.476	108.7	108.5	-0.4	0.1	0.0	0.7	-0.2
Durables, manufactured.....	41	12.028	100.5	100.5	0.5	0.0	-0.1	-0.3	0.0
Nonmanufactured consumer goods.....	42	1.212	102.1	102.9	-1.4	-0.5	1.0	0.0	0.8

1 Relative importance figures are based on 2008 trade values.

NOTES: Data may be revised in each of the three months after original publication.

Dash = Not available

Table 2. U.S. export price indexes and percent changes for selected categories of goods: February 2009 to February 2010

[2000=100, unless otherwise noted]

Description	End Use	Relative importance Jan. 2010 ¹	Index		Percent change				
			Jan. 2010	Feb. 2010	Annual	Monthly			
					Feb. 2009 to Feb. 2010	Oct. 2009 to Nov. 2009	Nov. 2009 to Dec. 2009	Dec. 2009 to Jan. 2010	Jan. 2010 to Feb. 2010
All commodities.....		100.000	120.5	119.9	3.1	0.8	0.7	0.7	-0.5
Agricultural commodities.....		9.054	166.9	160.6	2.3	3.9	1.8	1.3	-3.8
Nonagricultural commodities.....		90.946	117.2	117.0	3.3	0.5	0.5	0.7	-0.2
Foods, feeds, & beverages.....	0	8.230	167.5	161.2	-0.6	3.5	1.9	1.5	-3.8
Agricultural foods, feeds & beverages, excluding distilled beverages.....	00	7.668	170.6	163.2	-0.5	3.5	2.0	1.6	-4.3
Nonagricultural foods (fish, distilled beverages).....	01	0.562	140.3	146.4	0.5	3.6	0.4	-0.1	4.3
Industrial supplies & materials.....	1	30.586	152.5	151.8	10.1	1.8	1.8	1.6	-0.5
Industrial supplies & materials, durable.....		12.111	159.5	158.9	11.3	1.2	2.4	1.1	-0.4
Industrial supplies & materials, nondurable.....		18.475	149.0	148.3	9.4	2.3	1.3	1.9	-0.5
Agricultural industrial supplies & materials...	10	1.386	152.8	151.7	20.2	5.5	0.5	0.2	-0.7
Nonagricultural industrial supplies & materials.....		29.200	152.8	152.1	9.7	1.6	1.8	1.7	-0.5
Fuels & lubricants.....	11	5.778	200.3	191.2	22.4	5.2	2.7	5.6	-4.5
Nonagricultural supplies & materials excluding fuels & building materials.....	12	22.406	148.4	149.2	8.0	1.0	1.7	0.7	0.5
Selected building materials.....	13	1.016	115.1	116.2	0.8	0.4	0.4	1.4	1.0
Capital goods.....	2	38.889	103.4	103.1	0.8	0.1	-0.1	0.2	-0.3
Electrical generating equipment.....	20	3.640	109.5	109.6	2.7	0.9	0.4	0.2	0.1
Nonelectrical machinery.....	21	28.410	94.3	94.0	0.0	0.2	-0.1	-0.2	-0.3
Transportation equipment excluding motor vehicles (Dec. 2001=100).....	22	6.839	138.5	138.6	3.0	-0.4	-0.1	1.6	0.1
Automotive vehicles, parts & engines.....	3	9.306	108.5	108.6	0.5	0.1	0.0	0.3	0.1
Consumer goods, excluding automotives..	4	12.989	109.5	109.8	0.5	0.1	0.0	0.1	0.3
Nondurables, manufactured.....	40	5.961	111.0	111.9	2.7	0.5	0.2	0.9	0.8
Durables, manufactured.....	41	5.773	108.4	108.0	-1.6	-0.2	-0.2	-0.7	-0.4

¹ Relative importance figures are based on 2008 trade values.

NOTES: Data may be revised in each of the three months after original publication.

Dash = Not available

Table 3. U.S. import price indexes and percent changes for selected categories of goods: February 2009 to February 2010

[December 2005=100, unless otherwise noted]

Description	NAICS	Relative importance Jan. 2010 ¹	Index		Percent change				
			Jan. 2010	Feb. 2010	Annual	Monthly			
					Feb. 2009 to Feb. 2010	Oct. 2009 to Nov. 2009	Nov. 2009 to Dec. 2009	Dec. 2009 to Jan. 2010	Jan. 2010 to Feb. 2010
Nonmanufactured articles.....		18.470	130.0	128.0	61.8	6.0	-0.4	4.9	-1.5
Agriculture, forestry, fishing and hunting...	11	1.754	143.6	144.0	10.2	2.3	1.3	4.4	0.3
Crop production.....	111	1.268	152.1	152.7	7.8	2.6	1.5	4.5	0.4
Mining.....	21	16.716	128.4	126.1	70.9	6.4	-0.7	5.1	-1.8
Mining (except oil and gas) (Dec. 2006=100).....	212	0.505	128.2	128.0	-2.3	-1.0	-1.0	-0.5	-0.2
Manufactured articles.....		81.027	109.6	109.5	4.0	0.6	0.3	0.6	-0.1
Manufactured goods, part 1.....	31	10.060	107.9	107.7	0.6	0.2	0.1	0.3	-0.2
Food manufacturing.....	311	2.503	121.9	121.7	4.7	1.0	1.2	0.6	-0.2
Beverage and tobacco product manufacturing.....	312	0.918	108.8	108.3	1.6	0.5	0.6	-0.1	-0.5
Textile product mills.....	314	0.776	101.2	101.4	0.5	0.0	-0.1	0.9	0.2
Apparel manufacturing.....	315	3.945	101.1	101.0	-1.5	-0.1	-1.0	0.4	-0.1
Leather and allied product manufacturing. . .	316	1.515	106.8	106.7	-0.9	0.0	-0.1	-0.2	-0.1
Manufactured goods, part 2.....	32	17.933	121.2	120.7	13.7	1.9	0.9	2.4	-0.4
Wood product manufacturing.....	321	0.775	98.3	101.5	12.4	-0.2	2.3	2.4	3.3
Paper manufacturing.....	322	1.173	101.6	103.3	-3.5	1.1	0.5	0.6	1.7
Petroleum and coal products manufacturing.....	324	4.175	129.3	125.9	69.4	6.2	1.2	4.8	-2.6
Chemical manufacturing.....	325	8.920	124.5	124.5	3.9	0.7	0.7	2.0	0.0
Plastics and rubber products manufacturing.....	326	1.795	114.3	113.7	0.6	0.6	0.4	0.9	-0.5
Nonmetallic mineral product manufacturing.....	327	0.991	120.3	120.6	1.4	-0.1	0.1	0.8	0.2
Manufactured goods, part 3.....	33	53.035	106.3	106.4	1.8	0.2	0.3	0.0	0.1
Primary metal manufacturing.....	331	4.613	149.9	153.3	24.2	2.3	4.0	2.6	2.3
Fabricated metal product manufacturing. . .	332	2.678	116.3	116.6	-1.3	0.2	0.2	-0.1	0.3
Machinery manufacturing.....	333	6.788	113.2	112.9	1.4	0.0	0.3	0.0	-0.3
Computer and electronic product manufacturing.....	334	15.236	88.2	88.1	-1.6	-0.1	-0.3	-0.5	-0.1
Electrical equipment, appliance, and component manufacturing.....	335	3.842	113.1	112.7	-0.2	0.0	0.2	0.2	-0.4
Transportation equipment manufacturing. . .	336	13.386	106.0	105.9	1.0	0.0	-0.1	-0.2	-0.1
Furniture and related product manufacturing.....	337	1.349	107.8	107.6	-2.4	-0.5	0.2	-0.2	-0.2
Miscellaneous manufacturing.....	339	5.142	112.1	112.1	1.7	0.3	-0.1	-0.4	0.0

¹ Relative importance figures are based on 2008 trade values.

NOTES: Data may be revised in each of the three months after original publication.

Dash = Not available

Table 4. U.S. export price indexes and percent changes for selected categories of goods: February 2009 to February 2010

[December 2005=100, unless otherwise noted]

Description	NAICS	Relative importance Jan. 2010 ¹	Index		Percent change				
			Jan. 2010	Feb. 2010	Annual	Monthly			
					Feb. 2009 to Feb. 2010	Oct. 2009 to Nov. 2009	Nov. 2009 to Dec. 2009	Dec. 2009 to Jan. 2010	Jan. 2010 to Feb. 2010
Nonmanufactured articles.....		6.810	131.0	123.2	4.0	3.9	3.3	3.2	-6.0
Agriculture, forestry, fishing and hunting...	11	4.872	148.1	137.0	-0.8	6.1	2.6	3.1	-7.5
Crop production.....	111	4.506	152.3	139.9	-1.3	6.3	2.7	2.8	-8.1
Mining.....	21	1.938	92.8	90.8	20.7	-3.1	5.7	3.6	-2.2
Mining (except oil and gas).....	212	1.375	96.4	93.5	10.9	0.2	1.0	3.1	-3.0
Manufactured articles.....		90.483	110.5	110.4	2.8	0.6	0.5	0.5	-0.1
Manufactured goods, part 1.....	31	6.629	123.2	124.0	5.8	0.8	0.6	0.7	0.6
Food manufacturing.....	311	4.483	137.8	139.0	7.1	1.0	0.5	0.5	0.9
Beverage and tobacco product manufacturing.....	312	0.537	107.7	107.5	3.3	0.0	-0.3	0.0	-0.2
Apparel manufacturing.....	315	0.377	102.4	102.4	0.5	0.0	-0.4	0.0	0.0
Manufactured goods, part 2.....	32	23.392	115.0	114.7	5.9	1.7	0.6	1.7	-0.3
Wood product manufacturing.....	321	0.443	109.9	111.5	3.0	0.6	0.6	0.8	1.5
Paper manufacturing.....	322	1.927	113.1	112.8	0.3	0.2	1.3	0.6	-0.3
Petroleum and coal products manufacturing.....	324	3.698	121.9	112.7	27.5	9.8	0.3	7.7	-7.5
Chemical manufacturing.....	325	14.371	115.5	117.4	5.4	1.0	0.8	0.5	1.6
Plastics and rubber products manufacturing.....	326	2.084	106.6	106.8	-1.7	0.1	0.1	-0.7	0.2
Nonmetallic mineral product manufacturing.....	327	0.869	115.5	115.7	2.8	0.2	0.2	3.0	0.2
Manufactured goods, part 3.....	33	60.462	107.5	107.4	1.4	0.2	0.3	0.0	-0.1
Primary metal manufacturing.....	331	4.832	139.2	139.4	16.9	2.6	4.2	0.9	0.1
Fabricated metal product manufacturing.	332	2.805	121.2	121.3	-0.5	0.0	0.3	-0.5	0.1
Machinery manufacturing.....	333	12.671	113.2	113.1	1.2	0.0	0.1	0.3	-0.1
Computer and electronic product manufacturing.....	334	15.868	92.6	92.1	-1.3	0.2	-0.4	-0.4	-0.5
Electrical equipment, appliance, and component manufacturing.....	335	3.513	109.5	109.6	3.4	0.9	0.8	0.6	0.1
Transportation equipment manufacturing....	336	15.370	110.6	110.7	1.5	-0.2	-0.1	0.5	0.1
Miscellaneous manufacturing.....	339	5.041	108.9	108.5	-2.3	0.1	0.0	-1.4	-0.4

¹ Relative importance figures are based on 2008 trade values.

NOTES: Data may be revised in each of the three months after original publication.

Dash = Not available

Table 5. U.S. import price indexes and percent changes for selected categories of goods: February 2009 to February 2010

[2000=100, unless otherwise noted]

Description	Harmoni- zied system	Relative importance Jan. 2010 ¹	Index		Percent change				
			Jan. 2010	Feb. 2010	Annual	Monthly			
					Feb. 2009 to Feb. 2010	Oct. 2009 to Nov. 2009	Nov. 2009 to Dec. 2009	Dec. 2009 to Jan. 2010	Jan. 2010 to Feb. 2010
Live animals; animal products.....	I	1.030	131.3	132.1	6.8	0.3	-0.2	-0.5	0.6
Meat and edible meat offal.....	02	0.228	160.7	167.4	15.1	1.6	0.8	1.0	4.2
Fish and crustaceans, molluscs and other aquatic invertebrates.....	03	0.537	99.4	99.9	1.5	-0.4	-0.1	-0.8	0.5
Vegetable products.....	II	1.475	167.6	167.5	4.6	0.9	1.4	3.5	-0.1
Edible vegetables, roots, and tubers.....	07	0.395	305.3	297.0	15.2	1.4	-3.9	6.3	-2.7
Edible fruit and nuts; peel of citrus fruit or melons.....	08	0.406	106.8	108.9	-0.5	-3.4	1.1	7.4	2.0
Coffee, tea, mate and spices.....	09	0.280	164.4	161.9	9.1	2.4	3.9	-1.7	-1.5
Animal or vegetable fats and oils (Dec. 2009=100).....	III	0.210	102.5	99.5	-	-	-	2.5	-2.9
Prepared foodstuffs, beverages, and tobacco.....	IV	2.286	140.5	140.4	4.5	1.0	0.8	0.9	-0.1
Cocoa and cocoa preparations (Dec. 2009=100).....	18	0.215	103.2	105.4	-	-	-	3.2	2.1
Preparations of cereals, flour, starch or milk; bakers' wares (Dec. 2007=100).....	19	0.242	114.7	113.0	6.6	1.0	0.5	2.0	-1.5
Preparations of vegetables, fruit, nuts, or other parts of plants.....	20	0.289	130.5	130.9	-0.2	0.5	0.1	3.0	0.3
Beverages, spirits, and vinegar.....	22	0.905	118.4	117.7	2.3	0.9	0.6	-0.3	-0.6
Mineral products.....	V	21.357	263.9	258.9	67.9	6.1	-0.2	4.9	-1.9
Salt; sulfur; earths and stone; plaster materials, lime & cement (Dec. 2009=100).....	25	0.187	100.7	99.7	-	-	-	0.7	-1.0
Mineral fuels, oils and residuals, bituminous substances and mineral waxes.....	27	20.964	260.9	255.9	70.0	6.2	-0.2	5.0	-1.9
Products of the chemical or allied industries.....	VI	8.206	137.6	138.1	5.4	1.0	1.0	1.6	0.4
Inorganic chemicals.....	28	0.861	247.0	261.2	38.4	2.7	1.9	-1.1	5.7
Organic chemicals.....	29	2.731	132.0	132.0	9.2	1.1	0.9	1.6	0.0
Pharmaceutical products.....	30	2.865	119.1	118.9	3.0	1.0	1.0	2.4	-0.2
Fertilizers (Dec. 2009=100).....	31	0.331	107.3	100.6	-	-	-	7.3	-6.2
Tanning & dyeing extracts; dye & pigments; varnish & paints; putty.....	32	0.171	111.7	114.1	8.5	-0.3	3.1	2.5	2.1
Essential oils and resinoids (Dec. 2001=100).....	33	0.416	121.3	120.6	-0.1	-1.8	0.3	0.9	-0.6
Miscellaneous chemical products.....	38	0.487	91.4	92.9	-0.4	0.2	0.3	1.0	1.6
Plastics and articles thereof; rubber and articles thereof.....	VII	2.904	131.8	132.0	3.9	0.8	1.1	1.2	0.2
Plastics and articles thereof.....	39	1.826	127.4	127.6	2.7	0.6	1.0	0.6	0.2
Rubber and articles thereof.....	40	1.078	140.3	140.7	5.9	1.0	1.1	2.1	0.3
Raw hides, skins, leather, furskins, travel goods, etc.....	VIII	0.589	113.7	113.7	-0.2	0.0	0.0	0.1	0.0
Articles of leather; travel goods, bags, etc. of various materials.....	42	0.553	114.8	114.8	0.0	0.0	0.0	0.2	0.0
Wood, wood charcoal, cork, straw, basketware and wickerwork.....	IX	0.798	119.2	123.0	11.3	-0.3	2.3	2.3	3.2
Woodpulp, recovered paper, and paper products.....	X	1.324	106.4	107.5	-3.9	0.9	0.5	0.1	1.0
Pulp wood, waste paper, and paperboard (Dec. 2009=100).....	47	0.183	103.2	108.4	-	-	-	3.2	5.0
Paper and paperboard; articles of paper pulp, paper or paperboard.....	48	0.873	101.4	101.9	-9.7	0.2	0.6	-0.5	0.5
Printed matter.....	49	0.267	120.5	120.6	0.7	-0.1	0.5	-0.1	0.1

See footnotes at end of table.

Table 5. U.S. import price indexes and percent changes for selected categories of goods: February 2009 to February 2010 — Continued
 [2000=100, unless otherwise noted]

Description	Harmonized system	Relative importance Jan. 2010 ¹	Index		Percent change				
			Jan. 2010	Feb. 2010	Annual	Monthly			
					Feb. 2009 to Feb. 2010	Oct. 2009 to Nov. 2009	Nov. 2009 to Dec. 2009	Dec. 2009 to Jan. 2010	Jan. 2010 to Feb. 2010
Textile and textile articles.....	XI	4.965	102.8	102.8	-0.4	-0.1	-0.7	0.4	0.0
Articles of apparel and clothing accessories, knitted or crocheted.....	61	1.904	98.1	98.1	-1.9	-0.2	-2.1	0.8	0.0
Articles of apparel and clothing accessories, not knitted or crocheted.....	62	1.866	102.7	102.6	-1.2	0.0	0.0	0.0	-0.1
Made-up or worn textile articles.....	63	0.529	92.9	93.1	1.5	-0.1	0.2	1.1	0.2
Headgear, umbrellas, artificial flowers, etc. ...	XII	1.218	107.1	106.9	-1.0	-0.1	0.0	-0.3	-0.2
Footwear and parts of such articles.....	64	1.034	106.1	105.8	-1.4	-0.2	-0.1	-0.2	-0.3
Stone, plaster, cement, asbestos, ceramics, glass etc.....	XIII	0.888	124.5	124.4	0.6	-0.1	0.1	0.0	-0.1
Articles of stone, plaster, cement, asbestos, or mica (Dec. 2001=100).....	68	0.315	117.9	117.7	-1.2	-0.2	0.1	0.3	-0.2
Ceramic products.....	69	0.279	139.9	140.0	4.6	0.1	0.1	0.0	0.1
Glass and glassware.....	70	0.294	115.6	115.4	-1.3	-0.3	0.0	-0.3	-0.2
Pearls, stones, precious metals, imitation jewelry, and coins.....	XIV	2.715	155.5	155.0	17.2	2.1	4.1	-0.2	-0.3
Base metals and articles of base metals.....	XV	5.792	170.6	174.1	11.9	1.1	1.3	2.2	2.1
Iron and steel.....	72	1.232	201.6	210.2	2.9	1.4	0.0	2.4	4.3
Articles of iron or steel.....	73	1.749	140.6	141.0	-6.6	0.7	0.9	0.6	0.3
Copper and articles thereof.....	74	0.683	329.1	333.4	86.2	2.5	4.7	3.9	1.3
Nickel and articles thereof (Dec. 2009=100)...	75	0.152	99.2	107.6	-	-	-	-0.8	8.5
Aluminum and articles thereof.....	76	0.816	133.4	136.3	32.1	1.6	2.3	6.0	2.2
Tools, implements, cutlery, spoons and forks, of base metal; parts thereof.....	82	0.365	118.1	118.1	-0.4	0.1	0.6	0.4	0.0
Miscellaneous articles of base metal.....	83	0.414	127.5	129.7	-0.6	-0.4	0.0	0.0	1.7
Machinery, electrical equipment, TV image and sound recorders, parts, etc.....	XVI	25.675	87.1	87.0	0.0	0.0	-0.1	-0.1	-0.1
Machinery and mechanical appliances; parts thereof.....	84	12.870	88.2	88.1	0.1	0.0	0.1	-0.2	-0.1
Electrical machinery and equip, sound and TV recorders & reproducers, parts.....	85	12.805	86.1	86.0	-0.1	0.0	-0.3	0.1	-0.1
Vehicles, aircraft, vessels and associated transport equipment.....	XVII	11.338	110.0	109.8	0.4	0.0	-0.1	-0.3	-0.2
Motor vehicles and their parts.....	87	10.224	108.9	108.7	0.4	0.1	-0.2	-0.3	-0.2
Aircraft, spacecraft, and parts thereof (Dec. 2002=100).....	88	1.019	115.6	115.6	0.1	0.0	-0.3	0.2	0.0
Optical, photo, measuring, medical & musical instruments; & timepieces.....	XVIII	3.281	101.4	101.5	0.0	-0.2	0.1	-1.1	0.1
Optical, photographic, measuring and medical instruments.....	90	2.968	99.0	99.2	-0.2	-0.1	0.0	-1.1	0.2
Clocks and watches and parts thereof.....	91	0.234	124.7	124.5	1.8	0.2	0.1	-0.2	-0.2
Miscellaneous manufactured articles.....	XX	3.890	107.1	107.1	-0.6	-0.1	-0.3	0.1	0.0
Furniture & stuffed furnishings; lamps & lighting fittings, nesoi; prefab bldgs.....	94	1.990	110.7	110.8	-1.9	-0.3	-0.2	-0.2	0.1
Toys, games and sports equipment; parts and accessories thereof.....	95	1.697	101.0	100.9	0.3	-0.1	-0.2	0.1	-0.1
Miscellaneous manufactured articles.....	96	0.202	119.7	119.7	6.6	0.3	0.3	2.2	0.0

¹ Relative importance figures are based on 2008 trade values.

NOTES: Data may be revised in each of the three months after original publication.

Dash = Not available

Table 6. U.S. export price indexes and percent changes for selected categories of goods: February 2009 to February 2010

[2000=100, unless otherwise noted]

Description	Harmoni- zied system	Relative importance Jan. 2010 ¹	Index		Percent change				
			Jan. 2010	Feb. 2010	Annual	Monthly			
					Feb. 2009 to Feb. 2010	Oct. 2009 to Nov. 2009	Nov. 2009 to Dec. 2009	Dec. 2009 to Jan. 2010	Jan. 2010 to Feb. 2010
Live animals; animal products.....	I	1.618	155.5	161.5	3.7	0.7	1.3	1.5	3.9
Meat & edible meat offal (Dec. 2006=100). . .	02	0.894	124.2	131.1	8.3	0.2	2.0	0.8	5.6
Fish and crustaceans, molluscs and other aquatic invertebrates.....	03	0.298	139.4	147.3	-0.7	3.2	0.8	2.0	5.7
Vegetable products.....	II	4.548	192.1	175.7	-4.6	5.0	1.3	2.8	-8.5
Edible fruit and nuts; peel of citrus fruit or melons.....	08	0.771	125.6	124.2	19.7	-3.0	4.2	11.7	-1.1
Cereals.....	10	1.822	197.0	177.9	-9.7	9.0	3.1	1.9	-9.7
Oilseeds and misc. grains, seeds, fruits, plants, straw and fodder.....	12	1.410	209.6	189.2	-4.7	5.4	0.0	0.0	-9.7
Animal or vegetable fats and oils (Dec. 2009=100).....	III	0.298	102.7	99.5	-	-	-	2.7	-3.1
Prepared foodstuffs, beverages, and tobacco.....	IV	2.537	141.8	140.5	3.4	0.9	0.9	0.1	-0.9
Preparations of vegetables, fruit, nuts or other parts of plants (Dec. 2009=100).....	20	0.339	100.9	102.4	-	-	-	0.9	1.5
Miscellaneous edible preparations.....	21	0.419	119.2	119.2	-0.3	-0.3	-0.3	0.3	0.0
Beverages, spirits, and vinegar (Dec. 2008=100).....	22	0.340	104.4	104.1	3.5	0.3	0.0	0.6	-0.3
Residues and waste from the food industries; prepared animal feed.....	23	0.619	197.0	188.4	-0.4	2.6	1.4	-0.8	-4.4
Mineral products.....	V	5.715	238.1	226.3	25.5	4.2	2.5	6.0	-5.0
Mineral fuels, oils and residuals, bituminous substances and mineral waxes.....	27	5.081	232.4	220.7	26.5	5.1	2.7	6.2	-5.0
Products of the chemical or allied industries.....	VI	11.731	138.4	140.2	3.2	1.0	1.0	0.6	1.3
Inorganic chemicals.....	28	0.976	165.2	164.9	-19.2	0.4	0.7	-2.0	-0.2
Organic chemicals.....	29	2.976	145.6	146.7	11.4	3.0	1.6	0.5	0.8
Pharmaceutical products.....	30	2.964	120.8	122.5	4.0	0.6	0.3	2.8	1.4
Tanning or dyeing extracts, dyes, paints, varnish, putty, & inks.....	32	0.534	112.6	113.9	0.4	0.2	-0.3	-1.9	1.2
Essential oils and resinoids; perfumery cosmetic or toilet preparations.....	33	0.730	124.3	125.1	2.5	0.6	0.0	-2.0	0.6
Soap; lubricants; waxes, polishing or scouring products; candles, pastes.....	34	0.439	117.4	117.8	1.1	0.6	0.2	-0.1	0.3
Miscellaneous chemical products.....	38	2.002	134.2	134.6	3.5	0.2	0.5	0.2	0.3
Plastics and articles thereof; rubber and articles thereof.....	VII	4.996	133.0	134.4	1.2	0.1	0.3	-0.8	1.1
Plastics and articles thereof.....	39	4.023	126.0	127.8	1.0	0.0	0.3	-1.6	1.4
Rubber and articles thereof.....	40	0.973	165.6	164.1	2.0	0.5	0.2	3.0	-0.9
Raw hides, skins, leather, furskins, travel goods, etc.....	VIII	0.347	109.0	113.2	34.4	2.6	5.1	2.4	3.9
Wood, wood charcoal, cork, straw, basketware and wickerwork.....	IX	0.560	108.0	109.7	3.1	0.6	1.0	3.1	1.6
Woodpulp, recovered paper, and paper products.....	X	2.438	112.3	112.7	5.6	0.6	1.3	1.6	0.4
Woodpulp and recovered paper.....	47	0.639	117.3	120.0	36.7	2.5	5.0	6.0	2.3
Paper and paperboard; articles of paper pulp, paper or paperboard.....	48	1.289	110.3	109.6	-3.5	-0.1	0.1	0.5	-0.6
Printed material.....	49	0.509	116.1	116.2	0.5	0.6	0.0	-0.2	0.1
Textile and textile articles.....	XI	1.952	109.6	109.0	6.4	3.4	0.1	0.4	-0.5
Cotton, including yarns and woven fabrics thereof.....	52	0.601	114.8	113.0	24.0	11.1	0.4	0.4	-1.6

See footnotes at end of table.

Table 6. U.S. export price indexes and percent changes for selected categories of goods: February 2009 to February 2010 — Continued
 [2000=100, unless otherwise noted]

Description	Harmo- nized system	Relative importance Jan. 2010 ¹	Index		Percent change				
			Jan. 2010	Feb. 2010	Annual	Monthly			
					Feb. 2009 to Feb. 2010	Oct. 2009 to Nov. 2009	Nov. 2009 to Dec. 2009	Dec. 2009 to Jan. 2010	Jan. 2010 to Feb. 2010
Stone, plaster, cement, asbestos, ceramics, glass etc. (Dec. 2008=100).....	XIII	0.819	118.1	117.7	1.3	0.0	0.0	3.1	-0.3
Glass and glassware.....	70	0.436	100.1	100.0	-0.6	0.0	0.0	2.6	-0.1
Pearls, stones, precious metals, imitation jewelry, and coins.....	XIV	4.757	196.8	195.5	16.2	2.7	5.4	-0.1	-0.7
Base metals and articles of base metals.....	XV	5.822	157.5	157.2	8.9	0.3	0.8	2.4	-0.2
Iron and steel.....	72	1.653	179.4	179.8	5.5	-1.3	0.2	3.9	0.2
Articles of iron or steel.....	73	1.529	157.3	157.8	-4.0	0.3	-0.1	-0.1	0.3
Copper and articles thereof.....	74	0.584	224.0	215.8	80.1	4.4	4.8	4.9	-3.7
Aluminum and articles thereof.....	76	0.905	123.4	123.3	28.3	1.2	2.1	6.3	-0.1
Tools, implements, cutlery, spoons and forks, of base metal; parts thereof.....	82	0.418	123.9	124.2	2.0	0.0	0.0	0.1	0.2
Miscellaneous articles of base metal.....	83	0.314	122.4	122.4	-5.5	0.1	0.1	0.1	0.0
Machinery, electrical equipment, TV image and sound recorders, parts, etc.....	XVI	30.701	95.7	95.3	0.2	0.2	-0.1	0.2	-0.4
Machinery and mechanical appliances; parts thereof.....	84	17.901	106.1	105.7	0.7	0.2	-0.1	0.1	-0.4
Electrical machinery and equipment and parts and accessories thereof.....	85	12.800	84.3	84.1	-0.2	0.4	-0.1	0.2	-0.2
Vehicles, aircraft, vessels and associated transport equipment.....	XVII	13.400	120.5	120.7	1.5	-0.2	-0.1	0.4	0.2
Motor vehicles and their parts.....	87	8.638	108.0	108.1	0.5	0.0	0.0	0.2	0.1
Ships, boats and floating structures (Dec. 2009=100).....	89	0.297	100.1	100.1	-	-	-	0.1	0.0
Optical, photo, measuring, medical & musical instruments; & timepieces.....	XVIII	6.058	106.7	106.9	-0.1	0.0	0.1	-1.7	0.2
Miscellaneous manufactured articles.....	XX	1.552	108.5	108.5	2.1	0.1	-0.6	0.7	0.0
Furniture; stuffed furnishings; lamps and lighting fittings nesoi;.....	94	0.761	117.3	117.2	1.5	0.2	-1.4	-0.3	-0.1
Toys, games and sports equipment; parts and accessories thereof.....	95	0.676	95.3	95.3	2.5	0.1	0.1	2.1	0.0

1 Relative importance figures are based on 2008 trade values.

NOTES: Data may be revised in each of the three months after original publication.

Dash = Not available

Table 7. U.S. import price indexes and percent changes by locality of origin: February 2009 to February 2010
 [2000=100, unless otherwise noted]

Description	Percent of U.S. imports ¹	Index		Percent change				
		Jan. 2010	Feb. 2010	Annual	Monthly			
				Feb. 2009 to Feb. 2010	Oct. 2009 to Nov. 2009	Nov. 2009 to Dec. 2009	Dec. 2009 to Jan. 2010	Jan. 2010 to Feb. 2010
Industrialized Countries²	41.082	125.6	125.6	6.6	1.2	0.7	1.3	0.0
Nonmanufactured articles.....	5.687	211.8	211.5	49.9	8.6	2.0	6.1	-0.1
Manufactured articles.....	34.943	118.8	118.7	3.0	0.6	0.5	0.8	-0.1
Other Countries³	58.918	123.8	123.0	12.6	1.1	0.0	1.4	-0.6
Nonmanufactured articles.....	15.714	257.4	252.0	63.3	5.2	-1.5	3.9	-2.1
Manufactured articles.....	43.010	105.1	104.8	2.8	-0.1	0.5	0.6	-0.3
Canada	15.923	142.8	143.0	14.6	2.8	1.0	3.7	0.1
Nonmanufactured articles.....	5.257	205.3	205.0	49.7	9.9	1.9	6.6	-0.1
Manufactured articles.....	10.335	130.5	130.7	5.6	0.7	0.6	2.5	0.2
European Union⁴	16.799	127.6	127.5	2.7	0.6	0.4	0.2	-0.1
Nonmanufactured articles.....	0.211	248.4	244.8	30.6	1.6	1.2	-1.3	-1.4
Manufactured articles.....	16.491	125.1	125.0	2.5	0.7	0.3	0.2	-0.1
France (Dec. 2003=100)	1.948	124.7	122.2	2.8	0.7	0.1	0.5	-2.0
Germany (Dec. 2003=100)	4.572	114.1	113.5	3.9	1.1	1.0	0.8	-0.5
United Kingdom (Dec. 2003=100)	2.566	125.0	124.6	5.8	0.6	0.8	0.2	-0.3
Latin America⁵	17.999	157.5	156.7	18.5	2.1	-0.3	2.3	-0.5
Nonmanufactured articles.....	6.186	286.4	282.6	57.3	5.4	-2.3	4.7	-1.3
Manufactured articles.....	11.730	130.5	130.4	5.2	0.5	0.6	0.9	-0.1
Mexico (Dec. 2003=100)	10.275	137.3	136.3	8.4	0.8	-1.0	1.6	-0.7
Nonmanufactured articles (Dec. 2008=100).....	2.141	150.6	147.2	59.8	5.1	-4.2	5.2	-2.3
Manufactured articles (Dec. 2008=100)....	8.085	96.5	96.2	-1.6	-0.5	0.1	0.4	-0.3
Pacific Rim (Dec. 2003=100)⁶	31.500	100.4	100.3	0.6	0.1	0.4	0.1	-0.1
China (Dec. 2003=100)	16.449	100.3	100.2	-1.3	0.0	0.2	-0.3	-0.1
Japan	6.678	97.9	97.8	1.5	0.0	0.3	0.1	-0.1
Asian NICs⁷	5.003	87.2	87.0	0.9	0.0	0.7	0.9	-0.2
ASEAN (Dec. 2003=100)⁸	5.274	96.9	97.1	1.8	0.4	0.6	-0.6	0.2
Asia Near East (Dec. 2003=100)⁹	5.380	203.6	199.9	51.3	1.2	-1.4	2.3	-1.8

1 Percentage of trade figures are based on 2008 trade values.

2 Includes Western Europe, Canada, Japan, Australia, New Zealand and South Africa.

3 Includes Eastern Europe, Latin America, OPEC countries, and other countries in Asia, Africa and the Western Hemisphere.

4 Includes European Union countries.

5 Includes Mexico, Central America, South America and the Caribbean.

6 Includes China, Japan, Australia, Brunei, Indonesia, Macao, Malaysia, New Zealand, Papua New Guinea, Philippines and Asian Newly Industrialized Countries.

7 Asian Newly Industrialized Countries. Includes Hong Kong, Singapore, South Korea and Taiwan.

8 Association of Southeast Asian Nations. Includes Brunei, Cambodia, Indonesia, Laos, Malaysia, Myanmar, Philippines, Singapore, Thailand and Vietnam.

9 Includes Bahrain, Iran, Iraq, Israel, Jordan, Kuwait, Lebanon, Oman, Qatar, Saudi Arabia, Syria, United Arab Emirates and Yemen.

NOTES: Data may be revised in each of the three months after original publication.

Regions are not mutually exclusive.

Dash = Not available

Table 8. U.S. international price indexes and percent changes for selected transportation services: February 2009 to February 2010

[2000=100, unless otherwise noted]

Description	Relative importance Jan. 2010 ¹	Index		Percent change				
		Jan. 2010	Feb. 2010	Annual	Monthly			
				Feb. 2009 to Feb. 2010	Oct. 2009 to Nov. 2009	Nov. 2009 to Dec. 2009	Dec. 2009 to Jan. 2010	Jan. 2010 to Feb. 2010
Air Freight								
Import Air Freight	100.000	151.4	151.0	11.2	4.4	7.5	-7.6	-0.3
Europe (Dec. 2003=100).....	23.399	138.4	136.8	6.0	1.4	2.1	-1.6	-1.2
Asia.....	69.737	135.7	134.8	12.0	5.5	10.1	-10.1	-0.7
Export Air Freight	100.000	123.3	123.8	-2.5	0.4	0.9	0.3	0.4
Europe (Dec. 2006=100).....	33.185	113.3	113.5	-4.3	0.0	2.1	0.0	0.2
Inbound Air Freight	100.000	141.0	140.1	6.6	4.1	5.0	-4.3	-0.6
Europe (Dec. 2003=100).....	24.402	128.8	127.3	0.2	1.0	1.4	-0.5	-1.2
Asia.....	66.154	127.5	126.7	10.6	5.7	7.1	-6.3	-0.6
Outbound Air Freight	100.000	114.8	116.0	-5.1	0.8	1.1	0.2	1.0
Europe (Dec. 2003=100).....	40.969	132.2	133.0	-7.1	0.2	1.6	0.3	0.6
Asia.....	42.482	105.7	107.4	-0.4	1.1	1.0	0.6	1.6
Air Passenger Fares								
Import Air Passenger Fares	100.000	147.4	142.2	0.4	0.5	3.3	-3.2	-3.5
Europe.....	40.657	153.5	147.9	1.3	0.0	-2.3	-1.6	-3.6
Asia.....	29.148	132.9	122.8	-4.3	-2.3	11.0	-5.3	-7.6
Latin America/Caribbean.....	12.743	130.8	132.3	8.5	8.2	12.6	-10.8	1.1
Export Air Passenger Fares	100.000	161.4	149.0	1.0	1.9	10.2	3.4	-7.7
Europe.....	33.228	187.7	184.7	11.7	2.7	5.3	0.1	-1.6
Asia.....	30.055	135.6	121.7	-4.9	0.4	10.9	6.5	-10.3
Latin America/Caribbean.....	24.620	176.4	160.3	-1.1	3.6	16.1	2.7	-9.1

¹ Relative importance figures are based on 2008 trade values.

NOTES: Data may be revised in each of the three months after original publication.

Dash = Not available

TECHNICAL NOTE

Import and Export Merchandise and Services Price Indexes -- All indexes use a modified Laspeyres formula and are not seasonally adjusted. Price indexes are reweighted annually, with a two-year lag in the weights. Published series use a base year of 2000=100 where possible. More detailed index series and additional information may be obtained at <http://www.bls.gov/mxp>, or by calling (202) 691-7101.

Merchandise Goods Classification Systems -- The merchandise price indexes are published using three classification systems. Items are classified by end use according to the Bureau of Economic Analysis Classification System, by industry according to the North American Industry Classification System (NAICS), and by product category according to the Harmonized System (HS). While classification by end use and product category are self-explanatory, some notes are in order for classifying items by industry. In the NAICS imports and exports tables, items are classified by output industry, not input industry. As an example, NAICS import index 326 (plastics and rubber products manufacturing) include outputs such as manufactured plastic rather than inputs such as petroleum. The NAICS classification structure also matches the classification system used by the PPI (Producer Price Index) to produce the NAICS primary products indexes.

Import Price Indexes -- Products have been classified by the Harmonized Tariff Schedule of the United States Annotated (TSUSA). Import prices are based on U.S. dollar prices paid by the U.S. importer. The prices are generally either "free on board" (f.o.b.) foreign port or "cost, insurance, and freight" (c.i.f.) U.S. port transaction prices, depending on the practices of the individual industry. The index for crude petroleum is calculated from data collected by the U.S. Department of Energy.

Export Price Indexes -- Products have been classified by the Harmonized Schedule B classification system of the U.S. Bureau of the Census. The prices used are generally either "free alongside ship" (f.a.s.) factory or "free on board" (f.o.b.) transaction prices, depending on the practices of the individual industry. Prices used in the grain index, excluding rice, are obtained from the U.S. Department of Agriculture.

Services Price Indexes -- Starting in September 2008 the Import Air Passenger Fares Indexes represent changes in the average revenue per passenger received by foreign carriers from U.S. residents and are calculated from data obtained from an airline consulting service. These data include tickets sold by travel agencies and travel websites. Tickets sold directly by the airlines are excluded, as are frequent flyer tickets generally. Starting in January 2008 the Export Air Passenger Fares Indexes represent changes in the average revenue per passenger received by U.S. carriers from foreign residents and are calculated from data collected directly from airlines. These data include frequent flyer tickets and those sold by consolidators. Taxes and fees are included in the Import Air Passenger Fares Index and excluded from the Export Air Passenger Fares Index. The Air Freight Indexes are calculated from data collected directly from airlines. These data exclude mail and passenger baggage. The scope of the service being priced is the movement of freight from airport to airport only, and does not include any ground transportation or port service. The Air Freight Indexes are presented using two definitions: Balance of Payments (which represent transactions between U.S. and foreign residents) and International (which represent transactions inbound to and outbound from the U.S.). Fact sheets specifying detailed information for each services industry are available at <http://www.bls.gov/mxp> under "MXP Publications."

Import Indexes by Locality of Origin -- Prices used in these indexes are a subset of the data collected for the Import Price Indexes. Beginning with January 2002, the indexes are defined by locality of origin using a nomenclature based upon the North American Industry Classification System (NAICS). Nonmanufactured goods are defined as NAICS 11 and 21 and manufactured goods are defined as NAICS 31-33.

Revision Policy -- To reflect the availability of late reports and corrections by respondents, monthly data may be revised in each of the three months after original publication. After three months, no further data revisions take place. So, for example, data released in the January release will be subject to revision in the releases for February, March, and April.

Uses of the Data -- The primary use of the indexes is to deflate trade statistics, notably the foreign trade sector of the National Income and Product Accounts constructed by the Department of Commerce. Other published indexes are useful for general market analysis. For trade in international services, Balance of Payments indexes are used for deflating National Income and Product Accounts, while International indexes are more appropriate for market analysis. Merchandise and services indexes also can be used to study U.S. competitiveness and to compute price elasticities, and the merchandise import indexes by country or region of origin are useful in terms of trade analysis.

E-Mail Subscription -- The U.S. Import and Export Price Indexes news release is available through an e-mail subscription service at (<http://www.bls.gov/bls/list.htm>).

Additional Information -- More detailed data are available on the Import/Export Price Indexes home page at (<http://www.bls.gov/mxp>). Flat Files and the FTP server are available for users requiring access to either a large volume of time series data or other related documentation. The FTP site can be accessed at <ftp://ftp.bls.gov>. For technical assistance in using the BLS Internet site, send e-mail to (labstat.helpdesk@bls.gov). For Import/Export Price Index data requests, send e-mail to (mxpinfo@bls.gov).

Information from this release will be made available to sensory impaired individuals upon request. Voice phone: 202-691-5200; Federal Relay Service: 1-800-877-8339.