

Current Employment Statistics Highlights

Detailed Industry Employment Analysis

Contents

[Summary](#)

[Mining & Logging](#)

[Construction](#)

[Manufacturing](#)

[Wholesale Trade](#)

[Retail Trade](#)

[Transportation, Warehousing, & Utilities](#)

[Information](#)

[Financial Activities](#)

[Professional & Business Services](#)

[Private Education & Health Services](#)

[Leisure & Hospitality](#)

[Other Services](#)

[Government](#)

Current Employment Statistics Highlights



April 2023

Release Date: May 5, 2023

Prepared by Analysts of the National Estimates Branch
Current Employment Statistics Survey
U.S. Bureau of Labor Statistics

202-691-6555

[Email CES](#)

Current Employment Statistics Summary, April 2023

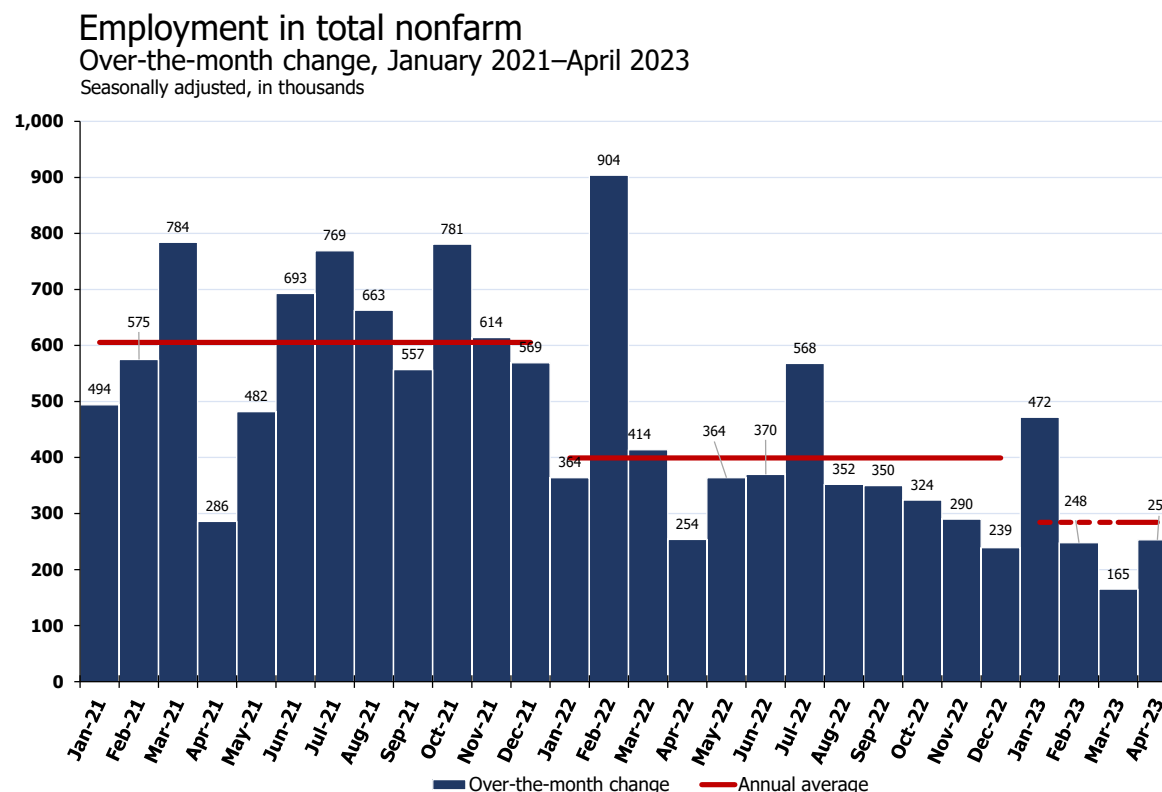
Nonfarm payroll employment rose by 253,000 in April, compared with an average monthly gain of 290,000 over the prior 6 months. In April, employment continued to trend up in professional and business services, health care, leisure and hospitality, and social assistance.

The seasonally adjusted employment change for February revised down from +326,000 to +248,000, and the change for March revised down from +236,000 to +165,000. The employment change over these months is 149,000 lower than previously reported.

In April, average hourly earnings for all employees on private-sector payrolls rose by 16 cents, or 0.5 percent. Over the year, average hourly earnings have increased by 4.4 percent. In April, average weekly hours for all employees were unchanged at 34.4 hours.

+ 77,000 Private Education and Health Services

Employment in health care rose by 40,000 in April, compared with the average monthly gain of 47,000 over the prior 6 months. Over the month, employment continued to trend up in ambulatory health care services



Bureau of Labor Statistics, Current Employment Statistics, May 05, 2023.
Most recent 2 months of data are preliminary.

(+24,000), nursing and residential care facilities (+9,000), and hospitals. Social assistance added 25,000 jobs over the month, in line with the average monthly gain over the

prior 6 months (+21,000). In April, individual and family services added 21,000 jobs.

+ 43,000 Professional and Business Services

In April, professional, scientific, and technical services added 45,000 jobs, above

Current Employment Statistics Survey Summary, April 2023

the average monthly gain of 28,000 over the prior 6 months.

+31,000 Leisure and Hospitality

Employment in food services and drinking places continued to trend up in April (+25,000). This industry had added an average of 50,000 jobs per month over the prior 6 months.

+23,000 Financial Activities

Employment in financial activities rose by 23,000 in April, above its prior 6-month average gain of 5,000 per month. In April, job gains occurred in insurance carriers and related activities (+15,000) and in real estate (+9,000).

+ 23,000 Government

Employment in government continued to trend up in April (+23,000). Government had added an average of 52,000 jobs per month over the prior 6 months.

+15,000 Construction

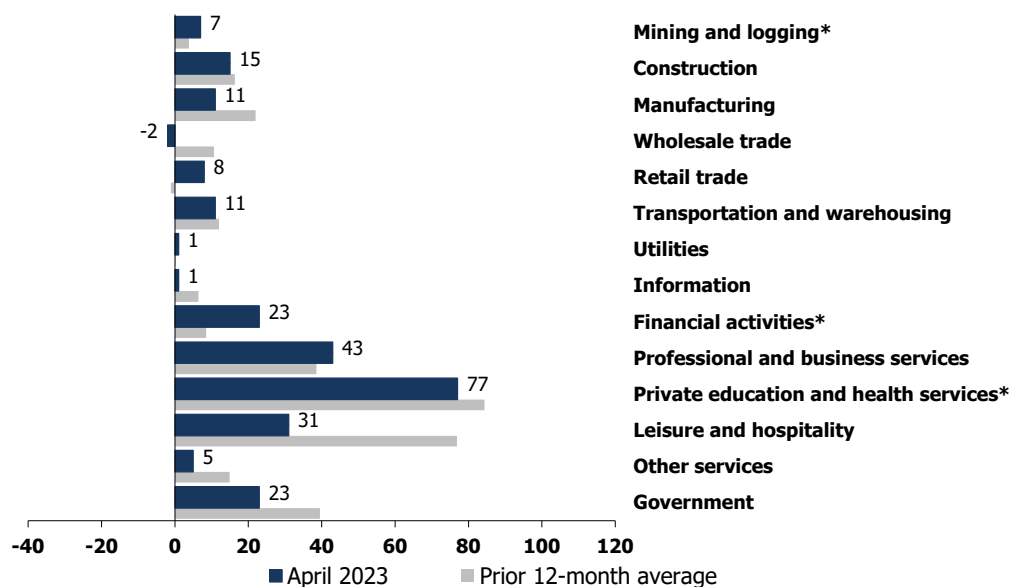
Employment in construction changed little in April (+15,000). Monthly growth in the industry had averaged 15,000 over the prior 6 months. In April, specialty trade contractors added 27,000 jobs.

Employment in total nonfarm

Over-the-month change, April 2023

Seasonally adjusted, in thousands

Total nonfarm:
253*



Bureau of Labor Statistics, Current Employment Statistics survey, May 05, 2023.

Data are preliminary.

* denotes significance

+11,000 Manufacturing

Employment in manufacturing changed little in April (+11,000). Job gains in fabricated metal product manufacturing (+6,000) were partially offset by losses in paper manufacturing (-3,000).

+11,000 Transportation and Warehousing

Employment in transportation and warehousing changed little in April (+11,000). Over the month, air transportation added 3,000 jobs, in line with the average monthly gain of 4,000 over the prior 6 months.

Current Employment Statistics Survey Summary, April 2023

+8,000 Retail Trade

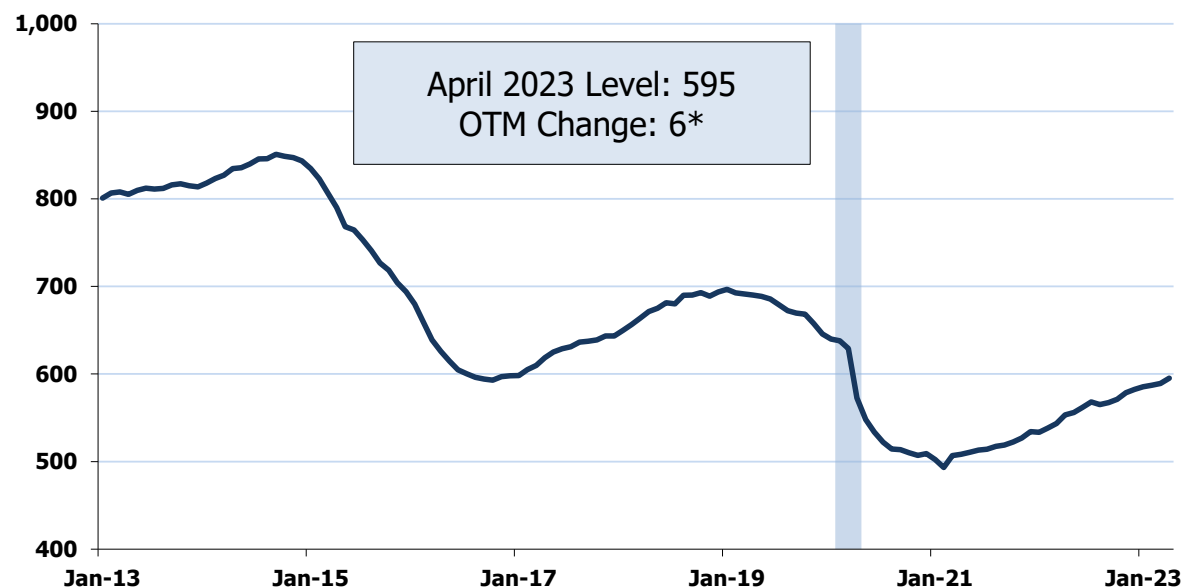
In April, employment in retail trade changed little (+8,000). Within the industry, gasoline stations and fuel dealers added 9,000 jobs, while furniture, home furnishings, electronics, and appliance retailers lost 4,000.

Summary	Mining & Logging	Construction	Manufacturing	Trade: Wholesale Retail	Transp., Warehousing & Utilities	Information	Financial Activities	Professional & Business Services	Private Education & Health Services	Leisure & Hospitality	Other Services	Government
---------	------------------	--------------	---------------	-------------------------	----------------------------------	-------------	----------------------	----------------------------------	-------------------------------------	-----------------------	----------------	------------

Mining and Logging

Employment in mining, quarrying, and oil and gas extraction January 2013–April 2023

Seasonally adjusted, in thousands

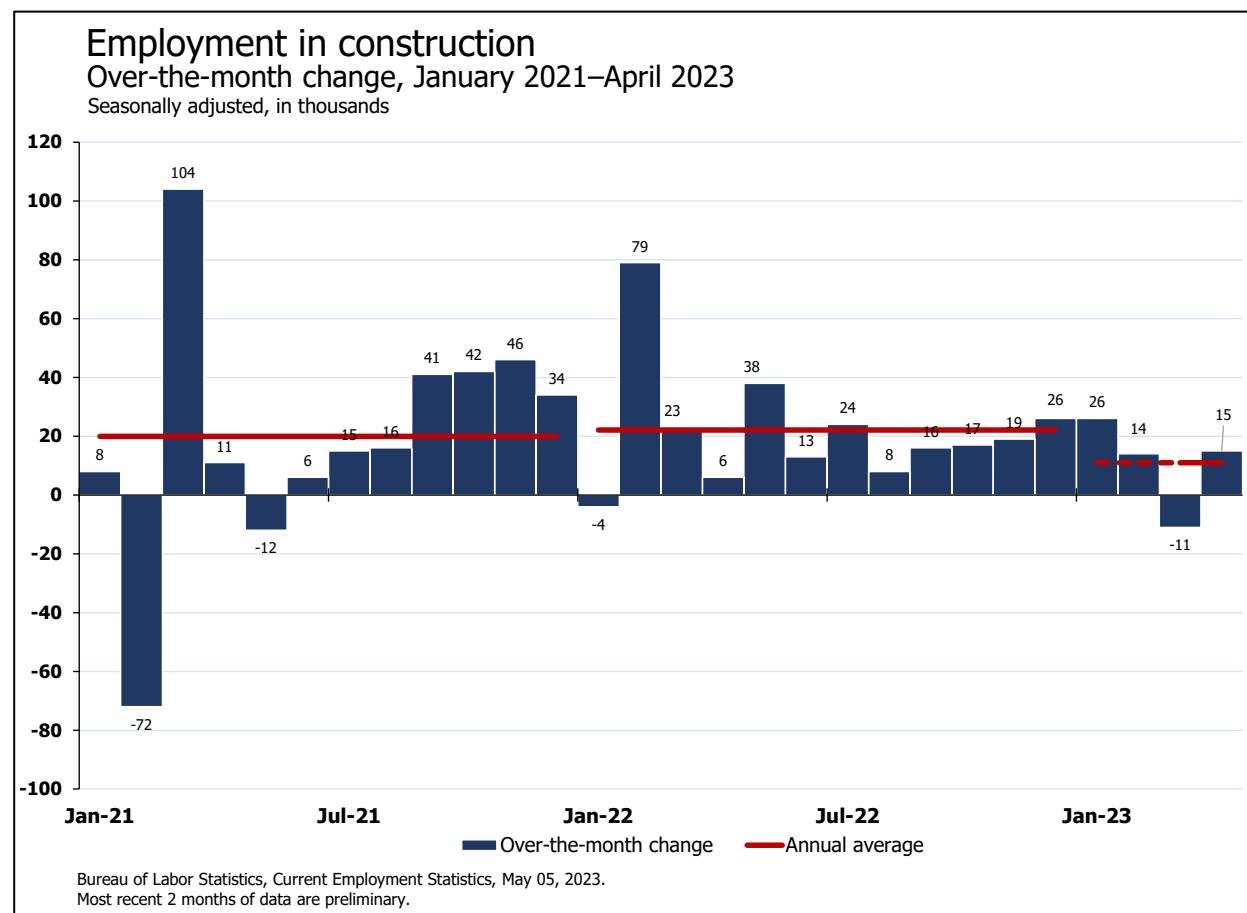


Bureau of Labor Statistics, Current Employment Statistics survey, May 05, 2023.
Shaded area represents recession as denoted by the National Bureau of Economic Research.
Most recent 2 months of data are preliminary.
* denotes significance.

Employment in mining, quarrying, and oil and gas extraction increased in April (+6,000) and has grown by 102,000 since an employment trough in February 2021. Nearly all of the April job gain occurred in support activities for mining.

Recent job growth in mining, quarrying, and oil and gas extraction coincides with a decrease in [North American rotary rigs](#), and an increase in the average weekly price of [West Texas Intermediate crude oil](#) in recent months.

Construction



Employment in construction changed little in April (+15,000). Over the prior 6 months, employment in construction had risen by an average of 15,000 per month.

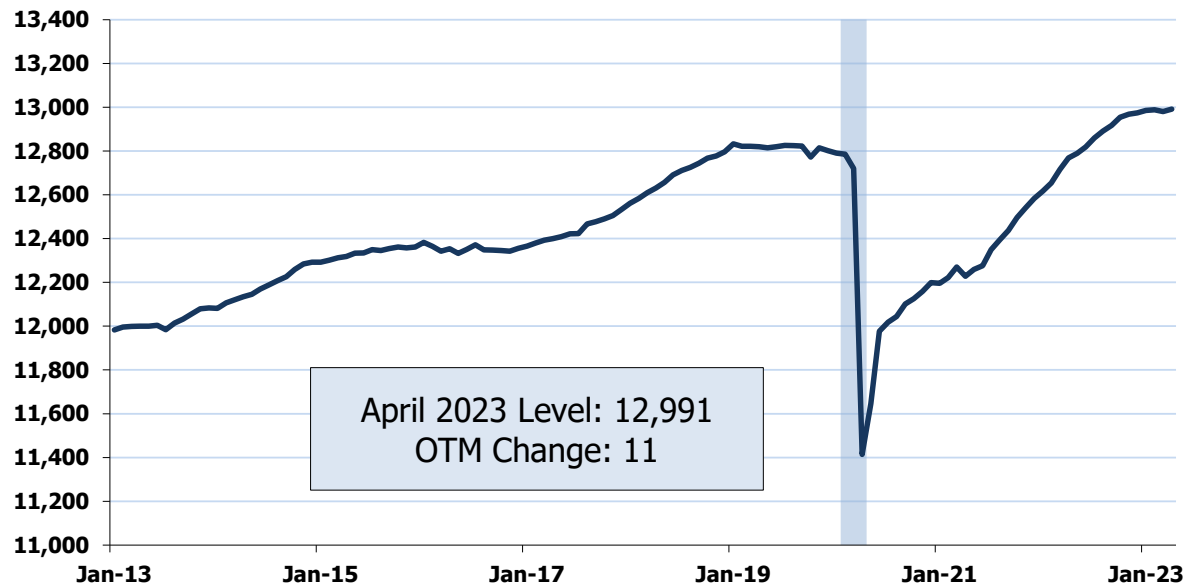
In April, employment in specialty trade contractors increased by 28,000, including a gain of 16,000 in residential specialty trade contractors.

Recent weakness in construction employment follows declines in [residential building permits](#) and [residential construction spending](#) in March.

Manufacturing

Employment in manufacturing January 2013–April 2023

Seasonally adjusted, in thousands



Bureau of Labor Statistics, Current Employment Statistics survey, May 05, 2023.
Shaded area represents recession as denoted by the National Bureau of Economic Research.
Most recent 2 months of data are preliminary.
* denotes significance.

In April, manufacturing employment changed little (+11,000).

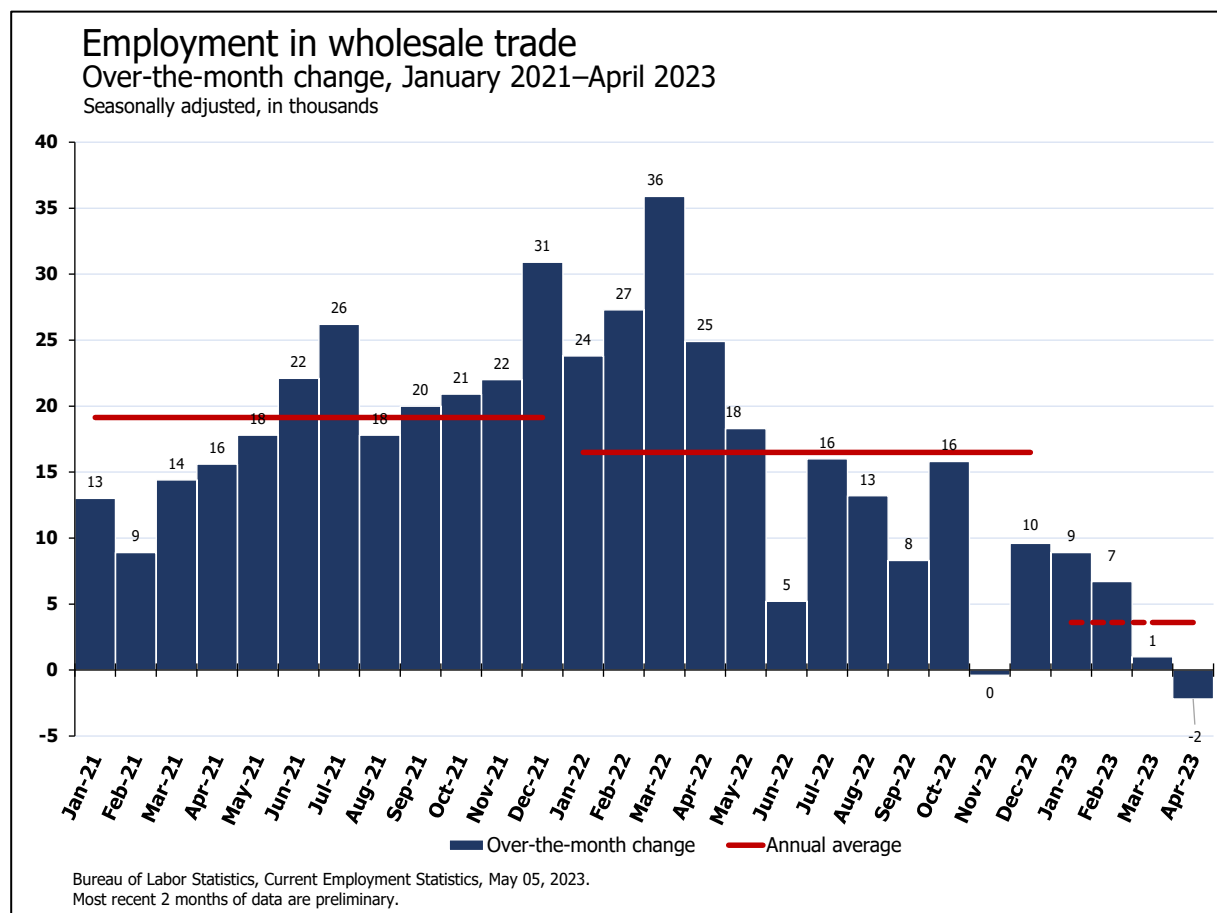
The manufacturing 1-month diffusion index fell 2.1 to 45.1. A number below 50 indicates that more manufacturing industries are losing jobs than are adding jobs.

Recent flatness in manufacturing employment corresponds with mixed movements in both the [Institute of Supply Management's Purchasing Managers' Index \(PMI\)](#) and the [S&P Global US Manufacturing PMI](#), which measure business sentiment and expectations.

In April, average hourly earnings for all employees in manufacturing increased by 13 cents to \$32.02. Average weekly hours of all employees in manufacturing fell by 0.1 hour, while the average workweek for production employees was unchanged over the month.

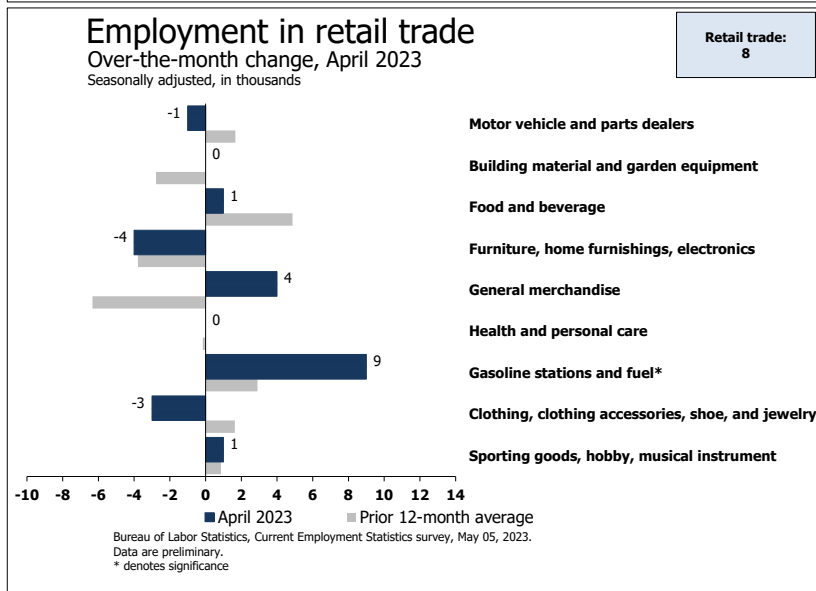
Wholesale Trade

Employment in wholesale trade was essentially flat in April (-2,000). Over the prior 6 months, the industry had averaged a monthly gain of 7,000.



Retail Trade

Employment in retail trade changed little in April (+8,000). Since a recent employment peak in February 2022, the industry has shown little net change (-28,000).

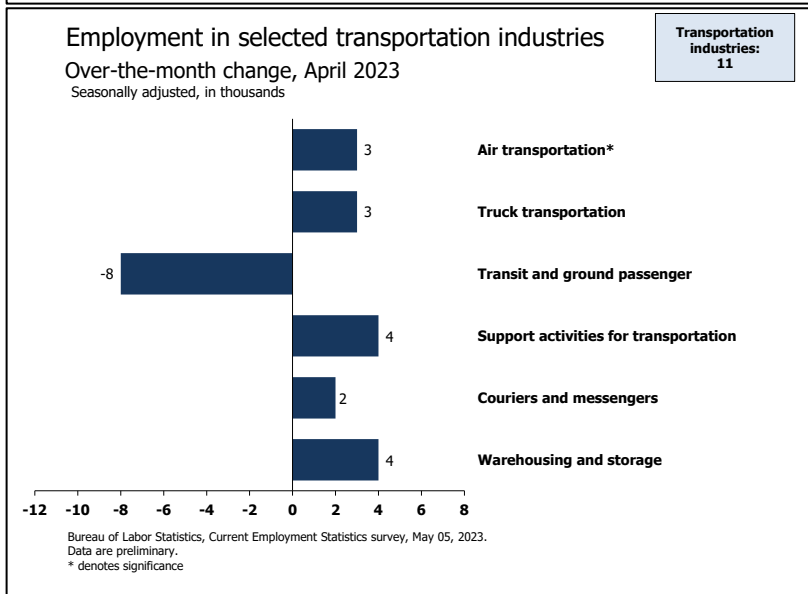
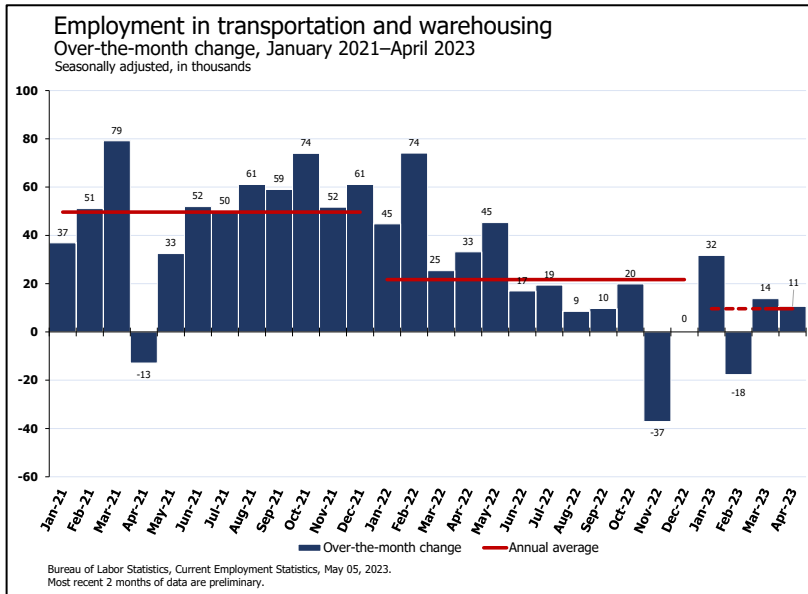


Within retail trade, gasoline stations and fuel dealers added 9,000 jobs, while furniture, home furnishings, electronics, and appliance retailers lost 4,000.

Retail-related economic indicators for the month are negative. In April, the [Consumer Confidence Index](#) decreased, and the per-gallon price of [regular gasoline](#) increased. In addition, [Auto Sales](#), [Retail Sales](#) and [Real Personal Consumption Expenditures](#) for goods decreased in March.

Transportation and Warehousing

Employment in transportation and warehousing changed little in April (+11,000). The industry had added an average 2,000 jobs per month over the prior 6 months.



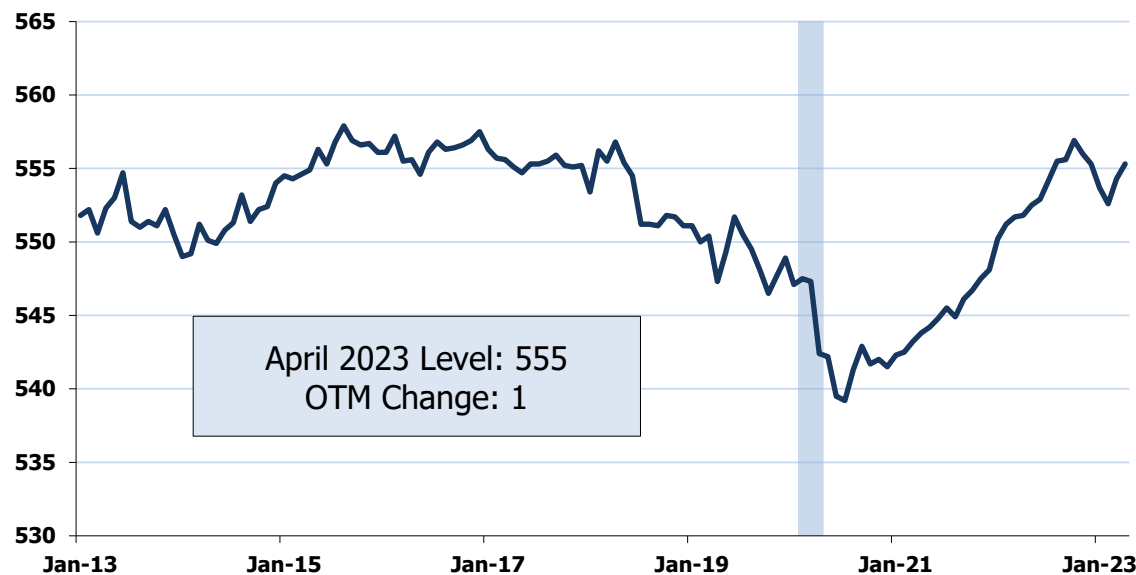
In April, air transportation added 3,000 jobs, while transit and ground passenger transportation shed 8,000 jobs.

Utilities

Employment in utilities was flat in April (+1,000).

Employment in utilities January 2013–April 2023

Seasonally adjusted, in thousands



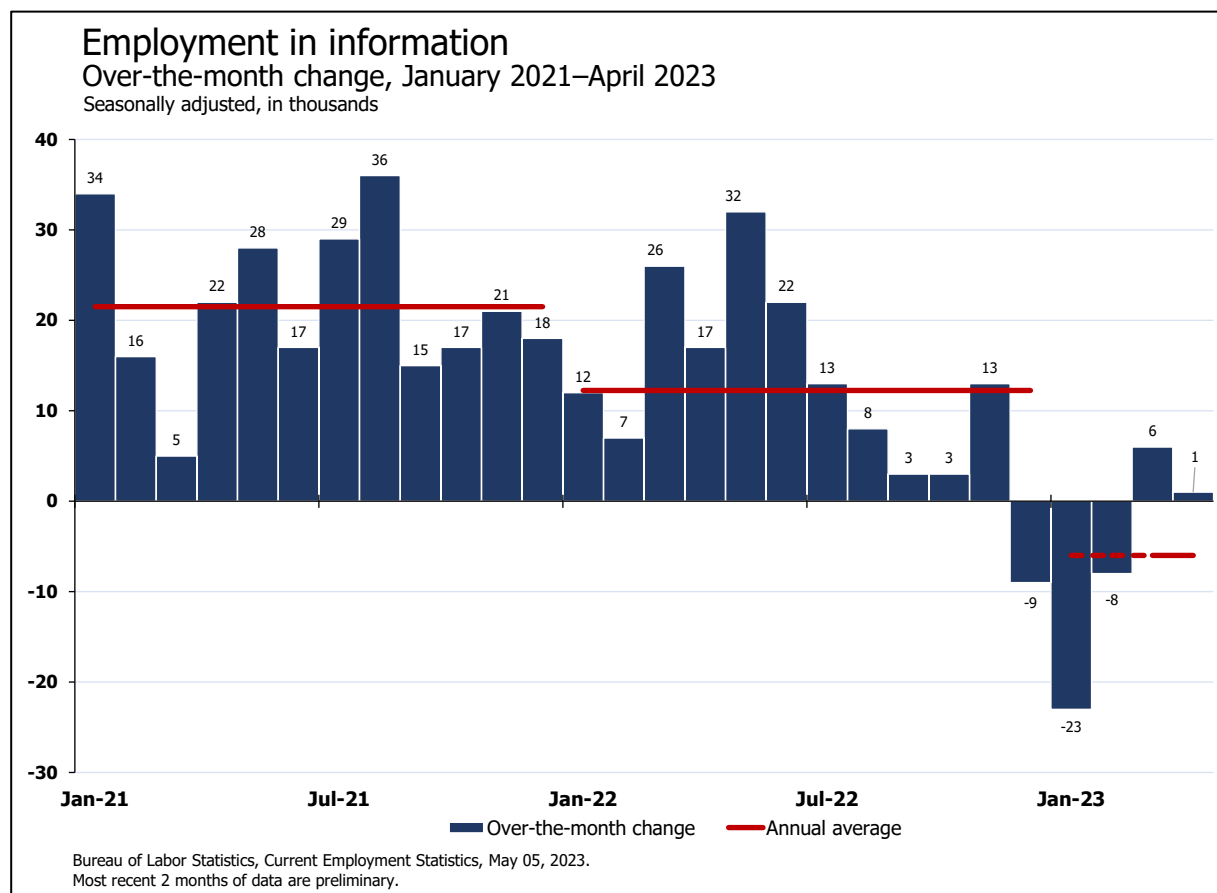
April 2023 Level: 555
OTM Change: 1

Bureau of Labor Statistics, Current Employment Statistics survey, May 05, 2023.
Shaded area represents recession as denoted by the National Bureau of Economic Research.
Most recent 2 months of data are preliminary.
* denotes significance.

Information

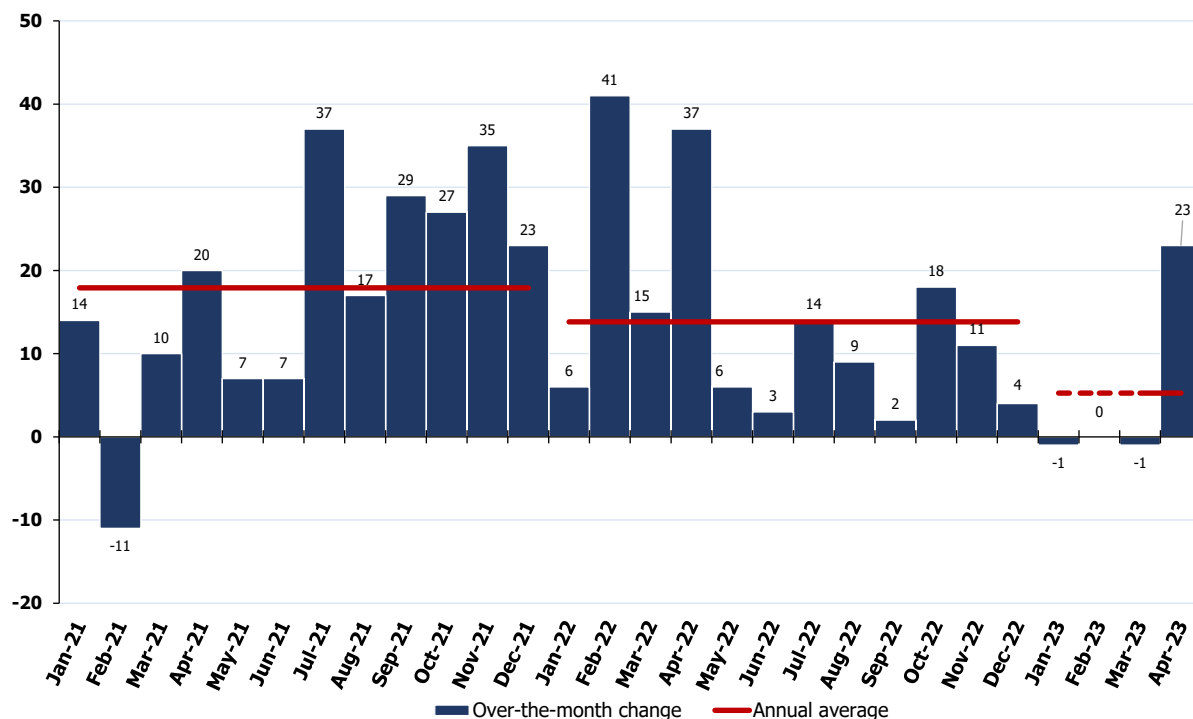
Employment in information was flat in April (+1,000).

In April, employment increased in computing infrastructure providers, data processing, web hosting, and related services (+7,000).



Financial Activities

Employment in financial activities
Over-the-month change, January 2021–April 2023
Seasonally adjusted, in thousands



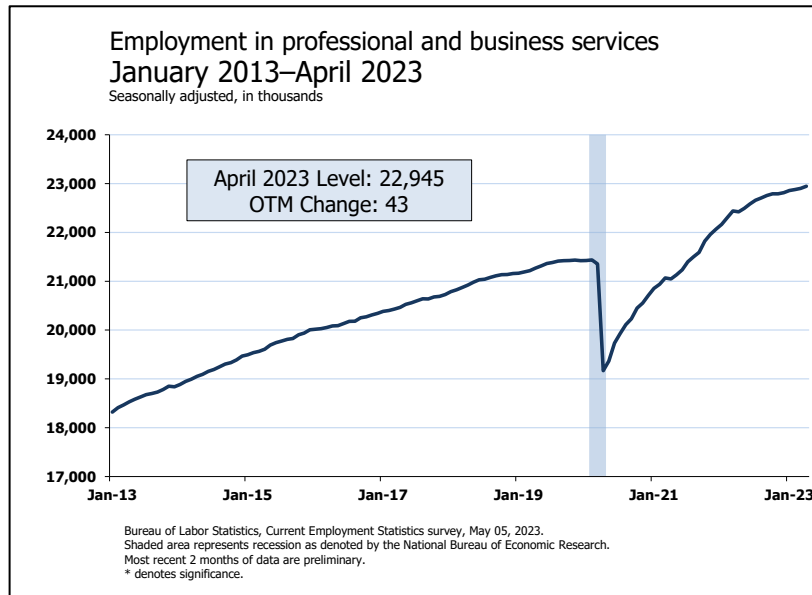
Bureau of Labor Statistics, Current Employment Statistics, May 05, 2023.
Most recent 2 months of data are preliminary.

Employment in financial activities increased by 23,000 in April, above its prior 6-month average gain of 5,000 per month.

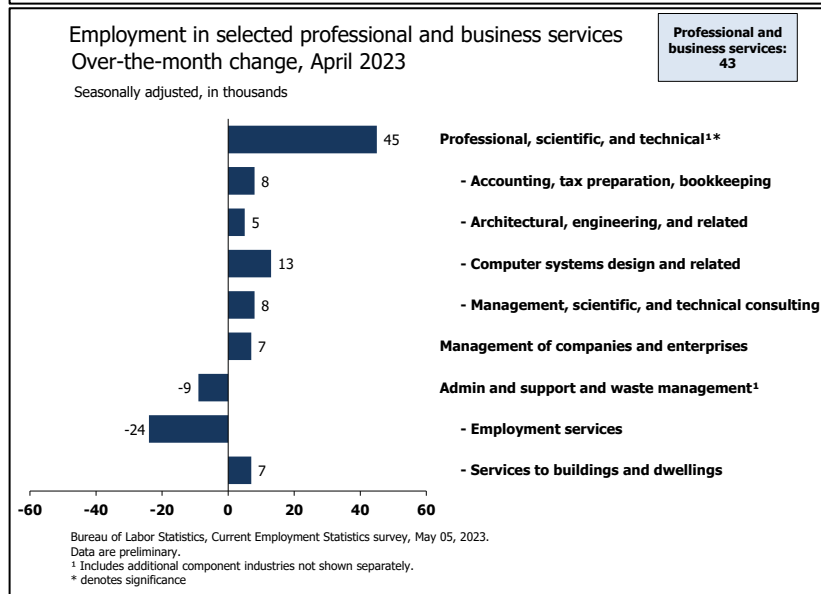
In April, employment increased in insurance carriers and related activities (+15,000) and in real estate (+9,000).

Professional and Business Services

Employment in professional and business services continued to trend up in April (+43,000). Over the month, professional, scientific, and technical services added 45,000 jobs, as employment in computer systems design and related services edged up by 13,000.

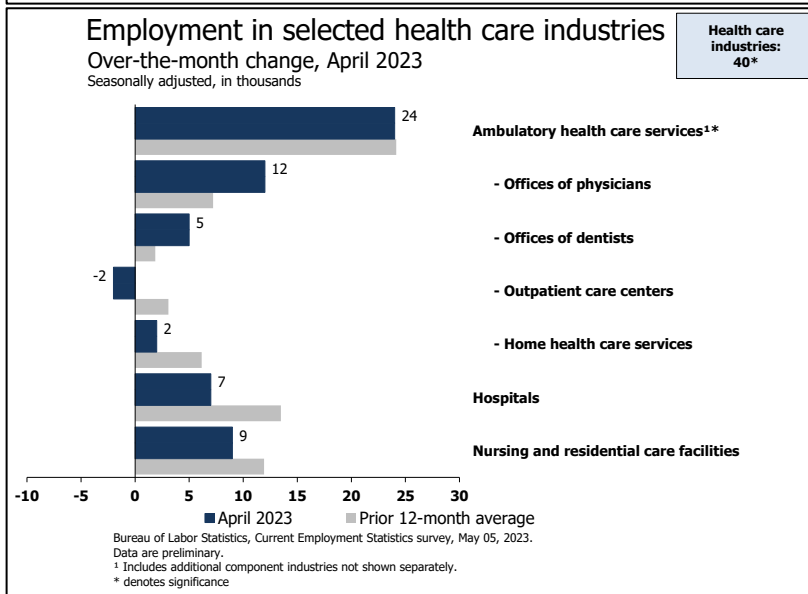
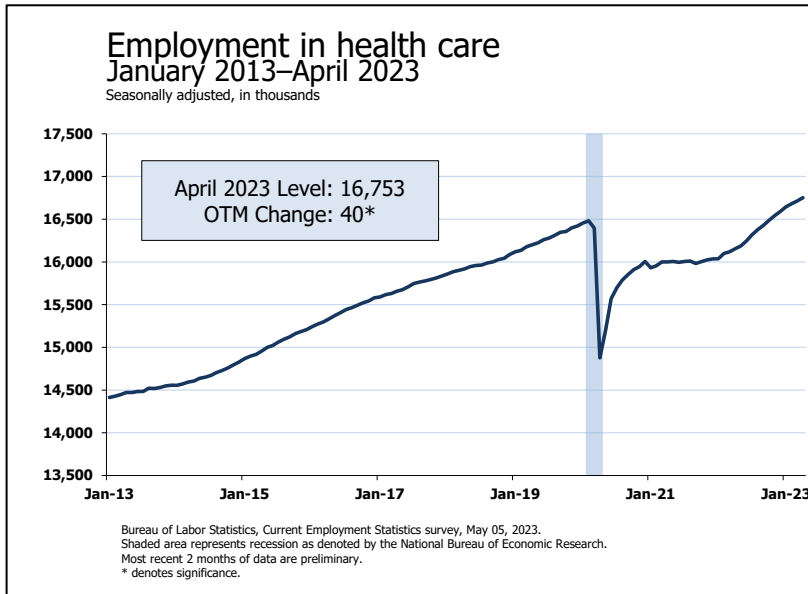


Temporary help services continued to trend down in April (-23,000), coinciding with recent weakness in the [ASA Staffing Index](#). Since reaching an employment peak in March 2022, temporary help services has lost 174,000 jobs.



Private Education and Health Services

Employment in health care increased by 40,000 in April, compared with the average monthly gain of 47,000 over the prior 6 months.



Within health care, ambulatory health care services added 24,000 jobs. Employment in social assistance increased by 25,000, mostly in individual and family services (+21,000).

Leisure and Hospitality

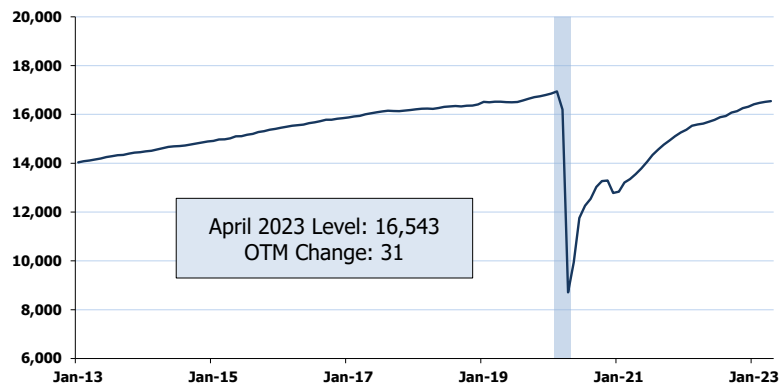
Employment in leisure and hospitality continued to trend up in April (+31,000). The industry had added an average of 73,000 per month over the prior 6 months. Industry employment is 402,000 lower than the February 2020 level.

Over the year, average hourly earnings for all employees in leisure and hospitality rose by 5.7 percent to \$21.01.

Employment in food services and drinking places continued to trend up in April (+25,000), after increasing by an average of 50,000 per month over the prior 6 months. [Sales](#) in food services and drinking places changed little in March (+0.4 percent) but were up by 12.5 percent over the year.

Employment in leisure and hospitality
January 2013–April 2023

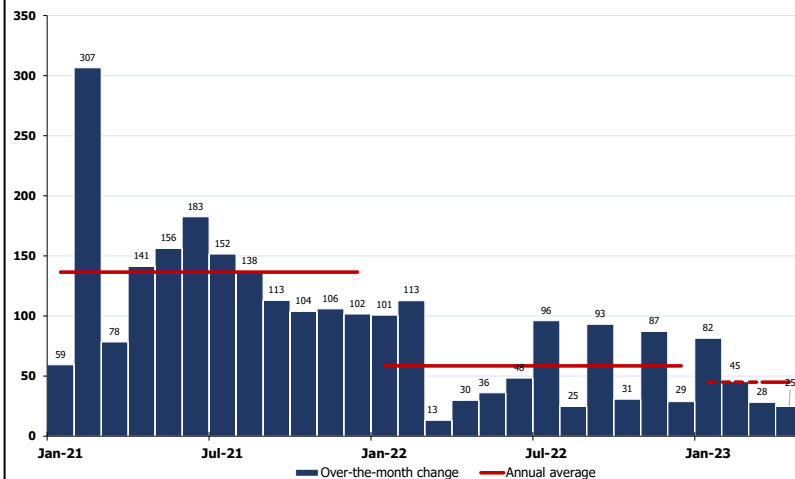
Seasonally adjusted, in thousands



Bureau of Labor Statistics, Current Employment Statistics survey, May 05, 2023.
Shaded area represents recession as denoted by the National Bureau of Economic Research.
Most recent 2 months of data are preliminary.
* denotes significance.

Employment in food services and drinking places
Over-the-month change, January 2021–April 2023

Seasonally adjusted, in thousands



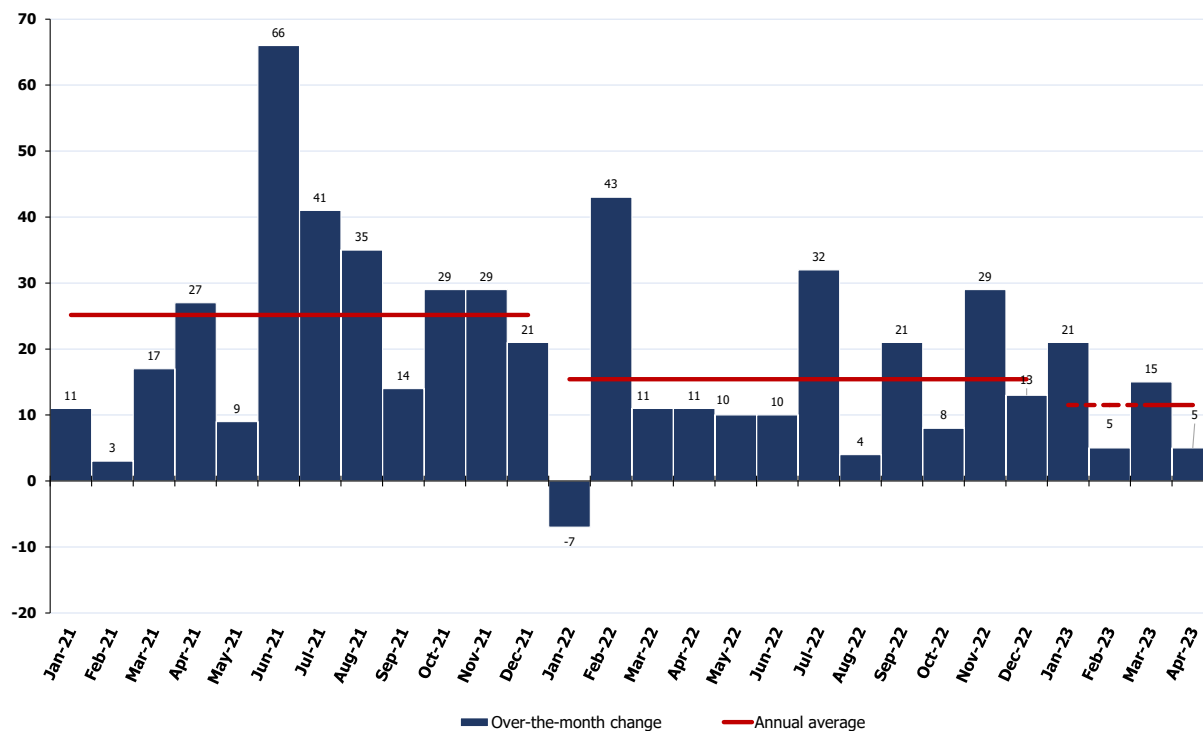
Bureau of Labor Statistics, Current Employment Statistics, May 05, 2023.
Most recent 2 months of data are preliminary.

Other Services

Employment in other services

Over-the-month change, January 2021–April 2023

Seasonally adjusted, in thousands



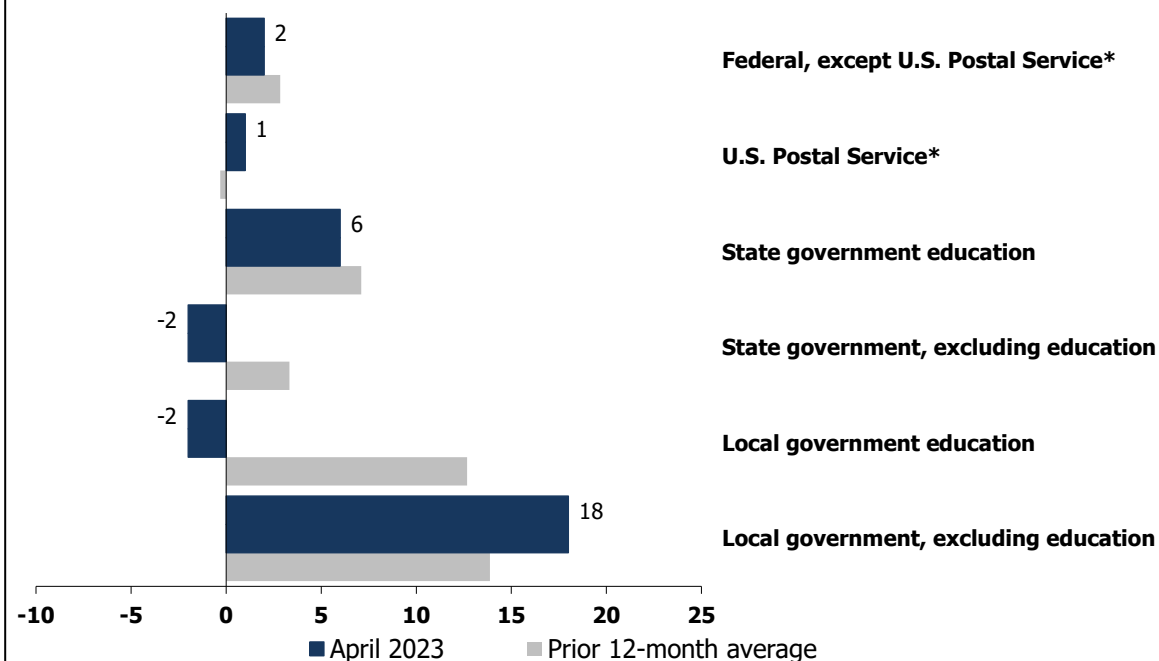
Bureau of Labor Statistics, Current Employment Statistics, May 05, 2023.
Most recent 2 months of data are preliminary.

Employment in other services changed little in April (+5,000) and is 96,000 below its February 2020 level.

Government

Employment in selected government Over-the-month change, April 2023 Seasonally adjusted, in thousands

**Government:
23**



Bureau of Labor Statistics, Current Employment Statistics survey, May 05, 2023.
Data are preliminary.
* denotes significance

Employment in government continued to trend up in April (+23,000), after increasing by an average of 52,000 per month over the prior 6 months. Industry employment is 301,000 below its February 2020 level.



CES Analysts

Osman Alhassan

Ryan Ansell

Hyun Choi

Purva Desai

Katelynn Harris

Matthew Hong

Kennedy Keller

Mike McCall

Patrycja Milewska

Maria Ramos

Rhiannon Sneeringer

Carson Wilson

Prepared by Staff of the National Estimates Branch
Current Employment Statistics Survey
U.S. Bureau of Labor Statistics

202-691-6555

[Email CES](#)