



Technical information: (202) 691-6567  
<http://www.bls.gov/cew/>

USDL 02-540

Media contact: 691-5902

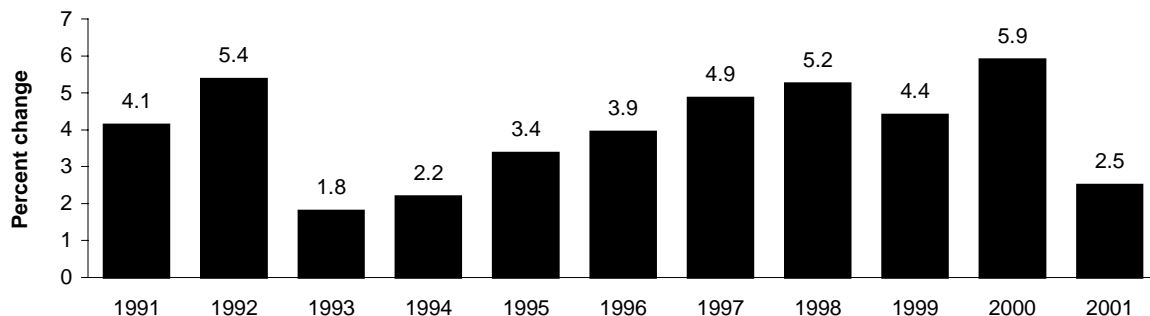
For release: 10:00 A.M. EDT  
Tuesday, September 24, 2002

## AVERAGE ANNUAL PAY BY STATE AND INDUSTRY, 2001

The average annual pay of all workers covered by state and federal unemployment insurance (UI) programs rose by 2.5 percent to \$36,214 in 2001, according to preliminary data released today by the Bureau of Labor Statistics of the U.S. Department of Labor. This compares with a 5.9 percent rise in 2000. The annual pay of private industry workers, comprising 84.3 percent of the nation's employment, grew by 2.3 percent in 2001, while pay for government workers rose by 3.6 percent. In 2000, the increase in pay for private sector workers was 6.3 percent and for government workers, 4.1 percent.

This release provides the first annual data that use the 2002 version of the North American Industry Classification System (NAICS) as the basis for the assignment and tabulation of economic data by industry. The NAICS structure is significantly different than that of the 1987 Standard Industrial Classification (SIC) system, which had been used for industry classification purposes until this year. This difference results in NAICS-based data that are not comparable with historical SIC-based data. For more information, see the Industry and the Change in Industry Classification Systems sections of this release.

Chart 1. Percent change in U.S. average annual pay, 1991-2001



### Quarterly Release of Covered Employment and Wages Data

BLS will begin the quarterly release of employment and wages data at the state total level and at the national industry subsector level, beginning with the release of data for the first quarter of 2002 in October 2002.

Pay growth for U.S. workers in 2001, at 2.5 percent, was the third lowest in the 1991-2001 period. (See chart 1.) As the economy slowed in 2001, pay growth dropped below 3 percent for the first time since 1994. Average annual pay for workers grew by 47.3 percent from 1991 to 2001, a gain of \$11,636. The attached tables contain pay data for the nation, each of the 50 states, the District of Columbia, Puerto Rico, and the Virgin Islands. (Data for Puerto Rico and the Virgin Islands are not included in the national averages.)

Annual pay data are compiled from reports submitted by employers subject to state and federal unemployment insurance (UI) laws, covering 129.7 million full- and part-time workers. Average annual pay is computed by dividing total annual payrolls of employees covered by UI programs by the average monthly number of these employees. (See Technical Note.) Pay differences among states reflect the varying composition of employment by occupation, industry, and hours of work, as well as other factors. Pay differences among industries are similarly affected. For example, average annual pay levels in retail trade industries are reduced by the relatively large share of part-time workers. Correspondingly, pay levels in construction industries reflect the prevalence of part-year employment due to weather and seasonal factors. Over-the-year pay changes may reflect shifts in the composition of employment, as well as changes in the level of average pay.

### States

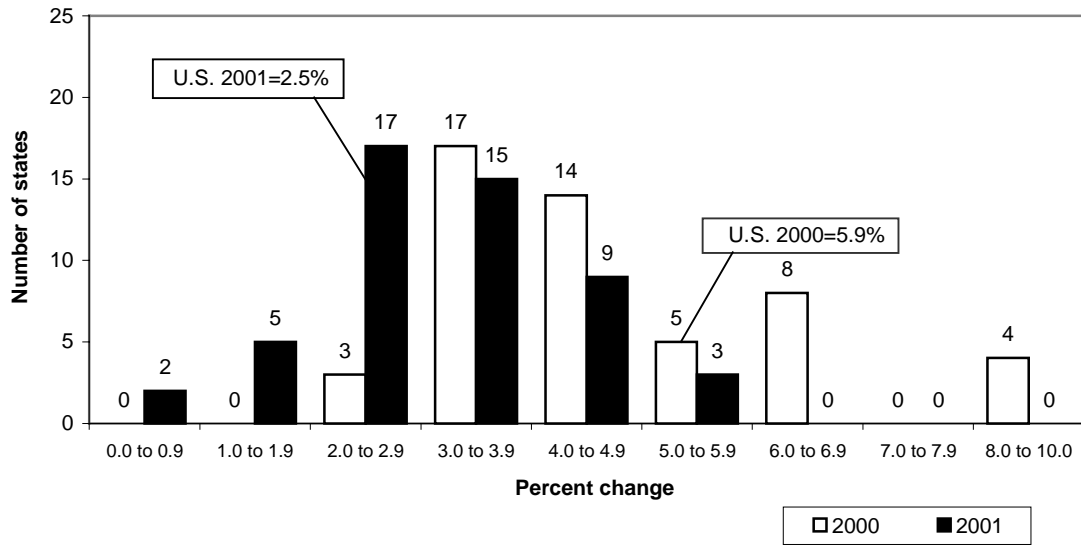
Among the states, Connecticut had the highest average pay level (\$46,963) in 2001, followed by New York (\$46,664), Massachusetts (\$44,976), New Jersey (\$44,285), and California (\$41,358). (See table 2.) The 2001 pay levels of these five highest-ranking states, accounting for 25 percent of the nation's employment, ranged from 14 to 30 percent higher than the U.S. average. Occupying the remaining top 10 pay positions for states were, in order of 2001 pay levels, Illinois, Delaware, Maryland, Colorado, and Washington. Michigan, Virginia, and Minnesota also had pay levels above the U.S. average. Among the jurisdictions covered in this release, the District of Columbia had the highest annual average pay level (\$56,024).

Among the states with annual pay below the U.S. average, Montana posted the lowest average pay (\$25,194) in 2001. The next lowest pay levels were in South Dakota (\$25,600), North Dakota (\$25,707), Mississippi (\$25,919), and Arkansas (\$27,258). These five states continued to have the lowest average wages in the nation, as they have since 1988. The 2001 average annual pay figures for these states, which account for only 3 percent of the nation's workers, were 25 to 30 percent below the national average. Average annual pay levels for 37 states were below the U.S. average in 2001; combined, workers in these states accounted for 56 percent of the nation's covered employment.

Overall, pay gains declined sharply in 2001 compared with the previous year. (See chart 2.) Annual pay grew by at least 4 percent in 30 states and the District of Columbia in 2000, whereas only 11 states and the District of Columbia reached this growth rate in 2001. While 12 states posted pay increases of 6 percent or higher in 2000, no states attained this level of growth in 2001. Only seven states and the District of Columbia experienced higher annual pay growth in 2001 than was experienced in 2000. The seven states were Alabama, Delaware, Kentucky, Louisiana, Maine, North Dakota, and West Virginia. In contrast, 41 states experienced higher annual pay growth rates in 2000 compared with 1999 growth rates.

On the high end of the growth scale in 2001, the District of Columbia and Delaware experienced the largest percentage increases in pay from 2000 to 2001 (5.8 and 5.2 percent, respectively). (See table 3.) The next highest pay increase was registered in Maryland (5.1 percent), followed by Vermont (4.6 percent) and Louisiana (4.5 percent). No state reported a decline in average annual pay in 2001. Idaho registered the smallest increase in pay (0.2 percent). Following Idaho were California (0.4 percent), Washington and

Chart 2. Distribution of percent changes in average annual pay by state, 2000 and 2001



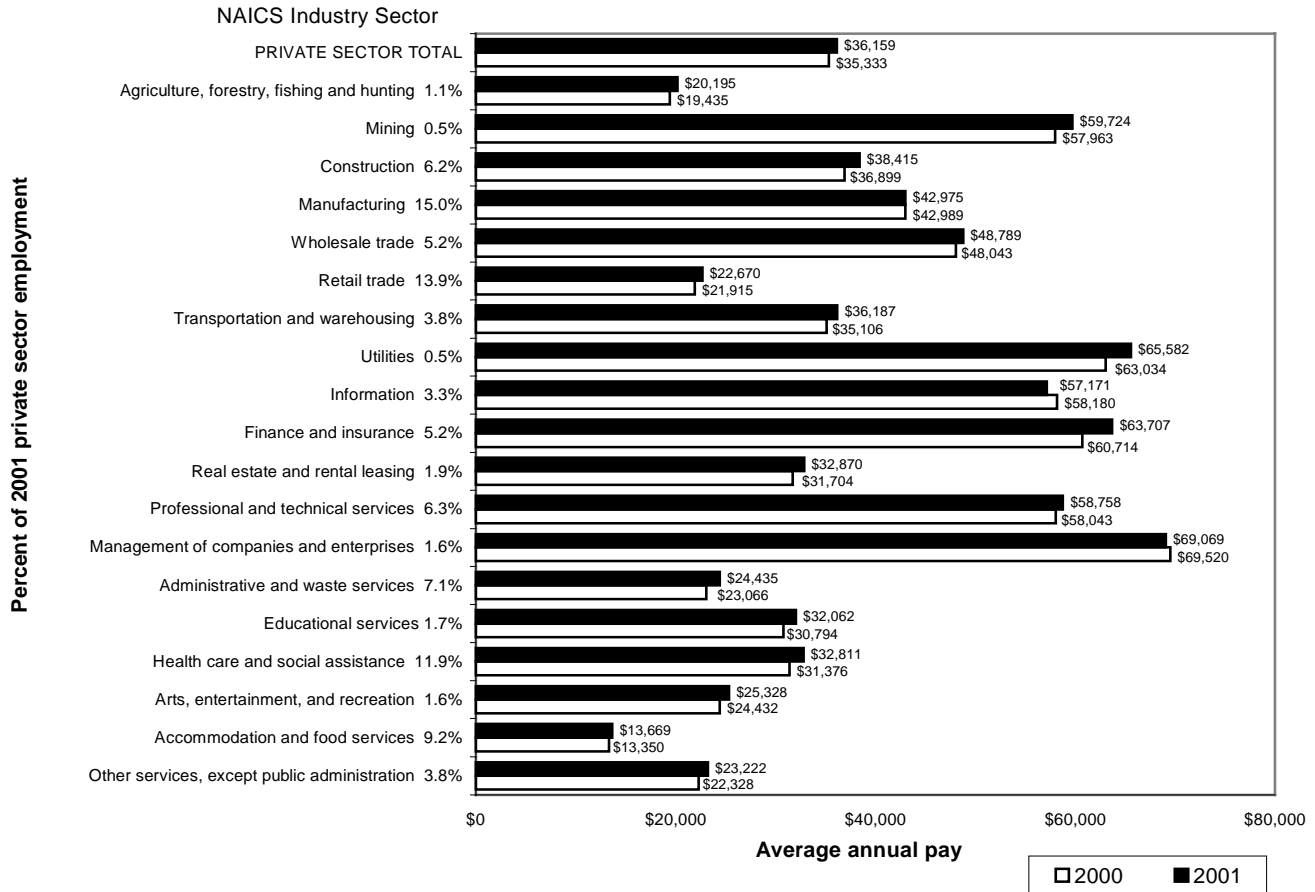
Michigan (1.0 percent each), and Oregon (1.3 percent). The 2001 growth rates for all of these states were lower than their pay growth in 2000. California experienced the largest slowdown in pay growth among all the states, moving from a 9.6 percent increase in 2000 to a 0.4 percent increase in 2001.

### Industry

Industrial classification has changed significantly with the introduction of the North American Industry Classification System (NAICS). While there were 9 major industry divisions in the private sector under the Standard Industrial Classification (SIC) system, there are 19 industrial sectors under NAICS. (See chart 3.) The NAICS-based industry data for 2001 are not comparable to the SIC-based data for earlier years. For example, retail trade accounted for 21.2 percent of private sector employment under the SIC in 2000, whereas retail trade under NAICS accounts for only 13.9 percent of 2001 private sector employment. This large shift is not economic in nature, but is caused by the substantially different industrial classification principles found in the NAICS system. (See the following section on the change in industry classification systems.) Another example can be drawn from the services industry. Under the SIC system, the services division accounted for over 34 percent of private sector employment. This group no longer exists under NAICS. Establishments formerly assigned to the SIC services division have been distributed across most of the sectors in the service-providing domain. For more information, see “Implementing the North American Industry Classification System at BLS” (<http://www.bls.gov/opub/mlr/2001/12/art2full.pdf>) and “A first look at employment and wages using NAICS” (<http://www.bls.gov/opub/mlr/2001/12/art3full.pdf>) in the December 2001 issue of the *Monthly Labor Review*.

Average annual pay levels for the nation varied widely by industry. (See table 4.) The highest average annual pay for 2001 was in the management of companies and enterprises industry—\$69,069. (See chart 3.) Workers within management of companies and enterprises received pay that was 91 percent greater than the national average for all private sector workers in 2001. The next highest pay level was in utilities (\$65,582), which was 81 percent higher than the average pay for all private industry workers. The lowest pay level in 2001 occurred in accommodation and food services (\$13,669). The pay level of workers in this industry was 62 percent below the national average for all private industry workers.

Chart 3. U.S. average annual pay by NAICS industry sector, private sector, 2000 and 2001

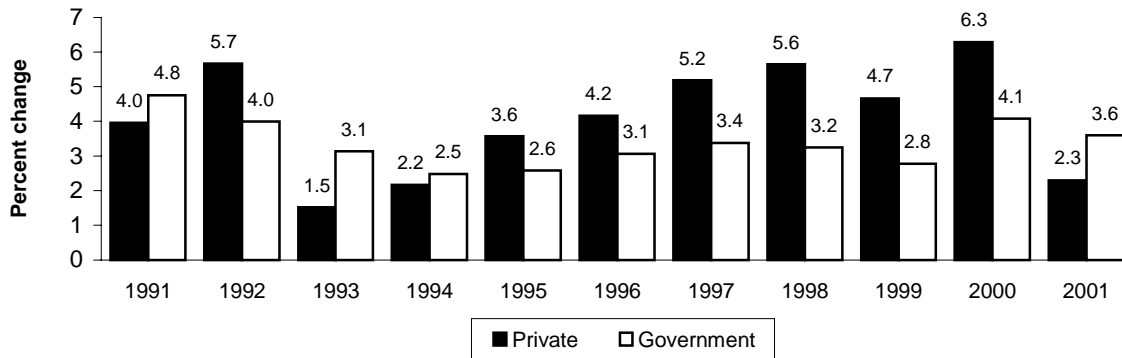


The largest over-the-year percentage pay increase in the private sector was registered in the administrative and waste services industry (5.9 percent). The next largest increase was in finance and insurance (4.9 percent), followed by health care and social assistance (4.6 percent) and educational services and construction (4.1 percent each). Combined, these five sectors account for 32 percent of private industry employment. The smallest pay gain among the 19 major private industry sectors occurred in professional and technical services (1.2 percent). Two industries that experienced negative pay growth were information (-1.7 percent) and management of companies and enterprises (-0.6 percent). The information industry is dominated by the telecommunications and information services groups.

The average annual pay level for the public sector, which includes federal, state, and local government establishments, was \$36,510 in 2001, 1.0 percent higher than the \$36,159 average pay level for the private sector. With the exception of the year 2000, private pay has been below government pay since BLS first published these figures in 1982. Public sector pay was 0.2 percent lower than private sector pay in 2000, 2 percent higher in 1999, 4 percent higher in 1998, and 10 percent higher in 1994. Pay differentials between the public and private sectors reflect many variables, including work activity and occupational structure.

This is the first year since 1994 that average annual pay gains in the government sector have outpaced those in the private sector. (See chart 4.) In 2001, average annual pay in the public sector grew 3.6 percent compared with 2.3 percent pay growth in the private sector. Since 1996, pay has grown by 18 percent in the public sector, 9 percentage points below the 27 percent growth rate in the private sector. Over the past 10 years, average annual pay for government employees rose by 37 percent, while pay for private industry workers increased by 50 percent.

**Chart 4. Percent change in U.S. average annual pay, private and government sector, 1991-2001**



### Change in Industry Classification Systems

Beginning with the release of data for 2001, publications presenting data from the Covered Employment and Wages program use the 2002 version of the North American Industry Classification System (NAICS) as the basis for the assignment and tabulation of economic data by industry. NAICS is the product of a cooperative effort on the part of the statistical agencies of the United States, Canada, and Mexico. Due to differences in NAICS and SIC structures, industry data for 2001 are not comparable to the SIC-based data for earlier years.

NAICS uses a production-oriented approach to categorize economic units. Units with similar production processes are classified in the same industry. NAICS focuses on **how** products and services are created, as opposed to the SIC focus on **what** is produced. This approach yields significantly different industry groupings than those produced by the SIC approach.

Data users will be able to work with new NAICS industrial groupings that better reflect the workings of the U.S. economy. For example, a new industry sector called *Information* brings together units which turn information into a commodity with units which distribute that commodity. *Information's* major components are publishing, broadcasting, telecommunications, information services, and data processing. Under the SIC system, these units were spread across the manufacturing, communications, business services, and amusement services groups. Another new sector of interest is *Professional and technical services*. This sector is comprised of establishments engaged in activities where human capital is the major input.

Users interested in more information about NAICS can access the Bureau of Labor Statistics Web page at <http://www.bls.gov/bls/NAICS.htm> and the Bureau of the Census Web page at <http://www.census.gov/epcd/www/naics.html>. The NAICS 2002 manual is available from the National Technical Information Service (NTIS) Web page at <http://www.ntis.gov/>.

Average annual pay for 2001 and other data from the Covered Employment and Wages (CEW) program will be available on the BLS Web site at <http://www.bls.gov/cew/> in mid-October.

# Technical Note

These data are the product of a federal-state cooperative program known as Covered Employment and Wages (CEW), or the ES-202 program. The data are derived from summaries of employment and total pay of workers covered by unemployment insurance (UI) legislation and provided by State Employment Security Agencies (SESAs). The summaries are a by product of the administration of state unemployment insurance programs that require most employers to pay quarterly taxes based on the employment and wages of workers covered by UI. Data for 2001 are preliminary and subject to revision.

Effective January 2001, the CEW program began assigning Indian Tribal Councils and related establishments to local government ownership. This action by the Bureau of Labor Statistics (BLS) was in response to a change in federal law dealing with the way Indian Tribes are treated under the Federal Unemployment Tax Act (FUTA). This law requires federally recognized Indian Tribes to be treated similarly to state and local governments. In the past, the CEW program coded Indian Tribal Councils and related establishments in the private sector. As a result of the new law, CEW data will reflect significant shifts in employment and wages between the private sector and local government from 2000 to 2001. BLS incorporated this change in first quarter 2001 data because of the immediate effectiveness of the law, signed December 21, 2000. Data will also reflect industry changes. In addition to the change to local government, the industry codes of federally recognized Indian Tribal Councils were changed. Those accounts previously assigned to civic and social organizations were assigned to tribal governments. There were no required industry changes for related establishments owned by these Tribal Councils. These tribal business establishments continued to be coded according to the economic activity of that entity.

## Coverage

Employment and wage data for workers covered by state UI laws and for federal civilian workers covered by the Unemployment Compensation for Federal Employees (UCFE) program are compiled from quarterly contribution reports submitted to the SESAs by employers. In addition to the quarterly contribution reports, employers who operate multiple establishments within a state complete a questionnaire, called the "Multiple Worksite Report," which provides detailed information on the location and industry of each of their establishments. Average annual employment and pay data included in this release are derived from microdata summaries of 8.0 million employer reports of employment and wages submitted by states to BLS. These reports are based on place of employment rather than place of residence.

UI and UCFE coverage is broad and basically comparable from state to state. In 2001, UI and UCFE programs covered workers in 129.7 million jobs. The estimated 124.8 million workers in these jobs (after adjustment for multiple jobholders)

represented 99.7 percent of wage and salary civilian employment. Multiple jobholder estimates are produced by the Current Population Survey. Covered workers received \$4.695 trillion in pay, representing 94.8 percent of the wage and salary component of personal income and 46.6 percent of the gross domestic product.

Major exclusions from UI coverage during 2001 are self-employed workers, most agricultural workers on small farms, all members of the Armed Forces, elected officials in most states, most employees of railroads, some domestic workers, most student workers at schools, and employees of certain small nonprofit organizations.

## Concepts and methodology

Average annual pay was computed by dividing total annual pay of employees covered by UI programs by the average monthly number of these employees. In addition to salaries, average annual pay data include bonuses, the cash value of meals and lodging when supplied, tips and other gratuities, and, in some states, employer contributions to certain deferred compensation plans such as 401(k) plans, and stock options. Monthly employment is based on the number of workers who worked during or received pay for the pay period including the 12th of the month. With few exceptions, all employees of covered firms are reported, including production and sales workers, corporation officials, executives, supervisory personnel, and clerical workers. Workers on paid vacations and part-time workers also are included. Percent changes in average annual pay were computed using preliminary North American Industry Classification System (NAICS)-based 2000 data as the base. These preliminary NAICS-based 2000 data will differ from the Standard Industrial Classification (SIC)-based 2000 data previously published.

Average annual pay is affected by the ratio of full-time to part-time workers as well as the number of individuals in high-paying and low-paying occupations. When comparing average annual pay levels between industries and/or states, these factors should be taken into consideration. Annual pay data only approximate annual earnings because an individual may not be employed by the same employer all year or may work for more than one employer. Also, year-to-year changes in average annual pay can result from a change in the proportion of employment in high- and low-wage jobs, as well as from changes in the level of average annual pay.

In order to insure the highest possible quality of data, SESAs verify with employers and update, if necessary, the industry, location, and ownership classification of all establishments on a 3-year cycle. Changes in establishment classification codes resulting from the verification process are introduced with the data reported for the first quarter of the year. Changes resulting from improved employer reporting also are introduced in the first quarter. For these reasons, some data, especially at more detailed industry levels, may not be strictly comparable with earlier years.

Data in table 4 are presented separately for the private sector and for government. Government data include federal, state, and local establishments.

A few covered employers provided insufficient information on the nature of their businesses to enable the SESA to assign a specific NAICS code. The establishments of these employers therefore could not be classified by industry sector. The wages for these nonclassifiable establishments, along with data for the agricultural division, are not shown separately, but are included in the averages for state and national totals.

#### **Additional statistics and other information**

An annual bulletin, *Employment and Wages*, features comprehensive information by detailed industry on establish-

ments, employment, and wages for the nation and all states. *Employment and Wages Annual Averages, 2001* will be available for sale in late 2002 from the BLS Publications Sales Center, P.O. Box 2145, Chicago, Illinois 60690. News releases on 2001 average annual pay for the nation's metropolitan areas and for 2001 employment and average annual pay for large counties are scheduled to be released soon. Average annual employment and pay data by state and industry are available upon request from the Division of Administrative Statistics and Labor Turnover, Bureau of Labor Statistics, U.S. Department of Labor, Washington, DC 20212, telephone 202-691-6567 (e-mail: CEWInfo@bls.gov).

Information in this release will be made available to sensory impaired individuals upon request. Voice phone: 202-691-5200; TDD message referral phone number: 1-800-877-8339.

**Table 1. State<sup>1</sup> average annual pay for 2000 and 2001 and percent change in pay for all covered workers<sup>2</sup>**

State	Average annual pay <sup>3</sup>		Percent change, 2000-01
	2000	2001	
UNITED STATES <sup>4</sup> .....	\$35,320	\$36,214	2.5
Alabama .....	29,041	30,090	3.6
Alaska .....	35,144	36,140	2.8
Arizona .....	32,610	33,408	2.4
Arkansas .....	26,317	27,258	3.6
California .....	41,207	41,358	0.4
Colorado .....	37,168	37,950	2.1
Connecticut .....	45,486	46,963	3.2
Delaware .....	36,535	38,434	5.2
District of Columbia .....	52,965	56,024	5.8
Florida .....	30,560	31,551	3.2
Georgia .....	34,214	35,114	2.6
Hawaii .....	30,628	31,250	2.0
Idaho .....	27,701	27,765	0.2
Illinois .....	38,045	39,058	2.7
Indiana .....	31,030	31,778	2.4
Iowa .....	27,931	28,840	3.3
Kansas .....	29,361	30,153	2.7
Kentucky .....	28,800	30,017	4.2
Louisiana .....	27,888	29,134	4.5
Maine .....	27,664	28,815	4.2
Maryland .....	36,395	38,237	5.1
Massachusetts .....	44,168	44,976	1.8
Michigan .....	37,011	37,387	1.0
Minnesota .....	35,414	36,585	3.3
Mississippi .....	25,208	25,919	2.8
Missouri .....	31,384	32,422	3.3
Montana .....	24,272	25,194	3.8
Nebraska .....	27,693	28,375	2.5
Nevada .....	32,277	33,122	2.6
New Hampshire .....	34,736	35,479	2.1
New Jersey .....	43,676	44,285	1.4
New Mexico .....	27,498	28,698	4.4
New York .....	45,358	46,664	2.9
North Carolina .....	31,068	32,026	3.1
North Dakota .....	24,683	25,707	4.1
Ohio .....	32,508	33,280	2.4
Oklahoma .....	26,988	28,020	3.8
Oregon .....	32,776	33,203	1.3
Pennsylvania .....	34,015	34,976	2.8
Rhode Island .....	32,615	33,592	3.0
South Carolina .....	28,179	29,253	3.8
South Dakota .....	24,802	25,600	3.2
Tennessee .....	30,557	31,491	3.1
Texas .....	34,943	36,039	3.1
Utah .....	29,229	30,074	2.9
Vermont .....	28,914	30,240	4.6
Virginia .....	35,172	36,716	4.4
Washington .....	37,099	37,475	1.0
West Virginia .....	26,888	27,982	4.1
Wisconsin .....	30,694	31,556	2.8
Wyoming .....	26,836	28,025	4.4
Puerto Rico .....	18,814	19,725	4.8
Virgin Islands .....	27,721	29,195	5.3

<sup>1</sup> Includes the District of Columbia, Puerto Rico, and the Virgin Islands.

<sup>2</sup> Includes workers covered by Unemployment Insurance (UI) and Unemployment Compensation for Federal Employees (UCFE) programs.

<sup>3</sup> Data are preliminary.

<sup>4</sup> Totals for the United States do not include data for Puerto Rico and the Virgin Islands.



**Table 2. State<sup>1</sup> average annual pay for 2000 and 2001 and percent change in pay for all covered workers<sup>2</sup> (ranked by average annual pay for 2001)**

State	Average annual pay <sup>3</sup>		Percent change, 2000-01
	2000	2001	
District of Columbia .....	\$52,965	\$56,024	5.8
Connecticut .....	45,486	46,963	3.2
New York .....	45,358	46,664	2.9
Massachusetts .....	44,168	44,976	1.8
New Jersey .....	43,676	44,285	1.4
California .....	41,207	41,358	0.4
Illinois .....	38,045	39,058	2.7
Delaware .....	36,535	38,434	5.2
Maryland .....	36,395	38,237	5.1
Colorado .....	37,168	37,950	2.1
Washington .....	37,099	37,475	1.0
Michigan .....	37,011	37,387	1.0
Virginia .....	35,172	36,716	4.4
Minnesota .....	35,414	36,585	3.3
UNITED STATES <sup>4</sup> .....	35,320	36,214	2.5
Alaska .....	35,144	36,140	2.8
Texas .....	34,943	36,039	3.1
New Hampshire .....	34,736	35,479	2.1
Georgia .....	34,214	35,114	2.6
Pennsylvania .....	34,015	34,976	2.8
Rhode Island .....	32,615	33,592	3.0
Arizona .....	32,610	33,408	2.4
Ohio .....	32,508	33,280	2.4
Oregon .....	32,776	33,203	1.3
Nevada .....	32,277	33,122	2.6
Missouri .....	31,384	32,422	3.3
North Carolina .....	31,068	32,026	3.1
Indiana .....	31,030	31,778	2.4
Wisconsin .....	30,694	31,556	2.8
Florida .....	30,560	31,551	3.2
Tennessee .....	30,557	31,491	3.1
Hawaii .....	30,628	31,250	2.0
Vermont .....	28,914	30,240	4.6
Kansas .....	29,361	30,153	2.7
Alabama .....	29,041	30,090	3.6
Utah .....	29,229	30,074	2.9
Kentucky .....	28,800	30,017	4.2
South Carolina .....	28,179	29,253	3.8
Virgin Islands .....	27,721	29,195	5.3
Louisiana .....	27,888	29,134	4.5
Iowa .....	27,931	28,840	3.3
Maine .....	27,664	28,815	4.2
New Mexico .....	27,498	28,698	4.4
Nebraska .....	27,693	28,375	2.5
Wyoming .....	26,836	28,025	4.4
Oklahoma .....	26,988	28,020	3.8
West Virginia .....	26,888	27,982	4.1
Idaho .....	27,701	27,765	0.2
Arkansas .....	26,317	27,258	3.6
Mississippi .....	25,208	25,919	2.8
North Dakota .....	24,683	25,707	4.1
South Dakota .....	24,802	25,600	3.2
Montana .....	24,272	25,194	3.8
Puerto Rico .....	18,814	19,725	4.8

<sup>1</sup> Includes the District of Columbia, Puerto Rico, and the Virgin Islands.

<sup>2</sup> Includes workers covered by Unemployment Insurance (UI) and Unemployment Compensation for Federal Employees (UCFE) programs.

<sup>3</sup> Data are preliminary.

<sup>4</sup> Totals for the United States do not include data for Puerto Rico and the Virgin Islands.

**Table 3. State<sup>1</sup> average annual pay for 2000 and 2001 and percent change in pay for all covered workers<sup>2</sup> (ranked by 2000-01 percent change in average annual pay)**

State	Average annual pay <sup>3</sup>		Percent change, 2000-01
	2000	2001	
District of Columbia .....	\$52,965	\$56,024	5.8
Virgin Islands .....	27,721	29,195	5.3
Delaware .....	36,535	38,434	5.2
Maryland .....	36,395	38,237	5.1
Puerto Rico .....	18,814	19,725	4.8
Vermont .....	28,914	30,240	4.6
Louisiana .....	27,888	29,134	4.5
New Mexico .....	27,498	28,698	4.4
Virginia .....	35,172	36,716	4.4
Wyoming .....	26,836	28,025	4.4
Kentucky .....	28,800	30,017	4.2
Maine .....	27,664	28,815	4.2
North Dakota .....	24,683	25,707	4.1
West Virginia .....	26,888	27,982	4.1
Montana .....	24,272	25,194	3.8
Oklahoma .....	26,988	28,020	3.8
South Carolina .....	28,179	29,253	3.8
Alabama .....	29,041	30,090	3.6
Arkansas .....	26,317	27,258	3.6
Iowa .....	27,931	28,840	3.3
Minnesota .....	35,414	36,585	3.3
Missouri .....	31,384	32,422	3.3
Connecticut .....	45,486	46,963	3.2
Florida .....	30,560	31,551	3.2
South Dakota .....	24,802	25,600	3.2
North Carolina .....	31,068	32,026	3.1
Tennessee .....	30,557	31,491	3.1
Texas .....	34,943	36,039	3.1
Rhode Island .....	32,615	33,592	3.0
New York .....	45,358	46,664	2.9
Utah .....	29,229	30,074	2.9
Alaska .....	35,144	36,140	2.8
Mississippi .....	25,208	25,919	2.8
Pennsylvania .....	34,015	34,976	2.8
Wisconsin .....	30,694	31,556	2.8
Illinois .....	38,045	39,058	2.7
Kansas .....	29,361	30,153	2.7
Georgia .....	34,214	35,114	2.6
Nevada .....	32,277	33,122	2.6
UNITED STATES <sup>4</sup> .....	35,320	36,214	2.5
Nebraska .....	27,693	28,375	2.5
Arizona .....	32,610	33,408	2.4
Indiana .....	31,030	31,778	2.4
Ohio .....	32,508	33,280	2.4
Colorado .....	37,168	37,950	2.1
New Hampshire .....	34,736	35,479	2.1
Hawaii .....	30,628	31,250	2.0
Massachusetts .....	44,168	44,976	1.8
New Jersey .....	43,676	44,285	1.4
Oregon .....	32,776	33,203	1.3
Michigan .....	37,011	37,387	1.0
Washington .....	37,099	37,475	1.0
California .....	41,207	41,358	0.4
Idaho .....	27,701	27,765	0.2

<sup>1</sup> Includes the District of Columbia, Puerto Rico, and the Virgin Islands.

<sup>2</sup> Includes workers covered by Unemployment Insurance (UI) and Unemployment Compensation for Federal Employees (UCFE) programs.

<sup>3</sup> Data are preliminary.

<sup>4</sup> Totals for the United States do not include data for Puerto Rico and the Virgin Islands.

**Table 4. State<sup>1</sup> and NAICS industry average annual pay for 2000 and 2001 and percent change in pay for all covered workers<sup>2</sup>**

State	Average annual pay <sup>3</sup>		Percent change, 2000-01
	2000	2001 <sup>4</sup>	
United States <sup>5</sup>			
Private			
Total <sup>6</sup> .....	\$35,333	\$36,159	2.3
Agriculture, forestry, fishing and hunting .....	19,435	20,195	3.9
Mining .....	57,963	59,724	3.0
Construction .....	36,899	38,415	4.1
Manufacturing .....	42,989	42,975	0.0
Wholesale trade .....	48,043	48,789	1.6
Retail trade .....	21,915	22,670	3.4
Transportation and warehousing .....	35,106	36,187	3.1
Utilities .....	63,034	65,582	4.0
Information .....	58,180	57,171	-1.7
Finance and insurance .....	60,714	63,707	4.9
Real estate and rental and leasing .....	31,704	32,870	3.7
Professional and technical services .....	58,043	58,758	1.2
Management of companies and enterprises .....	69,520	69,069	-0.6
Administrative and waste services .....	23,066	24,435	5.9
Educational services .....	30,794	32,062	4.1
Health care and social assistance .....	31,376	32,811	4.6
Arts, entertainment, and recreation .....	24,432	25,328	3.7
Accommodation and food services .....	13,350	13,669	2.4
Other services, except public administration .....	22,328	23,222	4.0
Government .....	35,248	36,510	3.6
Alabama			
Private			
Total <sup>6</sup> .....	28,491	29,520	3.6
Agriculture, forestry, fishing and hunting .....	24,111	24,525	1.7
Mining .....	51,283	51,304	0.0
Construction .....	29,467	30,843	4.7
Manufacturing .....	33,474	34,609	3.4
Wholesale trade .....	38,986	39,970	2.5
Retail trade .....	19,001	19,889	4.7
Transportation and warehousing .....	29,932	30,218	1.0
Utilities .....	62,197	67,142	8.0
Information .....	41,098	42,058	2.3
Finance and insurance .....	38,748	40,890	5.5
Real estate and rental and leasing .....	23,501	24,399	3.8
Professional and technical services .....	46,218	48,325	4.6
Management of companies and enterprises .....	48,477	51,168	5.6
Administrative and waste services .....	17,394	18,061	3.8
Educational services .....	22,212	23,278	4.8
Health care and social assistance .....	31,110	32,111	3.2
Arts, entertainment, and recreation .....	13,845	14,483	4.6
Accommodation and food services .....	10,557	10,766	2.0
Other services, except public administration .....	20,387	21,248	4.2
Government .....	31,559	32,671	3.5
Alaska			
Private			
Total <sup>6</sup> .....	33,503	34,991	4.4
Agriculture, forestry, fishing and hunting .....	43,937	( <sup>7</sup> )	( <sup>7</sup> )
Mining .....	87,539	( <sup>7</sup> )	( <sup>7</sup> )
Construction .....	47,163	49,108	4.1
Manufacturing .....	30,237	30,187	-0.2
Wholesale trade .....	38,159	39,667	4.0
Retail trade .....	23,112	23,689	2.5
Transportation and warehousing .....	41,134	42,539	3.4
Utilities .....	58,155	56,222	-3.3
Information .....	43,820	43,508	-0.7
Finance and insurance .....	39,440	40,776	3.4
Real estate and rental and leasing .....	25,269	26,213	3.7
Professional and technical services .....	42,591	44,869	5.3
Management of companies and enterprises .....	43,439	45,330	4.4
Administrative and waste services .....	25,961	27,214	4.8
Educational services .....	24,298	25,352	4.3
Health care and social assistance .....	31,642	33,011	4.3
Arts, entertainment, and recreation .....	13,330	13,579	1.9
Accommodation and food services .....	15,520	15,730	1.4
Other services, except public administration .....	23,384	( <sup>7</sup> )	( <sup>7</sup> )
Government .....	40,077	39,416	-1.6

See footnotes at end of table.

**Table 4. State<sup>1</sup> and NAICS industry average annual pay for 2000 and 2001 and percent change in pay for all covered workers<sup>2</sup> — Continued**

State	Average annual pay <sup>3</sup>		Percent change, 2000-01
	2000	2001 <sup>4</sup>	
Arizona			
Private			
Total <sup>6</sup> .....	\$32,432	\$33,162	2.3
Agriculture, forestry, fishing and hunting .....	15,893	16,762	5.5
Mining .....	46,736	47,487	1.6
Construction .....	32,883	34,012	3.4
Manufacturing .....	47,888	48,021	0.3
Wholesale trade .....	47,183	48,718	3.3
Retail trade .....	23,650	24,398	3.2
Transportation and warehousing .....	34,481	35,535	3.1
Utilities .....	60,503	64,567	6.7
Information .....	46,428	43,423	-6.5
Finance and insurance .....	42,975	46,322	7.8
Real estate and rental and leasing .....	29,574	30,746	4.0
Professional and technical services .....	55,202	49,289	-10.7
Management of companies and enterprises .....	49,613	53,185	7.2
Administrative and waste services .....	22,343	23,456	5.0
Educational services .....	28,180	29,342	4.1
Health care and social assistance .....	32,662	34,573	5.9
Arts, entertainment, and recreation .....	26,441	28,602	8.2
Accommodation and food services .....	13,326	13,539	1.6
Other services, except public administration .....	22,290	23,440	5.2
Government .....	33,679	34,728	3.1
Arkansas			
Private			
Total <sup>6</sup> .....	26,032	26,933	3.5
Agriculture, forestry, fishing and hunting .....	22,244	23,407	5.2
Mining .....	35,750	38,065	6.5
Construction .....	27,956	29,002	3.7
Manufacturing .....	29,048	29,869	2.8
Wholesale trade .....	35,710	37,291	4.4
Retail trade .....	17,173	17,670	2.9
Transportation and warehousing .....	30,453	31,376	3.0
Utilities .....	52,017	53,152	2.2
Information .....	34,375	35,089	2.1
Finance and insurance .....	35,600	37,077	4.1
Real estate and rental and leasing .....	21,460	21,680	1.0
Professional and technical services .....	38,873	40,057	3.0
Management of companies and enterprises .....	57,649	58,871	2.1
Administrative and waste services .....	15,747	16,391	4.1
Educational services .....	20,523	21,477	4.6
Health care and social assistance .....	27,361	28,645	4.7
Arts, entertainment, and recreation .....	12,971	13,122	1.2
Accommodation and food services .....	9,687	9,919	2.4
Other services, except public administration .....	19,454	20,373	4.7
Government .....	27,836	28,949	4.0
California			
Private			
Total <sup>6</sup> .....	41,199	40,973	-0.5
Agriculture, forestry, fishing and hunting .....	17,629	18,709	6.1
Mining .....	64,668	70,657	9.3
Construction .....	40,702	41,937	3.0
Manufacturing .....	56,569	51,298	-9.3
Wholesale trade .....	49,191	50,274	2.2
Retail trade .....	27,005	27,644	2.4
Transportation and warehousing .....	36,359	37,507	3.2
Utilities .....	66,824	69,065	3.4
Information .....	74,773	71,348	-4.6
Finance and insurance .....	67,421	72,554	7.6
Real estate and rental and leasing .....	35,937	36,955	2.8
Professional and technical services .....	69,709	67,695	-2.9
Management of companies and enterprises .....	68,116	66,562	-2.3
Administrative and waste services .....	25,026	27,000	7.9
Educational services .....	30,164	31,378	4.0
Health care and social assistance .....	34,374	36,266	5.5
Arts, entertainment, and recreation .....	35,462	36,991	4.3
Accommodation and food services .....	14,428	14,923	3.4
Other services, except public administration .....	21,520	22,380	4.0
Government .....	41,249	43,469	5.4

See footnotes at end of table.

**Table 4. State<sup>1</sup> and NAICS industry average annual pay for 2000 and 2001 and percent change in pay for all covered workers<sup>2</sup> — Continued**

State	Average annual pay <sup>3</sup>		Percent change, 2000-01
	2000	2001 <sup>4</sup>	
Colorado			
Private			
Total <sup>6</sup> .....	\$37,553	\$38,210	1.7
Agriculture, forestry, fishing and hunting .....	21,562	22,346	3.6
Mining .....	63,545	75,260	18.4
Construction .....	37,228	38,920	4.5
Manufacturing .....	46,982	47,544	1.2
Wholesale trade .....	52,756	52,464	-0.6
Retail trade .....	22,976	23,846	3.8
Transportation and warehousing .....	35,615	37,564	5.5
Utilities .....	56,863	65,194	14.7
Information .....	71,712	65,765	-8.3
Finance and insurance .....	53,192	55,653	4.6
Real estate and rental and leasing .....	31,839	33,424	5.0
Professional and technical services .....	61,005	61,425	0.7
Management of companies and enterprises .....	86,312	76,806	-11.0
Administrative and waste services .....	25,111	26,616	6.0
Educational services .....	28,597	29,531	3.3
Health care and social assistance .....	32,248	34,035	5.5
Arts, entertainment, and recreation .....	25,606	27,237	6.4
Accommodation and food services .....	13,289	13,737	3.4
Other services, except public administration .....	24,439	25,576	4.7
Government .....	34,911	36,464	4.4
Connecticut			
Private			
Total <sup>6</sup> .....	46,068	47,732	3.6
Agriculture, forestry, fishing and hunting .....	24,011	23,917	-0.4
Mining .....	50,632	51,131	1.0
Construction .....	45,999	48,113	4.6
Manufacturing .....	54,490	55,706	2.2
Wholesale trade .....	63,145	65,640	4.0
Retail trade .....	28,056	27,043	-3.6
Transportation and warehousing .....	33,497	34,824	4.0
Utilities .....	75,485	78,095	3.5
Information .....	57,818	57,692	-0.2
Finance and insurance .....	90,557	98,243	8.5
Real estate and rental and leasing .....	41,083	42,252	2.8
Professional and technical services .....	70,524	72,739	3.1
Management of companies and enterprises .....	112,213	104,891	-6.5
Administrative and waste services .....	26,801	28,660	6.9
Educational services .....	38,183	40,344	5.7
Health care and social assistance .....	34,928	36,593	4.8
Arts, entertainment, and recreation .....	25,157	24,554	-2.4
Accommodation and food services .....	14,922	15,518	4.0
Other services, except public administration .....	24,681	25,763	4.4
Government .....	41,521	42,290	1.9
Delaware			
Private			
Total <sup>6</sup> .....	36,610	38,688	5.7
Agriculture, forestry, fishing and hunting .....	23,739	( <sup>7</sup> )	( <sup>7</sup> )
Mining .....	( <sup>7</sup> )	( <sup>7</sup> )	( <sup>7</sup> )
Construction .....	36,121	37,468	3.7
Manufacturing .....	43,488	43,691	0.5
Wholesale trade .....	48,955	52,330	6.9
Retail trade .....	20,769	21,689	4.4
Transportation and warehousing .....	31,382	32,172	2.5
Utilities .....	71,308	77,858	9.2
Information .....	49,431	50,110	1.4
Finance and insurance .....	( <sup>7</sup> )	52,007	( <sup>7</sup> )
Real estate and rental and leasing .....	29,898	32,799	9.7
Professional and technical services .....	62,146	67,153	8.1
Management of companies and enterprises .....	74,795	80,327	7.4
Administrative and waste services .....	20,885	21,123	1.1
Educational services .....	27,163	29,198	7.5
Health care and social assistance .....	34,670	36,426	5.1
Arts, entertainment, and recreation .....	19,138	20,339	6.3
Accommodation and food services .....	13,605	13,955	2.6
Other services, except public administration .....	22,166	23,216	4.7
Government .....	36,040	36,750	2.0

See footnotes at end of table.

**Table 4. State<sup>1</sup> and NAICS industry average annual pay for 2000 and 2001 and percent change in pay for all covered workers<sup>2</sup> — Continued**

State	Average annual pay <sup>3</sup>		Percent change, 2000-01
	2000	2001 <sup>4</sup>	
District of Columbia			
Private			
Total <sup>6</sup> .....	\$49,828	\$53,038	6.4
Agriculture, forestry, fishing and hunting .....	85,569	(7)	(7)
Mining .....	215,944	(7)	(7)
Construction .....	40,672	43,526	7.0
Manufacturing .....	72,535	63,872	-11.9
Wholesale trade .....	64,635	63,418	-1.9
Retail trade .....	25,021	25,743	2.9
Transportation and warehousing .....	40,347	(7)	(7)
Utilities .....	58,671	(7)	(7)
Information .....	70,506	(7)	(7)
Finance and insurance .....	94,611	97,738	3.3
Real estate and rental and leasing .....	42,388	46,821	10.5
Professional and technical services .....	75,203	81,909	8.9
Management of companies and enterprises .....	128,291	131,687	2.6
Administrative and waste services .....	25,497	28,240	10.8
Educational services .....	39,570	40,883	3.3
Health care and social assistance .....	38,279	40,699	6.3
Arts, entertainment, and recreation .....	46,203	51,317	11.1
Accommodation and food services .....	21,099	21,916	3.9
Other services, except public administration .....	47,645	51,035	7.1
Government .....	58,980	61,705	4.6
Florida			
Private			
Total <sup>6</sup> .....	30,031	31,040	3.4
Agriculture, forestry, fishing and hunting .....	17,914	18,161	1.4
Mining .....	43,031	44,725	3.9
Construction .....	32,197	33,622	4.4
Manufacturing .....	37,191	37,984	2.1
Wholesale trade .....	44,744	45,645	2.0
Retail trade .....	21,746	22,645	4.1
Transportation and warehousing .....	32,484	33,697	3.7
Utilities .....	58,111	59,496	2.4
Information .....	45,673	46,509	1.8
Finance and insurance .....	47,443	48,937	3.1
Real estate and rental and leasing .....	29,234	30,287	3.6
Professional and technical services .....	48,770	49,678	1.9
Management of companies and enterprises .....	56,434	60,771	7.7
Administrative and waste services .....	21,670	22,683	4.7
Educational services .....	26,425	27,649	4.6
Health care and social assistance .....	32,337	33,585	3.9
Arts, entertainment, and recreation .....	25,693	26,206	2.0
Accommodation and food services .....	14,166	14,574	2.9
Other services, except public administration .....	21,327	22,215	4.2
Government .....	33,853	34,698	2.5
Georgia			
Private			
Total <sup>6</sup> .....	34,686	35,552	2.5
Agriculture, forestry, fishing and hunting .....	20,650	21,634	4.8
Mining .....	45,871	44,551	-2.9
Construction .....	34,398	35,675	3.7
Manufacturing .....	36,460	37,003	1.5
Wholesale trade .....	53,208	53,078	-0.2
Retail trade .....	21,625	22,499	4.0
Transportation and warehousing .....	40,483	41,992	3.7
Utilities .....	60,247	64,233	6.6
Information .....	58,548	57,224	-2.3
Finance and insurance .....	52,297	54,647	4.5
Real estate and rental and leasing .....	34,464	34,743	0.8
Professional and technical services .....	55,029	56,213	2.2
Management of companies and enterprises .....	54,126	58,400	7.9
Administrative and waste services .....	23,203	24,482	5.5
Educational services .....	28,965	29,558	2.0
Health care and social assistance .....	32,725	33,937	3.7
Arts, entertainment, and recreation .....	26,003	27,175	4.5
Accommodation and food services .....	13,152	13,378	1.7
Other services, except public administration .....	23,150	23,461	1.3
Government .....	31,588	32,739	3.6

See footnotes at end of table.

**Table 4. State<sup>1</sup> and NAICS industry average annual pay for 2000 and 2001 and percent change in pay for all covered workers<sup>2</sup> — Continued**

State	Average annual pay <sup>3</sup>		Percent change, 2000-01
	2000	2001 <sup>4</sup>	
Hawaii			
Private			
Total <sup>6</sup> .....	\$29,179	\$29,813	2.2
Agriculture, forestry, fishing and hunting .....	24,166	24,153	-0.1
Mining .....	57,402	58,031	1.1
Construction .....	45,958	47,103	2.5
Manufacturing .....	31,040	30,062	-3.2
Wholesale trade .....	37,291	38,068	2.1
Retail trade .....	21,524	21,977	2.1
Transportation and warehousing .....	35,661	36,022	1.0
Utilities .....	65,783	65,876	0.1
Information .....	42,746	43,331	1.4
Finance and insurance .....	44,847	46,130	2.9
Real estate and rental and leasing .....	29,148	30,496	4.6
Professional and technical services .....	43,852	45,837	4.5
Management of companies and enterprises .....	50,721	55,319	9.1
Administrative and waste services .....	20,903	21,938	5.0
Educational services .....	27,893	28,912	3.7
Health care and social assistance .....	34,559	35,053	1.4
Arts, entertainment, and recreation .....	19,126	19,263	0.7
Accommodation and food services .....	19,816	19,964	0.7
Other services, except public administration .....	22,216	22,949	3.3
Government .....	36,481	37,026	1.5
Idaho			
Private			
Total <sup>6</sup> .....	27,623	27,475	-0.5
Agriculture, forestry, fishing and hunting .....	20,124	20,735	3.0
Mining .....	39,770	38,746	-2.6
Construction .....	29,041	31,060	7.0
Manufacturing .....	43,524	37,715	-13.3
Wholesale trade .....	33,217	34,441	3.7
Retail trade .....	19,637	20,221	3.0
Transportation and warehousing .....	26,279	27,005	2.8
Utilities .....	46,199	47,938	3.8
Information .....	31,515	32,982	4.7
Finance and insurance .....	35,638	36,993	3.8
Real estate and rental and leasing .....	19,680	20,746	5.4
Professional and technical services .....	41,473	42,283	2.0
Management of companies and enterprises .....	( <sup>7</sup> )	( <sup>7</sup> )	( <sup>7</sup> )
Administrative and waste services .....	17,287	17,941	3.8
Educational services .....	27,079	27,399	1.2
Health care and social assistance .....	26,767	27,516	2.8
Arts, entertainment, and recreation .....	( <sup>7</sup> )	( <sup>7</sup> )	( <sup>7</sup> )
Accommodation and food services .....	9,755	10,032	2.8
Other services, except public administration .....	19,415	19,562	0.8
Government .....	28,060	29,061	3.6
Illinois			
Private			
Total <sup>6</sup> .....	38,246	39,206	2.5
Agriculture, forestry, fishing and hunting .....	23,639	24,293	2.8
Mining .....	48,740	50,283	3.2
Construction .....	46,116	47,594	3.2
Manufacturing .....	43,294	43,789	1.1
Wholesale trade .....	52,085	53,017	1.8
Retail trade .....	22,062	22,839	3.5
Transportation and warehousing .....	37,027	38,541	4.1
Utilities .....	73,666	78,114	6.0
Information .....	54,320	52,975	-2.5
Finance and insurance .....	61,953	65,703	6.1
Real estate and rental and leasing .....	39,150	39,543	1.0
Professional and technical services .....	63,316	64,100	1.2
Management of companies and enterprises .....	85,347	87,742	2.8
Administrative and waste services .....	24,078	25,194	4.6
Educational services .....	31,369	33,218	5.9
Health care and social assistance .....	31,824	33,193	4.3
Arts, entertainment, and recreation .....	24,245	24,691	1.8
Accommodation and food services .....	13,228	13,489	2.0
Other services, except public administration .....	25,538	26,273	2.9
Government .....	36,751	38,129	3.7

See footnotes at end of table.

**Table 4. State<sup>1</sup> and NAICS industry average annual pay for 2000 and 2001 and percent change in pay for all covered workers<sup>2</sup> — Continued**

State	Average annual pay <sup>3</sup>		Percent change, 2000-01
	2000	2001 <sup>4</sup>	
Indiana			
Private			
Total <sup>6</sup> .....	\$31,037	\$31,757	2.3
Agriculture, forestry, fishing and hunting .....	22,444	23,571	5.0
Mining .....	45,441	46,044	1.3
Construction .....	35,320	36,695	3.9
Manufacturing .....	41,818	42,097	0.7
Wholesale trade .....	40,696	41,488	1.9
Retail trade .....	18,935	19,704	4.1
Transportation and warehousing .....	31,122	31,866	2.4
Utilities .....	54,535	58,392	7.1
Information .....	37,700	38,104	1.1
Finance and insurance .....	41,414	44,327	7.0
Real estate and rental and leasing .....	24,543	25,412	3.5
Professional and technical services .....	40,963	42,416	3.5
Management of companies and enterprises .....	62,564	65,363	4.5
Administrative and waste services .....	19,379	21,126	9.0
Educational services .....	24,298	25,877	6.5
Health care and social assistance .....	30,267	31,503	4.1
Arts, entertainment, and recreation .....	23,013	23,847	3.6
Accommodation and food services .....	10,661	10,953	2.7
Other services, except public administration .....	20,151	20,754	3.0
Government .....	30,988	31,910	3.0
Iowa			
Private			
Total <sup>6</sup> .....	27,503	28,375	3.2
Agriculture, forestry, fishing and hunting .....	21,882	22,455	2.6
Mining .....	36,446	36,831	1.1
Construction .....	32,538	34,066	4.7
Manufacturing .....	36,370	37,234	2.4
Wholesale trade .....	36,774	36,885	0.3
Retail trade .....	18,172	18,870	3.8
Transportation and warehousing .....	30,172	30,935	2.5
Utilities .....	53,480	56,016	4.7
Information .....	34,873	34,877	0.0
Finance and insurance .....	40,423	41,709	3.2
Real estate and rental and leasing .....	24,339	25,386	4.3
Professional and technical services .....	36,039	37,627	4.4
Management of companies and enterprises .....	43,458	45,279	4.2
Administrative and waste services .....	18,102	19,410	7.2
Educational services .....	21,786	22,551	3.5
Health care and social assistance .....	26,417	27,694	4.8
Arts, entertainment, and recreation .....	15,313	15,389	0.5
Accommodation and food services .....	9,425	9,784	3.8
Other services, except public administration .....	19,828	20,299	2.4
Government .....	30,260	31,294	3.4
Kansas			
Private			
Total <sup>6</sup> .....	29,646	30,468	2.8
Agriculture, forestry, fishing and hunting .....	24,589	25,672	4.4
Mining .....	36,300	38,556	6.2
Construction .....	32,250	33,642	4.3
Manufacturing .....	37,933	39,245	3.5
Wholesale trade .....	40,679	41,641	2.4
Retail trade .....	18,874	19,595	3.8
Transportation and warehousing .....	30,205	31,405	4.0
Utilities .....	55,088	60,624	10.0
Information .....	52,779	45,155	-14.4
Finance and insurance .....	40,275	41,722	3.6
Real estate and rental and leasing .....	23,672	24,875	5.1
Professional and technical services .....	40,577	42,603	5.0
Management of companies and enterprises .....	47,015	50,493	7.4
Administrative and waste services .....	21,249	22,585	6.3
Educational services .....	24,698	26,217	6.2
Health care and social assistance .....	27,339	28,447	4.1
Arts, entertainment, and recreation .....	12,888	13,114	1.8
Accommodation and food services .....	10,346	10,763	4.0
Other services, except public administration .....	20,407	20,845	2.1
Government .....	28,021	28,709	2.5

See footnotes at end of table.



**Table 4. State<sup>1</sup> and NAICS industry average annual pay for 2000 and 2001 and percent change in pay for all covered workers<sup>2</sup> — Continued**

State	Average annual pay <sup>3</sup>		Percent change, 2000-01
	2000	2001 <sup>4</sup>	
<b>Kentucky</b>			
Private			
Total <sup>6</sup> .....	\$28,771	\$29,931	4.0
Agriculture, forestry, fishing and hunting .....	22,803	24,422	7.1
Mining .....	42,978	45,416	5.7
Construction .....	31,096	32,781	5.4
Manufacturing .....	37,101	38,065	2.6
Wholesale trade .....	38,869	40,247	3.5
Retail trade .....	18,359	19,060	3.8
Transportation and warehousing .....	37,124	38,336	3.3
Utilities .....	53,444	61,089	14.3
Information .....	34,175	35,135	2.8
Finance and insurance .....	38,866	40,076	3.1
Real estate and rental and leasing .....	23,046	23,773	3.2
Professional and technical services .....	39,870	42,263	6.0
Management of companies and enterprises .....	61,502	63,960	4.0
Administrative and waste services .....	16,922	18,394	8.7
Educational services .....	22,488	23,582	4.9
Health care and social assistance .....	29,484	30,776	4.4
Arts, entertainment, and recreation .....	15,879	16,400	3.3
Accommodation and food services .....	10,909	11,470	5.1
Other services, except public administration .....	20,318	21,165	4.2
Government .....	28,947	30,450	5.2
<b>Louisiana</b>			
Private			
Total <sup>6</sup> .....	28,012	29,210	4.3
Agriculture, forestry, fishing and hunting .....	20,987	21,443	2.2
Mining .....	53,299	55,876	4.8
Construction .....	31,377	32,225	2.7
Manufacturing .....	40,347	41,909	3.9
Wholesale trade .....	36,118	37,768	4.6
Retail trade .....	18,045	18,771	4.0
Transportation and warehousing .....	34,708	36,158	4.2
Utilities .....	52,012	53,470	2.8
Information .....	35,663	36,743	3.0
Finance and insurance .....	35,949	36,612	1.8
Real estate and rental and leasing .....	27,852	29,631	6.4
Professional and technical services .....	40,315	42,410	5.2
Management of companies and enterprises .....	43,307	45,961	6.1
Administrative and waste services .....	17,682	18,945	7.1
Educational services .....	29,919	( <sup>7</sup> )	( <sup>7</sup> )
Health care and social assistance .....	26,721	27,504	2.9
Arts, entertainment, and recreation .....	20,971	21,384	2.0
Accommodation and food services .....	11,475	11,767	2.5
Other services, except public administration .....	19,712	20,828	5.7
Government .....	27,360	28,809	5.3
<b>Maine</b>			
Private			
Total <sup>6</sup> .....	27,280	28,397	4.1
Agriculture, forestry, fishing and hunting .....	24,412	24,894	2.0
Mining .....	24,807	27,020	8.9
Construction .....	31,458	32,488	3.3
Manufacturing .....	35,450	36,448	2.8
Wholesale trade .....	38,314	39,981	4.4
Retail trade .....	18,767	19,837	5.7
Transportation and warehousing .....	28,040	28,818	2.8
Utilities .....	48,360	49,888	3.2
Information .....	34,560	36,046	4.3
Finance and insurance .....	39,356	41,063	4.3
Real estate and rental and leasing .....	23,433	24,353	3.9
Professional and technical services .....	39,276	39,960	1.7
Management of companies and enterprises .....	50,405	51,210	1.6
Administrative and waste services .....	21,058	22,962	9.0
Educational services .....	27,566	29,097	5.6
Health care and social assistance .....	27,486	29,093	5.8
Arts, entertainment, and recreation .....	15,289	16,472	7.7
Accommodation and food services .....	11,908	12,334	3.6
Other services, except public administration .....	19,836	20,401	2.8
Government .....	29,677	30,960	4.3

See footnotes at end of table.

**Table 4. State<sup>1</sup> and NAICS industry average annual pay for 2000 and 2001 and percent change in pay for all covered workers<sup>2</sup> — Continued**

State	Average annual pay <sup>3</sup>		Percent change, 2000-01
	2000	2001 <sup>4</sup>	
<b>Maryland</b>			
Private			
Total <sup>6</sup> .....	\$35,407	\$37,046	4.6
Agriculture, forestry, fishing and hunting .....	22,384	23,392	4.5
Mining .....	44,398	50,944	14.7
Construction .....	38,478	40,350	4.9
Manufacturing .....	45,815	47,170	3.0
Wholesale trade .....	50,478	52,025	3.1
Retail trade .....	23,052	24,012	4.2
Transportation and warehousing .....	34,024	34,858	2.5
Utilities .....	65,952	66,809	1.3
Information .....	55,122	55,865	1.3
Finance and insurance .....	55,543	57,790	4.0
Real estate and rental and leasing .....	33,274	35,690	7.3
Professional and technical services .....	55,813	59,000	5.7
Management of companies and enterprises .....	51,704	52,795	2.1
Administrative and waste services .....	23,755	25,595	7.7
Educational services .....	33,116	34,884	5.3
Health care and social assistance .....	32,901	34,817	5.8
Arts, entertainment, and recreation .....	22,854	22,694	-0.7
Accommodation and food services .....	14,660	15,564	6.2
Other services, except public administration .....	24,511	25,850	5.5
Government .....	40,893	43,564	6.5
<b>Massachusetts</b>			
Private			
Total <sup>6</sup> .....	44,870	45,562	1.5
Agriculture, forestry, fishing and hunting .....	30,785	31,632	2.8
Mining .....	44,501	47,084	5.8
Construction .....	47,629	50,795	6.6
Manufacturing .....	56,177	54,455	-3.1
Wholesale trade .....	62,580	61,873	-1.1
Retail trade .....	23,601	24,791	5.0
Transportation and warehousing .....	33,630	34,769	3.4
Utilities .....	74,592	76,825	3.0
Information .....	69,480	66,943	-3.7
Finance and insurance .....	83,880	87,572	4.4
Real estate and rental and leasing .....	41,520	43,271	4.2
Professional and technical services .....	75,683	74,574	-1.5
Management of companies and enterprises .....	68,964	66,867	-3.0
Administrative and waste services .....	29,987	30,323	1.1
Educational services .....	38,572	40,913	6.1
Health care and social assistance .....	34,238	36,020	5.2
Arts, entertainment, and recreation .....	26,575	28,087	5.7
Accommodation and food services .....	15,635	16,186	3.5
Other services, except public administration .....	23,678	24,738	4.5
Government .....	39,286	40,929	4.2
<b>Michigan</b>			
Private			
Total <sup>6</sup> .....	37,227	37,543	0.8
Agriculture, forestry, fishing and hunting .....	18,715	19,039	1.7
Mining .....	45,787	44,604	-2.6
Construction .....	42,183	42,825	1.5
Manufacturing .....	49,910	49,660	-0.5
Wholesale trade .....	51,107	51,089	0.0
Retail trade .....	20,975	21,672	3.3
Transportation and warehousing .....	39,390	39,920	1.3
Utilities .....	65,633	67,356	2.6
Information .....	46,157	47,261	2.4
Finance and insurance .....	45,790	48,748	6.5
Real estate and rental and leasing .....	27,663	28,705	3.8
Professional and technical services .....	61,533	60,900	-1.0
Management of companies and enterprises .....	86,105	84,479	-1.9
Administrative and waste services .....	25,073	26,502	5.7
Educational services .....	27,441	27,949	1.9
Health care and social assistance .....	32,340	33,701	4.2
Arts, entertainment, and recreation .....	21,848	22,472	2.9
Accommodation and food services .....	11,373	11,527	1.4
Other services, except public administration .....	23,164	24,501	5.8
Government .....	35,647	36,454	2.3

See footnotes at end of table.

**Table 4. State<sup>1</sup> and NAICS industry average annual pay for 2000 and 2001 and percent change in pay for all covered workers<sup>2</sup> — Continued**

State	Average annual pay <sup>3</sup>		Percent change, 2000-01
	2000	2001 <sup>4</sup>	
<b>Minnesota</b>			
Private			
Total <sup>6</sup> .....	\$35,514	\$36,778	3.6
Agriculture, forestry, fishing and hunting .....	21,581	22,103	2.4
Mining .....	48,602	49,403	1.6
Construction .....	42,650	44,072	3.3
Manufacturing .....	41,563	42,481	2.2
Wholesale trade .....	49,938	51,451	3.0
Retail trade .....	20,514	21,074	2.7
Transportation and warehousing .....	38,387	40,723	6.1
Utilities .....	61,348	67,216	9.6
Information .....	46,736	47,386	1.4
Finance and insurance .....	56,141	60,314	7.4
Real estate and rental and leasing .....	30,268	32,051	5.9
Professional and technical services .....	55,792	56,498	1.3
Management of companies and enterprises .....	74,583	77,685	4.2
Administrative and waste services .....	23,400	24,647	5.3
Educational services .....	28,076	28,524	1.6
Health care and social assistance .....	31,514	33,097	5.0
Arts, entertainment, and recreation .....	21,108	21,930	3.9
Accommodation and food services .....	11,837	11,771	-0.6
Other services, except public administration .....	21,216	21,865	3.1
Government .....	34,767	35,409	1.8
<b>Mississippi</b>			
Private			
Total <sup>6</sup> .....	24,836	25,592	3.0
Agriculture, forestry, fishing and hunting .....	20,396	21,198	3.9
Mining .....	38,755	41,834	7.9
Construction .....	27,750	28,394	2.3
Manufacturing .....	28,328	29,416	3.8
Wholesale trade .....	34,583	35,567	2.8
Retail trade .....	17,416	18,000	3.4
Transportation and warehousing .....	29,467	30,352	3.0
Utilities .....	44,186	46,791	5.9
Information .....	36,784	36,460	-0.9
Finance and insurance .....	34,561	34,991	1.2
Real estate and rental and leasing .....	19,881	20,922	5.2
Professional and technical services .....	36,682	38,503	5.0
Management of companies and enterprises .....	44,467	46,514	4.6
Administrative and waste services .....	15,816	16,700	5.6
Educational services .....	21,318	21,592	1.3
Health care and social assistance .....	28,364	29,062	2.5
Arts, entertainment, and recreation .....	19,243	19,321	0.4
Accommodation and food services .....	13,039	13,159	0.9
Other services, except public administration .....	19,355	19,993	3.3
Government .....	26,745	27,193	1.7
<b>Missouri</b>			
Private			
Total <sup>6</sup> .....	31,597	32,631	3.3
Agriculture, forestry, fishing and hunting .....	21,324	22,124	3.8
Mining .....	43,317	46,180	6.6
Construction .....	37,294	39,021	4.6
Manufacturing .....	37,521	38,964	3.8
Wholesale trade .....	43,469	44,165	1.6
Retail trade .....	19,535	20,368	4.3
Transportation and warehousing .....	32,255	33,450	3.7
Utilities .....	55,377	63,991	15.6
Information .....	43,742	45,165	3.3
Finance and insurance .....	43,069	44,752	3.9
Real estate and rental and leasing .....	26,309	27,690	5.2
Professional and technical services .....	50,410	51,272	1.7
Management of companies and enterprises .....	61,765	62,331	0.9
Administrative and waste services .....	20,244	21,749	7.4
Educational services .....	33,750	34,705	2.8
Health care and social assistance .....	29,565	30,762	4.0
Arts, entertainment, and recreation .....	25,536	25,435	-0.4
Accommodation and food services .....	11,447	11,778	2.9
Other services, except public administration .....	21,459	22,029	2.7
Government .....	30,195	31,282	3.6

See footnotes at end of table.

**Table 4. State<sup>1</sup> and NAICS industry average annual pay for 2000 and 2001 and percent change in pay for all covered workers<sup>2</sup> — Continued**

State	Average annual pay <sup>3</sup>		Percent change, 2000-01
	2000	2001 <sup>4</sup>	
Montana			
Private			
Total <sup>6</sup> .....	\$23,181	\$24,126	4.1
Agriculture, forestry, fishing and hunting .....	22,683	22,137	-2.4
Mining .....	49,951	52,704	5.5
Construction .....	29,240	30,504	4.3
Manufacturing .....	31,744	32,925	3.7
Wholesale trade .....	31,424	32,279	2.7
Retail trade .....	17,786	18,450	3.7
Transportation and warehousing .....	26,792	27,489	2.6
Utilities .....	51,032	53,080	4.0
Information .....	29,388	31,140	6.0
Finance and insurance .....	34,040	35,144	3.2
Real estate and rental and leasing .....	17,616	18,282	3.8
Professional and technical services .....	32,962	34,169	3.7
Management of companies and enterprises .....	34,298	35,545	3.6
Administrative and waste services .....	16,174	17,189	6.3
Educational services .....	19,041	18,439	-3.2
Health care and social assistance .....	26,028	26,847	3.1
Arts, entertainment, and recreation .....	12,253	12,610	2.9
Accommodation and food services .....	9,919	10,182	2.7
Other services, except public administration .....	17,303	17,611	1.8
Government .....	28,879	29,438	1.9
Nebraska			
Private			
Total <sup>6</sup> .....	27,472	28,032	2.0
Agriculture, forestry, fishing and hunting .....	21,409	21,618	1.0
Mining .....	33,572	34,849	3.8
Construction .....	31,933	32,215	0.9
Manufacturing .....	32,249	32,483	0.7
Wholesale trade .....	35,706	36,499	2.2
Retail trade .....	17,667	18,403	4.2
Transportation and warehousing .....	33,944	34,133	0.6
Utilities .....	55,678	59,281	6.5
Information .....	42,369	41,704	-1.6
Finance and insurance .....	38,298	39,577	3.3
Real estate and rental and leasing .....	22,879	23,572	3.0
Professional and technical services .....	42,151	42,502	0.8
Management of companies and enterprises .....	50,103	51,025	1.8
Administrative and waste services .....	19,040	20,429	7.3
Educational services .....	25,690	27,748	8.0
Health care and social assistance .....	28,840	29,775	3.2
Arts, entertainment, and recreation .....	12,066	13,003	7.8
Accommodation and food services .....	9,795	10,088	3.0
Other services, except public administration .....	18,940	19,692	4.0
Government .....	28,813	30,075	4.4
Nevada			
Private			
Total <sup>6</sup> .....	31,388	32,198	2.6
Agriculture, forestry, fishing and hunting .....	21,401	22,238	3.9
Mining .....	56,365	58,887	4.5
Construction .....	39,451	39,761	0.8
Manufacturing .....	37,207	39,477	6.1
Wholesale trade .....	44,017	46,017	4.5
Retail trade .....	24,565	25,200	2.6
Transportation and warehousing .....	28,070	27,984	-0.3
Utilities .....	63,993	68,127	6.5
Information .....	43,977	45,134	2.6
Finance and insurance .....	45,140	45,853	1.6
Real estate and rental and leasing .....	28,013	29,636	5.8
Professional and technical services .....	51,479	52,757	2.5
Management of companies and enterprises .....	82,130	88,542	7.8
Administrative and waste services .....	23,268	23,544	1.2
Educational services .....	26,580	28,203	6.1
Health care and social assistance .....	36,919	38,086	3.2
Arts, entertainment, and recreation .....	23,165	23,103	-0.3
Accommodation and food services .....	23,990	24,029	0.2
Other services, except public administration .....	24,782	24,758	-0.1
Government .....	39,177	40,054	2.2

See footnotes at end of table.

**Table 4. State<sup>1</sup> and NAICS industry average annual pay for 2000 and 2001 and percent change in pay for all covered workers<sup>2</sup> — Continued**

State	Average annual pay <sup>3</sup>		Percent change, 2000-01
	2000	2001 <sup>4</sup>	
<b>New Hampshire</b>			
Private			
Total <sup>6</sup> .....	\$35,248	\$35,954	2.0
Agriculture, forestry, fishing and hunting .....	24,279	23,497	-3.2
Mining .....	40,638	44,037	8.4
Construction .....	38,589	42,109	9.1
Manufacturing .....	45,066	44,709	-0.8
Wholesale trade .....	59,085	59,887	1.4
Retail trade .....	22,059	23,162	5.0
Transportation and warehousing .....	29,017	30,324	4.5
Utilities .....	64,314	64,394	0.1
Information .....	56,335	56,007	-0.6
Finance and insurance .....	53,047	53,505	0.9
Real estate and rental and leasing .....	29,615	30,166	1.9
Professional and technical services .....	56,800	57,058	0.5
Management of companies and enterprises .....	79,327	68,916	-13.1
Administrative and waste services .....	25,583	28,093	9.8
Educational services .....	29,512	31,042	5.2
Health care and social assistance .....	31,356	33,252	6.0
Arts, entertainment, and recreation .....	15,781	16,608	5.2
Accommodation and food services .....	13,321	14,052	5.5
Other services, except public administration .....	24,203	24,978	3.2
Government .....	31,205	32,294	3.5
<b>New Jersey</b>			
Private			
Total <sup>6</sup> .....	43,646	44,150	1.2
Agriculture, forestry, fishing and hunting .....	22,449	22,761	1.4
Mining .....	51,169	52,917	3.4
Construction .....	46,732	49,874	6.7
Manufacturing .....	50,828	51,612	1.5
Wholesale trade .....	59,381	59,975	1.0
Retail trade .....	25,693	26,841	4.5
Transportation and warehousing .....	36,698	37,894	3.3
Utilities .....	74,012	72,460	-2.1
Information .....	66,557	65,545	-1.5
Finance and insurance .....	73,960	75,314	1.8
Real estate and rental and leasing .....	38,637	40,086	3.8
Professional and technical services .....	66,965	67,785	1.2
Management of companies and enterprises .....	116,699	85,099	-27.1
Administrative and waste services .....	27,360	29,150	6.5
Educational services .....	36,545	37,958	3.9
Health care and social assistance .....	35,191	37,214	5.7
Arts, entertainment, and recreation .....	22,511	26,220	16.5
Accommodation and food services .....	17,416	17,863	2.6
Other services, except public administration .....	26,466	27,902	5.4
Government .....	43,854	45,067	2.8
<b>New Mexico</b>			
Private			
Total <sup>6</sup> .....	26,519	27,678	4.4
Agriculture, forestry, fishing and hunting .....	14,882	15,477	4.0
Mining .....	44,239	46,835	5.9
Construction .....	28,344	30,152	6.4
Manufacturing .....	38,330	38,214	-0.3
Wholesale trade .....	35,132	36,310	3.4
Retail trade .....	19,849	20,732	4.4
Transportation and warehousing .....	29,470	30,651	4.0
Utilities .....	50,391	54,328	7.8
Information .....	33,283	32,877	-1.2
Finance and insurance .....	34,369	35,603	3.6
Real estate and rental and leasing .....	23,158	24,678	6.6
Professional and technical services .....	47,577	49,131	3.3
Management of companies and enterprises .....	39,713	41,313	4.0
Administrative and waste services .....	20,667	22,451	8.6
Educational services .....	22,339	23,602	5.7
Health care and social assistance .....	27,364	28,498	4.1
Arts, entertainment, and recreation .....	17,892	16,248	-9.2
Accommodation and food services .....	10,868	11,143	2.5
Other services, except public administration .....	19,497	20,541	5.4
Government .....	31,105	32,119	3.3

See footnotes at end of table.

**Table 4. State<sup>1</sup> and NAICS industry average annual pay for 2000 and 2001 and percent change in pay for all covered workers<sup>2</sup> — Continued**

State	Average annual pay <sup>3</sup>		Percent change, 2000-01
	2000	2001 <sup>4</sup>	
New York			
Private			
Total <sup>6</sup> .....	\$46,225	\$47,654	3.1
Agriculture, forestry, fishing and hunting .....	20,751	21,930	5.7
Mining .....	43,289	43,869	1.3
Construction .....	44,176	46,599	5.5
Manufacturing .....	42,909	44,510	3.7
Wholesale trade .....	54,197	55,487	2.4
Retail trade .....	23,389	24,253	3.7
Transportation and warehousing .....	34,376	36,045	4.9
Utilities .....	71,136	70,341	-1.1
Information .....	65,442	67,258	2.8
Finance and insurance .....	131,441	136,940	4.2
Real estate and rental and leasing .....	39,881	41,495	4.0
Professional and technical services .....	67,081	68,667	2.4
Management of companies and enterprises .....	107,628	105,413	-2.1
Administrative and waste services .....	29,315	30,282	3.3
Educational services .....	33,424	34,494	3.2
Health care and social assistance .....	32,137	33,433	4.0
Arts, entertainment, and recreation .....	35,618	36,423	2.3
Accommodation and food services .....	17,103	17,177	0.4
Other services, except public administration .....	24,018	25,121	4.6
Government .....	40,973	( <sup>7</sup> )	( <sup>7</sup> )
North Carolina			
Private			
Total <sup>6</sup> .....	30,998	31,913	3.0
Agriculture, forestry, fishing and hunting .....	21,487	22,312	3.8
Mining .....	45,025	45,479	1.0
Construction .....	30,695	31,983	4.2
Manufacturing .....	36,854	37,097	0.7
Wholesale trade .....	42,224	43,298	2.5
Retail trade .....	20,515	21,200	3.3
Transportation and warehousing .....	34,267	34,832	1.6
Utilities .....	57,160	58,323	2.0
Information .....	44,785	46,510	3.9
Finance and insurance .....	49,127	51,055	3.9
Real estate and rental and leasing .....	27,333	28,054	2.6
Professional and technical services .....	47,638	48,414	1.6
Management of companies and enterprises .....	58,148	62,833	8.1
Administrative and waste services .....	19,424	21,079	8.5
Educational services .....	31,330	32,142	2.6
Health care and social assistance .....	30,281	31,679	4.6
Arts, entertainment, and recreation .....	21,826	23,113	5.9
Accommodation and food services .....	11,828	11,945	1.0
Other services, except public administration .....	21,234	22,000	3.6
Government .....	31,444	32,617	3.7
North Dakota			
Private			
Total <sup>6</sup> .....	24,319	25,324	4.1
Agriculture, forestry, fishing and hunting .....	22,456	23,480	4.6
Mining .....	45,015	48,527	7.8
Construction .....	31,342	31,899	1.8
Manufacturing .....	30,614	31,616	3.3
Wholesale trade .....	32,468	33,240	2.4
Retail trade .....	17,410	18,199	4.5
Transportation and warehousing .....	27,856	28,773	3.3
Utilities .....	52,665	56,651	7.6
Information .....	31,303	32,227	3.0
Finance and insurance .....	33,133	34,486	4.1
Real estate and rental and leasing .....	17,626	17,853	1.3
Professional and technical services .....	30,303	33,115	9.3
Management of companies and enterprises .....	39,877	40,172	0.7
Administrative and waste services .....	16,037	16,378	2.1
Educational services .....	22,600	21,083	-6.7
Health care and social assistance .....	25,886	27,218	5.1
Arts, entertainment, and recreation .....	13,979	10,860	-22.3
Accommodation and food services .....	8,791	9,038	2.8
Other services, except public administration .....	16,331	17,229	5.5
Government .....	26,362	27,283	3.5

See footnotes at end of table.

**Table 4. State<sup>1</sup> and NAICS industry average annual pay for 2000 and 2001 and percent change in pay for all covered workers<sup>2</sup> — Continued**

State	Average annual pay <sup>3</sup>		Percent change, 2000-01
	2000	2001 <sup>4</sup>	
<b>Ohio</b>			
Private			
Total <sup>6</sup> .....	\$32,191	\$32,883	2.1
Agriculture, forestry, fishing and hunting .....	19,722	20,699	5.0
Mining .....	44,325	47,309	6.7
Construction .....	36,492	37,390	2.5
Manufacturing .....	42,510	42,738	0.5
Wholesale trade .....	44,706	45,125	0.9
Retail trade .....	20,409	21,175	3.8
Transportation and warehousing .....	33,506	33,876	1.1
Utilities .....	54,588	58,278	6.8
Information .....	44,953	46,505	3.5
Finance and insurance .....	43,079	45,793	6.3
Real estate and rental and leasing .....	27,043	27,592	2.0
Professional and technical services .....	46,845	47,931	2.3
Management of companies and enterprises .....	63,678	63,608	-0.1
Administrative and waste services .....	20,593	21,393	3.9
Educational services .....	25,497	26,636	4.5
Health care and social assistance .....	30,438	31,579	3.7
Arts, entertainment, and recreation .....	20,257	22,178	9.5
Accommodation and food services .....	10,892	11,138	2.3
Other services, except public administration .....	20,455	21,173	3.5
Government .....	34,555	35,769	3.5
<b>Oklahoma</b>			
Private			
Total <sup>6</sup> .....	26,616	27,619	3.8
Agriculture, forestry, fishing and hunting .....	20,517	20,901	1.9
Mining .....	51,871	53,719	3.6
Construction .....	28,012	30,242	8.0
Manufacturing .....	34,854	34,323	-1.5
Wholesale trade .....	35,471	38,046	7.3
Retail trade .....	18,265	19,007	4.1
Transportation and warehousing .....	33,392	35,740	7.0
Utilities .....	47,712	51,670	8.3
Information .....	36,057	37,043	2.7
Finance and insurance .....	33,268	34,435	3.5
Real estate and rental and leasing .....	25,110	26,317	4.8
Professional and technical services .....	38,630	39,891	3.3
Management of companies and enterprises .....	42,177	46,446	10.1
Administrative and waste services .....	18,772	19,482	3.8
Educational services .....	22,420	23,201	3.5
Health care and social assistance .....	26,247	27,400	4.4
Arts, entertainment, and recreation .....	14,292	14,173	-0.8
Accommodation and food services .....	10,125	10,421	2.9
Other services, except public administration .....	19,178	19,710	2.8
Government .....	28,552	29,623	3.8
<b>Oregon</b>			
Private			
Total <sup>6</sup> .....	32,490	32,750	0.8
Agriculture, forestry, fishing and hunting .....	21,703	22,005	1.4
Mining .....	37,789	36,511	-3.4
Construction .....	38,770	39,536	2.0
Manufacturing .....	45,743	44,058	-3.7
Wholesale trade .....	47,145	47,076	-0.1
Retail trade .....	21,863	22,384	2.4
Transportation and warehousing .....	32,407	32,728	1.0
Utilities .....	58,811	60,168	2.3
Information .....	48,986	47,515	-3.0
Finance and insurance .....	43,795	46,263	5.6
Real estate and rental and leasing .....	24,548	25,481	3.8
Professional and technical services .....	45,726	47,219	3.3
Management of companies and enterprises .....	60,780	59,177	-2.6
Administrative and waste services .....	21,410	22,373	4.5
Educational services .....	23,330	24,223	3.8
Health care and social assistance .....	30,725	32,190	4.8
Arts, entertainment, and recreation .....	20,697	21,125	2.1
Accommodation and food services .....	12,277	12,501	1.8
Other services, except public administration .....	21,071	22,274	5.7
Government .....	34,369	35,603	3.6

See footnotes at end of table.

**Table 4. State<sup>1</sup> and NAICS industry average annual pay for 2000 and 2001 and percent change in pay for all covered workers<sup>2</sup> — Continued**

State	Average annual pay <sup>3</sup>		Percent change, 2000-01
	2000	2001 <sup>4</sup>	
<b>Pennsylvania</b>			
Private			
Total <sup>6</sup> .....	\$33,629	\$34,542	2.7
Agriculture, forestry, fishing and hunting .....	21,386	21,734	1.6
Mining .....	46,730	46,960	0.5
Construction .....	37,953	40,214	6.0
Manufacturing .....	40,962	41,439	1.2
Wholesale trade .....	45,635	46,702	2.3
Retail trade .....	20,277	21,153	4.3
Transportation and warehousing .....	33,563	33,921	1.1
Utilities .....	64,443	67,997	5.5
Information .....	48,966	49,076	0.2
Finance and insurance .....	50,705	52,786	4.1
Real estate and rental and leasing .....	30,757	32,008	4.1
Professional and technical services .....	55,616	56,408	1.4
Management of companies and enterprises .....	63,363	64,471	1.7
Administrative and waste services .....	23,904	24,817	3.8
Educational services .....	33,342	34,976	4.9
Health care and social assistance .....	30,705	32,050	4.4
Arts, entertainment, and recreation .....	21,862	21,719	-0.7
Accommodation and food services .....	11,918	12,311	3.3
Other services, except public administration .....	20,483	21,324	4.1
Government .....	36,705	37,969	3.4
<b>Rhode Island</b>			
Private			
Total <sup>6</sup> .....	31,206	32,186	3.1
Agriculture, forestry, fishing and hunting .....	20,656	( <sup>7</sup> )	( <sup>7</sup> )
Mining .....	35,661	( <sup>7</sup> )	( <sup>7</sup> )
Construction .....	39,246	40,445	3.1
Manufacturing .....	36,442	36,757	0.9
Wholesale trade .....	45,738	47,089	3.0
Retail trade .....	21,225	21,985	3.6
Transportation and warehousing .....	29,314	( <sup>7</sup> )	( <sup>7</sup> )
Utilities .....	70,028	( <sup>7</sup> )	( <sup>7</sup> )
Information .....	48,545	51,275	5.6
Finance and insurance .....	46,094	48,608	5.5
Real estate and rental and leasing .....	29,588	30,025	1.5
Professional and technical services .....	47,819	48,709	1.9
Management of companies and enterprises .....	71,129	62,435	-12.2
Administrative and waste services .....	20,232	22,034	8.9
Educational services .....	32,655	34,526	5.7
Health care and social assistance .....	29,676	30,903	4.1
Arts, entertainment, and recreation .....	18,508	18,617	0.6
Accommodation and food services .....	12,791	13,414	4.9
Other services, except public administration .....	20,753	21,713	4.6
Government .....	41,693	42,576	2.1
<b>South Carolina</b>			
Private			
Total <sup>6</sup> .....	27,776	28,793	3.7
Agriculture, forestry, fishing and hunting .....	21,764	22,918	5.3
Mining .....	39,007	38,810	-0.5
Construction .....	29,808	31,052	4.2
Manufacturing .....	34,977	35,878	2.6
Wholesale trade .....	39,528	40,001	1.2
Retail trade .....	20,077	20,755	3.4
Transportation and warehousing .....	29,707	30,624	3.1
Utilities .....	52,854	55,090	4.2
Information .....	38,027	38,877	2.2
Finance and insurance .....	37,730	39,196	3.9
Real estate and rental and leasing .....	26,240	27,348	4.2
Professional and technical services .....	42,702	45,303	6.1
Management of companies and enterprises .....	45,029	44,799	-0.5
Administrative and waste services .....	21,131	22,816	8.0
Educational services .....	23,247	24,054	3.5
Health care and social assistance .....	30,468	31,832	4.5
Arts, entertainment, and recreation .....	15,377	15,428	0.3
Accommodation and food services .....	11,646	11,943	2.6
Other services, except public administration .....	20,511	20,935	2.1
Government .....	30,118	31,447	4.4

See footnotes at end of table.



**Table 4. State<sup>1</sup> and NAICS industry average annual pay for 2000 and 2001 and percent change in pay for all covered workers<sup>2</sup> — Continued**

State	Average annual pay <sup>3</sup>		Percent change, 2000-01
	2000	2001 <sup>4</sup>	
South Dakota			
Private			
Total <sup>6</sup> .....	\$24,291	\$25,138	3.5
Agriculture, forestry, fishing and hunting .....	20,155	20,256	0.5
Mining .....	39,885	40,462	1.4
Construction .....	28,221	29,009	2.8
Manufacturing .....	28,546	29,836	4.5
Wholesale trade .....	32,033	34,526	7.8
Retail trade .....	17,611	18,117	2.9
Transportation and warehousing .....	27,034	27,412	1.4
Utilities .....	43,195	45,093	4.4
Information .....	30,837	31,768	3.0
Finance and insurance .....	31,742	33,071	4.2
Real estate and rental and leasing .....	19,108	19,321	1.1
Professional and technical services .....	31,817	33,057	3.9
Management of companies and enterprises .....	53,934	60,564	12.3
Administrative and waste services .....	20,702	20,190	-2.5
Educational services .....	22,618	22,433	-0.8
Health care and social assistance .....	26,760	28,232	5.5
Arts, entertainment, and recreation .....	13,311	12,661	-4.9
Accommodation and food services .....	9,172	9,443	3.0
Other services, except public administration .....	19,478	19,251	-1.2
Government .....	27,459	27,630	0.6
Tennessee			
Private			
Total <sup>6</sup> .....	30,530	31,438	3.0
Agriculture, forestry, fishing and hunting .....	21,752	21,357	-1.8
Mining .....	43,145	45,243	4.9
Construction .....	33,408	34,191	2.3
Manufacturing .....	36,142	36,933	2.2
Wholesale trade .....	41,418	41,920	1.2
Retail trade .....	21,365	21,956	2.8
Transportation and warehousing .....	35,899	36,484	1.6
Utilities .....	43,557	45,258	3.9
Information .....	39,080	39,908	2.1
Finance and insurance .....	44,902	47,324	5.4
Real estate and rental and leasing .....	27,886	29,058	4.2
Professional and technical services .....	43,839	45,843	4.6
Management of companies and enterprises .....	41,817	44,935	7.5
Administrative and waste services .....	21,093	22,846	8.3
Educational services .....	32,318	33,333	3.1
Health care and social assistance .....	32,463	33,705	3.8
Arts, entertainment, and recreation .....	24,948	25,548	2.4
Accommodation and food services .....	12,811	13,014	1.6
Other services, except public administration .....	21,495	22,408	4.2
Government .....	30,718	31,803	3.5
Texas			
Private			
Total <sup>6</sup> .....	35,683	36,789	3.1
Agriculture, forestry, fishing and hunting .....	18,999	19,722	3.8
Mining .....	78,302	78,144	-0.2
Construction .....	34,931	36,139	3.5
Manufacturing .....	44,995	46,233	2.8
Wholesale trade .....	54,090	53,185	-1.7
Retail trade .....	22,713	23,521	3.6
Transportation and warehousing .....	41,932	43,365	3.4
Utilities .....	75,844	76,314	0.6
Information .....	54,251	54,444	0.4
Finance and insurance .....	49,287	52,794	7.1
Real estate and rental and leasing .....	32,966	34,001	3.1
Professional and technical services .....	58,362	60,475	3.6
Management of companies and enterprises .....	63,982	63,227	-1.2
Administrative and waste services .....	23,776	25,352	6.6
Educational services .....	30,390	31,952	5.1
Health care and social assistance .....	29,768	31,341	5.3
Arts, entertainment, and recreation .....	21,715	22,572	3.9
Accommodation and food services .....	13,330	13,644	2.4
Other services, except public administration .....	21,973	22,783	3.7
Government .....	31,224	32,304	3.5

See footnotes at end of table.

**Table 4. State<sup>1</sup> and NAICS industry average annual pay for 2000 and 2001 and percent change in pay for all covered workers<sup>2</sup> — Continued**

State	Average annual pay <sup>3</sup>		Percent change, 2000-01
	2000	2001 <sup>4</sup>	
Utah			
Private			
Total <sup>6</sup> .....	\$28,925	\$29,699	2.7
Agriculture, forestry, fishing and hunting .....	19,801	21,111	6.6
Mining .....	48,230	51,167	6.1
Construction .....	29,771	30,414	2.2
Manufacturing .....	35,030	36,298	3.6
Wholesale trade .....	41,587	41,808	0.5
Retail trade .....	19,734	20,215	2.4
Transportation and warehousing .....	33,262	34,010	2.2
Utilities .....	58,919	73,723	25.1
Information .....	42,207	41,089	-2.6
Finance and insurance .....	38,414	39,848	3.7
Real estate and rental and leasing .....	24,133	25,253	4.6
Professional and technical services .....	45,610	46,598	2.2
Management of companies and enterprises .....	( <sup>7</sup> )	48,895	( <sup>7</sup> )
Administrative and waste services .....	18,777	19,926	6.1
Educational services .....	30,406	32,082	5.5
Health care and social assistance .....	28,309	28,781	1.7
Arts, entertainment, and recreation .....	( <sup>7</sup> )	17,934	( <sup>7</sup> )
Accommodation and food services .....	10,824	11,140	2.9
Other services, except public administration .....	21,023	21,027	0.0
Government .....	30,746	31,900	3.8
Vermont			
Private			
Total <sup>6</sup> .....	28,691	29,920	4.3
Agriculture, forestry, fishing and hunting .....	19,542	20,581	5.3
Mining .....	33,940	33,784	-0.5
Construction .....	31,284	32,754	4.7
Manufacturing .....	39,707	41,366	4.2
Wholesale trade .....	( <sup>7</sup> )	41,421	( <sup>7</sup> )
Retail trade .....	19,746	20,825	5.5
Transportation and warehousing .....	30,604	30,273	-1.1
Utilities .....	61,753	65,587	6.2
Information .....	33,388	35,526	6.4
Finance and insurance .....	42,422	44,794	5.6
Real estate and rental and leasing .....	23,339	25,465	9.1
Professional and technical services .....	( <sup>7</sup> )	42,153	( <sup>7</sup> )
Management of companies and enterprises .....	40,963	42,530	3.8
Administrative and waste services .....	( <sup>7</sup> )	22,633	( <sup>7</sup> )
Educational services .....	28,177	29,257	3.8
Health care and social assistance .....	27,917	28,812	3.2
Arts, entertainment, and recreation .....	16,937	16,037	-5.3
Accommodation and food services .....	13,439	13,935	3.7
Other services, except public administration .....	20,535	21,412	4.3
Government .....	30,087	31,901	6.0
Virginia			
Private			
Total <sup>6</sup> .....	34,967	36,503	4.4
Agriculture, forestry, fishing and hunting .....	20,170	21,011	4.2
Mining .....	43,925	44,784	2.0
Construction .....	33,124	34,897	5.4
Manufacturing .....	36,075	38,021	5.4
Wholesale trade .....	51,693	51,385	-0.6
Retail trade .....	20,519	21,310	3.9
Transportation and warehousing .....	33,822	34,983	3.4
Utilities .....	68,413	63,772	-6.8
Information .....	75,976	76,639	0.9
Finance and insurance .....	48,972	55,011	12.3
Real estate and rental and leasing .....	30,409	32,477	6.8
Professional and technical services .....	59,728	62,327	4.4
Management of companies and enterprises .....	63,682	64,723	1.6
Administrative and waste services .....	21,706	23,304	7.4
Educational services .....	28,512	29,423	3.2
Health care and social assistance .....	30,840	32,485	5.3
Arts, entertainment, and recreation .....	17,235	17,661	2.5
Accommodation and food services .....	12,549	12,855	2.4
Other services, except public administration .....	25,725	27,126	5.4
Government .....	36,128	37,700	4.4

See footnotes at end of table.

**Table 4. State<sup>1</sup> and NAICS industry average annual pay for 2000 and 2001 and percent change in pay for all covered workers<sup>2</sup> — Continued**

State	Average annual pay <sup>3</sup>		Percent change, 2000-01
	2000	2001 <sup>4</sup>	
Washington			
Private			
Total <sup>6</sup> .....	\$37,262	\$37,419	0.4
Agriculture, forestry, fishing and hunting .....	18,815	18,984	0.9
Mining .....	45,698	46,855	2.5
Construction .....	37,601	38,547	2.5
Manufacturing .....	46,804	47,558	1.6
Wholesale trade .....	45,596	46,876	2.8
Retail trade .....	24,675	24,771	0.4
Transportation and warehousing .....	37,314	38,127	2.2
Utilities .....	56,066	59,403	6.0
Information .....	129,256	111,085	-14.1
Finance and insurance .....	48,891	51,512	5.4
Real estate and rental and leasing .....	27,413	27,992	2.1
Professional and technical services .....	52,059	53,752	3.3
Management of companies and enterprises .....	62,982	63,298	0.5
Administrative and waste services .....	26,241	28,679	9.3
Educational services .....	26,048	27,237	4.6
Health care and social assistance .....	29,431	30,812	4.7
Arts, entertainment, and recreation .....	22,502	22,737	1.0
Accommodation and food services .....	12,990	13,527	4.1
Other services, except public administration .....	18,887	19,195	1.6
Government .....	36,305	37,736	3.9
West Virginia			
Private			
Total <sup>6</sup> .....	26,293	27,324	3.9
Agriculture, forestry, fishing and hunting .....	17,713	19,145	8.1
Mining .....	48,914	49,842	1.9
Construction .....	29,677	32,426	9.3
Manufacturing .....	38,174	39,091	2.4
Wholesale trade .....	35,024	36,508	4.2
Retail trade .....	16,969	17,731	4.5
Transportation and warehousing .....	32,945	32,829	-0.4
Utilities .....	54,194	59,328	9.5
Information .....	32,160	32,955	2.5
Finance and insurance .....	30,913	31,384	1.5
Real estate and rental and leasing .....	20,753	21,181	2.1
Professional and technical services .....	31,077	33,063	6.4
Management of companies and enterprises .....	47,748	45,947	-3.8
Administrative and waste services .....	16,359	17,146	4.8
Educational services .....	23,576	23,880	1.3
Health care and social assistance .....	27,052	28,051	3.7
Arts, entertainment, and recreation .....	14,114	14,999	6.3
Accommodation and food services .....	10,601	10,792	1.8
Other services, except public administration .....	17,611	18,415	4.6
Government .....	29,312	30,694	4.7
Wisconsin			
Private			
Total <sup>6</sup> .....	30,304	31,199	3.0
Agriculture, forestry, fishing and hunting .....	21,323	21,809	2.3
Mining .....	41,204	42,907	4.1
Construction .....	38,159	39,171	2.7
Manufacturing .....	38,604	39,219	1.6
Wholesale trade .....	40,979	41,776	1.9
Retail trade .....	19,638	19,963	1.7
Transportation and warehousing .....	30,371	31,417	3.4
Utilities .....	59,787	62,285	4.2
Information .....	37,055	38,049	2.7
Finance and insurance .....	40,779	42,245	3.6
Real estate and rental and leasing .....	24,417	25,297	3.6
Professional and technical services .....	44,519	46,214	3.8
Management of companies and enterprises .....	55,687	58,968	5.9
Administrative and waste services .....	18,182	19,933	9.6
Educational services .....	29,922	30,510	2.0
Health care and social assistance .....	29,875	31,629	5.9
Arts, entertainment, and recreation .....	18,969	20,146	6.2
Accommodation and food services .....	9,650	9,761	1.2
Other services, except public administration .....	18,567	19,195	3.4
Government .....	33,287	33,770	1.5

See footnotes at end of table.

**Table 4. State<sup>1</sup> and NAICS industry average annual pay for 2000 and 2001 and percent change in pay for all covered workers<sup>2</sup> — Continued**

State	Average annual pay <sup>3</sup>		Percent change, 2000-01
	2000	2001 <sup>4</sup>	
Wyoming			
Private			
Total <sup>6</sup> .....	\$26,500	\$27,607	4.2
Agriculture, forestry, fishing and hunting .....	22,082	22,250	0.8
Mining .....	56,409	53,316	-5.5
Construction .....	29,817	31,963	7.2
Manufacturing .....	34,727	36,671	5.6
Wholesale trade .....	34,869	36,752	5.4
Retail trade .....	17,876	18,693	4.6
Transportation and warehousing .....	30,405	( <sup>7</sup> )	( <sup>7</sup> )
Utilities .....	56,596	( <sup>7</sup> )	( <sup>7</sup> )
Information .....	31,051	( <sup>7</sup> )	( <sup>7</sup> )
Finance and insurance .....	34,067	36,938	8.4
Real estate and rental and leasing .....	20,969	22,467	7.1
Professional and technical services .....	31,347	33,597	7.2
Management of companies and enterprises .....	45,522	41,725	-8.3
Administrative and waste services .....	18,326	19,969	9.0
Educational services .....	18,752	19,936	6.3
Health care and social assistance .....	26,343	27,185	3.2
Arts, entertainment, and recreation .....	13,792	14,379	4.3
Accommodation and food services .....	10,447	10,842	3.8
Other services, except public administration .....	19,387	( <sup>7</sup> )	( <sup>7</sup> )
Government .....	27,912	29,363	5.2
Puerto Rico			
Private			
Total <sup>6</sup> .....	18,521	19,156	3.4
Agriculture, forestry, fishing and hunting .....	7,497	7,765	3.6
Mining .....	17,533	18,436	5.2
Construction .....	15,762	16,191	2.7
Manufacturing .....	23,823	25,277	6.1
Wholesale trade .....	27,167	28,244	4.0
Retail trade .....	13,982	14,493	3.7
Transportation and warehousing .....	22,082	22,630	2.5
Utilities .....	32,489	36,022	10.9
Information .....	30,010	30,645	2.1
Finance and insurance .....	28,460	29,194	2.6
Real estate and rental and leasing .....	16,418	17,327	5.5
Professional and technical services .....	26,989	28,719	6.4
Management of companies and enterprises .....	31,709	32,997	4.1
Administrative and waste services .....	12,704	12,876	1.4
Educational services .....	17,837	18,284	2.5
Health care and social assistance .....	15,953	16,558	3.8
Arts, entertainment, and recreation .....	13,494	13,333	-1.2
Accommodation and food services .....	11,577	11,818	2.1
Other services, except public administration .....	13,655	13,912	1.9
Government .....	19,582	21,189	8.2

See footnotes at end of table.

**Table 4. State<sup>1</sup> and NAICS industry average annual pay for 2000 and 2001 and percent change in pay for all covered workers<sup>2</sup> — Continued**

State	Average annual pay <sup>3</sup>		Percent change, 2000-01
	2000	2001 <sup>4</sup>	
Virgin Islands			
Private			
Total <sup>6</sup> .....	\$25,401	\$27,558	8.5
Agriculture, forestry, fishing and hunting .....	15,230	( <sup>7</sup> )	( <sup>7</sup> )
Mining .....	( <sup>7</sup> )	( <sup>7</sup> )	( <sup>7</sup> )
Construction .....	30,792	39,870	29.5
Manufacturing .....	44,490	48,478	9.0
Wholesale trade .....	28,075	( <sup>7</sup> )	( <sup>7</sup> )
Retail trade .....	19,300	19,318	0.1
Transportation and warehousing .....	23,677	25,414	7.3
Utilities .....	( <sup>7</sup> )	( <sup>7</sup> )	( <sup>7</sup> )
Information .....	37,836	36,594	-3.3
Finance and insurance .....	33,330	36,493	9.5
Real estate and rental and leasing .....	25,530	25,960	1.7
Professional and technical services .....	38,942	39,950	2.6
Management of companies and enterprises .....	33,839	30,360	-10.3
Administrative and waste services .....	18,248	19,079	4.6
Educational services .....	19,870	21,169	6.5
Health care and social assistance .....	17,645	19,421	10.1
Arts, entertainment, and recreation .....	18,623	19,567	5.1
Accommodation and food services .....	16,500	18,043	9.4
Other services, except public administration .....	36,780	35,418	-3.7
Government .....	32,942	33,458	1.6

<sup>1</sup> Includes the District of Columbia, Puerto Rico, and the Virgin Islands.

<sup>2</sup> Includes workers covered by Unemployment Insurance (UI) and Unemployment Compensation for Federal Employees (UCFE) programs.

<sup>3</sup> Data are preliminary.

<sup>4</sup> Data reflect the movement of Indian Tribal Council establishments from private industry to the public sector.

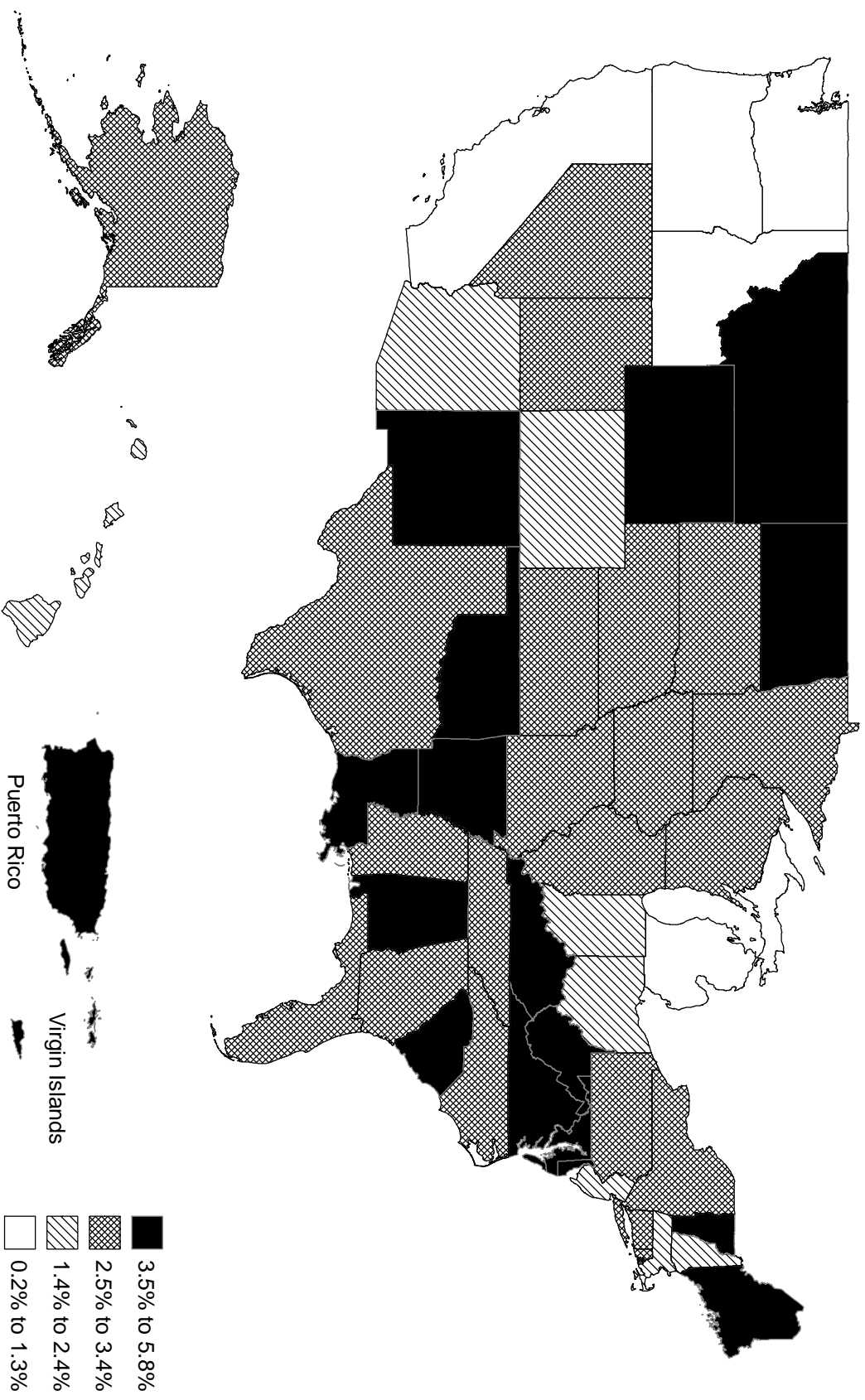
Effective with 2001, federally recognized Tribal Councils and their establishments were moved into local government. See Technical Note.

<sup>5</sup> Totals for the United States do not include data for Puerto Rico and the Virgin Islands.

<sup>6</sup> Includes other industries, not shown separately.

<sup>7</sup> Data do not meet BLS or State agency disclosure standards.

# Percent change in average annual pay from 2000 to 2001 by state (U.S. average = 2.5 percent)



Source: Bureau of Labor Statistics  
September 2002