

Employment charts and map from Employment and Wages, Annual Averages, 2003

Quarterly Census of Employment and Wages

Bureau of Labor Statistics

April 2005

Chart 1. Distribution of private sector employment by supersector, 2003

In millions of workers

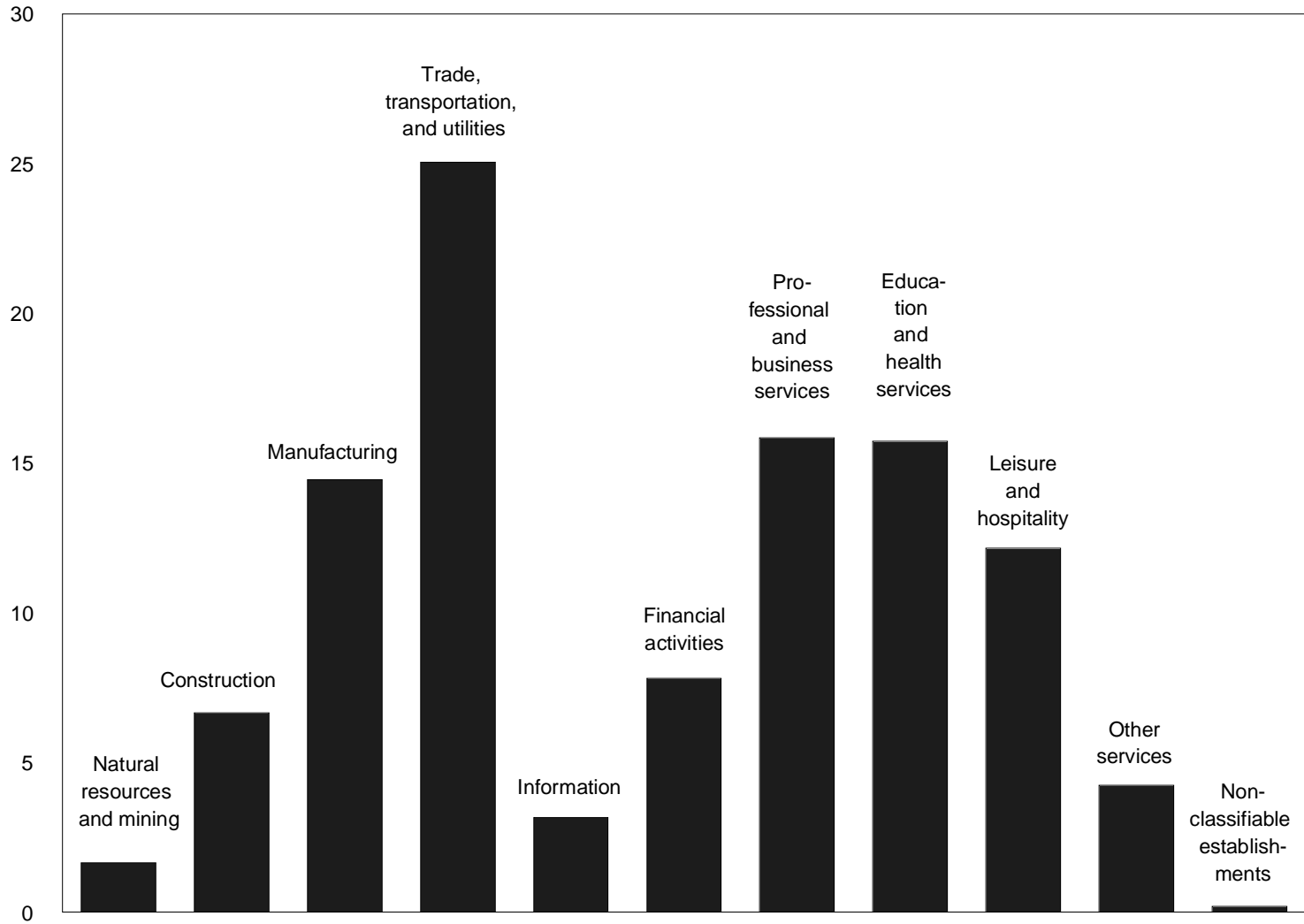


Chart 2. Percent distribution of private sector employment and establishments by size class, first quarter and March 2003

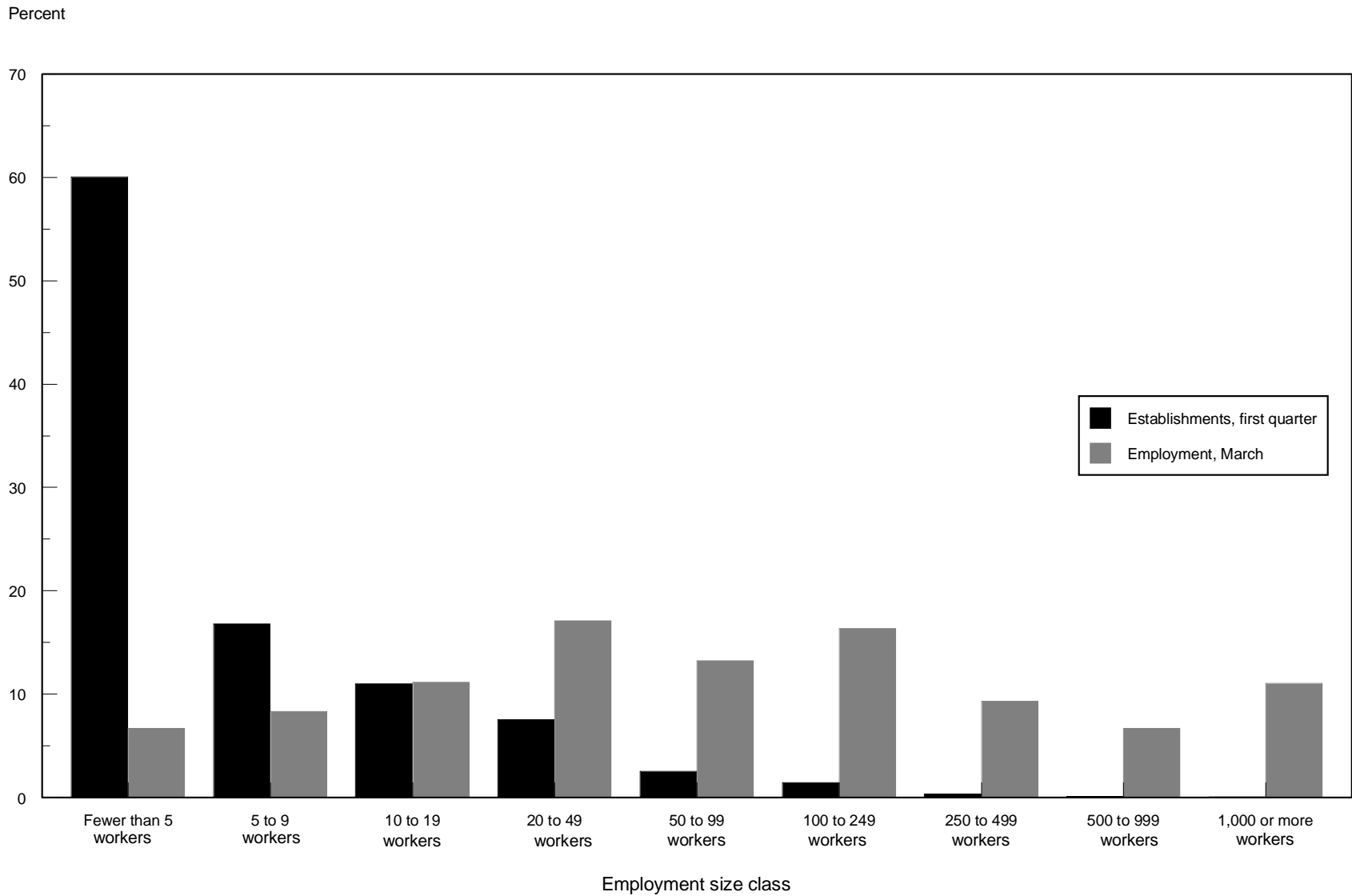


Chart 3. Percent change in annual average private sector employment and wages by supersector, 2002–2003

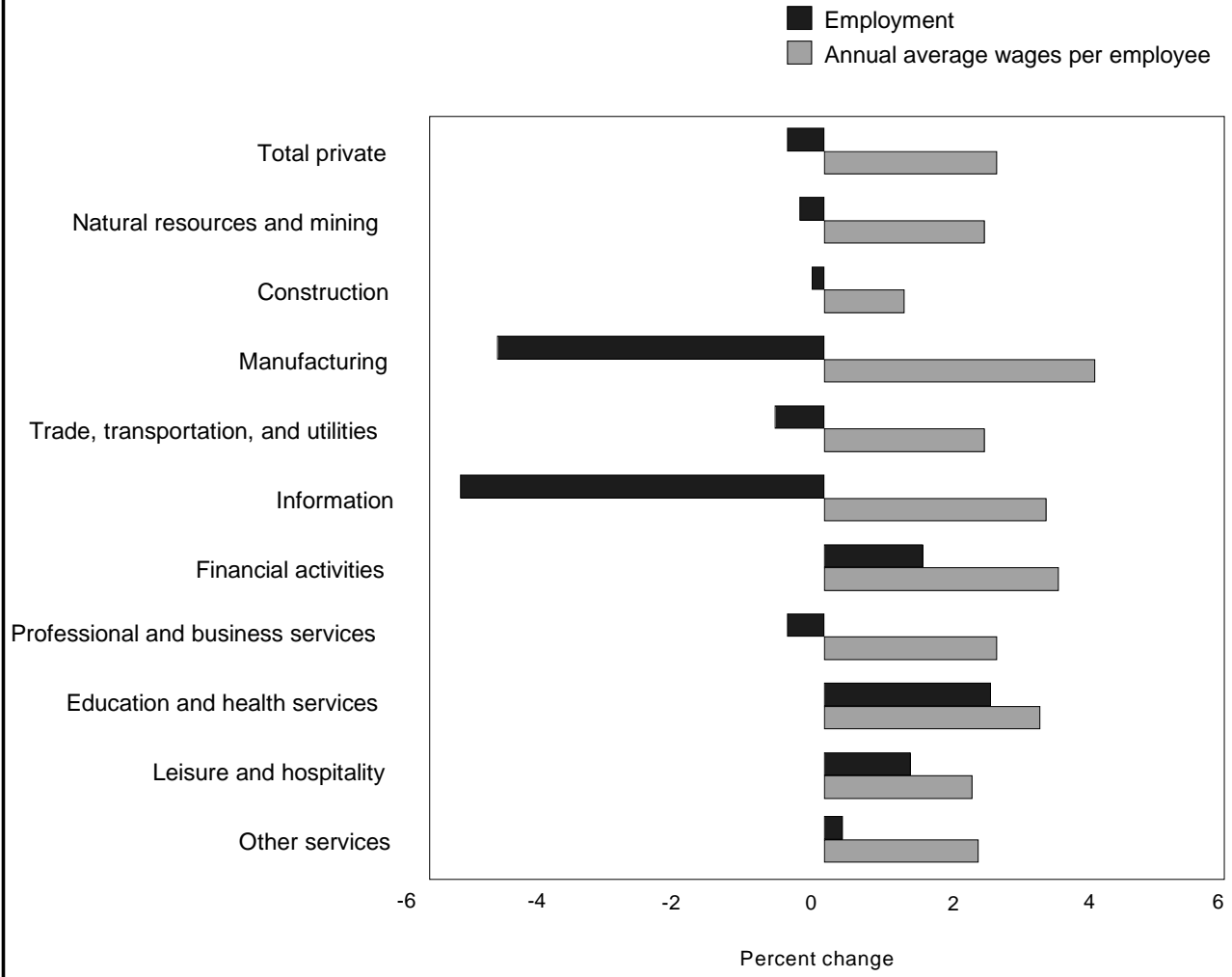
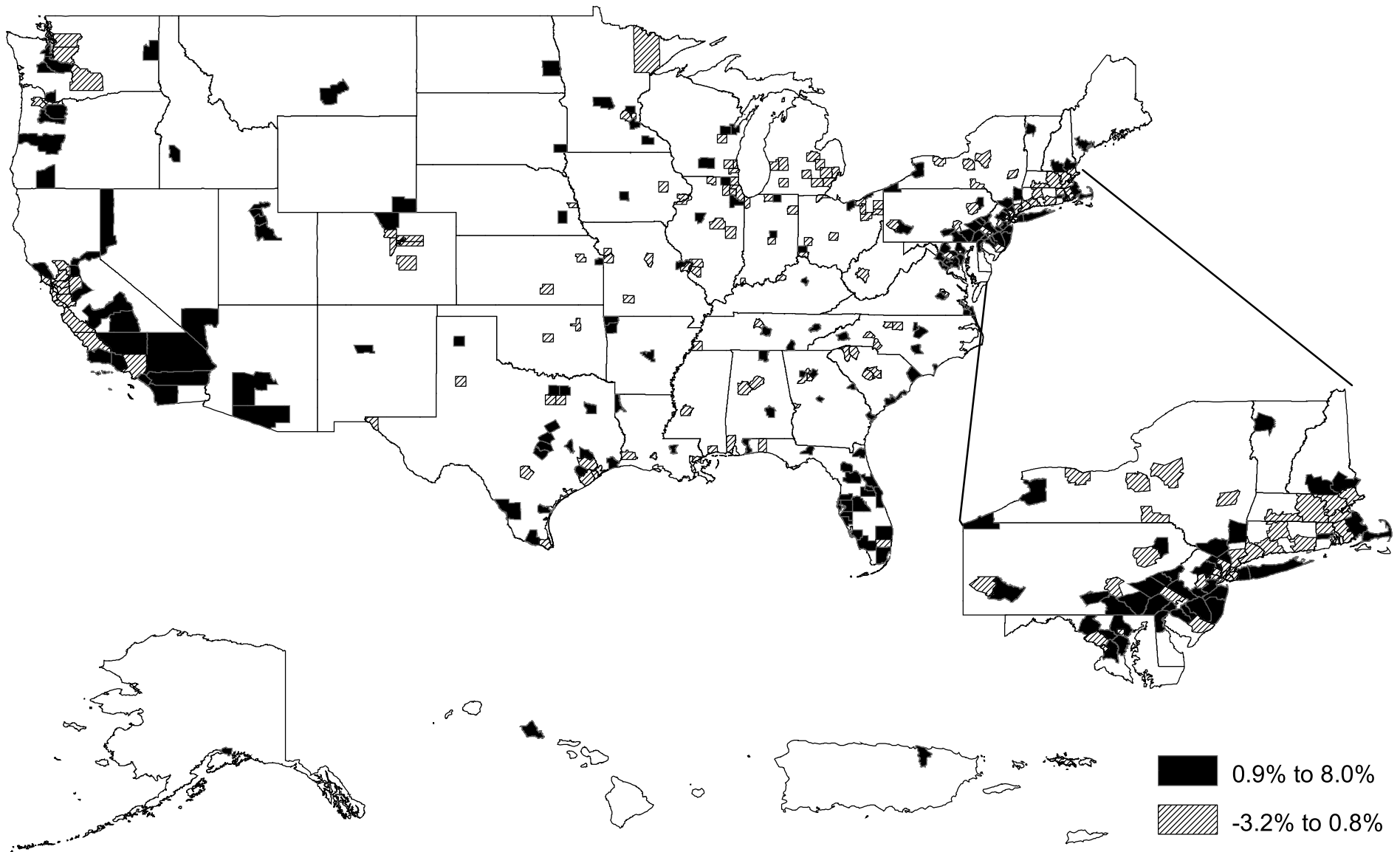
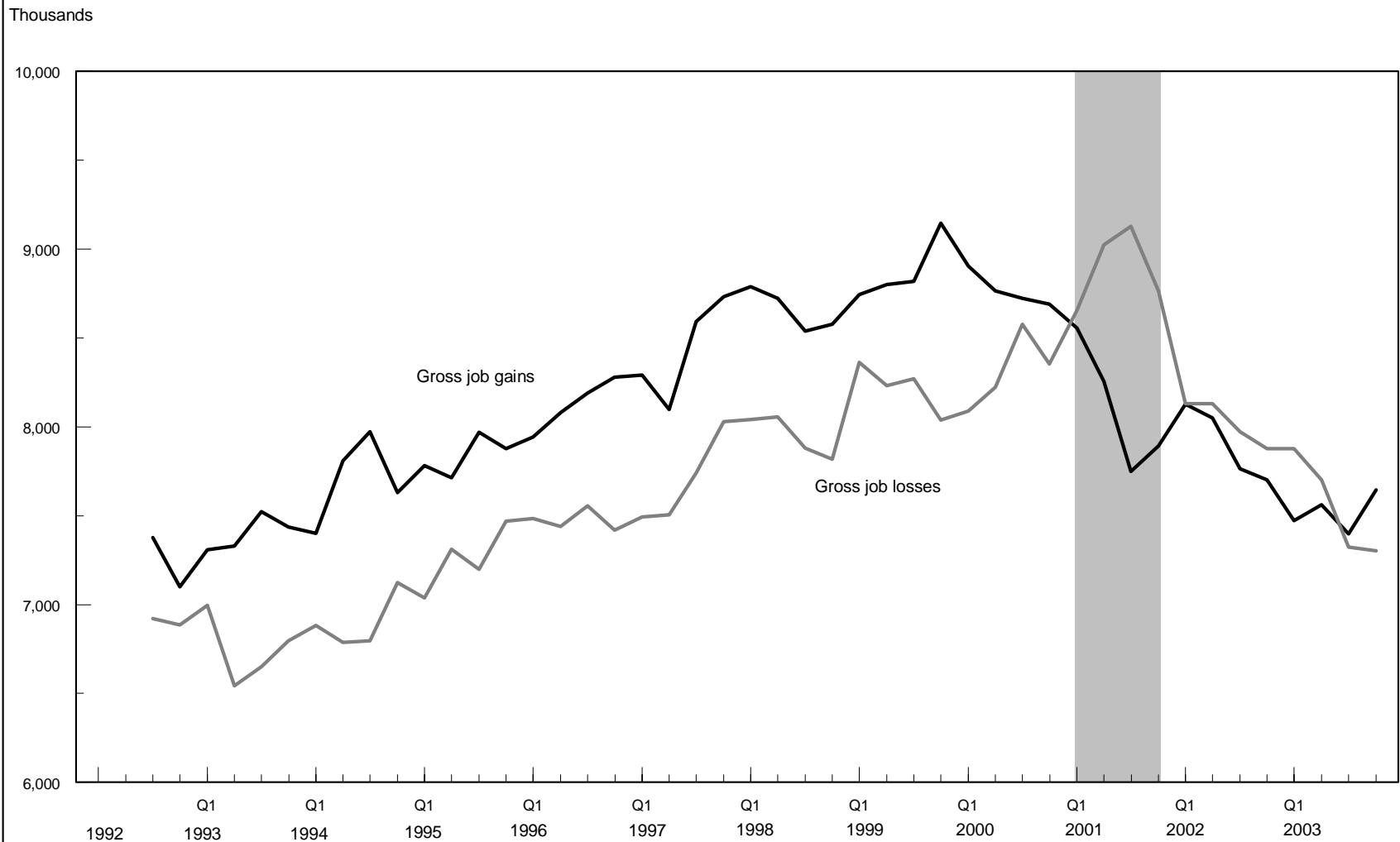


Chart 4. Percent change in employment in counties with 75,000 employees or more, March 2003 – 2004 (U.S. Average = 0.8%)



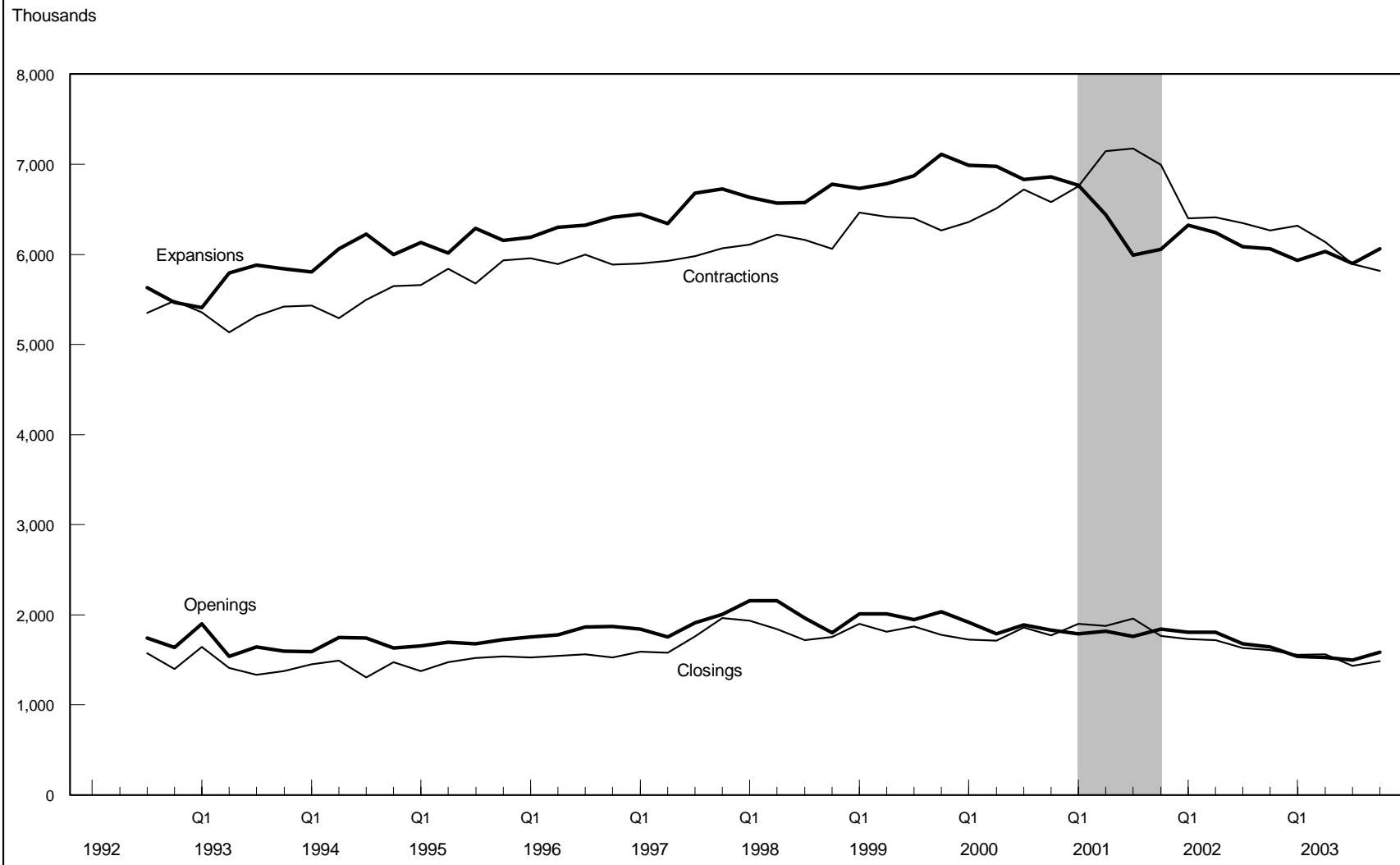
Note: The following counties have fewer than 75,000 employees but are included because they are the largest in their state or territory: Laramie, WY, Yellowstone, MT, and St. Thomas, VI.

Chart 5. Private sector gross job gains and gross job losses, seasonally adjusted, third quarter 1992–fourth quarter 2003



NOTE: The shaded area represents a period of recession.

Chart 6. Components of private sector gross job gains and gross job losses, seasonally adjusted, third quarter 1992–fourth quarter 2003



NOTE: The shaded area represents a period of recession.