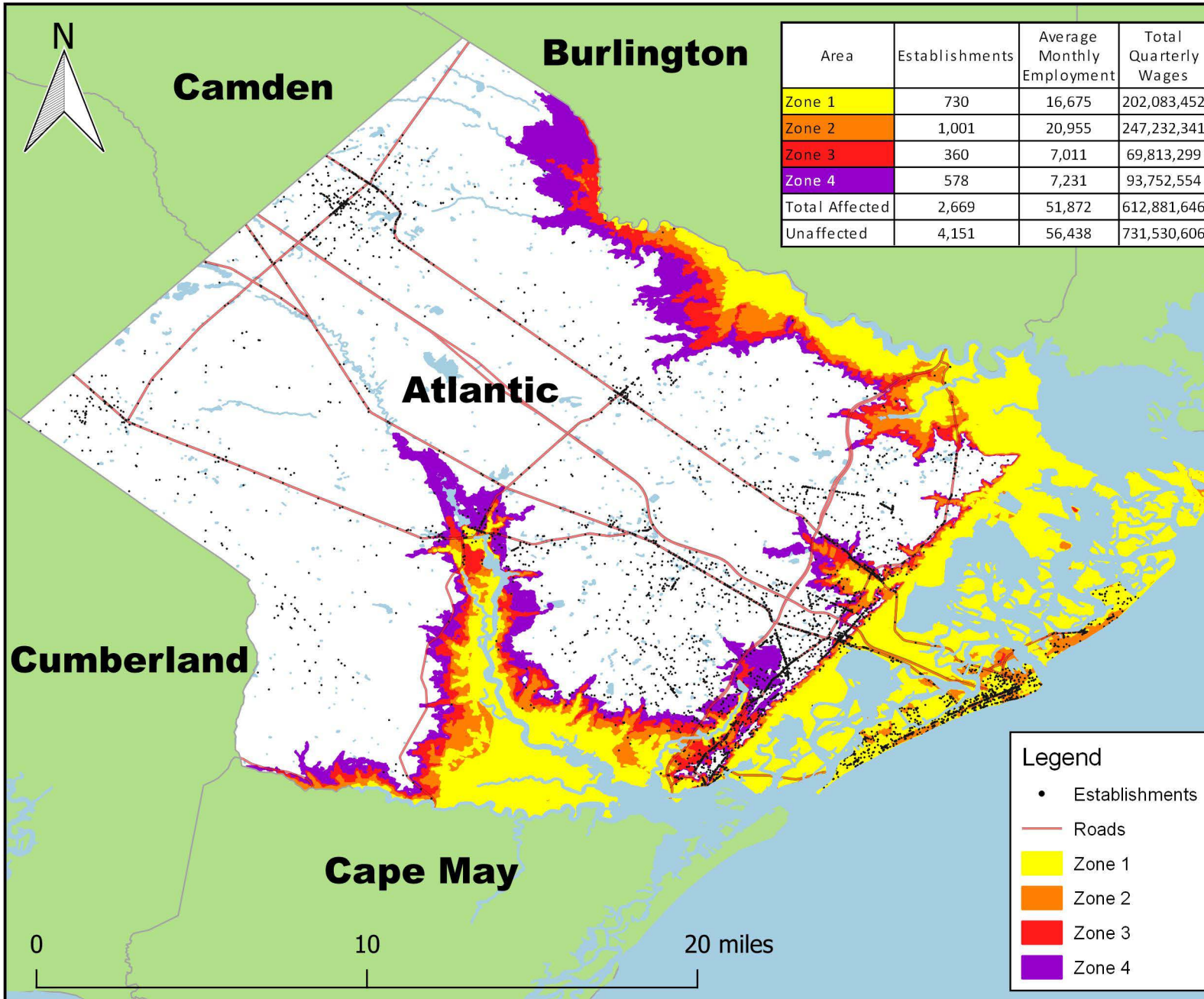


Employment in Hurricane Storm Surge Flood Zones, Atlantic County, NJ



Note: Flood zones represent a conservative estimation of areas that would experience flooding in the event of a hurricane. Zone 1 is the area that would be flooded by a Category I hurricane. A Category II hurricane would cause flooding in Zones 1 and 2. The hurricane categories reference the Saffir-Simpson Hurricane Scale.

Each black dot represents at least one establishment.

Data Source: U.S. Bureau of Labor Statistics, Quarterly Census of Employment and Wages; 2020 Third Quarter
<https://www.bls.gov/cew>

Flood Zone Source: National Hurricane Program



Legend

- Establishments
- Roads
- Zone 1
- Zone 2
- Zone 3
- Zone 4

