

Imputing Service Flows from Durables

Jeehoon Han
Zhejiang University

Bruce D. Meyer
University of Chicago, NBER

Jim Sullivan
University of Notre Dame,
LEO, J-PAL

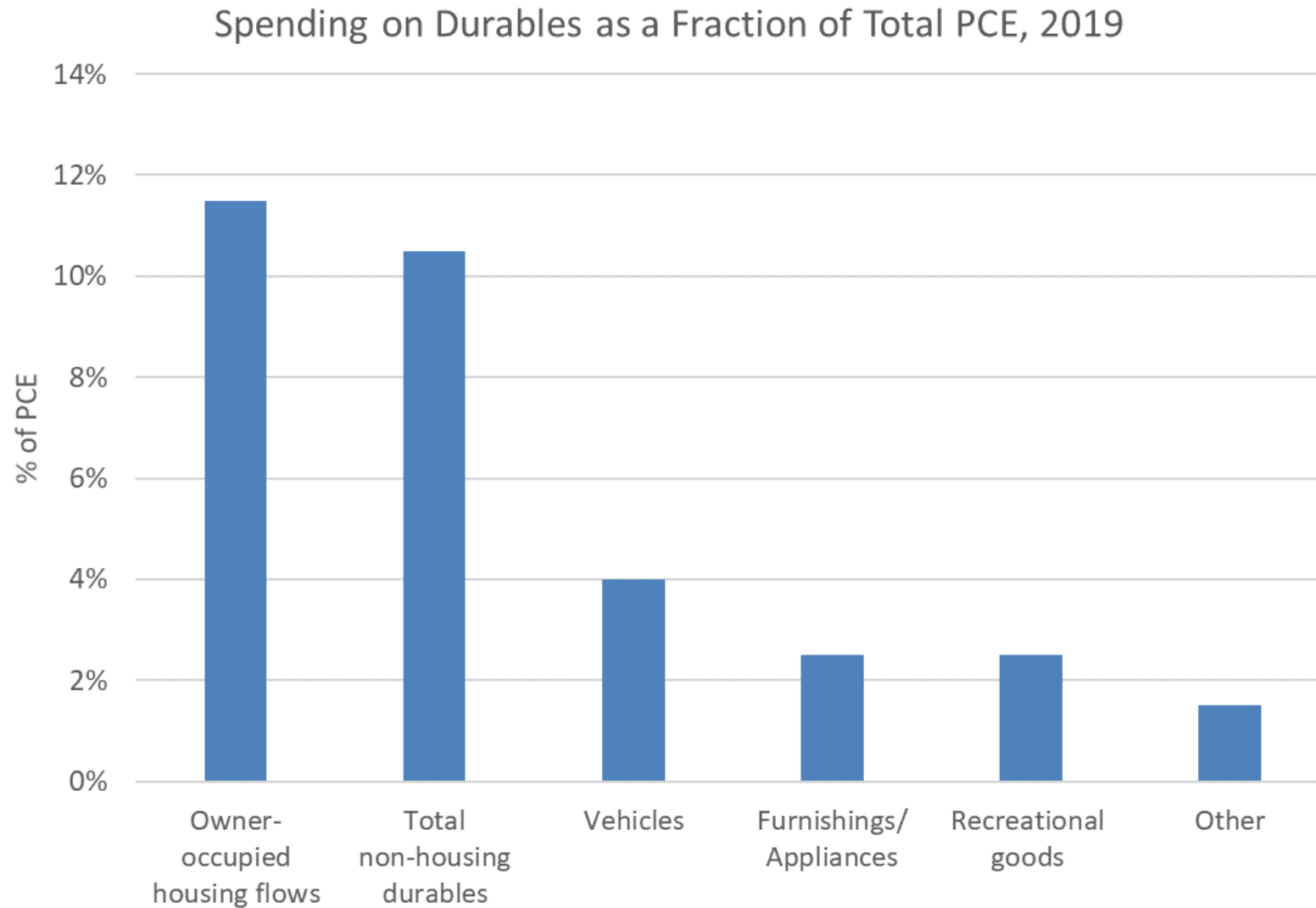
BLS Consumption Symposium
September 22, 2021

Introduction

- Accounting for durables in a measure of consumption is important
 - Spending on durables accounts for a high fraction (22%) of total spending
 - Durable goods are consumed or yield utility over multiple periods
- To account for durable consumption in a measure of total consumption one needs to determine a value of the flow of services from durables



Spending on durables

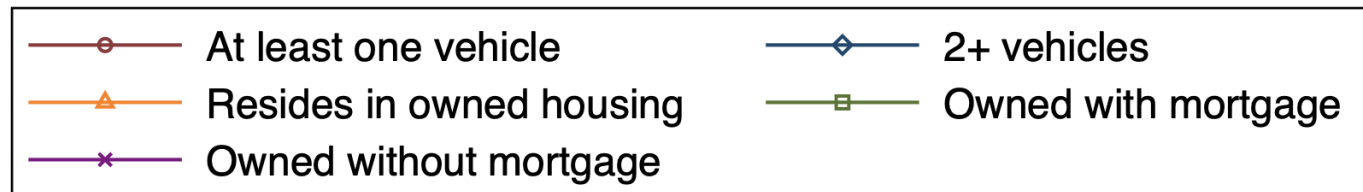
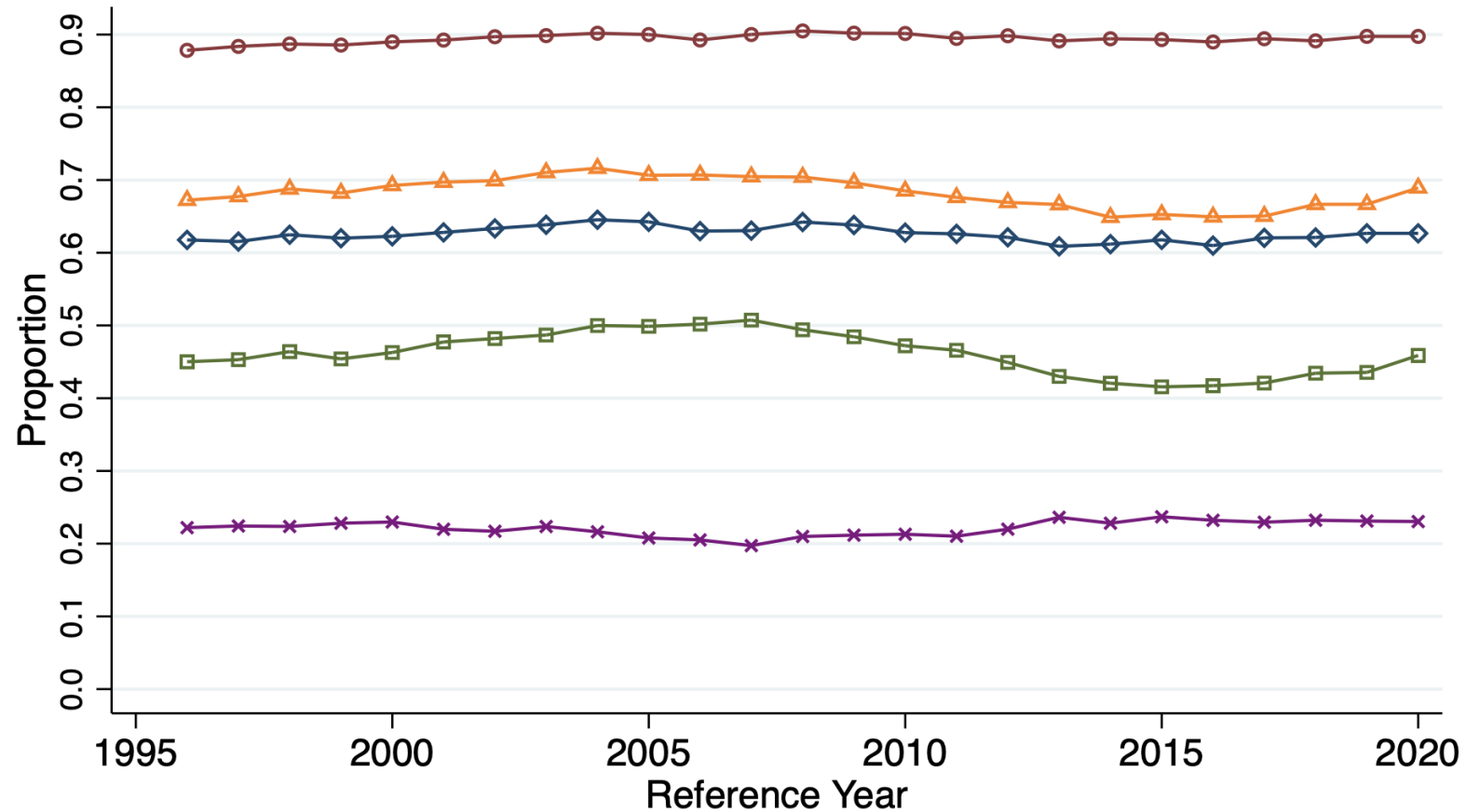


Source: NIPA, Table 2.4.5U. Personal Consumption Expenditures by Type of Product



Ownership of durables

Vehicle and Home Ownership Rates, CE



Outline

- I. Discuss how the flow of services from durables is typically measured and the pros and cons of these approaches
- II. Present evidence on how well the CE captures the ownership of key durables
- III. Show how converting spending on durables to a service flow affects the distribution



Imputing service flows

- Conceptually, we are interested in the value of the flow of services from the durable good.
- Two general approaches to estimate this price:
 - Estimate (or directly ask) what a respondent would have to pay to rent the good for the specified time period. Or alternatively, what the respondent could rent out the good for
 - If information on renting is not available, estimate it as the product of the current market price to purchase the durable and a depreciation rate



Imputing the service flow from owned homes

- Standard approach: use the reported rental equivalent
 - CE: “If someone were to rent this [unit] how much do you think it would rent for monthly, unfurnished and without utilities?”
- Pros
 - The right concept: captures the service flow from owned homes
 - Straightforward to measure in a survey
- Cons
 - Not clear respondents have good information on the rental value of their home / hard to validate
 - CE doesn't ask for rental equivalent for those in public or subsidized housing



Imputing the service flow from vehicles

- **Approach 1:** Estimate the current market price of a vehicle and the depreciation rate using blue book values
 - Pro: observe prices for most make, model, year combinations
 - Con: Requires merging outside information to vehicles in the CE; may be hard to get this information for earlier years
- **Approach 2:** Estimate the current market price of a vehicle and the depreciation rate using the purchase prices reported in the CE survey for similar vehicles
 - Pro: can be implemented using data available from the survey
 - Con: may not have a reported price for less common or older vehicles



Imputing services flows from other durables

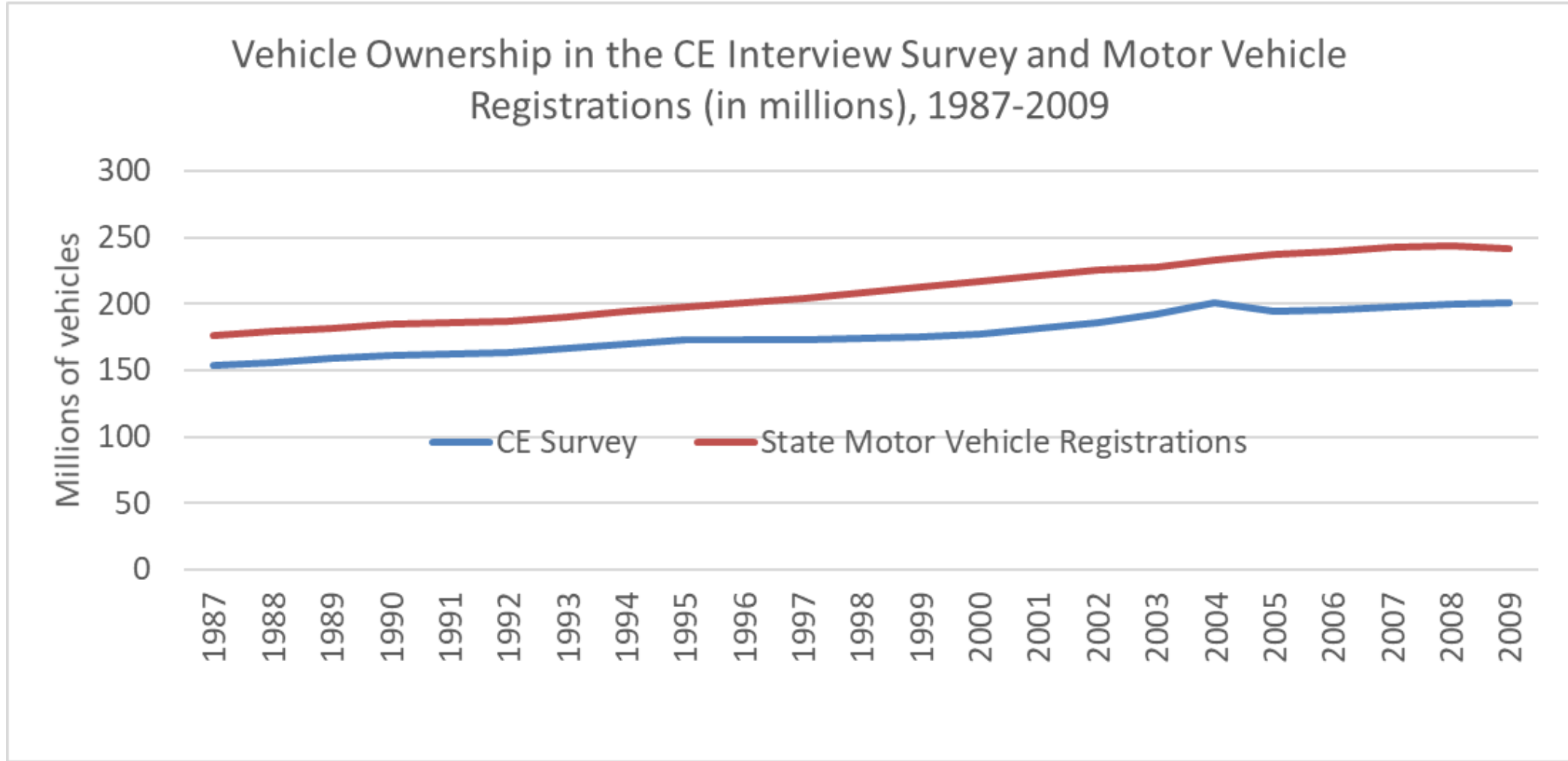
- In theory one could also impute the flows from other durables such as furniture, recreational goods, etc. However:
 - Some of these goods might depreciate quickly (i.e. smartphone)
 - Hard to get good estimates of the market value or depreciation rate without a well-developed market for used goods
 - All together, these other durables account for about 6.5% of spending

Evidence on the quality of reporting of durables in the CE

- In order to construct an accurate measure of service flows from durables, the ownership and/or value of these durables must be well-reported in the CE
- Are these durables well reported?
- To answer this we:
 - Compare ownership rates in the CE to administrative aggregates
 - Compare spending on specific types of durables to national accounts
 - Compare durable values in the CE to other sources on durable prices



Reporting of vehicle ownership



Source: Bee, Meyer, Sullivan (2015)



Reporting of vehicle purchase price

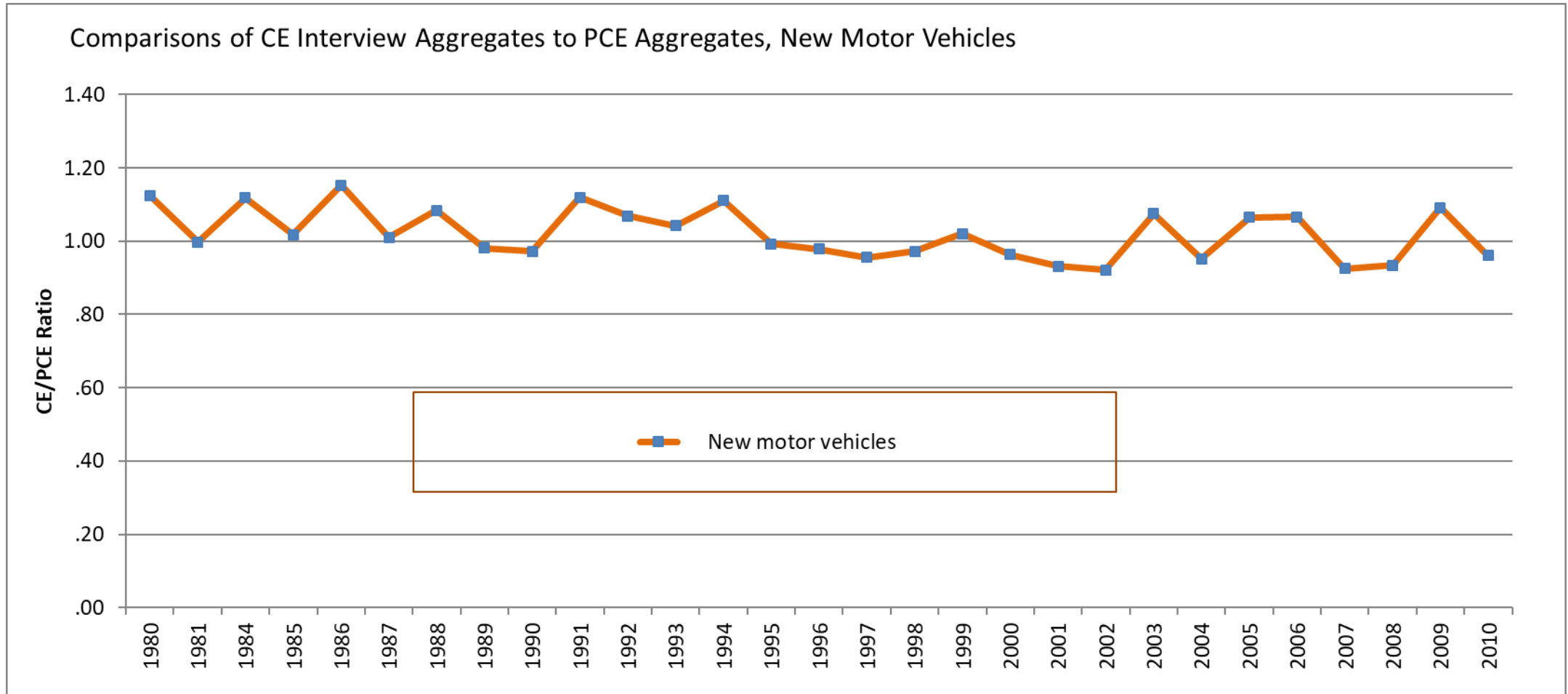
Correlation of Reported Vehicle Purchase Price in the CE Interview Survey to NADA values, New and Used Vehicles

Survey Year	1990	2000
Cars owned 6 months or less	0.956	0.912
Cars owned 12 months or less	0.937	0.790
Cars owned 24 months or less	0.879	0.779

Source: Bee, Meyer, Sullivan (2015)



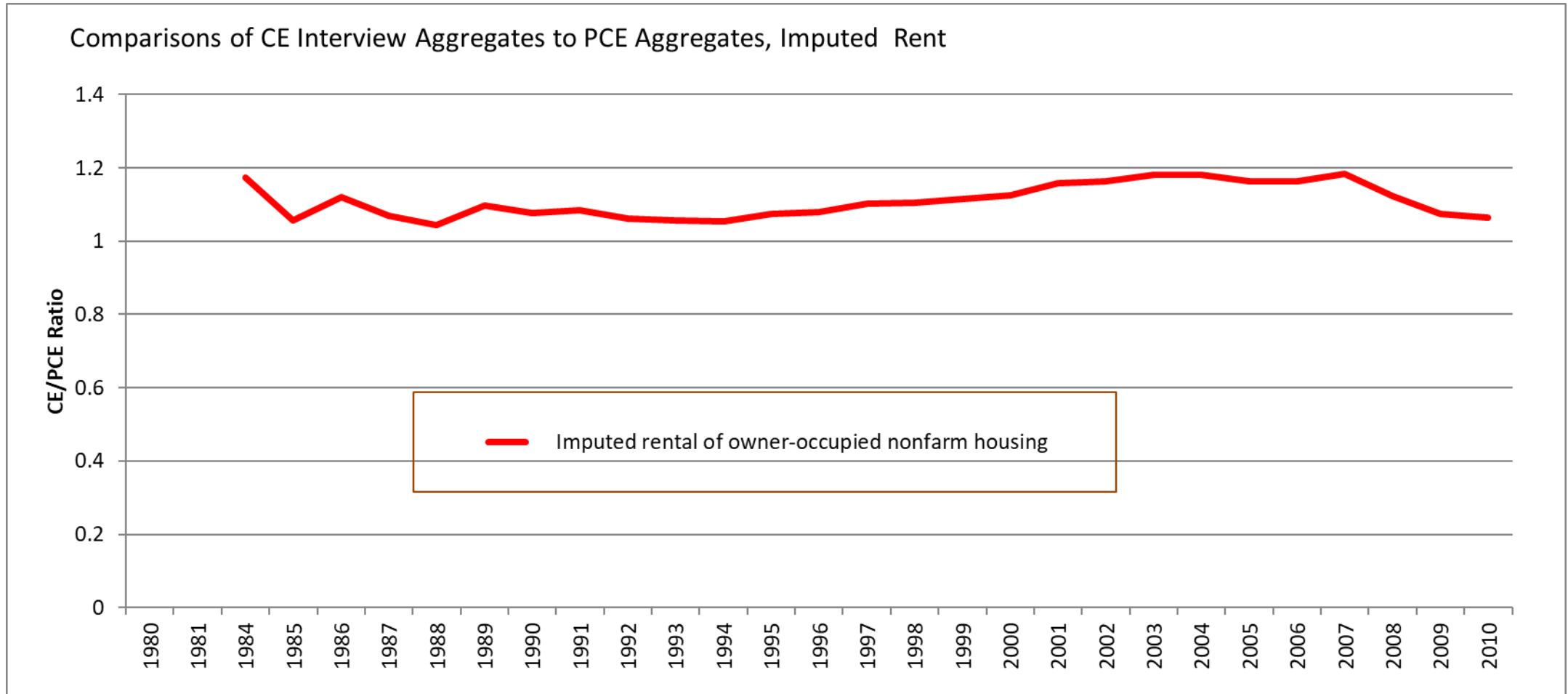
Comparison to national accounts: vehicles



Source: Bee, Meyer, Sullivan (2015)



Comparison to national accounts: imputed rent

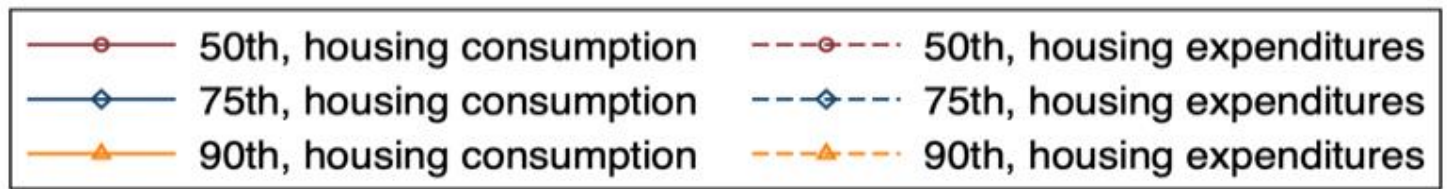
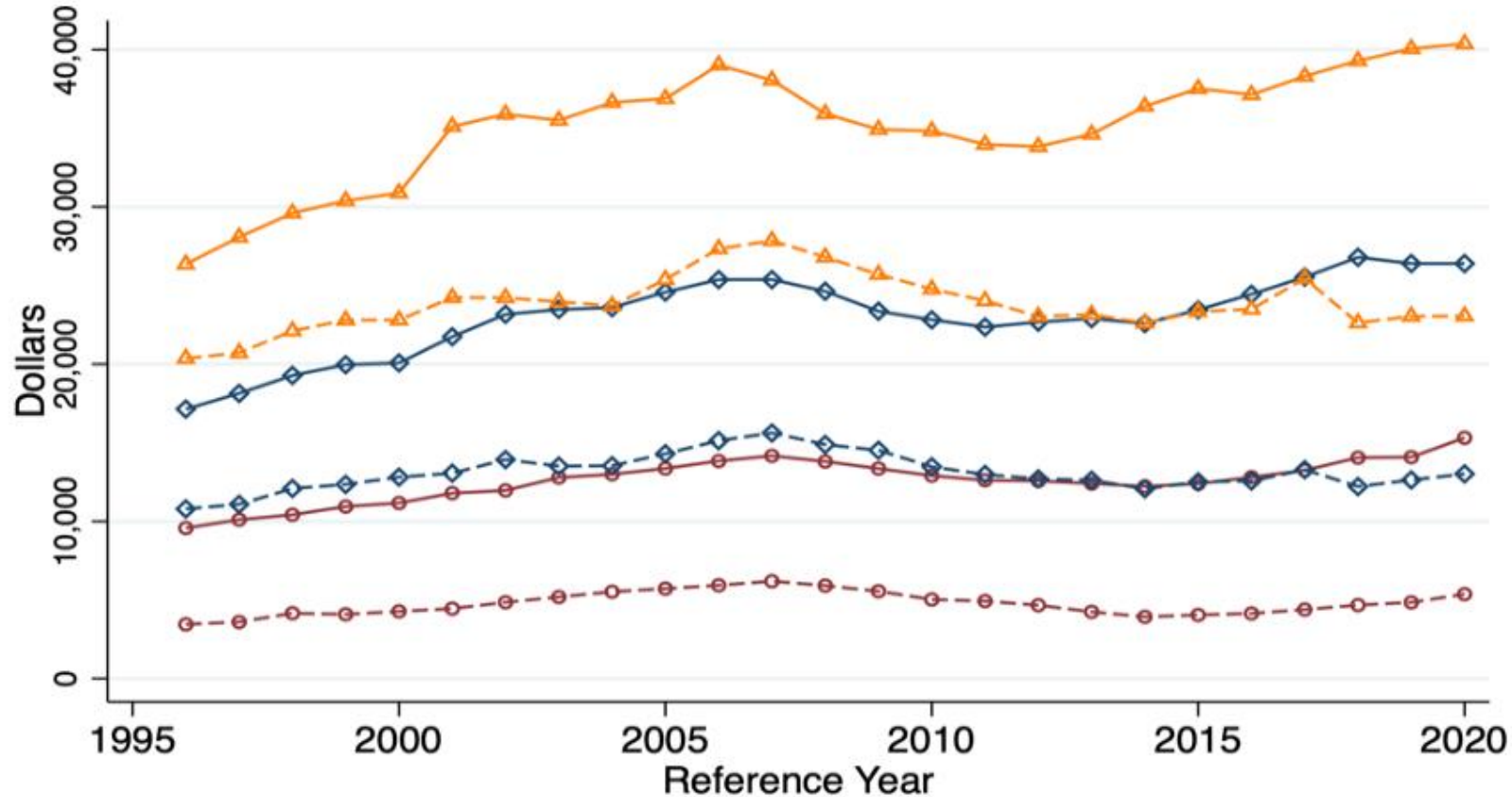


Source: Bee, Meyer, Sullivan (2015)



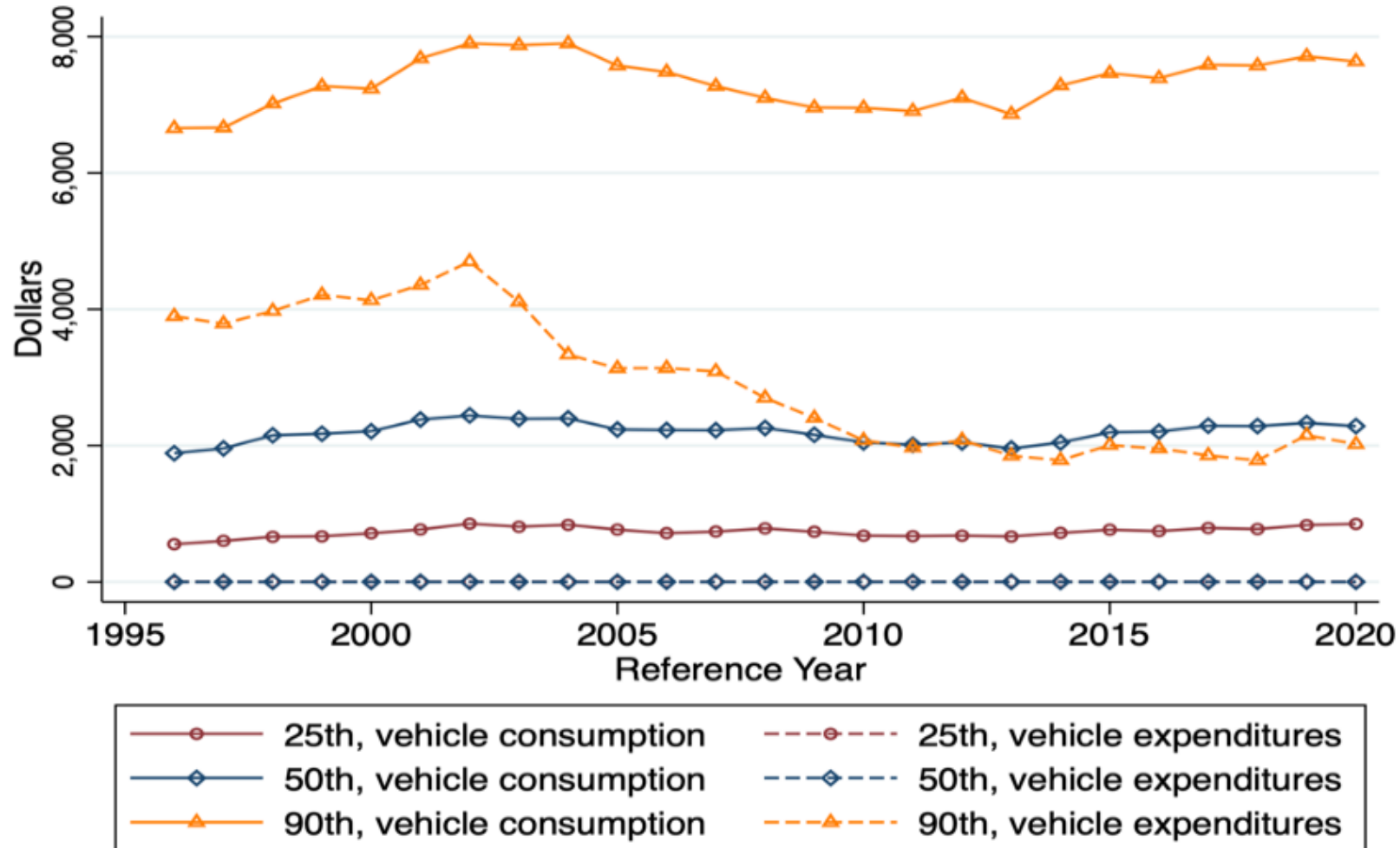
Housing consumption vs. spending on owned home

Owned housing expenditures and consumption, (50th, 75th, and 90th percentiles), CE



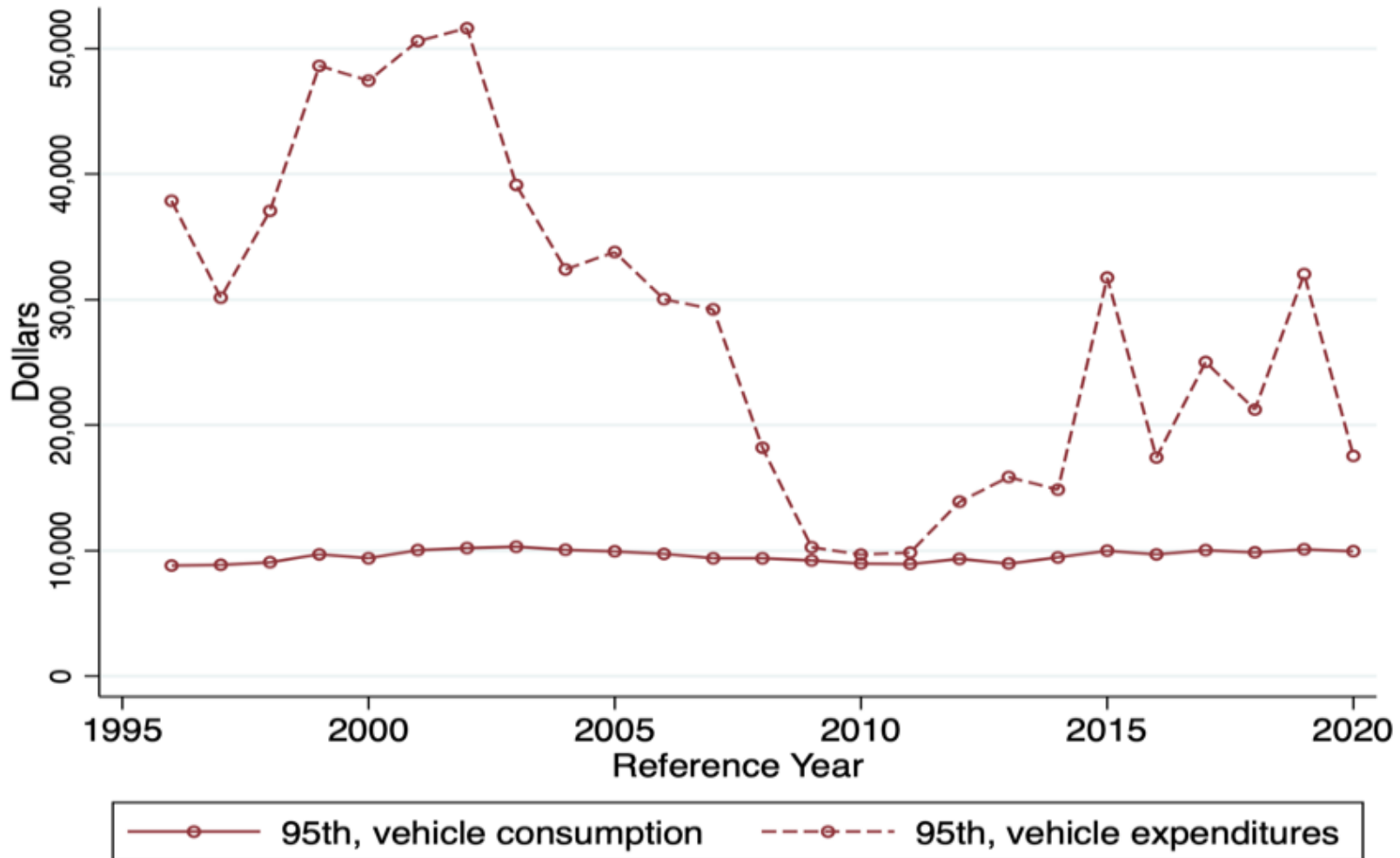
Vehicle consumption vs. spending on owned vehicles

Vehicle expenditures and consumption (25th, 50th, and 90th percentiles), CE



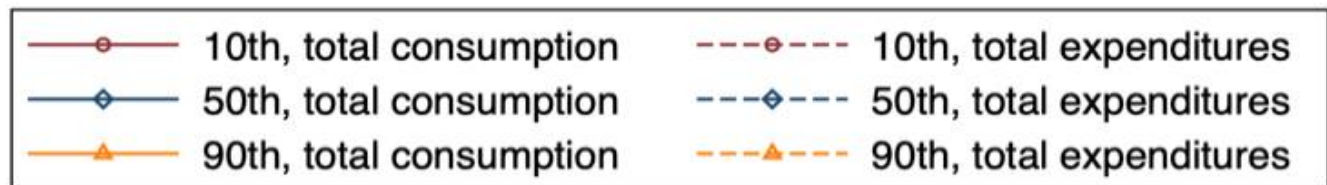
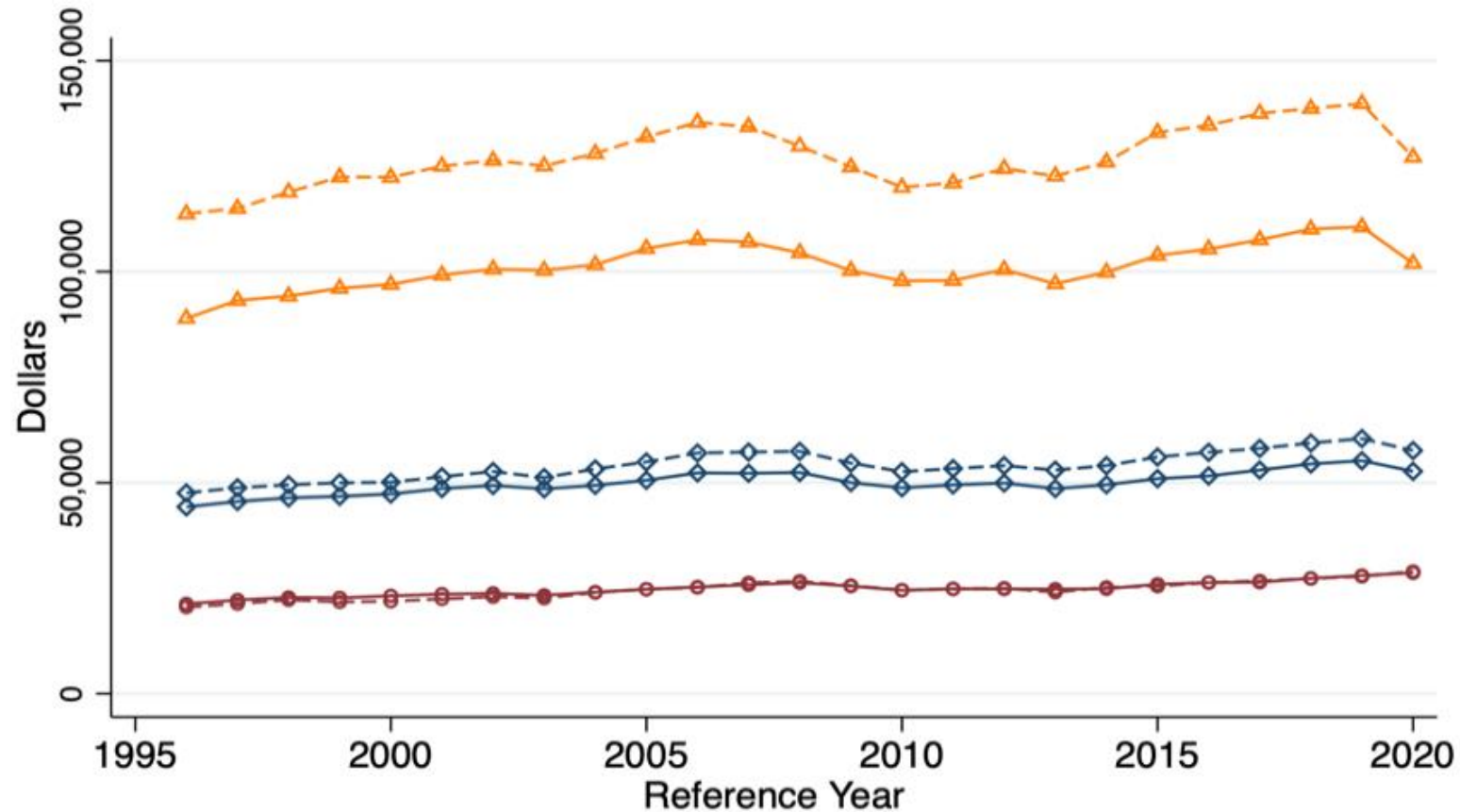
Vehicle consumption vs. spending on owned vehicles

Vehicle expenditures and consumption (95th percentile), CE



Total expenditures vs. total consumption

Total expenditures and consumption (10th, 50th, and 90th percentiles), CE



Other Considerations

- Additional information could be gathered to better determine the value of durables in the CE:
 - Link CE to administrative data on the value of subsidized housing
 - Collect information on the value of the unit for those in public housing
 - Collect detailed information on vehicles

