



Job Openings and Labor Turnover Survey

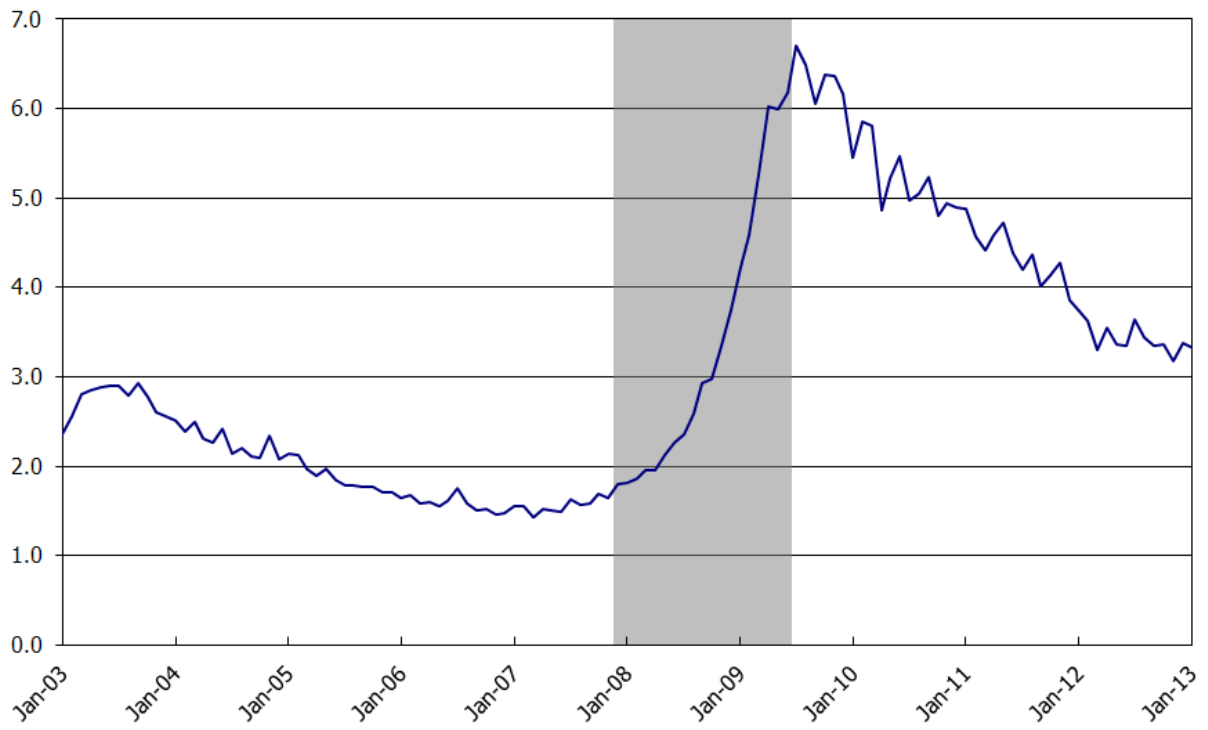
Highlights

January 2013

Bureau of Labor Statistics

March 12, 2013

**Chart 1. Number of unemployed persons per job opening
Seasonally adjusted**

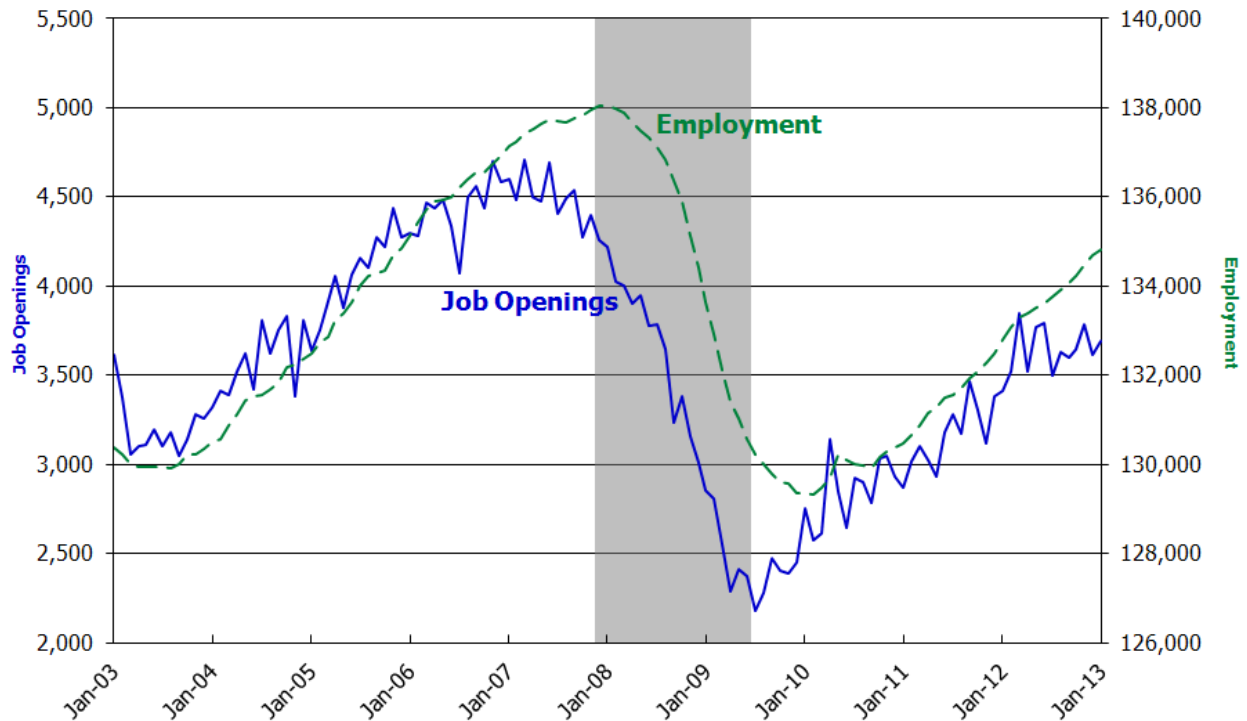


Source: Bureau of Labor Statistics, Current Population Survey and Job Openings and Labor Turnover Survey, March 12, 2013.

Note: Shaded area represents recession as determined by the National Bureau of Economic Research (NBER).

- The ratio between the unemployment level and job openings level changes over time.
- When the most recent recession began (December 2007), the number of unemployed persons per job opening was 1.8. When the recession ended (June 2009), there were 6.2 unemployed persons per job opening.
- The unemployed persons per job opening ratio has trended downward since the end of the recession and was 3.3 in January 2013.

Chart 2. Job openings and employment
Seasonally adjusted, in thousands

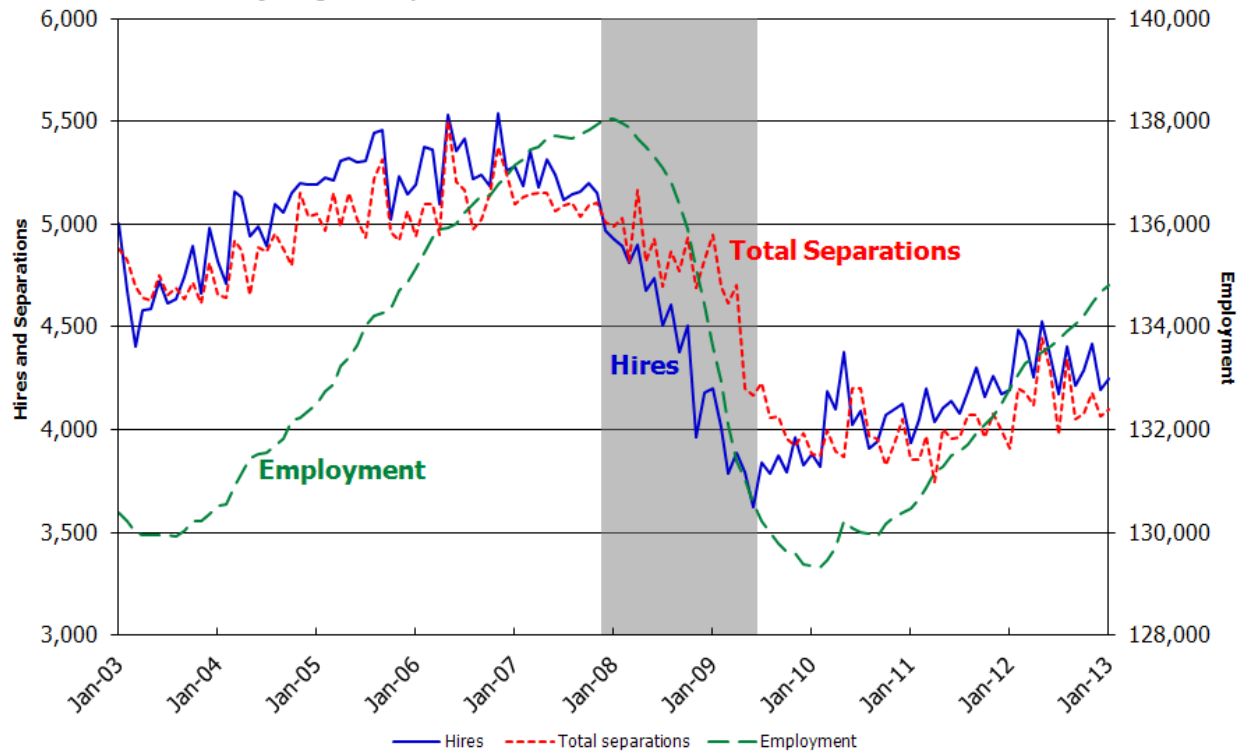


Source: Bureau of Labor Statistics, Current Employment Statistics and Job Openings and Labor Turnover Survey, March 12, 2013.

Note: Shaded area represents recession as determined by the National Bureau of Economic Research (NBER).

- The number of job openings declined to a series low in July 2009, one month after the official end of the most recent recession. Employment continued to decline after the end of the recession, reaching a low point in February 2010.
- In January 2013, there were 3.7 million job openings, which was 69 percent higher than the series low in July 2009. The level was still below the 4.7 million openings at the peak in March 2007.

Chart 3. Hires, total separations, and employment
Seasonally adjusted, in thousands

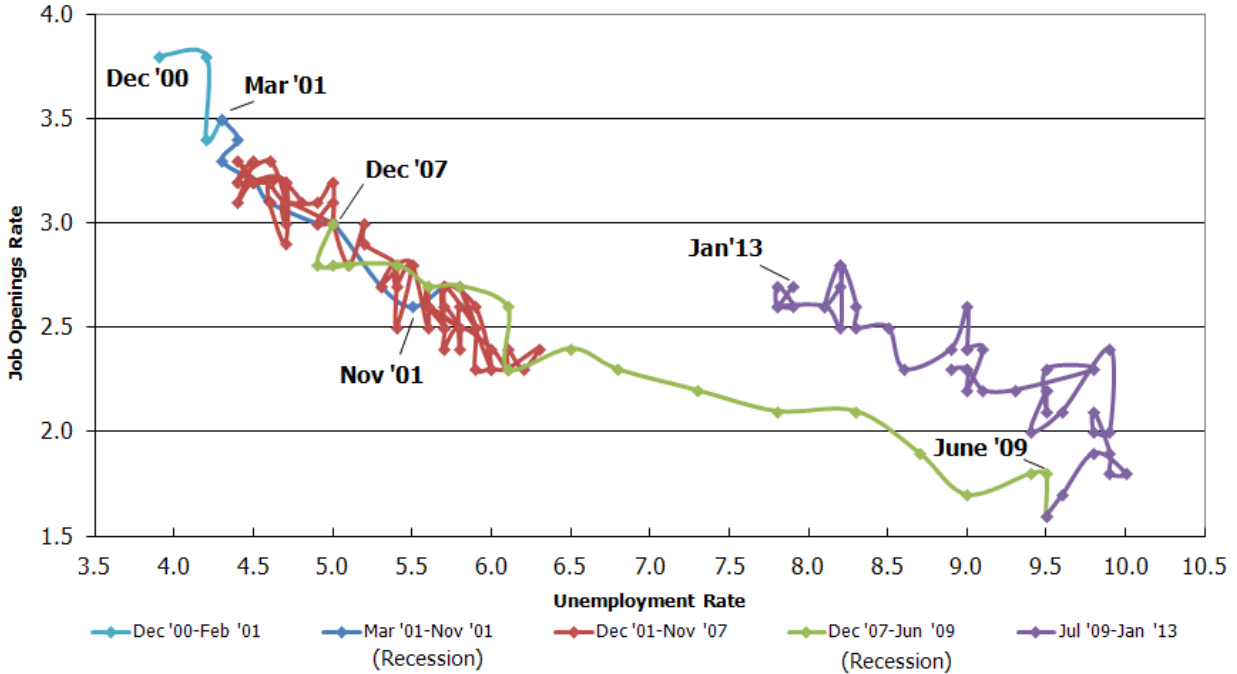


Source: Bureau of Labor Statistics, Current Employment Statistics and Job Openings and Labor Turnover Survey, March 12, 2013.

Note: Shaded area represents recession as determined by the National Bureau of Economic Research (NBER).

- Hires, total separations, and employment all remained below pre-recession levels in January 2013.
- In January, there were 4.2 million hires, which was 17 percent higher than the trough in June 2009.
- There were 4.1 million total separations in January.

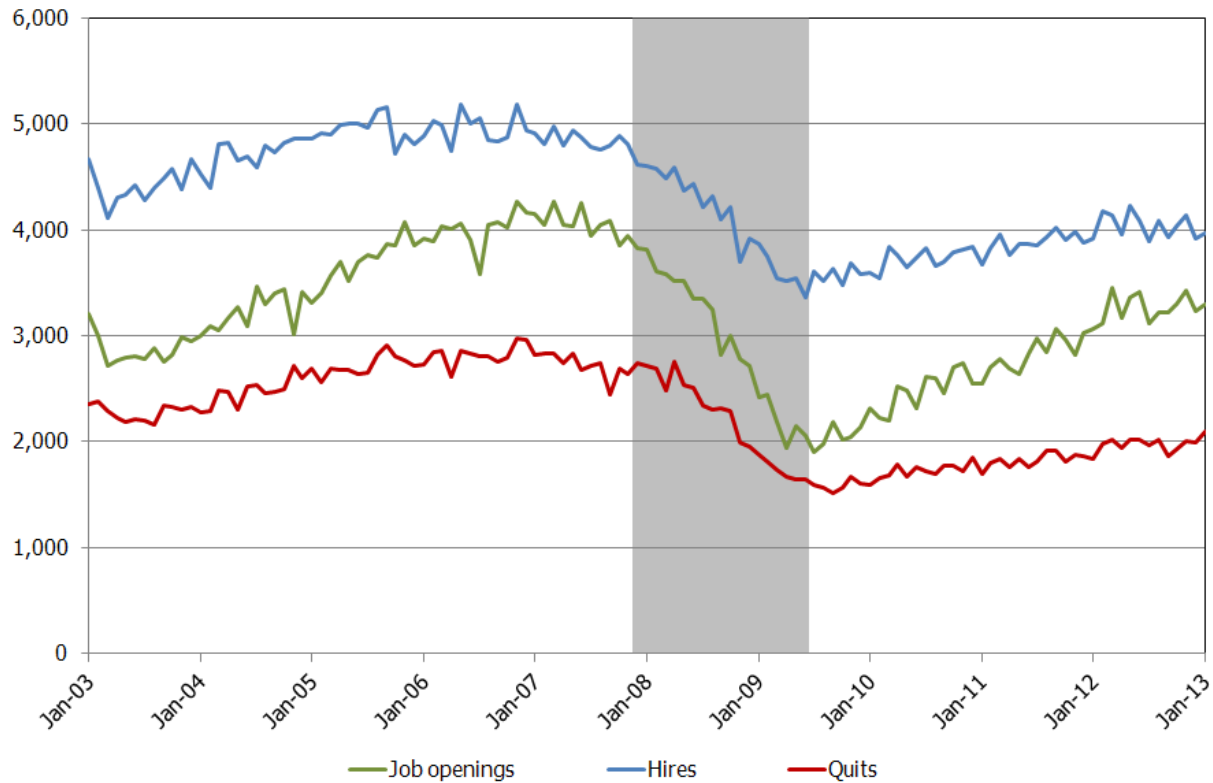
**Chart 4. The Beveridge Curve (job openings vs. unemployment rate)
Seasonally adjusted**



Source: Bureau of Labor Statistics, Current Population Survey and Job Openings and Labor Turnover Survey, March 12, 2013.

- This graph plots the job openings rate against the unemployment rate. This graphical representation is known as the Beveridge Curve, named after the British economist William Henry Beveridge (1879-1963). **The economy's position on the downward sloping Beveridge Curve** reflects the state of the business cycle.
- During an expansion, the unemployment rate is low and the job openings rate is high. Conversely, during a contraction, the unemployment rate is high and the job openings rate is low. The position of the curve is determined by the efficiency of the labor market. For example, a greater mismatch between available jobs and the unemployed in terms of skills or location would cause the curve to shift outward, up and toward the right.
- From the start of the most recent recession in December 2007 through the end of 2009, each **month's** point on the curve moved lower and further to the right as the job openings rate declined and the unemployment rate rose. From 2010 to the present, the point moved up and to the left as the job openings rate increased and the unemployment rate decreased.
- In January 2013, the job openings rate was 2.7 percent and the unemployment rate was 7.9 percent.

Chart 5. Total private job openings, hires, and quits
Seasonally adjusted, in thousands

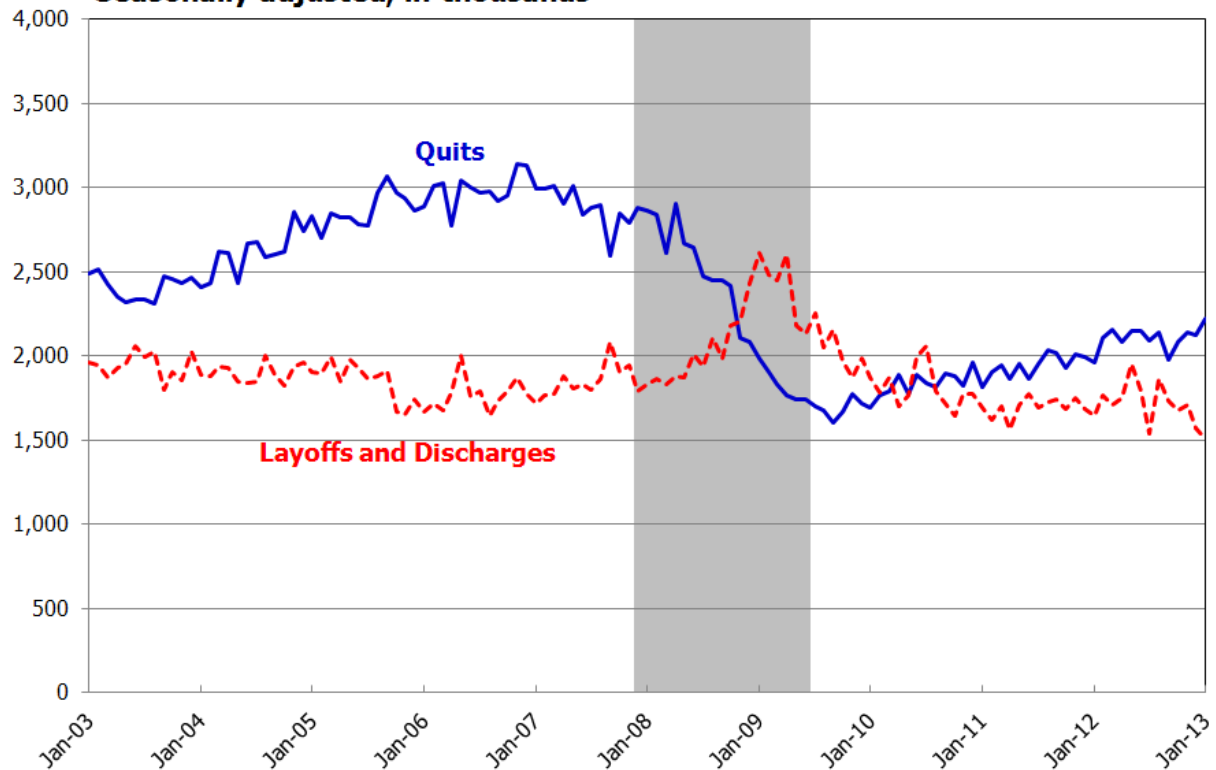


Source: Bureau of Labor Statistics, Job Openings and Labor Turnover Survey, March 12, 2013.

Note: Shaded area represents recession as determined by the National Bureau of Economic Research (NBER).

- Since reaching their respective post-recession troughs, the number of job openings has steadily increased and the numbers of hires and quits have increased slightly.
- Job openings in the private sector decreased steeply during the recession, falling from 3.8 million in December 2007 (the beginning of the recession) to a low of 1.9 million in July 2009. Since the trough in July 2009, the number of openings has increased by 73 percent, reaching 3.3 million in January 2013.
- Hires in the private sector also fell throughout the recession, although less steeply than job openings, falling from 4.6 million in December 2007 to a low of 3.4 million in June 2009. Since the trough, the number of hires has increased by 18 percent to 4.0 million in January 2013.
- Quits in the private sector also declined during the recession, starting at 2.7 million in December 2007 and reaching a low of 1.5 million in September 2009. Since the trough, the number of quits has increased by 39 percent, to 2.1 million in January 2013.

Chart 6. Quits and layoffs and discharges
Seasonally adjusted, in thousands

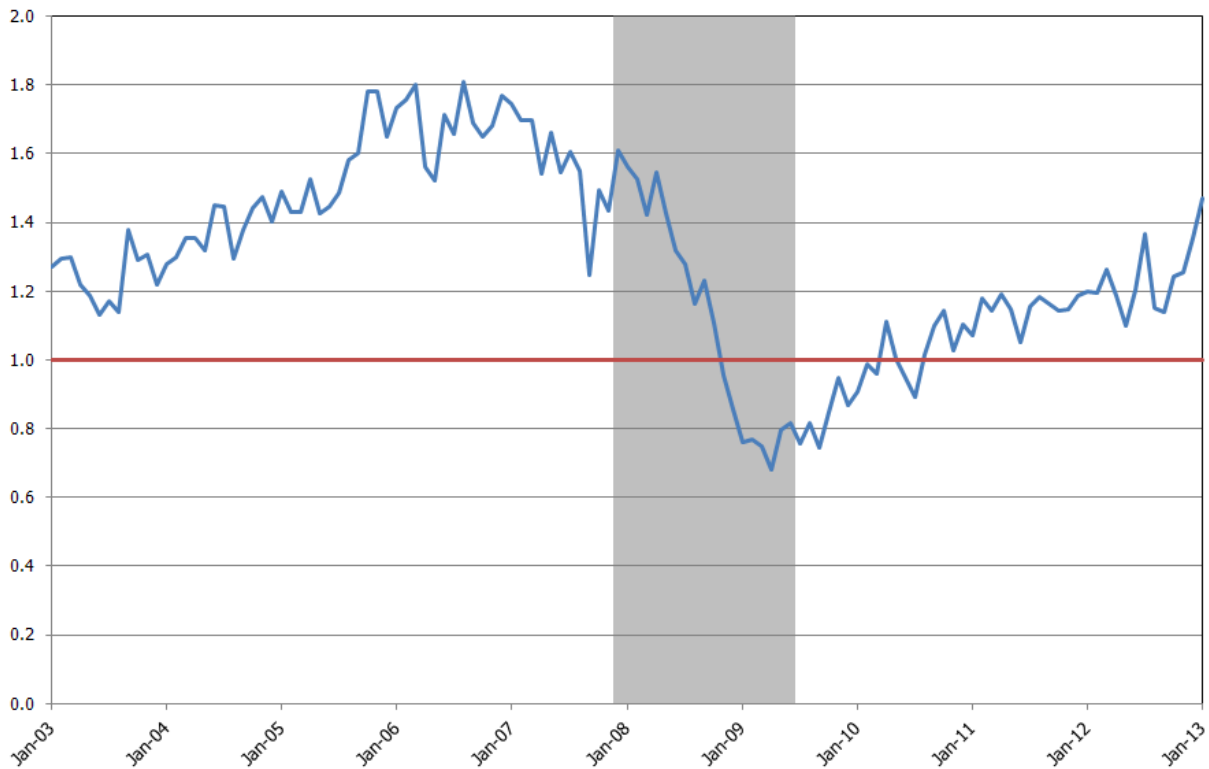


Source: Bureau of Labor Statistics, Job Openings and Labor Turnover Survey, March 12, 2013.

Note: Shaded area represents recession as determined by the National Bureau of Economic Research (NBER).

- Quits are generally voluntary separations initiated by the employee. Therefore, the quits rate can **serve as a measure of workers' willingness or ability to leave jobs.**
- The number of quits has exceeded the number of layoffs and discharges for most of the 12-year JOLTS history. During the latest recession, this relationship changed as layoffs and discharges outnumbered quits from November 2008 through March 2010.
- In January 2013, there were 2.2 million quits, still well below the 2.9 million quits in December 2007, the first month of the recession.
- The number of layoffs and discharges for total nonfarm was 1.5 million in January, down from a peak of 2.6 million in January 2009.

**Chart 7. Ratio of quits per layoff and discharge
Seasonally adjusted**

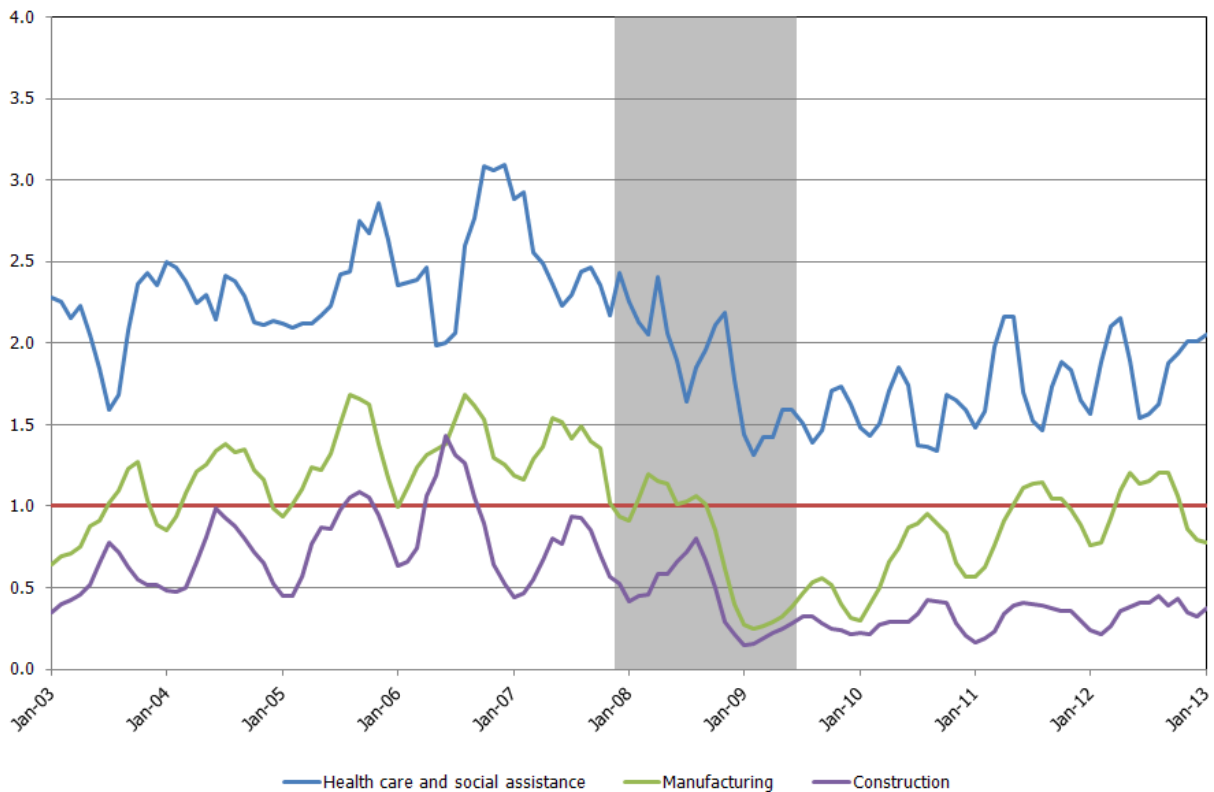


Source: Bureau of Labor Statistics, Job Openings and Labor Turnover Survey, March 12, 2013.

Note: Shaded area represents recession as determined by the National Bureau of Economic Research (NBER).

- Quits are generally voluntary separations initiated by an employee. Quits are procyclical, rising with an improving economy and falling with a faltering economy. Layoffs and discharges are generally involuntary separations initiated by an employer and are countercyclical, moving in the opposite direction of quits. The ratio of the number of quits to the number of layoffs and discharges provides insight into churn in the labor market over the business cycle.
- In August 2006, the ratio was highest at 1.8 before the recession, with nearly two people quitting their job for each person laid off or discharged.
- From November 2008 through March 2010, layoffs and discharges outnumbered quits and the ratio fell below 1.0. The ratio was lowest at 0.7 in April 2009 toward the end of the recession, with less than one person quitting for each person laid off or discharged.

Chart 8. Ratio of quits per layoff and discharge, by industry
Nonseasonally adjusted, 3-month moving average



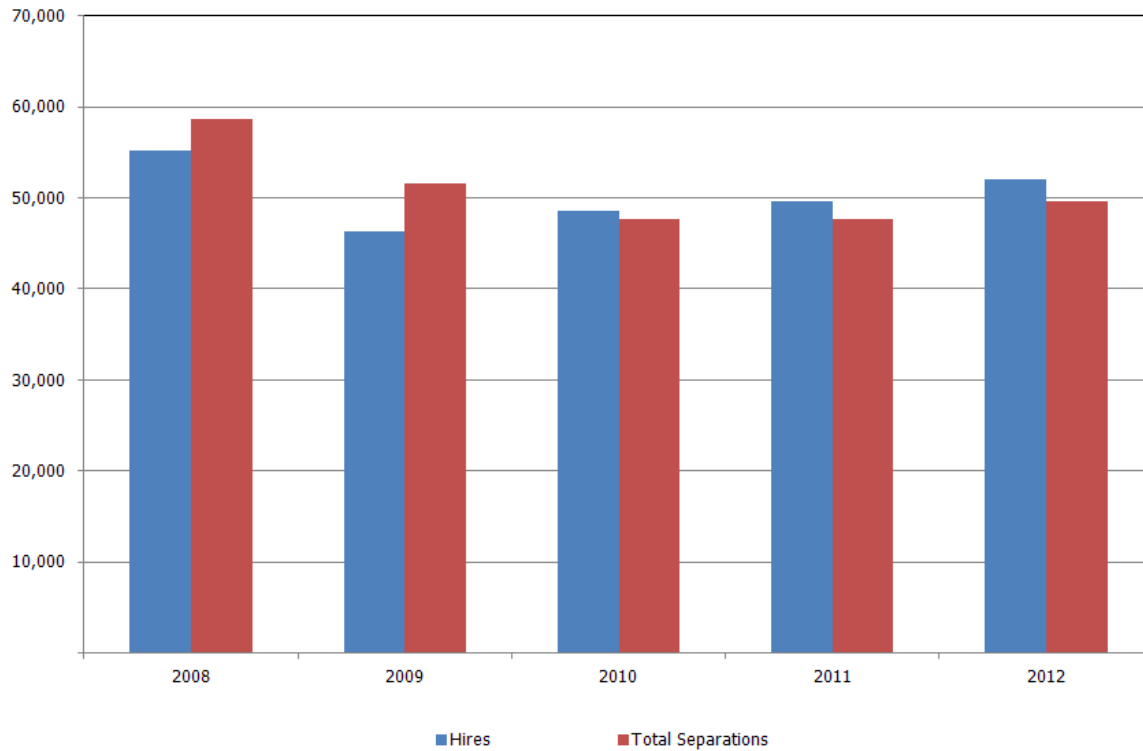
Source: Bureau of Labor Statistics, Job Openings and Labor Turnover Survey, March 12, 2013.

Note 1: Shaded area represents recession as determined by the National Bureau of Economic Research (NBER).

Note 2: Nonseasonally adjusted data is used because seasonally adjusted data is not available by industry.

- Although all industries experienced a change in the ratio of quits to layoffs and discharges over the business cycle, there are also ongoing differences among the industries regardless of the economic climate.
- The ratio for health care and social assistance remains above 1.0 throughout the business cycle and for the history of JOLTS. The high ratio suggests a need for workers as evidenced by constant voluntary turnover and few layoffs and discharges.
- The ratio for manufacturing goes above and below 1.0 across the business cycle, indicating that both quits and layoffs and discharges in the industry depend on the economy.
- The ratio for construction is below 1.0 for nearly every month in the JOLTS history, indicating that layoffs and discharges are more common than quits in this industry as workers are routinely laid off as projects are completed, and then rehired elsewhere for new projects.

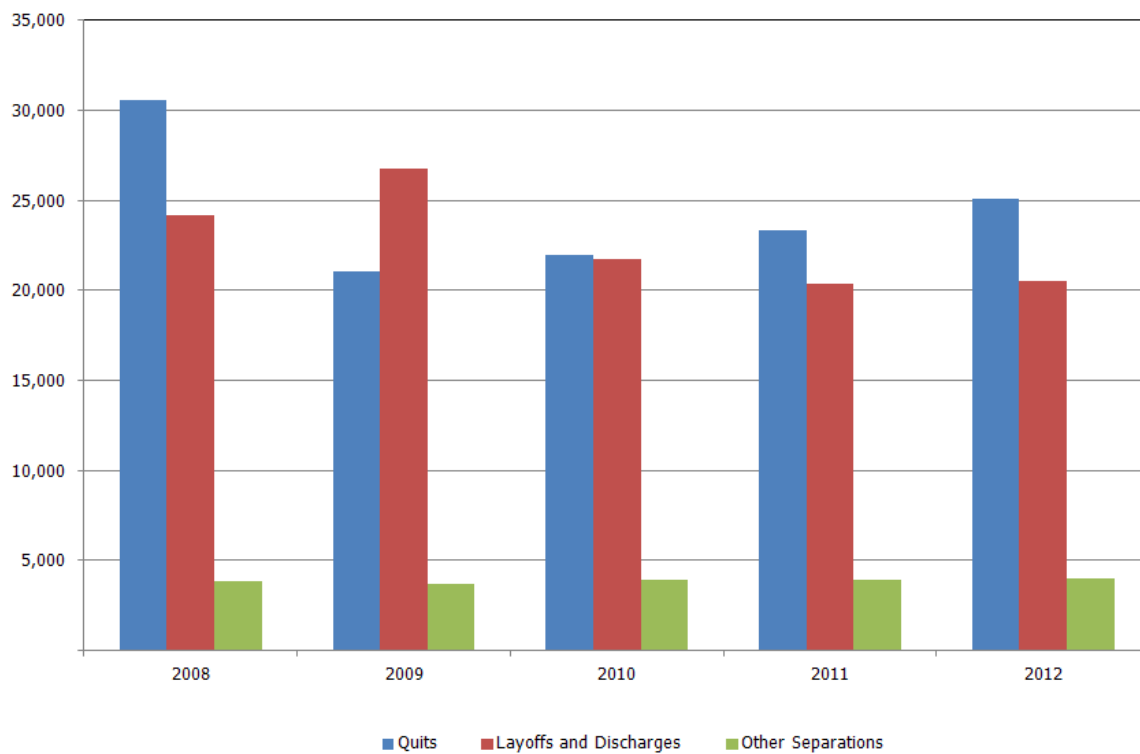
**Chart 9. Annual hires and total separations
in thousands**



Source: Bureau of Labor Statistics, Job Openings and Labor Turnover Survey, March 12, 2013.

- Annual hires rose slightly in 2012 for the third straight year.
- In 2012 annual total separations edged up from its 2011 level.

Chart 10. Annual quits, layoffs and discharges, and other separations, in thousands



Source: Bureau of Labor Statistics, Job Openings and Labor Turnover Survey, March 12, 2013.

- Annual quits and other separations rose slightly in 2012 for the third consecutive year.
- In 2012 annual layoffs and discharges stayed about the same.