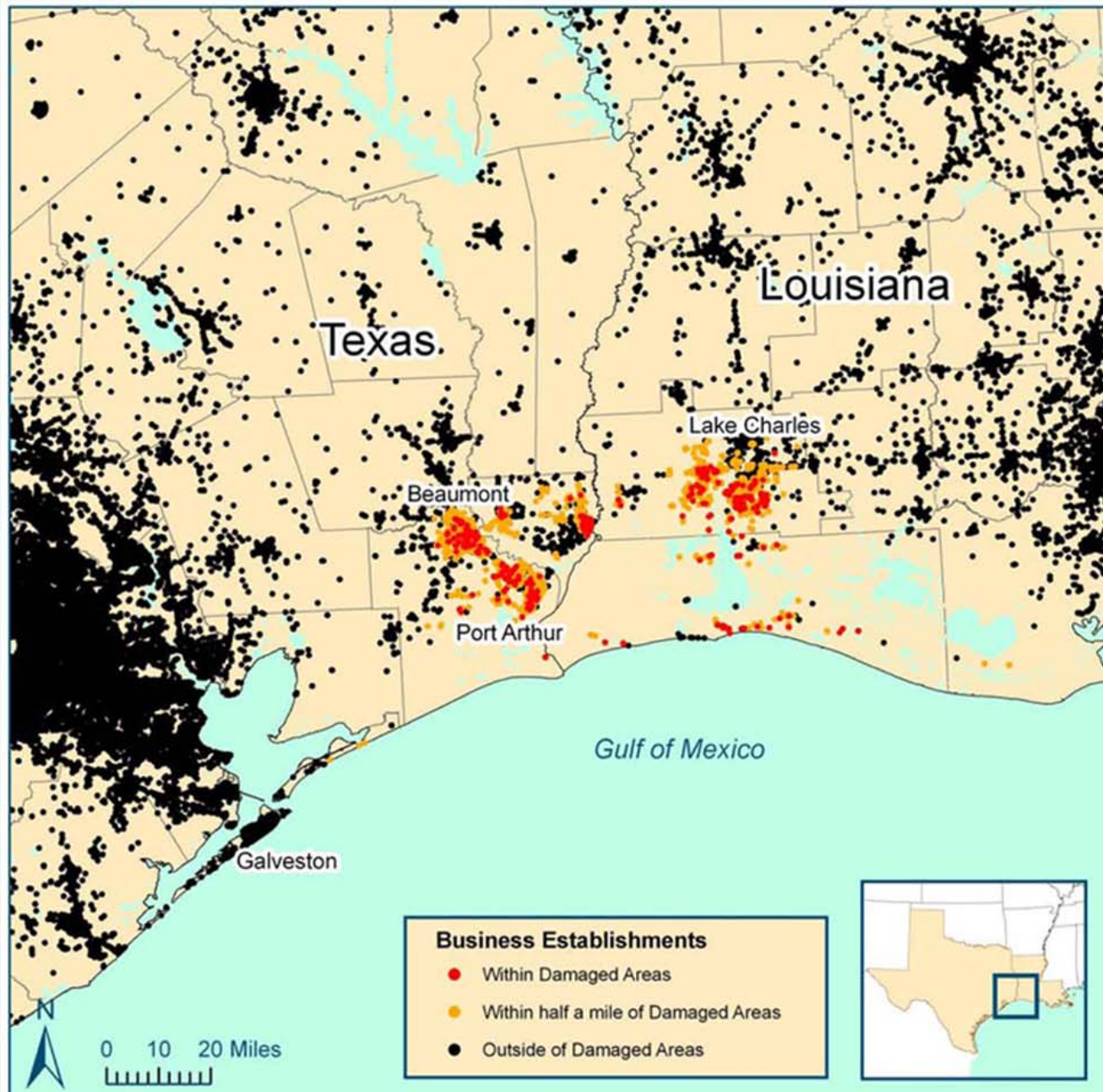


Business Establishments within Rita-Damaged Areas as Identified by FEMA Texas and Louisiana



Texas

0.1% of Texas' employment was within the FEMA Identified Damage Areas

| Business Establishments | Employees | Quarterly Wages |
|-------------------------|-----------|-----------------|
| 565 | 9,540 | \$86,449,504 |

1.2% was inside or within half a mile of the FEMA Identified Damage Areas

| Business Establishments | Employees | Quarterly Wages |
|-------------------------|-----------|-----------------|
| 6,342 | 110,894 | \$1,083,940,055 |

Louisiana

0.2% of Louisiana's employment was within the FEMA Identified Damage Areas

| Business Establishments | Employees | Quarterly Wages |
|-------------------------|-----------|-----------------|
| 233 | 3,066 | \$28,764,962 |

2.1% was inside or within half a mile of the FEMA Identified Damage Areas

| Business Establishments | Employees | Quarterly Wages |
|-------------------------|-----------|-----------------|
| 2,380 | 38,457 | \$322,014,376 |

Data source:
Quarterly Census of Employment and Wages (QCEW), developed through a cooperative program between the states and the U.S. Bureau of Labor Statistics.
FEMA Remote Sensing Damage Areas
1800 September 28, 2005, www.gismaps.fema.gov

Data notes:
Employment is from December 2004. Quarterly Wages are the total paid for the Fourth Quarter of 2004. Data are adjusted to include business establishments for whom accurate addresses are not available.

Cartography by:
State of California
Employment Development Department
www.labormarketinfo.edd.ca.gov
September 2005

