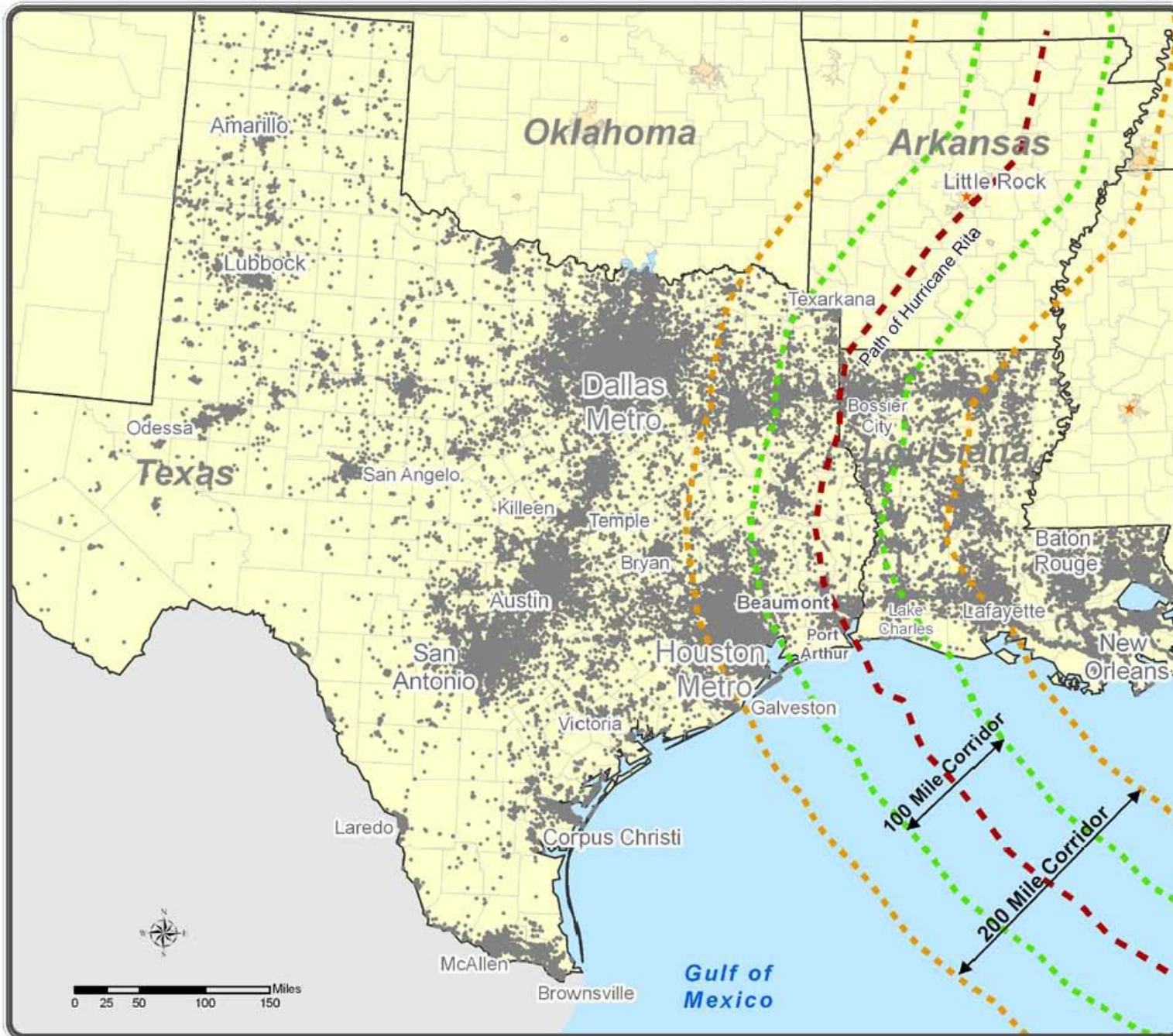


Locations of Business Establishments in Texas and Louisiana Relative to the Path of Hurricane Rita



Locations Within 100 Miles of Path

Employers 34,521	6.6% of Combined Totals
Employees 589,098	6.1% of Combined Totals
Total Wages \$4,930,568,212	5.0% of Combined Totals

Locations Within 200 Miles of Path

Employers 142,417	27.2% of Combined Totals
Employees 2,770,211	28.6% of Combined Totals
Total Wages \$30,503,615,617	31.2% of Combined Totals

Additional Information

Data Notes:

- Employment information is from December 2004.
- Wages are total paid for Fourth Quarter 2004.
- Some employers reported zero employment and/or wages during the quarter.
- Data includes only employers for which accurate physical locations were available.
- Data is from combined totals for TX and LA.

Data Sources:

- Quarterly Census of Employment and Wages (QCEW), 4th Qtr. 2004, developed through a cooperative program between the states and the U.S. Bureau of Labor Statistics. www.bls.gov

Cartography and QCEW Analysis:

- Missouri Economic Research and Information Center (MERIC), Missouri Dept. of Economic Development. www.MissouriEconomy.org

