



**Transmission of material in this release is embargoed until  
 8:30 a.m. (EDT) April 11, 2018**

USDL-18-0542

Technical information: (202) 691-7000 • [cpi\\_info@bls.gov](mailto:cpi_info@bls.gov) • [www.bls.gov/cpi](http://www.bls.gov/cpi)  
 Media Contact: (202) 691-5902 • [PressOffice@bls.gov](mailto:PressOffice@bls.gov)

### CONSUMER PRICE INDEX – MARCH 2018

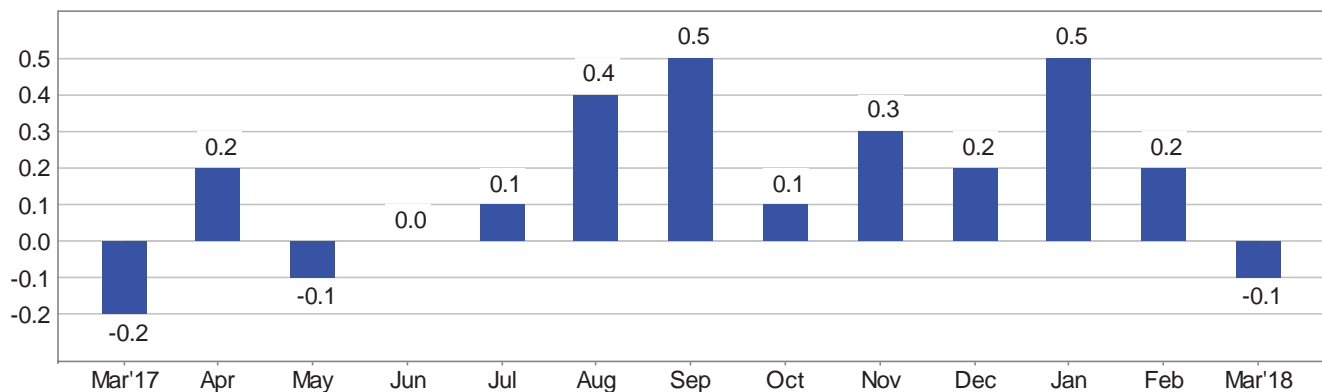
The Consumer Price Index for All Urban Consumers (CPI-U) decreased 0.1 percent in March on a seasonally adjusted basis after rising 0.2 percent in February, the U.S. Bureau of Labor Statistics reported today. Over the last 12 months, the all items index rose 2.4 percent before seasonal adjustment.

A decline in the gasoline index more than outweighed increases in the indexes for shelter, medical care, and food to result in the slight seasonally adjusted decline in the all items index. The energy index fell sharply due mainly to the 4.9-percent decrease in the gasoline index. The index for food rose 0.1 percent over the month, with the indexes for food at home and food away from home both increasing.

The index for all items less food and energy increased 0.2 percent in March, the same increase as in February. Along with shelter and medical care, the indexes for personal care, motor vehicle insurance, and airline fares all rose. The indexes for apparel, for communication, and for used cars and trucks all declined over the month.

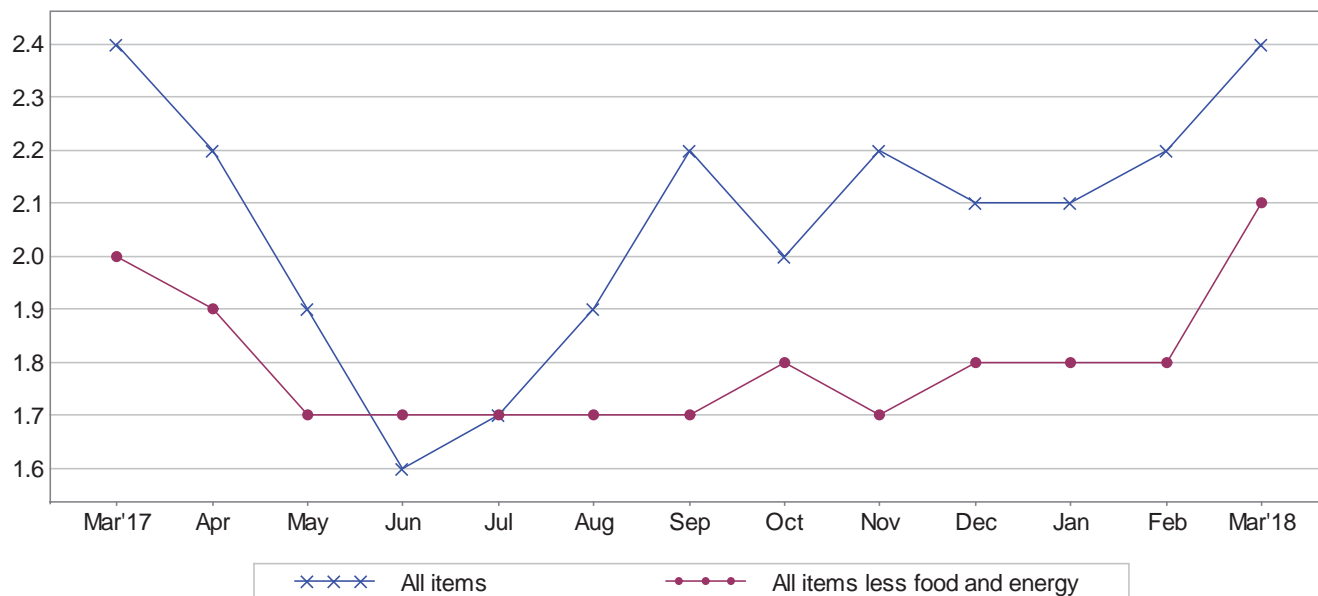
The all items index rose 2.4 percent for the 12 months ending March, the largest 12-month increase since the period ending March 2017 and higher than the 1.6-percent average annual rate over the past 10 years. The index for all items less food and energy rose 2.1 percent, its largest 12-month increase since the period ending February 2017. The energy index increased 7.0 percent over the past 12 months, and the food index advanced 1.3 percent.

**Chart 1. One-month percent change in CPI for All Urban Consumers (CPI-U), seasonally adjusted, Mar. 2017 - Mar. 2018**  
 Percent change



**Chart 2. 12-month percent change in CPI for All Urban Consumers (CPI-U), not seasonally adjusted, Mar. 2017 - Mar. 2018**

Percent change



**Table A. Percent changes in CPI for All Urban Consumers (CPI-U): U.S. city average**

	Seasonally adjusted changes from preceding month							Un-adjusted 12-mos. ended Mar. 2018
	Sep. 2017	Oct. 2017	Nov. 2017	Dec. 2017	Jan. 2018	Feb. 2018	Mar. 2018	
All items .....	.5	.1	.3	.2	.5	.2	-.1	2.4
Food .....	.1	.1	.0	.2	.2	.0	.1	1.3
Food at home .....	.0	.1	-.1	.2	.1	-.2	.1	.4
Food away from home <sup>1</sup> .....	.3	.1	.2	.2	.4	.2	.1	2.5
Energy .....	4.7	-1.4	3.2	-.2	3.0	.1	-2.8	7.0
Energy commodities .....	9.6	-3.0	5.8	-.7	5.8	-.9	-4.7	11.3
Gasoline (all types) .....	10.0	-3.2	6.0	-.8	5.7	-.9	-4.9	11.1
Fuel oil .....	6.4	1.4	5.6	.9	9.5	-3.6	-.7	20.0
Energy services .....	.0	.4	.5	.4	-.8	1.4	-.2	2.5
Electricity .....	.1	.4	.5	.2	-.2	.4	.0	2.2
Utility (piped) gas service .....	-.4	.4	.7	1.0	-2.6	4.7	-1.2	3.4
All items less food and energy .....	.1	.2	.1	.2	.3	.2	.2	2.1
Commodities less food and energy commodities .....	-.2	.0	-.1	.2	.4	.1	-.1	-.3
New vehicles .....	-.3	-.2	.2	.5	-.1	-.5	.0	-1.2
Used cars and trucks .....	-.3	.7	.5	.7	.4	-.3	-.3	.4
Apparel .....	.1	-.2	-.9	-.3	1.7	1.5	-.6	.3
Medical care commodities .....	-.5	.0	.5	.9	-.1	-.3	.1	1.4
Services less energy services .....	.2	.3	.2	.3	.3	.2	.3	2.9
Shelter .....	.2	.3	.2	.3	.2	.2	.4	3.3
Transportation services .....	.3	.4	.1	.3	.8	1.0	.2	4.3
Medical care services .....	.1	.3	-.1	.2	.6	.0	.5	2.1

<sup>1</sup> Not seasonally adjusted.

## **Food**

The food index rose 0.1 percent in March after being unchanged in February. The index for food away from home increased 0.1 percent in March. The index for food at home also increased 0.1 percent as four of the six major grocery store food group indexes rose. The index for meats, poultry, fish, and eggs increased 0.8 percent in March after declining in January and February. The index for cereals and bakery products rose 0.4 percent, as did the index for nonalcoholic beverages. The index for dairy and related products also rose in March, advancing 0.3 percent after declining 0.3 percent in February.

The fruits and vegetables index declined 0.7 percent in March after falling 0.5 percent the prior month. The index for other food at home also fell for the second month in a row, declining 0.2 percent.

The index for food at home rose 0.4 percent over the last 12 months. The index for meats, poultry, fish, and eggs increased 2.1 percent over the span. Other food at home price indexes were relatively flat; all five of the remaining grocery store food groups moved less than 1 percent over the last year. The index for food away from home increased 2.5 percent over the last 12 months.

## **Energy**

The energy index fell 2.8 percent in March after rising in 3 of the last 4 months. The gasoline index fell 4.9 percent in March after a 0.9-percent decrease in February. (Before seasonal adjustment, gasoline prices decreased 0.2 percent in March.) The index for natural gas also declined in March, falling 1.2 percent after rising 4.7 percent in February. The index for electricity was unchanged in March.

The energy index increased 7.0 percent over the past year, with all the major component indexes rising. The gasoline index increased 11.1 percent and the fuel oil index rose 20.0 percent. The electricity index increased 2.2 percent, and the index for natural gas advanced 3.4 percent.

## **All items less food and energy**

The index for all items less food and energy increased 0.2 percent in March. The shelter index increased 0.4 percent, with the indexes for rent and owners' equivalent rent both rising 0.3 percent. The index for lodging away from home increased 2.3 percent in March after falling in January and being unchanged in February. The medical care index rose 0.4 percent, with the hospital services index rising 0.6 percent, the physicians' services index increasing 0.2 percent, but the index for prescription drugs declining 0.2 percent.

The personal care index increased 0.3 percent in March. The index for motor vehicle insurance continued to rise, increasing 0.3 percent. The airline fares index increased 0.6 percent, the same increase as in February. The indexes for alcoholic beverages and household furnishings and operations both increased 0.1 percent in March, while the indexes for new vehicles and for recreation were unchanged.

The apparel index fell 0.6 percent in March after rising in each of the two prior months. The index for communication declined 0.3 percent. The used cars and trucks index fell 0.3 percent in March, the same decline as in February. The indexes for education and for tobacco also declined in March.

The index for all items less food and energy rose 2.1 percent over the past 12 months, a higher figure than the 1.8-percent annual average increase over the past 10 years. The shelter index rose 3.3 percent over the last 12 months, a higher figure than the 2.2-percent average annual increase over the past

decade. The index for medical care advanced 2.0 percent, a lower rate than the 2.9-percent average annual rate over the past 10 years.

### **Not seasonally adjusted CPI measures**

The Consumer Price Index for All Urban Consumers (CPI-U) increased 2.4 percent over the last 12 months to an index level of 249.554 (1982-84=100). For the month, the index increased 0.2 percent prior to seasonal adjustment.

The Consumer Price Index for Urban Wage Earners and Clerical Workers (CPI-W) increased 2.4 percent over the last 12 months to an index level of 243.463 (1982-84=100). For the month, the index increased 0.2 percent prior to seasonal adjustment.

The Chained Consumer Price Index for All Urban Consumers (C-CPI-U) increased 2.2 percent over the last 12 months. For the month, the index increased 0.2 percent on a not seasonally adjusted basis. Please note that the indexes for the past 10 to 12 months are subject to revision.

---

**The Consumer Price Index for April 2018 is scheduled to be released on Thursday, May 10, 2018, at 8:30 a.m. (EDT).**

## **Technical Note**

### **Brief Explanation of the CPI**

The Consumer Price Index (CPI) measures the change in prices paid by consumers for goods and services. The CPI reflects spending patterns for each of two population groups: all urban consumers and urban wage earners and clerical workers. The all urban consumer group represents about 93 percent of the total U.S. population. It is based on the expenditures of almost all residents of urban or metropolitan areas, including professionals, the self-employed, the poor, the unemployed, and retired people, as well as urban wage earners and clerical workers. Not included in the CPI are the spending patterns of people living in rural nonmetropolitan areas, farming families, people in the Armed Forces, and those in institutions, such as prisons and mental hospitals. Consumer inflation for all urban consumers is measured by two indexes, namely, the Consumer Price Index for All Urban Consumers (CPI-U) and the Chained Consumer Price Index for All Urban Consumers (C-CPI-U).

The Consumer Price Index for Urban Wage Earners and Clerical Workers (CPI-W) is based on the expenditures of households included in the CPI-U definition that meet two requirements: more than one-half of the household's income must come from clerical or wage occupations, and at least one of the household's earners must have been employed for at least 37 weeks during the previous 12 months. The CPI-W population represents about 29 percent of the total U.S. population and is a subset of the CPI-U population.

The CPIs are based on prices of food, clothing, shelter, fuels, transportation, doctors' and dentists' services, drugs, and other goods and services that people buy for day-to-day living. Prices are collected each month in 75 urban areas across the country from about 5,000 housing units and approximately 22,000 retail establishments (department stores, supermarkets, hospitals, filling stations, and other types of stores and service establishments). All taxes directly associated with the purchase and use of items are included in the index. Prices of fuels and a few other items are obtained every month in all 75 locations. Prices of most other commodities and services are collected every month in the three largest geographic areas and every other month in other areas. Prices of most goods and services are obtained by personal visits or telephone calls by the Bureau's trained representatives.

In calculating the index, price changes for the various items in each location are aggregated using weights, which represent their importance in the spending of the appropriate population group. Local data are then combined to obtain a U.S. city average. For the CPI-U and CPI-W, separate indexes are also published by size of city, by region of the country, for cross-classifications of regions and population-size classes, and for 23 selected local areas. Area indexes do not measure differences in the level of prices among cities; they only measure the average change in prices for each area since the base period. For the C-CPI-U, data are issued only at the national level. The CPI-U and CPI-W are considered final when released, but the C-CPI-U is issued in preliminary form and subject to three subsequent quarterly revisions.

The index measures price change from a designed reference date. For most of the CPI-U and the CPI-W, the reference base is 1982-84 equals 100. The reference base for the C-CPI-U is December 1999 equals 100. An increase of 7 percent from the reference base, for example, is shown as 107.000. Alternatively, that relationship can also be expressed as the price of a base period market basket of goods and services rising from \$100 to \$107.

### **Sampling Error in the CPI**

The CPI is a statistical estimate that is subject to sampling error because it is based upon a sample of retail prices and not the complete universe of all prices. BLS calculates and publishes estimates of the 1-month, 2-month, 6-month, and 12-month percent change standard errors annually for the CPI-U. These standard error estimates can be used to construct confidence intervals for hypothesis testing. For

example, the estimated standard error of the 1-month percent change is 0.03 percent for the U.S. all items CPI. This means that if we repeatedly sample from the universe of all retail prices using the same methodology, and estimate a percentage change for each sample, then 95 percent of these estimates will be within 0.06 percent of the 1-month percentage change based on all retail prices. For example, for a 1-month change of 0.2 percent in the all items CPI-U, we are 95 percent confident that the actual percent change based on all retail prices would fall between 0.14 and 0.26 percent. For the latest data, including information on how to use the estimates of standard error, see <https://www.bls.gov/cpi/tables/variance-estimates/home.htm>.

### Calculating Index Changes

Movements of the indexes from 1 month to another are usually expressed as percent changes rather than changes in index points, because index point changes are affected by the level of the index in relation to its base period, while percent changes are not. The following table shows an example of using index values to calculate percent changes:

	Item A	Item B	Item C
<b>Year I</b>	112.500	225.000	110.000
<b>Year II</b>	121.500	243.000	128.000
<b>Change in index points</b>	9.000	18.000	18.000
<b>Percent change</b>	$9.0/112.500 \times 100 = 8.0$	$18.0/225.000 \times 100 = 8.0$	$18.0/110.000 \times 100 = 16.4$

### Use of Seasonally Adjusted and Unadjusted Data

The Consumer Price Index (CPI) produces both unadjusted and seasonally adjusted data. Seasonally adjusted data are computed using seasonal factors derived by the X-13ARIMA-SEATS seasonal adjustment method. These factors are updated each February, and the new factors are used to revise the previous 5 years of seasonally adjusted data. For more information on data revision scheduling, please see the Factsheet on Seasonal Adjustment at [www.bls.gov/cpi/seasonal-adjustment/questions-and-answers.htm](http://www.bls.gov/cpi/seasonal-adjustment/questions-and-answers.htm) and the Timeline of Seasonal Adjustment Methodological Changes at [www.bls.gov/cpi/seasonal-adjustment/timeline-seasonal-adjustment-methodology-changes.htm](http://www.bls.gov/cpi/seasonal-adjustment/timeline-seasonal-adjustment-methodology-changes.htm).

For analyzing short-term price trends in the economy, seasonally adjusted changes are usually preferred since they eliminate the effect of changes that normally occur at the same time and in about the same magnitude every year—such as price movements resulting from weather events, production cycles, model changeovers, holidays, and sales. This allows data users to focus on changes that are not typical for the time of year. The unadjusted data are of primary interest to consumers concerned about the prices they actually pay. Unadjusted data are also used extensively for escalation purposes. Many collective bargaining contract agreements and pension plans, for example, tie compensation changes to the Consumer Price Index before adjustment for seasonal variation. BLS advises against the use of seasonally adjusted data in escalation agreements because seasonally adjusted series are revised annually.

### *Intervention Analysis*

The Bureau of Labor Statistics uses intervention analysis seasonal adjustment for some CPI series. Sometimes extreme values or sharp movements can distort the underlying seasonal pattern of price change. Intervention analysis seasonal adjustment is a process by which the distortions caused by such unusual events are estimated and removed from the data prior to calculation of seasonal factors. The

resulting seasonal factors, which more accurately represent the seasonal pattern, are then applied to the unadjusted data.

For example, this procedure was used for the motor fuel series to offset the effects of the 2009 return to normal pricing after the worldwide economic downturn in 2008. Retaining this outlier data during seasonal factor calculation would distort the computation of the seasonal portion of the time series data for motor fuel, so it was estimated and removed from the data prior to seasonal adjustment. Following that, seasonal factors were calculated based on this “prior adjusted” data. These seasonal factors represent a clearer picture of the seasonal pattern in the data. The last step is for motor fuel seasonal factors to be applied to the unadjusted data.

For the seasonal factors introduced in January 2018, BLS adjusted 38 series using intervention analysis seasonal adjustment, including selected food and beverage items, motor fuels, and natural gas.

#### *Revision of Seasonally Adjusted Indexes*

Seasonally adjusted data, including the U.S. city average all items index levels, are subject to revision for up to 5 years after their original release. Every year, economists in the CPI calculate new seasonal factors for seasonally adjusted series and apply them to the last 5 years of data. Seasonally adjusted indexes beyond the last 5 years of data are considered to be final and not subject to revision. In January 2018, revised seasonal factors and seasonally adjusted indexes for 2013 to 2017 were calculated and published. For series which are directly adjusted using the Census X-13ARIMA-SEATS seasonal adjustment software, the seasonal factors for 2017 will be applied to data for 2018 to produce the seasonally adjusted 2018 indexes. Series which are indirectly seasonally adjusted by summing seasonally adjusted component series have seasonal factors which are derived and are therefore not available in advance.

#### *Determining Seasonal Status*

Each year the seasonal status of every series is reevaluated based upon certain statistical criteria. Using these criteria, BLS economists determine whether a series should change its status from "not seasonally adjusted" to "seasonally adjusted", or vice versa. If any of the 81 components of the U.S. city average all items index change their seasonal adjustment status from seasonally adjusted to not seasonally adjusted, not seasonally adjusted data will be used in the aggregation of the dependent series for the last 5 years, but the seasonally adjusted indexes before that period will not be changed. Twenty-nine of the 81 components of the U.S. city average all items index are not seasonally adjusted for 2018.

#### **Contact Information**

For additional information about the CPI visit [www.bls.gov/cpi](http://www.bls.gov/cpi) or contact the CPI Information and Analysis Section at 202-691-7000 or [cpi\\_info@bls.gov](mailto:cpi_info@bls.gov).

For additional information on seasonal adjustment in the CPI visit <https://www.bls.gov/cpi/seasonal-adjustment/home.htm> or contact the CPI seasonal adjustment section at 202-691-6968 or [cpiseas@bls.gov](mailto:cpiseas@bls.gov).

Information from this release will be made available to sensory impaired individuals upon request. Voice phone: 202-691-5200; Federal Relay Service: 1-800-877-8339.

**Table 1. Consumer Price Index for All Urban Consumers (CPI-U): U.S. city average, by expenditure category, March 2018**

[1982-84=100, unless otherwise noted]

Expenditure category	Relative importance Feb. 2018	Unadjusted indexes			Unadjusted percent change		Seasonally adjusted percent change		
		Mar. 2017	Feb. 2018	Mar. 2018	Mar. 2017-Mar. 2018	Feb. 2018-Mar. 2018	Dec. 2017-Jan. 2018	Jan. 2018-Feb. 2018	Feb. 2018-Mar. 2018
All items.....	100.000	243.801	248.991	249.554	2.4	0.2	0.5	0.2	-0.1
Food.....	13.306	249.165	252.266	252.370	1.3	0.0	0.2	0.0	0.1
Food at home.....	7.327	238.256	239.190	239.158	0.4	0.0	0.1	-0.2	0.1
Cereals and bakery products.....	0.959	272.174	271.245	272.345	0.1	0.4	0.3	-0.1	0.4
Meats, poultry, fish, and eggs.....	1.610	244.306	247.095	249.516	2.1	1.0	-0.2	-0.2	0.8
Dairy and related products.....	0.735	218.567	216.412	216.497	-0.9	0.0	0.0	-0.3	0.3
Fruits and vegetables.....	1.298	292.932	298.503	293.870	0.3	-1.6	0.5	-0.5	-0.7
Nonalcoholic beverages and beverage materials.....	0.873	168.455	167.736	167.758	-0.4	0.0	0.0	-0.1	0.4
Other food at home.....	1.852	210.002	210.115	210.012	0.0	0.0	0.0	-0.1	-0.2
Food away from home <sup>1</sup> .....	5.978	267.055	273.435	273.733	2.5	0.1	0.4	0.2	0.1
Energy.....	7.687	198.597	213.519	212.554	7.0	-0.5	3.0	0.1	-2.8
Energy commodities.....	4.254	209.029	233.414	232.716	11.3	-0.3	5.8	-0.9	-4.7
Fuel oil.....	0.117	240.619	292.718	288.737	20.0	-1.4	9.5	-3.6	-0.7
Motor fuel.....	4.059	205.155	228.666	228.068	11.2	-0.3	5.6	-0.8	-4.9
Gasoline (all types).....	3.971	204.217	227.420	226.872	11.1	-0.2	5.7	-0.9	-4.9
Energy services <sup>2</sup> .....	3.433	197.709	203.932	202.625	2.5	-0.6	-0.8	1.4	-0.2
Electricity <sup>2</sup> .....	2.634	205.692	210.970	210.273	2.2	-0.3	-0.2	0.4	0.0
Utility (piped) gas service <sup>2</sup> .....	0.799	170.755	179.557	176.567	3.4	-1.7	-2.6	4.7	-1.2
All items less food and energy.....	79.007	251.290	255.783	256.610	2.1	0.3	0.3	0.2	0.2
Commodities less food and energy commodities.....	19.895	145.527	144.412	145.050	-0.3	0.4	0.4	0.1	-0.1
Apparel.....	3.136	128.250	126.587	128.604	0.3	1.6	1.7	1.5	-0.6
New vehicles.....	3.775	148.543	146.807	146.727	-1.2	-0.1	-0.1	-0.5	0.0
Used cars and trucks.....	2.407	139.372	137.768	139.892	0.4	1.5	0.4	-0.3	-0.3
Medical care commodities.....	1.740	376.440	381.975	381.804	1.4	0.0	-0.1	-0.3	0.1
Alcoholic beverages.....	0.970	244.978	248.166	248.287	1.4	0.0	0.0	0.2	0.1
Tobacco and smoking products.....	0.646	987.910	1,049.343	1,046.450	5.9	-0.3	0.3	0.1	-0.2
Services less energy services.....	59.112	316.481	324.690	325.610	2.9	0.3	0.3	0.2	0.3
Shelter.....	32.697	295.044	303.653	304.847	3.3	0.4	0.2	0.2	0.4
Rent of primary residence <sup>2</sup> .....	7.779	304.868	315.277	315.883	3.6	0.2	0.3	0.2	0.3
Owners' equivalent rent of residences <sup>2, 3</sup> .....	23.606	302.259	311.280	312.107	3.3	0.3	0.3	0.2	0.3
Medical care services.....	6.939	505.991	515.205	516.713	2.1	0.3	0.6	0.0	0.5
Physicians' services <sup>2</sup> .....	1.750	383.965	380.470	380.766	-0.8	0.1	0.3	0.2	0.2
Hospital services <sup>2, 4</sup> .....	2.324	314.529	329.701	330.759	5.2	0.3	1.3	-0.5	0.6
Transportation services.....	5.987	307.490	320.089	320.774	4.3	0.2	0.8	1.0	0.2
Motor vehicle maintenance and repair <sup>1</sup> .....	1.116	279.600	284.032	283.656	1.5	-0.1	0.1	0.3	-0.1
Motor vehicle insurance.....	2.396	517.619	563.365	563.762	8.9	0.1	1.3	1.7	0.3
Airline fares.....	0.712	283.583	265.272	267.482	-5.7	0.8	-0.6	0.6	0.6

<sup>1</sup> Not seasonally adjusted.

<sup>2</sup> This index series was calculated using a Laspeyres estimator. All other item stratum index series were calculated using a geometric means estimator.

<sup>3</sup> Indexes on a December 1982=100 base.

<sup>4</sup> Indexes on a December 1996=100 base.

NOTE: Index applies to a month as a whole, not to any specific date.



**Table 2. Consumer Price Index for All Urban Consumers (CPI-U): U.S. city average, by detailed expenditure category, March 2018**

[1982-84=100, unless otherwise noted]

Expenditure category	Relative importance Feb. 2018	Unadjusted percent change		Seasonally adjusted percent change		
		Mar. 2017- Mar. 2018	Feb. 2018- Mar. 2018	Dec. 2017- Jan. 2018	Jan. 2018- Feb. 2018	Feb. 2018- Mar. 2018
All items.....	100.000	2.4	0.2	0.5	0.2	-0.1
Food.....	13.306	1.3	0.0	0.2	0.0	0.1
Food at home.....	7.327	0.4	0.0	0.1	-0.2	0.1
Cereals and bakery products.....	0.959	0.1	0.4	0.3	-0.1	0.4
Cereals and cereal products.....	0.311	-1.0	-0.1	-0.1	0.1	0.0
Flour and prepared flour mixes.....	0.042	-0.1	-1.2	-0.2	1.5	-0.8
Breakfast cereal <sup>1</sup> .....	0.150	-2.4	0.4	-0.7	-1.5	0.4
Rice, pasta, cornmeal <sup>1</sup> .....	0.120	0.4	-0.3	0.7	1.3	-0.3
Rice <sup>1, 2, 3</sup> .....		-0.5	-0.6	1.9	-0.4	-0.6
Bakery products <sup>1</sup> .....	0.648	0.6	0.6	1.1	-0.5	0.6
Bread <sup>1, 2</sup> .....	0.189	1.3	2.0	-0.5	-0.6	2.0
White bread <sup>1, 3</sup> .....		0.5	2.4	-1.0	-0.6	2.4
Bread other than white <sup>1, 3</sup> .....		1.9	1.4	-0.2	-0.7	1.4
Fresh biscuits, rolls, muffins <sup>2</sup> .....	0.092	1.0	0.7	-0.6	-0.2	0.6
Cakes, cupcakes, and cookies.....	0.164	1.9	-0.3	1.6	0.6	-0.6
Cookies <sup>3</sup> .....		1.4	-0.9	2.4	0.7	-0.8
Fresh cakes and cupcakes <sup>1, 3</sup> .....		2.1	0.7	0.7	-0.1	0.7
Other bakery products.....	0.203	-1.3	0.1	0.5	-0.5	0.0
Fresh sweetrolls, coffeecakes, doughnuts <sup>1, 3</sup> .....		1.5	0.5	0.8	0.9	0.5
Crackers, bread, and cracker products <sup>3</sup> .....		-2.4	0.8	0.5	-1.1	0.5
Frozen and refrigerated bakery products, pies, tarts, turnovers <sup>3</sup> .....		-1.2	-1.1	0.6	-0.7	-1.2
Meats, poultry, fish, and eggs.....	1.610	2.1	1.0	-0.2	-0.2	0.8
Meats, poultry, and fish.....	1.511	1.3	1.0	-0.5	-0.3	0.6
Meats.....	0.948	1.4	1.0	-0.3	-0.6	0.6
Beef and veal.....	0.426	2.8	1.2	-1.2	-0.7	0.6
Uncooked ground beef <sup>1</sup> .....	0.173	4.0	1.0	-0.8	-0.4	1.0
Uncooked beef roasts <sup>1, 2</sup> .....	0.060	1.6	1.7	-1.2	1.3	1.7
Uncooked beef steaks <sup>2</sup> .....	0.156	1.1	1.4	-1.7	-1.0	0.4
Uncooked other beef and veal <sup>1, 2</sup> .....	0.037	5.5	0.7	0.3	0.4	0.7
Pork.....	0.298	0.4	0.7	0.7	-0.8	0.3
Bacon, breakfast sausage, and related products <sup>2</sup> .....	0.136	1.4	0.6	-0.1	-0.1	0.7
Bacon and related products <sup>3</sup> .....		0.0	-0.3	1.1	0.0	-1.0
Breakfast sausage and related products <sup>2, 3</sup> .....		3.5	1.7	-1.0	-0.7	2.5
Ham.....	0.052	-2.8	3.7	-1.4	-1.8	1.1
Ham, excluding canned <sup>3</sup> .....		-2.8	4.1	-1.0	-2.6	1.3
Pork chops <sup>1</sup> .....	0.043	0.9	-0.9	1.6	0.3	-0.9
Other pork including roasts and picnics <sup>2</sup> .....	0.068	0.6	-0.1	1.3	-1.7	0.6
Other meats.....	0.223	0.1	1.0	0.1	-0.2	1.0
Frankfurters <sup>3</sup> .....		1.3	1.3	-0.1	1.3	-0.4
Lunchmeats <sup>2, 3</sup> .....		-0.5	1.2	0.1	-0.4	1.2
Lamb and organ meats <sup>1, 3</sup> .....						
Lamb and mutton <sup>1, 2, 3</sup> .....						
Poultry <sup>1</sup> .....	0.318	0.7	0.5	-1.3	0.4	0.5
Chicken <sup>1, 2</sup> .....	0.261	2.1	0.8	-1.5	0.6	0.8
Fresh whole chicken <sup>1, 3</sup> .....		1.6	0.9	-0.3	-0.4	0.9
Fresh and frozen chicken parts <sup>1, 3</sup> .....		2.7	0.8	-2.0	1.1	0.8
Other poultry including turkey <sup>2</sup> .....	0.058	-5.3	-1.1	-1.9	-1.6	-1.5
Fish and seafood.....	0.245	1.7	1.3	-0.6	-0.1	1.0
Fresh fish and seafood <sup>2</sup> .....	0.127	2.3	1.3	-0.2	1.0	0.6
Processed fish and seafood <sup>2</sup> .....	0.118	1.4	1.3	-1.0	-1.7	2.0
Shelf stable fish and seafood <sup>1, 3</sup> .....		4.7	3.9	-1.7	-3.8	3.9

See footnotes at end of table.

**Table 2. Consumer Price Index for All Urban Consumers (CPI-U): U.S. city average, by detailed expenditure category, March 2018 — Continued**  
 [1982-84=100, unless otherwise noted]

Expenditure category	Relative importance Feb. 2018	Unadjusted percent change		Seasonally adjusted percent change		
		Mar. 2017- Mar. 2018	Feb. 2018- Mar. 2018	Dec. 2017- Jan. 2018	Jan. 2018- Feb. 2018	Feb. 2018- Mar. 2018
Frozen fish and seafood <sup>3</sup> .....		-1.8	-0.5	-0.7	-1.2	0.1
Eggs.....	0.099	16.3	1.4	5.2	2.0	3.8
Dairy and related products.....	0.735	-0.9	0.0	0.0	-0.3	0.3
Milk <sup>1, 2</sup> .....	0.202	-3.9	-1.3	-1.2	-0.2	-1.3
Fresh whole milk <sup>3</sup> .....		-5.1	-1.3	-0.9	0.6	-0.9
Fresh milk other than whole <sup>2, 3</sup> .....		-2.8	-1.0	-0.4	0.3	-0.6
Cheese and related products.....	0.240	0.8	0.6	0.5	-1.0	0.8
Ice cream and related products.....	0.106	-0.2	0.7	1.2	-2.3	2.0
Other dairy and related products <sup>1, 2</sup> .....	0.188	-0.3	0.4	0.8	0.0	0.4
Fruits and vegetables.....	1.298	0.3	-1.6	0.5	-0.5	-0.7
Fresh fruits and vegetables.....	1.025	1.0	-1.7	0.5	-0.7	-0.7
Fresh fruits.....	0.554	1.0	-1.9	1.9	-0.8	-1.2
Apples.....	0.078	-0.5	-1.3	0.1	-0.4	-1.2
Bananas <sup>1</sup> .....	0.081	1.1	0.9	0.4	1.4	0.9
Citrus fruits <sup>2</sup> .....	0.150	9.1	1.2	1.1	1.4	0.0
Oranges, including tangerines <sup>3</sup> .....		6.1	-2.6	1.1	0.9	-2.7
Other fresh fruits <sup>2</sup> .....	0.245	-3.2	-4.8	2.1	-2.4	-1.9
Fresh vegetables.....	0.471	1.1	-1.5	-1.2	-0.6	-0.1
Potatoes.....	0.076	-0.1	-2.2	-2.0	0.7	-1.1
Lettuce.....	0.057	-2.6	0.2	-5.5	0.6	2.9
Tomatoes <sup>1</sup> .....	0.082	5.4	-3.1	5.3	-8.7	-3.1
Other fresh vegetables.....	0.256	1.0	-1.2	-0.8	-0.3	-0.4
Processed fruits and vegetables <sup>2</sup> .....	0.273	-2.2	-1.0	0.4	0.0	-0.3
Canned fruits and vegetables <sup>2</sup> .....	0.148	-2.4	-1.1	2.1	-1.1	-0.3
Canned fruits <sup>2, 3</sup> .....		-5.5	-3.0	0.1	-0.7	-2.6
Canned vegetables <sup>2, 3</sup> .....		-0.6	-0.1	3.1	-1.3	0.7
Frozen fruits and vegetables <sup>2</sup> .....	0.080	-1.2	-0.4	-1.8	1.4	-0.3
Frozen vegetables <sup>3</sup> .....		-1.5	-0.2	-1.3	0.3	0.1
Other processed fruits and vegetables including dried <sup>2</sup> .....	0.045	-3.6	-2.0	-1.1	0.9	-1.0
Dried beans, peas, and lentils <sup>1, 2, 3</sup> .....		-4.0	-2.1	-2.4	1.7	-2.1
Nonalcoholic beverages and beverage materials.....	0.873	-0.4	0.0	0.0	-0.1	0.4
Juices and nonalcoholic drinks <sup>2</sup> .....	0.617	-0.1	-0.2	0.8	-0.2	0.3
Carbonated drinks.....	0.258	0.3	-0.2	0.4	0.4	0.3
Frozen noncarbonated juices and drinks <sup>1, 2</sup> .....	0.009	0.3	0.4	-0.5	0.6	0.4
Nonfrozen noncarbonated juices and drinks <sup>2</sup> .....	0.351	-0.5	-0.2	1.0	-1.0	0.4
Beverage materials including coffee and tea <sup>2</sup> .....	0.256	-1.2	0.5	-1.5	-0.4	0.9
Coffee.....	0.164	-1.6	1.1	-2.6	0.1	1.0
Roasted coffee <sup>3</sup> .....		-2.1	0.4	-2.5	0.1	0.3
Instant coffee <sup>1, 3</sup> .....		-3.5	2.0	-2.5	-1.3	2.0
Other beverage materials including tea <sup>1, 2</sup> .....	0.092	-0.4	-0.6	0.2	-0.4	-0.6
Other food at home.....	1.852	0.0	0.0	0.0	-0.1	-0.2
Sugar and sweets <sup>1</sup> .....	0.282	1.2	0.1	1.3	-0.3	0.1
Sugar and artificial sweeteners.....	0.043	1.4	-0.3	-0.2	-1.2	1.0
Candy and chewing gum <sup>1, 2</sup> .....	0.184	1.5	0.3	0.4	-0.2	0.3
Other sweets <sup>2</sup> .....	0.055	0.1	-0.5	0.7	0.1	-0.1
Fats and oils.....	0.218	0.2	-1.0	-0.1	0.5	-0.7
Butter and margarine <sup>2</sup> .....	0.061	-0.1	-0.7	0.0	-0.5	-0.1
Butter <sup>3</sup> .....		0.6	-1.7	0.4	0.1	-1.5
Margarine <sup>3</sup> .....		0.5	0.1	0.2	0.2	1.4
Salad dressing <sup>2</sup> .....	0.053	-1.6	-0.8	0.0	0.8	-0.3
Other fats and oils including peanut butter <sup>2</sup> .....	0.104	1.2	-1.2	-0.8	1.1	-1.2
Peanut butter <sup>1, 2, 3</sup> .....		1.0	-0.9	1.6	3.4	-0.9
Other foods.....	1.352	-0.3	0.1	-0.2	-0.1	-0.1

See footnotes at end of table.

**Table 2. Consumer Price Index for All Urban Consumers (CPI-U): U.S. city average, by detailed expenditure category, March 2018 — Continued**  
 [1982-84=100, unless otherwise noted]

Expenditure category	Relative importance Feb. 2018	Unadjusted percent change		Seasonally adjusted percent change		
		Mar. 2017- Mar. 2018	Feb. 2018- Mar. 2018	Dec. 2017- Jan. 2018	Jan. 2018- Feb. 2018	Feb. 2018- Mar. 2018
Soups.....	0.083	-2.0	-0.3	-0.9	0.0	-3.0
Frozen and freeze dried prepared foods <sup>1</sup> .....	0.235	-0.2	0.3	-1.5	0.0	0.3
Snacks <sup>1</sup> .....	0.312	-0.5	0.2	-0.2	0.6	0.2
Spices, seasonings, condiments, sauces.....	0.272	0.3	0.1	0.2	-1.1	0.4
Salt and other seasonings and spices <sup>2, 3</sup> .....		2.0	-0.6	2.1	-0.1	0.2
Olives, pickles, relishes <sup>1, 2, 3</sup> .....		-2.9	-2.0	0.9	0.2	-2.0
Sauces and gravies <sup>2, 3</sup> .....		2.5	0.6	0.4	-1.1	0.4
Other condiments <sup>3</sup> .....		-1.3	1.0	-1.4	-1.5	1.8
Baby food <sup>1, 2</sup> .....	0.049	0.9	-0.1	0.6	0.5	-0.1
Other miscellaneous foods <sup>1, 2</sup> .....	0.401	-0.3	-0.1	-1.6	0.9	-0.1
Prepared salads <sup>1, 3, 4</sup> .....		0.5	-0.2	-1.3	1.5	-0.2
Food away from home <sup>1</sup> .....	5.978	2.5	0.1	0.4	0.2	0.1
Full service meals and snacks <sup>1, 2</sup> .....	2.971	2.1	0.1	0.2	0.2	0.1
Limited service meals and snacks <sup>1, 2</sup> .....	2.544	3.0	0.1	0.5	0.3	0.1
Food at employee sites and schools <sup>2</sup> .....	0.180	2.1	-0.1	0.0	0.7	0.1
Food at elementary and secondary schools <sup>1, 3, 5</sup> .....		1.6	0.0	0.0	0.0	0.0
Food from vending machines and mobile vendors <sup>1, 2</sup> .....	0.090	2.3	0.1	0.3	0.1	0.1
Other food away from home <sup>1, 2</sup> .....	0.194	2.2	-0.2	0.8	0.0	-0.2
Energy.....	7.687	7.0	-0.5	3.0	0.1	-2.8
Energy commodities.....	4.254	11.3	-0.3	5.8	-0.9	-4.7
Fuel oil and other fuels.....	0.195	14.2	-1.1	7.0	-2.1	-0.8
Fuel oil.....	0.117	20.0	-1.4	9.5	-3.6	-0.7
Propane, kerosene, and firewood <sup>6</sup> .....	0.078	7.2	-0.7	2.2	-0.6	0.5
Motor fuel.....	4.059	11.2	-0.3	5.6	-0.8	-4.9
Gasoline (all types).....	3.971	11.1	-0.2	5.7	-0.9	-4.9
Gasoline, unleaded regular <sup>3</sup> .....		11.3	-0.3	6.1	-1.1	-4.8
Gasoline, unleaded midgrade <sup>3, 7</sup> .....		9.9	0.0	4.9	-1.3	-3.7
Gasoline, unleaded premium <sup>3</sup> .....		10.2	0.2	3.2	0.9	-4.5
Other motor fuels <sup>2</sup> .....	0.088	16.5	-1.2	6.6	1.4	-1.9
Energy services <sup>8</sup> .....	3.433	2.5	-0.6	-0.8	1.4	-0.2
Electricity <sup>8</sup> .....	2.634	2.2	-0.3	-0.2	0.4	0.0
Utility (piped) gas service <sup>8</sup> .....	0.799	3.4	-1.7	-2.6	4.7	-1.2
All items less food and energy.....	79.007	2.1	0.3	0.3	0.2	0.2
Commodities less food and energy commodities.....	19.895	-0.3	0.4	0.4	0.1	-0.1
Household furnishings and supplies <sup>9</sup> .....	3.395	-1.5	0.1	0.2	0.0	-0.1
Window and floor coverings and other linens <sup>1, 2</sup> .....	0.271	-1.7	-1.3	4.1	0.4	-1.3
Floor coverings <sup>1, 2</sup> .....	0.056	4.4	0.7	1.4	2.4	0.7
Window coverings <sup>1, 2</sup> .....	0.049	-5.5	-3.2	2.0	2.2	-3.2
Other linens <sup>1, 2</sup> .....	0.165	-2.7	-1.4	5.6	-0.7	-1.4
Furniture and bedding.....	0.888	-1.3	-0.4	0.4	0.2	-1.0
Bedroom furniture <sup>1</sup> .....	0.324	-0.1	-0.3	0.7	-0.2	-0.3
Living room, kitchen, and dining room furniture <sup>1, 2</sup> .....	0.425	-2.0	-0.6	0.6	0.1	-0.6
Other furniture <sup>2</sup> .....	0.127	-2.0	0.3	1.2	-1.9	-0.5
Infants' furniture <sup>1, 3, 5</sup> .....		-5.1	-4.2	-0.5	0.0	-4.2
Appliances <sup>2</sup> .....	0.208	-2.2	1.0	-0.6	-1.5	1.2
Major appliances <sup>2</sup> .....	0.074	-3.6	0.8	0.5	-2.7	0.3
Laundry equipment <sup>3</sup> .....		-7.2	0.2	3.4	-5.9	-0.6
Other appliances <sup>2</sup> .....	0.131	-1.5	1.1	-1.2	-0.6	1.7
Other household equipment and furnishings <sup>2</sup> .....	0.525	-6.2	0.2	-2.2	0.4	0.3
Clocks, lamps, and decorator items <sup>1</sup> .....	0.291	-10.2	-0.4	-0.7	-0.2	-0.4
Indoor plants and flowers <sup>10</sup> .....	0.095	1.5	1.2	-1.9	1.1	1.9
Dishes and flatware <sup>1, 2</sup> .....	0.059	-6.8	-2.7	0.9	1.1	-2.7
Nonelectric cookware and tableware <sup>2</sup> .....	0.081	-2.0	3.5	-2.1	1.9	3.0

See footnotes at end of table.

**Table 2. Consumer Price Index for All Urban Consumers (CPI-U): U.S. city average, by detailed expenditure category, March 2018 — Continued**  
 [1982-84=100, unless otherwise noted]

Expenditure category	Relative importance Feb. 2018	Unadjusted percent change		Seasonally adjusted percent change		
		Mar. 2017- Mar. 2018	Feb. 2018- Mar. 2018	Dec. 2017- Jan. 2018	Jan. 2018- Feb. 2018	Feb. 2018- Mar. 2018
Tools, hardware, outdoor equipment and supplies <sup>2</sup> . . .	0.673	0.0	0.4	0.3	0.4	0.2
Tools, hardware and supplies <sup>1, 2</sup> . . . . .	0.199	1.4	0.1	0.8	1.2	0.1
Outdoor equipment and supplies <sup>2</sup> . . . . .	0.311	-0.8	0.6	0.1	0.1	0.4
Housekeeping supplies <sup>1</sup> . . . . .	0.830	-0.1	0.4	0.6	-0.1	0.4
Household cleaning products <sup>2</sup> . . . . .	0.326	-1.3	0.5	-1.1	-0.1	0.3
Household paper products <sup>1, 2</sup> . . . . .	0.221	-0.5	-0.7	0.5	0.0	-0.7
Miscellaneous household products <sup>1, 2</sup> . . . . .	0.283	1.6	1.1	2.8	-0.4	1.1
Apparel . . . . .	3.136	0.3	1.6	1.7	1.5	-0.6
Men's and boys' apparel . . . . .	0.778	0.4	-1.2	1.8	1.7	-1.0
Men's apparel . . . . .	0.612	-0.4	-1.2	1.2	1.3	-1.0
Men's suits, sport coats, and outerwear . . . . .	0.111	-2.4	-1.6	-0.4	-0.2	-2.5
Men's furnishings . . . . .	0.150	-1.8	1.4	-1.8	-0.8	1.2
Men's shirts and sweaters <sup>2</sup> . . . . .	0.182	0.2	-1.5	4.2	4.3	-2.7
Men's pants and shorts . . . . .	0.162	1.7	-3.1	0.9	1.2	-2.1
Boys' apparel . . . . .	0.166	3.4	-1.2	4.5	3.6	-1.2
Women's and girls' apparel . . . . .	1.292	-1.0	2.6	2.8	1.5	-2.1
Women's apparel . . . . .	1.111	-1.2	2.6	3.4	1.8	-2.5
Women's outerwear . . . . .	0.070	-9.6	3.5	-6.3	4.8	0.9
Women's dresses . . . . .	0.135	3.2	7.7	3.8	1.9	-1.7
Women's suits and separates <sup>2</sup> . . . . .	0.588	-2.3	2.8	4.8	2.4	-4.0
Women's underwear, nightwear, sportswear and accessories <sup>2</sup> . . . . .	0.305	-1.1	-0.3	2.6	1.1	-2.5
Girls' apparel . . . . .	0.181	-1.1	3.1	-1.5	0.1	0.3
Footwear . . . . .	0.674	0.8	3.1	0.4	1.5	1.2
Men's footwear <sup>1</sup> . . . . .	0.217	0.6	2.1	2.2	1.8	2.1
Boys' and girls' footwear . . . . .	0.153	0.2	4.7	-2.7	-0.5	2.8
Women's footwear . . . . .	0.304	1.1	2.9	1.0	3.0	0.8
Infants' and toddlers' apparel . . . . .	0.134	4.6	2.6	1.1	0.9	2.2
Jewelry and watches <sup>6</sup> . . . . .	0.257	2.6	0.5	-1.5	0.6	1.8
Watches <sup>1, 6</sup> . . . . .	0.099	7.8	-0.7	2.4	1.2	-0.7
Jewelry <sup>6</sup> . . . . .	0.159	0.0	1.2	-1.5	1.8	1.6
Transportation commodities less motor fuel <sup>9</sup> . . . . .	6.676	-0.5	0.6	0.2	-0.4	-0.1
New vehicles . . . . .	3.775	-1.2	-0.1	-0.1	-0.5	0.0
New cars and trucks <sup>2, 3</sup> . . . . .		-1.3	-0.1	-0.1	-0.5	0.0
New cars <sup>3</sup> . . . . .		-1.8	-0.1	0.0	-0.6	0.0
New trucks <sup>3, 11</sup> . . . . .		-0.7	0.0	0.0	-0.6	0.0
Used cars and trucks . . . . .	2.407	0.4	1.5	0.4	-0.3	-0.3
Motor vehicle parts and equipment <sup>1</sup> . . . . .	0.380	-0.4	0.3	0.4	0.2	0.3
Tires <sup>1</sup> . . . . .	0.228	-1.5	0.0	0.6	0.4	0.0
Vehicle accessories other than tires <sup>1, 2</sup> . . . . .	0.152	1.3	0.8	0.2	-0.2	0.8
Vehicle parts and equipment other than tires <sup>1, 3</sup> . . . . .		2.2	1.2	0.4	-0.1	1.2
Motor oil, coolant, and fluids <sup>1, 3</sup> . . . . .		1.3	0.1	-0.3	-0.9	0.1
Medical care commodities . . . . .	1.740	1.4	0.0	-0.1	-0.3	0.1
Medicinal drugs <sup>1, 9</sup> . . . . .	1.682	1.5	0.0	0.2	0.3	0.0
Prescription drugs <sup>8</sup> . . . . .	1.338	1.9	-0.2	-0.2	-0.4	-0.2
Nonprescription drugs <sup>1, 9</sup> . . . . .	0.345	0.2	0.9	-0.8	0.3	0.9
Medical equipment and supplies <sup>1, 9</sup> . . . . .	0.058	-1.6	-2.0	0.5	0.6	-2.0
Recreation commodities <sup>9</sup> . . . . .	1.849	-2.9	0.2	-0.3	-0.3	0.3
Video and audio products <sup>9</sup> . . . . .	0.247	-12.0	-0.5	-1.8	-2.1	-0.8
Televisions . . . . .	0.117	-14.3	-1.3	-3.8	-3.3	-1.6
Other video equipment <sup>2</sup> . . . . .	0.027	-3.7	0.5	0.3	-0.2	-0.8
Audio equipment <sup>1</sup> . . . . .	0.044	-17.6	-0.2	0.7	-3.1	-0.2
Recorded music and music subscriptions <sup>1, 2</sup> . . . . .	0.051	-2.0	0.3	-0.6	0.2	0.3
Pets and pet products <sup>1</sup> . . . . .	0.600	-0.7	0.1	0.4	-0.1	0.1

See footnotes at end of table.

**Table 2. Consumer Price Index for All Urban Consumers (CPI-U): U.S. city average, by detailed expenditure category, March 2018 — Continued**  
 [1982-84=100, unless otherwise noted]

Expenditure category	Relative importance Feb. 2018	Unadjusted percent change		Seasonally adjusted percent change		
		Mar. 2017- Mar. 2018	Feb. 2018- Mar. 2018	Dec. 2017- Jan. 2018	Jan. 2018- Feb. 2018	Feb. 2018- Mar. 2018
Pet food <sup>1, 2, 3</sup> .....		-0.8	0.1	0.6	0.2	0.1
Purchase of pets, pet supplies, accessories <sup>1, 2, 3</sup> .....		-0.7	0.3	0.2	-0.7	0.3
Sporting goods.....	0.499	0.8	0.9	0.3	-0.2	1.3
Sports vehicles including bicycles <sup>1</sup> .....	0.282	2.9	1.6	0.3	1.0	1.6
Sports equipment.....	0.210	-1.9	0.1	0.2	-1.5	0.1
Photographic equipment and supplies.....	0.034	0.1	1.9	-1.8	1.8	2.1
Film and photographic supplies <sup>1, 2, 3</sup> .....						
Photographic equipment <sup>2, 3</sup> .....		1.4	2.4	-1.7	2.2	2.6
Recreational reading materials <sup>1</sup> .....	0.112	0.7	1.8	0.1	0.1	1.8
Newspapers and magazines <sup>1, 2</sup> .....	0.067	2.5	3.6	-0.1	0.4	3.6
Recreational books <sup>1, 2</sup> .....	0.045	-2.0	-0.9	0.2	-0.4	-0.9
Other recreational goods <sup>2</sup> .....	0.356	-7.0	-0.7	-1.2	0.3	-0.5
Toys.....	0.284	-8.5	-0.7	-1.8	0.6	-0.4
Toys, games, hobbies and playground equipment <sup>1, 3</sup> .....		-8.5	-1.0	-1.5	0.3	-0.4
Sewing machines, fabric and supplies <sup>1, 2</sup> .....	0.024	2.8	-1.4	5.2	-1.8	-1.4
Music instruments and accessories <sup>1, 2</sup> .....	0.036	0.1	-0.3	-0.9	-1.2	-0.3
Education and communication commodities <sup>9</sup> .....	0.562	-2.5	-0.3	0.8	-0.5	-0.4
Educational books and supplies.....	0.132	-0.4	0.3	-0.1	1.6	-0.1
College textbooks <sup>1, 3, 12</sup> .....		-0.7	0.4	-0.8	1.2	0.4
Information technology commodities <sup>9</sup> .....	0.429	-3.2	-0.5	1.0	-1.2	-0.4
Personal computers and peripheral equipment <sup>4</sup> .....	0.321	-3.7	-0.1	0.4	-1.2	0.1
Computer software and accessories <sup>1, 2</sup> .....	0.025	-1.9	-1.4	2.9	-3.2	-1.4
Telephone hardware, calculators, and other consumer information items <sup>1, 2</sup> .....	0.083	-4.1	-2.1	2.5	-0.5	-2.1
Alcoholic beverages.....	0.970	1.4	0.0	0.0	0.2	0.1
Alcoholic beverages at home.....	0.604	0.9	0.0	-0.5	0.4	0.0
Beer, ale, and other malt beverages at home.....	0.267	1.4	0.2	-0.4	0.2	0.2
Distilled spirits at home.....	0.081	-1.3	0.2	0.1	-0.6	0.2
Whiskey at home <sup>1, 3</sup> .....		-3.2	0.1	1.0	-1.2	0.1
Distilled spirits, excluding whiskey, at home <sup>1, 3</sup> .....		0.2	0.2	1.2	0.2	0.2
Wine at home.....	0.256	0.9	-0.3	-0.7	0.9	-0.5
Alcoholic beverages away from home <sup>1</sup> .....	0.366	2.1	0.1	0.5	0.2	0.1
Beer, ale, and other malt beverages away from home <sup>1, 2, 3</sup> .....		1.3	-0.2	0.5	0.1	-0.2
Wine away from home <sup>1, 2, 3</sup> .....		2.0	0.2	0.2	0.0	0.2
Distilled spirits away from home <sup>1, 2, 3</sup> .....		2.9	0.5	0.6	0.4	0.5
Other goods <sup>9</sup> .....	1.569	2.7	-0.2	0.5	-0.1	-0.2
Tobacco and smoking products.....	0.646	5.9	-0.3	0.3	0.1	-0.2
Cigarettes <sup>2</sup> .....	0.573	5.9	-0.4	0.2	0.2	-0.4
Tobacco products other than cigarettes <sup>1, 2</sup> .....	0.059	5.0	0.9	0.6	-0.5	0.9
Personal care products <sup>1</sup> .....	0.700	0.3	-0.1	0.4	0.1	-0.1
Hair, dental, shaving, and miscellaneous personal care products <sup>1, 2</sup> .....	0.385	-0.6	0.0	0.5	0.6	0.0
Cosmetics, perfume, bath, nail preparations and implements <sup>1</sup> .....	0.309	1.2	-0.1	0.3	-0.5	-0.1
Miscellaneous personal goods <sup>2</sup> .....	0.222	-0.1	-0.6	1.4	-1.1	-0.8
Stationery, stationery supplies, gift wrap <sup>3</sup> .....		-0.5	0.0	0.5	-0.7	0.1
Infants' equipment <sup>1, 3, 5</sup> .....		4.1	-1.6	0.4	0.1	-1.6
Services less energy services.....	59.112	2.9	0.3	0.3	0.2	0.3
Shelter.....	32.697	3.3	0.4	0.2	0.2	0.4
Rent of shelter <sup>13</sup> .....	32.325	3.3	0.4	0.2	0.2	0.4
Rent of primary residence <sup>9</sup> .....	7.779	3.6	0.2	0.3	0.2	0.3
Lodging away from home <sup>2</sup> .....	0.939	2.4	5.4	-2.0	0.0	2.3

See footnotes at end of table.

**Table 2. Consumer Price Index for All Urban Consumers (CPI-U): U.S. city average, by detailed expenditure category, March 2018 — Continued**  
 [1982-84=100, unless otherwise noted]

Expenditure category	Relative importance Feb. 2018	Unadjusted percent change		Seasonally adjusted percent change		
		Mar. 2017- Mar. 2018	Feb. 2018- Mar. 2018	Dec. 2017- Jan. 2018	Jan. 2018- Feb. 2018	Feb. 2018- Mar. 2018
Housing at school, excluding board <sup>8, 13</sup> .....	0.113	2.0	0.0	0.2	0.2	0.3
Other lodging away from home including hotels and motels.....	0.826	2.3	6.2	-2.5	-0.1	2.6
Owners' equivalent rent of residences <sup>8, 13</sup> .....	23.606	3.3	0.3	0.3	0.2	0.3
Owners' equivalent rent of primary residence <sup>8, 13</sup> .....	22.288	3.3	0.3	0.3	0.2	0.3
Tenants' and household insurance <sup>1, 2</sup> .....	0.373	0.8	0.0	0.3	0.1	0.0
Water and sewer and trash collection services <sup>2</sup> .....	1.073	2.9	0.2	0.2	0.3	0.2
Water and sewerage maintenance <sup>8</sup> .....	0.814	3.3	0.2	0.3	0.3	0.2
Garbage and trash collection <sup>1, 11</sup> .....	0.259	1.8	0.1	-0.1	0.3	0.1
Household operations <sup>1, 2</sup> .....	0.869	5.6	0.2	1.5	1.5	0.2
Domestic services <sup>1, 2</sup> .....	0.298	3.3	0.5	0.6	0.0	0.5
Gardening and lawncare services <sup>1, 2</sup> .....	0.286	5.9	0.2			0.2
Moving, storage, freight expense <sup>2</sup> .....	0.102	8.4	-0.8	1.0	1.1	0.0
Repair of household items <sup>1, 2</sup> .....	0.108	8.2	0.0	0.0	5.0	0.0
Medical care services.....	6.939	2.1	0.3	0.6	0.0	0.5
Professional services.....	3.277	0.6	0.4	0.1	0.4	0.5
Physicians' services <sup>8</sup> .....	1.750	-0.8	0.1	0.3	0.2	0.2
Dental services <sup>8</sup> .....	0.789	3.7	1.2	-0.1	1.3	1.2
Eyeglasses and eye care <sup>1, 6</sup> .....	0.320	1.4	-0.3	0.9	0.2	-0.3
Services by other medical professionals <sup>1, 8, 6</sup> .....	0.417	0.3	0.8	-0.4	-0.8	0.8
Hospital and related services.....	2.602	4.9	0.3	1.2	-0.4	0.6
Hospital services <sup>8, 14</sup> .....	2.324	5.2	0.3	1.3	-0.5	0.6
Inpatient hospital services <sup>8, 14, 3</sup> .....		4.6	0.1	1.2	-0.6	0.4
Outpatient hospital services <sup>8, 3, 6</sup> .....		5.1	0.5	1.4	-0.4	0.7
Nursing homes and adult day services <sup>8, 14</sup> .....	0.191	3.2	0.1	0.3	0.4	0.1
Care of invalids and elderly at home <sup>1, 5</sup> .....	0.087	0.4	0.1	0.2	0.8	0.1
Health insurance <sup>1, 5</sup> .....	1.060	0.1	0.0	0.6	0.1	0.0
Transportation services.....	5.987	4.3	0.2	0.8	1.0	0.2
Leased cars and trucks <sup>1, 12</sup> .....	0.651	5.3	-0.6	1.3	1.3	-0.6
Car and truck rental <sup>2</sup> .....	0.111	1.3	6.0	-2.6	0.0	3.0
Motor vehicle maintenance and repair <sup>1</sup> .....	1.116	1.5	-0.1	0.1	0.3	-0.1
Motor vehicle body work <sup>1</sup> .....	0.055	2.4	0.1	0.7	0.4	0.1
Motor vehicle maintenance and servicing <sup>1</sup> .....	0.624	2.1	0.2	0.0	0.2	0.2
Motor vehicle repair <sup>1, 2</sup> .....	0.373	0.1	-0.7	0.1	0.3	-0.7
Motor vehicle insurance.....	2.396	8.9	0.1	1.3	1.7	0.3
Motor vehicle fees <sup>1, 2</sup> .....	0.541	1.9	0.3	1.2	0.5	0.3
State motor vehicle registration and license fees <sup>1, 8, 2</sup> .....	0.282	1.6	0.0	0.9	0.0	0.0
Parking and other fees <sup>1, 2</sup> .....	0.243	2.4	0.7	1.5	1.0	0.7
Parking fees and tolls <sup>2, 3</sup> .....		2.4	0.2	0.4	0.3	0.3
Automobile service clubs <sup>1, 2, 3</sup> .....		0.6	1.0		0.7	1.0
Public transportation.....	1.171	-2.1	0.7	-0.1	0.6	0.3
Airline fares.....	0.712	-5.7	0.8	-0.6	0.6	0.6
Other intercity transportation.....	0.171	2.2	1.2	1.4	1.2	0.3
Intercity bus fare <sup>1, 3, 4</sup> .....		2.9	0.2	0.4	-0.5	0.2
Intercity train fare <sup>1, 3, 4</sup> .....						
Ship fare <sup>1, 2, 3</sup> .....		3.0	1.6	0.8	0.3	1.6
Intracity transportation <sup>1</sup> .....	0.282	3.1	0.0	0.3	0.5	0.0
Intracity mass transit <sup>1, 3, 9</sup> .....		3.8	0.0	0.3	0.8	0.0
Recreation services <sup>9</sup> .....	3.867	2.2	0.1	0.1	0.1	-0.1
Video and audio services <sup>9</sup> .....	1.602	2.7	0.4	0.0	0.1	-0.2
Cable and satellite television service <sup>11</sup> .....	1.513	2.7	0.4	-0.2	0.1	-0.2

See footnotes at end of table.

**Table 2. Consumer Price Index for All Urban Consumers (CPI-U): U.S. city average, by detailed expenditure category, March 2018 — Continued**  
 [1982-84=100, unless otherwise noted]

Expenditure category	Relative importance Feb. 2018	Unadjusted percent change		Seasonally adjusted percent change		
		Mar. 2017- Mar. 2018	Feb. 2018- Mar. 2018	Dec. 2017- Jan. 2018	Jan. 2018- Feb. 2018	Feb. 2018- Mar. 2018
Video discs and other media, including rental of video <sup>1, 2</sup> .....	0.089	2.1	-0.3	3.9	0.0	-0.3
Video discs and other media <sup>1, 2, 3</sup> .....		-1.3	0.3	5.3	0.3	0.3
Rental of video discs and other media <sup>1, 2, 3</sup> .....		2.7	0.0	-0.2	-0.1	0.0
Pet services including veterinary <sup>2</sup> .....	0.411	2.3	0.2	0.5	-0.4	0.2
Pet services <sup>1, 2, 3</sup> .....		1.1	0.0	-0.1	0.1	0.0
Veterinarian services <sup>2, 3</sup> .....		2.5	0.3	0.6	-0.5	0.4
Photographers and film processing <sup>1, 2</sup> .....	0.038	-3.0	-0.8	-1.0	-0.2	-0.8
Photographer fees <sup>1, 2, 3</sup> .....		0.0	-0.1	-0.3	0.0	-0.1
Film processing <sup>1, 2, 3</sup> .....		-8.7	-0.8	-4.1	-0.4	-0.8
Other recreation services <sup>2</sup> .....	1.814	1.9	-0.1	0.1	0.3	-0.1
Club membership for shopping clubs, fraternal, or other organizations, or participant sports fees <sup>1, 2</sup> .....	0.668	3.2	0.6	0.2	-0.3	0.6
Admissions.....	0.655	0.2	-0.9	-0.4	1.1	-1.0
Admission to movies, theaters, and concerts <sup>1, 2, 3</sup> .....		2.9	-0.1	-0.3	1.0	-0.1
Admission to sporting events <sup>1, 2, 3</sup> .....		-3.0	-3.4	2.1	2.8	-3.4
Fees for lessons or instructions <sup>1, 6</sup> .....	0.218	3.3	0.3	0.5	-0.5	0.3
Education and communication services <sup>9</sup> .....	6.063	0.1	-0.2	0.0	-0.2	-0.2
Tuition, other school fees, and childcare.....	2.869	1.9	-0.3	0.1	0.2	-0.1
College tuition and fees.....	1.590	1.7	-0.5	0.1	0.0	-0.2
Elementary and high school tuition and fees.....	0.327	3.8	0.0	0.3	0.3	0.3
Child care and nursery school <sup>10</sup> .....	0.802	1.3	0.0	0.0	0.3	0.0
Technical and business school tuition and fees <sup>2</sup> .....	0.032	1.7	0.1	-0.3	0.1	0.1
Postage and delivery services <sup>2</sup> .....	0.109	2.4	0.0	0.6	-0.6	0.2
Postage.....	0.095	2.0	0.0	0.4	-0.8	0.2
Delivery services <sup>2</sup> .....	0.014	6.1	0.0	1.5	0.2	0.3
Telephone services <sup>1, 2</sup> .....	2.298	-1.5	0.0	-0.1	-0.4	0.0
Wireless telephone services <sup>1, 2</sup> .....	1.719	-2.4	0.2	-0.2	-0.5	0.2
Land-line telephone services <sup>1, 9</sup> .....	0.579	0.5	-0.8	0.1	0.2	-0.8
Internet services and electronic information providers <sup>2</sup> .....	0.778	-2.8	-0.4	-0.3	-1.0	-1.0
Other personal services <sup>1, 9</sup> .....	1.616	2.5	0.6	0.4	0.4	0.6
Personal care services <sup>1</sup> .....	0.621	1.9	0.3	0.5	0.2	0.3
Haircuts and other personal care services <sup>1, 2</sup> .....	0.621	1.9	0.3	0.5	0.2	0.3
Miscellaneous personal services.....	0.995	2.8	0.8	0.3	0.5	0.7
Legal services <sup>1, 6</sup> .....	0.306	4.3	0.6	1.1	2.6	0.6
Funeral expenses <sup>1, 6</sup> .....	0.127	1.7	0.1	-0.1	0.4	0.1
Laundry and dry cleaning services <sup>1, 2</sup> .....	0.237	2.8	0.5	0.3	0.4	0.5
Apparel services other than laundry and dry cleaning <sup>1, 2</sup> .....	0.028	-0.3	-0.3	0.1	0.1	-0.3
Financial services <sup>6</sup> .....	0.227	1.4	2.1	-0.2	-2.2	1.5
Checking account and other bank services <sup>1, 2, 3</sup> .....		9.4	4.7	0.0	1.1	4.7
Tax return preparation and other accounting fees <sup>2, 3</sup> .....		-1.7	0.8	0.8	-4.6	-0.4

<sup>1</sup> Not seasonally adjusted.

<sup>2</sup> Indexes on a December 1997=100 base.

<sup>3</sup> Special index based on a substantially smaller sample.

<sup>4</sup> Indexes on a December 2007=100 base.

<sup>5</sup> Indexes on a December 2005=100 base.

<sup>6</sup> Indexes on a December 1986=100 base.

<sup>7</sup> Indexes on a December 1993=100 base.

<sup>8</sup> This index series was calculated using a Laspeyres estimator. All other item stratum index series were calculated using a geometric means estimator.

<sup>9</sup> Indexes on a December 2009=100 base.

<sup>10</sup> Indexes on a December 1990=100 base.

<sup>11</sup> Indexes on a December 1983=100 base.

<sup>12</sup> Indexes on a December 2001=100 base.

<sup>13</sup> Indexes on a December 1982=100 base.

<sup>14</sup> Indexes on a December 1996=100 base.

NOTE: Index applies to a month as a whole, not to any specific date.



**Table 3. Consumer Price Index for All Urban Consumers (CPI-U): U.S. city average, special aggregate indexes, March 2018**

[1982-84=100, unless otherwise noted]

Special aggregate indexes	Relative importance Feb. 2018	Unadjusted indexes			Unadjusted percent change		Seasonally adjusted percent change		
		Mar. 2017	Feb. 2018	Mar. 2018	Mar. 2017-Mar. 2018	Feb. 2018-Mar. 2018	Dec. 2017-Jan. 2018	Jan. 2018-Feb. 2018	Feb. 2018-Mar. 2018
All items less food.....	86.694	242.962	248.469	249.102	2.5	0.3	0.6	0.2	-0.1
All items less shelter.....	67.303	226.469	230.358	230.692	1.9	0.1	0.7	0.1	-0.3
All items less food and shelter.....	53.997	220.508	224.545	224.927	2.0	0.2	0.8	0.2	-0.4
All items less food, shelter, and energy.....	46.309	226.956	229.090	229.717	1.2	0.3	0.4	0.2	0.0
All items less food, shelter, energy, and used cars and trucks.....	43.902	232.304	234.707	235.187	1.2	0.2	0.4	0.2	0.1
All items less medical care.....	91.321	232.732	237.767	238.305	2.4	0.2	0.6	0.2	-0.1
All items less energy.....	92.313	250.277	254.555	255.275	2.0	0.3	0.3	0.2	0.2
Commodities.....	37.455	181.136	183.385	183.780	1.5	0.2	1.0	-0.1	-0.6
Commodities less food, energy, and used cars and trucks.....	17.488	146.911	145.851	146.274	-0.4	0.3	0.4	0.1	-0.1
Commodities less food.....	24.149	150.691	152.487	152.962	1.5	0.3	1.4	-0.1	-1.0
Commodities less food and beverages.....	23.179	147.435	149.182	149.663	1.5	0.3	1.4	-0.1	-1.0
Services.....	62.545	305.590	313.608	314.337	2.9	0.2	0.3	0.3	0.2
Services less rent of shelter <sup>1</sup> .....	30.220	327.067	334.488	334.676	2.3	0.1	0.2	0.5	0.2
Services less medical care services.....	55.606	290.423	298.306	298.978	2.9	0.2	0.2	0.4	0.3
Durables.....	10.087	106.343	104.626	105.046	-1.2	0.4	0.1	-0.4	0.0
Nondurables.....	27.368	218.705	223.624	223.953	2.4	0.1	1.1	0.2	-0.7
Nondurables less food.....	14.062	192.856	199.039	199.529	3.5	0.2	2.1	0.2	-1.5
Nondurables less food and beverages.....	13.092	189.614	195.966	196.477	3.6	0.3	2.3	0.2	-1.6
Nondurables less food, beverages, and apparel.....	9.957	232.124	243.516	243.131	4.7	-0.2	2.2	-0.1	-1.7
Nondurables less food and apparel.....	10.927	232.147	242.772	242.432	4.4	-0.1	2.0	0.0	-1.5
Housing.....	41.663	248.978	255.713	256.388	3.0	0.3	0.2	0.3	0.3
Education and communication <sup>2</sup> .....	6.624	136.234	136.327	136.029	-0.2	-0.2	0.1	-0.2	-0.2
Education <sup>2</sup> .....	3.001	251.113	256.291	255.609	1.8	-0.3	0.1	0.2	-0.1
Communication <sup>2</sup> .....	3.623	75.275	74.015	73.883	-1.8	-0.2	0.0	-0.6	-0.3
Information and information processing <sup>2</sup> ....	3.514	71.409	70.117	69.988	-2.0	-0.2	0.0	-0.6	-0.3
Information technology, hardware and services <sup>3</sup> .....	1.216	7.666	7.474	7.438	-3.0	-0.5	0.2	-1.1	-0.8
Recreation <sup>2</sup> .....	5.716	118.573	119.093	119.281	0.6	0.2	0.0	0.0	0.0
Video and audio <sup>2</sup> .....	1.849	104.011	104.650	104.921	0.9	0.3	-0.2	-0.2	-0.3
Pets, pet products and services <sup>2</sup> .....	1.011	170.197	170.706	171.011	0.5	0.2	0.5	-0.2	0.2
Photography <sup>2</sup> .....	0.074	75.883	74.383	74.728	-1.5	0.5	-1.3	0.7	0.5
Food and beverages.....	14.276	248.967	252.076	252.182	1.3	0.0	0.2	0.0	0.1
Domestically produced farm food.....	6.128	246.104	247.369	247.165	0.4	-0.1	0.0	-0.2	0.1
Other services.....	11.546	346.601	350.392	350.476	1.1	0.0	0.1	0.0	-0.1
Apparel less footwear.....	2.462	121.342	120.049	121.481	0.1	1.2	2.0	1.5	-1.1
Fuels and utilities.....	4.701	232.714	240.938	239.786	3.0	-0.5	-0.2	1.0	-0.2
Household energy.....	3.628	193.703	200.993	199.657	3.1	-0.7	-0.4	1.2	-0.3
Medical care.....	8.679	474.561	482.897	483.984	2.0	0.2	0.4	-0.1	0.4
Transportation.....	16.723	200.091	207.359	207.845	3.9	0.2	1.8	0.0	-1.2
Private transportation.....	15.551	194.890	202.935	203.343	4.3	0.2	2.0	0.0	-1.3
New and used motor vehicles <sup>2</sup> .....	7.059	99.582	99.010	99.552	0.0	0.5	0.2	-0.2	-0.1
Utilities and public transportation.....	9.489	214.482	217.061	216.906	1.1	-0.1	-0.2	0.8	0.0
Household furnishings and operations.....	4.264	121.548	121.376	121.484	-0.1	0.1	0.4	0.3	0.1
Other goods and services.....	3.184	428.336	438.306	439.269	2.6	0.2	0.4	0.2	0.2
Personal care.....	2.538	226.301	229.218	230.011	1.6	0.3	0.5	0.2	0.3

<sup>1</sup> Indexes on a December 1982=100 base.

<sup>2</sup> Indexes on a December 1997=100 base.

<sup>3</sup> Indexes on a December 1988=100 base.

NOTE: Index applies to a month as a whole, not to any specific date.

**Table 4. Consumer Price Index for All Urban Consumers (CPI-U): Selected areas, all items index, March 2018**  
 [1982-84=100, unless otherwise noted]

Area	Pricing Schedule <sup>1</sup>	Percent change to Mar. 2018 from:			Percent change to Feb. 2018 from:		
		Mar. 2017	Jan. 2018	Feb. 2018	Feb. 2017	Dec. 2017	Jan. 2018
U.S. city average.....	M	2.4	0.7	0.2	2.2	1.0	0.5
<b>Region and area size<sup>2</sup></b>							
Northeast.....	M	2.0	0.5	0.1	1.7	0.9	0.4
Northeast - Size Class A.....	M	1.9	0.6	0.1	1.7	0.9	0.5
Northeast - Size Class B/C <sup>3</sup> .....	M	2.1	0.5	0.1	1.8	1.0	0.3
New England <sup>4</sup> .....	M		0.7	0.3		1.1	0.4
Middle Atlantic <sup>4</sup> .....	M		0.5	0.0		0.9	0.4
Midwest.....	M	1.8	0.4	0.2	1.7	0.9	0.2
Midwest - Size Class A.....	M	1.8	0.3	0.2	1.7	0.7	0.1
Midwest - Size Class B/C <sup>3</sup> .....	M	1.4	0.5	0.2	1.2	1.0	0.3
East North Central <sup>4</sup> .....	M		0.2	0.1		0.8	0.1
West North Central <sup>4</sup> .....	M		0.8	0.3		1.0	0.5
South.....	M	2.3	0.8	0.2	2.1	1.1	0.6
South - Size Class A.....	M	2.6	0.8	0.0	2.7	1.2	0.8
South - Size Class B/C <sup>3</sup> .....	M	2.1	0.7	0.3	1.9	1.1	0.4
South Atlantic <sup>4</sup> .....	M		0.9	0.3		1.3	0.6
East South Central <sup>4</sup> .....	M		0.8	0.3		1.0	0.4
West South Central <sup>4</sup> .....	M		0.5	-0.1		0.8	0.5
West.....	M	3.2	0.9	0.4	3.1	1.0	0.5
West - Size Class A.....	M	3.5	1.0	0.4	3.4	1.2	0.6
West - Size Class B/C <sup>3</sup> .....	M	2.6	0.8	0.3	2.5	0.9	0.4
Mountain <sup>4</sup> .....	M		0.7	0.3		0.9	0.5
Pacific <sup>4</sup> .....	M		1.0	0.4		1.1	0.5
<b>Size classes</b>							
Size Class A <sup>5</sup> .....	M	2.5	0.7	0.2	2.4	1.0	0.5
Size Class B/C <sup>3</sup> .....	M	2.1	0.6	0.3	1.8	1.0	0.4
<b>Selected local areas</b>							
Chicago-Naperville-Elgin, IL-IN-WI.....	M	1.8	0.1	0.0	1.6	0.9	0.0
Los Angeles-Long Beach-Anaheim, CA.....	M	3.8	1.1	0.4	3.6	1.5	0.7
New York-Newark-Jersey City, NY-NJ-PA.....	M	1.7	0.5	0.0	1.7	1.0	0.5
Atlanta-Sandy Springs-Roswell, GA.....	2				3.3	1.2	
Baltimore-Columbia-Towson, MD <sup>6</sup> .....	2					1.0	
Detroit-Warren-Dearborn, MI.....	2				2.1	0.3	
Houston-The Woodlands-Sugar Land, TX.....	2				2.6	1.4	
Miami-Fort Lauderdale-West Palm Beach, FL.....	2				3.2	2.6	
Philadelphia-Camden-Wilmington, PA-NJ-DE-MD.....	2				0.5	0.4	
Phoenix-Mesa-Scottsdale, AZ <sup>7</sup> .....	2					1.8	
San Francisco-Oakland-Hayward, CA.....	2				3.6	1.4	
Seattle-Tacoma-Bellevue, WA.....	2				3.3	0.8	
St. Louis, MO-IL.....	2					0.8	
Urban Alaska.....	2					0.6	
Boston-Cambridge-Newton, MA-NH.....	1	3.6	0.9				
Dallas-Fort Worth-Arlington, TX.....	1	2.9	0.5				
Denver-Aurora-Lakewood, CO.....	1		0.3				
Minneapolis-St.Paul-Bloomington, MN-WI.....	1		0.5				
Riverside-San Bernardino-Ontario, CA <sup>4</sup> .....	1		1.0				
San Diego-Carlsbad, CA.....	1		0.9				
Tampa-St. Petersburg-Clearwater, FL <sup>8</sup> .....	1		0.6				
Urban Hawaii.....	1		0.5				
Washington-Arlington-Alexandria, DC-VA-MD-WV <sup>6</sup> .....	1	1.8	-0.1				

<sup>1</sup> Foods, fuels, and several other items are priced every month in all areas. Most other goods and services are priced as indicated: M - Every month. 1 - January, March, May, July, September, and November. 2 - February, April, June, August, October, and December.

<sup>2</sup> Regions defined as the four Census regions.

<sup>3</sup> Indexes on a December 1996=100 base.

<sup>4</sup> Indexes on a December 2017=100 base.

<sup>5</sup> Indexes on a December 1986=100 base.

<sup>6</sup> 1998 - 2017 indexes based on substantially smaller sample.

<sup>7</sup> Indexes on a December 2001=100 base.

<sup>8</sup> Indexes on a 1987=100 base.

NOTE: Local area indexes are byproducts of the national CPI program. Each local index has a smaller sample size than the national index and is, therefore, subject to substantially more sampling and other measurement error. As a result, local area indexes show greater volatility than the national index, although their long-term trends are similar. Therefore, the Bureau of Labor Statistics strongly urges users to consider adopting the national average CPI for use in their escalator clauses.

NOTE: Index applies to a month as a whole, not to any specific date.

**Table 5. Chained Consumer Price Index for All Urban Consumers (C-CPI-U) and the Consumer Price Index for All Urban Consumers (CPI-U): U.S. city average, all items index, March 2018**  
 [Percent changes]

Month Year	Unadjusted 1-month percent change		Unadjusted 12-month percent change	
	C-CPI-U <sup>1</sup>	CPI-U	C-CPI-U <sup>1</sup>	CPI-U
December 2000.....			2.6	3.4
December 2001.....			1.3	1.6
December 2002.....			2.0	2.4
December 2003.....			1.7	1.9
December 2004.....			3.2	3.3
December 2005.....			2.9	3.4
December 2006.....			2.3	2.5
December 2007.....			3.7	4.1
December 2008.....			0.2	0.1
December 2009.....			2.5	2.7
December 2010.....			1.3	1.5
December 2011.....			2.9	3.0
December 2012.....			1.5	1.7
December 2013.....			1.3	1.5
December 2014.....			0.5	0.8
December 2015.....			0.4	0.7
January 2016.....	0.1	0.2	1.1	1.4
February 2016.....	0.0	0.1	0.7	1.0
March 2016.....	0.5	0.4	0.5	0.9
April 2016.....	0.5	0.5	0.8	1.1
May 2016.....	0.4	0.4	0.7	1.0
June 2016.....	0.3	0.3	0.7	1.0
July 2016.....	-0.2	-0.2	0.5	0.8
August 2016.....	0.0	0.1	0.7	1.1
September 2016.....	0.2	0.2	1.1	1.5
October 2016.....	0.2	0.1	1.3	1.6
November 2016.....	-0.2	-0.2	1.4	1.7
December 2016.....	0.0	0.0	1.8	2.1
January 2017.....	0.6	0.6	2.3	2.5
February 2017.....	0.3	0.3	2.6	2.7
March 2017.....	0.0	0.1	2.1	2.4
April 2017.....	0.3	0.3	1.9	2.2
May 2017.....	0.1	0.1	1.5	1.9
June 2017.....	0.1	0.1	1.3	1.6
July 2017.....	-0.1	-0.1	1.4	1.7
August 2017.....	0.3	0.3	1.7	1.9
September 2017.....	0.6	0.5	2.1	2.2
October 2017.....	-0.1	-0.1	1.8	2.0
November 2017.....	0.0	0.0	2.0	2.2
December 2017.....	-0.1	-0.1	1.9	2.1
January 2018.....	0.5	0.5	1.9	2.1
February 2018.....	0.4	0.5	2.0	2.2
March 2018.....	0.2	0.2	2.2	2.4

<sup>1</sup> The C-CPI-U is designed to be a closer approximation to a cost-of-living index in that it, in its final form, accounts for any substitution that consumers make across item categories in response to changes in relative prices. Since the expenditure data required for the calculation of the C-CPI-U are available only with a time lag, the C-CPI-U is being issued first in preliminary form using the latest available expenditure data at that time and is subject to two revisions.

Indexes are issued as initial estimates. Indexes are revised each quarter with the publication of January, April, July, and October data as updated expenditure estimates become available. The C-CPI-U indexes are updated quarterly until they become final. January-March indexes are final in January of the following year; April-June indexes are final in April of the following year; July-September indexes are final in July of the following year; October-December indexes are final in October of the following year.

NOTE: Index applies to a month as a whole, not to any specific date.

**Table 6. Consumer Price Index for All Urban Consumers (CPI-U): U.S. city average, by expenditure category, March 2018, 1-month analysis table**  
 [1982-84=100, unless otherwise noted]

Expenditure category	Relative importance Feb. 2018	One Month				
		Seasonally adjusted percent change Feb. 2018-Mar. 2018	Seasonally adjusted effect on All Items Feb. 2018-Mar. 2018 <sup>1</sup>	Standard error, median price change <sup>2</sup>	Largest (L) or Smallest (S) seasonally adjusted change since: <sup>3</sup>	
					Date	Percent change
All items.....	100.000	-0.1		0.03	S-May 2017	-0.1
Food.....	13.306	0.1	0.017	0.06	L-Jan.2018	0.2
Food at home.....	7.327	0.1	0.011	0.10	L-Jan.2018	0.1
Cereals and bakery products.....	0.959	0.4	0.004	0.25	L-Oct.2015	0.7
Cereals and cereal products.....	0.311	0.0	0.000	0.42	S-Jan.2018	-0.1
Flour and prepared flour mixes.....	0.042	-0.8	0.000	0.66	S-Apr.2017	-1.1
Breakfast cereal <sup>4</sup> .....	0.150	0.4	0.001	0.68	L-Feb.2017	0.5
Rice, pasta, cornmeal <sup>4</sup> .....	0.120	-0.3	0.000	0.76	S-Dec.2017	-0.4
Rice <sup>4, 5, 6</sup> .....		-0.6		1.21	S-Dec.2017	-1.6
Bakery products <sup>4</sup> .....	0.648	0.6	0.004	0.28	L-Jan.2018	1.1
Bread <sup>4, 5</sup> .....	0.189	2.0	0.004	0.48	L-Nov.2013	2.0
White bread <sup>4, 6</sup> .....		2.4		0.59	L-Oct.2011	2.5
Bread other than white <sup>4, 6</sup> .....		1.4		0.81	L-Apr.2017	1.6
Fresh biscuits, rolls, muffins <sup>5</sup> .....	0.092	0.6	0.001	0.71	L-Dec.2017	1.0
Cakes, cupcakes, and cookies.....	0.164	-0.6	-0.001	0.58	S-Nov.2015	-0.6
Cookies <sup>6</sup> .....		-0.8		0.93	S-Feb.2017	-1.4
Fresh cakes and cupcakes <sup>4, 6</sup> .....		0.7		0.69	L-Jan.2018	0.7
Other bakery products.....	0.203	0.0	0.000	0.53	L-Jan.2018	0.5
Fresh sweetrolls, coffeecakes, doughnuts <sup>4, 6</sup> .....		0.5		0.74	S-Dec.2017	-0.4
Crackers, bread, and cracker products <sup>6</sup> .....		0.5		0.95	L-Jan.2018	0.5
Frozen and refrigerated bakery products, pies, tarts, turnovers <sup>6</sup> .....		-1.2		0.71	S-Feb.2017	-1.3
Meats, poultry, fish, and eggs.....	1.610	0.8	0.013	0.20	L-Dec.2017	0.8
Meats, poultry, and fish.....	1.511	0.6	0.009	0.21	L-Dec.2017	0.7
Meats.....	0.948	0.6	0.005	0.25	L-Dec.2017	0.6
Beef and veal.....	0.426	0.6	0.002	0.34	L-Dec.2017	1.1
Uncooked ground beef <sup>4</sup> .....	0.173	1.0	0.002	0.53	L-Jul.2017	1.8
Uncooked beef roasts <sup>4, 5</sup> .....	0.060	1.7	0.001	1.03	L-Jun.2017	3.5
Uncooked beef steaks <sup>5</sup> .....	0.156	0.4	0.001	0.63	L-Dec.2017	1.9
Uncooked other beef and veal <sup>4, 5</sup> .....	0.037	0.7	0.000	0.86	L-Nov.2017	1.5
Pork.....	0.298	0.3	0.001	0.55	L-Jan.2018	0.7
Bacon, breakfast sausage, and related products <sup>5</sup> .....	0.136	0.7	0.001	0.68	L-Sep.2017	0.9
Bacon and related products <sup>6</sup> .....		-1.0		1.01	S-Nov.2017	-2.6
Breakfast sausage and related products <sup>5, 6</sup> .....		2.5		1.08	L-May 2014	2.8
Ham.....	0.052	1.1	0.001	1.44	L-Oct.2017	2.5
Ham, excluding canned <sup>6</sup> .....		1.3		1.40	L-Oct.2017	2.8
Pork chops <sup>4</sup> .....	0.043	-0.9	0.000	1.37	S-Dec.2017	-2.1
Other pork including roasts and picnics <sup>5</sup> .....	0.068	0.6	0.000	1.19	L-Jan.2018	1.3
Other meats.....	0.223	1.0	0.002	0.54	L-Jul.2017	2.1
Frankfurters <sup>6</sup> .....		-0.4		1.43	S-Dec.2017	-1.0
Lunchmeats <sup>5, 6</sup> .....		1.2		0.54	L-Jul.2017	1.6
Lamb and organ meats <sup>4, 6</sup> .....						
Lamb and mutton <sup>4, 5, 6</sup> .....						
Poultry <sup>4</sup> .....	0.318	0.5	0.001	0.52	L-Dec.2017	1.6
Chicken <sup>4, 5</sup> .....	0.261	0.8	0.002	0.62	L-Dec.2017	1.4
Fresh whole chicken <sup>4, 6</sup> .....		0.9		1.14	L-Dec.2017	1.7
Fresh and frozen chicken parts <sup>4, 6</sup> .....		0.8		0.71	S-Jan.2018	-2.0
Other poultry including turkey <sup>5</sup> .....	0.058	-1.5	-0.001	0.89	L-Dec.2017	2.0
Fish and seafood.....	0.245	1.0	0.002	0.51	L-Oct.2017	1.3
Fresh fish and seafood <sup>5</sup> .....	0.127	0.6	0.001	0.75	S-Jan.2018	-0.2
Processed fish and seafood <sup>5</sup> .....	0.118	2.0	0.002	0.64	L-May 2017	2.9

See footnotes at end of table.

**Table 6. Consumer Price Index for All Urban Consumers (CPI-U): U.S. city average, by expenditure category, March 2018, 1-month analysis table — Continued**

[1982-84=100, unless otherwise noted]

Expenditure category	Relative importance Feb. 2018	One Month				
		Seasonally adjusted percent change Feb. 2018-Mar. 2018	Seasonally adjusted effect on All Items Feb. 2018-Mar. 2018 <sup>1</sup>	Standard error, median price change <sup>2</sup>	Largest (L) or Smallest (S) seasonally adjusted change since: <sup>3</sup>	
					Date	Percent change
Shelf stable fish and seafood <sup>4, 6</sup> .....		3.9		1.05	L-EVER	-
Frozen fish and seafood <sup>6</sup> .....		0.1		1.10	L-Oct.2017	2.2
Eggs.....	0.099	3.8	0.004	0.90	L-Jan.2018	5.2
Dairy and related products.....	0.735	0.3	0.002	0.28	L-Feb.2017	0.7
Milk <sup>4, 5</sup> .....	0.202	-1.3	-0.003	0.38	S-Apr.2017	-1.3
Fresh whole milk <sup>6</sup> .....		-0.9		0.56	S-Jan.2018	-0.9
Fresh milk other than whole <sup>5, 6</sup> .....		-0.6		0.51	S-Dec.2017	-0.6
Cheese and related products.....	0.240	0.8	0.002	0.51	L-Feb.2017	0.9
Ice cream and related products.....	0.106	2.0	0.002	0.75	L-Jan.2013	2.4
Other dairy and related products <sup>4, 5</sup> .....	0.188	0.4	0.001	0.56	L-Jan.2018	0.8
Fruits and vegetables.....	1.298	-0.7	-0.008	0.30	S-Jan.2017	-1.4
Fresh fruits and vegetables.....	1.025	-0.7	-0.008	0.36	-	-
Fresh fruits.....	0.554	-1.2	-0.007	0.45	S-Mar.2016	-2.2
Apples.....	0.078	-1.2	-0.001	1.15	S-Dec.2017	-1.9
Bananas <sup>4</sup> .....	0.081	0.9	0.001	0.64	S-Jan.2018	0.4
Citrus fruits <sup>5</sup> .....	0.150	0.0	0.000	0.75	S-Dec.2017	-0.5
Oranges, including tangerines <sup>6</sup> .....		-2.7		1.25	S-Jun.2014	-6.0
Other fresh fruits <sup>5</sup> .....	0.245	-1.9	-0.004	0.73	L-Jan.2018	2.1
Fresh vegetables.....	0.471	-0.1	-0.001	0.56	L-Dec.2017	0.5
Potatoes.....	0.076	-1.1	-0.001	1.22	S-Jan.2018	-2.0
Lettuce.....	0.057	2.9	0.002	1.62	L-Apr.2017	16.2
Tomatoes <sup>4</sup> .....	0.082	-3.1	-0.003	1.10	L-Jan.2018	5.3
Other fresh vegetables.....	0.256	-0.4	-0.001	0.69	S-Jan.2018	-0.8
Processed fruits and vegetables <sup>5</sup> .....	0.273	-0.3	-0.001	0.44	S-Dec.2017	-0.4
Canned fruits and vegetables <sup>5</sup> .....	0.148	-0.3	-0.001	0.65	L-Jan.2018	2.1
Canned fruits <sup>5, 6</sup> .....		-2.6		0.78	S-Dec.2012	-2.6
Canned vegetables <sup>5, 6</sup> .....		0.7		0.77	L-Jan.2018	3.1
Frozen fruits and vegetables <sup>5</sup> .....	0.080	-0.3	0.000	0.83	S-Jan.2018	-1.8
Frozen vegetables <sup>6</sup> .....		0.1		1.00	S-Jan.2018	-1.3
Other processed fruits and vegetables including dried <sup>5</sup> .....	0.045	-1.0	0.000	0.76	S-Jan.2018	-1.1
Dried beans, peas, and lentils <sup>4, 5, 6</sup> .....		-2.1		0.80	S-Jan.2018	-2.4
Nonalcoholic beverages and beverage materials.....	0.873	0.4	0.004	0.36	L-May 2017	0.9
Juices and nonalcoholic drinks <sup>5</sup> .....	0.617	0.3	0.002	0.41	L-Jan.2018	0.8
Carbonated drinks.....	0.258	0.3	0.001	0.77	S-Dec.2017	-0.7
Frozen noncarbonated juices and drinks <sup>4, 5</sup> .....	0.009	0.4	0.000	0.73	S-Jan.2018	-0.5
Nonfrozen noncarbonated juices and drinks <sup>5</sup> .....	0.351	0.4	0.001	0.51	L-Jan.2018	1.0
Beverage materials including coffee and tea <sup>5</sup> .....	0.256	0.9	0.002	0.61	L-Dec.2017	1.1
Coffee.....	0.164	1.0	0.002	0.77	L-Dec.2017	1.6
Roasted coffee <sup>6</sup> .....		0.3		1.08	L-Dec.2017	2.1
Instant coffee <sup>4, 6</sup> .....		2.0		0.71	L-Apr.2017	2.5
Other beverage materials including tea <sup>4, 5</sup> .....	0.092	-0.6	-0.001	0.99	S-Nov.2017	-0.8
Other food at home.....	1.852	-0.2	-0.003	0.20	S-Jun.2017	-0.2
Sugar and sweets <sup>4</sup> .....	0.282	0.1	0.000	0.49	L-Jan.2018	1.3
Sugar and artificial sweeteners.....	0.043	1.0	0.000	0.67	L-May 2017	1.7
Candy and chewing gum <sup>4, 5</sup> .....	0.184	0.3	0.001	0.69	L-Jan.2018	0.4
Other sweets <sup>5</sup> .....	0.055	-0.1	0.000	0.84	S-Dec.2017	-1.6
Fats and oils.....	0.218	-0.7	-0.002	0.44	S-Aug.2017	-0.8
Butter and margarine <sup>5</sup> .....	0.061	-0.1	0.000	0.88	L-Jan.2018	0.0
Butter <sup>6</sup> .....		-1.5		1.01	S-May 2016	-3.1
Margarine <sup>6</sup> .....		1.4		0.98	L-Apr.2017	1.6
Salad dressing <sup>5</sup> .....	0.053	-0.3	0.000	1.03	S-Dec.2017	-0.3
Other fats and oils including peanut butter <sup>5</sup> .....	0.104	-1.2	-0.001	0.56	S-Aug.2017	-1.2

See footnotes at end of table.

**Table 6. Consumer Price Index for All Urban Consumers (CPI-U): U.S. city average, by expenditure category, March 2018, 1-month analysis table — Continued**

[1982-84=100, unless otherwise noted]

Expenditure category	Relative importance Feb. 2018	One Month				
		Seasonally adjusted percent change Feb. 2018-Mar. 2018	Seasonally adjusted effect on All Items Feb. 2018-Mar. 2018 <sup>1</sup>	Standard error, median price change <sup>2</sup>	Largest (L) or Smallest (S) seasonally adjusted change since: <sup>3</sup>	
					Date	Percent change
Peanut butter <sup>4, 5, 6</sup> .....		-0.9		0.63	S-Dec.2017	-4.0
Other foods.....	1.352	-0.1	-0.002	0.25	—	—
Soups.....	0.083	-3.0	-0.003	1.07	S-Oct.2007	-3.3
Frozen and freeze dried prepared foods <sup>4</sup> .....	0.235	0.3	0.001	0.54	L-Nov.2017	0.5
Snacks <sup>4</sup> .....	0.312	0.2	0.001	0.72	S-Jan.2018	-0.2
Spices, seasonings, condiments, sauces.....	0.272	0.4	0.001	0.54	L-Nov.2017	0.6
Salt and other seasonings and spices <sup>5, 6</sup> .....		0.2		0.96	L-Jan.2018	2.1
Olives, pickles, relishes <sup>4, 5, 6</sup> .....		-2.0		1.31	S-Apr.2017	-3.1
Sauces and gravies <sup>5, 6</sup> .....		0.4		0.81	L-Jan.2018	0.4
Other condiments <sup>6</sup> .....		1.8		0.65	L-Apr.2016	2.6
Baby food <sup>4, 5</sup> .....	0.049	-0.1	0.000	0.52	S-Nov.2017	-0.4
Other miscellaneous foods <sup>4, 5</sup> .....	0.401	-0.1	0.000	0.41	S-Jan.2018	-1.6
Prepared salads <sup>4, 7, 6</sup> .....		-0.2		0.76	S-Jan.2018	-1.3
Food away from home <sup>4</sup> .....	5.978	0.1	0.007	0.04	S-Oct.2017	0.1
Full service meals and snacks <sup>4, 5</sup> .....	2.971	0.1	0.004	0.04	S-Nov.2017	0.1
Limited service meals and snacks <sup>4, 5</sup> .....	2.544	0.1	0.003	0.07	S-Dec.2017	0.1
Food at employee sites and schools <sup>5</sup> .....	0.180	0.1	0.000	0.38	S-Jan.2018	0.0
Food at elementary and secondary schools <sup>4, 8, 6</sup> .....		0.0		0.49	—	—
Food from vending machines and mobile vendors <sup>4, 5</sup> .....	0.090	0.1	0.000	0.11	—	—
Other food away from home <sup>4, 5</sup> .....	0.194	-0.2	0.000	0.09	S-Sep.2016	-0.2
Energy.....	7.687	-2.8	-0.218	0.08	S-Feb.2016	-5.6
Energy commodities.....	4.254	-4.7	-0.210	0.13	S-May 2017	-5.0
Fuel oil and other fuels.....	0.195	-0.8	-0.002	0.33	L-Jan.2018	7.0
Fuel oil.....	0.117	-0.7	-0.001	0.43	L-Jan.2018	9.5
Propane, kerosene, and firewood <sup>9</sup> .....	0.078	0.5	0.000	0.48	L-Jan.2018	2.2
Motor fuel.....	4.059	-4.9	-0.209	0.13	S-May 2017	-5.2
Gasoline (all types).....	3.971	-4.9	-0.205	0.13	S-May 2017	-5.3
Gasoline, unleaded regular <sup>6</sup> .....		-4.8		0.51	S-May 2017	-5.5
Gasoline, unleaded midgrade <sup>10, 6</sup> .....		-3.7		0.51	S-May 2017	-3.9
Gasoline, unleaded premium <sup>6</sup> .....		-4.5		0.44	S-Feb.2016	-9.5
Other motor fuels <sup>5</sup> .....	0.088	-1.9	-0.002	0.15	S-May 2017	-2.8
Energy services <sup>11</sup> .....	3.433	-0.2	-0.008	0.08	S-Jan.2018	-0.8
Electricity <sup>11</sup> .....	2.634	0.0	0.001	0.10	S-Jan.2018	-0.2
Utility (piped) gas service <sup>11</sup> .....	0.799	-1.2	-0.009	0.08	S-Jan.2018	-2.6
All items less food and energy.....	79.007	0.2	0.138	0.03	—	—
Commodities less food and energy commodities.....	19.895	-0.1	-0.025	0.08	S-Nov.2017	-0.1
Household furnishings and supplies <sup>12</sup> .....	3.395	-0.1	-0.002	0.16	S-Nov.2017	-0.2
Window and floor coverings and other linens <sup>4, 5</sup> .....	0.271	-1.3	-0.004	0.75	S-Nov.2017	-2.7
Floor coverings <sup>4, 5</sup> .....	0.056	0.7	0.000	0.56	S-Dec.2017	-1.9
Window coverings <sup>4, 5</sup> .....	0.049	-3.2	-0.002	0.88	S-Dec.2014	-3.3
Other linens <sup>4, 5</sup> .....	0.165	-1.4	-0.002	1.15	S-Nov.2017	-4.5
Furniture and bedding.....	0.888	-1.0	-0.009	0.34	S-Apr.2010	-1.6
Bedroom furniture <sup>4</sup> .....	0.324	-0.3	-0.001	0.52	S-Dec.2017	-1.2
Living room, kitchen, and dining room furniture <sup>4, 5</sup> .....	0.425	-0.6	-0.003	0.45	S-Nov.2017	-0.6
Other furniture <sup>5</sup> .....	0.127	-0.5	-0.001	0.71	L-Jan.2018	1.2
Infants' furniture <sup>4, 8, 6</sup> .....		-4.2		0.74	S-EVER	—
Appliances <sup>5</sup> .....	0.208	1.2	0.002	0.55	L-Feb.2005	1.3
Major appliances <sup>5</sup> .....	0.074	0.3	0.000	0.70	L-Jan.2018	0.5
Laundry equipment <sup>6</sup> .....		-0.6		1.18	L-Jan.2018	3.4
Other appliances <sup>5</sup> .....	0.131	1.7	0.002	0.63	L-Mar.2014	2.0
Other household equipment and furnishings <sup>5</sup> .....	0.525	0.3	0.002	0.48	S-Jan.2018	-2.2
Clocks, lamps, and decorator items <sup>4</sup> .....	0.291	-0.4	-0.001	0.76	S-Jan.2018	-0.7

See footnotes at end of table.

**Table 6. Consumer Price Index for All Urban Consumers (CPI-U): U.S. city average, by expenditure category, March 2018, 1-month analysis table — Continued**  
 [1982-84=100, unless otherwise noted]

Expenditure category	Relative importance Feb. 2018	One Month				
		Seasonally adjusted percent change Feb. 2018-Mar. 2018	Seasonally adjusted effect on All Items Feb. 2018-Mar. 2018 <sup>1</sup>	Standard error, median price change <sup>2</sup>	Largest (L) or Smallest (S) seasonally adjusted change since: <sup>3</sup>	
					Date	Percent change
Indoor plants and flowers <sup>13</sup> .....	0.095	1.9	0.002	0.68	L-Jun.2005	2.0
Dishes and flatware <sup>4, 5</sup> .....	0.059	-2.7	-0.002	1.49	S-Sep.2017	-3.2
Nonelectric cookware and tableware <sup>5</sup> .....	0.081	3.0	0.002	0.75	L-EVER	—
Tools, hardware, outdoor equipment and supplies <sup>5</sup> ....	0.673	0.2	0.001	0.24	S-Dec.2017	-0.5
Tools, hardware and supplies <sup>4, 5</sup> .....	0.199	0.1	0.000	0.35	S-Dec.2017	-0.7
Outdoor equipment and supplies <sup>5</sup> .....	0.311	0.4	0.001	0.30	L-Nov.2017	0.4
Housekeeping supplies <sup>4</sup> .....	0.830	0.4	0.003	0.24	L-Jan.2018	0.6
Household cleaning products <sup>5</sup> .....	0.326	0.3	0.001	0.39	L-Dec.2017	0.3
Household paper products <sup>4, 5</sup> .....	0.221	-0.7	-0.002	0.38	S-Nov.2017	-1.2
Miscellaneous household products <sup>4, 5</sup> .....	0.283	1.1	0.003	0.41	L-Jan.2018	2.8
Apparel.....	3.136	-0.6	-0.020	0.39	S-Nov.2017	-0.9
Men's and boys' apparel.....	0.778	-1.0	-0.008	0.72	S-Apr.2017	-1.6
Men's apparel.....	0.612	-1.0	-0.006	0.78	S-Apr.2017	-2.0
Men's suits, sport coats, and outerwear.....	0.111	-2.5	-0.003	1.68	S-Mar.2017	-3.0
Men's furnishings.....	0.150	1.2	0.002	1.45	L-Oct.2017	2.8
Men's shirts and sweaters <sup>5</sup> .....	0.182	-2.7	-0.005	1.22	S-Apr.2017	-3.4
Men's pants and shorts.....	0.162	-2.1	-0.003	1.28	S-Mar.2017	-5.4
Boys' apparel.....	0.166	-1.2	-0.002	1.44	S-Nov.2017	-1.6
Women's and girls' apparel.....	1.292	-2.1	-0.028	0.60	S-Dec.2004	-2.3
Women's apparel.....	1.111	-2.5	-0.029	0.65	S-Dec.2004	-2.8
Women's outerwear.....	0.070	0.9	0.001	2.13	S-Jan.2018	-6.3
Women's dresses.....	0.135	-1.7	-0.002	1.42	S-Aug.2017	-3.8
Women's suits and separates <sup>5</sup> .....	0.588	-4.0	-0.024	0.87	S-Dec.2004	-4.2
Women's underwear, nightwear, sportswear and accessories <sup>5</sup> .....	0.305	-2.5	-0.008	1.10	S-Jun.2017	-2.7
Girls' apparel.....	0.181	0.3	0.000	1.49	L-Dec.2017	1.8
Footwear.....	0.674	1.2	0.008	0.57	S-Jan.2018	0.4
Men's footwear <sup>4</sup> .....	0.217	2.1	0.004	0.96	L-Jan.2018	2.2
Boys' and girls' footwear.....	0.153	2.8	0.004	1.01	L-Jul.2014	3.1
Women's footwear.....	0.304	0.8	0.002	0.80	S-Dec.2017	0.0
Infants' and toddlers' apparel.....	0.134	2.2	0.003	1.24	L-Sep.2017	5.9
Jewelry and watches <sup>9</sup> .....	0.257	1.8	0.005	1.00	L-Apr.2017	2.7
Watches <sup>4, 9</sup> .....	0.099	-0.7	-0.001	1.52	S-Dec.2017	-4.8
Jewelry <sup>9</sup> .....	0.159	1.6	0.003	1.22	S-Jan.2018	-1.5
Transportation commodities less motor fuel <sup>12</sup> .....	6.676	-0.1	-0.005	0.09	L-Jan.2018	0.2
New vehicles.....	3.775	0.0	0.001	0.15	L-Dec.2017	0.5
New cars and trucks <sup>5, 6</sup> .....		0.0		0.23	L-Dec.2017	0.5
New cars <sup>6</sup> .....		0.0		0.24	L-Jan.2018	0.0
New trucks <sup>14, 6</sup> .....		0.0		0.21	L-Jan.2018	0.0
Used cars and trucks.....	2.407	-0.3	-0.008	0.02	—	—
Motor vehicle parts and equipment <sup>4</sup> .....	0.380	0.3	0.001	0.28	L-Jan.2018	0.4
Tires <sup>4</sup> .....	0.228	0.0	0.000	0.38	S-Nov.2017	-1.0
Vehicle accessories other than tires <sup>4, 5</sup> .....	0.152	0.8	0.001	0.44	L-Jul.2017	0.9
Vehicle parts and equipment other than tires <sup>4, 6</sup> ....		1.2		0.38	L-Nov.2008	1.5
Motor oil, coolant, and fluids <sup>4, 6</sup> .....		0.1		0.90	L-Nov.2017	3.3
Medical care commodities.....	1.740	0.1	0.001	0.25	L-Dec.2017	0.9
Medicinal drugs <sup>4, 12</sup> .....	1.682	0.0	0.000	0.26	S-Oct.2017	-0.2
Prescription drugs <sup>11</sup> .....	1.338	-0.2	-0.002	0.29	L-Jan.2018	-0.2
Nonprescription drugs <sup>4, 12</sup> .....	0.345	0.9	0.003	0.43	L-Feb.2015	1.0
Medical equipment and supplies <sup>4, 12</sup> .....	0.058	-2.0	-0.001	0.50	S-Jul.2011	-2.0
Recreation commodities <sup>12</sup> .....	1.849	0.3	0.006	0.17	L-Feb.2011	0.3
Video and audio products <sup>12</sup> .....	0.247	-0.8	-0.002	0.49	L-Sep.2017	-0.5
Televisions.....	0.117	-1.6	-0.002	0.81	L-Dec.2017	-1.2

See footnotes at end of table.



**Table 6. Consumer Price Index for All Urban Consumers (CPI-U): U.S. city average, by expenditure category, March 2018, 1-month analysis table — Continued**

[1982-84=100, unless otherwise noted]

Expenditure category	Relative importance Feb. 2018	One Month				
		Seasonally adjusted percent change Feb. 2018-Mar. 2018	Seasonally adjusted effect on All Items Feb. 2018-Mar. 2018 <sup>1</sup>	Standard error, median price change <sup>2</sup>	Largest (L) or Smallest (S) seasonally adjusted change since: <sup>3</sup>	
					Date	Percent change
Other video equipment <sup>5</sup> .....	0.027	-0.8	0.000	0.85	S-Dec.2017	-1.1
Audio equipment <sup>4</sup> .....	0.044	-0.2	0.000	0.71	L-Jan.2018	0.7
Recorded music and music subscriptions <sup>4, 5</sup> .....	0.051	0.3	0.000	0.85	L-Dec.2017	0.8
Pets and pet products <sup>4</sup> .....	0.600	0.1	0.001	0.23	L-Jan.2018	0.4
Pet food <sup>4, 5, 6</sup> .....		0.1		0.31	S-Nov.2017	-1.0
Purchase of pets, pet supplies, accessories <sup>4, 5, 6</sup> .....		0.3		0.39	L-Oct.2017	0.3
Sporting goods.....	0.499	1.3	0.006	0.29	L-Oct.2008	1.5
Sports vehicles including bicycles <sup>4</sup> .....	0.282	1.6	0.004	0.34	L-Apr.2016	2.3
Sports equipment.....	0.210	0.1	0.000	0.47	L-Jan.2018	0.2
Photographic equipment and supplies.....	0.034	2.1	0.001	0.66	L-Jun.2016	2.1
Film and photographic supplies <sup>4, 5, 6</sup> .....						
Photographic equipment <sup>5, 6</sup> .....		2.6		0.69	L-EVER	—
Recreational reading materials <sup>4</sup> .....	0.112	1.8	0.002	0.64	L-EVER	—
Newspapers and magazines <sup>4, 5</sup> .....	0.067	3.6	0.002	0.95	L-EVER	—
Recreational books <sup>4, 5</sup> .....	0.045	-0.9	0.000	0.97	S-Jun.2017	-1.9
Other recreational goods <sup>5</sup> .....	0.356	-0.5	-0.002	0.46	S-Jan.2018	-1.2
Toys.....	0.284	-0.4	-0.001	0.52	S-Jan.2018	-1.8
Toys, games, hobbies and playground equipment <sup>5, 6</sup> .....		-0.4		0.55	S-Jan.2018	-1.5
Sewing machines, fabric and supplies <sup>4, 5</sup> .....	0.024	-1.4	0.000	1.10	L-Jan.2018	5.2
Music instruments and accessories <sup>4, 5</sup> .....	0.036	-0.3	0.000	0.68	L-Dec.2017	0.8
Education and communication commodities <sup>12</sup> .....	0.562	-0.4	-0.002	0.36	L-Jan.2018	0.8
Educational books and supplies.....	0.132	-0.1	0.000	0.60	S-Jan.2018	-0.1
College textbooks <sup>4, 15, 6</sup> .....		0.4		0.58	S-Jan.2018	-0.8
Information technology commodities <sup>12</sup> .....	0.429	-0.4	-0.002	0.43	L-Jan.2018	1.0
Personal computers and peripheral equipment <sup>7</sup> .....	0.321	0.1	0.000	0.59	L-Jan.2018	0.4
Computer software and accessories <sup>4, 5</sup> .....	0.025	-1.4	0.000	1.10	L-Jan.2018	2.9
Telephone hardware, calculators, and other consumer information items <sup>4, 5</sup> .....	0.083	-2.1	-0.002	0.70	S-Oct.2017	-2.3
Alcoholic beverages.....	0.970	0.1	0.001	0.14	S-Jan.2018	0.0
Alcoholic beverages at home.....	0.604	0.0	0.000	0.22	S-Jan.2018	-0.5
Beer, ale, and other malt beverages at home.....	0.267	0.2	0.000	0.27	—	—
Distilled spirits at home.....	0.081	0.2	0.000	0.37	L-Jun.2017	0.2
Whiskey at home <sup>4, 6</sup> .....		0.1		0.54	L-Jan.2018	1.0
Distilled spirits, excluding whiskey, at home <sup>4, 6</sup> .....		0.2		0.50	—	—
Wine at home.....	0.256	-0.5	-0.001	0.46	S-Jan.2018	-0.7
Alcoholic beverages away from home <sup>4</sup> .....	0.366	0.1	0.000	0.12	S-Nov.2017	0.1
Beer, ale, and other malt beverages away from home <sup>1, 5, 6</sup> .....		-0.2		0.18	S-Jul.2017	-0.4
Wine away from home <sup>4, 5, 6</sup> .....		0.2		0.18	L-Jan.2018	0.2
Distilled spirits away from home <sup>4, 5, 6</sup> .....		0.5		0.15	L-Jan.2018	0.6
Other goods <sup>12</sup> .....	1.569	-0.2	-0.004	0.16	S-Dec.2017	-0.5
Tobacco and smoking products.....	0.646	-0.2	-0.001	0.14	S-Dec.2017	-0.4
Cigarettes <sup>5</sup> .....	0.573	-0.4	-0.002	0.15	S-Dec.2017	-0.4
Tobacco products other than cigarettes <sup>4, 5</sup> .....	0.059	0.9	0.001	0.33	L-Oct.2017	1.1
Personal care products <sup>4</sup> .....	0.700	-0.1	0.000	0.30	S-Dec.2017	-0.6
Hair, dental, shaving, and miscellaneous personal care products <sup>4, 5</sup> .....	0.385	0.0	0.000	0.37	S-Dec.2017	-0.2
Cosmetics, perfume, bath, nail preparations and implements <sup>4</sup> .....	0.309	-0.1	0.000	0.45	L-Jan.2018	0.3
Miscellaneous personal goods <sup>5</sup> .....	0.222	-0.8	-0.002	0.75	L-Jan.2018	1.4
Stationery, stationery supplies, gift wrap <sup>6</sup> .....		0.1		0.77	L-Jan.2018	0.5
Infants' equipment <sup>4, 8, 6</sup> .....		-1.6		0.46	S-Feb.2017	-1.7

See footnotes at end of table.

**Table 6. Consumer Price Index for All Urban Consumers (CPI-U): U.S. city average, by expenditure category, March 2018, 1-month analysis table — Continued**

[1982-84=100, unless otherwise noted]

Expenditure category	Relative importance Feb. 2018	One Month				
		Seasonally adjusted percent change Feb. 2018-Mar. 2018	Seasonally adjusted effect on All Items Feb. 2018-Mar. 2018 <sup>1</sup>	Standard error, median price change <sup>2</sup>	Largest (L) or Smallest (S) seasonally adjusted change since: <sup>3</sup>	
					Date	Percent change
Services less energy services.....	59.112	0.3	0.157	0.03	L-Jan.2018	0.3
Shelter.....	32.697	0.4	0.116	0.04	L-Aug.2017	0.4
Rent of shelter <sup>16</sup> .....	32.325	0.4	0.115	0.04	L-Aug.2017	0.4
Rent of primary residence <sup>11</sup> .....	7.779	0.3	0.020	0.03	L-Jan.2018	0.3
Lodging away from home <sup>5</sup> .....	0.939	2.3	0.022	1.24	L-Aug.2017	3.2
Housing at school, excluding board <sup>11, 16</sup> .....	0.113	0.3	0.000	0.06	L-Dec.2017	0.3
Other lodging away from home including hotels and motels.....	0.826	2.6	0.022	1.45	L-Aug.2017	3.7
Owners' equivalent rent of residences <sup>11, 16</sup> .....	23.606	0.3	0.074	0.03	L-Jan.2018	0.3
Owners' equivalent rent of primary residence <sup>11, 16</sup> .....	22.288	0.3	0.069	0.03	L-Jan.2018	0.3
Tenants' and household insurance <sup>4, 5</sup> .....	0.373	0.0	0.000	0.13	S-Dec.2017	0.0
Water and sewer and trash collection services <sup>5</sup> .....	1.073	0.2	0.002	0.05	S-Jan.2018	0.2
Water and sewerage maintenance <sup>11</sup> .....	0.814	0.2	0.002	0.06	S-Oct.2017	0.2
Garbage and trash collection <sup>4, 14</sup> .....	0.259	0.1	0.000	0.07	S-Jan.2018	-0.1
Household operations <sup>4, 5</sup> .....	0.869	0.2	0.001	0.32	S-Dec.2017	0.0
Domestic services <sup>4, 5</sup> .....	0.298	0.5	0.002	0.04	L-Jan.2018	0.6
Gardening and lawncare services <sup>4, 5</sup> .....	0.286	0.2	0.001	0.05	L-Jun.2017	0.6
Moving, storage, freight expense <sup>5</sup> .....	0.102	0.0	0.000	1.97	S-Dec.2017	-2.2
Repair of household items <sup>4, 5</sup> .....	0.108	0.0	0.000	0.23	S-Jan.2018	0.0
Medical care services.....	6.939	0.5	0.033	0.09	L-Jan.2018	0.6
Professional services.....	3.277	0.5	0.017	0.10	L-May 2016	0.6
Physicians' services <sup>11</sup> .....	1.750	0.2	0.004	0.09	—	—
Dental services <sup>11</sup> .....	0.789	1.2	0.009	0.11	S-Jan.2018	-0.1
Eyeglasses and eye care <sup>4, 9</sup> .....	0.320	-0.3	-0.001	0.31	S-Dec.2017	-0.3
Services by other medical professionals <sup>4, 11, 9</sup> .....	0.417	0.8	0.003	0.09	L-Jul.2016	0.9
Hospital and related services.....	2.602	0.6	0.015	0.12	L-Jan.2018	1.2
Hospital services <sup>11, 17</sup> .....	2.324	0.6	0.014	0.13	L-Jan.2018	1.3
Inpatient hospital services <sup>11, 17, 6</sup> .....		0.4		0.20	L-Jan.2018	1.2
Outpatient hospital services <sup>11, 9, 6</sup> .....		0.7		0.32	L-Jan.2018	1.4
Nursing homes and adult day services <sup>11, 17</sup> .....	0.191	0.1	0.000	0.12	S-Nov.2017	0.1
Care of invalids and elderly at home <sup>4, 8</sup> .....	0.087	0.1	0.000	0.12	S-Dec.2017	-0.3
Health insurance <sup>4, 8</sup> .....	1.060	0.0	0.000	0.08	S-Dec.2017	-0.1
Transportation services.....	5.987	0.2	0.011	0.13	S-Nov.2017	0.1
Leased cars and trucks <sup>4, 15</sup> .....	0.651	-0.6	-0.004	0.39	S-Aug.2017	-0.6
Car and truck rental <sup>5</sup> .....	0.111	3.0	0.003	1.78	L-Jun.2017	7.0
Motor vehicle maintenance and repair <sup>4</sup> .....	1.116	-0.1	-0.001	0.15	S-Nov.2017	-0.3
Motor vehicle body work <sup>4</sup> .....	0.055	0.1	0.000	0.11	S-Dec.2017	0.1
Motor vehicle maintenance and servicing <sup>4</sup> .....	0.624	0.2	0.001	0.24	—	—
Motor vehicle repair <sup>4, 5</sup> .....	0.373	-0.7	-0.003	0.14	S-Jun.2017	-0.9
Motor vehicle insurance.....	2.396	0.3	0.007	0.17	S-Jul.2017	0.3
Motor vehicle fees <sup>4, 5</sup> .....	0.541	0.3	0.002	0.12	S-Dec.2017	-0.3
State motor vehicle registration and license fees <sup>4, 11, 5</sup> .....	0.282	0.0	0.000	0.04	—	—
Parking and other fees <sup>4, 5</sup> .....	0.243	0.7	0.002	0.22	S-Dec.2017	-0.7
Parking fees and tolls <sup>5, 6</sup> .....		0.3		0.16	—	—
Automobile service clubs <sup>4, 5, 6</sup> .....		1.0		0.43	L-Nov.2016	9.9
Public transportation.....	1.171	0.3	0.004	0.36	S-Jan.2018	-0.1
Airline fares.....	0.712	0.6	0.005	0.58	—	—
Other intercity transportation.....	0.171	0.3	0.000	0.56	S-Dec.2017	0.2
Intercity bus fare <sup>4, 7, 6</sup> .....		0.2		0.98	L-Jan.2018	0.4
Intercity train fare <sup>4, 7, 6</sup> .....						
Ship fare <sup>4, 5, 6</sup> .....		1.6		0.82	L-Apr.2017	2.2

See footnotes at end of table.

**Table 6. Consumer Price Index for All Urban Consumers (CPI-U): U.S. city average, by expenditure category, March 2018, 1-month analysis table — Continued**  
 [1982-84=100, unless otherwise noted]

Expenditure category	Relative importance Feb. 2018	One Month				
		Seasonally adjusted percent change Feb. 2018-Mar. 2018	Seasonally adjusted effect on All Items Feb. 2018-Mar. 2018 <sup>1</sup>	Standard error, median price change <sup>2</sup>	Largest (L) or Smallest (S) seasonally adjusted change since: <sup>3</sup>	
					Date	Percent change
Intracity transportation <sup>4</sup> .....	0.282	0.0	0.000	0.19	S-Dec.2017	-0.2
Intracity mass transit <sup>4, 12, 6</sup> .....		0.0		0.15	S-Dec.2017	0.0
Recreation services <sup>12</sup> .....	3.867	-0.1	-0.005	0.16	S-Aug.2016	-0.1
Video and audio services <sup>12</sup> .....	1.602	-0.2	-0.004	0.15	S-Sep.2016	-0.2
Cable and satellite television service <sup>14</sup> .....	1.513	-0.2	-0.003	0.14	S-Jan.2018	-0.2
Video discs and other media, including rental of video <sup>4, 5</sup> .....	0.089	-0.3	0.000	1.26	S-Nov.2017	-3.9
Video discs and other media <sup>4, 5, 6</sup> .....		0.3		2.01	—	—
Rental of video discs and other media <sup>4, 5, 6</sup> .....		0.0		0.14	L-Dec.2017	0.6
Pet services including veterinary <sup>5</sup> .....	0.411	0.2	0.001	0.11	L-Jan.2018	0.5
Pet services <sup>4, 5, 6</sup> .....		0.0		0.10	S-Jan.2018	-0.1
Veterinarian services <sup>5, 6</sup> .....		0.4		0.13	L-Jan.2018	0.6
Photographers and film processing <sup>4, 5</sup> .....	0.038	-0.8	0.000	0.43	S-Jan.2018	-1.0
Photographer fees <sup>4, 5, 6</sup> .....		-0.1		0.06	S-Jan.2018	-0.3
Film processing <sup>4, 5, 6</sup> .....		-0.8		0.65	S-Jan.2018	-4.1
Other recreation services <sup>5</sup> .....	1.814	-0.1	-0.002	0.29	S-Jun.2017	-0.1
Club membership for shopping clubs, fraternal, or other organizations, or participant sports fees <sup>4, 5</sup> .....	0.668	0.6	0.004	0.22	L-Dec.2017	0.9
Admissions.....	0.655	-1.0	-0.006	0.58	S-Nov.2016	-1.0
Admission to movies, theaters, and concerts <sup>4, 5, 6</sup> .....		-0.1		0.46	S-Jan.2018	-0.3
Admission to sporting events <sup>4, 5, 6</sup> .....		-3.4		1.79	S-Nov.2016	-5.1
Fees for lessons or instructions <sup>4, 9</sup> .....	0.218	0.3	0.001	0.34	L-Jan.2018	0.5
Education and communication services <sup>12</sup> .....	6.063	-0.2	-0.010	0.07	—	—
Tuition, other school fees, and childcare.....	2.869	-0.1	-0.002	0.05	S-Aug.2000	-0.2
College tuition and fees.....	1.590	-0.2	-0.003	0.06	S-Aug.2000	-0.3
Elementary and high school tuition and fees.....	0.327	0.3	0.001	0.08	—	—
Child care and nursery school <sup>13</sup> .....	0.802	0.0	0.000	0.09	S-Jan.2018	0.0
Technical and business school tuition and fees <sup>5</sup> .....	0.032	0.1	0.000	0.11	—	—
Postage and delivery services <sup>5</sup> .....	0.109	0.2	0.000	0.02	L-Jan.2018	0.6
Postage.....	0.095	0.2	0.000	0.00	L-Jan.2018	0.4
Delivery services <sup>5</sup> .....	0.014	0.3	0.000	0.32	L-Jan.2018	1.5
Telephone services <sup>4, 5</sup> .....	2.298	0.0	-0.001	0.12	L-Dec.2017	0.2
Wireless telephone services <sup>4, 5</sup> .....	1.719	0.2	0.004	0.10	L-Nov.2017	0.3
Land-line telephone services <sup>4, 12</sup> .....	0.579	-0.8	-0.005	0.21	S-Sep.2016	-0.8
Internet services and electronic information providers <sup>5</sup> .....	0.778	-1.0	-0.008	0.29	—	—
Other personal services <sup>4, 12</sup> .....	1.616	0.6	0.010	0.11	L-May 2016	0.6
Personal care services <sup>4</sup> .....	0.621	0.3	0.002	0.13	L-Jan.2018	0.5
Haircuts and other personal care services <sup>4, 5</sup> .....	0.621	0.3	0.002	0.13	L-Jan.2018	0.5
Miscellaneous personal services.....	0.995	0.7	0.007	0.11	L-Jul.2016	0.8
Legal services <sup>4, 9</sup> .....	0.306	0.6	0.002	0.07	S-Dec.2017	0.0
Funeral expenses <sup>4, 9</sup> .....	0.127	0.1	0.000	0.09	S-Jan.2018	-0.1
Laundry and dry cleaning services <sup>4, 5</sup> .....	0.237	0.5	0.001	0.16	L-Mar.2017	0.5
Apparel services other than laundry and dry cleaning <sup>4, 5</sup> .....	0.028	-0.3	0.000	0.21	S-Aug.2017	-0.7
Financial services <sup>9</sup> .....	0.227	1.5	0.003	0.32	L-Jan.2015	2.2
Checking account and other bank services <sup>4, 5, 6</sup> .....		4.7		0.02	L-EVER	—
Tax return preparation and other accounting fees <sup>5, 6</sup> .....		-0.4		0.33	L-Jan.2018	0.8
<b>Special aggregate indexes</b>						

See footnotes at end of table.

**Table 6. Consumer Price Index for All Urban Consumers (CPI-U): U.S. city average, by expenditure category, March 2018, 1-month analysis table — Continued**

[1982-84=100, unless otherwise noted]

Expenditure category	Relative importance Feb. 2018	One Month				
		Seasonally adjusted percent change Feb. 2018-Mar. 2018	Seasonally adjusted effect on All Items Feb. 2018-Mar. 2018 <sup>1</sup>	Standard error, median price change <sup>2</sup>	Largest (L) or Smallest (S) seasonally adjusted change since: <sup>3</sup>	
					Date	Percent change
All items less food.....	86.694	-0.1	-0.080	0.03	S-May 2017	-0.1
All items less shelter.....	67.303	-0.3	-0.179	0.03	S-Mar.2017	-0.3
All items less food and shelter.....	53.997	-0.4	-0.196	0.04	S-Mar.2017	-0.5
All items less food, shelter, and energy.....	46.309	0.0	0.023	0.05	S-Nov.2017	0.0
All items less food, shelter, energy, and used cars and trucks.....	43.902	0.1	0.031	0.05	S-Nov.2017	0.0
All items less medical care.....	91.321	-0.1	-0.097	0.03	S-May 2017	-0.1
All items less energy.....	92.313	0.2	0.156	0.03	—	—
Commodities.....	37.455	-0.6	-0.218	0.05	S-Feb.2016	-0.9
Commodities less food, energy, and used cars and trucks.....	17.488	-0.1	-0.017	0.09	S-Nov.2017	-0.2
Commodities less food.....	24.149	-1.0	-0.235	0.07	S-May 2017	-1.0
Commodities less food and beverages.....	23.179	-1.0	-0.236	0.07	S-May 2017	-1.0
Services.....	62.545	0.2	0.149	0.03	S-Nov.2017	0.2
Services less rent of shelter <sup>16</sup> .....	30.220	0.2	0.047	0.05	S-Jan.2018	0.2
Services less medical care services.....	55.606	0.3	0.139	0.04	S-Jan.2018	0.2
Durables.....	10.087	0.0	0.002	0.08	L-Jan.2018	0.1
Nondurables.....	27.368	-0.7	-0.183	0.07	S-Feb.2016	-1.1
Nondurables less food.....	14.062	-1.5	-0.211	0.11	S-Feb.2016	-2.5
Nondurables less food and beverages.....	13.092	-1.6	-0.210	0.12	S-Feb.2016	-2.7
Nondurables less food, beverages, and apparel.....	9.957	-1.7	-0.171	0.09	S-Jun.2017	-1.7
Nondurables less food and apparel.....	10.927	-1.5	-0.170	0.08	S-Jun.2017	-1.5
Housing.....	41.663	0.3	0.110	0.04	—	—
Education and communication <sup>5</sup> .....	6.624	-0.2	-0.012	0.07	—	—
Education <sup>5</sup> .....	3.001	-0.1	-0.002	0.06	S-Aug.2000	-0.1
Communication <sup>5</sup> .....	3.623	-0.3	-0.010	0.11	L-Jan.2018	0.0
Information and information processing <sup>5</sup> .....	3.514	-0.3	-0.010	0.12	L-Jan.2018	0.0
Information technology, hardware and services <sup>18</sup> .....	1.216	-0.8	-0.010	0.25	L-Jan.2018	0.2
Recreation <sup>5</sup> .....	5.716	0.0	0.001	0.11	—	—
Video and audio <sup>5</sup> .....	1.849	-0.3	-0.006	0.15	S-Sep.2016	-0.5
Pets, pet products and services <sup>5</sup> .....	1.011	0.2	0.002	0.16	L-Jan.2018	0.5
Photography <sup>5</sup> .....	0.074	0.5	0.000	0.41	S-Jan.2018	-1.3
Food and beverages.....	14.276	0.1	0.018	0.06	L-Jan.2018	0.2
Domestically produced farm food.....	6.128	0.1	0.005	0.11	L-Dec.2017	0.2
Other services.....	11.546	-0.1	-0.007	0.06	S-Apr.2017	-0.1
Apparel less footwear.....	2.462	-1.1	-0.028	0.45	S-Nov.2017	-1.1
Fuels and utilities.....	4.701	-0.2	-0.007	0.06	S-Jan.2018	-0.2
Household energy.....	3.628	-0.3	-0.010	0.08	S-Jan.2018	-0.4
Medical care.....	8.679	0.4	0.034	0.09	L-Jan.2018	0.4
Transportation.....	16.723	-1.2	-0.202	0.06	S-Feb.2016	-2.4
Private transportation.....	15.551	-1.3	-0.206	0.06	S-Feb.2016	-2.5
New and used motor vehicles <sup>5</sup> .....	7.059	-0.1	-0.006	0.10	L-Jan.2018	0.2
Utilities and public transportation.....	9.489	0.0	0.001	0.07	S-Jan.2018	-0.2
Household furnishings and operations.....	4.264	0.1	0.002	0.16	S-Dec.2017	0.0
Other goods and services.....	3.184	0.2	0.007	0.10	—	—
Personal care <sup>4</sup> .....	2.538	0.3	0.009	0.13	L-Jan.2018	0.5

<sup>1</sup> The 'effect' of an item category is a measure of that item's contribution to the All items price change. For example, if the Food index had an effect of 0.40, and the All items index rose 1.2 percent, then the increase in food prices contributed 0.40 / 1.2, or 33.3 percent, to that All items increase. Said another way, had food prices been unchanged for that month the change in the All items index would have been 1.2 percent minus 0.40, or 0.8 percent. Effects can be negative as well. For example, if the effect of food was a negative 0.1, and the All items index rose 0.5 percent, the All items index actually would have been 0.1 percent higher (or 0.6 percent) had food prices been unchanged. Since food prices fell while prices overall were rising, the contribution of food to the All items price change was negative (in this case, -0.1 / 0.5, or minus 20 percent).

<sup>2</sup> A statistic's margin of error is often expressed as its point estimate plus or minus two standard errors. For example, if a CPI category rose 0.6 percent, and its standard error was 0.15 percent, the margin of error on this item's 1-month percent change would be 0.6 percent, plus or minus 0.3 percent.

<sup>3</sup> If the current seasonally adjusted 1-month percent change is greater than the previous published 1-month percent change, then this column identifies the closest prior month with a 1-month percent change as (L)arge as or (L)arger than the current 1-month change. If the current 1-month percent change is smaller than the previous published 1-month percent change, the most recent month with a change as (S)mall or (S)maller than the current month change is identified. If the current and previous published 1-month percent changes are equal, a dash will appear. Standard numerical comparisons are used. For example, 0.8% is greater than 0.6%, -0.4% is less than -0.2%, and -0.2% is less than 0.0%. Note that a (L)arger change can be a smaller decline, for example, a -0.2% change is larger than a -0.4% change, but still represents a decline in the price index. Likewise, (S)maller changes can be increases, for example, a 0.6% change is smaller than 0.8%, but still represents an increase in the price index. In this context, a -0.2% change is considered to be smaller than a 0.0% change.

<sup>4</sup> Not seasonally adjusted.

<sup>5</sup> Indexes on a December 1997=100 base.

<sup>6</sup> Special indexes based on a substantially smaller sample. These series do not contribute to the all items index aggregation and therefore do not have a relative importance or effect.

<sup>7</sup> Indexes on a December 2007=100 base.

<sup>8</sup> Indexes on a December 2005=100 base.

<sup>9</sup> Indexes on a December 1986=100 base.

<sup>10</sup> Indexes on a December 1993=100 base.

<sup>11</sup> This index series was calculated using a Laspeyres estimator. All other item stratum index series were calculated using a geometric means estimator.

<sup>12</sup> Indexes on a December 2009=100 base.

<sup>13</sup> Indexes on a December 1990=100 base.

<sup>14</sup> Indexes on a December 1983=100 base.

<sup>15</sup> Indexes on a December 2001=100 base.

<sup>16</sup> Indexes on a December 1982=100 base.

<sup>17</sup> Indexes on a December 1996=100 base.

<sup>18</sup> Indexes on a December 1988=100 base.

NOTE: Index applies to a month as a whole, not to any specific date.

**Table 7. Consumer Price Index for All Urban Consumers (CPI-U): U.S. city average, by expenditure category, March 2018, 12-month analysis table**  
 [1982-84=100, unless otherwise noted]

Expenditure category	Relative importance Feb. 2018	Twelve Month				
		Unadjusted percent change Mar. 2017- Mar. 2018	Unadjusted effect on All Items Mar. 2017- Mar. 2018 <sup>1</sup>	Standard error, median price change <sup>2</sup>	Largest (L) or Smallest (S) unadjusted change since: <sup>3</sup>	
					Date	Percent change
All items.....	100.000	2.4		0.07	L-Mar.2017	2.4
Food.....	13.306	1.3	0.175	0.10	S-Oct.2017	1.3
Food at home.....	7.327	0.4	0.029	0.16	S-Sep.2017	0.4
Cereals and bakery products.....	0.959	0.1	0.000	0.30	L-Apr.2016	0.2
Cereals and cereal products.....	0.311	-1.0	-0.004	0.62	L-Sep.2016	-0.6
Flour and prepared flour mixes.....	0.042	-0.1	0.000	0.99	S-Jan.2018	-0.4
Breakfast cereal.....	0.150	-2.4	-0.004	0.85	L-Jan.2018	-1.1
Rice, pasta, cornmeal.....	0.120	0.4	0.000	1.11	L-Feb.2016	0.8
Rice <sup>4, 5</sup> .....		-0.5		1.35	L-Sep.2017	-0.3
Bakery products.....	0.648	0.6	0.004	0.37	L-Apr.2016	1.0
Bread <sup>4</sup> .....	0.189	1.3	0.003	0.66	L-Nov.2015	2.2
White bread <sup>5</sup> .....		0.5		0.89	L-Sep.2017	0.7
Bread other than white <sup>5</sup> .....		1.9		0.89	L-Nov.2015	3.0
Fresh biscuits, rolls, muffins <sup>4</sup> .....	0.092	1.0	0.001	1.07	S-Dec.2017	1.0
Cakes, cupcakes, and cookies.....	0.164	1.9	0.003	0.68	S-Jan.2018	1.1
Cookies <sup>5</sup> .....		1.4		1.14	S-Jan.2018	0.3
Fresh cakes and cupcakes <sup>5</sup> .....		2.1		1.11	L-Jun.2017	2.9
Other bakery products.....	0.203	-1.3	-0.003	0.71	S-Nov.2017	-1.3
Fresh sweetrolls, coffeeecakes, doughnuts <sup>5</sup> .....		1.5		1.16	L-Jan.2018	1.8
Crackers, bread, and cracker products <sup>5</sup> .....		-2.4		1.24	S-Nov.2017	-2.9
Frozen and refrigerated bakery products, pies, tarts, turnovers <sup>5</sup> .....		-1.2		1.15	S-Nov.2017	-1.3
Meats, poultry, fish, and eggs.....	1.610	2.1	0.037	0.33	L-Dec.2017	2.8
Meats, poultry, and fish.....	1.511	1.3	0.021	0.32	L-Jan.2018	1.9
Meats.....	0.948	1.4	0.014	0.39	S-Sep.2017	0.8
Beef and veal.....	0.426	2.8	0.013	0.49	L-Dec.2017	3.5
Uncooked ground beef.....	0.173	4.0	0.007	0.81	S-Jan.2018	3.7
Uncooked beef roasts <sup>4</sup> .....	0.060	1.6	0.001	1.39	S-Nov.2017	0.5
Uncooked beef steaks <sup>4</sup> .....	0.156	1.1	0.002	0.91	L-Dec.2017	2.7
Uncooked other beef and veal <sup>4</sup> .....	0.037	5.5	0.002	1.30	L-Aug.2015	7.0
Pork.....	0.298	0.4	0.001	0.79	S-Jul.2017	0.0
Bacon, breakfast sausage, and related products <sup>4</sup> .....	0.136	1.4	0.002	1.01	S-May 2017	1.4
Bacon and related products <sup>5</sup> .....		0.0		1.31	S-Jan.2017	-2.2
Breakfast sausage and related products <sup>4, 5</sup> .....		3.5		1.67	L-Dec.2017	3.7
Ham.....	0.052	-2.8	-0.002	1.82	S-Feb.2017	-3.9
Ham, excluding canned <sup>5</sup> .....		-2.8		2.30	S-Feb.2017	-4.2
Pork chops.....	0.043	0.9	0.000	1.89	S-Oct.2017	-0.8
Other pork including roasts and picnics <sup>4</sup> .....	0.068	0.6	0.000	1.73	L-Jan.2018	3.7
Other meats.....	0.223	0.1	0.000	0.83	-	-
Frankfurters <sup>5</sup> .....		1.3		2.43	S-Jan.2018	0.4
Lunchmeats <sup>4, 5</sup> .....		-0.5		0.83	L-Jan.2018	-0.3
Lamb and organ meats <sup>5</sup> .....						
Lamb and mutton <sup>4, 5</sup> .....						
Poultry.....	0.318	0.7	0.003	0.72	S-Nov.2017	0.1
Chicken <sup>4</sup> .....	0.261	2.1	0.006	0.84	S-Jan.2018	1.9
Fresh whole chicken <sup>5</sup> .....		1.6		1.94	L-Jan.2018	2.8
Fresh and frozen chicken parts <sup>5</sup> .....		2.7		0.99	S-Jan.2018	1.1
Other poultry including turkey <sup>4</sup> .....	0.058	-5.3	-0.003	1.44	S-EVER	-
Fish and seafood.....	0.245	1.7	0.004	0.84	L-Dec.2017	1.7
Fresh fish and seafood <sup>4</sup> .....	0.127	2.3	0.003	1.17	L-Mar.2017	3.2
Processed fish and seafood <sup>4</sup> .....	0.118	1.4	0.002	0.98	L-Jan.2018	2.3
Shelf stable fish and seafood <sup>5</sup> .....		4.7		1.31	L-Feb.2013	5.0

See footnotes at end of table.

**Table 7. Consumer Price Index for All Urban Consumers (CPI-U): U.S. city average, by expenditure category, March 2018, 12-month analysis table — Continued**  
 [1982-84=100, unless otherwise noted]

Expenditure category	Relative importance Feb. 2018	Twelve Month				
		Unadjusted percent change Mar. 2017- Mar. 2018	Unadjusted effect on All Items Mar. 2017- Mar. 2018 <sup>1</sup>	Standard error, median price change <sup>2</sup>	Largest (L) or Smallest (S) unadjusted change since: <sup>3</sup>	
					Date	Percent change
Frozen fish and seafood <sup>5</sup> .....		-1.8		1.50	L-Jan.2018	1.2
Eggs.....	0.099	16.3	0.016	1.47	L-Nov.2015	23.7
Dairy and related products.....	0.735	-0.9	-0.008	0.40	L-Jan.2018	-0.9
Milk <sup>4</sup> .....	0.202	-3.9	-0.009	0.70	S-Aug.2016	-4.9
Fresh whole milk <sup>5</sup> .....		-5.1		1.68	S-Jul.2016	-7.0
Fresh milk other than whole <sup>4, 5</sup> .....		-2.8		0.99	S-Nov.2016	-2.9
Cheese and related products.....	0.240	0.8	0.002	0.68	L-Jan.2018	1.1
Ice cream and related products.....	0.106	-0.2	0.000	0.96	L-Jan.2018	0.4
Other dairy and related products <sup>4</sup> .....	0.188	-0.3	-0.001	0.82	L-Nov.2017	1.1
Fruits and vegetables.....	1.298	0.3	0.005	0.43	S-Mar.2017	-1.8
Fresh fruits and vegetables.....	1.025	1.0	0.011	0.53	S-Mar.2017	-2.2
Fresh fruits.....	0.554	1.0	0.006	0.68	S-May.2017	0.3
Apples.....	0.078	-0.5	-0.001	1.75	S-Dec.2017	-2.6
Bananas.....	0.081	1.1	0.001	1.03	L-Jan.2012	2.5
Citrus fruits <sup>4</sup> .....	0.150	9.1	0.013	1.42	L-Nov.2017	10.2
Oranges, including tangerines <sup>5</sup> .....		6.1		2.18	S-Jan.2018	6.0
Other fresh fruits <sup>4</sup> .....	0.245	-3.2	-0.008	1.05	S-Feb.2017	-10.6
Fresh vegetables.....	0.471	1.1	0.005	0.84	S-Mar.2017	-4.1
Potatoes.....	0.076	-0.1	0.000	2.08	S-Jan.2016	-0.6
Lettuce.....	0.057	-2.6	-0.002	2.35	S-Mar.2017	-2.7
Tomatoes.....	0.082	5.4	0.005	1.67	S-Nov.2017	-0.3
Other fresh vegetables.....	0.256	1.0	0.003	1.20	S-Jul.2017	1.0
Processed fruits and vegetables <sup>4</sup> .....	0.273	-2.2	-0.007	0.69	S-Dec.2017	-2.7
Canned fruits and vegetables <sup>4</sup> .....	0.148	-2.4	-0.004	0.87	S-Dec.2017	-4.1
Canned fruits <sup>4, 5</sup> .....		-5.5		1.19	S-EVER	-
Canned vegetables <sup>4, 5</sup> .....		-0.6		1.24	L-Jan.2018	0.0
Frozen fruits and vegetables <sup>4</sup> .....	0.080	-1.2	-0.001	1.35	S-Jan.2018	-1.5
Frozen vegetables <sup>5</sup> .....		-1.5		1.67	S-Nov.2017	-2.0
Other processed fruits and vegetables including dried <sup>4</sup> .....	0.045	-3.6	-0.002	1.42	S-Feb.2017	-3.6
Dried beans, peas, and lentils <sup>4, 5</sup> .....		-4.0		2.11	S-Nov.2017	-4.4
Nonalcoholic beverages and beverage materials.....	0.873	-0.4	-0.005	0.43	L-Jan.2018	0.4
Juices and nonalcoholic drinks <sup>4</sup> .....	0.617	-0.1	-0.001	0.53	L-Jan.2018	0.8
Carbonated drinks.....	0.258	0.3	0.001	0.87	L-Jan.2018	0.4
Frozen noncarbonated juices and drinks <sup>4</sup> .....	0.009	0.3	0.000	1.12	S-Nov.2017	0.1
Nonfrozen noncarbonated juices and drinks <sup>4</sup> .....	0.351	-0.5	-0.002	0.64	L-Jan.2018	1.0
Beverage materials including coffee and tea <sup>4</sup> .....	0.256	-1.2	-0.003	0.77	L-Jan.2018	-0.7
Coffee.....	0.164	-1.6	-0.003	1.09	L-Jan.2018	-1.4
Roasted coffee <sup>5</sup> .....		-2.1		1.60	L-Jan.2018	-1.2
Instant coffee <sup>5</sup> .....		-3.5		1.65	L-Dec.2017	0.2
Other beverage materials including tea <sup>4</sup> .....	0.092	-0.4	0.000	1.01	L-Jan.2018	0.5
Other food at home.....	1.852	0.0	0.000	0.31	S-Jun.2017	-0.1
Sugar and sweets.....	0.282	1.2	0.003	0.70	S-Dec.2017	0.5
Sugar and artificial sweeteners.....	0.043	1.4	0.001	0.87	L-Jan.2018	1.4
Candy and chewing gum <sup>4</sup> .....	0.184	1.5	0.003	0.91	S-Jan.2018	1.0
Other sweets <sup>4</sup> .....	0.055	0.1	0.000	1.22	S-Dec.2017	-0.5
Fats and oils.....	0.218	0.2	0.000	0.61	S-Apr.2017	-0.2
Butter and margarine <sup>4</sup> .....	0.061	-0.1	0.000	1.16	S-Feb.2017	-0.2
Butter <sup>5</sup> .....		0.6		1.57	S-Apr.2017	-0.3
Margarine <sup>5</sup> .....		0.5		1.43	L-Nov.2017	1.3
Salad dressing <sup>4</sup> .....	0.053	-1.6	-0.001	1.37	S-Apr.2017	-2.8
Other fats and oils including peanut butter <sup>4</sup> .....	0.104	1.2	0.001	0.92	S-Aug.2017	0.8
Peanut butter <sup>4, 5</sup> .....		1.0		1.06	S-Jan.2018	0.1
Other foods.....	1.352	-0.3	-0.004	0.36	S-Jul.2017	-0.3

See footnotes at end of table.

**Table 7. Consumer Price Index for All Urban Consumers (CPI-U): U.S. city average, by expenditure category, March 2018, 12-month analysis table — Continued**  
 [1982-84=100, unless otherwise noted]

Expenditure category	Relative importance Feb. 2018	Twelve Month				
		Unadjusted percent change Mar. 2017- Mar. 2018	Unadjusted effect on All Items Mar. 2017- Mar. 2018 <sup>1</sup>	Standard error, median price change <sup>2</sup>	Largest (L) or Smallest (S) unadjusted change since: <sup>3</sup>	
					Date	Percent change
Soups.....	0.083	-2.0	-0.002	1.65	S-Apr.2014	-2.6
Frozen and freeze dried prepared foods.....	0.235	-0.2	0.000	0.89	L-Jan.2018	-0.1
Snacks.....	0.312	-0.5	-0.002	0.82	S-Jul.2017	-1.3
Spices, seasonings, condiments, sauces.....	0.272	0.3	0.001	0.79	—	—
Salt and other seasonings and spices <sup>4, 5</sup> .....		2.0		1.40	S-Dec.2017	0.1
Olives, pickles, relishes <sup>4, 5</sup> .....		-2.9		1.68	S-Jul.2017	-4.2
Sauces and gravies <sup>4, 5</sup> .....		2.5		1.16	L-Jan.2018	2.7
Other condiments <sup>5</sup> .....		-1.3		1.74	L-Jan.2018	0.2
Baby food <sup>4</sup> .....	0.049	0.9	0.000	1.16	L-Oct.2017	1.0
Other miscellaneous foods <sup>4</sup> .....	0.401	-0.3	-0.001	0.51	S-Jan.2018	-0.4
Prepared salads <sup>6, 5</sup> .....		0.5		1.26	S-Jan.2018	0.5
Food away from home.....	5.978	2.5	0.146	0.10	S-Jan.2018	2.5
Full service meals and snacks <sup>4</sup> .....	2.971	2.1	0.061	0.13	—	—
Limited service meals and snacks <sup>4</sup> .....	2.544	3.0	0.074	0.18	S-Jan.2018	2.9
Food at employee sites and schools <sup>4</sup> .....	0.180	2.1	0.004	0.63	—	—
Food at elementary and secondary schools <sup>7, 5</sup> .....		1.6		0.52	—	—
Food from vending machines and mobile vendors <sup>4</sup> .....	0.090	2.3	0.002	1.49	S-Oct.2017	1.9
Other food away from home <sup>4</sup> .....	0.194	2.2	0.005	0.53	S-Dec.2017	2.2
Energy.....	7.687	7.0	0.508	0.11	S-Jan.2018	5.5
Energy commodities.....	4.254	11.3	0.420	0.17	S-Jan.2018	9.0
Fuel oil and other fuels.....	0.195	14.2	0.026	0.91	S-Dec.2017	12.6
Fuel oil.....	0.117	20.0	0.020	1.08	S-Dec.2017	15.2
Propane, kerosene, and firewood <sup>6</sup> .....	0.078	7.2	0.006	1.58	L-Jan.2018	9.0
Motor fuel.....	4.059	11.2	0.393	0.18	S-Jan.2018	8.6
Gasoline (all types).....	3.971	11.1	0.384	0.18	S-Jan.2018	8.5
Gasoline, unleaded regular <sup>5</sup> .....		11.3		0.94	S-Jan.2018	8.5
Gasoline, unleaded midgrade <sup>9, 5</sup> .....		9.9		0.78	S-Jan.2018	7.9
Gasoline, unleaded premium <sup>5</sup> .....		10.2		0.79	S-Jan.2018	8.4
Other motor fuels <sup>4</sup> .....	0.088	16.5	0.009	0.28	S-Jan.2018	15.8
Energy services <sup>10</sup> .....	3.433	2.5	0.088	0.15	S-Jan.2018	1.9
Electricity <sup>10</sup> .....	2.634	2.2	0.061	0.18	—	—
Utility (piped) gas service <sup>10</sup> .....	0.799	3.4	0.027	0.22	S-Jan.2018	0.2
All items less food and energy.....	79.007	2.1	1.677	0.08	L-Feb.2017	2.2
Commodities less food and energy commodities.....	19.895	-0.3	-0.041	0.19	L-Jan.2017	-0.2
Household furnishings and supplies <sup>11</sup> .....	3.395	-1.5	-0.045	0.33	L-Jun.2017	-1.3
Window and floor coverings and other linens <sup>4</sup> .....	0.271	-1.7	-0.004	1.10	S-Dec.2017	-2.1
Floor coverings <sup>4</sup> .....	0.056	4.4	0.002	1.56	L-Apr.2009	5.1
Window coverings <sup>4</sup> .....	0.049	-5.5	-0.003	2.47	S-Jan.2018	-5.7
Other linens <sup>4</sup> .....	0.165	-2.7	-0.003	1.79	S-Nov.2017	-5.5
Furniture and bedding.....	0.888	-1.3	-0.010	0.84	S-May.2017	-1.4
Bedroom furniture.....	0.324	-0.1	0.000	1.05	S-Jul.2017	-1.8
Living room, kitchen, and dining room furniture <sup>4</sup> .....	0.425	-2.0	-0.007	1.41	S-Jan.2018	-2.0
Other furniture <sup>4</sup> .....	0.127	-2.0	-0.003	1.58	L-Jan.2018	-0.8
Infants' furniture <sup>7, 5</sup> .....		-5.1		2.26	L-Dec.2017	-4.7
Appliances <sup>4</sup> .....	0.208	-2.2	-0.003	1.10	L-Jan.2018	-1.4
Major appliances <sup>4</sup> .....	0.074	-3.6	-0.002	1.29	L-Jan.2018	-2.4
Laundry equipment <sup>5</sup> .....		-7.2		2.84	L-Jan.2018	-3.6
Other appliances <sup>4</sup> .....	0.131	-1.5	-0.002	1.52	L-Jan.2018	-1.1
Other household equipment and furnishings <sup>4</sup> .....	0.525	-6.2	-0.028	1.03	L-Dec.2017	-5.1
Clocks, lamps, and decorator items.....	0.291	-10.2	-0.025	1.64	—	—
Indoor plants and flowers <sup>12</sup> .....	0.095	1.5	0.001	1.28	L-Dec.2017	2.0
Dishes and flatware <sup>4</sup> .....	0.059	-6.8	-0.004	3.20	S-Dec.2016	-7.2
Nonelectric cookware and tableware <sup>4</sup> .....	0.081	-2.0	-0.001	1.49	L-Mar.2017	-1.6

See footnotes at end of table.



**Table 7. Consumer Price Index for All Urban Consumers (CPI-U): U.S. city average, by expenditure category, March 2018, 12-month analysis table — Continued**  
 [1982-84=100, unless otherwise noted]

Expenditure category	Relative importance Feb. 2018	Twelve Month				
		Unadjusted percent change Mar. 2017- Mar. 2018	Unadjusted effect on All Items Mar. 2017- Mar. 2018 <sup>1</sup>	Standard error, median price change <sup>2</sup>	Largest (L) or Smallest (S) unadjusted change since: <sup>3</sup>	
					Date	Percent change
Tools, hardware, outdoor equipment and supplies <sup>4</sup> . . .	0.673	0.0	0.000	0.70	L-May 2017	0.3
Tools, hardware and supplies <sup>4</sup> . . . . .	0.199	1.4	0.003	0.81	L-Sep.2013	1.7
Outdoor equipment and supplies <sup>4</sup> . . . . .	0.311	-0.8	-0.003	0.92	L-Jul.2017	-0.7
Housekeeping supplies . . . . .	0.830	-0.1	-0.001	0.43	L-Apr.2017	-0.1
Household cleaning products <sup>4</sup> . . . . .	0.326	-1.3	-0.004	0.62	L-Dec.2017	-1.3
Household paper products <sup>4</sup> . . . . .	0.221	-0.5	-0.001	0.83	S-Dec.2017	-0.6
Miscellaneous household products <sup>4</sup> . . . . .	0.283	1.6	0.005	0.88	L-Jan.2018	1.6
Apparel . . . . .	3.136	0.3	0.015	0.79	S-Jan.2018	-0.7
Men's and boys' apparel . . . . .	0.778	0.4	0.003	1.43	L-Feb.2017	1.6
Men's apparel . . . . .	0.612	-0.4	-0.002	1.68	L-Dec.2017	-0.3
Men's suits, sport coats, and outerwear . . . . .	0.111	-2.4	-0.002	2.87	L-Jan.2018	-1.2
Men's furnishings . . . . .	0.150	-1.8	-0.004	3.59	L-Dec.2017	2.2
Men's shirts and sweaters <sup>4</sup> . . . . .	0.182	0.2	0.001	2.21	L-Jun.2017	0.3
Men's pants and shorts . . . . .	0.162	1.7	0.003	2.81	L-Nov.2017	3.0
Boys' apparel . . . . .	0.166	3.4	0.006	3.18	S-Jan.2018	1.7
Women's and girls' apparel . . . . .	1.292	-1.0	-0.009	1.21	S-Dec.2017	-2.4
Women's apparel . . . . .	1.111	-1.2	-0.006	1.32	S-Dec.2017	-3.1
Women's outerwear . . . . .	0.070	-9.6	-0.007	4.56	S-Aug.2012	-14.1
Women's dresses . . . . .	0.135	3.2	0.002	3.98	S-Jan.2018	1.3
Women's suits and separates <sup>4</sup> . . . . .	0.588	-2.3	0.004	1.77	S-Dec.2017	-5.5
Women's underwear, nightwear, sportswear and accessories <sup>4</sup> . . . . .	0.305	-1.1	-0.005	2.05	S-Dec.2017	-1.5
Girls' apparel . . . . .	0.181	-1.1	-0.003	2.99	S-Nov.2017	-1.5
Footwear . . . . .	0.674	0.8	0.006	1.29	L-Jul.2017	0.9
Men's footwear . . . . .	0.217	0.6	0.002	2.00	L-Aug.2017	1.1
Boys' and girls' footwear . . . . .	0.153	0.2	0.000	2.35	L-Dec.2017	0.7
Women's footwear . . . . .	0.304	1.1	0.004	1.69	L-Jul.2017	1.6
Infants' and toddlers' apparel . . . . .	0.134	4.6	0.006	2.57	L-Sep.2017	4.7
Jewelry and watches <sup>8</sup> . . . . .	0.257	2.6	0.008	4.64	L-Dec.2017	2.8
Watches <sup>8</sup> . . . . .	0.099	7.8	0.007	10.80	L-Nov.2017	11.2
Jewelry <sup>8</sup> . . . . .	0.159	0.0	0.001	4.96	L-Dec.2017	0.2
Transportation commodities less motor fuel <sup>11</sup> . . . . .	6.676	-0.5	-0.025	0.19	L-Apr.2016	-0.3
New vehicles . . . . .	3.775	-1.2	-0.045	0.33	L-Jan.2018	-1.2
New cars and trucks <sup>4, 5</sup> . . . . .		-1.3		0.39	L-Jan.2018	-1.3
New cars <sup>5</sup> . . . . .		-1.8		0.39	L-Jan.2018	-1.8
New trucks <sup>13, 5</sup> . . . . .		-0.7		0.52	L-Dec.2017	-0.1
Used cars and trucks . . . . .	2.407	0.4	0.021	0.09	L-Feb.2016	0.4
Motor vehicle parts and equipment . . . . .	0.380	-0.4	-0.001	0.70	S-Dec.2017	-0.5
Tires . . . . .	0.228	-1.5	-0.003	1.03	S-Nov.2017	-1.7
Vehicle accessories other than tires <sup>4</sup> . . . . .	0.152	1.3	0.002	0.75	L-Nov.2017	1.9
Vehicle parts and equipment other than tires <sup>5</sup> . . . . .		2.2		0.80	L-Oct.2013	2.2
Motor oil, coolant, and fluids <sup>5</sup> . . . . .		1.3		1.08	S-May 2017	1.1
Medical care commodities . . . . .	1.740	1.4	0.026	0.69	S-Oct.2017	0.9
Medicinal drugs <sup>11</sup> . . . . .	1.682	1.5	0.027	0.71	S-Oct.2017	0.9
Prescription drugs <sup>10</sup> . . . . .	1.338	1.9	0.026	0.87	S-Oct.2017	1.0
Nonprescription drugs <sup>11</sup> . . . . .	0.345	0.2	0.001	0.77	L-Dec.2017	0.7
Medical equipment and supplies <sup>11</sup> . . . . .	0.058	-1.6	-0.001	0.90	S-Dec.2015	-1.8
Recreation commodities <sup>11</sup> . . . . .	1.849	-2.9	-0.051	0.43	L-Oct.2017	-2.8
Video and audio products <sup>11</sup> . . . . .	0.247	-12.0	-0.027	1.38	S-Feb.2017	-12.6
Televisions . . . . .	0.117	-14.3	-0.016	1.88	S-May 2017	-16.0
Other video equipment <sup>4</sup> . . . . .	0.027	-3.7	-0.001	1.71	L-Nov.2017	-2.8
Audio equipment . . . . .	0.044	-17.6	-0.010	2.38	L-Jan.2018	-15.1
Recorded music and music subscriptions <sup>4</sup> . . . . .	0.051	-2.0	0.000	7.26	S-Feb.2017	-4.1
Pets and pet products . . . . .	0.600	-0.7	-0.004	0.54	L-Oct.2017	-0.7

See footnotes at end of table.

**Table 7. Consumer Price Index for All Urban Consumers (CPI-U): U.S. city average, by expenditure category, March 2018, 12-month analysis table — Continued**  
 [1982-84=100, unless otherwise noted]

Expenditure category	Relative importance Feb. 2018	Twelve Month				
		Unadjusted percent change Mar. 2017- Mar. 2018	Unadjusted effect on All Items Mar. 2017- Mar. 2018 <sup>1</sup>	Standard error, median price change <sup>2</sup>	Largest (L) or Smallest (S) unadjusted change since: <sup>3</sup>	
					Date	Percent change
Pet food <sup>4, 5</sup> .....		-0.8		0.69	L-Mar.2017	-0.2
Purchase of pets, pet supplies, accessories <sup>4, 5</sup> .....		-0.7		1.01	S-Dec.2017	-1.0
Sporting goods.....	0.499	0.8	0.004	0.81	L-Dec.2012	1.0
Sports vehicles including bicycles.....	0.282	2.9	0.008	1.23	L-Apr.2013	3.0
Sports equipment.....	0.210	-1.9	-0.004	1.05	L-Jan.2018	-0.2
Photographic equipment and supplies.....	0.034	0.1	0.000	2.01	L-Nov.2017	1.9
Film and photographic supplies <sup>4, 5</sup> .....						
Photographic equipment <sup>4, 5</sup> .....		1.4		2.74	L-Nov.2017	2.5
Recreational reading materials.....	0.112	0.7	0.000	1.35	L-Jul.2017	1.7
Newspapers and magazines <sup>4</sup> .....	0.067	2.5	0.001	1.97	L-Aug.2017	3.8
Recreational books <sup>4</sup> .....	0.045	-2.0	-0.001	1.67	S-Jan.2018	-3.0
Other recreational goods <sup>4</sup> .....	0.356	-7.0	-0.025	0.98	L-Oct.2017	-6.5
Toys.....	0.284	-8.5	-0.025	1.11	L-Oct.2017	-8.0
Toys, games, hobbies and playground equipment <sup>4, 5</sup> .....		-8.5		1.57	L-Dec.2017	-8.5
Sewing machines, fabric and supplies <sup>4</sup> .....	0.024	2.8	0.001	2.69	L-Jan.2018	4.2
Music instruments and accessories <sup>4</sup> .....	0.036	0.1	0.000	1.50	L-Jan.2018	1.0
Education and communication commodities <sup>11</sup> .....	0.562	-2.5	-0.015	0.97	L-Aug.2017	-2.5
Educational books and supplies.....	0.132	-0.4	-0.001	1.91	-	-
College textbooks <sup>14, 5</sup> .....		-0.7		1.65	S-Jan.2018	-0.7
Information technology commodities <sup>11</sup> .....	0.429	-3.2	-0.014	1.04	L-Oct.2017	-3.2
Personal computers and peripheral equipment <sup>6</sup> .....	0.321	-3.7	-0.010	1.24	L-Nov.2017	-3.5
Computer software and accessories <sup>4</sup> .....	0.025	-1.9	-0.001	3.43	S-Sep.2017	-3.9
Telephone hardware, calculators, and other consumer information items <sup>4</sup> .....	0.083	-4.1	-0.004	1.41	S-Dec.2017	-5.0
Alcoholic beverages.....	0.970	1.4	0.013	0.29	-	-
Alcoholic beverages at home.....	0.604	0.9	0.005	0.43	S-Jan.2018	0.5
Beer, ale, and other malt beverages at home.....	0.267	1.4	0.004	0.52	-	-
Distilled spirits at home.....	0.081	-1.3	-0.001	0.73	S-Nov.2010	-1.9
Whiskey at home <sup>5</sup> .....		-3.2		0.99	S-EVER	-
Distilled spirits, excluding whiskey, at home <sup>5</sup> .....		0.2		1.03	S-Jan.2018	0.0
Wine at home.....	0.256	0.9	0.002	0.81	S-Jan.2018	0.3
Alcoholic beverages away from home.....	0.366	2.1	0.008	0.32	-	-
Beer, ale, and other malt beverages away from home <sup>4, 5</sup> .....		1.3		0.63	S-May 2016	1.3
Wine away from home <sup>4, 5</sup> .....		2.0		0.58	L-Jan.2018	2.2
Distilled spirits away from home <sup>4, 5</sup> .....		2.9		0.77	L-Jul.2016	2.9
Other goods <sup>11</sup> .....	1.569	2.7	0.041	0.34	L-Jan.2018	2.7
Tobacco and smoking products.....	0.646	5.9	0.039	0.44	S-Mar.2017	3.6
Cigarettes <sup>4</sup> .....	0.573	5.9	0.036	0.43	S-Mar.2017	3.7
Tobacco products other than cigarettes <sup>4</sup> .....	0.059	5.0	0.002	1.18	L-Nov.2017	5.6
Personal care products.....	0.700	0.3	0.002	0.54	L-Sep.2016	0.4
Hair, dental, shaving, and miscellaneous personal care products <sup>4</sup> .....	0.385	-0.6	-0.002	0.81	L-Jan.2018	-0.5
Cosmetics, perfume, bath, nail preparations and implements.....	0.309	1.2	0.004	0.85	L-Aug.2016	1.8
Miscellaneous personal goods <sup>4</sup> .....	0.222	-0.1	0.000	1.81	L-Oct.2017	0.2
Stationery, stationery supplies, gift wrap <sup>5</sup> .....		-0.5		1.51	-	-
Infants' equipment <sup>7, 5</sup> .....		4.1		1.28	S-Jan.2018	2.3
Services less energy services.....	59.112	2.9	1.719	0.09	L-Mar.2017	2.9
Shelter.....	32.697	3.3	1.105	0.10	L-Aug.2017	3.3
Rent of shelter <sup>15</sup> .....	32.325	3.3	1.102	0.10	L-Oct.2017	3.3
Rent of primary residence <sup>10</sup> .....	7.779	3.6	0.283	0.11	-	-
Lodging away from home <sup>4</sup> .....	0.939	2.4	0.029	2.03	L-Apr.2017	2.9

See footnotes at end of table.

**Table 7. Consumer Price Index for All Urban Consumers (CPI-U): U.S. city average, by expenditure category, March 2018, 12-month analysis table — Continued**  
 [1982-84=100, unless otherwise noted]

Expenditure category	Relative importance Feb. 2018	Twelve Month				
		Unadjusted percent change Mar. 2017- Mar. 2018	Unadjusted effect on All Items Mar. 2017- Mar. 2018 <sup>1</sup>	Standard error, median price change <sup>2</sup>	Largest (L) or Smallest (S) unadjusted change since: <sup>3</sup>	
					Date	Percent change
Housing at school, excluding board <sup>10, 15</sup> .....	0.113	2.0	0.002	0.29	L-Jan.2018	2.0
Other lodging away from home including hotels and motels.....	0.826	2.3	0.027	2.37	L-Apr.2017	2.8
Owners' equivalent rent of residences <sup>10, 15</sup> .....	23.606	3.3	0.790	0.10	L-Aug.2017	3.3
Owners' equivalent rent of primary residence <sup>10, 15</sup> .....	22.288	3.3	0.754	0.10	L-Aug.2017	3.3
Tenants' and household insurance <sup>4</sup> .....	0.373	0.8	0.003	0.37	S-Dec.2017	0.6
Water and sewer and trash collection services <sup>4</sup> .....	1.073	2.9	0.033	0.20	—	—
Water and sewerage maintenance <sup>10</sup> .....	0.814	3.3	0.028	0.24	—	—
Garbage and trash collection <sup>13</sup> .....	0.259	1.8	0.005	0.38	L-Dec.2017	2.0
Household operations <sup>4</sup> .....	0.869	5.6	0.048	0.99	—	—
Domestic services <sup>4</sup> .....	0.298	3.3	0.010	0.41	S-Dec.2017	3.2
Gardening and lawncare services <sup>4</sup> .....	0.286	5.9	0.016	0.51	L-Mar.2015	6.2
Moving, storage, freight expense <sup>4</sup> .....	0.102	8.4	0.009	4.54	S-Jan.2018	4.3
Repair of household items <sup>4</sup> .....	0.108	8.2	0.008	0.81	S-Jan.2018	4.5
Medical care services.....	6.939	2.1	0.146	0.32	L-Jul.2017	2.3
Professional services.....	3.277	0.6	0.021	0.38	L-Jun.2017	0.6
Physicians' services <sup>10</sup> .....	1.750	-0.8	-0.013	0.62	L-Oct.2017	-0.6
Dental services <sup>10</sup> .....	0.789	3.7	0.029	0.50	L-Jul.2013	3.9
Eyeglasses and eye care <sup>8</sup> .....	0.320	1.4	0.005	0.78	L-Dec.2016	1.4
Services by other medical professionals <sup>10, 8</sup> .....	0.417	0.3	0.000	0.86	L-Jan.2018	0.9
Hospital and related services.....	2.602	4.9	0.124	0.50	L-Jan.2018	5.6
Hospital services <sup>10, 16</sup> .....	2.324	5.2	0.117	0.55	L-Jan.2018	6.0
Inpatient hospital services <sup>10, 16, 5</sup> .....		4.6		1.65	L-Jan.2018	5.2
Outpatient hospital services <sup>10, 8, 5</sup> .....		5.1		1.51	L-Jan.2018	6.0
Nursing homes and adult day services <sup>10, 16</sup> .....	0.191	3.2	0.006	0.44	S-Jan.2018	3.2
Care of invalids and elderly at home <sup>7</sup> .....	0.087	0.4	0.000	1.16	L-Dec.2016	1.5
Health insurance <sup>7</sup> .....	1.060	0.1	0.001	0.36	L-Jan.2018	0.3
Transportation services.....	5.987	4.3	0.256	0.25	S-Jan.2018	4.0
Leased cars and trucks <sup>14</sup> .....	0.651	5.3	0.030	1.20	L-Jan.2018	5.5
Car and truck rental <sup>4</sup> .....	0.111	1.3	0.002	2.67	L-Aug.2017	2.0
Motor vehicle maintenance and repair.....	1.116	1.5	0.017	0.47	—	—
Motor vehicle body work.....	0.055	2.4	0.001	0.64	S-Jan.2018	2.4
Motor vehicle maintenance and servicing.....	0.624	2.1	0.014	0.69	L-Dec.2017	2.4
Motor vehicle repair <sup>4</sup> .....	0.373	0.1	0.001	0.64	S-EVER	—
Motor vehicle insurance.....	2.396	8.9	0.216	0.46	S-Jan.2018	8.5
Motor vehicle fees <sup>4</sup> .....	0.541	1.9	0.011	0.35	L-Dec.2016	1.9
State motor vehicle registration and license fees <sup>10, 4</sup> .....	0.282	1.6	0.005	0.43	L-Jul.2017	1.7
Parking and other fees <sup>4</sup> .....	0.243	2.4	0.006	0.54	L-Oct.2017	2.4
Parking fees and tolls <sup>4, 5</sup> .....		2.4		1.21	—	—
Automobile service clubs <sup>4, 5</sup> .....		0.6		1.99	L-Aug.2016	0.6
Public transportation.....	1.171	-2.1	-0.020	0.63	S-Jan.2018	-2.1
Airline fares.....	0.712	-5.7	-0.032	0.94	S-Nov.2016	-6.6
Other intercity transportation.....	0.171	2.2	0.004	1.21	L-Apr.2017	2.5
Intercity bus fare <sup>6, 5</sup> .....		2.9		3.59	S-Aug.2012	2.2
Intercity train fare <sup>6, 5</sup> .....						
Ship fare <sup>4, 5</sup> .....		3.0		2.08	L-Nov.2016	5.0
Intracity transportation.....	0.282	3.1	0.009	0.30	S-Jan.2018	2.8
Intracity mass transit <sup>11, 5</sup> .....		3.8		0.81	S-Jan.2018	3.2
Recreation services <sup>11</sup> .....	3.867	2.2	0.086	0.55	S-Jul.2015	2.0
Video and audio services <sup>11</sup> .....	1.602	2.7	0.044	0.50	S-Feb.2016	2.3
Cable and satellite television service <sup>13</sup> .....	1.513	2.7	0.042	0.51	S-Feb.2016	2.5

See footnotes at end of table.

**Table 7. Consumer Price Index for All Urban Consumers (CPI-U): U.S. city average, by expenditure category, March 2018, 12-month analysis table — Continued**  
 [1982-84=100, unless otherwise noted]

Expenditure category	Relative importance Feb. 2018	Twelve Month				
		Unadjusted percent change Mar. 2017- Mar. 2018	Unadjusted effect on All Items Mar. 2017- Mar. 2018 <sup>1</sup>	Standard error, median price change <sup>2</sup>	Largest (L) or Smallest (S) unadjusted change since: <sup>3</sup>	
					Date	Percent change
Video discs and other media, including rental of video <sup>4</sup> .....	0.089	2.1	0.002	1.69	L-Jul.2016	3.1
Video discs and other media <sup>4, 5</sup> .....		-1.3		3.58	L-Jul.2016	1.2
Rental of video discs and other media <sup>4, 5</sup> .....		2.7		0.80	—	—
Pet services including veterinary <sup>4</sup> .....	0.411	2.3	0.009	0.57	L-Jan.2018	2.8
Pet services <sup>4, 5</sup> .....		1.1		0.60	—	—
Veterinarian services <sup>4, 5</sup> .....		2.5		0.65	L-Jan.2018	3.0
Photographers and film processing <sup>4</sup> .....	0.038	-3.0	-0.001	1.05	S-EVER	—
Photographer fees <sup>4, 5</sup> .....		0.0		1.26	S-Dec.2017	-0.5
Film processing <sup>4, 5</sup> .....		-8.7		1.21	S-EVER	—
Other recreation services <sup>4</sup> .....	1.814	1.9	0.035	1.08	S-Jun.2017	1.6
Club membership for shopping clubs, fraternal, or other organizations, or participant sports fees <sup>4</sup> .....	0.668	3.2	0.021	1.42	L-Jan.2018	4.2
Admissions.....	0.655	0.2	0.001	1.68	S-Nov.2014	0.2
Admission to movies, theaters, and concerts <sup>4, 5</sup> .....		2.9		1.68	L-Oct.2017	3.1
Admission to sporting events <sup>4, 5</sup> .....		-3.0		3.59	S-EVER	—
Fees for lessons or instructions <sup>8</sup> .....	0.218	3.3	0.007	1.34	S-Oct.2017	3.2
Education and communication services <sup>11</sup> .....	6.063	0.1	0.005	0.24	L-Dec.2016	0.1
Tuition, other school fees, and childcare.....	2.869	1.9	0.058	0.20	S-EVER	—
College tuition and fees.....	1.590	1.7	0.033	0.26	S-May 2017	1.7
Elementary and high school tuition and fees.....	0.327	3.8	0.012	0.42	L-Sep.2017	3.9
Child care and nursery school <sup>12</sup> .....	0.802	1.3	0.010	0.40	S-EVER	—
Technical and business school tuition and fees <sup>4</sup> .....	0.032	1.7	0.001	1.02	S-Dec.2016	1.7
Postage and delivery services <sup>4</sup> .....	0.109	2.4	0.003	0.22	—	—
Postage.....	0.095	2.0	0.002	0.22	—	—
Delivery services <sup>4</sup> .....	0.014	6.1	0.001	0.99	S-Sep.2017	5.2
Telephone services <sup>4</sup> .....	2.298	-1.5	-0.035	0.50	L-Aug.2016	-0.4
Wireless telephone services <sup>4</sup> .....	1.719	-2.4	-0.039	0.64	L-Sep.2016	-2.4
Land-line telephone services <sup>11</sup> .....	0.579	0.5	0.004	0.61	S-Jan.2017	0.4
Internet services and electronic information providers <sup>4</sup> .....	0.778	-2.8	-0.021	1.21	S-Aug.2015	-3.0
Other personal services <sup>11</sup> .....	1.616	2.5	0.040	0.25	L-May 2017	2.5
Personal care services.....	0.621	1.9	0.012	0.36	—	—
Haircuts and other personal care services <sup>4</sup> .....	0.621	1.9	0.012	0.36	—	—
Miscellaneous personal services.....	0.995	2.8	0.028	0.38	L-Jun.2017	3.0
Legal services <sup>8</sup> .....	0.306	4.3	0.013	0.56	L-Jun.2017	4.6
Funeral expenses <sup>8</sup> .....	0.127	1.7	0.002	0.41	L-Dec.2017	1.8
Laundry and dry cleaning services <sup>4</sup> .....	0.237	2.8	0.007	0.74	—	—
Apparel services other than laundry and dry cleaning <sup>4</sup> .....	0.028	-0.3	0.000	0.91	L-Dec.2017	-0.1
Financial services <sup>8</sup> .....	0.227	1.4	0.003	1.03	L-Jan.2018	3.9
Checking account and other bank services <sup>4, 5</sup> .....		9.4		0.96	L-EVER	—
Tax return preparation and other accounting fees <sup>4, 5</sup> .....		-1.7		1.14	S-EVER	—
<b>Special aggregate indexes</b>						
All items less food.....	86.694	2.5	2.185	0.07	L-Apr.2017	2.5
All items less shelter.....	67.303	1.9	1.254	0.08	L-Feb.2017	2.3
All items less food and shelter.....	53.997	2.0	1.080	0.10	L-Mar.2017	2.2
All items less food, shelter, and energy.....	46.309	1.2	0.572	0.11	L-Feb.2017	1.3
All items less food, shelter, energy, and used cars and trucks.....	43.902	1.2	0.551	0.12	L-Mar.2017	1.2
All items less medical care.....	91.321	2.4	2.188	0.07	L-Feb.2017	2.7

See footnotes at end of table.

**Table 7. Consumer Price Index for All Urban Consumers (CPI-U): U.S. city average, by expenditure category, March 2018, 12-month analysis table — Continued**

[1982-84=100, unless otherwise noted]

Expenditure category	Relative importance Feb. 2018	Twelve Month				
		Unadjusted percent change Mar. 2017- Mar. 2018	Unadjusted effect on All Items Mar. 2017- Mar. 2018 <sup>1</sup>	Standard error, median price change <sup>2</sup>	Largest (L) or Smallest (S) unadjusted change since: <sup>3</sup>	
					Date	Percent change
All items less energy.....	92.313	2.0	1.852	0.07	L-Aug.2016	2.0
Commodities.....	37.455	1.5	0.553	0.11	—	—
Commodities less food, energy, and used cars and trucks.....	17.488	-0.4	-0.062	0.21	L-Jul.2017	-0.2
Commodities less food.....	24.149	1.5	0.378	0.17	S-Jan.2018	0.9
Commodities less food and beverages.....	23.179	1.5	0.365	0.17	S-Jan.2018	0.9
Services.....	62.545	2.9	1.807	0.08	L-Mar.2017	2.9
Services less rent of shelter <sup>15</sup> .....	30.220	2.3	0.704	0.13	L-Feb.2017	2.7
Services less medical care services.....	55.606	2.9	1.661	0.09	L-Feb.2017	3.1
Durables.....	10.087	-1.2	-0.102	0.18	L-Mar.2016	-1.0
Nondurables.....	27.368	2.4	0.655	0.13	S-Jan.2018	2.2
Nondurables less food.....	14.062	3.5	0.480	0.24	S-Jan.2018	2.6
Nondurables less food and beverages.....	13.092	3.6	0.467	0.25	S-Jan.2018	2.8
Nondurables less food, beverages, and apparel.....	9.957	4.7	0.452	0.20	S-Jan.2018	3.9
Nondurables less food and apparel.....	10.927	4.4	0.465	0.18	S-Jan.2018	3.6
Housing.....	41.663	3.0	1.256	0.09	L-Jun.2017	3.0
Education and communication <sup>4</sup> .....	6.624	-0.2	-0.010	0.22	L-Dec.2016	-0.2
Education <sup>4</sup> .....	3.001	1.8	0.057	0.22	S-EVER	—
Communication <sup>4</sup> .....	3.623	-1.8	-0.068	0.37	L-Aug.2016	-0.9
Information and information processing <sup>4</sup> .....	3.514	-2.0	-0.070	0.38	L-Sep.2016	-2.0
Information technology, hardware and services <sup>17</sup> .....	1.216	-3.0	-0.035	0.81	S-Mar.2017	-3.2
Recreation <sup>4</sup> .....	5.716	0.6	0.035	0.40	—	—
Video and audio <sup>4</sup> .....	1.849	0.9	0.016	0.46	S-Oct.2016	0.7
Pets, pet products and services <sup>4</sup> .....	1.011	0.5	0.005	0.40	L-Jan.2018	0.5
Photography <sup>4</sup> .....	0.074	-1.5	-0.001	1.02	L-Nov.2017	0.2
Food and beverages.....	14.276	1.3	0.188	0.09	S-Oct.2017	1.3
Domestically produced farm food.....	6.128	0.4	0.028	0.17	S-Aug.2017	0.4
Other services.....	11.546	1.1	0.131	0.21	L-Feb.2017	1.6
Apparel less footwear.....	2.462	0.1	0.009	0.97	S-Jan.2018	-0.2
Fuels and utilities.....	4.701	3.0	0.148	0.12	S-Jan.2018	2.7
Household energy.....	3.628	3.1	0.114	0.15	S-Jan.2018	2.6
Medical care.....	8.679	2.0	0.172	0.30	L-Jan.2018	2.0
Transportation.....	16.723	3.9	0.624	0.12	S-Jan.2018	3.0
Private transportation.....	15.551	4.3	0.644	0.12	S-Jan.2018	3.4
New and used motor vehicles <sup>4</sup> .....	7.059	0.0	0.009	0.21	L-Mar.2016	0.1
Utilities and public transportation.....	9.489	1.1	0.109	0.16	L-Feb.2017	1.8
Household furnishings and operations.....	4.264	-0.1	0.003	0.36	—	—
Other goods and services.....	3.184	2.6	0.081	0.21	L-Apr.2017	2.7
Personal care.....	2.538	1.6	0.042	0.26	L-Feb.2017	1.6

<sup>1</sup> The 'effect' of an item category is a measure of that item's contribution to the All items price change. For example, if the Food index had an effect of 0.40, and the All items index rose 1.2 percent, then the increase in food prices contributed 0.40 / 1.2, or 33.3 percent, to that All items increase. Said another way, had food prices been unchanged for that year the change in the All items index would have been 1.2 percent minus 0.40, or 0.8 percent. Effects can be negative as well. For example, if the effect of food was a negative 0.1, and the All items index rose 0.5 percent, the All items index actually would have been 0.1 percent higher (or 0.6 percent) had food prices been unchanged. Since food prices fell while prices overall were rising, the contribution of food to the All items price change was negative (in this case, -0.1 / 0.5, or minus 20 percent).

<sup>2</sup> A statistic's margin of error is often expressed as its point estimate plus or minus two standard errors. For example, if a CPI category rose 2.6 percent, and its standard error was 0.25 percent, the margin of error on this item's 12-month percent change would be 2.6 percent, plus or minus 0.5 percent.

<sup>3</sup> If the current 12-month percent change is greater than the previous published 12-month percent change, then this column identifies the closest prior month with a 12-month percent change as (L)arge as or (L)arger than the current 12-month change. If the current 12-month percent change is smaller than the previous published 12-month percent change, the most recent month with a change as (S)mall or (S)maller than the current month change is identified. If the current and previous published 12-month percent changes are equal, a dash will appear. Standard numerical comparison is used. For example, 2.0% is greater than 0.6%, -4.4% is less than -2.0%, and -2.0% is less than 0.0%. Note that a (L)arger change can be a smaller decline, for example, a -0.2% change is larger than a -0.4% change, but still represents a decline in the price index. Likewise, (S)maller changes can be increases, for example, a 0.6% change is smaller than 0.8%, but still represents an increase in the price index. In this context, a -0.2% change is considered to be smaller than a 0.0% change.

<sup>4</sup> Indexes on a December 1997=100 base.

<sup>5</sup> Special indexes based on a substantially smaller sample. These series do not contribute to the all items index aggregation and therefore do not have a relative importance or effect.

<sup>6</sup> Indexes on a December 2007=100 base.

<sup>7</sup> Indexes on a December 2005=100 base.

<sup>8</sup> Indexes on a December 1986=100 base.

<sup>9</sup> Indexes on a December 1993=100 base.

<sup>10</sup> This index series was calculated using a Laspeyres estimator. All other item stratum index series were calculated using a geometric means estimator.

<sup>11</sup> Indexes on a December 2009=100 base.

<sup>12</sup> Indexes on a December 1990=100 base.

<sup>13</sup> Indexes on a December 1983=100 base.

<sup>14</sup> Indexes on a December 2001=100 base.

<sup>15</sup> Indexes on a December 1982=100 base.

<sup>16</sup> Indexes on a December 1996=100 base.

<sup>17</sup> Indexes on a December 1988=100 base.

NOTE: Index applies to a month as a whole, not to any specific date.