

Transmission of material in this release is embargoed until 8:30 a.m. (EDT) Friday, April 15, 2011

USDL-11-0513

Technical information: (202) 691-7000 • Reed.Steve@bls.gov • www.bls.gov/cpi
Media Contact: (202) 691-5902 • PressOffice@bls.gov

CONSUMER PRICE INDEX – MARCH 2011

The Consumer Price Index for All Urban Consumers (CPI-U) increased 0.5 percent in March on a seasonally adjusted basis, the U.S. Bureau of Labor Statistics reported today. Over the last 12 months, the all items index increased 2.7 percent before seasonal adjustment.

Gasoline and food prices continued to rise and together accounted for almost three quarters of the seasonally adjusted all items increase in March. The gasoline index posted its ninth consecutive increase and has now risen 14.4 percent over the last three months. The household energy index rose as well, with advances in the fuel oil and electricity indexes more than offsetting a decline in the index for natural gas. The food at home index continued to accelerate in March, rising 1.1 percent as all six major grocery store food groups increased.

The index for all items less food and energy rose 0.1 percent in March, a smaller increase than in the previous two months. The index for shelter rose slightly, as did the index for medical care. Several transportation indexes posted significant increases, including new vehicles, used cars and trucks, and airline fares. In contrast, the indexes for apparel and for household furnishings and operations both declined in March.

The all items index rose 2.7 percent in the last 12 months, the largest increase since December 2009. The energy index has now risen 15.5 percent over the last 12 months, with the gasoline index up 27.5 percent. The food index has risen 2.9 percent with the food at home index up 3.6 percent. The index for all items less food and energy has increased 1.2 percent with the shelter index up 0.9 percent.

Chart 1. One-month percent change in CPI for All Urban Consumers (CPI-U), seasonally adjusted, Mar. 2010 - Mar. 2011
Percent change

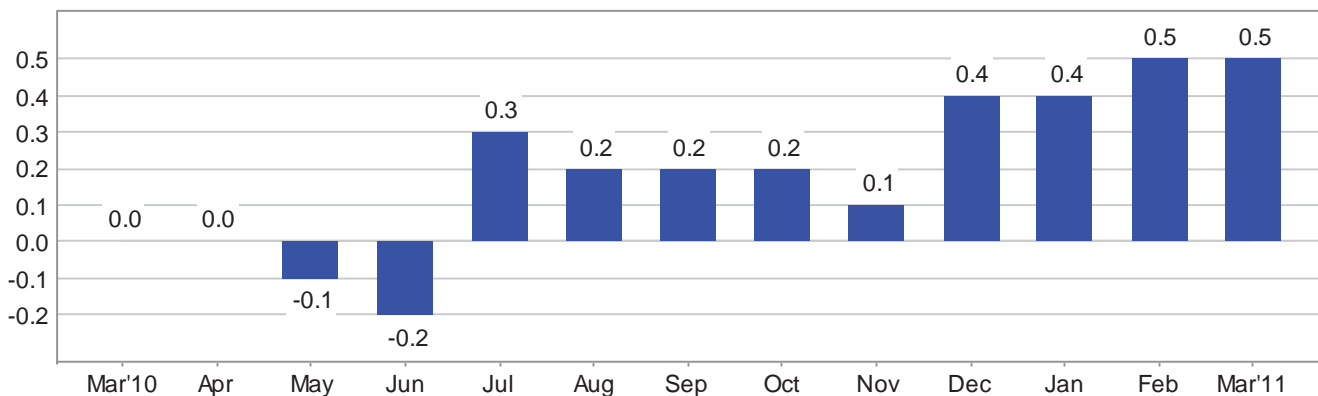


Chart 2. 12-month percent change in CPI for All Urban Consumers (CPI-U), not seasonally adjusted, Mar. 2010 - Mar. 2011

Percent change

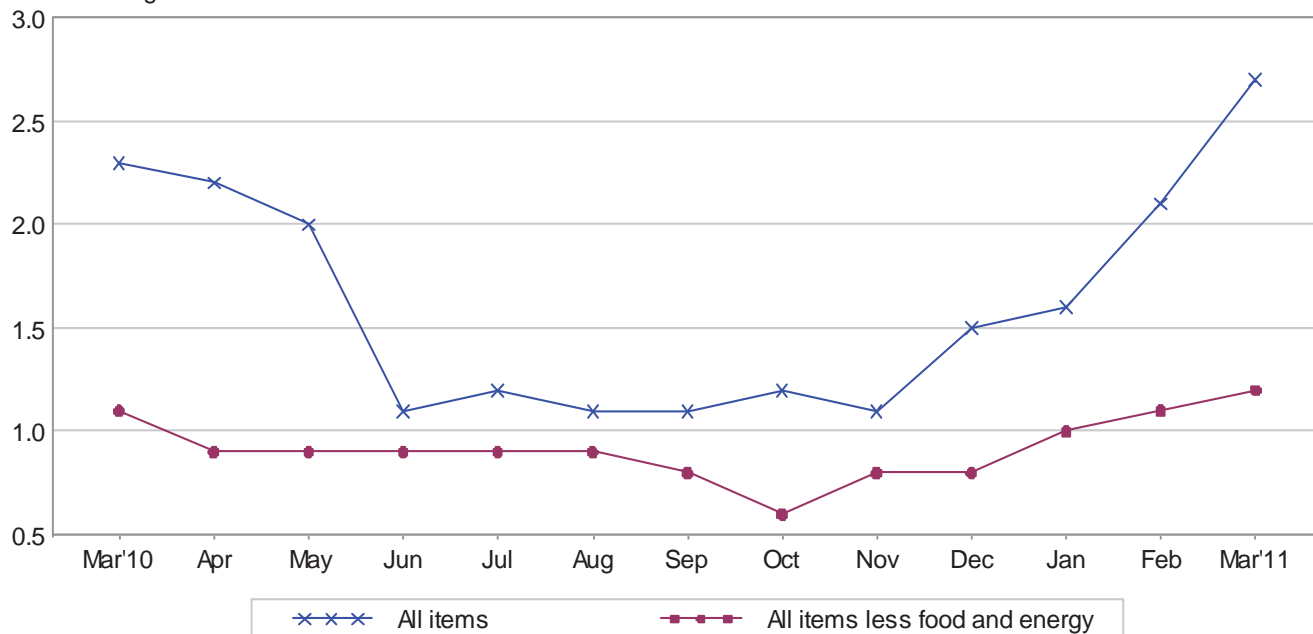


Table A. Percent changes in CPI for All Urban Consumers (CPI-U): U.S. city average

	Seasonally adjusted changes from preceding month							Un-adjusted 12-mos. ended Mar. 2011
	Sep. 2010	Oct. 2010	Nov. 2010	Dec. 2010	Jan. 2011	Feb. 2011	Mar. 2011	
All items2	.2	.1	.4	.4	.5	.5	2.7
Food3	.1	.2	.1	.5	.6	.8	2.9
Food at home4	.1	.2	.2	.7	.8	1.1	3.6
Food away from home ¹3	.1	.1	.1	.2	.2	.3	1.9
Energy	1.1	2.5	.1	4.0	2.1	3.4	3.5	15.5
Energy commodities	2.2	4.4	.7	6.4	4.0	4.8	5.5	27.5
Gasoline (all types)	2.2	4.5	.7	6.7	3.5	4.7	5.6	27.5
Fuel oil ¹8	4.7	4.2	4.9	6.8	5.8	6.2	34.0
Energy services	-.4	.0	-.8	.6	-.6	1.1	.2	-.6
Electricity	-.1	.2	.6	.3	-.5	.4	.7	1.0
Utility (piped) gas service	-1.4	-.6	-5.3	1.7	-1.2	3.4	-1.4	-5.5
All items less food and energy0	.0	.1	.1	.2	.2	.1	1.2
Commodities less food and energy commodities	-.2	-.2	.0	-.1	.2	.2	.1	.2
New vehicles1	-.1	-.2	-.1	-.1	1.0	.7	1.6
Used cars and trucks	-.4	-.6	.1	-.1	-.3	.1	.8	2.3
Apparel	-.5	-.2	.1	.1	1.0	-.9	-.5	-.6
Medical care commodities ¹3	.1	.2	.1	.5	.7	.5	2.8
Services less energy services1	.1	.2	.1	.1	.2	.2	1.6
Shelter0	.1	.1	.1	.1	.1	.1	.9
Transportation services3	.3	.4	.2	.6	.5	.5	3.7
Medical care services7	.2	.2	.3	-.1	.4	.1	2.7

¹ Not seasonally adjusted.

Consumer Price Index Data for March 2011

Food

The food index rose 0.8 percent in March after rising 0.6 percent in February. The food at home index increased 1.1 percent in March and has risen 2.7 percent over the past three months. All six major grocery store food groups increased in March, with increases ranging from 0.5 percent for cereals and bakery products to 1.9 percent for fruits and vegetables. Within the fruits and vegetables component, the fresh vegetables index rose 4.7 percent in March after a 6.7 percent increase in February, as indexes for potatoes, lettuce, and tomatoes all posted significant increases. The index for dairy and related products increased 1.3 percent, while the index for meats, poultry, fish, and eggs rose 1.1 percent. The index for nonalcoholic beverages increased 0.8 percent as the coffee index climbed 3.5 percent. Over the past 12 months, the index for food at home has risen 3.6 percent with the index for meats, poultry, fish and eggs up 7.9 percent. The index for food away from home increased 0.3 percent in March, its largest increase since September, and has risen 1.9 percent over the past 12 months.

Energy

The energy index rose 3.5 percent in March after increasing 3.4 percent in February. It has increased for nine months in a row, rising 23.7 percent since June 2010. The gasoline index rose 5.6 percent in March after a 4.7 percent increase in February. (Before seasonal adjustment, gasoline prices rose 11.7 percent in March.) The index for household energy advanced 0.6 percent in March after a 1.3 percent increase in February. The fuel oil index rose 6.2 percent and has increased 37.2 percent in the last six months. The index for electricity increased 0.7 percent in March, while the index for natural gas declined 1.4 percent. The household energy index has risen 1.2 percent over the last 12 months, with the fuel oil index up 34.0 percent and the electricity index up 1.0 percent but the index for natural gas down 5.5 percent.

All items less food and energy

The index for all items less food and energy rose 0.1 percent in March after increasing 0.2 percent in each of the previous two months. The shelter index increased 0.1 percent for the sixth month in a row, with rent and owners' equivalent rent both increasing 0.1 percent in March, as they did in February. Several transportation indexes increased in March; the new vehicles index rose 0.7 percent after a 1.0 percent increase in February, and the index for used cars and trucks rose 0.8 percent. The airline fares index also continued to rise, increasing 1.9 percent. The medical care index increased 0.2 percent in March after a 0.4 percent increase in February, with the medical care commodities index rising 0.5 percent and the index for medical care services advancing 0.1 percent. The recreation index was unchanged in March after a 0.3 percent increase in February, while several indexes posted declines in March. The apparel index fell 0.5 percent after a 0.9 percent decrease in February. The index for household furnishings and operations turned down in March, falling 0.1 percent after rising by that amount in February. Similarly, the index for personal care fell 0.2 percent in March after rising in each of the previous two months.

The index for all items less food and energy increased 1.2 percent over the last 12 months. This change is above the low of 0.6 percent in October, but is still below the 1.9 percent average over the last 10 years. The indexes for shelter, new vehicles, used cars and trucks, airline fares, and medical care are among those that have increased over the past year; the indexes for apparel, household furnishings and operations, and recreation have declined.

Not seasonally adjusted CPI measures

The Consumer Price Index for All Urban Consumers (CPI-U) increased 2.7 percent over the last 12 months to an index level of 223.467 (1982-84=100). For the month, the index increased 1.0 percent prior to seasonal adjustment.

The Consumer Price Index for Urban Wage Earners and Clerical Workers (CPI-W) increased 3.0 percent over the last 12 months to an index level of 220.024 (1982-84=100). For the month, the index rose 1.1 percent prior to seasonal adjustment.

The Chained Consumer Price Index for All Urban Consumers (C-CPI-U) increased 2.5 percent over the last 12 months. For the month, the index increased 0.9 percent on a not seasonally adjusted basis. Please note that the indexes for the post-2009 period are subject to revision.

The Consumer Price Index for April 2011 is scheduled to be released on Friday, May 13, 2011, at 8:30 a.m. (EDT).

Corrections to CPI data for January and February 2011

Incorrect prices were used in the calculation of the intracity transportation index, affecting the data for January and February 2011. The January and February news releases have been reissued with corrected data. The corrections affect indexes in Table 7 of the release and are noted in the footnotes of that table in this release.

Facilities for Sensory Impaired

Information from this release will be made available to sensory impaired individuals upon request. Voice phone: 202-691-5200, Federal Relay Services: 1-800-877-8339.

Brief Explanation of the CPI

The Consumer Price Index (CPI) is a measure of the average change in prices over time of goods and services purchased by households. The Bureau of Labor Statistics publishes CPIs for two population groups: (1) the CPI for Urban Wage Earners and Clerical Workers (CPI-W), which covers households of wage earners and clerical workers that comprise approximately 32 percent of the total population and (2) the CPI for All Urban Consumers (CPI-U) and the Chained CPI for All Urban Consumers (C-CPI-U), which cover approximately 87 percent of the total population and include in addition to wage earners and clerical worker households, groups such as professional, managerial, and technical workers, the self-employed, short-term workers, the unemployed, and retirees and others not in the labor force.

The CPIs are based on prices of food, clothing, shelter, and fuels, transportation fares, charges for doctors' and dentists' services, drugs, and other goods and services that people buy for day-to-day living. Prices are collected each month in 87 urban areas across the country from about 4,000 housing units and approximately 26,000 retail establishments-department stores, supermarkets, hospitals, filling stations, and other types of stores and service establishments. All taxes directly associated with the purchase and use of items are included in the index. Prices of fuels and a few other items are obtained every month in all 87 locations. Prices of most other commodities and services are collected every month in the three largest geographic areas and every other month in other areas. Prices of most goods and services are obtained by personal visits or telephone calls of the Bureau's trained representatives.

In calculating the index, price changes for the various items in each location are averaged together with weights, which represent their importance in the spending of the appropriate population group. Local data are then combined to obtain a U.S. city average. For the CPI-U and CPI-W separate indexes are also published by size of city, by region of the country, for cross-classifications of regions and population-size classes, and for 27 local areas. Area indexes do not measure differences in the level of prices among cities; they only measure the average change in prices for each area since the base period. For the C-CPI-U data are issued only at the national level. It is important to note that the CPI-U and CPI-W are considered final when released, but the C-CPI-U is issued in preliminary form and subject to two annual revisions.

The index measures price change from a designed reference date. For the CPI-U and the CPI-W the reference base is 1982-84 equals 100. The reference base for the C-CPI-U is December 1999 equals 100. An increase of 16.5 percent from the reference base, for example, is shown as 116.500. This

change can also be expressed in dollars as follows: the price of a base period market basket of goods and services in the CPI has risen from \$10 in 1982-84 to \$11.65.

For further details visit the CPI home page on the Internet at <http://www.bls.gov/cpi/> or contact our CPI Information and Analysis Section on (202) 691-7000.

Note on Sampling Error in the Consumer Price Index

The CPI is a statistical estimate that is subject to sampling error because it is based upon a sample of retail prices and not the complete universe of all prices. BLS calculates and publishes estimates of the 1-month, 2-month, 6-month and 12-month percent change standard errors annually, for the CPI-U. These standard error estimates can be used to construct confidence intervals for hypothesis testing. For example, the estimated standard error of the 1 month percent change is 0.03 percent for the U.S. All Items Consumer Price Index. This means that if we repeatedly sample from the universe of all retail prices using the same methodology, and estimate a percentage change for each sample, then 95% of these estimates would be within 0.06 percent of the 1 month percentage change based on all retail prices. For example, for a 1-month change of 0.2 percent in the All Items CPI for All Urban Consumers, we are 95 percent confident that the actual percent change based on all retail prices would fall between 0.14 and 0.26 percent. For the latest data, including information on how to use the estimates of standard error, see “Variance Estimates for Price Changes in the Consumer Price Index, January-December 2010”. These data are available on the CPI home page (<http://www.bls.gov/cpi/>), or by using the following link <http://www.bls.gov/cpi/cpivar2010.pdf>

Calculating Index Changes

Movements of the indexes from one month to another are usually expressed as percent changes rather than changes in index points, because index point changes are affected by the level of the index in relation to its base period while percent changes are not. The example below illustrates the computation of index point and percent changes.

Percent changes for 3-month and 6-month periods are expressed as annual rates and are computed according to the standard formula for compound growth rates. These data indicate what the percent change would be if the current rate were maintained for a 12-month period.

Index Point Change

CPI	202.416
Less previous index	201.800
Equals index point change	.616

Percent Change

Index point difference	.616
Divided by the previous index	201.800
Equals	0.003
Results multiplied by one hundred	0.003x100
Equals percent change	0.3

Regions Defined

The states in the four regions shown in Tables 3 and 6 are listed below.

The Northeast--Connecticut, Maine, Massachusetts, New Hampshire, New York, New Jersey, Pennsylvania, Rhode Island, and Vermont.

The Midwest--Illinois, Indiana, Iowa, Kansas, Michigan, Minnesota, Missouri, Nebraska, North Dakota, Ohio, South Dakota, and Wisconsin.

The South--Alabama, Arkansas, Delaware, Florida, Georgia, Kentucky, Louisiana, Maryland, Mississippi, North Carolina, Oklahoma, South Carolina, Tennessee, Texas, Virginia, West Virginia, and the District of Columbia.

The West--Alaska, Arizona, California, Colorado, Hawaii, Idaho, Montana, Nevada, New Mexico, Oregon, Utah, Washington, and Wyoming.

A Note on Seasonally Adjusted and Unadjusted Data

Because price data are used for different purposes by different groups, the Bureau of Labor Statistics publishes seasonally adjusted as well as unadjusted changes each month.

For analyzing general price trends in the economy, seasonally adjusted changes are usually preferred since they eliminate the effect of changes that normally occur at the same time and in about the same magnitude every year--such as price movements resulting from changing climatic conditions, production cycles, model changeovers, holidays, and sales.

The unadjusted data are of primary interest to consumers concerned about the prices they actually pay. Unadjusted data also are used extensively for escalation purposes. Many collective bargaining contract agreements and pension plans, for example, tie compensation changes to the Consumer Price Index before adjustment for seasonal variation.

Seasonal factors used in computing the seasonally adjusted indexes are derived by the X-12-ARIMA Seasonal Adjustment Method. Seasonally adjusted indexes and seasonal factors are computed annually. Each year, the last 5 years of seasonally adjusted data are revised. Data from January 2006 through December 2010 were replaced in January 2011. Exceptions to the usual revision schedule were: the updated seasonal data at the end of 1977 replaced data from 1967 through 1977; and, in January 2002, dependently seasonally adjusted series were revised for January 1987-December 2001 as a result of a change in the aggregation weights for dependently adjusted series. For further information, please see “Aggregation of Dependently Adjusted Seasonally Adjusted Series,” in the October 2001 issue of the CPI Detailed Report.

Effective with the publication of data from January 2006 through December 2010 in January 2011, the Video and audio series and the Information technology, hardware and services series were changed from independently adjusted to dependently adjusted. This resulted in an increase in the number of seasonal components used in deriving seasonal movement of the All items and 54 other lower level aggregations, from 73 for the publication of January 1998 through December 2005 data to 82 for the publication of seasonally adjusted data for January 2006 and later. Each year the seasonal status of every series is reevaluated based upon certain statistical criteria. If any of the 82 components change their seasonal adjustment status from seasonally adjusted to not seasonally adjusted, not seasonally adjusted data will be used in the aggregation of the dependent series for the last 5 years, but the seasonally adjusted indexes before that period will not be changed. Note: 37 of the 82 components are not seasonally adjusted for 2011.

Seasonally adjusted data, including the all items index levels, are subject to revision for up to five years after their original release. For this reason, BLS advises against the use of these data in escalation agreements.

Effective with the calculation of the seasonal factors for 1990, the Bureau of Labor Statistics has used an enhanced seasonal adjustment procedure called Intervention Analysis Seasonal Adjustment for some CPI series. Intervention Analysis Seasonal Adjustment allows for better estimates of seasonally adjusted data. Extreme values and/or sharp movements which might distort the seasonal pattern are estimated and removed from the data prior to calculation of seasonal factors. Beginning with the calculation of seasonal factors for 1996, X-12-ARIMA software was used for Intervention Analysis Seasonal Adjustment.

For the seasonal factors introduced in January 2011, BLS adjusted 29 series using Intervention Analysis Seasonal Adjustment, including selected food and beverage items, motor fuels, electricity and vehicles. For example, this procedure was used for the Motor fuel series to offset the effects of events such as damage to oil refineries from Hurricane Katrina.

For a complete list of Intervention Analysis Seasonal Adjustment series and explanations, please refer to the article “Intervention Analysis Seasonal Adjustment”, located on our website at <http://www.bls.gov/cpi/cpisapage.htm>.

For additional information on seasonal adjustment in the CPI, please write to the Bureau of Labor Statistics, Division of Consumer Prices and Price Indexes, Washington, DC 20212 or contact David Levin at (202) 691-6968, or by e-mail at Levin.David@bls.gov. If you have general questions about the CPI, please call our information staff at (202) 691-7000.

Table 1. Consumer Price Index for All Urban Consumers (CPI-U): U.S. city average, by expenditure category and commodity and service group

(1982-84=100, unless otherwise noted)

CPI-U Expenditure category	Relative importance, December 2010	Unadjusted indexes		Unadjusted percent change to Mar. 2011 from—		Seasonally adjusted percent change from—		
		Feb. 2011	Mar. 2011	Mar. 2010	Feb. 2011	Dec. to Jan.	Jan. to Feb.	Feb. to Mar.
All items	100.000	221.309	223.467	2.7	1.0	0.4	0.5	0.5
All items (1967=100)	-	662.943	669.409	-	-	-	-	-
Food and beverages	14.792	224.039	225.479	2.8	.6	.5	.5	.7
Food	13.742	223.799	225.350	2.9	.7	.5	.6	.8
Food at home	7.816	221.241	223.430	3.6	1.0	.7	.8	1.1
Cereals and bakery products	1.090	254.238	255.482	1.8	.5	.8	.0	.5
Meats, poultry, fish, and eggs	1.813	216.175	218.808	7.9	1.2	.9	1.2	1.1
Dairy and related products ¹839	203.510	206.161	3.7	1.3	.1	.6	1.3
Fruits and vegetables	1.152	286.766	290.279	3.5	1.2	1.3	2.2	1.9
Nonalcoholic beverages and beverage materials926	163.734	165.038	1.5	.8	1.5	.2	.8
Other food at home	1.996	193.055	194.747	2.0	.9	.2	.6	1.0
Sugar and sweets ¹297	204.168	205.505	2.8	.7	-.2	.8	.7
Fats and oils232	210.508	214.352	7.9	1.8	2.1	.9	2.8
Other foods	1.466	205.174	206.743	.9	.8	-.1	.5	.8
Other miscellaneous foods ^{1 2}432	121.438	122.665	.3	1.0	-1.2	.4	1.0
Food away from home ¹	5.926	228.606	229.282	1.9	.3	.2	.2	.3
Other food away from home ^{1 2}329	161.836	161.886	2.0	.0	.0	.7	.0
Alcoholic beverages	1.051	225.749	225.693	1.4	.0	.2	.2	.0
Housing	41.460	217.259	217.707	.8	.2	.1	.3	.1
Shelter	31.955	249.886	250.310	.9	.2	.1	.1	.1
Rent of primary residence ³	5.925	251.829	252.145	1.2	.1	.2	.1	.1
Lodging away from home ²776	131.572	136.486	2.6	3.7	-1.0	.0	.8
Owners' equivalent rent of residences ^{3 4}	24.905	258.073	258.263	.8	.1	.1	.1	.1
Owners' equivalent rent of primary residence ^{3 4}	23.310	258.060	258.253	.8	.1	.1	.1	.1
Tenants' and household insurance ^{1 2}349	126.529	125.863	1.2	-.5	.0	.3	-.5
Fuels and utilities	5.096	215.587	216.672	2.1	.5	-.1	1.2	.6
Household energy	4.000	189.006	190.071	1.2	.6	-.2	1.3	.6
Fuel oil and other fuels ¹309	326.919	341.884	23.9	4.6	5.4	4.1	4.6
Energy services ³	3.691	189.837	190.213	-.6	.2	-.6	1.1	.2
Water and sewer and trash collection services ²	1.095	177.194	177.694	5.4	.3	.3	.8	.5
Household furnishings and operations	4.409	124.576	124.735	-1.6	.1	.1	.1	-.1
Household operations ^{1 2}772	151.358	150.541	.4	-.5	.4	.1	-.5
Apparel	3.601	118.369	121.286	-.6	2.5	1.0	-.9	-.5
Men's and boys' apparel882	110.962	112.337	-.7	1.2	1.0	-.9	-.7
Women's and girls' apparel	1.520	105.076	109.544	-2.0	4.3	1.5	-1.2	-.9
Infants' and toddlers' apparel192	110.101	111.547	-3.8	1.3	-1.9	-1.6	.1
Footwear700	126.830	128.518	.0	1.3	.8	-.4	-.2
Transportation	17.308	203.037	211.014	9.8	3.9	1.3	1.9	2.2
Private transportation	16.082	198.073	206.165	9.8	4.1	1.3	1.9	2.3
New and used motor vehicles ²	6.333	97.633	98.275	1.3	.7	-.2	.5	.8
New vehicles	3.513	140.158	140.860	1.6	.5	-.1	1.0	.7
Used cars and trucks	2.055	142.937	144.072	2.3	.8	-.3	.1	.8
Motor fuel	5.079	271.843	303.565	27.7	11.7	3.9	4.8	5.6
Gasoline (all types)	4.865	270.822	302.574	27.5	11.7	3.5	4.7	5.6
Motor vehicle parts and equipment ¹408	140.912	140.686	3.8	-.2	.9	.3	-.2
Motor vehicle maintenance and repair ¹	1.172	250.851	250.820	1.7	.0	.2	.0	.0
Public transportation	1.227	265.327	270.366	10.5	1.9	1.7	1.9	1.3
Medical care	6.627	397.065	397.726	2.7	.2	.1	.4	.2
Medical care commodities ¹	1.633	321.186	322.691	2.8	.5	.5	.7	.5
Medical care services	4.994	420.567	420.852	2.7	.1	-.1	.4	.1
Professional services	2.830	334.296	334.671	2.6	.1	.0	.5	.2

See footnotes at end of table.

Table 1. Consumer Price Index for All Urban Consumers (CPI-U): U.S. city average, by expenditure category and commodity and service group-Continued

(1982-84=100, unless otherwise noted)

CPI-U Expenditure category	Relative importance, December 2010	Unadjusted indexes		Unadjusted percent change to Mar. 2011 from—		Seasonally adjusted percent change from—		
		Feb. 2011	Mar. 2011	Mar. 2010	Feb. 2011	Dec. to Jan.	Jan. to Feb.	Feb. to Mar.
Hospital and related services	1.703	633.413	634.387	5.1	0.2	-0.1	0.5	0.2
Recreation ²	6.293	113.183	113.261	-1	.1	.2	.3	.0
Video and audio ²	1.816	98.268	98.719	-1.2	.5	.0	.5	.1
Education and communication ²	6.421	130.692	130.682	1.1	.0	.2	.2	.1
Education ²	3.107	204.153	204.251	4.0	.0	.6	.4	.3
Educational books and supplies204	520.778	522.903	4.1	.4	1.2	-2	.6
Tuition, other school fees, and childcare	2.903	586.782	586.914	3.9	.0	.5	.4	.3
Communication ²	3.313	83.779	83.730	-1.4	-1	-2	.0	-1
Information and information processing ²	3.138	80.417	80.364	-1.7	-1	-4	.0	-1
Telephone services ^{1 2}	2.334	101.316	101.258	-1.0	-1	-3	-1	-1
Information technology, hardware and services ⁵804	9.204	9.196	-3.7	-1	-8	.2	-3
Personal computers and peripheral equipment ⁶228	72.709	72.073	-8.1	-9	-1.7	-5	-1.6
Other goods and services	3.497	385.397	385.637	1.8	.1	.1	.1	-1
Tobacco and smoking products ¹906	829.535	830.693	5.5	.1	.0	.2	.1
Personal care	2.591	207.685	207.758	.6	.0	.1	.1	-2
Personal care products ¹671	161.325	160.981	-9	-2	.2	.3	-2
Personal care services ¹638	230.177	230.034	.7	-1	-1	.1	-1
Miscellaneous personal services	1.055	358.521	359.096	2.0	.2	.1	.2	.1
Commodity and service group								
Commodities	40.012	178.874	182.728	4.5	2.2	.9	1.0	1.2
Food and beverages	14.792	224.039	225.479	2.8	.6	.5	.5	.7
Commodities less food and beverages	25.219	154.657	159.351	5.6	3.0	1.1	1.2	1.4
Nondurables less food and beverages	15.474	198.885	208.134	9.2	4.7	1.8	1.6	1.8
Apparel	3.601	118.369	121.286	-6	2.5	1.0	-9	-5
Nondurables less food, beverages, and apparel	11.873	253.570	266.993	12.3	5.3	2.0	2.1	2.9
Durables	9.745	111.237	111.707	.0	.4	-1	.4	.4
Services	59.988	263.480	263.956	1.4	.2	.1	.3	.2
Rent of shelter ⁴	31.607	260.373	260.834	.9	.2	-1	.0	.0
Tenants' and household insurance ^{1 2}349	126.529	125.863	1.2	-5	.0	.3	-5
Energy services ³	3.691	189.837	190.213	-6	.2	-6	1.1	.2
Water and sewer and trash collection services ²	1.095	177.194	177.694	5.4	.3	.3	.8	.5
Household operations ^{1 2}772	151.358	150.541	.4	-5	.4	.1	-5
Transportation services	6.140	265.354	266.754	3.7	.5	.6	.5	.5
Medical care services	4.994	420.567	420.852	2.7	.1	-1	.4	.1
Other services	11.340	311.975	312.310	1.6	.1	.2	.2	.1
Special indexes								
All items less food	86.258	220.937	223.192	2.7	1.0	.4	.5	.5
All items less shelter	68.045	212.633	215.505	3.5	1.4	.5	.7	.8
All items less medical care	93.373	212.709	214.907	2.7	1.0	.4	.6	.6
Commodities less food	26.270	157.221	161.804	5.4	2.9	1.1	1.2	1.4
Nondurables less food	16.525	200.543	209.282	8.7	4.4	1.6	1.5	1.7
Nondurables less food and apparel	12.923	249.895	262.068	11.4	4.9	1.9	2.0	2.7
Nondurables	30.266	212.056	217.791	6.0	2.7	1.1	1.1	1.4
Services less rent of shelter ⁴	28.382	287.547	288.077	2.0	.2	.1	.4	.2
Services less medical care services	54.994	251.354	251.834	1.3	.2	.0	.2	.1
Energy	9.079	226.860	242.516	15.5	6.9	2.1	3.4	3.5
All items less energy	90.921	222.506	223.315	1.4	.4	.2	.3	.2
All items less food and energy	77.179	223.011	223.690	1.2	.3	.2	.2	.1
Commodities less food and energy commodities	20.882	143.712	144.632	.2	.6	.2	.2	.1
Energy commodities	5.388	276.485	307.589	27.5	11.2	4.0	4.8	5.5
Services less energy services	56.297	270.982	271.468	1.6	.2	.1	.2	.2
Purchasing power of the consumer dollar (1982-84=\$1.00)	-	\$.452	\$.447	-	-	-	-	-
Purchasing power of the consumer dollar (1967=\$1.00)	-	\$.151	\$.149	-	-	-	-	-

¹ Not seasonally adjusted.

² Indexes on a December 1997=100 base.

³ This index series was calculated using a Laspeyres estimator. All other item stratum index series were calculated using a geometric means estimator.

⁴ Indexes on a December 1982=100 base.

⁵ Indexes on a December 1988=100 base.

⁶ Indexes on a December 2007=100 base.

- Data not available.

NOTE: Index applies to a month as a whole, not to any specific date.

Table 2. Consumer Price Index for All Urban Consumers (CPI-U): Seasonally adjusted U.S. city average, by expenditure category and commodity and service group

(1982-84=100, unless otherwise noted)

CPI-U	Seasonally adjusted indexes				Seasonally adjusted annual rate percent change for					
					3 months ended—			6 months ended—		
	Dec. 2010	Jan. 2011	Feb. 2011	Mar. 2011	June 2010	Sep. 2010	Dec. 2010	Mar. 2011	Sep. 2010	Mar. 2011
Expenditure category										
All items	220.186	221.062	222.270	223.490	-1.4	2.9	3.3	6.1	0.8	4.7
Food and beverages	221.524	222.602	223.779	225.345	.8	1.8	1.5	7.1	1.3	4.3
Food	221.190	222.314	223.544	225.228	.8	1.8	1.6	7.5	1.3	4.5
Food at home	217.375	218.983	220.800	223.219	.3	1.4	2.0	11.2	.8	6.5
Cereals and bakery products	251.870	253.956	254.037	255.395	-2.0	1.8	1.9	5.7	-1.1	3.8
Meats, poultry, fish, and eggs	211.984	213.942	216.444	218.803	11.9	3.7	2.9	13.5	7.7	8.1
Dairy and related products ¹	202.056	202.349	203.510	206.161	-1.7	2.2	6.2	8.4	.2	7.3
Fruits and vegetables	275.074	278.517	284.574	289.890	-9.5	-2.7	5.4	23.3	-6.1	14.0
Nonalcoholic beverages and beverage materials	160.310	162.636	162.958	164.340	-2.4	1.4	-3.1	10.4	-5.5	3.5
Other food at home	191.289	191.580	192.706	194.602	-2	1.2	-1	7.1	.5	3.4
Sugar and sweets ¹	203.098	202.648	204.168	205.505	-4	5.6	1.2	4.8	2.6	3.0
Fats and oils	202.623	206.878	208.833	214.596	2.3	2.0	3.4	25.8	2.2	14.1
Other foods	204.090	203.922	204.936	206.493	-5	.3	-9	4.8	-1	1.9
Other miscellaneous foods ^{1 2}	122.419	120.930	121.438	122.665	-2.5	1.8	1.0	.8	-3	.9
Food away from home ¹	227.722	228.181	228.606	229.282	1.4	2.3	1.1	2.8	1.9	2.0
Other food away from home ^{1 2}	160.681	160.643	161.836	161.886	1.6	2.0	1.5	3.0	1.8	2.3
Alcoholic beverages	224.494	224.951	225.415	225.409	1.1	2.2	.8	1.6	1.6	1.2
Housing	216.850	216.983	217.561	217.852	-3	.4	1.1	1.9	.1	1.5
Shelter	249.321	249.523	249.867	250.102	.8	.4	1.2	1.3	.6	1.2
Rent of primary residence ³	250.844	251.249	251.607	251.930	.3	.8	2.0	1.7	.6	1.9
Lodging away from home ²	134.258	132.892	132.915	133.920	20.6	-4.7	-2.8	-1.0	7.2	-1.9
Owners' equivalent rent of residences ^{3 4}	257.402	257.659	258.016	258.204	.2	.5	1.1	1.3	.4	1.2
Owners' equivalent rent of primary residence ^{3 4}	257.394	257.648	258.003	258.196	.2	.5	1.1	1.3	.4	1.2
Tenants' and household insurance ^{1 2}	126.194	126.192	126.529	125.863	2.8	4.3	-1.4	-1.0	3.6	-1.2
Fuels and utilities	215.738	215.607	218.231	219.480	-4.1	2.3	3.2	7.1	-1.0	5.2
Household energy	189.867	189.553	192.096	193.211	-6.4	1.6	2.7	7.2	-2.5	5.0
Fuel oil and other fuels ¹	298.037	314.130	326.919	341.884	-14.4	.4	58.0	73.2	-7.3	65.4
Energy services ³	192.310	191.114	193.224	193.654	-5.8	1.7	-6	2.8	-2.1	1.1
Water and sewer and trash collection services ²	174.824	175.400	176.725	177.684	5.1	4.8	5.1	6.7	5.0	5.9
Household furnishings and operations	124.307	124.382	124.493	124.375	-3.2	-1.8	-1.5	.2	-2.5	-6
Household operations ^{1 2}	150.648	151.189	151.358	150.541	1.5	-6	.8	-3	.5	.3
Apparel	119.208	120.456	119.384	118.770	.8	-1.4	-4	-1.5	-3	-9
Men's and boys' apparel	111.304	112.414	111.408	110.648	6.9	-3.6	-3.3	-2.3	1.5	-2.8
Women's and girls' apparel	106.330	107.957	106.622	105.708	-3.7	-2.1	.4	-2.3	-2.9	-1.0
Infants' and toddlers' apparel	113.587	111.436	109.634	109.796	1.5	-1.6	-1.6	-12.7	-1	-7.3
Footwear	127.149	128.166	127.691	127.476	2.2	.1	-3.3	1.0	1.2	-1.2
Transportation	200.956	203.622	207.433	212.001	-10.3	14.0	15.1	23.9	1.1	19.4
Private transportation	196.183	198.730	202.446	207.045	-11.6	15.3	15.1	24.1	1.0	19.5
New and used motor vehicles ²	97.173	97.000	97.490	98.249	.7	1.8	-1.8	4.5	1.2	1.3
New vehicles	137.923	137.752	139.065	140.078	.3	1.7	-1.7	6.4	1.0	2.3
Used cars and trucks	144.058	143.664	143.847	144.958	4.9	4.3	-2.3	2.5	4.6	.1
Motor fuel	267.320	277.665	291.093	307.358	-37.0	54.0	57.0	74.8	-1.5	65.6
Gasoline (all types)	267.635	277.129	290.027	306.128	-37.9	55.6	59.5	71.2	-1.7	65.2
Motor vehicle parts and equipment ¹	139.223	140.487	140.912	140.686	3.5	3.3	4.2	4.3	3.4	4.2
Motor vehicle maintenance and repair ¹	250.134	250.726	250.851	250.820	1.6	2.6	1.5	1.1	2.1	1.3
Public transportation	260.181	264.616	269.625	273.100	8.3	-1.7	15.2	21.4	3.2	18.2
Medical care	393.537	393.843	395.615	396.364	2.4	3.2	2.3	2.9	2.8	2.6
Medical care commodities ¹	317.199	318.929	321.186	322.691	1.1	1.2	1.8	7.1	1.1	4.4
Medical care services	417.315	417.004	418.529	418.937	2.9	3.9	2.5	1.6	3.4	2.0
Professional services	332.107	331.974	333.483	333.993	2.5	3.7	1.9	2.3	3.1	2.1

See footnotes at end of table.

Table 2. Consumer Price Index for All Urban Consumers (CPI-U): Seasonally adjusted U.S. city average, by expenditure category and commodity and service group-Continued

(1982-84=100, unless otherwise noted)

CPI-U	Seasonally adjusted indexes				Seasonally adjusted annual rate percent change for					
					3 months ended—			6 months ended—		
	Dec. 2010	Jan. 2011	Feb. 2011	Mar. 2011	June 2010	Sep. 2010	Dec. 2010	Mar. 2011	Sep. 2010	Mar. 2011
Expenditure category										
Hospital and related services	625.757	624.854	628.137	629.315	5.9	6.5	5.7	2.3	6.2	4.0
Recreation ²	112.727	112.939	113.242	113.228	1.0	-1.9	-1.2	1.8	-4	-3
Video and audio ²	97.871	97.904	98.395	98.466	-1.3	-3.1	-2.8	2.5	-2.2	-2
Education and communication ²	130.328	130.548	130.759	130.898	1.7	1.1	.0	1.8	1.4	.9
Education ²	202.558	203.738	204.456	205.133	4.5	2.2	4.0	5.2	3.4	4.6
Educational books and supplies	514.054	520.236	519.288	522.344	5.2	-1.6	6.5	6.6	1.7	6.6
Tuition, other school fees, and childcare	582.411	585.549	587.834	589.674	4.4	2.5	3.8	5.1	3.5	4.4
Communication ²	83.943	83.760	83.746	83.656	-8	.2	-3.6	-1.4	-3	-2.5
Information and information processing ²	80.761	80.399	80.383	80.290	-9	.2	-3.8	-2.3	-3	-3.1
Telephone services ^{1 2}	101.739	101.412	101.316	101.258	.0	1.3	-3.4	-1.9	.7	-2.7
Information technology, hardware and services ⁵	9.246	9.171	9.189	9.163	-3.4	-2.9	-4.9	-3.5	-3.2	-4.2
Personal computers and peripheral equipment ⁶	73.943	72.662	72.289	71.142	-6.5	-9	-11.6	-14.3	-2.9	-13.0
Other goods and services	384.680	385.031	385.532	385.215	2.6	3.3	.8	.6	2.9	.7
Tobacco and smoking products ¹	827.680	828.079	829.535	830.693	9.9	9.0	1.9	1.5	9.5	1.7
Personal care	207.326	207.547	207.783	207.451	.2	1.3	.4	.2	.8	.3
Personal care products ¹	160.656	160.920	161.325	160.981	-5.6	2.3	-8	.8	-1.7	.0
Personal care services ¹	230.159	229.933	230.177	230.034	3.2	.2	-3	-2	1.7	-3
Miscellaneous personal services	357.711	358.181	358.894	359.233	1.3	2.4	2.6	1.7	1.9	2.2
Commodity and service group										
Commodities	177.291	178.833	180.549	182.627	-5.2	5.7	6.0	12.6	.1	9.3
Food and beverages	221.524	222.602	223.779	225.345	.8	1.8	1.5	7.1	1.3	4.3
Commodities less food and beverages	153.502	155.178	157.054	159.267	-8.6	8.1	8.8	15.9	-6	12.3
Nondurables less food and beverages	197.199	200.839	204.142	207.789	-13.4	14.1	16.5	23.3	-6	19.8
Apparel	119.208	120.456	119.384	118.770	.8	-1.4	-.4	-1.5	-3	-9
Nondurables less food, beverages, and apparel	250.350	255.448	260.797	268.329	-17.7	19.8	22.3	32.0	-7	27.1
Durables	110.632	110.557	111.024	111.490	-.3	.3	-3.0	3.1	.0	.0
Services	262.782	263.034	263.745	264.161	1.2	1.1	1.4	2.1	1.1	1.8
Rent of shelter ⁴	260.617	260.471	260.509	260.389	.5	.9	2.6	-.3	.7	1.1
Tenants' and household insurance ^{1 2}	126.194	126.192	126.529	125.863	2.8	4.3	-1.4	-1.0	3.6	-1.2
Energy services ³	192.310	191.114	193.224	193.654	-5.8	1.7	-.6	2.8	-2.1	1.1
Water and sewer and trash collection services ²	174.824	175.400	176.725	177.684	5.1	4.8	5.1	6.7	5.0	5.9
Household operations ^{1 2}	150.648	151.189	151.358	150.541	1.5	-.6	.8	-.3	.5	.3
Transportation services	263.379	264.832	266.061	267.523	2.7	1.4	4.2	6.4	2.1	5.3
Medical care services	417.315	417.004	418.529	418.937	2.9	3.9	2.5	1.6	3.4	2.0
Other services	311.102	311.610	312.190	312.626	2.8	.9	.7	2.0	1.8	1.3
Special indexes										
All items less food	220.049	220.885	222.091	223.237	-1.7	3.1	3.5	5.9	.7	4.7
All items less shelter	211.276	212.429	213.995	215.619	-2.4	4.1	4.3	8.5	.8	6.3
All items less medical care	211.688	212.578	213.755	214.982	-1.6	2.9	3.3	6.4	.6	4.8
Commodities less food	156.060	157.709	159.553	161.713	-8.2	7.9	8.4	15.3	-5	11.8
Nondurables less food	199.211	202.374	205.455	208.940	-12.7	13.2	16.6	21.0	-6	18.8
Nondurables less food and apparel	246.849	251.499	256.414	263.245	-16.2	18.1	20.4	29.3	-5	24.8
Nondurables	210.033	212.320	214.660	217.689	-7.1	7.6	9.6	15.4	.0	12.4
Services less rent of shelter ⁴	286.792	287.061	288.270	288.851	1.7	1.4	2.2	2.9	1.5	2.5
Services less medical care services	251.378	251.378	251.810	252.011	1.0	1.0	2.4	1.0	1.0	1.7
Energy	225.151	229.915	237.620	245.941	-24.0	26.5	29.8	42.4	-1.9	36.0
All items less energy	221.434	221.922	222.483	222.992	1.1	.9	.9	2.8	1.0	1.9
All items less food and energy	222.210	222.587	223.029	223.331	1.2	.8	.8	2.0	1.0	1.4
Commodities less food and energy commodities	143.228	143.571	143.793	143.917	-.2	.2	-1.2	1.9	.0	.3
Energy commodities	270.712	281.416	294.905	311.218	-35.9	50.2	57.0	74.7	-1.8	65.6
Services less energy services	269.986	270.374	270.955	271.371	1.7	1.0	1.6	2.1	1.3	1.8

¹ Not seasonally adjusted.

² Indexes on a December 1997=100 base.

³ This index series was calculated using a Laspeyres estimator. All other item stratum index series were calculated using a geometric means estimator.

⁴ Indexes on a December 1982=100 base.

⁵ Indexes on a December 1988=100 base.

⁶ Indexes on a December 2007=100 base.

NOTE: Index applies to a month as a whole, not to any specific date.

Table 3. Consumer Price Index for All Urban Consumers (CPI-U): Selected areas, all items index

(1982-84=100, unless otherwise noted)

CPI-U	Pricing schedule 1	All items									
		Indexes				Percent change to Mar.2011 from—			Percent change to Feb.2011 from—		
		Dec. 2010	Jan. 2011	Feb. 2011	Mar. 2011	Mar. 2010	Jan. 2011	Feb. 2011	Feb. 2010	Dec. 2010	Jan. 2011
U.S. city average	M	219.179	220.223	221.309	223.467	2.7	1.5	1.0	2.1	1.0	0.5
Region and area size²											
Northeast urban	M	235.141	235.969	237.110	239.074	2.5	1.3	.8	2.0	.8	.5
Size A - More than 1,500,000	M	236.828	237.564	238.798	240.599	2.4	1.3	.8	2.0	.8	.5
Size B/C - 50,000 to 1,500,000 ³	M	140.351	141.001	141.547	143.001	3.0	1.4	1.0	2.2	.9	.4
Midwest urban	M	209.270	210.388	211.090	212.954	2.7	1.2	.9	2.2	.9	.3
Size A - More than 1,500,000	M	209.936	210.928	211.503	213.449	2.6	1.2	.9	2.0	.7	.3
Size B/C - 50,000 to 1,500,000 ³	M	134.267	135.061	135.665	136.834	2.8	1.3	.9	2.4	1.0	.4
Size D - Nonmetropolitan (less than 50,000)	M	206.136	207.551	208.156	209.713	2.7	1.0	.7	2.4	1.0	.3
South urban	M	212.488	213.589	214.735	217.214	2.8	1.7	1.2	2.2	1.1	.5
Size A - More than 1,500,000	M	213.850	215.127	216.145	218.391	2.7	1.5	1.0	2.2	1.1	.5
Size B/C - 50,000 to 1,500,000 ³	M	135.240	135.925	136.625	138.211	2.9	1.7	1.2	2.3	1.0	.5
Size D - Nonmetropolitan (less than 50,000)	M	216.189	216.750	218.772	222.275	3.4	2.5	1.6	2.2	1.2	.9
West urban	M	222.081	223.149	224.431	226.558	2.6	1.5	.9	1.9	1.1	.6
Size A - More than 1,500,000	M	226.112	227.281	228.444	230.707	2.7	1.5	1.0	2.0	1.0	.5
Size B/C - 50,000 to 1,500,000 ³	M	134.328	134.917	135.826	137.200	2.5	1.7	1.0	1.7	1.1	.7
Size classes											
A ⁴	M	200.123	201.059	201.974	203.833	2.6	1.4	.9	2.0	.9	.5
B/C ³	M	135.579	136.260	136.960	138.404	2.8	1.6	1.1	2.2	1.0	.5
D	M	212.541	213.417	214.862	216.988	2.8	1.7	1.0	2.3	1.1	.7
Selected local areas⁵											
Chicago-Gary-Kenosha, IL-IN-WI	M	213.778	215.155	216.192	217.880	2.3	1.3	.8	1.8	1.1	.5
Los Angeles-Riverside-Orange County, CA ...	M	226.639	228.652	229.729	232.241	3.0	1.6	1.1	2.3	1.4	.5
New York-Northern N.J.-Long Island, NY-NJ-CT-PA	M	241.874	242.639	243.832	245.617	2.3	1.2	.7	2.1	.8	.5
Boston-Brockton-Nashua, MA-NH-ME-CT	1	-	239.814	-	242.787	2.0	1.2	-	-	-	-
Cleveland-Akron, OH	1	-	207.587	-	209.372	2.8	.9	-	-	-	-
Dallas-Fort Worth, TX	1	-	203.199	-	206.967	2.5	1.9	-	-	-	-
Washington-Baltimore, DC-MD-VA-WV ⁶	1	-	144.327	-	146.044	3.0	1.2	-	-	-	-
Atlanta, GA	2	202.519	-	205.744	-	-	-	-	1.5	1.6	-
Detroit-Ann Arbor-Flint, MI	2	206.384	-	206.816	-	-	-	-	1.7	.2	-
Houston-Galveston-Brazoria, TX	2	194.479	-	197.224	-	-	-	-	2.5	1.4	-
Miami-Fort Lauderdale, FL	2	224.907	-	227.451	-	-	-	-	2.2	1.1	-
Philadelphia-Wilmington-Atlantic City, PA-NJ-DE-MD	2	228.017	-	230.878	-	-	-	-	1.9	1.3	-
San Francisco-Oakland-San Jose, CA	2	227.658	-	229.981	-	-	-	-	1.7	1.0	-
Seattle-Tacoma-Bremerton, WA	2	226.862	-	229.482	-	-	-	-	1.5	1.2	-

¹ Foods, fuels, and several other items priced every month in all areas; most other goods and services priced as indicated:

M - Every month.

1 - January, March, May, July, September, and November.

2 - February, April, June, August, October, and December.

² Regions defined as the four Census regions. See technical notes.

³ Indexes on a December 1996=100 base.

⁴ Indexes on a December 1986=100 base.

⁵ In addition, the following metropolitan areas are published semiannually and appear in Tables 34 and 39 of the January and July issues of the CPI Detailed Report: Anchorage, AK; Cincinnati-Hamilton, OH-KY-IN; Denver-Boulder-Greeley, CO; Honolulu, HI; Kansas City, MO-KS; Milwaukee-Racine, WI; Minneapolis-St. Paul, MN-WI; Phoenix-Mesa, AZ; Pittsburgh, PA; Portland-Salem, OR-WA; St. Louis, MO-IL; San Diego, CA;

Tampa-St. Petersburg-Clearwater, FL.

⁶ Indexes on a November 1996=100 base.

- Data not available.

NOTE: Local area indexes are byproducts of the national CPI program. Each local index has a smaller sample size than the national index and is, therefore, subject to substantially more sampling and other measurement error. As a result, local area indexes show greater volatility than the national index, although their long-term trends are similar. Therefore, the Bureau of Labor Statistics strongly urges users to consider adopting the national average CPI for use in their escalator clauses.

NOTE: Index applies to a month as a whole, not to any specific date.

Table 4. Consumer Price Index for Urban Wage Earners and Clerical Workers (CPI-W): U.S. city average, by expenditure category and commodity and service group

(1982-84=100, unless otherwise noted)

CPI-W Expenditure category	Relative importance, December 2010	Unadjusted indexes		Unadjusted percent change to Mar. 2011 from—		Seasonally adjusted percent change from—		
		Feb. 2011	Mar. 2011	Mar. 2010	Feb. 2011	Dec. to Jan.	Jan. to Feb.	Feb. to Mar.
All items	100.000	217.535	220.024	3.0	1.1	0.5	0.6	0.6
All items (1967=100)	-	647.969	655.385	-	-	-	-	-
Food and beverages	16.401	223.273	224.825	2.9	.7	.5	.5	.7
Food	15.315	222.942	224.577	3.0	.7	.5	.6	.8
Food at home	8.906	220.110	222.391	3.8	1.0	.8	.9	1.1
Cereals and bakery products	1.236	254.963	256.227	1.9	.5	.7	.1	.6
Meats, poultry, fish, and eggs	2.227	216.062	218.848	8.1	1.3	.9	1.2	1.2
Dairy and related products ¹917	202.335	205.163	3.9	1.4	.1	.6	1.4
Fruits and vegetables	1.219	284.132	288.168	3.9	1.4	1.2	2.4	2.0
Nonalcoholic beverages and beverage materials	1.091	163.262	164.583	1.3	.8	1.5	.1	.9
Other food at home	2.217	192.187	193.787	1.9	.8	.3	.6	.9
Sugar and sweets ¹324	203.373	204.408	2.9	.5	-2	.8	.5
Fats and oils258	210.741	214.457	7.9	1.8	2.1	1.0	2.6
Other foods	1.635	205.098	206.624	.8	.7	.1	.5	.7
Other miscellaneous foods ^{1 2}463	121.605	122.850	.3	1.0	-9	.4	1.0
Food away from home ¹	6.409	228.596	229.293	1.9	.3	.2	.1	.3
Other food away from home ^{1 2}326	162.728	162.850	2.4	.1	.0	.7	.1
Alcoholic beverages	1.086	226.675	227.022	1.6	.2	.1	.2	.2
Housing	39.228	213.931	214.323	.8	.2	.1	.3	.1
Shelter	29.811	243.961	244.270	.9	.1	.1	.2	.1
Rent of primary residence ³	8.396	250.128	250.445	1.2	.1	.2	.1	.1
Lodging away from home ²436	133.181	138.131	2.6	3.7	-1.3	.2	.8
Owners' equivalent rent of residences ^{3 4}	20.672	233.872	234.018	.8	.1	.1	.2	.1
Owners' equivalent rent of primary residence ^{3 4}	19.942	233.870	234.015	.8	.1	.1	.2	.1
Tenants' and household insurance ^{1 2}306	128.035	126.914	1.2	-9	.0	.3	-9
Fuels and utilities	5.633	213.775	214.774	1.9	.5	.0	1.0	.5
Household energy	4.476	186.578	187.561	1.1	.5	.0	1.1	.5
Fuel oil and other fuels ¹301	326.950	341.440	22.2	4.4	5.3	3.7	4.4
Energy services ³	4.175	188.567	188.985	-3	.2	-4	.9	.2
Water and sewer and trash collection services ²	1.157	177.594	178.016	5.2	.2	.3	.7	.5
Household furnishings and operations	3.784	120.518	120.765	-1.7	.2	.1	.0	.0
Household operations ^{1 2}364	153.703	152.965	.6	-5	.3	.1	-5
Apparel	3.668	117.507	120.091	-1.0	2.2	1.0	-.7	-.6
Men's and boys' apparel921	111.528	112.360	-.6	.7	1.3	-.8	-1.2
Women's and girls' apparel	1.502	104.611	108.551	-2.1	3.8	1.5	-1.0	-1.0
Infants' and toddlers' apparel280	112.814	114.446	-4.3	1.4	-2.1	-1.7	.1
Footwear750	126.363	128.077	-.1	1.4	.9	-.2	.0
Transportation	19.418	202.910	211.774	10.7	4.4	1.4	2.0	2.4
Private transportation	18.631	199.417	208.361	10.7	4.5	1.4	2.0	2.5
New and used motor vehicles ²	6.914	96.734	97.405	1.6	.7	-.2	.5	.8
New vehicles	3.320	141.114	141.899	1.6	.6	-.2	1.0	.8
Used cars and trucks	3.003	143.868	145.014	2.4	.8	-.3	.1	.8
Motor fuel	6.470	273.013	305.066	27.8	11.7	3.9	4.8	5.6
Gasoline (all types)	6.193	272.117	304.224	27.5	11.8	3.5	4.7	5.6
Motor vehicle parts and equipment ¹479	140.763	140.693	3.8	.0	.8	.3	.0
Motor vehicle maintenance and repair ¹	1.184	253.524	253.391	1.7	-.1	.2	.1	-.1
Public transportation787	262.444	266.726	9.8	1.6	1.5	2.0	1.1
Medical care	5.355	398.908	399.516	2.9	.2	.1	.5	.2
Medical care commodities ¹	1.318	312.764	314.190	2.8	.5	.5	.7	.5
Medical care services	4.038	424.289	424.516	2.9	.1	-.1	.4	.1
Professional services	2.220	337.901	338.225	2.7	.1	.1	.4	.1

See footnotes at end of table.

Table 4. Consumer Price Index for Urban Wage Earners and Clerical Workers (CPI-W): U.S. city average, by expenditure category and commodity and service group-Continued

(1982-84=100, unless otherwise noted)

CPI-W Expenditure category	Relative importance, December 2010	Unadjusted indexes		Unadjusted percent change to Mar. 2011 from—		Seasonally adjusted percent change from—		
		Feb. 2011	Mar. 2011	Mar. 2010	Feb. 2011	Dec. to Jan.	Jan. to Feb.	Feb. to Mar.
Hospital and related services	1.414	636.256	637.216	5.5	0.2	-0.1	0.6	0.2
Recreation ²	5.862	109.693	109.848	-2	.1	.4	.4	.1
Video and audio ²	1.959	98.897	99.398	-1.1	.5	.1	.5	.1
Education and communication ²	6.118	125.069	125.047	.5	.0	.0	.1	.1
Education ²	2.380	201.500	201.588	3.9	.0	.6	.3	.3
Educational books and supplies199	526.197	527.623	4.3	.3	1.6	.1	.4
Tuition, other school fees, and childcare	2.181	566.205	566.335	3.9	.0	.5	.3	.3
Communication ²	3.738	86.174	86.124	-1.6	-1	-4	.0	-1
Information and information processing ²	3.605	83.844	83.793	-1.8	-1	-5	-1	-1
Telephone services ^{1 2}	2.823	100.768	100.701	-1.3	-1	-4	-1	-1
Information technology, hardware and services ⁵782	9.734	9.729	-3.7	-1	-8	.2	-2
Personal computers and peripheral equipment ⁶208	72.138	71.404	-9.0	-1.0	-1.8	-5	-1.8
Other goods and services	3.950	415.088	415.318	2.4	.1	.1	.2	-1
Tobacco and smoking products ¹	1.450	834.343	835.368	5.4	.1	.0	.2	.1
Personal care	2.500	205.705	205.738	.7	.0	.1	.2	-2
Personal care products ¹717	161.974	161.667	-5	-2	.2	.3	-2
Personal care services ¹572	230.418	230.252	.8	-1	-1	.1	-1
Miscellaneous personal services	1.027	360.528	360.881	2.0	.1	.2	.2	.0
Commodity and service group								
Commodities	43.898	182.442	186.832	5.2	2.4	.9	1.1	1.3
Food and beverages	16.401	223.273	224.825	2.9	.7	.5	.5	.7
Commodities less food and beverages	27.497	160.171	165.647	6.6	3.4	1.2	1.4	1.6
Nondurables less food and beverages	17.244	209.079	219.775	10.4	5.1	1.8	1.8	2.1
Apparel	3.668	117.507	120.091	-1.0	2.2	1.0	-7	-6
Nondurables less food, beverages, and apparel	13.576	270.459	286.361	13.7	5.9	2.2	2.0	3.4
Durables	10.253	112.498	113.063	.4	.5	.0	.5	.5
Services	56.102	258.732	259.108	1.4	.1	.1	.3	.1
Rent of shelter ⁴	29.504	235.090	235.413	.9	.1	.1	.1	.0
Tenants' and household insurance ^{1 2}306	128.035	126.914	1.2	-9	.0	.3	-9
Energy services ³	4.175	188.567	188.985	-3	.2	-4	.9	.2
Water and sewer and trash collection services ²	1.157	177.594	178.016	5.2	.2	.3	.7	.5
Household operations ^{1 2}364	153.703	152.965	.6	-5	.3	.1	-5
Transportation services	5.994	265.521	266.383	3.4	.3	.4	.5	.4
Medical care services	4.038	424.289	424.516	2.9	.1	-1	.4	.1
Other services	10.563	297.671	298.010	1.2	.1	.1	.2	.1
Special indexes								
All items less food	84.685	216.389	219.027	3.1	1.2	.4	.6	.6
All items less shelter	70.189	210.242	213.549	3.9	1.6	.6	.8	.9
All items less medical care	94.645	210.198	212.722	3.1	1.2	.5	.6	.7
Commodities less food	28.583	162.470	167.826	6.4	3.3	1.2	1.3	1.6
Nondurables less food	18.329	210.278	220.431	9.8	4.8	1.7	1.7	2.0
Nondurables less food and apparel	14.662	265.539	280.056	12.8	5.5	2.0	1.9	3.2
Nondurables	33.644	216.941	223.402	6.7	3.0	1.2	1.2	1.6
Services less rent of shelter ⁴	26.598	253.664	254.057	1.8	.2	.1	.4	.2
Services less medical care services	52.065	247.244	247.622	1.2	.2	.1	.2	.1
Energy	10.946	228.160	244.773	16.3	7.3	2.3	3.4	3.7
All items less energy	89.054	217.222	218.011	1.5	.4	.2	.3	.2
All items less food and energy	73.739	216.448	217.067	1.2	.3	.2	.2	.1
Commodities less food and energy commodities	21.812	145.909	146.835	.4	.6	.2	.2	.1
Energy commodities	6.771	276.539	308.083	27.5	11.4	4.0	4.8	5.6
Services less energy services	51.927	266.394	266.766	1.5	.1	.1	.2	.1
Purchasing power of the consumer dollar (1982-84=\$1.00)	-	\$.460	\$.454	-	-	-	-	-
Purchasing power of the consumer dollar (1967=\$1.00)	-	\$.154	\$.153	-	-	-	-	-

¹ Not seasonally adjusted.

² Indexes on a December 1997=100 base.

³ This index series was calculated using a Laspeyres estimator. All other item stratum index series were calculated using a geometric means estimator.

⁴ Indexes on a December 1984=100 base

⁵ Indexes on a December 1988=100 base.

⁶ Indexes on a December 2007=100 base.

- Data not available.

NOTE: Index applies to a month as a whole, not to any specific date.

Table 5. Consumer Price Index for Urban Wage Earners and Clerical Workers (CPI-W): Seasonally adjusted U.S. city average, by expenditure category and commodity and service group

(1982-84=100, unless otherwise noted)

CPI-W	Seasonally adjusted indexes				Seasonally adjusted annual rate percent change for					
					3 months ended—			6 months ended—		
	Dec. 2010	Jan. 2011	Feb. 2011	Mar. 2011	June 2010	Sep. 2010	Dec. 2010	Mar. 2011	Sep. 2010	Mar. 2011
Expenditure category										
All items	216.367	217.344	218.702	220.122	-2.0	3.6	3.8	7.1	0.7	5.4
Food and beverages	220.782	221.853	223.029	224.691	.8	2.0	1.6	7.3	1.4	4.4
Food	220.351	221.486	222.716	224.464	.8	1.9	1.7	7.7	1.4	4.6
Food at home	216.235	217.871	219.728	222.200	.4	1.6	2.0	11.5	1.0	6.7
Cereals and bakery products	252.705	254.540	254.751	256.158	-2.2	2.1	2.2	5.6	-1	3.9
Meats, poultry, fish, and eggs	211.826	213.732	216.300	218.838	11.9	3.9	2.9	13.9	7.9	8.3
Dairy and related products ¹	200.958	201.170	202.335	205.163	-1.4	2.4	6.5	8.6	.4	7.6
Fruits and vegetables	272.546	275.896	282.396	288.166	-10.3	-2.2	6.0	25.0	-6.3	15.1
Nonalcoholic beverages and beverage materials	159.802	162.150	162.352	163.753	-2.7	1.2	-3.1	10.3	-8	3.4
Other food at home	190.252	190.804	191.912	193.640	-4	1.0	-3	7.3	.3	3.5
Sugar and sweets ¹	202.206	201.824	203.373	204.408	-3	4.9	2.5	4.4	2.3	3.4
Fats and oils	202.870	207.171	209.238	214.678	2.4	2.1	3.3	25.4	2.3	13.8
Other foods	203.773	203.965	204.938	206.374	-8	.1	-1.3	5.2	-4	1.9
Other miscellaneous foods ^{1 2}	122.267	121.161	121.605	122.850	-2.3	1.1	.3	1.9	-6	1.1
Food away from home ¹	227.871	228.279	228.596	229.293	1.4	2.4	1.2	2.5	1.9	1.9
Other food away from home ^{1 2}	161.657	161.635	162.728	162.850	1.5	2.9	2.3	3.0	2.2	2.6
Alcoholic beverages	225.647	225.786	226.181	226.591	1.5	2.7	.5	1.7	2.1	1.1
Housing	213.535	213.712	214.274	214.579	-5	.5	1.3	2.0	.0	1.6
Shelter	243.290	243.522	243.891	244.098	.5	.5	1.4	1.3	.5	1.4
Rent of primary residence ³	249.110	249.556	249.881	250.220	.2	.6	2.1	1.8	.4	1.9
Lodging away from home ²	135.916	134.166	134.483	135.526	20.8	-6.3	-1.0	-1.1	6.4	-1.1
Owners' equivalent rent of residences ^{3 4}	233.235	233.453	233.818	233.967	.2	.5	1.2	1.3	.4	1.2
Owners' equivalent rent of primary residence ^{3 4}	233.235	233.452	233.819	233.963	.2	.5	1.2	1.3	.4	1.2
Tenants' and household insurance ^{1 2}	127.674	127.690	128.035	126.914	3.1	4.4	-1	-2.4	3.8	-1.3
Fuels and utilities	214.276	214.330	216.540	217.690	-3.7	2.3	2.7	6.5	-7	4.6
Household energy	187.766	187.675	189.762	190.781	-5.7	1.8	2.2	6.6	-2.1	4.3
Fuel oil and other fuels ¹	299.558	315.348	326.950	341.440	-15.7	-6	57.8	68.8	-8.5	63.2
Energy services ³	191.094	190.284	192.035	192.493	-5.1	1.9	-8	3.0	-1.6	1.1
Water and sewer and trash collection services ²	175.249	175.803	177.057	177.954	5.0	4.5	5.0	6.3	4.7	5.6
Household furnishings and operations	120.388	120.479	120.458	120.458	-3.5	-2.2	-1.3	.2	-2.9	-5
Household operations ^{1 2}	153.116	153.583	153.703	152.965	3.1	-1.0	.7	-4	1.0	.1
Apparel	118.126	119.268	118.404	117.667	.7	-2.3	-.9	-1.5	-8	-1.2
Men's and boys' apparel	111.303	112.711	111.786	110.496	7.8	-4.4	-2.4	-2.9	1.5	-2.6
Women's and girls' apparel	105.468	107.067	106.045	104.954	-4.1	-1.8	-6	-1.9	-2.9	-1.3
Infants' and toddlers' apparel	116.916	114.477	112.572	112.693	.2	-4.9	1.7	-13.7	-2.4	-6.3
Footwear	126.296	127.404	127.194	127.212	1.9	-1.3	-3.6	2.9	.3	-4
Transportation	200.880	203.697	207.843	212.833	-11.9	16.2	16.7	26.0	1.2	21.3
Private transportation	197.516	200.277	204.353	209.373	-12.6	17.0	16.8	26.3	1.1	21.5
New and used motor vehicles ²	96.431	96.217	96.700	97.462	1.6	2.1	-1.6	4.3	1.8	1.3
New vehicles	138.950	138.691	140.067	141.132	.4	1.2	-1.4	6.4	.8	2.4
Used cars and trucks	145.000	144.598	144.792	145.911	4.8	4.4	-2.1	2.5	4.6	.2
Motor fuel	268.361	278.809	292.327	308.827	-37.2	54.2	57.0	75.4	-1.6	65.9
Gasoline (all types)	268.977	278.404	291.392	307.739	-38.0	55.6	60.0	71.3	-1.8	65.6
Motor vehicle parts and equipment ¹	139.150	140.289	140.763	140.693	3.4	3.0	4.2	4.5	3.2	4.4
Motor vehicle maintenance and repair ¹	252.759	253.310	253.524	253.391	1.6	2.9	1.3	1.0	2.3	1.2
Public transportation	256.908	260.787	266.108	268.996	7.0	-7	13.8	20.2	3.1	17.0
Medical care	395.218	395.575	397.444	398.099	2.6	3.3	2.6	2.9	3.0	2.8
Medical care commodities ¹	308.823	310.488	312.764	314.190	1.2	1.2	2.0	7.1	1.2	4.5
Medical care services	420.827	420.595	422.224	422.517	3.1	4.0	2.8	1.6	3.6	2.2
Professional services	335.472	335.757	337.029	337.449	3.0	3.6	1.9	2.4	3.3	2.2

See footnotes at end of table.

Table 5. Consumer Price Index for Urban Wage Earners and Clerical Workers (CPI-W): Seasonally adjusted U.S. city average, by expenditure category and commodity and service group-Continued

(1982-84=100, unless otherwise noted)

CPI-W	Seasonally adjusted indexes				Seasonally adjusted annual rate percent change for					
					3 months ended—			6 months ended—		
	Dec. 2010	Jan. 2011	Feb. 2011	Mar. 2011	June 2010	Sep. 2010	Dec. 2010	Mar. 2011	Sep. 2010	Mar. 2011
Expenditure category										
Hospital and related services	628.241	627.317	630.894	632.454	5.8	6.9	6.5	2.7	6.4	4.6
Recreation ²	108.943	109.345	109.742	109.798	.3	-2.0	-2.2	3.2	-9	.4
Video and audio ²	98.429	98.510	99.020	99.167	-2.0	-2.8	-2.7	3.0	-2.4	.1
Education and communication ²	124.955	124.959	125.081	125.167	1.2	1.0	-.9	.7	1.1	-.1
Education ²	199.846	200.978	201.628	202.290	4.5	2.1	4.1	5.0	3.3	4.5
Educational books and supplies	516.326	524.385	524.817	526.817	4.5	-1.0	5.7	8.4	1.7	7.0
Tuition, other school fees, and childcare	562.114	564.783	566.738	568.569	4.5	2.4	4.0	4.7	3.5	4.3
Communication ²	86.499	86.192	86.152	86.067	-.7	.3	-4.0	-2.0	-.2	-3.0
Information and information processing ²	84.299	83.864	83.822	83.735	-.8	.3	-4.2	-2.6	-.2	-3.4
Telephone services ^{1 2}	101.327	100.882	100.768	100.701	-.1	1.2	-3.8	-2.4	.5	-3.1
Information technology, hardware and services ⁵	9.782	9.704	9.722	9.699	-3.1	-2.8	-5.3	-3.4	-3.0	-4.3
Personal computers and peripheral equipment ⁶	73.494	72.178	71.808	70.542	-8.1	.5	-12.6	-15.1	-3.9	-13.9
Other goods and services	414.260	414.533	415.238	414.916	3.3	4.4	1.2	.6	3.9	.9
Tobacco and smoking products ¹	832.741	832.904	834.343	835.368	9.9	8.9	1.9	1.3	9.4	1.6
Personal care	205.285	205.476	205.822	205.424	-.2	2.0	.8	.3	.9	.6
Personal care products ¹	161.217	161.462	161.974	161.667	-6.1	3.1	.2	1.1	-1.6	.7
Personal care services ¹	230.332	230.140	230.418	230.252	3.5	.3	-.5	-.1	1.9	-.3
Miscellaneous personal services	359.558	360.275	360.922	360.899	.9	2.8	3.0	1.5	1.8	2.3
Commodity and service group										
Commodities	180.813	182.495	184.454	186.856	-5.8	6.8	7.0	14.1	.3	10.5
Food and beverages	220.782	221.853	223.029	224.691	.8	2.0	1.6	7.3	1.4	4.4
Commodities less food and beverages	158.952	160.848	163.087	165.737	-9.7	9.9	10.3	18.2	-.4	14.2
Nondurables less food and beverages	207.594	211.319	215.122	219.564	-14.6	15.3	20.3	25.1	-.7	22.7
Apparel	118.126	119.268	118.404	117.667	.7	-2.3	-.9	-1.5	-.8	-1.2
Nondurables less food, beverages, and apparel	267.257	273.060	278.583	287.991	-19.5	22.8	25.2	34.8	-.6	29.9
Durables	111.888	111.840	112.365	112.981	.7	.3	-3.2	4.0	.5	.3
Services	258.034	258.262	258.975	259.346	.9	1.1	1.3	2.0	1.0	1.7
Rent of shelter ⁴	234.729	234.950	235.112	235.189	.2	.8	1.9	.8	.5	1.4
Tenants' and household insurance ^{1 2}	127.674	127.690	128.035	126.914	3.1	4.4	-.1	-2.4	3.8	-1.3
Energy services ³	191.094	190.284	192.035	192.493	-5.1	1.9	-.8	3.0	-1.6	1.1
Water and sewer and trash collection services ²	175.249	175.803	177.057	177.954	5.0	4.5	5.0	6.3	4.7	5.6
Household operations ^{1 2}	153.116	153.583	153.703	152.965	3.1	-1.0	.7	-.4	1.0	.1
Transportation services	263.406	264.463	265.678	266.766	2.7	2.2	3.3	5.2	2.5	4.3
Medical care services	420.827	420.595	422.224	422.517	3.1	4.0	2.8	1.6	3.6	2.2
Other services	296.889	297.247	297.790	298.163	2.3	.7	.0	1.7	1.5	.9
Special indexes										
All items less food	215.473	216.422	217.800	219.161	-2.5	3.9	4.2	7.0	.6	5.6
All items less shelter	208.883	210.141	211.871	213.745	-3.1	4.9	4.8	9.6	.8	7.2
All items less medical care	209.116	210.104	211.434	212.864	-2.3	3.6	3.9	7.4	.6	5.6
Commodities less food	161.252	163.108	165.304	167.903	-9.2	9.6	9.9	17.5	-.3	13.7
Nondurables less food	208.830	212.360	215.973	220.224	-13.8	14.7	19.1	23.7	-.6	21.4
Nondurables less food and apparel	262.540	267.850	272.891	281.517	-18.0	21.1	23.2	32.2	-.4	27.6
Nondurables	214.836	217.332	219.926	223.418	-7.9	8.5	10.9	17.0	.0	13.9
Services less rent of shelter ⁴	253.116	253.273	254.399	254.803	1.4	1.5	1.8	2.7	1.4	2.2
Services less medical care services	246.935	247.082	247.660	247.897	.8	.9	1.7	1.6	.8	1.6
Energy	226.396	231.611	239.431	248.232	-24.9	28.3	31.3	44.5	-1.8	37.8
All items less energy	216.122	216.590	217.170	217.702	1.0	1.1	.8	3.0	1.1	1.9
All items less food and energy	215.648	215.982	216.431	216.717	1.1	.9	.7	2.0	1.0	1.3
Commodities less food and energy commodities	145.475	145.784	146.034	146.215	.3	.4	-1.3	2.1	.4	.4
Energy commodities	270.984	281.694	295.209	311.719	-36.4	51.2	57.0	75.1	-1.9	65.8
Services less energy services	265.330	265.675	266.270	266.630	1.4	1.1	1.5	2.0	1.3	1.7

¹ Not seasonally adjusted.

² Indexes on a December 1997=100 base.

³ This index series was calculated using a Laspeyres estimator. All other item stratum index series were calculated using a geometric means estimator.

⁴ Indexes on a December 1984=100 base

⁵ Indexes on a December 1988=100 base.

⁶ Indexes on a December 2007=100 base.

NOTE: Index applies to a month as a whole, not to any specific date.

Table 6. Consumer Price Index for Urban Wage Earners and Clerical Workers (CPI-W): Selected areas, all items index

(1982-84=100, unless otherwise noted)

CPI-W	Pricing schedule 1	All items									
		Indexes				Percent change to Mar.2011 from—			Percent change to Feb.2011 from—		
		Dec. 2010	Jan. 2011	Feb. 2011	Mar. 2011	Mar. 2010	Jan. 2011	Feb. 2011	Feb. 2010	Dec. 2010	Jan. 2011
U.S. city average	M	215.262	216.400	217.535	220.024	3.0	1.7	1.1	2.3	1.1	0.5
Region and area size²											
Northeast urban	M	233.082	233.914	235.109	237.377	2.9	1.5	1.0	2.3	.9	.5
Size A - More than 1,500,000	M	233.092	233.851	235.230	237.239	2.8	1.4	.9	2.2	.9	.6
Size B/C - 50,000 to 1,500,000 ³	M	141.598	142.196	142.691	144.395	3.2	1.5	1.2	2.4	.8	.3
Midwest urban	M	205.024	206.258	206.981	209.094	3.0	1.4	1.0	2.4	1.0	.4
Size A - More than 1,500,000	M	204.731	205.878	206.516	208.740	3.0	1.4	1.1	2.4	.9	.3
Size B/C - 50,000 to 1,500,000 ³	M	134.454	135.277	135.841	137.189	3.0	1.4	1.0	2.5	1.0	.4
Size D - Nonmetropolitan (less than 50,000)	M	204.132	205.648	206.306	208.108	3.0	1.2	.9	2.6	1.1	.3
South urban	M	209.994	211.216	212.416	215.272	3.2	1.9	1.3	2.5	1.2	.6
Size A - More than 1,500,000	M	211.712	213.058	214.129	216.680	2.9	1.7	1.2	2.3	1.1	.5
Size B/C - 50,000 to 1,500,000 ³	M	134.405	135.207	135.919	137.789	3.3	1.9	1.4	2.6	1.1	.5
Size D - Nonmetropolitan (less than 50,000)	M	216.477	217.200	219.352	223.059	3.6	2.7	1.7	2.4	1.3	1.0
West urban	M	216.847	217.995	219.368	221.830	3.0	1.8	1.1	2.2	1.2	.6
Size A - More than 1,500,000	M	219.273	220.564	221.848	224.576	3.2	1.8	1.2	2.3	1.2	.6
Size B/C - 50,000 to 1,500,000 ³	M	134.306	134.900	135.845	137.331	2.7	1.8	1.1	1.9	1.1	.7
Size classes											
A ⁴	M	198.979	200.022	201.033	203.220	3.0	1.6	1.1	2.3	1.0	.5
B/C ³	M	135.379	136.112	136.808	138.471	3.1	1.7	1.2	2.4	1.1	.5
D	M	210.959	212.005	213.495	215.928	3.2	1.9	1.1	2.5	1.2	.7
Selected local areas⁵											
Chicago-Gary-Kenosha, IL-IN-WI	M	207.479	209.016	210.106	212.256	2.8	1.6	1.0	2.2	1.3	.5
Los Angeles-Riverside-Orange County, CA ...	M	219.619	221.540	222.814	225.770	3.5	1.9	1.3	2.6	1.5	.6
New York-Northern N.J.-Long Island, NY-NJ-CT-PA	M	237.575	238.396	239.750	241.667	2.7	1.4	.8	2.4	.9	.6
Boston-Brockton-Nashua, MA-NH-ME-CT	1	-	240.540	-	244.324	2.5	1.6	-	-	-	-
Cleveland-Akron, OH	1	-	199.568	-	201.146	3.2	.8	-	-	-	-
Dallas-Fort Worth, TX	1	-	206.954	-	211.227	2.9	2.1	-	-	-	-
Washington-Baltimore, DC-MD-VA-WV ⁶	1	-	144.556	-	146.572	3.4	1.4	-	-	-	-
Atlanta, GA	2	201.390	-	204.611	-	-	-	-	1.6	1.6	-
Detroit-Ann Arbor-Flint, MI	2	202.280	-	202.849	-	-	-	-	2.0	.3	-
Houston-Galveston-Brazoria, TX	2	192.863	-	195.677	-	-	-	-	2.8	1.5	-
Miami-Fort Lauderdale, FL	2	222.510	-	225.346	-	-	-	-	1.9	1.3	-
Philadelphia-Wilmington-Atlantic City, PA-NJ-DE-MD	2	228.072	-	231.306	-	-	-	-	2.1	1.4	-
San Francisco-Oakland-San Jose, CA	2	224.152	-	226.638	-	-	-	-	2.1	1.1	-
Seattle-Tacoma-Bremerton, WA	2	222.853	-	225.790	-	-	-	-	2.1	1.3	-

¹ Foods, fuels, and several other items priced every month in all areas; most other goods and services priced as indicated:

M - Every month.

1 - January, March, May, July, September, and November.

2 - February, April, June, August, October, and December.

² Regions defined as the four Census regions. See technical notes.

³ Indexes on a December 1996=100 base.

⁴ Indexes on a December 1986=100 base.

⁵ In addition, the following metropolitan areas are published semiannually and appear in Tables 34 and 39 of the January and July issues of the CPI Detailed Report: Anchorage, AK; Cincinnati-Hamilton, OH-KY-IN; Denver-Boulder-Greeley, CO; Honolulu, HI; Kansas City, MO-KS; Milwaukee-Racine, WI; Minneapolis-St. Paul, MN-WI; Phoenix-Mesa, AZ; Pittsburgh, PA; Portland-Salem, OR-WA; St. Louis, MO-IL; San Diego, CA;

Tampa-St. Petersburg-Clearwater, FL.

⁶ Indexes on a November 1996=100 base.

- Data not available.

NOTE: Local area indexes are byproducts of the national CPI program. Each local index has a smaller sample size than the national index and is, therefore, subject to substantially more sampling and other measurement error. As a result, local area indexes show greater volatility than the national index, although their long-term trends are similar. Therefore, the Bureau of Labor Statistics strongly urges users to consider adopting the national average CPI for use in their escalator clauses.

NOTE: Index applies to a month as a whole, not to any specific date.

Table 7. Chained Consumer Price Index for All Urban Consumers (C-CPI-U): U.S. city average, by expenditure category and commodity and service group

(December 1999=100, unless otherwise noted)

C-CPI-U	Relative importance, 2007-2008	Unadjusted indexes		Unadjusted percent change to Mar. 2011 from—	
		Feb. 2011	Mar. 2011	Mar. 2010	Feb. 2011
Expenditure category					
All items ¹	100.000	127.429	128.618	2.5	0.9
Food and beverages	14.519	130.402	131.225	2.7	.6
Food	13.493	130.479	131.371	2.8	.7
Food at home	7.780	125.939	127.156	3.5	1.0
Food away from home	5.712	136.726	137.136	1.9	.3
Alcoholic beverages	1.027	130.092	130.010	1.4	-.1
Housing	42.074	128.726	128.982	.6	.2
Shelter	32.119	131.927	132.169	.9	.2
Fuels and utilities	5.231	158.474	159.059	1.5	.4
Household furnishings and operations	4.724	92.354	92.462	-2.0	.1
Apparel	3.772	88.737	90.915	-1.0	2.5
Transportation ²	17.199	^R 136.824	142.121	9.9	3.9
Private transportation	16.013	137.364	142.885	9.9	4.0
Public transportation ³	1.186	^R 129.878	132.342	10.4	1.9
Medical care	6.294	153.610	153.840	2.5	.1
Medical care commodities	1.570	135.298	135.901	2.6	.4
Medical care services	4.723	160.337	160.419	2.5	.1
Recreation	6.625	102.486	102.508	-.9	.0
Education and communication	6.288	112.737	112.691	.6	.0
Education	2.804	188.346	188.438	3.8	.0
Communication	3.484	71.813	71.732	-1.8	-.1
Other goods and services	3.229	140.344	140.404	1.5	.0
Commodity and service group					
Services ⁴	59.383	^R 136.560	136.799	1.3	.2
Commodities	40.617	116.442	118.832	4.2	2.1
Durables	10.376	80.543	80.840	-.7	.4
Nondurables	30.241	135.157	138.722	5.9	2.6
All items less food and energy ⁵	76.901	^R 120.721	121.086	.9	.3
Energy	9.606	193.273	205.843	14.9	6.5

¹ Revised index: Jan. 2011=126.811.

² Revised index: Jan. 2011=135.346.

³ Revised index: Jan. 2011=127.460.

⁴ Revised index: Jan. 2011=136.170.

⁵ Revised index: Jan. 2011=120.281.

^R Revised.

Indexes for 2011 are initial estimates. Indexes for 2010 are interim adjustments.

NOTE: Index applies to a month as a whole, not to any specific date.