

**Transmission of material in this release is embargoed until  
8:30 a.m. (EDT) Friday, August 13, 2010**

USDL-10-1105

Technical information: (202) 691-7000 • Reed.Steve@bls.gov • www.bls.gov/cpi  
Media Contact: (202) 691-5902 • PressOffice@bls.gov

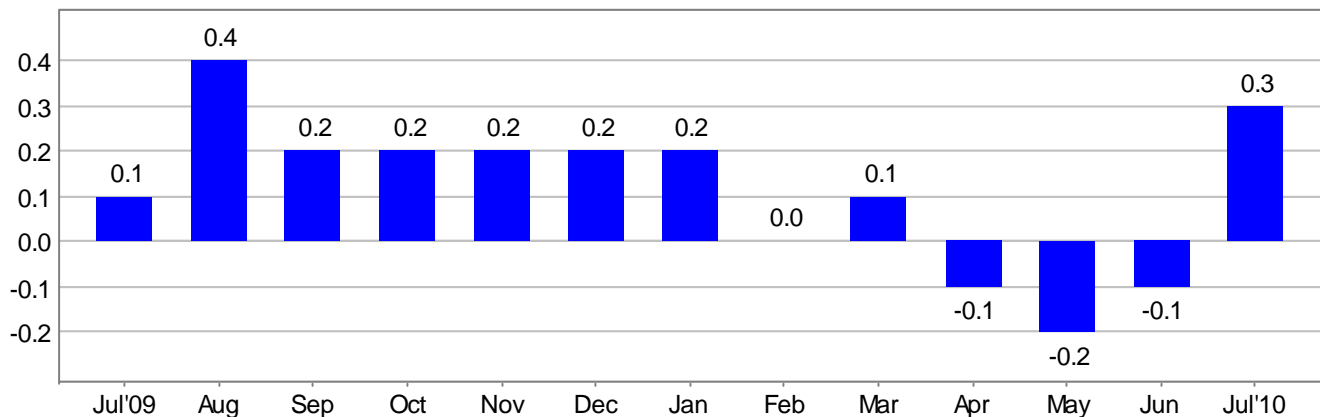
### CONSUMER PRICE INDEX –JULY 2010

The Consumer Price Index for All Urban Consumers (CPI-U) increased 0.3 percent in July on a seasonally adjusted basis, the U.S. Bureau of Labor Statistics reported today. (Before seasonal adjustment, the all items index was unchanged for the month.) Over the last 12 months, the index increased 1.2 percent before seasonal adjustment.

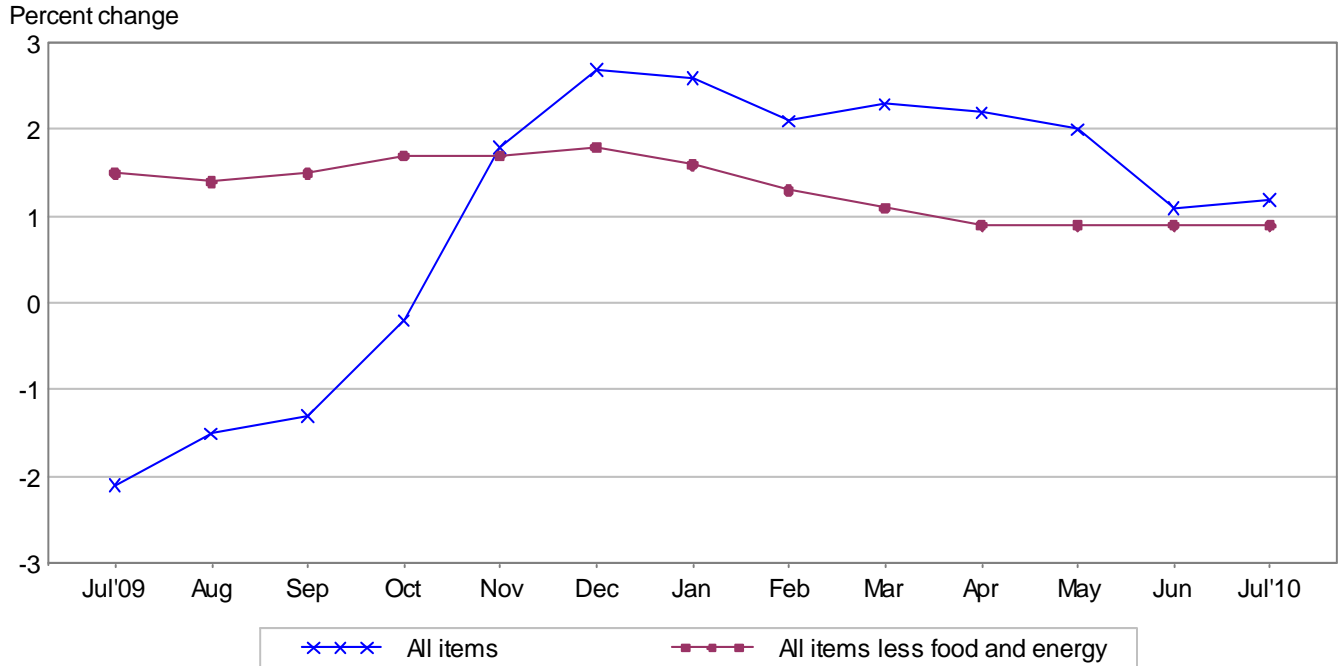
The energy index posted its first increase since January and accounted for over two thirds of the seasonally adjusted all items increase. Both the gasoline and household energy indexes turned up in July after a series of declines. The food index, in contrast, declined in July, largely due to the fourth consecutive decline in the fruits and vegetables index.

The index for all items less food and energy rose 0.1 percent in July after increasing 0.2 percent in June. The indexes for shelter, apparel, used cars and trucks, and tobacco all continued to increase in July. In contrast, the indexes for medical care and recreation turned down in July and the indexes for airline fares and household furnishings and operations continued to decline. The 12-month change in the index for all items less food and energy remained at 0.9 percent for the fourth month in a row.

**Chart 1. One-month percent change in CPI for All Urban Consumers (CPI-U), seasonally adjusted, July 2009 - July 2010**  
Percent change



**Chart 2. 12-month percent change in CPI for All Urban Consumers (CPI-U), not seasonally adjusted, July 2009 - July 2010**



**Table A. Percent changes in CPI for All Urban Consumers (CPI-U): U.S. city average**

	Seasonally adjusted changes from preceding month							Un-adjusted 12-mos. ended July 2010
	Jan. 2010	Feb. 2010	Mar. 2010	Apr. 2010	May 2010	June 2010	July 2010	
All items .....	.2	.0	.1	-.1	-.2	-.1	.3	1.2
Food .....	.2	.1	.2	.2	.0	.0	-.1	.9
Food at home .....	.4	.1	.5	.2	.0	-.1	-.1	.7
Food away from home <sup>1</sup> .....	.1	.1	.0	.1	.1	.1	.0	1.1
Energy .....	2.8	-.5	.0	-1.4	-2.9	-2.9	2.6	5.2
Energy commodities .....	4.9	-1.3	-1.0	-2.1	-4.8	-4.1	4.0	8.0
Gasoline (all types) .....	4.4	-1.4	-.8	-2.4	-5.2	-4.5	4.6	7.4
Fuel oil <sup>1</sup> .....	6.1	-2.4	.7	2.3	-1.4	-3.2	-1.6	15.1
Energy services .....	.0	.5	1.4	-.5	-.5	-1.6	.8	1.7
Electricity .....	-1.1	-.5	2.1	.7	-.4	-2.2	.5	1.3
Utility (piped) gas service .....	3.5	3.9	-.7	-4.4	-1.0	.6	1.7	3.1
All items less food and energy .....	-.1	.1	.0	.0	.1	.2	.1	.9
Commodities less food and energy commodities .....	.1	-.1	-.1	-.3	.1	.2	.2	1.0
New vehicles .....	-.5	.1	.1	.0	.1	.1	.1	.9
Used cars and trucks .....	1.5	.7	.5	.2	.6	.9	.8	17.0
Apparel .....	-.1	-.7	-.4	-.7	.2	.8	.6	-.3
Medical care commodities <sup>1</sup> .....	.7	.8	.4	.2	.1	.0	-.2	3.2
Services less energy services .....	-.2	.1	.1	.2	.1	.1	.1	.8
Shelter .....	-.5	.0	-.1	.0	.1	.1	.1	-.7
Transportation services .....	-.3	.4	.4	.4	.4	.0	.0	3.9
Medical care services .....	.5	.4	.3	.3	.0	.4	.0	3.2

<sup>1</sup> Not seasonally adjusted.

## **Consumer Price Index Data for July 2010**

### **Food**

The food index fell 0.1 percent in July after being unchanged in each of the two previous months. The index for food away from home was unchanged in July after rising 0.1 percent in June. The food at home index declined 0.1 percent, the same decrease as last month. The index for fruits and vegetables fell sharply, declining 1.9 percent after falling 1.3 percent the previous month, and the index for cereals and bakery products fell 0.3 percent. These declines more than offset increases in the other four grocery store food groups. The index for nonalcoholic beverages rose 0.6 percent after falling in each of the previous two months, and the index for dairy and related products rose 0.5 percent. The index for meats, poultry, fish, and eggs, rose 0.3 percent, its seventh consecutive increase, and the index for other food at home advanced 0.2 percent. The food index now has risen 0.9 percent over the last 12 months, with the food at home index up 0.7 percent. The indexes for fruits and vegetables, cereals and bakery products, and nonalcoholic beverages have declined over the past 12 months; the other grocery store food groups have posted increases.

### **Energy**

The energy index rose 2.6 percent in July after falling 2.9 percent in June. The gasoline index rose in July, increasing 4.6 percent after declining in each of the previous five months. (Before seasonal adjustment, gasoline prices fell 0.1 percent in July.) The household energy index, which fell 1.6 percent in June, rose 0.6 percent in July. The index for natural gas rose 1.7 percent after increasing 0.6 percent last month, and the electricity index turned up, increasing 0.5 percent after a 2.2 percent decline in June. These increases more than offset a 1.6 percent decline in the fuel oil index. The energy index has increased 5.2 percent over the last 12 months. The gasoline index has risen 7.4 percent over the last 12 months, with the index for household energy up 2.5 percent.

### **All items less food and energy**

The index for all items less food and energy rose 0.1 percent in July after rising 0.2 percent in June. The shelter index rose 0.1 percent in July, the third consecutive such increase. Within the shelter component, the indexes for both rent and owners' equivalent rent repeated their June increases of 0.1 percent, while the index for lodging away from home increased 0.2 percent. The apparel index rose 0.6 percent in July after increasing 0.8 percent in June. The index for used cars and trucks rose 0.8 percent in July following a 0.9 percent increase in June. The index for new vehicles rose 0.1 percent in July, the same increase as in the previous two months. The index for tobacco increased 1.6 percent in July, its third straight increase of at least one percent. A number of indexes declined in July. The index for airline fares decreased 1.2 percent after a 0.6 percent decline in June, and the household furnishings and operations index fell 0.1 percent in July after a 0.4 percent June decline. The medical care index, which rose 0.3 percent in June, fell 0.1 percent in July as the indexes for prescription drugs, nonprescription drugs, and hospital services all declined. The recreation index also turned down in July, falling 0.1 percent.

Over the last 12 months, the index for all items less food and energy has risen 0.9 percent. Indexes that have increased over that time period include used cars and trucks (17.0 percent), medical care (3.2 percent), airline fares (10.2 percent) and tobacco (7.4 percent). In contrast, the shelter index has fallen 0.7 percent, the index for household furnishings and operations has declined 3.1 percent, and the indexes for recreation and for apparel have declined 0.8 percent and 0.3 percent, respectively.

### **Not seasonally adjusted CPI measures**

The Consumer Price Index for All Urban Consumers (CPI-U) increased 1.2 percent over the last 12 months to an index level of 218.011 (1982-84=100). For the month, the index was unchanged prior to seasonal adjustment.

The Consumer Price Index for Urban Wage Earners and Clerical Workers (CPI-W) increased 1.6 percent over the last 12 months to an index level of 213.898 (1982-84=100). For the month, the index was unchanged prior to seasonal adjustment.

The Chained Consumer Price Index for All Urban Consumers (C-CPI-U) increased 1.0 percent over the last 12 months. For the month, the index was unchanged on a not seasonally adjusted basis. Please note that the indexes for the post-2008 period are subject to revision.

---

**The Consumer Price Index for August 2010 is scheduled to be released on Friday, September 17, 2010, at 8:30 a.m. (EDT).**

## **Facilities for Sensory Impaired**

Information from this release will be made available to sensory impaired individuals upon request. Voice phone: 202-691-5200, Federal Relay Services: 1-800-877-8339.

## **Brief Explanation of the CPI**

The Consumer Price Index (CPI) is a measure of the average change in prices over time of goods and services purchased by households. The Bureau of Labor Statistics publishes CPIs for two population groups: (1) the CPI for Urban Wage Earners and Clerical Workers (CPI-W), which covers households of wage earners and clerical workers that comprise approximately 32 percent of the total population and (2) the CPI for All Urban Consumers (CPI-U) and the Chained CPI for All Urban Consumers (C-CPI-U), which cover approximately 87 percent of the total population and include in addition to wage earners and clerical worker households, groups such as professional, managerial, and technical workers, the self-employed, short-term workers, the unemployed, and retirees and others not in the labor force.

The CPIs are based on prices of food, clothing, shelter, and fuels, transportation fares, charges for doctors' and dentists' services, drugs, and other goods and services that people buy for day-to-day living. Prices are collected each month in 87 urban areas across the country from about 4,000 housing units and approximately 25,000 retail establishments-department stores, supermarkets, hospitals, filling stations, and other types of stores and service establishments. All taxes directly associated with the purchase and use of items are included in the index. Prices of fuels and a few other items are obtained every month in all 87 locations. Prices of most other commodities and services are collected every month in the three largest geographic areas and every other month in other areas. Prices of most goods and services are obtained by personal visits or telephone calls of the Bureau's trained representatives.

In calculating the index, price changes for the various items in each location are averaged together with weights, which represent their importance in the spending of the appropriate population group. Local data are then combined to obtain a U.S. city average. For the CPI-U and CPI-W separate indexes are also published by size of city, by region of the country, for cross-classifications of regions and population-size classes, and for 27 local areas. Area indexes do not measure differences in the level of prices among cities; they only measure the average change in prices for each area since the base period. For the C-CPI-U data are issued only at the national level. It is important to note that the CPI-U and CPI-W are considered final when released, but the C-CPI-U is issued in preliminary form and subject to two annual revisions.

The index measures price change from a designed reference date. For the CPI-U and the CPI-W the reference base is 1982-84 equals 100.0. The reference base for the C-CPI-U is December 1999 equals 100. An increase of 16.5 percent from the reference base, for example, is shown as 116.5. This change can also be expressed in dollars as follows: the price of a base period market basket of goods and services in the CPI has risen from \$10 in 1982-84 to \$11.65.

For further details visit the CPI home page on the Internet at <http://www.bls.gov/cpi/> or contact our CPI Information and Analysis Section on (202) 691-7000.

## Note on Sampling Error in the Consumer Price Index

The CPI is a statistical estimate that is subject to sampling error because it is based upon a sample of retail prices and not the complete universe of all prices. BLS calculates and publishes estimates of the 1-month, 2-month, 6-month and 12-month percent change standard errors annually, for the CPI-U. These standard error estimates can be used to construct confidence intervals for hypothesis testing. For example, the estimated standard error of the 1 month percent change is 0.04 percent for the U.S. All Items Consumer Price Index. This means that if we repeatedly sample from the universe of all retail prices using the same methodology, and estimate a percentage change for each sample, then 95% of these estimates would be within 0.08 percent of the 1 month percentage change based on all retail prices. For example, for a 1-month change of 0.2 percent in the All Items CPI for All Urban Consumers, we are 95 percent confident that the actual percent change based on all retail prices would fall between 0.12 and 0.28 percent. For the latest data, including information on how to use the estimates of standard error, see “Variance Estimates for Price Changes in the Consumer Price Index, January-December 2009”. These data are available on the CPI home page (<http://www.bls.gov/cpi>), or by using the following link <http://www.bls.gov/cpi/cpivar2009.pdf>

## Calculating Index Changes

Movements of the indexes from one month to another are usually expressed as percent changes rather than changes in index points, because index point changes are affected by the level of the index in relation to its base period while percent changes are not. The example below illustrates the computation of index point and percent changes.

Percent changes for 3-month and 6-month periods are expressed as annual rates and are computed according to the standard formula for compound growth rates. These data indicate what the percent change would be if the current rate were maintained for a 12-month period.

### Index Point Change

CPI	202.416
Less previous index	201.800
Equals index point change	.616

### Percent Change

Index point difference	.616
Divided by the previous index	201.800
Equals	0.003
Results multiplied by one hundred	0.003x100
Equals percent change	0.3

## Regions Defined

The states in the four regions shown in Tables 3 and 6 are listed below.

The Northeast--Connecticut, Maine, Massachusetts, New Hampshire, New York, New Jersey, Pennsylvania, Rhode Island, and Vermont.

The Midwest--Illinois, Indiana, Iowa, Kansas, Michigan, Minnesota, Missouri, Nebraska, North Dakota, Ohio, South Dakota, and Wisconsin.

The South--Alabama, Arkansas, Delaware, Florida, Georgia, Kentucky, Louisiana, Maryland, Mississippi, North Carolina, Oklahoma, South Carolina, Tennessee, Texas, Virginia, West Virginia, and the District of Columbia.

The West--Alaska, Arizona, California, Colorado, Hawaii, Idaho, Montana, Nevada, New Mexico, Oregon, Utah, Washington, and Wyoming.

## A Note on Seasonally Adjusted and Unadjusted Data

Because price data are used for different purposes by different groups, the Bureau of Labor Statistics publishes seasonally adjusted as well as unadjusted changes each month.

For analyzing general price trends in the economy, seasonally adjusted changes are usually preferred since they eliminate the effect of changes that normally occur at the same time and in about the same magnitude every year--such as price movements resulting from changing climatic conditions, production cycles, model changeovers, holidays, and sales.

The unadjusted data are of primary interest to consumers concerned about the prices they actually pay. Unadjusted data also are used extensively for escalation purposes. Many collective bargaining contract agreements and pension plans, for example, tie compensation changes to the Consumer Price Index before adjustment for seasonal variation.

Seasonal factors used in computing the seasonally adjusted indexes are derived by the X-12-ARIMA Seasonal Adjustment Method. Seasonally adjusted indexes and seasonal factors are computed annually. Each year, the last 5 years of seasonally adjusted data are revised. Data from January 2005 through December 2009 were replaced in January 2010. Exceptions to the usual revision schedule were: the updated seasonal data at the end of 1977 replaced data from 1967 through 1977; and, in January 2002, dependently seasonally adjusted series were revised for January 1987-December 2001 as a result of a change in the aggregation weights for dependently adjusted series. For further information, please see "Aggregation of Dependently Adjusted Seasonally Adjusted Series," in the October 2001 issue of the CPI Detailed Report.

The seasonal movement of all items and 54 other aggregations is derived by combining the seasonal movement of 73 selected components. Each year the seasonal status of every series is reevaluated based upon certain statistical criteria. If any of the 73 components change their seasonal adjustment status from seasonally adjusted to not seasonally adjusted, not seasonally adjusted data will be used in the aggregation of the dependent series for the last 5 years, but the seasonally adjusted indexes will be used before that period. Note: 46 of the 73 components are seasonally adjusted for 2010.

Seasonally adjusted data, including the all items index levels, are subject to revision for up to five years after their original release. For this reason, BLS advises against the use of these data in escalation agreements.

Effective with the calculation of the seasonal factors for 1990, the Bureau of Labor Statistics has used an enhanced seasonal adjustment procedure called Intervention Analysis Seasonal Adjustment for some CPI series. Intervention Analysis Seasonal Adjustment allows for better estimates of seasonally adjusted data. Extreme values and/or sharp movements which might distort the seasonal pattern are estimated and removed from the data prior to calculation of seasonal factors. Beginning with the calculation of seasonal factors for 1996, X-12-ARIMA software was used for Intervention Analysis Seasonal Adjustment.

For the seasonal factors introduced in January 2010, BLS adjusted 30 series using Intervention Analysis Seasonal Adjustment, including selected food and beverage items, motor fuels, electricity and vehicles. For example, this procedure was used for the Motor fuel series to offset the effects of events such as damage to oil refineries from Hurricane Katrina.

For a complete list of Intervention Analysis Seasonal Adjustment series and explanations, please refer to the article "Intervention Analysis Seasonal Adjustment", located on our website at <http://www.bls.gov/cpi/cpisapage.htm>.

For additional information on seasonal adjustment in the CPI, please write to the Bureau of Labor Statistics, Division of Consumer Prices and Price Indexes, Washington, DC 20212 or contact David Levin at (202) 691-6968, or by e-mail at [Levin.David@bls.gov](mailto:Levin.David@bls.gov). If you have general questions about the CPI, please call our information staff at (202) 691-7000.



**Table 1. Consumer Price Index for All Urban Consumers (CPI-U): U.S. city average, by expenditure category and commodity and service group**

(1982-84=100, unless otherwise noted)

CPI-U Expenditure category	Relative importance, December 2009	Unadjusted indexes		Unadjusted percent change to July 2010 from—		Seasonally adjusted percent change from—		
		June 2010	July 2010	July 2009	June 2010	Apr. to May	May to June	June to July
All items .....	100.000	217.965	218.011	1.2	0.0	-0.2	-0.1	0.3
All items (1967=100) .....	-	652.926	653.066	-	-	-	-	-
Food and beverages .....	14.795	219.562	219.539	.9	.0	.0	.0	.0
Food .....	13.738	219.218	219.121	.9	.0	.0	.0	-.1
Food at home .....	7.801	215.361	215.256	.7	.0	.0	-.1	-.1
Cereals and bakery products .....	1.108	250.260	250.172	-1.3	.0	.2	-.6	-.3
Meats, poultry, fish, and eggs .....	1.745	208.171	208.989	3.6	.4	.4	1.0	.3
Dairy and related products <sup>1</sup> .....	.820	197.947	198.991	3.0	.5	.2	.1	.5
Fruits and vegetables .....	1.153	271.907	265.967	-1.8	-2.2	-1.1	-1.3	-1.9
Nonalcoholic beverages and beverage materials .....	.952	160.361	161.121	-.6	.5	-.8	-.2	.6
Other food at home .....	2.023	191.001	191.529	.3	.3	.3	-.3	.2
Sugar and sweets .....	.295	199.737	201.180	3.1	.7	1.2	-1.2	.6
Fats and oils .....	.232	199.375	200.506	-.3	.6	.1	.0	.0
Other foods .....	1.496	204.874	205.166	-.2	.1	-.1	-.2	.1
Other miscellaneous foods <sup>1 2</sup> .....	.439	121.551	122.052	.1	.4	-1.4	.8	.4
Food away from home <sup>1</sup> .....	5.937	225.797	225.710	1.1	.0	.1	.1	.0
Other food away from home <sup>1 2</sup> .....	.326	159.271	159.338	1.8	.0	-.1	.5	.0
Alcoholic beverages .....	1.056	222.680	223.639	1.3	.4	.2	.1	.5
Housing .....	41.960	216.778	217.076	-.5	.1	.0	-.1	.1
Shelter .....	32.289	248.470	248.677	-.7	.1	.1	.1	.1
Rent of primary residence <sup>3</sup> .....	5.966	248.999	249.126	.1	.1	.0	.1	.1
Lodging away from home <sup>2</sup> .....	.769	140.476	143.358	2.8	2.1	2.5	1.3	.2
Owners' equivalent rent of residences <sup>3 4</sup> .....	25.206	256.352	256.395	-.2	.0	.0	.1	.1
Owners' equivalent rent of primary residence <sup>3 4</sup> .....	23.593	256.347	256.387	-.2	.0	.0	.1	.1
Tenants' and household insurance <sup>1 2</sup> .....	.347	125.289	125.865	3.8	.5	.1	.2	.5
Fuels and utilities .....	5.081	217.820	219.614	3.1	.8	-.4	-1.2	.6
Household energy .....	4.028	193.678	195.268	2.5	.8	-.6	-1.6	.6
Fuel oil and other fuels <sup>1</sup> .....	.276	265.521	261.257	13.5	-1.6	-2.0	-2.6	-1.6
Gas (piped) and electricity <sup>3</sup> .....	3.752	198.207	200.177	1.7	1.0	-.5	-1.6	.8
Water and sewer and trash collection services <sup>2</sup> .....	1.052	169.745	171.156	6.0	.8	.5	.2	.4
Household furnishings and operations .....	4.590	125.589	125.239	-3.1	-.3	.0	-.4	-.1
Household operations <sup>1 2</sup> .....	.781	150.560	150.747	.5	.1	.3	.0	.1
Apparel .....	3.695	118.319	115.248	-.3	-2.6	.2	.8	.6
Men's and boys' apparel .....	.903	112.446	109.670	-.1	-2.5	.5	2.3	-.2
Women's and girls' apparel .....	1.580	104.746	100.659	-1.0	-3.9	.3	.2	1.4
Infants' and toddlers' apparel .....	.196	112.930	112.882	1.7	.0	-.4	.8	2.2
Footwear .....	.721	127.196	125.212	.6	-1.6	.0	.6	.2
Transportation .....	16.685	192.651	193.038	5.6	.2	-1.2	-1.0	1.3
Private transportation .....	15.497	187.593	188.028	5.4	.2	-1.4	-1.0	1.4
New and used motor vehicles <sup>2</sup> .....	6.386	97.176	97.620	4.5	.5	.2	.3	.3
New vehicles .....	3.573	137.503	137.323	.9	-.1	.1	.1	.1
Used cars and trucks .....	2.012	144.399	146.379	17.0	1.4	.6	.9	.8
Motor fuel .....	4.525	234.868	234.642	7.7	-.1	-5.0	-4.1	4.4
Gasoline (all types) .....	4.337	234.214	234.091	7.4	-.1	-5.2	-4.5	4.6
Motor vehicle parts and equipment <sup>1</sup> .....	.401	136.686	137.236	2.6	.4	.3	.4	.4
Motor vehicle maintenance and repair <sup>1</sup> .....	1.167	247.635	247.536	1.9	.0	.0	.1	.0
Public transportation .....	1.187	257.825	257.337	7.7	-.2	1.5	-.5	-.8
Medical care .....	6.513	388.199	387.898	3.2	-.1	.1	.3	-.1
Medical care commodities <sup>1</sup> .....	1.611	314.888	314.113	3.2	-.2	.1	.0	-.2
Medical care services .....	4.902	410.802	410.710	3.2	.0	.0	.4	.0
Professional services .....	2.796	327.938	328.899	2.8	.3	.0	.4	.3

See footnotes at end of table.

**Table 1. Consumer Price Index for All Urban Consumers (CPI-U): U.S. city average, by expenditure category and commodity and service group-Continued**

(1982-84=100, unless otherwise noted)

CPI-U	Relative importance, December 2009	Unadjusted indexes		Unadjusted percent change to July 2010 from—		Seasonally adjusted percent change from—		
		June 2010	July 2010	July 2009	June 2010	Apr. to May	May to June	June to July
<b>Expenditure category</b>								
Hospital and related services <sup>3</sup>	1.619	606.378	604.291	6.3	-0.3	0.4	0.6	-0.4
Recreation <sup>2</sup>	6.437	113.802	113.689	-.8	-.1	.0	.1	-.1
Video and audio <sup>2</sup>	1.894	99.814	99.244	-2.3	-.6	-.3	.4	-.4
Education and communication <sup>2</sup>	6.434	129.263	129.586	2.1	.2	.1	.1	.2
Education <sup>2</sup>	3.035	197.284	198.206	4.8	.5	.3	.4	.4
Educational books and supplies	.200	504.870	504.856	4.8	.0	.6	.8	-.2
Tuition, other school fees, and childcare	2.835	566.910	569.750	4.8	.5	.3	.4	.4
Communication <sup>2</sup>	3.399	84.657	84.703	-.4	.1	-.2	-.2	.1
Information and information processing <sup>1 2</sup>	3.225	81.487	81.535	-.6	.1	-.2	-.2	.1
Telephone services <sup>1 2</sup>	2.392	102.303	102.471	-.2	.2	.0	-.1	-.2
Information technology, hardware and services <sup>1 5</sup>	.833	9.422	9.399	-2.1	-.2	-.6	-.5	-.2
Personal computers and peripheral equipment <sup>6</sup>	.246	75.751	75.912	-6.1	.2	-1.3	-.4	.4
Other goods and services	3.483	380.926	383.247	2.8	.6	.2	.4	.7
Tobacco and smoking products <sup>1</sup>	.871	806.154	819.214	7.4	1.6	1.3	1.0	1.6
Personal care	2.612	206.481	207.025	1.2	.3	-.2	.2	.4
Personal care products <sup>1</sup>	.688	160.061	161.372	-.9	.8	-.8	-.2	.8
Personal care services <sup>1</sup>	.642	230.225	230.519	1.4	.1	.2	.1	.1
Miscellaneous personal services	1.048	353.941	354.533	3.0	.2	.1	.1	.5
<b>Commodity and service group</b>								
Commodities	39.816	173.899	173.503	1.8	-.2	-.6	-.4	.5
Food and beverages	14.795	219.562	219.539	.9	.0	.0	.0	.0
Commodities less food and beverages	25.021	149.648	149.116	2.3	-.4	-.9	-.6	.9
Nondurables less food and beverages	15.044	188.237	187.006	2.9	-.7	-1.5	-.8	1.3
Apparel	3.695	118.319	115.248	-.3	-2.6	.2	.8	.6
Nondurables less food, beverages, and apparel	11.349	236.028	235.935	3.9	.0	-2.0	-1.7	1.9
Durables	9.978	111.443	111.555	1.5	.1	.1	.1	.1
Services	60.184	261.756	262.241	.9	.2	.1	.0	.1
Rent of shelter <sup>4</sup>	31.942	258.910	259.115	-.7	.1	.2	.0	-.1
Tenants' and household insurance <sup>1 2</sup>	.347	125.289	125.865	3.8	.5	.1	.2	.5
Gas (piped) and electricity <sup>3</sup>	3.752	198.207	200.177	1.7	1.0	-.5	-1.6	.8
Water and sewer and trash collection services <sup>2</sup>	1.052	169.745	171.156	6.0	.8	.5	.2	.4
Household operations <sup>1 2</sup>	.781	150.560	150.747	.5	.1	.3	.0	.1
Transportation services	6.060	260.525	261.054	3.9	.2	.4	.0	.0
Medical care services	4.902	410.802	410.710	3.2	.0	.0	.4	.0
Other services	11.347	309.349	310.033	2.1	.2	.2	.2	.3
<b>Special indexes</b>								
All items less food	86.262	217.788	217.857	1.3	.0	-.2	-.2	.4
All items less shelter	67.711	208.486	208.469	2.2	.0	-.3	-.3	.4
All items less medical care	93.487	209.605	209.664	1.1	.0	-.2	-.2	.3
Commodities less food	26.078	152.247	151.754	2.3	-.3	-.9	-.6	.9
Nondurables less food	16.100	190.306	189.196	2.8	-.6	-1.3	-1.0	1.4
Nondurables less food and apparel	12.405	233.711	233.710	3.7	.0	-1.8	-1.6	1.7
Nondurables	29.838	204.157	203.471	1.9	-.3	-.9	-.9	.8
Services less rent of shelter <sup>4</sup>	28.243	285.371	286.238	2.7	.3	.1	-.1	.1
Services less medical care services	55.282	250.094	250.605	.7	.2	.1	-.1	.0
Energy	8.553	211.660	212.372	5.2	.3	-2.9	-2.9	2.6
All items less energy	91.447	220.336	220.316	.9	.0	.1	.1	.1
All items less food and energy	77.708	221.265	221.258	.9	.0	.1	.2	.1
Commodities less food and energy commodities	21.276	143.376	142.864	1.0	-.4	.1	.2	.2
Energy commodities	4.801	238.032	237.602	8.0	-.2	-4.8	-4.1	4.0
Services less energy services	56.432	268.308	268.655	.8	.1	.1	.1	.1
Purchasing power of the consumer dollar (1982-84=\$1.00)	-	\$ .459	\$ .459	-	-	-	-	-
Purchasing power of the consumer dollar (1967=\$1.00)	-	\$ .153	\$ .153	-	-	-	-	-

<sup>1</sup> Not seasonally adjusted.

<sup>2</sup> Indexes on a December 1997=100 base.

<sup>3</sup> This index series was calculated using a Laspeyres estimator. All other item stratum index series were calculated using a geometric means estimator.

<sup>4</sup> Indexes on a December 1982=100 base.

<sup>5</sup> Indexes on a December 1988=100 base.

<sup>6</sup> Indexes on a December 2007=100 base.

- Data not available.

NOTE: Index applies to a month as a whole, not to any specific date.

**Table 2. Consumer Price Index for All Urban Consumers (CPI-U): Seasonally adjusted U.S. city average, by expenditure category and commodity and service group**

(1982-84=100, unless otherwise noted)

CPI-U	Seasonally adjusted indexes				Seasonally adjusted annual rate percent change for					
					3 months ended—				6 months ended—	
	Apr. 2010	May 2010	June 2010	July 2010	Oct. 2009	Jan. 2010	Apr. 2010	July 2010	Jan. 2010	July 2010
<b>Expenditure category</b>										
All items .....	217.579	217.224	216.929	217.597	3.0	2.3	0.0	0.0	2.6	0.0
Food and beverages .....	219.680	219.764	219.696	219.641	.1	1.8	1.7	-.1	.9	.8
Food .....	219.396	219.459	219.369	219.222	.0	1.9	2.0	-.3	.9	.8
Food at home .....	216.045	215.939	215.622	215.430	-1.4	2.3	3.0	-1.1	.5	.9
Cereals and bakery products .....	250.147	250.615	249.216	248.561	-.1	-.4	-2.1	-2.5	-.2	-2.3
Meats, poultry, fish, and eggs .....	205.699	206.622	208.669	209.196	-3.6	3.1	8.2	7.0	-.3	7.6
Dairy and related products <sup>1</sup> .....	197.308	197.749	197.947	198.991	4.7	7.6	-3.3	3.5	6.1	.0
Fruits and vegetables .....	281.331	278.110	274.549	269.266	-8.8	7.4	13.0	-16.1	-1.0	-2.6
Nonalcoholic beverages and beverage materials .....	162.487	161.177	160.840	161.755	-.5	.0	.0	-1.8	-.3	-.9
Other food at home .....	190.748	191.270	190.613	190.968	1.5	-.7	-.1	.5	.4	.2
Sugar and sweets .....	199.672	202.040	199.608	200.816	6.7	1.9	1.6	2.3	4.2	2.0
Fats and oils .....	199.755	199.880	199.817	199.743	-3.4	1.8	.6	.0	-.8	.3
Other foods .....	204.458	204.717	204.265	204.548	1.3	-1.6	-.6	.2	-.2	-.2
Other miscellaneous foods <sup>1 2</sup> .....	122.298	120.607	121.551	122.052	.4	-1.8	2.4	-.8	-.7	.8
Food away from home <sup>1</sup> .....	225.276	225.573	225.797	225.710	1.6	1.2	.6	.8	1.4	.7
Other food away from home <sup>1 2</sup> .....	158.738	158.529	159.271	159.338	1.2	1.2	3.1	1.5	1.2	2.3
Alcoholic beverages .....	222.001	222.354	222.582	223.758	2.2	.5	-.9	3.2	1.4	1.1
Housing .....	216.129	216.172	215.933	216.192	.4	-1.4	-.1	.1	-.5	.0
Shelter .....	247.855	248.080	248.360	248.533	.3	-2.6	-.3	1.1	-1.1	.4
Rent of primary residence <sup>3</sup> .....	248.982	249.015	249.201	249.381	-.5	-.1	.2	.6	-.3	.4
Lodging away from home <sup>2</sup> .....	132.018	135.330	137.144	137.410	5.4	-13.0	7.3	17.4	-4.2	12.2
Owners' equivalent rent of residences <sup>3 4</sup> .....	256.091	256.166	256.370	256.521	-.1	-.7	-.7	.7	-.4	.0
Owners' equivalent rent of primary residence <sup>3 4</sup> .....	256.086	256.161	256.365	256.513	-.1	-.7	-.7	.7	-.4	.0
Tenants' and household insurance <sup>1 2</sup> .....	124.879	125.036	125.289	125.865	3.0	7.3	1.7	3.2	5.1	2.4
Fuels and utilities .....	215.725	214.885	212.218	213.471	4.9	6.8	5.7	-4.1	5.8	.7
Household energy .....	191.400	190.232	187.134	188.333	4.3	7.3	5.2	-6.3	5.8	-.7
Fuel oil and other fuels <sup>1</sup> .....	278.080	272.606	265.521	261.257	26.1	75.7	-3.9	-22.1	48.9	-13.5
Gas (piped) and electricity <sup>3</sup> .....	195.046	194.056	191.036	192.576	3.0	3.4	5.9	-5.0	3.2	.3
Water and sewer and trash collection services <sup>2</sup> .....	169.531	170.317	170.723	171.409	7.2	5.0	7.6	4.5	6.1	6.0
Household furnishings and operations .....	125.722	125.708	125.203	125.135	-3.8	-1.6	-5.1	-1.9	-2.7	-3.5
Household operations <sup>1 2</sup> .....	150.068	150.575	150.560	150.747	.5	-1.8	1.5	1.8	-.6	1.7
Apparel .....	118.459	118.740	119.705	120.373	-.3	-.2	-7.0	6.6	-.1	-.4
Men's and boys' apparel .....	110.398	110.897	113.432	113.220	-1.8	-1.7	-6.6	10.6	-1.8	1.7
Women's and girls' apparel .....	106.015	106.381	106.627	108.074	-1.1	1.1	-11.2	8.0	.0	-2.0
Infants' and toddlers' apparel .....	114.244	113.803	114.727	117.212	-2.6	-.8	-1.8	10.8	-.9	4.3
Footwear .....	127.337	127.334	128.153	128.465	1.1	4.3	-6.1	3.6	2.7	-1.4
Transportation .....	192.243	189.994	188.135	190.544	15.6	14.2	-2.8	-3.5	14.9	-3.1
Private transportation .....	187.597	185.021	183.147	185.797	15.6	14.9	-3.6	-3.8	15.2	-3.7
New and used motor vehicles <sup>2</sup> .....	96.840	97.011	97.307	97.557	7.8	4.9	1.7	3.0	6.4	2.4
New vehicles .....	137.747	137.840	137.939	138.139	2.9	-1.0	.8	1.1	.9	1.0
Used cars and trucks .....	141.905	142.691	143.950	145.088	30.5	24.6	5.6	9.3	27.5	7.4
Motor fuel .....	236.628	224.806	215.489	224.977	38.5	43.6	-17.2	-18.3	41.1	-17.8
Gasoline (all types) .....	236.631	224.391	214.321	224.135	37.5	44.8	-17.0	-19.5	41.1	-18.3
Motor vehicle parts and equipment <sup>1</sup> .....	135.701	136.135	136.686	137.236	-.2	5.0	1.3	4.6	2.3	2.9
Motor vehicle maintenance and repair <sup>1</sup> .....	247.355	247.311	247.635	247.536	3.9	.3	2.9	.3	2.1	1.6
Public transportation .....	250.293	254.009	252.626	250.567	16.3	5.9	8.8	.4	11.0	4.5
Medical care .....	386.905	387.136	388.254	387.933	3.7	3.8	4.4	1.1	3.7	2.7
Medical care commodities <sup>1</sup> .....	314.535	314.923	314.888	314.113	5.6	2.8	5.3	-.5	4.2	2.3
Medical care services .....	409.135	409.293	410.880	410.759	3.0	4.1	4.1	1.6	3.6	2.9
Professional services .....	326.134	326.207	327.522	328.610	2.7	3.6	1.7	3.1	3.1	2.4

See footnotes at end of table.

**Table 2. Consumer Price Index for All Urban Consumers (CPI-U): Seasonally adjusted U.S. city average, by expenditure category and commodity and service group-Continued**

(1982-84=100, unless otherwise noted)

CPI-U	Seasonally adjusted indexes				Seasonally adjusted annual rate percent change for					
					3 months ended—			6 months ended—		
	Apr. 2010	May 2010	June 2010	July 2010	Oct. 2009	Jan. 2010	Apr. 2010	July 2010	Jan. 2010	July 2010
<b>Expenditure category</b>										
Hospital and related services <sup>3</sup> .....	602.052	604.503	607.995	605.466	5.8	7.2	10.2	2.3	6.5	6.2
Recreation <sup>2</sup> .....	113.612	113.557	113.695	113.599	-1.4	-2.1	.3	.0	-1.8	.1
Video and audio <sup>2</sup> .....	99.556	99.212	99.598	99.240	-5.1	-1	-2.8	-1.3	-2.6	-2.0
Education and communication <sup>2</sup> .....	129.852	129.932	130.083	130.355	1.9	1.8	3.1	1.6	1.8	2.3
Education <sup>2</sup> .....	198.426	199.041	199.925	200.686	3.8	4.0	6.8	4.6	3.9	5.7
Educational books and supplies .....	502.840	505.738	509.604	508.430	5.1	6.4	3.2	4.5	5.7	3.9
Tuition, other school fees, and childcare .....	570.587	572.249	574.662	577.097	3.7	3.8	7.0	4.6	3.7	5.8
Communication <sup>2</sup> .....	84.950	84.811	84.657	84.702	.0	-4	-1	-1.2	-2	-6
Information and information processing <sup>1 2</sup> .....	81.784	81.641	81.487	81.535	-1	-8	-2	-1.2	-4	-7
Telephone services <sup>1 2</sup> .....	102.394	102.369	102.303	102.471	1.0	-6	-1.3	.3	.2	-5
Information technology, hardware and services <sup>1 5</sup> .....	9.530	9.473	9.422	9.399	-4.2	-1.8	3.1	-5.4	-3.0	-1.2
Personal computers and peripheral equipment <sup>6</sup> .....	77.198	76.179	75.891	76.160	-11.0	-4.2	-3.7	-5.3	-7.7	-4.5
Other goods and services .....	378.248	379.027	380.603	383.432	2.5	2.7	.4	5.6	2.6	3.0
Tobacco and smoking products <sup>1</sup> .....	788.066	798.192	806.154	819.214	5.8	6.9	.6	16.8	6.4	8.4
Personal care .....	206.116	205.796	206.246	207.160	1.3	1.1	.4	2.0	1.2	1.2
Personal care products <sup>1</sup> .....	161.601	160.351	160.061	161.372	-1.5	-1.5	-1	-6	-1.5	-3
Personal care services <sup>1</sup> .....	229.635	230.013	230.225	230.519	2.0	.3	1.8	1.5	1.2	1.7
Miscellaneous personal services .....	352.300	352.658	353.072	354.973	3.1	3.1	2.5	3.1	3.1	2.8
<b>Commodity and service group</b>										
Commodities .....	174.112	173.127	172.440	173.368	4.9	6.4	-2.5	-1.7	5.7	-2.1
Food and beverages .....	219.680	219.764	219.696	219.641	.1	1.8	1.7	-.1	.9	.8
Commodities less food and beverages .....	149.892	148.511	147.598	148.890	8.0	9.3	-4.8	-2.6	8.6	-3.7
Nondurables less food and beverages .....	188.173	185.316	183.771	186.102	11.9	15.3	-9.2	-4.3	13.6	-6.8
Apparel .....	118.459	118.740	119.705	120.373	-3	-2	-7.0	6.6	-.1	-.4
Nondurables less food, beverages, and apparel .....	235.996	231.178	227.173	231.395	16.0	20.2	-9.5	-7.6	18.1	-8.6
Durables .....	111.244	111.315	111.381	111.465	3.9	2.5	-1.1	.8	3.2	-.2
Services .....	260.792	261.066	261.169	261.549	1.7	-4	1.7	1.2	.6	1.4
Rent of shelter <sup>4</sup> .....	257.900	258.334	258.297	257.998	.6	-1.6	-1.9	.2	-.5	-.9
Tenants' and household insurance <sup>1 2</sup> .....	124.879	125.036	125.289	125.865	3.0	7.3	1.7	3.2	5.1	2.4
Gas (piped) and electricity <sup>3</sup> .....	195.046	194.056	191.036	192.576	3.0	3.4	5.9	-5.0	3.2	.3
Water and sewer and trash collection services <sup>2</sup> .....	169.531	170.317	170.723	171.409	7.2	5.0	7.6	4.5	6.1	6.0
Household operations <sup>1 2</sup> .....	150.068	150.575	150.560	150.747	.5	-1.8	1.5	1.8	-.6	1.7
Transportation services .....	258.879	259.890	259.909	259.852	7.3	2.1	5.0	1.5	4.7	3.2
Medical care services .....	409.135	409.293	410.880	410.759	3.0	4.1	4.1	1.6	3.6	2.9
Other services .....	308.870	309.426	310.105	310.990	1.6	1.3	2.5	2.8	1.5	2.6
<b>Special indexes</b>										
All items less food .....	217.313	216.892	216.564	217.361	3.5	2.4	-.3	.1	2.9	-.1
All items less shelter .....	208.187	207.597	207.070	207.943	4.3	4.7	.1	-.5	4.5	-.2
All items less medical care .....	209.257	208.883	208.536	209.236	2.9	2.2	-.3	.0	2.6	-.2
Commodities less food .....	152.467	151.127	150.242	151.537	7.7	8.9	-4.7	-2.4	8.3	-3.6
Nondurables less food .....	190.158	187.713	185.878	188.502	10.2	14.8	-8.7	-3.4	12.5	-6.1
Nondurables less food and apparel .....	233.688	229.400	225.675	229.614	14.1	19.0	-8.7	-6.8	16.5	-7.8
Nondurables .....	204.613	202.850	201.106	202.701	7.1	7.5	-2.9	-3.7	7.3	-3.3
Services less rent of shelter <sup>4</sup> .....	284.130	284.374	284.147	284.537	3.6	2.7	3.9	.6	3.1	2.2
Services less medical care services .....	249.037	249.394	249.234	249.251	1.8	-1	.6	.3	.9	.5
Energy .....	211.324	205.093	199.059	204.195	21.0	25.6	-7.6	-12.8	23.2	-10.2
All items less energy .....	219.942	220.179	220.463	220.684	1.4	.3	.8	1.4	.9	1.1
All items less food and energy .....	220.768	221.037	221.388	221.676	1.7	.0	.6	1.7	.8	1.1
Commodities less food and energy commodities .....	143.279	143.357	143.626	143.923	2.0	1.7	-1.6	1.8	1.8	.1
Energy commodities .....	240.344	228.758	219.487	228.353	37.8	45.4	-16.5	-18.5	41.5	-17.5
Services less energy services .....	267.547	267.941	268.337	268.610	1.6	-.6	1.4	1.6	.5	1.5

<sup>1</sup> Not seasonally adjusted.

<sup>2</sup> Indexes on a December 1997=100 base.

<sup>3</sup> This index series was calculated using a Laspeyres estimator. All other item stratum index series were calculated using a geometric means estimator.

<sup>4</sup> Indexes on a December 1982=100 base.

<sup>5</sup> Indexes on a December 1988=100 base.

<sup>6</sup> Indexes on a December 2007=100 base.

NOTE: Index applies to a month as a whole, not to any specific date.

**Table 3. Consumer Price Index for All Urban Consumers (CPI-U): Selected areas, all items index**

(1982-84=100, unless otherwise noted)

CPI-U	Pricing schedule 1	All items									
		Indexes				Percent change to July 2010 from—			Percent change to June 2010 from—		
		Apr. 2010	May 2010	June 2010	July 2010	July 2009	May 2010	June 2010	June 2009	Apr. 2010	May 2010
U.S. city average .....	M	218.009	218.178	217.965	218.011	1.2	-0.1	0.0	1.1	0.0	-0.1
<b>Region and area size<sup>2</sup></b>											
Northeast urban .....	M	233.615	234.130	233.834	233.885	1.6	-1	.0	1.7	.1	-1
Size A - More than 1,500,000 .....	M	235.496	236.054	235.769	235.770	1.4	-1	.0	1.6	.1	-1
Size B/C - 50,000 to 1,500,000 <sup>3</sup> .....	M	139.115	139.362	139.163	139.274	2.1	-1	.1	2.0	.0	-1
Midwest urban .....	M	207.777	207.987	207.886	208.211	1.7	.1	.2	1.2	.1	.0
Size A - More than 1,500,000 .....	M	208.308	208.489	208.289	208.556	1.4	.0	.1	1.0	.0	-1
Size B/C - 50,000 to 1,500,000 <sup>3</sup> .....	M	133.510	133.772	133.845	134.130	2.1	.3	.2	1.7	.3	.1
Size D - Nonmetropolitan (less than 50,000) .....	M	204.326	204.026	203.749	203.992	1.5	.0	.1	1.3	-.3	-1
South urban .....	M	211.528	211.423	211.232	210.988	1.0	-2	-.1	.9	-.1	-1
Size A - More than 1,500,000 .....	M	213.052	213.101	213.121	212.696	.8	-2	-.2	.8	.0	.0
Size B/C - 50,000 to 1,500,000 <sup>3</sup> .....	M	134.606	134.500	134.173	134.130	1.1	-3	.0	.8	-.3	-2
Size D - Nonmetropolitan (less than 50,000) .....	M	214.714	214.336	215.216	214.639	2.0	.1	-.3	1.6	.2	.4
West urban .....	M	221.202	221.417	221.147	221.331	.8	.0	.1	.6	.0	-1
Size A - More than 1,500,000 .....	M	225.040	225.571	225.291	225.574	.9	.0	.1	.6	.1	-1
Size B/C - 50,000 to 1,500,000 <sup>3</sup> .....	M	134.133	133.889	133.635	133.685	.7	-2	.0	.5	-.4	-2
<b>Size classes</b>											
A <sup>4</sup> .....	M	199.043	199.358	199.183	199.224	1.1	-1	.0	1.0	.1	-1
B/C <sup>3</sup> .....	M	134.920	134.909	134.692	134.753	1.3	-1	.0	1.1	-.2	-2
D .....	M	210.968	210.739	211.094	210.882	1.5	.1	-.1	1.2	.1	.2
<b>Selected local areas<sup>5</sup></b>											
Chicago-Gary-Kenosha, IL-IN-WI .....	M	212.929	212.984	212.186	212.535	.8	-2	.2	.6	-.3	-.4
Los Angeles-Riverside-Orange County, CA ...	M	225.916	226.438	225.877	225.991	.9	-2	.1	.9	.0	-2
New York-Northern N.J.-Long Island, NY-NJ-CT-PA .....	M	240.529	241.075	240.817	241.147	1.5	.0	.1	1.5	.1	-1
Boston-Brockton-Nashua, MA-NH-ME-CT .....	1	-	238.083	-	236.132	1.3	-8	-	-	-	-
Cleveland-Akron, OH .....	1	-	204.024	-	203.989	1.7	.0	-	-	-	-
Dallas-Fort Worth, TX .....	1	-	202.108	-	200.227	-2	-9	-	-	-	-
Washington-Baltimore, DC-MD-VA-WV <sup>6</sup> .....	1	-	142.025	-	141.966	.8	.0	-	-	-	-
Atlanta, GA .....	2	204.014	-	204.725	-	-	-	-	.6	.3	-
Detroit-Ann Arbor-Flint, MI .....	2	205.248	-	204.891	-	-	-	-	.2	-.2	-
Houston-Galveston-Brazoria, TX .....	2	194.037	-	194.734	-	-	-	-	1.3	.4	-
Miami-Fort Lauderdale, FL .....	2	222.625	-	222.390	-	-	-	-	.4	-.1	-
Philadelphia-Wilmington-Atlantic City, PA-NJ-DE-MD .....	2	227.432	-	228.074	-	-	-	-	1.9	.3	-
San Francisco-Oakland-San Jose, CA .....	2	227.697	-	228.110	-	-	-	-	1.1	.2	-
Seattle-Tacoma-Bremerton, WA .....	2	226.513	-	226.118	-	-	-	-	-.5	-.2	-

<sup>1</sup> Foods, fuels, and several other items priced every month in all areas; most other goods and services priced as indicated:

M - Every month.

1 - January, March, May, July, September, and November.

2 - February, April, June, August, October, and December.

<sup>2</sup> Regions defined as the four Census regions. See technical notes.

<sup>3</sup> Indexes on a December 1996=100 base.

<sup>4</sup> Indexes on a December 1986=100 base.

<sup>5</sup> In addition, the following metropolitan areas are published semiannually and appear in Tables 34 and 39 of the January and July issues of the CPI Detailed Report: Anchorage, AK; Cincinnati-Hamilton, OH-KY-IN; Denver-Boulder-Greeley, CO; Honolulu, HI; Kansas City, MO-KS; Milwaukee-Racine, WI; Minneapolis-St. Paul, MN-WI; Phoenix-Mesa, AZ; Pittsburgh, PA; Portland-Salem, OR-WA; St. Louis, MO-IL; San Diego, CA;

Tampa-St. Petersburg-Clearwater, FL.

<sup>6</sup> Indexes on a November 1996=100 base.

- Data not available.

NOTE: Local area indexes are byproducts of the national CPI program. Each local index has a smaller sample size than the national index and is, therefore, subject to substantially more sampling and other measurement error. As a result, local area indexes show greater volatility than the national index, although their long-term trends are similar. Therefore, the Bureau of Labor Statistics strongly urges users to consider adopting the national average CPI for use in their escalator clauses.

NOTE: Index applies to a month as a whole, not to any specific date.

**Table 4. Consumer Price Index for Urban Wage Earners and Clerical Workers (CPI-W): U.S. city average, by expenditure category and commodity and service group**

(1982-84=100, unless otherwise noted)

CPI-W Expenditure category	Relative importance, December 2009	Unadjusted indexes		Unadjusted percent change to July 2010 from—		Seasonally adjusted percent change from—		
		June 2010	July 2010	July 2009	June 2010	Apr. to May	May to June	June to July
All items .....	100.000	213.839	213.898	1.6	0.0	-0.3	-0.2	0.4
All items (1967=100) .....	-	636.962	637.138	-	-	-	-	-
Food and beverages .....	16.425	218.730	218.784	.9	.0	.0	.0	.0
Food .....	15.333	218.291	218.276	.9	.0	.0	-.1	.0
Food at home .....	8.900	214.143	214.212	.7	.0	-.1	-.2	.0
Cereals and bakery products .....	1.257	250.742	250.670	-1.3	.0	.2	-.6	-.2
Meats, poultry, fish, and eggs .....	2.144	207.883	208.784	3.7	.4	.4	1.1	.3
Dairy and related products <sup>1</sup> .....	.898	196.663	197.782	3.1	.6	.3	.1	.6
Fruits and vegetables .....	1.223	269.040	263.715	-2.1	-2.0	-1.3	-1.5	-1.8
Nonalcoholic beverages and beverage materials .....	1.123	159.938	160.862	-.5	.6	-.7	-.3	.7
Other food at home .....	2.254	190.164	190.675	.2	.3	-.2	-.4	.2
Sugar and sweets .....	.321	198.560	199.857	3.0	.7	1.1	-1.2	.4
Fats and oils .....	.259	199.676	200.656	-.5	.5	.0	-.1	.0
Other foods .....	1.674	204.877	205.206	-.2	.2	.1	-.2	.2
Other miscellaneous foods <sup>1 2</sup> .....	.472	121.830	122.217	.1	.3	-1.5	.8	.3
Food away from home <sup>1</sup> .....	6.433	225.846	225.707	1.0	-.1	.1	.1	-.1
Other food away from home <sup>1 2</sup> .....	.321	159.601	159.725	1.8	.1	-.1	.4	.1
Alcoholic beverages .....	1.092	223.718	224.772	1.5	.5	.3	.1	.7
Housing .....	39.753	213.469	213.743	-.1	.1	.0	-.1	.1
Shelter .....	30.171	242.253	242.396	-.4	.1	.1	.1	.1
Rent of primary residence <sup>3</sup> .....	8.476	247.389	247.442	-.1	.0	.0	.1	.0
Lodging away from home <sup>2</sup> .....	.432	142.529	145.768	3.5	2.3	2.1	1.8	.3
Owners' equivalent rent of residences <sup>3 4</sup> .....	20.959	232.235	232.271	-.2	.0	.0	.1	.1
Owners' equivalent rent of primary residence <sup>3 4</sup> .....	20.218	232.237	232.272	-.2	.0	.0	.1	.1
Tenants' and household insurance <sup>1 2</sup> .....	.303	126.345	126.950	4.3	.5	.1	.2	.5
Fuels and utilities .....	5.632	217.007	218.770	3.1	.8	-.4	-1.2	.6
Household energy .....	4.517	192.105	193.671	2.4	.8	-.6	-1.5	.6
Fuel oil and other fuels <sup>1</sup> .....	.271	267.671	263.269	13.0	-1.6	-2.2	-2.5	-1.6
Gas (piped) and electricity <sup>3</sup> .....	4.246	197.258	199.162	1.8	1.0	-.5	-1.5	.8
Water and sewer and trash collection services <sup>2</sup> .....	1.114	170.323	171.690	6.1	.8	.5	.2	.4
Household furnishings and operations .....	3.950	121.720	121.273	-3.1	-.4	.0	-.3	-.2
Household operations <sup>1 2</sup> .....	.369	153.235	153.634	.7	.3	.6	.0	.3
Apparel .....	3.788	117.630	114.464	-.9	-2.7	.4	.8	.4
Men's and boys' apparel .....	.945	112.359	109.313	-1.1	-2.7	.7	2.1	-.5
Women's and girls' apparel .....	1.568	103.952	99.600	-1.7	-4.2	.5	.2	.8
Infants' and toddlers' apparel .....	.285	116.509	116.291	2.2	-.2	-.2	.8	2.0
Footwear .....	.781	127.034	125.317	.2	-1.4	.1	.5	.3
Transportation .....	18.647	191.587	192.051	6.4	.2	-1.6	-1.1	1.5
Private transportation .....	17.881	188.088	188.577	6.4	.3	-1.7	-1.1	1.6
New and used motor vehicles <sup>2</sup> .....	6.952	96.467	97.003	6.6	.6	.3	.4	.3
New vehicles .....	3.385	138.639	138.387	1.0	-.2	.1	.1	.1
Used cars and trucks .....	2.944	145.257	147.247	17.0	1.4	.5	.9	.8
Motor fuel .....	5.774	235.670	235.399	7.7	-.1	-5.6	-4.2	4.4
Gasoline (all types) .....	5.530	235.124	234.959	7.4	-.1	-5.2	-4.6	4.6
Motor vehicle parts and equipment <sup>1</sup> .....	.472	136.719	137.218	2.6	.4	.2	.4	.4
Motor vehicle maintenance and repair <sup>1</sup> .....	1.180	250.142	250.143	1.9	.0	.0	.1	.0
Public transportation .....	.766	254.023	253.625	7.0	-.2	1.3	-.6	-.6
Medical care .....	5.261	389.513	389.335	3.5	.0	.1	.3	.0
Medical care commodities <sup>1</sup> .....	1.301	306.440	305.764	3.3	-.2	.1	.0	-.2
Medical care services .....	3.961	413.834	413.883	3.6	.0	.1	.4	.0
Professional services .....	2.195	331.323	332.219	2.9	.3	.0	.4	.3

See footnotes at end of table.

**Table 4. Consumer Price Index for Urban Wage Earners and Clerical Workers (CPI-W): U.S. city average, by expenditure category and commodity and service group-Continued**

(1982-84=100, unless otherwise noted)

CPI-W Expenditure category	Relative importance, December 2009	Unadjusted indexes		Unadjusted percent change to July 2010 from—		Seasonally adjusted percent change from—		
		June 2010	July 2010	July 2009	June 2010	Apr. to May	May to June	June to July
Hospital and related services <sup>3</sup> .....	1.339	606.700	605.634	7.1	-0.2	0.4	0.6	-0.2
Recreation <sup>2</sup> .....	6.031	110.339	110.076	-1.2	-2	-1	.1	-2
Video and audio <sup>2</sup> .....	2.046	100.239	99.660	-2.3	-6	-4	.3	-3
Education and communication <sup>2</sup> .....	6.175	124.430	124.687	1.6	.2	.0	.1	.2
Education <sup>2</sup> .....	2.327	194.746	195.550	4.8	.4	.3	.5	.4
Educational books and supplies .....	.196	507.168	506.799	4.4	-1	.4	.7	-3
Tuition, other school fees, and childcare .....	2.131	547.366	549.874	4.8	.5	.3	.4	.4
Communication <sup>2</sup> .....	3.848	87.306	87.376	-5	.1	-1	-2	.1
Information and information processing <sup>1 2</sup> .....	3.715	85.115	85.186	-5	.1	-2	-2	.1
Telephone services <sup>1 2</sup> .....	2.906	102.021	102.185	-4	.2	.0	-1	.2
Information technology, hardware and services <sup>1 5</sup> .....	.809	9.976	9.957	-1.5	-2	-6	-5	-2
Personal computers and peripheral equipment <sup>6</sup> .....	.225	75.631	75.929	-6.0	.4	-1.4	-6	.5
Other goods and services .....	3.919	408.610	411.793	3.3	.8	.3	.5	.9
Tobacco and smoking products <sup>1</sup> .....	1.397	811.325	824.198	7.3	1.6	1.2	1.0	1.6
Personal care .....	2.522	203.922	204.575	1.0	.3	-3	.2	.5
Personal care products <sup>1</sup> .....	.733	159.900	161.416	-8	.9	-8	-2	.9
Personal care services <sup>1</sup> .....	.577	230.472	230.769	1.4	.1	.2	.1	.1
Miscellaneous personal services .....	1.019	355.101	355.667	2.6	.2	.0	.0	.4
<b>Commodity and service group</b>								
Commodities .....	43.589	176.848	176.554	2.4	-2	-7	-5	.6
Food and beverages .....	16.425	218.730	218.784	.9	.0	.0	.0	.0
Commodities less food and beverages .....	27.164	154.282	153.847	3.2	-3	-1.2	-7	1.0
Nondurables less food and beverages .....	16.703	196.614	195.484	3.2	-6	-1.4	-1.5	1.7
Apparel .....	3.788	117.630	114.464	-9	-2.7	.4	.8	.4
Nondurables less food, beverages, and apparel .....	12.915	250.039	250.103	4.4	.0	-2.2	-1.9	2.1
Durables .....	10.461	112.781	112.995	3.3	.2	.1	.3	.1
Services .....	56.411	257.138	257.595	1.0	.2	.1	.0	.2
Rent of shelter <sup>4</sup> .....	29.868	233.460	233.588	-4	.1	.1	.0	.0
Tenants' and household insurance <sup>1 2</sup> .....	.303	126.345	126.950	4.3	.5	.1	.2	.5
Gas (piped) and electricity <sup>3</sup> .....	4.246	197.258	199.162	1.8	1.0	-5	-1.5	.8
Water and sewer and trash collection services <sup>2</sup> .....	1.114	170.323	171.690	6.1	.8	.5	.2	.4
Household operations <sup>1 2</sup> .....	.369	153.235	153.634	.7	.3	.6	.0	.3
Transportation services .....	5.918	260.032	260.674	3.9	.2	.3	.1	.2
Medical care services .....	3.961	413.834	413.883	3.6	.0	.1	.4	.0
Other services .....	10.631	296.070	296.475	1.7	.1	.1	.2	.2
<b>Special indexes</b>								
All items less food .....	84.667	212.865	212.937	1.7	.0	-3	-2	.4
All items less shelter .....	69.829	205.788	205.817	2.5	.0	-4	-3	.5
All items less medical care .....	94.739	206.706	206.771	1.5	.0	-3	-2	.4
Commodities less food .....	28.256	156.641	156.245	3.2	-3	-1.1	-7	1.0
Nondurables less food .....	17.795	198.309	197.295	3.1	-5	-1.3	-1.4	1.6
Nondurables less food and apparel .....	14.007	246.685	246.832	4.1	.1	-2.0	-1.8	2.0
Nondurables .....	33.128	208.127	207.547	2.1	-3	-1.1	-8	.9
Services less rent of shelter <sup>4</sup> .....	26.543	252.319	253.109	2.6	.3	.0	-1	.2
Services less medical care services .....	52.450	246.079	246.547	.8	.2	.1	.0	.1
Energy .....	10.291	212.049	212.674	5.3	.3	-3.4	-3.0	2.7
All items less energy .....	89.709	215.015	215.005	1.2	.0	.1	.1	.1
All items less food and energy .....	74.376	214.733	214.724	1.2	.0	.1	.2	.1
Commodities less food and energy commodities .....	22.211	145.603	145.205	1.9	-3	.1	.3	.2
Energy commodities .....	6.045	238.151	237.720	7.9	-2	-5.5	-4.1	4.1
Services less energy services .....	52.165	263.631	263.922	1.0	.1	.1	.1	.1
Purchasing power of the consumer dollar (1982-84=\$1.00) .....	-	\$.468	\$.468	-	-	-	-	-
Purchasing power of the consumer dollar (1967=\$1.00) .....	-	\$.157	\$.157	-	-	-	-	-

<sup>1</sup> Not seasonally adjusted.

<sup>2</sup> Indexes on a December 1997=100 base.

<sup>3</sup> This index series was calculated using a Laspeyres estimator. All other item stratum index series were calculated using a geometric means estimator.

<sup>4</sup> Indexes on a December 1984=100 base

<sup>5</sup> Indexes on a December 1988=100 base.

<sup>6</sup> Indexes on a December 2007=100 base.

- Data not available.

NOTE: Index applies to a month as a whole, not to any specific date.

**Table 5. Consumer Price Index for Urban Wage Earners and Clerical Workers (CPI-W): Seasonally adjusted U.S. city average, by expenditure category and commodity and service group**

(1982-84=100, unless otherwise noted)

CPI-W	Seasonally adjusted indexes				Seasonally adjusted annual rate percent change for					
					3 months ended—			6 months ended—		
	Apr. 2010	May 2010	June 2010	July 2010	Oct. 2009	Jan. 2010	Apr. 2010	July 2010	Jan. 2010	July 2010
<b>Expenditure category</b>										
All items .....	213.475	212.882	212.487	213.275	3.9	3.3	-0.3	-0.4	3.6	-0.3
Food and beverages .....	218.864	218.938	218.830	218.851	.1	1.8	1.8	.0	.9	.9
Food .....	218.518	218.546	218.416	218.336	.0	1.7	2.1	-.3	.8	.9
Food at home .....	214.833	214.701	214.353	214.312	-1.4	2.2	3.2	-1.0	.4	1.1
Cereals and bakery products .....	250.672	251.275	249.676	249.053	.1	-9	-1.8	-2.6	-4	-2.2
Meats, poultry, fish, and eggs .....	205.451	206.203	208.396	208.949	-3.5	2.9	8.8	7.0	-3	7.9
Dairy and related products <sup>1</sup> .....	195.958	196.490	196.663	197.782	5.0	7.5	-3.4	3.8	6.2	.1
Fruits and vegetables .....	278.948	275.416	271.241	266.463	-9.3	7.3	13.6	-16.7	-1.4	-2.7
Nonalcoholic beverages and beverage materials .....	162.122	160.946	160.429	161.496	-5	.0	.1	-1.5	-.3	-.7
Other food at home .....	190.036	190.471	189.767	190.144	1.6	-5	-.4	.2	.5	-1
Sugar and sweets .....	198.863	200.989	198.514	199.386	6.6	2.2	2.3	1.1	4.4	1.7
Fats and oils .....	200.301	200.344	200.054	199.998	-3.1	1.5	.2	-.6	-.8	-.2
Other foods .....	204.531	204.735	204.250	204.633	1.4	-1.3	-1.0	.2	.1	-4
Other miscellaneous foods <sup>1 2</sup> .....	122.712	120.869	121.830	122.217	1.8	-2.0	2.2	-1.6	-.1	.3
Food away from home <sup>1</sup> .....	225.395	225.657	225.846	225.707	1.8	1.1	.7	.6	1.4	.6
Other food away from home <sup>1 2</sup> .....	159.088	158.901	159.601	159.725	.0	2.0	3.6	1.6	1.0	2.6
Alcoholic beverages .....	222.504	223.245	223.450	224.936	1.9	1.8	-2.2	4.4	1.9	1.1
Housing .....	212.824	212.781	212.526	212.756	.4	-.4	.0	-.1	.0	-.1
Shelter .....	241.857	241.982	242.233	242.390	.1	-1.6	-.2	.9	-.8	.3
Rent of primary residence <sup>3</sup> .....	247.447	247.434	247.585	247.705	-6	-3	.2	.4	-.4	.3
Lodging away from home <sup>2</sup> .....	133.683	136.433	138.894	139.345	5.4	-12.6	8.8	18.0	-4.1	13.3
Owners' equivalent rent of residences <sup>3 4</sup> .....	232.020	232.086	232.272	232.411	.0	-.8	-.6	.7	-.4	.1
Owners' equivalent rent of primary residence <sup>3 4</sup> .....	232.021	232.088	232.275	232.411	.0	-.8	-.6	.7	-.4	.1
Tenants' and household insurance <sup>1 2</sup> .....	125.872	126.051	126.345	126.950	3.3	8.5	1.8	3.5	5.9	2.7
Fuels and utilities .....	214.347	213.520	211.014	212.231	4.8	6.7	5.3	-3.9	5.8	.6
Household energy .....	189.210	188.088	185.237	186.400	4.4	7.0	4.6	-5.8	5.7	-.7
Fuel oil and other fuels <sup>1</sup> .....	280.770	274.630	267.671	263.269	24.5	77.3	-4.6	-22.7	48.6	-14.1
Gas (piped) and electricity <sup>3</sup> .....	193.513	192.568	189.775	191.240	3.3	3.6	5.3	-4.6	3.5	.2
Water and sewer and trash collection services <sup>2</sup> .....	170.225	171.010	171.367	172.010	6.8	5.6	7.8	4.3	6.2	6.0
Household furnishings and operations .....	121.744	121.712	121.367	121.071	-2.9	-1.4	-5.8	-2.2	-2.2	-4.0
Household operations <sup>1 2</sup> .....	152.329	153.176	153.235	153.634	2.1	-4.8	2.2	3.5	-1.4	2.8
Apparel .....	117.754	118.204	119.096	119.544	-.7	-.5	-7.6	6.2	-.6	-.9
Men's and boys' apparel .....	110.263	111.040	113.393	112.845	-2.3	-4.2	-6.9	9.7	-3.3	1.1
Women's and girls' apparel .....	105.263	105.741	105.953	106.821	-1.3	1.0	-11.6	6.1	-.1	-3.2
Infants' and toddlers' apparel .....	117.760	117.581	118.487	120.885	-3.5	4.3	-2.3	11.0	.3	4.2
Footwear .....	127.125	127.277	127.913	128.294	1.3	2.6	-6.4	3.7	1.9	-1.5
Transportation .....	191.311	188.273	186.209	189.020	20.1	16.3	-3.7	-4.7	18.2	-4.2
Private transportation .....	188.020	184.801	182.732	185.661	20.3	16.8	-4.2	-4.9	18.5	-4.5
New and used motor vehicles <sup>2</sup> .....	95.843	96.087	96.497	96.827	12.0	8.0	2.1	4.2	10.0	3.1
New vehicles .....	138.762	138.877	139.038	139.218	3.1	-1.1	.5	1.3	1.0	.9
Used cars and trucks .....	142.767	143.528	144.773	145.889	30.7	24.8	5.5	9.0	27.7	7.3
Motor fuel .....	237.728	224.388	214.902	224.320	46.2	41.1	-17.7	-20.7	43.6	-19.2
Gasoline (all types) .....	237.823	225.380	215.031	224.891	37.4	46.3	-17.2	-20.0	41.8	-18.6
Motor vehicle parts and equipment <sup>1</sup> .....	135.914	136.182	136.719	137.218	-.1	4.9	1.6	3.9	2.4	2.7
Motor vehicle maintenance and repair <sup>1</sup> .....	249.873	249.841	250.142	250.143	4.0	.3	3.1	.4	2.1	1.8
Public transportation .....	247.394	250.693	249.252	247.744	16.2	5.0	6.9	.6	10.5	3.7
Medical care .....	388.188	388.456	389.639	389.453	3.7	4.1	5.0	1.3	3.9	3.1
Medical care commodities <sup>1</sup> .....	306.117	306.458	306.440	305.764	5.3	2.9	5.7	-.5	4.1	2.6
Medical care services .....	412.109	412.337	414.012	414.049	3.1	4.5	4.7	1.9	3.8	3.3
Professional services .....	329.450	329.497	330.959	331.963	2.8	3.9	1.9	3.1	3.4	2.5

See footnotes at end of table.



**Table 5. Consumer Price Index for Urban Wage Earners and Clerical Workers (CPI-W): Seasonally adjusted U.S. city average, by expenditure category and commodity and service group-Continued**

(1982-84=100, unless otherwise noted)

CPI-W	Seasonally adjusted indexes				Seasonally adjusted annual rate percent change for					
					3 months ended—			6 months ended—		
	Apr. 2010	May 2010	June 2010	July 2010	Oct. 2009	Jan. 2010	Apr. 2010	July 2010	Jan. 2010	July 2010
<b>Expenditure category</b>										
Hospital and related services <sup>3</sup> .....	602.551	604.958	608.514	606.994	5.8	8.0	11.8	3.0	6.9	7.3
Recreation <sup>2</sup> .....	110.165	110.072	110.196	109.992	-2.2	-1.9	.0	-6	-2.1	-3
Video and audio <sup>2</sup> .....	100.080	99.656	99.980	99.646	-4.6	.0	-2.8	-1.7	-2.3	-2.3
Education and communication <sup>2</sup> .....	124.905	124.929	125.018	125.256	1.5	1.3	2.5	1.1	1.4	1.8
Education <sup>2</sup> .....	195.692	196.263	197.168	197.893	3.7	4.1	7.0	4.6	3.9	5.8
Educational books and supplies .....	506.406	508.525	512.033	510.490	4.5	6.2	3.9	3.3	5.3	3.6
Tuition, other school fees, and childcare .....	550.348	551.888	554.317	556.699	3.6	3.9	7.2	4.7	3.7	6.0
Communication <sup>2</sup> .....	87.583	87.454	87.306	87.375	.0	-8	-2	-9	-4	-5
Information and information processing <sup>1 2</sup> .....	85.394	85.263	85.115	85.186	.0	-1.0	-2	-1.0	-5	-6
Telephone services <sup>1 2</sup> .....	102.132	102.101	102.021	102.185	.9	-1.2	-1.4	.2	-2	-6
Information technology, hardware and services <sup>1 5</sup> .....	10.087	10.028	9.976	9.957	-4.6	-7	4.4	-5.1	-2.7	-4
Personal computers and peripheral equipment <sup>6</sup> .....	77.339	76.229	75.763	76.168	-11.3	-3.4	-3.0	-5.9	-7.4	-4.5
Other goods and services .....	405.156	406.288	408.314	411.916	2.9	3.5	.3	6.8	3.2	3.5
Tobacco and smoking products <sup>1</sup> .....	793.243	803.019	811.325	824.198	5.7	7.0	.7	16.5	6.3	8.3
Personal care .....	203.801	203.291	203.690	204.671	1.0	1.3	.1	1.7	1.2	.9
Personal care products <sup>1</sup> .....	161.604	160.289	159.900	161.416	-1.3	-1.4	-2	-5	-1.3	-3
Personal care services <sup>1</sup> .....	229.857	230.263	230.472	230.769	2.1	.2	1.9	1.6	1.1	1.7
Miscellaneous personal services .....	354.179	354.133	354.233	355.713	2.6	3.8	2.4	1.7	3.2	2.1
<b>Commodity and service group</b>										
Commodities .....	176.982	175.718	174.912	176.029	7.1	7.5	-2.8	-2.1	7.3	-2.5
Food and beverages .....	218.864	218.938	218.830	218.851	.1	1.8	1.8	.0	.9	.9
Commodities less food and beverages .....	154.413	152.614	151.534	153.086	11.5	11.0	-5.4	-3.4	11.3	-4.4
Nondurables less food and beverages .....	196.223	193.425	190.600	193.805	13.7	18.4	-11.5	-4.8	16.0	-8.2
Apparel .....	117.754	118.204	119.096	119.544	-7	-5	-7.6	6.2	-6	-9
Nondurables less food, beverages, and apparel .....	249.714	244.252	239.549	244.635	18.9	22.1	-11.2	-7.9	20.5	-9.6
Durables .....	112.342	112.426	112.718	112.840	7.1	4.5	-1	1.8	5.8	.8
Services .....	256.225	256.389	256.454	256.860	1.5	.2	1.7	1.0	.9	1.3
Rent of shelter <sup>4</sup> .....	232.865	233.081	233.089	233.052	.4	-1.0	-1.3	.3	-3	-5
Tenants' and household insurance <sup>1 2</sup> .....	125.872	126.051	126.345	126.950	3.3	8.5	1.8	3.5	5.9	2.7
Gas (piped) and electricity <sup>3</sup> .....	193.513	192.568	189.775	191.240	3.3	3.6	5.3	-4.6	3.5	.2
Water and sewer and trash collection services <sup>2</sup> .....	170.225	171.010	171.367	172.010	6.8	5.6	7.8	4.3	6.2	6.0
Household operations <sup>1 2</sup> .....	152.329	153.176	153.235	153.634	2.1	-4.8	2.2	3.5	-1.4	2.8
Transportation services .....	258.832	259.637	259.839	260.234	6.9	1.8	5.2	2.2	4.3	3.7
Medical care services .....	412.109	412.337	414.012	414.049	3.1	4.5	4.7	1.9	3.8	3.3
Other services .....	295.503	295.891	296.522	297.141	1.2	1.3	1.9	2.2	1.3	2.1
<b>Special indexes</b>										
All items less food .....	212.397	211.695	211.254	212.194	4.7	3.6	-7	-4	4.1	-6
All items less shelter .....	205.432	204.572	203.939	204.964	5.7	5.5	-4	-9	5.6	-6
All items less medical care .....	206.373	205.759	205.321	206.132	3.9	3.3	-6	-5	3.6	-5
Commodities less food .....	156.736	155.000	153.951	155.506	11.1	10.7	-5.3	-3.1	10.9	-4.2
Nondurables less food .....	197.896	195.285	192.563	195.686	12.9	17.4	-10.9	-4.4	15.1	-7.7
Nondurables less food and apparel .....	246.339	241.419	237.103	241.864	16.8	21.1	-10.5	-7.1	18.9	-8.8
Nondurables .....	208.423	206.172	204.622	206.494	8.8	7.8	-4.0	-3.7	8.3	-3.8
Services less rent of shelter <sup>4</sup> .....	251.049	251.154	250.979	251.382	3.4	2.6	4.0	.5	3.0	2.3
Services less medical care services .....	245.161	245.348	245.258	245.438	1.6	.2	1.0	.5	.9	.7
Energy .....	211.677	204.416	198.255	203.561	25.7	25.4	-8.8	-14.5	25.5	-11.7
All items less energy .....	214.650	214.861	215.163	215.408	1.7	1.0	.8	1.4	1.3	1.1
All items less food and energy .....	214.247	214.496	214.887	215.198	2.0	.8	.5	1.8	1.4	1.1
Commodities less food and energy commodities .....	145.265	145.455	145.835	146.172	3.5	2.9	-1.6	2.5	3.2	.5
Energy commodities .....	240.647	227.514	218.075	227.010	45.2	42.5	-17.2	-20.8	43.8	-19.0
Services less energy services .....	263.042	263.332	263.722	264.007	1.4	-1	1.4	1.5	.7	1.4

<sup>1</sup> Not seasonally adjusted.

<sup>2</sup> Indexes on a December 1997=100 base.

<sup>3</sup> This index series was calculated using a Laspeyres estimator. All other item stratum index series were calculated using a geometric means estimator.

<sup>4</sup> Indexes on a December 1984=100 base

<sup>5</sup> Indexes on a December 1988=100 base.

<sup>6</sup> Indexes on a December 2007=100 base.

NOTE: Index applies to a month as a whole, not to any specific date.

**Table 6. Consumer Price Index for Urban Wage Earners and Clerical Workers (CPI-W): Selected areas, all items index**

(1982-84=100, unless otherwise noted)

CPI-W	Pricing schedule 1	All items									
		Indexes				Percent change to July 2010 from—			Percent change to June 2010 from—		
		Apr. 2010	May 2010	June 2010	July 2010	July 2009	May 2010	June 2010	June 2009	Apr. 2010	May 2010
U.S. city average .....	M	213.958	214.124	213.839	213.898	1.6	-0.1	0.0	1.4	-0.1	-0.1
<b>Region and area size<sup>2</sup></b>											
Northeast urban .....	M	231.109	231.661	231.308	231.380	2.1	-1	.0	2.0	.1	-2
Size A - More than 1,500,000 .....	M	231.338	231.851	231.552	231.615	1.8	-1	.0	1.9	.1	-1
Size B/C - 50,000 to 1,500,000 <sup>3</sup> .....	M	140.126	140.510	140.227	140.283	2.7	-2	.0	2.4	.1	-2
Midwest urban .....	M	203.426	203.674	203.524	203.877	2.0	.1	.2	1.5	.0	-1
Size A - More than 1,500,000 .....	M	203.056	203.330	203.063	203.363	1.9	.0	.1	1.4	.0	-1
Size B/C - 50,000 to 1,500,000 <sup>3</sup> .....	M	133.540	133.797	133.845	134.136	2.3	.3	.2	1.7	.2	.0
Size D - Nonmetropolitan (less than 50,000) .....	M	202.263	201.974	201.654	201.950	1.8	.0	.1	1.5	-3	-2
South urban .....	M	209.017	208.920	208.640	208.440	1.5	-2	-1	1.3	-2	-1
Size A - More than 1,500,000 .....	M	211.068	211.065	210.985	210.592	1.0	-2	-2	1.0	.0	.0
Size B/C - 50,000 to 1,500,000 <sup>3</sup> .....	M	133.695	133.621	133.227	133.227	1.7	-3	.0	1.4	-4	-3
Size D - Nonmetropolitan (less than 50,000) .....	M	215.006	214.679	215.416	214.840	2.1	.1	-3	1.7	.2	.3
West urban .....	M	215.873	216.044	215.681	215.824	1.1	-1	.1	.8	-1	-2
Size A - More than 1,500,000 .....	M	218.103	218.605	218.238	218.499	1.2	.0	.1	.9	.1	-2
Size B/C - 50,000 to 1,500,000 <sup>3</sup> .....	M	133.993	133.764	133.448	133.471	.9	-2	.0	.7	-4	-2
<b>Size classes</b>											
A <sup>4</sup> .....	M	197.786	198.087	197.852	197.908	1.4	-1	.0	1.2	.0	-1
B/C <sup>3</sup> .....	M	134.594	134.624	134.349	134.420	1.8	-2	.1	1.5	-2	-2
D .....	M	209.327	209.097	209.374	209.161	1.8	.0	-1	1.5	.0	.1
<b>Selected local areas<sup>5</sup></b>											
Chicago-Gary-Kenosha, IL-IN-WI .....	M	206.466	206.774	205.834	206.307	1.4	-2	.2	1.1	-3	-5
Los Angeles-Riverside-Orange County, CA ...	M	218.475	218.787	218.222	218.367	1.0	-2	.1	1.0	-1	-3
New York-Northern N.J.-Long Island, NY-NJ-CT-PA .....	M	235.750	236.144	235.916	236.330	1.8	.1	.2	1.7	.1	-1
Boston-Brockton-Nashua, MA-NH-ME-CT ....	1	-	238.863	-	236.657	1.8	-9	-	-	-	-
Cleveland-Akron, OH .....	1	-	195.574	-	195.477	2.1	.0	-	-	-	-
Dallas-Fort Worth, TX .....	1	-	205.263	-	203.537	.2	-8	-	-	-	-
Washington-Baltimore, DC-MD-VA-WV <sup>6</sup> .....	1	-	142.064	-	141.926	1.1	-1	-	-	-	-
Atlanta, GA .....	2	203.095	-	204.084	-	-	-	-	.7	.5	-
Detroit-Ann Arbor-Flint, MI .....	2	201.003	-	200.703	-	-	-	-	.4	-1	-
Houston-Galveston-Brazoria, TX .....	2	192.447	-	192.696	-	-	-	-	1.4	.1	-
Miami-Fort Lauderdale, FL .....	2	220.633	-	220.384	-	-	-	-	.6	-1	-
Philadelphia-Wilmington-Atlantic City, PA-NJ-DE-MD .....	2	227.325	-	228.175	-	-	-	-	2.2	.4	-
San Francisco-Oakland-San Jose, CA .....	2	223.821	-	224.185	-	-	-	-	1.4	.2	-
Seattle-Tacoma-Bremerton, WA .....	2	222.309	-	221.857	-	-	-	-	-1	-2	-

<sup>1</sup> Foods, fuels, and several other items priced every month in all areas; most other goods and services priced as indicated:

M - Every month.

1 - January, March, May, July, September, and November.

2 - February, April, June, August, October, and December.

<sup>2</sup> Regions defined as the four Census regions. See technical notes.

<sup>3</sup> Indexes on a December 1996=100 base.

<sup>4</sup> Indexes on a December 1986=100 base.

<sup>5</sup> In addition, the following metropolitan areas are published semiannually and appear in Tables 34 and 39 of the January and July issues of the CPI Detailed Report: Anchorage, AK; Cincinnati-Hamilton, OH-KY-IN; Denver-Boulder-Greeley, CO; Honolulu, HI; Kansas City, MO-KS; Milwaukee-Racine, WI; Minneapolis-St. Paul, MN-WI; Phoenix-Mesa, AZ; Pittsburgh, PA; Portland-Salem, OR-WA; St. Louis, MO-IL; San Diego, CA;

Tampa-St. Petersburg-Clearwater, FL.

<sup>6</sup> Indexes on a November 1996=100 base.

- Data not available.

NOTE: Local area indexes are byproducts of the national CPI program. Each local index has a smaller sample size than the national index and is, therefore, subject to substantially more sampling and other measurement error. As a result, local area indexes show greater volatility than the national index, although their long-term trends are similar. Therefore, the Bureau of Labor Statistics strongly urges users to consider adopting the national average CPI for use in their escalator clauses.

NOTE: Index applies to a month as a whole, not to any specific date.

**Table 7. Chained Consumer Price Index for All Urban Consumers (C-CPI-U): U.S. city average, by expenditure category and commodity and service group**

(December 1999=100, unless otherwise noted)

<b>C-CPI-U</b>	Relative importance, 2007-2008	Unadjusted indexes		Unadjusted percent change to July 2010 from—	
		June 2010	July 2010	July 2009	June 2010
<b>Expenditure category</b>					
All items .....	100.000	126.247	126.203	1.0	0.0
Food and beverages .....	14.519	128.137	127.917	.6	-.2
Food .....	13.493	128.121	127.842	.6	-.2
Food at home .....	7.780	123.035	122.904	.5	-.1
Food away from home .....	5.712	135.068	134.569	.7	-.4
Alcoholic beverages .....	1.027	128.805	129.360	1.2	.4
Housing .....	42.074	128.679	128.838	-.5	.1
Shelter .....	32.119	131.087	131.179	-.7	.1
Fuels and utilities .....	5.231	161.750	163.131	3.2	.9
Household furnishings and operations .....	4.724	93.136	92.841	-3.5	-.3
Apparel .....	3.772	88.100	85.643	-.9	-2.8
Transportation .....	17.199	131.562	131.791	5.9	.2
Private transportation .....	16.013	131.921	132.187	5.7	.2
Public transportation .....	1.186	126.596	126.345	7.8	-.2
Medical care .....	6.294	150.338	150.224	3.0	-.1
Medical care commodities .....	1.570	132.684	132.328	3.1	-.3
Medical care services .....	4.723	156.814	156.795	2.9	.0
Recreation .....	6.625	103.473	103.294	-2.2	-.2
Education and communication .....	6.288	111.835	112.088	1.5	.2
Education .....	2.804	182.045	182.870	4.6	.5
Communication .....	3.484	73.010	73.043	-1.0	.0
Other goods and services .....	3.229	137.952	138.653	2.2	.5
<b>Commodity and service group</b>					
Services .....	59.383	135.719	135.963	.7	.2
Commodities .....	40.617	114.616	114.215	1.4	-.3
Durables .....	10.376	81.139	81.171	.7	.0
Nondurables .....	30.241	132.053	131.416	1.6	-.5
All items less food and energy .....	76.901	119.814	119.755	.6	.0
Energy .....	9.606	187.625	188.248	5.4	.3

Indexes for 2010 are initial estimates. Indexes for 2009 are interim adjustments.  
NOTE: Index applies to a month as a whole, not to any specific date.