

Transmission of material in this release is embargoed until
8:30 a.m. (EST) Wednesday, November 17, 2010

USDL-10-1600

Technical information: (202) 691-7000 • Reed.Steve@bls.gov • www.bls.gov/cpi
Media Contact: (202) 691-5902 • PressOffice@bls.gov

CONSUMER PRICE INDEX – OCTOBER 2010

The Consumer Price Index for All Urban Consumers (CPI-U) increased 0.2 percent in October on a seasonally adjusted basis, the U.S. Bureau of Labor Statistics reported today. Over the last 12 months, the all items index increased 1.2 percent before seasonal adjustment.

As has frequently been the case in recent months, an increase in the energy index was the major factor in the all items seasonally adjusted increase. The gasoline index rose for the fourth month in a row and accounted for almost 90 percent of the all items increase; the household energy index rose as well. The food index rose slightly in October with the food at home index unchanged.

The index for all items less food and energy was unchanged in October, the third month in a row with no change. The indexes for shelter and medical care rose, but these increases were offset by declines in an array of indexes including new vehicles, used cars and trucks, apparel, recreation, and tobacco.

Over the last 12 months, the index for all items less food and energy has risen 0.6 percent, the smallest 12-month increase in the history of the index, which dates to 1957. The energy index has risen 5.9 percent over that span with the gasoline index up 9.5 percent. The food index has risen 1.4 percent, with both the food at home index and food away from home index rising the same 1.4 percent.

Chart 1. One-month percent change in CPI for All Urban Consumers (CPI-U), seasonally adjusted, Oct. 2009 - Oct. 2010
Percent change

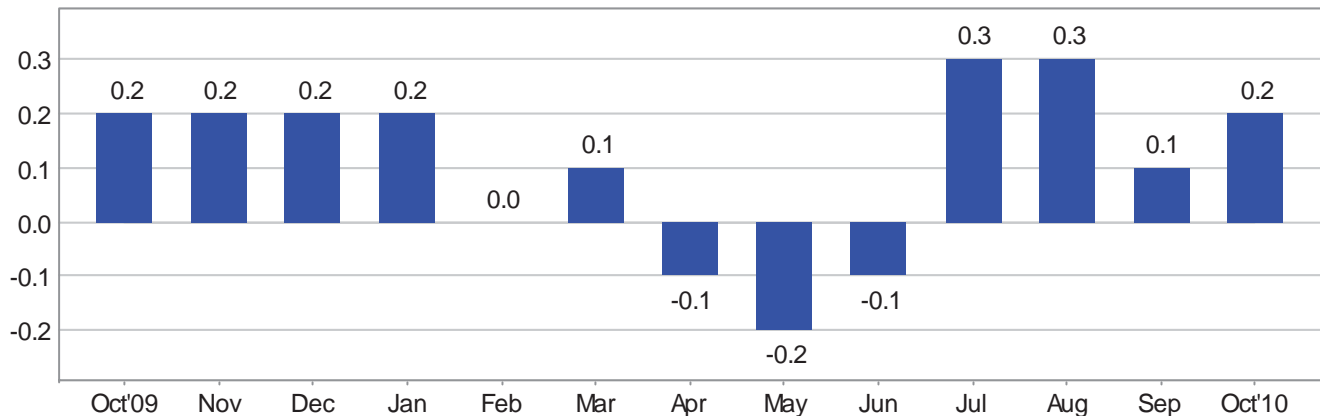


Chart 2. 12-month percent change in CPI for All Urban Consumers (CPI-U), not seasonally adjusted, Oct. 2009 - Oct. 2010

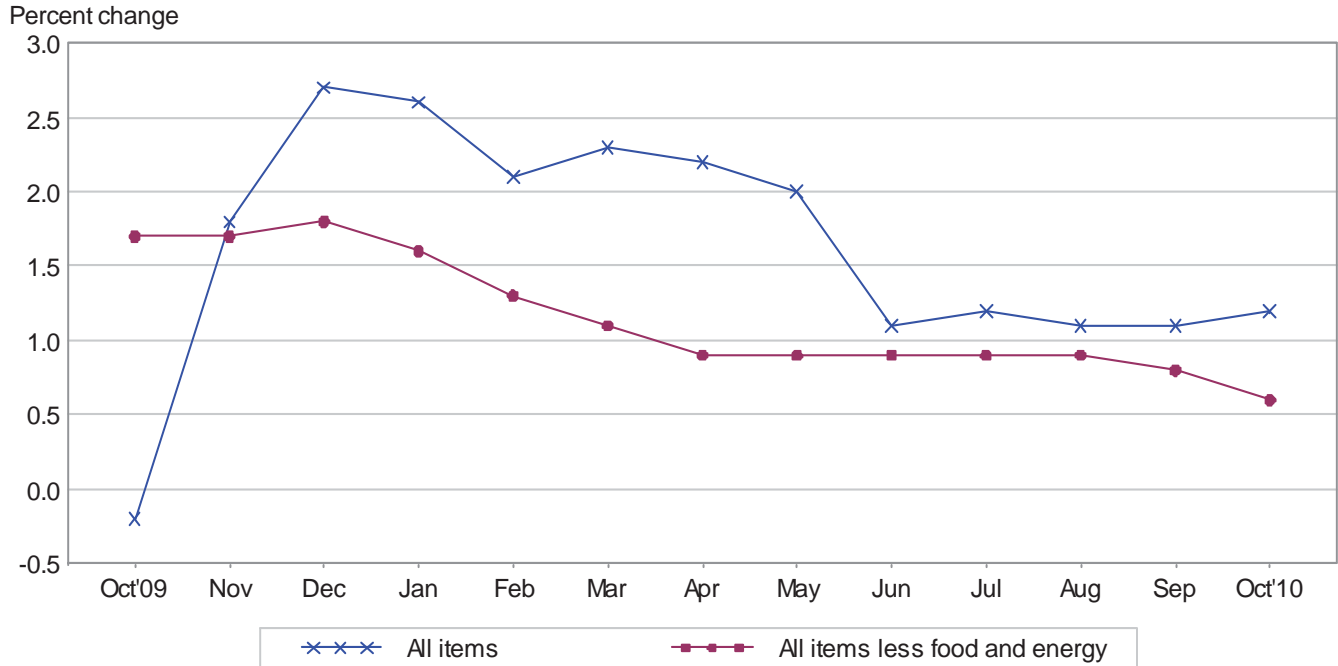


Table A. Percent changes in CPI for All Urban Consumers (CPI-U): U.S. city average

	Seasonally adjusted changes from preceding month							Un-adjusted 12-mos. ended Oct. 2010
	Apr. 2010	May 2010	June 2010	July 2010	Aug. 2010	Sep. 2010	Oct. 2010	
All items	-.1	-.2	-.1	.3	.3	.1	.2	1.2
Food2	.0	.0	-.1	.2	.3	.1	1.4
Food at home2	.0	-.1	-.1	.0	.3	.0	1.4
Food away from home ¹1	.1	.1	.0	.3	.3	.1	1.4
Energy	-1.4	-2.9	-2.9	2.6	2.3	.7	2.6	5.9
Energy commodities	-2.1	-4.8	-4.1	4.0	3.8	1.8	4.4	9.9
Gasoline (all types)	-2.4	-5.2	-4.5	4.6	3.9	1.6	4.6	9.5
Fuel oil ¹	2.3	-1.4	-3.2	-1.6	.9	.8	4.7	14.5
Energy services	-.5	-.5	-1.6	.8	.4	-.8	.2	.9
Electricity7	-.4	-2.2	.5	.2	-.3	.4	.6
Utility (piped) gas service	-4.4	-1.0	.6	1.7	1.1	-2.3	-.4	1.9
All items less food and energy0	.1	.2	.1	.0	.0	.0	.6
Commodities less food and energy commodities	-.3	.1	.2	.2	.1	-.2	-.2	.1
New vehicles0	.1	.1	.1	.3	.1	-.2	.4
Used cars and trucks2	.6	.9	.8	.7	-.7	-.9	8.6
Apparel	-.7	.2	.8	.6	-.1	-.6	-.3	-1.2
Medical care commodities ¹2	.1	.0	-.2	.2	.3	.1	2.5
Services less energy services2	.1	.1	.1	.0	.1	.1	.8
Shelter0	.1	.1	.1	.0	.0	.1	-.3
Transportation services4	.4	.0	.0	.1	.3	.3	2.8
Medical care services3	.0	.4	.0	.2	.8	.2	3.6

¹ Not seasonally adjusted.

Consumer Price Index Data for October 2010

Food

The food index rose 0.1 percent in October after a 0.3 percent increase in September. The index for food away from home rose 0.1 percent while the food at home index was unchanged. Among the six major grocery store food groups that comprise the food at home index, the index for dairy and related products posted the largest increase, rising 1.1 percent. This was its fifth increase in the last six months and its largest since January. The index for meats, poultry, fish, and eggs also rose, increasing 0.6 percent as increases in the indexes for beef, poultry, and pork offset a decline in the eggs index. These increases offset declines in the remaining food at home groups. The fruits and vegetables group posted the largest decline, falling 0.7 percent, while the index for nonalcoholic beverages fell 0.5 percent. The indexes for cereals and bakery products and for other food at home both fell 0.2 percent. Over the past year, the indexes for cereals and bakery products and for nonalcoholic beverages have declined, while the index for other food at home was unchanged and the indexes for the remaining three groups have risen.

Energy

The energy index rose 2.6 percent in October, its fourth consecutive monthly increase. The gasoline index rose 4.6 percent in October after rising 1.6 percent in September. (Before seasonal adjustment, gasoline prices rose 3.3 percent in October.) The household energy index, which declined in September, rose in October, increasing 0.4 percent. The natural gas index fell 0.4 percent, but this decline was more than offset by a 0.4 percent increase in the electricity index and a 4.7 percent rise in the index for fuel oil. The indexes of all the major energy components have risen over the last 12 months.

All items less food and energy

The index for all items less food and energy was unchanged in October for the third month in a row. After being unchanged the previous two months, the shelter index rose 0.1 percent in October. The indexes for rent and owners' equivalent rent both increased 0.1 percent while the index for lodging away from home declined 1.0 percent. The medical care index, which rose 0.6 percent in September, rose 0.1 percent in October, with the medical care commodities index rising 0.1 percent and the index for medical care services increasing 0.2 percent. Within the medical care services component, the index for physicians' services fell 0.1 percent but the hospital services index increased 0.7 percent. Offsetting these increases were declines in several indexes. The index for used cars and trucks fell 0.9 percent in October, its second straight decline after a long series of increases. The index for new vehicles fell as well, declining 0.2 percent. The apparel index fell 0.3 percent in October, its third straight decline. The recreation index fell for the fourth month in a row, decreasing 0.1 percent, and the index for tobacco fell for the first time since February, declining 0.3 percent.

The index for all items less food and energy increased 0.6 percent over the last 12 months. Several transportation indexes have increased; the index for used cars and trucks has risen 8.6 percent, while the new vehicles index has edged up 0.4 percent and the index for airline fares has risen 4.4 percent. The medical care index has also increased, rising 3.4 percent. Indexes that have declined over the past year include shelter, which has fallen 0.3 percent, household furnishings and operations (down 2.5 percent), apparel (down 1.2 percent), and recreation (down 1.0 percent).

Not seasonally adjusted CPI measures

The Consumer Price Index for All Urban Consumers (CPI-U) increased 1.2 percent over the last 12 months to an index level of 218.711 (1982-84=100). For the month, the index rose 0.1 percent prior to seasonal adjustment.

The Consumer Price Index for Urban Wage Earners and Clerical Workers (CPI-W) increased 1.5 percent over the last 12 months to an index level of 214.623 (1982-84=100). For the month, the index rose 0.1 percent prior to seasonal adjustment.

The Chained Consumer Price Index for All Urban Consumers (C-CPI-U) increased 1.0 percent over the last 12 months. For the month, the index rose 0.2 percent on a not seasonally adjusted basis. Please note that the indexes for the post-2008 period are subject to revision.

The Consumer Price Index for November 2010 is scheduled to be released on Wednesday, December 15, 2010, at 8:30 a.m. (EST).

Effective with the release of CPI data for January 2011 scheduled for Thursday, February 17, 2011, the following series will be re-titled:

- Recreation services will become Other recreation services
- Gas (piped) and electricity will become Energy services
- Canned fish and seafood will become Shelf stable fish and seafood

The Recreation services index does not include all services under the major group Recreation, specifically video and audio related services, pet services, and photography and film services are excluded. The new title, Other recreation services, will reflect these exclusions.

Gas (piped) and electricity has been presented as Energy services in Table A of the CPI News Release since August 2009. At that time, the format text of the News Release was updated to focus on Food, Energy, and All items less food and energy instead of the major groups (Food, Housing, Apparel, Transportation, Medical care, Education and communication, Recreation, and Other goods and services). The title will be changed in the remainder of the publication tables in January 2011 to improve consistency.

The title for Canned fish and seafood will change to Shelf stable fish and seafood to better reflect current packaging methods.

Facilities for Sensory Impaired

Information from this release will be made available to sensory impaired individuals upon request. Voice phone: 202-691-5200, Federal Relay Services: 1-800-877-8339.

Brief Explanation of the CPI

The Consumer Price Index (CPI) is a measure of the average change in prices over time of goods and services purchased by households. The Bureau of Labor Statistics publishes CPIs for two population groups: (1) the CPI for Urban Wage Earners and Clerical Workers (CPI-W), which covers households of wage earners and clerical workers that comprise approximately 32 percent of the total population and (2) the CPI for All Urban Consumers (CPI-U) and the Chained CPI for All Urban Consumers (C-CPI-U), which cover approximately 87 percent of the total population and include in addition to wage earners and clerical worker households, groups such as professional, managerial, and technical workers, the self-employed, short-term workers, the unemployed, and retirees and others not in the labor force.

The CPIs are based on prices of food, clothing, shelter, and fuels, transportation fares, charges for doctors' and dentists' services, drugs, and other goods and services that people buy for day-to-day living. Prices are collected each month in 87 urban areas across the country from about 4,000 housing units and approximately 25,000 retail establishments-department stores, supermarkets, hospitals, filling stations, and other types of stores and service establishments. All taxes directly associated with the purchase and use of items are included in the index. Prices of fuels and a few other items are obtained every month in all 87 locations. Prices of most other commodities and services are collected every month in the three largest geographic areas and every other month in other areas. Prices of most goods and services are obtained by personal visits or telephone calls of the Bureau's trained representatives.

In calculating the index, price changes for the various items in each location are averaged together with weights, which represent their importance in the spending of the appropriate population group. Local data are then combined to obtain a U.S. city average. For the CPI-U and CPI-W separate indexes are also published by size of city, by region of the country, for cross-classifications of regions and population-size classes, and for 27 local areas. Area indexes do not measure differences in the level of prices among cities; they only measure the average change in prices for each area since the base period. For the C-CPI-U data are issued only at the national level. It is important to note that the CPI-U and CPI-W are considered final when released, but the C-CPI-U is issued in preliminary form and subject to two annual revisions.

The index measures price change from a designed reference date. For the CPI-U and the CPI-W the reference base is 1982-84 equals 100.0. The reference base for the C-CPI-U is December 1999 equals 100. An increase of 16.5 percent from the reference base, for example, is shown as 116.5. This change can also be expressed in dollars as follows: the price of a base period market basket of goods and services in the CPI has risen from \$10 in 1982-84 to \$11.65.

For further details visit the CPI home page on the Internet at <http://www.bls.gov/cpi/> or contact our CPI Information and Analysis Section on (202) 691-7000.

Note on Sampling Error in the Consumer Price Index

The CPI is a statistical estimate that is subject to sampling error because it is based upon a sample of retail prices and not the complete universe of all prices. BLS calculates and publishes estimates of the 1-month, 2-month, 6-month and 12-month percent change standard errors annually, for the CPI-U. These standard error estimates can be used to construct confidence intervals for hypothesis testing. For example, the estimated standard error of the 1 month percent change is 0.04 percent for the U.S. All Items Consumer Price Index. This means that if we repeatedly sample from the universe of all retail prices using the same methodology, and estimate a percentage change for each sample, then 95% of these estimates would be within 0.08 percent of the 1 month percentage change based on all retail prices. For example, for a 1-month change of 0.2 percent in the All Items CPI for All Urban Consumers, we are 95 percent confident that the actual percent change based on all retail prices would fall between 0.12 and 0.28 percent. For the latest data, including information on how to use the estimates of standard error, see “Variance Estimates for Price Changes in the Consumer Price Index, January-December 2009”. These data are available on the CPI home page (<http://www.bls.gov/cpi>), or by using the following link <http://www.bls.gov/cpi/cpivar2009.pdf>

Calculating Index Changes

Movements of the indexes from one month to another are usually expressed as percent changes rather than changes in index points, because index point changes are affected by the level of the index in relation to its base period while percent changes are not. The example below illustrates the computation of index point and percent changes.

Percent changes for 3-month and 6-month periods are expressed as annual rates and are computed according to the standard formula for compound growth rates. These data indicate what the percent change would be if the current rate were maintained for a 12-month period.

Index Point Change

CPI	202.416
Less previous index	201.800
Equals index point change	.616

Percent Change

Index point difference	.616
Divided by the previous index	201.800
Equals	0.003
Results multiplied by one hundred	0.003x100
Equals percent change	0.3

Regions Defined

The states in the four regions shown in Tables 3 and 6 are listed below.

The Northeast--Connecticut, Maine, Massachusetts, New Hampshire, New York, New Jersey, Pennsylvania, Rhode Island, and Vermont.

The Midwest--Illinois, Indiana, Iowa, Kansas, Michigan, Minnesota, Missouri, Nebraska, North Dakota, Ohio, South Dakota, and Wisconsin.

The South--Alabama, Arkansas, Delaware, Florida, Georgia, Kentucky, Louisiana, Maryland, Mississippi, North Carolina, Oklahoma, South Carolina, Tennessee, Texas, Virginia, West Virginia, and the District of Columbia.

The West--Alaska, Arizona, California, Colorado, Hawaii, Idaho, Montana, Nevada, New Mexico, Oregon, Utah, Washington, and Wyoming.

A Note on Seasonally Adjusted and Unadjusted Data

Because price data are used for different purposes by different groups, the Bureau of Labor Statistics publishes seasonally adjusted as well as unadjusted changes each month.

For analyzing general price trends in the economy, seasonally adjusted changes are usually preferred since they eliminate the effect of changes that normally occur at the same time and in about the same magnitude every year--such as price movements resulting from changing climatic conditions, production cycles, model changeovers, holidays, and sales.

The unadjusted data are of primary interest to consumers concerned about the prices they actually pay. Unadjusted data also are used extensively for escalation purposes. Many collective bargaining contract agreements and pension plans, for example, tie compensation changes to the Consumer Price Index before adjustment for seasonal variation.

Seasonal factors used in computing the seasonally adjusted indexes are derived by the X-12-ARIMA Seasonal Adjustment Method. Seasonally adjusted indexes and seasonal factors are computed annually. Each year, the last 5 years of seasonally adjusted data are revised. Data from January 2005 through December 2009 were replaced in January 2010. Exceptions to the usual revision schedule were: the updated seasonal data at the end of 1977 replaced data from 1967 through 1977; and, in January 2002, dependently seasonally adjusted series were revised for January 1987-December 2001 as a result of a change in the aggregation weights for dependently adjusted series. For further information, please see "Aggregation of Dependently Adjusted Seasonally Adjusted Series," in the October 2001 issue of the CPI Detailed Report.

The seasonal movement of all items and 54 other aggregations is derived by combining the seasonal movement of 73 selected components. Each year the seasonal status of every series is reevaluated based upon certain statistical criteria. If any of the 73 components change their seasonal adjustment status from seasonally adjusted to not seasonally adjusted, not seasonally adjusted data will be used in the aggregation of the dependent series for the last 5 years, but the seasonally adjusted indexes will be used before that period. Note: 46 of the 73 components are seasonally adjusted for 2010.

Seasonally adjusted data, including the all items index levels, are subject to revision for up to five years after their original release. For this reason, BLS advises against the use of these data in escalation agreements.

Effective with the calculation of the seasonal factors for 1990, the Bureau of Labor Statistics has used an enhanced seasonal adjustment procedure called Intervention Analysis Seasonal Adjustment for some CPI series. Intervention Analysis Seasonal Adjustment allows for better estimates of seasonally adjusted data. Extreme values and/or sharp movements which might distort the seasonal pattern are estimated and removed from the data prior to calculation of seasonal factors. Beginning with the calculation of seasonal factors for 1996, X-12-ARIMA software was used for Intervention Analysis Seasonal Adjustment.

For the seasonal factors introduced in January 2010, BLS adjusted 30 series using Intervention Analysis Seasonal Adjustment, including selected food and beverage items, motor fuels, electricity and vehicles. For example, this procedure was used for the Motor fuel series to offset the effects of events such as damage to oil refineries from Hurricane Katrina.

For a complete list of Intervention Analysis Seasonal Adjustment series and explanations, please refer to the article "Intervention Analysis Seasonal Adjustment", located on our website at <http://www.bls.gov/cpi/cpisapage.htm>.

For additional information on seasonal adjustment in the CPI, please write to the Bureau of Labor Statistics, Division of Consumer Prices and Price Indexes, Washington, DC 20212 or contact David Levin at (202) 691-6968, or by e-mail at Levin.David@bls.gov. If you have general questions about the CPI, please call our information staff at (202) 691-7000.

Table 1. Consumer Price Index for All Urban Consumers (CPI-U): U.S. city average, by expenditure category and commodity and service group

(1982-84=100, unless otherwise noted)

CPI-U Expenditure category	Relative importance, December 2009	Unadjusted indexes		Unadjusted percent change to Oct. 2010 from—		Seasonally adjusted percent change from—		
		Sep. 2010	Oct. 2010	Oct. 2009	Sep. 2010	July to Aug.	Aug. to Sep.	Sep. to Oct.
All items	100.000	218.439	218.711	1.2	0.1	0.3	0.1	0.2
All items (1967=100)	-	654.346	655.162	-	-	-	-	-
Food and beverages	14.795	220.586	221.005	1.4	.2	.1	.3	.1
Food	13.738	220.216	220.616	1.4	.2	.2	.3	.1
Food at home	7.801	216.161	216.698	1.4	.2	.0	.3	.0
Cereals and bakery products	1.108	250.085	249.890	-6	-1	.1	.8	-2
Meats, poultry, fish, and eggs	1.745	211.280	212.170	5.8	.4	-3	.9	.6
Dairy and related products ¹820	199.042	201.291	3.0	1.1	-1	.2	1.1
Fruits and vegetables	1.153	268.832	270.200	.3	.5	.4	.1	-7
Nonalcoholic beverages and beverage materials952	161.771	161.313	-1.0	-3	-1	.0	-5
Other food at home	2.023	191.289	191.311	.0	.0	.2	.0	-2
Sugar and sweets295	202.469	202.962	3.2	.2	-1	1.1	.7
Fats and oils232	201.971	203.614	1.8	.8	.7	.1	.5
Other foods	1.496	204.322	203.990	-9	-2	.2	-2	-4
Other miscellaneous foods ^{1 2}439	122.106	121.698	-3	-3	-2	.3	-3
Food away from home ¹	5.937	227.075	227.287	1.4	.1	.3	.3	.1
Other food away from home ^{1 2}326	160.072	160.036	1.9	.0	.1	.3	.0
Alcoholic beverages	1.056	224.043	224.705	1.1	.3	.0	.2	.2
Housing	41.960	216.602	216.100	-2	-2	.0	-1	.1
Shelter	32.289	248.522	248.646	-3	.0	.0	.0	.1
Rent of primary residence ³	5.966	249.368	249.618	.3	.1	-1	.1	.1
Lodging away from home ²769	135.800	133.580	.1	-1.6	-1.3	-2	-1.0
Owners' equivalent rent of residences ^{3 4}	25.206	256.590	256.823	.0	.1	.0	.0	.1
Owners' equivalent rent of primary residence ^{3 4}	23.593	256.584	256.817	.0	.1	.0	.0	.1
Tenants' and household insurance ^{1 2}347	126.627	127.111	4.0	.4	.5	.1	.4
Fuels and utilities	5.081	217.695	213.031	2.4	-2.1	.4	-4	.4
Household energy	4.028	192.635	187.271	1.7	-2.8	.5	-6	.4
Fuel oil and other fuels ¹276	265.812	276.551	13.4	4.0	.7	1.0	4.0
Gas (piped) and electricity ^{3 5}	3.752	197.049	190.603	.9	-3.3	.4	-8	.2
Water and sewer and trash collection services ²	1.052	172.833	173.360	5.3	.3	.2	.4	.4
Household furnishings and operations	4.590	124.535	124.524	-2.5	.0	.0	-4	.0
Household operations ^{1 2}781	150.346	150.151	.0	-1	-1	-2	-1
Apparel	3.695	121.011	122.454	-1.2	1.2	-1	-6	-3
Men's and boys' apparel903	112.201	114.090	-6	1.7	-1	-6	-3
Women's and girls' apparel	1.580	109.217	110.723	-2.7	1.4	-3	-1.4	-4
Infants' and toddlers' apparel196	114.413	114.663	-2.2	.2	-1.3	-1.3	-1.9
Footwear721	129.303	130.896	.4	1.2	-5	.3	.2
Transportation	16.685	192.412	194.283	4.8	1.0	1.2	.5	1.2
Private transportation	15.497	187.646	189.674	4.9	1.1	1.3	.5	1.3
New and used motor vehicles ²	6.386	97.502	97.203	2.2	-3	.4	-2	-4
New vehicles	3.573	137.365	137.849	.4	.4	.3	.1	-2
Used cars and trucks	2.012	146.065	144.040	8.6	-1.4	.7	-7	-9
Motor fuel	4.525	232.518	240.303	9.7	3.3	3.9	1.8	4.4
Gasoline (all types)	4.337	231.819	239.527	9.5	3.3	3.9	1.6	4.6
Motor vehicle parts and equipment ¹401	137.802	138.289	3.5	.4	.3	.1	.4
Motor vehicle maintenance and repair ¹	1.167	249.231	249.824	1.8	.2	.3	.3	.2
Public transportation	1.187	252.525	251.435	4.3	-4	-2	.5	.2
Medical care	6.513	390.616	391.240	3.4	.2	.2	.6	.1
Medical care commodities ¹	1.611	315.804	316.082	2.5	.1	.2	.3	.1
Medical care services	4.902	413.807	414.564	3.6	.2	.2	.8	.2
Professional services	2.796	330.149	330.057	2.7	.0	.2	.4	.0

See footnotes at end of table.

Table 1. Consumer Price Index for All Urban Consumers (CPI-U): U.S. city average, by expenditure category and commodity and service group-Continued

(1982-84=100, unless otherwise noted)

CPI-U	Relative importance, December 2009	Unadjusted indexes		Unadjusted percent change to Oct. 2010 from—		Seasonally adjusted percent change from—		
		Sep. 2010	Oct. 2010	Oct. 2009	Sep. 2010	July to Aug.	Aug. to Sep.	Sep. to Oct.
Expenditure category								
Hospital and related services ³	1.619	614.667	618.936	7.5	0.7	0.5	1.5	0.5
Recreation ²	6.437	113.120	112.984	-1.0	-1	-2	-3	-1
Video and audio ²	1.894	98.638	98.503	-1.7	-1	-5	.0	-1
Education and communication ²	6.434	131.154	130.959	1.4	-1	.0	-1	-1
Education ²	3.035	203.353	203.071	3.7	-1	.0	-2	.0
Educational books and supplies	.200	508.892	510.335	3.2	.3	-1.4	.6	.5
Tuition, other school fees, and childcare	2.835	585.271	584.286	3.7	-2	.1	-3	.0
Communication ²	3.399	84.665	84.531	-6	-2	.0	.0	-2
Information and information processing ^{1 2}	3.225	81.497	81.359	-8	-2	.0	.0	-2
Telephone services ^{1 2}	2.392	102.633	102.458	-4	-2	.1	.1	-2
Information technology, hardware and services ^{1 6}	.833	9.339	9.324	-1.9	-2	-2	-4	-2
Personal computers and peripheral equipment ⁷	.246	75.570	75.385	-3.6	-2	.2	.1	-5
Other goods and services	3.483	383.663	382.764	1.9	-2	.3	-1	-3
Tobacco and smoking products ¹	.871	823.766	821.529	6.2	-3	.4	.1	-3
Personal care	2.612	206.929	206.471	.5	-2	.2	-2	-3
Personal care products ¹	.688	160.985	159.951	-1.4	-6	.0	-2	-6
Personal care services ¹	.642	230.332	229.343	.4	-4	-1	.0	-4
Miscellaneous personal services	1.048	355.964	356.508	2.5	.2	.2	-1	.2
Commodity and service group								
Commodities	39.816	174.282	175.225	1.7	.5	.5	.2	.5
Food and beverages	14.795	220.586	221.005	1.4	.2	.1	.3	.1
Commodities less food and beverages	25.021	149.761	150.882	1.9	.7	.8	.1	.7
Nondurables less food and beverages	15.044	188.770	191.332	3.0	1.4	1.4	.4	1.1
Apparel	3.695	121.011	122.454	-1.2	1.2	-1	-6	-3
Nondurables less food, beverages, and apparel	11.349	235.211	238.530	4.5	1.4	2.0	.8	1.5
Durables	9.978	111.174	110.966	.3	-2	.4	-3	-4
Services	60.184	262.320	261.927	.8	-1	.1	.0	.1
Rent of shelter ⁴	31.942	258.934	259.054	-4	.0	.1	.3	.1
Tenants' and household insurance ^{1 2}	.347	126.627	127.111	4.0	.4	.5	.1	.4
Gas (piped) and electricity ^{3 5}	3.752	197.049	190.603	.9	-3.3	.4	-8	.2
Water and sewer and trash collection services ²	1.052	172.833	173.360	5.3	.3	.2	.4	.4
Household operations ^{1 2}	.781	150.346	150.151	.0	-1	-1	-2	-1
Transportation services	6.060	260.577	261.625	2.8	.4	.1	.3	.3
Medical care services	4.902	413.807	414.564	3.6	.2	.2	.8	.2
Other services	11.347	311.802	311.375	1.4	-1	.0	-2	.0
Special indexes								
All items less food	86.262	218.179	218.431	1.1	.1	.3	.1	.3
All items less shelter	67.711	209.133	209.467	1.9	.2	.4	.1	.3
All items less medical care	93.487	210.001	210.257	1.0	.1	.3	.1	.2
Commodities less food	26.078	152.395	153.508	1.9	.7	.7	.1	.7
Nondurables less food	16.100	190.885	193.344	2.9	1.3	1.3	.5	.8
Nondurables less food and apparel	12.405	233.089	236.158	4.2	1.3	1.8	.7	1.2
Nondurables	29.838	204.920	206.518	2.2	.8	.9	.3	.8
Services less rent of shelter ⁴	28.243	286.640	285.588	2.2	-4	.2	.1	.2
Services less medical care services	55.282	250.516	250.066	.6	-2	.1	.1	.1
Energy	8.553	210.003	210.947	5.9	.4	2.3	.7	2.6
All items less energy	91.447	221.030	221.236	.7	.1	.1	.0	.0
All items less food and energy	77.708	221.907	222.079	.6	.1	.0	.0	.0
Commodities less food and energy commodities	21.276	143.866	144.028	.1	.1	.1	-2	-2
Energy commodities	4.801	235.797	243.784	9.9	3.4	3.8	1.8	4.4
Services less energy services	56.432	269.034	269.208	.8	.1	.0	.1	.1
Purchasing power of the consumer dollar (1982-84=\$1.00)	-	\$.458	\$.457	-	-	-	-	-
Purchasing power of the consumer dollar (1967=\$1.00)	-	\$.153	\$.153	-	-	-	-	-

¹ Not seasonally adjusted.

² Indexes on a December 1997=100 base.

³ This index series was calculated using a Laspeyres estimator. All other item stratum index series were calculated using a geometric means estimator.

⁴ Indexes on a December 1982=100 base.

⁵ In January, 2011, this series will be re-titled Energy services.

⁶ Indexes on a December 1988=100 base.

⁷ Indexes on a December 2007=100 base.

- Data not available.

NOTE: Index applies to a month as a whole, not to any specific date.

Table 2. Consumer Price Index for All Urban Consumers (CPI-U): Seasonally adjusted U.S. city average, by expenditure category and commodity and service group

(1982-84=100, unless otherwise noted)

CPI-U	Seasonally adjusted indexes				Seasonally adjusted annual rate percent change for					
					3 months ended—				6 months ended—	
	July 2010	Aug. 2010	Sep. 2010	Oct. 2010	Jan. 2010	Apr. 2010	July 2010	Oct. 2010	Apr. 2010	Oct. 2010
Expenditure category										
All items	217.597	218.150	218.372	218.879	2.3	0.0	0.0	2.4	1.1	1.2
Food and beverages	219.641	219.961	220.644	220.808	1.8	1.7	-1	2.1	1.8	1.0
Food	219.222	219.563	220.262	220.408	1.9	2.0	-3	2.2	1.9	.9
Food at home	215.430	215.506	216.241	216.339	2.3	3.0	-1.1	1.7	2.6	.3
Cereals and bakery products	248.561	248.746	250.651	250.168	-4	-2.1	-2.5	2.6	-1.2	.0
Meats, poultry, fish, and eggs	209.196	208.537	210.311	211.630	3.1	8.2	7.0	4.7	5.6	5.8
Dairy and related products ¹	198.991	198.712	199.042	201.291	7.6	-3.3	3.5	4.7	2.0	4.1
Fruits and vegetables	269.266	270.413	270.585	268.779	7.4	13.0	-16.1	-7	10.2	-8.7
Nonalcoholic beverages and beverage materials	161.755	161.588	161.667	160.937	.0	.0	-1.8	-2.0	.0	-1.9
Other food at home	190.968	191.436	191.482	191.175	-7	-1	.5	.4	-4	.4
Sugar and sweets	200.816	200.610	202.826	204.188	1.9	1.6	2.3	6.9	1.8	4.6
Fats and oils	199.743	201.077	201.256	202.234	1.8	.6	.0	5.1	1.2	2.5
Other foods	204.548	205.055	204.645	203.766	-1.6	-6	.2	-1.5	-1.1	-7
Other miscellaneous foods ^{1 2}	122.052	121.787	122.106	121.698	-1.8	2.4	-8	-1.2	.3	-1.0
Food away from home ¹	225.710	226.422	227.075	227.287	1.2	.6	.8	2.8	.9	1.8
Other food away from home ^{1 2}	159.338	159.517	160.072	160.036	1.2	3.1	1.5	1.8	2.2	1.6
Alcoholic beverages	223.758	223.789	224.249	224.665	.5	-9	3.2	1.6	-2	2.4
Housing	216.192	216.277	216.157	216.351	-1.4	-1	.1	.3	-7	.2
Shelter	248.533	248.475	248.590	248.725	-2.6	-3	1.1	.3	-1.4	.7
Rent of primary residence ³	249.381	249.213	249.535	249.675	-1	.2	.6	.5	.0	.6
Lodging away from home ²	137.410	135.651	135.371	134.035	-13.0	7.3	17.4	-9.5	-3.4	3.1
Owners' equivalent rent of residences ^{3 4}	256.521	256.580	256.667	256.884	-7	-7	.7	.6	-7	.6
Owners' equivalent rent of primary residence ^{3 4}	256.513	256.575	256.661	256.878	-7	-7	.7	.6	-7	.6
Tenants' and household insurance ^{1 2}	125.865	126.463	126.627	127.111	7.3	1.7	3.2	4.0	4.5	3.6
Fuels and utilities	213.471	214.372	213.483	214.378	6.8	5.7	-4.1	1.7	6.2	-1.2
Household energy	188.333	189.216	187.999	188.822	7.3	5.2	-6.3	1.0	6.3	-2.7
Fuel oil and other fuels ¹	261.257	263.196	265.812	276.551	75.7	-3.9	-22.1	25.6	30.0	-1.1
Gas (piped) and electricity ^{3 5}	192.576	193.441	191.969	192.302	3.4	5.9	-5.0	-.6	4.7	-2.8
Water and sewer and trash collection services ²	171.409	171.833	172.598	173.204	5.0	7.6	4.5	4.3	6.3	4.4
Household furnishings and operations	125.135	125.193	124.729	124.685	-1.6	-5.1	-1.9	-1.4	-3.4	-1.6
Household operations ^{1 2}	150.747	150.630	150.346	150.151	-1.8	1.5	1.8	-1.6	-.2	.1
Apparel	120.373	120.205	119.444	119.028	.2	-7.0	6.6	-4.4	-3.4	1.0
Men's and boys' apparel	113.220	113.094	112.412	112.077	-1.7	-6.6	10.6	-4.0	-4.2	3.1
Women's and girls' apparel	108.074	107.759	106.293	105.915	1.1	-11.2	8.0	-7.8	-5.2	-2
Infants' and toddlers' apparel	117.212	115.667	114.148	111.956	.8	-1.8	10.8	-16.8	-.5	-4.0
Footwear	128.465	127.882	128.327	128.548	4.3	-6.1	3.6	.3	-1.0	1.9
Transportation	190.544	192.909	193.961	196.318	14.2	-2.8	-3.5	12.7	5.4	4.3
Private transportation	185.797	188.302	189.331	191.780	14.9	-3.6	-3.8	13.5	5.3	4.5
New and used motor vehicles ²	97.557	97.908	97.739	97.303	4.9	1.7	3.0	-1.0	3.3	1.0
New vehicles	138.139	138.529	138.704	138.417	-1.0	.8	1.1	.8	-.1	1.0
Used cars and trucks	145.088	146.093	145.139	143.833	24.6	5.6	9.3	-3.4	14.7	2.7
Motor fuel	224.977	233.847	238.064	248.648	43.6	-17.2	-18.3	49.2	9.0	10.4
Gasoline (all types)	224.135	232.965	236.714	247.512	44.8	-17.0	-19.5	48.7	9.7	9.4
Motor vehicle parts and equipment ¹	137.236	137.646	137.802	138.289	5.0	1.3	4.6	3.1	3.1	3.9
Motor vehicle maintenance and repair ¹	247.536	248.390	249.231	249.824	.3	2.9	.3	3.7	1.6	2.0
Public transportation	250.567	250.191	251.529	251.992	5.9	8.8	.4	2.3	7.3	1.4
Medical care	387.933	388.842	391.328	391.902	3.8	4.4	1.1	4.2	4.1	2.6
Medical care commodities ¹	314.113	314.881	315.804	316.082	2.8	5.3	-.5	2.5	4.0	1.0
Medical care services	410.759	411.709	414.806	415.495	4.1	4.1	1.6	4.7	4.1	3.1
Professional services	328.610	329.413	330.705	330.626	3.6	1.7	3.1	2.5	2.6	2.8

See footnotes at end of table.

Table 2. Consumer Price Index for All Urban Consumers (CPI-U): Seasonally adjusted U.S. city average, by expenditure category and commodity and service group-Continued

(1982-84=100, unless otherwise noted)

CPI-U	Seasonally adjusted indexes				Seasonally adjusted annual rate percent change for					
					3 months ended—			6 months ended—		
	July 2010	Aug. 2010	Sep. 2010	Oct. 2010	Jan. 2010	Apr. 2010	July 2010	Oct. 2010	Apr. 2010	Oct. 2010
Expenditure category										
Hospital and related services ³	605.466	608.304	617.619	621.010	7.2	10.2	2.3	10.7	8.7	6.4
Recreation ²	113.599	113.375	113.028	112.945	-2.1	.3	.0	-2.3	-9	-1.2
Video and audio ²	99.240	98.747	98.746	98.605	-1	-2.8	-1.3	-2.5	-1.4	-1.9
Education and communication ²	130.355	130.369	130.220	130.140	1.8	3.1	1.6	-.7	2.5	.4
Education ²	200.686	200.746	200.358	200.442	4.0	6.8	4.6	-.5	5.3	2.0
Educational books and supplies	508.430	501.521	504.653	507.055	6.4	3.2	4.5	-1.1	4.8	1.7
Tuition, other school fees, and childcare	577.097	577.834	576.388	576.457	3.8	7.0	4.6	-.4	5.4	2.1
Communication ²	84.702	84.695	84.660	84.527	-.4	-1	-1.2	-.8	-.2	-1.0
Information and information processing ^{1 2}	81.535	81.532	81.497	81.359	-.8	-2	-1.2	-.9	-.5	-1.0
Telephone services ^{1 2}	102.471	102.534	102.633	102.458	-.6	-1.3	.3	-.1	-1.0	.1
Information technology, hardware and services ^{1 6}	9.399	9.381	9.339	9.324	-1.8	3.1	-5.4	-3.2	.6	-4.3
Personal computers and peripheral equipment ⁷	76.160	76.281	76.330	75.917	-4.2	-3.7	-5.3	-1.3	-3.9	-3.3
Other goods and services	383.432	384.493	383.948	382.701	2.7	.4	5.6	-.8	1.5	2.4
Tobacco and smoking products ¹	819.214	822.662	823.766	821.529	6.9	.6	16.8	1.1	3.7	8.7
Personal care	207.160	207.630	207.136	206.425	1.1	.4	2.0	-1.4	.7	.3
Personal care products ¹	161.372	161.337	160.985	159.951	-1.5	-1	-.6	-3.5	-.8	-2.0
Personal care services ¹	230.519	230.354	230.332	229.343	.3	1.8	1.5	-2.0	1.0	-.3
Miscellaneous personal services	354.973	355.528	355.275	356.127	3.1	2.5	3.1	1.3	2.8	2.2
Commodity and service group										
Commodities	173.368	174.304	174.665	175.490	6.4	-2.5	-1.7	5.0	1.9	1.6
Food and beverages	219.641	219.961	220.644	220.808	1.8	1.7	-.1	2.1	1.8	1.0
Commodities less food and beverages	148.890	150.042	150.262	151.324	9.3	-4.8	-2.6	6.7	2.0	1.9
Nondurables less food and beverages	186.102	188.620	189.461	191.616	15.3	-9.2	-4.3	12.4	2.3	3.7
Apparel	120.373	120.205	119.444	119.028	.2	-7.0	6.6	-4.4	-3.4	1.0
Nondurables less food, beverages, and apparel	231.395	235.953	237.892	241.403	20.2	-9.5	-7.6	18.5	4.3	4.6
Durables	111.465	111.895	111.580	111.174	2.5	-1.1	.8	-1.0	.6	-.1
Services	261.549	261.680	261.781	262.008	-.4	1.7	1.2	.7	.6	.9
Rent of shelter ⁴	257.998	258.276	259.063	259.238	-1.6	-1.9	.2	1.9	-1.8	1.0
Tenants' and household insurance ^{1 2}	125.865	126.463	126.627	127.111	7.3	1.7	3.2	4.0	4.5	3.6
Gas (piped) and electricity ^{3 5}	192.576	193.441	191.969	192.302	3.4	5.9	-5.0	-.6	4.7	-2.8
Water and sewer and trash collection services ²	171.409	171.833	172.598	173.204	5.0	7.6	4.5	4.3	6.3	4.4
Household operations ^{1 2}	150.747	150.630	150.346	150.151	-1.8	1.5	1.8	-1.6	-.2	.1
Transportation services	259.852	260.059	260.777	261.655	2.1	5.0	1.5	2.8	3.5	2.2
Medical care services	410.759	411.709	414.806	415.495	4.1	4.1	1.6	4.7	4.1	3.1
Other services	310.990	311.046	310.495	310.397	1.3	2.5	2.8	-.8	1.9	1.0
Special indexes										
All items less food	217.361	217.947	218.095	218.658	2.4	-.3	.1	2.4	1.0	1.2
All items less shelter	207.943	208.744	209.012	209.671	4.7	.1	-.5	3.4	2.4	1.4
All items less medical care	209.236	209.770	209.905	210.404	2.2	-.3	.0	2.3	.9	1.1
Commodities less food	151.537	152.662	152.889	153.938	8.9	-4.7	-2.4	6.5	1.9	1.9
Nondurables less food	188.502	190.950	191.839	193.327	14.8	-8.7	-3.4	10.6	2.4	3.4
Nondurables less food and apparel	229.614	233.855	235.546	238.419	19.0	-8.7	-6.8	16.2	4.2	4.1
Nondurables	202.701	204.516	205.209	206.911	7.5	-2.9	-3.7	8.6	2.2	2.3
Services less rent of shelter ⁴	284.537	284.979	285.138	285.577	2.7	3.9	.6	1.5	3.3	1.0
Services less medical care services	249.251	249.511	249.872	250.121	-.1	.6	.3	1.4	.2	.9
Energy	204.195	208.874	210.256	215.720	25.6	-7.6	-12.8	24.6	7.7	4.2
All items less energy	220.684	220.823	220.930	220.938	.3	.8	1.4	.5	.5	.9
All items less food and energy	221.676	221.779	221.781	221.765	.0	.6	1.7	.2	.3	.9
Commodities less food and energy commodities	143.923	144.079	143.727	143.379	1.7	-1.6	1.8	-1.5	.0	.1
Energy commodities	228.353	236.938	241.105	251.770	45.4	-16.5	-18.5	47.8	10.2	9.7
Services less energy services	268.610	268.672	268.921	269.138	-.6	1.4	1.6	.8	.4	1.2

¹ Not seasonally adjusted.

² Indexes on a December 1997=100 base.

³ This index series was calculated using a Laspeyres estimator. All other item stratum index series were calculated using a geometric means estimator.

⁴ Indexes on a December 1982=100 base.

⁵ In January, 2011, this series will be re-titled Energy services.

⁶ Indexes on a December 1988=100 base.

⁷ Indexes on a December 2007=100 base.

NOTE: Index applies to a month as a whole, not to any specific date.

Table 3. Consumer Price Index for All Urban Consumers (CPI-U): Selected areas, all items index

(1982-84=100, unless otherwise noted)

CPI-U	Pricing schedule 1	All items									
		Indexes				Percent change to Oct.2010 from—			Percent change to Sep.2010 from—		
		July 2010	Aug. 2010	Sep. 2010	Oct. 2010	Oct. 2009	Aug. 2010	Sep. 2010	Sep. 2009	July 2010	Aug. 2010
U.S. city average	M	218.011	218.312	218.439	218.711	1.2	0.2	0.1	1.1	0.2	0.1
Region and area size²											
Northeast urban	M	233.885	234.150	234.027	234.671	1.5	.2	.3	1.2	.1	-.1
Size A - More than 1,500,000	M	235.770	236.089	235.995	236.560	1.3	.2	.2	1.0	.1	.0
Size B/C - 50,000 to 1,500,000 ³	M	139.274	139.348	139.229	139.746	1.7	.3	.4	1.9	.0	-.1
Midwest urban	M	208.211	208.639	208.788	208.689	1.5	.0	.0	1.6	.3	.1
Size A - More than 1,500,000	M	208.556	208.912	209.253	209.182	1.2	.1	.0	1.4	.3	.2
Size B/C - 50,000 to 1,500,000 ³	M	134.130	134.375	134.275	134.074	1.8	-.2	-.1	1.9	.1	-.1
Size D - Nonmetropolitan (less than 50,000)	M	203.992	204.985	205.100	205.565	1.5	.3	.2	1.6	.5	.1
South urban	M	210.988	211.308	211.775	212.026	1.3	.3	.1	1.4	.4	.2
Size A - More than 1,500,000	M	212.696	212.947	213.493	213.589	1.2	.3	.0	1.1	.4	.3
Size B/C - 50,000 to 1,500,000 ³	M	134.130	134.335	134.658	134.890	1.4	.4	.2	1.5	.4	.2
Size D - Nonmetropolitan (less than 50,000)	M	214.639	215.266	215.172	215.390	1.4	.1	.1	2.0	.2	.0
West urban	M	221.331	221.523	221.384	221.708	.6	.1	.1	.5	.0	-.1
Size A - More than 1,500,000	M	225.574	225.790	225.726	226.058	.8	.1	.1	.6	.1	.0
Size B/C - 50,000 to 1,500,000 ³	M	133.685	133.704	133.544	133.745	.1	.0	.2	.3	-.1	-.1
Size classes											
A ⁴	M	199.224	199.477	199.617	199.842	1.1	.2	.1	1.0	.2	.1
B/C ³	M	134.753	134.908	134.987	135.174	1.3	.2	.1	1.4	.2	.1
D	M	210.882	211.606	211.524	211.831	1.3	.1	.1	1.4	.3	.0
Selected local areas⁵											
Chicago-Gary-Kenosha, IL-IN-WI	M	212.535	212.784	213.339	213.332	.8	.3	.0	.9	.4	.3
Los Angeles-Riverside-Orange County, CA ...	M	225.991	226.373	226.048	226.794	.7	.2	.3	.4	.0	-.1
New York-Northern N.J.-Long Island, NY-NJ-CT-PA	M	241.147	241.569	241.485	241.981	1.5	.2	.2	1.2	.1	.0
Boston-Brockton-Nashua, MA-NH-ME-CT	1	236.132	-	236.474	-	-	-	-	-.1	.1	-
Cleveland-Akron, OH	1	203.989	-	205.492	-	-	-	-	1.8	.7	-
Dallas-Fort Worth, TX	1	200.227	-	201.882	-	-	-	-	.0	.8	-
Washington-Baltimore, DC-MD-VA-WV ⁶	1	141.966	-	142.738	-	-	-	-	1.3	.5	-
Atlanta, GA	2	-	204.511	-	202.913	.9	-.8	-	-	-	-
Detroit-Ann Arbor-Flint, MI	2	-	205.412	-	205.824	.4	.2	-	-	-	-
Houston-Galveston-Brazoria, TX	2	-	195.165	-	195.094	1.8	.0	-	-	-	-
Miami-Fort Lauderdale, FL	2	-	222.803	-	223.631	.5	.4	-	-	-	-
Philadelphia-Wilmington-Atlantic City, PA-NJ-DE-MD	2	-	228.500	-	228.543	1.7	.0	-	-	-	-
San Francisco-Oakland-San Jose, CA	2	-	227.954	-	228.107	.9	.1	-	-	-	-
Seattle-Tacoma-Bremerton, WA	2	-	227.645	-	227.251	.4	-.2	-	-	-	-

¹ Foods, fuels, and several other items priced every month in all areas; most other goods and services priced as indicated:

M - Every month.

1 - January, March, May, July, September, and November.

2 - February, April, June, August, October, and December.

² Regions defined as the four Census regions. See technical notes.

³ Indexes on a December 1996=100 base.

⁴ Indexes on a December 1986=100 base.

⁵ In addition, the following metropolitan areas are published semiannually and appear in Tables 34 and 39 of the January and July issues of the CPI Detailed Report: Anchorage, AK; Cincinnati-Hamilton, OH-KY-IN; Denver-Boulder-Greeley, CO; Honolulu, HI; Kansas City, MO-KS; Milwaukee-Racine, WI; Minneapolis-St. Paul, MN-WI; Phoenix-Mesa, AZ; Pittsburgh, PA; Portland-Salem, OR-WA; St. Louis, MO-IL; San Diego, CA;

Tampa-St. Petersburg-Clearwater, FL.

⁶ Indexes on a November 1996=100 base.

- Data not available.

NOTE: Local area indexes are byproducts of the national CPI program. Each local index has a smaller sample size than the national index and is, therefore, subject to substantially more sampling and other measurement error. As a result, local area indexes show greater volatility than the national index, although their long-term trends are similar. Therefore, the Bureau of Labor Statistics strongly urges users to consider adopting the national average CPI for use in their escalator clauses.

NOTE: Index applies to a month as a whole, not to any specific date.

Table 4. Consumer Price Index for Urban Wage Earners and Clerical Workers (CPI-W): U.S. city average, by expenditure category and commodity and service group

(1982-84=100, unless otherwise noted)

CPI-W Expenditure category	Relative importance, December 2009	Unadjusted indexes		Unadjusted percent change to Oct. 2010 from—		Seasonally adjusted percent change from—		
		Sep. 2010	Oct. 2010	Oct. 2009	Sep. 2010	July to Aug.	Aug. to Sep.	Sep. to Oct.
All items	100.000	214.306	214.623	1.5	0.1	0.3	0.2	0.3
All items (1967=100)	-	638.353	639.296	-	-	-	-	-
Food and beverages	16.425	219.817	220.199	1.4	.2	.2	.3	.1
Food	15.333	219.376	219.736	1.4	.2	.2	.3	.1
Food at home	8.900	215.058	215.511	1.5	.2	.0	.3	.0
Cereals and bakery products	1.257	250.654	250.429	-6	-1	.2	.7	-2
Meats, poultry, fish, and eggs	2.144	211.109	211.978	5.9	.4	-3	.9	.6
Dairy and related products ¹898	197.812	199.890	3.0	1.1	-1	.1	1.1
Fruits and vegetables	1.223	266.461	267.466	.1	.4	.4	.0	-7
Nonalcoholic beverages and beverage materials	1.123	161.210	160.678	-1.1	-3	-2	-1	-5
Other food at home	2.254	190.318	190.351	-1	.0	.3	-1	-2
Sugar and sweets321	200.971	201.469	2.9	.2	-2	1.1	.6
Fats and oils259	202.118	203.670	1.4	.8	.6	.1	.5
Other foods	1.674	204.234	203.935	-1.0	-1	.3	-3	-4
Other miscellaneous foods ^{1 2}472	122.164	121.806	-7	-3	-3	.3	-3
Food away from home ¹	6.433	227.188	227.412	1.4	.1	.3	.3	.1
Other food away from home ^{1 2}321	160.755	160.988	2.6	.1	.1	.6	.1
Alcoholic beverages	1.092	224.828	225.531	1.3	.3	.1	.1	.1
Housing	39.753	213.294	212.681	.0	-3	.0	.0	.1
Shelter	30.171	242.338	242.513	-1	.1	.0	.1	.1
Rent of primary residence ³	8.476	247.589	247.823	.2	.1	-1	.1	.0
Lodging away from home ²432	136.488	134.787	.1	-1.2	-2.0	-3	-7
Owners' equivalent rent of residences ^{3 4}	20.959	232.472	232.680	.0	.1	.0	.1	.1
Owners' equivalent rent of primary residence ^{3 4}	20.218	232.473	232.683	.0	.1	.0	.1	.1
Tenants' and household insurance ^{1 2}303	127.718	128.130	4.4	.3	.5	.2	.3
Fuels and utilities	5.632	216.787	211.649	2.4	-2.4	.6	-4	.3
Household energy	4.517	191.066	185.262	1.7	-3.0	.7	-7	.3
Fuel oil and other fuels ¹271	267.283	278.516	13.1	4.2	.6	.9	4.2
Gas (piped) and electricity ^{3 5}	4.246	196.143	189.313	1.0	-3.5	.7	-8	.1
Water and sewer and trash collection services ²	1.114	173.258	173.843	5.3	.3	.2	.5	.2
Household furnishings and operations	3.950	120.560	120.643	-2.7	.1	-1	-3	.0
Household operations ^{1 2}369	152.851	152.729	-4	-1	-1	-5	-1
Apparel	3.788	119.942	121.587	-1.7	1.4	-4	-4	-3
Men's and boys' apparel945	111.901	113.618	-1.5	1.5	.1	-6	-5
Women's and girls' apparel	1.568	108.532	110.474	-2.5	1.8	-7	-3	-2
Infants' and toddlers' apparel285	116.688	117.250	-2.3	.5	-2.1	-1.6	-1.7
Footwear781	128.436	129.851	-6	1.1	-5	-2	.2
Transportation	18.647	191.517	193.553	5.5	1.1	1.6	.6	1.5
Private transportation	17.881	188.152	190.259	5.5	1.1	1.7	.7	1.6
New and used motor vehicles ²	6.952	96.860	96.402	3.2	-5	.4	-3	-5
New vehicles	3.385	138.353	138.806	.3	.3	.2	.1	-2
Used cars and trucks	2.944	146.959	144.952	8.6	-1.4	.7	-6	-9
Motor fuel	5.774	233.370	241.218	9.8	3.4	4.7	2.1	4.8
Gasoline (all types)	5.530	232.783	240.558	9.6	3.3	3.9	1.6	4.6
Motor vehicle parts and equipment ¹472	137.728	138.153	3.3	.3	.3	.1	.3
Motor vehicle maintenance and repair ¹	1.180	251.938	252.546	1.9	.2	.4	.3	.2
Public transportation766	249.816	249.169	3.9	-3	.0	.4	.4
Medical care	5.261	392.028	392.749	3.6	.2	.2	.6	.2
Medical care commodities ¹	1.301	307.322	307.539	2.6	.1	.3	.3	.1
Medical care services	3.961	416.993	417.913	3.9	.2	.2	.7	.2
Professional services	2.195	333.547	333.450	2.8	.0	.2	.4	.0

See footnotes at end of table.

Table 4. Consumer Price Index for Urban Wage Earners and Clerical Workers (CPI-W): U.S. city average, by expenditure category and commodity and service group-Continued

(1982-84=100, unless otherwise noted)

CPI-W	Relative importance, December 2009	Unadjusted indexes		Unadjusted percent change to Oct. 2010 from—		Seasonally adjusted percent change from—		
		Sep. 2010	Oct. 2010	Oct. 2009	Sep. 2010	July to Aug.	Aug. to Sep.	Sep. to Oct.
Expenditure category								
Hospital and related services ³	1.339	615.785	620.670	8.3	0.8	0.5	1.5	0.6
Recreation ²	6.031	109.626	109.449	-1.2	-2	-2	-3	-1
Video and audio ²	2.046	99.199	99.054	-1.6	-1	-4	.0	-1
Education and communication ²	6.175	125.818	125.617	1.0	-2	.0	-1	-1
Education ²	2.327	200.329	200.129	3.8	-1	.0	-2	.1
Educational books and supplies	.196	512.303	512.956	3.1	.1	-1.1	.6	.3
Tuition, other school fees, and childcare	2.131	563.998	563.319	3.9	-1	.1	-3	.1
Communication ²	3.848	87.343	87.170	-7	-2	.0	-1	-2
Information and information processing ^{1 2}	3.715	85.154	84.978	-8	-2	.0	-1	-2
Telephone services ^{1 2}	2.906	102.325	102.135	-7	-2	.1	.1	-2
Information technology, hardware and services ^{1 6}	.809	9.891	9.864	-1.3	-3	-1	-6	-3
Personal computers and peripheral equipment ⁷	.225	75.356	74.970	-3.8	-5	.2	-1	-8
Other goods and services	3.919	412.690	411.655	2.6	-3	.3	.0	-3
Tobacco and smoking products ¹	1.397	828.794	826.468	6.1	-3	.4	.1	-3
Personal care	2.522	204.620	204.142	.5	-2	.2	-1	-4
Personal care products ¹	.733	161.132	160.174	-1.3	-6	.0	-2	-6
Personal care services ¹	.577	230.624	229.635	.4	-4	-1	.0	-4
Miscellaneous personal services	1.019	357.423	357.784	2.4	.1	.2	.1	.2
Commodity and service group								
Commodities	43.589	177.267	178.283	2.1	.6	.7	.3	.6
Food and beverages	16.425	219.817	220.199	1.4	.2	.2	.3	.1
Commodities less food and beverages	27.164	154.406	155.663	2.6	.8	1.0	.3	.9
Nondurables less food and beverages	16.703	197.015	199.991	3.4	1.5	1.5	.6	1.3
Apparel	3.788	119.942	121.587	-1.7	1.4	-4	-4	-3
Nondurables less food, beverages, and apparel	12.915	249.301	253.167	5.0	1.6	2.2	1.0	1.9
Durables	10.461	112.646	112.294	1.2	-3	.3	-2	-4
Services	56.411	257.663	257.198	.9	-2	.1	.0	.1
Rent of shelter ⁴	29.868	233.516	233.679	-2	.1	.0	.2	.1
Tenants' and household insurance ^{1 2}	.303	127.718	128.130	4.4	.3	.5	.2	.3
Gas (piped) and electricity ^{3 5}	4.246	196.143	189.313	1.0	-3.5	.7	-8	.1
Water and sewer and trash collection services ²	1.114	173.258	173.843	5.3	.3	.2	.5	.2
Household operations ^{1 2}	.369	152.851	152.729	-4	-1	-1	-5	-1
Transportation services	5.918	260.813	262.219	3.1	.5	.1	.2	.4
Medical care services	3.961	416.993	417.913	3.9	.2	.2	.7	.2
Other services	10.631	297.815	297.397	1.2	-1	.0	-2	.0
Special indexes								
All items less food	84.667	213.223	213.532	1.5	.1	.4	.1	.4
All items less shelter	69.829	206.399	206.770	2.1	.2	.5	.2	.4
All items less medical care	94.739	207.107	207.409	1.3	.1	.4	.1	.3
Commodities less food	28.256	156.792	158.038	2.5	.8	1.0	.3	.9
Nondurables less food	17.795	198.749	201.606	3.3	1.4	1.5	.6	1.2
Nondurables less food and apparel	14.007	246.106	249.688	4.8	1.5	2.0	.9	1.6
Nondurables	33.128	208.853	210.627	2.4	.8	.9	.5	1.0
Services less rent of shelter ⁴	26.543	253.335	252.181	2.2	-5	.2	.0	.2
Services less medical care services	52.450	246.476	245.955	.7	-2	.1	.1	.1
Energy	10.291	210.386	211.514	6.2	.5	2.9	.9	2.9
All items less energy	89.709	215.742	215.961	.9	.1	.1	.1	.0
All items less food and energy	74.376	215.388	215.580	.8	.1	.0	.0	.0
Commodities less food and energy commodities	22.211	146.170	146.268	.6	.1	.1	-2	-3
Energy commodities	6.045	235.913	243.933	9.9	3.4	4.5	2.0	4.8
Services less energy services	52.165	264.342	264.603	.9	.1	.0	.1	.1
Purchasing power of the consumer dollar (1982-84=\$1.00)	-	\$.467	\$.466	-	-	-	-	-
Purchasing power of the consumer dollar (1967=\$1.00)	-	\$.157	\$.156	-	-	-	-	-

¹ Not seasonally adjusted.

² Indexes on a December 1997=100 base.

³ This index series was calculated using a Laspeyres estimator. All other item stratum index series were calculated using a geometric means estimator.

⁴ Indexes on a December 1984=100 base

⁵ In January, 2011, this series will be re-titled Energy services.

⁶ Indexes on a December 1988=100 base.

⁷ Indexes on a December 2007=100 base.

- Data not available.

NOTE: Index applies to a month as a whole, not to any specific date.

Table 5. Consumer Price Index for Urban Wage Earners and Clerical Workers (CPI-W): Seasonally adjusted U.S. city average, by expenditure category and commodity and service group

(1982-84=100, unless otherwise noted)

CPI-W	Seasonally adjusted indexes				Seasonally adjusted annual rate percent change for					
					3 months ended—				6 months ended—	
	July 2010	Aug. 2010	Sep. 2010	Oct. 2010	Jan. 2010	Apr. 2010	July 2010	Oct. 2010	Apr. 2010	Oct. 2010
Expenditure category										
All items	213.275	214.019	214.345	215.005	3.3	-0.3	-0.4	3.3	1.5	1.4
Food and beverages	218.851	219.203	219.852	220.003	1.8	1.8	.0	2.1	1.8	1.0
Food	218.336	218.696	219.367	219.514	1.7	2.1	-.3	2.2	1.9	.9
Food at home	214.312	214.392	215.042	215.136	2.2	3.2	-1.0	1.5	2.7	.3
Cereals and bakery products	249.053	249.429	251.234	250.767	-.9	-1.8	-2.6	2.8	-1.4	.1
Meats, poultry, fish, and eggs	208.949	208.288	210.142	211.446	2.9	8.8	7.0	4.9	5.8	5.9
Dairy and related products ¹	197.782	197.651	197.812	199.890	7.5	-3.4	3.8	4.3	1.9	4.1
Fruits and vegetables	266.463	267.571	267.680	265.939	7.3	13.6	-16.7	-.8	10.4	-9.1
Nonalcoholic beverages and beverage materials	161.496	161.246	161.087	160.297	.0	.1	-1.5	-2.9	.1	-2.2
Other food at home	190.144	190.637	190.495	190.170	-.5	-.4	.2	.1	-.4	.1
Sugar and sweets	199.386	199.065	201.240	202.408	2.2	2.3	1.1	6.2	2.2	3.6
Fats and oils	199.998	201.168	201.340	202.318	1.5	.2	-.6	4.7	.9	2.0
Other foods	204.633	205.225	204.561	203.701	-1.3	-1.0	.2	-1.8	-1.1	-.8
Other miscellaneous foods ^{1 2}	122.217	121.804	122.164	121.806	-2.0	2.2	-1.6	-1.3	.1	-1.5
Food away from home ¹	225.707	226.481	227.188	227.412	1.1	.7	.6	3.1	.9	1.8
Other food away from home ^{1 2}	159.725	159.866	160.755	160.988	2.0	3.6	1.6	3.2	2.8	2.4
Alcoholic beverages	224.936	225.179	225.507	225.707	1.8	-2.2	4.4	1.4	-.2	2.9
Housing	212.756	212.842	212.764	212.959	-.4	.0	-.1	.4	-.2	.1
Shelter	242.390	242.282	242.448	242.602	-1.6	-2	.9	.4	-.9	.6
Rent of primary residence ³	247.705	247.460	247.767	247.885	-.3	.2	.4	.3	.0	.4
Lodging away from home ²	139.345	136.626	136.197	135.294	-12.6	8.8	18.0	-11.1	-2.5	2.4
Owners' equivalent rent of residences ^{3 4}	232.411	232.443	232.567	232.759	-.8	-.6	.7	.6	-.7	.6
Owners' equivalent rent of primary residence ^{3 4}	232.411	232.444	232.568	232.762	-.8	-.6	.7	.6	-.7	.6
Tenants' and household insurance ^{1 2}	126.950	127.526	127.718	128.130	8.5	1.8	3.5	3.8	5.1	3.6
Fuels and utilities	212.231	213.407	212.484	213.115	6.7	5.3	-3.9	1.7	6.0	-1.1
Household energy	186.400	187.614	186.387	186.978	7.0	4.6	-5.8	1.2	5.8	-2.3
Fuel oil and other fuels ¹	263.269	264.904	267.283	278.516	77.3	-4.6	-22.7	25.3	30.1	-1.6
Gas (piped) and electricity ^{3 5}	191.240	192.489	191.045	191.184	3.6	5.3	-4.6	-.1	4.5	-2.4
Water and sewer and trash collection services ²	172.010	172.296	173.079	173.455	5.6	7.8	4.3	3.4	6.7	3.8
Household furnishings and operations	121.071	121.001	120.681	120.687	-1.4	-5.8	-2.2	-1.3	-3.7	-1.7
Household operations ^{1 2}	153.634	153.542	152.851	152.729	-4.8	2.2	3.5	-2.3	-1.4	.5
Apparel	119.544	119.017	118.544	118.175	-.5	-7.6	6.2	-4.5	-4.1	.7
Men's and boys' apparel	112.845	112.965	112.281	111.728	-4.2	-6.9	9.7	-3.9	-5.6	2.7
Women's and girls' apparel	106.821	106.111	105.776	105.596	1.0	-11.6	6.1	-4.5	-5.5	.6
Infants' and toddlers' apparel	120.885	118.376	116.525	114.553	4.3	-2.3	11.0	-19.4	1.0	-5.4
Footwear	128.294	127.689	127.444	127.691	2.6	-6.4	3.7	-1.9	-2.0	.9
Transportation	189.020	192.130	193.376	196.286	16.3	-3.7	-4.7	16.3	5.8	5.3
Private transportation	185.661	188.845	190.087	193.039	16.8	-4.2	-4.9	16.9	5.8	5.4
New and used motor vehicles ²	96.827	97.221	96.958	96.498	8.0	2.1	4.2	-1.4	5.0	1.4
New vehicles	139.218	139.526	139.661	139.363	-1.1	.5	1.3	.4	-.3	.9
Used cars and trucks	145.889	146.935	146.033	144.761	24.8	5.5	9.0	-3.1	14.7	2.8
Motor fuel	224.320	234.907	239.792	251.389	41.1	-17.7	-20.7	57.7	7.8	11.8
Gasoline (all types)	224.891	233.750	237.478	248.433	46.3	-17.2	-20.0	48.9	10.1	9.1
Motor vehicle parts and equipment ¹	137.218	137.612	137.728	138.153	4.9	1.6	3.9	2.8	3.2	3.3
Motor vehicle maintenance and repair ¹	250.143	251.084	251.938	252.546	.3	3.1	.4	3.9	1.7	2.2
Public transportation	247.744	247.825	248.885	249.803	5.0	6.9	.6	3.4	6.0	2.0
Medical care	389.453	390.299	392.737	393.364	4.1	5.0	1.3	4.1	4.5	2.7
Medical care commodities ¹	305.764	306.541	307.322	307.539	2.9	5.7	-.5	2.3	4.3	.9
Medical care services	414.049	414.900	417.992	418.780	4.5	4.7	1.9	4.6	4.6	3.3
Professional services	331.963	332.739	334.108	333.960	3.9	1.9	3.1	2.4	2.9	2.8

See footnotes at end of table.

Table 5. Consumer Price Index for Urban Wage Earners and Clerical Workers (CPI-W): Seasonally adjusted U.S. city average, by expenditure category and commodity and service group-Continued

(1982-84=100, unless otherwise noted)

CPI-W	Seasonally adjusted indexes				Seasonally adjusted annual rate percent change for					
	July 2010	Aug. 2010	Sep. 2010	Oct. 2010	3 months ended—				6 months ended—	
					Jan. 2010	Apr. 2010	July 2010	Oct. 2010	Apr. 2010	Oct. 2010
Expenditure category										
Hospital and related services ³	606.994	609.797	618.805	622.544	8.0	11.8	3.0	10.6	9.9	6.7
Recreation ²	109.992	109.813	109.532	109.427	-1.9	.0	-.6	-2.0	-1.0	-1.3
Video and audio ²	99.646	99.260	99.299	99.197	.0	-2.8	-1.7	-1.8	-1.4	-1.8
Education and communication ²	125.256	125.272	125.137	125.048	1.3	2.5	1.1	-.7	1.9	.2
Education ²	197.893	197.914	197.532	197.794	4.1	7.0	4.6	-.2	5.5	2.2
Educational books and supplies	510.490	504.799	507.899	509.466	6.2	3.9	3.3	-.8	5.0	1.2
Tuition, other school fees, and childcare	556.699	557.331	555.849	556.496	3.9	7.2	4.7	-.1	5.5	2.2
Communication ²	87.375	87.388	87.340	87.168	-.8	-.2	-.9	-.9	-.5	-.9
Information and information processing ^{1 2}	85.186	85.201	85.154	84.978	-1.0	-.2	-1.0	-1.0	-.6	-1.0
Telephone services ^{1 2}	102.185	102.239	102.325	102.135	-1.2	-1.4	.2	-.2	-1.3	.0
Information technology, hardware and services ^{1 6}	9.957	9.947	9.891	9.864	-7.4	4.4	-5.1	-3.7	1.8	-4.4
Personal computers and peripheral equipment ⁷	76.168	76.335	76.253	75.608	-3.4	-3.0	-5.9	-2.9	-3.2	-4.4
Other goods and services	411.916	413.142	413.007	411.642	3.5	.3	6.8	-.3	1.9	3.2
Tobacco and smoking products ¹	824.198	827.609	828.794	826.468	7.0	.7	16.5	1.1	3.8	8.6
Personal care	204.671	205.143	204.868	204.132	1.3	.1	1.7	-1.0	.7	.3
Personal care products ¹	161.416	161.376	161.132	160.174	-1.4	-.2	-.5	-3.0	-.8	-1.8
Personal care services ¹	230.769	230.625	230.624	229.635	.2	1.9	1.6	-2.0	1.0	-.2
Miscellaneous personal services	355.713	356.397	356.667	357.305	3.8	2.4	1.7	1.8	3.1	1.8
Commodity and service group										
Commodities	176.029	177.262	177.809	178.870	7.5	-2.8	-2.1	6.6	2.2	2.1
Food and beverages	218.851	219.203	219.852	220.003	1.8	1.8	.0	2.1	1.8	1.0
Commodities less food and beverages	153.086	154.660	155.148	156.567	11.0	-5.4	-3.4	9.4	2.5	2.8
Nondurables less food and beverages	193.805	196.796	197.981	200.534	18.4	-11.5	-4.8	14.6	2.4	4.4
Apparel	119.544	119.017	118.544	118.175	-.5	-7.6	6.2	-4.5	-4.1	.7
Nondurables less food, beverages, and apparel	244.635	249.977	252.387	257.082	22.1	-11.2	-7.9	22.0	4.1	6.0
Durables	112.840	113.188	112.925	112.468	4.5	-.1	1.8	-1.3	2.1	.2
Services	256.860	257.025	257.115	257.372	.2	1.7	1.0	.8	.9	.9
Rent of shelter ⁴	233.052	233.137	233.640	233.826	-1.0	-1.3	.3	1.3	-1.1	.8
Tenants' and household insurance ^{1 2}	126.950	127.526	127.718	128.130	8.5	1.8	3.5	3.8	5.1	3.6
Gas (piped) and electricity ^{3 5}	191.240	192.489	191.045	191.184	3.6	5.3	-4.6	-.1	4.5	-2.4
Water and sewer and trash collection services ²	172.010	172.296	173.079	173.455	5.6	7.8	4.3	3.4	6.7	3.8
Household operations ^{1 2}	153.634	153.542	152.851	152.729	-4.8	2.2	3.5	-2.3	-1.4	.5
Transportation services	260.234	260.588	261.213	262.351	1.8	5.2	2.2	3.3	3.5	2.7
Medical care services	414.049	414.900	417.992	418.780	4.5	4.7	1.9	4.6	4.6	3.3
Other services	297.141	297.236	296.788	296.741	1.3	1.9	2.2	-.5	1.6	.8
Special indexes										
All items less food	212.194	213.004	213.269	214.020	3.6	-.7	-.4	3.5	1.4	1.5
All items less shelter	204.964	206.024	206.412	207.262	5.5	-.4	-.9	4.6	2.5	1.8
All items less medical care	206.132	206.865	207.125	207.781	3.3	-.6	-.5	3.2	1.3	1.4
Commodities less food	155.506	157.049	157.535	158.926	10.7	-5.3	-3.1	9.1	2.4	2.8
Nondurables less food	195.686	198.552	199.695	202.081	17.4	-10.9	-4.4	13.7	2.3	4.3
Nondurables less food and apparel	241.864	246.763	248.977	252.930	21.1	-10.5	-7.1	19.6	4.1	5.4
Nondurables	206.494	208.421	209.473	211.654	7.8	-4.0	-3.7	10.4	1.7	3.1
Services less rent of shelter ⁴	251.382	251.873	251.937	252.325	2.6	4.0	.5	1.5	3.3	1.0
Services less medical care services	245.438	245.645	245.846	246.090	.2	1.0	.5	1.1	.6	.8
Energy	203.561	209.481	211.343	217.469	25.4	-8.8	-14.5	30.3	6.9	5.5
All items less energy	215.408	215.528	215.669	215.670	1.0	.8	1.4	.5	.9	1.0
All items less food and energy	215.198	215.269	215.303	215.274	.8	.5	1.8	.1	.7	1.0
Commodities less food and energy commodities	146.172	146.280	146.012	145.595	2.9	-1.6	2.5	-1.6	.7	.5
Energy commodities	227.010	237.307	242.121	253.766	42.5	-17.2	-20.8	56.2	8.7	11.2
Services less energy services	264.007	264.048	264.313	264.583	-.1	1.4	1.5	.9	.7	1.2

¹ Not seasonally adjusted.

² Indexes on a December 1997=100 base.

³ This index series was calculated using a Laspeyres estimator. All other item stratum index series were calculated using a geometric means estimator.

⁴ Indexes on a December 1984=100 base

⁵ In January, 2011, this series will be re-titled Energy services.

⁶ Indexes on a December 1988=100 base.

⁷ Indexes on a December 2007=100 base.

NOTE: Index applies to a month as a whole, not to any specific date.

Table 6. Consumer Price Index for Urban Wage Earners and Clerical Workers (CPI-W): Selected areas, all items index

(1982-84=100, unless otherwise noted)

CPI-W	Pricing schedule 1	All items									
		Indexes				Percent change to Oct.2010 from—			Percent change to Sep.2010 from—		
		July 2010	Aug. 2010	Sep. 2010	Oct. 2010	Oct. 2009	Aug. 2010	Sep. 2010	Sep. 2009	July 2010	Aug. 2010
U.S. city average	M	213.898	214.205	214.306	214.623	1.5	0.2	0.1	1.4	0.2	0.0
Region and area size²											
Northeast urban	M	231.380	231.694	231.566	232.396	1.8	.3	.4	1.5	.1	-.1
Size A - More than 1,500,000	M	231.615	231.995	231.881	232.672	1.7	.3	.3	1.2	.1	.0
Size B/C - 50,000 to 1,500,000 ³	M	140.283	140.390	140.295	140.848	2.1	.3	.4	2.1	.0	-.1
Midwest urban	M	203.877	204.273	204.442	204.329	1.8	.0	-.1	1.9	.3	.1
Size A - More than 1,500,000	M	203.363	203.593	203.946	203.906	1.6	.2	.0	1.7	.3	.2
Size B/C - 50,000 to 1,500,000 ³	M	134.136	134.426	134.361	134.093	2.0	-.2	-.2	2.2	.2	.0
Size D - Nonmetropolitan (less than 50,000)	M	201.950	202.896	203.086	203.548	1.7	.3	.2	1.8	.6	.1
South urban	M	208.440	208.740	209.155	209.376	1.6	.3	.1	1.7	.3	.2
Size A - More than 1,500,000	M	210.592	210.831	211.393	211.409	1.4	.3	.0	1.3	.4	.3
Size B/C - 50,000 to 1,500,000 ³	M	133.227	133.420	133.680	133.923	1.7	.4	.2	1.8	.3	.2
Size D - Nonmetropolitan (less than 50,000)	M	214.840	215.354	215.346	215.451	1.5	.0	.0	2.1	.2	.0
West urban	M	215.824	216.048	215.804	216.273	.7	.1	.2	.6	.0	-.1
Size A - More than 1,500,000	M	218.499	218.784	218.524	219.017	.9	.1	.2	.7	.0	-.1
Size B/C - 50,000 to 1,500,000 ³	M	133.471	133.480	133.346	133.622	.3	.1	.2	.4	-.1	-.1
Size classes											
A ⁴	M	197.908	198.168	198.278	198.576	1.4	.2	.2	1.2	.2	.1
B/C ³	M	134.420	134.581	134.644	134.840	1.6	.2	.1	1.7	.2	.0
D	M	209.161	209.863	209.864	210.160	1.5	.1	.1	1.7	.3	.0
Selected local areas⁵											
Chicago-Gary-Kenosha, IL-IN-WI	M	206.307	206.338	206.897	206.894	1.2	.3	.0	1.3	.3	.3
Los Angeles-Riverside-Orange County, CA ...	M	218.367	218.752	218.427	219.339	.9	.3	.4	.5	.0	-.1
New York-Northern N.J.-Long Island, NY-NJ-CT-PA	M	236.330	236.820	236.725	237.483	1.9	.3	.3	1.4	.2	.0
Boston-Brockton-Nashua, MA-NH-ME-CT	1	236.657	-	236.844	-	-	-	-	.5	.1	-
Cleveland-Akron, OH	1	195.477	-	196.787	-	-	-	-	2.1	.7	-
Dallas-Fort Worth, TX	1	203.537	-	205.602	-	-	-	-	.6	1.0	-
Washington-Baltimore, DC-MD-VA-WV ⁶	1	141.926	-	142.755	-	-	-	-	1.5	.6	-
Atlanta, GA	2	-	203.745	-	201.887	1.1	-.9	-	-	-	-
Detroit-Ann Arbor-Flint, MI	2	-	201.359	-	201.864	.8	.3	-	-	-	-
Houston-Galveston-Brazoria, TX	2	-	193.276	-	193.110	2.0	-.1	-	-	-	-
Miami-Fort Lauderdale, FL	2	-	220.790	-	221.497	.5	.3	-	-	-	-
Philadelphia-Wilmington-Atlantic City, PA-NJ-DE-MD	2	-	228.523	-	228.676	1.8	.1	-	-	-	-
San Francisco-Oakland-San Jose, CA	2	-	224.195	-	224.352	1.2	.1	-	-	-	-
Seattle-Tacoma-Bremerton, WA	2	-	223.444	-	223.112	.8	-.1	-	-	-	-

¹ Foods, fuels, and several other items priced every month in all areas; most other goods and services priced as indicated:

M - Every month.

1 - January, March, May, July, September, and November.

2 - February, April, June, August, October, and December.

² Regions defined as the four Census regions. See technical notes.

³ Indexes on a December 1996=100 base.

⁴ Indexes on a December 1986=100 base.

⁵ In addition, the following metropolitan areas are published semiannually and appear in Tables 34 and 39 of the January and July issues of the CPI Detailed Report: Anchorage, AK; Cincinnati-Hamilton, OH-KY-IN; Denver-Boulder-Greeley, CO; Honolulu, HI; Kansas City, MO-KS; Milwaukee-Racine, WI; Minneapolis-St. Paul, MN-WI; Phoenix-Mesa, AZ; Pittsburgh, PA; Portland-Salem, OR-WA; St. Louis, MO-IL; San Diego, CA;

Tampa-St. Petersburg-Clearwater, FL.

⁶ Indexes on a November 1996=100 base.

- Data not available.

NOTE: Local area indexes are byproducts of the national CPI program. Each local index has a smaller sample size than the national index and is, therefore, subject to substantially more sampling and other measurement error. As a result, local area indexes show greater volatility than the national index, although their long-term trends are similar. Therefore, the Bureau of Labor Statistics strongly urges users to consider adopting the national average CPI for use in their escalator clauses.

NOTE: Index applies to a month as a whole, not to any specific date.

Table 7. Chained Consumer Price Index for All Urban Consumers (C-CPI-U): U.S. city average, by expenditure category and commodity and service group

(December 1999=100, unless otherwise noted)

C-CPI-U	Relative importance, 2007-2008	Unadjusted indexes		Unadjusted percent change to Oct. 2010 from—	
		Sep. 2010	Oct. 2010	Oct. 2009	Sep. 2010
Expenditure category					
All items	100.000	126.418	126.614	1.0	0.2
Food and beverages	14.519	128.713	128.946	1.3	.2
Food	13.493	128.683	128.904	1.3	.2
Food at home	7.780	123.467	123.746	1.3	.2
Food away from home	5.712	135.821	135.954	1.3	.1
Alcoholic beverages	1.027	129.566	129.959	.9	.3
Housing	42.074	128.505	128.240	-.3	-.2
Shelter	32.119	131.106	131.161	-.4	.0
Fuels and utilities	5.231	161.361	158.349	2.4	-1.9
Household furnishings and operations	4.724	92.177	92.140	-3.0	.0
Apparel	3.772	89.951	91.154	-1.9	1.3
Transportation	17.199	131.313	132.737	5.1	1.1
Private transportation	16.013	131.858	133.434	5.2	1.2
Public transportation	1.186	123.963	123.470	4.4	-4
Medical care	6.294	151.186	151.393	3.1	.1
Medical care commodities	1.570	133.004	133.097	2.3	.1
Medical care services	4.723	157.867	158.118	3.3	.2
Recreation	6.625	102.617	102.437	-2.0	-.2
Education and communication	6.288	113.302	113.108	1.0	-.2
Education	2.804	187.500	187.174	3.6	-.2
Communication	3.484	72.993	72.869	-1.1	-.2
Other goods and services	3.229	138.734	138.471	1.5	-.2
Commodity and service group					
Services	59.383	135.941	135.745	.7	-.1
Commodities	40.617	114.721	115.403	1.5	.6
Durables	10.376	80.769	80.612	-.4	-.2
Nondurables	30.241	132.423	133.571	2.1	.9
All items less food and energy	76.901	120.061	120.149	.3	.1
Energy	9.606	186.018	187.484	6.2	.8

Indexes for 2010 are initial estimates. Indexes for 2009 are interim adjustments.
NOTE: Index applies to a month as a whole, not to any specific date.