

Transmission of material in this release is embargoed until
8:30 a.m. (EDT) Friday, July 5, 2013

USDL-13-1284

Technical information:

Household data: (202) 691-6378 • cpsinfo@bls.gov • www.bls.gov/cps

Establishment data: (202) 691-6555 • cesinfo@bls.gov • www.bls.gov/ces

Media contact: (202) 691-5902 • PressOffice@bls.gov

THE EMPLOYMENT SITUATION — JUNE 2013

Total **nonfarm payroll employment** increased by 195,000 in June, and the **unemployment rate** was unchanged at 7.6 percent, the U.S. Bureau of Labor Statistics reported today. Employment rose in leisure and hospitality, professional and business services, retail trade, health care, and financial activities.

Chart 1. Unemployment rate, seasonally adjusted, June 2011 – June 2013

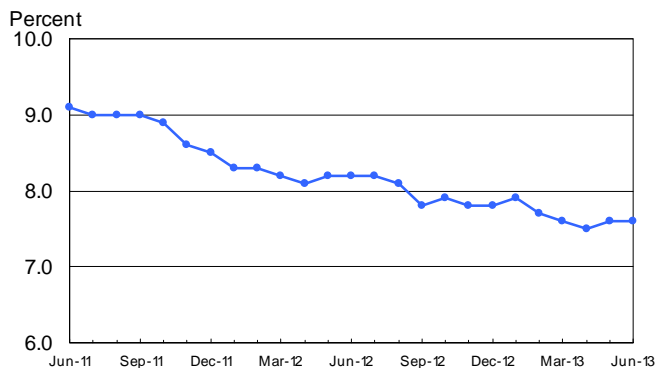
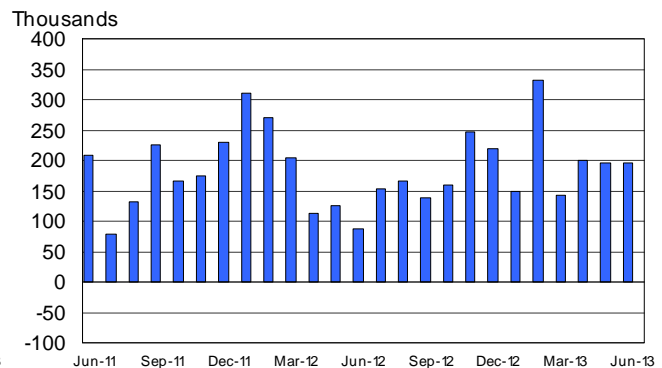


Chart 2. Nonfarm payroll employment over-the-month change, seasonally adjusted, June 2011 – June 2013



Household Survey Data

The number of **unemployed persons**, at 11.8 million, and the **unemployment rate**, at 7.6 percent, were unchanged in June. Both measures have shown little change since February. (See table A-1.)

Among the **major worker groups**, the unemployment rate for adult women (6.8 percent) edged up in June, while the rates for adult men (7.0 percent), teenagers (24.0 percent), whites (6.6 percent), blacks (13.7 percent), and Hispanics (9.1 percent) showed little or no change. The jobless rate for Asians was 5.0 percent (not seasonally adjusted), down from 6.3 percent a year earlier. (See tables A-1, A-2, and A-3.)

In June, the number of **long-term unemployed** (those jobless for 27 weeks or more) was essentially unchanged at 4.3 million. These individuals accounted for 36.7 percent of the unemployed. Over the past 12 months, the number of long-term unemployed has declined by 1.0 million. (See table A-12.)

The **civilian labor force participation rate**, at 63.5 percent, and the **employment-population ratio**, at 58.7 percent, changed little in June. Over the year, the labor force participation rate is down by 0.3 percentage point. (See table A-1.)

The number of persons employed **part time for economic reasons** (sometimes referred to as involuntary part-time workers) increased by 322,000 to 8.2 million in June. These individuals were working part time because their hours had been cut back or because they were unable to find a full-time job. (See table A-8.)

In June, 2.6 million persons were **marginally attached to the labor force**, essentially unchanged from a year earlier. (The data are not seasonally adjusted.) These individuals were not in the labor force, wanted and were available for work, and had looked for a job sometime in the prior 12 months. They were not counted as unemployed because they had not searched for work in the 4 weeks preceding the survey. (See table A-16.)

Among the marginally attached, there were 1.0 million **discouraged workers** in June, an increase of 206,000 from a year earlier. (The data are not seasonally adjusted.) Discouraged workers are persons not currently looking for work because they believe no jobs are available for them. The remaining 1.6 million persons marginally attached to the labor force in June had not searched for work for reasons such as school attendance or family responsibilities. (See table A-16.)

Establishment Survey Data

Total **nonfarm payroll employment** increased by 195,000 in June, in line with the average monthly gain of 182,000 over the prior 12 months. In June, job growth occurred in leisure and hospitality, professional and business services, retail trade, health care, and financial activities. (See table B-1.)

Leisure and hospitality added 75,000 jobs in June. Monthly job growth in this industry has averaged 55,000 thus far in 2013, almost twice the average gain of 30,000 per month in 2012. Within leisure and hospitality, employment in food services and drinking places continued to expand, increasing by 52,000 in June. Employment in the amusements, gambling, and recreation industry also continued to trend up in June (+19,000).

Employment in **professional and business services** rose by 53,000 in June. Job gains occurred in management and technical consulting services (+8,000) and in computer systems design and related services (+7,000). Employment continued to trend up in temporary help services (+10,000). Over the past year, professional and business services has added 624,000 jobs.

Retail trade employment increased by 37,000 in June. Within retail trade, employment increased by 9,000 in building material and garden supply stores and by 8,000 in motor vehicle and parts dealers. Employment in **wholesale trade** continued to trend up (+11,000).

Health care continued to add jobs in June, with a gain of 20,000. Within the industry, employment continued to trend up in ambulatory health care services (+13,000). A gain of 5,000 jobs in hospitals followed a loss of 8,000 jobs in May.

Employment in **financial activities** rose by 17,000 in June, with most of the increase occurring in credit intermediation (+6,000) and in insurance carriers and related activities (+6,000).

Federal government employment continued to trend down in June (-5,000) and has declined by 65,000 over the past 12 months.

Employment in most other major industries, including **mining and logging, construction, manufacturing, and transportation and warehousing**, showed little change in June.

The **average workweek for all employees** on private nonfarm payrolls was unchanged in June at 34.5 hours. In manufacturing, the workweek increased by 0.1 hour to 40.9 hours, and overtime was unchanged at 3.3 hours. The average workweek for **production and nonsupervisory employees** on private nonfarm payrolls was unchanged at 33.7 hours. (See tables B-2 and B-7.)

In June, **average hourly earnings for all employees** on private nonfarm payrolls rose by 10 cents to \$24.01. Over the year, average hourly earnings have risen by 51 cents, or 2.2 percent. In June, average hourly earnings of private-sector **production and nonsupervisory employees** increased by 5 cents to \$20.14. (See tables B-3 and B-8.)

The change in total nonfarm payroll employment for April was revised from +149,000 to +199,000, and the change for May was revised from +175,000 to +195,000. With these revisions, employment gains in April and May combined were 70,000 higher than previously reported.

The Employment Situation for July is scheduled to be released on Friday, August 2, 2013, at 8:30 a.m. (EDT).

HOUSEHOLD DATA

Summary table A. Household data, seasonally adjusted

[Numbers in thousands]

Category	June 2012	Apr. 2013	May 2013	June 2013	Change from: May 2013-June 2013
Employment status					
Civilian noninstitutional population.....	243,155	245,175	245,363	245,552	189
Civilian labor force.....	155,149	155,238	155,658	155,835	177
Participation rate.....	63.8	63.3	63.4	63.5	0.1
Employed.....	142,448	143,579	143,898	144,058	160
Employment-population ratio.....	58.6	58.6	58.6	58.7	0.1
Unemployed.....	12,701	11,659	11,760	11,777	17
Unemployment rate.....	8.2	7.5	7.6	7.6	0.0
Not in labor force.....	88,006	89,936	89,705	89,717	12
Unemployment rates					
Total, 16 years and over.....	8.2	7.5	7.6	7.6	0.0
Adult men (20 years and over).....	7.7	7.1	7.2	7.0	-0.2
Adult women (20 years and over).....	7.4	6.7	6.5	6.8	0.3
Teenagers (16 to 19 years).....	23.7	24.1	24.5	24.0	-0.5
White.....	7.3	6.7	6.7	6.6	-0.1
Black or African American.....	14.4	13.2	13.5	13.7	0.2
Asian (not seasonally adjusted).....	6.3	5.1	4.3	5.0	-
Hispanic or Latino ethnicity.....	11.0	9.0	9.1	9.1	0.0
Total, 25 years and over.....	6.9	6.1	6.1	6.2	0.1
Less than a high school diploma.....	12.5	11.6	11.1	10.7	-0.4
High school graduates, no college.....	8.5	7.4	7.4	7.6	0.2
Some college or associate degree.....	7.3	6.4	6.5	6.4	-0.1
Bachelor's degree and higher.....	4.1	3.9	3.8	3.9	0.1
Reason for unemployment					
Job losers and persons who completed temporary jobs.....	7,121	6,410	6,147	6,119	-28
Job leavers.....	936	864	944	1,030	86
Reentrants.....	3,243	3,151	3,333	3,291	-42
New entrants.....	1,316	1,280	1,268	1,259	-9
Duration of unemployment					
Less than 5 weeks.....	2,825	2,474	2,706	2,692	-14
5 to 14 weeks.....	2,826	2,848	2,669	2,864	195
15 to 26 weeks.....	1,813	1,967	1,950	1,896	-54
27 weeks and over.....	5,336	4,353	4,357	4,328	-29
Employed persons at work part time					
Part time for economic reasons.....	8,210	7,916	7,904	8,226	322
Slack work or business conditions.....	5,471	5,129	4,841	5,193	352
Could only find part-time work.....	2,514	2,527	2,721	2,652	-69
Part time for noneconomic reasons.....	18,825	18,908	18,934	19,044	110
Persons not in the labor force (not seasonally adjusted)					
Marginally attached to the labor force.....	2,483	2,347	2,164	2,582	-
Discouraged workers.....	821	835	780	1,027	-

- Over-the-month changes are not displayed for not seasonally adjusted data.

NOTE: Persons whose ethnicity is identified as Hispanic or Latino may be of any race. Detail for the seasonally adjusted data shown in this table will not necessarily add to totals because of the independent seasonal adjustment of the various series. Updated population controls are introduced annually with the release of January data.

ESTABLISHMENT DATA
Summary table B. Establishment data, seasonally adjusted

Category	June 2012	Apr. 2013	May 2013 ^p	June 2013 ^p
EMPLOYMENT BY SELECTED INDUSTRY (Over-the-month change, in thousands)				
Total nonfarm.....	87	199	195	195
Total private.....	78	188	207	202
Goods-producing.....	14	-17	0	8
Mining and logging.....	-2	-3	0	1
Construction.....	7	-7	7	13
Manufacturing.....	9	-7	-7	-6
Durable goods ¹	9	-1	0	-3
Motor vehicles and parts.....	5.8	-0.4	4.8	5.1
Nondurable goods.....	0	-6	-7	-3
Private service-providing ¹	64	205	207	194
Wholesale trade.....	8.9	3.8	8.3	11.3
Retail trade.....	-3.1	22.4	26.9	37.1
Transportation and warehousing.....	-2.5	6.5	-6.8	-5.1
Information.....	-6	-9	1	-5
Financial activities.....	6	14	6	17
Professional and business services ¹	35	69	65	53
Temporary help services.....	20.5	20.8	23.6	9.5
Education and health services ¹	6	36	23	13
Health care and social assistance.....	11.7	37.8	12.7	23.5
Leisure and hospitality.....	14	60	69	75
Other services.....	5	1	13	-4
Government.....	9	11	-12	-7
WOMEN AND PRODUCTION AND NONSUPERVISORY EMPLOYEES AS A PERCENT OF ALL EMPLOYEES ²				
Total nonfarm women employees.....	49.4	49.4	49.4	49.4
Total private women employees.....	47.9	47.9	47.9	47.9
Total private production and nonsupervisory employees.....	82.6	82.6	82.6	82.6
HOURS AND EARNINGS ALL EMPLOYEES				
Total private				
Average weekly hours.....	34.4	34.5	34.5	34.5
Average hourly earnings.....	\$ 23.50	\$ 23.89	\$ 23.91	\$ 24.01
Average weekly earnings.....	\$808.40	\$824.21	\$824.90	\$828.35
Index of aggregate weekly hours (2007=100) ³	96.2	98.2	98.4	98.6
Over-the-month percent change.....	0.0	-0.1	0.2	0.2
Index of aggregate weekly payrolls (2007=100) ⁴	107.9	111.9	112.2	112.9
Over-the-month percent change.....	0.4	0.2	0.3	0.6
HOURS AND EARNINGS PRODUCTION AND NONSUPERVISORY EMPLOYEES				
Total private				
Average weekly hours.....	33.7	33.7	33.7	33.7
Average hourly earnings.....	\$ 19.75	\$ 20.07	\$ 20.09	\$ 20.14
Average weekly earnings.....	\$665.58	\$676.36	\$677.03	\$678.72
Index of aggregate weekly hours (2002=100) ³	103.8	105.5	105.7	105.9
Over-the-month percent change.....	0.1	-0.2	0.2	0.2
Index of aggregate weekly payrolls (2002=100) ⁴	136.9	141.5	141.9	142.5
Over-the-month percent change.....	0.4	0.1	0.3	0.4
DIFFUSION INDEX (Over 1-month span) ⁵				
Total private (266 industries).....	57.3	57.7	61.8	58.8
Manufacturing (81 industries).....	50.6	44.4	48.1	46.3

1 Includes other industries, not shown separately.

2 Data relate to production employees in mining and logging and manufacturing, construction employees in construction, and nonsupervisory employees in the service-providing industries.

3 The indexes of aggregate weekly hours are calculated by dividing the current month's estimates of aggregate hours by the corresponding annual average aggregate hours.

4 The indexes of aggregate weekly payrolls are calculated by dividing the current month's estimates of aggregate weekly payrolls by the corresponding annual average aggregate weekly payrolls.

5 Figures are the percent of industries with employment increasing plus one-half of the industries with unchanged employment, where 50 percent indicates an equal balance between industries with increasing and decreasing employment.

p Preliminary

Frequently Asked Questions about Employment and Unemployment Estimates

1. Why are there two monthly measures of employment?

The household survey and establishment survey both produce sample-based estimates of employment, and both have strengths and limitations. The establishment survey employment series has a smaller margin of error on the measurement of month-to-month change than the household survey because of its much larger sample size. An over-the-month employment change of about 100,000 is statistically significant in the establishment survey, while the threshold for a statistically significant change in the household survey is about 400,000. However, the household survey has a more expansive scope than the establishment survey because it includes self-employed workers whose businesses are unincorporated, unpaid family workers, agricultural workers, and private household workers, who are excluded by the establishment survey. The household survey also provides estimates of employment for demographic groups. For more information on the differences between the two surveys, please visit www.bls.gov/web/empsit/ces_cps_trends.pdf.

2. Are undocumented immigrants counted in the surveys?

It is likely that both surveys include at least some undocumented immigrants. However, neither the establishment nor the household survey is designed to identify the legal status of workers. Therefore, it is not possible to determine how many are counted in either survey. The establishment survey does not collect data on the legal status of workers. The household survey does include questions which identify the foreign and native born, but it does not include questions about the legal status of the foreign born. Data on the foreign and native born are published each month in table A-7 of The Employment Situation news release.

3. Why does the establishment survey have revisions?

The establishment survey revises published estimates to improve its data series by incorporating additional information that was not available at the time of the initial publication of the estimates. The establishment survey revises its initial monthly estimates twice, in the immediately succeeding 2 months, to incorporate additional sample receipts from respondents in the survey and recalculated seasonal adjustment factors. For more information on the monthly revisions, please visit www.bls.gov/ces/cesrevinfo.htm.

On an annual basis, the establishment survey incorporates a benchmark revision that re-anchors estimates to nearly complete employment counts available from unemployment insurance tax records. The benchmark helps to control for sampling and modeling errors in the estimates. For more information on the annual benchmark revision, please visit www.bls.gov/web/empsit/cesbmart.htm.

4. Does the establishment survey sample include small firms?

Yes; about 40 percent of the establishment survey sample is comprised of business establishments with fewer than 20 employees. The establishment survey sample is designed to maximize the reliability of the statewide total nonfarm employment estimate; firms from all states, size classes, and industries are appropriately sampled to achieve that goal.

5. Does the establishment survey account for employment from new businesses?

Yes; monthly establishment survey estimates include an adjustment to account for the net employment change generated by business births and deaths. The adjustment comes from an econometric model that forecasts the monthly net jobs impact of business births and deaths based on the actual past values of the net impact that can be observed with a lag from the Quarterly Census of Employment and Wages. The establishment survey uses modeling rather than sampling for this purpose because the survey is not immediately able to bring new businesses into the sample. There is an unavoidable lag between the birth of a new firm and its appearance on the sampling frame and availability for selection. BLS adds new businesses to the survey twice a year.

6. Is the count of unemployed persons limited to just those people receiving unemployment insurance benefits?

No; the estimate of unemployment is based on a monthly sample survey of households. All persons who are without jobs and are actively seeking and available to work are included among the unemployed. (People on temporary layoff are included even if they do not actively seek work.) There is no requirement or question relating to unemployment insurance benefits in the monthly survey.

7. Does the official unemployment rate exclude people who want a job but are not currently looking for work?

Yes; however, there are separate estimates of persons outside the labor force who want a job, including those who are not currently looking because they believe no jobs are available (discouraged workers). In addition, alternative measures of labor underutilization (some of which include discouraged workers and other groups not officially counted as unemployed) are published each month in table A-15 of The Employment Situation news release. For more information about these alternative measures, please visit www.bls.gov/cps/lfcharacteristics.htm#altmeasures.

8. How can unusually severe weather affect employment and hours estimates?

In the establishment survey, the reference period is the pay period that includes the 12th of the month. Unusually severe weather is more likely to have an impact on average weekly hours than on employment. Average weekly hours are estimated for paid time during the pay period, including pay for holidays, sick leave, or other time off. The impact of severe weather on hours estimates typically, but not always, results in a reduction in average weekly hours. For example, some employees may be off work for part of the pay period and not receive pay for the time missed, while some workers, such as those dealing with cleanup or repair, may work extra hours.

In order for severe weather conditions to reduce the estimate of payroll employment, employees have to be off work without pay for the entire pay period. Slightly more than 20 percent of all employees in the payroll survey sample have a weekly pay period. Employees who receive pay for any part of the pay period, even 1 hour, are counted in the payroll employment figures. It is not possible to quantify the effect of extreme weather on estimates of over-the-month change in employment.

In the household survey, the reference period is generally the calendar week that includes the 12th of the month. Persons who miss the entire week's work for weather-related events are counted as employed whether or not they are paid for the time off. The household survey collects data on the number of persons who had a job but were not at work due to bad weather. It also provides a measure of the number of persons who usually work full time but had reduced hours. Current and historical data are available on the household survey's most requested statistics page at <http://data.bls.gov/cgi-bin/surveymost?ln>.

Technical Note

This news release presents statistics from two major surveys, the Current Population Survey (CPS; household survey) and the Current Employment Statistics survey (CES; establishment survey). The household survey provides information on the labor force, employment, and unemployment that appears in the "A" tables, marked HOUSEHOLD DATA. It is a sample survey of about 60,000 eligible households conducted by the U.S. Census Bureau for the U.S. Bureau of Labor Statistics (BLS).

The establishment survey provides information on employment, hours, and earnings of employees on nonfarm payrolls; the data appear in the "B" tables, marked ESTABLISHMENT DATA. BLS collects these data each month from the payroll records of a sample of nonagricultural business establishments. Each month the CES program surveys about 145,000 businesses and government agencies, representing approximately 557,000 individual worksites, in order to provide detailed industry data on employment, hours, and earnings of workers on nonfarm payrolls. The active sample includes approximately one-third of all nonfarm payroll employees.

For both surveys, the data for a given month relate to a particular week or pay period. In the household survey, the reference period is generally the calendar week that contains the 12th day of the month. In the establishment survey, the reference period is the pay period including the 12th, which may or may not correspond directly to the calendar week.

Coverage, definitions, and differences between surveys

Household survey. The sample is selected to reflect the entire civilian noninstitutional population. Based on responses to a series of questions on work and job search activities, each person 16 years and over in a sample household is classified as employed, unemployed, or not in the labor force.

People are classified as *employed* if they did any work at all as paid employees during the reference week; worked in their own business, profession, or on their own farm; or worked without pay at least 15 hours in a family business or farm. People are also counted as employed if they were temporarily absent from their jobs because of illness, bad weather, vacation, labor-management disputes, or personal reasons.

People are classified as *unemployed* if they meet all of the following criteria: they had no employment during the reference week; they were available for work at that time; and they made specific efforts to find employment sometime during the 4-week period ending with the reference week. Persons laid off from a job and expecting recall need not be looking for work to be counted as unemployed. The unemployment data derived from the household survey in no way depend upon the eligibility for or receipt of unemployment insurance benefits.

The *civilian labor force* is the sum of employed and unemployed persons. Those persons not classified as

employed or unemployed are *not in the labor force*. The *unemployment rate* is the number unemployed as a percent of the labor force. The *labor force participation rate* is the labor force as a percent of the population, and the *employment-population ratio* is the employed as a percent of the population. Additional information about the household survey can be found at www.bls.gov/cps/documentation.htm.

Establishment survey. The sample establishments are drawn from private nonfarm businesses such as factories, offices, and stores, as well as from federal, state, and local government entities. *Employees on nonfarm payrolls* are those who received pay for any part of the reference pay period, including persons on paid leave. Persons are counted in each job they hold. *Hours and earnings* data are produced for the private sector for all employees and for production and nonsupervisory employees. *Production and nonsupervisory* employees are defined as production and related employees in manufacturing and mining and logging, construction workers in construction, and non-supervisory employees in private service-providing industries.

Industries are classified on the basis of an establishment's principal activity in accordance with the 2012 version of the North American Industry Classification System. Additional information about the establishment survey can be found at www.bls.gov/ces/.

Differences in employment estimates. The numerous conceptual and methodological differences between the household and establishment surveys result in important distinctions in the employment estimates derived from the surveys. Among these are:

- The household survey includes agricultural workers, self-employed workers whose businesses are unincorporated, unpaid family workers, and private household workers among the employed. These groups are excluded from the establishment survey.
- The household survey includes people on unpaid leave among the employed. The establishment survey does not.
- The household survey is limited to workers 16 years of age and older. The establishment survey is not limited by age.
- The household survey has no duplication of individuals, because individuals are counted only once, even if they hold more than one job. In the establishment survey, employees working at more than one job and thus appearing on more than one payroll are counted separately for each appearance.

Seasonal adjustment

Over the course of a year, the size of the nation's labor force and the levels of employment and unemployment undergo regularly occurring fluctuations. These events may result from seasonal changes in weather, major holidays, and the opening and closing of schools. The effect of such seasonal variation can be very large.

Because these seasonal events follow a more or less regular pattern each year, their influence on the level of a series can be tempered by adjusting for regular seasonal variation. These adjustments make nonseasonal developments, such as declines in employment or increases in the participation of women in the labor force, easier to spot. For example, in the household survey, the large number of youth entering the labor force each June is likely to obscure any other changes that have taken place relative to May, making it difficult to determine if the level of economic activity has risen or declined. Similarly, in the establishment survey, payroll employment in education declines by about 20 percent at the end of the spring term and later rises with the start of the fall term, obscuring the underlying employment trends in the industry. Because seasonal employment changes at the end and beginning of the school year can be estimated, the statistics can be adjusted to make underlying employment patterns more discernable. The seasonally adjusted figures provide a more useful tool with which to analyze changes in month-to-month economic activity.

Many seasonally adjusted series are independently adjusted in both the household and establishment surveys. However, the adjusted series for many major estimates, such as total payroll employment, employment in most major sectors, total employment, and unemployment are computed by aggregating independently adjusted component series. For example, total unemployment is derived by summing the adjusted series for four major age-sex components; this differs from the unemployment estimate that would be obtained by directly adjusting the total or by combining the duration, reasons, or more detailed age categories.

For both the household and establishment surveys, a concurrent seasonal adjustment methodology is used in which new seasonal factors are calculated each month using all relevant data, up to and including the data for the current month. In the household survey, new seasonal factors are used to adjust only the current month's data. In the establishment survey, however, new seasonal factors are used each month to adjust the three most recent monthly estimates. The prior 2 months are routinely revised to incorporate additional sample reports and recalculated seasonal adjustment factors. In both surveys, 5-year revisions to historical data are made once a year.

Reliability of the estimates

Statistics based on the household and establishment surveys are subject to both sampling and nonsampling

error. When a sample, rather than the entire population, is surveyed, there is a chance that the sample estimates may differ from the true population values they represent. The component of this difference that occurs because samples differ by chance is known as *sampling error*, and its variability is measured by the standard error of the estimate. There is about a 90-percent chance, or level of confidence, that an estimate based on a sample will differ by no more than 1.6 standard errors from the true population value because of sampling error. BLS analyses are generally conducted at the 90-percent level of confidence.

For example, the confidence interval for the monthly change in total nonfarm employment from the establishment survey is on the order of plus or minus 90,000. Suppose the estimate of nonfarm employment increases by 50,000 from one month to the next. The 90-percent confidence interval on the monthly change would range from -40,000 to +140,000 (50,000 +/- 90,000). These figures do not mean that the sample results are off by these magnitudes, but rather that there is about a 90-percent chance that the true over-the-month change lies within this interval. Since this range includes values of less than zero, we could not say with confidence that nonfarm employment had, in fact, increased that month. If, however, the reported nonfarm employment rise was 250,000, then all of the values within the 90-percent confidence interval would be greater than zero. In this case, it is likely (at least a 90-percent chance) that nonfarm employment had, in fact, risen that month. At an unemployment rate of around 6.0 percent, the 90-percent confidence interval for the monthly change in unemployment as measured by the household survey is about +/- 300,000, and for the monthly change in the unemployment rate it is about +/- 0.2 percentage point.

In general, estimates involving many individuals or establishments have lower standard errors (relative to the size of the estimate) than estimates which are based on a small number of observations. The precision of estimates also is improved when the data are cumulated over time, such as for quarterly and annual averages.

The household and establishment surveys are also affected by *nonsampling error*, which can occur for many reasons, including the failure to sample a segment of the population, inability to obtain information for all respondents in the sample, inability or unwillingness of respondents to provide correct information on a timely basis, mistakes made by respondents, and errors made in the collection or processing of the data.

For example, in the establishment survey, estimates for the most recent 2 months are based on incomplete returns; for this reason, these estimates are labeled preliminary in the tables. It is only after two successive revisions to a monthly estimate, when nearly all sample reports have been received, that the estimate is considered final.

Another major source of nonsampling error in the establishment survey is the inability to capture, on a timely basis, employment generated by new firms. To correct for this systematic underestimation of employment growth, an estimation procedure with two components is used to

account for business births. The first component excludes employment losses from business deaths from sample-based estimation in order to offset the missing employment gains from business births. This is incorporated into the sample-based estimation procedure by simply not reflecting sample units going out of business, but imputing to them the same employment trend as the other firms in the sample. This procedure accounts for most of the net birth/death employment.

The second component is an ARIMA time series model designed to estimate the residual net birth/death employment not accounted for by the imputation. The historical time series used to create and test the ARIMA model was derived from the unemployment insurance universe micro-level database, and reflects the actual residual net of births and deaths over the past 5 years.

The sample-based estimates from the establishment

survey are adjusted once a year (on a lagged basis) to universe counts of payroll employment obtained from administrative records of the unemployment insurance program. The difference between the March sample-based employment estimates and the March universe counts is known as a benchmark revision, and serves as a rough proxy for total survey error. The new benchmarks also incorporate changes in the classification of industries. Over the past decade, absolute benchmark revisions for total nonfarm employment have averaged 0.3 percent, with a range from -0.7 to 0.6 percent.

Other information

Information in this release will be made available to sensory impaired individuals upon request. Voice phone: (202) 691-5200; Federal Relay Service: (800) 877-8339.

HOUSEHOLD DATA

Table A-1. Employment status of the civilian population by sex and age

[Numbers in thousands]

Employment status, sex, and age	Not seasonally adjusted			Seasonally adjusted ¹					
	June 2012	May 2013	June 2013	June 2012	Feb. 2013	Mar. 2013	Apr. 2013	May 2013	June 2013
TOTAL									
Civilian noninstitutional population.....	243,155	245,363	245,552	243,155	244,828	244,995	245,175	245,363	245,552
Civilian labor force.....	156,385	155,734	157,089	155,149	155,524	155,028	155,238	155,658	155,835
Participation rate.....	64.3	63.5	64.0	63.8	63.5	63.3	63.3	63.4	63.5
Employed.....	143,202	144,432	144,841	142,448	143,492	143,286	143,579	143,898	144,058
Employment-population ratio.....	58.9	58.9	59.0	58.6	58.6	58.5	58.6	58.6	58.7
Unemployed.....	13,184	11,302	12,248	12,701	12,032	11,742	11,659	11,760	11,777
Unemployment rate.....	8.4	7.3	7.8	8.2	7.7	7.6	7.5	7.6	7.6
Not in labor force.....	86,770	89,629	88,463	88,006	89,304	89,967	89,936	89,705	89,717
Persons who currently want a job.....	7,157	7,193	7,152	6,556	6,821	6,722	6,413	6,712	6,580
Men, 16 years and over									
Civilian noninstitutional population.....	117,277	118,393	118,490	117,277	118,117	118,204	118,296	118,393	118,490
Civilian labor force.....	83,369	82,924	83,837	82,457	82,823	82,584	82,621	82,862	82,898
Participation rate.....	71.1	70.0	70.8	70.3	70.1	69.9	69.8	70.0	70.0
Employed.....	76,338	76,608	77,277	75,522	76,375	76,329	76,239	76,299	76,447
Employment-population ratio.....	65.1	64.7	65.2	64.4	64.7	64.6	64.4	64.4	64.5
Unemployed.....	7,030	6,316	6,560	6,936	6,447	6,255	6,382	6,564	6,451
Unemployment rate.....	8.4	7.6	7.8	8.4	7.8	7.6	7.7	7.9	7.8
Not in labor force.....	33,909	35,469	34,654	34,820	35,295	35,619	35,675	35,531	35,592
Men, 20 years and over									
Civilian noninstitutional population.....	108,613	109,839	109,943	108,613	109,541	109,635	109,736	109,839	109,943
Civilian labor force.....	79,733	80,015	80,186	79,432	79,910	79,747	79,803	79,878	79,883
Participation rate.....	73.4	72.8	72.9	73.1	72.9	72.7	72.7	72.7	72.7
Employed.....	73,735	74,456	74,717	73,299	74,249	74,228	74,159	74,124	74,276
Employment-population ratio.....	67.9	67.8	68.0	67.5	67.8	67.7	67.6	67.5	67.6
Unemployed.....	5,998	5,559	5,469	6,133	5,661	5,519	5,644	5,754	5,607
Unemployment rate.....	7.5	6.9	6.8	7.7	7.1	6.9	7.1	7.2	7.0
Not in labor force.....	28,879	29,824	29,757	29,180	29,631	29,888	29,933	29,961	30,060
Women, 16 years and over									
Civilian noninstitutional population.....	125,878	126,970	127,062	125,878	126,710	126,791	126,878	126,970	127,062
Civilian labor force.....	73,017	72,810	73,253	72,691	72,701	72,443	72,617	72,796	72,938
Participation rate.....	58.0	57.3	57.7	57.7	57.4	57.1	57.2	57.3	57.4
Employed.....	66,863	67,824	67,565	66,926	67,116	66,956	67,340	67,599	67,612
Employment-population ratio.....	53.1	53.4	53.2	53.2	53.0	52.8	53.1	53.2	53.2
Unemployed.....	6,153	4,986	5,688	5,765	5,585	5,487	5,277	5,197	5,326
Unemployment rate.....	8.4	6.8	7.8	7.9	7.7	7.6	7.3	7.1	7.3
Not in labor force.....	52,862	54,160	53,809	53,187	54,009	54,348	54,261	54,174	54,124
Women, 20 years and over									
Civilian noninstitutional population.....	117,546	118,708	118,804	117,546	118,433	118,520	118,612	118,708	118,804
Civilian labor force.....	69,610	69,955	69,899	69,777	69,772	69,544	69,744	69,895	70,075
Participation rate.....	59.2	58.9	58.8	59.4	58.9	58.7	58.8	58.9	59.0
Employed.....	64,288	65,611	64,981	64,616	64,867	64,707	65,101	65,329	65,314
Employment-population ratio.....	54.7	55.3	54.7	55.0	54.8	54.6	54.9	55.0	55.0
Unemployed.....	5,322	4,343	4,918	5,161	4,905	4,837	4,642	4,566	4,761
Unemployment rate.....	7.6	6.2	7.0	7.4	7.0	7.0	6.7	6.5	6.8
Not in labor force.....	47,936	48,753	48,905	47,769	48,661	48,976	48,868	48,813	48,730
Both sexes, 16 to 19 years									
Civilian noninstitutional population.....	16,997	16,816	16,805	16,997	16,854	16,840	16,827	16,816	16,805
Civilian labor force.....	7,042	5,764	7,004	5,940	5,842	5,737	5,692	5,886	5,878
Participation rate.....	41.4	34.3	41.7	34.9	34.7	34.1	33.8	35.0	35.0
Employed.....	5,178	4,364	5,143	4,533	4,376	4,351	4,320	4,445	4,469
Employment-population ratio.....	30.5	26.0	30.6	26.7	26.0	25.8	25.7	26.4	26.6
Unemployed.....	1,864	1,400	1,860	1,406	1,466	1,386	1,372	1,441	1,409
Unemployment rate.....	26.5	24.3	26.6	23.7	25.1	24.2	24.1	24.5	24.0
Not in labor force.....	9,955	11,052	9,801	11,057	11,012	11,103	11,135	10,930	10,927

¹ The population figures are not adjusted for seasonal variation; therefore, identical numbers appear in the unadjusted and seasonally adjusted columns.

NOTE: Updated population controls are introduced annually with the release of January data.

HOUSEHOLD DATA

Table A-2. Employment status of the civilian population by race, sex, and age

[Numbers in thousands]

Employment status, race, sex, and age	Not seasonally adjusted			Seasonally adjusted ¹					
	June 2012	May 2013	June 2013	June 2012	Feb. 2013	Mar. 2013	Apr. 2013	May 2013	June 2013
WHITE									
Civilian noninstitutional population.....	193,120	194,147	194,254	193,120	193,859	193,946	194,041	194,147	194,254
Civilian labor force.....	124,624	123,836	124,627	123,783	123,626	123,382	123,504	123,844	123,766
Participation rate.....	64.5	63.8	64.2	64.1	63.8	63.6	63.6	63.8	63.7
Employed.....	115,280	115,828	116,132	114,730	115,250	115,080	115,266	115,557	115,563
Employment-population ratio.....	59.7	59.7	59.8	59.4	59.5	59.3	59.4	59.5	59.5
Unemployed.....	9,344	8,009	8,495	9,053	8,376	8,302	8,238	8,287	8,204
Unemployment rate.....	7.5	6.5	6.8	7.3	6.8	6.7	6.7	6.7	6.6
Not in labor force.....	68,496	70,311	69,628	69,337	70,233	70,565	70,537	70,303	70,488
Men, 20 years and over									
Civilian labor force.....	64,730	64,785	64,843	64,535	64,720	64,549	64,674	64,680	64,625
Participation rate.....	73.8	73.3	73.3	73.6	73.4	73.1	73.2	73.2	73.1
Employed.....	60,374	60,816	60,951	60,045	60,659	60,594	60,540	60,545	60,620
Employment-population ratio.....	68.8	68.8	68.9	68.4	68.8	68.7	68.6	68.5	68.6
Unemployed.....	4,356	3,969	3,892	4,490	4,061	3,955	4,135	4,135	4,005
Unemployment rate.....	6.7	6.1	6.0	7.0	6.3	6.1	6.4	6.4	6.2
Women, 20 years and over									
Civilian labor force.....	54,265	54,411	54,239	54,484	54,224	54,255	54,221	54,447	54,469
Participation rate.....	58.5	58.3	58.1	58.8	58.2	58.2	58.2	58.4	58.4
Employed.....	50,598	51,390	50,893	50,914	50,946	50,940	51,123	51,311	51,222
Employment-population ratio.....	54.6	55.1	54.5	54.9	54.7	54.7	54.8	55.0	54.9
Unemployed.....	3,667	3,021	3,346	3,570	3,278	3,315	3,098	3,136	3,247
Unemployment rate.....	6.8	5.6	6.2	6.6	6.0	6.1	5.7	5.8	6.0
Both sexes, 16 to 19 years									
Civilian labor force.....	5,629	4,641	5,545	4,764	4,682	4,578	4,608	4,717	4,672
Participation rate.....	44.4	37.1	44.3	37.6	37.3	36.5	36.8	37.7	37.3
Employed.....	4,308	3,622	4,289	3,771	3,645	3,546	3,603	3,700	3,721
Employment-population ratio.....	34.0	28.9	34.3	29.8	29.1	28.3	28.8	29.6	29.7
Unemployed.....	1,321	1,019	1,256	994	1,037	1,032	1,005	1,017	951
Unemployment rate.....	23.5	21.9	22.7	20.9	22.1	22.5	21.8	21.6	20.4
BLACK OR AFRICAN AMERICAN									
Civilian noninstitutional population.....	29,885	30,322	30,355	29,885	30,223	30,255	30,290	30,322	30,355
Civilian labor force.....	18,758	18,690	18,852	18,549	18,639	18,524	18,617	18,723	18,636
Participation rate.....	62.8	61.6	62.1	62.1	61.7	61.2	61.5	61.7	61.4
Employed.....	15,978	16,226	16,154	15,879	16,059	16,068	16,167	16,202	16,090
Employment-population ratio.....	53.5	53.5	53.2	53.1	53.1	53.1	53.4	53.4	53.0
Unemployed.....	2,780	2,464	2,698	2,670	2,580	2,456	2,450	2,521	2,546
Unemployment rate.....	14.8	13.2	14.3	14.4	13.8	13.3	13.2	13.5	13.7
Not in labor force.....	11,128	11,632	11,502	11,337	11,583	11,731	11,673	11,599	11,719
Men, 20 years and over									
Civilian labor force.....	8,376	8,432	8,411	8,319	8,437	8,447	8,377	8,441	8,358
Participation rate.....	68.8	67.8	67.5	68.3	68.2	68.1	67.4	67.9	67.1
Employed.....	7,204	7,274	7,331	7,140	7,352	7,370	7,319	7,301	7,270
Employment-population ratio.....	59.2	58.5	58.9	58.6	59.4	59.4	58.9	58.7	58.4
Unemployed.....	1,172	1,157	1,079	1,179	1,085	1,077	1,058	1,140	1,088
Unemployment rate.....	14.0	13.7	12.8	14.2	12.9	12.7	12.6	13.5	13.0
Women, 20 years and over									
Civilian labor force.....	9,471	9,530	9,551	9,486	9,491	9,365	9,529	9,562	9,556
Participation rate.....	62.9	62.3	62.3	63.0	62.2	61.3	62.3	62.5	62.3
Employed.....	8,266	8,531	8,365	8,287	8,302	8,226	8,425	8,487	8,413
Employment-population ratio.....	54.9	55.7	54.6	55.0	54.4	53.9	55.1	55.4	54.9
Unemployed.....	1,205	999	1,186	1,199	1,189	1,139	1,105	1,074	1,143
Unemployment rate.....	12.7	10.5	12.4	12.6	12.5	12.2	11.6	11.2	12.0
Both sexes, 16 to 19 years									
Civilian labor force.....	910	728	891	744	711	713	711	720	722
Participation rate.....	34.4	28.3	34.7	28.1	27.4	27.6	27.5	28.0	28.1
Employed.....	508	420	458	452	404	472	423	413	407
Employment-population ratio.....	19.2	16.3	17.8	17.1	15.6	18.2	16.4	16.1	15.8
Unemployed.....	402	308	433	292	307	241	287	307	315
Unemployment rate.....	44.2	42.3	48.6	39.3	43.1	33.8	40.5	42.6	43.6
ASIAN									
Civilian noninstitutional population.....	12,695	13,343	13,291	-	-	-	-	-	-

See footnotes at end of table.

HOUSEHOLD DATA

Table A-2. Employment status of the civilian population by race, sex, and age — Continued

[Numbers in thousands]

Employment status, race, sex, and age	Not seasonally adjusted			Seasonally adjusted ¹					
	June 2012	May 2013	June 2013	June 2012	Feb. 2013	Mar. 2013	Apr. 2013	May 2013	June 2013
Civilian labor force.....	8,202	8,491	8,737	—	—	—	—	—	—
Participation rate.....	64.6	63.6	65.7	—	—	—	—	—	—
Employed.....	7,682	8,127	8,302	—	—	—	—	—	—
Employment-population ratio.....	60.5	60.9	62.5	—	—	—	—	—	—
Unemployed.....	519	365	435	—	—	—	—	—	—
Unemployment rate.....	6.3	4.3	5.0	—	—	—	—	—	—
Not in labor force.....	4,493	4,851	4,554	—	—	—	—	—	—

¹ The population figures are not adjusted for seasonal variation; therefore, identical numbers appear in the unadjusted and seasonally adjusted columns.

- Data not available.

NOTE: Estimates for the above race groups will not sum to totals shown in table A-1 because data are not presented for all races. Updated population controls are introduced annually with the release of January data.

HOUSEHOLD DATA

Table A-3. Employment status of the Hispanic or Latino population by sex and age

[Numbers in thousands]

Employment status, sex, and age	Not seasonally adjusted			Seasonally adjusted ¹					
	June 2012	May 2013	June 2013	June 2012	Feb. 2013	Mar. 2013	Apr. 2013	May 2013	June 2013
HISPANIC OR LATINO ETHNICITY									
Civilian noninstitutional population.....	36,708	37,395	37,471	36,708	37,169	37,242	37,320	37,395	37,471
Civilian labor force.....	24,679	24,872	24,975	24,585	24,563	24,354	24,512	24,848	24,869
Participation rate.....	67.2	66.5	66.7	67.0	66.1	65.4	65.7	66.4	66.4
Employed.....	21,962	22,743	22,698	21,878	22,215	22,122	22,310	22,583	22,601
Employment-population ratio.....	59.8	60.8	60.6	59.6	59.8	59.4	59.8	60.4	60.3
Unemployed.....	2,718	2,129	2,277	2,708	2,348	2,232	2,202	2,265	2,267
Unemployment rate.....	11.0	8.6	9.1	11.0	9.6	9.2	9.0	9.1	9.1
Not in labor force.....	12,029	12,523	12,495	12,123	12,606	12,888	12,808	12,547	12,602
Men, 20 years and over									
Civilian labor force.....	13,425	13,731	13,768	-	-	-	-	-	-
Participation rate.....	81.2	81.4	81.4	-	-	-	-	-	-
Employed.....	12,147	12,737	12,731	-	-	-	-	-	-
Employment-population ratio.....	73.5	75.5	75.3	-	-	-	-	-	-
Unemployed.....	1,277	995	1,036	-	-	-	-	-	-
Unemployment rate.....	9.5	7.2	7.5	-	-	-	-	-	-
Women, 20 years and over									
Civilian labor force.....	9,909	10,017	9,914	-	-	-	-	-	-
Participation rate.....	60.0	59.3	58.6	-	-	-	-	-	-
Employed.....	8,886	9,203	9,057	-	-	-	-	-	-
Employment-population ratio.....	53.8	54.5	53.5	-	-	-	-	-	-
Unemployed.....	1,022	815	857	-	-	-	-	-	-
Unemployment rate.....	10.3	8.1	8.6	-	-	-	-	-	-
Both sexes, 16 to 19 years									
Civilian labor force.....	1,346	1,124	1,293	-	-	-	-	-	-
Participation rate.....	36.8	30.8	35.4	-	-	-	-	-	-
Employed.....	928	804	910	-	-	-	-	-	-
Employment-population ratio.....	25.4	22.0	24.9	-	-	-	-	-	-
Unemployed.....	418	320	383	-	-	-	-	-	-
Unemployment rate.....	31.0	28.5	29.6	-	-	-	-	-	-

1 The population figures are not adjusted for seasonal variation; therefore, identical numbers appear in the unadjusted and seasonally adjusted columns.

- Data not available.

NOTE: Persons whose ethnicity is identified as Hispanic or Latino may be of any race. Updated population controls are introduced annually with the release of January data.

HOUSEHOLD DATA

Table A-4. Employment status of the civilian population 25 years and over by educational attainment

[Numbers in thousands]

Educational attainment	Not seasonally adjusted			Seasonally adjusted					
	June 2012	May 2013	June 2013	June 2012	Feb. 2013	Mar. 2013	Apr. 2013	May 2013	June 2013
Less than a high school diploma									
Civilian labor force.....	11,623	11,483	11,414	11,383	11,256	11,264	10,999	11,237	11,161
Participation rate.....	45.9	45.9	45.5	45.0	47.2	46.0	44.8	45.0	44.5
Employed.....	10,291	10,295	10,312	9,956	9,999	10,012	9,725	9,993	9,969
Employment-population ratio.....	40.6	41.2	41.1	39.3	41.9	40.9	39.6	40.0	39.8
Unemployed.....	1,332	1,188	1,102	1,427	1,257	1,252	1,274	1,243	1,192
Unemployment rate.....	11.5	10.3	9.7	12.5	11.2	11.1	11.6	11.1	10.7
High school graduates, no college¹									
Civilian labor force.....	36,851	36,488	36,324	36,964	36,143	36,121	36,200	36,236	36,320
Participation rate.....	59.8	59.3	59.1	60.0	58.1	58.6	58.7	58.9	59.1
Employed.....	33,884	33,963	33,681	33,839	33,289	33,359	33,510	33,572	33,562
Employment-population ratio.....	55.0	55.2	54.8	54.9	53.6	54.1	54.3	54.6	54.6
Unemployed.....	2,967	2,525	2,643	3,125	2,854	2,762	2,689	2,664	2,757
Unemployment rate.....	8.1	6.9	7.3	8.5	7.9	7.6	7.4	7.4	7.6
Some college or associate degree									
Civilian labor force.....	37,194	37,189	36,943	37,416	37,291	37,232	37,371	37,470	37,297
Participation rate.....	68.4	68.0	67.4	68.8	68.0	68.1	68.4	68.5	68.1
Employed.....	34,446	34,848	34,561	34,680	34,776	34,845	34,992	35,036	34,925
Employment-population ratio.....	63.4	63.7	63.1	63.8	63.5	63.8	64.1	64.0	63.7
Unemployed.....	2,748	2,341	2,382	2,736	2,515	2,387	2,379	2,435	2,372
Unemployment rate.....	7.4	6.3	6.4	7.3	6.7	6.4	6.4	6.5	6.4
Bachelor's degree and higher²									
Civilian labor force.....	47,631	49,392	49,086	47,959	49,436	49,236	49,492	49,473	49,466
Participation rate.....	75.5	75.6	75.1	76.1	75.9	75.3	75.6	75.8	75.6
Employed.....	45,674	47,623	47,163	45,986	47,555	47,371	47,563	47,581	47,537
Employment-population ratio.....	72.4	72.9	72.1	72.9	73.0	72.5	72.7	72.9	72.7
Unemployed.....	1,957	1,770	1,923	1,973	1,881	1,865	1,929	1,892	1,929
Unemployment rate.....	4.1	3.6	3.9	4.1	3.8	3.8	3.9	3.8	3.9

1 Includes persons with a high school diploma or equivalent.

2 Includes persons with bachelor's, master's, professional, and doctoral degrees.

NOTE: Updated population controls are introduced annually with the release of January data.

HOUSEHOLD DATA

Table A-5. Employment status of the civilian population 18 years and over by veteran status, period of service, and sex, not seasonally adjusted

[Numbers in thousands]

Employment status, veteran status, and period of service	Total		Men		Women	
	June 2012	June 2013	June 2012	June 2013	June 2012	June 2013
VETERANS, 18 years and over						
Civilian noninstitutional population.....	21,193	21,412	19,380	19,188	1,813	2,224
Civilian labor force.....	10,958	10,950	9,853	9,532	1,104	1,418
Participation rate.....	51.7	51.1	50.8	49.7	60.9	63.8
Employed.....	10,151	10,264	9,144	8,952	1,007	1,311
Employment-population ratio.....	47.9	47.9	47.2	46.7	55.5	59.0
Unemployed.....	806	687	709	579	97	107
Unemployment rate.....	7.4	6.3	7.2	6.1	8.8	7.6
Not in labor force.....	10,235	10,462	9,527	9,656	709	806
 Gulf War-era II veterans						
Civilian noninstitutional population.....	2,597	2,790	2,168	2,232	429	558
Civilian labor force.....	2,061	2,223	1,767	1,825	294	398
Participation rate.....	79.4	79.7	81.5	81.7	68.4	71.4
Employed.....	1,865	2,063	1,602	1,700	264	363
Employment-population ratio.....	71.8	73.9	73.9	76.2	61.4	65.0
Unemployed.....	196	160	166	125	30	36
Unemployment rate.....	9.5	7.2	9.4	6.8	10.1	8.9
Not in labor force.....	536	567	401	408	136	160
 Gulf War-era I veterans						
Civilian noninstitutional population.....	3,053	3,266	2,590	2,627	464	639
Civilian labor force.....	2,541	2,658	2,181	2,164	359	494
Participation rate.....	83.2	81.4	84.2	82.4	77.5	77.3
Employed.....	2,377	2,527	2,055	2,056	322	471
Employment-population ratio.....	77.9	77.4	79.4	78.3	69.4	73.6
Unemployed.....	163	131	126	107	37	23
Unemployment rate.....	6.4	4.9	5.8	5.0	10.4	4.7
Not in labor force.....	513	609	408	463	105	145
 World War II, Korean War, and Vietnam-era veterans						
Civilian noninstitutional population.....	9,897	9,829	9,583	9,459	314	370
Civilian labor force.....	3,234	3,010	3,136	2,899	98	111
Participation rate.....	32.7	30.6	32.7	30.7	31.2	29.9
Employed.....	3,005	2,828	2,909	2,725	96	103
Employment-population ratio.....	30.4	28.8	30.4	28.8	30.5	27.8
Unemployed.....	229	183	227	175	2	8
Unemployment rate.....	7.1	6.1	7.2	6.0	2.1	7.1
Not in labor force.....	6,663	6,819	6,447	6,559	216	259
 Veterans of other service periods						
Civilian noninstitutional population.....	5,646	5,526	5,040	4,870	606	656
Civilian labor force.....	3,122	3,059	2,769	2,644	353	415
Participation rate.....	55.3	55.4	54.9	54.3	58.3	63.2
Employed.....	2,903	2,846	2,578	2,471	325	375
Employment-population ratio.....	51.4	51.5	51.2	50.7	53.7	57.1
Unemployed.....	219	213	191	173	28	40
Unemployment rate.....	7.0	7.0	6.9	6.5	7.9	9.7
Not in labor force.....	2,523	2,467	2,271	2,226	253	241
NONVETERANS, 18 years and over						
Civilian noninstitutional population.....	213,167	215,434	93,488	94,854	119,679	120,580
Civilian labor force.....	142,908	143,662	72,282	72,989	70,625	70,673
Participation rate.....	67.0	66.7	77.3	76.9	59.0	58.6
Employed.....	131,356	132,902	66,415	67,492	64,942	65,409
Employment-population ratio.....	61.6	61.7	71.0	71.2	54.3	54.2
Unemployed.....	11,551	10,760	5,868	5,497	5,684	5,263
Unemployment rate.....	8.1	7.5	8.1	7.5	8.0	7.4
Not in labor force.....	70,259	71,772	21,206	21,864	49,053	49,907

NOTE: Veterans served on active duty in the U.S. Armed Forces and were not on active duty at the time of the survey. Nonveterans never served on active duty in the U.S. Armed Forces. Veterans could have served anywhere in the world during these periods of service: Gulf War era II (September 2001-present), Gulf War era I (August 1990-August 2001), Vietnam era (August 1964-April 1975), Korean War (July 1950-January 1955), World War II (December 1941-December 1946), and other service periods (all other time periods). Veterans who served in more than one wartime period are classified only in the most recent one. Veterans who served during one of the selected wartime periods and another period are classified only in the wartime period. Beginning with data for January 2013, estimates for veterans incorporate population controls derived from the updated Department of Veterans Affairs' population model.

HOUSEHOLD DATA

Table A-6. Employment status of the civilian population by sex, age, and disability status, not seasonally adjusted

[Numbers in thousands]

Employment status, sex, and age	Persons with a disability		Persons with no disability	
	June 2012	June 2013	June 2012	June 2013
TOTAL, 16 years and over				
Civilian noninstitutional population.....	28,097	28,491	215,058	217,061
Civilian labor force.....	5,755	5,768	150,630	151,321
Participation rate.....	20.5	20.2	70.0	69.7
Employed.....	4,987	4,950	138,214	139,891
Employment-population ratio.....	17.7	17.4	64.3	64.4
Unemployed.....	768	818	12,416	11,430
Unemployment rate.....	13.3	14.2	8.2	7.6
Not in labor force.....	22,342	22,724	64,428	65,739
Men, 16 to 64 years				
Civilian labor force.....	2,546	2,570	76,457	76,761
Participation rate.....	34.2	34.4	83.6	83.5
Employed.....	2,215	2,204	70,073	70,795
Employment-population ratio.....	29.8	29.5	76.6	77.0
Unemployed.....	332	366	6,385	5,965
Unemployment rate.....	13.0	14.2	8.4	7.8
Not in labor force.....	4,893	4,907	15,016	15,132
Women, 16 to 64 years				
Civilian labor force.....	2,281	2,242	67,429	67,389
Participation rate.....	29.7	28.5	71.1	70.9
Employed.....	1,929	1,846	61,863	62,323
Employment-population ratio.....	25.1	23.4	65.2	65.6
Unemployed.....	352	397	5,566	5,065
Unemployment rate.....	15.4	17.7	8.3	7.5
Not in labor force.....	5,391	5,630	27,390	27,614
Both sexes, 65 years and over				
Civilian labor force.....	927	956	6,744	7,172
Participation rate.....	7.1	7.3	23.4	23.8
Employed.....	843	901	6,279	6,773
Employment-population ratio.....	6.5	6.9	21.8	22.5
Unemployed.....	84	55	465	399
Unemployment rate.....	9.1	5.8	6.9	5.6
Not in labor force.....	12,058	12,186	22,022	22,993

NOTE: A person with a disability has at least one of the following conditions: is deaf or has serious difficulty hearing; is blind or has serious difficulty seeing even when wearing glasses; has serious difficulty concentrating, remembering, or making decisions because of a physical, mental, or emotional condition; has serious difficulty walking or climbing stairs; has difficulty dressing or bathing; or has difficulty doing errands alone such as visiting a doctor's office or shopping because of a physical, mental, or emotional condition. Updated population controls are introduced annually with the release of January data.

HOUSEHOLD DATA

Table A-7. Employment status of the civilian population by nativity and sex, not seasonally adjusted

[Numbers in thousands]

Employment status and nativity	Total		Men		Women	
	June 2012	June 2013	June 2012	June 2013	June 2012	June 2013
Foreign born, 16 years and over						
Civilian noninstitutional population.....	37,315	37,658	18,294	18,371	19,021	19,286
Civilian labor force.....	25,009	25,305	14,588	14,692	10,420	10,612
Participation rate.....	67.0	67.2	79.7	80.0	54.8	55.0
Employed.....	22,985	23,670	13,502	13,809	9,483	9,861
Employment-population ratio.....	61.6	62.9	73.8	75.2	49.9	51.1
Unemployed.....	2,024	1,635	1,086	883	938	751
Unemployment rate.....	8.1	6.5	7.4	6.0	9.0	7.1
Not in labor force.....	12,306	12,353	3,705	3,679	8,601	8,674
Native born, 16 years and over						
Civilian noninstitutional population.....	205,840	207,894	98,984	100,119	106,857	107,775
Civilian labor force.....	131,377	131,785	68,781	69,144	62,596	62,640
Participation rate.....	63.8	63.4	69.5	69.1	58.6	58.1
Employed.....	120,217	121,172	62,836	63,468	57,380	57,704
Employment-population ratio.....	58.4	58.3	63.5	63.4	53.7	53.5
Unemployed.....	11,160	10,613	5,944	5,676	5,216	4,936
Unemployment rate.....	8.5	8.1	8.6	8.2	8.3	7.9
Not in labor force.....	74,464	76,110	30,203	30,975	44,261	45,135

NOTE: The foreign born are those residing in the United States who were not U.S. citizens at birth. That is, they were born outside the United States or one of its outlying areas such as Puerto Rico or Guam, to parents neither of whom was a U.S. citizen. The native born are persons who were born in the United States or one of its outlying areas such as Puerto Rico or Guam or who were born abroad of at least one parent who was a U.S. citizen. Updated population controls are introduced annually with the release of January data.

HOUSEHOLD DATA

Table A-8. Employed persons by class of worker and part-time status

[In thousands]

Category	Not seasonally adjusted			Seasonally adjusted					
	June 2012	May 2013	June 2013	June 2012	Feb. 2013	Mar. 2013	Apr. 2013	May 2013	June 2013
CLASS OF WORKER									
Agriculture and related industries.....	2,377	2,168	2,234	2,200	2,065	2,001	2,017	2,059	2,067
Wage and salary workers ¹	1,514	1,322	1,380	1,398	1,258	1,250	1,227	1,263	1,268
Self-employed workers, unincorporated.....	826	831	836	781	792	710	772	793	790
Unpaid family workers.....	37	15	18	-	-	-	-	-	-
Nonagricultural industries.....	140,824	142,263	142,607	140,218	141,415	141,317	141,592	141,890	142,004
Wage and salary workers ¹	131,694	133,483	133,652	131,342	132,694	132,761	132,847	133,201	133,273
Government.....	19,679	20,537	19,719	19,995	20,571	20,633	20,269	20,361	20,157
Private industries.....	112,015	112,947	113,932	111,403	112,141	112,147	112,558	112,865	113,167
Private households.....	832	663	702	-	-	-	-	-	-
Other industries.....	111,183	112,284	113,230	110,638	111,411	111,462	111,932	112,274	112,552
Self-employed workers, unincorporated.....	9,049	8,715	8,885	8,818	8,686	8,407	8,651	8,597	8,643
Unpaid family workers.....	82	65	71	-	-	-	-	-	-
PERSONS AT WORK PART TIME²									
All industries									
Part time for economic reasons ³	8,394	7,618	8,440	8,210	7,988	7,638	7,916	7,904	8,226
Slack work or business conditions.....	5,378	4,604	5,222	5,471	5,136	4,906	5,129	4,841	5,193
Could only find part-time work.....	2,599	2,727	2,748	2,514	2,578	2,576	2,527	2,721	2,652
Part time for noneconomic reasons ⁴	17,654	19,315	17,931	18,825	18,908	18,745	18,908	18,934	19,044
Nonagricultural industries									
Part time for economic reasons ³	8,268	7,523	8,328	8,072	7,865	7,544	7,793	7,797	8,111
Slack work or business conditions.....	5,294	4,544	5,150	5,363	5,045	4,832	5,058	4,778	5,120
Could only find part-time work.....	2,587	2,714	2,717	2,501	2,542	2,510	2,454	2,686	2,632
Part time for noneconomic reasons ⁴	17,285	18,993	17,644	18,470	18,549	18,435	18,542	18,511	18,696

1 Includes self-employed workers whose businesses are incorporated.

2 Refers to those who worked 1 to 34 hours during the survey reference week and excludes employed persons who were absent from their jobs for the entire week.

3 Refers to those who worked 1 to 34 hours during the reference week for an economic reason such as slack work or unfavorable business conditions, inability to find full-time work, or seasonal declines in demand.

4 Refers to persons who usually work part time for noneconomic reasons such as childcare problems, family or personal obligations, school or training, retirement or Social Security limits on earnings, and other reasons. This excludes persons who usually work full time but worked only 1 to 34 hours during the reference week for reasons such as vacations, holidays, illness, and bad weather.

- Data not available.

NOTE: Detail for the seasonally adjusted data shown in this table will not necessarily add to totals because of the independent seasonal adjustment of the various series. Updated population controls are introduced annually with the release of January data.

HOUSEHOLD DATA

Table A-9. Selected employment indicators

[Numbers in thousands]

Characteristic	Not seasonally adjusted			Seasonally adjusted					
	June 2012	May 2013	June 2013	June 2012	Feb. 2013	Mar. 2013	Apr. 2013	May 2013	June 2013
AGE AND SEX									
Total, 16 years and over.....	143,202	144,432	144,841	142,448	143,492	143,286	143,579	143,898	144,058
16 to 19 years.....	5,178	4,364	5,143	4,533	4,376	4,351	4,320	4,445	4,469
16 to 17 years.....	1,694	1,415	1,676	1,473	1,520	1,482	1,490	1,505	1,451
18 to 19 years.....	3,484	2,949	3,467	3,067	2,866	2,868	2,834	2,937	3,027
20 years and over.....	138,024	140,067	139,698	137,915	139,116	138,935	139,260	139,453	139,589
20 to 24 years.....	13,729	13,339	13,981	13,371	13,527	13,382	13,569	13,412	13,605
25 years and over.....	124,295	126,728	125,717	124,592	125,604	125,615	125,678	126,057	125,978
25 to 54 years.....	94,005	94,963	94,390	94,125	94,387	94,409	94,393	94,569	94,461
25 to 34 years.....	30,656	31,402	31,206	30,654	31,152	31,180	31,133	31,292	31,217
35 to 44 years.....	30,431	30,834	30,523	30,484	30,521	30,620	30,637	30,691	30,570
45 to 54 years.....	32,917	32,726	32,661	32,987	32,714	32,610	32,623	32,586	32,675
55 years and over.....	30,290	31,765	31,326	30,467	31,217	31,206	31,285	31,488	31,517
Men, 16 years and over.....	76,338	76,608	77,277	75,522	76,375	76,329	76,239	76,299	76,447
16 to 19 years.....	2,603	2,152	2,560	2,223	2,126	2,101	2,080	2,175	2,171
16 to 17 years.....	779	654	832	659	713	645	653	686	696
18 to 19 years.....	1,823	1,498	1,728	1,593	1,408	1,444	1,426	1,485	1,495
20 years and over.....	73,735	74,456	74,717	73,299	74,249	74,228	74,159	74,124	74,276
20 to 24 years.....	7,130	6,900	7,193	6,868	7,073	7,006	6,990	6,917	6,952
25 years and over.....	66,606	67,557	67,524	66,462	67,149	67,205	67,095	67,192	67,331
25 to 54 years.....	50,538	50,867	50,878	50,383	50,603	50,669	50,565	50,613	50,672
25 to 34 years.....	16,664	16,997	16,987	16,627	16,940	16,980	16,887	16,961	16,944
35 to 44 years.....	16,431	16,732	16,607	16,428	16,597	16,655	16,673	16,660	16,602
45 to 54 years.....	17,442	17,138	17,284	17,327	17,066	17,034	17,005	16,992	17,125
55 years and over.....	16,068	16,689	16,646	16,080	16,546	16,536	16,530	16,578	16,659
Women, 16 years and over.....	66,863	67,824	67,565	66,926	67,116	66,956	67,340	67,599	67,612
16 to 19 years.....	2,575	2,213	2,584	2,311	2,250	2,250	2,239	2,271	2,298
16 to 17 years.....	915	762	844	814	807	837	837	819	755
18 to 19 years.....	1,660	1,451	1,739	1,474	1,458	1,424	1,408	1,452	1,532
20 years and over.....	64,288	65,611	64,981	64,616	64,867	64,707	65,101	65,329	65,314
20 to 24 years.....	6,599	6,440	6,789	6,503	6,455	6,376	6,578	6,495	6,653
25 years and over.....	57,689	59,171	58,192	58,130	58,455	58,411	58,583	58,866	58,647
25 to 54 years.....	43,467	44,096	43,512	43,742	43,784	43,740	43,828	43,955	43,790
25 to 34 years.....	13,992	14,405	14,220	14,027	14,212	14,200	14,246	14,330	14,272
35 to 44 years.....	14,000	14,102	13,915	14,056	13,925	13,965	13,964	14,030	13,968
45 to 54 years.....	15,475	15,588	15,377	15,659	15,648	15,575	15,619	15,595	15,550
55 years and over.....	14,222	15,076	14,680	14,388	14,671	14,670	14,755	14,910	14,857
MARITAL STATUS									
Married men, spouse present.....	43,740	44,284	43,923	43,758	43,934	44,007	44,024	44,176	43,963
Married women, spouse present.....	34,177	34,804	34,276	34,553	34,400	34,319	34,346	34,716	34,672
Women who maintain families.....	9,264	9,557	9,348	-	-	-	-	-	-
FULL- OR PART-TIME STATUS									
Full-time workers ¹	116,024	116,643	117,400	114,606	115,841	115,903	116,053	116,238	115,998
Part-time workers ²	27,178	27,789	27,442	27,864	27,569	27,442	27,549	27,699	28,059
MULTIPLE JOBHOLDERS									
Total multiple jobholders.....	6,707	7,123	6,990	6,790	7,259	7,102	6,983	6,918	7,065
Percent of total employed.....	4.7	4.9	4.8	4.8	5.1	5.0	4.9	4.8	4.9
SELF-EMPLOYMENT									
Self-employed workers, incorporated.....	5,206	5,305	5,170	-	-	-	-	-	-
Self-employed workers, unincorporated.....	9,875	9,546	9,720	9,599	9,478	9,117	9,423	9,390	9,432

1 Employed full-time workers are persons who usually work 35 hours or more per week.

2 Employed part-time workers are persons who usually work less than 35 hours per week.

- Data not available.

NOTE: Detail for the seasonally adjusted data shown in this table will not necessarily add to totals because of the independent seasonal adjustment of the various series. Updated population controls are introduced annually with the release of January data.

HOUSEHOLD DATA

Table A-10. Selected unemployment indicators, seasonally adjusted

Characteristic	Number of unemployed persons (in thousands)			Unemployment rates					
	June 2012	May 2013	June 2013	June 2012	Feb. 2013	Mar. 2013	Apr. 2013	May 2013	June 2013
AGE AND SEX									
Total, 16 years and over.....	12,701	11,760	11,777	8.2	7.7	7.6	7.5	7.6	7.6
16 to 19 years.....	1,406	1,441	1,409	23.7	25.1	24.2	24.1	24.5	24.0
16 to 17 years.....	537	570	522	26.7	27.6	27.1	27.3	27.5	26.5
18 to 19 years.....	861	847	882	21.9	23.0	22.1	22.6	22.4	22.6
20 years and over.....	11,294	10,320	10,368	7.6	7.1	6.9	6.9	6.9	6.9
20 to 24 years.....	2,119	2,048	2,123	13.7	13.1	13.3	13.1	13.2	13.5
25 years and over.....	9,256	8,232	8,274	6.9	6.3	6.2	6.1	6.1	6.2
25 to 54 years.....	7,264	6,503	6,491	7.2	6.5	6.4	6.4	6.4	6.4
25 to 34 years.....	2,751	2,425	2,579	8.2	7.8	7.4	7.4	7.2	7.6
35 to 44 years.....	2,299	2,026	1,932	7.0	6.2	6.0	5.8	6.2	5.9
45 to 54 years.....	2,214	2,053	1,981	6.3	5.5	5.7	5.9	5.9	5.7
55 years and over.....	1,985	1,760	1,777	6.1	5.8	5.5	5.5	5.3	5.3
Men, 16 years and over.....	6,936	6,564	6,451	8.4	7.8	7.6	7.7	7.9	7.8
16 to 19 years.....	802	810	844	26.5	27.0	25.9	26.2	27.1	28.0
16 to 17 years.....	294	318	309	30.9	31.1	30.7	31.2	31.6	30.8
18 to 19 years.....	499	469	521	23.9	24.3	23.4	23.9	24.0	25.8
20 years and over.....	6,133	5,754	5,607	7.7	7.1	6.9	7.1	7.2	7.0
20 to 24 years.....	1,241	1,183	1,228	15.3	13.4	14.4	14.0	14.6	15.0
25 years and over.....	4,968	4,543	4,406	7.0	6.3	6.0	6.3	6.3	6.1
25 to 54 years.....	3,832	3,524	3,436	7.1	6.4	6.1	6.5	6.5	6.4
25 to 34 years.....	1,419	1,331	1,362	7.9	7.7	7.1	7.6	7.3	7.4
35 to 44 years.....	1,245	1,074	1,015	7.0	5.9	5.6	5.7	6.1	5.8
45 to 54 years.....	1,168	1,118	1,059	6.3	5.7	5.6	6.2	6.2	5.8
55 years and over.....	1,136	1,019	970	6.6	6.0	5.7	5.7	5.8	5.5
Women, 16 years and over.....	5,765	5,197	5,326	7.9	7.7	7.6	7.3	7.1	7.3
16 to 19 years.....	604	631	565	20.7	23.2	22.4	22.1	21.7	19.7
16 to 17 years.....	242	253	214	22.9	24.3	24.0	23.8	23.6	22.0
18 to 19 years.....	362	377	361	19.7	21.7	20.7	21.2	20.6	19.1
20 years and over.....	5,161	4,566	4,761	7.4	7.0	7.0	6.7	6.5	6.8
20 to 24 years.....	878	865	895	11.9	12.7	12.0	12.3	11.8	11.9
25 years and over.....	4,288	3,690	3,868	6.9	6.4	6.3	5.9	5.9	6.2
25 to 54 years.....	3,432	2,980	3,055	7.3	6.6	6.6	6.2	6.3	6.5
25 to 34 years.....	1,333	1,094	1,217	8.7	7.9	7.7	7.3	7.1	7.9
35 to 44 years.....	1,054	952	916	7.0	6.7	6.5	6.0	6.4	6.2
45 to 54 years.....	1,046	934	921	6.3	5.3	5.7	5.5	5.7	5.6
55 years and over ¹	879	685	836	5.8	5.6	5.2	4.8	4.3	5.4
MARITAL STATUS									
Married men, spouse present.....	2,273	2,018	1,975	4.9	4.5	4.3	4.4	4.4	4.3
Married women, spouse present.....	1,955	1,597	1,677	5.4	4.9	4.7	4.4	4.4	4.6
Women who maintain families ¹	1,237	1,044	1,123	11.8	11.0	10.7	10.3	9.9	10.7
FULL- OR PART-TIME STATUS									
Full-time workers ²	10,851	9,941	9,956	8.6	8.1	7.9	7.9	7.9	7.9
Part-time workers ³	1,869	1,752	1,834	6.3	6.2	5.9	6.0	5.9	6.1

1 Not seasonally adjusted.

2 Full-time workers are unemployed persons who have expressed a desire to work full time (35 hours or more per week) or are on layoff from full-time jobs.

3 Part-time workers are unemployed persons who have expressed a desire to work part time (less than 35 hours per week) or are on layoff from part-time jobs.

NOTE: Detail for the seasonally adjusted data shown in this table will not necessarily add to totals because of the independent seasonal adjustment of the various series. Updated population controls are introduced annually with the release of January data.

HOUSEHOLD DATA

Table A-11. Unemployed persons by reason for unemployment

[Numbers in thousands]

Reason	Not seasonally adjusted			Seasonally adjusted					
	June 2012	May 2013	June 2013	June 2012	Feb. 2013	Mar. 2013	Apr. 2013	May 2013	June 2013
NUMBER OF UNEMPLOYED									
Job losers and persons who completed temporary jobs.....	6,927	5,751	5,939	7,121	6,522	6,329	6,410	6,147	6,119
On temporary layoff.....	1,188	768	1,139	1,309	1,078	1,107	1,170	997	1,199
Not on temporary layoff.....	5,739	4,983	4,800	5,812	5,443	5,223	5,240	5,151	4,920
Permanent job losers.....	4,490	3,728	3,639	4,506	4,128	3,959	3,976	3,822	3,700
Persons who completed temporary jobs.....	1,249	1,255	1,161	1,307	1,315	1,264	1,264	1,329	1,220
Job leavers.....	879	882	981	936	956	986	864	944	1,030
Reentrants.....	3,556	3,459	3,600	3,243	3,340	3,176	3,151	3,333	3,291
New entrants.....	1,822	1,210	1,728	1,316	1,279	1,316	1,280	1,268	1,259
PERCENT DISTRIBUTION									
Job losers and persons who completed temporary jobs.....	52.5	50.9	48.5	56.4	53.9	53.6	54.8	52.6	52.3
On temporary layoff.....	9.0	6.8	9.3	10.4	8.9	9.4	10.0	8.5	10.2
Not on temporary layoff.....	43.5	44.1	39.2	46.1	45.0	44.2	44.8	44.1	42.1
Job leavers.....	6.7	7.8	8.0	7.4	7.9	8.4	7.4	8.1	8.8
Reentrants.....	27.0	30.6	29.4	25.7	27.6	26.9	26.9	28.5	28.1
New entrants.....	13.8	10.7	14.1	10.4	10.6	11.1	10.9	10.8	10.8
UNEMPLOYED AS A PERCENT OF THE CIVILIAN LABOR FORCE									
Job losers and persons who completed temporary jobs.....	4.4	3.7	3.8	4.6	4.2	4.1	4.1	3.9	3.9
Job leavers.....	0.6	0.6	0.6	0.6	0.6	0.6	0.6	0.6	0.7
Reentrants.....	2.3	2.2	2.3	2.1	2.1	2.0	2.0	2.1	2.1
New entrants.....	1.2	0.8	1.1	0.8	0.8	0.8	0.8	0.8	0.8

NOTE: Updated population controls are introduced annually with the release of January data.

HOUSEHOLD DATA

Table A-12. Unemployed persons by duration of unemployment

[Numbers in thousands]

Duration	Not seasonally adjusted			Seasonally adjusted					
	June 2012	May 2013	June 2013	June 2012	Feb. 2013	Mar. 2013	Apr. 2013	May 2013	June 2013
NUMBER OF UNEMPLOYED									
Less than 5 weeks.....	3,627	2,710	3,569	2,825	2,667	2,464	2,474	2,706	2,692
5 to 14 weeks.....	2,546	2,141	2,592	2,826	2,782	2,838	2,848	2,669	2,864
15 weeks and over.....	7,010	6,451	6,086	7,149	6,493	6,348	6,320	6,306	6,225
15 to 26 weeks.....	1,793	2,084	1,841	1,813	1,695	1,737	1,967	1,950	1,896
27 weeks and over.....	5,217	4,366	4,245	5,336	4,797	4,611	4,353	4,357	4,328
Average (mean) duration, in weeks.....	38.2	38.6	34.1	39.7	36.9	37.1	36.5	36.9	35.6
Median duration, in weeks.....	17.4	18.8	14.3	19.4	17.8	18.1	17.5	17.3	16.3
PERCENT DISTRIBUTION									
Less than 5 weeks.....	27.5	24.0	29.1	22.1	22.3	21.1	21.3	23.2	22.9
5 to 14 weeks.....	19.3	18.9	21.2	22.1	23.3	24.4	24.5	22.8	24.3
15 weeks and over.....	53.2	57.1	49.7	55.8	54.4	54.5	54.3	54.0	52.8
15 to 26 weeks.....	13.6	18.4	15.0	14.2	14.2	14.9	16.9	16.7	16.1
27 weeks and over.....	39.6	38.6	34.7	41.7	40.2	39.6	37.4	37.3	36.7

NOTE: Updated population controls are introduced annually with the release of January data.

HOUSEHOLD DATA

Table A-13. Employed and unemployed persons by occupation, not seasonally adjusted

[Numbers in thousands]

Occupation	Employed		Unemployed		Unemployment rates	
	June 2012	June 2013	June 2012	June 2013	June 2012	June 2013
Total, 16 years and over ¹	143,202	144,841	13,184	12,248	8.4	7.8
Management, professional, and related occupations.....	53,846	54,323	2,472	2,358	4.4	4.2
Management, business, and financial operations occupations.....	23,068	23,019	921	843	3.8	3.5
Professional and related occupations.....	30,778	31,304	1,551	1,515	4.8	4.6
Service occupations.....	26,476	26,769	2,634	2,732	9.0	9.3
Sales and office occupations.....	32,642	33,224	2,887	2,444	8.1	6.9
Sales and related occupations.....	15,322	15,765	1,397	1,124	8.4	6.7
Office and administrative support occupations.....	17,320	17,459	1,490	1,321	7.9	7.0
Natural resources, construction, and maintenance occupations.....	12,978	13,532	1,447	1,327	10.0	8.9
Farming, fishing, and forestry occupations.....	1,144	1,069	132	92	10.3	7.9
Construction and extraction occupations.....	7,020	7,480	1,046	937	13.0	11.1
Installation, maintenance, and repair occupations.....	4,815	4,983	269	298	5.3	5.6
Production, transportation, and material moving occupations.....	17,259	16,993	1,883	1,613	9.8	8.7
Production occupations.....	8,419	8,087	871	772	9.4	8.7
Transportation and material moving occupations.....	8,840	8,906	1,012	841	10.3	8.6

¹ Persons with no previous work experience and persons whose last job was in the U.S. Armed Forces are included in the unemployed total.

NOTE: Updated population controls are introduced annually with the release of January data.

HOUSEHOLD DATA

Table A-14. Unemployed persons by industry and class of worker, not seasonally adjusted

Industry and class of worker	Number of unemployed persons (in thousands)		Unemployment rates	
	June 2012	June 2013	June 2012	June 2013
Total, 16 years and over ¹	13,184	12,248	8.4	7.8
Nonagricultural private wage and salary workers.....	9,626	8,800	7.9	7.2
Mining, quarrying, and oil and gas extraction.....	52	70	4.8	6.4
Construction.....	1,039	825	12.8	9.8
Manufacturing.....	1,056	989	6.9	6.4
Durable goods.....	654	569	6.8	5.9
Nondurable goods.....	402	420	7.0	7.1
Wholesale and retail trade.....	1,709	1,415	8.3	7.0
Transportation and utilities.....	437	384	7.2	6.3
Information.....	201	164	7.1	5.6
Financial activities.....	510	441	5.6	4.7
Professional and business services.....	1,356	1,300	8.9	8.2
Education and health services.....	1,368	1,243	6.2	5.6
Leisure and hospitality.....	1,407	1,559	9.8	10.7
Other services.....	492	411	7.5	6.3
Agriculture and related private wage and salary workers.....	133	118	8.4	8.2
Government workers.....	1,079	1,086	5.2	5.2
Self-employed workers, unincorporated, and unpaid family workers.....	524	517	5.0	5.0

¹ Persons with no previous work experience and persons whose last job was in the U.S. Armed Forces are included in the unemployed total.

NOTE: Updated population controls are introduced annually with the release of January data.

HOUSEHOLD DATA

Table A-15. Alternative measures of labor underutilization

[Percent]

Measure	Not seasonally adjusted			Seasonally adjusted					
	June 2012	May 2013	June 2013	June 2012	Feb. 2013	Mar. 2013	Apr. 2013	May 2013	June 2013
U-1 Persons unemployed 15 weeks or longer, as a percent of the civilian labor force.....	4.5	4.1	3.9	4.6	4.2	4.1	4.1	4.1	4.0
U-2 Job losers and persons who completed temporary jobs, as a percent of the civilian labor force.....	4.4	3.7	3.8	4.6	4.2	4.1	4.1	3.9	3.9
U-3 Total unemployed, as a percent of the civilian labor force (official unemployment rate).....	8.4	7.3	7.8	8.2	7.7	7.6	7.5	7.6	7.6
U-4 Total unemployed plus discouraged workers, as a percent of the civilian labor force plus discouraged workers.....	8.9	7.7	8.4	8.7	8.3	8.1	8.0	8.0	8.2
U-5 Total unemployed, plus discouraged workers, plus all other persons marginally attached to the labor force, as a percent of the civilian labor force plus all persons marginally attached to the labor force.....	9.9	8.5	9.3	9.6	9.2	8.9	8.9	8.8	9.1
U-6 Total unemployed, plus all persons marginally attached to the labor force, plus total employed part time for economic reasons, as a percent of the civilian labor force plus all persons marginally attached to the labor force.....	15.1	13.4	14.6	14.8	14.3	13.8	13.9	13.8	14.3

NOTE: Persons marginally attached to the labor force are those who currently are neither working nor looking for work but indicate that they want and are available for a job and have looked for work sometime in the past 12 months. Discouraged workers, a subset of the marginally attached, have given a job-market related reason for not currently looking for work. Persons employed part time for economic reasons are those who want and are available for full-time work but have had to settle for a part-time schedule. Updated population controls are introduced annually with the release of January data.

HOUSEHOLD DATA

Table A-16. Persons not in the labor force and multiple jobholders by sex, not seasonally adjusted

[Numbers in thousands]

Category	Total		Men		Women	
	June 2012	June 2013	June 2012	June 2013	June 2012	June 2013
NOT IN THE LABOR FORCE						
Total not in the labor force.....	86,770	88,463	33,909	34,654	52,862	53,809
Persons who currently want a job.....	7,157	7,152	3,212	3,243	3,945	3,909
Marginally attached to the labor force ¹	2,483	2,582	1,226	1,332	1,256	1,250
Discouraged workers ²	821	1,027	511	595	310	431
Other persons marginally attached to the labor force ³	1,662	1,555	716	737	946	818
MULTIPLE JOBHOLDERS						
Total multiple jobholders ⁴	6,707	6,990	3,293	3,640	3,414	3,350
Percent of total employed.....	4.7	4.8	4.3	4.7	5.1	5.0
Primary job full time, secondary job part time.....	3,489	3,727	1,898	2,197	1,590	1,530
Primary and secondary jobs both part time.....	1,812	1,808	640	679	1,173	1,128
Primary and secondary jobs both full time.....	259	246	163	135	96	111
Hours vary on primary or secondary job.....	1,114	1,156	579	603	535	554

1 Data refer to persons who want a job, have searched for work during the prior 12 months, and were available to take a job during the reference week, but had not looked for work in the past 4 weeks.

2 Includes those who did not actively look for work in the prior 4 weeks for reasons such as thinks no work available, could not find work, lacks schooling or training, employer thinks too young or old, and other types of discrimination.

3 Includes those who did not actively look for work in the prior 4 weeks for such reasons as school or family responsibilities, ill health, and transportation problems, as well as a number for whom reason for nonparticipation was not determined.

4 Includes a small number of persons who work part time on their primary job and full time on their secondary job(s), not shown separately.

NOTE: Updated population controls are introduced annually with the release of January data.

ESTABLISHMENT DATA

Table B-1. Employees on nonfarm payrolls by industry sector and selected industry detail

[In thousands]

Industry	Not seasonally adjusted				Seasonally adjusted				Change from: May2013 - June2013 ^P
	June 2012	Apr. 2013	May 2013 ^P	June 2013 ^P	June 2012	Apr. 2013	May 2013 ^P	June 2013 ^P	
Total nonfarm.....	134,556	135,513	136,383	136,805	133,609	135,512	135,707	135,902	195
Total private.....	112,709	113,226	114,142	114,998	111,694	113,642	113,849	114,051	202
Goods-producing.....	18,700	18,420	18,665	18,929	18,410	18,635	18,635	18,643	8
Mining and logging.....	864	857	868	877	853	866	866	867	1
Logging.....	51.1	47.7	49.6	51.7	51.1	51.2	51.3	51.4	0.1
Mining.....	813.3	809.0	818.2	825.6	801.9	814.5	814.3	815.1	0.8
Oil and gas extraction.....	189.6	192.1	193.1	194.5	186.8	192.6	192.8	192.1	-0.7
Mining, except oil and gas ¹	228.5	220.6	226.4	229.8	221.6	223.6	222.3	223.4	1.1
Coal mining.....	88.1	84.1	85.7	86.7	87.2	84.3	85.1	85.9	0.8
Support activities for mining.....	395.2	396.3	398.7	401.3	393.5	398.3	399.2	399.6	0.4
Construction.....	5,820	5,648	5,837	6,003	5,622	5,792	5,799	5,812	13
Construction of buildings.....	1,261.5	1,230.4	1,260.0	1,291.0	1,232.8	1,263.0	1,261.5	1,262.3	0.8
Residential building.....	588.4	567.0	585.8	602.8	571.8	584.1	584.8	584.9	0.1
Nonresidential building.....	673.1	663.4	674.2	688.2	661.0	678.9	676.7	677.4	0.7
Heavy and civil engineering construction.....	910.3	857.1	913.7	944.3	862.0	886.7	892.7	898.3	5.6
Specialty trade contractors.....	3,648.3	3,560.4	3,662.9	3,767.2	3,527.6	3,642.3	3,644.6	3,651.8	7.2
Residential specialty trade contractors.....	1,529.1	1,502.9	1,557.1	1,610.1	1,470.5	1,539.4	1,542.5	1,547.6	5.1
Nonresidential specialty trade contractors.....	2,119.2	2,057.5	2,105.8	2,157.1	2,057.1	2,102.9	2,102.1	2,104.2	2.1
Manufacturing.....	12,016	11,915	11,960	12,049	11,935	11,977	11,970	11,964	-6
Durable goods.....	7,529	7,491	7,515	7,564	7,476	7,511	7,511	7,508	-3
Wood products.....	342.2	341.7	346.4	349.5	336.2	344.0	344.9	343.2	-1.7
Nonmetallic mineral products.....	371.3	363.6	371.8	374.9	362.2	366.4	367.1	365.6	-1.5
Primary metals.....	405.9	396.8	396.3	393.4	404.1	396.2	394.5	391.7	-2.8
Fabricated metal products.....	1,425.2	1,429.6	1,435.5	1,446.1	1,415.3	1,434.1	1,434.9	1,436.3	1.4
Machinery.....	1,110.3	1,104.4	1,101.5	1,107.3	1,102.9	1,105.7	1,101.7	1,101.3	-0.4
Computer and electronic products ¹	1,101.6	1,080.0	1,081.8	1,089.0	1,096.4	1,083.7	1,084.7	1,085.6	0.9
Computer and peripheral equipment.....	160.1	160.1	161.1	163.5	159.6	160.9	162.1	163.0	0.9
Communications equipment.....	109.8	107.2	107.1	107.1	109.2	107.6	107.3	106.7	-0.6
Semiconductors and electronic components.....	387.2	378.1	378.4	381.4	385.3	379.3	379.5	380.6	1.1
Electronic instruments.....	403.6	395.5	395.9	397.8	401.7	396.6	396.5	396.3	-0.2
Electrical equipment and appliances.....	373.2	363.9	364.3	364.0	371.4	365.1	365.0	361.7	-3.3
Transportation equipment ¹	1,463.2	1,485.3	1,487.7	1,502.2	1,455.9	1,485.9	1,488.7	1,494.3	5.6
Motor vehicles and parts ²	781.1	797.8	802.5	812.3	776.1	796.5	801.3	806.4	5.1
Furniture and related products.....	352.2	351.3	353.5	357.9	349.5	352.4	352.1	352.7	0.6
Miscellaneous durable goods manufacturing.....	584.1	574.6	576.2	579.9	582.4	577.2	577.0	575.4	-1.6
Nondurable goods.....	4,487	4,424	4,445	4,485	4,459	4,466	4,459	4,456	-3
Food manufacturing.....	1,478.8	1,445.3	1,454.0	1,477.1	1,472.2	1,475.0	1,472.5	1,471.9	-0.6
Textile mills.....	118.8	114.6	114.9	116.9	117.9	114.8	114.8	115.6	0.8
Textile product mills.....	118.3	114.1	114.2	115.8	116.6	114.7	114.3	114.4	0.1
Apparel.....	148.7	142.9	143.7	143.5	147.9	142.7	142.5	141.8	-0.7
Paper and paper products.....	382.0	374.9	375.8	378.8	380.0	376.9	376.7	376.3	-0.4
Printing and related support activities.....	466.1	451.9	449.5	449.8	463.9	453.0	449.4	447.9	-1.5
Petroleum and coal products.....	114.1	113.8	115.3	116.6	111.6	114.6	113.9	114.2	0.3
Chemicals.....	785.9	793.5	795.2	798.6	782.7	794.5	795.0	794.5	-0.5
Plastics and rubber products.....	648.6	654.5	658.7	661.8	645.4	656.5	657.2	656.7	-0.5
Miscellaneous nondurable goods manufacturing.....	225.5	218.7	223.2	226.5	221.1	222.9	223.0	222.3	-0.7
Private service-providing.....	94,009	94,806	95,477	96,069	93,284	95,007	95,214	95,408	194
Trade, transportation, and utilities.....	25,530	25,619	25,819	25,973	25,467	25,838	25,868	25,913	45
Wholesale trade.....	5,716.1	5,722.6	5,758.1	5,800.2	5,675.6	5,740.9	5,749.2	5,760.5	11.3
Durable goods.....	2,850.5	2,846.8	2,859.5	2,880.6	2,833.1	2,857.6	2,860.0	2,864.7	4.7
Nondurable goods.....	1,991.9	1,991.3	2,009.4	2,020.9	1,972.6	1,996.3	1,999.9	2,004.2	4.3
Electronic markets and agents and brokers... ³	873.7	884.5	889.2	898.7	869.9	887.0	889.3	891.6	2.3
Retail trade.....	14,836.5	14,906.9	15,031.3	15,144.0	14,835.8	15,071.9	15,098.8	15,135.9	37.1
Motor vehicle and parts dealers ¹	1,747.3	1,762.1	1,773.0	1,787.6	1,729.8	1,762.0	1,763.1	1,771.4	8.3
Automobile dealers.....	1,096.5	1,113.4	1,116.0	1,126.2	1,090.7	1,114.4	1,114.2	1,120.3	6.1
Furniture and home furnishings stores.....	432.5	445.9	445.8	445.5	440.2	452.0	452.3	451.0	-1.3

See footnotes at end of table.

ESTABLISHMENT DATA

Table B-1. Employees on nonfarm payrolls by industry sector and selected industry detail

— Continued

[In thousands]

Industry	Not seasonally adjusted				Seasonally adjusted				Change from: May2013 - June2013 ^P
	June 2012	Apr. 2013	May 2013 ^P	June 2013 ^P	June 2012	Apr. 2013	May 2013 ^P	June 2013 ^P	
Retail trade - Continued									
Electronics and appliance stores.....	502.7	496.1	496.3	496.8	509.1	502.6	504.8	505.5	0.7
Building material and garden supply stores...	1,228.4	1,221.7	1,254.0	1,249.7	1,169.4	1,179.9	1,181.4	1,189.9	8.5
Food and beverage stores.....	2,877.1	2,874.2	2,906.2	2,936.7	2,854.8	2,901.2	2,906.3	2,913.6	7.3
Health and personal care stores.....	994.9	1,025.0	1,024.8	1,025.2	996.0	1,030.3	1,027.5	1,024.5	-3.0
Gasoline stations.....	851.8	844.3	856.3	869.2	842.0	850.7	855.2	856.0	0.8
Clothing and clothing accessories stores.....	1,362.1	1,379.2	1,389.8	1,411.6	1,391.4	1,432.8	1,441.5	1,449.6	8.1
Sporting goods, hobby, book, and music stores.....	574.5	560.4	563.7	568.9	588.4	579.2	578.7	580.2	1.5
General merchandise stores ¹	3,032.9	3,070.1	3,077.1	3,093.7	3,074.5	3,122.6	3,128.3	3,128.2	-0.1
Department stores.....	1,453.8	1,456.6	1,453.2	1,458.1	1,492.9	1,494.7	1,494.6	1,494.7	0.1
Miscellaneous store retailers.....	800.1	795.3	810.1	822.0	795.4	811.4	812.7	817.8	5.1
Nonstore retailers.....	432.2	432.6	434.2	437.1	444.8	447.2	447.0	448.2	1.2
Transportation and warehousing.....	4,419.0	4,433.7	4,471.5	4,464.8	4,400.2	4,468.7	4,461.9	4,456.8	-5.1
Air transportation.....	464.8	446.2	448.4	450.7	460.7	447.2	447.2	446.4	-0.8
Rail transportation.....	232.0	231.5	232.2	232.2	230.7	231.2	231.2	231.4	0.2
Water transportation.....	63.9	62.2	62.9	63.8	62.6	63.3	62.6	62.5	-0.1
Truck transportation.....	1,368.0	1,368.9	1,385.7	1,395.0	1,349.4	1,385.6	1,383.2	1,379.7	-3.5
Transit and ground passenger transportation.....	432.2	485.1	487.0	457.3	437.4	470.1	468.6	462.9	-5.7
Pipeline transportation.....	44.1	44.1	45.3	45.9	44.0	44.5	45.3	45.5	0.2
Scenic and sightseeing transportation.....	34.1	23.6	28.2	32.2	27.4	26.1	26.2	25.8	-0.4
Support activities for transportation.....	580.6	583.1	584.0	588.4	578.2	584.2	584.0	587.2	3.2
Couriers and messengers.....	523.3	510.3	518.4	518.1	529.3	529.6	529.3	528.5	-0.8
Warehousing and storage.....	676.0	678.7	679.4	681.2	680.5	686.9	684.3	686.9	2.6
Utilities.....	558.5	555.7	558.4	563.5	555.3	556.9	558.0	559.3	1.3
Information.....	2,687	2,689	2,706	2,696	2,675	2,692	2,693	2,688	-5
Publishing industries, except Internet.....	737.9	727.6	725.6	727.1	737.9	729.7	728.7	727.2	-1.5
Motion picture and sound recording industries.....	381.6	388.6	407.9	390.3	371.5	389.6	390.9	384.4	-6.5
Broadcasting, except Internet.....	286.9	286.7	284.0	284.6	286.2	286.0	284.8	284.8	0.0
Telecommunications.....	855.6	855.1	854.5	857.8	857.0	856.0	856.7	857.4	0.7
Data processing, hosting and related services.....	251.1	252.1	253.3	253.5	250.0	250.7	250.9	252.7	1.8
Other information services.....	173.8	178.6	180.4	182.5	172.1	179.8	181.2	181.1	-0.1
Financial activities.....	7,833	7,843	7,874	7,947	7,788	7,873	7,879	7,896	17
Finance and insurance.....	5,842.8	5,878.5	5,881.4	5,918.4	5,830.6	5,892.6	5,894.1	5,906.7	12.6
Monetary authorities - central bank.....	17.1	16.6	16.7	16.9	17.1	16.8	16.8	16.9	0.1
Credit intermediation and related activities ¹	2,577.3	2,606.6	2,605.0	2,620.2	2,573.8	2,612.6	2,611.4	2,617.6	6.2
Depository credit intermediation ¹	1,739.8	1,734.0	1,731.9	1,740.6	1,736.7	1,737.9	1,736.0	1,737.1	1.1
Commercial banking.....	1,318.9	1,306.2	1,302.3	1,307.4	1,316.8	1,308.5	1,305.6	1,305.3	-0.3
Securities, commodity contracts, investments.....	817.5	826.4	826.8	833.7	815.4	828.3	830.2	829.2	-1.0
Insurance carriers and related activities.....	2,343.5	2,342.7	2,346.9	2,359.3	2,337.2	2,348.1	2,349.0	2,355.0	6.0
Funds, trusts, and other financial vehicles.....	87.4	86.2	86.0	88.3	87.1	86.8	86.7	88.0	1.3
Real estate and rental and leasing.....	1,990.4	1,964.8	1,992.3	2,028.2	1,957.0	1,979.9	1,984.8	1,989.7	4.9
Real estate.....	1,436.5	1,427.5	1,443.5	1,466.7	1,418.7	1,435.3	1,440.3	1,444.7	4.4
Rental and leasing services.....	529.7	514.5	525.9	538.0	514.0	521.6	521.3	521.5	0.2
Lessors of nonfinancial intangible assets.....	24.2	22.8	22.9	23.5	24.3	23.0	23.2	23.5	0.3
Professional and business services.....	18,062	18,389	18,491	18,641	17,913	18,419	18,484	18,537	53
Professional and technical services ¹	7,862.6	8,159.1	8,052.3	8,081.6	7,884.5	8,085.8	8,101.5	8,111.3	9.8
Legal services.....	1,133.7	1,125.8	1,125.5	1,134.4	1,121.9	1,129.0	1,126.1	1,122.9	-3.2
Accounting and bookkeeping services.....	849.4	1,039.9	896.6	873.0	910.9	936.0	937.9	936.5	-1.4
Architectural and engineering services.....	1,336.8	1,336.9	1,352.1	1,367.9	1,321.9	1,347.8	1,353.1	1,356.1	3.0
Computer systems design and related services.....	1,615.9	1,676.7	1,683.9	1,689.9	1,617.7	1,680.9	1,687.0	1,694.3	7.3
Management and technical consulting services.....	1,121.2	1,169.8	1,177.4	1,190.1	1,119.4	1,175.1	1,179.0	1,187.4	8.4
Management of companies and enterprises.....	2,020.5	2,024.8	2,037.7	2,058.3	2,008.1	2,035.9	2,041.3	2,046.0	4.7
Administrative and waste services.....	8,178.6	8,205.3	8,400.6	8,501.3	8,020.5	8,297.2	8,341.2	8,379.7	38.5

See footnotes at end of table.

ESTABLISHMENT DATA

Table B-1. Employees on nonfarm payrolls by industry sector and selected industry detail

— Continued

[In thousands]

Industry	Not seasonally adjusted				Seasonally adjusted				Change from: May2013 - June2013 ^p
	June 2012	Apr. 2013	May 2013 ^p	June 2013 ^p	June 2012	Apr. 2013	May 2013 ^p	June 2013 ^p	
Administrative and waste services - Continued									
Administrative and support services ¹	7,798.6	7,831.9	8,021.5	8,114.7	7,646.8	7,919.5	7,962.5	7,998.4	35.9
Employment services ¹	3,180.1	3,246.2	3,331.5	3,370.1	3,143.2	3,318.7	3,344.7	3,363.3	18.6
Temporary help services	2,538.0	2,587.7	2,664.2	2,689.2	2,514.3	2,648.6	2,672.2	2,681.7	9.5
Business support services	813.9	836.2	838.0	833.6	826.2	841.5	845.8	846.3	0.5
Services to buildings and dwellings	1,941.7	1,860.4	1,948.5	1,993.0	1,826.6	1,863.0	1,870.5	1,881.3	10.8
Waste management and remediation services	380.0	373.4	379.1	386.6	373.7	377.7	378.7	381.3	2.6
Education and health services	20,088	20,810	20,710	20,448	20,296	20,626	20,649	20,662	13
Educational services	3,134.6	3,527.8	3,410.9	3,150.5	3,348.0	3,358.9	3,369.0	3,358.4	-10.6
Health care and social assistance	16,953.6	17,281.7	17,299.2	17,297.2	16,947.8	17,266.9	17,279.6	17,303.1	23.5
Health care ³	14,304.1	14,522.2	14,537.1	14,579.9	14,284.2	14,537.3	14,548.3	14,568.1	19.8
Ambulatory health care services ¹	6,310.5	6,482.7	6,500.0	6,518.6	6,308.0	6,486.7	6,501.5	6,514.1	12.6
Offices of physicians	2,389.4	2,423.6	2,426.5	2,430.5	2,389.9	2,430.2	2,433.1	2,433.3	0.2
Outpatient care centers	650.4	682.2	686.5	689.3	650.2	681.5	685.4	688.6	3.2
Home health care services	1,194.3	1,269.4	1,276.9	1,283.0	1,194.7	1,267.4	1,274.7	1,281.5	6.8
Hospitals	4,788.8	4,831.3	4,821.4	4,833.8	4,782.2	4,838.1	4,830.2	4,834.7	4.5
Nursing and residential care facilities ¹	3,204.8	3,208.2	3,215.7	3,227.5	3,194.0	3,212.5	3,216.6	3,219.3	2.7
Nursing care facilities	1,670.4	1,660.1	1,660.6	1,663.8	1,665.5	1,662.7	1,660.8	1,660.2	-0.6
Social assistance ¹	2,649.5	2,759.5	2,762.1	2,717.3	2,663.6	2,729.6	2,731.3	2,735.0	3.7
Child day care services	829.2	881.5	880.6	830.8	851.6	857.6	854.8	854.4	-0.4
Leisure and hospitality	14,311	13,990	14,370	14,816	13,716	14,086	14,155	14,230	75
Arts, entertainment, and recreation	2,211.1	1,961.3	2,095.8	2,301.0	1,958.5	2,011.1	2,028.9	2,046.3	17.4
Performing arts and spectator sports	419.2	442.2	447.9	451.0	399.7	430.5	427.6	428.7	1.1
Museums, historical sites, and similar institutions	148.5	135.4	141.8	145.5	135.1	137.5	136.5	133.9	-2.6
Amusements, gambling, and recreation	1,643.4	1,383.7	1,506.1	1,704.5	1,423.7	1,443.1	1,464.8	1,483.7	18.9
Accommodation and food services	12,099.8	12,028.2	12,273.7	12,514.7	11,757.5	12,075.0	12,126.4	12,183.8	57.4
Accommodation	1,916.8	1,785.8	1,837.6	1,939.1	1,818.6	1,834.8	1,838.3	1,844.0	5.7
Food services and drinking places	10,183.0	10,242.4	10,436.1	10,575.6	9,938.9	10,240.2	10,288.1	10,339.8	51.7
Other services	5,498	5,466	5,507	5,548	5,429	5,473	5,486	5,482	-4
Repair and maintenance	1,199.3	1,200.8	1,207.0	1,202.9	1,186.6	1,197.5	1,200.9	1,194.6	-6.3
Personal and laundry services	1,325.0	1,331.5	1,347.2	1,354.1	1,308.6	1,329.5	1,333.6	1,337.0	3.4
Membership associations and organizations	2,973.8	2,933.2	2,952.7	2,990.5	2,933.9	2,945.9	2,951.8	2,950.0	-1.8
Government	21,847	22,287	22,241	21,807	21,915	21,870	21,858	21,851	-7
Federal	2,833.0	2,777.0	2,757.0	2,766.0	2,818.0	2,775.0	2,758.0	2,753.0	-5.0
Federal, except U.S. Postal Service	2,222.6	2,169.0	2,168.3	2,177.1	2,205.3	2,174.0	2,165.7	2,160.7	-5.0
U.S. Postal Service	610.6	607.9	589.0	589.1	613.0	600.5	592.5	592.4	-0.1
State government	4,820.0	5,202.0	5,066.0	4,786.0	5,050.0	5,043.0	5,032.0	5,017.0	-15.0
State government education	2,128.2	2,549.0	2,406.0	2,118.9	2,380.2	2,390.7	2,382.1	2,373.1	-9.0
State government, excluding education	2,692.2	2,652.9	2,660.0	2,666.8	2,669.7	2,652.3	2,649.5	2,643.7	-5.8
Local government	14,194.0	14,308.0	14,418.0	14,255.0	14,047.0	14,052.0	14,068.0	14,081.0	13.0
Local government education	7,738.0	8,110.6	8,140.6	7,776.6	7,764.6	7,768.9	7,775.3	7,773.9	-1.4
Local government, excluding education	6,455.7	6,197.7	6,277.4	6,478.8	6,281.9	6,283.3	6,292.2	6,307.2	15.0

1 Includes other industries, not shown separately.

2 Includes motor vehicles, motor vehicle bodies and trailers, and motor vehicle parts.

3 Includes ambulatory health care services, hospitals, and nursing and residential care facilities.

p Preliminary

ESTABLISHMENT DATA

Table B-2. Average weekly hours and overtime of all employees on private nonfarm payrolls by industry sector, seasonally adjusted

Industry	June 2012	Apr. 2013	May 2013 ^p	June 2013 ^p
AVERAGE WEEKLY HOURS				
Total private.....	34.4	34.5	34.5	34.5
Goods-producing.....	40.1	40.3	40.4	40.5
Mining and logging.....	44.0	43.2	43.8	44.4
Construction.....	38.5	39.0	39.2	39.0
Manufacturing.....	40.6	40.7	40.8	40.9
Durable goods.....	41.0	41.1	41.1	41.2
Nondurable goods.....	40.1	40.0	40.3	40.4
Private service-providing.....	33.3	33.3	33.4	33.4
Trade, transportation, and utilities.....	34.6	34.5	34.6	34.5
Wholesale trade.....	38.7	38.7	38.7	38.8
Retail trade.....	31.6	31.4	31.5	31.4
Transportation and warehousing.....	38.3	38.6	38.6	38.5
Utilities.....	41.6	42.2	42.3	42.6
Information.....	36.6	36.6	36.6	37.0
Financial activities.....	37.1	37.2	37.3	37.4
Professional and business services.....	35.9	36.0	36.1	36.1
Education and health services.....	32.9	32.9	32.9	33.0
Leisure and hospitality.....	26.1	26.1	26.1	26.1
Other services.....	31.6	31.6	31.7	31.5
AVERAGE OVERTIME HOURS				
Manufacturing.....	3.2	3.4	3.3	3.3
Durable goods.....	3.2	3.4	3.3	3.3
Nondurable goods.....	3.2	3.5	3.4	3.4

p Preliminary

ESTABLISHMENT DATA

Table B-3. Average hourly and weekly earnings of all employees on private nonfarm payrolls by industry sector, seasonally adjusted

Industry	Average hourly earnings				Average weekly earnings			
	June 2012	Apr. 2013	May 2013 ^p	June 2013 ^p	June 2012	Apr. 2013	May 2013 ^p	June 2013 ^p
Total private.....	\$23.50	\$23.89	\$23.91	\$24.01	\$ 808.40	\$ 824.21	\$ 824.90	\$ 828.35
Goods-producing.....	24.69	25.02	25.09	25.22	990.07	1,008.31	1,013.64	1,021.41
Mining and logging.....	28.70	29.06	29.53	29.81	1,262.80	1,255.39	1,293.41	1,323.56
Construction.....	25.74	26.08	26.09	26.17	990.99	1,017.12	1,022.73	1,020.63
Manufacturing.....	23.92	24.21	24.29	24.41	971.15	985.35	991.03	998.37
Durable goods.....	25.28	25.62	25.72	25.85	1,036.48	1,052.98	1,057.09	1,065.02
Nondurable goods.....	21.58	21.79	21.83	21.94	865.36	871.60	879.75	886.38
Private service-providing.....	23.21	23.62	23.63	23.73	772.89	786.55	789.24	792.58
Trade, transportation, and utilities.....	20.50	20.89	20.89	20.97	709.30	720.71	722.79	723.47
Wholesale trade.....	26.82	27.62	27.59	27.74	1,037.93	1,068.89	1,067.73	1,076.31
Retail trade.....	16.33	16.59	16.58	16.64	516.03	520.93	522.27	522.50
Transportation and warehousing.....	21.99	22.13	22.17	22.19	842.22	854.22	855.76	854.32
Utilities.....	33.99	34.74	35.26	35.18	1,413.98	1,466.03	1,491.50	1,498.67
Information.....	31.78	32.78	32.64	32.94	1,163.15	1,199.75	1,194.62	1,218.78
Financial activities.....	29.12	30.10	30.08	30.28	1,080.35	1,119.72	1,121.98	1,132.47
Professional and business services.....	28.05	28.44	28.44	28.53	1,007.00	1,023.84	1,026.68	1,029.93
Education and health services.....	24.21	24.52	24.55	24.65	796.51	806.71	807.70	813.45
Leisure and hospitality.....	13.38	13.43	13.44	13.46	349.22	350.52	350.78	351.31
Other services.....	20.78	21.15	21.22	21.29	656.65	668.34	672.67	670.64

p Preliminary

ESTABLISHMENT DATA

Table B-4. Indexes of aggregate weekly hours and payrolls for all employees on private nonfarm payrolls by industry sector, seasonally adjusted

[2007=100]

Industry	Index of aggregate weekly hours ¹					Index of aggregate weekly payrolls ²				
	June 2012	Apr. 2013	May 2013 ^p	June 2013 ^p	Percent change from: May 2013 - June 2013 ^p	June 2012	Apr. 2013	May 2013 ^p	June 2013 ^p	Percent change from: May 2013 - June 2013 ^p
Total private.....	96.2	98.2	98.4	98.6	0.2	107.9	111.9	112.2	112.9	0.6
Goods-producing.....	84.1	85.6	85.8	86.0	0.2	93.9	96.8	97.3	98.1	0.8
Mining and logging.....	117.9	117.6	119.2	121.0	1.5	135.9	137.2	141.3	144.8	2.5
Construction.....	74.6	77.9	78.4	78.1	-0.4	83.4	88.2	88.8	88.8	0.0
Manufacturing.....	87.2	87.7	87.9	88.0	0.1	97.0	98.7	99.2	99.9	0.7
Durable goods.....	86.3	86.9	86.9	87.1	0.2	96.9	98.9	99.3	100.0	0.7
Nondurable goods.....	89.2	89.1	89.7	89.8	0.1	97.7	98.6	99.3	100.0	0.7
Private service-providing.....	99.7	101.6	102.1	102.3	0.2	112.1	116.2	116.8	117.6	0.7
Trade, transportation, and utilities.....	95.8	96.9	97.3	97.2	-0.1	105.7	109.0	109.4	109.7	0.3
Wholesale trade.....	95.8	96.9	97.1	97.5	0.4	107.3	111.7	111.8	112.9	1.0
Retail trade.....	95.2	96.1	96.6	96.5	-0.1	102.8	105.4	105.9	106.2	0.3
Transportation and warehousing.....	96.5	98.7	98.6	98.2	-0.4	107.6	110.9	110.9	110.6	-0.3
Utilities.....	99.9	101.7	102.1	103.1	1.0	112.2	116.7	119.0	119.8	0.7
Information.....	89.4	90.0	90.0	90.8	0.9	101.2	105.0	104.6	106.5	1.8
Financial activities.....	94.6	95.9	96.2	96.7	0.5	107.5	112.6	112.9	114.2	1.2
Professional and business services.....	101.1	104.3	104.9	105.2	0.3	114.9	120.2	120.9	121.7	0.7
Education and health services.....	108.7	110.5	110.6	111.0	0.4	123.3	126.9	127.2	128.2	0.8
Leisure and hospitality.....	102.1	104.9	105.4	106.0	0.6	110.3	113.7	114.3	115.1	0.7
Other services.....	95.1	95.8	96.4	95.7	-0.7	112.1	115.0	116.0	115.6	-0.3

1 The indexes of aggregate weekly hours are calculated by dividing the current month's estimates of aggregate hours by the corresponding 2007 annual average aggregate hours. Aggregate hours estimates are the product of estimates of average weekly hours and employment.

2 The indexes of aggregate weekly payrolls are calculated by dividing the current month's estimates of aggregate weekly payrolls by the corresponding 2007 annual average aggregate weekly payrolls. Aggregate payrolls estimates are the product of estimates of average hourly earnings, average weekly hours, and employment.

p Preliminary

ESTABLISHMENT DATA

Table B-5. Employment of women on nonfarm payrolls by industry sector, seasonally adjusted

Industry	Women employees (in thousands)				Percent of all employees			
	June 2012	Apr. 2013	May 2013 ^p	June 2013 ^p	June 2012	Apr. 2013	May 2013 ^p	June 2013 ^p
Total nonfarm.....	65,943	66,882	66,980	67,093	49.4	49.4	49.4	49.4
Total private.....	53,476	54,402	54,507	54,623	47.9	47.9	47.9	47.9
Goods-producing.....	4,098	4,104	4,106	4,102	22.3	22.0	22.0	22.0
Mining and logging.....	113	118	118	116	13.2	13.6	13.6	13.4
Construction.....	722	739	742	744	12.8	12.8	12.8	12.8
Manufacturing.....	3,263	3,247	3,246	3,242	27.3	27.1	27.1	27.1
Durable goods.....	1,733	1,733	1,733	1,730	23.2	23.1	23.1	23.0
Nondurable goods.....	1,530	1,514	1,513	1,512	34.3	33.9	33.9	33.9
Private service-providing.....	49,378	50,298	50,401	50,521	52.9	52.9	52.9	53.0
Trade, transportation, and utilities.....	10,259	10,484	10,503	10,528	40.3	40.6	40.6	40.6
Wholesale trade.....	1,709.8	1,703.6	1,705.0	1,707.1	30.1	29.7	29.7	29.6
Retail trade.....	7,394.2	7,597.3	7,612.3	7,634.4	49.8	50.4	50.4	50.4
Transportation and warehousing.....	1,017.1	1,045.4	1,047.7	1,048.1	23.1	23.4	23.5	23.5
Utilities.....	138.0	137.6	138.3	138.2	24.9	24.7	24.8	24.7
Information.....	1,080	1,067	1,070	1,066	40.4	39.6	39.7	39.7
Financial activities.....	4,523	4,545	4,542	4,545	58.1	57.7	57.6	57.6
Professional and business services.....	7,924	8,173	8,212	8,244	44.2	44.4	44.4	44.5
Education and health services.....	15,565	15,827	15,841	15,859	76.7	76.7	76.7	76.8
Leisure and hospitality.....	7,175	7,328	7,354	7,398	52.3	52.0	52.0	52.0
Other services.....	2,852	2,874	2,879	2,881	52.5	52.5	52.5	52.6
Government.....	12,467	12,480	12,473	12,470	56.9	57.1	57.1	57.1

p Preliminary

ESTABLISHMENT DATA

Table B-6. Employment of production and nonsupervisory employees on private nonfarm payrolls by industry sector, seasonally adjusted¹

[In thousands]

Industry	June 2012	Apr. 2013	May 2013 ^p	June 2013 ^p
Total private.....	92,273	93,836	94,000	94,170
Goods-producing.....	13,272	13,408	13,392	13,380
Mining and logging.....	647	639	636	633
Construction.....	4,217	4,376	4,379	4,387
Manufacturing.....	8,408	8,393	8,377	8,360
Durable goods.....	5,156	5,156	5,150	5,137
Nondurable goods.....	3,252	3,237	3,227	3,223
Private service-providing.....	79,001	80,428	80,608	80,790
Trade, transportation, and utilities.....	21,611	21,857	21,877	21,913
Wholesale trade.....	4,565.8	4,622.8	4,631.2	4,640.5
Retail trade.....	12,796.0	12,927.1	12,943.1	12,971.4
Transportation and warehousing.....	3,807.0	3,857.9	3,852.6	3,850.1
Utilities.....	442.1	448.8	450.0	450.7
Information.....	2,163	2,182	2,184	2,178
Financial activities.....	5,990	6,063	6,062	6,076
Professional and business services.....	14,789	15,235	15,300	15,349
Education and health services.....	17,803	18,080	18,101	18,117
Leisure and hospitality.....	12,104	12,440	12,507	12,579
Other services.....	4,541	4,571	4,577	4,578

¹ Data relate to production employees in mining and logging and manufacturing, construction employees in construction, and nonsupervisory employees in the service-providing industries. These groups account for approximately four-fifths of the total employment on private nonfarm payrolls.

^p Preliminary

ESTABLISHMENT DATA

Table B-7. Average weekly hours and overtime of production and nonsupervisory employees on private nonfarm payrolls by industry sector, seasonally adjusted¹

Industry	June 2012	Apr. 2013	May 2013 ^p	June 2013 ^p
AVERAGE WEEKLY HOURS				
Total private.....	33.7	33.7	33.7	33.7
Goods-producing.....	41.1	41.3	41.3	41.2
Mining and logging.....	46.6	45.5	45.9	45.8
Construction.....	39.1	39.7	39.7	39.5
Manufacturing.....	41.6	41.8	41.8	41.8
Durable goods.....	42.1	42.1	42.1	42.1
Nondurable goods.....	40.9	41.2	41.3	41.3
Private service-providing.....	32.5	32.4	32.5	32.5
Trade, transportation, and utilities.....	33.8	33.6	33.8	33.7
Wholesale trade.....	38.7	38.6	38.8	38.8
Retail trade.....	30.5	30.0	30.3	30.1
Transportation and warehousing.....	38.0	38.6	38.5	38.5
Utilities.....	41.0	41.9	42.1	42.1
Information.....	36.0	35.8	35.8	36.1
Financial activities.....	36.6	36.7	36.7	36.9
Professional and business services.....	35.2	35.3	35.3	35.3
Education and health services.....	32.4	32.3	32.3	32.3
Leisure and hospitality.....	25.0	25.0	25.0	25.1
Other services.....	30.6	30.7	30.7	30.8
AVERAGE OVERTIME HOURS				
Manufacturing.....	4.2	4.3	4.2	4.3
Durable goods.....	4.4	4.3	4.2	4.3
Nondurable goods.....	3.9	4.3	4.3	4.3

¹ Data relate to production employees in mining and logging and manufacturing, construction employees in construction, and nonsupervisory employees in the service-providing industries. These groups account for approximately four-fifths of the total employment on private nonfarm payrolls.

p Preliminary

ESTABLISHMENT DATA

Table B-8. Average hourly and weekly earnings of production and nonsupervisory employees on private nonfarm payrolls by industry sector, seasonally adjusted¹

Industry	Average hourly earnings				Average weekly earnings			
	June 2012	Apr. 2013	May 2013 ^p	June 2013 ^p	June 2012	Apr. 2013	May 2013 ^p	June 2013 ^p
Total private.....	\$19.75	\$20.07	\$20.09	\$20.14	\$ 665.58	\$ 676.36	\$ 677.03	\$ 678.72
Goods-producing.....	20.93	21.21	21.25	21.25	860.22	875.97	877.63	875.50
Mining and logging.....	25.81	26.65	27.16	27.06	1,202.75	1,212.58	1,246.64	1,239.35
Construction.....	23.95	24.29	24.28	24.27	936.45	964.31	963.92	958.67
Manufacturing.....	19.08	19.23	19.25	19.26	793.73	803.81	804.65	805.07
Durable goods.....	20.19	20.26	20.30	20.34	850.00	852.95	854.63	856.31
Nondurable goods.....	17.28	17.54	17.55	17.52	706.75	722.65	724.82	723.58
Private service-providing.....	19.50	19.83	19.84	19.91	633.75	642.49	644.80	647.08
Trade, transportation, and utilities.....	17.47	17.62	17.62	17.69	590.49	592.03	595.56	596.15
Wholesale trade.....	22.22	22.49	22.59	22.64	859.91	868.11	876.49	878.43
Retail trade.....	13.88	13.92	13.90	13.96	423.34	417.60	421.17	420.20
Transportation and warehousing.....	19.59	19.58	19.62	19.65	744.42	755.79	755.37	756.53
Utilities.....	31.63	32.04	31.99	32.12	1,296.83	1,342.48	1,346.78	1,352.25
Information.....	26.85	27.84	27.63	27.87	966.60	996.67	989.15	1,006.11
Financial activities.....	22.75	23.81	23.90	23.98	832.65	873.83	877.13	884.86
Professional and business services.....	23.19	23.59	23.61	23.71	816.29	832.73	833.43	836.96
Education and health services.....	21.10	21.35	21.38	21.44	683.64	689.61	690.57	692.51
Leisure and hospitality.....	11.63	11.74	11.75	11.75	290.75	293.50	293.75	294.93
Other services.....	17.57	17.83	17.83	17.87	537.64	547.38	547.38	550.40

¹ Data relate to production employees in mining and logging and manufacturing, construction employees in construction, and nonsupervisory employees in the service-providing industries. These groups account for approximately four-fifths of the total employment on private nonfarm payrolls.

^p Preliminary

ESTABLISHMENT DATA

Table B-9. Indexes of aggregate weekly hours and payrolls for production and nonsupervisory employees on private nonfarm payrolls by industry sector, seasonally adjusted¹

[2002=100]

Industry	Index of aggregate weekly hours ²					Index of aggregate weekly payrolls ³				
	June 2012	Apr. 2013	May 2013 ^p	June 2013 ^p	Percent change from: May 2013 - June 2013 ^p	June 2012	Apr. 2013	May 2013 ^p	June 2013 ^p	Percent change from: May 2013 - June 2013 ^p
Total private.....	103.8	105.5	105.7	105.9	0.2	136.9	141.5	141.9	142.5	0.4
Goods-producing.....	83.4	84.6	84.5	84.2	-0.4	106.8	109.9	110.0	109.6	-0.4
Mining and logging.....	160.2	154.5	155.1	154.1	-0.6	240.5	239.5	245.0	242.5	-1.0
Construction.....	82.6	87.0	87.0	86.8	-0.2	106.8	114.1	114.1	113.7	-0.4
Manufacturing.....	80.3	80.5	80.4	80.2	-0.2	100.2	101.3	101.2	101.0	-0.2
Durable goods.....	81.6	81.6	81.5	81.3	-0.2	102.8	103.2	103.2	103.2	0.0
Nondurable goods.....	78.4	78.6	78.5	78.4	-0.1	95.7	97.4	97.4	97.1	-0.3
Private service-providing.....	109.6	111.2	111.8	112.1	0.3	146.4	151.1	152.0	152.9	0.6
Trade, transportation, and utilities.....	101.8	102.4	103.1	102.9	-0.2	126.9	128.7	129.6	129.9	0.2
Wholesale trade.....	104.1	105.1	105.8	106.0	0.2	136.2	139.2	140.8	141.4	0.4
Retail trade.....	98.8	98.2	99.3	98.8	-0.5	117.5	117.1	118.3	118.2	-0.1
Transportation and warehousing.....	108.9	112.1	111.7	111.6	-0.1	135.3	139.2	139.0	139.1	0.1
Utilities.....	92.7	96.2	96.9	97.0	0.1	122.4	128.6	129.4	130.1	0.5
Information.....	88.9	89.2	89.2	89.7	0.6	118.1	122.9	122.1	123.8	1.4
Financial activities.....	103.2	104.7	104.7	105.5	0.8	144.5	153.4	154.0	155.7	1.1
Professional and business services.....	116.7	120.5	121.0	121.4	0.3	161.0	169.2	170.1	171.3	0.7
Education and health services.....	124.4	126.0	126.1	126.2	0.1	172.6	176.8	177.3	177.9	0.3
Leisure and hospitality.....	110.8	113.9	114.5	115.7	1.0	146.4	151.9	152.8	154.3	1.0
Other services.....	97.5	98.4	98.5	98.9	0.4	124.8	127.9	128.0	128.8	0.6

1 Data relate to production employees in mining and logging and manufacturing, construction employees in construction, and nonsupervisory employees in the service-providing industries. These groups account for approximately four-fifths of the total employment on private nonfarm payrolls.

2 The indexes of aggregate weekly hours are calculated by dividing the current month's estimates of aggregate hours by the corresponding 2002 annual average aggregate hours. Aggregate hours estimates are the product of estimates of average weekly hours and employment.

3 The indexes of aggregate weekly payrolls are calculated by dividing the current month's estimates of aggregate weekly payrolls by the corresponding 2002 annual average aggregate weekly payrolls. Aggregate payrolls estimates are the product of estimates of average hourly earnings, average weekly hours, and employment.

p Preliminary