

**Transmission of material in this release is embargoed until 8:30 a.m. (EDT) Friday, August 6, 2010**

USDL-10-1076

Technical information:

Household data: (202) 691-6378 • cpsinfo@bls.gov • www.bls.gov/cps

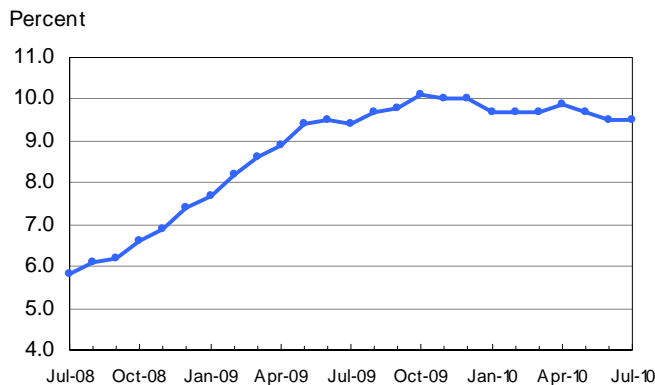
Establishment data: (202) 691-6555 • cesinfo@bls.gov • www.bls.gov/ces

Media contact: (202) 691-5902 • PressOffice@bls.gov

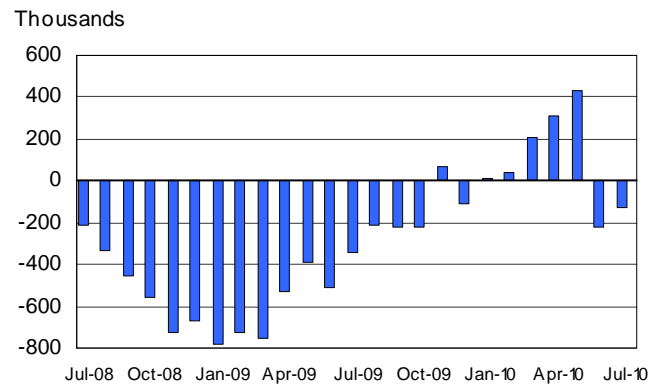
**THE EMPLOYMENT SITUATION – JULY 2010**

Total **nonfarm payroll employment** declined by 131,000 in July, and the **unemployment rate** was unchanged at 9.5 percent, the U.S. Bureau of Labor Statistics reported today. Federal government employment fell, as 143,000 temporary workers hired for the decennial census completed their work. **Private-sector payroll employment** edged up by 71,000.

**Chart 1. Unemployment rate, seasonally adjusted, July 2008 – July 2010**



**Chart 2. Nonfarm payroll employment over-the-month change, seasonally adjusted, July 2008 – July 2010**



**Household Survey Data**

Both the number of **unemployed persons**, at 14.6 million, and the **unemployment rate**, at 9.5 percent, were unchanged in July. (See table A-1.)

Among the **major worker groups**, the unemployment rate for adult men (9.7 percent), adult women (7.9 percent), teenagers (26.1 percent), whites (8.6 percent), blacks (15.6 percent), and Hispanics (12.1 percent) showed little or no change in July. The jobless rate for Asians was 8.2 percent, not seasonally adjusted. (See tables A-1, A-2, and A-3.)

In July, the number of **long-term unemployed** (those jobless for 27 weeks and over) was little changed at 6.6 million. These individuals made up 44.9 percent of unemployed persons. (See table A-12.)

The **civilian labor force participation rate** (64.6 percent) and the **employment-population ratio** (58.4 percent) were essentially unchanged in July; however, these measures have declined by 0.6 percentage point and 0.4 point, respectively, since April. (See table A-1.)

The number of persons employed **part time for economic reasons** (sometimes referred to as involuntary part-time workers) was essentially unchanged over the month at 8.5 million but has declined by 623,000 since April. These individuals were working part time because their hours had been cut back or because they were unable to find a full-time job. (See table A-8.)

About 2.6 million persons were **marginally attached to the labor force** in July, an increase of 340,000 from a year earlier. (The data are not seasonally adjusted.) These individuals were not in the labor force, wanted and were available for work, and had looked for a job sometime in the prior 12 months. They were not counted as unemployed because they had not searched for work in the 4 weeks preceding the survey. (See table A-16.)

Among the marginally attached, there were 1.2 million **discouraged workers** in July, up by 389,000 from a year earlier. (The data are not seasonally adjusted.) Discouraged workers are persons not currently looking for work because they believe no jobs are available for them. The remaining 1.4 million persons marginally attached to the labor force had not searched for work in the 4 weeks preceding the survey for reasons such as school attendance or family responsibilities. (See table A-16.)

### **Establishment Survey Data**

Total **nonfarm payroll employment** decreased by 131,000 in July, reflecting the departure of 143,000 temporary Census 2010 workers from federal government payrolls. Total **private employment** edged up over the month (+71,000). Thus far this year, private sector employment has increased by 630,000, with about two-thirds of the gain occurring in March and April. (See table B-1.)

**Manufacturing** employment increased by 36,000 over the month. Motor vehicles and parts had fewer seasonal layoffs than normal for July, contributing to a seasonally adjusted employment increase of 21,000. The industry had added 32,000 jobs in the first 6 months of the year. In July, employment in fabricated metals rose by 9,000. Manufacturing employment has expanded by 183,000 since December 2009.

**Health care** added 27,000 jobs in July. Over the past 12 months, health care employment has risen by 231,000.

In July, employment in **transportation and warehousing** edged up by 12,000. Since a recent low in February, transportation and warehousing has added 56,000 jobs.

**Mining** employment rose by 7,000 in July, with the gain concentrated in support activities for mining. Mining has added 63,000 jobs since October 2009.

Employment in **professional and business services** was little changed (-13,000) in July. The number of jobs in temporary help services showed little movement (-6,000) over the month.

Employment in **financial activities** continued to trend down in July, with a decline of 17,000. So far this year, monthly job losses in the industry have averaged 12,000, compared with an average monthly job loss of 29,000 for all of 2009.

**Construction** employment changed little (-11,000) in July; 10,000 construction workers were off payrolls due to strike activity.

Employment in other private-sector industries, including **wholesale trade, retail trade, information, and leisure and hospitality** showed little change in July.

**Government** employment fell by 202,000 in July, largely reflecting the loss of 143,000 temporary workers hired for Census 2010. Employment in both state and local governments edged down over the month.

In July, the **average workweek for all employees** on private nonfarm payrolls increased by 0.1 hour to 34.2 hours. The manufacturing workweek for all employees increased by 0.1 hour to 40.1 hours, following a decrease of 0.5 hour in June. The average workweek for **production and nonsupervisory employees** on private nonfarm payrolls increased by 0.1 hour to 33.5 hours in July. (See tables B-2 and B-7.)

**Average hourly earnings of all employees** on private nonfarm payrolls increased by 4 cents, or 0.2 percent, to \$22.59 in July. Over the past 12 months, average hourly earnings have increased by 1.8 percent. In July, average hourly earnings of private-sector **production and nonsupervisory employees** increased by 2 cents, or 0.1 percent, to \$19.04. (See tables B-3 and B-8.)

The change in total nonfarm payroll employment for May was revised from +433,000 to +432,000, and the change for June was revised from -125,000 to -221,000.

---

**The Employment Situation for August is scheduled to be released on Friday, September 3, 2010, at 8:30 a.m. (EDT).**

# HOUSEHOLD DATA

## Summary table A. Household data, seasonally adjusted

[Numbers in thousands]

Category	July 2009	May 2010	June 2010	July 2010	Change from: June 2010-July 2010
<b>Employment status</b>					
Civilian noninstitutional population.....	235,870	237,499	237,690	237,890	200
Civilian labor force.....	154,351	154,393	153,741	153,560	-181
Participation rate.....	65.4	65.0	64.7	64.6	-0.1
Employed.....	139,817	139,420	139,119	138,960	-159
Employment-population ratio.....	59.3	58.7	58.5	58.4	-0.1
Unemployed.....	14,534	14,973	14,623	14,599	-24
Unemployment rate.....	9.4	9.7	9.5	9.5	0.0
Not in labor force.....	81,519	83,107	83,949	84,330	381
<b>Unemployment rates</b>					
Total, 16 years and over.....	9.4	9.7	9.5	9.5	0.0
Adult men (20 years and over).....	9.8	9.8	9.9	9.7	-0.2
Adult women (20 years and over).....	7.6	8.1	7.8	7.9	0.1
Teenagers (16 to 19 years).....	24.5	26.4	25.7	26.1	0.4
White.....	8.7	8.8	8.6	8.6	0.0
Black or African American.....	14.7	15.5	15.4	15.6	0.2
Asian (not seasonally adjusted).....	8.3	7.5	7.7	8.2	-
Hispanic or Latino ethnicity.....	12.4	12.4	12.4	12.1	-0.3
Total, 25 years and over.....	8.1	8.4	8.2	8.1	-0.1
Less than a high school diploma.....	15.3	15.0	14.1	13.8	-0.3
High school graduates, no college.....	9.4	10.9	10.8	10.1	-0.7
Some college or associate degree.....	8.0	8.3	8.2	8.3	0.1
Bachelor's degree and higher.....	4.7	4.7	4.4	4.5	0.1
<b>Reason for unemployment</b>					
Job losers and persons who completed temporary jobs.....	9,549	9,223	9,114	9,125	11
Job leavers.....	882	969	900	900	0
Reentrants.....	3,306	3,453	3,308	3,393	85
New entrants.....	994	1,206	1,140	1,188	48
<b>Duration of unemployment</b>					
Less than 5 weeks.....	3,181	2,752	2,769	2,839	70
5 to 14 weeks.....	3,539	3,019	3,121	3,060	-61
15 to 26 weeks.....	2,847	2,161	2,208	2,151	-57
27 weeks and over.....	4,972	6,763	6,751	6,572	-179
<b>Employed persons at work part time</b>					
Part time for economic reasons.....	8,808	8,809	8,627	8,529	-98
Slack work or business conditions.....	6,831	6,143	6,165	6,119	-46
Could only find part-time work.....	1,826	2,326	2,101	2,246	145
Part time for noneconomic reasons.....	18,993	17,929	17,870	18,157	287
<b>Persons not in the labor force (not seasonally adjusted)</b>					
Marginally attached to the labor force.....	2,282	2,223	2,591	2,622	-
Discouraged workers.....	796	1,083	1,207	1,185	-

- Over-the-month changes are not displayed for not seasonally adjusted data.

NOTE: Persons whose ethnicity is identified as Hispanic or Latino may be of any race. Detail for the seasonally adjusted data shown in this table will not necessarily add to totals because of the independent seasonal adjustment of the various series. Updated population controls are introduced annually with the release of January data.

**ESTABLISHMENT DATA**  
**Summary table B. Establishment data, seasonally adjusted**

Category	July 2009	May 2010	June 2010 <sup>p</sup>	July 2010 <sup>p</sup>
<b>EMPLOYMENT BY SELECTED INDUSTRY</b> (Over-the-month change, in thousands)				
Total nonfarm.....	-346	432	-221	-131
Total private.....	-297	51	31	71
Goods-producing.....	-128	21	-3	33
Mining and logging.....	-5	11	5	8
Construction.....	-80	-29	-21	-11
Manufacturing.....	-43	39	13	36
Durable goods <sup>1</sup> .....	-25	36	15	36
Motor vehicles and parts.....	37.0	9.3	-2.4	20.7
Nondurable goods.....	-18	3	-2	0
Private service-providing <sup>1</sup> .....	-169	30	34	38
Wholesale trade.....	-15.8	-1.0	2.2	8.4
Retail trade.....	-53.5	-5.8	-20.5	6.7
Transportation and warehousing.....	-27.3	8.7	15.0	12.2
Information.....	-12	-2	-14	1
Financial activities.....	-23	-9	-12	-17
Professional and business services <sup>1</sup> .....	-48	26	23	-13
Temporary help services.....	-8.8	30.4	11.2	-5.6
Education and health services <sup>1</sup> .....	21	25	26	30
Health care and social assistance.....	27.2	18.8	21.1	27.8
Leisure and hospitality.....	-4	-15	21	6
Other services.....	-5	4	-4	6
Government.....	-49	381	-252	-202
<b>WOMEN AND PRODUCTION AND NONSUPERVISORY EMPLOYEES</b> AS A PERCENT OF ALL EMPLOYEES <sup>2</sup>				
Total nonfarm women employees.....	49.9	49.8	49.7	49.7
Total private women employees.....	48.4	48.3	48.2	48.2
Total private production and nonsupervisory employees.....	82.4	82.4	82.4	82.4
<b>HOURS AND EARNINGS</b> ALL EMPLOYEES				
<b>Total private</b>				
Average weekly hours.....	33.8	34.2	34.1	34.2
Average hourly earnings.....	\$ 22.20	\$ 22.55	\$ 22.55	\$ 22.59
Average weekly earnings.....	\$ 750.36	\$ 771.21	\$ 768.96	\$ 772.58
Index of aggregate weekly hours (2007=100) <sup>3</sup> .....	91.3	92.2	92.0	92.3
Over-the-month percent change.....	-0.2	0.3	-0.2	0.3
Index of aggregate weekly payrolls (2007=100) <sup>4</sup> .....	96.6	99.2	98.9	99.5
Over-the-month percent change.....	-0.1	0.6	-0.3	0.6
<b>HOURS AND EARNINGS</b> PRODUCTION AND NONSUPERVISORY EMPLOYEES				
<b>Total private</b>				
Average weekly hours.....	33.1	33.5	33.4	33.5
Average hourly earnings.....	\$ 18.62	\$ 19.00	\$ 19.02	\$ 19.04
Average weekly earnings.....	\$ 616.32	\$ 636.50	\$ 635.27	\$ 637.84
Index of aggregate weekly hours (2002=100) <sup>3</sup> .....	98.2	99.3	99.0	99.4
Over-the-month percent change.....	0.1	0.3	-0.3	0.4
Index of aggregate weekly payrolls (2002=100) <sup>4</sup> .....	122.1	126.1	125.9	126.4
Over-the-month percent change.....	0.3	0.6	-0.2	0.4
<b>DIFFUSION INDEX</b> (Over 1-month span) <sup>5</sup>				
Total private.....	26.4	56.1	55.2	55.6
Manufacturing.....	19.5	65.9	53.0	50.0

1 Includes other industries, not shown separately.

2 Data relate to production employees in mining and logging and manufacturing, construction employees in construction, and nonsupervisory employees in the service-providing industries.

3 The indexes of aggregate weekly hours are calculated by dividing the current month's estimates of aggregate hours by the corresponding annual average aggregate hours.

4 The indexes of aggregate weekly payrolls are calculated by dividing the current month's estimates of aggregate weekly payrolls by the corresponding annual average aggregate weekly payrolls.

5 Figures are the percent of industries with employment increasing plus one-half of the industries with unchanged employment, where 50 percent indicates an equal balance between industries with increasing and decreasing employment.

p Preliminary

## **Frequently Asked Questions about Employment and Unemployment Estimates**

### **Why are there two monthly measures of employment?**

The household survey and establishment survey both produce sample-based estimates of employment and both have strengths and limitations. The establishment survey employment series has a smaller margin of error on the measurement of month-to-month change than the household survey because of its much larger sample size. An over-the-month employment change of about 100,000 is statistically significant in the establishment survey, while the threshold for a statistically significant change in the household survey is about 400,000. However, the household survey has a more expansive scope than the establishment survey because it includes the self-employed, unpaid family workers, agricultural workers, and private household workers, who are excluded by the establishment survey. The household survey also provides estimates of employment for demographic groups.

### **Are undocumented immigrants counted in the surveys?**

It is likely that both surveys include at least some undocumented immigrants. However, neither the establishment nor the household survey is designed to identify the legal status of workers. Therefore, it is not possible to determine how many are counted in either survey. The establishment survey does not collect data on the legal status of workers. The household survey does include questions which identify the foreign and native born, but it does not include questions about the legal status of the foreign born.

### **Why does the establishment survey have revisions?**

The establishment survey revises published estimates to improve its data series by incorporating additional information that was not available at the time of the initial publication of the estimates. The establishment survey revises its initial monthly estimates twice, in the immediately succeeding 2 months, to incorporate additional sample receipts from respondents in the survey and recalculated seasonal adjustment factors. For more information on the monthly revisions, please visit [www.bls.gov/ces/cesrevinfo.htm](http://www.bls.gov/ces/cesrevinfo.htm).

On an annual basis, the establishment survey incorporates a benchmark revision that re-anchors estimates to nearly complete employment counts available from unemployment insurance tax records. The benchmark helps to control for sampling and modeling errors in the estimates. For more information on the annual benchmark revision, please visit [www.bls.gov/web/cesbmart.htm](http://www.bls.gov/web/cesbmart.htm).

### **Does the establishment survey sample include small firms?**

Yes; about 40 percent of the establishment survey sample is comprised of business establishments with fewer than 20 employees. The establishment survey sample is designed to maximize the reliability of the total nonfarm employment estimate; firms from all size classes and industries are appropriately sampled to achieve that goal.

### **Does the establishment survey account for employment from new businesses?**

Yes; monthly establishment survey estimates include an adjustment to account for the net employment change generated by business births and deaths. The adjustment comes from an econometric model that forecasts the monthly net jobs impact of business births and deaths based on the actual past values of the net impact that can be observed with a lag from the Quarterly Census of Employment and Wages. The establishment survey uses modeling rather than sampling for this purpose because the survey is not

immediately able to bring new businesses into the sample. There is an unavoidable lag between the birth of a new firm and its appearance on the sampling frame and availability for selection. BLS adds new businesses to the survey twice a year.

**Is the count of unemployed persons limited to just those people receiving unemployment insurance benefits?**

No; the estimate of unemployment is based on a monthly sample survey of households. All persons who are without jobs and are actively seeking and available to work are included among the unemployed. (People on temporary layoff are included even if they do not actively seek work.) There is no requirement or question relating to unemployment insurance benefits in the monthly survey.

**Does the official unemployment rate exclude people who have stopped looking for work?**

Yes; however, there are separate estimates of persons outside the labor force who want a job, including those who have stopped looking because they believe no jobs are available (discouraged workers). In addition, alternative measures of labor underutilization (discouraged workers and other groups not officially counted as unemployed) are published each month in The Employment Situation news release.

# Technical Note

This news release presents statistics from two major surveys, the Current Population Survey (household survey) and the Current Employment Statistics survey (establishment survey). The household survey provides information on the labor force, employment, and unemployment that appears in the "A" tables, marked HOUSEHOLD DATA. It is a sample survey of about 60,000 households conducted by the U.S. Census Bureau for the U.S. Bureau of Labor Statistics (BLS).

The establishment survey provides information on employment, hours, and earnings of employees on nonfarm payrolls; the data appear in the "B" tables, marked ESTABLISHMENT DATA. BLS collects these data each month from the payroll records of a sample of nonagricultural business establishments. The sample includes about 140,000 businesses and government agencies representing approximately 410,000 worksites and is drawn from a sampling frame of roughly 8.9 million unemployment insurance tax accounts. The active sample includes approximately one-third of all nonfarm payroll employees.

For both surveys, the data for a given month relate to a particular week or pay period. In the household survey, the reference period is generally the calendar week that contains the 12th day of the month. In the establishment survey, the reference period is the pay period including the 12th, which may or may not correspond directly to the calendar week.

## Coverage, definitions, and differences between surveys

**Household survey.** The sample is selected to reflect the entire civilian noninstitutional population. Based on responses to a series of questions on work and job search activities, each person 16 years and over in a sample household is classified as employed, unemployed, or not in the labor force.

People are classified as *employed* if they did any work at all as paid employees during the reference week; worked in their own business, profession, or on their own farm; or worked without pay at least 15 hours in a family business or farm. People are also counted as employed if they were temporarily absent from their jobs because of illness, bad weather, vacation, labor-management disputes, or personal reasons.

People are classified as *unemployed* if they meet all of the following criteria: they had no employment during the reference week; they were available for work at that time; and they made specific efforts to find employment sometime during the 4-week period ending with the reference week. Persons laid off from a job and expecting recall need not be looking for work to be counted as unemployed. The unemployment data derived from the household survey in no way depend upon the eligibility for or receipt of unemployment insurance benefits.

The *civilian labor force* is the sum of employed and unemployed persons. Those not classified as employed or unemployed are *not in the labor force*. The *unemployment rate* is the number unemployed as a percent of the labor force. The *labor force participation rate* is the labor force as a percent of the population, and the *employment-population ratio* is the employed as a percent of the population. Additional information about the household survey can be found at [www.bls.gov/cps/documentation.htm](http://www.bls.gov/cps/documentation.htm).

**Establishment survey.** The sample establishments are drawn from private nonfarm businesses such as factories, offices, and stores, as well as from federal, state, and local government entities. *Employees on nonfarm payrolls* are those who received pay for any part of the reference pay period, including persons on paid leave. Persons are counted in each job they hold. *Hours and earnings* data are produced for the private sector for all employees and for production and nonsupervisory employees. *Production and nonsupervisory employees* are defined as production and related employees in manufacturing and mining and logging, construction workers in construction, and non-supervisory employees in private service-providing industries.

Industries are classified on the basis of an establishment's principal activity in accordance with the 2007 version of the North American Industry Classification System. Additional information about the establishment survey can be found at [www.bls.gov/ces/#technical](http://www.bls.gov/ces/#technical).

**Differences in employment estimates.** The numerous conceptual and methodological differences between the household and establishment surveys result in important distinctions in the employment estimates derived from the surveys. Among these are:

- The household survey includes agricultural workers, the self-employed, unpaid family workers, and private household workers among the employed. These groups are excluded from the establishment survey.
- The household survey includes people on unpaid leave among the employed. The establishment survey does not.
- The household survey is limited to workers 16 years of age and older. The establishment survey is not limited by age.
- The household survey has no duplication of individuals, because individuals are counted only once, even if they hold more than one job. In the establishment survey, employees working at more than one job and thus appearing on more than one payroll are counted separately for each appearance.



## Seasonal adjustment

Over the course of a year, the size of the nation's labor force and the levels of employment and unemployment undergo regularly occurring fluctuations. These events may result from seasonal changes in weather, major holidays, and the opening and closing of schools. The effect of such seasonal variation can be very large.

Because these seasonal events follow a more or less regular pattern each year, their influence on the level of a series can be tempered by adjusting for regular seasonal variation. These adjustments make nonseasonal developments, such as declines in employment or increases in the participation of women in the labor force, easier to spot. For example, in the household survey, the large number of youth entering the labor force each June is likely to obscure any other changes that have taken place relative to May, making it difficult to determine if the level of economic activity has risen or declined. Similarly, in the establishment survey, payroll employment in education declines by about 20 percent at the end of the spring term and later rises with the start of the fall term, obscuring the underlying employment trends in the industry. Because seasonal employment changes at the end and beginning of the school year can be estimated, the statistics can be adjusted to make underlying employment patterns more discernable. The seasonally adjusted figures provide a more useful tool with which to analyze changes in month-to-month economic activity.

Many seasonally adjusted series are independently adjusted in both the household and establishment surveys. However, the adjusted series for many major estimates, such as total payroll employment, employment in most major sectors, total employment, and unemployment are computed by aggregating independently adjusted component series. For example, total unemployment is derived by summing the adjusted series for four major age-sex components; this differs from the unemployment estimate that would be obtained by directly adjusting the total or by combining the duration, reasons, or more detailed age categories.

For both the household and establishment surveys, a concurrent seasonal adjustment methodology is used in which new seasonal factors are calculated each month using all relevant data, up to and including the data for the current month. In the household survey, new seasonal factors are used to adjust only the current month's data. In the establishment survey, however, new seasonal factors are used each month to adjust the three most recent monthly estimates. The prior 2 months are routinely revised to incorporate additional sample reports and recalculated seasonal adjustment factors. In both surveys, 5-year revisions to historical data are made once a year.

## Reliability of the estimates

Statistics based on the household and establishment surveys are subject to both sampling and nonsampling

error. When a sample rather than the entire population is surveyed, there is a chance that the sample estimates may differ from the "true" population values they represent. The exact difference, or *sampling error*, varies depending on the particular sample selected, and this variability is measured by the standard error of the estimate. There is about a 90-percent chance, or level of confidence, that an estimate based on a sample will differ by no more than 1.6 standard errors from the "true" population value because of sampling error. BLS analyses are generally conducted at the 90-percent level of confidence.

For example, the confidence interval for the monthly change in total nonfarm employment from the establishment survey is on the order of plus or minus 100,000. Suppose the estimate of nonfarm employment increases by 50,000 from one month to the next. The 90-percent confidence interval on the monthly change would range from -50,000 to +150,000 (50,000 +/- 100,000). These figures do not mean that the sample results are off by these magnitudes, but rather that there is about a 90-percent chance that the "true" over-the-month change lies within this interval. Since this range includes values of less than zero, we could not say with confidence that nonfarm employment had, in fact, increased that month. If, however, the reported nonfarm employment rise was 250,000, then all of the values within the 90-percent confidence interval would be greater than zero. In this case, it is likely (at least a 90-percent chance) that nonfarm employment had, in fact, risen that month. At an unemployment rate of around 5.5 percent, the 90-percent confidence interval for the monthly change in unemployment as measured by the household survey is about +/- 280,000, and for the monthly change in the unemployment rate it is about +/- 0.19 percentage point.

In general, estimates involving many individuals or establishments have lower standard errors (relative to the size of the estimate) than estimates which are based on a small number of observations. The precision of estimates also is improved when the data are cumulated over time, such as for quarterly and annual averages.

The household and establishment surveys are also affected by *nonsampling error*, which can occur for many reasons, including the failure to sample a segment of the population, inability to obtain information for all respondents in the sample, inability or unwillingness of respondents to provide correct information on a timely basis, mistakes made by respondents, and errors made in the collection or processing of the data.

For example, in the establishment survey, estimates for the most recent 2 months are based on incomplete returns; for this reason, these estimates are labeled preliminary in the tables. It is only after two successive revisions to a monthly estimate, when nearly all sample reports have been received, that the estimate is considered final.

Another major source of nonsampling error in the establishment survey is the inability to capture, on a timely basis, employment generated by new firms. To correct for this systematic underestimation of employment growth, an estimation procedure with two components is used to

account for business births. The first component excludes employment losses from business deaths from sample-based estimation in order to offset the missing employment gains from business births. This is incorporated into the sample-based estimation procedure by simply not reflecting sample units going out of business, but imputing to them the same employment trend as the other firms in the sample. This procedure accounts for most of the net birth/death employment.

The second component is an ARIMA time series model designed to estimate the residual net birth/death employment not accounted for by the imputation. The historical time series used to create and test the ARIMA model was derived from the unemployment insurance universe micro-level database, and reflects the actual residual net of births and deaths over the past 5 years.

The sample-based estimates from the establishment survey are adjusted once a year (on a lagged basis) to

universe counts of payroll employment obtained from administrative records of the unemployment insurance program. The difference between the March sample-based employment estimates and the March universe counts is known as a benchmark revision, and serves as a rough proxy for total survey error. The new benchmarks also incorporate changes in the classification of industries. Over the past decade, absolute benchmark revisions for total nonfarm employment have averaged 0.3 percent, with a range from -0.7 to 0.6 percent.

#### **Other information**

Information in this release will be made available to sensory impaired individuals upon request. Voice phone: (202) 691-5200; Federal Relay Service: (800) 877-8339.

# HOUSEHOLD DATA

## Table A-1. Employment status of the civilian population by sex and age

[Numbers in thousands]

Employment status, sex, and age	Not seasonally adjusted			Seasonally adjusted <sup>1</sup>					
	July 2009	June 2010	July 2010	July 2009	Mar. 2010	Apr. 2010	May 2010	June 2010	July 2010
<b>TOTAL</b>									
Civilian noninstitutional population.....	235,870	237,690	237,890	235,870	237,159	237,329	237,499	237,690	237,890
Civilian labor force.....	156,255	154,767	155,270	154,351	153,910	154,715	154,393	153,741	153,560
Participation rate.....	66.2	65.1	65.3	65.4	64.9	65.2	65.0	64.7	64.6
Employed.....	141,055	139,882	140,134	139,817	138,905	139,455	139,420	139,119	138,960
Employment-population ratio.....	59.8	58.9	58.9	59.3	58.6	58.8	58.7	58.5	58.4
Unemployed.....	15,201	14,885	15,137	14,534	15,005	15,260	14,973	14,623	14,599
Unemployment rate.....	9.7	9.6	9.7	9.4	9.7	9.9	9.7	9.5	9.5
Not in labor force.....	79,614	82,923	82,620	81,519	83,249	82,614	83,107	83,949	84,330
Persons who currently want a job.....	6,244	6,461	6,143	5,978	6,044	5,951	5,734	5,895	5,886
<b>Men, 16 years and over</b>									
Civilian noninstitutional population.....	114,173	115,102	115,207	114,173	114,821	114,910	115,001	115,102	115,207
Civilian labor force.....	83,375	82,669	83,071	82,255	81,895	82,453	82,245	82,017	81,962
Participation rate.....	73.0	71.8	72.1	72.0	71.3	71.8	71.5	71.3	71.1
Employed.....	74,861	74,148	74,749	73,613	73,092	73,548	73,639	73,375	73,454
Employment-population ratio.....	65.6	64.4	64.9	64.5	63.7	64.0	64.0	63.7	63.8
Unemployed.....	8,515	8,521	8,323	8,642	8,803	8,905	8,606	8,642	8,507
Unemployment rate.....	10.2	10.3	10.0	10.5	10.7	10.8	10.5	10.5	10.4
Not in labor force.....	30,798	32,432	32,135	31,919	32,926	32,457	32,756	33,084	33,245
<b>Men, 20 years and over</b>									
Civilian noninstitutional population.....	105,530	106,522	106,641	105,530	106,198	106,301	106,407	106,522	106,641
Civilian labor force.....	79,337	79,201	79,356	78,984	78,796	79,356	79,237	79,110	78,971
Participation rate.....	75.2	74.4	74.4	74.8	74.2	74.7	74.5	74.3	74.1
Employed.....	71,911	71,773	72,068	71,255	70,913	71,358	71,477	71,316	71,332
Employment-population ratio.....	68.1	67.4	67.6	67.5	66.8	67.1	67.2	66.9	66.9
Unemployed.....	7,427	7,428	7,287	7,728	7,882	7,998	7,760	7,793	7,638
Unemployment rate.....	9.4	9.4	9.2	9.8	10.0	10.1	9.8	9.9	9.7
Not in labor force.....	26,193	27,321	27,286	26,547	27,403	26,945	27,170	27,412	27,671
<b>Women, 16 years and over</b>									
Civilian noninstitutional population.....	121,696	122,589	122,683	121,696	122,339	122,419	122,499	122,589	122,683
Civilian labor force.....	72,880	72,098	72,199	72,096	72,015	72,262	72,148	71,724	71,598
Participation rate.....	59.9	58.8	58.8	59.2	58.9	59.0	58.9	58.5	58.4
Employed.....	66,194	65,735	65,385	66,205	65,813	65,907	65,781	65,743	65,506
Employment-population ratio.....	54.4	53.6	53.3	54.4	53.8	53.8	53.7	53.6	53.4
Unemployed.....	6,686	6,363	6,814	5,892	6,203	6,355	6,367	5,981	6,092
Unemployment rate.....	9.2	8.8	9.4	8.2	8.6	8.8	8.8	8.3	8.5
Not in labor force.....	48,816	50,491	50,484	49,600	50,323	50,157	50,350	50,865	51,085
<b>Women, 20 years and over</b>									
Civilian noninstitutional population.....	113,296	114,264	114,372	113,296	113,974	114,066	114,160	114,264	114,372
Civilian labor force.....	68,993	68,761	68,717	68,910	69,027	69,265	69,128	68,859	68,747
Participation rate.....	60.9	60.2	60.1	60.8	60.6	60.7	60.6	60.3	60.1
Employed.....	63,182	63,277	62,775	63,685	63,495	63,552	63,505	63,516	63,314
Employment-population ratio.....	55.8	55.4	54.9	56.2	55.7	55.7	55.6	55.6	55.4
Unemployed.....	5,811	5,484	5,942	5,225	5,532	5,712	5,623	5,343	5,433
Unemployment rate.....	8.4	8.0	8.6	7.6	8.0	8.2	8.1	7.8	7.9
Not in labor force.....	44,303	45,504	45,654	44,386	44,947	44,801	45,032	45,405	45,625
<b>Both sexes, 16 to 19 years</b>									
Civilian noninstitutional population.....	17,044	16,904	16,877	17,044	16,987	16,962	16,932	16,904	16,877
Civilian labor force.....	7,925	6,806	7,197	6,457	6,087	6,094	6,028	5,772	5,843
Participation rate.....	46.5	40.3	42.6	37.9	35.8	35.9	35.6	34.1	34.6
Employed.....	5,962	4,833	5,290	4,877	4,496	4,544	4,438	4,286	4,315
Employment-population ratio.....	35.0	28.6	31.3	28.6	26.5	26.8	26.2	25.4	25.6
Unemployed.....	1,963	1,973	1,907	1,581	1,591	1,550	1,590	1,486	1,528
Unemployment rate.....	24.8	29.0	26.5	24.5	26.1	25.4	26.4	25.7	26.1
Not in labor force.....	9,118	10,098	9,679	10,586	10,899	10,867	10,905	11,132	11,034

<sup>1</sup> The population figures are not adjusted for seasonal variation; therefore, identical numbers appear in the unadjusted and seasonally adjusted columns.

NOTE: Updated population controls are introduced annually with the release of January data.

**HOUSEHOLD DATA**

**Table A-2. Employment status of the civilian population by race, sex, and age**

[Numbers in thousands]

Employment status, race, sex, and age	Not seasonally adjusted			Seasonally adjusted <sup>1</sup>					
	July 2009	June 2010	July 2010	July 2009	Mar. 2010	Apr. 2010	May 2010	June 2010	July 2010
<b>WHITE</b>									
Civilian noninstitutional population.....	190,944	191,979	192,109	190,944	191,648	191,749	191,856	191,979	192,109
Civilian labor force.....	127,069	125,761	126,152	125,911	125,054	125,779	125,429	124,959	125,060
Participation rate.....	66.5	65.5	65.7	65.9	65.3	65.6	65.4	65.1	65.1
Employed.....	115,861	114,782	115,183	114,984	114,108	114,484	114,359	114,163	114,300
Employment-population ratio.....	60.7	59.8	60.0	60.2	59.5	59.7	59.6	59.5	59.5
Unemployed.....	11,209	10,979	10,969	10,927	10,945	11,295	11,070	10,797	10,760
Unemployment rate.....	8.8	8.7	8.7	8.7	8.8	9.0	8.8	8.6	8.6
Not in labor force.....	63,875	66,218	65,957	65,033	66,594	65,970	66,427	67,019	67,049
<b>Men, 20 years and over</b>									
Civilian labor force.....	65,692	65,412	65,603	65,609	64,973	65,556	65,419	65,349	65,412
Participation rate.....	75.7	74.8	74.9	75.6	74.5	75.1	74.9	74.7	74.7
Employed.....	60,091	59,941	60,213	59,642	59,208	59,504	59,639	59,561	59,662
Employment-population ratio.....	69.2	68.5	68.8	68.7	67.9	68.2	68.3	68.1	68.2
Unemployed.....	5,602	5,471	5,389	5,967	5,765	6,052	5,780	5,788	5,750
Unemployment rate.....	8.5	8.4	8.2	9.1	8.9	9.2	8.8	8.9	8.8
<b>Women, 20 years and over</b>									
Civilian labor force.....	54,853	54,721	54,634	54,960	55,104	55,184	55,062	54,883	54,818
Participation rate.....	60.2	59.7	59.6	60.3	60.3	60.3	60.1	59.9	59.8
Employed.....	50,696	50,700	50,429	51,202	51,103	51,123	50,981	50,971	50,943
Employment-population ratio.....	55.6	55.3	55.0	56.2	55.9	55.9	55.7	55.6	55.5
Unemployed.....	4,157	4,022	4,205	3,759	4,000	4,061	4,081	3,911	3,875
Unemployment rate.....	7.6	7.3	7.7	6.8	7.3	7.4	7.4	7.1	7.1
<b>Both sexes, 16 to 19 years</b>									
Civilian labor force.....	6,525	5,628	5,915	5,342	4,977	5,040	4,948	4,728	4,830
Participation rate.....	50.1	43.6	46.0	41.0	38.4	38.9	38.3	36.7	37.5
Employed.....	5,075	4,141	4,540	4,140	3,797	3,857	3,739	3,630	3,695
Employment-population ratio.....	38.9	32.1	35.3	31.8	29.3	29.8	28.9	28.2	28.7
Unemployed.....	1,450	1,486	1,375	1,202	1,180	1,183	1,209	1,097	1,135
Unemployment rate.....	22.2	26.4	23.2	22.5	23.7	23.5	24.4	23.2	23.5
<b>BLACK OR AFRICAN AMERICAN</b>									
Civilian noninstitutional population.....	28,252	28,685	28,718	28,252	28,591	28,624	28,653	28,685	28,718
Civilian labor force.....	18,085	17,960	18,066	17,651	17,871	17,951	17,983	17,768	17,651
Participation rate.....	64.0	62.6	62.9	62.5	62.5	62.7	62.8	61.9	61.5
Employed.....	15,218	15,157	15,059	15,050	14,920	14,985	15,189	15,036	14,896
Employment-population ratio.....	53.9	52.8	52.4	53.3	52.2	52.4	53.0	52.4	51.9
Unemployed.....	2,867	2,803	3,007	2,600	2,951	2,966	2,794	2,732	2,755
Unemployment rate.....	15.9	15.6	16.6	14.7	16.5	16.5	15.5	15.4	15.6
Not in labor force.....	10,167	10,725	10,652	10,601	10,720	10,673	10,670	10,917	11,067
<b>Men, 20 years and over</b>									
Civilian labor force.....	7,976	8,107	8,088	7,875	8,134	8,130	8,184	8,062	8,004
Participation rate.....	70.1	69.8	69.5	69.2	70.4	70.2	70.6	69.4	68.8
Employed.....	6,693	6,717	6,749	6,617	6,592	6,668	6,782	6,656	6,667
Employment-population ratio.....	58.8	57.8	58.0	58.1	57.0	57.6	58.5	57.3	57.3
Unemployed.....	1,283	1,390	1,339	1,258	1,542	1,462	1,402	1,406	1,337
Unemployment rate.....	16.1	17.1	16.6	16.0	19.0	18.0	17.1	17.4	16.7
<b>Women, 20 years and over</b>									
Civilian labor force.....	9,154	9,098	9,161	9,030	9,021	9,146	9,106	9,070	9,005
Participation rate.....	64.5	63.1	63.5	63.7	62.8	63.6	63.3	62.9	62.4
Employed.....	7,951	8,035	7,854	7,958	7,907	7,894	7,977	7,998	7,847
Employment-population ratio.....	56.1	55.7	54.4	56.1	55.1	54.9	55.4	55.5	54.4
Unemployed.....	1,203	1,063	1,307	1,071	1,115	1,252	1,128	1,072	1,157
Unemployment rate.....	13.1	11.7	14.3	11.9	12.4	13.7	12.4	11.8	12.9
<b>Both sexes, 16 to 19 years</b>									
Civilian labor force.....	955	756	817	746	716	675	694	636	643
Participation rate.....	35.5	28.4	30.8	27.8	26.7	25.3	26.0	23.9	24.2
Employed.....	574	405	456	476	421	423	430	382	382
Employment-population ratio.....	21.4	15.2	17.2	17.7	15.7	15.8	16.2	14.4	14.4
Unemployed.....	380	351	361	270	294	252	263	254	261
Unemployment rate.....	39.9	46.4	44.2	36.2	41.1	37.3	38.0	39.9	40.6
<b>ASIAN</b>									
Civilian noninstitutional population.....	10,903	11,210	11,200	-	-	-	-	-	-

See footnotes at end of table.

**HOUSEHOLD DATA**

**Table A-2. Employment status of the civilian population by race, sex, and age — Continued**

[Numbers in thousands]

Employment status, race, sex, and age	Not seasonally adjusted			Seasonally adjusted <sup>1</sup>					
	July 2009	June 2010	July 2010	July 2009	Mar. 2010	Apr. 2010	May 2010	June 2010	July 2010
Civilian labor force.....	7,394	7,315	7,342	-	-	-	-	-	-
Participation rate.....	67.8	65.3	65.6	-	-	-	-	-	-
Employed.....	6,780	6,749	6,742	-	-	-	-	-	-
Employment-population ratio.....	62.2	60.2	60.2	-	-	-	-	-	-
Unemployed.....	614	566	601	-	-	-	-	-	-
Unemployment rate.....	8.3	7.7	8.2	-	-	-	-	-	-
Not in labor force.....	3,509	3,895	3,857	-	-	-	-	-	-

<sup>1</sup> The population figures are not adjusted for seasonal variation; therefore, identical numbers appear in the unadjusted and seasonally adjusted columns.

- Data not available.

NOTE: Estimates for the above race groups will not sum to totals shown in table A-1 because data are not presented for all races. Updated population controls are introduced annually with the release of January data.

**HOUSEHOLD DATA**

**Table A-3. Employment status of the Hispanic or Latino population by sex and age**

[Numbers in thousands]

Employment status, sex, and age	Not seasonally adjusted			Seasonally adjusted <sup>1</sup>					
	July 2009	June 2010	July 2010	July 2009	Mar. 2010	Apr. 2010	May 2010	June 2010	July 2010
<b>HISPANIC OR LATINO ETHNICITY</b>									
Civilian noninstitutional population.....	32,926	33,662	33,747	32,926	33,414	33,498	33,578	33,662	33,747
Civilian labor force.....	22,695	22,724	22,908	22,540	22,707	22,684	22,789	22,674	22,738
Participation rate.....	68.9	67.5	67.9	68.5	68.0	67.7	67.9	67.4	67.4
Employed.....	19,849	19,922	20,110	19,748	19,848	19,850	19,953	19,854	19,987
Employment-population ratio.....	60.3	59.2	59.6	60.0	59.4	59.3	59.4	59.0	59.2
Unemployed.....	2,846	2,802	2,798	2,792	2,859	2,834	2,836	2,820	2,751
Unemployment rate.....	12.5	12.3	12.2	12.4	12.6	12.5	12.4	12.4	12.1
Not in labor force.....	10,232	10,938	10,839	10,386	10,706	10,814	10,789	10,989	11,009
<b>Men, 20 years and over</b>									
Civilian labor force.....	12,824	12,965	13,065	-	-	-	-	-	-
Participation rate.....	83.7	82.7	83.2	-	-	-	-	-	-
Employed.....	11,384	11,500	11,735	-	-	-	-	-	-
Employment-population ratio.....	74.3	73.4	74.7	-	-	-	-	-	-
Unemployed.....	1,440	1,466	1,330	-	-	-	-	-	-
Unemployment rate.....	11.2	11.3	10.2	-	-	-	-	-	-
<b>Women, 20 years and over</b>									
Civilian labor force.....	8,553	8,700	8,650	-	-	-	-	-	-
Participation rate.....	59.1	59.0	58.5	-	-	-	-	-	-
Employed.....	7,541	7,741	7,599	-	-	-	-	-	-
Employment-population ratio.....	52.1	52.5	51.4	-	-	-	-	-	-
Unemployed.....	1,013	958	1,050	-	-	-	-	-	-
Unemployment rate.....	11.8	11.0	12.1	-	-	-	-	-	-
<b>Both sexes, 16 to 19 years</b>									
Civilian labor force.....	1,317	1,059	1,193	-	-	-	-	-	-
Participation rate.....	42.1	32.7	36.8	-	-	-	-	-	-
Employed.....	924	681	775	-	-	-	-	-	-
Employment-population ratio.....	29.6	21.0	23.9	-	-	-	-	-	-
Unemployed.....	393	378	418	-	-	-	-	-	-
Unemployment rate.....	29.8	35.7	35.0	-	-	-	-	-	-

<sup>1</sup> The population figures are not adjusted for seasonal variation; therefore, identical numbers appear in the unadjusted and seasonally adjusted columns.

- Data not available.

NOTE: Persons whose ethnicity is identified as Hispanic or Latino may be of any race. Updated population controls are introduced annually with the release of January data.

**HOUSEHOLD DATA**

**Table A-4. Employment status of the civilian population 25 years and over by educational attainment**

[Numbers in thousands]

Educational attainment	Not seasonally adjusted			Seasonally adjusted					
	July 2009	June 2010	July 2010	July 2009	Mar. 2010	Apr. 2010	May 2010	June 2010	July 2010
<b>Less than a high school diploma</b>									
Civilian labor force.....	12,142	12,330	11,823	12,412	11,775	12,122	12,133	12,095	12,048
Participation rate.....	47.3	46.3	46.4	48.3	46.1	46.4	45.8	45.4	47.3
Employed.....	10,352	10,727	10,286	10,518	10,067	10,335	10,319	10,391	10,390
Employment-population ratio.....	40.3	40.3	40.4	40.9	39.4	39.5	39.0	39.0	40.8
Unemployed.....	1,790	1,603	1,538	1,894	1,708	1,787	1,814	1,704	1,658
Unemployment rate.....	14.7	13.0	13.0	15.3	14.5	14.7	15.0	14.1	13.8
<b>High school graduates, no college<sup>1</sup></b>									
Civilian labor force.....	37,832	37,742	37,583	38,163	38,855	38,849	38,433	38,107	37,941
Participation rate.....	61.7	61.4	61.0	62.2	62.0	62.4	62.0	62.0	61.6
Employed.....	34,269	33,957	33,844	34,571	34,654	34,728	34,251	33,993	34,113
Employment-population ratio.....	55.9	55.2	54.9	56.4	55.3	55.8	55.2	55.3	55.4
Unemployed.....	3,563	3,786	3,739	3,593	4,201	4,120	4,182	4,114	3,829
Unemployment rate.....	9.4	10.0	9.9	9.4	10.8	10.6	10.9	10.8	10.1
<b>Some college or associate degree</b>									
Civilian labor force.....	36,839	36,383	36,884	36,600	36,582	36,552	36,832	36,586	36,713
Participation rate.....	71.2	70.3	70.3	70.7	70.8	70.8	71.0	70.7	70.0
Employed.....	33,800	33,411	33,715	33,684	33,586	33,535	33,780	33,579	33,652
Employment-population ratio.....	65.3	64.5	64.3	65.1	65.0	65.0	65.1	64.9	64.1
Unemployed.....	3,039	2,972	3,169	2,915	2,996	3,017	3,052	3,007	3,061
Unemployment rate.....	8.2	8.2	8.6	8.0	8.2	8.3	8.3	8.2	8.3
<b>Bachelor's degree and higher<sup>2</sup></b>									
Civilian labor force.....	45,751	45,911	46,042	45,680	45,800	45,879	45,718	46,246	46,015
Participation rate.....	76.9	76.7	76.2	76.8	77.2	77.3	77.3	77.3	76.2
Employed.....	43,330	43,868	43,725	43,527	43,549	43,642	43,581	44,200	43,924
Employment-population ratio.....	72.9	73.3	72.4	73.2	73.4	73.5	73.6	73.8	72.7
Unemployed.....	2,422	2,043	2,317	2,153	2,251	2,237	2,136	2,046	2,091
Unemployment rate.....	5.3	4.5	5.0	4.7	4.9	4.9	4.7	4.4	4.5

1 Includes persons with a high school diploma or equivalent.

2 Includes persons with bachelor's, master's, professional, and doctoral degrees.

NOTE: Updated population controls are introduced annually with the release of January data.

**HOUSEHOLD DATA**

**Table A-5. Employment status of the civilian population 18 years and over by veteran status, period of service, and sex, not seasonally adjusted**

[Numbers in thousands]

Employment status, veteran status, and period of service	Total		Men		Women	
	July 2009	July 2010	July 2009	July 2010	July 2009	July 2010
<b>VETERANS, 18 years and over</b>						
Civilian noninstitutional population.....	22,168	21,997	20,410	20,210	1,758	1,787
Civilian labor force.....	12,095	11,857	10,942	10,739	1,153	1,118
Participation rate.....	54.6	53.9	53.6	53.1	65.6	62.6
Employed.....	11,139	10,863	10,078	9,809	1,062	1,053
Employment-population ratio.....	50.3	49.4	49.4	48.5	60.4	58.9
Unemployed.....	955	994	864	930	91	65
Unemployment rate.....	7.9	8.4	7.9	8.7	7.9	5.8
Not in labor force.....	10,073	10,140	9,468	9,471	605	669
<b>Gulf War-era II veterans</b>						
Civilian noninstitutional population.....	1,937	2,161	1,559	1,758	377	402
Civilian labor force.....	1,632	1,824	1,347	1,529	286	295
Participation rate.....	84.3	84.4	86.4	87.0	75.7	73.3
Employed.....	1,472	1,609	1,221	1,346	251	262
Employment-population ratio.....	76.0	74.5	78.3	76.6	66.5	65.2
Unemployed.....	160	215	126	183	35	32
Unemployment rate.....	9.8	11.8	9.3	12.0	12.1	11.0
Not in labor force.....	304	336	213	229	92	108
<b>Gulf War-era I veterans</b>						
Civilian noninstitutional population.....	2,968	2,897	2,499	2,441	469	456
Civilian labor force.....	2,641	2,473	2,249	2,125	392	349
Participation rate.....	89.0	85.4	90.0	87.1	83.7	76.4
Employed.....	2,436	2,293	2,073	1,969	362	325
Employment-population ratio.....	82.1	79.2	83.0	80.7	77.4	71.1
Unemployed.....	205	180	175	156	30	24
Unemployment rate.....	7.8	7.3	7.8	7.3	7.5	6.9
Not in labor force.....	327	423	251	316	77	108
<b>World War II, Korean War, and Vietnam-era veterans</b>						
Civilian noninstitutional population.....	11,382	10,971	10,993	10,596	389	375
Civilian labor force.....	4,316	3,985	4,183	3,879	133	106
Participation rate.....	37.9	36.3	38.1	36.6	34.1	28.3
Employed.....	3,996	3,654	3,868	3,551	128	104
Employment-population ratio.....	35.1	33.3	35.2	33.5	33.0	27.6
Unemployed.....	319	331	315	328	4	2
Unemployment rate.....	7.4	8.3	7.5	8.5	3.2	2.2
Not in labor force.....	7,067	6,986	6,810	6,717	257	269
<b>Veterans of other service periods</b>						
Civilian noninstitutional population.....	5,882	5,968	5,359	5,415	523	553
Civilian labor force.....	3,506	3,574	3,164	3,206	342	368
Participation rate.....	59.6	59.9	59.0	59.2	65.5	66.6
Employed.....	3,235	3,306	2,916	2,943	320	363
Employment-population ratio.....	55.0	55.4	54.4	54.4	61.1	65.5
Unemployed.....	271	268	248	262	23	6
Unemployment rate.....	7.7	7.5	7.8	8.2	6.6	1.6
Not in labor force.....	2,375	2,394	2,195	2,209	181	185
<b>NONVETERANS, 18 years and over</b>						
Civilian noninstitutional population.....	204,913	207,265	89,230	90,554	115,683	116,712
Civilian labor force.....	141,217	140,908	70,916	70,999	70,300	69,908
Participation rate.....	68.9	68.0	79.5	78.4	60.8	59.9
Employed.....	127,779	127,573	63,690	64,035	64,089	63,538
Employment-population ratio.....	62.4	61.6	71.4	70.7	55.4	54.4
Unemployed.....	13,437	13,335	7,226	6,965	6,211	6,371
Unemployment rate.....	9.5	9.5	10.2	9.8	8.8	9.1
Not in labor force.....	63,696	66,357	18,314	19,554	45,382	46,803

NOTE: Veterans served on active duty in the U.S. Armed Forces and were not on active duty at the time of the survey. Nonveterans never served on active duty in the U.S. Armed Forces. Veterans could have served anywhere in the world during these periods of service: Gulf War era II (September 2001-present), Gulf War era I (August 1990-August 2001), Vietnam era (August 1964-April 1975), Korean War (July 1950-January 1955), World War II (December 1941-December 1946), and other service periods (all other time periods). Veterans who served in more than one wartime period are classified only in the most recent one. Veterans who served during one of the selected wartime periods and another period are classified only in the wartime period. Updated population controls are introduced annually with the release of January data.



**HOUSEHOLD DATA**

**Table A-6. Employment status of the civilian population by sex, age, and disability status, not seasonally adjusted**

[Numbers in thousands]

Employment status, sex, and age	Persons with a disability		Persons with no disability	
	July 2009	July 2010	July 2009	July 2010
<b>TOTAL, 16 years and over</b>				
Civilian noninstitutional population.....	27,027	26,000	208,842	211,890
Civilian labor force.....	6,217	5,603	150,039	149,668
Participation rate.....	23.0	21.5	71.8	70.6
Employed.....	5,275	4,684	135,780	135,450
Employment-population ratio.....	19.5	18.0	65.0	63.9
Unemployed.....	942	919	14,259	14,218
Unemployment rate.....	15.1	16.4	9.5	9.5
Not in labor force.....	20,810	20,397	58,804	62,223
<b>Men, 16 to 64 years</b>				
Civilian labor force.....	2,820	2,606	77,013	76,808
Participation rate.....	39.7	36.2	85.0	84.2
Employed.....	2,370	2,167	69,188	69,198
Employment-population ratio.....	33.3	30.1	76.3	75.8
Unemployed.....	450	439	7,825	7,609
Unemployment rate.....	16.0	16.8	10.2	9.9
Not in labor force.....	4,290	4,602	13,642	14,432
<b>Women, 16 to 64 years</b>				
Civilian labor force.....	2,575	2,192	67,421	67,036
Participation rate.....	33.5	30.3	72.9	71.7
Employed.....	2,153	1,801	61,368	60,827
Employment-population ratio.....	28.0	24.9	66.4	65.1
Unemployed.....	422	391	6,054	6,210
Unemployment rate.....	16.4	17.8	9.0	9.3
Not in labor force.....	5,103	5,046	25,025	26,460
<b>Both sexes, 65 years and over</b>				
Civilian labor force.....	821	805	5,604	5,824
Participation rate.....	6.7	7.0	21.8	21.4
Employed.....	752	716	5,224	5,425
Employment-population ratio.....	6.1	6.2	20.3	20.0
Unemployed.....	70	89	380	399
Unemployment rate.....	8.5	11.1	6.8	6.8
Not in labor force.....	11,417	10,749	20,137	21,331

NOTE: A person with a disability has at least one of the following conditions: is deaf or has serious difficulty hearing; is blind or has serious difficulty seeing even when wearing glasses; has serious difficulty concentrating, remembering, or making decisions because of a physical, mental, or emotional condition; has serious difficulty walking or climbing stairs; has difficulty dressing or bathing; or has difficulty doing errands alone such as visiting a doctor's office or shopping because of a physical, mental, or emotional condition. Updated population controls are introduced annually with the release of January data.

**HOUSEHOLD DATA**

**Table A-7. Employment status of the civilian population by nativity and sex, not seasonally adjusted**

[Numbers in thousands]

Employment status and nativity	Total		Men		Women	
	July 2009	July 2010	July 2009	July 2010	July 2009	July 2010
<b>Foreign born, 16 years and over</b>						
Civilian noninstitutional population.....	35,216	36,207	17,658	18,266	17,558	17,942
Civilian labor force.....	24,289	24,586	14,388	14,746	9,902	9,841
Participation rate.....	69.0	67.9	81.5	80.7	56.4	54.8
Employed.....	21,856	22,249	12,905	13,340	8,951	8,909
Employment-population ratio.....	62.1	61.5	73.1	73.0	51.0	49.7
Unemployed.....	2,433	2,337	1,483	1,405	951	932
Unemployment rate.....	10.0	9.5	10.3	9.5	9.6	9.5
Not in labor force.....	10,926	11,621	3,270	3,520	7,656	8,101
<b>Native born, 16 years and over</b>						
Civilian noninstitutional population.....	200,654	201,683	96,516	96,941	104,138	104,741
Civilian labor force.....	131,966	130,684	68,988	68,326	62,978	62,358
Participation rate.....	65.8	64.8	71.5	70.5	60.5	59.5
Employed.....	119,199	117,884	61,956	61,408	57,243	56,476
Employment-population ratio.....	59.4	58.5	64.2	63.3	55.0	53.9
Unemployed.....	12,767	12,800	7,032	6,918	5,735	5,882
Unemployment rate.....	9.7	9.8	10.2	10.1	9.1	9.4
Not in labor force.....	68,688	70,999	27,528	28,615	41,160	42,384

NOTE: The foreign born are those residing in the United States who were not U.S. citizens at birth. That is, they were born outside the United States or one of its outlying areas such as Puerto Rico or Guam, to parents neither of whom was a U.S. citizen. The native born are persons who were born in the United States or one of its outlying areas such as Puerto Rico or Guam or who were born abroad of at least one parent who was a U.S. citizen. Updated population controls are introduced annually with the release of January data.

**HOUSEHOLD DATA**

**Table A-8. Employed persons by class of worker and part-time status**

[In thousands]

Category	Not seasonally adjusted			Seasonally adjusted					
	July 2009	June 2010	July 2010	July 2009	Mar. 2010	Apr. 2010	May 2010	June 2010	July 2010
<b>CLASS OF WORKER</b>									
Agriculture and related industries.....	2,361	2,311	2,416	2,138	2,217	2,254	2,228	2,120	2,192
Wage and salary workers.....	1,392	1,401	1,485	1,236	1,374	1,397	1,363	1,289	1,329
Self-employed workers.....	926	854	884	867	851	823	821	808	825
Unpaid family workers.....	42	56	47	-	-	-	-	-	-
Nonagricultural industries.....	138,694	137,572	137,717	137,629	136,715	137,199	137,207	136,857	136,599
Wage and salary workers.....	129,619	128,339	128,707	128,849	127,712	128,183	128,197	127,900	127,881
Government.....	20,766	21,026	20,326	21,330	21,281	21,440	21,270	21,242	20,978
Private industries.....	108,853	107,312	108,381	107,464	106,447	106,706	106,906	106,740	106,869
Private households.....	923	697	692	-	-	-	-	-	-
Other industries.....	107,930	106,616	107,689	106,631	105,682	105,977	106,204	106,065	106,270
Self-employed workers.....	9,007	9,123	8,927	8,793	8,949	8,910	8,952	8,889	8,779
Unpaid family workers.....	68	110	83	-	-	-	-	-	-
<b>PERSONS AT WORK PART TIME<sup>1</sup></b>									
<b>All industries</b>									
Part time for economic reasons <sup>2</sup> .....	9,103	8,867	8,737	8,808	9,054	9,152	8,809	8,627	8,529
Slack work or business conditions.....	6,711	6,004	5,994	6,831	6,177	6,268	6,143	6,165	6,119
Could only find part-time work.....	1,978	2,380	2,360	1,826	2,388	2,489	2,326	2,101	2,246
Part time for noneconomic reasons <sup>3</sup> .....	17,235	16,847	16,635	18,993	18,379	18,140	17,929	17,870	18,157
<b>Nonagricultural industries</b>									
Part time for economic reasons <sup>2</sup> .....	8,977	8,734	8,610	8,664	8,946	9,049	8,661	8,472	8,386
Slack work or business conditions.....	6,606	5,924	5,907	6,713	6,099	6,213	6,041	6,074	6,018
Could only find part-time work.....	1,974	2,355	2,346	1,789	2,406	2,486	2,306	2,086	2,192
Part time for noneconomic reasons <sup>3</sup> .....	16,869	16,504	16,313	18,610	18,066	17,798	17,627	17,580	17,774

1 Refers to those who worked 1 to 34 hours during the survey reference week and excludes employed persons who were absent from their jobs for the entire week.

2 Refers to those who worked 1 to 34 hours during the reference week for an economic reason such as slack work or unfavorable business conditions, inability to find full-time work, or seasonal declines in demand.

3 Refers to persons who usually work part time for noneconomic reasons such as childcare problems, family or personal obligations, school or training, retirement or Social Security limits on earnings, and other reasons. This excludes persons who usually work full time but worked only 1 to 34 hours during the reference week for reasons such as vacations, holidays, illness, and bad weather.

- Data not available.

NOTE: Detail for the seasonally adjusted data shown in this table will not necessarily add to totals because of the independent seasonal adjustment of the various series. Updated population controls are introduced annually with the release of January data.

# HOUSEHOLD DATA

## Table A-9. Selected employment indicators

[Numbers in thousands]

Characteristic	Not seasonally adjusted			Seasonally adjusted					
	July 2009	June 2010	July 2010	July 2009	Mar. 2010	Apr. 2010	May 2010	June 2010	July 2010
<b>AGE AND SEX</b>									
Total, 16 years and over.....	141,055	139,882	140,134	139,817	138,905	139,455	139,420	139,119	138,960
16 to 19 years.....	5,962	4,833	5,290	4,877	4,496	4,544	4,438	4,286	4,315
16 to 17 years.....	2,136	1,554	1,698	1,695	1,402	1,453	1,429	1,380	1,345
18 to 19 years.....	3,826	3,279	3,591	3,186	3,093	3,073	2,992	2,899	2,984
20 years and over.....	135,093	135,049	134,844	134,941	134,409	134,911	134,982	134,833	134,646
20 to 24 years.....	13,342	13,087	13,275	12,758	12,601	12,509	12,818	12,698	12,670
25 years and over.....	121,751	121,962	121,569	122,332	121,731	122,352	122,203	122,263	122,109
25 to 54 years.....	94,873	94,137	93,780	95,202	94,053	94,487	94,227	94,270	94,062
25 to 34 years.....	30,128	30,232	30,405	30,061	30,080	30,208	30,162	30,157	30,278
35 to 44 years.....	31,421	30,714	30,470	31,566	30,730	30,874	30,844	30,772	30,604
45 to 54 years.....	33,324	33,192	32,906	33,575	33,244	33,405	33,221	33,341	33,180
55 years and over.....	26,878	27,825	27,789	27,130	27,678	27,865	27,976	27,993	28,047
Men, 16 years and over.....	74,861	74,148	74,749	73,613	73,092	73,548	73,639	73,375	73,454
16 to 19 years.....	2,950	2,375	2,680	2,357	2,179	2,189	2,162	2,059	2,122
16 to 17 years.....	1,092	748	905	816	689	698	679	631	667
18 to 19 years.....	1,857	1,627	1,776	1,547	1,492	1,500	1,479	1,434	1,472
20 years and over.....	71,911	71,773	72,068	71,255	70,913	71,358	71,477	71,316	71,332
20 to 24 years.....	6,930	6,747	6,857	6,517	6,410	6,357	6,565	6,473	6,434
25 years and over.....	64,980	65,026	65,211	64,791	64,503	64,945	64,922	64,862	64,937
25 to 54 years.....	50,771	50,425	50,624	50,576	50,003	50,363	50,317	50,264	50,340
25 to 34 years.....	16,399	16,358	16,616	16,238	16,261	16,370	16,272	16,274	16,403
35 to 44 years.....	16,923	16,664	16,702	16,882	16,593	16,661	16,686	16,649	16,644
45 to 54 years.....	17,448	17,404	17,306	17,455	17,149	17,332	17,359	17,341	17,293
55 years and over.....	14,210	14,600	14,588	14,215	14,500	14,582	14,605	14,598	14,597
Women, 16 years and over.....	66,194	65,735	65,385	66,205	65,813	65,907	65,781	65,743	65,506
16 to 19 years.....	3,012	2,458	2,609	2,519	2,317	2,355	2,275	2,227	2,192
16 to 17 years.....	1,043	806	794	879	713	755	750	749	678
18 to 19 years.....	1,969	1,652	1,816	1,639	1,601	1,573	1,513	1,466	1,512
20 years and over.....	63,182	63,277	62,775	63,685	63,495	63,552	63,505	63,516	63,314
20 to 24 years.....	6,412	6,340	6,418	6,240	6,191	6,152	6,253	6,225	6,236
25 years and over.....	56,770	56,937	56,358	57,541	57,229	57,407	57,282	57,401	57,172
25 to 54 years.....	44,102	43,712	43,157	44,627	44,050	44,124	43,910	44,006	43,722
25 to 34 years.....	13,728	13,874	13,789	13,823	13,819	13,837	13,890	13,882	13,875
35 to 44 years.....	14,498	14,049	13,768	14,684	14,137	14,213	14,158	14,123	13,960
45 to 54 years.....	15,876	15,788	15,600	16,120	16,094	16,073	15,862	16,000	15,887
55 years and over.....	12,668	13,225	13,201	12,915	13,179	13,283	13,371	13,396	13,450
<b>MARITAL STATUS</b>									
Married men, spouse present.....	43,900	43,397	43,367	43,955	43,083	43,205	43,322	43,333	43,369
Married women, spouse present.....	34,872	34,211	33,886	35,321	34,887	34,643	34,238	34,332	34,304
Women who maintain families.....	8,751	8,929	8,829	-	-	-	-	-	-
<b>FULL- OR PART-TIME STATUS</b>									
Full-time workers <sup>1</sup> .....	114,184	113,856	113,974	112,394	111,256	112,091	112,716	112,646	112,076
Part-time workers <sup>2</sup> .....	26,871	26,026	26,160	27,782	27,549	27,167	26,750	26,755	27,082
<b>MULTIPLE JOBHOLDERS</b>									
Total multiple jobholders.....	7,282	6,899	6,579	7,247	6,959	7,029	7,239	7,002	6,546
Percent of total employed.....	5.2	4.9	4.7	5.2	5.0	5.0	5.2	5.0	4.7

1 Employed full-time workers are persons who usually work 35 hours or more per week.

2 Employed part-time workers are persons who usually work less than 35 hours per week.

- Data not available.

NOTE: Detail for the seasonally adjusted data shown in this table will not necessarily add to totals because of the independent seasonal adjustment of the various series. Updated population controls are introduced annually with the release of January data.

# HOUSEHOLD DATA

## Table A-10. Selected unemployment indicators, seasonally adjusted

Characteristic	Number of unemployed persons (in thousands)			Unemployment rates					
	July 2009	June 2010	July 2010	July 2009	Mar. 2010	Apr. 2010	May 2010	June 2010	July 2010
<b>AGE AND SEX</b>									
Total, 16 years and over.....	14,534	14,623	14,599	9.4	9.7	9.9	9.7	9.5	9.5
16 to 19 years.....	1,581	1,486	1,528	24.5	26.1	25.4	26.4	25.7	26.1
16 to 17 years.....	596	568	586	26.0	29.6	29.2	29.8	29.2	30.4
18 to 19 years.....	970	915	924	23.3	24.4	24.1	24.6	24.0	23.6
20 years and over.....	12,953	13,137	13,072	8.8	9.1	9.2	9.0	8.9	8.8
20 to 24 years.....	2,301	2,300	2,345	15.3	15.8	17.2	14.7	15.3	15.6
25 years and over.....	10,807	10,896	10,784	8.1	8.3	8.3	8.4	8.2	8.1
25 to 54 years.....	8,786	8,802	8,684	8.4	8.8	8.7	8.7	8.5	8.5
25 to 34 years.....	3,360	3,464	3,336	10.1	10.0	10.2	10.5	10.3	9.9
35 to 44 years.....	2,731	2,621	2,659	8.0	8.6	8.1	8.1	7.8	8.0
45 to 54 years.....	2,696	2,717	2,689	7.4	7.8	7.7	7.7	7.5	7.5
55 years and over.....	1,963	2,073	2,066	6.7	6.9	7.0	7.1	6.9	6.9
Men, 16 years and over.....	8,642	8,642	8,507	10.5	10.7	10.8	10.5	10.5	10.4
16 to 19 years.....	914	849	869	27.9	29.7	29.3	28.1	29.2	29.0
16 to 17 years.....	325	308	321	28.5	30.9	32.2	32.4	32.8	32.5
18 to 19 years.....	580	540	535	27.3	29.1	27.8	26.3	27.4	26.7
20 years and over.....	7,728	7,793	7,638	9.8	10.0	10.1	9.8	9.9	9.7
20 to 24 years.....	1,349	1,404	1,438	17.1	18.4	19.9	16.1	17.8	18.3
25 years and over.....	6,487	6,432	6,270	9.1	9.0	8.9	9.1	9.0	8.8
25 to 54 years.....	5,347	5,241	5,047	9.6	9.5	9.3	9.5	9.4	9.1
25 to 34 years.....	2,038	2,110	1,957	11.2	11.2	10.9	11.4	11.5	10.7
35 to 44 years.....	1,658	1,499	1,505	8.9	8.8	8.5	8.6	8.3	8.3
45 to 54 years.....	1,651	1,631	1,584	8.6	8.6	8.5	8.4	8.6	8.4
55 years and over.....	1,140	1,191	1,223	7.4	7.4	7.5	7.6	7.5	7.7
Women, 16 years and over.....	5,892	5,981	6,092	8.2	8.6	8.8	8.8	8.3	8.5
16 to 19 years.....	667	637	659	20.9	22.4	21.4	24.6	22.3	23.1
16 to 17 years.....	271	260	266	23.6	28.3	26.2	27.4	25.8	28.2
18 to 19 years.....	389	374	389	19.2	19.5	20.2	22.9	20.3	20.5
20 years and over.....	5,225	5,343	5,433	7.6	8.0	8.2	8.1	7.8	7.9
20 to 24 years.....	952	896	907	13.2	13.0	14.3	13.2	12.6	12.7
25 years and over.....	4,320	4,464	4,514	7.0	7.5	7.6	7.6	7.2	7.3
25 to 54 years.....	3,439	3,561	3,637	7.2	7.9	7.9	7.9	7.5	7.7
25 to 34 years.....	1,322	1,353	1,379	8.7	8.6	9.4	9.5	8.9	9.0
35 to 44 years.....	1,072	1,122	1,153	6.8	8.4	7.6	7.4	7.4	7.6
45 to 54 years.....	1,045	1,086	1,105	6.1	6.9	6.9	6.8	6.4	6.5
55 years and over <sup>1</sup> .....	974	912	984	7.1	6.0	5.7	5.9	6.5	6.9
<b>MARITAL STATUS</b>									
Married men, spouse present.....	3,281	3,168	3,054	6.9	6.7	6.6	6.7	6.8	6.6
Married women, spouse present.....	2,041	2,133	2,103	5.5	6.0	6.3	6.3	5.9	5.8
Women who maintain families <sup>1</sup> .....	1,266	1,228	1,362	12.6	11.3	11.0	11.6	12.1	13.4
<b>FULL- OR PART-TIME STATUS</b>									
Full-time workers <sup>2</sup> .....	12,742	12,727	12,675	10.2	10.5	10.6	10.4	10.2	10.2
Part-time workers <sup>3</sup> .....	1,788	1,836	1,863	6.0	6.7	6.5	6.7	6.4	6.4

1 Not seasonally adjusted.

2 Full-time workers are unemployed persons who have expressed a desire to work full time (35 hours or more per week) or are on layoff from full-time jobs.

3 Part-time workers are unemployed persons who have expressed a desire to work part time (less than 35 hours per week) or are on layoff from part-time jobs.

NOTE: Detail for the seasonally adjusted data shown in this table will not necessarily add to totals because of the independent seasonal adjustment of the various series. Updated population controls are introduced annually with the release of January data.

**HOUSEHOLD DATA**

**Table A-11. Unemployed persons by reason for unemployment**

[Numbers in thousands]

Reason	Not seasonally adjusted			Seasonally adjusted					
	July 2009	June 2010	July 2010	July 2009	Mar. 2010	Apr. 2010	May 2010	June 2010	July 2010
<b>NUMBER OF UNEMPLOYED</b>									
Job losers and persons who completed temporary jobs.....	9,447	8,769	8,964	9,549	9,354	9,246	9,223	9,114	9,125
On temporary layoff.....	1,804	1,213	1,281	1,670	1,595	1,359	1,478	1,424	1,268
Not on temporary layoff.....	7,643	7,556	7,682	7,880	7,758	7,887	7,746	7,690	7,857
Permanent job losers.....	6,320	6,297	6,383	6,411	6,393	6,494	6,410	6,404	6,518
Persons who completed temporary jobs.....	1,323	1,258	1,300	1,343	1,366	1,393	1,336	1,287	1,339
Job leavers.....	917	847	935	882	894	938	969	900	900
Reentrants.....	3,464	3,628	3,591	3,306	3,544	3,739	3,453	3,308	3,393
New entrants.....	1,373	1,642	1,647	994	1,197	1,231	1,206	1,140	1,188
<b>PERCENT DISTRIBUTION</b>									
Job losers and persons who completed temporary jobs.....	62.1	58.9	59.2	64.8	62.4	61.0	62.1	63.0	62.5
On temporary layoff.....	11.9	8.1	8.5	11.3	10.6	9.0	9.9	9.8	8.7
Not on temporary layoff.....	50.3	50.8	50.8	53.5	51.8	52.0	52.2	53.2	53.8
Job leavers.....	6.0	5.7	6.2	6.0	6.0	6.2	6.5	6.2	6.2
Reentrants.....	22.8	24.4	23.7	22.4	23.6	24.7	23.3	22.9	23.2
New entrants.....	9.0	11.0	10.9	6.8	8.0	8.1	8.1	7.9	8.1
<b>UNEMPLOYED AS A PERCENT OF THE CIVILIAN LABOR FORCE</b>									
Job losers and persons who completed temporary jobs.....	6.0	5.7	5.8	6.2	6.1	6.0	6.0	5.9	5.9
Job leavers.....	0.6	0.5	0.6	0.6	0.6	0.6	0.6	0.6	0.6
Reentrants.....	2.2	2.3	2.3	2.1	2.3	2.4	2.2	2.2	2.2
New entrants.....	0.9	1.1	1.1	0.6	0.8	0.8	0.8	0.7	0.8

NOTE: Updated population controls are introduced annually with the release of January data.

## HOUSEHOLD DATA

**Table A-12. Unemployed persons by duration of unemployment**

[Numbers in thousands]

Duration	Not seasonally adjusted			Seasonally adjusted					
	July 2009	June 2010	July 2010	July 2009	Mar. 2010	Apr. 2010	May 2010	June 2010	July 2010
<b>NUMBER OF UNEMPLOYED</b>									
Less than 5 weeks.....	3,456	3,409	3,111	3,181	2,646	2,682	2,752	2,769	2,839
5 to 14 weeks.....	4,091	2,848	3,507	3,539	3,228	2,991	3,019	3,121	3,060
15 weeks and over.....	7,654	8,627	8,519	7,819	8,983	8,969	8,924	8,959	8,722
15 to 26 weeks.....	2,720	2,207	1,978	2,847	2,436	2,253	2,161	2,208	2,151
27 weeks and over.....	4,934	6,420	6,541	4,972	6,547	6,716	6,763	6,751	6,572
Average (mean) duration, in weeks.....	24.1	32.8	32.6	25.3	31.2	33.0	34.4	35.2	34.2
Median duration, in weeks.....	14.7	21.6	20.3	15.9	20.0	21.6	23.2	25.5	22.2
<b>PERCENT DISTRIBUTION</b>									
Less than 5 weeks.....	22.7	22.9	20.6	21.9	17.8	18.3	18.7	18.6	19.4
5 to 14 weeks.....	26.9	19.1	23.2	24.3	21.7	20.4	20.5	21.0	20.9
15 weeks and over.....	50.4	58.0	56.3	53.8	60.5	61.3	60.7	60.3	59.7
15 to 26 weeks.....	17.9	14.8	13.1	19.6	16.4	15.4	14.7	14.9	14.7
27 weeks and over.....	32.5	43.1	43.2	34.2	44.1	45.9	46.0	45.5	44.9

NOTE: Updated population controls are introduced annually with the release of January data.

**HOUSEHOLD DATA**

**Table A-13. Employed and unemployed persons by occupation, not seasonally adjusted**

[Numbers in thousands]

Occupation	Employed		Unemployed		Unemployment rates	
	July 2009	July 2010	July 2009	July 2010	July 2009	July 2010
Total, 16 years and over <sup>1</sup> .....	141,055	140,134	15,201	15,137	9.7	9.7
Management, professional, and related occupations.....	51,810	50,974	3,034	2,687	5.5	5.0
Management, business, and financial operations occupations.....	21,893	21,015	1,126	1,045	4.9	4.7
Professional and related occupations.....	29,917	29,959	1,909	1,642	6.0	5.2
Service occupations.....	25,831	25,314	2,756	2,903	9.6	10.3
Sales and office occupations.....	34,066	33,588	3,221	3,494	8.6	9.4
Sales and related occupations.....	16,016	15,400	1,450	1,723	8.3	10.1
Office and administrative support occupations.....	18,050	18,188	1,771	1,771	8.9	8.9
Natural resources, construction, and maintenance occupations.....	13,500	13,886	2,334	2,117	14.7	13.2
Farming, fishing, and forestry occupations.....	1,048	1,160	155	142	12.9	10.9
Construction and extraction occupations.....	7,492	7,775	1,686	1,470	18.4	15.9
Installation, maintenance, and repair occupations.....	4,961	4,950	493	506	9.0	9.3
Production, transportation, and material moving occupations.....	15,847	16,372	2,434	2,256	13.3	12.1
Production occupations.....	7,685	8,304	1,397	1,161	15.4	12.3
Transportation and material moving occupations.....	8,163	8,068	1,037	1,095	11.3	11.9

<sup>1</sup> Persons with no previous work experience and persons whose last job was in the U.S. Armed Forces are included in the unemployed total.

NOTE: Updated population controls are introduced annually with the release of January data.



**HOUSEHOLD DATA**

**Table A-14. Unemployed persons by industry and class of worker, not seasonally adjusted**

Industry and class of worker	Number of unemployed persons (in thousands)		Unemployment rates	
	July 2009	July 2010	July 2009	July 2010
Total, 16 years and over <sup>1</sup> .....	15,201	15,137	9.7	9.7
Nonagricultural private wage and salary workers.....	11,967	11,555	9.9	9.6
Mining, quarrying, and oil and gas extraction.....	95	79	12.6	10.1
Construction.....	1,687	1,528	18.2	17.3
Manufacturing.....	1,988	1,556	12.4	10.0
Durable goods.....	1,379	1,028	13.7	10.4
Nondurable goods.....	609	528	10.1	9.2
Wholesale and retail trade.....	1,854	2,023	9.0	9.8
Transportation and utilities.....	511	537	8.8	9.2
Information.....	373	344	11.5	10.6
Financial activities.....	570	582	6.1	6.4
Professional and business services.....	1,531	1,447	10.9	10.0
Education and health services.....	1,269	1,420	6.1	6.6
Leisure and hospitality.....	1,600	1,570	11.2	11.4
Other services.....	490	469	7.4	7.4
Agriculture and related private wage and salary workers.....	180	134	12.1	8.7
Government workers.....	1,129	1,187	5.1	5.5
Self-employed and unpaid family workers.....	552	614	5.2	5.8

<sup>1</sup> Persons with no previous work experience and persons whose last job was in the U.S. Armed Forces are included in the unemployed total.

NOTE: Updated population controls are introduced annually with the release of January data.

**HOUSEHOLD DATA**

**Table A-15. Alternative measures of labor underutilization**

[Percent]

Measure	Not seasonally adjusted			Seasonally adjusted					
	July 2009	June 2010	July 2010	July 2009	Mar. 2010	Apr. 2010	May 2010	June 2010	July 2010
U-1 Persons unemployed 15 weeks or longer, as a percent of the civilian labor force.....	4.9	5.6	5.5	5.1	5.8	5.8	5.8	5.8	5.7
U-2 Job losers and persons who completed temporary jobs, as a percent of the civilian labor force.....	6.0	5.7	5.8	6.2	6.1	6.0	6.0	5.9	5.9
U-3 Total unemployed, as a percent of the civilian labor force (official unemployment rate).....	9.7	9.6	9.7	9.4	9.7	9.9	9.7	9.5	9.5
U-4 Total unemployed plus discouraged workers, as a percent of the civilian labor force plus discouraged workers.....	10.2	10.3	10.4	9.9	10.3	10.6	10.3	10.2	10.2
U-5 Total unemployed, plus discouraged workers, plus all other persons marginally attached to the labor force, as a percent of the civilian labor force plus all persons marginally attached to the labor force.....	11.0	11.1	11.2	10.7	11.1	11.3	11.0	11.0	11.0
U-6 Total unemployed, plus all persons marginally attached to the labor force, plus total employed part time for economic reasons, as a percent of the civilian labor force plus all persons marginally attached to the labor force.....	16.8	16.7	16.8	16.4	16.9	17.1	16.6	16.5	16.5

NOTE: Persons marginally attached to the labor force are those who currently are neither working nor looking for work but indicate that they want and are available for a job and have looked for work sometime in the past 12 months. Discouraged workers, a subset of the marginally attached, have given a job-market related reason for not currently looking for work. Persons employed part time for economic reasons are those who want and are available for full-time work but have had to settle for a part-time schedule. Updated population controls are introduced annually with the release of January data.

**HOUSEHOLD DATA**

**Table A-16. Persons not in the labor force and multiple jobholders by sex, not seasonally adjusted**

[Numbers in thousands]

Category	Total		Men		Women	
	July 2009	July 2010	July 2009	July 2010	July 2009	July 2010
<b>NOT IN THE LABOR FORCE</b>						
Total not in the labor force.....	79,614	82,620	30,798	32,135	48,816	50,484
Persons who currently want a job.....	6,244	6,143	2,793	2,801	3,451	3,343
Marginally attached to the labor force <sup>1</sup> .....	2,282	2,622	1,138	1,385	1,144	1,237
Discouraged workers <sup>2</sup> .....	796	1,185	476	742	320	443
Other persons marginally attached to the labor force <sup>3</sup> .....	1,486	1,437	663	644	823	793
<b>MULTIPLE JOBHOLDERS</b>						
Total multiple jobholders <sup>4</sup> .....	7,282	6,579	3,529	3,206	3,753	3,373
Percent of total employed.....	5.2	4.7	4.7	4.3	5.7	5.2
Primary job full time, secondary job part time.....	3,807	3,424	1,972	1,821	1,835	1,603
Primary and secondary jobs both part time.....	1,796	1,679	621	557	1,175	1,122
Primary and secondary jobs both full time.....	332	283	194	199	138	84
Hours vary on primary or secondary job.....	1,292	1,144	707	604	585	540

1 Data refer to persons who want a job, have searched for work during the prior 12 months, and were available to take a job during the reference week, but had not looked for work in the past 4 weeks.

2 Includes those who did not actively look for work in the prior 4 weeks for reasons such as thinks no work available, could not find work, lacks schooling or training, employer thinks too young or old, and other types of discrimination.

3 Includes those who did not actively look for work in the prior 4 weeks for such reasons as school or family responsibilities, ill health, and transportation problems, as well as a number for whom reason for nonparticipation was not determined.

4 Includes a small number of persons who work part time on their primary job and full time on their secondary job(s), not shown separately.

NOTE: Updated population controls are introduced annually with the release of January data.

**ESTABLISHMENT DATA**

**Table B-1. Employees on nonfarm payrolls by industry sector and selected industry detail**

[In thousands]

Industry	Not seasonally adjusted				Seasonally adjusted				Change from: June 2010-July 2010 <sup>P</sup>
	July 2009	May 2010	June 2010 <sup>P</sup>	July 2010 <sup>P</sup>	July 2009	May 2010	June 2010 <sup>P</sup>	July 2010 <sup>P</sup>	
Total nonfarm.....	129,971	131,222	131,345	129,954	130,294	130,594	130,373	130,242	-131
Total private.....	108,697	107,846	108,640	108,731	107,778	107,635	107,666	107,737	71
Goods-producing.....	18,667	17,982	18,252	18,348	18,375	17,993	17,990	18,023	33
Mining and logging.....	697	718	731	747	687	720	725	733	8
Logging.....	49.9	47.0	48.0	49.4	49.1	48.7	48.2	48.4	0.2
Mining.....	647.2	670.7	683.1	697.3	637.4	671.1	676.7	684.1	7.4
Oil and gas extraction.....	162.3	165.0	166.0	166.0	161.0	165.3	164.0	164.3	0.3
Mining, except oil and gas <sup>1</sup> .....	216.6	216.0	219.9	222.7	208.6	213.3	213.5	214.0	0.5
Coal mining.....	80.6	82.6	82.8	83.3	80.9	82.8	83.0	83.3	0.3
Support activities for mining.....	268.3	289.7	297.2	308.6	267.8	292.5	299.2	305.8	6.6
Construction.....	6,225	5,646	5,784	5,857	5,949	5,605	5,584	5,573	-11
Construction of buildings.....	1,391.1	1,269.6	1,295.7	1,298.2	1,344.1	1,271.2	1,261.6	1,249.9	-11.7
Residential building.....	649.5	583.3	601.7	594.6	625.3	584.0	579.7	569.8	-9.9
Nonresidential building.....	741.6	686.3	694.0	703.6	718.8	687.2	681.9	680.1	-1.8
Heavy and civil engineering construction.....	892.9	826.3	854.3	865.9	834.6	802.8	805.5	804.8	-0.7
Specialty trade contractors.....	3,940.8	3,549.9	3,633.8	3,693.1	3,770.7	3,530.8	3,516.9	3,517.9	1.0
Residential specialty trade contractors.....	1,681.7	1,554.0	1,598.8	1,610.1	1,598.9	1,542.6	1,536.6	1,529.6	-7.0
Nonresidential specialty trade contractors.....	2,259.1	1,995.9	2,035.0	2,083.0	2,171.8	1,988.2	1,980.3	1,988.3	8.0
Manufacturing.....	11,745	11,618	11,737	11,744	11,739	11,668	11,681	11,717	36
Durable goods.....	7,177	7,133	7,202	7,206	7,197	7,159	7,174	7,210	36
Wood products.....	359.4	353.1	360.7	357.0	352.4	353.3	354.7	350.0	-4.7
Nonmetallic mineral products.....	403.6	388.5	393.9	395.2	393.5	386.0	384.6	384.6	0.0
Primary metals.....	350.6	367.7	371.9	371.6	353.8	370.0	372.5	373.2	0.7
Fabricated metal products.....	1,286.8	1,289.3	1,306.1	1,314.1	1,291.4	1,300.2	1,308.0	1,317.1	9.1
Machinery.....	1,005.2	988.5	998.8	1,001.7	1,008.6	996.3	1,000.1	1,003.2	3.1
Computer and electronic products <sup>1</sup> .....	1,125.7	1,093.2	1,100.0	1,104.0	1,122.8	1,096.0	1,097.9	1,099.0	1.1
Computer and peripheral equipment.....	163.1	158.8	158.6	160.3	163.2	158.9	159.0	159.7	0.7
Communication equipment.....	121.0	120.3	122.2	121.7	120.8	120.5	121.6	121.1	-0.5
Semiconductors and electronic components.....	369.3	363.3	367.1	368.6	369.2	365.1	366.6	367.8	1.2
Electronic instruments.....	422.4	404.5	405.9	407.4	419.9	404.7	404.5	404.5	0.0
Electrical equipment and appliances.....	372.1	368.4	370.9	373.2	370.9	369.7	369.7	371.3	1.6
Transportation equipment <sup>1</sup> .....	1,307.4	1,349.5	1,357.0	1,348.1	1,341.6	1,351.7	1,349.2	1,376.8	27.6
Motor vehicles and parts <sup>2</sup> .....	626.5	686.8	690.3	674.6	663.1	686.6	684.2	704.9	20.7
Furniture and related products.....	383.1	361.2	366.5	365.0	377.5	360.1	361.6	358.7	-2.9
Miscellaneous manufacturing.....	582.8	573.2	575.8	576.4	584.5	575.6	575.3	575.9	0.6
Nondurable goods.....	4,568	4,485	4,535	4,538	4,542	4,509	4,507	4,507	0
Food manufacturing.....	1,477.8	1,439.7	1,465.4	1,481.9	1,460.3	1,460.9	1,462.0	1,461.2	-0.8
Beverages and tobacco products.....	191.5	182.5	186.1	185.4	186.8	183.2	182.3	181.0	-1.3
Textile mills.....	121.7	123.9	124.4	124.3	122.8	123.5	123.9	124.9	1.0
Textile product mills.....	123.9	122.6	123.3	122.8	124.9	123.2	123.0	123.1	0.1
Apparel.....	168.0	164.5	167.6	165.0	168.2	164.9	164.7	165.3	0.6
Leather and allied products.....	28.8	28.5	29.0	28.0	29.0	28.3	28.7	28.1	-0.6
Paper and paper products.....	407.0	398.3	401.1	400.6	403.9	399.0	398.7	397.5	-1.2
Printing and related support activities.....	515.0	496.2	497.2	494.7	517.9	497.3	495.9	496.4	0.5
Petroleum and coal products.....	119.3	115.0	117.7	117.7	115.6	113.8	114.0	113.7	-0.3
Chemicals.....	801.3	781.3	784.0	782.0	797.3	782.1	779.1	777.9	-1.2
Plastics and rubber products.....	613.4	632.9	639.2	636.0	615.3	632.6	634.7	637.4	2.7
Private service-providing.....	90,030	89,864	90,388	90,383	89,403	89,642	89,676	89,714	38
Trade, transportation, and utilities.....	24,845	24,684	24,806	24,780	24,845	24,742	24,736	24,761	25
Wholesale trade.....	5,626.2	5,577.9	5,610.1	5,617.8	5,596.9	5,575.2	5,577.4	5,585.8	8.4
Durable goods.....	2,820.1	2,767.9	2,778.7	2,789.0	2,808.0	2,772.2	2,766.1	2,773.6	7.5
Nondurable goods.....	1,990.4	1,978.8	1,988.9	1,984.8	1,975.6	1,971.5	1,973.0	1,971.2	-1.8
Electronic markets and agents and brokers.....	815.7	831.2	842.5	844.0	813.3	831.5	838.3	841.0	2.7
Retail trade.....	14,489.9	14,386.3	14,438.7	14,443.1	14,492.3	14,447.5	14,427.0	14,433.7	6.7
Motor vehicle and parts dealers <sup>1</sup> .....	1,646.2	1,642.4	1,648.3	1,644.9	1,624.9	1,633.3	1,628.1	1,623.4	-4.7
Automobile dealers.....	1,018.0	1,015.9	1,021.9	1,019.3	1,008.9	1,014.5	1,013.8	1,010.6	-3.2
Furniture and home furnishings stores.....	439.9	433.4	435.5	435.2	445.9	441.2	441.8	441.2	-0.6

See footnotes at end of table.

**ESTABLISHMENT DATA**

**Table B-1. Employees on nonfarm payrolls by industry sector and selected industry detail**

— Continued

[In thousands]

Industry	Not seasonally adjusted				Seasonally adjusted				Change from: June 2010-July 2010 <sup>P</sup>
	July 2009	May 2010	June 2010 <sup>P</sup>	July 2010 <sup>P</sup>	July 2009	May 2010	June 2010 <sup>P</sup>	July 2010 <sup>P</sup>	
Retail trade - Continued									
Electronics and appliance stores.....	475.8	471.9	472.0	472.7	482.0	480.3	479.9	479.5	-0.4
Building material and garden supply stores...	1,187.4	1,224.9	1,200.9	1,171.8	1,155.0	1,163.3	1,146.9	1,143.8	-3.1
Food and beverage stores.....	2,850.7	2,805.3	2,823.3	2,821.8	2,834.4	2,807.2	2,801.7	2,802.7	1.0
Health and personal care stores.....	985.5	974.1	978.0	976.0	984.6	976.2	974.7	974.9	0.2
Gasoline stations.....	839.2	824.6	828.7	836.0	826.8	822.8	819.7	822.2	2.5
Clothing and clothing accessories stores.....	1,357.8	1,348.5	1,366.7	1,393.6	1,361.1	1,390.1	1,391.3	1,394.3	3.0
Sporting goods, hobby, book, and music stores.....	593.7	590.3	592.8	587.1	619.4	609.0	611.0	610.3	-0.7
General merchandise stores <sup>1</sup> .....	2,923.3	2,891.0	2,910.7	2,923.4	2,956.9	2,933.6	2,940.2	2,951.1	10.9
Department stores.....	1,435.5	1,442.7	1,451.9	1,459.5	1,467.8	1,482.0	1,486.1	1,490.5	4.4
Miscellaneous store retailers.....	783.4	771.0	770.9	771.9	780.3	769.5	767.9	768.5	0.6
Nonstore retailers.....	407.0	408.9	410.9	408.7	421.0	421.0	423.8	421.8	-2.0
Transportation and warehousing.....	4,165.3	4,162.3	4,198.0	4,164.1	4,195.9	4,162.3	4,177.3	4,189.5	12.2
Air transportation.....	460.3	453.5	455.8	455.1	457.0	452.9	452.9	451.2	-1.7
Rail transportation.....	217.5	216.2	218.7	219.7	217.0	216.4	219.0	218.7	-0.3
Water transportation.....	64.5	63.9	66.4	66.1	61.8	63.7	64.4	63.3	-1.1
Truck transportation.....	1,271.4	1,228.0	1,248.1	1,258.4	1,254.5	1,234.5	1,234.3	1,240.2	5.9
Transit and ground passenger transportation.....	359.2	434.0	419.4	371.7	418.7	414.6	419.7	430.3	10.6
Pipeline transportation.....	41.2	38.8	39.2	39.7	40.9	39.1	39.2	39.3	0.1
Scenic and sightseeing transportation.....	37.1	30.4	36.8	39.8	28.3	29.1	30.0	30.0	0.0
Support activities for transportation.....	539.8	541.8	549.6	552.3	538.7	545.2	548.4	550.7	2.3
Couriers and messengers.....	535.5	516.1	520.2	515.3	539.6	521.3	522.5	519.7	-2.8
Warehousing and storage.....	638.8	639.6	643.8	646.0	639.4	645.5	646.9	646.1	-0.8
Utilities.....	563.2	557.0	559.0	555.3	559.8	556.6	554.7	552.2	-2.5
Information.....	2,793	2,728	2,724	2,722	2,785	2,725	2,711	2,712	1
Publishing industries, except Internet.....	790.0	759.3	760.7	762.4	788.1	762.5	760.6	760.3	-0.3
Motion picture and sound recording industries.....	352.9	362.9	356.5	358.1	345.6	354.8	345.7	349.5	3.8
Broadcasting, except Internet.....	297.1	293.4	294.6	294.8	298.2	294.9	294.7	295.4	0.7
Telecommunications.....	969.1	925.5	925.7	919.0	968.9	927.5	925.2	919.4	-5.8
Data processing, hosting and related services.....	249.0	248.5	246.1	245.4	249.3	246.6	245.5	245.8	0.3
Other information services.....	134.6	138.5	140.3	141.9	134.4	138.9	139.6	141.6	2.0
Financial activities.....	7,786	7,590	7,637	7,633	7,719	7,602	7,590	7,573	-17
Finance and insurance.....	5,759.3	5,644.2	5,660.0	5,658.0	5,738.1	5,653.4	5,647.8	5,640.0	-7.8
Monetary authorities - central bank.....	21.1	21.3	21.2	21.4	20.9	21.2	21.2	21.3	0.1
Credit intermediation and related activities <sup>1</sup> .....	2,599.3	2,558.7	2,566.3	2,570.3	2,587.3	2,562.7	2,561.9	2,558.8	-3.1
Depository credit intermediation <sup>1</sup> .....	1,764.1	1,749.0	1,757.0	1,761.5	1,755.6	1,752.2	1,753.6	1,752.9	-0.7
Commercial banking.....	1,321.4	1,309.4	1,315.6	1,320.1	1,315.3	1,312.3	1,312.9	1,313.7	0.8
Securities, commodity contracts, investments.....	803.1	794.2	800.3	801.7	800.6	797.4	797.8	799.1	1.3
Insurance carriers and related activities.....	2,248.3	2,185.2	2,187.0	2,180.9	2,241.9	2,186.9	2,181.8	2,177.0	-4.8
Funds, trusts, and other financial vehicles.....	87.5	84.8	85.2	83.7	87.4	85.2	85.1	83.8	-1.3
Real estate and rental and leasing.....	2,026.4	1,945.5	1,977.0	1,975.0	1,980.8	1,948.4	1,941.9	1,932.9	-9.0
Real estate.....	1,431.4	1,384.7	1,399.4	1,396.6	1,404.7	1,387.8	1,380.8	1,374.5	-6.3
Rental and leasing services.....	568.5	536.6	553.4	554.2	550.1	536.3	537.1	534.5	-2.6
Lessors of nonfinancial intangible assets.....	26.5	24.2	24.2	24.2	26.0	24.3	24.0	23.9	-0.1
Professional and business services.....	16,518	16,632	16,780	16,784	16,405	16,664	16,687	16,674	-13
Professional and technical services <sup>1</sup> .....	7,439.4	7,321.6	7,357.2	7,378.7	7,464.9	7,405.5	7,400.8	7,405.6	4.8
Legal services.....	1,131.4	1,101.5	1,115.4	1,115.2	1,117.5	1,104.3	1,101.1	1,100.3	-0.8
Accounting and bookkeeping services.....	847.3	834.7	818.4	818.0	921.0	898.1	893.2	893.2	0.0
Architectural and engineering services.....	1,320.8	1,275.0	1,281.6	1,287.6	1,305.7	1,278.2	1,271.5	1,272.3	0.8
Computer systems design and related services.....	1,426.2	1,441.3	1,440.7	1,454.9	1,423.6	1,446.5	1,445.9	1,451.7	5.8
Management and technical consulting services.....	993.8	973.1	987.9	995.6	988.0	979.3	988.6	990.4	1.8
Management of companies and enterprises.....	1,857.7	1,821.2	1,842.0	1,835.5	1,849.0	1,825.5	1,828.0	1,824.2	-3.8
Administrative and waste services.....	7,221.3	7,488.8	7,580.6	7,570.2	7,091.3	7,432.7	7,458.2	7,444.4	-13.8

See footnotes at end of table.

**ESTABLISHMENT DATA**

**Table B-1. Employees on nonfarm payrolls by industry sector and selected industry detail**

— Continued

[In thousands]

Industry	Not seasonally adjusted				Seasonally adjusted				Change from: June 2010-July 2010 <sup>p</sup>
	July 2009	May 2010	June 2010 <sup>p</sup>	July 2010 <sup>p</sup>	July 2009	May 2010	June 2010 <sup>p</sup>	July 2010 <sup>p</sup>	
Administrative and waste services - Continued									
Administrative and support services <sup>1</sup> .....	6,864.6	7,135.1	7,221.5	7,204.6	6,741.0	7,078.9	7,103.4	7,087.1	-16.3
Employment services <sup>1</sup> .....	2,413.2	2,760.7	2,798.5	2,772.3	2,398.7	2,764.1	2,787.8	2,764.5	-23.3
Temporary help services .....	1,755.2	2,081.1	2,103.2	2,085.7	1,749.3	2,082.1	2,093.3	2,087.7	-5.6
Business support services .....	796.1	786.0	779.9	781.5	809.4	793.2	793.3	795.8	2.5
Services to buildings and dwellings .....	1,852.5	1,798.5	1,841.1	1,848.8	1,738.6	1,730.3	1,728.5	1,732.7	4.2
Waste management and remediation services .....	356.7	353.7	359.1	365.6	350.3	353.8	354.8	357.3	2.5
Education and health services .....	18,878	19,566	19,359	19,250	19,186	19,502	19,528	19,558	30
Educational services .....	2,794.0	3,183.7	2,960.0	2,855.4	3,085.8	3,138.9	3,144.4	3,146.5	2.1
Health care and social assistance .....	16,083.7	16,381.8	16,399.3	16,395.0	16,100.6	16,362.6	16,383.7	16,411.5	27.8
Health care <sup>3</sup> .....	13,580.5	13,715.1	13,768.8	13,814.4	13,540.8	13,731.6	13,745.6	13,772.2	26.6
Ambulatory health care services <sup>1</sup> .....	5,793.0	5,902.5	5,920.6	5,950.5	5,779.3	5,905.4	5,911.6	5,934.7	23.1
Offices of physicians .....	2,284.4	2,309.6	2,314.2	2,318.2	2,280.0	2,314.4	2,314.9	2,316.0	1.1
Outpatient care centers .....	543.8	550.1	552.4	554.0	543.0	550.5	551.7	552.8	1.1
Home health care services .....	1,027.3	1,066.3	1,067.3	1,076.5	1,025.7	1,064.5	1,065.2	1,074.4	9.2
Hospitals .....	4,692.7	4,697.7	4,718.9	4,726.2	4,675.2	4,708.9	4,711.9	4,709.6	-2.3
Nursing and residential care facilities <sup>1</sup> .....	3,094.8	3,114.9	3,129.3	3,137.7	3,086.3	3,117.3	3,122.1	3,127.9	5.8
Nursing care facilities .....	1,648.6	1,653.4	1,659.3	1,661.5	1,645.4	1,654.3	1,656.0	1,657.9	1.9
Social assistance <sup>1</sup> .....	2,503.2	2,666.7	2,630.5	2,580.6	2,559.8	2,631.0	2,638.1	2,639.3	1.2
Child day care services .....	788.6	889.0	854.2	800.5	849.4	863.9	866.2	863.6	-2.6
Leisure and hospitality .....	13,773	13,303	13,674	13,796	13,101	13,070	13,091	13,097	6
Arts, entertainment, and recreation .....	2,207.5	1,968.3	2,153.5	2,227.5	1,905.9	1,889.4	1,908.1	1,914.8	6.7
Performing arts and spectator sports .....	431.9	429.4	432.1	457.6	401.9	408.3	409.3	419.8	10.5
Museums, historical sites, zoos, and parks .....	144.3	134.1	142.3	145.8	129.8	128.9	130.0	130.4	0.4
Amusements, gambling, and recreation .....	1,631.3	1,404.8	1,579.1	1,624.1	1,374.2	1,352.2	1,368.8	1,364.6	-4.2
Accommodation and food services .....	11,565.3	11,334.5	11,520.7	11,568.3	11,195.4	11,180.1	11,182.8	11,182.0	-0.8
Accommodation .....	1,884.6	1,741.3	1,840.2	1,905.5	1,755.4	1,749.2	1,758.9	1,768.7	9.8
Food services and drinking places .....	9,680.7	9,593.2	9,680.5	9,662.8	9,440.0	9,430.9	9,423.9	9,413.3	-10.6
Other services .....	5,437	5,361	5,408	5,418	5,362	5,337	5,333	5,339	6
Repair and maintenance .....	1,157.6	1,159.7	1,157.3	1,158.5	1,149.1	1,150.2	1,145.3	1,147.6	2.3
Personal and laundry services .....	1,291.9	1,286.9	1,291.7	1,283.7	1,280.2	1,273.5	1,274.0	1,274.1	0.1
Membership associations and organizations .....	2,987.1	2,914.3	2,958.5	2,975.8	2,932.2	2,913.1	2,914.1	2,917.6	3.5
Government .....	21,274	23,376	22,705	21,223	22,516	22,959	22,707	22,505	-202
Federal .....	2,854.0	3,396.0	3,192.0	3,055.0	2,816.0	3,396.0	3,171.0	3,017.0	-154.0
Federal, except U.S. Postal Service .....	2,142.0	2,741.1	2,539.4	2,396.6	2,113.9	2,738.2	2,516.8	2,368.7	-148.1
U.S. Postal Service .....	711.8	654.6	652.5	658.2	701.7	657.9	654.2	648.6	-5.6
State government .....	4,850.0	5,208.0	4,934.0	4,815.0	5,154.0	5,157.0	5,144.0	5,134.0	-10.0
State government education .....	2,021.2	2,434.4	2,144.0	2,032.7	2,351.5	2,387.2	2,377.9	2,375.5	-2.4
State government, excluding education .....	2,828.5	2,773.4	2,790.3	2,782.3	2,802.0	2,769.3	2,765.8	2,758.2	-7.6
Local government .....	13,570.0	14,772.0	14,579.0	13,353.0	14,546.0	14,406.0	14,392.0	14,354.0	-38.0
Local government education .....	6,834.7	8,381.8	8,032.5	6,750.4	8,048.9	8,007.5	8,007.2	7,980.1	-27.1
Local government, excluding education .....	6,734.8	6,390.5	6,546.9	6,602.5	6,497.5	6,398.1	6,384.9	6,373.8	-11.1

1 Includes other industries, not shown separately.

2 Includes motor vehicles, motor vehicle bodies and trailers, and motor vehicle parts.

3 Includes ambulatory health care services, hospitals, and nursing and residential care facilities.

p Preliminary

**ESTABLISHMENT DATA**

**Table B-2. Average weekly hours and overtime of all employees on private nonfarm payrolls by industry sector, seasonally adjusted**

Industry	July 2009	May 2010	June 2010 <sup>p</sup>	July 2010 <sup>p</sup>
<b>AVERAGE WEEKLY HOURS</b>				
Total private.....	33.8	34.2	34.1	34.2
Goods-producing.....	38.5	39.6	39.3	39.4
Mining and logging.....	41.8	43.8	43.1	43.5
Construction.....	37.4	37.4	37.3	37.4
Manufacturing.....	38.8	40.5	40.0	40.1
Durable goods.....	39.0	40.7	40.3	40.4
Nondurable goods.....	38.7	40.0	39.6	39.5
Private service-providing.....	32.9	33.1	33.1	33.1
Trade, transportation, and utilities.....	34.1	34.2	34.2	34.3
Wholesale trade.....	37.8	38.2	38.2	38.2
Retail trade.....	31.3	31.2	31.2	31.3
Transportation and warehousing.....	38.2	38.5	38.3	38.4
Utilities.....	40.7	41.6	41.2	41.3
Information.....	36.4	36.8	36.8	36.8
Financial activities.....	36.5	37.0	37.1	37.1
Professional and business services.....	34.9	35.4	35.3	35.4
Education and health services.....	32.9	32.9	32.9	32.9
Leisure and hospitality.....	25.5	25.7	25.7	25.8
Other services.....	31.5	31.9	31.9	31.9
<b>AVERAGE OVERTIME HOURS</b>				
Manufacturing.....	2.2	3.0	2.9	2.9
Durable goods.....	2.0	3.0	2.9	2.9
Nondurable goods.....	2.6	3.1	3.0	3.0

p Preliminary

**ESTABLISHMENT DATA**

**Table B-3. Average hourly and weekly earnings of all employees on private nonfarm payrolls by industry sector, seasonally adjusted**

Industry	Average hourly earnings				Average weekly earnings			
	July 2009	May 2010	June 2010 <sup>p</sup>	July 2010 <sup>p</sup>	July 2009	May 2010	June 2010 <sup>p</sup>	July 2010 <sup>p</sup>
Total private.....	\$22.20	\$22.55	\$22.55	\$22.59	\$ 750.36	\$ 771.21	\$ 768.96	\$ 772.58
Goods-producing.....	23.79	24.02	23.97	24.02	915.92	951.19	942.02	946.39
Mining and logging.....	27.16	27.56	27.36	27.40	1,135.29	1,207.13	1,179.22	1,191.90
Construction.....	24.86	25.17	25.15	25.19	929.76	941.36	938.10	942.11
Manufacturing.....	23.06	23.27	23.21	23.27	894.73	942.44	928.40	933.13
Durable goods.....	24.58	24.74	24.68	24.75	958.62	1,006.92	994.60	999.90
Nondurable goods.....	20.63	20.89	20.84	20.86	798.38	835.60	825.26	823.97
Private service-providing.....	21.82	22.20	22.22	22.25	717.88	734.82	735.48	736.48
Trade, transportation, and utilities.....	19.33	19.77	19.74	19.76	659.15	676.13	675.11	677.77
Wholesale trade.....	25.50	26.22	26.20	26.28	963.90	1,001.60	1,000.84	1,003.90
Retail trade.....	15.41	15.63	15.59	15.60	482.33	487.66	486.41	488.28
Transportation and warehousing.....	20.36	20.93	20.97	20.94	777.75	805.81	803.15	804.10
Utilities.....	32.84	33.13	32.81	32.79	1,336.59	1,378.21	1,351.77	1,354.23
Information.....	29.46	30.33	30.42	30.25	1,072.34	1,116.14	1,119.46	1,113.20
Financial activities.....	26.44	27.12	27.12	27.17	965.06	1,003.44	1,006.15	1,008.01
Professional and business services.....	27.10	27.17	27.25	27.36	945.79	961.82	961.93	968.54
Education and health services.....	22.39	22.82	22.83	22.91	736.63	750.78	751.11	753.74
Leisure and hospitality.....	12.94	13.07	13.07	13.09	329.97	335.90	335.90	337.72
Other services.....	19.60	19.84	19.91	19.89	617.40	632.90	635.13	634.49

p Preliminary



**ESTABLISHMENT DATA**

**Table B-4. Indexes of aggregate weekly hours and payrolls for all employees on private nonfarm payrolls by industry sector, seasonally adjusted**

[2007=100]

Industry	Index of aggregate weekly hours <sup>1</sup>					Index of aggregate weekly payrolls <sup>2</sup>				
	July 2009	May 2010	June 2010 <sup>P</sup>	July 2010 <sup>P</sup>	Percent change from: June 2010-July 2010 <sup>P</sup>	July 2009	May 2010	June 2010 <sup>P</sup>	July 2010 <sup>P</sup>	Percent change from: June 2010 - July 2010 <sup>P</sup>
Total private.....	91.3	92.2	92.0	92.3	0.3	96.6	99.2	98.9	99.5	0.6
Goods-producing.....	80.6	81.2	80.5	80.9	0.5	86.7	88.1	87.3	87.8	0.6
Mining and logging.....	90.2	99.1	98.2	100.2	2.0	98.4	109.6	107.9	110.2	2.1
Construction.....	76.7	72.2	71.8	71.8	0.0	82.8	79.0	78.4	78.6	0.3
Manufacturing.....	81.9	85.0	84.1	84.5	0.5	87.9	92.0	90.7	91.5	0.9
Durable goods.....	79.0	82.0	81.4	82.0	0.7	86.3	90.1	89.2	90.1	1.0
Nondurable goods.....	87.7	90.0	89.1	88.9	-0.2	91.8	95.4	94.2	94.0	-0.2
Private service-providing.....	94.5	95.3	95.3	95.4	0.1	99.9	102.5	102.6	102.8	0.2
Trade, transportation, and utilities.....	92.1	92.0	91.9	92.3	0.4	95.8	97.9	97.7	98.2	0.5
Wholesale trade.....	92.3	92.9	93.0	93.1	0.1	98.2	101.7	101.6	102.1	0.5
Retail trade.....	92.1	91.5	91.4	91.7	0.3	93.8	94.6	94.2	94.6	0.4
Transportation and warehousing.....	91.7	91.7	91.6	92.1	0.5	94.8	97.4	97.4	97.8	0.4
Utilities.....	98.6	100.2	98.9	98.7	-0.2	106.9	109.6	107.2	106.9	-0.3
Information.....	92.6	91.6	91.1	91.1	0.0	97.1	98.9	98.7	98.2	-0.5
Financial activities.....	92.8	92.7	92.8	92.6	-0.2	95.8	98.1	98.2	98.2	0.0
Professional and business services.....	90.0	92.8	92.6	92.8	0.2	98.9	102.1	102.3	102.9	0.6
Education and health services.....	102.7	104.4	104.6	104.7	0.1	107.8	111.6	111.8	112.4	0.5
Leisure and hospitality.....	95.3	95.8	96.0	96.4	0.4	99.5	101.1	101.2	101.8	0.6
Other services.....	93.6	94.3	94.3	94.4	0.1	104.1	106.2	106.5	106.5	0.0

1 The indexes of aggregate weekly hours are calculated by dividing the current month's estimates of aggregate hours by the corresponding 2007 annual average aggregate hours. Aggregate hours estimates are the product of estimates of average weekly hours and employment.

2 The indexes of aggregate weekly payrolls are calculated by dividing the current month's estimates of aggregate weekly payrolls by the corresponding 2007 annual average aggregate weekly payrolls. Aggregate payrolls estimates are the product of estimates of average hourly earnings, average weekly hours, and employment.

p Preliminary

**ESTABLISHMENT DATA**

**Table B-5. Employment of women on nonfarm payrolls by industry sector, seasonally adjusted**

Industry	Women employees (in thousands)				Percent of all employees			
	July 2009	May 2010	June 2010 <sup>P</sup>	July 2010 <sup>P</sup>	July 2009	May 2010	June 2010 <sup>P</sup>	July 2010 <sup>P</sup>
Total nonfarm.....	65,032	64,975	64,839	64,758	49.9	49.8	49.7	49.7
Total private.....	52,148	51,934	51,915	51,914	48.4	48.3	48.2	48.2
Goods-producing.....	4,258	4,155	4,149	4,160	23.2	23.1	23.1	23.1
Mining and logging.....	98	100	101	100	14.3	13.9	13.9	13.6
Construction.....	795	739	737	736	13.4	13.2	13.2	13.2
Manufacturing.....	3,365	3,311	3,311	3,324	28.7	28.4	28.3	28.4
Durable goods.....	1,788	1,754	1,749	1,766	24.8	24.5	24.4	24.5
Nondurable goods.....	1,577	1,562	1,562	1,558	34.7	34.6	34.7	34.6
Private service-providing.....	47,890	47,779	47,766	47,754	53.6	53.3	53.3	53.2
Trade, transportation, and utilities.....	10,212	10,048	10,044	10,049	41.1	40.6	40.6	40.6
Wholesale trade.....	1,708.1	1,677.6	1,676.5	1,674.6	30.5	30.1	30.1	30.0
Retail trade.....	7,344.6	7,237.5	7,230.9	7,234.3	50.7	50.1	50.1	50.1
Transportation and warehousing.....	1,017.2	997.8	1,001.0	1,005.5	24.2	24.0	24.0	24.0
Utilities.....	141.9	135.4	135.1	134.1	25.3	24.3	24.4	24.3
Information.....	1,164	1,112	1,105	1,106	41.8	40.8	40.8	40.8
Financial activities.....	4,580	4,478	4,469	4,456	59.3	58.9	58.9	58.8
Professional and business services.....	7,400	7,416	7,422	7,399	45.1	44.5	44.5	44.4
Education and health services.....	14,851	15,056	15,065	15,084	77.4	77.2	77.1	77.1
Leisure and hospitality.....	6,863	6,862	6,848	6,853	52.4	52.5	52.3	52.3
Other services.....	2,820	2,807	2,813	2,807	52.6	52.6	52.7	52.6
Government.....	12,884	13,041	12,924	12,844	57.2	56.8	56.9	57.1

p Preliminary

**ESTABLISHMENT DATA**

**Table B-6. Employment of production and nonsupervisory employees on private nonfarm payrolls by industry sector, seasonally adjusted<sup>1</sup>**

[In thousands]

Industry	July 2009	May 2010	June 2010 <sup>p</sup>	July 2010 <sup>p</sup>
Total private.....	88,760	88,712	88,754	88,800
Goods-producing.....	13,226	12,951	12,955	12,967
Mining and logging.....	503	537	543	551
Construction.....	4,493	4,226	4,210	4,186
Manufacturing.....	8,230	8,188	8,202	8,230
Durable goods.....	4,920	4,901	4,919	4,949
Nondurable goods.....	3,310	3,287	3,283	3,281
Private service-providing.....	75,534	75,761	75,799	75,833
Trade, transportation, and utilities.....	21,056	20,968	20,976	20,997
Wholesale trade.....	4,511.4	4,482.3	4,484.8	4,483.0
Retail trade.....	12,440.7	12,428.9	12,424.7	12,438.5
Transportation and warehousing.....	3,655.2	3,613.2	3,625.8	3,637.5
Utilities.....	449.0	443.1	440.5	437.8
Information.....	2,226	2,183	2,178	2,177
Financial activities.....	5,969	5,873	5,853	5,832
Professional and business services.....	13,371	13,646	13,672	13,671
Education and health services.....	16,839	17,085	17,114	17,140
Leisure and hospitality.....	11,584	11,539	11,544	11,549
Other services.....	4,489	4,467	4,462	4,467

<sup>1</sup> Data relate to production employees in mining and logging and manufacturing, construction employees in construction, and nonsupervisory employees in the service-providing industries. These groups account for approximately four-fifths of the total employment on private nonfarm payrolls.

<sup>p</sup> Preliminary

**ESTABLISHMENT DATA**

**Table B-7. Average weekly hours and overtime of production and nonsupervisory employees on private nonfarm payrolls by industry sector, seasonally adjusted<sup>1</sup>**

Industry	July 2009	May 2010	June 2010 <sup>p</sup>	July 2010 <sup>p</sup>
<b>AVERAGE WEEKLY HOURS</b>				
Total private.....	33.1	33.5	33.4	33.5
Goods-producing.....	39.3	40.5	40.2	40.3
Mining and logging.....	42.9	45.4	44.6	44.7
Construction.....	37.8	38.1	38.2	38.1
Manufacturing.....	39.9	41.5	41.0	41.1
Durable goods.....	39.9	41.7	41.3	41.4
Nondurable goods.....	39.8	41.1	40.5	40.6
Private service-providing.....	32.0	32.3	32.2	32.3
Trade, transportation, and utilities.....	32.9	33.3	33.3	33.5
Wholesale trade.....	37.4	38.0	37.9	38.0
Retail trade.....	29.9	30.2	30.1	30.4
Transportation and warehousing.....	36.2	37.1	37.3	37.2
Utilities.....	41.9	42.2	42.3	42.4
Information.....	36.5	36.6	36.6	36.5
Financial activities.....	35.9	36.2	36.2	36.2
Professional and business services.....	34.6	35.1	35.0	35.1
Education and health services.....	32.2	32.2	32.2	32.1
Leisure and hospitality.....	24.7	24.8	24.7	24.9
Other services.....	30.4	30.9	30.8	30.9
<b>AVERAGE OVERTIME HOURS</b>				
Manufacturing.....	3.0	3.9	3.8	3.8
Durable goods.....	2.8	3.9	3.8	3.8
Nondurable goods.....	3.3	4.0	3.8	3.7

<sup>1</sup> Data relate to production employees in mining and logging and manufacturing, construction employees in construction, and nonsupervisory employees in the service-providing industries. These groups account for approximately four-fifths of the total employment on private nonfarm payrolls.

p Preliminary

**ESTABLISHMENT DATA**

**Table B-8. Average hourly and weekly earnings of production and nonsupervisory employees on private nonfarm payrolls by industry sector, seasonally adjusted<sup>1</sup>**

Industry	Average hourly earnings				Average weekly earnings			
	July 2009	May 2010	June 2010 <sup>p</sup>	July 2010 <sup>p</sup>	July 2009	May 2010	June 2010 <sup>p</sup>	July 2010 <sup>p</sup>
Total private.....	\$18.62	\$19.00	\$19.02	\$19.04	\$ 616.32	\$ 636.50	\$ 635.27	\$ 637.84
Goods-producing.....	19.92	20.21	20.21	20.24	782.86	818.51	812.44	815.67
Mining and logging.....	23.31	23.81	23.91	23.87	1,000.00	1,080.97	1,066.39	1,066.99
Construction.....	22.69	23.12	23.17	23.22	857.68	880.87	885.09	884.68
Manufacturing.....	18.26	18.56	18.53	18.57	728.57	770.24	759.73	763.23
Durable goods.....	19.40	19.73	19.69	19.73	774.06	822.74	813.20	816.82
Nondurable goods.....	16.56	16.80	16.76	16.79	659.09	690.48	678.78	681.67
Private service-providing.....	18.34	18.74	18.76	18.78	586.88	605.30	604.07	606.59
Trade, transportation, and utilities.....	16.44	16.87	16.86	16.85	540.88	561.77	561.44	564.48
Wholesale trade.....	20.86	21.49	21.50	21.54	780.16	816.62	814.85	818.52
Retail trade.....	12.96	13.22	13.24	13.24	387.50	399.24	398.52	402.50
Transportation and warehousing.....	18.75	19.31	19.18	19.17	678.75	716.40	715.41	713.12
Utilities.....	29.45	30.42	30.31	30.45	1,233.96	1,283.72	1,282.11	1,291.08
Information.....	25.48	25.77	25.68	25.83	930.02	943.18	939.89	942.80
Financial activities.....	20.79	21.36	21.37	21.40	746.36	773.23	773.59	774.68
Professional and business services.....	22.39	22.77	22.78	22.87	774.69	799.23	797.30	802.74
Education and health services.....	19.51	19.92	19.98	20.05	628.22	641.42	643.36	643.61
Leisure and hospitality.....	11.12	11.34	11.34	11.33	274.66	281.23	280.10	282.12
Other services.....	16.57	16.81	16.88	16.84	503.73	519.43	519.90	520.36

<sup>1</sup> Data relate to production employees in mining and logging and manufacturing, construction employees in construction, and nonsupervisory employees in the service-providing industries. These groups account for approximately four-fifths of the total employment on private nonfarm payrolls.

p Preliminary

**ESTABLISHMENT DATA**

**Table B-9. Indexes of aggregate weekly hours and payrolls for production and nonsupervisory employees on private nonfarm payrolls by industry sector, seasonally adjusted<sup>1</sup>**

[2002=100]

Industry	Index of aggregate weekly hours <sup>2</sup>					Index of aggregate weekly payrolls <sup>3</sup>				
	July 2009	May 2010	June 2010 <sup>p</sup>	July 2010 <sup>p</sup>	Percent change from: June 2010 - July 2010 <sup>p</sup>	July 2009	May 2010	June 2010 <sup>p</sup>	July 2010 <sup>p</sup>	Percent change from: June 2010 - July 2010 <sup>p</sup>
Total private.....	98.2	99.3	99.0	99.4	0.4	122.1	126.1	125.9	126.4	0.4
Goods-producing.....	79.4	80.2	79.6	79.9	0.4	96.9	99.2	98.5	99.0	0.5
Mining and logging.....	114.7	129.6	128.7	130.9	1.7	155.5	179.4	179.0	181.7	1.5
Construction.....	85.0	80.6	80.5	79.9	-0.7	104.2	100.6	100.7	100.1	-0.6
Manufacturing.....	75.4	78.0	77.2	77.6	0.5	90.0	94.7	93.5	94.3	0.9
Durable goods.....	73.7	76.8	76.3	77.0	0.9	89.3	94.6	93.8	94.8	1.1
Nondurable goods.....	77.6	79.6	78.3	78.5	0.3	90.8	94.5	92.8	93.1	0.3
Private service-providing.....	103.4	104.6	104.4	104.7	0.3	130.0	134.4	134.2	134.9	0.5
Trade, transportation, and utilities.....	96.6	97.3	97.4	98.1	0.7	113.3	117.1	117.1	117.9	0.7
Wholesale trade.....	99.4	100.3	100.1	100.3	0.2	122.1	127.0	126.8	127.3	0.4
Retail trade.....	94.2	95.0	94.7	95.7	1.1	104.6	107.7	107.4	108.6	1.1
Transportation and warehousing.....	99.6	100.9	101.8	101.9	0.1	118.5	123.6	123.9	123.9	0.0
Utilities.....	96.2	95.6	95.3	95.0	-0.3	118.3	121.4	120.6	120.7	0.1
Information.....	92.8	91.2	91.0	90.7	-0.3	117.0	116.4	115.7	116.0	0.3
Financial activities.....	102.5	101.7	101.4	101.0	-0.4	131.8	134.4	134.0	133.7	-0.2
Professional and business services.....	103.7	107.3	107.2	107.5	0.3	138.1	145.4	145.4	146.3	0.6
Education and health services.....	117.0	118.7	118.9	118.7	-0.2	150.0	155.4	156.1	156.4	0.2
Leisure and hospitality.....	104.9	104.9	104.5	105.4	0.9	132.4	135.1	134.6	135.6	0.7
Other services.....	95.7	96.8	96.4	96.8	0.4	115.6	118.6	118.6	118.8	0.2

1 Data relate to production employees in mining and logging and manufacturing, construction employees in construction, and nonsupervisory employees in the service-providing industries. These groups account for approximately four-fifths of the total employment on private nonfarm payrolls.

2 The indexes of aggregate weekly hours are calculated by dividing the current month's estimates of aggregate hours by the corresponding 2002 annual average aggregate hours. Aggregate hours estimates are the product of estimates of average weekly hours and employment.

3 The indexes of aggregate weekly payrolls are calculated by dividing the current month's estimates of aggregate weekly payrolls by the corresponding 2002 annual average aggregate weekly payrolls. Aggregate payrolls estimates are the product of estimates of average hourly earnings, average weekly hours, and employment.

p Preliminary