



**Transmission of material in this release is embargoed until 8:30 a.m. (EDT) Friday, October 6, 2017**

USDL-17-1347

Technical information:

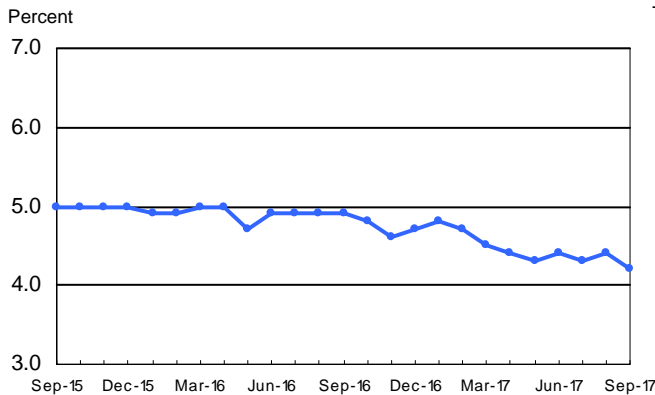
Household data: (202) 691-6378 • cpsinfo@bls.gov • www.bls.gov/cps  
 Establishment data: (202) 691-6555 • cesinfo@bls.gov • www.bls.gov/ces

Media contact: (202) 691-5902 • PressOffice@bls.gov

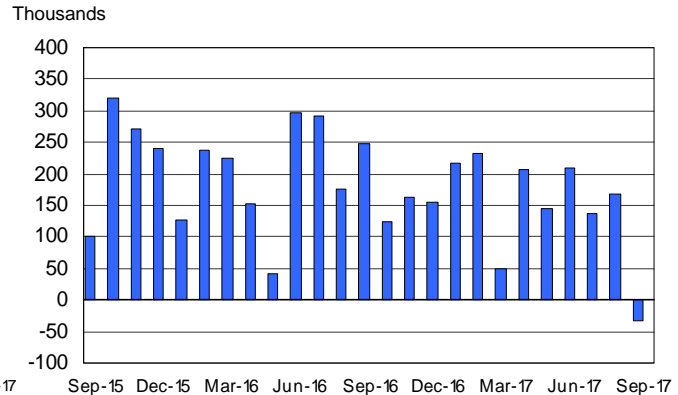
**THE EMPLOYMENT SITUATION — SEPTEMBER 2017**

The **unemployment rate** declined to 4.2 percent in September, and total **nonfarm payroll employment** changed little (-33,000), the U.S. Bureau of Labor Statistics reported today. A sharp employment decline in food services and drinking places and below-trend growth in some other industries likely reflected the impact of Hurricanes Irma and Harvey.

**Chart 1. Unemployment rate, seasonally adjusted, September 2015 – September 2017**



**Chart 2. Nonfarm payroll employment over-the-month change, seasonally adjusted, September 2015 – September 2017**



**Hurricanes Irma and Harvey**

Hurricane Irma made landfall in Florida on September 10—during the reference period for both the establishment and household surveys—causing severe damage in Florida and other parts of the Southeast. Hurricane Harvey made landfall in Texas on August 25—prior to the September reference periods—resulting in severe damage in Texas and other areas of the Gulf Coast.

Our analysis suggests that the net effect of these hurricanes was to reduce the estimate of total nonfarm payroll employment for September. There was no discernible effect on the national unemployment rate. No changes were made to either the establishment or household survey estimation procedures for the

September figures. For both surveys, collection rates generally were within normal ranges, both nationally and in the affected states. In the establishment survey, employees who are not paid for the pay period that includes the 12th of the month are not counted as employed. In the household survey, persons with a job are counted as employed even if they miss work for the entire survey reference week (the week including the 12th of the month), regardless of whether or not they are paid. For both surveys, national estimates do not include Puerto Rico or the U.S. Virgin Islands.

Further discussion of the impact of the recent hurricanes on the September estimates can be found in the Commissioner's Statement on the Employment Situation, at [www.bls.gov/news.release/jec.nr0.htm](http://www.bls.gov/news.release/jec.nr0.htm). For additional information on how severe weather affects employment data, see Question 8 in the Frequently Asked Questions section of this news release.

BLS will release the state estimates of employment and unemployment on October 20, 2017, at 10:00 a.m. (EDT).

### Household Survey Data

The **unemployment rate** decreased by 0.2 percentage point to 4.2 percent in September, and the number of **unemployed persons** declined by 331,000 to 6.8 million. Both measures were down over the year. (See table A-1.)

Among the **major worker groups**, the unemployment rates for adult men (3.9 percent) and Blacks (7.0 percent) declined in September. The jobless rates for adult women (3.9 percent), teenagers (12.9 percent), Whites (3.7 percent), Asians (3.7 percent), and Hispanics (5.1 percent) showed little change. (See tables A-1, A-2, and A-3.)

The number of **long-term unemployed** (those jobless for 27 weeks or more) was essentially unchanged in September at 1.7 million and accounted for 25.5 percent of the unemployed. (See table A-12.)

The **employment-population ratio** increased by 0.3 percentage point to 60.4 percent in September and has increased by 0.6 percentage point over the past 12 months. The **labor force participation rate**, at 63.1 percent, changed little over the month and has shown little movement over the year. (See table A-1.)

The number of persons employed **part time for economic reasons** (sometimes referred to as involuntary part-time workers) was little changed at 5.1 million in September. These individuals, who would have preferred full-time employment, were working part time because their hours had been cut back or because they were unable to find full-time jobs. (See table A-8.)

In September, 1.6 million persons were **marginally attached to the labor force**, down by 275,000 from a year earlier. (These data are not seasonally adjusted.) These individuals were not in the labor force, wanted and were available for work, and had looked for a job sometime in the prior 12 months. They were not counted as unemployed because they had not searched for work in the 4 weeks preceding the survey. (See table A-16.)

Among the marginally attached, there were 421,000 **discouraged workers** in September, down by 132,000 from a year earlier. Discouraged workers are persons not currently looking for work because

they believe no jobs are available for them. The remaining 1.1 million persons marginally attached to the labor force in September had not searched for work for reasons such as school attendance or family responsibilities. (See table A-16.)

### **Establishment Survey Data**

Total **nonfarm payroll employment** was little changed in September (-33,000), after adding an average of 172,000 jobs per month over the prior 12 months. In September, a steep employment decline in food services and drinking places and below-trend growth in some other industries likely reflected the impact of Hurricanes Irma and Harvey. Employment rose in health care and in transportation and warehousing. (See table B-1.)

Employment in **food services and drinking places** dropped sharply in September (-105,000), as many workers were off payrolls due to the recent hurricanes. Over the prior 12 months, food services and drinking places had added an average of 24,000 jobs per month.

In September, **health care** added 23,000 jobs, in line with its average monthly gain over the prior 12 months (+27,000). The employment increase in ambulatory health care services (+25,000) was partially offset by a decline in nursing care facilities (-9,000).

Employment in **transportation and warehousing** increased by 22,000 in September. Job gains occurred in warehousing and storage (+5,000), couriers and messengers (+4,000), and air transportation (+3,000).

Employment in **financial activities** changed little in September (+10,000). A job gain in insurance carriers and related activities (+11,000) largely reflected hurricane-recovery efforts. The gain was partly offset by losses in activities related to credit intermediation (-4,000) and in commercial banking (-3,000). Over the year, financial activities has added 149,000 jobs.

In September, employment in **professional and business services** was little changed (+13,000). Over the prior 12 months, job growth in the industry had averaged 50,000 per month.

**Manufacturing** employment was essentially unchanged in September (-1,000). From a recent employment trough in November 2016 through August of this year, the industry had added an average of 14,000 jobs per month.

Employment in other major industries, including **mining, construction, wholesale trade, retail trade, information, and government**, showed little change over the month.

The **average workweek for all employees** on private nonfarm payrolls was unchanged at 34.4 hours in September. In manufacturing, the workweek also was unchanged at 40.7 hours, and overtime held steady at 3.3 hours. The average workweek for **production and nonsupervisory employees** on private nonfarm payrolls was unchanged at 33.6 hours. (See tables B-2 and B-7.)

In September, **average hourly earnings for all employees** on private nonfarm payrolls rose by 12 cents to \$26.55. Over the past 12 months, average hourly earnings have increased by 74 cents, or 2.9 percent. In September, average hourly earnings of private-sector **production and nonsupervisory employees** increased by 9 cents to \$22.23. (See tables B-3 and B-8.)

The change in total nonfarm payroll employment for July was revised down from +189,000 to +138,000, and the change for August was revised up from +156,000 to +169,000. With these revisions, employment gains in July and August combined were 38,000 less than previously reported. (Monthly revisions result from additional reports received from businesses and government agencies since the last published estimates and from the recalculation of seasonal factors.) After revisions, job gains have averaged 91,000 over the past 3 months.

---

**The Employment Situation for October is scheduled to be released on Friday, November 3, 2017, at 8:30 a.m. (EDT).**

# HOUSEHOLD DATA

## Summary table A. Household data, seasonally adjusted

[Numbers in thousands]

Category	Sept. 2016	July 2017	Aug. 2017	Sept. 2017	Change from: Aug. 2017- Sept. 2017
<b>Employment status</b>					
Civilian noninstitutional population.....	254,091	255,151	255,357	255,562	205
Civilian labor force.....	159,830	160,494	160,571	161,146	575
Participation rate.....	62.9	62.9	62.9	63.1	0.2
Employed.....	151,926	153,513	153,439	154,345	906
Employment-population ratio.....	59.8	60.2	60.1	60.4	0.3
Unemployed.....	7,904	6,981	7,132	6,801	-331
Unemployment rate.....	4.9	4.3	4.4	4.2	-0.2
Not in labor force.....	94,261	94,657	94,785	94,417	-368
<b>Unemployment rates</b>					
Total, 16 years and over.....	4.9	4.3	4.4	4.2	-0.2
Adult men (20 years and over).....	4.6	4.0	4.1	3.9	-0.2
Adult women (20 years and over).....	4.4	4.0	4.0	3.9	-0.1
Teenagers (16 to 19 years).....	15.9	13.2	13.6	12.9	-0.7
White.....	4.4	3.8	3.9	3.7	-0.2
Black or African American.....	8.3	7.4	7.7	7.0	-0.7
Asian.....	3.9	3.8	4.0	3.7	-0.3
Hispanic or Latino ethnicity.....	6.4	5.1	5.2	5.1	-0.1
Total, 25 years and over.....	4.1	3.6	3.8	3.5	-0.3
Less than a high school diploma.....	8.5	6.9	6.0	6.5	0.5
High school graduates, no college.....	5.2	4.5	5.1	4.3	-0.8
Some college or associate degree.....	4.2	3.7	3.8	3.6	-0.2
Bachelor's degree and higher.....	2.5	2.4	2.4	2.3	-0.1
<b>Reason for unemployment</b>					
Job losers and persons who completed temporary jobs.....	3,930	3,378	3,523	3,359	-164
Job leavers.....	900	757	804	738	-66
Reentrants.....	2,327	2,083	2,132	2,079	-53
New entrants.....	802	703	656	669	13
<b>Duration of unemployment</b>					
Less than 5 weeks.....	2,584	2,133	2,222	2,226	4
5 to 14 weeks.....	2,220	2,017	2,015	1,874	-141
15 to 26 weeks.....	1,164	957	1,055	963	-92
27 weeks and over.....	1,963	1,785	1,740	1,733	-7
<b>Employed persons at work part time</b>					
Part time for economic reasons.....	5,874	5,282	5,255	5,122	-133
Slack work or business conditions.....	3,587	3,161	3,266	3,121	-145
Could only find part-time work.....	1,972	1,754	1,645	1,733	88
Part time for noneconomic reasons.....	20,742	21,260	21,447	21,011	-436
<b>Persons not in the labor force (not seasonally adjusted)</b>					
Marginally attached to the labor force.....	1,844	1,629	1,548	1,569	-
Discouraged workers.....	553	536	448	421	-

- Over-the-month changes are not displayed for not seasonally adjusted data.

NOTE: Persons whose ethnicity is identified as Hispanic or Latino may be of any race. Detail for the seasonally adjusted data shown in this table will not necessarily add to totals because of the independent seasonal adjustment of the various series. Updated population controls are introduced annually with the release of January data.

**ESTABLISHMENT DATA**  
**Summary table B. Establishment data, seasonally adjusted**

Category	Sept. 2016	July 2017	Aug. 2017 <sup>p</sup>	Sept. 2017 <sup>p</sup>
<b>EMPLOYMENT BY SELECTED INDUSTRY</b> (Over-the-month change, in thousands)				
Total nonfarm.....	249	138	169	-33
Total private.....	223	133	164	-40
Goods-producing.....	11	-20	66	9
Mining and logging.....	0	0	6	2
Construction.....	23	-9	19	8
Manufacturing.....	-12	-11	41	-1
Durable goods <sup>1</sup> .....	-10	-18	33	4
Motor vehicles and parts.....	-5.2	-27.1	23.9	-3.2
Nondurable goods.....	-2	7	8	-5
Private service-providing.....	212	153	98	-49
Wholesale trade.....	13.3	4.3	1.8	6.7
Retail trade.....	27.3	-10.8	-7.3	-2.9
Transportation and warehousing.....	-1.7	7.7	8.0	21.8
Utilities.....	0.5	-0.7	-0.3	0.0
Information.....	8	-3	-4	-9
Financial activities.....	9	11	8	10
Professional and business services <sup>1</sup> .....	83	43	43	13
Temporary help services.....	29.5	12.9	7.5	5.9
Education and health services <sup>1</sup> .....	48	51	45	27
Health care and social assistance.....	23.6	38.2	20.9	13.1
Leisure and hospitality.....	11	50	0	-111
Other services.....	13	1	4	-5
Government.....	26	5	5	7
<b>(3-month average change, in thousands)</b>				
Total nonfarm.....	239	164	172	91
Total private.....	205	164	168	86
<b>WOMEN AND PRODUCTION AND NONSUPERVISORY EMPLOYEES</b> AS A PERCENT OF ALL EMPLOYEES <sup>2</sup>				
Total nonfarm women employees.....	49.6	49.5	49.5	49.5
Total private women employees.....	48.2	48.1	48.1	48.1
Total private production and nonsupervisory employees.....	82.3	82.4	82.4	82.4
<b>HOURS AND EARNINGS</b> <b>ALL EMPLOYEES</b>				
<b>Total private</b>				
Average weekly hours.....	34.4	34.4	34.4	34.4
Average hourly earnings.....	\$25.81	\$26.39	\$26.43	\$26.55
Average weekly earnings.....	\$887.86	\$907.82	\$909.19	\$913.32
Index of aggregate weekly hours (2007=100) <sup>3</sup> .....	105.8	107.2	107.4	107.3
Over-the-month percent change.....	0.5	-0.2	0.2	-0.1
Index of aggregate weekly payrolls (2007=100) <sup>4</sup> .....	130.6	135.3	135.7	136.2
Over-the-month percent change.....	0.8	0.3	0.3	0.4
<b>DIFFUSION INDEX</b> (Over 1-month span) <sup>5</sup>				
Total private (261 industries).....	57.9	63.2	60.2	55.7
Manufacturing (78 industries).....	39.7	60.9	66.0	50.0

<sup>1</sup> Includes other industries, not shown separately.

<sup>2</sup> Data relate to production employees in mining and logging and manufacturing, construction employees in construction, and nonsupervisory employees in the service-providing industries.

<sup>3</sup> The indexes of aggregate weekly hours are calculated by dividing the current month's estimates of aggregate hours by the corresponding annual average aggregate hours.

<sup>4</sup> The indexes of aggregate weekly payrolls are calculated by dividing the current month's estimates of aggregate weekly payrolls by the corresponding annual average aggregate weekly payrolls.

<sup>5</sup> Figures are the percent of industries with employment increasing plus one-half of the industries with unchanged employment, where 50 percent indicates an equal balance between industries with increasing and decreasing employment.

p Preliminary

NOTE: Data have been revised to reflect March 2016 benchmark levels and updated seasonal adjustment factors.

# Frequently Asked Questions about Employment and Unemployment Estimates

## 1. Why are there two monthly measures of employment?

The household survey and establishment survey both produce sample-based estimates of employment, and both have strengths and limitations. The establishment survey employment series has a smaller margin of error on the measurement of month-to-month change than the household survey because of its much larger sample size. An over-the-month employment change of about 100,000 is statistically significant in the establishment survey, while the threshold for a statistically significant change in the household survey is about 500,000. However, the household survey has a more expansive scope than the establishment survey because it includes self-employed workers whose businesses are unincorporated, unpaid family workers, agricultural workers, and private household workers, who are excluded by the establishment survey. The household survey also provides estimates of employment for demographic groups. For more information on the differences between the two surveys, please visit [https://www.bls.gov/web/empsit/ces\\_cps\\_trends.htm](https://www.bls.gov/web/empsit/ces_cps_trends.htm).

## 2. Are undocumented immigrants counted in the surveys?

It is likely that both surveys include at least some undocumented immigrants. However, neither the establishment nor the household survey is designed to identify the legal status of workers. Therefore, it is not possible to determine how many are counted in either survey. The establishment survey does not collect data on the legal status of workers. The household survey does include questions which identify the foreign and native born, but it does not include questions about the legal status of the foreign born. Data on the foreign and native born are published each month in table A-7 of The Employment Situation news release.

## 3. Why does the establishment survey have revisions?

The establishment survey revises published estimates to improve its data series by incorporating additional information that was not available at the time of the initial publication of the estimates. The establishment survey revises its initial monthly estimates twice, in the immediately succeeding 2 months, to incorporate additional sample receipts from respondents in the survey and recalculated seasonal adjustment factors. For more information on the monthly revisions, please visit <https://www.bls.gov/ces/cesrevinfo.htm>.

On an annual basis, the establishment survey incorporates a benchmark revision that re-anchors estimates to nearly complete employment counts available from unemployment insurance tax records. The benchmark helps to control for sampling and modeling errors in the estimates. For more information on the annual benchmark revision, please visit <https://www.bls.gov/web/empsit/cesbmart.htm>.

## 4. Does the establishment survey sample include small firms?

Yes; about 40 percent of the establishment survey sample is comprised of business establishments with fewer than 20 employees. The establishment survey sample is designed to maximize the reliability of the statewide total nonfarm employment estimate; firms from all states, size classes, and industries are appropriately sampled to achieve that goal.

## **5. Does the establishment survey account for employment from new businesses?**

Yes; monthly establishment survey estimates include an adjustment to account for the net employment change generated by business births and deaths. The adjustment comes from an econometric model that forecasts the monthly net jobs impact of business births and deaths based on the actual past values of the net impact that can be observed with a lag from the Quarterly Census of Employment and Wages. The establishment survey uses modeling rather than sampling for this purpose because the survey is not immediately able to bring new businesses into the sample. There is an unavoidable lag between the birth of a new firm and its appearance on the sampling frame and availability for selection. BLS adds new businesses to the survey twice a year.

## **6. Is the count of unemployed persons limited to just those people receiving unemployment insurance benefits?**

No; the estimate of unemployment is based on a monthly sample survey of households. All persons who are without jobs and are actively seeking and available to work are included among the unemployed. (People on temporary layoff are included even if they do not actively seek work.) There is no requirement or question relating to unemployment insurance benefits in the monthly survey.

## **7. Does the official unemployment rate exclude people who want a job but are not currently looking for work?**

Yes; however, there are separate estimates of persons outside the labor force who want a job, including those who are not currently looking because they believe no jobs are available (discouraged workers). In addition, alternative measures of labor underutilization (some of which include discouraged workers and other groups not officially counted as unemployed) are published each month in table A-15 of The Employment Situation news release. For more information about these alternative measures, please visit <https://www.bls.gov/cps/lfcharacteristics.htm#altmeasures>.

## **8. How can unusually severe weather affect employment and hours estimates?**

In the establishment survey, the reference period is the pay period that includes the 12th of the month. Unusually severe weather is more likely to have an impact on average weekly hours than on employment. Average weekly hours are estimated for paid time during the pay period, including pay for holidays, sick leave, or other time off. The impact of severe weather on hours estimates typically, but not always, results in a reduction in average weekly hours. For example, some employees may be off work for part of the pay period and not receive pay for the time missed, while some workers, such as those dealing with cleanup or repair, may work extra hours.

Typically, it is not possible to precisely quantify the effect of extreme weather on payroll employment estimates. In order for severe weather conditions to reduce employment estimates, employees have to be off work without pay for the entire pay period. Employees who receive pay for any part of the pay period, even 1 hour, are counted in the payroll employment figures. For more information on how often employees are paid, please visit <https://www.bls.gov/opub/btn/volume-3/how-frequently-do-private-businesses-pay-workers.htm>.

In the household survey, the reference period is generally the calendar week that includes the 12th of the month. Persons who miss the entire week's work for weather-related events are counted as employed whether or not they are paid for the time off. The household survey collects data on the number of persons who had a job but were not at work due to bad weather. It also provides a measure of the number of persons who usually work full time but had reduced hours due to bad weather. Current and historical data are available on the household survey's most requested statistics page, please visit <https://data.bls.gov/cgi-bin/surveymost?ln>.



# Technical Note

This news release presents statistics from two major surveys, the Current Population Survey (CPS; household survey) and the Current Employment Statistics survey (CES; establishment survey). The household survey provides information on the labor force, employment, and unemployment that appears in the "A" tables, marked HOUSEHOLD DATA. It is a sample survey of about 60,000 eligible households conducted by the U.S. Census Bureau for the U.S. Bureau of Labor Statistics (BLS).

The establishment survey provides information on employment, hours, and earnings of employees on nonfarm payrolls; the data appear in the "B" tables, marked ESTABLISHMENT DATA. BLS collects these data each month from the payroll records of a sample of nonagricultural business establishments. Each month the CES program surveys about 147,000 businesses and government agencies, representing approximately 634,000 individual worksites, in order to provide detailed industry data on employment, hours, and earnings of workers on nonfarm payrolls. The active sample includes approximately one-third of all nonfarm payroll employees.

For both surveys, the data for a given month relate to a particular week or pay period. In the household survey, the reference period is generally the calendar week that contains the 12th day of the month. In the establishment survey, the reference period is the pay period including the 12th, which may or may not correspond directly to the calendar week.

## Coverage, definitions, and differences between surveys

**Household survey.** The sample is selected to reflect the entire civilian noninstitutional population. Based on responses to a series of questions on work and job search activities, each person 16 years and over in a sample household is classified as employed, unemployed, or not in the labor force.

People are classified as *employed* if they did any work at all as paid employees during the reference week; worked in their own business, profession, or on their own farm; or worked without pay at least 15 hours in a family business or farm. People are also counted as employed if they were temporarily absent from their jobs because of illness, bad weather, vacation, labor-management disputes, or personal reasons.

People are classified as *unemployed* if they meet all of the following criteria: they had no employment during the reference week; they were available for work at that time; and they made specific efforts to find employment sometime during the 4-week period ending with the reference week. Persons laid off from a job and expecting recall need not be looking for work to be counted as unemployed. The unemployment data derived from the household survey in no way depend upon the eligibility for or receipt of unemployment insurance benefits.

The *civilian labor force* is the sum of employed and unemployed persons. Those persons not classified as employed or unemployed are *not in the labor force*. The

*unemployment rate* is the number unemployed as a percent of the labor force. The *labor force participation rate* is the labor force as a percent of the population, and the *employment-population ratio* is the employed as a percent of the population. Additional information about the household survey can be found at <https://www.bls.gov/cps/documentation.htm>.

**Establishment survey.** The sample establishments are drawn from private nonfarm businesses such as factories, offices, and stores, as well as from federal, state, and local government entities. *Employees on nonfarm payrolls* are those who received pay for any part of the reference pay period, including persons on paid leave. Persons are counted in each job they hold. *Hours and earnings* data are produced for the private sector for all employees and for production and nonsupervisory employees. *Production and nonsupervisory* employees are defined as production and related employees in manufacturing and mining and logging, construction workers in construction, and non-supervisory employees in private service-providing industries.

Industries are classified on the basis of an establishment's principal activity in accordance with the 2012 version of the North American Industry Classification System. Additional information about the establishment survey can be found at <https://www.bls.gov/ces/>.

**Differences in employment estimates.** The numerous conceptual and methodological differences between the household and establishment surveys result in important distinctions in the employment estimates derived from the surveys. Among these are:

- The household survey includes agricultural workers, self-employed workers whose businesses are unincorporated, unpaid family workers, and private household workers among the employed. These groups are excluded from the establishment survey.
- The household survey includes people on unpaid leave among the employed. The establishment survey does not.
- The household survey is limited to workers 16 years of age and older. The establishment survey is not limited by age.
- The household survey has no duplication of individuals, because individuals are counted only once, even if they hold more than one job. In the establishment survey, employees working at more than one job and thus appearing on more than one payroll are counted separately for each appearance.

## Seasonal adjustment

Over the course of a year, the size of the nation's labor force and the levels of employment and unemployment undergo regularly occurring fluctuations. These events may result from seasonal changes in weather, major holidays, and the opening and closing of schools. The effect of such seasonal variation can be very large.

Because these seasonal events follow a more or less regular pattern each year, their influence on the level of a series can be tempered by adjusting for regular seasonal variation. These adjustments make nonseasonal developments, such as declines in employment or increases in the participation of women in the labor force, easier to spot. For example, in the household survey, the large number of youth entering the labor force each June is likely to obscure any other changes that have taken place relative to May, making it difficult to determine if the level of economic activity has risen or declined. Similarly, in the establishment survey, payroll employment in education declines by about 20 percent at the end of the spring term and later rises with the start of the fall term, obscuring the underlying employment trends in the industry. Because seasonal employment changes at the end and beginning of the school year can be estimated, the statistics can be adjusted to make underlying employment patterns more discernable. The seasonally adjusted figures provide a more useful tool with which to analyze changes in month-to-month economic activity.

Many seasonally adjusted series are independently adjusted in both the household and establishment surveys. However, the adjusted series for many major estimates, such as total payroll employment, employment in most major sectors, total employment, and unemployment are computed by aggregating independently adjusted component series. For example, total unemployment is derived by summing the adjusted series for four major age-sex components; this differs from the unemployment estimate that would be obtained by directly adjusting the total or by combining the duration, reasons, or more detailed age categories.

For both the household and establishment surveys, a concurrent seasonal adjustment methodology is used in which new seasonal factors are calculated each month using all relevant data, up to and including the data for the current month. In the household survey, new seasonal factors are used to adjust only the current month's data. In the establishment survey, however, new seasonal factors are used each month to adjust the three most recent monthly estimates. The prior 2 months are routinely revised to incorporate additional sample reports and recalculated seasonal adjustment factors. In both surveys, 5-year revisions to historical data are made once a year.

## Reliability of the estimates

Statistics based on the household and establishment surveys are subject to both sampling and nonsampling error. When a sample, rather than the entire population, is

surveyed, there is a chance that the sample estimates may differ from the true population values they represent. The component of this difference that occurs because samples differ by chance is known as *sampling error*, and its variability is measured by the standard error of the estimate. There is about a 90-percent chance, or level of confidence, that an estimate based on a sample will differ by no more than 1.6 standard errors from the true population value because of sampling error. BLS analyses are generally conducted at the 90-percent level of confidence.

For example, the confidence interval for the monthly change in total nonfarm employment from the establishment survey is on the order of plus or minus 120,000. Suppose the estimate of nonfarm employment increases by 50,000 from one month to the next. The 90-percent confidence interval on the monthly change would range from -70,000 to +170,000 (50,000 +/- 120,000). These figures do not mean that the sample results are off by these magnitudes, but rather that there is about a 90-percent chance that the true over-the-month change lies within this interval. Since this range includes values of less than zero, we could not say with confidence that nonfarm employment had, in fact, increased that month. If, however, the reported nonfarm employment rise was 250,000, then all of the values within the 90-percent confidence interval would be greater than zero. In this case, it is likely (at least a 90-percent chance) that nonfarm employment had, in fact, risen that month. At an unemployment rate of around 6.0 percent, the 90-percent confidence interval for the monthly change in unemployment as measured by the household survey is about +/- 300,000, and for the monthly change in the unemployment rate it is about +/- 0.2 percentage point.

In general, estimates involving many individuals or establishments have lower standard errors (relative to the size of the estimate) than estimates which are based on a small number of observations. The precision of estimates also is improved when the data are cumulated over time, such as for quarterly and annual averages.

The household and establishment surveys are also affected by *nonsampling error*, which can occur for many reasons, including the failure to sample a segment of the population, inability to obtain information for all respondents in the sample, inability or unwillingness of respondents to provide correct information on a timely basis, mistakes made by respondents, and errors made in the collection or processing of the data.

For example, in the establishment survey, estimates for the most recent 2 months are based on incomplete returns; for this reason, these estimates are labeled preliminary in the tables. It is only after two successive revisions to a monthly estimate, when nearly all sample reports have been received, that the estimate is considered final.

Another major source of nonsampling error in the establishment survey is the inability to capture, on a timely basis, employment generated by new firms. To correct for this systematic underestimation of employment growth, an estimation procedure with two components is used to account for business births. The first component excludes employment losses from business deaths from sample-based

estimation in order to offset the missing employment gains from business births. This is incorporated into the sample-based estimation procedure by simply not reflecting sample units going out of business, but imputing to them the same employment trend as the other firms in the sample. This procedure accounts for most of the net birth/death employment.

The second component is an ARIMA time series model designed to estimate the residual net birth/death employment not accounted for by the imputation. The historical time series used to create and test the ARIMA model was derived from the unemployment insurance universe micro-level database, and reflects the actual residual net of births and deaths over the past 5 years.

The sample-based estimates from the establishment survey are adjusted once a year (on a lagged basis) to

universe counts of payroll employment obtained from administrative records of the unemployment insurance program. The difference between the March sample-based employment estimates and the March universe counts is known as a benchmark revision, and serves as a rough proxy for total survey error. The new benchmarks also incorporate changes in the classification of industries. Over the past decade, absolute benchmark revisions for total nonfarm employment have averaged 0.3 percent, with a range from -0.7 percent to 0.6 percent.

#### **Other information**

Information in this release will be made available to sensory impaired individuals upon request. Voice phone: (202) 691-5200; Federal Relay Service: (800) 877-8339.

# HOUSEHOLD DATA

## Table A-1. Employment status of the civilian population by sex and age

[Numbers in thousands]

Employment status, sex, and age	Not seasonally adjusted			Seasonally adjusted <sup>1</sup>					
	Sept. 2016	Aug. 2017	Sept. 2017	Sept. 2016	May 2017	June 2017	July 2017	Aug. 2017	Sept. 2017
<b>TOTAL</b>									
Civilian noninstitutional population.....	254,091	255,357	255,562	254,091	254,767	254,957	255,151	255,357	255,562
Civilian labor force.....	159,636	160,863	161,049	159,830	159,784	160,145	160,494	160,571	161,146
Participation rate.....	62.8	63.0	63.0	62.9	62.7	62.8	62.9	62.9	63.1
Employed.....	151,977	153,576	154,494	151,926	152,923	153,168	153,513	153,439	154,345
Employment-population ratio.....	59.8	60.1	60.5	59.8	60.0	60.1	60.2	60.1	60.4
Unemployed.....	7,658	7,287	6,556	7,904	6,861	6,977	6,981	7,132	6,801
Unemployment rate.....	4.8	4.5	4.1	4.9	4.3	4.4	4.3	4.4	4.2
Not in labor force.....	94,456	94,494	94,513	94,261	94,983	94,813	94,657	94,785	94,417
Persons who currently want a job.....	5,753	5,852	5,415	6,082	5,561	5,431	5,420	5,844	5,628
<b>Men, 16 years and over</b>									
Civilian noninstitutional population.....	122,775	123,413	123,516	122,775	123,120	123,215	123,311	123,413	123,516
Civilian labor force.....	84,996	85,633	85,516	85,042	84,896	84,992	84,989	85,137	85,520
Participation rate.....	69.2	69.4	69.2	69.3	69.0	69.0	68.9	69.0	69.2
Employed.....	80,952	81,975	82,119	80,735	81,290	81,290	81,273	81,310	81,883
Employment-population ratio.....	65.9	66.4	66.5	65.8	66.0	66.0	65.9	65.9	66.3
Unemployed.....	4,043	3,659	3,397	4,307	3,606	3,702	3,715	3,826	3,636
Unemployment rate.....	4.8	4.3	4.0	5.1	4.2	4.4	4.4	4.5	4.3
Not in labor force.....	37,779	37,780	37,999	37,732	38,224	38,223	38,323	38,277	37,996
<b>Men, 20 years and over</b>									
Civilian noninstitutional population.....	114,289	114,918	115,020	114,289	114,627	114,721	114,817	114,918	115,020
Civilian labor force.....	82,020	82,474	82,633	81,988	81,942	81,975	82,108	82,252	82,569
Participation rate.....	71.8	71.8	71.8	71.7	71.5	71.5	71.5	71.6	71.8
Employed.....	78,459	79,255	79,662	78,191	78,801	78,707	78,830	78,847	79,377
Employment-population ratio.....	68.6	69.0	69.3	68.4	68.7	68.6	68.7	68.6	69.0
Unemployed.....	3,561	3,219	2,972	3,798	3,141	3,268	3,278	3,405	3,192
Unemployment rate.....	4.3	3.9	3.6	4.6	3.8	4.0	4.0	4.1	3.9
Not in labor force.....	32,269	32,445	32,387	32,301	32,685	32,746	32,709	32,666	32,451
<b>Women, 16 years and over</b>									
Civilian noninstitutional population.....	131,317	131,943	132,047	131,317	131,647	131,742	131,840	131,943	132,047
Civilian labor force.....	74,640	75,230	75,533	74,788	74,887	75,153	75,505	75,435	75,626
Participation rate.....	56.8	57.0	57.2	57.0	56.9	57.0	57.3	57.2	57.3
Employed.....	71,025	71,601	72,375	71,191	71,633	71,878	72,240	72,129	72,461
Employment-population ratio.....	54.1	54.3	54.8	54.2	54.4	54.6	54.8	54.7	54.9
Unemployed.....	3,615	3,628	3,158	3,597	3,255	3,274	3,265	3,306	3,165
Unemployment rate.....	4.8	4.8	4.2	4.8	4.3	4.4	4.3	4.4	4.2
Not in labor force.....	56,677	56,713	56,514	56,529	56,759	56,590	56,334	56,509	56,421
<b>Women, 20 years and over</b>									
Civilian noninstitutional population.....	123,066	123,679	123,781	123,066	123,386	123,480	123,577	123,679	123,781
Civilian labor force.....	71,902	72,045	72,670	71,856	71,988	72,149	72,526	72,425	72,569
Participation rate.....	58.4	58.3	58.7	58.4	58.3	58.4	58.7	58.6	58.6
Employed.....	68,709	68,835	69,820	68,702	69,105	69,241	69,599	69,500	69,737
Employment-population ratio.....	55.8	55.7	56.4	55.8	56.0	56.1	56.3	56.2	56.3
Unemployed.....	3,193	3,210	2,849	3,154	2,883	2,907	2,927	2,925	2,831
Unemployment rate.....	4.4	4.5	3.9	4.4	4.0	4.0	4.0	4.0	3.9
Not in labor force.....	51,164	51,634	51,111	51,210	51,398	51,332	51,051	51,254	51,212
<b>Both sexes, 16 to 19 years</b>									
Civilian noninstitutional population.....	16,737	16,759	16,761	16,737	16,754	16,756	16,757	16,759	16,761
Civilian labor force.....	5,714	6,344	5,746	5,987	5,854	6,021	5,860	5,895	6,008
Participation rate.....	34.1	37.9	34.3	35.8	34.9	35.9	35.0	35.2	35.8
Employed.....	4,810	5,487	5,011	5,034	5,017	5,220	5,084	5,092	5,230
Employment-population ratio.....	28.7	32.7	29.9	30.1	29.9	31.2	30.3	30.4	31.2
Unemployed.....	904	858	735	953	837	801	775	803	778
Unemployment rate.....	15.8	13.5	12.8	15.9	14.3	13.3	13.2	13.6	12.9
Not in labor force.....	11,023	10,415	11,015	10,750	10,901	10,735	10,898	10,865	10,753

<sup>1</sup> The population figures are not adjusted for seasonal variation; therefore, identical numbers appear in the unadjusted and seasonally adjusted columns.

NOTE: Updated population controls are introduced annually with the release of January data.

**HOUSEHOLD DATA**

**Table A-2. Employment status of the civilian population by race, sex, and age**

[Numbers in thousands]

Employment status, race, sex, and age	Not seasonally adjusted			Seasonally adjusted <sup>1</sup>					
	Sept. 2016	Aug. 2017	Sept. 2017	Sept. 2016	May 2017	June 2017	July 2017	Aug. 2017	Sept. 2017
<b>WHITE</b>									
Civilian noninstitutional population.....	198,509	199,082	199,191	198,509	198,775	198,872	198,974	199,082	199,191
Civilian labor force.....	124,689	125,280	125,320	124,826	124,481	124,890	124,968	125,037	125,393
Participation rate.....	62.8	62.9	62.9	62.9	62.6	62.8	62.8	62.8	63.0
Employed.....	119,465	120,365	120,857	119,391	119,896	120,091	120,262	120,209	120,753
Employment-population ratio.....	60.2	60.5	60.7	60.1	60.3	60.4	60.4	60.4	60.6
Unemployed.....	5,223	4,915	4,463	5,435	4,585	4,799	4,706	4,828	4,641
Unemployment rate.....	4.2	3.9	3.6	4.4	3.7	3.8	3.8	3.9	3.7
Not in labor force.....	73,820	73,802	73,871	73,683	74,294	73,982	74,006	74,046	73,797
<b>Men, 20 years and over</b>									
Civilian labor force.....	65,326	65,455	65,412	65,283	65,217	65,225	65,141	65,262	65,339
Participation rate.....	72.0	71.9	71.8	72.0	71.8	71.8	71.6	71.7	71.7
Employed.....	62,834	63,281	63,378	62,589	62,999	62,886	62,904	62,961	63,143
Employment-population ratio.....	69.3	69.5	69.6	69.0	69.3	69.2	69.2	69.2	69.3
Unemployed.....	2,491	2,174	2,034	2,693	2,218	2,339	2,238	2,301	2,196
Unemployment rate.....	3.8	3.3	3.1	4.1	3.4	3.6	3.4	3.5	3.4
<b>Women, 20 years and over</b>									
Civilian labor force.....	54,883	54,980	55,501	54,871	54,785	55,015	55,393	55,282	55,476
Participation rate.....	57.5	57.4	57.9	57.5	57.3	57.5	57.9	57.7	57.9
Employed.....	52,789	52,797	53,577	52,799	52,927	53,100	53,420	53,286	53,551
Employment-population ratio.....	55.3	55.2	55.9	55.3	55.4	55.5	55.8	55.7	55.9
Unemployed.....	2,094	2,183	1,924	2,072	1,858	1,915	1,973	1,996	1,925
Unemployment rate.....	3.8	4.0	3.5	3.8	3.4	3.5	3.6	3.6	3.5
<b>Both sexes, 16 to 19 years</b>									
Civilian labor force.....	4,480	4,845	4,407	4,672	4,479	4,650	4,433	4,492	4,578
Participation rate.....	36.3	39.3	35.7	37.8	36.3	37.7	35.9	36.4	37.1
Employed.....	3,842	4,288	3,902	4,002	3,970	4,105	3,938	3,962	4,058
Employment-population ratio.....	31.1	34.7	31.6	32.4	32.2	33.3	31.9	32.1	32.9
Unemployed.....	638	557	505	670	508	545	495	530	520
Unemployment rate.....	14.2	11.5	11.5	14.3	11.4	11.7	11.2	11.8	11.4
<b>BLACK OR AFRICAN AMERICAN</b>									
Civilian noninstitutional population.....	31,987	32,296	32,333	31,987	32,193	32,226	32,260	32,296	32,333
Civilian labor force.....	19,789	20,142	20,227	19,826	20,075	20,002	20,096	20,092	20,232
Participation rate.....	61.9	62.4	62.6	62.0	62.4	62.1	62.3	62.2	62.6
Employed.....	18,168	18,542	18,842	18,181	18,560	18,576	18,617	18,544	18,819
Employment-population ratio.....	56.8	57.4	58.3	56.8	57.7	57.6	57.7	57.4	58.2
Unemployed.....	1,620	1,600	1,385	1,646	1,515	1,426	1,479	1,548	1,413
Unemployment rate.....	8.2	7.9	6.8	8.3	7.5	7.1	7.4	7.7	7.0
Not in labor force.....	12,199	12,154	12,106	12,161	12,118	12,224	12,163	12,204	12,101
<b>Men, 20 years and over</b>									
Civilian labor force.....	9,021	9,214	9,315	9,000	9,063	9,084	9,163	9,205	9,279
Participation rate.....	67.7	68.3	69.0	67.5	67.5	67.5	68.0	68.2	68.7
Employed.....	8,306	8,521	8,708	8,264	8,475	8,510	8,522	8,487	8,654
Employment-population ratio.....	62.3	63.2	64.5	62.0	63.1	63.3	63.3	62.9	64.1
Unemployed.....	716	693	606	736	588	574	641	718	625
Unemployment rate.....	7.9	7.5	6.5	8.2	6.5	6.3	7.0	7.8	6.7
<b>Women, 20 years and over</b>									
Civilian labor force.....	10,069	10,108	10,153	10,074	10,224	10,143	10,170	10,127	10,149
Participation rate.....	62.4	62.0	62.2	62.4	62.9	62.4	62.5	62.1	62.2
Employed.....	9,361	9,405	9,549	9,370	9,513	9,455	9,511	9,474	9,541
Employment-population ratio.....	58.0	57.7	58.5	58.0	58.6	58.1	58.4	58.1	58.5
Unemployed.....	708	703	604	703	712	689	660	653	608
Unemployment rate.....	7.0	7.0	5.9	7.0	7.0	6.8	6.5	6.4	6.0
<b>Both sexes, 16 to 19 years</b>									
Civilian labor force.....	698	820	759	752	787	774	763	760	804
Participation rate.....	27.7	32.7	30.2	29.9	31.3	30.8	30.4	30.3	32.0
Employed.....	502	617	584	546	572	611	585	583	624
Employment-population ratio.....	20.0	24.6	23.3	21.7	22.8	24.3	23.3	23.2	24.9
Unemployed.....	196	204	174	206	215	163	178	178	180
Unemployment rate.....	28.1	24.8	23.0	27.4	27.3	21.1	23.3	23.4	22.4

See footnotes at end of table.

## HOUSEHOLD DATA

### Table A-2. Employment status of the civilian population by race, sex, and age — Continued

[Numbers in thousands]

Employment status, race, sex, and age	Not seasonally adjusted			Seasonally adjusted <sup>1</sup>					
	Sept. 2016	Aug. 2017	Sept. 2017	Sept. 2016	May 2017	June 2017	July 2017	Aug. 2017	Sept. 2017
<b>ASIAN</b>									
Civilian noninstitutional population.....	15,310	15,341	15,483	15,310	15,433	15,367	15,290	15,341	15,483
Civilian labor force.....	9,717	9,894	9,973	9,760	9,826	9,792	9,789	9,886	10,005
Participation rate.....	63.5	64.5	64.4	63.7	63.7	63.7	64.0	64.4	64.6
Employed.....	9,350	9,498	9,619	9,381	9,471	9,443	9,418	9,489	9,638
Employment-population ratio.....	61.1	61.9	62.1	61.3	61.4	61.4	61.6	61.9	62.3
Unemployed.....	367	396	353	379	356	350	370	397	366
Unemployment rate.....	3.8	4.0	3.5	3.9	3.6	3.6	3.8	4.0	3.7
Not in labor force.....	5,593	5,446	5,510	5,550	5,607	5,575	5,502	5,455	5,478

<sup>1</sup> The population figures are not adjusted for seasonal variation; therefore, identical numbers appear in the unadjusted and seasonally adjusted columns.

NOTE: Estimates for the above race groups will not sum to totals shown in table A-1 because data are not presented for all races. Updated population controls are introduced annually with the release of January data.

**HOUSEHOLD DATA**

**Table A-3. Employment status of the Hispanic or Latino population by sex and age**

[Numbers in thousands]

Employment status, sex, and age	Not seasonally adjusted			Seasonally adjusted <sup>1</sup>					
	Sept. 2016	Aug. 2017	Sept. 2017	Sept. 2016	May 2017	June 2017	July 2017	Aug. 2017	Sept. 2017
<b>HISPANIC OR LATINO ETHNICITY</b>									
Civilian noninstitutional population.....	40,919	41,492	41,579	40,919	41,241	41,323	41,404	41,492	41,579
Civilian labor force.....	27,019	27,335	27,599	27,063	27,239	27,290	27,487	27,322	27,633
Participation rate.....	66.0	65.9	66.4	66.1	66.0	66.0	66.4	65.8	66.5
Employed.....	25,366	25,922	26,270	25,331	25,833	25,974	26,078	25,914	26,229
Employment-population ratio.....	62.0	62.5	63.2	61.9	62.6	62.9	63.0	62.5	63.1
Unemployed.....	1,653	1,413	1,329	1,732	1,405	1,315	1,409	1,408	1,404
Unemployment rate.....	6.1	5.2	4.8	6.4	5.2	4.8	5.1	5.2	5.1
Not in labor force.....	13,901	14,157	13,980	13,856	14,003	14,034	13,917	14,170	13,946
<b>Men, 20 years and over</b>									
Civilian labor force.....	14,837	15,038	15,124	14,833	14,936	14,976	15,085	15,017	15,119
Participation rate.....	80.4	80.5	80.8	80.4	80.4	80.5	80.9	80.4	80.8
Employed.....	14,109	14,367	14,584	14,035	14,304	14,414	14,425	14,298	14,507
Employment-population ratio.....	76.5	76.9	77.9	76.1	77.0	77.5	77.4	76.5	77.5
Unemployed.....	728	670	540	798	632	562	660	719	612
Unemployment rate.....	4.9	4.5	3.6	5.4	4.2	3.8	4.4	4.8	4.0
<b>Women, 20 years and over</b>									
Civilian labor force.....	10,988	11,028	11,251	11,001	11,062	11,030	11,176	11,091	11,256
Participation rate.....	58.8	58.2	59.2	58.9	58.7	58.4	59.1	58.5	59.2
Employed.....	10,278	10,481	10,630	10,296	10,461	10,451	10,580	10,570	10,643
Employment-population ratio.....	55.0	55.3	55.9	55.1	55.5	55.4	55.9	55.8	56.0
Unemployed.....	710	547	621	705	601	579	596	521	613
Unemployment rate.....	6.5	5.0	5.5	6.4	5.4	5.3	5.3	4.7	5.4
<b>Both sexes, 16 to 19 years</b>									
Civilian labor force.....	1,193	1,269	1,224	1,229	1,240	1,284	1,227	1,214	1,258
Participation rate.....	31.4	32.9	31.7	32.4	32.3	33.4	31.9	31.5	32.6
Employed.....	979	1,073	1,056	1,000	1,068	1,110	1,073	1,046	1,078
Employment-population ratio.....	25.8	27.9	27.4	26.3	27.8	28.9	27.9	27.1	27.9
Unemployed.....	215	196	168	229	172	174	154	169	179
Unemployment rate.....	18.0	15.4	13.7	18.6	13.9	13.6	12.5	13.9	14.3

<sup>1</sup> The population figures are not adjusted for seasonal variation; therefore, identical numbers appear in the unadjusted and seasonally adjusted columns.

NOTE: Persons whose ethnicity is identified as Hispanic or Latino may be of any race. Updated population controls are introduced annually with the release of January data.

**HOUSEHOLD DATA**

**Table A-4. Employment status of the civilian population 25 years and over by educational attainment**

[Numbers in thousands]

Educational attainment	Not seasonally adjusted			Seasonally adjusted					
	Sept. 2016	Aug. 2017	Sept. 2017	Sept. 2016	May 2017	June 2017	July 2017	Aug. 2017	Sept. 2017
<b>Less than a high school diploma</b>									
Civilian labor force.....	10,763	10,499	10,611	10,803	10,299	10,304	10,570	10,565	10,575
Participation rate.....	45.4	45.9	46.4	45.6	45.1	45.3	47.3	46.2	46.3
Employed.....	9,939	9,924	9,985	9,881	9,671	9,649	9,842	9,933	9,891
Employment-population ratio.....	41.9	43.4	43.7	41.7	42.3	42.4	44.0	43.4	43.3
Unemployed.....	824	575	626	922	628	655	728	632	684
Unemployment rate.....	7.7	5.5	5.9	8.5	6.1	6.4	6.9	6.0	6.5
<b>High school graduates, no college<sup>1</sup></b>									
Civilian labor force.....	35,955	36,098	36,147	35,720	35,909	35,850	35,648	35,931	35,904
Participation rate.....	57.8	57.9	57.8	57.4	57.6	57.8	57.7	57.6	57.4
Employed.....	34,171	34,278	34,676	33,877	34,211	34,196	34,038	34,106	34,367
Employment-population ratio.....	54.9	55.0	55.4	54.4	54.9	55.2	55.1	54.7	54.9
Unemployed.....	1,784	1,821	1,471	1,843	1,697	1,653	1,610	1,825	1,537
Unemployment rate.....	5.0	5.0	4.1	5.2	4.7	4.6	4.5	5.1	4.3
<b>Some college or associate degree</b>									
Civilian labor force.....	37,820	37,076	37,583	37,963	37,433	37,579	37,475	37,388	37,659
Participation rate.....	66.9	65.3	65.9	67.2	65.9	65.6	65.4	65.9	66.1
Employed.....	36,258	35,617	36,249	36,378	35,941	36,150	36,077	35,978	36,306
Employment-population ratio.....	64.1	62.7	63.6	64.4	63.3	63.1	63.0	63.4	63.7
Unemployed.....	1,562	1,458	1,333	1,584	1,492	1,429	1,397	1,411	1,353
Unemployment rate.....	4.1	3.9	3.5	4.2	4.0	3.8	3.7	3.8	3.6
<b>Bachelor's degree and higher<sup>2</sup></b>									
Civilian labor force.....	54,279	55,222	55,711	54,310	55,039	55,283	55,696	55,595	55,655
Participation rate.....	74.1	73.4	74.2	74.2	73.8	73.9	73.7	73.9	74.2
Employed.....	52,916	53,720	54,464	52,942	53,760	53,982	54,378	54,250	54,395
Employment-population ratio.....	72.3	71.4	72.6	72.3	72.1	72.2	72.0	72.1	72.5
Unemployed.....	1,363	1,503	1,247	1,367	1,278	1,302	1,318	1,345	1,260
Unemployment rate.....	2.5	2.7	2.2	2.5	2.3	2.4	2.4	2.4	2.3

<sup>1</sup> Includes persons with a high school diploma or equivalent.

<sup>2</sup> Includes persons with bachelor's, master's, professional, and doctoral degrees.

NOTE: Updated population controls are introduced annually with the release of January data.



**HOUSEHOLD DATA**

**Table A-5. Employment status of the civilian population 18 years and over by veteran status, period of service, and sex, not seasonally adjusted**

[Numbers in thousands]

Employment status, veteran status, and period of service	Total		Men		Women	
	Sept. 2016	Sept. 2017	Sept. 2016	Sept. 2017	Sept. 2016	Sept. 2017
<b>VETERANS, 18 years and over</b>						
Civilian noninstitutional population.....	20,832	20,511	18,815	18,477	2,017	2,034
Civilian labor force.....	10,652	10,373	9,369	9,085	1,283	1,288
Participation rate.....	51.1	50.6	49.8	49.2	63.6	63.3
Employed.....	10,191	10,063	8,959	8,834	1,233	1,230
Employment-population ratio.....	48.9	49.1	47.6	47.8	61.1	60.5
Unemployed.....	461	309	411	251	50	58
Unemployment rate.....	4.3	3.0	4.4	2.8	3.9	4.5
Not in labor force.....	10,180	10,138	9,446	9,392	734	746
<b>Gulf War-era II veterans</b>						
Civilian noninstitutional population.....	3,935	4,119	3,235	3,373	701	746
Civilian labor force.....	3,170	3,306	2,650	2,769	520	537
Participation rate.....	80.5	80.3	81.9	82.1	74.2	72.0
Employed.....	3,030	3,176	2,523	2,675	507	500
Employment-population ratio.....	77.0	77.1	78.0	79.3	72.4	67.1
Unemployed.....	139	131	127	94	12	37
Unemployment rate.....	4.4	3.9	4.8	3.4	2.3	6.9
Not in labor force.....	766	813	585	604	181	209
<b>Gulf War-era I veterans</b>						
Civilian noninstitutional population.....	3,359	3,389	2,854	2,896	504	493
Civilian labor force.....	2,757	2,749	2,366	2,361	391	388
Participation rate.....	82.1	81.1	82.9	81.5	77.6	78.7
Employed.....	2,646	2,679	2,271	2,307	376	372
Employment-population ratio.....	78.8	79.0	79.6	79.6	74.5	75.4
Unemployed.....	111	71	95	55	16	16
Unemployment rate.....	4.0	2.6	4.0	2.3	4.0	4.1
Not in labor force.....	601	640	488	535	113	105
<b>World War II, Korean War, and Vietnam-era veterans</b>						
Civilian noninstitutional population.....	8,407	7,992	8,106	7,703	301	289
Civilian labor force.....	2,127	1,830	2,051	1,757	76	73
Participation rate.....	25.3	22.9	25.3	22.8	25.3	25.4
Employed.....	2,053	1,784	1,977	1,711	76	73
Employment-population ratio.....	24.4	22.3	24.4	22.2	25.1	25.4
Unemployed.....	74	46	74	46	1	0
Unemployment rate.....	3.5	2.5	3.6	2.6	0.7	-
Not in labor force.....	6,280	6,162	6,055	5,946	225	216
<b>Veterans of other service periods</b>						
Civilian noninstitutional population.....	5,131	5,011	4,620	4,505	511	506
Civilian labor force.....	2,598	2,487	2,302	2,198	295	290
Participation rate.....	50.6	49.6	49.8	48.8	57.8	57.3
Employed.....	2,462	2,425	2,188	2,140	274	284
Employment-population ratio.....	48.0	48.4	47.4	47.5	53.5	56.2
Unemployed.....	136	63	114	57	22	5
Unemployment rate.....	5.2	2.5	5.0	2.6	7.4	1.9
Not in labor force.....	2,533	2,524	2,318	2,307	216	216
<b>NONVETERANS, 18 years and over</b>						
Civilian noninstitutional population.....	224,233	225,860	99,452	100,353	124,781	125,507
Civilian labor force.....	146,789	148,380	74,586	75,362	72,203	73,018
Participation rate.....	65.5	65.7	75.0	75.1	57.9	58.2
Employed.....	139,919	142,394	71,122	72,353	68,797	70,041
Employment-population ratio.....	62.4	63.0	71.5	72.1	55.1	55.8
Unemployed.....	6,870	5,986	3,465	3,009	3,406	2,977
Unemployment rate.....	4.7	4.0	4.6	4.0	4.7	4.1
Not in labor force.....	77,444	77,480	24,866	24,991	52,578	52,489

NOTE: Veterans served on active duty in the U.S. Armed Forces and were not on active duty at the time of the survey. Nonveterans never served on active duty in the U.S. Armed Forces. Veterans could have served anywhere in the world during these periods of service: Gulf War era II (September 2001-present), Gulf War era I (August 1990-August 2001), Vietnam era (August 1964-April 1975), Korean War (July 1950-January 1955), World War II (December 1941-December 1946), and other service periods (all other time periods). Veterans who served in more than one wartime period are classified only in the most recent one. Veterans who served during one of the selected wartime periods and another period are classified only in the wartime period. Dash indicates no data or data that do not meet publication criteria (values not shown where base is less than 75,000).

**HOUSEHOLD DATA**

**Table A-6. Employment status of the civilian population by sex, age, and disability status, not seasonally adjusted**

[Numbers in thousands]

Employment status, sex, and age	Persons with a disability		Persons with no disability	
	Sept. 2016	Sept. 2017	Sept. 2016	Sept. 2017
<b>TOTAL, 16 years and over</b>				
Civilian noninstitutional population.....	30,421	30,635	223,670	224,927
Civilian labor force.....	6,027	6,481	153,609	154,568
Participation rate.....	19.8	21.2	68.7	68.7
Employed.....	5,502	5,994	146,475	148,499
Employment-population ratio.....	18.1	19.6	65.5	66.0
Unemployed.....	525	487	7,134	6,068
Unemployment rate.....	8.7	7.5	4.6	3.9
Not in labor force.....	24,395	24,154	70,061	70,359
<b>Men, 16 to 64 years</b>				
Civilian labor force.....	2,615	2,866	77,114	77,168
Participation rate.....	33.1	35.8	82.6	82.8
Employed.....	2,383	2,645	73,513	74,141
Employment-population ratio.....	30.2	33.0	78.8	79.5
Unemployed.....	232	221	3,601	3,027
Unemployment rate.....	8.9	7.7	4.7	3.9
Not in labor force.....	5,277	5,144	16,202	16,044
<b>Women, 16 to 64 years</b>				
Civilian labor force.....	2,312	2,356	68,184	68,889
Participation rate.....	28.8	30.4	70.7	71.2
Employed.....	2,063	2,153	64,962	66,094
Employment-population ratio.....	25.7	27.8	67.3	68.3
Unemployed.....	249	203	3,222	2,794
Unemployment rate.....	10.8	8.6	4.7	4.1
Not in labor force.....	5,702	5,393	28,319	27,830
<b>Both sexes, 65 years and over</b>				
Civilian labor force.....	1,100	1,260	8,311	8,512
Participation rate.....	7.6	8.5	24.6	24.3
Employed.....	1,056	1,197	8,000	8,264
Employment-population ratio.....	7.3	8.0	23.6	23.6
Unemployed.....	44	63	311	247
Unemployment rate.....	4.0	5.0	3.7	2.9
Not in labor force.....	13,417	13,617	25,540	26,485

NOTE: A person with a disability has at least one of the following conditions: is deaf or has serious difficulty hearing; is blind or has serious difficulty seeing even when wearing glasses; has serious difficulty concentrating, remembering, or making decisions because of a physical, mental, or emotional condition; has serious difficulty walking or climbing stairs; has difficulty dressing or bathing; or has difficulty doing errands alone such as visiting a doctor's office or shopping because of a physical, mental, or emotional condition. Updated population controls are introduced annually with the release of January data.

**HOUSEHOLD DATA**

**Table A-7. Employment status of the civilian population by nativity and sex, not seasonally adjusted**

[Numbers in thousands]

Employment status and nativity	Total		Men		Women	
	Sept. 2016	Sept. 2017	Sept. 2016	Sept. 2017	Sept. 2016	Sept. 2017
<b>Foreign born, 16 years and over</b>						
Civilian noninstitutional population.....	41,785	41,642	20,170	20,308	21,615	21,334
Civilian labor force.....	27,345	27,846	15,601	16,058	11,743	11,788
Participation rate.....	65.4	66.9	77.3	79.1	54.3	55.3
Employed.....	26,146	26,754	15,065	15,529	11,080	11,225
Employment-population ratio.....	62.6	64.2	74.7	76.5	51.3	52.6
Unemployed.....	1,199	1,092	536	529	663	563
Unemployment rate.....	4.4	3.9	3.4	3.3	5.6	4.8
Not in labor force.....	14,441	13,796	4,569	4,250	9,871	9,546
<b>Native born, 16 years and over</b>						
Civilian noninstitutional population.....	212,306	213,920	102,604	103,207	109,702	110,713
Civilian labor force.....	132,291	133,203	69,394	69,458	62,897	63,745
Participation rate.....	62.3	62.3	67.6	67.3	57.3	57.6
Employed.....	125,832	127,739	65,887	66,590	59,944	61,149
Employment-population ratio.....	59.3	59.7	64.2	64.5	54.6	55.2
Unemployed.....	6,460	5,464	3,507	2,868	2,952	2,596
Unemployment rate.....	4.9	4.1	5.1	4.1	4.7	4.1
Not in labor force.....	80,015	80,717	33,210	33,749	46,805	46,968

NOTE: The foreign born are those residing in the United States who were not U.S. citizens at birth. That is, they were born outside the United States or one of its outlying areas such as Puerto Rico or Guam, to parents neither of whom was a U.S. citizen. The native born are persons who were born in the United States or one of its outlying areas such as Puerto Rico or Guam or who were born abroad of at least one parent who was a U.S. citizen. Updated population controls are introduced annually with the release of January data.

**HOUSEHOLD DATA**

**Table A-8. Employed persons by class of worker and part-time status**

[In thousands]

Category	Not seasonally adjusted			Seasonally adjusted					
	Sept. 2016	Aug. 2017	Sept. 2017	Sept. 2016	May 2017	June 2017	July 2017	Aug. 2017	Sept. 2017
<b>CLASS OF WORKER</b>									
Agriculture and related industries.....	2,526	2,508	2,367	2,429	2,507	2,457	2,317	2,339	2,307
Wage and salary workers <sup>1</sup> .....	1,623	1,750	1,616	1,522	1,645	1,611	1,582	1,584	1,547
Self-employed workers, unincorporated.....	879	745	732	890	833	818	708	722	746
Unpaid family workers.....	24	13	19	-	-	-	-	-	-
Nonagricultural industries.....	149,451	151,068	152,126	149,526	150,417	150,848	151,208	151,143	152,093
Wage and salary workers <sup>1</sup> .....	140,780	142,368	143,214	140,739	141,849	141,989	142,714	142,466	143,106
Government.....	20,708	20,479	20,873	20,809	20,772	20,868	21,052	21,080	20,947
Private industries.....	120,073	121,889	122,341	119,990	121,096	121,053	121,627	121,366	122,188
Private households.....	715	670	583	-	-	-	-	-	-
Other industries.....	119,358	121,220	121,758	119,241	120,441	120,457	120,964	120,712	121,570
Self-employed workers, unincorporated.....	8,607	8,631	8,871	8,599	8,550	8,753	8,475	8,602	8,856
Unpaid family workers.....	64	69	42	-	-	-	-	-	-
<b>PERSONS AT WORK PART TIME<sup>2</sup></b>									
<b>  All industries</b>									
Part time for economic reasons <sup>3</sup> .....	5,550	5,204	4,818	5,874	5,219	5,326	5,282	5,255	5,122
Slack work or business conditions.....	3,376	3,214	2,908	3,587	3,082	3,286	3,161	3,266	3,121
Could only find part-time work.....	1,921	1,564	1,702	1,972	1,789	1,727	1,754	1,645	1,733
Part time for noneconomic reasons <sup>4</sup> .....	20,782	19,405	21,001	20,742	21,020	20,791	21,260	21,447	21,011
<b>    Nonagricultural industries</b>									
Part time for economic reasons <sup>3</sup> .....	5,468	5,130	4,740	5,770	5,154	5,282	5,231	5,179	5,032
Slack work or business conditions.....	3,316	3,158	2,864	3,510	3,045	3,249	3,137	3,217	3,071
Could only find part-time work.....	1,914	1,558	1,682	1,959	1,776	1,720	1,739	1,633	1,713
Part time for noneconomic reasons <sup>4</sup> .....	20,419	19,066	20,677	20,409	20,677	20,443	20,909	21,087	20,689

<sup>1</sup> Includes self-employed workers whose businesses are incorporated.

<sup>2</sup> Refers to those who worked 1 to 34 hours during the survey reference week and excludes employed persons who were absent from their jobs for the entire week.

<sup>3</sup> Refers to those who worked 1 to 34 hours during the reference week for an economic reason such as slack work or unfavorable business conditions, inability to find full-time work, or seasonal declines in demand.

<sup>4</sup> Refers to persons who usually work part time for noneconomic reasons such as childcare problems, family or personal obligations, school or training, retirement or Social Security limits on earnings, and other reasons. This excludes persons who usually work full time but worked only 1 to 34 hours during the reference week for reasons such as vacations, holidays, illness, and bad weather.

- Data not available.

NOTE: Detail for the seasonally adjusted data shown in this table will not necessarily add to totals because of the independent seasonal adjustment of the various series. Updated population controls are introduced annually with the release of January data.

# HOUSEHOLD DATA

## Table A-9. Selected employment indicators

[Numbers in thousands]

Characteristic	Not seasonally adjusted			Seasonally adjusted					
	Sept. 2016	Aug. 2017	Sept. 2017	Sept. 2016	May 2017	June 2017	July 2017	Aug. 2017	Sept. 2017
<b>AGE AND SEX</b>									
Total, 16 years and over.....	151,977	153,576	154,494	151,926	152,923	153,168	153,513	153,439	154,345
16 to 19 years.....	4,810	5,487	5,011	5,034	5,017	5,220	5,084	5,092	5,230
16 to 17 years.....	1,867	2,151	2,036	1,832	1,888	1,931	1,816	1,918	1,983
18 to 19 years.....	2,943	3,336	2,975	3,186	3,145	3,285	3,265	3,165	3,229
20 years and over.....	147,168	148,089	149,482	146,892	147,906	147,949	148,429	148,347	149,114
20 to 24 years.....	13,883	14,551	14,108	14,004	14,177	13,992	14,199	14,209	14,235
25 years and over.....	133,285	133,538	135,375	132,845	133,647	134,010	134,349	134,125	134,845
25 to 54 years.....	98,580	98,289	99,686	98,205	98,481	98,666	98,906	98,559	99,222
25 to 34 years.....	34,094	34,242	34,793	33,979	34,160	34,404	34,500	34,310	34,655
35 to 44 years.....	31,736	31,770	32,232	31,567	31,794	31,913	31,889	31,824	32,035
45 to 54 years.....	32,750	32,277	32,661	32,659	32,527	32,349	32,517	32,425	32,533
55 years and over.....	34,705	35,249	35,688	34,641	35,166	35,344	35,442	35,566	35,622
Men, 16 years and over.....	80,952	81,975	82,119	80,735	81,290	81,290	81,273	81,310	81,883
16 to 19 years.....	2,494	2,720	2,457	2,545	2,489	2,583	2,443	2,463	2,506
16 to 17 years.....	872	1,027	932	840	884	893	798	883	903
18 to 19 years.....	1,622	1,693	1,525	1,714	1,614	1,677	1,643	1,574	1,609
20 years and over.....	78,459	79,255	79,662	78,191	78,801	78,707	78,830	78,847	79,377
20 to 24 years.....	7,134	7,627	7,263	7,188	7,335	7,240	7,351	7,369	7,326
25 years and over.....	71,324	71,628	72,398	70,969	71,422	71,488	71,551	71,470	72,002
25 to 54 years.....	52,775	52,686	53,247	52,515	52,678	52,657	52,692	52,531	52,956
25 to 34 years.....	18,313	18,482	18,684	18,237	18,362	18,425	18,473	18,420	18,599
35 to 44 years.....	17,076	17,141	17,361	16,979	17,169	17,226	17,129	17,085	17,255
45 to 54 years.....	17,386	17,063	17,202	17,299	17,147	17,006	17,091	17,026	17,102
55 years and over.....	18,549	18,942	19,152	18,454	18,743	18,831	18,858	18,939	19,047
Women, 16 years and over.....	71,025	71,601	72,375	71,191	71,633	71,878	72,240	72,129	72,461
16 to 19 years.....	2,316	2,767	2,554	2,489	2,528	2,637	2,641	2,629	2,724
16 to 17 years.....	995	1,124	1,104	992	1,004	1,038	1,018	1,036	1,080
18 to 19 years.....	1,321	1,643	1,450	1,472	1,531	1,608	1,621	1,591	1,620
20 years and over.....	68,709	68,835	69,820	68,702	69,105	69,241	69,599	69,500	69,737
20 to 24 years.....	6,749	6,925	6,844	6,816	6,842	6,752	6,849	6,841	6,909
25 years and over.....	61,960	61,910	62,976	61,877	62,226	62,522	62,798	62,655	62,842
25 to 54 years.....	45,804	45,603	46,440	45,690	45,803	46,010	46,214	46,027	46,267
25 to 34 years.....	15,780	15,760	16,110	15,743	15,798	15,980	16,027	15,890	16,056
35 to 44 years.....	14,660	14,630	14,871	14,588	14,624	14,687	14,760	14,739	14,780
45 to 54 years.....	15,364	15,213	15,460	15,359	15,380	15,343	15,427	15,399	15,431
55 years and over.....	16,156	16,307	16,536	16,187	16,423	16,513	16,584	16,628	16,576
<b>MARITAL STATUS</b>									
Married men, spouse present <sup>1</sup> .....	45,872	45,370	45,846	45,647	45,784	45,913	45,574	45,327	45,646
Married women, spouse present <sup>1</sup> .....	35,675	34,966	35,696	35,495	36,121	35,803	35,946	35,475	35,571
Women who maintain families <sup>2</sup> .....	9,958	9,573	9,673	-	-	-	-	-	-
<b>FULL- OR PART-TIME STATUS</b>									
Full-time workers <sup>3</sup> .....	124,728	127,353	127,235	124,253	125,620	125,975	125,921	125,755	126,690
Part-time workers <sup>4</sup> .....	27,250	26,223	27,259	27,684	27,366	27,142	27,535	27,569	27,650
<b>MULTIPLE JOBHOLDERS</b>									
Total multiple jobholders.....	7,846	6,961	7,359	7,845	7,589	7,639	7,589	7,346	7,366
Percent of total employed.....	5.2	4.5	4.8	5.2	5.0	5.0	4.9	4.8	4.8
<b>SELF-EMPLOYMENT</b>									
Self-employed workers, incorporated.....	5,734	5,829	5,974	-	-	-	-	-	-
Self-employed workers, unincorporated.....	9,486	9,376	9,602	9,488	9,383	9,571	9,183	9,325	9,603

<sup>1</sup> Refers to persons in opposite-sex married couples only.

<sup>2</sup> Refers to female householders residing with one or more family members, but not an opposite-sex spouse.

<sup>3</sup> Employed full-time workers are persons who usually work 35 hours or more per week.

<sup>4</sup> Employed part-time workers are persons who usually work less than 35 hours per week.

- Data not available.

NOTE: Detail for the seasonally adjusted data shown in this table will not necessarily add to totals because of the independent seasonal adjustment of the various series. Updated population controls are introduced annually with the release of January data.

# HOUSEHOLD DATA

## Table A-10. Selected unemployment indicators, seasonally adjusted

Characteristic	Number of unemployed persons (in thousands)			Unemployment rates					
	Sept. 2016	Aug. 2017	Sept. 2017	Sept. 2016	May 2017	June 2017	July 2017	Aug. 2017	Sept. 2017
<b>AGE AND SEX</b>									
Total, 16 years and over.....	7,904	7,132	6,801	4.9	4.3	4.4	4.3	4.4	4.2
16 to 19 years.....	953	803	778	15.9	14.3	13.3	13.2	13.6	12.9
16 to 17 years.....	385	329	313	17.4	13.1	13.9	15.5	14.7	13.6
18 to 19 years.....	574	477	472	15.3	14.6	13.2	11.6	13.1	12.8
20 years and over.....	6,951	6,330	6,023	4.5	3.9	4.0	4.0	4.1	3.9
20 to 24 years.....	1,246	1,092	1,160	8.2	6.7	7.5	7.4	7.1	7.5
25 years and over.....	5,734	5,267	4,877	4.1	3.6	3.7	3.6	3.8	3.5
25 to 54 years.....	4,426	4,090	3,684	4.3	3.8	3.8	3.8	4.0	3.6
25 to 34 years.....	1,839	1,761	1,588	5.1	4.9	4.4	4.6	4.9	4.4
35 to 44 years.....	1,367	1,135	1,051	4.1	3.3	3.4	3.6	3.4	3.2
45 to 54 years.....	1,220	1,194	1,045	3.6	3.2	3.6	3.2	3.6	3.1
55 years and over.....	1,280	1,165	1,175	3.6	3.1	3.2	3.2	3.2	3.2
Men, 16 years and over.....	4,307	3,826	3,636	5.1	4.2	4.4	4.4	4.5	4.3
16 to 19 years.....	509	422	444	16.7	15.7	14.4	15.2	14.6	15.1
16 to 17 years.....	199	156	164	19.1	13.7	14.4	17.9	15.0	15.4
18 to 19 years.....	317	271	289	15.6	16.4	14.8	13.4	14.7	15.2
20 years and over.....	3,798	3,405	3,192	4.6	3.8	4.0	4.0	4.1	3.9
20 to 24 years.....	731	610	692	9.2	7.9	8.4	8.0	7.6	8.6
25 years and over.....	3,094	2,799	2,518	4.2	3.4	3.5	3.6	3.8	3.4
25 to 54 years.....	2,346	2,169	1,907	4.3	3.6	3.7	3.8	4.0	3.5
25 to 34 years.....	995	966	842	5.2	4.6	4.5	4.5	5.0	4.3
35 to 44 years.....	728	581	519	4.1	3.0	3.2	3.5	3.3	2.9
45 to 54 years.....	622	621	545	3.5	3.0	3.4	3.2	3.5	3.1
55 years and over.....	748	630	611	3.9	2.9	3.0	2.9	3.2	3.1
Women, 16 years and over.....	3,597	3,306	3,165	4.8	4.3	4.4	4.3	4.4	4.2
16 to 19 years.....	444	381	333	15.1	12.8	12.2	11.3	12.7	10.9
16 to 17 years.....	187	173	149	15.8	12.6	13.5	13.5	14.3	12.1
18 to 19 years.....	258	207	184	14.9	12.6	11.3	9.7	11.5	10.2
20 years and over.....	3,154	2,925	2,831	4.4	4.0	4.0	4.0	4.0	3.9
20 to 24 years.....	515	482	468	7.0	5.3	6.4	6.7	6.6	6.3
25 years and over.....	2,640	2,467	2,359	4.1	3.9	3.8	3.7	3.8	3.6
25 to 54 years.....	2,080	1,921	1,777	4.4	4.1	3.9	3.8	4.0	3.7
25 to 34 years.....	844	794	745	5.1	5.1	4.2	4.6	4.8	4.4
35 to 44 years.....	638	554	532	4.2	3.7	3.6	3.7	3.6	3.5
45 to 54 years.....	598	573	500	3.7	3.5	3.9	3.2	3.6	3.1
55 years and over.....	560	533	571	3.3	3.4	3.4	3.4	3.1	3.3
<b>MARITAL STATUS</b>									
Married men, spouse present <sup>1</sup> .....	1,343	1,217	1,059	2.9	2.3	2.2	2.4	2.6	2.3
Married women, spouse present <sup>1</sup> .....	1,098	1,039	915	3.0	2.5	2.8	2.9	2.8	2.5
Women who maintain families <sup>2</sup> .....	680	742	672	6.4	6.8	6.9	6.8	7.2	6.5
<b>FULL- OR PART-TIME STATUS</b>									
Full-time workers <sup>3</sup> .....	6,486	5,861	5,556	5.0	4.2	4.4	4.3	4.5	4.2
Part-time workers <sup>4</sup> .....	1,435	1,271	1,230	4.9	4.8	4.2	4.5	4.4	4.3

<sup>1</sup> Refers to persons in opposite-sex couples only.

<sup>2</sup> Data are not seasonally adjusted. Refers to female householders residing with one or more family members, but not an opposite-sex spouse.

<sup>3</sup> Full-time workers are unemployed persons who have expressed a desire to work full time (35 hours or more per week) or are on layoff from full-time jobs.

<sup>4</sup> Part-time workers are unemployed persons who have expressed a desire to work part time (less than 35 hours per week) or are on layoff from part-time jobs.

NOTE: Detail for the seasonally adjusted data shown in this table will not necessarily add to totals because of the independent seasonal adjustment of the various series. Updated population controls are introduced annually with the release of January data.

# HOUSEHOLD DATA

## Table A-11. Unemployed persons by reason for unemployment

[Numbers in thousands]

Reason	Not seasonally adjusted			Seasonally adjusted					
	Sept. 2016	Aug. 2017	Sept. 2017	Sept. 2016	May 2017	June 2017	July 2017	Aug. 2017	Sept. 2017
<b>NUMBER OF UNEMPLOYED</b>									
Job losers and persons who completed temporary jobs.....	3,536	3,536	2,992	3,930	3,327	3,444	3,378	3,523	3,359
On temporary layoff.....	694	1,051	568	1,068	814	900	1,044	1,032	895
Not on temporary layoff.....	2,842	2,485	2,424	2,862	2,513	2,545	2,334	2,490	2,464
Permanent job losers.....	1,968	1,788	1,742	1,963	1,741	1,758	1,676	1,799	1,759
Persons who completed temporary jobs....	874	697	682	899	772	787	658	691	705
Job leavers.....	991	874	805	900	804	820	757	804	738
Reentrants.....	2,367	2,151	2,127	2,327	2,100	2,043	2,083	2,132	2,079
New entrants.....	764	725	631	802	656	682	703	656	669
<b>PERCENT DISTRIBUTION</b>									
Job losers and persons who completed temporary jobs.....	46.2	48.5	45.6	49.4	48.3	49.3	48.8	49.5	49.1
On temporary layoff.....	9.1	14.4	8.7	13.4	11.8	12.9	15.1	14.5	13.1
Not on temporary layoff.....	37.1	34.1	37.0	36.0	36.5	36.4	33.7	35.0	36.0
Job leavers.....	12.9	12.0	12.3	11.3	11.7	11.7	10.9	11.3	10.8
Reentrants.....	30.9	29.5	32.4	29.2	30.5	29.2	30.1	30.0	30.4
New entrants.....	10.0	10.0	9.6	10.1	9.5	9.8	10.2	9.2	9.8
<b>UNEMPLOYED AS A PERCENT OF THE CIVILIAN LABOR FORCE</b>									
Job losers and persons who completed temporary jobs.....	2.2	2.2	1.9	2.5	2.1	2.2	2.1	2.2	2.1
Job leavers.....	0.6	0.5	0.5	0.6	0.5	0.5	0.5	0.5	0.5
Reentrants.....	1.5	1.3	1.3	1.5	1.3	1.3	1.3	1.3	1.3
New entrants.....	0.5	0.5	0.4	0.5	0.4	0.4	0.4	0.4	0.4

NOTE: Updated population controls are introduced annually with the release of January data.

**HOUSEHOLD DATA**

**Table A-12. Unemployed persons by duration of unemployment**

[Numbers in thousands]

Duration	Not seasonally adjusted			Seasonally adjusted					
	Sept. 2016	Aug. 2017	Sept. 2017	Sept. 2016	May 2017	June 2017	July 2017	Aug. 2017	Sept. 2017
<b>NUMBER OF UNEMPLOYED</b>									
Less than 5 weeks.....	2,562	2,199	2,227	2,584	2,154	2,305	2,133	2,222	2,226
5 to 14 weeks.....	2,092	2,411	1,740	2,220	1,960	1,933	2,017	2,015	1,874
15 weeks and over.....	3,004	2,677	2,589	3,127	2,820	2,612	2,742	2,795	2,696
15 to 26 weeks.....	1,083	936	889	1,164	1,157	948	957	1,055	963
27 weeks and over.....	1,921	1,741	1,700	1,963	1,663	1,664	1,785	1,740	1,733
Average (mean) duration, in weeks.....	27.2	23.7	26.9	27.3	24.7	24.7	24.9	24.4	26.8
Median duration, in weeks.....	10.2	10.1	10.3	10.3	10.4	9.6	10.6	10.5	10.3
<b>PERCENT DISTRIBUTION</b>									
Less than 5 weeks.....	33.5	30.2	34.0	32.6	31.1	33.6	30.9	31.6	32.8
5 to 14 weeks.....	27.3	33.1	26.5	28.0	28.3	28.2	29.3	28.7	27.6
15 weeks and over.....	39.2	36.7	39.5	39.4	40.7	38.1	39.8	39.7	39.7
15 to 26 weeks.....	14.1	12.8	13.6	14.7	16.7	13.8	13.9	15.0	14.2
27 weeks and over.....	25.1	23.9	25.9	24.7	24.0	24.3	25.9	24.7	25.5

NOTE: Updated population controls are introduced annually with the release of January data.



**HOUSEHOLD DATA**

**Table A-13. Employed and unemployed persons by occupation, not seasonally adjusted**

[Numbers in thousands]

Occupation	Employed		Unemployed		Unemployment rates	
	Sept. 2016	Sept. 2017	Sept. 2016	Sept. 2017	Sept. 2016	Sept. 2017
Total, 16 years and over <sup>1</sup> .....	151,977	154,494	7,658	6,556	4.8	4.1
Management, professional, and related occupations.....	59,599	60,990	1,652	1,463	2.7	2.3
Management, business, and financial operations occupations.....	24,729	25,309	708	636	2.8	2.5
Professional and related occupations.....	34,870	35,681	944	827	2.6	2.3
Service occupations.....	27,100	27,429	1,690	1,414	5.9	4.9
Sales and office occupations.....	33,435	33,697	1,614	1,415	4.6	4.0
Sales and related occupations.....	15,704	15,798	855	605	5.2	3.7
Office and administrative support occupations.....	17,731	17,899	760	810	4.1	4.3
Natural resources, construction, and maintenance occupations.....	14,106	14,110	772	746	5.2	5.0
Farming, fishing, and forestry occupations.....	1,159	1,155	116	105	9.1	8.3
Construction and extraction occupations.....	8,101	8,010	489	470	5.7	5.5
Installation, maintenance, and repair occupations.....	4,845	4,945	167	171	3.3	3.4
Production, transportation, and material moving occupations.....	17,738	18,268	1,151	873	6.1	4.6
Production occupations.....	8,261	8,282	561	405	6.4	4.7
Transportation and material moving occupations.....	9,477	9,986	590	468	5.9	4.5

<sup>1</sup> Persons with no previous work experience and persons whose last job was in the U.S. Armed Forces are included in the unemployed total.

NOTE: Updated population controls are introduced annually with the release of January data.

**HOUSEHOLD DATA**

**Table A-14. Unemployed persons by industry and class of worker, not seasonally adjusted**

Industry and class of worker	Number of unemployed persons (in thousands)		Unemployment rates	
	Sept. 2016	Sept. 2017	Sept. 2016	Sept. 2017
Total, 16 years and over <sup>1</sup> .....	7,658	6,556	4.8	4.1
Nonagricultural private wage and salary workers.....	5,828	5,063	4.6	4.0
Mining, quarrying, and oil and gas extraction.....	43	24	5.7	3.0
Construction.....	474	433	5.2	4.7
Manufacturing.....	668	587	4.2	3.8
Durable goods.....	410	365	4.1	3.8
Nondurable goods.....	258	221	4.3	3.9
Wholesale and retail trade.....	1,002	843	5.0	4.1
Transportation and utilities.....	283	282	4.3	4.1
Information.....	139	141	5.2	5.1
Financial activities.....	296	240	3.0	2.5
Professional and business services.....	902	723	5.3	4.1
Education and health services.....	860	804	3.7	3.4
Leisure and hospitality.....	917	708	6.5	5.0
Other services.....	245	280	3.7	4.2
Agriculture and related private wage and salary workers.....	139	111	8.1	6.7
Government workers.....	538	438	2.5	2.1
Self-employed workers, unincorporated, and unpaid family workers.....	389	312	3.9	3.1

<sup>1</sup> Persons with no previous work experience and persons whose last job was in the U.S. Armed Forces are included in the unemployed total.

NOTE: Updated population controls are introduced annually with the release of January data.

**HOUSEHOLD DATA**

**Table A-15. Alternative measures of labor underutilization**

[Percent]

Measure	Not seasonally adjusted			Seasonally adjusted					
	Sept. 2016	Aug. 2017	Sept. 2017	Sept. 2016	May 2017	June 2017	July 2017	Aug. 2017	Sept. 2017
U-1 Persons unemployed 15 weeks or longer, as a percent of the civilian labor force.....	1.9	1.7	1.6	2.0	1.8	1.6	1.7	1.7	1.7
U-2 Job losers and persons who completed temporary jobs, as a percent of the civilian labor force.....	2.2	2.2	1.9	2.5	2.1	2.2	2.1	2.2	2.1
U-3 Total unemployed, as a percent of the civilian labor force (official unemployment rate).....	4.8	4.5	4.1	4.9	4.3	4.4	4.3	4.4	4.2
U-4 Total unemployed plus discouraged workers, as a percent of the civilian labor force plus discouraged workers.....	5.1	4.8	4.3	5.3	4.5	4.7	4.7	4.7	4.5
U-5 Total unemployed, plus discouraged workers, plus all other persons marginally attached to the labor force, as a percent of the civilian labor force plus all persons marginally attached to the labor force.....	5.9	5.4	5.0	6.0	5.2	5.3	5.3	5.4	5.1
U-6 Total unemployed, plus all persons marginally attached to the labor force, plus total employed part time for economic reasons, as a percent of the civilian labor force plus all persons marginally attached to the labor force.....	9.3	8.6	8.0	9.7	8.4	8.6	8.6	8.6	8.3

NOTE: Persons marginally attached to the labor force are those who currently are neither working nor looking for work but indicate that they want and are available for a job and have looked for work sometime in the past 12 months. Discouraged workers, a subset of the marginally attached, have given a job-market related reason for not currently looking for work. Persons employed part time for economic reasons are those who want and are available for full-time work but have had to settle for a part-time schedule. Updated population controls are introduced annually with the release of January data.

**HOUSEHOLD DATA**

**Table A-16. Persons not in the labor force and multiple jobholders by sex, not seasonally adjusted**

[Numbers in thousands]

Category	Total		Men		Women	
	Sept. 2016	Sept. 2017	Sept. 2016	Sept. 2017	Sept. 2016	Sept. 2017
<b>NOT IN THE LABOR FORCE</b>						
Total not in the labor force.....	94,456	94,513	37,779	37,999	56,677	56,514
Persons who currently want a job.....	5,753	5,415	2,745	2,494	3,008	2,922
Marginally attached to the labor force <sup>1</sup> .....	1,844	1,569	993	798	851	772
Discouraged workers <sup>2</sup> .....	553	421	321	275	232	146
Other persons marginally attached to the labor force <sup>3</sup> ..	1,292	1,148	672	522	619	625
<b>MULTIPLE JOBHOLDERS</b>						
Total multiple jobholders <sup>4</sup> .....	7,846	7,359	3,691	3,699	4,154	3,660
Percent of total employed.....	5.2	4.8	4.6	4.5	5.8	5.1
Primary job full time, secondary job part time.....	4,298	4,053	2,358	2,236	1,939	1,816
Primary and secondary jobs both part time.....	2,087	2,040	637	753	1,451	1,287
Primary and secondary jobs both full time.....	319	305	195	190	124	115
Hours vary on primary or secondary job.....	1,065	923	470	502	595	421

<sup>1</sup> Data refer to persons who want a job, have searched for work during the prior 12 months, and were available to take a job during the reference week, but had not looked for work in the past 4 weeks.

<sup>2</sup> Includes those who did not actively look for work in the prior 4 weeks for reasons such as thinks no work available, could not find work, lacks schooling or training, employer thinks too young or old, and other types of discrimination.

<sup>3</sup> Includes those who did not actively look for work in the prior 4 weeks for such reasons as school or family responsibilities, ill health, and transportation problems, as well as a number for whom reason for nonparticipation was not determined.

<sup>4</sup> Includes a small number of persons who work part time on their primary job and full time on their secondary job(s), not shown separately.

NOTE: Updated population controls are introduced annually with the release of January data.

**ESTABLISHMENT DATA**

**Table B-1. Employees on nonfarm payrolls by industry sector and selected industry detail**

[In thousands]

Industry	Not seasonally adjusted				Seasonally adjusted				Change from: Aug.2017 - Sept.2017 <sup>P</sup>
	Sept. 2016	July 2017	Aug. 2017 <sup>P</sup>	Sept. 2017 <sup>P</sup>	Sept. 2016	July 2017	Aug. 2017 <sup>P</sup>	Sept. 2017 <sup>P</sup>	
Total nonfarm.....	145,084	146,288	146,540	146,880	144,882	146,523	146,692	146,659	-33
Total private.....	122,847	125,240	125,301	124,604	122,566	124,198	124,362	124,322	-40
Goods-producing.....	19,983	20,352	20,444	20,335	19,718	20,004	20,070	20,079	9
Mining and logging.....	668	723	729	729	661	713	719	721	2
Logging.....	52.2	51.2	50.9	50.6	50.7	49.6	49.0	49.2	0.2
Mining.....	615.9	671.8	677.6	678.1	610.2	663.7	669.9	672.2	2.3
Oil and gas extraction.....	177.5	179.9	179.5	181.1	177.7	178.4	178.7	181.0	2.3
Mining, except oil and gas.....	181.9	189.5	190.2	189.3	178.7	185.6	186.0	186.7	0.7
Coal mining.....	48.5	50.4	51.8	52.2	48.6	50.8	51.6	52.1	0.5
Metal ore mining.....	39.1	39.7	39.4	39.1	39.3	39.3	39.2	39.2	0.0
Nonmetallic mineral mining and quarrying.....	94.3	99.4	99.0	98.0	90.8	95.5	95.2	95.4	0.2
Support activities for mining.....	256.5	302.4	307.9	307.7	253.8	299.7	305.2	304.5	-0.7
Construction.....	6,943	7,143	7,171	7,116	6,727	6,884	6,903	6,911	8
Construction of buildings.....	1,528.3	1,567.6	1,571.6	1,562.1	1,494.3	1,522.5	1,526.9	1,527.8	0.9
Residential building.....	764.5	786.3	783.2	773.9	746.4	761.6	761.0	757.1	-3.9
Nonresidential building.....	763.8	781.3	788.4	788.2	747.9	760.9	765.9	770.7	4.8
Heavy and civil engineering construction.....	1,002.5	1,032.5	1,039.9	1,033.6	941.1	972.3	974.1	972.5	-1.6
Specialty trade contractors.....	4,411.7	4,542.7	4,559.1	4,520.5	4,291.6	4,389.1	4,401.7	4,410.6	8.9
Residential specialty trade contractors.....	1,924.5	2,000.9	2,008.1	1,984.9	1,865.9	1,926.4	1,935.4	1,935.8	0.4
Nonresidential specialty trade contractors.....	2,487.2	2,541.8	2,551.0	2,535.6	2,425.7	2,462.7	2,466.3	2,474.8	8.5
Manufacturing.....	12,372	12,486	12,544	12,490	12,330	12,407	12,448	12,447	-1
Durable goods.....	7,702	7,765	7,805	7,784	7,693	7,738	7,771	7,775	4
Wood products.....	392.9	397.9	399.5	394.5	391.3	394.0	394.3	392.8	-1.5
Nonmetallic mineral products.....	415.1	423.5	424.5	421.8	408.0	414.6	415.6	415.0	-0.6
Primary metals.....	375.2	385.0	385.3	383.3	375.4	384.4	384.2	382.4	-1.8
Fabricated metal products.....	1,417.2	1,449.6	1,449.0	1,449.3	1,418.6	1,443.4	1,446.3	1,450.1	3.8
Machinery.....	1,073.3	1,099.1	1,100.0	1,096.5	1,074.6	1,093.7	1,096.9	1,098.6	1.7
Computer and electronic products.....	1,042.5	1,044.3	1,046.5	1,043.8	1,043.1	1,038.9	1,041.1	1,044.1	3.0
Computer and peripheral equipment.....	163.5	162.7	166.0	166.5	163.8	161.6	164.7	166.4	1.7
Communications equipment.....	85.0	85.6	85.5	84.9	85.2	85.1	85.1	85.0	-0.1
Semiconductors and electronic components.....	363.6	363.2	362.3	361.3	364.1	361.4	360.1	361.8	1.7
Electronic instruments.....	395.0	398.9	398.9	397.4	394.6	397.0	397.4	397.4	0.0
Miscellaneous computer and electronic products.....	35.4	33.9	33.8	33.7	35.5	33.9	33.8	33.6	-0.2
Electrical equipment and appliances.....	382.3	393.1	393.3	392.7	382.1	390.5	391.8	392.5	0.7
Transportation equipment <sup>1</sup> .....	1,624.1	1,584.5	1,621.5	1,621.9	1,621.3	1,595.3	1,619.0	1,617.8	-1.2
Motor vehicles and parts <sup>2</sup> .....	940.9	905.2	944.2	942.3	937.6	918.9	942.8	939.6	-3.2
Furniture and related products.....	388.3	393.9	393.4	391.3	387.8	391.7	390.8	391.6	0.8
Miscellaneous durable goods manufacturing.....	590.8	593.9	592.1	589.3	591.2	591.2	590.5	590.0	-0.5
Nondurable goods.....	4,670	4,721	4,739	4,706	4,637	4,669	4,677	4,672	-5
Food manufacturing.....	1,585.5	1,625.0	1,644.3	1,631.4	1,564.1	1,596.5	1,603.1	1,607.3	4.2
Textile mills.....	112.3	109.0	109.4	110.6	112.9	109.4	109.8	110.8	1.0
Textile product mills.....	115.6	111.5	111.3	110.2	114.5	110.8	111.0	109.5	-1.5
Apparel.....	132.3	119.6	119.1	117.9	130.7	120.9	118.6	116.7	-1.9
Paper and paper products.....	368.8	370.2	370.0	367.2	368.8	368.2	368.2	367.6	-0.6
Printing and related support activities.....	444.2	439.3	439.2	434.8	444.1	438.1	438.7	435.1	-3.6
Petroleum and coal products.....	113.3	115.5	115.6	114.5	111.9	112.5	112.9	112.8	-0.1
Chemicals.....	810.8	825.7	822.7	816.2	811.5	819.6	819.3	817.3	-2.0
Plastics and rubber products.....	699.2	706.9	709.5	706.5	699.6	703.0	705.9	706.6	0.7
Miscellaneous nondurable goods manufacturing.....	288.0	298.5	298.0	297.0	279.2	290.2	289.4	288.6	-0.8
Private service-providing.....	102,864	104,888	104,857	104,269	102,848	104,194	104,292	104,243	-49
Trade, transportation, and utilities.....	27,186	27,372	27,346	27,277	27,322	27,377	27,379	27,405	26
Wholesale trade.....	5,878.3	5,956.1	5,950.5	5,933.1	5,877.5	5,924.3	5,926.1	5,932.8	6.7
Durable goods.....	2,930.6	2,973.8	2,971.6	2,964.6	2,930.7	2,957.3	2,957.8	2,965.8	8.0
Nondurable goods.....	2,052.0	2,069.1	2,067.3	2,061.7	2,051.1	2,057.5	2,059.1	2,059.2	0.1

See footnotes at end of table.

**ESTABLISHMENT DATA**

**Table B-1. Employees on nonfarm payrolls by industry sector and selected industry detail**

— Continued

[In thousands]

Industry	Not seasonally adjusted				Seasonally adjusted				Change from: Aug.2017 - Sept.2017 <sup>P</sup>
	Sept. 2016	July 2017	Aug. 2017 <sup>P</sup>	Sept. 2017 <sup>P</sup>	Sept. 2016	July 2017	Aug. 2017 <sup>P</sup>	Sept. 2017 <sup>P</sup>	
Wholesale trade - Continued									
Electronic markets and agents and brokers.....	895.7	913.2	911.6	906.8	895.7	909.5	909.2	907.8	-1.4
Retail trade.....	15,734.9	15,842.7	15,805.9	15,665.5	15,887.4	15,819.2	15,811.9	15,809.0	-2.9
Motor vehicle and parts dealers.....	1,995.7	2,031.8	2,031.2	2,019.4	1,988.6	2,014.3	2,014.6	2,012.9	-1.7
Automobile dealers.....	1,291.0	1,310.6	1,310.6	1,306.4	1,288.2	1,304.8	1,303.8	1,303.3	-0.5
Other motor vehicle dealers.....	153.5	166.2	164.0	155.1	150.7	155.7	155.9	152.7	-3.2
Auto parts, accessories, and tire stores...	551.2	555.0	556.6	557.9	549.8	553.8	554.9	556.8	1.9
Furniture and home furnishings stores.....	472.3	477.3	478.4	477.5	477.1	482.7	483.4	484.0	0.6
Electronics and appliance stores.....	516.6	494.7	494.9	494.1	530.2	503.8	503.9	502.1	-1.8
Building material and garden supply stores.....	1,256.1	1,326.3	1,294.5	1,275.1	1,279.1	1,290.1	1,291.3	1,296.6	5.3
Food and beverage stores.....	3,093.2	3,105.0	3,093.8	3,060.8	3,096.2	3,075.8	3,074.3	3,067.4	-6.9
Health and personal care stores.....	1,045.4	1,046.3	1,042.6	1,039.1	1,051.8	1,050.2	1,047.8	1,048.0	0.2
Gasoline stations.....	938.1	950.9	953.7	947.0	932.4	938.9	939.0	940.5	1.5
Clothing and clothing accessories stores....	1,317.6	1,321.3	1,321.3	1,283.2	1,351.8	1,328.5	1,323.6	1,321.1	-2.5
Sporting goods, hobby, book, and music stores.....	605.6	588.0	591.3	590.4	618.7	603.6	601.8	601.2	-0.6
General merchandise stores.....	3,126.9	3,099.1	3,103.0	3,079.9	3,188.6	3,131.9	3,133.2	3,130.7	-2.5
Department stores.....	1,272.3	1,256.7	1,256.1	1,239.5	1,314.8	1,279.0	1,277.3	1,275.1	-2.2
Other general merchandise stores.....	1,854.6	1,842.4	1,846.9	1,840.4	1,873.9	1,852.9	1,855.8	1,855.6	-0.2
Miscellaneous store retailers.....	832.0	841.1	840.2	834.3	833.2	832.0	830.9	834.4	3.5
Nonstore retailers.....	535.4	560.9	561.0	564.7	539.7	567.4	568.1	570.1	2.0
Transportation and warehousing.....	5,018.1	5,015.1	5,033.9	5,126.4	5,001.0	5,080.7	5,088.7	5,110.5	21.8
Air transportation.....	479.0	491.1	493.3	494.4	478.6	487.7	490.4	493.7	3.3
Rail transportation.....	214.1	207.2	207.2	207.2	213.2	207.0	206.7	206.3	-0.4
Water transportation.....	66.3	67.6	67.4	66.6	66.0	64.8	65.2	65.9	0.7
Truck transportation.....	1,469.3	1,491.0	1,490.7	1,485.8	1,454.4	1,473.0	1,471.3	1,471.2	-0.1
Transit and ground passenger transportation.....	483.0	415.5	413.9	495.0	472.6	475.6	473.1	482.5	9.4
Pipeline transportation.....	48.9	47.1	47.0	46.5	49.0	46.9	47.0	46.6	-0.4
Scenic and sightseeing transportation.....	42.2	48.5	47.3	42.7	35.1	36.3	35.9	35.9	0.0
Support activities for transportation.....	662.3	669.4	671.3	671.8	660.9	667.8	669.3	670.2	0.9
Couriers and messengers.....	624.8	630.3	642.0	654.3	645.2	669.6	673.6	677.2	3.6
Warehousing and storage.....	928.2	947.4	953.8	962.1	926.0	952.0	956.2	961.0	4.8
Utilities.....	555.1	558.2	555.4	551.8	555.9	553.0	552.7	552.7	0.0
Information.....	2,773	2,735	2,729	2,695	2,786	2,720	2,716	2,707	-9
Publishing industries, except Internet.....	731.4	723.8	721.6	717.0	730.7	720.4	718.8	716.8	-2.0
Motion picture and sound recording industries.....	415.5	410.1	408.0	385.2	425.0	401.7	399.2	394.6	-4.6
Broadcasting, except Internet.....	268.6	258.0	257.7	260.1	268.9	259.1	258.7	259.8	1.1
Telecommunications.....	794.0	761.5	759.6	755.1	797.4	761.0	759.9	758.0	-1.9
Data processing, hosting and related services.....	300.8	306.0	304.3	304.2	301.4	304.7	303.9	304.2	0.3
Other information services.....	262.5	275.8	277.7	273.2	262.4	273.4	275.6	273.2	-2.4
Financial activities.....	8,328	8,538	8,533	8,478	8,324	8,455	8,463	8,473	10
Finance and insurance.....	6,157.6	6,289.6	6,286.1	6,257.3	6,167.0	6,259.6	6,262.7	6,267.2	4.5
Monetary authorities - central bank.....	18.4	19.0	18.8	18.7	18.4	18.8	18.8	18.7	-0.1
Credit intermediation and related activities.....	2,618.3	2,676.2	2,678.1	2,652.6	2,622.1	2,661.3	2,664.1	2,657.5	-6.6
Depository credit intermediation <sup>1</sup> .....	1,698.6	1,729.2	1,725.9	1,711.5	1,702.9	1,719.7	1,718.4	1,716.9	-1.5
Commercial banking.....	1,306.0	1,324.3	1,322.3	1,310.3	1,308.7	1,317.5	1,316.6	1,313.5	-3.1
Nondepository credit intermediation.....	614.9	631.2	630.9	627.8	614.8	629.3	628.9	628.1	-0.8
Activities related to credit intermediation...	304.8	315.8	321.3	313.3	304.4	312.3	316.8	312.5	-4.3
Securities, commodity contracts, investments, and funds and trusts.....	933.0	959.0	957.8	948.8	932.8	949.8	948.4	948.7	0.3
Insurance carriers and related activities.....	2,587.9	2,635.4	2,631.4	2,637.2	2,593.7	2,629.7	2,631.4	2,642.3	10.9
Real estate and rental and leasing.....	2,170.5	2,248.3	2,246.7	2,220.3	2,156.5	2,195.2	2,200.4	2,206.0	5.6
Real estate.....	1,576.8	1,627.9	1,628.6	1,609.8	1,572.3	1,600.4	1,604.1	1,606.2	2.1
Rental and leasing services.....	570.4	596.6	594.4	587.4	560.8	571.5	572.9	576.6	3.7
Lessors of nonfinancial intangible assets....	23.3	23.8	23.7	23.1	23.4	23.3	23.4	23.2	-0.2

See footnotes at end of table.

**ESTABLISHMENT DATA**

**Table B-1. Employees on nonfarm payrolls by industry sector and selected industry detail**

— Continued

[In thousands]

Industry	Not seasonally adjusted				Seasonally adjusted				Change from: Aug.2017 - Sept.2017 <sup>P</sup>
	Sept. 2016	July 2017	Aug. 2017 <sup>P</sup>	Sept. 2017 <sup>P</sup>	Sept. 2016	July 2017	Aug. 2017 <sup>P</sup>	Sept. 2017 <sup>P</sup>	
Private service-providing - Continued									
Professional and business services.....	20,351	20,873	20,933	20,879	20,279	20,751	20,794	20,807	13
Professional and technical services.....	8,864.6	9,162.2	9,157.7	9,098.3	8,956.5	9,156.8	9,174.6	9,186.5	11.9
Legal services.....	1,117.7	1,137.2	1,130.2	1,125.0	1,121.3	1,127.0	1,127.7	1,128.6	0.9
Accounting and bookkeeping services.....	923.1	942.4	947.1	939.6	997.5	1,005.8	1,009.3	1,010.1	0.8
Architectural and engineering services.....	1,416.6	1,482.3	1,480.4	1,465.1	1,415.2	1,459.3	1,462.7	1,463.9	1.2
Specialized design services.....	140.4	143.3	139.0	138.4	142.2	142.2	139.2	140.0	0.8
Computer systems design and related services.....	2,004.8	2,068.4	2,071.1	2,058.9	2,012.6	2,057.8	2,062.7	2,066.9	4.2
Management and technical consulting services.....	1,396.0	1,456.5	1,457.5	1,451.4	1,398.4	1,448.4	1,451.1	1,453.0	1.9
Scientific research and development services.....	682.1	716.9	714.2	706.7	686.5	707.4	709.7	711.9	2.2
Advertising and related services.....	491.0	491.2	491.4	486.9	491.9	488.7	488.7	487.5	-1.2
Other professional and technical services.....	692.9	724.0	726.8	726.3	691.0	720.3	723.4	724.7	1.3
Management of companies and enterprises.....	2,248.7	2,299.6	2,294.5	2,278.0	2,246.5	2,280.8	2,282.0	2,277.8	-4.2
Administrative and waste services.....	9,238.0	9,411.0	9,481.1	9,502.3	9,076.1	9,313.3	9,337.4	9,342.6	5.2
Administrative and support services.....	8,828.2	8,989.8	9,059.5	9,083.7	8,669.7	8,901.1	8,922.8	8,926.9	4.1
Office administrative services.....	499.2	526.1	526.9	527.3	499.4	524.7	525.8	527.6	1.8
Facilities support services.....	142.1	144.4	145.5	146.0	141.9	144.6	145.3	145.3	0.0
Employment services <sup>1</sup> .....	3,674.3	3,676.2	3,742.4	3,804.9	3,587.3	3,706.5	3,714.3	3,718.7	4.4
Temporary help services.....	3,013.1	3,004.5	3,066.3	3,126.6	2,940.9	3,040.3	3,047.8	3,053.7	5.9
Business support services.....	917.2	899.9	906.1	911.4	922.5	914.4	915.9	916.3	0.4
Travel arrangement and reservation services.....	217.8	219.6	219.2	214.1	217.6	215.8	216.5	214.1	-2.4
Investigation and security services.....	907.9	914.4	922.1	924.8	900.9	916.8	918.7	918.6	-0.1
Services to buildings and dwellings.....	2,150.1	2,279.7	2,265.6	2,223.8	2,082.2	2,151.1	2,155.5	2,157.3	1.8
Other support services.....	319.6	329.5	331.7	331.4	318.0	327.3	330.9	329.2	-1.7
Waste management and remediation services.....	409.8	421.2	421.6	418.6	406.4	412.2	414.6	415.7	1.1
Education and health services.....									
Educational services.....	22,665	22,802	22,857	23,142	22,745	23,145	23,190	23,217	27
Educational services.....	3,542.7	3,317.6	3,334.2	3,632.3	3,587.1	3,632.1	3,656.0	3,669.9	13.9
Health care and social assistance.....	19,122.7	19,484.5	19,522.3	19,509.9	19,157.9	19,513.3	19,534.2	19,547.3	13.1
Health care <sup>3</sup> .....	15,490.9	15,796.0	15,816.7	15,809.6	15,499.8	15,773.4	15,795.0	15,817.5	22.5
Ambulatory health care services.....	7,122.0	7,325.0	7,339.8	7,348.8	7,134.8	7,323.0	7,334.0	7,358.7	24.7
Offices of physicians.....	2,538.7	2,599.6	2,600.8	2,606.9	2,542.7	2,597.2	2,600.5	2,609.3	8.8
Offices of dentists.....	926.8	943.9	945.4	941.7	930.6	942.9	942.8	945.8	3.0
Offices of other health practitioners.....	866.3	906.0	910.7	907.7	870.0	906.0	908.5	911.7	3.2
Outpatient care centers.....	866.1	911.2	913.9	914.7	867.4	910.3	913.6	916.4	2.8
Medical and diagnostic laboratories.....	262.4	258.4	260.6	260.6	264.2	258.0	260.3	261.0	0.7
Home health care services.....	1,371.9	1,410.7	1,413.6	1,419.0	1,371.1	1,413.4	1,414.6	1,417.6	3.0
Other ambulatory health care services.....	289.8	295.2	294.8	298.2	288.8	295.1	293.8	296.8	3.0
Hospitals.....	5,052.6	5,123.8	5,125.3	5,131.8	5,047.5	5,116.6	5,122.7	5,127.2	4.5
Nursing and residential care facilities.....	3,316.3	3,347.2	3,351.6	3,329.0	3,317.5	3,333.8	3,338.3	3,331.6	-6.7
Nursing care facilities.....	1,647.1	1,640.7	1,643.4	1,628.4	1,644.8	1,634.5	1,637.5	1,628.1	-9.4
Residential mental health facilities.....	614.0	624.9	623.5	621.7	614.1	622.2	621.8	622.2	0.4
Community care facilities for the elderly.....	891.0	911.1	913.1	910.0	894.2	908.9	909.4	912.5	3.1
Other residential care facilities.....	164.2	170.5	171.6	168.9	164.5	168.2	169.5	168.9	-0.6
Social assistance.....	3,631.8	3,688.5	3,705.6	3,700.3	3,658.1	3,739.9	3,739.2	3,729.8	-9.4
Individual and family services.....	2,232.8	2,313.2	2,306.2	2,287.3	2,249.6	2,310.8	2,306.6	2,305.1	-1.5
Emergency and other relief services.....	162.8	169.0	167.7	167.9	163.6	168.8	168.3	169.0	0.7
Vocational rehabilitation services.....	336.0	343.5	342.2	336.5	337.5	337.6	338.3	337.6	-0.7
Child day care services.....	900.2	862.8	889.5	908.6	907.3	922.7	926.0	918.1	-7.9
Leisure and hospitality.....									
Arts, entertainment, and recreation.....	15,866	16,735	16,653	16,049	15,684	15,984	15,984	15,873	-111
Arts, entertainment, and recreation.....	2,297.1	2,636.5	2,565.2	2,318.3	2,235.2	2,274.7	2,269.5	2,263.6	-5.9
Performing arts and spectator sports.....	473.7	492.7	484.8	478.1	457.5	463.5	457.0	459.7	2.7
Museums, historical sites, and similar institutions.....	162.6	187.8	181.6	170.2	161.5	169.3	168.0	168.6	0.6
Amusements, gambling, and recreation.....	1,660.8	1,956.0	1,898.8	1,670.0	1,616.2	1,641.9	1,644.5	1,635.3	-9.2
Accommodation and food services.....	13,569.3	14,098.2	14,088.2	13,730.6	13,449.2	13,709.0	13,714.5	13,609.1	-105.4

See footnotes at end of table.

**ESTABLISHMENT DATA**

**Table B-1. Employees on nonfarm payrolls by industry sector and selected industry detail**

— Continued

[In thousands]

Industry	Not seasonally adjusted				Seasonally adjusted				Change from: Aug.2017 - Sept.2017 <sup>P</sup>
	Sept. 2016	July 2017	Aug. 2017 <sup>P</sup>	Sept. 2017 <sup>P</sup>	Sept. 2016	July 2017	Aug. 2017 <sup>P</sup>	Sept. 2017 <sup>P</sup>	
Accommodation and food services - Continued									
Accommodation.....	1,990.2	2,114.6	2,095.6	1,992.6	1,950.2	1,957.8	1,954.7	1,954.0	-0.7
Food services and drinking places.....	11,579.1	11,983.6	11,992.6	11,738.0	11,499.0	11,751.2	11,759.8	11,655.1	-104.7
Other services.....	5,695	5,833	5,806	5,749	5,708	5,762	5,766	5,761	-5
Repair and maintenance.....	1,288.0	1,302.6	1,299.1	1,291.5	1,288.0	1,295.7	1,295.2	1,292.4	-2.8
Personal and laundry services.....	1,459.4	1,500.3	1,497.2	1,492.1	1,458.5	1,489.0	1,491.3	1,491.7	0.4
Membership associations and organizations...	2,947.7	3,029.7	3,009.2	2,964.9	2,961.5	2,977.3	2,979.8	2,976.5	-3.3
Government.....	22,237	21,048	21,239	22,276	22,316	22,325	22,330	22,337	7
Federal.....	2,815.0	2,822.0	2,813.0	2,811.0	2,811.0	2,808.0	2,806.0	2,806.0	0.0
Federal, except U.S. Postal Service.....	2,203.2	2,205.1	2,203.6	2,198.5	2,196.1	2,189.9	2,190.0	2,189.2	-0.8
U.S. Postal Service.....	611.3	617.1	609.6	612.2	614.5	617.9	615.9	616.3	0.4
State government.....	5,150.0	4,767.0	4,803.0	5,156.0	5,101.0	5,096.0	5,098.0	5,100.0	2.0
State government education.....	2,471.6	2,086.2	2,124.3	2,489.1	2,422.8	2,431.2	2,431.6	2,434.4	2.8
State government, excluding education.....	2,678.6	2,680.4	2,678.4	2,666.5	2,678.5	2,664.8	2,666.2	2,665.4	-0.8
Local government.....	14,272.0	13,459.0	13,623.0	14,309.0	14,404.0	14,421.0	14,426.0	14,431.0	5.0
Local government education.....	7,843.3	6,737.9	6,968.9	7,842.9	7,967.6	7,946.6	7,955.1	7,957.0	1.9
Local government, excluding education.....	6,429.0	6,721.1	6,654.3	6,466.2	6,436.0	6,473.9	6,471.0	6,474.2	3.2

<sup>1</sup> Includes other industries, not shown separately.

<sup>2</sup> Includes motor vehicles, motor vehicle bodies and trailers, and motor vehicle parts.

<sup>3</sup> Includes ambulatory health care services, hospitals, and nursing and residential care facilities.

<sup>p</sup> Preliminary

NOTE: Data have been revised to reflect March 2016 benchmark levels and updated seasonal adjustment factors.



**ESTABLISHMENT DATA**

**Table B-2. Average weekly hours and overtime of all employees on private nonfarm payrolls by industry sector, seasonally adjusted**

Industry	Sept. 2016	July 2017	Aug. 2017 <sup>p</sup>	Sept. 2017 <sup>p</sup>
<b>AVERAGE WEEKLY HOURS</b>				
Total private.....	34.4	34.4	34.4	34.4
Goods-producing.....	40.2	40.4	40.2	40.2
Mining and logging.....	43.7	45.3	44.8	45.0
Construction.....	38.8	39.1	38.9	38.8
Manufacturing.....	40.7	40.9	40.7	40.7
Durable goods.....	41.2	41.3	41.2	41.2
Nondurable goods.....	39.9	40.2	39.9	39.9
Private service-providing.....	33.2	33.3	33.2	33.2
Trade, transportation, and utilities.....	34.2	34.4	34.4	34.3
Wholesale trade.....	38.9	39.1	39.1	39.1
Retail trade.....	30.8	31.0	30.9	30.9
Transportation and warehousing.....	38.8	38.8	38.8	38.6
Utilities.....	42.4	42.3	41.6	42.3
Information.....	35.8	36.3	36.2	36.3
Financial activities.....	37.5	37.4	37.5	37.5
Professional and business services.....	36.1	36.1	36.0	36.0
Education and health services.....	32.9	32.9	32.9	32.8
Leisure and hospitality.....	26.1	26.0	26.0	26.0
Other services.....	31.9	31.8	31.8	31.7
<b>AVERAGE OVERTIME HOURS</b>				
Manufacturing.....	3.3	3.3	3.3	3.3
Durable goods.....	3.3	3.3	3.3	3.3
Nondurable goods.....	3.2	3.4	3.4	3.3

p Preliminary

NOTE: Data have been revised to reflect March 2016 benchmark levels and updated seasonal adjustment factors.

**ESTABLISHMENT DATA**

**Table B-3. Average hourly and weekly earnings of all employees on private nonfarm payrolls by industry sector, seasonally adjusted**

Industry	Average hourly earnings				Average weekly earnings			
	Sept. 2016	July 2017	Aug. 2017 <sup>p</sup>	Sept. 2017 <sup>p</sup>	Sept. 2016	July 2017	Aug. 2017 <sup>p</sup>	Sept. 2017 <sup>p</sup>
Total private.....	\$25.81	\$26.39	\$26.43	\$26.55	\$887.86	\$907.82	\$909.19	\$913.32
Goods-producing.....	27.09	27.69	27.61	27.75	1,089.02	1,118.68	1,109.92	1,115.55
Mining and logging.....	32.12	32.95	32.57	32.58	1,403.64	1,492.64	1,459.14	1,466.10
Construction.....	28.33	28.94	29.00	29.19	1,099.20	1,131.55	1,128.10	1,132.57
Manufacturing.....	26.16	26.69	26.56	26.68	1,064.71	1,091.62	1,080.99	1,085.88
Durable goods.....	27.46	27.95	27.81	27.95	1,131.35	1,154.34	1,145.77	1,151.54
Nondurable goods.....	23.95	24.56	24.42	24.49	955.61	987.31	974.36	977.15
Private service-providing.....	25.52	26.09	26.15	26.27	847.26	868.80	868.18	872.16
Trade, transportation, and utilities.....	22.45	22.86	22.89	22.95	767.79	786.38	787.42	787.19
Wholesale trade.....	29.73	30.15	30.14	30.25	1,156.50	1,178.87	1,178.47	1,182.78
Retail trade.....	17.91	18.20	18.27	18.27	551.63	564.20	564.54	564.54
Transportation and warehousing.....	23.41	23.94	23.97	24.03	908.31	928.87	930.04	927.56
Utilities.....	38.35	39.27	38.87	39.38	1,626.04	1,661.12	1,616.99	1,665.77
Information.....	36.98	38.56	38.48	38.90	1,323.88	1,399.73	1,392.98	1,412.07
Financial activities.....	32.55	33.22	33.31	33.44	1,220.63	1,242.43	1,249.13	1,254.00
Professional and business services.....	30.97	31.69	31.79	32.00	1,118.02	1,144.01	1,144.44	1,152.00
Education and health services.....	25.87	26.39	26.44	26.50	851.12	868.23	869.88	869.20
Leisure and hospitality.....	15.01	15.45	15.49	15.55	391.76	401.70	402.74	404.30
Other services.....	23.17	23.71	23.79	23.91	739.12	753.98	756.52	757.95

p Preliminary

NOTE: Data have been revised to reflect March 2016 benchmark levels and updated seasonal adjustment factors.

**ESTABLISHMENT DATA**

**Table B-4. Indexes of aggregate weekly hours and payrolls for all employees on private nonfarm payrolls by industry sector, seasonally adjusted**

[2007=100]

Industry	Index of aggregate weekly hours <sup>1</sup>					Index of aggregate weekly payrolls <sup>2</sup>				
	Sept. 2016	July 2017	Aug. 2017 <sup>p</sup>	Sept. 2017 <sup>p</sup>	Percent change from: Aug. 2017 - Sept. 2017 <sup>p</sup>	Sept. 2016	July 2017	Aug. 2017 <sup>p</sup>	Sept. 2017 <sup>p</sup>	Percent change from: Aug. 2017 - Sept. 2017 <sup>p</sup>
Total private.....	105.8	107.2	107.4	107.3	-0.1	130.6	135.3	135.7	136.2	0.4
Goods-producing.....	90.3	92.1	91.9	92.0	0.1	110.6	115.2	114.7	115.3	0.5
Mining and logging.....	90.8	101.5	101.2	102.0	0.8	117.1	134.3	132.4	133.4	0.8
Construction.....	90.0	92.8	92.6	92.4	-0.2	110.8	116.7	116.6	117.2	0.5
Manufacturing.....	90.3	91.3	91.1	91.1	0.0	109.8	113.3	112.6	113.1	0.4
Durable goods.....	89.2	90.0	90.1	90.2	0.1	108.8	111.7	111.3	111.9	0.5
Nondurable goods.....	92.3	93.7	93.1	93.0	-0.1	112.2	116.7	115.4	115.6	0.2
Private service-providing.....	109.9	111.6	111.4	111.3	-0.1	136.2	141.5	141.6	142.1	0.4
Trade, transportation, and utilities.....	101.6	102.4	102.4	102.2	-0.2	122.8	126.0	126.2	126.3	0.1
Wholesale trade.....	99.8	101.1	101.1	101.2	0.1	123.8	127.2	127.2	127.8	0.5
Retail trade.....	99.4	99.6	99.2	99.2	0.0	117.7	119.9	119.9	119.9	0.0
Transportation and warehousing.....	111.1	112.8	113.0	112.9	-0.1	131.9	137.1	137.5	137.7	0.1
Utilities.....	102.0	101.2	99.5	101.2	1.7	129.2	131.3	127.8	131.6	3.0
Information.....	91.1	90.2	89.8	89.7	-0.1	119.9	123.8	123.0	124.3	1.1
Financial activities.....	102.2	103.6	103.9	104.1	0.2	129.8	134.2	135.0	135.7	0.5
Professional and business services.....	115.1	117.8	117.7	117.8	0.1	144.5	151.3	151.6	152.7	0.7
Education and health services.....	122.2	124.3	124.6	124.3	-0.2	152.1	157.9	158.5	158.5	0.0
Leisure and hospitality.....	116.8	118.6	118.6	117.8	-0.7	141.4	147.8	148.2	147.7	-0.3
Other services.....	105.0	105.6	105.7	105.3	-0.4	133.3	137.3	137.8	138.0	0.1

<sup>1</sup> The indexes of aggregate weekly hours are calculated by dividing the current month's estimates of aggregate hours by the corresponding 2007 annual average aggregate hours. Aggregate hours estimates are the product of estimates of average weekly hours and employment.

<sup>2</sup> The indexes of aggregate weekly payrolls are calculated by dividing the current month's estimates of aggregate weekly payrolls by the corresponding 2007 annual average aggregate weekly payrolls. Aggregate payrolls estimates are the product of estimates of average hourly earnings, average weekly hours, and employment.

p Preliminary

NOTE: Data have been revised to reflect March 2016 benchmark levels and updated seasonal adjustment factors.

**ESTABLISHMENT DATA**

**Table B-5. Employment of women on nonfarm payrolls by industry sector, seasonally adjusted**

Industry	Women employees (in thousands)				Percent of all employees			
	Sept. 2016	July 2017	Aug. 2017 <sup>p</sup>	Sept. 2017 <sup>p</sup>	Sept. 2016	July 2017	Aug. 2017 <sup>p</sup>	Sept. 2017 <sup>p</sup>
Total nonfarm.....	71,873	72,542	72,620	72,579	49.6	49.5	49.5	49.5
Total private.....	59,073	59,724	59,794	59,753	48.2	48.1	48.1	48.1
Goods-producing.....	4,325	4,400	4,413	4,424	21.9	22.0	22.0	22.0
Mining and logging.....	99	100	100	100	15.0	14.0	13.9	13.9
Construction.....	841	872	876	882	12.5	12.7	12.7	12.8
Manufacturing.....	3,385	3,428	3,437	3,442	27.5	27.6	27.6	27.7
Durable goods.....	1,805	1,815	1,821	1,826	23.5	23.5	23.4	23.5
Nondurable goods.....	1,580	1,613	1,616	1,616	34.1	34.5	34.6	34.6
Private service-providing.....	54,748	55,324	55,381	55,329	53.2	53.1	53.1	53.1
Trade, transportation, and utilities.....	11,110	10,973	10,959	10,956	40.7	40.1	40.0	40.0
Wholesale trade.....	1,740.8	1,744.3	1,746.2	1,749.0	29.6	29.4	29.5	29.5
Retail trade.....	8,009.2	7,864.9	7,847.3	7,836.4	50.4	49.7	49.6	49.6
Transportation and warehousing.....	1,230.7	1,236.3	1,238.3	1,243.8	24.6	24.3	24.3	24.3
Utilities.....	129.4	127.5	127.6	127.0	23.3	23.1	23.1	23.0
Information.....	1,115	1,083	1,079	1,070	40.0	39.8	39.7	39.5
Financial activities.....	4,730	4,770	4,781	4,768	56.8	56.4	56.5	56.3
Professional and business services.....	9,115	9,328	9,341	9,349	44.9	45.0	44.9	44.9
Education and health services.....	17,533	17,836	17,863	17,882	77.1	77.1	77.0	77.0
Leisure and hospitality.....	8,145	8,289	8,309	8,253	51.9	51.9	52.0	52.0
Other services.....	3,000	3,045	3,049	3,051	52.6	52.8	52.9	53.0
Government.....	12,800	12,818	12,826	12,826	57.4	57.4	57.4	57.4

p Preliminary

NOTE: Data have been revised to reflect March 2016 benchmark levels and updated seasonal adjustment factors.

**ESTABLISHMENT DATA**

**Table B-6. Employment of production and nonsupervisory employees on private nonfarm payrolls by industry sector, seasonally adjusted<sup>1</sup>**

[In thousands]

Industry	Sept. 2016	July 2017	Aug. 2017 <sup>p</sup>	Sept. 2017 <sup>p</sup>
Total private.....	100,854	102,339	102,463	102,414
Goods-producing.....	14,149	14,371	14,423	14,440
Mining and logging.....	457	512	518	523
Construction.....	5,052	5,158	5,173	5,179
Manufacturing.....	8,640	8,701	8,732	8,738
Durable goods.....	5,278	5,306	5,333	5,338
Nondurable goods.....	3,362	3,395	3,399	3,400
Private service-providing.....	86,705	87,968	88,040	87,974
Trade, transportation, and utilities.....	22,943	23,073	23,076	23,104
Wholesale trade.....	4,705.3	4,746.2	4,747.5	4,746.9
Retail trade.....	13,464.0	13,469.2	13,469.0	13,477.7
Transportation and warehousing.....	4,326.2	4,413.2	4,414.9	4,434.6
Utilities.....	447.2	444.7	444.5	445.1
Information.....	2,240	2,196	2,189	2,176
Financial activities.....	6,460	6,578	6,583	6,590
Professional and business services.....	16,589	16,952	16,968	16,966
Education and health services.....	19,952	20,340	20,386	20,403
Leisure and hospitality.....	13,784	14,059	14,066	13,967
Other services.....	4,737	4,770	4,772	4,768

<sup>1</sup> Data relate to production employees in mining and logging and manufacturing, construction employees in construction, and nonsupervisory employees in the service-providing industries. These groups account for approximately four-fifths of the total employment on private nonfarm payrolls.

<sup>p</sup> Preliminary

NOTE: Data have been revised to reflect March 2016 benchmark levels and updated seasonal adjustment factors.

**ESTABLISHMENT DATA**

**Table B-7. Average weekly hours and overtime of production and nonsupervisory employees on private nonfarm payrolls by industry sector, seasonally adjusted<sup>1</sup>**

Industry	Sept. 2016	July 2017	Aug. 2017 <sup>p</sup>	Sept. 2017 <sup>p</sup>
<b>AVERAGE WEEKLY HOURS</b>				
Total private.....	33.6	33.7	33.6	33.6
Goods-producing.....	41.1	41.3	41.3	41.1
Mining and logging.....	45.6	45.8	45.5	45.9
Construction.....	39.6	39.6	39.6	39.4
Manufacturing.....	41.8	42.0	42.0	41.8
Durable goods.....	42.3	42.2	42.3	42.2
Nondurable goods.....	41.1	41.6	41.5	41.3
Private service-providing.....	32.3	32.5	32.4	32.4
Trade, transportation, and utilities.....	33.5	33.9	33.8	33.8
Wholesale trade.....	38.7	39.0	39.0	39.0
Retail trade.....	29.6	30.3	30.1	30.2
Transportation and warehousing.....	38.8	38.5	38.4	38.2
Utilities.....	42.7	42.6	42.1	42.6
Information.....	35.7	35.8	35.6	35.9
Financial activities.....	36.9	36.8	36.9	36.9
Professional and business services.....	35.4	35.5	35.4	35.4
Education and health services.....	32.2	32.2	32.2	32.2
Leisure and hospitality.....	24.9	24.8	24.7	24.5
Other services.....	30.8	30.8	30.8	30.7
<b>AVERAGE OVERTIME HOURS</b>				
Manufacturing.....	4.3	4.4	4.4	4.4
Durable goods.....	4.5	4.5	4.5	4.5
Nondurable goods.....	4.1	4.2	4.3	4.2

<sup>1</sup> Data relate to production employees in mining and logging and manufacturing, construction employees in construction, and nonsupervisory employees in the service-providing industries. These groups account for approximately four-fifths of the total employment on private nonfarm payrolls.

<sup>p</sup> Preliminary

NOTE: Data have been revised to reflect March 2016 benchmark levels and updated seasonal adjustment factors.

**ESTABLISHMENT DATA**

**Table B-8. Average hourly and weekly earnings of production and nonsupervisory employees on private nonfarm payrolls by industry sector, seasonally adjusted<sup>1</sup>**

Industry	Average hourly earnings				Average weekly earnings			
	Sept. 2016	July 2017	Aug. 2017 <sup>p</sup>	Sept. 2017 <sup>p</sup>	Sept. 2016	July 2017	Aug. 2017 <sup>p</sup>	Sept. 2017 <sup>p</sup>
Total private.....	\$21.68	\$22.09	\$22.14	\$22.23	\$728.45	\$744.43	\$743.90	\$746.93
Goods-producing.....	22.73	23.18	23.21	23.29	934.20	957.33	958.57	957.22
Mining and logging.....	27.09	27.87	27.75	27.63	1,235.30	1,276.45	1,262.63	1,268.22
Construction.....	26.21	26.77	26.80	27.01	1,037.92	1,060.09	1,061.28	1,064.19
Manufacturing.....	20.55	20.87	20.91	20.93	858.99	876.54	878.22	874.87
Durable goods.....	21.56	21.87	21.91	21.93	911.99	922.91	926.79	925.45
Nondurable goods.....	18.90	19.30	19.30	19.31	776.79	802.88	800.95	797.50
Private service-providing.....	21.46	21.86	21.92	22.01	693.16	710.45	710.21	713.12
Trade, transportation, and utilities.....	19.06	19.38	19.41	19.49	638.51	656.98	656.06	658.76
Wholesale trade.....	24.35	24.80	24.80	24.87	942.35	967.20	967.20	969.93
Retail trade.....	15.03	15.32	15.35	15.42	444.89	464.20	462.04	465.68
Transportation and warehousing.....	21.03	21.34	21.42	21.50	815.96	821.59	822.53	821.30
Utilities.....	35.47	36.25	35.91	36.29	1,514.57	1,544.25	1,511.81	1,545.95
Information.....	30.33	30.79	30.76	30.88	1,082.78	1,102.28	1,095.06	1,108.59
Financial activities.....	26.33	26.60	26.59	26.62	971.58	978.88	981.17	982.28
Professional and business services.....	25.62	26.10	26.21	26.31	906.95	926.55	927.83	931.37
Education and health services.....	22.62	23.05	23.10	23.16	728.36	742.21	743.82	745.75
Leisure and hospitality.....	12.96	13.36	13.41	13.47	322.70	331.33	331.23	330.02
Other services.....	19.43	19.96	20.04	20.13	598.44	614.77	617.23	617.99

<sup>1</sup> Data relate to production employees in mining and logging and manufacturing, construction employees in construction, and nonsupervisory employees in the service-providing industries. These groups account for approximately four-fifths of the total employment on private nonfarm payrolls.

p Preliminary

NOTE: Data have been revised to reflect March 2016 benchmark levels and updated seasonal adjustment factors.

**ESTABLISHMENT DATA**

**Table B-9. Indexes of aggregate weekly hours and payrolls for production and nonsupervisory employees on private nonfarm payrolls by industry sector, seasonally adjusted<sup>1</sup>**

[2002=100]

Industry	Index of aggregate weekly hours <sup>2</sup>					Index of aggregate weekly payrolls <sup>3</sup>				
	Sept. 2016	July 2017	Aug. 2017 <sup>p</sup>	Sept. 2017 <sup>p</sup>	Percent change from: Aug. 2017 - Sept. 2017 <sup>p</sup>	Sept. 2016	July 2017	Aug. 2017 <sup>p</sup>	Sept. 2017 <sup>p</sup>	Percent change from: Aug. 2017 - Sept. 2017 <sup>p</sup>
Total private.....	112.9	114.9	114.7	114.6	-0.1	163.6	169.6	169.7	170.3	0.4
Goods-producing.....	88.9	90.7	91.0	90.7	-0.3	123.7	128.7	129.4	129.3	-0.1
Mining and logging.....	110.7	124.6	125.2	127.6	1.9	174.5	202.0	202.1	205.0	1.4
Construction.....	100.2	102.3	102.6	102.2	-0.4	141.8	147.8	148.4	149.0	0.4
Manufacturing.....	82.9	83.9	84.2	83.8	-0.5	111.4	114.5	115.1	114.8	-0.3
Durable goods.....	83.9	84.2	84.8	84.7	-0.1	112.9	114.9	116.0	115.9	-0.1
Nondurable goods.....	81.4	83.2	83.1	82.7	-0.5	108.7	113.5	113.4	112.9	-0.4
Private service-providing.....	119.3	121.8	121.5	121.4	-0.1	175.5	182.5	182.6	183.2	0.3
Trade, transportation, and utilities.....	107.1	109.0	108.7	108.9	0.2	145.7	150.7	150.6	151.4	0.5
Wholesale trade.....	107.2	109.0	109.0	109.0	0.0	153.8	159.2	159.3	159.7	0.3
Retail trade.....	100.9	103.3	102.6	103.0	0.4	130.0	135.6	135.0	136.2	0.9
Transportation and warehousing.....	126.4	127.9	127.6	127.5	-0.1	168.6	173.1	173.4	173.9	0.3
Utilities.....	97.7	96.9	95.7	97.0	1.4	144.6	146.6	143.4	146.9	2.4
Information.....	91.3	89.7	88.9	89.2	0.3	137.0	136.8	135.4	136.3	0.7
Financial activities.....	112.2	114.0	114.4	114.5	0.1	181.8	186.5	187.1	187.5	0.2
Professional and business services.....	131.6	134.9	134.6	134.6	0.0	200.7	209.5	210.0	210.7	0.3
Education and health services.....	137.0	139.6	140.0	140.1	0.1	204.5	212.5	213.4	214.1	0.3
Leisure and hospitality.....	125.7	127.7	127.3	125.3	-1.6	185.0	193.8	193.8	191.7	-1.1
Other services.....	102.3	103.0	103.1	102.7	-0.4	144.9	149.8	150.5	150.6	0.1

<sup>1</sup> Data relate to production employees in mining and logging and manufacturing, construction employees in construction, and nonsupervisory employees in the service-providing industries. These groups account for approximately four-fifths of the total employment on private nonfarm payrolls.

<sup>2</sup> The indexes of aggregate weekly hours are calculated by dividing the current month's estimates of aggregate hours by the corresponding 2002 annual average aggregate hours. Aggregate hours estimates are the product of estimates of average weekly hours and employment.

<sup>3</sup> The indexes of aggregate weekly payrolls are calculated by dividing the current month's estimates of aggregate weekly payrolls by the corresponding 2002 annual average aggregate weekly payrolls. Aggregate payrolls estimates are the product of estimates of average hourly earnings, average weekly hours, and employment.

p Preliminary

NOTE: Data have been revised to reflect March 2016 benchmark levels and updated seasonal adjustment factors.