



For release 10:00 a.m. (ET) Friday, May 15, 2026

USDL-26-0725

Technical information: (202) 691-6569 • oewsinfo@bls.gov • www.bls.gov/oes

Media contact: (202) 691-5902 • PressOffice@bls.gov

OCCUPATIONAL EMPLOYMENT AND WAGES — MAY 2025

Construction and extraction occupations had employment of 6.4 million in May 2025, representing 4.1 percent of total national employment, the U.S. Bureau of Labor Statistics reported today. The largest construction and extraction occupations were construction laborers (1.1 million) and first-line supervisors of construction trades and extraction workers (812,210). (See chart 1.) The annual mean wage across all construction and extraction occupations was \$65,360, less than the U.S. average wage of \$69,770. (See chart 2.)

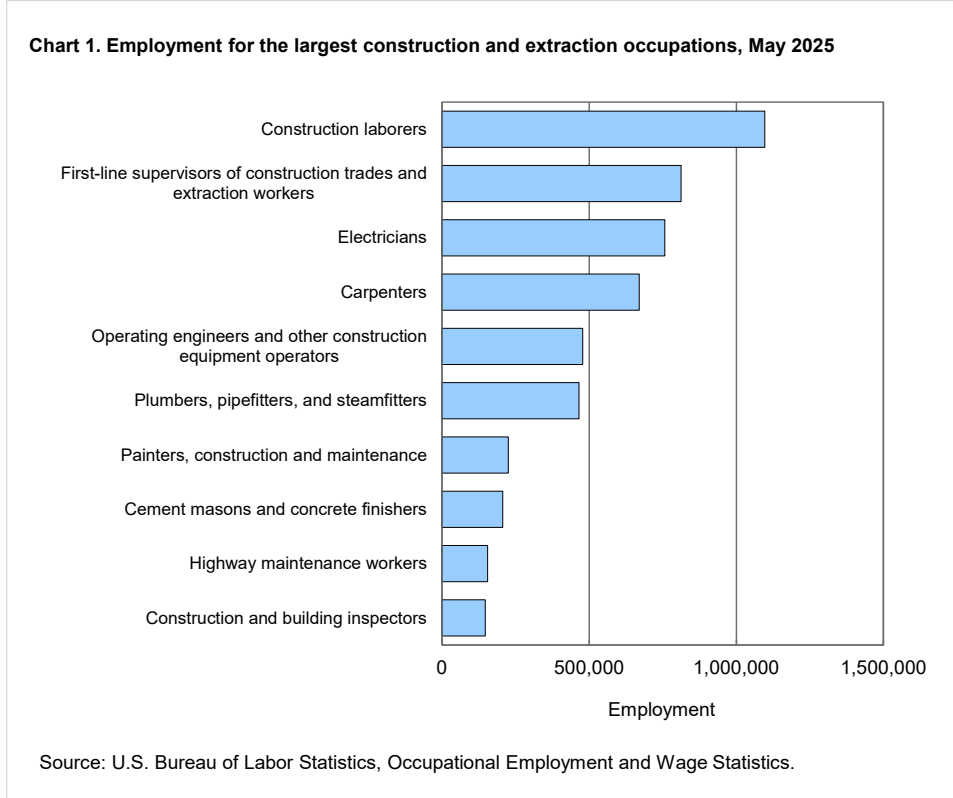
The Occupational Employment and Wage Statistics (OEWS) program provides employment and wage estimates for about 830 occupations in the nation, states, and approximately 530 areas. National data are available by industry for approximately 410 industry classifications and by ownership across all industries and for the educational services and hospitals industries. This news release features construction and extraction, educational instruction and library, and healthcare practitioners and technical occupations, in addition to largest occupations and public sector occupations. National employment and wage information for all occupations is shown in table 1.

Construction and extraction occupations

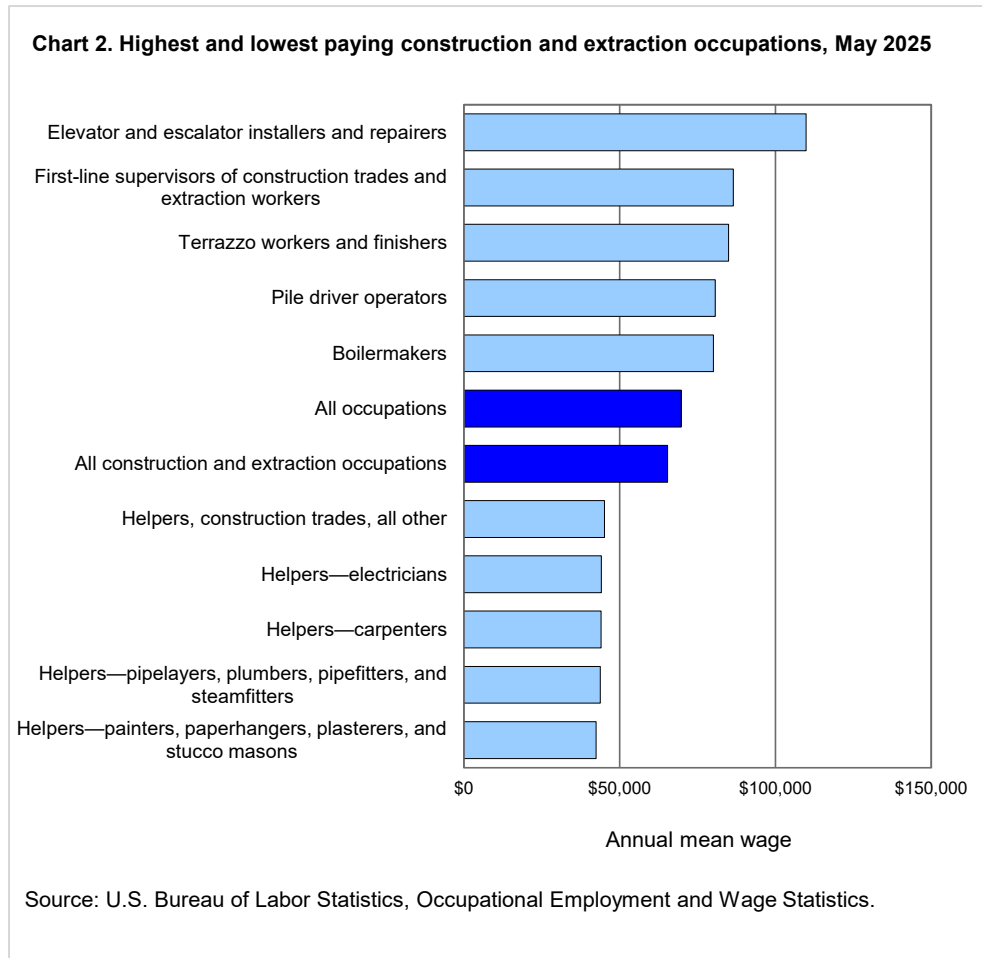
- The **largest** construction and extraction occupations were construction laborers (1.1 million), first-line supervisors of construction trades and extraction workers (812,210), electricians (757,220), and carpenters (670,090). (See table 1 and chart 1.)

Federal Government Shutdown

Because of the lapse in federal appropriations from October 1 through November 12, 2025, additional collection and processing time were required for the May 2025 OEWS survey panel once appropriations resumed. The response rate for the May 2025 survey panel was within the normal range and no additional modifications to the OEWS methodology and procedures were necessary as a result of the shutdown.



- The **highest paying** construction and extraction occupations included elevator and escalator installers and repairers (\$109,820), first-line supervisors of construction trades and extraction workers (\$86,450), and terrazzo workers and finishers (\$84,920). (See table 1 and chart 2.)
- The **lowest paying** construction and extraction occupations included helpers of painters, paperhangers, plasterers, and stucco masons (\$42,440) and helpers of pipelayers, plumbers, pipefitters, and steamfitters (\$43,730). (See table 1 and chart 2.)
- The **states** with the highest concentrations of construction and extraction occupations were Wyoming (9.1 percent of state employment) and North Dakota (8.1 percent).
- **Metropolitan areas** with the highest concentrations of construction and extraction occupations were Midland, TX (14.8 percent of area employment); Odessa, TX (12.8 percent); and Farmington, NM (12.3 percent).
- **Industries** with the highest employment of construction and extraction occupations were building equipment contractors (1.3 million); foundation, structure, and building exterior contractors (709,410); and building finishing contractors (583,790). Outside of the construction sector, industries with the highest employment of this occupational group included local government, excluding schools and hospitals (369,310) and support activities for mining (127,390).



State data are available at www.bls.gov/oes/current/oessrcst.htm ; metropolitan area data are available at www.bls.gov/oes/current/oessrcma.htm.

National industry-specific data are available at www.bls.gov/oes/current/oessrci.htm.

Educational instruction and library occupations

- Educational instruction and library occupations had **employment** of 9.1 million and an **annual mean wage** of \$67,540. (See table 1.)
- The **largest** educational instruction and library occupations were teaching assistants, except postsecondary (1.4 million) and elementary school teachers, except special education (1.4 million). (See table 1.)
- The **highest paying** educational instruction and library occupations were postsecondary health specialties teachers (\$147,570) and postsecondary law teachers (\$144,770). (See table 1.)

- The **lowest paying** occupations in this group were teaching assistants, except postsecondary (\$38,290) and preschool teachers, except special education (\$43,030). (See table 1.)
- **Elementary school teachers, except special education** had an annual mean wage of \$72,650 nationally. The highest paying states for this occupation included Washington (\$97,970) and California (\$95,670). The lowest paying states included Mississippi (\$52,300) and Oklahoma (\$52,320).
- Mount Vernon-Anacortes, WA (\$106,760), and El Centro, CA (\$105,390), were among the highest paying metropolitan areas for elementary school teachers, except special education. The lowest paying areas for this occupation included Enid, OK (\$48,500), and Lake Havasu City-Kingman, AZ (\$49,230).

Healthcare practitioners and technical occupations

- Healthcare practitioners and technical occupations, the larger of the two healthcare occupational groups, had **employment** of 9.8 million and an **annual mean wage** of \$108,700. (See table 1.)
- The **largest** healthcare practitioners and technical occupations were registered nurses (3.4 million), licensed practical and licensed vocational nurses (648,410), and pharmacy technicians (471,680). (See table 1.)
- The **highest paying** healthcare practitioners and technical occupations were pediatric surgeons (\$502,050) and cardiologists (\$454,940). These were also the two highest paying occupations overall. Nurse anesthetists (\$248,320) was the highest paying occupation in this group that was not a physician, surgeon, or dentist occupation. (See table 1.)
- The **lowest paying** healthcare practitioners and technical occupations included dietetic technicians (\$40,630) and psychiatric technicians (\$46,610). (See table 1.)
- **Registered nurses**, the largest healthcare practitioners and technical occupation, had an annual mean wage of \$101,420 nationally. Annual mean wages for this occupation varied by state from approximately \$77,000 in both Alabama and South Dakota to \$150,280 in California.
- Most registered nurses were employed in general medical and surgical hospitals. This industry accounted for 56 percent of employment in this occupation, or about 1.9 million jobs. After general medical and surgical hospitals, the industries with the highest employment of registered nurses were offices of physicians (232,420) and home health care services (198,180).

Largest occupations

- The largest occupation overall was home health and personal care aides, with employment of 4.3 million, followed by retail salespersons and fast food and counter workers (each 3.9 million). (See table 1.)
- Eight of the 10 largest occupations had below-average wages, ranging from \$32,150 for fast food and counter workers to \$46,590 for customer service representatives. (See table 1.)
- Of the 10 largest occupations, only registered nurses (\$101,420) and general and operations managers (\$134,940) had above-average wages. (See table 1.)

Public sector occupations

- The public sector made up 14.6 percent of employment and had a different occupational mix from the private sector.
- Several of the **largest** public sector occupations were related to education. These occupations included elementary school teachers, except special education (public sector employment of 1.2 million); teaching assistants, except postsecondary (1.1 million); secondary school teachers, except special and career/technical education (910,670); and middle school teachers, except special and career/technical education (548,550).
- Outside of the educational instruction and library group, the occupations with the highest public sector employment were police and sheriff's patrol officers (663,800), registered nurses (537,990), and janitors and cleaners, except maids and housekeeping cleaners (502,420).

Public/private sector ownership data are available at www.bls.gov/oes/current/oessrci.htm.

Technical Note

Scope of the survey

The Occupational Employment and Wage Statistics (OEWS) survey is an employer survey measuring occupational employment and wage rates for wage and salary workers in nonfarm establishments in the United States. The OEWS data available from the Bureau of Labor Statistics (BLS) include cross-industry occupational employment and wage estimates for the nation; states, the District of Columbia, and Guam, Puerto Rico, and the U.S. Virgin Islands; and approximately 530 metropolitan statistical areas (MSAs) and nonmetropolitan areas. BLS also publishes national industry-specific estimates for North American Industry Classification System (NAICS) sector, 3-digit, most 4-digit, and selected 5- and 6-digit industry levels; and national estimates by ownership across all industries and for schools and hospitals.

The OEWS survey is a cooperative effort between BLS and the state workforce agencies (SWAs). BLS funds the survey and provides the procedures and technical support, while the SWAs collect most of the data. OEWS estimates are constructed from a sample of about 1.1 million establishments. Each year, two semiannual panels of approximately 186,000 to 189,000 sampled establishments are contacted—one panel in May and the other in November. Responses are obtained by Internet or other electronic means, mail, email, telephone, or personal visit. The May 2025 estimates are based on responses from six semiannual panels collected over a 3-year period: May 2025, November 2024, May 2024, November 2023, May 2023, and November 2022. The unweighted sampled employment of 84.7 million across all six semiannual panels represents approximately 55 percent of total national employment. The overall national response rate for the six panels, based on the 50 states and the District of Columbia, is 66.2 percent based on establishments and 67.2 percent based on weighted sampled employment.

The occupational coding system

The May 2025 OEWS estimates contain approximately 830 occupational categories based on the Office of Management and Budget's 2018 Standard Occupational Classification (SOC) system. These occupational categories make up 22 of the 23 SOC major occupational groups. Major group 55, Military Specific Occupations, is not included.

For more information about the SOC system, please see the BLS website at www.bls.gov/soc/2018/.

The industry coding system

The May 2025 OEWS estimates use the 2022 NAICS. For more information about NAICS, see the BLS website at www.bls.gov/bls/naics.htm.

The OEWS survey excludes the majority of the agricultural sector, with the exception of logging (NAICS 113310), support activities for crop production (NAICS 1151), and support activities for animal production (NAICS 1152). Private households (NAICS 814) are also excluded. OEWS federal government data include the U.S. Postal Service and the federal executive branch only. All other industries, including state and local government, are covered by the survey.

Area definitions

The May 2025 OEWS estimates use the metropolitan area definitions in Office of Management and Budget (OMB) Bulletin 23-01. Nonmetropolitan area definitions are specific to the OEWS program and are set in consultation with the SWAs. For more information, see www.bls.gov/oes/area_definitions_m2025.xlsx.

Survey sample

The OEWS survey draws its sample from state unemployment insurance (UI) files. Supplemental sources are used for rail transportation (NAICS 4821) and Guam because they do not report to the UI program. The OEWS survey sample is stratified by metropolitan and nonmetropolitan area, industry, and size.

To provide the most occupational coverage, larger employers are more likely to be selected than smaller employers. An annual census is taken of the executive branch of the federal government, the U.S. Postal Service, and state government.

Concepts

Occupational employment is the estimate of total wage and salary employment in an occupation. The OEWS survey defines employment as the number of workers who can be classified as full- or part-time employees, including workers on paid vacations or other types of paid leave; workers on unpaid short-term absences; salaried officers, executives, and staff members of incorporated firms; employees temporarily assigned to other units; and employees for whom the reporting unit is their permanent duty station, regardless of whether that unit prepares their paycheck. The survey does not include the self-employed, owners and partners in unincorporated firms, household workers, or unpaid family workers.

Wages for the OEWS survey are straight-time, gross pay, exclusive of premium pay. Base rate; cost-of-living allowances; guaranteed pay; hazardous-duty pay; incentive pay, including commissions and production bonuses; and tips are included. Excluded are overtime pay, severance pay, shift differentials, nonproduction bonuses, employer cost for supplementary benefits, and tuition reimbursements.

The responding establishments are instructed to report hourly rates for part-time workers and to report annual rates for occupations that are typically paid at an annual rate but do not work 2,080 hours per year, such as teachers, pilots, and flight attendants. Other workers, such as some entertainment workers, are paid hourly rates, but generally do not work 40 hours per week, year round. For these workers, only an hourly wage is reported.

OEWS receives wage rate data for the federal government, the U.S. Postal Service, and most state government, local government, and private sector establishments. For the remaining establishments without wage rate data, the OEWS survey data were placed into 12 wage intervals. The intervals are defined both as hourly rates and the corresponding annual rates, where the annual rate for an occupation is calculated by multiplying the hourly wage rate by a typical work year of 2,080 hours.

Estimation methodology

The OEWS survey is designed to produce estimates by combining six panels of data collected over a 3-year period. Each OEWS panel contains approximately 186,000 to 189,000 establishments. The full six-panel sample of 1.1 million establishments allows the production of estimates at detailed levels of geography, industry, and occupation.

The May 2025 estimates were produced by a model-based estimation method using 3 years of OEWS data (MB3). Under MB3, data provided by survey respondents are used to model occupational staffing patterns and wages for all unobserved establishments in the population, including establishments that were not sampled, sampled establishments that did not respond, and respondents that did not meet stability criteria.

A donor pool typically consisting of 10 nearest neighbor responding establishments is used to predict data for each unobserved establishment; if 10 donors are not available, then as few as 5 can be used. Donors are matched to recipients based on detailed industry, geographic area, ownership, size, and survey panel. Within a given donor pool, donors that are more similar to the unobserved establishment are given more weight in determining the modeled data.

Each establishment's population employment is set as the average of its May 2025 and November 2024 employment from the

Quarterly Census of Employment and Wages (QCEW), the UI database from which the OEWS sample is drawn. Using adjustment factors derived from the OEWS survey data, wages collected in earlier survey panels are adjusted to the reference date of the estimates and donor wages are adjusted for differences between donor and recipient characteristics such as geographic area and industry.

Changes and special procedures in the May 2025 estimates

Because of the lapse in federal appropriations from October 1 through November 12, 2025, additional collection and processing time were required for the May 2025 OEWS survey panel once appropriations resumed. The response rate for the May 2025 survey panel was within the normal range and no additional modifications to the OEWS methodology and procedures were necessary as a result of the shutdown.

For more information

Answers to frequently asked questions about the OEWS data are available at www.bls.gov/oes/oes_ques.htm. If you are deaf, hard of hearing, or have a speech disability, please dial 7-1-1 to access telecommunications relay services.

Table 1. National employment and wage data from the Occupational Employment and Wage Statistics survey by occupation, May 2025

Occupation	Employment	Mean wages		Median hourly wages
		Hourly	Annual ¹	
All occupations	155,495,730	\$33.54	\$69,770	\$24.51
Management occupations	11,132,700	69.84	145,260	60.83
Top executives.....	3,720,520	68.33	142,120	52.17
Chief executives.....	204,350	129.63	269,630	102.88
General and operations managers.....	3,503,020	64.87	134,940	50.85
Advertising, marketing, promotions, public relations, and sales managers.....	1,167,460	80.73	167,930	74.89
Advertising and promotions managers.....	21,470	74.18	154,280	64.26
Marketing and sales managers.....	1,032,320	81.49	169,490	75.98
Marketing managers.....	395,240	85.47	177,770	80.19
Sales managers.....	637,080	79.02	164,350	71.28
Public relations and fundraising managers.....	113,670	75.15	156,310	65.61
Public relations managers.....	74,850	79.21	164,760	70.63
Fundraising managers.....	38,810	67.32	140,020	60.32
Operations specialties managers.....	2,775,810	79.49	165,330	72.45
Administrative services and facilities managers.....	420,130	60.12	125,040	53.13
Administrative services managers.....	263,960	62.44	129,870	54.87
Facilities managers.....	156,180	56.20	116,890	51.28
Computer and information systems managers.....	670,570	92.39	192,160	84.20
Financial managers.....	841,710	89.86	186,910	80.08
Industrial production managers.....	246,250	64.50	134,170	60.61
Purchasing managers.....	84,320	75.17	156,360	71.19
Transportation, storage, and distribution managers.....	221,180	58.46	121,600	51.55
Compensation and benefits managers.....	22,940	78.19	162,640	71.75
Human resources managers.....	220,660	78.96	164,230	71.77
Training and development managers.....	48,050	71.33	148,370	63.94
Other management occupations.....	3,468,900	60.07	124,950	51.33
Farmers, ranchers, and other agricultural managers.....	6,500	47.99	99,820	43.22
Construction managers.....	380,360	59.79	124,360	55.28
Education and childcare administrators.....	637,590	53.80	111,900	49.16
Education and childcare administrators, preschool and daycare.....	73,660	31.15	64,800	28.51
Education administrators, kindergarten through secondary.....	328,330	(²)	116,100	(²)
Education administrators, postsecondary.....	180,470	60.84	126,540	50.29
Education administrators, all other.....	55,130	48.99	101,900	45.77
Architectural and engineering managers.....	220,260	87.28	181,540	82.34
Food service managers.....	238,430	36.00	74,880	33.36
Entertainment and recreation managers.....	43,010	43.90	91,310	38.58
Gambling managers.....	5,030	49.54	103,050	44.82
Entertainment and recreation managers, except gambling.....	37,980	43.15	89,750	38.23
Lodging managers.....	42,620	37.86	78,740	33.29
Medical and health services managers.....	597,080	67.77	140,970	59.55
Natural sciences managers.....	108,690	86.66	180,250	80.39
Postmasters and mail superintendents.....	13,810	46.81	97,360	46.47
Property, real estate, and community association managers.....	311,180	40.25	83,710	33.65
Social and community service managers.....	209,330	42.73	88,880	38.65
Emergency management directors.....	13,500	49.24	102,420	44.87
Personal service managers.....	24,350	41.61	86,550	36.65
Funeral home managers.....	13,910	44.63	92,840	37.88
Personal service managers, all other.....	10,450	37.59	78,190	33.54
Managers, all other.....	622,190	73.99	153,890	68.22
Business and financial operations occupations	10,537,240	45.78	95,230	39.74
Business operations specialists.....	7,485,920	44.63	92,830	39.45
Agents and business managers of artists, performers, and athletes.....	12,620	68.07	141,580	39.85
Buyers and purchasing agents.....	491,430	40.27	83,770	37.36
Claims adjusters, appraisers, examiners, and investigators.....	335,790	38.66	80,420	37.51
Claims adjusters, examiners, and investigators.....	324,230	38.69	80,470	37.50
Insurance appraisers, auto damage.....	11,560	37.93	78,900	37.61
Compliance officers.....	417,070	42.50	88,400	38.81
Cost estimators.....	224,220	41.06	85,390	37.86
Human resources workers.....	977,550	39.95	83,090	36.87
Human resources specialists.....	912,430	39.42	81,990	36.51
Farm labor contractors.....	310	28.11	58,470	28.11
Labor relations specialists.....	64,810	47.46	98,720	45.87
Logisticians and project management specialists.....	1,317,720	51.32	106,740	48.00
Logisticians.....	251,040	43.14	89,730	39.58
Project management specialists.....	1,066,670	53.24	110,740	49.19
Management analysts.....	898,280	54.71	113,790	48.97
Meeting, convention, and event planners.....	142,860	31.98	66,520	29.41
Fundraisers.....	111,040	37.12	77,200	34.88
Compensation, benefits, and job analysis specialists.....	112,380	40.54	84,330	37.60
Training and development specialists.....	458,300	36.32	75,550	33.31
Market research analysts and marketing specialists.....	899,580	43.03	89,490	37.87
Business operations specialists, all other.....	1,087,090	45.18	93,970	39.93
Financial specialists.....	3,051,310	48.61	101,120	40.71
Accountants and auditors.....	1,449,500	45.56	94,750	40.23

See footnotes at end of table.

Table 1. National employment and wage data from the Occupational Employment and Wage Statistics survey by occupation, May 2025—Continued

Occupation	Employment	Mean wages		Median hourly wages
		Hourly	Annual ^a	
Business and financial operations occupations (Continued)				
Property appraisers and assessors.....	57,070	\$36.43	\$75,770	\$32.67
Budget analysts.....	47,160	46.33	96,370	44.06
Credit analysts.....	64,390	48.49	100,850	40.15
Financial analysts and advisors.....	798,050	61.39	127,690	49.08
Financial and investment analysts.....	361,980	56.15	116,800	49.40
Personal financial advisors.....	266,800	75.32	156,670	50.51
Insurance underwriters.....	105,420	45.05	93,700	39.12
Financial risk specialists.....	63,850	59.82	124,420	56.41
Financial examiners.....	67,830	51.08	106,240	45.27
Credit counselors and loan officers.....	302,100	40.86	84,980	35.55
Credit counselors.....	27,770	27.51	57,210	25.11
Loan officers.....	274,330	42.21	87,790	36.87
Tax examiners, collectors and preparers, and revenue agents.....	133,090	31.26	65,010	28.30
Tax examiners and collectors, and revenue agents.....	56,610	33.91	70,520	29.98
Tax preparers.....	76,480	29.30	60,930	26.40
Financial specialists, all other.....	132,130	45.10	93,810	38.99
Computer and mathematical occupations	5,260,110	57.73	120,080	52.54
Computer occupations.....	4,827,720	57.74	120,100	52.63
Computer and information analysts.....	710,180	57.41	119,420	52.81
Computer systems analysts.....	519,530	55.10	114,610	50.89
Information security analysts.....	190,650	63.71	132,510	62.11
Computer and information research scientists.....	37,200	74.00	153,930	67.45
Computer support specialists.....	863,380	33.55	69,790	30.24
Computer network support specialists.....	146,190	39.36	81,870	36.64
Computer user support specialists.....	717,190	32.37	67,330	29.74
Database and network administrators and architects.....	631,200	57.19	118,950	53.26
Computer network architects.....	179,740	67.11	139,580	64.45
Database administrators.....	69,990	52.93	110,090	50.30
Database architects.....	67,140	69.44	144,440	67.07
Network and computer systems administrators.....	314,340	49.85	103,680	47.66
Software and web developers, programmers, and testers.....	2,150,380	67.24	139,850	63.53
Computer programmers.....	92,230	50.56	105,170	48.26
Software developers.....	1,687,890	71.20	148,100	65.38
Software quality assurance analysts and testers.....	186,740	53.60	111,490	50.14
Web developers.....	70,190	47.49	98,770	44.54
Web and digital interface designers.....	113,330	56.49	117,490	50.00
Computer occupations, all other.....	435,370	58.77	122,230	56.05
Mathematical science occupations.....	432,400	57.63	119,880	51.71
Actuaries.....	26,670	68.02	141,480	62.50
Mathematicians.....	2,030	62.15	129,260	60.92
Operations research analysts.....	108,510	47.95	99,730	42.76
Statisticians.....	29,030	55.63	115,700	50.79
Data scientists.....	262,440	60.96	126,800	57.80
Mathematical science occupations, all other.....	3,720	44.02	91,550	39.18
Architecture and engineering occupations	2,617,130	51.36	106,830	47.85
Architects, surveyors, and cartographers.....	191,460	46.25	96,190	42.28
Architects, except naval.....	126,380	49.78	103,550	46.91
Architects, except landscape and naval.....	106,770	51.09	106,260	47.73
Landscape architects.....	19,600	42.68	88,780	38.40
Surveyors, cartographers, and photogrammetrists.....	65,090	39.38	81,910	36.97
Cartographers and photogrammetrists.....	14,260	41.68	86,690	39.13
Surveyors.....	50,830	38.73	80,570	36.27
Engineers.....	1,800,740	57.52	119,640	52.22
Aerospace engineers.....	67,710	68.30	142,060	64.89
Agricultural engineers.....	1,480	52.04	108,230	47.40
Bioengineers and biomedical engineers.....	23,480	56.20	116,890	52.58
Chemical engineers.....	21,070	62.49	129,980	60.12
Civil engineers.....	367,840	52.24	108,670	48.48
Computer hardware engineers.....	76,660	78.21	162,670	77.76
Electrical and electronics engineers.....	295,650	62.07	129,100	60.12
Electrical engineers.....	198,750	60.15	125,100	58.00
Electronics engineers, except computer.....	96,900	66.00	137,280	62.60
Environmental engineers.....	38,340	54.29	112,910	51.50
Industrial engineers, including health and safety.....	387,190	53.10	110,450	49.36
Health and safety engineers, except mining safety engineers and inspectors.....	21,450	57.58	119,770	55.36
Industrial engineers.....	365,740	52.84	109,900	49.25
Marine engineers and naval architects.....	8,250	59.70	124,180	53.96
Materials engineers.....	22,770	57.81	120,250	54.26
Mechanical engineers.....	296,810	54.62	113,610	50.05
Mining and geological engineers, including mining safety engineers.....	6,080	55.49	115,410	51.07
Nuclear engineers.....	15,280	67.51	140,420	64.41
Petroleum engineers.....	18,060	75.55	157,150	69.67
Engineers, all other.....	154,070	60.26	125,330	59.10
Drafters, engineering technicians, and mapping technicians.....	624,930	35.19	73,190	33.20
Drafters.....	176,060	34.90	72,590	32.74

See footnotes at end of table.

Table 1. National employment and wage data from the Occupational Employment and Wage Statistics survey by occupation, May 2025—Continued

Occupation	Employment	Mean wages		Median hourly wages
		Hourly	Annual ^a	
Architecture and engineering occupations (Continued)				
Architectural and civil drafters.....	103,700	\$34.01	\$70,740	\$31.80
Electrical and electronics drafters.....	17,920	39.08	81,280	36.96
Mechanical drafters.....	39,960	36.09	75,060	34.40
Drafters, all other.....	14,470	32.81	68,250	30.54
Engineering technologists and technicians, except drafters.....	390,860	36.40	75,710	35.32
Aerospace engineering and operations technologists and technicians.....	11,280	43.90	91,310	39.85
Civil engineering technologists and technicians.....	68,520	33.17	68,990	31.23
Electrical and electronic engineering technologists and technicians.....	95,130	38.79	80,680	37.59
Electro-mechanical and mechatronics technologists and technicians.....	15,520	36.74	76,420	35.53
Environmental engineering technologists and technicians.....	12,190	31.19	64,870	28.81
Industrial engineering technologists and technicians.....	75,570	33.99	70,700	31.79
Mechanical engineering technologists and technicians.....	36,190	36.72	76,380	35.82
Calibration technologists and technicians.....	16,540	35.66	74,170	32.61
Engineering technologists and technicians, except drafters, all other.....	59,930	38.93	80,960	37.67
Surveying and mapping technicians.....	58,010	27.89	58,000	26.08
Life, physical, and social science occupations	1,473,260	45.48	94,600	39.68
Life scientists.....	386,900	51.61	107,350	46.30
Agricultural and food scientists.....	31,890	43.71	90,910	39.41
Animal scientists.....	3,100	42.48	88,350	33.14
Food scientists and technologists.....	13,060	45.85	95,360	42.65
Soil and plant scientists.....	15,730	42.17	87,720	37.91
Biological scientists.....	126,740	51.91	107,970	47.96
Biochemists and biophysicists.....	33,830	62.43	129,840	61.26
Microbiologists.....	18,940	46.92	97,600	42.30
Zoologists and wildlife biologists.....	18,120	39.91	83,020	36.91
Biological scientists, all other.....	55,850	51.12	106,330	47.56
Conservation scientists and foresters.....	36,380	37.36	77,720	35.54
Conservation scientists.....	25,950	37.08	77,130	35.10
Foresters.....	10,430	38.06	79,170	36.73
Medical scientists.....	184,430	55.58	115,600	49.51
Epidemiologists.....	12,090	47.06	97,890	41.93
Medical scientists, except epidemiologists.....	172,340	56.18	116,840	49.72
Life scientists, all other.....	7,460	51.86	107,860	45.07
Physical scientists.....	264,650	51.99	108,140	46.29
Astronomers and physicists.....	22,540	80.57	167,590	80.23
Astronomers.....	2,120	63.91	132,920	61.94
Physicists.....	20,430	82.30	171,180	82.81
Atmospheric and space scientists.....	10,000	51.01	106,110	47.63
Chemists and materials scientists.....	91,250	49.44	102,840	45.70
Chemists.....	82,770	48.29	100,450	43.87
Materials scientists.....	8,470	60.67	126,180	56.63
Environmental scientists and geoscientists.....	118,560	46.69	97,110	40.97
Environmental scientists and specialists, including health.....	89,250	44.08	91,680	39.53
Geoscientists, except hydrologists and geographers.....	23,470	55.84	116,150	49.00
Hydrologists.....	5,850	49.81	103,600	46.44
Physical scientists, all other.....	22,300	62.13	129,230	58.93
Social scientists and related workers.....	288,600	51.08	106,250	47.07
Economists.....	17,790	68.33	142,130	59.96
Survey researchers.....	8,290	38.26	79,580	33.40
Psychologists.....	159,540	51.64	107,410	47.65
Industrial-organizational psychologists.....	790	81.84	170,230	93.24
Clinical and counseling psychologists.....	75,990	54.21	112,750	48.36
School psychologists.....	63,940	47.67	99,160	46.15
Psychologists, all other.....	18,820	53.47	111,210	53.29
Sociologists.....	2,260	55.25	114,920	50.98
Urban and regional planners.....	44,230	45.55	94,750	42.94
Miscellaneous social scientists and related workers.....	56,490	50.12	104,260	46.60
Anthropologists and archeologists.....	8,990	36.35	75,620	34.02
Geographers.....	1,400	49.21	102,350	49.06
Historians.....	3,450	39.06	81,240	36.90
Political scientists.....	5,540	68.51	142,510	68.31
Social scientists and related workers, all other.....	37,100	51.78	107,690	48.61
Life, physical, and social science technicians.....	361,920	30.91	64,290	28.61
Agricultural and food science technicians.....	29,730	26.55	55,220	24.60
Agricultural technicians.....	15,130	25.89	53,840	23.86
Food science technicians.....	14,600	27.24	56,660	25.06
Biological technicians.....	69,620	29.51	61,380	27.65
Chemical technicians.....	57,540	30.72	63,900	29.03
Environmental science and geoscience technicians.....	44,480	29.58	61,530	26.65
Environmental science and protection technicians, including health.....	34,670	29.23	60,800	26.49
Geological technicians, except hydrologic technicians.....	6,980	29.75	61,870	25.65
Hydrologic technicians.....	2,840	33.43	69,530	31.15
Nuclear technicians.....	6,470	52.37	108,940	53.00
Social science research assistants.....	30,640	31.80	66,140	29.81
Forest and conservation technicians.....	30,410	28.39	59,060	26.23

See footnotes at end of table.

Table 1. National employment and wage data from the Occupational Employment and Wage Statistics survey by occupation, May 2025—Continued

Occupation	Employment	Mean wages		Median hourly wages
		Hourly	Annual ¹	
Life, physical, and social science occupations (Continued)				
Miscellaneous life, physical, and social science technicians.....	93,030	\$33.14	\$68,930	\$30.62
Forensic science technicians.....	19,120	38.08	79,200	34.65
Life, physical, and social science technicians, all other.....	73,910	31.86	66,280	29.94
Occupational health and safety specialists and technicians.....	171,200	42.91	89,260	40.26
Occupational health and safety specialists and technicians.....	171,200	42.91	89,260	40.26
Occupational health and safety specialists.....	140,610	45.12	93,860	43.34
Occupational health and safety technicians.....	30,590	32.75	68,120	29.59
Community and social service occupations				
Counselors, social workers, and other community and social service specialists.....	2,668,680	30.49	63,410	28.03
Counselors, social workers, and other community and social service specialists.....	2,573,560	30.48	63,400	28.03
Counselors.....	1,035,300	31.88	66,300	29.00
Educational, guidance, and career counselors and advisors.....	353,310	34.34	71,430	30.93
Marriage and family therapists.....	66,740	37.00	76,960	32.18
Rehabilitation counselors.....	94,740	24.91	51,820	22.52
Substance abuse, behavioral disorder, and mental health counselors.....	491,930	30.98	64,440	28.53
Counselors, all other.....	28,580	27.99	58,210	24.45
Social workers.....	775,930	32.47	67,540	29.70
Child, family, and school social workers.....	392,550	30.77	64,000	28.63
Healthcare social workers.....	187,630	34.51	71,790	32.63
Mental health and substance abuse social workers.....	132,810	32.71	68,030	28.98
Social workers, all other.....	62,930	36.50	75,910	34.57
Miscellaneous community and social service specialists.....	762,330	26.56	55,250	23.74
Health education specialists.....	65,690	35.23	73,280	30.80
Probation officers and correctional treatment specialists.....	89,390	35.16	73,130	31.86
Social and human service assistants.....	437,860	22.93	47,690	22.08
Community health workers.....	61,660	27.01	56,180	24.93
Community and social service specialists, all other.....	107,730	28.65	59,590	27.28
Religious workers.....	95,120	30.58	63,600	27.95
Clergy.....	57,200	32.15	66,860	29.24
Directors, religious activities and education.....	22,160	29.86	62,100	25.05
Religious workers, all other.....	15,760	25.90	53,870	21.77
Legal occupations				
Lawyers, judges, and related workers.....	1,305,620	67.07	139,510	49.28
Lawyers, judges, and related workers.....	817,400	86.78	180,510	74.58
Lawyers and judicial law clerks.....	767,800	88.41	183,890	75.88
Lawyers.....	754,500	89.35	185,840	76.76
Judicial law clerks.....	13,290	35.07	72,950	31.21
Judges, magistrates, and other judicial workers.....	49,610	61.61	128,140	57.33
Administrative law judges, adjudicators, and hearing officers.....	16,370	60.57	125,990	56.67
Arbitrators, mediators, and conciliators.....	9,210	43.76	91,010	36.31
Judges, magistrate judges, and magistrates.....	24,030	69.15	143,830	74.03
Legal support workers.....	488,220	34.08	70,880	30.23
Paralegals and legal assistants.....	392,880	33.51	69,700	30.24
Miscellaneous legal support workers.....	95,340	36.41	75,740	30.15
Title examiners, abstractors, and searchers.....	48,580	29.97	62,350	28.20
Legal support workers, all other.....	46,760	43.10	89,660	34.67
Educational instruction and library occupations				
Postsecondary teachers.....	9,100,570	32.47	67,540	29.12
Postsecondary teachers.....	1,370,560	(2)	103,470	(2)
Business teachers, postsecondary.....	82,150	(2)	114,720	(2)
Math and computer science teachers, postsecondary.....	83,150	(2)	97,040	(2)
Computer science teachers, postsecondary.....	35,480	(2)	104,420	(2)
Mathematical science teachers, postsecondary.....	47,670	(2)	91,550	(2)
Engineering and architecture teachers, postsecondary.....	47,970	(2)	120,790	(2)
Architecture teachers, postsecondary.....	7,700	(2)	101,250	(2)
Engineering teachers, postsecondary.....	40,270	(2)	124,520	(2)
Life sciences teachers, postsecondary.....	60,630	(2)	102,710	(2)
Agricultural sciences teachers, postsecondary.....	8,920	(2)	102,050	(2)
Biological science teachers, postsecondary.....	50,190	(2)	102,840	(2)
Forestry and conservation science teachers, postsecondary.....	1,520	(2)	102,450	(2)
Physical sciences teachers, postsecondary.....	49,660	(2)	108,800	(2)
Atmospheric, earth, marine, and space sciences teachers, postsecondary.....	9,900	(2)	116,020	(2)
Chemistry teachers, postsecondary.....	19,980	(2)	105,210	(2)
Environmental science teachers, postsecondary.....	6,690	(2)	103,610	(2)
Physics teachers, postsecondary.....	13,090	(2)	111,460	(2)
Social sciences teachers, postsecondary.....	118,350	(2)	101,080	(2)
Anthropology and archeology teachers, postsecondary.....	5,240	(2)	106,880	(2)
Area, ethnic, and cultural studies teachers, postsecondary.....	11,300	(2)	98,330	(2)
Economics teachers, postsecondary.....	11,560	(2)	138,850	(2)
Geography teachers, postsecondary.....	3,330	(2)	102,350	(2)
Political science teachers, postsecondary.....	16,970	(2)	108,100	(2)
Psychology teachers, postsecondary.....	41,530	(2)	93,860	(2)
Sociology teachers, postsecondary.....	11,850	(2)	96,980	(2)
Social sciences teachers, postsecondary, all other.....	16,580	(2)	88,390	(2)
Health teachers, postsecondary.....	299,230	(2)	131,640	(2)
Health specialties teachers, postsecondary.....	221,270	(2)	147,570	(2)

See footnotes at end of table.

Table 1. National employment and wage data from the Occupational Employment and Wage Statistics survey by occupation, May 2025—Continued

Occupation	Employment	Mean wages		Median hourly wages
		Hourly	Annual ¹	
Educational instruction and library occupations (Continued)				
Nursing instructors and teachers, postsecondary.....	77,960	(²)	\$86,410	(²)
Education and library science teachers, postsecondary.....	64,460	(²)	79,840	(²)
Education teachers, postsecondary.....	60,830	(²)	79,350	(²)
Library science teachers, postsecondary.....	3,630	(²)	88,110	(²)
Law, criminal justice, and social work teachers, postsecondary.....	45,820	(²)	111,610	(²)
Criminal justice and law enforcement teachers, postsecondary.....	13,150	(²)	87,550	(²)
Law teachers, postsecondary.....	20,060	(²)	144,770	(²)
Social work teachers, postsecondary.....	12,610	(²)	83,940	(²)
Arts, communications, history, and humanities teachers, postsecondary.....	239,780	(²)	92,420	(²)
Art, drama, and music teachers, postsecondary.....	93,560	(²)	94,700	(²)
Communications teachers, postsecondary.....	29,420	(²)	90,010	(²)
English language and literature teachers, postsecondary.....	57,720	(²)	89,580	(²)
Foreign language and literature teachers, postsecondary.....	19,830	(²)	89,990	(²)
History teachers, postsecondary.....	18,790	(²)	96,580	(²)
Philosophy and religion teachers, postsecondary.....	20,460	(²)	92,040	(²)
Miscellaneous postsecondary teachers.....	279,350	(²)	82,770	(²)
Family and consumer sciences teachers, postsecondary.....	2,770	(²)	81,940	(²)
Recreation and fitness studies teachers, postsecondary.....	12,630	(²)	86,620	(²)
Career/technical education teachers, postsecondary.....	114,110	34.64	72,060	30.68
Postsecondary teachers, all other.....	149,840	(²)	90,630	(²)
Preschool, elementary, middle, secondary, and special education teachers.....	4,373,040	(²)	70,410	(²)
Preschool and kindergarten teachers.....	587,650	23.03	47,910	21.05
Preschool teachers, except special education.....	478,780	20.69	43,030	18.34
Kindergarten teachers, except special education.....	108,870	(²)	69,370	(²)
Elementary and middle school teachers.....	2,025,340	(²)	72,450	(²)
Elementary school teachers, except special education.....	1,388,390	(²)	72,650	(²)
Middle school teachers, except special and career/technical education.....	620,090	(²)	72,030	(²)
Career/technical education teachers, middle school.....	16,870	(²)	71,590	(²)
Secondary school teachers.....	1,176,620	(²)	75,970	(²)
Secondary school teachers, except special and career/technical education.....	1,065,210	(²)	76,320	(²)
Career/technical education teachers, secondary school.....	111,420	(²)	72,680	(²)
Special education teachers.....	583,430	(²)	74,730	(²)
Special education teachers, preschool.....	29,510	(²)	76,380	(²)
Special education teachers, kindergarten and elementary school.....	260,870	(²)	72,650	(²)
Special education teachers, middle school.....	95,200	(²)	73,780	(²)
Special education teachers, secondary school.....	163,930	(²)	77,260	(²)
Special education teachers, all other.....	33,930	(²)	79,750	(²)
Other teachers and instructors.....	1,183,050	25.12	52,250	21.99
Adult basic education, adult secondary education, and English as a second language instructors.....	37,310	31.66	65,860	29.59
Self-enrichment teachers.....	332,110	26.32	54,740	22.50
Substitute teachers, short-term.....	524,770	22.32	46,420	20.03
Tutors.....	175,070	23.10	48,050	20.84
Teachers and instructors, all other.....	113,790	(²)	73,880	(²)
Librarians, curators, and archivists.....	234,910	30.72	63,900	29.07
Archivists, curators, and museum technicians.....	32,430	31.71	65,960	29.00
Archivists.....	7,970	33.96	70,640	31.03
Curators.....	12,150	34.40	71,560	30.49
Museum technicians and conservators.....	12,310	27.60	57,410	24.73
Librarians and media collections specialists.....	133,790	35.02	72,840	32.82
Library technicians.....	68,690	21.88	45,500	21.43
Other educational instruction and library occupations.....	1,939,010	(²)	45,460	(²)
Farm and home management educators.....	8,220	29.35	61,060	28.95
Instructional coordinators.....	227,760	38.90	80,920	37.23
Teaching assistants.....	1,584,440	(²)	39,260	(²)
Teaching assistants, postsecondary.....	164,090	(²)	47,670	(²)
Teaching assistants, except postsecondary.....	1,420,350	(²)	38,290	(²)
Educational instruction and library workers, all other.....	118,590	28.39	59,060	24.47
Arts, design, entertainment, sports, and media occupations	2,046,290	38.36	79,790	30.17
Art and design workers.....	645,970	33.80	70,300	28.00
Artists and related workers.....	95,780	53.86	112,040	47.96
Art directors.....	53,070	62.23	129,440	55.22
Craft artists.....	4,580	23.91	49,740	22.15
Fine artists, including painters, sculptors, and illustrators.....	11,220	35.17	73,150	26.68
Special effects artists and animators.....	19,970	54.27	112,870	49.06
Artists and related workers, all other.....	6,930	38.72	80,530	34.25
Designers.....	550,190	30.31	63,040	25.52
Commercial and industrial designers.....	33,490	44.84	93,260	40.34
Fashion designers.....	21,450	43.86	91,230	38.92
Floral designers.....	40,590	19.00	39,520	17.96
Graphic designers.....	197,830	33.92	70,560	30.27
Interior designers.....	71,500	35.84	74,540	32.31
Merchandise displayers and window trimmers.....	165,220	20.59	42,830	18.94
Set and exhibit designers.....	10,630	39.98	83,160	36.17
Designers, all other.....	9,480	38.02	79,090	31.23

See footnotes at end of table.

Table 1. National employment and wage data from the Occupational Employment and Wage Statistics survey by occupation, May 2025—Continued

Occupation	Employment	Mean wages		Median hourly wages
		Hourly	Annual ¹	
Arts, design, entertainment, sports, and media occupations (Continued)				
Entertainers and performers, sports and related workers.....	562,100	\$42.60	\$88,620	\$28.56
Actors, producers, and directors.....	198,120	55.53	115,510	39.27
Actors.....	55,000	58.29	(?)	29.05
Producers and directors.....	143,120	54.47	113,300	43.44
Athletes, coaches, umpires, and related workers.....	279,790	(?)	67,610	(?)
Athletes and sports competitors.....	15,070	(?)	206,180	(?)
Coaches and scouts.....	248,950	(?)	60,160	(?)
Umpires, referees, and other sports officials.....	15,780	(?)	53,010	(?)
Dancers and choreographers.....	10,990	31.95	66,460	25.40
Dancers.....	8,130	30.83	(?)	24.80
Choreographers.....	2,860	35.14	73,100	26.59
Musicians, singers, and related workers.....	48,730	56.09	(?)	43.27
Music directors and composers.....	12,540	43.50	90,470	35.44
Musicians and singers.....	36,180	60.46	(?)	47.80
Miscellaneous entertainers and performers, sports and related workers.....	24,470	31.30	(?)	20.00
Disc jockeys, except radio.....	7,920	32.57	(?)	21.61
Entertainers and performers, sports and related workers, all other.....	16,550	30.70	(?)	18.82
Media and communication workers.....	613,530	41.09	85,470	35.70
Broadcast announcers and radio disc jockeys.....	21,240	37.85	78,720	22.76
News analysts, reporters, and journalists.....	39,250	49.26	102,460	29.91
Public relations specialists.....	283,380	40.44	84,120	35.94
Writers and editors.....	185,130	43.62	90,730	38.31
Editors.....	91,690	43.30	90,060	37.46
Technical writers.....	45,500	46.62	96,970	43.46
Writers and authors.....	47,940	41.39	86,090	36.98
Miscellaneous media and communication workers.....	84,520	34.76	72,300	30.52
Interpreters and translators.....	52,060	31.90	66,360	28.93
Court reporters and simultaneous captioners.....	12,870	37.86	78,760	34.82
Media and communication workers, all other.....	19,590	40.32	83,860	35.39
Media and communication equipment workers.....	224,690	33.40	69,480	28.46
Broadcast, sound, and lighting technicians.....	113,320	32.82	68,260	28.92
Audio and video technicians.....	70,230	31.07	64,630	27.93
Broadcast technicians.....	21,110	32.68	67,960	28.64
Sound engineering technicians.....	13,080	39.13	81,390	35.16
Lighting technicians.....	8,900	37.68	78,380	32.72
Photographers.....	51,760	26.64	55,410	21.47
Television, video, and film camera operators and editors.....	47,160	40.77	84,800	36.10
Camera operators, television, video, and film.....	21,550	40.01	83,210	36.05
Film and video editors.....	25,610	41.41	86,130	36.26
Media and communication equipment workers, all other.....	12,450	38.96	81,040	34.00
Healthcare practitioners and technical occupations				
Healthcare diagnosing or treating practitioners.....	9,823,860	52.26	108,700	41.60
Chiropractors.....	6,534,980	63.46	132,000	49.76
Dentists.....	39,630	43.52	90,520	38.08
Dentists, general.....	141,610	97.25	202,280	84.67
Oral and maxillofacial surgeons.....	124,390	91.99	191,350	82.19
Orthodontists.....	4,910	166.58	346,490	169.34
Prosthodontists.....	6,210	124.71	259,400	139.01
Dentists, all other specialists.....	870	129.15	268,630	149.61
Dietitians and nutritionists.....	5,230	119.20	247,930	108.17
Optometrists.....	77,570	37.08	77,130	36.73
Pharmacists.....	42,790	68.05	141,550	65.66
Physician assistants.....	321,970	67.75	140,920	67.75
Podiatrists.....	162,150	67.92	141,280	65.33
Therapists.....	9,680	84.37	175,480	77.07
Occupational therapists.....	816,170	47.33	98,440	47.14
Physical therapists.....	162,450	48.69	101,280	48.24
Radiation therapists.....	267,330	50.62	105,280	49.40
Recreational therapists.....	17,070	55.28	114,990	50.63
Respiratory therapists.....	14,930	32.52	67,630	29.79
Speech-language pathologists.....	139,790	41.97	87,300	39.56
Exercise physiologists.....	183,390	47.20	98,170	47.05
Therapists, all other.....	8,560	29.30	60,940	28.59
Veterinarians.....	22,640	43.47	90,420	37.47
Registered nurses.....	83,900	68.60	142,680	62.55
Nurse anesthetists.....	3,379,720	48.76	101,420	46.90
Nurse midwives.....	51,840	119.38	248,320	113.75
Nurse practitioners.....	7,920	65.86	136,980	64.44
Audiologists.....	323,040	66.01	137,300	63.61
Physicians.....	13,660	46.99	97,740	46.05
Anesthesiologists.....	754,760	133.30	277,260	130.33
Cardiologists.....	38,760	173.35	360,570	188.22
Dermatologists.....	17,290	218.72	454,940	238.47
Emergency medicine physicians.....	11,370	155.55	323,530	158.04
Family medicine physicians.....	32,880	152.64	317,480	161.32
General internal medicine physicians.....	107,510	122.99	255,820	117.39
	67,150	128.46	267,200	123.35

See footnotes at end of table.

Table 1. National employment and wage data from the Occupational Employment and Wage Statistics survey by occupation, May 2025—Continued

Occupation	Employment	Mean wages		Median hourly wages
		Hourly	Annual ¹	
Healthcare practitioners and technical occupations (Continued)				
Neurologists.....	10,590	\$128.67	\$267,630	\$119.50
Obstetricians and gynecologists.....	21,260	134.16	279,040	140.82
Pediatricians, general.....	39,390	101.98	212,110	100.98
Physicians, pathologists.....	11,110	137.22	285,420	150.19
Psychiatrists.....	27,980	129.78	269,940	135.51
Radiologists.....	26,770	183.43	381,530	202.34
Physicians, all other.....	342,720	125.98	262,040	127.85
Surgeons.....	49,380	175.17	364,360	177.66
Ophthalmologists, except pediatric.....	8,950	146.47	304,650	144.27
Orthopedic surgeons, except pediatric.....	14,100	179.60	373,570	172.38
Pediatric surgeons.....	1,190	241.37	502,050	268.76
Surgeons, all other.....	25,140	179.78	373,930	199.04
Miscellaneous healthcare diagnosing or treating practitioners.....	259,190	48.94	101,800	47.29
Acupuncturists.....	7,830	41.84	87,020	36.56
Dental hygienists.....	222,740	47.59	98,990	47.16
Healthcare diagnosing or treating practitioners, all other.....	28,630	61.38	127,660	55.39
Health technologists and technicians.....	3,159,280	29.77	61,910	27.97
Clinical laboratory technologists and technicians.....	332,940	32.38	67,350	30.26
Diagnostic related technologists and technicians.....	447,490	42.34	88,070	40.09
Cardiovascular technologists and technicians.....	62,960	36.99	76,940	35.73
Diagnostic medical sonographers.....	90,160	46.75	97,240	46.44
Nuclear medicine technologists.....	17,080	50.56	105,160	48.74
Radiologic technologists and technicians.....	230,490	40.31	83,840	38.52
Magnetic resonance imaging technologists.....	43,390	46.21	96,120	45.91
Medical dosimetrists.....	3,410	71.40	148,500	70.90
Emergency medical technicians and paramedics.....	281,120	25.36	52,750	23.15
Emergency medical technicians.....	180,510	22.52	46,830	21.38
Paramedics.....	100,610	30.46	63,360	29.13
Health practitioner support technologists and technicians.....	977,800	23.77	49,440	22.40
Dietetic technicians.....	31,560	19.54	40,630	18.09
Pharmacy technicians.....	471,680	22.41	46,620	22.00
Psychiatric technicians.....	156,960	22.41	46,610	21.70
Surgical technologists.....	117,460	33.03	68,710	31.08
Veterinary technologists and technicians.....	129,140	23.61	49,120	22.78
Ophthalmic medical technicians.....	71,010	22.63	47,060	21.91
Licensed practical and licensed vocational nurses.....	648,410	32.24	67,050	30.96
Medical records specialists.....	194,720	27.30	56,790	24.59
Opticians, dispensing.....	73,530	24.89	51,770	22.72
Miscellaneous health technologists and technicians.....	203,270	28.99	60,290	24.75
Orthotists and prosthetists.....	9,390	40.26	83,740	38.99
Hearing aid specialists.....	11,270	31.91	66,370	31.33
Health technologists and technicians, all other.....	182,610	28.23	58,710	24.18
Other healthcare practitioners and technical occupations.....	129,610	35.55	73,950	31.34
Health information technologists and medical registrars.....	38,100	36.04	74,970	32.70
Miscellaneous health practitioners and technical workers.....	91,510	35.35	73,520	30.94
Athletic trainers.....	30,500	(²)	66,620	(²)
Genetic counselors.....	3,740	50.30	104,620	48.09
Surgical assistants.....	22,270	34.96	72,710	32.11
Healthcare practitioners and technical workers, all other.....	35,010	36.89	76,720	31.63
Healthcare support occupations	7,901,670	19.62	40,800	18.43
Home health and personal care aides; and nursing assistants, orderlies, and psychiatric aides.....	5,842,680	18.20	37,850	17.82
Home health and personal care aides.....	4,305,810	17.36	36,120	17.21
Nursing assistants, orderlies, and psychiatric aides.....	1,536,870	20.53	42,700	20.18
Nursing assistants.....	1,448,910	20.53	42,700	20.32
Orderlies.....	52,440	19.55	40,660	18.41
Psychiatric aides.....	35,520	21.97	45,690	21.59
Occupational therapy and physical therapist assistants and aides.....	216,180	29.57	61,510	30.31
Occupational therapy assistants and aides.....	55,600	33.00	68,640	34.04
Occupational therapy assistants.....	51,290	33.99	70,710	34.76
Occupational therapy aides.....	4,310	21.21	44,110	18.83
Physical therapist assistants and aides.....	160,580	28.39	59,040	29.42
Physical therapist assistants.....	112,430	33.04	68,730	32.88
Physical therapist aides.....	48,150	17.52	36,430	16.94
Other healthcare support occupations.....	1,842,810	22.95	47,730	22.20
Massage therapists.....	98,790	30.69	63,830	28.10
Miscellaneous healthcare support occupations.....	1,744,020	22.51	46,810	22.12
Dental assistants.....	387,790	24.13	50,200	23.11
Medical assistants.....	817,870	22.17	46,120	21.97
Medical equipment preparers.....	77,420	24.28	50,510	22.93
Medical transcriptionists.....	41,550	20.05	41,710	19.43
Pharmacy aides.....	39,530	19.45	40,450	18.12
Veterinary assistants and laboratory animal caretakers.....	126,580	19.39	40,340	18.34
Phlebotomists.....	143,540	21.88	45,520	21.75
Healthcare support workers, all other.....	109,740	24.43	50,810	23.28

See footnotes at end of table.

Table 1. National employment and wage data from the Occupational Employment and Wage Statistics survey by occupation, May 2025—Continued

Occupation	Employment	Mean wages		Median hourly wages
		Hourly	Annual ¹	
Protective service occupations	3,776,610	\$29.19	\$60,720	\$24.08
Supervisors of protective service workers.....	409,310	44.49	92,550	41.55
First-line supervisors of law enforcement workers.....	208,000	50.51	105,050	48.10
First-line supervisors of correctional officers.....	53,380	40.57	84,380	37.49
First-line supervisors of police and detectives.....	154,610	53.94	112,190	50.98
First-line supervisors of firefighting and prevention workers.....	99,140	46.60	96,930	44.96
Miscellaneous first-line supervisors, protective service workers.....	102,170	30.21	62,830	28.00
First-line supervisors of security workers.....	81,480	28.80	59,900	26.90
First-line supervisors of protective service workers, all other.....	20,690	35.76	74,390	36.73
Firefighting and prevention workers.....	362,570	30.88	64,220	28.67
Firefighters.....	345,990	30.59	63,630	28.50
Fire inspectors.....	16,580	36.85	76,650	35.42
Fire inspectors and investigators.....	13,800	37.82	78,670	36.50
Forest fire inspectors and prevention specialists.....	2,780	32.04	66,640	27.34
Law enforcement workers.....	1,201,970	36.42	75,760	34.63
Bailiffs, correctional officers, and jailers.....	397,800	30.55	63,540	28.30
Bailiffs.....	17,310	29.65	61,660	27.21
Correctional officers and jailers.....	380,500	30.59	63,630	28.34
Detectives and criminal investigators.....	114,430	47.80	99,430	45.09
Fish and game wardens.....	5,770	36.03	74,950	35.60
Parking enforcement workers.....	9,050	24.61	51,190	22.47
Police officers.....	674,910	38.12	79,280	36.66
Police and sheriff's patrol officers.....	670,520	38.08	79,200	36.64
Transit and railroad police.....	4,390	44.14	91,810	43.38
Other protective service workers.....	1,802,770	20.56	42,770	18.22
Animal control workers.....	12,070	23.29	48,440	21.95
Private detectives and investigators.....	35,580	28.92	60,150	24.62
Security guards and gambling surveillance officers.....	1,292,990	20.43	42,490	18.29
Gambling surveillance officers and gambling investigators.....	9,520	21.94	45,630	20.85
Security guards.....	1,283,470	20.42	42,470	18.28
Miscellaneous protective service workers.....	462,130	20.21	42,050	17.70
Crossing guards and flaggers.....	94,360	20.84	43,350	18.32
Lifeguards, ski patrol, and other recreational protective service workers.....	157,550	16.57	34,470	16.14
Transportation security screeners.....	50,290	30.92	64,310	32.10
School bus monitors.....	78,420	16.90	35,150	16.88
Protective service workers, all other.....	81,500	23.11	48,070	20.45
Food preparation and serving related occupations	13,680,750	17.86	37,150	16.85
Supervisors of food preparation and serving workers.....	1,423,280	23.59	49,070	21.81
Supervisors of food preparation and serving workers.....	1,423,280	23.59	49,070	21.81
Chefs and head cooks.....	200,040	32.07	66,700	30.03
First-line supervisors of food preparation and serving workers.....	1,223,240	22.20	46,180	21.19
Cooks and food preparation workers.....	3,544,690	17.61	36,630	17.46
Cooks.....	2,651,090	17.83	37,080	17.62
Cooks, fast food.....	641,070	15.57	32,390	14.85
Cooks, institution and cafeteria.....	441,050	18.66	38,810	18.01
Cooks, private household.....	1,100	25.81	53,680	23.05
Cooks, restaurant.....	1,409,890	18.62	38,730	17.98
Cooks, short order.....	138,650	17.37	36,120	17.25
Cooks, all other.....	19,350	18.82	39,150	18.12
Food preparation workers.....	893,600	16.96	35,290	16.98
Food and beverage serving workers.....	7,175,250	17.18	35,730	16.06
Bartenders.....	756,390	19.61	40,790	16.51
Fast food and counter workers.....	3,854,050	15.46	32,150	15.00
Waiters and waitresses.....	2,270,910	19.26	40,060	16.94
Food servers, nonrestaurant.....	293,900	17.37	36,140	17.00
Other food preparation and serving related workers.....	1,537,520	16.33	33,960	16.38
Dining room and cafeteria attendants and bartender helpers.....	542,750	16.46	34,230	16.34
Dishwashers.....	477,450	16.49	34,310	16.73
Hosts and hostesses, restaurant, lounge, and coffee shop.....	432,690	15.72	32,690	15.00
Food preparation and serving related workers, all other.....	84,630	17.70	36,810	17.23
Building and grounds cleaning and maintenance occupations	4,548,260	19.66	40,880	18.12
Supervisors of building and grounds cleaning and maintenance workers.....	309,510	27.19	56,550	25.45
First-line supervisors of building and grounds cleaning and maintenance workers.....	309,510	27.19	56,550	25.45
First-line supervisors of housekeeping and janitorial workers.....	178,760	25.64	53,320	23.61
First-line supervisors of landscaping, lawn service, and groundskeeping workers.....	130,760	29.31	60,960	28.09
Building cleaning and pest control workers.....	3,190,260	18.56	38,600	17.62
Building cleaning workers.....	3,087,640	18.43	38,340	17.56
Janitors and cleaners, except maids and housekeeping cleaners.....	2,209,760	18.64	38,760	17.71
Maids and housekeeping cleaners.....	860,670	17.83	37,080	17.07
Building cleaning workers, all other.....	17,210	22.32	46,420	21.17
Pest control workers.....	102,620	22.31	46,400	21.75
Grounds maintenance workers.....	1,048,490	20.78	43,220	19.27
Grounds maintenance workers.....	1,048,490	20.78	43,220	19.27
Landscaping and groundskeeping workers.....	952,640	20.33	42,290	18.82
Pesticide handlers, sprayers, and applicators, vegetation.....	27,050	22.63	47,070	22.28

See footnotes at end of table.

Table 1. National employment and wage data from the Occupational Employment and Wage Statistics survey by occupation, May 2025—Continued

Occupation	Employment	Mean wages		Median hourly wages
		Hourly	Annual ¹	
Building and grounds cleaning and maintenance occupations (Continued)				
Tree trimmers and pruners.....	55,160	\$26.91	\$55,970	\$24.50
Grounds maintenance workers, all other.....	13,630	23.48	48,830	22.53
Personal care and service occupations				
	3,255,790	19.74	41,070	17.51
Supervisors of personal care and service workers.....	243,320	26.06	54,200	23.95
First-line supervisors of entertainment and recreation workers.....	129,200	26.84	55,820	24.52
First-line supervisors of gambling services workers.....	26,010	31.17	64,830	30.68
First-line supervisors of entertainment and recreation workers, except gambling services.....	103,190	25.75	53,550	23.34
First-line supervisors of personal service workers.....	114,110	25.17	52,360	23.36
Animal care and service workers.....	285,680	18.24	37,940	17.08
Animal trainers.....	18,770	22.61	47,020	19.22
Animal caretakers.....	266,910	17.94	37,300	17.00
Entertainment attendants and related workers.....	657,210	16.70	34,740	15.82
Gambling services workers.....	107,000	20.14	41,880	16.50
Gambling dealers.....	83,910	20.46	42,550	16.50
Gambling and sports book writers and runners.....	8,950	17.53	36,450	16.82
Gambling service workers, all other.....	14,140	19.90	41,380	17.46
Motion picture projectionists.....	1,480	24.75	51,480	18.40
Ushers, lobby attendants, and ticket takers.....	121,770	15.91	33,080	15.82
Miscellaneous entertainment attendants and related workers.....	426,960	16.04	33,360	15.52
Amusement and recreation attendants.....	397,830	15.69	32,640	15.46
Costume attendants.....	6,510	30.50	63,440	24.23
Locker room, coatroom, and dressing room attendants.....	15,560	18.49	38,460	17.45
Entertainment attendants and related workers, all other.....	7,060	16.82	34,980	15.69
Funeral service workers.....	63,050	22.71	47,250	20.53
Embalmers and crematory operators.....	6,870	25.42	52,880	24.17
Embalmers.....	3,890	28.07	58,390	28.26
Crematory operators.....	2,970	21.96	45,670	20.98
Funeral attendants.....	31,090	17.88	37,190	17.16
Morticians, undertakers, and funeral arrangers.....	25,100	27.96	58,160	26.45
Personal appearance workers.....	556,770	20.99	43,670	17.48
Barbers, hairdressers, hairstylists and cosmetologists.....	320,710	21.20	44,100	17.25
Barbers.....	15,000	22.63	47,070	18.37
Hairdressers, hairstylists, and cosmetologists.....	305,710	21.13	43,960	17.21
Miscellaneous personal appearance workers.....	236,070	20.71	43,070	17.61
Makeup artists, theatrical and performance.....	2,340	49.16	102,240	46.71
Manicurists and pedicurists.....	152,770	18.54	38,570	17.19
Shampooers.....	8,070	15.37	31,980	15.67
Skincare specialists.....	72,890	24.93	51,850	21.79
Baggage porters, bellhops, and concierges.....	77,750	19.74	41,070	18.47
Baggage porters, bellhops, and concierges.....	77,750	19.74	41,070	18.47
Baggage porters and bellhops.....	28,510	18.54	38,570	17.83
Concierges.....	49,240	20.44	42,510	18.73
Tour and travel guides.....	53,500	21.02	43,720	18.33
Tour and travel guides.....	53,500	21.02	43,720	18.33
Other personal care and service workers.....	1,318,510	19.70	40,980	17.76
Childcare workers.....	518,910	16.84	35,030	16.82
Recreation and fitness workers.....	654,420	21.82	45,380	18.63
Exercise trainers and group fitness instructors.....	322,930	25.20	52,420	22.67
Recreation workers.....	331,490	18.52	38,520	17.58
Residential advisors.....	84,760	21.15	43,990	20.31
Personal care and service workers, all other.....	60,420	19.29	40,120	20.00
Sales and related occupations				
	13,424,300	26.43	54,960	18.52
Supervisors of sales workers.....	1,336,190	29.21	60,750	24.79
First-line supervisors of sales workers.....	1,336,190	29.21	60,750	24.79
First-line supervisors of retail sales workers.....	1,121,800	25.66	53,380	23.33
First-line supervisors of non-retail sales workers.....	214,390	47.77	99,370	42.08
Retail sales workers.....	7,679,690	17.46	36,320	16.74
Cashiers.....	3,110,940	15.97	33,220	15.83
Cashiers.....	3,089,410	15.95	33,180	15.81
Gambling change persons and booth cashiers.....	21,530	18.80	39,100	17.41
Counter and rental clerks and parts salespersons.....	670,890	21.61	44,950	19.25
Counter and rental clerks.....	400,810	21.97	45,700	19.86
Parts salespersons.....	270,070	21.07	43,830	18.57
Retail salespersons.....	3,897,860	17.94	37,310	17.03
Sales representatives, services.....	2,371,490	41.85	87,040	32.78
Advertising sales agents.....	91,700	38.79	80,670	31.16
Insurance sales agents.....	479,100	39.18	81,480	29.94
Securities, commodities, and financial services sales agents.....	489,570	52.48	109,150	37.82
Travel agents.....	55,110	26.28	54,660	24.11
Sales representatives of services, except advertising, insurance, financial services, and travel.....	1,256,010	39.63	82,430	33.65
Sales representatives, wholesale and manufacturing.....	1,522,990	43.02	89,490	36.76
Sales representatives, wholesale and manufacturing.....	1,522,990	43.02	89,490	36.76
Sales representatives, wholesale and manufacturing, technical and scientific products.....	284,800	57.56	119,730	50.44
Sales representatives, wholesale and manufacturing, except technical and scientific products.....	1,238,190	39.68	82,530	34.65
Other sales and related workers.....	513,930	32.76	68,150	24.06

See footnotes at end of table.

Table 1. National employment and wage data from the Occupational Employment and Wage Statistics survey by occupation, May 2025—Continued

Occupation	Employment	Mean wages		Median hourly wages
		Hourly	Annual ¹	
Sales and related occupations (Continued)				
Models, demonstrators, and product promoters.....	68,300	\$22.64	\$47,090	\$19.02
Demonstrators and product promoters.....	64,520	21.91	45,580	18.91
Models.....	3,780	35.00	72,800	23.30
Real estate brokers and sales agents.....	239,470	34.75	72,290	27.59
Real estate brokers.....	46,100	40.36	83,950	35.20
Real estate sales agents.....	193,370	33.42	69,510	25.40
Sales engineers.....	51,790	62.57	130,140	60.05
Telemarketers.....	58,430	17.97	37,370	17.04
Miscellaneous sales and related workers.....	95,940	27.93	58,080	23.05
Door-to-door sales workers, news and street vendors, and related workers.....	2,760	21.08	43,850	19.89
Sales and related workers, all other.....	93,180	28.13	58,510	23.21
Office and administrative support occupations				
	17,753,430	24.79	51,560	22.81
Supervisors of office and administrative support workers.....	1,436,680	35.33	73,490	33.41
First-line supervisors of office and administrative support workers.....	1,436,680	35.33	73,490	33.41
Communications equipment operators.....	38,910	20.74	43,140	18.82
Switchboard operators, including answering service.....	34,280	20.34	42,300	18.57
Telephone operators.....	3,430	21.62	44,970	20.07
Communications equipment operators, all other.....	1,200	29.87	62,130	26.29
Financial clerks.....	2,525,690	24.87	51,720	23.38
Bill and account collectors.....	158,830	23.59	49,060	22.61
Billing and posting clerks.....	404,060	24.55	51,070	23.32
Bookkeeping, accounting, and auditing clerks.....	1,373,680	25.75	53,560	24.36
Gambling cage workers.....	14,430	19.00	39,510	18.07
Payroll and timekeeping clerks.....	153,140	28.67	59,630	28.01
Procurement clerks.....	55,810	25.18	52,370	24.32
Tellers.....	329,480	20.36	42,350	20.69
Financial clerks, all other.....	36,260	27.14	56,450	25.88
Information and record clerks.....	5,081,880	22.05	45,860	21.09
Brokerage clerks.....	35,940	35.03	72,850	31.61
Correspondence clerks.....	4,290	23.12	48,090	22.50
Court, municipal, and license clerks.....	179,750	25.15	52,320	23.41
Credit authorizers, checkers, and clerks.....	12,030	24.72	51,420	24.08
Customer service representatives.....	2,595,750	22.40	46,590	21.53
Eligibility interviewers, government programs.....	154,800	26.97	56,090	26.06
File clerks.....	73,440	21.92	45,590	20.96
Hotel, motel, and resort desk clerks.....	261,420	17.09	35,550	16.86
Interviewers, except eligibility and loan.....	148,060	22.71	47,240	22.08
Library assistants, clerical.....	85,520	18.93	39,370	17.74
Loan interviewers and clerks.....	164,790	25.25	52,520	24.05
New accounts clerks.....	36,860	23.73	49,370	22.92
Order clerks.....	75,200	23.19	48,220	22.20
Human resources assistants, except payroll and timekeeping.....	90,220	25.12	52,250	24.33
Receptionists and information clerks.....	910,180	18.97	39,460	18.27
Reservation and transportation ticket agents and travel clerks.....	118,710	23.86	49,630	21.34
Information and record clerks, all other.....	134,920	24.76	51,490	23.80
Material recording, scheduling, dispatching, and distributing workers.....	2,259,120	26.13	54,360	24.02
Cargo and freight agents.....	97,670	27.52	57,230	25.13
Couriers and messengers.....	68,640	19.70	40,970	18.85
Dispatchers.....	305,300	26.64	55,410	24.55
Public safety telecommunicators.....	102,500	27.28	56,740	25.50
Dispatchers, except police, fire, and ambulance.....	202,810	26.32	54,740	24.20
Meter readers, utilities.....	19,430	26.63	55,380	23.15
Postal service workers.....	507,730	29.71	61,800	28.79
Postal service clerks.....	73,720	29.74	61,860	29.87
Postal service mail carriers.....	328,820	30.07	62,540	29.11
Postal service mail sorters, processors, and processing machine operators.....	105,200	28.57	59,430	28.11
Production, planning, and expediting clerks.....	390,160	29.88	62,150	28.68
Shipping, receiving, and inventory clerks.....	816,870	22.50	46,810	21.76
Weighers, measurers, checkers, and samplers, recordkeeping.....	53,300	22.90	47,630	22.30
Secretaries and administrative assistants.....	3,284,600	25.63	53,310	23.23
Secretaries and administrative assistants.....	3,284,600	25.63	53,310	23.23
Executive secretaries and executive administrative assistants.....	459,910	38.05	79,140	36.82
Legal secretaries and administrative assistants.....	156,280	29.14	60,620	26.72
Medical secretaries and administrative assistants.....	961,610	22.50	46,800	22.08
Secretaries and administrative assistants, except legal, medical, and executive.....	1,706,790	23.73	49,350	22.86
Other office and administrative support workers.....	3,126,550	22.53	46,860	21.78
Data entry and information processing workers.....	162,090	21.63	44,990	20.72
Data entry keyers.....	127,080	20.82	43,310	19.88
Word processors and typists.....	35,010	24.58	51,120	23.69
Desktop publishers.....	3,350	29.79	61,970	26.58
Insurance claims and policy processing clerks.....	214,260	25.44	52,920	23.67
Mail clerks and mail machine operators, except postal service.....	55,230	20.03	41,650	18.89
Office clerks, general.....	2,464,940	22.32	46,420	21.64
Office machine operators, except computer.....	25,130	20.78	43,220	19.69
Proofreaders and copy markers.....	4,580	26.35	54,800	24.58

See footnotes at end of table.

Table 1. National employment and wage data from the Occupational Employment and Wage Statistics survey by occupation, May 2025—Continued

Occupation	Employment	Mean wages		Median hourly wages
		Hourly	Annual ¹	
Office and administrative support occupations (Continued)				
Statistical assistants.....	4,710	\$26.75	\$55,650	\$24.20
Office and administrative support workers, all other.....	192,260	23.40	48,670	21.96
Farming, fishing, and forestry occupations				
	435,200	19.96	41,510	17.61
Supervisors of farming, fishing, and forestry workers.....	27,960	30.16	62,730	28.52
First-line supervisors of farming, fishing, and forestry workers.....	27,960	30.16	62,730	28.52
Agricultural workers.....	371,340	18.74	38,970	17.29
Agricultural inspectors.....	14,410	26.40	54,910	24.01
Animal breeders.....	1,330	27.41	57,010	24.58
Graders and sorters, agricultural products.....	25,180	17.51	36,430	17.18
Miscellaneous agricultural workers.....	330,420	18.46	38,400	17.25
Agricultural equipment operators.....	28,500	21.02	43,710	20.06
Farmworkers and laborers, crop, nursery, and greenhouse.....	265,500	18.09	37,630	17.15
Farmworkers, farm, ranch, and aquacultural animals.....	32,810	18.88	39,260	17.63
Agricultural workers, all other.....	3,620	21.88	45,510	19.16
Forest, conservation, and logging workers.....	35,010	24.72	51,410	23.24
Forest and conservation workers.....	6,050	21.00	43,680	21.00
Logging workers.....	28,960	25.49	53,020	23.88
Fallers.....	3,130	27.46	57,110	25.05
Logging equipment operators.....	21,060	25.57	53,190	23.91
Log graders and scalers.....	3,070	22.97	47,770	22.27
Logging workers, all other.....	1,700	25.44	52,910	24.44
Construction and extraction occupations				
	6,425,160	31.42	65,360	28.63
Supervisors of construction and extraction workers.....	812,210	41.56	86,450	38.42
First-line supervisors of construction trades and extraction workers.....	812,210	41.56	86,450	38.42
Construction trades workers.....	4,739,450	30.23	62,880	27.96
Boilermakers.....	10,190	38.50	80,090	36.74
Brickmasons, blockmasons, and stonemasons.....	60,370	32.36	67,300	29.56
Brickmasons and blockmasons.....	52,550	32.83	68,280	29.87
Stonemasons.....	7,820	29.19	60,710	27.59
Carpenters.....	670,090	31.55	65,630	29.12
Carpet, floor, and tile installers and finishers.....	76,990	28.50	59,290	26.15
Carpet installers.....	13,780	27.40	56,990	24.20
Floor layers, except carpet, wood, and hard tiles.....	23,640	29.69	61,760	27.15
Floor sanders and finishers.....	3,720	25.22	52,460	24.25
Tile and stone setters.....	35,850	28.49	59,250	26.77
Cement masons, concrete finishers, and terrazzo workers.....	207,340	28.94	60,200	27.43
Cement masons and concrete finishers.....	206,170	28.87	60,050	27.41
Terrazzo workers and finishers.....	1,180	40.83	84,920	36.62
Construction laborers.....	1,096,780	25.02	52,030	22.66
Construction equipment operators.....	522,210	31.62	65,770	28.66
Paving, surfacing, and tamping equipment operators.....	41,820	28.37	59,000	25.64
Pile driver operators.....	2,310	38.81	80,710	35.24
Operating engineers and other construction equipment operators.....	478,090	31.87	66,290	28.78
Drywall installers, ceiling tile installers, and tapers.....	95,920	31.16	64,820	28.74
Drywall and ceiling tile installers.....	83,080	30.58	63,600	28.33
Tapers.....	12,840	34.96	72,710	32.82
Electricians.....	757,220	34.37	71,490	30.38
Glaziers.....	58,480	28.71	59,720	27.44
Insulation workers.....	70,110	28.22	58,690	24.68
Insulation workers, floor, ceiling, and wall.....	44,440	26.32	54,740	23.62
Insulation workers, mechanical.....	25,660	31.50	65,530	28.05
Painters and paperhangers.....	226,760	26.64	55,400	23.76
Painters, construction and maintenance.....	225,190	26.64	55,420	23.75
Paperhangers.....	1,570	25.83	53,730	25.07
Pipelayers, plumbers, pipefitters, and steamfitters.....	498,890	34.14	71,010	30.29
Pipelayers.....	33,050	26.30	54,700	23.56
Plumbers, pipefitters, and steamfitters.....	465,840	34.70	72,170	30.67
Plasterers and stucco masons.....	19,310	29.83	62,050	27.72
Reinforcing iron and rebar workers.....	13,800	31.76	66,060	28.35
Roofers.....	135,490	27.95	58,140	26.65
Sheet metal workers.....	119,770	32.62	67,850	29.71
Structural iron and steel workers.....	68,380	33.79	70,280	30.18
Solar photovoltaic installers.....	31,350	27.84	57,900	25.55
Helpers, construction trades.....	182,090	21.46	44,640	20.80
Helpers, construction trades.....	182,090	21.46	44,640	20.80
Helpers--brickmasons, blockmasons, stonemasons, and tile and marble setters.....	14,170	24.48	50,920	22.86
Helpers--carpenters.....	21,680	21.18	44,050	21.05
Helpers--electricians.....	63,630	21.19	44,080	20.51
Helpers--painters, paperhangers, plasterers, and stucco masons.....	7,490	20.40	42,440	19.46
Helpers--pipelayers, plumbers, pipefitters, and steamfitters.....	44,330	21.03	43,730	20.36
Helpers--roofers.....	6,030	21.71	45,150	21.23
Helpers, construction trades, all other.....	24,770	21.70	45,140	20.51
Other construction and related workers.....	480,270	30.98	64,440	28.10
Construction and building inspectors.....	146,720	37.37	77,730	35.91

See footnotes at end of table.

Table 1. National employment and wage data from the Occupational Employment and Wage Statistics survey by occupation, May 2025—Continued

Occupation	Employment	Mean wages		Median hourly wages
		Hourly	Annual ¹	
Construction and extraction occupations (Continued)				
Elevator and escalator installers and repairers.....	23,790	\$52.80	\$109,820	\$52.84
Fence erectors.....	24,480	24.29	50,530	23.07
Hazardous materials removal workers.....	51,710	27.13	56,430	23.78
Highway maintenance workers.....	154,960	25.52	53,080	24.16
Rail-track laying and maintenance equipment operators.....	19,580	33.05	68,740	33.69
Septic tank servicers and sewer pipe cleaners.....	30,650	25.72	53,500	23.98
Miscellaneous construction and related workers.....	28,380	26.51	55,130	24.00
Extraction workers.....	211,130	28.77	59,850	27.56
Derrick, rotary drill, and service unit operators, oil and gas.....	66,320	30.74	63,950	28.72
Derrick operators, oil and gas.....	10,590	28.95	60,210	28.18
Rotary drill operators, oil and gas.....	12,600	34.68	72,130	32.64
Service unit operators, oil and gas.....	43,140	30.04	62,470	27.96
Surface mining machine operators and earth drillers.....	53,920	29.32	60,980	28.02
Excavating and loading machine and dragline operators, surface mining.....	34,480	28.81	59,930	27.61
Earth drillers, except oil and gas.....	19,450	30.21	62,830	28.94
Explosives workers, ordnance handling experts, and blasters.....	5,100	32.04	66,640	29.51
Underground mining machine operators.....	25,260	32.80	68,220	32.05
Continuous mining machine operators.....	14,000	31.27	65,050	29.72
Roof bolters, mining.....	2,160	37.55	78,100	37.76
Loading and moving machine operators, underground mining.....	5,930	34.25	71,240	35.82
Underground mining machine operators, all other.....	3,180	33.59	69,860	33.72
Rock splitters, quarry.....	3,320	24.76	51,500	23.44
Roustabouts, oil and gas.....	44,970	23.65	49,200	22.58
Helpers--extraction workers.....	6,700	24.34	50,620	22.95
Extraction workers, all other.....	5,540	27.83	57,890	27.41
Installation, maintenance, and repair occupations	6,086,190	30.44	63,320	28.66
Supervisors of installation, maintenance, and repair workers.....	617,500	40.97	85,220	38.39
First-line supervisors of mechanics, installers, and repairers.....	617,500	40.97	85,220	38.39
Electrical and electronic equipment mechanics, installers, and repairers.....	458,290	32.12	66,800	29.81
Computer, automated teller, and office machine repairers.....	65,600	24.46	50,880	22.99
Radio and telecommunications equipment installers and repairers.....	152,060	32.98	68,600	30.70
Radio, cellular, and tower equipment installers and repairers.....	11,140	33.59	69,870	30.54
Telecommunications equipment installers and repairers, except line installers.....	140,920	32.93	68,500	30.72
Miscellaneous electrical and electronic equipment mechanics, installers, and repairers.....	240,630	33.66	70,010	30.80
Avionics technicians.....	18,830	40.09	83,380	39.56
Electric motor, power tool, and related repairers.....	14,450	28.18	58,610	27.02
Electrical and electronics installers and repairers, transportation equipment.....	6,940	40.05	83,300	40.81
Electrical and electronics repairers, commercial and industrial equipment.....	65,010	36.33	75,570	35.62
Electrical and electronics repairers, powerhouse, substation, and relay.....	20,720	48.44	100,760	49.53
Electronic equipment installers and repairers, motor vehicles.....	8,550	24.79	51,560	23.28
Audiovisual equipment installers and repairers.....	19,780	27.85	57,930	25.29
Security and fire alarm systems installers.....	86,340	29.31	60,960	28.88
Vehicle and mobile equipment mechanics, installers, and repairers.....	1,748,920	29.05	60,420	28.00
Aircraft mechanics and service technicians.....	138,090	40.74	84,740	38.40
Automotive technicians and repairers.....	874,260	27.33	56,840	24.57
Automotive body and related repairers.....	149,310	28.70	59,690	26.39
Automotive glass installers and repairers.....	20,310	24.25	50,430	22.90
Automotive service technicians and mechanics.....	704,640	27.13	56,420	24.34
Bus and truck mechanics and diesel engine specialists.....	289,960	30.92	64,320	29.70
Heavy vehicle and mobile equipment service technicians and mechanics.....	235,820	32.43	67,450	30.70
Farm equipment mechanics and service technicians.....	37,870	27.54	57,290	27.19
Mobile heavy equipment mechanics, except engines.....	176,600	33.29	69,240	31.50
Rail car repairers.....	21,350	33.98	70,680	32.46
Small engine mechanics.....	72,790	25.49	53,010	23.90
Motorboat mechanics and service technicians.....	23,220	27.92	58,070	27.67
Motorcycle mechanics.....	13,510	25.18	52,370	23.35
Outdoor power equipment and other small engine mechanics.....	36,060	24.04	49,990	23.02
Miscellaneous vehicle and mobile equipment mechanics, installers, and repairers.....	138,010	20.41	42,450	18.59
Bicycle repairers.....	12,170	20.55	42,730	20.57
Recreational vehicle service technicians.....	17,430	27.14	56,440	25.00
Tire repairers and changers.....	108,410	19.31	40,170	18.13
Other installation, maintenance, and repair occupations.....	3,261,490	28.96	60,250	27.61
Control and valve installers and repairers.....	75,360	33.41	69,490	30.17
Mechanical door repairers.....	27,120	27.67	57,540	26.79
Control and valve installers and repairers, except mechanical door.....	48,240	36.64	76,210	35.74
Heating, air conditioning, and refrigeration mechanics and installers.....	409,670	31.14	64,780	29.33
Home appliance repairers.....	32,150	26.94	56,040	24.51
Industrial machinery installation, repair, and maintenance workers.....	541,070	32.75	68,120	30.81
Industrial machinery mechanics.....	439,640	32.91	68,460	31.02
Maintenance workers, machinery.....	60,020	31.06	64,610	29.25
Millwrights.....	40,330	33.55	69,780	31.59
Refractory materials repairers, except brickmasons.....	1,080	30.66	63,770	29.47
Line installers and repairers.....	228,790	40.51	84,270	39.20
Electrical power-line installers and repairers.....	131,070	44.22	91,970	45.83
Telecommunications line installers and repairers.....	97,720	35.55	73,940	35.73

See footnotes at end of table.

Table 1. National employment and wage data from the Occupational Employment and Wage Statistics survey by occupation, May 2025—Continued

Occupation	Employment	Mean wages		Median hourly wages
		Hourly	Annual ¹	
Installation, maintenance, and repair occupations (Continued)				
Precision instrument and equipment repairers.....	83,720	\$31.43	\$65,370	\$29.43
Camera and photographic equipment repairers.....	1,650	26.94	56,040	25.35
Medical equipment repairers.....	65,990	31.70	65,930	29.64
Musical instrument repairers and tuners.....	5,380	24.02	49,960	22.32
Watch and clock repairers.....	1,310	34.06	70,840	32.32
Precision instrument and equipment repairers, all other.....	9,400	34.22	71,180	33.17
Maintenance and repair workers, general.....	1,529,700	25.86	53,780	23.84
Wind turbine service technicians.....	9,980	33.16	68,980	30.83
Miscellaneous installation, maintenance, and repair workers.....	351,050	25.12	52,250	22.82
Coin, vending, and amusement machine servicers and repairers.....	26,410	23.93	49,770	22.81
Commercial divers.....	3,450	42.46	88,320	35.09
Locksmiths and safe repairers.....	15,040	26.67	55,470	24.68
Manufactured building and mobile home installers.....	3,020	21.83	45,410	22.11
Riggers.....	22,530	32.12	66,810	30.12
Signal and track switch repairers.....	8,720	43.47	90,410	44.45
Helpers—installation, maintenance, and repair workers.....	95,580	19.95	41,490	19.05
Installation, maintenance, and repair workers, all other.....	176,300	25.89	53,850	23.67
Production occupations				
Supervisors of production workers.....	8,565,760	24.81	51,600	22.59
Supervisors of production workers.....	673,430	36.83	76,600	35.79
First-line supervisors of production and operating workers.....	673,430	36.83	76,600	35.79
Assemblers and fabricators.....	1,801,640	22.95	47,740	21.85
Aircraft structure, surfaces, rigging, and systems assemblers.....	34,020	34.34	71,420	31.43
Electrical, electronics, and electromechanical assemblers.....	259,810	22.98	47,800	22.08
Coil winders, tapers, and finishers.....	12,840	24.26	50,470	23.18
Electrical, electronic, and electromechanical assemblers, except coil winders, tapers, and finishers.....	246,970	22.92	47,660	22.04
Engine and other machine assemblers.....	34,000	27.78	57,790	25.82
Structural metal fabricators and fitters.....	52,360	25.98	54,030	24.68
Fiberglass laminators and fabricators.....	16,170	23.82	49,550	22.54
Timing device assemblers and adjusters.....	250	27.27	56,720	30.11
Miscellaneous assemblers and fabricators.....	1,405,030	22.43	46,660	21.47
Food processing workers.....	879,430	19.70	40,980	18.75
Bakers.....	236,200	18.50	38,480	17.86
Butchers and other meat, poultry, and fish processing workers.....	352,090	19.70	40,980	18.84
Butchers and meat cutters.....	136,430	20.37	42,380	19.30
Meat, poultry, and fish cutters and trimmers.....	145,700	18.89	39,280	18.41
Slaughterers and meat packers.....	69,950	20.08	41,770	19.29
Miscellaneous food processing workers.....	291,140	20.68	43,010	19.82
Food and tobacco roasting, baking, and drying machine operators and tenders.....	20,370	22.08	45,930	21.54
Food batchmakers.....	174,520	21.04	43,750	20.33
Food cooking machine operators and tenders.....	31,250	20.47	42,570	20.00
Food processing workers, all other.....	65,000	19.38	40,300	19.08
Metal workers and plastic workers.....	1,545,990	25.83	53,730	23.94
Forming machine setters, operators, and tenders, metal and plastic.....	95,010	24.37	50,680	23.27
Extruding and drawing machine setters, operators, and tenders, metal and plastic.....	60,840	23.79	49,480	22.94
Forging machine setters, operators, and tenders, metal and plastic.....	8,930	24.85	51,680	23.57
Rolling machine setters, operators, and tenders, metal and plastic.....	25,250	25.59	53,220	24.10
Machine tool cutting setters, operators, and tenders, metal and plastic.....	272,050	23.58	49,050	22.48
Cutting, punching, and press machine setters, operators, and tenders, metal and plastic.....	171,200	23.28	48,430	22.27
Drilling and boring machine tool setters, operators, and tenders, metal and plastic.....	4,680	24.91	51,810	23.60
Grinding, lapping, polishing, and buffing machine tool setters, operators, and tenders, metal and plastic.....	67,000	23.16	48,170	22.38
Lathe and turning machine tool setters, operators, and tenders, metal and plastic.....	16,710	25.24	52,490	24.34
Milling and planing machine setters, operators, and tenders, metal and plastic.....	12,460	27.28	56,740	25.39
Machinists.....	287,050	28.52	59,320	28.24
Metal furnace operators, tenders, pourers, and casters.....	21,340	26.55	55,230	25.85
Metal-refining furnace operators and tenders.....	16,780	26.68	55,490	26.17
Pourers and casters, metal.....	4,560	26.10	54,290	24.91
Model makers and patternmakers, metal and plastic.....	4,080	31.59	65,710	29.30
Model makers, metal and plastic.....	2,610	32.97	68,570	30.45
Patternmakers, metal and plastic.....	1,470	29.14	60,610	27.89
Molders and molding machine setters, operators, and tenders, metal and plastic.....	163,270	22.24	46,270	21.50
Foundry mold and coremakers.....	12,790	23.97	49,860	23.13
Molding, coremaking, and casting machine setters, operators, and tenders, metal and plastic.....	150,470	22.10	45,960	21.32
Multiple machine tool setters, operators, and tenders, metal and plastic.....	124,590	24.05	50,030	22.68
Tool and die makers.....	56,930	32.14	66,860	30.79
Welding, soldering, and brazing workers.....	447,810	27.07	56,300	25.36
Welders, cutters, solderers, and brazers.....	416,210	27.29	56,760	25.84
Welding, soldering, and brazing machine setters, operators, and tenders.....	31,600	24.15	50,220	23.04
Miscellaneous metal workers and plastic workers.....	73,880	23.66	49,210	22.42
Heat treating equipment setters, operators, and tenders, metal and plastic.....	14,000	24.26	50,450	23.44
Layout workers, metal and plastic.....	5,970	31.98	66,520	30.71
Plating machine setters, operators, and tenders, metal and plastic.....	32,410	21.69	45,100	21.14
Tool grinders, filers, and sharpeners.....	5,600	25.59	53,240	24.07
Metal workers and plastic workers, all other.....	15,900	23.36	48,580	22.09

See footnotes at end of table.

Table 1. National employment and wage data from the Occupational Employment and Wage Statistics survey by occupation, May 2025—Continued

Occupation	Employment	Mean wages		Median hourly wages
		Hourly	Annual ¹	
Production occupations (Continued)				
Printing workers.....	201,290	\$22.74	\$47,290	\$22.03
Printing workers.....	201,290	22.74	47,290	22.03
Prepress technicians and workers.....	23,840	24.43	50,800	23.41
Printing press operators.....	144,260	22.77	47,360	22.01
Print binding and finishing workers.....	33,180	21.38	44,460	20.33
Textile, apparel, and furnishings workers.....	454,710	18.19	37,840	17.50
Laundry and dry-cleaning workers.....	198,040	16.79	34,920	16.78
Pressers, textile, garment, and related materials.....	26,120	16.65	34,640	16.85
Sewing machine operators.....	104,880	18.08	37,600	17.63
Shoe and leather workers.....	10,730	18.40	38,280	17.97
Shoe and leather workers and repairers.....	7,450	18.83	39,160	18.17
Shoe machine operators and tenders.....	3,280	17.44	36,280	17.14
Tailors, dressmakers, and sewers.....	16,110	21.19	44,060	19.28
Sewers, hand.....	2,190	17.89	37,210	17.54
Tailors, dressmakers, and custom sewers.....	13,920	21.70	45,140	20.02
Textile machine setters, operators, and tenders.....	49,350	19.33	40,200	18.73
Textile bleaching and dyeing machine operators and tenders.....	5,310	19.41	40,380	18.36
Textile cutting machine setters, operators, and tenders.....	9,000	19.01	39,530	18.64
Textile knitting and weaving machine setters, operators, and tenders.....	13,030	19.58	40,720	19.01
Textile winding, twisting, and drawing out machine setters, operators, and tenders.....	22,020	19.29	40,120	18.59
Miscellaneous textile, apparel, and furnishings workers.....	49,480	22.72	47,250	21.17
Extruding and forming machine setters, operators, and tenders, synthetic and glass fibers.....	12,850	23.36	48,580	22.29
Fabric and apparel patternmakers.....	2,950	34.34	71,420	30.17
Upholsterers.....	20,140	22.76	47,340	22.28
Textile, apparel, and furnishings workers, all other.....	13,530	19.50	40,560	17.93
Woodworkers.....	199,920	21.94	45,630	21.78
Cabinetmakers and bench carpenters.....	77,170	23.22	48,290	22.44
Furniture finishers.....	14,480	21.78	45,300	21.41
Model makers and patternmakers, wood.....	500	28.58	59,450	24.57
Model makers, wood.....	280	30.61	63,670	27.19
Patternmakers, wood.....	220	26.08	54,240	23.86
Woodworking machine setters, operators, and tenders.....	102,270	20.95	43,570	20.72
Sawing machine setters, operators, and tenders, wood.....	40,850	20.95	43,580	20.56
Woodworking machine setters, operators, and tenders, except sawing.....	61,420	20.95	43,570	20.86
Woodworkers, all other.....	5,490	22.15	46,070	21.41
Plant and system operators.....	281,600	37.16	77,280	35.63
Power plant operators, distributors, and dispatchers.....	42,980	50.32	104,660	50.52
Nuclear power reactor operators.....	5,150	58.36	121,380	59.08
Power distributors and dispatchers.....	8,520	53.52	111,320	51.31
Power plant operators.....	29,320	47.97	99,790	49.06
Stationary engineers and boiler operators.....	28,250	40.37	83,960	37.80
Water and wastewater treatment plant and system operators.....	128,490	30.07	62,540	28.86
Miscellaneous plant and system operators.....	81,880	40.27	83,760	40.19
Chemical plant and system operators.....	16,610	38.45	79,970	37.56
Gas plant operators.....	18,030	42.65	88,710	42.22
Petroleum pump system operators, refinery operators, and gaugers.....	33,160	43.57	90,630	46.50
Plant and system operators, all other.....	14,080	31.59	65,700	30.03
Other production occupations.....	2,527,750	24.28	50,510	22.62
Chemical processing machine setters, operators, and tenders.....	199,730	28.51	59,300	27.09
Chemical equipment operators and tenders.....	139,630	29.19	60,710	27.90
Separating, filtering, clarifying, precipitating, and still machine setters, operators, and tenders.....	60,100	26.94	56,030	24.81
Crushing, grinding, polishing, mixing, and blending workers.....	131,430	24.71	51,390	23.31
Crushing, grinding, and polishing machine setters, operators, and tenders.....	26,000	24.70	51,380	23.34
Grinding and polishing workers, hand.....	10,510	21.64	45,020	20.51
Mixing and blending machine setters, operators, and tenders.....	94,920	25.04	52,090	23.55
Cutting workers.....	51,040	22.45	46,700	22.20
Cutters and trimmers, hand.....	6,060	19.74	41,050	18.28
Cutting and slicing machine setters, operators, and tenders.....	44,980	22.82	47,460	22.39
Extruding, forming, pressing, and compacting machine setters, operators, and tenders.....	58,770	22.72	47,260	22.00
Furnace, kiln, oven, drier, and kettle operators and tenders.....	14,280	24.49	50,940	23.10
Inspectors, testers, sorters, samplers, and weighers.....	597,370	25.70	53,450	23.35
Jewelers and precious stone and metal workers.....	22,440	27.87	57,960	25.26
Dental and ophthalmic laboratory technicians and medical appliance technicians.....	64,350	24.42	50,800	22.63
Dental laboratory technicians.....	34,410	26.10	54,290	23.85
Medical appliance technicians.....	11,280	25.35	52,730	23.09
Ophthalmic laboratory technicians.....	18,660	20.76	43,190	18.97
Packaging and filling machine operators and tenders.....	379,060	21.44	44,590	20.78
Painting workers.....	166,680	25.13	52,270	23.10
Painting, coating, and decorating workers.....	7,940	21.73	45,210	20.00
Coating, painting, and spraying machine setters, operators, and tenders.....	158,740	25.30	52,620	23.20
Semiconductor processing technicians.....	31,460	28.93	60,180	24.73
Photographic process workers and processing machine operators.....	4,800	22.14	46,050	19.52
Computer numerically controlled tool operators and programmers.....	197,950	27.35	56,890	25.67
Computer numerically controlled tool operators.....	169,450	26.11	54,320	24.37
Computer numerically controlled tool programmers.....	28,500	34.72	72,210	32.75
Miscellaneous production workers.....	608,390	21.88	45,520	20.75
Adhesive bonding machine operators and tenders.....	11,500	22.53	46,850	22.34

See footnotes at end of table.

Table 1. National employment and wage data from the Occupational Employment and Wage Statistics survey by occupation, May 2025—Continued

Occupation	Employment	Mean wages		Median hourly wages
		Hourly	Annual ¹	
Production occupations (Continued)				
Cleaning, washing, and metal pickling equipment operators and tenders.....	14,760	\$21.44	\$44,600	\$20.93
Cooling and freezing equipment operators and tenders.....	6,900	21.61	44,940	19.87
Etchers and engravers.....	7,750	22.27	46,320	20.82
Molders, shapers, and casters, except metal and plastic.....	33,190	22.84	47,500	22.20
Paper goods machine setters, operators, and tenders.....	96,130	25.40	52,840	24.17
Tire builders.....	20,770	27.48	57,160	27.59
Helpers--production workers.....	165,700	19.77	41,120	18.78
Production workers, all other.....	251,700	21.34	44,380	19.29
Transportation and material moving occupations				
	13,677,150	23.96	49,850	21.32
Supervisors of transportation and material moving workers.....	633,400	32.13	66,830	30.21
First-line supervisors of transportation and material moving workers.....	633,400	32.13	66,830	30.21
Aircraft cargo handling supervisors.....	9,760	31.26	65,010	27.97
First-line supervisors of transportation and material moving workers, except aircraft cargo handling supervisors.....	623,640	32.14	66,860	30.23
Air transportation workers.....	320,540	(?)	160,070	(?)
Aircraft pilots and flight engineers.....	151,190	(?)	243,730	(?)
Airline pilots, copilots, and flight engineers.....	103,560	(?)	288,650	(?)
Commercial pilots.....	47,630	(?)	146,080	(?)
Air traffic controllers and airfield operations specialists.....	37,700	54.38	113,100	48.74
Air traffic controllers.....	22,510	70.43	146,490	71.19
Airfield operations specialists.....	15,190	30.58	63,610	27.33
Flight attendants.....	131,650	(?)	77,440	(?)
Motor vehicle operators.....	4,365,780	25.47	52,980	23.74
Ambulance drivers and attendants, except emergency medical technicians.....	12,630	17.41	36,210	17.04
Driver/sales workers and truck drivers.....	3,454,520	26.13	54,350	24.23
Driver/sales workers.....	409,180	19.58	40,730	18.64
Heavy and tractor-trailer truck drivers.....	2,062,040	28.71	59,710	28.19
Light truck drivers.....	983,300	23.45	48,770	21.57
Passenger vehicle drivers.....	851,750	23.18	48,220	22.47
Bus drivers, school.....	402,930	23.28	48,430	23.04
Bus drivers, transit and intercity.....	159,240	28.98	60,280	28.39
Shuttle drivers and chauffeurs.....	248,530	19.17	39,880	17.93
Taxi drivers.....	41,050	24.01	49,930	20.24
Motor vehicle operators, all other.....	46,880	20.40	42,430	17.87
Rail transportation workers.....	107,550	38.12	79,290	37.90
Locomotive engineers and operators.....	37,380	40.42	84,070	38.43
Locomotive engineers.....	33,470	41.30	85,900	39.14
Rail yard engineers, dinkey operators, and hostlers.....	3,920	32.91	68,450	29.14
Railroad brake, signal, and switch operators and locomotive firers.....	12,400	33.19	69,030	33.10
Railroad conductors and yardmasters.....	46,440	38.03	79,100	37.50
Subway and streetcar operators.....	10,200	37.10	77,170	41.53
Rail transportation workers, all other.....	1,120	28.91	60,140	27.10
Water transportation workers.....	79,400	40.57	84,390	34.55
Sailors and marine oilers.....	31,670	27.32	56,830	24.77
Ship and boat captains and operators.....	39,330	48.43	100,730	41.80
Captains, mates, and pilots of water vessels.....	36,850	49.87	103,720	44.45
Motorboat operators.....	2,480	27.05	56,270	22.85
Ship engineers.....	8,400	53.75	111,790	52.66
Other transportation workers.....	347,240	20.04	41,680	17.53
Bridge and lock tenders.....	3,040	26.62	55,370	27.74
Parking attendants.....	137,880	16.82	34,990	16.90
Transportation service attendants.....	133,300	18.42	38,320	17.47
Automotive and watercraft service attendants.....	102,010	17.68	36,780	17.15
Aircraft service attendants.....	31,300	20.83	43,330	19.45
Traffic technicians.....	7,860	29.83	62,050	28.41
Transportation inspectors.....	24,500	42.57	88,540	44.28
Passenger attendants.....	27,110	18.18	37,820	18.14
Transportation workers, all other.....	13,550	24.47	50,890	21.95
Material moving workers.....	7,823,240	20.10	41,810	18.75
Conveyor operators and tenders.....	22,930	21.68	45,080	20.39
Crane and tower operators.....	42,890	34.68	72,130	32.73
Dredge operators.....	1,040	26.98	56,120	23.86
Hoist and winch operators.....	2,600	32.55	67,710	27.14
Industrial truck and tractor operators.....	774,420	23.25	48,370	22.32
Laborers and material movers.....	6,766,670	19.44	40,440	18.33
Cleaners of vehicles and equipment.....	380,430	17.78	36,980	17.23
Laborers and freight, stock, and material movers, hand.....	2,950,280	20.32	42,260	19.35
Machine feeders and offbearers.....	42,330	20.99	43,660	19.82
Packers and packagers, hand.....	559,820	18.05	37,540	17.44
Stockers and order fillers.....	2,833,810	19.01	39,540	17.95
Pumping station operators.....	31,270	33.10	68,840	31.34
Gas compressor and gas pumping station operators.....	3,510	35.87	74,610	37.17
Pump operators, except wellhead pumps.....	9,780	30.75	63,960	29.70
Wellhead pumps.....	17,990	33.83	70,370	33.63

See footnotes at end of table.

Table 1. National employment and wage data from the Occupational Employment and Wage Statistics survey by occupation, May 2025—Continued

Occupation	Employment	Mean wages		Median hourly wages
		Hourly	Annual ¹	
Transportation and material moving occupations (Continued)				
Refuse and recyclable material collectors.....	147,240	\$25.39	\$52,820	\$23.89
Tank car, truck, and ship loaders.....	10,700	28.83	59,970	28.30
Material moving workers, all other.....	23,480	21.94	45,640	20.10

¹ Annual wages have been calculated by multiplying the hourly mean wage by a "year-round, full-time" hours figure of 2,080 hours; for those occupations where there is not an hourly mean wage published, the annual wage has been directly calculated from the reported survey data.

² Wages for some occupations that do not generally work year-round, full time, are reported either as hourly wages or annual salaries, depending on how they are typically paid.