

For release 10:00 a.m. (EST) Thursday, December 4, 2014

USDL-14-2183

Technical information: (202) 691-6170 • [iifstaff@bls.gov](mailto:iifstaff@bls.gov) • [www.bls.gov/iif/oshsum.htm](http://www.bls.gov/iif/oshsum.htm)

Media contact: (202) 691-5902 • [PressOffice@bls.gov](mailto:PressOffice@bls.gov)

## **EMPLOYER-REPORTED WORKPLACE INJURIES AND ILLNESSES – 2013**

Slightly more than 3.0 million nonfatal workplace injuries and illnesses were reported by private industry employers in 2013, resulting in an incidence rate of 3.3 cases per 100 equivalent full-time workers, according to estimates from the Survey of Occupational Injuries and Illnesses (SOII) conducted by the U.S. Bureau of Labor Statistics. (See tables 1 and 2.) The rate reported for 2013 continues the pattern of statistically significant declines that, with the exception of 2012, occurred annually for the last 11 years.

### **Key findings from the 2013 Survey of Occupational Injuries and Illnesses**

- The total recordable cases (TRC) incidence rate of injury and illness reported by private industry employers declined in 2013 from a year earlier, as did the rate for cases of a more serious nature involving days away from work, job transfer, or restriction—commonly referred to as DART—marking the first decline in the DART rate since 2009. (See chart 1.)
- The rate of reported injuries and illnesses declined significantly in 2013 among the manufacturing, retail trade, and utilities sectors but was statistically unchanged among all other private industry sectors compared to a year earlier.
- Manufacturing continued a 16-year trend in 2013 as the only private industry sector in which the rate of job transfer or restriction only cases exceeded the rate of cases with days away from work. The rates for these two case types declined by 0.1 case in 2013 to 1.2 cases and 1.0 case per 100 full-time workers, respectively.
- The incidence rate of injuries only among private industry workers declined to 3.1 cases per 100 full-time workers in 2013, down from 3.2 cases in 2012. (See table 5.) In comparison, the incidence rate of illness cases was statistically unchanged in 2013. (See table 6a.)
- The rate of injuries and illnesses among state and local government workers combined declined to 5.2 cases per 100 full-time workers in 2013 compared to 5.6 cases in 2012 and remains significantly higher than the private industry rate. The incidence rates among state government and local government workplaces individually also declined significantly in 2013, state government from 4.4 to 3.9 cases per 100 full-time workers and local government from 6.1 to 5.7 cases per 100 full-time workers. (See chart 3.)

#### **Workplace Injuries and Illnesses Data Error**

BLS identified data processing errors that impacted previously published national-level estimates from the 2011 and 2012 Survey of Occupational Injuries and Illnesses. These estimates were corrected and republished in November 2014. More information on the data correction and revised estimates can be found at [www.bls.gov/bls/errata/iif\\_errata\\_1014.htm](http://www.bls.gov/bls/errata/iif_errata_1014.htm).

## Private Industry Injuries and Illnesses

### *Injuries and illnesses by type of case*

Over half of the more than 3.0 million private industry injury and illness cases reported in 2013 were of a more serious nature that involved days away from work, job transfer, or restriction (DART cases). These cases occurred at a rate of 1.7 cases per 100 full-time workers, a statistically significant decrease from 2012. (See table 7.) The rates for the two components of DART cases—cases involving days away from work and cases requiring job transfer or restriction—was unchanged at 1.0 and 0.7 case per 100 workers, respectively, in 2013. Other recordable cases—those not involving days away from work, job transfer, or restriction—accounted for the remaining 1.4 million injury and illness cases in 2013 and was unchanged at a rate of 1.6 cases per 100 full-time workers.

The TRC injury and illness incidence rate remained highest in 2013 among mid-size private industry establishments (those employing between 50 and 249 workers) and lowest among small establishments (those employing fewer than 11 workers). (See table 3 and chart 2.)

### *Injuries*

Nearly 2.9 million (94.9 percent) of the more than 3.0 million nonfatal occupational injuries and illnesses in 2013 were injuries. (See table 5.) Among injuries, over 2.1 million (75.5 percent) occurred in service-providing industries, which employed 82.4 percent of the private industry workforce. The remaining 0.7 million injuries (24.5 percent) occurred in goods-producing industries, which accounted for 17.6 percent of private industry employment in 2013.

### *Illnesses*

Workplace illnesses accounted for 5.1 percent of the more than 3.0 million injury and illness cases in 2013. (See table 6b.) The rate of workplace illnesses in 2013 (16.6 cases per 10,000 full-time workers) was not statistically different from the 2012 incidence rate (17.3 cases). The TRC illness incidence rate for all other illnesses—a category including such illnesses as musculoskeletal disorders—decreased significantly from 11.0 cases per 10,000 workers in 2012 to 10.2 cases in 2013. Rates among the other individual illness categories were unchanged in 2013 compared to a year earlier.

Goods-producing industries accounted for 34.4 percent of all occupational illness cases in 2013, resulting in an incidence rate of 27.6 cases per 10,000 full-time workers—remaining statistically unchanged from 28.6 cases in 2012. Service-providing industries accounted for 65.6 percent of private industry illness cases and experienced a rate of 13.7 cases per 10,000 full-time workers in 2013—statistically unchanged from the prior year.

## State Estimates

Private industry and public sector estimates are available for 41 participating states and for the District of Columbia for 2013. (See chart 4.) Data for establishments in the nine states for which individual estimates are unavailable are collected by BLS regional offices and used solely for the tabulation of national estimates. State estimates will be available online on Thursday, December 18, 2014; these estimates may also be requested prior to this date from the respective state offices. (See [www.bls.gov/iif/oshstate.htm](http://www.bls.gov/iif/oshstate.htm) for state contacts.) Factors such as differences in the composition of industry employment may influence state incidences rates and should be considered whenever comparing rates among different states.

## **Publication Tables and Supplemental Charts**

The Bureau of Labor Statistics (BLS) has generated estimates of injuries and illnesses for many of the 2-, 3-, 4-, 5-, and 6-digit industries as defined in the 2007 *North American Industry Classification System* (NAICS) manual. A complete listing of these estimates is not available in this release. However, summary tables 1 and 2—providing incidence rates and counts of injuries and illnesses by detailed NAICS industry, case type, and ownership (e.g., total recordable cases or cases with days away from work in private industry), respectively—may be accessed from [www.bls.gov/iif/oshsum.htm](http://www.bls.gov/iif/oshsum.htm), requested from BLS staff at (202) 691-6170, or requested by email at [IIFSTAFF@bls.gov](mailto:IIFSTAFF@bls.gov). Supplemental tables and charts illustrating trends among incidence rates and counts are also available from these sources. Information in this release will be made available to sensory impaired individuals upon request. Voice phone: (202) 691-5200; Federal Relay Service (800) 877-8339.

## **Background of the Survey**

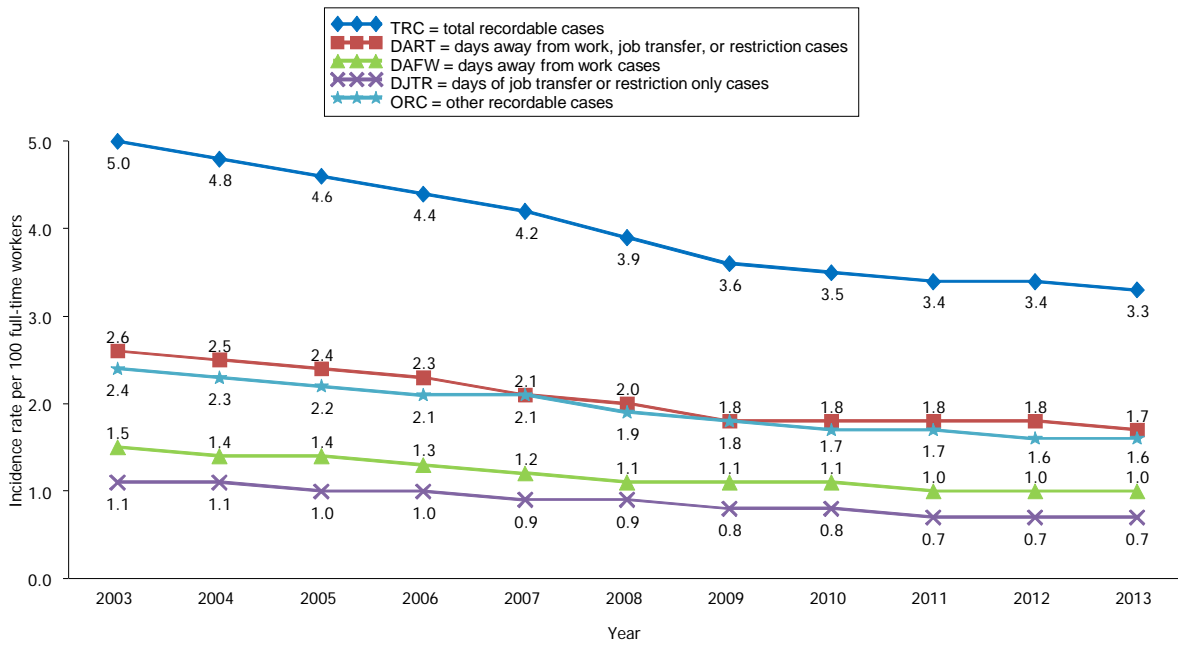
This news release is the second in a series of three releases from the BLS covering occupational safety and health statistics for the 2013 calendar year and follows the September preliminary report on fatal work-related injuries from the Census of Fatal Occupational Injuries (CFOI). A third release later this month will provide case circumstances and worker characteristics from the SOII for nonfatal injury and illness cases requiring at least one day away from work to recuperate.

All statements of comparison made in this news release were found to be statistically significant at the 95 percent confidence level. Additional background and methodological information regarding the BLS occupational safety and health statistics program can be found in Chapter 9 of the BLS Handbook of Methods at [www.bls.gov/pub/hom/pdf/homch9.pdf](http://www.bls.gov/pub/hom/pdf/homch9.pdf). Employment data in this news release are 2013 annual averages provided by the BLS Quarterly Census of Employment and Wages (QCEW) program.

## **Completeness of SOII Estimates**

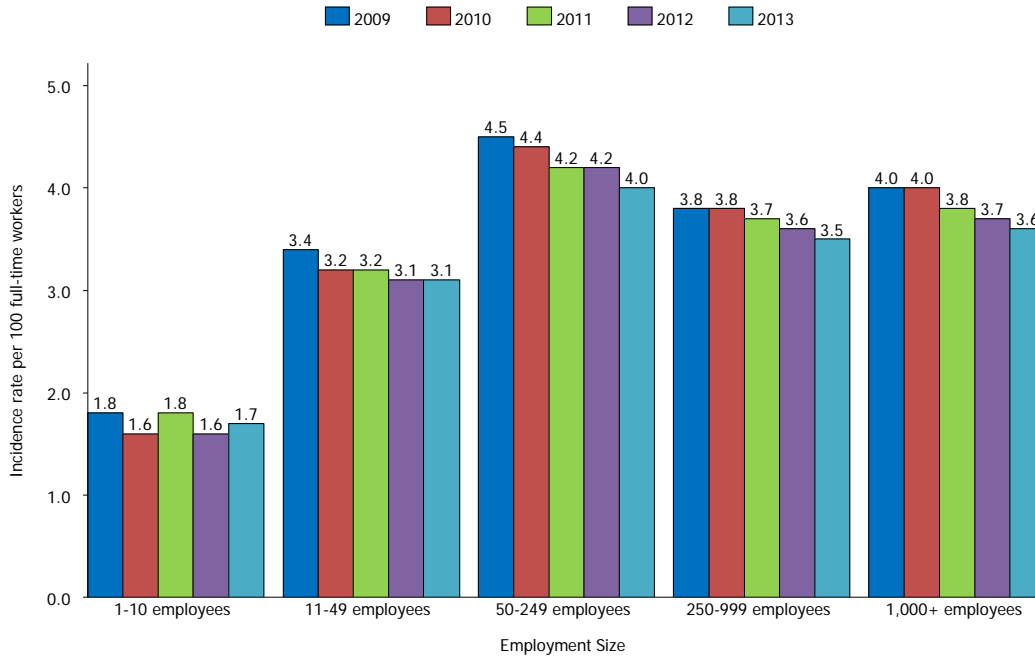
Several studies by outside researchers conducted in the mid-2000s questioned the completeness of BLS injury and illness estimates from the SOII. In response to these studies, the BLS began researching the issue internally in 2007 and, at the request of Congress, established an ongoing research program to explore potential undercounting of workplace injuries and illnesses. An initial round of research conducted between 2009 and 2012 determined that the SOII failed to capture some cases but could not determine the magnitude or leading cause of an undercount. Findings suggested that the ability to match injury and illness data across different data sources is impacted by various factors, such as establishment type, the time of case filing, and the type of injury. BLS initiated additional research from 2012 to 2014 that included interviews with employers on their injury and illness recordkeeping practices, a multiple year match of SOII data to workers' compensation records to analyze matching trends over time, and initial research on the use of computer-assisted coding of the SOII narrative information to improve classification consistency. In September 2014, BLS began a third round of research that includes a respondent recontact survey and exploratory research on collecting occupational injury and illness data directly from employees. Additional information about the completeness of SOII estimates can be found at [www.bls.gov/iif/undercount.htm](http://www.bls.gov/iif/undercount.htm).

Chart 1. Nonfatal occupational injury and illness incidence rates by case type, private industry, 2003-2013



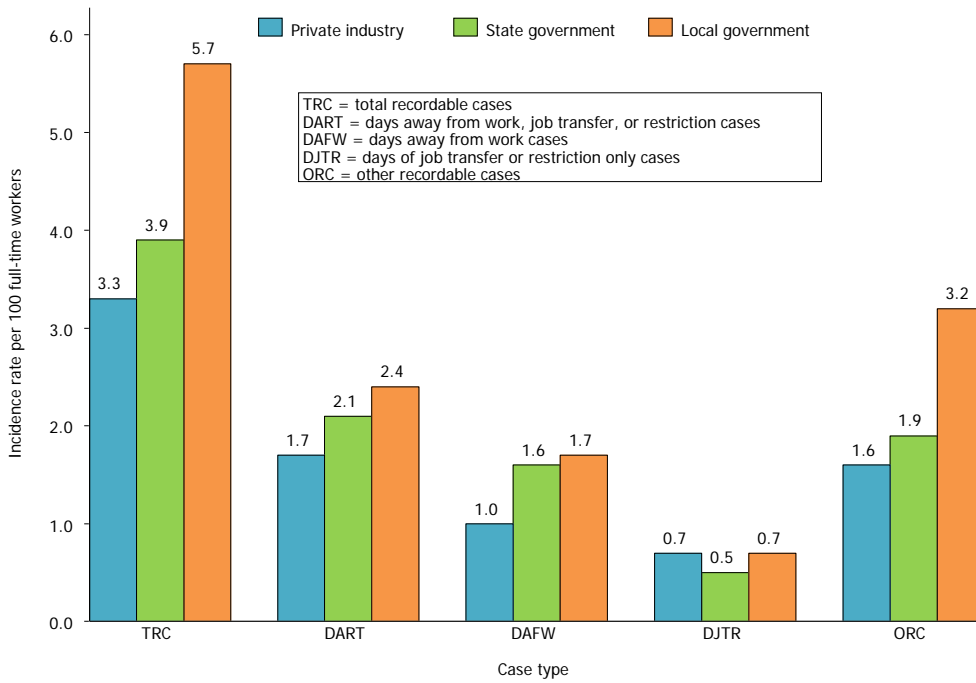
Source: U.S. Bureau of Labor Statistics, U.S. Department of Labor, December 2014

Chart 2. Total recordable nonfatal occupational injury and illness incidence rates by employment size, private industry, 2009-2013



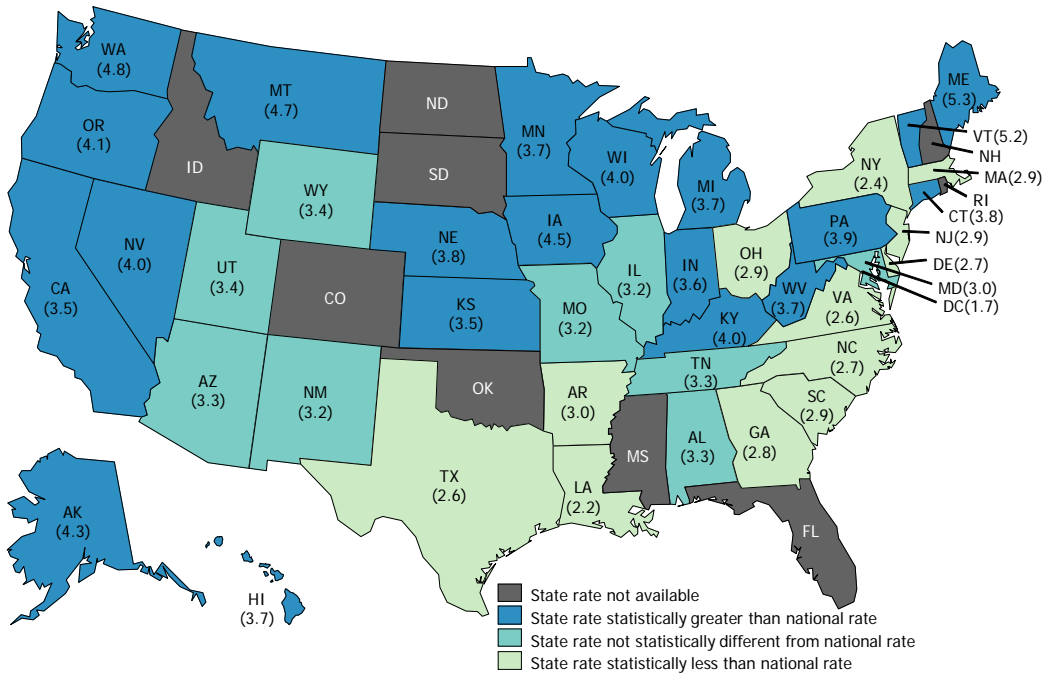
Source: U.S. Bureau of Labor Statistics, U.S. Department of Labor, December 2014

Chart 3. Nonfatal occupational injury and illness incidence rates by case type and ownership, 2013



Source: U.S. Bureau of Labor Statistics, U.S. Department of Labor, December 2014

Chart 4. State nonfatal occupational injury and illness incidence rates\* compared to the national rate, private industry, 2013



\* Total recordable case (TRC) incidence rate per 100 full-time workers  
 Source: U.S. Bureau of Labor Statistics, U.S. Department of Labor, December 2014

TABLE 1. Incidence rates<sup>1</sup> of nonfatal occupational injuries and illnesses by case type and ownership, selected industries, 2013

Industry <sup>2</sup>	NAICS code <sup>3</sup>	Total recordable cases	Cases with days away from work, job transfer, or restriction			Other recordable cases
			Total	Cases with days away from work <sup>4</sup>	Cases with job transfer or restriction	
<b>All industries including state and local government<sup>5</sup></b> .....		3.5	1.8	1.1	0.7	1.7
<b>Private industry<sup>5</sup></b> .....		3.3	1.7	1.0	.7	1.6
<b>Goods producing<sup>5</sup></b> .....		3.9	2.2	1.2	1.0	1.7
<b>Natural resources and mining<sup>5,6</sup></b> .....		3.9	2.4	1.5	.9	1.6
Agriculture, forestry, fishing and hunting <sup>5</sup> .....	11	5.7	3.4	2.0	1.3	2.3
Crop production <sup>5,7</sup> .....	111	5.5	3.2	1.8	1.4	2.4
Animal production <sup>5,7</sup> .....	112	6.2	3.6	2.2	1.5	2.6
Forestry and logging .....	113	3.3	2.6	2.1	.5	.8
Fishing, hunting and trapping .....	114	3.0	2.3	2.2	-	.7
Support activities for agriculture and forestry .....	115	6.0	3.7	2.3	1.4	2.4
Mining <sup>6</sup> .....	21	2.0	1.3	.9	.3	.7
Oil and gas extraction .....	211	1.3	.7	.5	.2	.6
Mining (except oil and gas) <sup>8</sup> .....	212	2.6	1.7	1.3	.4	.9
Support activities for mining .....	213	1.9	1.2	.9	.4	.7
<b>Construction</b> .....		3.8	2.2	1.5	.7	1.6
Construction .....	23	3.8	2.2	1.5	.7	1.6
Construction of buildings .....	236	3.3	1.9	1.3	.6	1.4
Heavy and civil engineering construction .....	237	3.2	1.8	1.1	.7	1.4
Specialty trade contractors .....	238	4.2	2.4	1.7	.7	1.7
<b>Manufacturing</b> .....		4.0	2.2	1.0	1.2	1.8
Manufacturing .....	31-33	4.0	2.2	1.0	1.2	1.8
Food manufacturing .....	311	5.0	3.3	1.3	2.0	1.7
Beverage and tobacco product manufacturing .....	312	5.5	3.8	1.5	2.3	1.6
Textile mills .....	313	3.3	2.0	.8	1.2	1.3
Textile product mills <sup>7</sup> .....	314	3.8	2.3	.9	1.4	1.5
Apparel manufacturing <sup>7</sup> .....	315	1.9	1.0	.5	.5	.9
Leather and allied product manufacturing .....	316	5.4	3.3	1.5	1.8	2.1
Wood product manufacturing .....	321	6.4	3.6	1.9	1.7	2.8
Paper manufacturing .....	322	2.8	1.5	.8	.8	1.2
Printing and related support activities .....	323	2.8	1.5	.8	.7	1.3
Petroleum and coal products manufacturing .....	324	1.6	.9	.5	.4	.7

See footnotes at end of table.

TABLE 1. Incidence rates<sup>1</sup> of nonfatal occupational injuries and illnesses by case type and ownership, selected industries, 2013 — Continued

Industry <sup>2</sup>	NAICS code <sup>3</sup>	Total recordable cases	Cases with days away from work, job transfer, or restriction			Other recordable cases
			Total	Cases with days away from work <sup>4</sup>	Cases with job transfer or restriction	
Chemical manufacturing .....	325	2.0	1.1	0.5	0.6	0.8
Plastics and rubber products manufacturing <sup>7</sup> .....	326	4.4	2.7	1.1	1.6	1.8
Nonmetallic mineral product manufacturing .....	327	5.0	2.8	1.4	1.4	2.1
Primary metal manufacturing .....	331	5.2	2.8	1.3	1.5	2.4
Fabricated metal product manufacturing .....	332	5.2	2.6	1.3	1.3	2.6
Machinery manufacturing <sup>7</sup> .....	333	4.0	1.8	.9	.9	2.2
Computer and electronic product manufacturing .....	334	1.3	.7	.3	.4	.6
Electrical equipment, appliance, and component manufacturing .....	335	2.8	1.6	.6	1.0	1.3
Transportation equipment manufacturing <sup>7</sup> .....	336	4.9	2.7	1.1	1.6	2.2
Furniture and related product manufacturing <sup>7</sup> .....	337	4.9	2.6	1.2	1.3	2.3
Miscellaneous manufacturing .....	339	3.1	1.6	.9	.7	1.5
<b>Service providing</b> .....		3.1	1.6	.9	.6	1.5
<b>Trade, transportation, and utilities<sup>9</sup></b> .....		3.8	2.2	1.3	1.0	1.5
Wholesale trade .....	42	3.1	1.9	1.0	.9	1.2
Merchant wholesalers, durable goods .....	423	2.9	1.6	.9	.7	1.3
Merchant wholesalers, nondurable goods .....	424	3.9	2.6	1.4	1.2	1.3
Retail trade .....	44-45	3.8	2.1	1.1	1.0	1.7
Motor vehicle and parts dealers .....	441	3.6	1.8	1.1	.7	1.8
Furniture and home furnishings stores .....	442	3.9	2.2	1.4	.7	1.7
Electronics and appliance stores .....	443	1.7	1.0	.7	.3	.7
Building material and garden equipment and supplies dealers .....	444	4.8	3.1	1.6	1.5	1.7
Food and beverage stores .....	445	4.7	2.8	1.5	1.3	1.9
Health and personal care stores .....	446	2.4	1.2	.9	—	1.2
Gasoline stations .....	447	2.4	1.2	.7	.5	1.2
Clothing and clothing accessories stores .....	448	2.6	1.1	.8	—	1.5
Sporting goods, hobby, book, and music stores .....	451	2.7	1.1	.6	.5	1.6
General merchandise stores .....	452	4.8	2.7	1.1	1.6	2.1
Miscellaneous store retailers .....	453	4.0	1.8	1.0	.8	2.2
Nonstore retailers .....	454	3.2	2.0	1.2	.8	—
Transportation and warehousing <sup>9</sup> .....	48-49	4.7	3.3	2.2	1.1	1.5
Air transportation .....	481	7.5	5.5	4.2	1.4	1.9
Rail transportation <sup>9</sup> .....	482	2.0	1.4	1.3	.1	.6
Water transportation .....	483	2.5	1.6	1.4	.2	1.0
Truck transportation .....	484	4.6	3.2	2.3	.9	1.4
Transit and ground passenger transportation .....	485	4.4	2.7	2.0	.8	1.6
Pipeline transportation .....	486	1.2	.5	.5	—	.8

See footnotes at end of table.

TABLE 1. Incidence rates<sup>1</sup> of nonfatal occupational injuries and illnesses by case type and ownership, selected industries, 2013 — Continued

Industry <sup>2</sup>	NAICS code <sup>3</sup>	Total recordable cases	Cases with days away from work, job transfer, or restriction			Other recordable cases
			Total	Cases with days away from work <sup>4</sup>	Cases with job transfer or restriction	
Scenic and sightseeing transportation .....	487	3.5	1.5	1.0	0.5	2.0
Support activities for transportation .....	488	3.7	2.4	1.5	.9	1.3
Couriers and messengers .....	492	6.5	4.4	2.7	1.7	2.1
Warehousing and storage .....	493	5.2	3.7	1.8	2.0	1.5
Utilities .....	22	2.1	1.1	.6	.5	1.0
Utilities .....	221	2.1	1.1	.6	.5	1.0
<b>Information</b> .....		1.5	.9	.6	.2	.7
Information .....	51	1.5	.9	.6	.2	.7
Publishing industries (except Internet) .....	511	1.0	.5	.4	.1	.5
Motion picture and sound recording industries .....	512	1.8	.5	.3	.1	1.3
Broadcasting (except Internet) .....	515	1.8	1.1	.6	.5	.7
Telecommunications <sup>7</sup> .....	517	2.1	1.4	1.1	.3	.6
Other information services <sup>7</sup> .....	519	.4	.2	.2	.1	.2
<b>Financial activities</b> .....		1.3	.6	.4	.2	.7
Finance and insurance .....	52	.7	.3	.2	—	.5
Monetary authorities - central bank .....	521	.8	.5	.5	.1	.3
Credit intermediation and related activities .....	522	.8	.3	.2	( <sup>10</sup> )	.6
Securities, commodity contracts, and other financial investments and related activities .....	523	—	.1	.1	( <sup>10</sup> )	—
Insurance carriers and related activities .....	524	.8	.3	.2	—	.4
Funds, trusts, and other financial vehicles .....	525	1.0	.5	.1	.4	.5
Real estate and rental and leasing .....	53	2.9	1.7	1.1	.6	1.3
Real estate <sup>7</sup> .....	531	2.6	1.5	1.0	.5	1.1
Rental and leasing services .....	532	3.8	2.1	1.2	.8	1.8
Lessors of nonfinancial intangible assets (except copyrighted works) .....	533	.5	.2	.2	—	.3
<b>Professional and business services</b> .....		1.6	.8	.5	.3	.8
Professional, scientific, and technical services .....	54	1.0	.3	.2	.1	.7
Professional, scientific, and technical services <sup>7</sup> .....	541	1.0	.3	.2	.1	.7
Management of companies and enterprises .....	55	1.2	.6	.4	.2	.6

See footnotes at end of table.



TABLE 1. Incidence rates<sup>1</sup> of nonfatal occupational injuries and illnesses by case type and ownership, selected industries, 2013 — Continued

Industry <sup>2</sup>	NAICS code <sup>3</sup>	Total recordable cases	Cases with days away from work, job transfer, or restriction			Other recordable cases
			Total	Cases with days away from work <sup>4</sup>	Cases with job transfer or restriction	
Administrative and support and waste management and remediation services .....	56	2.7	1.5	1.0	0.5	1.2
Administrative and support services <sup>7</sup> .....	561	2.5	1.3	.9	.4	1.2
Waste management and remediation services .....	562	4.7	3.4	2.2	1.3	1.3
<b>Education and health services</b> .....		4.4	2.0	1.2	.8	2.4
Educational services .....	61	2.0	.8	.6	.2	1.2
Educational services .....	611	2.0	.8	.6	.2	1.2
Health care and social assistance .....	62	4.7	2.2	1.3	.9	2.5
Ambulatory health care services .....	621	2.7	.9	.6	.3	1.8
Hospitals .....	622	6.4	2.6	1.5	1.1	3.8
Nursing and residential care facilities .....	623	7.3	4.5	2.2	2.3	2.9
Social assistance .....	624	3.4	1.8	1.2	.6	1.6
<b>Leisure and hospitality</b> .....		3.8	1.6	1.0	.6	2.2
Arts, entertainment, and recreation .....	71	4.8	2.2	1.4	.8	2.6
Performing arts, spectator sports, and related industries .....	711	7.2	2.9	2.3	.6	4.3
Museums, historical sites, and similar institutions .....	712	4.4	2.1	1.4	.7	2.3
Amusement, gambling, and recreation industries .....	713	4.1	2.0	1.1	.9	2.1
Accommodation and food services .....	72	3.7	1.5	1.0	.6	2.1
Accommodation .....	721	5.3	2.9	1.5	1.4	2.4
Food services and drinking places .....	722	3.3	1.2	.9	.4	2.1
<b>Other services</b> .....		2.5	1.2	.8	.4	1.3
Other services, except public administration .....	81	2.5	1.2	.8	.4	1.3
Repair and maintenance .....	811	2.8	1.4	1.0	.4	1.4
Personal and laundry services .....	812	2.3	1.3	.7	.6	1.0
Religious, grantmaking, civic, professional, and similar organizations .....	813	2.2	.8	.6	.2	1.4
<b>State and local government<sup>5</sup></b> .....		5.2	2.3	1.7	.6	2.8
<b>State government<sup>5</sup></b> .....		3.9	2.1	1.6	.5	1.9
<b>Service providing</b> .....		3.9	2.1	1.6	.5	1.9

See footnotes at end of table.

TABLE 1. Incidence rates<sup>1</sup> of nonfatal occupational injuries and illnesses by case type and ownership, selected industries, 2013 — Continued

Industry <sup>2</sup>	NAICS code <sup>3</sup>	Total recordable cases	Cases with days away from work, job transfer, or restriction			Other recordable cases
			Total	Cases with days away from work <sup>4</sup>	Cases with job transfer or restriction	
<b>Education and health services</b> .....		3.6	1.9	1.4	0.5	1.8
Educational services .....	61	2.1	.9	.6	.3	1.2
Educational services .....	611	2.1	.9	.6	.3	1.2
Health care and social assistance .....	62	7.7	4.4	3.5	.9	3.3
Hospitals .....	622	7.7	4.2	3.2	.9	3.5
Nursing and residential care facilities .....	623	13.7	8.7	6.9	1.7	5.0
<b>Public administration</b> .....		4.1	2.1	1.7	.5	1.9
Public administration .....	92	4.1	2.1	1.7	.5	1.9
Justice, public order, and safety activities .....	922	5.7	3.1	2.6	.5	2.6
<b>Local government<sup>5</sup></b> .....		5.7	2.4	1.7	.7	3.2
<b>Goods producing<sup>5</sup></b> .....		7.9	3.9	2.8	1.1	4.0
<b>Construction</b> .....		7.9	3.9	2.8	1.1	4.0
Construction .....	23	7.9	3.9	2.8	1.1	4.0
Heavy and civil engineering construction .....	237	8.0	3.9	2.9	1.1	4.1
<b>Service providing</b> .....		5.6	2.4	1.7	.7	3.2
<b>Trade, transportation, and utilities<sup>9</sup></b> .....		6.7	4.4	3.3	1.1	2.3
Transportation and warehousing <sup>9</sup> .....	48-49	7.1	4.8	4.1	.7	2.3
Transit and ground passenger transportation .....	485	7.1	4.8	4.2	.6	2.3
Utilities .....	22	6.3	4.0	2.6	1.4	2.3
Utilities .....	221	6.3	4.0	2.6	1.4	2.3

See footnotes at end of table.

TABLE 1. Incidence rates<sup>1</sup> of nonfatal occupational injuries and illnesses by case type and ownership, selected industries, 2013 — Continued

Industry <sup>2</sup>	NAICS code <sup>3</sup>	Total recordable cases	Cases with days away from work, job transfer, or restriction			Other recordable cases
			Total	Cases with days away from work <sup>4</sup>	Cases with job transfer or restriction	
<b>Education and health services</b> .....		4.7	1.6	1.1	0.5	3.0
Educational services .....	61	4.5	1.5	1.1	.5	3.0
Educational services .....	611	4.5	1.5	1.1	.5	3.0
Health care and social assistance .....	62	5.6	2.3	1.5	.8	3.3
Hospitals .....	622	6.0	2.3	1.4	.8	3.7
Nursing and residential care facilities .....	623	8.1	4.9	3.2	1.6	3.2
<b>Public administration</b> .....		7.3	3.5	2.5	.9	3.8
Public administration .....	92	7.3	3.5	2.5	.9	3.8
Justice, public order, and safety activities .....	922	10.2	5.1	4.2	.9	5.2

<sup>1</sup> The incidence rates represent the number of injuries and illnesses per 100 full-time workers and were calculated as: (N/EH) x 200,000, where

N = number of injuries and illnesses  
 EH = total hours worked by all employees during the calendar year  
 200,000 = base for 100 equivalent full-time workers (working 40 hours per week, 50 weeks per year)

<sup>2</sup> Totals include data for industries not shown separately.

<sup>3</sup> *North American Industry Classification System* — United States, 2007

<sup>4</sup> Days-away-from-work cases include those that result in days away from work with or without job transfer or restriction.

<sup>5</sup> Excludes farms with fewer than 11 employees.

<sup>6</sup> Data for Mining (Sector 21 in the *North American Industry Classification System* — United States, 2007) include establishments not governed by the Mine Safety and Health Administration rules and reporting, such as those in Oil and Gas Extraction and related support activities. Data for mining operators in coal, metal, and nonmetal mining are provided to BLS

by the Mine Safety and Health Administration, U.S. Department of Labor. Independent mining contractors are excluded from the coal, metal, and nonmetal mining industries. These data do not reflect the changes the Occupational Safety and Health Administration made to its recordkeeping requirements effective January 1, 2002; therefore, estimates for these industries are not comparable to estimates in other industries.

<sup>7</sup> Industry scope changed in 2009.

<sup>8</sup> Data for mining operators in this industry are provided to BLS by the Mine Safety and Health Administration, U.S. Department of Labor. Independent mining contractors are excluded. These data do not reflect the changes the Occupational Safety and Health Administration made to its recordkeeping requirements effective January 1, 2002; therefore, estimates for these industries are not comparable to estimates in other industries.

<sup>9</sup> Data for employers in railroad transportation are provided to BLS by the Federal Railroad Administration, U.S. Department of Transportation.

<sup>10</sup> Data too small to be displayed.

NOTE: Because of rounding, components may not add to totals. Dash indicates data do not meet publication guidelines.

SOURCE: U.S. Bureau of Labor Statistics, U.S. Department of Labor

**TABLE 2. Numbers of nonfatal occupational injuries and illnesses by case type and ownership, selected industries, 2013**

(thousands)

Industry <sup>1</sup>	NAICS code <sup>2</sup>	Total recordable cases	Cases with days away from work, job transfer, or restriction			Other recordable cases
			Total	Cases with days away from work <sup>3</sup>	Cases with job transfer or restriction	
<b>All industries including state and local government<sup>4</sup></b> .....		3,753.3	1,908.2	1,162.2	746.0	1,845.1
<b>Private industry<sup>4</sup></b> .....		3,007.3	1,572.7	917.1	655.6	1,434.6
<b>Goods producing<sup>4</sup></b> .....		751.5	426.8	229.5	197.3	324.7
<b>Natural resources and mining<sup>4,5</sup></b> .....		71.8	43.3	27.4	15.9	28.5
Agriculture, forestry, fishing and hunting <sup>4</sup> .....	11	54.9	32.5	19.6	13.0	22.4
Crop production <sup>4,6</sup> .....	111	22.1	12.6	7.1	5.6	9.5
Animal production <sup>4,6</sup> .....	112	12.5	7.3	4.3	3.0	5.2
Forestry and logging .....	113	1.8	1.4	1.1	.3	.4
Fishing, hunting and trapping .....	114	.2	.2	.2	—	.1
Support activities for agriculture and forestry .....	115	18.2	11.0	6.9	4.2	7.1
Mining <sup>5</sup> .....	21	16.9	10.8	7.8	3.0	6.1
Oil and gas extraction .....	211	2.2	1.2	.9	.3	1.0
Mining (except oil and gas) <sup>7</sup> .....	212	6.1	4.0	3.1	1.0	2.1
Support activities for mining .....	213	8.6	5.6	3.8	1.7	3.0
<b>Construction</b> .....		203.0	118.1	82.0	36.1	84.9
Construction .....	23	203.0	118.1	82.0	36.1	84.9
Construction of buildings .....	236	39.1	23.0	15.6	7.3	16.1
Heavy and civil engineering construction .....	237	27.2	15.3	9.2	6.0	11.9
Specialty trade contractors .....	238	136.7	79.9	57.2	22.7	56.8
<b>Manufacturing</b> .....		476.7	265.3	120.1	145.2	211.4
Manufacturing .....	31-33	476.7	265.3	120.1	145.2	211.4
Food manufacturing .....	311	71.8	47.0	18.4	28.6	24.8
Beverage and tobacco product manufacturing .....	312	10.2	7.1	2.9	4.3	3.0
Textile mills .....	313	3.9	2.4	1.0	1.4	1.5
Textile product mills <sup>6</sup> .....	314	4.1	2.5	1.0	1.5	1.6
Apparel manufacturing <sup>6</sup> .....	315	2.4	1.3	.6	.6	1.1
Leather and allied product manufacturing .....	316	1.4	.9	.4	.5	.6
Wood product manufacturing .....	321	22.2	12.6	6.6	6.0	9.6
Paper manufacturing .....	322	10.8	6.0	3.1	3.0	4.8

See footnotes at end of table.

TABLE 2. Numbers of nonfatal occupational injuries and illnesses by case type and ownership, selected industries, 2013 — Continued

(thousands)

Industry <sup>1</sup>	NAICS code <sup>2</sup>	Total recordable cases	Cases with days away from work, job transfer, or restriction			Other recordable cases
			Total	Cases with days away from work <sup>3</sup>	Cases with job transfer or restriction	
Printing and related support activities .....	323	11.7	6.4	3.3	3.1	5.4
Petroleum and coal products manufacturing .....	324	1.9	1.1	.6	.5	.9
Chemical manufacturing .....	325	16.2	9.3	4.1	5.2	6.9
Plastics and rubber products manufacturing <sup>6</sup> .....	326	28.8	17.4	7.3	10.1	11.5
Nonmetallic mineral product manufacturing .....	327	18.8	10.7	5.5	5.3	8.1
Primary metal manufacturing .....	331	21.6	11.6	5.3	6.3	10.0
Fabricated metal product manufacturing .....	332	74.5	37.6	18.9	18.7	36.9
Machinery manufacturing <sup>6</sup> .....	333	44.6	20.4	10.2	10.2	24.2
Computer and electronic product manufacturing .....	334	13.9	7.4	3.7	3.7	6.5
Electrical equipment, appliance, and component manufacturing .....	335	10.8	6.1	2.3	3.8	4.8
Transportation equipment manufacturing <sup>6</sup> .....	336	73.0	39.6	15.6	24.0	33.3
Furniture and related product manufacturing <sup>6</sup> .....	337	16.9	9.0	4.3	4.7	7.9
Miscellaneous manufacturing .....	339	17.1	8.9	5.0	3.9	8.2
<b>Service providing</b> .....		2,255.8	1,145.9	687.6	458.3	1,109.9
<b>Trade, transportation, and utilities<sup>8</sup></b> .....		815.5	483.7	276.5	207.3	331.8
Wholesale trade .....	42	173.8	105.2	57.2	48.0	68.6
Merchant wholesalers, durable goods .....	423	81.5	45.5	26.0	19.5	36.0
Merchant wholesalers, nondurable goods .....	424	75.0	50.3	26.7	23.6	24.7
Retail trade .....	44-45	438.3	240.7	128.8	111.9	197.7
Motor vehicle and parts dealers .....	441	62.0	30.8	19.5	11.3	31.1
Furniture and home furnishings stores .....	442	13.7	7.7	5.1	2.6	6.0
Electronics and appliance stores .....	443	6.7	4.0	2.9	1.1	2.7
Building material and garden equipment and supplies dealers ...	444	51.1	32.6	16.5	16.1	18.5
Food and beverage stores .....	445	97.8	57.4	30.8	26.7	40.4
Health and personal care stores .....	446	19.0	9.4	7.0	—	9.6
Gasoline stations .....	447	15.9	8.1	4.6	3.4	7.8
Clothing and clothing accessories stores .....	448	22.0	9.2	6.8	—	12.8
Sporting goods, hobby, book, and music stores .....	451	10.3	4.3	2.4	2.0	5.9
General merchandise stores .....	452	104.0	58.9	23.0	35.9	45.1
Miscellaneous store retailers .....	453	23.6	10.5	5.6	4.9	13.1
Nonstore retailers .....	454	12.3	7.7	4.6	3.1	—
Transportation and warehousing <sup>8</sup> .....	48-49	192.0	132.0	87.2	44.8	60.0
Air transportation .....	481	25.6	19.0	14.3	4.6	6.6
Rail transportation <sup>8</sup> .....	482	4.6	3.3	3.0	.3	1.3

See footnotes at end of table.

TABLE 2. Numbers of nonfatal occupational injuries and illnesses by case type and ownership, selected industries, 2013 — Continued

(thousands)

Industry <sup>1</sup>	NAICS code <sup>2</sup>	Total recordable cases	Cases with days away from work, job transfer, or restriction			Other recordable cases
			Total	Cases with days away from work <sup>3</sup>	Cases with job transfer or restriction	
Water transportation .....	483	1.7	1.0	0.9	0.1	0.7
Truck transportation .....	484	67.1	46.3	33.1	13.2	20.8
Transit and ground passenger transportation .....	485	13.7	8.6	6.2	2.4	5.1
Pipeline transportation .....	486	.5	.2	.2	—	.3
Scenic and sightseeing transportation .....	487	.8	.3	.2	.1	.4
Support activities for transportation .....	488	20.9	13.4	8.2	5.2	7.5
Couriers and messengers .....	492	24.3	16.5	10.0	6.5	7.9
Warehousing and storage .....	493	32.8	23.5	11.1	12.4	9.4
Utilities .....	22	11.4	5.9	3.3	2.5	5.5
Utilities .....	221	11.4	5.9	3.3	2.5	5.5
<b>Information .....</b>		<b>38.0</b>	<b>21.8</b>	<b>16.1</b>	<b>5.7</b>	<b>16.2</b>
Information .....	51	38.0	21.8	16.1	5.7	16.2
Publishing industries (except Internet) .....	511	6.6	3.3	2.5	.8	3.3
Motion picture and sound recording industries .....	512	5.6	1.6	1.1	.5	4.0
Broadcasting (except Internet) .....	515	4.7	3.0	1.6	1.4	1.7
Telecommunications <sup>6</sup> .....	517	17.3	12.1	9.4	2.7	5.2
Other information services <sup>6</sup> .....	519	.7	.4	.3	.1	.3
<b>Financial activities .....</b>		<b>91.0</b>	<b>43.5</b>	<b>29.0</b>	<b>14.5</b>	<b>47.5</b>
Finance and insurance .....	52	38.6	13.7	9.5	—	24.9
Monetary authorities - central bank .....	521	.2	.1	.1	( <sup>9</sup> )	.1
Credit intermediation and related activities .....	522	20.6	6.4	5.2	1.2	14.2
Securities, commodity contracts, and other financial investments and related activities .....	523	—	.7	.6	.1	—
Insurance carriers and related activities .....	524	14.6	6.2	3.6	—	8.4
Funds, trusts, and other financial vehicles .....	525	.8	.4	.1	.3	.4
Real estate and rental and leasing .....	53	52.4	29.8	19.5	10.3	22.6
Real estate <sup>6</sup> .....	531	33.5	19.7	13.3	6.4	13.8
Rental and leasing services .....	532	18.8	10.1	6.1	3.9	8.7
Lessors of nonfinancial intangible assets (except copyrighted works) .....	533	.1	( <sup>9</sup> )	( <sup>9</sup> )	—	.1
<b>Professional and business services .....</b>		<b>223.6</b>	<b>107.1</b>	<b>69.7</b>	<b>37.4</b>	<b>116.4</b>

See footnotes at end of table.

TABLE 2. Numbers of nonfatal occupational injuries and illnesses by case type and ownership, selected industries, 2013 — Continued

(thousands)

Industry <sup>1</sup>	NAICS code <sup>2</sup>	Total recordable cases	Cases with days away from work, job transfer, or restriction			Other recordable cases
			Total	Cases with days away from work <sup>3</sup>	Cases with job transfer or restriction	
Professional, scientific, and technical services .....	54	74.7	25.5	16.4	9.1	49.2
Professional, scientific, and technical services <sup>6</sup> .....	541	74.7	25.5	16.4	9.1	49.2
Management of companies and enterprises .....	55	22.8	10.9	6.8	4.1	11.9
Administrative and support and waste management and remediation services .....	56	126.0	70.8	46.5	24.3	55.2
Administrative and support services <sup>6</sup> .....	561	108.1	57.8	38.3	19.5	50.3
Waste management and remediation services .....	562	17.9	13.0	8.2	4.8	4.9
<b>Education and health services</b> .....		666.3	305.3	177.6	127.7	361.0
Educational services .....	61	36.9	14.9	10.5	4.4	21.9
Educational services .....	611	36.9	14.9	10.5	4.4	21.9
Health care and social assistance .....	62	629.5	290.4	167.2	123.2	339.1
Ambulatory health care services .....	621	135.2	45.3	30.3	15.0	89.9
Hospitals .....	622	244.8	98.9	57.7	41.2	145.9
Nursing and residential care facilities .....	623	181.5	110.8	55.0	55.8	70.8
Social assistance .....	624	67.9	35.4	24.2	11.2	32.5
<b>Leisure and hospitality</b> .....		346.3	148.5	94.7	53.8	197.8
Arts, entertainment, and recreation .....	71	61.4	28.5	17.6	10.9	32.9
Performing arts, spectator sports, and related industries .....	711	19.3	7.7	6.1	1.6	11.6
Museums, historical sites, and similar institutions .....	712	4.2	2.0	1.3	.7	2.1
Amusement, gambling, and recreation industries .....	713	37.9	18.8	10.2	8.6	19.1
Accommodation and food services .....	72	284.9	119.9	77.1	42.8	164.9
Accommodation .....	721	75.4	40.9	21.1	19.8	34.5
Food services and drinking places .....	722	209.5	79.0	56.1	23.0	130.4
<b>Other services</b> .....		75.0	35.9	23.9	12.0	39.1
Other services, except public administration .....	81	75.0	35.9	23.9	12.0	39.1
Repair and maintenance .....	811	31.5	15.5	11.4	4.0	16.0
Personal and laundry services .....	812	22.9	13.0	7.2	5.7	10.0

See footnotes at end of table.

TABLE 2. Numbers of nonfatal occupational injuries and illnesses by case type and ownership, selected industries, 2013 — Continued

(thousands)

Industry <sup>1</sup>	NAICS code <sup>2</sup>	Total recordable cases	Cases with days away from work, job transfer, or restriction			Other recordable cases
			Total	Cases with days away from work <sup>3</sup>	Cases with job transfer or restriction	
Religious, grantmaking, civic, professional, and similar organizations .....	813	20.6	7.5	5.3	2.2	13.1
<b>State and local government<sup>4</sup></b> .....		746.0	335.5	245.1	90.4	410.6
<b>State government<sup>4</sup></b> .....		160.4	84.1	65.0	19.2	76.2
<b>Service providing</b> .....		156.2	81.9	63.5	18.4	74.3
<b>Education and health services</b> .....		76.0	38.7	28.8	9.9	37.3
Educational services .....	61	32.3	13.5	8.8	4.7	18.8
Educational services .....	611	32.3	13.5	8.8	4.7	18.8
Health care and social assistance .....	62	43.7	25.2	20.0	5.2	18.5
Hospitals .....	622	24.2	13.1	10.2	2.9	11.1
Nursing and residential care facilities .....	623	16.7	10.6	8.5	2.1	6.1
<b>Public administration</b> .....		71.9	37.5	29.6	8.0	34.3
Public administration .....	92	71.9	37.5	29.6	8.0	34.3
Justice, public order, and safety activities .....	922	41.3	22.7	19.1	3.6	18.6
<b>Local government<sup>4</sup></b> .....		585.7	251.4	180.1	71.2	334.3
<b>Goods producing<sup>4</sup></b> .....		7.4	3.6	2.6	1.0	3.8
<b>Construction</b> .....		7.4	3.6	2.6	1.0	3.7
Construction .....	23	7.4	3.6	2.6	1.0	3.7
Heavy and civil engineering construction .....	237	7.2	3.5	2.6	1.0	3.7

See footnotes at end of table.



TABLE 2. Numbers of nonfatal occupational injuries and illnesses by case type and ownership, selected industries, 2013 — Continued

(thousands)

Industry <sup>1</sup>	NAICS code <sup>2</sup>	Total recordable cases	Cases with days away from work, job transfer, or restriction			Other recordable cases
			Total	Cases with days away from work <sup>3</sup>	Cases with job transfer or restriction	
<b>Service providing</b> .....		578.3	247.7	177.5	70.2	330.6
<b>Trade, transportation, and utilities</b> <sup>8</sup> .....		30.9	20.3	15.4	4.9	10.6
Transportation and warehousing <sup>8</sup> .....	48-49	16.5	11.2	9.5	1.7	5.3
Transit and ground passenger transportation .....	485	13.2	8.9	7.8	1.1	4.3
Utilities .....	22	14.3	9.0	5.9	3.1	5.3
Utilities .....	221	14.3	9.0	5.9	3.1	5.3
<b>Education and health services</b> .....		286.1	100.5	70.1	30.4	185.6
Educational services .....	61	245.7	83.8	59.2	24.5	162.0
Educational services .....	611	245.7	83.8	59.2	24.5	162.0
Health care and social assistance .....	62	40.3	16.7	10.9	5.8	23.6
Hospitals .....	622	31.4	11.9	7.6	4.3	19.5
Nursing and residential care facilities .....	623	4.9	2.9	2.0	1.0	1.9
<b>Public administration</b> .....		239.4	114.7	84.0	30.7	124.7
Public administration .....	92	239.4	114.7	84.0	30.7	124.7
Justice, public order, and safety activities .....	922	89.0	44.1	36.1	8.0	44.8

<sup>1</sup> Totals include data for industries not shown separately.

<sup>2</sup> *North American Industry Classification System* — United States, 2007

<sup>3</sup> Days-away-from-work cases include those that result in days away from work with or without job transfer or restriction.

<sup>4</sup> Excludes farms with fewer than 11 employees.

<sup>5</sup> Data for Mining (Sector 21 in the *North American Industry Classification System* — United States, 2007) include establishments not governed by the Mine Safety and Health Administration rules and reporting, such as those in Oil and Gas Extraction and related support activities. Data for mining operators in coal, metal, and nonmetal mining are provided to BLS by the Mine Safety and Health Administration, U.S. Department of Labor. Independent mining contractors are excluded from the coal, metal, and nonmetal mining industries. These data do not reflect the changes the Occupational Safety and Health Administration made to its recordkeeping requirements effective January 1, 2002; therefore, estimates for these industries are not comparable to estimates in other industries.

<sup>6</sup> Industry scope changed in 2009.

<sup>7</sup> Data for mining operators in this industry are provided to BLS by the Mine Safety and Health Administration, U.S. Department of Labor. Independent mining contractors are excluded. These data do not reflect the changes the Occupational Safety and Health Administration made to its recordkeeping requirements effective January 1, 2002; therefore, estimates for these industries are not comparable to estimates in other industries.

<sup>8</sup> Data for employers in railroad transportation are provided to BLS by the Federal Railroad Administration, U.S. Department of Transportation.

<sup>9</sup> Data too small to be displayed.

NOTE: Because of rounding, components may not add to totals. Dash indicates data do not meet publication guidelines.

SOURCE: U.S. Bureau of Labor Statistics, U.S. Department of Labor

TABLE 3. Incidence rates<sup>1</sup> of nonfatal occupational injuries and illnesses by major industry sector, employment size, and ownership, 2013

Industry sector	All establishments	Establishment employment size (workers)				
		1 to 10	11 to 49	50 to 249	250 to 999	1,000 or more
All industries including state and local government <sup>2</sup> .....	3.5	1.7	3.1	4.1	3.9	4.2
Private industry <sup>2</sup> .....	3.3	1.7	3.1	4.0	3.5	3.6
Goods producing <sup>2</sup> .....	3.9	2.8	4.4	4.5	3.5	3.2
Natural resources and mining <sup>2,3</sup> .....	3.9	—	4.0	4.3	3.7	3.9
Construction .....	3.8	3.2	4.5	4.1	2.7	1.1
Manufacturing .....	4.0	1.9	4.4	4.7	3.6	3.3
Service providing .....	3.1	1.5	2.8	3.8	3.5	3.7
Trade, transportation, and utilities <sup>4</sup> .....	3.8	1.9	3.4	4.5	4.6	4.3
Information .....	1.5	—	1.9	2.0	1.1	.7
Financial activities .....	1.3	1.3	1.5	1.5	1.2	.7
Professional and business services .....	1.6	1.0	2.1	1.7	1.4	1.0
Education and health services .....	4.4	1.4	2.8	5.2	5.2	5.4
Leisure and hospitality .....	3.8	1.8	3.0	4.7	6.4	5.0
Other services, except public administration .....	2.5	1.5	2.7	3.7	2.8	2.3
State and local government <sup>2</sup> .....	5.2	—	4.4	5.0	5.8	5.2
State government <sup>2</sup> .....	3.9	2.8	2.9	4.0	4.7	3.8
Local government <sup>2</sup> .....	5.7	—	4.8	5.2	6.3	6.0

<sup>1</sup> The incidence rates represent the number of injuries and illnesses per 100 full-time workers and were calculated as: (N/EH) x 200,000, where

N = number of injuries and illnesses  
 EH = total hours worked by all employees during the calendar year  
 200,000 = base for 100 equivalent full-time workers (working 40 hours per week, 50 weeks per year)

<sup>2</sup> Excludes farms with fewer than 11 employees.

<sup>3</sup> Data for Mining (Sector 21 in the *North American Industry Classification System* — United States, 2007) include establishments not governed by the Mine Safety and Health

Administration rules and reporting, such as those in Oil and Gas Extraction and related support activities. Data for mining operators in coal, metal, and nonmetal mining are provided to BLS by the Mine Safety and Health Administration, U.S. Department of Labor. Independent mining contractors are excluded from the coal, metal, and nonmetal mining industries. These data do not reflect the changes the Occupational Safety and Health Administration made to its recordkeeping requirements effective January 1, 2002; therefore, estimates for these industries are not comparable to estimates in other industries.

<sup>4</sup> Data for employers in railroad transportation are provided to BLS by the Federal Railroad Administration, U.S. Department of Transportation.

NOTE: Dash indicates data do not meet publication guidelines.  
 SOURCE: U.S. Bureau of Labor Statistics, U.S. Department of Labor

**TABLE 4. Number of cases and incidence rate<sup>1</sup> of nonfatal occupational injuries and illnesses for industries with 100,000 or more cases, 2013**

Industry <sup>2</sup>	NAICS code <sup>3</sup>	Total cases (thousands)	Incidence rate
Elementary and secondary schools (Local government) .....	6111	237.1	4.7
General medical and surgical hospitals (Private industry) .....	6221	226.6	6.4
Food services and drinking places (Private industry) .....	722	209.5	3.3
Nursing and residential care facilities (Private industry) .....	623	181.5	7.3
Specialty trade contractors (Private industry) .....	238	136.7	4.2
Ambulatory health care services (Private industry) .....	621	135.2	2.7
Administrative and support services (Private industry) .....	561	108.1	2.5
General merchandise stores (Private industry) .....	452	104.0	4.8
<b>All industries including state and local government<sup>4</sup> .....</b>		<b>3,753.3</b>	<b>3.5</b>

<sup>1</sup> The incidence rates represent the number of injuries and illnesses per 100 full-time workers and were calculated as:  $(N/EH) \times 200,000$ , where

N = number of injuries and illnesses  
 EH = total hours worked by all employees during the calendar year  
 200,000 = base for 100 equivalent full-time workers  
 (working 40 hours per week, 50 weeks per year)

<sup>2</sup> Totals include data for industries not shown separately.

<sup>3</sup> *North American Industry Classification System* — United States, 2007

<sup>4</sup> Excludes farms with fewer than 11 employees.

SOURCE: U.S. Bureau of Labor Statistics, U.S. Department of Labor

TABLE 5. Incidence rate<sup>1</sup> and number of nonfatal occupational injuries by selected industries and ownership, 2013

Industry <sup>2</sup>	NAICS code <sup>3</sup>	Incidence rate	Number of cases (thousands)
<b>All industries including state and local government<sup>4</sup></b> .....		3.3	3,553.9
<b>Private industry<sup>4</sup></b> .....		3.1	2,855.0
<b>Goods producing<sup>4</sup></b> .....		3.7	699.0
<b>Natural resources and mining<sup>4,5</sup></b> .....		3.7	67.3
Agriculture, forestry, fishing and hunting <sup>4</sup> .....	11	5.3	51.4
Crop production <sup>4,6</sup> .....	111	5.2	20.8
Animal production <sup>4,6</sup> .....	112	6.0	12.0
Forestry and logging .....	113	3.3	1.8
Fishing, hunting and trapping .....	114	2.1	.2
Support activities for agriculture and forestry .....	115	5.5	16.7
Mining <sup>5</sup> .....	21	1.9	15.9
Oil and gas extraction .....	211	1.2	2.0
Mining (except oil and gas) <sup>7</sup> .....	212	2.4	5.6
Support activities for mining .....	213	1.8	8.2
<b>Construction</b> .....		3.7	197.8
Construction .....	23	3.7	197.8
Construction of buildings .....	236	3.2	37.9
Heavy and civil engineering construction .....	237	3.1	26.4
Specialty trade contractors .....	238	4.1	133.4
<b>Manufacturing</b> .....		3.6	434.0
Manufacturing .....	31-33	3.6	434.0
Food manufacturing .....	311	4.2	61.2
Beverage and tobacco product manufacturing .....	312	5.2	9.7
Textile mills .....	313	3.1	3.6
Textile product mills <sup>6</sup> .....	314	3.5	3.7
Apparel manufacturing <sup>6</sup> .....	315	1.7	2.2
Leather and allied product manufacturing .....	316	4.9	1.3
Wood product manufacturing .....	321	6.1	21.0
Paper manufacturing .....	322	2.6	10.0
Printing and related support activities .....	323	2.7	11.2
Petroleum and coal products manufacturing .....	324	1.4	1.7
Chemical manufacturing .....	325	1.8	14.9

See footnotes at end of table.

TABLE 5. Incidence rate<sup>1</sup> and number of nonfatal occupational injuries by selected industries and ownership, 2013  
— Continued

Industry <sup>2</sup>	NAICS code <sup>3</sup>	Incidence rate	Number of cases (thousands)
Plastics and rubber products manufacturing <sup>6</sup> .....	326	4.1	26.9
Nonmetallic mineral product manufacturing .....	327	4.7	17.7
Primary metal manufacturing .....	331	4.8	19.9
Fabricated metal product manufacturing .....	332	4.9	70.4
Machinery manufacturing <sup>6</sup> .....	333	3.8	41.7
Computer and electronic product manufacturing .....	334	1.2	12.4
Electrical equipment, appliance, and component manufacturing .....	335	2.6	10.0
Transportation equipment manufacturing <sup>6</sup> .....	336	4.2	62.7
Furniture and related product manufacturing <sup>6</sup> .....	337	4.6	16.1
Miscellaneous manufacturing .....	339	2.8	15.7
<b>Service providing</b> .....		3.0	2,155.9
<b>Trade, transportation, and utilities<sup>8</sup></b> .....		3.6	790.0
Wholesale trade .....	42	3.0	168.8
Merchant wholesalers, durable goods .....	423	2.8	79.2
Merchant wholesalers, nondurable goods .....	424	3.8	73.0
Retail trade .....	44-45	3.7	426.7
Motor vehicle and parts dealers .....	441	3.5	60.3
Furniture and home furnishings stores .....	442	3.8	13.6
Electronics and appliance stores .....	443	1.7	6.6
Building material and garden equipment and supplies dealers .....	444	4.8	50.6
Food and beverage stores .....	445	4.6	96.0
Health and personal care stores .....	446	2.3	18.6
Gasoline stations .....	447	2.4	15.6
Clothing and clothing accessories stores .....	448	2.5	20.9
Sporting goods, hobby, book, and music stores .....	451	2.6	10.1
General merchandise stores .....	452	4.6	99.6
Miscellaneous store retailers .....	453	3.9	23.0
Nonstore retailers .....	454	3.1	12.0
Transportation and warehousing <sup>8</sup> .....	48-49	4.6	184.4
Air transportation .....	481	7.0	24.1
Rail transportation <sup>8</sup> .....	482	1.9	4.4
Water transportation .....	483	1.8	1.2
Truck transportation .....	484	4.5	66.1
Transit and ground passenger transportation .....	485	4.2	13.2
Pipeline transportation .....	486	1.0	.5
Scenic and sightseeing transportation .....	487	3.4	.7
Support activities for transportation .....	488	3.6	20.1

See footnotes at end of table.

TABLE 5. Incidence rate<sup>1</sup> and number of nonfatal occupational injuries by selected industries and ownership, 2013  
— Continued

Industry <sup>2</sup>	NAICS code <sup>3</sup>	Incidence rate	Number of cases (thousands)
Couriers and messengers .....	492	6.0	22.4
Warehousing and storage .....	493	5.1	31.9
Utilities .....	22	1.8	10.0
Utilities .....	221	1.8	10.0
<b>Information</b> .....		1.4	35.3
Information .....	51	1.4	35.3
Publishing industries (except Internet) .....	511	.9	6.2
Motion picture and sound recording industries .....	512	1.7	5.4
Broadcasting (except Internet) .....	515	1.8	4.5
Telecommunications <sup>6</sup> .....	517	1.9	15.7
Other information services <sup>6</sup> .....	519	.4	.7
<b>Financial activities</b> .....		1.2	86.1
Finance and insurance .....	52	.6	34.7
Monetary authorities - central bank .....	521	.8	.2
Credit intermediation and related activities .....	522	.7	18.7
Securities, commodity contracts, and other financial investments and related activities .....	523	—	—
Insurance carriers and related activities .....	524	.7	13.2
Funds, trusts, and other financial vehicles .....	525	1.0	.8
Real estate and rental and leasing .....	53	2.9	51.4
Real estate <sup>6</sup> .....	531	2.6	32.7
Rental and leasing services .....	532	3.8	18.6
Lessors of nonfinancial intangible assets (except copyrighted works) .....	533	.5	.1
<b>Professional and business services</b> .....		1.5	211.8
Professional, scientific, and technical services .....	54	.9	71.1
Professional, scientific, and technical services <sup>6</sup> .....	541	.9	71.1
Management of companies and enterprises .....	55	1.1	21.6
Administrative and support and waste management and remediation services .....	56	2.5	119.1
Administrative and support services <sup>6</sup> .....	561	2.3	101.5
Waste management and remediation services .....	562	4.6	17.6

See footnotes at end of table.

TABLE 5. Incidence rate<sup>1</sup> and number of nonfatal occupational injuries by selected industries and ownership, 2013  
— Continued

Industry <sup>2</sup>	NAICS code <sup>3</sup>	Incidence rate	Number of cases (thousands)
<b>Education and health services</b> .....		4.1	624.7
Educational services .....	61	1.9	35.0
Educational services .....	611	1.9	35.0
Health care and social assistance .....	62	4.4	589.7
Ambulatory health care services .....	621	2.4	123.7
Hospitals .....	622	6.0	227.9
Nursing and residential care facilities .....	623	7.0	174.0
Social assistance .....	624	3.2	64.1
<b>Leisure and hospitality</b> .....		3.7	336.2
Arts, entertainment, and recreation .....	71	4.5	58.4
Performing arts, spectator sports, and related industries .....	711	7.1	19.0
Museums, historical sites, and similar institutions .....	712	4.2	4.0
Amusement, gambling, and recreation industries .....	713	3.8	35.4
Accommodation and food services .....	72	3.6	277.8
Accommodation .....	721	5.0	72.1
Food services and drinking places .....	722	3.2	205.6
<b>Other services</b> .....		2.4	71.9
Other services, except public administration .....	81	2.4	71.9
Repair and maintenance .....	811	2.8	30.5
Personal and laundry services .....	812	2.3	22.2
Religious, grantmaking, civic, professional, and similar organizations .....	813	2.1	19.2
<b>State and local government<sup>4</sup></b> .....		4.9	698.9
<b>State government<sup>4</sup></b> .....		3.6	146.0
<b>Service providing</b> .....		3.6	142.2

See footnotes at end of table.

TABLE 5. Incidence rate<sup>1</sup> and number of nonfatal occupational injuries by selected industries and ownership, 2013  
 — Continued

Industry <sup>2</sup>	NAICS code <sup>3</sup>	Incidence rate	Number of cases (thousands)
<b>Education and health services</b> .....		3.4	70.6
Educational services .....	61	2.0	29.8
Educational services .....	611	2.0	29.8
Health care and social assistance .....	62	7.2	40.8
Hospitals .....	622	7.0	22.0
Nursing and residential care facilities .....	623	13.2	16.2
<b>Public administration</b> .....		3.6	63.9
Public administration .....	92	3.6	63.9
Justice, public order, and safety activities .....	922	5.1	36.7
<b>Local government<sup>4</sup></b> .....		5.3	552.9
<b>Goods producing<sup>4</sup></b> .....		7.6	7.1
<b>Construction</b> .....		7.6	7.1
Construction .....	23	7.6	7.1
Heavy and civil engineering construction .....	237	7.7	6.9
<b>Service providing</b> .....		5.3	545.8
<b>Trade, transportation, and utilities<sup>8</sup></b> .....		6.2	28.6
Transportation and warehousing <sup>8</sup> .....	48-49	6.7	15.5
Transit and ground passenger transportation .....	485	6.7	12.4
Utilities .....	22	5.8	13.1
Utilities .....	221	5.8	13.1

See footnotes at end of table.



TABLE 5. Incidence rate<sup>1</sup> and number of nonfatal occupational injuries by selected industries and ownership, 2013  
— Continued

Industry <sup>2</sup>	NAICS code <sup>3</sup>	Incidence rate	Number of cases (thousands)
<b>Education and health services</b> .....		4.5	278.3
Educational services .....	61	4.4	240.5
Educational services .....	611	4.4	240.5
Health care and social assistance .....	62	5.2	37.8
Hospitals .....	622	5.6	29.2
Nursing and residential care facilities .....	623	8.0	4.8
<b>Public administration</b> .....		6.6	218.0
Public administration .....	92	6.6	218.0
Justice, public order, and safety activities .....	922	9.1	79.5

<sup>1</sup> The incidence rates represent the number of injuries per 100 full-time workers and were calculated as:  $(N/EH) \times 200,000$ , where

N = number of injuries  
 EH = total hours worked by all employees during the  
       calendar year  
 200,000 = base for 100 equivalent full-time workers  
           (working 40 hours per week, 50 weeks per year)

<sup>2</sup> Totals include data for industries not shown separately.

<sup>3</sup> *North American Industry Classification System* — United States, 2007

<sup>4</sup> Excludes farms with fewer than 11 employees.

<sup>5</sup> Data for Mining (Sector 21 in the *North American Industry Classification System* — United States, 2007) include establishments not governed by the Mine Safety and Health Administration rules and reporting, such as those in Oil and Gas Extraction and related support activities. Data for mining operators in coal, metal, and nonmetal mining are provided to BLS by the Mine Safety and Health Administration, U.S. Department of

Labor. Independent mining contractors are excluded from the coal, metal, and nonmetal mining industries. These data do not reflect the changes the Occupational Safety and Health Administration made to its recordkeeping requirements effective January 1, 2002; therefore, estimates for these industries are not comparable to estimates in other industries.

<sup>6</sup> Industry scope changed in 2009.

<sup>7</sup> Data for mining operators in this industry are provided to BLS by the Mine Safety and Health Administration, U.S. Department of Labor. Independent mining contractors are excluded. These data do not reflect the changes the Occupational Safety and Health Administration made to its recordkeeping requirements effective January 1, 2002; therefore, estimates for these industries are not comparable to estimates in other industries.

<sup>8</sup> Data for employers in railroad transportation are provided to BLS by the Federal Railroad Administration, U.S. Department of Transportation.

NOTE: Because of rounding, components may not add to totals. Dash indicates data do not meet publication guidelines.

SOURCE: U.S. Bureau of Labor Statistics, U.S. Department of Labor

TABLE 6a. Incidence rates<sup>1</sup> of nonfatal occupational illnesses by major industry sector, category of illness, and ownership, 2013

Industry sector	Total cases	Skin diseases or disorders	Respiratory conditions	Poisonings	Hearing loss	All other illnesses
	Incidence rates per 10,000 full-time workers					
All industries including state and local government <sup>2</sup> .....	18.8	3.2	1.8	0.3	2.0	11.5
Private industry <sup>2</sup> .....	16.6	2.8	1.4	.2	2.0	10.2
Goods producing <sup>2</sup> .....	27.6	3.5	1.4	.3	7.4	15.0
Natural resources and mining <sup>2,3</sup> .....	24.9	5.1	4.4	.6	1.4	13.5
Construction .....	9.8	2.0	.7	.3	.6	6.2
Manufacturing .....	35.9	4.0	1.3	.2	11.3	19.2
Service providing .....	13.7	2.7	1.4	.2	.6	8.9
Trade, transportation, and utilities <sup>4</sup> .....	11.8	1.5	1.0	.3	—	7.5
Information .....	11.0	1.1	—	—	.9	8.0
Financial activities .....	6.9	.9	.7	—	—	5.3
Professional and business services .....	8.3	—	.9	( <sup>5</sup> )	.2	4.5
Education and health services .....	27.4	4.9	3.2	.2	.1	19.0
Leisure and hospitality .....	11.2	3.4	1.0	.2	.1	6.4
Other services, except public administration .....	10.4	2.7	1.0	—	.2	6.5
State and local government <sup>2</sup> .....	32.7	5.2	4.6	1.1	2.1	19.7
State government <sup>2</sup> .....	35.3	4.3	4.2	1.0	2.1	23.7
Local government <sup>2</sup> .....	31.7	5.6	4.7	1.1	2.1	18.1

<sup>1</sup> The incidence rates represent the number of illnesses per 10,000 full-time workers and were calculated as: (N/EH) x 20,000,000, where

N = number of illnesses  
 EH = total hours worked by all employees during the calendar year  
 20,000,000 = base for 10,000 equivalent full-time workers (working 40 hours per week, 50 weeks per year)

<sup>2</sup> Excludes farms with fewer than 11 employees.

<sup>3</sup> Data for Mining (Sector 21 in the *North American Industry Classification System* — United States, 2007) include establishments not governed by the Mine Safety and Health Administration rules and reporting, such as those in Oil and Gas Extraction and related support activities. Data for mining operators

in coal, metal, and nonmetal mining are provided to BLS by the Mine Safety and Health Administration, U.S. Department of Labor. Independent mining contractors are excluded from the coal, metal, and nonmetal mining industries. These data do not reflect the changes the Occupational Safety and Health Administration made to its recordkeeping requirements effective January 1, 2002; therefore, estimates for these industries are not comparable to estimates in other industries.

<sup>4</sup> Data for employers in railroad transportation are provided to BLS by the Federal Railroad Administration, U.S. Department of Transportation.

<sup>5</sup> Data too small to be displayed.

NOTE: Because of rounding, components may not add to totals. Dash indicates data do not meet publication guidelines.

SOURCE: U.S. Bureau of Labor Statistics, U.S. Department of Labor

TABLE 6b. Numbers of cases of nonfatal occupational illnesses by major industry sector, category of illness, and ownership, 2013

Industry sector	Total cases	Skin diseases or disorders	Respiratory conditions	Poisonings	Hearing loss	All other illnesses
	Numbers of illnesses in thousands					
All industries including state and local government <sup>1</sup> .....	199.4	33.6	19.6	3.2	21.2	121.9
Private industry <sup>1</sup> .....	152.3	26.0	13.0	1.6	18.1	93.5
Goods producing <sup>1</sup> .....	52.5	6.7	2.7	.5	14.0	28.6
Natural resources and mining <sup>1,2</sup> .....	4.5	.9	.8	.1	.3	2.5
Construction .....	5.2	1.1	.4	.2	.3	3.3
Manufacturing .....	42.7	4.7	1.5	.2	13.4	22.8
Service providing .....	99.9	19.3	10.3	1.1	4.1	65.0
Trade, transportation, and utilities <sup>3</sup> .....	25.5	3.3	2.2	.6	—	16.2
Information .....	2.7	.3	—	—	.2	2.0
Financial activities .....	4.9	.6	.5	—	—	3.8
Professional and business services .....	11.8	—	1.3	.1	.3	6.4
Education and health services .....	41.7	7.5	4.9	.3	.1	28.8
Leisure and hospitality .....	10.1	3.1	.9	.2	.1	5.8
Other services, except public administration .....	3.1	.8	.3	—	.1	2.0
State and local government <sup>1</sup> .....	47.1	7.5	6.6	1.5	3.1	28.4
State government <sup>1</sup> .....	14.3	1.7	1.7	.4	.9	9.6
Local government <sup>1</sup> .....	32.8	5.8	4.9	1.1	2.2	18.8

<sup>1</sup> Excludes farms with fewer than 11 employees.

<sup>2</sup> Data for Mining (Sector 21 in the *North American Industry Classification System* — United States, 2007) include establishments not governed by the Mine Safety and Health Administration rules and reporting, such as those in Oil and Gas Extraction and related support activities. Data for mining operators in coal, metal, and nonmetal mining are provided to BLS by the Mine Safety and Health Administration, U.S. Department of Labor. Independent mining contractors are excluded from the coal, metal, and nonmetal mining industries. These data do not reflect the changes the Occupational Safety and Health Administration made to its recordkeeping requirements effective January 1, 2002; therefore, estimates for these industries

are not comparable to estimates in other industries.

<sup>3</sup> Data for employers in railroad transportation are provided to BLS by the Federal Railroad Administration, U.S. Department of Transportation.

NOTE: Because of rounding, components may not add to totals. Dash indicates data do not meet publication guidelines.

SOURCE: U.S. Bureau of Labor Statistics, U.S. Department of Labor

**TABLE 7. Incidence rates<sup>1</sup> of nonfatal occupational injuries and illnesses by major private industry sector and case type, 2011-2013**

Industry sector	Total recordable cases			Cases with days away from work, job transfer, or restriction									Other recordable cases		
				Total			Cases with days away from work <sup>2</sup>			Cases with job transfer or restriction					
	2011	2012	2013	2011	2012	2013	2011	2012	2013	2011	2012	2013	2011	2012	2013
Private industry <sup>3</sup> .....	3.4	3.4	3.3	1.8	1.8	1.7	1.0	1.0	1.0	0.7	0.7	0.7	1.7	1.6	1.6
Goods producing <sup>3</sup> .....	4.2	4.1	3.9	2.3	2.3	2.2	1.2	1.2	1.2	1.1	1.1	1.0	1.9	1.8	1.7
Natural resources and mining <sup>3,4</sup> .....	4.0	3.9	3.9	2.3	2.3	2.4	1.4	1.4	1.5	.9	.9	.9	1.7	1.5	1.6
Construction .....	3.9	3.7	3.8	2.1	2.1	2.2	1.5	1.5	1.5	.7	.6	.7	1.8	1.6	1.6
Manufacturing .....	4.3	4.2	4.0	2.4	2.3	2.2	1.1	1.1	1.0	1.2	1.3	1.2	2.0	1.9	1.8
Service providing .....	3.3	3.2	3.1	1.6	1.6	1.6	1.0	1.0	.9	.6	.6	.6	1.6	1.6	1.5
Trade, transportation, and utilities <sup>5</sup> .....	3.9	3.9	3.8	2.3	2.3	2.2	1.3	1.3	1.3	1.0	1.0	1.0	1.6	1.6	1.5
Information .....	1.6	1.4	1.5	.9	.8	.9	.6	.6	.6	.3	.2	.2	.7	.6	.7
Financial activities .....	1.4	1.3	1.3	.6	.6	.6	.4	.4	.4	.2	.2	.2	.7	.7	.7
Professional and business services .....	1.7	1.6	1.6	.8	.8	.8	.5	.5	.5	.3	.3	.3	.8	.8	.8
Education and health services .....	4.6	4.5	4.4	2.1	2.1	2.0	1.3	1.2	1.2	.9	.9	.8	2.5	2.4	2.4
Leisure and hospitality .....	4.0	3.9	3.8	1.6	1.6	1.6	1.0	1.0	1.0	.6	.6	.6	2.4	2.3	2.2
Other services, except public administration .....	2.6	2.5	2.5	1.3	1.3	1.2	.9	.9	.8	.4	.4	.4	1.3	1.2	1.3

<sup>1</sup> The incidence rates represent the number of injuries and illnesses per 100 full-time workers and were calculated as: (N/EH) x 200,000, where

N = number of injuries and illnesses  
 EH = total hours worked by all employees during the calendar year  
 200,000 = base for 100 equivalent full-time workers (working 40 hours per week, 50 weeks per year)

<sup>2</sup> Days-away-from-work cases include those that result in days away from work with or without job transfer or restriction.

<sup>3</sup> Excludes farms with fewer than 11 employees.

<sup>4</sup> Data for Mining (Sector 21 in the *North American Industry Classification System* — United States,

2007) include establishments not governed by the Mine Safety and Health Administration rules and reporting, such as those in Oil and Gas Extraction and related support activities. Data for mining operators in coal, metal, and nonmetal mining are provided to BLS by the Mine Safety and Health Administration, U.S. Department of Labor. Independent mining contractors are excluded from the coal, metal, and nonmetal mining industries. These data do not reflect the changes the Occupational Safety and Health Administration made to its recordkeeping requirements effective January 1, 2002; therefore, estimates for these industries are not comparable to estimates in other industries.

<sup>5</sup> Data for employers in railroad transportation are provided to BLS by the Federal Railroad Administration, U.S. Department of Transportation.

NOTE: Because of rounding, components may not add to totals.  
 SOURCE: U.S. Bureau of Labor Statistics, U.S. Department of Labor