

**Transmission of material in this release is embargoed until  
8:30 a.m. (EST), Wednesday, November 14, 2012**

USDL-12-2258

Technical information: (202) 691-7705 • [ppi-info@bls.gov](mailto:ppi-info@bls.gov) • [www.bls.gov/ppi](http://www.bls.gov/ppi)  
Media contact: (202) 691-5902 • [PressOffice@bls.gov](mailto:PressOffice@bls.gov)

**PRODUCER PRICE INDEXES – OCTOBER 2012**

The Producer Price Index for finished goods declined 0.2 percent in October, seasonally adjusted, the U.S. Bureau of Labor Statistics reported today. Prices for finished goods increased 1.1 percent in September and 1.7 percent in August. At the earlier stages of processing, prices received by manufacturers of intermediate goods edged down 0.1 percent in October, and the crude goods index moved up 0.9 percent. On an unadjusted basis, the finished goods index advanced 2.3 percent for the 12 months ended October 2012, the largest rise since a 2.8-percent increase for the 12 months ended March 2012. (See table A.)

**Table A. Monthly and 12-month percent changes in selected stage-of-processing price indexes, seasonally adjusted**

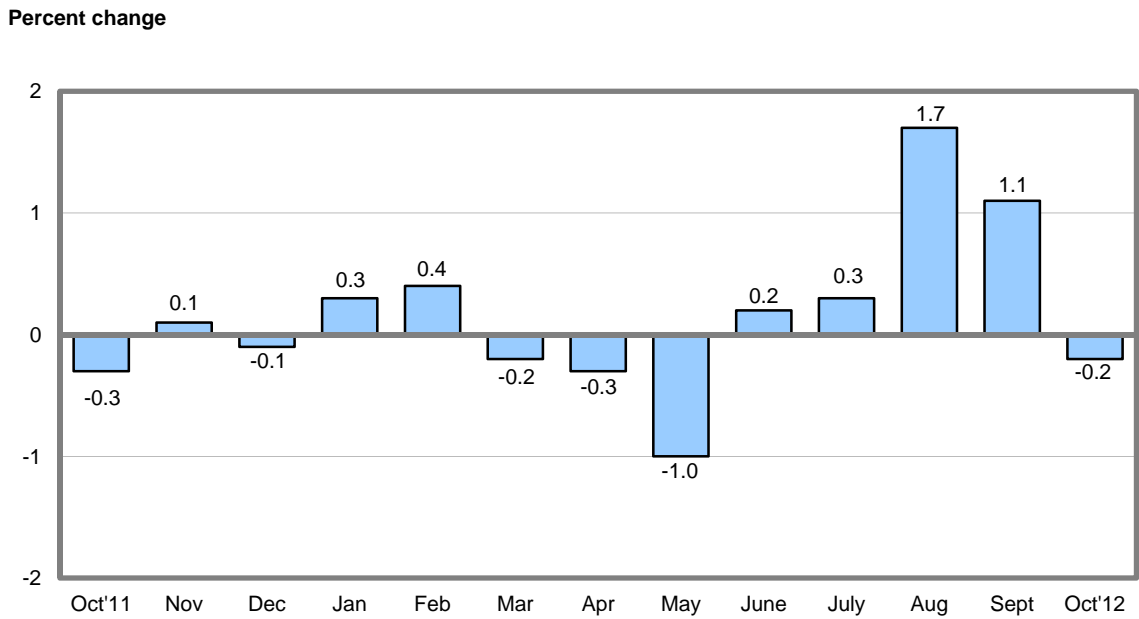
Month	Finished goods					Intermediate goods	Crude goods
	Total	Foods	Energy	Except foods and energy	Change in finished goods from 12 months ago (unadj.)		
<b>2011</b>							
Oct.....	-0.3	0.1	-1.5	0.0	5.8	-1.0	-1.7
Nov.....	0.1	1.0	-0.3	0.1	5.6	-0.1	1.9
Dec.....	-0.1	-0.7	-0.3	0.2	4.7	-0.2	-0.6
<b>2012</b>							
Jan.....	0.3	-0.1	-0.2	0.6	4.1	0.0	1.1
Feb.....	0.4	-0.2	1.8	0.1	3.4	0.7	0.9
Mar.....	-0.2	0.1	-1.2	0.2	2.8	0.8	-2.7
Apr.....	-0.3	-0.1	-1.4	0.1	1.8	-0.6	-4.5
May.....	-1.0	-0.4	-4.4	0.1	0.6	-1.0	-3.5
June <sup>1</sup> .....	0.2	0.6	-0.6	0.2	0.7	-0.8	-3.4
July <sup>1</sup> .....	0.3	0.4	-0.4	0.5	0.5	-0.4	2.0
Aug.....	1.7	0.9	6.4	0.2	2.0	1.1	5.8
Sept.....	1.1	0.2	4.7	0.0	2.1	1.5	2.8
Oct.....	-0.2	0.4	-0.5	-0.2	2.3	-0.1	0.9

<sup>1</sup> Some of the figures shown above and elsewhere in this release may differ from those previously reported because data for June 2012 have been revised to reflect the availability of late reports and corrections by respondents.

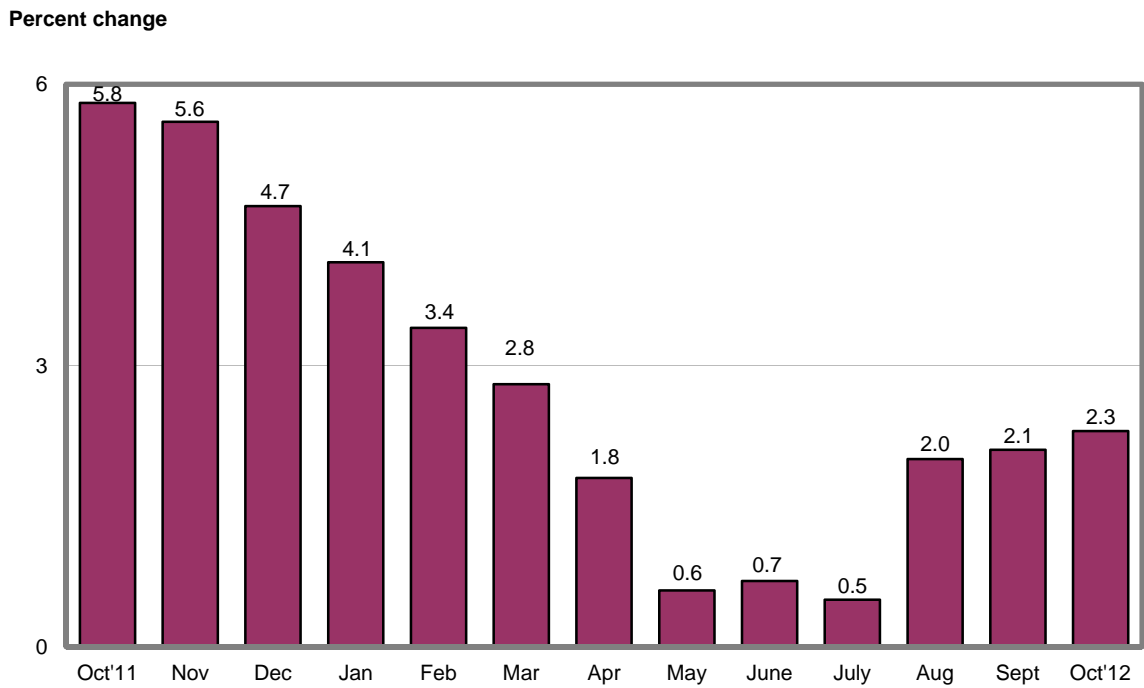
**Hurricane Sandy**

Hurricane Sandy had virtually no impact on data collection efforts or survey response rates for October, and no changes in estimation procedures were necessary.

**Chart 1. Monthly percent changes in the Producer Price Index for finished goods, seasonally adjusted: October 2011 – October 2012**



**Chart 2. 12-month percent changes in the Producer Price Index for finished goods, not seasonally adjusted: October 2011 – October 2012**



## Stage-of-Processing Analysis

### Finished goods

In October, the decrease in the finished goods index is attributable to prices for finished energy goods and the index for finished goods less foods and energy, which declined 0.5 percent and 0.2 percent, respectively. By contrast, prices for finished consumer foods advanced 0.4 percent.

**Finished energy:** The index for finished energy goods moved down 0.5 percent in October after increasing 4.7 percent a month earlier. A 2.2-percent drop in gasoline prices accounted for most of this decrease. Declines in the indexes for home heating oil and liquefied petroleum gas also contributed to lower finished energy goods prices. (See table 2.)

**Finished core:** The index for finished goods less foods and energy moved down 0.2 percent in October, the first decline since a 0.1-percent decrease in November 2010. Lower prices for light motor trucks and passenger cars led the October decline, falling 1.5 percent and 1.6 percent, respectively. (On a not seasonally adjusted basis, the index for light motor trucks rose 3.9 percent and passenger car prices moved up 1.4 percent.) In accordance with usual practice, most new-model-year passenger cars and light motor trucks were introduced into the PPI in October (see *Report on Quality Changes for 2013 Model Vehicles*, at [www.bls.gov/web/ppi/ppimotveh.htm](http://www.bls.gov/web/ppi/ppimotveh.htm)).

**Finished foods:** In October, prices for finished consumer foods advanced 0.4 percent, the fifth consecutive increase. Leading the October rise, the index for dairy products climbed 3.0 percent.

### Intermediate goods

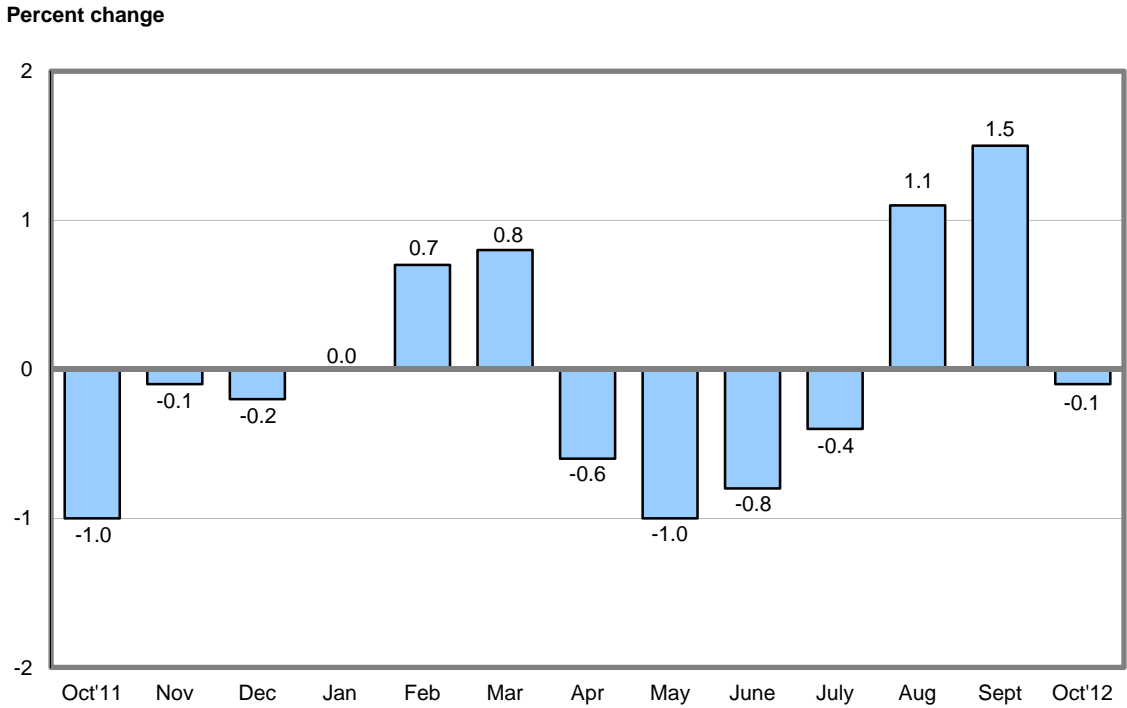
The Producer Price Index for intermediate materials, supplies, and components inched down 0.1 percent in October following two consecutive increases. The October decrease was the result of a 0.6-percent decline in prices for intermediate energy goods. By contrast, the index for intermediate foods and feeds rose 0.7 percent. Prices for intermediate materials less foods and energy were unchanged. For the 12 months ended in October, the index for intermediate materials, supplies, and components rose 0.8 percent following five straight months of year-over-year decreases. (See table B.)

**Intermediate energy:** The index for intermediate energy goods fell 0.6 percent in October following a 4.3-percent advance in September. A major factor in the October decline was a 1.6-percent decrease in the index for industrial electric power. Lower prices for gasoline and lubricating oil base stocks also contributed significantly to the decline in the intermediate energy goods index. (See table 2.)

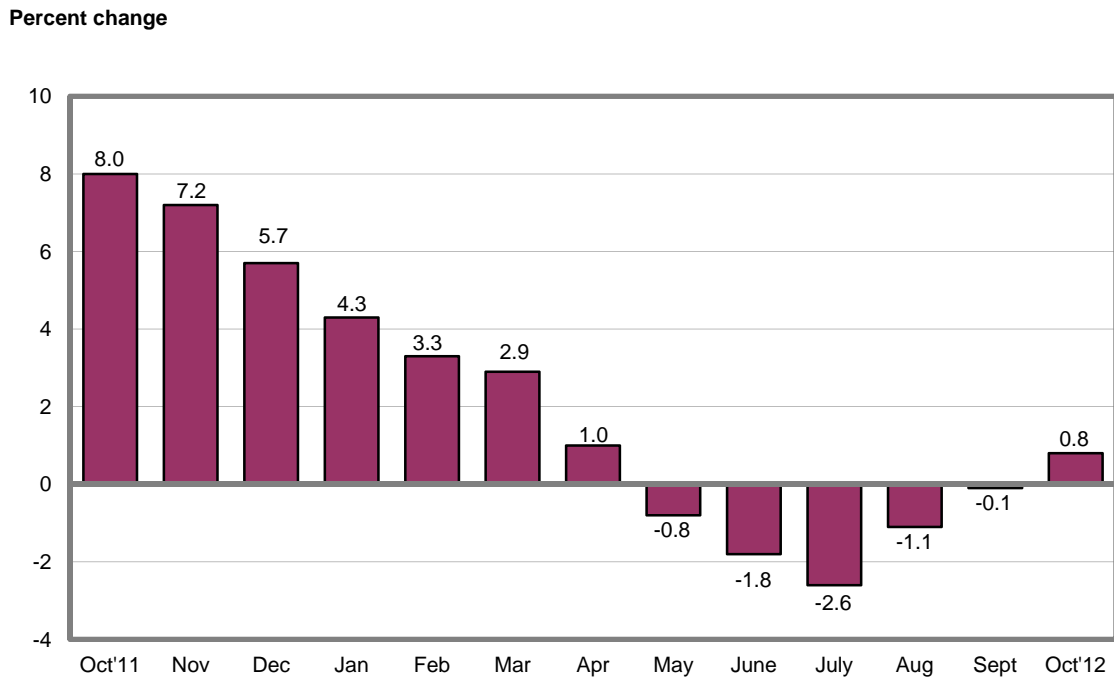
**Intermediate foods:** Prices for intermediate foods and feeds advanced 0.7 percent in October, the eighth consecutive increase. A major factor in the October rise was the index for pork, which jumped 8.1 percent. An increase in prices for dairy products also was a significant factor in the advance in the intermediate foods and feeds index.

**Intermediate core:** The index for intermediate goods less foods and energy was unchanged in October following a 0.6-percent advance in September. In October, higher prices for nonferrous metals were offset by lower prices for steel mill products.

**Chart 3. Monthly percent changes in the Producer Price Index for intermediate goods, seasonally adjusted: October 2011 – October 2012**



**Chart 4. 12-month percent changes in the Producer Price Index for intermediate goods, not seasonally adjusted: October 2011 – October 2012**



## Crude goods

The Producer Price Index for crude materials for further processing advanced 0.9 percent in October. For the 3 months ended in October, prices for crude materials climbed 9.7 percent following a 5.0-percent decline from April to July. In October, the monthly increase in the crude goods index was led by a 1.9-percent rise in prices for crude foodstuffs and feedstuffs. Also contributing to the advance, the index for crude energy materials moved up 1.3 percent. By contrast, prices for crude nonfood materials less energy fell 1.4 percent. (See table B.)

**Crude foods:** The index for crude foodstuffs and feedstuffs increased 1.9 percent in October. From July to October, prices for crude foodstuffs and feedstuffs moved up 8.3 percent, compared with a 1.3-percent advance for the 3 months ended in July. Leading the monthly rise in October, the index for slaughter hogs surged 27.7 percent. Higher prices for raw milk and slaughter chickens also were major factors in the increase in the crude foodstuffs and feedstuffs index. (See table 2.)

**Crude energy:** The index for crude energy materials moved up 1.3 percent in October. For the 3 months ended in October, prices for crude energy materials jumped 16.0 percent after falling 9.6 percent from April to July. In October, most of the monthly advance can be traced to the index for natural gas, which climbed 9.5 percent. Higher prices for coal also contributed to the rise in the crude energy materials index.

**Crude core:** The index for crude nonfood materials less energy fell 1.4 percent in October. From July to October, prices for crude nonfood materials less energy advanced 2.4 percent following a 6.2-percent decrease for the 3 months ended in July. In October, most of the monthly decline is attributable to a 12.0-percent drop in prices for carbon steel scrap.

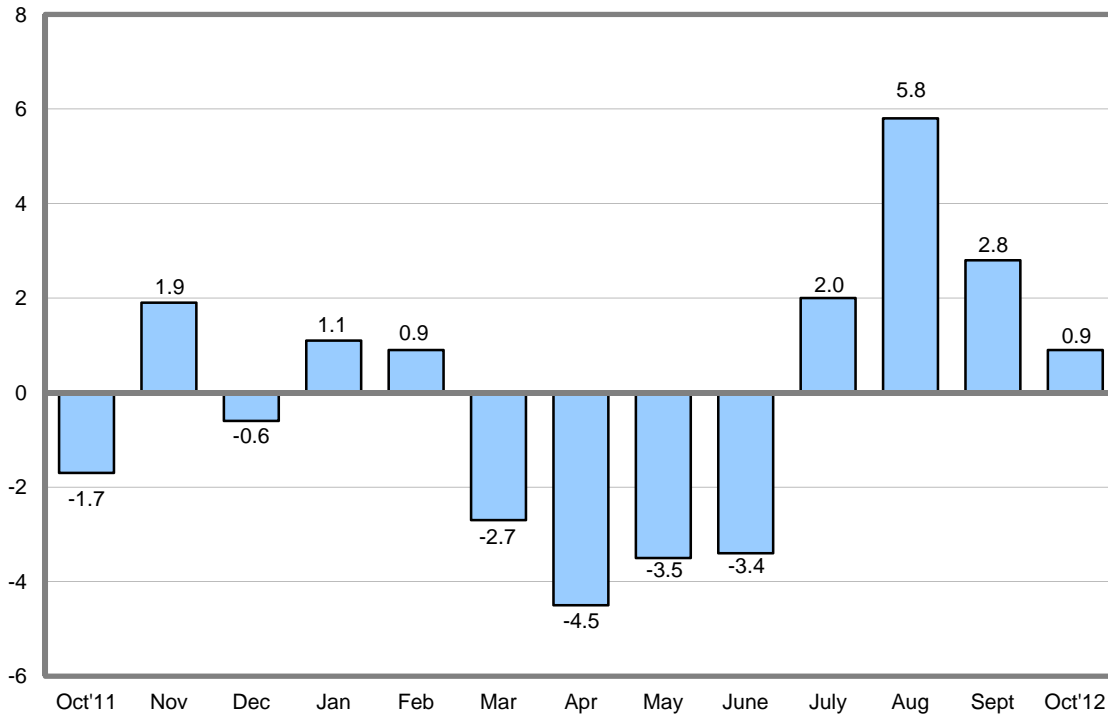
**Table B. Monthly and 12-month percent changes in selected price indexes for intermediate goods and crude goods, seasonally adjusted**

Month	Intermediate goods				Crude goods			
	Foods	Energy	Except foods and energy	Change in intermediate goods from 12 months ago (unadj.)	Foods	Energy	Except foods and energy	Change in crude goods from 12 months ago (unadj.)
<b>2011</b>								
Oct.....	-1.1	-2.2	-0.6	8.0	-1.9	-0.1	-4.3	12.8
Nov.....	-0.1	0.5	-0.4	7.2	1.2	4.4	-2.0	14.4
Dec.....	-0.8	0.8	-0.6	5.7	-2.9	1.6	-0.6	6.6
<b>2012</b>								
Jan.....	-0.1	-0.9	0.4	4.3	1.9	-0.6	2.3	4.3
Feb.....	-0.2	0.8	0.7	3.3	0.2	1.8	-0.3	1.0
Mar.....	0.6	1.3	0.7	2.9	2.7	-9.0	0.4	0.2
Apr.....	0.3	-3.0	0.2	1.0	-3.5	-7.1	-1.8	-7.4
May.....	0.1	-3.6	-0.3	-0.8	-2.4	-5.6	-2.0	-8.1
June <sup>1</sup> .....	0.8	-0.3	-1.1	-1.8	-1.2	-4.7	-4.1	-11.6
July <sup>1</sup> .....	1.4	-1.0	-0.4	-2.6	5.1	0.5	-0.2	-9.6
Aug.....	2.4	4.4	-0.2	-1.1	4.6	9.7	2.2	-3.5
Sept.....	2.0	4.3	0.6	-0.1	1.6	4.4	1.6	-2.6
Oct.....	0.7	-0.6	0.0	0.8	1.9	1.3	-1.4	-0.2

<sup>1</sup> Some of the figures shown above and elsewhere in this release may differ from those previously reported because data for June 2012 have been revised to reflect the availability of late reports and corrections by respondents.

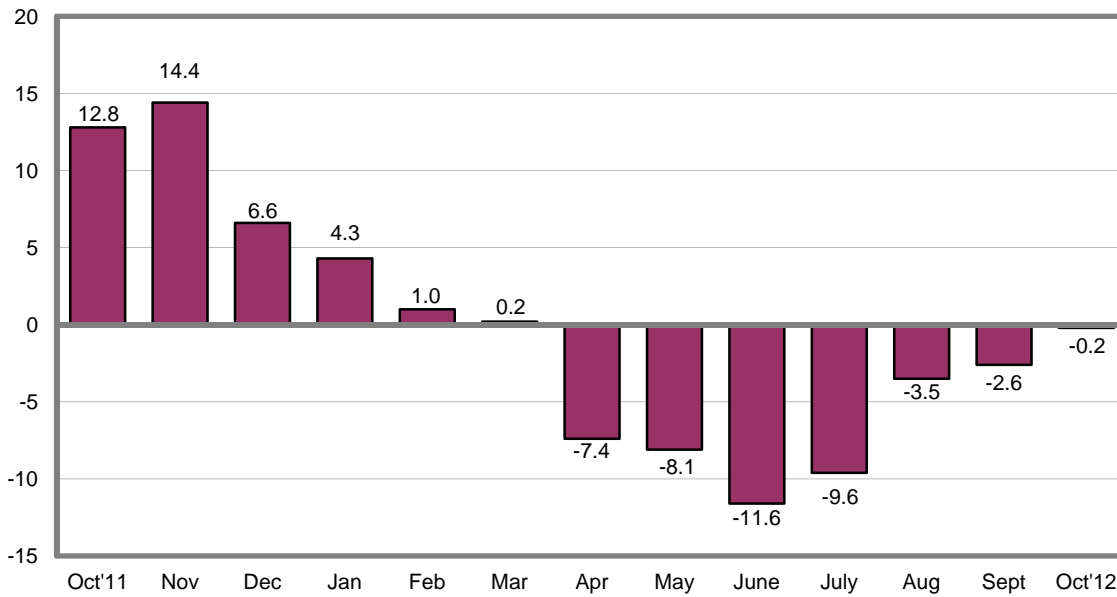
**Chart 5. Monthly percent changes in the Producer Price Index for crude materials, seasonally adjusted: October 2011 – October 2012**

Percent change



**Chart 6. 12-month percent changes in the Producer Price Index for crude materials, not seasonally adjusted: October 2011 – October 2012**

Percent change



## Services Analysis

**Trade industries:** The Producer Price Index for the net output of total trade industries moved up 1.5 percent in October, the largest increase since a 1.6-percent advance in August 2011. (Trade indexes measure changes in margins received by wholesalers and retailers.) One-third of the October rise can be attributed to the index for merchant wholesalers of nondurable goods, which climbed 2.4 percent. Higher margins received by gasoline stations with convenience stores and department stores also were factors in the increase in the total trade industries index.

**Transportation and warehousing industries:** The Producer Price Index for the net output of transportation and warehousing industries climbed 1.0 percent in October, the largest increase since a 1.0-percent rise in March 2012. Accounting for over half of the October advance, the index for the air transportation industry group moved up 2.8 percent. Higher prices received by couriers and messengers and by line-haul railroads also contributed to the increase in the transportation and warehousing industries index.

**Traditional service industries:** The Producer Price Index for the net output of total traditional service industries edged up 0.1 percent in October subsequent to a 0.2-percent decrease in the prior month. The index for general medical and surgical hospitals led the October increase, climbing 0.9 percent. Higher prices received by portfolio managers and by non-casino hotels and motels also were factors in the advance in the total traditional service industries index.

---

**The Producer Price Index for November 2012 is scheduled to be released on Thursday, December 13, 2012 at 8:30 a.m. (EST).**

### **Recalculated Seasonal Adjustment Factors and Relative Importance Figures to be Available on February 15, 2013**

Each year with the release of PPI data for January, seasonal adjustment factors are recalculated to reflect price movements from the just-completed calendar year. The following information will be available on February 15, 2013 (2 workdays prior to the release of PPI data for January 2013 on February 20):

- Direct seasonal factors for commodity indexes for the year 2013,
- Recalculated seasonal factors for the last 5 years (2008-2012) for the commodity indexes,
- Recalculated seasonal factors for the last 5 years (2008-2012) for the stage-of-processing indexes,
- Recalculated seasonal data for the last 5 years (2008 – 2012) for stage-of-processing and commodity indexes.

In addition, December 2012 relative importance figures also will be available on February 15, 2013.

To obtain this information, visit the PPI website at [www.bls.gov/ppi](http://www.bls.gov/ppi) or call the Division of Industrial Prices and Price Indexes, Section of Index Analysis and Public Information at (202) 691-7705.

# Technical Note

## Brief Explanation of Producer Price Indexes

The Producer Price Index (PPI) of the Bureau of Labor Statistics (BLS) is a family of indexes that measure the average change over time in the prices received by domestic producers of goods and services. PPIs measure price change from the perspective of the seller. This contrasts with other measures, such as the Consumer Price Index (CPI). CPIs measure price change from the purchaser's perspective. Sellers' and purchasers' prices can differ due to government subsidies, sales and excise taxes, and distribution costs.

More than 9,000 PPIs for individual products and groups of products are released each month. PPIs are available for the products of virtually every industry in the mining and manufacturing sectors of the U.S. economy. New PPIs are gradually being introduced for the products of industries in the construction, trade, finance, and services sectors of the economy.

More than 100,000 price quotations per month are organized into three sets of PPIs: (1) Stage-of-processing indexes, (2) commodity indexes, and (3) indexes for the net output of industries and their products. The stage-of-processing structure organizes products by class of buyer and degree of fabrication. The commodity structure organizes products by similarity of end use or material composition. The entire output of various industries is sampled to derive price indexes for the net output of industries and their products.

### Stage-of-Processing Indexes

Within the stage-of-processing system, finished goods are commodities that will not undergo further processing and are ready for sale to the final-demand user, either an individual consumer or business firm. Consumer foods include unprocessed foods such as eggs and fresh vegetables, as well as processed foods such as bakery products and meats. Other finished consumer goods include durable goods such as automobiles, household furniture, and appliances, as well as nondurable goods such as apparel and home heating oil. Capital equipment includes durable goods such as heavy motor trucks, tractors, and machine tools.

The stage-of-processing category for intermediate materials, supplies, and components consists partly of commodities that have been processed but require further processing. Examples of such semifinished goods include flour, cotton yarn, steel mill products, and lumber. The intermediate goods category also encompasses nondurable, physically complete items purchased by business firms as inputs for their operations. Examples include diesel fuel, belts and belting, paper boxes, and fertilizers.

Crude materials for further processing are products entering the market for the first time that have not been manufactured or fabricated and that are not sold directly to consumers. Crude foodstuffs and feedstuffs include items such as grains and livestock. Examples of crude nonfood materials include raw cotton, crude petroleum, coal, hides and skins, and iron and steel scrap.

## Commodity Indexes

The commodity classification structure of the PPI organizes goods and services by similarity of material composition or end use, disregarding their industry of origin. Table 6 of the *PPI Detailed Report* includes data for commodity indexes, organized in a hierarchal structure, including major commodity groupings (two-digit commodity codes), subgroups (three-digit codes), product classes (four-digit codes), subproduct classes (five- and six-digit codes), item groupings (seven-digit codes) and individual items (eight-, nine-, and ten-digit codes).

### Industry Net-Output Price Indexes

PPIs for the net output of industries and their products are grouped according to the North American Industry Classification System (NAICS). Prior to the release of January 2004, industry-based PPIs were published according to the Standard Industrial Classification (SIC) system. Industry price indexes are compatible with other economic time series organized by industry, such as data on employment, wages, and productivity. Table 5 of the *PPI Detailed Report* includes data for NAICS industries and industry groups (3-, 4-, 5-, and 6-digit codes), Census product classes (7- and 8-digit codes), products (9-digit codes), and more detailed subproducts (11-digit codes), and, for some industries, indexes for other sources of revenue.

Indexes may represent one of three kinds of product categories. Every industry has primary product indexes to show changes in prices received by establishments classified in the industry for products made primarily, but not necessarily exclusively, by that industry. The industry classification of an establishment is determined by which products make up a plurality of its total shipment value. In addition, most industries have secondary product indexes that show changes in prices received by establishments classified in the industry for products chiefly made in some other industry. Finally, some industries have miscellaneous receipts indexes to show price changes in other sources of revenue received by establishments within the industry that are not derived from sales of their products—for example, resales of purchased materials, or revenues from parking lots owned by a manufacturing plant.

### Data Collection

PPIs are based on selling prices reported by establishments of all sizes selected by probability sampling, with the probability of selection proportionate to size. Individual items and transaction terms from these firms also are chosen by probability proportionate to size. BLS strongly encourages cooperating companies to supply actual transaction prices at the time of shipment to minimize the use of list prices. Prices submitted by survey respondents are effective on the Tuesday of the week containing the 13th day of the month. This survey is conducted via mail, fax, and the Internet.



Price data are provided on a voluntary and confidential basis; only sworn BLS employees are allowed access to individual company price reports. BLS publishes price indexes instead of actual prices. All PPIs are subject to revision 4 months after original publication to reflect the availability of late reports and corrections by respondents.

BLS periodically updates the PPI sample of survey respondents to better reflect current conditions when the structure, membership, technology, or product mix of an industry shifts significantly and to spread reporting burden among smaller firms. Results of these resampling efforts are incorporated into the PPI with the release of data for January and July.

As part of an ongoing effort to expand coverage to sectors of the economy other than mining and manufacturing, an increasing number of service sector industries have been introduced into the PPI. The following list of industries introduced since the mid-1990s includes the month and year in which an article describing the industry's content appeared in the *PPI Detailed Report*.

**Service sector industries introduced into the Producer Price Index, by SIC or NAICS code and the *PPI Detailed Report* that announces their introduction**

<i>Title</i>	<i>Code</i>	<i>PPI Detailed Report Issue</i>
<b>SIC</b>		
Wireless telecommunications .....	4812	July 1999
Telephone communications, except radio telephone .....	4813	July 1995
Television broadcasting .....	4833	July 2002
Grocery stores .....	5411	July 2000
Meat and fish (seafood) markets .....	5421	July 2000
Fruit and vegetable markets .....	5431	July 2000
Candy, nut, and confectionery stores ...	5441	July 2000
Retail bakeries .....	5461	July 2000
Miscellaneous food stores .....	5499	July 2000
New car dealers .....	5511	July 2000
Gasoline service stations .....	5541	January 2002
Boat dealers .....	5551	January 2002
Recreational vehicle dealers .....	5561	January 2002
Miscellaneous retail .....	59	January 2001
Security brokers, dealers, and investment bankers .....	6211	January 2001
Investment advice .....	6282	January 2003
Life insurance carriers .....	6311	January 1999
Property and casualty insurance .....	6331	July 1998
Insurance agencies and brokerages ....	6412	January 2003
Operators and lessors of nonresidential buildings .....	6512	January 1996
Real estate agents and managers .....	6531	January 1996
Prepackaged software .....	7372	January 1998
Data processing services .....	7374	January 2002
Home health care services .....	8082	January 1997
Legal services .....	8111	January 1997
Engineering design, analysis, and consulting services .....	8711	January 1997
Architectural design, analysis, and consulting services .....	8712	January 1997
Premiums for property and casualty insurance .....	9331	July 1998

<i>Title</i>	<i>Code</i>	<i>PPI Detailed Report Issue</i>
<b>NAICS</b>		
New Industrial building construction .....	236211	January 2008
New warehouse building construction ..	236221	July 2005
New school construction .....	236222	July 2006
New office construction .....	236223	January 2007
Concrete contractors, nonresidential building work .....	23811X	July 2008
Roofing contractors, nonresidential building work .....	23816X	July 2008
Electrical contractors, nonresidential building work .....	23821X	July 2008
Plumbing / HVAC contractors, nonresidential building work .....	23822X	July 2008
Merchant wholesalers, durable goods ..	423	July 2005
Merchant wholesalers, nondurable goods .....	424	July 2005
Wholesale trade agents and brokers ...	425120	July 2005
Furniture and home furnishings stores .	442	January 2004
Electronics and appliance stores .....	443	January 2004
Building material and garden equipment and supplies dealers .....	444	January 2004
Clothing and clothing accessories stores .....	448	January 2004
Sporting goods, hobby, book, and music stores .....	451	January 2004
General merchandise stores .....	452	January 2004
Miscellaneous store retailers .....	453	January 2004
Internet service providers .....	518111	July 2005
Internet publishing and web search portals .....	519130	January 2010
Commercial banking .....	522110	January 2005
Savings institutions .....	522120	January 2005
Direct health and medical insurance carriers .....	524114	July 2004
Construction, mining, and forestry machinery and equipment rental and leasing .....	532412	January 2005
Management consulting services .....	541610	January 2007
Security guards and patrol services .....	561612	July 2005
Computer training .....	611420	July 2007
Offices of dentists .....	621210	January 2011
Blood and organ banks .....	621991	January 2007
Amusement and theme parks .....	713110	July 2006
Golf courses and country clubs .....	713910	July 2006
Fitness and recreational sports centers .	713940	July 2005
Commercial machinery repair and maintenance.....	811310	July 2007

**Weights**

Weights for most traditional commodity groupings of the PPI, as well as weights for commodity-based aggregate indexes calculated using traditional commodity groupings, such as stage-of-processing indexes, currently reflect 2007 values of shipments as reported in the *Census of Manufactures* and other sources. From January 2007 through December 2011, PPI weights were derived from 2002 shipment values. Industry indexes now are calculated under the 2012 NAICS structure utilizing 2007 value of shipment weights and 2002 net output ratios. The periodic update of the value weights

used to calculate the PPI is done to more accurately reflect changes in production and marketing patterns in the economy. Net output values of shipments are used as weights for industry indexes. Net output values refer to the value of shipments from establishments within the industry to buyers outside the industry. However, weights for commodity price indexes are based on gross shipment values, including values of shipments between establishments within the same industry. As a result, broad commodity grouping indexes, such as the PPI for All Commodities (which is comprised of major commodity groupings 01 through 15), are affected by the multiple counting of price change at successive stages of processing, which can lead to exaggerated or misleading signals about inflation. Stage-of-processing indexes partially correct for this defect, but industry indexes consistently correct for this at all levels of aggregation. Therefore, industry and stage-of-processing indexes are more appropriate than broad commodity groupings for economic analysis of general price trends.

### Price Index Reference Base

Effective with publication of January 1988 data, many important PPI series (including stage-of-processing groupings and most commodity groups and individual items) were placed on a new reference base, 1982 = 100. From 1971 through 1987, the standard reference base for most PPI series was 1967 = 100. Except for rounding differences, the shift to the new reference base did not alter any previously published percent changes for affected PPI series. (See “Calculating Index Changes,” below.) The 1982 reference base is not used for commodity indexes with a base later than December 1981 or for industry net output indexes and their products.

For further information on the underlying concepts and methodology of the Producer Price Index, see chapter 14, “Producer Prices,” in the *BLS Handbook of Methods* (July 2010). This chapter can be downloaded from the BLS Web site at [www.bls.gov/opub/hom/homch14.htm](http://www.bls.gov/opub/hom/homch14.htm).

### Calculating Index Changes

Each PPI measures price changes from a reference period that equals 100.0. An increase of 5.5 percent from the reference period in the Finished Goods Price Index, for example, is shown as 105.5. This change also can be expressed in dollars, as follows: prices received by domestic producers of a sample of finished goods have risen from \$100 in 1982 to \$105.50. Likewise, a current index of 90.0 would indicate that prices received by producers of finished goods are 10 percent lower than they were in 1982.

Movements of price indexes from one month to another are usually expressed as percent changes, rather than as changes in index points. Index point changes are affected by the level of the index in relation to its base period, whereas percent changes are not. The following example shows the computation of index point and percent changes.

#### *Index point change*

Finished Goods Price Index	107.5
Less previous index	104.0
Equals index point change	3.5

#### *Index percent change*

Index point change	3.5
Divided by the previous index	104.0
Equals	0.034
Result multiplied by 100	0.034 x 100
Equals percent change	3.4

### Seasonally Adjusted and Unadjusted Data

Because price data are used for different purposes by different groups, BLS publishes seasonally adjusted and unadjusted changes each month. Seasonally adjusted data are preferred for analyzing general price trends in the economy because these data eliminate the effect of changes that normally occur at about the same time, and in about the same magnitude, every year—such as price movements resulting from normal weather patterns, regular production and marketing cycles, model changeovers, seasonal discounts, and holidays. For these reasons, seasonally adjusted data more clearly reveal underlying cyclical trends. Unadjusted data are of primary interest to users who need information that can be related to actual dollar values of transactions. Individuals requiring this information include marketing specialists, purchasing agents, budget and cost analysts, contract specialists, and commodity traders. It is the unadjusted data that are generally cited when escalating long-term contracts such as purchasing agreements or real estate leases. For more information, see *Escalation and Producer Price Indexes: A Guide for Contracting Parties*, BLS Report 807, September 1991, on the Web at [www.bls.gov/ppi/ppiescalation.htm](http://www.bls.gov/ppi/ppiescalation.htm).

In 1998, the PPI implemented the X-12-ARIMA Seasonal Adjustment Method; prior to that year, the PPI employed the X-11 method. Each year, the seasonal status of most commodity indexes is reevaluated to reflect more recent price behavior. Industry net output indexes are not seasonally adjusted. For time series that exhibit seasonal pricing patterns, new seasonal factors are estimated and applied to the unadjusted data for the previous 5 years. These updated seasonally adjusted indexes replace the most recent 5 years of seasonal data.

Seasonal factors may be applied to series using either a direct or an aggregative method. Generally, commodity indexes are seasonally adjusted using direct seasonal adjustment, which produces a more complete elimination of seasonal movements than does the aggregative method. However, the direct seasonal adjustment process may not yield figures that possess additive consistency. Thus, a seasonally adjusted index for a broad category that is directly adjusted may not be logically consistent with all seasonally adjusted indexes for its components. Seasonal movements for stage-of-

processing indexes are derived indirectly through an aggregative method that combines movements of a wide variety of subproduct class (six-digit) series.

Seasonally adjusted indexes can become problematic when previously stable and predictable price patterns abruptly change. If the new pattern persists, the seasonal adjustment method will eventually reflect it adequately; if the pattern keeps shifting, however, seasonally adjusted data will become chronically troublesome. This problem occurs relatively infrequently for farm and food-related products, but has more often affected manufactured products such as automobiles and steel.

Since January 1988, the PPI has used Intervention Analysis Seasonal Adjustment methods to enhance the calculation of seasonal factors. With this technique, outlier values that may distort the seasonal pattern are removed from the data prior to applying the standard seasonal factor estimation procedure. For example, a possible economic cause for large price movements for petroleum-based products might have been the Persian Gulf War. In this case, intervention techniques allowed for better estimates of seasonally adjusted data. On the whole, very few series have required intervention. Out of almost 300 seasonally adjusted series, only 27 were subject to intervention in 2009.

For more information relating to seasonal adjustment methods, see (1) “Appendix A: Seasonal Adjustment Methodology at BLS,” in the *BLS Handbook of Methods* (July 2010) and (2) “Summary of Changes to the PPI’s Seasonal Adjustment Methodology” in the January 1995 issue of *Producer Price Indexes*.

## Producer Price Index Data on the Internet

In 1995, the BLS began posting PPI series, news releases, and technical information to both a World Wide Web (WWW) site and a file transfer protocol (FTP) site. During the years following the introduction of PPI Internet services, use of these sites eclipsed more traditional methods of data dissemination, such as subscriptions to the *PPI Detailed Report*. There were more than 2.1 million instances of PPI series being downloaded from the Internet during the 12 months ended December 31, 2008.

## Retrieving PPI data from the PPI Web site

PPI data can be obtained from the WWW address ([www.bls.gov/ppi](http://www.bls.gov/ppi)). Clicking on the “PPI Databases” link reveals the following methods of data retrieval:

- **Top Picks** is a form-based application for both Industry Data and Commodity Data that allows the user to quickly obtain PPI time series data by selecting the most commonly requested time series, including the All Commodities Index and the stage-of-processing indexes (for example, Finished Goods). Within each list, any one—or all—of the time series shown can be selected. A user can modify the

date range and output options after executing the query, using the reformat button above the data output table.

- **One-Screen Data Search and Multi-Screen Data Search** are form-based query applications for both Industry Data and Commodity Data designed for users unfamiliar with the PPI coding structure. These applications guide a user through the PPI classification system by listing index titles and do not require knowledge of commodity or industry codes. Data retrieved are based on a query formulated by selecting data characteristics from lists provided. Two options are available to create customized tables, depending on a user’s browser capability. The one-screen option is a JavaScript application that uses a single screen to guide a user through the available time series data. The second option is a multiple-screen, non-Java-based application. Both methods allow a user to browse the PPI coding structure and select multiple series codes. Users can modify the date range and output options after executing the query using the reformat button above the data output table.
- **Series Report** is a form-based application that uses formatted PPI time series identifiers (commodity or industry codes) as input in extracting data according to a specified set of date ranges and output options. This application provides the most efficient path for users who are familiar with the format of PPI time series identifiers. Up to 300 indexes can be extracted at a time.

There are five alphabetic prefixes used to create unique PPI time series identifiers: WP, WD, PC, PD, and ND. Each provides the user access to a different PPI database. Adding either a “u” (not seasonally adjusted) or an “s” (seasonally adjusted) to the end of these prefixes further specifies the type of data needed.

## EXAMPLES

**For commodity and stage-of-processing indexes,** series identifiers combine a “wpu” prefix (not seasonally adjusted) or a “wps” prefix (seasonally adjusted) with a commodity code.

<u>Commodity code</u>	<u>Provides data for:</u>
wps141101	Passenger cars, seasonally adjusted
wpu141101	Passenger cars, not seasonally adjusted
wpusop3000	Finished goods, not seasonally adjusted

**For discontinued commodity indexes**, series identifiers combine a “wdu” prefix (not seasonally adjusted) or a “wds” prefix (seasonally adjusted) with a commodity code.

<u>Commodity code</u>	<u>Provides data for:</u>
wds019	Other farm products, seasonally adjusted
wdu0635	Preparations, ethical (prescription), not seasonally adjusted
wdusi138011	Stainless steel mill products, not seasonally adjusted

**Current price indexes grouped by industry according to NAICS** have series identifiers that begin with the prefix “pcu.” After the prefix, there are 12 digits (the 6-digit industry code is listed twice) followed by up to 7 alphanumeric characters identifying product detail. Dashes are used as placeholders for higher-level industry group codes.

<u>Industry-product code, current NAICS series</u>	<u>Provides data for:</u>
pcu325---325---	Chemical manufacturing, not seasonally adjusted
pcu336110336110	Automobile and light duty motor vehicle manufacturing
pcu621111621111411	Offices of physicians, one- and two-physician practices and single-specialty group practices, general/family practice
pcu325412325412A	Pharmaceutical preparation manufacturing, pharmaceuticals acting on the respiratory system

**Discontinued industry-product codes based on SIC** combine a “pdu” prefix and “#” between the fourth and fifth characters of the product code. Series identifiers for the discontinued dataset use underscores as placeholders to complete a reference to an SIC industry group code of fewer than four digits. (All PPI industry-based indexes organized by SIC were discontinued with the introduction of NAICS.)

<u>Industry-product code, discontinued SIC series</u>	<u>Provides data for:</u>
pdu28_#	Chemicals and allied products, not seasonally adjusted
pdu331_#	Blast furnaces, steel works, and rolling and finishing mills, not seasonally adjusted
pdu3711#111	Passenger cars

**Price indexes for discontinued series grouped by industry according to NAICS** have identifiers that begin with the prefix “ndu.” After the prefix, there are 12 numeric digits (the 6-digit industry code is listed twice), and up to 7 additional alphanumeric characters that identify product detail. Dashes are used as placeholders for higher-level industry group codes.

<u>Industry-product code, discontinued NAICS series</u>	<u>Provides data for</u>
ndu212231212231	Lead ore and zinc ore mining
ndu2122312122312	Lead and zinc concentrates
ndu212231212231214	Lead concentrates

- **Text Files (FTP)** and the FTP server are best suited for users requiring access to either a large volume of time series data or other PPI-related documentation (such as seasonal factor and relative importance tables). The FTP sites can be accessed at <ftp://ftp.bls.gov> or directly from the links on the “PPI Databases” page or the PPI homepage. Data and documentation available for download include the following:

	<u>Directory:</u>
Industry Data	<a href="#">/pub/time.series/pc</a>
Industry Data - Discontinued (NAICS basis)	<a href="#">/pub/time.series/nd</a>
(SIC basis)	<a href="#">/pub/time.series/pd</a>
Commodity Data	<a href="#">/pub/time.series/wp</a>
Commodity Data - Discontinued Series	<a href="#">/pub/time.series/wd</a>
Special requests	<a href="#">/pub/special.requests/ppi</a>

The FTP site maintains files to help with searches and downloads. These files are centrally located in the [/pub/doc](#) directory. Within this directory, the **overview.txt** file contains an overview relating to all BLS data available through the FTP site. For current commodity-based PPI data, the program help file is **wp.txt**; for discontinued commodity series, **wd.txt**; for current industry-based PPI data based on NAICS, **pc.txt**; for industry-based SIC time series that have been discontinued, **pd.txt**; and for industry-based NAICS series that have been discontinued, **nd.txt**.

Users who prefer downloading PPI datasets as individual ZIP files should go to the directory labeled [/pub/time.series/compressed/tape.format/](#) on the FTP site. This directory includes six PPI-specific ZIP files, one for each of the PPI databases—WP, WD, PC, ND, and PD—and a ZIP file for the annual 5-year revision to historical seasonal PPIs.

## Other Sources of PPI Data

PPI data can also be accessed via the BLS homepage ([www.bls.gov](http://www.bls.gov)). Clicking on the “Databases & Tools” tab at the top of the homepage calls up a listing all available BLS programs.

## **Additional information**

The PPI homepage ([www.bls.gov/ppi](http://www.bls.gov/ppi)) contains additional information regarding PPI data and methodology. The top section of the homepage provides PPI news releases, both current and archived, as well as general PPI information. The “Tables Created by BLS” section found beneath the

statistics section provides relative importance and seasonal factor tables. The remaining sections offer special notices and publications pertaining to PPI methodology and applications.

For questions or comments regarding PPI data classification, methodology, or data availability on the Internet, call or e-mail the Section of Index Analysis and Public Information at (202) 691-7705 or [ppi-info@bls.gov](mailto:ppi-info@bls.gov).

**Table 1. Producer price indexes and percent changes by stage of processing**  
[1982=100]

Grouping	Relative importance Dec. 2011 <sup>1</sup>	Unadjusted index			Unadjusted percent change to Oct. 2012 from:		Seasonally adjusted percent change from:		
		June 2012 <sup>2</sup>	Sept. 2012 <sup>2</sup>	Oct. 2012 <sup>2</sup>	Oct. 2011	Sept. 2012	July to Aug.	Aug. to Sept.	Sept. to Oct.
Finished goods.....	100.000	192.8	196.7	196.3	2.3	-0.2	1.7	1.1	-0.2
Finished consumer goods.....	73.330	205.5	211.2	210.0	2.7	-0.6	2.3	1.6	-0.1
Finished consumer foods.....	18.778	198.1	200.8	200.5	2.3	-0.1	0.9	0.2	0.4
Crude.....	1.402	165.6	174.9	164.7	-5.8	-5.8	6.7	-0.8	-5.1
Processed.....	17.376	201.2	203.3	203.8	2.9	0.2	0.4	0.3	0.8
Finished consumer goods, excluding foods.....	54.552	206.9	213.6	212.2	2.9	-0.7	2.7	2.0	-0.3
Nondurable goods less foods.....	40.917	232.1	242.1	238.9	3.2	-1.3	3.6	2.7	-0.2
Durable goods.....	13.635	150.4	150.4	152.5	1.9	1.4	0.2	0.1	-0.5
Capital equipment.....	26.670	162.5	162.5	163.5	1.4	0.6	0.2	-0.1	-0.3
Manufacturing industries.....	6.091	164.9	165.1	165.6	1.3	0.3	0.1	0.0	-0.1
Nonmanufacturing industries.....	20.579	161.5	161.4	162.7	1.5	0.8	0.2	-0.1	-0.3
Intermediate materials, supplies, and components.....	100.000	199.7	202.9	201.8	0.8	-0.5	1.1	1.5	-0.1
Materials and components for manufacturing.....	44.573	187.9	188.3	188.0	-1.4	-0.2	0.0	0.9	-0.1
Materials for food manufacturing.....	3.264	196.0	201.0	201.8	2.7	0.4	1.0	0.8	1.3
Materials for nondurable manufacturing.....	16.019	241.8	242.9	242.3	-3.6	-0.2	0.3	1.6	-0.2
Materials for durable manufacturing.....	9.345	198.9	197.4	197.0	-2.7	-0.2	-0.8	1.0	-0.1
Components for manufacturing.....	15.946	147.9	148.0	147.8	0.7	-0.1	0.0	0.2	-0.1
Materials and components for construction.....	9.136	219.1	219.1	219.2	2.2	0.0	0.2	0.3	0.1
Processed fuels and lubricants.....	21.619	210.7	222.5	217.7	2.6	-2.2	4.2	4.3	-0.5
Manufacturing industries.....	5.475	213.1	223.6	215.2	1.7	-3.8	2.9	3.2	-1.8
Nonmanufacturing industries.....	16.144	210.4	222.7	219.1	2.9	-1.6	4.7	4.7	-0.1
Containers.....	2.478	206.7	206.3	206.5	0.5	0.1	-0.1	0.4	0.2
Supplies.....	22.193	188.4	191.2	191.1	2.9	-0.1	0.6	0.7	0.1
Manufacturing industries.....	2.833	183.6	182.4	182.5	0.2	0.1	-0.7	0.2	0.1
Nonmanufacturing industries.....	19.360	187.7	191.0	190.8	3.2	-0.1	0.9	0.7	0.1
Feeds.....	1.558	222.1	258.8	254.0	24.8	-1.9	7.8	6.1	-1.2
Other supplies.....	17.802	186.5	187.1	187.3	1.3	0.1	0.1	0.2	0.2
Crude materials for further processing.....	100.000	227.1	244.5	242.3	-0.2	-0.9	5.8	2.8	0.9
Foodstuffs and feedstuffs.....	35.619	188.9	201.7	202.4	8.6	0.3	4.6	1.6	1.9
Nonfood materials.....	64.381	244.2	264.3	259.7	-5.1	-1.7	6.6	3.5	0.2
Nonfood materials except fuel <sup>3</sup> .....	49.948	308.5	335.9	323.9	-2.4	-3.6	6.7	6.0	-1.3
Manufacturing <sup>3</sup> .....	48.090	291.3	318.2	306.4	-2.6	-3.7	7.0	6.2	-1.3
Construction.....	1.858	212.1	214.0	212.9	2.9	-0.5	-0.2	0.8	0.0
Crude fuel <sup>4</sup> .....	14.433	133.8	141.3	149.3	-13.0	5.7	6.5	-5.3	5.9
Manufacturing industries.....	0.546	179.0	181.9	187.6	-6.2	3.1	3.4	-2.2	3.6
Nonmanufacturing industries.....	13.887	135.0	142.8	151.0	-13.3	5.7	6.6	-5.4	6.1
<b>Special groupings</b>									
Finished goods, excluding foods.....	81.222 <sup>5</sup>	190.7	194.9	194.4	2.4	-0.3	1.9	1.3	-0.3
Intermediate materials less foods and feeds.....	92.396 <sup>6</sup>	199.6	202.2	201.0	0.2	-0.6	0.9	1.5	-0.2
Intermediate foods and feeds.....	7.604 <sup>6</sup>	198.9	209.7	209.4	7.4	-0.1	2.4	2.0	0.7
Crude materials less agricultural products <sup>3, 7</sup> .....	61.245 <sup>8</sup>	244.3	263.3	259.1	-5.9	-1.6	6.8	3.7	0.2
Finished energy goods.....	22.631 <sup>5</sup>	188.8	201.9	197.1	3.1	-2.4	6.4	4.7	-0.5
Finished goods less energy.....	77.369 <sup>5</sup>	185.4	186.5	187.4	2.1	0.5	0.4	0.1	-0.1
Finished consumer goods less energy.....	50.699 <sup>5</sup>	196.4	198.2	198.9	2.5	0.4	0.5	0.2	0.0
Finished goods less foods and energy.....	58.591 <sup>5</sup>	181.8	182.4	183.6	2.1	0.7	0.2	0.0	-0.2
Finished consumer goods less foods and energy.....	31.921 <sup>5</sup>	195.9	197.2	198.4	2.6	0.6	0.2	0.2	-0.3
Consumer nondurable goods less foods and energy.....	18.286 <sup>5</sup>	237.2	239.9	240.1	3.2	0.1	0.2	0.2	0.0
Intermediate energy goods.....	22.994 <sup>6</sup>	215.5	227.5	222.6	2.4	-2.2	4.4	4.3	-0.6
Intermediate materials less energy.....	77.006 <sup>6</sup>	193.1	193.9	193.8	0.3	-0.1	0.1	0.7	0.1
Intermediate materials less foods and energy.....	69.402 <sup>6</sup>	192.2	192.0	191.9	-0.5	-0.1	-0.2	0.6	0.0
Crude energy materials <sup>3</sup> .....	39.792 <sup>8</sup>	197.4	221.7	218.8	-4.8	-1.3	9.7	4.4	1.3
Crude materials less energy.....	60.208 <sup>8</sup>	232.5	244.0	242.7	2.7	-0.5	3.7	1.6	0.7
Crude nonfood materials less energy <sup>4</sup> .....	24.589 <sup>8</sup>	357.7	364.9	357.7	-6.2	-2.0	2.2	1.6	-1.4

1 Comprehensive relative importance figures are initially computed after the publication of December indexes and are recalculated after final December indexes are available. Individual items and subtotals may not add exactly to totals because of rounding differences.

2 The indexes for June 2012 have been recalculated to incorporate late reports and corrections by respondents. All indexes are subject to revision 4 months after original publication.

3 Includes crude petroleum.

4 Excludes crude petroleum.

5 Percent of total finished goods.

6 Percent of total intermediate materials.

7 Formerly titled "Crude materials for further processing, excluding crude foodstuffs and feedstuffs, plant and animal fibers, oilseeds, and leaf tobacco."

8 Percent of total crude materials.

**Table 2. Producer price indexes and percent changes for selected commodity groupings by stage of processing**

[1982=100, unless otherwise indicated]

Grouping	Commodity code	Unadjusted index			Unadjusted percent change to Oct. 2012 from:		Seasonally adjusted percent change from:		
		June 2012 <sup>1</sup>	Sept. 2012 <sup>1</sup>	Oct. 2012 <sup>1</sup>	Oct. 2011	Sept. 2012	July to Aug.	Aug. to Sept.	Sept. to Oct.
<b>Finished goods.....</b>		192.8	196.7	196.3	2.3	-0.2	1.7	1.1	-0.2
Finished consumer goods.....		205.5	211.2	210.0	2.7	-0.6	2.3	1.6	-0.1
Finished consumer foods.....		198.1	200.8	200.5	2.3	-0.1	0.9	0.2	0.4
Fresh fruits and melons <sup>2</sup> .....	01-11	114.7	125.0	124.3	7.9	-0.6	-0.8	11.1	-0.6
Fresh and dry vegetables <sup>2</sup> .....	01-13	165.4	155.5	138.4	-21.9	-11.0	7.4	-6.6	-11.0
Eggs for fresh use (Dec 1991=100).....	01-71-07	126.1	153.1	142.1	-6.0	-7.2	22.8	-10.0	-7.6
Bakery products.....	02-11	260.7	261.7	261.1	1.1	-0.2	0.2	0.3	-0.5
Milled rice <sup>2</sup> .....	02-13	197.9	205.1	205.5	-1.9	0.2	1.9	0.8	0.2
Pasta products (June 1985=100) <sup>2</sup> .....	02-14-02	205.1	202.4	199.7	0.8	-1.3	0.1	-0.4	-1.3
Beef and veal.....	02-21-01	206.9	207.5	193.9	6.8	-6.6	-3.2	2.3	-2.5
Pork.....	02-21-04	149.3	148.7	157.3	-6.0	5.8	1.4	-6.7	8.1
Processed young chickens.....	02-22-03	167.1	168.3	171.5	18.7	1.9	2.0	0.1	3.8
Processed turkeys.....	02-22-06	145.3	146.6	147.8	-5.3	0.8	2.2	2.2	-0.1
Finfish and shellfish.....	02-23	285.8	289.1	284.8	1.6	-1.5	1.0	2.1	-2.2
Dairy products <sup>2</sup> .....	02-3	184.1	197.2	203.2	1.9	3.0	3.0	2.8	3.0
Processed fruits and vegetables.....	02-4	191.7	192.3	192.7	2.9	0.2	0.2	-0.3	0.5
Confectionery end products <sup>2</sup> .....	02-55	260.8	260.6	262.7	3.6	0.8	0.2	0.1	0.8
Soft drinks <sup>2</sup> .....	02-62	191.9	192.8	193.7	2.5	0.5	0.3	-0.2	0.5
Roasted coffee <sup>2</sup> .....	02-63-01	216.2	213.5	213.0	-8.3	-0.2	-0.8	0.1	-0.2
Shortening and cooking oils.....	02-78	295.9	294.0	291.2	-2.5	-1.0	-1.5	1.6	2.3
Frozen specialties <sup>2</sup> .....	02-85	183.7	184.2	184.7	1.9	0.3	0.1	0.1	0.3
Finished consumer goods excluding foods.....		206.9	213.6	212.2	2.9	-0.7	2.7	2.0	-0.3
Alcoholic beverages.....	02-61	185.2	188.4	189.8	3.1	0.7	0.6	0.5	-0.5
Pet food.....	02-94-02	240.2	244.1	243.1	3.3	-0.4	0.5	0.9	-0.4
Women's, girls', & infants' apparel (Dec 2003=100) <sup>2</sup> .....	03-81-06	103.7	103.6	103.8	0.5	0.2	0.1	0.1	0.2
Men's and boys' apparel (Dec 2003=100) <sup>2</sup> .....	03-81-07	112.4	113.3	113.1	3.5	-0.2	1.0	0.0	-0.2
Textile housefurnishings <sup>2</sup> .....	03-82	142.2	144.3	143.7	1.9	-0.4	1.0	-0.9	-0.4
Footwear <sup>2</sup> .....	04-3	176.0	178.1	178.2	4.8	0.1	-0.3	-0.1	0.1
Residential electric power (Dec 1990=100).....	05-41	161.7	163.0	161.2	1.3	-1.1	0.4	0.3	1.6
Residential gas (Dec 1990=100).....	05-51	172.8	180.1	180.3	-7.6	0.1	1.0	1.3	0.2
Gasoline.....	05-71	296.8	331.7	317.8	9.6	-4.2	13.6	9.8	-2.2
Home heating oil and distillates.....	05-73-02	261.1	305.0	286.6	2.7	-6.0	10.8	3.1	-3.3
Pharmaceutical preparations (June 2001=100).....	06-38	169.5	173.1	173.9	6.6	0.5	0.5	0.3	0.7
Soaps and detergents <sup>2</sup> .....	06-71	174.3	175.5	176.5	3.9	0.6	0.0	0.3	0.6
Cleaning and polishing products (June 1983=100) <sup>2</sup> .....	06-72	169.1	169.9	169.7	2.7	-0.1	0.5	0.0	-0.1
Cosmetics and other toilet preparations <sup>2</sup> .....	06-75	153.5	154.9	153.9	0.9	-0.6	1.0	-0.2	-0.6
Tires, tubes, tread, etc <sup>2</sup> .....	07-12	159.4	159.4	157.9	0.7	-0.9	-0.1	-0.1	-0.9
Sanitary paper products <sup>2</sup> .....	09-15-01	186.1	186.1	185.7	-0.1	-0.2	-0.1	0.1	-0.2
Household furniture <sup>2</sup> .....	12-1	196.8	196.8	198.1	2.2	0.7	-0.3	0.1	0.7
Floor coverings <sup>2</sup> .....	12-3	181.1	181.6	179.6	-0.5	-1.1	-0.5	0.3	-1.1
Household appliances.....	12-4	117.5	118.1	118.8	5.1	0.6	0.1	0.3	0.5
Home electronic equipment <sup>2</sup> .....	12-5	52.4	52.2	52.2	-1.3	0.0	-0.4	0.0	0.0
Lawn and garden equip, ex tractors <sup>2</sup> .....	12-66	142.2	142.3	142.3	0.6	0.0	0.1	0.0	0.0
Silverware and hollowware (Dec 2011=100) <sup>2</sup> .....	12-6A	99.8	99.2	100.0	-	0.8	-1.8	0.8	0.8
Passenger cars.....	14-11-01	130.8	130.4	132.2	0.2	1.4	-0.2	-0.2	-1.6
Travel trailers and campers (June 1984=100).....	14-16	178.7	179.1	179.3	3.0	0.1	1.5	-1.2	0.0
Toys, games, and children's vehicles <sup>2</sup> .....	15-11	150.2	150.7	150.6	3.2	-0.1	2.2	-0.5	-0.1
Sporting and athletic goods <sup>2</sup> .....	15-12	134.2	134.5	134.3	0.9	-0.1	0.1	0.0	-0.1
Tobacco products <sup>2</sup> .....	15-2	627.3	639.2	639.3	3.8	0.0	0.1	0.0	0.0
Mobile homes <sup>2</sup> .....	15-5	245.4	247.1	248.2	3.5	0.4	0.4	-0.1	0.4
Jewelry, platinum, & karat gold <sup>2</sup> .....	15-94-02	238.5	240.5	240.7	2.5	0.1	0.1	1.0	0.1
Costume jewelry and novelties <sup>2</sup> .....	15-94-04	164.6	166.5	166.0	2.0	-0.3	2.1	-0.7	-0.3
Capital equipment.....		162.5	162.5	163.5	1.4	0.6	0.2	-0.1	-0.3
Agricultural machinery and equipment <sup>2</sup> .....	11-1	213.8	214.3	214.2	0.9	0.0	0.0	0.1	0.0
Construction machinery and equipment.....	11-2	205.5	205.4	206.4	3.6	0.5	0.0	-0.1	0.5
Metal cutting machine tools <sup>2</sup> .....	11-37	184.8	186.4	185.6	1.9	-0.4	1.2	-0.3	-0.4
Metal forming machine tools <sup>2</sup> .....	11-38	208.6	213.3	211.4	3.9	-0.9	0.2	2.4	-0.9
Tools, dies, jigs, fixtures, and ind. molds <sup>2</sup> .....	11-39	147.8	148.3	148.3	0.9	0.0	-0.1	0.3	0.0
Pumps, compressors, and equipment.....	11-41	230.4	230.9	230.9	2.7	0.0	0.1	0.2	0.0
Industrial material handling equipment <sup>2</sup> .....	11-44	193.9	195.2	194.9	2.6	-0.2	0.1	0.1	-0.2
Electronic computers (Dec 2004=100) <sup>2</sup> .....	11-51	24.8	24.0	24.2	-6.9	0.8	-0.4	-2.4	0.8

See footnotes at end of table.

**Table 2. Producer price indexes and percent changes for selected commodity groupings by stage of processing — Continued**  
 [1982=100, unless otherwise indicated]

Grouping	Commodity code	Unadjusted index			Unadjusted percent change to Oct. 2012 from:		Seasonally adjusted percent change from:		
		June 2012 <sup>1</sup>	Sept. 2012 <sup>1</sup>	Oct. 2012 <sup>1</sup>	Oct. 2011	Sept. 2012	July to Aug.	Aug. to Sept.	Sept. to Oct.
<b>Capital equipment - Continued</b>									
Textile machinery <sup>2</sup> .....	11-62	168.3	169.3	169.7	1.4	0.2	0.8	-0.2	0.2
Paper industries machinery (June 1982=100) <sup>2</sup> .....	11-64	204.6	207.2	206.4	1.7	-0.4	0.0	1.2	-0.4
Printing trades machinery <sup>2</sup> .....	11-65	157.9	158.8	158.8	0.9	0.0	0.2	0.0	0.0
Transformers and power regulators <sup>2</sup> .....	11-74	227.1	224.2	225.5	-1.7	0.6	0.1	0.1	0.6
Communication & related equip (Dec 1985=100).....	11-76	106.7	106.0	106.0	0.1	0.0	0.2	-0.7	0.0
X-ray and electromedical equipment.....	11-79-05	88.2	88.5	88.5	0.1	0.0	0.5	-0.1	0.0
Oil field and gas field machinery.....	11-91	211.3	211.7	211.8	2.4	0.0	1.2	-0.1	0.1
Mining machinery and equipment.....	11-92	243.2	246.7	246.3	3.9	-0.2	0.0	0.2	-0.3
Office and store machines and equipment <sup>2</sup> .....	11-93	123.2	120.8	120.8	-1.8	0.0	0.0	-1.9	0.0
Commercial furniture <sup>2</sup> .....	12-2	205.6	204.9	205.5	1.5	0.3	0.4	-0.7	0.3
Light motor trucks.....	14-11-05	158.1	157.6	163.8	3.2	3.9	0.6	0.3	-1.5
Heavy motor trucks <sup>2</sup> .....	14-11-06	205.9	204.6	205.3	1.5	0.3	-0.1	-0.5	0.3
Truck trailers <sup>2</sup> .....	14-14	197.2	195.5	195.5	2.0	0.0	-1.0	0.1	0.0
Civilian aircraft (Dec 1985=100).....	14-21-02	251.7	254.1	253.8	2.5	-0.1	0.1	0.4	-0.2
Ships (Dec 1985=100) <sup>2</sup> .....	14-31	220.7	219.5	219.6	-0.8	0.0	0.0	-0.7	0.0
Railroad equipment <sup>2</sup> .....	14-4	191.5	190.6	190.8	1.8	0.1	-1.1	0.5	0.1
Signs and advertising displays (Dec 1985=100) <sup>2</sup> .....	15-9A-04	158.7	159.9	159.8	1.6	-0.1	0.1	0.2	-0.1
<b>Intermediate materials, supplies, and components.....</b>		<b>199.7</b>	<b>202.9</b>	<b>201.8</b>	<b>0.8</b>	<b>-0.5</b>	<b>1.1</b>	<b>1.5</b>	<b>-0.1</b>
<b>Intermediate foods and feeds.....</b>									
		<b>198.9</b>	<b>209.7</b>	<b>209.4</b>	<b>7.4</b>	<b>-0.1</b>	<b>2.4</b>	<b>2.0</b>	<b>0.7</b>
Flour <sup>2</sup> .....	02-12-03	219.6	238.8	238.6	7.8	-0.1	-1.7	3.1	-0.1
Refined sugar and byproducts <sup>2</sup> .....	02-53	207.3	202.7	200.0	-2.8	-1.3	-1.0	-1.1	-1.3
Confectionery materials.....	02-54	178.2	177.5	177.7	-4.9	0.1	0.3	1.0	0.1
Soft drink beverage bases (Dec 1985=100) <sup>2</sup> .....	02-64-01-11	233.4	233.4	233.3	2.9	0.0	0.0	0.0	0.0
Processed eggs <sup>2</sup> .....	02-83	140.8	194.8	213.1	19.8	9.4	30.1	3.8	9.4
Prepared animal feeds.....	02-9	218.5	248.1	243.7	20.3	-1.8	6.6	5.1	-0.6
<b>Intermediate materials less foods and feeds.....</b>									
		<b>199.6</b>	<b>202.2</b>	<b>201.0</b>	<b>0.2</b>	<b>-0.6</b>	<b>0.9</b>	<b>1.5</b>	<b>-0.2</b>
Synthetic fibers <sup>2</sup> .....	03-1	123.1	121.9	120.8	-0.7	-0.9	-0.5	-0.2	-0.9
Processed yarns and threads <sup>2</sup> .....	03-2	142.3	141.5	142.0	-9.1	0.4	1.3	-0.6	0.4
Gray fabrics <sup>2</sup> .....	03-3	143.0	141.2	140.7	-4.4	-0.4	0.0	0.4	-0.4
Finished fabrics <sup>2</sup> .....	03-4	149.9	149.6	149.6	-0.7	0.0	-0.1	-0.7	0.0
Industrial textile products <sup>2</sup> .....	03-83-03	158.5	159.4	159.3	2.8	-0.1	-0.1	0.6	-0.1
Leather <sup>2</sup> .....	04-2	258.8	261.4	263.6	-0.3	0.8	-0.2	1.6	0.8
Liquefied petroleum gas <sup>2</sup> .....	05-32	223.5	280.2	279.3	-24.1	-0.3	11.9	3.5	-0.3
Commercial electric power.....	05-42	188.1	190.6	186.1	0.3	-2.4	0.7	-0.4	1.3
Industrial electric power.....	05-43	207.7	225.1	214.5	3.8	-4.7	0.3	0.4	-1.6
Commercial natural gas (Dec 1990=100) <sup>2</sup> .....	05-52	169.4	177.9	175.6	-9.7	-1.3	2.5	-0.4	-1.3
Industrial natural gas (Dec 1990=100).....	05-53	157.4	165.1	164.7	-11.7	-0.2	2.8	2.0	0.2
Natural gas to electric utilities (Dec 1990=100).....	05-54	148.3	149.0	152.3	-5.2	2.2	2.9	-1.4	1.0
Jet fuels.....	05-72-03	283.5	331.7	326.4	10.4	-1.6	9.0	13.8	1.0
No 2 Diesel fuel.....	05-73-03	295.4	341.7	349.6	12.6	2.3	4.9	9.2	2.2
Residual fuels <sup>2</sup> .....	05-74	259.9	284.6	288.0	6.0	1.2	9.4	5.0	1.2
Basic inorganic chemicals <sup>2</sup> .....	06-13	298.2	296.3	296.8	-3.1	0.2	-0.4	-0.3	0.2
Basic organic chemicals <sup>2</sup> .....	06-14	300.5	301.8	301.2	-9.0	-0.2	-0.9	3.0	-0.2
Prepared paint <sup>2</sup> .....	06-21	270.9	271.8	271.8	8.5	0.0	0.0	0.1	0.0
Paint materials <sup>2</sup> .....	06-22	303.0	302.1	293.3	6.0	-2.9	-1.6	1.2	-2.9
Medicinal and botanical chemicals <sup>2</sup> .....	06-31	178.9	179.1	177.9	1.8	-0.7	0.0	0.0	-0.7
Fats and oils, inedible <sup>2</sup> .....	06-4	334.8	351.6	333.3	-3.8	-5.2	1.2	0.6	-5.2
Mixed fertilizers <sup>2</sup> .....	06-51	209.4	194.6	197.2	-2.6	1.3	-6.2	-0.7	1.3
Nitrogenates <sup>2</sup> .....	06-52-01	384.7	355.0	352.8	-2.8	-0.6	-7.5	3.4	-0.6
Phosphates <sup>2</sup> .....	06-52-02	256.0	264.8	265.7	-12.9	0.3	0.3	1.2	0.3
Other agricultural chemicals <sup>2</sup> .....	06-53	182.7	185.8	183.6	3.0	-1.2	0.2	0.3	-1.2
Plastic resins and materials <sup>2</sup> .....	06-6	236.3	235.0	238.2	3.9	1.4	0.8	0.3	1.4
Synthetic rubber <sup>2</sup> .....	07-11-02	268.8	243.7	244.4	-17.5	0.3	-1.7	-2.7	0.3
Plastic construction products <sup>2</sup> .....	07-21	208.2	207.2	207.6	2.7	0.2	0.0	0.8	0.2
Unsupported plastic film, sheet, & other shapes <sup>2</sup> .....	07-22	212.6	212.7	212.0	0.7	-0.3	-0.7	1.1	-0.3
Plastic parts and components for manufacturing <sup>2</sup> .....	07-26	140.8	141.3	141.4	1.9	0.1	-0.1	0.9	0.1
Softwood lumber.....	08-11	176.3	177.6	169.7	6.7	-4.4	3.4	2.6	-2.7
Hardwood lumber <sup>2</sup> .....	08-12	182.3	184.2	185.7	1.0	0.8	1.9	-0.5	0.8
Millwork.....	08-2	216.6	217.9	218.4	2.6	0.2	0.5	0.2	0.2
Plywood <sup>2</sup> .....	08-3	189.8	195.8	195.3	12.8	-0.3	0.4	1.7	-0.3
Treated wood (June 1985=100).....	08-71-01	184.0	180.2	180.8	13.4	0.3	3.5	1.7	2.3

See footnotes at end of table.



**Table 2. Producer price indexes and percent changes for selected commodity groupings by stage of processing — Continued**  
 [1982=100, unless otherwise indicated]

Grouping	Commodity code	Unadjusted index			Unadjusted percent change to Oct. 2012 from:		Seasonally adjusted percent change from:		
		June 2012 <sup>1</sup>	Sept. 2012 <sup>1</sup>	Oct. 2012 <sup>1</sup>	Oct. 2011	Sept. 2012	July to Aug.	Aug. to Sept.	Sept. to Oct.
<b>Intermediate materials less foods and feeds - Continued</b>									
Woodpulp <sup>2</sup> .....	09-11	185.9	185.1	184.9	-3.7	-0.1	-0.1	-1.7	-0.1
Paper <sup>2</sup> .....	09-13	191.8	191.6	191.0	-1.2	-0.3	-0.4	-0.1	-0.3
Paperboard <sup>2</sup> .....	09-14	225.9	225.0	228.5	-0.7	1.6	0.3	-0.5	1.6
Paper boxes and containers.....	09-15-03	225.8	225.2	227.2	1.2	0.9	-0.2	0.0	1.1
Building paper and board <sup>2</sup> .....	09-2	181.8	199.3	200.2	22.3	0.5	6.5	2.6	0.5
Commercial printing (June 1982=100) <sup>2</sup> .....	09-47	169.6	169.5	169.8	-0.7	0.2	-0.1	-0.2	0.2
Foundry and forge shop products <sup>2</sup> .....	10-15	208.7	208.4	208.3	1.7	0.0	-0.3	0.2	0.0
Steel mill products <sup>2</sup> .....	10-17	209.9	203.3	199.4	-8.5	-1.9	-2.5	1.0	-1.9
Primary nonferrous metals <sup>2</sup> .....	10-22	205.1	215.1	225.6	4.0	4.9	0.3	6.4	4.9
Aluminum mill shapes <sup>2</sup> .....	10-25-01	176.8	176.4	178.8	-4.6	1.4	-0.7	1.1	1.4
Copper and brass mill shapes <sup>2</sup> .....	10-25-02	416.6	428.3	440.5	4.7	2.8	-1.0	3.6	2.8
Titanium mill shapes <sup>2</sup> .....	10-25-05	183.8	185.5	184.7	-15.2	-0.4	-0.4	-7.8	-0.4
Nonferrous wire and cable <sup>2</sup> .....	10-26	264.1	263.3	266.9	-2.6	1.4	0.5	-1.3	1.4
Metal containers <sup>2</sup> .....	10-3	152.1	152.2	151.2	-0.7	-0.7	0.2	2.1	-0.7
Hardware <sup>2</sup> .....	10-4	203.0	202.2	204.0	1.6	0.9	-0.4	0.1	0.9
Plumbing fixtures and brass fittings.....	10-5	241.4	242.3	242.8	1.8	0.2	0.1	0.5	0.4
Heating equipment <sup>2</sup> .....	10-6	235.5	236.9	237.6	3.0	0.3	0.0	0.3	0.3
Fabricated structural metal products.....	10-7	215.4	214.0	214.1	0.6	0.0	-0.2	0.6	0.0
Fabricated ferrous wire products (June 1982=100).....	10-88	222.0	221.3	220.8	1.4	-0.2	-0.7	0.1	0.0
Other misc metal products <sup>2</sup> .....	10-89	160.1	160.0	159.8	0.5	-0.1	-0.1	0.1	-0.1
Mechanical power transmission equipment <sup>2</sup> .....	11-45	247.7	248.2	248.2	1.6	0.0	0.1	0.0	0.0
Air conditioning and refrigeration equipment <sup>2</sup> .....	11-48	170.2	172.3	169.9	0.8	-1.4	0.8	0.9	-1.4
Metal valves, ex.fluid power (Dec. 1982=100).....	11-49-02	275.9	276.1	278.0	3.8	0.7	-0.1	0.0	0.8
Ball and roller bearings <sup>2</sup> .....	11-49-05	244.8	245.3	245.6	3.1	0.1	0.5	-0.4	0.1
Wiring devices <sup>2</sup> .....	11-71	224.2	227.5	227.9	3.8	0.2	0.8	0.5	0.2
Motors, generators, motor generator sets <sup>2</sup> .....	11-73	206.6	206.2	206.2	1.0	0.0	-0.1	0.0	0.0
Switchgear, switchboard, etc, equipment <sup>2</sup> .....	11-75	212.4	213.9	213.9	1.5	0.0	0.6	0.0	0.0
Electronic components and accessories <sup>2</sup> .....	11-78	69.5	69.6	69.0	-2.3	-0.9	0.0	-0.1	-0.9
Internal combustion engines.....	11-94	165.6	165.8	165.8	0.1	0.0	0.1	0.1	0.1
Machine shop products <sup>2</sup> .....	11-95	182.6	183.2	183.2	1.7	0.0	0.1	0.2	0.0
Flat glass <sup>2</sup> .....	13-11	113.9	115.7	115.6	1.8	-0.1	0.4	1.0	-0.1
Cement <sup>2</sup> .....	13-22	191.3	190.7	191.4	3.9	0.4	-0.5	-0.1	0.4
Concrete products.....	13-3	214.1	215.2	215.7	2.3	0.2	0.5	0.1	0.2
Asphalt felts and coatings <sup>2</sup> .....	13-6	237.6	235.0	236.4	-1.5	0.6	-1.5	0.3	0.6
Gypsum products <sup>2</sup> .....	13-7	236.6	232.3	230.7	14.1	-0.7	0.3	-1.3	-0.7
Glass containers.....	13-8	188.1	188.0	187.0	1.4	-0.5	0.1	0.1	-0.3
Motor vehicle parts <sup>2</sup> .....	14-12	125.1	125.3	125.3	0.6	0.0	0.0	0.2	0.0
Aircraft engines & engine parts (Dec 1985=100).....	14-23	211.2	212.4	212.3	3.8	0.0	0.4	0.3	0.1
Aircraft parts & aux. equip.,nec (June 1985=100).....	14-25	171.6	172.6	172.6	0.3	0.0	0.2	0.6	-0.1
Photographic supplies <sup>2</sup> .....	15-42	147.1	147.1	147.1	3.7	0.0	0.1	0.0	0.0
Medical/surgical/personal aid devices.....	15-6	172.7	172.7	172.9	1.1	0.1	0.2	0.2	0.2
<b>Crude materials for further processing.....</b>		227.1	244.5	242.3	-0.2	-0.9	5.8	2.8	0.9
<b>Crude foodstuffs and feedstuffs.....</b>		188.9	201.7	202.4	8.6	0.3	4.6	1.6	1.9
Wheat <sup>2</sup> .....	01-21	185.8	232.4	234.8	17.2	1.0	0.1	3.6	1.0
Corn.....	01-22-02	247.6	310.1	297.7	17.9	-4.0	9.9	-1.7	1.0
Slaughter cattle <sup>2</sup> .....	01-31	181.7	188.2	185.2	6.7	-1.6	3.2	4.1	-1.6
Slaughter hogs.....	01-32	117.3	82.4	102.5	-12.7	24.4	-11.8	-16.1	27.7
Slaughter chickens.....	01-41-02	235.8	222.0	220.9	19.8	-0.5	9.3	2.8	5.4
Slaughter turkeys.....	01-42	207.9	219.5	218.3	-3.1	-0.5	-0.8	-0.7	-2.8
Raw milk.....	01-6	121.1	142.8	157.7	6.0	10.4	5.6	5.7	8.7
Soybeans <sup>2</sup> .....	01-83-01-31	245.1	289.8	263.1	28.0	-9.2	2.1	2.5	-9.2
Cane sugar, raw <sup>2</sup> .....	02-52-01	181.7	177.6	175.2	-11.7	-1.4	1.6	-1.4	-1.4
<b>Crude nonfood materials.....</b>		244.2	264.3	259.7	-5.1	-1.7	6.6	3.5	0.2
Raw cotton <sup>2</sup> .....	01-51	128.8	120.5	121.0	-21.3	0.4	-8.1	2.7	0.4
Hides and skins <sup>2</sup> .....	04-1	278.6	271.6	267.6	-1.1	-1.5	-0.9	0.1	-1.5
Coal.....	05-1	212.7	209.7	212.2	2.3	1.2	0.8	0.1	2.0
Natural gas <sup>2</sup> .....	05-31	102.1	114.6	125.5	-20.8	9.5	11.0	-9.6	9.5
Crude petroleum.....	05-61	241.4	283.3	267.9	1.0	-5.4	12.8	11.4	-1.5
Logs, timber, etc <sup>2</sup> .....	08-5	229.7	232.1	232.7	-0.2	0.3	-0.4	0.7	0.3
Wastepaper <sup>2</sup> .....	09-12	396.6	288.7	322.5	-32.8	11.7	-17.7	-12.0	11.7

See footnotes at end of table.

**Table 2. Producer price indexes and percent changes for selected commodity groupings by stage of processing — Continued**

[1982=100, unless otherwise indicated]

Grouping	Commodity code	Unadjusted index			Unadjusted percent change to Oct. 2012 from:		Seasonally adjusted percent change from:		
		June 2012 <sup>1</sup>	Sept. 2012 <sup>1</sup>	Oct. 2012 <sup>1</sup>	Oct. 2011	Sept. 2012	July to Aug.	Aug. to Sept.	Sept. to Oct.
Crude nonfood materials - Continued									
Iron ore <sup>2</sup> .....	10-11	180.5	179.1	179.1	4.7	0.0	-2.3	-1.8	0.0
Iron and steel scrap <sup>2</sup> .....	10-12	535.0	531.8	471.1	-27.3	-11.4	9.0	-0.3	-11.4
Nonferrous metal ores (Dec 1983=100) <sup>2</sup> .....	10-21	343.9	362.8	374.1	6.9	3.1	0.6	5.1	3.1
Copper base scrap.....	10-23-01	600.3	592.2	599.3	2.7	1.2	-1.9	7.0	0.0
Aluminum base scrap.....	10-23-02	235.1	223.6	234.5	-7.5	4.9	2.6	1.2	4.7
Construction sand, gravel, and crushed stone.....	13-21	272.5	275.1	273.5	2.6	-0.6	-0.2	0.9	-0.1
Industrial sand.....	13-99-01	276.1	276.1	276.1	11.7	0.0	0.3	0.1	0.3

<sup>1</sup> The indexes for June 2012 have been recalculated to incorporate late reports and corrections by respondents. All indexes are subject to revision 4 months after original publication.

<sup>2</sup> Not seasonally adjusted.

"-" Data not available.

**Table 3. Producer price indexes for selected commodity groupings**  
 [1982=100, unless otherwise indicated]

Grouping	Commodity code	Unadjusted index <sup>1</sup>		
		June 2012	Sept. 2012	Oct. 2012
All commodities.....		199.8	204.5	203.5
<b>Major commodity groups</b>				
Farm products and processed foods and feeds.....		197.1	205.7	205.2
Farm products.....	01	184.7	199.7	198.0
Processed foods and feeds.....	02	203.7	209.3	209.4
Industrial commodities.....		200.0	203.9	202.9
Textile products and apparel.....	03	142.1	142.0	141.7
Hides, skins, leather, and related products.....	04	203.6	203.2	202.6
Fuels and related products and power.....	05	205.5	220.7	216.2
Chemicals and allied products.....	06	273.9	275.4	275.2
Rubber and plastic products.....	07	188.3	186.1	185.9
Lumber and wood products.....	08	202.3	203.9	203.0
Pulp, paper, and allied products.....	09	244.2	242.7	243.7
Metals and metal products.....	10	218.5	217.4	216.4
Machinery and equipment.....	11	134.3	134.4	134.2
Furniture and household durables.....	12	160.9	160.9	161.3
Nonmetallic mineral products.....	13	211.4	211.9	211.9
Transportation equipment.....	14	169.1	169.3	171.2
Miscellaneous products.....	15	234.7	236.1	236.3
Industrial commodities less fuels and related products and power.....		193.7	193.7	193.9
<b>Other commodity groupings</b>				
Fruits and melons, fresh and dry vegetables, and tree nuts.....	01-1	155.6	156.3	148.1
Grains.....	01-2	232.8	289.4	281.2
Slaughter livestock.....	01-3	169.5	161.0	166.4
Slaughter poultry.....	01-4	226.2	217.8	216.8
Plant and animal fibers.....	01-5	130.1	121.7	122.2
Chicken eggs.....	01-7	145.0	193.8	179.6
Hay, hayseeds, and oilseeds.....	01-8	288.5	327.4	305.4
Oilseeds.....	01-83	268.7	311.1	284.6
Cereal and bakery products.....	02-1	243.7	249.9	248.8
Meats, poultry, and fish.....	02-2	181.8	181.7	180.5
Processed poultry.....	02-22	157.9	158.6	161.0
Sugar and confectionery.....	02-5	219.1	217.8	218.2
Beverages and beverage materials.....	02-6	192.7	194.4	195.4
Packaged beverage materials.....	02-63	209.4	207.2	207.0
Fats and oils.....	02-7	299.9	301.5	297.1
Apparel.....	03-81	136.3	136.7	136.7
Other leather and related products.....	04-4	167.3	168.7	168.8
Gas fuels.....	05-3	131.3	152.9	162.2
Electric power.....	05-4	192.7	197.4	192.8
Refined petroleum products.....	05-7	291.7	327.4	320.2
Drugs and pharmaceuticals.....	06-3	414.2	421.4	421.7
Agricultural chemicals and products.....	06-5	251.2	247.2	246.4
Other chemicals and allied products.....	06-7	188.9	189.5	189.1
Rubber and rubber products.....	07-1	190.4	186.5	185.7
Rubber, except natural rubber.....	07-11	267.4	242.4	243.2
Miscellaneous rubber products.....	07-13	195.0	196.2	195.4
Plastic products.....	07-2	194.4	192.7	192.7
Lumber.....	08-1	174.7	176.2	172.1
Pulp, paper, and products, excluding building paper and board.....	09-1	213.9	211.3	212.4
Converted paper and paperboard products.....	09-15	218.6	218.1	218.5
Iron and steel.....	10-1	239.0	234.1	225.2
Nonferrous metals.....	10-2	250.4	253.0	259.1
Nonferrous mill shapes.....	10-25	205.1	206.1	209.7
Metalworking machinery and equipment.....	11-3	179.3	180.0	179.9
General purpose machinery and equipment.....	11-4	213.8	214.7	214.5
Special industry machinery.....	11-6	193.6	194.2	194.1
Electrical machinery and equipment.....	11-7	113.5	113.4	113.1
Miscellaneous machinery and equipment.....	11-9	176.5	176.5	176.7
Other household durable goods.....	12-6	184.8	184.8	184.9
Concrete ingredients.....	13-2	238.3	239.8	239.0
Motor vehicles and equipment.....	14-1	141.5	141.4	143.7
Toys, sporting goods, small arms, etc.....	15-1	152.9	153.3	153.1
Photographic equipment and supplies.....	15-4	127.4	127.7	127.9
Other miscellaneous products.....	15-9	175.5	176.0	176.3

<sup>1</sup> Data for June 2012 have been revised to reflect the availability of late reports and corrections by respondents. All data are subject to revision 4 months after original publication.

**Table 4. Producer price indexes for the net output of selected industries and industry groups, not seasonally adjusted**

Industry <sup>1</sup>	Industry code	Index base	Index			Percent change to Oct. 2012 from:	
			June 2012 <sup>2</sup>	Sept. 2012 <sup>2</sup>	Oct. 2012 <sup>2</sup>	Oct. 2011	Sept. 2012
<b>Total mining, utilities, and manufacturing industries.....</b>		12/06	120.4	122.7	122.3	2.0	-0.3
<b>Total mining industries.....</b>		12/84	208.4	227.7	226.3	-3.7	-0.6
Oil and gas extraction.....	211	12/85	208.4	244.0	239.9	-8.7	-1.7
Mining (except oil & gas).....	212	12/03	227.5	228.8	231.8	3.5	1.3
Mining support activities.....	213	06/09	116.4	116.7	116.7	2.7	0.0
<b>Utilities.....</b>	221	12/03	131.4	133.7	131.4	-1.5	-1.7
<b>Total manufacturing industries.....</b>		12/84	191.7	195.3	194.9	2.5	-0.2
Food mfg.....	311	12/84	197.1	201.7	201.7	3.8	0.0
Beverage & tobacco mfg.....	312	12/03	131.4	132.9	133.5	3.0	0.5
Textile mills.....	313	12/84	128.1	127.6	127.4	-3.1	-0.2
Textile product mills.....	314	12/03	125.6	126.3	125.7	0.4	-0.5
Apparel manufacturing.....	315	12/03	107.3	107.6	107.6	0.9	0.0
Leather and allied product manufacturing.....	316	12/84	167.5	168.5	169.1	2.1	0.4
Wood product manufacturing.....	321	12/03	113.1	114.7	114.4	4.9	-0.3
Paper manufacturing.....	322	12/03	131.6	131.4	131.8	-0.3	0.3
Printing and related support activities.....	323	12/03	111.8	111.6	111.8	-0.5	0.2
Petroleum and coal products manufacturing.....	324	12/84	366.7	400.5	390.4	5.8	-2.5
Chemical mfg.....	325	12/84	259.6	260.7	261.7	2.3	0.4
Plastics and rubber products mfg.....	326	12/84	181.7	180.4	180.2	0.8	-0.1
Nonmetallic mineral product mfg.....	327	12/84	180.0	180.9	180.9	3.3	0.0
Primary metal mfg.....	331	12/84	207.1	204.5	203.7	-4.9	-0.4
Fabricated metal product mfg.....	332	12/84	185.9	185.5	185.6	0.7	0.1
Machinery mfg.....	333	12/03	126.1	126.6	126.5	1.8	-0.1
Computer & electronic product mfg.....	334	12/03	89.6	89.3	89.1	-0.8	-0.2
Electrical equipment, appliance & component mfg.....	335	12/03	138.6	138.4	138.7	1.6	0.2
Transportation equipment mfg.....	336	12/03	114.4	114.4	115.8	1.8	1.2
Furniture & related product mfg.....	337	12/84	185.0	185.7	186.1	2.0	0.2
Miscellaneous mfg.....	339	12/03	117.5	117.7	117.8	1.1	0.1
<b>Total trade industries.....</b>		12/06	119.0	118.6	120.4	3.0	1.5
<b>Total wholesale trade industries.....</b>		12/06	121.1	123.2	124.4	3.0	1.0
Merchant wholesalers, durable goods.....	423	06/04	123.3	125.2	124.9	3.2	-0.2
Merchant wholesalers, nondurable goods.....	424	06/05	140.8	143.8	147.2	2.6	2.4
Wholesale trade agents and brokers.....	425	06/05	129.7	129.9	129.9	4.5	0.0
<b>Total retail trade industries.....</b>		12/06	117.7	115.4	117.7	3.0	2.0
Motor vehicle and parts dealers.....	441	12/03	131.4	131.7	131.4	2.7	-0.2
Furniture and home furnishings stores.....	442	12/03	127.2	125.8	127.1	-0.1	1.0
Electronics and appliance stores.....	443	12/03	78.0	76.8	78.9	-11.7	2.7
Bldg material and garden equip and supp dealers.....	444	12/03	127.7	130.6	131.6	5.7	0.8
Food and beverage stores.....	445	12/99	163.6	164.7	164.4	4.1	-0.2
Health and personal care stores.....	446	12/03	134.6	138.1	136.4	1.4	-1.2
Gasoline stations.....	447	06/01	86.4	73.2	79.9	1.7	9.2
Clothing and clothing accessories stores.....	448	12/03	128.1	118.8	125.0	-2.7	5.2
Sporting goods hobby, book and music stores.....	451	12/03	114.7	116.2	116.1	3.8	-0.1
General merchandise stores.....	452	12/03	126.3	123.3	129.9	10.6	5.4
Florists.....	4531	12/03	107.1	107.0	106.9	4.6	-0.1
Office supplies, stationery and gift stores.....	4532	12/03	135.3	139.1	141.0	7.0	1.4
Manufactured (mobile) home dealers.....	45393	12/03	114.7	112.2	110.6	-5.7	-1.4
Nonstore retailers.....	454	12/03	155.8	139.5	140.5	-1.0	0.7
<b>Transportation and warehousing industries.....</b>		12/06	124.5	123.1	124.3	3.2	1.0
<b>Transportation industries.....</b>		12/06	122.4	121.0	122.2	3.1	1.0
Air transportation.....	481	12/92	233.7	218.2	224.3	1.9	2.8
Rail transportation.....	482	12/96	179.5	177.0	179.1	4.2	1.2
Water transportation.....	483	12/03	137.6	135.8	136.2	3.4	0.3
Truck transportation.....	484	12/03	130.0	132.2	132.5	3.9	0.2
Pipeline transportation of crude oil.....	486110	06/86	208.0	224.2	224.8	7.5	0.3
Refined petroleum product pipeline transport.....	486910	06/86	161.4	169.4	169.6	5.1	0.1
Transportation support activities.....	488	12/03	115.6	116.5	116.4	1.9	-0.1
<b>Delivery and warehouse industries.....</b>		12/06	131.1	130.0	131.0	3.9	0.8
U.S. Postal Service.....	491	06/89	196.0	196.0	196.0	2.3	0.0
Couriers and messengers.....	492	12/03	181.1	177.9	180.5	6.3	1.5
Warehousing and storage.....	493	12/06	100.4	101.1	101.1	-2.4	0.0
<b>Total traditional service industries.....</b>		12/06	108.9	109.1	109.2	1.2	0.1
<b>Information.....</b>		12/06	102.7	103.2	102.8	0.2	-0.4
Publishing industries, except Internet.....	511	12/03	111.2	111.5	111.4	0.2	-0.1
Broadcasting, except Internet.....	515	12/03	117.8	118.1	123.2	7.7	4.3
Telecommunications.....	517	12/03	101.8	102.4	101.6	-0.4	-0.8

See footnotes at end of table.

**Table 4. Producer price indexes for the net output of selected industries and industry groups, not seasonally adjusted — Continued**

Industry <sup>1</sup>	Industry code	Index base	Index			Percent change to Oct. 2012 from:	
			June 2012 <sup>2</sup>	Sept. 2012 <sup>2</sup>	Oct. 2012 <sup>2</sup>	Oct. 2011	Sept. 2012
Data processing and related services.....	5182	12/03	102.5	102.9	102.7	0.7	-0.2
Internet publishing and web search portals.....	519130	12/09	97.0	97.1	96.3	-0.9	-0.8
<b>Selected health care industries.....</b>		12/06	114.8	115.2	115.8	1.9	0.5
Offices of physicians.....	6211	12/96	133.1	133.3	133.5	0.9	0.2
Offices of dentists.....	6212	06/10	103.8	103.9	103.9	1.4	0.0
Medical and diagnostic laboratories.....	6215	12/03	108.3	108.5	108.5	-0.5	0.0
Home health care services.....	6216	12/96	130.2	130.4	130.6	0.6	0.2
Blood and organ banks.....	621991	06/06	114.8	115.2	115.3	0.9	0.1
Hospitals.....	622	12/92	180.8	181.7	183.3	2.6	0.9
Nursing care facilities.....	6231	12/03	130.2	130.7	131.0	2.3	0.2
Residential mental retardation facilities.....	62321	12/03	139.5	139.9	144.4	4.6	3.2
<b>Other selected traditional service industries.....</b>		12/06	108.0	108.0	108.2	1.2	0.2
Depository credit intermediation.....	5221	12/03	106.0	103.6	102.4	-5.3	-1.2
Security, commodity contracts and like activity.....	523	12/03	127.8	129.6	131.7	7.8	1.6
Insurance carriers and related activities.....	524	12/03	122.6	122.7	122.9	1.7	0.2
Lessors of nonres bldg (exc miniwarehouse).....	53112	12/03	110.4	110.5	109.7	-0.5	-0.7
Lessors of miniwarehouse and self storage units.....	53113	12/03	114.7	118.4	116.7	2.7	-1.4
Offices of real estate agents and brokers.....	5312	12/03	98.9	100.1	100.6	3.1	0.5
Real estate property managers.....	53131	12/03	107.8	107.4	107.9	0.7	0.5
Offices of real estate appraisers.....	531320	12/03	98.9	99.1	99.1	1.5	0.0
Automotive equipment rental and leasing.....	5321	06/01	128.0	132.1	132.9	-0.4	0.6
Other heavy machinery rental and leasing.....	532412	12/03	114.3	117.2	119.3	0.9	1.8
Legal services.....	5411	12/96	182.9	183.1	183.0	2.6	-0.1
Offices of certified public accountants.....	541211	12/03	111.1	115.1	113.7	2.3	-1.2
Other accounting services.....	541219	12/03	106.0	106.0	106.0	0.8	0.0
Architectural, engineering and related services.....	5413	12/96	147.2	148.4	148.5	1.5	0.1
Management and technical consulting services.....	5416	06/06	110.4	110.4	110.2	0.5	-0.2
Advertising agencies.....	54181	12/03	107.5	108.4	108.1	1.7	-0.3
Employment services.....	5613	12/96	126.2	126.6	126.6	0.8	0.0
Travel agencies.....	56151	12/03	101.5	102.0	102.1	0.4	0.1
Security guards and patrol services.....	561612	12/04	109.2	109.2	109.2	0.0	0.0
Janitorial services.....	56172	12/03	113.8	113.6	113.6	0.1	0.0
Waste collection.....	5621	12/03	121.8	122.3	122.5	0.8	0.2
Computer training.....	61142	06/06	113.7	113.7	113.7	0.6	0.0
Amusement and theme parks.....	71311	06/06	135.4	138.0	137.7	10.2	-0.2
Golf courses and country clubs.....	71391	12/05	111.8	111.8	110.4	1.5	-1.3
Fitness and recreational sports centers.....	71394	12/04	102.4	102.5	102.6	0.5	0.1
Accommodation.....	721	12/96	147.2	146.1	148.6	2.3	1.7
Commercial machinery repair and maintenance.....	8113	06/06	117.7	118.5	118.2	1.6	-0.3

1 Indexes in this table are derived from the net-output-weighted industry price indexes. Because of differences in coverage and aggregation methodology, they will generally not match the movements of similarly titled indexes which are derived from traditional commodity groupings.

2 The indexes for June 2012 have been recalculated to incorporate late reports and corrections by respondents. All indexes are subject to revision 4 months after original publication.

"-" Data not available.

NOTE: NAICS replaced the SIC system beginning with the release of PPI data for January 2004. See <http://www.bls.gov/ppi/ppinaics.htm> for details.

**Table 5. Producer price indexes by stage of processing, seasonally adjusted**  
 [1982=100]

Grouping	Index <sup>1</sup>					
	May 2012	June 2012	July 2012	Aug. 2012	Sept. 2012	Oct. 2012
Finished goods.....	191.6	191.9	192.4	195.6	197.8	197.5
Finished consumer goods.....	203.4	203.6	204.1	208.7	212.0	211.7
Finished consumer foods.....	196.7	197.9	198.7	200.4	200.9	201.7
Crude.....	167.0	172.3	172.6	184.1	182.6	173.2
Processed.....	199.2	200.1	201.0	201.8	202.4	204.1
Finished consumer goods, excluding foods.....	204.6	204.5	204.9	210.5	214.8	214.1
Nondurable goods less foods.....	228.1	227.5	227.7	235.9	242.2	241.6
Durable goods.....	150.5	151.3	152.0	152.3	152.4	151.6
Capital equipment.....	162.8	163.1	163.5	163.8	163.7	163.2
Manufacturing industries.....	165.2	165.3	165.6	165.8	165.8	165.6
Nonmanufacturing industries.....	161.7	162.1	162.6	162.9	162.7	162.2
Intermediate materials, supplies, and components.....	199.9	198.4	197.6	199.7	202.7	202.5
Materials and components for manufacturing.....	191.3	187.8	186.7	186.7	188.4	188.3
Materials for food manufacturing.....	192.9	194.6	196.7	198.7	200.3	203.0
Materials for nondurable manufacturing.....	253.1	242.1	238.8	239.5	243.3	242.8
Materials for durable manufacturing.....	201.7	198.9	197.2	195.6	197.5	197.4
Components for manufacturing.....	147.8	147.8	147.7	147.7	148.0	147.9
Materials and components for construction.....	218.9	219.1	218.2	218.6	219.3	219.6
Processed fuels and lubricants.....	203.9	204.1	202.7	211.3	220.4	219.3
Manufacturing industries.....	198.0	204.0	204.0	210.0	216.8	212.8
Nonmanufacturing industries.....	206.9	205.1	203.3	212.8	222.8	222.6
Containers.....	207.2	206.4	205.2	205.0	205.8	206.3
Supplies.....	188.0	188.1	188.6	189.8	191.1	191.3
Manufacturing industries.....	183.8	183.6	183.3	182.0	182.4	182.6
Nonmanufacturing industries.....	187.2	187.3	187.9	189.5	190.9	191.0
Feeds.....	217.6	220.1	227.3	245.0	260.0	256.9
Other supplies.....	186.4	186.3	186.4	186.6	187.0	187.3
Crude materials for further processing.....	229.4	221.6	226.0	239.2	245.8	247.9
Foodstuffs and feedstuffs.....	185.0	182.7	192.0	200.8	204.1	208.0
Nonfood materials.....	251.3	239.4	239.6	255.5	264.5	264.9
Nonfood materials except fuel <sup>2</sup> .....	328.6	303.6	299.5	319.6	338.8	334.4
Manufacturing <sup>2</sup> .....	310.4	285.8	281.7	301.5	320.3	316.0
Construction.....	210.4	211.2	211.7	211.3	213.0	213.0
Crude fuel <sup>3</sup> .....	123.9	133.1	140.3	149.4	141.5	149.9
Manufacturing industries.....	170.0	176.3	179.2	185.3	181.2	187.8
Nonmanufacturing industries.....	124.8	134.2	141.8	151.1	142.9	151.6
<b>Special groupings</b>						
Finished goods, excluding foods.....	189.6	189.6	190.0	193.6	196.2	195.6
Intermediate materials less foods and feeds.....	200.3	198.5	197.4	199.2	202.2	201.8
Intermediate foods and feeds.....	196.2	197.8	200.6	205.5	209.6	211.0
Crude materials less agricultural products <sup>2</sup> .....	251.6	239.9	237.5	253.7	263.0	263.5
Finished energy goods.....	183.1	182.0	181.2	192.8	201.9	200.9
Finished goods less energy.....	185.2	185.9	186.7	187.4	187.5	187.4
Finished consumer goods less energy.....	196.0	196.8	197.9	198.8	199.1	199.1
Finished goods less foods and energy.....	182.0	182.4	183.3	183.7	183.7	183.3
Finished consumer goods less foods and energy.....	196.1	196.6	197.9	198.3	198.6	198.1
Consumer nondurable goods less foods and energy.....	237.2	237.3	239.2	239.7	240.2	240.2
Intermediate energy goods.....	209.7	209.1	207.0	216.2	225.5	224.1
Intermediate materials less energy.....	194.7	192.9	192.5	192.6	194.0	194.1
Intermediate materials less foods and energy.....	194.4	192.3	191.5	191.1	192.2	192.2
Crude energy materials <sup>2</sup> .....	200.6	191.1	192.0	210.6	219.9	222.8
Crude materials less energy.....	233.2	227.6	234.5	243.1	247.0	248.7
Crude nonfood materials less energy <sup>3</sup> .....	370.8	355.5	354.8	362.6	368.3	363.3

1 All seasonally adjusted indexes are subject to change up to 5 years after original publication due to the recalculation of seasonal factors each January. The indexes for June 2012 have been recalculated to incorporate late reports and corrections by respondents.

2 Includes crude petroleum.

3 Excludes crude petroleum.