

# NEWS RELEASE

BUREAU OF LABOR STATISTICS

U. S. D E P A R T M E N T O F L A B O R



For release 10:00 a.m. (ET) Thursday, May 29, 2025

USDL-25-0906

Technical Information: (202) 691-5606 • [productivity@bls.gov](mailto:productivity@bls.gov) • [www.bls.gov/productivity](http://www.bls.gov/productivity)

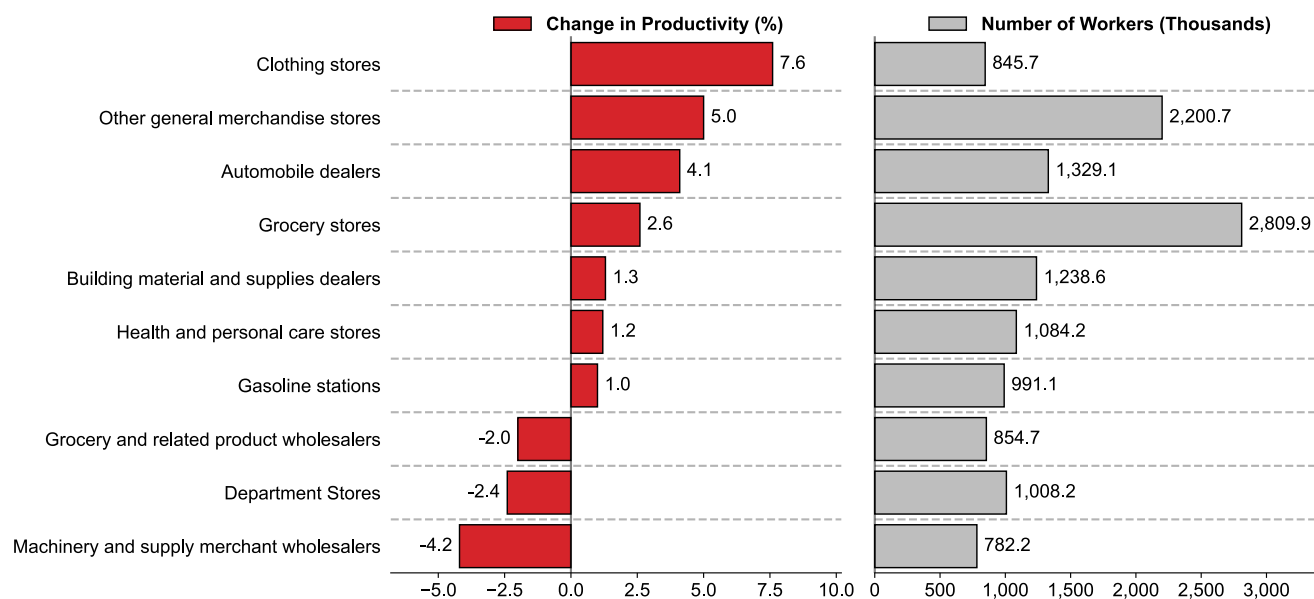
Media Contact: (202) 691-5902 • [PressOffice@bls.gov](mailto:PressOffice@bls.gov)

## PRODUCTIVITY AND COSTS BY INDUSTRY WHOLESALE TRADE AND RETAIL TRADE INDUSTRIES – 2024

**Labor productivity** grew 1.8 percent in wholesale trade and 4.6 percent in retail trade in 2024, the U.S. Bureau of Labor Statistics reported today. Output grew 2.7 percent in wholesale trade and 3.3 percent in retail trade. Hours worked increased 0.9 percent in wholesale trade and decreased 1.2 percent in retail trade. **Unit labor costs**, which reflect the total labor costs required to produce a unit of output, rose 1.1 percent in wholesale trade and fell 1.8 percent in retail trade.

The ten largest four-digit NAICS industries by employment represent 58.2 percent of all workers in the wholesale and retail trade sectors. Among these ten industries, productivity growth in 2024 was greatest in clothing stores (+7.6 percent), building on its increase in 2023. Three of these ten industries posted productivity declines: machinery and supply merchant wholesalers (-4.2 percent), department stores (-2.4 percent), and grocery and related product wholesalers (-2.0 percent).

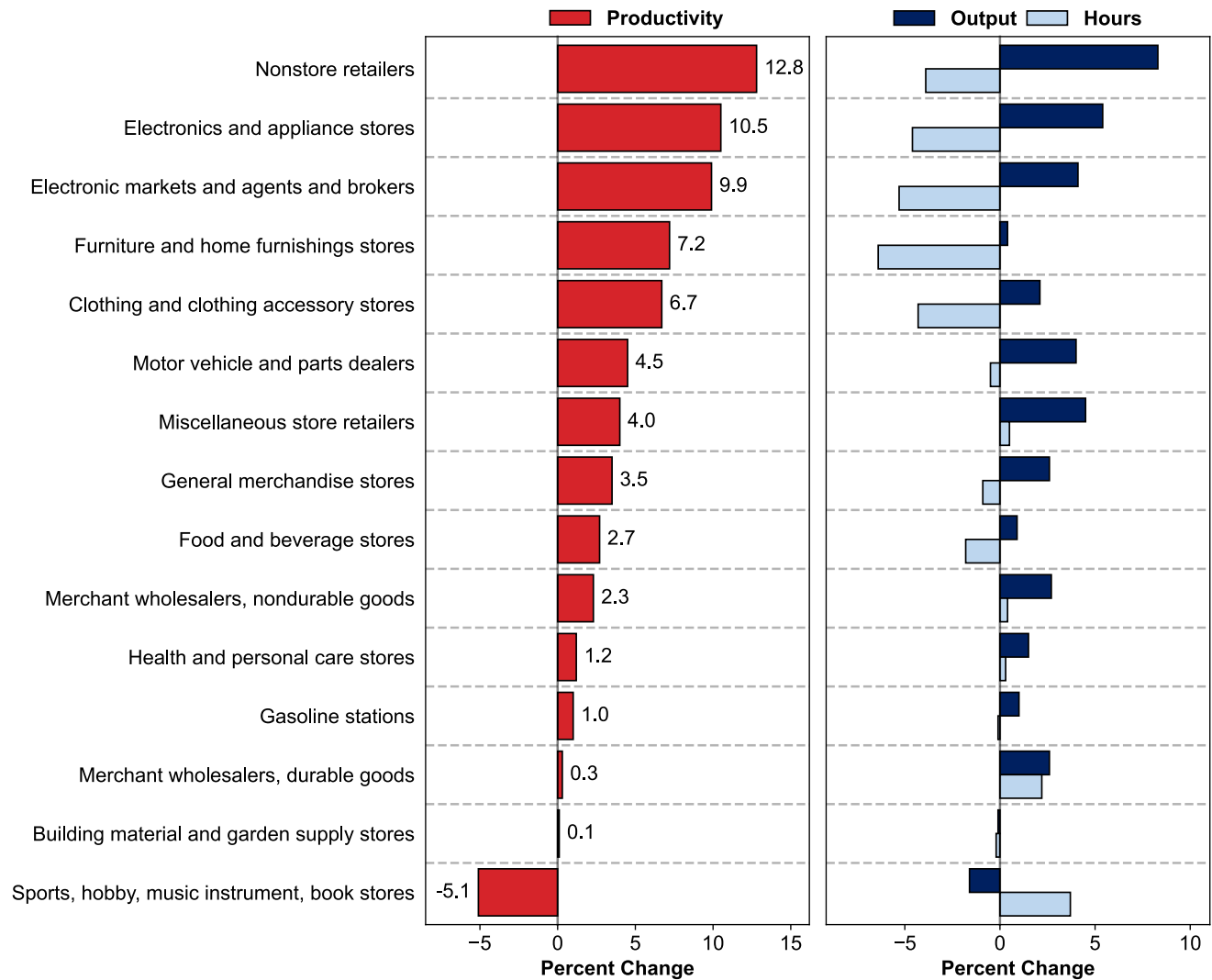
**Chart 1. Productivity change in the largest (by number of workers) four-digit NAICS wholesale and retail trade industries, 2024**



## Labor Productivity Rose in All but 1 of the Three-Digit NAICS Trade Industries in 2024

Productivity increased in 14 of 15 three-digit NAICS industries in 2024. (See table 1.) The industries with double-digit gains were nonstore retailers (+12.8 percent) and electronics and appliance stores (+10.5 percent). Sporting goods, hobby, musical instrument, and book stores was the lone industry with a productivity decline (-5.1 percent), attributed to declining output (-1.6 percent) and increasing hours (+3.7 percent). (See chart 2.)

**Chart 2. Productivity change in three-digit NAICS wholesale and retail trade industries, 2024**



## Labor Productivity Increased in 32 of 46 Four-Digit NAICS Trade Industries in 2024

Productivity increased in 12 of 19 four-digit NAICS wholesale trade industries with output increasing in 11 industries and hours worked rising in 11 industries.

- Productivity rose 0.3 percent in durable goods wholesalers and 2.3 percent in nondurable goods wholesalers.
- Among four-digit industries, the highest increase in productivity occurred in petroleum and petroleum products merchant wholesalers (+12.9 percent), as output rose (+7.4 percent) while hours declined (-4.9 percent).

Productivity increased in 20 of 27 four-digit NAICS retail trade industries while output grew in 17 industries and hours worked rose in 10 industries.

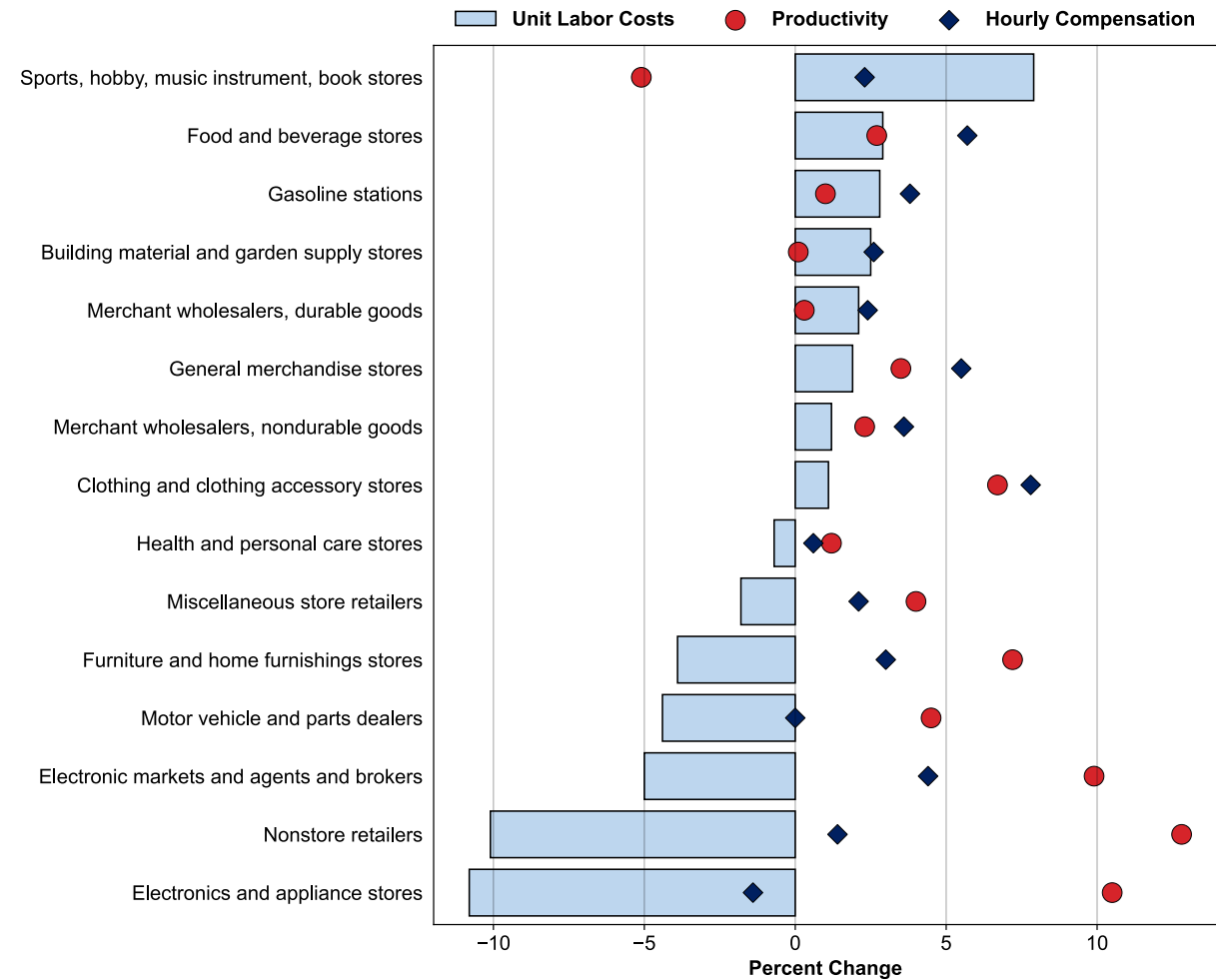
- The largest productivity increase occurred in florists (+24.1 percent), as output increased (+3.9 percent) and hours fell (-16.3 percent).
- The largest output increase occurred in electronic shopping and mail-order houses (+9.8 percent). This increase combined with a drop in hours (-5.5 percent) resulted in a 16.2-percent growth in productivity.

### Unit Labor Costs Rose in 8 of 15 Three-Digit NAICS Trade Industries in 2024

When hourly compensation outpaces productivity gains, **unit labor costs** grow.

- The largest decrease in unit labor costs occurred in electronics and appliance stores (-10.8 percent), in which productivity grew (+10.5 percent) while hourly compensation declined (-1.4 percent). (See chart 3.)
- Among four-digit NAICS industries, unit labor costs rose in 12 of 19 wholesale trade industries and in 11 of 27 retail trade industries.
- Hourly compensation rose in 38 of 46 four-digit NAICS industries.

**Chart 3. Unit labor costs, productivity, and hourly compensation in three-digit NAICS wholesale and retail trade industries, 2024**



## 2019 to 2024 Trends

**Labor productivity** increased in 33 of 46 four-digit trade industries from 2019 to 2024. Output increased in 27 of 46 four-digit trade industries from 2019 to 2024. (See table 3.) Note that the annual percent changes for periods of more than 1 year are annualized average rates of change over the entire period, or a compound annual growth rate. The industry with the highest labor productivity growth rate during this period was electronic shopping and mail-order houses (+13.2 percent per year). This industry also had the highest output increase from 2019 to 2024 (+13.8 percent). Vending machine operators experienced the steepest annual declines in labor productivity (-7.2 percent) and output (-7.8 percent) during this period.

Hours worked decreased in 28 of 46 four-digit trade industries from 2019 to 2024. The four industries with the largest decreases in hours worked over these 5 years were shoe stores (-5.8 percent per year), direct selling establishments (-5.6 percent), office supplies, stationery, and gift stores (-5.5 percent), and jewelry, luggage, and leather goods stores (-5.0 percent). The industry with the largest increase in hours worked was used merchandise stores (+4.1 percent).

### Long-term Labor Productivity Increases in All but 3 Trade Industries

From 1987 to 2024, **labor productivity** increased 2.4 percent per year in wholesale trade and 3.2 percent per year in retail trade. (See table 2.)

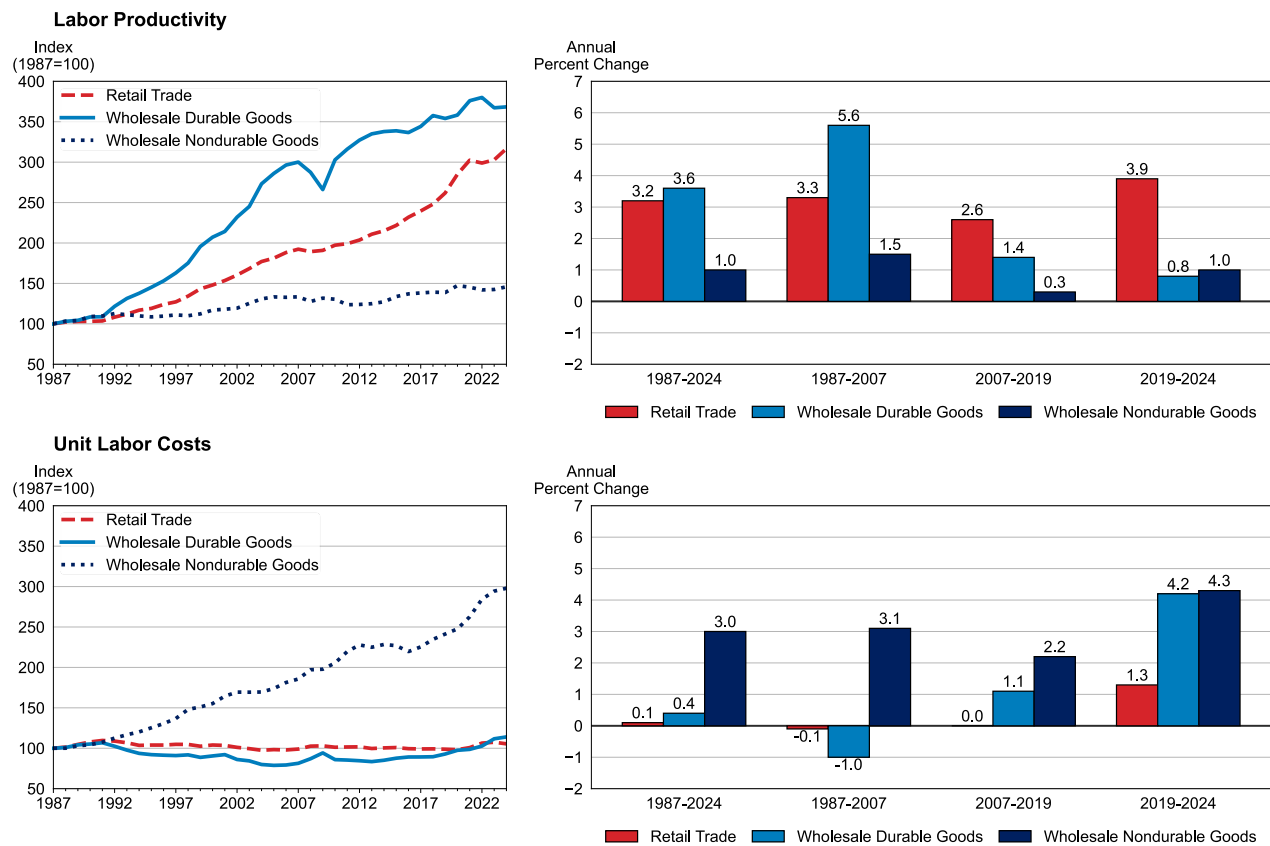
- Among the 46 four-digit NAICS industries, productivity rose in all but three industries—metal and mineral merchant wholesalers (-0.7 percent), vending machine operators (-0.5 percent), and miscellaneous nondurable goods merchant wholesalers (unchanged).
- Of the 43 four-digit NAICS industries with increasing productivity growth, output rose in 38 industries and hours worked increased in 22.
- Median productivity among four-digit NAICS industries grew at an annual rate of 2.0 percent.
- Among subperiods, productivity growth in the wholesale nondurable goods and retail trade industries was slower from 2007 to 2019 than during the periods preceding and following. The slowest productivity increase for wholesale durable goods occurred over the 2019-24 period (+0.8 percent). Productivity growth was fastest for retail trade in the 2019-24 period and for both durable and nondurable wholesale trade industries in the 1987-2007 period. (See chart 4.)
- Productivity grew in 43 of 46 four-digit NAICS industries during the 1987-2007 period. The number of industries with productivity growth fell to 33 in both the 2007-19 and 2019-24 periods.

### Long-term Trends in Unit Labor Costs Vary by Sector

From 1987 to 2024, **unit labor costs** increased 1.5 percent per year in wholesale trade and 0.1 percent per year in retail trade. (See table 2.)

- Among the 46 four-digit NAICS industries, unit labor costs rose in 17 of 19 wholesale trade industries and 15 of 27 retail trade industries from 1987 to 2024.
- Across subperiods, unit labor costs rose in 29 industries in 1987-2007, 34 industries in 2007-19, and 40 industries in 2019-24. (See chart 4.)
- In all three periods, unit labor costs remained positive for wholesale nondurable goods. After falling from 1987 to 2007, wholesale durable goods unit labor costs increased for both the 2007-19 and 2019-24 periods. In retail trade, unit labor costs fell slightly from 1987 to 2007, were unchanged from 2007 to 2019, and rose from 2019 to 2024.

Chart 4. Long-term changes in productivity and unit labor costs for retail trade industry and the wholesale trade durable and nondurable goods industry groups



## **Additional Information**

The trade measures in this release incorporate benchmark data from the Census Bureau's Monthly Wholesale Trade Survey (March 2025), Monthly Retail Trade Survey (February 2025), and Nonemployer Statistics (December 2024) with the National Income and Product Accounts (March 2025) from the Bureau of Economic Analysis. Accordingly, the labor productivity and output series for all industries have been revised for 2023 and earlier years. Additionally, the unit labor cost measures incorporate preliminary data from the BLS Quarterly Census of Employment and Wages (March 2025).

More information about the North American Industry Classification System (NAICS) can be found at [www.census.gov/naics/](http://www.census.gov/naics/).

Access the productivity data dashboard at [www.bls.gov/productivity/tables/labor-productivity-detailed-industries.xlsx](http://www.bls.gov/productivity/tables/labor-productivity-detailed-industries.xlsx) for

- Additional industries and sectors
- Detailed data series: indexes of productivity and related measures; rates of change; and levels of industry employment, hours worked, nominal value of production, and labor compensation
- Additional years and long-term data

Subscribe to productivity news releases on the BLS website at <https://public.govdelivery.com/accounts/USDOLBLS/subscriber/new>.

If you are deaf, hard of hearing, or have a speech disability, please dial 7-1-1 to access telecommunications relay services.

## Technical Note

**Labor Productivity:** Labor productivity describes the relationship between output and the labor hours involved in its production. These measures show the changes from period to period in the amount of goods and services produced per hour worked. Although the labor productivity measures relate real output in an industry to hours worked of all persons in that industry, they do not measure the specific contribution of labor to growth in output. Rather, they reflect the joint effects of many influences, including: changes in technology; capital investment; utilization of capacity, energy, and materials; the use of purchased services inputs, including contract employment services; the organization of production; the characteristics and effort of the workforce; and managerial skill.

**Unit Labor Costs:** Unit labor costs represent the cost of labor required to produce one unit of output. The unit labor cost indexes are computed by dividing an index of nominal industry labor compensation by an index of real industry output. Unit labor costs also describe the relationship between compensation per hour worked (hourly compensation) and real output per hour worked (labor productivity). When hourly compensation growth outpaces productivity, unit labor costs increase. Alternatively, when productivity growth exceeds hourly compensation, unit labor costs decrease.

**Output:** Industry output is measured as an annual-weighted index of the changes in the various products (in real terms) provided for sale outside the industry. Real industry output for data in this release is derived by deflating nominal sales or values of production using price indexes. Industry output measures are constructed primarily using U.S. Census Bureau data from the economic censuses and annual surveys along with U.S. Bureau of Economic Analysis National Income and Product Accounts reported revenues and prices, together with information on price changes from BLS.

**Labor Hours:** Labor hours are measured as annual hours worked by all workers in an industry. All workers include the sum of BLS Current Employment Statistics (CES) data on the number of jobs held by wage and salary workers in nonfarm establishments and Current Population Survey (CPS) data on the number of self-employed and unpaid family workers. Labor hours for wage and salary workers are estimated using CES data on hours paid of all employees. Paid hours are adjusted to an hours worked concept using ratios of hours worked to hours paid based on data from the National Compensation Survey (NCS) and off-the-clock hours incorporated from CPS data. Hours worked of self-employed and unpaid family workers are directly from the CPS. For some industries, employment and hours data are supplemented or further disaggregated using data from the BLS Quarterly Census of Employment and Wages (QCEW), the Census Bureau, or other sources. Hours worked are estimated separately for different types of workers and then are directly aggregated; no adjustments for labor composition are made.

**Labor Compensation:** Labor compensation, defined as payroll plus supplemental payments, is a measure of the cost to the employer of securing the services of labor. Payroll includes salaries, wages, commissions, dismissal pay, bonuses, vacation and sick leave pay, and compensation in kind. Supplemental payments include both legally required expenditures and payments for voluntary programs. The legally required portion consists primarily of federal old age and survivors' insurance, unemployment compensation, and workers' compensation. Payments for voluntary programs include all programs not specifically required by legislation, such as the employer portion of private health

insurance and pension plans. Industry compensation measures are constructed primarily using data from the BLS QCEW and the economic censuses of the Census Bureau at the U.S. Department of Commerce.

**Annual Percent Change:** The annual percent change is the change in a series from one year to the next as a percent of the series value in the previous year. Over a period of more than one year, the annual percent change is the compound annual growth rate in an index series, or an annualized average growth rate. Because the change of an index series varies from year to year, the annual percent change for a long time period reflects the constant rate that can be applied to each year in a period, from the start to the end, that would give the same total result. It is calculated as  $(\text{Ending Value}/\text{Starting Value})^{(1/\text{Number of Years})} - 1$ .



**Table 1. Recent labor productivity, unit labor costs, and related data**

Industry	2017 NAICS code	2024 Employment (thousands)	Percent change, 2023-2024					
			Labor productivity	Unit labor costs	Output	Hours worked	Labor compen- sation	Hourly compen- sation
Wholesale trade.....	42	6,264.8	1.8	1.1	2.7	0.9	3.9	2.9
Merchant wholesalers, durable goods.....	423	3,484.0	0.3	2.1	2.6	2.2	4.7	2.4
Motor vehicles and parts.....	4231	387.6	2.1	-1.2	4.4	2.3	3.2	0.9
Furniture and furnishings.....	4232	113.4	0.5	5.2	-2.6	-3.1	2.5	5.7
Lumber and construction supplies.....	4233	268.9	-6.7	10.9	-5.1	1.7	5.3	3.5
Commercial equipment.....	4234	756.6	2.4	0.4	4.8	2.3	5.2	2.8
Metals and minerals.....	4235	138.6	-12.4	9.2	-7.8	5.3	0.7	-4.4
Appliances and electric goods.....	4236	383.3	6.4	-5.0	11.6	4.9	6.0	1.1
Hardware and plumbing.....	4237	317.3	4.3	0.2	4.0	-0.2	4.2	4.4
Machinery and supplies.....	4238	782.2	-4.2	7.7	-1.9	2.4	5.7	3.2
Miscellaneous durable goods.....	4239	336.1	-3.6	3.7	-1.6	2.0	2.0	0.0
Merchant wholesalers, nondurable goods.....	424	2,279.8	2.3	1.2	2.7	0.4	4.0	3.6
Paper and paper products.....	4241	115.1	2.1	4.5	-2.6	-4.6	1.9	6.7
Druggists' goods.....	4242	261.0	7.9	0.0	5.3	-2.4	5.3	7.9
Apparel and piece goods.....	4243	149.2	8.4	-3.3	3.2	-4.8	-0.3	4.8
Grocery and related products.....	4244	854.7	-2.0	4.0	1.1	3.1	5.1	2.0
Farm product raw materials.....	4245	78.3	3.6	-4.9	13.1	9.2	7.6	-1.5
Chemicals.....	4246	157.4	0.3	2.1	1.0	0.6	3.1	2.4
Petroleum.....	4247	102.9	12.9	-6.3	7.4	-4.9	0.7	5.8
Alcoholic beverages.....	4248	220.1	-4.9	8.0	-2.7	2.3	5.1	2.7
Miscellaneous nondurable goods.....	4249	341.1	-3.0	7.7	-5.0	-2.1	2.3	4.5
Electronic markets and agents and brokers.....	425	501.0	9.9	-5.0	4.1	-5.3	-1.1	4.4
Electronic markets and agents and brokers.....	4251	501.0	9.9	-5.0	4.1	-5.3	-1.1	4.4
Retail trade.....	44-45	16,312.8	4.6	-1.8	3.3	-1.2	1.4	2.7
Motor vehicle and parts dealers.....	441	2,104.4	4.5	-4.4	4.0	-0.5	-0.6	0.0
Automobile dealers.....	4411	1,329.1	4.1	-5.1	4.4	0.3	-0.9	-1.2
Other motor vehicle dealers.....	4412	170.5	8.1	-3.3	-0.5	-7.9	-3.7	4.5
Auto parts, accessories, and tire stores.....	4413	604.8	2.9	-0.5	2.7	-0.2	2.2	2.4
Furniture and home furnishings stores.....	442	419.7	7.2	-3.9	0.4	-6.4	-3.5	3.0
Furniture stores.....	4421	207.0	7.7	-3.5	-0.1	-7.3	-3.6	3.9
Home furnishings stores.....	4422	212.7	6.7	-4.4	1.0	-5.4	-3.4	2.0
Electronics and appliance stores.....	443	401.5	10.5	-10.8	5.4	-4.6	-6.0	-1.4
Electronics and appliance stores.....	4431	401.5	10.5	-10.8	5.4	-4.6	-6.0	-1.4
Building material and garden supply stores.....	444	1,444.3	0.1	2.5	-0.1	-0.2	2.4	2.6
Building material and supplies dealers.....	4441	1,238.6	1.3	1.4	0.2	-1.0	1.6	2.7
Lawn and garden equipment and supplies stores.....	4442	205.7	-6.4	10.2	-1.9	4.8	8.1	3.2
Food and beverage stores.....	445	3,248.2	2.7	2.9	0.9	-1.8	3.8	5.7
Grocery stores.....	4451	2,809.9	2.6	3.5	0.7	-1.8	4.2	6.2
Specialty food stores.....	4452	242.4	8.0	-2.5	5.2	-2.6	2.6	5.3
Beer, wine and liquor stores.....	4453	195.9	1.9	-2.5	1.0	-1.0	-1.6	-0.7
Health and personal care stores.....	446	1,084.2	1.2	-0.7	1.5	0.3	0.8	0.6
Health and personal care stores.....	4461	1,084.2	1.2	-0.7	1.5	0.3	0.8	0.6
Gasoline stations.....	447	991.1	1.0	2.8	1.0	-0.1	3.8	3.8
Gasoline stations.....	4471	991.1	1.0	2.8	1.0	-0.1	3.8	3.8
Clothing and clothing accessories stores.....	448	1,163.3	6.7	1.1	2.1	-4.3	3.2	7.8
Clothing stores.....	4481	845.7	7.6	-0.1	2.6	-4.7	2.4	7.5
Shoe stores.....	4482	170.2	5.8	4.4	-5.2	-10.4	-1.1	10.4
Jewelry, luggage, and leather goods stores.....	4483	147.4	0.9	3.1	5.9	5.0	9.2	4.0
Sports, hobby, music instruments, book stores.....	451	620.7	-5.1	7.9	-1.6	3.7	6.1	2.3
Sporting goods and musical instrument stores.....	4511	552.4	-5.4	8.8	-1.7	3.8	6.9	3.0
Book stores and news dealers.....	4512	68.3	-3.0	0.0	-0.6	2.5	-0.6	-3.1

**Table 1. Recent labor productivity, unit labor costs, and related data – Continued**

Industry	2017 NAICS code	2024 Employment (thousands)	Percent change, 2023-2024					
			Labor productivity	Unit labor costs	Output	Hours worked	Labor compen- sation	Hourly compen- sation
General merchandise stores.....	452	3,208.9	3.5	1.9	2.6	-0.9	4.5	5.5
Department stores.....	4522	1,008.2	-2.4	11.2	-1.7	0.8	9.3	8.5
Other general merchandise stores.....	4523	2,200.7	5.0	-0.5	3.3	-1.6	2.8	4.5
Miscellaneous store retailers.....	453	962.0	4.0	-1.8	4.5	0.5	2.6	2.1
Florists.....	4531	74.2	24.1	-6.5	3.9	-16.3	-2.8	16.1
Office supplies, stationery and gift stores.....	4532	208.6	7.2	-5.1	-0.1	-6.8	-5.2	1.7
Used merchandise stores.....	4533	272.5	-8.5	11.9	2.6	12.1	14.8	2.4
Other miscellaneous store retailers.....	4539	406.7	5.5	-3.9	6.2	0.6	2.0	1.4
Nonstore retailers.....	454	664.5	12.8	-10.1	8.3	-3.9	-2.6	1.4
Electronic shopping and mail-order houses.....	4541	458.9	16.2	-11.8	9.8	-5.5	-3.1	2.5
Vending machine operators.....	4542	49.5	-22.3	39.4	-11.2	14.3	23.8	8.3
Direct selling establishments.....	4543	156.1	-2.6	2.6	-6.7	-4.2	-4.3	-0.1

**Table 2. Long run labor productivity, unit labor costs, and related data**

Industry	2017 NAICS code	2024 Employment (thousands)	Annual percent change, 1987-2024					
			Labor productivity	Unit labor costs	Output	Hours worked	Labor compen- sation	Hourly compen- sation
Wholesale trade.....	42	6,264.8	2.4	1.5	2.7	0.3	4.2	3.9
Merchant wholesalers, durable goods.....	423	3,484.0	3.6	0.4	3.9	0.3	4.3	4.0
Motor vehicles and parts.....	4231	387.6	3.1	0.8	3.2	0.1	4.0	3.9
Furniture and furnishings.....	4232	113.4	1.6	2.5	1.3	-0.3	3.8	4.1
Lumber and construction supplies.....	4233	268.9	0.3	2.6	1.2	0.8	3.8	3.0
Commercial equipment.....	4234	756.6	9.5	-4.9	9.9	0.4	4.6	4.1
Metals and minerals.....	4235	138.6	-0.7	4.3	-0.5	0.2	3.8	3.6
Appliances and electric goods.....	4236	383.3	6.5	-2.0	6.4	-0.1	4.2	4.4
Hardware and plumbing.....	4237	317.3	1.3	2.5	2.3	1.0	4.9	3.8
Machinery and supplies.....	4238	782.2	1.3	2.6	1.6	0.3	4.3	4.0
Miscellaneous durable goods.....	4239	336.1	0.8	3.0	1.4	0.6	4.4	3.7
Merchant wholesalers, nondurable goods.....	424	2,279.8	1.0	3.0	1.2	0.2	4.2	4.0
Paper and paper products.....	4241	115.1	1.3	2.8	-0.2	-1.4	2.6	4.1
Druggists' goods.....	4242	261.0	2.4	3.5	3.6	1.2	7.2	6.0
Apparel and piece goods.....	4243	149.2	1.3	2.2	0.9	-0.4	3.1	3.5
Grocery and related products.....	4244	854.7	0.7	2.8	1.4	0.7	4.3	3.5
Farm product raw materials.....	4245	78.3	1.1	3.7	-0.3	-1.4	3.4	4.8
Chemicals.....	4246	157.4	0.2	3.5	0.6	0.3	4.1	3.8
Petroleum.....	4247	102.9	2.0	2.5	0.8	-1.1	3.3	4.5
Alcoholic beverages.....	4248	220.1	0.5	2.8	2.0	1.5	4.8	3.3
Miscellaneous nondurable goods.....	4249	341.1	0.0	3.6	-0.4	-0.4	3.1	3.5
Electronic markets and agents and brokers.....	425	501.0	1.6	1.2	2.5	1.0	3.8	2.8
Electronic markets and agents and brokers.....	4251	501.0	1.6	1.2	2.5	1.0	3.8	2.8
Retail trade.....	44-45	16,312.8	3.2	0.1	3.3	0.1	3.4	3.3
Motor vehicle and parts dealers.....	441	2,104.4	2.1	1.0	2.7	0.6	3.8	3.2
Automobile dealers.....	4411	1,329.1	2.2	1.1	2.8	0.6	3.9	3.3
Other motor vehicle dealers.....	4412	170.5	2.0	1.5	3.0	1.0	4.5	3.5
Auto parts, accessories, and tire stores.....	4413	604.8	1.4	1.2	1.9	0.5	3.2	2.6
Furniture and home furnishings stores.....	442	419.7	3.8	-0.6	3.1	-0.7	2.5	3.2
Furniture stores.....	4421	207.0	3.4	-0.4	2.7	-0.7	2.2	2.9
Home furnishings stores.....	4422	212.7	4.4	-0.8	3.7	-0.7	2.8	3.6
Electronics and appliance stores.....	443	401.5	10.3	-6.4	9.6	-0.6	2.6	3.3
Electronics and appliance stores.....	4431	401.5	10.3	-6.4	9.6	-0.6	2.6	3.3
Building material and garden supply stores.....	444	1,444.3	2.2	0.7	2.7	0.5	3.4	2.9
Building material and supplies dealers.....	4441	1,238.6	2.2	0.8	2.7	0.5	3.5	2.9
Lawn and garden equipment and supplies stores.....	4442	205.7	2.6	0.2	2.8	0.2	3.0	2.8
Food and beverage stores.....	445	3,248.2	0.8	2.4	0.7	-0.1	3.1	3.3
Grocery stores.....	4451	2,809.9	0.7	2.6	0.7	-0.1	3.3	3.4
Specialty food stores.....	4452	242.4	0.7	2.0	0.0	-0.6	2.0	2.6
Beer, wine and liquor stores.....	4453	195.9	2.0	0.9	1.6	-0.4	2.5	3.0
Health and personal care stores.....	446	1,084.2	2.2	1.1	2.8	0.6	4.0	3.3
Health and personal care stores.....	4461	1,084.2	2.2	1.1	2.8	0.6	4.0	3.3
Gasoline stations.....	447	991.1	1.0	2.3	0.9	-0.1	3.2	3.3
Gasoline stations.....	4471	991.1	1.0	2.3	0.9	-0.1	3.2	3.3
Clothing and clothing accessories stores.....	448	1,163.3	4.4	-0.9	3.4	-1.0	2.4	3.4
Clothing stores.....	4481	845.7	4.7	-1.1	3.7	-0.9	2.6	3.5
Shoe stores.....	4482	170.2	3.1	-0.2	2.0	-1.1	1.8	2.9
Jewelry, luggage, and leather goods stores.....	4483	147.4	4.3	-0.5	2.9	-1.3	2.4	3.8
Sports, hobby, music instruments, book stores.....	451	620.7	3.6	-0.2	3.5	-0.1	3.3	3.4
Sporting goods and musical instrument stores.....	4511	552.4	4.3	-0.7	4.4	0.1	3.7	3.6
Book stores and news dealers.....	4512	68.3	0.7	1.8	-0.6	-1.3	1.2	2.5

**Table 2. Long run labor productivity, unit labor costs, and related data – Continued**

Industry	2017 NAICS code	2024 Employment (thousands)	Annual percent change, 1987-2024					
			Labor productivity	Unit labor costs	Output	Hours worked	Labor compen- sation	Hourly compen- sation
General merchandise stores.....	452	3,208.9	3.3	-0.3	3.8	0.5	3.5	2.9
Department stores.....	4522	1,008.2	1.0	1.3	0.0	-1.0	1.3	2.3
Other general merchandise stores.....	4523	2,200.7	4.9	-1.2	6.6	1.7	5.3	3.6
Miscellaneous store retailers.....	453	962.0	3.4	-0.5	3.1	-0.3	2.6	2.9
Florists.....	4531	74.2	3.1	0.2	0.2	-2.8	0.4	3.4
Office supplies, stationery and gift stores.....	4532	208.6	5.1	-1.9	2.9	-2.1	0.9	3.1
Used merchandise stores.....	4533	272.5	3.9	-1.2	5.6	1.6	4.3	2.7
Other miscellaneous store retailers.....	4539	406.7	1.8	0.7	2.7	0.9	3.4	2.5
Nonstore retailers.....	454	664.5	9.1	-4.1	9.4	0.2	4.9	4.7
Electronic shopping and mail-order houses.....	4541	458.9	10.7	-4.9	13.9	2.9	8.3	5.2
Vending machine operators.....	4542	49.5	-0.5	4.3	-2.4	-2.0	1.8	3.8
Direct selling establishments.....	4543	156.1	3.3	0.0	1.1	-2.1	1.1	3.3

**Table 3. Labor productivity, unit labor costs, and related data, 2019-2024**

Industry	2017 NAICS code	2024 Employment (thousands)	Annual percent change, 2019-2024					
			Labor productivity	Unit labor costs	Output	Hours worked	Labor compen- sation	Hourly compen- sation
Wholesale trade.....	42	6,264.8	0.7	4.4	1.2	0.5	5.7	5.1
Merchant wholesalers, durable goods.....	423	3,484.0	0.8	4.2	2.0	1.2	6.2	5.0
Motor vehicles and parts.....	4231	387.6	2.4	2.6	3.5	1.1	6.3	5.1
Furniture and furnishings.....	4232	113.4	0.2	4.6	-1.5	-1.7	3.0	4.8
Lumber and construction supplies.....	4233	268.9	-2.0	7.4	-0.8	1.2	6.5	5.3
Commercial equipment.....	4234	756.6	0.1	4.7	1.7	1.6	6.5	4.8
Metals and minerals.....	4235	138.6	-2.7	7.9	-3.4	-0.6	4.2	4.9
Appliances and electric goods.....	4236	383.3	4.9	-0.4	6.2	1.2	5.8	4.5
Hardware and plumbing.....	4237	317.3	0.3	6.1	1.3	1.0	7.5	6.4
Machinery and supplies.....	4238	782.2	-1.0	5.9	0.5	1.5	6.5	4.9
Miscellaneous durable goods.....	4239	336.1	-0.7	5.5	0.5	1.2	6.0	4.7
Merchant wholesalers, nondurable goods.....	424	2,279.8	1.0	4.3	1.0	0.0	5.3	5.4
Paper and paper products.....	4241	115.1	1.6	5.9	-3.3	-4.8	2.4	7.6
Druggists' goods.....	4242	261.0	6.0	0.5	7.3	1.2	7.9	6.6
Apparel and piece goods.....	4243	149.2	-1.5	5.1	-1.9	-0.4	3.1	3.5
Grocery and related products.....	4244	854.7	-0.5	5.7	0.2	0.7	5.9	5.2
Farm product raw materials.....	4245	78.3	-1.4	4.6	1.2	2.7	5.9	3.1
Chemicals.....	4246	157.4	0.6	4.7	-0.6	-1.2	4.1	5.3
Petroleum.....	4247	102.9	0.2	3.3	-0.1	-0.3	3.3	3.5
Alcoholic beverages.....	4248	220.1	0.9	2.9	1.1	0.1	4.0	3.9
Miscellaneous nondurable goods.....	4249	341.1	-1.7	7.8	-2.8	-1.1	4.9	6.0
Electronic markets and agents and brokers.....	425	501.0	-0.8	5.6	-2.0	-1.3	3.4	4.8
Electronic markets and agents and brokers.....	4251	501.0	-0.8	5.6	-2.0	-1.3	3.4	4.8
Retail trade.....	44-45	16,312.8	3.9	1.3	3.0	-0.8	4.4	5.2
Motor vehicle and parts dealers.....	441	2,104.4	1.3	3.8	0.9	-0.4	4.8	5.2
Automobile dealers.....	4411	1,329.1	1.3	4.5	0.8	-0.5	5.4	5.9
Other motor vehicle dealers.....	4412	170.5	0.8	3.2	-0.2	-1.0	3.0	4.1
Auto parts, accessories, and tire stores.....	4413	604.8	2.8	0.4	2.8	0.0	3.3	3.2
Furniture and home furnishings stores.....	442	419.7	3.5	2.3	-0.4	-3.7	1.9	5.8
Furniture stores.....	4421	207.0	2.9	1.5	-0.4	-3.2	1.1	4.4
Home furnishings stores.....	4422	212.7	4.2	3.1	-0.3	-4.3	2.8	7.4
Electronics and appliance stores.....	443	401.5	7.8	-2.9	3.3	-4.1	0.4	4.7
Electronics and appliance stores.....	4431	401.5	7.8	-2.9	3.3	-4.1	0.4	4.7
Building material and garden supply stores.....	444	1,444.3	0.3	4.2	0.5	0.3	4.8	4.5
Building material and supplies dealers.....	4441	1,238.6	0.5	4.2	0.3	-0.2	4.5	4.7
Lawn and garden equipment and supplies stores.....	4442	205.7	-0.7	4.3	2.2	2.9	6.6	3.5
Food and beverage stores.....	445	3,248.2	1.3	4.4	1.0	-0.3	5.4	5.7
Grocery stores.....	4451	2,809.9	1.2	4.6	0.8	-0.4	5.4	5.9
Specialty food stores.....	4452	242.4	1.5	4.0	1.4	-0.2	5.4	5.6
Beer, wine and liquor stores.....	4453	195.9	2.2	1.5	3.0	0.8	4.5	3.7
Health and personal care stores.....	446	1,084.2	4.3	-1.4	3.8	-0.5	2.3	2.8
Health and personal care stores.....	4461	1,084.2	4.3	-1.4	3.8	-0.5	2.3	2.8
Gasoline stations.....	447	991.1	-1.6	7.5	-0.8	0.8	6.6	5.8
Gasoline stations.....	4471	991.1	-1.6	7.5	-0.8	0.8	6.6	5.8
Clothing and clothing accessories stores.....	448	1,163.3	7.1	-0.3	2.1	-4.7	1.8	6.8
Clothing stores.....	4481	845.7	6.5	0.0	1.9	-4.3	1.9	6.5
Shoe stores.....	4482	170.2	5.2	2.1	-0.9	-5.8	1.1	7.4
Jewelry, luggage, and leather goods stores.....	4483	147.4	11.4	-3.8	5.8	-5.0	1.8	7.1
Sports, hobby, music instruments, book stores.....	451	620.7	3.5	2.3	3.1	-0.4	5.4	5.8
Sporting goods and musical instrument stores.....	4511	552.4	4.0	2.2	3.7	-0.2	6.0	6.2
Book stores and news dealers.....	4512	68.3	-0.5	3.3	-2.3	-1.8	0.9	2.8

**Table 3. Labor productivity, unit labor costs, and related data, 2019-2024 – Continued**

Industry	2017 NAICS code	2024 Employment (thousands)	Annual percent change, 2019-2024					
			Labor productivity	Unit labor costs	Output	Hours worked	Labor compen- sation	Hourly compen- sation
General merchandise stores.....	452	3,208.9	2.3	2.3	2.1	-0.1	4.5	4.6
Department stores.....	4522	1,008.2	0.5	3.5	-1.7	-2.2	1.7	4.0
Other general merchandise stores.....	4523	2,200.7	2.0	2.7	2.9	0.9	5.7	4.7
Miscellaneous store retailers.....	453	962.0	4.5	1.1	3.1	-1.3	4.2	5.6
Florists.....	4531	74.2	5.6	0.8	3.3	-2.2	4.1	6.4
Office supplies, stationery and gift stores.....	4532	208.6	3.6	1.2	-2.1	-5.5	-0.9	4.9
Used merchandise stores.....	4533	272.5	0.7	3.2	4.7	4.1	8.1	3.9
Other miscellaneous store retailers.....	4539	406.7	6.6	0.6	4.4	-2.0	5.0	7.2
Nonstore retailers.....	454	664.5	13.7	-5.5	12.3	-1.2	6.2	7.5
Electronic shopping and mail-order houses.....	4541	458.9	13.2	-5.3	13.8	0.6	7.8	7.2
Vending machine operators.....	4542	49.5	-7.2	13.7	-7.8	-0.7	4.8	5.5
Direct selling establishments.....	4543	156.1	5.7	0.2	-0.2	-5.6	0.0	6.0