



**Transmission of material in this release is embargoed until
 8:30 a.m. (EST) Friday, February 10, 2017**

USDL-17-0181

Technical information: (202) 691-7101 • MXPinfo@bls.gov • www.bls.gov/mxp
 Media contact: (202) 691-5902 • PressOffice@bls.gov

U.S. IMPORT AND EXPORT PRICE INDEXES – JANUARY 2017

U.S. import prices advanced 0.4 percent in January, the U.S. Bureau of Labor Statistics reported today, following a 0.5-percent increase in December. For both months, a rise in fuel prices more than offset declining nonfuel prices. Prices for U.S. exports advanced 0.1 percent in January, after rising 0.4 percent the previous month.

Chart 1. One-month percent change in the Import Price Index: January 2016 – January 2017

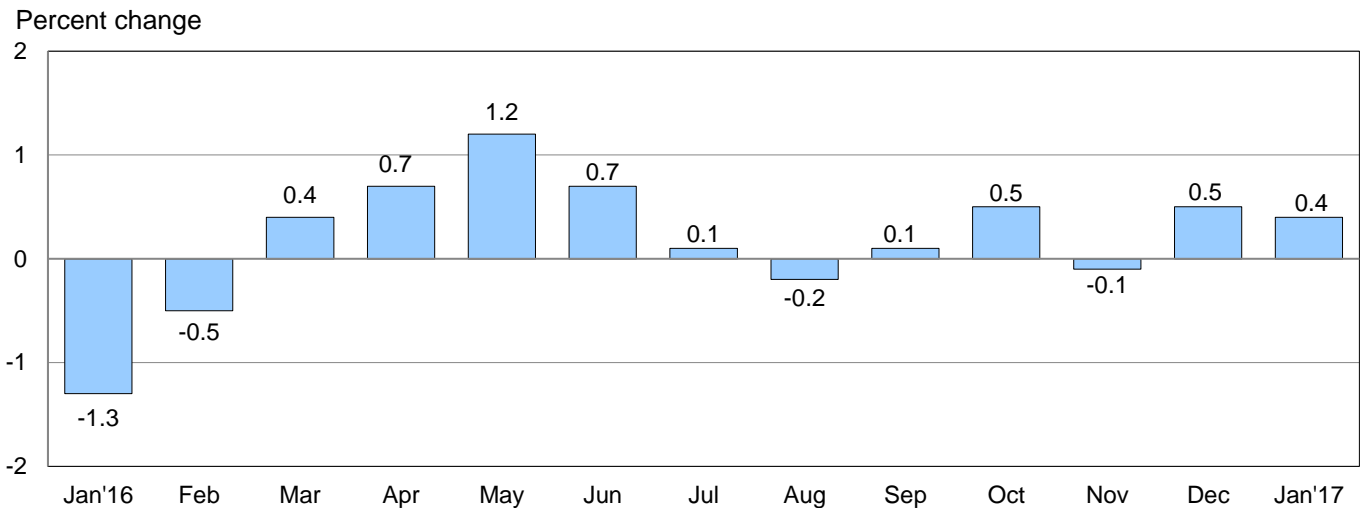
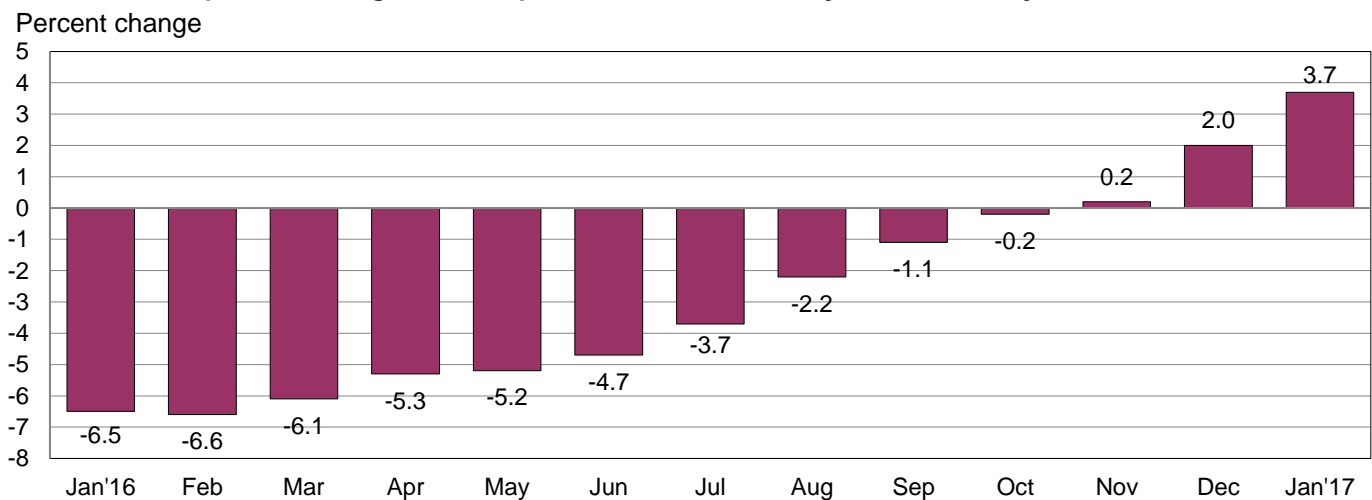


Chart 2. 12-month percent change in the Import Price Index: January 2016 – January 2017



All Imports: Import prices increased 0.4 percent in January following a 0.5-percent advance in December. The price index for overall imports has trended up since March 2016 and rose 3.7 percent over the past year. The advance between January 2016 and January 2017 was the largest 12-month rise since the index increased 5.1 percent in February 2012.

Fuel Imports: Prices for import fuel rose 5.8 percent in January following an increase of 6.6 percent in December. In January, higher prices for both petroleum and natural gas contributed to the overall rise in fuel prices. Petroleum prices rose 5.2 percent and natural gas prices increased 12.2 percent in January, after both indexes advanced in the previous month. Import fuel prices increased 57.6 percent over the past 12 months, the largest over-the-year rise since the index advanced 61.7 percent in March 2010. Petroleum prices rose 60.9 percent for the year ended in January and natural gas prices advanced 45.0 percent over the same period.

All Imports Excluding Fuel: In contrast to fuel prices, import nonfuel prices decreased 0.2 percent in January, after edging down 0.1 percent in December and November. The price index for nonfuel imports has not recorded a monthly increase since a 0.3-percent rise in July 2016. The January drop was led by lower prices for foods, feeds, and beverages and each of the major finished goods categories, which more than offset higher prices for nonfuel industrial supplies and materials. Nonfuel import prices recorded no change over the past 12 months.

Table A. Percent change in Import and Export Price Indexes, selected categories

Month	IMPORTS			EXPORTS		
	All imports	Fuel imports	Nonfuel imports	All exports	Agricultural exports	Non-agricultural exports
2016						
January.....	-1.3	-15.6	-0.1	-0.9	-1.3	-0.9
February.....	-0.5	-6.8	-0.1	-0.4	0.7	-0.6
March.....	0.4	8.5	-0.1	-0.1	-2.1	0.2
April.....	0.7	9.8	0.1	0.5	0.8	0.4
May.....	1.2	12.7	0.3	1.1	3.0	1.0
June.....	0.7	10.5	-0.2	0.8	2.5	0.5
July.....	0.1	-2.1	0.3	0.2	-0.3	0.3
August.....	-0.2	-3.4	0.0	-0.8	-3.4	-0.6
September.....	0.1	1.3	0.0	0.3	-1.0	0.5
October.....	0.5 ^r	6.6 ^r	0.0 ^r	0.2	0.5	0.2
November.....	-0.1 ^r	-1.1 ^r	-0.1	0.1 ^r	0.7 ^r	0.0 ^r
December.....	0.5 ^r	6.6 ^r	-0.1 ^r	0.4 ^r	-0.2 ^r	0.4
2017						
January.....	0.4	5.8	-0.2	0.1	-0.1	0.1
Jan. 2015 to 2016.....	-6.5	-37.7	-2.9	-5.9	-12.8	-5.1
Jan. 2016 to 2017.....	3.7	57.6	0.0	2.3	0.8	2.4

r Revised

Chart 3. One-month percent change in the Export Price Index: January 2016 – January 2017

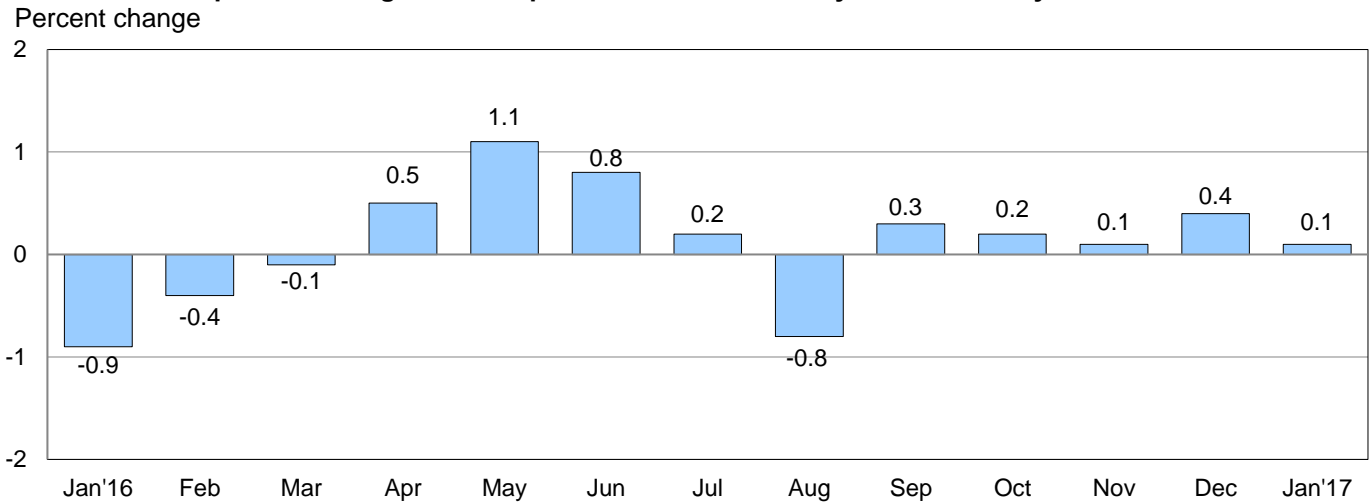
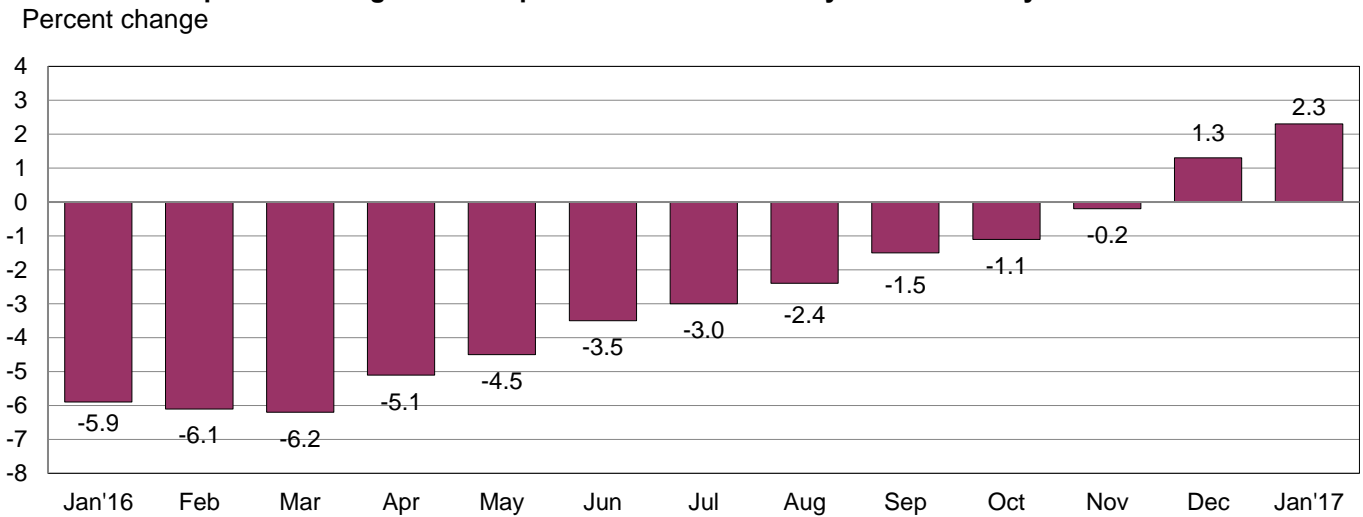


Chart 4. 12-month percent change in the Export Price Index: January 2016 – January 2017



All Exports: Export prices ticked up 0.1 percent in January, following a 0.4-percent increase in December. Rising prices for nonagricultural exports more than offset falling agricultural prices in each of the 2 months. With the exception of a 0.8-percent drop in August 2016, export prices have trended up since April 2016 and rose 2.3 percent for the year ended in January. The 2.3-percent rise was the largest 12-month advance since the index increased 2.6 percent between January 2011 and January 2012.

Agricultural Exports: Export agricultural prices edged down 0.1 percent in January, after declining 0.2 percent in December. The recent downturn followed increases of 0.7 percent and 0.5 percent in November and October, respectively. In January, falling prices for soybeans more than offset higher prices for corn. Despite the recent drops, agricultural export prices rose 0.8 percent for the year ended in January.

All Exports Excluding Agriculture: The price index for nonagricultural exports ticked up 0.1 percent in January, after rising 0.4 percent the previous month. In January, the advance was led by increasing prices for nonagricultural industrial supplies and materials and automotive vehicles. In contrast, consumer goods and capital goods prices declined in January. Nonagricultural exports also advanced over the past year, rising 2.4 percent between January 2016 and January 2017.

SELECTED JANUARY HIGHLIGHTS

Import Prices

Imports by Locality of Origin: Prices for imports from China fell 0.1 percent in January, after recording no change in December and fell 1.7 percent over the past 12 months. The price index for imports from China has not recorded a monthly increase since the index rose 0.1 percent in December 2014. Import prices from Japan declined 0.3 percent in January, the first decrease for the index since a 0.1-percent drop in January 2016 and the largest decline since the index fell 0.3 percent in August 2015. Prices for imports from Mexico and the European Union also fell in January, declining 1.3 percent and 0.1 percent, respectively. In contrast, import prices from Canada advanced 1.8 percent in January, driven by higher fuel prices.

Nonfuel Industrial Supplies and Materials: Prices for nonfuel industrial supplies and materials increased 0.7 percent in January following a 0.6-percent rise in December. Both advances were led by higher unfinished metal prices.

Finished Goods: Each of the major finished goods price indexes declined in January. Prices for automotive vehicles fell 0.5 percent, driven by a 1.2-percent drop in the price index for non-engine parts. Capital goods and consumer goods prices also decreased in January, each edging down 0.1 percent.

Foods, Feeds, and Beverages: Prices for import foods, feeds, and beverages declined 1.3 percent in January, after decreasing 1.5 percent the previous month.

Transportation Services: Import air passenger fares fell 1.7 percent in January following a 1.3-percent rise in December. The January downturn was driven by an 8.5-percent decline in Asian fares and an 11.7-percent drop in Latin American/Caribbean fares. The index for import air passenger fares decreased 4.9 percent for the year ended in January. Import air freight prices also declined in January, falling 1.8 percent. The price index for import air freight increased 5.0 percent over the past 12 months.

Export Prices

Nonagricultural Industrial Supplies and Materials: Export nonagricultural industrial supplies and materials prices advanced 0.7 percent in January, after a 2.1-percent rise the previous month. Both increases were primarily led by rising fuel prices.

Finished Goods: Export finished goods prices were mixed in January. The price index for consumer goods decreased 1.0 percent for the second consecutive month. Those were the largest monthly declines for the index since the index fell 1.4 percent in June 1991. In January, the drop was driven by a 3.5-percent decline in medicinal, dental, and pharmaceutical materials prices. Capital goods prices also fell in January, edging down 0.1 percent. In contrast, automotive vehicle prices rose 0.4 percent in January.

Transportation Services: Export air passenger fares increased 0.8 percent in January, and have not recorded a monthly decline since the index fell 11.1 percent in September 2016. The January advance was led by a 10.1-percent rise in Asian fares. The index for export air passenger fares rose 0.9 percent for the year ended in January. Export air freight prices increased 0.6 percent in January and declined 1.8 percent over the past year.

Import and Export Price Index data for February 2017 are scheduled for release on Thursday, March 9, 2017 at 8:30 a.m. (EST).

Table 1. U.S. import price indexes and percent changes for selected categories of goods: January 2016 to January 2017

[2000=100, unless otherwise noted]

Description	End Use	Relative importance Dec. 2016 ¹	Index		Percent change				
			Dec. 2016	Jan. 2017	Annual Jan. 2016 to Jan. 2017	Monthly			
						Sept. 2016 to Oct. 2016	Oct. 2016 to Nov. 2016	Nov. 2016 to Dec. 2016	Dec. 2016 to Jan. 2017
All commodities		100.000	121.7	122.2	3.7	0.5	-0.1	0.5	0.4
All imports excluding food and fuels (Dec. 2010=100)		84.742	98.1	98.0	-0.1	0.0	-0.2	0.1	-0.1
All imports excluding petroleum		91.610	111.0	111.0	0.3	-0.1	0.0	-0.1	0.0
All imports excluding fuels (Dec. 2001=100)		90.945	115.0	114.8	0.0	0.0	-0.1	-0.1	-0.2
Foods, feeds, & beverages	0	6.203	179.5	177.2	2.0	-0.7	1.5	-1.5	-1.3
Agricultural foods, feeds & beverages, excluding distilled beverages.....	00	4.850	196.7	193.0	0.8	-1.0	1.8	-1.9	-1.9
Nonagricultural foods (fish, distilled beverages).....	01	1.353	140.7	142.1	6.0	0.4	0.4	-0.2	1.0
Industrial supplies & materials	1	22.192	164.2	168.7	21.4	2.2	-0.4	3.0	2.7
Industrial supplies & materials excluding petroleum.....		13.802	142.7	144.6	5.4	-0.8	0.4	0.8	1.3
Industrial supplies & materials excluding fuels (Dec. 2001=100).....		13.137	161.1	162.2	4.2	-0.6	0.0	0.6	0.7
Industrial supplies & materials, durable....		8.110	150.6	151.9	7.0	-1.2	0.2	0.6	0.9
Industrial supplies & materials nondurable excluding petroleum.....		5.027	132.7	135.4	3.3	-0.2	0.7	1.1	2.0
Fuels & lubricants.....	10	9.055	170.5	180.4	57.6	6.6	-1.1	6.6	5.8
Petroleum & petroleum products.....	100	8.390	183.2	192.7	60.9	7.5	-1.7	6.8	5.2
Crude.....	10000	5.961	187.9	194.5	67.5	8.2	-3.7	9.6	3.5
Fuels, n.e.s.-coals & gas.....	101	0.520	108.1	123.8	41.8	-3.8	9.3	5.5	14.5
Gas-natural.....	10110	0.420	92.5	103.8	45.0	-4.6	10.8	6.4	12.2
Paper & paper base stocks.....	11	0.541	105.6	105.1	-2.5	-0.8	-0.6	1.1	-0.5
Materials associated with nondurable supplies & materials.....	12	4.555	150.4	151.1	0.3	0.5	-0.1	0.6	0.5
Selected building materials.....	13	1.383	137.3	138.9	3.5	-0.1	-0.6	0.6	1.2
Unfinished metals related to durable goods.....	14	3.287	198.8	202.0	16.3	-2.2	0.7	0.9	1.6
Finished metals related to durable goods.....	15	1.688	144.7	144.8	0.1	-1.1	0.3	0.3	0.1
Nonmetals related to durable goods.....	16	1.683	107.8	107.9	0.3	-0.1	-0.4	0.3	0.1
Capital goods	2	27.638	88.7	88.6	-1.1	-0.1	-0.2	0.0	-0.1
Electric generating equipment.....	20	3.338	116.2	116.1	-0.7	-0.2	0.3	0.2	-0.1
Nonelectrical machinery.....	21	21.676	81.1	80.9	-1.3	-0.2	-0.2	0.0	-0.2
Transportation equipment excluding motor vehicles (Dec. 2001=100).....	22	2.624	136.5	136.8	-0.4	0.0	0.1	0.1	0.2
Automotive vehicles, parts & engines	3	16.461	110.6	110.1	-0.1	0.3	0.0	-0.1	-0.5
Consumer goods, excluding automotives	4	27.506	106.4	106.3	-0.9	0.3	-0.3	-0.2	-0.1
Nondurables, manufactured.....	40	13.389	119.9	120.0	0.3	0.3	0.1	0.2	0.1
Durables, manufactured.....	41	12.784	93.4	93.1	-2.0	0.3	-0.5	-0.3	-0.3
Nonmanufactured consumer goods.....	42	1.333	115.5	115.7	-3.4	0.1	-0.2	-2.4	0.2

¹ Relative importance figures are based on 2015 trade values.

NOTES: Data may be revised in each of the 3 months after original publication.

Dash = Not available

Table 2. U.S. export price indexes and percent changes for selected categories of goods: January 2016 to January 2017

[2000=100, unless otherwise noted]

Description	End Use	Relative importance Dec. 2016 ¹	Index		Percent change				
			Dec. 2016	Jan. 2017	Annual	Monthly			
					Jan. 2016 to Jan. 2017	Sept. 2016 to Oct. 2016	Oct. 2016 to Nov. 2016	Nov. 2016 to Dec. 2016	Dec. 2016 to Jan. 2017
All commodities.....		100.000	121.3	121.4	2.3	0.2	0.1	0.4	0.1
Agricultural commodities.....		9.358	175.0	174.9	0.8	0.5	0.7	-0.2	-0.1
All exports excluding food and fuels (Dec. 2010=100).....		83.322	98.1	97.9	0.0	-0.2	0.1	-0.2	-0.2
Nonagricultural commodities.....		90.642	117.2	117.3	2.4	0.2	0.0	0.4	0.1
Foods, feeds, & beverages.....	0	8.675	176.4	177.5	1.6	0.5	0.8	-0.5	0.6
Agricultural foods, feeds & beverages, excluding distilled beverages.....	00	8.089	176.2	176.8	1.1	0.5	0.9	-0.3	0.3
Nonagricultural foods (fish, distilled beverages).....	01	0.586	186.8	194.8	8.2	0.2	-0.7	-2.7	4.3
Industrial supplies & materials.....	1	29.795	146.0	146.8	9.2	0.8	0.0	2.0	0.5
Industrial supplies & materials, durable....		10.453	154.3	155.5	5.6	-0.8	1.0	-0.5	0.8
Industrial supplies & materials, nondurable.....		19.342	142.4	142.9	11.3	1.8	-0.5	3.5	0.4
Agricultural industrial supplies & materials.....	10	1.269	172.9	168.0	-0.9	0.8	-0.9	0.2	-2.8
Nonagricultural industrial supplies & materials.....		28.526	145.1	146.1	9.7	0.8	0.1	2.1	0.7
Fuels & lubricants.....	11	8.003	166.0	169.8	34.4	4.7	-1.4	8.4	2.3
Nonagricultural supplies & materials excluding fuels & building materials....	12	19.501	149.5	149.6	2.5	-0.5	0.6	-0.1	0.1
Selected building materials.....	13	1.022	117.5	116.7	1.7	-0.2	0.3	0.4	-0.7
Capital goods.....	2	38.225	106.7	106.6	-0.2	-0.1	0.0	0.0	-0.1
Electrical generating equipment.....	20	3.961	111.8	112.2	0.1	-0.1	-0.1	0.0	0.4
Nonelectrical machinery.....	21	25.207	93.6	93.4	-1.0	-0.1	0.0	-0.1	-0.2
Transportation equipment excluding motor vehicles (Dec. 2001=100).....	22	9.056	165.1	165.4	2.0	0.1	-0.1	0.1	0.2
Automotive vehicles, parts & engines.....	3	10.357	112.5	113.0	-0.4	0.1	0.0	-0.3	0.4
Consumer goods, excluding automotives.....	4	12.948	108.8	107.7	-2.6	-0.5	-0.2	-1.0	-1.0
Nondurables, manufactured.....	40	6.304	105.3	103.1	-2.5	-0.5	-0.3	-0.6	-2.1
Durables, manufactured.....	41	5.242	107.1	106.9	-1.9	-0.6	0.0	-0.3	-0.2

¹ Relative importance figures are based on 2015 trade values.

NOTES: Data may be revised in each of the 3 months after original publication.

Dash = Not available

Table 3. U.S. import price indexes and percent changes for selected categories of goods: January 2016 to January 2017

[December 2005=100, unless otherwise noted]

Description	NAICS	Relative importance Dec. 2016 ¹	Index		Percent change				
			Dec. 2016	Jan. 2017	Annual Jan. 2016 to Jan. 2017	Monthly			
						Sept. 2016 to Oct. 2016	Oct. 2016 to Nov. 2016	Nov. 2016 to Dec. 2016	Dec. 2016 to Jan. 2017
Nonmanufacturing.....		8.671	94.7	97.7	43.7	5.0	-1.2	6.0	3.2
Agriculture, forestry, fishing and hunting.....	11	2.058	183.0	181.2	0.9	-1.8	3.1	-2.8	-1.0
Crop production.....	111	1.659	197.3	192.3	-1.2	-2.1	3.7	-4.9	-2.5
Animal production (Dec. 2014=100).....	112	0.196	74.7	79.1	-2.7	-4.7	-1.1	4.6	5.9
Mining.....	21	6.613	84.2	88.0	63.3	7.4	-2.6	8.9	4.5
Mining (except oil and gas) (Dec. 2006=100).....	212	0.247	96.7	106.2	14.1	0.3	0.1	1.0	9.8
Manufacturing.....		91.051	109.0	109.1	0.7	0.1	0.0	0.0	0.1
Manufacturing, part 1.....	31	12.026	123.9	123.5	0.6	0.0	0.1	0.0	-0.3
Food manufacturing.....	311	3.494	154.4	152.7	3.6	-0.1	0.4	0.1	-1.1
Beverage and tobacco product manufacturing.....	312	1.068	117.9	117.8	-0.2	0.3	-0.2	-0.1	-0.1
Textile mills (Dec. 2011=100).....	313	0.401	97.9	97.9	-1.5	-0.1	0.2	0.0	0.0
Textile product mills.....	314	0.944	108.8	108.4	-1.5	0.0	0.0	-0.2	-0.4
Apparel manufacturing.....	315	4.251	111.1	111.2	-0.4	0.0	0.0	-0.1	0.1
Leather and allied product manufacturing.....	316	1.868	123.1	123.0	-0.8	0.0	0.1	0.0	-0.1
Manufacturing, part 2.....	32	17.236	117.0	118.7	4.9	0.8	0.6	0.1	1.5
Wood product manufacturing.....	321	0.829	116.2	117.9	6.3	0.0	-0.8	1.2	1.5
Paper manufacturing.....	322	1.031	104.5	104.2	-1.1	-0.5	-0.2	0.7	-0.3
Printing and related support activities (Dec.2016=100).....	323	0.224	100.0	99.8	-	-	-	-	-0.2
Petroleum and coal products manufacturing.....	324	2.203	80.0	87.0	43.8	5.0	3.6	-0.4	8.8
Chemical manufacturing.....	325	9.691	131.1	131.6	0.5	0.5	0.2	0.2	0.4
Plastics and rubber products manufacturing.....	326	2.236	116.8	116.9	-0.3	-0.3	0.0	-0.4	0.1
Nonmetallic mineral product manufacturing.....	327	1.023	129.0	129.0	-0.9	0.0	-0.1	-0.2	0.0
Manufacturing, part 3.....	33	61.789	103.1	103.0	-0.2	-0.1	-0.2	-0.1	-0.1
Primary metal manufacturing.....	331	3.929	131.7	134.2	13.8	-1.6	0.5	0.9	1.9
Fabricated metal product manufacturing.....	332	3.093	121.3	121.2	-1.7	-0.3	-0.2	-0.2	-0.1
Machinery manufacturing.....	333	7.141	116.1	115.8	-1.2	0.0	-0.2	-0.2	-0.3
Computer and electronic product manufacturing.....	334	17.777	75.8	75.6	-1.9	0.0	-0.7	0.0	-0.3
Electrical equipment, appliance, and component manufacturing.....	335	4.966	114.7	114.5	-1.7	0.3	-0.1	-0.1	-0.2
Transportation equipment manufacturing.....	336	17.762	109.8	109.4	-0.1	0.3	0.0	-0.1	-0.4
Furniture and related product manufacturing.....	337	1.737	114.5	114.4	-0.8	0.0	-0.3	-0.1	-0.1
Miscellaneous manufacturing.....	339	5.384	117.7	117.4	-1.4	-0.4	-0.2	-1.2	-0.3

¹ Relative importance figures are based on 2015 trade values.

NOTES: Data may be revised in each of the 3 months after original publication.

Dash = Not available

Table 4. U.S. export price indexes and percent changes for selected categories of goods: January 2016 to January 2017

[December 2005=100, unless otherwise noted]

Description	NAICS	Relative importance Dec. 2016 ¹	Index		Percent change				
			Dec. 2016	Jan. 2017	Annual	Monthly			
					Jan. 2016 to Jan. 2017	Sept. 2016 to Oct. 2016	Oct. 2016 to Nov. 2016	Nov. 2016 to Dec. 2016	Dec. 2016 to Jan. 2017
Nonmanufacturing.....		7.405	131.1	131.6	9.0	0.3	-0.5	7.5	0.4
Agriculture, forestry, fishing and hunting.....	11	4.555	151.8	152.6	0.2	1.1	1.2	-0.5	0.5
Crop production.....	111	4.302	158.4	158.9	0.8	1.1	1.4	-0.3	0.3
Mining.....	21	2.850	81.6	81.6	26.9	-1.2	-3.5	23.1	0.0
Mining (except oil and gas).....	212	1.110	91.6	98.9	30.8	2.6	6.4	4.3	8.0
Manufacturing.....		91.163	111.4	111.3	1.4	0.2	0.0	-0.1	-0.1
Manufacturing, part 1.....	31	7.024	135.2	134.9	2.0	-0.3	-0.1	0.1	-0.2
Food manufacturing.....	311	4.712	152.9	153.4	3.8	-0.1	0.3	0.3	0.3
Beverage and tobacco product manufacturing.....	312	0.688	108.0	101.8	-3.0	-1.0	-3.0	-0.5	-5.7
Textile mills (Dec. 2016=100).....	313	0.671	100.0	101.1	–	–	–	–	1.1
Leather and allied product manufacturing (Dec. 2016=100).....	316	0.291	100.0	100.1	–	–	–	–	0.1
Manufacturing, part 2.....	32	24.207	107.6	107.2	5.4	1.3	-0.4	0.8	-0.4
Paper manufacturing.....	322	1.661	118.3	118.4	-2.7	-1.2	-0.7	0.3	0.1
Petroleum and coal products manufacturing.....	324	5.305	94.8	96.6	39.0	7.7	-1.8	4.6	1.9
Chemical manufacturing.....	325	13.347	113.9	112.0	-1.1	0.0	0.2	-0.1	-1.7
Plastics and rubber products manufacturing.....	326	2.301	113.4	114.7	-0.6	-0.6	0.1	-0.3	1.1
Nonmetallic mineral product manufacturing.....	327	0.846	112.4	112.6	0.6	-0.3	0.1	-0.3	0.2
Manufacturing, part 3.....	33	59.932	110.6	110.7	-0.1	-0.2	0.1	-0.5	0.1
Primary metal manufacturing.....	331	3.924	132.8	133.8	5.6	-1.8	0.8	-2.6	0.8
Fabricated metal product manufacturing... ..	332	3.159	130.2	130.8	0.5	-0.1	0.0	-0.2	0.5
Machinery manufacturing.....	333	10.356	125.4	125.2	-0.2	0.1	-0.2	-0.3	-0.2
Computer and electronic product manufacturing.....	334	14.339	82.9	82.7	-1.9	-0.5	0.1	0.0	-0.2
Electrical equipment, appliance, and component manufacturing.....	335	3.984	112.1	112.2	0.2	0.0	-0.1	0.1	0.1
Transportation equipment manufacturing..	336	18.350	122.2	122.6	0.7	0.2	0.0	-0.1	0.3
Furniture and related product manufacturing (Dec. 2011=100).....	337	0.459	117.3	117.8	6.5	0.1	0.0	-0.6	0.4
Miscellaneous manufacturing.....	339	5.361	118.0	117.8	-3.4	-0.1	0.2	-1.5	-0.2

¹ Relative importance figures are based on 2015 trade values.

NOTES: Data may be revised in each of the 3 months after original publication.

Dash = Not available

Table 5. U.S. import price indexes and percent changes for selected categories of goods: January 2016 to January 2017

[2000=100, unless otherwise noted]

Description	Harmoni- zied system	Relative importance Dec. 2016 ¹	Index		Percent change				
			Dec. 2016	Jan. 2017	Annual	Monthly			
					Jan. 2016 to Jan. 2017	Sept. 2016 to Oct. 2016	Oct. 2016 to Nov. 2016	Nov. 2016 to Dec. 2016	Dec. 2016 to Jan. 2017
Live animals; animal products.....	I	1.470	188.3	189.3	4.9	-1.2	0.2	-0.2	0.5
Meat and edible meat offal.....	02	0.428	233.5	228.4	5.8	-1.5	0.9	-1.4	-2.2
Fish and crustaceans, molluscs and other aquatic invertebrates.....	03	0.764	144.5	146.7	10.6	0.2	0.7	-0.6	1.5
Vegetable products.....	II	2.106	219.0	212.7	0.3	-1.0	3.2	-4.4	-2.9
Edible vegetables, roots, and tubers.....	07	0.433	488.5	420.0	-28.7	-4.3	-1.5	-1.4	-14.0
Edible fruit and nuts; peel of citrus fruit or melons.....	08	0.851	125.0	123.4	32.4	0.2	7.8	-9.0	-1.3
Coffee, tea, mate and spices.....	09	0.367	234.1	239.2	6.2	-0.6	4.5	-4.4	2.2
Animal or vegetable fats and oils (Dec. 2009=100).....	III	0.311	117.9	116.4	19.0	-0.8	3.5	3.6	-1.3
Prepared foodstuffs, beverages, and tobacco.....	IV	2.721	160.7	159.4	0.7	-0.1	-0.3	0.3	-0.8
Sugars and sugar confectionary (Dec. 2012=100).....	17	0.195	90.3	87.1	2.7	0.5	0.9	2.6	-3.5
Cocoa and cocoa preparations (Dec. 2009=100).....	18	0.215	104.8	100.8	-7.7	-3.0	-4.1	-1.6	-3.8
Preparations of vegetables, fruit, nuts, or other parts of plants.....	20	0.353	162.7	161.6	4.6	1.1	-0.4	1.2	-0.7
Beverages, spirits, and vinegar.....	22	1.010	127.8	127.5	-0.4	0.2	-0.1	-0.1	-0.2
Mineral products.....	V	8.928	169.8	179.9	57.3	6.7	-1.1	6.6	5.9
Mineral fuels, oils and residuals, bituminous substances and mineral waxes.....	27	8.686	167.6	177.8	60.0	6.8	-1.0	6.7	6.1
Products of the chemical or allied industries.....	VI	9.122	146.9	148.1	0.6	0.2	0.1	0.3	0.8
Inorganic chemicals.....	28	0.511	254.2	263.7	-2.9	-2.0	-0.1	1.9	3.7
Organic chemicals.....	29	2.353	120.6	121.7	-1.3	-0.6	-0.5	0.6	0.9
Pharmaceutical products.....	30	4.217	143.0	143.6	3.5	1.1	0.3	0.3	0.4
Fertilizers (Dec. 2009=100).....	31	0.267	74.9	76.7	-7.8	-0.4	5.7	0.9	2.4
Tanning extracts; dye, pigments, varnish, paints & putty (Dec. 2011=100).....	32	0.184	101.6	101.6	6.3	0.9	-0.2	-0.7	0.0
Essential oils and resinoids (Dec. 2016=100).....	33	0.551	100.0	100.3	-	-	-	-	0.3
Miscellaneous chemical products.....	38	0.680	102.3	103.0	0.6	0.0	0.3	0.1	0.7
Plastics and articles thereof; rubber and articles thereof.....	VII	3.424	137.3	138.1	1.3	0.4	-0.1	0.0	0.6
Plastics and articles thereof.....	39	2.173	139.0	139.3	-0.8	0.3	-0.5	-0.6	0.2
Rubber and articles thereof.....	40	1.251	135.6	137.4	5.2	0.7	0.4	1.1	1.3
Raw hides, skins, leather, furskins, travel goods, etc.....	VIII	0.692	123.3	123.1	-2.5	0.0	0.1	-0.1	-0.2
Articles of leather; travel goods, bags, etc. of various materials.....	42	0.661	128.7	128.5	-1.2	0.1	0.0	0.0	-0.2
Wood, wood charcoal, cork, straw, basketware and wickerwork.....	IX	0.861	141.4	143.7	6.1	-0.1	-0.8	1.1	1.6
Wood and articles of wood; wood charcoal (Dec. 2014=100).....	44	0.836	97.2	98.8	6.4	0.0	-0.8	1.1	1.6
Woodpulp, recovered paper, and paper products.....	X	1.096	109.9	109.5	-0.4	-0.2	0.0	1.0	-0.4
Paper and paperboard; articles of paper pulp, paper or paperboard.....	48	0.731	103.6	103.5	-0.4	-0.8	0.1	0.0	-0.1
Printed matter (Dec. 2015=100).....	49	0.222	105.9	105.8	5.7	1.6	1.5	1.8	-0.1
Textile and textile articles.....	XI	5.400	113.1	113.0	-0.6	-0.1	0.0	-0.1	-0.1

See footnotes at end of table.

Table 5. U.S. import price indexes and percent changes for selected categories of goods: January 2016 to January 2017 — Continued
 [2000=100, unless otherwise noted]

Description	Harmonized system	Relative importance Dec. 2016 ¹	Index		Percent change				
			Dec. 2016	Jan. 2017	Annual Jan. 2016 to Jan. 2017	Monthly			
						Sept. 2016 to Oct. 2016	Oct. 2016 to Nov. 2016	Nov. 2016 to Dec. 2016	Dec. 2016 to Jan. 2017
Articles of apparel and clothing accessories, knitted or crocheted.....	61	2.222	103.7	103.8	-0.1	0.1	0.0	0.0	0.1
Articles of apparel and clothing accessories, not knitted or crocheted.....	62	1.853	119.1	119.0	-0.8	-0.3	0.0	-0.1	-0.1
Made-up or worn textile articles.....	63	0.658	103.6	103.2	-0.9	-0.1	0.2	0.1	-0.4
Headgear, umbrellas, artificial flowers, etc.....	XII	1.539	122.5	122.7	-0.3	0.0	0.0	0.1	0.2
Footwear and parts of such articles.....	64	1.303	121.6	121.5	-0.5	0.0	0.0	0.1	-0.1
Stone, plaster, cement, asbestos, ceramics, glass etc.....	XIII	0.955	130.5	130.4	-0.9	-0.1	0.0	-0.2	-0.1
Articles of stone, plaster, cement, asbestos, or mica (Dec. 2015=100).....	68	0.331	97.1	97.2	-2.2	0.0	-0.1	-0.6	0.1
Ceramic products.....	69	0.276	137.1	137.1	-1.0	-0.1	0.0	0.0	0.0
Glass and glassware.....	70	0.348	129.7	129.2	0.2	-0.1	-0.1	0.0	-0.4
Pearls, stones, precious metals, imitation jewelry, and coins.....	XIV	2.760	165.0	165.1	2.9	-2.2	0.0	-4.6	0.1
Base metals and articles of base metals. ...	XV	5.361	159.8	161.6	6.4	-0.7	0.6	2.3	1.1
Iron and steel.....	72	1.224	175.7	185.9	23.4	-2.7	0.2	4.7	5.8
Articles of iron or steel.....	73	1.641	138.0	138.4	-1.4	-0.3	0.4	0.5	0.3
Copper and articles thereof.....	74	0.386	269.9	263.6	6.6	-1.1	3.9	8.6	-2.3
Aluminum and articles thereof.....	76	0.772	122.0	122.5	1.6	0.8	0.7	0.5	0.4
Tools, implements, cutlery, spoons and forks, of base metal; parts thereof.....	82	0.435	121.8	122.8	-2.3	-0.1	-0.2	-0.2	0.8
Miscellaneous articles of base metal.....	83	0.522	135.4	135.2	-1.3	0.0	-0.7	-0.1	-0.1
Machinery, electrical equipment, TV image and sound recorders, parts, etc.....	XVI	30.121	80.5	80.3	-1.5	0.1	-0.4	0.0	-0.2
Machinery and mechanical appliances; parts thereof.....	84	14.885	85.3	85.4	-1.2	-0.1	-0.4	-0.1	0.1
Electrical machinery and equip, sound and TV recorders & reproducers, parts.....	85	15.236	75.8	75.4	-1.8	0.4	-0.4	0.0	-0.5
Vehicles, aircraft, vessels and associated transport equipment.....	XVII	14.769	114.1	113.9	-0.1	0.4	-0.1	-0.2	-0.2
Motor vehicles and their parts.....	87	13.253	112.8	112.5	0.0	0.4	-0.1	-0.1	-0.3
Aircraft, spacecraft, and parts thereof (Dec. 2002=100).....	88	1.380	118.9	118.9	-1.2	0.1	0.0	0.0	0.0
Optical, photo, measuring, medical & musical instruments; & timepieces.....	XVIII	3.932	102.4	101.5	-1.3	-0.5	-0.4	-0.1	-0.9
Optical, photographic, measuring and medical instruments.....	90	3.603	99.1	98.3	-1.3	-0.6	-0.3	-0.2	-0.8
Clocks and watches and parts thereof.....	91	0.269	141.6	140.0	-0.2	-0.1	-0.3	-0.1	-1.1
Miscellaneous manufactured articles.....	XX	4.355	111.6	111.2	-1.0	-0.1	0.0	-0.1	-0.4
Furniture & stuffed furnishings; lamps & lighting fittings, nesoi; prefab bldgs.....	94	2.672	116.3	116.0	-0.7	0.1	-0.2	-0.1	-0.3
Toys, games and sports equipment; parts and accessories thereof.....	95	1.400	103.4	103.0	-0.8	0.0	0.0	0.1	-0.4
Miscellaneous manufactured articles.....	96	0.283	131.7	128.5	-5.1	-1.7	0.0	-0.1	-2.4

¹ Relative importance figures are based on 2015 trade values.

NOTES: Data may be revised in each of the 3 months after original publication.

Dash = Not available

Table 6. U.S. export price indexes and percent changes for selected categories of goods: January 2016 to January 2017

[2000=100, unless otherwise noted]

Description	Harmoni- zied system	Relative importance Dec. 2016 ¹	Index		Percent change				
			Dec. 2016	Jan. 2017	Annual	Monthly			
					Jan. 2016 to Jan. 2017	Sept. 2016 to Oct. 2016	Oct. 2016 to Nov. 2016	Nov. 2016 to Dec. 2016	Dec. 2016 to Jan. 2017
Live animals; animal products.....	I	1.806	192.7	195.5	9.0	0.4	0.3	0.1	1.5
Meat & edible meat offal (Dec. 2006=100)...	02	1.024	148.4	149.8	10.5	0.3	0.5	0.5	0.9
Fish and crustaceans, mollusks and aquatic invertebrates (Dec. 2016=100).....	03	0.375	100.0	103.9	-	-	-	-	3.9
Vegetable products.....	II	4.277	192.2	192.9	-0.8	1.3	2.1	-1.0	0.4
Edible fruit and nuts; peel of citrus fruit or melons.....	08	0.877	145.8	147.3	-14.6	7.0	-0.2	-3.8	1.0
Cereals.....	10	1.159	167.8	174.3	-2.6	2.8	1.2	-1.8	3.9
Oilseeds and misc. grains, seeds, fruits, plants, straw and fodder.....	12	1.730	207.1	202.8	9.3	-2.8	0.4	3.7	-2.1
Prepared foodstuffs, beverages, and tobacco.....	IV	3.110	148.2	145.3	-1.0	-0.5	-0.3	0.1	-2.0
Preparations of vegetables, fruit, nuts or other parts of plants (Dec. 2009=100)....	20	0.386	116.8	116.4	-2.4	-0.9	0.2	0.1	-0.3
Beverages, spirits, and vinegar (Dec. 2008=100).....	22	0.567	113.7	112.2	7.4	0.8	0.5	1.4	-1.3
Residues and waste from the food industries; prepared animal feed.....	23	0.752	203.0	190.5	-2.4	-1.1	-2.2	0.9	-6.2
Mineral products.....	V	8.252	195.1	197.9	35.6	4.2	0.0	8.8	1.4
Ores, slag and ash (Dec. 2012=100).....	26	0.533	89.0	87.7	27.7	0.5	5.1	3.7	-1.5
Mineral fuels, oils and residuals, bituminous substances and mineral waxes.....	27	7.530	187.2	190.2	37.4	4.7	-0.4	9.5	1.6
Products of the chemical or allied industries.....	VI	11.059	135.8	133.1	-2.6	-0.1	0.1	-0.1	-2.0
Inorganic chemicals.....	28	0.862	178.6	179.8	-2.4	1.3	0.5	1.6	0.7
Organic chemicals.....	29	2.604	134.1	128.8	-1.9	0.3	0.8	0.1	-4.0
Pharmaceutical products.....	30	3.268	107.0	103.0	-3.5	-0.2	-0.5	-1.1	-3.7
Fertilizers (Dec. 2016=100).....	31	0.230	100.0	99.1	-	-	-	-	-0.9
Tanning or dyeing extracts, dyes, paints varnish, putty, & inks (Dec. 2015=100)....	32	0.526	97.9	97.3	-2.3	-0.2	0.0	0.4	-0.6
Essential oils and resinoids; perfumery cosmetic or toilet preparations.....	33	0.814	131.0	131.2	-2.3	-2.6	0.0	-0.1	0.2
Soap; lubricants; waxes, polishing or scouring products; candles, pastes.....	34	0.520	116.2	120.0	3.4	0.4	-0.1	0.0	3.3
Miscellaneous chemical products.....	38	1.795	146.5	145.5	-1.4	-0.5	0.1	0.4	-0.7
Plastics and articles thereof; rubber and articles thereof.....	VII	5.116	136.5	136.6	0.8	0.1	0.2	-0.4	0.1
Plastics and articles thereof.....	39	4.155	132.0	131.8	0.8	0.5	0.1	-0.5	-0.2
Rubber and articles thereof.....	40	0.961	155.7	157.1	1.0	-1.1	1.1	-0.4	0.9
Raw hides, skins, leather, furskins, travel goods, etc.....	VIII	0.348	121.2	122.1	1.8	0.3	0.6	0.1	0.7
Wood, wood charcoal, cork, straw, baskets and wickerwork (Dec. 2014=100).....	IX	0.610	93.4	93.6	-2.6	-1.5	-1.3	-0.5	0.2
Woodpulp, recovered paper, and paper products.....	X	2.112	123.9	125.2	3.7	-0.2	0.3	0.7	1.0
Woodpulp and recovered paper.....	47	0.675	134.6	139.5	16.7	-0.5	1.2	2.9	3.6
Paper and paperboard; articles of paper pulp, paper or paperboard.....	48	1.083	118.3	118.0	-1.9	-0.3	-0.1	-0.2	-0.3
Printed material (Dec. 2014=100).....	49	0.353	100.6	100.6	0.2	0.2	0.0	0.0	0.0
Textile and textile articles.....	XI	1.753	119.6	121.0	0.6	-0.3	-0.2	0.2	1.2
Cotton, including yarns and woven fabrics thereof.....	52	0.443	122.1	126.2	10.0	0.2	0.2	-0.3	3.4

See footnotes at end of table.

Table 6. U.S. export price indexes and percent changes for selected categories of goods: January 2016 to January 2017 — Continued
 [2000=100, unless otherwise noted]

Description	Harmonized system	Relative importance Dec. 2016 ¹	Index		Percent change				
			Dec. 2016	Jan. 2017	Annual Jan. 2016 to Jan. 2017	Monthly			
						Sept. 2016 to Oct. 2016	Oct. 2016 to Nov. 2016	Nov. 2016 to Dec. 2016	Dec. 2016 to Jan. 2017
Stone, plaster, cement, asbestos, ceramics, glass etc.....	XIII	0.843	122.9	122.5	-0.3	-0.1	0.1	-0.2	-0.3
Articles of stone, plaster, cement, asbestos, or mica (Dec. 2015=100).....	68	0.281	101.3	99.5	-1.0	0.0	0.1	0.0	-1.8
Glass and glassware.....	70	0.433	99.6	100.2	0.8	0.0	0.1	-0.2	0.6
Pearls, stones, precious metals, imitation jewelry, and coins.....	XIV	4.089	223.6	223.4	1.7	-2.1	0.2	-5.2	-0.1
Base metals and articles of base metals. ...	XV	4.834	147.2	149.2	5.6	-0.1	1.2	1.9	1.4
Iron and steel.....	72	1.014	151.7	161.1	18.2	-1.4	2.1	5.6	6.2
Copper and articles thereof.....	74	0.487	170.7	166.0	14.9	1.9	2.8	8.9	-2.8
Aluminum and articles thereof.....	76	0.813	106.8	106.9	2.6	-0.1	3.1	0.5	0.1
Tools, implements, cutlery, spoons and forks, of base metal (Dec. 2015=100).	82	0.353	100.0	100.0	-0.2	0.0	0.0	0.0	0.0
Miscellaneous articles of base metal.....	83	0.349	147.7	147.7	-0.3	0.0	0.0	-0.1	0.0
Machinery, electrical equipment, TV image and sound recorders, parts, etc.....	XVI	28.767	95.2	95.2	-0.7	-0.2	0.1	-0.1	0.0
Machinery and mechanical appliances; parts thereof.....	84	16.821	112.1	111.8	-0.7	-0.1	0.0	-0.1	-0.3
Electrical machinery and equipment and parts and accessories thereof.....	85	11.946	77.0	77.1	-1.0	-0.3	0.0	0.0	0.1
Vehicles, aircraft, vessels and associated transport equipment.....	XVII	15.025	131.7	132.1	0.8	0.2	-0.1	0.0	0.3
Motor vehicles and their parts.....	87	8.728	114.4	115.0	0.2	0.3	0.0	-0.3	0.5
Optical, photo, measuring, medical & musical instruments; & timepieces.....	XVIII	6.078	105.9	105.7	-1.5	0.1	0.0	-0.2	-0.2
Miscellaneous manufactured articles.....	XX	1.501	112.4	112.6	1.4	0.1	0.0	-0.1	0.2
Furniture; stuffed furnishings; lamps and lighting fittings nesoi;.....	94	0.908	128.3	128.7	3.5	0.1	0.0	-0.2	0.3
Toys, games and sports equipment; parts and accessories thereof.....	95	0.442	89.3	89.4	-0.8	0.0	0.1	0.0	0.1

¹ Relative importance figures are based on 2015 trade values.

NOTES: Data may be revised in each of the 3 months after original publication.

Dash = Not available

Table 7. U.S. import price indexes and percent changes by locality of origin: January 2016 to January 2017
[2000=100, unless otherwise noted]

Description	Relative importance Dec. 2016 ¹	Index		Percent change				
		Dec. 2016	Jan. 2017	Annual	Monthly			
				Jan. 2016 to Jan. 2017	Sept. 2016 to Oct. 2016	Oct. 2016 to Nov. 2016	Nov. 2016 to Dec. 2016	Dec. 2016 to Jan. 2017
Industrialized Countries²	100.000	118.2	118.6	4.2	0.6	-0.2	0.6	0.3
Nonmanufacturing.....	8.399	132.6	139.1	46.3	7.5	-3.6	7.6	4.9
Manufacturing.....	91.147	116.6	116.5	1.4	0.0	0.2	0.0	-0.1
Other Countries³	100.000	119.0	118.8	2.6	0.5	-0.3	0.8	-0.2
Nonmanufacturing.....	8.699	191.9	195.1	38.2	4.2	-0.3	6.3	1.7
Manufacturing.....	91.106	102.8	102.5	-0.1	0.2	-0.3	0.3	-0.3
Canada	100.000	122.4	124.6	13.2	1.7	-0.6	2.2	1.8
Nonmanufacturing.....	23.612	127.2	133.7	49.2	8.1	-3.5	8.0	5.1
Manufacturing.....	75.617	124.9	125.9	5.0	0.2	0.1	0.5	0.8
European Union⁴	100.000	131.6	131.5	-0.2	0.5	0.0	-0.2	-0.1
Manufacturing.....	99.413	128.2	128.2	-0.2	0.4	0.0	-0.2	0.0
France (Dec. 2003=100)	100.000	121.9	121.7	-0.4	0.0	0.0	-0.1	-0.2
Germany (Dec. 2003=100)	100.000	111.6	110.7	-2.2	-0.6	-0.1	-0.4	-0.8
United Kingdom (Dec. 2003=100)	100.000	117.5	117.5	-3.5	-0.2	-0.3	-0.1	0.0
Latin America⁵	100.000	142.1	142.0	5.0	0.6	-0.9	2.2	-0.1
Nonmanufacturing.....	18.178	222.5	224.5	38.8	3.8	-0.1	8.5	0.9
Manufacturing.....	81.506	119.1	118.7	-0.5	0.0	-1.1	1.0	-0.3
Mexico (Dec. 2003=100)	100.000	124.3	122.7	-1.9	0.0	-1.2	-0.1	-1.3
Nonmanufacturing (Dec. 2008=100).....	8.415	115.1	113.1	20.4	-0.1	3.2	-2.0	-1.7
Manufacturing (Dec. 2008=100).....	91.270	86.8	85.7	-3.7	0.0	-1.7	0.2	-1.3
Pacific Rim (Dec. 2003=100)⁶	100.000	98.3	98.2	-0.8	0.0	-0.2	-0.1	-0.1
China (Dec. 2003=100)	100.000	100.2	100.1	-1.7	-0.1	-0.4	0.0	-0.1
Japan	100.000	96.6	96.3	1.4	0.2	0.3	0.0	-0.3
Asian NICs⁷	100.000	84.4	84.4	-0.2	-0.1	0.0	0.1	0.0
ASEAN (Dec. 2003=100)⁸	100.000	97.3	97.5	0.5	0.1	0.0	0.2	0.2
Asia Near East (Dec. 2003=100)⁹	100.000	152.6	156.3	26.0	3.4	0.7	2.2	2.4

¹ Relative importance figures are based on 2015 trade values.

² Western Europe, Canada, Japan, Australia, New Zealand and South Africa.

³ Eastern Europe, Latin America, OPEC countries, and other countries in Asia, Africa and the Western Hemisphere.

⁴ European Union countries.

⁵ Mexico, Central America, South America and the Caribbean.

⁶ China, Japan, Australia, Brunei, Indonesia, Macao, Malaysia, New Zealand, Papua New Guinea, Philippines and the Asian Newly Industrialized Countries.

⁷ Asian Newly Industrialized Countries - Hong Kong, Singapore, South Korea and Taiwan.

⁸ Association of Southeast Asian Nations - Brunei, Cambodia, Indonesia, Laos, Malaysia, Myanmar, Philippines, Singapore, Thailand and Vietnam.

⁹ Bahrain, Iran, Iraq, Israel, Jordan, Kuwait, Lebanon, Oman, Qatar, Saudi Arabia, Syria, United Arab Emirates and Yemen.

NOTES: Data may be revised in each of the 3 months after original publication.

Regions are not mutually exclusive.

Dash = Not available

Table 8. U.S. international price indexes and percent changes for selected transportation services: January 2016 to January 2017

[2000=100, unless otherwise noted]

Description	Relative importance Dec. 2016 ¹	Index		Percent change				
		Dec. 2016	Jan. 2017	Annual	Monthly			
				Jan. 2016 to Jan. 2017	Sept. 2016 to Oct. 2016	Oct. 2016 to Nov. 2016	Nov. 2016 to Dec. 2016	Dec. 2016 to Jan. 2017
Air Freight								
Import Air Freight	100.000	165.2	162.2	5.0	9.0	-0.3	-0.5	-1.8
Europe (Dec. 2003=100).....	24.407	136.9	135.9	-3.6	0.2	0.2	-1.4	-0.7
Asia.....	62.789	153.8	149.9	9.2	14.3	-0.6	-0.2	-2.5
Export Air Freight	100.000	154.9	155.8	-1.8	1.0	0.0	0.2	0.6
Europe (Dec. 2006=100).....	33.391	145.9	147.1	-3.0	0.0	0.0	0.3	0.8
Inbound Air Freight	100.000	155.4	154.3	3.8	6.0	0.5	0.1	-0.7
Europe (Dec. 2003=100).....	26.548	131.3	132.3	-2.3	-0.4	-1.0	-1.6	0.8
Asia.....	60.429	145.6	142.0	6.9	10.8	1.4	0.8	-2.5
Outbound Air Freight	100.000	136.5	138.9	-3.9	0.1	-0.5	0.1	1.8
Europe (Dec. 2003=100).....	31.010	143.3	146.0	-7.6	0.0	-0.1	0.0	1.9
Asia.....	45.670	128.7	131.6	-1.9	0.4	-0.1	0.1	2.3
Air Passenger Fares								
Import Air Passenger Fares	100.000	186.2	183.0	-4.9	6.3	-2.7	1.3	-1.7
Europe.....	38.922	196.5	215.5	-5.6	6.9	-1.2	-9.9	9.7
Asia.....	22.838	146.4	133.9	-6.9	4.8	-5.0	17.4	-8.5
Latin America/Caribbean.....	10.310	175.3	154.8	8.6	4.2	4.7	8.3	-11.7
Export Air Passenger Fares	100.000	168.5	169.9	0.9	2.5	4.1	7.9	0.8
Europe.....	30.588	217.8	204.1	3.1	2.6	2.4	6.9	-6.3
Asia.....	25.624	141.2	155.4	2.2	1.2	6.5	4.8	10.1
Latin America/Caribbean.....	23.241	170.8	175.7	-0.5	6.9	-1.0	4.8	2.9

¹ Relative importance figures are based on 2015 trade values.

NOTES: Data may be revised in each of the 3 months after original publication.

Dash = Not available

TECHNICAL NOTE

Import and Export Merchandise and Services Price Indexes - All indexes use a modified Laspeyres formula and are not seasonally adjusted. Price indexes are reweighted annually, with a 2-year lag in the weights. Published series use a base year of 2000=100 where possible. More detailed index series and additional information may be obtained at www.bls.gov/mxp or by calling (202) 691-7101.

Merchandise Goods Classification Systems - The merchandise price indexes are published using three classification systems. Items are classified by end use according to the Bureau of Economic Analysis Classification System, by industry according to the North American Industry Classification System (NAICS), and by product category according to the Harmonized System (HS). While classification by end use and product category are self-explanatory, some notes are in order for classifying items by industry. In the NAICS imports and exports tables, items are classified by output industry, not input industry. As an example, NAICS import index 326 (plastics and rubber products manufacturing) include outputs such as manufactured plastic rather than inputs such as petroleum. The NAICS classification structure also matches the classification system used by the Producer Price Index (PPI) to produce the NAICS primary products indexes.

Import Price Indexes - Products have been classified by the Harmonized Tariff Schedule of the United States Annotated (TSUSA). Import prices are based on U.S. dollar prices paid by the U.S. importer. The prices are generally either "free on board" (f.o.b.) foreign port or "cost, insurance, and freight" (c.i.f.) U.S. port transaction prices, depending on the practices of the individual industry. The index for crude petroleum is calculated from data collected by the U.S. Department of Energy.

Export Price Indexes - Products have been classified by the Harmonized Schedule B classification system of the U.S. Bureau of the Census. The prices used are generally either "free alongside ship" (f.a.s.) factory or "free on board" (f.o.b.) transaction prices, depending on the practices of the individual industry. Prices used in the grain index, excluding rice, are obtained from the U.S. Department of Agriculture.

Services Price Indexes - Starting in September 2008, the import air passenger fares indexes represent changes in the average revenue per passenger received by foreign carriers from U.S. residents and are calculated from data obtained from an airline consulting service. These data include tickets sold by travel agencies and travel websites. Tickets sold directly by the airlines are excluded, as are frequent flyer tickets generally. Starting in January 2008, the export air passenger fares indexes represent changes in the average revenue per passenger received by U.S. carriers from foreign residents and are calculated from data collected directly from airlines. These data include frequent flyer tickets and those sold by consolidators. Taxes and fees are included in the import air passenger fares indexes and excluded from the export air passenger fares indexes. The air freight indexes are calculated from data collected directly from airlines. These data exclude mail and passenger baggage. The scope of the service being priced is the movement of freight from airport to airport only, and does not include any ground transportation or port service. The air freight indexes are presented using two definitions: balance of payments (which represent transactions between U.S. and foreign residents) and international (which represent transactions inbound to and outbound from the U.S.). Fact sheets specifying detailed information for each services industry are available at www.bls.gov/mxp under "MXP Publications."

Import Indexes by Locality of Origin - Prices used in these indexes are a subset of the data collected for the import price indexes. Beginning with January 2002, the indexes are defined by locality of origin using a nomenclature based upon the North American Industry Classification System (NAICS). Nonmanufactured goods are defined as NAICS 11 and 21, and manufactured goods are defined as NAICS 31-33.

Revision Policy - To reflect the availability of late reports and corrections by respondents, monthly data may be revised in each of the 3 months after original publication. After 3 months, no further data revisions take place. For example, data first published in the January release will be subject to revision in the releases for February, March, and April.

Uses of the Data - The primary use of the indexes is to deflate trade statistics, notably the foreign trade sector of the National Income and Product Accounts (NIPA) constructed by the Department of Commerce. Other published indexes are useful for general market analysis. For trade in international services, balance of payments indexes are used for deflating NIPA, while international indexes are more appropriate for market analysis. Merchandise and services indexes also can be used to study U.S. competitiveness and to compute price elasticities, and the merchandise import indexes by country or region of origin are useful in terms of trade analysis.

Email Subscription - The U.S. import and export price indexes news release is available through an email subscription service at www.bls.gov/bls/list.htm.

Additional Information - More detailed data are available on the Import/Export Price Indexes home page at www.bls.gov/mxp. For import and export price indexes data requests, send an email to mxpinfo@bls.gov.

Information from this release will be made available to sensory impaired individuals upon request. Voice phone: (202)-691-5200; Federal Relay Service: 1-(800)-877-8339.