

Transmission of material in this release is embargoed until
8:30 a.m. (EDT) Thursday, March 13, 2014

USDL-14-0391

Technical information: (202) 691-7101 • MXPinfo@bls.gov • www.bls.gov/mxp
Media contact: (202) 691-5902 • PressOffice@bls.gov

U.S. IMPORT AND EXPORT PRICE INDEXES – FEBRUARY 2014

U.S. import prices increased 0.9 percent in February following a 0.4 percent advance the previous month, the U.S. Bureau of Labor Statistics reported today. The February advance was led by higher fuel prices which more than offset declining nonfuel prices. U.S. export prices rose 0.6 percent in February, after increasing 0.2 percent in January.

Chart 1. One-month percent change in the Import Price Index: February 2013 – February 2014

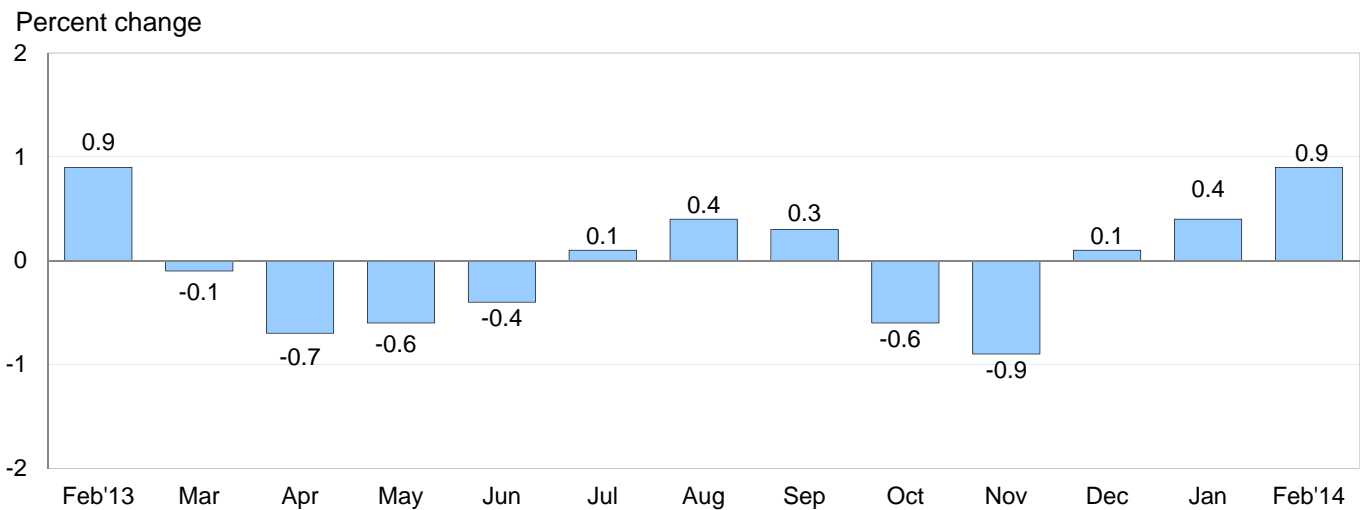
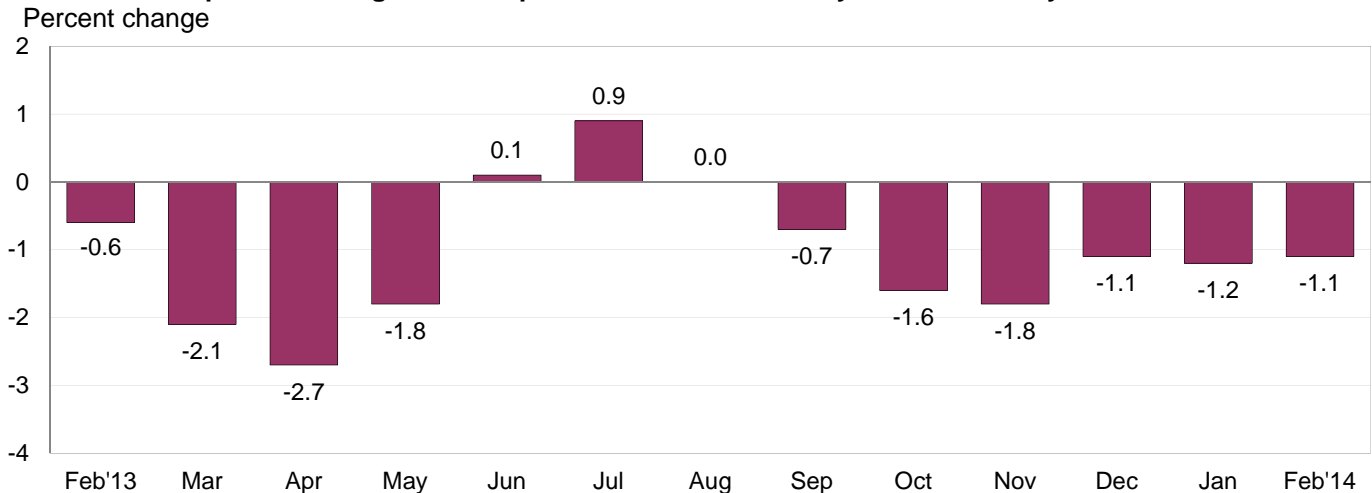


Chart 2. 12-month percent change in the Import Price Index: February 2013 – February 2014



All Imports: Import prices rose for the third consecutive month in February, increasing 0.9 percent. Despite the recent increases, prices for overall imports decreased 1.1 percent for the year ended in February, after declining 0.6 percent from February 2012 to February 2013.

Fuel Imports: The price index for import fuel increased 5.1 percent in February, the largest monthly advance for fuel prices since the index rose 6.1 percent in August 2012. A 4.4 percent increase in petroleum prices and a 22.4 percent jump in natural gas prices both contributed to the overall advance in fuel prices. Natural gas prices have risen 120.5 percent since September 2013. Despite the February increase, import fuel prices fell 0.5 percent over the past year. A 2.6 percent drop in petroleum prices more than offset a 70.6 percent rise in natural gas prices.

All Imports Excluding Fuel: In contrast to fuel prices, nonfuel import prices declined 0.2 percent in February following a 0.3 percent increase in January. Lower prices for capital goods and foods, feeds, and beverages drove the February decline in nonfuel prices, while prices for nonfuel industrial supplies and materials ticked up 0.1 percent and the price indexes for consumer goods and automotive vehicles were unchanged. Nonfuel import prices also declined over the past 12 months, decreasing 1.2 percent. Lower prices over the past year for nonfuel industrial supplies and materials, automotive vehicles, and capital goods all contributed to the decrease in overall nonfuel prices.

Table A. Percent change in import and export price indexes, selected categories

Month	IMPORTS			EXPORTS		
	All imports	Fuel imports	Nonfuel imports	All exports	Agricultural exports	Non-agricultural exports
2013						
February.....	0.9	3.6	0.1	0.7	2.0	0.6
March.....	-0.1	0.0	-0.1	-0.5	-1.8	-0.3
April.....	-0.7	-2.4	-0.2	-0.6	-2.1	-0.5
May.....	-0.6	-1.7	-0.4	-0.5	1.1	-0.7
June.....	-0.4	-0.7	-0.3	-0.1	0.8	-0.2
July.....	0.1	1.7	-0.4	-0.2	-0.3	-0.2
August.....	0.4	2.6	-0.2	-0.5	-4.2	0.0
September.....	0.3	1.0	0.1	0.4	0.6	0.3
October.....	-0.6	-3.3	0.1	-0.6	-1.3	-0.5
November.....	-0.9	-4.2 ^r	0.0	0.2	-0.2 ^r	0.1
December.....	0.1 ^r	0.7 ^r	-0.1	0.4	0.3 ^r	0.4 ^r
2014						
January.....	0.4 ^r	1.1 ^r	0.3	0.2	-0.4 ^r	0.2
February.....	0.9	5.1	-0.2	0.6	1.7	0.6
Feb. 2012 to 2013.....	-0.6	-2.5	0.1	1.5	13.4	0.0
Feb. 2013 to 2014.....	-1.1	-0.5	-1.2	-1.3	-6.0	-0.7

r Revised

Chart 3. One-month percent change in the Export Price Index: February 2013 – February 2014

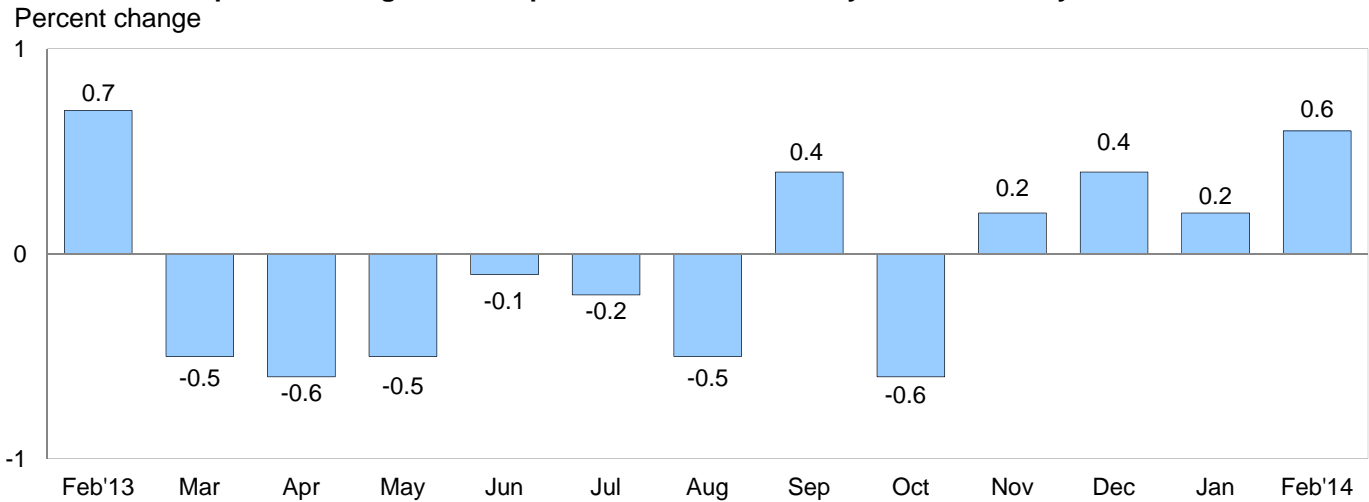
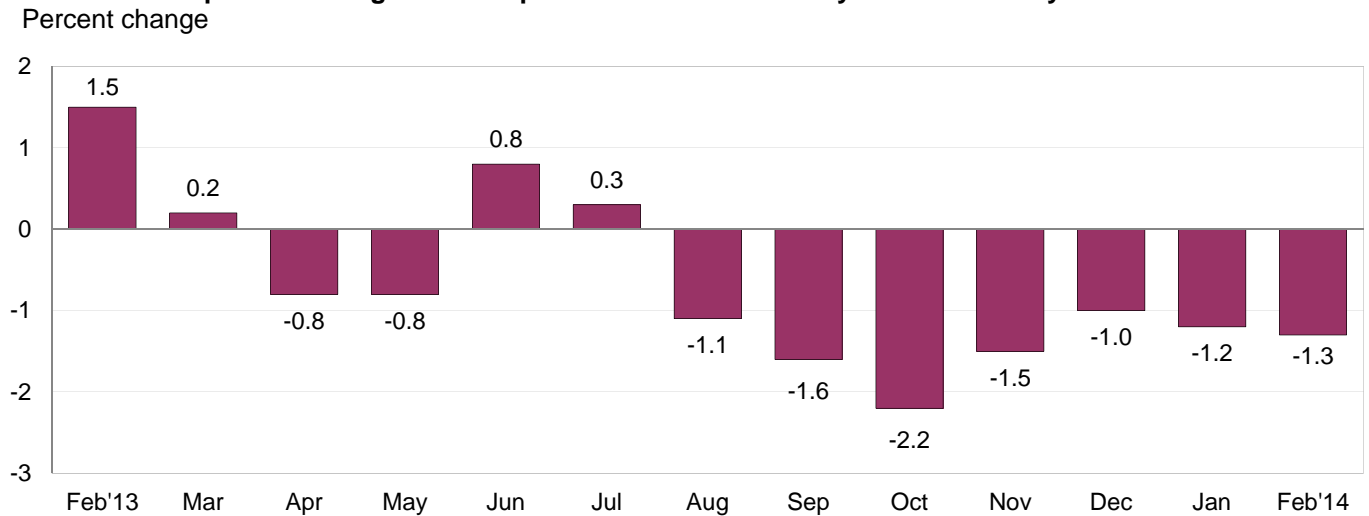


Chart 4. 12-month percent change in the Export Price Index: February 2013 – February 2014



All Exports: Export prices rose 0.6 percent in February, and have not recorded a monthly decline since a 0.6 percent drop in October. The February 2014 increase was the largest monthly advance in export prices since a 0.7 percent rise in February 2013, and higher prices for both agricultural exports and nonagricultural exports contributed to the advance. Despite the recent increases, export prices fell 1.3 percent over the past 12 months.

Agricultural Exports: Prices for agricultural exports advanced 1.7 percent in February, after decreasing 0.4 percent the previous month. Rising prices for fruit, cotton, and corn all contributed to the February increase in agricultural export prices. The price index for agricultural exports fell 6.0 percent for the year ended in February, led by a 10.2 percent decrease in soybean prices, a 32.2 percent drop in corn prices, and a 19.1 percent decline in wheat prices.

All Exports Excluding Agriculture: The price index for nonagricultural exports increased 0.6 percent in February 2014, the largest monthly advance since a 0.6 percent rise in February 2013. Higher prices for nonagricultural industrial supplies and materials and capital goods more than offset lower prices for consumer goods and automotive vehicles. Prices for nonagricultural exports decreased 0.7 percent over the past year.

SELECTED FEBRUARY HIGHLIGHTS

Import Prices

Imports by Locality of Origin: Prices for imports from China rose 0.2 percent in February, after edging down 0.1 percent the previous month. Import prices from China declined 0.4 percent over the past year, the smallest 12-month decrease since a 0.3 percent decline between October 2011 and October 2012. Prices for imports from Canada and the European Union also increased in February, rising 2.3 percent and 0.1 percent, respectively. Higher fuel prices contributed to the advances. In contrast, the price index for imports from Japan edged down 0.1 percent in February. Prices for imports from Japan have not recorded a monthly advance since ticking up 0.1 percent in October 2012 and declined 3.2 percent over the past 12 months. Import prices from Mexico recorded no change in February.

Nonfuel Industrial Supplies and Materials: The price index for nonfuel industrial supplies and materials ticked up 0.1 percent for the second consecutive month in February. The February advance was driven by a 1.2 percent increase in unfinished metals prices. The rise in nonfuel prices was partially mitigated by a 1.4 percent drop in chemical prices.

Finished Goods: Import finished goods prices fell overall in February, led by a 0.2 percent drop in capital goods prices. The decline in capital goods prices followed a 0.1 percent increase in January and was the largest monthly decline for the index since a 0.2 percent decrease in April 2013. The price indexes for consumer goods and automotive vehicles both recorded no change in February following a 0.8 percent increase for consumer goods prices and a 0.2 percent decline for automotive vehicles prices.

Foods, Feeds, and Beverages: Prices for foods, feeds, and beverages fell 0.7 percent in February, after a 0.6 percent advance in January. The February decline was the largest monthly drop for the index since a 1.1 percent decrease in June 2013 and was driven by an 11.4 percent drop in vegetable prices.

Transportation Services: Import air passenger fares advanced 0.3 percent in February following a 6.4 percent decline in January. In February, a 3.2 percent increase in European fares more than offset a 3.4 percent decrease in Asian fares. The index for import air passenger fares rose 6.7 percent for the year ended in February. Import air freight prices fell 0.6 percent in February and advanced 0.5 percent over the past 12 months.

Export Prices

Nonagricultural Industrial Supplies and Materials: The price index for nonagricultural industrial supplies and materials increased 1.5 percent in February, led by a 3.9 percent advance in fuel prices.

Finished Goods: Finished goods prices were mixed in February. Capital goods prices increased 0.2 percent for the second consecutive month; the February advance was driven by a 1.6 percent rise in transportation equipment prices. In contrast, the price indexes for consumer goods and automotive vehicles each declined in February, falling 0.3 percent and 0.2 percent, respectively.

Transportation Services: Export air passenger fares declined 12.8 percent in February, driven by a 21.6 percent drop in Asian fares. The index for export air passenger fares declined 6.5 percent over the past 12 months. Export air freight prices rose 0.2 percent in February and 1.5 percent over the past year.

Import and Export Price Index data for March 2014 are scheduled for release on Thursday, April 10, 2014 at 8:30 a.m. (EDT).

Table 1. U.S. import price indexes and percent changes for selected categories of goods: February 2013 to February 2014

[2000=100, unless otherwise noted]

Description	End Use	Relative importance Jan. 2014 ¹	Index		Percent change				
			Jan. 2014	Feb. 2014	Annual	Monthly			
					Feb. 2013 to Feb. 2014	Oct. 2013 to Nov. 2013	Nov. 2013 to Dec. 2013	Dec. 2013 to Jan. 2014	Jan. 2014 to Feb. 2014
All commodities		100.000	138.4	139.7	-1.1	-0.9	0.1	0.4	0.9
All imports excluding food and fuels (Dec. 2010=100)		75.473	102.1	102.1	-1.4	0.1	-0.2	0.3	0.0
All imports excluding petroleum		81.864	115.7	115.9	-0.6	0.1	0.2	0.4	0.2
All imports excluding fuels (Dec. 2001=100)		80.740	119.4	119.2	-1.2	0.0	-0.1	0.3	-0.2
Foods, feeds, & beverages	0	5.267	176.9	175.6	2.8	-0.6	0.5	0.6	-0.7
Agricultural foods, feeds & beverages, excluding distilled beverages.....	00	3.969	191.7	189.7	-1.1	-0.5	0.7	-0.2	-1.0
Nonagricultural foods (fish, distilled beverages).....	01	1.298	143.2	143.7	16.6	-0.8	-0.3	3.1	0.3
Industrial supplies & materials	1	32.216	244.0	251.5	-2.6	-2.6	0.3	0.7	3.1
Industrial supplies & materials excluding petroleum.....		14.081	161.5	164.0	-2.2	0.3	1.1	0.8	1.5
Industrial supplies & materials excluding fuels (Dec. 2001=100).....		12.957	178.7	178.9	-5.5	-0.1	-0.4	0.1	0.1
Industrial supplies & materials, durable....		7.770	165.8	167.0	-6.3	-0.1	-0.5	-0.6	0.7
Industrial supplies & materials nondurable excluding petroleum.....		5.187	155.6	159.5	2.9	0.8	2.9	2.6	2.5
Fuels & lubricants.....	10	19.259	327.9	344.6	-0.5	-4.2	0.7	1.1	5.1
Petroleum & petroleum products.....	100	18.135	360.1	375.8	-2.6	-4.6	-0.2	0.6	4.4
Crude.....	10000	13.616	368.3	382.6	-4.0	-5.5	-1.0	1.0	3.9
Fuels, n.e.s.-coals & gas.....	101	0.949	161.8	194.0	56.8	6.7	26.5	10.9	19.9
Gas-natural.....	10110	0.806	153.0	187.2	70.6	7.9	31.4	13.8	22.4
Paper & paper base stocks.....	11	0.540	113.3	113.6	0.5	-0.3	-0.3	-0.5	0.3
Materials associated with nondurable supplies & materials.....	12	4.721	170.1	168.3	-4.7	0.1	-0.3	1.3	-1.1
Selected building materials.....	13	1.053	142.5	143.7	-2.6	0.4	-0.2	0.1	0.8
Unfinished metals related to durable goods.....	14	3.480	233.9	236.8	-10.5	-0.3	-1.0	-0.7	1.2
Finished metals related to durable goods.....	15	1.635	155.8	156.2	-2.9	-0.1	0.1	0.0	0.3
Nonmetals related to durable goods.....	16	1.528	111.1	111.2	-2.9	0.1	-0.2	-1.1	0.1
Capital goods	2	25.159	92.6	92.4	-0.8	0.2	-0.1	0.1	-0.2
Electric generating equipment.....	20	3.023	119.4	119.4	-0.2	0.1	0.0	0.1	0.0
Nonelectrical machinery.....	21	20.188	85.3	85.1	-0.9	0.2	-0.1	0.1	-0.2
Transportation equipment excluding motor vehicles (Dec. 2001=100).....	22	1.949	136.1	136.3	0.8	-0.1	0.0	0.1	0.1
Automotive vehicles, parts & engines	3	13.657	113.2	113.2	-1.6	0.0	0.0	-0.2	0.0
Consumer goods, excluding automobiles	4	23.700	108.1	108.1	0.2	0.1	-0.2	0.8	0.0
Nondurables, manufactured.....	40	11.443	118.0	118.0	1.5	0.1	0.0	1.5	0.0
Durables, manufactured.....	41	11.075	97.9	97.9	-1.5	0.0	-0.3	0.0	0.0
Nonmanufactured consumer goods.....	42	1.181	118.5	120.1	3.8	-0.2	0.0	1.2	1.4

¹ Relative importance figures are based on 2012 trade values.

NOTES: Data may be revised in each of the three months after original publication.

Dash = Not available

Table 2. U.S. export price indexes and percent changes for selected categories of goods: February 2013 to February 2014

[2000=100, unless otherwise noted]

Description	End Use	Relative importance Jan. 2014 ¹	Index		Percent change				
			Jan. 2014	Feb. 2014	Annual	Monthly			
					Feb. 2013 to Feb. 2014	Oct. 2013 to Nov. 2013	Nov. 2013 to Dec. 2013	Dec. 2013 to Jan. 2014	Jan. 2014 to Feb. 2014
All commodities.....		100.000	132.5	133.3	-1.3	0.2	0.4	0.2	0.6
Agricultural commodities.....		9.759	211.9	215.4	-6.0	-0.2	0.3	-0.4	1.7
All exports excluding food and fuels (Dec. 2010=100).....		80.863	101.9	102.1	-1.3	-0.1	-0.1	0.2	0.2
Nonagricultural commodities.....		90.240	126.7	127.4	-0.7	0.1	0.4	0.2	0.6
Foods, feeds, & beverages.....	0	8.931	212.2	215.1	-6.4	-0.1	0.5	-0.5	1.4
Agricultural foods, feeds & beverages, excluding distilled beverages.....	00	8.321	215.4	218.3	-6.9	-0.1	0.4	-0.3	1.3
Nonagricultural foods (fish, distilled beverages).....	01	0.610	184.4	187.2	-1.5	-0.2	1.1	-2.7	1.5
Industrial supplies & materials.....	1	33.600	178.6	181.5	-1.5	0.1	1.0	0.3	1.6
Industrial supplies & materials, durable....		11.155	170.4	170.5	-8.1	-0.3	-0.8	-0.2	0.1
Industrial supplies & materials, nondurable.....		22.443	183.9	188.3	2.1	0.3	1.9	0.6	2.4
Agricultural industrial supplies & materials.....	10	1.438	197.8	204.3	-0.4	-0.8	-0.1	-0.9	3.3
Nonagricultural industrial supplies & materials.....		32.161	178.1	180.8	-1.6	0.1	1.0	0.4	1.5
Fuels & lubricants.....	11	10.205	266.7	277.1	4.3	1.5	4.5	0.6	3.9
Nonagricultural supplies & materials excluding fuels & building materials....	12	20.915	165.1	165.9	-4.6	-0.4	-0.4	0.2	0.5
Selected building materials.....	13	1.041	129.7	129.8	8.6	0.4	0.4	2.5	0.1
Capital goods.....	2	36.260	106.7	106.9	0.2	0.1	0.0	0.2	0.2
Electrical generating equipment.....	20	3.662	114.6	114.3	-0.7	-0.2	0.0	0.0	-0.3
Nonelectrical machinery.....	21	25.718	95.5	95.3	-0.4	0.2	0.0	0.1	-0.2
Transportation equipment excluding motor vehicles (Dec. 2001=100).....	22	6.880	153.2	155.6	2.8	0.0	0.1	0.8	1.6
Automotive vehicles, parts & engines.....	3	9.466	113.8	113.6	0.1	0.0	0.0	0.2	-0.2
Consumer goods, excluding automotives.....	4	11.743	114.9	114.5	-1.3	0.3	0.1	-0.1	-0.3
Nondurables, manufactured.....	40	5.436	112.4	111.0	-3.8	0.2	-0.1	-1.6	-1.2
Durables, manufactured.....	41	4.996	112.4	112.4	-0.4	0.1	0.1	0.5	0.0

¹ Relative importance figures are based on 2012 trade values.

NOTES: Data may be revised in each of the three months after original publication.

Dash = Not available

Table 3. U.S. import price indexes and percent changes for selected categories of goods: February 2013 to February 2014

[December 2005=100, unless otherwise noted]

Description	NAICS	Relative importance Jan. 2014 ¹	Index		Percent change				
			Jan. 2014	Feb. 2014	Annual	Monthly			
					Feb. 2013 to Feb. 2014	Oct. 2013 to Nov. 2013	Nov. 2013 to Dec. 2013	Dec. 2013 to Jan. 2014	Jan. 2014 to Feb. 2014
Nonmanufactured articles.....		16.786	163.8	171.0	0.2	-4.4	0.6	1.4	4.4
Agriculture, forestry, fishing and hunting.....	11	1.782	174.1	170.4	0.4	-1.3	1.7	-0.2	-2.1
Crop production.....	111	1.346	179.3	173.6	-0.2	-2.3	2.8	-0.8	-3.2
Forestry and logging (Dec. 2012=100).....	113	0.163	91.8	90.1	-15.4	0.3	-3.5	1.2	-1.9
Mining.....	21	15.004	162.4	170.8	0.2	-4.7	0.5	1.6	5.2
Mining (except oil and gas) (Dec. 2006=100).....	212	0.247	121.8	123.1	-8.6	0.3	0.4	-6.6	1.1
Manufactured articles.....		82.812	116.1	116.4	-1.1	-0.1	-0.1	0.3	0.3
Manufactured goods, part 1.....	31	10.516	124.5	124.6	0.7	-0.2	-0.2	0.4	0.1
Food manufacturing.....	311	3.065	157.7	158.6	2.4	-0.6	-0.6	1.1	0.6
Beverage and tobacco product manufacturing.....	312	0.927	114.9	115.3	1.6	0.2	0.1	0.3	0.3
Textile mills (Dec. 2011=100).....	313	0.359	102.1	102.1	0.1	0.1	0.5	0.5	0.0
Textile product mills.....	314	0.772	114.5	114.3	-1.2	-0.2	-0.1	0.1	-0.2
Apparel manufacturing.....	315	3.742	110.4	110.1	-0.5	-0.1	0.2	-0.2	-0.3
Leather and allied product manufacturing.....	316	1.652	122.2	122.3	0.9	0.2	0.0	0.3	0.1
Manufactured goods, part 2.....	32	17.664	137.3	139.0	-0.5	-0.4	0.4	1.0	1.2
Wood product manufacturing.....	321	0.636	122.1	123.4	-4.0	0.6	-0.2	0.1	1.1
Paper manufacturing.....	322	0.988	110.8	110.7	0.3	0.0	-0.1	-0.3	-0.1
Printing and related support activities (Dec. 2013=100).....	323	0.190	100.3	100.2	-	-	-	0.3	-0.1
Petroleum and coal products manufacturing.....	324	4.023	158.2	168.0	-0.3	-2.0	1.8	-1.0	6.2
Chemical manufacturing.....	325	9.015	137.3	136.8	0.1	0.1	0.0	2.7	-0.4
Plastics and rubber products manufacturing.....	326	1.970	123.5	123.3	-3.0	0.0	0.1	-0.7	-0.2
Nonmetallic mineral product manufacturing.....	327	0.843	130.2	130.4	1.1	0.0	0.0	0.2	0.2
Manufactured goods, part 3.....	33	54.632	107.9	107.9	-1.6	0.0	-0.2	0.1	0.0
Primary metal manufacturing.....	331	4.106	154.6	156.3	-10.0	-0.2	-0.8	-0.3	1.1
Fabricated metal product manufacturing.....	332	2.686	126.3	126.2	-2.8	0.3	-0.2	0.0	-0.1
Machinery manufacturing.....	333	6.958	121.7	121.5	-0.5	0.1	-0.1	0.6	-0.2
Computer and electronic product manufacturing.....	334	16.155	80.4	80.2	-1.5	0.1	-0.1	-0.1	-0.2
Electrical equipment, appliance, and component manufacturing.....	335	4.116	118.4	118.4	-1.1	-0.1	-0.3	-0.3	0.0
Transportation equipment manufacturing.....	336	14.531	111.8	111.7	-0.8	0.0	0.0	0.1	-0.1
Furniture and related product manufacturing.....	337	1.356	114.9	114.8	0.8	0.0	0.1	0.3	-0.1
Miscellaneous manufacturing.....	339	4.724	121.2	121.5	0.7	0.1	-0.2	0.2	0.2

¹ Relative importance figures are based on 2012 trade values.

NOTES: Data may be revised in each of the three months after original publication.

Dash = Not available

Table 4. U.S. export price indexes and percent changes for selected categories of goods: February 2013 to February 2014

[December 2005=100, unless otherwise noted]

Description	NAICS	Relative importance Jan. 2014 ¹	Index		Percent change				
			Jan. 2014	Feb. 2014	Annual	Monthly			
					Feb. 2013 to Feb. 2014	Oct. 2013 to Nov. 2013	Nov. 2013 to Dec. 2013	Dec. 2013 to Jan. 2014	Jan. 2014 to Feb. 2014
Nonmanufactured articles.....		7.420	164.8	173.2	-2.0	-0.3	1.3	2.7	5.1
Agriculture, forestry, fishing and hunting.....	11	4.973	194.5	197.1	-10.4	-0.5	0.4	0.4	1.3
Crop production.....	111	4.574	201.0	204.8	-10.5	-0.7	0.3	0.7	1.9
Mining.....	21	2.447	99.1	111.8	19.2	0.3	3.8	7.6	12.8
Mining (except oil and gas).....	212	1.363	101.3	100.3	-7.2	-0.1	-0.1	0.1	-1.0
Manufactured articles.....		90.635	120.3	120.8	-0.9	0.0	0.3	-0.1	0.4
Manufactured goods, part 1.....	31	6.959	151.0	152.9	0.2	-0.2	0.5	-0.3	1.3
Food manufacturing.....	311	4.870	173.0	174.1	-0.9	-0.6	0.5	-0.2	0.6
Beverage and tobacco product manufacturing.....	312	0.525	118.3	129.6	0.8	1.8	-0.8	-4.6	9.6
Leather and allied product manufacturing (Dec. 2013=100).....	316	0.277	101.4	102.2	-	-	-	1.4	0.8
Manufactured goods, part 2.....	32	26.485	133.5	134.3	-0.8	0.2	1.1	-0.4	0.6
Wood product manufacturing.....	321	0.460	124.2	123.8	8.3	0.4	0.1	0.8	-0.3
Paper manufacturing.....	322	1.807	123.4	125.0	3.9	0.5	0.1	0.5	1.3
Petroleum and coal products manufacturing.....	324	7.656	172.0	175.4	2.3	2.2	4.9	-0.6	2.0
Chemical manufacturing.....	325	13.339	127.7	127.6	-3.5	-0.7	-0.2	-0.6	-0.1
Plastics and rubber products manufacturing.....	326	2.177	119.6	119.3	-0.4	-0.1	-0.1	-0.4	-0.3
Nonmetallic mineral product manufacturing.....	327	0.766	112.0	112.2	1.5	0.1	0.0	0.0	0.2
Manufactured goods, part 3.....	33	57.191	112.2	112.5	-1.1	0.0	-0.1	0.1	0.3
Primary metal manufacturing.....	331	4.549	144.5	146.4	-13.7	-0.7	-1.7	-1.8	1.3
Fabricated metal product manufacturing.....	332	2.790	131.7	131.5	-0.6	0.1	0.4	0.0	-0.2
Machinery manufacturing.....	333	11.692	123.4	123.2	0.9	0.2	0.1	0.3	-0.2
Computer and electronic product manufacturing.....	334	13.831	88.0	87.8	-1.7	0.2	-0.1	-0.1	-0.2
Electrical equipment, appliance, and component manufacturing.....	335	3.458	113.9	113.8	0.0	-0.4	0.0	0.3	-0.1
Transportation equipment manufacturing.....	336	15.507	118.6	119.4	1.4	0.0	0.0	0.3	0.7
Furniture and related product manufacturing (Dec. 2011=100).....	337	0.362	107.6	107.4	1.9	-0.2	0.0	0.3	-0.2
Miscellaneous manufacturing.....	339	5.001	123.0	123.7	0.7	0.3	0.2	0.9	0.6

¹ Relative importance figures are based on 2012 trade values.

NOTES: Data may be revised in each of the three months after original publication.

Dash = Not available

Table 5. U.S. import price indexes and percent changes for selected categories of goods: February 2013 to February 2014

[2000=100, unless otherwise noted]

Description	Harmoni- zied system	Relative importance Jan. 2014 ¹	Index		Percent change				
			Jan. 2014	Feb. 2014	Annual	Monthly			
					Feb. 2013 to Feb. 2014	Oct. 2013 to Nov. 2013	Nov. 2013 to Dec. 2013	Dec. 2013 to Jan. 2014	Jan. 2014 to Feb. 2014
Live animals; animal products.....	I	1.288	192.9	195.4	16.5	-0.8	-0.2	2.7	1.3
Meat and edible meat ofal.....	02	0.268	223.1	229.4	3.6	-1.3	0.4	0.6	2.8
Fish and crustaceans, molluscs and other aquatic invertebrates.....	03	0.740	148.4	149.1	25.7	-1.4	-0.6	4.1	0.5
Vegetable products.....	II	1.678	201.5	194.9	-6.9	-1.7	2.7	-0.5	-3.3
Edible vegetables, roots, and tubers.....	07	0.429	400.9	328.0	-1.6	-2.6	4.4	2.1	-18.2
Edible fruit and nuts; peel of citrus fruit or melons.....	08	0.446	109.9	108.3	-6.6	-0.5	2.0	-2.0	-1.5
Coffee, tea, mate and spices.....	09	0.312	220.0	235.6	-4.9	-2.2	3.8	-2.7	7.1
Animal or vegetable fats and oils (Dec. 2009=100).....	III	0.245	112.7	111.1	-8.3	0.0	-0.4	-2.2	-1.4
Prepared foodstuffs, beverages, and tobacco.....	IV	2.491	159.1	159.5	1.4	0.1	-0.5	0.3	0.3
Sugars and sugar confectionary (Dec. 2012=100).....	17	0.162	85.7	86.4	-14.1	-0.2	-2.1	-1.9	0.8
Cocoa and cocoa preparations (Dec. 2009=100).....	18	0.223	100.9	99.2	13.5	-0.6	-0.9	0.4	-1.7
Preparations of cereals, flour, starch or milk; bakers' wares (Dec. 2007=100).....	19	0.246	131.3	131.2	0.0	0.0	0.0	0.5	-0.1
Preparations of vegetables, fruit, nuts, or other parts of plants.....	20	0.302	165.4	170.1	5.1	0.4	-2.6	2.4	2.8
Beverages, spirits, and vinegar.....	22	0.943	125.6	126.1	1.4	0.3	0.2	0.2	0.4
Mineral products.....	V	19.075	328.6	345.8	-0.8	-4.3	0.6	0.9	5.2
Mineral fuels, oils and residuals, bituminous substances and mineral waxes.....	27	18.820	325.9	343.1	-0.7	-4.4	0.6	1.1	5.3
Products of the chemical or allied industries.....	VI	8.215	152.2	152.2	0.0	0.1	0.1	2.5	0.0
Inorganic chemicals.....	28	0.614	308.7	301.7	-19.7	0.5	-0.7	-0.4	-2.3
Organic chemicals.....	29	2.445	137.0	137.6	-2.3	0.1	1.0	0.2	0.4
Pharmaceutical products.....	30	3.376	133.5	133.6	9.0	0.2	-0.1	6.1	0.1
Fertilizers (Dec. 2009=100).....	31	0.318	109.1	107.9	-15.5	-0.2	-0.6	3.7	-1.1
Tanning extracts; dye, pigments, varnish, paints & putty (Dec. 2011=100).....	32	0.173	100.3	100.2	6.6	0.3	-0.3	6.6	-0.1
Miscellaneous chemical products.....	38	0.469	93.4	93.2	-9.2	-1.0	-1.1	-2.4	-0.2
Plastics and articles thereof; rubber and articles thereof.....	VII	3.211	149.2	147.6	-4.2	-0.1	-0.4	0.5	-1.1
Plastics and articles thereof.....	39	2.028	149.3	147.4	-1.0	-0.2	-0.3	1.2	-1.3
Rubber and articles thereof.....	40	1.183	150.4	149.4	-9.1	0.1	-0.7	-0.9	-0.7
Raw hides, skins, leather, furskins, travel goods, etc.....	VIII	0.619	127.5	127.6	0.9	0.4	0.2	0.9	0.1
Articles of leather; travel goods, bags, etc. of various materials.....	42	0.571	128.7	128.8	1.3	0.4	0.1	0.9	0.1
Wood, wood charcoal, cork, straw, basketware and wickerwork.....	IX	0.666	148.1	149.6	-4.3	0.7	-0.3	0.1	1.0
Woodpulp, recovered paper, and paper products.....	X	1.054	114.0	114.1	0.6	0.0	-0.1	-0.3	0.1
Paper and paperboard; articles of paper pulp, paper or paperboard.....	48	0.694	107.4	107.2	-0.4	0.0	-0.2	-0.4	-0.2
Printed matter (Dec. 2013=100).....	49	0.196	100.2	100.2	-	-	-	0.2	0.0
Textile and textile articles.....	XI	4.749	113.8	113.5	-0.6	0.0	0.1	-0.2	-0.3
Articles of apparel and clothing accessories, knitted or crocheted.....	61	1.850	102.5	101.9	-2.3	0.0	0.0	-0.3	-0.6

See footnotes at end of table.

Table 5. U.S. import price indexes and percent changes for selected categories of goods: February 2013 to February 2014 — Continued
 [2000=100, unless otherwise noted]

Description	Harmoni- zied system	Relative importance Jan. 2014 ¹	Index		Percent change				
			Jan. 2014	Feb. 2014	Annual	Monthly			
					Feb. 2013 to Feb. 2014	Oct. 2013 to Nov. 2013	Nov. 2013 to Dec. 2013	Dec. 2013 to Jan. 2014	Jan. 2014 to Feb. 2014
Articles of apparel and clothing accessories, not knitted or crocheted.....	62	1.722	118.6	118.6	1.5	0.0	0.2	-0.2	0.0
Made-up or worn textile articles.....	63	0.554	107.9	107.6	-0.6	-0.3	-0.1	0.4	-0.3
Headgear, umbrellas, artificial flowers, etc...	XII	1.330	121.0	121.0	0.2	0.0	0.0	-0.1	0.0
Footwear and parts of such articles.....	64	1.146	120.2	120.2	0.2	0.1	0.0	0.0	0.0
Stone, plaster, cement, asbestos, ceramics, glass etc.....	XIII	0.782	133.2	133.2	0.9	0.0	0.0	0.2	0.0
Articles of stone, plaster, cement, asbestos, or mica (Dec. 2001=100).....	68	0.258	126.3	126.3	1.1	-0.1	-0.1	0.2	0.0
Ceramic products.....	69	0.240	140.9	140.9	0.2	-0.1	0.1	-0.1	0.0
Glass and glassware.....	70	0.284	130.2	130.2	1.4	0.2	-0.1	0.3	0.0
Pearls, stones, precious metals, imitation jewelry, and coins.....	XIV	2.588	176.5	178.6	-12.0	-0.7	-1.9	-1.0	1.2
Base metals and articles of base metals. ...	XV	5.329	180.6	181.4	-2.2	0.2	0.1	0.2	0.4
Iron and steel.....	72	1.261	218.7	221.0	0.9	0.4	0.9	0.3	1.1
Articles of iron or steel.....	73	1.684	153.2	153.6	-2.5	0.3	0.1	-0.5	0.3
Copper and articles thereof.....	74	0.464	344.9	345.8	-4.3	-0.6	0.2	3.3	0.3
Aluminum and articles thereof.....	76	0.700	134.8	136.0	-3.1	0.1	-1.2	0.3	0.9
Tools, implements, cutlery, spoons and forks, of base metal; parts thereof.....	82	0.396	129.0	128.9	-0.5	0.4	0.1	-0.7	-0.1
Miscellaneous articles of base metal.....	83	0.445	135.9	136.1	-0.3	0.2	0.1	0.1	0.1
Machinery, electrical equipment, TV image and sound recorders, parts, etc.....	XVI	27.383	84.6	84.5	-1.3	0.0	-0.1	0.1	-0.1
Machinery and mechanical appliances; parts thereof.....	84	14.219	89.6	89.5	-0.7	0.2	-0.2	0.2	-0.1
Electrical machinery and equip, sound and TV recorders & reproducers, parts.....	85	13.164	79.8	79.8	-1.8	0.0	-0.1	0.0	0.0
Vehicles, aircraft, vessels and associated transport equipment.....	XVII	12.180	116.0	116.0	-0.6	0.0	0.0	0.0	0.0
Motor vehicles and their parts.....	87	11.153	114.7	114.7	-0.8	0.0	0.0	0.0	0.0
Aircraft, spacecraft, and parts thereof (Dec. 2002=100).....	88	0.925	120.2	120.5	0.9	0.0	-0.1	0.0	0.2
Optical, photo, measuring, medical & musical instruments; & timepieces.....	XVIII	3.466	104.7	104.1	0.4	0.2	-0.1	0.4	-0.6
Optical, photographic, measuring and medical instruments.....	90	3.162	101.4	100.8	0.4	0.1	-0.1	0.3	-0.6
Clocks and watches and parts thereof.....	91	0.246	144.9	144.4	1.5	0.5	-0.3	2.3	-0.3
Miscellaneous manufactured articles.....	XX	3.572	113.1	113.1	0.2	-0.1	0.0	-0.1	0.0
Furniture & stuffed furnishings; lamps & lighting fittings, nesoi; prefab bldgs.....	94	2.075	117.1	116.9	0.3	0.0	-0.2	0.1	-0.2
Toys, games and sports equipment; parts and accessories thereof.....	95	1.262	105.6	105.6	0.4	0.0	0.0	0.2	0.0
Miscellaneous manufactured articles.....	96	0.236	136.0	136.1	-1.2	0.1	0.1	-2.0	0.1

¹ Relative importance figures are based on 2012 trade values.

NOTES: Data may be revised in each of the three months after original publication.

Dash = Not available

Table 6. U.S. export price indexes and percent changes for selected categories of goods: February 2013 to February 2014

[2000=100, unless otherwise noted]

Description	Harmoni- zied system	Relative importance Jan. 2014 ¹	Index		Percent change				
			Jan. 2014	Feb. 2014	Annual	Monthly			
					Feb. 2013 to Feb. 2014	Oct. 2013 to Nov. 2013	Nov. 2013 to Dec. 2013	Dec. 2013 to Jan. 2014	Jan. 2014 to Feb. 2014
Live animals; animal products.....	I	2.012	222.3	226.3	1.8	1.0	0.8	-1.7	1.8
Meat & edible meat offal (Dec. 2006=100)...	02	1.146	165.6	166.9	-1.3	0.7	0.5	-1.5	0.8
Fish and crustaceans, molluscs and other aquatic invertebrates.....	03	0.346	198.5	203.1	0.5	-0.2	2.3	-2.7	2.3
Vegetable products.....	II	4.603	246.0	247.6	-11.1	0.5	0.0	0.6	0.7
Edible fruit and nuts; peel of citrus fruit or melons.....	08	1.210	188.5	188.3	15.2	7.5	-0.6	7.3	-0.1
Cereals.....	10	1.079	237.5	241.8	-25.0	-2.3	-0.7	-2.9	1.8
Oilseeds and misc. grains, seeds, fruits, plants, straw and fodder.....	12	1.838	266.4	268.5	-9.4	-2.8	3.8	-1.6	0.8
Animal or vegetable fats and oils (Dec. 2009=100).....	III	0.248	113.3	109.2	-19.8	-4.4	-0.1	-2.3	-3.6
Prepared foodstuffs, beverages, and tobacco.....	IV	2.876	165.1	168.2	0.1	-0.5	0.4	-0.4	1.9
Preparations of vegetables, fruit, nuts or other parts of plants (Dec. 2009=100).....	20	0.341	115.2	114.7	2.4	-0.3	1.4	1.1	-0.4
Beverages, spirits, and vinegar (Dec. 2008=100).....	22	0.488	112.0	110.6	-3.0	0.2	-0.4	-0.5	-1.3
Residues and waste from the food industries; prepared animal feed.....	23	0.705	257.9	282.3	3.7	-1.5	1.7	-2.8	9.5
Mineral products.....	V	10.071	312.5	324.3	4.6	1.8	4.2	0.8	3.8
Ores, slag and ash (Dec. 2012=100).....	26	0.438	94.0	92.5	-7.4	0.8	-1.3	3.3	-1.6
Mineral fuels, oils and residuals, bituminous substances and mineral waxes.....	27	9.453	310.6	323.3	5.4	1.9	4.6	0.7	4.1
Products of the chemical or allied industries.....	VI	10.865	150.4	149.7	-3.5	-0.5	0.0	-0.4	-0.5
Inorganic chemicals.....	28	0.893	174.9	175.9	-4.7	-0.8	-0.6	-0.7	0.6
Organic chemicals.....	29	3.130	163.6	164.1	-2.8	-0.7	0.2	1.6	0.3
Pharmaceutical products.....	30	2.619	117.6	114.9	-7.8	0.4	-0.3	-2.7	-2.3
Fertilizers (Dec. 2012=100).....	31	0.249	69.7	72.3	-24.3	-8.4	-4.1	-7.8	3.7
Essential oils and resinoids; perfumery cosmetic or toilet preparations.....	33	0.718	135.7	132.7	-3.1	0.1	0.3	-0.1	-2.2
Soap; lubricants; waxes, polishing or scouring products; candles, pastes.....	34	0.467	121.4	121.4	0.1	0.0	0.0	0.0	0.0
Miscellaneous chemical products.....	38	1.799	157.3	157.1	1.4	-0.5	1.0	1.0	-0.1
Plastics and articles thereof; rubber and articles thereof.....	VII	5.155	149.2	149.9	-0.1	-0.3	-0.1	-0.2	0.5
Plastics and articles thereof.....	39	4.177	143.8	144.5	1.5	-0.5	-0.1	0.0	0.5
Rubber and articles thereof.....	40	0.978	173.0	172.9	-6.9	0.8	0.1	-0.5	-0.1
Raw hides, skins, leather, furskins, travel goods, etc.....	VIII	0.428	151.8	153.7	7.5	1.4	1.2	1.5	1.3
Woodpulp, recovered paper, and paper products.....	X	2.255	123.6	125.6	4.8	0.2	-0.5	1.0	1.6
Woodpulp and recovered paper.....	47	0.673	127.7	130.8	5.9	0.8	-1.6	1.0	2.4
Paper and paperboard; articles of paper pulp, paper or paperboard.....	48	1.153	122.1	124.1	4.5	0.1	-0.1	1.2	1.6
Textile and textile articles.....	XI	1.932	135.1	137.2	5.6	-0.4	0.2	2.6	1.6
Cotton, including yarns and woven fabrics thereof.....	52	0.615	151.1	157.8	8.3	-2.7	-0.8	5.2	4.4
Stone, plaster, cement, asbestos, ceramics, glass etc.....	XIII	0.736	118.7	118.7	0.7	0.0	0.0	0.1	0.0
Glass and glassware.....	70	0.378	97.7	97.8	0.6	0.1	0.0	0.2	0.1

See footnotes at end of table.

Table 6. U.S. export price indexes and percent changes for selected categories of goods: February 2013 to February 2014 — Continued
 [2000=100, unless otherwise noted]

Description	Harmoni- zied system	Relative importance Jan. 2014 ¹	Index		Percent change				
			Jan. 2014	Feb. 2014	Annual	Monthly			
					Feb. 2013 to Feb. 2014	Oct. 2013 to Nov. 2013	Nov. 2013 to Dec. 2013	Dec. 2013 to Jan. 2014	Jan. 2014 to Feb. 2014
Pearls, stones, precious metals, imitation jewelry, and coins.....	XIV	4.240	238.8	241.9	-14.3	-0.5	-1.8	-0.8	1.3
Base metals and articles of base metals. . .	XV	5.382	166.6	165.5	-4.1	0.1	0.2	0.7	-0.7
Iron and steel.....	72	1.413	189.6	186.3	-8.2	0.4	0.9	1.2	-1.7
Copper and articles thereof.....	74	0.629	238.6	233.4	-10.3	-0.3	-1.3	2.1	-2.2
Aluminum and articles thereof.....	76	0.836	120.6	122.1	-3.7	0.3	-0.9	0.5	1.2
Tools, implements, cutlery, spoons and forks, of base metal; parts thereof.....	82	0.402	138.8	138.7	5.2	1.0	0.9	1.2	-0.1
Miscellaneous articles of base metal.....	83	0.311	146.8	146.5	-0.1	-0.1	-0.1	-0.1	-0.2
Machinery, electrical equipment, TV image and sound recorders, parts, etc.....	XVI	27.687	97.0	97.2	-0.4	0.1	0.0	0.0	0.2
Machinery and mechanical appliances; parts thereof.....	84	16.672	111.8	112.3	0.7	0.3	-0.1	0.2	0.4
Electrical machinery and equipment and parts and accessories thereof.....	85	11.015	80.9	80.8	-2.1	-0.1	0.0	-0.2	-0.1
Vehicles, aircraft, vessels and associated transport equipment.....	XVII	13.391	129.3	129.4	1.3	0.0	0.0	0.6	0.1
Motor vehicles and their parts.....	87	8.751	115.0	114.8	1.0	0.0	0.0	0.6	-0.2
Optical, photo, measuring, medical & musical instruments; & timepieces.....	XVIII	5.995	107.4	107.3	-0.1	0.2	0.0	0.1	-0.1
Miscellaneous manufactured articles.....	XX	1.413	110.4	110.7	-0.1	-0.4	0.0	0.5	0.3
Furniture; stuffed furnishings; lamps and lighting fittings nesoi;.....	94	0.782	121.5	122.1	0.9	-0.7	0.0	0.2	0.5
Toys, games and sports equipment; parts and accessories thereof.....	95	0.477	89.7	89.6	-1.4	-0.2	0.0	1.4	-0.1

¹ Relative importance figures are based on 2012 trade values.

NOTES: Data may be revised in each of the three months after original publication.

Dash = Not available

Table 7. U.S. import price indexes and percent changes by locality of origin: February 2013 to February 2014
[2000=100, unless otherwise noted]

Description	Relative importance Jan. 2014 ¹	Index		Percent change				
		Jan. 2014	Feb. 2014	Annual	Monthly			
				Feb. 2013 to Feb. 2014	Oct. 2013 to Nov. 2013	Nov. 2013 to Dec. 2013	Dec. 2013 to Jan. 2014	Jan. 2014 to Feb. 2014
Industrialized Countries²	100.000	131.1	132.6	0.2	-0.7	-0.2	0.9	1.1
Nonmanufactured articles.....	11.901	226.9	243.6	11.1	-7.3	-0.2	5.5	7.4
Manufactured articles.....	87.509	123.3	123.7	-1.2	0.2	-0.2	0.3	0.3
Other Countries³	100.000	137.7	138.9	-1.6	-0.9	0.1	0.1	0.9
Nonmanufactured articles.....	19.599	338.5	348.8	-4.6	-3.7	0.6	0.1	3.0
Manufactured articles.....	80.154	110.0	110.3	-0.5	-0.1	0.0	0.2	0.3
Canada	100.000	150.1	153.5	1.8	-2.1	-0.1	2.0	2.3
Nonmanufactured articles.....	31.106	219.4	235.8	12.9	-7.4	-0.1	6.5	7.5
Manufactured articles.....	67.972	135.4	135.4	-2.8	0.1	-0.1	0.0	0.0
European Union⁴	100.000	137.6	137.7	0.7	0.3	-0.2	0.9	0.1
France (Dec. 2003=100)	100.000	122.8	123.3	1.9	0.3	0.0	0.2	0.4
Germany (Dec. 2003=100)	100.000	118.5	118.4	1.9	0.2	-0.2	1.0	-0.1
United Kingdom (Dec. 2003=100)	100.000	129.2	129.3	-3.1	0.4	-0.2	0.1	0.1
Latin America⁵	100.000	172.1	173.9	-3.4	-1.8	0.5	0.3	1.0
Nonmanufactured articles.....	28.523	360.5	370.0	-6.6	-5.4	1.9	0.4	2.6
Manufactured articles.....	71.087	131.1	131.6	-1.6	-0.2	0.0	0.2	0.4
Mexico (Dec. 2003=100)	100.000	141.2	141.2	-3.5	-1.1	0.1	0.1	0.0
Nonmanufactured articles (Dec. 2008=100).....	16.483	191.9	193.6	-9.5	-6.3	2.4	0.9	0.9
Manufactured articles (Dec. 2008=100)...	83.270	92.9	92.7	-1.9	0.0	-0.3	0.0	-0.2
Pacific Rim (Dec. 2003=100)⁶	100.000	103.0	102.9	-1.1	0.1	-0.1	-0.1	-0.1
China (Dec. 2003=100)	100.000	103.7	103.9	-0.4	0.1	0.1	-0.1	0.2
Japan	100.000	99.1	99.0	-3.2	-0.1	-0.3	-0.2	-0.1
Asian NICs⁷	100.000	89.5	89.7	-0.2	0.3	-1.2	-0.3	0.2
ASEAN (Dec. 2003=100)⁸	100.000	104.7	104.3	0.0	0.1	-0.1	-0.2	-0.4
Asia Near East (Dec. 2003=100)⁹	100.000	254.6	263.5	-4.7	-2.5	-0.7	0.5	3.5

¹ Relative importance figures are based on 2012 trade values.

² Western Europe, Canada, Japan, Australia, New Zealand and South Africa.

³ Eastern Europe, Latin America, OPEC countries, and other countries in Asia, Africa and the Western Hemisphere.

⁴ European Union countries.

⁵ Mexico, Central America, South America and the Caribbean.

⁶ China, Japan, Australia, Brunei, Indonesia, Macao, Malaysia, New Zealand, Papua New Guinea, Philippines and the Asian Newly Industrialized Countries.

⁷ Asian Newly Industrialized Countries - Hong Kong, Singapore, South Korea and Taiwan.

⁸ Association of Southeast Asian Nations - Brunei, Cambodia, Indonesia, Laos, Malaysia, Myanmar, Philippines, Singapore, Thailand and Vietnam.

⁹ Bahrain, Iran, Iraq, Israel, Jordan, Kuwait, Lebanon, Oman, Qatar, Saudi Arabia, Syria, United Arab Emirates and Yemen.

NOTES: Data may be revised in each of the three months after original publication.

Regions are not mutually exclusive.

Dash = Not available

Table 8. U.S. international price indexes and percent changes for selected transportation services: February 2013 to February 2014

[2000=100, unless otherwise noted]

Description	Relative importance Jan. 2014 ¹	Index		Percent change				
		Jan. 2014	Feb. 2014	Annual Feb. 2013 to Feb. 2014	Monthly			
					Oct. 2013 to Nov. 2013	Nov. 2013 to Dec. 2013	Dec. 2013 to Jan. 2014	Jan. 2014 to Feb. 2014
Air Freight								
Import Air Freight	100.000	177.3	176.3	0.5	2.2	-0.4	0.0	-0.6
Europe (Dec. 2006=100).....	28.313	182.3	181.4	8.2	7.2	-0.8	1.6	-0.5
Asia.....	67.451	152.8	151.9	-1.9	0.8	-0.3	-0.7	-0.6
Export Air Freight	100.000	150.9	151.2	1.5	-0.1	-0.2	2.4	0.2
Europe (Dec. 2006=100).....	35.695	135.3	135.9	2.2	-0.5	-0.2	2.3	0.4
Inbound Air Freight	100.000	164.2	163.1	-0.9	1.7	-0.4	-0.4	-0.7
Europe (Dec. 2003=100).....	27.424	159.9	159.6	4.9	4.5	-0.6	1.9	-0.2
Asia.....	62.121	146.0	144.5	-3.2	0.9	-0.3	-1.4	-1.0
Outbound Air Freight	100.000	147.6	147.6	-0.2	0.3	0.1	0.6	0.0
Europe (Dec. 2003=100).....	33.216	164.5	164.4	1.7	1.8	0.0	0.4	-0.1
Asia.....	47.248	140.3	140.5	-0.6	-0.4	0.2	0.8	0.1
Air Passenger Fares								
Import Air Passenger Fares	100.000	196.6	197.1	6.7	3.4	7.1	-6.4	0.3
Europe.....	42.416	216.8	223.7	3.6	2.4	-2.5	-0.7	3.2
Asia.....	24.632	158.5	153.1	3.4	-0.1	15.6	-8.2	-3.4
Latin America/Caribbean.....	8.648	168.1	165.7	1.2	3.9	10.0	-10.4	-1.4
Export Air Passenger Fares	100.000	197.4	172.1	-6.5	-1.7	8.9	2.3	-12.8
Europe.....	23.792	208.4	208.5	-4.6	2.4	-1.6	-4.3	0.0
Asia.....	31.902	184.3	144.4	-11.2	-0.5	10.0	12.7	-21.6
Latin America/Caribbean.....	20.269	219.1	202.0	4.0	-1.8	10.0	3.8	-7.8

¹ Relative importance figures are based on 2012 trade values.

NOTES: Data may be revised in each of the three months after original publication.

Dash = Not available

TECHNICAL NOTE

Import and Export Merchandise and Services Price Indexes -- All indexes use a modified Laspeyres formula and are not seasonally adjusted. Price indexes are reweighted annually, with a two-year lag in the weights. Published series use a base year of 2000=100 where possible. More detailed index series and additional information may be obtained at <http://www.bls.gov/mxp>, or by calling (202) 691-7101.

Merchandise Goods Classification Systems -- The merchandise price indexes are published using three classification systems. Items are classified by end use according to the Bureau of Economic Analysis Classification System, by industry according to the North American Industry Classification System (NAICS), and by product category according to the Harmonized System (HS). While classification by end use and product category are self-explanatory, some notes are in order for classifying items by industry. In the NAICS imports and exports tables, items are classified by output industry, not input industry. As an example, NAICS import index 326 (plastics and rubber products manufacturing) include outputs such as manufactured plastic rather than inputs such as petroleum. The NAICS classification structure also matches the classification system used by the PPI (Producer Price Index) to produce the NAICS primary products indexes.

Import Price Indexes -- Products have been classified by the Harmonized Tariff Schedule of the United States Annotated (TSUSA). Import prices are based on U.S. dollar prices paid by the U.S. importer. The prices are generally either "free on board" (f.o.b.) foreign port or "cost, insurance, and freight" (c.i.f.) U.S. port transaction prices, depending on the practices of the individual industry. The index for crude petroleum is calculated from data collected by the U.S. Department of Energy.

Export Price Indexes -- Products have been classified by the Harmonized Schedule B classification system of the U.S. Bureau of the Census. The prices used are generally either "free alongside ship" (f.a.s.) factory or "free on board" (f.o.b.) transaction prices, depending on the practices of the individual industry. Prices used in the grain index, excluding rice, are obtained from the U.S. Department of Agriculture.

Services Price Indexes -- Starting in September 2008 the Import Air Passenger Fares Indexes represent changes in the average revenue per passenger received by foreign carriers from U.S. residents and are calculated from data obtained from an airline consulting service. These data include tickets sold by travel agencies and travel websites. Tickets sold directly by the airlines are excluded, as are frequent flyer tickets generally. Starting in January 2008 the Export Air Passenger Fares Indexes represent changes in the average revenue per passenger received by U.S. carriers from foreign residents and are calculated from data collected directly from airlines. These data include frequent flyer tickets and those sold by consolidators. Taxes and fees are included in the Import Air Passenger Fares Index and excluded from the Export Air Passenger Fares Index. The Air Freight Indexes are calculated from data collected directly from airlines. These data exclude mail and passenger baggage. The scope of the service being priced is the movement of freight from airport to airport only, and does not include any ground transportation or port service. The Air Freight Indexes are presented using two definitions: Balance of Payments (which represent transactions between U.S. and foreign residents) and International (which represent transactions inbound to and outbound from the U.S.). Fact sheets specifying detailed information for each services industry are available at <http://www.bls.gov/mxp> under "MXP Publications."

Import Indexes by Locality of Origin -- Prices used in these indexes are a subset of the data collected for the Import Price Indexes. Beginning with January 2002, the indexes are defined by locality of origin using a nomenclature based upon the North American Industry Classification System (NAICS). Nonmanufactured goods are defined as NAICS 11 and 21 and manufactured goods are defined as NAICS 31-33.

Revision Policy -- To reflect the availability of late reports and corrections by respondents, monthly data may be revised in each of the three months after original publication. After three months, no further data revisions take place. So, for example, data released in the January release will be subject to revision in the releases for February, March, and April.

Uses of the Data -- The primary use of the indexes is to deflate trade statistics, notably the foreign trade sector of the National Income and Product Accounts constructed by the Department of Commerce. Other published indexes are useful for general market analysis. For trade in international services, Balance of Payments indexes are used for deflating National Income and Product Accounts, while International indexes are more appropriate for market analysis. Merchandise and services indexes also can be used to study U.S. competitiveness and to compute price elasticities, and the merchandise import indexes by country or region of origin are useful in terms of trade analysis.

E-Mail Subscription -- The U.S. Import and Export Price Indexes news release is available through an e-mail subscription service at (<http://www.bls.gov/bls/list.htm>).

Additional Information -- More detailed data are available on the Import/Export Price Indexes home page at (<http://www.bls.gov/mxp>). For technical assistance in using the BLS Internet site, send e-mail to (labstat.helpdesk@bls.gov). For Import/Export Price Index data requests, send e-mail to (mxpinfo@bls.gov).

Information from this release will be made available to sensory impaired individuals upon request. Voice phone: 202-691-5200; Federal Relay Service: 1-800-877-8339.