

# NEWS RELEASE

BUREAU OF LABOR STATISTICS  
U. S. D E P A R T M E N T O F L A B O R



Transmission of material in this release is embargoed until  
8:30 a.m. (EDT) Friday, March 13, 2020

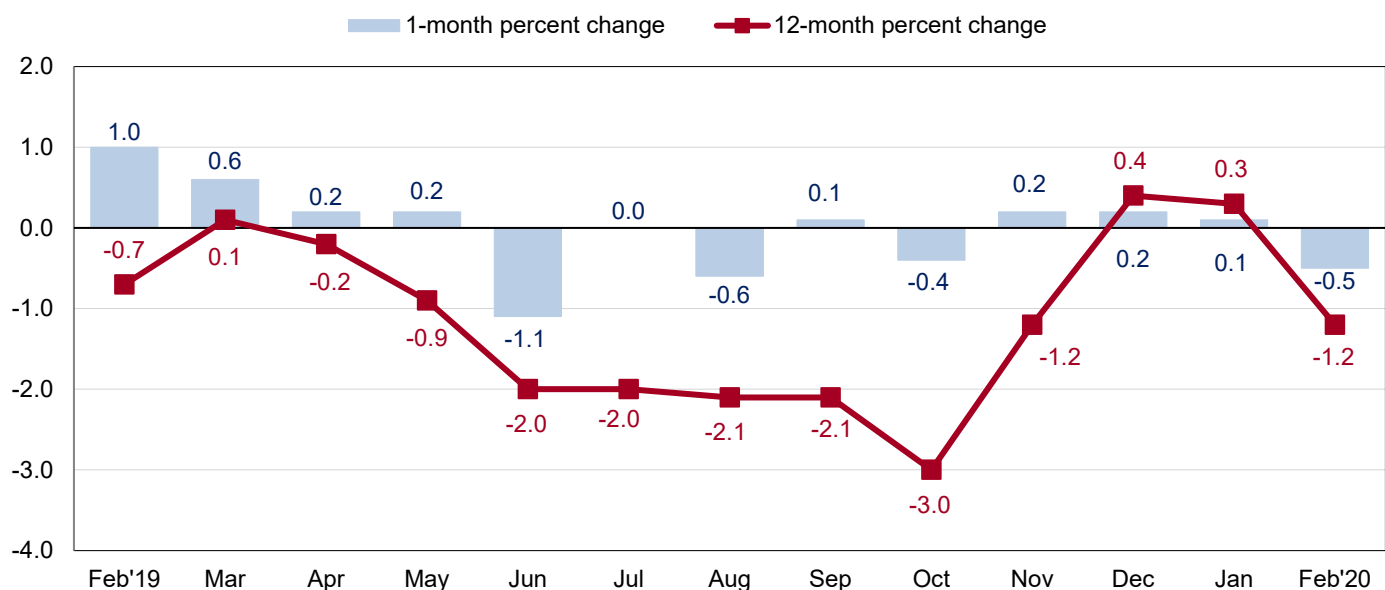
USDL-20-0405

Technical information: (202) 691-7101 • [MXPinfo@bls.gov](mailto:MXPinfo@bls.gov) • [www.bls.gov/mxp](http://www.bls.gov/mxp)  
Media contact: (202) 691-5902 • [PressOffice@bls.gov](mailto:PressOffice@bls.gov)

## U.S. IMPORT AND EXPORT PRICE INDEXES – FEBRUARY 2020

U.S. import prices declined 0.5 percent in February, the U.S. Bureau of Labor Statistics reported today, after ticking up 0.1 percent in January. In February, falling import fuel prices more than offset higher prices for nonfuel imports. Prices for U.S. exports decreased 1.1 percent in February, after advancing 0.6 percent the previous month.

Chart 1. One-month and 12-month percent changes in the Import Price Index: February 2019 – February 2020



### Imports

Import prices declined 0.5 percent in February, after rising 0.1 percent in January and 0.2 percent in December. The decline in February was the largest decrease since the index fell 0.6 percent in August. Prices for U.S. imports decreased 1.2 percent from February 2019 to February 2020, as declining prices for both nonfuel and fuel imports contributed to the movement. (See table 1.)

**Fuel Imports:** Import fuel prices decreased 7.7 percent in February, the largest monthly decline since the index dropped 7.8 percent in June 2019. The February decrease was led by lower prices for petroleum, though falling prices for natural gas also contributed to the monthly decline. Petroleum prices fell 7.6 percent in February following no change in January and a 0.5-percent advance in December. The price index for natural gas declined 12.4 percent in February, after decreasing 13.2 percent in January. Import fuel prices fell 5.8 percent over the past 12 months, driven by a 5.5-percent drop in petroleum prices and a 13.9-percent decline in natural gas prices.

**All Imports Excluding Fuel:** The price index for nonfuel imports increased 0.3 percent in February, following rises of 0.2 percent and 0.1 percent in January and December, respectively. Higher prices for nonfuel industrial supplies and materials; foods, feeds, and beverages; and capital goods all contributed to the February advance. Despite the recent monthly increases, nonfuel import prices fell 0.7 percent over the 12-month period ended in February and have not increased on an over-the-year basis since rising 0.6 percent in December 2018.

*Nonfuel Industrial Supplies and Materials:* Import prices for nonfuel industrial supplies and materials rose 1.1 percent in February following an advance of 0.2 percent the previous month. The February advance was primarily driven by a 3.6-percent rise in unfinished metals prices and a 1.8-percent advance in building materials prices.

*Finished Goods:* Finished goods prices were mostly unchanged in February. Capital goods prices ticked up 0.1 percent for the second consecutive month in February. Prices for automotive vehicles and consumer goods were unchanged in February.

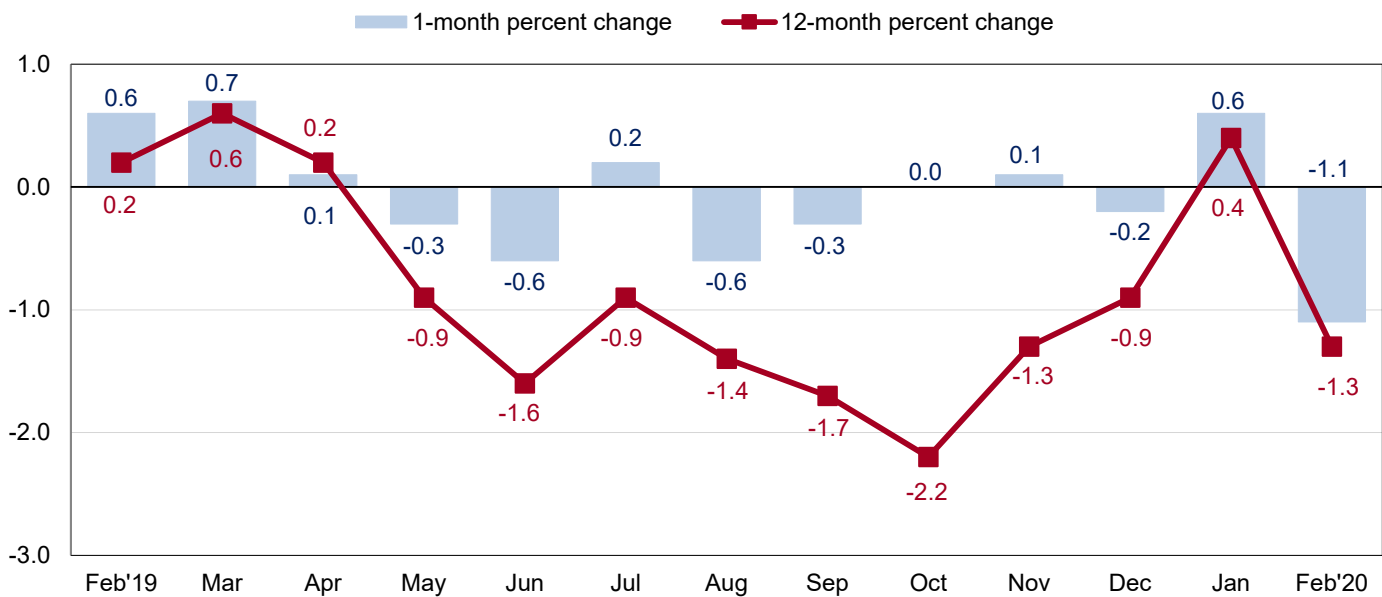
*Foods, Feeds, and Beverages:* Foods, feeds, and beverages prices advanced 1.5 percent in February, after rising 0.4 percent in January. Increases in prices for fruit, distilled alcoholic beverages, and vegetables drove the monthly advance.

**Table A. Percent change in Import and Export Price Indexes, selected categories**

Month	IMPORTS			EXPORTS		
	All imports	Fuel imports	Nonfuel imports	All exports	Agricultural exports	Non-agricultural exports
<b>2019</b>						
February.....	1.0	10.2	0.1	0.6	0.2	0.7
March.....	0.6	7.2	-0.2	0.7	0.9	0.7
April.....	0.2	1.9	-0.1	0.1	-1.4	0.2
May.....	0.2	3.6	-0.3	-0.3	-1.1	-0.2
June.....	-1.1	-7.8	-0.3	-0.6	2.4	-0.9
July.....	0.0	0.1	0.0	0.2	0.2	0.2
August.....	-0.6	-4.2	-0.1	-0.6	-2.4	-0.3
September.....	0.1	1.0	-0.1	-0.3	-1.6	-0.2
October.....	-0.4	-1.6	-0.3	0.0	1.7	-0.2
November.....	0.2	2.2 <sup>r</sup>	-0.1	0.1	2.4	-0.1
December.....	0.2	1.1 <sup>r</sup>	0.1 <sup>r</sup>	-0.2	-0.1	-0.2
<b>2020</b>						
January.....	0.1 <sup>r</sup>	-0.6 <sup>r</sup>	0.2	0.6 <sup>r</sup>	2.1 <sup>r</sup>	0.6 <sup>r</sup>
February.....	-0.5	-7.7	0.3	-1.1	-2.7	-1.0
Feb. 2018 to 2019.....	-0.7	-1.2	-0.5	0.2	-0.3	0.3
Feb. 2019 to 2020.....	-1.2	-5.8	-0.7	-1.3	0.2	-1.6

r Revised

**Chart 2. One-month and 12-month percent change in the Export Price Index: February 2019 – February 2020**



## Exports

U.S. export prices decreased 1.1 percent in February, the largest monthly decline since the index fell 1.1 percent in December 2015. In February, falling prices for both agricultural and nonagricultural exports contributed to the overall decrease. Prices for exports declined 1.3 percent on a 12-month basis in February, after rising 0.4 percent from January 2019 to January 2020. (See table 2.)

**Agricultural Exports:** The price index for agricultural exports declined 2.7 percent in February following an increase of 2.1 percent in January. Falling prices for vegetables, soybeans, and meat in February more than offset higher fruit prices. Prices for agricultural exports increased over the past 12 months, rising 0.2 percent from February 2019 to February 2020.

**All Exports Excluding Agriculture:** Nonagricultural export prices decreased 1.0 percent in February, after advancing 0.6 percent the previous month. In February, declining prices for nonagricultural industrial supplies and materials drove the decrease in nonagricultural export prices. The price index for nonagricultural exports declined 1.6 percent for the year ended in February.

*Nonagricultural Industrial Supplies and Materials:* Prices for nonagricultural industrial supplies and materials declined 3.2 percent in February following a 0.8-percent increase the previous month. The February decrease was led by a 9.9-percent decline in fuel prices. Lower chemicals prices also contributed to the decline.

*Finished Goods:* Prices for each of the major finished goods categories were up in February. The export price index for capital goods rose 0.3 percent, led by higher prices for both electrical generating equipment and nonelectrical machinery. Prices for automotive vehicles increased 0.2 percent in February, driven by a 0.2-percent rise in automotive parts prices. In February, consumer goods prices increased 0.2 percent, the largest rise since the index advanced 0.3 percent in July. Higher prices for medicinal, dental, and pharmaceutical preparatory materials as well as home entertainment equipment drove the advance.

## **Measures of Import and Export Prices by Locality**

**Imports by Locality of Origin:** The price index for imports from China declined 0.2 percent in February, after no change in January. The February decline was the largest drop since the index fell 0.3 percent in January 2019. Prices for imports from China declined 1.5 percent over the past year. Import prices from Japan recorded no change in February, after ticking up 0.1 percent in January. The price index for imports from Canada fell 2.8 percent in February, the largest decrease since the index declined 4.4 percent in June 2019. The February drop was driven by lower fuel prices. Import prices from Canada fell 3.6 percent over the past 12 months, the largest over-the-year decline since the index decreased 9.1 percent for the year ended December 2018. In contrast, prices for imports from Mexico increased in February, ticking up 0.1 percent for the month. Import prices from the European Union recorded no change in February after the index rose 0.3 percent in January. (See table 7.)

**Exports by Locality of Destination:** Prices for exports to China decreased 0.9 percent in February, after rising 0.2 percent in January. The February decline was the largest 1-month drop since the index decreased 1.2 percent in August. An 8.2-percent decrease in prices for nonmanufacturing exports drove the February decline. The price index for exports to Japan fell 1.3 percent in February following no change in January and December. Prices for exports to Japan decreased 0.7 percent over the past 12 months. Export prices to Canada and Mexico both declined in February, falling 1.6 percent and 2.3 percent, respectively. The price index for exports to the European Union fell 1.0 percent in February, the largest monthly decrease since the index was first published in December 2017. (See table 8.)

**Terms of Trade Indexes:** Terms of Trade indexes are based on country, region, or grouping and measure the change in the purchasing power of exports relative to imports. The index for U.S. terms of trade with China declined 0.7 percent in February, the largest monthly drop since falling 1.0 percent in August. In February, falling export prices to China more than offset lower import prices from China. The index for U.S. terms of trade with Japan decreased 1.2 percent in February, the largest decrease since the index fell 1.4 percent in January 2019. The U.S. terms of trade with Canada advanced 1.2 percent and the U.S. terms of trade with Mexico decreased 2.4 percent in February. The U.S. terms of trade with the European Union decreased 1.0 percent in February, the largest monthly drop since the index was first published in December 2017. (See table 9.)

## **Import and Export Services**

**Imports:** Import air passenger fares rose 0.2 percent in February following an 8.7-percent decrease in January. The February advance was led by higher Latin American/Caribbean and European fares. Import air passenger fares decreased 7.4 percent for the year ended in February. Import air freight prices declined 1.3 percent in February, after decreasing 2.3 percent in January. Despite the recent declines, prices for import air freight rose over the past year, advancing 0.3 percent. (See table 10.)

**Exports:** The index for export air passenger fares fell 9.3 percent in February, the largest decline since decreasing 11.6 percent in February 2017. The February decline was driven by a 13.9-percent decrease in Asian fares and a 13.0-percent drop in Latin American/Caribbean fares. Export air passenger fares decreased 2.6 percent over the past year. Prices for export air freight fell 1.4 percent in February, the largest 1-month decline since the index decreased 1.4 percent in September. Despite the decline in February, export air freight prices rose 0.4 percent over the past 12 months.

---

**Import and Export Price Index data for March are scheduled for release on Tuesday, April 14, 2020 at 8:30 a.m. (EDT).**

**Table 1. U.S. import price indexes and percent changes for selected categories of goods: February 2019 to February 2020**

[2000=100, unless otherwise noted]

Description	End Use	Relative importance Jan. 2020 <sup>1</sup>	Index		Percent change				
			Jan. 2020	Feb. 2020	Annual	Monthly			
					Feb. 2019 to Feb. 2020	Oct. 2019 to Nov. 2019	Nov. 2019 to Dec. 2019	Dec. 2019 to Jan. 2020	Jan. 2020 to Feb. 2020
<b>All commodities</b> .....		100.000	125.0	124.4	-1.2	0.2	0.2	0.1	-0.5
<b>All imports excluding food and fuels (Dec. 2010=100)</b> .....		84.104	98.9	99.1	-0.8	-0.1	0.0	0.1	0.2
<b>All imports excluding petroleum</b> .....		90.667	112.1	112.3	-0.8	0.1	0.2	0.1	0.2
<b>All imports excluding fuels (Dec. 2001=100)</b> .....		90.221	115.9	116.3	-0.7	-0.1	0.1	0.2	0.3
<b>Foods, feeds, &amp; beverages</b> .....	0	6.117	178.3	181.0	0.8	-0.4	1.1	0.4	1.5
Agricultural foods, feeds & beverages, excluding distilled beverages.....	00	4.721	193.0	195.9	-0.5	-0.5	1.4	0.0	1.5
Nonagricultural foods (fish, distilled beverages).....	01	1.396	145.9	148.1	5.4	0.1	0.1	1.9	1.5
<b>Industrial supplies &amp; materials</b> .....	1	23.443	187.5	182.7	-2.7	0.9	0.5	-0.2	-2.6
Industrial supplies & materials excluding petroleum.....		14.352	154.9	155.8	-1.1	1.4	0.6	-0.4	0.6
Industrial supplies & materials excluding fuels (Dec. 2001=100).....		13.681	174.1	176.0	-0.6	0.0	0.0	0.2	1.1
Industrial supplies & materials, durable....		8.595	167.6	170.5	2.0	0.2	-0.3	0.7	1.7
Industrial supplies & materials nondurable excluding petroleum.....		5.516	139.2	137.5	-5.8	3.0	1.9	-2.0	-1.2
Fuels & lubricants.....	10	9.779	210.7	194.4	-5.8	2.2	1.1	-0.6	-7.7
Petroleum & petroleum products.....	100	9.333	226.4	209.2	-5.5	0.9	0.5	0.0	-7.6
Crude.....	10000	6.369	230.5	209.6	-8.8	1.8	0.9	-1.1	-9.1
Fuels, n.e.s.-coals & gas.....	101	0.446	122.8	109.5	-14.1	35.1	11.9	-10.9	-10.8
Gas-natural.....	10110	0.385	112.4	98.5	-13.9	44.3	14.5	-13.2	-12.4
Paper & paper base stocks.....	11	0.505	110.3	109.9	-12.2	-1.5	-0.8	-1.1	-0.4
Materials associated with nondurable supplies & materials.....	12	4.564	154.3	154.4	-4.0	-0.1	0.7	-0.7	0.1
Selected building materials.....	13	1.496	142.8	145.3	0.0	-0.1	0.3	-0.3	1.8
Unfinished metals related to durable goods.....	14	3.520	237.4	245.9	5.8	0.6	-1.1	2.2	3.6
Finished metals related to durable goods.....	15	1.785	157.7	157.7	-0.9	0.0	0.4	0.1	0.0
Nonmetals related to durable goods.....	16	1.794	113.1	112.8	-0.7	0.0	0.2	-0.5	-0.3
<b>Capital goods</b> .....	2	28.325	87.5	87.6	-1.7	-0.3	0.0	0.1	0.1
Electric generating equipment.....	20	3.592	120.2	119.9	1.6	0.0	0.0	0.0	-0.2
Nonelectrical machinery.....	21	22.392	79.5	79.6	-2.2	-0.3	0.1	0.1	0.1
Transportation equipment excluding motor vehicles (Dec. 2001=100).....	22	2.341	134.9	135.0	-0.7	-0.9	-0.4	-0.1	0.1
<b>Automotive vehicles, parts &amp; engines</b> .....	3	15.556	110.2	110.2	0.1	0.1	0.0	0.5	0.0
<b>Consumer goods, excluding automobiles</b> .....	4	26.558	106.8	106.8	-0.6	-0.1	0.1	0.0	0.0
Nondurables, manufactured.....	40	13.071	123.8	123.9	0.3	0.0	0.2	-0.1	0.1
Durables, manufactured.....	41	12.227	91.0	91.0	-1.1	-0.1	0.0	0.0	0.0
Nonmanufactured consumer goods.....	42	1.260	116.6	116.6	-2.9	0.0	0.0	0.1	0.0

<sup>1</sup> Relative importance figures are based on 2018 trade values.

NOTES: Data may be revised in each of the 3 months after original publication.

Dash = Not available

**Table 2. U.S. export price indexes and percent changes for selected categories of goods: February 2019 to February 2020**

[2000=100, unless otherwise noted]

Description	End Use	Relative importance Jan. 2020 <sup>1</sup>	Index		Percent change				
			Jan. 2020	Feb. 2020	Annual	Monthly			
					Feb. 2019 to Feb. 2020	Oct. 2019 to Nov. 2019	Nov. 2019 to Dec. 2019	Dec. 2019 to Jan. 2020	Jan. 2020 to Feb. 2020
<b>All commodities.....</b>		100.000	125.8	124.4	-1.3	0.1	-0.2	0.6	-1.1
<b>Agricultural commodities.....</b>		9.585	184.3	179.4	0.2	2.4	-0.1	2.1	-2.7
<b>All exports excluding food and fuels (Dec. 2010=100).....</b>		79.555	101.4	101.7	0.1	0.0	-0.1	0.4	0.3
<b>Nonagricultural commodities.....</b>		90.415	121.4	120.2	-1.6	-0.1	-0.2	0.6	-1.0
<b>Foods, feeds, &amp; beverages.....</b>	0	8.903	188.8	183.4	0.9	2.2	-0.2	2.3	-2.9
Agricultural foods, feeds & beverages, excluding distilled beverages.....	00	8.335	187.2	181.5	0.9	2.5	-0.1	2.4	-3.0
Nonagricultural foods (fish, distilled beverages).....	01	0.568	221.4	220.6	0.1	-0.8	-0.7	2.0	-0.4
<b>Industrial supplies &amp; materials.....</b>	1	32.836	152.4	147.7	-5.2	-0.2	-0.5	0.9	-3.1
Industrial supplies & materials, durable....		10.445	168.8	171.4	4.0	0.3	-0.2	1.3	1.5
Industrial supplies & materials, nondurable.....		22.392	145.5	137.8	-9.3	-0.5	-0.6	0.7	-5.3
Agricultural industrial supplies & materials.....	10	1.221	172.3	171.7	-4.2	1.4	0.2	0.6	-0.3
Nonagricultural industrial supplies & materials.....		31.616	151.8	147.0	-5.2	-0.3	-0.4	0.8	-3.2
Fuels & lubricants.....	11	11.542	174.9	157.5	-13.6	-0.6	-0.8	1.0	-9.9
Nonagricultural supplies & materials excluding fuels & building materials.....	12	19.169	156.8	158.0	-0.2	-0.1	-0.2	0.8	0.8
Selected building materials.....	13	0.905	116.0	116.1	-5.2	-0.4	-0.8	-0.7	0.1
<b>Capital goods.....</b>	2	36.229	111.0	111.3	0.5	-0.1	0.1	0.4	0.3
Electrical generating equipment.....	20	3.712	118.2	120.1	2.1	0.1	0.1	0.8	1.6
Nonelectrical machinery.....	21	23.590	94.8	95.0	-0.1	-0.2	0.0	0.3	0.2
Transportation equipment excluding motor vehicles (Dec. 2001=100).....	22	8.928	183.5	183.6	1.8	0.1	0.1	0.3	0.1
<b>Automotive vehicles, parts &amp; engines.....</b>	3	9.744	114.2	114.4	-0.3	0.0	-0.3	0.4	0.2
<b>Consumer goods, excluding automotives.....</b>	4	12.287	110.3	110.5	0.5	0.1	-0.1	0.0	0.2
Nondurables, manufactured.....	40	5.924	108.3	108.4	1.1	0.2	0.0	0.1	0.1
Durables, manufactured.....	41	4.903	107.0	107.2	0.2	0.0	-0.3	0.1	0.2
Nonmanufactured consumer goods (Dec. 2018=100).....	42	1.460	98.9	98.7	-1.3	-0.2	0.2	-0.1	-0.2

<sup>1</sup> Relative importance figures are based on 2018 trade values.

NOTES: Data may be revised in each of the 3 months after original publication.

Dash = Not available

**Table 3. U.S. import price indexes and percent changes for selected industries: February 2019 to February 2020**

[December 2005=100, unless otherwise noted]

Description	NAICS	Relative importance Jan. 2020 <sup>1</sup>	Index		Percent change				
			Jan. 2020	Feb. 2020	Annual	Monthly			
					Feb. 2019 to Feb. 2020	Oct. 2019 to Nov. 2019	Nov. 2019 to Dec. 2019	Dec. 2019 to Jan. 2020	Jan. 2020 to Feb. 2020
<b>Nonmanufacturing.....</b>		8.937	112.2	105.0	-6.8	2.0	1.8	-0.9	-6.4
<b>Agriculture, forestry, fishing and hunting.....</b>	11	1.857	175.4	178.8	-2.8	-1.4	3.3	1.0	1.9
Crop production.....	111	1.479	181.9	187.9	-5.1	-2.2	3.1	0.1	3.3
<b>Mining.....</b>	21	7.080	105.7	96.6	-8.1	2.8	1.5	-1.4	-8.6
Oil and gas extraction.....	211	6.818	105.2	95.6	-9.0	2.9	1.4	-1.5	-9.1
<b>Manufacturing.....</b>		90.763	110.8	110.9	-0.5	-0.2	0.1	0.2	0.1
<b>Manufacturing, part 1.....</b>	31	11.297	125.4	125.8	0.6	0.2	0.1	0.1	0.3
Food manufacturing.....	311	3.515	155.2	155.7	0.6	0.3	0.4	0.1	0.3
Beverage and tobacco product manufacturing.....	312	1.140	125.9	128.9	5.5	0.2	0.0	0.2	2.4
Textile mills (Dec. 2011=100).....	313	0.368	98.9	98.8	-1.4	-0.5	0.0	-0.4	-0.1
Textile product mills.....	314	0.926	106.6	106.6	-2.2	-0.3	-0.2	-0.6	0.0
Apparel manufacturing.....	315	3.714	112.6	112.5	0.4	0.0	0.2	0.0	-0.1
Leather and allied product manufacturing.....	316	1.633	124.1	124.5	0.5	0.3	-0.1	0.3	0.3
<b>Manufacturing, part 2.....</b>	32	18.291	125.0	124.4	-1.3	-0.4	-0.1	0.0	-0.5
Wood product manufacturing (Dec. 2019=100).....	321	0.787	99.6	103.2	—	—	—	-0.4	3.6
Paper manufacturing.....	322	0.988	107.6	107.4	-7.8	-0.8	-0.4	-0.5	-0.2
Petroleum and coal products manufacturing.....	324	2.712	101.5	97.0	2.6	-1.8	-1.3	2.7	-4.4
Chemical manufacturing.....	325	10.181	137.8	137.9	-1.8	-0.1	0.3	-0.4	0.1
Plastics and rubber products manufacturing.....	326	2.368	119.2	118.9	-0.4	0.1	-0.1	-0.1	-0.3
Nonmetallic mineral product manufacturing.....	327	1.076	131.6	131.2	0.2	0.2	0.2	0.2	-0.3
<b>Manufacturing, part 3.....</b>	33	61.174	103.4	103.7	-0.6	-0.1	0.0	0.3	0.3
Primary metal manufacturing.....	331	4.047	157.4	162.4	4.0	0.6	-0.9	2.0	3.2
Fabricated metal product manufacturing... ..	332	3.203	126.2	126.4	0.0	-0.2	0.3	-0.4	0.2
Machinery manufacturing.....	333	7.690	119.3	119.4	0.5	0.1	-0.1	0.5	0.1
Computer and electronic product manufacturing.....	334	16.912	71.7	71.7	-3.1	-0.4	0.0	0.0	0.0
Electrical equipment, appliance, and component manufacturing.....	335	5.443	117.2	116.8	0.2	-0.4	0.3	-0.1	-0.3
Transportation equipment manufacturing..	336	16.587	109.4	109.4	0.1	0.0	0.1	0.5	0.0
Furniture and related product manufacturing.....	337	1.890	115.5	115.6	-1.6	-0.3	-0.2	0.1	0.1
Miscellaneous manufacturing.....	339	5.402	118.8	119.3	0.2	0.3	0.3	-0.3	0.4

<sup>1</sup> Relative importance figures are based on 2018 trade values.

NOTES: Data may be revised in each of the 3 months after original publication.

Dash = Not available

**Table 4. U.S. export price indexes and percent changes for selected industries: February 2019 to February 2020**

[December 2005=100, unless otherwise noted]

Description	NAICS	Relative importance Jan. 2020 <sup>1</sup>	Index		Percent change				
			Jan. 2020	Feb. 2020	Annual	Monthly			
					Feb. 2019 to Feb. 2020	Oct. 2019 to Nov. 2019	Nov. 2019 to Dec. 2019	Dec. 2019 to Jan. 2020	Jan. 2020 to Feb. 2020
<b>Nonmanufacturing.....</b>		10.101	128.8	120.9	-11.0	0.9	-0.4	0.2	-6.1
<b>Agriculture, forestry, fishing and hunting.....</b>	11	4.802	157.1	151.3	-1.2	3.2	-1.2	3.5	-3.7
Crop production.....	111	4.553	164.8	158.3	-1.2	3.3	-1.2	3.8	-3.9
<b>Mining.....</b>	21	5.298	76.9	70.5	-20.1	-1.6	0.6	-2.7	-8.3
Mining (except oil and gas).....	212	1.190	97.3	97.0	-18.6	-3.5	-1.9	-4.7	-0.3
<b>Manufacturing.....</b>		88.680	116.9	116.2	-0.3	0.0	-0.2	0.7	-0.6
<b>Manufacturing, part 1.....</b>	31	6.798	143.2	141.8	1.1	0.9	0.6	1.1	-1.0
Food manufacturing.....	311	4.698	162.8	160.3	2.2	1.3	0.9	1.1	-1.5
Beverage and tobacco product manufacturing.....	312	0.635	122.5	122.8	-2.2	0.0	-0.2	1.0	0.2
<b>Manufacturing, part 2.....</b>	32	24.502	113.7	110.3	-3.8	-0.1	-0.7	1.1	-3.0
Wood product manufacturing (Dec. 2017=100).....	321	0.449	92.7	92.6	-10.3	-0.7	-0.4	-1.1	-0.1
Paper manufacturing.....	322	1.476	118.1	117.3	-10.1	-0.1	-0.3	-1.2	-0.7
Petroleum and coal products manufacturing.....	324	6.172	110.0	97.3	-7.9	0.3	-1.9	4.5	-11.5
Chemical manufacturing.....	325	13.100	117.1	117.0	-1.9	-0.3	-0.3	0.1	-0.1
Plastics and rubber products manufacturing.....	326	2.287	116.8	117.1	0.5	0.0	-0.3	-0.1	0.3
Nonmetallic mineral product manufacturing.....	327	0.818	117.1	117.3	0.7	-0.2	-0.5	0.1	0.2
<b>Manufacturing, part 3.....</b>	33	57.380	115.6	116.1	1.0	-0.1	0.0	0.4	0.4
Primary metal manufacturing.....	331	4.149	156.2	160.6	9.5	0.2	-0.2	2.4	2.8
Fabricated metal product manufacturing...	332	3.051	150.3	150.7	3.6	-0.1	0.1	0.8	0.3
Machinery manufacturing.....	333	9.735	130.6	130.8	0.9	-0.4	-0.2	0.6	0.2
Computer and electronic product manufacturing.....	334	13.581	81.8	82.3	-0.6	0.1	-0.1	0.4	0.6
Electrical equipment, appliance, and component manufacturing.....	335	3.741	117.6	117.9	-0.1	0.0	0.1	0.1	0.3
Transportation equipment manufacturing..	336	17.418	129.3	129.4	0.8	0.0	0.1	0.3	0.1
Furniture and related product manufacturing (Dec. 2011=100).....	337	0.389	122.5	122.5	1.4	0.0	0.0	0.0	0.0
Miscellaneous manufacturing.....	339	5.316	119.9	119.9	-0.2	-0.1	-0.3	0.0	0.0

<sup>1</sup> Relative importance figures are based on 2018 trade values.

NOTES: Data may be revised in each of the 3 months after original publication.

Dash = Not available



**Table 5. U.S. import price indexes and percent changes for selected categories of goods: February 2019 to February 2020**

[2000=100, unless otherwise noted]

Description	Harmoni- zied system	Relative importance Jan. 2020 <sup>1</sup>	Index		Percent change				
			Jan. 2020	Feb. 2020	Annual	Monthly			
					Feb. 2019 to Feb. 2020	Oct. 2019 to Nov. 2019	Nov. 2019 to Dec. 2019	Dec. 2019 to Jan. 2020	Jan. 2020 to Feb. 2020
<b>Live animals; animal products.....</b>	I	1.392	200.8	199.3	3.1	1.0	1.5	0.8	-0.7
Meat and edible meat offal.....	02	0.378	268.4	269.8	6.7	3.3	2.8	-3.6	0.5
Fish and crustaceans, molluscs and other aquatic invertebrates.....	03	0.748	144.2	141.9	2.5	0.2	1.2	3.4	-1.6
<b>Vegetable products.....</b>	II	1.821	201.1	208.2	-4.3	-2.3	2.7	0.2	3.5
Edible vegetables, roots, and tubers.....	07	0.478	489.2	505.8	-2.6	-1.3	5.6	-1.4	3.4
Edible fruit and nuts; peel of citrus fruit or melons.....	08	0.616	101.3	108.3	-9.7	-7.0	2.1	1.5	6.9
Coffee, tea, mate and spices.....	09	0.335	207.1	214.6	6.5	2.6	2.6	-1.8	3.6
<b>Animal or vegetable fats and oils (Dec. 2009=100).....</b>	III	0.254	89.6	88.6	-3.0	1.1	0.1	4.3	-1.1
<b>Prepared foodstuffs, beverages, and tobacco.....</b>	IV	2.967	168.1	169.8	2.7	0.2	0.3	0.1	1.0
Cocoa and cocoa preparations (Dec. 2009=100).....	18	0.205	101.5	102.9	7.3	0.4	2.7	0.1	1.4
Preparations of vegetables, fruit, nuts, or other parts of plants.....	20	0.368	171.7	171.3	-1.2	0.0	0.1	-0.1	-0.2
Beverages, spirits, and vinegar.....	22	1.090	136.4	140.0	5.7	0.2	0.1	0.3	2.6
<b>Mineral products.....</b>	V	9.825	211.3	196.1	-5.2	2.2	1.0	-0.5	-7.2
Mineral fuels, oils and residuals, bituminous substances and mineral waxes.....	27	9.488	208.1	191.9	-6.1	2.3	1.1	-0.7	-7.8
<b>Products of the chemical or allied industries.....</b>	VI	9.575	156.3	156.7	-0.9	-0.1	0.4	-0.4	0.3
Inorganic chemicals.....	28	0.502	299.1	300.4	-9.5	3.4	3.5	-2.4	0.4
Organic chemicals.....	29	2.134	125.6	126.5	-0.9	-0.7	0.3	-0.1	0.7
Pharmaceutical products.....	30	4.896	154.3	154.2	0.8	-0.1	-0.1	0.0	-0.1
Essential oils and resinoids (Dec. 2016=100).....	33	0.625	104.2	104.2	1.5	0.1	-0.1	1.0	0.0
Miscellaneous chemical products.....	38	0.590	101.3	101.5	-3.8	-0.1	0.3	-1.1	0.2
<b>Plastics and articles thereof; rubber and articles thereof.....</b>	VII	3.636	139.9	139.4	-0.7	-0.2	-0.1	0.0	-0.4
Plastics and articles thereof.....	39	2.443	142.3	141.7	-1.6	-0.2	-0.1	-0.1	-0.4
Rubber and articles thereof.....	40	1.192	137.2	137.0	1.2	-0.1	-0.1	0.1	-0.1
<b>Raw hides, skins, leather, furskins, travel goods, etc.....</b>	VIII	0.614	124.1	125.2	-0.1	-0.1	-0.2	0.2	0.9
Articles of leather; travel goods, bags, etc. of various materials.....	42	0.588	130.8	132.0	0.2	0.0	-0.2	0.2	0.9
<b>Wood, wood charcoal, cork, straw, basketware and wickerwork.....</b>	IX	0.811	144.2	149.5	-0.3	-0.8	0.5	-0.4	3.7
Wood and articles of wood; wood charcoal (Dec. 2019=100).....	44	0.787	99.5	103.2	-	-	-	-0.5	3.7
<b>Woodpulp, recovered paper, and paper products.....</b>	X	1.013	112.4	112.2	-8.8	-0.9	-0.3	-1.7	-0.2
Paper and paperboard; articles of paper pulp, paper or paperboard.....	48	0.711	108.0	108.0	-3.7	-0.5	0.3	-0.6	0.0
<b>Textile and textile articles.....</b>	XI	4.818	114.2	114.0	-0.5	-0.1	0.1	-0.1	-0.2
Articles of apparel and clothing accessories, knitted or crocheted.....	61	1.963	105.5	105.3	0.5	0.1	0.4	-0.2	-0.2
Articles of apparel and clothing accessories, not knitted or crocheted.....	62	1.605	121.0	120.8	0.3	-0.2	0.0	0.4	-0.2
Made-up or worn textile articles.....	63	0.629	100.4	100.3	-3.5	-0.3	-0.1	-1.0	-0.1

See footnotes at end of table.

**Table 5. U.S. import price indexes and percent changes for selected categories of goods: February 2019 to February 2020 — Continued**  
 [2000=100, unless otherwise noted]

Description	Harmoni- zied system	Relative importance Jan. 2020 <sup>1</sup>	Index		Percent change				
			Jan. 2020	Feb. 2020	Annual	Monthly			
					Feb. 2019 to Feb. 2020	Oct. 2019 to Nov. 2019	Nov. 2019 to Dec. 2019	Dec. 2019 to Jan. 2020	Jan. 2020 to Feb. 2020
<b>Headgear, umbrellas, artificial flowers, etc.....</b>	XII	1.374	124.4	124.5	1.2	0.4	0.7	0.2	0.1
Footwear and parts of such articles.....	64	1.150	122.7	122.9	0.7	0.6	0.0	0.3	0.2
<b>Stone, plaster, cement, asbestos, ceramics, glass etc.....</b>	XIII	0.967	132.5	132.1	0.2	0.2	0.1	0.0	-0.3
<b>Pearls, stones, precious metals, imitation jewelry, and coins.....</b>	XIV	2.899	198.1	209.3	17.5	0.9	0.1	2.9	5.7
<b>Base metals and articles of base metals. . .</b>	XV	5.474	169.5	168.5	-4.9	-0.3	-0.5	0.2	-0.6
Iron and steel.....	72	1.104	199.3	201.8	-7.9	-2.1	-0.7	-0.1	1.3
Articles of iron or steel.....	73	1.676	146.9	146.7	-2.6	-0.5	0.5	-0.4	-0.1
Copper and articles thereof.....	74	0.430	277.3	264.5	-8.4	2.7	0.3	2.4	-4.6
Aluminum and articles thereof.....	76	0.903	127.6	125.9	-5.6	1.5	-0.3	0.3	-1.3
Tools, implements, cutlery, spoons and forks, of base metal; parts thereof.....	82	0.459	122.7	123.0	-0.7	-0.6	-0.2	0.0	0.2
Miscellaneous articles of base metal.....	83	0.531	134.6	134.5	-2.1	-0.1	-0.1	-0.3	-0.1
<b>Machinery, electrical equipment, TV image and sound recorders, parts, etc.....</b>	XVI	30.251	78.7	78.6	-1.6	-0.3	-0.1	0.1	-0.1
Machinery and mechanical appliances; parts thereof.....	84	15.310	83.9	84.0	-2.9	-0.6	0.0	-0.2	0.1
Electrical machinery and equip, sound and TV recorders & reproducers, parts.....	85	14.942	73.6	73.5	-0.4	0.0	0.0	0.1	-0.1
<b>Vehicles, aircraft, vessels and associated transport equipment.....</b>	XVII	13.743	114.1	114.1	0.3	0.0	0.1	0.7	0.0
Motor vehicles and their parts.....	87	12.627	113.2	113.2	0.3	0.0	0.2	0.6	0.0
<b>Optical, photo, measuring, medical &amp; musical instruments; &amp; timepieces.....</b>	XVIII	4.059	101.8	102.0	-0.2	0.1	0.3	-0.1	0.2
Optical, photographic, measuring and medical instruments.....	90	3.788	97.9	98.1	-0.6	0.1	0.3	-0.5	0.2
<b>Miscellaneous manufactured articles.....</b>	XX	4.433	111.3	111.4	-1.2	0.0	0.1	-0.2	0.1
Furniture & stuffed furnishings; lamps & lighting fittings, nesoi; prefab bldgs.....	94	2.789	117.0	117.1	-1.3	-0.3	0.1	-0.1	0.1
Toys, games and sports equipment; parts and accessories thereof.....	95	1.376	102.1	102.2	-0.4	0.7	0.0	-0.2	0.1
Miscellaneous manufactured articles.....	96	0.268	127.2	127.2	-1.9	0.0	0.0	0.1	0.0

<sup>1</sup> Relative importance figures are based on 2018 trade values.

NOTES: Data may be revised in each of the 3 months after original publication.

Dash = Not available

**Table 6. U.S. export price indexes and percent changes for selected categories of goods: February 2019 to February 2020**

[2000=100, unless otherwise noted]

Description	Harmoni- zied system	Relative importance Jan. 2020 <sup>1</sup>	Index		Percent change				
			Jan. 2020	Feb. 2020	Annual	Monthly			
					Feb. 2019 to Feb. 2020	Oct. 2019 to Nov. 2019	Nov. 2019 to Dec. 2019	Dec. 2019 to Jan. 2020	Jan. 2020 to Feb. 2020
<b>Live animals; animal products.....</b>	I	1.974	217.6	213.8	2.2	1.5	0.3	0.7	-1.7
Meat & edible meat offal (Dec. 2006=100)...	02	1.171	167.9	163.9	1.5	3.2	1.0	0.2	-2.4
Fish and crustaceans, mollusks and aquatic invertebrates (Dec. 2016=100).....	03	0.357	122.0	120.5	-1.0	-1.3	-0.9	2.2	-1.2
<b>Vegetable products.....</b>	II	4.410	204.0	194.9	-0.9	3.3	-1.2	3.7	-4.5
Edible fruit and nuts; peel of citrus fruit or melons.....	08	0.952	137.1	137.7	-2.7	3.1	1.5	-5.4	0.4
Cereals.....	10	1.428	200.8	200.3	1.3	2.5	-0.4	3.5	-0.2
Oilseeds and misc. grains, seeds, fruits, plants, straw and fodder.....	12	1.488	199.0	188.3	-1.5	2.9	-2.8	4.6	-5.4
<b>Prepared foodstuffs, beverages, and tobacco.....</b>	IV	3.085	157.3	155.4	1.5	0.6	0.5	0.7	-1.2
Preparations of vegetables, fruit, nuts or other parts of plants (Dec. 2019=100)....	20	0.330	99.9	99.8	-	-	-	-0.1	-0.1
Miscellaneous edible preparations (Dec. 2017=100).....	21	0.586	100.4	100.7	4.8	0.6	0.2	0.0	0.3
Beverages, spirits, and vinegar (Dec. 2008=100).....	22	0.554	106.7	106.8	1.0	-1.7	-1.1	-4.4	0.1
Residues and waste from the food industries; prepared animal feed.....	23	0.774	236.7	225.1	-0.1	3.5	3.1	6.6	-4.9
<b>Mineral products.....</b>	V	11.451	210.5	189.5	-13.5	-0.5	-0.9	1.1	-10.0
Ores, slag and ash (Dec. 2012=100).....	26	0.382	91.7	91.2	-7.3	0.7	-4.7	-2.8	-0.5
Mineral fuels, oils and residuals, bituminous substances and mineral waxes.....	27	10.874	202.3	181.1	-14.0	-0.6	-0.7	1.3	-10.5
<b>Products of the chemical or allied industries.....</b>	VI	10.841	137.6	137.2	-1.7	-0.2	-0.1	0.2	-0.3
Inorganic chemicals.....	28	0.744	147.7	140.6	-6.5	-0.7	-0.4	0.9	-4.8
Organic chemicals.....	29	2.448	138.3	138.4	-6.7	-0.7	0.0	0.0	0.1
Pharmaceutical products.....	30	3.134	108.0	108.4	2.7	0.3	0.0	0.3	0.4
Tanning or dyeing extracts, dyes, paints varnish, putty, & inks (Dec. 2015=100)....	32	0.529	104.9	105.0	2.4	-0.1	-0.7	-0.1	0.1
Essential oils and resinoids; perfumery cosmetic or toilet preparations.....	33	0.860	128.8	128.2	-3.9	-0.2	0.1	-1.2	-0.5
Soap; lubricants; waxes, polishing or scouring products; candles, pastes.....	34	0.487	125.2	125.4	2.1	0.1	-0.1	0.2	0.2
Miscellaneous chemical products.....	38	2.013	158.8	158.7	1.4	0.1	0.0	1.7	-0.1
<b>Plastics and articles thereof; rubber and articles thereof.....</b>	VII	5.072	141.2	142.0	-1.2	0.0	-0.1	0.1	0.6
Plastics and articles thereof.....	39	4.195	138.2	139.0	-1.0	0.0	0.1	0.1	0.6
Rubber and articles thereof.....	40	0.877	152.6	153.1	-2.0	-0.3	-0.7	0.4	0.3
<b>Wood, wood charcoal, cork, straw, baskets and wickerwork (Dec. 2014=100).....</b>	IX	0.545	90.6	90.5	-9.6	-0.6	-1.2	-0.5	-0.1
<b>Woodpulp, recovered paper, and paper products.....</b>	X	1.709	117.3	117.4	-9.4	-0.4	0.0	-1.1	0.1
Woodpulp and recovered paper (Dec. 2019=100).....	47	0.399	95.9	99.0	-	-	-	-4.1	3.2
Paper and paperboard; articles of paper pulp, paper or paperboard.....	48	1.022	124.0	122.6	-4.4	0.2	-0.2	-0.2	-1.1
<b>Textile and textile articles.....</b>	XI	1.695	121.5	121.0	-2.0	0.8	0.1	1.9	-0.4
Cotton, including yarns and woven fabrics thereof.....	52	0.490	121.3	119.4	-5.5	3.2	0.3	3.9	-1.6
<b>Stone, plaster, cement, asbestos, ceramics, glass etc.....</b>	XIII	0.799	127.0	127.0	0.9	-0.1	-0.2	0.0	0.0

See footnotes at end of table.

**Table 6. U.S. export price indexes and percent changes for selected categories of goods: February 2019 to February 2020 — Continued**  
 [2000=100, unless otherwise noted]

Description	Harmoni- zied system	Relative importance Jan. 2020 <sup>1</sup>	Index		Percent change				
			Jan. 2020	Feb. 2020	Annual	Monthly			
					Feb. 2019 to Feb. 2020	Oct. 2019 to Nov. 2019	Nov. 2019 to Dec. 2019	Dec. 2019 to Jan. 2020	Jan. 2020 to Feb. 2020
Glass and glassware (Dec. 2019=100).....	70	0.389	100.0	100.0	-	-	-	0.0	0.0
<b>Pearls, stones, precious metals, imitation jewelry, and coins.....</b>	XIV	4.603	266.1	276.2	13.4	0.2	-0.4	1.9	3.8
<b>Base metals and articles of base metals. ...</b>	XV	4.602	157.8	156.2	-2.3	0.8	0.3	1.5	-1.0
Copper and articles thereof.....	74	0.507	182.0	172.8	-6.4	2.2	0.4	4.1	-5.1
Aluminum and articles thereof.....	76	0.680	99.3	101.0	-3.7	-0.1	-0.2	1.0	1.7
Miscellaneous articles of base metal.....	83	0.337	156.1	156.1	2.0	-0.1	-0.2	1.8	0.0
<b>Machinery, electrical equipment, TV image and sound recorders, parts, etc.....</b>	XVI	28.103	97.6	97.8	-0.3	-0.1	0.0	0.3	0.2
Machinery and mechanical appliances; parts thereof.....	84	16.787	115.7	115.7	-0.6	-0.2	-0.3	0.3	0.0
Electrical machinery and equipment and parts and accessories thereof.....	85	11.316	78.2	78.6	0.3	0.1	0.1	0.4	0.5
<b>Vehicles, aircraft, vessels and associated transport equipment.....</b>	XVII	13.235	137.6	138.0	1.1	0.0	0.1	0.4	0.3
Motor vehicles and their parts.....	87	7.975	116.6	116.9	0.4	0.0	0.0	0.4	0.3
<b>Optical, photo, measuring, medical &amp; musical instruments; &amp; timepieces.....</b>	XVIII	5.993	110.6	111.0	1.7	-0.3	-0.2	0.3	0.4
<b>Miscellaneous manufactured articles.....</b>	XX	1.321	112.4	112.4	-0.4	-0.1	0.2	-0.4	0.0
Furniture; stuffed furnishings; lamps and lighting fittings nesoi;.....	94	0.737	131.2	131.1	0.7	0.0	-0.1	0.5	-0.1
Toys, games and sports equipment; parts and accessories thereof.....	95	0.430	87.1	87.1	-1.5	-0.1	0.6	-1.9	0.0

<sup>1</sup> Relative importance figures are based on 2018 trade values.

NOTES: Data may be revised in each of the 3 months after original publication.

Dash = Not available

**Table 7. U.S. import price indexes and percent changes by locality of origin: February 2019 to February 2020**  
 [2000=100, unless otherwise noted]

Description	Relative importance Jan. 2020 <sup>1</sup>	Index		Percent change				
		Jan. 2020	Feb. 2020	Annual	Monthly			
				Feb. 2019 to Feb. 2020	Oct. 2019 to Nov. 2019	Nov. 2019 to Dec. 2019	Dec. 2019 to Jan. 2020	Jan. 2020 to Feb. 2020
<b>Industrialized Countries<sup>2</sup></b> .....	100.000	126.9	125.9	-0.3	0.5	0.0	0.0	-0.8
Nonmanufacturing.....	11.018	181.1	166.3	-8.6	2.5	-1.3	-0.1	-8.2
Manufacturing.....	88.491	121.8	121.9	0.7	0.2	0.1	0.1	0.1
<b>Canada</b> .....	100.000	138.3	134.4	-3.6	0.9	-0.6	0.2	-2.8
Nonmanufacturing.....	31.143	176.9	161.9	-8.9	2.6	-1.5	-0.1	-8.5
Manufacturing.....	68.036	129.7	129.4	-1.1	0.4	-0.4	0.2	-0.2
<b>European Union</b> .....	100.000	137.4	137.4	0.3	0.1	0.1	0.3	0.0
Manufacturing.....	98.552	133.7	133.7	0.2	0.2	0.0	0.3	0.0
<b>France (Dec. 2003=100)</b> .....	100.000	128.0	127.2	-0.2	0.2	-0.2	0.5	-0.6
<b>Germany (Dec. 2003=100)</b> .....	100.000	113.3	113.7	1.2	0.0	0.5	0.2	0.4
<b>United Kingdom (Dec. 2003=100)</b> .....	100.000	122.7	123.4	2.4	0.2	0.2	0.2	0.6
<b>Latin America<sup>3</sup></b> .....	100.000	145.1	144.4	-2.4	-0.6	0.3	0.1	-0.5
Nonmanufacturing.....	15.241	257.6	244.5	-4.6	-0.8	4.3	0.2	-5.1
Manufacturing.....	84.472	118.2	118.6	-2.1	-0.6	-0.4	0.1	0.3
<b>Mexico (Dec. 2003=100)</b> .....	100.000	125.9	126.0	-1.2	-1.0	0.3	0.0	0.1
Nonmanufacturing (Dec. 2008=100).....	8.121	133.9	130.1	-3.1	-6.5	5.3	1.2	-2.8
Manufacturing (Dec. 2008=100).....	91.588	86.7	86.9	-1.0	-0.6	0.0	-0.1	0.2
<b>Pacific Rim (Dec. 2003=100)<sup>4</sup></b> .....	100.000	97.6	97.5	-1.2	-0.1	0.1	0.0	-0.1
<b>China (Dec. 2003=100)</b> .....	100.000	98.1	97.9	-1.5	-0.2	0.1	0.0	-0.2
<b>Japan</b> .....	100.000	96.9	96.9	0.3	0.0	-0.1	0.1	0.0
<b>Taiwan (Dec. 2018=100)</b> .....	100.000	98.7	98.8	-0.6	0.0	0.0	0.0	0.1
<b>Asian NICs<sup>5</sup></b> .....	100.000	86.2	85.8	-2.8	-0.1	-0.2	-0.3	-0.5
<b>ASEAN (Dec. 2003=100)<sup>6</sup></b> .....	100.000	97.3	97.1	-0.1	-0.1	0.2	0.1	-0.2
<b>Asia Near East (Dec. 2003=100)<sup>7</sup></b> .....	100.000	176.6	168.4	-2.8	3.7	-0.3	-1.0	-4.6

<sup>1</sup> Relative importance figures are based on 2018 trade values.

<sup>2</sup> Western Europe, Canada, Japan, Australia, New Zealand, and South Africa.

<sup>3</sup> Mexico, Central America, South America, and the Caribbean.

<sup>4</sup> China, Japan, Australia, Brunei, Indonesia, Macao, Malaysia, New Zealand, Papua New Guinea, Philippines, and the Asian Newly Industrialized Countries.

<sup>5</sup> Asian Newly Industrialized Countries - Hong Kong, Singapore, South Korea, and Taiwan.

<sup>6</sup> Association of Southeast Asian Nations - Brunei, Cambodia, Indonesia, Laos, Malaysia, Myanmar, Philippines, Singapore, Thailand, and Vietnam.

<sup>7</sup> Bahrain, Iran, Iraq, Israel, Jordan, Kuwait, Lebanon, Oman, Qatar, Saudi Arabia, Syria, United Arab Emirates, and Yemen.

NOTES: Data may be revised in each of the 3 months after original publication.

Regions are not mutually exclusive.

Dash = Not available

**Table 8. U.S. export price indexes and percent changes by locality of destination: February 2019 to February 2020**

[December 2017=100, unless otherwise noted]

Description	Relative importance Jan. 2020 <sup>1</sup>	Index		Percent change				
		Jan. 2020	Feb. 2020	Annual	Monthly			
				Feb. 2019 to Feb. 2020	Oct. 2019 to Nov. 2019	Nov. 2019 to Dec. 2019	Dec. 2019 to Jan. 2020	Jan. 2020 to Feb. 2020
<b>Industrialized Countries<sup>2</sup></b> .....	100.000	103.6	102.4	-0.6	0.2	-0.1	0.6	-1.2
Nonmanufacturing.....	10.410	105.6	95.8	-14.2	1.1	-0.2	0.3	-9.3
Manufacturing.....	88.339	103.6	103.4	0.8	0.1	-0.1	0.6	-0.2
<b>Canada</b> .....	100.000	105.2	103.5	-0.9	0.7	-0.1	0.5	-1.6
<b>European Union</b> .....	100.000	105.1	104.1	-0.2	-0.2	0.0	0.6	-1.0
Nonmanufacturing.....	9.507	99.8	91.9	-14.5	-1.4	1.3	-1.3	-7.9
Manufacturing.....	89.054	105.6	105.2	1.0	-0.1	-0.1	0.8	-0.4
<b>Germany</b> .....	100.000	105.6	103.1	1.1	0.1	0.2	1.0	-2.4
<b>Latin America<sup>3</sup></b> .....	100.000	101.6	98.5	-2.9	0.2	-0.5	1.6	-3.1
Nonmanufacturing.....	7.399	105.7	101.2	-5.4	1.2	-1.6	1.8	-4.3
Manufacturing.....	92.125	101.3	98.3	-2.7	0.0	-0.3	1.5	-3.0
<b>Mexico</b> .....	100.000	100.9	98.6	-2.2	0.4	-0.4	1.1	-2.3
Nonmanufacturing.....	5.729	98.1	94.2	-7.6	2.2	-3.6	1.8	-4.0
Manufacturing.....	93.701	101.1	98.8	-1.9	0.3	-0.3	1.2	-2.3
<b>Pacific Rim<sup>4</sup></b> .....	100.000	99.5	98.3	-2.0	-0.6	-0.2	0.3	-1.2
Nonmanufacturing.....	14.915	96.8	90.4	-7.5	-3.7	-0.5	1.3	-6.6
Manufacturing.....	83.487	100.5	100.3	-0.8	-0.2	-0.1	0.0	-0.2
<b>China</b> .....	100.000	97.5	96.6	-2.0	0.1	0.0	0.2	-0.9
Nonmanufacturing.....	13.304	94.9	87.1	-9.2	1.2	0.1	-0.1	-8.2
Manufacturing.....	84.718	99.9	100.2	0.0	-0.1	-0.1	0.1	0.3
<b>Japan</b> .....	100.000	100.5	99.2	-0.7	-0.4	0.0	0.0	-1.3
Nonmanufacturing.....	20.666	98.0	91.9	-9.8	-1.3	1.1	-0.7	-6.2
Manufacturing.....	77.720	100.3	100.0	0.8	-0.4	-0.2	0.0	-0.3

<sup>1</sup> Relative importance figures are based on 2018 trade values.

<sup>2</sup> Western Europe, Canada, Japan, Australia, New Zealand, and South Africa.

<sup>3</sup> Mexico, Central America, South America, and the Caribbean.

<sup>4</sup> China, Japan, Australia, Brunei, Indonesia, Macao, Malaysia, New Zealand, Papua New Guinea, Philippines, and the Asian Newly Industrialized Countries.

NOTES: Data may be revised in each of the 3 months after original publication.

Regions are not mutually exclusive.

Dash = Not available

**Table 9. U.S. terms of trade indexes and percent changes by locality: February 2019 to February 2020<sup>1</sup>**  
 [December 2017=100, unless otherwise noted]

Description	Index		Percent change				
	Jan. 2020	Feb. 2020	Annual	Monthly			
			Feb. 2019 to Feb. 2020	Oct. 2019 to Nov. 2019	Nov. 2019 to Dec. 2019	Dec. 2019 to Jan. 2020	Jan. 2020 to Feb. 2020
<b>Industrialized Countries<sup>2</sup></b> .....	99.9	99.6	-0.2	-0.3	-0.1	0.6	-0.3
<b>Canada</b> .....	100.0	101.2	2.8	-0.3	0.6	0.3	1.2
<b>European Union</b> .....	103.0	102.0	-0.5	-0.4	0.0	0.3	-1.0
<b>Germany</b> .....	107.3	104.4	-0.1	0.1	-0.4	0.8	-2.7
<b>Latin America<sup>3</sup></b> .....	104.3	101.6	-0.5	0.8	-0.8	1.5	-2.6
<b>Mexico</b> .....	103.4	100.9	-1.1	1.5	-0.7	1.1	-2.4
<b>Pacific Rim<sup>4</sup></b> .....	100.3	99.2	-0.8	-0.5	-0.3	0.3	-1.1
<b>China</b> .....	99.5	98.8	-0.5	0.3	-0.1	0.2	-0.7
<b>Japan</b> .....	99.0	97.8	-1.0	-0.4	0.2	-0.2	-1.2

<sup>1</sup> Terms of trade indexes are derived by dividing the export price index by the corresponding import price index and multiplying by 100.

<sup>2</sup> Western Europe, Canada, Japan, Australia, New Zealand, and South Africa.

<sup>3</sup> Mexico, Central America, South America, and the Caribbean.

<sup>4</sup> China, Japan, Australia, Brunei, Indonesia, Macao, Malaysia, New Zealand, Papua New Guinea, Philippines, and the Asian Newly Industrialized Countries.

NOTES: Data may be revised in each of the 3 months after original publication.

Regions are not mutually exclusive.

Dash = Not available

**Table 10. U.S. international price indexes and percent changes for selected transportation services: February 2019 to February 2020**

[2000=100, unless otherwise noted]

Description	Relative importance Jan. 2020 <sup>1</sup>	Index		Percent change				
		Jan. 2020	Feb. 2020	Annual Feb. 2019 to Feb. 2020	Monthly			
					Oct. 2019 to Nov. 2019	Nov. 2019 to Dec. 2019	Dec. 2019 to Jan. 2020	Jan. 2020 to Feb. 2020
<b>Air Freight</b>								
<b>Import Air Freight</b> .....	100.000	178.1	175.7	0.3	2.2	1.8	-2.3	-1.3
Europe (Dec. 2003=100).....	27.111	144.1	144.4	-3.3	-1.2	-0.1	0.6	0.2
Asia.....	58.645	167.3	163.4	1.6	4.0	2.8	-4.4	-2.3
<b>Export Air Freight</b> .....	100.000	168.3	166.0	0.4	-0.2	0.8	2.7	-1.4
Europe (Dec. 2006=100).....	31.774	157.1	155.3	3.4	0.6	0.7	3.1	-1.1
<b>Inbound Air Freight</b> .....	100.000	164.3	162.5	-2.3	1.3	1.2	-0.9	-1.1
Europe (Dec. 2003=100).....	28.522	132.8	132.6	-4.0	-1.0	-0.1	1.3	-0.2
Asia.....	57.197	151.5	148.9	-2.1	2.6	1.9	-2.6	-1.7
<b>Outbound Air Freight</b> .....	100.000	149.9	190.6	31.9	2.2	0.9	1.6	27.2
Europe (Dec. 2003=100).....	32.704	162.3	161.3	7.0	1.0	1.3	2.3	-0.6
Asia.....	46.073	143.0	227.3	61.8	4.3	1.0	1.3	59.0
<b>Air Passenger Fares</b>								
<b>Import Air Passenger Fares</b> .....	100.000	171.9	172.3	-7.4	2.7	5.7	-8.7	0.2
Europe.....	47.271	207.1	208.3	-7.5	8.0	-1.4	0.8	0.6
Asia.....	22.045	130.7	121.3	-3.3	0.1	19.3	-14.7	-7.2
Latin America/Caribbean.....	7.922	149.7	162.7	4.7	4.0	16.1	-19.2	8.7
<b>Export Air Passenger Fares</b> .....	100.000	157.8	143.1	-2.6	3.3	-0.7	7.4	-9.3
Europe.....	26.895	183.2	179.5	-7.6	4.5	-2.2	-0.9	-2.0
Asia.....	27.049	147.8	127.2	-1.9	5.2	-1.9	14.4	-13.9
Latin America/Caribbean.....	27.656	177.3	154.3	2.9	0.9	3.7	11.9	-13.0

<sup>1</sup> Relative importance figures are based on 2018 trade values.

NOTES: Data may be revised in each of the 3 months after original publication.

Dash = Not available



## TECHNICAL NOTE

**Import and Export Goods and Services Price Indexes** - All indexes use a modified Laspeyres formula and are not seasonally adjusted. Price indexes are reweighted annually, with a 2-year lag in the weights. Published series use a base year of 2000=100 where possible. More detailed index series and additional information may be obtained at [www.bls.gov/mxp](http://www.bls.gov/mxp) or by calling (202) 691-7101.

**Merchandise Goods Classification Systems** - The merchandise price indexes are published using three classification systems. Items are classified by end use according to the Bureau of Economic Analysis Classification System, by industry according to the North American Industry Classification System (NAICS), and by product category according to the Harmonized System (HS). While classification by end use and product category are self-explanatory, some notes are in order for classifying items by industry. In the NAICS imports and exports tables, items are classified by output industry, not input industry. As an example, NAICS import index 326 (plastics and rubber products manufacturing) includes outputs such as manufactured plastic rather than inputs such as petroleum. The NAICS classification structure also matches the classification system used by the Producer Price Index (PPI) to produce the NAICS primary products indexes.

**Import Price Goods Indexes** - Items are classified by the Harmonized Tariff Schedule of the United States Annotated (TSUSA). Import prices are based on U.S. dollar prices paid by the U.S. importer. The prices are generally either "free on board" (f.o.b.) foreign port or "cost, insurance, and freight" (c.i.f.) U.S. port transaction prices, depending on the practices of the individual industry. The index for crude petroleum is calculated from data collected by the U.S. Department of Energy.

**Export Price Goods Indexes** - Items are classified by the Harmonized Schedule B classification system of the U.S. Bureau of the Census. The prices used are generally either "free alongside ship" (f.a.s.) factory or "free on board" (f.o.b.) transaction prices, depending on the practices of the individual industry. Prices used in the grain index, excluding rice, are obtained from the U.S. Department of Agriculture.

**Services Price Indexes** - Indexes for import and export air passenger fares calculate changes in the average revenue received per passenger by foreign carriers from U.S. residents and by U.S. carriers from foreign residents, respectively. Data are obtained from an airline consulting service and report on tickets sold by travel agencies, travel websites, and directly by the airlines. Taxes and fees are included in both the import and export air passenger fares indexes. Import air passenger fares data have used the airline consulting service source since September 2008. Before April 2018, the export air passenger fares data were collected directly by BLS from U.S. airlines. The air freight indexes are calculated from data collected directly from airlines. These data exclude mail and passenger baggage. The scope of the service being priced is the movement of freight from airport to airport only, and does not include any ground transportation or port service. The air freight indexes are presented using two definitions: balance of payments (which represents transactions between U.S. and foreign residents) and international (which represents transactions inbound to and outbound from the United States.) Fact sheets specifying detailed information for each services industry are available at [www.bls.gov/mxp](http://www.bls.gov/mxp) under "MXP Publications."

**Import Price Indexes by Locality of Origin** - Prices used in these indexes are a subset of the data collected for the import price indexes. The indexes are specific to a country, region, or grouping and, beginning with January 2002, are based on the North American Industry Classification System (NAICS) covering goods-producing industries. Nonmanufactured goods are defined as NAICS 11 and 21, and manufactured goods are defined as NAICS 31-33.

**Export Price Indexes by Locality of Destination** - Prices used in these indexes are a subset of the data collected for the export price indexes. The indexes are specific to a country, region, or grouping and are based on the North American Industry Classification System (NAICS) covering goods-producing industries. Nonmanufactured goods are defined as NAICS 11 and 21, and manufactured goods are defined as NAICS 31-33.

**Terms of Trade Indexes** - Terms of trade indexes measure the relative price of exports in terms of import prices for a specific country, region, or grouping. The indexes are calculated as one country, region, or grouping's all-export goods price index divided by the corresponding all-import goods price index on a scale of 100.

**Relative Importance** - A relative importance is a specific index's price-updated value share (expressed as a percentage) of overall imports or exports at a specific point in time. Relative importance values are affected by the trade weights at the point indexes are reweighted and index changes relative to other indexes since the reweight point. If an index is rising in value relative to other indexes over time, the relative importance will increase as well.

**Revision Policy** - To reflect the availability of late reports and corrections by respondents, monthly data may be revised in each of the 3 months after original publication. After 3 months, no further data revisions take place. For example, data first published in the January release will be subject to revision in the releases for February, March, and April.

**Rounding Policy** - Index values are rounded to the tenth decimal place after being calculated. All percent changes are then derived from the rounded index values and subsequently rounded to the tenth decimal place.

**Uses of the Data** - The primary use of the indexes is to deflate trade statistics, notably the foreign trade sector of the National Income and Product Accounts (NIPA) constructed by the Department of Commerce. Other published indexes are useful for general market analysis. For trade in international services, balance of payments indexes are used for deflating NIPA, while international indexes are more appropriate for market analysis.

**Email Subscription** - The U.S. import and export price indexes news release is available through an email subscription service at [www.bls.gov/bls/list.htm](http://www.bls.gov/bls/list.htm).

**Additional Information** - More detailed data are available on the Import/Export Price Indexes home page at [www.bls.gov/mxp](http://www.bls.gov/mxp). For import and export price indexes data requests, send an email to [mxpinfo@bls.gov](mailto:mxpinfo@bls.gov).

Information from this release will be made available to sensory impaired individuals upon request. Voice phone: (202)-691-5200; Federal Relay Service: 1-(800)-877-8339.