



**Transmission of material in this release is embargoed until  
 8:30 a.m. (ET) Wednesday, March 25, 2026**

USDL-26-0559

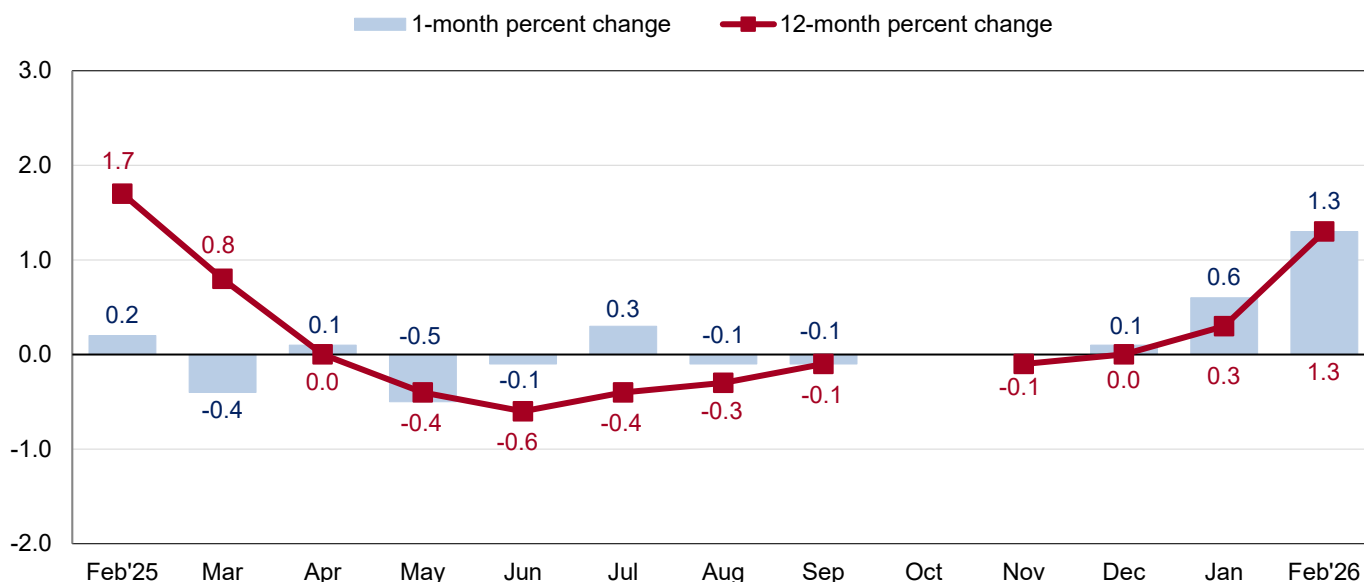
Technical information: (202) 691-7101 • [MXPinfo@bls.gov](mailto:MXPinfo@bls.gov) • [www.bls.gov/mxp](http://www.bls.gov/mxp)

Media contact: (202) 691-5902 • [PressOffice@bls.gov](mailto:PressOffice@bls.gov)

## U.S. IMPORT AND EXPORT PRICE INDEXES - FEBRUARY 2026

U.S. import prices increased 1.3 percent in February, the U.S. Bureau of Labor Statistics reported today, following a 0.6-percent advance in January. Higher prices for nonfuel imports and fuel imports drove the increase in February. Prices for U.S. exports advanced 1.5 percent in February, after rising 0.6 percent the previous month.

**Chart 1. One-month and 12-month percent changes in the Import Price Index: February 2025 – February 2026**



Note: The Oct and Nov 2025 data values are not available due to the 2025 lapse in appropriations.

### Imports

Import prices advanced 1.3 percent in February following an increase of 0.6 percent in January and a rise of 0.1 percent in December. The February advance was the largest monthly increase since the index rose 2.9 percent in March 2022. The index for U.S. import prices increased 1.3 percent from February 2025 to February 2026. The February advance was the largest annual increase since the index rose 1.7 percent in February 2025. (See table 1.)

**Fuel Imports:** Import prices for fuels and lubricants increased 3.8 percent in February following a decrease of 1.2 percent in January and a decline of 1.1 percent in December. The February advance was the largest monthly rise since the index increased 3.9 percent in April 2024. Higher prices for petroleum and natural gas drove the increase. Prices for import petroleum and petroleum products increased 2.5 percent and natural gas advanced 24.7 percent. Despite February's increase, import fuels and lubricants prices decreased 10.6 percent from February 2025 to February 2026. The price index for import petroleum and petroleum

products decreased 14.8 percent over the past 12 months, while import natural gas prices increased 57.9 percent over the same period.

**All Imports Excluding Fuel:** Prices for nonfuel imports rose 1.1 percent in February, following an increase of 0.8 percent in January. Higher prices for imports were driven by capital goods; nonfuel industrial supplies and materials; consumer goods excluding automobiles; foods, feeds, and beverages; and automotive vehicles, parts and engines. Nonfuel import prices advanced 2.5 percent on a 12-month basis, the largest over-the-year increase since the index rose 2.9 percent for the 12-month period ended October 2022. Higher prices for nonfuel industrial supplies and materials, capital goods, and consumer goods excluding automobiles more than offset lower prices for foods, feeds, and beverages as well as for automotive vehicles, parts and engines from February 2025 to February 2026.

*Foods, Feeds, and Beverages:* Foods, feeds, and beverages import prices rose 0.8 percent in February following an increase of 0.5 percent in January and an advance of 0.4 percent in December. Higher prices for other animal and vegetable preparations; vegetables; distilled alcoholic beverages; meat; food oils and oilseeds; as well as for bakery and confectionery products contributed to the increase in February.

*Nonfuel Industrial Supplies and Materials:* Nonfuel industrial supplies and materials import prices advanced 2.6 percent in February, after a 2.4-percent increase in January. Higher prices for finished metals shapes and advanced manufacturing; finished nonmetals; and chemicals, excluding medicinals drove the advance in February while lower prices for major nonferrous metals-crude had a mitigating effect on the index.

*Finished Goods:* Prices for the major finished goods import categories advanced in February. Import capital goods prices increased 1.3 percent, the largest advance since the index was first published on a monthly basis in December 1988. Higher prices for computers, peripherals and semiconductors as well as for industrial and service machinery drove the increase. The price index for import consumer goods excluding automobiles rose 0.5 percent in February. Higher prices for coins, gems, jewelry, and collectibles as well as for apparel, footwear, and household goods drove the overall increase in consumer goods excluding automobiles import prices. Automotive vehicles, parts and engines import prices increased 0.2 percent in February.

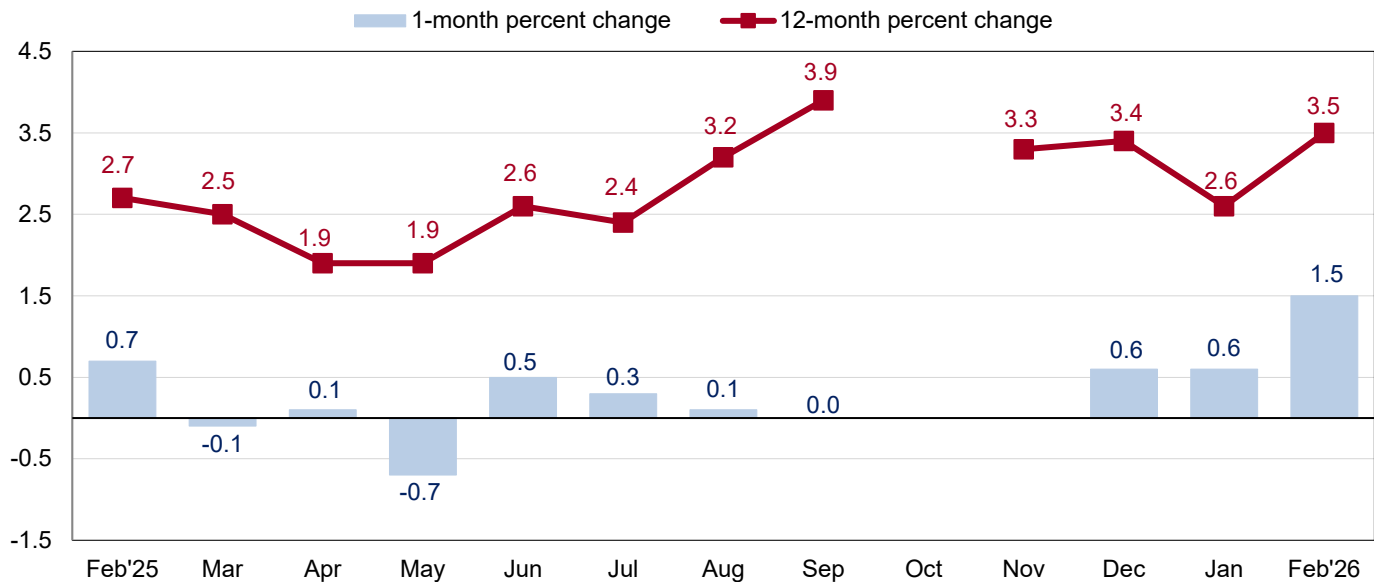
**Table A. Percent change in Import and Export Price Indexes, selected categories**

Month	IMPORTS			EXPORTS		
	All imports	Fuel imports	Nonfuel imports	All exports	Agricultural exports	Non-agricultural exports
<b>2025</b>						
February.....	0.2	1.6	0.2	0.7	0.6	0.6
March.....	-0.4	-3.4	-0.1	-0.1	-0.2	0.0
April.....	0.1	-2.6	0.3	0.1	0.3	0.0
May.....	-0.5	-5.0	-0.1	-0.7	0.2	-0.8
June.....	-0.1	0.6	-0.3	0.5	0.8	0.6
July.....	0.3	2.7	0.2	0.3	-0.2	0.3
August.....	-0.1	-0.7	-0.2	0.1	-0.1	0.2
September.....	-0.1	-1.5	0.0	0.0	-0.5	0.1
October.....	—	—	—	—	0.4	—
November.....	—	—	—	—	0.8	—
December.....	0.1 <sup>r</sup>	-1.1	0.2	0.6	-0.2 <sup>r</sup>	0.7
<b>2026</b>						
January.....	0.6 <sup>r</sup>	-1.2 <sup>r</sup>	0.8 <sup>r</sup>	0.6	0.2	0.7
February.....	1.3	3.8	1.1	1.5	0.7	1.7
Feb. 2024 to 2025.....	1.7	2.1	1.7	2.7	0.3	2.9
Feb. 2025 to 2026.....	1.3	-10.6	2.5	3.5	2.2	3.8

<sup>r</sup> Revised

Some Oct and Nov 2025 data values are not available due to the 2025 lapse in appropriations.

**Chart 2. One-month and 12-month percent changes in the Export Price Index: February 2025 – February 2026**



Note: The Oct and Nov 2025 data values are not available due to the 2025 lapse in appropriations.

## Exports

The price index for U.S. exports rose 1.5 percent in February, the largest monthly advance since the index increased 2.7 percent in May 2022. Higher prices for nonagricultural exports and agricultural exports drove the advance in February. Prices for U.S. exports also increased over the 12-month period ended in February, rising 3.5 percent. (See table 2.)

**Agricultural Exports:** The price index for agricultural exports rose 0.7 percent in February following a 0.2-percent increase in January. The February advance in agricultural prices was led by higher prices for meat, soybeans, and vegetables, which more than offset lower prices for other agricultural materials as well as for corn. The price index for agricultural exports advanced 2.2 percent from February 2025 to February 2026, as higher prices for other foods and food preparations, meat, and nuts drove the 12-month increase.

**All Exports Excluding Agriculture:** Export prices for nonagricultural commodities increased 1.7 percent in February, after rising 0.7 percent in both January and December. Higher prices for nonagricultural industrial supplies and materials; consumer goods excluding automobiles; capital goods; and automotive vehicles, parts and engines drove the increase. For the 12-month period ended February 2026, prices for nonagricultural exports advanced 3.8 percent. Higher prices for nonagricultural industrial supplies and materials; capital goods; and consumer goods excluding automobiles contributed to the 12-month increase.

*Nonagricultural Industrial Supplies and Materials:* Nonagricultural industrial supplies and materials prices increased 3.6 percent in February, after an advance of 0.5 percent the previous month. Higher prices for natural gas; crude petroleum; nonferrous metals; and chemicals, excluding medicinals drove the increase in February.

*Finished Goods:* Prices for the major finished goods export categories advanced in February. Consumer goods excluding automobiles export prices increased 0.7 percent for the second consecutive month in February and has not recorded a monthly decrease since the index fell 0.2 percent in September 2025. Capital goods export prices increased 0.2 percent in February and rose 3.0 percent year-over-year. Export prices for automotive vehicles, parts and engines ticked up 0.1 percent for the month.

More information for the major import and export price indexes can be found at [www.bls.gov/web/ximpim/largest.htm](http://www.bls.gov/web/ximpim/largest.htm).

## **Measures of Import and Export Prices by Locality**

**Imports by Locality of Origin:** Import prices from China increased 0.5 percent in February and declined 1.9 percent over the past 12 months. The February increase was the largest monthly advance since the index rose 0.5 percent in March 2022. Prices for imports from Japan increased 0.4 percent in February following no recorded change in January and a decrease of 0.5 percent in December. Over the past 12 months, the price index for imports from Japan increased 0.7 percent. Import prices from the European Union increased 0.6 percent in February, the largest monthly advance since January 2024, and prices for imports from Canada increased 1.6 percent. In contrast, the price index for imports from Mexico decreased 0.5 percent in February, after rising 0.3 percent the previous month. (See table 7.)

**Exports by Locality of Destination:** Prices for exports to China increased 0.7 percent in February. Over the past 12 months, the price index for exports to China advanced 3.6 percent. Prices for exports to Japan rose 2.4 percent in February following an increase of 1.2 percent in January and a rise of 0.6 percent in December. The price index for exports to Japan advanced 5.9 percent over the past 12 months. Export prices to the European Union increased 3.2 percent in February, the largest monthly advance since the index rose 4.6 percent in March 2022. Export prices to Mexico advanced 0.9 percent in February, after falling 0.2 percent the previous month. Prices for exports to Canada increased 1.9 percent in February, the largest monthly advance since the index rose 3.0 percent in March 2022. Export prices to Canada increased 6.5 percent over the past 12 months, the largest over-the-year advance since an 8.7-percent increase in December 2022. (See table 8.)

**Terms of Trade Indexes:** Terms of trade indexes are based on the country, region, or grouping and measure the change in the purchasing power of exports relative to imports. The U.S. terms of trade index with China increased 0.2 percent in February, following a 0.8-percent advance in January. The index for U.S. terms of trade with Japan advanced 1.9 percent in February. The U.S. terms of trade index with the European Union increased 2.6 percent in February, after falling 0.1 percent in January. In February, the U.S. terms of trade index with Canada rose 0.3 percent and the index for U.S. terms of trade with Mexico advanced 1.3 percent. (See table 9.)

## **Import and Export Services**

**Imports:** Import air passenger fares fell 0.4 percent in February, after a decrease of 10.1 percent in January. Lower prices for Asian fares more than offset higher prices for Latin American/Caribbean and European fares. The price index for import air passenger fares decreased 0.2 percent over the past year. Prices for import air freight declined 0.7 percent in February and increased 13.0 percent over the past 12 months. The over-the-year rise in February for import air freight prices was the largest advance since the index increased 17.3 percent for the 12 months ended January 2025. (See table 10.)

**Exports:** The price index for export air passenger fares decreased 11.9 percent in February after an increase of 13.2 percent in January. The February decline is the largest monthly decrease since the index fell 13.0 percent in February 2025. Lower Latin American/Caribbean, Asian and European fares in February contributed to the overall decrease in export air passenger fares. Export air passenger fares fell 1.6 percent from February 2025 to February 2026. Prices for export air freight rose 2.1 percent in February following a 2.8-percent increase in January. Higher prices for export European air freight and export Asian air freight contributed to the monthly advance. Despite the recent monthly increases, the price index for export air freight declined 1.0 percent over the past 12 months.

---

**U.S. Import and Export Price Index data for March 2026 are scheduled for release on Wednesday, April 15, 2026, at 8:30 a.m. (ET).**

### **Impacts of Federal Government Shutdowns on U.S. Import and Export Price Indexes**

As a result of the lapse in appropriations from October 1, 2025, through November 12, 2025, some U.S. Import and Export Price Index (MXP) values for October 2025 are permanently suppressed for publication. For additional information see [www.bls.gov/mxp/notices/2026/availability-of-oct-2025-mxpi-in-bls-database.htm](http://www.bls.gov/mxp/notices/2026/availability-of-oct-2025-mxpi-in-bls-database.htm).

**Table 1. U.S. import price indexes and percent changes for End Use categories of goods: February 2025 to February 2026**

[2000=100, unless otherwise noted]

Description	End Use	Relative importance Jan. 2026 <sup>1</sup>	Index		Percent change				
			Jan. 2026	Feb. 2026	Annual	Monthly			
					Feb. 2025 to Feb. 2026	Oct. 2025 to Nov. 2025	Nov. 2025 to Dec. 2025	Dec. 2025 to Jan. 2026	Jan. 2026 to Feb. 2026
<b>All commodities</b> .....		100.000	142.2	144.0	1.3	–	0.1	0.6	1.3
<b>All imports excluding food and fuels (Dec. 2010=100)</b> .....		86.059	111.4	112.7	3.0	–	0.3	0.7	1.2
<b>All imports excluding petroleum</b> .....		93.856	128.1	129.7	2.8	–	0.4	0.8	1.2
<b>All imports excluding fuels (Dec. 2001=100)</b> .....		92.996	131.8	133.2	2.5	–	0.2	0.8	1.1
<b>Foods, feeds, &amp; beverages</b> .....	0	6.937	226.2	228.0	-3.4	-0.7	0.4	0.5	0.8
Agricultural foods, feeds & beverages, excluding distilled beverages.....	00	5.756	258.0	260.0	-2.2	-1.0	0.5	0.4	0.8
Nonagricultural foods (fish, distilled beverages).....	01	1.181	148.5	149.6	-9.1	1.3	-0.3	1.0	0.7
<b>Industrial supplies &amp; materials</b> .....	1	21.805	247.3	254.7	2.0	–	0.7	1.2	3.0
Industrial supplies & materials excluding petroleum.....		15.740	228.3	235.9	11.1	–	2.5	2.8	3.3
Industrial supplies & materials excluding fuels (Dec. 2001=100).....		14.796	252.4	259.0	9.6	–	1.6	2.4	2.6
Industrial supplies & materials, durable....		10.196	260.6	268.7	16.2	0.8	3.1	3.4	3.1
Industrial supplies & materials nondurable excluding petroleum.....		5.466	189.4	196.4	2.9	–	1.5	1.9	3.7
Fuels & lubricants.....	10	7.004	239.2	248.4	-10.6	–	-1.1	-1.2	3.8
Petroleum & petroleum products.....	100	6.144	244.9	251.0	-14.8	-1.3	-3.1	-2.7	2.5
Crude petroleum.....	10000	4.322	248.1	250.9	-17.4	-1.7	-3.1	-2.6	1.1
Fuels, n.e.s.-coals & gas.....	101	0.609	267.1	323.0	50.7	–	34.3	15.1	20.9
Natural gas.....	10110	0.527	281.3	350.8	57.9	–	47.9	17.7	24.7
Paper & paper base stocks.....	11	0.430	127.7	129.5	-5.1	-0.7	-0.7	-0.4	1.4
Materials associated with nondurable supplies & materials.....	12	4.176	198.2	201.1	-2.4	–	-1.4	0.2	1.5
Selected building materials (Jan. 2025=100).....	13	1.375	92.5	94.1	-6.1	–	-0.3	0.5	1.7
Unfinished metals related to durable goods.....	14	4.138	429.0	422.8	24.0	2.3	4.6	4.3	-1.4
Finished metals related to durable goods.....	15	3.085	282.1	310.9	27.3	-1.0	4.7	4.9	10.2
Nonmetals related to durable goods (Jan. 2025=100).....	16	1.598	98.6	101.0	1.0	1.9	-1.0	0.8	2.4
<b>Capital goods</b> .....	2	31.082	95.8	97.0	3.9	–	0.0	0.7	1.3
Nonelectrical machinery.....	21	24.352	86.2	87.6	4.2	–	-0.1	0.7	1.6
Transportation equipment excluding motor vehicles (Dec. 2001=100).....	22	2.006	163.2	163.5	2.1	–	0.1	-0.1	0.2
<b>Automotive vehicles, parts &amp; engines</b> .....	3	14.912	120.4	120.7	-0.9	–	0.0	0.3	0.2
Automotive vehicles, parts and engines, 2 digit (Dec. 2023=100).....	30	14.912	101.1	101.4	-0.9	–	-0.1	0.4	0.3
<b>Consumer goods, excluding automotives</b> .....	4	25.264	110.3	110.8	0.6	–	0.0	0.1	0.5
Nondurables, manufactured.....	40	13.650	126.2	126.7	-0.2	–	-0.3	-0.2	0.4
Durables, manufactured.....	41	10.844	95.3	95.8	1.8	–	0.3	0.5	0.5
Nonmanufactured consumer goods.....	42	0.770	126.7	128.0	1.0	–	0.6	0.8	1.0

<sup>1</sup> Relative importance values are based on 2024 trade values.

NOTES: Data may be revised in each of the 3 months after original publication.

Some Nov 2025 one-month percent changes are not available due to the 2025 lapse in appropriations.

Dash = Not available

**Table 2. U.S. export price indexes and percent changes for End Use categories of goods: February 2025 to February 2026**

[2000=100, unless otherwise noted]

Description	End Use	Relative importance Jan. 2026 <sup>1</sup>	Index		Percent change				
			Jan. 2026	Feb. 2026	Annual	Monthly			
					Feb. 2025 to Feb. 2026	Oct. 2025 to Nov. 2025	Nov. 2025 to Dec. 2025	Dec. 2025 to Jan. 2026	Jan. 2026 to Feb. 2026
<b>All commodities</b> .....		100.000	155.6	158.0	3.5	–	0.6	0.6	1.5
<b>Agricultural commodities</b> .....		8.980	233.4	235.0	2.2	0.8	-0.2	0.2	0.7
<b>All exports excluding food and fuels (Dec. 2010=100)</b> .....		75.779	124.4	125.2	5.7	–	0.3	1.1	0.6
<b>All exports excluding fuels (June 2022=100)</b> .....		84.296	107.3	108.0	5.6	–	0.4	1.0	0.7
<b>Nonagricultural commodities</b> .....		91.020	149.4	151.9	3.8	–	0.7	0.7	1.7
<b>Foods, feeds, &amp; beverages</b> .....	0	8.517	239.5	241.6	2.8	1.0	0.0	0.1	0.9
Agricultural foods, feeds & beverages, excluding distilled beverages.....	00	8.049	240.7	243.0	2.7	1.2	-0.1	0.0	1.0
Nonagricultural foods (fish, distilled beverages).....	01	0.468	213.3	214.0	4.6	-1.0	1.3	0.9	0.3
<b>Industrial supplies &amp; materials</b> .....	1	37.951	210.4	217.8	4.4	–	1.3	0.6	3.5
Industrial supplies & materials excluding fuels (Dec. 2020=100).....		22.172	137.6	139.5	12.2	–	0.7	1.9	1.4
Industrial supplies & materials, durable....		12.689	287.0	291.8	24.1	–	1.8	2.9	1.7
Industrial supplies & materials, nondurable.....		25.262	181.4	189.3	-3.4	–	1.1	-0.5	4.4
Agricultural industrial supplies & materials.....	10	0.931	194.8	191.7	-1.9	-2.2	-0.5	2.0	-1.6
Nonagricultural industrial supplies & materials.....		37.020	210.9	218.5	4.5	–	1.4	0.5	3.6
Fuels & lubricants.....	11	15.704	216.5	230.5	-5.4	–	2.3	-1.3	6.5
Nonagricultural supplies & materials excluding fuels & building materials.....	12	20.558	233.0	236.6	13.2	–	0.7	2.0	1.5
Selected building materials.....	13	0.758	163.6	165.7	4.6	–	2.1	-0.8	1.3
<b>Capital goods</b> .....	2	32.513	127.9	128.2	3.0	–	0.1	0.9	0.2
Nonelectrical machinery.....	21	22.392	105.8	106.1	2.7	–	-0.1	0.9	0.3
Transportation equipment excluding motor vehicles (Dec. 2001=100).....	22	6.343	231.1	230.4	2.8	–	0.0	1.9	-0.3
<b>Automotive vehicles, parts &amp; engines</b> .....	3	8.245	134.1	134.2	2.6	–	0.0	0.1	0.1
Vehicles-passenger (Dec. 2023=100).....	30	8.245	105.5	105.6	2.6	–	0.1	0.1	0.1
<b>Consumer goods, excluding automobiles</b> .....	4	12.774	122.6	123.4	4.0	–	0.8	0.7	0.7
Nondurables, manufactured.....	40	7.499	112.0	112.7	3.1	–	0.5	1.0	0.6
Durables, manufactured.....	41	4.501	128.7	129.7	6.3	–	1.6	0.1	0.8
Nonmanufactured consumer goods (Dec. 2018=100).....	42	0.774	118.1	118.1	-0.9	–	0.0	0.1	0.0

<sup>1</sup> Relative importance values are based on 2024 trade values.

NOTES: Data may be revised in each of the 3 months after original publication.

Some Nov 2025 one-month percent changes are not available due to the 2025 lapse in appropriations.

Dash = Not available

**Table 3. U.S. import price indexes and percent changes for NAICS industries: February 2025 to February 2026**  
 [December 2005=100, unless otherwise noted]

Description	NAICS	Relative importance Jan. 2026 <sup>1</sup>	Index		Percent change				
			Jan. 2026	Feb. 2026	Annual	Monthly			
					Feb. 2025 to Feb. 2026	Oct. 2025 to Nov. 2025	Nov. 2025 to Dec. 2025	Dec. 2025 to Jan. 2026	Jan. 2026 to Feb. 2026
<b>Nonmanufacturing.....</b>		7.249	139.6	143.6	-10.0	–	0.3	-0.1	2.9
<b>Agriculture, forestry, fishing and hunting.....</b>	11	2.088	253.0	255.6	-6.3	-1.1	0.6	1.7	1.0
Crop production.....	111	1.719	267.6	269.3	-7.2	-1.1	0.9	1.5	0.6
Animal production (Dec. 2022=100).....	112	0.234	132.0	133.4	0.4	-1.1	-0.5	6.2	1.1
Forestry and logging (Jan. 2025=100).....	113	0.093	87.2	90.7	-7.0	-2.9	2.7	-5.3	4.0
Fishing, hunting and trapping (Jan. 2025=100).....	114	0.042	90.4	98.9	-1.1	6.0	-10.3	2.5	9.4
<b>Mining.....</b>	21	5.161	124.2	128.7	-11.5	–	0.2	-1.0	3.6
Oil and gas extraction.....	211	4.950	121.3	125.8	-12.1	–	0.1	-0.8	3.7
Mining (except oil and gas) (Dec. 2022=100).....	212	0.211	127.1	127.9	4.2	1.4	3.5	-3.1	0.6
<b>Manufacturing.....</b>		92.363	124.3	125.7	2.2	–	0.1	0.6	1.1
<b>Manufacturing, part 1.....</b>	31	10.274	139.1	140.4	-2.2	–	-0.5	-0.6	0.9
Food manufacturing.....	311	4.570	205.1	206.8	-0.4	-1.1	0.0	-0.9	0.8
Beverage and tobacco product manufacturing.....	312	0.905	121.7	124.3	-12.0	1.8	-1.1	0.9	2.1
Textile mills (Dec. 2023=100).....	313	0.284	99.6	101.5	-1.3	-0.2	-1.2	0.3	1.9
Textile product mills (Dec. 2023=100).....	314	0.692	94.0	95.9	-4.8	–	-1.1	0.8	2.0
Apparel manufacturing.....	315	2.545	114.1	114.9	-2.5	–	-1.3	-1.0	0.7
<b>Manufacturing, part 2.....</b>	32	18.768	136.4	137.8	-1.8	–	-0.7	0.1	1.0
Wood product manufacturing (Jan. 2025=100).....	321	0.712	89.8	92.3	-7.5	–	-1.5	0.9	2.8
Paper manufacturing.....	322	0.775	112.4	114.0	-2.9	-1.0	-0.8	0.1	1.4
Petroleum and coal products manufacturing.....	324	1.633	110.3	116.7	-8.3	-0.4	-3.5	-2.7	5.8
Chemical manufacturing.....	325	12.246	149.4	149.8	0.1	–	-0.3	0.3	0.3
Plastics and rubber products manufacturing.....	326	2.358	127.2	128.7	-1.7	–	-0.1	0.6	1.2
Nonmetallic mineral product manufacturing.....	327	0.915	141.2	141.1	-2.2	–	0.4	0.6	-0.1
<b>Manufacturing, part 3.....</b>	33	63.321	117.1	118.6	4.2	–	0.5	0.9	1.3
Primary metal manufacturing.....	331	5.808	317.5	331.4	33.8	–	5.0	5.3	4.4
Fabricated metal product manufacturing.....	332	2.962	139.9	142.6	-2.3	–	1.2	0.1	1.9
Machinery manufacturing.....	333	8.121	135.1	135.1	2.0	–	-0.2	0.6	0.0
Computer and electronic product manufacturing.....	334	17.781	72.2	73.7	2.6	–	-0.1	0.7	2.1
Electrical equipment, appliance, and component manufacturing.....	335	6.429	126.8	126.8	3.1	–	0.2	0.3	0.0
Transportation equipment manufacturing.....	336	15.480	119.8	120.1	-0.7	–	0.0	0.3	0.3
Miscellaneous manufacturing.....	339	5.229	137.2	139.0	6.4	–	0.4	1.0	1.3

<sup>1</sup> Relative importance values are based on 2024 trade values.

NOTES: Data may be revised in each of the 3 months after original publication.

Some Nov 2025 one-month percent changes are not available due to the 2025 lapse in appropriations.

Dash = Not available

**Table 4. U.S. export price indexes and percent changes for NAICS industries: February 2025 to February 2026**  
 [December 2005=100, unless otherwise noted]

Description	NAICS	Relative importance Jan. 2026 <sup>1</sup>	Index		Percent change				
			Jan. 2026	Feb. 2026	Annual	Monthly			
					Feb. 2025 to Feb. 2026	Oct. 2025 to Nov. 2025	Nov. 2025 to Dec. 2025	Dec. 2025 to Jan. 2026	Jan. 2026 to Feb. 2026
<b>Nonmanufacturing.....</b>		14.156	165.7	176.3	-2.3	-0.5	3.5	-1.2	6.4
<b>Agriculture, forestry, fishing and hunting.....</b>	11	4.258	183.4	184.6	1.8	1.8	-1.0	0.2	0.7
Crop production.....	111	4.010	194.5	196.2	1.8	2.0	-1.0	-0.1	0.9
Animal production (Jan. 2025=100).....	112	0.114	106.0	101.9	4.7	-4.0	1.1	4.8	-3.9
Forestry and logging (Jan. 2025=100)....	113	0.103	103.3	98.7	-1.2	3.9	-2.6	1.7	-4.5
Fishing, hunting and trapping (Jan. 2025=100).....	114	0.031	88.7	99.0	1.0	-8.1	1.7	3.1	11.6
<b>Mining.....</b>	21	9.897	103.7	112.8	-3.5	-	5.2	-1.7	8.8
Oil and gas extraction (Dec. 2021=100)...	211	8.715	92.3	101.4	-5.0	-1.5	5.4	-2.1	9.9
Mining (except oil and gas).....	212	1.183	127.1	127.8	9.9	-	4.0	1.2	0.6
<b>Manufacturing.....</b>		84.119	142.0	143.0	4.4	-	0.1	0.8	0.7
<b>Manufacturing, part 1.....</b>	31	6.095	176.4	177.9	3.4	-	0.7	0.2	0.9
Food manufacturing.....	311	4.464	209.2	210.9	2.6	0.1	0.7	0.0	0.8
Beverage and tobacco product manufacturing.....	312	0.507	136.5	135.3	3.0	-	-0.1	2.5	-0.9
<b>Manufacturing, part 2.....</b>	32	24.770	133.3	134.4	-0.7	-	-0.8	-0.1	0.8
Wood product manufacturing (Dec. 2017=100).....	321	0.432	136.7	136.8	4.7	-	-1.4	-0.2	0.1
Paper manufacturing (Jan. 2025=100)....	322	1.269	98.6	97.8	-1.7	-0.4	-0.3	-0.7	-0.8
Petroleum and coal products manufacturing.....	324	5.725	127.6	130.2	-5.7	1.9	-2.4	-0.6	2.0
Chemical manufacturing.....	325	14.399	133.8	135.1	0.0	-	-0.6	-0.1	1.0
Plastics and rubber products manufacturing.....	326	2.151	143.3	139.8	4.3	-	0.2	1.6	-2.4
Nonmetallic mineral product manufacturing.....	327	0.627	135.4	136.6	2.1	-	2.8	-2.6	0.9
<b>Manufacturing, part 3.....</b>	33	53.254	142.8	143.6	6.8	-	0.4	1.3	0.6
Primary metal manufacturing.....	331	6.003	344.7	354.9	44.2	-	2.0	7.3	3.0
Machinery manufacturing.....	333	8.711	157.5	157.8	2.4	-	-0.7	0.3	0.2
Computer and electronic product manufacturing.....	334	13.352	84.8	85.1	2.4	-	-0.1	1.0	0.4
Transportation equipment manufacturing..	336	13.580	156.7	156.5	2.6	-	0.1	0.8	-0.1
Furniture and related product manufacturing (Dec. 2023=100).....	337	0.306	112.0	112.2	6.7	-	0.8	0.9	0.2
Miscellaneous manufacturing.....	339	4.493	147.8	149.1	5.5	-	1.9	0.3	0.9

<sup>1</sup> Relative importance values are based on 2024 trade values.

NOTES: Data may be revised in each of the 3 months after original publication.

Some Nov 2025 one-month percent changes are not available due to the 2025 lapse in appropriations.

Dash = Not available

**Table 5. U.S. import price indexes and percent changes for Harmonized categories of goods: February 2025 to February 2026**

[2000=100, unless otherwise noted]

Description	Harmoni- zied system	Relative importance Jan. 2026 <sup>1</sup>	Index		Percent change				
			Jan. 2026	Feb. 2026	Annual	Monthly			
					Feb. 2025 to Feb. 2026	Oct. 2025 to Nov. 2025	Nov. 2025 to Dec. 2025	Dec. 2025 to Jan. 2026	Jan. 2026 to Feb. 2026
<b>Live animals; animal products.....</b>	I	1.564	262.9	263.9	2.4	0.0	0.6	1.6	0.4
Meat and edible meat offal.....	02	0.544	396.2	397.7	9.6	-0.7	2.0	-0.6	0.4
Fish and crustaceans, molluscs and other aquatic invertebrates.....	03	0.688	162.8	162.1	-2.2	0.4	1.1	2.5	-0.4
Dairy products, eggs, and honey (Jan. 2025=100).....	04	0.148	102.5	102.1	1.6	1.8	-2.8	1.2	-0.4
<b>Vegetable products.....</b>	II	2.104	267.3	269.3	-4.8	0.1	0.0	1.0	0.7
Live trees & plants; bulbs, roots; cut flowers and ornamental foliage (Jan. 2025=100)...	06	0.148	87.2	89.6	-8.6	3.5	-0.9	-0.3	2.8
Edible vegetables, roots, and tubers.....	07	0.442	510.7	527.8	-2.5	-2.0	-2.3	0.5	3.3
Edible fruit and nuts; peel of citrus fruit or melons.....	08	0.701	116.7	116.3	-14.7	0.3	1.9	-0.1	-0.3
Coffee, tea, mate and spices.....	09	0.501	440.0	436.8	13.3	2.4	1.2	3.7	-0.7
Cereals (Jan. 2025=100).....	10	0.088	91.6	95.4	-6.9	-1.0	-3.8	0.7	4.1
Milling industry products; malt; starches; inulin; wheat gluten (Jan. 2025=100).....	11	0.084	92.5	92.5	-7.6	-1.2	-0.5	0.8	0.0
Oilseeds & misc grains, seeds, plants, straw & fodder (Jan. 2025=100).....	12	0.089	100.2	95.8	-3.5	-2.6	-1.9	3.8	-4.4
<b>Animal or vegetable fats and oils (Dec. 2009=100).....</b>	III	0.565	159.5	166.7	3.3	0.8	-0.1	-3.4	4.5
Animal or vegetable fats and oils and their cleavage products; prepared (Dec. 2023=100).....	15	0.565	107.4	112.2	3.3	0.8	-0.2	-3.3	4.5
<b>Prepared foodstuffs, beverages, and tobacco.....</b>	IV	3.229	200.2	202.1	-6.7	-1.9	-0.4	-0.7	0.9
Sugars and sugar confectionary (Dec. 2021=100).....	17	0.202	113.3	112.2	-8.2	4.6	-4.0	-2.8	-1.0
Cocoa and cocoa preparations (Dec. 2009=100).....	18	0.316	259.6	258.7	-12.7	-9.6	3.0	-1.4	-0.3
Preparations of cereals, flour, starch or milk; bakers' wares (Dec. 2023=100).....	19	0.498	98.3	99.6	0.4	-0.7	-1.9	0.1	1.3
Preparations of vegetables, fruit, nuts, or other parts of plants (Jan. 2025=100).....	20	0.457	97.3	96.6	-3.6	-0.4	-0.8	0.3	-0.7
Miscellaneous edible preparations (Dec. 2022=100).....	21	0.407	96.6	98.3	-2.5	-9.1	1.0	-4.1	1.8
Beverages, spirits, and vinegar.....	22	0.853	131.2	134.1	-12.9	1.9	-1.1	0.5	2.2
Residues and waste from the food industries; prepared animal feed (Jan. 2025=100).....	23	0.151	90.5	90.0	-9.1	0.3	1.4	-1.6	-0.6
Tobacco and manufactured tobacco substitutes (Jan. 2025=100).....	24	0.107	98.0	101.1	1.8	0.4	0.6	2.9	3.2
<b>Mineral products.....</b>	V	6.906	247.2	257.0	-10.7	-	-0.9	-1.3	4.0
Salt; sulfur; earths and stone; plaster materials, lime & cement (Jan. 2025=100).....	25	0.162	102.8	107.9	5.4	-	5.2	-2.4	5.0
Ores, slag and ash (Jan. 2025=100).....	26	0.121	108.0	103.1	-2.2	-4.4	3.6	1.6	-4.5
Mineral fuels, oils and residuals, bituminous substances and mineral waxes.....	27	6.623	239.4	249.2	-11.2	-	-1.1	-1.3	4.1
<b>Products of the chemical or allied industries.....</b>	VI	11.755	170.9	171.3	0.4	-	-0.4	0.3	0.2
Inorganic chemicals (Dec. 2024=100).....	28	0.585	97.8	95.7	1.4	-	-2.3	0.8	-2.1
Organic chemicals.....	29	1.948	119.8	122.1	-8.9	-	-1.0	-6.3	1.9
Pharmaceutical products.....	30	6.949	160.1	160.0	4.3	-	0.1	1.7	-0.1
Fertilizers (Dec. 2022=100).....	31	0.316	68.4	68.1	9.7	-0.7	-5.1	-0.1	-0.4

See footnotes at end of table.

**Table 5. U.S. import price indexes and percent changes for Harmonized categories of goods: February 2025 to February 2026 — Continued**  
 [2000=100, unless otherwise noted]

Description	Harmoni- zied system	Relative importance Jan. 2026 <sup>1</sup>	Index		Percent change				
			Jan. 2026	Feb. 2026	Annual	Monthly			
					Feb. 2025 to Feb. 2026	Oct. 2025 to Nov. 2025	Nov. 2025 to Dec. 2025	Dec. 2025 to Jan. 2026	Jan. 2026 to Feb. 2026
Soap, lubricants; waxes, candles, polishing products, and modeling paste (Dec. 2024=100).....	34	0.196	99.1	99.5	1.1	—	-0.3	0.7	0.4
Albuminoidal substances; modified starches; glues; enzymes (Jan. 2025=100).....	35	0.113	96.1	97.3	1.7	0.6	-1.3	3.9	1.2
Miscellaneous chemical products.....	38	0.731	109.8	109.4	-0.2	—	-1.6	1.9	-0.4
<b>Plastics and articles thereof; rubber and articles thereof.....</b>	VII	3.301	148.2	150.7	-2.6	—	-0.4	0.6	1.7
Plastics and articles thereof.....	39	2.242	144.2	147.4	-2.4	—	-0.4	0.6	2.2
Rubber and articles thereof.....	40	1.060	159.1	160.3	-2.9	—	-0.5	0.6	0.8
<b>Raw hides, skins, leather, furskins, travel goods, etc (Dec. 2025=100).....</b>	VIII	0.432	99.4	100.1	—	—	—	-0.6	0.7
Articles of leather; travel goods, bags, etc. of various materials (Dec. 2025=100).....	42	0.415	99.4	100.2	—	—	—	-0.6	0.8
<b>Wood, wood charcoal, cork, straw, basketware and wickerwork (Jan. 2025=100).....</b>	IX	0.732	90.4	92.9	-7.1	—	-1.8	1.1	2.8
Wood and articles of wood; wood charcoal (Jan. 2025=100).....	44	0.702	89.9	92.0	-7.9	—	-1.4	1.2	2.3
<b>Woodpulp, recovered paper, and paper products (Jan. 2025=100).....</b>	X	0.867	95.6	96.6	-2.5	—	-0.5	0.0	1.0
Pulp wood, waste paper, and paperboard (Jan. 2025=100).....	47	0.120	88.5	90.2	-9.3	-1.5	-2.5	-1.3	1.9
Paper and paperboard; articles of paper pulp, paper or paperboard (Jan. 2025=100).....	48	0.579	95.9	97.1	-1.7	-0.7	-0.3	0.2	1.3
<b>Textile and textile articles.....</b>	XI	3.436	115.1	116.2	-3.2	—	-1.4	-0.7	1.0
Manmade filaments, yarns and woven fabrics (Jan. 2025=100).....	54	0.055	93.5	97.8	-3.3	-1.4	-1.0	2.6	4.6
Manmade staple fibers, yarns & woven fabrics (Jan. 2025=100).....	55	0.049	95.9	93.3	-5.5	-0.3	-0.6	2.5	-2.7
Wadding, felt and nonwovens; special yarns; twine, cordage, and ropes (Jan. 2025=100).....	56	0.087	96.0	98.5	-2.5	0.1	1.2	-1.3	2.6
Articles of apparel and clothing accessories, knitted or crocheted (Dec. 2023=100).....	61	1.387	95.3	95.8	-2.2	—	-1.4	-1.1	0.5
Articles of apparel and clothing accessories, not knitted or crocheted.....	62	1.068	122.2	123.3	-3.5	—	-1.2	-1.5	0.9
Made-up or worn textile articles (Dec. 2023=100).....	63	0.495	90.9	92.9	-6.3	1.0	-2.6	1.8	2.2
<b>Headgear, umbrellas, artificial flowers, etc.....</b>	XII	1.063	126.4	127.1	1.1	-1.0	0.2	-0.9	0.6
Footwear and parts of such articles.....	64	0.887	125.9	125.4	2.0	-1.3	0.2	-0.1	-0.4
<b>Stone, plaster, cement, asbestos, ceramics, glass etc.....</b>	XIII	0.806	133.4	133.2	-2.8	—	-0.2	0.3	-0.1
Articles of stone, plaster, cement, asbestos, or mica (Dec. 2020=100).....	68	0.290	95.0	95.3	-3.9	—	-0.6	1.0	0.3
Ceramic products (Dec. 2024=100).....	69	0.231	97.6	98.2	-1.8	—	1.2	0.0	0.6
Glass and glassware (Dec. 2021=100).....	70	0.285	109.3	108.2	-2.3	—	-1.0	-0.3	-1.0
<b>Pearls, stones, precious metals, imitation jewelry, and coins.....</b>	XIV	4.626	396.2	412.9	53.5	—	6.7	6.6	4.2
Pearls, precious stones, precious metals jewelry, coin (Dec. 2023=100).....	71	4.626	176.0	183.4	53.5	—	6.7	6.5	4.2
<b>Base metals and articles of base metals. ...</b>	XV	5.165	227.9	233.6	1.6	—	0.9	1.7	2.5

See footnotes at end of table.

**Table 5. U.S. import price indexes and percent changes for Harmonized categories of goods: February 2025 to February 2026 — Continued**  
 [2000=100, unless otherwise noted]

Description	Harmoni- zied system	Relative importance Jan. 2026 <sup>1</sup>	Index		Percent change				
			Jan. 2026	Feb. 2026	Annual	Monthly			
					Feb. 2025 to Feb. 2026	Oct. 2025 to Nov. 2025	Nov. 2025 to Dec. 2025	Dec. 2025 to Jan. 2026	Jan. 2026 to Feb. 2026
Iron and steel (Jan. 2025=100).....	72	0.875	91.6	91.3	-8.1	-0.7	0.6	0.7	-0.3
Articles of iron or steel.....	73	1.478	177.6	181.1	-4.4	—	0.6	0.2	2.0
Copper and articles thereof.....	74	0.649	495.5	524.4	24.9	4.9	1.2	5.9	5.8
Nickel and articles thereof (Jan. 2025=100).....	75	0.106	99.7	103.4	2.8	3.4	-1.6	1.0	3.7
Aluminum and articles thereof.....	76	0.936	211.2	220.5	4.2	—	2.1	3.4	4.4
Lead and articles thereof (Jan. 2025=100)...	78	0.030	104.4	107.5	0.5	-3.9	1.6	2.8	3.0
Zinc and articles thereof (Jan. 2025=100)...	79	0.075	106.7	107.5	8.7	3.2	3.8	1.2	0.7
Tin and articles thereof (Jan. 2025=100).....	80	0.038	131.2	128.4	30.6	2.4	1.8	9.2	-2.1
Base metals nesoi; cermets; articles thereof (Jan. 2025=100).....	81	0.125	110.2	113.6	12.5	-0.1	0.5	0.1	3.1
Tools, implements, cutlery, spoons and forks, of base metal; parts thereof.....	82	0.355	132.8	134.6	1.9	—	0.9	3.4	1.4
Miscellaneous articles of base metal.....	83	0.497	144.7	147.4	3.0	—	0.1	-1.6	1.9
<b>Machinery, electrical equipment, TV image and sound recorders, parts, etc.....</b>	XVI	32.167	83.1	84.1	2.7	—	0.1	0.6	1.2
Machinery and mechanical appliances; parts thereof.....	84	16.988	91.8	93.7	4.1	—	0.1	0.5	2.1
Electrical machinery and equip, sound and TV recorders & reproducers, parts.....	85	15.180	75.0	75.3	1.2	—	0.3	0.4	0.4
<b>Vehicles, aircraft, vessels and associated transport equipment.....</b>	XVII	13.185	123.5	124.0	-0.7	—	0.0	0.2	0.4
Motor vehicles and their parts.....	87	12.156	122.1	122.6	-1.0	—	-0.1	0.3	0.4
<b>Optical, photo, measuring, medical &amp; musical instruments; &amp; timepieces.....</b>	XVIII	4.264	113.7	114.0	3.1	—	-0.2	0.8	0.3
Optical, photographic, measuring and medical instruments.....	90	3.949	108.6	108.8	2.4	—	-0.1	0.7	0.2
<b>Miscellaneous manufactured articles.....</b>	XX	3.754	121.4	121.7	0.5	—	0.0	0.1	0.2
Toys, games and sports equipment; parts and accessories thereof.....	95	1.312	107.0	107.1	0.4	—	0.0	0.5	0.1
Miscellaneous manufactured articles.....	96	0.267	146.8	150.5	-5.6	—	-1.1	0.3	2.5

<sup>1</sup> Relative importance values are based on 2024 trade values.

NOTES: Data may be revised in each of the 3 months after original publication.

Some Nov 2025 one-month percent changes are not available due to the 2025 lapse in appropriations.

Dash = Not available

**Table 6. U.S. export price indexes and percent changes for Harmonized categories of goods: February 2025 to February 2026**

[2000=100, unless otherwise noted]

Description	Harmoni- zied system	Relative importance Jan. 2026 <sup>1</sup>	Index		Percent change				
			Jan. 2026	Feb. 2026	Annual	Monthly			
					Feb. 2025 to Feb. 2026	Oct. 2025 to Nov. 2025	Nov. 2025 to Dec. 2025	Dec. 2025 to Jan. 2026	Jan. 2026 to Feb. 2026
<b>Live animals; animal products.....</b>	I	1.867	284.0	288.6	2.3	-1.0	0.2	-0.5	1.6
Meat & edible meat offal (Dec. 2006=100)...	02	1.164	247.8	253.8	3.9	-0.2	0.3	-1.3	2.4
Fish and crustaceans, mollusks and aquatic invertebrates (Jan. 2025=100).....	03	0.256	103.7	105.0	3.9	-3.3	1.2	1.5	1.3
Dairy products, eggs and honey (Jan. 2025=100).....	04	0.318	92.2	93.1	-7.3	-1.4	-0.3	-1.7	1.0
Products of animal origin, nesoi (Jan. 2025=100).....	05	0.056	110.3	107.7	5.8	1.9	-4.6	4.0	-2.4
<b>Vegetable products.....</b>	II	4.141	245.1	247.4	2.8	2.2	-0.9	0.2	0.9
Edible Vegetables (Jan. 2025=100).....	07	0.324	99.2	102.6	4.0	1.2	-2.5	-1.4	3.4
Edible fruit and nuts; citrus or melon peels...	08	0.997	191.8	192.9	7.1	5.0	-1.5	-0.9	0.6
Cereals.....	10	1.191	226.0	226.7	-4.9	0.8	-1.1	1.1	0.3
Milling industry products; malt; starches; inulin; wheat gluten (Jan. 2025=100).....	11	0.063	100.4	100.9	1.4	-0.5	0.6	2.2	0.5
Oilseeds and misc. grains, seeds, fruits, plants, straw and fodder.....	12	1.431	223.0	225.9	3.2	1.5	0.1	0.3	1.3
<b>Animal or vegetable fats and oils (Jan. 2025=100).....</b>	III	0.123	103.1	103.7	6.1	-0.6	-1.1	-1.2	0.6
Animal or vegetable fats & oils (Jan. 2025=100).....	15	0.123	103.1	103.7	6.1	-0.6	-1.1	-1.2	0.6
<b>Prepared foodstuffs, beverages, and tobacco.....</b>	IV	2.949	186.2	185.4	2.3	-	0.7	0.5	-0.4
Edible preps of meat, of fish, or of aquatic invertebrates (Jan. 2025=100).....	16	0.138	103.3	103.8	4.0	-0.6	0.6	-0.5	0.5
Sugars and sugar confectionary (Jan. 2025=100).....	17	0.154	102.9	102.8	3.5	1.9	-0.2	-1.6	-0.1
Cocoa and cocoa preparations (Jan. 2025=100).....	18	0.204	113.4	111.5	4.4	2.5	1.4	-2.3	-1.7
Preparations of cereals, flour, starch or milk; bakers' wares (Dec. 2023=100).....	19	0.273	105.0	106.3	3.7	-2.1	2.5	-0.3	1.2
Preparations of vegetables, fruit, nuts or other parts of plants (Jan. 2025=100).....	20	0.303	102.2	102.3	2.7	1.2	0.7	-0.4	0.1
Miscellaneous edible preparations (Dec. 2017=100).....	21	0.583	124.2	123.2	3.6	1.9	1.6	1.8	-0.8
Beverages, spirits, and vinegar (Dec. 2024=100).....	22	0.543	102.4	99.9	3.3	-	-2.4	1.8	-2.4
Residues and waste from the food industries; prepared animal feed.....	23	0.664	239.7	241.4	-0.9	-0.2	1.5	1.0	0.7
<b>Mineral products.....</b>	V	15.576	264.4	281.0	-4.4	-0.2	2.6	-1.3	6.3
Ores, slag and ash (Dec. 2012=100).....	26	0.544	169.4	166.0	25.5	2.5	3.6	-1.3	-2.0
Mineral fuels, oils and residuals, bituminous substances and mineral waxes.....	27	14.861	250.0	266.6	-5.2	-0.2	2.4	-1.3	6.6
<b>Products of the chemical or allied industries.....</b>	VI	12.500	165.4	167.0	0.4	-	-0.3	-1.0	1.0
Inorganic chemicals (Jan. 2025=100).....	28	0.983	108.5	111.8	11.1	-	-1.5	3.6	3.0
Organic chemicals (Jan. 2025=100).....	29	2.347	86.0	87.9	-13.2	-	-1.1	-10.4	2.2
Pharmaceutical products.....	30	4.909	109.8	109.9	3.2	-	-0.1	2.3	0.1
Fertilizers (Jan. 2025=100).....	31	0.312	108.6	109.0	8.9	5.7	-2.8	-2.3	0.4
Tanning or dyeing extracts, dyes, paints varnish, putty, & inks (Dec. 2024=100)....	32	0.468	114.9	117.2	15.8	-	2.1	0.4	2.0
Miscellaneous chemical products.....	38	1.848	196.3	196.1	0.9	-	0.1	0.7	-0.1
Rubber and articles thereof.....	40	0.730	194.1	198.0	0.1	-	-1.9	-2.6	2.0

See footnotes at end of table.

**Table 6. U.S. export price indexes and percent changes for Harmonized categories of goods: February 2025 to February 2026 — Continued**  
 [2000=100, unless otherwise noted]

Description	Harmoni- zied system	Relative importance Jan. 2026 <sup>1</sup>	Index		Percent change				
			Jan. 2026	Feb. 2026	Annual	Monthly			
					Feb. 2025 to Feb. 2026	Oct. 2025 to Nov. 2025	Nov. 2025 to Dec. 2025	Dec. 2025 to Jan. 2026	Jan. 2026 to Feb. 2026
Raw hides and skins other than furskins and leather (Jan. 2025=100).....	41	0.067	97.5	91.8	-1.7	-1.0	-4.2	-3.1	-5.8
<b>Wood, wood charcoal, cork, straw, baskets and wickerwork (Dec. 2014=100).....</b>	<b>IX</b>	<b>0.503</b>	<b>121.8</b>	<b>120.7</b>	<b>2.7</b>	<b>-</b>	<b>-0.1</b>	<b>-0.4</b>	<b>-0.9</b>
Wood and articles of wood; wood charcoal (Dec. 2023=100).....	44	0.502	113.3	112.3	2.4	-	-0.1	-0.5	-0.9
<b>Woodpulp, recovered paper, and paper products (Jan. 2025=100).....</b>	<b>X</b>	<b>1.385</b>	<b>98.3</b>	<b>98.9</b>	<b>-1.0</b>	<b>-1.1</b>	<b>-0.1</b>	<b>-0.1</b>	<b>0.6</b>
Woodpulp and recovered paper (Dec. 2019=100).....	47	0.389	157.0	155.8	-8.9	-2.2	-2.0	-1.1	-0.8
Paper and paperboard; articles of paper pulp, paper or paperboard (Jan. 2025=100).....	48	0.797	99.8	100.1	0.8	-0.1	1.1	-0.1	0.3
<b>Textile and textile articles (Jan. 2025=100)..</b>	<b>XI</b>	<b>1.197</b>	<b>101.2</b>	<b>102.8</b>	<b>2.7</b>	<b>-</b>	<b>0.9</b>	<b>0.2</b>	<b>1.6</b>
Cotton, yarns and woven fabrics thereof....	52	0.263	132.5	130.4	-5.8	-2.2	-0.6	0.4	-1.6
Manmade filaments, yarns and woven fabrics (Jan. 2025=100).....	54	0.072	100.3	102.4	2.2	-1.2	3.6	-2.7	2.1
Manmade staple fibers, yarns and woven fabrics (Jan. 2025=100).....	55	0.104	95.7	97.2	-1.6	1.3	0.7	-4.1	1.6
<b>Stone, plaster, cement, asbestos, ceramics, glass etc.....</b>	<b>XIII</b>	<b>0.676</b>	<b>162.8</b>	<b>164.3</b>	<b>2.7</b>	<b>-</b>	<b>1.1</b>	<b>-1.6</b>	<b>0.9</b>
Glass and glassware (Dec. 2019=100).....	70	0.314	116.2	117.2	1.3	-	2.8	-3.9	0.9
<b>Pearls, stones, precious metals, imitation jewelry, and coins.....</b>	<b>XIV</b>	<b>5.847</b>	<b>546.7</b>	<b>566.3</b>	<b>47.6</b>	<b>-</b>	<b>4.1</b>	<b>6.9</b>	<b>3.6</b>
Pearls, precious stones, precious metals; jewelry, coin (Dec. 2023=100).....	71	5.847	175.1	181.4	47.6	-	4.1	6.9	3.6
<b>Base metals and articles of base metals. ...</b>	<b>XV</b>	<b>4.887</b>	<b>234.0</b>	<b>237.3</b>	<b>11.8</b>	<b>-</b>	<b>0.5</b>	<b>0.8</b>	<b>1.4</b>
Iron and steel (Jan. 2025=100).....	72	0.990	105.1	106.4	6.7	-0.3	1.2	-0.2	1.2
Copper and articles thereof.....	74	0.731	344.7	359.1	24.6	-	1.6	4.0	4.2
Aluminum and articles thereof.....	76	0.836	179.7	184.5	17.7	-	1.6	0.2	2.7
<b>Machinery, electrical equipment, TV image and sound recorders, parts, etc.....</b>	<b>XVI</b>	<b>27.095</b>	<b>112.6</b>	<b>112.9</b>	<b>3.2</b>	<b>-</b>	<b>0.0</b>	<b>1.0</b>	<b>0.3</b>
Machinery and mechanical appliances; parts thereof.....	84	16.028	139.3	139.5	3.1	-	-0.1	1.2	0.1
Electrical machinery and equipment and parts and accessories thereof.....	85	11.067	85.0	85.3	3.4	-	0.2	0.7	0.4
<b>Vehicles, aircraft, vessels and associated transport equipment.....</b>	<b>XVII</b>	<b>9.710</b>	<b>162.0</b>	<b>162.4</b>	<b>2.5</b>	<b>-</b>	<b>0.1</b>	<b>0.1</b>	<b>0.2</b>
Motor vehicles and their parts.....	87	7.049	134.8	134.9	2.4	-	0.1	0.0	0.1
Aircraft, spacecraft, and parts thereof (excluding military) (Dec. 2025=100).....	88	2.662	100.7	101.2	-	-	-	0.7	0.5
<b>Miscellaneous manufactured articles.....</b>	<b>XX</b>	<b>1.079</b>	<b>149.0</b>	<b>150.0</b>	<b>9.5</b>	<b>-</b>	<b>2.8</b>	<b>0.1</b>	<b>0.7</b>
Furniture; stuffed furnishings; lamps and lighting fittings nesoi.....	94	0.546	161.6	161.0	5.3	-	1.5	1.1	-0.4
Toys, games and sports equipment; parts and accessories thereof.....	95	0.395	132.9	133.4	15.6	-	0.7	0.8	0.4

<sup>1</sup> Relative importance values are based on 2024 trade values.

NOTES: Data may be revised in each of the 3 months after original publication. Dash = not available. Some Nov 2025 one-month percent changes are not available due to the 2025 lapse in appropriations.

**Table 7. U.S. import price indexes and percent changes by locality of origin: February 2025 to February 2026**  
 [2000=100, unless otherwise noted]

Description	Relative importance Jan. 2026 <sup>1</sup>	Index		Percent change				
		Jan. 2026	Feb. 2026	Annual	Monthly			
				Feb. 2025 to Feb. 2026	Oct. 2025 to Nov. 2025	Nov. 2025 to Dec. 2025	Dec. 2025 to Jan. 2026	Jan. 2026 to Feb. 2026
<b>Industrialized Countries<sup>2</sup></b> .....	100.000	150.7	152.6	3.2	—	0.5	0.9	1.3
Nonmanufacturing.....	9.750	233.2	243.0	-8.2	—	1.7	-0.6	4.2
Manufacturing.....	89.616	143.4	144.9	4.4	—	0.4	1.0	1.0
<b>Canada</b> .....	100.000	171.8	174.5	-0.2	—	0.7	0.9	1.6
Nonmanufacturing.....	28.824	226.5	236.7	-8.2	—	1.9	-0.7	4.5
Manufacturing.....	70.228	160.9	161.5	3.2	—	0.2	1.6	0.4
<b>European Union</b> .....	100.000	159.0	159.9	1.5	—	0.3	0.1	0.6
Manufacturing.....	99.209	154.4	155.5	1.4	—	0.3	0.1	0.7
<b>France (Dec. 2003=100)</b> .....	100.000	155.3	155.9	-1.1	—	0.3	-1.2	0.4
<b>Germany (Dec. 2003=100)</b> .....	100.000	130.5	131.2	3.9	—	0.5	1.3	0.5
<b>United Kingdom (Dec. 2003=100)</b> .....	100.000	138.5	140.1	0.1	—	-0.6	0.4	1.2
<b>Latin America<sup>3</sup></b> .....	100.000	177.3	177.3	-0.2	—	0.2	0.5	0.0
Nonmanufacturing.....	12.221	316.9	322.9	-9.4	—	-0.5	0.5	1.9
Manufacturing.....	87.334	144.8	144.3	1.3	—	0.3	0.4	-0.3
<b>Mexico (Dec. 2003=100)</b> .....	100.000	150.7	150.0	-0.5	—	0.3	0.3	-0.5
Nonmanufacturing (Dec. 2008=100).....	5.670	156.3	161.5	-12.7	—	0.3	-0.1	3.3
Manufacturing (Dec. 2008=100).....	93.930	104.2	103.4	0.8	—	0.2	0.4	-0.8
<b>Pacific Rim (Dec. 2003=100)<sup>4</sup></b> .....	100.000	101.7	103.3	0.5	—	-0.1	0.2	1.6
<b>China (Dec. 2003=100)</b> .....	100.000	97.4	97.9	-1.9	—	0.1	0.2	0.5
<b>Japan</b> .....	100.000	102.6	103.0	0.7	—	-0.5	0.0	0.4
<b>Taiwan (Dec. 2018=100)</b> .....	100.000	112.7	114.0	3.3	—	0.4	0.4	1.2
<b>Asian NICs<sup>5</sup></b> .....	100.000	93.9	96.4	0.0	—	-1.3	-0.2	2.7
<b>ASEAN (Dec. 2003=100)<sup>6</sup></b> .....	100.000	101.7	102.4	1.5	—	-0.2	-1.0	0.7
<b>Asia Near East (Dec. 2003=100)<sup>7</sup></b> .....	100.000	195.9	197.3	-6.3	—	-0.4	0.5	0.7

<sup>1</sup> Relative importance values are based on 2024 trade values.

<sup>2</sup> Western Europe, Canada, Japan, Australia, New Zealand, and South Africa.

<sup>3</sup> Mexico, Central America, South America, and the Caribbean.

<sup>4</sup> China, Japan, Australia, Brunei, Indonesia, Macao, Malaysia, New Zealand, Papua New Guinea, Philippines, and the Asian Newly Industrialized Countries.

<sup>5</sup> Asian Newly Industrialized Countries - Hong Kong, Singapore, South Korea, and Taiwan.

<sup>6</sup> Association of Southeast Asian Nations - Brunei, Cambodia, Indonesia, Laos, Malaysia, Myanmar, Philippines, Singapore, Thailand, and Vietnam.

<sup>7</sup> Bahrain, Iran, Iraq, Israel, Jordan, Kuwait, Lebanon, Oman, Qatar, Saudi Arabia, Syria, United Arab Emirates, and Yemen.

NOTES: Data may be revised in each of the 3 months after original publication.

Nov 2025 one-month percent changes are not available due to the 2025 lapse in appropriations.

Regions are not mutually exclusive.

Dash = Not available

**Table 8. U.S. export price indexes and percent changes by locality of destination: February 2025 to February 2026**

[December 2017=100, unless otherwise noted]

Description	Relative importance Jan. 2026 <sup>1</sup>	Index		Percent change				
		Jan. 2026	Feb. 2026	Annual Feb. 2025 to Feb. 2026	Monthly			
					Oct. 2025 to Nov. 2025	Nov. 2025 to Dec. 2025	Dec. 2025 to Jan. 2026	Jan. 2026 to Feb. 2026
<b>Industrialized Countries<sup>2</sup></b> .....	100.000	132.0	134.8	6.9	–	1.4	0.8	2.1
Nonmanufacturing.....	13.361	134.9	144.2	-1.8	–	3.6	-0.7	6.9
Manufacturing.....	84.890	131.4	133.2	8.0	–	0.9	1.0	1.4
<b>Canada</b> .....	100.000	137.5	140.1	6.5	–	1.7	0.7	1.9
Nonmanufacturing (Dec. 2020=100).....	8.587	145.0	148.0	1.3	–	1.7	1.3	2.1
Manufacturing (Dec. 2020=100).....	88.460	127.0	128.8	5.7	–	1.5	0.3	1.4
<b>European Union</b> .....	100.000	121.2	125.1	3.3	–	1.3	0.0	3.2
Nonmanufacturing.....	19.324	123.4	134.7	-1.5	–	4.3	-1.3	9.2
Manufacturing.....	79.689	121.3	123.1	3.9	–	0.2	0.4	1.5
<b>Germany</b> .....	100.000	134.2	137.6	10.7	–	-0.8	1.9	2.5
<b>Latin America<sup>3</sup></b> .....	100.000	124.5	125.8	1.1	–	0.2	-0.5	1.0
Nonmanufacturing.....	9.022	154.6	160.0	-0.9	–	7.7	-1.9	3.5
Manufacturing.....	90.510	122.4	123.4	1.4	–	-0.5	-0.4	0.8
<b>Mexico</b> .....	100.000	127.9	129.0	2.4	–	-0.2	-0.2	0.9
Nonmanufacturing.....	8.246	143.0	145.6	-2.2	–	9.1	-4.2	1.8
Manufacturing.....	91.159	127.8	128.8	2.9	–	-1.0	0.2	0.8
<b>Pacific Rim<sup>4</sup></b> .....	100.000	117.3	119.1	3.5	–	0.4	1.2	1.5
Nonmanufacturing.....	18.755	105.5	111.3	-4.5	–	1.3	0.2	5.5
Manufacturing.....	79.338	122.0	122.5	5.2	–	-0.2	1.7	0.4
<b>China</b> .....	100.000	111.8	112.6	3.6	–	0.1	1.0	0.7
Nonmanufacturing.....	23.438	98.5	100.4	1.8	–	2.5	-0.5	1.9
Manufacturing.....	74.127	118.3	118.7	3.7	–	-0.9	1.3	0.3
<b>Japan</b> .....	100.000	119.1	121.9	5.9	–	0.6	1.2	2.4
Nonmanufacturing.....	20.707	115.6	124.1	-1.0	–	6.1	1.0	7.4
Manufacturing.....	78.153	119.6	120.6	7.3	–	-1.5	1.6	0.8

<sup>1</sup> Relative importance values are based on 2024 trade values.

<sup>2</sup> Western Europe, Canada, Japan, Australia, New Zealand, and South Africa.

<sup>3</sup> Mexico, Central America, South America, and the Caribbean.

<sup>4</sup> China, Japan, Australia, Brunei, Indonesia, Macao, Malaysia, New Zealand, Papua New Guinea, Philippines, and the Asian Newly Industrialized Countries.

NOTES: Data may be revised in each of the 3 months after original publication.

Nov 2025 one-month percent changes are not available due to the 2025 lapse in appropriations.

Regions are not mutually exclusive.

Dash = Not available

**Table 9. U.S. terms of trade indexes and percent changes by locality: February 2025 to February 2026<sup>1</sup>**  
 [December 2017=100, unless otherwise noted]

Description	Index		Percent change				
	Jan. 2026	Feb. 2026	Annual	Monthly			
			Feb. 2025 to Feb. 2026	Oct. 2025 to Nov. 2025	Nov. 2025 to Dec. 2025	Dec. 2025 to Jan. 2026	Jan. 2026 to Feb. 2026
<b>Industrialized Countries<sup>2</sup></b> .....	107.2	108.1	3.5	–	0.8	-0.1	0.8
<b>Canada</b> .....	105.2	105.5	6.7	–	1.1	-0.3	0.3
<b>European Union</b> .....	102.6	105.3	1.8	–	0.9	-0.1	2.6
<b>Germany</b> .....	118.4	120.7	6.5	–	-1.3	0.6	1.9
<b>Latin America<sup>3</sup></b> .....	104.6	105.6	1.2	–	0.1	-0.9	1.0
<b>Mexico</b> .....	109.5	110.9	2.8	–	-0.5	-0.5	1.3
<b>Pacific Rim<sup>4</sup></b> .....	113.5	113.5	3.0	–	0.5	1.0	0.0
<b>China</b> .....	114.9	115.1	5.6	–	0.0	0.8	0.2
<b>Japan</b> .....	110.9	113.0	5.2	–	1.1	1.2	1.9

<sup>1</sup> Terms of trade indexes are derived by dividing the export price index by the corresponding import price index and multiplying by 100.

<sup>2</sup> Western Europe, Canada, Japan, Australia, New Zealand, and South Africa.

<sup>3</sup> Mexico, Central America, South America, and the Caribbean.

<sup>4</sup> China, Japan, Australia, Brunei, Indonesia, Macao, Malaysia, New Zealand, Papua New Guinea, Philippines, and the Asian Newly Industrialized Countries.

NOTES: Data may be revised in each of the 3 months after original publication.

Nov 2025 one-month percent changes are not available due to the 2025 lapse in appropriations.

Regions are not mutually exclusive.

Dash = Not available

**Table 10. U.S. international price indexes and percent changes for selected transportation services: February 2025 to February 2026**

[2000=100, unless otherwise noted]

Description	Relative importance Jan. 2026 <sup>1</sup>	Index		Percent change				
		Jan. 2026	Feb. 2026	Annual Feb. 2025 to Feb. 2026	Monthly			
					Oct. 2025 to Nov. 2025	Nov. 2025 to Dec. 2025	Dec. 2025 to Jan. 2026	Jan. 2026 to Feb. 2026
<b>Air Freight</b>								
<b>Import Air Freight</b> .....	100.000	262.6	260.7	13.0	–	3.7	-3.2	-0.7
Europe (Dec. 2003=100).....	36.559	213.2	212.7	27.7	–	4.5	5.8	-0.2
Asia.....	61.131	263.4	259.6	11.5	–	4.1	-9.3	-1.4
<b>Export Air Freight</b> .....	100.000	168.7	172.2	-1.0	–	0.7	2.8	2.1
Europe (Dec. 2006=100).....	34.927	128.9	134.4	2.4	–	-0.1	3.0	4.3
Asia (Dec. 2011=100).....	38.048	126.2	126.9	-7.9	–	3.0	-2.0	0.6
<b>Inbound Air Freight</b> .....	100.000	185.2	184.5	6.8	–	3.3	-3.1	-0.4
Europe (Dec. 2003=100).....	33.316	176.7	174.6	20.7	–	4.3	5.4	-1.2
Asia.....	54.805	172.3	171.2	2.0	–	4.1	-9.3	-0.6
<b>Outbound Air Freight</b> .....	100.000	157.5	159.9	-5.0	–	0.5	1.2	1.5
Europe (Dec. 2003=100).....	36.825	162.4	167.8	-0.8	–	0.7	2.5	3.3
Asia.....	35.984	156.1	156.7	-11.7	–	0.3	0.3	0.4
<b>Air Passenger Fares</b>								
<b>Import Air Passenger Fares</b> .....	100.000	173.0	172.3	-0.2	2.1	6.4	-10.1	-0.4
Europe.....	45.981	200.1	201.4	6.3	2.6	-0.7	0.9	0.6
Asia.....	18.355	144.3	129.6	-13.6	-0.3	12.9	-18.4	-10.2
Latin America/Caribbean.....	8.684	140.1	154.5	-0.8	8.3	16.3	-19.3	10.3
<b>Export Air Passenger Fares</b> .....	100.000	195.1	171.8	-1.6	1.0	-2.3	13.2	-11.9
Europe.....	31.195	223.7	206.3	1.7	-4.7	-3.2	7.8	-7.8
Asia.....	18.509	187.6	149.1	-7.6	9.9	-6.9	19.3	-20.5
Latin America/Caribbean.....	31.738	214.4	180.2	-2.7	0.4	1.8	26.4	-16.0

<sup>1</sup> Relative importance values are based on 2024 trade values.

NOTES: Data may be revised in each of the 3 months after original publication.

Some Nov 2025 one-month percent changes are not available due to the 2025 lapse in appropriations.

Dash = Not available

## TECHNICAL NOTE

**Import and Export Goods and Services Price Indexes** - All indexes use a modified Laspeyres formula and are not seasonally adjusted. Price indexes are reweighted annually, with a 2-year lag in the weights. Published series use a base year of 2000=100 where possible. More detailed index series and additional information may be obtained at [www.bls.gov/mxp](http://www.bls.gov/mxp) or by calling (202) 691-7101.

**Merchandise Goods Classification Systems** - The merchandise price indexes are published using three classification systems. Items are classified by end use according to the Bureau of Economic Analysis Classification System, by industry according to the North American Industry Classification System (NAICS), and by product category according to the Harmonized System (HS). While classification by end use and product category are self-explanatory, some notes are in order for classifying items by industry. In the NAICS imports and exports tables, items are classified by output industry, not input industry. As an example, NAICS import index 326 (plastics and rubber products manufacturing) includes outputs such as manufactured plastic rather than inputs such as petroleum. The NAICS classification structure also matches the classification system used by the Producer Price Index (PPI) to produce the NAICS primary products indexes.

**Import Price Goods Indexes** - Items are classified by the Harmonized Tariff Schedule of the United States Annotated (TSUSA). Import prices are based on U.S. dollar prices paid by the U.S. importer. The prices are generally either "free on board" (f.o.b.) foreign port or "cost, insurance, and freight" (c.i.f.) U.S. port transaction prices, depending on the practices of the individual industry.

**Export Price Goods Indexes** - Items are classified by the Harmonized Schedule B classification system of the U.S. Bureau of the Census. The prices used are generally either "free alongside ship" (f.a.s.) factory or "free on board" (f.o.b.) transaction prices, depending on the practices of the individual industry.

**Services Price Indexes** - Indexes for import and export air passenger fares calculate changes in the average revenue received per passenger by foreign carriers from U.S. residents and by U.S. carriers from foreign residents, respectively. The air freight indexes are calculated from data collected directly from airlines. These data exclude mail and passenger baggage. The scope of the service being priced is the movement of freight from airport to airport only and does not include any ground transportation or port service. The air freight indexes are presented using two definitions: balance of payments (which represents transactions between U.S. and foreign residents) and international (which represents transactions inbound to and outbound from the United States.)

**Import Price Indexes by Locality of Origin** - Prices used in these indexes are a subset of the data collected for the import price indexes. The indexes are specific to a country, region, or grouping and, beginning with January 2002, are based on the North American Industry Classification System (NAICS) covering goods-producing industries. Nonmanufactured goods are defined as NAICS 11 and 21, and manufactured goods are defined as NAICS 31-33.

**Export Price Indexes by Locality of Destination** - Prices used in these indexes are a subset of the data collected for the export price indexes. The indexes are specific to a country, region, or grouping and are based on the North American Industry Classification System (NAICS) covering goods-producing industries. Nonmanufactured goods are defined as NAICS 11 and 21, and manufactured goods are defined as NAICS 31-33.

**Terms of Trade Indexes** - Terms of trade indexes measure the relative price of exports in terms of import prices for a specific country, region, or grouping. The indexes are calculated as one country, region, or grouping's all-export goods price index divided by the corresponding all-import goods price index on a scale of 100.

**Relative Importance** - A relative importance is a specific index's price-updated value share (expressed as a percentage) of overall imports or exports at a specific point in time. Relative importance values are affected by the trade weights at the point indexes are reweighted and index changes relative to other indexes since the reweight point. If an index is rising in value relative to other indexes over time, the relative importance will increase as well.

**Revision Policy** - To reflect the availability of late reports and corrections by respondents, monthly data may be revised in each of the 3 months after original publication. After 3 months, no further data revisions take place. For example, data first published in the January release will be subject to revision in the releases for February, March, and April.

**Rounding Policy** - Index values are rounded to the tenth decimal place after being calculated. All percent changes are then derived from the rounded index values and subsequently rounded to the tenth decimal place.

**Uses of the Data** - The primary use of the indexes is to deflate trade statistics, notably the foreign trade sector of the National Income and Product Accounts (NIPA) constructed by the Department of Commerce. Other published indexes are useful for general market analysis. For trade in international services, balance of payments indexes are used for deflating NIPA, while international indexes are more appropriate for market analysis.

**Additional Information** - More detailed data are available on the Import/Export Price Indexes home page at [www.bls.gov/mxp](http://www.bls.gov/mxp). For import and export price indexes data requests, send an email to [mxpinfo@bls.gov](mailto:mxpinfo@bls.gov).

If you are deaf, hard of hearing, or have a speech disability, please dial 7-1-1 to access telecommunications relay services.