



**Transmission of material in this release is embargoed until
 8:30 a.m. (EDT) Tuesday, April 12, 2016**

USDL-16-0745

Technical information: (202) 691-7101 • MXPinfo@bls.gov • www.bls.gov/mxp
 Media contact: (202) 691-5902 • PressOffice@bls.gov

U.S. IMPORT AND EXPORT PRICE INDEXES – MARCH 2016

U.S. import prices increased 0.2 percent in March, the U.S. Bureau of Labor Statistics reported today. The advance followed a 0.4-percent drop the previous month and was driven by an upturn in fuel prices which more than offset lower nonfuel prices. Prices for U.S. exports recorded no change in March, after falling 0.5 percent in February.

Chart 1. One-month percent change in the Import Price Index: March 2015 – March 2016

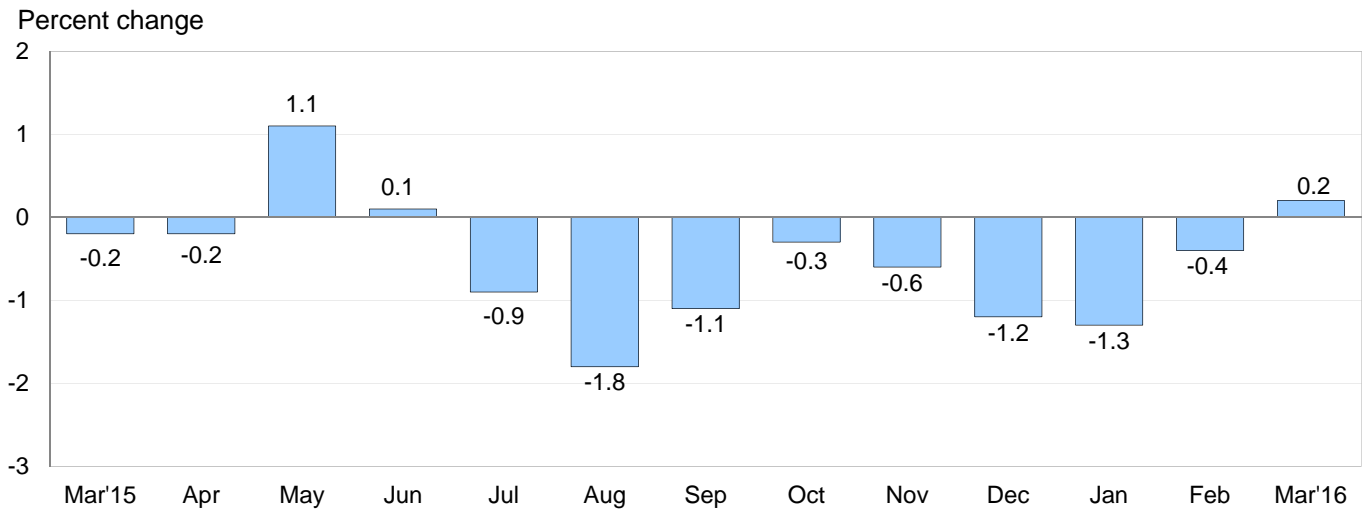
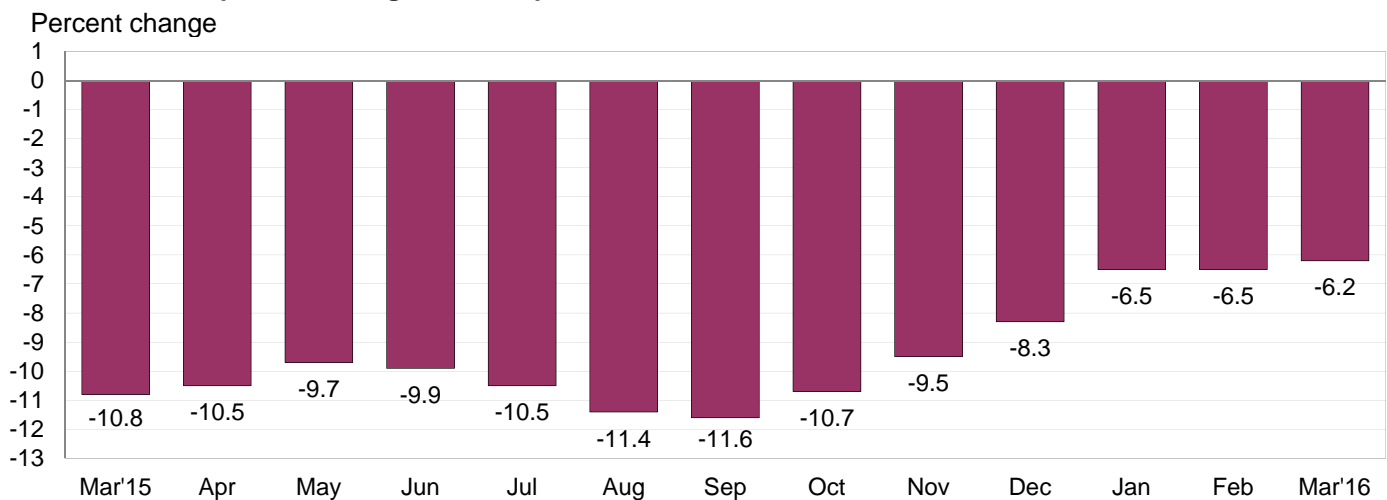


Chart 2. 12-month percent change in the Import Price Index: March 2015 – March 2016



All Imports: The price index for U.S. imports rose 0.2 percent in March, the first monthly increase for the index since a 0.1-percent uptick in June 2015. The March advance was the largest 1-month rise since the index increased 1.1 percent in May 2015. Despite the upturn, overall import prices remained down over the past year, falling 6.2 percent from March 2015 to March 2016.

Fuel Imports: Import fuel prices increased 4.9 percent in March following declines of 5.9 percent in February, 15.7 percent in January, and 10.0 percent in December. The March advance was the first monthly increase since the index rose 1.5 percent in June 2015 and the largest advance since a 10.8-percent increase in May 2015. The March rise was led by a 6.5-percent advance in petroleum prices that more than offset a 16.1-percent drop in natural gas prices. Fuel prices decreased 38.3 percent over the past 12 months; a 39.5-percent decline in petroleum prices and a 37.7-percent fall in natural gas prices each contributed to the overall drop.

All Imports Excluding Fuel: Prices for nonfuel imports in March fell 0.1 percent for a third consecutive month. Nonfuel import prices have not recorded an increase since the index advanced 0.1 percent in July 2014. In March, falling prices for consumer goods; foods, feeds, and beverages; and capital goods more than countered rising prices for nonfuel industrial supplies and materials, and automotive vehicles. Nonfuel import prices declined 2.5 percent for the year ended in March.

Table A. Percent change in Import and Export Price Indexes, selected categories

Month	IMPORTS			EXPORTS		
	All imports	Fuel imports	Nonfuel imports	All exports	Agricultural exports	Non-agricultural exports
2015						
March.....	-0.2	1.5	-0.4	0.0	-1.6	0.2
April.....	-0.2	1.8	-0.3	-0.6	-0.9	-0.7
May.....	1.1	10.8	0.0	0.5	-1.3	0.6
June.....	0.1	1.5	-0.2	-0.3	-1.6	-0.1
July.....	-0.9	-6.1	-0.3	-0.4	1.0	-0.6
August.....	-1.8	-12.7	-0.3	-1.4	-2.5	-1.3
September.....	-1.1	-8.4	-0.3	-0.6	-1.4	-0.5
October.....	-0.3	-0.4	-0.3	-0.2	0.1	-0.3
November.....	-0.6	-4.0	-0.3	-0.7	-0.9	-0.7
December.....	-1.2	-10.0	-0.3	-1.1	-0.9	-1.1
2016						
January.....	-1.3 ^r	-15.7 ^r	-0.1 ^r	-0.8	-1.3	-0.9
February.....	-0.4 ^r	-5.9 ^r	-0.1	-0.5 ^r	0.6	-0.5 ^r
March.....	0.2	4.9	-0.1	0.0	-2.5	0.3
Mar. 2014 to 2015.....	-10.8	-47.7	-1.8	-6.7	-13.7	-5.8
Mar. 2015 to 2016.....	-6.2	-38.3	-2.5	-6.1	-11.1	-5.6

^r Revised

Chart 3. One-month percent change in the Export Price Index: March 2015 – March 2016

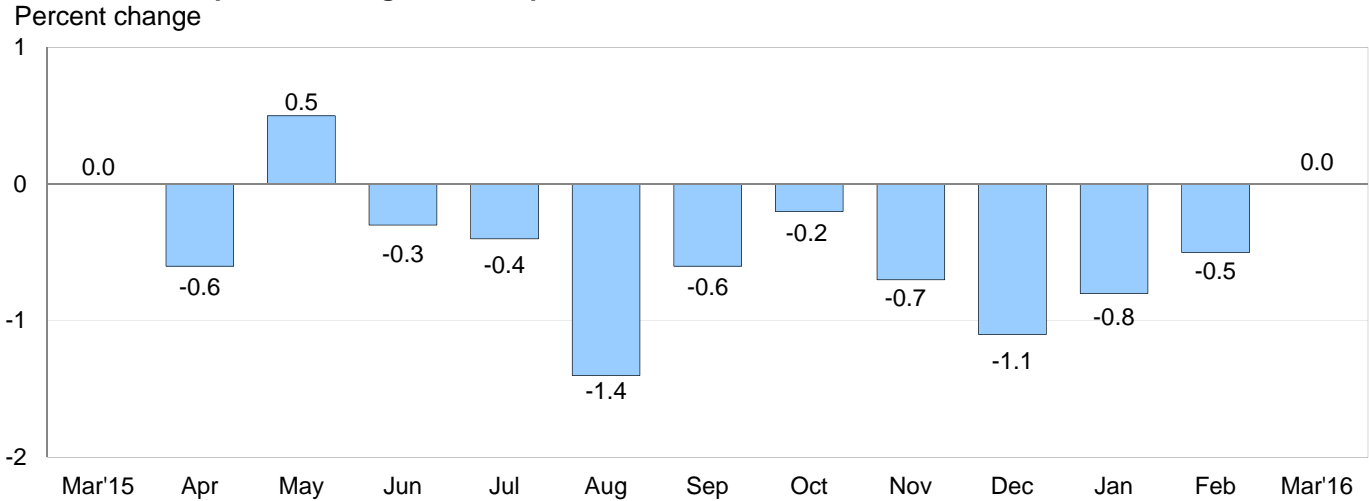
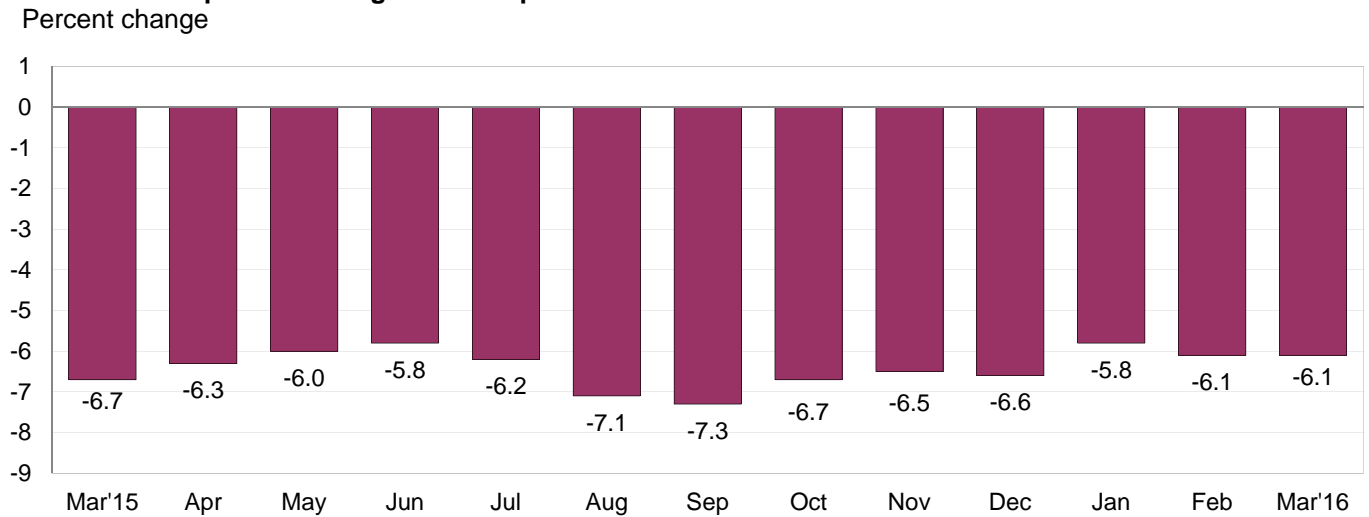


Chart 4. 12-month percent change in the Export Price Index: March 2015 – March 2016



All Exports: U.S. export prices recorded no change in March. This is the first time that the index did not decline since a 0.5-percent rise in May 2015. Prior to March, export prices decreased 0.5 percent in February, 0.8 percent in January, and 1.1 percent in December. In March, agricultural prices declined and the price index for nonagricultural exports advanced. Overall prices for U.S. exports decreased 6.1 percent over the past year.

Agricultural Exports: Prices for agricultural exports declined 2.5 percent in March, after rising 0.6 percent the previous month. The March decrease matched a 2.5-percent drop in August 2015; those were the largest 1-month declines since the index fell 3.1 percent in August 2014. The decrease in March was driven by lower prices for fruit, soybeans, corn, and nuts. Agricultural prices also fell over the past 12 months, declining 11.1 percent for the year ended in March.

All Exports Excluding Agriculture: The price index for nonagricultural exports rose 0.3 percent in March following a 0.5-percent decrease in February. The March advance was the first monthly increase for the index since a 0.6-percent rise in May 2015. In March, higher prices for nonagricultural industrial supplies and materials more than offset falling automotive vehicles prices. Despite the March upturn, nonagricultural export prices decreased 5.6 percent over the past 12 months.

SELECTED MARCH HIGHLIGHTS

Import Prices

Imports by Locality of Origin: In March, import prices from China declined 0.2 percent for the second consecutive month. The index has not recorded a monthly increase since ticking up 0.1 percent in December 2014 and declined 1.8 percent over the past year. That matched the largest 12-month drop since the index decreased 2.4 percent for the year ended November 2009. Prices for imports from the European Union also declined in March, edging down 0.1 percent. In contrast, the price index for imports from Japan rose 0.1 percent in March, after increasing 0.2 percent in February. Import prices from Canada and Mexico advanced 0.5 percent and 0.1 percent, respectively, led by an upturn in petroleum prices.

Nonfuel Industrial Supplies and Materials: Nonfuel industrial supplies and materials prices advanced 0.5 percent in March, the first 1-month increase since the index rose 0.5 percent in July 2014 and the largest monthly advance since a 0.6-percent rise in March 2014. The March 2016 increase was led by a 3.2-percent increase in unfinished metals prices which more than offset lower chemical prices.

Finished Goods: Consumer goods prices fell 0.3 percent in March, after increasing 0.3 percent in February. The March decline was led by a 1.0-percent drop in the price index for medicinal, dental, and pharmaceutical materials. Prices for capital goods also decreased in March, edging down 0.1 percent. In contrast, automotive vehicles prices rose 0.1 percent, the first monthly advance for the index since a 0.1-percent increase in July 2015.

Foods, Feeds, and Beverages: Prices for foods, feeds, and beverages declined 0.6 percent in March, following a 1.6-percent decrease the previous month. The March drop was driven by lower prices for vegetables, meat, and fruit.

Transportation Services: Import air passenger fares declined 5.4 percent in March, the largest monthly drop since the index fell 6.8 percent in January 2015. The March decrease was led by an 11.3-percent decline in European fares. The index for import air passenger fares fell 6.3 percent for the year ended in March. Import air freight prices decreased 0.1 percent in March and 12.6 percent over the past year.

Export Prices

Nonagricultural Industrial Supplies and Materials: Nonagricultural industrial supplies and materials prices rose 0.8 percent in March following a 2.2-percent decline the previous month. Higher metals prices in March drove the increase.

Finished Goods: Finished goods prices were mixed in March. The price index for automotive vehicles decreased 0.2 percent for the second consecutive month. In contrast, consumer goods prices ticked up 0.1 percent, the first 1-month increase since the index advanced 0.4 percent in June 2015. Prices for capital goods recorded no change in March.

Transportation Services: Export air passenger fares advanced 7.8 percent in March following a 13.5-percent drop the previous month. The March increase was the largest monthly rise since the index advanced 8.3 percent in December 2014. Despite the March rise, export air passenger fares fell 4.6 percent over the past year. Export air freight prices declined 3.0 percent in March and 1.8 percent over the past year.

Import and Export Price Index data for April 2016 are scheduled for release on Thursday, May 12, 2016 at 8:30 a.m. (EDT).

Table 1. U.S. import price indexes and percent changes for selected categories of goods: March 2015 to March 2016

[2000=100, unless otherwise noted]

Description	End Use	Relative importance Feb. 2016 ¹	Index		Percent change				
			Feb. 2016	Mar. 2016	Annual	Monthly			
					Mar. 2015 to Mar. 2016	Nov. 2015 to Dec. 2015	Dec. 2015 to Jan. 2016	Jan. 2016 to Feb. 2016	Feb. 2016 to Mar. 2016
All commodities		100.000	117.3	117.5	-6.2	-1.2	-1.3	-0.4	0.2
All imports excluding food and fuels (Dec. 2010=100)		87.776	98.2	98.1	-2.3	-0.3	-0.2	0.1	-0.1
All imports excluding petroleum		94.595	110.6	110.4	-2.7	-0.4	-0.1	-0.1	-0.2
All imports excluding fuels (Dec. 2001=100)		93.974	114.7	114.6	-2.5	-0.3	-0.1	-0.1	-0.1
Foods, feeds, & beverages	0	6.198	170.8	169.8	-4.6	-0.1	0.7	-1.6	-0.6
Agricultural foods, feeds & beverages, excluding distilled beverages.....	00	4.801	187.2	185.2	-5.5	-0.3	0.5	-2.0	-1.1
Nonagricultural foods (fish, distilled beverages).....	01	1.397	133.7	135.0	-1.6	0.5	1.4	-0.3	1.0
Industrial supplies & materials	1	19.476	136.2	138.7	-21.1	-4.8	-6.2	-2.0	1.8
Industrial supplies & materials excluding petroleum.....		14.072	136.8	136.8	-9.3	-1.4	-0.8	-0.4	0.0
Industrial supplies & materials excluding fuels (Dec. 2001=100).....		13.451	155.5	156.2	-8.4	-1.3	-0.9	-0.2	0.5
Industrial supplies & materials, durable....		8.024	142.2	144.2	-9.0	-1.7	-1.2	0.3	1.4
Industrial supplies & materials nondurable excluding petroleum.....		5.427	129.9	127.5	-9.8	-1.1	-0.3	-1.1	-1.8
Fuels & lubricants.....	10	6.024	107.6	112.9	-38.3	-10.0	-15.7	-5.9	4.9
Petroleum & petroleum products.....	100	5.403	112.3	119.6	-39.5	-10.5	-17.2	-6.2	6.5
Crude.....	10000	3.755	109.3	118.8	-38.5	-12.4	-17.1	-5.8	8.7
Fuels, n.e.s.-coals & gas.....	101	0.429	82.8	72.3	-31.7	-5.3	-2.5	-5.0	-12.7
Gas-natural.....	10110	0.336	67.0	56.2	-37.7	-7.5	0.0	-6.4	-16.1
Paper & paper base stocks.....	11	0.594	107.7	107.5	-3.7	-0.9	-0.6	-0.1	-0.2
Materials associated with nondurable supplies & materials.....	12	4.901	149.8	148.3	-8.0	-0.7	-0.5	-0.9	-1.0
Selected building materials.....	13	1.299	133.2	133.8	-3.3	-0.3	-0.1	-0.7	0.5
Unfinished metals related to durable goods.....	14	3.164	174.2	179.8	-16.3	-3.6	-2.1	0.5	3.2
Finished metals related to durable goods.....	15	1.726	144.6	145.1	-5.8	-1.0	-0.6	0.0	0.3
Nonmetals related to durable goods.....	16	1.767	108.7	108.5	-1.5	-0.3	-0.7	1.0	-0.2
Capital goods	2	29.474	89.6	89.5	-2.1	-0.2	-0.2	0.0	-0.1
Electric generating equipment.....	20	3.575	116.6	116.6	-2.2	-0.3	0.2	-0.2	0.0
Nonelectrical machinery.....	21	23.101	82.0	81.9	-2.4	-0.2	-0.4	0.0	-0.1
Transportation equipment excluding motor vehicles (Dec. 2001=100).....	22	2.798	137.5	137.5	0.5	0.0	0.2	0.1	0.0
Automotive vehicles, parts & engines	3	16.529	110.2	110.3	-0.9	-0.1	-0.2	-0.1	0.1
Consumer goods, excluding automobiles	4	28.322	107.7	107.4	-0.1	0.0	0.2	0.3	-0.3
Nondurables, manufactured.....	40	13.542	120.8	120.2	0.9	0.1	0.5	0.8	-0.5
Durables, manufactured.....	41	13.229	94.8	94.7	-1.4	-0.3	-0.1	-0.1	-0.1
Nonmanufactured consumer goods.....	42	1.551	120.1	118.8	0.6	1.5	-0.4	0.3	-1.1

¹ Relative importance figures are based on 2014 trade values.

NOTES: Data may be revised in each of the 3 months after original publication.

Dash = Not available

Table 2. U.S. export price indexes and percent changes for selected categories of goods: March 2015 to March 2016

[2000=100, unless otherwise noted]

Description	End Use	Relative importance Feb. 2016 ¹	Index		Percent change				
			Feb. 2016	Mar. 2016	Annual	Monthly			
					Mar. 2015 to Mar. 2016	Nov. 2015 to Dec. 2015	Dec. 2015 to Jan. 2016	Jan. 2016 to Feb. 2016	Feb. 2016 to Mar. 2016
All commodities.....		100.000	118.2	118.2	-6.1	-1.1	-0.8	-0.5	0.0
Agricultural commodities.....		9.167	174.5	170.2	-11.1	-0.9	-1.3	0.6	-2.5
All exports excluding food and fuels (Dec. 2010=100).....		85.801	97.9	98.1	-2.7	-0.5	-0.3	0.0	0.2
Nonagricultural commodities.....		90.834	114.0	114.3	-5.6	-1.1	-0.9	-0.5	0.3
Foods, feeds, & beverages.....	0	8.588	176.2	171.8	-11.3	-1.2	-1.4	0.9	-2.5
Agricultural foods, feeds & beverages, excluding distilled beverages.....	00	7.900	176.2	171.5	-11.1	-1.1	-1.5	0.7	-2.7
Nonagricultural foods (fish, distilled beverages).....	01	0.688	184.4	182.9	-12.9	-1.2	-1.2	2.4	-0.8
Industrial supplies & materials.....	1	27.531	131.7	132.6	-14.8	-3.0	-2.1	-2.1	0.7
Industrial supplies & materials, durable....		10.431	147.4	150.5	-6.4	-1.8	-0.1	-0.1	2.1
Industrial supplies & materials, nondurable.....		17.102	124.3	124.0	-19.3	-3.6	-3.2	-3.2	-0.2
Agricultural industrial supplies & materials.....	10	1.267	169.4	167.1	-11.2	0.4	-0.2	-0.1	-1.4
Nonagricultural industrial supplies & materials.....		26.265	130.4	131.5	-14.9	-3.1	-2.3	-2.2	0.8
Fuels & lubricants.....	11	5.612	117.1	117.5	-36.0	-8.9	-7.7	-7.3	0.3
Nonagricultural supplies & materials excluding fuels & building materials.....	12	19.613	145.1	146.6	-7.1	-1.3	-0.5	-0.7	1.0
Selected building materials.....	13	1.040	113.7	113.1	-5.1	0.6	0.2	-0.9	-0.5
Capital goods.....	2	39.774	107.1	107.1	-0.6	-0.2	-0.1	0.3	0.0
Electrical generating equipment.....	20	4.032	111.9	112.0	-2.4	-0.4	-0.2	-0.2	0.1
Nonelectrical machinery.....	21	26.848	94.3	94.3	-1.4	-0.2	-0.1	-0.1	0.0
Transportation equipment excluding motor vehicles (Dec. 2001=100).....	22	8.894	164.4	164.5	2.4	-0.1	0.2	1.4	0.1
Automotive vehicles, parts & engines.....	3	10.949	113.3	113.1	-0.7	-0.1	0.0	-0.2	-0.2
Consumer goods, excluding automotives.....	4	13.158	110.5	110.6	-2.0	-0.4	-0.8	-0.1	0.1
Nondurables, manufactured.....	40	5.915	105.3	105.4	-3.1	-0.5	-1.4	-0.4	0.1
Durables, manufactured.....	41	5.573	109.3	109.3	-1.4	-0.4	-0.5	0.3	0.0

¹ Relative importance figures are based on 2014 trade values.

NOTES: Data may be revised in each of the 3 months after original publication.

Dash = Not available

Table 3. U.S. import price indexes and percent changes for selected categories of goods: March 2015 to March 2016

[December 2005=100, unless otherwise noted]

Description	NAICS	Relative importance Feb. 2016 ¹	Index		Percent change				
			Feb. 2016	Mar. 2016	Annual	Monthly			
					Mar. 2015 to Mar. 2016	Nov. 2015 to Dec. 2015	Dec. 2015 to Jan. 2016	Jan. 2016 to Feb. 2016	Feb. 2016 to Mar. 2016
Nonmanufactured articles.....		6.398	64.3	66.8	-30.6	-8.4	-10.6	-5.4	3.9
Agriculture, forestry, fishing and hunting.....	11	2.022	170.3	167.1	-4.7	1.6	1.5	-5.2	-1.9
Crop production.....	111	1.630	182.3	177.3	-3.4	2.8	1.5	-6.3	-2.7
Animal production (Dec. 2014=100).....	112	0.221	82.6	85.3	-8.9	-5.2	5.4	1.6	3.3
Mining.....	21	4.376	50.9	54.2	-37.6	-11.5	-15.3	-5.6	6.5
Mining (except oil and gas) (Dec. 2006=100).....	212	0.241	93.1	93.1	-19.7	-0.2	-4.5	0.1	0.0
Manufactured articles.....		93.313	108.2	108.2	-3.7	-0.5	-0.6	-0.1	0.0
Manufactured goods, part 1.....	31	12.423	122.7	122.6	-2.1	-0.3	-0.1	0.0	-0.1
Food manufacturing.....	311	3.468	147.6	147.3	-5.3	-0.9	-0.1	0.3	-0.2
Beverage and tobacco product manufacturing.....	312	1.122	118.1	118.6	0.7	-0.3	0.2	0.1	0.4
Textile mills (Dec. 2011=100).....	313	0.418	99.1	98.7	-3.2	-0.3	0.0	-0.3	-0.4
Textile product mills.....	314	0.927	109.6	109.4	-3.1	-0.1	-0.6	-0.5	-0.2
Apparel manufacturing.....	315	4.505	111.6	111.4	-0.7	-0.1	0.2	0.0	-0.2
Leather and allied product manufacturing.....	316	1.983	123.7	123.6	-0.5	-0.1	-0.3	-0.2	-0.1
Manufactured goods, part 2.....	32	16.879	113.2	112.5	-8.9	-0.9	-2.2	-0.3	-0.6
Wood product manufacturing.....	321	0.775	110.3	111.0	-4.7	-0.5	0.1	-0.5	0.6
Paper manufacturing.....	322	1.106	105.4	105.9	-3.4	-0.7	-0.5	0.0	0.5
Petroleum and coal products manufacturing.....	324	1.536	56.1	56.8	-42.9	-5.9	-18.6	-7.3	1.2
Chemical manufacturing.....	325	9.850	132.5	130.9	-2.6	-0.1	0.4	0.7	-1.2
Plastics and rubber products manufacturing.....	326	2.340	117.3	116.9	-2.9	-0.3	-0.9	0.1	-0.3
Nonmetallic mineral product manufacturing.....	327	1.067	130.1	130.0	-0.2	0.0	-0.2	-0.1	-0.1
Manufactured goods, part 3.....	33	64.011	103.2	103.3	-2.5	-0.4	-0.3	0.0	0.1
Primary metal manufacturing.....	331	3.930	118.0	121.3	-15.6	-3.3	-2.2	0.2	2.8
Fabricated metal product manufacturing.....	332	3.212	122.9	122.6	-3.0	-0.3	-0.5	-0.3	-0.2
Machinery manufacturing.....	333	7.969	117.1	116.8	-2.2	-0.4	-0.4	-0.1	-0.3
Computer and electronic product manufacturing.....	334	18.680	77.1	76.9	-2.0	-0.1	-0.3	0.0	-0.3
Electrical equipment, appliance, and component manufacturing.....	335	5.029	116.0	115.9	-2.3	-0.5	0.3	-0.4	-0.1
Transportation equipment manufacturing.....	336	17.776	109.5	109.6	-0.6	-0.2	0.0	-0.1	0.1
Furniture and related product manufacturing.....	337	1.713	115.2	115.1	-0.9	-0.3	0.2	-0.1	-0.1
Miscellaneous manufacturing.....	339	5.702	120.0	120.3	-0.2	-0.2	0.2	0.8	0.3

¹ Relative importance figures are based on 2014 trade values.

NOTES: Data may be revised in each of the 3 months after original publication.

Dash = Not available

Table 4. U.S. export price indexes and percent changes for selected categories of goods: March 2015 to March 2016

[December 2005=100, unless otherwise noted]

Description	NAICS	Relative importance Feb. 2016 ¹	Index		Percent change				
			Feb. 2016	Mar. 2016	Annual	Monthly			
					Mar. 2015 to Mar. 2016	Nov. 2015 to Dec. 2015	Dec. 2015 to Jan. 2016	Jan. 2016 to Feb. 2016	Feb. 2016 to Mar. 2016
Nonmanufactured articles.....		6.848	118.6	112.0	-18.9	-0.4	0.7	-1.7	-5.6
Agriculture, forestry, fishing and hunting.....	11	4.737	154.4	147.2	-12.3	-1.1	-1.2	1.4	-4.7
Crop production.....	111	4.336	159.6	152.7	-11.7	-1.2	-1.3	1.2	-4.3
Mining.....	21	2.111	59.0	54.6	-31.0	0.8	4.9	-8.2	-7.5
Mining (except oil and gas).....	212	1.084	73.2	75.2	-16.6	-1.9	-2.1	-3.2	2.7
Manufactured articles.....		91.935	109.4	109.7	-5.0	-1.1	-0.8	-0.4	0.3
Manufactured goods, part 1.....	31	6.760	132.4	131.8	-8.9	-0.6	-1.0	0.1	-0.5
Food manufacturing.....	311	4.501	147.5	146.7	-10.8	-1.0	-1.1	-0.1	-0.5
Beverage and tobacco product manufacturing.....	312	0.618	105.8	105.8	-9.3	0.8	-2.1	0.8	0.0
Manufactured goods, part 2.....	32	22.362	100.1	100.3	-13.2	-2.9	-2.7	-1.7	0.2
Paper manufacturing.....	322	1.777	121.8	121.8	-1.7	-0.3	-0.4	0.1	0.0
Printing and related support activities (Dec. 2015=100).....	323	0.274	100.0	100.0	-	-	0.0	0.0	0.0
Petroleum and coal products manufacturing.....	324	3.453	64.6	66.1	-39.6	-11.8	-10.3	-7.1	2.3
Chemical manufacturing.....	325	12.997	112.3	112.1	-7.0	-0.9	-1.4	-0.9	-0.2
Plastics and rubber products manufacturing.....	326	2.459	116.7	116.8	-2.1	-0.2	0.3	-0.1	0.1
Nonmetallic mineral product manufacturing.....	327	0.876	111.9	111.8	-0.7	0.1	-0.7	0.0	-0.1
Manufactured goods, part 3.....	33	62.814	110.9	111.2	-1.2	-0.4	-0.1	0.1	0.3
Primary metal manufacturing.....	331	4.067	126.0	131.8	-7.1	-3.0	-0.5	-0.6	4.6
Fabricated metal product manufacturing...	332	3.353	130.1	129.4	0.1	-0.1	0.2	0.0	-0.5
Machinery manufacturing.....	333	11.783	125.5	125.8	0.6	-0.1	0.2	0.1	0.2
Computer and electronic product manufacturing.....	334	14.800	84.1	84.0	-3.1	-0.4	-0.5	-0.2	-0.1
Electrical equipment, appliance, and component manufacturing.....	335	3.891	111.9	111.9	-2.5	-0.5	-0.4	0.0	0.0
Transportation equipment manufacturing..	336	18.706	122.3	122.1	0.7	-0.1	0.1	0.5	-0.2
Furniture and related product manufacturing (Dec. 2011=100).....	337	0.408	113.1	113.0	4.9	0.1	0.4	2.3	-0.1
Miscellaneous manufacturing.....	339	5.806	122.0	122.2	-1.2	-0.2	-0.2	0.1	0.2

¹ Relative importance figures are based on 2014 trade values.

NOTES: Data may be revised in each of the 3 months after original publication.

Dash = Not available

Table 5. U.S. import price indexes and percent changes for selected categories of goods: March 2015 to March 2016

[2000=100, unless otherwise noted]

Description	Harmonized system	Relative importance Feb. 2016 ¹	Index		Percent change				
			Feb. 2016	Mar. 2016	Annual	Monthly			
					Mar. 2015 to Mar. 2016	Nov. 2015 to Dec. 2015	Dec. 2015 to Jan. 2016	Jan. 2016 to Feb. 2016	Feb. 2016 to Mar. 2016
Live animals; animal products.....	I	1.462	182.2	182.6	-4.9	-1.6	1.4	1.4	0.2
Meat and edible meat offal.....	02	0.374	223.6	216.8	-10.1	-3.5	-2.8	5.2	-3.0
Fish and crustaceans, molluscs and other aquatic invertebrates.....	03	0.751	132.0	134.7	-0.9	0.6	2.8	-0.5	2.0
Vegetable products.....	II	2.063	199.0	192.4	-3.6	3.1	1.5	-6.2	-3.3
Edible vegetables, roots, and tubers.....	07	0.507	447.7	424.6	-0.6	4.3	13.3	-24.0	-5.2
Edible fruit and nuts; peel of citrus fruit or melons.....	08	0.605	96.8	94.2	-5.6	2.7	-4.5	3.9	-2.7
Coffee, tea, mate and spices.....	09	0.368	225.9	224.6	-8.3	2.0	-2.6	0.3	-0.6
Oilseeds & misc grains, seeds, plants, straw & fodder (Dec. 2015=100).....	12	0.171	102.2	101.5	-	-	3.0	-0.8	-0.7
Animal or vegetable fats and oils (Dec. 2009=100).....	III	0.265	98.4	99.3	-8.1	-5.3	0.7	0.6	0.9
Prepared foodstuffs, beverages, and tobacco.....	IV	2.815	158.0	158.8	-1.9	-0.4	-0.4	-0.3	0.5
Sugars and sugar confectionary (Dec. 2012=100).....	17	0.194	84.9	86.2	-6.0	-0.6	-0.1	0.1	1.5
Cocoa and cocoa preparations (Dec. 2009=100).....	18	0.235	106.2	110.7	2.3	-0.3	-5.5	-2.7	4.2
Preparations of cereals, flour, starch or milk; bakers' wares (Dec. 2007=100).....	19	0.292	132.1	132.4	-0.1	0.0	0.2	-0.2	0.2
Preparations of vegetables, fruit, nuts, or other parts of plants.....	20	0.330	153.9	155.4	-4.5	0.3	-0.1	-0.5	1.0
Beverages, spirits, and vinegar.....	22	1.059	128.2	128.4	0.4	0.0	0.0	0.2	0.2
Mineral products.....	V	6.073	107.6	113.0	-38.6	-10.1	-16.0	-5.9	5.0
Mineral fuels, oils and residuals, bituminous substances and mineral waxes.....	27	5.810	104.4	109.8	-39.3	-10.4	-16.4	-6.0	5.2
Products of the chemical or allied industries.....	VI	9.250	149.0	147.3	-0.7	-0.1	1.0	0.8	-1.1
Inorganic chemicals.....	28	0.591	267.5	265.5	-11.9	-2.2	-2.6	-1.0	-0.7
Organic chemicals.....	29	2.529	124.5	121.4	-1.4	0.6	2.8	-0.6	-2.5
Pharmaceutical products.....	30	3.957	141.8	142.1	4.3	0.2	-0.2	2.4	0.2
Fertilizers (Dec. 2009=100).....	31	0.318	83.8	75.9	-33.4	0.9	-9.0	-0.5	-9.4
Tanning extracts; dye, pigments, varnish, paints & putty (Dec. 2011=100).....	32	0.190	96.2	97.2	-2.8	-0.2	-2.2	0.6	1.0
Miscellaneous chemical products.....	38	0.694	102.6	102.6	13.7	-0.7	14.7	0.2	0.0
Plastics and articles thereof; rubber and articles thereof.....	VII	3.580	135.9	135.5	-5.6	-0.4	-1.0	-0.3	-0.3
Plastics and articles thereof.....	39	2.300	139.6	139.4	-5.8	-0.2	-1.1	-0.6	-0.1
Rubber and articles thereof.....	40	1.280	130.8	130.1	-5.2	-0.8	-0.9	0.2	-0.5
Raw hides, skins, leather, furskins, travel goods, etc.....	VIII	0.736	125.2	124.7	-2.8	-0.1	-0.5	-0.9	-0.4
Articles of leather; travel goods, bags, etc. of various materials.....	42	0.689	129.6	129.3	-1.1	0.0	-0.1	-0.2	-0.2
Wood, wood charcoal, cork, straw, basketware and wickerwork.....	IX	0.812	134.5	135.2	-4.4	-0.5	0.1	-0.7	0.5
Wood and articles of wood; wood charcoal (Dec. 2014=100).....	44	0.772	92.2	92.7	-4.5	-0.4	0.1	-0.8	0.5
Woodpulp, recovered paper, and paper products.....	X	1.186	109.8	110.2	-2.0	-0.5	-0.5	-0.1	0.4
Paper and paperboard; articles of paper pulp, paper or paperboard.....	48	0.802	104.2	104.6	-1.7	-0.1	-0.9	0.3	0.4

See footnotes at end of table.

Table 5. U.S. import price indexes and percent changes for selected categories of goods: March 2015 to March 2016 — Continued

[2000=100, unless otherwise noted]

Description	Harmonized system	Relative importance Feb. 2016 ¹	Index		Percent change				
			Feb. 2016	Mar. 2016	Annual	Monthly			
					Mar. 2015 to Mar. 2016	Nov. 2015 to Dec. 2015	Dec. 2015 to Jan. 2016	Jan. 2016 to Feb. 2016	Feb. 2016 to Mar. 2016
Printed matter (Dec. 2015=100).....	49	0.216	100.1	100.4	-	-	0.1	0.0	0.3
Textile and textile articles.....	XI	5.658	113.5	113.4	-1.2	-0.2	-0.1	-0.1	-0.1
Articles of apparel and clothing accessories, knitted or crocheted.....	61	2.348	104.0	103.7	-0.6	0.0	-0.1	0.1	-0.3
Articles of apparel and clothing accessories, not knitted or crocheted.....	62	1.959	119.7	119.7	-0.5	-0.2	0.3	0.0	0.0
Made-up or worn textile articles.....	63	0.657	103.5	103.2	-3.4	-0.2	-0.7	-0.6	-0.3
Headgear, umbrellas, artificial flowers, etc....	XII	1.580	123.1	123.0	0.1	-0.1	-0.2	0.0	-0.1
Footwear and parts of such articles.....	64	1.372	122.1	122.1	0.0	-0.2	-0.3	0.0	0.0
Stone, plaster, cement, asbestos, ceramics, glass etc.....	XIII	0.990	131.5	131.6	-0.7	-0.2	-0.3	-0.1	0.1
Articles of stone, plaster, cement, asbestos, or mica (Dec. 2015=100).....	68	0.342	99.0	99.5	-	-	-0.6	-0.4	0.5
Ceramic products.....	69	0.293	138.4	137.5	-0.9	0.1	0.3	-0.1	-0.7
Glass and glassware.....	70	0.355	129.0	129.4	0.2	-0.5	-0.4	0.1	0.3
Pearls, stones, precious metals, imitation jewelry, and coins.....	XIV	3.016	162.6	168.2	-2.5	-2.6	0.6	1.4	3.4
Base metals and articles of base metals. ...	XV	5.444	151.1	151.5	-12.0	-1.2	-1.8	-0.5	0.3
Iron and steel.....	72	1.210	149.7	149.8	-23.7	-1.7	-4.4	-0.7	0.1
Articles of iron or steel.....	73	1.781	139.2	138.8	-7.8	-0.9	-1.3	-0.7	-0.3
Copper and articles thereof.....	74	0.370	241.9	248.7	-13.7	-1.5	-2.6	-2.1	2.8
Aluminum and articles thereof.....	76	0.740	120.1	120.5	-11.1	-0.7	-0.7	-0.4	0.3
Tools, implements, cutlery, spoons and forks, of base metal; parts thereof.....	82	0.470	125.6	125.5	-2.7	-0.2	-0.2	0.0	-0.1
Miscellaneous articles of base metal.....	83	0.543	136.9	136.7	-1.2	-0.1	-0.5	-0.1	-0.1
Machinery, electrical equipment, TV image and sound recorders, parts, etc.....	XVI	31.714	81.4	81.3	-2.0	-0.2	-0.2	-0.1	-0.1
Machinery and mechanical appliances; parts thereof.....	84	16.116	86.4	86.4	-2.2	-0.3	-0.2	-0.1	0.0
Electrical machinery and equip, sound and TV recorders & reproducers, parts.....	85	15.598	76.5	76.4	-2.1	-0.3	0.0	-0.4	-0.1
Vehicles, aircraft, vessels and associated transport equipment.....	XVII	14.773	113.9	114.0	-0.5	-0.2	-0.1	-0.1	0.1
Motor vehicles and their parts.....	87	13.223	112.4	112.5	-0.6	-0.2	-0.2	-0.1	0.1
Aircraft, spacecraft, and parts thereof (Dec. 2002=100).....	88	1.476	120.3	120.4	0.4	0.1	0.4	0.0	0.1
Optical, photo, measuring, medical & musical instruments; & timepieces.....	XVIII	4.165	104.0	103.9	-0.2	-0.2	-0.3	1.4	-0.1
Optical, photographic, measuring and medical instruments.....	90	3.825	100.8	100.7	-0.1	-0.2	-0.4	1.4	-0.1
Clocks and watches and parts thereof.....	91	0.274	141.2	141.8	-0.8	-0.7	0.2	0.6	0.4
Miscellaneous manufactured articles.....	XX	4.329	112.2	112.1	-1.1	-0.2	0.1	-0.1	-0.1
Furniture & stuffed furnishings; lamps & lighting fittings, nesoi; prefab bldgs.....	94	2.647	116.8	116.6	-1.4	-0.3	0.1	0.0	-0.2
Toys, games and sports equipment; parts and accessories thereof.....	95	1.393	103.7	103.5	-1.4	0.1	-0.1	-0.1	-0.2
Miscellaneous manufactured articles.....	96	0.288	135.4	135.4	0.6	-0.1	1.1	0.0	0.0

¹ Relative importance figures are based on 2014 trade values.

NOTES: Data may be revised in each of the 3 months after original publication.

Dash = Not available

Table 6. U.S. export price indexes and percent changes for selected categories of goods: March 2015 to March 2016

[2000=100, unless otherwise noted]

Description	Harmoni- zied system	Relative importance Feb. 2016 ¹	Index		Percent change				
			Feb. 2016	Mar. 2016	Annual	Monthly			
					Mar. 2015 to Mar. 2016	Nov. 2015 to Dec. 2015	Dec. 2015 to Jan. 2016	Jan. 2016 to Feb. 2016	Feb. 2016 to Mar. 2016
Live animals; animal products.....	I	1.720	181.8	181.9	-13.9	-1.6	-1.5	1.3	0.1
Meat & edible meat offal (Dec. 2006=100)...	02	1.005	141.7	144.6	-11.6	-1.4	-2.4	4.5	2.0
Vegetable products.....	II	4.460	197.2	187.5	-12.0	-1.8	-1.0	1.4	-4.9
Edible fruit and nuts; peel of citrus fruit or melons.....	08	1.050	172.2	154.7	-11.3	-2.9	1.4	-0.1	-10.2
Cereals.....	10	1.315	184.6	176.6	-14.3	-4.1	-3.5	3.2	-4.3
Oilseeds and misc. grains, seeds, fruits, plants, straw and fodder.....	12	1.538	187.9	181.4	-15.8	0.4	-1.7	1.2	-3.5
Prepared foodstuffs, beverages, and tobacco.....	IV	2.946	145.2	144.3	-8.8	-0.4	-1.1	-1.1	-0.6
Preparations of vegetables, fruit, nuts or other parts of plants (Dec. 2009=100)....	20	0.385	118.9	118.9	0.3	0.5	0.3	-0.3	0.0
Beverages, spirits, and vinegar (Dec. 2008=100).....	22	0.525	104.3	105.5	-4.3	-1.3	-1.5	-0.2	1.2
Residues and waste from the food industries; prepared animal feed.....	23	0.650	193.1	186.6	-20.0	-0.7	-2.0	-1.0	-3.4
Mineral products.....	V	5.659	136.7	136.1	-35.5	-9.0	-5.7	-6.2	-0.4
Ores, slag and ash (Dec. 2012=100).....	26	0.440	68.3	70.8	-20.0	-2.5	-2.3	-0.6	3.7
Mineral fuels, oils and residuals, bituminous substances and mineral waxes.....	27	5.018	128.7	127.7	-37.3	-9.7	-6.0	-7.0	-0.8
Products of the chemical or allied industries.....	VI	10.830	134.6	134.4	-6.5	-0.6	-1.4	-1.5	-0.1
Inorganic chemicals.....	28	0.922	172.6	172.4	-6.6	0.4	0.2	-6.3	-0.1
Organic chemicals.....	29	2.460	130.4	130.3	-10.4	-0.9	-2.4	-0.8	-0.1
Pharmaceutical products.....	30	2.932	105.7	105.9	-4.9	-1.0	-2.4	-0.8	0.2
Tanning or dyeing extracts, dyes, paints varnish, putty, & inks (Dec. 2015=100)....	32	0.556	98.9	99.0	-	-	-0.4	-0.7	0.1
Essential oils and resinoids; perfumery cosmetic or toilet preparations.....	33	0.845	134.1	134.4	-1.3	0.0	-0.9	-0.1	0.2
Soap; lubricants; waxes, polishing or scouring products; candles, pastes.....	34	0.525	116.2	116.2	1.5	-0.4	3.3	0.2	0.0
Miscellaneous chemical products.....	38	1.855	144.5	143.8	-6.2	-0.9	-0.7	-2.1	-0.5
Plastics and articles thereof; rubber and articles thereof.....	VII	5.187	136.4	136.3	-5.5	-0.4	-0.4	0.3	-0.1
Plastics and articles thereof.....	39	4.191	131.9	131.6	-5.9	-0.4	-0.5	0.4	-0.2
Rubber and articles thereof.....	40	0.996	155.3	156.4	-4.0	-0.6	0.5	-0.4	0.7
Raw hides, skins, leather, furskins, travel goods, etc.....	VIII	0.338	120.8	117.7	-20.4	0.0	-0.5	0.7	-2.6
Raw hides and skins other than furskins and leather (Dec.2014=100).....	41	0.180	67.8	68.3	-28.7	-0.4	-1.3	-0.3	0.7
Wood, wood charcoal, cork, straw, baskets and wickerwork (Dec. 2014=100).....	IX	0.657	94.7	93.3	-5.6	0.8	-0.2	-1.5	-1.5
Woodpulp, recovered paper, and paper products.....	X	2.142	120.2	120.9	-1.6	-0.6	-1.0	-0.4	0.6
Woodpulp and recovered paper.....	47	0.596	117.8	119.9	-1.5	-1.3	-1.5	-1.4	1.8
Paper and paperboard; articles of paper pulp, paper or paperboard.....	48	1.159	120.2	120.4	-2.4	-0.8	-1.1	-0.1	0.2
Printed material (Dec. 2014=100).....	49	0.388	100.4	100.4	0.1	1.2	0.0	0.0	0.0
Textile and textile articles.....	XI	1.747	120.0	118.7	-3.0	0.5	-0.3	-0.2	-1.1
Cotton, including yarns and woven fabrics thereof.....	52	0.388	113.4	109.9	-7.4	0.4	-1.6	-1.1	-3.1

See footnotes at end of table.

Table 6. U.S. export price indexes and percent changes for selected categories of goods: March 2015 to March 2016 — Continued

[2000=100, unless otherwise noted]

Description	Harmoni- zied system	Relative importance Feb. 2016 ¹	Index		Percent change				
			Feb. 2016	Mar. 2016	Annual	Monthly			
					Mar. 2015 to Mar. 2016	Nov. 2015 to Dec. 2015	Dec. 2015 to Jan. 2016	Jan. 2016 to Feb. 2016	Feb. 2016 to Mar. 2016
Stone, plaster, cement, asbestos, ceramics, glass etc.....	XIII	0.886	122.9	122.8	0.2	0.1	0.2	0.0	-0.1
Articles of stone, plaster, cement, asbestos, or mica (Dec. 2015=100).....	68	0.299	100.5	100.5	—	—	0.5	0.0	0.0
Glass and glassware.....	70	0.447	99.4	99.4	-0.2	0.1	0.1	0.0	0.0
Pearls, stones, precious metals, imitation jewelry, and coins.....	XIV	4.320	223.4	231.3	-2.3	-2.5	0.7	1.7	3.5
Base metals and articles of base metals. ...	XV	4.935	139.7	141.0	-7.8	-1.3	-0.4	-1.1	0.9
Iron and steel.....	72	0.971	134.8	134.5	-16.8	-2.8	-1.0	-1.1	-0.2
Copper and articles thereof.....	74	0.409	144.5	152.4	-18.6	-6.3	-4.4	0.0	5.5
Aluminum and articles thereof.....	76	0.743	98.3	102.4	-13.4	0.0	-0.1	-5.0	4.2
Tools, implements, cutlery, spoons and forks, of base metal (Dec. 2015=100).	82	0.399	99.8	99.8	—	—	0.2	-0.4	0.0
Miscellaneous articles of base metal.....	83	0.362	148.2	148.2	0.3	-0.2	-0.1	0.0	0.0
Machinery, electrical equipment, TV image and sound recorders, parts, etc.....	XVI	30.484	96.2	96.2	-1.4	-0.2	-0.2	0.2	0.0
Machinery and mechanical appliances; parts thereof.....	84	18.254	113.4	113.4	-0.5	-0.2	-0.1	0.6	0.0
Electrical machinery and equipment and parts and accessories thereof.....	85	12.230	77.7	77.6	-2.8	-0.4	-0.3	-0.3	-0.1
Vehicles, aircraft, vessels and associated transport equipment.....	XVII	15.387	131.0	131.0	0.4	-0.1	0.1	0.0	0.0
Motor vehicles and their parts.....	87	9.383	114.6	114.6	-0.3	-0.1	0.0	-0.2	0.0
Optical, photo, measuring, medical & musical instruments; & timepieces.....	XVIII	6.377	107.2	107.4	0.1	-0.3	0.3	-0.1	0.2
Miscellaneous manufactured articles.....	XX	1.578	111.6	111.6	0.6	0.2	0.0	0.5	0.0
Furniture; stuffed furnishings; lamps and lighting fittings nesoi;.....	94	0.932	125.0	125.0	2.1	0.2	0.2	0.5	0.0
Toys, games and sports equipment; parts and accessories thereof.....	95	0.485	90.1	90.1	0.1	0.3	0.0	0.0	0.0

¹ Relative importance figures are based on 2014 trade values.

NOTES: Data may be revised in each of the 3 months after original publication.

Dash = Not available

Table 7. U.S. import price indexes and percent changes by locality of origin: March 2015 to March 2016
 [2000=100, unless otherwise noted]

Description	Relative importance Feb. 2016 ¹	Index		Percent change				
		Feb. 2016	Mar. 2016	Annual	Monthly			
				Mar. 2015 to Mar. 2016	Nov. 2015 to Dec. 2015	Dec. 2015 to Jan. 2016	Jan. 2016 to Feb. 2016	Feb. 2016 to Mar. 2016
Industrialized Countries²	100.000	113.8	114.1	-5.5	-1.0	-1.3	-0.2	0.3
Nonmanufactured articles.....	5.761	90.7	93.9	-30.1	-9.2	-11.1	-4.6	3.5
Manufactured articles.....	93.862	115.2	115.2	-3.4	-0.4	-0.6	0.1	0.0
Other Countries³	100.000	115.0	115.1	-6.8	-1.2	-1.4	-0.7	0.1
Nonmanufactured articles.....	6.767	131.8	137.2	-30.7	-8.4	-9.8	-6.6	4.1
Manufactured articles.....	93.006	102.3	102.2	-4.0	-0.4	-0.7	-0.3	-0.1
Canada	100.000	108.9	109.4	-12.5	-2.9	-3.6	-1.2	0.5
Nonmanufactured articles.....	17.234	85.2	88.2	-31.4	-9.8	-11.7	-4.9	3.5
Manufactured articles.....	82.078	119.6	119.3	-7.1	-1.1	-1.6	-0.4	-0.3
European Union⁴	100.000	131.4	131.3	-2.2	-0.4	0.0	-0.5	-0.1
Manufactured articles.....	99.548	128.1	128.0	-2.1	-0.3	0.0	-0.5	-0.1
France (Dec. 2003=100)	100.000	122.3	122.5	0.1	-0.2	0.9	0.1	0.2
Germany (Dec. 2003=100)	100.000	113.7	113.7	-2.8	-0.3	-2.7	0.4	0.0
United Kingdom (Dec. 2003=100)	100.000	121.4	118.3	-3.0	-0.7	1.9	-0.3	-2.6
Latin America⁵	100.000	133.3	133.9	-9.7	-1.6	-1.9	-1.4	0.5
Nonmanufactured articles.....	13.331	151.5	155.2	-29.8	-8.2	-7.7	-6.3	2.4
Manufactured articles.....	86.235	118.7	118.8	-5.3	-0.3	-0.8	-0.5	0.1
Mexico (Dec. 2003=100)	100.000	123.8	123.9	-5.5	-0.8	-0.6	-1.0	0.1
Nonmanufactured articles (Dec. 2008=100).....	6.720	83.5	84.9	-31.3	-6.8	-2.9	-11.1	1.7
Manufactured articles (Dec. 2008=100)...	92.847	88.9	88.8	-2.7	-0.3	-0.4	-0.1	-0.1
Pacific Rim (Dec. 2003=100)⁶	100.000	98.9	98.7	-2.4	-0.2	-0.3	-0.1	-0.2
China (Dec. 2003=100)	100.000	101.6	101.4	-1.8	-0.1	-0.1	-0.2	-0.2
Japan	100.000	95.2	95.3	-1.8	-0.2	-0.1	0.2	0.1
Asian NICs⁷	100.000	85.1	84.7	-2.5	-0.4	-0.6	0.6	-0.5
ASEAN (Dec. 2003=100)⁸	100.000	96.3	96.3	-3.7	-0.4	-0.7	-0.7	0.0
Asia Near East (Dec. 2003=100)⁹	100.000	119.6	122.4	-25.2	-5.3	-8.4	-4.2	2.3

¹ Relative importance figures are based on 2014 trade values.

² Western Europe, Canada, Japan, Australia, New Zealand and South Africa.

³ Eastern Europe, Latin America, OPEC countries, and other countries in Asia, Africa and the Western Hemisphere.

⁴ European Union countries.

⁵ Mexico, Central America, South America and the Caribbean.

⁶ China, Japan, Australia, Brunei, Indonesia, Macao, Malaysia, New Zealand, Papua New Guinea, Philippines and the Asian Newly Industrialized Countries.

⁷ Asian Newly Industrialized Countries - Hong Kong, Singapore, South Korea and Taiwan.

⁸ Association of Southeast Asian Nations - Brunei, Cambodia, Indonesia, Laos, Malaysia, Myanmar, Philippines, Singapore, Thailand and Vietnam.

⁹ Bahrain, Iran, Iraq, Israel, Jordan, Kuwait, Lebanon, Oman, Qatar, Saudi Arabia, Syria, United Arab Emirates and Yemen.

NOTES: Data may be revised in each of the 3 months after original publication.

Regions are not mutually exclusive.

Dash = Not available

Table 8. U.S. international price indexes and percent changes for selected transportation services: March 2015 to March 2016

[2000=100, unless otherwise noted]

Description	Relative importance Feb. 2016 ¹	Index		Percent change				
		Feb. 2016	Mar. 2016	Annual	Monthly			
				Mar. 2015 to Mar. 2016	Nov. 2015 to Dec. 2015	Dec. 2015 to Jan. 2016	Jan. 2016 to Feb. 2016	Feb. 2016 to Mar. 2016
Air Freight								
Import Air Freight	100.000	151.2	151.1	-12.6	-2.8	-4.6	-2.1	-0.1
Europe (Dec. 2003=100).....	24.083	138.9	140.5	-6.5	-3.4	0.4	-1.5	1.2
Asia.....	61.755	132.8	132.2	-16.5	-3.1	-7.4	-3.3	-0.5
Export Air Freight	100.000	158.7	153.9	-1.8	-0.1	1.4	0.0	-3.0
Europe (Dec. 2006=100).....	38.189	151.8	147.7	-0.9	0.3	1.3	0.1	-2.7
Inbound Air Freight	100.000	146.8	144.8	-9.2	-1.9	-2.5	-1.3	-1.4
Europe (Dec. 2003=100).....	27.894	133.7	134.6	-4.2	-2.0	0.3	-1.3	0.7
Asia.....	57.361	130.1	127.1	-13.7	-2.2	-4.3	-2.0	-2.3
Outbound Air Freight	100.000	144.2	138.9	-6.8	-0.3	-0.2	0.1	-3.7
Europe (Dec. 2003=100).....	34.806	158.3	152.6	-10.0	0.5	0.1	0.2	-3.6
Asia.....	42.373	133.3	126.7	-9.8	-1.0	-0.8	0.2	-5.0
Air Passenger Fares								
Import Air Passenger Fares	100.000	189.5	179.2	-6.3	-0.6	-1.0	-1.5	-5.4
Europe.....	47.759	236.6	209.9	-9.7	-11.6	11.0	3.6	-11.3
Asia.....	22.332	134.2	130.5	-7.6	13.2	-10.1	-6.7	-2.8
Latin America/Caribbean.....	8.606	146.6	148.3	-11.2	14.2	-16.4	2.9	1.2
Export Air Passenger Fares	100.000	145.7	157.1	-4.6	4.5	4.7	-13.5	7.8
Europe.....	31.223	194.6	223.3	6.5	-5.9	-0.7	-1.7	14.7
Asia.....	28.332	127.0	128.5	-6.7	5.0	9.0	-16.4	1.2
Latin America/Caribbean.....	22.986	149.9	157.3	-14.6	5.4	8.3	-15.1	4.9

¹ Relative importance figures are based on 2014 trade values.

NOTES: Data may be revised in each of the 3 months after original publication.

Dash = Not available

TECHNICAL NOTE

Import and Export Merchandise and Services Price Indexes - All indexes use a modified Laspeyres formula and are not seasonally adjusted. Price indexes are reweighted annually, with a 2-year lag in the weights. Published series use a base year of 2000=100 where possible. More detailed index series and additional information may be obtained at www.bls.gov/mxp or by calling (202) 691-7101.

Merchandise Goods Classification Systems - The merchandise price indexes are published using three classification systems. Items are classified by end use according to the Bureau of Economic Analysis Classification System, by industry according to the North American Industry Classification System (NAICS), and by product category according to the Harmonized System (HS). While classification by end use and product category are self-explanatory, some notes are in order for classifying items by industry. In the NAICS imports and exports tables, items are classified by output industry, not input industry. As an example, NAICS import index 326 (plastics and rubber products manufacturing) include outputs such as manufactured plastic rather than inputs such as petroleum. The NAICS classification structure also matches the classification system used by the Producer Price Index (PPI) to produce the NAICS primary products indexes.

Import Price Indexes - Products have been classified by the Harmonized Tariff Schedule of the United States Annotated (TSUSA). Import prices are based on U.S. dollar prices paid by the U.S. importer. The prices are generally either "free on board" (f.o.b.) foreign port or "cost, insurance, and freight" (c.i.f.) U.S. port transaction prices, depending on the practices of the individual industry. The index for crude petroleum is calculated from data collected by the U.S. Department of Energy.

Export Price Indexes - Products have been classified by the Harmonized Schedule B classification system of the U.S. Bureau of the Census. The prices used are generally either "free alongside ship" (f.a.s.) factory or "free on board" (f.o.b.) transaction prices, depending on the practices of the individual industry. Prices used in the grain index, excluding rice, are obtained from the U.S. Department of Agriculture.

Services Price Indexes - Starting in September 2008, the import air passenger fares indexes represent changes in the average revenue per passenger received by foreign carriers from U.S. residents and are calculated from data obtained from an airline consulting service. These data include tickets sold by travel agencies and travel websites. Tickets sold directly by the airlines are excluded, as are frequent flyer tickets generally. Starting in January 2008, the export air passenger fares indexes represent changes in the average revenue per passenger received by U.S. carriers from foreign residents and are calculated from data collected directly from airlines. These data include frequent flyer tickets and those sold by consolidators. Taxes and fees are included in the import air passenger fares indexes and excluded from the export air passenger fares indexes. The air freight indexes are calculated from data collected directly from airlines. These data exclude mail and passenger baggage. The scope of the service being priced is the movement of freight from airport to airport only, and does not include any ground transportation or port service. The air freight indexes are presented using two definitions: balance of payments (which represent transactions between U.S. and foreign residents) and international (which represent transactions inbound to and outbound from the U.S.). Fact sheets specifying detailed information for each services industry are available at www.bls.gov/mxp under "MXP Publications."

Import Indexes by Locality of Origin - Prices used in these indexes are a subset of the data collected for the import price indexes. Beginning with January 2002, the indexes are defined by locality of origin using a nomenclature based upon the North American Industry Classification System (NAICS). Nonmanufactured goods are defined as NAICS 11 and 21, and manufactured goods are defined as NAICS 31-33.

Revision Policy - To reflect the availability of late reports and corrections by respondents, monthly data may be revised in each of the 3 months after original publication. After 3 months, no further data revisions take place. For example, data first published in the January release will be subject to revision in the releases for February, March, and April.

Uses of the Data - The primary use of the indexes is to deflate trade statistics, notably the foreign trade sector of the National Income and Product Accounts (NIPA) constructed by the Department of Commerce. Other published indexes are useful for general market analysis. For trade in international services, balance of payments indexes are used for deflating NIPA, while international indexes are more appropriate for market analysis. Merchandise and services indexes also can be used to study U.S. competitiveness and to compute price elasticities, and the merchandise import indexes by country or region of origin are useful in terms of trade analysis.

Email Subscription - The U.S. import and export price indexes news release is available through an email subscription service at www.bls.gov/bls/list.htm.

Additional Information - More detailed data are available on the Import/Export Price Indexes home page at www.bls.gov/mxp. For import and export price indexes data requests, send an email to mxpinfo@bls.gov.

Information from this release will be made available to sensory impaired individuals upon request. Voice phone: (202)-691-5200; Federal Relay Service: 1-(800)-877-8339.