

Transmission of material in this release is embargoed until
8:30 a.m. (EDT) Tuesday, April 13, 2010

USDL-10-0465

Technical information: (202) 691-7101 • MXPinfo@bls.gov • www.bls.gov/mxp
Media contact: (202) 691-5902 • PressOffice@bls.gov

U.S. IMPORT AND EXPORT PRICE INDEXES – MARCH 2010

The U.S. Import Price Index rose 0.7 percent in March, the U.S. Bureau of Labor Statistics reported today. The increase was attributable to higher prices for both fuel and nonfuel imports and followed a 0.2 percent decline in February. Export prices also rose 0.7 percent in March after declining 0.4 percent the previous month.

Chart 1. One-month percent change in the Import Price Index: March 2009 – March 2010

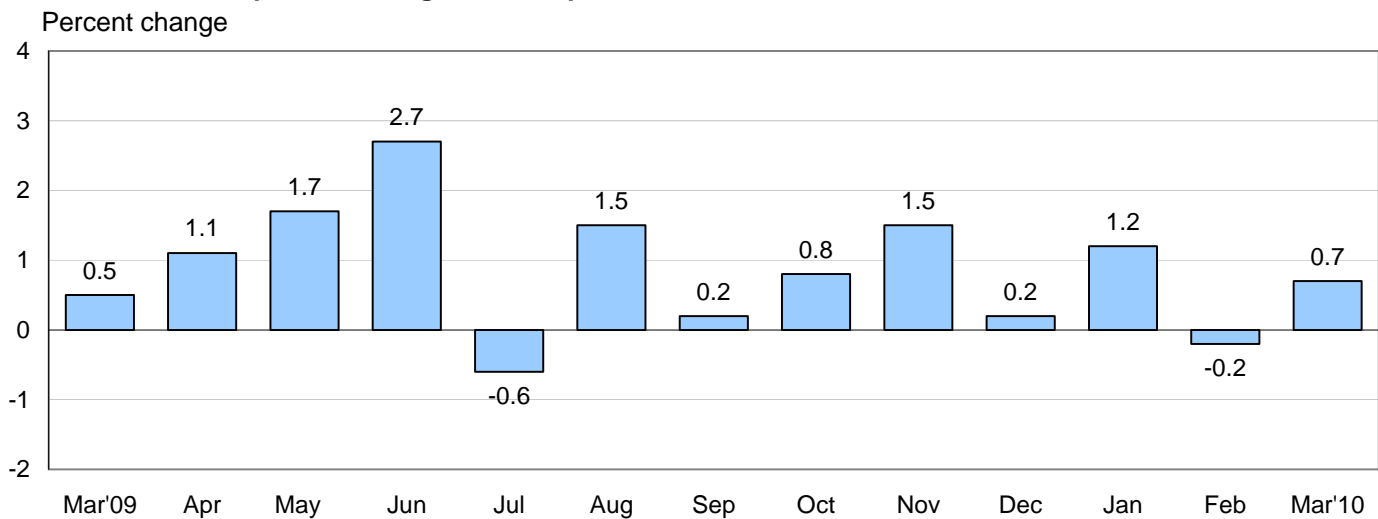
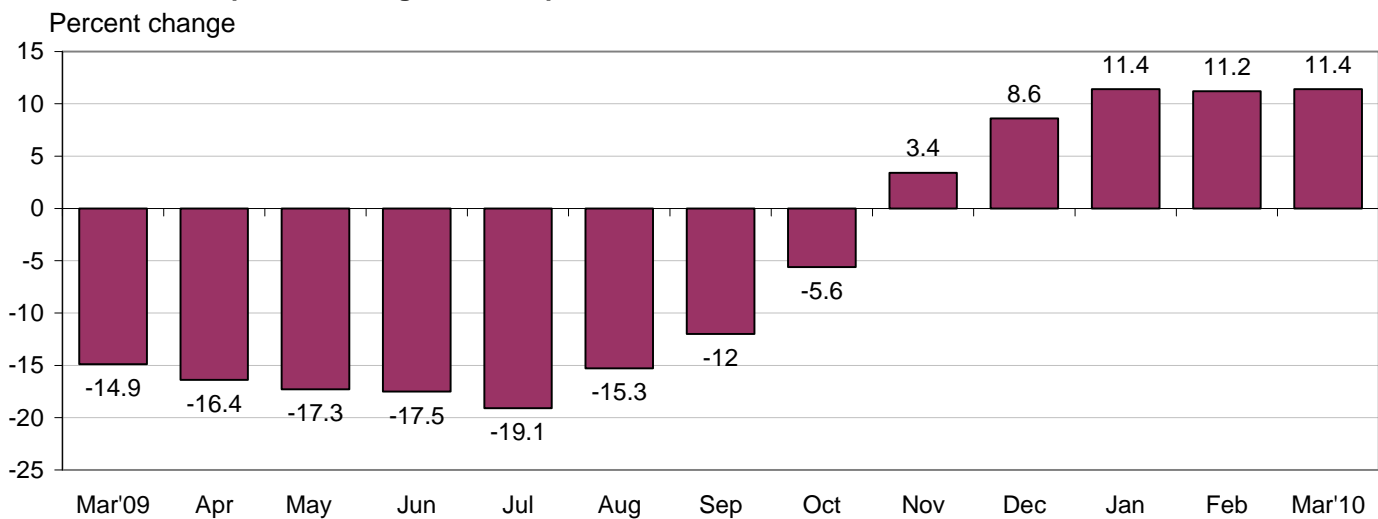


Chart 2. 12-month percent change in the Import Price Index: March 2009 – March 2010



All Imports: In March, import prices increased for the seventh time in the past eight months, rising 0.7 percent. The March upturn followed a 0.2 percent decline in February and was largely driven by a turnaround in fuel prices, which accounted for approximately 80 percent of the increase. Import prices advanced 11.4 percent for the year ended in March after decreasing 14.9 percent for the March 2008-09 period.

Fuel Imports: Import fuel prices resumed an upward trend in March, rising 2.9 percent following a 1.2 percent drop in February. A 4.0 percent increase in petroleum prices was slightly offset by a 12.4 percent decline in natural gas prices, which decreased for the first time in six months. Over the past year, the price index for petroleum increased 70.2 percent and natural gas prices rose 19.0 percent, driving overall fuel prices up 63.3 percent for the same period. The 12-month increase in fuel prices followed a 50.7 percent drop for the March 2008-09 period.

All Imports Excluding Fuel: Prices for nonfuel imports rose for the eighth consecutive month, advancing 0.2 percent. The increase was led by higher prices for nonfuel industrial supplies and materials, consumer goods, and foods, feeds, and beverages. Lower prices for capital goods and automotive vehicles partly offset the overall advance. Over the past 12 months, nonfuel import prices rose 2.7 percent, the largest 12-month increase since the index went up 4.8 percent for the October 2007-2008 period.

Table A. Percent changes

Month	IMPORTS			EXPORTS		
	All imports	Fuel imports	Nonfuel imports	All exports	Agricultural exports	Non-agricultural exports
2009						
March.....	0.5	7.8	-0.6	-0.7	-3.4	-0.4
April.....	1.1	7.5	0.1	0.5	3.7	0.2
May.....	1.7	9.8	0.2	0.4	3.6	0.3
June.....	2.7	16.0	0.2	1.0	4.2	0.6
July.....	-0.6	-2.6	-0.2	-0.3	-4.9	0.1
August.....	1.5	7.0	0.4	0.6	0.2	0.7
September.....	0.2	-1.3	0.4	-0.2	-2.9	0.1
October.....	0.8	3.0	0.4	0.0	-0.7	0.1
November.....	1.5	6.3	0.3	0.8	3.9	0.5
December.....	0.2	-0.2	0.4	0.7	1.8	0.6 ^r
2010						
January.....	1.2 ^r	4.4 ^r	0.4	0.7	1.3	0.6 ^r
February.....	-0.2 ^r	-1.2 ^r	0.1 ^r	-0.4 ^r	-3.8	-0.2
March.....	0.7	2.9	0.2	0.7	2.1	0.6
Mar. 2008 to 2009.....	-14.9	-50.7	-2.8	-6.7	-22.0	-5.0
Mar. 2009 to 2010.....	11.4	63.3	2.7	4.6	8.2	4.3

^r Revised

Chart 3. One-month percent change in the Export Price Index: March 2009 – March 2010

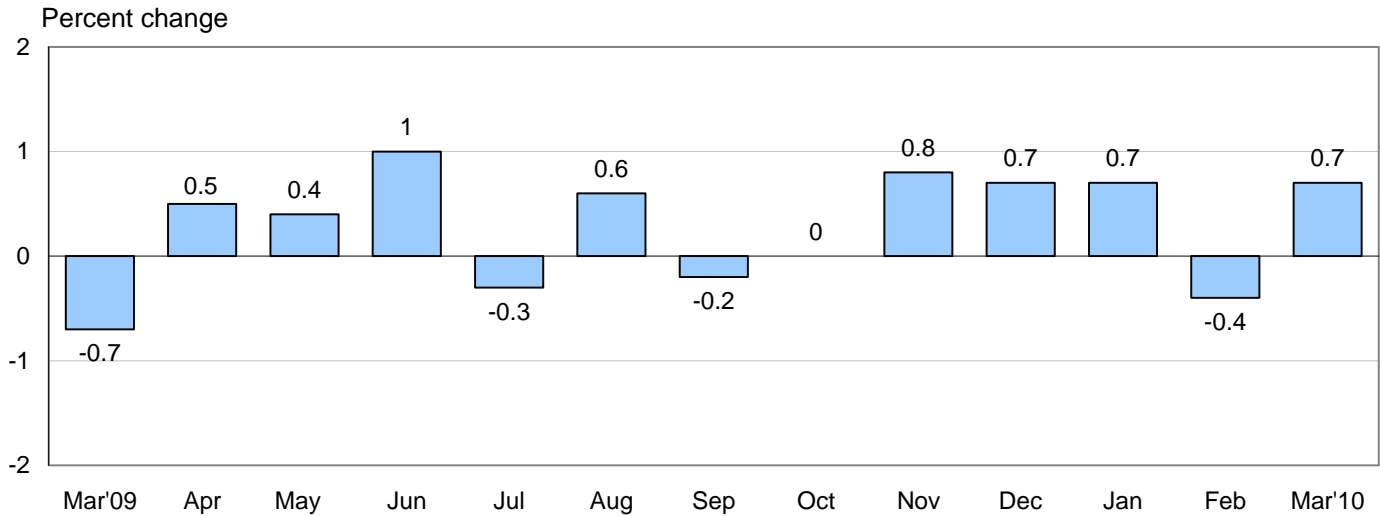
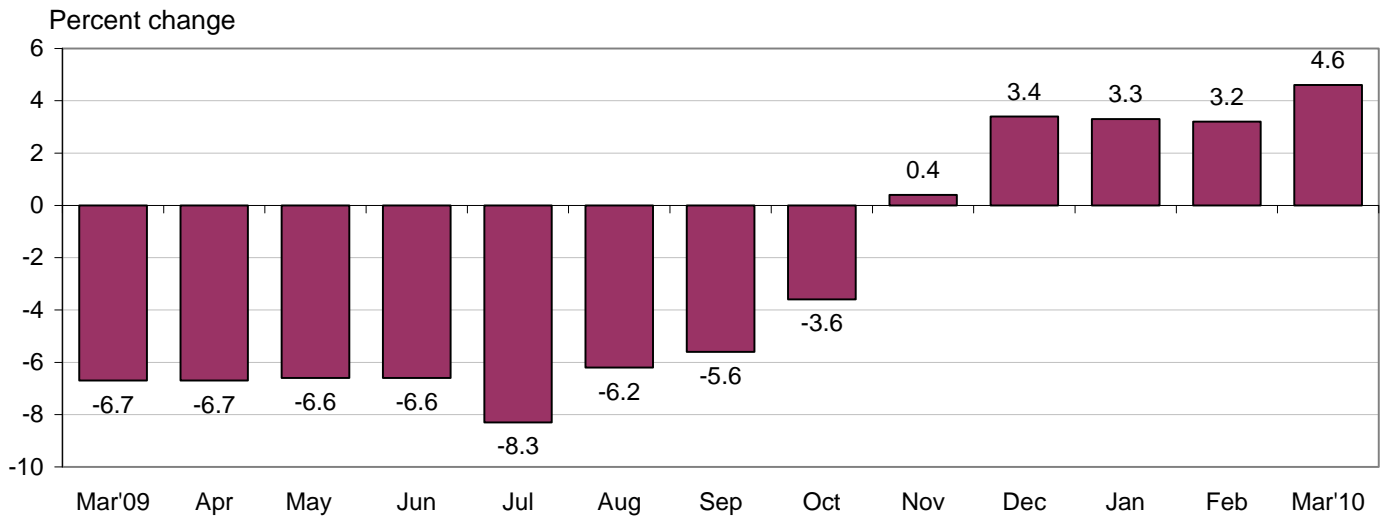


Chart 4. 12-month percent change in the Export Price Index: March 2009 – March 2010



All Exports: Export prices increased for the fourth time in the past five months, rising 0.7 percent in March. Higher nonagricultural prices accounted for approximately 75 percent of the overall increase. The price index for overall exports rose 4.6 percent over the past 12 months.

Agricultural Exports: The price index for agricultural exports rose 2.1 percent in March, following a 3.8 percent decline in February. Higher prices for cotton, soybeans, corn, meat, and wheat all contributed to the upturn in agricultural prices. For the year ended in March, agricultural prices rose 8.2 percent, led by a 55.9 percent increase in cotton prices and a 45.6 percent rise in nut prices.

All Exports Excluding Agriculture: Nonagricultural prices resumed an upward trend in March following a 0.2 percent downturn in February, increasing 0.6 percent. Higher prices for nonagricultural industrial supplies and materials and capital goods contributed to the overall increase in March. The price index for nonagricultural export prices increased 4.3 percent for the year ended in March.

SELECTED MARCH HIGHLIGHTS

Import Prices

Nonfuel Industrial Supplies and Materials: Prices for nonfuel industrial supplies and materials increased 0.6 percent in March after advancing 1.0 percent in February. Rising prices for chemicals and iron and steel mill products, which increased 1.4 percent and 4.5 percent, respectively, led the advances this month.

Finished Goods: Prices for the major finished goods categories were mixed in March, as the price indexes for capital goods and automotive vehicles decreased 0.4 percent and 0.2 percent, respectively, while the price index for consumer goods increased 0.3 percent. The decrease in capital goods prices was led by a 3.6 percent drop in prices for semiconductors.

Foods, Feeds, and Beverages: The price index for foods, feeds, and beverages rose 1.4 percent in March after falling 0.5 percent in February. Vegetables and meat, which advanced 11.2 percent and 5.4 percent, respectively, were the primary contributors to the March increase.

Imports by Locality of Origin: Import prices from China and Canada declined in March, each falling 0.1 percent. In contrast, the price indexes for imports from Mexico and from Japan rose 1.4 percent and 0.3 percent, respectively. Import prices from the European Union were unchanged.

Transportation Services: Import air passenger fares rose 5.3 percent in March after decreasing 3.5 percent in February. Higher European fares led the advance. In contrast, the price index for import air freight decreased in March, edging down 0.1 percent. The decline was led by a 3.7 percent decrease in European air freight prices.

Export Prices

Nonagricultural Industrial Supplies and Materials: Nonagricultural industrial supplies and materials prices increased 1.6 percent in March after declining 0.4 percent in February. Higher prices for petroleum and chemicals, up 5.5 percent and 2.2 percent, respectively, contributed to the March increase.

Finished Goods: Prices for the major finished goods categories were mixed in March. The price index for capital goods rose 0.2 percent, while prices for consumer goods fell 0.1 percent and the price index for automotive vehicles was unchanged. The advance in capital goods prices was led by a 3.1 percent increase in prices for computer peripherals, accessories, and parts.

Transportation Services: Export air passenger fares increased 3.3 percent in March following a 7.0 percent decrease the previous month. The advance was led by higher Asian fares. In contrast, the price index for export air freight rose 0.6 percent in March after advancing 0.5 percent in February.

Import and Export Price Index data for April 2010 are scheduled for release on Thursday, May 13, 2010 at 8:30 a.m. (EDT).

Table 1. U.S. import price indexes and percent changes for selected categories of goods: March 2009 to March 2010

[2000=100, unless otherwise noted]

Description	End Use	Relative importance Feb. 2010 ¹	Index		Percent change				
			Feb. 2010	Mar. 2010	Annual	Monthly			
					Mar. 2009 to Mar. 2010	Nov. 2009 to Dec. 2009	Dec. 2009 to Jan. 2010	Jan. 2010 to Feb. 2010	Feb. 2010 to Mar. 2010
All commodities		100.000	125.7	126.6	11.4	0.2	1.2	-0.2	0.7
All imports excluding petroleum		80.765	110.5	110.3	2.8	0.5	0.5	0.2	-0.2
All imports excluding fuels (Dec. 2001=100) ..		78.929	113.5	113.7	2.7	0.4	0.4	0.1	0.2
Foods, feeds, & beverages	0	4.678	144.9	147.0	7.3	0.8	1.3	-0.5	1.4
Agricultural foods, feeds & beverages, excluding distilled beverages.....	00	3.642	162.7	165.3	9.3	0.8	1.9	-0.7	1.6
Nonagricultural foods (fish, distilled beverages).....	01	1.036	104.7	105.6	0.8	0.4	-0.7	0.5	0.9
Industrial supplies & materials	1	35.070	202.1	206.0	38.0	0.6	3.3	-0.3	1.9
Industrial supplies & materials excluding petroleum.....		15.835	150.6	149.6	12.4	2.8	2.6	1.1	-0.7
Industrial supplies & materials excluding fuels (Dec. 2001=100).....		13.999	162.8	163.7	12.5	1.8	1.6	1.0	0.6
Industrial supplies & materials, durable.....		8.826	157.4	157.6	17.0	2.3	1.7	1.5	0.1
Industrial supplies & materials nondurable excluding petroleum.....		5.173	142.3	140.1	6.9	3.2	3.8	0.6	-1.5
Fuels & lubricants.....	10	21.072	257.6	265.1	63.3	-0.2	4.4	-1.2	2.9
Petroleum & petroleum products.....	100	19.236	275.8	286.8	70.2	-1.1	3.8	-1.4	4.0
Crude.....	10000	14.085	279.3	293.0	70.7	-2.0	3.0	-1.3	4.9
Fuels, n.e.s.-coals & gas.....	101	1.589	164.3	148.1	14.8	12.1	12.6	1.3	-9.9
Gas-natural.....	10110	1.266	156.2	136.8	19.0	14.2	17.6	1.7	-12.4
Paper & paper base stocks.....	11	0.682	106.4	108.0	1.3	0.7	1.2	2.0	1.5
Materials associated with nondurable supplies & materials.....	12	4.567	142.6	144.2	5.5	0.9	1.4	0.0	1.1
Selected building materials.....	13	1.340	124.8	128.1	10.2	2.0	1.4	1.8	2.6
Unfinished metals related to durable goods.....	14	4.078	233.4	231.9	35.1	4.0	2.8	2.5	-0.6
Finished metals related to durable goods. ...	15	1.784	141.1	141.2	6.4	0.9	0.9	-0.4	0.1
Nonmetals related to durable goods.....	16	1.548	106.5	106.6	1.3	0.2	0.5	0.6	0.1
Capital goods	2	23.375	91.8	91.4	-0.4	0.0	0.0	-0.1	-0.4
Electric generating equipment.....	20	2.965	111.8	111.1	1.6	0.3	0.5	-0.1	-0.6
Nonelectrical machinery.....	21	18.378	86.2	85.9	-0.8	0.0	-0.2	0.0	-0.3
Transportation equipment excluding motor vehicles (Dec. 2001=100).....	22	2.032	122.9	121.8	1.0	-0.2	0.4	-0.2	-0.9
Automotive vehicles, parts & engines	3	12.116	108.4	108.2	0.5	-0.1	-0.3	-0.1	-0.2
Consumer goods, excluding automotives ..	4	24.761	104.4	104.7	0.8	0.0	0.2	-0.1	0.3
Nondurables, manufactured.....	40	11.499	108.6	109.2	0.7	0.0	0.7	-0.1	0.6
Durables, manufactured.....	41	12.043	100.4	100.4	0.6	-0.1	-0.4	0.0	0.0
Nonmanufactured consumer goods.....	42	1.219	102.4	102.5	1.3	1.0	0.0	0.3	0.1

¹ Relative importance figures are based on 2008 trade values.

NOTES: Data may be revised in each of the three months after original publication.

Dash = Not available

Table 2. U.S. export price indexes and percent changes for selected categories of goods: March 2009 to March 2010

[2000=100, unless otherwise noted]

Description	End Use	Relative importance Feb. 2010 ¹	Index		Percent change				
			Feb. 2010	Mar. 2010	Annual	Monthly			
					Mar. 2009 to Mar. 2010	Nov. 2009 to Dec. 2009	Dec. 2009 to Jan. 2010	Jan. 2010 to Feb. 2010	Feb. 2010 to Mar. 2010
All commodities.....		100.000	120.0	120.8	4.6	0.7	0.7	-0.4	0.7
Agricultural commodities.....		8.753	160.6	164.0	8.2	1.8	1.3	-3.8	2.1
Nonagricultural commodities.....		91.247	117.0	117.7	4.3	0.6	0.6	-0.2	0.6
Foods, feeds, & beverages.....	0	7.956	161.2	163.7	4.5	1.9	1.5	-3.8	1.6
Agricultural foods, feeds & beverages, excluding distilled beverages.....	00	7.373	163.3	166.0	4.9	2.0	1.6	-4.3	1.7
Nonagricultural foods (fish, distilled beverages).....	01	0.583	144.8	146.1	1.2	0.7	0.1	2.7	0.9
Industrial supplies & materials.....	1	30.620	152.0	154.7	13.3	1.8	1.7	-0.4	1.8
Industrial supplies & materials, durable.....		12.184	159.8	160.4	11.9	2.4	1.3	0.1	0.4
Industrial supplies & materials, nondurable.....		18.437	148.1	152.0	14.2	1.3	2.0	-0.7	2.6
Agricultural industrial supplies & materials.....	10	1.380	151.4	158.4	28.9	0.5	0.1	-0.8	4.6
Nonagricultural industrial supplies & materials.....		29.240	152.3	154.8	12.6	1.8	1.8	-0.4	1.6
Fuels & lubricants.....	11	5.522	190.6	197.3	34.3	2.7	5.5	-4.7	3.5
Nonagricultural supplies & materials excluding fuels & building materials.....	12	22.689	149.6	151.5	9.6	1.7	0.9	0.7	1.3
Selected building materials.....	13	1.029	116.1	116.1	1.8	0.4	1.2	1.0	0.0
Capital goods.....	2	38.983	103.2	103.4	1.1	0.0	0.1	-0.2	0.2
Electrical generating equipment.....	20	3.664	109.8	109.6	2.6	0.4	0.3	0.2	-0.2
Nonelectrical machinery.....	21	28.442	94.0	94.2	0.4	-0.1	-0.2	-0.3	0.2
Transportation equipment excluding motor vehicles (Dec. 2001=100).....	22	6.877	138.7	139.1	3.0	0.0	1.5	0.1	0.3
Automotive vehicles, parts & engines.....	3	9.363	108.7	108.7	0.5	0.0	0.3	0.2	0.0
Consumer goods, excluding automotives..	4	13.078	109.8	109.7	1.1	0.0	0.0	0.4	-0.1
Nondurables, manufactured.....	40	6.033	111.8	111.7	4.3	0.2	0.8	0.8	-0.1
Durables, manufactured.....	41	5.745	107.4	107.2	-2.5	-0.2	-1.4	-0.3	-0.2

¹ Relative importance figures are based on 2008 trade values.

NOTES: Data may be revised in each of the three months after original publication.

Dash = Not available

Table 3. U.S. import price indexes and percent changes for selected categories of goods: March 2009 to March 2010

[December 2005=100, unless otherwise noted]

Description	NAICS	Relative importance Feb. 2010 ¹	Index		Percent change				
			Feb. 2010	Mar. 2010	Annual	Monthly			
					Mar. 2009 to Mar. 2010	Nov. 2009 to Dec. 2009	Dec. 2009 to Jan. 2010	Jan. 2010 to Feb. 2010	Feb. 2010 to Mar. 2010
Nonmanufactured articles.....		18.236	128.0	132.1	56.7	-0.4	4.3	-0.9	3.2
Agriculture, forestry, fishing and hunting...	11	1.747	142.6	147.5	14.9	1.3	4.4	-0.7	3.4
Crop production.....	111	1.254	149.9	154.3	13.1	1.5	4.5	-1.4	2.9
Mining.....	21	16.489	126.2	130.3	63.3	-0.7	4.3	-1.0	3.2
Mining (except oil and gas) (Dec. 2006=100).....	212	0.513	129.7	131.5	1.5	-1.0	-0.5	1.2	1.4
Manufactured articles.....		81.254	109.5	109.7	4.5	0.3	0.6	0.0	0.2
Manufactured goods, part 1.....	31	10.084	107.8	108.1	1.0	0.1	0.4	-0.2	0.3
Food manufacturing.....	311	2.503	121.5	122.7	6.1	1.3	0.6	-0.4	1.0
Beverage and tobacco product manufacturing.....	312	0.917	108.3	108.2	1.2	0.6	0.0	-0.5	-0.1
Textile product mills.....	314	0.781	101.4	101.0	0.3	-0.1	0.9	0.2	-0.4
Apparel manufacturing.....	315	3.962	101.2	101.4	-1.2	-0.8	0.3	0.0	0.2
Leather and allied product manufacturing. . .	316	1.518	106.7	106.7	-0.8	-0.1	-0.1	-0.2	0.0
Manufactured goods, part 2.....	32	17.913	120.6	122.1	14.3	0.8	2.2	-0.2	1.2
Wood product manufacturing.....	321	0.804	101.7	106.5	18.5	2.5	2.5	3.2	4.7
Paper manufacturing.....	322	1.195	103.2	104.1	-1.2	0.5	0.5	1.7	0.9
Petroleum and coal products manufacturing.....	324	4.132	127.6	129.8	63.1	1.2	5.1	-1.6	1.7
Chemical manufacturing.....	325	8.887	123.7	124.9	5.1	0.6	1.5	-0.1	1.0
Plastics and rubber products manufacturing.....	326	1.794	113.8	114.3	1.2	0.4	0.9	-0.4	0.4
Nonmetallic mineral product manufacturing.....	327	0.996	120.6	120.5	1.1	0.1	0.8	0.2	-0.1
Manufactured goods, part 3.....	33	53.256	106.4	106.1	2.0	0.3	0.0	0.1	-0.3
Primary metal manufacturing.....	331	4.731	153.2	152.7	26.8	4.0	2.6	2.2	-0.3
Fabricated metal product manufacturing. . .	332	2.686	116.2	116.3	-0.5	0.2	-0.1	-0.1	0.1
Machinery manufacturing.....	333	6.800	113.1	113.2	1.9	0.3	0.1	-0.2	0.1
Computer and electronic product manufacturing.....	334	15.283	88.2	87.7	-1.3	-0.3	-0.3	-0.1	-0.6
Electrical equipment, appliance, and component manufacturing.....	335	3.846	112.8	112.2	-0.1	0.2	0.2	-0.3	-0.5
Transportation equipment manufacturing....	336	13.407	105.8	105.5	0.7	-0.2	-0.2	-0.1	-0.3
Furniture and related product manufacturing.....	337	1.354	107.8	108.1	-2.1	0.2	-0.1	-0.1	0.3
Miscellaneous manufacturing.....	339	5.149	111.9	112.0	1.8	-0.1	-0.5	0.0	0.1

¹ Relative importance figures are based on 2008 trade values.

NOTES: Data may be revised in each of the three months after original publication.

Dash = Not available

Table 4. U.S. export price indexes and percent changes for selected categories of goods: March 2009 to March 2010

[December 2005=100, unless otherwise noted]

Description	NAICS	Relative importance Feb. 2010 ¹	Index		Percent change				
			Feb. 2010	Mar. 2010	Annual	Monthly			
					Mar. 2009 to Mar. 2010	Nov. 2009 to Dec. 2009	Dec. 2009 to Jan. 2010	Jan. 2010 to Feb. 2010	Feb. 2010 to Mar. 2010
Nonmanufactured articles.....		6.426	123.1	125.9	12.4	3.2	3.2	-5.9	2.3
Agriculture, forestry, fishing and hunting...	11	4.524	136.9	141.8	9.8	2.6	3.0	-7.4	3.6
Crop production.....	111	4.161	140.0	145.5	10.3	2.7	2.8	-8.1	3.9
Mining.....	21	1.902	90.6	89.9	21.2	5.4	3.5	-2.1	-0.8
Mining (except oil and gas).....	212	1.342	93.7	98.0	12.9	1.0	3.3	-3.0	4.6
Manufactured articles.....		90.833	110.4	111.0	3.7	0.5	0.5	-0.1	0.5
Manufactured goods, part 1.....	31	6.693	123.8	124.3	6.1	0.7	0.7	0.5	0.4
Food manufacturing.....	311	4.533	138.7	139.1	7.2	0.5	0.6	0.6	0.3
Beverage and tobacco product manufacturing.....	312	0.539	107.5	108.1	2.6	-0.3	0.0	-0.2	0.6
Apparel manufacturing.....	315	0.379	102.4	102.9	0.7	-0.4	0.0	0.0	0.5
Manufactured goods, part 2.....	32	23.433	114.6	116.7	9.5	0.7	1.6	-0.3	1.8
Wood product manufacturing.....	321	0.453	111.8	111.7	4.3	0.6	0.8	1.7	-0.1
Paper manufacturing.....	322	1.930	112.8	113.3	1.3	1.3	0.6	-0.3	0.4
Petroleum and coal products manufacturing.....	324	3.426	112.4	120.1	48.6	0.3	7.4	-7.6	6.9
Chemical manufacturing.....	325	14.661	117.3	118.8	7.7	0.9	0.6	1.4	1.3
Plastics and rubber products manufacturing.....	326	2.094	106.7	106.5	-1.5	0.1	-0.7	0.0	-0.2
Nonmetallic mineral product manufacturing.....	327	0.868	114.8	114.7	1.8	0.0	2.7	-0.1	-0.1
Manufactured goods, part 3.....	33	60.707	107.4	107.5	1.4	0.3	0.0	-0.1	0.1
Primary metal manufacturing.....	331	4.886	140.1	139.7	15.1	4.2	1.2	0.4	-0.3
Fabricated metal product manufacturing.	332	2.820	121.3	120.6	-0.2	0.3	-0.7	0.2	-0.6
Machinery manufacturing.....	333	12.725	113.2	113.2	1.3	0.1	0.3	0.0	0.0
Computer and electronic product manufacturing.....	334	15.852	92.0	92.3	-0.9	-0.4	-0.5	-0.5	0.3
Electrical equipment, appliance, and component manufacturing.....	335	3.539	109.8	109.8	3.4	0.8	0.6	0.2	0.0
Transportation equipment manufacturing....	336	15.464	110.8	110.9	1.4	0.0	0.5	0.2	0.1
Miscellaneous manufacturing.....	339	5.058	108.8	108.6	-2.3	0.1	-1.6	0.0	-0.2

¹ Relative importance figures are based on 2008 trade values.

NOTES: Data may be revised in each of the three months after original publication.

Dash = Not available

Table 5. U.S. import price indexes and percent changes for selected categories of goods: March 2009 to March 2010

[2000=100, unless otherwise noted]

Description	Harmonized system	Relative importance Feb. 2010 ¹	Index		Percent change				
			Feb. 2010	Mar. 2010	Annual	Monthly			
					Mar. 2009 to Mar. 2010	Nov. 2009 to Dec. 2009	Dec. 2009 to Jan. 2010	Jan. 2010 to Feb. 2010	Feb. 2010 to Mar. 2010
Live animals; animal products.....	I	1.038	132.0	136.3	7.8	-0.1	-0.4	0.3	3.3
Meat and edible meat offal.....	02	0.238	167.1	174.0	20.6	1.1	1.4	3.3	4.1
Fish and crustaceans, molluscs and other aquatic invertebrates.....	03	0.540	99.7	101.5	1.0	0.0	-0.8	0.2	1.8
Vegetable products.....	II	1.465	166.0	170.7	11.2	1.4	3.5	-1.0	2.8
Edible vegetables, roots, and tubers.....	07	0.385	297.0	341.4	25.7	-3.9	6.3	-2.7	14.9
Edible fruit and nuts; peel of citrus fruit or melons.....	08	0.408	107.0	106.4	2.3	1.1	7.4	0.2	-0.6
Coffee, tea, mate and spices.....	09	0.276	161.9	159.4	14.6	3.9	-1.7	-1.5	-1.5
Animal or vegetable fats and oils (Dec. 2009=100).....	III	0.204	99.5	104.2	-	-	2.4	-2.8	4.7
Prepared foodstuffs, beverages, and tobacco.....	IV	2.286	140.1	139.6	4.3	0.7	1.0	-0.4	-0.4
Cocoa and cocoa preparations (Dec. 2009=100).....	18	0.214	102.2	100.0	-	-	3.2	-1.0	-2.2
Preparations of cereals, flour, starch or milk; bakers' wares (Dec. 2007=100).....	19	0.240	113.1	112.3	5.6	0.5	2.0	-1.4	-0.7
Preparations of vegetables, fruit, nuts, or other parts of plants.....	20	0.290	130.8	130.5	2.1	0.1	3.0	0.2	-0.2
Beverages, spirits, and vinegar.....	22	0.904	117.9	117.7	1.8	0.5	-0.3	-0.4	-0.2
Mineral products.....	V	21.052	259.4	266.8	60.8	-0.2	4.4	-1.2	2.9
Salt; sulfur; earths and stone; plaster materials, lime & cement (Dec. 2009=100).....	25	0.186	99.7	99.6	-	-	0.7	-1.0	-0.1
Mineral fuels, oils and residuals, bituminous substances and mineral waxes.....	27	20.653	256.4	263.8	62.5	-0.2	4.4	-1.2	2.9
Products of the chemical or allied industries.....	VI	8.238	137.8	139.5	7.4	0.9	1.6	0.3	1.2
Inorganic chemicals.....	28	0.912	261.2	282.5	47.8	1.9	-1.1	5.7	8.2
Organic chemicals.....	29	2.726	131.4	132.8	9.5	0.7	1.3	0.0	1.1
Pharmaceutical products.....	30	2.867	118.9	118.5	4.9	1.0	2.4	-0.2	-0.3
Fertilizers (Dec. 2009=100).....	31	0.312	100.7	103.3	-	-	7.3	-6.2	2.6
Tanning & dyeing extracts; dye & pigments; varnish & paints; putty.....	32	0.175	114.1	113.4	8.9	3.1	2.5	2.1	-0.6
Essential oils and resinoids (Dec. 2001=100).....	33	0.412	119.9	118.7	0.0	0.3	0.4	-0.7	-1.0
Miscellaneous chemical products.....	38	0.496	92.8	93.2	0.6	0.3	1.0	1.5	0.4
Plastics and articles thereof; rubber and articles thereof.....	VII	2.922	132.3	133.6	5.6	1.0	1.2	0.5	1.0
Plastics and articles thereof.....	39	1.834	127.6	127.7	3.3	1.0	0.6	0.2	0.1
Rubber and articles thereof.....	40	1.088	141.3	145.0	9.7	1.1	2.1	0.7	2.6
Raw hides, skins, leather, furskins, travel goods, etc.....	VIII	0.591	113.7	113.9	0.1	0.0	0.1	0.0	0.2
Articles of leather; travel goods, bags, etc. of various materials.....	42	0.555	114.8	114.9	0.2	0.0	0.2	0.0	0.1
Wood, wood charcoal, cork, straw, basketware and wickerwork.....	IX	0.826	123.0	128.4	16.7	2.4	2.3	3.1	4.4
Woodpulp, recovered paper, and paper products.....	X	1.341	107.5	108.2	-2.2	0.5	0.1	1.0	0.7
Pulp wood, waste paper, and paperboard (Dec. 2009=100).....	47	0.193	108.4	113.2	-	-	3.2	5.0	4.4
Paper and paperboard; articles of paper pulp, paper or paperboard.....	48	0.880	101.9	102.0	-8.3	0.6	-0.5	0.5	0.1
Printed matter.....	49	0.268	120.6	120.0	0.2	0.5	-0.1	0.1	-0.5

See footnotes at end of table.

Table 5. U.S. import price indexes and percent changes for selected categories of goods: March 2009 to March 2010 — Continued

[2000=100, unless otherwise noted]

Description	Harmoni- zied system	Relative importance Feb. 2010 ¹	Index		Percent change				
			Feb. 2010	Mar. 2010	Annual	Monthly			
					Mar. 2009 to Mar. 2010	Nov. 2009 to Dec. 2009	Dec. 2009 to Jan. 2010	Jan. 2010 to Feb. 2010	Feb. 2010 to Mar. 2010
Textile and textile articles.....	XI	4.981	102.9	103.0	-0.1	-0.7	0.5	0.0	0.1
Articles of apparel and clothing accessories, knitted or crocheted.....	61	1.913	98.3	98.2	-1.8	-1.8	0.7	0.0	-0.1
Articles of apparel and clothing accessories, not knitted or crocheted.....	62	1.870	102.7	103.3	-0.6	0.0	0.0	0.0	0.6
Made-up or worn textile articles.....	63	0.532	93.1	93.2	3.0	0.2	1.1	0.2	0.1
Headgear, umbrellas, artificial flowers, etc. . .	XII	1.218	106.9	106.8	-1.1	0.0	-0.2	-0.3	-0.1
Footwear and parts of such articles.....	64	1.034	105.9	105.8	-1.4	-0.1	-0.2	-0.2	-0.1
Stone, plaster, cement, asbestos, ceramics, glass etc.....	XIII	0.889	124.4	124.3	0.2	0.1	0.0	-0.1	-0.1
Articles of stone, plaster, cement, asbestos, or mica (Dec. 2001=100).....	68	0.316	117.7	118.0	-0.9	0.1	0.3	-0.2	0.3
Ceramic products.....	69	0.279	140.0	139.9	3.6	0.1	0.0	0.1	-0.1
Glass and glassware.....	70	0.294	115.4	115.0	-1.6	0.0	-0.3	-0.2	-0.3
Pearls, stones, precious metals, imitation jewelry, and coins.....	XIV	2.728	155.9	155.0	15.2	4.1	-0.2	0.3	-0.6
Base metals and articles of base metals.....	XV	5.911	173.7	173.6	15.0	1.3	2.2	1.8	-0.1
Iron and steel.....	72	1.282	209.4	216.5	13.1	0.0	2.4	3.9	3.4
Articles of iron or steel.....	73	1.758	140.9	142.2	-3.0	1.0	0.5	0.2	0.9
Copper and articles thereof.....	74	0.692	332.6	323.4	77.8	4.7	3.8	1.2	-2.8
Nickel and articles thereof (Dec. 2009=100)...	75	0.166	107.6	111.2	-	-	-0.8	8.5	3.3
Aluminum and articles thereof.....	76	0.836	136.3	133.1	32.2	2.3	6.0	2.2	-2.3
Tools, implements, cutlery, spoons and forks, of base metal; parts thereof.....	82	0.365	118.0	117.7	-0.5	0.6	0.4	-0.1	-0.3
Miscellaneous articles of base metal.....	83	0.417	128.1	127.2	-2.5	0.0	0.0	0.5	-0.7
Machinery, electrical equipment, TV image and sound recorders, parts, etc.....	XVI	25.713	87.0	86.8	0.3	-0.1	0.0	-0.2	-0.2
Machinery and mechanical appliances; parts thereof.....	84	12.893	88.2	88.1	0.6	0.1	-0.1	-0.1	-0.1
Electrical machinery and equip, sound and TV recorders & reproducers, parts.....	85	12.820	85.9	85.6	0.1	-0.3	0.1	-0.2	-0.3
Vehicles, aircraft, vessels and associated transport equipment.....	XVII	11.346	109.8	109.4	0.3	-0.1	-0.4	-0.1	-0.4
Motor vehicles and their parts.....	87	10.230	108.6	108.5	0.4	-0.2	-0.4	-0.2	-0.1
Aircraft, spacecraft, and parts thereof (Dec. 2002=100).....	88	1.022	115.6	113.8	-1.4	-0.3	0.2	0.0	-1.6
Optical, photo, measuring, medical & musical instruments; & timepieces.....	XVIII	3.282	101.2	100.8	-0.6	0.0	-1.4	0.2	-0.4
Optical, photographic, measuring and medical instruments.....	90	2.969	98.8	98.6	-0.6	0.0	-1.5	0.2	-0.2
Clocks and watches and parts thereof.....	91	0.234	124.5	120.5	-1.7	0.1	-0.2	-0.2	-3.2
Miscellaneous manufactured articles.....	XX	3.904	107.2	107.4	-0.5	-0.3	0.2	0.0	0.2
Furniture & stuffed furnishings; lamps & lighting fittings, nesoi; prefab bldgs.....	94	1.999	110.9	110.9	-2.0	-0.2	-0.2	0.2	0.0
Toys, games and sports equipment; parts and accessories thereof.....	95	1.700	101.0	101.1	0.4	-0.2	0.1	0.0	0.1
Miscellaneous manufactured articles.....	96	0.205	120.8	121.9	9.2	0.1	2.7	0.7	0.9

¹ Relative importance figures are based on 2008 trade values.

NOTES: Data may be revised in each of the three months after original publication.

Dash = Not available

Table 6. U.S. export price indexes and percent changes for selected categories of goods: March 2009 to March 2010

[2000=100, unless otherwise noted]

Description	Harmoni- zied system	Relative importance Feb. 2010 ¹	Index		Percent change				
			Feb. 2010	Mar. 2010	Annual	Monthly			
					Mar. 2009 to Mar. 2010	Nov. 2009 to Dec. 2009	Dec. 2009 to Jan. 2010	Jan. 2010 to Feb. 2010	Feb. 2010 to Mar. 2010
Live animals; animal products.....	I	1.691	161.8	164.6	5.9	1.5	1.6	3.7	1.7
Meat & edible meat offal (Dec. 2006=100). . .	02	0.948	131.0	134.7	9.7	2.0	0.8	5.5	2.8
Fish and crustaceans, molluscs and other aquatic invertebrates.....	03	0.318	147.9	150.6	3.4	1.7	2.5	4.7	1.8
Vegetable products.....	II	4.186	176.0	181.2	3.8	1.3	2.8	-8.4	3.0
Edible fruit and nuts; peel of citrus fruit or melons.....	08	0.768	124.4	124.9	24.9	4.2	11.8	-1.0	0.4
Cereals.....	10	1.653	177.9	183.3	-1.8	3.1	1.9	-9.7	3.0
Oilseeds and misc. grains, seeds, fruits, plants, straw and fodder.....	12	1.278	189.2	195.3	6.3	0.0	0.0	-9.7	3.2
Animal or vegetable fats and oils (Dec. 2009=100).....	III	0.290	99.5	103.6	-	-	2.7	-3.1	4.1
Prepared foodstuffs, beverages, and tobacco.....	IV	2.527	140.6	139.1	2.9	0.9	0.1	-0.9	-1.1
Preparations of vegetables, fruit, nuts or other parts of plants (Dec. 2009=100).....	20	0.344	102.3	102.5	-	-	0.9	1.4	0.2
Miscellaneous edible preparations.....	21	0.421	119.2	119.0	-0.5	-0.3	0.3	0.0	-0.2
Beverages, spirits, and vinegar (Dec. 2008=100).....	22	0.341	104.1	105.0	4.6	0.0	0.6	-0.3	0.9
Residues and waste from the food industries; prepared animal feed.....	23	0.597	189.1	179.5	-0.7	1.3	-0.8	-4.0	-5.1
Mineral products.....	V	5.430	225.2	232.2	37.3	2.4	5.8	-5.3	3.1
Mineral fuels, oils and residuals, bituminous substances and mineral waxes.....	27	4.819	219.4	227.1	41.5	2.6	6.0	-5.4	3.5
Products of the chemical or allied industries.....	VI	11.953	140.4	141.9	5.0	1.1	0.6	1.4	1.1
Inorganic chemicals.....	28	1.013	170.6	173.0	-13.1	1.4	-1.0	1.5	1.4
Organic chemicals.....	29	3.015	146.8	149.2	11.3	1.5	0.3	1.0	1.6
Pharmaceutical products.....	30	3.012	122.2	122.1	6.7	0.3	2.6	1.5	-0.1
Tanning or dyeing extracts, dyes, paints, varnish, putty, & inks.....	32	0.542	113.9	113.9	-0.1	-0.3	-1.8	1.1	0.0
Essential oils and resinoids; perfumery cosmetic or toilet preparations.....	33	0.739	125.1	123.5	1.6	0.0	-2.0	0.6	-1.3
Soap; lubricants; waxes, polishing or scouring products; candles, pastes.....	34	0.444	118.3	117.4	1.7	0.2	0.3	0.3	-0.8
Miscellaneous chemical products.....	38	1.996	133.2	133.5	3.0	0.5	0.2	-0.7	0.2
Plastics and articles thereof; rubber and articles thereof.....	VII	5.065	134.3	135.2	3.8	0.3	-0.7	0.8	0.7
Plastics and articles thereof.....	39	4.096	127.7	128.8	4.0	0.3	-1.5	1.2	0.9
Rubber and articles thereof.....	40	0.969	164.2	164.1	2.9	0.3	2.9	-0.8	-0.1
Raw hides, skins, leather, furskins, travel goods, etc.....	VIII	0.362	113.2	116.5	44.4	5.2	2.3	3.9	2.9
Wood, wood charcoal, cork, straw, basketware and wickerwork.....	IX	0.566	108.8	108.0	3.4	1.0	2.2	1.6	-0.7
Woodpulp, recovered paper, and paper products.....	X	2.456	112.6	114.3	7.5	1.3	1.6	0.3	1.5
Woodpulp and recovered paper.....	47	0.657	120.0	125.6	41.8	5.0	6.0	2.3	4.7
Paper and paperboard; articles of paper pulp, paper or paperboard.....	48	1.287	109.6	110.2	-2.5	0.1	0.4	-0.5	0.5
Printed material.....	49	0.512	116.2	116.1	1.5	0.0	-0.2	0.1	-0.1
Textile and textile articles.....	XI	1.951	109.1	112.2	10.9	0.1	0.4	-0.5	2.8
Cotton, including yarns and woven fabrics thereof.....	52	0.596	113.2	123.2	43.4	0.4	0.4	-1.4	8.8

See footnotes at end of table.

Table 6. U.S. export price indexes and percent changes for selected categories of goods: March 2009 to March 2010 — Continued

[2000=100, unless otherwise noted]

Description	Harmoni- zied system	Relative importance Feb. 2010 ¹	Index		Percent change				
			Feb. 2010	Mar. 2010	Annual	Monthly			
					Mar. 2009 to Mar. 2010	Nov. 2009 to Dec. 2009	Dec. 2009 to Jan. 2010	Jan. 2010 to Feb. 2010	Feb. 2010 to Mar. 2010
Stone, plaster, cement, asbestos, ceramics, glass etc. (Dec. 2008=100).....	XIII	0.821	117.7	117.5	1.1	0.0	3.1	-0.3	-0.2
Glass and glassware.....	70	0.439	100.1	99.7	-0.8	0.0	2.6	0.0	-0.4
Pearls, stones, precious metals, imitation jewelry, and coins.....	XIV	4.796	197.5	196.7	12.7	5.5	0.3	-0.1	-0.4
Base metals and articles of base metals.....	XV	5.898	158.8	161.2	13.2	0.8	2.5	0.7	1.5
Iron and steel.....	72	1.724	186.2	191.2	15.8	0.2	4.6	3.1	2.7
Articles of iron or steel.....	73	1.537	157.4	156.7	-4.6	-0.1	-0.3	0.3	-0.4
Copper and articles thereof.....	74	0.565	215.8	231.2	92.0	4.8	4.9	-3.7	7.1
Aluminum and articles thereof.....	76	0.908	123.2	123.4	28.9	2.1	6.3	-0.2	0.2
Tools, implements, cutlery, spoons and forks, of base metal; parts thereof.....	82	0.421	124.2	124.2	2.0	0.0	0.1	0.2	0.0
Miscellaneous articles of base metal.....	83	0.319	123.8	124.9	2.1	0.1	0.1	1.1	0.9
Machinery, electrical equipment, TV image and sound recorders, parts, etc.....	XVI	30.750	95.4	95.6	0.7	-0.1	0.2	-0.3	0.2
Machinery and mechanical appliances; parts thereof.....	84	17.916	105.7	106.2	1.3	-0.1	0.1	-0.4	0.5
Electrical machinery and equipment and parts and accessories thereof.....	85	12.834	84.1	84.1	-0.1	-0.1	0.2	-0.2	0.0
Vehicles, aircraft, vessels and associated transport equipment.....	XVII	13.486	120.8	121.0	1.5	0.0	0.4	0.2	0.2
Motor vehicles and their parts.....	87	8.696	108.2	108.3	0.7	0.0	0.2	0.2	0.1
Ships, boats and floating structures (Dec. 2009=100).....	89	0.298	100.1	100.1	-	-	0.1	0.0	0.0
Optical, photo, measuring, medical & musical instruments; & timepieces.....	XVIII	6.064	106.4	106.2	-0.7	0.0	-2.1	0.2	-0.2
Miscellaneous manufactured articles.....	XX	1.558	108.4	107.7	0.9	-0.6	0.7	-0.1	-0.6
Furniture; stuffed furnishings; lamps and lighting fittings nesoi;.....	94	0.764	117.2	118.1	1.6	-1.4	-0.3	-0.1	0.8
Toys, games and sports equipment; parts and accessories thereof.....	95	0.678	95.2	92.9	-0.2	0.1	2.0	0.0	-2.4

1 Relative importance figures are based on 2008 trade values.

NOTES: Data may be revised in each of the three months after original publication.

Dash = Not available

Table 7. U.S. import price indexes and percent changes by locality of origin: March 2009 to March 2010
 [2000=100, unless otherwise noted]

Description	Percent of U.S. imports ¹	Index		Percent change				
		Feb. 2010	Mar. 2010	Annual	Monthly			
				Mar. 2009 to Mar. 2010	Nov. 2009 to Dec. 2009	Dec. 2009 to Jan. 2010	Jan. 2010 to Feb. 2010	Feb. 2010 to Mar. 2010
Industrialized Countries²	41.082	125.8	125.4	6.7	0.6	1.3	0.2	-0.3
Nonmanufactured articles.....	5.687	215.6	215.0	49.4	1.6	5.7	2.6	-0.3
Manufactured articles.....	34.943	118.7	118.2	2.9	0.5	0.7	0.0	-0.4
Other Countries³	58.918	123.2	124.7	13.1	0.0	1.3	-0.4	1.2
Nonmanufactured articles.....	15.714	252.7	264.0	58.3	-1.4	3.6	-1.6	4.5
Manufactured articles.....	43.010	104.9	105.2	3.4	0.5	0.5	-0.1	0.3
Canada	15.923	144.1	144.0	15.8	1.0	3.6	1.0	-0.1
Nonmanufactured articles.....	5.257	209.8	209.2	49.7	1.9	6.1	2.7	-0.3
Manufactured articles.....	10.335	131.0	130.9	6.7	0.6	2.6	0.3	-0.1
European Union⁴	16.799	127.5	127.5	3.2	0.4	0.1	0.0	0.0
Nonmanufactured articles.....	0.211	252.3	259.9	38.0	0.7	-1.2	2.1	3.0
Manufactured articles.....	16.491	125.0	125.0	2.9	0.3	0.2	-0.1	0.0
France (Dec. 2003=100)	1.948	122.2	121.7	2.2	0.1	0.5	-2.0	-0.4
Germany (Dec. 2003=100)	4.572	113.5	112.9	4.2	1.0	0.8	-0.5	-0.5
United Kingdom (Dec. 2003=100)	2.566	124.9	126.0	6.6	0.9	0.2	-0.1	0.9
Latin America⁵	17.999	156.2	158.7	20.1	-0.3	2.2	-0.8	1.6
Nonmanufactured articles.....	6.186	279.8	290.9	54.0	-2.1	4.3	-2.1	4.0
Manufactured articles.....	11.730	130.4	130.9	7.6	0.6	0.9	-0.1	0.4
Mexico (Dec. 2003=100)	10.275	136.3	138.2	11.0	-0.7	1.7	-1.1	1.4
Nonmanufactured articles (Dec. 2008=100).....	2.141	146.9	155.5	58.2	-3.1	5.9	-4.2	5.9
Manufactured articles (Dec. 2008=100)....	8.085	96.2	96.4	1.2	0.1	0.4	-0.3	0.2
Pacific Rim (Dec. 2003=100)⁶	31.500	100.3	100.4	1.1	0.4	0.1	-0.1	0.1
China (Dec. 2003=100)	16.449	100.2	100.1	-0.8	0.2	-0.4	0.0	-0.1
Japan	6.678	97.8	98.1	1.9	0.3	0.1	-0.1	0.3
Asian NICs⁷	5.003	87.1	87.1	2.0	0.8	0.8	-0.1	0.0
ASEAN (Dec. 2003=100)⁸	5.274	96.7	96.9	1.7	0.4	-0.5	-0.1	0.2
Asia Near East (Dec. 2003=100)⁹	5.380	207.2	214.1	40.9	-1.3	2.3	1.7	3.3

1 Percentage of trade figures are based on 2008 trade values.

2 Includes Western Europe, Canada, Japan, Australia, New Zealand and South Africa.

3 Includes Eastern Europe, Latin America, OPEC countries, and other countries in Asia, Africa and the Western Hemisphere.

4 Includes European Union countries.

5 Includes Mexico, Central America, South America and the Caribbean.

6 Includes China, Japan, Australia, Brunei, Indonesia, Macao, Malaysia, New Zealand, Papua New Guinea, Philippines and Asian Newly Industrialized Countries.

7 Asian Newly Industrialized Countries. Includes Hong Kong, Singapore, South Korea and Taiwan.

8 Association of Southeast Asian Nations. Includes Brunei, Cambodia, Indonesia, Laos, Malaysia, Myanmar, Philippines, Singapore, Thailand and Vietnam.

9 Includes Bahrain, Iran, Iraq, Israel, Jordan, Kuwait, Lebanon, Oman, Qatar, Saudi Arabia, Syria, United Arab Emirates and Yemen.

NOTES: Data may be revised in each of the three months after original publication.

Regions are not mutually exclusive.

Dash = Not available

Table 8. U.S. international price indexes and percent changes for selected transportation services: March 2009 to March 2010

[2000=100, unless otherwise noted]

Description	Relative importance Feb. 2010 ¹	Index		Percent change				
		Feb. 2010	Mar. 2010	Annual	Monthly			
				Mar. 2009 to Mar. 2010	Nov. 2009 to Dec. 2009	Dec. 2009 to Jan. 2010	Jan. 2010 to Feb. 2010	Feb. 2010 to Mar. 2010
Air Freight								
Import Air Freight	100.000	156.2	156.0	17.4	7.5	-4.4	-0.3	-0.1
Europe (Dec. 2003=100).....	22.201	136.8	131.8	5.8	2.1	-1.6	-1.2	-3.7
Asia.....	69.829	141.5	143.2	20.9	10.1	-5.6	-0.6	1.2
Export Air Freight	100.000	123.7	124.4	0.2	0.9	0.2	0.5	0.6
Europe (Dec. 2006=100).....	33.145	113.5	114.7	-0.4	2.1	0.0	0.2	1.1
Inbound Air Freight	100.000	143.1	143.6	12.6	5.0	-2.2	-0.6	0.3
Europe (Dec. 2003=100).....	23.553	127.3	123.5	1.7	1.4	-0.5	-1.2	-3.0
Asia.....	66.338	131.0	132.5	17.9	7.1	-3.1	-0.6	1.1
Outbound Air Freight	100.000	115.9	117.0	-2.3	1.1	0.3	0.9	0.9
Europe (Dec. 2003=100).....	40.855	133.0	133.7	-5.7	1.6	0.3	0.6	0.5
Asia.....	42.716	107.2	108.3	3.0	1.0	0.8	1.2	1.0
Air Passenger Fares								
Import Air Passenger Fares	100.000	142.2	149.8	11.0	3.3	-3.2	-3.5	5.3
Europe.....	40.612	147.9	162.6	20.8	-2.3	-1.6	-3.6	9.9
Asia.....	27.920	122.8	126.4	2.7	11.0	-5.3	-7.6	2.9
Latin America/Caribbean.....	13.363	132.3	135.9	15.0	12.6	-10.8	1.1	2.7
Export Air Passenger Fares	100.000	146.6	151.4	6.8	10.2	1.0	-7.0	3.3
Europe.....	34.412	180.0	181.7	18.2	5.3	-0.6	-3.4	0.9
Asia.....	29.194	122.0	130.8	1.9	10.9	6.0	-9.6	7.2
Latin America/Caribbean.....	24.050	159.5	162.3	8.4	16.1	2.7	-9.6	1.8

¹ Relative importance figures are based on 2008 trade values.

NOTES: Data may be revised in each of the three months after original publication.

Dash = Not available

TECHNICAL NOTE

Import and Export Merchandise and Services Price Indexes -- All indexes use a modified Laspeyres formula and are not seasonally adjusted. Price indexes are reweighted annually, with a two-year lag in the weights. Published series use a base year of 2000=100 where possible. More detailed index series and additional information may be obtained at <http://www.bls.gov/mxp>, or by calling (202) 691-7101.

Merchandise Goods Classification Systems -- The merchandise price indexes are published using three classification systems. Items are classified by end use according to the Bureau of Economic Analysis Classification System, by industry according to the North American Industry Classification System (NAICS), and by product category according to the Harmonized System (HS). While classification by end use and product category are self-explanatory, some notes are in order for classifying items by industry. In the NAICS imports and exports tables, items are classified by output industry, not input industry. As an example, NAICS import index 326 (plastics and rubber products manufacturing) include outputs such as manufactured plastic rather than inputs such as petroleum. The NAICS classification structure also matches the classification system used by the PPI (Producer Price Index) to produce the NAICS primary products indexes.

Import Price Indexes -- Products have been classified by the Harmonized Tariff Schedule of the United States Annotated (TSUSA). Import prices are based on U.S. dollar prices paid by the U.S. importer. The prices are generally either "free on board" (f.o.b.) foreign port or "cost, insurance, and freight" (c.i.f.) U.S. port transaction prices, depending on the practices of the individual industry. The index for crude petroleum is calculated from data collected by the U.S. Department of Energy.

Export Price Indexes -- Products have been classified by the Harmonized Schedule B classification system of the U.S. Bureau of the Census. The prices used are generally either "free alongside ship" (f.a.s.) factory or "free on board" (f.o.b.) transaction prices, depending on the practices of the individual industry. Prices used in the grain index, excluding rice, are obtained from the U.S. Department of Agriculture.

Services Price Indexes -- Starting in September 2008 the Import Air Passenger Fares Indexes represent changes in the average revenue per passenger received by foreign carriers from U.S. residents and are calculated from data obtained from an airline consulting service. These data include tickets sold by travel agencies and travel websites. Tickets sold directly by the airlines are excluded, as are frequent flyer tickets generally. Starting in January 2008 the Export Air Passenger Fares Indexes represent changes in the average revenue per passenger received by U.S. carriers from foreign residents and are calculated from data collected directly from airlines. These data include frequent flyer tickets and those sold by consolidators. Taxes and fees are included in the Import Air Passenger Fares Index and excluded from the Export Air Passenger Fares Index. The Air Freight Indexes are calculated from data collected directly from airlines. These data exclude mail and passenger baggage. The scope of the service being priced is the movement of freight from airport to airport only, and does not include any ground transportation or port service. The Air Freight Indexes are presented using two definitions: Balance of Payments (which represent transactions between U.S. and foreign residents) and International (which represent transactions inbound to and outbound from the U.S.). Fact sheets specifying detailed information for each services industry are available at <http://www.bls.gov/mxp> under "MXP Publications."

Import Indexes by Locality of Origin -- Prices used in these indexes are a subset of the data collected for the Import Price Indexes. Beginning with January 2002, the indexes are defined by locality of origin using a nomenclature based upon the North American Industry Classification System (NAICS). Nonmanufactured goods are defined as NAICS 11 and 21 and manufactured goods are defined as NAICS 31-33.

Revision Policy -- To reflect the availability of late reports and corrections by respondents, monthly data may be revised in each of the three months after original publication. After three months, no further data revisions take place. So, for example, data released in the January release will be subject to revision in the releases for February, March, and April.

Uses of the Data -- The primary use of the indexes is to deflate trade statistics, notably the foreign trade sector of the National Income and Product Accounts constructed by the Department of Commerce. Other published indexes are useful for general market analysis. For trade in international services, Balance of Payments indexes are used for deflating National Income and Product Accounts, while International indexes are more appropriate for market analysis. Merchandise and services indexes also can be used to study U.S. competitiveness and to compute price elasticities, and the merchandise import indexes by country or region of origin are useful in terms of trade analysis.

E-Mail Subscription -- The U.S. Import and Export Price Indexes news release is available through an e-mail subscription service at (<http://www.bls.gov/bls/list.htm>).

Additional Information -- More detailed data are available on the Import/Export Price Indexes home page at (<http://www.bls.gov/mxp>). Flat Files and the FTP server are available for users requiring access to either a large volume of time series data or other related documentation. The FTP site can be accessed at <ftp://ftp.bls.gov>. For technical assistance in using the BLS Internet site, send e-mail to (labstat.helpdesk@bls.gov). For Import/Export Price Index data requests, send e-mail to (mxpinfo@bls.gov).

Information from this release will be made available to sensory impaired individuals upon request. Voice phone: 202-691-5200; Federal Relay Service: 1-800-877-8339.