



Transmission of material in this release is embargoed until
8:30 a.m. (ET) Tuesday, June 16, 2026

USDL-26-0903

Technical information: (202) 691-7101 • MXPinfo@bls.gov • www.bls.gov/mxp

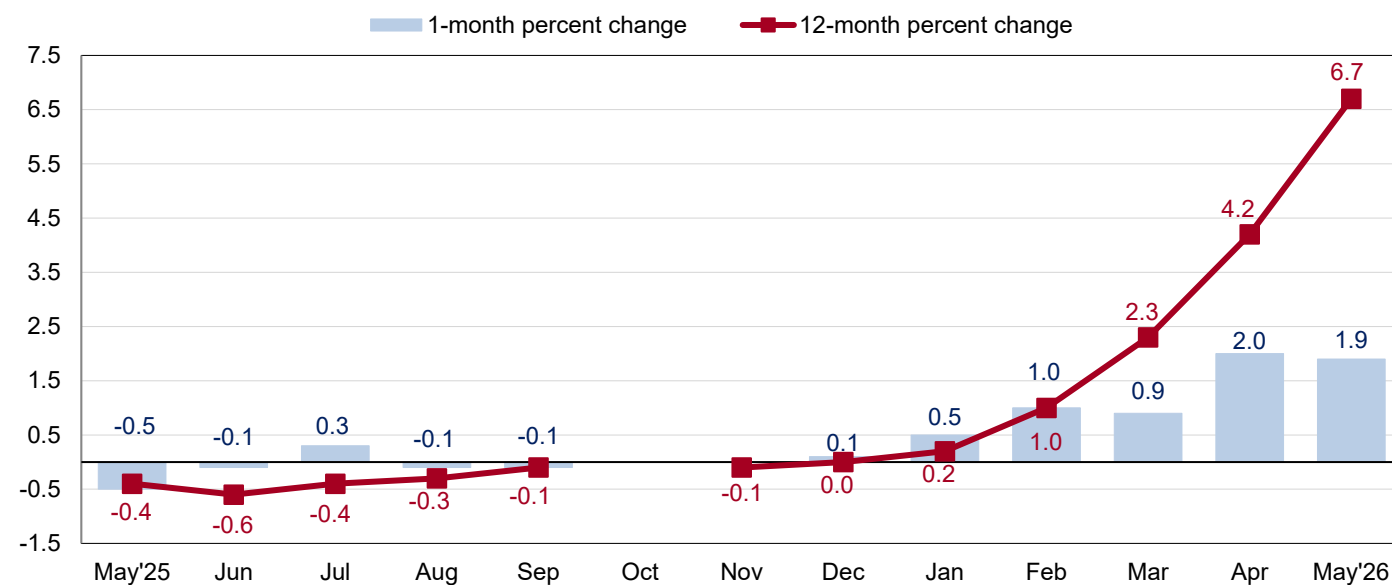
Media contact: (202) 691-5902 • PressOffice@bls.gov

U.S. IMPORT AND EXPORT PRICE INDEXES - MAY 2026

U.S. import prices increased 1.9 percent in May, the U.S. Bureau of Labor Statistics reported today, following a 2.0-percent rise in April. Higher prices for fuel imports and nonfuel imports drove the advance in May. Prices for U.S. exports increased 1.3 percent in May, after rising 3.5 percent the previous month.

Imports

Chart 1. One-month and 12-month percent changes in the Import Price Index: May 2025 – May 2026



Note: The Oct 2025 data and 1-month percent change for Nov 2025 are not available due to the 2025 lapse in appropriations.

Prices for U.S. imports advanced 1.9 percent in May following increases of 2.0 percent in April and 0.9 percent in March. Prices for U.S. imports rose 6.7 percent from May 2025 to May 2026, the largest over-the-year advance since the index increased 7.7 percent in August 2022. (See table 1.)

Fuel Imports: Fuels and lubricants import prices increased 12.5 percent in May following a rise of 18.6 percent in April and an advance of 10.2 percent in March. The 47.0-percent rise from February to May was the largest 3-month advance since the index increased 58.3 percent for the 3-month period ended July 2020. Higher prices for petroleum and natural gas drove the May advance, increasing 13.0 percent and 10.4 percent, respectively. Import fuels and lubricants prices rose 45.1 percent from May 2025 to May 2026, the largest over-the-year advance since the index rose 46.4 percent for the 12-month period ended August 2022. The price index for petroleum imports increased 48.1 percent over the 12 months ended May 2026 and prices for natural gas imports advanced 35.3 percent over the same period.

All Imports Excluding Fuel: Prices for nonfuel imports increased 0.8 percent in May, after advancing 0.6 percent in April. In May, higher prices for capital goods; nonfuel industrial supplies and materials; consumer goods, excluding automobiles; and automotive vehicles, parts, and engines more than offset lower prices for foods, feeds, and beverages. Nonfuel import prices increased 3.7 percent from May 2025 to May 2026, the largest over-the-year advance since the index rose 3.9 percent for the 12 months ended August 2022. Higher prices for capital goods; nonfuel industrial supplies and materials; and consumer goods, excluding automobiles, more than offset lower prices for foods, feeds, and beverages as well as automotive vehicles, parts, and engines for the 12 months ended in May.

Foods, Feeds, and Beverages: Import foods, feeds, and beverages prices decreased 0.1 percent in May, the first monthly decline since the index fell 0.7 percent in November 2025. The May drop follows increases of 0.3 percent in April and 1.1 percent in March. In May, lower prices for vegetables, fruit, and green coffee more than offset higher prices for other animal and vegetable preparations and products; fish and shellfish; as well as wine, beer, and related products.

Nonfuel Industrial Supplies and Materials: Import prices for nonfuel industrial supplies and materials rose 1.0 percent in May, after a 1.5-percent increase in April. Higher prices for chemicals and finished nonmetals (boxes, belting, glass, etc.) more than offset lower prices for major nonferrous metals-crude in May.

Finished Goods: Finished goods import prices were up in May. Import capital goods prices increased 1.3 percent for the month. Higher prices for computers, peripherals, and semiconductors; scientific and medical machinery; and industrial and service machinery drove the advance. The price index for import consumer goods, excluding automobiles, increased 0.5 percent in May, the largest monthly advance since the index rose 1.1 percent in January 2024. Higher prices for apparel, footwear, and household goods as well as coins, gems, jewelry, and collectibles contributed to the advance in May. Import prices for automotive vehicles, parts, and engines increased 0.3 percent in May.

Table A. Percent change in Import and Export Price Indexes, selected categories

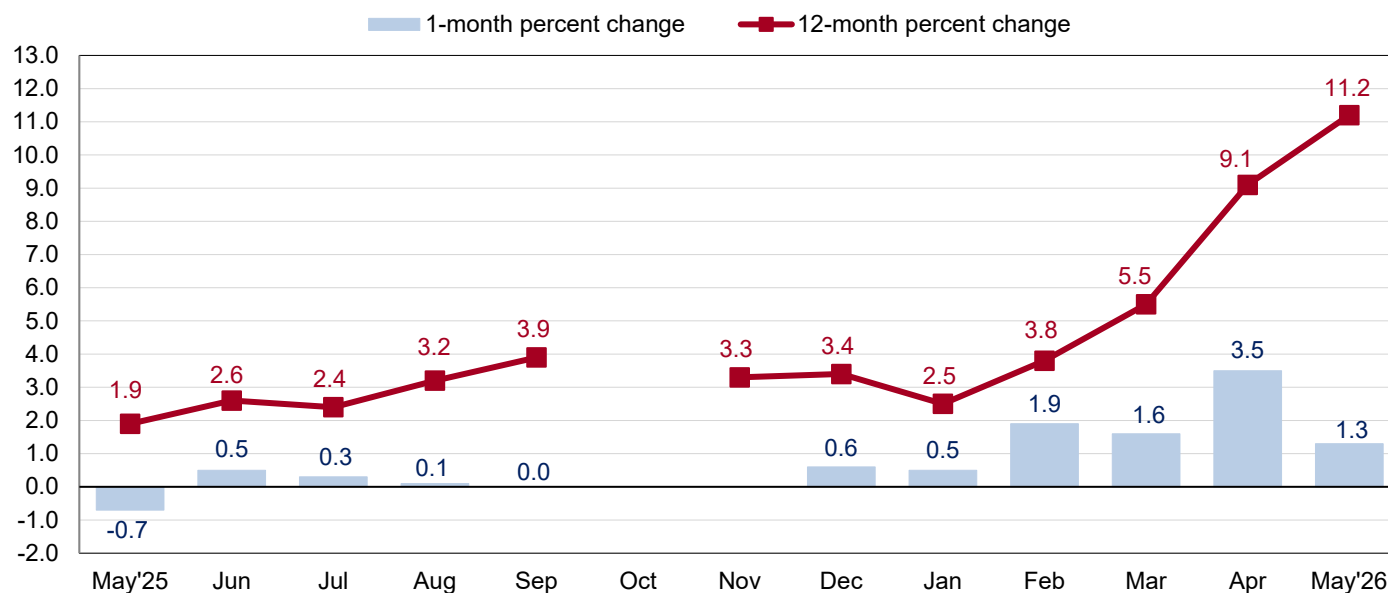
| Month | IMPORTS | | | EXPORTS | | |
|-----------------------|------------------|-------------------|------------------|------------------|----------------------|--------------------------|
| | All imports | Fuel imports | Nonfuel imports | All exports | Agricultural exports | Non-agricultural exports |
| 2025 | | | | | | |
| May..... | -0.5 | -5.0 | -0.1 | -0.7 | 0.2 | -0.8 |
| June..... | -0.1 | 0.6 | -0.3 | 0.5 | 0.8 | 0.6 |
| July..... | 0.3 | 2.7 | 0.2 | 0.3 | -0.2 | 0.3 |
| August..... | -0.1 | -0.7 | -0.2 | 0.1 | -0.1 | 0.2 |
| September..... | -0.1 | -1.5 | 0.0 | 0.0 | -0.5 | 0.1 |
| October..... | – | – | – | – | 0.4 | – |
| November..... | – | – | – | – | 0.8 | – |
| December..... | 0.1 | -1.1 | 0.2 | 0.6 | -0.2 | 0.7 |
| 2026 | | | | | | |
| January..... | 0.5 | -1.2 | 0.7 | 0.5 | 0.1 | 0.5 |
| February..... | 1.0 | 2.5 | 0.8 | 1.9 | 0.8 | 2.1 |
| March..... | 0.9 | 10.2 ^r | 0.2 | 1.6 ^r | 0.6 | 1.6 |
| April..... | 2.0 ^r | 18.6 ^r | 0.6 ^r | 3.5 ^r | 1.7 ^r | 3.7 ^r |
| May..... | 1.9 | 12.5 | 0.8 | 1.3 | 1.2 | 1.2 |
| May 2024 to 2025..... | -0.4 | -16.5 | 1.2 | 1.9 | 1.6 | 1.8 |
| May 2025 to 2026..... | 6.7 | 45.1 | 3.7 | 11.2 | 5.5 | 11.8 |

r Revised

Some Oct and Nov 2025 data values are not available due to the 2025 lapse in appropriations.

Exports

Chart 2. One-month and 12-month percent changes in the Export Price Index: May 2025 – May 2026



Note: The Oct 2025 data and 1-month percent change for Nov 2025 are not available due to the 2025 lapse in appropriations.

Prices for U.S. exports rose 1.3 percent in May, the sixth consecutive monthly advance for the index. The monthly rise was led by higher prices for nonagricultural exports; agricultural export prices also contributed to the advance. U.S. export prices increased 11.2 percent over the 12-month period ended in May, the largest over-the-year advance since the index rose 11.2 percent from August 2021 to August 2022. (See table 2.)

Agricultural Exports: The price index for agricultural exports increased 1.2 percent in May following a 1.7-percent advance in April. Agricultural export prices have not recorded a monthly decline since December 2025. Higher prices for dairy products and eggs, meat, and vegetables drove the rise in May. Agricultural export prices advanced 5.5 percent over the past 12 months, as higher prices for soybeans, meat, as well as other foods and food preparations drove the increase.

All Exports Excluding Agriculture: Nonagricultural export prices increased 1.2 percent in May, after rising 7.6 percent from January to April. Higher prices for nonagricultural industrial supplies and materials; capital goods; consumer goods, excluding automobiles; and automotive vehicles, parts, and engines drove the advance in May. The price index for nonagricultural exports rose 11.8 percent from May 2025 to May 2026, the largest over-the-year advance since the index increased 12.9 percent for the 12-month period ended July 2022. Higher prices for nonagricultural industrial supplies and materials; capital goods; and consumer goods, excluding automobiles, contributed to the 12-month rise of the index in May.

Nonagricultural Industrial Supplies and Materials: Nonagricultural industrial supplies and materials prices increased 2.4 percent in May, after rising 7.9 percent the previous month. Higher prices for petroleum, chemicals, and nonferrous metals more than offset lower prices for natural gas in May.

Finished Goods: Finished goods export prices were up in May. Capital goods prices increased 0.5 percent. Higher prices for industrial and service machinery; computers, peripherals, and semiconductors; and scientific and medical machinery contributed to the increase. Consumer goods, excluding automobiles, prices rose 0.2 percent in May and prices for automotive vehicles, parts, and engines ticked up 0.1 percent.

More information for the major import and export price indexes can be found at www.bls.gov/web/ximpim/largest.htm.

Measures of Import and Export Prices by Locality

Imports by Locality of Origin: Import prices from China increased 0.9 percent in May and rose 1.1 percent over the past 12 months. The increase in May was the largest 1-month advance since the index rose 0.9 percent in January 2008. Prices for imports from Japan increased 0.4 percent in May following an advance of 0.5 percent in April. The price index for imports from Japan rose 2.0 percent over the past 12 months, the largest over-the-year advance since the index increased 2.0 percent for the 12 months ended January 2023. The price index for imports from the European Union increased 0.6 percent in May and import prices from Mexico advanced 0.2 percent, after rising 1.2 percent the previous month. Prices for imports from Canada increased 4.9 percent in May and rose 18.3 percent over the past 12 months. The 12-month advance is the largest such movement since the index increased 19.0 percent in August 2022. The over-the-year increase in May was driven by a 40.2-percent rise in import nonmanufacturing prices from Canada. (See table 7.)

Exports by Locality of Destination: Prices for exports to China rose 1.5 percent in May. The price index for exports to China increased 5.5 percent over the past 12 months, the largest over-the-year rise since the index increased 7.4 percent in August 2022. Prices for exports to Japan decreased 0.2 percent in May following an increase of 1.8 percent in April and a decrease of 0.9 percent in March. Despite the recent declines, export prices to Japan increased 8.7 percent over the past 12 months, the largest year-over-year rise since the index advanced 10.2 percent from August 2021 to August 2022. The price index for exports to the European Union rose 1.5 percent in May and export prices to Mexico increased 1.8 percent, after advancing 2.7 percent the previous month. Prices for exports to Canada increased 0.9 percent in May. (See table 8.)

Terms of Trade Indexes: Terms of trade indexes are based on country, region, or grouping and measure the change in the purchasing power of exports relative to imports. The U.S. terms of trade index with China rose 0.5 percent in May following a 0.7-percent increase in April. In May, higher export prices to China more than offset rising import prices from China. The index for U.S. terms of trade with Japan decreased 0.6 percent in May. The U.S. terms of trade index with the European Union and Mexico increased in May, rising 0.8 percent and 1.6 percent, respectively. In May, the U.S. terms of trade index with Canada decreased 3.7 percent, as higher import prices from Canada more than offset rising export prices to Canada. (See table 9.)

Import and Export Services

Imports: Import air passenger fares increased 11.3 percent in May, after a decrease of 2.7 percent in April. The increase in May is the largest monthly advance since the index rose 14.0 percent in September 2025. Import air passenger fares increased 5.4 percent over the past year. Prices for import air freight increased 18.8 percent in May and advanced 27.6 percent over the past 12 months. The over-the-year rise was the largest increase since the index advanced 35.2 percent for the 12 months ended November 2021. (See table 10.)

Exports: Export air passenger fares decreased 3.3 percent in May following a 5.2-percent increase the previous month. Lower Latin American/Caribbean and Asian fares more than offset higher European fares. The price index for export air passenger fares increased 3.9 percent from May 2025 to May 2026. Export air freight prices rose 4.3 percent in May following a 9.0-percent advance in April. The index advanced 12.4 percent over the past year, the largest 12-month increase since the index rose 13.1 percent in October 2022.

The U.S. Import and Export Price Indexes news release for June 2026 is scheduled to be published on Friday, July 17, 2026, at 8:30 a.m. (ET).

Table 1. U.S. import price indexes and percent changes for End Use categories of goods: May 2025 to May 2026

[2000=100, unless otherwise noted]

| Description | End Use | Relative importance Apr. 2026 ¹ | Index | | Percent change | | | | |
|---|---------|--|-----------|----------|----------------------|------------------------|------------------------|------------------------|-----------------------|
| | | | Apr. 2026 | May 2026 | Annual | Monthly | | | |
| | | | | | May 2025 to May 2026 | Jan. 2026 to Feb. 2026 | Feb. 2026 to Mar. 2026 | Mar. 2026 to Apr. 2026 | Apr. 2026 to May 2026 |
| All commodities | | 100.000 | 147.7 | 150.5 | 6.7 | 1.0 | 0.9 | 2.0 | 1.9 |
| All imports excluding food and fuels (Dec. 2010=100) | | 84.189 | 113.2 | 114.3 | 4.2 | 0.9 | 0.1 | 0.6 | 1.0 |
| All imports excluding petroleum | | 91.576 | 129.8 | 130.9 | 3.8 | 0.9 | 0.0 | 0.5 | 0.8 |
| All imports excluding fuels (Dec. 2001=100) | | 90.970 | 133.9 | 135.0 | 3.7 | 0.8 | 0.2 | 0.6 | 0.8 |
| Foods, feeds, & beverages | 0 | 6.781 | 229.7 | 229.4 | -1.9 | 0.3 | 1.1 | 0.3 | -0.1 |
| Agricultural foods, feeds & beverages, excluding distilled beverages..... | 00 | 5.630 | 262.1 | 261.4 | -1.4 | 0.2 | 1.1 | 0.5 | -0.3 |
| Nonagricultural foods (fish, distilled beverages)..... | 01 | 1.151 | 150.4 | 151.2 | -4.2 | 0.8 | 0.7 | -0.3 | 0.5 |
| Industrial supplies & materials | 1 | 23.702 | 279.2 | 294.2 | 22.2 | 2.3 | 2.8 | 7.4 | 5.4 |
| Industrial supplies & materials excluding petroleum..... | | 15.319 | 230.7 | 233.5 | 10.4 | 2.2 | -1.9 | 0.8 | 1.2 |
| Industrial supplies & materials excluding fuels (Dec. 2001=100)..... | | 14.668 | 259.9 | 262.6 | 10.3 | 2.3 | -0.8 | 1.5 | 1.0 |
| Industrial supplies & materials, durable.... | | 10.132 | 269.0 | 270.1 | 15.5 | 2.7 | -0.9 | 1.5 | 0.4 |
| Industrial supplies & materials nondurable excluding petroleum..... | | 5.147 | 183.9 | 188.9 | 2.1 | 1.2 | -3.5 | -0.5 | 2.7 |
| Fuels & lubricants..... | 10 | 9.030 | 320.3 | 360.2 | 45.1 | 2.5 | 10.2 | 18.6 | 12.5 |
| Petroleum & petroleum products..... | 100 | 8.424 | 348.9 | 394.3 | 48.1 | 2.7 | 14.0 | 21.6 | 13.0 |
| Crude petroleum..... | 10000 | 5.799 | 345.7 | 393.5 | 45.5 | 2.2 | 11.5 | 22.3 | 13.8 |
| Fuels, n.e.s.-coals & gas..... | 101 | 0.369 | 168.3 | 182.9 | 24.0 | 1.5 | -24.6 | -17.7 | 8.7 |
| Natural gas..... | 10110 | 0.294 | 163.1 | 180.0 | 35.3 | 1.8 | -29.2 | -19.6 | 10.4 |
| Paper & paper base stocks..... | 11 | 0.415 | 128.1 | 128.4 | -5.6 | 0.7 | -0.7 | 0.3 | 0.2 |
| Materials associated with nondurable supplies & materials..... | 12 | 4.125 | 203.4 | 208.7 | 1.4 | 1.3 | -0.3 | 1.6 | 2.6 |
| Selected building materials (Jan. 2025=100)..... | 13 | 1.343 | 93.9 | 95.1 | -2.8 | 1.4 | 0.0 | 0.1 | 1.3 |
| Unfinished metals related to durable goods..... | 14 | 4.226 | 455.2 | 447.6 | 27.7 | 5.3 | 1.4 | -0.4 | -1.7 |
| Finished metals related to durable goods..... | 15 | 3.014 | 286.3 | 289.0 | 14.4 | 1.2 | -5.5 | 6.0 | 0.9 |
| Nonmetals related to durable goods (Jan. 2025=100)..... | 16 | 1.548 | 99.2 | 103.5 | 6.3 | 0.2 | 0.4 | 0.0 | 4.3 |
| Capital goods | 2 | 30.759 | 98.4 | 99.7 | 5.6 | 1.3 | 0.6 | 0.9 | 1.3 |
| Nonelectrical machinery..... | 21 | 24.331 | 89.5 | 90.9 | 7.1 | 1.5 | 0.7 | 1.6 | 1.6 |
| Transportation equipment excluding motor vehicles (Dec. 2001=100)..... | 22 | 1.957 | 165.5 | 165.7 | 2.0 | 0.2 | 1.0 | 0.1 | 0.1 |
| Automotive vehicles, parts & engines | 3 | 14.341 | 120.3 | 120.7 | -0.4 | 0.1 | 0.0 | -0.1 | 0.3 |
| Automotive vehicles, parts and engines, 2 digit (Dec. 2023=100)..... | 30 | 14.341 | 101.0 | 101.3 | -0.4 | 0.1 | 0.0 | -0.1 | 0.3 |
| Consumer goods, excluding automotives | 4 | 24.416 | 110.8 | 111.4 | 1.7 | 0.2 | 0.2 | 0.2 | 0.5 |
| Nondurables, manufactured..... | 40 | 13.196 | 126.7 | 127.6 | 1.3 | 0.1 | 0.4 | 0.1 | 0.7 |
| Durables, manufactured..... | 41 | 10.521 | 96.1 | 96.5 | 2.7 | 0.3 | 0.3 | 0.2 | 0.4 |
| Nonmanufactured consumer goods..... | 42 | 0.698 | 119.3 | 119.3 | -2.8 | -0.7 | -4.9 | 1.2 | 0.0 |

¹ Relative importance values are based on 2024 trade values.

NOTES: Data may be revised in each of the 3 months after original publication.

Dash = Not available

Table 2. U.S. export price indexes and percent changes for End Use categories of goods: May 2025 to May 2026

[2000=100, unless otherwise noted]

| Description | End Use | Relative importance Apr. 2026 ¹ | Index | | Percent change | | | | |
|--|---------|--|-----------|----------|----------------------|------------------------|------------------------|------------------------|-----------------------|
| | | | Apr. 2026 | May 2026 | Annual | Monthly | | | |
| | | | | | May 2025 to May 2026 | Jan. 2026 to Feb. 2026 | Feb. 2026 to Mar. 2026 | Mar. 2026 to Apr. 2026 | Apr. 2026 to May 2026 |
| All commodities | | 100.000 | 166.5 | 168.6 | 11.2 | 1.9 | 1.6 | 3.5 | 1.3 |
| Agricultural commodities | | 8.637 | 240.3 | 243.2 | 5.5 | 0.8 | 0.6 | 1.7 | 1.2 |
| All exports excluding food and fuels (Dec. 2010=100) | | 71.945 | 126.4 | 127.5 | 6.1 | 1.0 | 0.0 | 0.8 | 0.9 |
| All exports excluding fuels (June 2022=100) | | 80.167 | 109.1 | 110.0 | 6.1 | 0.8 | 0.2 | 0.8 | 0.8 |
| Nonagricultural commodities | | 91.363 | 160.5 | 162.5 | 11.8 | 2.1 | 1.6 | 3.7 | 1.2 |
| Foods, feeds, & beverages | 0 | 8.222 | 247.5 | 249.6 | 5.6 | 1.2 | 0.6 | 1.7 | 0.8 |
| Agricultural foods, feeds & beverages, excluding distilled beverages..... | 00 | 7.769 | 248.7 | 251.3 | 5.6 | 1.2 | 0.5 | 1.7 | 1.0 |
| Nonagricultural foods (fish, distilled beverages)..... | 01 | 0.454 | 221.1 | 216.2 | 5.7 | 0.9 | 2.0 | 0.9 | -2.2 |
| Industrial supplies & materials | 1 | 41.469 | 246.1 | 252.0 | 24.7 | 4.6 | 3.8 | 7.8 | 2.4 |
| Industrial supplies & materials excluding fuels (Dec. 2020=100)..... | | 21.563 | 143.2 | 146.2 | 14.6 | 2.6 | 0.1 | 1.6 | 2.1 |
| Industrial supplies & materials, durable.... | | 12.151 | 294.1 | 298.6 | 21.5 | 3.9 | -0.7 | -0.6 | 1.5 |
| Industrial supplies & materials, nondurable..... | | 29.318 | 225.3 | 231.5 | 25.9 | 4.9 | 6.1 | 11.7 | 2.8 |
| Agricultural industrial supplies & materials..... | 10 | 0.868 | 194.5 | 199.4 | 4.1 | -2.7 | 0.7 | 2.2 | 2.5 |
| Nonagricultural industrial supplies & materials..... | | 40.600 | 247.6 | 253.5 | 25.2 | 4.8 | 3.9 | 7.9 | 2.4 |
| Fuels & lubricants..... | 11 | 19.833 | 292.6 | 300.7 | 37.6 | 7.4 | 8.9 | 15.6 | 2.8 |
| Nonagricultural supplies & materials excluding fuels & building materials..... | 12 | 20.046 | 243.2 | 248.4 | 15.4 | 2.9 | 0.0 | 1.5 | 2.1 |
| Selected building materials..... | 13 | 0.722 | 166.8 | 165.9 | 3.9 | 2.0 | 0.2 | 0.6 | -0.5 |
| Capital goods | 2 | 30.599 | 128.8 | 129.5 | 3.0 | 0.1 | 0.1 | 0.7 | 0.5 |
| Nonelectrical machinery..... | 21 | 21.084 | 106.6 | 107.4 | 3.4 | 0.0 | -0.1 | 1.1 | 0.8 |
| Transportation equipment excluding motor vehicles (Dec. 2001=100)..... | 22 | 5.913 | 230.6 | 230.6 | 2.4 | -0.2 | 0.3 | -0.2 | 0.0 |
| Automotive vehicles, parts & engines | 3 | 7.705 | 134.1 | 134.2 | 1.2 | 0.0 | 0.1 | -0.1 | 0.1 |
| Vehicles-passenger (Dec. 2023=100)..... | 30 | 7.705 | 105.5 | 105.5 | 1.2 | 0.0 | 0.1 | -0.1 | 0.0 |
| Consumer goods, excluding automotives | 4 | 12.005 | 123.3 | 123.5 | 3.4 | 0.7 | -0.1 | 0.2 | 0.2 |
| Nondurables, manufactured..... | 40 | 7.067 | 113.0 | 113.4 | 3.6 | 0.8 | 0.0 | 0.4 | 0.4 |
| Durables, manufactured..... | 41 | 4.247 | 130.0 | 129.6 | 4.7 | 0.5 | 0.4 | 0.2 | -0.3 |
| Nonmanufactured consumer goods (Dec. 2018=100)..... | 42 | 0.691 | 112.8 | 112.8 | -5.4 | 0.0 | -4.6 | 0.1 | 0.0 |

¹ Relative importance values are based on 2024 trade values.

NOTES: Data may be revised in each of the 3 months after original publication.

Dash = Not available

Table 3. U.S. import price indexes and percent changes for NAICS industries: May 2025 to May 2026
 [December 2005=100, unless otherwise noted]

| Description | NAICS | Relative importance Apr. 2026 ¹ | Index | | Percent change | | | | |
|---|-------|--|--------------|-------------|---|---------------------------------|---------------------------------|---------------------------------|--------------------------------|
| | | | Apr. 2026 | May 2026 | Annual May 2025 to May 2026 | Monthly | | | |
| | | | | | | Jan. 2026 to Feb. 2026 | Feb. 2026 to Mar. 2026 | Mar. 2026 to Apr. 2026 | Apr. 2026 to May 2026 |
| Nonmanufacturing | | 8.516 | 170.3 | 186.3 | 29.2 | 1.6 | 5.8 | 13.4 | 9.4 |
| Agriculture, forestry, fishing and hunting | 11 | 2.119 | 266.7 | 261.2 | -2.1 | 0.7 | 3.7 | 0.9 | -2.1 |
| Crop production..... | 111 | 1.750 | 282.9 | 275.8 | -3.4 | 0.6 | 4.2 | 0.9 | -2.5 |
| Animal production (Dec. 2022=100)..... | 112 | 0.233 | 136.1 | 135.0 | 7.9 | -0.4 | 1.6 | 1.9 | -0.8 |
| Forestry and logging (Jan. 2025=100).... | 113 | 0.096 | 93.4 | 96.3 | 0.2 | 3.4 | -0.6 | 4.1 | 3.1 |
| Fishing, hunting and trapping (Jan. 2025=100)..... | 114 | 0.041 | 91.4 | 90.8 | 2.6 | 6.5 | 8.6 | -12.6 | -0.7 |
| Mining | 21 | 6.397 | 159.9 | 181.0 | 42.4 | 2.1 | 6.6 | 18.3 | 13.2 |
| Oil and gas extraction..... | 211 | 6.187 | 157.4 | 178.7 | 43.6 | 2.1 | 6.9 | 18.9 | 13.5 |
| Mining (except oil and gas) (Dec. 2022=100)..... | 212 | 0.210 | 131.1 | 136.8 | 10.5 | 0.5 | 1.5 | 1.2 | 4.3 |
| Manufacturing | | 91.095 | 127.3 | 128.8 | 4.7 | 0.9 | 0.5 | 1.1 | 1.2 |
| Manufacturing, part 1 | 31 | 9.912 | 139.4 | 140.9 | -0.4 | 0.1 | -0.1 | 0.4 | 1.1 |
| Food manufacturing..... | 311 | 4.411 | 205.6 | 207.3 | -0.2 | -0.2 | 0.1 | 0.6 | 0.8 |
| Beverage and tobacco product manufacturing..... | 312 | 0.887 | 123.9 | 124.6 | -9.1 | 2.1 | -0.7 | 0.6 | 0.6 |
| Textile mills (Dec. 2023=100)..... | 313 | 0.276 | 100.6 | 104.0 | 3.4 | 0.5 | 0.3 | 0.2 | 3.4 |
| Textile product mills (Dec. 2023=100).... | 314 | 0.686 | 96.7 | 98.2 | 1.8 | 1.2 | 1.2 | 0.5 | 1.6 |
| Apparel manufacturing..... | 315 | 2.435 | 113.4 | 114.8 | 0.3 | -0.1 | -1.0 | 0.4 | 1.2 |
| Manufacturing, part 2 | 32 | 19.041 | 143.7 | 147.5 | 6.0 | 0.6 | 2.3 | 2.5 | 2.6 |
| Wood product manufacturing (Jan. 2025=100)..... | 321 | 0.709 | 92.9 | 93.2 | -4.8 | 2.0 | 0.7 | 0.8 | 0.3 |
| Paper manufacturing..... | 322 | 0.748 | 112.7 | 113.9 | -2.2 | 0.3 | 0.2 | -0.2 | 1.1 |
| Petroleum and coal products manufacturing..... | 324 | 2.397 | 168.1 | 188.3 | 57.3 | 3.8 | 21.5 | 20.8 | 12.0 |
| Chemical manufacturing..... | 325 | 11.920 | 151.0 | 152.6 | 1.3 | 0.3 | 0.5 | 0.5 | 1.1 |
| Plastics and rubber products manufacturing..... | 326 | 2.270 | 127.1 | 130.1 | 2.0 | 0.1 | -0.4 | 0.2 | 2.4 |
| Nonmetallic mineral product manufacturing..... | 327 | 0.874 | 140.0 | 143.1 | 0.8 | -0.6 | 0.6 | -0.8 | 2.2 |
| Manufacturing, part 3 | 33 | 62.142 | 119.3 | 120.3 | 5.2 | 1.1 | 0.1 | 0.7 | 0.8 |
| Primary metal manufacturing..... | 331 | 5.821 | 330.4 | 327.5 | 26.8 | 4.7 | -2.3 | 1.7 | -0.9 |
| Fabricated metal product manufacturing... | 332 | 2.963 | 145.3 | 148.9 | 3.8 | 0.4 | 0.1 | 3.3 | 2.5 |
| Machinery manufacturing..... | 333 | 7.877 | 136.1 | 136.3 | 2.4 | 0.1 | 0.3 | 0.2 | 0.1 |
| Computer and electronic product manufacturing..... | 334 | 17.923 | 75.5 | 77.0 | 7.7 | 1.9 | 0.8 | 1.9 | 2.0 |
| Electrical equipment, appliance, and component manufacturing..... | 335 | 6.117 | 125.3 | 125.4 | -1.3 | 0.0 | -0.1 | -1.1 | 0.1 |
| Transportation equipment manufacturing.. | 336 | 14.934 | 120.0 | 120.4 | 0.0 | 0.2 | 0.2 | -0.1 | 0.3 |
| Miscellaneous manufacturing..... | 339 | 5.049 | 137.6 | 138.9 | 5.3 | 1.1 | -0.1 | -0.5 | 0.9 |

¹ Relative importance values are based on 2024 trade values.

NOTES: Data may be revised in each of the 3 months after original publication.

Dash = Not available

Table 4. U.S. export price indexes and percent changes for NAICS industries: May 2025 to May 2026
 [December 2005=100, unless otherwise noted]

| Description | NAICS | Relative importance Apr. 2026 ¹ | Index | | Percent change | | | | |
|--|-------|--|--------------|-------------|-------------------------------|---------------------------------|---------------------------------|---------------------------------|--------------------------------|
| | | | Apr. 2026 | May 2026 | Annual | Monthly | | | |
| | | | | | May 2025 to May 2026 | Jan. 2026 to Feb. 2026 | Feb. 2026 to Mar. 2026 | Mar. 2026 to Apr. 2026 | Apr. 2026 to May 2026 |
| Nonmanufacturing..... | | 16.493 | 206.9 | 211.1 | 27.6 | 7.5 | 3.9 | 11.6 | 2.0 |
| Agriculture, forestry, fishing and hunting..... | 11 | 4.127 | 190.4 | 191.2 | 4.4 | 0.8 | 0.6 | 2.4 | 0.4 |
| Crop production..... | 111 | 3.895 | 202.4 | 203.3 | 4.4 | 0.9 | 0.7 | 2.4 | 0.4 |
| Animal production (Jan. 2025=100)..... | 112 | 0.107 | 106.8 | 107.7 | 10.1 | -5.1 | 1.2 | 4.0 | 0.8 |
| Forestry and logging (Jan. 2025=100).... | 113 | 0.093 | 99.3 | 99.8 | -3.9 | 0.2 | -2.3 | 2.2 | 0.5 |
| Fishing, hunting and trapping (Jan. 2025=100)..... | 114 | 0.032 | 99.6 | 95.1 | 10.7 | 10.9 | -1.9 | 3.3 | -4.5 |
| Mining..... | 21 | 12.366 | 138.8 | 142.4 | 37.6 | 10.4 | 5.2 | 15.0 | 2.6 |
| Oil and gas extraction (Dec. 2021=100)... | 211 | 11.184 | 126.9 | 130.9 | 39.9 | 10.8 | 5.7 | 17.2 | 3.2 |
| Mining (except oil and gas)..... | 212 | 1.182 | 136.1 | 132.4 | 19.1 | 6.7 | 1.8 | -1.8 | -2.7 |
| Manufacturing..... | | 81.691 | 147.7 | 149.4 | 8.1 | 0.8 | 1.1 | 2.1 | 1.2 |
| Manufacturing, part 1..... | 31 | 5.831 | 180.8 | 183.6 | 6.7 | 0.8 | 0.3 | 1.7 | 1.5 |
| Food manufacturing..... | 311 | 4.264 | 214.1 | 217.8 | 6.3 | 1.0 | 0.4 | 1.2 | 1.7 |
| Beverage and tobacco product manufacturing..... | 312 | 0.485 | 139.9 | 138.2 | 4.1 | -1.3 | 1.4 | 2.8 | -1.2 |
| Manufacturing, part 2..... | 32 | 25.764 | 148.5 | 151.7 | 13.3 | 1.1 | 3.9 | 5.9 | 2.2 |
| Wood product manufacturing (Dec. 2017=100)..... | 321 | 0.399 | 135.2 | 134.5 | 2.0 | -0.5 | -1.3 | 1.3 | -0.5 |
| Paper manufacturing (Jan. 2025=100).... | 322 | 1.199 | 99.8 | 99.8 | -2.8 | -1.0 | 0.7 | 1.6 | 0.0 |
| Petroleum and coal products manufacturing..... | 324 | 7.290 | 174.1 | 179.5 | 40.3 | 2.4 | 15.2 | 15.8 | 3.1 |
| Chemical manufacturing..... | 325 | 14.172 | 141.1 | 144.1 | 6.3 | 1.0 | 0.9 | 2.9 | 2.1 |
| Plastics and rubber products manufacturing..... | 326 | 1.941 | 138.5 | 140.2 | 3.5 | -0.9 | -1.9 | 1.1 | 1.2 |
| Nonmetallic mineral product manufacturing..... | 327 | 0.606 | 140.2 | 140.5 | 3.6 | 1.7 | -0.4 | 0.9 | 0.2 |
| Manufacturing, part 3..... | 33 | 50.096 | 143.9 | 144.7 | 5.7 | 0.7 | -0.1 | 0.3 | 0.6 |
| Primary metal manufacturing..... | 331 | 5.661 | 348.3 | 352.8 | 30.3 | 4.1 | -0.9 | -2.2 | 1.3 |
| Machinery manufacturing..... | 333 | 8.177 | 158.4 | 159.5 | 3.6 | 0.2 | 0.3 | 0.1 | 0.7 |
| Computer and electronic product manufacturing..... | 334 | 12.681 | 86.3 | 87.2 | 3.9 | 0.0 | 0.2 | 2.0 | 1.0 |
| Transportation equipment manufacturing.. | 336 | 12.661 | 156.5 | 156.5 | 1.6 | -0.1 | 0.2 | -0.2 | 0.0 |
| Furniture and related product manufacturing (Dec. 2023=100)..... | 337 | 0.288 | 113.0 | 113.0 | 7.4 | 0.3 | -0.3 | 0.9 | 0.0 |
| Miscellaneous manufacturing..... | 339 | 4.188 | 147.6 | 147.9 | 3.3 | 0.6 | -0.6 | 0.2 | 0.2 |

¹ Relative importance values are based on 2024 trade values.

NOTES: Data may be revised in each of the 3 months after original publication.

Dash = Not available

Table 5. U.S. import price indexes and percent changes for Harmonized categories of goods: May 2025 to May 2026

[2000=100, unless otherwise noted]

| Description | Harmoni- zied system | Relative importance Apr. 2026 ¹ | Index | | Percent change | | | | |
|--|----------------------------|---|--------------|-------------|-------------------------------|---------------------------------|---------------------------------|---------------------------------|--------------------------------|
| | | | Apr. 2026 | May 2026 | Annual | Monthly | | | |
| | | | | | May 2025 to May 2026 | Jan. 2026 to Feb. 2026 | Feb. 2026 to Mar. 2026 | Mar. 2026 to Apr. 2026 | Apr. 2026 to May 2026 |
| Live animals; animal products..... | I | 1.526 | 266.5 | 266.2 | 4.6 | -0.2 | 0.6 | 0.9 | -0.1 |
| Meat and edible meat offal..... | 02 | 0.528 | 399.9 | 401.5 | 6.6 | -1.0 | 0.0 | 1.9 | 0.4 |
| Fish and crustaceans, molluscs and other aquatic invertebrates..... | 03 | 0.669 | 164.5 | 164.7 | 4.2 | -0.5 | 2.2 | -0.6 | 0.1 |
| Dairy products, eggs, and honey (Jan. 2025=100)..... | 04 | 0.139 | 99.7 | 100.5 | -0.3 | -1.1 | -1.4 | -0.3 | 0.8 |
| Vegetable products..... | II | 2.113 | 278.8 | 273.9 | -1.4 | 0.2 | 3.5 | 1.2 | -1.8 |
| Live trees & plants; bulbs, roots; cut flowers and ornamental foliage (Jan. 2025=100)... | 06 | 0.140 | 85.7 | 87.2 | 4.3 | -0.8 | -9.7 | 9.7 | 1.8 |
| Edible vegetables, roots, and tubers..... | 07 | 0.534 | 126.1 | 118.7 | 18.7 | 3.9 | 15.1 | 4.9 | -5.9 |
| Edible fruit and nuts; peel of citrus fruit or melons..... | 08 | 0.708 | 122.4 | 120.1 | -8.1 | 0.5 | 3.5 | 0.8 | -1.9 |
| Coffee, tea, mate and spices..... | 09 | 0.423 | 385.9 | 383.5 | -13.3 | -3.3 | -2.8 | -4.1 | -0.6 |
| Cereals (Jan. 2025=100)..... | 10 | 0.089 | 95.6 | 95.9 | -1.3 | 0.4 | 4.1 | -0.5 | 0.3 |
| Milling industry products; malt; starches; inulin; wheat gluten (Jan. 2025=100)..... | 11 | 0.082 | 94.2 | 94.0 | -0.3 | 0.0 | 0.8 | 1.1 | -0.2 |
| Oilseeds & misc grains, seeds, plants, straw & fodder (Jan. 2025=100)..... | 12 | 0.084 | 98.7 | 104.5 | 7.2 | -3.3 | 3.4 | -1.7 | 5.9 |
| Animal or vegetable fats and oils (Dec. 2009=100)..... | III | 0.582 | 170.6 | 175.9 | 8.7 | 2.2 | -0.4 | 5.1 | 3.1 |
| Animal or vegetable fats and oils and their cleavage products; prepared (Dec. 2023=100)..... | 15 | 0.582 | 114.8 | 118.4 | 8.7 | 2.1 | -0.4 | 5.0 | 3.1 |
| Prepared foodstuffs, beverages, and tobacco..... | IV | 3.105 | 200.0 | 200.7 | -7.1 | 0.5 | -0.3 | -0.3 | 0.4 |
| Sugars and sugar confectionary (Dec. 2021=100)..... | 17 | 0.199 | 115.7 | 117.6 | -3.5 | -1.7 | 4.5 | -0.7 | 1.6 |
| Cocoa and cocoa preparations (Dec. 2009=100)..... | 18 | 0.281 | 239.2 | 232.0 | -28.1 | -1.0 | -2.2 | -4.9 | -3.0 |
| Preparations of cereals, flour, starch or milk; bakers' wares (Dec. 2023=100)..... | 19 | 0.481 | 98.5 | 98.5 | 0.6 | 0.8 | -0.3 | -0.3 | 0.0 |
| Preparations of vegetables, fruit, nuts, or other parts of plants (Jan. 2025=100)..... | 20 | 0.434 | 96.0 | 97.3 | -1.7 | -0.6 | -1.1 | 0.2 | 1.4 |
| Miscellaneous edible preparations (Dec. 2022=100)..... | 21 | 0.391 | 96.5 | 97.9 | -0.2 | 0.3 | 0.5 | -0.9 | 1.5 |
| Beverages, spirits, and vinegar..... | 22 | 0.835 | 133.4 | 134.1 | -9.9 | 2.4 | -1.3 | 0.7 | 0.5 |
| Residues and waste from the food industries; prepared animal feed (Jan. 2025=100)..... | 23 | 0.147 | 91.6 | 90.5 | -6.7 | -0.9 | 0.6 | 1.6 | -1.2 |
| Tobacco and manufactured tobacco substitutes (Jan. 2025=100)..... | 24 | 0.108 | 102.6 | 98.8 | -1.9 | 0.6 | 2.4 | 1.9 | -3.7 |
| Mineral products..... | V | 8.899 | 330.9 | 373.4 | 45.5 | 2.4 | 10.2 | 18.6 | 12.8 |
| Salt; sulfur; earths and stone; plaster materials, lime & cement (Jan. 2025=100)..... | 25 | 0.168 | 110.7 | 114.1 | 14.2 | 4.1 | 2.7 | 0.7 | 3.1 |
| Ores, slag and ash (Jan. 2025=100)..... | 26 | 0.112 | 103.6 | 111.6 | 8.2 | -4.8 | 0.9 | 0.6 | 7.7 |
| Mineral fuels, oils and residuals, bituminous substances and mineral waxes..... | 27 | 8.620 | 323.7 | 366.1 | 46.9 | 2.5 | 10.5 | 19.4 | 13.1 |
| Products of the chemical or allied industries..... | VI | 11.416 | 172.4 | 173.7 | 1.3 | 0.1 | 0.5 | 0.3 | 0.8 |
| Inorganic chemicals (Dec. 2024=100)..... | 28 | 0.547 | 95.0 | 94.1 | 2.0 | -1.0 | -1.1 | -0.7 | -0.9 |
| Organic chemicals..... | 29 | 1.928 | 123.2 | 125.5 | -5.1 | 1.0 | 0.7 | 2.1 | 1.9 |
| Pharmaceutical products..... | 30 | 6.742 | 161.3 | 161.6 | 3.7 | -0.1 | 0.8 | -0.1 | 0.2 |
| Fertilizers (Dec. 2022=100)..... | 31 | 0.324 | 72.9 | 77.0 | 16.0 | -0.1 | 2.3 | 4.3 | 5.6 |

See footnotes at end of table.

Table 5. U.S. import price indexes and percent changes for Harmonized categories of goods: May 2025 to May 2026 — Continued

[2000=100, unless otherwise noted]

| Description | Harmonized system | Relative importance Apr. 2026 ¹ | Index | | Percent change | | | | |
|---|-------------------|--|-----------|----------|----------------------|------------------------|------------------------|------------------------|-----------------------|
| | | | Apr. 2026 | May 2026 | Annual | Monthly | | | |
| | | | | | May 2025 to May 2026 | Jan. 2026 to Feb. 2026 | Feb. 2026 to Mar. 2026 | Mar. 2026 to Apr. 2026 | Apr. 2026 to May 2026 |
| Soap, lubricants; waxes, candles, polishing products, and modeling paste (Dec. 2024=100)..... | 34 | 0.188 | 99.1 | 100.8 | 1.2 | 0.2 | 1.5 | -1.7 | 1.7 |
| Albuminoidal substances; modified starches; glues; enzymes (Jan. 2025=100)..... | 35 | 0.110 | 97.2 | 96.9 | 3.3 | 0.3 | -1.5 | 2.3 | -0.3 |
| Miscellaneous chemical products..... | 38 | 0.704 | 109.8 | 110.4 | 0.7 | 1.1 | 0.9 | -1.9 | 0.5 |
| Plastics and articles thereof; rubber and articles thereof..... | VII | 3.216 | 150.0 | 155.5 | 3.3 | 0.3 | -0.3 | 1.1 | 3.7 |
| Plastics and articles thereof..... | 39 | 2.208 | 147.6 | 154.1 | 5.3 | 0.6 | 0.1 | 1.7 | 4.4 |
| Rubber and articles thereof..... | 40 | 1.008 | 157.3 | 160.6 | -0.8 | -0.1 | -1.0 | -0.1 | 2.1 |
| Raw hides, skins, leather, furskins, travel goods, etc (Dec. 2025=100)..... | VIII | 0.413 | 98.5 | 99.3 | — | 0.1 | -0.6 | -0.4 | 0.8 |
| Articles of leather; travel goods, bags, etc. of various materials (Dec. 2025=100)..... | 42 | 0.395 | 98.3 | 99.0 | — | 0.2 | -0.9 | -0.4 | 0.7 |
| Wood, wood charcoal, cork, straw, basketware and wickerwork (Jan. 2025=100)..... | IX | 0.724 | 92.9 | 93.5 | -5.0 | 1.7 | 1.0 | 0.3 | 0.6 |
| Wood and articles of wood; wood charcoal (Jan. 2025=100)..... | 44 | 0.695 | 92.4 | 93.4 | -5.0 | 1.9 | 0.3 | 0.7 | 1.1 |
| Woodpulp, recovered paper, and paper products (Jan. 2025=100)..... | X | 0.835 | 95.6 | 96.0 | -2.2 | 0.3 | -0.2 | -0.1 | 0.4 |
| Pulp wood, waste paper, and paperboard (Jan. 2025=100)..... | 47 | 0.116 | 88.9 | 87.3 | -16.5 | 1.0 | -1.3 | 0.8 | -1.8 |
| Paper and paperboard; articles of paper pulp, paper or paperboard (Jan. 2025=100)..... | 48 | 0.557 | 95.9 | 96.9 | 0.4 | 0.4 | 0.0 | -0.4 | 1.0 |
| Textile and textile articles..... | XI | 3.312 | 115.2 | 116.9 | 0.4 | 0.3 | -0.4 | 0.3 | 1.5 |
| Manmade filaments, yarns and woven fabrics (Jan. 2025=100)..... | 54 | 0.053 | 93.9 | 99.8 | 0.7 | 1.0 | -0.3 | -0.1 | 6.3 |
| Manmade staple fibers, yarns & woven fabrics (Jan. 2025=100)..... | 55 | 0.046 | 94.0 | 95.8 | -1.0 | -3.1 | 1.9 | -0.4 | 1.9 |
| Wadding, felt and nonwovens; special yarns; twine, cordage, and ropes (Jan. 2025=100)..... | 56 | 0.085 | 96.7 | 101.4 | 2.6 | 2.8 | -3.3 | 1.4 | 4.9 |
| Articles of apparel and clothing accessories, knitted or crocheted (Dec. 2023=100)..... | 61 | 1.322 | 94.4 | 95.2 | -0.2 | -0.3 | -1.2 | 0.5 | 0.8 |
| Articles of apparel and clothing accessories, not knitted or crocheted..... | 62 | 1.028 | 122.1 | 123.8 | 0.0 | 0.7 | -0.8 | 0.2 | 1.4 |
| Made-up or worn textile articles (Dec. 2023=100)..... | 63 | 0.494 | 94.1 | 95.8 | 1.6 | 1.2 | 2.4 | -0.1 | 1.8 |
| Headgear, umbrellas, artificial flowers, etc..... | XII | 1.018 | 125.8 | 128.1 | 3.9 | 0.1 | 0.4 | -0.9 | 1.8 |
| Footwear and parts of such articles..... | 64 | 0.840 | 123.8 | 125.7 | 3.5 | -0.9 | 0.9 | -1.7 | 1.5 |
| Stone, plaster, cement, asbestos, ceramics, glass etc..... | XIII | 0.771 | 132.5 | 135.6 | 0.5 | -0.5 | 0.5 | -0.6 | 2.3 |
| Articles of stone, plaster, cement, asbestos, or mica (Dec. 2020=100)..... | 68 | 0.278 | 94.9 | 98.6 | 2.5 | 0.1 | -1.5 | 1.3 | 3.9 |
| Ceramic products (Dec. 2024=100)..... | 69 | 0.224 | 98.5 | 96.5 | -1.3 | -0.2 | 1.7 | -0.6 | -2.0 |
| Glass and glassware (Dec. 2021=100)..... | 70 | 0.269 | 106.8 | 111.3 | 0.1 | -1.5 | 1.4 | -2.3 | 4.2 |
| Pearls, stones, precious metals, imitation jewelry, and coins..... | XIV | 4.461 | 396.9 | 384.6 | 31.7 | 4.0 | -3.0 | -0.3 | -3.1 |
| Pearls, precious stones, precious metals jewelry, coin (Dec. 2023=100)..... | 71 | 4.461 | 176.3 | 170.9 | 31.7 | 3.9 | -3.0 | -0.3 | -3.1 |
| Base metals and articles of base metals. ... | XV | 5.297 | 242.8 | 249.1 | 10.0 | 2.2 | 0.6 | 3.7 | 2.6 |

See footnotes at end of table.

Table 5. U.S. import price indexes and percent changes for Harmonized categories of goods: May 2025 to May 2026 — Continued

[2000=100, unless otherwise noted]

| Description | Harmoni- zied system | Relative importance Apr. 2026 ¹ | Index | | Percent change | | | | |
|--|----------------------------|---|--------------|-------------|-------------------------------|---------------------------------|---------------------------------|---------------------------------|--------------------------------|
| | | | Apr. 2026 | May 2026 | Annual | Monthly | | | |
| | | | | | May 2025 to May 2026 | Jan. 2026 to Feb. 2026 | Feb. 2026 to Mar. 2026 | Mar. 2026 to Apr. 2026 | Apr. 2026 to May 2026 |
| Iron and steel (Jan. 2025=100)..... | 72 | 0.872 | 94.8 | 96.4 | -1.0 | 0.2 | 1.1 | 2.2 | 1.7 |
| Articles of iron or steel..... | 73 | 1.474 | 184.0 | 191.5 | 3.6 | -0.4 | -0.5 | 4.6 | 4.1 |
| Copper and articles thereof..... | 74 | 0.689 | 546.9 | 553.6 | 24.7 | 7.6 | -0.4 | 2.9 | 1.2 |
| Nickel and articles thereof (Jan. 2025=100)..... | 75 | 0.108 | 105.8 | 102.5 | 4.4 | 1.7 | 1.1 | 3.2 | -3.1 |
| Aluminum and articles thereof..... | 76 | 1.025 | 240.1 | 248.9 | 23.0 | 4.6 | 1.4 | 7.2 | 3.7 |
| Lead and articles thereof (Jan. 2025=100)... | 78 | 0.028 | 101.0 | 105.9 | 4.0 | 1.1 | -1.0 | -3.4 | 4.9 |
| Zinc and articles thereof (Jan. 2025=100)... | 79 | 0.075 | 109.8 | 109.4 | 16.4 | 0.7 | 0.6 | 1.8 | -0.4 |
| Tin and articles thereof (Jan. 2025=100)..... | 80 | 0.042 | 153.2 | 156.3 | 45.1 | 10.4 | 4.1 | 1.6 | 2.0 |
| Base metals nesoi; cermets; articles thereof (Jan. 2025=100)..... | 81 | 0.142 | 129.2 | 130.1 | 24.5 | 6.8 | 4.1 | 5.4 | 0.7 |
| Tools, implements, cutlery, spoons and forks, of base metal; parts thereof..... | 82 | 0.356 | 138.1 | 140.6 | 8.8 | 0.9 | 0.2 | 2.9 | 1.8 |
| Miscellaneous articles of base metal..... | 83 | 0.486 | 147.0 | 150.4 | 5.0 | 1.3 | 1.6 | -1.1 | 2.3 |
| Machinery, electrical equipment, TV image and sound recorders, parts, etc..... | XVI | 31.774 | 85.3 | 86.4 | 4.9 | 1.1 | 0.5 | 1.1 | 1.3 |
| Machinery and mechanical appliances; parts thereof..... | 84 | 17.112 | 96.1 | 98.2 | 8.9 | 1.7 | 0.7 | 2.1 | 2.2 |
| Electrical machinery and equip, sound and TV recorders & reproducers, parts..... | 85 | 14.663 | 75.3 | 75.6 | 0.7 | 0.3 | 0.3 | -0.1 | 0.4 |
| Vehicles, aircraft, vessels and associated transport equipment..... | XVII | 12.733 | 123.9 | 124.0 | -0.2 | 0.2 | 0.2 | -0.1 | 0.1 |
| Motor vehicles and their parts..... | 87 | 11.724 | 122.4 | 122.4 | -0.4 | 0.2 | 0.0 | 0.0 | 0.0 |
| Optical, photo, measuring, medical & musical instruments; & timepieces..... | XVIII | 4.108 | 113.8 | 113.9 | 1.1 | 0.6 | 0.4 | -0.6 | 0.1 |
| Optical, photographic, measuring and medical instruments..... | 90 | 3.818 | 109.1 | 109.2 | 1.3 | 0.6 | 0.2 | -0.1 | 0.1 |
| Miscellaneous manufactured articles..... | XX | 3.623 | 121.6 | 121.9 | 0.3 | 0.3 | -0.1 | -0.1 | 0.2 |
| Toys, games and sports equipment; parts and accessories thereof..... | 95 | 1.257 | 106.6 | 106.6 | -0.2 | 0.0 | -0.2 | -0.2 | 0.0 |
| Miscellaneous manufactured articles..... | 96 | 0.266 | 151.7 | 153.0 | 1.3 | 1.4 | 1.3 | 0.5 | 0.9 |

¹ Relative importance values are based on 2024 trade values.

NOTES: Data may be revised in each of the 3 months after original publication.

Dash = Not available

Table 6. U.S. export price indexes and percent changes for Harmonized categories of goods: May 2025 to May 2026

[2000=100, unless otherwise noted]

| Description | Harmoni- zied system | Relative importance Apr. 2026 ¹ | Index | | Percent change | | | | |
|--|----------------------------|---|--------------|-------------|-------------------------------|---------------------------------|---------------------------------|---------------------------------|--------------------------------|
| | | | Apr. 2026 | May 2026 | Annual | Monthly | | | |
| | | | | | May 2025 to May 2026 | Jan. 2026 to Feb. 2026 | Feb. 2026 to Mar. 2026 | Mar. 2026 to Apr. 2026 | Apr. 2026 to May 2026 |
| Live animals; animal products..... | I | 1.815 | 296.2 | 302.2 | 8.0 | 1.8 | 0.9 | 1.6 | 2.0 |
| Meat & edible meat offal (Dec. 2006=100)... | 02 | 1.133 | 258.9 | 261.9 | 6.8 | 2.4 | 0.5 | 1.6 | 1.2 |
| Fish and crustaceans, mollusks and aquatic invertebrates (Jan. 2025=100)..... | 03 | 0.243 | 105.8 | 105.3 | 6.9 | 3.2 | 0.2 | -1.0 | -0.5 |
| Dairy products, eggs and honey (Jan. 2025=100)..... | 04 | 0.318 | 98.9 | 106.1 | 10.1 | 1.3 | 1.9 | 3.7 | 7.3 |
| Products of animal origin, nesoi (Jan. 2025=100)..... | 05 | 0.051 | 108.2 | 111.6 | 11.4 | -3.3 | 3.3 | -1.7 | 3.1 |
| Vegetable products..... | II | 4.010 | 254.7 | 255.4 | 4.6 | 0.7 | 0.9 | 2.3 | 0.3 |
| Edible Vegetables (Jan. 2025=100)..... | 07 | 0.318 | 104.3 | 108.9 | 11.5 | 5.3 | -3.4 | 2.4 | 4.4 |
| Edible fruit and nuts; citrus or melon peels... | 08 | 0.967 | 199.5 | 198.1 | 1.1 | 0.5 | -0.3 | 3.7 | -0.7 |
| Cereals..... | 10 | 1.133 | 230.7 | 232.3 | 0.5 | -1.3 | 1.0 | 2.3 | 0.7 |
| Milling industry products; malt; starches; inulin; wheat gluten (Jan. 2025=100)..... | 11 | 0.058 | 99.4 | 100.5 | 1.1 | -1.6 | -0.5 | 0.9 | 1.1 |
| Oilseeds and misc. grains, seeds, fruits, plants, straw and fodder..... | 12 | 1.413 | 236.2 | 235.1 | 8.5 | 1.6 | 3.0 | 1.5 | -0.5 |
| Animal or vegetable fats and oils (Jan. 2025=100)..... | III | 0.121 | 109.0 | 110.2 | 9.8 | 1.7 | -1.3 | 6.2 | 1.1 |
| Animal or vegetable fats & oils (Jan. 2025=100)..... | 15 | 0.121 | 109.0 | 110.2 | 9.8 | 1.7 | -1.3 | 6.2 | 1.1 |
| Prepared foodstuffs, beverages, and tobacco..... | IV | 2.771 | 187.8 | 190.4 | 4.6 | 0.1 | 0.4 | 0.9 | 1.4 |
| Edible preps of meat, of fish, or of aquatic invertebrates (Jan. 2025=100)..... | 16 | 0.131 | 104.9 | 106.6 | 4.4 | 0.6 | 2.4 | -1.2 | 1.6 |
| Sugars and sugar confectionary (Jan. 2025=100)..... | 17 | 0.145 | 104.3 | 103.8 | 4.4 | 1.0 | 1.3 | -0.6 | -0.5 |
| Cocoa and cocoa preparations (Jan. 2025=100)..... | 18 | 0.192 | 114.1 | 115.9 | 8.7 | 3.6 | -4.2 | 2.1 | 1.6 |
| Preparations of cereals, flour, starch or milk; bakers' wares (Dec. 2023=100)..... | 19 | 0.258 | 106.3 | 107.2 | 2.6 | 2.0 | 0.3 | -1.2 | 0.8 |
| Preparations of vegetables, fruit, nuts or other parts of plants (Jan. 2025=100)..... | 20 | 0.282 | 102.1 | 103.3 | 2.5 | 0.1 | 0.7 | -0.9 | 1.2 |
| Miscellaneous edible preparations (Dec. 2017=100)..... | 21 | 0.537 | 122.7 | 124.1 | 3.8 | -0.6 | -1.5 | 1.5 | 1.1 |
| Beverages, spirits, and vinegar (Dec. 2024=100)..... | 22 | 0.504 | 102.0 | 105.5 | 4.6 | -3.9 | 3.1 | 1.3 | 3.4 |
| Residues and waste from the food industries; prepared animal feed..... | 23 | 0.639 | 247.5 | 250.4 | 6.6 | 1.6 | 0.7 | 1.6 | 1.2 |
| Mineral products..... | V | 19.616 | 357.3 | 367.2 | 39.0 | 7.4 | 8.8 | 15.5 | 2.8 |
| Ores, slag and ash (Dec. 2012=100)..... | 26 | 0.546 | 182.7 | 179.1 | 33.0 | 8.9 | -1.0 | -1.1 | -2.0 |
| Mineral fuels, oils and residuals, bituminous substances and mineral waxes..... | 27 | 18.907 | 341.2 | 351.3 | 39.5 | 7.4 | 9.2 | 16.2 | 3.0 |
| Products of the chemical or allied industries..... | VI | 12.259 | 174.0 | 175.2 | 4.8 | 1.3 | 0.3 | 1.9 | 0.7 |
| Inorganic chemicals (Jan. 2025=100)..... | 28 | 0.942 | 111.5 | 113.5 | 10.2 | 2.2 | -0.6 | 1.3 | 1.8 |
| Organic chemicals (Jan. 2025=100)..... | 29 | 2.705 | 106.3 | 107.7 | 7.8 | 2.7 | 2.2 | 6.1 | 1.3 |
| Pharmaceutical products..... | 30 | 4.562 | 109.5 | 109.7 | 2.2 | 0.3 | 0.4 | -0.3 | 0.2 |
| Fertilizers (Jan. 2025=100)..... | 31 | 0.309 | 115.4 | 112.6 | 5.2 | 0.9 | 0.2 | 5.5 | -2.4 |
| Tanning or dyeing extracts, dyes, paints varnish, putty, & inks (Dec. 2024=100).... | 32 | 0.420 | 110.7 | 112.3 | 2.7 | -0.4 | 0.1 | 0.6 | 1.4 |
| Miscellaneous chemical products..... | 38 | 1.766 | 201.3 | 200.0 | 3.3 | 2.3 | -0.8 | 1.4 | -0.6 |
| Rubber and articles thereof..... | 40 | 0.700 | 199.6 | 206.6 | 3.0 | 1.8 | 0.5 | 0.6 | 3.5 |

See footnotes at end of table.

Table 6. U.S. export price indexes and percent changes for Harmonized categories of goods: May 2025 to May 2026 — Continued

[2000=100, unless otherwise noted]

| Description | Harmoni- zied system | Relative importance Apr. 2026 ¹ | Index | | Percent change | | | | |
|--|----------------------------|---|--------------|--------------|-------------------------------|---------------------------------|---------------------------------|---------------------------------|--------------------------------|
| | | | Apr. 2026 | May 2026 | Annual | Monthly | | | |
| | | | | | May 2025 to May 2026 | Jan. 2026 to Feb. 2026 | Feb. 2026 to Mar. 2026 | Mar. 2026 to Apr. 2026 | Apr. 2026 to May 2026 |
| Raw hides and skins other than furskins and leather (Jan. 2025=100)..... | 41 | 0.060 | 93.2 | 92.6 | 2.2 | -7.3 | -1.8 | 4.1 | -0.6 |
| Wood, wood charcoal, cork, straw, baskets and wickerwork (Dec. 2014=100)..... | IX | 0.463 | 120.3 | 119.5 | 0.8 | -0.6 | -1.5 | 1.5 | -0.7 |
| Wood and articles of wood; wood charcoal (Dec. 2023=100)..... | 44 | 0.461 | 112.1 | 111.3 | 0.5 | -0.4 | -1.5 | 1.5 | -0.7 |
| Woodpulp, recovered paper, and paper products (Jan. 2025=100)..... | X | 1.309 | 99.6 | 99.9 | -1.6 | 0.7 | 0.5 | 0.6 | 0.3 |
| Woodpulp and recovered paper (Dec. 2019=100)..... | 47 | 0.371 | 160.6 | 161.5 | -9.3 | -0.3 | 1.9 | 0.7 | 0.6 |
| Paper and paperboard; articles of paper pulp, paper or paperboard (Jan. 2025=100)..... | 48 | 0.749 | 100.7 | 101.5 | 1.0 | 0.3 | 0.0 | 0.8 | 0.8 |
| Textile and textile articles (Jan. 2025=100).. | XI | 1.146 | 104.0 | 106.4 | 6.7 | 1.4 | -1.1 | 3.0 | 2.3 |
| Cotton, yarns and woven fabrics thereof.... | 52 | 0.245 | 132.1 | 137.2 | 2.5 | -1.8 | -1.2 | 2.8 | 3.9 |
| Manmade filaments, yarns and woven fabrics (Jan. 2025=100)..... | 54 | 0.067 | 100.8 | 104.7 | 1.7 | 1.9 | -4.4 | 3.0 | 3.9 |
| Manmade staple fibers, yarns and woven fabrics (Jan. 2025=100)..... | 55 | 0.099 | 97.9 | 97.2 | -2.5 | 1.5 | -0.5 | 1.9 | -0.7 |
| Stone, plaster, cement, asbestos, ceramics, glass etc..... | XIII | 0.649 | 167.6 | 168.2 | 4.0 | 1.5 | -0.4 | 0.7 | 0.4 |
| Glass and glassware (Dec. 2019=100)..... | 70 | 0.306 | 121.5 | 122.1 | 3.2 | 1.7 | -1.7 | 2.1 | 0.5 |
| Pearls, stones, precious metals, imitation jewelry, and coins..... | XIV | 5.549 | 556.6 | 562.2 | 34.4 | 6.5 | -1.0 | -3.7 | 1.0 |
| Pearls, precious stones, precious metals; jewelry, coin (Dec. 2023=100)..... | 71 | 5.549 | 178.3 | 180.1 | 34.4 | 6.6 | -1.0 | -3.7 | 1.0 |
| Base metals and articles of base metals. ... | XV | 4.764 | 244.8 | 248.5 | 14.1 | 2.3 | 0.3 | 1.8 | 1.5 |
| Iron and steel (Jan. 2025=100)..... | 72 | 0.958 | 109.1 | 110.8 | 7.1 | 1.4 | 1.5 | 0.9 | 1.6 |
| Copper and articles thereof..... | 74 | 0.731 | 369.7 | 390.1 | 29.8 | 5.9 | -1.0 | 2.0 | 5.5 |
| Aluminum and articles thereof..... | 76 | 0.852 | 196.4 | 200.5 | 24.5 | 4.2 | 0.6 | 4.3 | 2.1 |
| Machinery, electrical equipment, TV image and sound recorders, parts, etc..... | XVI | 25.456 | 113.5 | 113.8 | 2.5 | 0.2 | 0.1 | 0.7 | 0.3 |
| Machinery and mechanical appliances; parts thereof..... | 84 | 15.057 | 140.4 | 140.8 | 2.7 | 0.2 | 0.2 | 0.4 | 0.3 |
| Electrical machinery and equipment and parts and accessories thereof..... | 85 | 10.400 | 85.7 | 85.7 | 2.1 | 0.0 | 0.0 | 1.3 | 0.0 |
| Vehicles, aircraft, vessels and associated transport equipment..... | XVII | 9.084 | 162.6 | 162.8 | 2.5 | 0.2 | 0.1 | 0.1 | 0.1 |
| Motor vehicles and their parts..... | 87 | 6.486 | 135.0 | 134.9 | 2.4 | 0.1 | 0.1 | 0.0 | -0.1 |
| Aircraft, spacecraft, and parts thereof (excluding military) (Dec. 2025=100)..... | 88 | 2.471 | 101.7 | 102.2 | - | 0.5 | 0.1 | 0.4 | 0.5 |
| Miscellaneous manufactured articles..... | XX | 1.028 | 152.4 | 152.9 | 8.1 | 0.5 | 0.9 | 0.8 | 0.3 |
| Furniture; stuffed furnishings; lamps and lighting fittings nesoi..... | 94 | 0.521 | 165.3 | 166.0 | 9.6 | 0.2 | 1.2 | 0.9 | 0.4 |
| Toys, games and sports equipment; parts and accessories thereof..... | 95 | 0.372 | 134.4 | 134.5 | 5.3 | 0.8 | 0.5 | -0.1 | 0.1 |

¹ Relative importance values are based on 2024 trade values.

NOTES: Data may be revised in each of the 3 months after original publication.

Dash = Not available

Table 7. U.S. import price indexes and percent changes by locality of origin: May 2025 to May 2026
 [2000=100, unless otherwise noted]

| Description | Relative importance Apr. 2026 ¹ | Index | | Percent change | | | | |
|---|--|-----------|----------|-----------------------------------|---------------------------|---------------------------|---------------------------|--------------------------|
| | | Apr. 2026 | May 2026 | Annual May 2025 to May 2026 | Monthly | | | |
| | | | | | Jan. 2026 to Feb. 2026 | Feb. 2026 to Mar. 2026 | Mar. 2026 to Apr. 2026 | Apr. 2026 to May 2026 |
| Industrialized Countries² | 100.000 | 156.7 | 159.7 | 8.9 | 1.0 | 0.6 | 2.3 | 1.9 |
| Nonmanufacturing..... | 11.445 | 284.6 | 319.2 | 38.8 | 1.4 | 3.5 | 16.3 | 12.2 |
| Manufacturing..... | 88.045 | 146.4 | 147.3 | 5.5 | 1.0 | 0.3 | 0.6 | 0.6 |
| Canada | 100.000 | 189.1 | 198.4 | 18.3 | 1.2 | 2.7 | 6.2 | 4.9 |
| Nonmanufacturing..... | 32.250 | 278.8 | 313.4 | 40.2 | 1.5 | 3.4 | 17.2 | 12.4 |
| Manufacturing..... | 66.818 | 168.4 | 170.7 | 9.1 | 1.1 | 2.3 | 1.7 | 1.4 |
| European Union | 100.000 | 161.7 | 162.7 | 3.2 | 0.6 | 0.5 | 0.3 | 0.6 |
| Manufacturing..... | 99.300 | 157.2 | 158.2 | 3.3 | 0.8 | 0.4 | 0.3 | 0.6 |
| France (Dec. 2003=100) | 100.000 | 159.2 | 163.9 | 3.9 | 0.6 | 1.0 | 0.3 | 3.0 |
| Germany (Dec. 2003=100) | 100.000 | 131.4 | 132.6 | 4.6 | -0.2 | 0.7 | -0.1 | 0.9 |
| United Kingdom (Dec. 2003=100) | 100.000 | 139.1 | 140.9 | 1.4 | 0.2 | 0.1 | 0.4 | 1.3 |
| Latin America³ | 100.000 | 184.6 | 185.5 | 5.6 | 0.7 | 1.7 | 1.7 | 0.5 |
| Nonmanufacturing..... | 14.684 | 396.5 | 397.6 | 20.2 | 2.7 | 9.7 | 11.1 | 0.3 |
| Manufacturing..... | 84.803 | 146.4 | 147.2 | 3.4 | 0.3 | 0.6 | 0.2 | 0.5 |
| Mexico (Dec. 2003=100) | 100.000 | 154.5 | 154.8 | 3.6 | 0.2 | 1.1 | 1.2 | 0.2 |
| Nonmanufacturing (Dec. 2008=100)..... | 7.596 | 214.7 | 206.4 | 22.2 | 4.6 | 15.0 | 13.9 | -3.9 |
| Manufacturing (Dec. 2008=100)..... | 91.944 | 104.6 | 105.1 | 2.4 | -0.1 | 0.2 | 0.3 | 0.5 |
| Pacific Rim (Dec. 2003=100)⁴ | 100.000 | 104.5 | 106.3 | 4.2 | 1.2 | 0.5 | 1.0 | 1.7 |
| China (Dec. 2003=100) | 100.000 | 97.9 | 98.8 | 1.1 | 0.2 | 0.4 | 0.0 | 0.9 |
| Japan | 100.000 | 103.6 | 104.0 | 2.0 | 0.4 | 0.0 | 0.5 | 0.4 |
| Taiwan (Dec. 2018=100) | 100.000 | 115.7 | 117.4 | 5.2 | 0.9 | 0.6 | 1.6 | 1.5 |
| Asian NICs⁵ | 100.000 | 99.6 | 102.3 | 7.5 | 2.1 | 1.7 | 2.4 | 2.7 |
| ASEAN (Dec. 2003=100)⁶ | 100.000 | 103.1 | 103.9 | 1.3 | 0.8 | 0.3 | 0.2 | 0.8 |
| Asia Near East (Dec. 2003=100)⁷ | 100.000 | 218.0 | 248.1 | 21.7 | 0.1 | 3.5 | 7.5 | 13.8 |

¹ Relative importance values are based on 2024 trade values.

² Western Europe, Canada, Japan, Australia, New Zealand, and South Africa.

³ Mexico, Central America, South America, and the Caribbean.

⁴ China, Japan, Australia, Brunei, Indonesia, Macao, Malaysia, New Zealand, Papua New Guinea, Philippines, and the Asian Newly Industrialized Countries.

⁵ Asian Newly Industrialized Countries - Hong Kong, Singapore, South Korea, and Taiwan.

⁶ Association of Southeast Asian Nations - Brunei, Cambodia, Indonesia, Laos, Malaysia, Myanmar, Philippines, Singapore, Thailand, and Vietnam.

⁷ Bahrain, Iran, Iraq, Israel, Jordan, Kuwait, Lebanon, Oman, Qatar, Saudi Arabia, Syria, United Arab Emirates, and Yemen.

NOTES: Data may be revised in each of the 3 months after original publication.

Regions are not mutually exclusive.

Dash = Not available

Table 8. U.S. export price indexes and percent changes by locality of destination: May 2025 to May 2026
 [December 2017=100, unless otherwise noted]

| Description | Relative importance Apr. 2026 ¹ | Index | | Percent change | | | | |
|---|--|-----------|----------|-----------------------------------|---------------------------|---------------------------|---------------------------|--------------------------|
| | | Apr. 2026 | May 2026 | Annual May 2025 to May 2026 | Monthly | | | |
| | | | | | Jan. 2026 to Feb. 2026 | Feb. 2026 to Mar. 2026 | Mar. 2026 to Apr. 2026 | Apr. 2026 to May 2026 |
| Industrialized Countries² | 100.000 | 140.0 | 141.5 | 12.0 | 2.3 | 1.2 | 2.6 | 1.1 |
| Nonmanufacturing..... | 16.779 | 179.7 | 185.2 | 37.5 | 9.0 | 8.4 | 12.7 | 3.1 |
| Manufacturing..... | 81.317 | 133.6 | 134.3 | 7.0 | 1.0 | 0.0 | 0.9 | 0.5 |
| Canada | 100.000 | 142.1 | 143.4 | 9.0 | 1.7 | 0.4 | 1.4 | 0.9 |
| Nonmanufacturing (Dec. 2020=100)..... | 10.062 | 175.5 | 172.0 | 23.7 | 8.0 | 3.6 | 7.7 | -2.0 |
| Manufacturing (Dec. 2020=100)..... | 86.755 | 128.6 | 130.4 | 6.8 | 0.7 | 0.3 | 0.7 | 1.4 |
| European Union | 100.000 | 134.4 | 136.4 | 14.3 | 3.0 | 3.0 | 4.8 | 1.5 |
| Nonmanufacturing..... | 24.645 | 174.5 | 180.3 | 45.4 | 9.6 | 10.5 | 16.6 | 3.3 |
| Manufacturing..... | 74.335 | 125.4 | 126.2 | 5.9 | 1.2 | 0.8 | 1.5 | 0.6 |
| Germany | 100.000 | 142.7 | 145.9 | 14.7 | 3.0 | 1.8 | 1.6 | 2.2 |
| Latin America³ | 100.000 | 134.5 | 137.5 | 12.0 | 1.2 | 2.6 | 4.0 | 2.2 |
| Nonmanufacturing..... | 8.447 | 156.4 | 166.1 | 12.8 | 3.8 | -3.4 | 0.8 | 6.2 |
| Manufacturing..... | 91.082 | 133.1 | 135.6 | 11.9 | 0.8 | 3.3 | 4.3 | 1.9 |
| Mexico | 100.000 | 135.3 | 137.7 | 9.6 | 1.2 | 1.9 | 2.7 | 1.8 |
| Nonmanufacturing..... | 7.499 | 137.7 | 146.8 | 8.9 | 2.4 | -5.8 | -0.3 | 6.6 |
| Manufacturing..... | 91.895 | 136.3 | 138.2 | 9.7 | 1.1 | 2.5 | 3.0 | 1.4 |
| Pacific Rim⁴ | 100.000 | 124.6 | 125.7 | 10.3 | 1.7 | 1.4 | 3.3 | 0.9 |
| Nonmanufacturing..... | 22.327 | 133.4 | 136.5 | 29.9 | 5.1 | 6.3 | 12.5 | 2.3 |
| Manufacturing..... | 75.761 | 123.7 | 124.1 | 5.1 | 0.8 | 0.2 | 1.0 | 0.3 |
| China | 100.000 | 113.9 | 115.6 | 5.5 | 0.1 | 1.8 | 0.6 | 1.5 |
| Nonmanufacturing..... | 22.971 | 98.4 | 98.9 | 2.3 | 0.3 | 0.2 | 1.8 | 0.5 |
| Manufacturing..... | 74.491 | 121.2 | 123.2 | 5.6 | -0.1 | 2.4 | 0.1 | 1.7 |
| Japan | 100.000 | 123.6 | 123.3 | 8.7 | 2.6 | -0.9 | 1.8 | -0.2 |
| Nonmanufacturing..... | 20.889 | 121.1 | 122.7 | 7.3 | 8.8 | -8.0 | 4.3 | 1.3 |
| Manufacturing..... | 77.807 | 123.6 | 122.5 | 8.4 | 0.8 | 1.0 | 1.3 | -0.9 |

¹ Relative importance values are based on 2024 trade values.

² Western Europe, Canada, Japan, Australia, New Zealand, and South Africa.

³ Mexico, Central America, South America, and the Caribbean.

⁴ China, Japan, Australia, Brunei, Indonesia, Macao, Malaysia, New Zealand, Papua New Guinea, Philippines, and the Asian Newly Industrialized Countries.

NOTES: Data may be revised in each of the 3 months after original publication.

Regions are not mutually exclusive.

Dash = Not available

Table 9. U.S. terms of trade indexes and percent changes by locality: May 2025 to May 2026¹
 [December 2017=100, unless otherwise noted]

| Description | Index | | Percent change | | | | |
|---|-----------|----------|----------------------|------------------------|------------------------|------------------------|-----------------------|
| | Apr. 2026 | May 2026 | Annual | Monthly | | | |
| | | | May 2025 to May 2026 | Jan. 2026 to Feb. 2026 | Feb. 2026 to Mar. 2026 | Mar. 2026 to Apr. 2026 | Apr. 2026 to May 2026 |
| Industrialized Countries² | 109.4 | 108.5 | 2.8 | 1.2 | 0.6 | 0.4 | -0.8 |
| Canada | 98.7 | 95.0 | -7.9 | 0.5 | -2.2 | -4.5 | -3.7 |
| European Union | 111.9 | 112.8 | 10.7 | 2.3 | 2.4 | 4.5 | 0.8 |
| Germany | 125.0 | 126.6 | 9.6 | 3.2 | 1.2 | 1.6 | 1.3 |
| Latin America³ | 108.5 | 110.4 | 6.1 | 0.6 | 0.9 | 2.3 | 1.8 |
| Mexico | 113.0 | 114.8 | 5.9 | 1.0 | 0.7 | 1.5 | 1.6 |
| Pacific Rim⁴ | 117.3 | 116.4 | 5.8 | 0.5 | 1.0 | 2.3 | -0.8 |
| China | 116.5 | 117.1 | 4.3 | -0.1 | 1.3 | 0.7 | 0.5 |
| Japan | 113.9 | 113.2 | 6.6 | 2.3 | -0.9 | 1.2 | -0.6 |

¹ Terms of trade indexes are derived by dividing the export price index by the corresponding import price index and multiplying by 100.

² Western Europe, Canada, Japan, Australia, New Zealand, and South Africa.

³ Mexico, Central America, South America, and the Caribbean.

⁴ China, Japan, Australia, Brunei, Indonesia, Macao, Malaysia, New Zealand, Papua New Guinea, Philippines, and the Asian Newly Industrialized Countries.

NOTES: Data may be revised in each of the 3 months after original publication.

Regions are not mutually exclusive.

Dash = Not available

Table 10. U.S. international price indexes and percent changes for selected transportation services: May 2025 to May 2026

[2000=100, unless otherwise noted]

| Description | Relative importance Apr. 2026 ¹ | Index | | Percent change | | | | |
|---|--|-----------|----------|----------------------|------------------------|------------------------|------------------------|-----------------------|
| | | Apr. 2026 | May 2026 | Annual | Monthly | | | |
| | | | | May 2025 to May 2026 | Jan. 2026 to Feb. 2026 | Feb. 2026 to Mar. 2026 | Mar. 2026 to Apr. 2026 | Apr. 2026 to May 2026 |
| Air Freight | | | | | | | | |
| Import Air Freight | 100.000 | 253.8 | 301.4 | 27.6 | -1.2 | -1.7 | 0.9 | 18.8 |
| Europe (Dec. 2003=100)..... | 37.964 | 212.1 | 216.6 | 10.4 | -0.8 | 6.6 | -2.3 | 2.1 |
| Asia..... | 59.256 | 244.6 | 323.6 | 42.2 | -1.5 | -7.6 | 2.0 | 32.3 |
| Export Air Freight | 100.000 | 187.7 | 195.7 | 12.4 | 1.6 | -0.1 | 9.0 | 4.3 |
| Europe (Dec. 2006=100)..... | 37.345 | 135.3 | 144.3 | 9.0 | 1.0 | -5.0 | 7.3 | 6.7 |
| Asia (Dec. 2011=100)..... | 43.822 | 142.7 | 147.6 | 11.4 | 2.4 | 1.6 | 9.0 | 3.4 |
| Inbound Air Freight | 100.000 | 194.1 | 219.1 | 20.8 | -1.7 | 2.6 | 4.4 | 12.9 |
| Europe (Dec. 2003=100)..... | 32.147 | 178.7 | 188.2 | 15.4 | -2.5 | 9.2 | -3.0 | 5.3 |
| Asia..... | 54.596 | 179.9 | 218.1 | 31.2 | -1.7 | -3.6 | 9.4 | 21.2 |
| Outbound Air Freight | 100.000 | 179.9 | 186.2 | 14.0 | 0.6 | -1.2 | 13.9 | 3.5 |
| Europe (Dec. 2003=100)..... | 34.639 | 174.5 | 189.7 | 12.9 | -1.3 | -4.5 | 10.9 | 8.7 |
| Asia..... | 36.013 | 178.4 | 179.1 | 9.6 | 2.4 | 0.8 | 11.0 | 0.4 |
| Air Passenger Fares | | | | | | | | |
| Import Air Passenger Fares | 100.000 | 171.1 | 190.4 | 5.4 | -0.4 | 2.0 | -2.7 | 11.3 |
| Europe..... | 46.484 | 200.0 | 218.9 | 6.7 | 0.6 | 2.8 | -3.4 | 9.5 |
| Asia..... | 19.809 | 154.0 | 168.3 | 4.9 | -10.2 | 20.5 | -1.4 | 9.3 |
| Latin America/Caribbean..... | 10.167 | 162.2 | 154.6 | 7.6 | 10.3 | 2.3 | 2.7 | -4.7 |
| Export Air Passenger Fares | 100.000 | 191.0 | 184.7 | 3.9 | -11.9 | 5.6 | 5.2 | -3.3 |
| Europe..... | 30.441 | 213.7 | 229.8 | 0.9 | -7.8 | 5.7 | -2.0 | 7.5 |
| Asia..... | 18.182 | 180.4 | 173.1 | 5.3 | -20.5 | 7.7 | 12.3 | -4.0 |
| Latin America/Caribbean..... | 32.315 | 213.7 | 182.3 | 5.9 | -16.0 | 4.0 | 14.0 | -14.7 |

¹ Relative importance values are based on 2024 trade values.

NOTES: Data may be revised in each of the 3 months after original publication.

Dash = Not available

TECHNICAL NOTE

Import and Export Goods and Services Price Indexes - All indexes use a modified Laspeyres formula and are not seasonally adjusted. Price indexes are reweighted annually, with a 2-year lag in the weights. Published series use a base year of 2000=100 where possible. More detailed index series and additional information may be obtained at www.bls.gov/mxp or by calling (202) 691-7101.

Merchandise Goods Classification Systems - The merchandise price indexes are published using three classification systems. Items are classified by end use according to the Bureau of Economic Analysis Classification System, by industry according to the North American Industry Classification System (NAICS), and by product category according to the Harmonized System (HS). While classification by end use and product category are self-explanatory, some notes are in order for classifying items by industry. In the NAICS imports and exports tables, items are classified by output industry, not input industry. As an example, NAICS import index 326 (plastics and rubber products manufacturing) includes outputs such as manufactured plastic rather than inputs such as petroleum. The NAICS classification structure also matches the classification system used by the Producer Price Index (PPI) to produce the NAICS primary products indexes.

Import Price Goods Indexes - Items are classified by the Harmonized Tariff Schedule of the United States Annotated (TSUSA). Import prices are based on U.S. dollar prices paid by the U.S. importer. The prices are generally either "free on board" (f.o.b.) foreign port or "cost, insurance, and freight" (c.i.f.) U.S. port transaction prices, depending on the practices of the individual industry.

Export Price Goods Indexes - Items are classified by the Harmonized Schedule B classification system of the U.S. Bureau of the Census. The prices used are generally either "free alongside ship" (f.a.s.) factory or "free on board" (f.o.b.) transaction prices, depending on the practices of the individual industry.

Services Price Indexes - Indexes for import and export air passenger fares calculate changes in the average revenue received per passenger by foreign carriers from U.S. residents and by U.S. carriers from foreign residents, respectively. The air freight indexes are calculated from data collected directly from airlines. These data exclude mail and passenger baggage. The scope of the service being priced is the movement of freight from airport to airport only and does not include any ground transportation or port service. The air freight indexes are presented using two definitions: balance of payments (which represents transactions between U.S. and foreign residents) and international (which represents transactions inbound to and outbound from the United States.)

Import Price Indexes by Locality of Origin - Prices used in these indexes are a subset of the data collected for the import price indexes. The indexes are specific to a country, region, or grouping and, beginning with January 2002, are based on the North American Industry Classification System (NAICS) covering goods-producing industries. Nonmanufactured goods are defined as NAICS 11 and 21, and manufactured goods are defined as NAICS 31-33.

Export Price Indexes by Locality of Destination - Prices used in these indexes are a subset of the data collected for the export price indexes. The indexes are specific to a country, region, or grouping and are based on the North American Industry Classification System (NAICS) covering goods-producing industries. Nonmanufactured goods are defined as NAICS 11 and 21, and manufactured goods are defined as NAICS 31-33.

Terms of Trade Indexes - Terms of trade indexes measure the relative price of exports in terms of import prices for a specific country, region, or grouping. The indexes are calculated as one country, region, or grouping's all-export goods price index divided by the corresponding all-import goods price index on a scale of 100.

Relative Importance - A relative importance is a specific index's price-updated value share (expressed as a percentage) of overall imports or exports at a specific point in time. Relative importance values are affected by the trade weights at the point indexes are reweighted and index changes relative to other indexes since the reweight point. If an index is rising in value relative to other indexes over time, the relative importance will increase as well.

Revision Policy - To reflect the availability of late reports and corrections by respondents, monthly data may be revised in each of the 3 months after original publication. After 3 months, no further data revisions take place. For example, data first published in the January release will be subject to revision in the releases for February, March, and April.

Rounding Policy - Index values are rounded to the tenth decimal place after being calculated. All percent changes are then derived from the rounded index values and subsequently rounded to the tenth decimal place.

Uses of the Data - The primary use of the indexes is to deflate trade statistics, notably the foreign trade sector of the National Income and Product Accounts (NIPA) constructed by the Department of Commerce. Other published indexes are useful for general market analysis. For trade in international services, balance of payments indexes are used for deflating NIPA, while international indexes are more appropriate for market analysis.

Additional Information - More detailed data are available on the Import/Export Price Indexes home page at www.bls.gov/mxp. For import and export price indexes data requests, send an email to mxpinfo@bls.gov.

If you are deaf, hard of hearing, or have a speech disability, please dial 7-1-1 to access telecommunications relay services.