

Transmission of material in this release is embargoed until
8:30 a.m. (EDT) Wednesday, July 14, 2010

USDL-10-0964

Technical information: (202) 691-7101 • MXPinfo@bls.gov • www.bls.gov/mxp
Media contact: (202) 691-5902 • PressOffice@bls.gov

U.S. IMPORT AND EXPORT PRICE INDEXES – JUNE 2010

U.S. import prices declined for the second consecutive month in June, the U.S. Bureau of Labor Statistics reported today, decreasing 1.3 percent. The drop was driven by declining fuel prices, although a downturn in nonfuel prices also contributed to the overall decrease. Export prices also fell in June, edging down 0.2 percent following three consecutive monthly increases.

Chart 1. One-month percent change in the Import Price Index: June 2009 – June 2010

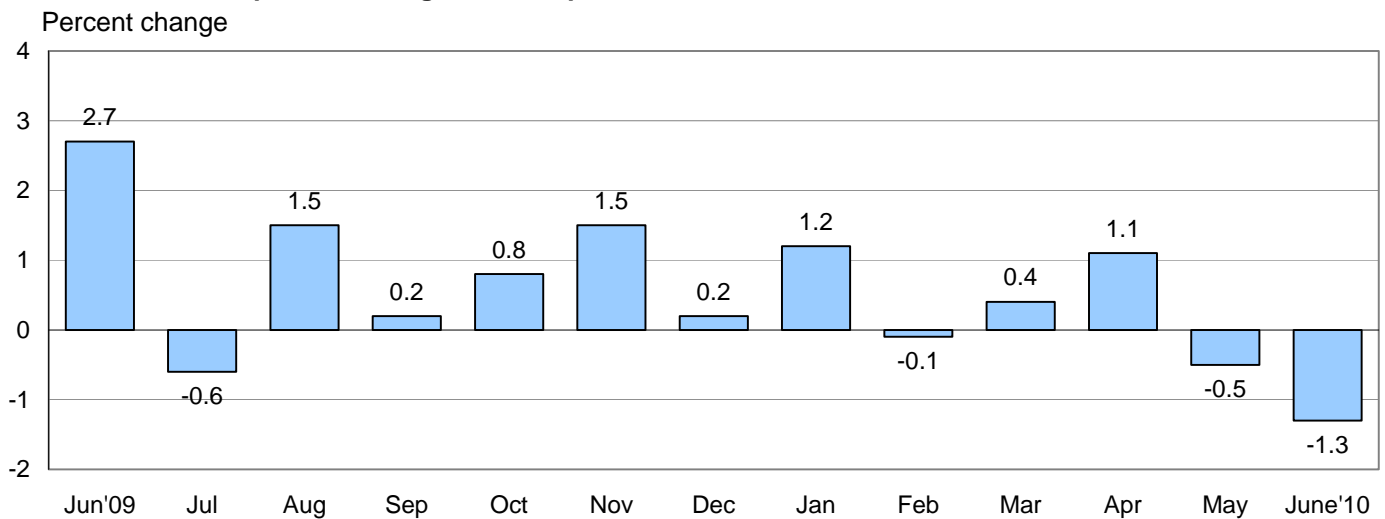
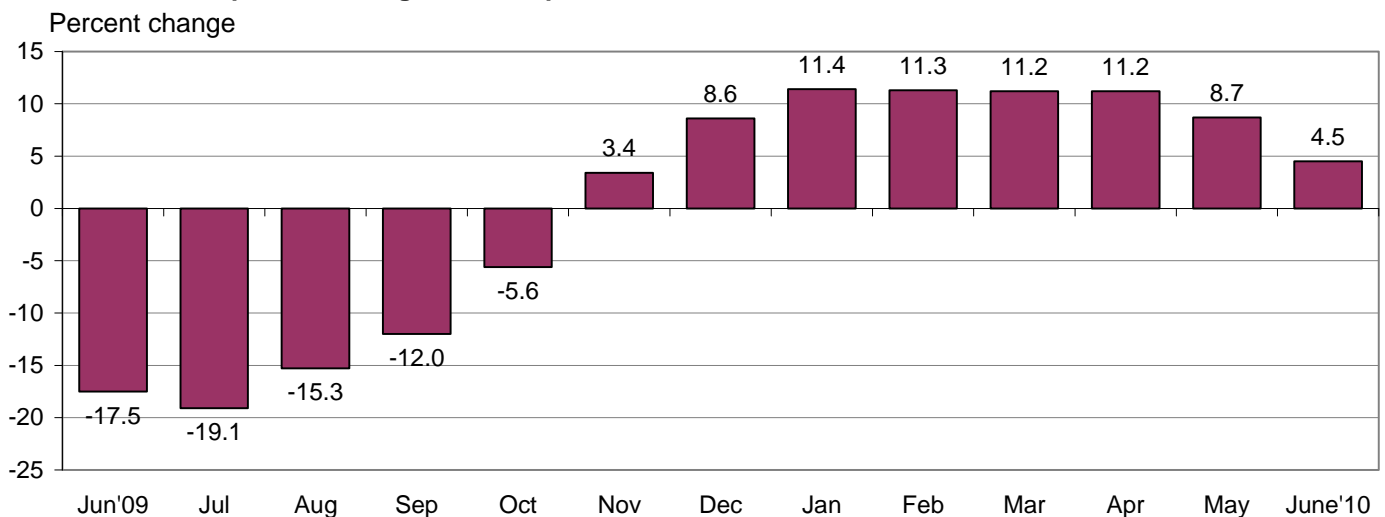


Chart 2. 12-month percent change in the Import Price Index: June 2009 – June 2010



All Imports: Prices of U.S. imports fell 1.3 percent in June after a 0.5 percent drop the previous month. The decrease was the largest monthly decline since a 1.3 percent decline in January 2009, which was also the last time the index fell in consecutive months. Despite the recent declines, import prices advanced 4.5 percent for the year ended in June, down on a 12-month basis from an 8.7 percent increase for the May 2009-2010 period.

Fuel Imports: Fuel prices also declined for the second consecutive month, falling 4.0 percent in June after a similar 4.1 percent decrease in May. The June decline was led by a 4.4 percent drop in petroleum prices which followed a 4.2 percent fall in May and was the largest monthly decrease for that index since a 4.6 percent drop in January 2009. For the first half of 2010, petroleum prices were virtually unchanged. In contrast, natural gas prices rose 1.5 percent in June, partially offsetting the decline in petroleum prices. Despite the recent decreases, overall fuel prices increased 11.6 percent over the past year.

All Imports Excluding Fuel: The price index for import prices excluding fuel fell 0.6 percent in June, the first monthly decline since a 0.2 percent decrease in July 2009 and the largest since a 0.6 percent drop in March 2009. A 1.5 percent downturn in nonfuel industrial supplies and materials was the largest contributor to the June decline, while prices for consumer goods, foods, feeds, and beverages, and capital goods also decreased. For the 12 months ended in June, nonfuel import prices advanced 2.8 percent.

Table A. Percent changes

Month	IMPORTS			EXPORTS		
	All imports	Fuel imports	Nonfuel imports	All exports	Agricultural exports	Non-agricultural exports
2009						
June.....	2.7	16.0	0.2	1.0	4.2	0.6
July.....	-0.6	-2.6	-0.2	-0.3	-4.9	0.1
August.....	1.5	7.0	0.4	0.6	0.2	0.7
September.....	0.2	-1.3	0.4	-0.2	-2.9	0.1
October.....	0.8	3.0	0.4	0.0	-0.7	0.1
November.....	1.5	6.3	0.3	0.8	3.9	0.5
December.....	0.2	-0.2	0.4	0.7	1.8	0.6
2010						
January.....	1.2	4.4	0.4	0.8	1.3	0.7
February.....	-0.1	-0.7	0.1	-0.3	-4.0	0.1
March.....	0.4	1.4	0.2	0.7	1.9	0.6 ^r
April.....	1.1	2.6 ^r	0.6	1.1 ^r	-0.4	1.3
May.....	-0.5 ^r	-4.1 ^r	0.5	0.6 ^r	1.5 ^r	0.5 ^r
June.....	-1.3	-4.0	-0.6	-0.2	-0.1	-0.2
June 2008 to 2009.....	-17.5	-47.6	-4.5	-6.6	-13.1	-5.9
June 2009 to 2010.....	4.5	11.6	2.8	4.3	-2.8	5.1

r Revised

Chart 3. One-month percent change in the Export Price Index: June 2009 – June 2010

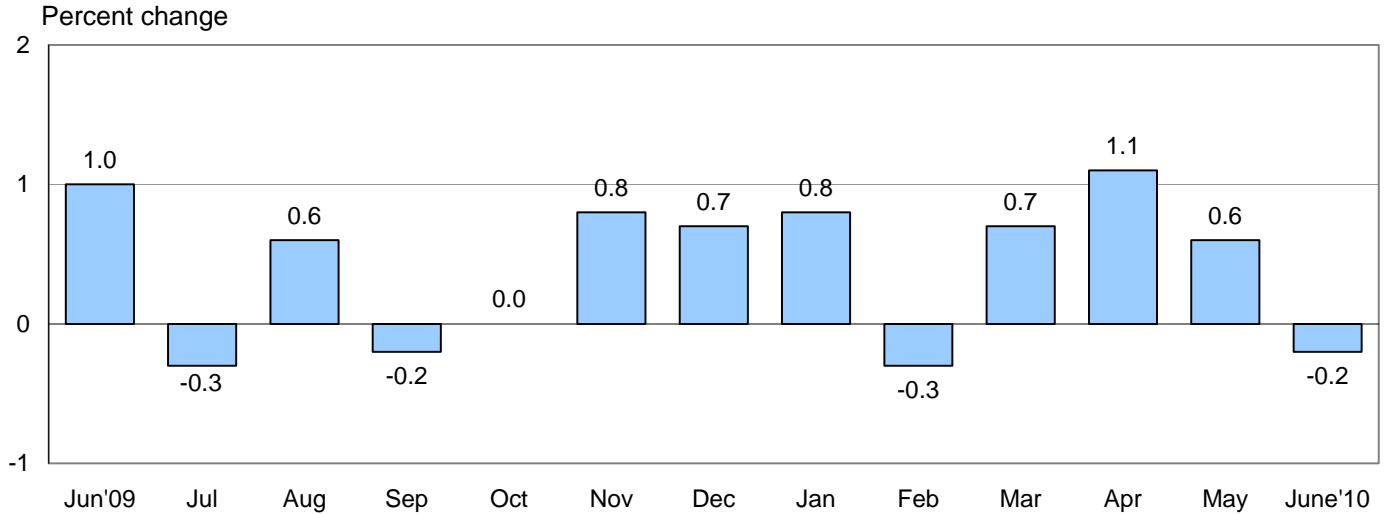
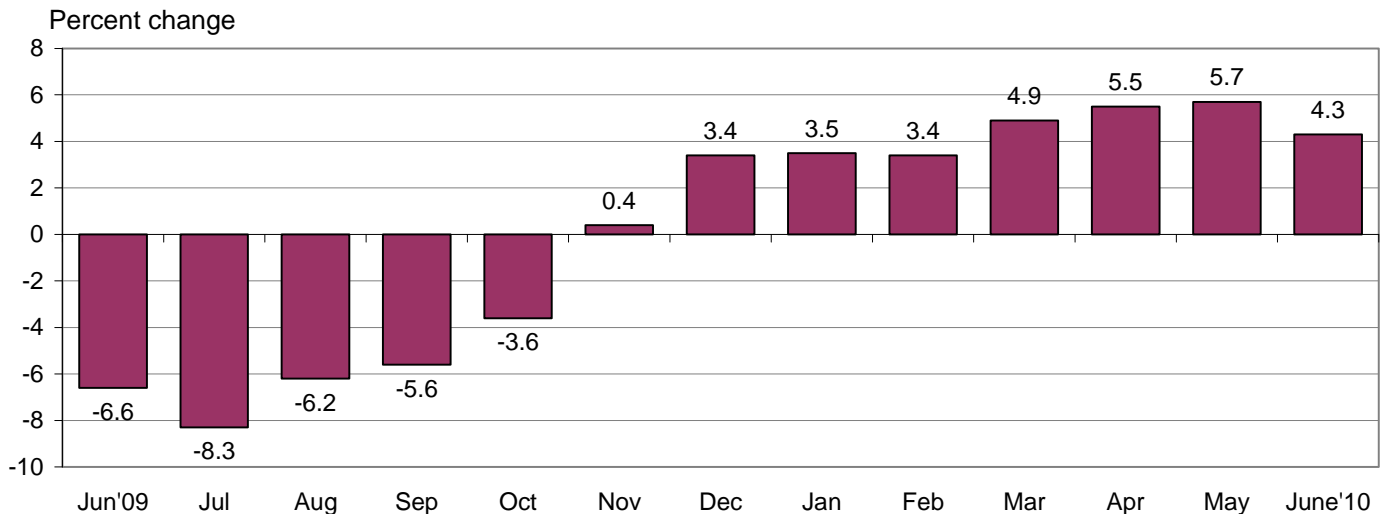


Chart 4. 12-month percent change in the Export Price Index: June 2009 – June 2010



All Exports: Export prices fell 0.2 percent in June following increases of 0.6 percent, 1.1 percent, and 0.7 percent, respectively, the previous three months. Most of the decline was attributable to falling nonagricultural prices, although agricultural prices also declined. The price index for overall exports rose on a 12-month basis in June, increasing 4.3 percent.

Agricultural Exports: Prices for agricultural exports edged down 0.1 percent in June after a 1.5 percent increase in May. The decrease was led by a 4.9 percent fall in corn prices and a 7.2 percent drop in wheat prices, which more than offset higher cotton and nut prices. Agricultural prices decreased 2.8 percent for the year ended in June.

All Exports Excluding Agriculture: The price index for nonagricultural exports fell 0.2 percent in June, the first monthly decline for the index since March 2009. The June decrease was led by a 0.4 percent drop in capital goods prices and a 0.6 percent decline in consumer goods prices. Notwithstanding the June downturn, nonagricultural export prices rose 5.1 percent over the past year.

SELECTED JUNE HIGHLIGHTS

Import Prices

Nonfuel Industrial Supplies and Materials: Prices for nonfuel industrial supplies and materials fell 1.5 percent in June, the first decline for the index since a 0.3 percent drop in July 2009 and the largest one-month downturn since a 4.1 percent decrease in January 2009. The decline in nonfuel industrial supplies and materials prices was led by a 3.4 percent downturn in unfinished metals prices which increased 3.7 percent in May. Unfinished metals prices, up 38.6 percent over the past 12 months, have been the largest factor for an upward trend in nonfuel industrial supplies and materials prices over the past year.

Finished Goods: Prices for each of the major finished goods categories declined in June. Consumer goods prices fell 0.4 percent, the largest drop since a 0.5 percent decline in March 2009. Lower prices for household goods, toys, and television receivers all contributed to the decrease. Capital goods prices and prices for automotive vehicles also declined in June, falling 0.3 percent and 0.2 percent, respectively.

Foods, Feeds, and Beverages: Foods, feeds, and beverages prices also declined in June, falling 1.7 percent after a 1.3 percent rise the previous month. A 5.3 percent decrease in fruit prices and a 4.5 percent drop in vegetable prices were the primary contributors to the decline.

Imports by Locality of Origin: The price index of imports from China declined 0.3 percent in June, the largest monthly decrease since a 0.3 percent drop in January. Falling fuel prices led the declines in import prices from Canada, the European Union, and Mexico; down 1.6 percent, 0.9 percent, and 0.8 percent, respectively. In contrast, prices of imports from Japan ticked up 0.1 percent in June.

Transportation Services: Import air passenger fares increased 9.2 percent in June, led by seasonal increases in European and Asian fares, up 13.7 percent and 11.5 percent, respectively. The seasonal June increase was the largest monthly advance since a 13.0 percent increase in June 2009. The index for import air passenger fares rose 19.0 percent over the last 12 months. Import air freight prices fell 0.9 percent in June, driven by a 5.5 percent decline in European air freight prices. Despite the June drop, import air freight prices rose 22.1 percent over the past year.

Export Prices

Nonagricultural Industrial Supplies and Materials: Prices for nonagricultural supplies and materials were unchanged in June following a 1.6 percent increase in May. Decreasing metals and chemical prices were offset by a 5.1 percent increase in export fuel prices that was driven by an increase in coal prices.

Finished Goods: Finished goods prices were down overall for the second consecutive month in June. The price index for capital goods fell 0.4 percent, the largest one-month drop since a similar 0.4 percent decline in August 2005. The June decrease was led by a 1.6 percent decline in computer, peripherals, and semiconductor prices. Consumer goods prices fell 0.6 percent in June, the first monthly decrease for the index since a 0.9 percent drop in April 2009.

Transportation Services: Export air passenger fares rose 6.7 percent in June, led by an 18.1 percent surge in European fares. The index for export air passenger fares advanced 26.2 percent for the year ended in June. Export air freight prices increased 1.8 percent in June and 8.3 percent over the past year.

Import and Export Price Index data for July 2010 are scheduled for release on Thursday, August 12, 2010 at 8:30 a.m. (EDT).

Table 1. U.S. import price indexes and percent changes for selected categories of goods: June 2009 to June 2010

[2000=100, unless otherwise noted]

Description	End Use	Relative importance May 2010 ¹	Index		Percent change				
			May 2010	June 2010	Annual	Monthly			
					June 2009 to June 2010	Feb. 2010 to Mar. 2010	Mar. 2010 to Apr. 2010	Apr. 2010 to May 2010	May 2010 to June 2010
All commodities.....		100.000	127.0	125.4	4.5	0.4	1.1	-0.5	-1.3
All imports excluding petroleum.....		80.535	111.3	110.7	3.1	-0.1	0.5	0.5	-0.5
All imports excluding fuels (Dec. 2001=100)..		79.099	115.0	114.3	2.8	0.2	0.6	0.5	-0.6
Foods, feeds, & beverages.....	0	4.823	151.0	148.4	6.2	1.4	1.1	1.3	-1.7
Agricultural foods, feeds & beverages, excluding distilled beverages.....	00	3.760	169.7	165.3	6.3	1.7	1.0	1.4	-2.6
Nonagricultural foods (fish, distilled beverages).....	01	1.063	108.7	110.1	5.5	0.9	1.4	1.5	1.3
Industrial supplies & materials.....	1	35.570	207.2	201.0	13.4	1.1	2.8	-1.7	-3.0
Industrial supplies & materials excluding petroleum.....		16.105	154.5	152.5	15.4	-0.6	1.7	1.5	-1.3
Industrial supplies & materials excluding fuels (Dec. 2001=100).....		14.669	172.5	169.9	16.0	0.7	3.0	1.9	-1.5
Industrial supplies & materials, durable.....		9.319	168.0	164.8	21.2	0.5	3.5	2.5	-1.9
Industrial supplies & materials nondurable excluding petroleum.....		5.349	138.7	138.2	8.5	-1.9	-0.6	0.1	-0.4
Fuels & lubricants.....	10	20.900	258.3	247.9	11.6	1.4	2.6	-4.1	-4.0
Petroleum & petroleum products.....	100	19.464	282.1	269.7	11.7	2.5	3.6	-4.2	-4.4
Crude.....	10000	14.243	285.5	277.5	12.2	3.2	4.1	-5.5	-2.8
Fuels, n.e.s.-coals & gas.....	101	1.197	125.2	126.6	12.4	-11.4	-10.8	-2.7	1.1
Gas-natural.....	10110	0.877	109.5	111.1	13.8	-14.3	-14.1	-3.7	1.5
Paper & paper base stocks.....	11	0.714	112.7	115.5	13.5	1.1	1.8	2.9	2.5
Materials associated with nondurable supplies & materials.....	12	4.712	148.8	146.9	6.8	1.2	2.3	0.6	-1.3
Selected building materials.....	13	1.419	133.6	132.7	14.4	2.3	2.0	2.7	-0.7
Unfinished metals related to durable goods.....	14	4.423	255.9	247.2	38.6	-0.1	5.7	3.7	-3.4
Finished metals related to durable goods. ...	15	1.852	148.1	146.5	10.0	0.7	2.6	1.4	-1.1
Nonmetals related to durable goods.....	16	1.549	107.7	107.8	4.7	0.4	0.2	0.4	0.1
Capital goods.....	2	23.074	91.6	91.3	-0.7	-0.3	0.1	0.1	-0.3
Electric generating equipment.....	20	2.910	110.9	110.6	0.5	-0.7	0.4	-0.4	-0.3
Nonelectrical machinery.....	21	18.176	86.1	85.9	-0.7	-0.2	0.1	0.1	-0.2
Transportation equipment excluding motor vehicles (Dec. 2001=100).....	22	1.988	121.5	121.3	-0.9	-0.9	0.0	0.0	-0.2
Automotive vehicles, parts & engines.....	3	11.995	108.5	108.3	0.3	-0.1	0.3	0.0	-0.2
Consumer goods, excluding automotives..	4	24.538	104.6	104.2	-0.1	0.2	0.0	0.1	-0.4
Nondurables, manufactured.....	40	11.419	109.0	109.0	0.8	0.5	0.0	0.0	0.0
Durables, manufactured.....	41	11.906	100.3	99.7	-0.9	-0.2	0.1	0.1	-0.6
Nonmanufactured consumer goods.....	42	1.213	103.0	102.5	1.1	0.1	-0.5	1.0	-0.5

1 Relative importance figures are based on 2008 trade values.

NOTES: Data may be revised in each of the three months after original publication.

Dash = Not available

Table 2. U.S. export price indexes and percent changes for selected categories of goods: June 2009 to June 2010

[2000=100, unless otherwise noted]

Description	End Use	Relative importance May 2010 ¹	Index		Percent change				
			May 2010	June 2010	Annual	Monthly			
					June 2009 to June 2010	Feb. 2010 to Mar. 2010	Mar. 2010 to Apr. 2010	Apr. 2010 to May 2010	May 2010 to June 2010
All commodities.....		100.000	123.2	122.9	4.3	0.7	1.1	0.6	-0.2
Agricultural commodities.....		8.753	165.0	164.9	-2.8	1.9	-0.4	1.5	-0.1
Nonagricultural commodities.....		91.247	120.2	119.9	5.1	0.6	1.3	0.5	-0.2
Foods, feeds, & beverages.....	0	7.929	165.0	164.5	-5.9	1.6	-0.5	1.5	-0.3
Agricultural foods, feeds & beverages, excluding distilled beverages.....	00	7.353	167.3	166.8	-6.6	1.7	-0.7	1.6	-0.3
Nonagricultural foods (fish, distilled beverages).....	01	0.576	147.2	146.4	3.5	0.8	1.3	-0.4	-0.5
Industrial supplies & materials.....	1	31.908	162.7	162.8	16.0	1.6	3.3	1.6	0.1
Industrial supplies & materials, durable.....		12.443	167.6	165.4	14.9	0.4	3.2	1.2	-1.3
Industrial supplies & materials, nondurable.....		19.465	160.6	162.1	16.6	2.5	3.3	1.8	0.9
Agricultural industrial supplies & materials.....	10	1.400	157.8	159.6	21.8	3.5	1.0	0.4	1.1
Nonagricultural industrial supplies & materials.....		30.508	163.2	163.2	15.6	1.6	3.4	1.6	0.0
Fuels & lubricants.....	11	6.093	216.0	227.0	29.6	3.5	6.2	3.3	5.1
Nonagricultural supplies & materials excluding fuels & building materials.....	12	23.395	158.5	156.3	12.9	1.1	2.8	1.3	-1.4
Selected building materials.....	13	1.020	118.2	118.8	5.1	0.2	1.6	0.3	0.5
Capital goods.....	2	38.178	103.8	103.4	0.3	0.2	0.1	-0.1	-0.4
Electrical generating equipment.....	20	3.542	109.0	109.3	2.0	-0.2	-1.0	0.3	0.3
Nonelectrical machinery.....	21	27.899	94.7	94.2	-0.2	0.2	0.2	-0.2	-0.5
Transportation equipment excluding motor vehicles (Dec. 2001=100).....	22	6.738	139.6	139.6	1.7	0.3	0.1	0.2	0.0
Automotive vehicles, parts & engines.....	3	9.100	108.5	108.5	0.5	-0.1	-0.1	0.0	0.0
Consumer goods, excluding automotives..	4	12.885	111.1	110.4	1.8	0.2	0.7	0.1	-0.6
Nondurables, manufactured.....	40	5.913	112.6	111.6	2.9	0.0	0.5	0.1	-0.9
Durables, manufactured.....	41	5.640	108.3	108.2	0.1	0.2	0.4	0.2	-0.1

1 Relative importance figures are based on 2008 trade values.

NOTES: Data may be revised in each of the three months after original publication.

Dash = Not available

Table 3. U.S. import price indexes and percent changes for selected categories of goods: June 2009 to June 2010

[December 2005=100, unless otherwise noted]

Description	NAICS	Relative importance May 2010 ¹	Index		Percent change				
			May 2010	June 2010	Annual	Monthly			
					June 2009 to June 2010	Feb. 2010 to Mar. 2010	Mar. 2010 to Apr. 2010	Apr. 2010 to May 2010	May 2010 to June 2010
Nonmanufactured articles.....		18.132	128.7	124.8	12.6	1.8	2.4	-3.9	-3.0
Agriculture, forestry, fishing and hunting...	11	1.876	154.8	148.5	11.4	3.2	1.7	3.3	-4.1
Crop production.....	111	1.335	161.4	153.4	7.6	2.5	0.7	4.3	-5.0
Mining.....	21	16.256	125.9	122.3	12.9	1.7	2.5	-4.6	-2.9
Mining (except oil and gas) (Dec. 2006=100).....	212	0.523	133.7	139.2	7.4	1.5	0.1	1.3	4.1
Manufactured articles.....		81.332	110.8	109.9	2.9	0.2	0.7	0.3	-0.8
Manufactured goods, part 1.....	31	10.086	109.0	109.1	2.2	0.3	0.4	0.4	0.1
Food manufacturing.....	311	2.579	126.6	127.2	9.5	1.0	1.2	1.8	0.5
Beverage and tobacco product manufacturing.....	312	0.912	109.1	108.1	1.0	0.0	-0.1	-0.1	-0.9
Textile product mills.....	314	0.773	101.5	101.9	3.1	-0.5	0.2	0.8	0.4
Apparel manufacturing.....	315	3.923	101.3	101.3	-0.9	0.3	0.1	-0.3	0.0
Leather and allied product manufacturing. . .	316	1.497	106.4	106.5	-0.9	-0.2	0.0	0.0	0.1
Manufactured goods, part 2.....	32	18.193	123.9	121.4	6.0	0.9	1.5	0.1	-2.0
Wood product manufacturing.....	321	0.886	113.2	111.7	24.1	4.0	2.9	4.1	-1.3
Paper manufacturing.....	322	1.225	106.9	109.0	6.5	0.7	1.2	1.8	2.0
Petroleum and coal products manufacturing.....	324	4.176	130.4	120.3	7.9	0.2	3.2	-2.0	-7.7
Chemical manufacturing.....	325	9.020	126.9	126.1	4.8	1.3	1.1	0.2	-0.6
Plastics and rubber products manufacturing.....	326	1.795	115.2	115.4	2.8	0.0	0.1	1.0	0.2
Nonmetallic mineral product manufacturing.....	327	0.985	120.6	120.7	0.3	0.0	0.2	-0.1	0.1
Manufactured goods, part 3.....	33	53.053	107.2	106.5	2.0	-0.2	0.6	0.5	-0.7
Primary metal manufacturing.....	331	5.134	168.1	162.1	33.0	0.3	5.5	3.5	-3.6
Fabricated metal product manufacturing. . .	332	2.701	118.2	118.4	1.8	0.3	0.8	0.6	0.2
Machinery manufacturing.....	333	6.730	113.2	112.9	1.3	0.1	0.0	0.0	-0.3
Computer and electronic product manufacturing.....	334	15.040	87.8	87.3	-1.9	-0.3	-0.2	0.2	-0.6
Electrical equipment, appliance, and component manufacturing.....	335	3.774	112.0	111.9	-0.4	-0.9	0.4	-0.3	-0.1
Transportation equipment manufacturing. . .	336	13.245	105.7	105.4	0.0	-0.2	0.3	-0.1	-0.3
Furniture and related product manufacturing.....	337	1.316	106.0	106.1	-2.7	-0.5	0.1	0.1	0.1
Miscellaneous manufacturing.....	339	5.113	112.4	111.8	0.1	0.1	-0.1	0.3	-0.5

¹ Relative importance figures are based on 2008 trade values.

NOTES: Data may be revised in each of the three months after original publication.

Dash = Not available

Table 4. U.S. export price indexes and percent changes for selected categories of goods: June 2009 to June 2010

[December 2005=100, unless otherwise noted]

Description	NAICS	Relative importance May 2010 ¹	Index		Percent change				
			May 2010	June 2010	Annual	Monthly			
					June 2009 to June 2010	Feb. 2010 to Mar. 2010	Mar. 2010 to Apr. 2010	Apr. 2010 to May 2010	May 2010 to June 2010
Nonmanufactured articles.....		6.852	134.9	144.8	12.9	2.4	1.3	5.5	7.3
Agriculture, forestry, fishing and hunting...	11	4.600	143.0	141.6	-6.7	3.6	-1.0	1.8	-1.0
Crop production.....	111	4.237	146.5	144.8	-7.9	3.9	-1.2	1.8	-1.2
Mining.....	21	2.252	110.2	137.1	78.5	-0.4	6.8	13.8	24.4
Mining (except oil and gas).....	212	1.768	126.8	166.8	89.1	4.9	9.4	17.2	31.5
Manufactured articles.....		90.261	112.7	112.0	3.4	0.5	1.0	0.3	-0.6
Manufactured goods, part 1.....	31	6.627	126.0	126.6	5.1	0.4	1.0	0.7	0.5
Food manufacturing.....	311	4.505	141.6	142.4	4.9	0.5	1.2	0.9	0.6
Beverage and tobacco product manufacturing.....	312	0.503	103.1	103.0	-3.7	-0.9	-2.5	0.0	-0.1
Apparel manufacturing.....	315	0.368	102.2	104.7	2.3	0.5	-0.7	0.0	2.4
Manufactured goods, part 2.....	32	23.994	120.6	118.4	7.4	1.7	2.5	0.4	-1.8
Wood product manufacturing.....	321	0.458	116.1	116.1	11.7	0.0	3.0	1.0	0.0
Paper manufacturing.....	322	1.972	118.4	121.0	9.5	0.4	1.7	2.7	2.2
Petroleum and coal products manufacturing.....	324	3.721	125.5	116.8	9.7	7.0	6.5	-2.0	-6.9
Chemical manufacturing.....	325	14.966	123.1	121.3	8.6	1.2	2.2	0.7	-1.5
Plastics and rubber products manufacturing.....	326	2.045	107.1	106.7	-1.2	-0.2	-0.6	1.1	-0.4
Nonmetallic mineral product manufacturing.....	327	0.832	113.1	112.3	-0.7	-0.4	-0.2	-0.7	-0.7
Manufactured goods, part 3.....	33	59.639	108.5	108.1	1.7	0.1	0.5	0.2	-0.4
Primary metal manufacturing.....	331	4.982	146.8	147.1	22.9	-0.6	2.8	2.7	0.2
Fabricated metal product manufacturing.	332	2.752	121.6	121.0	-0.1	-0.5	0.8	0.0	-0.5
Machinery manufacturing.....	333	12.563	114.8	114.7	2.6	0.4	0.3	0.0	-0.1
Computer and electronic product manufacturing.....	334	15.514	92.6	91.7	-2.1	0.2	0.3	-0.2	-1.0
Electrical equipment, appliance, and component manufacturing.....	335	3.387	108.0	108.1	1.1	0.0	-1.6	0.1	0.1
Transportation equipment manufacturing....	336	15.091	111.1	111.1	0.7	0.1	0.1	0.1	0.0
Miscellaneous manufacturing.....	339	4.998	110.5	109.8	0.1	0.0	1.3	0.0	-0.6

¹ Relative importance figures are based on 2008 trade values.

NOTES: Data may be revised in each of the three months after original publication.

Dash = Not available

Table 5. U.S. import price indexes and percent changes for selected categories of goods: June 2009 to June 2010

[2000=100, unless otherwise noted]

Description	Harmonized system	Relative importance May 2010 ¹	Index		Percent change				
			May 2010	June 2010	Annual	Monthly			
					June 2009 to June 2010	Feb. 2010 to Mar. 2010	Mar. 2010 to Apr. 2010	Apr. 2010 to May 2010	May 2010 to June 2010
Live animals; animal products.....	I	1.125	144.6	143.1	10.9	3.3	3.2	2.8	-1.0
Meat and edible meat offal.....	02	0.265	188.0	184.5	22.3	4.3	3.4	4.2	-1.9
Fish and crustaceans, molluscs and other aquatic invertebrates.....	03	0.572	106.7	107.7	7.9	1.8	2.6	2.5	0.9
Vegetable products.....	II	1.542	176.8	168.8	4.7	2.4	1.2	2.6	-4.5
Edible vegetables, roots, and tubers.....	07	0.443	344.9	326.2	11.3	14.9	-3.7	4.9	-5.4
Edible fruit and nuts; peel of citrus fruit or melons.....	08	0.434	115.2	106.8	2.9	-0.7	5.6	2.7	-7.3
Coffee, tea, mate and spices.....	09	0.284	168.6	170.1	5.6	-1.5	7.1	-2.0	0.9
Animal or vegetable fats and oils (Dec. 2009=100).....	III	0.211	103.8	101.4	-	4.3	0.6	-0.6	-2.3
Prepared foodstuffs, beverages, and tobacco.....	IV	2.276	141.1	141.0	4.9	-0.4	-0.1	0.9	-0.1
Cocoa and cocoa preparations (Dec. 2009=100).....	18	0.217	104.9	96.8	-	-2.2	0.2	4.7	-7.7
Preparations of cereals, flour, starch or milk; bakers' wares (Dec. 2007=100).....	19	0.239	114.4	116.9	6.2	-0.7	0.3	1.5	2.2
Preparations of vegetables, fruit, nuts, or other parts of plants.....	20	0.285	130.1	129.5	3.6	-0.2	-0.9	0.6	-0.5
Beverages, spirits, and vinegar.....	22	0.899	118.6	117.4	1.1	-0.1	-0.1	-0.1	-1.0
Mineral products.....	V	20.866	260.1	250.7	11.7	1.3	2.6	-4.1	-3.6
Salt; sulfur; earths and stone; plaster materials, lime & cement (Dec. 2009=100).....	25	0.189	102.4	102.0	-	0.2	1.7	0.2	-0.4
Mineral fuels, oils and residuals, bituminous substances and mineral waxes.....	27	20.462	256.9	247.0	11.6	1.3	2.7	-4.2	-3.9
Products of the chemical or allied industries.....	VI	8.329	140.9	139.2	6.0	1.2	0.6	0.5	-1.2
Inorganic chemicals.....	28	0.999	289.2	277.7	23.7	5.7	1.9	3.6	-4.0
Organic chemicals.....	29	2.767	134.9	133.3	7.0	1.5	0.7	0.3	-1.2
Pharmaceutical products.....	30	2.807	117.7	117.5	3.7	-0.2	-0.1	-0.1	-0.2
Fertilizers (Dec. 2009=100).....	31	0.321	104.7	101.8	-	2.8	1.2	-1.7	-2.8
Tanning & dyeing extracts; dye & pigments; varnish & paints; putty.....	32	0.166	109.3	106.7	2.7	-1.8	-0.9	-1.4	-2.4
Essential oils and resinoids (Dec. 2001=100).....	33	0.406	119.4	116.5	-1.9	-1.1	0.9	-0.3	-2.4
Miscellaneous chemical products.....	38	0.502	95.1	95.1	5.3	0.6	1.2	0.5	0.0
Plastics and articles thereof; rubber and articles thereof.....	VII	3.004	137.5	137.3	5.9	1.2	1.8	0.7	-0.1
Plastics and articles thereof.....	39	1.878	132.1	131.8	2.0	0.9	2.2	0.2	-0.2
Rubber and articles thereof.....	40	1.126	147.9	147.9	13.1	1.8	1.0	1.5	0.0
Raw hides, skins, leather, furskins, travel goods, etc.....	VIII	0.587	114.4	114.5	0.7	0.3	0.1	0.2	0.1
Articles of leather; travel goods, bags, etc. of various materials.....	42	0.534	114.9	114.9	0.2	0.2	-0.1	0.0	0.0
Wood, wood charcoal, cork, straw, basketware and wickerwork.....	IX	0.907	136.7	135.6	23.0	3.8	3.0	4.0	-0.8
Woodpulp, recovered paper, and paper products.....	X	1.367	110.8	112.7	4.3	0.6	0.8	1.7	1.7
Pulp wood, waste paper, and paperboard (Dec. 2009=100).....	47	0.214	121.6	129.1	-	2.7	3.5	5.6	6.2
Paper and paperboard; articles of paper pulp, paper or paperboard.....	48	0.886	103.7	104.8	-2.8	0.2	0.5	1.1	1.1
Printed matter.....	49	0.267	121.3	121.4	1.3	-0.2	0.2	0.5	0.1

See footnotes at end of table.

Table 5. U.S. import price indexes and percent changes for selected categories of goods: June 2009 to June 2010 — Continued

[2000=100, unless otherwise noted]

Description	Harmonized system	Relative importance May 2010 ¹	Index		Percent change				
			May 2010	June 2010	Annual June 2009 to June 2010	Monthly			
						Feb. 2010 to Mar. 2010	Mar. 2010 to Apr. 2010	Apr. 2010 to May 2010	May 2010 to June 2010
Textile and textile articles.....	XI	4.930	103.0	103.1	0.5	0.1	0.1	-0.1	0.1
Articles of apparel and clothing accessories, knitted or crocheted.....	61	1.882	97.8	98.0	-1.5	0.0	0.3	-0.7	0.2
Articles of apparel and clothing accessories, not knitted or crocheted.....	62	1.863	103.5	103.3	-0.1	0.6	0.1	0.0	-0.2
Made-up or worn textile articles.....	63	0.527	93.5	93.5	3.5	-0.2	0.0	1.3	0.0
Headgear, umbrellas, artificial flowers, etc. . .	XII	1.196	106.1	106.2	-1.7	-0.6	-0.1	0.0	0.1
Footwear and parts of such articles.....	64	1.017	105.2	105.3	-1.8	-0.6	0.0	0.0	0.1
Stone, plaster, cement, asbestos, ceramics, glass etc.....	XIII	0.876	124.0	123.8	-1.2	-0.1	-0.1	-0.1	-0.2
Articles of stone, plaster, cement, asbestos, or mica (Dec. 2001=100).....	68	0.311	117.5	117.3	-0.4	0.1	-0.2	0.0	-0.2
Ceramic products.....	69	0.276	139.8	139.7	0.1	-0.1	0.0	-0.1	-0.1
Glass and glassware.....	70	0.289	114.9	114.3	-3.5	-0.3	-0.1	-0.1	-0.5
Pearls, stones, precious metals, imitation jewelry, and coins.....	XIV	2.813	162.5	162.1	15.3	-0.6	2.1	2.8	-0.2
Base metals and articles of base metals.....	XV	6.262	186.1	181.0	19.8	0.7	4.2	2.0	-2.7
Iron and steel.....	72	1.453	240.0	240.7	37.7	5.2	6.1	2.5	0.3
Articles of iron or steel.....	73	1.837	148.9	149.9	7.4	1.8	1.8	1.8	0.7
Copper and articles thereof.....	74	0.721	350.3	317.5	35.2	-2.4	7.2	0.6	-9.4
Nickel and articles thereof (Dec. 2009=100)...	75	0.226	148.5	130.4	-	3.3	17.3	13.9	-12.2
Aluminum and articles thereof.....	76	0.860	141.8	132.8	25.6	-2.3	4.9	1.6	-6.3
Tools, implements, cutlery, spoons and forks, of base metal; parts thereof.....	82	0.361	117.9	117.9	0.4	-0.2	0.3	-0.2	0.0
Miscellaneous articles of base metal.....	83	0.408	126.8	126.5	-3.0	-0.7	-0.2	-0.2	-0.2
Machinery, electrical equipment, TV image and sound recorders, parts, etc.....	XVI	25.348	86.8	86.5	-0.5	-0.3	0.0	0.1	-0.3
Machinery and mechanical appliances; parts thereof.....	84	12.738	88.1	87.8	-0.1	-0.1	0.0	0.1	-0.3
Electrical machinery and equip, sound and TV recorders & reproducers, parts.....	85	12.610	85.5	85.2	-0.7	-0.5	0.0	0.0	-0.4
Vehicles, aircraft, vessels and associated transport equipment.....	XVII	11.223	109.8	109.4	-0.3	-0.2	0.3	0.0	-0.4
Motor vehicles and their parts.....	87	10.132	108.8	108.4	-0.2	-0.1	0.4	-0.1	-0.4
Aircraft, spacecraft, and parts thereof (Dec. 2002=100).....	88	0.998	114.1	113.8	-1.5	-1.4	0.1	0.0	-0.3
Optical, photo, measuring, medical & musical instruments; & timepieces.....	XVIII	3.245	101.2	100.8	-1.2	-0.4	0.0	0.0	-0.4
Optical, photographic, measuring and medical instruments.....	90	2.939	98.9	98.7	-1.0	-0.2	-0.1	0.0	-0.2
Clocks and watches and parts thereof.....	91	0.227	122.3	119.2	-3.4	-1.9	0.1	-0.1	-2.5
Miscellaneous manufactured articles.....	XX	3.830	106.4	106.0	-1.6	-0.1	-0.2	0.1	-0.4
Furniture & stuffed furnishings; lamps & lighting fittings, nesoi; prefab bldgs.....	94	1.950	109.4	109.5	-2.4	-0.5	0.1	0.0	0.1
Toys, games and sports equipment; parts and accessories thereof.....	95	1.679	100.9	99.8	-1.1	0.2	-0.4	0.1	-1.1
Miscellaneous manufactured articles.....	96	0.200	119.4	119.9	3.4	0.1	0.3	0.3	0.4

¹ Relative importance figures are based on 2008 trade values.

NOTES: Data may be revised in each of the three months after original publication.

Dash = Not available

Table 6. U.S. export price indexes and percent changes for selected categories of goods: June 2009 to June 2010

[2000=100, unless otherwise noted]

Description	Harmoni- zied system	Relative importance May 2010 ¹	Index		Percent change				
			May 2010	June 2010	Annual June 2009 to June 2010	Monthly			
						Feb. 2010 to Mar. 2010	Mar. 2010 to Apr. 2010	Apr. 2010 to May 2010	May 2010 to June 2010
Live animals; animal products.....	I	1.742	171.2	173.1	8.4	2.2	2.7	1.7	1.1
Meat & edible meat offal (Dec. 2006=100). . .	02	1.022	145.0	145.0	9.9	3.7	4.4	3.9	0.0
Fish and crustaceans, molluscs and other aquatic invertebrates.....	03	0.318	151.9	151.7	7.8	1.6	1.9	-0.7	-0.1
Vegetable products.....	II	4.186	180.7	177.3	-13.7	2.9	-2.2	2.0	-1.9
Edible fruit and nuts; peel of citrus fruit or melons.....	08	0.772	128.5	131.0	29.4	0.4	6.7	-3.6	1.9
Cereals.....	10	1.640	181.3	171.4	-22.8	3.0	-6.8	6.1	-5.5
Oilseeds and misc. grains, seeds, fruits, plants, straw and fodder.....	12	1.291	196.3	195.7	-17.8	3.2	-1.4	2.0	-0.3
Animal or vegetable fats and oils (Dec. 2009=100).....	III	0.317	111.6	109.4	-	1.6	5.3	4.5	-2.0
Prepared foodstuffs, beverages, and tobacco.....	IV	2.400	137.2	138.2	-2.0	-1.2	-0.8	-0.1	0.7
Preparations of vegetables, fruit, nuts or other parts of plants (Dec. 2009=100).....	20	0.346	105.6	105.5	-	0.3	1.7	1.3	-0.1
Miscellaneous edible preparations.....	21	0.406	118.1	117.7	-0.3	-0.3	-0.7	0.2	-0.3
Beverages, spirits, and vinegar (Dec. 2008=100).....	22	0.327	102.8	101.9	0.1	0.4	-1.9	0.1	-0.9
Residues and waste from the food industries; prepared animal feed.....	23	0.517	168.3	173.8	-20.7	-5.0	-3.0	-1.5	3.3
Mineral products.....	V	6.044	257.5	270.2	32.5	2.9	6.7	3.9	4.9
Mineral fuels, oils and residuals, bituminous substances and mineral waxes.....	27	5.334	249.4	263.5	32.9	3.6	6.7	2.9	5.7
Products of the chemical or allied industries.....	VI	12.195	147.1	144.8	6.7	1.2	2.0	1.0	-1.6
Inorganic chemicals.....	28	1.068	184.8	184.3	0.2	0.6	1.8	6.6	-0.3
Organic chemicals.....	29	3.105	155.3	148.7	7.4	1.6	4.5	-1.0	-4.2
Pharmaceutical products.....	30	2.970	123.7	121.9	4.9	0.2	1.0	-0.2	-1.5
Tanning or dyeing extracts, dyes, paints, varnish, putty, & inks.....	32	0.539	116.2	113.8	-0.2	0.0	2.0	0.0	-2.1
Essential oils and resinoids; perfumery cosmetic or toilet preparations.....	33	0.717	124.8	123.2	-1.4	-1.2	0.6	0.6	-1.3
Soap; lubricants; waxes, polishing or scouring products; candles, pastes.....	34	0.433	118.5	117.8	2.7	-0.5	1.0	1.5	-0.6
Miscellaneous chemical products.....	38	2.063	141.4	142.2	8.2	1.5	0.9	0.6	0.6
Plastics and articles thereof; rubber and articles thereof.....	VII	5.096	138.8	137.0	5.5	0.3	1.7	0.7	-1.3
Plastics and articles thereof.....	39	4.144	132.7	130.6	4.3	0.3	2.2	0.6	-1.6
Rubber and articles thereof.....	40	0.952	165.7	165.7	11.2	0.4	-0.3	0.9	0.0
Raw hides, skins, leather, furskins, travel goods, etc.....	VIII	0.379	121.9	121.1	53.1	3.2	3.1	1.3	-0.7
Wood, wood charcoal, cork, straw, basketware and wickerwork.....	IX	0.561	110.8	111.2	8.5	-0.6	1.9	0.6	0.4
Woodpulp, recovered paper, and paper products.....	X	2.496	117.6	116.8	8.9	1.2	1.2	1.9	-0.7
Woodpulp and recovered paper.....	47	0.705	132.3	126.7	35.9	3.8	0.6	5.8	-4.2
Paper and paperboard; articles of paper pulp, paper or paperboard.....	48	1.290	112.9	114.1	1.8	0.5	1.7	0.7	1.1
Printed material.....	49	0.501	116.7	116.4	0.3	-0.1	0.4	0.1	-0.3
Textile and textile articles.....	XI	1.987	114.1	115.6	13.4	2.8	1.3	0.2	1.3
Cotton, including yarns and woven fabrics thereof.....	52	0.659	128.6	132.1	44.7	8.6	3.0	0.9	2.7

See footnotes at end of table.

Table 6. U.S. export price indexes and percent changes for selected categories of goods: June 2009 to June 2010 — Continued

[2000=100, unless otherwise noted]

Description	Harmonized system	Relative importance May 2010 ¹	Index		Percent change				
			May 2010	June 2010	Annual	Monthly			
					June 2009 to June 2010	Feb. 2010 to Mar. 2010	Mar. 2010 to Apr. 2010	Apr. 2010 to May 2010	May 2010 to June 2010
Stone, plaster, cement, asbestos, ceramics, glass etc. (Dec. 2008=100)	XIII	0.788	116.1	115.8	-0.1	-0.3	0.0	-0.6	-0.3
Glass and glassware.....	70	0.416	97.7	97.1	-3.0	-0.8	-0.5	-1.0	-0.6
Pearls, stones, precious metals, imitation jewelry, and coins	XIV	4.926	208.3	210.5	23.0	0.2	3.0	1.9	1.1
Base metals and articles of base metals	XV	6.020	166.5	160.0	11.5	1.2	4.0	-0.4	-3.9
Iron and steel.....	72	1.859	206.2	194.3	29.5	2.4	8.4	0.0	-5.8
Articles of iron or steel.....	73	1.504	158.2	157.7	-3.6	-0.4	1.0	0.0	-0.3
Copper and articles thereof.....	74	0.579	227.0	216.4	25.8	6.6	4.7	-5.8	-4.7
Aluminum and articles thereof.....	76	0.926	129.1	116.6	16.0	-0.2	4.6	0.2	-9.7
Tools, implements, cutlery, spoons and forks, of base metal; parts thereof.....	82	0.409	124.2	124.2	1.9	0.0	0.0	0.0	0.0
Miscellaneous articles of base metal.....	83	0.312	124.4	124.6	2.1	0.7	0.0	0.0	0.2
Machinery, electrical equipment, TV image and sound recorders, parts, etc	XVI	30.106	95.9	95.5	0.2	0.3	-0.1	-0.1	-0.4
Machinery and mechanical appliances; parts thereof.....	84	17.705	107.3	106.6	1.4	0.4	0.5	-0.2	-0.7
Electrical machinery and equipment and parts and accessories thereof.....	85	12.401	83.5	83.5	-1.4	-0.1	-0.6	-0.1	0.0
Vehicles, aircraft, vessels and associated transport equipment	XVII	13.196	121.4	121.4	0.7	0.2	0.2	0.2	0.0
Motor vehicles and their parts.....	87	8.491	108.5	108.5	0.7	0.0	0.2	0.1	0.0
Ships, boats and floating structures (Dec. 2009=100).....	89	0.290	100.0	100.0	-	0.0	-0.1	0.0	0.0
Optical, photo, measuring, medical & musical instruments; & timepieces	XVIII	5.901	106.3	106.0	-1.7	-0.1	0.1	0.0	-0.3
Miscellaneous manufactured articles	XX	1.512	108.1	108.1	1.1	-0.7	0.2	0.2	0.0
Furniture; stuffed furnishings; lamps and lighting fittings nesoi;.....	94	0.753	118.7	118.9	2.4	0.4	0.5	0.3	0.2
Toys, games and sports equipment; parts and accessories thereof.....	95	0.646	93.2	92.9	-0.4	-2.1	0.0	0.0	-0.3

¹ Relative importance figures are based on 2008 trade values.

NOTES: Data may be revised in each of the three months after original publication.

Dash = Not available

Table 7. U.S. import price indexes and percent changes by locality of origin: June 2009 to June 2010
 [2000=100, unless otherwise noted]

Description	Percent of U.S. imports ¹	Index		Percent change				
		May 2010	June 2010	Annual	Monthly			
				June 2009 to June 2010	Feb. 2010 to Mar. 2010	Mar. 2010 to Apr. 2010	Apr. 2010 to May 2010	May 2010 to June 2010
Industrialized Countries²	41.082	125.8	124.8	4.6	0.0	0.3	-0.2	-0.8
Nonmanufactured articles.....	5.687	195.4	192.2	12.7	-2.0	-1.0	-5.9	-1.6
Manufactured articles.....	34.943	120.1	119.3	3.8	0.2	0.5	0.5	-0.7
Other Countries³	58.918	125.3	123.6	4.1	0.8	1.3	-0.4	-1.4
Nonmanufactured articles.....	15.714	264.1	255.3	13.2	3.2	3.6	-2.2	-3.3
Manufactured articles.....	43.010	105.8	105.1	1.5	0.0	0.7	0.1	-0.7
Canada	15.923	143.1	140.8	9.1	0.0	0.4	-0.8	-1.6
Nonmanufactured articles.....	5.257	189.1	186.8	14.3	-2.0	-1.3	-6.3	-1.2
Manufactured articles.....	10.335	134.8	132.6	7.8	0.8	1.1	1.3	-1.6
European Union⁴	16.799	128.8	127.6	2.6	0.1	0.2	0.2	-0.9
Nonmanufactured articles.....	0.211	260.6	256.0	11.3	1.4	3.2	0.0	-1.8
Manufactured articles.....	16.491	126.2	125.1	2.5	0.1	0.2	0.1	-0.9
France (Dec. 2003=100)	1.948	121.6	121.1	0.4	-0.4	0.0	0.0	-0.4
Germany (Dec. 2003=100)	4.572	112.6	111.2	2.4	-0.5	-0.1	-0.2	-1.2
United Kingdom (Dec. 2003=100)	2.566	126.3	125.3	3.7	0.8	0.1	0.3	-0.8
Latin America⁵	17.999	158.0	155.3	5.9	1.2	1.6	-1.2	-1.7
Nonmanufactured articles.....	6.186	282.4	273.8	7.7	3.5	2.3	-3.7	-3.0
Manufactured articles.....	11.730	131.9	130.5	4.4	-0.1	1.3	-0.1	-1.1
Mexico (Dec. 2003=100)	10.275	138.4	137.3	3.1	1.2	1.2	-0.9	-0.8
Nonmanufactured articles (Dec. 2008=100).....	2.141	153.7	146.6	8.1	5.4	3.5	-4.1	-4.6
Manufactured articles (Dec. 2008=100)....	8.085	97.0	97.3	1.5	0.2	0.5	0.1	0.3
Pacific Rim (Dec. 2003=100)⁶	31.500	101.0	101.0	1.4	-0.1	0.4	0.4	0.0
China (Dec. 2003=100)	16.449	100.6	100.3	-0.1	-0.1	0.2	0.3	-0.3
Japan	6.678	98.4	98.5	1.7	0.3	0.2	0.1	0.1
Asian NICs⁷	5.003	87.9	88.0	2.7	-0.1	0.2	0.8	0.1
ASEAN (Dec. 2003=100)⁸	5.274	95.9	95.7	-1.4	-1.2	0.7	-0.3	-0.2
Asia Near East (Dec. 2003=100)⁹	5.380	210.8	205.6	9.8	0.3	3.1	-1.5	-2.5

1 Percentage of trade figures are based on 2008 trade values.

2 Includes Western Europe, Canada, Japan, Australia, New Zealand and South Africa.

3 Includes Eastern Europe, Latin America, OPEC countries, and other countries in Asia, Africa and the Western Hemisphere.

4 Includes European Union countries.

5 Includes Mexico, Central America, South America and the Caribbean.

6 Includes China, Japan, Australia, Brunei, Indonesia, Macao, Malaysia, New Zealand, Papua New Guinea, Philippines and Asian Newly Industrialized Countries.

7 Asian Newly Industrialized Countries. Includes Hong Kong, Singapore, South Korea and Taiwan.

8 Association of Southeast Asian Nations. Includes Brunei, Cambodia, Indonesia, Laos, Malaysia, Myanmar, Philippines, Singapore, Thailand and Vietnam.

9 Includes Bahrain, Iran, Iraq, Israel, Jordan, Kuwait, Lebanon, Oman, Qatar, Saudi Arabia, Syria, United Arab Emirates and Yemen.

NOTES: Data may be revised in each of the three months after original publication.

Regions are not mutually exclusive.

Dash = Not available

Table 8. U.S. international price indexes and percent changes for selected transportation services: June 2009 to June 2010

[2000=100, unless otherwise noted]

Description	Relative importance May 2010 ¹	Index		Percent change				
		May 2010	June 2010	Annual	Monthly			
				June 2009 to June 2010	Feb. 2010 to Mar. 2010	Mar. 2010 to Apr. 2010	Apr. 2010 to May 2010	May 2010 to June 2010
Air Freight								
Import Air Freight	100.000	163.6	162.1	22.1	1.3	1.3	2.1	-0.9
Europe (Dec. 2003=100).....	20.723	133.8	126.4	0.2	-3.3	0.2	0.8	-5.5
Asia.....	70.978	150.7	151.1	30.0	3.3	1.6	1.5	0.3
Export Air Freight	100.000	124.9	127.1	8.3	0.6	-0.3	1.1	1.8
Europe (Dec. 2006=100).....	38.437	114.9	117.7	11.4	1.1	-0.2	0.8	2.4
Inbound Air Freight	100.000	146.8	146.2	16.9	0.8	0.4	1.3	-0.4
Europe (Dec. 2003=100).....	22.457	124.5	119.6	0.1	-2.8	-0.3	0.9	-3.9
Asia.....	67.113	135.9	136.6	25.0	1.7	0.7	1.3	0.5
Outbound Air Freight	100.000	121.3	122.5	9.3	1.5	0.9	1.8	1.0
Europe (Dec. 2003=100).....	41.325	140.8	142.7	11.8	1.3	2.1	1.3	1.3
Asia.....	41.899	110.0	110.9	8.0	1.4	-0.5	1.9	0.8
Air Passenger Fares								
Import Air Passenger Fares	100.000	160.6	175.3	19.0	5.3	4.2	2.9	9.2
Europe.....	43.121	177.4	201.7	25.6	9.9	5.2	3.7	13.7
Asia.....	28.085	139.5	155.6	14.5	2.9	3.6	6.6	11.5
Latin America/Caribbean.....	12.365	138.3	140.5	23.4	2.7	7.0	-4.9	1.6
Export Air Passenger Fares	100.000	163.5	174.4	26.2	1.7	2.7	0.9	6.7
Europe.....	33.910	206.7	244.1	40.0	0.9	4.5	0.6	18.1
Asia.....	31.188	151.8	149.6	37.0	6.4	-0.8	7.1	-1.4
Latin America/Caribbean.....	20.764	160.5	166.5	15.9	1.4	3.3	-3.9	3.7

¹ Relative importance figures are based on 2008 trade values.

NOTES: Data may be revised in each of the three months after original publication.

Dash = Not available

TECHNICAL NOTE

Import and Export Merchandise and Services Price Indexes -- All indexes use a modified Laspeyres formula and are not seasonally adjusted. Price indexes are reweighted annually, with a two-year lag in the weights. Published series use a base year of 2000=100 where possible. More detailed index series and additional information may be obtained at <http://www.bls.gov/mxp>, or by calling (202) 691-7101.

Merchandise Goods Classification Systems -- The merchandise price indexes are published using three classification systems. Items are classified by end use according to the Bureau of Economic Analysis Classification System, by industry according to the North American Industry Classification System (NAICS), and by product category according to the Harmonized System (HS). While classification by end use and product category are self-explanatory, some notes are in order for classifying items by industry. In the NAICS imports and exports tables, items are classified by output industry, not input industry. As an example, NAICS import index 326 (plastics and rubber products manufacturing) include outputs such as manufactured plastic rather than inputs such as petroleum. The NAICS classification structure also matches the classification system used by the PPI (Producer Price Index) to produce the NAICS primary products indexes.

Import Price Indexes -- Products have been classified by the Harmonized Tariff Schedule of the United States Annotated (TSUSA). Import prices are based on U.S. dollar prices paid by the U.S. importer. The prices are generally either "free on board" (f.o.b.) foreign port or "cost, insurance, and freight" (c.i.f.) U.S. port transaction prices, depending on the practices of the individual industry. The index for crude petroleum is calculated from data collected by the U.S. Department of Energy.

Export Price Indexes -- Products have been classified by the Harmonized Schedule B classification system of the U.S. Bureau of the Census. The prices used are generally either "free alongside ship" (f.a.s.) factory or "free on board" (f.o.b.) transaction prices, depending on the practices of the individual industry. Prices used in the grain index, excluding rice, are obtained from the U.S. Department of Agriculture.

Services Price Indexes -- Starting in September 2008 the Import Air Passenger Fares Indexes represent changes in the average revenue per passenger received by foreign carriers from U.S. residents and are calculated from data obtained from an airline consulting service. These data include tickets sold by travel agencies and travel websites. Tickets sold directly by the airlines are excluded, as are frequent flyer tickets generally. Starting in January 2008 the Export Air Passenger Fares Indexes represent changes in the average revenue per passenger received by U.S. carriers from foreign residents and are calculated from data collected directly from airlines. These data include frequent flyer tickets and those sold by consolidators. Taxes and fees are included in the Import Air Passenger Fares Index and excluded from the Export Air Passenger Fares Index. The Air Freight Indexes are calculated from data collected directly from airlines. These data exclude mail and passenger baggage. The scope of the service being priced is the movement of freight from airport to airport only, and does not include any ground transportation or port service. The Air Freight Indexes are presented using two definitions: Balance of Payments (which represent transactions between U.S. and foreign residents) and International (which represent transactions inbound to and outbound from the U.S.). Fact sheets specifying detailed information for each services industry are available at <http://www.bls.gov/mxp> under "MXP Publications."

Import Indexes by Locality of Origin -- Prices used in these indexes are a subset of the data collected for the Import Price Indexes. Beginning with January 2002, the indexes are defined by locality of origin using a nomenclature based upon the North American Industry Classification System (NAICS). Nonmanufactured goods are defined as NAICS 11 and 21 and manufactured goods are defined as NAICS 31-33.

Revision Policy -- To reflect the availability of late reports and corrections by respondents, monthly data may be revised in each of the three months after original publication. After three months, no further data revisions take place. So, for example, data released in the January release will be subject to revision in the releases for February, March, and April.

Uses of the Data -- The primary use of the indexes is to deflate trade statistics, notably the foreign trade sector of the National Income and Product Accounts constructed by the Department of Commerce. Other published indexes are useful for general market analysis. For trade in international services, Balance of Payments indexes are used for deflating National Income and Product Accounts, while International indexes are more appropriate for market analysis. Merchandise and services indexes also can be used to study U.S. competitiveness and to compute price elasticities, and the merchandise import indexes by country or region of origin are useful in terms of trade analysis.

E-Mail Subscription -- The U.S. Import and Export Price Indexes news release is available through an e-mail subscription service at (<http://www.bls.gov/bls/list.htm>).

Additional Information -- More detailed data are available on the Import/Export Price Indexes home page at (<http://www.bls.gov/mxp>). Flat Files and the FTP server are available for users requiring access to either a large volume of time series data or other related documentation. The FTP site can be accessed at <ftp://ftp.bls.gov>. For technical assistance in using the BLS Internet site, send e-mail to (labstat.helpdesk@bls.gov). For Import/Export Price Index data requests, send e-mail to (mxpinfo@bls.gov).

Information from this release will be made available to sensory impaired individuals upon request. Voice phone: 202-691-5200; Federal Relay Service: 1-800-877-8339.