



**Transmission of material in this release is embargoed until
8:30 a.m. (EDT) Thursday, August 11, 2016**

USDL-16-1655

Technical information: (202) 691-7101 • MXPinfo@bls.gov • www.bls.gov/mxp

Media contact: (202) 691-5902 • PressOffice@bls.gov

U.S. IMPORT AND EXPORT PRICE INDEXES – JULY 2016

Prices for U.S. imports advanced 0.1 percent in July, the U.S. Bureau of Labor Statistics reported today, following a 0.6-percent rise the previous month. In July, increasing nonfuel prices more than offset a downturn in fuel prices. The price index for U.S. exports rose 0.2 percent in July, after advancing 0.8 percent in June.

Chart 1. One-month percent change in the Import Price Index: July 2015 – July 2016

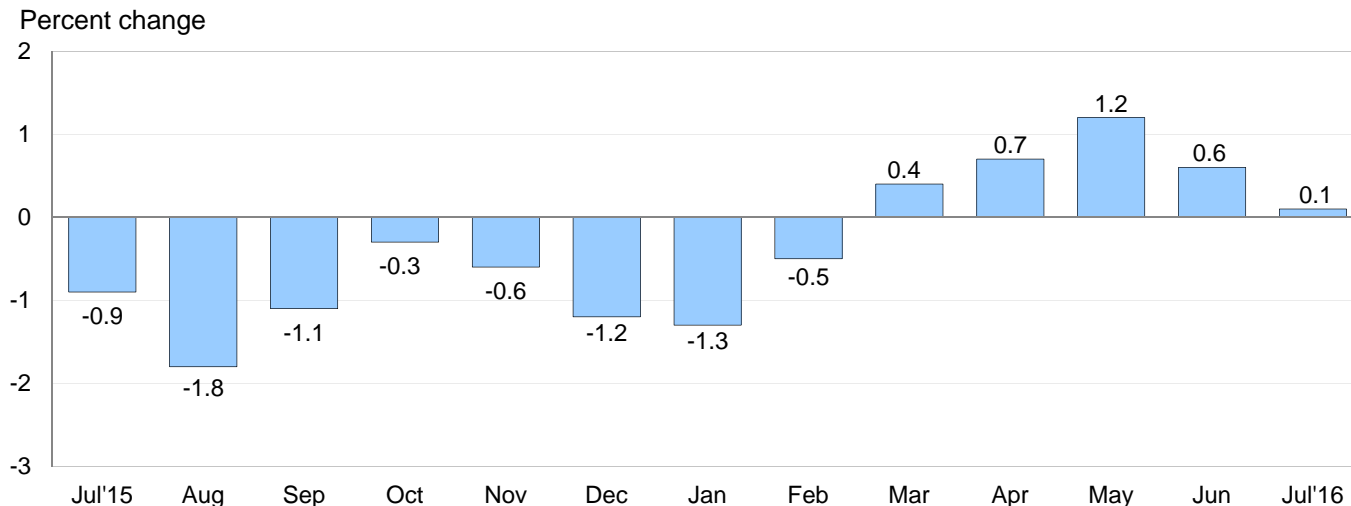
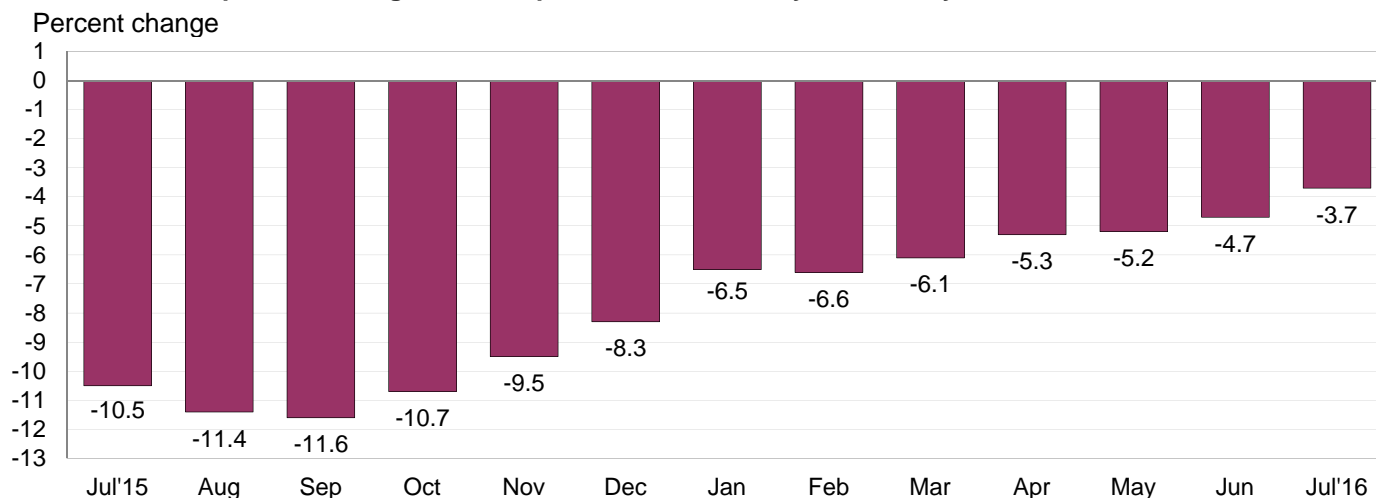


Chart 2. 12-month percent change in the Import Price Index: July 2015 – July 2016



All Imports: U.S. import prices continued to advance in July, ticking up 0.1 percent. Prices for imports have not recorded a monthly decrease over the past 5 months and increased 3.0 percent since last declining in February. Prior to July, the increases were driven by rising fuel prices. In contrast, in July, nonfuel prices led the advance and fuel prices recorded a decrease. Despite the recent increases, import prices remain down on an over-the-year basis, falling 3.7 percent over the past 12 months. Import prices have not recorded a 12-month advance since 2 years ago when the index rose 0.9 percent between July 2013 and July 2014.

All Imports Excluding Fuel: The price index for nonfuel imports rose 0.3 percent in July following a 0.2-percent drop in June and a 0.3-percent advance in May. The 0.3-percent increases were the largest 1-month advances since the index rose 0.3 percent in March 2014. The last time the index increased more than 0.3 percent was a 0.4-percent rise in March 2012. The July advance was led by higher prices for nonfuel industrial supplies and materials; and foods, feeds, and beverages. In contrast, import finished goods prices decreased in July. Prices for nonfuel imports declined 1.2 percent over the past year.

Fuel Imports: Fuel prices decreased 2.5 percent in July, the first monthly decline since the index fell 6.8 percent in February. Before the downturn, import fuel prices rose 47.1 percent from February to June. In July, a 3.6-percent drop in petroleum prices drove the downturn in fuel prices and more than offset a 31.4 percent increase in the price index for natural gas. Prices for import fuel decreased 22.3 percent for the year ended in July. A 23.1-percent decline in petroleum prices over the period and a 17.5-percent drop in natural gas prices each contributed to the overall fall in fuel prices.

Table A. Percent change in Import and Export Price Indexes, selected categories

Month	IMPORTS			EXPORTS		
	All imports	Fuel imports	Nonfuel imports	All exports	Agricultural exports	Non-agricultural exports
2015						
July.....	-0.9	-6.1	-0.3	-0.4	1.0	-0.6
August.....	-1.8	-12.7	-0.3	-1.4	-2.5	-1.3
September.....	-1.1	-8.4	-0.3	-0.6	-1.4	-0.5
October.....	-0.3	-0.4	-0.3	-0.2	0.1	-0.3
November.....	-0.6	-4.0	-0.3	-0.7	-0.9	-0.7
December.....	-1.2	-10.0	-0.3	-1.1	-0.9	-1.1
2016						
January.....	-1.3	-15.6	-0.1	-0.9	-1.3	-0.9
February.....	-0.5	-6.8	-0.1	-0.4	0.7	-0.6
March.....	0.4	8.5	-0.1	-0.1	-2.1	0.2
April.....	0.7	9.8	0.1	0.5 ^r	0.8	0.4
May.....	1.2 ^r	12.7 ^r	0.3	1.1 ^r	3.0 ^r	1.0
June.....	0.6 ^r	9.6 ^r	-0.2 ^r	0.8	2.6 ^r	0.5
July.....	0.1	-2.5	0.3	0.2	-0.4	0.3
July 2014 to 2015.....	-10.5	-42.9	-2.6	-6.2	-14.4	-5.3
July 2015 to 2016.....	-3.7	-22.3	-1.2	-3.0	-2.6	-3.0

r Revised

Chart 3. One-month percent change in the Export Price Index: July 2015 – July 2016

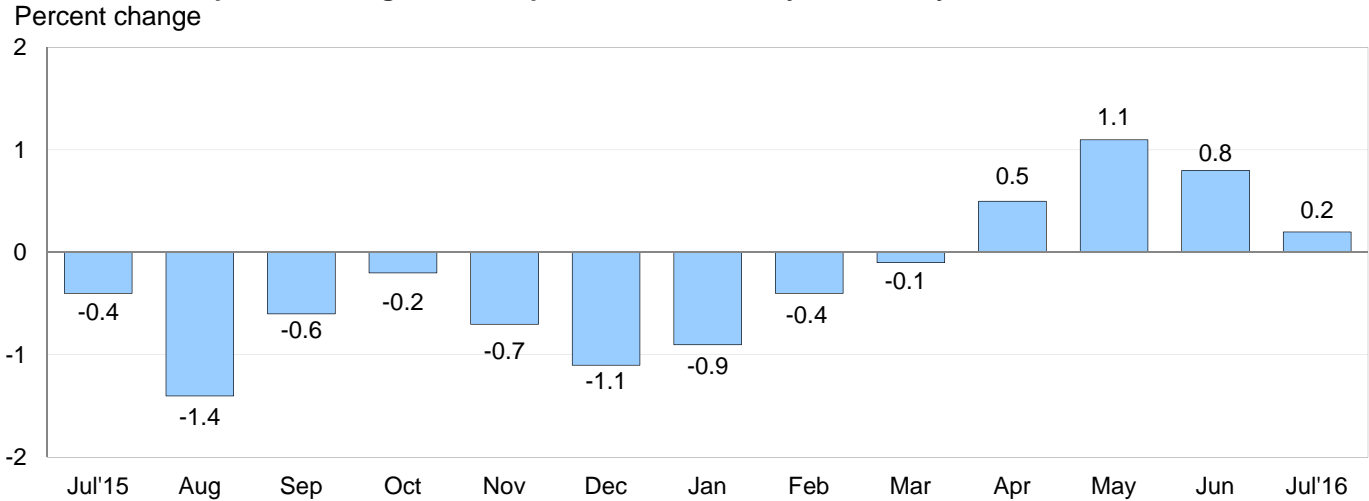
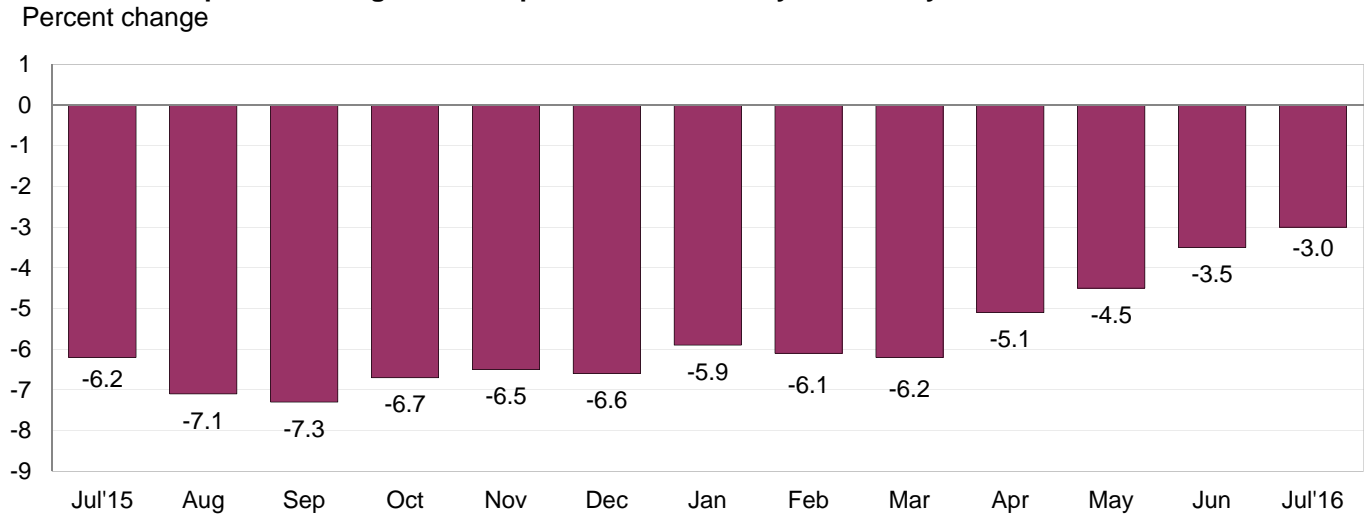


Chart 4. 12-month percent change in the Export Price Index: July 2015 – July 2016



All Exports: Prices for U.S. exports increased 0.2 percent in July, after rising 2.4 percent over the 3 previous months. In July, higher nonagricultural prices more than offset a decrease in agricultural prices. The price index for exports last recorded a 1-month decline when the index edged down 0.1 percent in March. Even accounting for the recent advances, export prices declined 3.0 percent over the past 12 months and have not increased on an over-the-year basis since the index advanced 0.4 percent in August 2014.

All Exports Excluding Agriculture: Nonagricultural prices increased 0.3 percent in July following a 0.5 percent advance the previous month. In July, rising prices for nonagricultural industrial supplies and materials as well as consumer goods drove the overall rise. Prices for nonagricultural exports fell 3.0 percent over the past 12 months and declines for each of the major end-use categories contributed to the decrease from July 2015 to July 2016.

Agricultural Exports: The price index for agricultural exports declined 0.4 percent in July, after rising 2.6 percent in June, 3.0 percent in May, and 0.8 percent in April. The downturn in July was led by an 8.5-percent decrease in corn prices; lower wheat prices also contributed to the overall decrease. Agricultural export prices fell 2.6 percent for the year ended in July, driven primarily by falling prices for nuts, wheat, and corn.

SELECTED JULY HIGHLIGHTS

Import Prices

Imports by Locality of Origin: Prices for imports from China edged down 0.1 percent in July, after decreasing 0.2 percent in June. The price index for imports from China has not recorded a monthly advance since ticking up 0.1 percent in December 2014 and decreased 1.8 percent on a 12-month basis for the second consecutive month in July. Import prices from the European Union and Mexico also declined in July, falling 0.3 percent and 0.2 percent, respectively. In contrast, prices for imports from Japan rose 0.2 percent in July. The last time the price index for imports from Japan recorded a monthly advance larger than 0.2 percent was a 0.3-percent increase in August 2011. Import prices from Canada rose 0.2 percent in July following a 2.7-percent advance in June.

Nonfuel Industrial Supplies and Materials: Nonfuel industrial supplies and materials prices rose 1.6 percent in July, after a 0.2-percent drop in June. The July advance was led by higher prices for gold, other precious metals, and iron and steel mill products.

Finished Goods: Each of the major finished goods categories recorded declines in July. Automotive vehicles prices fell 0.3 percent, driven by lower passenger car prices. The price indexes for capital goods and consumer goods each edged down 0.1 percent in July. Capital goods prices last rose on a monthly basis in June 2014.

Foods, Feeds, and Beverages: Prices for foods, feeds, and beverages increased 3.3 percent in July, driven by a 32.0-percent jump in import fruit prices. The July advance in foods, feeds, and beverages prices was the largest monthly advance since the index rose 3.6 percent in March 2014.

Transportation Services: Import air passenger fares declined 3.9 percent in July following monthly increases in each of the past 3 months. An 8.4-percent drop in European fares was the main contributor to the July downturn, while Asian fares also fell, declining 3.1 percent. Import air passenger fares decreased 8.3 percent over the past year. The price index for import air freight rose 2.5 percent in July, the largest 1-month rise for the index since a 5.0-percent advance in October 2015. Despite the July rise, import air freight prices fell 7.7 percent over the past 12 months.

Export Prices

Nonagricultural Industrial Supplies and Materials: Nonagricultural industrial supplies and materials rose 0.6 percent in July, after advancing 1.8 percent in June. The July increase was led by a 6.7-percent rise in nonferrous metal prices.

Finished Goods: Finished goods prices were mixed in July. Prices for consumer goods rose 0.5 percent, driven by a 1.7-percent advance in the price index for medicinal, dental, and pharmaceutical materials. The last time consumer goods prices increased by more than 0.5 percent was a 1.2-percent advance in June 2011. Capital goods prices edged down 0.1 percent in July and automotive vehicles prices recorded no change.

Transportation Services: Export air passenger fares rose 4.4 percent in July following a 3.4-percent advance in June. An 11.5-percent increase in Latin American/Caribbean fares and a 5.9-percent rise in Asian fares each contributed to the overall advance for export air passenger fares. Despite the recent increase, export air passenger fares fell 9.4 percent over the past 12 months. The price index for export air freight fell 0.2 percent in July and 3.2 percent over the past year.

Import and Export Price Index data for August 2016 are scheduled for release on Wednesday, September 14, 2016 at 8:30 a.m. (EDT).

Table 1. U.S. import price indexes and percent changes for selected categories of goods: July 2015 to July 2016

[2000=100, unless otherwise noted]

Description	End Use	Relative importance June 2016 ¹	Index		Percent change				
			June 2016	July 2016	Annual July 2015 to July 2016	Monthly			
						Mar. 2016 to Apr. 2016	Apr. 2016 to May 2016	May 2016 to June 2016	June 2016 to July 2016
All commodities		100.000	120.6	120.7	-3.7	0.7	1.2	0.6	0.1
All imports excluding food and fuels (Dec. 2010=100)		85.367	98.2	98.3	-1.4	0.0	0.3	-0.1	0.1
All imports excluding petroleum		91.957	110.5	111.0	-1.3	0.0	0.4	-0.3	0.5
All imports excluding fuels (Dec. 2001=100)		91.448	114.8	115.2	-1.2	0.1	0.3	-0.2	0.3
Foods, feeds, & beverages	0	6.081	172.3	177.9	1.4	1.3	0.3	-0.6	3.3
Agricultural foods, feeds & beverages, excluding distilled beverages.....	00	4.675	187.4	195.4	0.2	1.4	0.1	-0.7	4.3
Nonagricultural foods (fish, distilled beverages).....	01	1.406	138.4	138.3	5.9	1.3	1.5	-0.3	-0.1
Industrial supplies & materials	1	21.957	157.8	157.8	-12.2	3.6	5.4	3.3	0.0
Industrial supplies & materials excluding petroleum.....		13.914	139.0	141.9	-3.4	0.6	1.5	-0.4	2.1
Industrial supplies & materials excluding fuels (Dec. 2001=100).....		13.405	159.4	161.9	-2.9	0.4	1.6	-0.2	1.6
Industrial supplies & materials, durable....		8.125	148.0	151.7	-0.8	0.8	2.3	-0.5	2.5
Industrial supplies & materials nondurable excluding petroleum.....		5.280	127.6	129.8	-6.7	0.2	0.5	-0.4	1.7
Fuels & lubricants.....	10	8.551	157.0	153.0	-22.3	9.8	12.7	9.6	-2.5
Petroleum & petroleum products.....	100	8.042	171.8	165.6	-23.1	10.7	13.9	10.6	-3.6
Crude.....	10000	5.869	175.7	169.5	-22.5	12.0	14.8	10.2	-3.5
Fuels, n.e.s.-coals & gas.....	101	0.331	65.7	80.8	-15.4	3.3	-1.0	-7.9	23.0
Gas-natural.....	10110	0.241	49.4	64.9	-17.5	4.3	-1.3	-10.3	31.4
Paper & paper base stocks.....	11	0.576	107.4	106.8	-2.7	-0.3	-0.2	0.4	-0.6
Materials associated with nondurable supplies & materials.....	12	4.771	149.9	150.5	-6.4	0.1	0.7	0.1	0.4
Selected building materials.....	13	1.302	137.3	137.3	-0.2	1.3	0.8	0.1	0.0
Unfinished metals related to durable goods.....	14	3.351	189.7	200.8	0.2	1.6	5.1	-1.3	5.9
Finished metals related to durable goods.....	15	1.683	145.0	146.0	-3.7	-0.2	0.1	0.0	0.7
Nonmetals related to durable goods.....	16	1.722	108.9	108.2	-1.3	-0.1	0.1	0.2	-0.6
Capital goods	2	28.494	89.0	88.9	-1.9	-0.2	0.0	-0.2	-0.1
Electric generating equipment.....	20	3.456	115.8	115.7	-1.8	-0.4	0.1	-0.2	-0.1
Nonelectrical machinery.....	21	22.333	81.5	81.4	-2.0	-0.1	0.0	-0.2	-0.1
Transportation equipment excluding motor vehicles (Dec. 2001=100).....	22	2.705	136.6	136.2	-0.6	-0.1	0.0	-0.5	-0.3
Automotive vehicles, parts & engines	3	16.131	110.6	110.3	-0.8	0.1	0.3	0.0	-0.3
Consumer goods, excluding automobiles	4	27.337	106.9	106.8	-0.4	-0.3	0.2	-0.2	-0.1
Nondurables, manufactured.....	40	13.055	119.7	119.7	0.6	-0.1	0.1	-0.2	0.0
Durables, manufactured.....	41	12.788	94.2	94.2	-1.4	-0.3	0.1	-0.2	0.0
Nonmanufactured consumer goods.....	42	1.494	119.0	118.3	0.6	-0.3	0.8	-0.3	-0.6

¹ Relative importance figures are based on 2014 trade values.

NOTES: Data may be revised in each of the 3 months after original publication.

Dash = Not available

Table 2. U.S. export price indexes and percent changes for selected categories of goods: July 2015 to July 2016

[2000=100, unless otherwise noted]

Description	End Use	Relative importance June 2016 ¹	Index		Percent change				
			June 2016	July 2016	Annual July 2015 to July 2016	Monthly			
						Mar. 2016 to Apr. 2016	Apr. 2016 to May 2016	May 2016 to June 2016	June 2016 to July 2016
All commodities.....		100.000	120.9	121.1	-3.0	0.5	1.1	0.8	0.2
Agricultural commodities.....		9.359	182.1	181.3	-2.6	0.8	3.0	2.6	-0.4
All exports excluding food and fuels (Dec. 2010=100).....		84.284	98.3	98.6	-1.5	0.2	0.2	-0.1	0.3
Nonagricultural commodities.....		90.640	116.3	116.6	-3.0	0.4	1.0	0.5	0.3
Foods, feeds, & beverages.....	0	8.781	184.2	182.8	-2.5	0.9	3.0	2.6	-0.8
Agricultural foods, feeds & beverages, excluding distilled beverages.....	00	8.108	184.9	183.2	-2.9	1.0	3.3	2.8	-0.9
Nonagricultural foods (fish, distilled beverages).....	01	0.673	184.8	186.4	1.5	0.6	-1.1	1.6	0.9
Industrial supplies & materials.....	1	28.790	140.8	141.9	-7.5	1.4	3.0	1.8	0.8
Industrial supplies & materials, durable....		10.498	151.7	154.6	-1.5	0.5	1.8	-1.2	1.9
Industrial supplies & materials, nondurable.....		18.291	135.9	135.9	-10.7	1.9	3.8	3.6	0.0
Agricultural industrial supplies & materials.....	10	1.251	171.0	175.4	-1.0	-0.1	0.4	1.8	2.6
Nonagricultural industrial supplies & materials.....		27.539	139.9	140.8	-7.7	1.4	3.2	1.8	0.6
Fuels & lubricants.....	11	6.934	148.0	147.7	-18.7	3.8	11.1	9.7	-0.2
Nonagricultural supplies & materials excluding fuels & building materials....	12	19.573	148.1	149.6	-4.0	0.8	0.9	-0.7	1.0
Selected building materials.....	13	1.032	115.4	115.6	0.0	0.8	0.6	0.2	0.2
Capital goods.....	2	38.915	107.1	107.0	-0.5	0.1	0.0	0.0	-0.1
Electrical generating equipment.....	20	3.969	112.7	112.7	-1.1	0.1	-0.1	0.3	0.0
Nonelectrical machinery.....	21	26.256	94.3	94.2	-0.9	0.1	0.0	0.0	-0.1
Transportation equipment excluding motor vehicles (Dec. 2001=100).....	22	8.690	164.2	164.0	1.5	0.2	0.1	0.1	-0.1
Automotive vehicles, parts & engines.....	3	10.692	113.2	113.2	-0.5	0.0	0.0	0.1	0.0
Consumer goods, excluding automotives.....	4	12.821	110.1	110.6	-1.8	-0.1	0.2	-0.4	0.5
Nondurables, manufactured.....	40	5.827	106.0	107.0	-1.4	0.3	0.4	-0.1	0.9
Durables, manufactured.....	41	5.372	107.7	107.7	-2.6	-0.3	-0.1	-0.6	0.0

¹ Relative importance figures are based on 2014 trade values.

NOTES: Data may be revised in each of the 3 months after original publication.

Dash = Not available

Table 3. U.S. import price indexes and percent changes for selected categories of goods: July 2015 to July 2016

[December 2005=100, unless otherwise noted]

Description	NAICS	Relative importance June 2016 ¹	Index		Percent change				
			June 2016	July 2016	Annual	Monthly			
					July 2015 to July 2016	Mar. 2016 to Apr. 2016	Apr. 2016 to May 2016	May 2016 to June 2016	June 2016 to July 2016
Nonmanufactured articles.....		8.304	85.8	85.7	-17.6	7.9	9.5	6.2	-0.1
Agriculture, forestry, fishing and hunting.....	11	1.892	163.8	175.1	-0.3	0.9	-0.8	-1.9	6.9
Crop production.....	111	1.511	173.7	189.0	1.8	0.6	-0.4	-2.1	8.8
Animal production (Dec. 2014=100).....	112	0.209	80.3	78.2	-14.2	1.2	-4.9	-0.1	-2.6
Mining.....	21	6.412	76.7	75.0	-21.5	10.9	13.2	8.9	-2.2
Mining (except oil and gas) (Dec. 2006=100).....	212	0.239	95.0	93.5	-4.8	2.8	-0.6	-0.1	-1.6
Manufactured articles.....		91.387	109.0	109.1	-2.1	0.2	0.6	0.1	0.1
Manufactured goods, part 1.....	31	12.199	123.9	124.0	-0.2	0.4	0.4	0.1	0.1
Food manufacturing.....	311	3.505	153.4	154.3	1.6	1.6	1.6	0.4	0.6
Beverage and tobacco product manufacturing.....	312	1.098	118.8	117.8	-0.4	0.0	0.2	-0.1	-0.8
Textile mills (Dec. 2011=100).....	313	0.406	98.7	99.2	-1.6	-0.1	0.0	0.1	0.5
Textile product mills.....	314	0.895	108.8	108.8	-2.8	-0.2	-0.2	-0.3	0.0
Apparel manufacturing.....	315	4.371	111.3	111.2	-0.6	0.0	-0.1	-0.1	-0.1
Leather and allied product manufacturing.....	316	1.924	123.3	123.3	-0.9	-0.1	0.0	-0.2	0.0
Manufactured goods, part 2.....	32	16.878	116.4	116.0	-5.8	0.6	1.5	1.5	-0.3
Wood product manufacturing.....	321	0.790	115.6	115.6	0.1	1.9	1.0	0.7	0.0
Paper manufacturing.....	322	1.077	105.5	105.3	-2.4	-0.3	-0.1	0.2	-0.2
Petroleum and coal products manufacturing.....	324	2.034	76.4	73.4	-26.5	7.9	11.6	11.9	-3.9
Chemical manufacturing.....	325	9.467	130.9	131.3	-2.2	-0.2	0.5	0.1	0.3
Plastics and rubber products manufacturing.....	326	2.276	117.3	117.8	-0.8	-0.3	0.3	0.3	0.4
Nonmetallic mineral product manufacturing.....	327	1.034	129.7	129.2	-1.4	0.0	0.3	-0.5	-0.4
Manufactured goods, part 3.....	33	62.310	103.3	103.5	-1.4	0.0	0.3	-0.2	0.2
Primary metal manufacturing.....	331	4.098	126.5	132.7	-1.3	0.9	4.1	-0.8	4.9
Fabricated metal product manufacturing.....	332	3.106	122.2	122.3	-2.9	-0.2	-0.2	-0.1	0.1
Machinery manufacturing.....	333	7.706	116.5	116.5	-1.8	0.1	0.0	-0.1	0.0
Computer and electronic product manufacturing.....	334	18.041	76.5	76.3	-2.1	-0.3	0.0	-0.3	-0.3
Electrical equipment, appliance, and component manufacturing.....	335	4.828	114.5	114.3	-2.3	-0.9	0.3	-0.5	-0.2
Transportation equipment manufacturing.....	336	17.332	109.8	109.5	-0.7	0.2	0.2	-0.1	-0.3
Furniture and related product manufacturing.....	337	1.664	115.0	114.9	-0.9	0.0	0.1	-0.2	-0.1
Miscellaneous manufacturing.....	339	5.535	119.8	120.1	0.2	-0.1	0.2	-0.1	0.3

¹ Relative importance figures are based on 2014 trade values.

NOTES: Data may be revised in each of the 3 months after original publication.

Dash = Not available

Table 4. U.S. export price indexes and percent changes for selected categories of goods: July 2015 to July 2016

[December 2005=100, unless otherwise noted]

Description	NAICS	Relative importance June 2016 ¹	Index		Percent change				
			June 2016	July 2016	Annual	Monthly			
					July 2015 to July 2016	Mar. 2016 to Apr. 2016	Apr. 2016 to May 2016	May 2016 to June 2016	June 2016 to July 2016
Nonmanufactured articles.....		7.159	126.7	129.1	-4.4	2.7	4.5	5.2	1.9
Agriculture, forestry, fishing and hunting.....	11	4.866	162.1	158.5	-5.9	1.1	4.0	4.6	-2.2
Crop production.....	111	4.591	170.1	166.2	-5.1	1.1	5.0	4.8	-2.3
Mining.....	21	2.293	65.6	72.5	-1.6	6.4	5.5	6.7	10.5
Mining (except oil and gas).....	212	1.116	77.0	78.4	-9.5	0.8	1.8	-0.6	1.8
Manufactured articles.....		91.525	111.4	111.5	-2.7	0.4	0.7	0.5	0.1
Manufactured goods, part 1.....	31	6.781	135.8	137.1	-0.4	0.2	1.1	1.1	1.0
Food manufacturing.....	311	4.556	152.6	154.4	-0.3	0.4	1.5	1.3	1.2
Beverage and tobacco product manufacturing.....	312	0.634	110.9	114.5	3.2	0.6	1.0	2.2	3.2
Manufactured goods, part 2.....	32	23.222	106.2	105.6	-8.3	1.4	2.4	2.2	-0.6
Paper manufacturing.....	322	1.726	120.9	120.5	-3.0	-0.2	0.2	-0.7	-0.3
Printing and related support activities (Dec. 2015=100).....	323	0.268	100.0	100.0	—	0.0	0.0	0.0	0.0
Petroleum and coal products manufacturing.....	324	4.552	87.1	84.3	-22.4	4.4	13.1	12.1	-3.2
Chemical manufacturing.....	325	12.915	114.1	114.3	-5.1	1.2	0.3	0.3	0.2
Plastics and rubber products manufacturing.....	326	2.378	115.4	114.2	-3.0	0.0	0.2	-0.1	-1.0
Nonmetallic mineral product manufacturing.....	327	0.860	112.2	112.2	-0.1	0.1	0.4	-0.2	0.0
Manufactured goods, part 3.....	33	61.521	111.1	111.4	-0.6	0.0	0.2	-0.2	0.3
Primary metal manufacturing.....	331	4.150	131.4	138.1	0.4	-0.2	2.4	-2.4	5.1
Fabricated metal product manufacturing...	332	3.281	130.1	130.3	0.9	-0.2	0.5	0.0	0.2
Machinery manufacturing.....	333	11.598	126.3	126.5	1.0	0.3	0.0	0.2	0.2
Computer and electronic product manufacturing.....	334	14.413	83.7	83.5	-2.6	0.0	-0.1	-0.1	-0.2
Electrical equipment, appliance, and component manufacturing.....	335	3.838	112.8	112.6	-1.2	0.0	0.1	0.3	-0.2
Transportation equipment manufacturing..	336	18.268	122.1	122.0	0.3	0.2	0.0	0.1	-0.1
Furniture and related product manufacturing (Dec. 2011=100).....	337	0.406	115.0	116.6	6.6	0.4	0.2	1.1	1.4
Miscellaneous manufacturing.....	339	5.567	119.6	119.3	-3.2	-0.5	-0.2	-0.9	-0.3

¹ Relative importance figures are based on 2014 trade values.

NOTES: Data may be revised in each of the 3 months after original publication.

Dash = Not available

Table 5. U.S. import price indexes and percent changes for selected categories of goods: July 2015 to July 2016

[2000=100, unless otherwise noted]

Description	Harmonized system	Relative importance June 2016 ¹	Index		Percent change				
			June 2016	July 2016	Annual	Monthly			
					July 2015 to July 2016	Mar. 2016 to Apr. 2016	Apr. 2016 to May 2016	May 2016 to June 2016	June 2016 to July 2016
Live animals; animal products.....	I	1.479	189.4	189.9	3.1	2.6	1.9	-0.8	0.3
Meat and edible meat offal.....	02	0.386	236.6	237.3	0.0	5.4	6.1	-3.2	0.3
Fish and crustaceans, molluscs and other aquatic invertebrates.....	03	0.773	139.5	141.1	11.5	2.7	1.7	-0.7	1.1
Vegetable products.....	II	1.876	186.0	204.1	1.4	1.0	-0.5	-3.7	9.7
Edible vegetables, roots, and tubers.....	07	0.449	407.4	411.9	-12.3	4.8	-7.7	-0.9	1.1
Edible fruit and nuts; peel of citrus fruit or melons.....	08	0.500	82.1	111.9	15.4	-1.7	-0.4	-10.9	36.3
Coffee, tea, mate and spices.....	09	0.364	229.6	234.8	0.7	0.7	0.8	0.6	2.3
Oilseeds & misc grains, seeds, plants, straw & fodder (Dec. 2015=100).....	12	0.175	107.3	106.3	-	1.9	3.5	0.3	-0.9
Animal or vegetable fats and oils (Dec. 2009=100).....	III	0.280	106.7	106.9	2.5	6.3	-1.9	-0.3	0.2
Prepared foodstuffs, beverages, and tobacco.....	IV	2.835	163.5	163.5	1.2	0.3	0.5	1.9	0.0
Sugars and sugar confectionary (Dec. 2012=100).....	17	0.193	86.8	86.2	-4.9	-0.1	-0.2	1.2	-0.7
Cocoa and cocoa preparations (Dec. 2009=100).....	18	0.248	115.1	115.2	1.7	0.7	2.9	0.4	0.1
Preparations of cereals, flour, starch or milk; bakers' wares (Dec. 2007=100).....	19	0.287	133.2	133.0	0.5	0.5	0.1	0.0	-0.2
Preparations of vegetables, fruit, nuts, or other parts of plants.....	20	0.323	154.6	157.8	1.2	0.2	-0.6	0.1	2.1
Beverages, spirits, and vinegar.....	22	1.035	128.7	127.6	-0.5	0.1	0.2	-0.1	-0.9
Mineral products.....	V	8.596	156.6	152.4	-23.0	9.8	12.5	9.4	-2.7
Mineral fuels, oils and residuals, bituminous substances and mineral waxes.....	27	8.434	154.1	150.0	-23.2	10.2	13.0	9.8	-2.7
Products of the chemical or allied industries.....	VI	8.879	146.9	147.1	-1.1	-0.1	0.3	-0.1	0.1
Inorganic chemicals.....	28	0.562	261.6	257.4	-12.6	-1.1	0.7	-1.2	-1.6
Organic chemicals.....	29	2.388	120.8	121.2	-3.9	0.4	0.2	0.2	0.3
Pharmaceutical products.....	30	3.856	142.0	141.9	3.7	-0.2	0.6	-0.4	-0.1
Fertilizers (Dec. 2009=100).....	31	0.288	78.1	78.6	-28.5	1.0	-0.8	1.2	0.6
Tanning extracts; dye, pigments, varnish, paints & putty (Dec. 2011=100).....	32	0.190	98.5	101.6	3.0	0.3	0.5	0.5	3.1
Miscellaneous chemical products.....	38	0.664	100.9	101.8	13.2	-1.3	0.0	-0.4	0.9
Plastics and articles thereof; rubber and articles thereof.....	VII	3.503	136.7	137.1	-2.6	0.2	0.4	0.1	0.3
Plastics and articles thereof.....	39	2.251	140.4	140.3	-3.2	0.0	0.3	0.2	-0.1
Rubber and articles thereof.....	40	1.252	131.6	133.0	-1.6	0.5	0.5	0.0	1.1
Raw hides, skins, leather, furskins, travel goods, etc.....	VIII	0.706	123.5	123.5	-3.5	-0.3	-0.1	-0.6	0.0
Articles of leather; travel goods, bags, etc. of various materials.....	42	0.673	128.9	128.8	-1.5	-0.1	0.0	-0.3	-0.1
Wood, wood charcoal, cork, straw, basketware and wickerwork.....	IX	0.825	140.5	140.7	0.4	1.8	0.9	0.6	0.1
Wood and articles of wood; wood charcoal (Dec. 2014=100).....	44	0.786	96.5	96.7	0.4	1.8	1.1	0.5	0.2
Woodpulp, recovered paper, and paper products.....	X	1.155	109.9	109.6	-1.7	-0.4	0.0	0.1	-0.3
Paper and paperboard; articles of paper pulp, paper or paperboard.....	48	0.783	104.5	104.5	-0.9	0.1	0.0	-0.1	0.0

See footnotes at end of table.

Table 5. U.S. import price indexes and percent changes for selected categories of goods: July 2015 to July 2016 — Continued
 [2000=100, unless otherwise noted]

Description	Harmonized system	Relative importance June 2016 ¹	Index		Percent change				
			June 2016	July 2016	Annual July 2015 to July 2016	Monthly			
						Mar. 2016 to Apr. 2016	Apr. 2016 to May 2016	May 2016 to June 2016	June 2016 to July 2016
Printed matter (Dec. 2015=100).....	49	0.211	100.3	100.8	-	0.0	-0.1	0.0	0.5
Textile and textile articles.....	XI	5.493	113.3	113.3	-0.9	0.0	0.0	-0.1	0.0
Articles of apparel and clothing accessories, knitted or crocheted.....	61	2.271	103.4	103.5	-0.6	0.0	-0.2	-0.1	0.1
Articles of apparel and clothing accessories, not knitted or crocheted.....	62	1.908	119.9	119.6	-0.1	-0.1	0.1	-0.1	-0.3
Made-up or worn textile articles.....	63	0.635	103.0	102.9	-2.7	-0.1	-0.2	-0.1	-0.1
Headgear, umbrellas, artificial flowers, etc....	XII	1.535	122.9	122.8	-0.4	-0.1	0.0	-0.1	-0.1
Footwear and parts of such articles.....	64	1.334	122.0	122.0	-0.3	-0.1	0.0	-0.1	0.0
Stone, plaster, cement, asbestos, ceramics, glass etc.....	XIII	0.964	131.7	130.9	-1.4	0.2	0.4	-0.5	-0.6
Articles of stone, plaster, cement, asbestos, or mica (Dec. 2015=100).....	68	0.334	99.4	97.9	-	0.4	0.7	-1.1	-1.5
Ceramic products.....	69	0.282	137.1	136.8	-1.3	0.0	0.0	-0.3	-0.2
Glass and glassware.....	70	0.348	130.0	129.9	0.2	0.2	0.3	-0.2	-0.1
Pearls, stones, precious metals, imitation jewelry, and coins.....	XIV	3.026	167.6	177.0	5.5	-0.2	2.9	-2.7	5.6
Base metals and articles of base metals. ...	XV	5.443	155.3	156.9	-5.1	0.7	1.5	0.3	1.0
Iron and steel.....	72	1.340	170.3	174.4	-2.1	3.7	5.7	3.6	2.4
Articles of iron or steel.....	73	1.718	138.0	138.2	-6.2	-0.3	-0.2	-0.1	0.1
Copper and articles thereof.....	74	0.359	241.1	241.2	-14.7	-0.2	-0.8	-2.2	0.0
Aluminum and articles thereof.....	76	0.725	120.9	120.9	-6.8	0.1	1.3	-1.1	0.0
Tools, implements, cutlery, spoons and forks, of base metal; parts thereof.....	82	0.445	122.2	122.3	-4.8	-0.8	-1.0	-0.2	0.1
Miscellaneous articles of base metal.....	83	0.528	136.7	137.0	-1.0	0.0	0.1	0.0	0.2
Machinery, electrical equipment, TV image and sound recorders, parts, etc.....	XVI	30.663	80.8	80.7	-1.9	-0.2	0.0	-0.2	-0.1
Machinery and mechanical appliances; parts thereof.....	84	15.582	85.9	85.7	-1.9	-0.2	0.2	-0.3	-0.2
Electrical machinery and equip, sound and TV recorders & reproducers, parts.....	85	15.081	76.0	75.9	-1.9	-0.4	0.0	-0.1	-0.1
Vehicles, aircraft, vessels and associated transport equipment.....	XVII	14.416	114.2	113.8	-0.8	0.2	0.1	-0.1	-0.4
Motor vehicles and their parts.....	87	12.923	112.8	112.4	-0.9	0.2	0.2	-0.1	-0.4
Aircraft, spacecraft, and parts thereof (Dec. 2002=100).....	88	1.422	119.0	119.0	-0.8	-0.1	0.0	-1.0	0.0
Optical, photo, measuring, medical & musical instruments; & timepieces.....	XVIII	4.031	103.4	103.2	-0.5	-0.2	0.1	0.0	-0.2
Optical, photographic, measuring and medical instruments.....	90	3.700	100.2	100.0	-0.4	-0.2	0.1	0.0	-0.2
Clocks and watches and parts thereof.....	91	0.267	141.5	141.5	-0.6	0.2	-0.1	-0.1	0.0
Miscellaneous manufactured articles.....	XX	4.208	112.1	111.9	-0.9	0.1	0.0	-0.1	-0.2
Furniture & stuffed furnishings; lamps & lighting fittings, nesoi; prefab bldgs.....	94	2.573	116.6	116.4	-0.9	0.1	0.2	-0.3	-0.2
Toys, games and sports equipment; parts and accessories thereof.....	95	1.355	103.7	103.4	-1.3	0.0	-0.1	0.2	-0.3
Miscellaneous manufactured articles.....	96	0.280	135.2	135.2	0.7	0.0	-0.1	0.0	0.0

¹ Relative importance figures are based on 2014 trade values.

NOTES: Data may be revised in each of the 3 months after original publication.

Dash = Not available

Table 6. U.S. export price indexes and percent changes for selected categories of goods: July 2015 to July 2016

[2000=100, unless otherwise noted]

Description	Harmonized system	Relative importance June 2016 ¹	Index		Percent change				
			June 2016	July 2016	Annual July 2015 to July 2016	Monthly			
						Mar. 2016 to Apr. 2016	Apr. 2016 to May 2016	May 2016 to June 2016	June 2016 to July 2016
Live animals; animal products.....	I	1.733	186.9	189.7	0.2	0.1	0.8	1.1	1.5
Meat & edible meat offal (Dec. 2006=100)...	02	1.045	150.3	151.2	3.2	-0.2	2.3	0.8	0.6
Vegetable products.....	II	4.610	208.0	203.5	-4.5	1.2	4.7	4.2	-2.2
Edible fruit and nuts; peel of citrus fruit or melons.....	08	0.940	158.2	155.5	-9.1	-2.2	1.7	1.2	-1.7
Cereals.....	10	1.336	192.4	175.6	-16.7	0.6	3.9	4.2	-8.7
Oilseeds and misc. grains, seeds, fruits, plants, straw and fodder.....	12	1.756	220.3	227.9	4.8	3.3	9.2	7.6	3.4
Prepared foodstuffs, beverages, and tobacco.....	IV	2.990	150.4	151.9	-0.7	0.8	1.4	1.3	1.0
Preparations of vegetables, fruit, nuts or other parts of plants (Dec. 2009=100)....	20	0.377	118.9	118.8	0.4	0.1	0.0	-0.1	-0.1
Beverages, spirits, and vinegar (Dec. 2008=100).....	22	0.549	111.3	112.3	3.6	1.0	2.9	1.8	0.9
Residues and waste from the food industries; prepared animal feed.....	23	0.697	211.4	220.2	1.0	0.7	3.7	5.8	4.2
Mineral products.....	V	6.801	167.6	170.0	-17.7	3.5	9.3	9.1	1.4
Ores, slag and ash (Dec. 2012=100).....	26	0.480	75.9	75.7	-6.0	3.2	1.1	1.7	-0.3
Mineral fuels, oils and residuals, bituminous substances and mineral waxes.....	27	6.119	160.1	162.6	-18.9	3.6	10.4	10.1	1.6
Products of the chemical or allied industries.....	VI	10.757	136.4	136.8	-4.5	0.9	0.4	0.1	0.3
Inorganic chemicals.....	28	0.908	173.6	174.9	-5.3	0.2	0.3	0.2	0.7
Organic chemicals.....	29	2.458	132.9	132.5	-8.6	1.5	0.5	0.2	-0.3
Pharmaceutical products.....	30	2.918	107.3	109.4	-1.8	0.5	0.8	0.0	2.0
Tanning or dyeing extracts, dyes, paints varnish, putty, & inks (Dec. 2015=100)....	32	0.547	99.1	99.2	-	0.0	0.1	0.1	0.1
Essential oils and resinoids; perfumery cosmetic or toilet preparations.....	33	0.831	134.5	134.6	-1.3	0.1	0.1	-0.1	0.1
Soap; lubricants; waxes, polishing or scouring products; candles, pastes.....	34	0.516	116.5	115.0	-0.2	0.3	-0.1	0.1	-1.3
Miscellaneous chemical products.....	38	1.866	148.4	148.3	-2.1	2.2	0.5	0.5	-0.1
Plastics and articles thereof; rubber and articles thereof.....	VII	5.080	136.3	135.4	-4.7	0.5	0.1	-0.2	-0.7
Plastics and articles thereof.....	39	4.100	131.7	131.0	-5.0	0.5	-0.1	0.0	-0.5
Rubber and articles thereof.....	40	0.980	156.0	153.9	-3.5	0.4	0.8	-1.1	-1.3
Raw hides, skins, leather, furskins, travel goods, etc.....	VIII	0.328	119.4	119.9	-6.8	0.7	0.1	0.7	0.4
Raw hides and skins other than furskins and leather (Dec.2014=100).....	41	0.181	69.6	70.1	-8.1	1.3	0.3	0.3	0.7
Wood, wood charcoal, cork, straw, baskets and wickerwork (Dec. 2014=100).....	IX	0.651	95.7	95.5	-0.5	1.1	0.3	0.3	-0.2
Woodpulp, recovered paper, and paper products.....	X	2.117	121.2	122.4	-1.6	0.2	0.2	-0.2	1.0
Woodpulp and recovered paper.....	47	0.607	122.5	127.7	-1.2	1.9	0.9	-0.9	4.2
Paper and paperboard; articles of paper pulp, paper or paperboard.....	48	1.130	119.7	119.1	-3.1	-0.5	0.0	0.0	-0.5
Printed material (Dec. 2014=100).....	49	0.380	100.4	100.4	1.7	0.0	0.0	0.0	0.0
Textile and textile articles.....	XI	1.705	119.5	120.6	-1.6	0.5	0.1	0.1	0.9
Cotton, including yarns and woven fabrics thereof.....	52	0.395	117.9	124.9	3.3	2.5	2.3	2.3	5.9

See footnotes at end of table.

Table 6. U.S. export price indexes and percent changes for selected categories of goods: July 2015 to July 2016 — Continued
 [2000=100, unless otherwise noted]

Description	Harmoni- zied system	Relative importance June 2016 ¹	Index		Percent change				
			June 2016	July 2016	Annual July 2015 to July 2016	Monthly			
						Mar. 2016 to Apr. 2016	Apr. 2016 to May 2016	May 2016 to June 2016	June 2016 to July 2016
Stone, plaster, cement, asbestos, ceramics, glass etc.....	XIII	0.867	122.7	122.7	0.4	-0.2	0.1	0.1	0.0
Articles of stone, plaster, cement, asbestos, or mica (Dec. 2015=100).....	68	0.293	100.5	100.5	—	0.0	0.0	0.0	0.0
Glass and glassware.....	70	0.439	99.7	99.7	0.8	0.0	0.1	0.2	0.0
Pearls, stones, precious metals, imitation jewelry, and coins.....	XIV	4.351	229.6	240.6	4.3	-0.1	1.6	-2.1	4.8
Base metals and articles of base metals. ...	XV	4.961	143.3	143.9	-4.2	0.4	2.1	-1.0	0.4
Iron and steel.....	72	1.021	144.7	144.3	-8.7	3.4	7.0	-2.9	-0.3
Copper and articles thereof.....	74	0.417	150.1	154.2	-15.2	-0.3	-0.7	-0.2	2.7
Aluminum and articles thereof.....	76	0.775	104.7	104.8	-6.9	0.3	2.8	-0.9	0.1
Tools, implements, cutlery, spoons and forks, of base metal (Dec. 2015=100).	82	0.391	100.0	100.1	—	-0.1	0.3	0.0	0.1
Miscellaneous articles of base metal.....	83	0.354	147.7	147.7	-0.5	0.0	0.0	-0.3	0.0
Machinery, electrical equipment, TV image and sound recorders, parts, etc.....	XVI	29.784	96.0	95.9	-1.0	-0.1	0.0	0.1	-0.1
Machinery and mechanical appliances; parts thereof.....	84	17.824	113.0	113.0	-0.3	0.0	0.0	0.1	0.0
Electrical machinery and equipment and parts and accessories thereof.....	85	11.960	77.5	77.4	-2.3	0.0	0.0	-0.1	-0.1
Vehicles, aircraft, vessels and associated transport equipment.....	XVII	15.151	131.6	131.4	0.4	0.3	0.1	0.1	-0.2
Motor vehicles and their parts.....	87	9.222	114.9	114.8	-0.2	0.3	0.0	0.0	-0.1
Optical, photo, measuring, medical & musical instruments; & timepieces.....	XVIII	6.191	106.2	106.0	-1.6	0.1	-0.1	-0.7	-0.2
Miscellaneous manufactured articles.....	XX	1.546	111.6	112.2	0.6	0.1	-0.7	0.7	0.5
Furniture; stuffed furnishings; lamps and lighting fittings nesoi;.....	94	0.922	126.2	127.6	3.0	0.3	-0.4	1.0	1.1
Toys, games and sports equipment; parts and accessories thereof.....	95	0.471	89.2	89.2	-0.4	-0.3	-0.3	0.0	0.0

¹ Relative importance figures are based on 2014 trade values.

NOTES: Data may be revised in each of the 3 months after original publication.

Dash = Not available

Table 7. U.S. import price indexes and percent changes by locality of origin: July 2015 to July 2016
 [2000=100, unless otherwise noted]

Description	Relative importance June 2016 ¹	Index		Percent change				
		June 2016	July 2016	Annual	Monthly			
				July 2015 to July 2016	Mar. 2016 to Apr. 2016	Apr. 2016 to May 2016	May 2016 to June 2016	June 2016 to July 2016
Industrialized Countries²	100.000	117.6	117.8	-2.9	0.8	1.4	0.9	0.2
Nonmanufactured articles.....	7.882	128.3	127.3	-14.7	9.3	8.4	9.7	-0.8
Manufactured articles.....	91.683	116.3	116.6	-1.9	0.1	0.9	0.2	0.3
Other Countries³	100.000	118.3	117.7	-4.5	0.6	1.4	0.6	-0.5
Nonmanufactured articles.....	8.607	172.5	171.4	-19.3	6.3	10.7	5.2	-0.6
Manufactured articles.....	91.154	103.2	102.7	-2.5	0.2	0.6	0.2	-0.5
Canada	100.000	120.6	120.9	-5.5	3.3	3.1	2.7	0.2
Nonmanufactured articles.....	22.398	122.6	121.5	-15.2	9.9	8.7	10.4	-0.9
Manufactured articles.....	76.837	124.0	124.8	-2.6	1.7	1.7	0.7	0.6
European Union⁴	100.000	132.1	131.7	-2.3	0.2	0.6	0.1	-0.3
Manufactured articles.....	99.517	128.7	128.3	-2.3	0.2	0.5	0.1	-0.3
France (Dec. 2003=100)	100.000	122.6	122.6	0.7	0.1	0.2	-0.2	0.0
Germany (Dec. 2003=100)	100.000	113.2	113.1	-3.3	-0.3	0.1	0.0	-0.1
United Kingdom (Dec. 2003=100)	100.000	118.9	118.9	-2.2	0.1	0.3	0.1	0.0
Latin America⁵	100.000	139.3	139.4	-5.9	0.8	1.8	0.8	0.1
Nonmanufactured articles.....	16.483	195.7	198.0	-14.3	5.1	10.0	4.8	1.2
Manufactured articles.....	83.049	119.3	119.2	-4.0	0.1	0.4	0.0	-0.1
Mexico (Dec. 2003=100)	100.000	125.9	125.7	-3.9	0.3	1.0	0.2	-0.2
Nonmanufactured articles (Dec. 2008=100).....	8.246	104.1	116.1	-10.8	5.0	11.1	3.3	11.5
Manufactured articles (Dec. 2008=100)...	91.292	88.9	87.8	-2.9	-0.1	0.2	0.0	-1.2
Pacific Rim (Dec. 2003=100)⁶	100.000	98.5	98.5	-1.6	-0.1	0.0	-0.2	0.0
China (Dec. 2003=100)	100.000	101.0	100.9	-1.8	-0.1	-0.1	-0.2	-0.1
Japan	100.000	95.2	95.4	-0.2	0.0	0.1	-0.1	0.2
Asian NICs⁷	100.000	84.4	83.9	-2.3	-0.1	0.1	-0.4	-0.6
ASEAN (Dec. 2003=100)⁸	100.000	97.2	96.8	-1.5	0.4	0.1	0.4	-0.4
Asia Near East (Dec. 2003=100)⁹	100.000	143.1	135.6	-23.4	6.8	6.2	2.9	-5.2

¹ Relative importance figures are based on 2014 trade values.

² Western Europe, Canada, Japan, Australia, New Zealand and South Africa.

³ Eastern Europe, Latin America, OPEC countries, and other countries in Asia, Africa and the Western Hemisphere.

⁴ European Union countries.

⁵ Mexico, Central America, South America and the Caribbean.

⁶ China, Japan, Australia, Brunei, Indonesia, Macao, Malaysia, New Zealand, Papua New Guinea, Philippines and the Asian Newly Industrialized Countries.

⁷ Asian Newly Industrialized Countries - Hong Kong, Singapore, South Korea and Taiwan.

⁸ Association of Southeast Asian Nations - Brunei, Cambodia, Indonesia, Laos, Malaysia, Myanmar, Philippines, Singapore, Thailand and Vietnam.

⁹ Bahrain, Iran, Iraq, Israel, Jordan, Kuwait, Lebanon, Oman, Qatar, Saudi Arabia, Syria, United Arab Emirates and Yemen.

NOTES: Data may be revised in each of the 3 months after original publication.

Regions are not mutually exclusive.

Dash = Not available

Table 8. U.S. international price indexes and percent changes for selected transportation services: July 2015 to July 2016

[2000=100, unless otherwise noted]

Description	Relative importance June 2016 ¹	Index		Percent change				
		June 2016	July 2016	Annual	Monthly			
				July 2015 to July 2016	Mar. 2016 to Apr. 2016	Apr. 2016 to May 2016	May 2016 to June 2016	June 2016 to July 2016
Air Freight								
Import Air Freight	100.000	148.0	151.7	-7.7	0.9	-0.9	-2.1	2.5
Europe (Dec. 2003=100).....	24.445	138.0	137.6	-7.5	-3.3	1.4	0.2	-0.3
Asia.....	61.249	128.9	134.3	-8.9	3.0	-2.2	-3.2	4.2
Export Air Freight	100.000	153.5	153.2	-3.2	0.1	0.2	-0.5	-0.2
Europe (Dec. 2006=100).....	37.825	145.5	145.5	-4.0	-0.5	0.0	0.0	0.0
Inbound Air Freight	100.000	142.2	143.5	-7.5	1.2	-1.5	-1.4	0.9
Europe (Dec. 2003=100).....	29.170	135.4	133.4	-5.1	-0.1	0.7	0.0	-1.5
Asia.....	56.005	123.0	126.6	-10.1	2.4	-3.1	-2.5	2.9
Outbound Air Freight	100.000	138.0	136.9	-9.2	-2.0	0.1	-0.3	-0.8
Europe (Dec. 2003=100).....	32.403	141.0	141.6	-10.6	-6.1	0.0	-1.0	0.4
Asia.....	43.714	131.6	129.2	-11.6	0.0	0.0	0.0	-1.8
Air Passenger Fares								
Import Air Passenger Fares	100.000	188.8	181.4	-8.3	3.5	1.5	0.3	-3.9
Europe.....	45.399	224.0	205.2	-8.9	5.1	0.5	1.1	-8.4
Asia.....	24.674	147.7	143.1	-6.8	3.8	3.0	5.9	-3.1
Latin America/Caribbean.....	8.972	152.3	156.9	-4.7	-2.2	-0.7	5.7	3.0
Export Air Passenger Fares	100.000	151.5	158.2	-9.4	-6.0	-0.5	3.4	4.4
Europe.....	33.762	208.3	200.4	-15.9	-11.4	-3.4	9.0	-3.8
Asia.....	30.306	134.5	142.5	-0.9	-3.7	7.8	0.8	5.9
Latin America/Caribbean.....	23.674	152.8	170.3	-2.8	-4.3	0.1	2.0	11.5

¹ Relative importance figures are based on 2014 trade values.

NOTES: Data may be revised in each of the 3 months after original publication.

Dash = Not available

TECHNICAL NOTE

Import and Export Merchandise and Services Price Indexes - All indexes use a modified Laspeyres formula and are not seasonally adjusted. Price indexes are reweighted annually, with a 2-year lag in the weights. Published series use a base year of 2000=100 where possible. More detailed index series and additional information may be obtained at www.bls.gov/mxp or by calling (202) 691-7101.

Merchandise Goods Classification Systems - The merchandise price indexes are published using three classification systems. Items are classified by end use according to the Bureau of Economic Analysis Classification System, by industry according to the North American Industry Classification System (NAICS), and by product category according to the Harmonized System (HS). While classification by end use and product category are self-explanatory, some notes are in order for classifying items by industry. In the NAICS imports and exports tables, items are classified by output industry, not input industry. As an example, NAICS import index 326 (plastics and rubber products manufacturing) include outputs such as manufactured plastic rather than inputs such as petroleum. The NAICS classification structure also matches the classification system used by the Producer Price Index (PPI) to produce the NAICS primary products indexes.

Import Price Indexes - Products have been classified by the Harmonized Tariff Schedule of the United States Annotated (TSUSA). Import prices are based on U.S. dollar prices paid by the U.S. importer. The prices are generally either "free on board" (f.o.b.) foreign port or "cost, insurance, and freight" (c.i.f.) U.S. port transaction prices, depending on the practices of the individual industry. The index for crude petroleum is calculated from data collected by the U.S. Department of Energy.

Export Price Indexes - Products have been classified by the Harmonized Schedule B classification system of the U.S. Bureau of the Census. The prices used are generally either "free alongside ship" (f.a.s.) factory or "free on board" (f.o.b.) transaction prices, depending on the practices of the individual industry. Prices used in the grain index, excluding rice, are obtained from the U.S. Department of Agriculture.

Services Price Indexes - Starting in September 2008, the import air passenger fares indexes represent changes in the average revenue per passenger received by foreign carriers from U.S. residents and are calculated from data obtained from an airline consulting service. These data include tickets sold by travel agencies and travel websites. Tickets sold directly by the airlines are excluded, as are frequent flyer tickets generally. Starting in January 2008, the export air passenger fares indexes represent changes in the average revenue per passenger received by U.S. carriers from foreign residents and are calculated from data collected directly from airlines. These data include frequent flyer tickets and those sold by consolidators. Taxes and fees are included in the import air passenger fares indexes and excluded from the export air passenger fares indexes. The air freight indexes are calculated from data collected directly from airlines. These data exclude mail and passenger baggage. The scope of the service being priced is the movement of freight from airport to airport only, and does not include any ground transportation or port service. The air freight indexes are presented using two definitions: balance of payments (which represent transactions between U.S. and foreign residents) and international (which represent transactions inbound to and outbound from the U.S.). Fact sheets specifying detailed information for each services industry are available at www.bls.gov/mxp under "MXP Publications."

Import Indexes by Locality of Origin - Prices used in these indexes are a subset of the data collected for the import price indexes. Beginning with January 2002, the indexes are defined by locality of origin using a nomenclature based upon the North American Industry Classification System (NAICS). Nonmanufactured goods are defined as NAICS 11 and 21, and manufactured goods are defined as NAICS 31-33.

Revision Policy - To reflect the availability of late reports and corrections by respondents, monthly data may be revised in each of the 3 months after original publication. After 3 months, no further data revisions take place. For example, data first published in the January release will be subject to revision in the releases for February, March, and April.

Uses of the Data - The primary use of the indexes is to deflate trade statistics, notably the foreign trade sector of the National Income and Product Accounts (NIPA) constructed by the Department of Commerce. Other published indexes are useful for general market analysis. For trade in international services, balance of payments indexes are used for deflating NIPA, while international indexes are more appropriate for market analysis. Merchandise and services indexes also can be used to study U.S. competitiveness and to compute price elasticities, and the merchandise import indexes by country or region of origin are useful in terms of trade analysis.

Email Subscription - The U.S. import and export price indexes news release is available through an email subscription service at www.bls.gov/bls/list.htm.

Additional Information - More detailed data are available on the Import/Export Price Indexes home page at www.bls.gov/mxp. For import and export price indexes data requests, send an email to mxpinfo@bls.gov.

Information from this release will be made available to sensory impaired individuals upon request. Voice phone: (202)-691-5200; Federal Relay Service: 1-(800)-877-8339.