

Transmission of material in this release is embargoed until  
8:30 a.m. (EDT) Thursday, August 12, 2010

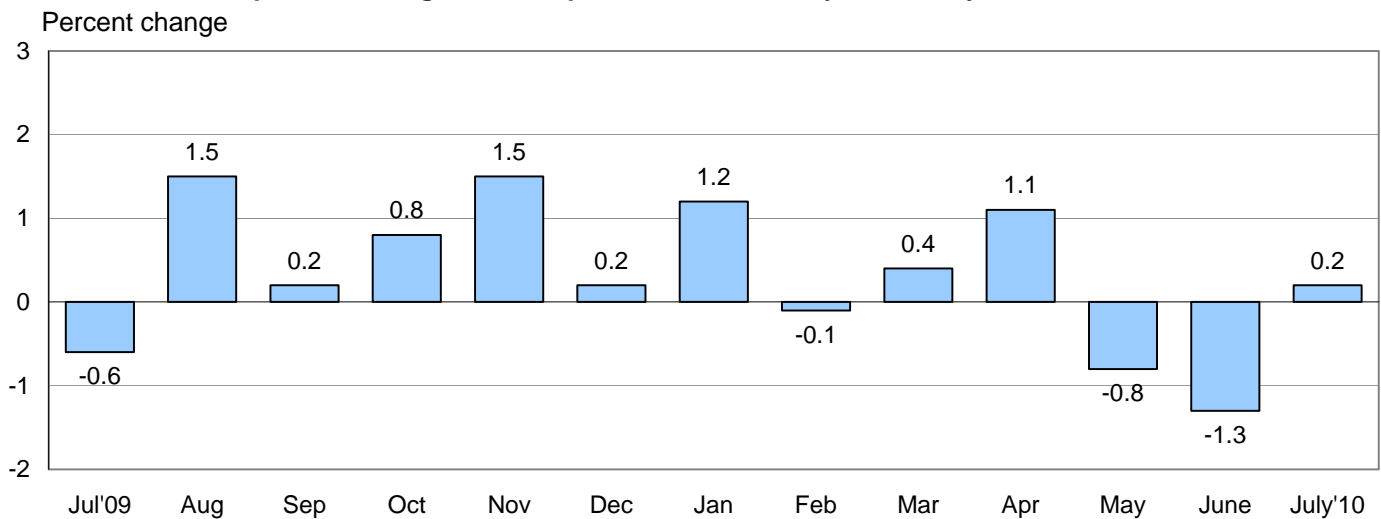
USDL-10-1104

Technical information: (202) 691-7101 • MXPinfo@bls.gov • www.bls.gov/mxp  
Media contact: (202) 691-5902 • PressOffice@bls.gov

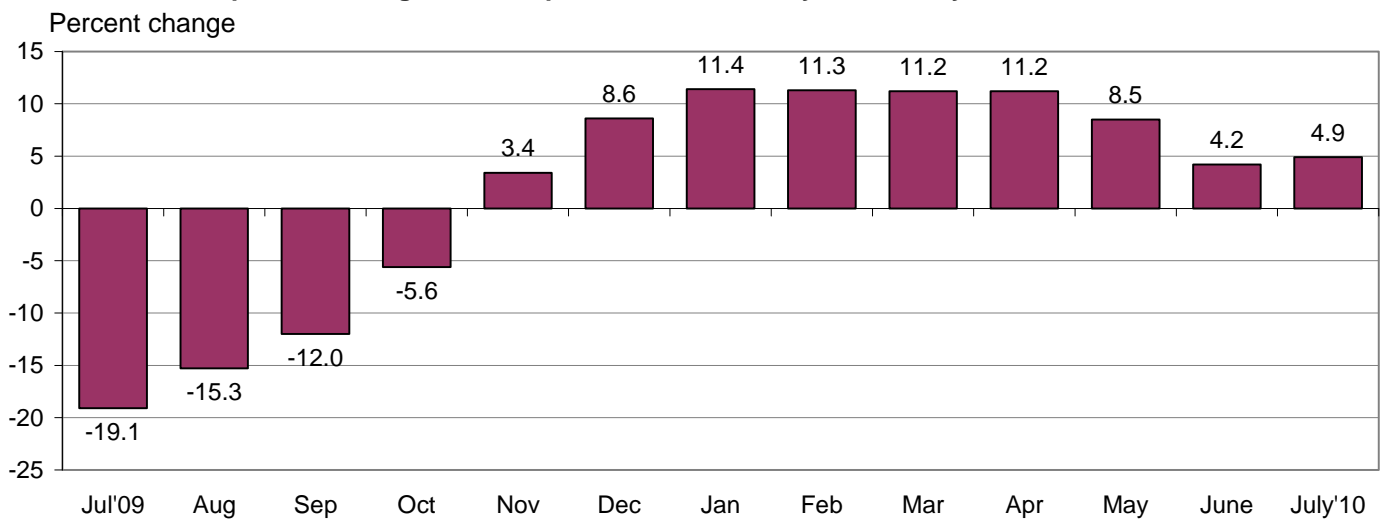
### U.S. IMPORT AND EXPORT PRICE INDEXES – JULY 2010

U.S. import prices increased 0.2 percent in July, the U.S. Bureau of Labor Statistics reported today, following declines in each of the two previous months. The advance was led by higher fuel prices, which more than offset a second consecutive drop in nonfuel prices. In contrast, export prices decreased in July, falling 0.2 percent after falling 0.7 percent in June.

**Chart 1. One-month percent change in the Import Price Index: July 2009 – July 2010**



**Chart 2. 12-month percent change in the Import Price Index: July 2009 – July 2010**



**All Imports:** Import prices ticked up 0.2 percent in July following declines of 1.3 percent and 0.8 percent, respectively, in the previous two months. Despite the July increase, the index fell 2.0 percent over the past quarter, the largest three-month decline since the quarter ended in February 2009. The price index for overall imports rose 4.9 percent for the year ended in July.

**Fuel Imports:** The increase in import prices was driven by a 2.1 percent advance in fuel prices. Import fuel prices had declined 4.9 percent and 5.1 percent, respectively, in June and May prior to the upturn in July. Most of the increase in fuel prices resulted from a 2.0 percent advance in petroleum prices. A 5.3 percent rise in natural gas prices also contributed to the increase. Fuel prices rose 14.8 percent over the past year, while both the price indexes for petroleum and natural gas also increased over the same period, rising 14.4 percent and 29.1 percent, respectively.

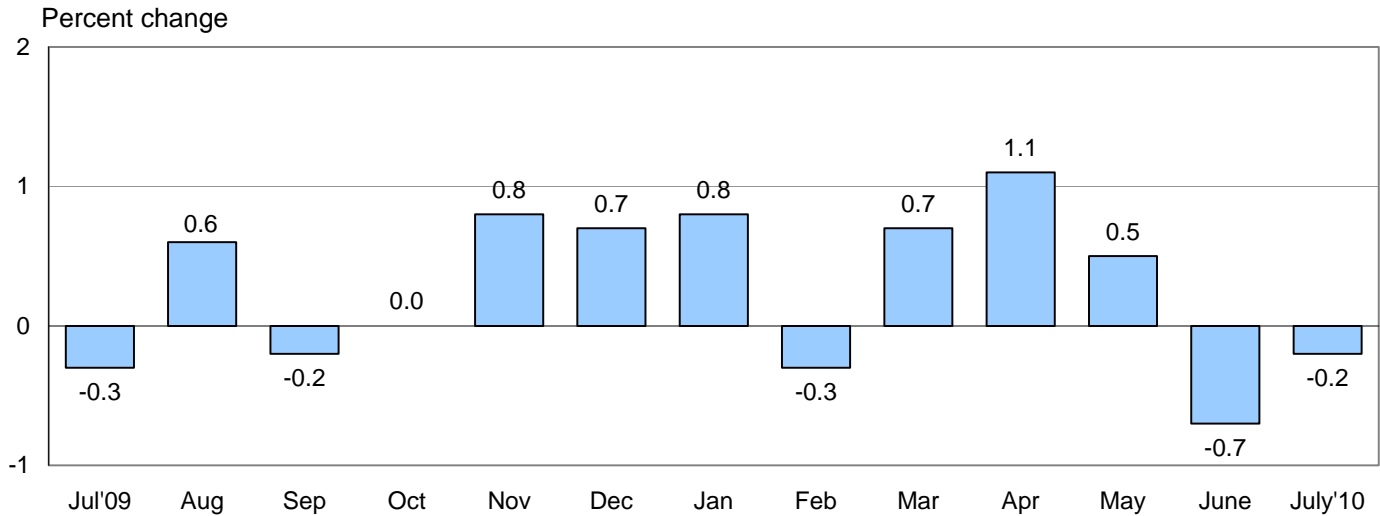
**All Imports Excluding Fuel:** In contrast, nonfuel prices fell 0.3 percent in July after a 0.5 percent decline in June. Those were the first monthly decreases since a 0.2 percent drop in July 2009 and the largest since a 0.6 percent decline in March 2009. The July decline was driven by a 1.2 percent decrease in the price index for nonfuel industrial supplies and materials while foods, feeds, and beverages prices advanced and the major finished goods categories were mixed. Despite the recent declines, nonfuel import prices advanced 2.8 percent over the past 12 months.

**Table A. Percent changes**

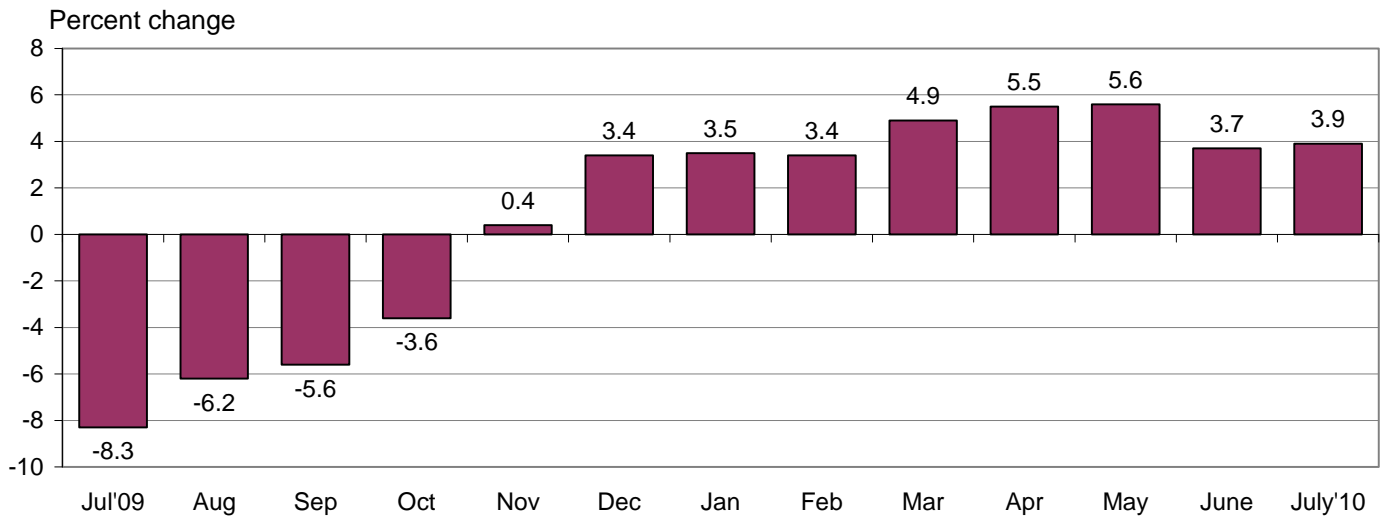
Month	IMPORTS			EXPORTS		
	All imports	Fuel imports	Nonfuel imports	All exports	Agricultural exports	Non-agricultural exports
<b>2009</b>						
July.....	-0.6	-2.6	-0.2	-0.3	-4.9	0.1
August.....	1.5	7.0	0.4	0.6	0.2	0.7
September.....	0.2	-1.3	0.4	-0.2	-2.9	0.1
October.....	0.8	3.0	0.4	0.0	-0.7	0.1
November.....	1.5	6.3	0.3	0.8	3.9	0.5
December.....	0.2	-0.2	0.4	0.7	1.8	0.6
<b>2010</b>						
January.....	1.2	4.4	0.4	0.8	1.3	0.7
February.....	-0.1	-0.7	0.1	-0.3	-4.0	0.1
March.....	0.4	1.4	0.2	0.7	1.9	0.6
April.....	1.1	2.6	0.6	1.1	-0.4	1.3
May.....	-0.8 <sup>r</sup>	-5.1 <sup>r</sup>	0.5	0.5 <sup>r</sup>	1.6 <sup>r</sup>	0.3 <sup>r</sup>
June.....	-1.3	-4.9 <sup>r</sup>	-0.5 <sup>r</sup>	-0.7 <sup>r</sup>	0.0 <sup>r</sup>	-0.8 <sup>r</sup>
July.....	0.2	2.1	-0.3	-0.2	-0.1	-0.2
July 2008 to 2009.....	-19.1	-50.6	-5.3	-8.3	-22.5	-6.6
July 2009 to 2010.....	4.9	14.8	2.8	3.9	2.4	4.1

r Revised

**Chart 3. One-month percent change in the Export Price Index: July 2009 – July 2010**



**Chart 4. 12-month percent change in the Export Price Index: July 2009 – July 2010**



**All Exports:** Export prices fell for the second month in a row in July, declining 0.2 percent following a 0.7 percent decrease in June. The June and July drops represented the first time export prices have fallen in consecutive months since February and March 2009. Approximately 91 percent of the overall decrease was attributable to falling nonagricultural prices. Despite the recent declines, overall export prices rose 3.9 percent for the July 2009-2010 period.

**Agricultural Exports:** The price index for agricultural exports also fell in July, edging down 0.1 percent after recording no change the previous month. Agricultural prices rose 2.4 percent over the past year, led by higher prices for cotton and meat, which increased 43.3 percent and 13.1 percent, respectively.

**All Exports Excluding Agriculture:** Nonagricultural export prices fell 0.2 percent in July following a 0.8 percent decline in June. Prices for nonagricultural exports decreased 0.6 percent over the past quarter, the largest three-month decline since a 1.8 percent drop for the quarter ended February 2009. Falling nonagricultural industrial supplies and materials prices, capital goods prices, and prices for automotive vehicles all contributed to the decrease in July. Notwithstanding the declines over the past two months, the price index for nonagricultural exports rose 4.1 percent for the year ended in July.

## SELECTED JULY HIGHLIGHTS

### Import Prices

**Nonfuel Industrial Supplies and Materials:** Nonfuel industrial supplies and materials prices decreased 1.2 percent after a 1.5 percent drop the previous month. Those declines countered an upward trend over the past year. Lower prices for unfinished metals and building materials, down 2.5 percent and 5.2 percent, respectively, each contributed to the July decline. Despite the declines in June and July, the price index for nonfuel industrial supplies and materials rose 14.5 percent over the past year.

**Finished Goods:** Finished goods prices were mixed in July with the price indexes for consumer goods and capital goods declining 0.2 percent and 0.1 percent, respectively, and automotive vehicles prices rising 0.4 percent. The drop in consumer goods prices was led by a 4.1 percent decrease in prices for home entertainment equipment while lower computers, peripherals, and semiconductors prices drove the decrease in capital goods prices.

**Foods, Feeds, and Beverages:** Prices for foods, feeds, and beverages rose 0.4 percent in July after a 1.7 percent decline the previous month. Higher prices for coffee, bakery and confectionery products, and fish and shellfish were the main contributors to the advance.

**Imports by Locality of Origin:** Import prices from China ticked up 0.1 percent in July. In contrast, the price indexes for imports from Mexico, the European Union, and Canada all decreased in July, falling 0.7 percent, 0.2 percent, and 0.1 percent, respectively. Prices for imports from Japan were unchanged in July following a 0.2 percent advance the previous month.

**Transportation Services:** Import air passenger fares fell 1.3 percent in July, led by a 3.9 percent decline in European fares. The downturn in overall import air passenger fares followed a 9.2 percent increase the previous month. Over the past year, import air passenger fares rose 21.3 percent. The price index for import air freight also fell in July, decreasing 1.1 percent after a 0.9 percent decline in June.

### Export Prices

**Nonagricultural Industrial Supplies and Materials:** The price index for nonagricultural industrial supplies and materials fell 0.4 percent in July following a 1.7 percent drop in June. The July decline was led by a 1.6 percent drop in fuel prices, although lower prices for chemicals and steelmaking materials also contributed to the overall decrease.

**Finished Goods:** Overall, finished goods prices recorded little movement in July as the prices indexes for capital goods and automotive vehicles each ticked down 0.1 percent while consumer goods prices rose 0.2 percent. The drop in capital goods prices was driven by a 0.8 percent decline in prices for computers, peripherals, and semiconductors.

**Transportation Services:** Export air passenger fares rose 4.8 percent in July as higher prices for Asian fares, European fares, and Latin American and Caribbean fares air contributed to the rise. In contrast, export air freight prices decreased 1.4 percent, led by a 1.9 percent drop in the price index for European air freight.

---

**Import and Export Price Index data for August 2010 are scheduled for release on Wednesday, September 15, 2010 at 8:30 a.m. (EDT).**

**Table 1. U.S. import price indexes and percent changes for selected categories of goods: July 2009 to July 2010**

[2000=100, unless otherwise noted]

Description	End Use	Relative importance June 2010 <sup>1</sup>	Index		Percent change				
			June 2010	July 2010	Annual	Monthly			
					July 2009 to July 2010	Mar. 2010 to Apr. 2010	Apr. 2010 to May 2010	May 2010 to June 2010	June 2010 to July 2010
<b>All commodities.....</b>		100.000	125.0	125.2	4.9	1.1	-0.8	-1.3	0.2
<b>All imports excluding petroleum.....</b>		81.454	110.7	110.5	3.1	0.5	0.5	-0.5	-0.2
<b>All imports excluding fuels (Dec. 2001=100)..</b>		79.994	114.4	114.1	2.8	0.6	0.5	-0.5	-0.3
<b>Foods, feeds, &amp; beverages.....</b>	0	4.823	148.6	149.2	8.0	1.1	1.4	-1.7	0.4
Agricultural foods, feeds & beverages, excluding distilled beverages.....	00	3.735	165.8	166.0	8.4	1.0	1.4	-2.4	0.1
Nonagricultural foods (fish, distilled beverages).....	01	1.088	109.4	111.3	6.8	1.6	1.3	0.6	1.7
<b>Industrial supplies &amp; materials.....</b>	1	34.648	198.5	200.0	14.7	2.8	-2.4	-3.5	0.8
Industrial supplies & materials excluding petroleum.....		16.102	151.9	150.8	15.0	1.7	1.2	-1.4	-0.7
Industrial supplies & materials excluding fuels (Dec. 2001=100).....		14.642	169.4	167.3	14.5	3.0	1.7	-1.5	-1.2
Industrial supplies & materials, durable.....		9.250	164.0	160.8	16.1	3.5	2.1	-2.0	-2.0
Industrial supplies & materials nondurable excluding petroleum.....		5.392	137.8	138.9	13.7	-0.7	0.1	-0.6	0.8
Fuels & lubricants.....	10	20.006	243.2	248.4	14.8	2.6	-5.1	-4.9	2.1
Petroleum & petroleum products.....	100	18.546	264.4	269.8	14.4	3.6	-5.3	-5.2	2.0
Crude.....	10000	13.791	271.9	279.3	15.5	4.1	-6.6	-3.6	2.7
Fuels, n.e.s.-coals & gas.....	101	1.217	125.2	130.1	24.5	-10.8	-2.6	-0.1	3.9
Gas-natural.....	10110	0.892	109.5	115.3	29.1	-14.1	-3.6	-0.1	5.3
Paper & paper base stocks.....	11	0.744	115.5	116.9	18.0	1.8	2.9	2.5	1.2
Materials associated with nondurable supplies & materials.....	12	4.725	146.7	146.7	10.9	2.2	0.5	-1.3	0.0
Selected building materials.....	13	1.424	131.8	124.9	5.8	2.0	2.7	-1.3	-5.2
Unfinished metals related to durable goods.....	14	4.300	244.7	238.7	29.2	5.6	3.0	-3.7	-2.5
Finished metals related to durable goods. ...	15	1.869	147.0	146.8	9.9	2.7	1.3	-0.7	-0.1
Nonmetals related to durable goods.....	16	1.580	108.1	108.2	5.3	0.3	0.5	0.2	0.1
<b>Capital goods.....</b>	2	23.433	91.5	91.4	-0.5	0.1	0.1	-0.1	-0.1
Electric generating equipment.....	20	2.964	111.1	111.3	1.0	0.4	-0.2	-0.1	0.2
Nonelectrical machinery.....	21	18.451	86.0	85.8	-0.8	0.0	0.2	-0.1	-0.2
Transportation equipment excluding motor vehicles (Dec. 2001=100).....	22	2.018	121.3	121.4	-1.4	0.0	0.0	-0.2	0.1
<b>Automotive vehicles, parts &amp; engines.....</b>	3	12.188	108.4	108.8	0.6	0.3	0.0	-0.1	0.4
<b>Consumer goods, excluding automotives..</b>	4	24.908	104.4	104.2	0.1	0.0	0.1	-0.2	-0.2
Nondurables, manufactured.....	40	11.635	109.2	109.6	1.7	0.1	0.1	0.0	0.4
Durables, manufactured.....	41	12.047	99.8	99.1	-1.5	0.1	0.0	-0.4	-0.7
Nonmanufactured consumer goods.....	42	1.226	102.4	101.9	0.6	-0.5	1.0	-0.6	-0.5

<sup>1</sup> Relative importance figures are based on 2008 trade values.

NOTES: Data may be revised in each of the three months after original publication.

Dash = Not available

**Table 2. U.S. export price indexes and percent changes for selected categories of goods: July 2009 to July 2010**

[2000=100, unless otherwise noted]

Description	End Use	Relative importance June 2010 <sup>1</sup>	Index		Percent change				
			June 2010	July 2010	Annual July 2009 to July 2010	Monthly			
						Mar. 2010 to Apr. 2010	Apr. 2010 to May 2010	May 2010 to June 2010	June 2010 to July 2010
<b>All commodities.....</b>		100.000	122.2	122.0	3.9	1.1	0.5	-0.7	-0.2
<b>Agricultural commodities.....</b>		8.841	165.3	165.1	2.4	-0.4	1.6	0.0	-0.1
<b>Nonagricultural commodities.....</b>		91.157	119.1	118.9	4.1	1.3	0.3	-0.8	-0.2
<b>Foods, feeds, &amp; beverages.....</b>	0	7.968	164.4	164.0	-0.5	-0.5	1.5	-0.4	-0.2
Agricultural foods, feeds & beverages, excluding distilled beverages.....	00	7.388	166.7	166.2	-0.8	-0.7	1.7	-0.4	-0.3
Nonagricultural foods (fish, distilled beverages).....	01	0.580	146.7	147.0	3.4	1.3	-0.3	-0.4	0.2
<b>Industrial supplies &amp; materials.....</b>	1	31.597	159.8	159.2	13.2	3.2	1.4	-1.5	-0.4
Industrial supplies & materials, durable.....		12.389	165.5	165.4	14.0	3.2	1.3	-1.3	-0.1
Industrial supplies & materials, nondurable.....		19.207	157.1	156.3	12.9	3.1	1.5	-1.6	-0.5
Agricultural industrial supplies & materials.....	10	1.453	162.4	163.8	21.4	0.9	1.3	2.1	0.9
<b>Nonagricultural industrial supplies &amp; materials.....</b>		30.143	159.9	159.3	12.9	3.3	1.4	-1.7	-0.4
Fuels & lubricants.....	11	5.912	207.9	204.5	23.2	6.2	2.9	-3.4	-1.6
Nonagricultural supplies & materials excluding fuels & building materials.....	12	23.198	155.8	155.7	11.4	2.6	1.0	-1.3	-0.1
Selected building materials.....	13	1.033	118.7	117.8	4.4	1.6	0.3	0.4	-0.8
<b>Capital goods.....</b>	2	38.378	103.5	103.4	0.2	0.1	-0.1	-0.3	-0.1
Electrical generating equipment.....	20	3.590	109.6	109.1	2.0	-0.9	0.4	0.4	-0.5
Nonelectrical machinery.....	21	27.986	94.2	94.2	-0.3	0.3	-0.3	-0.5	0.0
Transportation equipment excluding motor vehicles (Dec. 2001=100).....	22	6.801	139.7	140.1	2.0	0.2	0.1	0.1	0.3
<b>Automotive vehicles, parts &amp; engines.....</b>	3	9.176	108.5	108.4	0.5	-0.1	0.0	0.0	-0.1
<b>Consumer goods, excluding automotives..</b>	4	12.880	110.1	110.3	1.3	0.6	-0.1	-0.6	0.2
Nondurables, manufactured.....	40	5.883	111.1	110.7	1.8	0.4	-0.1	-1.0	-0.4
Durables, manufactured.....	41	5.680	108.2	109.0	-0.5	0.4	-0.1	0.2	0.7

<sup>1</sup> Relative importance figures are based on 2008 trade values.

NOTES: Data may be revised in each of the three months after original publication.

Dash = Not available

**Table 3. U.S. import price indexes and percent changes for selected categories of goods: July 2009 to July 2010**

[December 2005=100, unless otherwise noted]

Description	NAICS	Relative importance June 2010 <sup>1</sup>	Index		Percent change				
			June 2010	July 2010	Annual July 2009 to July 2010	Monthly			
						Mar. 2010 to Apr. 2010	Apr. 2010 to May 2010	May 2010 to June 2010	June 2010 to July 2010
<b>Nonmanufactured articles.....</b>		17.577	122.8	125.6	16.6	2.4	-4.8	-3.7	2.3
<b>Agriculture, forestry, fishing and hunting...</b>	11	1.829	148.6	147.8	14.9	1.6	3.4	-4.0	-0.5
Crop production.....	111	1.287	153.2	152.1	12.3	0.7	4.3	-5.0	-0.7
<b>Mining.....</b>	21	15.748	120.0	123.2	16.9	2.5	-5.6	-3.7	2.7
Mining (except oil and gas) (Dec. 2006=100).....	212	0.553	139.2	141.0	10.6	0.2	1.3	4.0	1.3
<b>Manufactured articles.....</b>		81.891	109.8	109.6	2.7	0.7	0.3	-0.9	-0.2
<b>Manufactured goods, part 1.....</b>	31	10.259	109.1	109.9	3.1	0.4	0.4	0.1	0.7
Food manufacturing.....	311	2.635	127.3	129.3	11.4	1.4	1.7	0.5	1.6
Beverage and tobacco product manufacturing.....	312	0.920	108.2	108.4	1.0	-0.1	-0.2	-0.7	0.2
Textile product mills.....	314	0.790	102.2	103.5	4.1	0.3	0.9	0.5	1.3
Apparel manufacturing.....	315	3.979	101.1	101.3	-0.7	0.0	-0.4	0.0	0.2
Leather and allied product manufacturing. . .	316	1.529	107.0	107.6	0.5	0.2	0.1	0.3	0.6
<b>Manufactured goods, part 2.....</b>	32	18.036	120.9	120.4	6.7	1.6	-0.2	-2.3	-0.4
Wood product manufacturing.....	321	0.882	110.9	100.3	7.5	3.1	4.4	-2.5	-9.6
Paper manufacturing.....	322	1.267	108.8	109.8	10.9	1.1	1.9	1.8	0.9
Petroleum and coal products manufacturing.....	324	3.828	117.7	118.1	9.0	3.2	-3.1	-8.7	0.3
Chemical manufacturing.....	325	9.118	126.3	125.9	6.3	1.2	0.2	-0.6	-0.3
Plastics and rubber products manufacturing.....	326	1.828	115.4	115.9	3.6	0.0	1.1	0.2	0.4
Nonmetallic mineral product manufacturing.....	327	1.005	121.1	122.1	1.9	0.2	0.1	0.2	0.8
<b>Manufactured goods, part 3.....</b>	33	53.597	106.5	106.1	1.3	0.6	0.4	-0.6	-0.4
Primary metal manufacturing.....	331	5.013	161.6	157.7	26.4	5.5	3.0	-3.3	-2.4
Fabricated metal product manufacturing. . .	332	2.749	118.4	118.7	2.4	0.9	0.6	0.1	0.3
Machinery manufacturing.....	333	6.819	112.9	113.0	0.9	0.0	0.0	-0.3	0.1
Computer and electronic product manufacturing.....	334	15.201	87.3	86.5	-2.8	-0.2	0.1	-0.5	-0.9
Electrical equipment, appliance, and component manufacturing.....	335	3.847	112.3	112.6	0.1	0.4	-0.1	0.1	0.3
Transportation equipment manufacturing....	336	13.441	105.6	105.8	0.2	0.3	-0.1	-0.1	0.2
Furniture and related product manufacturing.....	337	1.336	105.9	105.8	-2.9	0.0	0.0	0.1	-0.1
Miscellaneous manufacturing.....	339	5.190	112.3	112.4	0.4	-0.1	0.3	-0.1	0.1

<sup>1</sup> Relative importance figures are based on 2008 trade values.

NOTES: Data may be revised in each of the three months after original publication.

Dash = Not available

**Table 4. U.S. export price indexes and percent changes for selected categories of goods: July 2009 to July 2010**

[December 2005=100, unless otherwise noted]

Description	NAICS	Relative importance June 2010 <sup>1</sup>	Index		Percent change				
			June 2010	July 2010	Annual	Monthly			
					July 2009 to July 2010	Mar. 2010 to Apr. 2010	Apr. 2010 to May 2010	May 2010 to June 2010	June 2010 to July 2010
<b>Nonmanufactured articles.....</b>		6.864	133.9	131.8	10.1	1.3	5.3	-0.6	-1.6
<b>Agriculture, forestry, fishing and hunting...</b>	11	4.598	141.7	140.8	0.6	-0.9	1.8	-1.0	-0.6
Crop production.....	111	4.228	144.9	144.0	-0.3	-1.1	1.8	-1.2	-0.6
<b>Mining.....</b>	21	2.266	110.0	106.3	41.7	6.8	13.3	0.3	-3.4
Mining (except oil and gas).....	212	1.796	127.7	125.8	45.3	9.4	17.2	0.7	-1.5
<b>Manufactured articles.....</b>		90.411	111.9	112.0	3.3	1.0	0.2	-0.6	0.1
<b>Manufactured goods, part 1.....</b>	31	6.728	126.8	127.4	5.7	1.0	0.9	0.5	0.5
Food manufacturing.....	311	4.557	142.0	142.9	5.5	1.2	0.9	0.3	0.6
Beverage and tobacco product manufacturing.....	312	0.531	107.8	109.8	2.7	-2.1	2.2	1.9	1.9
Apparel manufacturing.....	315	0.380	104.7	104.7	2.0	-0.7	0.0	2.4	0.0
<b>Manufactured goods, part 2.....</b>	32	23.675	118.0	117.8	7.0	2.3	0.1	-1.7	-0.2
Wood product manufacturing.....	321	0.462	116.1	115.4	9.9	3.0	1.0	0.0	-0.6
Paper manufacturing.....	322	2.033	121.0	123.1	12.5	1.7	2.7	2.2	1.7
Petroleum and coal products manufacturing.....	324	3.504	117.1	115.1	19.0	6.5	-2.0	-6.7	-1.7
Chemical manufacturing.....	325	14.785	120.5	120.3	6.0	1.9	0.2	-1.3	-0.2
Plastics and rubber products manufacturing.....	326	2.054	106.6	107.0	-0.8	-0.6	1.0	-0.4	0.4
Nonmetallic mineral product manufacturing.....	327	0.837	112.7	112.9	1.5	-0.2	-0.6	-0.4	0.2
<b>Manufactured goods, part 3.....</b>	33	60.009	108.2	108.3	1.7	0.5	0.1	-0.2	0.1
Primary metal manufacturing.....	331	5.043	147.2	148.1	23.1	2.7	2.7	0.3	0.6
Fabricated metal product manufacturing. ....	332	2.764	121.1	121.5	0.3	0.7	0.1	-0.3	0.3
Machinery manufacturing.....	333	12.666	114.7	114.9	2.1	0.3	0.0	-0.1	0.2
Computer and electronic product manufacturing.....	334	15.498	91.7	91.3	-2.4	0.4	-0.4	-0.9	-0.4
Electrical equipment, appliance, and component manufacturing.....	335	3.423	108.1	108.3	1.0	-1.6	0.0	0.2	0.2
Transportation equipment manufacturing....	336	15.239	111.2	111.3	0.9	0.1	0.1	0.1	0.1
Miscellaneous manufacturing.....	339	5.021	110.0	110.8	0.2	1.3	-0.1	-0.4	0.7

<sup>1</sup> Relative importance figures are based on 2008 trade values.

NOTES: Data may be revised in each of the three months after original publication.

Dash = Not available



**Table 5. U.S. import price indexes and percent changes for selected categories of goods: July 2009 to July 2010**

[2000=100, unless otherwise noted]

Description	Harmonized system	Relative importance June 2010 <sup>1</sup>	Index		Percent change				
			June 2010	July 2010	Annual July 2009 to July 2010	Monthly			
						Mar. 2010 to Apr. 2010	Apr. 2010 to May 2010	May 2010 to June 2010	June 2010 to July 2010
<b>Live animals; animal products.....</b>	I	1.128	142.8	142.7	10.2	3.2	2.7	-1.1	-0.1
Meat and edible meat offal.....	02	0.264	184.4	181.4	18.2	3.4	4.2	-1.9	-1.6
Fish and crustaceans, molluscs and other aquatic invertebrates.....	03	0.580	106.5	108.1	9.0	2.4	2.4	0.1	1.5
<b>Vegetable products.....</b>	II	1.498	169.0	168.6	9.8	1.2	2.6	-4.4	-0.2
Edible vegetables, roots, and tubers.....	07	0.425	326.2	300.6	6.4	-3.7	4.9	-5.4	-7.8
Edible fruit and nuts; peel of citrus fruit or melons.....	08	0.408	106.6	105.5	9.7	5.6	2.7	-7.5	-1.0
Coffee, tea, mate and spices.....	09	0.293	171.1	184.5	25.3	6.8	-1.9	1.7	7.8
<b>Animal or vegetable fats and oils (Dec. 2009=100).....</b>	III	0.210	101.7	103.6	-	0.6	-0.7	-1.9	1.9
<b>Prepared foodstuffs, beverages, and tobacco.....</b>	IV	2.318	141.4	143.8	6.6	0.0	0.9	0.1	1.7
Cocoa and cocoa preparations (Dec. 2009=100).....	18	0.203	96.8	96.4	-	0.2	4.7	-7.7	-0.4
Preparations of cereals, flour, starch or milk; bakers' wares (Dec. 2007=100).....	19	0.248	116.8	125.0	12.1	0.1	1.9	1.9	7.0
Preparations of vegetables, fruit, nuts, or other parts of plants.....	20	0.290	130.0	129.5	3.5	-0.7	0.7	-0.4	-0.4
Beverages, spirits, and vinegar.....	22	0.905	117.5	117.9	1.3	-0.1	-0.1	-0.9	0.3
<b>Mineral products.....</b>	V	20.050	245.9	251.4	15.1	2.6	-5.1	-4.5	2.2
Salt; sulfur; earths and stone; plaster materials, lime & cement (Dec. 2009=100).....	25	0.191	102.0	102.4	-	1.7	0.2	-0.4	0.4
Mineral fuels, oils and residuals, bituminous substances and mineral waxes.....	27	19.608	242.2	247.7	15.0	2.7	-5.2	-4.7	2.3
<b>Products of the chemical or allied industries.....</b>	VI	8.380	139.5	138.9	7.0	0.8	0.5	-1.1	-0.4
Inorganic chemicals.....	28	0.974	277.5	276.8	36.0	1.9	3.5	-4.0	-0.3
Organic chemicals.....	29	2.789	133.8	133.2	6.2	0.8	0.3	-1.0	-0.4
Pharmaceutical products.....	30	2.857	117.9	118.0	3.4	0.2	-0.1	-0.1	0.1
Fertilizers (Dec. 2009=100).....	31	0.315	101.1	101.0	-	1.2	-2.2	-3.0	-0.1
Tanning & dyeing extracts; dye & pigments; varnish & paints; putty.....	32	0.165	106.9	105.3	0.8	-0.9	-1.4	-2.3	-1.5
Essential oils and resinoids (Dec. 2001=100).....	33	0.404	116.9	114.7	-4.7	0.8	-0.3	-2.0	-1.9
Miscellaneous chemical products.....	38	0.510	95.1	95.5	6.6	1.2	0.5	0.0	0.4
<b>Plastics and articles thereof; rubber and articles thereof.....</b>	VII	3.047	137.2	137.6	9.2	1.6	0.7	-0.1	0.3
Plastics and articles thereof.....	39	1.904	131.8	132.2	7.0	2.1	0.2	-0.2	0.3
Rubber and articles thereof.....	40	1.143	147.7	148.1	13.3	1.0	1.5	-0.1	0.3
<b>Raw hides, skins, leather, furskins, travel goods, etc.....</b>	VIII	0.598	114.5	114.7	1.3	0.1	0.2	0.1	0.2
Articles of leather; travel goods, bags, etc. of various materials.....	42	0.543	114.9	114.8	0.5	-0.1	-0.1	0.1	-0.1
<b>Wood, wood charcoal, cork, straw, basketware and wickerwork.....</b>	IX	0.906	134.3	122.3	7.7	3.1	4.2	-2.0	-8.9
<b>Woodpulp, recovered paper, and paper products.....</b>	X	1.410	112.5	113.3	8.0	0.8	1.7	1.5	0.7
Pulp wood, waste paper, and paperboard (Dec. 2009=100).....	47	0.231	129.1	130.6	-	3.5	5.6	6.2	1.2
Paper and paperboard; articles of paper pulp, paper or paperboard.....	48	0.907	104.5	105.5	2.4	0.5	1.1	0.8	1.0
Printed matter.....	49	0.272	121.4	121.5	1.2	0.2	0.5	0.1	0.1

See footnotes at end of table.

**Table 5. U.S. import price indexes and percent changes for selected categories of goods: July 2009 to July 2010 — Continued**  
 [2000=100, unless otherwise noted]

Description	Harmoni- zied system	Relative importance June 2010 <sup>1</sup>	Index		Percent change				
			June 2010	July 2010	Annual July 2009 to July 2010	Monthly			
						Mar. 2010 to Apr. 2010	Apr. 2010 to May 2010	May 2010 to June 2010	June 2010 to July 2010
<b>Textile and textile articles.....</b>	XI	5.007	103.0	103.3	0.5	0.0	-0.1	0.1	0.3
Articles of apparel and clothing accessories, knitted or crocheted.....	61	1.920	98.2	98.8	-0.9	0.3	-0.5	0.2	0.6
Articles of apparel and clothing accessories, not knitted or crocheted.....	62	1.878	102.6	102.4	-0.7	-0.2	-0.3	-0.3	-0.2
Made-up or worn textile articles.....	63	0.539	93.9	95.5	5.3	0.1	1.4	0.2	1.7
<b>Headgear, umbrellas, artificial flowers, etc. . .</b>	XII	1.224	106.9	107.6	0.0	0.1	0.3	0.3	0.7
Footwear and parts of such articles.....	64	1.042	106.1	106.9	0.2	0.3	0.2	0.4	0.8
<b>Stone, plaster, cement, asbestos, ceramics, glass etc.....</b>	XIII	0.890	123.9	124.3	-0.4	-0.1	0.0	-0.2	0.3
Articles of stone, plaster, cement, asbestos, or mica (Dec. 2001=100).....	68	0.316	117.3	117.8	0.2	-0.2	0.0	-0.2	0.4
Ceramic products.....	69	0.280	139.7	139.7	0.2	0.0	-0.1	-0.1	0.0
Glass and glassware.....	70	0.294	114.8	115.1	-1.9	-0.1	0.1	-0.3	0.3
<b>Pearls, stones, precious metals, imitation jewelry, and coins.....</b>	XIV	2.840	161.5	160.8	14.6	2.1	2.4	-0.2	-0.4
<b>Base metals and articles of base metals.....</b>	XV	6.180	180.7	177.9	16.1	4.2	1.8	-2.6	-1.5
Iron and steel.....	72	1.473	239.3	232.6	30.1	5.8	2.2	0.3	-2.8
Articles of iron or steel.....	73	1.889	150.7	151.9	10.9	1.9	1.9	1.1	0.8
Copper and articles thereof.....	74	0.654	312.7	305.7	24.6	7.1	-0.6	-9.5	-2.2
Nickel and articles thereof (Dec. 2009=100)...	75	0.201	130.4	116.8	-	17.3	13.9	-12.2	-10.4
Aluminum and articles thereof.....	76	0.818	132.8	129.7	18.6	4.9	1.6	-6.3	-2.3
Tools, implements, cutlery, spoons and forks, of base metal; parts thereof.....	82	0.367	117.9	117.9	0.4	0.3	-0.1	-0.1	0.0
Miscellaneous articles of base metal.....	83	0.414	126.6	127.1	-2.3	-0.2	-0.2	-0.2	0.4
<b>Machinery, electrical equipment, TV image and sound recorders, parts, etc.....</b>	XVI	25.683	86.5	86.1	-1.0	0.0	0.1	-0.3	-0.5
Machinery and mechanical appliances; parts thereof.....	84	12.910	87.8	87.7	-0.7	0.0	0.1	-0.3	-0.1
Electrical machinery and equip, sound and TV recorders & reproducers, parts.....	85	12.773	85.2	84.5	-1.4	0.0	0.0	-0.4	-0.8
<b>Vehicles, aircraft, vessels and associated transport equipment.....</b>	XVII	11.390	109.7	110.1	0.3	0.4	0.0	-0.2	0.4
Motor vehicles and their parts.....	87	10.285	108.7	109.1	0.3	0.4	0.0	-0.2	0.4
Aircraft, spacecraft, and parts thereof (Dec. 2002=100).....	88	1.011	113.8	113.8	-1.6	0.1	0.0	-0.3	0.0
<b>Optical, photo, measuring, medical &amp; musical instruments; &amp; timepieces.....</b>	XVIII	3.286	100.8	101.0	-1.3	-0.1	0.0	-0.3	0.2
Optical, photographic, measuring and medical instruments.....	90	2.977	98.6	98.8	-1.2	-0.1	-0.1	-0.2	0.2
Clocks and watches and parts thereof.....	91	0.230	121.6	121.6	-1.8	0.1	0.0	-0.7	0.0
<b>Miscellaneous manufactured articles.....</b>	XX	3.893	106.4	106.4	-1.4	-0.2	0.0	0.1	0.0
Furniture & stuffed furnishings; lamps & lighting fittings, nesoi; prefab bldgs.....	94	1.981	109.3	109.3	-2.5	0.0	0.0	0.0	0.0
Toys, games and sports equipment; parts and accessories thereof.....	95	1.708	100.9	101.0	-0.5	-0.4	0.0	0.1	0.1
Miscellaneous manufactured articles.....	96	0.204	119.8	119.8	3.2	0.3	0.3	0.3	0.0

<sup>1</sup> Relative importance figures are based on 2008 trade values.

NOTES: Data may be revised in each of the three months after original publication.

Dash = Not available

**Table 6. U.S. export price indexes and percent changes for selected categories of goods: July 2009 to July 2010**

[2000=100, unless otherwise noted]

Description	Harmoni- zied system	Relative importance June 2010 <sup>1</sup>	Index		Percent change				
			June 2010	July 2010	Annual July 2009 to July 2010	Monthly			
						Mar. 2010 to Apr. 2010	Apr. 2010 to May 2010	May 2010 to June 2010	June 2010 to July 2010
<b>Live animals; animal products.....</b>	I	1.766	172.0	174.0	10.7	2.7	1.7	0.5	1.2
Meat & edible meat offal (Dec. 2006=100). . .	02	1.019	143.4	148.0	15.8	4.4	3.9	-1.1	3.2
Fish and crustaceans, molluscs and other aquatic invertebrates.....	03	0.320	151.7	152.9	8.6	1.9	-0.7	-0.1	0.8
<b>Vegetable products.....</b>	II	4.147	177.5	176.9	-5.7	-2.2	2.1	-1.9	-0.3
Edible fruit and nuts; peel of citrus fruit or melons.....	08	0.794	131.0	120.7	17.5	6.7	-3.6	1.9	-7.9
Cereals.....	10	1.564	171.4	174.5	-4.9	-6.8	6.1	-5.5	1.8
Oilseeds and misc. grains, seeds, fruits, plants, straw and fodder.....	12	1.302	196.2	199.2	-12.9	-1.2	2.0	-0.4	1.5
<b>Animal or vegetable fats and oils (Dec. 2009=100).....</b>	III	0.314	109.4	107.9	-	5.3	4.5	-2.0	-1.4
<b>Prepared foodstuffs, beverages, and tobacco.....</b>	IV	2.457	139.2	140.3	0.2	-0.8	0.4	1.0	0.8
Preparations of vegetables, fruit, nuts or other parts of plants (Dec. 2009=100).....	20	0.350	105.7	106.0	-	1.8	1.3	0.0	0.3
Miscellaneous edible preparations.....	21	0.408	117.7	117.5	-0.3	-0.7	0.2	-0.3	-0.2
Beverages, spirits, and vinegar (Dec. 2008=100).....	22	0.329	102.3	101.8	0.1	-1.8	0.1	-0.6	-0.5
Residues and waste from the food industries; prepared animal feed.....	23	0.558	180.1	187.4	-11.4	-3.0	0.6	4.7	4.1
<b>Mineral products.....</b>	V	5.862	247.6	242.0	27.8	6.7	3.8	-3.7	-2.3
Mineral fuels, oils and residuals, bituminous substances and mineral waxes.....	27	5.152	238.8	233.5	27.9	6.7	2.7	-4.1	-2.2
<b>Products of the chemical or allied industries.....</b>	VI	12.039	144.0	143.6	5.1	1.8	0.3	-1.2	-0.3
Inorganic chemicals.....	28	1.077	184.7	187.9	-1.6	2.1	4.7	1.4	1.7
Organic chemicals.....	29	3.065	152.0	149.9	7.4	4.4	-0.7	-2.4	-1.4
Pharmaceutical products.....	30	2.926	120.8	121.2	4.6	0.5	-0.4	-1.6	0.3
Tanning or dyeing extracts, dyes, paints, varnish, putty, & inks.....	32	0.532	113.8	116.4	1.9	2.0	0.0	-2.1	2.3
Essential oils and resinoids; perfumery cosmetic or toilet preparations.....	33	0.717	123.7	122.5	-1.8	0.6	0.6	-1.0	-1.0
Soap; lubricants; waxes, polishing or scouring products; candles, pastes.....	34	0.434	117.7	118.0	2.3	1.2	1.0	-0.4	0.3
Miscellaneous chemical products.....	38	2.097	142.5	144.5	9.4	1.0	0.6	0.6	1.4
<b>Plastics and articles thereof; rubber and articles thereof.....</b>	VII	5.075	137.0	137.1	3.1	1.7	0.6	-1.2	0.1
Plastics and articles thereof.....	39	4.116	130.6	130.6	1.6	2.2	0.6	-1.6	0.0
Rubber and articles thereof.....	40	0.959	165.4	166.1	9.1	-0.3	0.7	-0.1	0.4
<b>Raw hides, skins, leather, furskins, travel goods, etc.....</b>	VIII	0.380	121.0	119.9	39.4	3.1	1.3	-0.7	-0.9
<b>Wood, wood charcoal, cork, straw, basketware and wickerwork.....</b>	IX	0.568	111.1	110.6	9.5	1.9	0.6	0.3	-0.5
<b>Woodpulp, recovered paper, and paper products.....</b>	X	2.519	117.6	120.1	12.3	1.2	1.8	0.1	2.1
Woodpulp and recovered paper.....	47	0.701	130.2	133.7	41.5	0.6	5.5	-1.3	2.7
Paper and paperboard; articles of paper pulp, paper or paperboard.....	48	1.315	114.0	117.1	6.1	1.7	0.7	1.0	2.7
Printed material.....	49	0.504	116.4	116.0	-0.9	0.4	0.1	-0.3	-0.3
<b>Textile and textile articles.....</b>	XI	2.031	115.7	115.9	12.3	1.3	0.3	1.3	0.2
Cotton, including yarns and woven fabrics thereof.....	52	0.683	132.2	132.9	39.2	3.0	0.9	2.7	0.5

See footnotes at end of table.

**Table 6. U.S. export price indexes and percent changes for selected categories of goods: July 2009 to July 2010 — Continued**

[2000=100, unless otherwise noted]

Description	Harmo- nized system	Relative importance June 2010 <sup>1</sup>	Index		Percent change				
			June 2010	July 2010	Annual July 2009 to July 2010	Monthly			
						Mar. 2010 to Apr. 2010	Apr. 2010 to May 2010	May 2010 to June 2010	June 2010 to July 2010
<b>Stone, plaster, cement, asbestos, ceramics, glass etc. (Dec. 2008=100).....</b>	XIII	0.793	115.8	115.5	1.0	0.0	-0.6	-0.3	-0.3
Glass and glassware.....	70	0.418	97.2	97.1	-0.4	-0.5	-1.0	-0.5	-0.1
<b>Pearls, stones, precious metals, imitation jewelry, and coins.....</b>	XIV	5.028	210.8	213.6	22.8	3.0	1.9	1.2	1.3
<b>Base metals and articles of base metals.....</b>	XV	5.854	160.5	160.2	10.6	4.0	-0.3	-3.7	-0.2
Iron and steel.....	72	1.767	194.3	193.3	24.1	8.4	0.0	-5.7	-0.5
Articles of iron or steel.....	73	1.518	158.3	159.0	-0.6	1.1	0.3	-0.3	0.4
Copper and articles thereof.....	74	0.558	217.0	216.1	24.5	4.7	-5.8	-4.4	-0.4
Aluminum and articles thereof.....	76	0.853	117.8	117.5	13.0	4.6	0.2	-8.8	-0.3
Tools, implements, cutlery, spoons and forks, of base metal; parts thereof.....	82	0.413	124.0	124.0	0.7	-0.1	0.0	-0.1	0.0
Miscellaneous articles of base metal.....	83	0.317	125.0	125.5	3.0	0.0	0.0	0.5	0.4
<b>Machinery, electrical equipment, TV image and sound recorders, parts, etc.....</b>	XVI	30.224	95.4	95.3	-0.1	-0.1	-0.2	-0.4	-0.1
Machinery and mechanical appliances; parts thereof.....	84	17.776	106.8	106.8	1.3	0.5	-0.2	-0.5	0.0
Electrical machinery and equipment and parts and accessories thereof.....	85	12.448	83.1	82.9	-2.0	-0.6	-0.4	-0.2	-0.2
<b>Vehicles, aircraft, vessels and associated transport equipment.....</b>	XVII	13.321	121.5	121.6	0.9	0.2	0.1	0.1	0.1
Motor vehicles and their parts.....	87	8.566	108.5	108.4	0.7	0.3	0.0	0.0	-0.1
Ships, boats and floating structures (Dec. 2009=100).....	89	0.293	100.1	100.1	-	-0.1	0.0	0.1	0.0
<b>Optical, photo, measuring, medical &amp; musical instruments; &amp; timepieces.....</b>	XVIII	5.949	106.3	106.6	-1.2	0.3	0.0	-0.2	0.3
<b>Miscellaneous manufactured articles.....</b>	XX	1.525	108.1	108.0	0.6	0.2	0.2	0.0	-0.1
Furniture; stuffed furnishings; lamps and lighting fittings nesoi;.....	94	0.761	118.9	118.7	1.7	0.5	0.3	0.2	-0.2
Toys, games and sports equipment; parts and accessories thereof.....	95	0.650	92.9	92.9	-0.5	0.0	0.0	-0.3	0.0

1 Relative importance figures are based on 2008 trade values.

NOTES: Data may be revised in each of the three months after original publication.

Dash = Not available

**Table 7. U.S. import price indexes and percent changes by locality of origin: July 2009 to July 2010**  
 [2000=100, unless otherwise noted]

Description	Percent of U.S. imports <sup>1</sup>	Index		Percent change				
		June 2010	July 2010	Annual	Monthly			
				July 2009 to July 2010	Mar. 2010 to Apr. 2010	Apr. 2010 to May 2010	May 2010 to June 2010	June 2010 to July 2010
<b>Industrialized Countries<sup>2</sup></b> .....	41.082	124.2	124.5	4.5	0.4	-0.4	-1.2	0.2
Nonmanufactured articles.....	5.687	188.8	193.0	14.6	-0.9	-7.2	-2.1	2.2
Manufactured articles.....	34.943	118.9	118.9	3.6	0.6	0.5	-1.1	0.0
<b>Other Countries<sup>3</sup></b> .....	58.918	122.7	123.3	4.8	1.4	-1.1	-1.4	0.5
Nonmanufactured articles.....	15.714	248.3	254.5	16.8	3.6	-4.3	-4.1	2.5
Manufactured articles.....	43.010	105.0	104.9	1.5	0.7	0.0	-0.7	-0.1
<b>Canada</b> .....	15.923	140.0	139.9	9.1	0.4	-1.2	-1.8	-0.1
Nonmanufactured articles.....	5.257	182.4	186.9	15.9	-1.4	-7.7	-2.0	2.5
Manufactured articles.....	10.335	132.7	131.5	7.3	1.1	1.4	-1.6	-0.9
<b>European Union<sup>4</sup></b> .....	16.799	127.6	127.4	2.2	0.3	0.1	-0.9	-0.2
Nonmanufactured articles.....	0.211	249.5	253.7	10.8	3.2	-4.1	-0.2	1.7
Manufactured articles.....	16.491	125.1	124.9	2.1	0.2	0.2	-1.0	-0.2
<b>France (Dec. 2003=100)</b> .....	1.948	121.1	121.2	-0.3	0.0	0.0	-0.4	0.1
<b>Germany (Dec. 2003=100)</b> .....	4.572	111.3	110.8	1.5	0.0	-0.3	-1.2	-0.4
<b>United Kingdom (Dec. 2003=100)</b> .....	2.566	125.1	125.2	3.6	0.1	0.1	-0.7	0.1
<b>Latin America<sup>5</sup></b> .....	17.999	154.4	154.8	7.1	1.7	-2.1	-1.4	0.3
Nonmanufactured articles.....	6.186	269.9	275.7	13.5	2.5	-6.1	-2.1	2.1
Manufactured articles.....	11.730	130.3	129.4	3.8	1.3	-0.2	-1.1	-0.7
<b>Mexico (Dec. 2003=100)</b> .....	10.275	136.9	135.9	3.8	1.3	-1.3	-0.8	-0.7
Nonmanufactured articles (Dec. 2008=100).....	2.141	144.6	146.4	15.5	3.7	-5.7	-4.5	1.2
Manufactured articles (Dec. 2008=100)....	8.085	97.2	96.0	0.4	0.5	0.0	0.3	-1.2
<b>Pacific Rim (Dec. 2003=100)<sup>6</sup></b> .....	31.500	101.0	101.1	1.7	0.4	0.5	-0.1	0.1
<b>China (Dec. 2003=100)</b> .....	16.449	100.4	100.5	0.2	0.2	0.3	-0.2	0.1
<b>Japan</b> .....	6.678	98.6	98.6	1.6	0.2	0.1	0.2	0.0
<b>Asian NICs<sup>7</sup></b> .....	5.003	88.1	88.4	3.4	0.2	0.9	0.1	0.3
<b>ASEAN (Dec. 2003=100)<sup>8</sup></b> .....	5.274	95.9	96.2	-0.6	0.8	-0.3	-0.1	0.3
<b>Asia Near East (Dec. 2003=100)<sup>9</sup></b> .....	5.380	204.8	208.6	14.4	3.1	-2.1	-2.2	1.9

1 Percentage of trade figures are based on 2008 trade values.

2 Includes Western Europe, Canada, Japan, Australia, New Zealand and South Africa.

3 Includes Eastern Europe, Latin America, OPEC countries, and other countries in Asia, Africa and the Western Hemisphere.

4 Includes European Union countries.

5 Includes Mexico, Central America, South America and the Caribbean.

6 Includes China, Japan, Australia, Brunei, Indonesia, Macao, Malaysia, New Zealand, Papua New Guinea, Philippines and Asian Newly Industrialized Countries.

7 Asian Newly Industrialized Countries. Includes Hong Kong, Singapore, South Korea and Taiwan.

8 Association of Southeast Asian Nations. Includes Brunei, Cambodia, Indonesia, Laos, Malaysia, Myanmar, Philippines, Singapore, Thailand and Vietnam.

9 Includes Bahrain, Iran, Iraq, Israel, Jordan, Kuwait, Lebanon, Oman, Qatar, Saudi Arabia, Syria, United Arab Emirates and Yemen.

NOTES: Data may be revised in each of the three months after original publication.

Regions are not mutually exclusive.

Dash = Not available

**Table 8. U.S. international price indexes and percent changes for selected transportation services: July 2009 to July 2010**

[2000=100, unless otherwise noted]

Description	Relative importance June 2010 <sup>1</sup>	Index		Percent change				
		June 2010	July 2010	Annual	Monthly			
				July 2009 to July 2010	Mar. 2010 to Apr. 2010	Apr. 2010 to May 2010	May 2010 to June 2010	June 2010 to July 2010
<b>Air Freight</b>								
<b>Import Air Freight</b> .....	100.000	162.5	160.7	20.5	1.3	2.2	-0.9	-1.1
Europe (Dec. 2003=100).....	19.711	126.4	124.8	-4.2	0.2	0.8	-5.5	-1.3
Asia.....	71.658	151.1	150.7	30.7	1.6	1.5	0.3	-0.3
<b>Export Air Freight</b> .....	100.000	126.4	124.6	4.4	-0.3	0.6	1.6	-1.4
Europe (Dec. 2006=100).....	33.441	117.0	114.8	6.0	-0.2	-0.5	3.2	-1.9
<b>Inbound Air Freight</b> .....	100.000	146.8	144.7	15.5	0.4	1.4	-0.1	-1.4
Europe (Dec. 2003=100).....	21.583	119.7	118.2	-3.7	-0.3	0.9	-3.9	-1.3
Asia.....	67.447	136.6	135.8	25.6	0.7	1.3	0.5	-0.6
<b>Outbound Air Freight</b> .....	100.000	122.4	121.6	8.2	0.9	1.4	1.2	-0.7
Europe (Dec. 2003=100).....	41.350	142.1	141.2	10.7	2.1	0.4	1.8	-0.6
Asia.....	41.831	110.9	110.1	7.6	-0.5	1.9	0.8	-0.7
<b>Air Passenger Fares</b>								
<b>Import Air Passenger Fares</b> .....	100.000	175.3	173.1	21.3	4.2	2.9	9.2	-1.3
Europe.....	44.908	201.7	193.9	28.4	5.2	3.7	13.7	-3.9
Asia.....	28.708	155.6	156.8	15.8	3.6	6.6	11.5	0.8
Latin America/Caribbean.....	11.506	140.5	145.4	18.4	7.0	-4.9	1.6	3.5
<b>Export Air Passenger Fares</b> .....	100.000	176.2	184.6	29.6	3.0	0.6	7.8	4.8
Europe.....	36.669	240.8	247.7	33.1	4.5	0.6	16.5	2.9
Asia.....	29.588	155.1	164.6	46.4	-0.1	6.0	2.4	6.1
Latin America/Caribbean.....	20.354	169.5	173.8	16.2	3.3	-3.9	5.6	2.5

<sup>1</sup> Relative importance figures are based on 2008 trade values.

NOTES: Data may be revised in each of the three months after original publication.

Dash = Not available

## TECHNICAL NOTE

**Import and Export Merchandise and Services Price Indexes** -- All indexes use a modified Laspeyres formula and are not seasonally adjusted. Price indexes are reweighted annually, with a two-year lag in the weights. Published series use a base year of 2000=100 where possible. More detailed index series and additional information may be obtained at <http://www.bls.gov/mxp>, or by calling (202) 691-7101.

**Merchandise Goods Classification Systems** -- The merchandise price indexes are published using three classification systems. Items are classified by end use according to the Bureau of Economic Analysis Classification System, by industry according to the North American Industry Classification System (NAICS), and by product category according to the Harmonized System (HS). While classification by end use and product category are self-explanatory, some notes are in order for classifying items by industry. In the NAICS imports and exports tables, items are classified by output industry, not input industry. As an example, NAICS import index 326 (plastics and rubber products manufacturing) include outputs such as manufactured plastic rather than inputs such as petroleum. The NAICS classification structure also matches the classification system used by the PPI (Producer Price Index) to produce the NAICS primary products indexes.

**Import Price Indexes** -- Products have been classified by the Harmonized Tariff Schedule of the United States Annotated (TSUSA). Import prices are based on U.S. dollar prices paid by the U.S. importer. The prices are generally either "free on board" (f.o.b.) foreign port or "cost, insurance, and freight" (c.i.f.) U.S. port transaction prices, depending on the practices of the individual industry. The index for crude petroleum is calculated from data collected by the U.S. Department of Energy.

**Export Price Indexes** -- Products have been classified by the Harmonized Schedule B classification system of the U.S. Bureau of the Census. The prices used are generally either "free alongside ship" (f.a.s.) factory or "free on board" (f.o.b.) transaction prices, depending on the practices of the individual industry. Prices used in the grain index, excluding rice, are obtained from the U.S. Department of Agriculture.

**Services Price Indexes** -- Starting in September 2008 the Import Air Passenger Fares Indexes represent changes in the average revenue per passenger received by foreign carriers from U.S. residents and are calculated from data obtained from an airline consulting service. These data include tickets sold by travel agencies and travel websites. Tickets sold directly by the airlines are excluded, as are frequent flyer tickets generally. Starting in January 2008 the Export Air Passenger Fares Indexes represent changes in the average revenue per passenger received by U.S. carriers from foreign residents and are calculated from data collected directly from airlines. These data include frequent flyer tickets and those sold by consolidators. Taxes and fees are included in the Import Air Passenger Fares Index and excluded from the Export Air Passenger Fares Index. The Air Freight Indexes are calculated from data collected directly from airlines. These data exclude mail and passenger baggage. The scope of the service being priced is the movement of freight from airport to airport only, and does not include any ground transportation or port service. The Air Freight Indexes are presented using two definitions: Balance of Payments (which represent transactions between U.S. and foreign residents) and International (which represent transactions inbound to and outbound from the U.S.). Fact sheets specifying detailed information for each services industry are available at <http://www.bls.gov/mxp> under "MXP Publications."

**Import Indexes by Locality of Origin** -- Prices used in these indexes are a subset of the data collected for the Import Price Indexes. Beginning with January 2002, the indexes are defined by locality of origin using a nomenclature based upon the North American Industry Classification System (NAICS). Nonmanufactured goods are defined as NAICS 11 and 21 and manufactured goods are defined as NAICS 31-33.

**Revision Policy** -- To reflect the availability of late reports and corrections by respondents, monthly data may be revised in each of the three months after original publication. After three months, no further data revisions take place. So, for example, data released in the January release will be subject to revision in the releases for February, March, and April.

**Uses of the Data** -- The primary use of the indexes is to deflate trade statistics, notably the foreign trade sector of the National Income and Product Accounts constructed by the Department of Commerce. Other published indexes are useful for general market analysis. For trade in international services, Balance of Payments indexes are used for deflating National Income and Product Accounts, while International indexes are more appropriate for market analysis. Merchandise and services indexes also can be used to study U.S. competitiveness and to compute price elasticities, and the merchandise import indexes by country or region of origin are useful in terms of trade analysis.

**E-Mail Subscription** -- The U.S. Import and Export Price Indexes news release is available through an e-mail subscription service at (<http://www.bls.gov/bls/list.htm>).

**Additional Information** -- More detailed data are available on the Import/Export Price Indexes home page at (<http://www.bls.gov/mxp>). Flat Files and the FTP server are available for users requiring access to either a large volume of time series data or other related documentation. The FTP site can be accessed at <ftp://ftp.bls.gov>. For technical assistance in using the BLS Internet site, send e-mail to ([labstat.helpdesk@bls.gov](mailto:labstat.helpdesk@bls.gov)). For Import/Export Price Index data requests, send e-mail to ([mxpinfo@bls.gov](mailto:mxpinfo@bls.gov)).

Information from this release will be made available to sensory impaired individuals upon request. Voice phone: 202-691-5200; Federal Relay Service: 1-800-877-8339.