



**Transmission of material in this release is embargoed until
8:30 a.m. (EDT) Tuesday, August 15, 2017**

USDL-17-1127

Technical information: (202) 691-7101 • MXPinfo@bls.gov • www.bls.gov/mxp

Media contact: (202) 691-5902 • PressOffice@bls.gov

U.S. IMPORT AND EXPORT PRICE INDEXES – JULY 2017

Prices for U.S. imports edged up 0.1 percent in July, the U.S. Bureau of Labor Statistics reported today, led by higher fuel prices which more than offset lower prices for nonfuel imports. The July increase in import prices followed declines in each of the 2 previous months. U.S. export prices advanced 0.4 percent in July, after decreasing 0.2 percent in June.

Chart 1. One-month percent change in the Import Price Index: July 2016 – July 2017

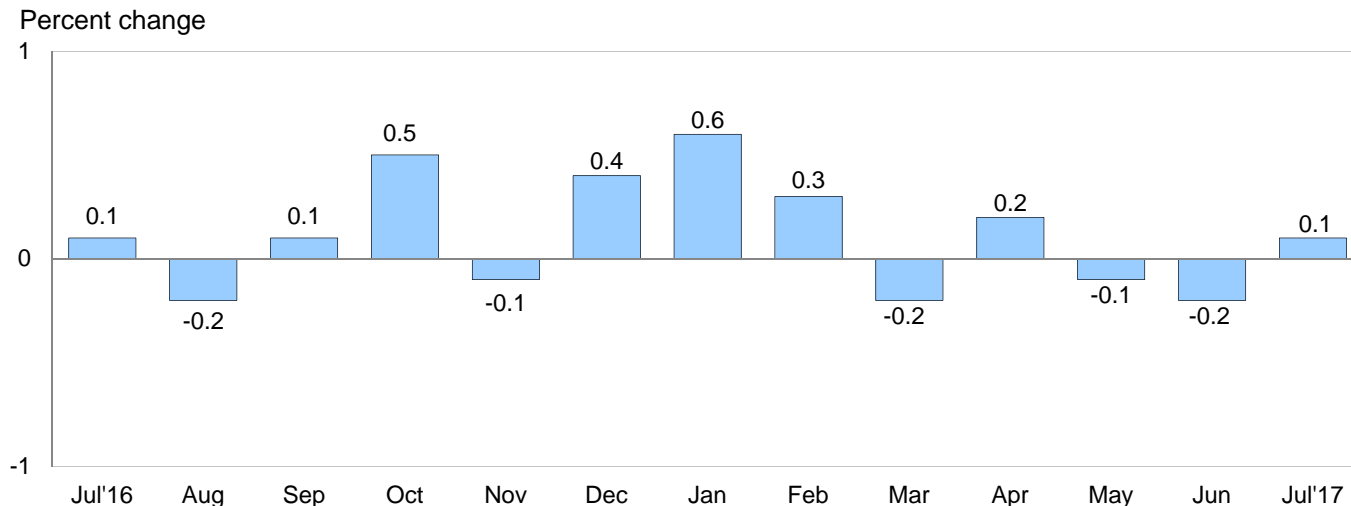
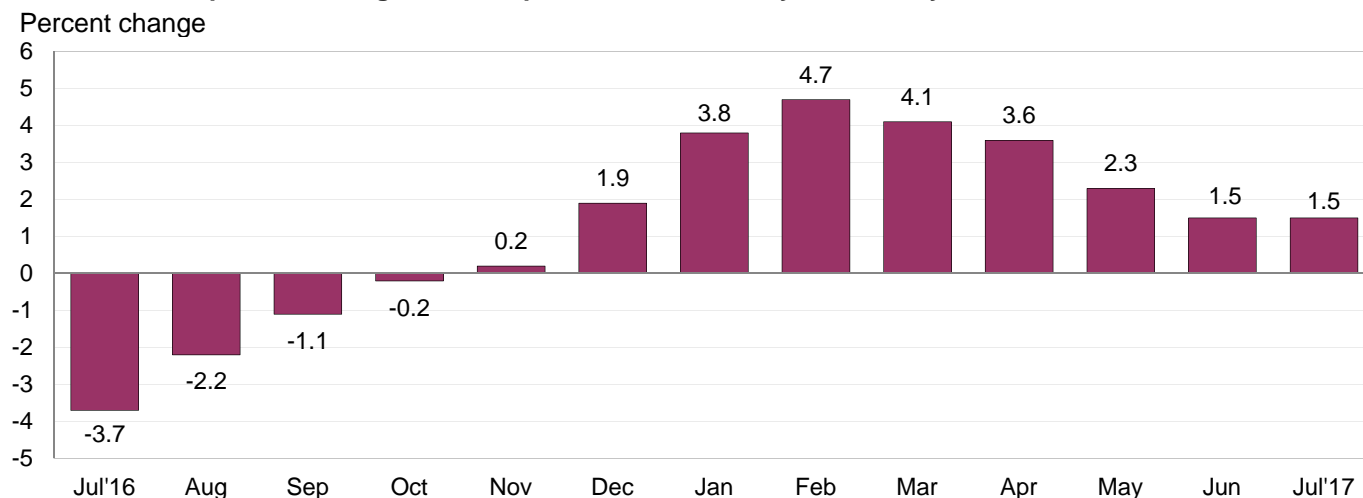


Chart 2. 12-month percent change in the Import Price Index: July 2016 – July 2017



All Imports: Import prices advanced 0.1 percent in July, after a 0.2-percent decrease in June and a 0.1-percent drop in May. The price index for U.S. imports rose over the past year, increasing 1.5 percent. Prices for U.S. imports have risen on an over-the-year basis for 9 consecutive months; the last decrease was a 0.2-percent drop in October 2016.

Fuel Imports: Fuel prices rose 0.5 percent in July following declines of 2.6 percent in June, 0.9 percent in May, and 0.4 percent in April. The July increase was the first monthly advance since the index rose 0.3 percent in February. A 0.7-percent rise in petroleum prices contributed to the advance in July, more than offsetting a 5.0-percent drop in natural gas prices. Import fuel prices increased 8.9 percent over the past year, driven by an 8.3-percent rise in petroleum prices and a 20.4-percent advance in natural gas prices. Import fuel prices have not recorded a 12-month decline since a 3.7-percent fall for the period ended September 2016.

All Imports Excluding Fuel: In contrast, nonfuel import prices edged down 0.1 percent in July, the first monthly decrease since a 0.1-percent drop in January. The last time nonfuel import prices fell more than 0.1 percent on a monthly basis was a 0.2-percent decline in June 2016. Lower prices for nonfuel industrial supplies and materials and automotive vehicles more than offset price increases for foods, feeds, and beverages and capital goods. Consumer goods prices recorded no change in July. Nonfuel import prices advanced 0.7 percent over the past year; the index has not decreased on a 12-month basis since falling 0.2 percent in November. The over-the-year increase was driven by rising prices for nonfuel industrial supplies and materials; foods, feeds, and beverages; capital goods; and consumer goods, which more than offset declining automotive vehicles prices.

Table A. Percent change in Import and Export Price Indexes, selected categories

Month	IMPORTS			EXPORTS		
	All imports	Fuel imports	Nonfuel imports	All exports	Agricultural exports	Non-agricultural exports
2016						
July.....	0.1	-2.1	0.3	0.2	-0.3	0.3
August.....	-0.2	-3.4	0.0	-0.8	-3.4	-0.6
September.....	0.1	1.3	0.0	0.3	-1.0	0.5
October.....	0.5	6.6	0.0	0.2	0.5	0.2
November.....	-0.1	-1.1	-0.1	0.1	0.7	0.0
December.....	0.4	5.8	0.0	0.4	-0.2	0.4
2017						
January.....	0.6	6.1	-0.1	0.2	0.4	0.2
February.....	0.3	0.3	0.3	0.3	1.4	0.3
March.....	-0.2	-3.0	0.2	0.1	1.1	0.0
April.....	0.2	-0.4	0.3	0.2	0.1	0.3
May.....	-0.1	-0.9 ^r	0.1 ^r	-0.5	-1.6	-0.4
June.....	-0.2	-2.6 ^r	0.1	-0.2	-1.4 ^r	0.0
July.....	0.1	0.5	-0.1	0.4	2.1	0.3
July 2015 to 2016.....	-3.7	-21.3	-1.2	-3.0	-2.6	-3.0
July 2016 to 2017.....	1.5	8.9	0.7	0.8	-1.4	1.0

r Revised

Chart 3. One-month percent change in the Export Price Index: July 2016 – July 2017

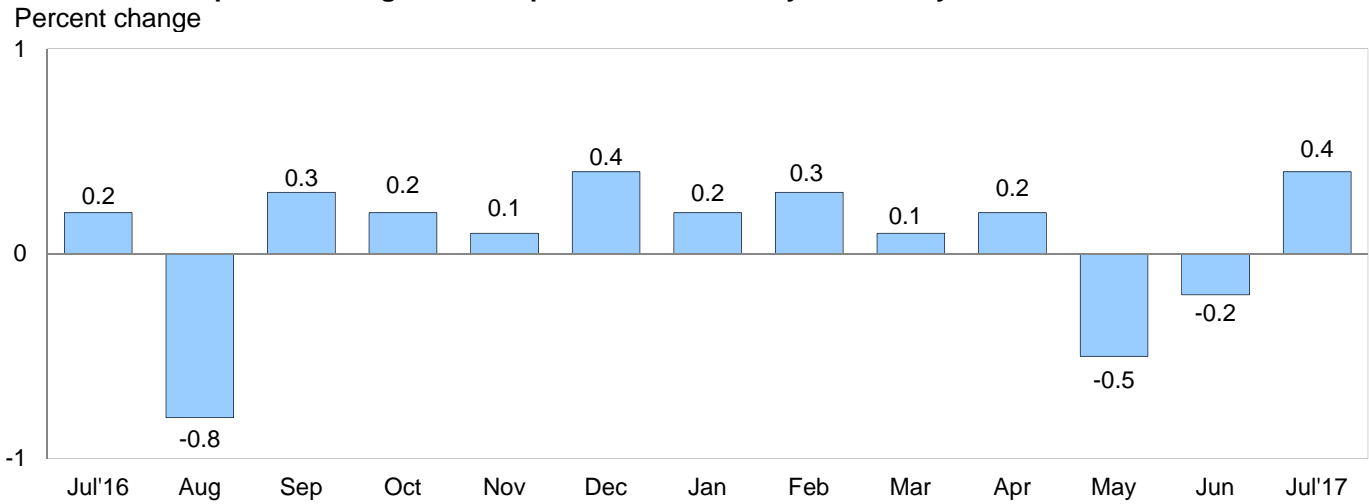
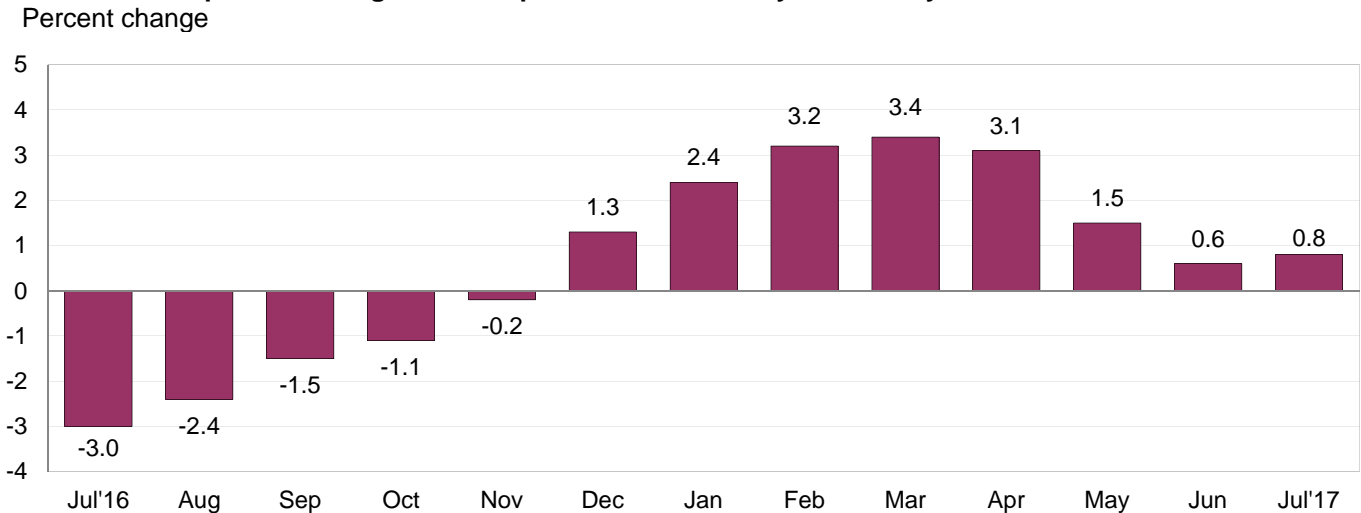


Chart 4. 12-month percent change in the Export Price Index: July 2016 – July 2017



All Exports: The price index for U.S. exports advanced 0.4 percent in July, matching a 0.4-percent rise in December 2016. The increases are the largest monthly advances since a 0.8-percent rise in June 2016. Rising prices for both agricultural and nonagricultural exports contributed to the July increase. Prices for U.S. exports rose 0.8 percent over the past year, continuing an upward trend; U.S. export prices have not recorded an over-the-year decrease since falling 0.2 percent in November 2016.

Agricultural Exports: Export agricultural prices advanced 2.1 percent in July, after dropping 1.4 percent in June and 1.6 percent in May. The July increase was the largest advance since the index rose 2.5 percent in June 2016. Increasing prices for wheat, soybeans, meat, and fruit contributed to the monthly advance, more than offsetting lower vegetables prices. Despite the monthly rise, agricultural prices recorded an overall 1.4-percent decline for the year ended in July. Price decreases for soybeans and fruit led the yearly decline, despite higher prices for meat exports over the past 12 months.

All Exports Excluding Agriculture: The price index for nonagricultural exports rose 0.3 percent in July. Export prices for nonagricultural industrial supplies and materials; capital goods; and consumer goods increased, driving the monthly advance despite lower prices for automotive vehicles exports. Nonagricultural export prices increased 1.0 percent over the year ended in July, led by higher prices for nonagricultural industrial supplies and materials and capital goods. Export prices for consumer goods and automotive vehicles fell over the past 12 months.

SELECTED JULY HIGHLIGHTS

Import Prices

Imports by Locality of Origin: Prices for imports from China ticked up 0.1 percent in July, after falling 0.2 percent over the previous 3 months. Import prices from China declined 0.9 percent over the past 12 months, continuing a trend of 12-month price decreases since the index rose 0.1 percent in October 2014. The price index for imports from Japan fell 0.3 percent in July and increased 0.4 percent over the past year. Prices for imports from Canada advanced 0.6 percent in July. In contrast, the price indexes for imports from the European Union and Mexico fell 0.2 percent and 0.1 percent, respectively.

Nonfuel Industrial Supplies and Materials: The price index for nonfuel industrial supplies and materials declined 0.4 percent in July, after recording no change in June. Lower prices for nonmonetary gold, other precious metals, and chemicals drove the decrease, despite higher building materials prices.

Finished Goods: Prices for the major finished goods categories were mixed in July. The price index for import capital goods rose 0.1 percent, driven by higher prices for nonelectrical machinery. Automotive vehicles prices fell 0.2 percent for the second consecutive month. Import prices for consumer goods recorded no change in July.

Foods, Feeds, and Beverages: Import foods, feeds, and beverages prices increased in July, rising 0.6 percent. Import prices for vegetables and feedstuff rose, driving the monthly advance despite lower prices for imported fruit.

Transportation Services: The price index for import air passenger fares declined 2.8 percent in July. Asian fares led the drop, decreasing 6.5 percent after a 10.9-percent rise in June. European fares also contributed to the monthly decrease in July, falling 6.1 percent. Latin American/Caribbean fares rose 2.0 percent in July. The index for import air passenger fares fell 2.6 percent over the past year. Import air freight prices increased 10.3 percent in July, the largest increase since the index was first published in December 2005. The index rose 22.1 percent over the past 12 months. The over-the-year advance was the largest since a 22.4-percent increase for the year ended in June 2010.

Export Prices

Nonagricultural Industrial Supplies and Materials: Prices for nonagricultural industrial supplies and materials increased 0.5 percent in July, after declining 0.1 percent in June. A 1.0-percent rise in prices for petroleum and a 1.1-percent advance in prices for chemicals drove the increase.

Finished Goods: Export finished goods prices were mostly up in July. Prices for capital goods edged up 0.1 percent for the third consecutive month. Industrial engines prices drove the July increase, rising 0.9 percent. The price index for consumer goods rose 0.2 percent in July. Automotive vehicles export prices edged down 0.1 percent in July, led by a 0.3-percent drop in parts and accessories prices.

Transportation Services: Export air passenger fares rose 4.9 percent in July, following a 4.8-percent increase in June. Price increases for Latin American/Caribbean and European fares contributed to the July advance. The export air passenger fares index rose 4.3 percent over the past 12 months. Prices for export air freight dropped 2.5 percent in July. Despite the monthly decrease, the export air freight price index rose 3.1 percent between July 2016 and July 2017.

Import and Export Price Index data for August 2017 are scheduled for release on Tuesday, September 19, 2017 at 8:30 a.m. (EDT).

Table 1. U.S. import price indexes and percent changes for selected categories of goods: July 2016 to July 2017

[2000=100, unless otherwise noted]

Description	End Use	Relative importance June 2017 ¹	Index		Percent change				
			June 2017	July 2017	Annual July 2016 to July 2017	Monthly			
						Mar. 2017 to Apr. 2017	Apr. 2017 to May 2017	May 2017 to June 2017	June 2017 to July 2017
All commodities		100.000	122.5	122.6	1.5	0.2	-0.1	-0.2	0.1
All imports excluding food and fuels (Dec. 2010=100)		84.827	98.9	98.9	0.6	0.2	0.0	0.0	0.0
All imports excluding petroleum		91.794	112.0	112.0	0.9	0.3	0.0	0.1	0.0
All imports excluding fuels (Dec. 2001=100)		91.135	116.1	116.0	0.7	0.3	0.1	0.1	-0.1
Foods, feeds, & beverages	0	6.249	182.1	183.2	3.2	0.3	1.0	1.1	0.6
Agricultural foods, feeds & beverages, excluding distilled beverages.....	00	4.894	199.8	201.7	3.5	0.6	1.1	1.3	1.0
Nonagricultural foods (fish, distilled beverages).....	01	1.355	141.9	141.1	1.7	-0.5	0.4	0.1	-0.6
Industrial supplies & materials	1	22.441	167.2	167.1	5.4	0.4	-0.5	-1.1	-0.1
Industrial supplies & materials excluding petroleum.....		14.425	148.2	147.4	3.9	1.2	-0.5	0.1	-0.5
Industrial supplies & materials excluding fuels (Dec. 2001=100).....		13.610	167.7	167.0	3.3	1.0	-0.4	0.0	-0.4
Industrial supplies & materials, durable....		8.468	158.4	158.1	4.3	1.1	-0.4	0.2	-0.2
Industrial supplies & materials nondurable excluding petroleum.....		5.767	135.3	134.0	3.4	1.1	-0.5	-0.1	-1.0
Fuels & lubricants.....	10	8.865	168.1	168.9	8.9	-0.4	-0.9	-2.6	0.5
Petroleum & petroleum products.....	100	8.206	180.4	181.7	8.3	-0.7	-0.8	-2.9	0.7
Crude.....	10000	5.751	182.6	187.1	8.7	-0.6	0.3	-4.4	2.5
Fuels, n.e.s.-coals & gas.....	101	0.505	105.8	102.1	23.5	6.1	-3.3	1.7	-3.5
Gas-natural.....	10110	0.381	84.6	80.4	20.4	8.0	-4.2	2.3	-5.0
Paper & paper base stocks.....	11	0.548	107.6	108.1	1.1	1.3	0.5	0.7	0.5
Materials associated with nondurable supplies & materials.....	12	4.629	153.9	152.6	1.8	0.6	-0.3	-0.5	-0.8
Selected building materials.....	13	1.459	145.8	147.7	7.4	2.5	0.8	-0.6	1.3
Unfinished metals related to durable goods.....	14	3.511	213.9	210.7	5.0	0.9	-1.4	0.3	-1.5
Finished metals related to durable goods.....	15	1.740	150.3	150.5	3.1	1.5	0.4	0.7	0.1
Nonmetals related to durable goods.....	16	1.690	109.0	109.9	1.9	0.1	-0.3	0.0	0.8
Capital goods	2	27.544	89.0	89.1	0.2	0.0	0.1	0.2	0.1
Electric generating equipment.....	20	3.330	116.7	117.0	1.0	-0.2	0.0	0.3	0.3
Nonelectrical machinery.....	21	21.649	81.5	81.7	0.4	0.2	0.0	0.2	0.2
Transportation equipment excluding motor vehicles (Dec. 2001=100).....	22	2.566	134.5	134.4	-1.5	-1.5	0.1	-0.1	-0.1
Automotive vehicles, parts & engines	3	16.320	110.4	110.2	-0.2	0.5	0.0	-0.2	-0.2
Consumer goods, excluding automobiles	4	27.445	106.9	106.9	0.1	0.1	-0.1	0.0	0.0
Nondurables, manufactured.....	40	13.496	121.7	121.4	1.5	0.1	0.0	0.1	-0.2
Durables, manufactured.....	41	12.632	93.0	93.1	-1.2	-0.1	-0.1	0.0	0.1
Nonmanufactured consumer goods.....	42	1.318	115.0	114.8	-3.0	1.2	0.1	-1.2	-0.2

¹ Relative importance figures are based on 2015 trade values.

NOTES: Data may be revised in each of the 3 months after original publication.

Dash = Not available

Table 2. U.S. export price indexes and percent changes for selected categories of goods: July 2016 to July 2017

[2000=100, unless otherwise noted]

Description	End Use	Relative importance June 2017 ¹	Index		Percent change				
			June 2017	July 2017	Annual	Monthly			
					July 2016 to July 2017	Mar. 2017 to Apr. 2017	Apr. 2017 to May 2017	May 2017 to June 2017	June 2017 to July 2017
All commodities.....		100.000	121.6	122.1	0.8	0.2	-0.5	-0.2	0.4
Agricultural commodities.....		9.335	175.0	178.7	-1.4	0.1	-1.6	-1.4	2.1
All exports excluding food and fuels (Dec. 2010=100).....		83.663	98.7	98.8	0.2	-0.1	-0.1	0.0	0.1
Nonagricultural commodities.....		90.665	117.5	117.8	1.0	0.3	-0.4	0.0	0.3
Foods, feeds, & beverages.....	0	8.660	176.6	180.9	-1.3	0.5	-2.0	-1.5	2.4
Agricultural foods, feeds & beverages, excluding distilled beverages.....	00	8.058	176.0	180.1	-1.9	0.3	-1.9	-1.4	2.3
Nonagricultural foods (fish, distilled beverages).....	01	0.602	192.5	199.9	7.2	3.8	-3.2	-3.2	3.8
Industrial supplies & materials.....	1	29.600	145.5	146.1	3.0	0.4	-1.4	-0.1	0.4
Industrial supplies & materials, durable....		10.630	157.3	156.7	1.4	-0.2	-0.6	-0.5	-0.4
Industrial supplies & materials, nondurable.....		19.044	140.0	141.3	3.8	0.6	-1.8	0.1	0.9
Agricultural industrial supplies & materials.....	10	1.276	174.3	175.2	1.4	-1.2	0.6	-1.4	0.5
Nonagricultural industrial supplies & materials.....		28.324	144.5	145.2	3.1	0.4	-1.4	-0.1	0.5
Fuels & lubricants.....	11	7.750	161.2	162.4	10.3	3.5	-2.9	-0.1	0.7
Nonagricultural supplies & materials excluding fuels & building materials....	12	19.536	150.1	150.6	0.5	-0.8	-0.9	0.0	0.3
Selected building materials.....	13	1.038	119.7	119.7	3.6	0.5	0.4	-0.4	0.0
Capital goods.....	2	38.472	107.7	107.8	0.8	0.0	0.1	0.1	0.1
Electrical generating equipment.....	20	3.976	112.6	112.5	0.0	0.1	0.0	-0.2	-0.1
Nonelectrical machinery.....	21	25.166	93.7	93.9	-0.1	0.0	0.0	0.0	0.2
Transportation equipment excluding motor vehicles (Dec. 2001=100).....	22	9.330	170.5	170.8	3.8	0.1	0.3	0.1	0.2
Automotive vehicles, parts & engines.....	3	10.390	113.2	113.1	-0.1	0.2	0.0	-0.1	-0.1
Consumer goods, excluding automotives.....	4	12.877	108.5	108.7	-1.7	0.3	0.1	0.2	0.2
Nondurables, manufactured.....	40	6.231	104.4	104.7	-2.1	0.7	0.2	0.1	0.3
Durables, manufactured.....	41	5.235	107.2	107.3	-0.5	0.0	0.1	0.3	0.1

¹ Relative importance figures are based on 2015 trade values.

NOTES: Data may be revised in each of the 3 months after original publication.

Dash = Not available

Table 3. U.S. import price indexes and percent changes for selected industries: July 2016 to July 2017
 [December 2005=100, unless otherwise noted]

Description	NAICS	Relative importance June 2017 ¹	Index		Percent change				
			June 2017	July 2017	Annual July 2016 to July 2017	Monthly			
						Mar. 2017 to Apr. 2017	Apr. 2017 to May 2017	May 2017 to June 2017	June 2017 to July 2017
Nonmanufacturing		8.509	93.6	95.2	9.7	0.1	0.5	-2.3	1.7
Agriculture, forestry, fishing and hunting	11	2.096	187.8	189.5	8.3	1.2	1.9	1.3	0.9
Crop production.....	111	1.683	201.8	205.4	8.8	2.1	2.1	2.0	1.8
Animal production (Dec. 2014=100).....	112	0.212	81.5	80.5	2.9	-1.3	2.6	1.4	-1.2
Mining	21	6.413	82.3	83.9	10.1	-0.4	0.2	-3.5	1.9
Oil and gas extraction.....	211	6.111	81.3	83.0	9.4	-0.1	-0.1	-4.0	2.1
Mining (except oil and gas) (Dec. 2006=100).....	212	0.302	118.9	119.5	26.3	-3.7	6.3	7.9	0.5
Manufacturing		91.207	110.0	109.8	0.6	0.2	-0.1	0.1	-0.2
Manufacturing, part 1	31	11.986	124.4	124.4	0.4	0.1	0.2	0.2	0.0
Food manufacturing.....	311	3.518	156.6	156.7	1.6	0.1	0.6	0.5	0.1
Beverage and tobacco product manufacturing.....	312	1.067	118.7	118.8	0.8	-0.1	0.2	0.3	0.1
Textile mills (Dec. 2011=100).....	313	0.400	98.2	98.3	-0.6	0.2	-0.2	0.0	0.1
Textile product mills.....	314	0.934	108.5	109.0	0.3	0.0	0.0	0.0	0.5
Apparel manufacturing.....	315	4.212	110.9	110.9	-0.3	0.0	-0.2	0.0	0.0
Leather and allied product manufacturing.....	316	1.856	123.2	122.9	-0.2	0.0	0.2	0.0	-0.2
Manufacturing, part 2	32	17.579	120.2	119.6	3.1	0.3	-0.4	-0.1	-0.5
Wood product manufacturing.....	321	0.896	126.5	129.2	11.6	3.9	1.2	-1.8	2.1
Paper manufacturing.....	322	1.028	105.0	105.2	-0.1	0.3	0.2	0.3	0.2
Printing and related support activities (Dec. 2016=100).....	323	0.223	100.0	100.0	-	0.0	0.0	-0.1	0.0
Petroleum and coal products manufacturing.....	324	2.224	81.4	78.7	6.5	-0.7	-3.2	1.1	-3.3
Chemical manufacturing.....	325	9.955	135.7	135.0	3.1	0.4	-0.1	-0.1	-0.5
Plastics and rubber products manufacturing.....	326	2.242	118.0	118.5	0.7	0.3	0.0	0.0	0.4
Nonmetallic mineral product manufacturing.....	327	1.010	128.3	128.3	-0.9	-0.1	-0.1	0.0	0.0
Manufacturing, part 3	33	61.642	103.6	103.6	0.1	0.2	-0.1	0.1	0.0
Primary metal manufacturing.....	331	4.202	141.9	140.7	6.2	0.7	-1.1	0.4	-0.8
Fabricated metal product manufacturing... ..	332	3.107	122.8	123.1	0.8	0.8	0.1	0.3	0.2
Machinery manufacturing.....	333	7.110	116.5	116.7	0.2	0.2	-0.1	0.3	0.2
Computer and electronic product manufacturing.....	334	17.663	75.9	76.0	-0.5	0.0	0.0	0.1	0.1
Electrical equipment, appliance, and component manufacturing.....	335	4.923	114.5	115.0	0.6	0.4	0.0	0.0	0.4
Transportation equipment manufacturing..	336	17.565	109.4	109.3	-0.2	0.2	0.0	-0.2	-0.1
Furniture and related product manufacturing.....	337	1.737	115.3	115.4	0.2	0.1	0.0	0.0	0.1
Miscellaneous manufacturing.....	339	5.335	117.5	117.4	-2.2	-0.2	0.0	0.1	-0.1

¹ Relative importance figures are based on 2015 trade values.

NOTES: Data may be revised in each of the 3 months after original publication.

Dash = Not available

Table 4. U.S. export price indexes and percent changes for selected industries: July 2016 to July 2017
 [December 2005=100, unless otherwise noted]

Description	NAICS	Relative importance June 2017 ¹	Index		Percent change				
			June 2017	July 2017	Annual	Monthly			
					July 2016 to July 2017	Mar. 2017 to Apr. 2017	Apr. 2017 to May 2017	May 2017 to June 2017	June 2017 to July 2017
Nonmanufacturing.....		7.244	128.8	134.1	5.1	1.3	0.0	-2.9	4.1
Agriculture, forestry, fishing and hunting.....	11	4.438	148.5	153.8	-3.6	-0.1	-2.8	-3.7	3.6
Crop production.....	111	4.095	154.4	160.0	-4.4	-0.5	-2.7	-3.5	3.6
Mining.....	21	2.805	80.6	84.6	22.3	3.9	5.0	-1.8	5.0
Mining (except oil and gas).....	212	1.237	101.9	102.8	32.6	-3.9	3.3	-0.8	0.9
Manufacturing.....		91.239	112.0	112.1	0.5	0.3	-0.4	0.1	0.1
Manufacturing, part 1.....	31	7.145	138.1	139.3	2.2	0.0	0.4	0.2	0.9
Food manufacturing.....	311	4.816	156.9	158.3	3.0	0.3	0.6	0.4	0.9
Beverage and tobacco product manufacturing.....	312	0.703	110.8	114.0	1.9	-1.5	1.0	-0.7	2.9
Textile mills (Dec. 2016=100).....	313	0.676	101.2	100.9	-	-0.3	-0.1	-0.2	-0.3
Leather and allied product manufacturing (Dec. 2016=100).....	316	0.286	98.8	98.4	-	-0.3	-0.8	-0.2	-0.4
Manufacturing, part 2.....	32	23.722	105.9	106.4	0.6	0.7	-1.9	0.1	0.5
Paper manufacturing.....	322	1.663	118.9	121.1	0.6	2.3	-1.3	2.8	1.9
Petroleum and coal products manufacturing.....	324	5.040	90.5	89.7	6.4	3.3	-6.6	0.9	-0.9
Chemical manufacturing.....	325	13.098	112.2	113.2	-1.4	-0.2	-0.8	-0.4	0.9
Plastics and rubber products manufacturing.....	326	2.306	114.1	113.8	-0.5	-0.5	0.3	-0.4	-0.3
Nonmetallic mineral product manufacturing.....	327	0.851	113.6	113.9	1.4	-0.5	0.2	0.2	0.3
Manufacturing, part 3.....	33	60.372	111.9	111.8	0.4	0.2	0.0	0.1	-0.1
Primary metal manufacturing.....	331	4.047	137.5	134.9	-2.2	0.7	-0.3	0.1	-1.9
Fabricated metal product manufacturing...	332	3.338	138.1	138.0	6.0	0.0	0.6	-0.1	-0.1
Machinery manufacturing.....	333	10.316	125.4	125.7	-0.3	0.2	0.0	0.0	0.2
Computer and electronic product manufacturing.....	334	14.247	82.7	82.7	-1.0	0.1	0.1	0.0	0.0
Electrical equipment, appliance, and component manufacturing.....	335	4.003	113.1	113.3	0.8	0.2	0.0	0.0	0.2
Transportation equipment manufacturing..	336	18.599	124.4	124.4	1.8	0.1	0.1	0.1	0.0
Furniture and related product manufacturing (Dec. 2011=100).....	337	0.458	117.5	117.5	0.8	0.1	0.0	0.0	0.0
Miscellaneous manufacturing.....	339	5.366	118.6	118.7	-0.7	-0.3	-0.1	0.3	0.1

¹ Relative importance figures are based on 2015 trade values.

NOTES: Data may be revised in each of the 3 months after original publication.

Dash = Not available

Table 5. U.S. import price indexes and percent changes for selected categories of goods: July 2016 to July 2017

[2000=100, unless otherwise noted]

Description	Harmonized system	Relative importance June 2017 ¹	Index		Percent change				
			June 2017	July 2017	Annual July 2016 to July 2017	Monthly			
						Mar. 2017 to Apr. 2017	Apr. 2017 to May 2017	May 2017 to June 2017	June 2017 to July 2017
Live animals; animal products.....	I	1.536	198.1	196.6	3.6	0.3	1.8	1.2	-0.8
Meat and edible meat offal.....	02	0.464	255.2	253.9	7.4	1.9	2.8	1.7	-0.5
Fish and crustaceans, molluscs and other aquatic invertebrates.....	03	0.754	143.7	141.2	-0.2	-0.8	0.6	-0.1	-1.7
Vegetable products.....	II	2.125	222.6	226.3	11.0	2.5	1.5	1.3	1.7
Edible vegetables, roots, and tubers.....	07	0.411	467.6	529.6	28.8	2.9	1.0	9.8	13.3
Edible fruit and nuts; peel of citrus fruit or melons.....	08	0.911	134.8	130.7	16.9	4.0	3.7	1.1	-3.0
Coffee, tea, mate and spices.....	09	0.353	226.6	232.5	-1.0	-1.2	-1.1	-1.4	2.6
Animal or vegetable fats and oils (Dec. 2009=100).....	III	0.302	115.2	115.2	7.8	-0.5	0.1	1.6	0.0
Prepared foodstuffs, beverages, and tobacco.....	IV	2.700	160.6	161.6	-1.2	-0.4	-0.1	0.5	0.6
Sugars and sugar confectionary (Dec. 2012=100).....	17	0.186	86.6	87.4	0.9	0.1	-0.1	0.8	0.9
Cocoa and cocoa preparations (Dec. 2009=100).....	18	0.196	96.4	94.5	-18.0	-4.6	-1.7	4.0	-2.0
Preparations of vegetables, fruit, nuts, or other parts of plants.....	20	0.355	164.7	169.0	6.8	-0.2	0.2	-0.1	2.6
Beverages, spirits, and vinegar.....	22	1.007	128.3	128.5	0.6	-0.1	0.1	0.2	0.2
Mineral products.....	V	8.784	168.3	169.3	9.6	-0.2	-0.6	-2.4	0.6
Mineral fuels, oils and residuals, bituminous substances and mineral waxes.....	27	8.516	165.5	166.5	9.4	-0.1	-0.9	-2.7	0.6
Products of the chemical or allied industries.....	VI	9.365	151.9	151.5	3.1	-0.2	-0.1	0.0	-0.3
Inorganic chemicals.....	28	0.557	279.2	277.7	7.9	1.4	-0.1	-2.4	-0.5
Organic chemicals.....	29	2.394	123.6	123.0	2.0	-0.6	0.0	0.2	-0.5
Pharmaceutical products.....	30	4.366	149.2	148.5	4.7	-0.1	0.1	0.1	-0.5
Fertilizers (Dec. 2009=100).....	31	0.259	73.3	72.4	-9.5	-2.9	-3.8	0.1	-1.2
Tanning extracts; dye, pigments, varnish, paints & putty (Dec. 2011=100).....	32	0.195	108.6	109.0	7.7	5.0	0.1	1.5	0.4
Essential oils and resinoids (Dec. 2016=100).....	33	0.543	99.3	99.8	-	-1.0	0.2	0.1	0.5
Miscellaneous chemical products.....	38	0.686	103.9	105.1	3.5	-0.2	-0.5	0.5	1.2
Plastics and articles thereof; rubber and articles thereof.....	VII	3.454	139.5	139.1	1.5	0.4	0.1	-0.5	-0.3
Plastics and articles thereof.....	39	2.185	140.8	141.6	1.1	0.6	0.1	-0.3	0.6
Rubber and articles thereof.....	40	1.269	138.6	136.0	2.2	0.1	-0.1	-0.7	-1.9
Raw hides, skins, leather, furskins, travel goods, etc.....	VIII	0.688	123.6	123.7	0.2	-0.2	0.5	0.0	0.1
Articles of leather; travel goods, bags, etc. of various materials.....	42	0.657	128.8	129.0	0.1	-0.2	0.5	0.0	0.2
Wood, wood charcoal, cork, straw, basketware and wickerwork.....	IX	0.933	154.3	157.4	11.6	3.8	1.2	-1.3	2.0
Wood and articles of wood; wood charcoal (Dec. 2014=100).....	44	0.908	106.3	108.5	12.0	3.9	1.2	-1.4	2.1
Woodpulp, recovered paper, and paper products.....	X	1.096	110.6	110.8	1.1	0.3	0.3	0.3	0.2
Paper and paperboard; articles of paper pulp, paper or paperboard.....	48	0.722	103.0	102.9	-1.6	-0.6	0.0	-0.1	-0.1
Printed matter (Dec. 2015=100).....	49	0.221	106.0	106.1	5.5	0.0	0.0	0.0	0.1
Textile and textile articles.....	XI	5.363	113.1	113.2	0.0	0.0	-0.1	0.0	0.1

See footnotes at end of table.

Table 5. U.S. import price indexes and percent changes for selected categories of goods: July 2016 to July 2017 — Continued

[2000=100, unless otherwise noted]

Description	Harmonized system	Relative importance June 2017 ¹	Index		Percent change				
			June 2017	July 2017	Annual July 2016 to July 2017	Monthly			
						Mar. 2017 to Apr. 2017	Apr. 2017 to May 2017	May 2017 to June 2017	June 2017 to July 2017
Articles of apparel and clothing accessories, knitted or crocheted.....	61	2.203	103.5	103.6	0.2	0.0	-0.4	0.1	0.1
Articles of apparel and clothing accessories, not knitted or crocheted.....	62	1.838	118.9	119.0	-0.5	0.1	0.0	-0.2	0.1
Made-up or worn textile articles.....	63	0.654	103.7	103.7	0.9	0.0	0.0	0.0	0.0
Headgear, umbrellas, artificial flowers, etc.....	XII	1.528	122.4	122.1	-0.4	0.0	0.0	0.1	-0.2
Footwear and parts of such articles.....	64	1.294	121.5	121.1	-0.6	0.0	0.1	0.0	-0.3
Stone, plaster, cement, asbestos, ceramics, glass etc.....	XIII	0.944	130.0	130.0	-0.9	0.0	-0.1	0.1	0.0
Articles of stone, plaster, cement, asbestos, or mica (Dec. 2015=100).....	68	0.327	96.5	96.4	-2.1	-0.1	-0.2	0.5	-0.1
Ceramic products.....	69	0.272	136.0	135.7	-1.0	-0.1	-0.2	-0.2	-0.2
Glass and glassware.....	70	0.346	129.9	130.1	0.2	0.1	0.2	-0.1	0.2
Pearls, stones, precious metals, imitation jewelry, and coins.....	XIV	2.834	170.6	167.3	-5.6	0.4	-1.2	1.2	-1.9
Base metals and articles of base metals. ...	XV	5.551	166.7	166.9	6.6	0.9	-0.3	-0.1	0.1
Iron and steel.....	72	1.354	195.7	194.1	11.9	1.6	-0.7	-1.1	-0.8
Articles of iron or steel.....	73	1.699	143.9	144.6	4.8	1.4	0.9	1.3	0.5
Copper and articles thereof.....	74	0.378	266.0	271.5	12.3	-1.7	-1.9	0.0	2.1
Aluminum and articles thereof.....	76	0.806	128.4	128.7	6.5	0.9	-0.4	-0.8	0.2
Tools, implements, cutlery, spoons and forks, of base metal; parts thereof.....	82	0.434	122.4	122.6	0.2	0.1	-0.2	-0.2	0.2
Miscellaneous articles of base metal.....	83	0.522	136.5	136.3	-0.2	0.8	0.1	-0.1	-0.1
Machinery, electrical equipment, TV image and sound recorders, parts, etc.....	XVI	29.896	80.5	80.6	-0.2	0.0	0.0	0.1	0.1
Machinery and mechanical appliances; parts thereof.....	84	14.864	85.8	85.9	0.0	0.1	0.0	0.1	0.1
Electrical machinery and equip, sound and TV recorders & reproducers, parts.....	85	15.031	75.4	75.5	-0.5	-0.1	0.0	0.1	0.1
Vehicles, aircraft, vessels and associated transport equipment.....	XVII	14.664	114.1	113.9	0.0	0.3	0.0	-0.1	-0.2
Motor vehicles and their parts.....	87	13.197	113.1	112.9	0.4	0.5	-0.1	0.0	-0.2
Aircraft, spacecraft, and parts thereof (Dec. 2002=100).....	88	1.335	115.8	115.7	-2.7	-2.1	0.0	-0.3	-0.1
Optical, photo, measuring, medical & musical instruments; & timepieces.....	XVIII	3.866	101.4	101.5	-1.6	0.2	-0.1	0.2	0.1
Optical, photographic, measuring and medical instruments.....	90	3.537	98.0	98.1	-1.9	0.2	-0.2	0.2	0.1
Clocks and watches and parts thereof.....	91	0.269	142.5	143.9	1.6	0.1	0.0	0.4	1.0
Miscellaneous manufactured articles.....	XX	4.295	110.9	111.0	-0.9	-0.4	0.0	0.0	0.1
Furniture & stuffed furnishings; lamps & lighting fittings, nesoi; prefab bldgs.....	94	2.656	116.4	116.6	0.0	0.0	0.1	-0.1	0.2
Toys, games and sports equipment; parts and accessories thereof.....	95	1.363	101.4	101.3	-2.0	-1.3	0.0	0.0	-0.1
Miscellaneous manufactured articles.....	96	0.276	129.7	129.7	-4.1	0.0	0.1	-0.2	0.0

¹ Relative importance figures are based on 2015 trade values.

NOTES: Data may be revised in each of the 3 months after original publication.

Dash = Not available

Table 6. U.S. export price indexes and percent changes for selected categories of goods: July 2016 to July 2017

[2000=100, unless otherwise noted]

Description	Harmoni- zied system	Relative importance June 2017 ¹	Index		Percent change				
			June 2017	July 2017	Annual July 2016 to July 2017	Monthly			
						Mar. 2017 to Apr. 2017	Apr. 2017 to May 2017	May 2017 to June 2017	June 2017 to July 2017
Live animals; animal products.....	I	1.937	207.6	213.6	13.3	1.2	0.0	1.7	2.9
Meat & edible meat offal (Dec. 2006=100)...	02	1.147	166.9	172.6	15.3	0.8	1.8	2.8	3.4
Fish and crustaceans, mollusks and aquatic invertebrates (Dec. 2016=100).....	03	0.387	103.3	109.0	–	6.7	-6.3	-4.4	5.5
Vegetable products.....	II	4.149	187.2	194.2	-5.2	0.5	-4.9	-3.8	3.7
Edible fruit and nuts; peel of citrus fruit or melons.....	08	0.800	133.5	140.5	-9.6	-1.1	-3.1	-3.0	5.2
Cereals.....	10	1.220	177.4	190.9	8.6	-4.7	0.9	1.3	7.6
Oilseeds and misc. grains, seeds, fruits, plants, straw and fodder.....	12	1.586	190.7	198.6	-12.8	-8.7	2.0	-2.8	4.1
Prepared foodstuffs, beverages, and tobacco.....	IV	3.085	147.6	148.2	-1.7	0.3	0.6	-0.7	0.4
Preparations of vegetables, fruit, nuts or other parts of plants (Dec. 2009=100)....	20	0.385	117.0	117.1	-0.3	0.2	0.1	0.0	0.1
Beverages, spirits, and vinegar (Dec. 2008=100).....	22	0.552	111.2	111.5	-0.4	0.9	-0.1	-0.6	0.3
Residues and waste from the food industries; prepared animal feed.....	23	0.708	191.9	191.6	-10.9	-1.1	0.7	-2.2	-0.2
Mineral products.....	V	8.053	191.2	193.7	14.8	3.2	-2.3	-0.3	1.3
Ores, slag and ash (Dec. 2012=100).....	26	0.534	89.5	92.5	19.4	0.6	-2.1	-2.1	3.4
Mineral fuels, oils and residuals, bituminous substances and mineral waxes.....	27	7.325	182.8	185.0	14.8	3.5	-2.4	-0.2	1.2
Products of the chemical or allied industries.....	VI	10.748	132.5	133.7	-2.3	-0.7	-0.5	-0.5	0.9
Inorganic chemicals.....	28	0.773	160.7	161.8	-7.6	-5.1	-0.3	-4.4	0.7
Organic chemicals.....	29	2.488	128.7	130.0	-2.1	-2.4	-2.3	-0.2	1.0
Pharmaceutical products.....	30	3.188	104.8	104.8	-4.1	1.1	0.3	0.2	0.0
Fertilizers (Dec. 2016=100).....	31	0.250	107.7	106.7	–	4.1	1.9	-1.9	-0.9
Tanning or dyeing extracts, dyes, paints varnish, putty, & inks (Dec. 2015=100)....	32	0.537	100.3	99.5	1.3	0.3	0.3	1.8	-0.8
Essential oils and resinoids; perfumery cosmetic or toilet preparations.....	33	0.821	132.6	132.4	-1.6	1.0	0.0	-0.5	-0.2
Soap; lubricants; waxes, polishing or scouring products; candles, pastes.....	34	0.501	112.5	129.7	12.1	-1.1	-1.1	-0.9	15.3
Miscellaneous chemical products.....	38	1.754	143.8	143.8	-3.0	-0.3	-0.3	-0.6	0.0
Plastics and articles thereof; rubber and articles thereof.....	VII	5.117	137.1	137.1	0.1	0.1	-1.1	-0.4	0.0
Plastics and articles thereof.....	39	4.152	132.4	132.9	0.2	0.3	-0.5	0.0	0.4
Rubber and articles thereof.....	40	0.965	157.0	155.0	-0.3	-0.5	-3.4	-2.5	-1.3
Raw hides, skins, leather, furskins, travel goods, etc.....	VIII	0.346	121.1	120.2	0.6	-0.2	-1.4	-0.7	-0.7
Wood, wood charcoal, cork, straw, baskets and wickerwork (Dec. 2014=100).....	IX	0.626	96.2	97.2	2.2	0.3	1.3	-2.0	1.0
Woodpulp, recovered paper, and paper products.....	X	2.183	128.6	130.8	6.9	-3.6	-0.3	3.8	1.7
Woodpulp and recovered paper.....	47	0.729	145.8	149.8	17.5	-11.7	-0.9	11.8	2.7
Paper and paperboard; articles of paper pulp, paper or paperboard.....	48	1.099	120.5	122.3	2.6	0.8	-0.1	0.2	1.5
Printed material (Dec. 2014=100).....	49	0.355	101.5	101.5	1.1	0.0	0.0	0.0	0.0
Textile and textile articles.....	XI	1.755	120.2	119.8	-0.7	0.1	-0.1	-0.7	-0.3
Cotton, including yarns and woven fabrics thereof.....	52	0.461	127.5	126.2	1.0	0.1	0.4	-2.3	-1.0

See footnotes at end of table.

Table 6. U.S. export price indexes and percent changes for selected categories of goods: July 2016 to July 2017 — Continued

[2000=100, unless otherwise noted]

Description	Harmoni- zied system	Relative importance June 2017 ¹	Index		Percent change				
			June 2017	July 2017	Annual July 2016 to July 2017	Monthly			
						Mar. 2017 to Apr. 2017	Apr. 2017 to May 2017	May 2017 to June 2017	June 2017 to July 2017
Stone, plaster, cement, asbestos, ceramics, glass etc.....	XIII	0.841	123.1	123.4	0.5	-0.6	0.2	0.2	0.2
Articles of stone, plaster, cement, asbestos, or mica (Dec. 2015=100).....	68	0.280	101.1	101.1	0.6	0.1	0.0	0.0	0.0
Glass and glassware.....	70	0.429	99.1	99.2	-0.5	0.0	-0.1	-0.1	0.1
Pearls, stones, precious metals, imitation jewelry, and coins.....	XIV	4.253	233.5	229.7	-4.5	0.3	-0.8	1.3	-1.6
Base metals and articles of base metals. ...	XV	4.947	151.3	151.7	6.1	0.3	-0.1	-0.9	0.3
Iron and steel.....	72	1.022	153.6	156.1	11.0	-0.1	-0.8	-2.4	1.6
Copper and articles thereof.....	74	0.476	167.6	172.6	11.9	0.2	-0.3	-0.6	3.0
Aluminum and articles thereof.....	76	0.844	111.3	110.1	5.1	0.9	0.2	-2.3	-1.1
Tools, implements, cutlery, spoons and forks, of base metal (Dec. 2015=100).	82	0.350	99.5	99.5	-0.6	0.0	0.0	0.0	0.0
Miscellaneous articles of base metal.....	83	0.349	148.0	148.0	0.2	0.0	0.0	-0.1	0.0
Machinery, electrical equipment, TV image and sound recorders, parts, etc.....	XVI	28.898	96.1	96.2	0.5	0.1	0.1	0.0	0.1
Machinery and mechanical appliances; parts thereof.....	84	16.997	113.7	113.9	1.2	0.3	0.1	0.0	0.2
Electrical machinery and equipment and parts and accessories thereof.....	85	11.901	77.0	77.2	-0.3	0.0	0.0	0.0	0.3
Vehicles, aircraft, vessels and associated transport equipment.....	XVII	15.079	132.7	132.7	0.8	0.2	0.0	0.1	0.0
Motor vehicles and their parts.....	87	8.745	115.1	115.0	0.1	0.2	-0.1	-0.1	-0.1
Optical, photo, measuring, medical & musical instruments; & timepieces.....	XVIII	6.079	106.3	106.3	0.3	-0.4	0.2	0.2	0.0
Miscellaneous manufactured articles.....	XX	1.495	112.4	112.4	0.2	-0.1	-0.1	0.0	0.0
Furniture; stuffed furnishings; lamps and lighting fittings nesoi;.....	94	0.905	128.4	128.4	0.6	0.2	0.0	0.0	0.0
Toys, games and sports equipment; parts and accessories thereof.....	95	0.438	88.7	88.7	-0.6	-0.7	0.0	0.0	0.0

¹ Relative importance figures are based on 2015 trade values.

NOTES: Data may be revised in each of the 3 months after original publication.

Dash = Not available

Table 7. U.S. import price indexes and percent changes by locality of origin: July 2016 to July 2017
 [2000=100, unless otherwise noted]

Description	Relative importance June 2017 ¹	Index		Percent change				
		June 2017	July 2017	Annual	Monthly			
				July 2016 to July 2017	Mar. 2017 to Apr. 2017	Apr. 2017 to May 2017	May 2017 to June 2017	June 2017 to July 2017
Industrialized Countries²	100.000	119.6	119.6	1.9	0.2	0.1	0.3	0.0
Nonmanufacturing.....	8.643	138.0	140.4	14.1	-0.2	2.5	0.8	1.7
Manufacturing.....	90.958	117.7	117.5	0.9	0.3	-0.1	0.2	-0.2
Other Countries³	100.000	118.8	119.1	0.8	0.2	-0.2	-0.4	0.3
Nonmanufacturing.....	8.599	189.4	192.4	8.6	0.2	-0.5	-3.0	1.6
Manufacturing.....	91.194	102.7	102.8	0.0	0.1	-0.2	-0.1	0.1
Canada	100.000	124.9	125.7	4.8	0.0	0.6	-0.2	0.6
Nonmanufacturing.....	23.977	131.8	134.5	14.7	-0.4	2.4	0.5	2.0
Manufacturing.....	75.285	126.9	127.1	1.9	0.2	0.0	-0.4	0.2
European Union⁴	100.000	132.8	132.6	0.8	0.0	0.0	0.4	-0.2
Manufacturing.....	99.470	129.4	129.3	0.9	0.1	0.0	0.3	-0.1
France (Dec. 2003=100)	100.000	120.9	121.4	-1.0	-0.4	-0.1	0.1	0.4
Germany (Dec. 2003=100)	100.000	114.1	114.4	1.1	0.5	-0.2	0.4	0.3
United Kingdom (Dec. 2003=100)	100.000	117.6	117.6	-0.9	-0.5	0.1	0.3	0.0
Latin America⁵	100.000	142.5	142.9	2.0	0.7	-0.1	-0.6	0.3
Nonmanufacturing.....	17.678	216.9	220.4	9.7	1.2	-0.3	-2.9	1.6
Manufacturing.....	81.977	120.0	120.1	0.5	0.5	0.0	-0.2	0.1
Mexico (Dec. 2003=100)	100.000	126.7	126.6	0.0	1.9	0.3	-0.1	-0.1
Nonmanufacturing (Dec. 2008=100).....	8.887	123.9	123.6	2.0	1.0	3.2	0.2	-0.2
Manufacturing (Dec. 2008=100).....	90.804	88.0	87.9	-0.2	2.0	0.1	-0.1	-0.1
Pacific Rim (Dec. 2003=100)⁶	100.000	98.3	98.4	-0.1	0.0	-0.1	0.0	0.1
China (Dec. 2003=100)	100.000	100.0	100.1	-0.9	-0.1	0.0	-0.1	0.1
Japan	100.000	96.3	96.0	0.4	-0.1	0.0	-0.1	-0.3
Asian NICs⁷	100.000	86.1	86.5	3.0	0.6	0.1	0.3	0.5
ASEAN (Dec. 2003=100)⁸	100.000	98.0	97.7	0.9	0.1	0.1	0.0	-0.3
Asia Near East (Dec. 2003=100)⁹	100.000	148.3	149.3	3.0	-2.7	-1.7	-3.1	0.7

¹ Relative importance figures are based on 2015 trade values.

² Western Europe, Canada, Japan, Australia, New Zealand, and South Africa.

³ Eastern Europe, Latin America, OPEC countries, and other countries in Asia, Africa, and the Western Hemisphere.

⁴ European Union countries.

⁵ Mexico, Central America, South America, and the Caribbean.

⁶ China, Japan, Australia, Brunei, Indonesia, Macao, Malaysia, New Zealand, Papua New Guinea, Philippines, and the Asian Newly Industrialized Countries.

⁷ Asian Newly Industrialized Countries - Hong Kong, Singapore, South Korea, and Taiwan.

⁸ Association of Southeast Asian Nations - Brunei, Cambodia, Indonesia, Laos, Malaysia, Myanmar, Philippines, Singapore, Thailand, and Vietnam.

⁹ Bahrain, Iran, Iraq, Israel, Jordan, Kuwait, Lebanon, Oman, Qatar, Saudi Arabia, Syria, United Arab Emirates, and Yemen.

NOTES: Data may be revised in each of the 3 months after original publication.

Regions are not mutually exclusive.

Dash = Not available

Table 8. U.S. international price indexes and percent changes for selected transportation services: July 2016 to July 2017

[2000=100, unless otherwise noted]

Description	Relative importance June 2017 ¹	Index		Percent change				
		June 2017	July 2017	Annual	Monthly			
				July 2016 to July 2017	Mar. 2017 to Apr. 2017	Apr. 2017 to May 2017	May 2017 to June 2017	June 2017 to July 2017
Air Freight								
Import Air Freight	100.000	164.8	181.7	22.1	1.5	0.7	-0.8	10.3
Europe (Dec. 2003=100).....	24.827	139.0	143.3	4.1	2.9	0.1	-1.3	3.1
Asia.....	62.167	151.9	175.9	35.0	1.6	0.3	-0.7	15.8
Export Air Freight	100.000	161.9	157.9	3.1	-0.3	0.5	1.6	-2.5
Europe (Dec. 2006=100).....	32.183	146.9	146.9	1.0	0.0	-0.1	0.0	0.0
Inbound Air Freight	100.000	155.1	164.9	15.6	0.7	0.8	-0.3	6.3
Europe (Dec. 2003=100).....	26.475	130.6	133.6	-1.0	0.9	-0.8	-1.3	2.3
Asia.....	59.812	143.8	158.5	27.6	1.4	0.6	0.2	10.2
Outbound Air Freight	100.000	141.0	143.1	4.3	-1.6	1.8	1.1	1.5
Europe (Dec. 2003=100).....	30.462	145.4	146.0	3.1	0.7	0.0	0.0	0.4
Asia.....	47.205	137.4	141.4	8.9	-4.0	4.0	2.5	2.9
Air Passenger Fares								
Import Air Passenger Fares	100.000	181.7	176.6	-2.6	-3.2	3.9	3.7	-2.8
Europe.....	40.062	197.4	185.4	-9.6	-7.5	3.7	4.2	-6.1
Asia.....	24.163	151.1	141.3	-1.3	0.2	6.2	10.9	-6.5
Latin America/Caribbean.....	9.806	162.7	166.0	5.8	0.9	-4.6	4.3	2.0
Export Air Passenger Fares	100.000	156.5	164.2	4.3	-6.0	1.9	4.8	4.9
Europe.....	31.414	207.7	211.5	2.8	-9.2	3.4	7.7	1.8
Asia.....	25.073	128.2	127.5	-6.0	-1.7	-0.6	3.9	-0.5
Latin America/Caribbean.....	23.535	160.6	171.8	3.2	-3.0	-2.3	1.2	7.0

¹ Relative importance figures are based on 2015 trade values.

NOTES: Data may be revised in each of the 3 months after original publication.

Dash = Not available

TECHNICAL NOTE

Announcement - The Bureau of Labor Statistics is utilizing new index estimation and review systems for the import and export price indexes effective with the release of the June 2017 price data on July 18, 2017. The new estimation and index review systems, the first major improvement to the existing systems in over 20 years, are redesigned, state-of-the-art systems with improved flexibility and review capabilities. The changes to the systems will not have a significant effect on the estimates of price change for the U.S. import and export price indexes.

Import and Export Merchandise and Services Price Indexes - All indexes use a modified Laspeyres formula and are not seasonally adjusted. Price indexes are reweighted annually, with a 2-year lag in the weights. Published series use a base year of 2000=100 where possible. More detailed index series and additional information may be obtained at www.bls.gov/mxp or by calling (202) 691-7101.

Merchandise Goods Classification Systems - The merchandise price indexes are published using three classification systems. Items are classified by end use according to the Bureau of Economic Analysis Classification System, by industry according to the North American Industry Classification System (NAICS), and by product category according to the Harmonized System (HS). While classification by end use and product category are self-explanatory, some notes are in order for classifying items by industry. In the NAICS imports and exports tables, items are classified by output industry, not input industry. As an example, NAICS import index 326 (plastics and rubber products manufacturing) include outputs such as manufactured plastic rather than inputs such as petroleum. The NAICS classification structure also matches the classification system used by the Producer Price Index (PPI) to produce the NAICS primary products indexes.

Import Price Indexes - Products have been classified by the Harmonized Tariff Schedule of the United States Annotated (TSUSA). Import prices are based on U.S. dollar prices paid by the U.S. importer. The prices are generally either "free on board" (f.o.b.) foreign port or "cost, insurance, and freight" (c.i.f.) U.S. port transaction prices, depending on the practices of the individual industry. The index for crude petroleum is calculated from data collected by the U.S. Department of Energy.

Export Price Indexes - Products have been classified by the Harmonized Schedule B classification system of the U.S. Bureau of the Census. The prices used are generally either "free alongside ship" (f.a.s.) factory or "free on board" (f.o.b.) transaction prices, depending on the practices of the individual industry. Prices used in the grain index, excluding rice, are obtained from the U.S. Department of Agriculture.

Services Price Indexes - Starting in September 2008, the import air passenger fares indexes represent changes in the average revenue per passenger received by foreign carriers from U.S. residents and are calculated from data obtained from an airline consulting service. These data include tickets sold by travel agencies and travel websites. Tickets sold directly by the airlines are excluded, as are frequent flyer tickets generally. Starting in January 2008, the export air passenger fares indexes represent changes in the average revenue per passenger received by U.S. carriers from foreign residents and are calculated from data collected directly from airlines. These data include frequent flyer tickets and those sold by consolidators. Taxes and fees are included in the import air passenger fares indexes and excluded from the export air passenger fares indexes. The air freight indexes are calculated from data collected directly from airlines. These data exclude mail and passenger baggage. The scope of the service being priced is the movement of freight from airport to airport only, and does not include any ground transportation or port service. The air freight indexes are presented using two definitions: balance of payments (which represent transactions between U.S. and foreign residents) and international (which represent transactions inbound to and outbound from the U.S.). Fact sheets specifying detailed information for each services industry are available at www.bls.gov/mxp under "MXP Publications."

Import Indexes by Locality of Origin - Prices used in these indexes are a subset of the data collected for the import price indexes. Beginning with January 2002, the indexes are defined by locality of origin using a nomenclature based upon the North American Industry Classification System (NAICS). Nonmanufactured goods are defined as NAICS 11 and 21, and manufactured goods are defined as NAICS 31-33.

Revision Policy - To reflect the availability of late reports and corrections by respondents, monthly data may be revised in each of the 3 months after original publication. After 3 months, no further data revisions take place. For example, data first published in the January release will be subject to revision in the releases for February, March, and April.

Uses of the Data - The primary use of the indexes is to deflate trade statistics, notably the foreign trade sector of the National Income and Product Accounts (NIPA) constructed by the Department of Commerce. Other published indexes are useful for general market analysis. For trade in international services, balance of payments indexes are used for deflating NIPA, while international indexes are more appropriate for market analysis. Merchandise and services indexes also can be used to study U.S. competitiveness and to compute price elasticities, and the merchandise import indexes by country or region of origin are useful in terms of trade analysis.

Email Subscription - The U.S. import and export price indexes news release is available through an email subscription service at www.bls.gov/bls/list.htm.

Additional Information - More detailed data are available on the Import/Export Price Indexes home page at www.bls.gov/mxp. For import and export price indexes data requests, send an email to mxpinfo@bls.gov.

Information from this release will be made available to sensory impaired individuals upon request. Voice phone: (202)-691-5200; Federal Relay Service: 1-(800)-877-8339.