



**Transmission of material in this release is embargoed until  
 8:30 a.m. (EDT) Tuesday, September 19, 2017**

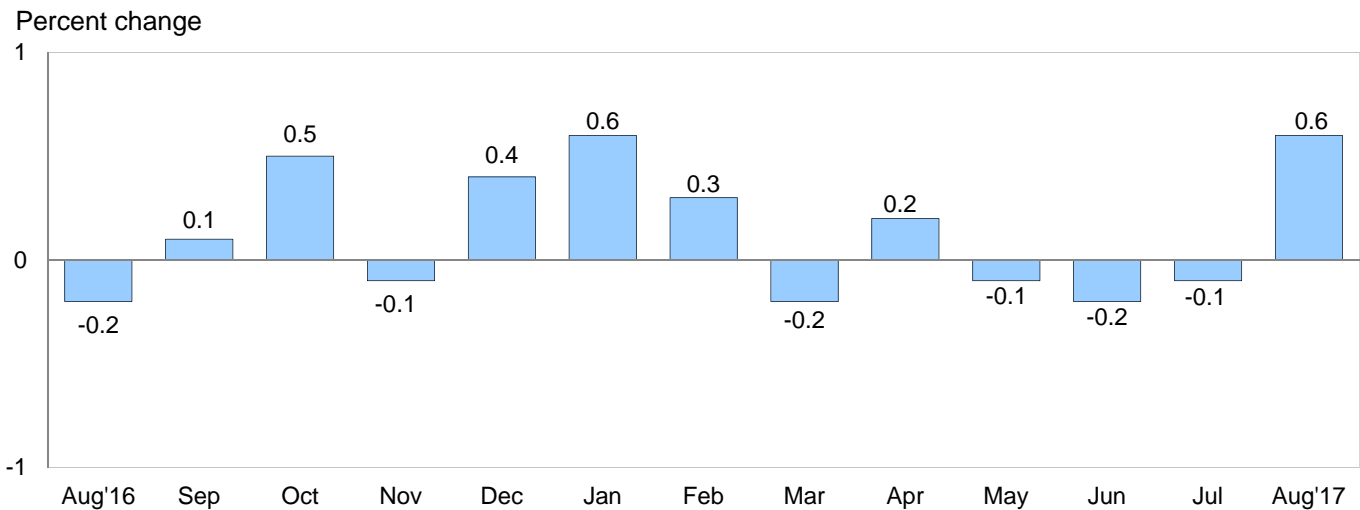
USDL-17-1291

Technical information: (202) 691-7101 • MXPinfo@bls.gov • www.bls.gov/mxp  
 Media contact: (202) 691-5902 • PressOffice@bls.gov

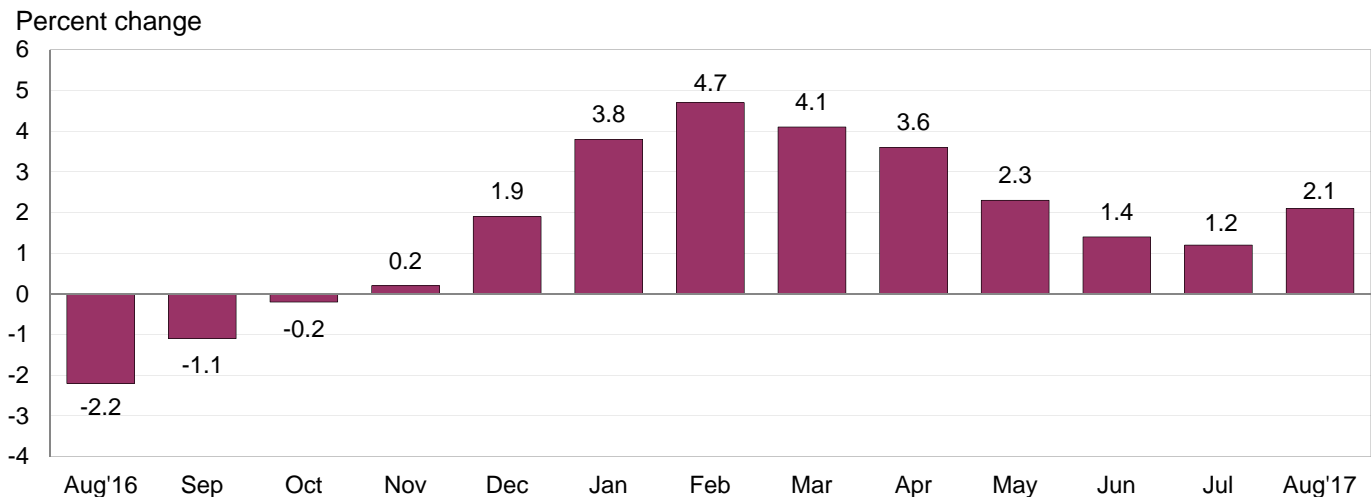
**U.S. IMPORT AND EXPORT PRICE INDEXES – AUGUST 2017**

U.S. import prices increased 0.6 percent in August, the U.S. Bureau of Labor Statistics reported today, following declines in the previous 3 months. The price index for U.S. exports also advanced 0.6 percent in August, after increasing 0.5 percent in July.

**Chart 1. One-month percent change in the Import Price Index: August 2016 – August 2017**



**Chart 2. 12-month percent change in the Import Price Index: August 2016 – August 2017**



**Hurricane Harvey:** Hurricane Harvey did not impact the collection of the import and export price index data for August because the reference period for the data is the first week of the month.

**All Imports:** Import prices rose 0.6 percent in August, the first monthly rise since a 0.2-percent increase in April and the largest advance since the index rose 0.6 percent in January. The last time import prices recorded a larger increase was a 0.7-percent advance in June 2016. Higher import prices for both fuel and nonfuel contributed to the rise in August. Prices for U.S. imports also increased over the past 12 months, advancing 2.1 percent.

**Fuel Imports:** Fuel prices increased 4.2 percent in August, the first monthly advance since the index rose 0.3 percent in February and the largest advance since the index increased 6.1 percent in January. Prior to August, prices for import fuel fell 8.3 percent between February and July. The August advance was driven by a 4.8-percent rise in petroleum prices which more than offset a 5.7-percent drop in natural gas prices. The price index for import fuel increased 15.0 percent between August 2016 and August 2017, led by a 15.8-percent advance in petroleum prices over the same period. Prices for natural gas ticked up 0.1 percent for the year ended in August.

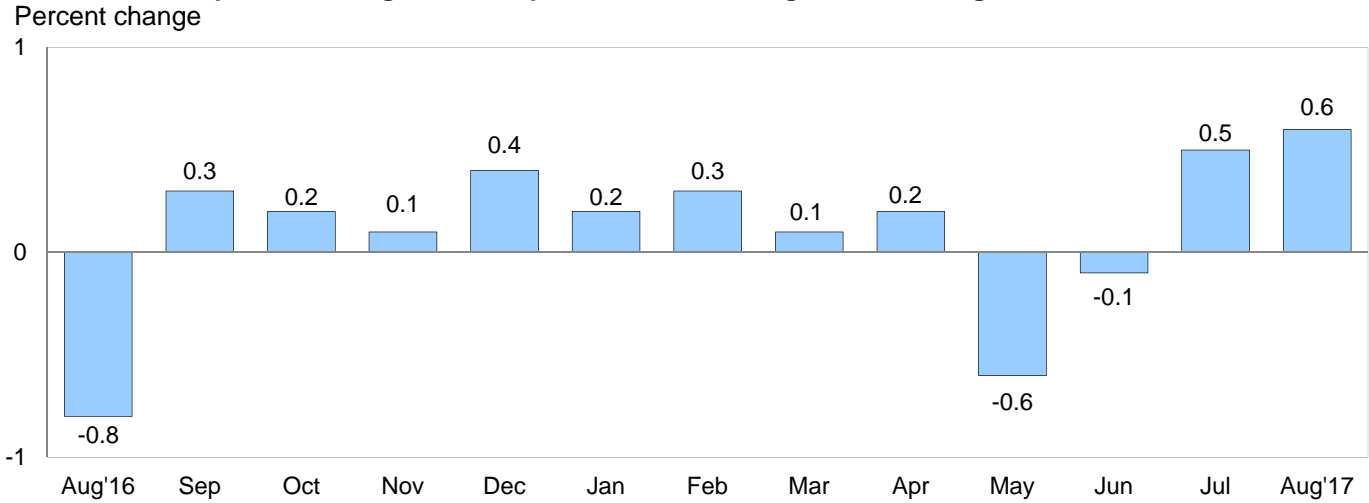
**All Imports Excluding Fuel:** The price index for nonfuel imports advanced 0.3 percent in August, after edging down 0.1 percent in July. In August, advances for each of the major end-use categories contributed to the overall rise in nonfuel prices. Prices for nonfuel imports increased 1.0 percent over the past year. The rise was led by a 3.9-percent advance in nonfuel industrial supplies and materials prices, although rising prices for each of the major finished goods categories and foods, feeds, and beverages also contributed to the overall advance in nonfuel prices.

**Table A. Percent change in Import and Export Price Indexes, selected categories**

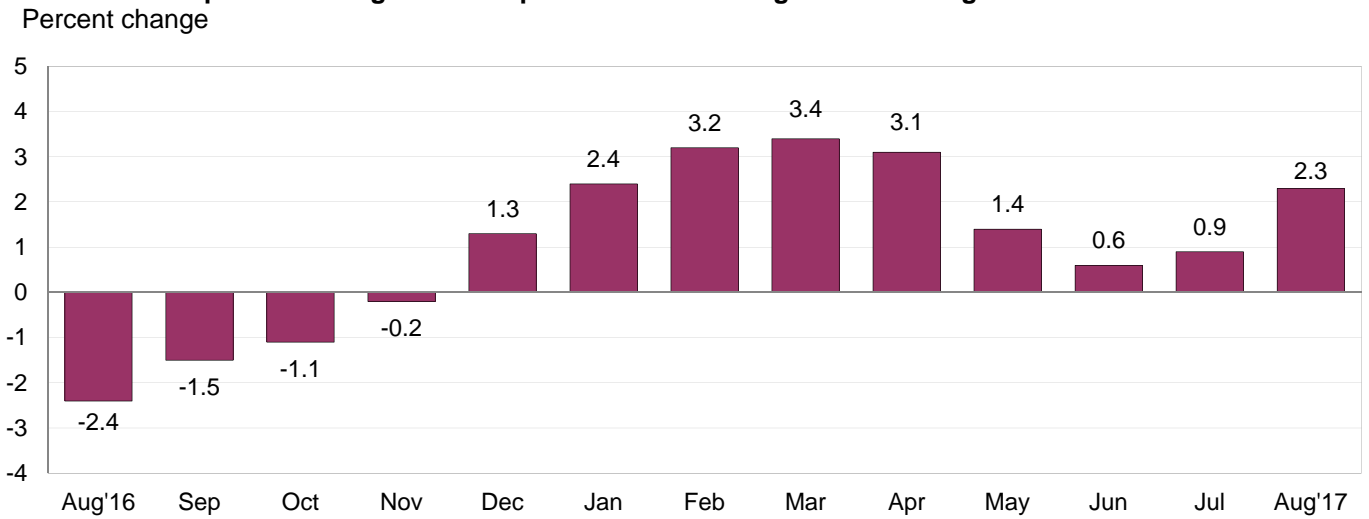
Month	IMPORTS			EXPORTS		
	All imports	Fuel imports	Nonfuel imports	All exports	Agricultural exports	Non-agricultural exports
<b>2016</b>						
August.....	-0.2	-3.4	0.0	-0.8	-3.4	-0.6
September.....	0.1	1.3	0.0	0.3	-1.0	0.5
October.....	0.5	6.6	0.0	0.2	0.5	0.2
November.....	-0.1	-1.1	-0.1	0.1	0.7	0.0
December.....	0.4	5.8	0.0	0.4	-0.2	0.4
<b>2017</b>						
January.....	0.6	6.1	-0.1	0.2	0.4	0.2
February.....	0.3	0.3	0.3	0.3	1.4	0.3
March.....	-0.2	-3.0	0.2	0.1	1.1	0.0
April.....	0.2	-0.4	0.3	0.2	0.1	0.3
May.....	-0.1	-0.9	0.1	-0.6 <sup>r</sup>	-1.6	-0.4
June.....	-0.2	-3.7 <sup>r</sup>	0.1	-0.1 <sup>r</sup>	-1.4	0.0
July.....	-0.1 <sup>r</sup>	-0.6 <sup>r</sup>	-0.1	0.5 <sup>r</sup>	1.9 <sup>r</sup>	0.3
August.....	0.6	4.2	0.3	0.6	0.1	0.7
Aug. 2015 to 2016.....	-2.2	-12.9	-0.9	-2.4	-3.5	-2.3
Aug. 2016 to 2017.....	2.1	15.0	1.0	2.3	1.9	2.4

r Revised

**Chart 3. One-month percent change in the Export Price Index: August 2016 – August 2017**



**Chart 4. 12-month percent change in the Export Price Index: August 2016 – August 2017**



**All Exports:** U.S. export prices rose 0.6 percent in August following a 0.5-percent increase the previous month. The August advance was the largest monthly rise since the index increased 0.8 percent in June 2016. Prices for exports advanced 2.3 percent over the past year. Both agricultural export prices and nonagricultural export prices contributed to the August and 12-month increases for overall export prices.

**Agricultural Exports:** The price index for agricultural exports ticked up 0.1 percent in August, after rising 1.9 percent in July. In August, higher prices for soybeans and other oilseeds, fruit, and meat more than offset lower wheat and corn prices. Export agricultural prices increased 1.9 percent over the past year, driven by increasing meat, wheat, and vegetable prices.

**All Exports Excluding Agriculture:** Nonagricultural export prices advanced 0.7 percent in August following a 0.3-percent rise the previous month. The increase was the largest monthly advance since a 1.0-percent rise in May 2016. In August, the increase was driven by rising nonagricultural industrial supplies and materials prices. Each of the major finished goods categories also contributed to the overall increase in nonagricultural export prices in August. The price index for nonagricultural exports advanced 2.4 percent for the year ended in August, led by rising nonagricultural industrial supplies and materials prices.

## SELECTED AUGUST HIGHLIGHTS

### Import Prices

**Imports by Locality of Origin:** Import prices from China recorded no change in August, after edging up 0.1 percent in July. Prices for imports from China fell 0.7 percent for the year ended in August, the smallest over-the-year decline since the index fell 0.5 percent between April 2014 and April 2015. Import prices from Japan decreased 0.5 percent in August following declines of 0.2 percent in July and 0.1 percent in June. In contrast, rising petroleum prices contributed to higher import prices from Canada, the European Union, and Mexico in August. The price index for imports from Canada rose 1.4 percent, import prices from the European Union advanced 0.8 percent, and prices for imports from Mexico increased 0.6 percent.

**Nonfuel Industrial Supplies and Materials:** Nonfuel industrial supplies and materials prices rose 0.8 percent in August, after decreasing 0.5 percent the previous month. The August advance was led by a 2.5-percent increase in unfinished metals prices and a 2.2-percent rise in prices for selected building materials.

**Finished Goods:** Each of the major finished goods categories recorded increasing prices in August. Automotive vehicles prices rose 0.2 percent in August following a 0.2-percent decline in July. The August increase was driven by a 0.4-percent advance in automotive parts prices. The price indexes for capital goods and consumer goods each ticked up 0.1 percent in August.

**Foods, Feeds, and Beverages:** Import foods, feeds, and beverages prices advanced 0.3 percent in August, after edging down 0.1 percent in July. The August increase was led by a 1.8-percent rise in fruit prices which more than offset falling meat prices.

**Transportation Services:** Import air passenger fares declined 10.6 percent in August following a 2.8-percent drop in July. Lower European and Asian fares contributed to the August decline which was the largest monthly drop since the index was first published on a monthly basis in December 2000. Import air passenger fares decreased 7.4 percent over the past year. The price index for import air freight rose 0.2 percent in August and 20.4 percent over the past 12 months.

### Export Prices

**Nonagricultural Industrial Supplies and Materials:** Nonagricultural industrial supplies and materials prices increased 1.7 percent in August, after rising 0.6 percent in July. The August increase was led by a 4.3-percent rise in fuel prices; higher prices for nonferrous metals and chemicals also contributed to the overall advance.

**Finished Goods:** The price index for each of the major finished goods categories rose 0.2 percent in August. Capital goods prices have not risen by more than 0.2 percent since a 0.3-percent advance in February 2014; the index has not recorded a decline since edging down 0.1 percent in October 2016. The 0.2-percent increase in consumer goods prices followed a 0.5-percent advance in July and was led by higher medicinal, dental, and pharmaceutical prices. The 0.2-percent advance in automotive vehicles prices was driven by a 0.5-percent increase for transport vehicle prices.

**Transportation Services:** Export air passenger fares declined 1.3 percent in August and 1.5 percent over the past 12 months. The August decrease was driven by a 14.1-percent drop in European fares which more than offset a 16.4-percent rise in Asian fares. The price index for export air freight fell 0.3 percent in August. Despite the decline, export air freight prices advanced 2.7 percent for the year ended in August.

---

**Import and Export Price Index data for September 2017 are scheduled for release on Tuesday, October 17, 2017 at 8:30 a.m. (EDT).**

**Table 1. U.S. import price indexes and percent changes for selected categories of goods: August 2016 to August 2017**

[2000=100, unless otherwise noted]

Description	End Use	Relative importance July 2017 <sup>1</sup>	Index		Percent change				
			July 2017	Aug. 2017	Annual	Monthly			
					Aug. 2016 to Aug. 2017	Apr. 2017 to May 2017	May 2017 to June 2017	June 2017 to July 2017	July 2017 to Aug. 2017
<b>All commodities</b> .....		100.000	122.3	123.0	2.1	-0.1	-0.2	-0.1	0.6
<b>All imports excluding food and fuels (Dec. 2010=100)</b> .....		84.920	98.9	99.1	0.8	0.0	0.0	0.0	0.2
<b>All imports excluding petroleum</b> .....		91.897	111.9	112.2	1.0	0.0	0.1	-0.1	0.3
<b>All imports excluding fuels (Dec. 2001=100)</b> .....		91.264	116.0	116.3	1.0	0.1	0.1	-0.1	0.3
<b>Foods, feeds, &amp; beverages</b> .....	0	6.258	182.0	182.5	1.4	1.0	1.1	-0.1	0.3
Agricultural foods, feeds & beverages, excluding distilled beverages.....	00	4.906	199.9	200.8	1.4	1.1	1.3	0.1	0.5
Nonagricultural foods (fish, distilled beverages).....	01	1.352	141.4	140.9	1.5	0.4	0.2	-0.4	-0.4
<b>Industrial supplies &amp; materials</b> .....	1	22.283	165.7	169.3	8.1	-0.5	-1.4	-0.5	2.2
Industrial supplies & materials excluding petroleum.....		14.366	147.3	148.3	4.1	-0.4	-0.1	-0.5	0.7
Industrial supplies & materials excluding fuels (Dec. 2001=100).....		13.581	167.0	168.4	3.9	-0.3	0.0	-0.5	0.8
Industrial supplies & materials, durable....		8.480	158.3	160.8	5.4	-0.3	0.2	-0.2	1.6
Industrial supplies & materials nondurable excluding petroleum.....		5.700	133.4	132.6	2.1	-0.5	-0.4	-1.1	-0.6
Fuels & lubricants.....	10	8.736	165.3	172.3	15.0	-0.9	-3.7	-0.6	4.2
Petroleum & petroleum products.....	100	8.103	177.8	186.3	15.8	-0.7	-3.9	-0.4	4.8
Crude.....	10000	5.750	182.3	189.9	14.9	0.4	-5.8	1.2	4.2
Fuels, n.e.s.-coals & gas.....	101	0.479	100.1	96.0	7.5	-3.3	-1.3	-2.4	-4.1
Gas-natural.....	10110	0.479	78.3	73.8	0.1	-4.4	-1.6	-3.6	-5.7
Paper & paper base stocks.....	11	0.550	107.9	107.5	0.5	0.5	0.7	0.3	-0.4
Materials associated with nondurable supplies & materials.....	12	4.585	152.2	151.8	1.7	-0.3	-0.5	-1.1	-0.3
Selected building materials.....	13	1.478	147.5	150.7	9.4	0.8	-0.6	1.2	2.2
Unfinished metals related to durable goods.....	14	3.471	211.1	216.4	6.3	-1.3	0.3	-1.4	2.5
Finished metals related to durable goods.....	15	1.750	150.9	151.7	3.5	0.5	0.7	0.3	0.5
Nonmetals related to durable goods.....	16	1.712	110.2	110.3	2.4	-0.2	0.1	0.9	0.1
<b>Capital goods</b> .....	2	27.641	89.1	89.2	0.3	0.1	0.2	0.1	0.1
Electric generating equipment.....	20	3.333	116.6	116.9	0.9	-0.2	0.2	0.3	0.3
Nonelectrical machinery.....	21	21.740	81.7	81.8	0.5	0.0	0.2	0.2	0.1
Transportation equipment excluding motor vehicles (Dec. 2001=100).....	22	2.568	134.3	134.1	-1.7	0.0	-0.1	-0.1	-0.1
<b>Automotive vehicles, parts &amp; engines</b> .....	3	16.320	110.2	110.4	0.1	0.0	-0.2	-0.2	0.2
<b>Consumer goods, excluding automobiles</b> .....	4	27.498	106.9	107.0	0.4	-0.1	0.0	0.0	0.1
Nondurables, manufactured.....	40	13.501	121.5	121.6	1.8	0.0	0.1	-0.2	0.1
Durables, manufactured.....	41	12.679	93.1	93.3	-0.7	-0.1	0.0	0.1	0.2
Nonmanufactured consumer goods.....	42	1.319	114.9	114.4	-3.1	0.1	-1.2	-0.1	-0.4

<sup>1</sup> Relative importance figures are based on 2015 trade values.

NOTES: Data may be revised in each of the 3 months after original publication.

Dash = Not available

**Table 2. U.S. export price indexes and percent changes for selected categories of goods: August 2016 to August 2017**

[2000=100, unless otherwise noted]

Description	End Use	Relative importance July 2017 <sup>1</sup>	Index		Percent change				
			July 2017	Aug. 2017	Annual	Monthly			
					Aug. 2016 to Aug. 2017	Apr. 2017 to May 2017	May 2017 to June 2017	June 2017 to July 2017	July 2017 to Aug. 2017
<b>All commodities.....</b>		100.000	122.2	122.9	2.3	-0.6	-0.1	0.5	0.6
<b>Agricultural commodities.....</b>		9.468	178.3	178.5	1.9	-1.6	-1.4	1.9	0.1
<b>All exports excluding food and fuels (Dec. 2010=100).....</b>		83.395	98.9	99.2	0.8	-0.1	0.0	0.2	0.3
<b>Nonagricultural commodities.....</b>		90.532	117.9	118.7	2.4	-0.4	0.0	0.3	0.7
<b>Foods, feeds, &amp; beverages.....</b>	0	8.813	180.6	180.8	2.4	-2.1	-1.5	2.3	0.1
Agricultural foods, feeds & beverages, excluding distilled beverages.....	00	8.192	179.7	179.9	2.1	-2.0	-1.3	2.1	0.1
Nonagricultural foods (fish, distilled beverages).....	01	0.622	199.8	200.4	6.8	-3.2	-3.2	3.8	0.3
<b>Industrial supplies &amp; materials.....</b>	1	29.638	146.3	148.7	6.1	-1.4	-0.1	0.6	1.6
Industrial supplies & materials, durable....		10.517	156.4	158.5	2.4	-0.6	-0.6	-0.5	1.3
Industrial supplies & materials, nondurable.....		19.143	141.8	144.3	8.3	-1.8	0.2	1.3	1.8
Agricultural industrial supplies & materials.....	10	1.276	175.1	174.8	0.8	0.6	-1.4	0.5	-0.2
<b>Nonagricultural industrial supplies &amp; materials.....</b>		28.362	145.4	147.8	6.3	-1.4	0.0	0.6	1.7
Fuels & lubricants.....	11	7.813	163.3	170.3	21.6	-3.3	0.0	1.6	4.3
Nonagricultural supplies & materials excluding fuels & building materials....	12	19.514	150.7	151.7	1.4	-0.8	0.1	0.3	0.7
Selected building materials.....	13	1.035	119.9	120.6	4.1	0.4	-0.4	0.2	0.6
<b>Capital goods.....</b>	2	38.342	107.8	108.0	1.1	0.1	0.1	0.1	0.2
Electrical generating equipment.....	20	3.960	112.6	112.8	0.4	0.0	-0.2	0.0	0.2
Nonelectrical machinery.....	21	25.082	93.9	94.0	0.2	0.0	0.1	0.1	0.1
Transportation equipment excluding motor vehicles (Dec. 2001=100).....	22	9.300	170.8	171.1	3.9	0.3	0.1	0.2	0.2
<b>Automotive vehicles, parts &amp; engines.....</b>	3	10.340	113.2	113.4	0.7	0.0	-0.1	0.0	0.2
<b>Consumer goods, excluding automotives.....</b>	4	12.867	109.0	109.2	-1.1	0.1	0.2	0.5	0.2
Nondurables, manufactured.....	40	6.241	105.1	105.3	-1.1	0.1	0.1	0.8	0.2
Durables, manufactured.....	41	5.222	107.5	107.8	-0.1	0.1	0.3	0.3	0.3

<sup>1</sup> Relative importance figures are based on 2015 trade values.

NOTES: Data may be revised in each of the 3 months after original publication.

Dash = Not available

**Table 3. U.S. import price indexes and percent changes for selected industries: August 2016 to August 2017**  
 [December 2005=100, unless otherwise noted]

Description	NAICS	Relative importance July 2017 <sup>1</sup>	Index		Percent change				
			July 2017	Aug. 2017	Annual Aug. 2016 to Aug. 2017	Monthly			
						Apr. 2017 to May 2017	May 2017 to June 2017	June 2017 to July 2017	July 2017 to Aug. 2017
<b>Nonmanufacturing</b> .....		8.462	92.9	95.4	11.4	0.5	-3.3	0.3	2.7
<b>Agriculture, forestry, fishing and hunting</b> .....	11	2.075	185.6	186.3	1.6	1.9	1.3	-1.2	0.4
Crop production.....	111	1.672	200.1	201.6	0.9	2.1	1.9	-0.8	0.7
Animal production (Dec. 2014=100).....	112	0.211	80.9	80.8	2.1	2.6	1.6	-1.0	-0.1
<b>Mining</b> .....	21	6.388	81.8	84.7	14.9	0.2	-4.9	0.9	3.5
Oil and gas extraction.....	211	6.084	80.8	83.9	14.5	-0.1	-5.4	0.9	3.8
Mining (except oil and gas) (Dec. 2006=100).....	212	0.304	119.5	117.5	24.2	6.3	7.9	0.5	-1.7
<b>Manufacturing</b> .....		91.253	109.8	110.2	1.2	-0.1	0.1	-0.2	0.4
<b>Manufacturing, part 1</b> .....	31	12.013	124.5	124.6	0.8	0.1	0.2	0.1	0.1
Food manufacturing.....	311	3.528	156.8	157.1	2.5	0.6	0.6	0.1	0.2
Beverage and tobacco product manufacturing.....	312	1.070	118.9	118.5	0.7	0.2	0.3	0.2	-0.3
Textile mills (Dec. 2011=100).....	313	0.401	98.3	98.5	0.8	-0.2	0.0	0.1	0.2
Textile product mills.....	314	0.940	109.0	108.9	0.0	0.0	0.1	0.4	-0.1
Apparel manufacturing.....	315	4.222	111.0	111.2	0.0	-0.2	0.0	0.1	0.2
Leather and allied product manufacturing.....	316	1.851	122.7	122.8	-0.2	0.2	0.0	-0.3	0.1
<b>Manufacturing, part 2</b> .....	32	17.490	119.4	120.5	4.8	-0.4	0.0	-0.7	0.9
Wood product manufacturing.....	321	0.913	128.6	132.9	14.3	1.2	-1.8	1.7	3.3
Paper manufacturing.....	322	1.035	105.5	105.4	0.1	0.3	0.5	0.2	-0.1
Printing and related support activities (Dec. 2016=100).....	323	0.223	100.0	99.9	-	0.0	-0.1	0.0	-0.1
Petroleum and coal products manufacturing.....	324	2.128	77.8	82.7	17.0	-3.2	1.1	-4.4	6.3
Chemical manufacturing.....	325	9.921	135.0	134.7	3.5	-0.1	-0.1	-0.5	-0.2
Plastics and rubber products manufacturing.....	326	2.260	118.7	119.0	1.1	0.0	0.0	0.6	0.3
Nonmetallic mineral product manufacturing.....	327	1.011	128.1	128.2	-0.9	-0.1	0.0	-0.2	0.1
<b>Manufacturing, part 3</b> .....	33	61.750	103.6	103.9	0.4	-0.1	0.1	0.0	0.3
Primary metal manufacturing.....	331	4.184	141.0	143.2	6.4	-0.8	0.4	-0.8	1.6
Fabricated metal product manufacturing... ..	332	3.119	123.0	123.6	1.2	0.1	0.2	0.2	0.5
Machinery manufacturing.....	333	7.139	116.8	117.1	0.7	-0.1	0.3	0.3	0.3
Computer and electronic product manufacturing.....	334	17.701	75.9	76.0	-0.3	0.0	0.1	0.0	0.1
Electrical equipment, appliance, and component manufacturing.....	335	4.952	115.0	115.1	0.6	0.0	0.0	0.4	0.1
Transportation equipment manufacturing..	336	17.569	109.3	109.4	-0.1	0.0	-0.2	-0.1	0.1
Furniture and related product manufacturing.....	337	1.740	115.3	115.6	0.6	0.0	0.0	0.0	0.3
Miscellaneous manufacturing.....	339	5.345	117.5	117.8	-1.8	0.0	0.1	0.0	0.3

<sup>1</sup> Relative importance figures are based on 2015 trade values.

NOTES: Data may be revised in each of the 3 months after original publication.

Dash = Not available

**Table 4. U.S. export price indexes and percent changes for selected industries: August 2016 to August 2017**  
 [December 2005=100, unless otherwise noted]

Description	NAICS	Relative importance July 2017 <sup>1</sup>	Index		Percent change				
			July 2017	Aug. 2017	Annual	Monthly			
					Aug. 2016 to Aug. 2017	Apr. 2017 to May 2017	May 2017 to June 2017	June 2017 to July 2017	July 2017 to Aug. 2017
<b>Nonmanufacturing.....</b>		7.531	134.6	131.7	7.9	-0.4	-2.8	4.7	-2.2
<b>Agriculture, forestry, fishing and hunting.....</b>	11	4.561	153.4	152.4	1.3	-2.8	-3.6	3.2	-0.7
Crop production.....	111	4.209	159.5	158.4	0.8	-2.7	-3.4	3.2	-0.7
<b>Mining.....</b>	21	2.970	85.8	82.0	20.4	4.0	-1.5	7.1	-4.4
Mining (except oil and gas).....	212	1.235	102.3	103.3	30.1	1.1	0.0	1.8	1.0
<b>Manufacturing.....</b>		90.940	112.2	113.0	1.8	-0.4	0.1	0.2	0.7
<b>Manufacturing, part 1.....</b>	31	7.157	139.1	139.6	2.6	0.4	0.3	0.7	0.4
Food manufacturing.....	311	4.823	158.0	159.0	3.9	0.5	0.5	0.8	0.6
Beverage and tobacco product manufacturing.....	312	0.719	114.0	113.9	0.2	1.0	-0.7	2.9	-0.1
Textile mills (Dec. 2016=100).....	313	0.671	100.9	100.8	-	-0.1	-0.2	-0.3	-0.1
Leather and allied product manufacturing (Dec. 2016=100).....	316	0.283	98.4	96.8	-	-0.8	-0.2	-0.4	-1.6
<b>Manufacturing, part 2.....</b>	32	23.747	106.6	108.8	4.4	-1.9	0.2	0.6	2.1
Paper manufacturing.....	322	1.684	121.1	120.2	-0.2	-1.3	2.8	1.9	-0.7
Petroleum and coal products manufacturing.....	324	4.979	89.8	98.0	23.0	-6.6	0.9	-0.8	9.1
Chemical manufacturing.....	325	13.183	113.6	113.9	0.1	-0.7	-0.3	1.1	0.3
Plastics and rubber products manufacturing.....	326	2.286	113.7	114.2	0.0	0.3	-0.4	-0.4	0.4
Nonmetallic mineral product manufacturing.....	327	0.846	113.5	114.1	1.2	0.1	0.1	0.1	0.5
<b>Manufacturing, part 3.....</b>	33	60.036	111.8	112.1	0.8	0.0	0.1	-0.1	0.3
Primary metal manufacturing.....	331	3.944	134.8	137.3	-0.7	-0.3	0.1	-2.0	1.9
Fabricated metal product manufacturing..	332	3.320	138.1	138.2	5.9	0.6	0.0	-0.1	0.1
Machinery manufacturing.....	333	10.280	125.7	126.0	0.0	0.0	0.1	0.2	0.2
Computer and electronic product manufacturing.....	334	14.183	82.7	82.8	-0.6	0.1	0.0	0.0	0.1
Electrical equipment, appliance, and component manufacturing.....	335	3.988	113.3	113.4	1.2	0.0	-0.1	0.3	0.1
Transportation equipment manufacturing..	336	18.519	124.5	124.6	2.1	0.1	0.1	0.1	0.1
Furniture and related product manufacturing (Dec. 2011=100).....	337	0.455	117.4	117.4	-0.3	0.0	0.0	-0.1	0.0
Miscellaneous manufacturing.....	339	5.348	118.8	119.2	-0.3	-0.1	0.3	0.2	0.3

<sup>1</sup> Relative importance figures are based on 2015 trade values.

NOTES: Data may be revised in each of the 3 months after original publication.

Dash = Not available



**Table 5. U.S. import price indexes and percent changes for selected categories of goods: August 2016 to August 2017**

[2000=100, unless otherwise noted]

Description	Harmonized system	Relative importance July 2017 <sup>1</sup>	Index		Percent change				
			July 2017	Aug. 2017	Annual	Monthly			
					Aug. 2016 to Aug. 2017	Apr. 2017 to May 2017	May 2017 to June 2017	June 2017 to July 2017	July 2017 to Aug. 2017
<b>Live animals; animal products.....</b>	I	1.529	196.8	195.0	2.2	1.8	1.2	-0.7	-0.9
Meat and edible meat offal.....	02	0.462	253.5	248.1	3.6	2.8	1.6	-0.5	-2.1
Fish and crustaceans, molluscs and other aquatic invertebrates.....	03	0.745	141.7	140.2	-1.4	0.6	0.1	-1.5	-1.1
<b>Vegetable products.....</b>	II	2.106	220.1	221.9	2.1	1.5	1.3	-1.1	0.8
Edible vegetables, roots, and tubers.....	07	0.408	463.4	457.9	5.8	1.0	9.8	-0.9	-1.2
Edible fruit and nuts; peel of citrus fruit or melons.....	08	0.888	131.1	133.9	1.1	3.7	1.1	-2.7	2.1
Coffee, tea, mate and spices.....	09	0.363	232.5	233.1	-0.5	-1.1	-1.4	2.6	0.3
<b>Animal or vegetable fats and oils (Dec. 2009=100).....</b>	III	0.303	115.3	116.7	8.8	0.1	1.6	0.1	1.2
<b>Prepared foodstuffs, beverages, and tobacco.....</b>	IV	2.721	161.6	162.4	0.9	0.0	0.4	0.6	0.5
Sugars and sugar confectionary (Dec. 2012=100).....	17	0.187	86.7	85.9	-1.3	-0.1	0.8	0.1	-0.9
Cocoa and cocoa preparations (Dec. 2009=100).....	18	0.193	94.5	95.4	-15.5	-1.7	4.0	-2.0	1.0
Preparations of vegetables, fruit, nuts, or other parts of plants.....	20	0.364	168.7	169.4	7.2	0.2	-0.1	2.4	0.4
Beverages, spirits, and vinegar.....	22	1.010	128.6	128.1	0.3	0.1	0.3	0.2	-0.4
<b>Mineral products.....</b>	V	8.667	165.8	172.6	15.6	-0.6	-3.4	-0.4	4.1
Mineral fuels, oils and residuals, bituminous substances and mineral waxes.....	27	8.398	163.0	170.0	15.7	-0.9	-3.8	-0.4	4.3
<b>Products of the chemical or allied industries.....</b>	VI	9.352	151.5	151.2	3.3	-0.1	0.1	-0.3	-0.2
Inorganic chemicals.....	28	0.550	275.0	268.7	4.3	-0.1	-2.3	-1.6	-2.3
Organic chemicals.....	29	2.387	123.0	123.1	1.9	0.0	0.1	-0.4	0.1
Pharmaceutical products.....	30	4.358	148.6	148.7	5.4	0.1	0.1	-0.4	0.1
Fertilizers (Dec. 2009=100).....	31	0.256	72.3	69.5	-5.3	-3.8	0.1	-1.4	-3.9
Tanning extracts; dye, pigments, varnish, paints & putty (Dec. 2011=100).....	32	0.196	109.0	108.9	7.5	0.1	1.5	0.4	-0.1
Essential oils and resinoids (Dec. 2016=100).....	33	0.547	99.8	100.2	-	0.2	0.1	0.5	0.4
Miscellaneous chemical products.....	38	0.694	105.0	105.0	3.2	-0.5	0.5	1.1	0.0
<b>Plastics and articles thereof; rubber and articles thereof.....</b>	VII	3.457	139.4	139.5	1.9	0.1	-0.4	-0.1	0.1
Plastics and articles thereof.....	39	2.205	141.8	142.2	1.6	0.2	-0.2	0.6	0.3
Rubber and articles thereof.....	40	1.252	136.4	136.2	2.6	-0.1	-0.7	-1.6	-0.1
<b>Raw hides, skins, leather, furskins, travel goods, etc.....</b>	VIII	0.690	123.7	123.7	0.3	0.5	0.0	0.1	0.0
Articles of leather; travel goods, bags, etc. of various materials.....	42	0.659	129.0	129.0	0.2	0.5	0.0	0.2	0.0
<b>Wood, wood charcoal, cork, straw, basketware and wickerwork.....</b>	IX	0.949	156.7	161.7	14.2	1.2	-1.3	1.6	3.2
Wood and articles of wood; wood charcoal (Dec. 2014=100).....	44	0.924	108.0	111.6	14.7	1.2	-1.4	1.6	3.3
<b>Woodpulp, recovered paper, and paper products.....</b>	X	1.098	110.7	110.5	0.8	0.3	0.3	0.1	-0.2
Paper and paperboard; articles of paper pulp, paper or paperboard.....	48	0.722	102.9	102.9	-1.6	0.0	-0.1	-0.1	0.0
Printed matter (Dec. 2015=100).....	49	0.221	106.1	105.9	5.3	0.0	0.0	0.1	-0.2
<b>Textile and textile articles.....</b>	XI	5.380	113.2	113.4	0.2	-0.1	0.0	0.1	0.2

See footnotes at end of table.

**Table 5. U.S. import price indexes and percent changes for selected categories of goods: August 2016 to August 2017 — Continued**  
 [2000=100, unless otherwise noted]

Description	Harmonized system	Relative importance July 2017 <sup>1</sup>	Index		Percent change				
			July 2017	Aug. 2017	Annual Aug. 2016 to Aug. 2017	Monthly			
						Apr. 2017 to May 2017	May 2017 to June 2017	June 2017 to July 2017	July 2017 to Aug. 2017
Articles of apparel and clothing accessories, knitted or crocheted.....	61	2.204	103.7	104.1	0.6	-0.4	0.1	0.2	0.4
Articles of apparel and clothing accessories, not knitted or crocheted.....	62	1.836	118.9	118.9	-0.6	-0.1	-0.1	0.0	0.0
Made-up or worn textile articles.....	63	0.654	103.7	103.7	0.4	0.0	0.0	0.0	0.0
<b>Headgear, umbrellas, artificial flowers, etc.....</b>	XII	1.523	121.8	121.9	-0.5	0.0	0.0	-0.4	0.1
Footwear and parts of such articles.....	64	1.289	120.9	121.1	-0.4	0.0	0.0	-0.4	0.2
<b>Stone, plaster, cement, asbestos, ceramics, glass etc.....</b>	XIII	0.945	129.9	130.3	-0.5	-0.1	0.1	-0.1	0.3
Articles of stone, plaster, cement, asbestos, or mica (Dec. 2015=100).....	68	0.327	96.4	96.5	-1.7	-0.2	0.5	-0.1	0.1
Ceramic products.....	69	0.270	135.0	135.3	-1.2	-0.2	-0.2	-0.7	0.2
Glass and glassware.....	70	0.348	130.4	131.3	1.2	0.2	0.0	0.3	0.7
<b>Pearls, stones, precious metals, imitation jewelry, and coins.....</b>	XIV	2.783	167.3	170.6	-4.7	-1.2	1.2	-1.9	2.0
<b>Base metals and articles of base metals. ...</b>	XV	5.579	167.2	168.2	7.0	-0.2	-0.1	0.2	0.6
Iron and steel.....	72	1.351	194.9	197.2	12.9	-0.3	-1.1	-0.8	1.2
Articles of iron or steel.....	73	1.715	145.0	143.2	3.8	1.0	1.3	0.7	-1.2
Copper and articles thereof.....	74	0.387	271.7	285.3	18.1	-1.9	0.0	2.1	5.0
Aluminum and articles thereof.....	76	0.809	128.7	128.7	6.6	-0.4	-0.8	0.2	0.0
Tools, implements, cutlery, spoons and forks, of base metal; parts thereof.....	82	0.435	122.5	123.0	0.6	-0.2	-0.2	0.1	0.4
Miscellaneous articles of base metal.....	83	0.523	136.4	136.8	0.2	0.1	-0.1	-0.1	0.3
<b>Machinery, electrical equipment, TV image and sound recorders, parts, etc.....</b>	XVI	29.989	80.6	80.7	0.1	0.0	0.0	0.2	0.1
Machinery and mechanical appliances; parts thereof.....	84	14.918	86.0	86.3	0.8	0.0	0.1	0.2	0.3
Electrical machinery and equip, sound and TV recorders & reproducers, parts.....	85	15.071	75.4	75.5	-0.4	0.0	0.0	0.1	0.1
<b>Vehicles, aircraft, vessels and associated transport equipment.....</b>	XVII	14.663	113.9	114.0	0.1	0.0	-0.1	-0.2	0.1
Motor vehicles and their parts.....	87	13.196	112.9	113.0	0.4	-0.1	0.0	-0.2	0.1
Aircraft, spacecraft, and parts thereof (Dec. 2002=100).....	88	1.335	115.6	115.3	-2.9	0.0	-0.3	-0.2	-0.3
<b>Optical, photo, measuring, medical &amp; musical instruments; &amp; timepieces.....</b>	XVIII	3.883	101.7	101.8	-1.6	-0.1	0.2	0.3	0.1
Optical, photographic, measuring and medical instruments.....	90	3.551	98.3	98.4	-1.9	-0.2	0.3	0.2	0.1
Clocks and watches and parts thereof.....	91	0.272	143.9	143.9	1.7	0.0	0.4	1.0	0.0
<b>Miscellaneous manufactured articles.....</b>	XX	4.306	111.0	111.1	-0.7	0.0	0.0	0.1	0.1
Furniture & stuffed furnishings; lamps & lighting fittings, nesoi; prefab bldgs.....	94	2.664	116.6	116.8	0.3	0.1	-0.1	0.2	0.2
Toys, games and sports equipment; parts and accessories thereof.....	95	1.366	101.4	101.3	-2.0	0.0	0.0	0.0	-0.1
Miscellaneous manufactured articles.....	96	0.277	129.7	129.7	-3.9	0.1	-0.2	0.0	0.0

<sup>1</sup> Relative importance figures are based on 2015 trade values.

NOTES: Data may be revised in each of the 3 months after original publication.

Dash = Not available

**Table 6. U.S. export price indexes and percent changes for selected categories of goods: August 2016 to August 2017**

[2000=100, unless otherwise noted]

Description	Harmoni- zied system	Relative importance July 2017 <sup>1</sup>	Index		Percent change				
			July 2017	Aug. 2017	Annual	Monthly			
					Aug. 2016 to Aug. 2017	Apr. 2017 to May 2017	May 2017 to June 2017	June 2017 to July 2017	July 2017 to Aug. 2017
<b>Live animals; animal products.....</b>	I	1.970	212.3	213.0	13.1	-0.2	1.6	2.5	0.3
Meat & edible meat offal (Dec. 2006=100)...	02	1.216	171.4	172.2	16.6	1.8	2.8	2.6	0.5
Fish and crustaceans, mollusks and aquatic invertebrates (Dec. 2016=100).....	03	0.422	109.0	109.2	-	-6.3	-4.4	5.5	0.2
<b>Vegetable products.....</b>	II	4.266	193.6	192.5	0.8	-5.0	-3.6	3.3	-0.6
Edible fruit and nuts; peel of citrus fruit or melons.....	08	0.827	138.8	141.6	-2.4	-3.1	-2.1	3.0	2.0
Cereals.....	10	1.306	190.9	180.8	5.9	0.9	1.3	7.6	-5.3
Oilseeds and misc. grains, seeds, fruits, plants, straw and fodder.....	12	1.640	198.2	200.7	-4.0	1.9	-2.8	4.1	1.3
<b>Prepared foodstuffs, beverages, and tobacco.....</b>	IV	3.085	148.4	148.7	-1.3	0.5	-0.6	0.5	0.2
Preparations of vegetables, fruit, nuts or other parts of plants (Dec. 2009=100)....	20	0.383	117.1	117.0	-0.5	0.1	0.0	0.1	-0.1
Beverages, spirits, and vinegar (Dec. 2008=100).....	22	0.550	111.4	112.4	2.0	-0.1	-0.6	0.2	0.9
Residues and waste from the food industries; prepared animal feed.....	23	0.708	192.9	189.6	-11.9	0.5	-1.7	0.2	-1.7
<b>Mineral products.....</b>	V	8.167	195.0	202.7	24.9	-2.7	-0.1	2.2	3.9
Ores, slag and ash (Dec. 2012=100).....	26	0.547	92.1	95.0	21.0	-2.1	-2.1	2.9	3.1
Mineral fuels, oils and residuals, bituminous substances and mineral waxes.....	27	7.427	186.4	194.1	26.0	-2.8	0.0	2.2	4.1
<b>Products of the chemical or allied industries.....</b>	VI	10.826	134.2	134.8	-0.9	-0.4	-0.4	1.1	0.4
Inorganic chemicals.....	28	0.770	161.0	163.0	-6.5	-0.5	-4.5	0.5	1.2
Organic chemicals.....	29	2.530	131.6	133.4	0.9	-2.0	0.1	1.5	1.4
Pharmaceutical products.....	30	3.179	105.1	105.5	-2.8	0.2	0.3	0.3	0.4
Fertilizers (Dec. 2016=100).....	31	0.247	107.1	106.0	-	1.5	-1.5	-0.6	-1.0
Tanning or dyeing extracts, dyes, paints varnish, putty, & inks (Dec. 2015=100)....	32	0.533	100.0	98.3	0.4	0.4	1.8	-0.4	-1.7
Essential oils and resinoids; perfumery cosmetic or toilet preparations.....	33	0.816	132.5	132.3	-1.7	0.0	-0.5	-0.1	-0.2
Soap; lubricants; waxes, polishing or scouring products; candles, pastes.....	34	0.575	129.7	129.9	12.3	-1.1	-0.9	15.3	0.2
Miscellaneous chemical products.....	38	1.745	143.9	144.0	-2.0	-0.3	-0.6	0.1	0.1
<b>Plastics and articles thereof; rubber and articles thereof.....</b>	VII	5.077	136.8	137.0	0.7	-1.1	-0.4	-0.2	0.1
Plastics and articles thereof.....	39	4.137	132.7	133.1	1.1	-0.6	0.1	0.2	0.3
Rubber and articles thereof.....	40	0.941	153.8	152.7	-1.7	-3.4	-2.5	-2.0	-0.7
<b>Raw hides, skins, leather, furskins, travel goods, etc.....</b>	VIII	0.341	119.9	117.1	-1.8	-1.4	-0.8	-0.9	-2.3
<b>Wood, wood charcoal, cork, straw, baskets and wickerwork (Dec. 2014=100).....</b>	IX	0.637	98.6	99.2	3.8	1.3	-2.0	2.5	0.6
<b>Woodpulp, recovered paper, and paper products.....</b>	X	2.209	130.8	129.0	4.0	-0.2	3.8	1.6	-1.4
Woodpulp and recovered paper.....	47	0.746	150.0	143.6	7.2	-0.8	11.9	2.7	-4.3
Paper and paperboard; articles of paper pulp, paper or paperboard.....	48	1.110	122.3	122.4	3.0	-0.1	0.2	1.5	0.1
Printed material (Dec. 2014=100).....	49	0.353	101.5	101.5	1.1	0.0	0.0	0.0	0.0
<b>Textile and textile articles.....</b>	XI	1.740	119.8	120.0	0.2	-0.1	-0.7	-0.3	0.2
Cotton, including yarns and woven fabrics thereof.....	52	0.454	126.2	127.3	4.9	0.4	-2.3	-1.0	0.9

See footnotes at end of table.

**Table 6. U.S. export price indexes and percent changes for selected categories of goods: August 2016 to August 2017 — Continued**  
 [2000=100, unless otherwise noted]

Description	Harmoni- zied system	Relative importance July 2017 <sup>1</sup>	Index		Percent change				
			July 2017	Aug. 2017	Annual	Monthly			
					Aug. 2016 to Aug. 2017	Apr. 2017 to May 2017	May 2017 to June 2017	June 2017 to July 2017	July 2017 to Aug. 2017
<b>Stone, plaster, cement, asbestos, ceramics, glass etc.....</b>	XIII	0.836	123.0	123.0	-0.1	0.1	0.1	0.2	0.0
Articles of stone, plaster, cement, asbestos, or mica (Dec. 2015=100).....	68	0.279	101.1	101.3	0.1	0.0	0.0	0.0	0.2
Glass and glassware.....	70	0.425	98.5	98.4	-1.3	-0.3	-0.4	-0.1	-0.1
<b>Pearls, stones, precious metals, imitation jewelry, and coins.....</b>	XIV	4.165	229.9	233.7	-3.1	-0.8	1.3	-1.5	1.7
<b>Base metals and articles of base metals. ...</b>	XV	4.926	151.4	153.3	7.1	-0.1	-0.9	0.1	1.3
Iron and steel.....	72	1.024	154.7	158.6	10.7	-0.8	-2.4	0.7	2.5
Copper and articles thereof.....	74	0.486	172.1	180.4	17.0	-0.3	-0.6	2.7	4.8
Aluminum and articles thereof.....	76	0.830	110.1	111.6	8.1	0.2	-2.3	-1.1	1.4
Tools, implements, cutlery, spoons and forks, of base metal (Dec. 2015=100). ....	82	0.348	99.5	99.5	-0.5	0.0	0.0	0.0	0.0
Miscellaneous articles of base metal.....	83	0.347	148.0	148.0	0.2	0.0	-0.1	0.0	0.0
<b>Machinery, electrical equipment, TV image and sound recorders, parts, etc.....</b>	XVI	28.798	96.2	96.3	0.8	0.1	0.0	0.1	0.1
Machinery and mechanical appliances; parts thereof.....	84	16.936	113.9	114.1	1.5	0.1	0.1	0.1	0.2
Electrical machinery and equipment and parts and accessories thereof.....	85	11.862	77.2	77.2	-0.1	0.1	-0.1	0.3	0.0
<b>Vehicles, aircraft, vessels and associated transport equipment.....</b>	XVII	15.010	132.8	133.0	1.2	0.0	0.1	0.1	0.2
Motor vehicles and their parts.....	87	8.698	115.1	115.2	0.8	-0.1	-0.1	0.0	0.1
<b>Optical, photo, measuring, medical &amp; musical instruments; &amp; timepieces.....</b>	XVIII	6.050	106.4	106.8	0.8	0.2	0.2	0.1	0.4
<b>Miscellaneous manufactured articles.....</b>	XX	1.487	112.3	112.3	0.0	-0.1	0.0	-0.1	0.0
Furniture; stuffed furnishings; lamps and lighting fittings nesoi;.....	94	0.899	128.3	128.3	0.0	0.0	-0.1	0.0	0.0
Toys, games and sports equipment; parts and accessories thereof.....	95	0.435	88.7	88.7	-0.6	0.0	0.0	0.0	0.0

<sup>1</sup> Relative importance figures are based on 2015 trade values.

NOTES: Data may be revised in each of the 3 months after original publication.

Dash = Not available

**Table 7. U.S. import price indexes and percent changes by locality of origin: August 2016 to August 2017**  
 [2000=100, unless otherwise noted]

Description	Relative importance July 2017 <sup>1</sup>	Index		Percent change				
		July 2017	Aug. 2017	Annual	Monthly			
				Aug. 2016 to Aug. 2017	Apr. 2017 to May 2017	May 2017 to June 2017	June 2017 to July 2017	July 2017 to Aug. 2017
<b>Industrialized Countries<sup>2</sup></b> .....	100.000	118.9	119.8	2.5	0.2	-0.2	-0.3	0.8
Nonmanufacturing.....	8.256	131.0	134.9	12.7	2.5	-3.7	-0.6	3.0
Manufacturing.....	91.341	117.5	118.1	1.6	-0.1	0.2	-0.2	0.5
<b>Other Countries<sup>3</sup></b> .....	100.000	119.0	119.5	1.6	-0.2	-0.3	0.1	0.4
Nonmanufacturing.....	8.684	191.6	195.9	13.8	-0.2	-3.1	0.9	2.2
Manufacturing.....	91.113	102.8	103.0	0.4	-0.2	-0.1	0.1	0.2
<b>Canada</b> .....	100.000	123.5	125.2	5.7	0.6	-1.4	0.0	1.4
Nonmanufacturing.....	23.002	125.0	128.9	13.1	2.4	-4.2	-0.5	3.1
Manufacturing.....	76.255	127.1	128.1	3.7	0.0	-0.4	0.2	0.8
<b>European Union<sup>4</sup></b> .....	100.000	132.6	133.6	1.9	0.0	0.4	-0.2	0.8
Manufacturing.....	99.452	129.3	130.2	2.0	0.0	0.4	-0.2	0.7
<b>France (Dec. 2003=100)</b> .....	100.000	122.9	124.8	2.0	-0.1	1.4	0.3	1.5
<b>Germany (Dec. 2003=100)</b> .....	100.000	114.4	114.9	2.0	-0.2	0.4	0.3	0.4
<b>United Kingdom (Dec. 2003=100)</b> .....	100.000	117.6	118.0	-0.7	0.1	0.3	0.0	0.3
<b>Latin America<sup>5</sup></b> .....	100.000	143.0	143.8	3.2	0.0	-0.7	0.3	0.6
Nonmanufacturing.....	17.986	221.6	226.9	16.8	0.3	-3.0	1.7	2.4
Manufacturing.....	81.680	120.1	120.2	0.5	0.0	-0.2	0.0	0.1
<b>Mexico (Dec. 2003=100)</b> .....	100.000	126.5	127.2	1.0	0.4	-0.2	-0.2	0.6
Nonmanufacturing (Dec. 2008=100).....	8.850	123.2	127.6	12.6	3.3	0.1	-0.6	3.6
Manufacturing (Dec. 2008=100).....	90.840	87.9	88.1	0.0	0.1	-0.1	-0.1	0.2
<b>Pacific Rim (Dec. 2003=100)<sup>6</sup></b> .....	100.000	98.4	98.4	-0.1	0.0	0.0	0.0	0.0
<b>China (Dec. 2003=100)</b> .....	100.000	100.1	100.1	-0.7	0.0	-0.1	0.1	0.0
<b>Japan</b> .....	100.000	96.1	95.6	-0.4	0.0	-0.1	-0.2	-0.5
<b>Asian NICs<sup>7</sup></b> .....	100.000	86.6	86.6	3.0	0.1	0.3	0.6	0.0
<b>ASEAN (Dec. 2003=100)<sup>8</sup></b> .....	100.000	97.8	97.9	1.2	0.1	0.1	-0.3	0.1
<b>Asia Near East (Dec. 2003=100)<sup>9</sup></b> .....	100.000	147.4	148.1	2.8	-1.7	-2.9	-0.9	0.5

<sup>1</sup> Relative importance figures are based on 2015 trade values.

<sup>2</sup> Western Europe, Canada, Japan, Australia, New Zealand, and South Africa.

<sup>3</sup> Eastern Europe, Latin America, OPEC countries, and other countries in Asia, Africa, and the Western Hemisphere.

<sup>4</sup> European Union countries.

<sup>5</sup> Mexico, Central America, South America, and the Caribbean.

<sup>6</sup> China, Japan, Australia, Brunei, Indonesia, Macao, Malaysia, New Zealand, Papua New Guinea, Philippines, and the Asian Newly Industrialized Countries.

<sup>7</sup> Asian Newly Industrialized Countries - Hong Kong, Singapore, South Korea, and Taiwan.

<sup>8</sup> Association of Southeast Asian Nations - Brunei, Cambodia, Indonesia, Laos, Malaysia, Myanmar, Philippines, Singapore, Thailand, and Vietnam.

<sup>9</sup> Bahrain, Iran, Iraq, Israel, Jordan, Kuwait, Lebanon, Oman, Qatar, Saudi Arabia, Syria, United Arab Emirates, and Yemen.

NOTES: Data may be revised in each of the 3 months after original publication.

Regions are not mutually exclusive.

Dash = Not available

**Table 8. U.S. international price indexes and percent changes for selected transportation services: August 2016 to August 2017**

[2000=100, unless otherwise noted]

Description	Relative importance July 2017 <sup>1</sup>	Index		Percent change				
		July 2017	Aug. 2017	Annual Aug. 2016 to Aug. 2017	Monthly			
					Apr. 2017 to May 2017	May 2017 to June 2017	June 2017 to July 2017	July 2017 to Aug. 2017
<b>Air Freight</b>								
<b>Import Air Freight</b> .....	100.000	181.7	182.0	20.4	0.7	-0.8	10.3	0.2
Europe (Dec. 2003=100).....	23.206	143.3	144.7	6.6	0.1	-1.3	3.1	1.0
Asia.....	65.272	175.9	175.6	30.8	0.3	-0.7	15.8	-0.2
<b>Export Air Freight</b> .....	100.000	157.9	157.5	2.7	0.5	1.6	-2.5	-0.3
Europe (Dec. 2006=100).....	33.000	146.9	146.9	1.0	-0.1	0.0	0.0	0.0
<b>Inbound Air Freight</b> .....	100.000	164.9	165.5	14.5	0.8	-0.3	6.3	0.4
Europe (Dec. 2003=100).....	25.466	133.6	134.4	0.1	-0.8	-1.3	2.3	0.6
Asia.....	61.997	158.5	159.2	25.2	0.6	0.2	10.2	0.4
<b>Outbound Air Freight</b> .....	100.000	143.1	141.0	3.1	1.8	1.1	1.5	-1.5
Europe (Dec. 2003=100).....	30.137	146.0	146.0	2.7	0.0	0.0	0.4	0.0
Asia.....	47.860	141.4	137.0	6.6	4.0	2.5	2.9	-3.1
<b>Air Passenger Fares</b>								
<b>Import Air Passenger Fares</b> .....	100.000	176.6	157.9	-7.4	3.9	3.7	-2.8	-10.6
Europe.....	38.729	185.4	162.4	-13.5	3.7	4.2	-6.1	-12.4
Asia.....	23.243	141.3	129.4	-2.6	6.2	10.9	-6.5	-8.4
Latin America/Caribbean.....	10.294	166.0	161.9	3.0	-4.6	4.3	2.0	-2.5
<b>Export Air Passenger Fares</b> .....	100.000	164.4	162.2	-1.5	1.9	4.8	5.0	-1.3
Europe.....	30.446	211.5	181.6	-5.9	3.4	7.7	1.8	-14.1
Asia.....	23.904	128.5	149.6	-9.9	-0.6	3.9	0.2	16.4
Latin America/Caribbean.....	23.880	171.2	168.8	3.4	-2.3	1.2	6.6	-1.4

<sup>1</sup> Relative importance figures are based on 2015 trade values.

NOTES: Data may be revised in each of the 3 months after original publication.

Dash = Not available

## TECHNICAL NOTE

**Announcement** - The Bureau of Labor Statistics is utilizing new index estimation and review systems for the import and export price indexes effective with the release of the June 2017 price data on July 18, 2017. The new estimation and index review systems, the first major improvement to the existing systems in over 20 years, are redesigned, state-of-the-art systems with improved flexibility and review capabilities. The changes to the systems will not have a significant effect on the estimates of price change for the U.S. import and export price indexes.

**Import and Export Merchandise and Services Price Indexes** - All indexes use a modified Laspeyres formula and are not seasonally adjusted. Price indexes are reweighted annually, with a 2-year lag in the weights. Published series use a base year of 2000=100 where possible. More detailed index series and additional information may be obtained at [www.bls.gov/mxp](http://www.bls.gov/mxp) or by calling (202) 691-7101.

**Merchandise Goods Classification Systems** - The merchandise price indexes are published using three classification systems. Items are classified by end use according to the Bureau of Economic Analysis Classification System, by industry according to the North American Industry Classification System (NAICS), and by product category according to the Harmonized System (HS). While classification by end use and product category are self-explanatory, some notes are in order for classifying items by industry. In the NAICS imports and exports tables, items are classified by output industry, not input industry. As an example, NAICS import index 326 (plastics and rubber products manufacturing) include outputs such as manufactured plastic rather than inputs such as petroleum. The NAICS classification structure also matches the classification system used by the Producer Price Index (PPI) to produce the NAICS primary products indexes.

**Import Price Indexes** - Products have been classified by the Harmonized Tariff Schedule of the United States Annotated (TSUSA). Import prices are based on U.S. dollar prices paid by the U.S. importer. The prices are generally either "free on board" (f.o.b.) foreign port or "cost, insurance, and freight" (c.i.f.) U.S. port transaction prices, depending on the practices of the individual industry. The index for crude petroleum is calculated from data collected by the U.S. Department of Energy.

**Export Price Indexes** - Products have been classified by the Harmonized Schedule B classification system of the U.S. Bureau of the Census. The prices used are generally either "free alongside ship" (f.a.s.) factory or "free on board" (f.o.b.) transaction prices, depending on the practices of the individual industry. Prices used in the grain index, excluding rice, are obtained from the U.S. Department of Agriculture.

**Services Price Indexes** - Starting in September 2008, the import air passenger fares indexes represent changes in the average revenue per passenger received by foreign carriers from U.S. residents and are calculated from data obtained from an airline consulting service. These data include tickets sold by travel agencies and travel websites. Tickets sold directly by the airlines are excluded, as are frequent flyer tickets generally. Starting in January 2008, the export air passenger fares indexes represent changes in the average revenue per passenger received by U.S. carriers from foreign residents and are calculated from data collected directly from airlines. These data include frequent flyer tickets and those sold by consolidators. Taxes and fees are included in the import air passenger fares indexes and excluded from the export air passenger fares indexes. The air freight indexes are calculated from data collected directly from airlines. These data exclude mail and passenger baggage. The scope of the service being priced is the movement of freight from airport to airport only, and does not include any ground transportation or port service. The air freight indexes are presented using two definitions: balance of payments (which represent transactions between U.S. and foreign residents) and international (which represent transactions inbound to and outbound from the U.S.). Fact sheets specifying detailed information for each services industry are available at [www.bls.gov/mxp](http://www.bls.gov/mxp) under "MXP Publications."

**Import Indexes by Locality of Origin** - Prices used in these indexes are a subset of the data collected for the import price indexes. Beginning with January 2002, the indexes are defined by locality of origin using a nomenclature based upon the North American Industry Classification System (NAICS). Nonmanufactured goods are defined as NAICS 11 and 21, and manufactured goods are defined as NAICS 31-33.

**Revision Policy** - To reflect the availability of late reports and corrections by respondents, monthly data may be revised in each of the 3 months after original publication. After 3 months, no further data revisions take place. For example, data first published in the January release will be subject to revision in the releases for February, March, and April.

**Uses of the Data** - The primary use of the indexes is to deflate trade statistics, notably the foreign trade sector of the National Income and Product Accounts (NIPA) constructed by the Department of Commerce. Other published indexes are useful for general market analysis. For trade in international services, balance of payments indexes are used for deflating NIPA, while international indexes are more appropriate for market analysis. Merchandise and services indexes also can be used to study U.S. competitiveness and to compute price elasticities, and the merchandise import indexes by country or region of origin are useful in terms of trade analysis.

**Email Subscription** - The U.S. import and export price indexes news release is available through an email subscription service at [www.bls.gov/bls/list.htm](http://www.bls.gov/bls/list.htm).

**Additional Information** - More detailed data are available on the Import/Export Price Indexes home page at [www.bls.gov/mxp](http://www.bls.gov/mxp). For import and export price indexes data requests, send an email to [mxpinfo@bls.gov](mailto:mxpinfo@bls.gov).

Information from this release will be made available to sensory impaired individuals upon request. Voice phone: (202)-691-5200; Federal Relay Service: 1-(800)-877-8339.