

NEWS RELEASE

BUREAU OF LABOR STATISTICS
U. S. D E P A R T M E N T O F L A B O R



Transmission of material in this release is embargoed until
8:30 a.m. (EDT) Friday, October 11, 2019

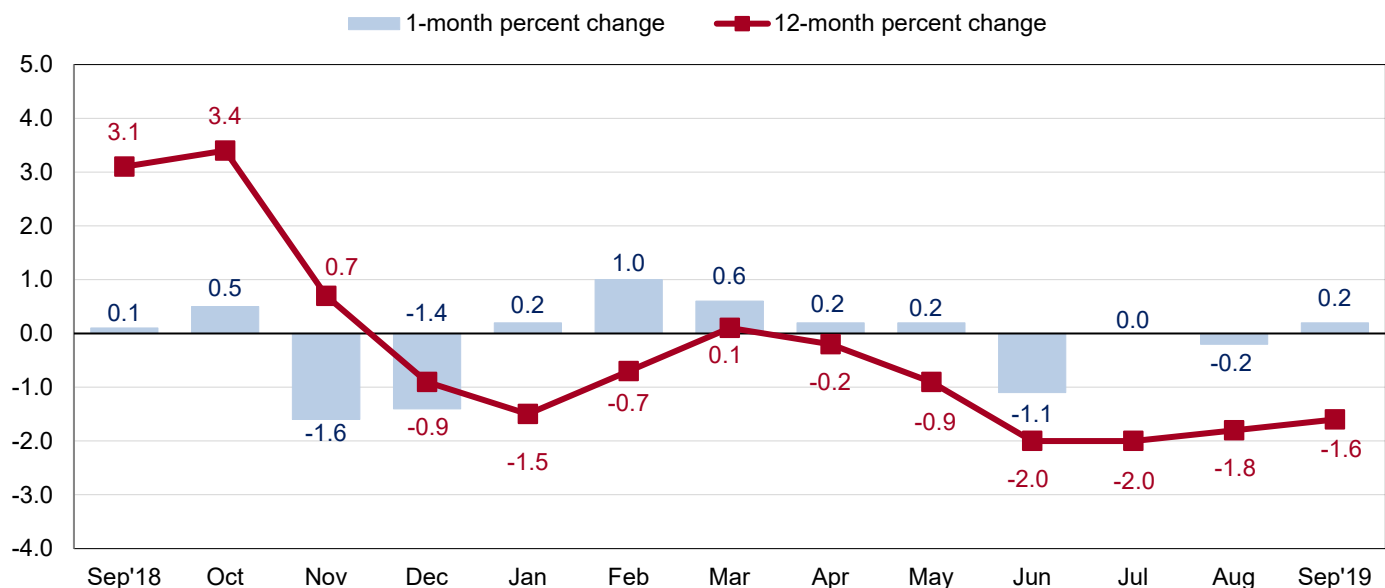
USDL-19-1775

Technical information: (202) 691-7101 • MXPinfo@bls.gov • www.bls.gov/mxp
Media contact: (202) 691-5902 • PressOffice@bls.gov

U.S. IMPORT AND EXPORT PRICE INDEXES – SEPTEMBER 2019

U.S. import prices increased 0.2 percent in September, the U.S. Bureau of Labor Statistics reported today, following a 0.2-percent decline the previous month. The advance in September was driven by higher fuel prices; prices for nonfuel goods edged down 0.1 percent. The price index for U.S. exports fell 0.2 percent in September, after decreasing 0.6 percent in August.

Chart 1. One-month and 12-month percent changes in the Import Price Index: September 2018 – September 2019



Imports

Prices for U.S. imports advanced 0.2 percent in September, after decreasing 0.2 percent in August and unchanged in July. The price index for U.S. imports has not recorded an increase larger than 0.2 percent since the index rose 0.6 percent in March. U.S. import prices declined 1.6 percent from September 2018 to September 2019. (See table 1.)

Fuel Imports: Import fuel prices rose 2.1 percent in September following a 1.9-percent decline in August. Higher prices for petroleum drove the September increase, more than offsetting lower natural gas prices. The price index for import petroleum advanced 2.3 percent in September, after declining 2.3 percent the previous month. In September, natural gas prices fell 3.7 percent, resuming a downward trend after the rise in August. Fuel prices decreased 5.1 percent over the past year. Prices for import petroleum fell 5.8 percent from September 2018 to September 2019. Natural gas prices declined 10.4 percent over the same period.

All Imports Excluding Fuel: Prices for nonfuel imports edged down 0.1 percent in September following two consecutive months unchanged. Foods, feeds, and beverages prices declined 0.8 percent; in contrast, nonfuel industrial supplies and materials prices rose 0.5 percent. The price index for nonfuel imports declined 1.1 percent over the past 12 months, led by price decreases for capital goods and nonfuel industrial supplies and materials.

Nonfuel Industrial Supplies and Materials: Prices for nonfuel industrial supplies and materials increased 0.5 percent in September, after falling 0.3 percent in August and rising 0.2 percent in July. The increase in September was driven by higher prices for nonferrous metals and lumber, which more than offset price decreases for chemicals.

Finished Goods: Prices for imported finished goods were unchanged in September. Consumer goods prices were unchanged following a 0.1-percent increase in August. Lower prices for household goods were offset by price increases for coins, gems, jewelry, and collectibles. The price index for automotive vehicles was unchanged for the second consecutive month, after decreasing 0.2 percent in July. Prices for capital goods were unchanged in September, after edging down 0.1 percent the previous month.

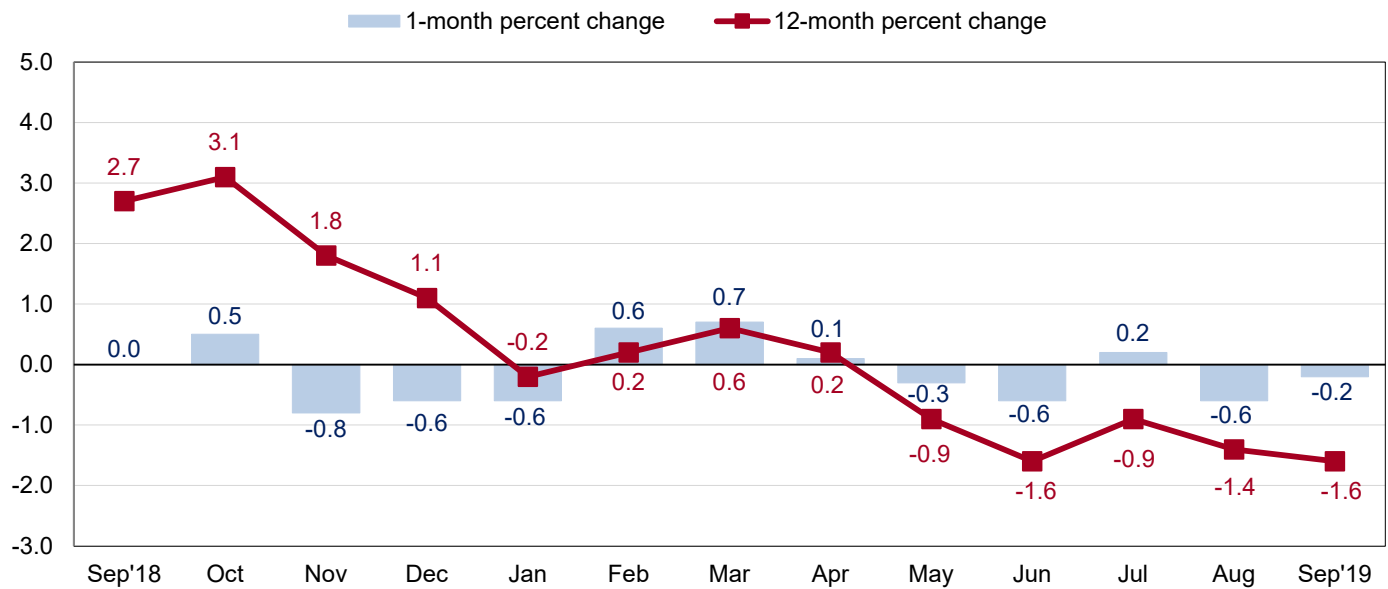
Foods, Feeds, and Beverages: The price index for import foods, feeds, and beverages fell 0.8 percent in September following a 0.5-percent drop in August. A 7.6-percent decrease in fruit prices, which more than offset higher coffee prices, drove the September decline.

Table A. Percent change in Import and Export Price Indexes, selected categories

Month	IMPORTS			EXPORTS		
	All imports	Fuel imports	Nonfuel imports	All exports	Agricultural exports	Non-agricultural exports
2018						
September.....	0.1	0.0	0.0	0.0	-1.3	0.2
October.....	0.5	3.3	0.1	0.5	-0.1	0.5
November.....	-1.6	-12.2	-0.2	-0.8	1.7	-1.0
December.....	-1.4	-13.3	0.0	-0.6	3.8	-1.1
2019						
January.....	0.2	4.6	-0.3	-0.6	-2.1	-0.4
February.....	1.0	10.2	0.1	0.6	0.2	0.7
March.....	0.6	7.2	-0.2	0.7	0.9	0.7
April.....	0.2	1.9	-0.1	0.1	-1.4	0.2
May.....	0.2	3.6	-0.3	-0.3	-1.1	-0.2
June.....	-1.1	-7.8	-0.3	-0.6	2.4	-0.9
July.....	0.0 ^r	0.1 ^r	0.0	0.2	0.2	0.2
August.....	-0.2 ^r	-1.9 ^r	0.0	-0.6	-2.3 ^r	-0.3 ^r
September.....	0.2	2.1	-0.1	-0.2	-1.8	-0.1
Sept. 2017 to 2018.....	3.1	25.6	0.6	2.7	-2.1	3.3
Sept. 2018 to 2019.....	-1.6	-5.1	-1.1	-1.6	0.2	-1.9

r Revised

Chart 2. One-month and 12-month percent change in the Export Price Index: September 2018 – September 2019



Exports

The price index for U.S. exports declined 0.2 percent in September following a 0.6-percent drop in August and a 0.2-percent advance in July. Price declines for agricultural and nonagricultural exports each contributed to the September decrease. U.S. export prices fell 1.6 percent from September 2018 to September 2019. (See table 2.)

Agricultural Exports: Agricultural export prices declined 1.8 percent in September, after falling 2.3 percent in August. Lower prices for corn, meat, wheat, and soybeans each contributed to the decline, more than offsetting higher fruit prices. Despite the decrease in September, agricultural export prices advanced 0.2 percent over the past year.

All Exports Excluding Agriculture: Prices for nonagricultural exports edged down 0.1 percent in September following a 0.3-percent drop the previous month. Price declines for nonagricultural industrial supplies and materials, consumer goods, and automotive vehicles drove the September decrease. Capital goods prices were unchanged in September. The price index for nonagricultural exports decreased 1.9 percent from September 2018 to September 2019. Lower nonagricultural industrial supplies and materials prices more than offset price increases for capital goods, consumer goods, and automotive vehicles over the past year.

Nonagricultural Industrial Supplies and Materials: Prices for nonagricultural industrial supplies and materials declined 0.3 percent in September following a 1.0-percent drop in August. The price index for nonagricultural industrial supplies and materials fell 6.5 percent over the past 12 months, the largest decrease since declining 7.7 percent over the period ended July 2016.

Finished Goods: Prices for export finished goods were mostly down in September. Consumer goods prices fell 0.3 percent, after edging down 0.1 percent in August. Prices for automotive vehicles declined for the third consecutive month in September, falling 0.1 percent. Capital goods prices were unchanged for the month; higher nonelectrical machinery and transportation equipment prices offset lower prices for electrical generating equipment in September.

Measures of Import and Export Prices by Locality

Imports by Locality of Origin: Import prices from China decreased 0.2 percent in September, after falling 0.1 percent the previous month. Prices for imports from China have not increased on a monthly basis since ticking up 0.1 percent in May 2018. The price index for imports from China declined 1.8 percent over the past year, the largest 12-month drop since a 1.9-percent decrease from January 2016 to January 2017. Prices for imports from Japan were unchanged in September following an increase of 0.1 percent in August. The last time the index rose more than 0.1 percent was a 0.2-percent advance in July 2018. Import prices from Japan increased 0.2 percent over the past 12 months. Prices for imports from the European Union decreased 0.1 percent in September, after declining 0.2 percent in August. Import prices from Mexico declined 0.2 percent for the second consecutive month in September. The price index for imports from Canada advanced 0.6 percent in September following a 0.6-percent increase in August. Import prices from Canada rose 5.9 percent over the past year. (See table 7.)

Exports by Locality of Destination: The price index for exports to China decreased 0.2 percent in September following declines of 1.5 percent in August, 0.3 percent in July, and 0.2 percent in June. Export prices to China fell 2.0 percent over the past year. Prices for exports to Japan ticked up 0.1 percent in September, after a 0.7-percent drop in August. Export prices to the European Union edged down 0.1 percent in September and increased 1.5 percent over the past 12 months. The price indexes for exports to Canada and Mexico declined 0.2 percent and 0.5 percent, respectively, in September. (See table 8.)

Terms of Trade Indexes: Terms of Trade indexes are based on country, region, or grouping and measure the change in the purchasing power of exports relative to imports. The U.S. terms of trade with China were unchanged in September following a 1.4-percent drop in August. In September, lower export prices to China offset price decreases for imports from China. The index for U.S. terms of trade with China fell 0.2 percent over the past 12 months. U.S. terms of trade with Japan increased 0.1 percent in September, after a 0.7-percent decline in August and a 0.6-percent rise in July. The U.S. terms of trade with Japan decreased 0.5 percent over the year ended in September. The index for U.S. terms of trade with the European Union was unchanged for the second consecutive month in September. U.S. terms of trade with Mexico fell 0.2 percent in September and 1.0 percent over the past 12 months. The U.S. terms of trade with Canada decreased 0.7 percent in September and declined 6.1 percent over the past year. (See table 9.)

Import and Export Services

Imports: Import air passenger fares rose 9.1 percent in September, after falling 8.2 percent in August and declining 9.9 percent in July. In September, higher European fares more than offset lower Latin American/Caribbean and Asian fares. Import air passenger fares fell 7.4 percent over the 12 months ended in September. Import air freight prices decreased 0.3 percent in September. The price index for import air freight fell 8.4 percent over the past year. (See table 10.)

Exports: The index for export air passenger fares declined 5.2 percent in September following a drop of 3.1 percent in August. Lower Asian and Latin American/Caribbean fares more than offset higher European fares in September. Export air passenger fares decreased 3.2 percent from September 2018 to September 2019. Export air freight prices fell 1.2 percent for the second consecutive month in September, the largest monthly drops since decreasing 6.2 percent in December 2017. Prices for export air freight declined 1.2 percent over the past 12 months.

Import and Export Price Index data for October are scheduled for release on Friday, November 15, 2019 at 8:30 a.m. (EST).

Table 1. U.S. import price indexes and percent changes for selected categories of goods: September 2018 to September 2019

[2000=100, unless otherwise noted]

Description	End Use	Relative importance Aug. 2019 ¹	Index		Percent change				
			Aug. 2019	Sept. 2019	Annual Sept. 2018 to Sept. 2019	Monthly			
						May 2019 to June 2019	June 2019 to July 2019	July 2019 to Aug. 2019	Aug. 2019 to Sept. 2019
All commodities		100.000	125.3	125.6	-1.6	-1.1	0.0	-0.2	0.2
All imports excluding food and fuels (Dec. 2010=100)		83.554	99.2	99.2	-1.1	-0.1	0.0	0.0	0.0
All imports excluding petroleum		89.883	112.0	111.9	-1.1	-0.4	0.0	0.0	-0.1
All imports excluding fuels (Dec. 2001=100)		89.536	116.2	116.1	-1.1	-0.3	0.0	0.0	-0.1
Foods, feeds, & beverages	0	5.982	178.1	176.7	-1.7	-1.5	-0.5	-0.5	-0.8
Agricultural foods, feeds & beverages, excluding distilled beverages.....	00	4.622	193.7	191.6	-2.5	-1.8	-0.5	-1.2	-1.1
Nonagricultural foods (fish, distilled beverages).....	01	1.361	143.4	143.7	1.1	-0.2	-0.3	1.8	0.2
Industrial supplies & materials	1	24.336	187.5	189.7	-3.7	-3.9	0.2	-1.1	1.2
Industrial supplies & materials excluding petroleum.....		14.375	151.7	152.3	-2.5	-1.2	0.1	0.0	0.4
Industrial supplies & materials excluding fuels (Dec. 2001=100).....		13.873	173.8	174.6	-2.2	-0.6	0.2	-0.3	0.5
Industrial supplies & materials, durable....		8.789	166.0	167.7	-0.5	-0.5	0.7	0.1	1.0
Industrial supplies & materials nondurable excluding petroleum.....		5.430	134.2	133.2	-5.2	-2.3	-1.0	-0.1	-0.7
Fuels & lubricants.....	10	10.464	211.3	215.8	-5.1	-7.8	0.1	-1.9	2.1
Petroleum & petroleum products.....	100	10.117	231.6	237.0	-5.8	-7.5	0.2	-2.3	2.3
Crude.....	10000	7.316	239.8	246.3	-6.7	-8.5	-0.9	-1.8	2.7
Fuels, n.e.s.-coals & gas.....	101	0.347	79.2	77.1	-11.3	-16.7	-3.9	10.8	-2.7
Gas-natural.....	10110	0.254	62.9	60.6	-10.4	-22.1	-2.6	13.1	-3.7
Paper & paper base stocks.....	11	0.556	116.4	115.5	-5.9	0.1	-3.1	-0.3	-0.8
Materials associated with nondurable supplies & materials.....	12	4.527	155.0	154.3	-5.0	-0.9	-0.4	-1.1	-0.5
Selected building materials.....	13	1.477	141.3	142.3	-6.8	0.6	0.9	-1.2	0.7
Unfinished metals related to durable goods.....	14	3.792	233.3	237.9	3.2	-1.2	1.1	0.7	2.0
Finished metals related to durable goods.....	15	1.766	157.1	157.7	-1.9	-0.5	0.3	-0.2	0.4
Nonmetals related to durable goods.....	16	1.755	113.2	113.2	-1.3	0.0	0.2	0.1	0.0
Capital goods	2	27.834	88.2	88.2	-1.2	-0.2	0.0	-0.1	0.0
Electric generating equipment.....	20	3.441	119.7	120.0	1.6	0.3	0.2	0.1	0.3
Nonelectrical machinery.....	21	22.089	80.2	80.1	-2.0	-0.2	-0.1	-0.1	-0.1
Transportation equipment excluding motor vehicles (Dec. 2001=100).....	22	2.305	136.9	136.9	1.7	0.3	-0.1	0.1	0.0
Automotive vehicles, parts & engines	3	15.703	109.7	109.7	-0.7	0.1	-0.2	0.0	0.0
Consumer goods, excluding automobiles	4	26.145	107.1	107.1	-0.4	0.0	0.2	0.1	0.0
Nondurables, manufactured.....	40	12.505	124.1	124.0	0.3	0.0	0.5	0.2	-0.1
Durables, manufactured.....	41	12.379	91.4	91.4	-1.2	-0.1	0.0	0.0	0.0
Nonmanufactured consumer goods.....	42	1.260	116.5	116.5	1.0	0.0	0.2	-0.2	0.0

¹ Relative importance figures are based on 2017 trade values.

NOTES: Data may be revised in each of the 3 months after original publication.

Dash = Not available

Table 2. U.S. export price indexes and percent changes for selected categories of goods: September 2018 to September 2019

[2000=100, unless otherwise noted]

Description	End Use	Relative importance Aug. 2019 ¹	Index		Percent change				
			Aug. 2019	Sept. 2019	Annual	Monthly			
					Sept. 2018 to Sept. 2019	May 2019 to June 2019	June 2019 to July 2019	July 2019 to Aug. 2019	Aug. 2019 to Sept. 2019
All commodities.....		100.000	125.5	125.2	-1.6	-0.6	0.2	-0.6	-0.2
Agricultural commodities.....		9.531	176.6	173.5	0.2	2.4	0.2	-2.3	-1.8
All exports excluding food and fuels (Dec. 2010=100).....		80.855	101.5	101.4	0.0	-0.1	0.0	0.0	-0.1
Nonagricultural commodities.....		90.469	121.6	121.5	-1.9	-0.9	0.2	-0.3	-0.1
Foods, feeds, & beverages.....	0	8.893	180.5	177.7	1.5	2.9	0.2	-2.1	-1.6
Agricultural foods, feeds & beverages, excluding distilled beverages.....	00	8.276	178.7	175.5	1.6	3.1	0.2	-2.3	-1.8
Nonagricultural foods (fish, distilled beverages).....	01	0.616	215.0	218.2	0.6	-0.8	0.5	1.3	1.5
Industrial supplies & materials.....	1	31.942	153.3	152.8	-6.5	-2.7	0.5	-1.0	-0.3
Industrial supplies & materials, durable....		10.451	167.0	167.4	3.2	-0.5	0.7	0.9	0.2
Industrial supplies & materials, nondurable.....		21.491	147.3	146.5	-10.9	-3.6	0.3	-2.0	-0.5
Agricultural industrial supplies & materials.....	10	1.225	168.1	165.9	-9.0	-1.5	-0.3	-2.8	-1.3
Nonagricultural industrial supplies & materials.....		30.717	152.8	152.4	-6.5	-2.7	0.5	-1.0	-0.3
Fuels & lubricants.....	11	10.252	176.7	175.7	-16.5	-6.7	1.4	-3.3	-0.6
Nonagricultural supplies & materials excluding fuels & building materials.....	12	19.486	157.5	157.2	-1.1	-0.5	0.0	0.3	-0.2
Selected building materials.....	13	0.979	119.2	119.4	-2.9	-0.9	-0.7	-0.8	0.2
Capital goods.....	2	36.306	110.8	110.8	0.6	0.1	-0.1	0.1	0.0
Electrical generating equipment.....	20	3.787	117.8	117.3	-0.3	0.1	-0.2	-0.1	-0.4
Nonelectrical machinery.....	21	23.715	94.7	94.8	-0.2	0.1	0.0	0.0	0.1
Transportation equipment excluding motor vehicles (Dec. 2001=100).....	22	8.804	182.9	183.0	3.4	0.2	0.1	0.1	0.1
Automotive vehicles, parts & engines.....	3	10.231	114.4	114.3	0.1	0.0	-0.2	-0.2	-0.1
Consumer goods, excluding automotives.....	4	12.629	110.7	110.4	0.5	0.2	0.3	-0.1	-0.3
Nondurables, manufactured.....	40	5.983	108.2	107.9	1.3	0.0	0.7	-0.5	-0.3
Durables, manufactured.....	41	5.203	107.8	107.5	0.0	0.7	-0.4	0.4	-0.3
Nonmanufactured consumer goods (Dec. 2018=100).....	42	1.443	99.0	99.2	-	-0.4	0.1	0.0	0.2

¹ Relative importance figures are based on 2017 trade values.

NOTES: Data may be revised in each of the 3 months after original publication.

Dash = Not available

Table 3. U.S. import price indexes and percent changes for selected industries: September 2018 to September 2019

[December 2005=100, unless otherwise noted]

Description	NAICS	Relative importance Aug. 2019 ¹	Index		Percent change				
			Aug. 2019	Sept. 2019	Annual Sept. 2018 to Sept. 2019	Monthly			
						May 2019 to June 2019	June 2019 to July 2019	July 2019 to Aug. 2019	Aug. 2019 to Sept. 2019
Nonmanufacturing.....		9.804	113.8	115.8	-3.0	-7.5	-0.9	-1.6	1.8
Agriculture, forestry, fishing and hunting.....	11	1.874	174.9	172.7	-3.3	-3.4	-0.7	-2.5	-1.3
Crop production.....	111	1.505	186.3	182.8	-4.2	-3.7	-1.1	-3.5	-1.9
Mining.....	21	7.930	107.7	110.4	-3.0	-8.5	-1.0	-1.5	2.5
Oil and gas extraction.....	211	7.674	107.4	110.1	-3.5	-8.7	-1.0	-1.6	2.5
Manufacturing.....		89.887	111.0	111.0	-1.1	-0.4	0.1	-0.1	0.0
Manufacturing, part 1.....	31	11.231	125.3	125.0	0.0	-0.1	-0.1	0.2	-0.2
Food manufacturing.....	311	3.370	154.2	153.5	-1.4	-0.3	-0.8	-0.1	-0.5
Beverage and tobacco product manufacturing.....	312	1.154	126.0	125.5	3.0	-0.1	0.1	2.4	-0.4
Textile mills (Dec. 2011=100).....	313	0.367	99.9	99.6	-0.6	-0.3	2.0	-1.2	-0.3
Textile product mills.....	314	0.929	108.3	108.0	-0.9	-0.3	-0.7	0.0	-0.3
Apparel manufacturing.....	315	3.773	112.8	112.8	0.8	0.1	0.4	0.2	0.0
Leather and allied product manufacturing.....	316	1.638	123.4	123.1	-0.2	0.0	0.2	0.0	-0.2
Manufacturing, part 2.....	32	17.486	125.5	125.7	-2.7	-1.1	0.6	-0.9	0.2
Paper manufacturing.....	322	1.027	110.9	110.3	-4.8	0.0	-1.7	-0.4	-0.5
Petroleum and coal products manufacturing.....	324	2.577	100.7	102.2	-2.3	-4.8	4.0	-3.6	1.5
Chemical manufacturing.....	325	9.560	138.6	138.4	-2.3	-0.6	0.1	-0.2	-0.1
Plastics and rubber products manufacturing.....	326	2.266	118.9	118.7	-0.7	0.0	-0.3	0.1	-0.2
Nonmetallic mineral product manufacturing.....	327	1.036	131.0	130.7	-0.5	0.0	-0.3	0.2	-0.2
Manufacturing, part 3.....	33	61.170	103.5	103.6	-0.9	-0.1	-0.1	0.0	0.1
Primary metal manufacturing.....	331	4.384	155.7	158.4	3.2	-1.2	0.9	0.3	1.7
Fabricated metal product manufacturing.....	332	3.115	126.4	126.4	-1.2	-0.1	-0.1	0.2	0.0
Machinery manufacturing.....	333	7.320	119.0	118.9	0.3	0.0	0.3	0.0	-0.1
Computer and electronic product manufacturing.....	334	17.215	72.4	72.3	-3.5	-0.4	-0.3	-0.1	-0.1
Electrical equipment, appliance, and component manufacturing.....	335	5.177	117.7	117.8	1.5	0.3	0.2	0.0	0.1
Transportation equipment manufacturing.....	336	16.699	109.1	109.0	-0.5	0.1	-0.2	0.1	-0.1
Furniture and related product manufacturing.....	337	1.867	116.4	116.2	-1.0	-0.4	-0.3	-0.3	-0.2
Miscellaneous manufacturing.....	339	5.393	118.4	118.6	0.3	0.1	0.0	0.2	0.2

¹ Relative importance figures are based on 2017 trade values.

NOTES: Data may be revised in each of the 3 months after original publication.

Dash = Not available

Table 4. U.S. export price indexes and percent changes for selected industries: September 2018 to September 2019

[December 2005=100, unless otherwise noted]

Description	NAICS	Relative importance Aug. 2019 ¹	Index		Percent change				
			Aug. 2019	Sept. 2019	Annual	Monthly			
					Sept. 2018 to Sept. 2019	May 2019 to June 2019	June 2019 to July 2019	July 2019 to Aug. 2019	Aug. 2019 to Sept. 2019
Nonmanufacturing.....		8.735	127.5	126.7	-7.8	-0.4	-0.8	-3.2	-0.6
Agriculture, forestry, fishing and hunting.....	11	4.688	146.9	143.7	-1.3	4.0	0.0	-4.2	-2.2
Crop production.....	111	4.344	153.3	149.6	-1.1	4.5	-0.1	-4.6	-2.4
Mining.....	21	4.046	80.7	81.6	-16.1	-5.1	-1.7	-1.9	1.1
Mining (except oil and gas).....	212	1.302	113.6	108.9	-4.3	-2.0	-1.3	-0.1	-4.1
Manufacturing.....		90.047	116.7	116.4	-0.9	-0.6	0.3	-0.3	-0.3
Manufacturing, part 1.....	31	6.836	141.3	140.0	0.1	0.4	0.3	-0.3	-0.9
Food manufacturing.....	311	4.678	159.5	157.7	0.8	0.6	0.4	-0.3	-1.1
Beverage and tobacco product manufacturing.....	312	0.664	123.5	122.3	-0.6	0.4	0.8	0.1	-1.0
Manufacturing, part 2.....	32	25.093	114.1	113.4	-5.4	-2.3	0.8	-1.3	-0.6
Wood product manufacturing (Dec. 2017=100).....	321	0.517	96.3	96.0	-6.5	-1.5	-0.5	-1.0	-0.3
Paper manufacturing.....	322	1.658	122.4	121.9	-8.0	-0.5	-1.6	-1.4	-0.4
Petroleum and coal products manufacturing.....	324	6.123	107.5	105.2	-15.4	-7.9	3.5	-3.8	-2.1
Chemical manufacturing.....	325	13.423	118.5	118.2	-1.6	-0.4	0.1	-0.5	-0.3
Plastics and rubber products manufacturing.....	326	2.294	117.0	117.2	1.2	0.2	0.2	0.2	0.2
Nonmetallic mineral product manufacturing.....	327	0.849	117.7	119.4	2.2	-0.1	0.0	0.0	1.4
Manufacturing, part 3.....	33	58.119	115.3	115.3	1.1	0.1	0.0	0.3	0.0
Primary metal manufacturing.....	331	4.183	151.4	152.7	7.8	-0.3	1.7	2.6	0.9
Fabricated metal product manufacturing...	332	3.013	148.2	148.2	5.0	0.6	0.2	0.1	0.0
Machinery manufacturing.....	333	9.621	130.1	130.1	1.9	0.1	0.1	0.2	0.0
Computer and electronic product manufacturing.....	334	13.851	81.8	81.9	-1.8	0.0	-0.1	-0.2	0.1
Electrical equipment, appliance, and component manufacturing.....	335	3.821	117.8	117.5	-0.7	-0.1	0.0	-0.3	-0.3
Transportation equipment manufacturing..	336	17.803	129.0	129.1	1.5	0.1	-0.1	-0.1	0.1
Furniture and related product manufacturing (Dec. 2011=100).....	337	0.399	122.5	122.6	1.6	-0.1	-0.2	0.2	0.1
Miscellaneous manufacturing.....	339	5.429	121.1	120.8	0.4	0.6	-0.2	0.7	-0.2

¹ Relative importance figures are based on 2017 trade values.

NOTES: Data may be revised in each of the 3 months after original publication.

Dash = Not available

Table 5. U.S. import price indexes and percent changes for selected categories of goods: September 2018 to September 2019

[2000=100, unless otherwise noted]

Description	Harmonized system	Relative importance Aug. 2019 ¹	Index		Percent change				
			Aug. 2019	Sept. 2019	Annual	Monthly			
					Sept. 2018 to Sept. 2019	May 2019 to June 2019	June 2019 to July 2019	July 2019 to Aug. 2019	Aug. 2019 to Sept. 2019
Live animals; animal products.....	I	1.400	196.2	195.8	1.3	-0.7	-0.3	0.6	-0.2
Meat and edible meat offal.....	02	0.380	262.9	259.0	7.6	0.1	-1.3	0.2	-1.5
Fish and crustaceans, molluscs and other aquatic invertebrates.....	03	0.737	140.3	140.6	-0.8	-0.4	-0.1	0.6	0.2
Vegetable products.....	II	1.828	206.1	203.1	-3.7	-3.8	-1.3	-2.9	-1.5
Edible vegetables, roots, and tubers.....	07	0.484	497.9	502.8	30.9	0.5	-7.9	6.6	1.0
Edible fruit and nuts; peel of citrus fruit or melons.....	08	0.648	114.4	105.2	-22.2	-11.0	1.9	-9.9	-8.0
Coffee, tea, mate and spices.....	09	0.320	191.0	203.4	0.9	1.6	-0.1	-3.3	6.5
Animal or vegetable fats and oils (Dec. 2009=100).....	III	0.226	85.1	83.2	-14.8	-1.5	0.4	0.7	-2.2
Prepared foodstuffs, beverages, and tobacco.....	IV	2.865	166.7	166.4	0.2	0.1	0.0	0.8	-0.2
Cocoa and cocoa preparations (Dec. 2009=100).....	18	0.223	96.6	95.3	-3.2	1.2	0.6	-1.8	-1.3
Preparations of vegetables, fruit, nuts, or other parts of plants.....	20	0.365	171.2	170.4	-2.4	0.1	0.4	0.3	-0.5
Beverages, spirits, and vinegar.....	22	1.106	136.4	135.8	2.9	-0.1	0.1	2.6	-0.4
Mineral products.....	V	10.456	211.6	216.0	-5.1	-7.6	0.0	-1.8	2.1
Mineral fuels, oils and residuals, bituminous substances and mineral waxes.....	27	10.141	208.7	213.1	-5.5	-7.8	0.0	-1.9	2.1
Products of the chemical or allied industries.....	VI	8.932	156.6	156.5	-1.9	-0.6	0.4	-0.1	-0.1
Inorganic chemicals.....	28	0.488	277.5	277.2	-15.2	-5.0	-0.5	-4.3	-0.1
Organic chemicals.....	29	2.016	126.4	126.0	-5.6	-0.2	-0.2	-0.6	-0.3
Pharmaceutical products.....	30	4.416	155.0	155.2	1.4	-0.3	1.4	0.4	0.1
Fertilizers (Dec. 2009=100).....	31	0.262	79.2	79.6	-4.7	-2.7	-6.7	-0.6	0.5
Essential oils and resinoids (Dec. 2016=100).....	33	0.603	103.6	103.2	-0.2	0.0	0.6	-0.4	-0.4
Miscellaneous chemical products.....	38	0.583	103.0	102.1	-4.6	-0.1	0.4	-0.5	-0.9
Plastics and articles thereof; rubber and articles thereof.....	VII	3.472	139.8	139.5	-1.3	0.1	-0.4	-0.4	-0.2
Plastics and articles thereof.....	39	2.322	142.6	142.2	-1.8	0.1	-0.3	-0.3	-0.3
Rubber and articles thereof.....	40	1.150	136.4	136.4	-0.1	0.5	-0.7	-0.4	0.0
Raw hides, skins, leather, furskins, travel goods, etc.....	VIII	0.617	123.9	123.8	-0.9	-0.1	-0.5	-0.1	-0.1
Articles of leather; travel goods, bags, etc. of various materials.....	42	0.589	130.4	130.3	-0.5	-0.1	-0.5	-0.1	-0.1
Wood, wood charcoal, cork, straw, basketware and wickerwork.....	IX	0.836	142.6	144.4	-12.4	1.0	1.7	-2.3	1.3
Woodpulp, recovered paper, and paper products.....	X	1.079	117.4	116.6	-4.0	0.2	-2.0	-0.3	-0.7
Paper and paperboard; articles of paper pulp, paper or paperboard.....	48	0.728	109.9	109.2	-1.7	0.1	-0.9	-0.3	-0.6
Textile and textile articles.....	XI	4.903	114.7	114.6	0.1	-0.2	0.6	-0.2	-0.1
Articles of apparel and clothing accessories, knitted or crocheted.....	61	1.994	105.8	105.8	1.3	-0.1	1.0	0.2	0.0
Articles of apparel and clothing accessories, not knitted or crocheted.....	62	1.645	120.9	121.1	0.7	0.2	0.0	0.2	0.2
Made-up or worn textile articles.....	63	0.639	102.0	101.6	-2.4	-0.1	-1.2	-0.4	-0.4

See footnotes at end of table.

Table 5. U.S. import price indexes and percent changes for selected categories of goods: September 2018 to September 2019 — Continued
 [2000=100, unless otherwise noted]

Description	Harmoni- zied system	Relative importance Aug. 2019 ¹	Index		Percent change				
			Aug. 2019	Sept. 2019	Annual	Monthly			
					Sept. 2018 to Sept. 2019	May 2019 to June 2019	June 2019 to July 2019	July 2019 to Aug. 2019	Aug. 2019 to Sept. 2019
Headgear, umbrellas, artificial flowers, etc.....	XII	1.365	122.7	122.4	0.0	0.0	0.2	0.1	-0.2
Footwear and parts of such articles.....	64	1.134	121.7	121.3	0.1	0.0	0.2	0.1	-0.3
Stone, plaster, cement, asbestos, ceramics, glass etc.....	XIII	0.951	132.2	131.8	-0.3	0.1	-0.2	0.3	-0.3
Ceramic products.....	69	0.267	135.7	135.7	0.4	0.1	-0.7	0.0	0.0
Pearls, stones, precious metals, imitation jewelry, and coins.....	XIV	2.838	185.5	191.9	14.7	0.7	2.9	1.5	3.5
Base metals and articles of base metals. ...	XV	5.787	173.3	173.3	-3.7	-1.2	-0.5	-0.1	0.0
Iron and steel.....	72	1.328	214.3	212.9	-7.7	-1.3	-1.4	0.2	-0.7
Articles of iron or steel.....	73	1.720	149.6	150.0	-1.6	-0.3	-0.5	0.3	0.3
Copper and articles thereof.....	74	0.424	266.7	264.3	-2.4	-5.0	1.3	-3.1	-0.9
Aluminum and articles thereof.....	76	0.979	128.2	127.0	-8.0	-1.3	-0.3	-1.5	-0.9
Tools, implements, cutlery, spoons and forks, of base metal; parts thereof.....	82	0.443	123.6	123.8	0.3	0.1	-0.1	-0.1	0.2
Miscellaneous articles of base metal.....	83	0.517	135.8	135.8	-0.9	-0.2	0.1	-0.2	0.0
Machinery, electrical equipment, TV image and sound recorders, parts, etc.....	XVI	30.020	79.3	79.2	-1.5	0.0	0.1	-0.1	-0.1
Machinery and mechanical appliances; parts thereof.....	84	14.921	85.5	85.3	-1.7	-0.1	0.0	0.0	-0.2
Electrical machinery and equip, sound and TV recorders & reproducers, parts.....	85	15.099	73.5	73.5	-1.3	0.1	0.1	-0.1	0.0
Vehicles, aircraft, vessels and associated transport equipment.....	XVII	13.920	113.4	113.3	-0.8	-0.1	-0.2	0.1	-0.1
Motor vehicles and their parts.....	87	12.747	112.6	112.5	-0.7	0.0	-0.2	0.2	-0.1
Aircraft, spacecraft, and parts thereof (Dec. 2002=100).....	88	1.062	113.0	113.0	-1.8	-0.7	-0.6	0.0	0.0
Optical, photo, measuring, medical & musical instruments; & timepieces.....	XVIII	3.989	101.6	101.7	-0.5	-0.1	0.1	-0.1	0.1
Optical, photographic, measuring and medical instruments.....	90	3.716	98.1	98.2	-0.5	-0.2	0.1	-0.1	0.1
Clocks and watches and parts thereof.....	91	0.211	143.3	144.1	1.3	-0.1	1.0	0.1	0.6
Miscellaneous manufactured articles.....	XX	4.439	111.8	111.7	-1.0	-0.2	-0.3	-0.1	-0.1
Furniture & stuffed furnishings; lamps & lighting fittings, nesoi; prefab bldgs.....	94	2.790	117.8	117.6	-0.8	-0.3	-0.2	-0.3	-0.2
Toys, games and sports equipment; parts and accessories thereof.....	95	1.378	101.8	101.8	-1.4	0.1	-0.6	0.3	0.0
Miscellaneous manufactured articles.....	96	0.271	128.7	128.7	-0.6	0.0	-0.1	0.0	0.0

¹ Relative importance figures are based on 2017 trade values.

NOTES: Data may be revised in each of the 3 months after original publication.

Dash = Not available

Table 6. U.S. export price indexes and percent changes for selected categories of goods: September 2018 to September 2019

[2000=100, unless otherwise noted]

Description	Harmonized system	Relative importance Aug. 2019 ¹	Index		Percent change				
			Aug. 2019	Sept. 2019	Annual	Monthly			
					Sept. 2018 to Sept. 2019	May 2019 to June 2019	June 2019 to July 2019	July 2019 to Aug. 2019	Aug. 2019 to Sept. 2019
Live animals; animal products.....	I	2.006	217.4	213.8	2.9	1.0	-0.1	-0.1	-1.7
Meat & edible meat offal (Dec. 2006=100)...	02	1.193	171.5	164.8	2.5	1.9	0.2	-0.9	-3.9
Fish and crustaceans, mollusks and aquatic invertebrates (Dec. 2016=100).....	03	0.403	118.6	120.4	0.9	-1.0	0.4	1.8	1.5
Vegetable products.....	II	4.403	190.5	185.9	1.3	5.2	0.2	-4.5	-2.4
Edible fruit and nuts; peel of citrus fruit or melons.....	08	0.969	135.4	139.9	6.6	6.1	-2.5	-0.7	3.3
Cereals.....	10	1.380	194.4	177.3	-6.9	11.9	-0.5	-5.0	-8.8
Oilseeds and misc. grains, seeds, fruits, plants, straw and fodder.....	12	1.658	184.3	182.8	2.3	3.8	1.7	-3.0	-0.8
Prepared foodstuffs, beverages, and tobacco.....	IV	3.046	154.6	153.4	1.3	1.0	0.8	-0.1	-0.8
Miscellaneous edible preparations (Dec. 2017=100).....	21	0.573	98.8	98.6	0.8	0.8	0.7	0.1	-0.2
Beverages, spirits, and vinegar (Dec. 2008=100).....	22	0.564	112.7	110.9	4.4	3.6	2.5	-0.2	-1.6
Residues and waste from the food industries; prepared animal feed.....	23	0.702	215.6	209.5	-3.1	1.5	0.8	-0.7	-2.8
Mineral products.....	V	10.346	212.8	211.9	-15.7	-6.8	1.4	-3.3	-0.4
Ores, slag and ash (Dec. 2012=100).....	26	0.410	98.3	96.6	1.3	-3.7	-0.5	1.7	-1.7
Mineral fuels, oils and residuals, bituminous substances and mineral waxes.....	27	9.737	204.1	203.3	-16.8	-7.0	1.5	-3.6	-0.4
Products of the chemical or allied industries.....	VI	10.963	138.6	138.0	-1.1	-0.5	0.1	-0.1	-0.4
Inorganic chemicals.....	28	0.735	147.7	146.4	-3.7	-0.3	0.0	-1.3	-0.9
Organic chemicals.....	29	2.592	142.4	141.3	-5.5	-0.7	-0.8	-0.2	-0.8
Pharmaceutical products.....	30	3.093	107.9	107.4	0.8	0.0	1.0	0.0	-0.5
Tanning or dyeing extracts, dyes, paints varnish, putty, & inks (Dec. 2015=100)....	32	0.567	107.5	104.5	2.1	-1.2	1.6	1.9	-2.8
Essential oils and resinoids; perfumery cosmetic or toilet preparations.....	33	0.851	130.5	130.4	-0.4	-0.6	-0.2	-0.5	-0.1
Soap; lubricants; waxes, polishing or scouring products; candles, pastes.....	34	0.494	124.6	125.2	4.5	-0.1	0.1	0.2	0.5
Miscellaneous chemical products.....	38	1.973	155.5	156.3	1.4	-0.4	-0.6	-0.1	0.5
Plastics and articles thereof; rubber and articles thereof.....	VII	5.213	143.1	142.0	-2.1	-0.1	0.0	-0.6	-0.8
Plastics and articles thereof.....	39	4.333	140.2	138.9	-1.8	0.1	-0.1	-0.6	-0.9
Rubber and articles thereof.....	40	0.879	153.7	153.4	-3.7	-0.6	0.5	-0.3	-0.2
Wood, wood charcoal, cork, straw, baskets and wickerwork (Dec. 2014=100).....	IX	0.624	95.5	94.3	-8.4	-1.3	-0.8	-1.0	-1.3
Woodpulp, recovered paper, and paper products.....	X	1.869	122.4	121.6	-8.9	-0.6	-1.6	-0.1	-0.7
Paper and paperboard; articles of paper pulp, paper or paperboard.....	48	1.083	125.0	124.9	-3.6	0.2	-0.2	-0.6	-0.1
Textile and textile articles.....	XI	1.683	117.4	117.5	-6.7	-1.9	-0.2	-3.1	0.1
Cotton, including yarns and woven fabrics thereof.....	52	0.445	108.7	109.3	-19.0	-6.7	-1.9	-6.5	0.6
Stone, plaster, cement, asbestos, ceramics, glass etc.....	XIII	0.824	127.4	128.2	3.1	0.0	-0.1	0.0	0.6
Pearls, stones, precious metals, imitation jewelry, and coins.....	XIV	4.477	258.8	262.9	14.1	1.6	2.3	3.1	1.6
Base metals and articles of base metals. ...	XV	4.679	157.3	155.3	-2.8	-1.2	-0.6	-0.2	-1.3

See footnotes at end of table.

Table 6. U.S. export price indexes and percent changes for selected categories of goods: September 2018 to September 2019 — Continued
 [2000=100, unless otherwise noted]

Description	Harmoni- zied system	Relative importance Aug. 2019 ¹	Index		Percent change				
			Aug. 2019	Sept. 2019	Annual	Monthly			
					Sept. 2018 to Sept. 2019	May 2019 to June 2019	June 2019 to July 2019	July 2019 to Aug. 2019	Aug. 2019 to Sept. 2019
Copper and articles thereof.....	74	0.465	172.7	171.4	-4.6	-5.3	-0.3	-3.0	-0.8
Aluminum and articles thereof.....	76	0.691	101.7	98.8	-11.9	-2.2	-1.1	-1.3	-2.9
Miscellaneous articles of base metal.....	83	0.337	154.3	154.1	0.8	0.0	-0.1	0.3	-0.1
Machinery, electrical equipment, TV image and sound recorders, parts, etc.....	XVI	28.163	97.6	97.6	-0.2	0.1	-0.2	-0.2	0.0
Machinery and mechanical appliances; parts thereof.....	84	16.365	115.8	115.8	0.5	0.1	-0.2	-0.3	0.0
Electrical machinery and equipment and parts and accessories thereof.....	85	11.798	78.1	78.1	-1.1	-0.1	-0.3	0.0	0.0
Vehicles, aircraft, vessels and associated transport equipment.....	XVII	13.817	137.1	137.1	1.1	0.1	-0.1	0.0	0.0
Motor vehicles and their parts.....	87	8.358	116.3	116.3	-0.1	0.0	-0.2	-0.2	0.0
Optical, photo, measuring, medical & musical instruments; & timepieces.....	XVIII	5.988	111.3	111.4	1.8	0.9	0.8	0.4	0.1
Miscellaneous manufactured articles.....	XX	1.382	112.9	112.9	0.1	-0.1	0.0	0.0	0.0
Furniture; stuffed furnishings; lamps and lighting fittings nesoi;.....	94	0.769	130.6	130.7	0.6	-0.2	-0.1	-0.2	0.1
Toys, games and sports equipment; parts and accessories thereof.....	95	0.458	88.6	88.6	1.0	0.1	0.0	0.5	0.0

¹ Relative importance figures are based on 2017 trade values.

NOTES: Data may be revised in each of the 3 months after original publication.

Dash = Not available

Table 7. U.S. import price indexes and percent changes by locality of origin: September 2018 to September 2019

[2000=100, unless otherwise noted]

Description	Relative importance Aug. 2019 ¹	Index		Percent change				
		Aug. 2019	Sept. 2019	Annual Sept. 2018 to Sept. 2019	Monthly			
					May 2019 to June 2019	June 2019 to July 2019	July 2019 to Aug. 2019	Aug. 2019 to Sept. 2019
Industrialized Countries²	100.000	127.0	127.4	2.4	-1.6	0.2	0.2	0.3
Nonmanufacturing.....	11.184	189.0	193.2	24.4	-11.2	-0.2	2.6	2.2
Manufacturing.....	88.236	121.2	121.3	0.0	-0.4	0.3	-0.2	0.1
Canada	100.000	140.3	141.1	5.9	-4.4	-0.4	0.6	0.6
Nonmanufacturing.....	30.538	185.2	189.6	28.5	-11.6	-0.6	2.8	2.4
Manufacturing.....	68.584	129.8	129.7	-2.6	-0.9	-0.3	-0.3	-0.1
European Union	100.000	136.8	136.7	-0.2	-0.5	0.1	-0.2	-0.1
Manufacturing.....	98.744	133.2	133.1	-0.3	-0.4	0.2	-0.2	-0.1
France (Dec. 2003=100)	100.000	127.8	127.5	-0.7	-0.6	0.5	-0.2	-0.2
Germany (Dec. 2003=100)	100.000	112.4	112.7	0.7	0.0	0.1	0.0	0.3
United Kingdom (Dec. 2003=100)	100.000	121.4	121.8	0.3	-0.7	0.5	-0.3	0.3
Latin America³	100.000	147.1	147.4	-3.3	-1.3	-0.2	-0.6	0.2
Nonmanufacturing.....	16.614	254.9	257.2	-10.7	-4.5	-1.4	-5.3	0.9
Manufacturing.....	83.104	120.4	120.6	-1.3	-0.6	0.1	0.3	0.2
Mexico (Dec. 2003=100)	100.000	127.7	127.4	-1.8	-1.3	0.1	-0.2	-0.2
Nonmanufacturing (Dec. 2008=100).....	8.319	136.7	132.6	-15.8	-9.5	1.2	-9.0	-3.0
Manufacturing (Dec. 2008=100).....	91.418	87.8	87.8	-0.3	-0.5	0.0	0.7	0.0
Pacific Rim (Dec. 2003=100)⁴	100.000	98.1	98.0	-1.1	-0.2	0.0	-0.1	-0.1
China (Dec. 2003=100)	100.000	98.6	98.4	-1.8	-0.2	-0.2	-0.1	-0.2
Japan	100.000	96.8	96.8	0.2	0.0	0.0	0.1	0.0
Taiwan (Dec. 2018=100)	100.000	99.0	99.2	-	0.0	0.1	0.1	0.2
Asian NICs⁵	100.000	87.8	87.7	-1.2	-0.8	0.6	-0.6	-0.1
ASEAN (Dec. 2003=100)⁶	100.000	97.4	97.4	-1.3	-0.2	0.9	-0.1	0.0
Asia Near East (Dec. 2003=100)⁷	100.000	182.5	185.4	-6.4	-4.8	-0.7	1.2	1.6

¹ Relative importance figures are based on 2017 trade values.

² Western Europe, Canada, Japan, Australia, New Zealand, and South Africa.

³ Mexico, Central America, South America, and the Caribbean.

⁴ China, Japan, Australia, Brunei, Indonesia, Macao, Malaysia, New Zealand, Papua New Guinea, Philippines, and the Asian Newly Industrialized Countries.

⁵ Asian Newly Industrialized Countries - Hong Kong, Singapore, South Korea, and Taiwan.

⁶ Association of Southeast Asian Nations - Brunei, Cambodia, Indonesia, Laos, Malaysia, Myanmar, Philippines, Singapore, Thailand, and Vietnam.

⁷ Bahrain, Iran, Iraq, Israel, Jordan, Kuwait, Lebanon, Oman, Qatar, Saudi Arabia, Syria, United Arab Emirates, and Yemen.

NOTES: Data may be revised in each of the 3 months after original publication.

Regions are not mutually exclusive.

Dash = Not available

Table 8. U.S. export price indexes and percent changes by locality of destination: September 2018 to September 2019

[December 2017=100, unless otherwise noted]

Description	Relative importance Aug. 2019 ¹	Index		Percent change				
		Aug. 2019	Sept. 2019	Annual Sept. 2018 to Sept. 2019	Monthly			
					May 2019 to June 2019	June 2019 to July 2019	July 2019 to Aug. 2019	Aug. 2019 to Sept. 2019
Industrialized Countries²	100.000	102.9	102.8	0.2	-0.3	0.3	-0.4	-0.1
Nonmanufacturing.....	8.082	104.0	104.7	3.4	-2.7	-1.2	-4.8	0.7
Manufacturing.....	90.796	103.1	102.8	0.0	-0.1	0.4	0.0	-0.3
Canada	100.000	103.8	103.6	-0.7	-0.4	0.2	-0.9	-0.2
European Union	100.000	105.1	105.0	1.5	-0.4	0.7	-0.2	-0.1
Nonmanufacturing.....	7.075	103.0	100.9	-0.8	-2.4	-2.6	-2.5	-2.0
Manufacturing.....	91.802	105.3	105.4	1.7	-0.3	1.0	-0.1	0.1
Germany	100.000	104.3	104.5	3.7	0.2	1.2	0.0	0.2
Latin America³	100.000	100.5	100.1	-3.7	-1.8	0.7	-1.1	-0.4
Nonmanufacturing.....	6.974	103.7	100.7	-3.9	1.1	-0.7	-1.4	-2.9
Manufacturing.....	92.602	100.3	100.1	-3.7	-2.0	0.9	-1.1	-0.2
Mexico	100.000	100.3	99.8	-2.8	-1.3	0.7	-0.7	-0.5
Nonmanufacturing.....	6.007	96.6	95.0	-7.9	0.5	-0.4	-1.5	-1.7
Manufacturing.....	93.502	100.5	100.1	-2.5	-1.4	0.7	-0.6	-0.4
Pacific Rim⁴	100.000	100.2	100.3	0.6	-0.1	0.8	-0.5	0.1
Nonmanufacturing.....	14.313	99.2	98.7	7.0	0.2	4.0	-3.2	-0.5
Manufacturing.....	83.863	101.0	101.1	0.2	0.0	0.3	0.0	0.1
China	100.000	96.3	96.1	-2.0	-0.2	-0.3	-1.5	-0.2
Nonmanufacturing.....	20.285	93.9	94.3	5.7	0.3	0.3	-3.7	0.4
Manufacturing.....	76.458	98.4	98.2	-2.4	0.0	-0.3	-1.0	-0.2
Japan	100.000	100.1	100.2	-0.3	0.1	0.7	-0.7	0.1
Nonmanufacturing.....	18.371	100.5	98.4	-0.2	1.8	0.1	-4.6	-2.1
Manufacturing.....	80.450	99.8	100.2	-0.7	-0.2	0.6	0.4	0.4

¹ Relative importance figures are based on 2017 trade values.

² Western Europe, Canada, Japan, Australia, New Zealand, and South Africa.

³ Mexico, Central America, South America, and the Caribbean.

⁴ China, Japan, Australia, Brunei, Indonesia, Macao, Malaysia, New Zealand, Papua New Guinea, Philippines, and the Asian Newly Industrialized Countries.

NOTES: Data may be revised in each of the 3 months after original publication.

Regions are not mutually exclusive.

Dash = Not available

Table 9. U.S. terms of trade indexes and percent changes by locality: September 2018 to September 2019¹
 [December 2017=100, unless otherwise noted]

Description	Index		Percent change				
	Aug. 2019	Sept. 2019	Annual	Monthly			
			Sept. 2018 to Sept. 2019	May 2019 to June 2019	June 2019 to July 2019	July 2019 to Aug. 2019	Aug. 2019 to Sept. 2019
Industrialized Countries²	99.2	98.8	-2.2	1.4	0.1	-0.5	-0.4
Canada	97.2	96.5	-6.1	4.1	0.5	-1.4	-0.7
European Union	103.4	103.4	1.8	0.1	0.6	0.0	0.0
Germany	106.8	106.7	2.9	0.2	1.0	0.0	-0.1
Latin America³	101.7	101.1	-0.3	-0.5	0.9	-0.5	-0.6
Mexico	101.3	101.1	-1.0	0.0	0.7	-0.6	-0.2
Pacific Rim⁴	100.5	100.7	1.7	0.1	0.8	-0.4	0.2
China	97.8	97.8	-0.2	0.0	-0.1	-1.4	0.0
Japan	98.8	98.9	-0.5	0.1	0.6	-0.7	0.1

¹ Terms of trade indexes are derived by dividing the export price index by the corresponding import price index and multiplying by 100.

² Western Europe, Canada, Japan, Australia, New Zealand, and South Africa.

³ Mexico, Central America, South America, and the Caribbean.

⁴ China, Japan, Australia, Brunei, Indonesia, Macao, Malaysia, New Zealand, Papua New Guinea, Philippines, and the Asian Newly Industrialized Countries.

NOTES: Data may be revised in each of the 3 months after original publication.

Regions are not mutually exclusive.

Dash = Not available

Table 10. U.S. international price indexes and percent changes for selected transportation services: September 2018 to September 2019

[2000=100, unless otherwise noted]

Description	Relative importance Aug. 2019 ¹	Index		Percent change				
		Aug. 2019	Sept. 2019	Annual Sept. 2018 to Sept. 2019	Monthly			
					May 2019 to June 2019	June 2019 to July 2019	July 2019 to Aug. 2019	Aug. 2019 to Sept. 2019
Air Freight								
Import Air Freight	100.000	173.7	173.1	-8.4	-0.1	-2.5	-0.4	-0.3
Europe (Dec. 2003=100).....	27.356	145.7	145.5	-0.1	0.1	-2.6	1.0	-0.1
Asia.....	59.357	161.2	160.3	-13.0	-0.1	-2.8	-1.1	-0.6
Export Air Freight	100.000	164.4	162.4	-1.2	-0.5	0.7	-1.2	-1.2
Europe (Dec. 2006=100).....	32.038	151.6	151.1	1.2	-0.5	0.5	-0.6	-0.3
Inbound Air Freight	100.000	161.0	160.1	-7.2	0.5	-2.2	-2.1	-0.6
Europe (Dec. 2003=100).....	28.360	132.0	132.6	-2.2	1.4	-4.3	-0.1	0.5
Asia.....	56.355	147.9	146.0	-11.2	0.2	-1.6	-3.5	-1.3
Outbound Air Freight	100.000	146.4	141.8	-2.3	0.0	2.6	-1.5	-3.1
Europe (Dec. 2003=100).....	33.282	154.7	154.7	3.8	-0.3	0.4	-0.3	0.0
Asia.....	44.559	141.0	131.5	-8.0	0.4	6.2	-3.8	-6.7
Air Passenger Fares								
Import Air Passenger Fares	100.000	153.6	167.6	-7.4	6.7	-9.9	-8.2	9.1
Europe.....	50.328	162.0	192.6	-8.9	7.3	-12.7	-12.2	18.9
Asia.....	21.530	125.9	124.0	-6.3	9.7	-11.8	-5.1	-1.5
Latin America/Caribbean.....	7.734	160.3	147.6	-0.8	4.3	6.1	-4.6	-7.9
Export Air Passenger Fares	100.000	154.4	146.3	-3.2	4.0	3.3	-3.1	-5.2
Europe.....	26.572	184.1	186.2	-6.2	5.2	3.2	-11.4	1.1
Asia.....	29.515	145.6	130.6	-3.2	5.5	1.6	3.2	-10.3
Latin America/Caribbean.....	25.874	164.6	154.1	0.6	4.9	6.7	-3.0	-6.4

¹ Relative importance figures are based on 2017 trade values.

NOTES: Data may be revised in each of the 3 months after original publication.

Dash = Not available

TECHNICAL NOTE

Import and Export Goods and Services Price Indexes - All indexes use a modified Laspeyres formula and are not seasonally adjusted. Price indexes are reweighted annually, with a 2-year lag in the weights. Published series use a base year of 2000=100 where possible. More detailed index series and additional information may be obtained at www.bls.gov/mxp or by calling (202) 691-7101.

Merchandise Goods Classification Systems - The merchandise price indexes are published using three classification systems. Items are classified by end use according to the Bureau of Economic Analysis Classification System, by industry according to the North American Industry Classification System (NAICS), and by product category according to the Harmonized System (HS). While classification by end use and product category are self-explanatory, some notes are in order for classifying items by industry. In the NAICS imports and exports tables, items are classified by output industry, not input industry. As an example, NAICS import index 326 (plastics and rubber products manufacturing) includes outputs such as manufactured plastic rather than inputs such as petroleum. The NAICS classification structure also matches the classification system used by the Producer Price Index (PPI) to produce the NAICS primary products indexes.

Import Price Goods Indexes - Items are classified by the Harmonized Tariff Schedule of the United States Annotated (TSUSA). Import prices are based on U.S. dollar prices paid by the U.S. importer. The prices are generally either "free on board" (f.o.b.) foreign port or "cost, insurance, and freight" (c.i.f.) U.S. port transaction prices, depending on the practices of the individual industry. The index for crude petroleum is calculated from data collected by the U.S. Department of Energy.

Export Price Goods Indexes - Items are classified by the Harmonized Schedule B classification system of the U.S. Bureau of the Census. The prices used are generally either "free alongside ship" (f.a.s.) factory or "free on board" (f.o.b.) transaction prices, depending on the practices of the individual industry. Prices used in the grain index, excluding rice, are obtained from the U.S. Department of Agriculture.

Services Price Indexes - Indexes for import and export air passenger fares calculate changes in the average revenue received per passenger by foreign carriers from U.S. residents and by U.S. carriers from foreign residents, respectively. Data are obtained from an airline consulting service and report on tickets sold by travel agencies, travel websites, and directly by the airlines. Taxes and fees are included in both the import and export air passenger fares indexes. Import air passenger fares data have used the airline consulting service source since September 2008. Before April 2018, the export air passenger fares data were collected directly by BLS from U.S. airlines. The air freight indexes are calculated from data collected directly from airlines. These data exclude mail and passenger baggage. The scope of the service being priced is the movement of freight from airport to airport only, and does not include any ground transportation or port service. The air freight indexes are presented using two definitions: balance of payments (which represents transactions between U.S. and foreign residents) and international (which represents transactions inbound to and outbound from the United States.) Fact sheets specifying detailed information for each services industry are available at www.bls.gov/mxp under "MXP Publications."

Import Price Indexes by Locality of Origin - Prices used in these indexes are a subset of the data collected for the import price indexes. The indexes are specific to a country, region, or grouping and, beginning with January 2002, are based on the North American Industry Classification System (NAICS) covering goods-producing industries. Nonmanufactured goods are defined as NAICS 11 and 21, and manufactured goods are defined as NAICS 31-33.

Export Price Indexes by Locality of Destination - Prices used in these indexes are a subset of the data collected for the export price indexes. The indexes are specific to a country, region, or grouping and are based on the North American Industry Classification System (NAICS) covering goods-producing industries. Nonmanufactured goods are defined as NAICS 11 and 21, and manufactured goods are defined as NAICS 31-33.

Terms of Trade Indexes - Terms of trade indexes measure the relative price of exports in terms of import prices for a specific country, region, or grouping. The indexes are calculated as one country, region, or grouping's all-export goods price index divided by the corresponding all-import goods price index on a scale of 100.

Relative Importance - A relative importance is a specific index's price-updated value share (expressed as a percentage) of overall imports or exports at a specific point in time. Relative importance values are affected by the trade weights at the point indexes are reweighted and index changes relative to other indexes since the reweight point. If an index is rising in value relative to other indexes over time, the relative importance will increase as well.

Revision Policy - To reflect the availability of late reports and corrections by respondents, monthly data may be revised in each of the 3 months after original publication. After 3 months, no further data revisions take place. For example, data first published in the January release will be subject to revision in the releases for February, March, and April.

Rounding Policy - Index values are rounded to the tenth decimal place after being calculated. All percent changes are then derived from the rounded index values and subsequently rounded to the tenth decimal place.

Uses of the Data - The primary use of the indexes is to deflate trade statistics, notably the foreign trade sector of the National Income and Product Accounts (NIPA) constructed by the Department of Commerce. Other published indexes are useful for general market analysis. For trade in international services, balance of payments indexes are used for deflating NIPA, while international indexes are more appropriate for market analysis.

Email Subscription - The U.S. import and export price indexes news release is available through an email subscription service at www.bls.gov/bls/list.htm.

Additional Information - More detailed data are available on the Import/Export Price Indexes home page at www.bls.gov/mxp. For import and export price indexes data requests, send an email to mxpinfo@bls.gov.

Information from this release will be made available to sensory impaired individuals upon request. Voice phone: (202)-691-5200; Federal Relay Service: 1-(800)-877-8339.